

Willamette Collegian

35

Thursday, October 7, 1976

Willamette University, Salem, Oregon

Volume 88, No. 5

Large featured at senate

by Joe Reinhart

Larry Large, Vice-President of Student Affairs was invited to the ASWU Senate to discuss security and SAGA last week. But the meeting focused mainly on the alcohol question.

"I'm not going to come on campus and search for alcohol," said Large, "but if I run into the situation on the way to my office or an event on campus, action will be taken."

In the fall of 1975 the Board of Trustees voted to accept a new alcohol policy as printed on page eight of the student affairs Standards of Conduct. It reads: "the possession and use of alcoholic beverages on campus and in University Facilities shall be in conformance with all applicable laws and University regulations. Possession and use of

alcoholic beverages on campus shall be limited to private rooms of campus residences, such use may be permitted by the residents of the living organizations subject to the approval of the Office of Student Affairs." The full standards will accompany the Fusser's Guide when delivered later this month.

Large commented that he has received several complaints this fall from students who couldn't sleep because of parties. They stated that they found messes in the bathrooms, including kegs in the shower and remains of where people had been sick. This was reported from both Greek and dorm living organizations.

He added that students who are drinking against policy are drinking against state law. If a student or someone from the community calls the Salem police to com-

plain, they will come on campus with reason to believe a violation of the law is taking place. Those who are caught will run the risk of being punished through the student code and Oregon law for minor in possession of an alcoholic beverage and/or contributing to the delinquency of a minor.

Large emphasized that the policy was debated for two years before being accepted by the student affairs committee, senate, administration, and the board of trustees. "We are all committed to it," he added. "And it goes about as far as it can and be within the law."

The vice-president is meeting with interested groups who wish to discuss the matter and ask questions on alternatives and penalties. He meets with the Interfraternity Council tonight.

WU can't meet

budget expectations

by Dave Rice

A freeze on spending in the major areas of hiring and purchase of new equipment and library books is now in effect university-wide. The freeze was instituted by the administrative council on September 27 and it will remain thru October 11. A \$165,000 income deficit resulting from somewhat lower than predicted enrollment and student retention was the reason for the decision. Action was taken to keep options open while possible spending cuts for this year and the future are analyzed.

Willamette's budget of approximately \$8.7 million was approved by the board of trustees last May. The budget contained enrollment predictions which, according to vice president for financial affairs Milo Harris, are difficult to make because students today are more apt to take time off during their education. Fewer undergraduates than expected returned to Willamette this year, but Mr. Harris emphasized, "retention of undergraduates is not quite as good as in the past two years, but it's clearly above the average of the seven years before that."

Vice President Harris spoke of three budgetary emphases of recent years that have lessened the budget's capacity to absorb the unexpected, such as the \$165,000 shortfall. He said that President Lisensky has been concerned with stimulating innovative education and improving faculty salaries while minimizing

tuition increases. The percentage of total costs paid by tuition has dropped from about 66% to 61% in five years, he pointed out. These emphases have lessened flexibility in the budget. Mr. Harris sees the present as a transition period of rethinking and belt tightening. He thinks that most belt tightening will be mostly "non-instructional" and avoid "classroom impact."

Responsibility for making budget changes rests on the administrative council. The council consists of the deans of the four schools, vice presidents Manley, Large and Harris, assistant to the president Buzz Yocom, and librarian Pat Stockton. Each is analyzing her or his own areas and the university as a whole. Mr. Harris expects a "fairly well defined program" for immediate cuts and more permanent changes by the end of next week. He expects cuts for this year to total about \$110,000.

People complaining about budgeting often cites the building program, Mr. Harris said. He explained that gifts that finance building are restricted by their donors for that purpose. The university solicits non-restricted gifts, but they're harder to obtain.

Mr. Harris announced a series of noon meetings to "take an integrated look at the total financing and budgeting picture." Open to anyone, the meetings will be held in Eaton and will occur weekly from October 11 through February 14.

Salmon swim against the odds

by Julie Barbour

The salmon are coming home to the Mill Creek.

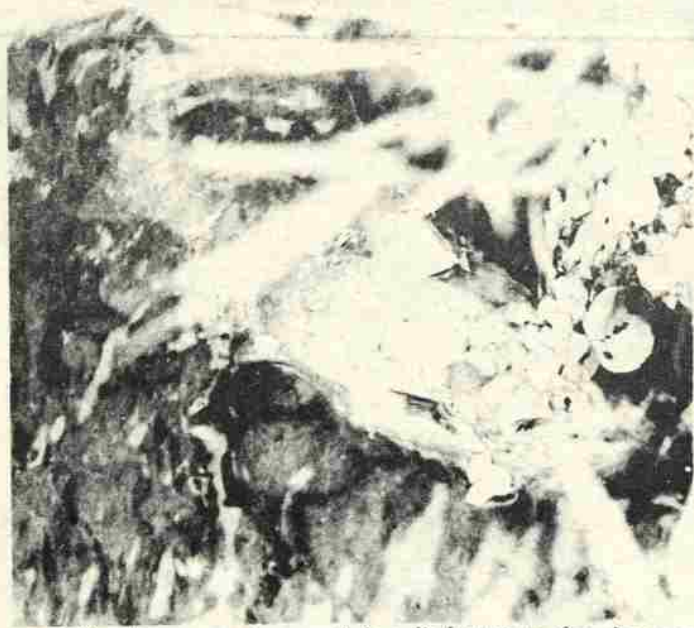
They give birth to a new generation.

They die.

Every fall the Chinook salmon can be seen struggling up the Mill Creek just south of the WU campus. Their two year journey in the ocean is behind them and the stream of their birth before them. Their life cycle is nearly complete and their story is fascinating.

Young salmon hatch in mid-winter in gravel bars along the edges of the stream near the Oregon State Penitentiary. They remain in fresh water until spring, migrate toward the sea, and enter the marine biome around early summer. The sea is their home for the next two years and there this particular species accumulates 15 to 20 pounds of bulk. With Autumn, the salmon are on schedule and begin to seek the rivers that lead to their place of birth.

It is remarkable that some of these fish do find their way back to the very spot they were born after spending years in the distant ocean and studies continue to determine the reasons for



Fall salmon run leaves fish a little worse for the wear.

photo by mcnut

that occurrence. Dr. Donald Breakey, head of the Biology dept. calls it an "amazing thing." The explanation most supported is that somehow the salmon detect (possibly the olfactory senses) Mill Creek water at the outflow of the Columbia into the Pacific and follow the traces home.

Along the journey the salmon turn in from the Willamette to the Mill Creek (the campus Mill Race, part of the Mill Creek, has had its entrance blocked so the fish follow the single tributary,) and swim as far as the OSP. There they reach the fast-flowing shallow water and find the most satisfactory egg-laying habitat in the gravel. The female flaps her tail to dig a trench, drifts back and releases her eggs. The male follows, releasing sperm and then the

eggs are covered with silt. The adults die withing 3 weeks and then the scavengers--snails, fish, bacteria--dispose of them.

This year the class of 1973 is returning, yet only 1/2 to 1% of any annual salmon run make it home. With them are a few errant "jacks," sexually immature males that return one year early, and baffle the scientists altogether. The returning numbers are so low because there are countless natural and man-made obstacles the salmon must overcome thru years and distance and most of them are not lucky enough to withstand them all.

What is also interesting about this natural phenomenon is that it was once terminated thoughtlessly by man and then restored again, by man.

The contamination of the

Willamette in the mid-sixties was too concentrated for the salmon to survive its waters as oxygen content decreased considerably. To restore the salmon run and the general liveability of the river the Willamette was cleaned up in a major project. Then the Oregon Fish Commission picked certain sites to serve as rearing ponds and beginning in 1968, continuing through the next five years, two million Fall Chinook salmon fingerlings were stocked and fed and thus imprinted by the stream in which they were released: the Mill Creek.

The saga of the Willamette clean-up and the salmon run restoration spotlighted Oregon and presented an answer to alleviating problems of a polluted, undesirable habitat. Their natural habitat intact, the salmon return home.

Senate news

by Sue Hunter

As in the previous meeting, nominations to committees and a visit from the administration were the highlights of the Sept. 30 gathering of the ASWU Senate.

Nominated and approved to Publications Board were Barbara Olson, Composition Manager; Mike McNutt, Darkroom Manager; Joe Reinhart, Chairperson; Jim Ellis, Business Manager; and Rob Richardson and Bob Houck, Publications at large. The nomination of Jim Eustrom,

cont. to pg. 8, col. 4

Salem highrise in a park-like setting



7 story Equitable Building
photo by mcnut

by Sue Morrow

In 1867, Salem children played jacks on the slate sidewalks at the corner of Center and State Streets in front of the First Christian Church. Today, over one hundred years later, the slate sidewalks have been replaced by concrete and where the small brick church stood there is "a first class, quality high-rise" office complex, the Equitable Center.

Completed in November, 1975, the tower houses seven floors of office space topped by a penthouse-type restaurant. Constructed by Century Construction Company of Seattle, the complex also features a patio and park-like setting fronting on High Street, backed by a complex of retail shops.

According to leasing manager, Roger Blake, the offices are designed to attract "first class professionals--doctors, lawyers, CPA's." In order to accommodate this type of client the developers included such amenities as a law library, a conference room which can hold fifty people, lunch areas and ground level parking.

The overall tone of the building according to Blake, is one of "subdued elegance." He noted such extras as floor-to-ceiling doors, spacious office suites and lobbies, and "sound proofing" between offices.

The lobby, located on the ground level of the complex between Equitable Savings and Loan offices, will soon display a sculpture by Willamette art professor, Roger Hull.

In order to attract the medical profession, one entire floor of the tower was designed with outlets for needed equipment. "This," stated Blake, "is attracting tenants not only from Salem,

but from Portland and other areas as well."

"The Loft" is the appropriately titled restaurant topping the Equitable Tower. Windows enclose the three sides of the unit providing an elevated view of Salem. According to owner and Salem developer, Merideth Mills, both a restaurant and a bar will be in operation, with Indian artifacts highlighting the various partitions between rooms.

The restaurant will also feature a dance floor, with entertainment by "folk singers, duos, etc."

The menu of "The Loft," scheduled to open today, will consist of Continental cuisine with a few gourmet dishes, all of which will be prepared by a French chef. "Prices," stated Mills, "will be comparable to other Salem restaurants."

The retail area, which according to Roger Blake, sets the tone for the personality of a professional building consists mainly of Salem based business: either established business changing locations or new business just starting.

The Equitable Center, built at an approximate cost of \$5.3 million dollars, is according to Blake, about 40% leased at the present time. He anticipates that the building should be "fully occupied withing a year to a year and a half."

While hoping for state of federal patronage, Blake expressed some doubt because "the cost of our office space is slightly more expensive than the government usually pays."

Blake was quick to note, however, that the public image of the complex is that of a much more expensive rent space than it really is." He emphasized that the 60¢ per foot per month is much less than in either San Francisco or Portland.

Quad Quotes

photos by Geo. Perry

As part of the Willamette Collegian's continuing effort to report the news and stimulate interest on campus, we bring you a new feature. Each week we will pose a question to a handful of people and print their response. The questions will deal with a vast array of topics, and should produce some interesting and entertaining responses.

This week the topic is the much discussed, and perhaps overemphasized alcohol policy at Willamette. The question is: The campus alcohol policy has received considerable attention recently. What is your opinion of that policy?

Dear Editor,

There is a significant error for which I am responsible in the OSPIRG Health Services Directory for Willamette University which has been distributed around campus. In the section on Counseling and Family Planning, Al-Anon is described as "A fellowship of wives of alcoholics." It should read that it's a fellowship of spouses of alcoholics. The mistake implies that only men are alcoholics. Also, it makes Al-Anon seem like a Fellowship for women only; when it is actually open to both sexes.

Dave Rice



"There have been an unusually large amount of parties, comparatively. But it doesn't bother me." Jean Randall, Senior, Baxter

"Well what's the policy? I can't really give an opinion. If they're trying to crack down, I think it should be up to the organizations." Mike Contreras, Sophomore, Off Campus



"What is the policy? Is that why they're cracking down on no parties? It's going to cause some problems with people partying off campus." Nancy Green, Senior, Delta Gamma

"It just seems boring, it doesn't seem interesting. Like most Willamette policies it was implemented five years after everyone else." Professor Bill Braden, English Dept.



"I think they should close their eyes. It's not something that needs to be enforced." Amy Stagger, Sophomore, Pi Beta Phi

"They should let it go as long as people are confined to their rooms. We've taken our parties off campus, they're more fun." Mike Crabbe, Sophomore, Matthews



"They shouldn't be trying to make a big deal about it. They shouldn't try to enforce a policy that is not really enforceable." Bill Mills, Junior

WILLAMETTE COLLEGIAN

editor
managing editor
news editor
arts editor
sports editor
ad manager
composition manager
darkroom manager

mark elgin
anne pfister
jeff swanson
kim salzwedel
john dillin
john barbour
barb olson
michael mcnut

The contents of the publication are the opinion and responsibility of the staff of the Willamette COLLEGIAN and do not necessarily reflect the policy of the ASWU of Willamette University. Official publication of the Associated Students of Willamette University. Second class postage paid at Salem, Oregon 97301. Represented by National Educational Advertising Service, Inc. Published weekly, except during vacation and examination periods. Subscription rates \$5.00 in the U.S.A. Ad rates: \$1.75 per column inch. Contract rates lower. For information call the COLLEGIAN Advertising Manager, at 370-6224.

Volunteer program

There's something to be shared

Does it ever seem like there should be more to life than books and classes? Sometimes you feel like you want to do more--but what? Tonight from 6:30 to 7:30pm in Doney the WU Volunteer Bureau will provide you with an option that might just open up a whole new life for you.

The basis for this evening is a new program through Marion County Volunteer Services called "FRIENDS UNLIMITED." This is an opportunity for you to be friends with a mentally retarded person (over 18) on a one-to-one basis. As a friend you might help the person adjust to his or her community like teaching them to ride the bus, read traffic signs or write a check. In general, you would offer the kind of support, friendship and instruction which may be needed to help the individual function better in society.

Tonight the movie *Something Shared* will be shown. This is the story of a young man and his friend through this program. Charlotte Hartwig, Volunteer Coordinator for Marion County, and

a current "Friend" will be there to tell you more about the program.

In case you don't have the time to volunteer for such a one-to-one commitment, Tim Petshaw of Shangri-la School for the Mentally Retarded will be there to talk

about volunteering with his school and also about a very special opportunity to work at the SPECIAL OLYMPICS in November.

Give your heart to a friend.. For more information call: Tami Pangborn 399-7282.

Statistically Speaking

by Julie Barbour

Males still outnumber females and total enrollment is slightly greater than last year for Willamette in the 1976-77 academic period.

There are 1971 students now enrolled at the University. This figure includes 374 in the College of Law, 93 in the Graduate School of Administration (GSA) and 21 in the joint program for the two graduate schools. Remaining are 1253 undergraduate students enrolled in the College of Music and Theater and the College of Liberal Arts. 646 men and 607

women comprise the undergraduate ranks and there appears to be a trend toward equilibrium in the male-female ratio, which has narrowed considerably in the past few years.

The Grad schools continue to have a much higher percentage of men on the WU campus. The Law school breakdown includes 286 men and 88 women, the GSA 74 men, 19 women and the joint program has 18 male and 3 female participants.

And Willamette students keep movin' on...

Calendar

Thursday, October 7

Movie: *Fort Apache* at 7:30pm in Waller Auditorium. Admission \$1.00.

Willamette Student Education Assoc. meets at 6:30pm in the Harrison Conference Room in UC.

Movie: *Something Shared* at 6:30pm in Doney Hall.

Larry Large, Vice-Pres., will discuss the "Federal Bureaucracy and its impact on higher education" at noon in Conference Dining Room 1 of UC.

Monterey Institute of Foreign Studies is interviewing from 1-4pm in Committee Room 2 of the UC.

Guitarist, Scott Brown featured at coffeehouse in Cat Cavern, 8:30-11:00pm. Free coffee and donuts.

Senate meeting at 7pm in Autzen Senate Chambers, UC.

Friday, October 8

Hall & Oates in Portland -

Saturday, October 9

Football: WU vs. Pacific Lutheran at Tacoma. Soccer: WU vs. Western Baptist at 2pm on Brau Field.

Rugby: WU vs. Bend Rugby Club at 1pm at Bend.

Dance: Morning After play in Cat Cavern from 9pm-1am. Free with ASWU ID. \$1 w/o ASWU ID.

Monday, October 11

Campus Escort Service meets at 7:30pm in the basement of Belknap Hall.

Oriental art for sale in main foyer of UC from 10am to 5pm.

Field Hockey: WU vs. SOC at 3:30pm - Brown Field.

Tuesday, October 12

Christian Inquiry Group meets in the Alumni Lounge of UC at 6:15pm.

Movie: *Sunshine Boys* 7 and 9:30pm, Cat Cavern of UC. \$.50 with ASWU ID and \$1 w/o ASWU ID.

Wednesday, October 13

Convocation: "A Passionate Education" by Dr. George McCowen at 11am, Waller Auditorium.

People's Law School. 7:30pm, WU College of Law.

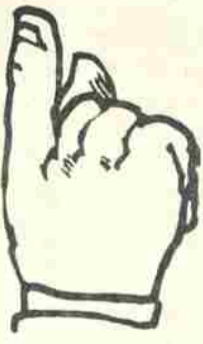
Duane Ackerson, WU writer-in-residence, will give a reading of his poetry at 7:30pm in the Alumni Lounge, UC.

THE PICKLE EMPORIUM

MOOLIGAN SANDWICHES	
SUPER MOOLIGAN	1.99
RANCH ROAST BEEF	1.85
PASTRAMI	1.85
CORNERED BEEF	1.85
TURKEY PASTRAMI	1.50
TURKEY	1.50
SMOKED HAM	1.50
SALAMI	1.30
CHEESE	1.10
HOT ITALIAN MEATBALL	1.30
HOT REUBEN	2.00



With a purchase of any deli sandwich receive a free large Pepsi when accompanied by this ad.



THE GIFT HUTCH

AT VIP'S

"Specializing in select Indian jewelry, clocks, antiques, imports, music boxes, plants, pottery, Hummels, handcrafted originals, decorative accessories, and other unique and precious things."

260 Liberty St. SE
Salem, Oregon 97301
581-2717



Poor Richards Pipe & Tobacco

REED OPERA HOUSE
189 LIBERTY N.E.

Machines, papers & tobacco for your hand rolled cigarettes

Tobaccos and Pipes from around the world.
Imported Cigars & Cigarettes.

Wargamers: we have Avalon Hill in stock.
Soon to arrive SPI and 3M

ARTS & ENTERTAINMENT

Loosely Speaking

by eric nelson

Have you ever felt that everyone is normal except you? Does it seem that despite the fact that you've studied all the new Know-and Love Yourself psychology books, you're still a neurotic? That nothing anyone does seems logical to you -- though they can rationalize it beautifully? You've already tried TA (Freud for the fixated), assertiveness training (the *Reader's Digest* Condensed Version of de Sade and Machiavelli) and even EST (or, how to be sensitive to Erhard) and realize that font of masochism within you), but you're still not normal. Right?

Well, since I know I'm infinitely more sane and healthy than the rest of you twitching, blithering neurotic products of the American Dream, I shall now give you a short course on *How to be Normal -- Just Like Me (bing!). Just Like Me (bing!). Just Like Me (bing!) Just Like -- (thank you)*

1. *How to Get Up in the Morning* -- The natural condition of the human mind and body is sleep. So don't be ashamed of it! Hundreds of famous, successful people have spent their entire lives asleep: so much so, that they've even been known to express a belief in the rationality of mankind! Therefore, don't give in to the temptation to get up. Actualize! You're in your natural state and it can only get worse if you deny it.

Think of it this way: *What if they gave a war and everyone stayed in bed?*

2. *How to Face the World if You do Get Up* --

If, in the event that your bedside conveniences fail and somehow afterwards you find a 240lb. Taurus in a Sherman tank blocking the hallway back to the bed, then you'd better admit that Mars is after you, the stars are against you, it is a triple-zero day, the draft board is in town, there's a fungus amongus and MP's in the trees, and that it just wasn't meant to be.

Thus girded, you are ready to face the mad, arbitrary world out there. The world of Mary "Bubbles" Moore, and Spastic and Klutz. But don't despair, there are worse fates (though I can't think of any offhand). Instead, drag your scriptwriter out of the closet, hype him with speed and get your day's dialogue ready.

3. *Clues to Getting What You Want Out There* --

Now that you are on the outside, script in hand, you are faced with the necessity of getting your (aside from back to bed, which won't happen till the tank goes off duty), and here you must remember this rule: *to get what you need, you must not need it.* This goes for everything, money, food, sex, ping pong balls. One of the most tragic scenes I've ever seen was of a well-dressed, prosperous, middle-aged man debasing himself in a sporting goods store by begging for a ping pong ball: saying that if he didn't get one his kids would reject him, his wife would leave and her mother remain to torment him. As you can imagine, the revulsion which I saw in the clerk's face was incredible. Would you have sold a ping pong ball to this man? Of course not. He's too instable to handle the responsibility. The correct approach is to enter saying, "Do you happen to have any Iranian widgit-stompers?" Something they obviously do not have, thereby putting the clerk on the defense, where his natural servility can come forward. "I'm sorry, sir," he can now squirm, "But we're all out today." "DRAT!" you swear. "Well in that case, do you carry any ping pong balls?" "Oh yes! Would you like one, sir?" "Oh no thank you, I don't need one. I merely wanted to check, in case I should need one . . . someday." Now of course, you've got him hooked and you won't be allowed to leave without one. He will be happy, nay *ecstatic*, to sell you one, a dozen, or even the entire store, since it is obvious you need that even less.

The rule of thumb, then, is: *People cannot stand need, and cannot tolerate not being needed.*

So much for this week. The next lesson will begin with the philosophy of Functional Paranoia. And the final lesson will be on how to make a million in a country of neurotics.



311 Commercial St. N.E.

Salem, Oregon 97301

585-9109

Rising Sun Record Review

Stills & Young...

'Long may you run'

by kay boots

The talents of two of rock and roll's long recognized "biggies", Stephen Stills and Neil Young, are combined on the newly released album, "Long May You Run." Their product is sometimes brilliant and sometimes disappointing.

The brilliance of the album lies in such fine songs as "12/8 Blues (All The Same)" and "Guardian Angel" by Stills and "Fountainbleau" and "Midnight on the Bay" by Young. The latter contribution by Young ("Midnight...") is surely one of the high points of the album. It stimulates the imagination pleasurably and combines descriptively simple lyrics with an instrumentation which flows gently and which compliments the image beautifully. Bright and alive images of the beach, sailboats, cool breezes, and moonlight are sprinkled throughout the album, most of them are distributed by Neil (a result of his move to Malibu?). It's nice to see his spirit lifted from the depths penetrated by "Tonight's the Night," recorded during the emotional aftermath of the death of two good friends.

This lyrical brightness is shaded a bit by Stills with some of his 'down and out, crying, dying' references. By and large, Stephen's songs are most uneven. They vary from the excellent Manassas-like "12/8 Blues" to the awkward and disjointed "Black Coral."

The unmistakable impression about the album which is disappointing is that there are no great efforts made on "Long May You Run" to combine Stills' and Young's diverse musical style. What emerges is something similar to a side of Stills and a side of Young shuffled together and called an album. Their distinctive voices -- Stills' raspy voice and Young's high, reedy tone -- are displayed apart from one another and this contributes to their noticeable separation on the record.

ings. It seems as if one didn't want to have anything to do vocally with the other. Looking at this separation positively, though, it gives each artist the opportunity to individually sound-off with their musical talents.

The album emerges without a sense of power and direction that makes for a vital, compelling work; without the kind of raw emotional pulse that is all too rare in this age of polished pop music. This pulse is noticed clearly in Neil Young during his "Everybody Knows This is Nowhere"/"After the Gold Rush"/"Harvest" period and in Stills during his Manassas period. The worth of the new album, although not a monumental work in the careers of both artists, is nonetheless intact because Stills and Young aim at and accomplish a lighter and more relaxed tone with their music. Through their songs, both are able to maintain reputations as keen social observers. The overall result of this mix is a set of tunes which are musically and lyrically pleasing.

The format used by Stills and Young is so similar to the Crosby-Nash albums (especially alternating the songs according to the writer) that the idea of a Stills-Young Band may be tongue in cheek.) What can be learned from the past experiences of the rebellious Young and the unpredictable Stills is that neither are beyond such a stab at their ol' buddies from CSNY. However, what Crosby-Nash have musically that Stills-Young lack is a sense of continuity which results from their integration of styles and vocals.

In general, the album is lively and dynamic and the words, especially Young's, are worth spending some time with. "Long May You Run" is a successful record -- mainly because Stills and Young are such capable musicians and song-writers.

VOLUNTEERS

Babysitter: Two hours on Thursday mornings. Sit with pre-schoolers while low-income mothers participate in a special program, minimum age:16.

Instructor: Instruct and demonstrate making Christmas gifts or decorations. Second Tuesday in October at 7:20pm. One time only, and the volunteer may choose the topic he or she wishes to demonstrate.

Reader: Handicapped 14-year-old student needs a female to read texts to her. Mondays-Thursdays from 2 to 3pm. Days are flexible. Age is not a factor, awareness is.

Lifeguard-WSI: Certified Water Safety Instructor for small group four to five persons in pool, with Staff. Maturity is not as important as age. Evenings about 4 hrs. Volunteer may choose evening.

Activities aides: Teen Recreation program needs volunteers to help with activities. You need not be an expert at playing pool or games weekdays from 6 to 10pm or Saturdays from 7 to 11pm. Volunteer may choose night.

If you have a special skill that you want to share, or just feel the need to help others, please call Tami at 399-7282.



COME AND SEE THE
"BEERCATS" LEAGUE
OPENER!
THIS SAT. 2:00
BRAU (RAM) FIELD

ZODIAC NEWS

(ZNS) What is being billed as the Earth's first landing field for flying saucers has been opened for operation in the small community of Ares, France.

The "Ufoport", featuring a landing strip and directional lights, was dedicated this week by the mayor of Ares, his counselors and a French Air Force Officer.

An airport official stated during the dedication that (quote) "The reason that flying saucers have never landed on the Earth is because there are no airports for them."

The Ufoport will be open 24-hours a day, and there will be a special bonus for the first U.F.O. that lands; it will be exempt from paying the normal French landing fees -- *Zodiac*

Convocation critique:

Macrokosmos II considered rare and memorable experience

by Iumnifat

It's not often you see a pianist wiping blood off his knuckles after a recital. But then it's not often you hear a recital like James Cook's Convocation recital yesterday. In his first public performance of George Crumb's *Makrokosmos II*, Professor Cook treated a small but enthusiastic audience to a most exciting display of his musicianship and agility.

It would have been exciting even if the music hadn't been very interesting, but *Makrokosmos II* deserved all of the artistry and showmanship Mr. Cook lavished on it. As he suggested in his introductory remarks, Crumb's work makes great music out of many of the technical innovations of *avant garde* experiments of the last 30 years, supplementing the traditional range of the piano with many strange and wonderful sounds that can be produced by playing on the

works of the instrument rather than simply on the keys. Professor Cook's skill in teasing these new sounds out of the piano would have been impressive, even if the sounds hadn't produced compelling music. As it was, his performance was exciting and satisfying to both the eye and the ear.

I didn't mention that bit about the bloody hands just as a come-on; this was very definitely not an ordinary piano recital, and Professor Cook's spirited performance was obviously physically taxing for him. Though most of the unconventional sounds in *Makrokosmos II* were delicate and haunting, the sixth and seventh sections, particularly the long glissandos, were violent enough to draw blood. I only hope the extreme demands of performing the piece won't keep Professor Cook from offering us another chance to hear it, as it was a rare and memorable experience.

Announcements

COMMITTEE OPENINGS:

Freshmen students are needed to manage Freshmen Glee. Glee is a contest in which the freshman class challenges all the other classes to composition and rendition of an original song, based on a theme adopted for the occasion. Each class works out a marching formation; and, after much "pre-presentation" enthusiasm, the entire class presents its song in competition with the other classes. For further information call: Gary Thede (6245 or 6226) OR Ken Slack (6245 or 6367)

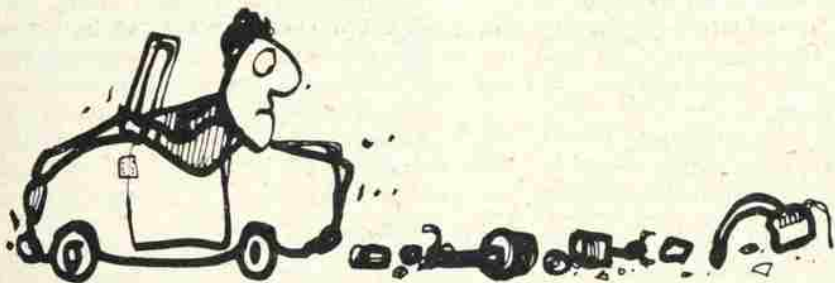
Students are needed to aid and to consult the President of the University in the formulation of the University budget. This committee shall meet at least once a month during the academic year. For further information call: Bill Olson, President ASWU (6245 or 6236) OR Bob Lisensky, President W.U. (6200)

Do you need a ride or riders to go somewhere? As a result of energy from OSPIRG, there is now a rideboard in the University Center for your use.

"A Passionate Education" is the title of the presentation by Prof. George McCowen, Dept. of History, at next week's Convocation (Oct. 13), 11am, Waller Hall Auditorium.

The Alpha Phi's are having a lawn sale, October 9th and 10th from 10-4, both days. Items included in the sale are bicycles, a TV set, luggage, etc.

Biking Across America -- On Wednesday, October 13th, at 7pm, in the Autzen Senate Chambers of the University Center, Jamey Stilings will give a slide presentation and talk on his cross-country bicycle tour with Bikecentennial this past summer.



Ackerson poetry recital scheduled next Wednesday

Willamette's writer-in-residence, Duane Ackerson will give a reading of his poetry Wed. Oct. 13 at 7:30pm in the Alumni Lounge, University Center. The reading, jointly sponsored by the Boonesbury Poetry Group and the Dept. of English, will include selected words from throughout his distinguished career.

Ackerson, who is spending his first year at Willamette, has published several hundreds of poems in literary magazines and anthologies that include *The Seventies*, *Northwest Review*, *Arts in Society*, and *S.F. Directions*. His art has been reviewed in such places as *Book Review*, *Rolling Stone*, *N.Y. Times Book Review*, and *English Journal*. Since 1969, he has edited a literary magazine.

In 1974, Duane received a National Endowment for the Arts creative writing fellowship, and settled in Eugene for the past two years to write before coming to Salem.

Duane's poetic style is strikingly unique, with its incredible metaphors and constant shifting of context, such as in one prose poem that begins, "We sit in the classroom, the very first school of frogs." Poems, Ackerson says, "are like mannequins who need your head to see, your direction to walk. One might even now be pointed in your direction." Poetry to Ackerson is essentially an attempt to render, clarify and match the beauty and strangeness of life itself. As he says, "It has seemed to me in the past -- it still seems so -- that everything in life belongs in a poem, or somehow we're shortchanging both our lives and our poems."

Below are two examples of Ackerson's work.

REVERENCE FOR LIFE

The world shrinks,
and even Schweitzer, the humanitarian, wonders,
injecting an antitoxin, which one to save
the man or microbe.

Long ago, Michelangelo butchered rocks
to free the men inside.

A MURDER IN AUSTIN, TEXAS

The energetic Indian pushed his wife,
his heavy squaw,
up into the sky.

He kicked her to death one night,
But we didn't see that;
We only saw him the day before,
smiling and shoving her on a swing,
higher and higher
till she was gone.

(From *VA Flight to Chicago*, Best Cellar Press, 1971.)

WU Playhouse scheduled 'Two Gentlemen of Verona' as season opener

by robbie d'anneo

Two Gentlemen of Verona is a tale of four young lovers and their struggles with love, friendship and family, fighting a world of deeply rooted tradition. Set in 1912 Italy by director D. Scott Glasser, this early Shakespearean comedy will be presented by the Willamette University Playhouse as its first production of the season.

Considered Shakespeare's first romantic comedy, *Two Gentlemen of Verona* employs many of the elements to be later found in his great comedies: themes touching upon reconciliation and forgiveness, the heroine disguised as a boy, the use of comic characters and the use of songs.

Two Gentlemen of Verona should not be presented as a museum piece, says Glasser. That is, it should not mimic the conventions of a time gone by. Instead, it should allow the true energy and spirit of the play to emerge regardless of time or place. And it is because of this timelessness that Glasser is dedicated to performing Shakespeare, for Shakespeare's play are potentially just as engaging, virile and vibrant as when they were first written and performed.

In keeping with his belief in the transcendent quality of Shakespeare, Glasser chose pre-WWI Italy as the setting for his production, giving the cast a cultural base from which to work. The change brought about by a new century, the innocence prior to WWI and the struggle of an entrenched tradition challenged by an industrially-oriented, energetic new generation, compose this base of Italian life in the early 1900's. These underlying attitudes point to the motivating factors of the characters' interaction, and focus upon the cultural clash between the older, agricultural, small town of Verona and the fast-paced, changing, banking center of Milan.

Tryouts for *Two Gentlemen of Verona* were held September 6th and 7th and the following people were chosen for the cast: Dave Aiello-Thurio, Alan Brown-Valentine, Wendy Brown-Outlaw, Ed Bowen-Launce, Rayne Engle-Ursula, James Mearns-Duke, Karen Morris-Host, Perry Norris-Outlaw, Mary Patton-Julia, Mark Phillips-Antonio, Eglamour, Dave Rice-Outlaw, Elizabeth Rolfe-Panthina, Pam Shein-Outlaw, Shannon Shepard-Lucetta, Craig Strobel-Speed, Kevin Sullivan-Proteus, Annajo Trowbridge-Silvia, Jennifer Walker-Outlaw.

The lighting and set are being designed by Mr. Tom Gill, the Assistant Director of English and Humanities from Chemeketa Community College. The Division of Theatre is pleased to add his talents to the production.

Sarah Stewart, a senior student from Willamette University is designing the costumes for the production.

Two Gentlemen of Verona will be performed October 22, 23, 26, 27, 28, 29, and 30 at 8pm. There will be a matinee performance on October 24th at 2pm.

Tickets are free for students, but must be reserved in advance. Faculty pass is available for \$5 which entitles faculty and family to one performance per production. A season pass is available for \$5 for those in the community who wish to attend all three productions. Seating is reserved and tickets must be obtained prior to each show. From October 11-14 tickets are available for season ticket holders. Starting October 14, ticket sales are open to the general public. The ticket office is located in the Willamette Playhouse and will observe the following hours: Monday thru Friday 1-4pm.

SPORTS

DILL'S DOPE



Be a women's athletic supporter

by John Dillin

Last week I ran a story with the headline "Gals' basketball team is Hawaii bound." I would like to change that headline to "Gals' basketball team is Hawaii bound with your support."

Coach Fran Howard plans to take herself, 12 players and a trainer to the University of Hawaii Women's Basketball Invitational, March 18-20 for a little post-season fun. As of now, each girl needs to raise \$200 to balance the cost of the trip. The U. of Hawaii will cover the tab for \$600 worth of lodging and van rental for the four days and nights of the tournament. The \$240 airfare is budgeted, too. It's up to the girls to meet the additional expense.

"Some girls will be able to afford the extra money for the additional expense, others won't," said Howard. "That's why, as a team, we'll be having money-making projects."

Starting this week some or all of the 32 girls that showed up for the first basketball meeting called by Howard last week will be selling bumper stickers, buttons, and candy bars for the 12 players that will make the trip.

That's the sticker. Only 12 girls will make the trip and 32 were present for the initial meeting. Howard is pleased to see the huge turnout, but is sorry that only 12 will make the trip. She also was disappointed in announcing that there will be no junior varsity team this season, as she is lacking a qualified coach to take the responsibility.

So, 20 girls will be out of a chance to play intercollegiate basketball and a chance at a trip to the beautiful Islands.

Willamette will be one of three state-side schools entered in the tournament, joining Oregon State and California State at Long Beach. Besides the host team, the Rainbows, Brigham Young and Maui Community College are entered as the Island's representatives.

Howard received the invitation through a coaching friend, Dr. Donnis Thompson, who just happens to be the women's athletic director at the school. "We talked about it for a couple of years. It wasn't until last spring that it became a reality when another U of H coach talked to me about the details at a softball tournament."

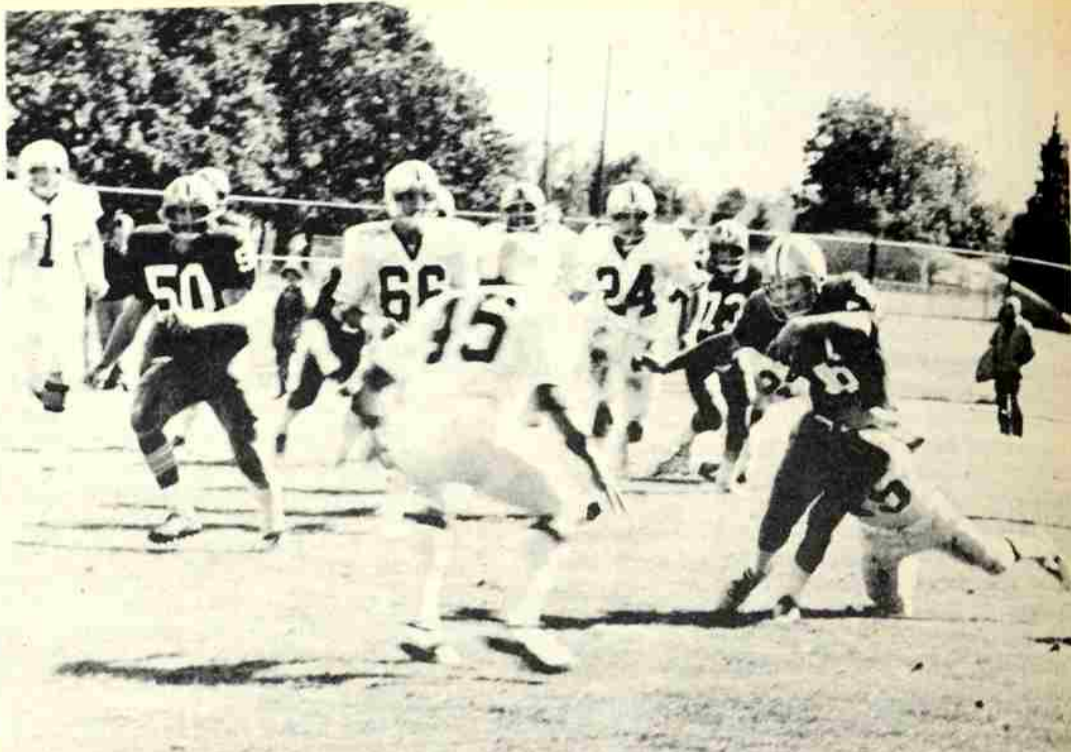
Being the smallest team (both in height and school-size) from the mainland doesn't scare Howard much. They're going over for the experience (Willamette's basketball season begins in December and ends before Spring Vacation, the week of the trip).

"Perhaps we can do a little recruiting while we're over there," smiled Howard with a sparkle in her eyes as warm as the tropical sun.

The girls that do make the team of the 32 interested, will have a fabulous eight days in the land of sunshine, flowers and good-looking babes. The 20 who fail to make the team, will stay at home, but their contribution will be felt strongly, for without their help the team wouldn't have made the trip.

Your support is needed too. Buy a bumper sticker for your car, a button for your jacket and a candy bar, or two, for a friend.

Aloha!



Quarterback Brent Mellbye scampers for short yardage against Whitworth's defense during last Saturday's Northwest Conference opener at McCulloch Stadium.

photo by McNutt

'Cats are on the road to PLU

Mellbye directs 40-30 upset victory

by John Dillin

The pressure was off for a few hours and the celebrant atmosphere was alive around the Willamette University campus - for the Bearcats had won their first football game of the season.

The hours of celebration were soon gone and the pressures of the following week had already begun to build as coach Tommy Lee walked into his office Monday morning after a 40-30 upset win over Whitworth last Saturday. His Bearcats had knocked off a heavy pre-season Northwest Conference favorite and three-way co-champion of last year, yet seven days later his team is to take on another conference favorite and co-champion, Pacific Lutheran.

Lee can hardly look at Pacific Lutheran as just another game, although the 'Lutes have suffered setbacks from University of Puget Sound (the Bearcats also lost to the Loggers 37-7 two weeks ago) and Lewis and Clark last weekend 20-6. The Lutherans will be hungry for their first conference win and the carefree Bearcat head mentor had better have his troops prepared, as many teams travel to Tacoma and return with heads hanging low.

Willamette shares an early four-way lead in the NWC one-game standings with Lewis and Clark, Linfield and Pacific. At least one team will fall from the top this weekend as Linfield hosts the Pioneers and the Bearcats take on Pacific Lutheran.

Lee called the turnover-plagued Whitworth win "a great team effort" as the 'Cats finally put things together enough to earn a win. The Bearcats are now 1-2 on the season.

We improved both offensively and defensively," said Lee. "We are playing much better from one week to the next."

Perhaps the Bearcat's

tough pre-league schedule was a blessing in disguise preparing them for a just as tough conference opening schedule.

"PLU is a good football team. They lost to UPS, rebounded to easily beat Central Washington, but they elapsed again to Lewis and Clark," said Lee. "They just didn't execute as well as normal against the Pioneers."

Lee assured himself that they'll (PLU) be working hard in the coming week to iron out any problems, and that they are a big, well-balanced team and maybe went to Palatine Hill in Portland just a little overconfident.

"We expect them to be sky-high for us," said Lee.

The coach also hopes that his team doesn't leave Friday night for Tacoma a little too cocky -- so his Bearcats were to go through heavy workouts to ready for the hungry 'Lutes.

The victory last Saturday was a good win, for the team and for the 1,800-plus crowd that attended the game. With a total of 12 turnovers in the game, the fans had a lot to cheer or jeer about.

Early last week Lee said he was going to senior Brent Mellbye at quarterback, perhaps for some consistent leadership on the field. That is exactly what Lee got in return as Mellbye passed for four touchdowns, totalled 255 yards in the air, throwing 24 times for 14 completions and only two interceptions. An afternoon worth bragging about.

Lee pointed to his offensive standouts as being Mellbye, Gerrit Knaap, Terry Haugen and Larry Staab. The latter three names happen to be Mellbye's three touchdown targets as Haugen scored on a five-yard play, Staab a 15-yard pass and Knaap scored first on a 10-yard pass and then in the fourth quarter

went 80 yards for the go-ahead touchdown that put the Bearcats out front for good 33-30.

Lee said his defense was keyed by the play of John Kent (two interceptions), Brad Marineau (one interception, a fumble recovery, and eight tackles), Tommy Moore (one interception, a fumble recovery, a forced fumble and six tackles) and Gary Johnson who had a fumble recovery to his credit, but more importantly led a defensive line attack which stopped Whitworth's running game cold at just 37 yards rushing (the Pioneers went to the air for 259 yards hoping to maintain their 500-plus total offense output prior to last Saturday).

Fullback Willy Keola, who usually leads the way for companion Bill Gray, led all rushers for the game with 65 yards.

Credit should also go to the kicking leg of sophomore Tim Simmers, who found the range twice in the second quarter from 23 and 27 yards, six of 19 second quarter points.

Willamette came out of the game relatively injury-free for how hard both teams were hitting. The two lines reminded some of watching two rows of army tanks crashing head on. Running back Matt Beddow, who has been out three weeks with a knee injury, aggravated the same injury again, but Lee said he should be available for spot action again next week. Offensive lineman Matt Overholt received a hip pointer but should be ready for Saturday's game.

With the important conference opener under their belts, the Bearcats should shorten what might be a long season ahead with a repeat performance, both offensively and defensively, against Pacific Lutheran. So it's move over NWC favorites, Willamette wants a piece of the action.

Hockey team beats PLU, ties OCE

by Susan Ruff

Fran Howard's field hockey team had some "ups and downs" this past week. On Friday, they travelled to Tacoma to meet the return awesome Pacific Lutheran Lutes. In the first game on Friday, Willamette successfully came through to win 2-0. Goals were scored by Jenny Schlaudeman and Linda Farmer. On a cold and

damp Saturday, the tough Lutes defeated the Bearcats 5-1. Linda Farmer scored the lone goal for Willamette.

On Monday on Brown Field, Oregon College fell into the clutches of an aggressive Willamette attack led by Kelsey Bunker, who scored 2 goals in the first half. Fired by either a halftime

peptalk or by the score, the OCE forces rallied to score on Willamette. Then, with 30 seconds left, they shot on goal once again and found the pocket. Thus, the final score was 2-2.

The two teams then played a "fun" game which lasted 25 minutes. Helen Brown from Willamette pulled through with the only score.

Bearcats rally for three goals to beat LCC

by Jon Hook

The never-say-die spirit of the Willamette Bearcats proved evident Saturday afternoon as the Cats battled back from a 3-1 deficit to claw out a 4-3 victory over Lane Community College.

As halves usually dictate a game's momentum this

was no exception as L.C.C. claimed the first period and Willamette the second. The Bearcats looked tired and lifeless as Lane took an early two-goals lead before the 'Cats could attempt to regroup.

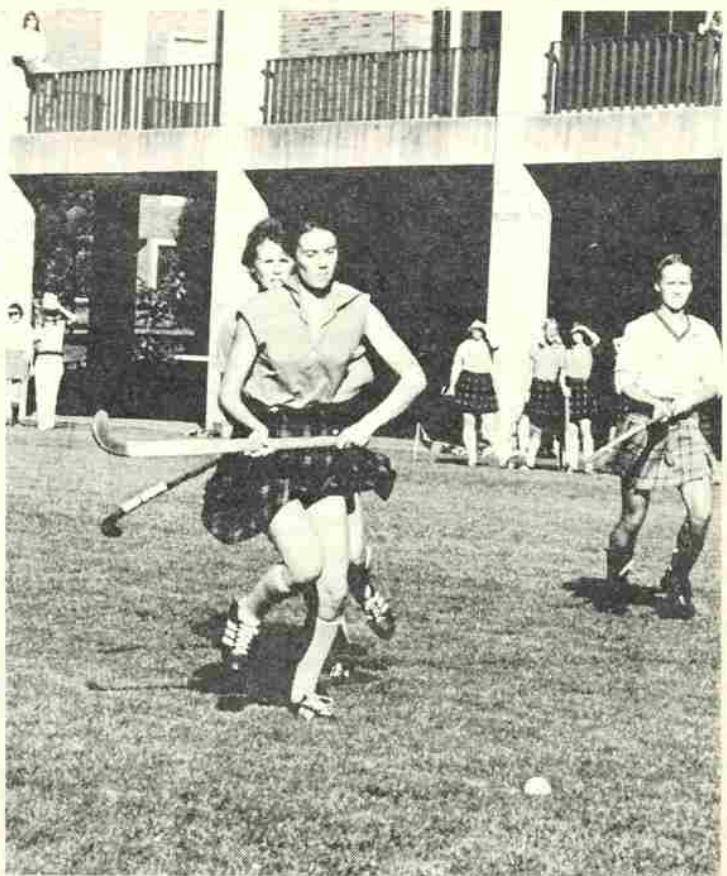
The first 'Cat break came when Dan Boettcher took a pass in a crowd of defenders

and blasted one home past the stunned Lane goalie. Celebrating the first goal proved deadly for Willamette, though, as Lane retaliated immediately to set the lead at 3-1 for the first half.

Always a second half team, the Bearcats proved up to it as they came out fired up to play soccer. Action was now being concentrated in the offensive end of the field for the first time in the game. Right wing Gary Boehne and left wing Hal Williams took high bouncing passes and headed them past the diving goalie to knot the game at 3-3.

Time began to play an important factor. With less than five minutes to go, both teams were desperately searching for the decisive tally. Twenty-five seconds is not much time, but that was all that remained after Hal Williams received a perfect lead pass, streaked down the field and fired a blue darter through the goalie's legs to score his second and Willamette's fourth and deciding goal.

Coming off perhaps their most satisfying victory to date, the undefeated Bearcats will tangle with Western Baptist this Saturday on Brau field. Bring a friend and have a good time.



Kelsey Bunker drives to score one of her two goals in Wednesday's 5-1 field hockey win over Linfield. Kathy May added two goals to boost the Willamette attack.

photo by McNutt



Bearcat Harold Zagunis challenges Lane's Phil O'Malley during last Saturday's 4-3 comeback win. photo by Hook

Zerzan paces WU harriers to second

by Dave Wright

Highline Junior College, from Seattle, placed four runners in the top 10 to capture the Willamette Invitational Cross-Country title this past Saturday at Bush Park.

The Bearcats managed a second in the meet out of the 12 teams and over 100 runners entered.

The top three team scores were: Highline 39, Willamette 56, and Portland Track Club 67.

Keith Woodward, of the Spur of the Moment TC, was first across the finish line with an excellent time of 24:44.5 minutes for five miles.

Terry Zerzan finished third for the Bearcats with a time of 24:51.

Tim Rutledge, Steve McGrew, Bill Hurst, and John Watts were eighth, ninth,

15th and 24th respectively to round out the scoring for Willamette.


Coach Bowles had nothing but positive remarks for his Bearcat harriers. Dr. Bowles mentioned that this is the first year with everyone on the team competing for the top seven spots. He also said, "The team is progressing well and has the potential of being the best team in Willamette's cross-country history."

Terry Zerzan's time on Saturday moved him into second place on the all-time best list for five miles. Five Bearcat runners are currently on the top ten Northwest Conference all-time best list for five miles.

This Saturday the Bearcat harriers will be in Forest Grove for the Pacific University Invitational Meet.

SCANDINAVIAN INTERIORS

SCANDINAVIAN INTERIORS



alleniana

alleniana textiles
hand silk screened

alleniana textiles
64" wide @ \$19.00/yd

alleniana textiles
for wall hangings

design 1440

1276 alleniana post townsend 1976

234 Liberty St. N.E. next to Knopps
364-8712

SCANDINAVIAN INTERIORS

Student Desk Lamps

reg. \$23.00
now \$13.99

7 colors

SCANDINAVIAN INTERIORS

234 Liberty St. N.E. next to Knopp's
364-8712

SCANDINAVIAN INTERIORS

available monday October 11 at

A&W

Coupon book worth \$10.00 for only \$7.50.
New Closing Hours

Sunday-Thursday 10:30

Friday-Saturday 11:00.

The new ski equipment is in at

Anderson's

340 Court St.

People's Law School

A practical program

by Liz Herrmann

The second edition of the People's Law School opens Wednesday at the Collins Legal Center. The school was started by Marc Sussman a third year law student, at the beginning of last year. The purpose of the school is to give people a broad information service about different aspects of law.

Courses vary from *Courts and Lawyers*, when and if a lawyer is needed, the cost and how court systems operate, to *Abused Women and the Law*, which deals primarily with battered women, rape, child custody, where to go, and what to do for help as a victim. Speakers for the lectures are students, professors, and attorneys. They teach together with sometimes three lecturers per class. Although the student does most of the teaching, attorneys are able to give the real life aspect.

People who attend one seminar usually return for others. "People come with definite questions on the

border of advice. We are not allowed to give advice," says James Rhoades, a second year law student working on the project. She says the program has been helpful, but because of its infancy it is hard to tell if it has made an impact. "We are trying to reach the lower class because they're frequently ones who don't know their rights, and haven't had the exposure. They're also the ones who get the shaft the most."

People's Law School is offering a series of outreach classes to be taught at the convenience of those organizations whose members are not able to attend the regular sessions. In addition to the regular classes, Social Welfare Law, Aid to Dependent Children, Rights of the Aged and Social Security will also be discussed.

In addition to the outreach classes, People's Law School is featuring two Public Issue forms. One is on Nuclear Safeguards, and the other is

Land Use Planning. These issues are on the November ballot. Dates are October 21, and the 28th. Discussions will be from both sides of the issues.

The schedule for regular classes: Oct. 13-*Court and Lawyers*, Oct. 20-*Oregon's New Traffic Code*, Oct. 27-*Wills and Probate*, Nov. 3-*Landlord/Tenant*, Nov. 10-*Abused Women and the Law*, Nov. 17-*Prisons, Parole, Probation, Pardon*. Classes begin at 7:30pm, and every one is welcome.

cont. from pg. 1

Bill Ahina, and Rick Ikeda for co-editorship of the *Willamette* was tabled until the Oct. 7th meeting.

Rick Hohnbaum, Linda Getchell, and Mark Miller were approved to serve on the President's Advisory Committee; Cathy Meschter and Dave Martin were approved for the Off-Campus Studies committee; and Bill Boyden and Bill Mills were elected to serve on Finance Board.

Still needed are two students, hopefully a fraternity member and a freshman, to serve on Activities Board, and a Chairperson for the University Speakers Bureau. Ken Slack also mentioned that

petitions are being taken for Freshman Glee Manager and are due in the student body office by 5pm Oct. 15.

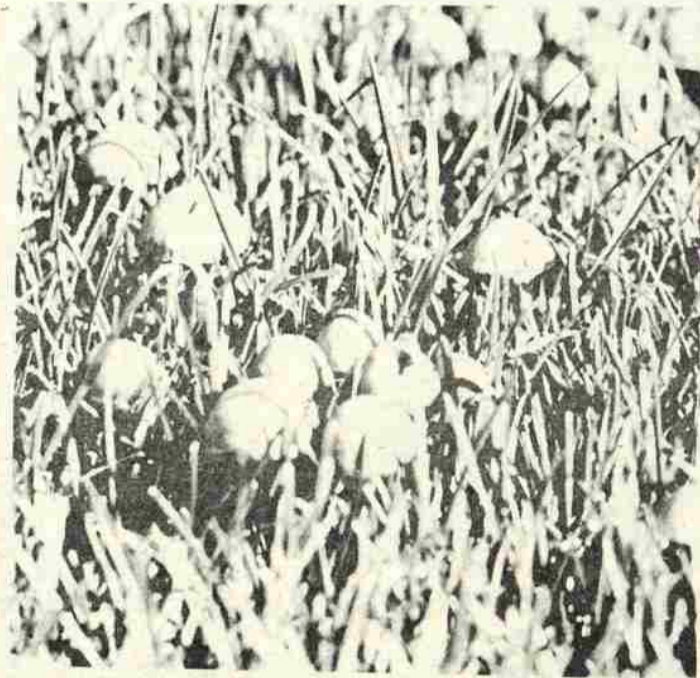
Larry Large, Vice-President of Student Affairs, attended the meeting and, after a lengthy wait, fielded questions from the senate. Campus security was again discussed, with several new developments appearing. A light will be installed on the Beta house that will shine into the bushes around the library, while on Oct. 11, at 7:30pm in the Belknap basement a meeting for men wishing to serve as escorts will be held. Jo Siebert will also be holding security classes which will deal with preventative measures.

Workshop for groups

In business, government or politics, most of the work you will do after graduation will require an ability to work well with groups. Some of the things you are involved in now may require this same skill. Yet few of us receive any training in group process.

On Saturday October 9, from 10:00 to about 3:00, OSPIRG will conduct an organizing workshop which will shed some light on the following aspects of working within a group: defining a problem as a group, deciding how to tackle the problem, parceling out tasks among members of the group, and pulling the individual tasks back together again to accomplish the purpose of the group.

Any interested persons are invited to attend the workshop. Bring your lunch. Hopefully, we'll have good weather and can eat together outside. If you would like to attend the workshop or would like to know more about it, please contact April Allen at 370-6156.



Wizard of Oz or Willamette Quad. Willamette's new grass sprouts a few innocent mushrooms. photo by mcnut

Imported Motor Service

foreign car specialists

380 Market st. NE
364-6103

Nationally Known Speed Reading Course To Be Taught Here In Salem

Salem Special

United States reading Lab will offer a 4 week course in speed reading to a limited number of qualified people in the Salem area.

This recently developed method of instruction is the most innovative and effective program available in the United States.

Not only does this famous course reduce your time in the classroom to just one class time per week for four short weeks, but also includes an advanced speed reading course on cassette tape so that you can continue to improve for the rest of your life.

If you're a student who would rather receive A's than B's or C's or a business person who wants to stay abreast of today's ever-changing and accelerating world then this course is an absolute necessity.

In a few months some students are reading 20 to 30 times faster, attaining speeds that approach 6,000 words per minute.

Our average graduate should read 7 to 10 times faster upon completion of the course with a marked improvement in comprehension and concentration.

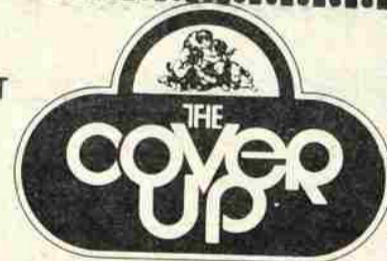
For those who would like additional information, a series of free, one hour orientation lectures have been scheduled.

These free meetings are held at the following times and places:

YMCA 685 Court NE

Oct. 12 6:30pm and 8:30pm
Oct. 13 6:30 pm and 8:30 pm
Oct. 14 6:30pm and 8:30pm
Oct. 15 6:30 pm and 8:30 pm
Oct. 16 10:30am and 1:30pm
Oct. 18 6:30pm and 8:30pm
Oct. 19 6:30 pm and 8:30pm

FIND YOUR
FALL LOOK AT



"good time clothes for gals"

IN THE REED OPERA HOUSE, CORNER OF COURT & LIBERTY STREETS.
HOURS: 10-6 MON-THURS, SAT.
10-9 FRI, 12-5 SUN.

Reed Opera House, Salem, Oregon
Morgan's Alley / The Water Tower, Johns Landing, Portland, Oregon

CANDIANIAN'S INTERIORS

Bean Bag Chair

\$24.50

reduced from \$32.95



colors available

Blue Red
Green Yellow

234 Liberty St. NE next to Knopp's
364-8712



nightly live Entertainment

HOURS
11am - 2am

Lunch
Dinner
cocktails

189
LIBERTY