
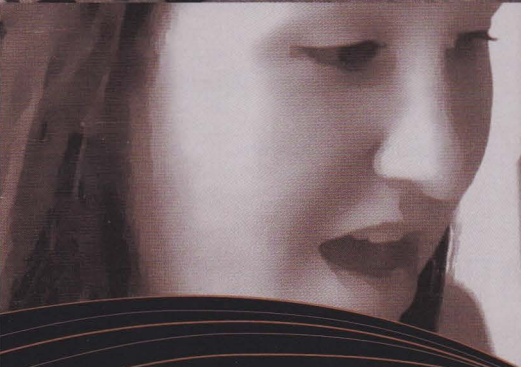


WILLAMETTE  UNIVERSITY

THE FIRST UNIVERSITY IN THE WEST



TOUR 2003

*Chamber Choir*  
*Willamette Singers*

## CHAMBER CHOIR

<i>Personent Hodie</i> Festival Processional	Lara G. Hoggard Contemporary
<i>Venite, Exsultemus Domino</i>	Jan Pieterzoon Sweelinck (1562-1621)
<i>Ave Maria</i>	R. Douglas Helvering Contemporary
<i>Gloria</i>	Jeffrey H. Rickard Contemporary
<i>The Garden of the Seraglio</i>	Wilhelm Stenhammar (1871-1927) English Text by Gunilla Marcus
<i>I'm a Train</i>	Paul Simon Arranged by Norm Wallen
<i>Hope for Resolution</i> <i>Piano:</i> Jana Fischer <i>Bass:</i> Matt Hoffman <i>Violin:</i> Bryn Lynch <i>Djembe:</i> Chris Foot	Paul Caldwell/Sean Ivory Contemporary
<i>Nunc Dimittis</i>	Aleksandr Gretchaninov (1864-1956)

## TRANSLATIONS

- Personent Hodie*  
Festival Processional
1. Let youthful voices resound today, joyfully praising Him who is born for us, who is given unto us by the most high God, and brought forth from a virgin.
  2. He is born in the world, is wrapped in swaddling cloths and placed in a manger in a stable of beasts. He is ruler over all things. (The prince of darkness has lost his prey!)
  3. Three wise men come, bearing gifts. They have found the Child by following a little star. Adoring the Lord, they offer Him gold, incense and myrrh.
  4. Let all young choristers now sing as did the angels, praising Him who has come into all the world: "Glory to God in the highest!"

*Venite, Exsultemus Domino*  
Psalm 94:1-3

O come let us sing, let us sing unto the Lord. Sing joyfully to our salvation. Come let us greet him, greet the Lord with thanksgiving. And with psalms, sing jubilantly to Him. For the Lord is a great God, and a great King, praised beyond all gods.

*Ave Maria*  
Hail Mary, full of grace, the Lord is with thee. Blessed art thou among women, and blessed is the fruit of thy womb, Jesus. Holy Mary, mother of God, pray for us sinners.

*Gloria*  
Glory to God in the highest, and on earth, peace to all those of good will.

*Hope for Resolution*  
Zulu Translation

Thula sizwe, ungabokhala, UJehovah wakho uzokunqobela. Inkululeko, sizoyithola, UJehovah wakho uzokunqobela.	Nation, do not cry. Jehovah will protect us. We will attain freedom. Jehovah will protect us.
---	--

## WILLAMETTE SINGERS

<i>Dizzy Atmosphere</i>	J. Dizzy Gillespie Arr. Vijay Singh
<i>We've Got a World That Swings</i>	Lil Mattis, Louis Yule Brown Arr. Dave Cazier
<i>Rusty Dusty Blues</i>	Joe Williams Arr. Darcy Schmidt
<i>Here, There, and Everywhere</i>	John Lennon/Paul McCartney Arr. Gene Puerling
<i>Summertime</i>	George Gershwin Arr. Tom Walworth
<i>Some of These Days</i>	Shelton Brooks Arr. Dave Cazier
<i>Why Do People Fall In Love</i>	Dennis Lambert/Brian Potter Arr. Dave Barduhn
<i>Lucky Southern</i>	Keith Jarrett Arr. Vijay Singh
<i>New York Afternoon</i>	Richie Cole Arr. Phil Mattson

## TOUR ROSTER

### CHAMBER CHOIR

#### *Soprano I*

Kristi Evans, Salem, Ore.  
Lesley Meyer, Missoula, Mont.  
Marcella Orwick, Salem, Ore.  
Karin Sanberg, Eagle River, Alaska  
Katie Skiff\*, Bremerton, Wash.

#### *Soprano II*

Sarah Boyer, Oregon City, Ore.  
Lindsay Hook, Portland, Ore.  
Monica Peyer, Monmouth, Ore.  
Robin Ricard\*\*, Dexter, Ore.  
Heather Schludermann, Hillsboro, Ore.

#### *Alto I*

Sarah Brauer, Tigard, Ore.  
Jana Fischer\*\*, Boise, Idaho  
Christine Greger, Portland, Ore.  
Mary McCauley, Tualatin, Ore.  
Melissa Smith, Salem, Ore.

#### *Alto II*

Heather Bullock, The Dalles, Ore.  
Kate Lawrence, Arlington, Texas  
Ashley Lindsay, San Diego, Calif.  
Lisa Oakley, Pleasant Hill, Ore.  
Laura Schick, Portland, Ore.  
Reneé Schwab\*, Beaverton, Ore.

#### *Tenor I*

Josh McCall, Camas, Wash.  
Philip Morton, Klamath Falls, Ore.  
Nick Pleasure\*, Pacifica, Calif.  
Ryan Rogers\*\*, Mesa, Ariz.  
Robert Sumner, The Dalles, Ore.

#### *Tenor II*

Tyler Baker, Klamath Falls, Ore.  
Pierre-Alain Chevalier, Tigard, Ore.  
Sean Fennell, Tigard, Ore.  
Jonathan Osborne, Klamath Falls, Ore.  
Jason Solano, Courtdale, Penn.

#### *Bass I*

Rob Arndt, Woodburn, Ore.  
Jesse Blanchard, Roseburg, Ore.  
Jim Davidson, Lake Oswego, Ore.  
Ian Lindsay, Salt Lake City, Utah  
Bob Macfarlane, Palmer, Alaska  
Ryan Tong, Gladstone, Ore.

#### *Bass II*

Lucas Anderson, Salem, Ore.  
Chris Foot\*\*, Red Wing, Minn.  
Matt Hoffman\*, Klamath Falls, Ore.  
Andrew Koch, Aptos, Calif.  
Joshua Smith, Bellevue, Wash.  
Jonathan Westfall, Salem, Ore.

#### *Officers*

President – Lucas Anderson  
Vice President – Christine Greger  
Secretary – Sarah Brauer  
Historians – Sarah Boyer, Ryan Rogers

#### *Section Leader noted with \**

*Assistant Section Leader noted with \*\**

### WILLAMETTE SINGERS

#### *Soprano 1*

Bryn Lynch, Salem, Ore.  
Amy Kerr, Keizer, Ore.

#### *Soprano 2*

Christine Greger, Portland, Ore.  
Katie Skiff, Bremerton, Wash.

#### *Alto*

Lisa Oakley, Pleasant Hill, Ore.  
Renée Schwab, Beaverton, Ore.

#### *Tenor*

Philip Morton, Klamath Falls, Ore.  
Nick Pleasure, Pacifica, Calif.

#### *Baritone*

Rob Arndt, Woodburn, Ore.  
Dan Fennessy, Spokane, Wash.

#### *Bass*

Lucas Anderson, Salem, Ore.  
Chris Foot, Red Wing, Ore.

#### *Piano*

Kristin Friesen, Tualatin, Ore.

#### *Drums*

Nick Grant, Meridian, Idaho

#### *Bass*

Matt Hoffman, Klamath Falls, Ore.

#### *Sound*

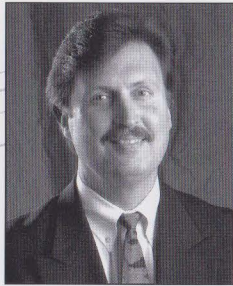
Jim Davidson, Lake Oswego, Ore.  
Jonathan Westfall, Salem, Ore.



Chamber Choir



Willamette Singers



### WALLACE H. LONG JR.

Wallace Long has been director of choral activities at Willamette University in Salem, Ore., since 1983. He received his master of music degree and doctorate in choral conducting from the University of Arizona at Tucson.

A frequent vocal/choral adjudicator, clinician and guest conductor, he is an active supporter of public school music in the Northwest. He conducted the Kansas All-State Choir in 1993.

Long sings professionally with Male Ensemble Northwest and in 1993 became a member of the Festival Singers of the Robert Shaw Choral Institute, performing at Carnegie Hall in January 1994. That summer, he traveled to Souillac, France, to record two compact discs of contemporary choral literature for Shaw. In 1996, he joined Shaw's Festival Singers for performances of the Verdi Requiem in Carnegie, and the Rachmaninoff Vespers in the Cathedral of St. John the Divine in New York City.

### WILLAMETTE UNIVERSITY CHAMBER CHOIR

The Willamette Chamber Choir is a 48-voice ensemble open by audition to all Willamette University students. A wide variety of literature selected from the Renaissance through the contemporary periods is studied and performed each year. The group tours annually throughout the Northwest and is frequently invited to perform at music conventions and workshops held by the American Choral Directors Association, Music Educators National Conference and Oregon Music Educators Association.

### WILLAMETTE SINGERS

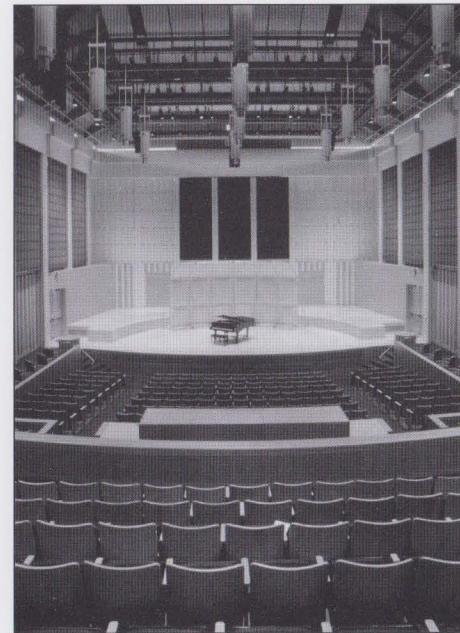
The Willamette Singers is a 15-member ensemble which explores music particularly suitable to small groups of highly skilled and flexible vocalists. Willamette University is one of the few four-year universities in Oregon that offers experience in vocal jazz. The Willamette Singers participate in a yearly tour and in recent years has been invited to perform for many regional, national and international conventions of the American Choral Directors Association, the Oregon Music Educators Association, the Music Educators National Conference and the International Association of Jazz Educators. In February of 2003, Singers will travel to New York City to perform for the National Convention of the American Choral Directors Association. Singers' sixth CD "Where Do You Start" was released in the fall of 2002.

### OTHER VOCAL ENSEMBLES

Male Ensemble Willamette is an all-male performance group which sings a full spectrum of vocal music – from classical to doo-wop and barbershop. Voce Femina is a women's choral organization which explores and performs works written for treble voices from all historical periods and styles. Willamette Master Chorus is a 60-voice group whose membership is drawn from the Salem community. This organization has grown to be an exceptional performing ensemble, offering a large repertoire of classical music, and hosting an annual "Messiah Sing Together" at Christmas.

### MUSIC AT WILLAMETTE

The Willamette University Department of Music offers the music major intensive professional training coupled with a balanced core of liberal arts courses. For the non-major, the department offers performance opportunities through private instruction, performing ensembles of all types and a wide selection of general music courses, many of which are designed to meet the fine arts requirements of Willamette's general education program.



*Jerry E. Hudson Concert Hall*

The music department annually serves 300-400 students. Willamette offers four bachelor's degrees in music: music with an emphasis in music education, performance, composition and a bachelor of arts in music. Willamette's Master of Arts in teaching completes the certification requirements and prepares the students for a career in music education.

In 1999 the Mary Stuart Rogers Music Center opened at a cost of \$8.5 million. This state-of-the-art facility houses the 450-seat Jerry E. Hudson Concert Hall, the James W. Rogers Rehearsal Hall, the Roger W. Rogers Art Gallery and several faculty offices and practice rooms. This beautiful building represents more than a state-of-the-art facility; it is a symbol of Willamette's vision for the future of the arts and its students.

### ABOUT WILLAMETTE UNIVERSITY

Willamette University, founded in 1842, is the first university in the West and is comprised of the College of Liberal Arts, the College of Law, the Atkinson Graduate School of Management and the School of Education, which prepare students for successful professional and personal lives. The self-contained campus is situated on 61 acres. Adjacent to the campus is Tokyo International University of America (TIUA), the American campus of Willamette's Japanese sister university. TIUA offers classes in English and American studies to visiting students from Japan. Salem's population of 135,000 makes it Oregon's second largest city and the community offers a range of restaurants, movie theaters and cultural opportunities all within easy walking distance of the campus, augmenting University activities. Willamette also benefits from being located across the street from the state Capitol. In the larger setting, the cultural attractions and diversity of Portland, Oregon's largest city, are within 45 miles. The ski slopes of Mt. Hood and Mt. Bachelor are two hours away while Oregon's beautiful, rugged coast is an hour's drive.

# TOUR SCHEDULE

**Saturday, Jan. 11, 2003, 7 p.m.**

Hudson Hall, Willamette University  
900 State St., Salem, Ore.  
Tour Kick-Off Concert

*Performance: Chamber Choir/Willamette Singers with West Salem High School South Salem High School*

**Sunday, Jan. 12, 2003, 6 p.m.**

Borah High School Auditorium  
6001 Cassia St., Boise, Idaho

*Performance: Chamber Choir/Willamette Singers with Borah High School Timberline High School*

**Monday, Jan. 13, 2003, 12:35 p.m.**

Hillcrest High School  
2800 Owens St., Idaho Falls, Idaho  
*Performance: Willamette Singers*

**Monday, Jan. 13, 2003, 7 p.m.**

Trinity United Methodist Church  
237 N. Water Ave., Idaho Falls, Idaho  
*Performance: Chamber Choir with Hillcrest High Idaho Falls High School*

**Tuesday, Jan. 14, 2003, 12:50 p.m.**

Bozeman High School  
205 N. 11th Ave., Bozeman, Mont.  
*Performance: Willamette Singers*

**Tuesday, Jan. 14, 2003, 7:30 p.m.**

First Presbyterian Church  
26 West Babcock, Bozeman, Mont.  
*Performance: Chamber Choir with Bozeman High School*

**Wednesday, Jan. 15, 2003, 10:15 a.m.**

Billings Senior High School  
425 Grand Ave., Billings, Mont.  
*Performance: Willamette Singers*

**Wednesday, Jan. 15, 2003, 7 p.m.**

First Congregational Church  
310 N. 27th, Billings, Mont.  
*Performance: Chamber Choir with Billings Senior High School Billings West High School*

**Thursday, Jan. 16, 2003, 7 p.m.**

First United Presbyterian Church  
201 South 5th West, Missoula, Mont.  
*Performance: Chamber Choir with Hellgate High School Big Sky High School*

**Friday, Jan. 17, 2003 1:15 p.m.**

Flathead High School  
644 Fourth Ave. West, Kalispell, Mont.  
*Performance: Willamette Singers*

**Friday, Jan. 17, 2003 7:30 p.m.**

Trinity Lutheran Church  
400 W. California St., Kalispell, Mont.  
*Performance: Chamber Choir with Flathead High School Montan-Aires*

**Saturday, Jan. 18, 5:10 p.m.**

St. James Cathedral  
804 9th Ave., Seattle, Wash.  
*Chamber Choir will provide music during mass and will give a short concert prior to and following mass.*



## WILLAMETTE UNIVERSITY

COLLEGE OF LIBERAL ARTS

COLLEGE OF LAW

ATKINSON GRADUATE SCHOOL OF MANAGEMENT

SCHOOL OF EDUCATION

For music scholarship information:

[www.willamette.edu/cla/music/moreinfo.htm](http://www.willamette.edu/cla/music/moreinfo.htm)

or call 503-370-6255