

STUDENT HANDBOOK



1939 - 1940



The Student Handbook

■

THIS BOOK IS THE PROPERTY OF

NAME

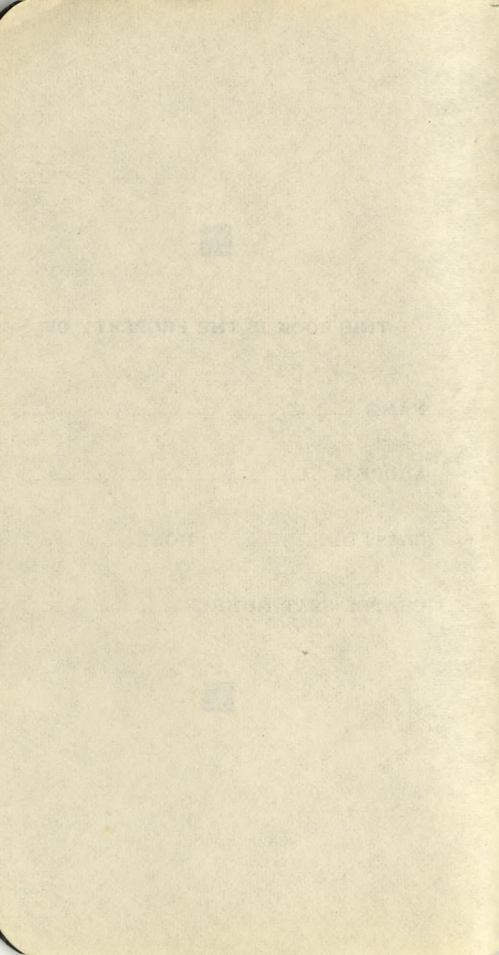
ADDRESS

CLASS OF..... **PHONE**.....

CHAPEL SEAT NUMBER

■

PAUL WHITTLE, Editor



The
Student Handbook



Annual Publication of
THE ASSOCIATED STUDENTS
OF
WILLAMETTE UNIVERSITY

VOLUME XLVI

1939-1940



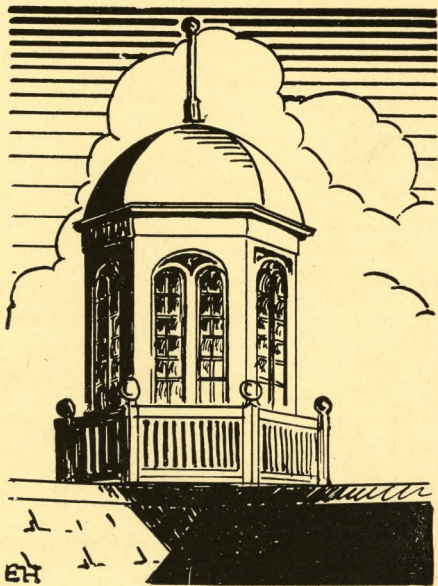
PAUL WHIPPLE, Editor

FOREWORD

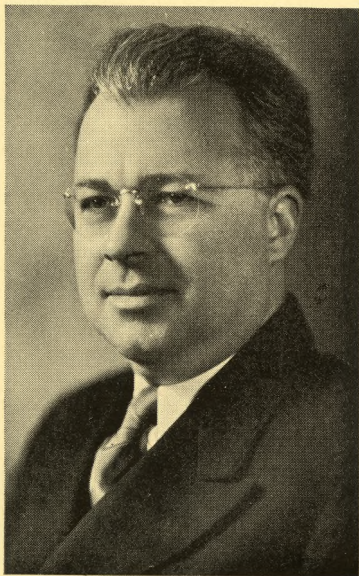
This little handbook attempts to present in condensed form as much information about the University, student organizations and leaders, and the activities of the student body as possible. It is of course to the new student that the book will be most valuable, and it is hoped that the information contained herein will in some small measure make it easier for him or her to know our school as we know it.

What the student gets out of college is almost entirely up to him, but others can contribute in their small way a few tips and hints on how to get the most out of school. If this book in any way makes it easier for the new students to do that, its purpose will be amply fulfilled.

THE EDITOR



INSPIRATION



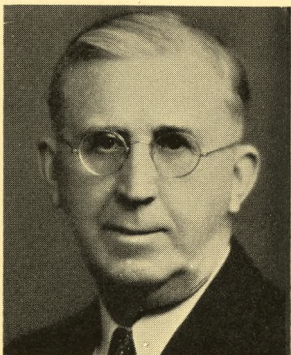
DR. BRUCE R. BAXTER
President of Willamette University

I bring most sincere greetings to the student body for this new University year, particularly to the Freshmen and other new students. I welcome you to a campus upon which you will find considerable improvement since last June. But far more than a welcome to the campus itself is the welcome to the University. You become a part of an institution that possesses almost a full century of traditions. One of these is Freshman Glee, in which you will find real delight next spring. Another is the spirit of friendliness through which students quickly come to know each other and the faculty members. There is a tradition of scholarship which means that we shall all do the best work of which we are capable. There is a definite tradition that moral and spiritual values are given a high place.

You will find that Willamette graduates are very largely in the service professions. As you meet them when they return to the campus you will discover this fact. They are teaching in the schools, preaching in the churches, presiding over Christian homes. Many of them are to be found in unlovely places in foreign lands performing needed service. Not a great number have made much money but they have come into everlasting wealth. And so it is into this rich heritage that I welcome you at the beginning of the ninety-eighth year of Willamette history. May the year be pleasant and may it be rewarding.

BRUCE R. BAXTER,

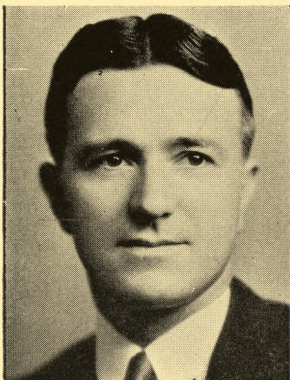
President



Education may be defined as widening horizons—escape from provincialism—from the narrower circle of youthful home to the wider circle in place, in glimpses of life, in knowledge and understanding of values which the University offers.

Student activities play an important part in the process, so properly our welcome is given to you in the handbook of student activities, for unless education functions in life it is of small value. Yet a greeting in the midst of college interests may be a vain effort. Small time for formalities as one plunges into the busy student hours. For our own sake, then, let us say "Welcome," knowing better than you can know at the outset to what a great adventure you have come.

FRANK M. ERICKSON,
Dean



Welcome, and three cheers for the class of 1943! We receive you with a spirit of anticipation, and we hope that you come with sincerity and only the highest of hopes and expectations. We purpose to assist you in the attainment of your goal. To this end we invite your cooperation. That you will have problems we have no doubt. Please do not feel that any of them are too serious or too trivial to bring to our attention. During the first few weeks of adjustment, as well as the remainder of the year, we invite you to bring your problems to this office and if you do so we promise you a sympathetic hearing and a sincere effort of assistance.

DAN H. SCHULZE,
Dean of Men



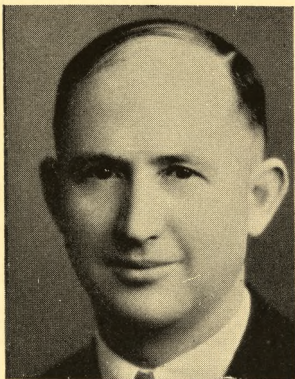
To the Freshmen:

It has been impressed upon my mind through years in this office that a student who lacks anything whatsoever, money, information, advice, yes, and sometimes even a good round scolding, should not hesitate to call at the office of either the Dean of Men or the Dean of Women. That is what we are here for, and truly in all sincerity we wish to serve you.

Much time and many nights of worry may be saved by letting your wants be known, and so I, as Dean of Women, am offering to help and serve you.

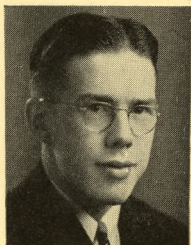
We welcome you to Willamette, and we wish to get personally acquainted with each one of you. Do not wait for a call to the office but come and make yourself known.

OLIVE M. DAHL,
Dean of Women



Familiarity with A. S. W. U. finances is not complete until the student has found his way to the general manager's office. The student body of Willamette University maintains and operates a business office under the direction of a general manager. The office is located in the gymnasium. Authorization for expenditure of A. S. W. U. funds is obtained from this office. All money received by managers or collected by any of the A. S. W. U. activities is turned in to the general manager's office. Student activity tickets and handbooks may be obtained from the office. If you are a returning student, make use of the office. If you are a new student, you are invited to become acquainted with the organization and administration of A. S. W. U. money.

LESTLE J. SPARKS
General Manager

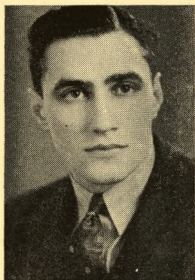


As a representative of the Associated Students, it is with real pleasure that I welcome you into our student body, for we always look forward with waiting eagerness to the new enthusiasm, the new ideas, and the new individuals that make their appearance with each incoming class.

Many of the organizations listed in this book will play a contributing part in adding to your enjoyment of your college days. But in your display of loyalty to these individual groups, take particular care that you don't forget your primary responsibility to the student body as a whole, for it is only when we exhibit this attitude that we can develop a program of greatest benefit to the majority of students.

Keeping this in mind, I am sure, with your support, we shall make this a banner year for W. U.

DAYTON ROBERTSON,
President A. S. W. U.

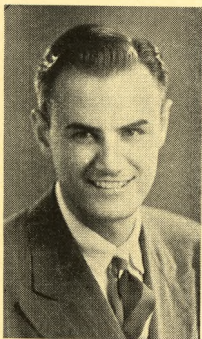


Welcome Freshmen! Blue Key congratulates you upon completing another step in your life's education, and upon choosing Willamette University as the place to begin your next important unit.

We believe that you will find here a true, friendly spirit, high scholastic standards, and many interesting and glorious traditions—all of which should aid you in developing a well-rounded personality. We hope that while here you will make your college days a credit to yourself and to your school.

It is our desire, as members of Blue Key, to serve you in whatever way possible. So again we say, "Welcome to Willamette," and may your college days be filled with many pleasant and successful experiences.

ALBERT KLASSEN,
President Blue Key



"Hi, Fellas!"

We are happy to greet you, the Class of '43, as you enter the portals of a new life, crammed full of joys and thrilling experiences. Willamette University will realize your every dream far beyond your highest expectations. Put your whole heart and soul into the school's activities and traditions, and we can guarantee that your Freshman year will truly be the happiest year you have ever spent in any school. We are glad you chose Willamette.

The Y. M. C. A. is the largest men's organization on the campus. Join us in our suppers, parties, picnics, and swims. We want to help you to enjoy every day of your college life, and then we know that, with your help and enthusiasm, we shall again have another successful year together here at Willamette.

RALPH MAY,
President of Y. M. C. A.



The Y. W. welcomes the class of '43 to Willamette and invites all new girls to join in its program this year. Essentially we are a service organization whose aim is to serve campus needs as well as help the individual girl find a place in campus and community life. Moreover, we aim to discover what our part and attitude as Christian students should be toward national and international events. However, our activity does not center wholly upon the Willamette campus; we often cooperate with students on other campuses in such common projects as Seabeck promotion.

We have a place for every girl in our program, and I am sure that through active work in the Y. W. you can make your first year at Willamette richer and happier.

DOROTHY CUTLER,
President Y. W. C. A.

COLLEGE CALENDAR



1939

- September 18-19—Freshman Days.
September 20, Wednesday—Registration Day
for other students.
September 21, Thursday—Recitations begin.
November 30 - December 2 — Thanksgiving
Holiday.
December 21, Thursday — Christmas Recess
begins.

1940

- January 3, Wednesday — Christmas Recess
ends.
January 22-26—First Semester Finals and
Second Semester Registration.
January 29, Monday—Recitations for Second
Semester begins.
March 23-30—Spring Vacation.
May 3-4—May Week-end.
June 3-7—Second Semester Finals.
June 8, Saturday—Commencement Day.

Organizations



A. S. W. U.

The Associated Students of Willamette University is the organization for government of the whole student body, all students paying the student body fee being members. The actual governmental authority is vested in the Executive Committee, composed of the student body president, first and second vice-presidents, secretary, editors of the Collegian and Wallulah, a representative from each class, a faculty adviser, and the graduate manager. Government is carried on in accordance with the student body constitution and amendments.

Plans for a student union, to be completed in 1942 on the 100th anniversary of the University, have received much discussion, although no actual steps have been taken. At present Chresto Cottage is used as a student union, and Willamette Lodge, 255 N. Capitol, the private residence of Mrs. Claudius Thayer, is used for meetings and teas.

A. S. W. U. Officers

President	Dayton Robertson
First Vice-President.....	June Bradsted
Second Vice-President	Henry Frantz
Secretary	Verna Vosper
Song Queen	Carol Read
Collegian Editor	Fred Bernau
Collegian Manager.....	Tom Riches
Wallulah Editor	Dan Moses
Wallulah Manager	Jack Walker

Culture

International Club

A local group, consisting of sixty per cent foreign and forty per cent American students, organized to promote a closer relationship between foreign and American students. International relations and problems receive much attention in the discussions at the periodic meetings.

Officers to be elected this fall.

Delta Tau Gamma

A national organization of independent women, to which sorority women may also belong. Purpose of the society is to provide an opportunity for every girl to develop her personality through social activities, and to promote the spirit of democracy among the girls on the campus.

Officers

President.....	Marie Tatro
First Vice-President.....	Frances Pickard
Second Vice-President.....	Edna Thoman
Secretary.....	Erma Taylor
Treasurer.....	Helen Neiger
Corresponding Secretary.....	Arliss Thomas
Reporter.....	Hermie Palmer
Historian.....	Lorraine Vick
Marshal.....	Janet Powell
Alumnae Secretary.....	Marian Hall
Social Com.....	Aileen LaRaut, Della Willard

Mathematics Club

A local organization open to all students interested in mathematics, from the theoretical, practical or social points of view of the application of the subject. Campus and industrial affairs come in for their share of discussion at the meetings.

Officers

President	Betty Starr
Secretary-Treasurer	John Laughlin

Coffee House

A local group, made up of students interested in creative writing. Criticism and discussion of individual productions is carried on at periodic meetings.

Officers to be elected this fall.

Classical Club

A local club composed of students studying the classics. Promotion of appreciation of Greek and Roman literature and history is the purpose of their informal discussions, held twice a month.

Officers to be elected this fall.

French Club

A local organization open to all students interested in the French language. French games are played, riddles and axioms told—all in French, as the purpose of the club is to promote fluency in the use of the language. No English is spoken at any of the meetings.

Officers to be elected this fall.

Paint Spots

Interest in art, rather than artistic ability is the basis of membership in this club. The making of scenery, posters, and decorations for other campus organizations is part of services it renders to the student body. Members are encouraged to develop any ideas they may have.

Officers to be elected this fall.

Pi Gamma Mu

This national honorary society is devoted to the encouragement of undergraduate study of social science. Faculty members, Alumni, and Seniors who have had twenty semester hours in the social science field with a grade average of "B" are eligible.

Officers to be elected this fall.

Service

Blue Key

A national service fraternity whose two-fold purpose is to promote a national spirit by the exchange of ideas among the various colleges and to serve as a point of contact between students and faculty. New members are selected from the Sophomore class.

Officers

President	Albert Klassen
Vice-President	Cecil Queseth
Secretary	Dick McNees
Treasurer	Henry Frantz

Cap and Gown

A local honorary society eventually to be a chapter of Mortar Board. Composed of five Seniors whose selection is based upon personality, service, scholarship and Christian character. The organization, among other things, entertains Freshman and Sophomore women of high scholastic standing.

Members for 1939-40 are:

Olive Clemes	Edna Thoman
Elizabeth James	Verna Vosper
Dorothy Wright	

Tacks

A local service organization whose members usher at student body plays and concerts, serve at banquets, and assist at other functions. Membership is open to all Sophomore women.

Officers to elected this fall.

Y. M. C. A.

Helping new students orient themselves, entertaining, and in other ways promoting better student relations are the big jobs which this organization carries out. The YM-YW formal is the first big social function of the year and helps to break the ice for new students.

Officers

President.....	Ralph May
Vice-President	Bill Laughlin
Secretary.....	Winfield Achor
Treasurer	John Laughlin

Y. W. C. A.

An extensive service program is handled by this organization, consisting of joint sponsorship of the "Y" reception, the Big Sister project, campus teas, Faculty Firesides, the Chresto program, group discussions, and many other worthwhile projects.

Officers

President.....	Dorothy Cutler
Vice-Presidents.....	Ruth Alice Grant Esther Mae Devore
Treasurer.....	Barbara Hollingworth
Campus Relations	Jeanette Hulst
Intercollegiate Relations.....	Leone Burdick
International Relations.....	Della Willard
Finance.....	Rowena Upjohn
Publicity.....	Barbara Brandt
Public Affairs	Mary Head
Worship Chairman.....	Martha Rose Roddy

Music

Mu Phi Epsilon

A national music sorority, membership in which is based upon interest and ability in music plus high scholastic standing and spirit of service.

Officers

President.....	Belle Brown
Vice-President.....	Edna Thoman
Secretary	Olive Clemes
Treasurer.....	Ina Bennett
Warden.....	Miss Helen MacHirron
Historian.....	Mrs. Mary Schulz Duncan
Chorister	Mrs. Finnley
Alumni Secretary.....	Miss Clara Eness
Chaplain.....	Mrs. Denton

Phi Delta Mu

A local organization, whose purposes are to promote student interest in music, cultivate appreciation of good music, and to offer a common meeting ground for music student to discuss interests and problems.

Officers to be elected this fall.

Songmen

The men's glee club, membership of which is determined by tryouts held early each year. It is directed by Prof. Cameron Marshall and, in addition to several broadcasts, makes numerous appearances in Salem, Portland and other cities.

Treble Clef

The women's glee club, open to those who pass the tryouts each fall. Members are active in all musical activities on the campus.

Philharmonic Choir

Composed of members of the Songmen and Treble Clef, this choir is directed by Prof. Marshall and has acquired a reputation of unsurpassed excellence in the northwest. Many concerts were given by the group last year and throughout the second semester broadcasts were made over KOIN. It also made a ten-day tour of Oregon and Washington in May.

University Band

A colorful, spirited organization which helps create enthusiasm at football games and also presents several concerts during the year. Membership is by tryouts, and, under the capable direction of Ralph Nohlgren, has developed into one of the school's best advertisements.

String Quartette

The quartette, three violins and piano, under the direction of Mrs. Mary Schulz Duncan, plays at various student and town functions.

Speech

Forensic Council

This council is composed of three members of the debate squad who have won the Bar "W." It has charge of all forensic activities and attempts to promote interest in public speaking on the campus.

Debate and Oratory

Willamette is a member of the Pacific Forensic League and the Intercollegiate Oratorical Association of Oregon. Teams from the University take part in the contests and tournaments sponsored by these organizations, and also make several tours throughout the western states to meet with teams from other schools.

Inter-class debate on the campus is an important part of the intermural activities program.

Tau Kappa Alpha

This national forensic fraternity attempts to promote interest in forensic activities. It sponsors inter-class and intercollegiate debates and oratorical contests. Members are recruited from the University debate and oratorical squads.

Officers to be elected this fall.

Theta Alpha Phi

A national dramatic society whose membership is limited to those who have shown real ability in acting, or in directing or managing dramatic productions. It presents several plays each year and provides a social medium for those with histrionic talents.

Officers

President.....	Donald Ewing
Vice-President.....	Frances Pickard
Secretary	Margaret Mackenzie
Adviser.....	Dr. R. M. Gatke

Little Theatre Guild

An organization whose purpose is primarily to develop dramatic talent. Several plays and skits are presented each year, giving students opportunity to exercise their talents in casting, costuming, play-writing, make-up, directing, or managing. The prerequisite for membership is ability in these fields and is determined by tryouts each fall.

Officers

President	Bettie Irvine
Vice-President	Barbara Hollingworth
Secretary.....	Dorothy Moore
Treasurer	Bob Dean
Publicity Chairman.....	David Stahl

Athletics

P. E. Club

The Physical Education Club is made up of students interested in athletics and in furthering recreation as an extra-curricular activity. An important part of the club program is the fostering of student play night to demonstrate the advantages and enjoyment of recreation.

Officers to be elected this fall.

"W" Club

Composed of men who have earned their gold "W" in a major varsity sport. Upholding campus customs and traditions, encouraging student attendance at games, and promoting a spirit of good sportsmanship at all functions are their main purposes.

Officers to be elected this fall.

Women's Athletic Association

The W. A. A. is composed of women who have earned at least 100 points in campus athletics or have earned their letter in varsity sports. It promotes interest in athletics, intramural contests, and attempts to provide sports that all girls may participate in.

Officers

President	Marjorie Herr
Vice-President	Maxine Crabtree
Secretary	Althea LaRaut
Basketball	Jean McCorkle
Baseball	Madelyn Morgan
Volleyball	Aileen LaRaut
Archery	Carolyn Woods
Soccer	Jean Sweet
Hiking	Jean Anunsen
Golf	Dorothy Moore
Tennis	Eleanor Perry
Swimming	Margaret Rankin

Law

Delta Theta Phi

The local chapter of this national law fraternity, the Wolverton Senate, has for its purpose the promotion of high scholarship and ideals, unity among the students and the advancement of justice in the legal profession.

Officers

Dean.....	William Hanzen
Vice-Dean.....	Bill Dick
Tribune.....	Jack McCollough
Clerk of Rolls.....	Bob DeArmond
Clerk of the Exchequer.....	Claude Johns
Master of Ritual.....	Joe Devers
Bailiff.....	George Sibbald

RELIGION

University Vespers

An organization seeking to integrate the religious and social activities of students. Sunday meetings are held in the Educational Temple of the First Methodist Church. "Cookie Jar." the Thursday afternoon tea, various parties and picnics, and the Senior banquet are among the social activities of the group.

Officers

President.....	Dick McNees
Vice-President.....	Frances Pickard
Secretary	Della Willard
Treasurer.....	Leo Baldwin

Wesleyans

A national organization for promotion of interest in missionary work. Discussions of religious problems, both on the campus and off, are held at weekly meetings.

Officers to be elected this fall.

Traditions

Homecoming

The first of the three major campus social functions which have become traditions at Willamette is Homecoming. On this particular weekend each year the "Old Grads" gather for a reunion and are entertained in royal fashion by the undergraduates. A football game, with the Freshman-Sophomore bag rush between halves to determine if the Frosh may doff their caps or shopping bags (depending on their sex), teas and dinners, the Homecoming Sign Contest participated by the living organizations, and finally the Homecoming Play on Saturday night, constitute the general program of activities.

Freshman Glee

Inter-class competition reaches its yearly high during this very popular melodic tourney. Sponsored and managed by the Freshman class, the Glee is the occasion of feverish composition and rendition of songs specially written for the occasion in accordance with the theme agreed upon beforehand. Presented the first Saturday night in March, the Glee has gained such a reputation that people come from far away to pack the gym, and KOIN has broadcast it for the last three years. The songs composed are collected in the Willamette Songbook and kept for future generations.

On Monday morning following, the oddly assorted bets made on the outcome of the affair are paid off, and the male members of the losing class take a more or less willing plunge into the mill stream.

May Weekend

On the first weekend in May this festival, primarily in honor of high school guests, takes place. Friday night the May Queen and her two princesses, chosen by student election, are honored by a dance, preceded by a baseball game in the afternoon. Saturday morning the Y. W. C. A. sponsored May Breakfast is eaten on the campus lawn, the Freshman-Sophomore tug-of-war is held, and various other activities are participated in. On Saturday afternoon the May Queen is crowned, a May Pole Dance is presented, and in other ways the royal court is honored. And as conclusion to the festivities the May Weekend Play is presented in the evening, at which the May court is further honored.

Chapel

Regular Chapel assemblies are held on Tuesday, Wednesday, and Thursday from 11:30 to 12:00 A. M. The programs consist of talks by Dr. Baxter or various outside speakers, and student attendance is compulsory. On Friday, Chapel is devoted to student body meetings, and student matters are discussed or programs are presented by the various campus organizations.

Victory Bell

The Victory Bell in the tower of Waller Hall is rung at all Willamette athletic victories. The number of tolls proclaim the University's score.

Flunk Days

Trips to the beach—without the knowledge of underclassmen—are planned by the Junior and Senior classes each spring. On their respective Flunk Days, the members of each of these classes are excused from their studies, that they may get sand in their ears without worry.

TIPS

College is primarily a place to study, but there is truth in the advice not to let your studies interfere with your education. Get into outside activities—you'll get more out of study because of it.

Get acquainted at the YM-YW reception and remember those you meet with a word and a smile.

Look for messages and letters under the proper letter in the alphabetical mail boxes on the first floor of Eaton Hall.

Respect the Honor Code: the one who loses most by cheating—even if he gets away with it—is the culprit.

FRESHMEN must carry the Student Handbook at all times, must attend Kangaroo Court until Homecoming, must do a certain amount of work on the campus, boys wear a rook cap and girls carry their books in a shopping bag, enter and leave Chapel by the side door. REMEMBER these things; if you can't, the "W" club will help you.

Seniors may sit on the Senior Bench—others at their own risk.

Underclassmen may wear cords—if they like to be ducked in the mill stream.

No one may smoke on the campus.

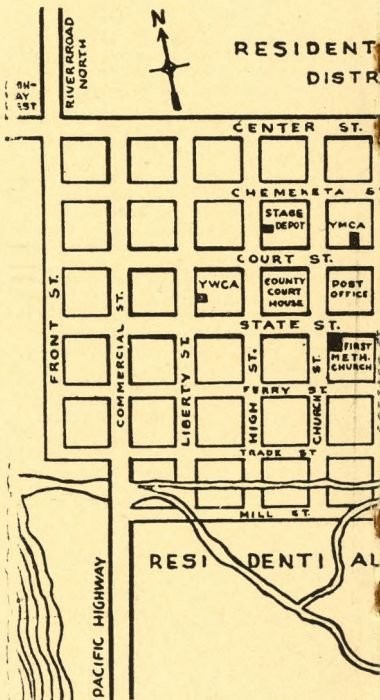
Street shoes are not worn on the gym floor.

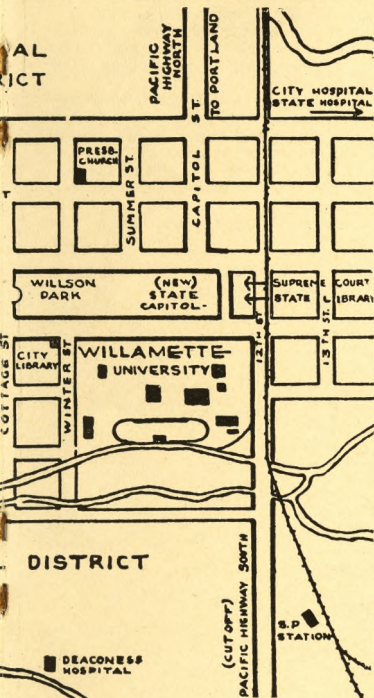
Students turn out for rallies and games, and are ALWAYS good sports at inter-collegiate contests.

Don't complain about the way things are run if you do not attend student body and class meetings.

If you must whittle, take a stick to class, the furniture in the classrooms and library looks much better without your initials.

Rise when the "Old Historic Temple" is sung, everyone else does.





Do not applaud after "Farewell Willamette"—think of what it means instead.

The Student Body Constitution may be had for the asking in the General Manager's office. It is a good thing to know how your affairs are run.

Don't be afraid to cultivate your professor's acquaintance; he might be able to help you with your problems. The Freshman Counselor is a friend, treat him like one.

You may be proud of your high school reputation, but we don't care what you were, we want to know you as you are.

Remember those people back home you call your parents? They like to hear from you occasionally.

The library is a place to study. Others may want to even if you don't.

The songs and yells in this book are well worth learning.

FRATERNITIES

Alpha Psi Delta

895 Chemeketa Street, Phone 6588

Officers

President.....	Max Hauser
First Vice-President.....	Dean Trumbo
Second Vice-President.....	Victor Crow
Secretary.....	John Hathaway
Member-at-Large.....	Quay Wassam
Alumni Editor.....	Dan Moses
Manager.....	Wayne Brainard

Kappa Gamma Rho

316 North Church Street, Phone 8823

Officers

President.....	Roderic Barklow
First Vice-President.....	Winston Bunnell
Second Vice-President.....	Loren Hicks
Secretary.....	Al Ferrin
Member-at-Large.....	Al Klassen
Manager.....	Winston Taylor

Sigma Tau

920 Oak Street, Phone 8718

President.....	John Horton
First Vice-President	Roger Foster
Second Vice-President	Connie Schneider
Secretary	John Taylor
Manager	Ken Sherman

Inter-Fraternity Rushing Rules

Procedure: Subsequent to registration, at a time set by the Inter-Fraternity Council, each new registering man shall be given the opportunity to signify his choice of fraternities, which shall be written and filed in the Dean of Men's office. Each fraternity shall present to the Dean a list of new men whom it wishes to pledge. Official notification shall issue from the Dean's office to each fraternity respectively of the names which correspond to the list it has handed in.

Time of Pledging: No man shall be offered the opportunity to pledge any fraternity until the time of pledging set by the Inter-Fraternity Council and until he shall have completed registration. Completion of registration means the making of final arrangements with the business office in regard to the payment of tuitions. Any violation of this provision on the part of any fraternity shall mean the forfeiture of the right to pledge the man in question for a period of thirty days.

Bids for preferences to houses shall be turned in to the Dean of Men's office by four o'clock Friday of Freshman Week.

SORORITIES

Alpha Phi Alpha

750 North Summer Street, Phone 8911

Officers

President.....	Betty Williams
Vice-President.....	Gayle Denison
Recording Secretary.....	Maxine Goodenough
Corresponding Secretary.....	Betty Lou Strachan
Manager	Mary Head

Beta Chi

1445 State Street, Phone 8760

Officers

President	Mary Sadler
Vice-President.....	Patricia Schramm
Recording Secretary	Betty Zook
Corresponding Secretary.....	Julia Foglesong
Treasurer.....	Dorothy Wright
Sergeant-at-Arms	Margaret Moulton
Manager.....	Jessie Mae Ruhndorf

Delta Phi

1610 Court Street, Phone 8730

Officers

President.....	Elizabeth James
First Vice-President.....	June Charboneau
Second Vice-President	Margaret Upjohn
Recording Secretary.....	Juanita Cross
Corresponding Secretary	Betty Starr
Telephone Secretary.....	Helen Dooley
Social Treasurer.....	Charlotte McKee
Manager	June Brasted

Inter-Sorority Rushing Rules

(Effective summer, fall of 1939 and winter of 1940.)

I. Fall Rushing:

1. Girls planning to graduate from Wil-
lamette will be given first consideration
in rushing.

2. Girls who are registered for less than twelve semester hours are not eligible for pledging.
3. Girls on probation will not be rushed.
4. Independent or fraternity men may not assist in sorority rushing.
5. Rushing must never include conversation concerning other Houses.
6. Rushing will take place the 21st, 22nd, 23rd of November, 1939 with November 25th the date for the preferential dinner.
7. No favors will be given to guests at the buffet suppers.
8. Alumnae of the sorority must observe all rush regulations.
9. Violation of any rush rule will be subject to forfeiture of the winter social function of the sorority.
10. From September 18, 1939 to November 21, 1939 the following rules shall be in effect:
 - a. No expenditure of time or money on rushing.
 - b. Sorority members may not issue direct invitations to new girls. Incidental invitations issued in a general manner are allowed.
 - c. Sorority members may not invite new girls to the sorority houses.
 - d. No freshman or new girl may enter a sorority house.
 - e. Sorority members may not invite new girls to stay in their homes.
 - f. Sorority girls may become acquainted with new girls in the following manner:
 1. Study together.
 2. Attend church together.
 3. Double date.
 4. Visit at Lausanne Hall during visiting hours.

g. Costs for preferential banquet is not to exceed \$50.00 including favors, decorations, food, etc.

h. Each sorority must submit an itemized account of rushing expenditures to the office of the Dean of Women.

II. Second Semester Rushing:

1. Spring rushing shall consist of one informal function and no money is to be expended on it.

III. Summer Rushing:

1. Each sorority shall be entitled to give two major rush functions in Portland and two in Salem during the summer vacation.
2. A major rush function will consist of more than three girls from one sorority and more than three rushees. A group of six is not to be considered a major function.
3. Alumnae of the sorority must observe the above regulations.
4. Violation of any rush rule will be subject to punishment, namely, the forfeiture of the winter social function of the sorority.

LAUSANNE HALL REGULATIONS

To promote new friendships and to create a spirit of democracy, all Freshmen girls and all other girls new to the campus are required to spend their first year in Lausanne Hall.

Hours on week nights and on Sunday nights are 10:00 P. M., signing out being required after 7:30 P. M. On Friday and Saturday nights hours at 12:00.

Students are expected to preserve quiet from 7:45 to 11:30 A. M. and from 1:15 to 4:00 P. M., except Saturdays, and from 3:00 to 5:00 P. M. on Sundays. Quiet hours are observed from 7:30 P. M. on each week night.

On leaving town permission must be secured from Miss Jack, and girls shall register their address while away and the probable time of their return. Girls wishing to spend Friday or Saturday nights away from the Hall must secure permission. Late permissions may be granted by Miss Jack for any special functions. If, on any night, girls are attending a campus function which lets out too late for regular hours to be maintained, all girls shall be in twenty minutes after the first girl arrives from that function.

Publications

Willamette Collegian

The official newspaper of the student body, published weekly. Consistent good writing and editing by the staff have made it one of the better college papers on the coast. Staff members with a record of faithful work during their first year receive a gold "C" as a reward.

It is usual, and expected, that Willamette students patronize Collegian advertisers.

Wallulah

The yearbook published by the Associated students. It appears about June 1 each spring. Upon approval by the awards committee, staff members with a good record of work are awarded a gold "W."

Student Directory

A supplement of the **Wallulah**, this is published at least once each year by the staff of that publication. The "fusser's guide" lists the names, addresses, and telephone numbers of the students and faculty, and the important social functions of the semester.

Student Handbook

The "frosh bible" is published by the student body at the beginning of each year to acquaint new students with the University and with student activities and organizations.

Willamette Songbook

A collection of Freshman Glee and other outstanding Willamette songs which grows larger each year by the addition of the winning compositions from the Glee.

LIBRARY RULES

General Rules

Current magazines are treated as reserve books. Reference books and bound periodicals do not circulate.

Hours

The library is open from 7:30 A. M. to 9:30 P. M., Monday through Thursday. On Fridays and Saturdays hours are from 7:30 A. M. to 6:00 P. M.

Fines

The charge for overdue two-week books is two cents a day; for three-day books, five cents a day; and for reserve books, five cents an hour and twenty-five cents a day.

If overdue material has not been returned and the fine has not been paid a week after the first notice has been sent, a second notice is mailed, adding ten cents to the amount of the fine. If the fine has not been adjusted at the end of the next week, the student is reported to the office of the Registrar and a fifty-cent charge is added to the original fine.

Reserve Books

Several hundred books in which reading assignments are made are kept at the desk and they are given to students by request.

Each reserve book has an orange card and a red dot. Reserve books will be charged out for two-hour periods and they will be due on the half hour nearest the two hours elapsed since the book was checked out.

AWARDS

Announcement of the winners of the following prizes is made each year at Commencement:

Alpha Kappa Nu

A local honorary society comprising the top ten per cent, in scholastic standing, of the Senior class.

Elected in 1939 were:

Betty Craney	Theodore Ludden
Martha Okuda	Margaret Macy
Marian Chase	David Bates
William Clemes	Clay Racely
Lois Burton	Aldus Smith

Albert Prize

An award of \$25 by the late Joseph H. Albert of Salem to the student who, having maintained good standing in scholarship during the year, opportunities considered, has made the greatest progress toward the ideal in character, service, and wholesome influence.

Margaret Macy

Colonel Percy Willis Prize

An award of \$25 by Colonel Percy Willis of Portland to the student who, during the year, has done the most real good for stu-

dents in the University by kindness and helpfulness, coupled with a steadfast devotion to high ideals and upright character.

Neil Shaffer

J. H. Booth Athletic Prize

A plaque awarded by J. H. Booth of Roseburg to the Senior, who, in addition to maintaining high scholarship standing, has exerted a fine moral influence and has achieved the best standing in athletics. In addition to the personal trophy, the student's name is engraved on the large loving cup held as a permanent trophy at the University.

Neil Shaffer

Class of 1919 Scholarship Prize

An award of \$10 by the Class of 1919 to the Senior with the most outstanding scholarship record.

Betty Craney

Library Recreational Reading Prizes

Awards of \$10, \$8, and \$5 for reading and reviewing books from a selected list.

First prize.....	George Gutekunst
Second Prize	James Anderson
Freshman Prize	Gene Huntley

Keyes Prizes

Awards of \$15 and \$10 by the Honorable Walter E. Keyes of Salem to the students winning first and second honors in oratory.

First Prize.....	Eugene Hill
Second Prize.....	Glenn Olds

University Extempore Speaking Prize

An award of \$15 by the Intercollegiate Forensic Association of Oregon plus \$5 by the University to the winner of Association contest.

Debris Darnielle

Pacific Forensic League Prize

An award of \$10 by the University plus a cup by the P. F. L.

William Thomas

A. S. W. U. Four-Year Forensic Trophy

For a record of four years participation in forensics.

Aldus Smith

Willamette Women's Athletic Honor

Conferred upon the Sophomore or Junior girl who in the opinion of the honor committee has made an outstanding contribution to the social and ethical aspects of the women's physical recreation activities of the University.

June Brasted

Women's Athletic Association Senior Cup

Awarded by vote of the Association to the all around athlete, including sportsmanship, personality, and cooperation.

Barbara Kurtz

Bancroft-Whitney Prize

A set of Jones' Commentaries on Evidence by the Bancroft-Whitney Company to the Senior law student doing the most commendable work in trial practice.

Philip Hayter

Senior Scholars for 1939-40

Appointments made at the close of the Junior year to hold throughout the Senior year. Duties of the Senior scholar are to make special studies of the teaching methods, examine and criticize papers, and assist in the laboratories. Selection based on scholarship and fitness to profit by the appointment.

Biology.....	Spohia Hughes
Chemistry.....	Romeo Gouley, Carroll Drew
Economics.....	Wallace Turner
English.....	Donald Ewing, Esther Cammack
French.....	Erma Taylor, Margaret Upjohn
History.....	Victor Haugeberg
Home Economics.....	Margaret Moulton
Mathematics.....	Betty Starr
Music.....	Olive Clemes, Edna Thoman
Physical Ed.....	June Brasted, Leighton Blake
Physics.....	John Laughlin
Political Science.....	Dayton Robertson
Philosophy.....	Alfred Vosper
Public Administration.....	Mabel Lenz
Religion.....	Verna Vosper
Speech.....	Doris Riggs
Sociology.....	Donald I. Smith
Western Civilization.....	Lois Herman
Zoology.....	Max Hauser

Class Officers

Senior Class

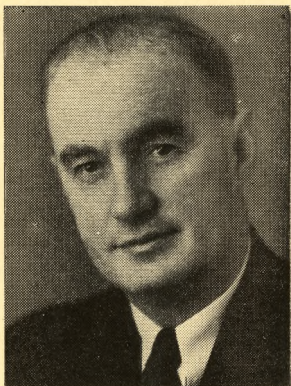
President.....	Max Hauser
Vice-President.....	June Charboneau
Treasurer.....	Warren Biggerstaff
Secretary.....	Carolyn Woods

Junior Class

President.....	Mel Cleveland
Vice-President.....	Patricia Schramm
Treasurer.....	Dean Trumbo
Secretary.....	Barbara Young

Sophomore Class

President.....	John Hathaway
Vice-President.....	Barbara Hollingworth
Treasurer.....	Orville Ragsdale
Secretary.....	Darlene Robertson
Song Queen.....	Betty Keller



Coach Keene

1939 *Football Schedule*

Sept. 23—San Diego Marines at San Diego.

Sept. 29—Santa Barbara State at Santa Barbara.

Oct. 6—Portland University at Salem (night)

Oct. 13—Linfield College at Salem (night)

Oct. 27—College of Puget Sound at Tacoma (night).

Nov. 3—San Jose State at Salem (night).

Nov. 10—Pacific University at Salem (night).

Nov. 18—College of Idaho at Caldwell.

Nov. 30—Whitman College at Walla Walla.

ATHLETICS

Intercollegiate athletics are maintained under the personal supervision of the Director of Athletics and under the jurisdiction of the Athletic Council.

The Northwest Conference, of which Willamette is a member is composed of the following schools: Whitman College, College of Idaho, College of Puget Sound, and Pacific University. It is the purpose of this Conference to foster, as far as possible, participation by all members in contests of football, basketball, baseball, tennis, and track.

Intramural Activities

Intramural activities are maintained under the personal supervision of the Director of Athletics and the chairman of the Interclass Rivalry Committee. Increasing emphasis is being laid upon intramural athletics as a part of the University athletic program.

The intramural program extends throughout the school year and is composed of the following activities: cross country, scrimmage ball, basketball, boxing, wrestling, physical ability tests, track, baseball, and tennis.

Students taking Physical Education for credit must pass the Physical Ability Tests before they are permitted to substitute an intramural activity for the regular class work.

Gymnasium Requirements

Physical Education is required of all students throughout their freshman and sophomore years.

The regulation uniform for the Physical Education classes consists of rubber-soled shoes, supporters, sleeveless jersey, pants, and sweatshirt, or heavy sweater.

Lockers should be locked at all times. Equipment left out will be picked up.

VARSIITY YELLS**Fight Team!**

Fight, team, fight, fight! (softly)

Fight, team, fight, fight! (louder)

Fight, team, fight, fight! (shout)

Yea, W. U.

Yea, W. U.

Yea, W. U.

Yea, W. U.

Fight 'em, fight 'em, fight 'em.

Go Get 'Em, Bearcats

Go get 'em, Bearcats, go get 'em!

(slowly, softly)

Go get 'em, Bearcats, go get 'em!

(faster, louder)

GO GET 'EM, BEARCATS, GO GET 'EM!

Skyrocket

S-s-s-s-s-s-s-s-s-s-s-s-(rise on whistle) BOOM!

A-a-a-h, WILLAMETTE!

Keene

He's Keene!

Who's Keene!

Spec's Keen!

Locomotive

(Spell softly and slowly working up to fast
and loud)

W-I-L-L-A-M-E-T-T-E

(Repeat several times)

Spell Bearcats

Be . . ar . . ca . . ts (slowly)

Be . . ar . . ca . . ts (faster)

Be . . ar . . ca . . ts (fast)

Be . . ar . . ca . . ts (very fast)

Bear-cats!

BEARCATS (shout)



Carol Read
Song Queen

VARSIITY SONGS

Old Historic Temple

There's an old Historic Temple
Rising grandly through the years;
Where the oaken-hearted fathers
Drew their strength for strong careers.
Down the years its portals open,
Gather wise ones to its fold;
Breathes the spirit of the Westland,
Card'nal emblem 'bossed with gold.
Spirit of the Golden Westland,
Breathing through our father's tears;
Tells the story of the Temple,
Bids us hope adown the years.
Sing, oh sing, of old Willamette,
Sing while hearts are young and true;
Sea to sea the chorus swelling,
Dear old school, our W. U.

I Love Willamette U

I love Willamette U,
I love her campus too;
I love her Profs. so good and true,
I love her spirit real true blue.
I love the old mill stream,
I love to sit and dream;
I see it all in shadows cool,
I love our dear old school.

Dream On

The stars are softly gleaming
In the shadows of the night,
The moon like glowing silver
Covers all with mellow light;
The world is resting peaceful
From the hurry of the day,
So now beneath your window
Do I sing to you and say—

Chorus—(Boys sing)

Dream on gently, pretty maiden,
Till the golden heart of you
Thrills with the night-time's tender beauty,
And your fairest dreams come true.

(Girls sing)

Dream on, lad of old Willamette
Till the youthful heart of you
Thrills with life and love and glory
And your fairest dreams come true.

Fight, Sons of Old Willamette

Fight, sons of old Willamette,
Fight, till the battle's done;
With a valor ever bold
For the Card'nal and the Gold
Fight till the vict'ry's won!
Many hearts are standing by you
With a spirit ever true;
Fight with courage never dying
Fight! Willamette U.

Fight, Bearcats

Fight, Bearcats, fight!
A victory for W. U.
Cardinal and Gold, victorious of old
Will give us a spirit ever true.
Fight, fight, fight!
Cardinal courage show
And Gold is our faith so true
We shout our war cry out to you
Come on and fight, fight, fight!

Wa Hoo

Wa hoo, wa hoo,
Rip zip ba-zoo
I yell, I yell for W. U.
Wa hoo, wa hoo, wa hoo.
Well, well, well,
Well, well, well, well,
Well, well, well, well,
Wa hoo, etc.

Cannibal King

A cannibal king with a big nose ring
Got stuck on a Zulu maid,
And every night when the moon shone bright
Across the canal he d wade
To hug and kiss this dusky miss
Out under the big bay tree,
And when they met they sang a duet
That sounded like this to me:
Oh, Jason Lee, socretty boo-ya
Oh Poppa Waller, chenickety umba
Umpa-Umpa-Um.

Victory Song

Vict'ry for W. U.
The bell in the tower rings.
The battle's done;
The victory's won:
Card'nal and Gold are flaming
Proudly o'er us.
Here's to the Bearcat Team
Who carried our colors through!
Our song shall go
Till the world will know
There's a vict'ry for W. U.

Around the Campus

Around the campus of old Willamette
We'll shuffle the cards and roll the bones
along, along, along.

Around the campus of old Willamette,
We'll shuffle the cards and roll the bones
along.

Slinga da ink and push the pen along, along,
along.

Around the campus of old Willamette,
We'll slinga da ink and push the pen along.
Worry the Profs, worry the Profs,
Worry the Profs and kid them right along,
along, along,—

(Boys sing)

Fuss the girls, fuss the girls,
Fuss the girls and kid them right along,
along, along,—

(Girls sing)

Vamp the boys, vamp the boys,
Vamp the boys and kid them right along,
along, along,—

W. U., W. U.,

W. U. will help you right along, along, along,
(Each class insert its own number)

'43, '43,

'43 will help you right along, along, along,—

Senior Serenade Song — 1936

Silver clouds are rifted by the starlight,
The scented blossoms lowly bend with dew;
Magic pools of mist that come with midnight
Echo back my song of love to you.

Chorus—

Soft music lifting,
Through shadows drifting,
Into your dreamland,
There to live anew.
Pale moon descending,
My love song ending—
Sweetheart of W. U.

Freshman Song — 1933

Come let our laughter mingle
With silvery sounds of night,
But list, my sweetheart of Willamette
While I tell my plight.

Chorus—

Waken, loved one, heed that bright moonbeam
Straight as a gleaming dart;
Waken, dear one, cease your dreaming,
To you, the delight of my heart,
I'm calling. Here beneath your window singing
A song that is ever new;
Though 'tis the old, old song I'm singing
It means, sweetheart, I love you!

Serenade Song

When all the campus is sleeping,
Bathed in a silv'ry glow,
Lulled to rest by the mill stream,
Murmuring soft and low.
Our voices will lift 'neath your window,
Soft as the palest moonlight;
Not to disturb your fair slumbers,
But to wish as we bid you good night.

Chorus—

While you are sleeping, sleeping,
Under the milky way,
Wrapt in the shadow of night-time,
Far from the cares of the day;
May you be dreaming, dreaming,
Dreams of a love ever true,
Love that a lad of Willamette
Holds in his heart for you.

Fight, Fight, Fight — Junior, 1935

Fight, fight, fight, you fearless men of might
Who face the foe for W. U.

Fight, fight, fight, with victory in sight
Your strength and courage will renew.

Fight, fight, fight, you dauntless Bearcats,
fight,

And as you fall upon the foe
Let your hearts and strength unite
To Fight, Fight, Fight.

The enemy will fear you,
And the multitude will cheer you
As you Fight, Fight, Fight. (repeat song)

Go On to Victory — Junior Song

Words and Music: Clayton Wheeler

Send out to vict'ry our heroes brave,
Who can face each challenge in view;
Shoulder to shoulder we fight to save
Our colors both tried and true.

Chorus—

Go, Go, Go, Go, Go on to victory,
Fight on for W. U.
Send out the battle cry, no-one will dare
defy—

"We fight, we win, or we die."

Fight, Fight, Fight, Fight, Fight on to victory,
Carry our emblem through.

Stand up and cheer, for triumph is near,
Let's fight, (fight) fight (fight) fight.

Downed by the hands of our Bearcat team,
Goes the foes of Willamette U.

Bolder and bolder with might supreme,
We carry our banner through.

Senior Song — 1937

Oh, the Indians known to Jason Lee,
Went out one night on a little spree
They organized a rythm band
That soon was known throughout the land
Then they went off to college
And they took their band along,
With sharps and flats and feathers in their
hats
They beat their big tom-toms.
The big chief smiled
The squaws went wild
As they sang their college song.
Woo-oo Woo-oooo Woooo-ooo
At Willamette U each gal and lad
Has the same kind of rythm that the Indians
had.
The red man's ghost is with us still
And if we don't whoop we're sure they will.

The Pledge of Loyalty — Freshmen, 1938

We're loyal to our alma mater, old Willam-
ette U;
Proud and strong each son and daughter,
sings her praises true.
Through the years we'll shout the story of
her grand old name,
Let the nation glory in her fame.
We'll always love her cheerful campus, her
traditions old;
We'll rally 'round her flying colors, Cardinal
and Gold.
We'll long remember all the joys and all the
sadness, too;
We're loyal to the name of old Willamette
U.

Sophomore Loyalty Song — 1934

Hail to our Alma Mater,
To the Card'nal and to the Gold,
Honor as true as card'nal,
Loyalty true as gold.
Hail to the friends we cherish,
We pledge loyalty to you;
We'll always share the fellowship
At our Willamette U.
Hail to the teams whose valor
Will bring victory to you;
Hail to the campus spirit,
With loyalty made more true.
Hail to the dauntless courage,
As bright as the card'nal hue;
We see it all in college days,
At our Willamette U.

Fly the Colors — Sophomore, 1938

Raise the colors of Willamette,
Fly the cardinal and gold;
High above our Alma Mater
Victorious as of old.
She is our empire builder
Pledge our hearts so true;
Here's where our songs will ever
Ring glory for W. U.

Chorus—

So we'll fight, fight, fight, and with strength
unite
To keep our colors true.
We'll give praise, praise, praise, to our college
days
That we spend at W. U.
It is here we'll be with our loyalty,
And in our spirits ever true,
On mount or sea we'll send loyalty
Back to our Willamette U.

CHURCH DIRECTORY

- American Lutheran—Church, between Chemeketa and Center.
Bethany Reformed—Capitol and Marion.
Calvary Baptist—Liberty and Miller.
Castle Chapel, United Brethren — Nebraska and 17th.
Christ Evangelical, Lutheran—State, between 17th and 18th.
Church of Christ—1489 N. Cottage.
Church of God—1346 N. Church.
Church of the Latter Day Saints—Chemeketa and Cottage.
Church of the Nazarene—Center and 13th.
Court Street Christian—Court and 17th.
First Baptist—Liberty and Marion.
First Christian—High and Center.
First Church of Christ Scientist—Chemeketa and Liberty.
First Congregational—Liberty and Center.
First Evangelical—Marion and Summer.
First German Baptist—Cottage and D.
First Methodist—State and Church.
First Presbyterian—Chemeketa and N. Winter.
First United Brethren—Mission and 12th.
Highland Friends—Highland and Church.
Immanuel Baptist—Hazel and Academy.
Jason Lee Memorial, Methodist — Jefferson and N. Winter.
Knight Memorial Congregational—Ferry and 19th.
Leslie Methodist—Commercial and Myers.
Market Street Free Methodist—Market and N. Winter.
Mill Street Methodist—Mill and 15th.
Seventh Day Adventist—Hood and Summer.
South Salem Friends—Commercial and Washington.
St. John's Lutheran—16th and A.
St. Joseph's Catholic—Cottage and Chemeketa.
St. Paul's Episcopal—Church and Chemeketa.
St. Vincent de Paul, Catholic—2200 Myrtle.
West Salem Methodist—State and 3rd.

Faculty Directory

	Phone
Dr. Bruce R. Baxter, 180 S. Winter.....	8764
Dean Frank M. Erickson, 220 Salem Heights Ave., Dial 116.....	62F3
Dean Daniel H. Schulze, 30 Hanson Ave.	8139
Dean Olive M. Dahl, 1556 Ferry.....	6694
Miss Helen B. Arthur, 695 Court.....	5768
Prof. E. T. Brown, 715 S. Capitol.....	3496
Prof. W. W. H. Clark, 1902 N. Church..	7388
Miss A. Gale Currey, 1490 State.....	6778
Mrs. M. Schulz Duncan, 1305 Broadway	5319
Mrs. E. J. Ellis, 2535 Nob Hill.....	5894
Miss Clara Eness, 150 S. Winter.....	8072
Miss Constance Fowler, Rt. 6. Box 319 Dial 116	110F13
Dr. Robert M. Gatke, 280 Richmond Av.	9471
Prof. C. C. Haworth, 410 W. Rural Av.	7349
Miss Lorena M. Jack, Lausanne Hall....	6672
Prof. C. H. Johnson, 362 Jerris Ave.....	5835
Prof. William C. Jones, 465 S. 23rd.....	3809
Coach Roy Keene, 540 Lefelle.....	9460
Dr. Henry C. Kohler, 754 Ferry.....	8072
Miss Lois E. Latimer, 966 Center.....	8432
Dr. S. B. Laughlin, 1705 Court.....	4224
Dr. R. Ivan Lovell, 553 Statesman.....	7928
Dr. Chester F. Luther, 120 E. Superior..	4951
Miss Helen MacHirron, Lausanne Hall..	6672
Coach Howard Maple, 335 Fawk.....	3218
Prof. Cameron Marshall, 215 S. Winter	5768
Dr. James T. Matthews, 1393 S. 12th....	5768
Prof. Richard F. Miller, 172 W. Myers..	8576
Prof. Cecil R. Monk, 1025 N. Capitol....	8430
Miss Marion Morange, 1490 State.....	
Mr. Harry S. Mosher, 354 N. Winter....	4897
Prof. Ralph M. Murphy, 815 N. Winter	6009
Mr. Ralph Nohlgren, 945 N. Summer....	4971
Prof. Egbert S. Oliver.....	5768

Phone

Mrs. Genevieve L. Oppen, 1565 S. Church	5768
Miss Bernice Orwig, 1775 S. High.....	8510
Dr. Helen Pearce, 267 N. Winter.....	4236
Prof. Morton E. Peck, 1552 Court.....	5258
Prof. Herbert E. Rahe, 1026 N. Winter	5768
Mr. Ivan B. Rhodes.....	5768
Prof. T. S. Roberts, 505 N. Summer.....	7111
Dr. Charles L. Sherman, 835 D.....	5762
Prof. Lestle J. Sparks, 1045 N. 14th.....	3291
Prof. R. F. Thompson, 340 E. Lincoln..	3775
Dr. A. A. Vazakas, 860 N. Cottage.....	6840

COLLEGE OF LAW

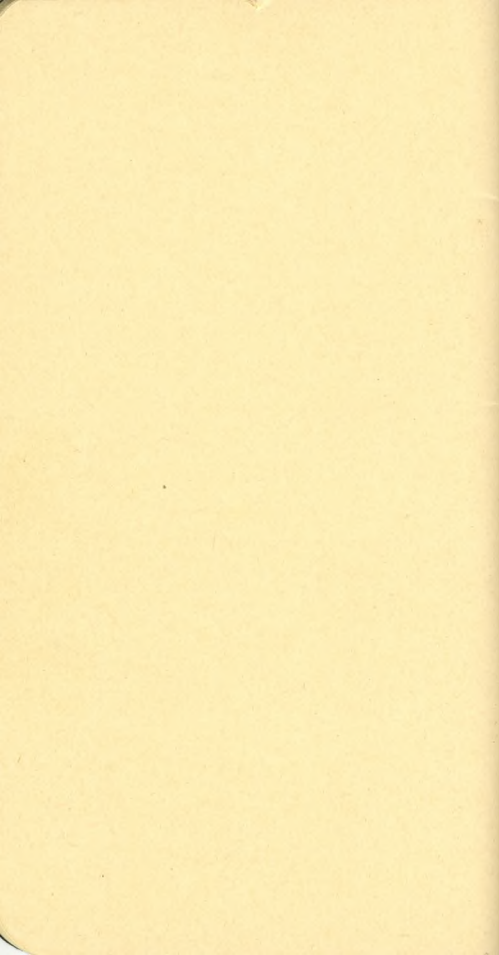
Dr. Roy M. Lockenour, 465 N. 14th.....	5222
Prof. C. M. Inman, 1465 Mission.....	6402
Prof. Willis S. Moore, 495 N. Com'l.....	8884
Prof. Ray L. Smith, 1895 Center.....	7557
Miss Helen B. Arthur, 695 Court.....	5763
Mr. Walter E. Keyes, 185 S. Winter.....	9475

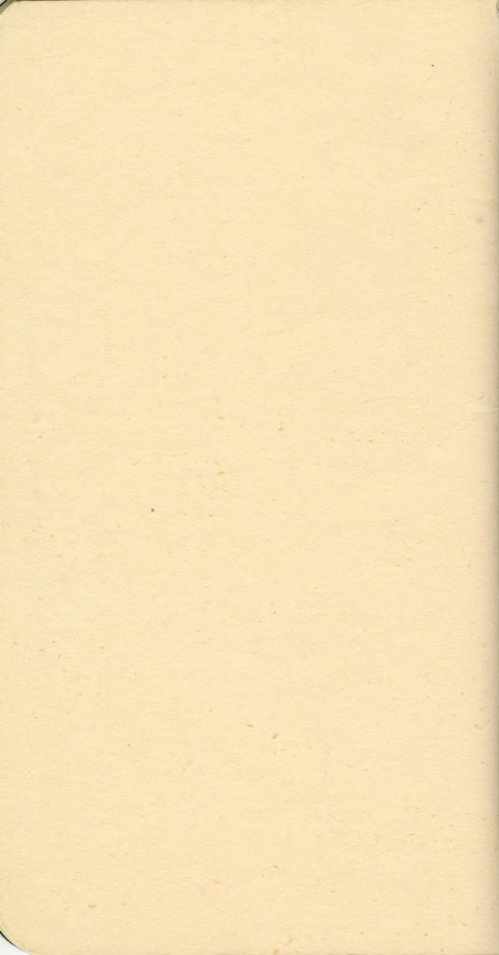
MISCELLANEOUS

Dr. Powers	3123
Eaton Hall	5768
General Manager's Office.....	6778
Gym	6778
Science Hall	3400
Lausanne Hall	6672
Capital Journal Office.....	3571
Statesman Office	9101
S. P. Station.....	4408
Stage Terminal	4151
Student Body Office.....	3088

Index

	Page
Athletics	44
Awards	39
Church Directory	54
Class Officers	42
College Calendar	16
Faculty Directory	55
Football Schedule	43
Foreword	4
Fraternities	32
Greetings	7
Inter-Fraternity Rushing Rules.....	33
Inter-Sorority Rushing Rules.....	34
Lausanne Hall Regulations.....	36
Library Rules	38
Organizations	17
Publications	37
Tips	29
Traditions	27
Varsity Songs	46
Varsity Yells	45









KRAPPS & LONG, PRINTERS, SALEM