





WILLAMETTE UNIVERSITY  
STUDENT HANDBOOK



VOLUME XLI

1934-1935



Published by  
THE ASSOCIATED STUDENT BODY OF  
WILLAMETTE UNIVERSITY  
DORIS UNRUH, Editor

WILLAMETTE UNIVERSITY  
STUDENT HANDBOOK

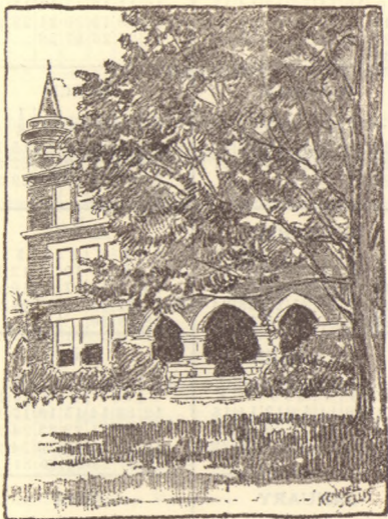


FOREWORD

It is hoped that this Handbook, the first greeting from the University and Associated Students to you Freshmen, may briefly acquaint you with the leaders, organizations, and traditions of Willamette. Through the pages of this small book may you receive a vision of the true Willamette, its spirit and ideals, so that you will sooner feel yourself a genuine part of it.

THE EDITOR

Published by  
THE ASSOCIATED STUDENT BODY OF  
WILLAMETTE UNIVERSITY  
DORIS CURRAN, Editor





## COLLEGE CALENDAR

1934

- Sept. 17, Monday—Freshman Days begin, 9:00 A. M.
- Sept. 19, Wednesday—Registration Day for other students.
- Sept. 20, Thursday—Recitations begin, 7:45 A. M.
- Nov. 29-30, Thursday-Friday—Thanksgiving holiday.
- Dec. 20, Thursday—Christmas Recess begins, 4:00 P. M.

1935

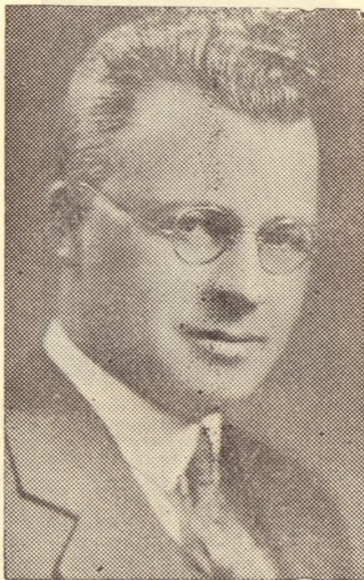
- Jan. 2, Wednesday—Christmas Recess ends, 7:45 A. M.
- Jan. 21-25—Examinations for First Semester.
- Jan. 21-25—Registration for Second Semester.
- Jan. 28, Monday—Recitations of Second Semester begin.
- April 13-20—Spring Vacation.
- June 10, Monday—Commencement Day.

## TO THE PRESIDENT:

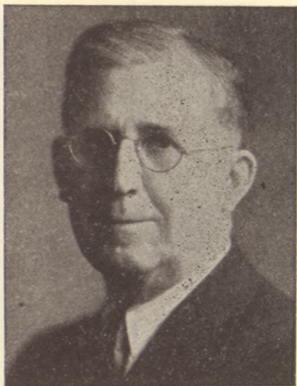
*With sincere wishes that you may find your work at Willamette University very pleasant, we welcome you, Dr. Baxter. We trust that all of us may become personally acquainted with you and that a bond of friendship will develop which will enrich our lives throughout the years.*

*Honored that we may have you as president of the University, we will do all that we can to make your presidency enjoyable*

THE ASSOCIATED  
STUDENTS



**DR. BRUCE RICHARD BAXTER**  
President of Willamette University



Each year the freshmen come, open-eyed, light of heart, eager in anticipation of a college education. Not less interested is the older generation of students who know how large a part the incoming class will later play in college affairs. Here is the all-conference athlete, the manager of the Collegian, the editor of the Wallulah, the future student body president, and some, too, who will fall by the way. Which is which? Who is who? We greet you, freshmen, welcome you to Willamette.

And to you, also, upperclassmen, greeting. The year lies ahead of you with all its tremendous possibilities for self improvement and, also, with responsibilities to the newer students, the University and to society. Make the year count.

Cordially yours,

FRANK M. ERICKSON  
Acting President



To Incoming Freshmen:

We are all eager to welcome you to Willamette University. It is our hope that from the very beginning you will get acquainted with us, and let us help you get acquainted with all the University offers for your benefit.

Early in the first week will you come to the office of the Dean of Women and let me know you personally and give you what help I can?

Cordially,

OLIVE M. DAHL,  
Dean of Women



Familiarity with A. S. W. U. finances is not complete until the student has found his way to the general manager's office. The student body of Willamette University maintains and operates a business office under the direction of a general manager. The office is located in the gymnasium. Authorization for expenditure of A. S. W. U. funds is obtained from this office. All money received by managers or collected by any of the A. S. W. U. activities is turned in to the general manager's office. Student activity tickets and hand books may be obtained from the office. If you are a returning student, make use of the office. If you are a new student, you are invited to become acquainted with the organization and administration of A. S. W. U. money.

**LESTLE J. SPARKS,**  
General Manager

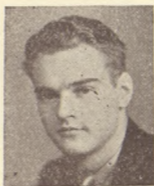


### GREETINGS '38

The Associated Students are happy to receive you as members of our organization. The privileges of membership will go far toward making your college life both enjoyable and profitable. Student body activities offer a field of personal development and achievement available to all and are a desirable accompaniment to your scholastic pursuits.

We commend you upon your choice of Willamette University for your college career because we believe you will find, as we have found, a scholastic standard, a high moral ideal, a spirit of comradeship and worthwhile traditions that will give you the richest and most pleasurable years of your life. We look to you not only to take just pride in her achievements of the past, but also to contribute the interest and service which will make the most of a future bright with promise for our school.

**RICHARD LUCKE,**  
President A. S. W. U.



To the class of '38 we, the Cubs, extend a most friendly welcome. We wish to make our greeting a tangible bond which will help you to become happily situated at Willamette.

The Cubs is a service organization through which the traditions of Willamette are upheld. This group will acquaint you with these traditions so that they may sooner become a part of your college life. We sincerely desire to be of assistance in making your environment enjoyable. With your cooperation we shall have a happy and harmonious student body.

**BOB HART,**  
President of the Cubs



### CONGRATULATIONS '38

Blue Key congratulates you upon finishing another unit of your life's education, and upon choosing well the place where you are to begin the next and more important unit.

ever it may be. It is our desire that during this coming year we may serve you and enjoy your friendship in a cooperative effort to enhance the high ideals of Willamette University. We trust that you will accord us the pleasure of a wholesome fellowship with you while we seek adequately to equip ourselves for a more beneficial appreciation of the responsibilities of life that are confronting us in increasingly full measure.

Sincerely yours,

GARFIELD BARNETT,

President of Blue Key



To the women of the class of '38 we extend our greetings.

The Y. W. C. A. welcomes you through its Big Sisters, eager to introduce you to the traditions and varied activities of the campus. Every woman student on the campus is a member of this organization if she desires, and in it she may find expression of her singular interests. The social service program is an attractive pursuit, or you may find inspiration in the field of worship. Again, Y. W. C. A. finances present a practical diversion, or the planning for social functions you may find engaging.

Indeed, here you may each one find fields of service and, in these, associations which lead to creative living. We invite you to be one of us.

EDITH SIDWELL,

President of the Y. W. C.A.

Freshmen, we're happy to welcome and to salute you as fellow Willamette students. Your worth to Willamette and Willamette's worth to you will be dependent upon the ideals that you mold while here.



By the time you have mentally rolled up your sleeves for that first exam you will have realized that college life is great fun. Friendship is sterling here at Willamette and is easily found among the students and faculty. Willamette has been founded on religious principles

that emphasize spiritual vitality as well as intellectual attainment.

The service and religious groups on the campus are striving to produce a program that will more adequately meet our student needs. By dissolving our old boundaries of service and by substituting a higher goal of attainment which will encompass more of our collegiate needs these groups will be of better service to you freshmen. This year will be brimful of excitement and new experiences for you; be a part of this program and work towards a better Willamette.

Memories at the end of the school year next June—Waller Hall steps, Dr. Matthews and his hello, Freshman Glee and the millstream, chapel programs, "bull sessions" with the gang, Lausanne Hall, serenades, our new president, friendships—all a part of dear, old Willamette.

What a heritage and what a morrow for you lucky freshmen!

LOWELL L. EDDY,  
President of the Y. M. C. A.

## TRADITIONS

We are WILLAMETTE STUDENTS, first, last, and always!

A smile and "Hello" are expected from every student at all times and without exception.

Rise when "The Old Historic Temple" is sung.

Learn the yells and songs in this book.

Freshmen do not enter or leave chapel by the side doors.

Only Seniors use the Senior bench.

Only upperclassmen wear corduroys.

Freshmen do not wear high school pins, rings, or emblems.

Students do not smoke on the campus.

Street shoes are not worn on the gym floor.

Go to all Student Body and Class meetings.

Each student is a member of a Christian organization.

Students' mail addressed to Willamette University is placed in the alphabetical mail boxes on the first floor of Eaton Hall.

Attend all rallies and games.

Freshmen are required to do a certain amount of work on the campus and athletic field.

Willamette students are good sports in all inter-collegiate contests.

The library is a place for study.

No applause after "Farewell Willamette."

Uphold the Honor Code.

### FRESHMEN REMEMBER

That Willamette has many traditions sacred to our University, and we are depending upon you to preserve and cherish these traditions.

That the University's courtesy at athletic contests is above reproach. Do your part to keep it so.

That it is a good principle to write to the folks at home at least once a week.

That the churches of Salem offer something that the University cannot give to your life.

That you are a Willamette man now. Be proud of it.

To keep your eye on your studies. They merit your consideration.

To get acquainted with your professors. They are a fine bunch of fellows.

To forget that you came from any particular high school and keep quiet about your prep school records.

### A GOOD FRESHMAN WILL

Wear his cap with proper spirit.

Learn his school songs and yells and join in when he hears them.

Stand and remove his cap when the "Alma Mater" is being sung or played.

Follow the walks on the campus.

Say "hello."

Obey the University traditions.

### TIPS TO FRESHMEN

Your first year is one of preparation for the remaining three. Choose your course of study carefully, and having chosen, work it hard. Do your work daily. It is easier to keep up than to catch up.

Do not be afraid to cultivate your instructors' acquaintance. The opportunity to know earnest students is one of their chief delights, and the advantage to you may be inestimable.

Do not let the turmoil of the first week disturb your equilibrium too violently. Take a reasonable share of social life. Play is an essential part of normal development.

## WHO'S WHO AT W. U.

### A. S. W. U. OFFICERS

President .....	Richard Lucke
First Vice-President.....	Nova Hedin
Second Vice-President.....	Kenneth Manning
Secretary.....	Anna Jo Fleming
Wallulah Editor.....	Esther Black
Wallulah Manager .....	Earle Potter
Collegian Editor.....	David Johnson
Collegian Manager.....	George Self
General Manager.....	Lestle Sparks

### SENIOR CLASS

President.....	Edward Frantz
Vice-President.....	Eleanor Yarnes
Secretary.....	Ruth Chapman
Treasurer.....	Joe Scott

### JUNIOR CLASS

President .....	Steve Anderson
Vice-President.....	Doris Unruh
Secretary.....	Marian Beezley
Treasurer.....	Brongwyn Williams

### SOPHOMORE CLASS

President .....	Dwight Aden
Vice-President .....	Lillian Graham
Secretary .....	Lucile Brainard
Treasurer.....	Donald Brandon

## HONORARY ORGANIZATIONS

### Alpha Kappa Nu

Alpha Kappa Nu, established on the Willamette campus in 1920, is a local honorary scholastic fraternity, having for its purpose the promotion of high scholarship. Its membership is limited to not more than fifteen per cent of each Senior class, and selection of members is made just preceding Commencement each year.

### Pi Gamma Mu

Oregon Alpha chapter of Pi Gamma Mu was installed on the Willamette campus in 1924. This national social fraternity aims to develop in the college students an interest in the solution of human problems by scientific methods. Seniors having completed twenty semester hours work in this field, with an average grade of at least 85 per cent therein, are eligible to membership.

### Cap and Gown

Each spring, five Junior girl are elected to Cap and Gown. They are selected for their outstanding qualities of character, leadership, personality, and scholarship. It is the desire of the organization to maintain such high quality during the next five years that they will be eligible to inaugurate "Mortar Board," a national honorary for Senior women.

#### Officers

President ..... Kathleen Skinner  
Secretary-Treasurer ..... Amelia Schrack

### Theta Alpha Phi

Since its installation on the campus in 1920, the Oregon Alpha chapter of Theta Alpha Phi, national dramatic fraternity, has promoted interest in dramatics to a large degree. The fraternity presents from two to four plays each year, and the tryouts are open to all students, thus offering a medium for any who are interested to take part. Membership is limited to those who show real ability in the field.

(Officers will be elected this fall.)

### Tau Kappa Alpha

Tau Kappa Alpha, national forensic fraternity, established a chapter at Willamette in 1926. The purpose of this organization is to promote interest in forensics, and in the years since its installation here it has proven to be the foundation upon which all forensic activities are based.

#### Officers

President .....	Garfield Barnett
Secretary-Treasurer.....	William Mosher

### Delta Theta Phi

The Wolverton Senate of Delta Theta Phi, national legal fraternity, was established on the Willamette campus in 1928. It has been in existence but a short time here, but already it promises to be an organization of great strength in the Law School. The honor of having the Law School of Willamette recognized in this manner is felt to be a big step forward for the University.

#### Officers

Dean .....	Jack Grant
Tribune.....	George Dukek
Vice-Dean.....	Lawrence Brown
Clerk of Rolls.....	Wallace Doulgass
Clerk of Exchequer.....	Ralph Scopel
Master of Ritual.....	Melvin Good
Bailiff.....	Ray Rhoten

### Blue Key

The Blue Key fraternity, which is a national service fraternity, established a chapter at Willamette in 1926. It is composed of upperclassmen, and each year members are elected from the Sophomore class. The fraternity endeavors to render service to the campus in every field of activity.

#### Officers

President.....	Garfield Barnett
Vice-President.....	Louis Magin
Secretary .....	Reo Young
Treasurer .....	Max Bigby

## RELIGIOUS ORGANIZATIONS

## Y. W. C. A.

## Officers

President .....	Edith Sidwell
Vice-President .....	Mary Nelson
Secretary .....	Lucille Brainard
Treasurer .....	Helen Burdick
Conference .....	Martha Jane Hottel
Girl Reserve .....	Marian Beezley
Finance .....	Vivian Widmer
Program .....	Gwen Gallaher
Publicity .....	Helen Carlson
Rooms .....	Betty Galloway
Social .....	Helen Keudell
Social Service .....	Lois Underwood
Worship .....	Seiko Watanabe

## Y. M. C. A.

## Officers

President .....	Lowell Eddy
Vice-President .....	Louis Magin
Secretary .....	Joseph Scott
Treasurer .....	Howard Ennor
Social Chairman .....	Burton Lemmon
Finance Chairman .....	George Self
Worship Chairman .....	Laurence Burdette
Campus Service Chairman .....	Laurence Morley
Relationship Chairman .....	Randall Kester
Freshman Aid Chairman .....	Robert Banning

## Willamette Wesleyans

The national organization of which the Willamette Wesleyans is a part has for its purpose the promotion of interest in missionary work, and is composed of students who plan to give full time Christian service in the home or foreign field. The Willamette group holds weekly meetings, at which time lectures and discussions of interest are enjoyed.

## Officers

President .....	Seiko Watanabe
Vice-President .....	Edgar Blaine
Secretary-Treasurer .....	Martha Jane Hottel
Social Chairman .....	Esther Spiers

## MUSICAL ORGANIZATIONS

### Women's Glee Club

Tryouts for membership in the Women's Glee Club are held soon after the opening of school in the fall. The club gives a home concert, and, during spring vacation takes a trip, giving concerts in Oregon and Washington. The members are active in all musical activities on the campus.

### Men's Glee Club

Membership in the Men's Glee Club is determined by tryouts, and the organization makes an extended tour between semesters. The Varsity Quartette takes a prominent part in the festivities of Junior Week End.

### University Band

The Willamette University Band was organized in 1930 for the prime purpose of creating pep and spirit at athletic contests. This year Alexander Melovidoff, formerly band and orchestra instructor at Haskell Junior College, Lawrence, Kansas, and at Chemawa Indian School, will be the instructor.

### University Orchestra

The Orchestra was organized in order to bring out and develop the musical talent of the University.

### Freshman Glee

Freshman Glee is held early in March each year, and is the occasion of great inter-class rivalry. Each class presents an original song, and the winning class is awarded the coveted Freshman Glee Banner. Through this contest Willamette has come into possession of many beautiful songs, and has become noted for its music.

## FORENSICS

### Forensic Council

The Forensic Council is composed of three members of the debate squad who have won the Bar "W." It has charge of all forensic activities and promotes interest in public speaking on the

campus.

### Debate

Willamette now holds an outstanding position in the Pacific Coast Forensic League, due to her excellent work in debate. Both the men's and women's teams took rather extensive tours during the past school year.

Intercross debate is an activity in which numerous students can and do participate.

### Oratory

Willamette was represented in a number of oratorical contests last year and scored high in all of them.

## ATHLETIC ORGANIZATIONS

### "W" Club

The "W" Club is composed of all students who have won their letter in varsity athletics on the campus, and encourages a spirit of good sportsmanship at all inter-collegiate contests.

(Officers will be elected this fall.)

### Women's Athletic Association

The Women's Athletic Association is composed of women who have earned their letter in inter-class or varsity athletic contests. The organization sponsors a number of hikes during the school year, and actively promotes interest in inter-class sports.

#### Officers

President.....	Seiko Watanabe
Vice-President .....	Esther Black
Secretary-Treasurer .....	Dorothy McDonald

### Cubs

The Cubs is an organization of Freshmen and Sophomores, whose duty it is to usher at games, care for the interests of visiting teams, and enforce traditions. They are recognized as officials at all games.

#### Officers

President .....	Robert Hart
Vice-President.....	William Miller
Secretary.....	Randall Kester

Treasurer .....Robert Anderson

### Athletic Board

The Athletic Board, composed of members from the Board of Trustees, faculty, coaching staff, and students, acts as an advisory committee in regard to policy, finance, etc.

### Awards Committee

The Awards Committee is composed of members from the faculty, coaching staff, and student body, and decides upon the distribution of awards, upon the recommendation of the coaches.

### Athletic Managers

Varsity sports managers are appointed, and class managers elected, and these students arrange the various inter-class and varsity sports.

## CLUBS AND SOCIETIES

### Daleth Teth Gimel

Daleth Teth Gimel is a chapter of the national organization of Daleth Teth Gimel, and was organized on the campus in the fall of 1928. Both sorority and non-sorority girls are members. The purpose of the society is to provide an opportunity for every girl to develop personality fully through social activities, and to promote a spirit of democracy among the girls on the campus.

#### Officers

President .....Harriet Burdette  
 Vice-President .....May Ringo  
 Secretary .....Agnes Corthell  
 Treasurer .....Roberta Smith

### International Club

International Club, as the name denotes, is made up of Japanese, Chinese, Negro, Indian, Russian, Filipino, Korean, and American students. The object of this organization is to create a feeling of international friendship and understanding. The club's motto is "International Good Will."

Membership is restricted to sixty per cent foreign and forty per cent American and is by

invitation.

#### Officers

First Councillor.....	George Cannady
Second Councillor.....	Evelyn Welsh
Third Councillor.....	Ross Brown

#### Coffee House

Coffee House, the only campus creative literary society, has a membership selected from students interested in literature from a creative viewpoint. It meets bi-weekly to read and discuss the productions of its members and has as its purpose the promotion of constructive criticism and creative writing among students. Membership is by invitation.

#### Officers

President.....	Nellie Perrine
Vice-President.....	Florence DuRette
Secretary-Treasurer.....	Agnes Corthell

#### The Little Theatre Guild

The Little Theatre Guild, organized on the campus last year, is primarily an organization to develop dramatic talent among the students. It presents several plays and skits throughout the year, thus offering dramatic opportunities for students who are interested in costuming, play-writing, make-up, and scenery.

Entrance into the society, the requirements of which include ability in any of the four fields mentioned, is determined by tryouts held annually at the first of each scholastic year.

(Officers will be elected this fall.)

#### Science Club

Students who are interested in study and research in the field of the natural sciences compose the Science Club. Interesting and unique experiments are conducted, and the group entertains at student chapel once or twice during the year.

(Officers will be elected this fall.)

#### Classical Club

Students taking the classics are eligible to membership in the Classical Club, whose purpose is to further interest in and appreciation of the

Greeks and Romans and their languages.

#### Officers

President.....	Gertrude Roenicke
Vice-President.....	Elva Sehon
Secretary-Treasurer .....	Agnes Corthell
Program Chairman .....	Dalbert Jepson

#### Paint Spots

The Paint Spots was organized to promote interest in art on the Willamette Campus. Any student interested in the group and wishing to develop his creative ability may become a member by submitting work to be voted upon by the members.

#### Officers

President .....	Virginia Wassam
Vice-President .....	May Ringo
Secretary .....	Helen LaFollette

#### The French Club

The French Club is a comparatively new organization upon the Willamette Campus, having been organized in the fall of 1930. It meets every other week at Willamette Lodge, and is conducted under the very efficient leadership of Madam Vazakas. French games are played, riddles and axioms are presented in interesting manners, and progressive stories with amusing and startling details are told in French.

The club has no definite membership, but is open to all those who feel interested enough to attend. No English is spoken at the fortnightly meetings, as the purpose of the organization is to aid pupils to become fluent and precise in their use of the French language.

#### Shakespeare Club

The Shakespeare Club, the newest organization on the campus, is composed of students who take an especial interest in the works of Shakespeare from a literary, dramatic, or musical standpoint. Dr. Kohler is the founder and adviser of the group.

### PUBLICATIONS

#### The Willamette Collegian

The Collegian is the official college paper and

is published weekly by the student body. Staff members who have served one year faithfully, and who have done work of real merit are awarded with a gold Old English "C."

It is customary and expected that Willamette students will patronize Collegian advertisers.

### **Wallulah**

The Wallulah is the annual year book, published by the student body, and appearing June first. Staff members who are recommended by the Manager or the Editor of the Wallulah as having done work of genuine merit are awarded with a gold Old English "W", if such recommendations are approved by the Awards committee.

### **Student Handbook**

The Student Handbook is published annually by the A. S. W. U. Its purpose is to acquaint new students with the University and give useful information concerning student activities.

### **Willamette Song Book**

The Willamette Song Book includes all the Willamette songs up to date. Every student should own a copy.

## **PRIZES**

At Commencement time of each year a number of prizes are awarded to those students in the University who have shown ability in certain fields of endeavor.

### **Albert Prize**

Mr. Jos. H. Albert, of Salem, awards \$25 to the student having a record for faithful study and scholarship not below the average, who, during the school year, opportunities considered, has made the greatest progress toward the ideal in character, service, and wholesome influence.

### **The Colonel Willis Prize**

Col. Percy Willis, '95, of Portland, offers a prize of \$25 "to the student who throughout

the school year has done the most real good to fellow students and the University by deeds of kindness and genuine helpfulness, coupled with steadfast devotion to high ideals and upright character."

#### **Steeves Prize**

A prize of \$10 is offered by Dr. B. L. Steeves, '91, for the student who does the best work in Latin.

#### **Keyes Prize**

Hon. Walter E. Keyes, of Salem, offers two prizes of \$15 and \$10 to those who win first and second honors in oratory.

#### **Outstanding Athlete's Trophy**

To the Senior man whose record in scholarship, athletics and all-around development is deemed most outstanding a silver loving cup is given.

To the Senior girl whose achievement in personality, sportsmanship, leadership, scholarship, and assistance to others in athletics is deemed greatest, and who is herself outstanding in athletics, a silver loving cup is given.

## LEAVE OF ABSENCE FOR WOMEN'S RESIDENCE HALLS

No resident of the Lausanne Hall or of any Sorority House shall be out of the Hall or House after 7:30 except for college engagements and for study at the libraries, or when permission has been granted by the Dean of Women or House Mother. Upper class girls may have one extra night out each week.

On Friday and Saturday nights girls must be in at 11:10 P. M. On Sunday night the hour is 10:00 P. M.

On leaving town, permission having been previously secured from the Dean of Women or House Mother, all girls shall register the time of the departure, their address while away, and the time of return.

Residents wishing to spend the night outside the Hall or House shall first obtain permission from the Dean of Women or House Mother.

Residents of Hall or Houses shall not accept invitations to evening social functions or entertainments, on week nights, without permission from the Dean of Women or House Mother; but attendance at the following regular meetings is understood as approved:

Clubs and societies connected with the various departments of academic work in the college; evening classes; literary societies; public oratorical contests; college debates; public college lecture; religious services; athletic events; entertainments given by permission of the authorities of the college for college classes or for the entire student body.

Should these functions hold until 9:40 on week nights, 10:50 on Friday night, and 10:50 on Saturday nights, girls must be in twenty minutes after the first girl returns.

### Lausanne Hall Officers

President .....	Helen Mott
Vice-President.....	Madge Marian
Secretary-Treasurer.....	Margaret Howerton

## FRATERNITIES

## Alpha Psi Delta, 1920

895 Chemeketa Street, Phone 6588

## Officers

President .....	Edward Frantz
First Vice-President .....	Maurice McCann
Second Vice-President.....	Rex Pemberton
Secretary.....	Guy Heimsoth
Manager.....	Alfred Pietila

## Kappa Gamma Rho, 1921

316 North Church Street, Phone 8882

## Officers

President.....	Garfield Barnett
Vice-President .....	Wendell Brainard
Secretary .....	Virgil Compton
Manager .....	Max Bigby

## Sigma Tau, 1919

920 Oak Street, Phone 8718

## Officers

President .....	Ralph Barber
First Vice-President.....	John Ross
Second Vice-President.....	Louis Magin
Secretary .....	William Miller
Manager.....	Arthur Smith

## INTER-FRATERNITY PLEDGING RULES

**Pledging**—The act of pledging shall consist of a man wearing the official pledge pin of the fraternity and signing the official pledge card of the fraternity.

**Time of Pledging**—No man shall be offered the opportunity to pledge any fraternity until he shall have completed registration. Completion of registration means the making of final arrangements with the business office in regard to the payment of tuition. Any violation of this provision on the part of any fraternity shall mean the forfeiture of the right to pledge the man in question for a period of thirty days.

**Breaking of Pledge**—No man may accept a bid from any fraternity after having broken a pledge to another fraternity until a period of

ninety days has elapsed after the breaking of his first pledge, except on the condition that he be given a release by the fraternity to which he was first pledged.

**Enforcement**—These rules shall be enforced by the Inter-fraternity Council with provision for appeal as enumerated in the Constitution of the Inter-fraternity Council.

### SORORITIES

#### Alpha Phi Alpha, 1923

750 North Summer Street, Phone 8911

##### Officers

President .....	Rose Naef
Vice-President .....	Marian Beezley
Secretary .....	Elizabeth Galloway
Treasurer .....	Helyn Hoskins
Manager .....	Sydney Hannaford

#### Beta Chi, 1919

1445 State Street, Phone 8760

##### Officers

President .....	Clara Wright
Vice-President .....	Margaret Nunn
Secretary .....	Nellie Perrine
Treasurer .....	Carol Fleming
Manager .....	Nova Hedin

#### Delta Phi, 1920

1610 Court Street, Phone 8730

##### Officers

President .....	Ruth Chapman
Vice-President .....	Lois Underwood
Secretary .....	Gwen Gallaher
Manager .....	Helen Carlson

### SUMMER RUSHING RULES

1. Informal rushing, during the summer, may include 4 house girls and 4 rushees.
2. There may be only two formal rush functions in any town.
3. A rushee may attend only two formal functions. House members may go to any to help with a rush party.
4. Violations of summer rushing rules shall be

punishable in the same manner as violations of fall rushing rules.

5. It is a University ruling that the sorority houses shall not be used for rushing purposes during the summer.

### FALL RUSHING RULES, 1934

The sorority rushing season for the year 1934-1935 shall be from September 24 to October 7, inclusive.

#### I

Personal rushing shall begin September 25 through September 27.

- (a) When more than three sorority girls or three new girls are in a group, it shall be considered a formal rushing.
- (b) Personal rushing shall not include any expenditure of funds whatsoever by sorority girls; that includes food, gifts, and games. Home rushing is forbidden. There shall be no entertaining of rushees at town houses. Girls may, however, be entertained at the sorority house at any time during the days of personal rushing.
- (c) Throughout all rushing there is to be no conversation about other houses or concerning personal house affairs.
- (d) Alumnae are put under the same rules as active sorority girls.
- (e) In personal rushing sorority girls may enter the hall from 4:00 to 5:45 and 6:30 to 7:20 P. M.
- (f) There shall be no rushing by men or non-sorority women. This includes mothers or sisters.
- (g) All personal rushing shall be from 4:00 to 7:30 P. M.
- (h) Personal rush days for the three houses shall be as follows:
 

Tuesday, Sept. 25.....	Delta Phi
Wednesday, Sept. 26.....	Alpha Phi Alpha
Thursday, Sept. 27.....	Beta Chi

#### II

Inter-sorority at home shall be held Monday,

September 24, for all freshmen girls. No rushing shall be done before this time.

### III

House rushing shall begin September 28, through October 1, omitting Sunday, September 30.

- (a) No slumber parties shall be given.
- (b) No personal rushing shall be done.
  - 1. This includes sending letters, gifts, or visiting hall, etc.
- (c) A date book shall be issued by inter-sorority council and dates shall be checked, and no invitations shall be issued.
- (d) A schedule of dates shall be agreed upon.
- (e) Sororities shall not call for rushees.
- (f) Dinners shall last from 5:30 to 7:30 P. M.
- (g) Teas shall last from 4:15 to 5:15 P. M.
- (h) No favors shall be used at any informal rush affair.

### IV

Formal rush season shall be from October 2 to October 7, inclusive.

- (a) Formal party shall be a dinner party to be held from 5:00 to 8:00 P. M. The succession of parties for 1934-1935 shall be:
 

Tuesday.....	Alpha Phi Alpha
Wednesday.....	Beta Chi
Thursday.....	Delta Phi
- (b) The formal rush parties shall be limited to a certain fixed sum. For the year 1934-1935 it shall not exceed \$50.00. Only formal decorations shall be used.
- (c) An itemized account of party expenses is to be turned in to the Dean of Women by October 13.

### V

There shall be a system of preferential bidding.

- (a) New girls shall hand in their choices of sororities by 6:00 P. M., October 5, to the Dean of Women.
- (b) The sororities shall have their bids in at the office of the Dean of Women by 6:00 P. M., October 5.

- (c) The girls shall then receive their bids by 9:00 P. M. Pledge services shall be held October 7, attendance at church following.

## VI

Sororities may pledge during the first six weeks any girl who has been on the campus a previous semester.

## VII

New girls of Freshman, Sophomore, Junior, or Senior classes shall not be pledged until formal pledging of rush week.

- (a) No girl taking less than 12 hours shall be pledged.

## VIII

No bids shall be promised to any girl at any time. Bids not accepted October 5, will be referred to second semester rushing.

## IX

No personal expenditure for favors.

## X

Any sorority violating the above rules shall be subject to forfeit in the following manner:

First offense .....	Tea
Second offense.....	Dinner
Third offense.....	Formal Dinner

For any violation from September 28 to October 4, the formal dinner shall be forfeited.

## XI

Silence shall last from October 2 to October 6, inclusive.

## SECOND SEMESTER RUSHING RULES

## I

Second semester rushing shall take place second week.

- (a) It shall last from Monday at 4:00 P. M. until Friday at 9:30 P. M.  
 (b) There shall be no rushing during study hours.

## II

Personal rushing shall be Monday from 4:30

to 5:30 and 6:30 to 7:30 P. M., and Friday from 4:00 to 6:00 and 7:30 to 9:30 P. M.

- (a) Notes for personal rushing on Monday shall be sent to girls on Friday. Notes for Friday shall be put in mail boxes in Eaton Hall Friday morning. Reply by phone for Friday and in writing for Monday.

### III

Each house shall have a tea and a dinner.

- (a) Teas shall last from 4:15 to 5:15; dinners 5:30 to 7:30.  
 (b) Invitations shall be issued by phone or personally.

Tuesday—

Tea .....Alpha Phi Alpha

Dinner.....Beta Chi

Wednesday—

Tea .....Delta Phi

Dinner.....Alpha Phi Alpha

Thursday—

Tea .....Beta Chi

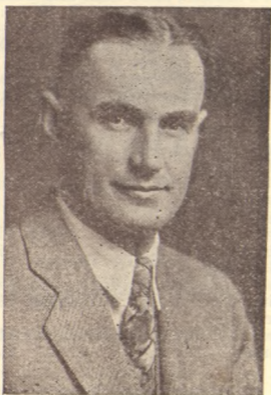
Dinner.....Delta Phi

### IV

Bids and preferences shall be in by 6:00 P. M. Saturday to the Dean of Women and they shall be delivered by one girl from each house.

### V

There shall be silence Saturday. Pledging shall be Sunday morning as in fall rushing.



COACH KEENE

## FOOTBALL SCHEDULE

1934

- Sept. 22—Oregon State College at Corvallis.  
Sept. 29—Oregon Normal at Salem, night game.  
Oct. 12—Albany College at Albany.  
Oct. 20—Linfield College at McMinnville.  
Oct. 27—College of Puget Sound at Salem, night game.  
Nov. 3—Pacific University at Salem, night game.  
Nov. 10—San Jose State Teachers College at San Jose.  
Nov. 17—Columbia University at Portland.  
Nov. 29—Whitman College at Salem.

## ATHLETICS

Intercollegiate Athletics are maintained under the personal supervision of the Director of Athletics and under the jurisdiction of the Athletic Council.

Willamette belongs to the Northwest Conference, composed of the following schools: Whitman College, College of Idaho, College of Puget Sound, Pacific University, and Linfield College. It is the purpose of this Conference, as far as possible, to foster participation by all members of the Conference in contests of football, basketball, baseball, tennis, and track.

### Intramural Activities

Intramural activities are maintained under the personal supervision of the Director of Physical Education and the Chairman of the Interclass Rivalry Committee.

The program extends over the entire school year, and is composed of the following activities: cross country, scrimmage ball, basketball, boxing, wrestling, physical ability tests, track, baseball, and tennis.

Students taking Physical Education for credit must pass the Physical Ability Tests before they are permitted to substitute an intramural activity for the regular class work.

### Gymnasium Requirements

Physical Education is required of all students throughout the Freshman and Sophomore years.

The regulation uniform for the Physical Education classes consists of rubber-soled shoes, supporter, sleeveless jersey, pants, and a heavy sweater or sweatshirt.

Locker should be locked at all times. Equipment that is left out will be picked up.



**LAURENCE MORLEY**  
Yell King

**VARSITY YELLS**

**Spell Bearcats**

B—E—A—R—C—A—T—S

Rah!

B-E-A-R-C-A-T-S

Rah!

**BEARCATS**

(Spelled)

**RAH RAH RAH RAH—BEARCATS**  
(Yelled)

**Y-E-A—W. U.**

Y-e-a—W. U.

Y-e-a—W. U.

Y-e-a—W. U.

**Fight' em! Fight 'em! Fight 'em!**

**Team Yell**

**T-E-A-M—TEAM!**

**Fight-Fight-Fight . . . TEAM!**

**Go Get 'Em Yell**

Go get 'em, Bearcats, Go get 'em  
(slowly, softly)

Go Get 'Em, Bearcats, Go Get 'Em  
(faster, louder)

GO GET 'EM—BEARCATS—GO GET 'EM  
Willamette

**Locomotive**

Rah, Rah, Rah, Rah, W. U., W. U.

Rah, Rah, Rah, Rah, W. U., W. U.

Rah, Rah, Rah, Rah, W. U., W. U.

Rah, Rah, Rah, Rah, WILLAMETTE  
(FAST AND LOUD)

**Skyrocket**

S-s-s-s-s-s-s-s-s-s (rise on whistle) s-s—BOOM!

A-a-a-a-ah . . . WILAMETTE!!!!

**Keene**

He's Keen!

Who's Keen?

SPEC'S KEEN!



WANDA LANDON  
Song Queen

### OLD HISTORIC TEMPLE

There's an old Historic Temple  
Rising grandly through the years;  
Where the oaken-hearted fathers  
Drew their strength for strong careers.  
Down the years its portals open,  
Gathers wise ones to its fold;  
Breathes the spirit of the Westland,  
Card'nal emblem 'bossed with gold.  
Spirit of the Golden Westland,  
Breathing through our father's tears;  
Tells the story of the Temple,  
Bids us hope adown the years.  
Sing, oh sing, of old Willamette,  
Sing while hearts are young and true;  
Sea to sea the chorus swelling,  
Dear old school, our W. U.

**I LOVE WILLAMETTE U**

I love Willamette U,  
I love her campus too;  
I love her Profs so good and true,  
I love her spirit true blue,  
I love the old mill stream,  
I love to sit and dream;  
I see it all in shadows cool,  
I love our dear old school.

**QUEEN OF THE WEST**

The East may love old Harvard,  
The North love old Cornell;  
But the school of fame, whose noble name  
Forever shall excel  
Stands proudly in the West land,  
Where friends are staunch and true;  
We love our dear old college,  
So here's to W. U.!

**Chorus—**

Willamette, to thee we will be true,  
Willamette, we'll ever fight for you,  
We pledge our loyalty,  
Our homage pay to thee.  
Pride of all the West, you are the best,  
Willamette, our hearts we pledge anew,  
Willamette, our fealty to you,  
Faithful we will be  
With staunch fidelity  
Willamette, queen of all!

**WILLAMETTE**

There's a school we call Willamette  
That will ever prompt our praise,

For 'tis there we win our victories  
 And there our standards raise.  
 It's a school that makes true sportsmen  
 And will lasting service give  
 To those who dare to do their share  
 And fight that she might live.

**Chorus—**

Willamette, Willamette, we're with you to the end!  
 Willamette, Willamette, our voices gladly blend  
 To cheer you, revere you and your undaunted  
     fame,  
 Oh, Willamette U.,  
 We will see you through  
 And guard your glorious name!

**BEND THE KNEE**

Bend the knee, yes, bend the knee  
 To the Cardinal and the Gold;  
 Before the Bearcat's fighting power  
 Mars himself must even cower  
 Rise, we sons of Jason Lee  
 We will win the victory.  
 So bend, bend the knee to Willamette Varsity.  
 Victory; yes, victory to the Cardinal and the Gold;  
 Then fearful foes will bite the dust,  
 For win we will, for win we must.  
 Onward, then to mastery,  
 This our conquering song shall be;  
 So bend, bend the knee to Willamette Varsity.

**VICTORY FOR W. U.**

Vict'ry for W. U.  
 The bell in the tower rings.  
 The battle's done;  
 The victory's won;

Card'nal and Gold are flaming  
Proudly o'er us.

Here's to the Bearcat team  
Who carried our colors through!

Our song shall go  
Till the world will know  
There's a vict'ry for W. U.!

### FIGHT, BEARCATS, FIGHT

Fight, Bearcats, fight.

A victory for W. U.  
The Card'nal and Gold,  
Victorious of old,

Shall give us a spirit ever new.  
Card'nal courage shows,  
And Gold in our faith so true.

We shout our war cry now to you—  
Come on and fight, fight, fight,  
Fight, fight, fight!

### TRUE TO YOUR SPIRIT

True to your spirit!

On brave warriors, to the end;  
Fight till the foe shall fear us,  
Till the enemy's haughty head shall bend.  
On for Willamette,

Fight the battle as of old,  
Victory the prize shall be  
Of the Cardinal embossed with Gold.

### FIGHT, SONS OF OLD WILLAMETTE

Fight, sons of old Willamette,  
Fight 'til the battle's done;  
With a valor ever bold  
For the Card'nal and the Gold  
Fight 'til the vict'ry's won!

Many hearts are standing by you  
With a spirit ever true;  
Fight with courage never dying  
Fight! Willamette U.

### SOPHOMORE LOYALTY SONG—1934

Hail to our Alma Mater,  
To the Card'nal and to the Gold,  
Honor as true as card'nal,  
Loyalty true as gold.  
Hail to the friends we cherish,  
We pledge loyalty to you;  
We'll always share the fellowship  
At our Willamette U.  
Hail to the teams whose valor  
Will bring victory to you;  
Hail to the campus spirit,  
With loyalty made more true.  
Hail to the dauntless courage,  
As bright as the card'nal hue;  
We see it all in college days,  
At our Willamette U.

### WA HOO

Wa hoo wa hoo  
Rip zip ba zoo,  
I yell, I yell for W. U.  
Wa hoo wa hoo wa hoo  
Well, well, well,  
Well, well, well, well,  
Well, well, well, well,  
Wa hoo, etc.

### CANNIBAL KING

A cannibal king with a big nose ring

Got stuck on a Zulu maid,  
And every night when the moon shone bright  
Across the canal he'd wade  
To hug and kiss this dusky miss  
Out under the big bay tree,  
And when they met they sang a duet  
That sounded like this to me:  
Oh, Jason Lee, socretty boo-ya  
Oh, Poppa Waller, chenickety umba  
Umba-Umba-Um.

### SERENADE SONG

When all the campus is sleeping,  
Bathed in a silv'ry glow,  
Lulled to rest by the mill stream,  
Murmuring soft and low,  
Our voices will lift 'neath your window,  
Soft as the palest moonlight  
Not to disturb your fair slumbers,  
But wish as we bid you good night.

#### Chorus—

While you are sleeping, sleeping,  
Under the milky way,  
Wrapt in the shadow of night-time,  
Far from the cares of the day;  
May you be dreaming, dreaming,  
Dreams of a love ever true  
Love that a lad of Willamette  
Holds in his heart for you.

### DREAM ON

The stars are softly gleaming  
In the shadows of the night,  
The moon like glowing silver

Covers all with mellow light.  
 The world is resting peaceful  
 From the hurry of the day,  
 So now beneath your window  
 Do I sing to you and say—

**Chorus—**(Boys sing)

Dream on gently, pretty maiden,  
 Till the golden heart of you  
 Thrills with night-time's tender beauty,  
 And your fairest dreams come true.

(Girls sing)

Dream on, lad of old Willamette  
 Till the youthful heart of you  
 Thrills with life and love and glory,  
 And your fairest dreams come true.

### WILLAMETTE NIGHT SONG

Over the moon's bright circle  
 Clouds like a curtain creep  
 The night with sombre darkness  
 Covers the world asleep.  
 Then the moon by the clouds unveiled,  
 Casts a flood of silvered light  
 And my longing heart turns to singing  
 This fantasy of the night.

**Chorus—**

Dream on, Oh fairest one  
 Wrapt in gentle slumber  
 Sleep on, while yet the moon so softly beams;  
 Dream on in sweet repose  
 Lulled by songs of love  
 And may their spirit weave into your dreams.  
 Sleep on while still the night  
 Robed in velvet splendor

Has charmed Willamette with its magic spell  
My heart bids you sweet farewell  
For the paling stars fortell  
Night shall fade in morning light,  
Fairest one, good-night—good-night.  
The years shall pass by us swiftly  
    Dimming youth's brightest rays  
But the mem'ries of life's gay springtime  
    Will lighten the darkest days;  
The spell of our dear Willamette  
    Binds our hearts with a golden chain  
And the song we sang together  
    Shall echo for us again.

#### FRESHMAN SONG—1933

Come let our laughter mingle  
    With silvery sounds of night,  
But list, my sweet heart of Willamette  
    While I tell my plight.

#### Chorus—

Waken, loved one, heed that bright moonbeam  
    Straight as a gleaming dart.  
Waken, dear one, cease your dreaming,  
    To you, the delight of my heart,  
    I'm calling.  
Here beneath your window singing  
    A song that is ever new.  
Though 'tis the old, old song I'm singing,  
    It means, sweetheart, I love you!

#### WILLAMETTE SPRING SONG

Oh, springtime at Willamette,  
    There's naught could sweeter be!  
Like mists by sunlight melted,

The clouds of trouble flee.  
And all of life seems gladness  
At just a sparrow's trill,  
Or glimpse of maple blossoms,  
Our hearts with rapture thrill.

**Chorus—**

Oh, sweet is day's stern labor,  
We conquer without fear;  
And sweet the hours of evening  
When college friends are near.  
So gathered here at twilight  
Amid the shadows long,  
Soft notes of youth and springtime  
Are mingled in our song.

## GO TO CHURCH

History records man as a being who worships. The desire to worship is universal. Among every people of whom we have record, signs of worship have been discovered. Let us develop and direct this instinct of worship.

Today, while attending college, most of us are away from home; yet the deep wish in the heart of every father and mother is that we remain true to the teachings of our youth. By home training and tradition we have some knowledge of the purposes and claims of religion. We believe that in the Bible man finds a standard whereby to guide his life. Religion in its broadest sense is life lived in all its relationships. Religion is the ballast which steadies man's life. Religion is friendship with God.

Willamette wishes to co-operate with the churches of Salem. We have included this church directory in the handbook with the special hope that the church going habit learned at home may not be lost at college.

---

## STUDENT PURPOSE

We unite in the desire to realize full and creative life through a growing knowledge of God.

We determine to make this life possible for all people.

In this task we seek to understand Jesus and to follow Him.

## CHURCH DIRECTORY

- Calvary Baptist—High and Ferry.  
First Baptist—Liberty and Marion.  
First German Baptist—Cottage and D.  
Immanuel Baptist—Hazel and Academy.  
St. Joseph's Catholic—Cottage and Chemeketa.  
St. Vincent De Paul, Catholic—2200 Myrtle.  
Court Street Christian—Court and 17th.  
First Christian—High and Center.  
First Church of Christ Scientist—Chemeketa and Liberty.  
Church of Christ—1489 N. Cottage.  
Church of God—1346 N. Church.  
First Congregational—Liberty and Center.  
Knight Memorial, Congregational—Ferry and 19th.  
St. Paul's, Episcopal—Church and Chemeketa.  
First Evangelical—Marion and Summer.  
Highland Friends—Highland and Church.  
South Salem Friends—Commercial and Washington.  
American Lutheran—Church, between Chemeketa and Center.  
Christ Evangelical, Lutheran—State, between 17th and 18th.  
St. John's Lutheran—16th and A.  
First Methodist—State and Church.  
Center Street Methodist—Center and 13th.  
Jason Lee Memorial, Methodist—Jefferson and N. Winter.  
Leslie Methodist—Commercial and Myers.  
Mill Street Methodist—Mill and 15th.  
West Salem Methodist—State and 3rd.  
Market Street Free Methodist—Market and N. Winter.  
Church of the Nazarene—Breyman and 11th.  
First Presbyterian—Chemeketa and N. Winter.  
Bethany Reformed—Capitol and Marion.  
Seventh Day Adventist—Gaines and 5th.  
First Unitarian—Chemeketa and Cottage.  
First United Brethren—Mission and 12th.  
Castle Chapel, United Brethren—Nebraska and 17th.



**RECITATION SCHEDULE**  
**First Semester**

	M	T	W	Th.	F
7:45					
8:40					
9:35					
10:30					
11:25	Chapel	Chapel	Chapel	Chapel	Chapel
1:15					
2:10					
3:05					
4:00					

Chapel Seat..... Gym No.....

**Second Semester**

	M	T	W	Th.	F
7:45					
8:40					
9:35					
10:30					
11:25	Chapel	Chapel	Chapel	Chapel	Chapel
1:15					
2:10					
3:05					
4:00					

Chapel Seat..... Gym No.....

A Dependable  
Laundry and  
Dry Cleaning  
Service

**SALEM LAUNDRY CO.**

(Wieder's)

PHONE 9125

263 S. High

**CLOUGH-BARRICK CO.**  
**F U N E R A L S**

PHONE 9139

Church at Ferry

---

**JAMES, KERNS &**  
**ABBOTT COMPANY**  
**P R I N T E R S**

**PORTLAND**

“IT COSTS  
NO MORE  
TO ENJOY  
MILLER  
QUALITY”



Salem's Leading  
Department Store

**MILLER'S**

## **PEDIGREED NAMES....**

If there is an Aristocracy of the Candy and Ice Cream family we claim that honor. The patronage of Willamette students is but natural.

## **THE SPA**

Restaurant and Confectionery

---

## **STATE STREET MARKET**

**1312 STATE STREET**

**Salem, Oregon**

## **KER - PLUNK!**

Time to roll out. That's the thud of The Morning Statesman hitting the front porch.

Time to get up and read about all that's happened in Salem, in Oregon, in the United States, in the world in the previous 24 hours.

**The OREGON STATESMAN**  
**Founded 1851**

**“WOOL FOR HEALTH!”**

**Thos. Kay Woolen Mills Co.**

260 S. 12th Street

**HARTMAN BROS. CO.**  
**JEWELERS**

**Diamonds – Watches**  
**Silverware**

Corner State and Liberty



**Typewriter**  
**Exchange**

**THOS. ROEN**  
**420 Court St.**

**Capital**  
**Bedding**  
**Co.**

**Rugs Cleaned**  
**and Sized**

**We Save You**  
**Money on**  
**MATTRESSES**

**3030 N. Pacific Ave.**  
**PHONE 4069**

# North Pacific College of Oregon . . . .

Schools of Dentistry  
and Pharmacy

For Catalogue of Information

Address: The Registrar

N.E. 6th Ave. at Oregon Street

Portland

---

# Capital City Laundry and Dry Cleaning

First in Quality  
and Service

PHONE 3165

1246 Broadway

# Kennell-Ellis

Official Photographers  
for the 1935  
WALLULAH

420 OREGON BLDG.  
TELEPHONE 7830

## **COEDS!**

FOR SMART CLOTHES  
VISIT THE  
**SMART SHOP**

115 N. Liberty Street

---

## **THE MAN'S SHOP**

FOR STYLE  
AND VALUE

416 State St.

---

PLUMBING  
SHEET METAL  
WORK

## **NELSON BROS., INC.**

Heating – Furnaces

Roofing – Paint

PHONE 3810  
355-361 Chemeketa

# Sport Goods

AT

---

**CLIFF PARKER, INC.**

372 State St.

PHONE 6042

---

FOR BETTER BUILDING  
MATERIALS

**GABRIEL POWDER &  
SUPPLY CO.**

610 N. Capitol

PHONE 9191

---

PROMPT SERVICE  
AT THE

**BLUEBIRD**

Confectionery and Fountain Lunch

Located at 524 State St.

FOR QUALITY  
DAIRY PRODUCTS  
**Butter, Milk  
and Cream**

Just Dial 4616

**PRODUCERS MILK CO.  
INC.**

## HOTEL SENATOR

Salem's New and  
Finest Hotel . . . .

Fine Coffee Shop  
in Connection

W. W. CHADWICK  
Managing Director

Affiliated with Hotel Jackson, Medford, Ore.

---

Office Phone 7773

Res. Phone 6593

BEST STORAGE IN CITY

## Capital City Transfer Co.

Established 1906

Furniture Moving and Packing a  
Specialty . . . Reduced Freight Rates  
to Eastern Points . . . Also Dealers  
in Fuel Oils, Coal and Briquets

F. E. LOOSE, Proprietor

Office and Warehouse 226 State St. Salem, Or.

---

**THE J. J. KRAPS CO.**

**PRINTERS**

**DIAL 8594**

---

**Drs. Thompson & Glutsch**

**OPTOMETRISTS**

**PHONE 5927 FOR APPOINTMENT**

**333 State Street**

## **CITY ICE WORKS**

**PURE CRYSTAL ICE**

Cold Storage – Automatic Burner Oil

**PHONE 3121**

**1551 Center St.**

---

## **Willamette Grocery Co.**

Distributors of

**Elsinore Canned Goods**

**PHONES 4146 – 4147 – 4148**

---

## **Capital Business College**

Thoroughly Modern

**Salem, Oregon**

---

## **GEO. C. WILL**

**MUSIC**

**PHONE 4959**

**432 State St.**

## **YOUR EYES**

Are a Priceless Asset

Don't Put Off Giving Them  
the Attention They Deserve

### **MORRIS OPTICAL CO.**

PHONE 5528

444 State St.

---

## **THE CAPITAL THEATRE BARBER SHOP**

On Your Way to Town

550 State Street

---

## **MODERN BEAUTY COLLEGE**

The most up-to-date beauty  
service and beauty training  
at rates you can afford....

129 New Bligh Bldg.

PHONE 8141

When You Think  
of EATS . . . .

For Any Occasion  
Just Call

**BURT CRARY**

Dial 6753

1689 B St.

PHONE 5228

444 State St.



**YOUR SATISFACTION IS OUR  
BEST ADVERTISEMENT**

PHONE 8141

129 New Bligh Bldg.

BISHOP'S...

THE STORE FOR  
YOUNG MEN . . .

BETTER BINDINGS



CAPITAL CITY BINDERY

PHONE 8176 461 N. FRONT ST.

**MEADOW GROVE DAIRY**

Grade A Milk and Cream

Raw and Pasteurized

DIAL 116 ASK FOR 85F11

---

**ANDERSON'S**

HOME MADE CANDY

135 N. High St., Salem, Oregon

---

**Imperial Furniture Co., Inc.**

467 Court St.

PHONE 8419

---

**RISE'S BOOTERY**

129 N. COMMERCIAL ST.

Salem, Oregon

---

**WOOLPERT & LEGG**

DRUGS

Corner Court at Liberty

PHONE 3444

---

**MIDGET MARKET**

ORIGINATORS OF LOW PRICES

Salem's Only Market Handling  
State Inspected Meats Exclusively  
We Slaughter and Cure All of  
Our Meats Here in Salem....  
State Inspected Meats Exclusively.

351 State St.

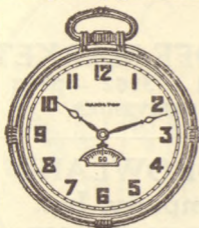
PHONE 4988

# Where Men Are Judged



by the minutes they  
*save . . .*

That's the world. Faulty time-pieces don't excuse lateness or wasted time in modern business life. The young graduate needs an accurate watch—a



HAMILTON — transportation's time-piece for all who value time. See the new HAMILTONS on display at our store.

## POMEROY & KEENE

379 STATE ST.

## **THE KLASIC**

**Salem Photo Supply**

**Kodak Finishing  
Greeting Cards  
Picture Frames**

**In the Entrance of  
the Capitol Theatre**

---

**For Good Things to Eat—  
Phone**

## **STUESLOFF MARKET**

**Phone 3161 - 3162 - 3163**

**FREE DELIVERIES**

---

**THIELSEN-ROWLAND  
Printing Company, Inc.**

**COMMERCIAL AND  
SOCIETY PRINTING**

**PHONE 8853**

**Masonic Bldg.**

Why Not Have Your  
Lunches and Parties

AT THE  
**MARION HOTEL**

Finest Coffee Shop,  
Dining Rooms and  
Private Banquet  
Rooms in Salem . . .  
Reasonable Rates



**Western Dairy Products Co.**

FOR FRATERNITY,  
SORORITY AND  
PRIVATE PARTIES

### **The Gray Belle Silver Grille**

Offers privacy, and  
the advantage of a  
complete restaurant  
and fountain service



*The Gray Belle*

Let Me Show You How  
You Can Be Better Dressed  
And at Less Cost . . . .

## D. H. MOSHER, Tailor

474 COURT ST.

SUITS - O'COATS - PANTS

Cleaning - Pressing - Repairing

---

## PADE'S GROCERY AND MARKET

Delivery Service

PHONE 9137

1244 State St.

---

## FLOWERS . . .

WE GROW  
OUR OWN

Oscar D. "Frosty" Olson

Court and High

PHONE 7166

---

## W. T. RIGDON & SON, Inc.

Funerals Since 1891

---

SALEM, OREGON

**QUISENBERRY'S  
CENTRAL PHARMACY**

The Drug Store Complete

410 State St.

PHONE 9123

---

**DOUGLAS McKAY  
CHEVROLET CO.**

430 N. Commercial St.

Salem, Oregon

---

**Fleener Electric Co., Inc.**

Wiring - Fixtures

PHONE 7993

695 N. High

---

**ANGORA FUR SHOPPE**

Fur Coats, Scarfs, Capes

PHONE 6814

1348 Ferry St.

---

**F. W. WOOLWORTH CO.**425 STATE STREET

---

**HILL'S...**

HOME OF GOOD CANDY

697 N. Capitol St.

---

**Kennedy's City Cleaning  
Works**

1245 State St.

PHONE 6897

---

**ANDERSON'S**

The Sporting Goods Store

## H. L. Stiff Furniture Co.

"The Store With a Friendly Spirit"

House Furnishings  
Radios - Luggage  
Furniture Rentals

TELEPHONE 9185

446 Court St.

---

Class Jewelry  
Commencement  
Announcements

## MASTER ENGRAVERS

45 Fourth St.

Portland, Ore.

---

We Welcome Student Accounts

## LADD & BUSH, Bankers

Salem, Oregon

Commercial Banking

Savings Accounts

Trust Department

Established 1868



May I propose, my dear?  
Oh my! This is so thrilling;  
If you'll keep me in Shipley's togs  
Then, darling, I am willing.

BAID  
©  
INC. N.Y.

**VITALITY - - ENERGY**  
IN  
**HILLMAN'S**  
**MASTER BREAD**

Made in Salem by

**CHERRY CITY BAKING**  
**COMPANY**

---

**HAZEL DELL DAIRY, Inc.**  
Grade A Raw and Pasteurized  
Milk and Cream  
Sweet Butter

DIAL 9622

IF NO ANSWER DIAL 116—22F21

1260 State St.

## **FITTS MARKET**

For Quality Sea Foods  
and Poultry

**FREE DELIVERY**

**PHONE 4424**

**216 N. Commercial St.**

---

## **EOFF ELECTRIC CO.**

**FOR DESK LAMPS**

All Electrical Appliances

Radio and Frigidaire

**347 Court St.**

**PHONE 9119**

---

## **The Capital Drug Store**

**J. H. WILLETT**

**FILLING PRESCRIPTIONS**

**Is the Best Thing We Do**

**Corner State and Liberty**

---

See Us for Your  
**P R I N T I N G**

**Bertelson & McShane**

**PHONE 7109**

**294 Chemeketa St.**

---

COMPLIMENTS—

**VALLEY MOTOR CO.**

SALEM

---

**Firestone Service Stores, Inc.**

PHONE 9144

Center and Liberty

---

**LENA BELLE TARTAR**

VOCAL TEACHER

Personal and Group Instruction

Studio 407 Court St.

PHONE 3847

---

**Western States Grocery Co.**

PHONE 9171

280 S. High St.

---

**SALEM HARDWARE CO.**

PHONE 4906

120 N. Commercial St.

---

**W. H. BURGHARDT**

"INSURANCE ON EVERYTHING"

463 Ferry St.

PHONE 4663

---

**STANDLEY & FOLEY**

GENERAL INSURANCE

PHONE 5876

Ladd & Bush Bldg.

---

YOU'LL LIKE OUR BAKED GOODS

**LITTLE LADIES STORE**

PHONE 8661

1190 Center St.

---

**ADAMS, FLORIST**

FLOWERS FOR ALL OCCASIONS

453 Court St.

---

FIRST CLASS WORK AT THE

**State Street Barber Shop**

1256 State Street

---

**J. M. RUPERT**

INSURANCE

169 S. High St.

Salem, Oregon

COMPLIMENTS OF—  
**Northwestern School  
of Commerce**

Portland, Oregon

---

**WM. GAHLSDORF, INC.**

Kitchenware – Glassware

325 COURT STREET

---

**Cherry City Cleaners**

PHONE 7779

230 N. Liberty St.

---

**Commercial Book Store**

For Student's Supplies

PHONE 4534

163 N. Commercial

---

**NEW SALEM HOTEL**

AND

**COFFEE SHOP**

Opposite the Elsinore

---

**LES NEWMAN'S**

Men's Furnishings

189 N. Commercial

---

**GRABER BROS.**

PLUMBING – HEATING

154 S. Liberty St.

PHONE 6594

---

**COBBS & MITCHELL CO.**

Lumber – Building Materials

PHONE 7443

349 S. 12th St.

---

## MODEL FOOD MARKET

Free Delivery and Monthly  
Account Service

PHONE 4111

275 N. High

---

### K. L. KING

COMMERCIAL ARTIST

1014 Bedell Bldg.

Portland, Oregon

---

## THE SHYNNE SHOPPE

HATS BLOCKED AND SHOES REPAIRED  
PHONE 7000

147 N. High St.

---

### J. H. McGILCHRIST

INSURANCE

Bligh Bldg.

---

## DeLUXE ICE CREAM CO.

For Those Frozen

Delicacies . . . .

## Salem Sanitary Milk Co.

Pure Jersey Milk and Cream

1857 State St.

PHONE 5774

# WILLAMETTE UNIVERSITY

Welcomes you  
back to an-  
other joyous  
year of endea-  
vor.



---

**C. F. BREITHAUPT**  
**FLORIST**

557 Court Street

PHONE 5904

---

**WILE'S OPERA HOUSE**  
**PHARMACY**

Court and High Sts.

---

**UPSTON'S GROCERY**

Consistently Low Prices

PHONE 3837

State and Commercial Sts.

---

**THATCHER**  
**PRINTING**  
**COMPANY**

Commercial  
PRINTING

PHONE 7490  
153 S. High St.

---

**Bloch's Golden Rule Store**  
"GREET'S YOU"

---

TRY THE

**GREENWOOD LUNCH**

1230 STATE ST.

COMPLIMENTS OF—

**VALLEY PACKING CO.**

Packers of

**Cascade Brand Meats**

---

**DISTINCTIVE . . .**

Printing and Advertising

**Unruh - Knapp Printing Co.**

U. S. National Bank Bldg.

---

**HELLO '38**

Start Right By Letting

Us Supply You With

All Your School Needs

Typewriters - Laundry

Cases and Sundry

School Supplies . . .

**Needham's Book Store**

465 STATE ST.

INDEX

WEST COAST ENGRAVING  
COMPANY

Engravers and  
Designers for  
the Wallulah

## I N D E X

	Page
Athletics .....	37
Athletic Organizations .....	23
Calendar .....	4
Church Directory .....	50
Clubs and Societies .....	24
College Calendar .....	5
Dean Dahl's Greeting.....	9
Football Schedule .....	36
Forensics .....	22
Fraternities .....	30
Freshmen Remember .....	17
General Manager's Greeting.....	10
Go to Church .....	49
Greeting to Dr. Bruce Baxter.....	6
Honorary Organizations .....	19
Inter-Fraternity Pledging Rules .....	30
Leave of Absence for Women's Residence Halls	29
Musical Organizations .....	22
President Erickson's Greeting.....	8
President A. S. W. U. Greeting.....	11
President Blue Key Greeting.....	13
President Cubs Greeting.....	12
Prizes .....	27
Publications .....	26
Recitation Schedule .....	52
Religious Organizations .....	21
Rushing Rules for Sororities.....	31
Songs .....	40
Sororities .....	31
Student Purpose .....	49
Telephone Directory .....	51
Traditions .....	16
Varsity Yells .....	38
Who's Who at W. U.....	18
Y. M. C. A. Greeting.....	15
Y. W. C. A. Greeting.....	14



