

W I L L A M E T T E COLLEGIAN

OFFICIAL STUDENT NEWSPAPER

VOLUME 101, No. 14 · NOVEMBER 30, 1990

Timber tension

Last night in the Cat Cavern, panelists discussed cutting and conservation, economic and natural issues, and various solutions to the conflicts over forest policy that have divided the Northwest. by Nancy Lee

Senator Robert Packwood opened last night's program, "Environmental Crisis: A Conflict in Values." He stressed the necessity of balancing equities and admitting that "Honest people differ...as to values to be given to different points of view."

The floor was then given to the eight panelists that represented various perspectives of both sides of the timber issue. The panel included professors, U.S. Forest Service workers, a timber worker, and an executive of a timber company.

Packwood spoke of his hope that this program would help people to see that "There are knowledgeable people out there who honestly differ." He emphasized the importance of "not attacking the other side as the devil or worse." Next, he brought forth the initial debate over the definition of the term "old growth" itself.

Packwood admitted that when the Endangered Species Act was passed, the committee related it to projects. They considered governmental rather than economic consequences. "Is it fair to weigh the loss of eight to ten thousand jobs" against the spotted owl issue, he asked the audience. He also asked what the consequences of saving all, some, or

none of the old growth timber would be.

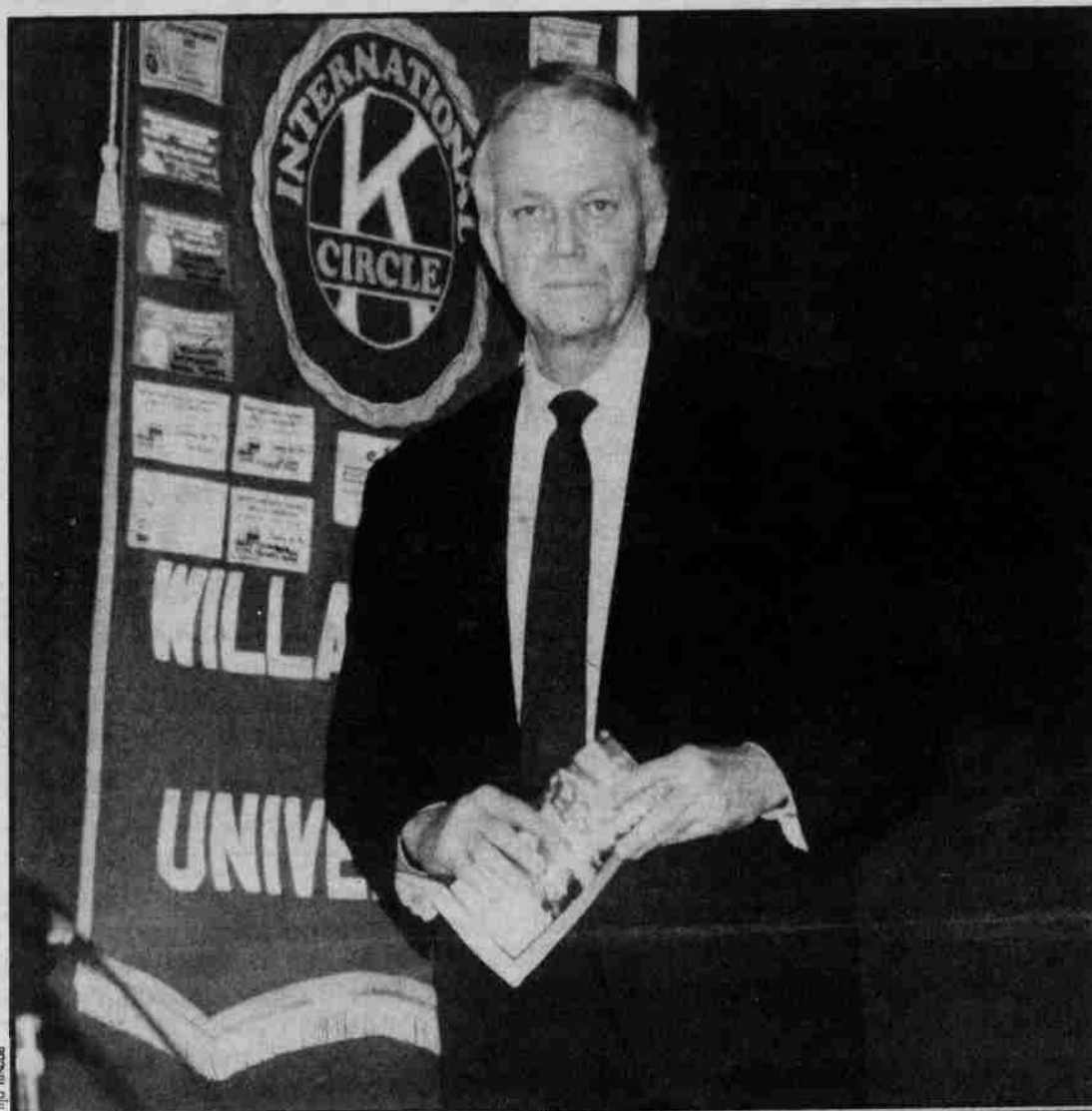
It is unfair to ask the public to make the decisions regarding the environment, stated Packwood. However, he believes that it is fair to ask them to understand the economic and environmental consequences of the subject. He stressed the importance of knowing a variety of positions.

"There's nothing to be ashamed of about being a good timber-producing area ... so long as we do it from a sustained-yield basis," emphasized Packwood.

After Packwood spoke, moderator Stuart Foster gave each panelist the opportunity to give a short statement.

Stuart Greber, a forest economist, stated that resources become a crisis if they are not recognized as relating to personal cost. Once issues are recognized as costing personally, it becomes a trade-off of values. He emphasized the need to evaluate the trade-offs between the needs and desires of the majority and those of the minority.

We have to adapt to survive and compete, said Marc Liverman, the Conservation director of Portland Audubon Society. He spoke of the



Senator Bob Packwood

need to retain species. "We can't be halfway pregnant ... just as we can't have half a species."

A. Troy Reinhart, executive director of Douglas Timber Operations, Inc., believes that the forests are well-managed. He stressed several times the importance of improving forest management over the years, rather than focusing on the mistakes that were made in the past. If less timber is logged, he asked, "Where

will wood come from?"

Michael Jones, a professor, spoke of Enola Hill, an important cultural area for the Indians. He spent years fighting the timber industry in their desire to log the area. He finds the system inherently imbalanced because of the importance of the dollar, and believes that the only way

•SEE TIMBER TENSION ON PAGE FOUR

INSIDE:

Scoring goals:

Results are mixed as we evaluate the progress made so far on the Collegian's Community Goals. page 2

Growing pains:

Part two of our series on the WU-TIUA relationship. page 3

Hooping it up:

We preview the men's and women's seasons in basketball. pages 7-8

Proposal calls for speed limit; bumps rejected

BY MISSY SWENSON

Senate last night passed a resolution concerning the safety of students on campus from vehicles.

The resolution was the result of a concern of Delta Tau Delta Senator Ken Oplinger, who while walking with a friend one night was almost hit by a Campus Safety car. After gathering data on what speeds were actually reached on campus, he presented a proposal to alleviate the problem.

The resolution calls for the placement of speed limit signs on service roads leading onto campus to lower the speed to five miles per hour from the current twenty. Also, signs on Mill Street will slow the speed there to ten miles per hour. Letters will also be sent to Campus Safety, the Physical Plant, Domino's Pizza, and Casey's Pizza, to inform them of the recent problems on campus and what

ASWU would like to see done.

Oplinger noted in that his meetings with Campus Safety Director Ross Stout and Vice President of Student Affairs Frank Meyer that they wanted to "understand what had occurred," and were concerned as to "what we could do to alleviate the problem in the future."

What Stout suggested as an option was to have plastic speed bumps placed on the service roads on campus. The speed bumps would have spaces between them that would allow wheelchair access, but still force cars to go over them. Oplinger also said that Stout would bring up the speeding problem at the next Campus Safety meeting.

When the proposal was originally introduced, the senators were reluctant to have the speed bumps on campus, because according to Oplin-

ger, "They were unnecessary and aesthetically displeasing." Senate referred the proposal to an ad-hoc committee for review and changes. The proposal that passed unanimously did not mention speed bumps.

"I know before I was opposed to it but now I'm for it in light of it not detracting from the beauty of the campus," commented Beta Theta Pi Senator Nate McLemore in his endorsement of the proposal.

Oplinger was pleased that the proposal was passed and will now be sent to the Willamette administration for their approval. However he had some reservations about the result.

"My honest opinion is that we need the speed bumps," he noted, adding that some sort of deterrent was needed. "I have the strange feeling that we're going to have to do something about it again next semester."

VANTAGE POINT STAFF EDITORIAL

Dangers are different

A little over three months ago, Willamette students, both incoming freshmen and upper-classmen, were introduced for the first time to Willamette's stricter implementation of its campus alcohol policy, which brings the university into compliance with the the Drug Free Schools and Communities Act. As a result of the new implementation, largely aimed at the restriction of alcohol consumption by minors on campus, no alcohol has been served at registered campus functions this semester.

There have been positive effects. For example, it has definitely reduced the accessibility of alcoholic beverages to minors on campus. Minors that really wish to drink alcohol have to actively seek unsanctioned means to do so. Another important pro to be considered is the fact that Willamette, under this stricter policy, is now making a more concerted effort to adhere to Oregon state law, which as we all are aware, explicitly prohibits the consumption of alcoholic beverages by citizens under the age of 21.

Granted, these can be viewed as two of the positive results, but there have been some not-so-positive results with the 'new' alcohol policy as well. First, since alcohol being served at hall functions has been prohibited, a percentage

•PLEASE SEE POLICY ON PAGE EIGHT

WILLAMETTE COLLEGIAN

900 STATE STREET • SALEM, OR 97301 • (503) 370-6053

CURT KIPP / *Editor-in-Chief*

Assistant Editors

GRETCHEN ANDERS / *Writing and Production*
KEVIN GROSSMAN / *Writing and Production*
LANCE TODD SHIPLEY / *Production*
MISSY SWENSON / *Writing*

TODD RYGH / *Business Manager*
HEIDI SINCLAIR / *Circulation Manager*
SCOTT EASTMAN / *Darkroom Manager*
CHIJO TAKEDA / *Assistant Darkroom Manager*

SUZANNE BUDD, CHRISTINA MARCOULES,
CHRIS MEHELS, CHRIS ROGERS, SETH SCHAEFER,
HEIDI SINCLAIR, THERESA VAN WINKLE,
REBECCA ZISCH / *Core Writers*
ROGER BUDGE, T.J. CHANDLER, VELVA HAMPSON,
NANCY LEE, J. MICHAEL STOCKMAN / *Contributors*

The Willamette Collegian is the official publication of the Associated Students of Willamette University, published weekly except during holidays and exam weeks. The contents of this publication are the opinions and responsibility of the staff of the Collegian and do not necessarily reflect the policy of the ASWU or Willamette University.

Mixed progress made on goals thus far

Is progress being made on the Willamette campus? Such a broad question is by its nature difficult to answer. The *Collegian's* attempts to get into the specifics of this question have been the weekly *Vantage Point* and the *Collegian Community Goals 1990-91*.

The end of the semester is frenetic. But it's a good time to reflect on the five community goals the *Collegian* staff set back in early October. Each year is unpredictable, and while we didn't expect everything on our list to happen

evaluation to be redone.

The College of Liberal Arts, the Atkinson School and the Law School each have their own statements of purpose, which represent an appalling lack of coordination between the three. In order for Willamette to remain one of the premier small schools of the West, it must make sure that this integration takes place. Part of this is already being done, with members of all three schools being part of the self-study steering committee, which is attempting to create a cohesive

can a truly cohesive purpose be achieved.

In the integration of TIUA and Willamette, much still needs to be done. With the incorporation of TIUA students into ASWU, more has been done at the student level to increase daily student involvement. Much more needs to be done at the administrative and academic level to complete the integration, including classes. More needs to be done to increase involvement of the faculty on both sides of the bridge with students from Willamette and TIUA being able to attend classes at both schools.

2. Increase student participation in speaking engagements and programs on campus.

As you know, there have been a wide variety of educational programs this semester. Not only have we seen students attend the programs that were put on by the university, but students and faculty have also taken it upon themselves to organize events that were informative and well received by the Willamette community.

Students and faculty have had the opportunity to discuss issues as diverse as abortion, the draft and the results of allowing TIUA to join ASWU. We have also seen internationally known theatre companies (Theatre Roundabout) and musicians (the Los Angeles Chamber Orchestra Winds).

Those who have taken the time to attend campus events can testify that the learning experience at Willamette is not limited to what we see and hear in the classroom. Students should continue in the spring semester to support this ideal.

3. Prediction of the tuition rate for the four years of your education.

Nothing is certain but death and taxes. Oh, and one other thing: a tuition increase. High tuition is one of the stock complaints of students, along with bad food and the lack of cable TV or anything fun to do. Those last three seem somewhat permanent, but least some feel something can be done about high tuition—it can be regulated and made predictable. Tuition prediction, as a concept, has been high on the list of ASWU Senate's goals this fall.

The sentiment is there among students that prediction is a reasonable and needed thing. What's needed now is resolve to convince Willamette administrators that implementing this proposal is in their best interests. Though we don't mind reasonable rate hikes, we're concerned that the increase for each of the

•PLEASE SEE GOALS ON PAGE EIGHT

WILLAMETTE COLLEGIAN

Community Goals 1990-91

immediately, some of the progress already made this semester is very promising. In other areas, however, the situation hasn't moved an inch.

Here are updates on each of our five community goals:

1. Improve interaction between the College of Liberal Arts, the Atkinson School, the Law School and Tokyo International University of America.

Each of the three schools that make up Willamette has a separate identity and yet still make up part of the same university. The question of the integration of the schools is one that is of increasing importance considering the comments made by the accreditation team in asking for the self-

for some time on attracting students to their schools through the joint degree program, which offers a Masters of Management as well as a law degree. The College of Liberal Arts and the Atkinson School have a three-two program in which students at Willamette can get a Master's as well as a Bachelor's Degree in five years.

Yet this is not enough. Not enough is being done to encourage classes at each of the schools to have professors from other schools come and teach particular classes. It would be nice to see economics professors from the Liberal Arts School teach classes or seminars at Atkinson and have the same happen between the Law School and the other two schools. Only in this way

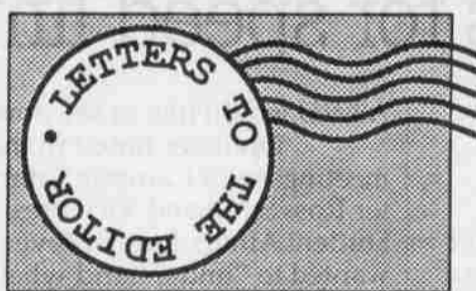
alter our lifestyle a bit and do without so much oil.

What we can't do without is the lives of thousands of people we could lose from another senseless war. With the tone of our government and the sound of the United Nations it doesn't appear that far off.

You don't have to have hair down to your ankles or wear a peace symbol to oppose war. All you need is a love and respect for mankind and a willingness to put yourself on the line for it. If you'd like to join me in a peaceful effort to oppose our military actions in the Middle East, please drop me a note in box H-166 with a name and where you can be contacted.

To me, this will all boil down to people killing other people to get something. I hope there are a few others out there that feel this shouldn't be tolerated.

BECKY HATFIELD



War in Middle East would be senseless

TO THE EDITOR:

Do we have to wait for our buddies to start coming home in bloody body bags and wheelchairs before we start making a real effort to oppose our military actions in the Middle East?

As much as some of us might like to deny it, no third party intervened and helped the Indians when we felt the urge to expand West. And I imagine we could

GROWING PAINS

In the second year of their sister relationship, TIUA and Willamette work to improve their orientation and integration.

BY SETH SCHAEFER AND SUZANNE BUDD
The second part of a series of two articles

In 1990, Dr. Michael Finigan reported to the Northwest Consortium in a report that there were problems with the TIUA relationship with Willamette. While most of his report centered on students, members of the faculty were also consulted about their feelings on the situation.

"About half of the faculty respondents (that Finigan interviewed) indicated that the program had little impact or a negative impact on the campus," he reported. Of the faculty members that were interviewed, 75 percent said that they never attended social functions with TIUA persons present. Finigan said, "Some (faculty) felt that the main impact of the program was to bring racism and inter-cultural conflicts to the attention of Willamette students and force them to come to grips with their own ethnocentrism."

Faculty suggestions

Suggestions of the faculty toward the problems faced included: integrating the schools completely by residence units, conducting more workshops for people teaching at TIUA, better preparing TIUA students taking classes from Willamette faculty, and having peer-taught workshops for Willamette students taught by Willamette students with previous experience with TIUA roommates.

Richard Yocom, Assistant to the President, believes that changes are coming along, but "Students with a short tenure (four years) may not see

the changes automatically. It takes time.

"(TIUA) is the most significant modification of the Willamette University program, yet it is to the betterment of our graduates," Yocom said.

He also did not think the full benefits of the program were being realized. "We need more preparation and a readiness to modify procedures," he said. "People are impatient, but we have made strides in the right direction."

He cited the causes of the problems as a difference in the time schedule of the two student bodies (new TIUA students every year, new Willamette students every four years), and a need for orientation programs more often for both the students and the faculty. "We held two orientation sessions for the faculty on a voluntary basis, and not many came. There is a dedicated group of students and faculty to the program, a less dedicated group, and then a totally uninvolved group. I think the ones who do not get involved are missing out on a wonderful opportunity."

TIUA Director Ryuji Torihara commented that "The report did highlight problems in the first year. Yes, we had orientation problems." He emphasized, however, the changes made between the first year of TIUA (when the report was compiled) and subsequent years. "This year's program addressed and sometimes solved problems (in the report)," he said.

Torihara emphasized the inherent difficulties in a cultural exchange

program, adding that "If you look at this kind of a program and expect no problems, you are unrealistic." He also commented that even among people of similar backgrounds difficulties will arise.

Changes made

Torihara talked about the changes between the first year of TIUA and this last year. The addition of ten Willamette students to act as peer counselors to the Japanese students is one step. Torihara also hopes to create a "superbody" council to facilitate cooperation between the sister schools. As far as preparation for Willamette students, "We have provided staff support to help Residence Life (for students with TIU roommates)," he said.

TIUA is also expanding its partici-

indication of intent," he said. "The people involved in day-to-day implementation (the goals)."

Torihara did worry about input into implementing the relationship, especially in constructive ways. "We don't know what the expectations are for us," he explained. He commented that a lot of what he hears is grumbling or rumor and that "We'd like to hear it as a constructive discussion. Unless we hear it we cannot deal with it."

TIUA Resident Director Robin Craggs explained, in reference to the report by Finigan, that many changes have occurred in the TIUA program. The first year, Craggs said, "There was isolated bonding happening (among the TIU students)." There was also no Residence Life staff training and little orientation or warning for WU freshmen assigned to TIUA roommates. "The basis of the problem was

Willamette University - Tokyo International University Statement of academic goals

In our mutual desire to provide an education of the highest quality possible, thus serving the best interests of our students, we, Tokyo International University (TIU) and Willamette University (WU), jointly seek to attain the following goals through the establishment by TIU of Tokyo International University of America (TIUA) and the cooperation by WU in the TIUA program:

1. To improve language communication skills in English and Japanese;
2. To understand through mutual study the economics, the politics, the social systems and the literatures of the two countries;
3. To appreciate the diversity of our histories, cultures and lifestyles;
4. To bring about and further encourage interpersonal relationships that are free of bias and racism.

pation in the Willamette community, Torihara said. "We should become part of Willamette's resources," he explained, "We would like to add more human resources." These may include TIUA courses taught in Japanese but open to WU students and a Japanese major. "I'm always pursuing a couple of new ideas," Torihara said.

The goals for the WU-TIUA relationship have also been updated, Torihara commented. "These goals are more specific. Before they were more philosophical." He added that the goals are still fairly non-specific, but said that making them too specific would limit potential. "These are an

more personal than cultural," she said.

Having the TIUA students arrive in March, when WU students were still on campus, "made a profound difference" for the current group of students. The TIUA students also had WU Residence Life staff members orienting them, which Craggs believes "had an impact since it was students doing it (orientation)." There was also cultural training for last year's American students in Kaneko.

Craggs' comments also touched on the misconceptions and problems associated with the TIUA program. "I think it's important that Willamette realizes cross-cultural communication isn't easy. It doesn't have to be easy to be good," she said.

The relationship between the schools is confusing, Craggs believes, because "It is more like a marriage at a spiritual level." Practical concerns are sometimes hard to define, but Craggs offered some ideas. "I hope that we're going to see more direct involvement from the International Office at Willamette," she said. She hopes for a pre-departure orientation for TIU students will explain the curiosity of U.S. students have regarding Japanese culture, and for increased activity from the TIUA Student Affairs Office.

Craggs sees the program progressing, even with some problems. "For the first time we have been able to step back and look at our program," she explained. "I think it's going to feel more natural every year."

Dining commons may be located in new building

BY SUZANNE BUDD

Last night, Senate heard two reports on changes coming to Willam-

President Dawna Davies presented the proposal from the Food Service Committee that will be recommended today to the Board of Trustees. The architects for the project studied costs, traffic patterns and campus space use before recommending (to the committee) that a separate facility be built.

Davies showed the Senate three concepts, each placing the dining facility on a different part of campus.

The choices were to put the building where the tennis courts are currently, in the parking lot near Matthews hall

and Delta Tau Delta or on the other side of the Millstream across from Doney and Lausanne. The Food Committee will recommend the latter idea to the Trustees, Davies said.

Kaneko RD Robin Craggs brought up concern that the proposed site is one of a few areas on campus with lots of trees and other senators questioned the need for a facility outside the UC. Davies responded that remodeling the UC was deemed too cost prohibitive. In response to Craggs' concern, Davies said she would pass it on and that she had confidence that the architects would

• PLEASE SEE SENATE ON PAGE SIX

SENATE REPORT

NOVEMBER 29, 1990

ette. It also passed a Campus Safety proposal from a few weeks back and addressed a few budget requests.

Timber tension

• CONTINUED FROM PAGE ONE

to balance the system would be to assign dollar values to natural resources, such as streams and rivers. The idea of wood as a crop, with a sustained yield was taught by those involved in forestry, said Andrew Anderson, the executive vice president for the Oregon Farm Bureau Federation. Now he feels that those farmers are being penalized, as they are not able to log or grow crops on their land. "The system is out of whack," he stated. Society decided values, but was not willing to pay the price. "I can guarantee that if it

continues in the way it has, everyone will pay the price."

Jeanine Boldt, a teacher, said, "Those of us who aren't willing to get involved are passing along an overwhelming problem to future generations."

Both Debbie Miley and her husband are employed by the timber industry. "My family lives with uncertainty every day." She stressed the need to know that her children's lives are as important as a species of animals.

Timothy Hermack, who serves on the Native Forest Council, stressed the need for the public to be informed. "These lands are your lands, what do you want done with them," he asked. He compared Brazil with Oregon,

explaining that Brazil was asked to stop logging when it had logged fifteen percent of its forests. Oregon has logged ninety percent of its forests.

The underlying crisis of this issue is the individuals' loss of touch with themselves and the strength of their institutions, said Robert Lee, a professor in the College of Forest Resources at the University of Washington. He stressed that land and science have always been morally neutral. "We can sustain our forests...if we recognize our institutions strength."

At this time, Foster began to ask each panelist questions. Greber stated that the impact of restrictions on the timber industry due to the spotted owl could be a loss of three to 7,000

jobs. Economy-wise, five to 16,000 jobs would be lost. Liverman countered these job losses, saying that in 1988-89, 100,000 new jobs were created in Oregon. He stressed the need for alternate training programs and community outreach.

Reinhart stressed the resiliency of the forests. Boldt, however, disagreed. She believes that what is on paper regarding sustained yield is not what is taking place. "Until we know what is happening (within the forests) we want you to back off."

Lee stressed the utopian ideology presented in the program. "If we don't get goods here we will get them someplace else in the world."

The session ended with an a series of questions from the audience.

Music majors express their concern over heavy course load

BY T.J. CHANDLER

The purpose of the music department is "to educate students for careers of musical performance and music therapy within the broad spectrum of a liberal arts education. ..." This includes a strong combination of both classroom instruction and out-of-class application. Students, however, are finding that completing the music degree programs in four years is an objective in itself.

Four degrees are presently offered from the music department at Willamette University: Bachelor of Music in Education, Bachelor of Music in Performance, Bachelor of Music in Music Therapy, and Bachelor of Arts or Science in Music. The first three are considered "professional" degrees, while the fourth is a standard "baccalaureate" degree with a "music major." By far, most students enroll in the professional programs.

Students claim that the two greatest barriers to graduating on time are, 1) The number of classes required and 2) Out-of-class practice time. Most music classes, particularly those in which performance is required, are worth either .25 or .5 credit; consequently, many more courses must be taken each semester to fulfill credit requirements than for other majors. Sonia Engle, a Music Therapy student, noted that "Last semester (Spring '90) I took only one full-credit class ... and this

semester I am taking seven different classes." As demonstrated by enrollment figures, a disproportionate number of classes is being taken in relation to the number of degrees conferred by the music department as compared to other departments such as English and Political Science.

Dr. Richard Stewart, chairperson of the Music Department, pointed out that although the number of classes may be greater, student credit loads are always between 4.0 and 4.75. The reason why so many classes are necessary is because "We operate on a 'tier' system" which is highly sequenced—more so than other programs. He understands that if a student decides to pursue a music degree late in her/his Willamette career, it is difficult to "dive right into a program" because of all the prerequisites.

Students have in some ways been frustrated by this. "You basically have to know your freshman year that you're going to be a music major and structure your whole career at Willamette accordingly," claims Kristi Baack, a senior who has petitioned the Academic Council to change her degree from a B.A. in Music to a B.M. in Music History in order to graduate this spring.

"Advising is an important element," agrees Stewart. The student handbook for music degrees outlines

several "example programs," but a music student must be aware of the requirements and options. He recommends that students uncertain about the programs consult the Music Department directly.

Practice, rehearsal, and performances seem to be the second barrier, as they can dominate a student's schedule. Engle explains, "each class takes an incredible time commitment—even though it's only a quarter credit." Violin student Matthew Raley commented that as a music student, he is "seldom allowed to venture far outside of Smith [Auditorium]."

Stewart emphasizes the need to "integrate the cognitive, motor and expressive/aesthetic" in music

instruction. "Underpinning all music programs is the practice of the art." Stewart claims that Willamette is "typical" of music programs at other schools in structure, and "just like athletics or acting—a student must repeat the skill over and over." "We expect a lot out of the students," Stewart affirms, and application of a concept or skill learned in the classroom is among the greatest of these expectations.

Presently, the Department is gathering information from the Theatre Department regarding a Bachelor of Fine Arts in Music. As the *Collegian* reported in its November 16, 1990 edition, the Theatre Department is currently considering such a degree.

Degrees for Music at Willamette University

Degree	1986	1987	1988	1989	1990	1986-1990
Baccalaureate	0	0	2	2	2	6
Professional	10	13	8	10	11	52

Department	Enrollment, Fall 1990	Degrees granted, Spring, 1990
English	554	40
Music	527	13
Political Science	327	47

Vandalism, theft hit KWU as station's fate remains indefinite

BY J. MICHAEL STOCKMAN

KWU has been the victim of numerous incidents of "sabotage," according to program director Monte Pescador.

The most recent occurrence was the unauthorized use of a damaged compact disc the night of November 19. According to Pescador, DJ Justin Potts finished his show late Monday night and placed the designated CD in the player to fill the broadcast time until the next show on Tuesday.

When Pescador checked into the studio Tuesday morning, he discovered that someone had entered the studio during the evening and placed a damaged copy of *Certain Damage*, a sampler of selected cuts from new albums that is supplied to the station by the College Music Journal.

Following this incident, Pescador closed the station to student DJ's and played only CDs until November 26. Pescador has also restricted access to the station to a handful of DJ's for the rest of the semester.

Pescador said he believes the act was done by someone "as if to say I did this and you don't know who I am." Over the course of the fall semester, Pescador said other acts of "sabotage" have occurred at the station, including damage to the studio's turntables and master control board, a stolen pair of headphones, DJ's re-wiring equipment without permission, and the disappearance of records and CDs.

According to Pescador, 75 records from the station's new age, world music, and classic rock library have

disappeared over the course of the semester. He also indicated that at least 40 CDs were taken sometime between November 12 and 16.

Pescador suspects either one of the DJ's on the staff or friends of DJ's are the culprits. The studio door is locked, but the key is kept in a small combination lockbox on the door. Pescador said he believes DJ's may have given the combination to the box to friends.

He also reported that janitors in the University Center have been approached by people during the evening, claiming to be on the KWU staff. They request that the door be unlocked and the janitors refused. When they reported these incidents to Pescador, he said, "I didn't recognize the descriptions" of the people involved.

Crayton Webb, a DJ at the station, was disappointed at the reports of vandalism and theft at the station. "That's one thing we don't need happening right now," Webb commented. Pescador agreed, noting that KWU is currently being reviewed by the administration and program board to see if the station should be continued.

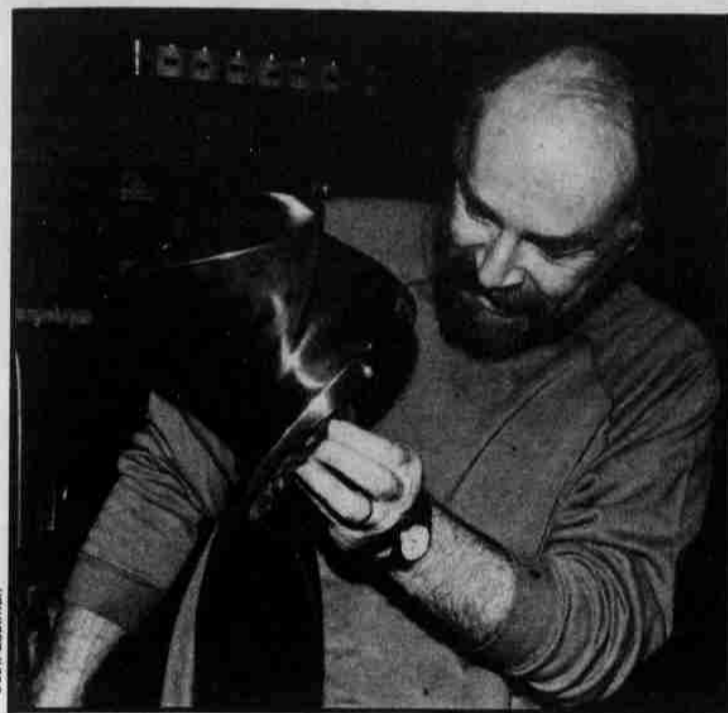
According to Sally Suby-Long, chairperson for the KWU advisory board, the current general manager for the station, Kellie Rider, will be graduating this semester. "We haven't advertised the position, and it probably won't be filled until after Spring Semester starts next year," she said. This decision was made as the advisory board is waiting to see "which direction KWU goes."

FEATURE

WILLAMETTE COLLEGIAN

NOVEMBER 30, 1990

WU Professor Hess displays fruits of travel to Europe in gallery



Scott Eastman

BY CHRISTINA MARCOULES

"The Moses drawing is the closest I have come to a religious experience," commented Professor Robert Hess about his new display of art in Hallie Brown Ford Gallery scheduled for November 12th through December 7th.

Hess, who was on sabbatical last spring, traveled to Holland and Italy to study Renaissance art. "A lot of us are going back and looking for our roots and to reevaluate. We're in a transitional period," he said.

"Moses (a sculpture by Michelangelo) is a great work of art. I tried to capture the

feelings in it; the majesty and the wrath. I captured the wrath with the hard lines across the piece. It is the piece that captured my feelings," Hess said.

While in Holland, Hess had a strong desire to use oil crayon. "I had been a painter and there's this part of me who loves color and surface. I love color paintings," he commented. Hess also added that "form is constant with me, that's why I'm a scul-

tor." The bridge painting, which is on display, was painted while he was in Holland. "The color was invented. I was painting my emotional response. The painting is a half-way point between myself and nature," he said.

In Italy, Hess had the opportunity to view the works of da Vinci, Michelangelo, Botticelli, Raphael and Giotto. "Sometimes the crowds were so intense, it was hard to draw." Hess said that the

works taught him a great deal. "They told me you should complete a sculpture, not finish it. In another words, don't eliminate the

history of the work," he said.

An experience Hess had while on sabbatical was that he had an encounter with Italian youths. "I was thoroughly impressed when I saw them talking about Donatello and Michelangelo. I told my roommates about it, but I soon learned that they were talking about the Teenage Mutant Ninja Turtles!" Hess exclaimed.

Professor Hess gives one of his works a final polish in his studio.

IHA kicks off holiday season with tree-lighting ceremony

BY SETH SCHAEFER

This year the Independent Hall Association (IHA) sponsored the first annual holiday tree lighting ceremony in Jackson Plaza. Instead of providing one tree per residence hall, as was done in the past, IHA decided just to have one tree for the entire campus.

The idea for the ceremony originated with Linda Conway, IHA treasurer. "I saw a tree lighting ceremony last year and I thought it would be neat to try something like that at Willamette," she said. Conway and Aaron Brown spent two days assembling the tree and light display. In all, there are 1700 lights, "one light for just about every Willamette student," observed Conway.

At 6 p.m. over 50 students, with

hot chocolate in hand, gathered around the tree in the plaza to watch the lights come

alive. To put the events into motion, a quick version of *Jingle Bells* was attempted but was cut short when the clock tower started

to play several holiday tunes. Paper snowflakes, chains, and ornaments that students made were hung on the tree along with the lights.

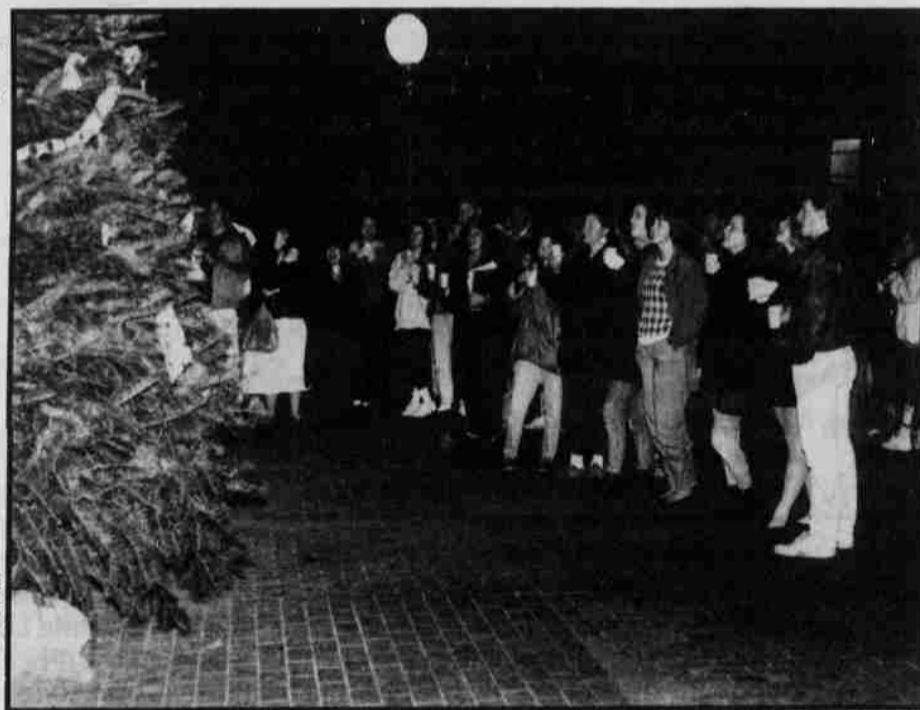
With the beginning of the music, the tree and surrounding area was instantly light up. The crowd reacted with loud cheers and gasps at all of the lights that highlighted the area.

"I'm really happy with the way it (the lighting ceremony) turned out. I hope it becomes a Willamette Univer-

sity tradition,"

Students celebrate beginning of the holiday season with carols, hot chocolate, and a festooned Christmas tree.

Conway said. Diane Bush agreed, "I'm glad everyone involved got together and made it happen."



Scott Eastman

Twentieth century music warmly received by WU audience

Professor John Peel inaugurates Swindell Endowed Chair in Music Composition

BY VELVA HAMPSON

Last night members of the Willamette community and a group of visiting musicians presented an evening of twentieth century music under the direction of John Peel.

The concert, which included music by Stravinsky, Schoenberg, Stockhausen, Boulez, Berg, and Peel, was held to dedicate the Irene Gerlinger Swindells endowed chair in composition. Peel is the first composer to hold this position.

Peel considers this concert his introduction to the Willamette community, and he chose the program with this in mind. "In this first concert I'm giving a genealogy of my compositional aesthetic. These composers have had an important role in forming my musical thought. This is where I'm coming from."

Three of the pieces were settings of poetry. The Stravinsky is a setting of

three Japanese poems sung in Russian, while the Boulez and the Peel present three poems by the French poet Mallarme.

According to Peel, the work of Mallarme has inspired generations of composers. "Musicians have responded not only to the beauties of language in the poems but also to the aesthetic ideals and concepts of form."

The Boulez is unique in that it is meant to be performed by soprano accompanied by six percussionists and harp. Most of the time the percussion instruments are unpitched, making the piece sound almost improvisational.

Soprano Susan Naruki, who has been featured with the New York Philharmonic and the Los Angeles Philharmonic, performed the Boulez as well as Stravinsky's *Three Japanese Lyrics* and Peel's *Two poems of Mallarme*. The group also presented

Schoenberg's *Phantasy for Violin with Piano Accompaniment*, Stockhausen's *Zyklus for One Percussionist*, Berg's *Four Pieces for Clarinet and Piano*.

Students also had the opportunity to attend a lecture-demonstration on twentieth century music which was presented by Naruki Friday morning.

The audience reaction to the concert was very positive, with the audience calling the performers back for a second and even third bow. Willamette student, Wayne Henry saw the concert as a good experience overall in spite of the fact that he has not listened to music of this sort before. "It's very difficult but also very interesting."

Matt Raley, a sophomore who played second violin in the chamber ensembles, commented on the importance of providing opportunities to listen to new music. "It's absolutely necessary because we get a lot of twentieth century art in the form of

theatre and literature, but we don't get much twentieth century music. Plus I think that in and of itself its fascinating stuff."

Several members of the Willamette music department participated in the performance, the majority of which was conducted by Peel.

Peel welcomes the opportunity to present twentieth century music to the students at Willamette, and he is hoping to give another concert next semester.

"In a way this is the perfect setting for a concert like this—we don't have to worry about ticket sales—it can be an educational experience. I want a person to come out of this feeling that he or she has had a complete aesthetic experience. That is that he or she has encountered music of our time expressing a wide range of emotions in a variety of compositional techniques."

Student-written and -directed play, *Qualities*, to find stage on Friday

BY REBECCA ZISCH

"It's different than most plays here because it's a little more avant garde," was how Brian Weir described his play *The Qualities* that will be performed Friday and Saturday night at 8:00 p.m. in the Arena Theatre. These productions will be the realization of Weir's undergraduate research project. He received a grant to spend the summer adapting J. Ruth Gendlers' *The Book of Qualities* as a one-act performance piece for four actors.

In *The Book of Qualities*, Gendler attempted to personify about eighty different human feelings. Weir chose about sixty of those and transformed the book into monologues, dialogues and scenes that explore relationships, families and other human experiences. But actress Sheryle Wells insisted that "it's not so much the lines as it is the subtext." Weir concurred by explaining that the actors never leave the stage and even if they aren't saying anything, "There's not a moment where an actor isn't involved."

Performing the piece are Freshmen Paul Auchterlanie and Wells and Sophomores Erich MacNaughton and Carrie Cole. "They all play all these different qualities but they're all embodying one group," was how Weir explained the "ensemble piece" of acting. But he also explained that "we never make a pretense that they aren't actors." The theatre's "fourth wall" is non-existent for this piece and the performers

communicate directly with audience members.

The only set to speak of in the theatre are four boxes of different sizes. Weir wanted it to be "an exploration every night for the actors" because as he also said "it's about them." As a director, Weir "made them do something different every night" while rehearsing, and admitted that "it must be exhaust-

ing to perform in." Auchterlanie agreed by saying "you just have to keep pushing your limit

Right to left: Sheryle Wells, Erich MacNaughton, Paul Auchterlanie, and Carrie Cole rehearse for the premiere of Weir's production



physically and mentally," and added "in that aspect

...I feel like I got a lot out of it." MacNaughton summed up *The Qualities* by stating that "It's ex-

tremely emotional...It's like life." Weir hopes that "the audience will leave having had an experience."

Hitting Birth rubs realities of life into listener's face

So, here we are, in the happy holiday season. It's that time when everybody goes around being bright and cheerful to each other for a few weeks, and then they go back to snarling at each other for the rest of the year. Well, I hate to break up this

97208), or in finer (privately owned) record stores in the Portland area. And while I heartily recommend you purchase their tape very soon, I recommend even more strongly that you go and see them live during the Christmas break. As it says on the liner notes of the tape, "For full listening pleasure, come see us live."

But you're probably saying, "What does this band sound like?" I'm glad you asked. Imagine two drummers pounding out tribal/rock rhythms, with lyrics that

sound like excerpts from the editorial page of *Mother Jones Magazine*.

The song "Why Hate Loving Living" sports a drum-heavy melody and a chanted vocal style with lyrics of a highly political nature. A sample lyric from this song reads, "I didn't ask to be black, I didn't ask to be white, I didn't ask to be born into a world that has to fight." Sounds like

rap, right? Unfortunately, that's a superficial comparison that barely scratches the surface of what Hitting Birth is all about.

When was the last time you heard a rap group use an amplified shopping cart as a percussion instrument? And instead of record scratching (the "instrument" of choice for most rap groups), Hitting Birth uses a sampling keyboard. This instrument allows them to utilize a variety of sounds, from political sound bites to police sirens to the most horrible NOISES you can imagine. The best description of this band is the following: rap meets industrial with a heavy dose of world beat.

But don't let the industrial description make you think there's no melody to this band. Hitting Birth uses drums and metal percussion to establish melody and rhythm, just as many world beat musicians do.

An excellent example of this is "It's The Kids," where things like hubcaps and metal pipes are used as percussion

instruments and played to produce a descending melody. It's not uncommon for Latin American and African musicians to use these same sorts of metal objects and make melodies with them.

One of the band's more popular songs, "Crack," emphasizes their political edge. The sampling machine is used to re-arrange sound bites from George Bush's infamous 1989 "Crack Cocaine Bought in Front of the White House" speech. By placing the phrase out of context with other phrases, Bush's words "Let me share with you," are made to sound like he's offering the listener a hit of his stash.

The biggest drawback to this tape is that it doesn't capture the performance art aspect of their live show. There are photos of the band in action on the liner notes of the tape, but they're so dark and blurry, it's hard to tell what's going on in the picture. So, you should take heed of what they wrote in the liner notes, "For full listening pleasure, come see us live."

COVERT SOUNDS

J. MICHAEL STOCKMAN

joyful little facade, but I'd like to introduce you to someone I know. Reader, meet Hitting Birth, an amazing band from the city of Portland, Oregon, who will rub the realities of life into your face.

You can become acquainted with them by buying their new tape, *Hits of Birth*, available by mail from the band (PO Box 4112, Portland, Oregon

Senate

• CONTINUED FROM PAGE THREE
make the building aesthetically pleasing.

Kim Coghlan spoke on the new World Views topic, explaining that the Latin American topic would encompass themes of the forest, the economy, women, race issues, colonization, and politics. She mentioned that part of the rationale for the change was that "after four years it needed to be changed" and that there was some fear that the Victorian program was becoming a great books as opposed to a world view program. She also said that "Latin America offered a good place because it offers a world view."

Senate passed a previously tabled plan for speed limits and traffic control on campus. The author of the

proposal, Senator Ken Oplinger, removed the section that would have required speed bumps on the Eaton-Collins sidewalk.

Errata

In a photo caption on page six of the November 16th edition of the *Collegian*, the facilitator of a recent self-defense course was misidentified as "Roland S. Clark". The trainer's actual name is Ben Coleman.

Furthermore, the meeting times for the final two seminars were erroneously stated. The author and editors apologize for any inconveniences these errors may have caused.

The editors would also wish to invite readers to notify the *Collegian* promptly with any other corrections or tips they wish to suggest.

Handel's MESSIAH

a holiday tradition

SMITH AUDITORIUM
Sunday, December 2nd
3:00 p.m.

Presented by Willamette's
Community Orchestra
Master Chorus
University Choirs

YOUR COLUMN HERE

The *Collegian* is seeking

Dedicated • Creative • Talented

Column Writers to enhance the
quality staff of
Willamette University's
Official Student Newspaper

Contact Curt Kipp, Editor-in-Chief
or the ASWU Office,
3rd floor University Center

Women's basketball makes impressive debut vs. Columbia Christian

BY ROGER BUDGE

The Willamette Women's Basketball team opened their season in an impressive fashion Tuesday night by defeating Columbia Christian 85-60. The victory is the first step on a season in which the 'Cats hope to return to the NAIA District 2 playoffs.

With the win, the Bearcats showed little effect from a somewhat slow start in practice. It took them "a little while to get organized" in the early-going because five members of the team were involved in fall sports and missed the first practices, nonetheless Coach Cheryl Brown is eager for the new year to start.

Brown, returning to the helm after spending the past year on sabbatical, is optimistic about the upcoming season based on what she's seen in pre-season practices. "So far I've been very pleased with how things have gone. The returning players seem to be hungry for the season. It's apparent that they put in extra time in the off-season to improve their skills. The new players are very talented, and have been a pleasant surprise."

Much of Coach Brown's optimism is founded on the return of three players that have played for her

before: Tara Johnson, Tracie Muir, and Dianna Ohlde. She noted, "They have an understanding of what we're trying to accomplish and they're knowledgeable about a variety of the aspects of the game."

Brown, however, admits that no one or two individuals will be able to carry the team for the season. She explained, "We have to have a total team effort mentally and physically. The success of the season is going to depend on the team attitude and where each of the individual roles fits into the team concept."

The Bearcats will be an exciting team to watch this year as their youth and enthusiasm for the game has helped them to build up a good team chemistry early on. They are very young and enthusiastic for the new season. Brown feels that such chemistry can be the difference in close games down the stretch as they aim for a spot in the District Playoffs. Expected to be among the top teams in the district are Western

Oregon, defending district champion Pacific, and Northwest Nazarene.

Another plus for the squad is

Players watch for the results of a shot attempted by Willamette in their win over Columbia Christian.

Assistant Coach Marigay Schopp, who has remained with the team

after serving as head coach last year during Brown's absence. Brown points out that this will be a big asset to the team since Schopp already knows the strengths and weaknesses of the players and other teams in the district.



The Bearcats will be at home for a pair of games before Christmas Break. Saturday night they host NCIC rival Pacific Lutheran, and on Tuesday they host Western Baptist. Both games will have 5:15 tipoffs.



Swimming boasts stellar individual performances

BY CHRIS MEHELIS

Ask anyone who swims and they will testify that it is difficult to breathe underwater.

Johan Hansson (front) and Brandt Haagensen practice for the Bearcats.

But a few certainly do it better than others. This few would be the men and women who swim for the Willamette swim team.

However, in two meets on the

weekend before Thanksgiving (and in the second week of competition), the Bearcats found themselves out-manned and outgunned. On Friday, they fell to Simon Fraser but beat Evergreen State in a three-way meet.

Then on Saturday they dropped a meet at PLU. Regardless, the number of individual performances made the teams from Willamette look very tough indeed.

For starters, there was Alicia Potter. Already bound for nationals, she has qualified in the 100-yard butterfly with a time of 1:01:85, less than a second off the school record set in 1982. Her 200-yard butterfly time was six seconds below the national qualifying time. She has also qualified in the 500-yard freestyle. Potter led off the 200-yard medley relay team which

also qualified for nationals. Rounding out the team were Shelley Blain, Stephanie Murdock, and Marcie Slaughter. They finished with a time of 1:59:91.

Slaughter, another dynamic swimmer, has qualified in the 100-yard breaststroke with a time of 1:10:4— one second off the school record. She has also qualified in the 200-yard breaststroke and the 200-yard medley relay.

Impressive have been the performances of Jim Butler, who dropped a significant amount of time in his race—the butterfly, and Dan Evans, who has been swimming strong, fast 200-yard butterflies. Sophomore phenom Matt Boltz swam 22.26 in the 50-yard freestyle, and his time, as fast as it is, will probably drop further. Boltz's efforts led the 200-yard freestyle relay team to yet another qualifying time of 1:31:5.

Willamette cross-country travels to Wisconsin for Nationals

BY CHRIS MEHELIS

Wherever on earth Kenosha, Wisconsin is, it's where two Saturdays ago John King and the entire women's Cross Country team traveled to represent Willamette University at the NAIA Cross Country Championships. Though their respective performances produced no national champions, they nonetheless ran very respectable performances at the University of Wisconsin-Parkside course.

The WU women placed 29th out of 40 as a team. For a team which shocked other NAIA Division II teams in a huge upset to reach nationals, this is nothing less that outstanding. Joanna Goth, top performer on the team, who did not miss a single race during the 1990 season finished first for Willamette at a time of 20:14 and 142 out of 327 finishers. Twelve seconds and fourteen runners behind her was teammate Marisa Nickle at

156th place, 20:26. Christina Bruce was next at 231th place with a finishing time of 22:01. Kathy Mikami 237th and 21:26, Trish Hanly 255th and 21:45, Esther Colbert 264th and 22:01, and Mary Colbert 265th and 22:01 all followed suit on the women's 5000-meter course.

Four years ago, then Willamette junior David Gilroy placed 19th. Although John King wasn't as fast or as high of a placer as Gilroy, he was

the first NAIA District 2 finisher. Cruising to a finishing time of 25:28 over the 8000-meter course (just about five miles) put King at 36th place out of 358 male finishers, the best a WU harrier has done since Gilroy. Last year Derek Hayden placed 62nd and first for the team, but at districts the men's cross country team failed to qualify for nationals and only John King was able to run this year.

Men's basketball starts with tough schedule, drops two of four games

BY ROGER BUDGE

A tough early season schedule should help the Willamette Men's Basketball team down the stretch. The Bearcats have opened up their season with a 2-2 mark after four road games. The past weekend saw them drop a pair of tough games in Billings, Montana. They lost to Rocky Mountain by one, 83-82, on Friday and then fell to NCAA Division II Eastern Montana by a 69-51 mark.

Coach Gordie James admits that he has been pleased by the progress the team has made. He notes, "We're rebounding the ball very well and steadily getting better defensively." However, he added, "We need to be more consistent on offense." He felt that the team played very well offensively in their narrow loss at Rocky Mountain.

As for the early season schedule and its tough road games, he observed, "It's important to learn to play tough on the road because it's important in tournament and league play. It's different due to the changes in environment that occur on the road."

It will be important to win on the road in district and conference play this year and James expects all the games to be very intense and competitive.

The Bearcats will be depending on such players as Erik Clarkson and Paul Scott to provide a lot of their scoring. James feels that both of those players have the ability to score both inside and outside.

Last year, Clarkson was an NAIA Honorable Mention All-American. So far, James noted, the Bearcats have been getting outstanding defensive play out of Mike Ward and Scott Baker. They have also been very effective on the boards.

The team, however, recently received a blow when it was determined that center Martin Sehlin will miss the rest of the season due to a knee injury that has been bothering him for some time.

In the Northwest Conference race, James sees Pacific Lutheran as one of the favorites along with Whitman and Whitworth, who both had good recruiting years. The Bearcats will get a chance to see PLU firsthand this Saturday when they travel to Tacoma to take on the Lutes.

In District play, the main challenges will be Southern Oregon—scoring 100 points a game right now, along with Linfield and Pacific. James notes that there really is no clear-cut favorite and that as mentioned earlier, all district games will be very tough and close.

The Bearcats make their home debut Friday December 7th when they host the 17th Annual John Lewis Holiday Classic. Southern Oregon, Western



The Bearcats prepare for a tough, close season of hoops.

Baptist, and Western Oregon will round out the field for the four-team two-day tournament. Game times will be 6:30 and 8:30 both nights.

Goals: Campus recycling efforts show preliminary progress

•CONTINUED FROM PAGE TWO
last three years was bigger than the one before. And another hike is coming this February, just in time for Willamette's 149th anniversary. How big will it be?

4. Greater administrative accountability and openness to Willamette students.

It is difficult to tell what is being done in terms of the administration being more open. When things go wrong at Willamette, the administration is usually not the one looked to for accountability, ASWU is. However, with the deferring of accreditation, this is changing as students are becoming more involved on committees that are part of the process. This gives students a voice in how the evaluation is going.

The other place that students need to hold the administration accountable is in tuition. Students have a right to know if the price of their education is going up and where that extra money is going. Students can make their voices heard through the university budget committee, which has a student representative on it.

5. Establishment of a workable, well-used campus-wide recycling system.

Though \$4000 was recently approved for a main storage area for recycled materials, a campus wide university sponsored recycling program is still not in existence. A variety of campus groups are continuing to attempt to fill the gap that the university has not filled.

Students Concerned About Rapid Environmental Deterioration (SCARED) have attempted to persuade the administration to implement a campus wide recycling program. This organization and its 30 members circulated a petition, and collected almost 1000 signatures in

order to illustrate to the administration that students are serious about recycling. SCARED then brought in a representative from the Garten Corporation, a company in Salem that collects recycled materials, who provided a free consultation. Since the petition and the consultation, the administration has approved \$4000 in funding to build a main storage area for all of campus.

Another campus group that is in the preliminary stages of helping the environment is Mortar Board. Mortar Board's motto this year is 'Environmental Awareness'. This honor society has been selling Bonus Buyer Cards for almost two weeks. These cards provide savings at local merchants' places of business and sell for \$1 each. Some of the money that is

collected from the sale of these cards is going to be used to help implement recycling programs at WU. In addition to selling these cards, Mortar Board has hired Mike Lysobey to coordinate a recycling program.

Senate tried to do its part by appointing Seiji Shiratori chairperson of an ad hoc committee to study the issue of what the university needs in terms of recycling. This ad hoc committee came up with the recommendation that another committee be established to take charge of the recycling program. This second committee is to be made up of 'important people' who have the power to actually implement some changes, and students who can provide input. This committee has the potential to organize all of the various campus

groups interested in recycling and this is something that desperately needs to be done. The idea of this committee is good; let's hope that they aren't like most committees who meet frequently, but accomplish little. In addition to forming a committee who decided to form another committee, senate also gave \$100 in ASWU funding to SCARED.

The newspaper collection bins that are in various spots on campus were not provided by anyone affiliated with the university. Instead, they were provided by Sanitary Services, a garbage collection service, who on October 1 became legally obligated to offer recycling to anyone in Salem. It is indeed sad that the government's bureaucracy is working faster than Willamette's.

Alcohol: Students should meet challenges of new policy

•CONTINUED FROM PAGE TWO
of WU students now regularly drink alcohol behind closed doors in their residence halls. Can we just write this kind of drinking off with the old saying 'out of sight out of mind'? Is alcohol consumption O.K. as long as the university doesn't know about it?

Second, many Willamette students below the state-sanctioned drinking age (which is most of the population) have found a not-so-new method of subverting the University's stricter alcohol policy; they attend the various keggers sponsored off-campus. Some might regard having alcohol consumption moved off-campus as a plus, but with students engaging in drinking activities off-campus comes a potential for a very large and serious problem: students who drink off-campus, and then return by car intoxicated. Such students pose a danger to themselves and the community.

What are we going to do among the Willamette community to prevent this problem from becoming a serious one? The solution to this problem will be up to us.

Kappa Sigma and Pi Beta Phi are among the first to realize the importance of keeping drunken WU students from behind the wheels of automobiles. They have recently sponsored a pilot-program for students to obtain 'safe rides' back to the Willamette campus. We at the Collegian encourage students to make use of this service and commend the sponsors on their initiative in trying to face this problem.

Though obeying the law is commendable, Willamette University must now be ready to face this new series of challenges we have opted into with our stricter alcohol policy. We, as students, must band together to do the job that the alcohol policy

doesn't, which is to protect ourselves and our friends from the dangers presented by increased drinking behind closed doors in our living organizations, and the even more worrisome problem of incidents of drunken-driving becoming a more frequent occurrence among members of the Willamette community.

Still waiting.

Applications are available outside the ASWU office, still, for Business Manager of the Collegian. Apply by Wednesday, December 5.