

## What's All The Chuting About?

*page 4*



# THE UNIVERSITY

## The Energy Crunch

Colder buildings with less illumination are costing much more to maintain this year despite vigorous energy conservation steps. That's the energy crunch in a nutshell at Willamette.

The entry of the 72,000 square foot Physical Education and Recreation Center onto the fuel oil and electric circuits makes direct yearly comparison difficult, but oil and electricity usage is down by over 20 percent according to data and estimates for fall semester. But those savings pale in comparison to the tripling of fuel costs and 31 percent hike in electric rates over last year.

Thermostats in all non-residence buildings are set at 66.5, and heat in most of them is turned completely off between 4 p.m. and 6 a.m. Residences have been encouraged to turn heat back at individual radiators and heat will be off completely in residences between midnight and 6 a.m.

Illumination wattage in academic buildings and the University Center has been reduced by 42 percent by removal and/or replacement of certain light bulbs.

"Generally, we feel that good progress has been made by the campus in this energy conservation effort," said Vice-President for Financial Affairs Milo Harris. He sees the necessity for continued cooperation and sacrifice as additional energy saving steps are taken in the months ahead.

## Survival Without Change?

Given present trends in higher education and demographic projections, can Willamette survive without major changes?

A committee charged with conducting an institutional self-evaluation doesn't think so.

At least that is one preliminary conclusion of the 11-member Committee for Institutional Change. Meeting twice weekly since Oct. 22, the committee of six professors, three administrators and two students has narrowed considerable research and discussion down to two basic documents before final task force recommendations are made to the President by Feb. 1.

One document, entitled "Summary of Assumptions with Respect to Willamette's External Environment," is a distillation of many data considered by the committee. It lists five trend conclusions based upon costs and demographic projections, future trends in higher education, and general projections concerning the probable nature of the environment within which the University will find itself in the years ahead.

Basically, the trends run counter to traditional operations and assumptions of Willamette. Trends like a decline in the "college age" population, increasing demand for technical or vocational education, disenchantment among students concerning the value of a college degree, more educational flexibility, and spiraling costs are serious challenges to small private colleges in general and Willamette in particular.

"In order to survive with little or no change Willamette would have to be exceptional enough that it can buck all these trends. This would require that the program at Willamette be superior enough (and this superiority be recognized to the

extent) that we could continue to attract adequate numbers of good students in spite of increased competition. Furthermore it would be necessary that outside support increase sufficiently to fill the financial gap caused by inflation," concluded the Committee.

It then asks, "Can changes be made that will enable us to satisfy the above conditions, and what kinds of changes will suffice that also will be acceptable to the University community?" Answers to those questions will presumably come from various task force recommendations within the next 12 months.

The Committee also adopted a motion affirming Willamette's commitment to the broad concept of liberal arts education, stating that "Willamette undergraduate programs must provide a dynamic environment in which the student can:

1. Develop analytic and synthetic reasoning ability;
2. Confront moral and ethical questions and nurture personal commitments concerning them;
3. Learn to live with a variety of different people, interests, backgrounds and points of view;
4. Learn creative and constructive uses of leisure;
5. Develop intellectual and emotional capacities to facilitate the probable changes in career, habitat and lifestyle during a lifetime; and
6. Develop a capacity to deal with a rapidly changing environment while maintaining a sense of self-worth and meaning."

With this re-affirmation, the Committee feels Willamette is more distinctively designed to assist students in the art of living as opposed to the business of living. Willamette's undergraduate program should give the concept of liberal arts sophisticated relevance in contemporary society, believes the Committee on Institutional Change.

## WILLAMETTE SCENE

Vol. 7, No. 1 January, 1974

Editor: Robert C. Woodle

Assistant: Jan McMillin

Published January, February, March, August, September and November by Willamette University, Salem, Oregon 97301 for constituents of Willamette. Second class postage paid at Salem, Oregon 97301.

### Budget Process Opened

The realities of budget planning are getting faculty and student scrutiny under President Lisensky's desire to open the administration decision-making process. He instituted an ad hoc Committee on Budget Planning "to provide a means for all constituencies to participate with the officers of the University in fiscal planning and budgeting."

The committee's purpose isn't to make policy decisions but to influence policy formulation. Dr. Lisensky said "As we refine techniques for cost analysis and planned program budgeting and use the data for future choices, those affected will want even more to challenge the suitability and the reliability of the data."

By finding additional ways of involving more constituents in the decision-making process, Dr. Lisensky envisions a community form of organization which removes the necessity of sharply defined power relationships. "This is not a call for sentimental cooperation but respect for the other individual or group and an attempt to understand the basis of their thinking. The theme is shared respect, shared authority," he said.

### Editorial Lauds Listener's Program

"Just jump in and learn" was the editorial headline in the Sept. 10, 1973 *Capital Journal* lauding the University's innovative Academic Listener's Program. In part the editorial said the program "sounds like just what the learning-hungry old grad (or non-grad) ordered."

"Anyone now can sit in on Willamette courses (providing there still is chair space in the classroom) for a fraction of the

regular student cost. The listener can buy the texts or skip them, as he wishes. He can ask to participate in discussion, or remain only a listener. He can take one or half a dozen courses, one semester or year after year. He gets no credits, no grades, no transcript. Just pure learning.

"Regular courses are only \$15 each per semester. Lab courses are \$25. Anyone over 65 pays just \$5 for regular courses and \$15 for lab courses.

"It's the best buy in the West, and we hope listeners jam the registration lines this fall," concludes the editorial.

Well, the lines weren't exactly jammed, but 52 people signed up for 55 fall courses, and benefits were reported from listeners, professors, and regular students alike because of the age and experience diversity. With all the pluses, Dean of Admissions and Registrar Buzz Yocom, who conceived the idea, thinks it will attract many more listeners in the future.

### Cousins, Eiseley, Clark Due

Three well-known speakers are scheduled at Willamette this spring, starting with Norman Cousins, editor and publisher of the *Saturday Review/World*. He will speak at Smith Auditorium at 11 a.m. Feb. 6 and meet informally with students from 1-5 p.m. that afternoon.

Author and natural scientist Dr. Loren Eiseley will speak at 11 a.m. Feb. 27 and rap with students in the afternoon, and former Supreme Court Associate Justice Tom C. Clark will deliver three lectures as Distinguished Visiting Scholar at the College of Law in a two week period from March 25 to April 5. All three men are appearing under the auspices of the Atkinson Fund Committee.

### GSA Progressing Well

The first class and faculty for Willamette's new Graduate School of Administration is taking shape. Dean Steve Archer is "fantastically pleased" with the first four faculty appointments, and applications for the two-year program are starting to come in from among the 400 people who have inquired about the school. Dean Archer expects to have about 75 students and five faculty members aboard for fall classes.

Meanwhile, architectural plans are proceeding for the \$1.5 million Seeley G. Mudd building which will house the GSA. The building will hopefully be completed by fall of 1975 to accommodate about 150 students seeking their master's degrees in administration.

In keeping with the goal to provide graduates with an understanding of the roles, interrelationships and accountability demands of today's business and public administrators, the first faculty appointments reflect the dual thrust of the school. Dean Archer is excited about the professors chosen from among 200 possibilities. They include an accounting specialist, a lawyer/Ph.D. with an impressive background in business and government relations, an expert in business finance, and a man skilled in quantitative methods as they apply to public administration.

By January 1, the University was within \$90,000 of its \$500,000 goal to earn the \$1 million challenge grant from the Seeley G. Mudd Foundation for the building. To provide foundation for the academic program, over \$750,000 of a \$3.7 million goal has been received.

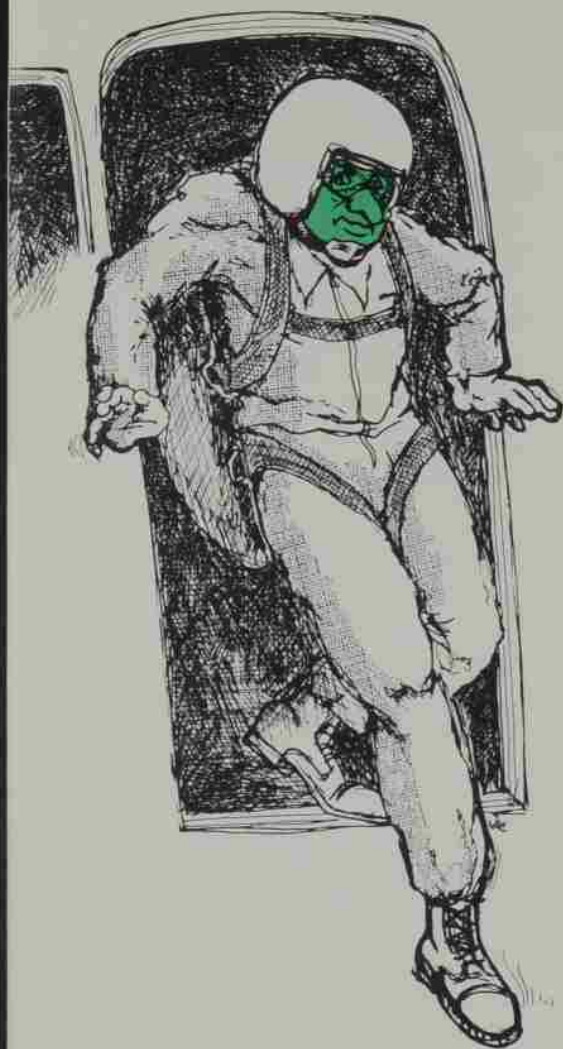


*THE LESTLE SPARKS PHYSICAL EDUCATION & RECREATION CENTER* has taken its place on the campus horizon. Finishing touches on the inside are expected to have the 72,000 square foot facility ready for occupancy in mid-March. A delay in the manufacture of bleachers prevents use of the nearly finished field

house portion for any basketball games this season as originally hoped. The above photo was shot from the southwest, with the gymnasium and handball courts in the foreground, the entryway to the right of the tree trunks and the field house beyond. Dedication of the facility is set for Alumni Day May 11.

# WHAT'S ALL THE CHUTING ABOUT?

By Gary Kaster '76



PICTURE YOURSELF in a small airplane cruising over a beautiful patchwork quilt of verdant farmland. You can see the plane's shadow moving toward a large clearing with a circle pit in the center. The quick climb to 3,000 feet is reminiscent of a non-stop elevator ride to a 20th floor dentist's office ... with the same nervous grip on the stomach.

The door on the small aircraft pops open and a noisy burst of air ripples and grabs at your clothes. You lean out and look down, palms sweaty against the door jam. One clear thought comes through the dizziness. The only thing between you and mother earth is 3,000 feet of *graspless* air. Got the picture? Well, shut the door and relax a bit while I relate to you how 20 Willamette students have discovered the thrill of skydiving this fall within minutes of the campus.

ABOUT TWO WEEKS into the school year, I learn about the opportunity. Sophomore Eric Stolz (Bellingham, WA) tells of his summer skydiving thrills and it doesn't take long to spark interest in the dorm. After several of my Matthews dormmates come back from the nearby parachute drop zone filled with excitement, I decide to give it a try the next weekend.

September 15 starts unusually early for a Saturday morning. Foregoing the luxury of sleeping in, jumpers and new recruits fill three cars and head 30 miles west to the outskirts of the small farm community of Sheridan, arriving before 10 a.m.

Upon entering the Pacific Parachute Center, we spot four extra long tables (used for chute packing) and a husky guy built like a wrestler. It is Ted Mayfield, owner and operator of the center, who greets us with a friendly smile. Naturally likeable, he exudes confidence that helps alleviate some of the apprehensions that have started to build.

He hands us liability release forms and explains the new Oregon law lowering consent from 21 to 18. I'm clear. My

parents won't have to know what their "level-headed" son is getting himself into. Besides, I wouldn't want them to worry while waiting to hear of my success ... or failure.

I give Ted \$35 to cover the pre-jump lessons, jumpsuits, ankle supporting boots, parachute and plane ride. He explains that the next 10 jumps are \$10 each and \$3 each thereafter — when I've become an experienced jumper. I still have the first jump ahead of me, so I'm all ears and concentration as he starts the lesson.

We start with PLF's (parachute landing falls), learning the sequential positions of the body to minimize impact upon landing. Since the only real chance of injury occurs when you hit the ground, we practice landings for an hour, jumping from a four-foot table.

Ted tells of other dangers, however. We must be very protective of our chutes while in the aircraft. A chute that opens inside a moving aircraft could be sucked outside, pulling the wearer out and through anything and anybody in the way. On one extremely rare occasion a whole tailsection was torn off in this manner, he says. I file in my mind his advice: follow the chute out the door immediately if it starts to go.

It is reassuring to hear Ted talk. He has successfully completed about 4,000 jumps. Only two other skydivers in North America can top that. I feel my confidence build as he continues our lesson inside on the functioning of the emergency chute. We drill for an hour as he tells us that a skydiver's biggest worry is to avoid landing in water, wires or trees. Most of the very rare fatalities that occur with skydiving are a result of drowning, he says. We go over the procedures to follow if we confront bad landing sites, and more importantly, we learn how to control and steer our chutes to avoid bad situations. I keep giving myself a mental pep talk to keep the apprehensions down, and the instruction is sure helping. Which is good, because Ted suddenly says "You're all ready to go up." "But the lessons seemed so short," I say to myself. Five hours ago

I was eating breakfast in the dorm, and now I'm about to jump out of an airplane!

The first plane load takes off with second-time jumpers. We go inside and get our gear on and return in time to see the wind drift indicator drop from the plane. On the next pass, I see a small figure climb out of the plane and drop. The static line attached to the plane has his chute opening as he drops and a few seconds later the chute fully billows open. I feel relief over that reassurance.

Two more jumpers follow the first, and before any of them reach the ground the plane lands to take up the second group. I'm in the third group, so I watch carefully as Ted directs them into the open space behind the single pilot's seat and hooks up their static lines. Off they go.

"What am I doing here?" I ask myself. "Can I really go through with this?" My wonderings and doubts don't have long to build. Three more chutes carrying first time jumpers float earthward as the plane lands for my group.

Ted has me get in first, which is fine for me. I'll be the last to jump and can watch Jim Weatherby and Brian Brandstetter lead the way. Ted hooks our static lines and climbs in to serve as jumpmaster. Our plane takes off, destined for 2800 feet, a height to allow sufficient time to activate our emergency chutes if necessary. On the way up I have time to check the static line hook-up several times. It

---

**"My time has come! . . . I grip the strut tightly and look at it in time to see the words 'Jump You Fool.' Ted slaps my thigh and yells 'Go!' Without thinking I do. Then it hits me. What the hell am I doing? I must be a fool!"**

---

remains secure, a fact which helps settle my stomach.

We pass the target area for a quick look and Ted guides the pilot into position for the first drop. The loud buzz of the plane is replaced by a deafening roar of wind turbulence as Ted pops open the door on the passenger side. He directs Jim out to the wing strut as the pilot slows the plane. I feel that his success is tied to mine, so I anxiously await his release. Ted yells "go!" and slaps Jim on the thigh. Jim disappears from sight as the pilot guns the engine and the plane surges upward. I can't see his chute open, but Ted and the pilot show no concern as we ready for Brian's turn. He's soon out on the strut and drops from sight as I start moving around in the tight quarters to shake the cramps from tight muscles.

My time has come! I move alongside the door, which is closed after each jump. My nervousness is gone now, perhaps because my mind has a mental block on

what I'm about to do. Ted unlatches the door and the wind rips at my clothes. I don't look down as Ted yells at me to move out. I grip the strut tightly and look at it just in time to see the words "Jump You Fool." Ted slaps my thigh and yells "GO!" — without thinking I do. Then it hits me.

What the hell am I doing?! I really must be a fool!

I'm falling for what seems like years before I'm aware of a soft slowing down. I look up. The chute is beautifully opened against the blue sky. I see Jim and Brian drifting below me. It looks like they will miss the target, so I start pulling the cords to guide my chute in the right direction. The quiet amazes me. With the chute doing its job, the ride down is a piece of cake.

My judgment is also a bit off as I drift away from the target. The ground comes up quickly as I touch down, feet first, then bottom, then back. Without really thinking, I spring up and start deflating the chute before the wind catches it and starts dragging me. Watching all those Ripcord shows on TV has paid off.

Never in my life can I remember such a feeling of accomplishment! The mental block is still operating, but I can feel the excitement building within me to be fully released in animated conversation on the way home. Back at the training center Ted is recording my success in a logbook that will establish my "credentials" for future jumps.

Indeed, each of us relives the excitement of the past hour as we drive back to campus. These six hours have been extremely worthwhile in my life. The cost, relatively cheap when compared to an expensive sport like skiing, is well worth the experience and thrill. I can't really find the words to describe the feeling of falling out of the sky. Like so many things of worth, it has to be experienced to be communicated. The interest at Willamette is genuine and efforts are being taken to establish a nationally sanctioned club. With the opportunity so close, skydiving may take traditional Willamette by surprise.

PUT YOURSELF in a small airplane cruising over a beautiful patchwork quilt of verdant farmland . . .





# THE STUDENTS

## Career Planning Emphasized

Students planning to enter the job market when they graduate from Willamette are taking advantage of an expanded program in career planning and placement under the direction of Karen Kohne, Associate Dean of Students.

One of the major goals in the program is to relate the value of liberal arts education to various career fields. Toward that end, a library of materials on occupational fields has been greatly enlarged; speakers from different career fields have been featured; more recruiters have been invited to the campus; and faculty members are cooperating in the communication of job options and counseling.

Alumni have been invited to participate in a couple of ways, as speakers on campus and through the "Send Us a Job" program that was launched last year, generating over 30 responses. Plans also call for a network of geographical "job help" contacts around the country for local assistance in job planning and placement.

Assistance is also offered through vocational interest tests; workshops on how to apply, write resumes, and conduct interviews; and a twice weekly newsletter which highlights career information. "We hope to provide our students with information on a variety of options and assist them in making reasoned choices by reducing chance factors in career selection," said Dean Kohne.

## Residential Program Active

Educational and cultural activities in the campus residences are on the rise through a new residential education program. Taking a cue from the highly successful Willamette International Studies House (WISH), educational and cultural programs have been featured in one form or another throughout the residences this past fall.

WISH, a residence comprised of students interested in language and international studies, has generated a variety of in-house programs, including faculty and outside speakers, slide shows, foreign

films, poetry readings, an international cabaret and Christmas parties with a foreign flavor. Dr. Frances Chapple, associate professor of chemistry and a native of England, is the proud head resident at WISH. "It's the greatest!" she beams.

More general programs have been featured in other residences, including speakers on various career fields, two guests-in-residence, dramatical skits, study skills seminars, a guitar-mandolin workshop, a dinner for foreign students on campus, and several other events. Among spring semester plans are an amateur arts/craft show for students to display and/or sell their creations, more music events, and proposals to better utilize space in the residences for a variety of uses.

Jo Seibert, an energetic Assistant Dean of Students, is working directly with students in making the campus residences more active and attractive educationally and culturally. She comes with experience in residential education from Colorado State University and Kenyon College. She is pleased with progress to date, but she hopes that the student body will earmark more funds for use in the residences "where the students can get more direct benefit for their student body fees." One of her hopes is finding some space in several residences for crafts rooms for some old tables and no fear of making a mess.

## Enrollment Totals

The University's fall enrollment total of 1,611 represents 37 states and 14 countries. Undergraduate enrollment was 1,219; law, 392. Oregon residents comprise 49 percent of the enrollment, followed by California, 21%; Washington, 17%; and Hawaii, 4%. Last year's fall enrollment was 1,598.

## Law Grads Impressive

All 29 of the 1973 College of Law graduates taking the Washington State Bar examination passed and 71 of 74 (95.9%) of those taking the Oregon Bar for the

first time passed. It marked the fourth straight year that Willamette has topped the Oregon Bar. About 83% of the 343 first time takers from other law schools passed in Oregon.

## AFROTC's First Coed

Junior Patti Blank of Salem is the first Willamette woman cadet in the 22-year history of Air Force Reserve Officer Training Corp on campus. Another coed from Linfield is also a cadet in the detachment which now serves students at Willamette, Linfield and Oregon College of Education. An environmental science and Spanish major, Cadet Blank hopes to study meteorology in the Air Force and eventually become a meteorologist in a Spanish speaking country when her four years of active Air Force duty are over.

## Athletes 1, 2, 3, 4

Willamette athletic teams have finished 1, 2, 3, 4 in the four fall sports: first in field hockey and second in volleyball in the Women's Conference of Independent Colleges; third in cross country and fourth in football in the Northwest Conference. The field hockey title was the first in four years for coach Fran Howard. Her defending champion basketball team is again favored for the title.

Joe Schaffeld's football team finished the season with a 5-4 record (4-3 in NWC) with wins over Lewis & Clark, Pacific, Whitman, Puget Sound and College of Idaho and losses to Chico State, Linfield, Pacific Lutheran, and Whitworth.

In a rebuilding year, Jim Boutin's Bearcat basketballers compiled a 7-4 pre-Northwest Conference mark which included a second place finish in the Rogue River Invitational Tournament. Junior transfer Mike Cashman from Central Oregon College, a 6-6 forward, broke the single game scoring record in his second game. His 41 points broke Doug Holden's record of 40 set in 1972.



Marathon runner and free-lance writer Ken Moore and his wife talk with students interested in writing and running. They were guests-in-residence for three days in October as part of the expanded Residential Education Program.

# Annual Report



WILLAMETTE  
UNIVERSITY

1972-73



## MORE THAN A YEAR OF TRANSITION

Some people expected 1972-73 to be simply a year of transition, a period of waiting for new leadership. But, under Interim President James H. Corson, it proved to be far more than that.

Certainly the most significant action was in the personnel area, culminating with the May announcement that Robert P. Lisensky would leave his post as Vice President for Academic Affairs at Ohio Wesleyan University to become Willamette's 19th president.

The faculty was enriched with the appointment of two new chairpersons, Charles E. Garth in sociology and Richard S. Hall in mathematics; and nine other new teachers: E. David Booth, sociology; Robert H. Hess, art; Richard Iltis, mathematics; Tommy Lee, Physical Education; Carol Long, English; Theodore Ozawa, Education; Clayton Patrick, Law; Robert E. Peffers, theatre; and Thomas B. Talbott, philosophy. Also, it was announced that Philip S. Hanni would arrive in the summer to serve as University chaplain.

On the administrative side, personnel appointments included: Larry D. Large to Dean of Students; Acting Dean Larry K. Harvey to Dean of the College of Law; and Paul M. Duell, chairman of the chemistry de-

partment to Acting Dean of the College of Liberal Arts. And Stephen H. Archer was selected to be the first dean of the new Graduate School of Administration.

The Willamette Board of Trustees was strengthened with the addition of Coburn Grabenhorst, Dale R. Gustafson, Robert J. Miller, and Bishop Jack M. Tuell.

Of course, the appearance of Mr. Corson on campus was significant in itself. A California school administrator with experience at all grade levels of education, he agreed to serve as Interim President until the new appointee arrived. Devoting himself to the entire University constituency, he made countless friends on and off campus.

The school year also saw the University lose one of its most popular figures, John R. Lewis, longtime director of athletics and baseball coach. The 57-year-old coach succumbed January 31, 1973 after a heart attack, bringing about a spontaneous outpouring of condolences and gifts in his memory. Appropriately, the University baseball field became John Lewis Field to honor his 25 years of dedication to Willamette students.

Photo: Interim President and Mrs. James Corson

# A Review of 1972-73

## MORE THAN A YEAR OF TRANSITION

### ENROLLMENT DOWN, ACTIVITY UP

Student enrollment for the year was 1170 undergraduate and 391 in law. This represented a total decrease of 6.4% from 1971-72 although the number in law increased. But, if the number of students declined slightly, the quality of the academic program did not. Perhaps most significant was the increase in off-campus opportunities including a new academic program in Queretaro, Mexico, second semester and a five week post-session environmental field studies program in the Hawaiian Islands.

More formal academic efforts were supplemented by the appearance on campus of many outstanding visitors including Buckminster Fuller, Alan Watts, Mark Hatfield, Wayne Morse, Tommy Smothers, Sally Struthers, David Harris, Robert Goralski, and John Kenneth Galbraith. And there was the annual summer program for students from International College of Commerce and Economics, our sister college in Japan.

All was not speaking and rapping, however. As usual, the Willamette singers, concert band, choir, woodwind ensemble, and others gave musical performances on and off campus; trumpeter Don Ellis brought his band to the auditorium; talented student John West did his spectacular things in "John West Presents;" there was student opera; and a cabaret-style performance of *Jacques Brel Is Alive and Well and Living in Paris* was so well received that extra shows had to be added. Non-music dramatic performances included "My Three Angels" and some experimental theatre.

The Political Science Department initiated a Crystal Ball Forum for campus and community to take a look at 1973 locally, statewide, nationally, and internationally. Then, the department conducted a successful series of five-day seminars in government for 250 high school students from all over Oregon. Meanwhile, the College of Law continued its attractive panels and seminars, and Honors Moot Court Competition, and conducted the first Oregon Judicial College for training newly-appointed judges.

At the February trustee meeting, the Board adopted a recommendation that the College of Music

include theatre and dance, and change its name to College of Music and Theatre.

Willamette competed at the varsity level in ten women's sports and nine men's sports. The women won championships in volleyball, basketball, badminton, and golf.

The year 1972-73 was a peaceful year as campus peace is judged these days. There was substantial student and faculty concern over the failure of the University to renew the contract of English Assistant Professor Donald R. Zimbalist because of departmental priorities. Also, there was a student protest about restrictions on off-campus living, and two student officers resigned because they felt the University was not sufficiently responsive to their demands.

### SECOND HIGHEST GIFT YEAR

One of the highlights of 1972-73 was a gift total of \$1,795,164. This was the second highest in Willamette history and marked the ninth consecutive year over one million dollars. Bequests, at \$439,180, were exceptionally high. A year-end \$25,781 gift was designated for a new all-weather track and construction began almost immediately at McCulloch Stadium. And donations kept the law library ahead of its 60,000-volume goal for January 1, 1975.

More good news was the July groundbreaking for the new \$2.6 million Physical Education and Recreation Center. Lestle J. Sparks, whose name will adorn the building, dug the first spadeful and construction moved rapidly toward an early 1974 opening.

The high gift total, planning, and financial belt-tightening helped the University to once again accomplish an increasingly difficult task - balancing the budget.

\*\*\*\*\*

The year concluded with 238 graduating seniors and 100 law graduates sitting in the sun to hear Robert D. Clark, University of Oregon president, deliver the commencement address. Most appropriately, Clark and G. Herbert Smith - Willamette President for 27 years - were awarded honorary degrees.

# Gift Highlights, 1972-73

- For the ninth consecutive year, Willamette received more than \$1 million in gifts and grants.
- Gifts from trusts and bequests were exceptionally high - \$439,180.
- Gifts and pledges for the Lestle J. Sparks Physical Education and Recreation Center reached \$2,216,158. Goal is \$2.6 million.
- Of the \$241,784 from business and industry, \$78,278 was received through the Oregon Independent College Foundation.
- Income from the federal and state government increased \$65,137 to \$426,039.
- An anonymous donor contributed \$25,781 for the construction of an eight-lane, all-weather track.
- The Board of Trustees approved establishment of a Pooled Income Fund which will become operative in 1973-74.
- The Willamette University Friends of the Library was formed to increase support for the library.
- Gifts in memory of John Lewis totalled \$7,186.

## GIFTS BY TYPE OF DONOR

	1971-72		1972-73	
	Donors	Amount	Donors	Amount
	June 1 - May 31		June 1 - May 31	
Individuals:				
Alumni	1564	\$ 179,601	1159	\$ 144,255
Parents	181	11,311	85	19,583
Friends	231	78,211	329	114,311
Totals	1976	\$ 269,123	1573	\$278,149
Business & Industry	120	185,266	95	241,784
Foundations	21	356,525	29	348,783
Churches	75	34,098	75	30,935
Associations	53	22,774	53	30,294
Bequests	4	29,122	6	439,180
Sub Totals	2249	\$ 896,908	1831	\$1,369,125
Government:				
Federal	7	242,199	5	243,681
State	10	118,703	11	182,358
Sub Totals	17	\$ 360,902	16	\$426,039
<b>Grand Totals</b>	<b>2266</b>	<b>\$1,257,810</b>	<b>1847</b>	<b>\$1,795,164</b>

## GIFTS BY PURPOSE

	Gifts	Amount
Current:		
Unrestricted	1174	\$ 336,332
College or Dept. General	14	18,312
Student Aid	239	295,391
Faculty Improvement	9	4,174
Furniture & Equipment	15	10,768
Plant Maintenance	221	7,277
Landscaping	—	—
Library (other than books)	2	520
Books & Manuscripts	128	17,245
Research	3	1,470
Other	8	1,200
Sub Totals	1813	\$ 692,689
Loan Funds	21	92,448
Endowment	101	430,082
Plant Funds	321	499,050
Agency Funds	—	—
Educational Opportunity Grants	3	80,895
<b>Grand Totals</b>	<b>2259</b>	<b>\$1,795,164</b>

## GIFTS BY SOURCE

	Gifts	Amount
PERC Program	303	\$ 454,808
Memorial Fund (Library)	289	18,042
Cardinal Round Table	64	5,689
Oregon Independent College Foundation	13	78,278
Alumni Loyalty Fund (Mail)	1022	32,909
Alumni Loyalty Fund (Personal Solicitation)	6	176
Law Development Fund (Mail)	101	11,558
Law Development Fund (Personal Solicitation)	39	6,917
Parents' Fund (Mail)	56	4,545
Parents' Fund (Personal Solicitation)	6	1,380
Special Gifts (No specific program)	345	1,129,802
Capital Campaign (GSA)	4	50,425
Friends of the Library	11	635
<b>Grand Totals</b>	<b>2259</b>	<b>\$1,795,164</b>

# Comparative Operating Statements

For the Years Ending May 31, 1972 and May 31, 1973

Income	1971-72	1972-73	Expenditures	1971-72	1972-73
<i>Educational and General:</i>			<i>Educational and General:</i>		
Student Tuition and Fees .....	\$2,938,928	\$2,985,718	Instructional .....	\$1,610,864	\$1,708,604
Endowment Income .....	388,469	377,029	Library .....	276,477	297,436
Gifts and Grants .....	280,703	433,734	General Administrative .....	554,657	594,424
All Other Sources .....	145,263	184,401	Student Services .....	299,152	261,512
Total .....	<u>\$3,753,363</u>	<u>\$3,980,882</u>	Faculty & Staff Benefits .....	284,537	303,408
<i>Auxiliary Enterprises:</i>			General Institutional .....	144,767	103,431
Dorms-Dining-Bookstore .....	\$1,158,756	\$1,096,710	Plant Renovation .....	0	0
Conferences .....	65,261	56,033	Physical Plant Operation and Maintenance .....	388,648	391,859
Total .....	<u>\$1,224,017</u>	<u>\$1,152,743</u>	Total .....	<u>\$3,529,102</u>	<u>\$3,660,674</u>
<i>Student Aid:</i>			<i>Auxiliary Enterprises:</i>		
Endowment Income .....	\$ 103,862	\$ 84,065	Dorms-Dining-Bookstore .....	\$1,075,475	\$1,036,763
Other Scholarship Income .....	257,857	288,945	Conferences .....	38,549	32,081
Total .....	<u>\$ 361,719</u>	<u>\$ 373,010</u>	Plant Renovations .....	0	0
			Total .....	<u>\$1,114,024</u>	<u>\$1,068,844</u>
			<i>Student Aid:</i>		
			Endowed Scholarships .....	\$ 103,862	\$ 84,065
			Other Financial Aid .....	581,857	675,096
			Total .....	<u>\$ 685,719</u>	<u>\$ 759,161</u>
			Fund for Future Development ..	\$ 10,254	\$ 0
<b>TOTAL OPERATING INCOME</b>	<u><b>\$5,339,099</b></u>	<u><b>\$5,506,635</b></u>	<b>TOTAL OPERATING EXPENDITURES</b>	<u><b>\$5,339,099</b></u>	<u><b>\$5,488,679</b></u>

# Comparative Balance Sheet

Assets	May 31, 1972	May 31, 1973
<i>Current Funds:</i>		
Unrestricted Cash, Receivables and Investments .....	\$ 1,791,262	\$ 1,677,724
Restricted Cash, Receivables and Investments .....	812,552	770,424
Total .....	<u>\$ 2,603,814</u>	<u>\$ 2,448,148</u>
<i>Student Loan Funds:</i>		
Cash Receivables and Investments .....	\$ 1,222,510	\$ 1,414,768
<i>Endowment Funds:</i>		
Cash, Receivables and Other .....	\$ 175,621	\$ 82,151
Investments .....	10,789,918	11,497,548
Total .....	<u>\$10,965,539*</u>	<u>\$11,579,699*</u>
<i>Plant Funds:</i>		
Cash, Receivables and Investments .....	\$ 2,588,496	\$ 1,772,833
Property, Plant Equipment .....	12,093,450	13,471,869
Total .....	<u>\$14,681,946</u>	<u>\$15,244,702</u>
<i>Agency Funds:</i>		
Cash, Receivables and Investments .....	\$ 30,036	\$ 36,265
TOTAL ASSETS .....	<u>\$29,503,845</u>	<u>\$30,723,582</u>

Liabilities & Fund Balances	May 31, 1972	May 31, 1973
<i>Current Funds:</i>		
Unrestricted Current Liabilities and Interfund Liabilities .....	\$ 1,791,262	\$ 1,677,724
Restricted Reserves, Fund Balances, and Deferred Income .....	812,552	770,424
Total .....	<u>\$ 2,603,814</u>	<u>\$ 2,448,148</u>
<i>Student Loan Funds:</i>		
Fund Balance .....	\$ 1,222,510	\$1,414,768
<i>Endowment Funds:</i>		
Endowment Liabilities and Fund Balance .....	\$ 6,284,802	\$ 6,709,100
Funds Functioning Fund Balance .....	4,680,737	4,870,599
Total .....	<u>\$10,965,539</u>	<u>\$11,579,699</u>
<i>Plant Funds:</i>		
Bonds Payable and Interfund Liabilities .....	\$ 2,625,333	\$ 2,561,666
Fund Balance .....	\$12,056,613	12,683,036
Total .....	<u>\$14,681,946</u>	<u>\$15,244,702</u>
<i>Agency Funds:</i>		
Fund Balance .....	\$ 30,036	\$ 36,265
TOTAL LIABILITIES AND FUND BALANCES .....	<u>\$29,503,845</u>	<u>\$30,723,582</u>

\*Approximate market value at 5/31/73 was \$17,134,226 and \$18,032,358 at 5/31/72.

# Century Club and Honor Roll

The Century Club consists of donors who have contributed \$100 or more to the Loyalty Fund or the Law Development Fund. The Honor Roll lists donors of \$100 or more to the Parents' Fund. In 1972-74, 187 donors contributed \$38,968.63 in gifts of \$100 or more.

## ALUMNI CENTURY CLUB

Achor, Mr. & Mrs. R. W.  
Agnew, Mr. Donald L.  
Alkinson, Mr. George H.  
Barrick, Dr. Claude W. Jr.  
Bartholomew, Mr. P. J.  
Barlett, Dr. Thomas A.  
Binford, Mr. John P.  
Bishop, Mr. Jack L.  
Bolton, Dr. Richard N.  
Bond, Mr. & Mrs. Charles A.  
Bonnington, Dr. William  
Booth, Mr. James C.  
Brazie, Dr. Joseph  
Burnett, Rev. & Mrs. Helen Purvine  
Catherwood, Mr. Dwight  
Cheeld, Mr. & Mrs. Charles  
Chipman, Mrs. June B.  
Class of 1923  
Collins, Miss Cheri  
Collins Foundation  
Crececius, Dr. Lyle E.  
Currin, Dr. Hugh B.  
Eddy, Dr. Lowell L.  
Edmunson, Dr. W. T.  
Emmel, Dr. Harry  
Fairham, Mr. Leighton C.  
Ferrin, Dr. Allan  
Frederickson, Dr. Edward  
Frees, Mrs. Gertrude Smith  
Fritts, Mr. Alfred T.  
Fyfe, Mrs. Hazel Burden  
Geddes, Dr. David D.  
Gillim, Mrs. William  
Gleiser, Mr. Thornton M.  
Goudy, Mrs. Grace Cullins  
Gustafson, Mrs. Sally Bridgeman  
Gustafson, Mr. Dale R.  
Hathaway, Mrs. Margaret Lewis  
Henderson, Mr. Winthrop C.  
Houser, Mr. Douglas G.  
Hurst, Mrs. C. T.  
Kingston, Mrs. Louisa Lamb  
Kirchner, Mr. Roger K.  
Landau, Mrs. Ann Bowman

Lawson, Mrs. Marguerite Cooke  
Legge, Mr. & Mrs. Kenneth  
Litchfield, Mr. G. Kenneth  
Litchfield, Mrs. Frances McGilvra  
Litchfield, Dr. Ralph  
Lowe, Mr. & Mrs. Eugene L.  
McConnell, Mrs. V. S.  
McGilvra, Mr. & Mrs. Hugh  
McKittrick, Mrs. Myrtle Mason  
Mercer, Dr. Richard L.  
Miller, Mr. Robert J.  
Mills, Mr. Charles K.  
Montgomery, Mrs. Elma White  
Mosier, Mr. Dan  
Mosher, Mrs. Eleanor  
Mumford, Mr. William W.  
Murphy, Dr. Thomas O.  
Packwood, Mr. Robert W.  
Pemberton, Dr. Paul A.  
Poppert, Mr. Claris C.  
Quaker Oats Fdn  
Racely, Dr. Clay A.  
Reader's Digest Assoc., Inc.  
Rhoten, Mrs. Ruth Ross  
Rigby, Mrs. Virginia M.  
Ross, Dr. John M.  
Roth, Dr. John C.  
Ryals, Mr. & Mrs. Stanley  
Sayre, Hon. Robert M.  
Schulze, Mr. Merlin D.  
Silke, Dr. Harold E. Jr.  
Smith, Mr. G. Herbert  
Stoddard, Mr. Charles B.  
Tallman, Miss Carolene  
Upjohn, Dr. R. H.  
Verloop, Mr. Peter  
Von Eschen, Mr. Ellis F.  
Weisser, Mr. Karl E.  
Whitsett, Mrs. E. Atkinson  
Wilcox, Dr. & Mrs. Everett  
Winans, Rev. Edward J.  
Wulf, Mrs. Pauline Findley  
Zimmerman, Dr. Neal L.

## PARENTS' HONOR ROLL

Adams, Mr. & Mrs. Ralph Jr.  
Casile and Cooke, Inc.  
Celoria, Mr. & Mrs. John  
Davis, Mr. & Mrs. S. K.  
Hansen, Mr. & Mrs. Raymond Jr.  
Heller, Mr. & Mrs. Harold W.  
Hooton, Mr. & Mrs. A. W.  
Kawasaki, Mr. & Mrs. Shigejo  
Klecker, Mr. & Mrs. John  
McLeod, Mr. & Mrs. D. A.  
Mandelik, Mr. & Mrs. Lucien  
Monroe, Mr. & Mrs. Donald  
Ono, Mr. & Mrs. Alfred

Park, Mr. & Mrs. K. D.  
Ramos, Mr. & Mrs. Bernard G.  
Renzel, Mr. & Mrs. E. Jr.  
Roberts, Mr. & Mrs. Bruce  
Smith, Mr. & Mrs. A. V.  
Smith, Mr. & Mrs. Donald J.  
Swain, Mrs. Marian L.  
Tucker, Mr. & Mrs. W. D.  
Vorster, Mr. & Mrs. Erwin  
Voss, Mr. & Mrs. Ralph  
Wilfert, Mr. & Mrs. Glen  
Wolfe, Mr. & Mrs. Herman  
Woodworth, Mr. & Mrs. John

## LAW CENTURY CLUB

Anderson, Stead & Sampson  
Baldersee, Mr. W. W.  
Batchelder, Mr. R. B.  
Bodie, Mr. James F.  
Brink, Mr. Mervin  
Brownstein, Mr. Richard J.  
Churchill, Mr. T. W.  
Close, Mr. Bertrand J.  
Collins, Mrs. Mary L.  
Collins, Mrs. Truman W.  
Cooney, Mr. Thomas E.  
Crow, Mr. William B.  
Ellis, Mr. James R.  
Estes, Mr. Herman C.  
Fahre, Mr. Harold A.  
Forest, Mrs. Marjorie M.  
Gerlinger, Mrs. Louis Jr.  
Goudy, Mrs. Grace Collins  
Harland, Mr. Roy  
Hearn, Mr. James A.  
Hershberger, Mr. J. Ronald

Hilliard, Mr. Wayne  
Johnson, Mr. Cecil H.  
Kelley, Mr. Norman F.  
Lane, Mr. & Mrs. Alan  
Litchfield, Mr. G. Kenneth  
McAllister, Mr. Honorable W. M.  
McDonald, Mr. William D.  
Minturn, Mr. James B.  
Monahan, Mr. J. T.  
Olsen, Mr. Clifford B.  
Potter, Mr. Ervin W.  
Sause, Mr. & Mrs. Paul  
Sumner, Mr. Sam R. Jr.  
Teter, Mr. Gordon E.  
Thomas, Mr. Charles L.  
Time, Inc.  
Van Dyke, Mr. Frank J.  
Van Voorhees, Mr. J. C.  
Wall, Mr. Robert C.  
Webb, Mr. Norman  
Zimmerman, Dr. Wayne W.

# Alumni Loyalty Fund

The class of 1912 topped the Alumni Loyalty Fund in percentage of participation during 1972-73 with gifts from three of the remaining four class members. The class of 1957 contributed the most money, \$1,046.50, while the class of 1968 had the most individual donors, 32. Following are the ALF totals with the top ten ranking of participation percentage designated in parenthesis:

Class	Donors	\$ Amount	% Participation	Class	Donors	\$ Amount	% Participation
1907	2	105.00	25.0	1951	16	510.00	7.5
1908	2	25.00	66.6 (2)	1952	24	484.00	9.1
1909	1	12.50	50.0 (3)	1953	20	303.00	8.3
1910	2	30.00	28.5	1954	24	862.50	12.2
1911	2	65.00	40.0 (5)	1955	21	487.00	9.9
1912	3	145.00	75.0 (1)	1956	9	107.00	4.4
1913	4	262.50	30.7 (9)	1957	29	1046.50	11.0
1914	6	196.50	40.0 (5)	1958	18	359.00	8.5
1915	4	67.50	23.5	1959	11	198.50	5.1
1916	5	60.00	21.7	1960	14	417.50	6.8
1917	2	27.50	9.5	1961	25	696.50	9.6
1918	6	97.50	27.2	1962	25	470.00	9.5
1919	10	192.50	38.5 (6)	1963	22	515.00	8.8
1920	8	300.00	30.7 (9)	1964	17	272.00	6.3
1921	12	390.00	30.8 (8)	1965	21	314.00	7.0
1922	14	805.00	32.5	1966	24	464.50	7.8
1923	23	636.00	43.4 (4)	1967	22	288.50	7.9
1924	15	405.00	26.8	1968	32	367.50	10.4
1925	22	850.00	37.9 (7)	1969	10	109.50	3.7
1926	18	727.50	24.0	1970	14	300.79	4.3
1927	14	544.63	17.3	1971	13	104.50	5.0
1928	14	545.00	24.1	1972	9	800.00	2.9
1929	13	565.00	20.6	1973	2	125.00	.8
1930	23	720.00	28.7 (10)				
1931	10	570.00	11.4				
1932	9	187.00	10.5				
1933	16	303.50	20.5				
1934	13	397.50	14.7				
1935	15	503.00	17.2				
1936	10	320.00	11.1				
1937	19	623.00	17.6				
1938	8	117.50	7.7				
1939	9	280.00	7.0				
1940	16	515.00	11.3				
1941	15	374.00	10.7				
1942	18	670.00	10.2				
1943	8	177.50	6.5				
1944	3	42.00	2.5				
1945	14	232.50	12.9				
1946	9	202.50	11.8				
1947	12	132.50	8.8				
1948	14	462.50	8.7				
1949	22	977.50	10.3				
1950	22	561.50	8.8				

Gifts to the Alumni Loyalty Fund totaled \$25,026.42. In addition, \$7,000 was added by the Collins Foundation Matching Fund.

## *Dr. Robert Lisensky Invested as 19th President*

Dr. Robert Paul Lisensky, 44, officially assumed duties as Willamette University's 19th President August 15, 1973.

The former Vice-President for Academic Affairs at Ohio Wesleyan received two wooden symbols of authority in a brief investiture ceremony on the lawn of the University quadrangle.

Interim President James Corson turned over an historic gavel to his successor. The gavel was carved from apple wood from a tree planted by Willamette founder Jason Lee.

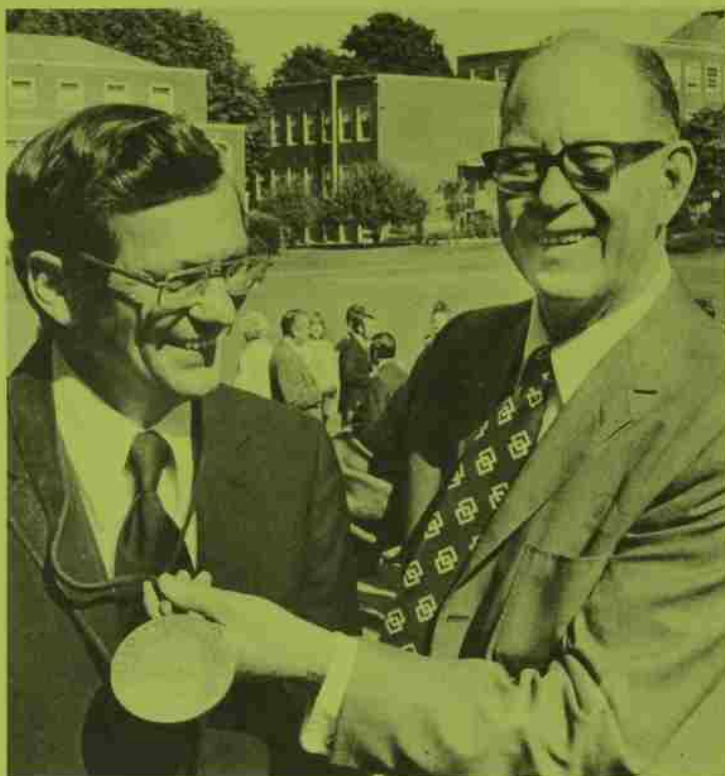
Geo. H. Atkinson, chairman of the Willamette Board of Trustees, presented Dr. Lisensky with a hand-carved myrtlewood seal of the University.

Lisensky told the 250 faculty, trustees, students and friends assembled that upon receiving the symbols of his election to the presidency of Willamette "I find myself with mixed emotions — a sense of pride mixed with elements of concern."

"Willamette University is a distinguished institution of higher education, evidenced by its long, long history and especially by the quality of lives and depth of commitment of its graduates, faculty, trustees, administrators and benefactors. I am proud to become a part of this tradition.

"However, when one thinks of the magnitude of the challenge of the position — that of serving so distinguished a community of scholars, of helping to maintain an environment where teacher and learning are inter-related elements, and sharing in the task of providing a learning process that seeks to develop responsible citizens to operate in a responsible society, there is some sense of humility."

He concluded "to accept that challenge with assurance, as I do, is only possible because of my commitment to the goals and objectives of Willamette University and my faith in the persons serving this University. May our aims be blessed by God."



President Robert Lisensky and Trustee Chairman Geo. Atkinson



**WILLAMETTE**  
UNIVERSITY

Salem, Oregon 97301



# THE FACULTY

## Profs Praised

"As you look back over your years at Willamette, which professors would you identify as having had the greatest positive influence on you? Why?"

That was the question asked of the 238 graduates last spring by the Teaching Effectiveness Committee (TEC) to add hopefully a new dimension to the evaluation process. About 20% of the departing seniors responded, offering positive comment on 68 different professors or about 85% of the undergraduate faculty.

The individual professors received the comments and had the option to pass them along to administrative heads after the TEC digested the material. Committee member Virginia Bothun (Instructor in English) has summarized the responses into "some generalizations of interest as we think about the quality of our programs and try to appraise our accomplishments."

She delineates three broad categories: personal characteristics, student-faculty relationships, and knowledgeability and classroom technique.

She reports: "By far the most-mentioned personal attribute was enthusiasm ... at the flame of this enthusiasm, their (the students') own interests were kindled. They spoke as well of honesty, humanity, and a broad view of life. Studying with those who displayed these qualities ... taught them much about themselves and about life and its living."

"(Students) regarded highly the ability of professors to relate to students and were gratified that they could feel that their professors really cared about them. If indeed our stress at Willamette is on teaching and reaching the student, much of what was stated in these 45 responses would indicate some major successes.

"Our seniors consistently praised professors for their careful organization of their courses and their careful structuring of the class hour. They wanted and appreciated challenge, high standards, and being encouraged to strive for achievement. 'I'd much rather have a hard pro-

fessor than an easy one. You've accomplished something when you've passed that class,' was one remark."

Mrs. Bothun believes the survey was a successful beginning of what could develop into an important part of the total evaluation process. "Surely, its results gave some encouraging insights into what we are doing right," she concludes.

One satisfied senior said "The professors at Willamette have always amazed me in their depth of knowledge. But not only that, they amaze me in their way of life which is one I would like to imitate. Their continued interest in their subjects, their concern for their students' intellectual development, and their activity in campus affairs are all qualities which I appreciate."

## Have Course, Will Travel

Man and his environment will receive emphasis for any takers of Earth Science Professor Harry Rorman's "Foreign Field Study" course this summer. He's willing to take from six to nine students anywhere in the world for four weeks of on-the-spot study of geology, geography and the environment. Rorman sees the course as an alternative to the "canned" overseas study programs that attract summer students. In addition to academic pursuits, Rorman believes students will learn a lot on how to organize, budget, work together, and perceive through direct on-the-spot instruction. His previous two "Environmental Field Studies" courses in Oregon and Hawaii with Prof. Don Breakey have been quite successful.

## Supreme Court Taps Law Prof

Debut or swan song? Both are probably correct regarding Law Professor Ross Runkel's appearance before the U.S. Supreme Court in October to argue a habeas corpus case. About five percent of the pleas directed toward the high court are reviewed each year, so the invitation from the Supreme Court for Runkel to plead a constitutional question on behalf of a man convicted of armed robbery was a rare treat. The Court voted 6 to 3 against

Runkel's client in the case which had worked its way up through the courts during a three-year period. The story has a happy ending, though, as his court-appointed client is just nine hours away from college graduation through the Operation Newgate program which allows convicts rehabilitation through education. "He has really reformed and is now on parole," said Runkel who accepted court appointments three years ago to provide some practical experience for students under his supervision in the College of Law intern program.

## APPOINTMENTS

*Fall, 1973* — **Dr. Paul M. Duell**, Dean, College of Liberal Arts from Acting Dean. At Willamette since 1957, he continues as Professor of Chemistry, teaching one course. **John West, Jr.**, Admissions Counselor, a 1973 graduate of the Willamette College of Music & Theatre, for one year.

*Spring, 1974* — **Diane Wakoski**, Post-in-Residence, 1960 graduate of Cal-Berkeley, author of several volumes of poetry, former Post-in-Residence at Cal Tech and University of Virginia, Guggenheim Fellowship winner, 1972-73; one semester only. **James P. Brink**, Instructor in Physical Education and Aquatics Director, doctoral candidate at the University of Oregon, B.A. and M.P.E. Idaho State University; taught at U.S. Military Academy.

*Fall, 1974* — **Dr. Russell J. Petersen**, Assoc. Professor at the Graduate School of Administration (accounting), from Asst. Prof. Duke University, B.S. Oregon State '63; M.S. Univ. of Oregon '64; Ph.D., U. of Washington '71. **Dr. Jann W. Carpenter**, Assoc. Prof. GSA (law and business/government relations) from Assoc. Prof. Central Wash. State; B.S. Oregon State '57; J.D. Univ. of Oregon '63; M.B.A. '70 and Ph.D. '72 U. of Wash. **Dr. Marc Choate**, Assoc. Prof. GSA (business economics and finance) from Asst. Prof. U. of Mass. School of Business Administration; MBA and Ph.D. U. of Wash. **Dr. Bruce Gates**, Assoc. Prof. GSA (public administration) from Asst. Prof. at The Maxwell School, Syracuse Univ.; B.S.E. Princeton '66; Ph.D. Univ. of Pittsburgh Graduate School of Public and International Affairs '71.

## DEPARTURES

*Fall, 1973* — **Dr. Chester Kaiser**, Professor Emeritus of History, requested early retirement for health reasons, closing out a 27-year teaching career at Willamette, presently working on research in Willamette Library.

*Feb. 1, 1974* — **David Lewis**, Business Manager, resigned after 20 years of service to enter private business in Salem.

*May 31, 1974* — **Karen Kohne**, Associate Dean of Students, will leave at the end of her fifth year at Willamette to commit more time to personal interests.

## IN MEMORIAM

*Oct. 6, 1973* — **Clorinda Topping**, Associate Professor Emeritus of Voice, died at her home in Salem. She taught at Willamette for 19 years before retiring in 1967. She is remembered as an outstanding soprano soloist and a merry-eyed, friendly teacher who established a group known as the Topping Singers and directed several other vocal groups in the community. Friends, associates and former students have established "The Clorinda Topping Scholarship Fund" at Willamette in her memory.

# Japanese Semester: Educational and Eventful

## People, Culture Leave Impression Upon 25 Students

Ed. note: Professor of Economics Dr. Richard Gillis accompanied 25 students to Willamette's sister college in Japan, the International College of Commerce and Economics, during fall semester. In addition to classes the 16-week stay was quite eventful, as the following excerpts from Dr. Gillis' newsletters home indicate.

We hit the national press here. In case you miss one or two words in the enclosed article (which is clearly self-explanatory) the girl is Karen Muldoon (Junior - Fullerton, CA) and the picture was taken on her first home stay. It says that she became an expert at ikebana (flower arranging) which is pure fiction. But people are now calling her for advice on flower arranging, which is kind of wild!

Incidentally, they are making a 20-minute movie documentary of our visit and we're supposed to get a copy . . . in English.

Our train between Honkowagoe and Kasumigaseki is, we thought, only a local. However, we have since found out there is an express that zips past Kasumigaseki and heads for parts unknown. The first one to discover this was "Wild" Bill Williams (Senior - Pasadena, CA). He was seen flashing past Kasumigaseki with his face pressed against the train window and a look of sheer panic. After some time he reappeared on the ICC campus with a somewhat incoherent story of his "adventures on the train system of Japan."

His experience pales in comparison to a ride on the Tokyo subway system at the height of rush hour. Although we didn't encounter the famous packers (college students hired to push people into the cars), we didn't really miss them. Just when it seemed that the cars were so full that they could not take another person, the whole thing would stop and 50 more people would get in. We were lucky to have someone like Dan Bisgaard (Junior



Japan press calls Karen Muldoon "expert in ikebana."

- Salem) who towers over the Japanese - we use him as a guide post.

A couple of our guys were visiting a restaurant the other day and would you believe it, saw a delightful American repast being served. Anxious to find out how you ordered this in Japanese they whipped out "Kore wa non desu ka?" (What is that?) and the waiter replied in faultless English "Bacon and Eggs." Sometimes you just can't win. With true American knowhow our kids have located a McDonald's, Col. Sanders Kentucky Fried Chicken, Shakey's Pizza, and Dunkin' Donuts. Nothing like the exotic Japanese cuisine to sustain one.

Peggy Traugher (Senior-Milpitas, CA) is studying Judo (very effectively I might add). One of the Japanese counselors came up behind Peggy the other day and asked her what she would do if he grabbed her from behind. He found out. Peggy proceeded to bounce him off the ground. He lost his glasses, dignity, and had a badly bruised ego. Does all this speak to a new round of fem lib?

George Dunford (Junior - Phoenix, OR) is giving his new camera a workout. His prize picture is entitled "Japanese warehouse window taken from a speeding train." As near as I can figure, this is a unique shot - at least no one else admits to taking such a picture.

We took the bullet train from Tokyo to Hiroshima. It travels at a tad over 125 mph, so we zipped to Hiroshima in a hurry. Now that is one place all of the rulers of all of the nations ought to see. We went to the Peace Park and saw the one remaining building from the bombing. . . . We had an opportunity to talk to a survivor of the A-Bomb, and we saw a film, in English, of what had happened and its aftermath. Many of our kids could not sit through the film, and all were visibly moved by what they saw. It sure made a strong case for peace.

## 米女子大生 日本を学ぶ

なれぬ手つきで生け花も

Willamette University students in Japan. Karen Muldoon is the girl in the foreground.

October was our month for National TV. Rush Yeates (Senior - Saratoga, CA), Bill Williams, Sid Zeller (Senior - Lincoln City, OR), Peggy Traugher and George Dunford all appeared on the State TV System (much like BBC) for a discussion of student life in the U.S. and for observations and impressions of Japan. Rush was stopped on a train the next day by someone who recognized him from the TV program. Guess it will be "Duke" Yeates from now on.

All in all, October was a great month. Some things we will never forget - the view of Hong Kong Harbor from the top of Victoria Peak; the complete Japanese meal (not Americanized, but complete with raw fish, etc) at the Ryokan in Hiroshima; the artists at work in Kyoto; further adventures in getting lost on the trains; and many more.

Our visit has been highly educational in just plain getting along with people - a stranger in a strange land - but we have been warmly received, so warmly that there is a great reluctance to leave these people. It is significant to say that many of our students are planning to someday return to Japan.

There has been some worry about the demonstrations here, particularly against the U.S. . . . The demonstrations in Japan are a ritual and very controlled. My family has been on the streets when these anti-U.S. demonstrations have passed and all we received were friendly smiles and a big wave. It is very rare indeed when any of the demonstrations get unruly.

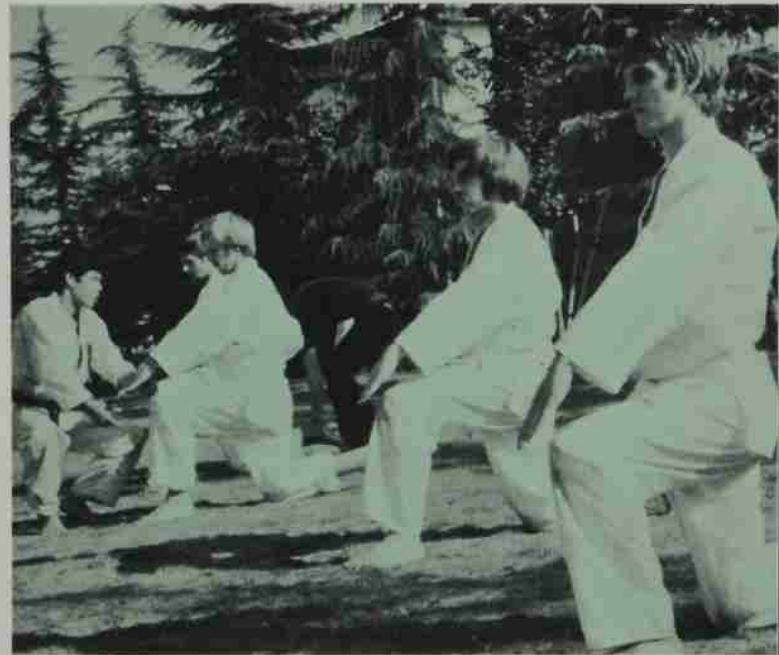
(Dr. Gillis notes that the last week of classes were cancelled to allow further travel and farewell parties. On the return trip, the group was scheduled to stay with Willamette related families in Honolulu for three days before returning home before Christmas from a delightful and educational Willamette Semester in Japan.)



Five homestays of three to four days each gave Willamette students a closer look at the life and customs of their friendly Japanese hosts. Marybeth Ormsby, Milwaukie, went shopping for a kimono and observes a familiar transaction at the fish market. A tea break in the tatami room (which triples as a dining, living and bedroom) gives her a chance to become better acquainted with her hosts. The language barrier was surmounted with a few handy phrases from a conversational Japanese class and a good deal of sign language. In addition to enjoyable homestays, the students saw much of the country on extended trips to Hiroshima, Hong Kong, Macao, and around Tokyo on long weekends. One of the favorite stops was Kyoto handcraft center where the artisans fascinated their American visitors.



Classes in language, culture, politics and economics weren't the only focus of interest at the International College of Commerce and Economics as Dave Jory and Scott Swain attest.



Taido, a specialized form of self defense, attracted several of the Willamette students in Japan. Among purple belt winners were (l-r) Dale Sause, Dave Nall, Steve Scott and Bob Wells.



# THE ALUMNI

## Willamette Clubs Forming

The San Francisco Bay Willamette Club is the first of possibly 16 Willamette Clubs planned for areas with high concentrations of Alumni. The Alumni Association Board of Directors placed priority on establishing clubs in the Bay area, Salem, Portland, Puget Sound, Southern California and Honolulu. In addition, future clubs are being considered for Eugene, Southern Oregon, Washington, D.C., San Diego, Anchorage, Phoenix, New York, Bend, Santa Barbara and Denver.

The clubs are being initiated in order to provide alumni a means of keeping in touch with each other and with the ongoing programs of the University. The type, frequency and time of meetings will be up to each club.

Jay Grenig '66 is the chairman for the SF Bay club. It will draw from approximately 550 alumni and parents in San Mateo, San Francisco, Marin, Contra Costa and Alameda counties.

As leaders are selected for other Willamette Clubs, they may attend regular meetings of the Alumni Board of Directors and will receive a monthly newsletter pertaining to alumni affairs and activities of interest.

## Study-Tour Fully Booked

Response to the joint Willamette-Lewis & Clark Italy-France study tour was overwhelming, with several alumni from both colleges being turned down on the first-come first-serve basis. So, on March 27, 13 alums from each school, accompanied by Professors Emeritus Marion Morange of Willamette and Bernard Hinshaw of LC, will leave Portland for the three-week tour.

The tour includes stops at Rome, Siena, Florence, Dijon, Autun, Vezelay, Chartres, Versailles and Paris. Pre-tour meetings with illustrated lectures and lists of required and suggested reading are preparing the tourists for their art and history oriented study.

The Continuing Education Committee of the Alumni Board is presently working out details for a backpacking tour in Eastern Oregon for this summer and a study tour to Washington, D.C. and another joint over-seas tour for 1975.

## Two Join Staff

The administrative staff in the Alumni Office has been bolstered this year with the addition of two alumni who are sharing duties between the admissions office and the alumni office. Serving as Assistant Directors of Alumni Relations part time are Teresa Krug Hudkins '69 and Dennis Reese '72.

Their assistance allows Director John Simmons to head up the important capital campaign for the Graduate School of Administration, an effort to attract a total of \$5.2 million (over \$2 million has been received or pledged to date).

Teresa, a music graduate, is assisting with the alumni programs in continuing education, alumni-admissions, geographical alumni activities outside the Willamette Valley, and class reunions. Denny, a political science graduate who eventually hopes to enter law school, is heading up the programs in job placement, Willamette Valley alumni, governmental relations, and Alumni Association honors. Their work as admissions counselors part time ties in well, as they often meet with alumni on their travels around the West Coast.

## Area Meetings Held

President Robert Lisensky and other administrative heads have been featured at several alumni gatherings this year along with alumni staff members. Alumni meetings have been held in Anchorage, Bend, San Francisco, San Jose, Santa Barbara, Tacoma, Eugene, Seattle, Medford, and Los Angeles. More than 300 have attended the functions. Other meetings scheduled for spring semester include Hawaii, Portland, Seattle, Lake Oswego, Albany, Denver and Boise.

## Trustees Elect Sue Juba

Sue Juba '52, faithful secretary to the Alumni Association, was elected to the Willamette Board of Trustees last October to serve a three-year term. She joins Bob Miller '53 and Dale Gustafson '56 as members on the Board of Trustees nominated by the Alumni Association Board of Directors. The Trustees approved an amendment to their By-Laws permitting the Alumni Association Board to nominate one person annually to serve for a three-year term on the Board of Trustees.



## Empey Heads ALF

Donald Empey '54, Superintendent of Schools for the Lake Washington School District near Seattle, is presently serving as national chairman of the Alumni Loyalty Fund. The ALF this year will return to a "class agent" basis, with representatives from each class assisting in the campaign.

## Library Friends Slate Spring Events

The new Friends of the Library organization is off to an energetic start. Several events for the spring semester have been announced by group President, Dr. Paul Trueblood, including the following:

— **Feb. 1** — F.O.L. Booksale and next business meeting in conjunction with University's 132nd anniversary;

— **March 28-30** — Writers' Conference (under auspices of the English Department) featuring workshops in poetry and fiction and several poets and writers from the west.

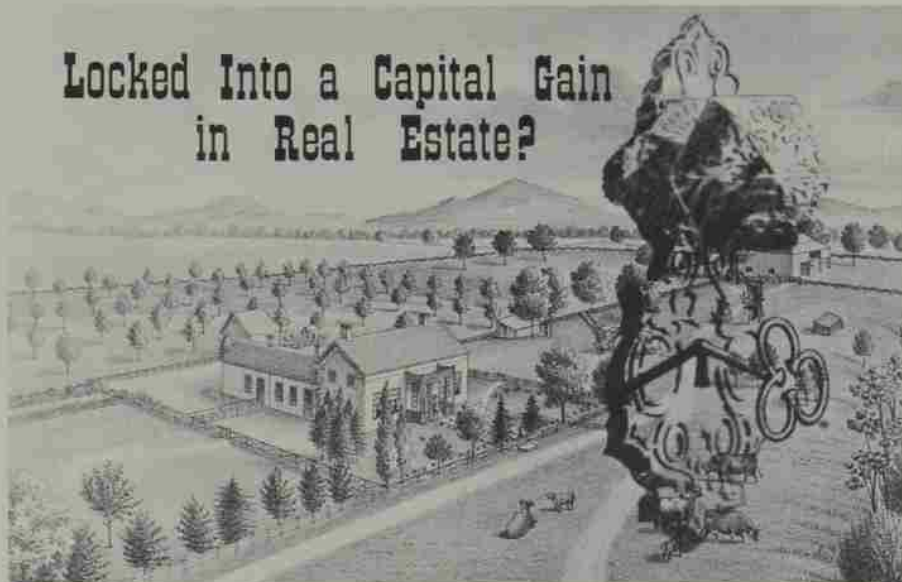
— **March 29** — F.O.L. Annual Dinner Meeting, featuring Ken McCormick '28, senior consulting editor and vice president of Doubleday & Co. Publishers, and announcement of winners in the creative writing contest;

— **May 11** — F.O.L. coffee and display in conjunction with Alumni Day; also a business meeting.

Some 170 people have become Friends or Patron Friends of the Library since the group was formed last spring. Joining Professor Emeritus Trueblood on the executive board are vice president Louise Brown McMinimee '31; recording secretary Grace Henderson DeHarpport '31; and recording treasurer Thomas Hibbard, associate professor of economics.

In anticipation of the arrival of Diane Wakoski as the first Poet-in-Residence at Willamette, the F.O.L. Book Selection Committee has purchased several volumes by American poets.

## Locked Into a Capital Gain in Real Estate?



Real estate values have gone up sharply in recent years. When you sell your house, farm or other property you may be faced with costly taxes on long term capital gains. **But there is a way out.** You can avoid all tax on long term gains and obtain higher income for life through a charitable gift in trust. There are other tax advantages, too. Let us furnish details.

Call or write:  
Development Office  
WILLAMETTE UNIVERSITY  
Salem, Oregon 97301 503/370-6352

I (we) want to help make the Willamette University Library a distinctive place of learning.

### FRIENDS OF THE LIBRARY

**Objectives:** To foster interest in the Willamette University Library on campus, in the community, and among friends of the University; to enhance the cultural life of the campus and community, with special programs for those persons affiliated with the organization; and to help increase the holdings and overall facilities of the Library.

**To Join:** Fill out the form at right and enclose it with your check in an envelope addressed to Friends of the Library, University House, Willamette University, Salem, OR 97301

Please enroll me (us).  Check enclosed.\*

- \_\_\_ Student Friend @ \$2
- \_\_\_ Friend @ \$5
- \_\_\_ Contributor @ \$15
- \_\_\_ Family Friend @ \$20
- \_\_\_ Sustaining Friend @ \$40
- \_\_\_ Patron Friend @ \$100
- \_\_\_ Lifetime Membership @ \$500

\*Checks payable to Willamette University Friends of Library

Name \_\_\_\_\_

Address \_\_\_\_\_

City, State, Zip \_\_\_\_\_



**JOHN & MARY & MARK & LEAH  
and ERIC & SUE & ANNE & JEFF**

represent the typically special students at Willamette in law and undergraduate studies. What attracts quality students like these to Willamette each year? Much of the answer is in the word "tradition". Like their predecessors, they recognize an extra margin of quality in the Willamette offerings. This extra margin is perpetuated by generous alumni and friends who desire to keep a good tradition going. Your investment in the annual funds is an investment in the tradition of quality. Mail your gift to the *Law Development Fund* or *Alumni Loyalty Fund* today and keep the John's & Mary's & Mark's & Leah's and Eric's & Sue's & Anne's & Jeff's coming to Willamette.



**THE ALUMNI BULLETIN BOARD**

**Willamette Club Meetings**

- Feb.  
26 — Portland Willamette Forum  
Sheraton Inn
- March  
6 — Tucson, Arizona
- 7 — Phoenix, Arizona
- 11 — Denver, Colorado  
Dean of Students Larry Large,  
speaker
- 14 — Puget Sound Willamette Forum  
Doubletree Inn, Seattle
- 19 — Honolulu  
Hilton Hawaiian Village  
President Robert Lisensky, speaker
- April  
18 — Portland Family Night  
Old Spaghetti Factory

More information will be forthcoming.

**WANTED: POLICY SHAPERS . . .**

. . . To serve a two-year term as an officer and a three-year term on the Alumni Association Board of Directors beginning this June. You will have an opportunity to work with 23 other dedicated Willamette Alumni in developing a strong Willamette Alumni program for 1974-77.

The only qualification for election is an abiding interest in Willamette University.

To: Nominations Committee  
Alumni Association  
Willamette University  
Salem, Oregon 97301

I am pleased to nominate the following for:

President-Elect \_\_\_\_\_

Secretary \_\_\_\_\_

Board of Directors \_\_\_\_\_

Board of Directors \_\_\_\_\_

Signed \_\_\_\_\_ Class \_\_\_\_\_

*Please return by February 18, 1974*

**May 11, 1974**

**CLASS REUNIONS**

- 50th Reunion of Class of 1924
- 25th Reunion of Class of 1949
- Half Century Club

Concurrent reunions for  
Classes of 1944-47 and 1968-71

**Mark the Date!**

MR + MRS LEWIS R WILLIAMS JR  
609 S 12TH CT  
COOS BAY, OR 97420

Second class postage paid at Salem, Oregon 97301