

# Alma Mater

'61



Here's your 1961 Alma Mater Freshman Glee Souvenir in pictures. From 1908 to 1961, our W.U. Freshman Class has presented its annual inter-class battle in song. Members of our classes write the songs, design the formations, and then, on Glee Night, present their musical creations in competition with the other classes. As the high-point of Willamette traditions, our Glee has something to offer to everyone. To our spectators, we offer an entertaining evening; to the winning class, possession of the coveted Glee Banner; to the losing class, a free, guided tour of the Mill Stream; and finally, for everyone, the chance for class competition and a good time.



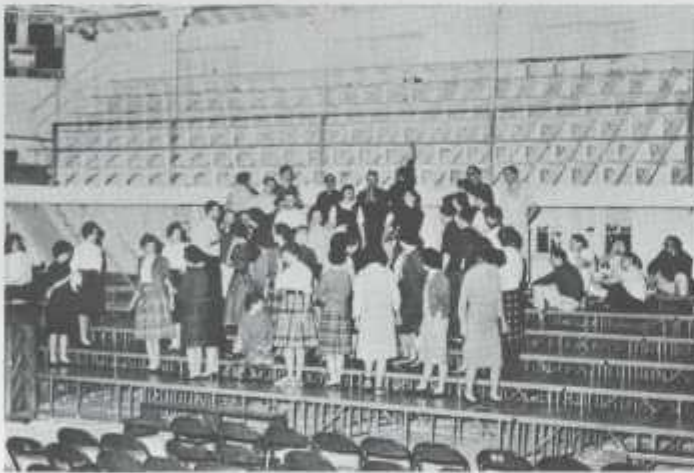
With their song leader aloft, the sophomores celebrate their victory.



To Arms!



This is Glee.



5 A.M. — It's Glee again.



Last minute preparations.



"And smile please!"



"Make way, make way, for the Junior Class; we don't care if we come in last!"



Sophomore finds floor . . .



Mike at the mike.



Seniors predict their own fate.



With dignity befitting their station, the juniors enter.



Frosh leader.



Senior encouragement.



"Schulze talks on tonight."



With the spire of Waller and two bells, the seniors sing "To the Spires of Willamette."



"The Spirit of Willamette" is sung by the juniors with an hour-glass formation.



A victory for the sophomores was won with, "Symphonyin Trust," and a black, white and gold mortar board.



"To Willamette" is sung by proud freshman as they depict the bell of Waller Hall.



**"Throw the seniors in the stream! Let's keep Willamette clean!"**



**Pie-Face.**



**Don't hold up the traffic.**



**Mill stream bound.**



**What some people won't do for a Glee bet.**



Trip 2 . . . 3 . . . 4.



1 . . . 2 . . . 3 . . . Leap.



Darwin's Theory of Evolution?



"Swish, Swish."



Artist? at work.



"Splish-Splash, I was taking a bath!"





**Freshman Glee Committee Heads:** Seated — Janet Clow, corres. sec.; Pete Smith, asst. mgr.; Mike Wayland, Glee mgr.; Mary J. Schaefer, rec. sec.; Standing — Barb Bong, Linda Crawford, Jan Vandiver, Dianne Lord, Sue Strach, Nan Means; 2nd row — Jim Brown, Chuck Reinhorn, Jim Marshall, Lynda Shelley, Ken Cruden, Phil Krozek.



**Glee Manager — Mike Wayland.**



**Assistant Glee Manager — Pete Smith.**



**Glee Song Leaders —** Sam Cady, freshman; Sue Lewis, sophomore; Gerry Darby, senior; not pictured, junior Dick Campbell.



**Formation Leaders —** Doug Simon, sophomore; Tony Meeker, senior; Ed Sasaki, junior, and Don Lorenzen, freshman.



**Souvenir Committee:** Gary Miller, Jim Brown, co-chr.; Pat French, Linda Crawford, co-chr.; Pete Finke, Clark Anderson.



**Souvenir Photographer:** Burr Baughman.

