



# Willamette Scene

Willamette University • Salem, Oregon • August 1980 • Number 5 • (USPS 684-260) • Second class postage paid at Salem, Oregon 97301



August 1980

- 2 President Hudson settles in
- 3 More new Faces
- 4 On the Scene
- 5 Sports
- 8-9 Commencement Fever
- 10 Alumni Scholarships
- 12-15 Class Notes
- 16 Bulletin Board

# Hudson named Willamette president

Dr. Jerry E. Hudson will be Willamette University's 20th president it was announced Tuesday by Warne Nunn, Chairman of the university's Board of Trustees. Hudson, 42, comes to Willamette from Hamline University in St. Paul, Minnesota, where he has been president since 1975. He will take over the position vacated by Robert P. Lisensky, who resigned the Willamette post in February.

Lisensky's resignation will take effect on August 1 of this year but there has been no confirmed date as to when Hudson will assume the Willamette presidency.

Hudson's approval by the Willamette Board of Trustees came Monday at a special session. He was among the four candidates invited to campus by the Presidential Search and Screening Committee. All four visited the Willamette campus during the past two weeks.

The Search and Screening Committee met Saturday, reviewing the candidates and then making its report to the Board's Presidential Selection Committee. The Presidential Selection Committee in turn made its recommendation Monday at which time Nunn announced the Board's confirmation of Dr. Hudson.

Married and the father of four daughters, Dr. Hudson served as Dean and Professor of History and Provost at Pepperdine University in Malibu, Cal., prior to taking over the presidency at Hamline.

After earning his Bachelor of Arts degree from David Lipscomb College in Tennessee in 1959, Hudson then received his Masters degree from Tulane University in 1961 and his Ph.D. degree also from Tulane in 1965.

While teaching at Pepperdine, Dr. Hudson spent a year in Europe, studying in Heidelberg, Germany as director of the Year-In-Europe program for the school.

While teaching at Pepperdine, Dr. Hudson led an effort that balanced the budget, increased annual giving substantially and raised \$5.7 million in capital funds during his final two years at Hamline.

Dr. Hudson has also been an active member of the St. Paul community. He has held several leadership positions in the community, including Directorships of the Commercial State Bank, United Hospital and the Twin Cities Opera Guild. His academic affiliations are equally impressive having served as Chairman of the Board of the Associated Colleges of the Twin Cities in 1978-79. He is currently serving as treasurer of the Minnesota Private College Council.

Like Willamette, Hamline is a private coeducational university with a College of Liberal Arts and a School of Law and is related to the United Methodist Church.

## A passion for leadership

One of Dr. Jerry Hudson's secret passions is that he enjoys listening to country music. It's a joy he kept hidden from the faculty and staff at Hamline University for four of the five years he served as president there.

"It just didn't seem quite fitting for a college president," laughed Hudson, who wanted everything "out front" before taking over the Willamette presidency this month. Perhaps his educational roots stemming from David Lipscomb College in Tennessee or maybe his background in United States History, including research into leisure time during the early national period, have something to do with thirst for the "down home" sound.

"Down home" is now Salem and his passion for "country" is easily exceeded by his enthusiasm for Willamette and perhaps his two greatest passions, higher education and leadership. He'll blend them together at Willamette—"a school of outstanding quality with a fine reputation"—when he takes over the presidency from Dr. Robert Lisensky, who resigned earlier in the year.

Willamette's quality and reputation were major contributors to the decision to come here, according to Dr. Hudson. "It's a very highly regarded institution even though it's not often pronounced correctly in my part of the country."

Hudson's part of the country has turned to Salem and aside from changes in the weather, there aren't a great many differences from the Minnesota school he just left and the Oregon school he now enters.

"On paper the schools are amazingly similar," points out Dr. Hudson, who also noted that one of his major concerns was that perhaps there was not enough difference.

Both schools are indeed similar in size and both schools are related to the Methodist Church. Hamline, like Willamette, has a law school. So, why the change?

Dr. Hudson had more than a single reason but he grouped them all well into a single word—potential.

"I believe the future here is tremendously bright. There is an excellent faculty, broad constituency support, fine location, strong demographics in the area, no clear or obvious problems . . . it is the institution of the area.

"There is a challenge here like there is anywhere and an advantage of going anywhere is to revitalize things. I hope I'm leaving a good situation to come to a better one."

Coming into the school, Dr. Hudson seems to like what lies ahead. His experience would dictate he'll fit in well.

Emphasizing the importance of church relations, Dr. Hudson pointed to his obvious background at Methodist-related Hamline. "It's important to belong," stresses Dr. Hudson. "I believe its to our advantage to keep strong relations with our own history . . . those who had a part in founding and nurturing the university. We plan to maintain the importance of our Methodist affiliation."

Hudson's dedication to Willamette's church relations and the school's proud past seem to be surpassed only by his dedication to liberal arts philosophy.

"I'm deeply committed to a liberal arts education as the best preparation for society today. We have to realize that a broad general education puts the majority of students in the best possible position for the changing times in which they will be living," says Dr. Hudson.

"The best things we can do," continued the new president, "are to teach students to solve problems, to read, to write . . . we are training people now for jobs that do not now exist."

Dr. Hudson was quick to note that "we are obviously judged by what happens to our students." Pointing to an obligation by Willamette in areas of career planning and placement, Dr. Hudson pointed out that it should be done not only out of conviction but "because it is the pragmatic thing to do."

"We help ourselves when we help them," emphasized the president. "It's something we can do throughout the entire college experience, not just the last semester of the senior year. It's a mixed bag. We don't want to force them into a decision about their life too early. In that respect a career planning program can offer them options and variables throughout their college life."



New president Dr. Jerry Hudson, left, discusses Willamette's future with Vice President for University Relations, Larry Large, as renovation of Collins Hall continues in the background.

Basically, Hudson looks at college life with hope and in a positive manner, not just the next year but the next decade.

"I'm not one of the prophets of doom. There are enough variables that with sufficient planning, a little luck and a lot of money, the future can be very bright. We can't go on measuring our success in terms of growth. We must come to terms with the fact that we are in a no-growth industry. If we can accept those limitations then we can have growth in a qualitative way."

In Dr. Hudson's view, Willamette can indeed grow and perhaps some of that growth will come through cooperation with other area colleges and universities and it isn't an idea with which Hudson is unfamiliar.

Hamline was part of a consortium of five colleges within the Twin Cities, sharing curriculum and even some purchasing items.

"It can be a fine thing. Something like that can offer excellent curriculum enrichment. Students at any of the five colleges in the consortium were able to take classes at any of the other four schools without exchange of tuition. It wasn't an overwhelming success, but it worked fairly well."

There were some advantages in purchasing power, too. We started with light bulbs and toilet tissue and moved on from there."

The situation obviously differs geographically in Oregon but the idea of cooperation still holds water for Dr. Hudson.

"There is every reason to try it. Of course there will be difficulties, particularly in demographic areas. As the competition for students increases, the pool of students decreases and that could easily create a problem. But the idea of cooperation is a good one."

Good ideas are also expected to pop up during Dr. Hudson's upcoming visit to China, which will include stops in Korea and Japan as well. Dr. Hudson will be making the trip early in the school year, traveling for four weeks with a group of Methodist college presidents, dealing specifically with exchange possibilities.

"I'm delighted with the opportunity and I'm sure it will be helpful," related Dr. Hudson. "The timing isn't the best since I will have only just arrived at Willamette before I'll be leaving again, but I do think there will be some direct benefits."

Working a new presidency around a four-week trip to China is just one of the problems Dr. Hudson will cope with in making the adjustment to a new school. He does come with a plan of attack, however.

"I'm going to begin by learning all I can. I'm not coming in thinking I have all the answers when I'm not even sure what all the questions are. There is going to have to be a time for observing and learning and just sitting down and talking to people.

"It's an exciting opportunity to come to a new place. I want to bring some ideas of my own to add and, I hope, to insure further progress. One of the excitements is the newness of things and I'll be new but one can only plead ignorance for a short time."

Dr. Hudson and family got a sampling of the new things as they drove out, taking a short vacation stop in Yellowstone National Park for a boat trip.

Then, for Dr. Hudson and his wife, Ann, whom he met as an undergraduate at David Lipscomb, and daughters Judy, 21, Laura, 19, Janet, 17, and Angela, 13, it will be a new life in Oregon.

With three of his daughters in college (Judy to graduate from Hamline next May, Laura a sophomore at Bethel College in Minnesota and Janet to be a freshman at David Lipscomb this fall) Dr. Hudson may be able to find a little bit more time for his country music and two more secret passions, racquetball and the Baltimore Colts. But his enthusiasm for higher education in general and the Willamette presidency in particular figure to get the bulk of his attention. After all, they are his two greatest passions.

Willamette Scene  
August, 1980  
Vol. 3, No. 5

Editor: Steve Lathrop  
Contributors: Ralph Wright  
Photos: Jim Bortvedt,  
Sue Tackmier

Published April, August, October and January by Willamette University, Salem, Oregon for constituents of the West's oldest University. Second class postage paid at Salem, Oregon 97301.

Send address change to University House, Willamette University, Salem.

# CAMPUS CAPSULES

## Shawaker named VP for Financial Affairs

David R. Shawaker will join the Willamette University administrative staff in September as the new Vice President for Financial Affairs it was announced Wednesday.

Shawaker, 38, comes to Willamette from the University of Southern California where he is Executive Director for Fiscal Planning and Control. A 1976 graduate of the Managerial Policy Institute of the University of Southern California, Shawaker has a bachelor of science degree from Massachusetts Institute of Technology in Electrical Engineering (1963) and a M.B.A. from the University of Michigan (1965).

Married and the father of two children, Shawaker's professional background includes six years as an auditor and consultant for Touche Ross &

Company, two years as Associate Budget Director and Vice Chancellor for Administrative Service at the University of Massachusetts and seven years at USC.

Also an experienced teacher, Shawaker was a faculty member of the Western Association of College and University Business Officers (WACUBO) Business Management Institute at Stanford University in 1978, where he taught Fiscal Management and Planning.

Shawaker is slated to begin his work at Willamette in September. He replaces Roy Ruffner, who resigned the post in April to accept an appointment at Tennessee Technological University in Cookeville, Tenn.

## Two join Willamette staff



John Diehnel

Two new administrators, John Diehnel and Sabey Grange, will join the Willamette University staff in August, filling vacancies created by resignations last school year.

Diehnel will be Director of Audio-Visual Services and Ms. Grange will be Assistant Director of Alumni Relations.

Experienced in all phases of design, editing and media production, Diehnel, 36, comes to Willamette from Rena Ware Distributors of Bellevue, Washington, where he served as a designer and editor in the promotion department. Prior to his work for Rena Ware, Diehnel was the director of the media facilities at Lower Columbia College in Longview and also worked for KPTV in Portland. He also served as a radio and radar maintenance technician in the U.S. Navy.

Diehnel has a Bachelor of Science degree from the University of Oregon in Broadcasting and Drama and earned his Master of Science degree from Oregon in 1969 in Media and Broadcasting.

As Director of Audio-Visual Services, Diehnel will report to Vice President of Academic Affairs, Sam Hall.

Sabey Grange holds a Master of Arts degree from Michigan State University. Her Bachelor of Arts degree is in Busi-

ness Administration from Oregon State.

Ms. Grange gained considerable alumni experience working as a professional advisor to a national sorority. Her assignment involved organizing alumni fund raising activities and other volunteer efforts.

She also has an extensive background in higher education administration. She has served as a Graduate Assistant Advisor for Michigan State University's Housing Office and also worked in the Office of Volunteer Programs, Career Resources Center and Financial Aid Office at MSU. In addition, Ms. Grange worked in the Student Activities and Career Planning and Placement Offices at Lewis and Clark College in Portland.

She and her husband Russell moved to Salem last fall.

As Assistant Director of Alumni Relations, Ms. Grange will serve as a staff liaison who will organize and motivate various volunteer groups working on behalf of the university in the alumni and parents program. She will also be involved directly in fund-raising activities and coordination of the University Alumni Clubs program throughout the country.



Sabey Grange

## Management development classes taught in Portland

July 30 marked the beginning of a major new set of activities by the Center for Business-Government Studies—the offering of management development classes to executives of public and private organizations. The initial offering in Salem will be followed by four classes to be taught in Portland during the fall semester.

The first class is being taught by Roy Glen, Assistant Professor of Organizational behavior and Management at the Atkinson School. Topics of the class, "Managing Through Others," include organizational analysis and design, implementing change, courses of and strategies for resolving organizational conflict, diagnosing motivational problems, and techniques of job design, goal setting, and behavioral change.

Five three hour lecture sessions are combined with one all-day simulation to be held on Saturday, August 23.

Offerings in Portland will include three classes in addition to "Managing Through Others." One, involving twenty-one hours of instruction, will be "Finance and Accounting Tools for Managerial Decision-Making by Non-financial Executives."

Participants will study financial statements and their analysis, working capital planning, cash budgeting, capital budgeting, valuation, and cash flow analysis. Instructors will be Steven Archer, the Guy F. Atkinson Professor of Finance, and Earl Littrell, Associate Professor of Accounting and Information Sciences, both of the Atkinson School.

Professor Archer will also offer a single four-hour session on Leasing Economics. Topics will include present value, interest tax subsidies, depreci-

ation tax subsidy, interest rate, rate of return, and lease vs. purchase decisions. According to Dr. Archer, participants will examine the pros and cons of leasing plant or equipment rather than purchasing it and will learn how to evaluate whether it is financially desirable to lease or purchase. Marc Choate, Professor of Finance, will join Dr. Archer in teaching the class.

The fourth class will be "Introduction to the Use of Statistical Forecasts: Opportunities and Pitfalls for Managers." Bruce Gates, Associate Professor of Quantitative Methods and Public Administration, and Mike Hand, Assistant Professor of Applied Statistics and Information Systems, will introduce the methods and uses of statistical forecasting to managers who must rely on forecasts as a basis for making better decisions but do not participate in the forecasting process.

Dr. Gates says that, through extensive use of examples, a number of the most valuable forecasting models will be analyzed. Particular emphasis will be placed on the assumptions underlying each model, the most common errors made in using them, their data requirements, and how to judge their accuracy. The class will involve two four-hour sessions.

The development of continuing education opportunities for business and government managers was one of the activities funded by the grant from the Murdock Charitable Trust to the Atkinson School for the establishment of the Center. According to Gene Leonardson, the Center's Director for Continuing Education, the Center expects to offer at least fourteen continuing education classes during the next year. For further information, contact Dr. Leonardson at 370-6448.

# ON THE SCENE



**CAROL LONG**

Willamette University's Carol Long, an associate professor of English, was named by Oregon Governor Vic Atiyeh to the newly created Deschutes River Scenic Waterway Advisory Task Force announced on July 10.

Professor Long, will represent the Oregon Environmental Council on the Task Force which was designed to provide full citizen input to the identification of management issues concerning the Deschutes River and its future in preparation of a Deschutes River Management Plan. Fishery, wildlife, scenic and recreational uses will be among the issues studied by the Task Force.



**KATY DEMORY**

Katy Demory, a Willamette junior, was chosen as a student representative to the Governing Board of the Model United Nations of the Far West, Inc., during its regional meeting this spring.

Miss Demory will represent the Northwest Region (Oregon, Idaho, Washington, Alaska and Northern Canada) as one of eight members who will serve the board for the 1980-81 school year. The Board is made up of three students and five advisors (alumni and friends) from member schools throughout the west.

The Governing Board is an organizational group which controls contractual obligations and organizes conference and workshops for the Model U.N. The Northwest Region is scheduled to host two conferences during the 1980-81 school year simulating workings of the United Nations.

A Political Science major from Newport, Miss Demory is the second WU student to be named to the Board in the last three years. Nancy Williams of Salem was the Northwest representative in 1979.

**KEVIN HIGGINS**

Kevin Higgins of Sparks, Nev., was one of two Willamette students honored by the Harry S. Truman Scholarship Foundation for the coming school year. Higgins was selected as the Truman Scholar winner from the state of Nevada, and will receive a \$20,000 scholarship covering four years, including two years of graduate school.

The \$5,000-per-year award for each of the next four years is for students interested in public service and government service and is presented by the Foundation, a Congressionally authorized Federal memorial to Harry S. Truman, 33rd President of the United States.

Higgins is a Political Science major at Willamette and he joins Richard Pine of Portland, who was selected as an Alternate, as one of less than 200 students from throughout the country to be named as Truman Scholars and Alternates. Higgins and Pine give Willamette the rare distinction of having two students honored from the same school in the same year.



**LEE TORNQUIST**

Selected as one of only 12 professors to participate from throughout the United States, Leroy Tornquist, Dean of Willamette University College of Law, recently completed a six-week seminar at Yale University in New Haven, Connecticut, as part of a grant he received from the National Endowment for the Humanities.

Selection of the 12 participants for the seminar was made in April and the six-week course began in June. The summer humanities seminars are intended for teachers in American law schools and American medical and health care schools for the purpose of providing them with opportunities to work with humanistic scholars concerning questions that relate to the legal and medical professions.

The seminar—"The Supreme Court in the Twentieth Century: An Intellectual History"—was designed to cover the social, political and economic impact of the decisions of the Supreme Court during this century. Participants were involved in lectures, discussion, individual study and an individual research project.

# SPRING SPORTS

## National competition highlights balanced spring

If balance is the key to a successful athletic program then figure Willamette has a lock on the top program in the Northwest. The Bearcats displayed enough all-around excellence in the spring sports to make them the "Flying Wollendas" of the Northwest Conference as Willamette athletes tight-roped their way to top regional and national places amid threatening volcanoes and a spring full of dismal weather.

Traditionally, spring means baseball and the Bearcat team had a traditionally strong season. After regrouping from an early season slump in non-league games, Willamette challenged for a playoff spot up to the final day of the regular season but lost out in the second game of a doubleheader at Pacific.

Still, WU was third overall in the Northwest Conference with an 11-7 record. Individual honors were piled up by junior Dave Wong, who added to an already strong athletic season (first team All-American in football) by leading the 'Cats in hitting and pitching. He ripped opposing pitchers for a .383 average, slugged five home runs and drove in 16 to lead WU in all three

offensive categories. On the mound he was 4-1 on the year with a league leading 1.52 ERA. Wong capped it all by signing a professional contract at the conclusion of the collegiate season.

Ivan Endo and Ken Garland also had fine seasons at the plate for the Bearcat sluggers with respective .340 and .312 batting averages. Rick Baldini aided WU pitching and along with Wong, earned NWC All-Star honors.

For Willamette's track and field team, honors piled up all over the place. Even though Chuck Bowles' thinclads lost their hold on the NWC championship to Linfield, Willamette came on strong at the season's end to finish second to George Fox in the District meet and then cop the best Northwest finish in National competition.

Bowles' men sent a strong crew to Nationals, including four District champions. The 'Cats finished in a tie for 25th overall with eight points, all of those coming from Dave Fleming, who finished second in the national meet in the 5,000 meter run, with a 14:34.52 time, just a step out of the top spot.

Rick LaGreide, Scott Wallace, Doug Osterhout and Greg Hansen also qualified for the national finals but failed to

place among the top six.

Two of Bowles' women athletes earned berths in the NCWSA Regional meet on their efforts in the WCIC Championships. High jumper Leslie Wickman and field performer Ann Davis qualified for the Boise State competition.

Wickman was the league high jump champ at 5-2 and Davis was second in three events—discus, shot put and javelin—to highlight the Willamette season. Christi Colburn also came through at the WCIC meet where she won the 3,000 meter competition.

Willamette finished third overall in the WCIC meet with a 103 point total, trailing only winner George Fox (122-1/2) and runnerup Linfield (116).

Mark Johnson was the story for Willamette in tennis. Both the WU men and women had solid seasons but Johnson stole the show individually with a 21-2 overall record on the year, including a district championship and three wins in national competition.

Johnson reached the final 32 at national competition in Kansas City before he was finally ousted by second seeded John Mattke from Octavus Adolphus University. Johnson's effort

in the 256-man tournament was the highest finish ever by a Willamette player in national tennis competition.

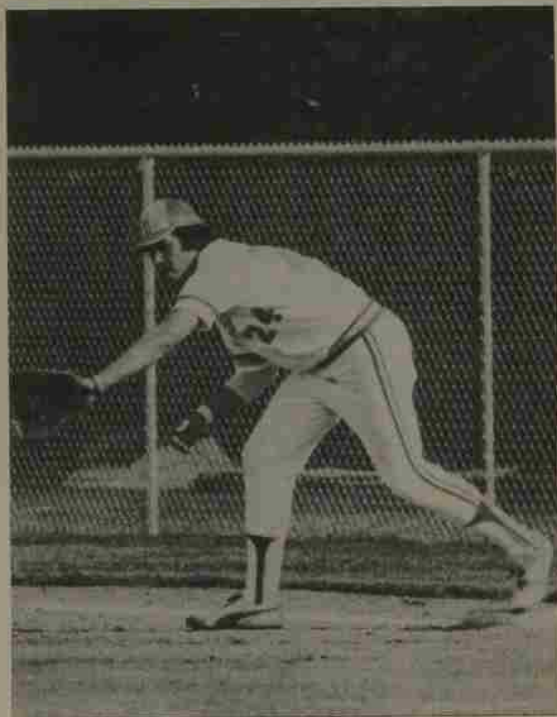
Steve Prothero's golfers didn't fair as well as the other 'Cat teams, finishing fifth in the Northwest Conference by the WU squad did regroup to gain fourth overall in district play.

WU hosted the district meet at Illahe Country Club and finished with a 643 team total. Jerry McCarthy led the 'Cats with a 36-hole, 150 score for fourth place in the individual play, gaining a place on the All-District team.

The 1980 Bearcat softball team also struggled but showed vast improvement over the winless 1979 season. Willamette finished with three wins in 1980 behind some improved hitting.

Sue Ruff's team was led by the play of Susan Gill, Janet Oliver, Stacy Hayworth and Irma DeCorte.

Aided by the efforts of the balanced spring sports teams, Willamette finished second in the battle for the John Lewis All Sports Trophy, awarded in honor of the late Willamette coach. Willamette finished with 96 points, the same amount it had a year ago when the Bearcats won the trophy. This year, however, PLU came away with 110 total points to win.



DAVE WONG

All-around athlete Dave Wong ended his outstanding Willamette athletic career just a bit prematurely when he signed a professional baseball contract after a highly successful 1980 season on the Bearcat diamond. Wong, who won all Northwest Conference and District II honors for the Bearcats, signed with the Kansas City Royals of the American League after being drafted on the 19th round of the major league free agent draft.

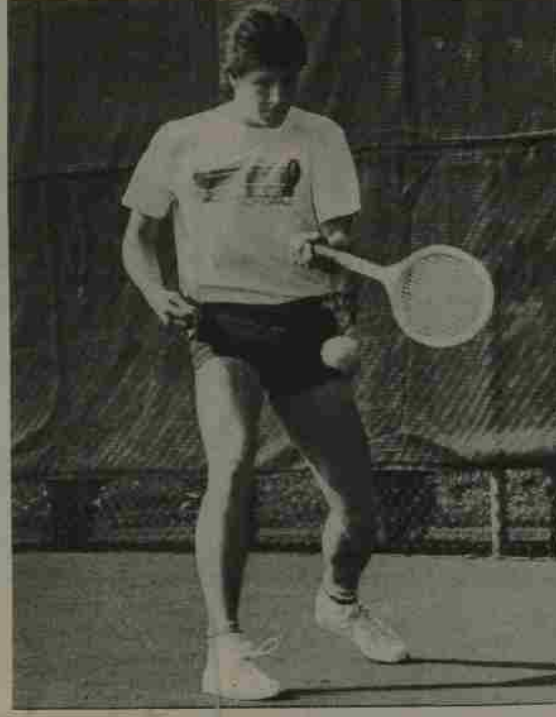
The 21-year-old pitcher, first baseman led the Bearcats in hitting, home runs and RBI's and also was the top hurler with a 1.52 earned run average and a 4-1 record overall, giving him a career mark of 19-6. The 6-4 junior still had a year of eligibility remaining in football and baseball. He was a first team NAIA All-American defensive tackle in 1979. Wong reported to Kansas City's rookie team in Sarasota, FLA.



DAVE FLEMING

Willamette's strong junior distance runner Dave Fleming came within a breath of claiming a National Championship in the 5,000 meter run at the NAIA finals in Abilene, Texas this spring, but the Bearcat speedster had to settle for second place honors. Fleming's 14:34.52 time was just a fraction off the winning pace of 14:34.19 set by Sammy Maritim of Azusa Pacific in California.

Fleming's quick time capped a brilliant season for the Bearcat leader, who won both the Northwest Conference and the NAIA District II meet races before narrowly missing out in the National meet. Fleming and the rest of the Willamette team had to settle for second place in the NWC but did come back to gain second in the District meet behind George Fox and sent five men to the National Championships to give head coach Chuck Bowles another successful season.



MARK JOHNSON

Sailing through three matches at the NAIA national tennis tournament in Kansas City, Willamette's Mark Johnson finished higher than any Bearcat in history before finally being ousted by the tournament's second seeded player in the round of 32 finalists.

Johnson opened the tournament with three straight triumphs as Willamette's only representative and the NAIA District II champion. The talented southpaw won six straight tournament matches before finally falling, 6-2, 6-1 to second seed John Mattke from Octavus Adolphus University. The national tournament featured no less than 256 entrants at the start. Johnson, a McNary High School graduate, finished his excellent season with a dominant 21-2 overall mark.

# CAMPUS CAPSULES

## Grants support Willamette programs

Implementing "Project Examination" and expanding Willamette's enrichment of Japanese studies program will be the focus of two grants authorized to Willamette this spring.

A three-year, \$150,000 grant from the Northwest Area Foundation and a three-year, \$38,465 grant from the Japan Foundation will put emphasis on those areas as the new school year begins.

The \$150,000 from the Northwest Foundation puts "Project Examination" into its third and final phase, implementing the new curriculum and graduation requirements and guidelines. The \$38,465 from Tokyo's Japan Foundation will allow the Japanese studies program to expand to full-time faculty staffing.

"Project Examination" began in 1977 with a \$3,000 mini-grant from the Northwest Area Foundation for evaluation and a \$98,353 planning grant followed in 1978 to set up final funding for the implementation stage which will begin this year. The funding from the grant will provide support for development of the new and revised courses as well as professional training activities to broaden faculty competence.

Distribution of funds for the grant will begin in September. The three-year funding calls for \$75,000 in 1980-81, \$50,000 in 1981-82 and \$25,000 in 1982-83. The first year funds will cover the transition from planning to implementation, followed by the actual implementation in the new and revised

courses in 1981-82. The final stage of funding will allow the completion of the implementation process, specifically the curricular changes involving academic major programs and general education courses.

Expansion of the Japanese Studies program will be able to move beyond its current part-time faculty involvement to full-time faculty staffing. Funding is scheduled to begin this month with an \$11,700 payment set for the year. An August 1980 payment of \$7,800 will be followed by a \$3,900 payment in April. Additional payments include \$12,870 for the 1981-82 academic year and \$13,895 for the 1982-83 academic year.

The enrichment of Japanese studies program is moving to create a Japan-

ese emphasis area within the broader framework of Far Eastern Studies. Willamette currently maintains a long-standing agreement with Hokusai Shoka Daigaku (International College of Commerce and Economics, Kawagoe City, Japan) to cooperate in academic and cultural exchange programs.

Along with the International Studies major program, Willamette sponsors foreign study programs throughout the world, exchange programs with ICC and is now offering Japanese language instruction at the two-year level on campus.

Dr. Jerry Berberet, Dean of the College of Liberal Arts, will act as Project Director for both the Northwest Area Foundation Grant and the Japan Foundation Grant.



### A Face Lift

Willamette's science people have moved south for about 15 months—but not very far south.

With Collins Hall abandoned for renovation, science faculty offices and the computer science classroom have taken over York House and part of the Playhouse, where earth science is ensconced. Biology has set up its laboratory in the basement of Matthews Hall with earth science and physics moving their equipment into the basement of nearby Belknap.

Meanwhile, the chemistry labs have moved the farthest, occupying two temporary buildings set up in the play fields in back of the sororities. The air-conditioned, wood-paneled structures are joined by a wooden walkway.

Construction workers took over Collins Hall shortly after classes ended and already have the interior nearly gutted. A wooden fence keeps pedestrians out of danger from debris, much of which is sent sliding down chutes into dumpsters below.

As expected, Collins Hall is the first building to be renovated in the renovation and renewal program which has resulted in extensive academic changes and calls for a new library and major work in Waller Hall, Eaton Hall and the current University Library (to be an administration building) as well as in Collins Hall.

Waller Hall was built in 1867, Eaton in 1909, the library in 1938 and Collins in 1941.

### United Airlines awards Willamette \$1,000

Willamette University announced that for the second year in a row, the University has received a \$1,000 check from United Airlines. The gift, which is unrestricted, was presented by William Supac, Portland, and Keith Phildius and Jeanne Ketchum, who handle United business in Salem.

Supac said that most of the gifts from

the company's foundation are directed to education and that he hopes company profits will enable the foundation to continue supporting higher education. He also expressed hope that the gift would be seen as one indication that United Airlines will continue its interest in the Salem community.

Larry Large, Vice President for Uni-

versity Relations, pointed out the importance of unrestricted as well as restricted gifts from business and industry. Unrestricted gifts from local business and industry are directed to the Community Work Scholarship Fund, which provides funds for Willamette students to earn money for their education by performing various jobs.

### Tracks lifted from campus

Southern Pacific has removed its tracks from campus. Dr. Jerry E. Hudson participated in a symbolic spike-pulling ceremony August 19 before actual removal began. The SP branch-line through campus was 110 years old.

## Willamette alive, well and ash free

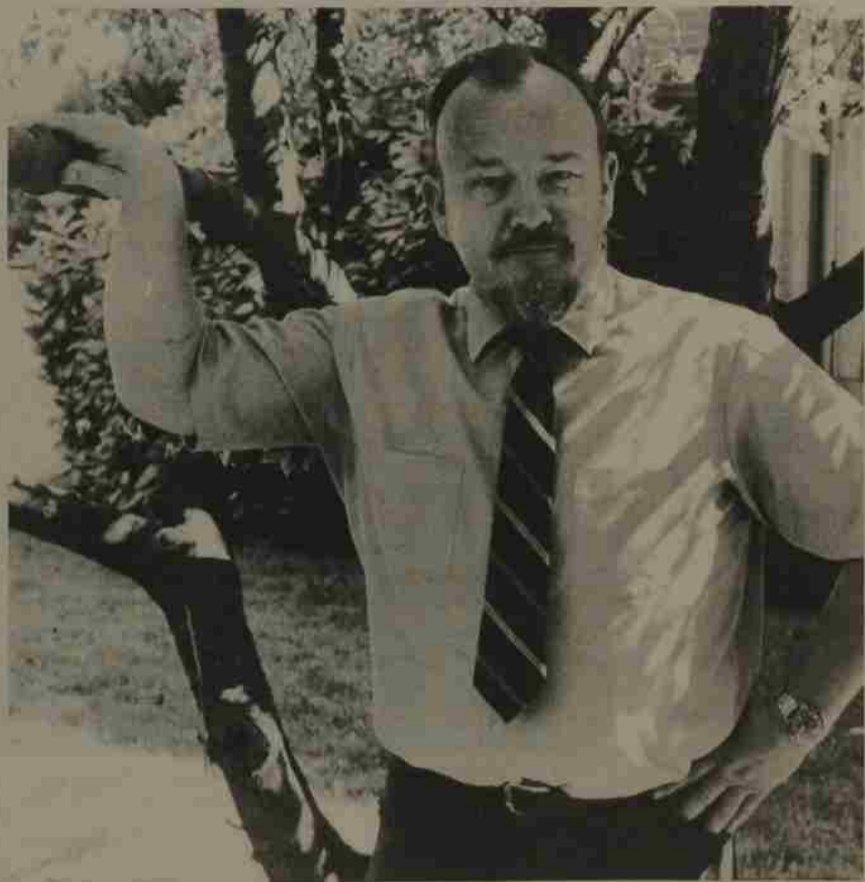
Reports of Willamette's death due to volcanic ash have been greatly exaggerated. In fact, there is so little ash on campus, in Salem and in Oregon in general, some people feel bad about not being included in all the excitement.

There have been smatterings of ash twice during the summer but hardly a trace was left around to cause any trouble. Oregon and Willamette are

both as clear and clean as ever.

Now, if you want to view the volcanic activity! Well, you still can't find a better place than Oregon. Safely on the Oregon side of the river you can view the blowing and belching mountain completely dust free.

So disregard those rumors from the east. Willamette is as alive and well as ever.



William Iron heads Theatre Department.

### Acting Chairman

## William Iron assumes WU Theatre Chair for '80-81

William Iron, Assistant Professor of Theatre at Willamette during the past year, has been named acting chairman of the Theatre Department for the coming school year.

Iron will replace Robert Peffers, who officially announced his resignation earlier this week. Experienced in all phases of theatre, Iron, 54, has been involved in writing for the stage along with his teaching duties at Willamette. He is in the process of completing two plays both of which he hopes to have finished prior to the opening of school in the fall.

Holder of a Ph.D. in Theatre from the University of Oregon, Iron is originally from Twin Falls, Idaho. Prior to coming to Willamette, he chaired the theatre department at Grand Valley State Colleges, a multi-college system

in Michigan. He has also taught at Lewis and Clark College in Portland.

Iron, who was originally scheduled to be a part time instructor for the 1980-81 school year, will officially begin his duties on August 1. He has already started working with Professor Peffers, who is currently helping the department in its transition.

Vice President of Academic Affairs, Sam Hall, noted that a nation wide search for a permanent replacement for Professor Peffers will be undertaken in the fall. Hall also emphasized Willamette will replace Iron's part time position as soon as possible.

Professor Peffers is leaving Willamette after a seven-year stay to take a position at the University of Nebraska in Omaha.

## Land gifts vital to WU

Willamette University's campus is frequently mentioned in discussion about the solidarity of the school. Particularly its land, 57 acres in the heart of the state capital.

Willamette's land is a valuable asset, but other land is beginning to play an equally important role in the progress of the University. This is land given to Willamette by its friends, often people with highly appreciated real estate. They give land to Willamette and, at the same time, realize tax and income benefits.

When the land becomes University property, it can be sold to provide funds for academic programs to support scholarships and to generally enhance educational progress. Because of interest in real estate gifts, this article is devoted to that subject.

### HOW TO GIVE REAL ESTATE

Often when stock prices have declined severely, real estate has held its value remarkably well. Real estate may thus be an extremely advantageous way to make a substantial charitable gift and enjoy the advantages of large tax savings plus lifetime income if desired.

There are many ways in which gifts of real estate can be made. The circumstances and objectives of the individual donor determine which is the most desirable for him or her to use. The following represent most of the available alternatives.

- **Bequest.** The Bequest of a building or land to a charitable institution in one's will is one of the finest forms of

remembrance, and one which saves an executor or heirs the trouble and expense of selling the property.

- **Outright lifetime gift.** This is an even more welcome gift to the institution, as it provides an opportunity to honor the donor during his or her lifetime. The donor claims income-tax charitable deduction for the full fair market value of the property.

- **Undivided portion.** Frequently, a donor may hold property that has appreciated in value and that he or she wishes to sell, but dislikes the prospect of the large long-term capital gains tax involved. A donation can be made of, say, a 25% or 50% or other percentage of the undivided portion of the donor's entire interest in the property. Then, when the sale is accomplished, the proceeds are divided between the institution and

the donor according to the specified percentage. The advantage to the donor is there is no tax on the long-term gain attributable to the institution's percentage share. This reduction in capital gains tax liability of the donor, together with the income tax charitable deduction for the fair market value of the contributed portion can substantially reduce the donor's out-of-pocket cost of the gift.

- **Residence or farm with reserved life estate.** This is a give-it-and-keep-it form of gift. For example, an elderly couple has a home in the city or a farm, or a home at the coast which they would like to continue to use for the rest of their lives. However, they have no desire to pass it along to other persons and they do not wish their estate to have the trouble of selling it, paying potential capital gains tax, etc. They may donate the

property now while reserving the right to lifetime use of it and obtain an immediate income tax charitable deduction. This form of gift is a simple conveyance of a remainder interest for which Willamette can honor the donors during their lifetimes.

- **Property in trust.** Donors may own property that has appreciated in value but are reluctant to sell because of the capital gains tax liability it would entail. An ideal resolution may be to donate the property through a charitable remainder unitrust or annuity trust, reserving lifetime income. This can generate numerous advantages, such as no tax on the long-term capital gain when the property is transferred to the trust, immediate income-tax charitable deduction, higher lifetime income, estate tax reduced or eliminated, etc. If the property is in the name of a closely held corporation, stock in the corporation can be contributed, with similar advantages accruing to the donor.
- **Corporate gifts.** Corporations may also make donations of real estate, with advantages similar to those for individuals.

## Unitrust aids Willamette

Recently a 73-year-old alumna created a charitable remainder unitrust by irrevocably transferring to Willamette unimproved real property appraised at \$48,000.

This resulted in an income-tax charitable deduction of \$25,068, and the donor paid no capital-gains tax on the transfer of the appreciated property.

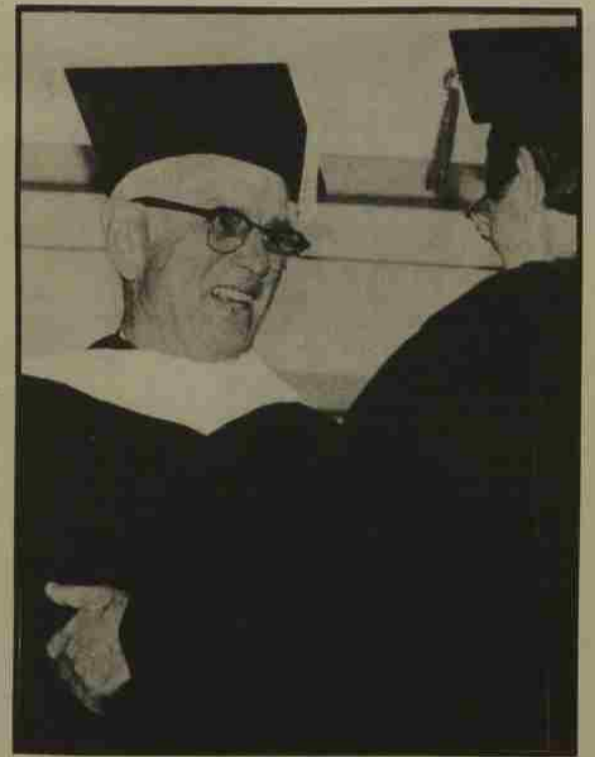
In addition, the alumna increased

spendable income. During the first year, the alumna will receive seven percent of \$48,000, or \$3,360 in income on an annual basis. If in the second year the value of the assets increase to \$60,000, the income for that year will increase to \$4,200. This property has been a no-yield investment.

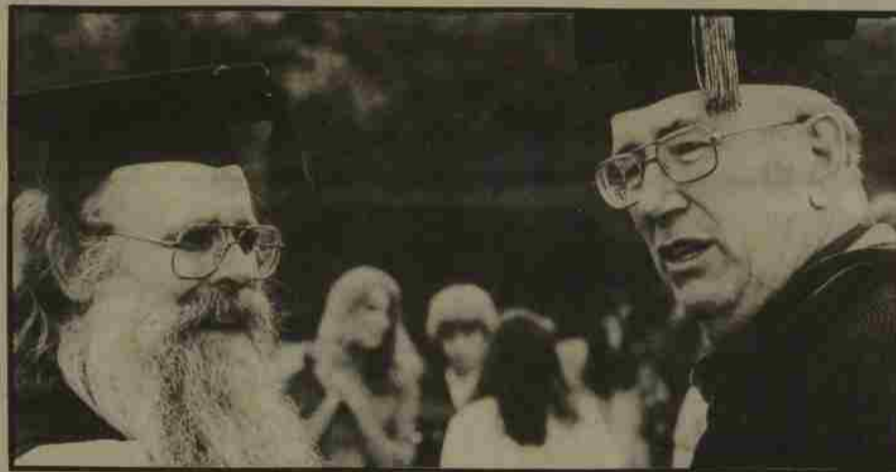
We thank this thoughtful and generous alumna.

# COMMENCEMENT

## Commencement Fever catches on as Alums and grads collect at Willamette



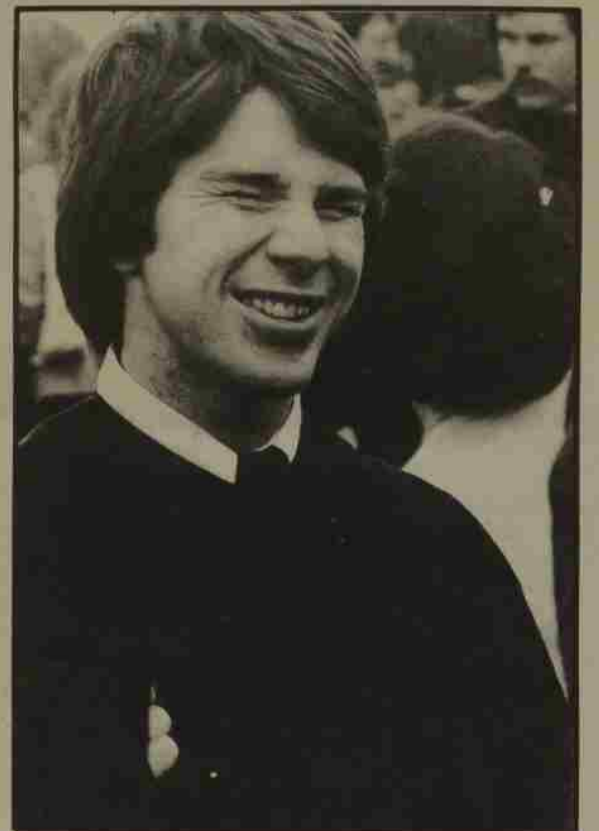
Frewing receives Honorary Degree.



Maury Stewart and Ken Smith enjoy reception at McCulloch Stadium.

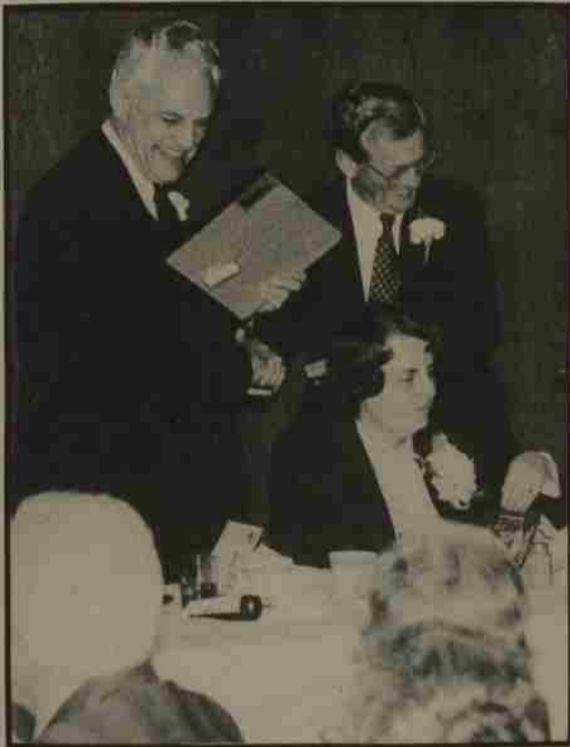


Delta Phi Charter member Deane Hatton Moodhe returned for 60th anniversary.



Mark Terry reflects his graduation mood following recessional.

# WEEKEND 1980



Otto Skopil, Jr. receives Alumni Citation from Dr. Lisensky.

*It was like Blazermania revisited. It was an Oregon Mardi Gras, a political convention. The people kept filing through the entrance to McCulloch Stadium. The air was festive, happy, exciting! The mood was contagious. As it became increasingly obvious that the stadium would not hold enough to accommodate the steady throngs flooding through the gates, Ralph Wright, Cliff Hockley and others scurried to find as much alternate seating arrangements as possible. Ultimately, it was standing room only.*

*The culmination of a delightful weekend, traditionally marking the end of the academic year at Willamette, was everything anyone could have hoped for. As commencement weekend wound to a close with graduation ceremonies, students, parents, faculty and alumni were all together to crown another banner year.*

*Alumni Day kicked it off on Saturday, May 10 with class reunions, a traditional alumni banquet, special alumni presentations, acknowledgement of four distinguished retirees, reminiscences and so much more. Including among the activity was a 60-year anniversary of the founding of Delta Phi Sorority which drew 75 members.*

*Outgoing president Robert Lisensky presided at the Alumni Banquet and presented 50-year medallions to the class of 1930. The president also honored alumni citation winners, Lucille Clark, Fred J. Cummings, Harold Hawk, Sue Juba and Otto R. Skopil Jr. Chester Luther was on hand to present the 25-year medallions given in his name to the class of 1955. A Saturday of memories old and new.*

*It all set up a fitting climax at Baccalaureate featuring Phil Hanni as speaker and graduation activities on Sunday, May 11. Dr. William Boyd, president of the University of Oregon, who resigned that position a day later, presented the commencement address to the overflow crowd. Dr. Boyd and H. Leslie Freewing received honorary degrees as Doctor of Letters and Doctor of Humanities respectively.*

*President Lisensky conferred degrees on graduates of the College of Liberal Arts, the College of Law and the Atkinson Graduate School of Administration.*

*A reception on the field immediately followed the recessional and Willamette's 'festival of education' came to a close. You can chalk it up to tradition, protocol or even habit but any way you look at it, for two days in May, Willamette had 'Commencement Fever' and it spread to anyone who even ventured near the campus.*



Outgoing presidents Boyd and Lisensky confer following commencement.



Alumni Citation recipient Sue Juba emphasizes a point during Alumni Banquet.

*'I'm so excited I could almost burst!'*



# SCHOLARS, GOLF AND THE MOVIES

## 36 students awarded alumni scholarships for '80-81

Students from Alaska, British Columbia, California, Colorado, Hawaii, Maryland, Oregon and Washington were among those selected as Alumni Student Scholars for the school year beginning this fall. Thirty-six students will receive financial aid through the program established with alumni gifts to the 1979-80 annual funds.

Those chosen as Alumni Scholars must have financial need and also must have demonstrated academic performance worthy of recognition. Selection is not limited to children of alumni although a number of the recipients have parents who attended the University.

Twenty returning students were selected: Sally Benninghoff, Salem, Ore.; JoAnn Claunch, Lake Oswego, Ore.; Barbara Delph, Portland, Ore.; Rick Delph, Weston, Ore.; Kenneth Garland, Kent, Wash.; Jeffrey Harvey, Tigard, Ore.; Tracy Hoffman, Salem, Ore.; Ryan Holznagel, Forest Grove, Ore.; Donald Kraemer, Hillsboro, Ore.; Michael Matsuno, Honolulu, Hawaii; Jerry McCarthy, Salem, Ore.; Deston Nokes, Bethesda, Md.; Ted Pavlicek, Woodburn, Ore.; Rebecca Roberts, Chugiak, Alaska; Laura, Linda and Stasia Scarborough, Salem,

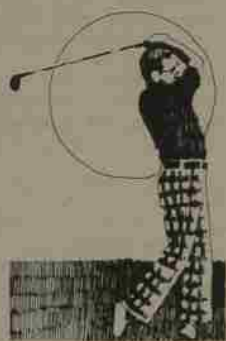
Ore.; David Standifer, Eugene, Ore.; Thomas Yedinak, Eugene, Ore.; and Victoria Yoshikai, Salem, Ore.

Sixteen of the Alumni Scholars are entering students: Thomas F. Davis, Albany, Ore.; Eric B. Hannibal, Salem, Ore.; Robert J. Johnson, Prineville, Ore.; Karen A. Karteman, Medford, Ore.; Dawn E. Hoff, Woodinville, Wash.; Ho Joon Chaey, Salem, Ore.; Edwin V. Maeda, Hilo, Hawaii; Tristi Wood, Medford, Ore.; Steven J. Gilson, Salem, Ore.; Carol A. McGowan, Stockton, Calif.; James E. Parker, Prineville, Ore.; John B. Schmor, Forest Grove, Ore.; Kelly Woda, Colorado Springs, Colorado; Helen D. Woods, Anchorage, Alaska; Richard Groenendaal, Salem, Ore.; and Mark C. Lipke, Hines, Ore.

The Alumni Student Scholars Program was endorsed by the Willamette University Alumni Association Board of Directors because it paid tribute to Willamette alumni and, at the same time, helped worthy students to attend the University. Again in 1980-81, all alumni annual funds will be directed to the Alumni Student Scholars Program unless otherwise specified.



Dial-A-Scholar. Sisters, Stasia, left, Lina, Center, and Laura Scarborough of Salem get together around the sundial in front of Eaton Hall after being named among the 36 recipients of Alumni Student Scholarships.



Fifth Annual  
**FORE**  
Willamette

### A PREMIER GOLF EVENT To benefit Willamette University Monday, Sept. 29, 1980 Illahe Hills Country Club, Salem

- 18-holes of golf four-man team best-ball with shotgun start at 1:00 p.m.
- Tee prizes for all entrants everyone goes home with something
- Lunch get acquainted over lunch from 11:00-12:30

- Dinner and special programs featuring Bob Murphy, former intercollegiate athletic administrator and promoter in the San Francisco Bay area, one of the voices of the San Francisco 49er and Stanford Cardinal football broadcasts, and currently director of a major sports cable television network. He will be talking on "Ethics in Intercollegiate Athletics."

Entry fee \$150 (\$105 is tax deductible as a charitable contribution); \$55 for dinner only (\$40 tax deductible) (\$150 entry covers all expenses: lunch, dinner, green fees, power carts, range balls, bag tags and tees, tee prizes and a chance to win additional prizes)

Join some of your golfing friends FORE Willamette  
Submit entry by September 7 to Willamette University, Salem, Oregon 97301

### Official Entry (tear at perforation and return by September 7, 1980) Count me in FORE Willamette Monday, September 29, 1980

Golf, dinner, and all the fun (\$150)  
 Dinner only (\$55)

Handicap \_\_\_\_\_ (I have no handicap; my lowest score is \_\_\_\_\_)

Entry deadline, September 7, 1980

Name \_\_\_\_\_ Phone \_\_\_\_\_

Address \_\_\_\_\_

City, State, Zip \_\_\_\_\_

Make check payable to Willamette University and mail to Willamette University, FORE Willamette, Salem, Oregon 97301

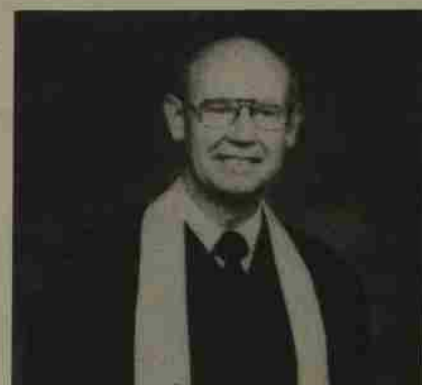
## Cal McConnell joins Willamette Board of Trustees as Bishop

Former Willamette University chaplain and assistant professor of religion, Calvin D. McConnell, was elected to the episcopacy of the United Methodist Church on July 18 and will administer the denomination in Oregon and Southern Idaho.

The Bishop automatically joins the Willamette Board of Trustees and will be a member of the Executive Committee.

Bishop McConnell served as chaplain and assistant professor at the university from 1961 to 1968 and prior to that held pastorates in Boulder, Denver and Colorado, Colo. and also in California.

Succeeding Bishop Jack M. Tuell, who was transferred to Los Angeles, Bishop McConnell, 51, holds degrees from the University of Denver, Iliff School of Theology in Denver and



Bishop Cal McConnell

Andover Newton School of Theology in Andover, Mass. Bishop McConnell and his wife Mary, who is an education specialist, have two sons, David, 26, and Mark, 24.

## TV movie at Willamette

Filming for a fall (probably October) NBC-TV movie began August 20 at Willamette's McCulloch Stadium. Tony Randall and William Windom are among the star performers in "Pigs vs. Freaks," which has a football encounter bring better understanding among police and hippies.

The plot is based upon an actual game which took place in East Lansing, Mich., in 1968 and has been continued since.

Football Coach Tommy Lee and some Bearcat football players and current students and faculty have been involved in the production.

# CAMPUS CALENDAR

## ART

An art exhibit by Salem painter Mary W. Earls will be in Putnam University Center on campus August 15 through September 30.

Carl Hall from Willamette's Art Department will show "Recent Works" at the Hallie Brown Ford Art Gallery September 1-26.

"Mixed Media" will be on display by McMinnville artist Burrell Brenneman at the Hallie Brown Ford Art Gallery September 29 through October 31.

Works by Jan Janosek will be displayed September 1 through November 1 at the Smith Gallery.

## MUSIC

Izquierda Concert on September 19 at 8 p.m. in the Kresge Theatre at the Willamette Playhouse.

Pianist Robert Reynolds will begin the Distinguished Artist Series in the Smith Auditorium with performances on September 23, at 3:30 and 8 p.m.; September 24 at 11 a.m., 12:15 and 8 p.m.; and September 25 at 2, 4 and 8 p.m.\*

Willamette's James Cook will be featured at the Faculty Recital on September 17 in the Smith Auditorium at 8 p.m.

Amy Barlowe will perform at the Faculty Recital on October 3, 8 p.m., Smith Auditorium. Subsequent faculty recitals will be held on November 9, and '23 (participants will be announced).

The Oregon Trio featuring Bruce McIntosh, James Cook, and Amy Barlowe will begin a Beethoven Series on October 1 and will continue performances weekly through the fall semester. Their performances will be Thursday's at noon in the Smith Auditorium. The trio will not perform November 6 or 27 (Thanksgiving).\*

Willamette University's Jazz Extension will provide music at noon in the Putnam University Cat Cavern on October 7.

A concert by the Oregon Symphony will be on October 15 at 8 p.m. in the Smith Auditorium.

The Salem Symphony will perform on October 22 at 8 p.m. in the Smith Auditorium. The Salem Symphony can also be seen (and heard) on November 19 in Smith Auditorium.\*

A performance for the Distinguished Artist Series is scheduled for October 29 at 8 p.m. by the Portland Brass Society.

## MUSIC (cont.)

The Irish National Orchestra, Chorus and Dancers will give a community concert on October 26 at 8 p.m. in the Smith Auditorium.

Distinguished Artist Series hosts jazz musicians Clark Terry and the Jolly Giants at 8 p.m. in the Smith Auditorium, November 3. The Jolly Giants will also be featured at the 11 a.m. convocation on Wednesday, November 5.\*

The Willamette University Chamber Orchestra will be featured on November 5 at 8 p.m., Smith Auditorium.

Smith Auditorium is also the location for a concert by the Willamette University Band on November 12 at 8 p.m.

The Willamette University Choir Concert will perform at the First Methodist Church in Salem, 2:00 p.m., November 16.

\*A continuing education program this fall will include lectures (7:15-8:30 p.m.), Sept. 22 for the Sept. 23 concert, Sept. 29 for the Oct. 2 Oregon Trio, Oct. 20 for the Oct. 22 Salem Symphony and Oct. 27 for the Nov. 3 concert. Additional information: 370-6285.

## SPORTS

Willamette University will challenge Willamette Alumni to a football game at McCulloch Stadium on September 20, (1:30 p.m.). This game will get the team ready to begin the conference games on September 27 when the Bearcats face OCE at McCulloch, (1:30 p.m.). SOC will meet Willamette at McCulloch on October 4, (1:30 p.m.). Key road games find the Bearcats at Klamath Falls (Oct. 11) where they will meet OIT (1:00 p.m.); and at McMinnville (Oct. 18) against rival Linfield (1:30 p.m.). Willamette is back to McCulloch Stadium on October 25 against Lewis and Clark (1:30 p.m.).

Men and women Cross Country teams compete in the Invitational meet at University of Portland on September 20, (11:00 a.m.). Linfield comes to Salem on October 4 to compete against Willamette (men and women) at 11:00 a.m. On October 11, Willamette will host an Invitational meet for men and women, (11:00 a.m.). The Cross Country team will take on SOSC in Salem October 18, and the men will travel to Tacoma on the 25th for the Northwest Conference meet, while the women will also compete in Tacoma at the WCIC. On October 29 the men are back in Salem competing against Lewis and Clark, 4:30 p.m.

Willamette's Soccer team will be at its best when it takes on Lewis and Clark September 20 in Salem, (2:00 p.m.). George Fox will be the next opponent on the 27th, also in Salem, (2:00 p.m.). On October 4 Willamette will meet Warner Pacific at Portland, but will be back on campus the 11th to face Pacific (2:00



Carl Hall exhibits Sept. 1-26

## ALSO

Opening Convocation and Investiture for new Willamette President Dr. Jerry E. Hudson will be September 3 in Smith Auditorium at 8 p.m.

The Royal Lichtenstein Sidewalk Circus will perform September 12 at 4 p.m. in the Willamette Quad.

The Faculty Women's Club will sponsor a Newcomers Dessert at 7:30 p.m. on October 8 in the Cat Cavern.

The Fifth Annual Fore-Willamette Tournament will take place at Ilabe Hills Country Club in Salem on Monday, September 29. Tournament information can be obtained by calling Steve Prothero or Edie Mulkey at 370-6356.

p.m.). The 15th will bring Western Baptist to Salem (4:00 p.m.) with Northwest Nazarene to follow on the 17th, also in Salem (4:00 p.m.). The slate takes the team next to McMinnville for a kick-off with Linfield on the 18th, (2:00 p.m.); and back to Salem on the 25th for a rematch with Lewis and Clark (2:00 p.m.).

Willamette will host a Women's Field Hockey Invitational September 23-27. The invitational will be followed by a road trip to Idaho where the women will be up against Northwest Nazarene at Nampa on October 3 (4:30 p.m.); and October 4 against Boise State at Boise (10:00 a.m.) On the 8th Willamette will be closer to home meeting OCE at Monmouth (1:00 p.m.). October 17-18 are the dates set for a Field Hockey tournament with Oregon, Northwest Nazarene, PLU, OCE, and Willamette at Salem (2:00 p.m.). Willamette will next meet OCE on October 21 in Salem (3:30 p.m.). The season winds down with a tournament hosted by PLU at Tacoma on October 24-25, time to be announced, and a game against OCE at Monmouth October 28 (3:30 p.m.).

Willamette's volleyball team will open against Puget Sound at Tacoma September 26, (7:00 p.m.) and meet PLU on the 27th also at Tacoma (11:00 p.m.). The opening road trip will conclude against Linfield at McMinnville the 29th (1:00 p.m.) with the home opener against PLU at Salem October 2 (7:00 p.m.). The OCE Invitational at Monmouth October 3-4, will follow. Willamette will take on Lewis and Clark the 8th at Portland (7:00 p.m.) and Willamette will travel to Forest Grove on the 13th to meet Pacific (7:00 p.m.). On October 15, Linfield will come to Salem (7:00 p.m.) and on October 17-18 Willamette will host its own Invitational, (time to be announced).

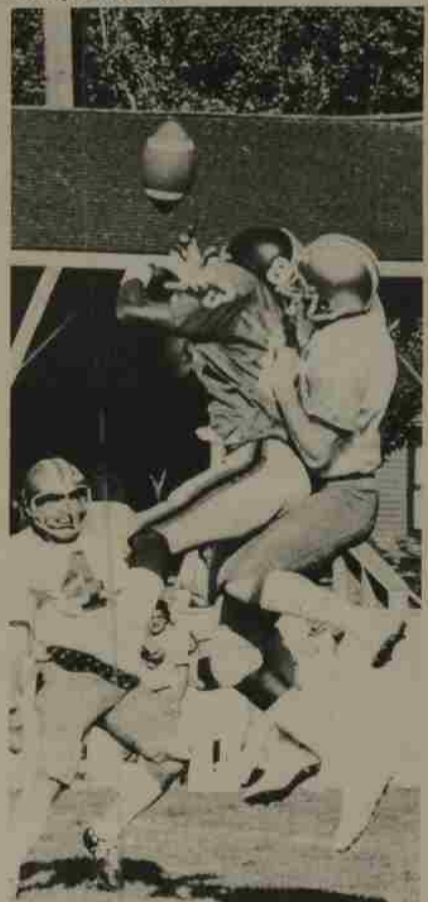
October 20 takes Willamette's women to Newberg to battle George Fox (7:00 p.m.); followed by a Portland date October 22 with University of Portland. October 24-25 Willamette will compete in the SOSC Invitational at Ashland, (time to be announced). On October 27 Lewis and Clark will face Willamette (7:00 p.m.) and October 29 Pacific will come to Salem (7:00 p.m.).

Football ticket information and complete schedules for all sports are available through the Willamette University Athletic Department (370-6420).

## THEATRE

The Willamette University Theatre production of "Rimers Eldritch" by Lanford Wilson will kick off the 1980-81 season on Oct. 3, 4, 5 and 9, 10 and 11 in the Arena Theatre. The production will be directed by Nick Leland.

Ticket information is available by contacting the Willamette University Theatre Department ticket office (370-6223).



Football opener Sept. 20



Oregon Trio offers Beethoven Series

Edited By  
Theresa Primbs  
Alumni Records Secretary

# CLASS NOTES

## 1928

**Hugh E. McGilvra** has been named by Gov. Atiyeh to the Oregon Fair Plan Assoc. Board of Directors, which functions as a market for essential property insurance. The term will run for four years. McGilvra is publisher of the Washington County News-Times newspaper in Forest Grove, and of the Times newspapers of Beaverton, Tigard, and Wilsonville.

## 1930

**Helene Price Green** sold her Portland home and moved to Chehalis, WA to be closer to one of her two sons. She retired from teaching at David Douglas High School in Portland.

## 1935

**Frances Poor Brown** has two daughters and three grandsons. She and her husband, Jim reside in Ft. Lauderdale, FL. They have traveled all 50 states, Mexico, Jamaica, Bahamas, Canada, etc. (husband is a boat captain). She hopes to stay in southeast Florida.

**Ross and Madge (Marean) Brown** are both retired high school teachers from Eureka, CA and are now living in Medford, OR. They have two children and one grandchild.

**Paul G. Carpenter** and his wife, Janice make their home in Baton Rouge, LA. Paul plans to continue as Executive Director of the Alcohol and Drug Abuse Council of Greater Baton Rouge, a position he has held for five years since retirement from industry. He also fills much time with wood-working and general handyman. There are two children and five grandchildren.

**Clara Wright Dean** and her husband **Maurice Dean '36** continue to enjoy their home, half-acre garden and orchard in Castro Valley, CA. They have four children and seven grandchildren. Clara spent two months this spring in France, welcoming their newest grandchild.

**Lowell Eddy, M.D.** resides in Seattle, WA and has spent 30 years in surgical practice. He and his wife have two sons and two grandchildren.

**Eleanor Barth Haddock** and her husband, Austin make their home in Carson City, NV. After many years of home making, she for the past five years has returned to teaching and playground "aide". They are hoping to retire back "home" in Oregon.

**Seiko Watanabe Hasegawa** is retired and now making her home in Mercer Island, WA.

**Esther Spiers LaClair** and her husband, Eugene, have three daughters and six grandchildren. Esther retired after 18 years of teaching English at North Bend High School. Her home is in North Bend, OR.

**Frances Schilling Miller** retired after 35 years of teaching. She and her husband, Kenneth reside in San Pablo, CA. They have two children and four grandchildren.

**Roy Mink** retired in March of '72 after 30 years as auditor and assistant audit supervisor for the State of Oregon—PUC. He and his wife make their home in Salem, OR. They have one child and two grandchildren.

**David E. Moser** and his wife **Margaret (Notson) '33** reside in Columbia, MO. He is a Professor Emeritus, University of Missouri-Columbia. They have three children and two grandchildren.

**Mildred Drager Parr** is now retired from teaching and resides in Merrill, OR. She has two children and five grandchildren.

**Anna Jo Fleming Phares** and her husband, Dick, reside in Laguna Miguel, CA. They have three children and two grandchildren.

**LaForest McDonald Schenk** is a case-worker and active in community life. She makes her home in McMinnville, OR. She has three children and one grandchild.

**Arthur T. Smith** and his wife, Gladys, make their home in Port Orchard, WA. Their family consists of four children and three grandchildren.

**Ethel Adam Schreiber** and her husband, Daniel, have two daughters and one grandchild. Their home is in Forest Grove, OR.

**Rose Naef Stromquist** is a retired music teacher and makes her home in Mill City, OR. She and her husband, Harold, have two sons and three grandchildren. Rose recently made a trip to New Zealand and Fiji.

**Ruth Billings Wood** and her husband, Kenneth, have three children and five grandchildren. Ruth is kept busy with family, community and church activities. Their home is in Saratoga, CA.

## 1938

The **Lorne Dixons (Charlotte Litchfield)** have recently retired after their association with Shell Oil Co. for over 40 years. They still have their home on Yaquina Bay, near Toledo, OR and now plan on more time for traveling and fishing.

## 1939

**Arthur J. Gallon** who coached a UCSB basketball team to a championship, and was the first chairman of the campus' department of physical activities, will retire June 30 after a 23-year career at this campus. He was elected to the Santa Barbara Athletic Roundtable Hall of Fame in 1975 on the basis of his coaching record at UCSB, Berkeley, and the University of Hawaii. He is the author of many articles published in physical education and coaching journals. Art and his wife, **June (Aasheim) '39** make their home in Santa Barbara, CA.

## 1940

**Harold Hutchinson** continues to practice dentistry in Salem. He enjoyed his travels to East Africa and Greece.

**June Brasted Chipman** is a housewife in La Jolla, CA. She and her husband chartered a sailboat to Tonga, Samoa and Fiji. They plan to go to Kenya and Tanzania this Fall.

**Leighton Blake** and his wife, the former **Betty Anne Faxon, '42**, live in Gig Harbor, WA. He is the agency manager for State Farm Insurance in Tacoma. They have four children.

**Roger Baker** lives in Lake Oswego and has six children. He is an engineer consultant for the food industry. He prepares designs for food plants around the country. He enjoyed a working tour of Turkey for the World Bank.

**George Abbott** and his wife, former **Irma Oehler '38**, live in El Cerrito, CA. He is retired after 30 years of teaching in California Junior and Senior High Schools. They have made four trips to Europe and hope to continue to travel.

**Lucille Strauss Dawson** of Reedsport served two years as president of the League of Oregon Artists and has won quite a few awards in art shows for her paintings. She is now involved in land-use planning for the coastal area of Douglas County.

**Esther Cammack Rand** has retired from 25 years of teaching in Seattle Elementary Schools. Her husband is a general contractor who builds mainly churches. Their

satisfaction and happiness is found in church and family.

**Doris Riggs Pague** is a home maker, mother of three sons, and lives in Boulder, CO. She has traveled extensively around the world and 18 months ago visited the People's Republic of China.

**Grace Bailey McCusker** is a housewife, mother of two, and lives in Bend. She is a volunteer worker and part-time medical technician at a hospital.

**Carolyn Woods Drobot** is a housewife in Upper Montclair, N.J. She has three children. She has climbed Mt. Hood and Mt. Fuji and skied at St. Moritz.

**George Siranio** lives in Salem and has three sons, all bigger than their father. He is now retired and camps, golfs, hunts, gardens, and enjoys crafts.

**Carl Mason** lives in Salem. He served as Western District Superintendent, Methodist Church, 1974-1980. Now retired, he plans to supply pulpits and play a little more golf.

## 1941

**Keneth and Luree (Norris '42) Hughes** are now living in Brookings, OR. Ken retired in October from U.S.F.S. Forestry sciences Laboratory on the O.S.U. campus.

**Vernon A. Larson** retired from principalship in Juneau Public Schools, Juneau, Alaska on June 1, 1979. He and his wife, Audrey are now living in Oregon City, OR.

**Mabelle J. Lilburn** is a service representative for Pacific Telephone in San Diego, CA.

## 1944

**Ray Short** who published "Is It Sex, Love or Infatuation: How Can I Really Know?" a couple of years ago, gives presentations on the subject. A Methodist minister and professor of sociology at University of Wisconsin, Platteville, Ray teaches classes on marriage and the family. He's married and the father of five children, two of them teenagers.

**Barbara Hermann Marshall** resides in Santa Maria, CA where she is the director of Accelerated Learning Systems.

## 1945

**Louise Cutler Barter** makes her home in Salem, OR where she is a social worker and home maker. She has four children and five grandchildren.

**Stan Buch** is a pharmacist in Lancaster, PA. He has visited the Portland-Seattle areas in recent years as a son lives in Portland and a daughter in Seattle. He invites class-mates to visit "the garden spot"—Lancaster County—as he is a qualified "tour guide."

**Acacia Wing Ebbesen** resides in Grants Pass, OR and hopes to be affiliated with the coming Montessori School there.

**Margaret Forsythe** is a retired government employee and makes her home in Salem, OR. She spent two years in Bolivia '58-'60, and four years in South Vietnam '70-'74.

**Charles B. Larkin M.D.** and his wife, Irene reside in San Bernardino, CA. They have seven children and four grandchildren. Charles plans to continue to practice medicine with semi-retirement in Santa Rosa, CA in about five or six years.

**Jean Carkin Sanesi** and her husband, Nelson reside in Granada Hills, CA. They have four children. Jean is a home maker and recently retired from solo work in singing. She and her husband plan to travel now that he is retired. They own a condominium at Spanish Head on the Oregon Coast and spend time there visiting with their children near by.

**Wilma Froman Sheridan** is a professor of music at Portland State University. She and her husband, Robert, reside in Portland, OR. They have three children.

**Marian Carter Showers** resides in Portland, OR where she is a physical therapist. In 1981, she is planning a trip to Sapporo, Japan to celebrate the Zonta Club of Sapporo's 10th birthday, combined with a trip to Singapore to do some workshops on Stress Management through tension control.

**Helene Thomas** is a graphics technician and lives in Beaverton, OR.

## 1947

**Georgia Hull Spooner** has been serving as Chairman of The Guilds of the Orange County Music Center. The Guilds of the Orange County Music Center were officially chartered to provide operating funds for the parent Corporation and to stimulate support both for the Music Center project and for the performing arts in Orange County. **Richard Spooner (L49)** is President of Newport Beach Chamber of Commerce. They make their home in Corona Del Mar, CA.

**Gilbert J. Clausman** was presented an engraved plaque of appreciation from the 1980 graduating class of New York University School of Medicine, "in honor of twenty-five years of dedicated service." Mr. Clausman, who recently completed his term as president of the Medical Library Association, has been an active member of the NYU faculty since 1955.

## 1948

**Frank Jungers** former chairman of the board and chief executive officer of Arabian American Oil, has been named to the board of directors of Orbanco Financial Services. He also serves on the boards of Georgia-Pacific and Hyster. His home is in Sun River, OR.

**Artie Phillips Rodgers** lives in Olympia, WA where she is an associate with Rodgers & Associates Insurance.

## 1949

**Frank and Susanne (Wilson '44) Newell** are now living in Sidney, NB. Frank is the president and publisher of Sidney Telegraph.

## 1950

**Pat Howard Acker** makes her home in Saratoga, CA. She is in sales with St. Claire Motor Co., San Jose and account executive for KNBR Radio in San Francisco. She has three children.

**Frank E. Bales** is deputy director of Oregon State of General Services. He and his wife, Gwen, recently purchased a new home in Salem.

**G. Dean and Virginia (Allen) Barnhart** have three children and reside in Portland, OR. Dean is senior claims supervisor for Oregon Mutual Insurance Co.

**Dale G. Cleaver** is professor of Art, University of Tenn., Knoxville. Dale writes that he is looking forward to more teaching, more writing, and more skiing in Colorado.

**Bill Cogswell** has been reappointed by Gov. Atiyeh as a member of the Oregon State Board of Parole. He is a former board chairman. His new four-year term will run to July, 1984.

**Janice Smith Edmondson** makes her home in Toledo, OR. She is very busy—Board of Directors for Toledo Chamber of Commerce, Sec. of Toledo Cemetery Assn., Sec. of Lincoln County Library Assn., and Chairman of Oregon

## Sturholm authors second book

Larry Sturholm, Class of 1965, has just resigned as speechwriter for Oregon's governor and is back to full-time writing—and perhaps a few other journalistic ventures.

His second book, "In the Line of Duty," was published last month by Doubleday-Gallie, and the 8,000 first-edition copies have already been sold. Sturholm admits to being uncomfortable with the theme: a father and son—both policemen—overcome personal disaster through their faith. He said it took a friend and Jess Roe, the policeman father, a year and a half to convince him that he should write the book.

Sturholm's first book, "All for Nothing," is about the last of the great attempted train robberies in America, a bungled job in Ashland, Oregon. Much of his informa-

tion for that 1977 book came from interviewing the surviving brother of the three who attempted the 1923 robbery. The book sold 7,000 copies, and movie rights were purchased for a John Wayne film, but Wayne died. David Janssen was then said to be interested in playing the lead, but he too died. Sturholm still has hopes for a movie version.

After three years as a Willamette student, Sturholm left "because I couldn't pass Professor Gillis' statistics class" and got a journalism degree from University of Oregon. The 37-year-old alumnus has done a variety of writing for print and broadcast and considers his wife the family manuscript expert for spelling, grammar and punctuation.

Bell Collectors. She has three children and seven grandchildren.

**Lois Mulcahy Estell** is a first-grade teacher. She and her husband, Quintin, reside in Silverton, OR and have two children.

**Betty Thompson Fedje** and her husband, **Ray ('49)** moved to Alaska three years ago. She writes that it's a great country and many fascinating things are happening. Betty is a music specialist, teaching vocal music in Dimond High School for the Anchorage Public Schools. They have one married daughter.

**Marjorie Cooper Fleck**, her husband, Ben, and three sons, spent many years living in various places in Asia while her husband was with the Foreign Service. They now reside in Rockville, MD. Marjorie is a housewife, part time wedding director, and museum docent at Smithsonian (Asia Hall, Museum of Natural History). Her husband has retired from Foreign Service but still works part time for the U.S. Department of State.

**Arthur A. Gottfried** is a resident bridge engineer with the Oregon State Highway Dept. He and his wife, Patricia reside in Salem, OR and have eight children.

**Inie Wilhelm Jenkins** and her husband reside in West Linn, Or. They have five children and eight grandchildren. Inie has been a full time student, taking brush-up science courses to qualify for admission to chiropractic college. She will enroll for a four year program at Western States Chiropractic College this fall.

**Audrey Lien Kaplan** and her husband, **Robert ('52)** make their home in Rancho Palos Verdes, CA. He is a professor of Applied Linguistics at USC. They travel much as he teaches and consults in various countries, most recently they spent six months in Australia and six weeks in New Zealand, and this summer, a month in England. They have three children.

**Ruth James Laba** is secretary for Saga Corp. (corporate marketing-product concept and development). She and her husband reside in Redwood City, CA and have three teenagers.

**O. Rex Lindemood** and his wife, Verna, reside in North Webster, IN. They have three sons. Rex is a United Methodist minister and hopes to continue to serve the church until retirement.

**Albert R. McMullen** and his wife **Beth (Guttridge '49)** make their home in Newport, OR where he is a circuit judge. They have three children.

**Bob Muhr** for the past seven years has been plant manager for Domtar Gypsum America Inc. He and his wife, Barbara have two children and make their home in Concord, CA.

**Bob and Doris (Walser) O'Neill** have two children and reside in Centralia, WA. Bob is president of Hemphill-O'Neill Lumber Co.

**Margaret Atwood Orsi** resides in Corvallis, OR where she is executive secretary to the president of Linn-Benton College. Margaret has raised four children who are all in college. She plans to rebuild her beach cabin at Otter Rock and retire there.

**Betty Kuhlman Pease** is a violinist, teacher and composer. She and her husband make their home in Bowling Green, KY and have one married daughter.

**Gordon and La Fyne (Showacy) Pratt** are making their home in Monmouth, OR. Gordon is Supt. of Monmouth-Independence School District and La Fyne is Media Specialist at Campus Elementary School in Monmouth. They have four children.

**Warren R. Schmidt** is in real estate and resides in Spokane, WA.

**Doris Gragg Sherry** is Director of Christian Education in Corvallis, OR. She and her husband, Keith, have four children.

**John Slanchik** is now working for Dome (Div. of Miles Lab.) in Pharmaceutical Sales. His territory is from the San Fernando Valley north to Santa Barbara. He resides in Woodland Hills, CA.

**Delbert and Doris (Kimble) Tillotson** reside in Mt. Vernon, WA. Del is Dean of Finance at Skagit Valley College and Doris is a sewing teacher at Skagit Valley College. They have two sons.

**Russ Tripp** and his wife, **Barbara (MacDuffee '49)** reside in Albany, OR where Russ is in real estate.

**Scott and Jane (Mountcastle) Turner** are living in Raymond, WA where they own and operate a Shell Oil Co. jobbership. Scott is general manager and Jane keeps the books and runs the office. They have three children.

**Albert W. Wardin** is professor of History at Belmont College, Nashville, TN. In 1977-78, Al took a sabbatical in Kenya, East Africa where he taught at Kenyatta University College. He has also written two books—*Baptists in Oregon* and *Baptist Atlas*.

**Frank (Scotty) Washburn** lives in Black Mountain, N.C. where he is Executive Director of YMCA Blue Ridge Assembly-Conference and Training Center, owned and operated by the YMCAs of the 10 southeastern states. Scotty and his wife, Buena, have five children.

**Betty Paulsen Woodburn** is now living in Fort Dodge, IA. Her husband's job has taken them to a number of places as he is V.P. and General Manager for Central Telephone of Iowa and Missouri. They hope to return to Oregon in the near future where their three sons reside.

**Tom Yates** and his wife, **Jo Anne (Estey '52)** have four children and make their home in Corvallis, OR. Tom is professor and director of the O.S.U. Computer Center.

### 1951

**Dr. John Kaemmer** has been named chairman of the sociology and anthropology department at DePauw University in Greencastle, IN. He has been a member of the DePauw faculty since 1975.

### 1952

**Betty Eby Saunders** is living in Stockton, CA where she is a special education teacher for the Stockton Unified School District.

### 1953

**Dr. Ernest and Kathleen (Revis '52) Duvall** are now living in Birmingham, AL. He is a physician with the Univ. of Alabama Hospitals—Diagnostic Radiology Dept.

**Laura Newton Luce** is a diaconal minister—Assn. in Education for Wesley United Methodist Church in Eugene, OR.

### 1954

**Richard B. Blakney** is living in Seattle, WA where he is a lecturer at the University of Washington.

Send class news to NewsCat  
Julie Mellor Reid  
705 Plymouth Road  
San Marino, CA 91108

### 1955

**Loris Merriott Uhl** and her husband are owners of the Holland Lake Lodge in Seeley Lake, Montana, where she reports there is great hunting, fishing, packtrips and winter sports—"drop in and say hi!"

From Sydney, Australia, came a note from **Kent Holmes**, who is State Department Consul headquartered at the American Consulate General.

**Philip and Betty (Gilmore '56) Brown** are still in Beaverton, Oregon, where he's in insurance sales with Tri-County Insurance, Inc.

**Jerry Friesen** is Director of Music Education at George Fox College in Newberg, Oregon.

**Ken Cooper** received his Master's degree from Cal/State University in March. He's director of Community Services at Gavilan College in Gilroy, California.

**Henry Stevenson's** moved to a new home in Salem... he reports that daughter Debra is now a junior at Willamette.

**Dr. Kenneth Haevernick's** a busy man... following medical school, he established his practice in Lebanon, OR... became involved in politics and served a term as Mayor of his city. He then was appointed to the Board of Education of Linn Benton Community College, where he serves as chairman. In the early 70's he went to Rhodesia, where he served in the medical mission field setting up a hospital. In addition, he's presently President of the Oregon Academy of Family Physicians. Ken and his wife Sally have 2 children and are the "proud grandparents of 2 grandsons."

### 1956

**Ray Donnenwirth** is vice principal at the Portola High School in Portola, CA.

**Patricia Payne Drake** lives in Salem, OR where she is a legal assistant to William Linfoot, attorney at law.

**Gordon Chang** resides in Honolulu, HI and is a teacher and coach at Castle High School.

**Dr. Donald Hobson** makes his home in Meadville, PA where he is the chaplain and assoc. professor of Religion at Allegheny College.

**Margie Swanson Horton** lives in Marin County, CA. She taught for five years at San Francisco Art Institute. She is now studying to be a Rev. at Berkeley Psychic Institute. She has two children: Alexander and Cosmo.

### 1957

**Douglas Houser** has been named to the Judicial Fitness Commission for the State of Oregon. He resides in Portland, OR.

**James R. Jones** was recently promoted to Vice President of the ENI Corporation's San Francisco Branch office. ENI Corporation has become one of the largest sponsors of oil and gas drilling programs in the nation. Jim and his wife, Diane, will be moving to Palo Alto, CA in the near future.

### 1958

**Jerry Brackins Kieta** recently moved to Bremerton, WA where her husband was transferred to Puget Sound Naval Shipyard.

**David E. Mix** is now living in Portland, OR. He is a warehouseman, salesman and driver for Oregon Wine Wholesalers. After 20 years in the US Navy, Dave returned to Willamette and received his degree in May '80.

**Joan P. Payne** since 1968 has acted as a consultant for Dr. Julie Grach, the Director of the Cystic Fibrosis Treatment and Research Center of the Univ. of Oregon. In addition she also taught at the Univ. of Oregon. Since 1976 she has acted as a Consultant Microbiologist and worked on numerous projects, including research for Veterans Administration Hospital, Flow Laboratories, Wampole Laboratories, Hoffman-LaRoche and Laboratory Director for Miracle Medical Laboratory. She resides in Portland, OR.

### 1959

**Carole Warren Ackerson** received a degree in Psychology in '79 from the Univ. of Washington and is now working on her MBA at Seattle University. She is living in Bellevue, WA.

**Franklin G. Caruso** is a tour guide for Olympia Brewing Company in Olympia, WA.

**Don F. Swartz** is a biologist for the Fish & Wildlife Commission of Oregon. He and his wife, Barbara reside in Milwaukie, OR.

### 1960

**Lois Widener Alworth** was a housewife for years, then a graduate student. She is now a student trainee at a veteran's hospital doing speech therapy with brain damaged adults. She and her husband and three teenage children reside in New Orleans, LA.

**Russ Beaton** with his wife, Delana, and three children reside in Salem, OR. Russ is a professor of Economics at Willamette University.

**Bob Bennett** lives in Desford, England. He is a teacher in a Leicestershire Upper School (somewhat like an American high school) of remedial (or supplementary education) students. He and his wife have three children.

**Donnise E. Brown** lives in Albany, OR where she is supervisor of Special Programs for Greater Albany Public Schools. She will leave in June for Madrid to write the final draft on her dissertation and will receive her Ph.D. in August from the University of Oregon.

**Jennice Robnett Cauble** and her husband, John have three sons and live in Eugene, OR. Jennice is an elementary school teacher at Adams School.

**Frances McKinley Cook** is a housewife and mother of three children. They have been living in Spirit Lake, ID, but are moving to Ontario, CA this summer. Frances plans to go back to school for R.N.

**Dale and Janeen (Hardy '62) Denham** are living in Richland, WA with their three children. Dale is a research scientist for Battelle Northwest, specializing in environmental evaluations as a health physicist. He was involved in radiological cleanup of Euewetole Atoll in Marshall Islands 1977-79, including three separate trips of five-plus weeks each.

**Toni Folsom Dyer** and her husband **Norman ('59)** returned to Oregon to live after 20 years and are now in Beaverton. They have two sons.

**Janice Bean Eisele**, her husband, Don and three children make their home in West Linn, OR. Janice is a housewife and substitute teacher.

**Nancy Weeks Federici** is co-owner with her husband in "Tony's Shoes" in St. Helens, OR. They have two children.

**Barbara Pfaff Ford** is a school counselor in San Jose, CA.

**Charles R. Foster** is a professor at the Methodist Theological School in OH. He and his wife, Janet, and two children reside in Worthington, OH.

**Frederick J. Fowler** is a Lt. Col., USAF, currently chief, Meteorology Office, Air Force Space Division and makes his home in Rolling Hills Estates, CA. After his retirement from the Air Force, he hopes to have a second career in the aerospace industry.

**Carl W. Geist**, his wife, Judy and two children reside in Gig Harbor, WA. Carl is manager of Container Board Marketing—worldwide—for Weyerhaeuser Co.

**Dr. Larry L. Halstead** is a dentist in Grants Pass, OR. In 1970, he and his family spent the summer helping to establish and operate medical-dental clinics in the mountains of Tenn. for Project Concern.



Susan Bowers '63



Nancy Bearg Dyke '69

Louis Hisel and his wife, Gloria, have two children and reside in Jonesboro, GA. Louis is a pilot for Eastern Air Lines and also served as mayor of Morrow, GA from '76-'79.

Dot Manker Hoskin is a wife, mother, and political education co-ordinator for local Home Builders Assn. She and her husband, Greg, and three children reside in Grand Junction, CO.

Joanne McGilvra Hoyt is a home maker and social worker. She and her husband, George ('58) have two teenage sons and are living in McLean, VA.

Clifford K. Hussey and his wife, Cheryl have three children and reside in El Sobrante, CA. Cliff is in commercial real estate, specializing in aquisition, sales and leasing of health care facilities/business.

Ronald P. Johnson is a Lt. Col. with the USAF. He is presently stationed in Omaha, NB as chief of nuclear security inspection for Strategic Air Command. He will retire from the AF on October 1, 1980 and will move back to Salem, OR. He is presently looking for a new career in the Salem area.

Ann Fields Kaufman is a teacher for 7th and 8th grades at Cascade Jr. High. She and her two children reside in Vancouver, WA.

Donna Fraser Kernutt is a former teacher—now a home maker and volunteer. She was elected to Eugene School Board in 1976 and is currently chairperson. Donna and her husband, Don have three children and reside in Eugene, OR.

Eugenia King Larson is a housewife and mother and sings in the St. Louis Symphony Chorus. She and her husband, Gary have four children. They continue to travel, tent camp and back pack—mostly in Canada, Washington, Oregon and Missouri. Their home is in St. Louis, MO, VA.

Mark Teppola makes Portland, OR his home where he is president of National Builders Hardware Co. He has served on numerous local boards and committees and is currently on the Business License Appeals Board for the city of Portland.

Laurel L. Tiller and his wife Priscilla (Prouty '62) have two children and are living in Centralia, WA. Laurel is an attorney.

Fred and Mariel (Fahlstrom) Van Natta and two children reside in Salem, OR. Mariel is a home maker and Fred is in the Government Relations business.

Jean Pritchard Wheeler is currently substitute teaching and tutoring. She has taught in secondary and elementary public and private schools for eight years. She and her husband, Jim, have two children and reside in Huntington Beach, CA.

Dr. Jim Whitmire and his wife, JoAnn have two children and make their home in Camas, WA. Jim is a Dr. of Chiropractic and plans in the future to practice chiropractic in Vancouver, WA and develop a multiple doctor practice and clinic.

Patty Mitzel Whitney and her husband have two daughters and reside in Tigard, OR. Patty is a teacher—English as a non-native language and French—at Portland Community College. She recently developed the curriculum for English as a non-native language which has more than a 900-student enrollment.

### 1961

Dr. Edward G. Foxley is presently hospital epidemiologist at Desert Samaritan Hospital, and also in the process of obtaining a Masters in Epidemiology at the Univ. of Calif. at San Diego. He resides in Mesa, AZ.

### 1962

Marcia Ruby Douglas recently completed a Masters degree in Education at Portland State University, with emphasis on

community college programming for adult learning needs. She has been working at the Northwest Regional Educational Laboratory in Portland for the past six years and is currently an associate in the education and work program where she coordinates a unit of projects concerned with communicating information about effective career education programs. She and husband, Jim Douglas ('64) reside in Portland with their two sons.

Michael W. Foster is living in Astoria, OR where he is Librarian at Astoria High School. He also owns Michael's Antiques.

### 1963

Susan Bowers was recently selected to receive a Graduate Teaching Fellow Award for Outstanding Teaching for 1980 from the University of Oregon. Besides working on a doctoral degree in English, Susan has taught introductory literature classes and English composition, supervised student writers and lectured in other literature classes. She resides in Eugene, OR.

Elizabeth Keyser is an English teacher at the Westridge School for Girls in Pasadena, CA.

Gary Mansavage will start a one year "sabbatical" from the State Department beginning mid-May. His address will be in St. Helens, OR.

Mike Weinstein moved to Roosevelt this year, after 10 years at Jefferson, where he teaches history. He is also varsity football and head track coach. Mike makes his home in Portland, OR.

Elaine Pflugmacher Wick's husband, Jim, was reassigned to TAC Headquarters at Langley AFB, VA after a year in Alabama. They are residing in Pogooson, VA.

### 1964

James G. Leathers is a partner in the law firm of Chickering and Gregory in San Francisco, CA. He resides in Lafayette.

### 1965

Having "retired" after 14 years of teaching to look after my two active one-year-olds and having a stepson entering Willamette in the fall prompted me to write Buzz Yocom to inquire about alumni activities in my area. So, here I am, NewsCat for the class of '65 and president of the Eugene-Springfield Alumni Club!

It was great to see so many of you at the reunion and I hope that we can keep in contact through the Willamette Scene. I encourage you to send news of yourselves and other classmates to me soon and often! We would love to know what YOU are doing!

A promotion to Communications Program Manager, Office Products Division of Xerox has brought Phoebe Finley Baker from Virginia to Dallas, Texas. She writes that she is "living downtown to avoid freeways and find a tree or two!"

Hunter Dixon completed law school at the University of Puget Sound in 1979. He is on active duty with the U.S. Air Force as an attorney stationed at Castle AFB. He and his wife live in Atwater, CA.

### 1967

Jay ('68) and Sharon Flanigan Grenig are residing in Waukesha, Wisconsin with son Robert. Jay is a law professor at Marquette University Law School and is a labor arbitrator throughout the States. Last year he wrote a book on arbitration advocacy and the 1979 Supplement to West Publishing Company's California's Education and Code Forms.

Glen Childs, wife Vivian and children

Patrick (11), Charlene (9) and Laura (8) moved to their current Portland home in late February. Glen is a stocks and bonds trader for Capital Consultants.

Carrie Lou Walters, M.D. is an Assistant Professor of Neurosurgery at the University of Vermont Medical School. Currently living in South Burlington, Carrie Lou finished her neurosurgical residency at the University of Chicago in June 1977, then spent 2 years at N.I.H. doing clinical and research neurosurgery.

Steve Ward is a Senior Investigator for Worker's Compensation Department in Portland. He also is an MBA candidate at Portland State School of Business.

John Erickson and wife Susan live in Coquille where John is Director of Curriculum and Instruction for Coquille Public Schools, District 8. John received his Ph.D. from OSU in June '80. The degree program emphasized school administration.

Malcolm Tabor is a Mental Health Specialist with Children's Services Division in Salem where he has been employed for 9 years. He received his Master of Social Work from the University of Washington in 1972. Malcolm and I have had a few contacts via phone regarding some shared concerns—who would have thought seminars of Dr. John (Rademacher) would lead to this.

Congratulations to Bill Alberger who was recently named chairman of the International Trade Commission by President Carter. Bill was appointed to the commission in 1977 for a nine-year term.

On a recent Hawaiian vacation, I had a much-too-brief telephone conversation with Bill von Arnswaldt and Ronnie Lee. Both are teaching/coaching at Kaiser High School and moonlighting at the Outrigger (night club). I had hoped to meet with them, their wives and families (Ronnie and his wife just had a daughter in March) and to also reminisce with Dennis and Diane Kauahi. I was disappointed we couldn't coordinate our schedules.

### 1968

Dawn Hanson Smith and her husband, Jonathan are settled in Bamako, Mali with the organization Summer Institute of Linguistics. Jonathan is working with a government agency interested in literacy in the various ethnic languages of Mali, some of them as yet unwritten. The Smith's have one daughter, Abigail, born in April 1979.

Bret D. Anerson is now the principal of Surabanga International School in Surabaya, Indonesia. Bret writes that if any Willamette alums are out that way, please drop in. The phone number is (031)69324.

### 1969

Nancy J. Bearg Dyke was recently appointed as Deputy Assistant Secretary of the Air Force for Manpower Resources and Military Personnel. Nancy was married on June 22, 1980 to Major General William Dyke. They make their home in Alexandria, VA.

Kim Foskett Skerritt recently graduated from the Kennedy School of Government at Harvard University, and is now living in Washington D.C.

### 1970

Our ten-year reunion is a thing of the past (and so is my Scene deadline). It was great to see and hear about so many of you; it will probably take two issues just to cover everyone. For those of you who couldn't make it, we all look great!

Gary and Gretchen (Gruber '71) Hull just returned from two years in Guam. He is

a staff attorney with Industrial Indemnity in Portland. They live in Tigard with their two daughters.

Jim and Suzanne Stunz Baldwin have also moved recently—from Tucson to Boise. He is now manager of the Highlands branch of the Bank of Idaho. They also have two children.

Margery Osborne Thomason is a fisheries biologist with the U.S. Fish and Wildlife Department in Auk Bay, Alaska. Her husband Greg works for the Alaska Fish and Game Department.

Leslie Robertson Hopper is a legal assistant with Swan, Butler & Looney, P.C., in Vale, Oregon.

Gale Vaandering is the assistant plant manager at the Stayton Canning Cooperative.

Joe Trachtenberg is Assistant Professor of Political Science at Clayton College in Morrow, Georgia. He is presently working on a book about the state judiciary.

Cristie Sleeter lives in Madison, WI, where she is currently working on her doctorate in education. She has been a high school special ed teacher and is now project director for Teacher Corps.

Marg Roupf Blake is financial development director for the YWCA in Salem.

Sue Friesen teaches music at Aumsville School near Salem.

Linda Cates Murray is second vice-president of Chase Manhattan Bank. She and her husband Tom live in Brooklyn, where they are restoring an 1871 brownstone townhouse.

Dee Whitworth Waldie is a surgical nurse with the University of Oregon Health Science Center in Portland. Her husband, Bruce is Executive Director of the American Heart Association of Wyoming. They live in Portland, OR.

Well, that's the end of part I. Next time I'll get caught up on those of us who were at the reunion. Many thanks for all your support in this job. I really enjoy doing this but if there is anyone out there who is eager for a chance to be the NewsCat, drop me a line, I'm sure we can work something out.

### 1973

Christine Stark Burkland lives in Bainbridge, WA where she is a student in interior design.

Clare Conner Garling was named Director of Public Relations for George Williams College in April 1980. She and her husband have just purchased a house in Wheaton, IL.

Kathleen Mansfield is employed as a legal secretary for the firm of Douglas and Crawford in Concord, CA.

Dr. Randy and Cynthia Shaw Pitts ('76) live in Tulsa, OK where he is a physician in family practice with the University of Oklahoma Tulsa Medical College.

John A. West lives in Los Angeles, CA and is the organist for the First Baptist Church of Van Nuys.

### 1974

Jerry Woelke and his wife, Linda, are living in Oklahoma City, OK where Jerry is a contracting officer for the Defense Logistics Agency.

Now living in Lynnwood, WA, Steve Sawyer writes that he is an international trading officer with Seattle-First National Bank. He is married to the former Jan Gordon.

Rocky Hammond is now a self-employed dentist in Fall City, WA. He received an award from the American Society of Dentistry for Children upon his graduation from dental school in June, 1979. Rocky lives on a farm near Fall City.



Bill Alberger '67



Christine Goosman '75

There's a new Neuschwander! **Bruce and Cindy Grazda Neuschwander** have a son, Timothy, born April 20, 1978. They are living in Mission Viejo, CA where Bruce is a senior financial analyst for Memorex Precision Products. He received his MS in Administration from UC Irvine in June, 1978 and Cindy was awarded her MA in Education from Stanford in June, 1976.

**John Morris** moved back to Portland in September, 1979. He works for Arthur Andersen & Co. as a consultant and is married to the former Mitzi Bryan. John received his MBA from Northwestern University in 1976.

Also making their home in Portland are **Bill and Melissa Veroske Williams**. Bill is a property manager with Norris, Beggs & Simpson and Melissa works as a legal librarian for the Portland Law Library Service.

**P. Herbert Schmidt** writes that he is an attorney with the firm of Bartlett & Associates in Portland.

send class news to NewsCat  
Lloyd Bloodworth Newman  
1021 Bigelow Street  
Olympia, WA 98502

## 1975

Hello Class of 1975! Thank you for all the letters and cards telling me about your whereabouts. Please send pictures too if you have them.

**Melissa Backer Hilton** is now living in Lincoln City, OR. She is employed as the community editor for the News Guard. She states that she is "glad to be back in Oregon and launched on my career as a journalist."

**Marion Leanne Elliott Boyet** is a professional dancer/teacher for the Foothill College/Massenkoff Russian Folk Festival. She is also a secretary for Wright and Company, Realtors. She makes her home in Menlo Park, CA.

**Christine E. Goosman** has joined Clay Publicom, Inc. the Irvine-based advertising and public relations firm, as account executive. Prior to joining the firm, Christine was a freelance writer for 18 months, regularly working as a copywriter/reporter for a national trucking magazine, and as an interviewer/photographer for three leading Japanese music magazines. Upon graduation from WU in 1975, she served as a public relations consultant for two Japanese universities, simultaneously teaching English in one of them. Christine makes her home in Tustin, CA.

**Sally M. Allen** is an employment counselor with Snelling and Snelling in Portland, OR. She has been awarded the Honor Circle award, which is the highest award a counselor can receive from Snelling and Snelling.

**Karla Brichfield** has attended three years of school at the School of Nursing, Good Samaritan Hospital, Portland, OR, and one additional year of education at Howard Masters. She is now a registered nurse. Karla makes her home in Portland, OR.

**Stephanie J. Hare** is the manager at B. Dalton Bookseller. She makes her home in Seattle, WA. Her most important achievement since graduation has been successfully managing two profitable B. Dalton Stores.

**Becky Mitchell** is an attorney. She graduated from California Western School of Law. Becky lives in San Diego, CA.

**Patty Campbell Montmorency** graduated in 1976 from American Graduate School of International Management with a Masters. She is employed by BancOhio National Bank, Columbus, Ohio as an international loan officer. Her most exciting adventure since Willamette was traveling through Bolivia and Peru with her husband "unhurried and unscheduled."

**Eric Nelson** is in his second year of graduate school at the University of Chicago. He states his occupation as "perpetual student." Eric says this of his future plans:

"To finish my Ph.D. program, and do research in thought processes, memory, and language.

**Bron Eschell Pellissier** has completed her Masters in student personnel administration/business administration at Oregon State University, 1976-78. She and her husband Tim make their home in Orange, CA. She is the Director of Housing/Assistant Dean of Students at Chapman College. Bron's most exciting adventure since graduation? "Marriage!"

## 1976

**Sarah J. Bell** resides in Portland, OR and is a teacher at Knight Elementary, Canby School District.

**Timothy P. Bunger** is a flight attendant for Frontier Airlines in Denver, CO. He is also attending the University of Colorado in Transportation Management.

**Craig T. Cookingham** is living in Ukiah, Ca an dis in sale sixth Louisiana Pacific Corp.

**Daniel B. Hall** is now living in Orange, CA and is assistant comptroller for Allstate.

**Anna Kosinski** resides in Bend, OR where she is Executive Director for Central Oregon Council Camp Fire, Inc.

**Richard and Christina Clement Ortogero** make their home in Honolulu, HI. Dick is a teacher at Damien High School and Christina is a legal secretary for the law firm of Spencer, Snyder & Sterling.

## 1977

**Teresa Kostol Fritz** received a M.S. in Optical Sciences from the Univ. of Arizona recently. She is now living in Newtown, CT and is an engineer for Perkin-Elmer Corp.

**Stewart W. Jones** received a Masters degree in Economics from the University of Washington in June. He is now living in Seattle, WA.

**LeAnn Oliver** has completed work on her Master of Public Administration degree at State University of New York at Albany. She was selected as a 1980 presidential management intern and will be working as a Program Analyst for the Small Business Administration. She will be living in Arlington, VA.

**Daniel W. Tuttle** lives in Honolulu, HI and is a science teacher at Punahou School.

send class news to NewsCat  
Janie Beyer Grossman  
3554 Lawrence, S.E.  
Salem, OR 97302

## 1978

Hello, I'm Janie, your new NewsCat. I'm currently working as the Development Secretary here in the University House. In my spare time I am working, in collaboration with Judith Cornell, on writing a feature length film along with raising my 14 and 16 year old daughters. I enjoy very much hearing from all the alums. I know there are lots more of you out there doing interesting things—it would be so nice to hear from all of you. Be sure to send your news to the address above.

We got a nice post card from **Elizabeth Graham** who is living in Buckhorn, Kentucky working as a tutor for pre-delinquent, mildly emotionally disturbed adolescent children and a teacher/aid in the Day Care Center at Buckhorn. Elizabeth's home is in Santa Fe, New Mexico where she is pursuing a career in ECE/Child Development. Prior to that she was a volunteer at Friendly House, Inc., in Portland, as an on-staff activities and program director.

**Vicki L. Gordon** is living in Milwaukie, OR working as a swimming instructor for the Clackamas School District.

**Paul D. Alexa** is a Student Instructor at Key Driving School in San Jose, CA.

**Michael and Elizabeth Crapuchettes Miles** live in Portland. Michael is employed as a Mechanical Design Engineer for Tektronix.

**Barbara J. Olson** is teaching at Swegle School right here in Salem.

**Frederick H. Hahn** is living at Eagle River in Alaska. Fred will be a 2nd year Law student at the U of O next year.

**Gary R. and Anita Kudrna Goin** are making their home in Portland. Gary and Anita were married on December 29th. Anita is from Lacey, WA and attended Eastern Washington University. Gary is now a third year med student at UOHSC Medical School and is also the Vice President of the Family Practice Club.

**Kelsey L. Bunker** is presently a Ceptor Coordinator at Multnomah County Juvenile Court and will be attending Lewis and Clark Law School starting Fall of '80.

**Carol L. Schriener** graduated from Case Western Reserve U. (Cleveland, OH) May 1980 earning a M.S.E. in Clinical Engineering. Carol is making her home in Newport, OR.

**Kirk Hofstetter** is making his home right here on the WU Campus at the Kappa Sigma Fraternity House. Kirk is Head Resident, and also Retail Manager for Curly's Dairy, Inc.

**Kenneth M. Shleifer** is Vice President of Broadway Furniture in Portland while he makes his home in Tigard.

**Barry E. Sullivan** lives in Seattle where he is in Marketing Personnel Development with Union 76 Oil Company of California.

**Cara L. Bailey** also resides in Seattle where she is Assistant to the Personnel Director for Northwest Hospital.

**Bruce Cowger** is employed as a Junior Engineer with the Tally Corporation in Kent, WA. Bruce is making his home in Renton.

**Jon Hook** has completed his M.B.A. degree at Baylor University in Texas. While earning his degree, Jon had a graduate assistantship in teaching economics at Baylor. This summer Jon has an internship with First City National Bank in Houston as a Financial Analyst. Jon is still busy serving as the Student Representative to the Executive Committee of Omicron Delta Kappa as well as it's Student Director of the Texas-Louisiana Province.

**Maureen D. Hainley** is teaching music at Anchorage School in Anchorage, AK.

**Anne L. Bettis** graduated from the American Graduate School of International Management in May of this year and is currently working for Monsanto Company as a financial/operational Auditor. She is based at their world headquarters in St. Louis, MO.

## 1979

**Michael G. Contreras** is now living in Jamaica Plain, MA where he is pursuing his interest in music and developing his song writing talents at the Berklee College of Music.

**Leslie L. Kinyon** is a librarian for the Seattle Public Library and resides in Seattle, WA.

**Randolph J. Traeger** is living in Mt. Angel, OR where he is the office manager for Traeger Heating.

**Amy E. Wallace** is a graduate student in Chemistry at Baylor University in Waco, TX.

## Births

To **Bruce Hubbell '65** and his wife, a son was born April 11, 1980. They live in Chico, CA where Bruce is owner of B.R. Hubbell, CPA.

To **Lyn Simmons Deits '66** and husband, D. Paul Deits, a daughter, Briana Michelle was born April 30, 1980 in Bainbridge, WA. They have two other children, Brittany (2) and Brett (4).

To **Jay '66 and Sharon Flanigan Grenig '67**, a son, Robert Jay, born July 2, 1979. They make their home in Waukesha, WI.

To **Todd Dugdale '69** and his wife, Amy, a son, Joel Wynne was born May 20, 1980. Todd, Amy and Joel live in Sherwood, OR where Todd is the city Planning Director.

To **Robert '68 and Shana Bechtel Johnstone '69**, a son, Brady Clinton, born Feb. 25, 1980 in San Francisco, CA.

To **Bruce and Linda Patrick Wright '71**, a daughter, Kristin Louise, born Dec. 23, 1979 in Tucson, AZ.

To **John and Susan Loomis Hamer '72**, a daughter, Erin Ashley, born April 17, 1979. Both Susan and John teach and reside in Lebanon, OR.

To **Robert Lumm '76** and wife, Patricia, a daughter, Tifanie Nicole, was born Feb. 25, 1980. Bob is a career development supervisor for Co-ordinated Financial Planning in Portland, OR. His wife, Patti, teaches at Clackamas Community College.

To **Dennis M. Fast '76** and wife, Nancy, a son, Kaley Grant, born June 4, 1980. They make their home in Dallas, OR. Dennis is a Correctional Counselor III for Oregon State Correctional Institution.

To **Gerald W. Hill '78** and wife, Erika, a daughter, Emily Erika, born Feb. 1, 1980 in Salem, OR. Gerald is a social worker for the Fairview Training center.

To **Thad and Peggy Dyer Knowles '80** a son, Jason Andrew was born in Corvallis, OR on Feb. 3, 1979.

## Deaths

**Dr. Guy Woods '11** died in Portland, OR on March 24, 1980. He worked as a dentist for 35 years, retiring in 1955.

**Bernard Morse '23** died May 19, 1979 in Boise, ID.

**Willard Lawson '23** died in Mt. Vernon, WA on June 26, 1979. He is survived by his wife, **Helen McInturff Lawson '23**.

**Eugenia Baker Allen '27** died April 22, 1980 in Fresno, CA.

**James D. Moyer '39** died in Salem, OR on March 17, 1980. He was an artist for the state Highway Department for 18 years and a flight radio operator for United Air Lines.

**Arthur Wilson '46** died on March 22, 1980 in Roseburg, OR. He had practiced law there for many years. He is survived by his wife, **Eleanor Todd Wilson '44**.

**Helen Stout Ewaliko '49** died in Salem, OR on April 15, 1980. She had been teaching in Willamina for the past 12 years.

**Lt. Col. Thomas A. Elliott '61** died May 2, 1980 in Portland, OR. He had served in the Air Force since 1961 as an intelligence officer.

## Weddings

**Audrey Bliss '52** and Hal Burdick were married on March 23, 1980 in Cupertino, CA. Audrey is an education lobbyist for the California PTA. She is listed in "Who's Who of American Women" 1977-79-81.

**Christine M. Gruber '69** was married June 21, 1980 to Jens Anders Greve. They are living in Copenhagen, Denmark.

**Robert O. Gallagher '70 and Elizabeth Luthy '72** were married recently. They are making their home in Beaverton, OR. Robert is with Freightliner and Elizabeth is employed with Dunhill Temporary Employment.

**Carol D. Ward '71** and John Pedisich were married recently. Carol is Div. Personnel Manager for Tektronix and her husband is Operations Manager of Waterway Terminals, a subsidiary of Crown Zellerbach. They reside in Portland, OR.

**Caryn M. Zanzot '73** was married June 23, 1979 to David Cherpin. They are living in Glendora, CA.

# BULLETIN BOARD

## Back on campus for Alumni Day



CLASS OF 1930: First row: Bill Mumford, Lewis Van Winkle, Robin Moser, Wendell Robinson, Wendell Keck. Second row: George Poor, Frances McGilvra Litchfield, Lydia Childs Isom, Dorothy Taylor Patch, Gaynelle Beckett Alfred, Anna Lanke Van Winkle, Roberta Vanice Boylen, Eugene Silke, Leslie Manker. Third row: Harold Hauk, Violet Beecher Frazier, Marjory Miller Marsh, Mary Hershberger Church, Helene Price Green, Florence Power Scales, Caroline Lam-

bert Simpson, Helen Hughes. Fourth row: Paul Geddes, Leah Fanning Hatrick, Florence Emmons Riggs, Lois Benjamin Gardner, Margaret Bolt Horner, Helen McPherson, Dorothy Gordon Linfoot, Margaret Hogg. Fifth row: Harold Tomlinson, Edward Stadler, Kenneth Mosher, Donna Hildeseim Kramer, Bill Linfoot, Leta Hale Roehl, Evelyn Hartung Zeller, Harold Shellhart, Dorothy Hutchason Pierson.



CLASS OF 1955: Row 1: Neil Daugherty, Bob Alfred, Jerry McNeerney, Norman Dversdal, Judy (Fullager) Hume, Liz (Loving) Bushnell, Mary Jo (Ewell) Gilson, Marie (DeHarpport) Lindsay, Al Siebert, Judy (Finch) Cooper, Ralph Richardson. Row 2: Ruben J. Menashe, Gerald C. Nelson, Joanne (Taylor) Bergmann, Dick Church, Charles Seagraves, V'Anne (Chance) Didzun, Janet (DeWeese) Ackerman, JoAnn (Howard) Seagraves, Pat (Sundstrom) Ellis, Sally (Grimm)

Schaefer, Inez (Adams) Gusey, Bob Straumfjord, Judith (Wood) Kent. Row 3: George Carlisle, Bill Lasswell, Dale Harris, Larry Monk, John Roehr, Jack Phipps, Martin D. Knittel, Tom Yoshikai, Thomas A. Bright, Lewis B. Hampton, Tom Whitehead, Bob Dyer, Bob Schaefer, Dick Gusey, Paul Johnson, Dave Jackson.

AUGUST 1980