

wallulah

1958







The Wallulah—1958  
Willamette University  
Salem, Oregon

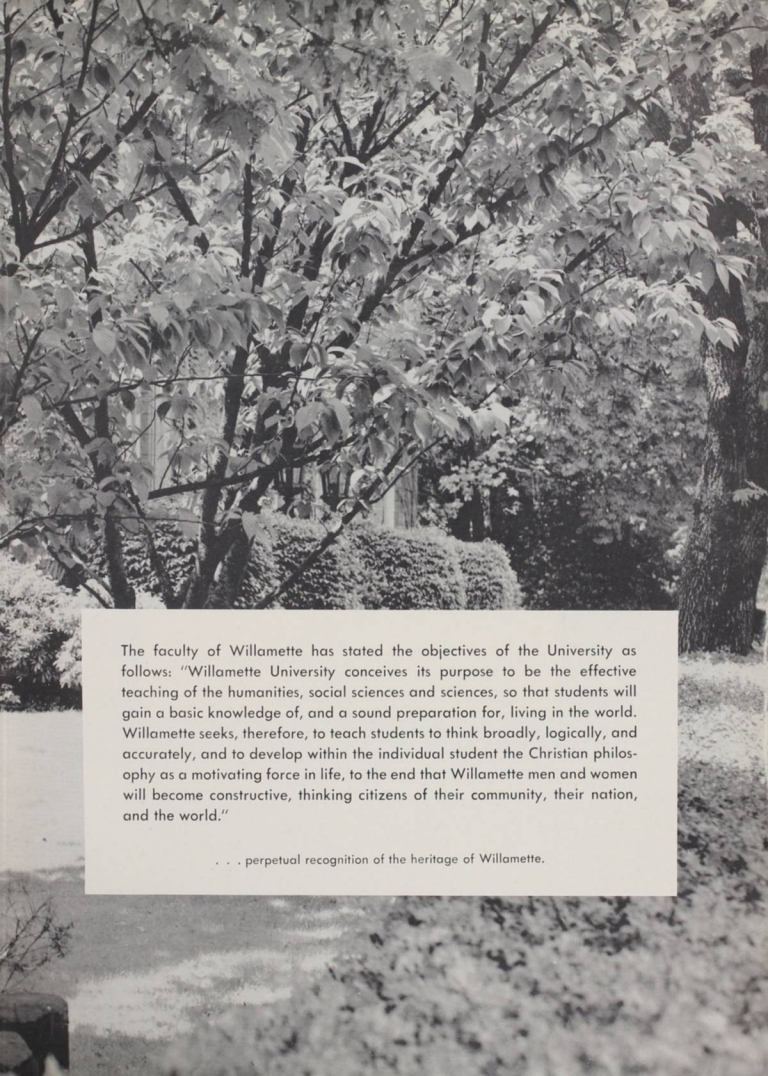


WILLAMETTE  
UNIVERSITY

FOUNDED BY JASON LEE AND  
THE EARLY CHRISTIAN PIONEERS

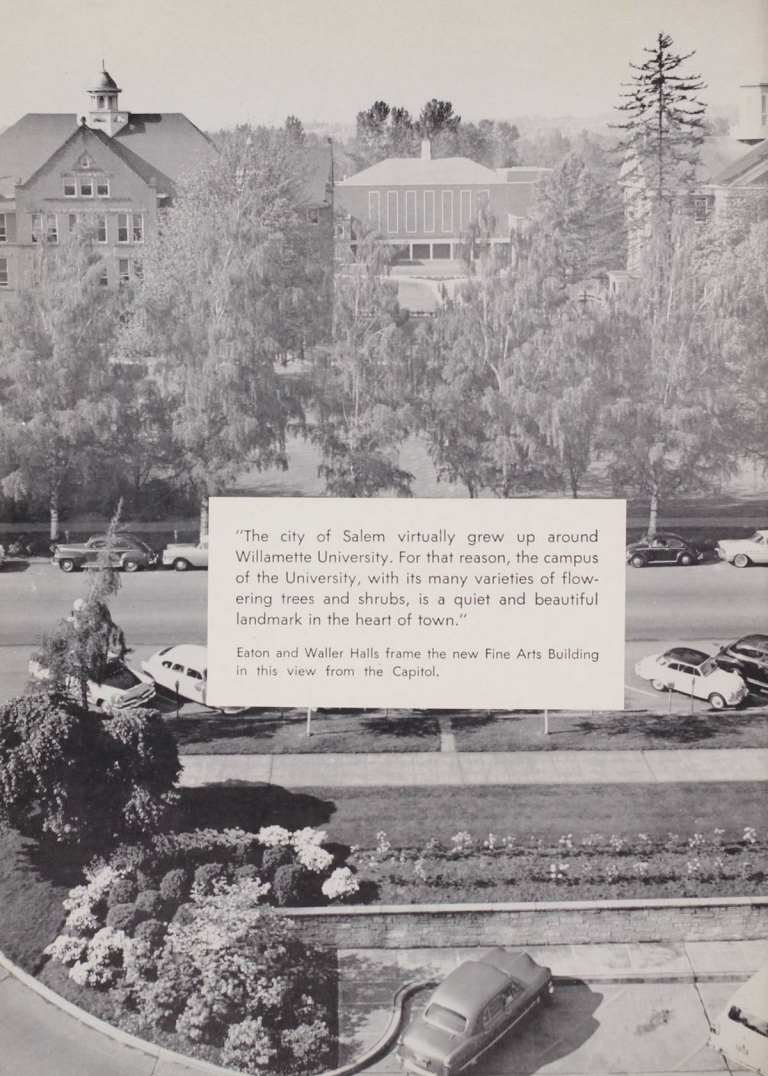
1842

THE OLDEST UNIVERSITY IN THE WEST



The faculty of Willamette has stated the objectives of the University as follows: "Willamette University conceives its purpose to be the effective teaching of the humanities, social sciences and sciences, so that students will gain a basic knowledge of, and a sound preparation for, living in the world. Willamette seeks, therefore, to teach students to think broadly, logically, and accurately, and to develop within the individual student the Christian philosophy as a motivating force in life, to the end that Willamette men and women will become constructive, thinking citizens of their community, their nation, and the world."

. . . perpetual recognition of the heritage of Willamette.



"The city of Salem virtually grew up around Willamette University. For that reason, the campus of the University, with its many varieties of flowering trees and shrubs, is a quiet and beautiful landmark in the heart of town."

Eaton and Waller Halls frame the new Fine Arts Building in this view from the Capitol.

958

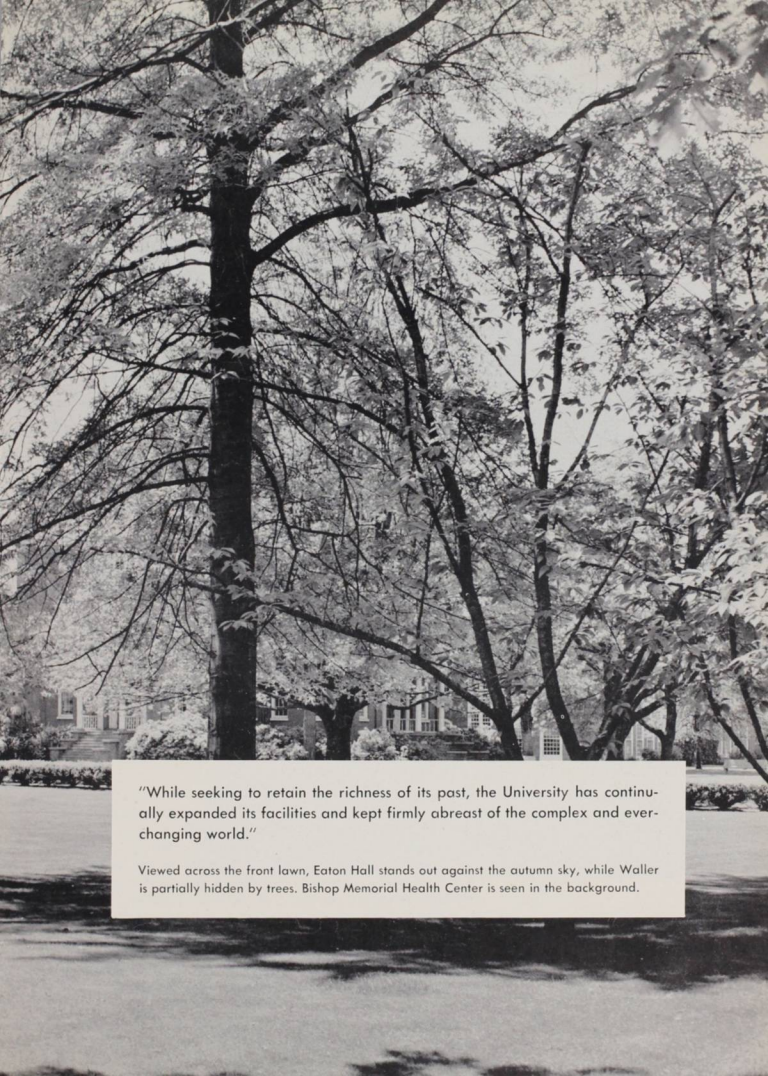
# wallulah

miriam mathews and muriel miettunen  
co-editors

## contents

introduction	2
dedication	8
orientation	16
social events	24
academics	68
aswu	102
sports	110
clubs and honoraries	134
living organizations	160
ads and index	196





*"While seeking to retain the richness of its past, the University has continually expanded its facilities and kept firmly abreast of the complex and ever-changing world."*

Viewed across the front lawn, Eaton Hall stands out against the autumn sky, while Waller is partially hidden by trees. Bishop Memorial Health Center is seen in the background.

dedicated to . . .



Mr. Harold Jory  
Registrar

Mr. Harold Jory, whose father was a WU graduate and professor, has been a full-fledged member of the Willamette family for fifty years. After a college career outstanding in athletics and music he received his chemistry degree here in 1915; he was also active in the foundation of two still-flourishing traditions: the singing of "Farewell Willamette" at senior chapel and "Make Way for the Queen" during May Weekend coronation ceremonies.

In 1946, after some years spent as a teacher — and a mortician — Mr. Jory returned to Willamette, where he has been registrar ever since. During semi-annual registration, which he handles with characteristic good humor, his figure behind the circulation desk in the library is well-known to all students. And they find his office, dealing in such commodities as transcripts, drop-and-add cards, petitions for degrees and GPA's one of the busiest on campus.

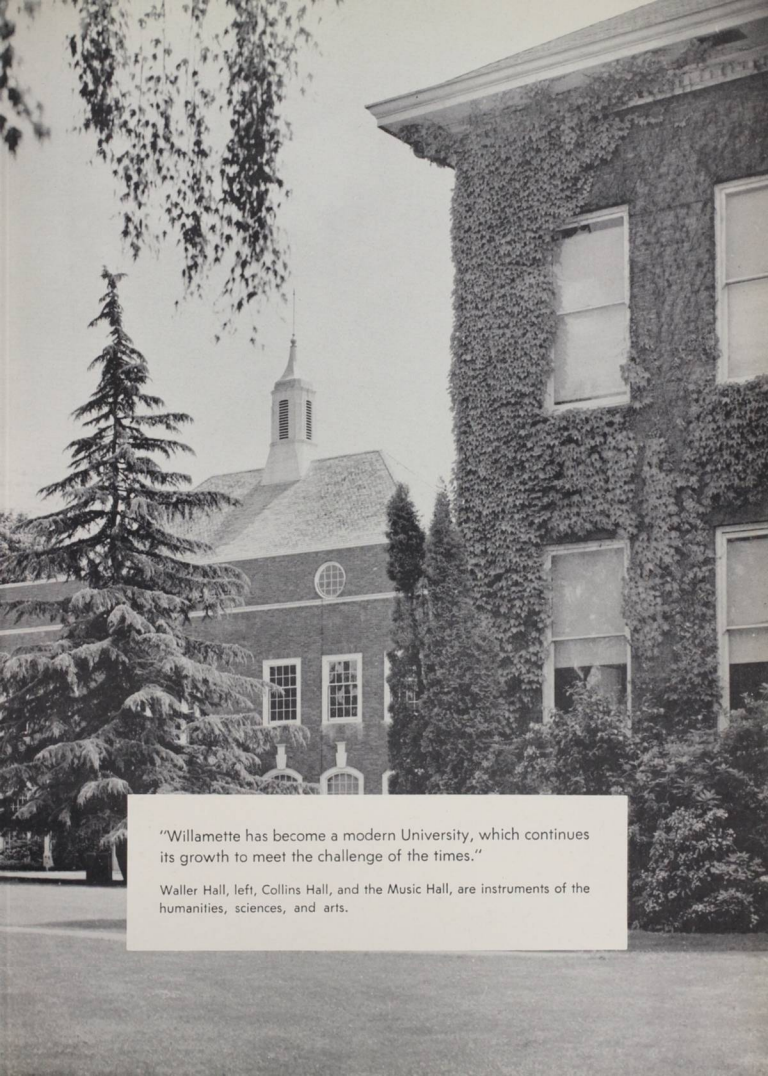
Thought provoking classes, subtle wit, deep knowledge of the subject — these describe Dr. Henry Kohler to any Willamette student. For thirty-two years a member of the faculty, he has taught English courses to most students attending Willamette during that time. Though his major field has been Elizabethan literature, drama and poetry, he has covered a wide range of subjects within the department; his enthusiastic treatment of all has become almost legendary to Willamette students. Those who know him are certain to appreciate his creative approach to the "universals" in the world of literature and the wider perspective he has shared with his classes.

Dr. Henry Kohler  
*Professor of English*



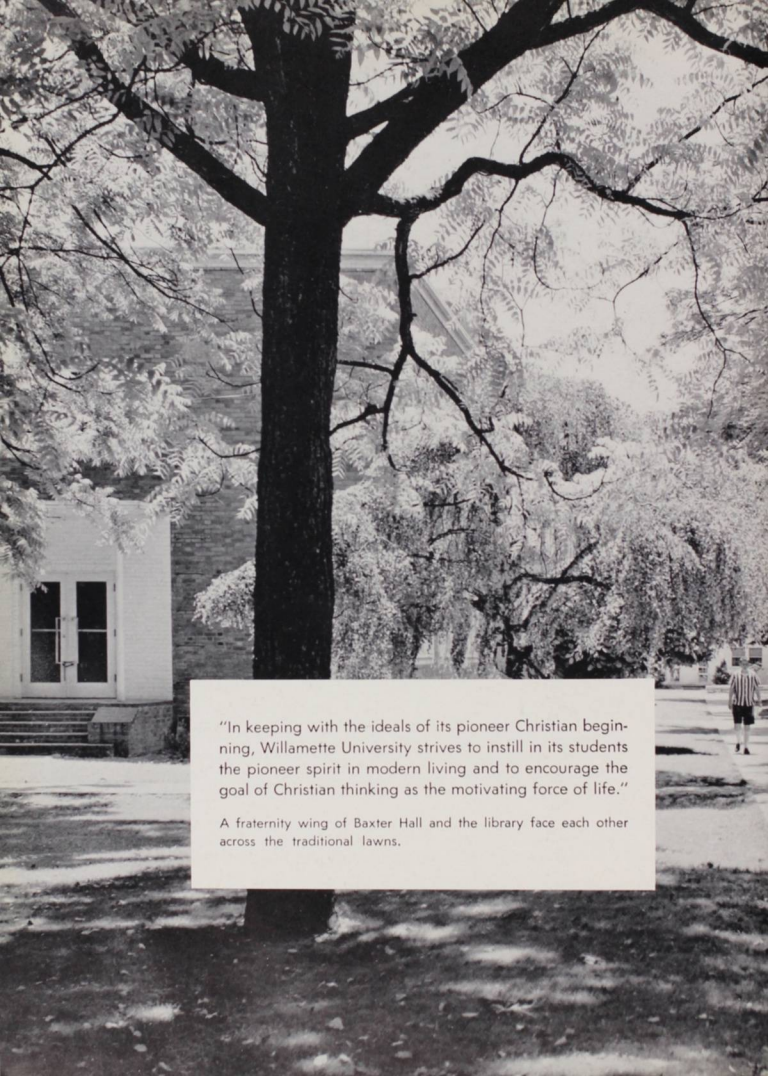
To these two men, Mr. Harold Jory and Dr. Henry Kohler, who by their industry and personal qualities have endeared themselves to the Willamette family, the staff of the 1958 Wallulah dedicates this book.





"Willamette has become a modern University, which continues its growth to meet the challenge of the times."

Waller Hall, left, Collins Hall, and the Music Hall, are instruments of the humanities, sciences, and arts.

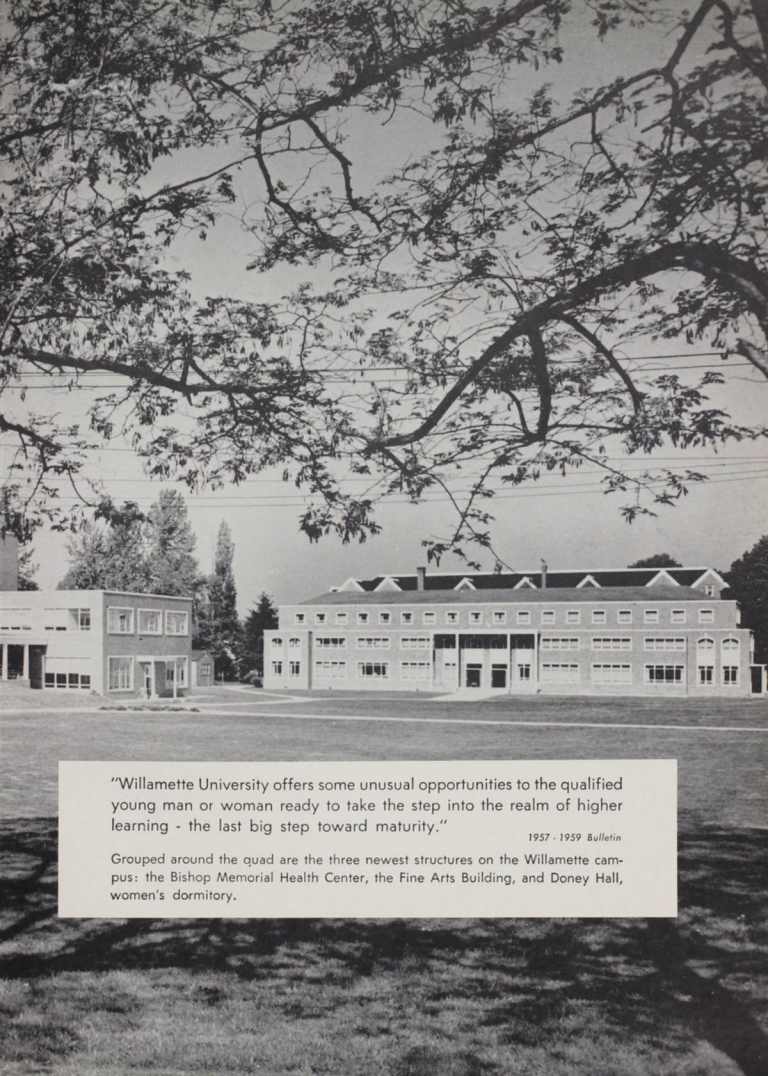


"In keeping with the ideals of its pioneer Christian beginning, Willamette University strives to instill in its students the pioneer spirit in modern living and to encourage the goal of Christian thinking as the motivating force of life."

A fraternity wing of Baxter Hall and the library face each other across the traditional lawns.







"Willamette University offers some unusual opportunities to the qualified young man or woman ready to take the step into the realm of higher learning - the last big step toward maturity."

*1957 - 1959 Bulletin*

Grouped around the quad are the three newest structures on the Willamette campus: the Bishop Memorial Health Center, the Fine Arts Building, and Doney Hall, women's dormitory.



from confusion



orientation

Trees and spacious lawns complement the aged brick of Eaton and Waller Halls.

## w u preview



Charles Paeth, Director of Admissions, was one of the first to meet the freshmen — by letter, application blank, or personal contact.



Looking busy but calm, Dorthea Fravel assisted the Director of Admissions.

Energetic Richard Yocom, Admissions Counselor, worked closely with Mr Paeth.



Himself a WU graduate, Charles Ruud — Director of Information — was often found beating out a blurb to publicize the university.



First for the new students was Orientation Week. This not only introduced them to study life at Willamette, but also showed them the social side. These pages follow the freshmen through Orientation Week with all its ceremony—a new student's introduction to Willamette.

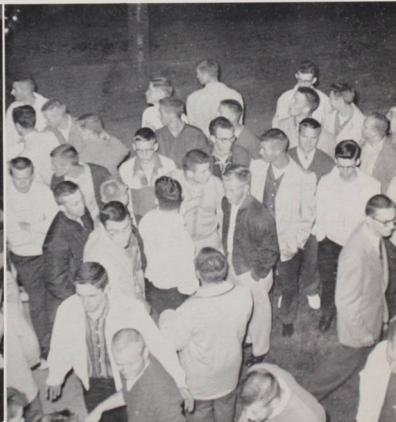
Carol Woodbury made one of the last steps for the Freshman X-Ray.



Judy Olsen, Nettie Hansen, Barbara Smith, Bill Seawell, and Dick Hill, Willamette's Rally Squad, entertained during the Freshman Mixer.

One of the highlights of rush was the new pledges' return to their homes for informal pledging and a get-together with their sisters.

After informal pledging, the Phi Delt entertained the new Chi Omega pledges with a traditional serenade.





Blanche Christensen, Helen Brewster and Lillian Haytack helped Suzy Platt fill out her petition for graduation.



Dean Ewalt, Jean Warden, and Lewis Bright signed registration books after they were sure all requirements were complete.

On registration day, the library was the busiest place on campus.



Willamette's registrar, Mr. Jory, thankful that registration was over, started planning for the next registration.



Like many others, this new Willamette student consulted with advisor Mr. Mader about his course.



Dr. Petrie, financial Vice-President, made the final entries in his ledger.



Another milestone in the line: Lynne Coleman held her checkbook in readiness while Mrs. Brumfield typed Ann Barber's fee slip.



Efficient members of the student body office staff rewarded those who survived the registration line with student body cards — their passports to campus events.



Ellen Fromm worked busily to keep up with the financial reports.



Even as registration was completed, book lines awaited us.



With a streamlined setup and extra help recruited for the registration rush, Mrs. Larson filled book orders in record time.



Janice Adams looked at schedules, found books and filled out endless slips in the bookstore.



YWCA Big-Little Sister party succeeded in acquainting the girl with the campus.



Jerry Carlson dejectedly thought about paying for his stack of books.

A traditional part of being a freshman is the wearing of rook lids. These girls looked sadly at the lids and wondered about their hair-dos.





Willamette's trees blossomed in the fall, as semi-yearly election fever hit the campus.



Frosh president Kevin Midlam conferred with an eager crew of fall officers: Vice-President Sue Jenkins, Secretary Kayla Henry, Treasurer Ann Harper and Sergeant-at-Arms Tom Chase.

## deans advised, socialized

With keen interest in student welfare, Willamette's personnel deans, Regina L. Ewalt and Elmer C. Rieck, kept a watchful eye on both academic pursuits and extracurricular activities. Added to daily schedules was an endless round of social functions, enabling them to meet with students outside those jam-packed office hours. At the end of first semester Dean Rieck obtained leave of absence to complete work on his doctorate at the University of Wisconsin, and Richard Yocom took over as acting counselor for men during the remainder of the year.

parent's Weekend gave students, parents and faculty opportunity to become better acquainted. Dean Rieck conversed with sophomore Rusty Beaton and his family during Saturday afternoon's get-together in the library.



Over cider and doughnut holes, Dean Ewalt chatted with freshmen Barbara Hoffman and Carol Woodbury at the fall Smarty Party. Honoring scholarship holders, this annual function was sponsored by Cap and Gown; Dean Ewalt assisted members in a brief description of the honorary's purpose and activities.



the

Willamette lawns are a favorite spot for studies and social life.

spice of life



## convocations brought variety

Tuesday morning convocations, a traditional feature of Willamette life, sought both to educate and to amuse. Alberta Tetrick and Jo Heald planned programs ranging from "last lectures" by Willamette professors and excerpts from drama department plays to Rally Squad tryouts. Also featured from time to time were noted visiting speakers.

Assisted by convocations manager Alberta Tetrick and ASWU president Wayne Carr, Dean Gregg packed his suitcase for a world tour after his "last lecture."



Barney Bearcat and the Honeybears led the student body in a cheer at a rally during basketball season.

At one Tuesday convo, AFROTC candidates for Little Colonel were introduced. They were Pat Duffy, Barbara Royer, Drury Spurlock, Janice Bean, Beth Kelso and Jo McNary.



Coach John Lewis presented members of the basketball team to the student body.



For the annual Founders and Benefactors Day, held in conjunction with midyear graduation, Mary Beth Van Cleave spoke about benefactor General William H. Odell, president of the Board of Trustees during the 1890's.

Always well attended, teas have the dual purpose of giving students a rest from their books, and an opportunity for meeting new people in a relaxed, informal atmosphere. First event of the Willamette social season was the Angel Flight tea which introduced this adjunct of AFROTC to militarily minded freshman women. Next was the Cap and Gown Smarty Party honoring women who held scholarships. The Pi Phi tea gave students the occasion to meet Mrs. Sawyer, housemother, and to enjoy Pi Phi hospitality. Because of the flu epidemic, the Baxter Hall and Delta Gamma teas were postponed for a month, but were enjoyed the more for the wait.



Pete Leveton helped Sheila Tomlin and Alice Eastman fill out questionnaires at the Angel Flight rush tea, held early in the semester to acquaint women interested in the AFROTC with Willamette's women's auxiliary.



Scholarship holders Barbara Smith and Carolyn Frey enjoyed the cider served by Cap and Gown members Nancy Groth, Lucy Myers, and Anita Booth at the annual Smarty Party.



Joan Sherrill helped herself to coffee at the Pi Beta Phi tea honoring their visiting province secretary.



President Ann Barber and housemother Mrs. Merservy, heading the reception line at the Delta Gamma tea, chatted with Mrs. Wooton and Frank Tannehill.

## visiting folks palavered, played



Parents' Weekend manager George Hoyt illustrated its theme, the "Guiding Light."

October sunshine and warm weather greeted parents who visited the campus for Parents' Weekend. Starting the weekend events was "Trial by Jury," Gilbert and Sullivan operetta, which was enjoyed by an overflow crowd. Saturday was a busy day for parents as they went from meetings to barbecue to library conferences with their sons' or daughters' professors. An addition to Parents' Weekend was the non-competitive all-campus sing—moved from May Weekend. After supper with their off-spring, the parents watched an exciting football game with Lewis and Clark.



Jilted bride Jo Hansen sang her woe to Judge Mac Baker and the rest of the cast of Gilbert and Sullivan's farcical "Trial by Jury."

Gathered in the Fine Arts Building, parents heard about the Willamette campus and renewed friendships of past years.



Love conquered all in the finale of the Parents' Weekend musicale.



Mr. Eugene Card introduced Dr. Kaestner (unseen behind lecturer) to the parents as Wayne Carr, Mrs. Hoyt, George Hoyt and Dr. Smith watched from the stage.





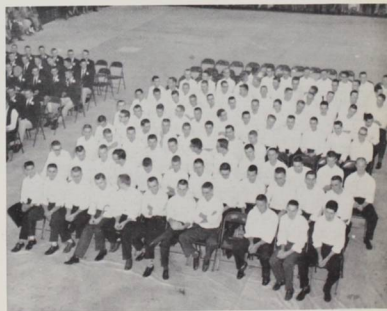
Parents waited with their sons or daughters to attend the traditional barbecue.



Everyone was eager to finish lunch and continue with the day's activities.



Students displayed their talents in a "song fest" among living organizations, demonstrated by the women of Alpha Chi Omega.



"Why don't they hurry?" asked the fellows as they waited to sing.



During the library conferences with the professors, parents were able to inquire about the progress of their sons or daughters.



Parents greeted old friends and made new ones during the coffee hour in Baxter Hall.



Dick Hill and his parents were among the many to meet Dr. Luther during the conferences in the library.



Members of Cap and Gown served coffee to parents at the Parent-Faculty coffee in Baxter Hall.



Parents' Weekend manager, George Hoyt took time from a busy schedule to discuss the problem of garbage disposal with barbecue chairman, Dick Audley.



These Willamette University coeds donated their dollars during the Campus Chest drive this fall.



Ted Cook, Campus Chest manager, reached his goal for this year.

## campus chest

'Beat last year's goal of \$1250' was the '57-58 Campus Chest drive. Each year WU students are asked to donate their dollars. The drive collects funds to assist organizations like foreign student aid, YWCA, YMCA, UNESCO, and a scholarship fund for Negro students.

## official efficiency

Familiar to most students were the secretaries to President Smith, Dean Ewalt and Dean Rieck. Mrs. Ryan, Mrs. Warden and Mrs. Sisk must have answers for all types of questions, along with their regular duties as secretaries for the President and Deans.

Kept busy most of the day with official business of this university, Mrs. Esther Ryan, secretary to President Smith, still has time to consult with students.



"May I help you?" is a familiar phrase used by Mrs. Jean Warden, secretary to Dean Ewalt, when students enter the Dean's office.



Activities in the Dean of Students' office helped to make the days pass very quickly for Mrs. Ruth Sisk, secretary to Dean Rieck.



Willamette's Homecoming Hostess, Martha Eagleson, was the junior girl selected by the student body to welcome returning alums and reign over the weekend's traditional events.





Candidates for the title of the ugliest man on campus displayed their qualifications to begin the events leading up to Homecoming. Standing: Dick White, Bill Joseph, Howard Stroebel and Andy Kuehn. Seated: Dan Pettit, Tom Gail and Jerry May.



Decked out in Homecoming mums of Willamette's traditional cardinal and gold, these two alums enjoyed greeting old friends over a cup of coffee after the game.

## alums returned

Greeting the alums this year was the Asiatic flu bug — a part time stand-in for the homecoming schedule. Around those activities replaced as a precautionary measure were the sign contest, Varsity Varieties, the freshman leaf rake, and the bonfire in Bush's pasture. From the student's point of view, the infirmary, flu shots, and thermometers were substituted. However, the pre-game rally, ugly man contest, the WU Pacific game and Homecoming Dance — in addition to the alum visits — survived the annihilation of the schedule.



In their first public appearance, the newly organized Honey Bears presented their version of the Charleston during the halftime at the Homecoming game.



One of the highlights of Homecoming was a semiformal dance, honoring the alums, which was held Saturday night in the gym.



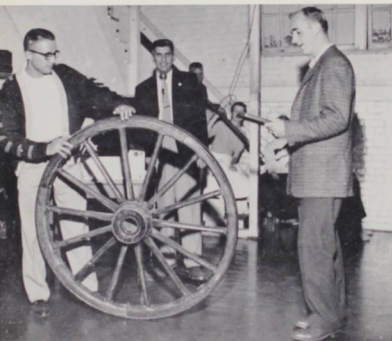
While Bob Boss and Dick White applauded, Homecoming Hostess Martha Eagleson performed one of her official duties by awarding the Ugly Man trophy to Andy Kuehn, Doney Hall's candidate.



During October, campus activities were halted by the advent of Flo the Flu Bug, who limited events to classes.



Revelry, the hallmark of Halloween, inspired students with this impromptu dance in the library.



To Willamette went the spoils of the Lewis and Clark-Willamette game as Don Pinnock, their president, relinquishes the "wooden wheel" to Wayne Carr.



Kangaroo Kourt was the annual determinant that freshmen could take off their rook lids. Here Chuck Shields and Pat Montgomery worried about digestion as they drank cokes while standing on their heads.



Football was taught to these women violators of freshman rules by the lettermen.



During his visit as speaker for the third annual Willamette University Lecture Series, the Right Honorable Anthony Nutting discussed international affairs with President Smith.

Throughout his sixteen years as president of Willamette University, Dr. G. Herbert Smith has endeavored to bring the students the best in equipment, faculty and cultural opportunities. Devoted to maintaining a balanced liberal arts education at Willamette, he has tirelessly dealt with the myriad problems of any large group living and working together. In this policy of obtaining the best that is possible, Dr. Smith has been instrumental in the Willamette University Lecture Series, which has covered thus far religion, literature, and foreign affairs.

## vision in administration



Dr. Smith displayed proposed building plans for the university's long-range enlargement program.



Following his evening lecture, Mr. Nutting was honored at a reception in Doney Hall, where Salem townspeople and students were given an opportunity to meet and talk informally with him.

## sweetheart of sigma chi



From twenty-six girls representing all women's living organizations, the men of Sigma Chi chose Midge Scott, Alice Eastman and Jean Sanford as finalists in their annual Sweetheart contest. They were honored at a formal dance in the Gold Room of the Marion Hotel, where Miss Eastman was crowned Sweetheart of Sigma Chi.

## queen of violets



As Sigma Alpha Epsilon Violet Queen, Marcia Humphrey reigned over the Violet Ball November 15. Her court was, *left to right*: Connie Snow, Elaine Buckinger, Pat Holcomb, Beverly Fulton and Barbara Royer. At their traditional kidnap dinner the SAE's informed the girls that one would be chosen Violet Queen.



Dr. Adolph Weinzirl elaborated on his theme, "The Role of Values in Maintaining Mental Health," in an informal discussion with CR Week committee members Joan Sherrill, John Heidel, Dave Steward and Warren Walker following his Tuesday lecture.

## what do you live for?



"Student Values in the World and At Willamette" was the topic of a panel presented by Dr. Shay, Dr. Schulze and Dr. Zeigler. Warren Walker introduced these speakers at Wednesday's convocation.



Rev. Clarence Forsberg of the First Methodist Church in Eugene spoke to the Thursday chapel about values in religion.



David Charleston (Bob Higbee) and his friend Streeter (Dan Feller) discussed the former's past successes while Chang (Steve Hane) sat disinterestedly by.

Highlighting the Christian Resource Week theme — "What Do You Live For?" — was an early December production of Robert Arbrej's *Thunder Rock* by the drama department. In the play, embittered lighthouse keeper Bob Higbee discovered his old self-confidence and role in life, aided by ghosts from a ship wrecked on the rocks years before.

## thunder rock

About to leave the island, Charleston gave last-minute information to Cassidy (Alan Zehntbauer), and Inspector Flanning (Jack Knopp) urged him and Nonny (Laurel Tiller) to the plane.



Their true condition revealed, the ghosts appalled Charleston by their hopelessness.

## afrotc selects top brass



At the annual Military Ball, sponsored by the AFROTC unit, Janice Bean was pinned with the silver wings of a Little Colonel. With Little Captains Pat Duffy and Barbara Royer, she reigned over WU's first all-campus formal of the year, December 13 in the gym.



The six candidates for the AFROTC Little Colonel chosen by their living organizations were Jo McNary, Beth Kelso, Pat Duffy, Janice Bean, Drury Spurlock, and Barbara Royer. The AFROTC picked three finalists from this group.

## wings for a little colonel

First formal all-campus dance of the season, this year's Military Ball lived up to its glittering past tradition. Sponsored by the Willamette AFROTC unit and honoring Little Colonel Janice Bean and her Little Captains Barbara Royer and Pat Duffy, the gala function was held in the Crystal Gardens Ballroom.

Little Colonel Janice Bean received her wings from Cadet Colonel Jerry Ackerson while Pat Duffy and Barbara Royer conversed excitedly.



Lausanne Hall and the Chi Omegas gathered around the Christmas tree for a caroling session with the WITS and men of Baxter.



Celebrating their first appearance as a drill team during half-time entertainment, members of Angel Flight sponsored an all-campus sock hop following a January basketball game.

Chuck Foster, Baxter song leader, directed a group of firesiders in Christmas carols.

## winter fun

Though Salem missed its share of snow, WU students had a full schedule of winter activities. Pre-holiday included traditional caroling firesides, parties for underprivileged children and informal tree-trimming sessions. Following finals, WU was one of the fifteen Northwest schools participating in the Snow Carnival at Mt. Hood, while Wesley sponsored its annual Ski Spree at Hoodoo Bowl.

Snow princess who had never skied — WU's choice for the court of the February Snow Carnival at Timberline Lodge was Sandi Harris, junior from California.



After a long day on the slopes, ski enthusiasts at Hoodoo Bowl organized a back-rubbing marathon to combat sore muscles.



Bill Larson, Pat Duffy and Jo Hansen entertained with novelty songs.



Red and white streamers decorated the American Legion Hall for the annual AWS dance in honor of Betty Coed and Joe College.

## coeds coordinated dance



Starting the spring with excitement, AWS members presented their annual dance this year in the American Legion Hall. Climaxing a formal evening of dancing and entertainment was the choice of two Betty Coeds and a Joe College as typical WU students. Also specially honored at the dance were AWS Coeds of the Month and Dean Ewalt.

Elected by students attending the dance, Joan Sherrill and Gloria Carver shared honors as Betty Coeds, while John Jelderks was named Joe College. Announcement of the court climaxed an enjoyable evening.

## summer and smoke

Third play presented by the drama department, *Summer and Smoke* gave its cast problems of both characterization and dialect. Like most Tennessee Williams plays, it dealt with the decadent South, and its characters included a neurotic spinster, her insane mother, and an undisciplined young doctor.



To Alma and her father (Wayne Haverson), the insane Mrs. Winemiller (Barbara Bredsteen) was a cross they had to bear.



Under the angel of the park fountain, Alma Winemiller (Mary Beth Van Cleave) renewed her acquaintance with Dr. John Buchanan (Mac Baker). But the entrance of Rosa Gonzales (Gail Boden) distracted the doctor from his prim companion.



In the finale, the entire cast assembled on stage, a stylistic representation of the parsonage, the park fountain, and the doctor's office.

Directed by concert series manager Chuck Marsters, the Distinguished Artist Series brought back Kovack and Robovsky, the Russian ballet team that was so popular last year to begin the season November 28. Baritone Leonard Warren and pianist Seymour Lipkin were featured during the year, and in the final concert in March, world famous contralto Marian Anderson drew a capacity audience.



Leonard Warren, baritone soloist with the Distinguished Artist Series, was cordially greeted by this year's concert series manager, Chuck Marsters.



Backstage after her concert, Marian Anderson graciously signed programs for her admirers.

## concert series



Members of the Russian ballet troupe began the year's Distinguished Artist Series with a colorful and artistic program.



Glee manager Dale Daniel conferred with committee members during a planning session in Lausanne Hall.



With co-chairmen for each sub-committee, the class of '61 did special research on Glee's beginnings and history and capably produced "Golden Glee."

## freshman glee

For this year's presentation of the annual Freshman Glee, 532 Bearcats marched onto the risers, sang their respective songs, and marched off to await the results of five o'clock practices. Winners of the Fiftieth Glee were the seniors, with the juniors, sophomores, and freshmen following along. Honored at Glee was the class of 1912, originators of the song contest.



Released from captivity by the sophomores, freshman president Paul McGilvra issued the official challenge. Al Siebert, concerned with more serious pursuits, first declined, but a burst of latent senior enthusiasm led to final acceptance.

## freshman class officers



Paul McGilvra,  
president  
Bill Graham,  
vice-president  
Gail Larsen,  
secretary  
Ann Laird,  
treasurer  
Steve Berglund,  
sergeant-at-arms

Gathered around the piano, song leaders Tom Elliott, Janet Jamison, Gail Boden and Ron Kingsley discussed the fine points of an arrangement.



Tony Meeker, Ron Walker, Larry Willingham and George Hoyt pooled past experience and new ideas as class formation leaders.

During the challenge assembly, sophomores predicted a sedate fight song from the seniors.



Donning black paper ears, seniors reverted to childhood with their Mouseketeer parody.

Winning with 311 points after a year in second place, the class of '58 presented "Bearcats to Victory." From a scoreboard showing a 19 to 58 victory, seniors reminisced as they marched their clock, rose and oak off the risers.





As Dr. Schulze studied the results he held, nine freshmen stood poised for flight. Coeds holding the banner were Marilyn Wright, Alice Stewart, Sherri Jenkins, Drury Spurlock and Carol Hobbs, while Dorr Dearborn, Dick Krebs, Jim Travis and Dave Meyers formed the honor guard.



Losing all their reserve, overjoyed seniors mobbed the risers to claim their third Glee banner.

While the judges retired to make their decision, Bill Snow and Mary Shiels rocked the oxcart in a spirited dance routine, part of the "Supplement to the Chronicles."



With rolling eyes, the juniors' Barney Bearcat presented "The Cardinal and Gold" and claimed second place with 304 points.



During the minutes of suspense after all classes had performed, freshman Bob Trelstad conducted a spot interview which proved to be a mock history of Willamette and Glee.

Forming a cardinal "W" on a golden shield, sophomores dropped from last year's first spot to third with "Cardinal and Gold."



As the Wright brothers, Bill Richter and George Rogers brought the AFROC to Willamette during the entertainment.



Despite assurance that "freshmen never lose," the class of '61 — 224 strong — found their "Bearcat Locomotive" headed for fourth place and the mill stream.





Freshman Neil Hutchinsen surveyed the Blue Monday situation from atop a column behind the library.

Dennis Toomey seemed unconcerned by a lack of modern conveniences.

Under the gray skies and drizzles that invariably seem to accompany Blue Monday, students drifted around the campus — paying off, collecting or just observing the zany bets. High point of the day was the convocation presented by the losing freshmen, followed by their mass migration through the mill stream.



## ... to blue monday

Under a shining shield (i.e., garbage-can lid) the freshmen gave their version of the class of '60.



Freshman class president Paul McGilvra, dressed for the occasion, crowned senior prexy Al Siebert with a triumphal wreath.



Supplied with inner tubes and old clothes, the frosh splashed through the mill stream — and dampened several spectators in the process.



Under the direction of manager Dick Hill, blood drive participation was encouraged through competition.



They lined up to be questioned and tested. . .



. . . and then gave blood as this student did.

Despite flu, "Keep healthy and give" was the slogan of WU's blood drive. Best results for a spring drive - 243 pints - were obtained from students and faculty.

## "keep healthy and give"



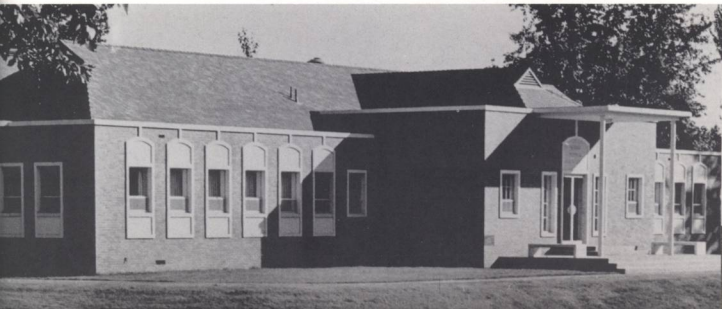
With stethoscope poised for action, Dr. Ralph Purvine was ready for ailing students.



Henrietta Althoff - known as Hank by most students - capably administered pills, took temperatures and gave shots to her charges.

Bishop Memorial Health Center, under the guidance of Dr. Purvine and Mrs. Althoff, was the constant source of throat lozenges, cough remedy and even band-aids. This year traffic to the infirmary was especially heavy as the flu bug threatened to bite in late fall, and a measles scare hit campus in spring.

Comfort and convenience of modern Bishop Memorial Health Center made being sick ALMOST nice .



## lettermen feted five



Bill Long, president of the Willamette Lettermen's Club, placed a crown of rosebuds on the head of freshman Sue Webber, this year's Varsity Queen.

Before the announcement during intermission, the five queen candidates waited in a row. Left to Right: Kathy Evans, Pat Holcomb, Gail Larson, Midge Scott and Sue Webber.



This spring the Willamette Lettermen's Club chose a court of five freshman girls to vie for the title of Varsity Queen. Their choice was announced at the annual Varsity Ball, first formal event of spring.



Del Cummings, Tom Caylor and Pat Montgomery provided intermission entertainment with instrumental and vocal treatment of folk songs.

Despite the rainy evening, many couples enjoyed the Varsity Ball. Held in the WU gym, the dance featured scenes of athletic events and pictures of the court.



With efficiency their by-word, the WU secretaries help keep the school running smoothly. In every office — from the dean's to the business office — these women fill those vital positions and handle necessary business.

## business, too



Dora Howard  
accountant



Dorthea Fravel  
secretary to the director of information



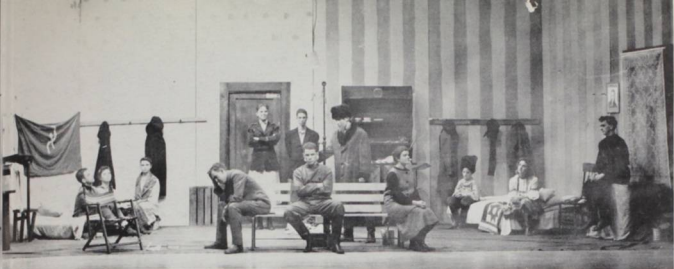
Margaret Maris  
secretary to the director of development

Janell Loewen  
secretary to the dean of students



Naomi James  
cashier





With marital and political difficulties resolved, the entire cast of this farcical blend of romance and Communism assembled for a final curtain call.

## squaring the circle



While their poet-landlord sang on a park bench in the center of the room, the two young couples attempted to live their separate lives.

For the season's final production, the drama department chose Valentine Katayev's "Squaring the Circle"—a frothy comedy satirizing Communism. Two pairs of newlyweds found sharing a room disrupted their "workers' solidarity" and—after complications were added by an old party leader, a deadbeat poet and a Communist investigating committee—solved the problem by switching partners.

Barely concealing their impatience, the mismatched couples (Barbara Bredsteen, Dick Geer, Judy Dalton and Ross Stephen) listened to an impassioned recitation by the poet (Bob Braddy.)



## welcome

Following the play Friday night, Mortar Board sponsored a reception honoring Queen Jeannine and her court.



Once again WU welcomed May—and visiting high school seniors—with a weekend of special festivities. Under direction of May Weekend manager Gordon MacPherson, the weekend officially began with Friday's drama department performance of "Squaring the Circle," followed by a reception in Doney Hall. After an academic preview Saturday morning, guests attended coronation ceremonies, a noon barbecue, track meet with Whitman and A W S fashion show. This activity-packed day was climaxed by the annual Queen's Ball, last all-campus formal of the year.



One of the most colorful features of the coronation ceremonies was the winding of the May pole by a group of freshman women .

Led by a dozen heralds, the queen and her court approached by a broad walk lined with flowers, pennants and the traditional sophomore daisy chain.

# seniors



Before a flower-decked arch, May Queen Jeannine Mercer took her place with princesses Sharon Allen, left, and Anita Booth, to enjoy the special entertainment after her coronation.



Final feature of the coronation ceremonies was the traditional planting of the magnolia by Queen Jeannine.



The Queen's Ball, with the theme "He Loves Me - He Loves Me Not," climaxed the weekend for a large crowd of students and guests.



Saturday afternoon brought a showing of round-the-clock styles presented by AWS for visiting senior girls.



queen jeannine



princesses sharon and anita

# 151 earned degrees



Ackerson, Gerald G.  
Salem, Oregon  
Psychology



Aldinger, Paul W.  
Hillsboro, Oregon  
Political Science



Alexander, Laurel R.  
Sunny Valley, Oregon  
Political Science



Allen, Sharon K.  
Walla Walla, Wash.  
English



Armanino, Robert C.  
San Mateo, Cal.  
Political Science

Backlund, Victor L.  
Bandon, Oregon  
History

Baker, Lucian M.  
Salem, Oregon  
Speech and Drama

Bates, Sharon J.  
Salem, Oregon  
Biology

Barber, Ann  
Eugene, Oregon  
Music

Bartell, Donald Robert  
Dallas, Oregon  
Biology

Beebe, Mary E.  
Newport, Oregon  
Art

Beebe, William C.  
Salem, Oregon  
Mathematics

Blakely, Marilyn A.  
Salem, Oregon  
Music

Booth, Anita G.  
Kanab, Utah  
Political Science

Borsberry, James R.  
Dallas, Oregon  
Biology

Boss, Robert J.  
Clackamas, Oregon  
Psychology

Bowker, John K.  
Porterville, Cal.  
Economics

Brackins, Jerry A.  
Seattle, Wash.  
Sociology

Braddy, Robert E.  
Monterey, Cal.  
English





Bright, Phillip L.  
Medford, Ore.  
Speech and Drama



Butler, Fred M.  
Salem, Ore.  
Economics



Campbell, Robert  
Salem, Ore.  
Economics



Campbell, Warren A.  
Seattle, Wash.  
Mathematics



Carson, Annette M.  
Portland, Ore.  
Music

Cauble, John  
Salem, Ore.  
Psychology

Chambers, Elizabeth Ann M.  
Roseburg, Ore.  
Home Economics



Chambers, Frederick G.  
Sweet Home, Ore.  
Political Science



Chanda, Richard N.  
Bonneville, Ore.  
Chemistry



Clark, Constance L.  
Medford, Ore.  
Sociology

Coates, Vernon E.  
Salem, Ore.  
Economics

Conway, Michael J.  
Salem, Ore.  
Economics

Mixing business with relaxation, the fall officers for the class of 1958, Bill Long, president; Joyce Hill, secretary; Jim Wells, vice-president; Warren Campbell, sergeant-at-arms; and Frank Tannehill, treasurer, worked out last minute details over coffee.



Corey, Eugene  
West Linn, Ore.  
Chemistry

Crecelius, Lyle E.  
Salem, Ore.  
Chemistry

Day, L. B.  
Salem, Ore.  
Political Science



Friesen, Myra J.  
Dallas, Ore.  
Music



Fulmer, Jeanette  
Salem, Ore.  
Foreign Language

Gail, Thomas A.  
Medford, Ore.  
Biology



Gillett, Marion J.  
Roseburg, Ore.  
Religion

Goodier, Barbara A.  
Portland, Ore.  
Economics



Gwilliam, Esther W.  
McCall, Idaho  
History

Hartley, Richard L.  
Salem, Ore.  
Physical Education



Haverson, Wayne W.  
Salem, Ore.  
Economics

Hill, Joyce A.  
Portland, Ore.  
Psychology



Hofstetter, Merlin I.  
Silverton, Ore.  
Philosophy



Holloway, James  
Sutherlin, Ore.  
Music

Horsley, Loretta M.  
Salem, Ore.  
Psychology

Hoyt, George W.  
Portland, Ore.  
Economics

Everts, Edwin C.  
Portland, Ore.  
Chemistry



Eberhardt, Judith M.  
Silverton, Ore.  
Political Science

Feller, Mary Beth V.  
Silverton, Ore.  
English



Fowler, Jac L.  
Sutton, Wash.  
Mathematics



Preparing for comps, Darr Johnson fortified himself with books we'd never seen before.



Huntemann, Roger L.  
Medford, Ore.  
Music

Lane, Lola A.  
Cleveland, Ohio  
Music



Johns, Thomas A.  
Pendleton, Ore.  
Economics

Lebold, Frank C.  
Salem, Ore.  
Music



Johnson, Darr G.  
Manchester, Wash.  
Political Science

Johnson, Gerald G.  
Salem, Ore.  
Music



Jones, Dianne F.  
Vancouver, Wash.  
Art

Kay, Henry J.  
Salem, Ore.  
Physics



Kingsley, Ronald K.  
Beaverton, Ore.  
Music

Klarr, Dean F.  
Salem, Ore.  
Religion



Korean embassy official Pyo Wook Han delivered the Commencement address, "We Have No Choice but to Choose."



Knapp, John H.  
Portland, Ore.  
Foreign Language

Krause, Mary L.  
Seattle, Wash.  
English

Lim, Daisy  
Medan, Indonesia  
Music



Lloyd, John  
Salem, Ore.  
Physics

MacKillop, Allan  
Medford, Mass.  
English

Marsters, Charles L.  
Salem, Ore.  
Mathematics



Martin, E. Jean  
Yakima, Wash.  
Social Science

Martin, Larry C.  
Salem, Ore.  
Political Science

Mathews, Miriam L.  
Portland, Ore.  
Philosophy





McClure, Charles J.  
Portland, Ore.  
History

McCormick, Ruth  
White Salmon, Wash.  
Speech and Drama

McKenney, James W.  
Salem, Ore.  
History

Mercer, Jeannine G.  
Salem, Ore.  
Psychology

Mercer, Kendrick  
Portland, Ore.  
History

Mooney, Larry A.  
Yakima, Wash.  
Chemistry

Michaelides, Anastasia  
Salem, Ore.  
Biology

Michalson, Karen S.  
Salem, Ore.  
English



Miettunen, Muriel A.  
Malalla, Ore.  
Art

Minten, Shirley J.  
Aumsville, Ore.  
Physical Education

Morton, Marilyn A.  
The Dalles, Ore.  
Mathematics

Mundinger, Lola A.  
Salem, Ore.  
Psychology

Myers, Lucy  
Cheshire, Ore.  
Psychology

Nason, Stephen G.  
Chemult, Ore.  
Chemistry

Neubauer, Floyd K.  
Orchards, Wash.  
Music

Newberry, Daniel  
Salem, Ore.  
Foreign Language



Nichols, Lowell L.  
Madras, Ore.  
Mathematics

Pajari, Earl A.  
Reedsport, Ore.  
History



Person, James C.  
Salem, Ore.  
Chemistry

Platt, Shirley S.  
Lewiston, Cal.  
English

Poff, David E.  
St. Helens, Ore.  
Economics



In the WU bookstore, seniors LoAnne Mundinger and Dean Short were helped to their caps and gowns by Mrs. Larson.



Pohl, Arlene S.  
Portland, Ore.  
History



Poppert, Claris C.  
Salem, Ore.  
Economics



Preuss, Paula E.  
Vancouver, Wash.  
Religion



Rhodes, Douglas K.  
Lebanon, Ore.  
Political Science

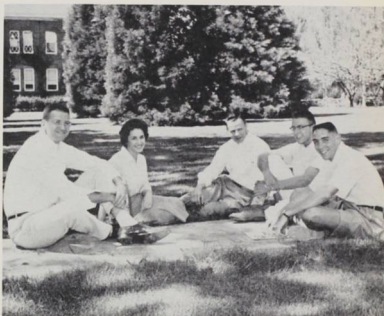


Riley, Herbert G.  
McMinnville, Ore.  
Art

Roberts, Arla D.  
Sweet Home, Ore.  
English

Rogers, Lloyd B.  
Salem, Ore.  
Economics

Rohrer, Richard G.  
Salem, Ore.  
English



Seniors' spring officers, Tom Johns, *Sergeant-at-Arms*; Lucy Myers, *Secretary*; Frank Tannehill, *Vice-President*; Dick Chanda, *Treasurer*; and Al Siebert, *President*; planned Senior activities.



Rosbergs, Anna  
Boise, Idaho  
Economics



Rose, Ashley S.  
Mt. Angel, Ore.  
English



Schaefer, Robert J.  
Turner, Ore.  
Music

Shaw, Edwin H.  
Salem, Ore.  
Sociology

Shdo, Ivone  
Seattle, Wash.  
Political Science

Short, Warren D.  
Salem, Ore.  
Economics



Ruid, Dixie J.  
Molalla, Ore.  
History



Sailor, Nancy G.  
Delake, Ore.  
Music



Siebert, Lawrence A.  
Portland, Ore.  
Psychology



Sommer, Donald H.  
Hillsborough, Cal.  
Economics



Speer, Howard E.  
Aumsville, Ore.  
Political Science





Stevens, Robert W.  
Myrtle Point, Ore.  
Economics

Swegart, Barbara L.  
Salem, Ore.  
Psychology

Tannehill, Frank  
San Diego, Cal.  
Economics



Jim Wells, Joyce Hill, Bill Long and Frank Tannehill displayed the seniors' gift to WU: a contribution to the loyalty fund which will help raise profs' salaries.



Taylor, Robert E.  
Clarksville, Tenn.  
Biology

Taylor, Ronald R.  
Corvallis, Ore.  
Economics



Tellin, M.A.  
Salem, Ore.  
Economics

Tetrick, Alberta N.  
Menlo Park, Cal.  
English

Turner, Mary L.  
Weiser, Idaho  
Psychology

Van Horn, Ralph E.  
Salem, Ore.  
Economics

Walsh, William E.  
Lakeside, Ore.  
Biology



Weaver, William G.  
Portland, Ore.  
Economics

Weston, Joan R.  
Reedsport, Ore.  
Psychology

Wilcox, Donald H.  
Salem, Ore.  
Psychology

White, Richard A.  
Salem, Ore.  
Psychology

Yader, Anne B.  
Portland, Ore.  
Psychology



One last view of campus from Waller's Bell Tower for Marilyn Morton and LaAnne Mundinger. . .





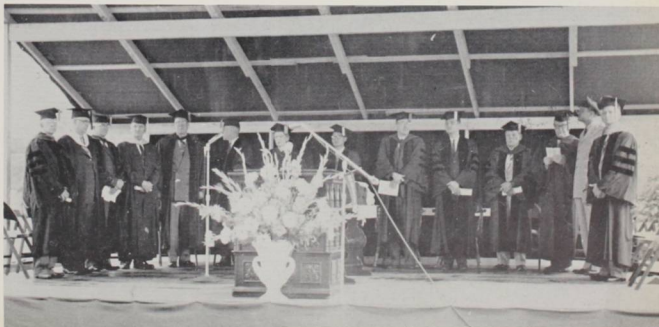
"Pomp and Circumstance" began  
and the seniors marched the  
cinderpath to Commencement. . .


## . . . and commencement



Faculty members and honored  
guests waited to take their places  
in the academic procession in the  
Recessional.

. . . and were the last into their  
seats.





Conveniently situated between the men's living organizations and Eaton Hall, the library forms a study spot and central meeting place for Willamette students.

knowledge was shared



## college of liberal arts



Dr. Robert Gregg, Dean of the College of Liberal Arts, conferred with senior Al Siebert.

From science to economics to art, the College of Liberal Arts presents its students with that proverbial "well-rounded education." This year, supervised by Dean Gregg, the college has found itself challenged by the growing emphasis on technical education, and has preserved for WU students the opportunity of gaining a broad background while meeting the need for increased specialization.



Mrs. Betty Brumfield was the busy secretary to the Dean of the College of Liberal Arts.

## art



Dr. Cameron  
Paulin  
professor

Carl Hall  
artist in  
residence

Muriel  
Mieltunen  
senior scholar

Not pictured  
Herb Riley  
departmental  
assistant

Analyzing, evaluating, and synthesizing, students in the art department learn concrete bases for judgment to replace mere personal preference. With courses in both the theoretical history and the practical aspects of painting, sculpture, ceramics and weaving, students gain an understanding of their field.



Construction of a balsa-wood stabile proved a problem in space relationships for design student John Galbraith.

## home economics

All is not cooking and sewing in the home economics department, for students learn to budget an income and decorate a room in the variety of courses offered.



Lois Latimer  
professor

Ann Chambers  
senior scholar

## philosophy



Dr. Clifford  
Hanson  
professor

Miriam  
Mathews  
senior scholar

Dave Steward  
departmental  
assistant

During classes and seminars philosophy students discuss subjects as varied as ethical relativism, logic, and existentialism in their attempt to understand the implications of the many questions asked.

# foreign languages



Mastering the art of pronunciation was a large part of Mr. Cooper's French lab.



Dr. Marion  
Morange  
professor



Dr. Daniel  
Schulze  
professor

Offering courses designed to help students master grammar while learning of the history, literature and culture of a variety of countries, the foreign language department encourages a thoroughly "well-rounded" education.



Dr. Paul Beal  
associate  
professor



Dr. James  
Fonseca  
assistant  
professor



Clarence Kraft  
assistant  
professor



Marguerite  
Berg  
acting assistant  
professor



Henry Cooper  
graduate  
assistant



Jeannette  
Fulmer  
senior scholar



Esther Gwilliam  
senior scholar



Daniel  
Newberry  
senior scholar



Sue Snyder  
departmental  
assistant

# religion



Dr. Norman Huffman  
professor

Burton Bastuscheck  
assistant professor

Dr. Berkeley Ormond  
instructor



Dr. Harley Zeigler  
chaplain

Paula Preuss  
departmental assistant

From Christianity to Shinto, from theories of worship to New Testament Greek, WU's department of religion teaches the elements and implications of many faiths. Each student, major or non-major, freshman or senior, scientist or future minister, takes courses in religion and — of course — becomes involved in the perennial bull- sessions provoked by those classes.

Dr. Huffman discussed translations with the two members of the New Testament Greek class, Dean Klarr and Paul Riensche.



# sociology

In the department of sociology one may find student interests ranging from group behavior to cultural anthropology. With projects involving migrant workers and surveys on current social problems the sociology department offers the opportunity for a practical as well as theoretical education.



Dr. John Rademaker  
professor

Arthur Gravatt  
assistant professor



Donald Miller  
instructor

M. E. Moore  
instructor

Jerry Brackins  
senior scholar

Connie Clark  
departmental assistant

Dick Ferrell  
departmental assistant

George Gray  
senior scholar

# afrotc

Filling the two year AFROTC requirements for all WU men, the RO department also offers a four year course in air science which leads to an Air Force reserve commission. These courses and drills aid WU men in understanding air science and national defense.



They drilled in fair weather and foul.



Lt. Col.  
Edward Fritsch  
professor



Major  
Kenneth  
Pennell  
assistant  
professor



S-Sgt.  
Dennis Moore  
instructor

## NOT PICTURED

Capt. Richard Jenkins, assistant professor  
T-Sgt. Leslie Ostlund, instructor  
M-Sgt. Robert Ward, instructor



Captain  
Douglas Weart  
assistant  
professor



Capt.  
William  
Wright  
assistant  
professor



M-Sgt.  
Donald  
Curtiss  
instructor



...marching, marching, and more marching.

AFROTC men went through drill.



# physical education



Lester Sparks  
professor

Ted Ogdahl  
instructor

John Lewis  
assistant  
professor

Gerald Long  
instructor

Answering Willamette's four-semester physical education requirement is a wide variety of classes—everything from modern dance and fencing to golf and swimming. For those majoring in physical education, theoretical courses are also offered.



Dr. Gale  
Currey  
professor

Jean Williams  
instructor

Not Pictured  
Shirley Minten  
senior scholar  
Dick Hartley  
senior scholar



In the modern dance class, women students filled their physical education requirement while finding expression in leaps and pirouettes.

# education



White turned round in an attempt to disrupt Dr. [Name]'s class in special methods of teaching social studies.



Dr. James Lyles  
professor

Dr. Homer  
Hawes  
associate  
professor

Elmer Rieck  
associate  
professor

WU's department of education, while attempting to help overcome the much discussed teacher-shortage, offers knowledge of education problems and techniques. And the frustrated student-teacher must make lesson plans and cope with problem children as well as master his or her own field.



Peggy Cope  
graduate  
assistant

# biology



Dr. Cecil R.  
Monk  
professor

Dr. Martha E.  
Springer  
professor

Donald R.  
Breakey  
assistant  
professor

Dr. Morton E.  
Peck  
curator of  
herbarium

Bugs, birds, and beach trips . . . all find a special place among the interests of WU biologists. In addition to practical laboratory methods, biology students learn the many theories that help one pass those senior orals.

Not pictured  
Allen Bartlett  
Anastasia Michaelides  
departmental assistants



Sharon Bates  
senior scholar

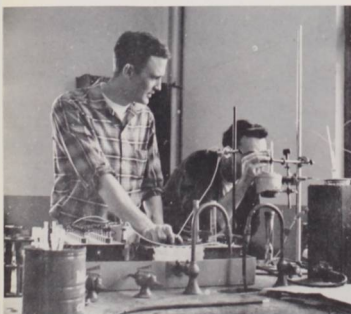
Ed Everts  
departmental  
assistant

Tom Gail  
departmental  
assistant

Bill Walsh  
departmental  
assistant

Late labs, inorganic configurations of molecules, and those inevitable "unknowns" lead the young chemist into that wonderland behind the things we meet daily. Preparing its students for careers in the various divisions of chemistry, the department offers courses in physical and organic chemistry.

# chemistry



Physical chemistry students L. E. Crecelius and Larry Mooney prepared to smash atoms during an experiment.



Dr. Charles  
H. Duell  
professor

Dr. Paul M.  
Duell  
assistant  
professor

Warren  
Campbell  
senior scholar



Jim Person  
senior scholar

Richard Chanda  
departmental  
assistant

Eugene Corey  
departmental  
assistant

# physics



Text ready to interpret their complex devices, Keith Pailthorp, Joe Stewart, and Jim Person trace electric currents during a class in electricity and magnetism.



Dr. Robert  
L. Purbrick  
professor

Alexander G.  
Michaelides  
instructor

Richard C.  
Montgomery  
assistant  
professor

Space-travel . . . sputniks . . . dynamos . . . galvanometers . . . physics majors study them all. As part of their internship in Collins, these budding scientists attend endless labs and classes, preparing for graduation and the questionable future.

# economics



Howard A.  
Mader  
assistant  
professor

Earl Holmer  
visiting assistant  
professor

Richard M.  
Gillis  
associate  
professor

Thomas B.  
Brand  
lecturer

Vital to any college student and businessman is the budgeting and handling of money; the department of economics is thus an important one. Learning not only economic history and theory but practical accounting as well, students prepare to take their place in the world of business.



Barbara Goodier  
senior scholar

George Hoyt  
senior scholar

Robert Stevens  
senior scholar

Ralph VanHorn  
departmental  
assistant

Robert  
Campbell  
senior scholar

# history



Dr. Ivan  
Lovell  
professor

Dr. Chester  
Kaiser  
associate  
professor

Dr. Robert  
Gregg  
professor

Charles Ruud  
instructor

Charles  
McClure  
senior scholar



Dixie Ruud  
senior scholar

Victor Backlund  
senior scholar

Egypt's ancient empire, the Norman invasion and the Napoleonic wars quickly become vital points for the students in the history department as they learn the structure and the implications of the past.

# political science

From study of such courses as political theory, American government and Constitutional history, majors in political science gain a broad background in their field. Class discussions help students to formulate their own views, pointing to possible careers in the political world.

With a world map for reference, Dr. Shay discussed Soviet communist world politics with his class.



Dr. Robert  
Gatke  
professor

Dr. William  
Cornelius  
associate  
professor

Dr. Theodore  
Shay  
assistant  
professor

A. Freeman  
Holmer  
associate  
professor



Larry Martin  
senior scholar

Skip Alexander  
senior scholar

Anita Booth  
senior scholar

Fred Chambers  
senior scholar



# speech and drama



Robert Putnam  
associate  
professor



Dr. Howard  
Runkel  
professor



Carl Ritchie  
acting  
instructor



Mary Beth  
Feller  
senior scholar

Would-be actors and debaters, technicians and radio announcers—to all these the speech and drama department is home. Four times a year, the activity runs high as another production is readied for the stage in the drama department, and from the speech section is heard the sound of speakers practicing all year round. For those not headed for the stage or podium, the department may give a sense of poise and timing that will be invaluable wherever they may be.



Drama students gathered in Mr. Putnam's office as another play approached.



Dr. Charles  
Derthick  
professor



Dr. Noel  
Kaestner  
assistant  
professor



Richard Yocum  
instructor



Jeannine  
Mercer  
senior scholar



Al Siebert  
departmental  
assistant



Loretta Horsley  
senior scholar

# psychology

Despite a few cases of Sophomore Syndrome (students who are sure they are either psychotic or psychopathic, or both) the department of psychology aims toward a firm basis in couch—theory and practice. From Freud to experimental psychology, majors and non-majors have the opportunity to learn behavior and motivation.

"How's your reaction time?"



# english



Dr. Paul  
Trueblood  
professor

Dr. Henry  
Kohler  
professor

James Douglas  
assistant  
professor

Dr. O. W.  
Frost  
assistant  
professor

Dr. Murco  
Ringnald  
professor

Margaret  
Ringnald  
acting  
assistant  
professor

From Chaucer to James Joyce, from Shakespeare to Arthur Miller: the English department seeks to give students a grasp of the intricacies of grammar and the beauties of literature.



Lucile Bartel  
instructor

Saundra Moore  
departmental  
assistant

Suzy Platt  
senior scholar



Minalou Byler  
senior scholar

Ashley Rose  
senior scholar

Mary Lou  
Krause  
senior scholar

Bob Braddy  
departmental  
assistant

NOT  
PICTURED  
Alan MacKillop  
departmental  
assistant

# math



Dr. Chester  
Luther  
professor

Dr. James  
Nickel  
assistant  
professor

Armed only with a slide rule and a head full of numbers (no comptometers or UNIVACS allowed) members of the math department meet the challenge of figuring the angles and discovering universal laws.

## collegian: campus coverage

Directed by efficient Lucy Myers, the Collegian staff began the school year with a new paint job for the office. Weekly issues originating there combined spirit and journalistic ability to produce a first class paper. Through thought-provoking editorials and excellent news coverage the Collegian staff kept the campus informed.

With the help of Eugene Kitzmiller, sports editor Paul Aldinger and campus editor Howard Nelson checked page proofs on Wednesday morning.



Collegian editor Lucy Myers scanned details of a story submitted by Jane Dedrick, assistant copy editor.



Assisted by advisor Dr. Murco Ringnald, Dick Forcum, layouts, Lucy Myers, and society editor Mary Lou Krause checked galley proofs at the Statesman office.



Busy planning the next Collegian were Dan Newberry, Peggy Cope, Howard Nelson and Pete Blewett.

Writing and proofing copy were Suzy Platt, Carol McMinimee, and Jane Dedrick.



Ad staff manager Ross Stephen met with his staff members, Orin Ormsbee and Bruce Kielsmeier.



# wallulah



Mim Mathews, co-editor, happily addressed another shipment of pages for the publisher.



Checking over a page of proofs was co-editor Muriel Miettunen.



Business manager Barbara Roach held the Wallulah purse strings, while Dave Erickson supervised the advertising staff.

Each Tuesday and Thursday morning — plus frequent night sessions — a harried staff gathered in the Wallulah office, scheduling pix, writing copy and assembling layout mats. Despite problems of flu, photography and pressing deadlines, they managed to produce their record of Willamette life.

While Ron Johnson filed negatives, section editors collaborated on their pages. Left to right: Marilyn Morton, Peggy Cope, Paula Preuss and Yvonne Shdo.





Layouts were designed by Sue Trueblood and her assistant John Galbraith.



Marilyn Marton, *left*, social events editor, helped academics editor Peggy Cope identify a picture.

Searching through a file of carbons were Yvonne Shda, heading the sports section, and clubs and honoraries editor Judy Taylor.



Responsible for proofs, prints and photographers when needed was John Barth, darkroom manager.



Aiding in taking and developing those vital pictures were: *Left to Right*: Phil Henderson, Frank Bosh, Lewis Seagraves, Jim Cline and Ron Johnson.



With the work just beginning, Fusser's Guide editors, Carol McMinimee and Jane Dedrick and assistant Mary Owens watched Mary Beebe begin work on the cover and cartoons.

## fusser's guide . . . blotter



With the finished product in hand, Fusser's editors Carol McMinimee and Jane Dedrick shouted for joy and planned to celebrate.

Blotter editor Ross Stephen prepared his list of ad prospects with the aid of the last blotter as he began work on WU's guide to Salem.



# college of music

"Harmonic dictation" — "form" — "counterpoint" — these phrases probably indicate a music major nearby. But the College of Music, with courses ranging from music appreciation to brass methods, appeals to liberal arts students as well. And recitals offer both experience for the participants and enjoyment for the audience.

Florence Wade  
Secretary to the Dean of the College of Music



Melvin H. Geist  
Dean of the College of Music



Joanna Lester and Gene Parrett tried out a duet.

Studying filled those few free hours of these music students.



# music school faculty



Dr. Willis C.  
Gates  
professor



Don M.  
Gleckler  
associate  
professor



Josef H.  
Schnelker  
professor



Maurice W.  
Brennen  
associate  
professor



Edwin W.  
Butler  
professor



Ralph Dobbs  
associate  
professor



Clarinda R.  
Topping  
associate  
professor



Miriam Bednarz  
instructor



Charles Allen  
Gove  
instructor



E. Donald  
Jessop  
instructor



Charles W.  
Yuki  
instructor



Myra Jean  
Friesen  
senior scholar



Ronald Keith  
Kingsley  
senior scholar



Daisy Lim  
senior scholar



Jerry  
Johnson  
departmental  
assistant



Nancy Groth  
Saylor  
senior scholar

NOT  
PICTURED  
Herbert Brower  
graduate  
assistant  
Frank Lebold  
departmental  
assistant



Keith Taylor presented a piano solo at a weekly student recital.

# willamette university band



Maurice Brennen, band director, stood uniformed and ready to give the down-beat.

Sunday practice sessions were added to thrice-weekly band rehearsals when an early tour conflicted with finals. Five days performing in Oregon coastal cities were climaxed by a concert in the Fine Arts auditorium. Faithful music makers for home games, Baccalaureate and Commencement, band members also presented an afternoon colonnade concert for Alumni Day.



Band officers relaxed on the lawn before an afternoon rehearsal. Left to Right: Jim Fiske, Geranna Stevens, Ron Kingsley, Norman Walters.

Band members presented one of their tour numbers during the winter concert.





Relaxing a minute, these members of the percussion section of the band waited for their entrance.

WU's band rehearsed under the direction of Mr. Brennan.



# a cappella choir

One of the hardest-working organizations on campus, the a cappella choir provided music for weekly chapels and was also called upon to furnish entertainment for various civic groups. This year choir members even managed to spend part of spring vacation in Sun Valley, on their ten-day tour of eastern Oregon and Idaho.



Choir officers pooled opinions on a new arrangement. Left to Right: Keith Neubauer, President, Paula Preuss, Gail Boden, John Heidel, and John Vale.



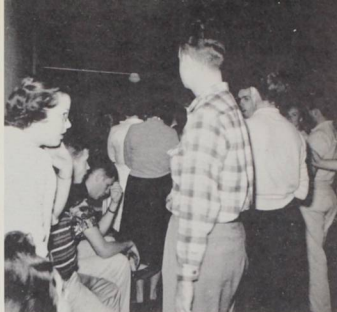
Each Thursday at 11:00 found the choir in place in the chancel of the First Methodist Church.

Assembled for their formal picture were the members of the W U a cappella choir.





One stop after a long drive found touring choir members dancing while the bus got gas.



Singing round the piano, WU's choir relaxed.



Sun Valley and time to play. . .

## choir toured



. . . to skate. . .



. . . and to swim as did Gail Larsen, Chuck Marsters, and Karen Dryer.



Dr. Willis Gates  
*director*

## willamette orchestra

Willamette's orchestra could be found practicing any Tuesday evening as its members perfected their instrumental abilities. Directed by Dr. Willis Gates, the orchestra drew its members from music students, alums, and town people.

Keith Neubauer sang as the orchestra played Mozart in Waller Hall.





Don Gleckler directed another choir rehearsal before tour.



Relaxed but working were these choir members as they perfected a song.

Jim Wright sang, accompanied by Nancy Weeks, at a Tuesday student recital.

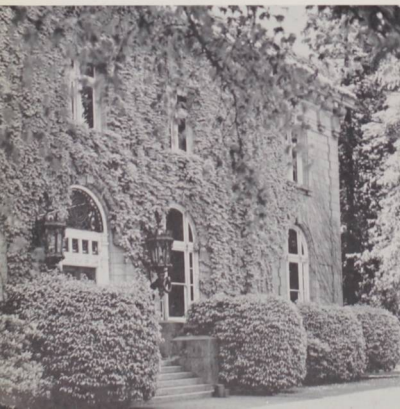


## college of law



Dr. Seward Reese  
Dean of the College of Law

Willamette's College of Law



Phyllis Chriswell  
Secretary to the Dean of the College of Law



Edwin Butler  
professor



Dr. John  
Paulus  
professor



Charles  
Gramley  
assistant  
professor



Alta Rieck, WU's law school librarian found herself amid the many books.



Charles Jens  
professor

NOT PICTURED

Thomas Brand, lecturer

Thomas Churchill, instructor

Sam Haley, lecturer

Dr. Reginald Parker, professor

Escaping all distractions these students studied among the volumes found in the law library.



# phi delta phi

Beneath the statue of Justice gathered the law students.



Phi Delta Phi officers were Donald Drollman, Norman Webb, Jack Howay, and Rodney Adams.

High scholarship and legal astuteness kept the members of Phi Delta Phi, one of the two legal fraternities on campus, busy. Despite their serious intent, members of the group found time for a variety of social activities.

MEMBERS OF PHI DELTA PHI — *First Row:* Gino Pieretti, Dick Stratton, Dick Mills, Ted Sampson, John Skimas, Norm Webb, Dale Carroll, Don Drollman, Doug White. *Second Row:* Jim Scott, Ross Fortner, Alex Byler, Lou Selken, Bill Colver. *Third Row:* Bob Thompson, Jack Howay, Bob Simpson, Joe Kershner, Harold Blank, Bob Fox, Koon Imm Ching, Dan Callaghan. *Fourth Row:* Karl Klinkinbeard, David Hitchman, George Wegner, Jerry Markham, Bill Paulus, Sam Schlageter. *Fifth Row:* Ron Ricketts, Rodney Adams, Ted Carlstrom, Pete Schwabe, Ron Low, Martin Howard, Jim Lock, David Gooding, Tom Gooding, Bob Sailor. *Sixth Row:* Wayne Thompson, Larry Dean, Duane Ertsgaard, Louis Hampton, Len Pearlman, Tom Goldsmith, Bob Heffernan, and Jim Garrett.



# delta theta phi

John Ester,  
dean  
Neil Bennett,  
vice-dean  
Ron Lansing,  
tribune  
Wm. Schantz,  
master of roles



Richard Franzke,  
chancellor of the exchequer  
Ralph Schiegel,  
master of ritual  
Pat Albano,  
bailiff



Amid the many law books were found the members of the Delta Theta Phi legal fraternity, as they learned of tax and criminal law or prepared briefs. Though this study for careers in law occupied most of their time, these future lawyers also found the opportunity for many social activities.

*First Row:* John Ester, Bob Stevens, Bob Chidester, Ken Colley, Harold Lewis, Neil Bennet, Gary Lockwood. *Second Row:* Starr Thurston, Joe Ricks, Dave Nelson, John DuBay, Cash Perrine, Stu Gates, George Frum. *Third Row:* Joe Lunsford, Pat Albano, Jim Gubernath, Orlin Anson, Bob Ancrich, Ralph Schlegel. *Fourth Row:* Dick Franzke, Dave Rhoten, Bill Schantz, Gop Boer, Ron Hoxie, Dale Cubbison. *Fifth Row:* Dave Frost, Al Davis, Ron Lansing, and Max Peak.



# law students

## THIRD YEAR LAW

Andrick, Robert  
Baer, Gottlieb  
Blank, Harold  
Byler, Alex  
Ching, Koon Imm  
Clinkinbeard, Karl  
Cubbison, Dale



Davis, A. A.  
Dean, Larry  
Ertsgaard, Duane  
Flakel, Benton  
Fortner, Ross  
Frum, George  
Gooding, Tom



Gordon, Ernest  
Heffernan Jr., Robert  
Hoxi, Ronald  
Johnson, Robert  
Lewis, Harold  
Mills, Richard  
Nelson, David



Paulus, William  
Perrine, Cash  
Pieretti, Gino  
Rickets, Ron  
Schlegel, Jena Vayne  
Selken, Louis  
Southwell, William



Stratton, Richard  
Thompson, Robert  
Thompson, Wayne  
Wagner, George  
Weigum, George  
White, Douglas  
SECOND YEAR LAW  
Allagan, Don



Corroll, Dale  
Chidester, Robert  
Colfry, Kenneth  
Colver, William  
Drake, Patricia  
Ester, John  
Garrett, James



Gates, Stuart  
Goldsmith, Thomas  
Hansen, Marvin  
Howay, Jack  
Laue, Al  
Lock, James  
Markham, Jerrold



Miller, Richard  
 Pearlmann, Leonard  
 Ricks, Joe  
 Sailer, Robert  
 Scott, James  
 Simpson, Robert  
 Skimas, John



Smith, Ronald  
 Stevens, Robert  
 Stunz, Gene  
 Webb, Norman  
**FIRST YEAR LAW**  
 Adams, Rodney  
 Albano, Pat  
 Allison, Cliff



Allred, Bernard  
 Anson, Drlin  
 Bennett, Neil  
 Brown, Jack  
 Carlstrom, Ted  
 Curran, Ed  
 Dopson, Lindy



DuBay, John  
 Fliegel, Joseph  
 Foster, Harry  
 Fox, Robert  
 Franke, Richard  
 Freerksen, Karl  
 Frost, Dave



Gubernath, James  
 Hitchman, Dave  
 Jack, Alan  
 Kataoka, John  
 Kay, Douglas  
 Kershner, Joe  
 Lansing, Ron



Lempeses, Pete  
 Lockwood, Gary  
 Lunsford, Joe  
 Mary, Richard  
 Millbank, Chop  
 Mullan, John  
 Myalt, Lewis



Peak, H. M.  
 Peterson, Vernon  
 Plimpton, Hollis  
 Plunkett, Jerry  
 Rhoter, David  
 Schantz, William  
 Schlegel, Ralph



Schwabe, Peter  
 Simpson, Helen  
 Snow, Ed  
 Swanson, Courtney  
 Thurston, Stan  
 Veens, Duane  
 Wolf, Martin



## information on file

To the library went students needing books or information — or a coffee date. Thus doubling as the intended student union, W U's library met both academic and social needs. Though the year's highlight for many was the library dance, January and June again found a crowd — this time studying for finals.



Librarian Brooks Jenkins and his assistant Magdelaine deTirefort examined one of the displays on the library bulletin board.



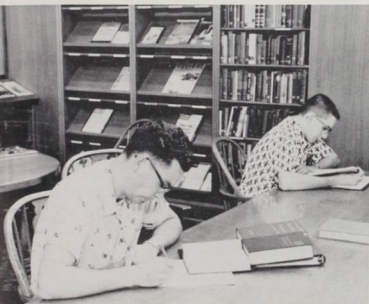
Stacks of new books meant more work for Ruth Robbins, assistant librarian and cataloger.

Joy Wood, library clerical assistant, gave instructions to student librarians Andy Snyder and Jean Pritchard.





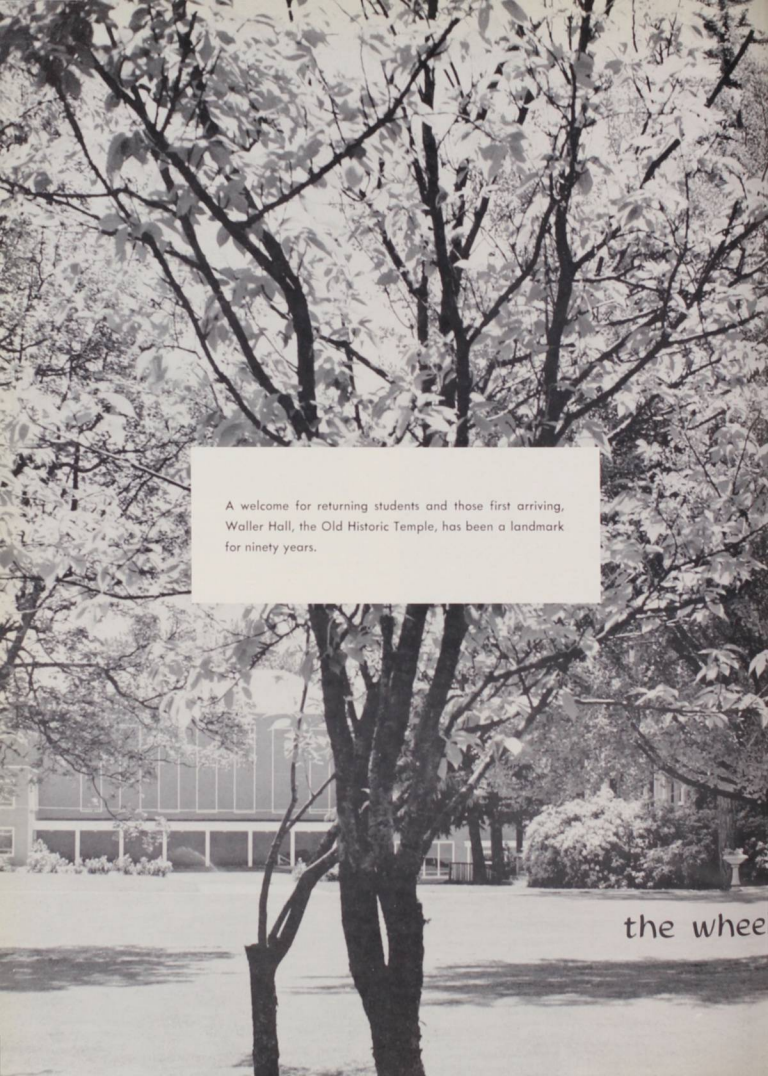
Students checking out books at the main circulation desk stopped to chat with student librarian Jean Pritchard.



Despite the tempting array of magazines available, these students seemed thoroughly involved in an afternoon of study.

Almost any day or evening—especially as finals approached—the library was filled with students finishing assignments, reading or just daydreaming.





A welcome for returning students and those first arriving, Waller Hall, the Old Historic Temple, has been a landmark for ninety years.

the wheel



urned

# leaders serve school

Leading the leaders, President Wayne Carr took time from his many duties to listen to ideas and complaints of individual students like freshman Kate Moretti.



Composed of representatives from every living organization, Student Council met weekly to discuss such diverse topics as pep bands and buzzer systems. Wielding the gavel for the group was Wayne Carr, ASWU president, assisted by secretary Diane Wickstrom.



Guarded by the venerable Erasmus, ASWU secretary Diane Wickstrom checked through past minutes and official papers.

Student leaders and faculty advisors assembled for the weekly Student Council meeting.





Familiar to anyone wanting to schedule an event was Activities Board, deciding "who, what and when" at their Tuesday meetings. Led by Anita Booth, first vice-president, the group scheduled campus activities and — when flu threatened — cancelled them.

## social beginnings



Fulfilling her duty of keeping social calendars in the library and the basement of Waller up-to-date, Anita Booth was assisted by an obliging passer-by.

One of the busier students on Willamette's campus was ASWU first vice-President. First woman to hold the office in ten years, Anita Booth, was faced with the task of keeping social life running smoothly and co-ordinating the schedules of numerous clubs and activities.

Directing Rally Squad policies was the function of the Rally Commission. In one of their noon meetings, Anita Booth, Nettie Hansen, Sandy Reed, Al Siebert and Steve Hone conferred under the wheel battled for annually by WU and Lewis and Clark football teams.



## a question of opinion . . .



Skip Alexander, member-at-large, discussed Roberts' Rules with Dick Audley, left.

Filling the bill as general informants and Glee records salemen, this year's ASWU officers were faced with added problems brought by the flu. Challenging tasks were those of second vice-president Dick White, charged to conduct elections to the students' satisfaction, and member-at-large Skip Alexander, authority on the legal aspects of parliamentary procedure.



With his padlocked ballot-box and paper-punch ready for action, Dick White was prepared for elections.



Sigma Alpha Chi member Ron Walker watched the polls while Barbara Bredsteen, Sara Pope and Deanna Sehorn prepared to cast their ballots. Assisting the SAX were women of Beta Alpha Gamma, corresponding Sophomore Service honorary.

## the financial section



With meticulous care, ASWU Treasurer Dean Short checked class and organization budgets against available funds.



Cheerful and efficient, financial advisor Jerry Whipple made sure each account was accurate and up-to-date.

Financial triumvirate: financial advisor Jerry Whipple, ASWU treasurer Dean Short and publications manager Wayne Haverson held the responsibility of balancing and allocating student funds.

## voice of the people



Co-ordinating and approving publication policies and budgets, Wayne Haverson found the position of publications manager one that demanded both tact and concentration.

During a meeting conducted by Wayne Haverson, dubious publications board members considered petitions for next year's editorships. *First Row:* Dean Short, Diane Wickstrom, Lucy Myers, Carol McMinnee, Jane Dedrick, Barbara Roach. *Second Row:* Ross Stephen, Miriam Mathews, Muriel Miettunen.



# wheels within wheels



Junior class president fall semester, Del Cummings tried to convince his fellow officers an idea was sound. Serving with him were vice-president Pete Leveton, treasurer Sue Snyder, secretary Pat Renshaw and sergeant-at-arms Bill Joseph.



President Dave Landis asked a question as junior spring officers prepared for a meeting. Left to Right: Fred Wade and Bill Sewell, sergeants-at-arms; Joan Sherrill, secretary; Landis; Gary Larson, vice-president; Barbara Dennis, treasurer.

Emerging from Waller, sophomore fall semester officers left for a class meeting. Left to Right: Peggy Doertler, treasurer; Ron Walker, president; Pete Blewett, vice-president; Toni Folsom Dyer, secretary. Not pictured: Terry Kent, sergeant-at-arms.

Taking advantage of warm weather, sophomore spring officers met informally to plan their program. Left to Right: John Bergstrom, president; Joanne McGilvra, treasurer; Judy Olsen, secretary; Ron Gerbing, sergeant-at-arms; Ralph Litchfield, vice-president.



## spot for a break

Thronged with students from 8 to 4, the 'Cat Cavern did a thriving business. Aided by student helpers, Mrs. Swensen prepared such goodies as milkshakes, floats and hamburgers for students cutting classes, studying or just relaxing. Variety was added to the surroundings by murals and pictures.



Presiding over 'Cat Cavern operations, Mrs. Eleanor Swensen listened sympathetically to woes, mothered her staff of student helpers, and provided efficient service for all comers.



A lull in the noon-hour rush gave members of the 'Cat staff a chance to enjoy a relaxing cup of coffee or coke. Karen Michalson behind the counter served Dave Marsters, Loretta Horsley, Mrs. Swensen and Lois Widener. Missing from the picture were Orin Ormsbee and Gary Lovre.

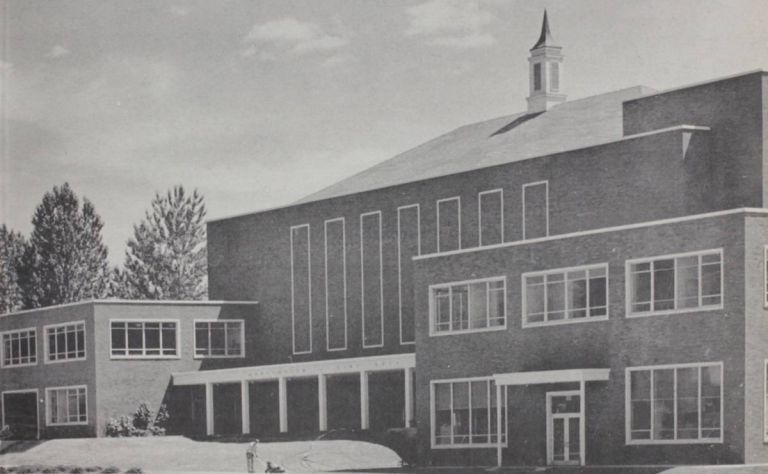
Especially bustling around noon, the 'Cat Cavern provided a haven for the sack-lunch set. Married students Dan and Beth Newberry discussed domestic problems while other loafers and/or studiers enjoyed magazines, Collegians — even books.



“the sport is at



the best”



Sweetland Field, where Willamette's football players used to pursue their games within full view of the coeds in Lausanne, is now the quad surrounded by new buildings.



Ready for the game, rally squad members Dick Hill, Barbara Smith, Bill Seawell, *Front Seat*; Nettie Hanson, Larry Willingham, and Ginny

Gray were prepared for an afternoon of excitement. *Not pictured,* Judy Olson.

## fight bearcats, fight

Inspiring hearty cheering sections with the essence of WU school spirit was the 1957-58 rally squad. These seven enthusiastic members of our student body led Willamette's spectators through the teams' crucial plays for hard-won points. The squad worked as a body, uniting the cheering sections in spirit and occasionally segregating the guys and gals to obtain maximum lung-power and enthusiasm.

### football: northwest conference standings

	W	L	T
Linfield .....	5	0	0
Willamette .....	3	1	1
College of Idaho .....	3	2	0
Whitman .....	2	2	1
Lewis and Clark .....	1	4	0
Pacific .....	0	5	0

# we got our kicks



*First Row:* Dale Shumway, Earl Jambura, Jim Moore, Terry Kent, Jim Anderson, Vic Backlund, Rex Domaschofsky, Paul McGilvra, Jack Berkey, Bob Kauf, Jim Hess, Jim Travis. *Second Row:* Vern Coates, Dennis Mihm, Lee Weaver, Stan Solomon, Keith Driver, Howard Stroebel, Dennis Sarver, John Hinds, Herb Juran, Larry Thompson, Ron Harrison, Bob Pierre, Manager Paul Aldinger, Coach Long. *Third Row:* Bill Wall, Jim Robinson, Bob Griffin, Marv Cisnros, Jerry Tankersly, Gary Raid, Bill Long, Steve Berglund, Lee Thurber, Tony Mecker, Paul Shaley, Coach Ogdahl.

Coach Ogdahl's Bearcats showed the WU students an exciting season. Winning the first conference game with Whitworth 26-12, the WU team went on to a victory over Lewis and Clark, leaving embarrassed LC student body president, Don Pinnock, to ride an unconcerned donkey at the game's close. Though the next game was lost, high point of the season for the team was the escape from books and cold rain for a week's trip to Hawaii. Later, though it upset other activities, the flu bug dampened none of the team's prowess in the Homecoming game with Pacific — score: Pacific 6, WU 40. Though the final game with Linfield set us in NWC second place, the team earned first place for rushing. At the November 22 awards banquet, Vic Backlund received the captain award and Bill Long was named the season's best lineman.

Managers Paul Aldinger and Pete Welch aided during practices.



## scoreboard

Willamette	13	California Aggies	13
Willamette	26	Whitworth	12
Willamette	25	Lewis and Clark	14
Willamette	0	University of Hawaii	27
Willamette	13	Whitman	13
Willamette	33	College of Idaho	21
Willamette	35	College of Puget Sound	6
Willamette	40	Pacific University	6
Willamette	14	Linfield	27

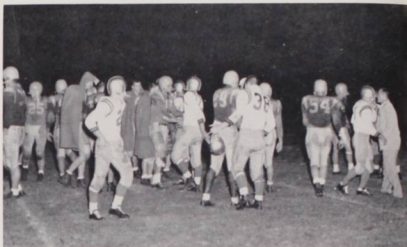


Intent looks and sound advice from Coaches Ogdahl and Long encouraged football practices.



In the first game of the season, the W U men met the California Aggies on McCulloch field.

This non-conference game matching the Bearcats and the Cal Aggies ended with a 13 - 13 tie.



During one tense moment in the W U - Lewis and Clark game that all-important ball hung in mid-air.



Men from the press gathered in their box on the stadium roof for a bird's eye view of each game's action.



During Parents' Weekend, WU and Whitman fought to a 13-13 tie in their night game.



After the WU - Lewis and Clark game, Don Pinnock, losing S B president, rode this donkey to pay off his bet with Wayne Carr, WU student body president.

Vic Backlund



Jack Berkey



Marvin Cisneros

Rex Domaschofsky

Keith Driver



Ivan Griffin



John Hinds



Earl Jambura



Herb Juran



Terry Kent



Ball-carrying Keith Driver helped WU to the Homecoming victory over Pacific.

Bill Long

Dennis Mihm



Gary Raid



Dennis Sarver



Dale Shumway

Stan Solomon

Howard Stroebel

Lee Weaver



Though the final score gave a win to Linfield, this time their player was stopped by muddy WU men.

# varsity basketball



First Row: Bob Penater, Ed Johnson, Managers. Second Row: Terry Ziegelman, Ron Russell, Dick Hartley, Larry Lynn, Lee Weaver, Masashi Watanabe. Third Row: Coach John Lewis, Tom Weston, Ron Taylor, Vic Backlund, Tom Johns, Buzz Wilfert, Ed Grossenbacher, Hisao Sato.



Coach John Lewis led the Bearcats to a tie for first place in the Northwest basketball conference.

Playing fifteen Northwest Conference games, WU's basketball Bearcats displayed a knack on the court. The season ended with Willamette and rival Linfield tied for first place, each having won ten and lost five games.

Eager to whip Whitman, Barney Bearcat leaped through the hoop held by the yell kings during half-time activities.



## northwest conference standings

	W	L
Willamette .....	10	5
Linfield .....	10	5
Lewis and Clark .....	8	7
College of Idaho .....	8	7
Whitman .....	6	9
Pacific .....	3	12



In the game with the College of Idaho, Larry Lynn tried for that basket.



Lee Weaver prepared to shoot a basket in the Willamette Whitman game.



Vic Backlund  
Forward



Ed Grossenbacher  
Guard



Dick Hartley  
Forward



Tom Johns  
Center



Larry Lynn  
Forward



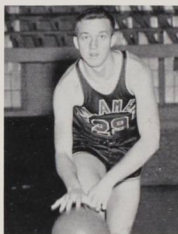
It was a free-for-all as the WU men fought Linfield for two more points.



Hisao Sato  
Guard



Gordon Wilfert  
Center



Ron Taylor  
Guard

Almost, but not quite, for this one in the WU — College of Puget Sound game.



In the WU — Lewis and Clark game suspense grew.



With mad scrambles, WU's JV Bearcats met the Valley Motors team.

A hot and cold season found the Willamette JV Basketball team heir to an eight and eleven record on their '57 campaign. Pre-season competition netted the Bearkittens five of their eight wins, while the official NWC play added only three more to the victory column.



Coach Jerry Long.

Left to Right: Coach Jerry Long, Joe Karmos, Gary Winner, Don Vannice, Fidel Gaviola, Jay Butler, Spencer Ericson, Jerry Pelug, Bob Olinger, Gordon Rounds, Dick Krebs.



## w u relays

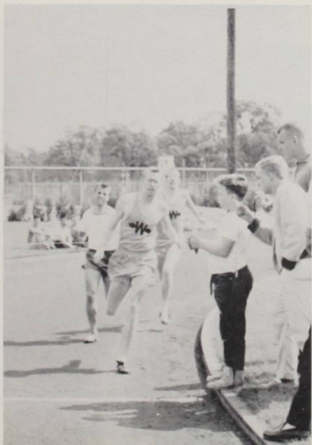
Hosting teams from schools throughout the northwest, WU again presented its annual WU relays. Featured were the Invitational Mile and the Invitational 100-yard dash. Eighteen colleges and over sixty high schools took part in the April event at McCulloch Stadium.



Up and away it went in the discus event of the WU relays.



Up, up and over and these Whitman cindermen displayed their hurdling ability.



Almost but not quite as a WU man watched two Whitman trackmen finish ahead of him.



Spin, up, out and this participant could only watch and hope as the discus sailed toward its mark.

Coch Ted Ogdahl



With everything from discus to relays and pole vaulting WU's cindermen met their opponents. Though the season ended with Willamette in fifth place, many records were broken and the season was successful. Two WU men, Dale Hartman and Skip Spence, qualified for the national meet at San Diego. Hartman's time of 1:54.4 in the 880 placed him fifth at the national meet. And, this year, seventeen men earned their Bearcat letters in track.



Ally, ally oop and over. Art Weston cleared the high bar with inches spare in the pole vault.

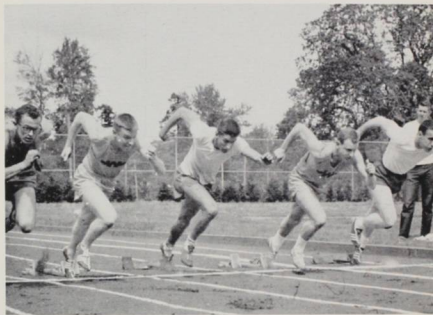
Seated, Left to Right: Stan Solomon, Gary Raid, Art Weston, Dale Hartman, Bob Schaefer, Don Neu, Jack Berkey, Jim Whitmier, Jim Person. Standing: Bob Roy, Dick Hazlett, Skip Spence, Earl Jelden, Jim Robinson, Fidel Gaviola, Bill Fairbanks, Ted Foxley, Jim Lewis, Ed Swenson (grounds keeper), Jim James, Lowell Nichols, and Coach Ted Ogdahl.





At the finish of the long race Bearcat Dale Hartman stopped the clock ahead of a Whitman cinderman.

Caught in a perfect start, five dash-men leave the blocks in the May Weekend meet with Whitman.



Skip Spence, frosh Bearcat, snapped the wire ahead of Whitman's Max Johnson in the 100-yard dash.

W U miler Dale Hartman was way out in front as he led the field in his favorite event.

#### CONFERENCE STANDINGS

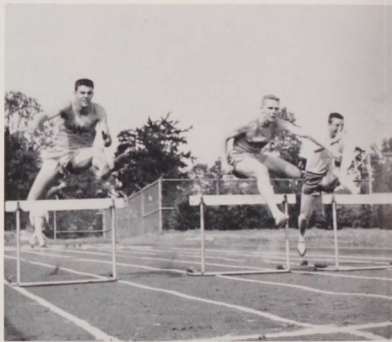
Whitman .....	96¼
Linfield .....	62½
Lewis and Clark .....	54½
Pacific .....	38
Willamette .....	34½
College of Idaho .....	3¼





In a tight finish Willamette's Skip Spence saw Max Johnson of Whitman snap the tape ahead of him.

1

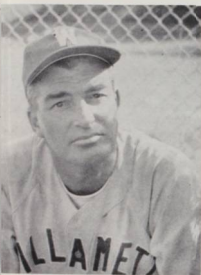


One—two—then up, and Willamette's hurdler was the last one over in this meet with Whitman.



"If I only had wings," Lowell Nichols seemed to be saying as he sailed high and wide in the broad jump.

# baseball



John Lewis  
coach



In the Pacific game, Coach Lewis contested a decision with the umpire.

First Row: Keith Driver, Howard Spear, Tom Moore, Vic Backlund, Frank Caruso, Brad Lucas, John Fredrick. Second Row: Dick Hanada, Ken Ginoza, Gordy Rounds, Bob Klindworth, Hiaso Sato, Ted Farley, Pete Welch, John Lewis. Third Row: Gene Hansey, Ron VanNoy, Larry Bright, Gene Gtiepentrog, Bill Lewis, Ken Stoop, Wayne Feller, Larry Schmit, Al Geddes.





Vic Backlund  
catcher



Ted Farley made home once again.



Frank Caruso  
first base

Bad weather, inexperience, and the opposition were just too much for the Willamette baseballers as they landed in the cellar of the Northwest Conference along with the Whitman Missionaries. Off to a slow start because of numerous rained-out games, the Bearcats could never quite catch fire. However, despite the poor showing in the win-loss column, Willamette placed three men on the mythical Northwest Conference All-conference nine. Vic Backlund and Frank Caruso, repeaters from last year all-conference selections, were joined this spring by Howard Speer, clutch-hitting Bearcat outfielder.



Safe at first . . .

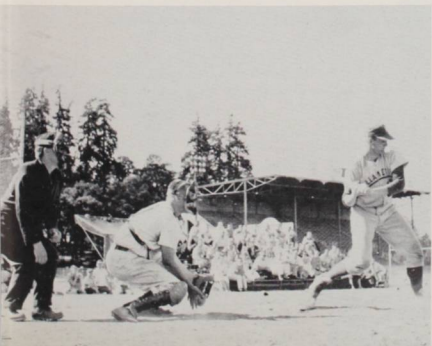


With that ball coming fast,  
WU was at bat again.

Game-time found non-playing Bearcat team members eagerly watching from the bench.



Trying for another run, this WU batter left the plate.



Keith Driver  
infielder



CONFERENCE STANDINGS

	W	L
College of Idaho -----	11	4
Pacific -----	8	7
Linfield -----	7	8
Lewis and Clark -----	7	8
Willamette -----	6	9
Whitman -----	6	9



Ted Farley  
third base



John Fredrick  
pitcher



Richard Hanada  
second base



Dick Hartley  
pitcher

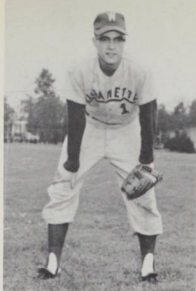
Safe. . . or not, was the question.



Bob Klindworth  
pitcher



Brad Lucas  
pitcher



Tom Moore  
outfielder



Gordon Rounds  
outfielder



Hisao Sato  
shortstop



Howard Speer  
outfield

## golf

Winning golf team members were: Coach Jerry Long, Joe Karmos, Jan Aaseth, Rusty Beaton, John Holmes, and Gene Paterson.

Stroking their way to the Northwest Conference victory, the golfing Bearcats were coached by Jerry Long. These strong winners presented tough competition for their opponents, leading all six conference matches.

### CONFERENCE STANDINGS

Willamette .....	620
College of Idaho .....	664
Linfield .....	684
Pacific .....	689
Lewis and Clark .....	694
Whitman .....	698





Jan Aaseth demonstrated the swing that earned the team's NWC medalist titles for him this year.



Second man on Gerry Long's links crew this year was Joe Karmos who averaged seventy-five strokes per match over the season.

. . . and more golf



Intramural championship bowling team, the Sigma Chi's, admired their trophy. Champ keglers were, Left to Right: Jac Fowler, Dan Neu, Jim Wells, and Bob Klindworth.

## intramurals



High in the air to spike the ball and tally a point. . .

## intramural standings

Sigma Chi	201
Sigma Alpha Epsilon	118.5
Phi Delta Theta	117
Law	99
Baxter	84
Beta Theta Pi	66
Rinky Dinks	57
Independents	12
WITS	9

Copping the intramural crown for the year, the Sigma Chis amassed 201 points and left Sigma Alpha Epsilon in second place. The Phi Deltis ran a very close third. Dominating the championship scene, the Sigs grabbed first place laurels in football, basketball, softball and badminton.

Paul Aldinger, timer, showed colossal boredom with a volley ball game as an intent referee called the play.



# tennis

## CONFERENCE STANDINGS

Willamette -----	13
Whitman -----	12
Lewis and Clark -----	7
Linfield -----	7
Pacific -----	5
College of Idaho -----	3



Les Sparks  
Tennis coach

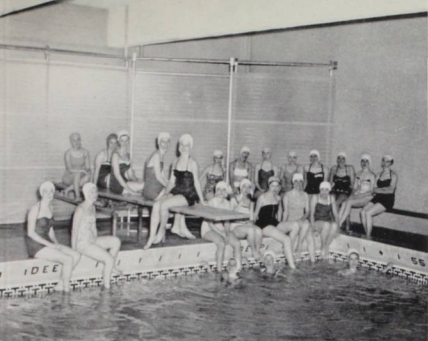


Tennis team members included: Coach Les Sparks, Bill Richter, Bob Bennett, Jerry Winner, and Glen Durham. Front Row: Don Gordon, Tom Elliot, Dorr Dearborn.

. . . and still champions! The Willamette University tennis team, composed entirely of sophomores and freshmen, again claimed the Northwest Conference tennis crown after a fine team effort in the conference tourney. Placing men in the semi-finals of both the singles and doubles, the Bearcat netmen managed to amass enough total points to come out on top in the annual conference decider. Coach Les Sparks looks for a strong returning team in 1959.

Bob Bennett served while Bill Richter awaited the return.





Swimming was a favorite for the women students.

Tennis team members were: Mary Blanchard, Bev Krough, Jean Williams, coach, Ann Bercaw, and Linda Berry.

## women's sports

From modern dance to fencing, from swimming to tennis, the women taking P E enjoyed their required hours. Throughout the year WU's women had as much fun with sports as the men did, and they participated in a variety of athletic activities.



Archery behind the library made passers-by cautious as these women filled their P E requirement.





clubs and honoraries

Center of Willamette's academic life, the library also hosts many of the school's clubs and honoraries.

livened the campus



# phi eta sigma - alpha lambda delta

Beaton, Rusty  
Campbell, Tim  
Johnson, Craig

Litchfield, Ralph  
Randall, Bill

NOT PICTURED  
Coe, Don



Two national freshman honoraries, Phi Eta Sigma for men and Alpha Lambda Delta for women, continued to promote high scholarship on the WU campus. With nineteen members this year, Alpha Lambda Delta included among its services to the campus registration for Parents' Weekend, a tea for freshman women, and collection of chapel slips. Phi Eta Sigma had seven active members who found themselves available for a variety of campus projects. For both, the year was climaxed by initiation of new members and a joint banquet in Doney Hall.



Casper, Cappy  
Culley, Pat  
Daum, Micky  
Dedrick, Jane  
Doerfler, Peggy

Edmundson, Midge  
Johnson, Kathy  
Laird, Elizabeth  
Lund, Cathy  
Manker, Dot

McGilvra, Joanne  
Mitzel, Patty  
Owens, Mary  
Peterson, Sonja  
Quiring, Sylvia

Shepherd, Ann  
Shidler, Donnie  
Teague, Nancy  
Thompson, Phyllis

## honey bears

Color and beauty in the form of the Honey Bears were seen for the first time during the half-time entertainment periods for all team sports this year. In addition to their athletic activities, the Honey Bears helped boost campus spirit with services such as their trimming of the Christmas tree in Eaton's lobby.

### NOT PICTURED

Fridlund, Jan  
Hall, Rene  
Knoles, Alice  
Reed, Sandy  
Schmid, Judy  
Wilkinson, Lee



Honey Bears Connie Kent, Gerry Fandrich, Sue Webber, Linda Freeman, Rosella Homrich, and Marilyn Wright added to the Christmas spirit when they decorated the Tree in Eaton.

Raising morale and razing morals for the WU football team was this line of bare-kneed lovelies.





Watching the polls for BAG's this year were Sylvia Quiring, Jan Hansen, Ann Fields, Dot Manker, and Cynthia Shaw.

An alum party and a picnic found the women of Beta Alpha Gamma and the men of Sigma Alpha Chi relaxing together. Major activity for both sophomore service-activities honoraries was monitoring the ballot boxes during all school elections. The BAG's also found themselves collecting chapel slips, ushering at various affairs, and sponsoring the Ugly Man contest.



Dick White picked up his chapel slip from BAG Carol McMinimee as Ann Bercaw, Toni Dyer, Jane Dedrick, and Micky Daum looked on.

NOT PICTURED  
Cook, Ginny  
Culley, Pat  
Doerfler, Peggy

## beta alpha gamma - sigma alpha chi



Assembled with their ballot box were —SAX: *First Row:* Ted Cook, Tim Campbell, Bob Clark, Johnny Bergstrom, Laurel Tiller, Terry Kent. *Second Row:* Pete Blewett, Ron Walker, Ed Johnson, Howard Nelson, Jim Brentlinger, and Tom Caylor.

NOT PICTURED  
Hill, Dick



Skip Wilcox auctioned off the services of two lovely Sigma Chi housemaids.

# A W S

AWS, whose membership includes all Willamette women, functioned mainly through its council and Judicial Board. These, led by presidents Jerry Brackins and Linda Berry, handled women's orientation, rules and activities. Proceeds from the annual AWS dance (formal this year), mum sale, auction and penny-a-minute late pers went toward the AWS scholarship, awarded each spring.

## coeds of the month



OCTOBER  
Jeannine Mercer  
NOVEMBER  
Anita Booth  
DECEMBER  
Sharon Bates  
JANUARY  
Nancy Sailor  
FEBRUARY  
Jean Martin

MARCH  
Jerry Brackins  
APRIL  
Muriel Miettunen  
MAY  
Diane Wickstrom

Popular talent at the AWS auction was this costumed band from the DG house.



## mortar board

Cap and Gown, senior women's honorary, spent a busy year preparing for installation of a Mortar Board chapter at WU. But they also found time to honor scholarship holders at a fall Smarty Party, sponsor a food sale and staff the Fine Arts check room at evening functions. In April the group climaxed their installation and ceremonies with an evening serenade when new members were tapped.



Snapped during an informal weekly meeting were: Seated: Anita Booth, Minalou Byler, Esther Gwilliam, Lucy Myers, Jeannine Mercer, Suzy Platt, Muriel Miettunen. Standing: Jean Martin.



Jeannine Mercer served as president of Willamette's charter chapter of Mortar Board.

Following their initiation, Mortar Board members gathered in their academic costumes and new pins. Left to Right: Jeannine Mercer, Lucy Myers, Muriel Miettunen, Suzy Platt, Dean Ewalt, Minalou Byler, Jean Martin, Nancy Sailor, Anita Booth.



## phi sigma iota

Students with a GPA of 3.5 or better who had taken at least one course in literature in a foreign language were eligible for membership in Phi Sigma Iota, national foreign language honorary. Trips to hear speakers, a discussion of teaching in France conducted by Sandy Schuermann, and caroling at Christmas kept the PSI members busy.

Bennett, Bob  
Fulmer, Jeanette  
Harris, Sandi  
Manker, Dot



Miller, Carolyn  
Mitzel, Patty  
Newberry, Dan  
Platt, Suzy  
Snyder, Sue

NOT PICTURED  
Drayton, Paule



From ethics to religion ranged the topics during Phi Sigma Tau's discussion meetings. Made up of faculty and student members, the national philosophy honorary tried to encourage WU campus interest in philosophy through discussion and a recognition of ability in the field.

## phi sigma tau

Culy, Stan  
Goodier, Barbara  
Hanson, Dr. Clifford  
Halstetter, Merlin  
Lane, Lola



Mathews, Mim  
Sandine, Gayle  
Shay, Dr. Ted  
Steward, Dave  
Zeigler, Dr. Harley



# mu phi epsilon

Promotion of musicianship, scholarship and American music was the purpose of Mu Phi Epsilon, national music sorority. Besides ushering for recitals, Mu Phis were active magazine salesmen and sent music to the Far East. New this year were a scholarship from their Salem alums and a composition contest sponsored jointly with Phi Mu Alpha.



NOT PICTURED  
Boden, Gail  
Brandt, Pat  
Ganoce, Phyllis  
Sailor, Nancy



Mu Phis gathered on the steps of the Music Hall were: First Row: Ann Barber, Barbara Dixon, Judy Anderson, Carolyn Risley. Second Row: Sonja Peterson, Myra Friesen, Daisy Lim, Cappy Casper, Elizabeth Laird, Janet Tindall.

Mu Phi president this year was Judy Anderson.

# phi mu alpha



Phi Mu Alpha Sinfonia, professional music fraternity, listed as its aim the furthering of composition and performance of American music. Members applied this objective at a local level through attendance, ushering and participation in WU concerts. Serenades to women's living groups, a Chapter Day banquet and the annual American Music concert were some of their activities.

NOT PICTURED  
Gates, Dr. Willis  
Gleckler, Mr. Don  
Hedeon, Ken  
Kelley, Larry  
Lebold, Frank  
Stewart, Joe



Phi Mu members pictured were: First Row: Gene Parrett, Jim Fiske, Ron Kingsley, Jim Holloway. Second Row: Keith Neubauer, Gene Corey, Jim Warner, Jerry Johnson, Roger Moorhead, John Vale, Gary Lovre, John Heidel, Larry Hobson, Norman Walters, Bill Shannon, Roger Huntemann.

Ron Kingsley served as president of Phi Mu Alpha.

# omicron delta kappa



Pictured at an evening meeting were: *First Row:* Joe Stewart, Willard Bunney, Ron Kingsley, Skip Alexander, Jim Person, Steve Nason. *Second Row:* Lewis Bright, Dick Chanda, Ed Everts, Larry Willingham, Gene Corey, Gary Larson, Dick Audley.

Omicron Delta Kappa, national honorary for junior and senior men, also chooses some members from the faculty. Thus practicing its purpose of furthering communication between students and faculty, the group also encourages scholarship and worthwhile campus activities.

#### NOT PICTURED

Backlund, Vic  
Gregg, Dr. Robert  
Holmer, Prof. Freeman  
Lewis, John  
Luther, Dr. Chester  
Petrie, Dr. Richard  
Pieretti, Gino  
Schulze, Dr. Daniel  
Shay, Dr. Theodore  
Smith, Dr. G. Herbert

Theta Alpha Phi, producing organization of the WU theater, attempted to further interest and work in drama. Special convos publicized coming plays, and members handled all details from tickets to lighting and costumes. At the Theta Alpha Phi banquet, held in May, acting awards were presented and new members named.

# theta alpha phi

High spot of Theta Alpha Phi's spring banquet was the presentation of annual acting awards.

#### MEMBERS

Baker, Mac  
Braddy, Bob  
Feller, Mary Beth  
Geer, Dick  
Haverson, Wayne  
Newberry, Beth  
Putnam, Prof. Robert  
Ritchie, Prof. Carl



## psi chi

Promotion of the aims and incentives of psychology and recognition of persons outstanding in that field were the purposes of Psi Chi. This national honorary sponsored movies and speakers for both its own members and other campus groups.

### NOT PICTURED

Card, Doug  
Cable, Pete  
Clark, Barbara  
Honl, Tom  
Lind, Marietta  
Mitzel, Patty  
Nelson, Jack  
Quiring, Sylvia  
Roach, Barbara  
Siebert, Al  
Stout, Marge  
Swegart, Barbara  
Weston, Joan  
Yoder, Anne  
Zavala, Al



With their advisors, Psi Chi members assembled for a picture. *First Row:* Joan Sherrill, Lucy Myers, Jeannine Mercer, Carol Warren. *Second Row:* Dr. Kaestner, Gerry Ackerson, Mary Turner, Ann Chambers, LoAnne Munding, Loretta Horsley, Dr. Derthick.

## ski club



With evident need and interest, Willamette's new ski club held its first meeting for about forty students. Organized to promote interest and good fellowship in skiing among WU students, the group found coordination of transportation its immediate concern. Weekly rides for interested skiers were provided, and several movies on skiing technique were shown during the year.

Shown were a few of Willamette's ski enthusiasts. *First Row:* Don Gordon, Gary Buell, Gretchen Goodrich, Terry Kent, Dot Manker. *Second Row:* Bob Clark, Bill Seawell, John Bergstrom.

# kappa delta pi

Students interested in education (in the upper 10% of their class with at least six hours in the field) were given the opportunity of membership in Kappa Delta Pi, national education honorary. As a service to the school, the group sponsored a lecture explaining teaching requirements.

PRESIDENT  
Bates, Sharon



ADVISOR  
Lyles, Dr. James  
Backlund, Vic  
Chambers, Ann



Christiansen, Art  
Clark, Barbara  
Cope, Peggy  
Derthick, Dr. Charles  
Douglas, James



Driver, Keith  
Eagleson, Martha  
Feller, Dan  
Gravatt, Arthur  
William, Esther



Hawes, Dr. Homer  
Johnson, Jerry  
Kaiser, Dr. Chester  
Kingsley, Ron  
Lind, Marietta



Martin, Jean  
Moore, Sandra  
Pohl, Arlene  
Sailor, Nancy  
Smullin, Mary Jo



# pi gamma mu



Larry Martin  
president

With both faculty and student members, Pi Gamma Mu, the national social science honorary, sponsored speakers of interest in the various social studies and sent delegates to a variety of conferences. Purpose of the honorary is to improve scholarship in this area of study.



Alexander, Skip  
Audley, Dick  
Backlund, Vic  
Bright, Lewis  
Bunney, Willard  
Campbell, Bob



Chambers, Fred  
Frost, Dave  
Gatke, Dr. Robert  
Goodier, Barbara  
Gravatt, Arthur  
Gwilliam, Esther



Hawas, Dr. Homer  
Kaiser, Dr. Chester  
Long, Bill  
Lovell, Dr. Ivan  
MacIver, Clyde  
Mader, Howard



Martin, Jean  
McClure, Chuck  
Mercer, Rick  
Montgomery, Richard  
Moore, Conrad  
Moore, Tom



Paterson, Gene  
Roark, Sandra  
Ruberg, Kay  
Rud, Chuck  
Shay, Dr. Ted  
Stoop, Ken



Van Horn, Pete  
Willingham, Larry  
Wolf, Martin

NOT PICTURED  
Bullard, Bill  
Empey, Don  
Gillis, Richard  
Gooding, Tom  
Gregg, Dr. Robert  
Hatfield, Mark  
H-lmer, Freeman  
Kanoff, Bill  
Miller, Don  
Moore, Gus  
Petrie, Dr. Richard  
Rademaker, Dr. John

# pe club

Promotion of the professional interests of students majoring in health, physical education and recreation is the purpose of WU's P E club. This group sponsored movies on physical education and brought special speakers for their meetings throughout this year.

Applegate, Ruth  
Domaschofsky, Rex  
Enberg, Karen



Heald, Jo  
Madsen, Karen  
Manwaring, Jim



Neu, Don  
Reed, Sandy  
Schmid, Judy  
Teague, Nancy



## NOT PICTURED

Balmeier, Gretchen  
Hartley, Dick  
Kekahio, Nute  
Minten, Shirley  
Sequira, Windy  
Watanabe, Masashi  
Ziegelman, Terry



# student nea

New to the WU campus this year was the Student National Education Association. With monthly meetings, the group provided its student members with opportunities for developing professional competence and gave an understanding of teaching as a career.

Allabach, Mary  
Allen, Shirley  
Backlund, Vic  
Bates, Sharon



Carson, Annette  
Martin, Jean  
Michalson, Karen  
Morton, Marilyn



Mundinger, LoAnn  
Pohl, Arlene  
Robinson, Jan  
Ross, Nicole  
Williams, Charles



NOT PICTURED  
Ellis, Virginia  
Lienhart, John

# lettermen's club



PRESIDENT  
Bill Long

Working toward good sportsmanship and enforcing observance of WU customs and traditions, lettermen kept frosh aware of the necessity of rook lids and punished offenders at Kangaroo Kourt. Ushering at games, assisting the rally squad and presenting the Varsity Ball were among their activities.



Aldinger, Paul  
Backlund, Vic  
Berglund, Steve



Beaton, Rusty  
Berkey, Jack  
Campbell, Tim  
Caruso, Frank  
Coates, Verne  
Domaschofsky, Rex



Driver, Keith  
Fowler, Jac  
Griffin, Bob  
Grossenbacher, Ed  
Hartman, Dale  
Hinds, John



Johns, Tom  
Lewis, Jim  
Lucas, Brad  
Lynn, Larry  
MacIver, Clyde  
McGivra, Paul



Meeke, Tony  
Moore, Tom  
Person, Jim  
Raid, Gary  
Robinson, Jim  
Roy, Bob



Shumway, Dale  
Stroebel, Howard  
Taylor, Ron  
Thurber, Lee  
Wall, Bill  
Weaver, Lee

Weston, Art  
Weston, Tom  
Wilfert, Buzz  
Winner, Gerry



NOT PICTURED  
Anderson, Jim  
Bishoprick, Dean  
Cisneros, Marv  
Frederick, John  
Hartley, Dick  
Jambura, Earl  
Kent, Terry  
Mihm, Dennis  
Sarver, Denny  
Sato, Hisao  
Solomon, Stan  
Tankersley, Jerry  
Travis, Jim  
Watanabe, Masa  
Ziegelman, Terry

# young republicans

WU's Young Republicans, striving to stimulate political thinking and support the G O P , organized this fall with twin goals of education and organization for 1958 elections. Besides sending delegates to various YR conferences, the group featured speakers from the political scene at their meetings.

PRESIDENT  
Ruberg, Kay



Applegate, Ruth  
Barber, Joan  
Barclay, Betsy  
Barker, Sammie  
Bash, Frank  
Beebe, Mary  
Bolmeier, Gretchen



Covey, Jan  
Embree, Judy  
Fretwell, Joan  
Frey, Carol  
Fulton, Beverlee  
Giberson, Bobbie  
Goodier, Barbara



Grabinski, Roger  
Hillman, Melinda  
Hamrich, Rosella  
Hounsell, Nora  
Humphrey, Marcia  
Johnson, Jan  
Julian, Bea



Kettenring, Karin  
Klock, Leta  
Lasswell, Ann  
Lewis, Bill  
Lindquist, Sandra  
Lusch, Joanne  
Lusty, Suzanne



Mangels, Myrna  
Morton, Marilyn  
Muhs, Emil  
Mundinger, LoAnne  
O'Neill, Marcia  
Paige, Patience  
Parsons, Marilyn



Rasey, Ellen  
Ray, Loretta  
Ross, Nicole  
Ruud, Dixie  
Sample, Beverly  
Schrock, Lynn  
Scott, Midge



Sherk, Barbara  
Short, Dean  
Stambaugh, Ann  
Tannehill, Frank  
White, Gerald  
Wilkinson, Ron  
Yoder, Anne



NOT PICTURED  
Dickson, Dianne  
Dockstader, Harriet  
Garner, Ann  
Krough, Beverly  
Philippi, Bruce  
Robertson, Beth  
Swegart, Barbara  
Kanoff, Bill

# young democrats

Growing rapidly in the past year, the Young Democrats were the host club for a successful state Young Democrats convention held in Salem this May. Fred Chambers was elected to one of the vice-president posts of the state organization and was one of the first college students to hold such an office. The YD's were planning an active campaign in the fall elections and hoped by their efforts, to stimulate youthful interest in government affairs.



Alexander, Skip  
Allender, Marky  
Brister, Sharon  
Cartwright, Carole

## NOT PICTURED

Aldinger, Paul  
Alexander, Nancy  
Conway, Mick  
Fikar, Mari  
Gannon, Jo  
Holmes, John  
Gildea, Larry  
Kaneski, Don  
Lee, Pat  
Marsh, Dan  
Marsh, Jerry  
McBride, Gary  
Murray, Pete  
Olsen, Clyde  
Schwabauer, Jim  
Theodore, John



Chambers, Ann  
Chambers, Fred  
Gallagher, John  
Goertzen, Gene



Haverson, Wayne  
Hays, Leonard  
Hise, Louis  
Johnson, Bill



Luoma, Barbara  
Minor, Mary  
Nute, Ellen  
Ormsbee, Orin  
Scoggins, Jim



Shdo, Ivone  
Smith, Mariel  
Stephen, Ross  
Welch, Pete  
Youngblood, Hugh

# angel flight

New on the WU campus this year was Angel Flight, the women's auxiliary of AFROTC. Dressed in smart blue and white uniforms, these women presided as hostesses at RO functions and developed an accomplished drill team.



Angel Flight girls drilled . . . and drilled.

Members of Angel Flight reviewed the AFROTC drill team during drill competition.



With the purpose of instructing in the business of the Air Force, Arnold Air Society is made up of advanced AFROTC cadets. This group, this year headed by Gerald Ackerson, sponsored the annual Military Ball and a spring beach trip.

# arnold air society

Ackerson, Gerald  
Cummings, Del  
Driver, Keith  
Fowler, Jac  
Leveton, Pete



Martin, Larry  
Marsters, Chuck  
McClure, Chuck  
Stoop, Ken  
Willingham, Larry

NOT PICTURED  
Gilbert, Merell  
Weaver, Bill



Willamette's organized independent women functioned as a unit with the purpose of promoting activities and social life for their group. With an open house, a carwash, and their spring dance — Gruesome Twosomes — these gals climaxed their year.



Officers for the organized independent women were: Caroline Prince, Alice Knoles, Jane Sanford, Kathy Bill, Liz Laird, Joy Robinson, and Carol Stone and Barbara Sherk, seated on the floor.

## independent women students

With unity plus, these independent women met each week in Lausanne.



# y w c a



Berry, Linda  
Beggs, Jan  
Daum, Mickey  
Dedrick, Jane  
Doerfler, Peggy



Jamison, Janet  
Krause, Mary Lou  
Mills, Jody  
Pfaff, Babs  
Rose, Mary Ella



Shaw, Cynthia  
Snyder, Sue  
Stone, Carol  
Strausz, Betty  
Teague, Nancy

NOT PICTURED  
Seely, Judy

Warren, Carol



Campus Y held another mixer party.



To further the purpose of the national YWCA, WU's campus group found itself busy throughout the year. With a Big-Little Sister party to begin the activities and a mixer before Freshman Glee. In addition, the Y gals worked on model UN and helped at both McLaren and Hillcrest.

Through denominational groups and living organizations the Religious Life Council coordinated the religious activities of the campus. Main project of this group for the year was the annual Christian Resource Week with the theme "What Do You Live For?" In charge of weekly chapels was the chapel board advised by Dr. Harley Zeigler.



Chapel manager for this year was Dave Steward, assisted by Eugenia King, Joan Sherrill, and Chaplain Dr. Harley Zeigler.

## religious life council

Religious Life Council representatives were: Seated: Robin Boardman, Nancy Weeks, Mary Minor, Lois Widener. Standing: Howard Nelson, Eugenia King, John Sweeney, Marietta Lind, Dave Steward, Dick White, Henry Kay, Marg Stout, Warren Walker, George Rogers, Gayle Sandine, and Dr. Harley Zeigler, advisor.



# conquest club

Augee, Mike  
Hays, Leonard  
Hodges, Don  
Hotelling, Carol



Jacobson, Dorothy  
Jenkins, Sue  
Kay, Henry  
Smith, Mariel  
Teague, Nancy



NOT PICTURED  
Frey, Don  
Fuller, Al  
Jeldon, Earl  
Peterson, Arlan  
Seitz, Jim

Gathered for their formal picture were the members of Conquest Club.

Providing for Christian fellowship and spiritual training, Conquest Club of the First Baptist Church met Sunday evenings for devotionals and recreation. Sing-spirations, a barn party, a formal Christmas banquet, and a swimming party were listed among their many activities.



To help students gain a better understanding of their faith through fellowship is the purpose of the Congregational—Presbyterian Student Fellowship. With weekly meetings, a spring retreat, and a major project, these students strived for their goal. This year they participated in the distribution of Thanksgiving food baskets to needy Salem families.



Allender, Markey  
Anderson, Karen  
Evans, Kathy  
Hamilton, Barb



Henderson, Phil  
Johnson, Laura  
Karmos, Joe  
Laird, Ann



Leenhouts, Linda  
MacKenzie, Marilyn  
Meara, Hannah  
O'Neill, Marcia



Perrine, Linda  
Shiels, Mary  
Sherk, Barbara  
Snyder, Andy



Stewart, Joe  
Sweeney, John  
Thompson, Jean  
Weeks, Nancy  
White, Dick  
NOT PICTURED  
Hall, Ed  
Robinson, Joy

Weekly meetings for discussion and a social hour brought WU's Lutheran students together. They were guided in these meetings by several Lutheran ministers. Various service activities and a group dinner occupied the group's spare time.



Enjoying a church sponsored dinner were these Lutheran students and their friends.

## willamette newman club

Newman Club met each week for discussion and study.



Work with blind children, discussion groups, and retreats kept WU's Catholic students busy. In addition to these activities, Newman club sponsored two movies and organized a number of social functions throughout the year.



Larry Mooney  
fall president

Al Zavala  
spring president



At a Wesley retreat Mun and Bob Stevens cooked for the gang.

## wesley fellowship

With weekly meetings featuring speakers and discussions, occasional retreats and monthly parties, Wesley promoted the fellowship of WU's Methodist students. Highlight of the social year was the annual Ski Spree held between semesters.



Wesley Cabinet members were: Stan Culy, Jo Gannon, Dave Patch, Diane Dixon, Kathy Burnard, John Heidel, Mary Owens, Dave Steward, and Carol Brinkworth.



Wesley Ski Spree found back-rubs in great demand.

# unesco



Stan Culy  
president

Sammy Barker  
Fred Chambers  
Paul deLespinasse



Carol Hotelling  
Dorothy Hudson  
Bill Richter  
Nicki Ross



Don Sommer  
Joe Stewart

NOT PICTURED  
Terry Jew  
Andy Snyder

With speakers and discussions, members of WU's campus UNESCO attempted to develop a wider concern with world problems. First activity of the year was assisting at Governor Holmes' tea for Oregon mayors. Two major projects, one a clothing drive, kept the group hopping. UNESCO collected five-hundred books to send to Asian students during their spring book drive.

Filling the UNESCO book box were: Carol Hotelling, Joe Stewart, Librarian, Brooks Jenkins, Terry Jew, Dorothy Hudson, and Stan Culy.



friendship and friction





part of group living

Forming the center bar of an "H" is Baxter Hall, home of the independent men, while extensions house the four fraternities.

## saga served . . .



Ed Andrick was in charge of food for the men.



"It's time to eat" was the by-word as the Lausanne kitchen staff waited for hungry students.

Planning meals and all that goes with this job was the full time occupation of the representatives of Saga Food Service as they tried to satisfy WU's many lunchmouths. From creamed crab to Saturday steaks, the food service provided good and balanced meals . . . and seconds.



Mac McFadden and his staff prepared for one of the year's many banquets.



Indulging an urge to travel, Baxter men went "Around the World in Eighty Days."

At the Baxter dance two Polynesian natives and a Frenchman shared the refreshments under posters from romantic lands.



## fall dances



Alice Eastman, Sweetheart of Sigma Chi, and members of her court took the floor with their escorts soon after their choice at the traditional Sweetheart Ball.

Transforming their house into "Dodge City After Dark," the Phi Delt's went western this year.



Stirring up plans for their Halloween Dance, the Doney girls were unaware that the flu epidemic would interfere.

Gathering to choose a queen soon after the flu ban was lifted, the SAE's whirled their way through a romantic formal evening.



# panhellenic

Coordinating rush and assisting with the problems of sorority living was Panhellenic Council. Dean Ewalt was the group's advisor. Each house was represented on the council, and with the installation of the Alpha Phi chapter, another member joined Panhellenic.

## FALL REPRESENTATIVES

Barbara Clark  
president  
Jane Dedrick  
vice-president  
Joan Sherril  
secretary  
Mary Jo Smullen  
treasurer

## SPRING REPRESENTATIVES

Karma Miller  
president  
Kathy Johnson  
vice-president  
Sonja Peterson  
secretary  
Jan Hanson  
treasurer  
Judy Abele



Made up of the presidents of each fraternity, Inter-Fraternity Council helped organize Greek living for W U's affiliated men. Assisting with this task were Dean Elmer Rieck and acting dean Buzz Yocom.

# ifc

## FALL REPRESENTATIVES

Lewis Bright  
Ed Everts  
Rick Mercer  
Steve Nason



## SPRING REPRESENTATIVES

Pete Cauble  
Bill Long  
Conrad Moore  
Dean Short





Girls and housemother alike enjoyed a quick game of hearts.



Leading Alpha Chi Omega during the fall semester was Nancy Sailor.



Martha Eagleston, spring president, found time for study in her busy schedule.

## alpha chi omega

This fall the Alpha Chis welcomed back their housemother, Mrs. Booth, for another year at 610 North 15th. Because of the flu epidemic, their annual Golden Lyre Ball was postponed until spring, when the chapter house was transformed into the Golden Angel night club. Open house for the whole campus took the place of a fall dance. Alpha Chis were favored with royalty this year, with Homecoming Hostess, Little Colonel, Sweetheart of Sigma Chi, SAE Violet Ball princess, Varsity Ball princesses and Betty Coed among their members.

Housemother Mrs. Mary Booth glanced up from the book she was reading.



Living near the mill stream, Alpha Chis found feeding the ducks a pleasant pastime.



SENIORS

Brackins, Jerry  
Pohl, Arlene  
Ruud, Dixie  
Sailor, Nancy  
Yader, Anne  
JUNIORS  
Boden, Gail  
Clark, Barbara



Dennis, Barbara  
Eggleston, Martha  
Enberg, Karen  
Renshow, Pat  
Warren, Carole  
SOPHOMORES  
Bean, Janice  
Bercaw, Ann



Cain, Virginia  
Carver, Gloria  
Dixon, Barbara  
Hansen, Jan  
Hansen, Nettie  
Lund, Cathy  
Miller, Diane



Moulton, Susie  
Palmer, Sue  
Quiring, Sylvia  
Robnett, Janice  
Shaffer, Margaret  
Thompson, Phyllis  
Tunnell, Peggy



Weeks, Nancy  
FRESHMEN  
Barber, Joan  
Boyd, Terry  
Eagleson, Jane  
Eastman, Alice  
Edwards, Mary  
Harper, Ann



Henry, Kayla  
Halcomb, Pat  
Jenkins, Sue  
Laird, Ann  
Larson, Gail  
MacKenzie, Marilyn  
Meara, Hannah



Ray, Loretta  
Stambaugh, Ann  
Tomlin, Sheila  
Zeller, Mary  
PLEDGE, JUNIOR  
Campbell, Sybil  
PLEDGE, SOPHOMORE  
Bolmeier, Gretchen  
PLEDGES, FRESHMAN  
Davis, Pat



Evans, Kathy  
Geer, Judy  
Jenkins, Sherri  
Joseph, Sally  
Scott, Midge  
Shiels, Mary



NOT PICTURED  
Peasley, Jean  
Moore, Sandra  
O'Neill, Marcia  
Krough, Bev  
Pemberton, Joan



Busy with her knitting was Mrs. Mary Langen, new Chi Omega housemother.



Marilyn Morton, first semester president, turned her attention to a plant that needed watering.



Spring president Jane Dedrick pointed out some of the flowering shrubs around the Chi O house.

## chi omega

This year Chi O's celebrated Halloween with a costume party, entertaining the Brownie troop adopted by the chapter. Another fall event, the Eleusinian banquet, honored the founding and founders of Chi Omega and included traditional candlelighting ceremonies. Chi O seniors were feted at a spring dinner dance, the annual White Carnation Ball.

Saturday mornings found Chi O's dressed and ready for a thorough housecleaning.



Guest at the Chi O house this year was Daisy Lim, senior from Indonesia.

**SENIORS**  
 Beebe, Mary  
 Chambers, Ann  
 Lane, Lola  
 Morton, Marilyn  
 Mundinger, Lo Anne



Platt, Suzy  
 Shdo, Ivone  
 Turner, Mary  
**JUNIOR**  
 Thronson, Joan  
**SOPHOMORES**  
 Coleman, Lynn



Dedrick, Jane  
 Folsom, Toni  
 Griffith, Sally  
 Horton, Audney  
 Hume, Judy



Johnson, Kathryn  
 Loennig, Mary  
 Olmscheid, Sally  
 Risley, Carolyn  
 Stryker, Hollis



**FRESHMEN**  
 Brookes, Langley  
 Allender, Marky  
 Luoma, Barbara  
 Ross, Nicole  
 Seely, Sandra



Spurlock, Drury  
 Wilkinson, Lee  
**PLEDGES**  
 Beaty, Joan  
 Bennett, Barbara  
 Koch, Lois



Cody, Collene  
 Elliott, Nancy  
 Grigsby, Sheila  
 Leenhouts, Linda  
 Paulson, Mara



Rettig, Judy  
 Ross, Charland  
 Schrag, Carolyn  
 Sheppler, Lois  
 Snow, Connie



**NOT PICTURED**  
 Fudge, Jean  
 Weston, Joan



Enthusiastic reception was given the men of Baxter Hall for their Christmas serenade and door decoration.



Fall house president Ann Barber relaxed at the piano.



Sue Snyder, president spring semester, added a last touch to an arrangement of flowers.

## delta gamma

First social event at the Delta Gamma house this fall was a tea honoring their new housemother and their province secretary. A tree-trimming party, an all-campus open house and a spring dance—"Bolshevik's Blast," featuring imaginative costumes and portraits of Communist heroes—rounded out the year's social calendar. Beauty had its place: D G's claimed a Queen of Violets, Little Captain, Varsity Queen and May Princess. And more serious pursuits were not forgotten, for the Blind School was a national philanthropic project and once more Delta Gamma claimed top scholastic honors for the campus.

Busy with her correspondence was Mrs. Meservey, new Delta Gamma housemother.



All else was forgotten in the race to find the right pieces in this jigsaw puzzle.



SENIORS

Barber, Ann  
Carson, Annette  
Gwilliam, Esther  
Krause, Mary Lou  
Martin, Jean  
Myers, Lucy  
JUNIORS  
Allabach, Mary



Frey, Carol  
Galbraith, Jean  
Hainman, Bev  
Heald, Jo  
Hillman, Melinda  
Lasswell, Anne  
Miller, Carolyn



Miller, Karma  
Mills, Jody  
Roach, Barbara  
Ruberg, Kay  
Sandine, Gayle  
Sanford, Kay  
Sherrill, Joan



Stout, Marge  
Snyder, Sue  
SOPHOMORES  
Bruning, Deanna  
Culley, Pat  
Doerfler, Peggy  
Dreyer, Mary Anne  
Edmundson, Mildred



Fields, Ann  
Fraser, Donna  
Griffis, Joan  
King, Eugenia  
McIver, Sue  
Nelson, Jan  
Pritchard, Jean



Robison, Jan  
Strausz, Bette  
Trueblood, Sue  
Warren, Jo Anne  
FRESHMEN  
Embree, Judy  
Frey, Carolyn  
Gannon, Jo



Garner, Ann  
Hafter, Marcia  
Hobbs, Carol  
Humphrey, Marcia  
Mason, Carol  
Royer, Barbara  
Simon, Barbara



Taylor, Judy  
Wood, Marilyn  
PLEDGES

Barker, Sammie Lou  
Greison, Elinor  
Lusty, Sue  
Madsen, Karen  
McClaskey, Diana



Mullarky, Sue  
Sanford, Jean  
Sherk, Barbara  
Webber, Sue  
Zachary, Rita

NOT PICTURED

Bradley, Ann  
Boath, Anita  
Butchart, Laura  
Hanson, Gwen  
Henninger, Karen





Doney women and their guests spent an evening trimming the Christmas tree.



Answering Doney's phone was a frequent occupation of Muriel Miettunen, fall house president.



Marietta Lind, spring president, rearranged one of the plants in the living room.

## doney hall

Doney Hall began the year with a large, enthusiastic crop of freshmen, outnumbering upper class women by a large margin. Plans were laid for a fall dance with a Halloween motif, but when Asian flu interfered, girls settled for a costumed fun night with jazz combo. Andy Kuehn, Doney's Ugly Man candidate, brought them a trophy during Homecoming weekend, and Christmas functions included a tree-trimming party, a holiday tea and a serenade for men's living groups. Functions for the year were topped off with cherry blossoms and Japanese scrolls at the spring dance and a semi-formal banquet honoring the seniors and housemother Mrs. Wissenbach.

Bicycling became Doney's favorite spring sport, while the front porch was a perfect spot to sit and watch the campus go by.



Serving her third year in Doney was busy housemother Mrs. Billie Wissenbach.



SENIORS

Mathews, Miriam  
Miettunen, Muriel  
Preuss, Paula  
Roberts, Arla  
Sequeira, Lei  
JUNIORS  
Bredsteen, Barbara



Freeman, Joanne  
Ganoë, Phyllis  
Hill, Yvonne  
Moore, Maggie  
Williams, Julia  
SOPHOMORES  
Ball, Audrey



Beggs, Jan  
Biggs, Joyce  
Dalton, Judy  
Moseley, Robin  
Pope, Sara  
Scott, Donna



Sehorn, Deanna  
Sowell, Della  
Swanson, Frances  
Waggner, Helen  
Westbrook, Donna  
Widener, Lois



Williams, Kay  
FRESHMEN  
Anderson, Karen  
Cleek, Pat  
Emert, Naida  
Fenner, Sally  
Flournoy, Sharon



Fridlund, Jan  
Henderson, Louise  
Isaackson, JoAnn  
Landye, Donna  
Page, Sally  
Reed, Sandy



Rothrock, Rowena  
Schierman, Marilyn  
Wyatt, Joanne  
NOT PICTURED  
Amrine, Lynn  
Leitch, Nancy  
Luders, Cynthia





Scissors, paste and old Collegians helped keep the Lausanne scrapbook up-to-date.



Knitting was a favorite hobby of Mrs. Ella Watson, housemother.

## lausanne hall

Like the rest of the campus, Lausanne found its fall social life hampered by the flu scare. But a surprise Halloween party given by the food service helped pass the time, and the annual Christmas tea was held as usual. Doors of each room were decorated, and prizes were given in several divisions. Lausanne's spring dance turned the basement into "Showboat," and a banquet in May honored senior residents.

Halting at the sign-out book became second nature for all Lausanne women.



At the telephone was Ann Starkweather, assistant housemother.

Lausanne's president during the fall semester was Ruth Applegate.

Heading the second semester list of officers was Donna Fraser.



**SENIORS**

Friesen, Myra  
 Gillett, Marion  
 Rosbergs, Anna  
**JUNIOR**  
 Anderson, Judy  
**SOPHOMORES**  
 Alger, Ragene  
 Bagley, Ann  
 Blye, Laurel



Brister, Sharon  
 Cartwright, Carol  
 Church, Diane  
 Couey, Jan  
 Fahlstrom, Mariel  
 Greider, Carol  
 Hotelling, Carol



Inman, Barbara  
 Mergler, Stephanie  
 Minor, Mary  
 Nute, Ellen  
 O'Neill, Marcia  
 Saito, Carrie  
 Steen, Cynthia



Stone, Carol  
 Teeland, Colleen  
**FRESHMEN**  
 Allen, Shirley  
 Avery, Maureen  
 Bill, Kathy  
 Bradford, Sue  
 Brinkworth, Carol



Burnard, Kathy  
 Fandrich, Gerry  
 Flory, Karen  
 Fretwell, Joan  
 Fulton, Beverly  
 Gage, Susan  
 Hadley, Nancy



Hanley, Sharon  
 Hooker, Carmen  
 Homrich, Rosella  
 Johnson, Laura  
 Kaitera, Mary  
 Kelso, Beth  
 Knoles, Alice



Leger, Norissa  
 Lindquist, Sandra  
 Lusch, Joanne  
 McLean, Marsha  
 Martin, Marilyn  
 Nelson, Karen  
 Nickels, Henrietta



Parsons, Marilyn  
 Perrine, Linda  
 Porter, Marilyn  
 Rasey, Ellen  
 Sager, Ellen  
 Sample, Beverly  
 Sanford, Jane



Smith, Mariel  
 Stevens, Geranna  
 Trenholm, Pam  
 Voll, Sharon





Home from classes, Pi Phi had just enough time for a quick card game before dinner.

## pi beta phi

Highest scoring chapter in province standardization tests, Pi Phi started the year with an afternoon tea honoring their national vice-president and province president. In January the campus attended the unveiling of the newly-decorated Pi Phi basement — gift of the Portland Mothers Club. On Arrow Day Phi Phi gave a coat of red paint to the floor of the ASWU office. Two were members of the May Court, and the spring dance, "Scotch on the Rocks," even featured a bagpipe band.

Connie Clark, fall president, found study a vital part of any senior's life.

Sondra Roark took over as house proxy during spring semester.



Mrs. Jeannette Sawyer, new housemother, tended one of the house plants.



Snack time found Mary Jo Smullin, Sandi Harris and Sharon Allen fixing cocoa in the kitchen.



**SENIORS**

Allen, Sharon  
 Clark, Connie  
 Feller, Mary Beth  
 Hill, Joyce  
 Jones, Dianne  
 Mercer, Jeannine  
 Tetric, Alberta



Wickstrom, Diane

**JUNIORS**

Berry, Linda  
 Harris, Sandi  
 Hewitt, Barbara  
 Lowe, Marg  
 Roark, Sondra  
 Schrock, Lynn



Smullin, Mary Jo

**SOPHOMORES**

Boardman, Robin  
 Casper, Cappy  
 Cook, Ginny  
 Daum, Mickey  
 Goodrich, Gretchen  
 Jamison, Janet



Mangels, Myrna

Manker, Dot  
 McGilvra, Joanne  
 McMinnimee, Carol  
 Mitzel, Patty  
 Olsen, Judy  
 Owens, Mary



Perry, Janet

Peterson, Sonja  
 Pfaff, Barbara  
 Roeding, Diane  
 Rose, Mary Ella  
 Shepherd, Ann  
 Stephenson, Rosemary



Wilcox, Lynn

**FRESHMEN**

Buckinger, Elaine  
 Drier, Karen  
 Duffy, Pat  
 Hoffman, Peggy  
 Hounsel, Nora  
 Julien, Bea



Kettenring, Karin

Leonard, Fran  
 Stewart, Alice  
 Tuffel, Judy  
 Tharnton, Lee

**PLEDGES**

Baer, Barbara  
 Barclay, Betsy



Blanchard, Mary  
 Giberson, Bobbie  
 Hamilton, Barbara  
 Hansen, Jo  
 Marette, Kate  
 Toy, Betty  
 Wright, Marilyn

**NOT PICTURED**

Hostetler, Linda



Judy Rettig, University House president, applied some elbow grease to a plaque in the living room.

Though most of the women living in University House were affiliated with other living groups and ate in Lausanne, such close quarters naturally led to a strong feeling of unity. As a living organization, U House had its own executive council and house meetings while cooperating with Lausanne in social events.

SOPHOMORES  
Baer, Barbara  
Doerfler, Peggy  
Grigsby, Sheila  
Stryker, Holly



Warren, Joanne  
FRESHMEN  
Hoffman, Barbara  
Holcomb, Pat  
Lester, Joanna



MacKenzie, Marilyn  
Schmid, Judi  
Sheppler, Lois



Snow, Connie  
Thornton, Lee  
Toy, Betty



## university house

Joanna Lester and Sheila Grigsby found the spacious living room in U House a cool and quiet place for study.



Busy at her typewriter was Miss Ruth Lofstrom, housemother.





Appropriate for the newest campus sorority, Alpha Phi presented "Baby Ball," decorating with toys and balloons and serving animal crackers.



Orchid leis, muu-muus, gaudy shirts — all these appeared at Phi Delta Theta's "Mahaini Holiday."

## spring house dances

Couples dressed in self-styled Martian costumes gathered outside the SAE space station.



Clouds and spaceships formed truly "Out Of This World" decorations for the man of Sigma Alpha Epsilon.





Glittering three-dimensional stars and appropriate murals set the heavenly atmosphere of Alpha Chi Omega's Golden Angel nightclub.

Couples entered the Stardust Room through a replica of the Alpha Chi Omega lyre.



Delta Gamma "Commies" and their escorts gathered to pay their respects to the last of Joseph Stalin.

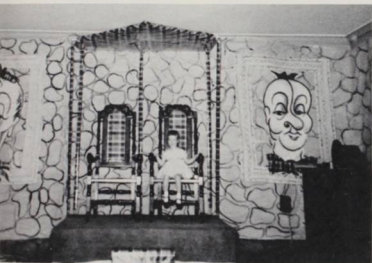


Under the hammer and sickle, a wide variety of costumes were seen at the DG "Bolshevik Blast."





With "Scotch on the Rocks," Pi Phi women managed to turn their whole house into a castle.



Even the details of the throne room were plaid in the Pi Phis' Highland castle.



Men of Beta Theta Pi and their dates enjoyed a formal dinner dance at the VFW Hall.

Cookies, punch and souvenir glasses kept business booming at the refreshment bar of Lausanne's "Showboat."





Baxter men eagerly sampled a box of Christmas cookies.



Gene Corey headed Baxter's fall roster of officers.



For spring semester, junior Ron Wilkinson took over the office of president.

## baxter hall

This fall Baxter men welcomed a new housemother, Mrs. Ford. First semester social function included a tea in her honor, a costume dance — "Around the World," a Christmas serenade when door decorations were given each women's living organization and a party for underprivileged children. Japanese lanterns and blossoms transformed the hall into "Exotica" for the spring formal, and despite rainy weather a beach trip was held for Baxter men and their dates.

New to the WU campus was Baxter's housemother, Mrs. Maryetta Ford.



### SENIORS

Bowker, John

Corey, Gene

### JUNIORS

Arnold, Jerry

Balmsadesa, Ces

Barth, John

Culy, Stan

DeArmond, Gordon

Henderson, Phil

McClard, Dave

Moellering, Ed

Muhs, Emil

Neu, Don

Steward, Dave

Warner, Jim

Wilkinson, Ron

### SOPHOMORES

Berkey, Jack

Bones, Arlo

Bong, Bill  
Cline, Jim  
Fahey, Mike  
Foster, Chuck  
Garvin, Claude  
Halstead, Larry  
Hardy, Justin



Hickock, Craig  
Hussey, Cliff  
Hone, Steve  
Kielmeier, Bruce  
Lovre, Gary  
Mankinen, Carl  
Paquin, Larry



Pierce, Clarence  
Randall, William  
Rasmussen, John  
Seagraves, Louie  
Stratten, Larry  
Taylor, Paul  
Wilden, Howard



**FRESHMEN**

Briggs, Pete  
Bunse, Dale  
Burgess, Thomas  
Butler, Stewart  
Carter, Charles  
Cox, Gary  
Conklin, Dale



Crane, David  
Cruzan, Kent  
DeBoer, Judd  
deLespinasse, Paul  
Ginoza, Ken  
Hagedorn, Mike  
Hamilton, Larry



Hellenenthal, Robert  
Hess, Jim  
Johnson, Craig  
Kitchener, David  
Kohntopp, Dean  
Lane, Chuck  
McIntosh, David



Matsumura, Roy  
Minor, Paul  
Moore, Jim  
Myers, Dick  
Neketin, Tim  
Pfister, Chuck  
Riggs, Bill



Rogers, George  
Rounds, Gardie  
Russell, Ron  
Saito, Jim  
Sanford, John  
Snyder, Andy  
Stewart, Kit



Taylor, Keith  
Thompson, Dale  
Tonn, Norm  
Tucker, Lyle  
Walker, Lawrence  
Ward, Dave  
Waterman, Mike

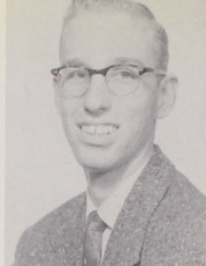


NOT PICTURED  
Beamish, Tufton



Music-loving Betas enthusiastically recorded an impromptu session of their rhythm band.

Cards were always a popular pastime in the Beta house.



Ed Everts wielded the gavel in the Beta house fall semester.



Conrad Moore, spring president, found time to enjoy the hi-fi set.

## beta theta pi

When the Betas' fall festivities hit their Halloween peak, the administration declared a brief rest period—a semester of social probation. Compensation for a blank calendar included house football and basketball leagues, a Christmas party for underprivileged children and a special dinner honoring Tarantula Ghoul. And extra study time helped the Betas maintain their high scholastic average. Probation's end was celebrated by the whole campus at "Dragon Inn," and Betas attending convlave in British Columbia came home with two honors in singing, chapter publications and scholarship.



Mrs. Hester Payne, housemother, listed crossword puzzles among her spare time activities.

### SENIORS

Alexander, Skip  
Boss, Bob  
Campbell, Bob  
Chanda, Dick  
Everts, Ed  
Gail, Tom

Hayt, George  
Kingsley, Ron  
Nichols, Lowell  
Person, Jim  
Siebert, Al  
Taylor, Bob  
Weaver, Bill



**JUNIORS**

Bash, Frank  
 Erickson, Dave  
 Ferrell, Dick  
 Griffin, Bob  
 Gustafson, Bruce  
 Heidel, John  
 Landis, Dave



Larson, Gary  
 MacIver, Clyde  
 McCloud, Paul  
 Moore, Conrad  
 Moore, Tom  
 Nelt, Ted  
 Parrett, Gene



Peterson, Dave  
 Sitzman, Jim  
 Stewart, Joe  
 Wade, Fred  
 Walker, Warren  
 Williams, Don  
 Willingham, Larry



Zavala, Al  
**SOPHOMORES**  
 Beaton, Rusty  
 Bergstrom, John  
 Bernklau, Rod  
 Cook, Ted  
 Denham, Dale  
 Dorsett, Ian



Geist, Carl  
 Gerbing, Ron  
 Gordon, Don  
 Grossenbacher, Ed  
 Karmos, Joe  
 Kaufman, John  
 Litchfield, Ralph



Pailthorp, Keith  
 Smith, Dennis  
 Sterling, Larry  
 Teppola, Mark  
 Tiller, Laurel  
 Walker, Ron  
**FRESHMEN**  
 Craig, Bob



Dearborn, Dorr  
 Donnell, Jim  
 Forcum, Dick  
 Hutchinson, Neil  
 McGilvra, Paul  
 Midlam, Kevin  
 Mortenson, Dale



Myers, Michael  
 Peterson, Gary  
 Rehfuss, Dave  
 Spence, Skip  
 Teeters, Jim  
 Weisel, Pete  
**PLEDGES**  
 Cochran, Dwight



Ericson, Spence  
 Grinnell, Larry  
 Meeker, Tony  
 Pierce, Bob  
 Van Noy, Ronald  
**NOT PICTURED**  
 Kent, Terry





Watching a favorite TV program or browsing through the day's newspaper provided popular after-dinner relaxation for the Phi Deltas.



Housemother for her third year was Mrs. Charles McElhinney.

## phi delta theta



Bill Long, left, spring president, pondered his next move in a chess game with Lewis Bright, who headed the Phis' slate of officers for fall semester.

WU's chapter of Phi Delta Theta moved into the limelight this fall as one of their seniors, Vic Backlund, received the fraternity's top national award. A large fall pledge class swelled Phi Delt ranks, and a costume dance—"Dodge City After Dark"—entertained the men and their dates in a Western atmosphere. Like many of the other living groups, the Phi Deltas entertained at a children's party just before Christmas. Spring brought a Community Service cleanup of Bush's Pasture, and later the Phis went native at their dance, "Mahalini Holiday."

### SENIORS

Ackerson, Gerry  
Adams, Gary  
Backlund, Vic  
Baker, Mac

Bright, Lewis  
Campbell, Warren  
Card, Doug  
Johns, Tom

Johnson, Jerry  
Long, Bill  
Lucas, Brad  
Marsters, Chuck  
Pajari, Earl  
Poff, Dave  
Taylor, Ron



Van Horn, Pete  
Walsh, Bill  
**JUNIORS**  
Bishoprick, Dean  
Crooks, Dick  
Cummings, Del  
Driver, Keith  
Fudge, Bob



Hewitt, Roger  
Kuehn, Andy  
Leveton, Pete  
Paterson, Gene  
Raid, Gary  
Stoop, Ken,  
**SOPHOMORES**  
Baird, Truman



Blewett, Pete  
Campbell, Tim  
Caylor, Tom  
Graydon, Mike  
Hinds, John  
Lynn, Larry  
McLin, Wendell



Sisson, Hall  
Streaper, Dick  
Sweeney, John  
Trelstad, John  
Youngblood, Bob  
**FRESHMEN**  
Berglund, Steve  
Bergman, Floyd



Butler, Jay  
Chapin, Roy  
Gaviola, Fidel  
Graham, Bill  
Hanson, Bill  
Hanson, Gene  
Knappe, Ed



Krebs, Dick  
Marsters, Dave  
Milnes, Greg  
Montgomery, Pat  
Ormsbee, Orrin  
Rollins, Earl  
Snow, Bill



Spoonemore, Jerry  
Stenzel, Pete  
Thornton, Ed  
Trelstad, Bob  
Youngblood, Hubert  
**PLEDGES**  
Buell, Gary  
Clifton, Jerry



Empey, Gary  
Grabinski, Roger  
Harris, Eugene  
LeFore, Dick  
Marsh, Grant  
Robinson, Jim  
Willfert, Buzz



**NOT PICTURED**  
Busch, Jim  
Butler, Fred  
Chase, Tom  
Elliott, Tom  
Foxley, Ted  
Richter, Bill



John Dorsch and Steve Nason joined in a chorus while Norm Dyer beat out the accompaniment.



Steve Nason, fall house president, put a favorite record on the hi-fi set.

Spring proxy Dean Short polished up one of the chapter trophies.

Tradition with a new twist - that described this year's SAE kidnap dinner. After initiation into the Magnanimous Order of Minerva's Lions, surprised guests were informed they were candidates for SAE Queen of Violets. Announcement of the final selection was made at the first Violet Ball. Books were not forgotten; the chapter was one of ten receiving their own library from the national Levere Memorial Foundation. Winding up the year was "Blast Off," a costume dance with an outer-space theme.

Even Elvis found his way into the SAE record collection.

Mrs. Ida Wooton, housemother, showed her curious old-fashioned clock.



**GRADUATE**  
 Christiansen, Art  
**SENIORS**  
 Chambers, Fred  
 Fiske, Jim  
 Haverson, Wayne  
 Johnson, Darr  
 Laughlin, John  
 Mooney, Larry



Nason, Steve  
 Short, Dean  
 Tannehill, Frank  
 White, Dick  
**JUNIORS**  
 Anderson, Earl  
 Bunney, Willard  
 Colling, Gorman



Dorsch, John  
 Dyer, Norm  
 Kelley, Larry  
 Lewis, Bill  
 Murphy, Chuck  
 Wood, John  
**SOPHOMORES**  
 Brentlinger, Jim



Crecelius, L. E.  
 Fairbanks, William  
 Fowler, Fred  
 Galbreith, John  
 Girod, Alan  
 Johnson, Ed  
 Johnson, Ron



Miller, Matt  
 Monson, Bob  
 Nelson, Howard  
 Neuharth, Glen  
 Smoyer, Elvin  
 Stephen, Ross  
 White, Gerald



**FRESHMEN**  
 Daniel, Dale  
 Davis, Norm  
 Evans, Parker  
 Howells, Dave  
 Johnson, Bing  
 Kelso, Pete  
 McBride, Gary



Penater, Bob  
 Welch, Pete  
 Zehnbauser, Alan  
**PLEDGES**  
 Chandler, Ellison  
 Darby, Gerald  
 Fritts, Bill  
 Hollen, Gary



Jones, Gordon  
 Kruger, Ray  
 May, Jerry  
 McMurray, Larry  
 Olson, Eldon  
 Peterson, Russ  
 Roy, Bob



Thompson, Jay  
 Tyack, Richard  
 Wright, Jim

**NOT PICTURED**  
 Neuharth, Glen  
 Kruger, Ray





These Sigs appeared engrossed in the evening paper: comics, sports page or "Dear Abby?"



Occupied with her knitting was Mrs. Edwin McWilliams, house-mother.

## sigma chi

With selection of their Sweetheart, announced at the traditional Sweetheart Ball, men of Sigma Chi began another active year. In addition to a children's Christmas party, holiday-conscious Sigs presented women's living groups with Christmas trees and gave candy on Valentine's Day and Easter. Sigma Chi placed first in intra-mural bowling and the blood drive competition, and their spring dance, "Mad," was one of the year's zaniest.

Sentiments seemed mixed during this pinochle game at the Sig house.



Sigma Chi president during first semester was Rick Mercer.



Pete Cauble, spring president, showed some of the Sigma Chi trophies.

SENIORS

Armano, Bob  
Coates, Vern  
Fowler, Jac  
McClure, Chuck  
Mercer, Rick  
Rhodes, Doug  
Sommer, Don



Wileox, Don

JUNIORS

Audley, Dick  
Caruso, Frank  
Holmberg, Todd  
Honl, Tom  
Joseph, Bill  
Klindworth, Bob



MacPherson, Gordon

Moore, Jim  
Nokes, Greg  
Nye, George  
Seawell, Bill  
SOPHOMORES  
Caldwell, John  
Chandos, Larry



Clark, Bob

Hill, Dick  
MacDonald, Arbie  
Schulze, Del  
Skalheim, John  
Weston, Art  
Weston, Tom



Winner, Gerry

Yunker, Lloyd  
FRESHMEN  
Figour, Mike  
Litcheff, Daryl  
MacDowell, Pete  
Manning, Pete  
Moore, Bill



Thurber, Leo

PLEDGES  
Auvinen, Jerry  
Cheld, Chuck  
Farley, Ted  
Griepentrag, Gene  
Jelders, John  
Manwaring, Jim



Toomey, Dennis

Ward, Doug  
GUEST  
Aaseth, Jan



NOT PICTURED

Anderson, Doug  
Anderson, Jim  
Carr, Wayne  
Cauble, Pete  
Christiansen, Keith  
Domagalla, Gordon  
Duncan, Furr  
Feller, Wayne  
Hall, Ed  
James, Jim  
Jessell, Todd  
Osterlund, Paul  
Parks, Jerre  
Turner, Tom  
Wells, Jim



Bob Bennett  
president



David Crane

Dick Myers

Bill Riggs



Andy Snyder

Keith Taylor

Larry Walker

## south hall

Though for most of its occupants South Hall was only a temporary residence before moving into a fraternity or Baxter Hall, members of this small living organization were a closeknit group. The nearness to the gym—especially for RO and 5 o'clock Glee practices—and to the library made South Hall a convenient residence.



Mrs. Esther Keller was South Hall's housemother this year.

PRESIDENT  
Lind, Marietta

JUNIOR  
Prince, Carolyn  
SOPHOMORES  
Applegate, Ruth  
Klock, Leta  
Laird, Elizabeth  
Norbeck, Jan

Shaw, Cynthia  
Smith, Marilyn  
Teague, Nancy  
FRESHMEN  
Abele, Judy  
Collins, Nancy

Freeman, Linda  
Hille, Carol  
Hingston, Phyllis  
Jacobson, Dorothy  
Johnson, Jan

Kent, Connie  
McNary, Jo  
Page, Patience  
Woodbury, Carol



## alpha phi

With W.U.'s increased feminine population, need for a fifth sorority was felt, and in March twenty women received the ivy leaf and pledge ribbons of Alpha Phi. Weekly meetings and an informal dance in Doney Hall kept the new pledges busy all spring. Late in May initiation ceremonies were held, and members were honored at a formal banquet and an afternoon reception.

Tired but happy, new Alpha Phis relaxed after initiation ceremonies.



Marietta Lind, first president of Willdmette's Alpha Phi chapter, displayed the charter with one of the national officers present for the initiation.

# willamette independent town students

Abrahamson, Lois  
Adams, Janice  
Augee, Mike  
Bahine, Mary Jane  
Barber, Joel



Barney, Jerry  
Bates, Sharon  
Boniface, Barbara  
Braddy, Bob  
Buzzell, Erma Jean



Buzzell, Bruce  
Callanan, Tom  
Case, Chuck  
Coe, Pat  
Coe, Wanda



Coffey, Dennis  
Corme, LeRoy  
Cozzell, Shirley  
Crose, Arvin  
Davis, Fred



DeLaire, Linda  
Feitelson, Ira  
Forbes, Nancy  
Fulmer, Jeannette  
Gallagher, John



Ginter, Jack  
Goertzen, Eugene  
Goodier, Barbara  
Scoggin, Jim  
Henderson, Louise



Hisel, Louis  
Hodges, Don  
Hudson, Dorothy  
Huntemann, Robert  
Jacobsen, Fred





Johnson, Bill  
Jones, Malcolm  
Kay, Henry  
Kangas, Kathryn  
Klarr, Dean



Kuenzi, James  
Layton, Rex  
Lewis, James  
Livre, John  
Mainwaring, Ruth



Martin, Larry  
Mason, Virgil  
McFarland, Diane  
Mertz, Dave  
Myers, Jim



Michalson, Karen  
Neubauer, Keith  
Newberry, Beth  
Patch, Dave  
Pettit, Dan



Smith, Howard  
Domaschofsky, Rex  
Van Cleave, John  
Van Natta, Fred  
Vale, John



Wallis, Douglas  
Weber, Dan  
Whelan, Pat  
Whitman, Ronald  
Williams, Charles



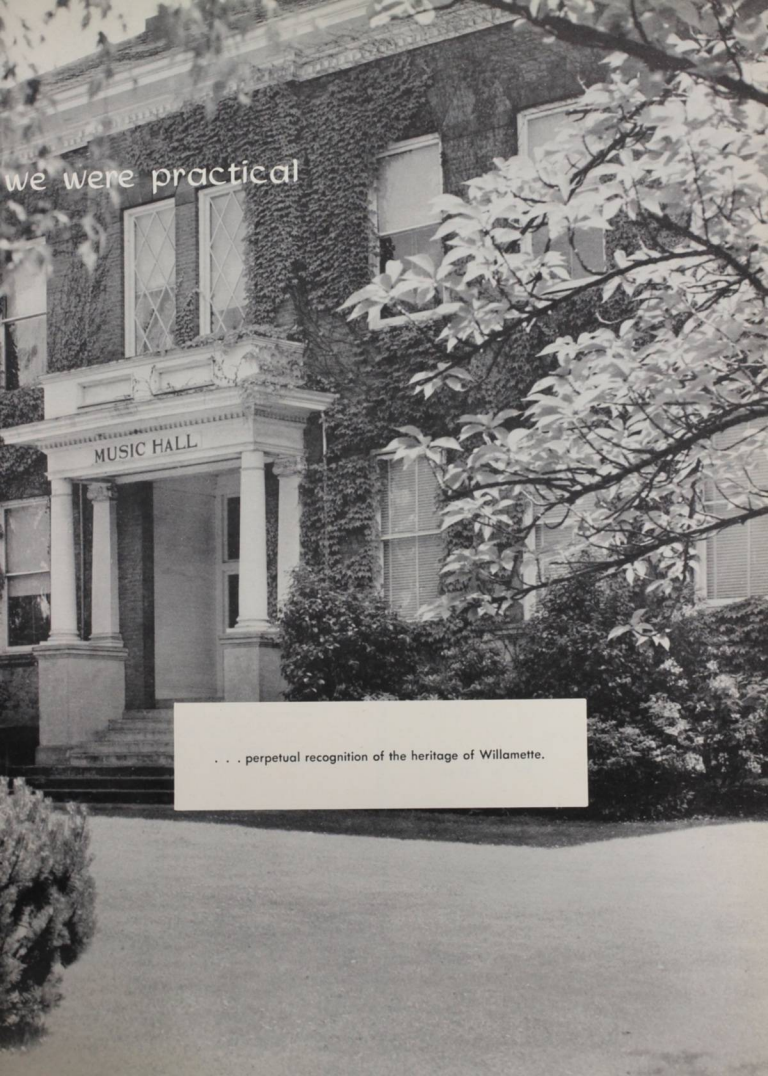
Williams, James  
Walters, Norman  
Wright, James  
Wyant, Charles  
Hays, Leonard

WILLAMETTE  
UNIVERSITY

FOUNDED BY JASON LEE AND  
THE EARLY CHRISTIAN PIONEERS

1842

THE OLDEST UNIVERSITY IN THE WEST

A black and white photograph of a large, multi-story building with a classical portico. The building's facade is heavily covered in ivy. The portico features four columns and a pediment with the words "MUSIC HALL" inscribed on it. Several windows are visible, some with white shutters. In the foreground, there are trees and bushes, with some branches and leaves partially obscuring the view of the building. The overall scene is well-lit, suggesting a bright day.

we were practical

MUSIC HALL

. . . perpetual recognition of the heritage of Willamette.

**PORTLAND ROAD LUMBER YARD**

"Your Building Supply Friends"

Ph. EM 4-4433 3545 Portland Rd.

Salem, Oregon

Phone EM 3-9822

**MABEL'S**

**BEAUTY SALON**

1345 State Street

**The Best in Nationally Advertised  
Jewelry — Watches — Diamonds**

Fine Watch and  
Jewelry Repairs  
Guaranteed

**THE JEWEL BOX**

Oldest Salem Jewelers under same owners

**WILLS MUSIC STORE**

Instruments  
Pianos • Organs  
Radios • Records

Repair Service  
Sheet Music  
TV • Hi Fi

432 State Street

EM 4-6757

**SALEM  
CONCRETE PIPE & PRODUCTS CO.**

Service — Quality — Economy

Phone EM 3-3500  
2990 Portland Road  
At the undercrossing

*Vibbert Electric*

**THE SPUDNUT SHOP**

The Perfect Party Confection  
Wholesale & Retail

1964 N. Capitol

EM 2-6794

Service Contracting

Paul W. Silke, owner

551 Court Street

Salem, Oregon

See your local sport specialists for the most  
complete stock of quality sporting goods

**HOWARD WICKLUND**

**SPORTING GOODS, INC.**

Phone 3-6042

372 State Street

Salem, Oregon

24 hour service

**MASTER**  
**SERVICE STATIONS, INC.**

365 N. Commercial

Headquarters for

- \* General Electric Appliances & TV
- \* TV Service on All Makes
- \* Goodyear Tires
- \* Union Oil Products

*S & H Green Stamps — Terms*



**ROEN'S**

465 Court  
Ph. EM 3-6773

All Makes

Sold — Rented — Repaired

Buy As You Rent

Agreeable

Food

Agreeable

Prices



**WOODROFFE'S SAN SHOP**

The Oregon Home of "Sloppy Joe"

a delicious sandwich

**LAUNDERETTE**

We appreciate your patronage  
both past and present.

1255 Ferry Street

For the best in haircuts

**WAYNE'S BARBER SHOP**

146 So. 13th Street

**JUDSON'S**

**PLUMBING • HEATING**

279 N. COMMERCIAL ST.

"SPEEDY SERVICE"

Phone EM 3-4141

Everything Fine in Music . . .

\* \* Conn Band Instruments \* \* LeBlanc  
Woodwinds

\* \* Vincent Bach Brasses \* \* Wm. S. Haynes-  
Artley Flutes

**WILTSEY - WEATHERS MUSIC**

470 N. Capitol Ph. EM. 2--8708

**J. W. COPELAND YARDS**

LUMBER, BUILDING MATERIALS,  
BOYSEN PAINTS, HARDWARE

349 So. 12th Street

EM 3-9606

Congratulations Class of '58  
from

**CAPITOL**

**CHEVROLET - CADILLAC**

510 North Commercial Street

After Games and Dancing Head to

**CHINA CITY**

Plenty of Parking, Chinese & American Food  
Open 12:00 p.m. to 1:00 a.m., Saturdays  
until 3:00 a.m.

3555 So. Commercial

Phone EM 2-2117

**PADE'S****GROCERY & MARKET**

Groceries — Meats — Vegetables

Call EM. 3-9135 for Delivery

1244 State

Salem

**The Quisenberry Pharmacies**

"that operate as one"

**THE QUISENBERRY CORNER**

Court & Commercial Phone EM 3-9123

**MEDICAL CENTER BRANCH**

2440 Gear Street Phone EM 3-3157

**LIBERTY STREET PHARMACY**

150 South Liberty Phone EM 4-3336

**4 CONVENIENT BRANCHES IN SALEM TO SERVE YOU**

**OREGON'S OWN STATE-WIDE BANK**

**U·S·  
NATIONAL  
BANK**

**OF PORTLAND**

Member of Federal Deposit Insurance Corp.

## STATE STREET MARKET

1230 State St.

Your Favorite IGA Store.

## CAPITAL VARIETY STORE

Stationery, School Supplies

Norcross Greeting Cards

1262 State Street

Phone EM 2-5622

## SALEM HARDWARE COMPANY

Try Us First  
Hardware — Glidden Paint  
Housewares — Sporting Goods

120 N. Commercial

Phone EM 3-4906

*"Congratulations to the Class*

*of 1958"*



## BURRIGHT'S CLEANERS

Cleaned Right  
Pressed Right  
By Burright

198 Church S.E.

Phone EM 3-4242

## LARMER

### TRANSFER, STORAGE & WAREHOUSE COs.



889 Liberty NE  
EMpire 3-3131



Scheduled Freight Service — Moving — Storage — Fuel



Distinctive Apparel For Women

Phone EM 4-6828

460 State St.

## OTTO J. WILSON COMPANY

Buick Sales and Service

COMMERCIAL AT CENTER

SALEM, OREGON

Established 1902

Kenneth Wilson

Otto J. Wilson

Switch to  
**SQUIRT**

TRADE-MARK  
Never an  
After - thirst



— SQUIRT BOTTLER —

1095 N. Liberty

Phone 3-6116

Salem, Oregon



## JAYSON'S

Your Sportswear  
& Clothing  
Hdq

Styled and Purchased  
Especially for  
College Men

Compliments of

## CAPITOL COFFEE SHOP

### PEERLESS BAKERY

Special Orders for All Occasions  
170 N. Commercial St.

Salem, Ore. Phone EM 3-5704  
Bakers for Her Majesty, the Housewife  
BUY THE BEST — WE DO



## SALEM GOLF CLUB

Karl G. Becke Leslie Wadsworth  
All Kinds of Insurance & Surety Bonds  
**BECKE & WADSWORTH**  
Opposite  
Court House  
121 N.E. High Street  
Salem, Ore. Telephone 4-3333

### OREGON BUILDER'S HARDWARE

465 12th S.E.  
Suppliers of Hardware of Distinction  
EM 3-9146

Compliments of



We Give S & H Green Stamps

COMMERCIAL PRINTING . . .  
PHOTO-ENGRAVING . . .  
Printers of the Willamette Collegian  
STATESMAN PUBLISHING  
COMPANY

280 North Church Street

Holly says: "If any of you are altar bound, come to Jackson's where the finest Diamonds are found."



## JACKSON JEWELERS

225 N. Liberty

Phone EM 3-5640

## MC EWAN'S PHOTO SHOPS

"The Best in everything.....  
.....from Portraits to Photo Supplies

Salem — 245 High Street, Phone EM 3-5470

Silverton — 209 Oak Street, Phone TR 2251

Salem — 2058 North Capitol, Phone  
EM 2-4422

The Best Place To Buy

THE BEST CANDY

GAY'S CANDY

135 North High  
Salem

Phone 2-9235



**HEIDERS T.V.**

363 N. High

Phone EM 4-2271

TV Phonos  
And  
Appliances

**ACE'S BARBERSHOP**

1/2 Block From Campus

3 Barbers

Crew Cuts

1256 State Street

**FIRST FEDERAL SAVINGS  
AND  
LOAN ASSOCIATION**

129 N. Commercial St.  
Save Where Saving Pays.



**W. T. GRANT CO.**



**CAPITOL OFFICE EQUIPMENT  
Underwood Agent**

Office Furniture, Machines, Supplies

EM 3-5584

148 S. High



STYLE CENTER FOR MEN

**BISHOP'S**

3-4933

SALEM

145 North Liberty



Established 1901

Phone EM 4-6705

**FITTS MARKET**

Fish, Clams, Oysters, Poultry  
216 North Commercial Street  
SALEM, OREGON

(Wieder's)

**SALEM LAUNDRY  
COMPANY AND  
DRY CLEANING**

With  
Sta-NU

Phone EM 3-9125

263 So. High

## MOTEL GUIDE

Grand occasions at Willamette call for a good room for Mom and Dad. So when Parents' Weekend (pictured below), Homecoming, or Freshman Glee rolls around, make reservations for the folks at one of these motels. Good beds, kitchenettes, TV, and all other conveniences. All are accredited and within easy driving distance from the school.



### **Nob Hill Motel**

2515 S. Commercial St.  
Phone EM 2-0965

### **Gables Motel**

2375 S. Commercial St.  
Phone EM 2-9185

### **La Vista Motel**

2990 S. Commercial St.  
Phone EM 2-6792

**Coke** STATIONERY COMPANY •  
Phone 3-4404 370 STATE ST. SALEM, ORE.

OFFICE SUPPLIES AND EQUIPMENT  
BOOKS - STATIONERY AGENTS - ART  
METAL STEEL FILES - EL-UNITS SIKES  
CHAIRS - MYRTLE DESKS - HERRING -  
HALL-MARVIN SAFES - SCHOOL SUPPLIES

Phone EM 3-4404

Ride  
**GREYHOUND**

Phone EM 2-2428

A	
Aaseth, Jan	129, 130, 191
Abele, Judith	165, 193
Abrahamson, Lois	194
ACADEMICS	68
Ackerson, Gerald	41, 60, 144, 151, 186
ACTIVITIES BOARD	105
Adams, Gary	60, 186
Adams, Janice	22, 194
Adams, Rodney Chas.	96, 99
ADMISSIONS OFFICE	54
ADVERTISING	196
AIR SCIENCE	74
Albano, William	97, 99
Aldinger, Paul	60, 81, 113, 131, 148, 150
Alexander, Laurel	78, 106, 131, 146, 150, 184
Alexander, Nancy	150
Alger, Rogene	175
Allabach, Mary	147, 171
Allen, Sharon	59, 60, 177
Allen, Shirley Jean	147, 175, 176
Allender, MarKathern	150, 156, 169
Allison, Clift	99
Allred, Bernard	99
ALPHA CHI OMEGA	166
ALPHA LAMBDA DELTA	136
ALPHA PHI	193
Althoff, Henrietta	51
Amrine, Lynn	173
Anderson, Douglas	191
Anderson, Earl	189
Anderson, James	113, 148, 191
Anderson, Judith	142, 175
Anderson, Karen	156, 173
Andrich, Robert	97, 98
Andrick, Ed	162
ANGEL FLIGHT	151
Anson, Orlin	97, 99
Applegate, Ruth	147, 149, 174, 193
Armanino, Robert	60, 191
Arnold, Jerry	182
ARNOLD AIR SOCIETY	151
ART	71
ASSOCIATED WOMEN STUDENTS	139
A S W U	102
A S W U OFFICERS	104-106
Audley, Dick	30, 143, 146, 191
Augee, Mike	155, 194
Avuinen, Jerry Paul	191
Avery, Maureen	175

B	
Backlund, Victor	60, 78, 113, 115, 117, 118, 125, 126, 143, 145, 146, 147, 148, 186
Baer, Barbara	177, 178
Baer, Gottlieb	97, 98
Bagley, Ann	175
Bahme, Mary Jane	194
Baird, James	187
Baker, Mac	28, 44, 60, 143, 186
Ball, Audrey	173
Balmaseda, Cesar Juan	182
BAND	88, 89
Barber, Ann	21, 27, 60, 147, 170, 171

Barber, Joan	149, 167
Barber, Joel	194
Barclay, Betsy	149, 177
Barker, Sammie Lou	149, 159, 171
Barney, Gerald	194
Bartel, Lucile	80
Bartell, Donald Robert	60
Barth, John	84, 182
Bartlett, Allan	76
BASEBALL	125
Bastuschek, Burton	73
Bash, Frank	84, 149, 185
BASKETBALL	117
Bates, Sharon	60, 76, 139, 145, 147, 194
BAXTER HALL	182
Beal, Paul	72
Beamish, Tufton	183
Bean, Janice	40, 41, 167
BEARCAT CAVERN	109
Beaton, Charles	129, 136, 148, 185
Beaty, Joan	169
Bednartz, Miriam	87
Beebe, Mary	60, 85, 149, 169
Beebe, William	60
Beggs, Jan	153
Bennett, Barbara	169
Bennett, Neil	97, 99
Bennett, Robert	130, 141, 192
Bercaw, Ann	133, 138, 167
Berg, Marguerite	72
Berglund, Steven	46, 113, 148, 187
Bergmann, Floyd	187
Bergstrom, John	108, 138, 144, 185
Berkey, Jack	113, 115, 122, 148, 182
Bernklau, Rodney	185
Berry, Linda	133, 153, 177
BETA ALPHA GAMMA	138
BETA THETA PI	184
Biggs, Joyce	173
Bill, Kathleen	152, 175
BIOLOGY	76
Bishop Memorial Health Center	51
Bishoprick, Dean	148, 187
Blakley, Marilyn	60
Blanchard, Mary	133, 177
Blank, Harold	96, 98
Blewett, Pete	82, 108, 138, 187
BLOOD DRIVE	51
BLOTTER	85
BLUE MONDAY	50
Blye, Laurel	175
Boardman, Robin	154, 177
Boden, Gail	44, 47, 90, 142, 167
Bolmeier, Gretchen	149, 167
Bong, William	183
Bones, Arlo	182
Boniface, Barbara	194
BOOKSTORE	21, 22
Booth, Anita	27, 57, 59, 60, 78, 105, 139, 140
Booth, Mrs. Mary	166
Borsberry, James	60
Boss, Robert	33, 60, 184
Bowker, John	60, 182
Boyd, Terry	167
Brackins, Jerry	60, 73, 139, 167
Braddy, Robert	55, 60, 80, 143, 194

Bradford, Susan Jane	175
Brand, Thomas	77
Brandt, Patricia	142
Breakey, Donald	76
Bredsteen, Barbara	44, 55, 106, 173
Brennan, Maurice	87, 88
Brentlinger, James	138, 189
Brewster, Helen	20
Briggs, C. Peter	183
Bright, Larry	125
Bright, Lewis	20, 61, 143, 146, 165, 186
Brinkworth, Carol	158, 175
Brister, Sharon	150, 175
Brookes, Langley	169
Brown, Alva	61
Brown, Andrew	99
Brumfield, Betty	21, 70
Brunsten, Helen	20
Bruning, Deanna	171
Buell, Gary	144, 187
Buckinger, Elaine	37, 177
Bullard, William	146
Bunney, Willard	143, 146, 189
Bunse, Dale	183
Burgess, Thomas	183
Burnard, Kathleen	158, 175
Busch, James	187
BUSINESS OFFICE	21
Butler, Edwin	95
Butler, Fred	61, 187
Butler, Jay	120, 187
Butler, Stanley	87
Butler, Stewart	183
Buzzell, Bruce	194
Buzzell, Erna	194
Byler, Alex	96, 98
Byler, Minalou S.	61, 80, 140

C

Cain, Virginia	167
Callaghan, John	96, 191
Callanan, Joseph	194
Campbell, Robert	61, 146, 184
Campbell, Sybil	167
Campbell, Timothy	136, 138, 148, 187
Campbell, Warren	61, 76, 186
CAMPUS CHEST	31
Card, Douglas	61, 144, 186
Carlson, Jerry	22
Carlstrom, Theodore	96, 99
Carr, Wayne	26, 34, 61, 104, 115, 191
Carroll, Dale	96
Carson, Annette	61, 147, 171
Carter, Charles	183
Cartwright, Carole	150, 175
Caruso, Frank	125, 126, 148, 191
Carver, Gl6ria	53, 167
Case, Chuck	194
Casper, Catherine	136, 142, 177
CAT CAVERN	109
Cauble, John	61, 144, 165, 190
Caylor, Thomas	53, 138, 187
Chambers, Ann	61, 71, 77, 144, 145, 150, 169
Chambers, Fred	61, 78, 150, 159, 189



Fritsch, Lt. Col. Edward	74
Fritts, William	189
Framm, Ellen	21
Frost, David	97, 99, 146
Frost, Dr. Orcutt	80
Frum, George	97, 98
Fudge, Robert	187
Fulmer, Jeanette	62, 72, 194
Fulton, Beverlee	37, 149, 175
FUSSER'S GUIDE	85

## G

Gage, Susan	175
Gail, Thomas	33, 62, 76, 184
Galbraith, Jean	171
Galbraith, John	84, 189
Gallagher, John	71, 150, 194
Gannon, Jo	150, 158, 171
Ganoe, Phyllis	142, 173
Garner, Ann	149, 171
Garnett, James	96, 98
Garvin, Claude	183
Gates, Stuart	97, 98
Gates, Dr. Willis	87, 92, 142
Gateke, Dr. Robert	78, 146
Gaviola, Fidel	120, 122, 187
Geddes, Allan	125
Geer, Dick	55, 143
Geer, Judith	167
Geist, Carl	185
Geist, Melvin	86
Gerbing, G. Ronald	108, 185
Giberson, Barbara	149, 177
Gilbert, Merrill	151
Gildea, Larry	150
Gillett, Marion	62, 175
Gillis, Richard	77, 146
Ginoza, Kenneth	125, 183
Ginter, Jack	194
Gleckler, Don	87, 93, 142
Goertzen, Eugene	150, 194
Goldsmith, Thomas	96, 98
GOLF	129
Goodier, Barbara	62, 77, 141, 146, 149, 194
Gooding, Thomas	96, 98, 146
Goodrich, Gretchen	144, 177
Gordon, Don	130, 144, 185
Gordon, Ernest	98
Gove, C. Allen	87
Grabinski, Roger	149, 187
Graham, William	46, 187
Grant, Virginia	112
Gravatt, Arthur	73, 145, 146
Gray, George	73
Graydon, Mike	187
Greider, Carol	175
Gregg, Dr. Robert	26, 70, 78, 143, 146
Greison, Elinor	171
Griepentrog, Eugene	125, 191
Griffin, Bobby	115, 148, 185
Griffis, Joan	171
Grigsby, Shiela	169, 178
Grinnell, Larry	185
Grossenbacher, Edward	117, 118, 148, 185
Gromley, Charles	95
Gubernath, James	97, 99

Gustafson, Bruce	185
Gwilliam, Esther	62, 72, 140, 145, 146, 171

## H

Hadley, Nancy Ann	175
Haftner, Marcia	171
Hagedorn, Michael	183
Hall, Carl	71
Hall, Edward Russell	191
Hall, Rene Carol	137
Halstead, Larry	183
Hamada, Richard	128
Hamilton, Barbara	156, 177
Hamilton, Larry	183
Hamman, Bev	171
Hampton, Lewis	96
Hanada, Dick	125
Hanley, Sharon	175
Hansen, Jan	138, 165, 167
Hansen, Judith	28, 43, 177
Hansen, Marvin	98
Hansen, Nettie	19, 105, 112, 167
Hanson, Dr. Clifford	71, 141
Hanson, L. Eugene	125, 187
Hanson, William Charles	187
Hardy, Justin	183
Harper, Ann	167
Harris, Eugene	187
Harris, Sandra	42, 176, 177
Harrison, Ron	113
Hartley, Richard	62, 75, 117, 118, 128, 148
Hartman, Dale	122, 123, 148
Haverson, Wayne	44, 62, 107, 143, 150, 189
Hawes, Dr. Homer	145, 146
Haytack, Lillian	20
Hays, Leonard LeRoy	150, 155, 195
Hazlett, Richard	122
Heald, Josephine	26, 147, 171
Hedeen, Kenneth	112
Hefferman, Robert	96, 98
Heidel, John	35, 38, 90, 142, 158, 185
Hellenthal, Robert	183
Henderson, Louise	173, 194
Henderson, Phil	84, 156, 182
Henry, Kayla	167
Hess, Jim	113, 183
Hewitt, Barbara	177
Hewitt, Roger	187
Hickok, Craig	136, 183
Higbee, Robert	39
Hill, Joyce	61, 62, 66, 177
Hill, Richard	19, 30, 51, 112, 138, 191
Hill, Yvonne	173
Hille, Carol	193
Hillman, Melinda	149, 171
Hinds, Johnny	113, 115, 148, 187
Hingston, Phyllis	193
Hisel, Louis	150, 194
HISTORY	78
Hitchman, David	96, 99
Hobbs, Carol	48, 171
Hobson, Lawrence	142
Hodges, Donald	155, 194
Hoffman, Barbara	23, 178

Hoffman, Peggy	177
Hofstetter, Merlin	62, 141
Holcomb, Patricia	37, 52, 167, 178
Hollen, Gary	189
Holloway, James	62, 142
Holmer, Earl	77
Holmer, A. Freeman	78, 143, 146
Holmberg, Wesley Todd	191
Holmes, John	129, 150
HOMECOMING	33
HOMECOMING HOSTESS	32
HOME ECONOMICS	71
Homrich, Rosella	137, 149, 175
Hone, Stephen	39, 105, 183
HONEY BEARS	137
Honl, Tom	144, 191
Horton, Audney	169
Horsley, Loretta	62, 79, 109, 144
Hooker, Carmen	175
Hostetler, Linda	177
Hotelling, Carol	155, 159, 175
Hounsell, Nora	149, 177
HOUSE DANCES	180, 181
Howard, Donald	96
Howard, Dora	54
Howay, Jack	96, 98
Howells, Dave Robert	189
Hoxie, Ronald	97
Hoyt, George	28, 30, 47, 62, 77, 184
Hudson, Dorothy	159, 194
Huffman, Norman	73
Hume, Judie	169
Humphrey, Marcia	37, 149, 171
Huntemann, Roger	63, 142, 194
Hussey, Cliff	183
Hutchinson, Neil	50, 185
INDEPENDENT WOMEN	152
INFIRMARY	51
Inman, Barbara	175
INTERFRATERNITY COUNCIL	165
INTRAMURALS	130
Isackson, JoAnn	173

## J

Jack, Alan	99
Jacobsen, Dorothy	155, 195
Jacobsen, Fredrick	194
Jambura, Earl	113, 115, 148
James, Jim	122, 191
James, Naomi	54
Jamison, Janet	47, 153, 177
Jeldon, Earl	122
Jelderks, John	43, 191
Jenkins, Brooks	100, 159
Jenkins, Richard	74
Jenkins, Sherri	48, 155, 167
Jenkins, Sue	167
Jens, Charles	95
Jessell, Charles	191
Jessop, E. Donald	87
Jew, Terry Ting	65, 159
Johns, Thomas	63, 117, 118, 148, 186
Johnson, Bing	189
Johnson, Charles	76
Johnson, Craig	183
Johnson, Darr	62, 63, 189
Johnson, Edward	117, 138, 189

Johnson, Gerald	63, 87, 142, 145, 186
Johnson, Jan	149, 193
Johnson, Kathryn	136, 165, 169
Johnson, Laura May	156, 175
Johnson, Robert	98
Johnson, Ronald	83, 84, 189
Johnson, William	150, 195
Jones, Dianne	63, 177
Jones, Gordon	189
Jones, Malcom	195
Jory, Harold	8, 20
Joseph, Sally Jo	167
Joseph, William	108, 191
Julian, Beatrice	149, 177
JUNIOR CLASS OFFICERS	108
Juran, Herbert	113, 115

### K

Kaestner, Dr. Noel	79, 144
Kaiser, Dr. Chester	77, 145, 146
Kaitera, Mary	175
Kaneski, Don Edward	151
KANGAROO KOURT	148
Kangas, Kathryn	195
Kanoff, George W.	146, 149
KAPPA DELTA PI	145
Karmos, Joseph	120, 129, 130, 156, 185
Kataaka, John	99
Kauf, Bob	113
Kaufman, John	185
Kay, Douglas	99
Kay, Henry	63, 155, 195
Kelly, J. Larry	142, 189
Keller, Mrs. Esther	192
Kelso, Arch Peter	189
Kelso, Beth	41, 113, 175
Kent, Constance	137, 193
Kent, Terry	108, 113, 115, 138, 144, 148, 185
Kershner, Joe	96, 99
Kettenring, Karen	149, 179
Kielsmeier, Bruce	82, 183
King, Eugenia	154, 171
Kingsley, Ron	47, 63, 87, 88, 142, 143, 145, 184
Kitchener, David	183
Klarr, Dean	63, 73, 195
Klindworth, Robert	125, 128, 130, 191
Klock, Leta	149, 193
Knapp, John	39, 63
Knappe, Edward	187
Knoles, Alice	137, 152, 175
Koch, Lois	169
Kohler, Dr. Henry	9, 80
Kohntopp, Dean	183
Kraft, Clarence	72
Krause, Mary Lou	63, 80, 81, 153, 171
Krebs, Richard Louis	48, 120, 187
Krough, Beverly	133, 149
Kuehn, Andy	172, 187
Kuenzi, James	195

### L

Laird, Carol	46, 167
--------------	---------

Laird, Elizabeth	136, 142, 152, 156, 193
Landis, Dave	108, 185
Landye, Donna	173
Lane, Charles	183
Lane, Lola	63, 141, 169
Langen, Mrs. Mary	168
Lansing, Ronald	97, 99
Larsen, Gail	43, 46, 52
Larson, Gary	91, 108, 143, 167, 185
Larson, Mrs. Delsia	22, 64
Lasswell, Mary Ann	149, 171
Latimer, Lois	71
Laue, Alfred	98
Laughlin, John	189
LAUSANNE HALL	174
LAW SCHOOL	95
Layton, Clarence	195
Lebold, Frank	63, 142
LECTURE SERIES	35
Lefor, Dick	187
Lee, Pat	150
Leenhouts, Linda	156, 169
Leger, Norissa Mae	175
Leitch, Nancy	173
Lempeses, Pete	99
Leonard, Fran	177
Lester, Joanna	86, 178
LETTERMEN	148
Leveton, Pete	27, 108, 151, 187
Lewis, Harold	97, 98
Lewis, James	122, 148, 194
Lewis, John	26, 65, 75, 117, 125, 143
Lewis, William	125, 149, 189
LIBRARY	100
Lim, Daisy	63, 87, 142, 168
Lind, Marietta	144, 145, 154, 172, 193
Lindquist, Sandra	149, 175
Litchfield, Daryl	191
Litchfield, Ralph	108, 136, 185
Livie, John	195
LIVING ORGANIZATIONS	160
Lloyd, John	63
Lock, James	96, 98
Lockwood, Gary	97, 99
Loennig, Mary	169
Loew, Ronald	96
Loewen, Jane	54
Lofstrom, Ruth	178
Long, Gerald	75, 113, 120, 129
Long, William	52, 61, 66, 113, 116, 146, 165, 186
Lovell, Dr. Ivan	78, 146
Lovre, Gary	109, 142, 183
Lowe, Margaret	177
Lucas, Brad	125, 129, 148, 186
Luders, Cynthia	173
Lund, Catherine	136, 167
Luoma, Barbara	150, 169
Lunsford, Joe	97, 99
Lusch, Joanne	149, 175
Lusty, Suzanne	149, 171
Luther, Dr. Chester	30, 80, 143
L S A	157
Lyles, Dr. James	75, 145
Lynn, Larry	117, 118, 148, 187

### M

McBride, Benjamin	150, 189
McLard, Dave	182
McClaskey, Diana	171
McCloud, Paul	185
McClure, Charles	64, 78, 146, 151, 191
McCormick, Ruth	64
McDowell, Pete	191
McElhinney, Mrs. Charles	186
McFadden, Mac	162
McFarland, Dianne	195
McGilvra, Joanne	108, 136, 177
McGilvra, Paul	46, 50, 113, 148, 185
McIntosh, David	183
McKenney, James	64
McLean, Marcia	175
McLin, Wendell	187
McMinimee, Carol	82, 85, 107, 138, 177
McMurray, Larry Edward	189
McNary, Jo	26, 41, 193
McWilliams, Mrs. Edwin	190
MacDonald, Arbie	191
MacIver, Clyde	146, 148, 185
MacIver, Sue Tripp	171
MacKenzie, Marilyn	156, 167, 178
MacKillop, Alan	63, 80
Macpherson, Gordon	191
Mader, Howard	20, 77, 146
Madsen, Karen	147, 171
Mangels, Myrna	149, 177
Manker, Dorothy	136, 138, 144, 177
Mankinen, Carl	183
Manning, Peter	191
Manwaring, Jim	147, 191
Maris, Margaret	54
Markham, Jerrold	96, 98
Marsh, Daniel	150
Marsh, Gerald	150
Marsh, Grant	187
Marsters, Charles	45, 63, 91, 151, 186
Marsters, David	109, 187
Martin, Elizabeth Jean	63, 139, 140, 145, 146, 147, 171
Martin, Larry	63, 78, 146, 151, 195
Martin, Marilyn	175
Mason, Carol	171
Mason, Virgil	195
MATHEMATICS	80
Mathews, Miriam	63, 83, 71, 107, 141, 173
Matsumura, Roy	83
MAY QUEEN	58
May, Richard	99
MAY WEEKEND	56
Meara, Hanna	156, 167
Meeker, Tony	47, 113, 148, 185
Mercer, Jeannine	56, 57, 58, 64, 79, 139, 140, 144, 177
Mercer, Rick	64, 146, 165, 190, 191
Mergler, Steph	175
Merz, David	195
Meservey, Mrs. W. D.	27, 170
Meyers, Dave	48
Michaelides, Alexander	77

Michaelides, Anastasis	64, 76	Nelson, Jack	144	Petrie, Dr. Richard	21, 143, 146
Michalson, Karen	64, 109, 147, 195	Nelson, Janet	171	Pfaff, Barbara	153, 177
Midlam, Kevin	185	Nelson, Karen	175	Pfister, Chuck	183
Miettunen, Muriel	64, 71, 83, 107, 139, 140, 172, 173	Neu, Don	122, 130, 147, 187	Pflug, Jerry	120
Mihm, Dennis	113, 116, 148	Neubauer, Keith	64, 90, 92, 195	PHI DELTA PHI	96
Milbank, Narris	99	Neuharth, Glen	189	PHI DELTA THETA	186
MILITARY BALL	40	Newberry, Beth	109, 143, 195	PHI ETA SIGMA	136
Miller, Donald	73, 146	Newberry, Daniel	64, 72, 82, 109	PHILOSOPHY	71
Miller, Diane	167	NEWMAN CLUB	157	PHI MU ALPHA	142
Miller, Carolyn	141, 171	Nichols, Lowell	64, 121, 122, 184	PHI SIGMA IOTA	141
Miller, George	189	Nickel, Dr. James	80	PHI SIGMA TAU	141
Miller, Karma	165, 171	Nickels, Henrietta	175	P.E. CLUB	147
Mills, Jody	153, 171	Nokes, Richard	191	PHYSICAL EDUCATION	75
Mills, Richard	96, 98, 99	Norbeck, Janice	193	PHYSICS	77
Milnes, Gregory	187	Nute, Ellen	150, 175	PI BETA PHI	176
Minor, Mary	150, 154, 175	Nye, George	191	Pierce, Clarence	183
Minor, Paul	183			Pierce, Robert	185
Minten, Shirley	64, 75	O		Pieretti, Gino	96, 143
Mitzel, Patricia	136, 144, 177	Ogdahl, Ted	75, 113, 122	Pierre, Bob	113
Moellering, Edward	182	Olinger, Robert	120	PI GAMMA MU	146
Monk, Cecil	76	Olmscheid, Sally	169	Pinnach, Don	34
Monson, Robert	189	Olsen, Clyde	150	Platt, Suzy	64, 80, 82, 140, 169
Montgomery, Alan	34	Olsen, Judith	19, 108, 177	Plumpton, Hollis	99
Montgomery, Pat	53, 187	OMICRON DELTA KAPPA	143	Plunket, Gerald	99
Montgomery, Richard	77, 146	O'Neill, Marcia	149, 154, 175	Poff, David	64, 186
Mooney, Larry	64, 76, 157, 189	ORCHESTRA	92	Pohl, Arlene	65, 145, 167
Moore, Conrad	146, 165, 184, 185	ORIENTATION	18	POLITICAL SCIENCE	78
Moore, S/Sgt. Dennis	74	Ormand, Berkeley	73	Pope, Sara	106, 173
Moore, James	113, 183, 191	Ormsbee, Orrin	82, 109, 150, 187	Poppert, Claris	65
Moore, Maggie	173	Ostlund, T/Sgt. Leslie	74	Porter, Marilyn	175
Moore, M. E.	73, 146	Osterlund, Paul	191	Portser, Paula	65, 73, 83, 90, 173
Moore, Sandra	80, 145	Owens, Mary	85, 136, 177	Prince, Caroline	152, 193
Moore, Thomas	125, 129, 146, 148, 185			Pritchard, Jean	100, 101, 171
Moore, William	191	P		PSI CHI	144
Moorehead, Roger	142	Paeth, Charles	18	PSYCHOLOGY	79
Moretti, Kate	104, 177	Page, Sally	173	PUBLICATIONS BOARD	107
Marange, Dr. Marion	72	Paige, Patience	149, 193	Purbrick, Dr. Robert	77
MORTAR BOARD	140	Pailthorp, Keith	77, 185	Purvine, Dr. Ralph	51
Martensen, Dale	185	Pajari, Earl	64, 186	Putnam, Robert	79, 143
Marton, Marilyn	64, 66, 83, 84, 147, 149, 168, 169	Palmer, Harriett	167		
Maseley, Robin	173	PANHELLENIC	165	Q	
Moulton, Susan	167	Paquin, Larry	183	Quiring, Sylvia	136, 138, 144, 167
Muhs, Emil	149, 182	PARENTS' WEEKEND	28		
Mullan, John	99	Parks, Jerre B.	191	R	
Mullarky, Sue	171	Parrett, Roland	86, 142, 185	Rademaker, John	73, 146
MU PHI EPSILON	142	Parsons, Marilyn	149, 175	Raid, Gary	113, 116, 122, 148, 187
Munding, Lo Anne	64, 66, 144, 149, 167	Patch, David	158, 195	Randall, William	136, 183
Murphy, Charles	189	Paterson, Gene	129, 146, 187	Rasey, Ellen	149, 175
Murray, Peter	150	Paulson, Mara	169	Rasmussen, John	183
MUSIC SCHOOL	86	Paulus, John	95	Ray, Loretta	149, 167
Myatt, Lewis	99	Paulus, William	96, 98	Reed, Sandy	105, 137, 147, 173
Myers, Jim	195	Paulin, Dr. Cameron	71	Reese, Dr. Seward	94
Myers, Lucy	27, 64, 65, 81, 107, 140, 144, 171	Payne, Mrs. Hester	184	REGISTRAR	20
Myers, Michael	185	Peak, H. Maxwell	97, 99	Rehffus, Dave	185
Myers, Richard	183, 192	Pearlman, Leonard	96, 99	RELIGION	73
		Peck, Dr. Marton	76	RELIGIOUS LIFE COUNCIL	154
N		Pelbt, Dave	195	Renshaw, Patricia	108, 167
Nason, Stephen	64, 143, 165, 188, 189	Penater, Robert	117, 189	Rettig, Judith	169, 178
Neff, Ted	185	Pennell, Major Kenneth	74	Rhodes, Douglas	65, 191
Neketen, Tim	183	Perrine, Cash	97, 98	Rhoten, David	97, 99
Nelson, David	97, 98, 192	Perrine, Linda	156, 175	Richter, William	49, 130, 159, 187
Nelson, Howard	81, 82, 138, 154, 189	Perry, Janet	177	Ricketts, Ronald	96, 98
		Person, James	64, 76, 77, 122, 143, 148, 184	Ricks, Joseph	97, 99
		Peterson, David	185	Rieck, Alta	95
		Peterson, Gary	185	Rieck, Dean Elmer	23, 31, 75
		Peterson, Richard	189	Riensch, Paul	73
		Peterson, Sonja	136, 142, 165, 177	Riggs, Richard	183, 192
		Peterson, Vernon	99	Riley, Herbert	65, 71

Ringnald, Margaret	80	Scott, James	96, 99	Spence, Skip	121, 122, 185	
Ringnald, Dr. Murco	80, 81	Seagraves, Lewis	84, 183	Spoonmore, Jerry	187	
Risley, Carolyn	169	Seawell, William	19, 108, 112, 144, 191	SPORTS	110	
Ritchie, Carl	79, 143	Seeley, Sandra	169	Springer, Dr. Martha	76	
Roach, Barbara	83, 144, 171	Sehorn, Deanna	106, 173	Spurlock, Drury	26, 41, 48, 169	
Roark, Sandra	146, 176, 177	Selken, Louis	96, 98	SQUARING THE CIRCLE	55	
Robbins, Ruth	100	SENIOR CLASS OFFICERS	61	Stambaugh, Annabelle	149, 167	
Roberts, Arla	65, 173	SENIOR CLASS PICTURES	60	Starkweather, Ann	174	
Robertson, Elizabeth	149	Sequeira, Lei	173	Steen, Cynthia	175	
Robinson, James	113, 122, 148, 187	Shaffer, Margaret	167	Stenzel, Pete	187	
Robinson, Joyce	152	Shannon, William	142	Stephen, Ross	55, 82, 85, 107, 150, 189	
Robinson, Janet	171	Shaw, Cynthia	138, 153, 193	Stephenson, Rosemary	177	
Robnett, Jennice	167	Shaw, Ed	65	Sterling, Larry	185	
Roeding, Diane	177	Shay, Dr. Theodore	35, 78, 141, 143, 146	Stevens, Geranna	88, 175	
Rogers, George	49, 154, 183	Shaley, Paul	113	Stevens, Robert R.	97, 99	
Rogers, Lloyd	65	Shdo, Ivone	65, 83, 84, 150, 169	Stevens, Robert W.	66, 158	
Rohrer, Richard	65	Shepherd, Ann	136, 177	Steward, Dave	35, 71, 141, 154, 158, 182	
Rollins, Earl	187	Shepler, Lois	169, 178	Stewart, Alice	48, 177	
Rosbergs, Anna	65, 175	Sherk, Barbara	149, 152, 156, 171	Stewart, James	77, 156, 159, 183	
Rose, Ashley	65, 80	Sherrill, Joan	27, 35, 38, 108, 144, 154, 165, 171	Stewart, Joseph	142, 143, 185	
Rose, Mary Ella	153, 177	Shidler, Donnise	136	Stone, Carol	152, 153, 175	
Ross, Nichole Patricia	149, 159, 169	Shiels, Mary	156	Stoop, James	125, 146, 151, 187	
Ross, Charland	169	Shields, Chuck	34	Stout, Margaret	144, 154, 171	
Rothrock, Rowena	173	Short, Dean	64, 65, 107, 149, 165, 188, 189	Stratton, Larry	183	
Rounds, Gordon	120, 125, 129, 183	Shumway, Elwyn Dale	113, 116, 148	Stratton, Richard	96, 98	
Roy, Robert	122, 148, 189	Siebert, Al	46, 50, 65, 70, 79, 105, 144, 184	Strausz, Betty	153, 171	
Royer, Barbara	26, 37, 40, 41, 171	SIGMA ALPHA CHI	138	Streepser, Richard	187	
Ruberg, Katherine	146, 149, 171	SIGMA ALPHA EPSILON	188	Stroebel, John	33, 113, 116, 148	
Runkel, Dr. Howard	79	SIGMA CHI	190	Stryker, Hollis	169, 178	
Russell, Ronald	117, 183	Simon, Barbara	171	STUDENT COUNCIL	104	
Ruud, Charles	18, 78, 146	Simpson, Helen	99	STUDENT N E A	147	
Ruud, Dixie	65, 78, 149, 167	Simpson, Robert	96, 99	Stunz, E. Gene	99	
Ryan, Esther	31	Sisk, Ruth	31	SUMMER AND SMOKE	44	
S					Suppin, Robert	113
Sager, Marjorie	175	Sisson, Hall	187	Swanson, B. Courtney	99	
Sailor, Nancy Groth	27, 65, 87, 139, 140, 142, 145, 166	Sitzman, James	185	Swanson, Frances	173	
Sailor, Robert	96, 99, 167	Skaalheim, John	191	Sweeney, John	154, 156, 187	
Saito, Carrie	175	SKI CLUB	144	SWEETHEART OF SIGMA CHI	36	
Saito, Jeremy	183	Skimas, John	96, 99	Swegart, Barbara	64, 144	
Sample, Constance	149, 175	Smith, Barbara	19, 27, 116	Swensen, Mrs. Eleanor	109	
Sampson, Theodore	96	Smith, Dennis	185	T		
Sandine, Gayle	141, 154, 171	Smith, Dr. G. Herbert	28, 31, 35, 143	Tankersley, Jerry	113, 148	
Sanford, Jane	152, 175	Smith, Howard	195	Tannehill, Frank	27, 61, 65, 66, 149, 189	
Sanford, Jean	56, 171	Smith, Mariel	150, 155, 175	Taylor, Keith	87, 183, 192	
Sanford, John	183	Smith, Marilyn	193	Taylor, Judy	84, 171	
Sanford, Kathryn	171	Smith, Ronald	99	Taylor, Paul	183	
Sarver, Dennis	113, 116, 148	Smullen, Mary Jo	145, 165, 176, 177	Taylor, Robert	66, 184	
Sato, Hisao	117, 119, 125, 129, 148	Snow, Constance	37, 169, 178	Taylor, Ron	66, 117, 119, 148, 186	
Sawyer, Mrs. Jeannette	27, 176	Snow, Edwin	99	Teague, Nancy	136, 147, 153, 155, 193	
Schaefer, Robert	65, 122	Snow, William	187	Tealand, Colleen	175	
Schantz, William	97, 99	Snyder, Andrew	100, 156, 183, 192	Teeters, James	185	
Schierman, Marilyn	173	Snyder, Susan	72, 108, 153, 170, 171	Tellin, Mahlon	66	
Schlegeter, Sam	96	SOCIAL EVENTS	24	TENNIS	132	
Schlegel, Ralph	97, 99	SOCIOLOGY	73	Teppola, Mark	185	
Schmid, Judi	137, 147, 178	Solomon, Stanley	113, 116, 122, 148	Tetrick, Alberta Nichols	26, 66, 177	
Schmidt, Larry	125	Sommer, Donald	65, 159, 191	Teufel, Judy	177	
Schmelker, Josef	87	SOPHOMORE CLASS OFFICERS	108	Theodore, John	150	
Schrag, Carolyn	169	SOUTH HALL	192	THETA ALPHA PHI	143	
Schrock, Lynn	149, 177	Southwell, William	98	Thompson, Dale	183	
Schulze, Del	191	Sowell, Della	173	Thompson, Jay	189	
Schulze, Dr. Daniel	35, 48, 72, 143	Sparks, Lestle	75, 130	Thompson, Larry	113	
Schwabe, Peter	96, 99	SPEECH AND DRAMA	79	Thompson, Phyllis	136, 167	
Schwabauer, James	150	Speer, Howard	65, 125, 129	Thompson, Robert	96, 98	
Scoggin, Jimmie	150, 194			Thompson, Wayne	96, 98	
Scott, Donna	173					
Scott, Margery	52, 56, 149, 167					

Thomson, Jean	156
Thornton, Edward	187
Thornton, Lee	177, 178
Thronson, Beverly	169
THUNDER ROCK	39
Thurber, Lee	113, 148, 191
Thurston, Starr	97, 99
Tiller, Laurel	39, 138, 185
Tindall, Janet	142
Tomlin, Sheila	27, 167
Tonn, Norman	183
Toomey, Dennis	50, 191
Topping, Clorinda	87
Toy, Betty	177, 178
TRACK	121
Travis, James	48, 113, 148
Trelstad, John	187
Trelstad, Robert	49, 187
Trenholm, Pamela	175
Trueblood, Dr. Paul	80
Trueblood, Susan	84, 171
Tucker, Lyle	183
Tunnell, Peggy	167
Turner, Mary	66, 144, 169
Turner, Theodore	191
Tyack, Richard	189

U

UNESCO	159
UNIVERSITY FOOD SERVICE	162
UNIVERSITY HOUSE	178

V

Vale, John	90, 142, 195
Van Cleave, John	195
Van Cleave, Mary Beth	26, 44, 79, 143
Van Horn, Ralph	66, 146, 187
Van Natta, Fred	195
Vannice, Donald	120
VanNoy, Ronald	125, 185
VARSITY BALL	52
Vennes, Duane	99
Violet Queen	37
Voll, Sharon	175

W

Wade, Florence	86
Wade, Fred	108, 185
Waggoner, Helen	173
Wagner, George	96, 98
Walker, Lawrence	183, 192
Walker, Ronald	47, 106, 108, 138, 185
Walker, Warren	35, 38, 154, 185
Wall, Bill	113, 148
Wallis, Douglas	195
WALLULAH	83, 84
Walsh, William	66, 76, 187
Walters, Norman	88, 142, 195
Ward, David	183
Ward, Douglas	191
Ward, M./Sgt. Robert	74
Warden, Jean	20, 31
Warner, James	142, 182
Warren, Carole	144, 167
Warren, Joanne	171, 178
Watanabe, Masashi	117, 148
Waterman, Michael	183

Watson, Mrs. Ella	174
Weart, Capt. Douglas	74
Weaver, Lee	113, 116, 117, 118
Weaver, William	66, 148, 151, 184
Weber, Donald	195
Webb, Norman	96, 99
Webber, Sue	52, 171
Weeks, Nancy	93, 154, 156, 167
Weisel, Peter	185
Welch, Peter	113, 125, 150, 189
Wells, James	61, 66, 130, 191
WESLEY	158
Westbrook, Donna	173
Weston, Arthur	122, 148
Weston, Tom	117, 148, 191
Weston, Joan Roberts	66, 144
Whelan, Patricia	195
Whipple, Jerry	107
White, Douglas	96, 98
White, Gerald	149, 189
White, Richard	33, 66, 75, 106, 138, 154, 156, 189
Whitman, Ronald	195
Whitmire, Jim	122
Wickstrom, Diane	139, 177
Widener, Lois	109, 154, 173
Wilcox, Donald	66, 139, 191
Wilcox, Lynn	177
Wildin, Howard	183
Wilfert, Gordon	117, 119, 148, 187
Wilkinson, Ronald	149, 182
Wilkinson, Lee	137, 168
WITS	194
Williams, Charles	195
Williams, Jean	75, 133
Williams, Jim	195
Williams, Julia	173
Williams, Kay	173
Williams, Louis Donald	185
Willingham, Larry	47, 112, 143, 146, 151, 185
Walters, Norman	195
Winner, Gerry	120, 130, 148, 191
Wissenbach, Mrs. Billie	172
Wolf, Martin	99, 146
WOMEN'S SPORTS	133
Wood, Joy	100
Wood, Marilyn	171
Woodbury, Carol	19, 23, 193
Wooton, Mrs. Ida	27, 188
Wright, Jim	93, 195
Wright, Marilyn	48, 137, 177
Wright, Capt. William	74
Wyant, Charles	195
Wyatt, Joanne	173

Y

Yocom, Richard	18, 79
Yoder, Anne	66, 144, 149, 167
Youngblood, James	150, 187
Youngblood, Robert	187
YOUNG DEMOCRATS	150
YOUNG REPUBLICANS	149
Y W C A	153
Yunker, Lloyd	191
Yukl, Charles	87

Z

Zachary, Rita	171
---------------	-----

Zavala, Albert	144, 157, 185
Zehnbauer, Alan	39, 189
Zeigler, Dr. Harley	35, 73, 141, 154
Zeller, Mary	167
Ziegelman, Terry	117, 148















**INTER-COLLEGIATE PRESS**

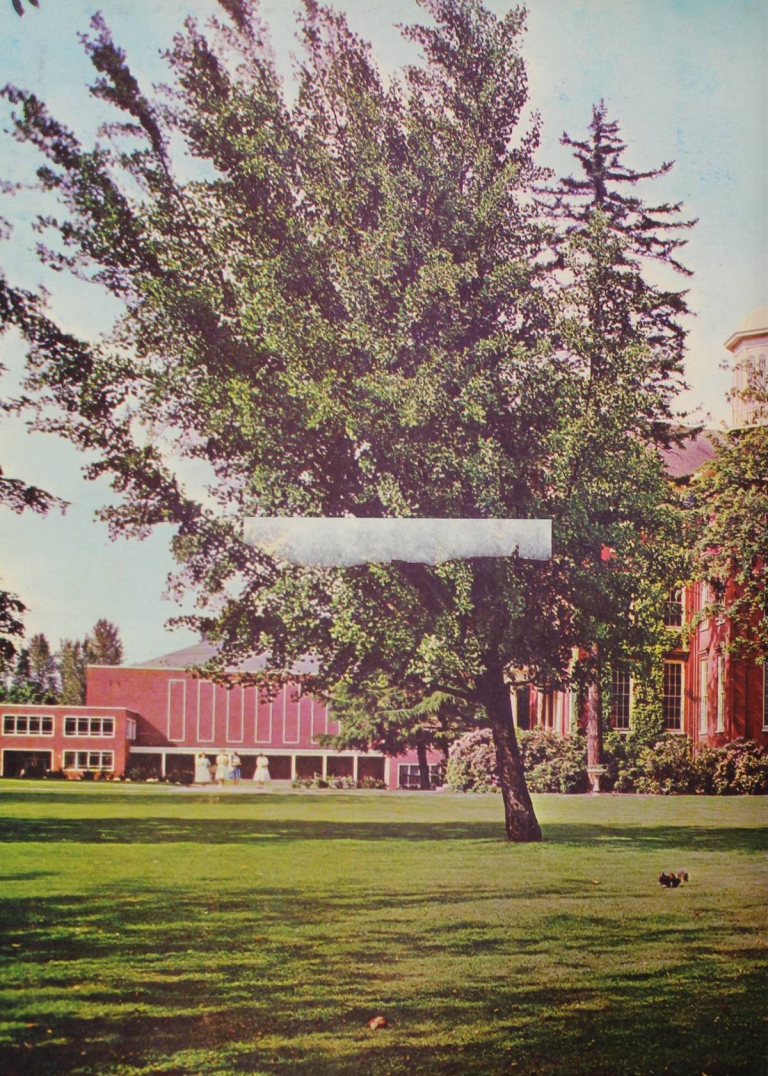
Publishers · Cover Manufacturers · Book Binders

FACTORY · HOME OFFICE

**Kansas City**

PRINTED IN U. S. A.

---



THIS BOOK DOES  
NOT LEAVE  
THE LIBRARY



*willamette university salem, oregon*