

Periodical

Wallulah

1915



Published by the Class of  
1915

Willamette University  
Salem, Oregon  
1915

WILLAMETTE UNIVERSITY LIBRARY  
SALEM, OREGON

# Foreword



IN PRESENTING THIS "1915 COMET," we wish to offer an explanation rather than an apology for its appearance. Since the Juniors were not publishing a "1916 Wallulah," the Seniors chose to print this book, rather than forfeit a record of this year's activities.

This book does not purport to be a "Wallulah," but, true to its name, appears suddenly in the sky, and will probably never reappear in the solar system of Old Willamette.

Its purpose will be accomplished if for Alumni and friends it stimulates a new interest in the school, if to undergraduates it furnishes a brief record of college life in 1914-15, and particularly if Seniors shall find in these pages a faithful picture of days spicy with uncertainty and anticipation, well-filled with work and play, the happiest and yet withal the saddest of our college days under the kindly, guiding hand of our Alma Mater.

Especial thanks are due Miss Margaret Gill of Willamette Art School, and Mr. Errol Proctor, whose brushes have lent brilliancy to this "Comet," and we gratefully recognize them here.

# Editorial Staff

GERTRUDE EAKIN ..... Editor-in-Chief  
PAUL IRVINE ..... Associate Editor

## Assistants

HELEN PEARCE  
ERIC BOLT  
KEITH VAN WINKLE  
ALICE FIELDS  
MILTON MARCY

## Art Staff

LEILA LENT  
DAISY MULKEY  
MARY CONE

## Managerial Staff

LELAND R. SACKETT ..... Manager  
PAUL R. SMITH ..... Assistant  
HARRY S. IRVINE ..... Assistant

To  
**Prof. and Mrs. Morton E. Peck,**  
Wise Counselors, Sincere Friends and  
Popular Chaperones, we, the Class  
of 1915, heartily Dedicate  
this Annual.





# Book of Stars



PART I.

The Astronomers

PART II.

The Fixed Stars

PART III.

The Planates

PART IV.

The Satellites

PART V.

The Great Bear

PART VI.

The Milky Way

PATR VII.

The Comet's Tail





COLLEGE OF MUSIC LAUSANNE HALL

SCIENCE BLDG

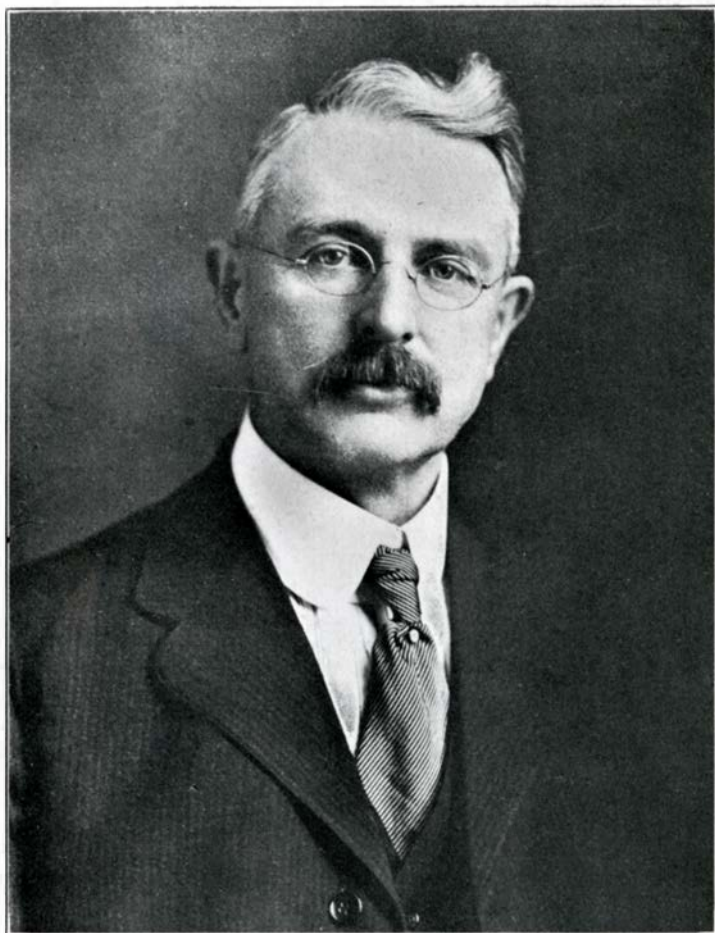
MALLER HALL

PART ONE |

A  
S  
T  
R  
O  
N  
O  
M  
E  
R  
S  
.

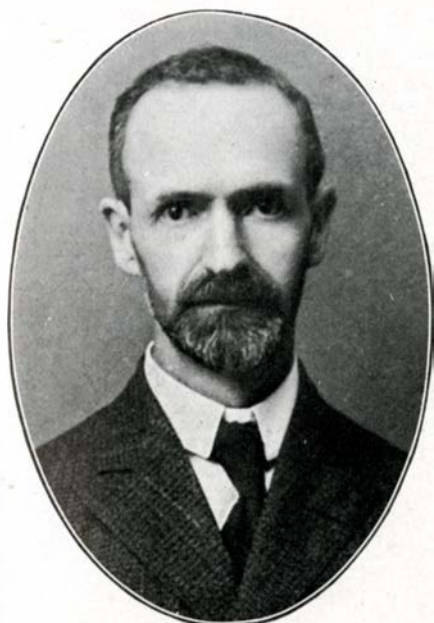


College of Liberal Arts



GEORGE H. ALDEN, Dean  
B. S. Carleton College  
A. B. Harvard University  
Ph. D. University of Wisconsin

College of Liberal Arts



**JAMES T. MATTHEWS**

A. B. and A. M. Willamette University  
Professor in Willamette University 1893  
MATHEMATICS

**FLORIAN VON ESCHEN**

Ph. B. and Ph. M. Simpson College  
Graduate Student University of Chicago 1905-  
1907  
Graduate Student University of Washington  
1907-1908  
PHYSICS and CHEMISTRY



College of Liberal Arts



MORTON E. PECK

A. B. and A. M. Cornell College  
Research Work in Central America  
Three Years  
Research Work in Oregon Investigating the  
Flora and Fauna of the State  
BIOLOGY

ROBERT B. WALSH

A. B. of University of Kentucky  
Graduate Student in Syracuse University, also  
in the Universities of Heidelberg and Berlin  
GERMAN and FRENCH



College of Liberal Arts



STELLA A. CHAPPELL  
A. B. Northwestern University  
GREEK and LATIN

ALICE E. PAGE  
Ph. B. Penn College  
Graduate Student University of Iowa 1907-1909  
Work in Residence for Masters' Degree  
Completed  
HISTORY



College of Liberal Arts

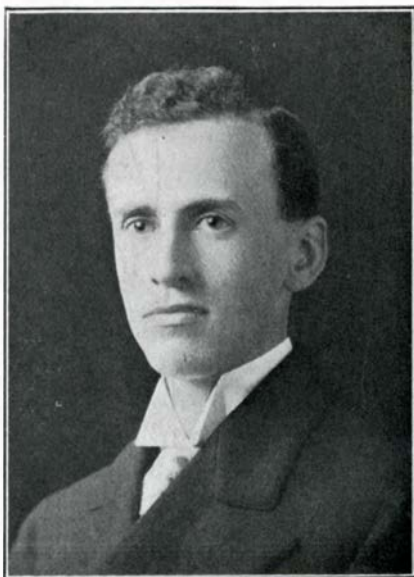


WALLACE MACMURRAY

A. B. and A. M. University of Minnesota  
Resident Work for Directorate, University of  
Minnesota  
ENGLISH

IRA A. MORTON

A. B. Mount Union College  
B. D. Drew Theological Seminary  
A. M. Columbia University  
PHILOSOPHY and RELIGION



College of Liberal Arts

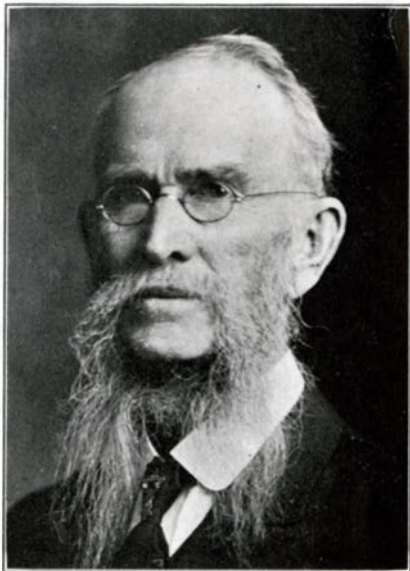


CHARLES L. SHERMAN

Ph. B. Upper Iowa University  
Pd. M. and Pd. D. New York University School  
of Pedagogy  
Ph. D. New York University  
SOCIAL SCIENCE and EDUCATION

JAMES LISLE

A. B. and A. M. Iowa Wesleyan University  
Ph. D. Hedding College  
CURATOR of the MUSEUM



College of Liberal Arts



FANNIE ELLIOTT PRICE  
B. S. University of Chicago  
LIBRARIAN

JUNIA TODD  
Ph. B. Simpson College  
DEAN of WOMEN



College of Liberal Arts



O. C. THOMPSON

Y. M. C. A. College, Chicago  
PHYSICAL DIRECTOR AND ATHLETIC  
COACH

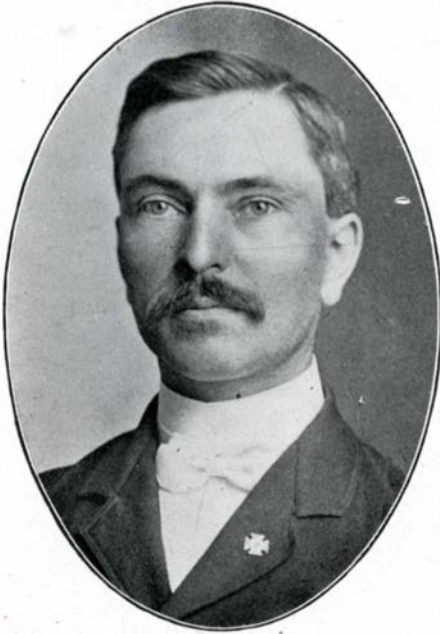
College of Theology

H. J. TALBOT

Dean of the College of Theology  
A. M. Indiana Asbury University  
D. D. DePauw University, also University of  
Denver  
PROFESSOR OF SYSTEMATIC and  
PASTORAL THEOLOGY



College of Theology



EDWIN SHERWOOD

A. B. and A. M. Ohio Wesleyan University  
D. D. Drew Theological Seminary  
Graduate Student Leipsic 1894-1895  
NEW TESTAMENT GREEK and EXEGESIS



EVERETT S. HAMMOND

A. B. and A. M. Ohio Wesleyan University  
S. T. B. Boston University  
Ph. D. Illinois Wesleyan University  
HISTORICAL THEOLOGY

## College of Music



**FREDERICK S. MENDENHALL**

Dean of the School of Music  
A. B. and A. M. Ohio Wesleyan University  
Three Years in Columbia University  
New York  
One Year Oxford University, England  
PIANO, ORGAN, THEORETICAL SUBJECTS

**MYRTLE L. MENDENHALL**

School of Music, Southwest Kansas College  
Studied under Frank Croxton and Madam  
Rabriskie, New York and Harlane Cozine,  
Chicago

VOICE CULTURE



## College of Music



**JOY INMAN TURNER**

Graduate Western Conservatory of Chicago  
Willamette Graduate in Music  
Graduate Student in New England Conservatory of Music, Boston, Mass.  
VIOLIN and ASSISTANT in PIANO

## School of Art

**MARGARET GILL**

Graduate Willamette Art School  
Studied in New York at Pratt Institute,  
Cooper Union and Art Students'  
League  
Pupil of Kenneth Hays Miller  
INSTRUCTOR IN ART



## College of Law



I. H. Van WINKLE, A. B., LL. B.  
DEAN OF THE COLLEGE OF LAW

ERNEST BLUE, LL. B.  
REGISTRAR OF THE COLLEGE OF LAW



College of Law

# Law Faculty

I. H. VAN WINKLE, A. B., LL. B., Dean  
Willamette University, 1901  
Constitutional Law, Judge of the Moot Court

W. C. WINSLOW, A. B., LL. B.  
Willamette University, 1908  
Blackstone, Code and Practice Work

WALTER E. KEYES, LL. B.  
George Washington University, 1906  
Criminal Law, Criminal Procedure, Bills and Notes

ROY F. SHIELDS, LL. B.  
Willamette University, 1910  
Real Property, Evidence

GUY O. SMITH, LL. B.  
Willamette University, 1910  
Partnership, Corporations, Torts

JOHN BAYNE, LL. B.  
Willamette University, 1893; U. S. Referee in Bankruptcy  
Bankruptcy, Federal Court Practice

GEORGE G. BINGHAM, LL. B.  
University of Michigan, 1880  
Code Pleading, Probate Law

CLAIR M. INMAN, LL. B.  
Willamette University, 1901  
Equity

DONALD W. MILES, LL. B.  
Willamette University, 1913  
Domestic Relations, Sales

HAROLD D. ROBERTS, A. B.  
Colorado College, 1908  
Bailments and Carriers, Common Law Pleadings

T. A. REINHART, LL. B.  
Willamette University, 1913  
Agency.

ERNEST BLUE, LL. B., REGISTRAR  
Willamette University, 1913  
Contracts

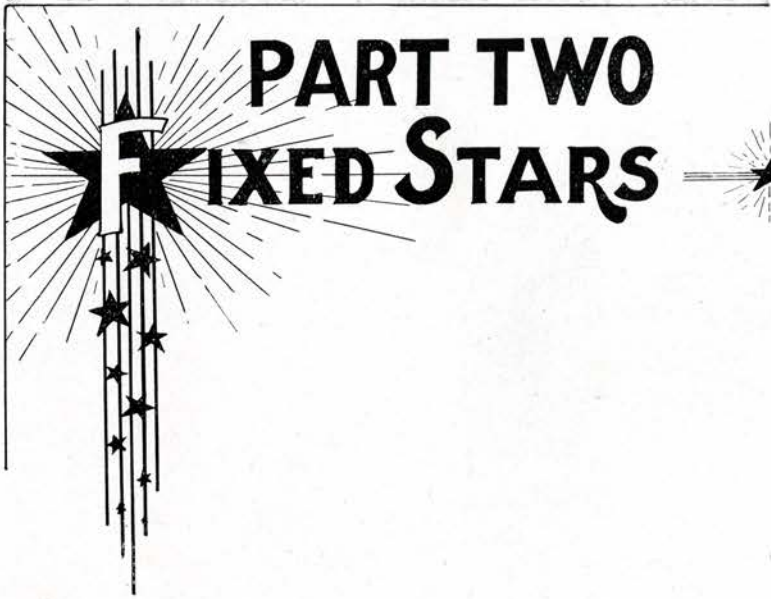
Academy



MARY E. REYNOLDS  
B. S. Willamette University  
Teacher in Willamette University 1893  
HISTORY and MATHEMATICS

WALTER H. DEBRA  
B. S. Cornell College  
SCIENCES





**PART TWO**  
**FIXED STARS**







### FRANK S. FRANCIS

Manager Eaton Club (2)  
 Leader S. V. B. (3)  
 Forensic "W" Club. State Prohi Contest  
 at Newberg (3)  
 First Prize. National Oratorical Contest of  
 Methodist Colleges (3)  
 Writer Glee Song (3)  
 Author of "Rum Rhymes" and Nature  
 Poems  
 Censor Philodorian (3)  
 Pres. Class (4)  
 Senior Basketball team  
 Major, Education

### GERTRUDE EAKIN

Treas. class (1), vice pres. (4)  
 Chairman Freshman Glee Com.  
 Collegian Staff (2), Associate Editor (4)  
 Wallulah staff (3)  
 Editor-in-Chief Comet (4)  
 Composer Glee Song (3)  
 Adelante, Reporter (2), Directress (3),  
 Critic (4)  
 Winner Inter-Society Oratorical (3)  
 Y. W. C. A.  
 Manager Tennis (3)  
 Editor Co-Ed Collegian (2)  
 Major, Ancient Language

### LELAND R. SACKETT

Websterian, Cor. Sec. (2), Vice Pres. (3),  
 Pres. (4)  
 Assistant Manager Collegian (2), Associate  
 Editor (4)  
 Student Body Treas. (3). Executive Com.  
 (3) (4)  
 Manager Track (3), Manager Basket-  
 ball (4)  
 Junior Play (3)  
 Manager Comet (4)  
 Football (2), I. P. A. (3) (4)  
 Y. M. C. A. Cabinet (3)  
 Manager D. D. Club (4)  
 Major, History

### INA MILDRED McBRIDE

Y. W. C. A. Adelante  
 I. P. A. Local Pres. (2), State Pres. (4)  
 Junior Play  
 Paradise  
 W. I. of S. R. Vice-Pres. (4)  
 Class Secretary (4)  
 Major, Biology

### MARY CONE

Class Sec. (3), Treas. (4)  
Y. W. C. A. Sec. (3)  
Adelante Vice-Pres. (3), Critic (4)  
Student Volunteer Band Sec. (3)  
Teutonia (2) (3)  
Wallulah Staff  
Major, English Literature



### HARVEY E. TOBIE

Entered from Dakota Wesleyan (2)  
Philodorian, Treas. (2), Reporter (3),  
Pres. (4)  
Tug o' War (2)  
I. P. A. Oratorical Contest  
Wallulah staff (3)  
Junior Play  
Football (4), Track (4)  
Class Basketball (4)  
Collegian staff (4)  
Treas. class (4)  
Major, English



### GRACE ELEANOR THOMPSON

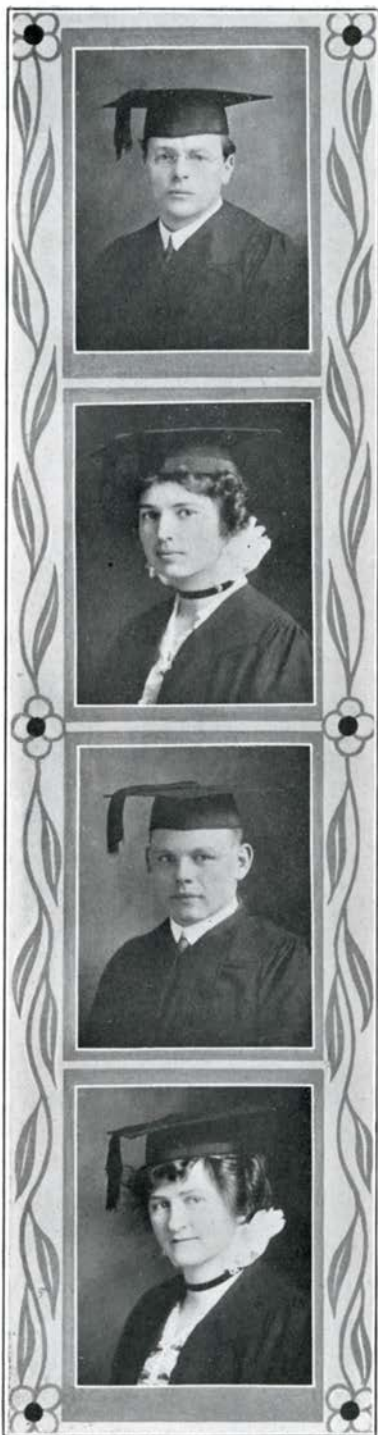
Y. W. C. A.  
Treasurer of Class (3), Vice-Pres. of  
Class (4)  
Adelante Society, sec. (1), Vice-Pres. (3)  
Teutonia Verein, Treas. (2)  
Collegian staff (3)  
Ladies' Club 1-4, Sec. (4)  
Junior Play  
Major, Biology



### ROLAND L. PFAFF

Websterian, Critic (4)  
Y. M. C. A. Teutonia (2), Vice-Pres. (3)  
Willamette Institute of Scientific Research  
(3), Pres. (4)  
Glee Club Pres. and Comedian (2)  
"W" Club (2) (3), Pres. (4)  
Basketball (1) (2) (3), Manager (2)  
Football (3) (4), Track (1) (2) (3) (4)  
May Day Manager (3), Junior Play  
Varsity Band (1) (2)  
Chimes of Normandy (2)  
Class Baseball, Football and Track  
Major, Natural Science





**JACOB STOCKER**

Senior and Graduate Student  
 Websterian  
 Teutonia  
 Kloshe Klub  
 Class Pres. (2)  
 Y. M. C. A.  
 Official W in Oratory  
 Second Place State Prohi Contest (2)  
 Married. Minister  
 Major, Education

**KATE BARTON**

Student Executive Committee (3)  
 Class secretary (2), Pres. (3)  
 Y. W. C. A. Vice-Pres. (3), Cabinet (1)(2)  
 Adelante Treas. (1), Critic (2), Directress  
 (4), Pres. (4)  
 Associate Editor Collegian (3)  
 Wallulah staff  
 Junior Play  
 Major, English and French

**EMERY DOANE**

Websterian, Vice-Pres. (3), Critic (3)  
 Track Team (1) (2) (3) (4)  
 Baseball (2) (3) (4), Football (3) (4),  
 Captain (4)  
 Senior Basketball Team  
 Y. M. C. A., Cabinet (3)  
 Chairman Bell Tower Com.  
 Executive Com. (3)  
 Kloshe Klub, Manager (3) (4)  
 Junior Play, Manager, Cast  
 Pres. Class (3)  
 Pres. Student Body (4)  
 Major, Chemistry

**DAISY MARGUERITE MULKEY**

Vice-Pres. Class (3)  
 Executive Committee Class (3)  
 Ladies' Club (1) (2) (3) (4), Vice-Pres.  
 (2), Pres. (4)  
 Junior Play (3)  
 Paradise  
 Wallulah Staff.  
 Comet Staff  
 Major, English and French

**ALICE L. FIELDS**

Adelante, Sec. (1), Directress (4), Vice-Prs. (4)  
Y. W. C. A.  
Member "Scribblers" Club  
Major, Latin

**HARRY IRVINE**

Websterian  
Y. M. C. A.  
Science Club  
Football (4), Manager (4)  
Speaker of House of Mock Legislature (4)  
Class Prs. (4), Class Basketball (4), Baseball (1) (4), Football (1) (2)  
Class Track (1) (2) (3) (4)  
Athletic Editor Collegian (3)  
Varsity Band Leader (1) (2)  
Junior Play  
Prohi League (1) (2) (4)  
Assistant Manager Comet  
Major, Natural Science

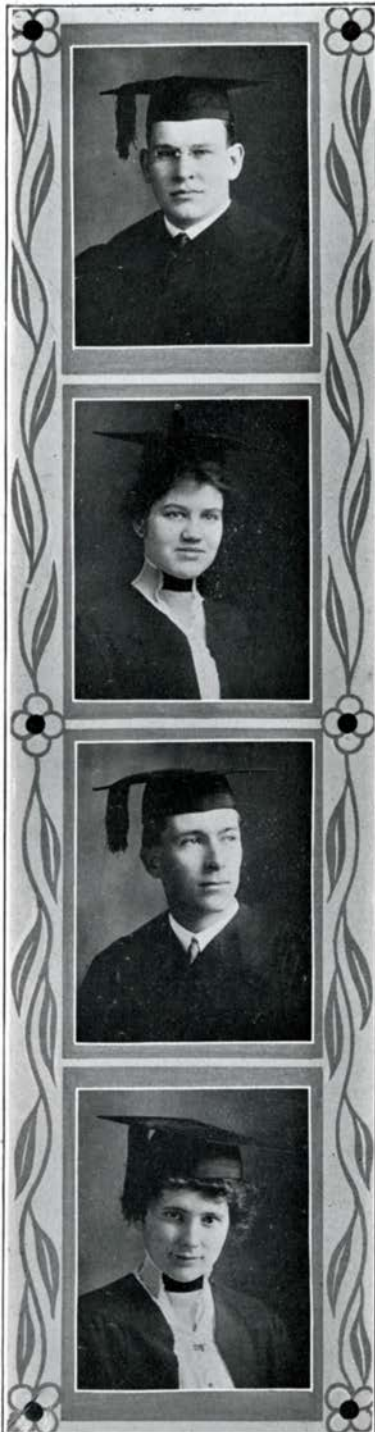
**V. KEITH VAN WINKLE**

Entered from Albany College, Sophomore Year  
Class Treas. (2), Vice-Pres. (3)  
Philodorian, Sec. (3)  
Y. M. C. A. Cabinet (4)  
Cor. Sec. W. I. of S. R. (4)  
Junior Play  
Paradise  
Comet staff  
Major, Biology

**PAUL IRVINE**

Websterian, Sec. (1), Inter-Society Com. (2) (3), Pres. (4)  
Y. M. C. A. Cabinet (2) (3)  
Prohi League, Treas. (1), Pres. (3)  
Collegian staff (2), Literary Editor (4)  
Editor-in-Chief Wallulah (3)  
Associate Editor Comet (4)  
Manager Song Book (4)  
Manager Junior-Senior Banquet (3)  
Vice-Pres. Oratorical Association (2)  
Manager Forensics (4)  
Class Baseball (1) (2), Class Track (3)  
Glee Club (2) (3) (4), Sec. (3)  
Composed Class Glee Song (1) (4), Writer (4)  
Major, Social Science and English Literature





### ERIC P. BOLT

Executive Committee (1) (3)  
 Pres. Class (1)  
 Athletic Council (2) (3)  
 Vice-Pres. Student Body (3)  
 Y. M. C. A. Cabinet (3), Vice-Pres. (3)  
 Football (1) (2) (3) (4), Captain (3)  
 Manager Basketball (3)  
 Oratory (2) (3)  
 Delegate Student Volunteer Convention (3)  
 Treas. "W" Club (2)  
 Websterian, Cor. Sec. (1) (4)  
 Forensic "W" Club (2) (3) (4)  
 Junior Play. Class track team. Tug o.  
 War (1) (2)  
 Pres. D. D. Club  
**Major, Social Science**

### MILDRED BARTHOLOMEW

Y. W. C. A. Cabinet (1) (2) (3), Pres. (4)  
 Philodorian, Pres. (2), Vice-Pres., Treas.,  
 Censor, Reporter  
 Pres. Lausanne Hall Club (3)  
 Pres. Oratorical Association (3)  
 Sec. Class (3)  
**Major, English Literature**

### MILTON A. MARCY

Y. M. C. A., Sec. (1). Kimball College  
 Glee Club (1) (2) (3)  
 Vice-Pres. Kimball S. B. (3), Pres. (4)  
 Captain Senior Basketball Team  
 First Place, 220 yard dash Hexathlon (4)  
**Major, Greek**

### LEILA LENT

Vice-Pres. W. Y. C. A. (3)  
 Treasurer Class (3)  
 Junior Play (3)  
 Editor 1914-15 Hand Book  
 Collegian staff (3), Associate Editor (4)  
 Art Staff of the "Comet" (4)  
 Adelante Society, Treas. (1), First Direct-  
 ress (4)  
 President Lausanne Club (4)  
 I. P. A. Treas. (2), Vice-Pres. (3)  
 May Queen (4)  
**Major, French**

### CLARA SCHNASSE

Y. W. C. A.  
Philodorian, Treas. (1), Censor (3), Pres.  
(4)  
Vice-Leader S. V. B., (3) Leader (4)  
Secretary Class (4)  
Ladies' Club (1) (3)  
Teutonia (2)  
Washingtonian  
May Day Biscuits (1) (2) (3) (4)  
Major, English



### HAROLD B. JORY

Kloshe Klub (1) (2), Manager (2)  
Glee Club (2) (3) (4), Treas. (3), Pres. (4)  
Soloist (3), Sketch (3) (4)  
German Play (2) (3)  
Junior Play  
Class Pres. (3)  
Websterian, Vice-Pres. (1), Pres. (4)  
Y. M. C. A., Pres. (4)  
Institute of Scientific Research (3) (4)  
Track team (1) (3) (4), Football (4)  
Class Basketball (1) (2) (4)  
Tug o' War (1) (2)  
Major, Chemistry



### HELEN PEARCE

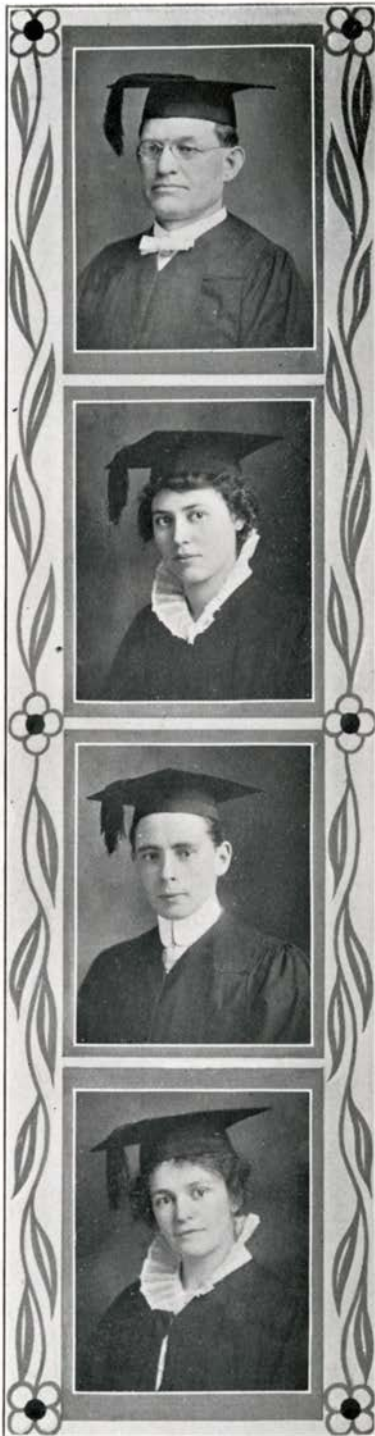
Teutonia  
Y. W. C. A. Cabinet  
Ladies' Glee Club  
Adelante, Sec. Critic, Pres. (4)  
Major, German



### GLEN J. McCADDAM

Glee Club (1) (2), Manager (3) (4)  
Philodorian, Pres. (4)  
Debate "W" (2), Oratory "W" (3)  
Yell Leader (2)  
Executive Committee (3)  
Inter-Society Cup in Oratory (2)  
Opened and operated Varsity Book Store  
(3) (4)  
Y. M. C. A.  
Major, Social Science





**J. M. HIXSON**

Y. M. C. A. (1) (4)  
 Four Year Course in Kimball College, Special Work in C. L. A.  
 Kimball Glee Club (1) (2)  
 Collegian Reporter (4)  
 Sec. Affiliated Junior Class  
 Websterian  
 Major, Theology

**NAOMI ABBEY RUNNER**

Adelante (2) (3) (4), Cor. Sec. (3) (4)  
 Y. W. C. A.  
 Student Volunteer (2) (3) (4), Leader (4)  
 Teutonia (2)  
 Major, Mathematics

**BRUCE W. McDANIEL**

Websterian  
 Collegian (1) (2), Editor-in-Chief (3)  
 Y. M. C. A. (1), Cabinet (2)  
 Secretary Oratorical Association (3)  
 Class Basketball (3) (4), Baseball (1) (2)  
 Manager "Chimes of Normandy" (2)  
 Manager "Talk of the Town" (2)  
 Composer of winning song Freshman Glee (2)  
 Originator and Manager Y. M. C. A. Xmas Fred to News Boys (2)  
 Publicity Manager German Play (2)  
 Executive Committee (3). May Day Chef (1) (2) (3)  
 Class Debate (4)  
 Freshman Minstrels (1)  
 Poets Club (4). Devils' Inn (4). Law  
 Major, Social Science

**EUNICE HUBERTA MILLER**

Adelante (2) (3) (4), Critic (3)  
 Y. W. C. A.  
 Teutonia (1) (2), Reporter (1), Sec. (2)  
 Major, English Literature

**STELLA GRAHAM**

Class Vice-Pres. (1)  
Philodorian, Sec. (1), Censor (3), Pres.  
elect (4).  
Ladies Club (1) (2) (3)  
Vice-Pres. Student Body (4)  
Major, History



**MERWYN E. PAGET**

Websterian, Y. M. C. A. Cabinet (2)  
Kloshe Club (1) (2) (3)  
Executive Committee (2) (3)  
Junior Play, Wallulah Staff (3)  
Class Football (2), Baseball (1) (2), Bas-  
ketball (2) (3) (4)  
Manager "Neffe als Onkel" (3)  
Treas. Student Body (2)  
Football (4), Manager (2) (3)  
Baseball (3). "W" Club  
Major, Social Science



**LUCILE KUNTZ**

Ladies Club, Pres. (2)  
Philodorian, Treas. (1), Vice-Pres. (2),  
Censor (4), Pres. (4).  
Y. W. C. A.  
Composer Glee Song (1) (2)  
Major, Music



**LOUISE BEAMAN**

Philodorian  
Ladies Club  
Major, Music



**LENA DOTSON**

Major, Music



DAVID O'HARA



MRS. ALICE H. PAGE



D. McALLISTER



C. W. BARRICK



ALLAN A. HALL



A. J. FINNERTY



D. E. FLETCHER

# LAW



A. E. BALL



RAY L. SMITH



HARVEY L. FISCHER



GEORGE S. BEASLEY



ESTHER K. GANSON



JOHN GANSON, JR.



RAY MARK



ROY SPARKS



'16



Ruth Hodge



Mabel St. Pierre



Annie Walker



Fred McMillan



F.M. Jasper



C.B. Van Stryke



Beryl Holt



Estaline Harding



Erud Elliot



Elma Ohline



John Gant



Hays Schroeder



Harold Hall



Maxwell Ball



Genevieve Arison



Hilley Wastell



Walter Gierke



Vilora Hoxie



Vilora Hoxie



Charles Kittus

# '16



Thos. Yarnes



Dan De Long



D.L. Coon



Kenneth Jenett



Henry Rice



Eva Howe



Eva Billings



Ruth Winters



Nellie Quisenberry



J.R. Bain



Annie Ryan



Paul Smith



Edith Lorantson



Nora Ross



Lloyd Swisher



Laura Ross



Joe Garhart



Eval Brent



Florence Pace



Tommie Gilbert





'17



FRANK BAILEY



EARL COTTON



ESTHER EMMEL



WARREN BOOTH



RAYMOND GILBERT



HAROLD GARRARD



LORA DOUGHTY



LORETTA FORD



SAM KING



HENRY H. HUBEL



WILLIS BARTLETT



WALLACE ADAMS



MISS OAKER



W. R. JEFFREY



CARL REETZ



HAROLD BARNES



GEORGE LIENING



EUGENIA MCINTOSH



ISABEL MCCORBETT

# 17



TERREL CHAPLER



HELEN GOLDBERG



JEAN BOTSFORD



MARIE SNEED



LEAH STEVES



VIOLET MACLEAN



OLIVE ROSCOE



JAMES GILLETTE



PETER EMMEL



WESLEY HAMMOND



R. O. OWSEN



ANNIE TOBIE



BETH BARNES



EMILY MARTIN



EARL FIEGEL



LEONARD SWANNAN



J. R. TEETERS



CARL GREER



CORBIE COONEY







*HAROLD MILLER*

18



*TOM DOUGLAS*



*DONALD BYRD*



*RAY METCALF*



*JOSEPHINE TROY*



*RUTH SPOOR*



*CLARA PERKINS*



*NORMAN HAYNER*



*CHAS. VICKREY*



*HELEN GOLTRA*



*HARRY BOWERS*



*PAUL MILLER*



*GLADYS MALONEY*



*I. L. KETCHAM*



*MARY EYRE*



*ROY GATAE*



*C. R. RANDALL*



*HAROLD TOBIE*



FERN WELLS

'18



MYRTLE ALBRIGHT



AYRIL HARRIS



MABEL GARRETT



GUSTAVE ANDERSON



HAROLD McQUEEN



NELLIE PATCHIN



LOYD HAIGHT



ROGER LYON



LOLA COOLEY



J. DON FLETCHER



OLIVE MARK



LELAND AUSTIN



MARIE LUTHY



HAROLD ENNIS



EARLE PROCTOR



MABEL BOUGHEY



J. A. ROOK



LLOYD LEE

18



NELLIE BEAVER



LUCILE JAKOBSON



ROULPH SPIESS



GERTRUDE CUNNINGHAM



RUTH PERINGER



HARVEY WRIGHT



LELA McCADAM



HERALD DOYSEE



FLORENCE COOKE



DOROTHY SCHRAGE



LILLIAN BELL



EVELYN REIGLEMAN



MINNIE BEAVER



FANNIE MCKENNON



PERCY DAYE



STELLA COYNE



BERNARD BRAESTER

ACADEMY

# ACADEMY



N. L. HINK (44)



VESTA MULLIGAN (44)



ADDIE PATTERSON (44)



ERNEST ALBRIGHT (44)



ANETA JONES (44)



LEE M. ALLISTER (44)



ATHELL IRVINE (44)



MINNIE KUHNKE (44)



KEITH CAPPELL (44)



ROSLYN ALBRIGHT (43)



W. ROSSELL DOY (44)



ROOT WAGON (43)



MARY FINDLEY (43)



E. K. PETERSMYER (42)



F. P. MICKELSON (42)



LUCILE MCCULLY (42)



ROY VINARD (42)



GEO. LEWIS (44)



FRED CHRISTENSEN (41)



JOHN ABEL (41)



EDM. RICHARDSON (41)



BAYARD FINDLEY (41)

# Theology



Tom DeWalt



J. L. Ketchum



Bernard Bennett



M. S. Marcy



J. M. Hixon



Harold Hixerson



Harold Hill



Don DeLong



Carl Reetz



Fred Nicholl



Harold Dwyer



E. M. Petersmier



R. D. Cady



Albert Gathe



Thos. Amason



Mrs. Don DeLong



F. A. Mardson



J. W. Warrell



Leslie Bailey



Ernest Albright



John Abel

# Law Students

## SENIORS

F. H. Reeves  
Roy R. Sparks  
C. W. Barrick  
G. S. Beasley  
A. E. Ball  
Esther Carson  
John Carson  
D. E. Fletcher  
H. L. Fisher  
Allan A. Hall

Ray Mark  
M. D. McCallister  
David O'Hara  
Alice H. Page  
Arthur J. Reinhart  
Ray L. Smith  
Oliver J. Van Valin  
Elmo S. White  
Roy Stroud

## JUNIORS

O. H. Carson  
Roy A. Grant  
Paul R. Smith

A. L. Seamster  
Archie G. Walker

## FRESHMEN

Russell Brooks  
S. Z. Culver  
I. Don Fletcher  
Henry C. Gregg  
Joe C. Kaiser  
M. S. Lamport  
Ralph Miller  
Glenn J. McCaddam

Bruce McDaniel  
Ivan McDaniel  
Merwyn E. Paget  
Chas. R. Randall  
Harry H. Savage  
Harvey A. Wight  
W. A. Weist

# Music Students

Barnes, Howard	Huffman, Maggie
Beaman, Louise	Jones, Lucile
Beaver, Nellie	Kelley, Ethel
Bell, Inice	Kuntz, Lucile
Carl, Hammel	Lindahl, Grace
Clapper, Maude	Mark, Olive
Cone, Flora	Marvin, Marjorie
Cooke, Florence	McCully, Lucile
Cooley, Neva	McGilchrist, Isobel
Denison, Inez	Metcalf, R. W.
Digerness, Merene	Moffitt, V. W.
Dimick, Frances	Mulligan, Vesta
Dotson, Lena	Olinger, Patti
Emmons, Lucile	O'Neil, Charles
Emmons, Marian	Ostermann, Pearl
Findley, Genevieve	Pearce, Helen
Findley, Mary	Radcliff, Gilbert
Findley, Lenore	Radcliff, Henry
Fisher, Eva	Ryan, Annie
Fink, Lelia	Schnasse, Lydia
Gage, Lawrence	Schrunk, Bessie
Gardner, Clyde	Sherwood, William
Garret, Mabel	Siegmund, Floyd
George, Pearl	Witham, Vera
Harris, Ross	

# Art Department

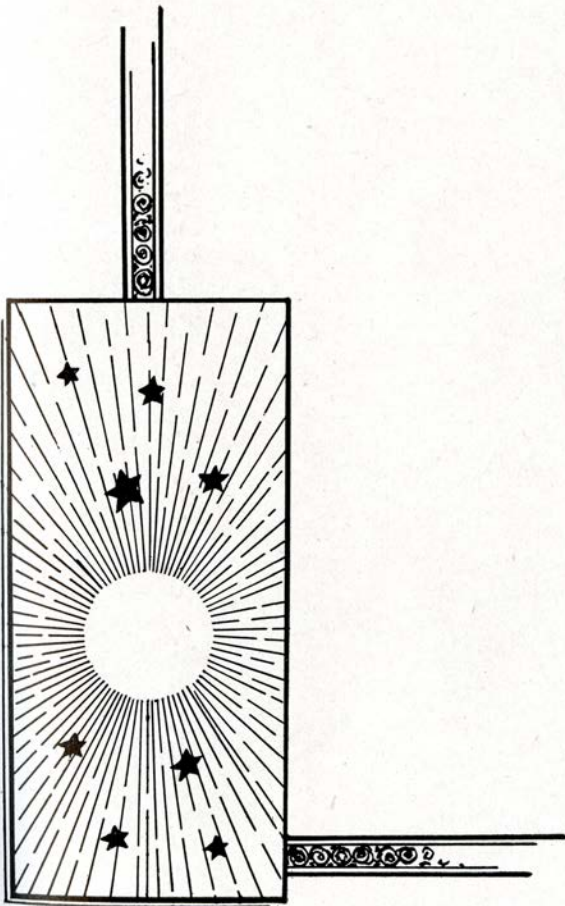
## Students

Roslyn Allbright.	Mrs. O.C. Lock.
Mrs. J. Arnold.	Mrs. J.A. Lilsey.
Mrs. G.G. Brown.	Leila Lent.
Mrs. Bengen.	Mrs. M. Gilchrist.
Ruth Boyer.	Essie Mull.
Mrs. J.B. Craig.	Esther Magg.
Miss Churchill.	Lucile McCully.
Irene Curtis.	Miss. M. Neel.
Miss. J.C. Currie.	Arice Ogden.
Mrs. Cronwell.	Elmo Ohling.
Mary Eckerson.	Joe Omsted.
Beda Erickson.	Miss. Poague.
Marion Gould.	Mrs. F.E. Shafer.
Bessie Gill.	Nancy Skaije.
Grace Howell.	Hallie Sampson.
Mrs. Holcomb.	Joy Turner.
Alta Jones.	Mrs. A.J. Walker.
Edna Josse.	Miss White.



# PART THREE

# Book Of Planets



# Student Body Officers



EMERY DOANE  
President



STELLA GRAHAM  
Vice-President



VIOLET McCLAIN  
Secretary



HOWARD JEWETT  
Treasurer

# The Student Body

EMERY DOANE, President  
STELLA GRAHAM, Vice-President

VIOLET MACLEAN, Secretary  
HAROLD JEWETT, Treasurer

## EXECUTIVE COMMITTEE

EMERY DOANE, President  
STELLA GRAHAM, Vice-President  
VIOLET MACLEAN, Secretary  
HOWARD JEWETT, Treasurer  
LELAND SACKETT

ARLIE WALKER  
WARREN BOOTH  
EMMA MINTON  
WALTER GLEISER  
PROF. R. B. WALSH

## MANAGERS

HARRY IRVINE, Football  
LELAND SACKETT, Basketball  
ARLIE G. WALKER, Baseball  
JOHN GARY, Track

RONALD TEETERS, Tennis  
PAUL IRVINE, Forensics  
ALPHEUS GILLETTE, Collegian



THE ORGANIZATION of which all students in every department of the University are members is completing successfully a very busy year which is marked by new developments along several lines.

While the major part of the business of the Student Body is handled by the executive committee, it is nevertheless true that the students as a whole have a very live interest in all phases of Student Body activity, and the five-dollar fee has resulted in a better support for all enterprises.

The football excursion to Corvallis for the O. A. C.-W. U. game did much to stimulate the fine spirit that has been manifest during the year, not to mention the enthusiasm created for that game.

The newly made cinder track is a much needed and splendid addition to an athletic field which requires only a new gymnasium to make it one of the finest in the Northwest.

The action of the previous year, of applying for membership in the Northwest Conference, was deemed inadvisable and was rescinded this year. Before making application again the Student Body will probably wait until financial prospects are brighter and the athletic outlook more assuring.

While there have been fewer signal victories in athletics than in previous years, real progress has been made in the nature of the schedules which have been unusually heavy and have included many Conference teams.

Two new cement tennis courts have made that sport more popular. This year's activities are drawing to an auspicious close and the efficient organization of the Student Body augurs well for next year.



# Y. M. C. A. Cabinet

HAROLD JORY, President

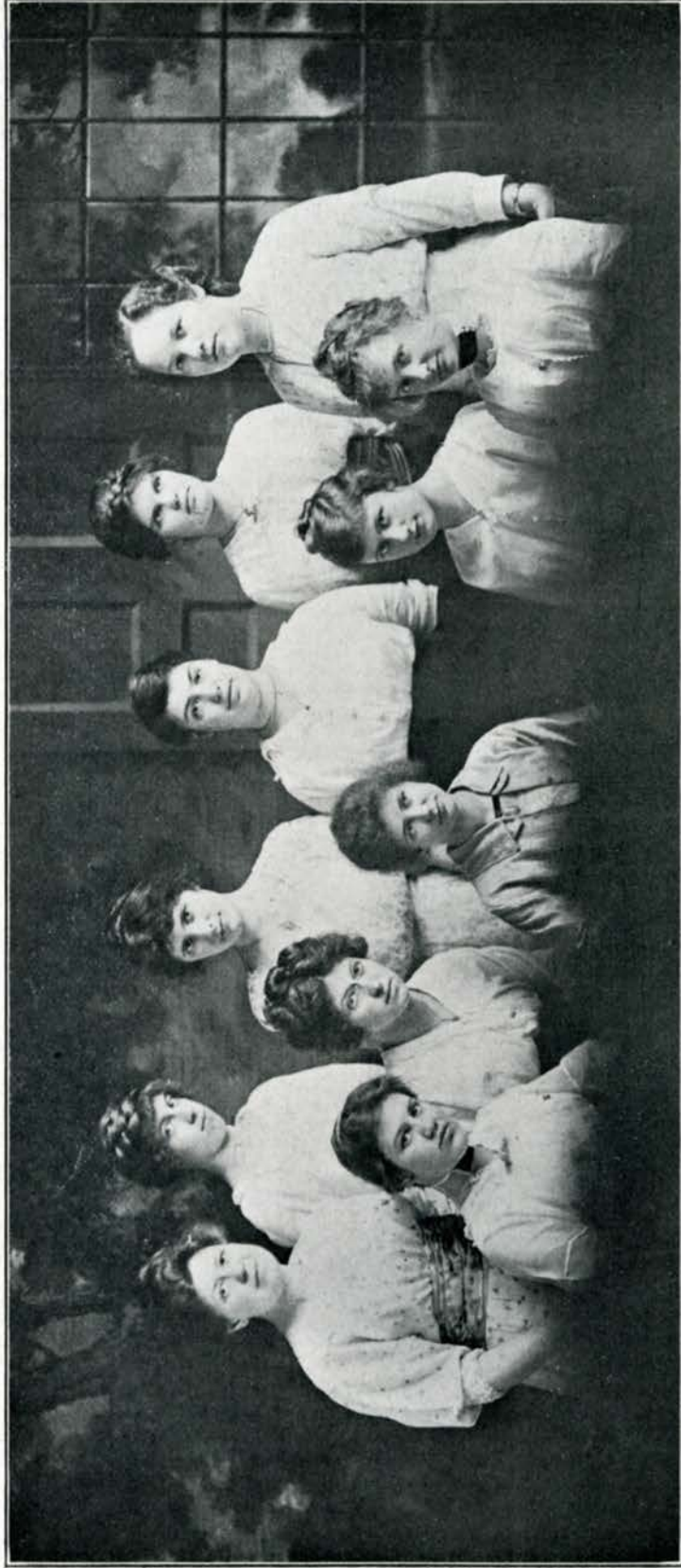
SAM KING, Secretary

WALTER GLEISER, Vice-President and Bible Study

FRED McMILLIN, Treasurer TINKHAM GILBERT, Meetings

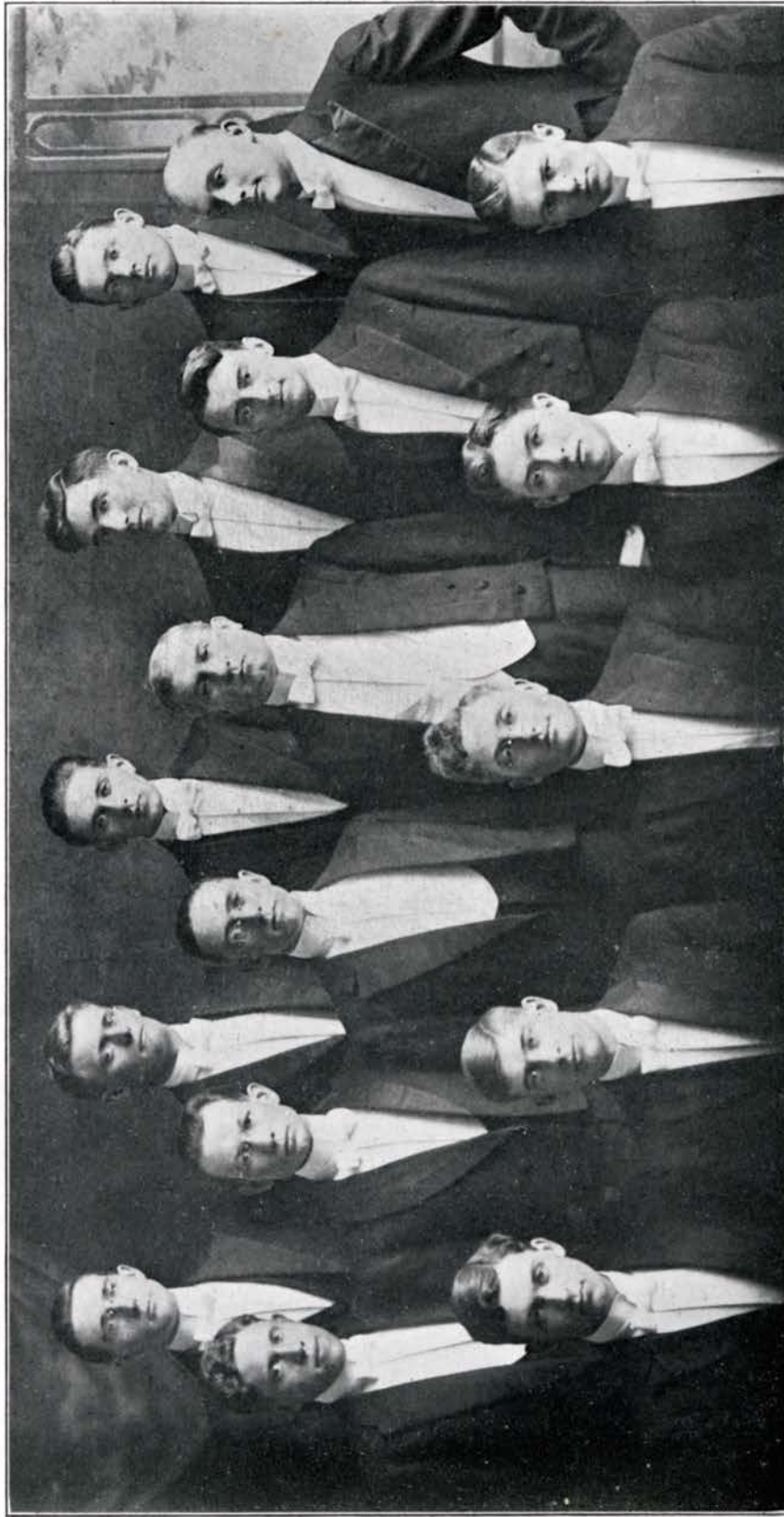
HARRY RICE, Membership

NORMAN HAYNER, Extension HOWARD JEWETT, Social



# Y. W. C. A. Cabinet

MILDRED BARTHOLOMEW, President  
LEILA LENT, Vice-President  
ESTHER EMMEL, Secretary  
CARRIE COOKSEY, Treasurer  
BERYL HOLT, Meetings  
VIOLET MACLEAN, Extension  
ROSAMOND GILBERT, Social  
AETNA EMMEL, Mission Study  
ANNIE RYAN, Bible Study  
KEITH VAN WINKLE, Rest Room and Summer Conference  
MARY FINDLEY, Academy Representative



# Glee Club

FIRST TENOR  
Booth  
Steeves  
Jeffrey  
Anderson

SECOND TENOR  
Barnes  
Smith  
Gillette  
Douglass

BARITONE  
Jory  
Hall  
Irvine  
Chapler

BASS  
McCaddam  
Metcalfe  
Lyon  
Bowers



# Ladies Club

FIRST SOPRANO  
 Dimick  
 Cooksey  
 Rosche  
 McGilchrist  
 Swarthout

SECOND SOPRANO  
 Cooke  
 Winters  
 McCully  
 Schnasse  
 Maclean

FIRST ALTO  
 Kuntz  
 Avison  
 Emmel  
 Thompson

SECOND ALTO  
 Mulkey  
 Ryan  
 Hoxie  
 Cone

# Inter-Collegiate Prohibition Association



MILDRED McBRIDE  
State President

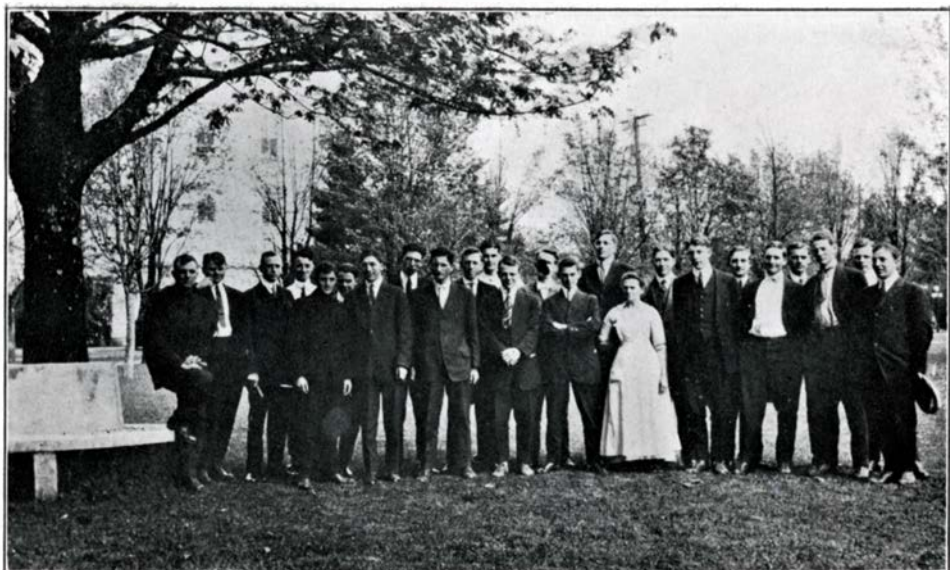


F. S. FRANCIS  
Local President

# Willamette Institute of Scientific Research



ROLAND PFAFF, President	KEITH VAN WINKLE, Cor. Sec.
MILDRED McBRIDE, Vice-President	HARRY RICE, R. M. of E.
ROLAND JEFFREY, Marshal	
Prof. Von Eschen	Henry Richter
Prof. Peck	Willis Bartlett
Prof. Matthews	Carie Cooksey
Mrs. Peck	Harold Jory
Herman Clarke	Harry Irvine
Benjamin Neustel	Grace Irvine
Grace Thompson	

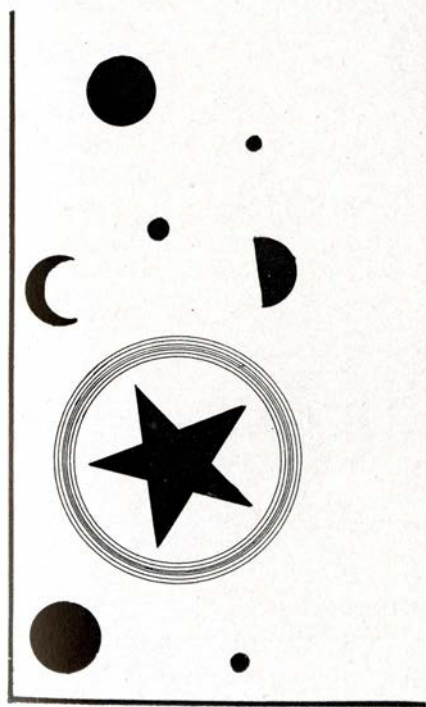


Kloshe Klub



D. D. Club

**PART FOUR**  
**Book Of Satellites**



# Philodosian Literary Society

Myrtle Albright  
Mildred Bartholomew  
Ruth Barnes  
Louise Beaman  
Minnie Beaver  
Nellie Beaver  
Edna Billings  
Irma Botsford  
Enid Elliott  
Valeria Goldberger  
Helen Goltra  
Stella Graham  
Ermine Harding  
Florence Hofer  
Beryl Holt  
Flora Housel  
Lucile Jaskoski  
Lucile Kuntz

Edith Lorntsen  
Violet Maclean  
Olive Mark  
Isobel McGilchrist  
Fannie McKennon  
Daisy Mulkey  
Elmo Ohling  
Clara Perkins  
Ruth Peringer  
Olive Rosche  
Annie Ryan  
Clara Schnasse  
Dorothy Schnasse  
Marie Sneed  
Addie Tobie  
Keith VanWinkle  
Ruth Winters  
Helen Wastell

# Philodossian



# Philodorian



# Philodorian Literary Society

Francis  
Bagley  
Reetz  
Gleiser  
Grallapp  
Adams  
Bain  
Lyons  
Ketchum  
Dawe  
Fletcher  
Doxee  
Toby, Harvey  
Toby, Harold  
Randall  
Miller  
McCaddam  
Gates  
Gerhart  
Schroeder

# Philodorian



# Adelante Literary Society

Genevieve Avison  
Kate Barton  
Mabel Boughey  
Ruth Boyer  
Lovella Buell  
Lola Cooley  
Flora Cone  
Mary Cone  
Carrie Cooksey  
Lila Doughty  
Gertrude Eakin  
Aetna Emmel  
Esther Emmel  
Lucile Emmons  
Mary Eyre  
Alice Fields  
Loretta Ford  
Mabel Garrett  
Nellie Gleiser  
Rosamond Gilbert  
Stella Goyne  
Averill Harris

Ruth Hodge  
Eva Hogue  
Valeda Hoxie  
Leila Lent  
Marie Luthy  
Mildred McBride  
Eugenia McInturff  
Eunice Miller  
Emma Minton  
Avis Ogden  
Florence Page  
Nellie Patchin  
Helen Pearce  
Evelyn Reigelman  
Ada Ross  
Laura Ross  
Naomi Runner  
Ruth Spoor  
Mabel St. Pierre  
Grace Thompson  
Josephine Troy  
Fern Wells

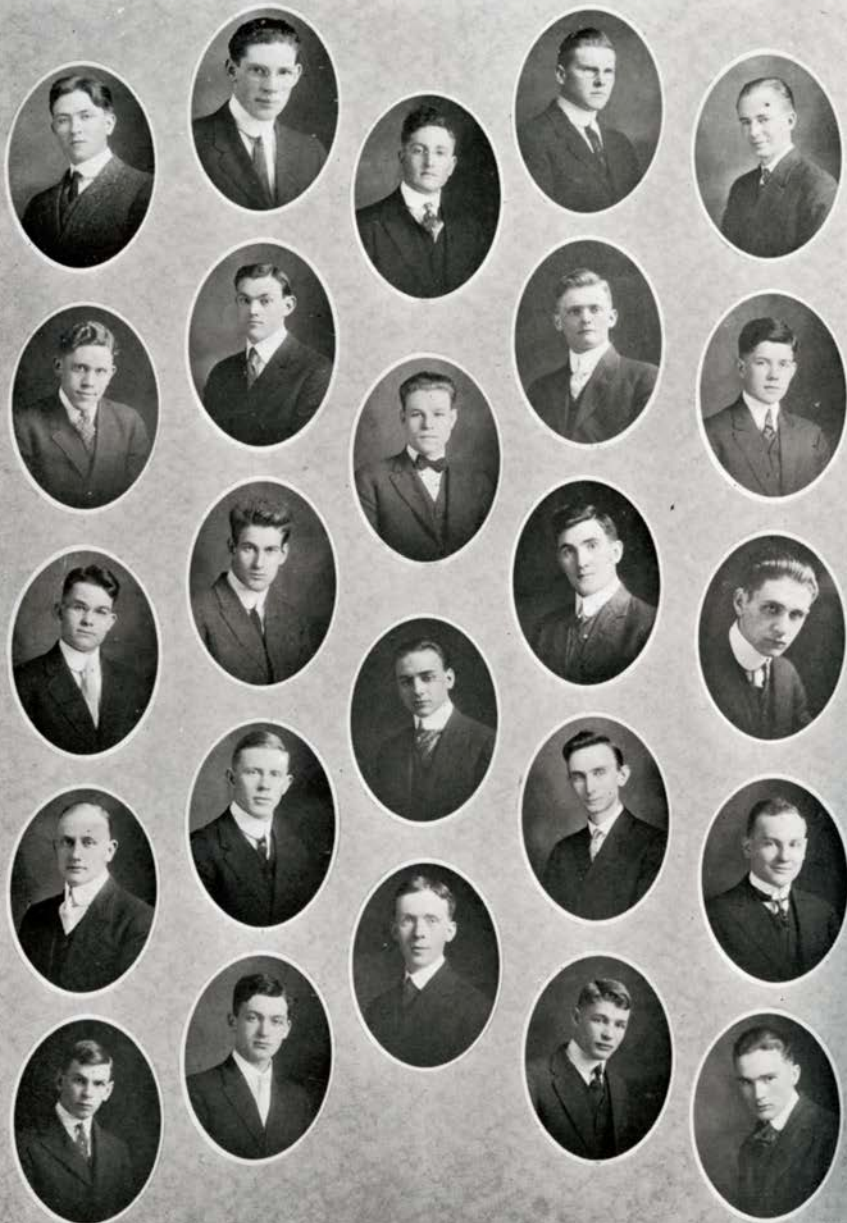
# Adelante



# Adelante



# WEBSTARIAN





# Websterian Literary Society

Anderson  
Austin  
Ball  
Bartlett  
Bowers  
Bolt  
Chapler  
Cook  
Doane  
Douglass  
Eakin  
Flegel  
Gary  
Gilbert  
Gillette  
Gregg  
Haight  
Hall  
Hammond  
Hayner  
Hixson  
Irvine, Harry  
Irvine, Paul  
Jeffrey

Jewett  
Jory  
Keefer  
King  
Lee  
Liening  
Mark  
Matthews  
McMillin  
McQueen  
Metcalf  
Miller  
Pfaff  
Proctor  
Paget  
Rice  
Rook  
Sackett  
Sherman  
Spiess  
Steeves  
Stocker  
Smith  
Walker



LEE McALLISTER  
TREAS.



GEO. LEWIS  
REC. SEC.

C  
R  
I  
T  
I  
C  
I  
S  
M



KEITH CHAPPELL  
PRES.

C  
O  
N  
F  
I  
D  
E  
N  
T  
I  
A  
L



ROBT. GATKE  
VICE PRES.



FREDERICK McALESON  
COR. SEC.

# W



# Forsenics

## ORATORS

McCaddam  
Francis  
Bolt  
Stocker  
Bain  
Doxee

## DEBATERS

McCaddam  
Smith  
Savage



HIS UNIVERSITY holds membership in the State Oratorical League, the State and National Prohibition Oratorical Leagues and the International Peace Oratorical Association. As a member of these organizations, Willamette is entitled to a representative in each of the state contests. It would seem as though the privilege of representing the school in such contests should prove a sufficient incentive for an active interest in forensics. But such is not the case. The prize is too far removed from the students at large and no incentive is given to bring our best material into the tryouts. It is hoped that in future steps will be taken to make it worth while for the strongest men in school to give their time to this work, for time it takes, and many hours of the hardest application. To the honor of Willamette and her Student Body, however, be it said, she has never failed to have a representative in the State Contests, and that man has always

done his best.

Mr. J. R. Bain was our representative in the Peace Contest this year. His oration was one of the strongest given from our platform in some years. Herald Doxee represented us in the Old Line contest with an able oration on Progress. And Mr. Bolt appeared for Willamette in the Prohibition Contest dealing with a political phase of the liquor problem.

## DEBATE

For the past few years Willamette has failed to enter intercollegiate debating circles, but this season finds us debating Corvallis in May. Inter-class competition was the method used in the tryouts. Next year it is hoped that a different method of selecting the men will be used so that the final team will not be from one class.

Our one debate of prime importance has been that between the Websterian and the Philodorian Literary Societies. This debate is characterized by several features not common to debates as generally conducted. A broad subject is chosen by a committee and just twenty-four hours before the debate is to be given the specific topic is decided upon by a faculty committee. Another noticeable feature is the lack of written decision at the close of the debate. This feature does away with the claims of "unfair" so often made after such a contest when a decision has been rendered.

With much good material in school and prospects bright for more aspirants with "silver tongues" coming in next year, we should look forward to putting Willamette on the map, "forensically" speaking.

# Alumni Association



E. KINNEY MILLER, President

W. E. ANDERSON, Vice-President      JAMES CRAWFORD, Secretary  
J. O. GOLTRA, Vice-President      MRS. F. H. THOMPSON, Treasurer  
SYLVIA JONES, Vice-President

EXECUTIVE COMMITTEE

BURGESS FORD

MRS. J. O. GOLTRA

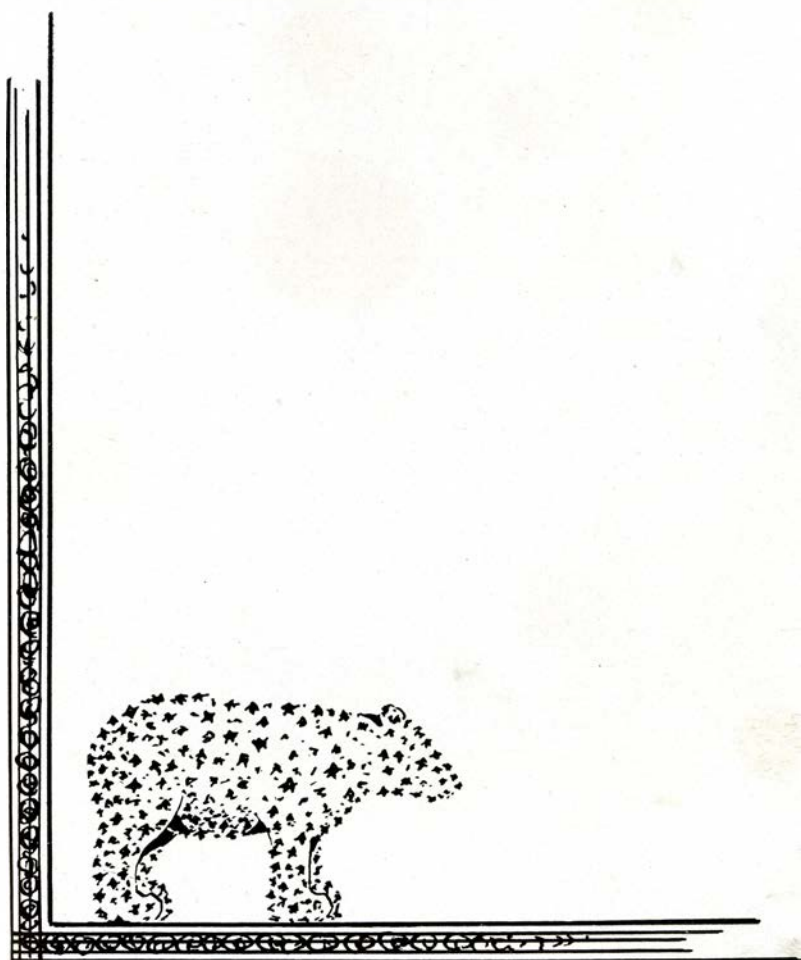


ALTHOUGH other organizations may have their ups and downs and even disband when their purpose is accomplished, a college Alumni Association must always remain as permanent as the college itself. The Willamette Association has always been strong, and its members and their achievements are too well known to need mention here. The older Alumni have become distinguished in their respective fields—as doctors, ministers, college professors. Among the latter ones are many teachers and not a few homemakers. And Willamette is proud of them all. Commencement Day reaches its climax when Seniors change their tassels to the other side of the mortar boards and sit down to the banquet table with the men of '87 and '94, the clever toastmaster, and the tales of pranks that happened “when I was in school.”

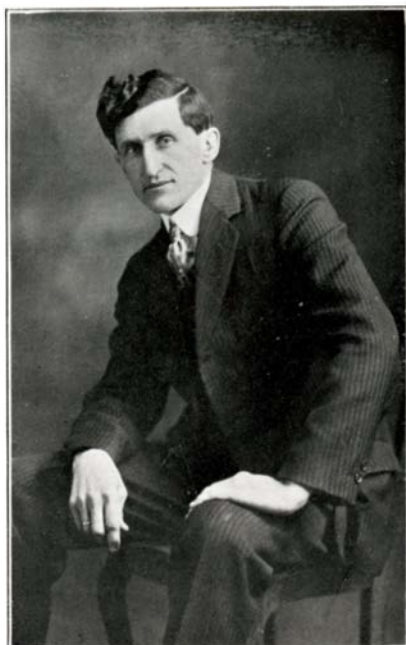
The Alumni Association is doing much to secure new students and hold old ones for Old Willamette, and membership in this society of the aristocrats of the intellect is coveted by every loyal student of W. U.

# PART FIVE

# THE GREAT BEAR



# Athletics



O. C. THOMPSON  
COACH



WHEN THE ATHLETIC MANAGERS announced their respective schedules for each season of the athletic year, it was prophesied that the seasons would be good ones. These prophesies have been fulfilled thus far. Football and basketball, while they did not cover any large score-board with victories or turn the Student Body treasury into a gold mine, nevertheless were both gratifying in their results. Never did Willamette lose because of failure to do her part, and that fact has meant good games regardless of score. Some of the strongest Conference and Non-Conference teams of the Northwest were played on the home field and floor. We of the "Willamette Spirit" take more pride in playing a strong team with a possible defeat than in seizing the many victories for the sake of a large score.

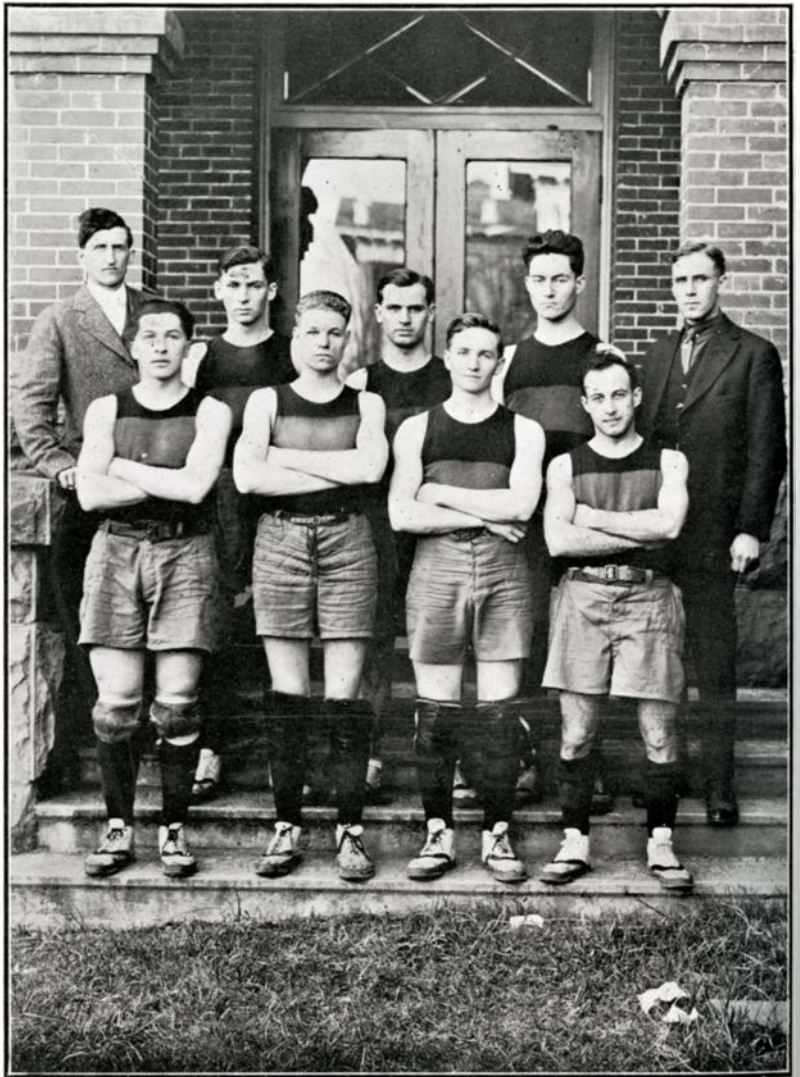
The feature of the football season was the Freshman-Sophomore bag rush in which the Freshmen defeated the Sophomores. A series of interclass basketball games resulted in the Seniors carrying off the trophy.

The present season has brought forth a generous supply of baseball and tennis material, and the lure of the new cinder track along with the interclass track meet has produced an increase in the gym laundry bill. In looking into the future we can foretell with confidence that the scheduled events, coupled with the existing Willamette loyalty, will insure satisfactory results in each of the spring sports. Opportunity has knocked several times at the door of each athlete this year. Even the Faculty caught the fever, and appeared upon the floor in contest with the interclass basketball champions, while an all-student tennis championship series called forth a small army to do battle with the racquet.

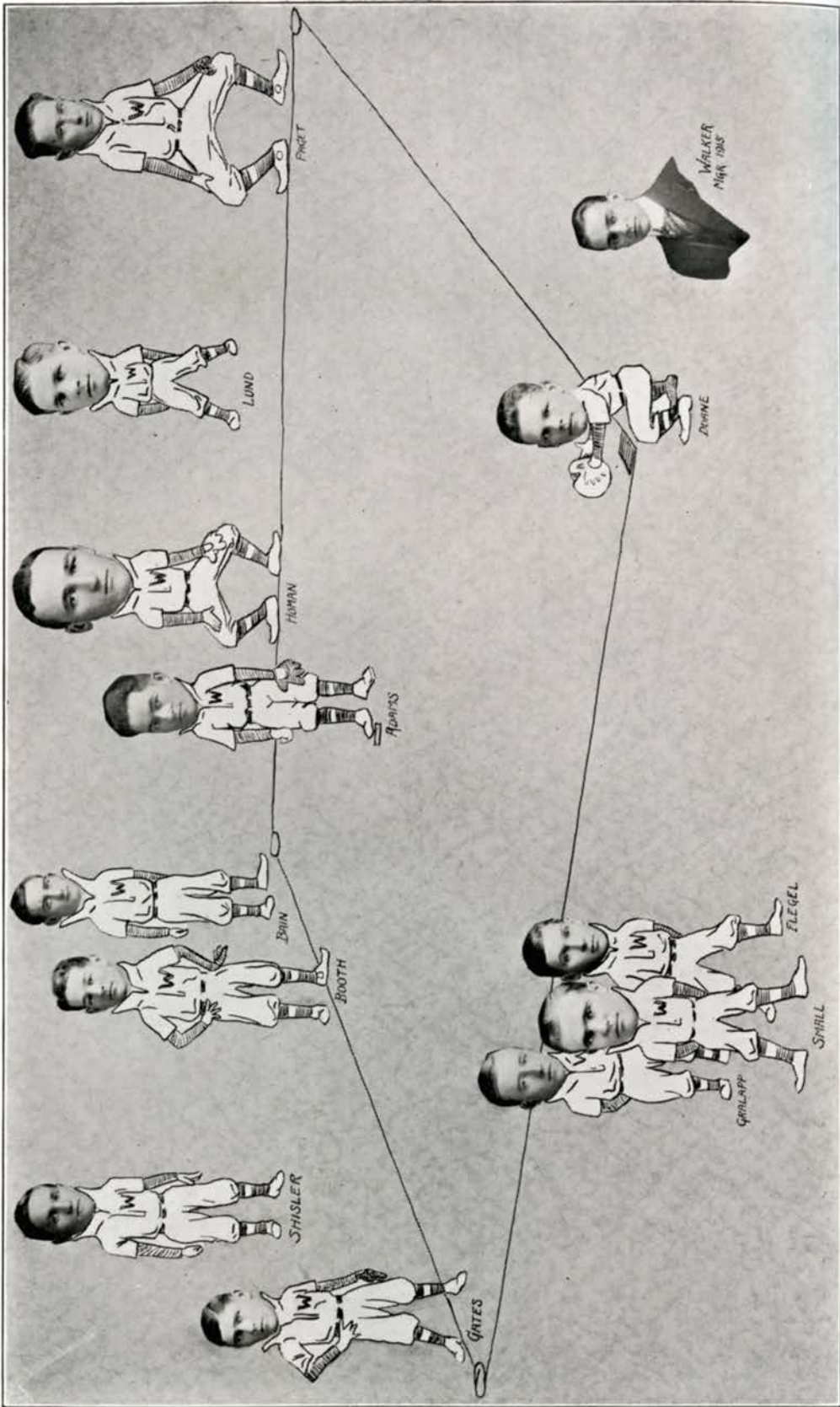
Coach Thompson has succeeded in getting a large number of the students to take active part this year in athletics, and has built up strong undergraduate teams for 1915-16, unless the vicissitudes of a summer vacation produce serious reactions.



# Basketball



Crawford  
Flegel  
Proctor  
Bagley  
Shisler  
Adams  
Jewett  
Sackett, Manager

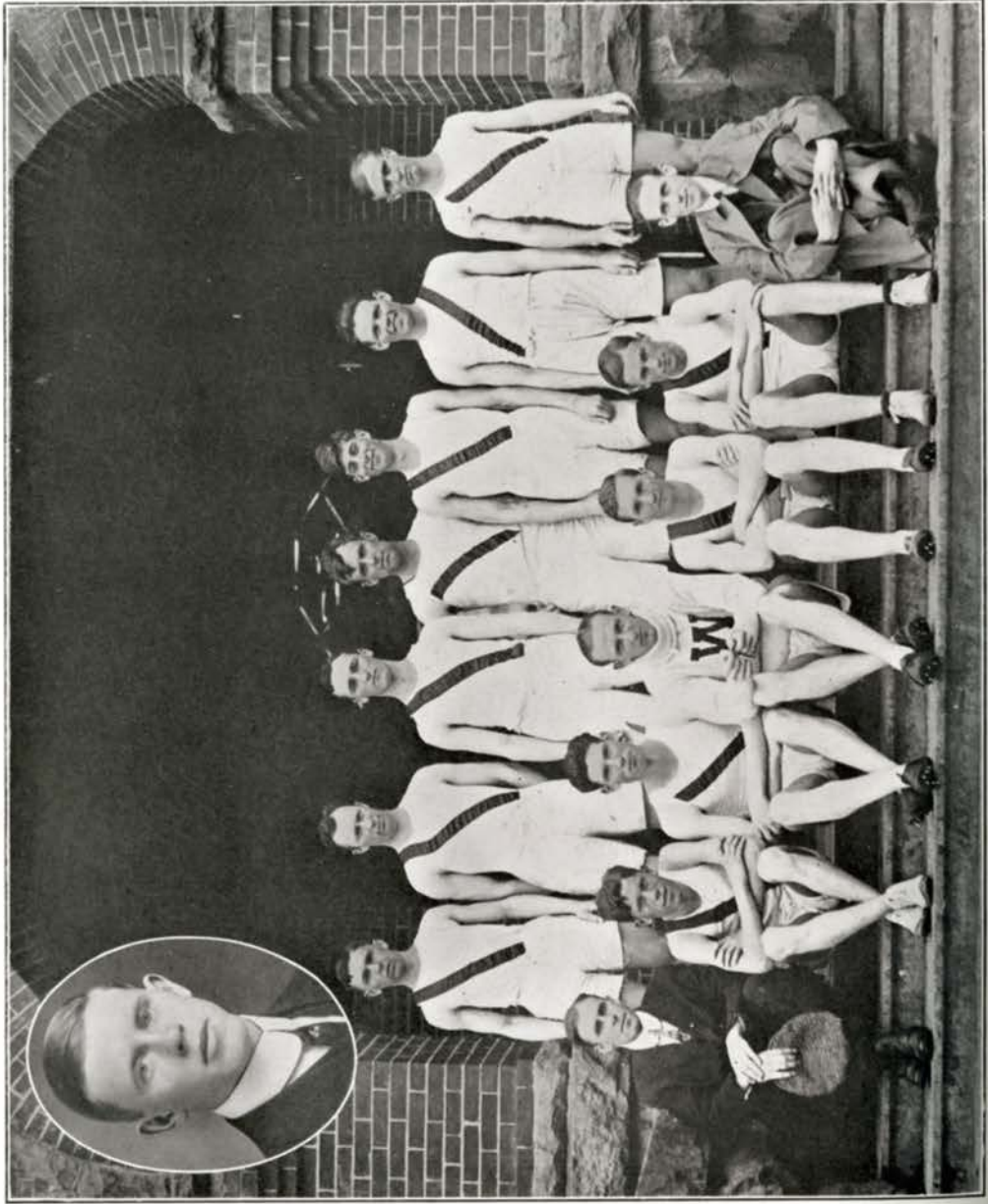


# Track

Axley  
Hogue  
Homan  
Pfaff  
Jory Doane

Small  
Chapler  
Rice  
Mills  
Shisler  
Steeves

Gary, Manager





RONALD TEETERS  
Manager of Tennis

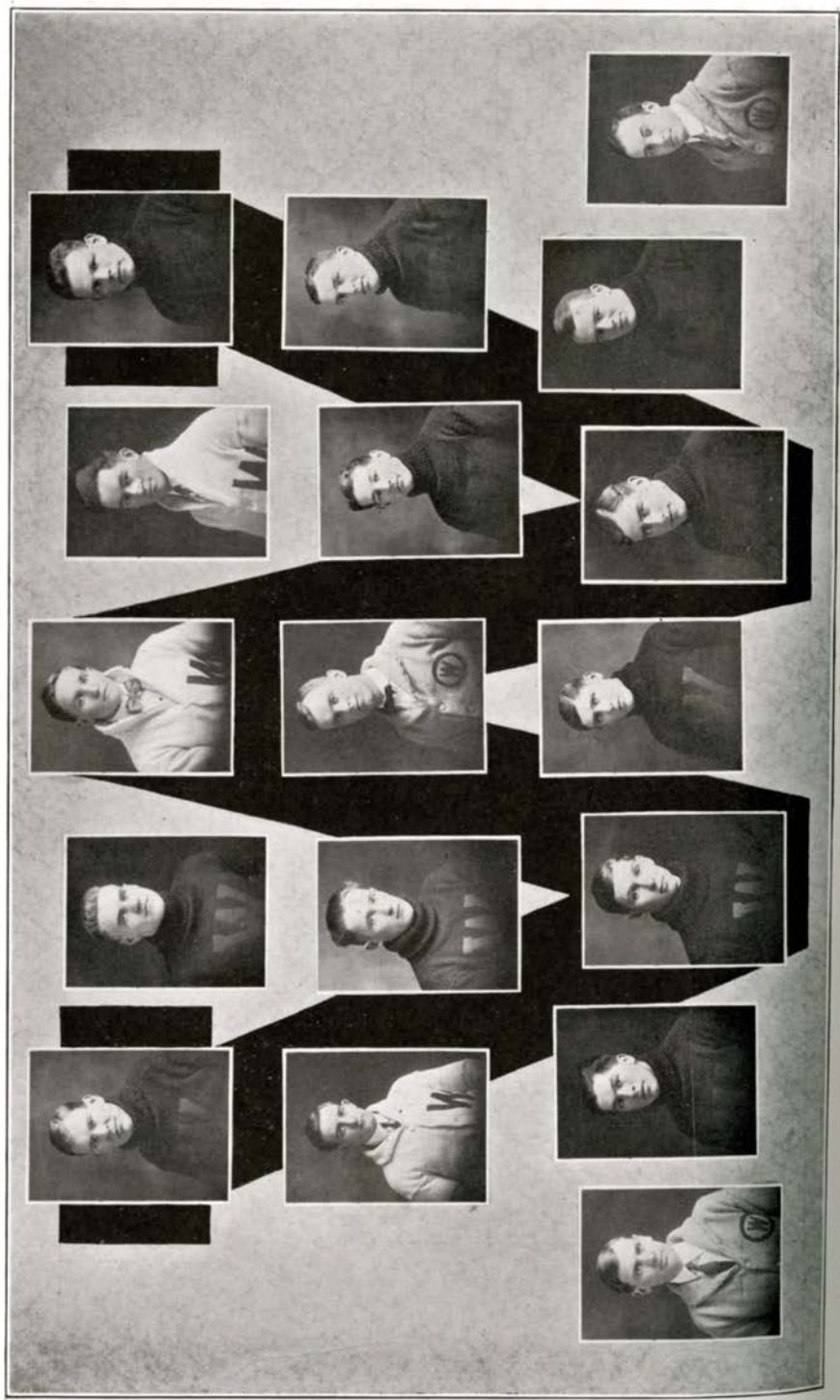


ENNIS is fast becoming one of the most popular sports at Willamette. Last year the only meet was with Pacific University. This year, however, on our own asphalt courts which were put in during the past summer, we plan to meet all of the non-conference schools and some of the conference teams. On May first we meet Pacific University, and on May twenty-first and twenty-second we will have a big tournament in which eight non-conference colleges will participate.

The material that is developing is far above the average class. In a school tournament held last fall Earl Flegel succeeded in carrying away the school honors for the men and Mary Findley for the women.

Since that time many men and women have turned out and great enthusiasm and interest are being shown. Howard Jewett is now winner of the local championship, playing against Paul Smith in the finals.

With the present equipment, material and general student interest, it is evident that in the near future Willamette will have a tennis team worthy of note.





# Last Will and Testament of Class of '15



NOW ALL MEN by these presents, that, we, The Senior Class, 1915, of Willamette University, in full possession of our faculties and not acting under any duress or fraud, do hereby make, publish and declare this our Last Will and Testament.

1. We hereby provide that our funeral expenses be paid by our Exæcutor hereinafter named, out of the money realized from the publication of The Comet which work promises to take rank as one of the "Best Six-Sellers" of the season.

2. Unto the Class of 1916 we give and bequeath our great wisdom in things parliamentary and our unanimity in class affairs; also our front seats in chapel which we believe they will occupy with dignity equal to our own and from which we hope they may inspire chapel speakers as we have done; also we give and bequeath our former member, Miss Florence Page, of whom, as a rival to Pavlowa, they may some day be proud; also to this same party we give and bequeath our musical and poetical ability heretofore so well manifested in Freshman Gleees and which we trust will be both edifying and useful to the aforementioned class.

3. Unto the Class of 1917 we give and bequeath our histrionic ability which may be useful to them next year and which we hope may be used by them as creditably as by ourselves.

4. Unto the Class of 1918 we extend our sympathy because of the fact that it has been their privilege to be our fellow students for one year only and we hope that this evident disadvantage in their college career may be compensated to them in some way; also we beg to remind them that the only way to attain success such as we have reached is to follow the Golden Rule and we urge them to remember this invaluable maxim in the future when called upon to deal with such weighty questions as that of the Green Caps.

5. Unto the students of Willamette Academy we give and bequeath the following dearly bought wisdom: Remember that attendance at chapel is regarded as a valuable test of character and that regularity is the only rule that pays.

6. Unto the Faculty of Willamette University we wish to express our condolences for the loss of a class whose members,

through faithful attendance and diligent preparation must have been a constant inspiration to their teachers.

7. Unto the Weekly Willamette Collegian we extend sympathy for the sorrow it must feel over the loss of our literary ability from its pages and we hope that some of our successors may be able to atone in a measure for this loss.

8. Unto the future Ibsen Seminar we give and bequeath six bottles of "Mental Shampoo" to be purchased by our Executor and presented by him in our name.

9. Unto Professor R. B. Walsh we give and bequeath some flowers from our commencement bouquets to be pressed and made into an everlasting boutonniere.

10. Our knowledge of the Modern Drama we return with deep gratitude to Professor Wallace MacMurray, with the stipulation that, throughout the future, it be used expressly for Juniors.

11. Unto some member of the Class of 1916 we give and bequeath the privilege of monopolizing the floor in Student Body meetings, preferably to J. R. Bain whom we know to be a member of the opposition and a man "devoid of sentiment."

12. Unto the Kloshe Klub we give and bequeath the privilege of using its own kitchen and cooking utensils when the same are not being borrowed for some festivity on the third floor.

13. Lastly, if other claimants upon our estate present themselves after our demise, we hereby authorize our Executor to present them with a copy of the 1915 Comet, a perusal of which should be both profitable and edifying.

In witness Whereof, we have hereunto set our hand and seal this first day of May, in the year of our Lord, One Thousand Nine Hundred and Fifteen.

SENIOR CLASS OF 1915.

We hereby nominate and appoint the Student Body President for next year to be the Executor of this Will.

The foregoing Will was signed, sealed, published and declared by the Class of 1915 of Willamette University, Salem, Oregon, the testator above named, as and for this Last Will and Testament in the presence of each of us, who in their presence and at their bequest and in the presence of each other, have hereunto subscribed our names as witness hereto, the day and date above written, as understanding every word of it.

JACK BARTLETT,  
May Day Manager.  
ROLAND JEFFREY,  
Varsity Book Store.

# To Class of 1915



OUR YEARS out of our lives! Oh, classmates staunch,  
The heap of treasures we have saved together,  
Now, with a musing eye, we look them o'er,  
Con each bead upon a rosary.  
And thus we smile and slip the beads along,  
And wonder that the thread of memory holds  
So varied and so rich a store. Keen shafts  
Of recollection pierce the opaque dusk,  
Till from the gloom glows clear each loved face,  
The last link joined; and thus with clasped hands  
And voices tense with effort not to break,  
We sing, "The Tie That Binds." The stings of tears  
Unshed, calls for the Spartan trained within,  
Until with lifted heads we meet each eye,  
Give faith for faith, aye, smile, as who would say,  
"Tear-stained todays will merge in brave tomorrows;  
In bold outline against our somber sky  
God's brush will swing the arch of rainbow glory."  
No room for sorrow! Neither time nor space  
Puts up a bar to hold a spirit chained;  
For something indestructible is welded  
Henceforth into the metal of our souls  
That fuses in us something of us all,  
That makes us classmates for eternity.

EUNICE MILLER.

# PART SIX

# THE MILKY WAY





P. IRVINE-LITERARY



GLEISER-EDITOR



BALL-ATHLETICS



LENT-SOCIETY



ROSER-REPORTER



TOBIE-REPORTER



ERKIN-NEWS



RYSFORD-REPORTER

# Collegian Staff



KING-REPORTER



DINE-REPORTER



PROCTOR-CARTONIST



EGAN-REPORTER



AERN-ASST. CH. MAN.



GILLETTE-MAN.



CHISLER-CH. MAN.



EGAN-ASST. MGR.

# COMET STAFF



HELEN PEARCE - LITERARY



PAUL IRVINE - ASSO. EDT.



G. EAKIN - EDITOR



MILTON MARCY - ATHLETICS



MARY CONE - ART



ERIC BOLT - FORENSICS



KEITH VAN WINKLE - SWAP SHOTS



DRISY MULKEY - ART



ALICE FIELDS - ASSISTANT



LEILA LENT - ART



PAUL SMITH - ASST. MGR.

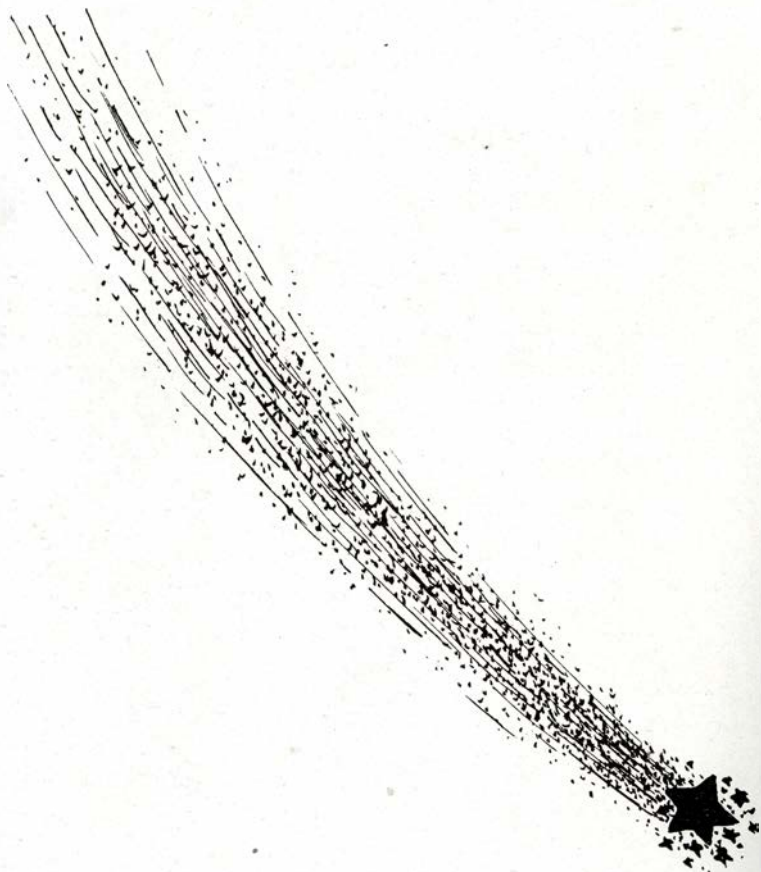


HARRY IRVINE - ASST. MGR.



LELAND SACK - MANGER

# PART SEVEN THE COMETS' TAIL





Student Volunteers

A  
M  
A  
Y  
M  
O  
N  
T  
H



Junior Ambitions



Camp Heck



Junior Play 1919



Forbidden Fruit



MUTT AND JEFF



All Alone



Reveries of a Bachelor



Monsieur Jory



Toughie

nager of the Steam Roller



Weenie



Literary?



Tobe



Love Game!



Mr. Peter Paff



Captain Marcy



Pretty Sab!



A. J. ...



Brother Hinson



Yacob



Prexie



Roary Mac



Scoop



BEFORE the tail end of "The Comet's Tail" is reached, the Manager wishes to add a short tale to all that has been said.

First, he wishes to express his thanks to the members of the Senior Class, who have so worthily cooperated in a material way; second, to the students, as a whole, for their generous response and support; third, to the two assistants who have rendered efficient service; and fourth, to our advertisers, though they be few, the Manager wishes to commend them to all students as being thoroughly reliable and fully worthy of their patronage.

The time spent in the compilation of this book has been extremely short, but it is to be hoped that the finished product will be fully worthy of the effort spent. The Editor and staff have labored hard, and are worthy of full commendation.

LELAND R. SACKETT

# BISHOP'S

READY TAILORED CLOTHES



Are commendable  
for their high quality--  
correctness of style—  
and neatness of fit.

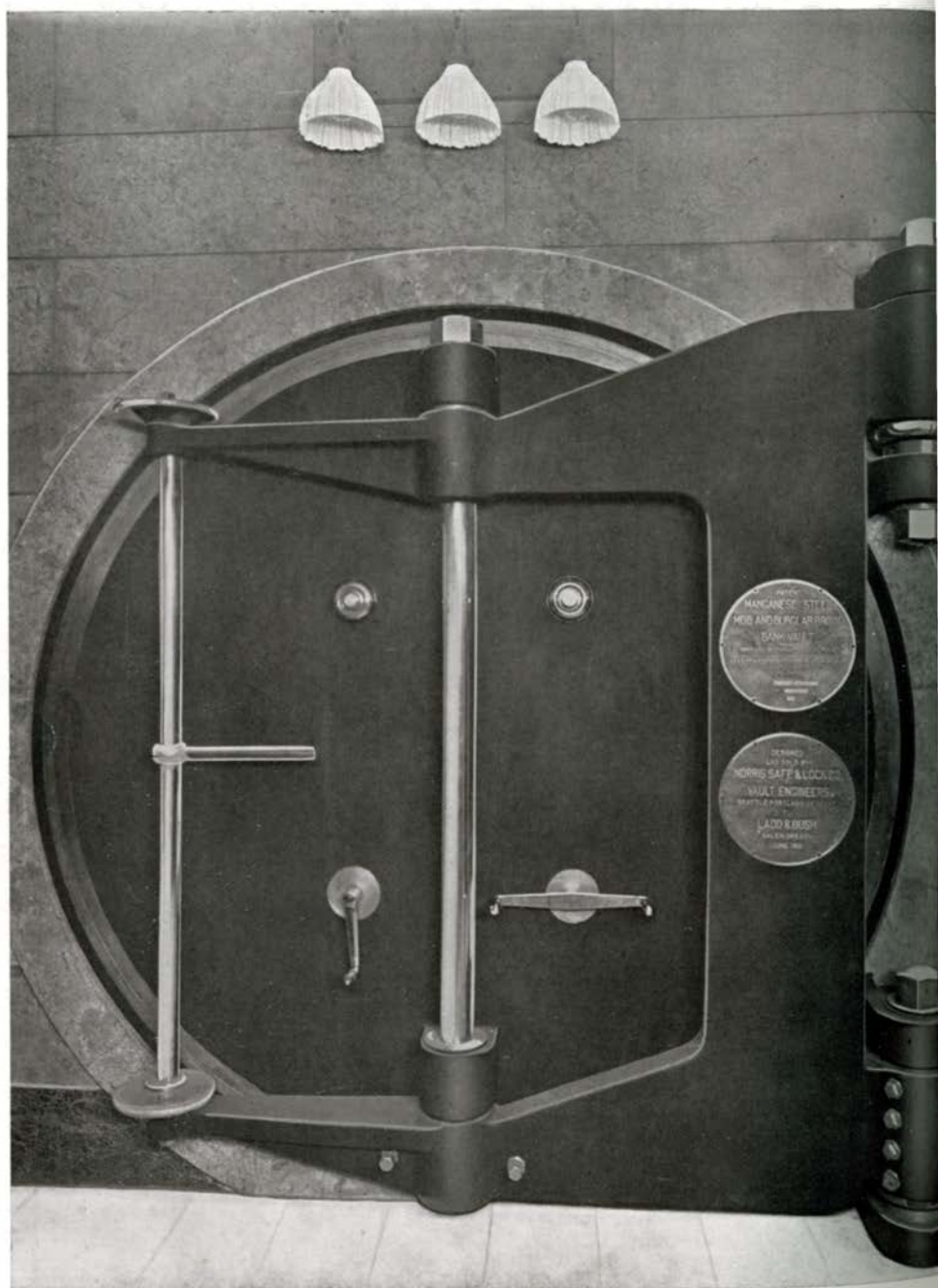
We take special  
pains and pleasure in  
handling the kind of  
clothes you college men  
enjoy wearing.

*Suits \$15 to \$30*

Copyright, 1915  
Michaels, Stern & Co.

**SALEM  
WOOLEN MILLS  
STORE**

Chauncey Bishop, Manager



**MANGANESE STEEL VAULT**—The strongest vault in the Pacific Northwest.  
**LADD & BUSH. BANKERS. Salem, Oregon.**

## The Knowledge of Comfort

and where it is to be found is an education everyone is seeking For the comfort of its guests

## *The* IMPERIAL HOTEL

puts forth every effort. This knowledge will be of value to you when in Portland. If you want comfort stop with us.

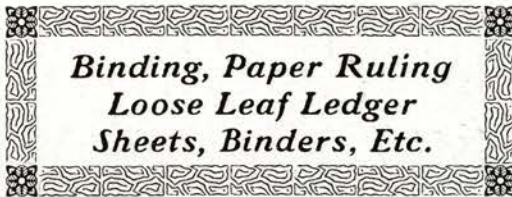
### Rooms \$1 to \$5 Per Day

First class Grill in Connection.

*"The House of Personal Service"*

PHIL METSCHAN AND SONS,  
Proprietors

We have the largest and best equipped bindery in the State, outside of Portland, and are always glad to quote prices on



Students will find it very convenient and inexpensive to have their class notes bound in permanent form.

The binding of this book is a sample of our workmanship.

## Rodgers Paper Company

460 Ferry Street

SALEM, OREGON

# BEAVER ENGRAVING COMPANY

1 ST. & ANKENY STS.

PHONE MAIN 1335

PORTLAND,

OREGON



*"The work of the Beaver  
is unexcelled."*

# Art Department

OF

Willamette University

Come to Willamette and graduate from the

## SCHOOL OF FINE ARTS



The school offers the study of Fine Arts as a part of a liberal education, either as teacher's artists, illustrators for magazines, or trades.

Special courses in china painting.

The head of the department has had wide experience, having studied for several years in New York at Pratt Institute, Cooper Union and Art Students League.

For further information address

**MISS MARGARET GILL**

WILLAMETTE UNIVERSITY

**THE SPA** Salem's leading confectionery. Quality and Service unexcelled. Manufacturers in their line.

382 STATE STREET

## WILLAMETTE UNIVERSITY

1915

Department of Law

1916

*I. H. Van Winkle, Dean Ernest Blue, Registrar*

### FRESHMAN YEAR

Blackstone . . . . .	67 Lectures	Sales . . . . .	20 Lectures
Contracts . . . . .	33 Lectures	Domestic Relations . . . . .	16 Lectures
Criminal Law . . . . .	26 Lectures	Agency . . . . .	16 Lectures
Bailments and Carriers . . . . .	16 Lectures		

### JUNIOR YEAR

Evidence . . . . .	24 Lectures	Partnership . . . . .	15 Lectures
Real Property . . . . .	65 Lectures	Corporations . . . . .	16 Lectures
Bills and Notes . . . . .	24 Lectures	Torts . . . . .	16 Lectures
Common Law Pleadings . . . . .	17 Lectures		
Bankruptcy . . . . .	16 Lectures		

### SENIOR YEAR

Federal Court Practice . . . . .	18 Lectures	Equity . . . . .	46 Lectures
Code - Practice Work . . . . .	65 Lectures	Constitutional Law . . . . .	32 Lectures
Code Pleading and Probate Law . . . . .	32 Lectures		

Moot Court two and one-half hours per week.

The State Law Library and Supreme Court is located across the street from the University. One of the most beneficial features of the school work is that of the student's actual practice in the rules of evidence and general court and trial procedure.

For further information address THE REGISTRAR.

## Willamette University

FOUNDED 1844

*High Standards in Scholarship and Morals*

*Superior Library Facilities in State Libraries  
Strategic Location. Beautiful Grounds*

¶ A Liberal Arts education and an education in state-craft at the same time. The Willamette University campus and the state capitol grounds are contiguous. As a result the alumni record contains the names of many eminent and useful citizens.

*Well Endowed.*

*Well Equipped*

For information address

**GEO. H. ALDEN, Dean, Salem, Oregon**

