

# WILLAMETTE SCENE

SPRING

1990



## TOWARD A GLOBAL VIEW

WU, TIUA Students Develop Understanding  
Jane Bryant Quinn Speaks  
Economic Fallout in China

# The Student Loan Default Picture: A New Look

Students at Willamette University and many similar educational institutions are receiving an undeserved black eye over student loan default rates. How many times have you heard or read negative comments about this subject? Defaults on student loans is indeed a national problem, but the public has not been clearly informed or noted adequately the source of these defaults and the true nature of the problem.

A few years ago Congress changed the legislation providing federal financial aid to students to make those students studying at profit-making proprietary institutions eligible for federal financial aid. It is students at these institutions who have defaulted in massive numbers.

The highest default rates in Oregon for 1988, the latest figures available, were at Grants Pass College of Beauty at 52.6 percent and Milwaukie Beauty School at 51.2 percent. The single largest amount of money defaulted was by students at the International Institute of Transportation Resources in Clackamas. According to the U.S. Department of Education, of the students from International Institute of Transportation Resources who began repayment in 1988, 39.6% defaulted for a total of \$3.4 million.

Contrast those figures with the Willamette University results reported by the U.S. Department of Education. Our default rate for 1988 was 1.7 percent with 12 borrowers in



default of \$70,841. Though I am not pleased with the dozen who have defaulted—and I urge you to meet your obligations—I suspect our percentage rate would be the envy of almost any lending agency.

I believe the problem is that proprietary schools are organized to produce a profit for their owners and apparently some are more interested in enrolling students and receiving their tuition than providing a service. Certainly a distinction must be drawn between those proprietary schools who take seriously the need to provide quality training and those merely interested in collecting tuition. Whether it is the fault of the institution or the students, it is nevertheless true that student default rates at proprietary institutions average 33 percent.

The answer is not to cut off funds for all proprietary schools. There is a national need for vocationally trained individuals. We need beauticians and truck drivers and people trained for other vocations. But these needs should be separated from the pursuit of a national policy that supports the education of future leadership in business, government, and society being done by non-profit colleges and universities. Every year fewer and fewer federal dollars are made available to students attending non-profit public and private institutions because more and more is being absorbed by students at profit-making institutions.

What can we do? First, don't lump all students together when lamenting the irresponsible default rates. We are being unfair to Willamette students and others who are faithfully honoring their obligation when we smear all students with the same brush. Secondly, we need to pursue a separation in federal financial aid programs between proprietary schools and non-profit colleges and universities. By doing this, Congress can deliberately determine the balance of funding it wants to provide between the two types. The default rates would also be reported separately, thus giving a more accurate picture. Our society might then get a clearer picture of the potential for abuse when the profit motive is applied to education.

JERRY E. HUDSON  
President

# WILLAMETTE SCENE

PUBLISHED FOR ALUMNI AND FRIENDS OF THE WEST'S OLDEST UNIVERSITY

SPRING 1990 VOL. VII, NO. 2

**Editor:**

Betty M. O'Brien M '81

**Art Director:**

Susan C. Blettel

**Publications Assistant:**

Nancy A. DeSouza

**Special Writers:**

Andrea G. Dailey

Nancie Fadeley

Anne Kenney '87

J. Wesley Sullivan

**Contributors:**

Susan Blettel

Jim Booth '65

Nancy DeSouza

Kevin Morrison '92

Marjean Rich '89

Chad Seps '92

Cliff Voliva

**Photographers:**

Susan Blettel

Woodrow M. Blettel

Scott Eastman '91

Steve DiPaola

Shan Gordon '81



**Willamette University President**

Jerry E. Hudson

Published Winter, Spring, Summer and Fall by Willamette University, Salem, Oregon, for constituents of the West's oldest university. Send correspondence to address below. Phone (503) 370-6014. Second class postage paid at Salem, OR 97301.

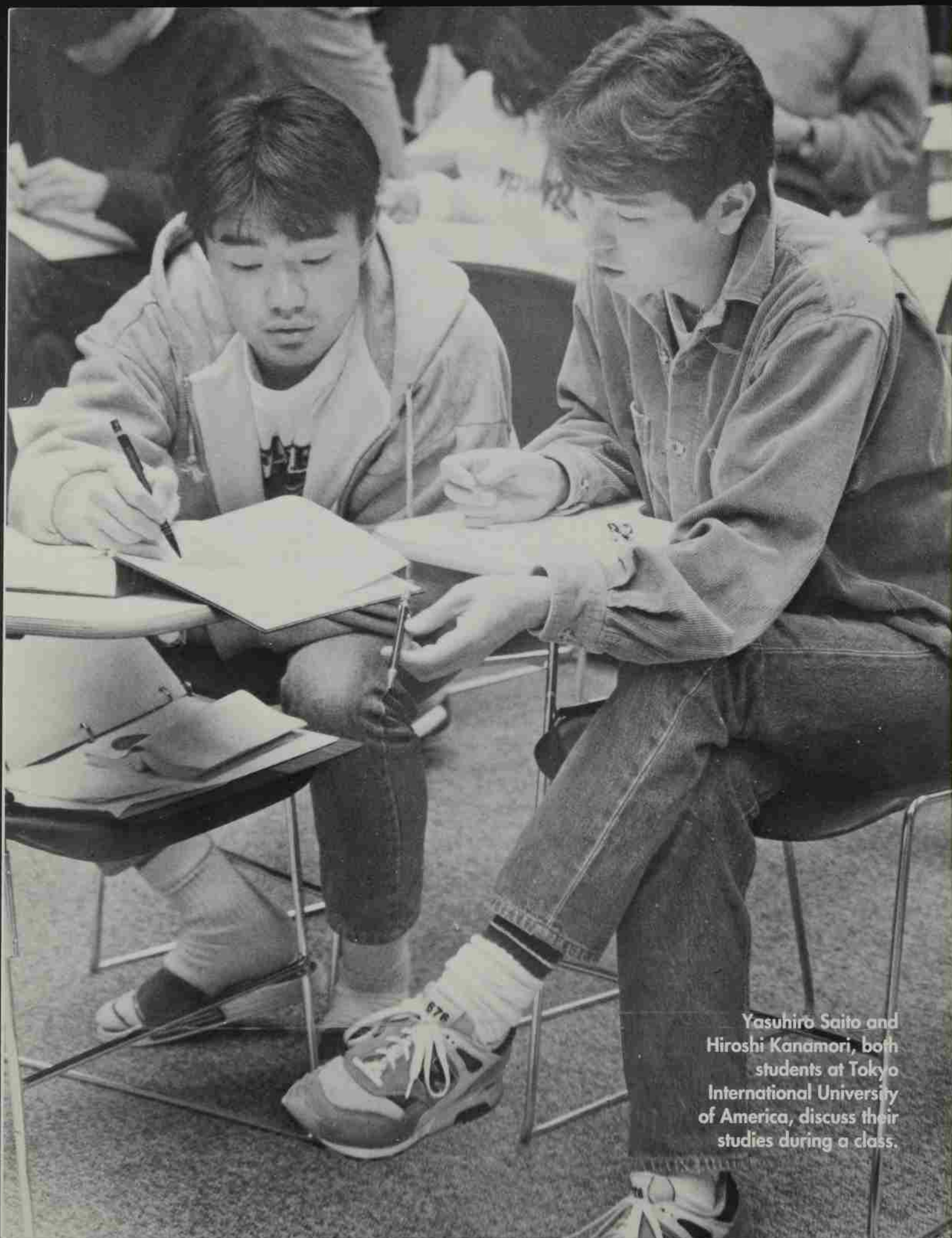
**POSTMASTER:** Send address changes to University Relations, Willamette University, 900 State Street, Salem, OR 97301.

285N&P-190-21.5MTL (USPS 684-26000)

## CONTENTS

- 3 TIUA and WU learn as they guide students
- 6 Quinn cautions against risky wishful thinking
- 8 Professor weighs likelihood of economic fallout in China
- 9 Oregon's first cattle baron
- 12 On Campus:  
Dean begins June 1  
Grants post created  
Faculty and students earn recognition  
Poets present reading  
In the Pacific Interest is topic  
Scholarship established  
Two Elderhostel sessions set  
Alumni in the news  
Law alum cheeerleader supports contest fun
- 15 Sports  
The evolution of Barney the Bearcat  
Twenty-five wins  
WU women take 9th at nationals; men win NCIC title
- 17 Welcome to the club!  
Alumni clubs  
Athletes share memories at basketball reunion
- 19 Four alumni recount the past
- 21 Class notes

**COVER PHOTO:** Tokyo International University of America students celebrate victory after an impromptu game on the Quad. *Photo by Susan Blettel.*



Yasuhiro Saito and Hiroshi Kanamori, both students at Tokyo International University of America, discuss their studies during a class.

*Both Japanese and American students can benefit from learning to accommodate, appreciate, and understand cultural differences in this era of globalism. But it isn't always easy.*

# TIUA & WU LEARN AS THEY GUIDE STUDENTS

A far closer "family relationship" develops when a Sister University that has been visiting from afar for more than 20 years moves in next door.

Willamette University and Tokyo International University of America, on its new campus across 12th street in Salem, are discovering that relationship.

In the process of turning a promising international educational experiment into a reality, both universities have learned a great deal about each other's cultures and may be developing broader, more far-reaching goals than either had imagined at the outset.

The 1989-90 "shakedown" year saw 60 Japanese students on the beautiful new TIUA campus, only half of the complement of 119 who arrived for the second academic year this March 19. (The TIUA school year runs from March through January.)

Looking back on the year, Ryuji Torihara, TIUA director of administration says, "The most important part of the first year program was that we experienced it. Learning each other's expectations and adjusting was an important part of the learning experience."



*Masayo Takahashi, a student at TIUA, and Ann Alisa Colburn, a Willamette student and resident assistant at TIUA, share a laugh in Kaneko Hall at TIUA.*

---

BY J. WESLEY SULLIVAN

To encourage a cultural exchange, the two-person dormitory rooms on the new campus are shared by one Japanese and one American student. As Torihara says, "The differences in values between American and Japanese cultures come into focus more clearly when rooms are shared for an academic year than when Japanese students are temporary visitors on the WU campus."

For example, there are significant cultural differences in smoking and the use of alcohol. These are accepted as part of Japanese life. While also a part of the American culture, they increasingly are treated as vices.

Japanese students aren't accustomed to having roommates. They enjoy and prefer more privacy.

Japanese students normally relax after dinner and during the evening. They begin studying about 10 or 11 and continue until 1 or 2 a.m. A customary midweek pattern for the Americans, on the other hand, is to study during the evening and to be ready for bed at 10 or 11. Accommodations were made.

The Americans also were compelled to learn that the Japanese, as a form of politeness, tend to tell people what they believe people want to hear rather than what they're really thinking.

For example, when an American student asks his Japanese roommate "Do you mind if I turn on the stereo?" the Japanese is likely to reply "Please do," even though the music interferes with his studying. The resulting combination of exterior acceptance and interior hostility is confusing to the American.

The Japanese have a word, "tatemae," for a person's response in a formal setting, and another word, "honne," for true personal feelings. Japanese are expected to recognize the difference and to act accordingly.

**U**nderstanding cultural differences and learning how to cope with them may turn out to be one of the most important learning experiences for both sets of students.

Torihara stresses the importance of

*Jennifer Sah, Nobuyasu Onuma, and Katherine Morrow chat during a quiet moment at TIUA. Sah and Morrow are Willamette University students and resident assistants at TIUA, where Onuma is a student.*



*Richard Ilitis, a Willamette University professor of math, teaches a class to TIUA students, including Yasuhiro Saito and Hiroshi Kanamori.*



students becoming "bicultural" as well as "bilingual." He adds that, for the Japanese at least, students must learn to switch from one cultural imperative to the other.

He has been in Oregon for 20 years, since he was a participant in the WU-TIU exchange program. "But when I return home," he says, "I'm expected to act and react like a Japanese."

"I would like to put a 'cultural switch' in their heads," he says of the TIUA students.

Perhaps on no level are the cultures more in contrast than in the different treatment of men and women.

It presented a genuine cultural challenge to the Japanese men arriving on campus a year ago to find that the head of the TIUA residence hall is a young American woman, Robin Craggs.

Women are not accorded leadership roles in Japan. For example, among the 77,500 officers in labor and trade organizations in Japan, only 39 are women.

For a woman to be in charge of the dormitory, especially a woman

younger than many of the Japanese students, was an affront to the men's status.

Craggs, a Willamette graduate and an exchange student at TIU in 1985, is, along with her husband, a veteran of a two-year assignment with the Peace Corps in Papua, New Guinea.

The Japanese men responded to the situation at first by giving her a child-like name, lessening their discomfort with humor.

She quickly challenged their use of the name as a putdown. Further, when she found the men treating the Japanese women students in a demeaning manner (half of last year's student body of 60 were women), she challenged them again.

During the year, group meetings of Americans and Japanese were held to discuss relationships and cultural differences.

"It's very hard not to be mothering to the Japanese students," she says. "That's what they would expect and what they would like. We are trying to make them responsible for their ac-

tions. And if you adopt a mothering attitude, you eventually become responsible for their actions."

"The Japanese are group oriented," she adds. "What an individual does or says in a group is safe. They will make responses in a group that they wouldn't as individuals."

On the other hand, the individualistic Americans learned the benefits of the Japanese group concept.

After a Willamette University dance, she says, when a call is issued for people to stay and clean up the hall, everyone leaves. But the Japanese group-oriented students stay and help. Seeing the Japanese example, the American students also stay and help.

Craggs is proud of the Willamette and TIUA students and the lengths to which they went to accommodate one another.

"These young students have their own development issues to deal with, in addition to having to deal with cultural differences. And this is all thrown on top of the challenge of learning how to be an econ major, for example," she said.

"It's a big package, especially for the Japanese who are being urged to develop instant openness, something they haven't learned in their own culture."

**T**he first year's results in the WU-TIUA program are being analyzed on many levels by teams on both the Willamette campus and the home TIU campus at Kawagoe City, Japan.

The Willamette team is headed by Professor Steven Hey of the Sociology Department. The team is interviewing not only the students and faculty who participate in the program but other students and faculty, to gauge the campuswide impact of having the TIUA campus and program next door.

"We want to get beneath the surface of the interaction between the Americans and Japanese," he says.

A Willamette University administrator will go to TIU in Japan as part of the program evaluation.

Torihara has high expectations for

the TIUA campus. He hopes it can be used for more than training TIUA students. He would like to see it hosting Pacific Rim conferences and training corporate personnel in how to deal with Japan.

He looks towards satellite links as a means of broadening the coverage, sending educational programs in both directions.

He points out that a private company has established a satellite linkup between educational institutions throughout Japan. He hopes TIUA and Willamette can tie in with the Ednet state-operated educational communications system in this state when it is operational.

He points out that the time difference between the U.S. and Japan would permit TIUA and WU to use the satellite system at different times than the peak demand.

**N**ow in its first year with a full-size student body, TIUA also has dramatically expanded its course offerings, from three electives the first year to 15.

But the potential of the TIUA-WU relationship can't be measured alone by the number of students and course offerings or by its financial success. Beneath those surface accomplishments is the beginning of a cross-cultural exchange far deeper and far more significant than anything that was accomplished in the 20 years of student exchanges between the Japanese and Oregon campuses under the original Sister University program—which still is continuing on a separate basis.

The benefits of having two campuses side by side already are apparent, but their potential is yet to be fully recognized and explored.

TIU president Yasuo Kaneko tells returning students, "You have just finished the first chapter in the book called 'America.'"

The footbridge across the SP railroad tracks in Salem seems certain to open new and exciting chapters of Japanese-American relationships in the future. ☐

## WU Resident Assistants help TIUA students adjust to U.S. lifestyle

BY KEVIN M. MORRISON '92

**E**arly in March, eight Willamette University students were selected to be resident assistants at Tokyo International University of America. We spent one week preparing for the arrival of the Japanese students on March 19. Training consisted of normal RA issues such as policy and community development, as well as issues related directly to cultural differences and expectations.

One of the more interesting sessions involved group participation. The RAs formed two cultures based on guidelines. After establishing a history and basic ways of behavior, the two cultures were mixed and asked to accomplish tasks as a group. This exercise increased awareness of the differences that can occur, and how easily people's actions can be misconstrued to mean different things given different cultural backgrounds.

Other training sessions included dealing with social and value structures of Japan and establishing open lines of communication.

The residence life staff at TIUA act as "peer counselors" to the Japanese students. The staff tries to establish rapport with the students to create a comfortable atmosphere for open communication. For example, orientation groups consisted of 15 Japanese students and one residence life staff member. These groups met daily for a week to address issues such as safety, health care, and use of facilities. The orientation groups will continue to meet once a week until July, when the students will get a break between class sessions. It is evident that the resident assistant job is a challenge. However, it is also one filled with rewards, and we are all looking forward to a great year ahead. ☐



## Quinn cautions against risky wishful thinking

BY ANDREA G. DAILEY

**T**he most serious risks American investors face in the next decade lie in our national obsession with wishful thinking, said economist and nationally syndicated columnist Jane Bryant Quinn in an Atkinson Lecture at Willamette in February.

"Structurally, the economy is in much better shape than it was in 1980, but politically it is still ambivalent and confused," Quinn warned. "We have not resolved our national spending priorities or our fiscal policy. We are spending time in evading budgetary realities. We are making wish do for fact."

The current debate about the Social Security surplus points up the extent of our self-delusion, she said.

"We are using the Social Security surplus to kid ourselves. Leaving out Social Security, the operating deficit of the U.S. government is still going through the roof. The official budget deficit for fiscal 1989 was down two percent to \$152 billion. The actual U.S. operating deficit, leaving out that Social Security surplus, was \$204 billion, up 5.4 percent from the year before.

"We have to close the operating deficit, and that will never happen as long as the politicians can claim...that they are actually doing a terrific job of bringing spending down. They are not!"

Quinn said she would support U.S. Sen. Patrick Moynihan's proposal to cut the Social Security tax if that were the only way to force the public to confront the problem. In any event, cutting the payroll tax now would not affect Social Security benefits in the future.

"The payroll tax you are paying now is not saved up for your future," she said. "It goes to pay current Social Security bills and...to pay current operating bills of the U.S. government. You will get Social Security benefits only because the next generation will be taxed to pay for you."

A truly secure retirement system, Quinn said, depends on willingness and ability of the next generation to

support it.

"We have to look at what is the best way to produce growth in this country, so the next generation can afford to pay for our retirement," Quinn said. "The best way to do that is to eliminate the government operating deficit which is the Pac Man that has eaten our savings up."

It will take both tax increases and spending cuts to erase the deficit, in Quinn's opinion. She favors raising income and gasoline taxes but opposes creating a national sales tax because, she said, states need to keep that device for their own use in order to pay all the expenses the federal government has turned back on them.

Surprisingly, Quinn pointed out, tax revenues and government spending are about the same percentage of gross national product as they were 25 years ago. Where things have changed, and sharply, is in spending for Social Security and Medicare. Social policy won't allow "kicking the elderly back into poverty," Quinn said, and she sees no clear way to bring down health care costs, either. So, spending cuts will have to come in other areas.

**I**n the realm of personal finance, Quinn's specialty, she outlined several trends of the 1990s she believes will have major impact.

Interest rates will stay relatively high, Quinn forecasted. Slower economic growth will reduce tax revenues and, barring spending cuts, require more government borrowing. The government also will have to borrow to pay bills like the savings and loan bailout and the HUD losses.

Our personal savings rate will improve, however, spurred by higher interest rates but mostly by worried baby boomers trying to save for their children's educations and their own retirement years.

The trend to a global economy Quinn called the most significant economic and social event of our time, "as dramatic and permanent as the industrial revolution of the nineteenth century." Thanks to another revolution,

the advent of the information age, even cities can take the initiative to "globalize" their economies by attracting foreign investors, Quinn said.

Wise U.S. investors will include foreign stocks in their mutual fund investments, Quinn said. "They will outperform U.S. stocks when the dollar declines"—and in the long term she sees "great potential weakness in the dollar." Foreign stocks also will do better than U.S. stocks when European and Asian growth is stronger than ours, "which will probably be often."

Wise parents will see that their children get a global education, Quinn advised. "An education that is narrowly focused on ourselves, our own history, our own economics, is insufficient... The future will belong to people who understand what global thinking is."

The global structure of the markets is not complete, however, and Quinn sees the incomplete transition from national to international economies as a destabilizing force on the current scene.

Markets will stabilize as "restless" capital from western countries finds a

*"The future will belong to people who understand what global thinking is."*

long-term home in investments in Eastern Europe and the Pacific Rim nations which gradually are opening up. The process will take awhile, though, during which "we as investors are simply going to have to learn to live with highly volatile markets."

She cites some implications for individual investors.

"First, you keep absolutely no short-term money in stocks, ...money you are going to need within two or three years, because a wrecker's ball

can come along and hit the market at any time." Short-term money belongs in certificates of deposit or U.S. Treasury issues, she said.

"Second, you should not be in stocks if you're up to your ears in mortgaged real estate... But if you are a long-term investor with only moderate real estate exposure, you should absolutely be in stocks no matter how wild the market is."

Anyone investing for the long term, which Quinn defined as at least 10 years, should be in stocks because of their superior returns, she said. Given the risk of inflation, "long-term bonds and bond mutual funds are really for speculative money. They are not for safe money."

Quinn also recommended stocks and stock-owning mutual funds as better investments for children's college funds than the currently popular zero-coupon bonds and the U.S. Series EE Saving Bond. "Over 10 or 12 years there is no doubt in my mind that a good dividend-paying stock fund will exceed the rate of college inflation, which I expect to continue to run in the area of eight percent or more." **rw**

## Atkinson Lecture Series Brings Major Speakers

**T**he Atkinson Lecture Series is sponsored by the Atkinson Fund to provide an opportunity for the University community and the community at large to hear major speakers in varied disciplines. The series was inaugurated in the fall of 1986 with the appearance of Philip Habib, the distinguished special envoy and senior negotiator for the President of the United States. In April 1987, Ellen Goodman, the columnist and commentator, addressed a number of contemporary issues with her wry wit.

The following season, Willamette welcomed grand diva of the American opera, Beverly Sills, and journalist and former State Department spokesman, Bernard Kalb. In 1988-89, the series included four speakers: the Pulitzer-Prize-winning political cartoonist Jeff MacNelly and writers Joyce Carol Oates, Maya Angelou and Kurt Vonnegut.

Scientist and author Stephen Jay Gould, business columnist Jane Bryant Quinn and playwright Edward Albee were Atkinson lecturers for the 1989-90 academic year.

In addition to their major addresses, the speakers in the series have each met on a more informal basis with faculty and students, sharing insights from their professional and personal experiences. Faculty members have used the works of several of the speakers in classes and have otherwise used their visits to enhance the curriculum.

1990-91 ATKINSON LECTURE SERIES speakers will include Wall Street Week in Review host Louis Rukeyser (October 9) and writer Studs Terkel (March 12). For more information, please call University Relations (503) 370-6340.

**K**illing students in Tiananmen Square last June was bad for China's political relations with the West, but it hasn't hurt China's economy substantially—as yet, says Willamette Economics Professor Jeffrey Taylor.

Taylor, whose special interest is in the Chinese and other Asian economies, sees economic fallout ahead for China, however, as a result of events surrounding the Tiananmen Square massacre.

Foreign investors are skittish about the country's political stability and pulled back sharply on investments in the last half of 1989, Taylor says. Tourism, another big source of hard currency, is depressed too.

"The Chinese are having a terrible time attracting investment for the future, and I'll bet when we see the numbers for 1990 the situation is going to look quite bad for them," Taylor says, particularly because China needs foreign exchange to meet payments on its World Bank borrowings.

Yet Taylor is optimistic than in the longer run the reforms China began in 1978 will continue to evolve.

Even if China's leaders wanted to return to a completely command economy, the populace wouldn't stand for it, Taylor maintains. "They can't put the genie back in the bottle. The peasants would revolt if the country went back to collectivization. Rural incomes have more than quadrupled since 1978 [under decollectivization]. The peasants are building houses, their health care is better than it's ever been. They're not going to give that up."

The leadership schism that led to the Chinese student uprising last year and the crackdown in Tiananmen Square was, in Taylor's view, the product of incomplete economic reform.

"If they'd made changes across the board, chances are you wouldn't have seen all these problems occurring at once," Taylor says. The problems he refers to include corruption spawned

## Professor weighs likelihood of economic fallout in China

By ANDREA G. DAILEY

by a system of tiered prices and inflation that Taylor estimates soared to 49 percent when prices were fully decontrolled in 1988. By comparison, China's inflation rate for the years 1952 to 1978 was a total of one-half of one percent.

Taylor, a native of Boring, Oregon, has been studying China since his days as an undergraduate at Georgetown University School of Foreign Service where he majored in international economics and minored in Asian affairs.

"I didn't know squat about economics before I went to college," he says. "It showed me a new way to understand things. After I took my first course, I decided to major in it."

Before and during his Ph.D. studies at the University of Michigan, Taylor at various times worked as a consultant for Data Resources, Inc., a leading economics research and analysis firm; as a research associate for the World Bank and the International Monetary Fund (IMF); as a lecturer in the Johns Hopkins University School of Advanced International Studies; and as an economist with the Bureau of the Census in Washington, D.C.

Taylor left his work at the census bureau last year to join the Willamette

faculty, but he was to leave Salem in May to return to Washington and a job at the IMF.

"It was just one of those things," he says with a rueful smile. "I was planning to be here a long time, but then these people [from the IMF] came to me with an offer I couldn't pass up."

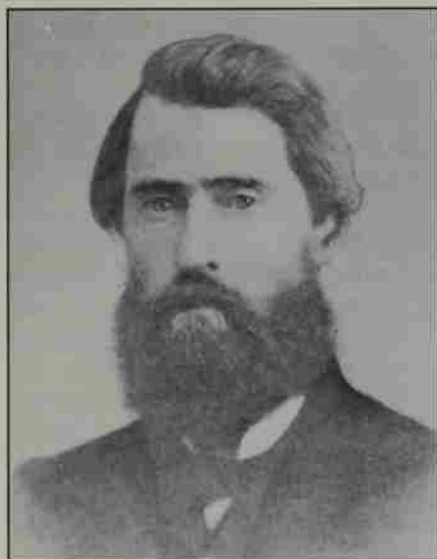
It has been a full year for him in Salem. He has taught four courses and directed Willamette's team competing in the national Business Simulation games in Reno, he has written half a dozen or so scholarly articles for publication, and he's delivered a paper to a national conference of economists.

His upcoming post at the IMF is related to the turmoil in China and eastern Europe. "The IMF needs to re-evaluate its macroeconomic policies to see whether these countries are eligible to borrow at concessionary rates," Taylor explains. His work is likely to take him abroad several times a year as a member of IMF delegations. He also expects to do a little teaching, working with people who come from other countries' central banks to the IMF to learn such skills as balance of payments accounting.

During a 1979 internship with the IMF, Taylor developed the first U.S. official estimate of China's balance of payments, a critical step in the process that brought China into the IMF. Getting the data for the analysis wasn't easy, Taylor recalls. "The Chinese national statistics office had a staff of 12. Can you imagine, in a country of one billion?"

Taylor routinely canvasses a great many primary sources to get the data he wants. He is fluent in Chinese, subscribes to numerous Chinese publications, and on visits to China grabs whatever materials in bookstores he sees because "the Chinese system is such you never know when or if you'll see the stuff again."

Despite the events of last June, Taylor believes progress in reform continues quietly in many areas. "China has retained all the key elements of reform," he says. "The framework is still there. They've just tightened up."



Jason Lee

## Oregon's First Cattle Baron

BY NANCIE FADELEY

Reprinted from *Oregon Business Magazine*, April 1990, Vol. 13, No. 4, pp 55-56, with permission of the author.

**T**he missionaries, who were the first American citizens to settle in the Oregon country, brought more to the Pacific Northwest than Methodism.

They brought education and established schools, including Oregon Institute. Today it is known as Willamette University, the oldest university in the West.

The missionary organization led by the Rev. Jason Lee provided a framework for government, and the missionaries' fervent patriotism assured that the government would be American.

What's more, the missionaries' secular activities were the beginnings of business and industry in Oregon. Some of these economic ventures developed in a most surprising way. For example, the Methodists' well-known hatred of liquor led to the introduction of the cattle and dairy industry in this state.

It all began when a fur trapper named Ewing Young arrived in the Willamette Valley from California. He found himself unable to buy what he called the "necessities of life" because he couldn't sell his furs.

There was nothing wrong with his furs. He was a master trapper, the one who had taught young Kit Carson trapping and exploration.

But the chief factor of the Hudson's Bay Company, Dr. John McLaughlin, had issued an order barring trade with Young. McLaughlin, who was the dominant figure in the Oregon country for many years, had good reason to discourage Young's presence here. Governor Jose Figueroa of Mexican California had sent word that Young was one of a number of horse thieves headed for Oregon.

Young was not a horse thief. He happened to have had the misfortune to have been traveling in a party which was joined by some men who apparently had "neglected" to pay for their horses.

However, communications systems being what they were in that day,

McLaughlin had no way of knowing he had received incomplete information. Determined to deter horse thieves from coming into his trading area, he had notices of the ordered boycott posted on trees, notices which an incensed Young angrily tore down. A contemporary wrote of Young that "a cloud hung over him so long, through Dr. McLaughlin's influence, that he was almost maddened by the harsh treatment he had received from that gentleman."

Bitter and frustrated, Young came up with an idea for making money and for getting back at McLaughlin, an idea that shocked almost everyone for miles around. Purchasing a salmon-pickling caldron abandoned by the fur trading expedition led by Nathaniel Wyeth, Young began building a still.

McLaughlin was as opposed to that enterprise as he was to horse thieves. He had explained his opposition in a letter to his company headquarters: "As to Distilling, I began to Distil in '33, but '36, finding the bad effects it had on our affairs I gave it over, and would recommend if possible never to attempt it again..."

### Distillery Alarms Locals

Young's entrepreneurship was also a concern for the Methodist missionaries who had shortly after their arrival in the Oregon country organized the Oregon Temperance Society, the first temperance society in the West. The account of that event in the *Mission Record Book* ends with this prayer: "O Lord save this rising settlement from the curse of intemperance."

Reacting immediately to Young's business venture, the missionaries hastily called a Society meeting at which they decided to try to get him to abandon his "manufacture of ardent spirits" by buying him out. They offered him \$51 and some bushels of grain.

Young promised to think over their offer. He also made clear his need to make a living somehow.

Encouraged by the federal agent in Oregon, Navy Lt. William S. Slacum,

Lee provided Young another way to make a living, the Willamette Cattle Company.

The Rev. Lee raised money for the company by selling stock to McLaughlin, Slacum, the missionaries, and others in the area, and by investing mission funds. He turned this money over to Young so he could buy cattle in California and drive them north to the Willamette Valley.

Slacum provided Young and the men who accompanied him free transportation for the trip south in 1837. Just before they sailed, Lee boarded Slacum's brig, the *Loriot*, to pray "for the Divine blessing" to attend the enterprise.

Young was remarkably well-suited for this assignment. A few years earlier in the Southwest, he helped organize mule drives to the Mississippi River country. Those animals later became the famous Missouri mules.

What's more, Young was highly motivated to return to California so he could clear his reputation of the horse thief charge.

In California, he bought 729 head of wild Spanish cattle at the San Francisco and San Jose missions. Then, with his small band of cowboys, he drove those cattle 600 miles, arriving in the Willamette Valley with 630 head of cattle, mostly heifers.

Those wild cattle were a stubborn lot, not an easy bunch to drive over difficult terrain. One of the crew wrote that their tedious progress was made with "Hallooing, bawling, stones, clubs, and everything on which we could lay our hands."

Upon their arrival in Oregon, the cattle had to be tamed. The missionaries record amusing stories about the problems of milking. The best method seems to have been to wedge the cows between a sturdy gate and a fence and then attempt to milk by reaching through the slats.

That cattle drive was an impressive accomplishment. There were geographical barriers, including arid lands and mountains, and unfriendly native Americans who knew of

Young's reputation for killing Indians. Young, though not as cruel as many American trappers, believed in immediate and sometimes savage retaliation after Indian attacks, a policy which Lee opposed. Often this vengeance was dealt out to any Indians who might be nearby, not necessarily those who had harmed the trappers. The trappers justified the attacks on the grounds it was important that the word get around to the tribes that Americans were to be left alone.

### Reputation Redeemed

Upon his return to the Willamette Valley, Young—no longer reputed to be a horse thief—became a respected and very wealthy member of the community. He took his share of the cattle to his ranch in the Chehalem Valley where his business interests broadened. There he bred horses, trapped, built a lumber mill and a grist mill, raised wheat, opened a store, and through his extensions of credit, developed a banking operation. In short, he engaged in about every business possible except the liquor business.

Flood waters long ago washed away Young's lumber mill, which was located on Chehalem Creek just outside the present city limits of Newberg. The Chehalem Park and Recreation District now owns that site. With the help and encouragement of enthusiastic members of the Ewing Young Historical Park Committee, the park district is planning to develop the mill site and surrounding area into a living history park.

The spiritual and spirituous origin of the dairy and cattle industry in this state is an important political chapter in the Oregon story.

Until that time, probably because the area did not seem worth fighting over, British and United States interests were operating in the Oregon country under a joint occupancy agreement that purposely did not address the question of sovereignty. This conflict of territorial claims easily could have resulted in war. The vast area included all the area from the

crest of the Rockies west to the Pacific and from the California border north to an undetermined point.

There is evidence the United States government was well aware that a strong mission populated by American missionaries could provide a solution to the boundary question. There are rumors in the history books—rumors which are probably true—that government money from a secret fund subsidized the Willamette mission.

Today the idea that the United States government was using missionaries to run a CIA-type operation in Oregon 160 years ago is shocking. However, in the 1830s, those patriotic missionaries would have seen no conflict in encouraging the role of law through American influence concurrent with spreading the word of Christ. Lee believed it was not possible to Christianize without the civilizing influence of government.

### Cows Give Independence

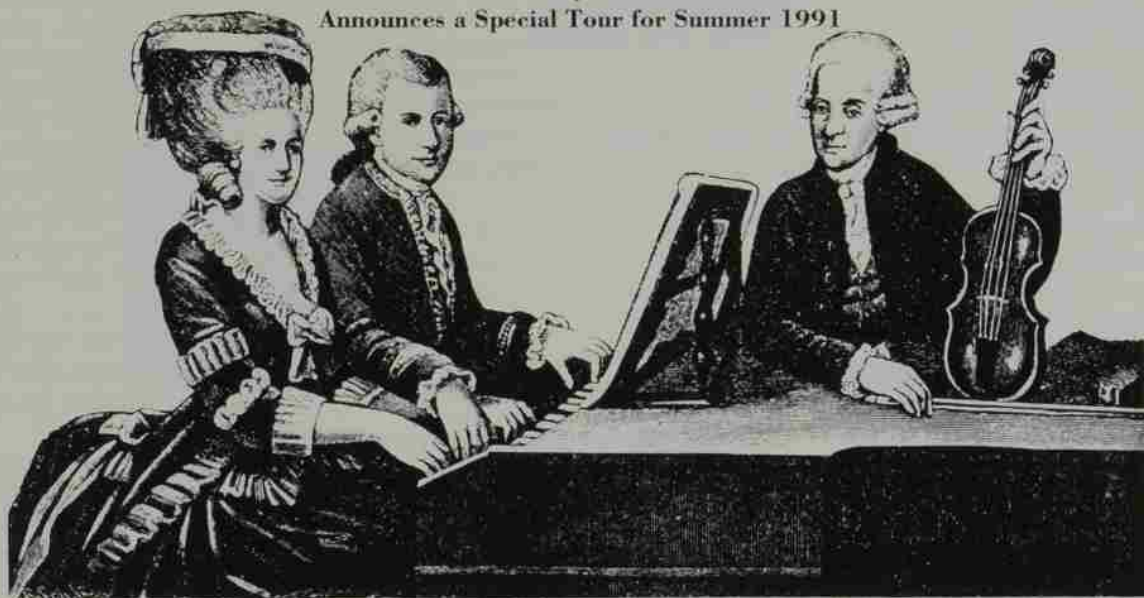
Even though the missionaries aimed at economic self-sufficiency, Lee had discovered on his first trip west the difficulties of trying to coax cattle from Missouri to Oregon. The Americans' need for their own livestock points up the important role of Slacum, whose assignment was a bit unusual for a military officer. He had been sent to the Oregon country as President Andrew Jackson's personal representative to gather "useful information" about the British and other inhabitants of the Pacific Northwest.

Even though he often praised Lee for his leadership in organizing the Willamette Cattle Company, it was Slacum who came up with the idea after he had been unsuccessful in his effort to get Young to close down his still. Slacum played an active role in the negotiations with Young, and encouraged the organization of the joint stock company, investing \$500 in it.

By making his brig available for the trip south, he saved the company money and spared Young's party the dangers of an overland trip. All this

CONTINUED ON PAGE 11

Willamette University's Alumni Association  
Announces a Special Tour for Summer 1991



## LIFE OF MOZART BICENTENNIAL TOUR

June 8-26, 1991

Join Bruce McIntosh, associate professor of music at Willamette, in commemorating the bicentennial anniversary of the death of Wolfgang Amadeus Mozart, by visiting Mozart's Europe.

You'll visit Mozart's home in Vienna and follow his travels to the Court of the King of Prussia. During the 15-night tour, you'll visit Vienna, Salzburg, Prague, Leipzig, Dresden, Potsdam and Berlin. An optional three-day visit to Budapest will be available at the end of the regular tour.

Among the highlights will be eight to 10 concert and opera performances at the Vienna State Opera, Leipzig Gewandhaus, Dresden Semper Opera, and in Budapest, Prague, Vienna and Dresden.

### *Special features of the program include:*

A demonstration on Mozart's pianoforte

A demonstration of an authentic Silbermann organ

A performance of a recently completed Mozart organ improvisation

Relaxing excursions and meetings with Mozart authorities will round out the program. Along the way, special attention will be paid to places associated with other great composers, such as the house where Schubert was born.

### *For further information, contact:*

Professor Bruce McIntosh, Music Department,

Willamette University, 900 State Street, Salem, OR 97301. Telephone (503) 370-6255

*The tour is being arranged under the auspices of The Original Mozart's Europe Tour, through New Voyager Tours of Vermont. Registration will be limited.*

### **Oregon's First Cattle Baron**

CONTINUED FROM PAGE 10

Slacum reported to President Jackson. Here, in part is what Slacum wrote in that report, a report which evaluates the cattle venture in this way:

"I certainly view this measure as one of the highest importance to the future growth and prosperity of this fine country, even if no other object is

attained by my visit to the Columbia."

Slacum was right. The success of that cattle drive truly was "of highest importance." Cattle and calves are now Oregon's biggest agricultural cash commodity; dairy products rank third.

The cattle drive was also a significant political event. Until that time, all domestic livestock in the Oregon country belonged to the British. McLaughlin was generous about

lending the missionaries Hudson's Bay Company cattle, but he rigidly observed the company policy and refused to sell them. Any calves born to borrowed cattle belonged to the company.

Once they had their own cattle, these America missionaries achieved an economic independence they had not before, an independence that made political freedom from the British possible.

## Dean begins June 1

G. Dale Weight has been named dean of the Atkinson Graduate School of Management, effective June 1.

Weight was chairman, president and chief executive officer of Benj. Franklin Federal Savings and Loan Association, Portland, from 1983 until 1990.

"Dale's long-time prominence in Oregon's business community, coupled with his academic background, equip him ideally to lead the Atkinson School in the '90s," President Jerry E. Hudson commented in announcing the appointment.

Weight was with Syracuse Savings Bank from 1972-1983, and was its president, CEO and a trustee from 1974-1983. Previously, he worked for the Federal Home Loan Bank of Pittsburgh and the Federal Reserve Bank in Cleveland.

He earned both his Ph.D. and M.S. degrees from the University of Oregon, and his B.S. degree from the University of Utah. He was an instructor at the University of Oregon from 1963-1968, and adjunct professor of finance at Syracuse University in 1973.

The new dean is active in numerous professional organizations. He is a Director of the Federal Home Loan Bank of Seattle and of the Oregon Business Council; a member of the Federal Reserve Bank of San Francisco, Portland Branch, Board; and vice chairman and member of the Oregon State Board of Education.

Among his civic board memberships are Boy Scouts of America Columbia Pacific Council, Portland Rose Festival Association and Oregon Independent College Foundation. He served as vice chairman of the Governor's Commission on Oregon School Funding Reform in 1988.



## Grants post created

Patricia Alley '73 has been named to the new position of director of academic grants and awards, which she began on April 1.

Formerly the director of the Academic Grants Office at Loyola Marymount University in Los Angeles, Alley primarily worked with faculty members. She also worked for the Los Angeles Theatre Center researching government grant opportunities.

At Willamette, Alley's role is to provide information about sources of financial support for research, and to work with faculty and students throughout the application process. She monitors announcements of grant opportunities by federal and state agencies. If a grant is a good match for a professor's or a student's project, then the application process begins.

Alley works with the applicant, forming and revising a proposal. Her work includes proposal review, budget preparation, contact with funding agencies and coordination of the final application packet.

"I love it when a good application and applicant get funded...money [is being] used well to actually help people," Alley adds. "It can open up a new world to a professor or student who didn't have that chance before."

Graduating summa cum laude from Willamette with a B.A. in English, Alley earned her M.A. and Ph.D. in English from Claremont Graduate School.

## Faculty and students earn recognition

Suresht R. Bald, associate professor of political science, is one of 20 faculty members from throughout the United States to be awarded the first Pew Faculty Fellowships in International Affairs.

The new program, sponsored by Harvard University's John F. Kennedy school of Government and The Pew Charitable Trusts, provides teachers with an intensive two-week introduction to the case method at the Kennedy School. Fellows will also receive support for developing case courses and teaching them in their own institutions.

The Fellows were selected from 291 applicants, for their academic achievement, commitment to teaching, leadership and creativity.

Ron Loftus, associate professor of Japanese language, has received a 1990 Fulbright Research Award to continue his study of gender in the autobiographies of Japanese women writers. Part of his 1990-91 sabbatical will be spent in Japan working on this project.

Lou Goble, assistant professor of philosophy, has won a \$3,500 National Endowment for the Humanities summer fellowship to continue work on "The Logic of Obligation: 'Better' and 'Worse.'"

Greg Mulhauser '91 has won a \$4,200 NEH summer grant to continue studying "Chaos Theory and the Idea of Human Freedom." Lou Goble will also receive a stipend as his faculty sponsor. Mulhauser began this study with a 1989 Willamette Undergraduate Research Grant. He also won a third-place award for an essay he submitted to the Foundation for Economic Education, on education for a free society.

Kim Coghlan '92 is one of 10 winners of the 1990 General Motors Liberal Arts Excellence Awards, which recognizes top liberal arts students who plan to pursue careers in business and industry. Her award, administered by the Foundation for Independent Higher Education, includes a \$5,000 two-year scholarship, plus a \$5,000 unrestricted grant to Willamette. This is the second time in the three years since this program began that a Willamette sophomore was among the 10 recipients. Greg Mulhauser was a winner last year.

## Poets present reading

Poet-in-residence Roland Flint joined poet William Stafford to present a reading on March 8. *Stories That Could be True* was the title of the event, borrowed from a 1977 Stafford book. The two read to an audience of about 200 people in Waller Hall's Cone Chapel.



Flint



Stafford

Flint, who was on the Willamette campus for part of the spring semester (February 12 to March 16), is a professor of English at Georgetown University in Washington, D.C. Noted for the frank, personal and accessible style of his poetry, Flint read a selection of works from his previous three books and a new book that had been released that day, *Stubborn*, published by the University of Illinois Press. The title poem deals with Flint's struggle to come to terms with the death of his son who was hit and killed by a car. Unafraid to address such issues, Flint's poetry relies primarily on personal experience, both good and bad. Family members from his father and grandmother to his daughters appear frequently in his work.

Presenting poetry in union with Flint's, William Stafford is also known for his accessibility and ability to find poetry in the commonplace. He was appointed Oregon's poet laureate (an unofficial position) by Governor Tom McCall in 1975 and resigned the title recently. Stafford taught at Lewis & Clark College in Portland for many years, and has participated in many workshops regionally and nationally. *Stories That Could be True* is Stafford's largest collection of poetry incorporat-

ing new poems along with those from a number of previous books. He has published over 35 books.

Both poets revealed the use of a tool that contributes to their shared plain-spoken style: they each keep journals in which they record ordinary events in their daily lives. This use of commonplace subject matter joins them in tone and style, and the two friends are considering producing a book together. Willamette University will publish a chapbook of the work of both artists in the autumn.

## In the Pacific Interest is topic

The *In the Pacific Interest* Conference held at Willamette University for the second year February 22-24 is one element of a three-year program designed to strengthen international education. The conference was supported by a grant from the Fred Meyer Charitable Trust.

Two alumni from Willamette's College of Law, John Hagelgam and Mamoru Nakamura, were among featured speakers.

Hagelgam, president of the Federated States of Micronesia, spoke about his country's efforts toward self-determination. He attended WUCL in 1974.

Nakamura L'69, chief justice of the Supreme Court, Republic of Palau, made a joint presentation on "Implementing Human Rights in the Pacific Interest," with Ved Nanda of the University of Denver School of Law and Jaime Bautista, consul general of the Philippines. He also presented "Palau's Transition to Democracy and New Relationships in the Pacific Community."

A new element in this year's conference was the presentation of undergraduate student research papers. Undergraduates from Minnesota, California and throughout the Northwest joined Willamette undergraduates to present 15 papers.

Conference themes are chosen by faculty members from the College of Liberal Arts, College of Law and At-

kinson Graduate School of Management. The Conference themes explored the issues of democracy, women and the environment. CLA Dean Julie Ann Carson was conference director, and Marjean Rich '89 was coordinator. About 200 persons attended.

Keynote speaker was Carolyn Merchant, who linked democratic participation with the need to protect the environment. She is an ecofeminist scholar and author.

Selected papers from the conference are to be printed in a special issue of the Willamette Journal of the Liberal Arts.

## Scholarship established

A scholarship fund bearing the name of former Willamette professor Dr. Sceva Bright Laughlin has been established by sons John '40 and William '41 and by daughter Mary Barlow '45.

For 23 years, from 1923 to 1946, Dr. Laughlin was a leader of the Willamette faculty, first in economics and sociology from 1923 to 1935, and in sociology and anthropology until his retirement in 1946.

Dr. Sceva Laughlin worked successfully for improving race relations and eugenics legislation. He was also active as a foreign student counselor on the campus, as well as in the Society of Friends and in other groups seeking world peace.

Dr. John Laughlin is former chairman and current staff member of the Department of Medical Physics at Memorial Sloan-Kettering Cancer Center, and editor of the journal *Medical Physics*. Dr. William Laughlin is professor of biobehavioral sciences at the University of Connecticut, and father of the "coastal theory" of migration to America. Mary Laughlin Barlow is a mental health specialist with Marion County's Mental Health Department in Salem.

## Two Elderhostel sessions set

Willamette University will host one Elderhostel session July 29-August 4 and cooperate with Tokyo International University of America and Mission Mill Museum in hosting another one June 17-23.

Elderhostel is an educational program for adults 60 and over. Registrants come from as far away as Hawaii and the East Coast.



The three classes available during the July 29-August 4 session, and their instructors, are: Understanding of Opera, Julio Viamonte, professor of music; Joy of Tragedy, Richard Lord, associate dean of the College of Liberal Arts; and Acting Workshops: A Means of Play Character Discovery, Chris Harris, associate professor of theatre.



The three subjects featured at the joint WU-TIUA-MMM Elderhostel are:

Japanese Arts and Crafts, The Oregon Territory in Transition: 1780-1843, and Gardens for Leisure and Learning.

The fee is \$255 for either three-part program. This includes accommodations in Willamette University residence halls. Local residents who do not require housing may participate for a reduced fee. More information may be obtained from Marjorie Patton of Willamette University at 370-6162.

## Alumni in the News

**William S. Laughlin '41**, professor of biobehavioral sciences at the University of Connecticut and father of the coastal theory, is featured in one of the cover stories in the U.S. News and World Report's April 2 issue, page 54.

**Paul Wynne '65**, a television journalist in San Francisco, was profiled in the New York Times on January 22. The focus is his television journal about his encounter with AIDS.

## Law alum cheeererleader supports contest fun



**John Rodgers L'79**, a graduate of Pacific University and the Willamette University College of Law, has been a follower of both schools' athletic teams over the years. "Ever since I went to law school here, whenever Pacific and Willamette would play, I would root for the visiting team in the first half and the home team in the second half," said Rodgers, sporting a wide smile that reflects his warm personality.

Now, Rodgers attends most of Willamette's home football and basketball games, and lets fellow Bearcat rowdies know he's amongst them by spinning around in his front row seat and bellowing: "Heyyyyyy ...!" As is customary now, the WU faithful returns in chorus their "heyyyyyy ...," and the fun begins.

While Rodgers believes steadfastly that a good fan section can help any team, he doesn't take the rooting as seriously as when he was going to school. "Even when it is Pacific and Willamette, for me, watching sports is more for recreation. I get loud and demonstrative, but frankly, I don't really care if we win or lose. My philosophy has been for a long time, the most important thing to do is to have fun as a spectator," said Rodgers. "If I've helped the atmosphere, that's enough for me. To feel like I'm contributing something is all any person can ask and that's what keeps me coming back right now."

Willamette tied Pacific 17-17 on the gridiron, but WU swept the Boxers in their two-game basketball series. So where does his allegiance stand now? "Well, it's about between ... I'd say it's between here and Forest Grove, but that would put it in McMinnville (home of Linfield), and I don't want to ever identify with McMinnville," said Rodgers, chuckling. "I have really enjoyed getting to know Willamette again. I really appreciate having been asked to participate in the way I do."

The evolution of ...

# Barney the Bearcat

1915      1925      1935      1945      1955      1965      1975      1985      1995

A.D.



## THE PAST

**CIRCA 1915-1952:** The "Bearcat" became the official mascot of Willamette University athletic teams following an inspiring speech from then-president Dr. Carl G. Doney in 1915. Speaking at a football pep rally about coach R. L. Matthews' team, Doney said the WU squad possessed the attributes of a Bearcat because the team had the tenacious fight of a bear and the agility and cunning of a cat. Later in the rally, J. Read Bain '16, proclaimed that this noble animal would henceforth be the mascot of Willamette. Bain was a fiery basketball manager who was trying to help promote WU's athletic teams. The drawing at left depicts the Bearcat, a fictional animal, in the character that Doney envisioned.



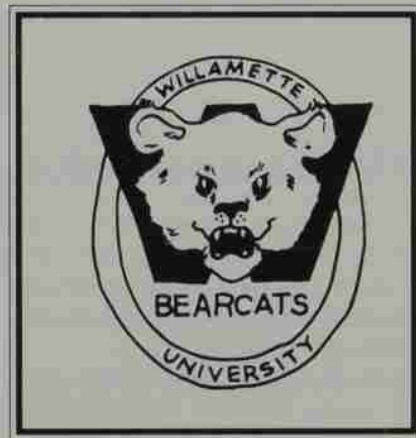
## THE PRESENT

**CIRCA 1952-1990:** The ferocious, shaggy Bearcat that represented Willamette's athletic teams underwent a dramatic change in 1952 under the pen of publicity director Nancy Stuart '47. Stuart did away with the menacing claws and other aggressive features and came up with a more teddy bear-like mascot that wore a sweater with a 'W' on it. The artist and publicist was also credited with naming the mascot "Barney."

## THE FUTURE

**CIRCA 1990-????:** The face of college athletics in the last 15 years has changed dramatically, and a large reason has been promotion. A casual fan can turn on the tube, and by seeing a horse trotting around the field with a Trojan on its back, knows he or she is in for USC football. Mascots call attention to themselves, and in turn, to the sports programs they represent.

The original Bearcat represented WU for 37 years, while the more subtle Barney has reigned for the past 38 years. Now, as Willamette is nearing its 150th year (1992), a more modern Barney, which depicts the personality and attitude of the current athletic department, is needed. Call it: "Barney Hits the Weight Room." Jim Sumner, dean of admissions, summed up the new logo committee's intention best by saying it should represent the athletic department *and* the school in a "dignified manner." The sketch at right is by WU Art Director Susan Blettel.



**EDITOR'S NOTE:** Finalization of the new Barney Bearcat logo is expected this fall. Questions or comments on this matter can be sent to: Cliff Voliva, Sports Information Director, Willamette University, Salem, OR 97301. Just thought you'd like to know ...

# Twenty-five wins

*Bearcats break many records en route to 25-6 season – the second-winningest in WU history*

*By Cliff Voliva  
Sports Information Director*

Desire and teamwork more than compensated for a lack of height and quickness as Willamette's men's basketball team waltzed through one of the most successful seasons in the 66 years of the sport this past winter.

When everything was in the books, the Bearcats had a 25-6 campaign under their belts and the ownership of four championships: the 16th annual John Lewis Holiday Basketball Classic; the 12th annual La Jolla Classic; the West Division of NAIA District 2 (10-2); and a share of the Northwest Conference crown with Whitworth at 10-2.

WU rolled over Lewis & Clark, Warner Pacific and defending District champ The College of Idaho in the playoffs until George Fox edged the 'Cats 98-95 in overtime of the District 2 final in Newberg.

Third-year head coach Gordie James' crew, despite being one of the

shortest teams in the District, outrebounded its opponents an average of 3.1 per game and was among the District leaders in both field goal percentage (48.3%) and free throw accuracy (71.0%).

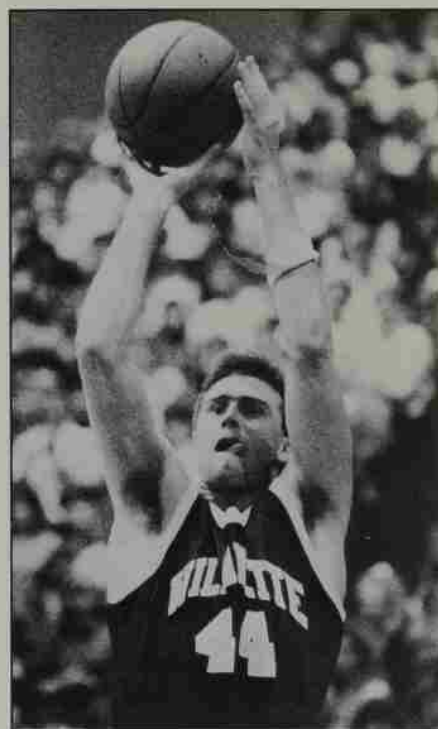
The season wasn't even over before the long list of honors came pouring in.

■ Junior forward Erik Clarkson: NAIA honorable mention All-American; Northwest Conference Most Valuable Player; first-team all-District 2; MVP of the La Jolla Classic; and John Lewis Classic all-tournament team.

■ Senior guard Russ Sovde: second-team all-Northwest Conference; honorable mention all-District 2; and Bearcat MVP.

■ Junior guard Ted Harris: second-team all-Northwest Conference, honorable mention all-District 2, John Lewis Classic all-tournament team and La Jolla Classic all-tournament team.

■ Senior guard Chris Roche: NAIA Scholar Athlete.



*All-American junior Erik Clarkson*

■ Third-year coach Gordie James: NAIA District 2 and Northwest Conference Coach of the Year.

In addition to becoming the first WU team in 15 years to be nationally-ranked (No. 23 while 18-3) and having the second-winningest season in school history (the 1938-39 squad was 29-6), numerous records were broken.

Sovde set new marks for steals in a game, free throw accuracy in a game, and free throw accuracy in a career, and Roche broke Harris' record for free throw accuracy in a season.

## *Swimming recap*

### **WU women take 9th at nationals; men win NCIC title**

The Bearcat swim teams took a step closer to the nation's elite this year behind the All-American performances of seniors Nancy Maxwell, Eric Moore and Sherry Neumeister.

Maxwell and Neumeister led a relatively young women's team to ninth place at the NAIA national championships held March 8-10 in Canton, Ohio. Moore paced the men to an 8-0 dual meet record, the Northwest Confer-

ence crown and 13th at the NAIA meet.

Maxwell, an All-American freestyler in two events a year ago, placed second in the 100 backstroke in a new school-record time of 1:00.68. She also placed sixth in the 100 freestyle (53.99) and helped all five relay teams to top 10 finishes. Swimmers finishing in the top eight are NAIA All-Americans.

Moore, an All-American in the 100 and 200 backstrokes in 1989, repeated

that distinction this winter by placing fourth in the 200 backstroke (1:58.55) and eighth in the 100 backstroke (54.87). He was on three of WU's relay teams that placed from 11th to 15th.

Neumeister, who missed last season to study in London, returned to All-American form by taking sixth in the 100 freestyle (1:01.69). It was her record of 1:01.81 set in '88 in the 100 backstroke that Maxwell broke.

# Welcome to the Club!

By JIM BOOTH, DIRECTOR OF ALUMNI/PARENT RELATIONS

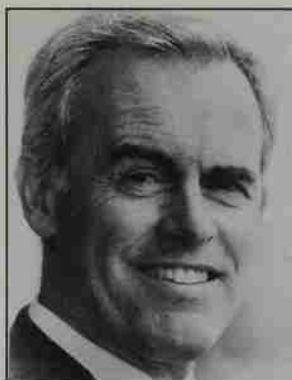
**T**he concept of alumni clubs is not a new one for Willamette. The official bylaws for alumni clubs were drawn up in 1973. Since that time, there have been many attempts at club organization around the country. But something has been missing. I'm not sure why we haven't been able to sustain club organization and activities, but I have a few ideas that I'd like to try. In my first year on the job, resurrecting Willamette's alumni clubs has become my number one goal. Here is my view on why, where, when and how it will be done.

## WHY?

Whether you're old or young, alumni clubs offer you an opportunity to reconnect to something that has been an important part of your life. A well-organized club will offer you a chance to see old friends, meet new friends, give something back to the institution (through recruiting, career development, phonathons, etc.), make business contacts, continue your education (via speakers, programs, tours, etc.), and support education in general.

## WHERE?

There are at least 23 areas that I have defined by zip code. They are listed below. If you have suggestions for more (or fewer), please drop me a note. These defined areas include about 95 percent of our alumni (and presumably the same percent of parents).



Area	Alumni*
Portland/Vancouver .....	3015
Salem/Albany/Corvallis .....	2021
Eugene/Roseburg.....	494
Medford/Northern California .....	281
Central Oregon.....	149
Northeast Oregon/Southern Washington .....	180
Eastern Oregon/Southern Idaho .....	378
Puget Sound .....	1236
Eastern Washington/Northern Idaho/Montana .....	200
Sacramento/San Joaquin Valley... ..	376
Bay Area/Monterey .....	980
Los Angeles/Las Vegas .....	1041
San Diego .....	158
Alaska .....	211
Hawaii .....	237
Southwest (Arizona/New Mexico) .....	184
Denver/Rocky Mountains .....	208
Chicago/Midwest.....	375
Dallas/South Central .....	150
Deep South .....	169
Washington, D.C. ....	261
New York/Connecticut .....	236
New England.....	100
Japan .....	75

\*Does not include Law, GSM or parents.

Keep in mind that all alumni, including law and GSM, are included as members. Also, all parents of present students and alumni would be considered members.

## WHEN?

We hope to have all clubs up and running by our Sesquicentennial celebration in the spring of 1992. The Eugene and Puget Sound area clubs are already in place. We will be working this summer to get clubs started in the largest areas. We plan to kick off the Sesquicentennial year with a 149th Birthday Party on February 1, 1991, in as many clubs as we have set up by then. Let me know if you would like to work on a 149th Birthday Party in your area!

## HOW?

The keys seem to me to be 1) enthusiastic leadership, 2) active support from the university, and 3) solid organization and planning by the area boards of directors.

Enthusiastic leadership is contagious. I've already seen two excellent boards come together in Eugene and Seattle. The alumni and parents in those areas will become aware of their enthusiasm very soon. I am looking for leadership in all of the above areas. If you would like to get involved, please fill out the form below and send it to me.

Support from the university will come in the form of lists, labels, ideas, leadership conferences, coordination

of speakers, mailings, etc. Support will also come from the Alumni Association Board of Directors and its committees.

Finally, organization and planning are critical if the clubs are to sustain themselves. The new revised bylaws are designed to be definitive and to provide for efficient succession of board members and officers. Division of jobs, so that no one person has to do too much, is important. Planning is also important in terms of giving people things to look forward to, with time to plan for them. The Eugene club planned its whole year during a lunchtime meeting. I will recommend that all clubs plan their year's calendar in advance, and mail it out to the members for participation and planning.

So there you have it. An alumni club should be coming to your area soon. If you would like to take a leadership role, or simply participate in one aspect of the club, please take a moment and let us know via the form below.

#### AREA ALUMNI CLUB INTEREST

- Yes, I'm interested in helping to organize an alumni club in my area.
- Yes, I'm interested in the following activities in my area.
- Admission/recruiting
  - Career development
  - Special events
  - Continuing education
  - Phonathon
- Sorry, I'm not interested in these activities, please remove me from your mailing list.

Name: \_\_\_\_\_

Address: \_\_\_\_\_

\_\_\_\_\_

City: \_\_\_\_\_

State/Zip: \_\_\_\_\_

Please fill out & return to: Jim Booth, Director  
of Alumni/Parent Relations, Willamette  
University, Salem, OR 97301.

## Athletes share memories at basketball reunion

**W**ILLAMETTE UNIVERSITY'S FIRST REUNION for all former men's basketball players was held January 27. The event was an unqualified success as 85 former players returned and 175 players, spouses, friends and guests attended the banquet.

The reunion started with an afternoon session, watching the current team practice and hearing Coach Gordie James share his philosophy on today's game. The social hour and banquet were held at Tokyo International University of America, across 12th street skybridge from the Sparks Center. Videos from former coaches Jim Boutin and Geoff Petrie were shown, along with memorabilia from the past.

The high point of the evening (aside from the Bearcats' exciting one-point win over Whitman after the banquet!) was a sharing and recollection time after dinner in which former players from seven decades shared their memories of a great Bearcat basketball heritage.

It is tentatively planned to invite former women's basketball players back to campus next winter, and then combine the reunions every five years, starting in 1995.



Ted Johnson '50 (right) and Bill Beard '38 talk about the great teams of their eras.



Grace and Bud Ledbetter '29 look at memorabilia.

# Four alumni recount the past

BY ANNE KENNEY '87

Four Willamette alumni have recently decided to write about their own or their families' lives. Howard Teeple '38, Thomas Terjeson '41, Everett Whealdon '31 and Beatrice L. Bliss White '29 have written books which trace the past through religious journeys, travel and history.

## Howard Teeple

**I STARTED TO BE A MINISTER: FROM FUNDAMENTALISM TO A RELIGION OF ETHICS**

*Publisher: Religion and Ethics Institute, Inc., PO Box 664, Evanston, Illinois 60204. \$19.95 hardback.*

Howard Teeple's book, *I Started to be a Minister: From Fundamentalism to a Religion of Ethics*, reveals the author's investigation of religion, focusing on the Bible, early Judaism, and early Christianity. Teeple describes his intellectual journey from religious fundamentalism to religious liberalism.

The book describes the variety of Teeple's experiences, including numerous trips to Europe to photograph archaeological artifacts related to the history of religion and his work in founding and directing the Religion and Ethics Institute, Inc. It concludes with an expose of fundamentalism, followed by a call for basing religion on the principles of truth and ethics.

Teeple said he became interested in studying religion while at Willamette. He said that students were required to take a course called "Records of the Life of Jesus." "This course aroused my curiosity about how Christianity began," he said.

After graduating from Willamette in 1938, Teeple studied the Bible at the



Teeple



Terjeson

University of Chicago and earned a Ph.D.

He said he wanted to include a study on how Christianity began in this book. However, the subject was too large, so he decided to write a second book, *How Did Christianity Really Begin*, which will be published sometime next year.

## Thomas Terjeson

**ELLIS ISLAND AND ME**

*Publisher: Carlton Press, 11 West 32nd St., NY, NY 10001 \$7.75 (+ \$.75 shipping)*

*Ellis Island and Me*, by Thomas Terjeson, chronicles the author's early life in Kongsmo, Norway, and his family's journey to America in 1925, when he was 10 years old. He details the bureaucratic problems his family encountered at Ellis Island.

Terjeson said he wrote the book due to interest shown by his children. They wanted to know more about his experiences in Norway, and what it was like for his family to travel to America as immigrants.

He began by writing down information he thought was important. The more he wrote, however, the more he realized that he should write a book.

Terjeson also commented that he wanted the book to be available for the dedication of Ellis Island as a National Monument. The dedication, which was delayed, is now scheduled for this September.

Terjeson graduated from Willamette in 1941 and holds a Ph.D. in Education from the University of Washington. *Continued on next page.*

### Everett Whealdon

THE GREEN CHAIN AND OTHER STORIES OF THE GREAT DEPRESSION

Available from the author, 314 Logan St., Port Townsend, WA 98368

*The Green Chain*, according to author Everett Whealdon, is part autobiography and part fiction, as well as a religious book. He said his editor wanted him to market it as a bootlegging book since bootlegging seemed more marketable than religion.

Bootlegging is one activity which occurs in the book, but it is not the primary focus, said Whealdon.

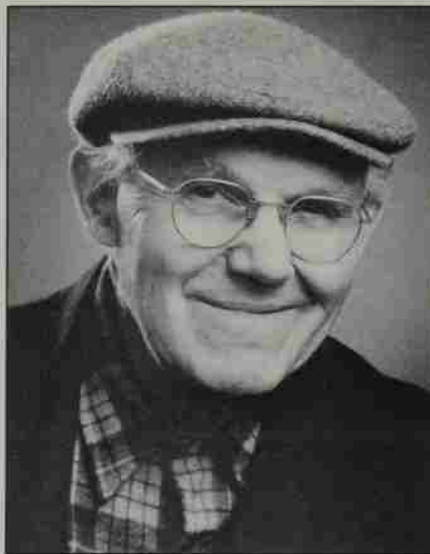
In the book, Whealdon describes the difficulties faced during the Great Depression, such as the scarcity of jobs and money.

The main character is a young man named Jim Goodwin who decides to go to college in order to become a minister. To earn money for college, Jim pulls green chain at a local lumber mill, which entails pulling freshly cut timber off a moving chain.

In the middle of his freshman year, Jim runs out of money and turns to smuggling whiskey over the border from Canada. The rest of the book details the problems he and others encountered during that time in history.

Whealdon said that Jim's experiences parallel his own as a college student and millworker and in his search for employment. Unlike Jim, he said, he never smuggled whiskey.

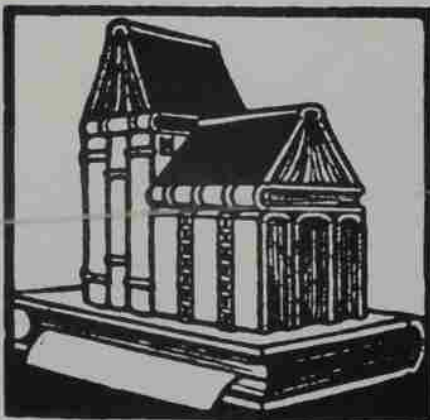
Whealdon attended Willamette from 1933 to 1938. In 1957 he started working for the Fish and Wildlife service. For 14 years, he worked at a research station in La Crosse, Wisconsin, and he has written a book about the time he spent there. It is called *The Dreams are Dying*. The publication date is not yet set.



Whealdon



White



### Beatrice L. Bliss White

NOT ON A SILVER PLATTER

Publisher: First Print, Forest Grove, OR 97116. \$18.50 paperback (+\$2 mailing). \$50 hardbound (100 numbered copies)

"I wouldn't have him if you handed him to me on a silver platter," Millie Adams was heard to exclaim about John Meredith, the brother of the minister's wife, who was highly regarded by all.

Ironically, though, Millie Adams eventually meets and marries John Meredith in *Not on a Silver Platter* by Beatrice L. Bliss White, the Merediths' granddaughter.

The story is a historical account of the settling of the Willamette Valley, and covers the period between 1858 and 1904.

Much of the book is filled with dialogue reconstructed from family tales and letters, said White.

White said that all the characters and incidents in the book are real and that she read miles of microfilm, as well as Salem Council Hall minutes, while researching the book.

Among the incidents covered in the book are: The Great Flood of 1860-61, the Beale and Baker hanging, General Grant's visit to Salem, the building of the First Methodist Church, and the tension surrounding the moving of Willamette University.

White began writing this book after the death of her husband of 43 years, Jack Bliss, in 1978. It is a sequel to her other book of Oregon History, *Mary Vowell Adams, Reluctant Pioneer*, which was published in 1972.

White graduated from Willamette in 1929. She married Ivan White, a former Willamette classmate, in 1982.

## 18

**Mary E. Eyre** reports that the first grant from the Mary Eyre Scholarship Fund was made this year. She has been selected as a woman of achievement by the Lewis and Clark Chapter of the March of Dimes, cited for her "lifelong commitment to education in the Salem community." She recently celebrated her 93rd birthday.

## 19

**Louis F. Stewart** resides at Rose Villa in Milwaukie, and keeps busy singing in Vesper Choir, leading group singing, singing male quartet, duets and solos. He sees **Dr. Frank Bennett '21** almost every day.

## 22

**Ruth (Schaefer) Page** notes from Portland that she lives in her family home and takes care of yard work, a vegetable garden and various flowers. She attends several clubs and teaches an adult social studies class.

## 25

**Volena (Jenks) Davidson** reports from Claremont, CA, that living in a retirement home in a college town is ideal.

**Fay Sparks** is retired and lives in Salem. She keeps busy with correspondents she has in many countries.

## 28

**Ken McCormick** sends word from New York, where he resides with his wife, Anne, that he is in the editorial department of Doubleday publishing.

**Eugenia M. Savage** lives in Asheville, NC, in a United Methodist Church retirement home where she stays busy with music.

**Vernon R. Taylor** sends a cheerful "hello" to the Class of 1928.

## 29

**Helen (Hisey) Barnes** and her husband, Robert, were named Honored Pioneer Citizens for 1989 by the Gresham Historical Society.

**Everett H. Gardner** and his wife, **Lois (Benjamin) Gardner '30**, are retired and living in Rose Villa Retirement Home in Milwaukie.

**Frank P. Girod** was the Grand Marshal of the 1989 Lebanon Strawberry Festival in Lebanon.

**Emma Jean (White) Potts** has been elected president of the Town and Gown, an organization which helps support WU in such ways as music scholarships.

## 30

**Dorothy (Hutchason) Pierson** resides in Klamath Falls, where she travels with the Silver Roadrunners, a club that goes on one-day sight-seeing trips. She also types three or four times a week at the Gospel Mission.

## 31

**Ronald H. Best's** book, *COLBY - A Dog's Story* was recently published through Vantage Press, NY.

**Beatrice (Hartung) Moore** and her husband, **Marion "Gus" Moore '33**, are both active in the Berkeley YMCA as volunteers. Bea swims a mile two or three times a week, and Gus works out or plays racquetball. Gus is chairman of the "Friends of Youth" group which helps underwrite the cost of the Y's extensive youth program. Gus is also active in Berkeley Rotary & Breakfast Club and runs the annual golf tournament for each organization.

## 32

**Stearns Cushing** was elected as a Fellow to the Melvin Jones Lion Foundation, a select group of Lions (20,000) for outstanding humanitarian service.

**William and Susan (Chadwick) Hall** live in Atlanta, where they both work.

**Roscoe Plowman** is studying at the Writer's Digest School for Short Stories in New York. He is also active in prison ministry, deer hunting, and jam and jelly making.

## 33

**Michael Emmet Fitzpatrick** was honored at a party for his 80th birthday. Since retiring from the U.S. National Bank, he has been active with Catholic Church parishes and with the St. Vincent dePaul Society. He and his wife, Mary Ellen, live in Keizer.

## 34

**Kenneth A. Oliver** and his wife, **Madaline (Schmidt)**, travel widely, via books. They also enjoy friends and family.

**Carroll D. Shank** and his wife, Mary Ellen, were proud to see their grandson graduate from the U.S. Naval Academy, 41st out of 1,546 graduates. Their other grandson is a member of the class of 1991 at the U.S. Military Academy, West Point.

## 35

**Cecil R. Scheuerman** and his wife, Bernice, live in Lincoln City, where Cecil is retired.

## 38

**Una Lee Kruse** has been active in the American Association of University Women, Coos Bay branch, for years. She has also been active for 30 years at the Faith Lutheran Church in North Bend.

## 39

**Helen Dorothea (Woodfin) Sefcik** sends word from Los Angeles that she is enjoying retirement in music circles

and performing musically as a singer and accordionist.

### 40

**John S. Laughlin** gave an address on the development of the technology of radiation therapy at the annual meeting of the Radiological Society of North America.

### 41

**Geraldine (Parker) Brown** has retired from the Memphis Public Library.

**Oscar Leonard Donaldson, Jr.** has retired from his positions as chairperson of the board of directors for the Monterey County Federal Employees Credit Union, district manager for the Social Security Administration and also as teacher at schools and colleges.

### 42

**Frances (Dillon) Garvin** and her husband, Albert, recently went to Australia for their fourth visit.

**Marjorie (Waters) Hamilton** retired in March of 1989 from her position in Special Education with the Salem-Keizer School District.

**Avis (Pick) Waring** and her husband, Ronald, live at 4155 Crooked Mile Road, Merritt Island, FL 32952. They invite anyone associated with WU to use their guest house (completely furnished and separate from the main house) for a vacation. They live near the Space Center, Disney World, and the ocean beaches. They also have a pool and boating on the Indian River available. In return, guests are asked to contribute to WU. Write or call (407) 453-6269 for more information.

**Helen (Acheson) Wofhagen** is taking art classes and workshops, painting watercolors, joining art societies and exhibiting in group shows. She is also studying Chinese and Russian.

### 45

**Rosalie (Hoover) Dumbeck** reports that the third generation of her family is now at WU and that she finds that exciting and expensive!

**Lois (Butler) McGourty** has enjoyed traveling and showing her golden retrievers in obedience competition since her retirement.

### 49

**Elizabeth (Guttridge) McMullen** and her husband, **Albert R. McMullen '50 L'52**, report from Newport that Al retired from the Circuit Court bench in December but works occasionally as Senior Judge. Beth and Al enjoy traveling including trips to Wyoming, Massachusetts, Montana, Alberta and British Columbia, Canada.

### 50

**Gordon C. Cline** now enjoys retirement after 33 years as technical manager with E.I. Du Pont and six years as production manager with Technical Coatings, Inc.

**Lyle H. Hamilton** retired from the Veteran's Administration and Medical College of Wisconsin in 1988 and is now president of a medical instrument manufacturing company specializing in gastroenterology and pulmonary instruments. About 35 percent of sales are in Europe and Asia. Developing the market entails significant travel, particularly foreign.

**William Moynihan** just completed his 20th trip to England. He invites anyone who desires information on England to contact him.

**Betty (Kuhlman) Pease** retired from professorship at Western Kentucky University last May.

**Robert O. Robertson** recently retired as director of parks and recreation for the Municipality of Anchorage after 18 years. He worked 39 years in parks and recreation.

**Jane (Mountcastle) Turner**, since the death of her husband, **Scott '50**, lives in Raymond, WA, where she is president/manager of Turner & Son, Inc. (Shell Oil jobber). She would "love to see any of our friends who might be passing this way."

### 51

**John B. "Jack" Gunn** recently went to Connecticut and Cape Cod. He and his wife, Karla, also have a vacation home in Langley, WA.

**Sara Louise (Sally) Gunn** and her husband, George, have moved to North Carolina.

**Dale Parnell** has written a book titled *Dateline 2000: The New Higher Education Agenda*. He is president/CEO of the American Association of Community and Technical Colleges. He and his wife, Beverly, live in Bethesda, MD.

**LaVonne (Wood) Sparkman** traveled with her husband, Elmer, to England, Wales and Scotland last summer.

**Jeanne L. (duBuy) Spaziani** is enjoying retirement, being active in the community and battling the war against "middle-age spread."

### 52

**B. Anne (Swanson) Benson** is a quality assurance manager at C.A. Reed, Inc. in Williamsport, PA.

**Patsy Benson** appeared recently in a production of *Visions*, by the Artists Repertory Theatre in Portland. She has been in productions at the Storefront, Civic and New Rose theaters.

**Harold (Hal) D. Jole** retired after 33 years as an elementary teacher and principal. He is enjoying community service, square dancing, photography, trailering and traveling.

**Eugene H. Walters** is the new part-time pastor at Carus Community United Methodist Church. He is also pastor at the Marquam United Methodist Church. After graduation from

WU, he attended Drew Theological Seminary in New Jersey and helped establish a church in the Vermont Hills area of Portland. He spent eight years in Alaska before returning to Oregon to establish a church in Aloha. He is married to **Carolann (Snarr)** '52.

## 53

**Bob and Margaret (McDermott) Borquist** spent last fall in the Philippines with their son **Bruce** '77, daughter-in-law **Ann (Croswaite)** '78, and their granddaughter Elena. They also spent a week in Hong Kong.

**Elizabeth (Morley) Douris** would like to hear from people she went to school with, at P.O. Box 994, Kapaau, HI 96755-0994.

**Suzanne (Shipley) Dreyer** is part-owner of Ewald Travel Service and a full-time travel agent.

## 54

**Jan (Munson) Frederick** and her husband, **Karl R. Frederick** '56 enjoy traveling in South America. One son, **Rod** '78, is a professional wildlife artist living in Bend.

**Franklin Kehrl** reports from Walnut Creek, CA, that he was a little shaken up but had no damage as a result of the October earthquake. Franklin was at Candlestick Park for the World Series at the time the quake hit.

**Lisbeth (Shields) Pierce** lives in Filer, ID, where she is owner of Mr. B's Restaurant. She sends a reminder that her first job was with William Smullin (Medford KBES-TV), whom she refers to as "a wonderful man!"

**Richard E. Satter** recently moved from Oregon to South Carolina to be near his children and grandchildren.

**E. Harold Silke** is an orthodontist in Longview, WA, where he lives with his wife, Shirley. Their son, **David** L'91 is a second-year law student and the third generation to attend WU.

## 55

**Hal H. Hargreaves** had a book published by University Press of America entitled *Visions and Discoveries: Reflections on the Nature of Scientific Inquiry*.

**Dale C. Harris** and his wife, **Carla (McKeen) Harris** '56 report that Dale is in his fourth year as senior pastor of the Corvallis First United Methodist Church. Carla is a part-time instructor in OSU's department of journalism. In September of 1989 she was named executive secretary of Northwest Scholastic Press, a support and service association to benefit high school publications staffs and advisers.

**John N. Roehr** retired from practice of radiology in Seattle in 1989, and he celebrated his 30th wedding anniversary in March 1989.

## 56

**Gerald M. Baker** teaches at Lewis & Clark State College along with **Steven R. Evans** '65.

**Clarine B. (Woolery) Harp** went with former WU drama professor, Robert Putnam, to perform Shakespeare at the Women's State Prison in Salem. She has been at Walker Middle School in Salem for 7 1/2 years as an instructional assistant.

**Doug E. Heider** recently formed Gribling/Heider & Assoc. Public Affairs Professionals to represent clients on governmental relations issues.

**Joan Lawson** reminisces that after living next to the Oregon Capitol Building while at WU, it is interesting that she has worked in two state capitol buildings, Washington's "Leg" and Maine's "State House" (where she currently works).

**Catherine (Schwerin) Nyhus** and her husband, Ralph, have a son, Greg, who is attending WU Law School.

**Jerry L. Patterson** is a professional gambler living in Carson City, NV. He has written six gambling books includ-

ing best selling *Gamingbook: Blackjack: A Winner's Handbook*.

**Nancy Shipley** was appointed in 1989 as a human relations commissioner for the City of Palo Alto, CA.

## 57

**James I. Brown** reports that he had the pleasure of being in the first class taught by Dr. Richard Gillis at WU, and his son was in Richard's last class 30 years later.

**Douglas G. Houser** '57 L'60 was appointed as an adviser to the American Law Institute on Tort and Insurance Law. The ALI prepares the Restatements of the Law and all ALI-ABA CLE programs. He was also inducted as a Fellow of the International Academy of Trial Lawyers. Related alumni include sons **Brooks Houser** '85, **MM'87, JD'89** and **Bradley Houser** '89, and daughter-in-law **Susan J. Bozlee** '85.

**Lou Ann (Mergler) Sobieski** was honored last spring for 20 years as librarian at the Sequoyah School library she founded two decades ago. A banquet was held at Cal Tech University at which the establishment of a library endowment fund named in her honor was announced. She also attended a special Children's Literature Institute at Cambridge University, England, in August 1989.

**K.C. VanNatta** attended an economic seminar in Japan in October 1988 as a representative of the timber industry. He has also served four years as president of the Northwest Oregon Forest Protective Association.

**Donna (Rohlfing) Wood** works with "at-risk" students at the middle school level and teaching English as a second language for adults in Lompoc, CA.

## 58

**Richard C. Brockway** is taking early retirement from his position as director of business development at GTE

## CLASS NOTES

Government Systems Corp. to consult in communications and to form a new company, Ancient Arts International. This combination will allow him to pursue his life-long love of archaeology and the ancient arts. Richard and his wife, Elke, would love to have WU friends visit them in their Victorian home in Middleboro, MA.

**Wayne Haverson** has been promoted to full professor at Oregon State University.

**Suzu Platt** is the editor of *Respectfully Quoted*, a dictionary of quotations requested from Congressional Review Service (CRS). It was published in early 1989 as part of the Library of Congress's recognition of the 100th Congress.

**Douglas K. Rhodes** L'89 was sworn in as an attorney in California in July 1989. He is seeking employment with San Diego County public defender's office.

**Lois (Schultz) Steinbach** moved to Maryland where she is a school bus driver. Lois and her husband, Philip, sponsor two midshipmen from the U.S. Naval Academy.

### 60

**Janice M. Adams** is a fire operations clerk with the State Department of Forestry and reports that "I am to be married in June to the most wonderful person in the world."

**Emily J. (Gannaway) Willecke** is director of children's ministries for Cherry Creek Presbyterian Church in Denver. She loves music, opera in particular, and is often found speaking and teaching women's groups and workshops for Sunday School conventions as well as serving as a consultant for Gospel Light Publishers.

### 61

**Bruce Buzzell** is at Seaside High School as a teacher/coach for junior high football and JV basketball.

**Joan (Pemberton) Cravens** moved to Benicia, CA, after 25 years in the Midwest. She is the editor of *Cross Stitch and Country Crafts* magazine.

### 62

**Marjorie (Mikkelsen) Enneking** spent the 88-89 academic year on sabbatical from her position at Portland State University as a visiting professor at Ohio State University.

**Penny (Post) Lewis** is a manager at Packaging Specialties/Warehouse Store in Seattle.

**W. Gregg Monroe** has been an army chaplain for 13 years. In 1985, he received a Th.M. in history of religions at Princeton Theological Seminary and was assigned to U.S. Army Chaplain School as a writer and instructor.

**Verrill (Redo) Rinehart** lives in Dallas, TX, where she is a technical consultant with Cray Research, Inc.

**Ronald E. Williams** received his Ed.D. from the University of San Diego in education administration last May.

### 63

**Nancy (Stewart) Burkhart** is a singing member of the Portland Symphonic Choir as well as serving on the board of directors.

**John E. Frank** has been with Mobil Oil since 1979. He retired from the Air Force Reserve after 20 years.

**John S. Rogers** retired from the Air Force in November 1989.

### 64

**Barbara (Morse) Bentley** spent the 88-89 academic year at the Bodega Marine Lab (University of California-Davis) as an NSF visiting professor. She was elected vice president of the Ecological Society of America and is serving on the Board of Directors of the Community Health Plan of Suffolk, the regional HMO for Long Island, NY.

**James C. Booth**, after 22 years in business, has chosen to work for his alma mater as Director of Alumni & Parent Relations. The job is proving to be challenging, fun and a perfect fit. He also gets a bonus every time he sees sons, **Jay '91** and **Brian '93** on campus. He and wife Sandy live in Portland.

**Virginia M. Judd** is a teacher at Centennial High School in Portland.

**Suzanne (Shane) Myrene** was appointed to a three-year term as a member of the Governor's Committee on Disability Issues and Employment in Wenatchee, WA.

**Nan (Means) Steenson** completed a Ph.D. in psychology at Pacific University. Her husband is **Brian A. Steenson** L'66.

Navy Captain **Frank B. Swayze** has been assigned to Subic Bay Naval Base, in the Philippines, where he will serve as military legal adviser to the senior military representative for the Philippine base negotiations.

**Ann (Finlayson) Voas** finished her courses in business and is considering a career move this summer. Her oldest daughter is a sophomore at the University of Oregon and her twins are juniors at Sheldon High School, in Eugene, Oregon.

### 65

**Kristine (Anderson) Blodgett**, after teaching life sciences at the community college level for several years, is going back to school to get a bachelor of fine arts degree. She plans a career in natural science and medical illustration. She is also working on a research project in human genetics with the University of Washington.

**Barbara J. Davis** is in her sixth year as the senior partner in a litigation support firm, Emdee Associates. They have offices in Portland and San Francisco. Her poetry has been published in various literary magazines in the U.S. and she is active with a group of Portland poets.

**Barbara (Smith) Ely** and her husband, Alan, moved to a new home in the Portland area in July 1989. Both are active in their church choir and take music lessons.

**Heather (Lundgren) Flynn** is chair and chief mediator in local politics in Anchorage.

**Dianna R. Gentry** and her husband, C. Walter Ebell, moved from Alaska to Seattle to manage their Seattle branch office of Jamin Ebell Bolger & Gentry.

**Carol (Gibson) Ratzlaf** and her husband, Walter, have a daughter, Amy, who will graduate from WU this year in German or psychology. Their son, Dieter, is a freshman business and music major at WU.

**Stephen (Steve) Smith** plans to retire in a year or two from his post at HQ AFCCC. He and his wife, Pam, will then devote their time to youth ministry, focusing on Christian counseling to adolescents and youth. Pam and Steve are active in youth ministry in Belleville, Illinois.

## 66

**Larry A. Liebenow** formed a partnership with Euro Belge of Italy to purchase Quaker Fabric Corporation, a company traded on the American Stock Exchange, where he is now president/owner. His wife is **Kathleen (Bendix) Liebenow**.

**Phillip A. Marsh** and his wife, **Ruth (Younker) Marsh**, live in Arizona. Phil has been promoted to vice president at Alexander & Alexander and is an avid golfer. Ruth works part-time at a tennis pro shop and spends her time playing tennis. Both of their daughters are in college in Arizona.

**Marilyn (Miller) Stokes** was appointed by the mayor of Denver to the nine-member planning board for the city and county of Denver. The board advises the Planning Department on policy, as well as zoning, comprehensive planning, and capital improvement matters.

## 67

**Lanae Isaacson** is a recipient of the National Endowment for the Humanities research grant for study, writing and research at the Library of Congress (1989-90).

**Janet (Loomis) Withycombe Faust** has a daughter, **Vicky**, who is a freshman at WU. Janet is planning to get married in June.

## 68

**Gerald D. Brown, Jr.** is chairman of the Deacons for Shastaway Christian Church in Klamath Falls, OR.

**Michael duBois** is president/CEO of Wagner Excelllo, a Chicago-based company in the food business. His older daughter is at Brooks Prep School in Boston, and his younger daughter is an Olympic diving hopeful, studying under the Princeton University diving coach.

**Clayton Fujie** is the principal at Noelani Elementary School in Honolulu.

## 69

**Kathryn (Way) Cowin** works for the Yakima School District as a paraprofessional in special education. Her assignment is in a bilingual kindergarten working with a five-year-old Spanish-speaking boy with cerebral palsy. Kathy's son, David, has graduated from high school and is employed full-time on the family fruit ranch. Daughter Rachel is a sophomore in high school.

**Linda E. (Wangsness) Threlkeld** sends word from Brookfield, VT, that life continues to be busy and fulfilling. In addition to her duties as CEO of the household, she is busy with her husband, David, their four children, six horses, four dogs, innumerable cats and two rabbits.

## 70

**David Conlin** began a small private psychotherapy practice this year specializing in sexual abuse, sexual orientation, and couple therapy. He is on the field faculty at the School of Social Work, University of British Columbia.

**Sanford Kawana**, football coach at Mililani High School in Honolulu, was named Coach of the Year for the OIA Western Division.

**Calvin Lee** is a coach at St. Louis High School in Honolulu. He was named high school coach of the year in Hawaii. His team was ranked in the top 20 nationally in a recent USA Today poll and was unbeaten.

**Janine (Onnfroy) Shelley** received a grant from the French government to spend a month in Nancy, France, at a cultural seminar. She is a French teacher at Valley High School in Des Moines, IA.

**Cynthia (Carlson) Widmer** is executive director of Planned Parenthood of Walla Walla, WA. She is a guest columnist for the Walla Walla *Bulletin*, contributing articles on how parents can better manage the day-to-day balance of life. She has a five-year-old son, Zachary.

## 71

**Karen Boone** reports that she is happy and incredibly busy with her two teenagers and her practice of Oriental medicine, including acupuncture, herbs, and nutrition. She is also remodeling her home.

**Lana (Walter) Manahan** teaches music in Sutherlin, and also teaches second-year musicianship at Umpqua Community College. She has more than a dozen published choral compositions, and always has something in the works. For relaxation she folk dances and lifts weights.

**Bruce A. Pahl** reports from Carlsbad, CA, that everything is going well, and

## CLASS NOTES

that he would like to hear from any of his classmates and friends.

### 72

**Douglas C. Brown** practices law in Salem and lives near Silverton. He is active with the local fire district as an emergency medical technician and firefighter. He teaches classes in emergency medicine and the law at Chemeketa Community College and for fire departments in the Willamette Valley. He also teaches emergency vehicle driving.

**W. Kent Tobiska** is a space physics scientist at the University of California at Berkeley. He and his wife, Susan, have two children, Elizabeth and Catherine, both attending the University of California at Santa Cruz.

**Ryuji Torihara** M'78 was featured speaker at the installation ceremony for the president of the Salem Chapter 312, American Association of Retired Persons.

### 73

**Ivan P. Edwards, Jr.** is owner of Ivan's Finishing in Salem.

**Louise (Cady) McCutcheon** and her husband, Mac, live on Duck Lake in Ocean Shores, WA, with their two daughters. They're active in community and church events and love living at the beach.

### 74

**Susan Marie (Scott) Arceneaux** lives in Cleveland Heights, Ohio, with her daughter, Dana Lonje. She completed her M.D. degree at Dartmouth Medical School in 1988 and is in a physical medicine and rehabilitation residency program at Metro Health System (formerly Cleveland Metropolitan General Hospital).

**A. Terry Barrall** and her husband, Douglas W. Franchot III, live in the country near Minneapolis in a natural

wetland area. Terry is out of the rat-race of full-time advertising and is freelancing part-time.

**Rockwell Hammond, Jr.** is in private dental practice in Fall City, WA, and is part-time clinical instructor at University of Washington Department of Restorative Dentistry. He and his wife, Jill, have one son, Madison.

**Robert J. Olson** and his wife, **Pamela (Thoits) Olson** live in Cataumet, MA. Pamela is the chairman of the Bourne Composting and Recycling Committee. Rob is studying marine phytoplankton in particular, a newly recognized tiny prochlorophyte which is probably the most numerous phytoplankton in the ocean.

**Edward (Ted) Shuck** and his wife, Marsha, moved to Bedford, England, in April.

**Margaret A. (Peggy) Traughber** writes software documentation for Sun Microsystems in Milpitas, CA. She co-authored a comedy play *Community Property* that has been produced twice in the South Bay. She also has other works in progress.

**Ed Whipple**, his wife, Darlene, and their son, John (2 1/2), moved from Tuscaloosa, AL, to Billings, MT, where Ed is vice president of student affairs for Eastern Montana College.

### 75

**Gregory G. Lutje** is an attorney with the Portland office of Schwabe, Williamson & Wyatt. He works in the real estate practice group.

**Thomas McHill** is City Attorney of Lebanon and partner at Morley, Thomas, Kingsley, Reuter & McHill. His wife, **Eileen (Thomas) McHill '76** has taught Spanish in Sweet Home for seven years and just returned from her third trip to Europe with her students.

**Carl J. March** and his wife, Suzie, built a house on Bainbridge Island in Washington. Carl enjoys commuting on the ferry to downtown Seattle where he is

the Director of the Protein Chemistry Department at Immunex Corp.

**Marilyn G. (Rapp) Paja** was recently reappointed Gig Harbor Municipal Court Judge, a position she's held since 1984. Because it is a part-time court, she is able to continue practicing law full-time in an adjoining town.

**Jeremiah Scannell** is a prosecutor in the Curry County District Attorney's office. He spent 15 years building high-rises in Washington, D.C., before returning to law school at Lewis & Clark, where he graduated last May. He and his wife, Maureen, have two daughters.

### 76

**David A. Ball** lives in Portland where he works for Lindsay, Hart, Neil & Weigler. He says "without hydrogen bonding there would be no snow, without snow there would be no skiing, without skiing there would be no...?"

### 77

**Norman Chusid** has been elected vice-president of the Mittleman Jewish Community Center in Portland. He has served on their Board of Directors since 1988. Norman is president of Nor-Mon Distributing, Inc., a wholesale warehouse distributor of appliance parts and hardware.

**Andrew J. Hedgcock IV**, after spending his 20s in Hollywood working in "Show Biz," made a switch in careers and joined the "civilian" world in sales and marketing. He enjoys the atmosphere and the people and says, "I live in Newport Beach, CA. Surf's Up!"



**Mark LeCoq** was elected to partnership status at Schwabe, Williamson & Wyatt in Portland.

**Peggy E. McNees** and her family spent a wonderful month touring Thailand last December and January. A four-day trek northeast of Chaingmai was a highlight, particularly with the kids. The hill tribes rarely see Caucasian children so there was quite a stir upon entering each village.

## 78

**Suzanne C. Andresen** is director of marketing at Colliers, Macaulay, Nicolls International in Washington, where she lives with her husband, Dennis, and daughter, Carrie.

**Debbie F. Cleaver** is vice principal of Lake Oswego Junior High School.

**Darrel A. Libby**, his wife Lynda, and their three children have returned to the Portland area after living in the Netherlands for four years. They are living in Vancouver, WA.

**Kathy A. Neraas** is happily married, living in Seattle, and in her last year at University of Washington School of Medicine.

**Carol Schriener** rode her bike 450 miles as a participant in Cycle Oregon II and didn't use the sag wagon once. She says "otherwise life's the same, still a busy pediatrician in Albany."

**Gerald A. Takase** has lived in Hilo, HI, for the past seven years. He's with the Corporation Counsel's Office for the County of Hawaii. He sees fellow alumni **Mike McKiernan '74**, **Gary Weunten '79**, **Aaron Venu '80** and brother **Glenn Takase '88** in Hilo.

## 79

**Randall J. Fastabend** is producer/director of Science Discovery Theatre, UC Berkeley, Lawrence Hall of Science and first tenor for St. Mary's Star of the Sea Choir.

## 80

**Susan (Reynolds) Ballinger** and her husband, **Paul '81**, moved to Milwau-

kee, WI, where Paul will continue with a G.I. fellowship training program. Their two children, Thomas and Kristen, will miss their Fresno orange trees. In Fresno, Paul completed an internal medicine residency; Susan earned a master's in biology.

**Mary E. Coleman** is in a private practice counseling service in Portland. She works primarily with adults and adolescents.

**Andrew R. Gala** is an associate with Schwabe, Williamson & Wyatt-Seattle.

**Mike Gilson** and his wife, **Doris (Hudson) Gilson**, continue their involvement in Anchorage Youth for Christ. Mike recently accepted the position of executive director, and Doris is a volunteer in the Campus Life program. They are enjoying Alaska and their two active boys, Matthew, three, and Peter, one.

**Nora Hill** enjoys her new position as Director of Child Development for the YMCA of Snohomish County in Washington. She supervises six child-care sites, 20 staff and 200 children a day.

**Olu Sengan Sarr (formerly Sam O. Sarr)** graduated from University of Missouri-Columbia in May of 1983 with an M.A. in journalism, specializing in radio and television. After returning to Gambia in 1984, he worked with Radio Gambia for three months before becoming sub-editor, English desk, with Pana. He has covered UNESCO (Paris), OAU (Addis Ababa), the Commonwealth Conference, and the signing of peace accords between Cuba, Angola, and South Africa. He lives in Dakar, Senegal.

## 81

**Jeffrey J. Cain** is on the faculty of the Mercy Family Practice Residency program in Denver.

**Brenda L. Hansen-Coats** plays lots of volleyball and basketball, although she reports that her body is starting to let her know that she is 30 years old.

She keeps busy managing her horse ranch, raising, training and showing registered Morgans with her husband, Douglas.

**Mark A. Johnson** has been promoted to corporate headquarters as senior financial analyst for CSX Corporation. Mark, wife Pamela and their son, Eric, live in Virginia.

**Mary (Gunning) Kolstad** loves being back in the Pacific Northwest and keeps busy restoring an older home in Portland. She and her husband, Ron, look forward to the upcoming birth of their second child.

**Dave B. Standifer** is a physical therapist and clinical director at Bend Rehabilitation and Physical Therapy. He was a recent speaker at the World Veterans' Games in Eugene, and is a member of the Oregon Physical Therapy Association and the sports medicine section of the American Physical Therapy Association.

**Mark A. Stephenson** is a deputy director of public affairs with the Department of the Interior in Washington, D.C. He recently traveled with Interior Secretary Manuel Lujan to inspect areas damaged by Hurricane Hugo.

## 82

**Gregg Gustafson** and his wife, **Laurie '85**, send word from Dublin, Ohio, that Gregg is responsible for all training, promotions and incentive programs for Farmer's Insurance Group in Ohio, Indiana and Michigan. Laurie works part-time in private practice as a family therapist, specializing in adoption.

**Robert P. Kremer**, his wife, Mary, and their daughter will move back to Portland after ten years in Chicago.

**Kirk J. Parker** and his wife, Jill, reside in Portland. Kirk practices optometry in Aloha at Costco. They have a 16-month-old son, Brandon, and expect their second child in August 1990.

**Mark G. Simmer** supervises the News 8 reporting staff and is glad to be back in Portland.

## 83

**Louise G. Foster** is a costumer for the Seattle Opera.

**Scott N. Losk** received his Ph.D. in clinical psychology in June 1989. He is in a post-doctoral residency at Oregon Health Sciences University. His wife, **Kenlynn (Snowden) Losk** finished her master's in career and guidance counseling this summer, and is employed by North Clackamas School District as a junior high counselor.

**Greg E. Moreland** was recently "honored" by appearing on *America's Funniest Home Videos*. He was involved in a magic act that ignited more than an audience response. He was shown trying to ignite lighter fluid in a pan. When he had trouble, he added more lighter fluid, not realizing the pan had a pinhole leak and the lighter fluid saturated the tablecloth underneath. When he lit it on fire, the whole thing went up. He said, "What a career-maker this is for me."

**Scott Sheridan** is in a family practice residency in Houston, Texas.

## 84

**Karen (Schultz) Breda** was recently admitted to the practice of law in Massachusetts. She has practiced law as a litigation attorney in Portland since 1988, and plans to move to Boston to join her husband, John.

**Everett E. Fruehling** and his wife, **Kris (Hubbell)** '85 are alive and well and living in Seattle. Kris is a buyer of raw materials for the Japanese trading company Nissho Iwai. Everett is a second-year law student. They invite alumni to look them up if in the area.

## 85

**Todd M. Alberts** works as an administrator at Flintstone Crushing in Eugene. He received his stockbroker's license in 1986 and spent a year at the U of Washington Law School. He re-

turned to the U of Oregon in 1988 to finish his MBA, and will complete his law degree in Eugene. He awaits his first child in October.

**John Bodenman** lives in University Park, PA, where he is in a Penn State master's program in resource economics, to be completed in August 1990. He received a grant to do a locational analysis of the secondary wood products manufacturing industry in the Northwest.

**Matt C. Colbern** is a carrier-based attack pilot for the U.S. Navy stationed in Hanford, CA. He is married to **Rosemary (Bardinca)**.

**Kathryn S. Hamilton** completed her M.A. in English at the University of Washington in December 1987.

**Julie Hotchkiss** is assistant professor of economics and research associate in the policy research program at Georgia State University in Atlanta. She graduated with an M.A. in economics from Cornell University in 1988 and with a Ph.D. in economics in 1989.

**Martin J. Letourneau** is a senior associate with ICF Inc. in Los Angeles. He received an MPP in environmental and natural resource policy from the Kennedy School at Harvard and is now working on the greenhouse effect, stratospheric ozone protection and local waste management issues. He married in 1988.

**Bill R. Potter** resides in Pacifica, CA. After graduating, he joined the Peace Corps and spent three years in Mali, working on a rural water supply program. After the Peace Corps he worked on a rural water supply program for Foster Parent Plan International, then returned to the Peace Corps for five months. He and his fiancée are biking across the U.S.

**John Thomas Ptacek** and his wife, **Nancy (Keiser) Ptacek** live in Seattle, where J.T. is working on his dissertation and should complete his Ph.D. in psychology in the spring of 1991. Nancy is a physical therapist at Virginia Mason Medical Center.

## 86

**Jim K. Bassett** would like to report that he saw Elvis at the last alumni gathering.

**Paul D. Bloom** is employed by the City of New York as an analyst with the Office of Management and Budget. After graduation he spent two years at Columbia Business School studying finance and public management.

**James A. Green** spent the last three years as Director of Sales-North America for Seattle-based Evergreen Hardwood, a firm specializing in the import, export, and domestic sale of hardwood forest products. Job-related travel has taken him to Brazil, the Philippines, Malaysia and Singapore.

**David T. Hill** is with Palmer, Groth and Pietka as a real estate analyst in Portland, working toward obtaining the professional designation of Member of Appraisal Institute. His wife, **Wendy (Wright)** is a marketing representative for the Xerox Corporation.

**Donald J. McLean** lives in La Paz, Bolivia, and is a volunteer for Food for the Hungry, International. He and his wife, **Christine (Miller)**, had their first child last November.

**Lindsay Reed Partridge** L'89 was sworn into the Oregon State Bar in July.

**Jim C. Robison** is a self-employed consultant living in Ridgefield, WA. He received his master's in public policy from the Kennedy School of Government at Harvard, with an emphasis on energy and environmental policy.

**Alexandra E. Schweier** is employed by Delta Airlines as a flight attendant and lives in Seattle. She also takes business and accounting classes at the University of Washington.

## 87

**Bill Ayers** is a registered representative of the Painter Financial Group in Portland.

**James (Jim) Brooks** is key accounts manager in charge of the Sacramento, San Francisco, and Oakland markets for Smith Kline Beecham Pharmaceuticals. He survived the earthquake after driving over the Nimitz Freeway which collapsed several minutes later.

**Jeff L. Butler** is the national marketing director for National Safety Associates in Burbank, CA. He went into sales after graduation and has a sales organization of over 1000 people.

**Kathleen M. Fisher** is a Peace Corps volunteer in Mali.

**Kevin Heidel** is working on his thesis and will receive his master's in health fitness in May. He invites alumni in the New York area to drop by.

**Kurt H. Heisler** has completed two years in the Philippines with the Peace Corps. He worked in agriculture and water and sanitation projects at a rural island barrio.

**Lynelle A. Littke** works for Oregon Governor Neil Goldschmidt. She edits outgoing correspondence, instructs staff and agency personnel, and works with the citizens' representative. She attended the dedication of Waller Hall last autumn and says "it is certainly different from the creaky old Waller I had come to love, but it is beautiful and much more functional. I must say, however, the climb up three flights of stairs hasn't gotten any shorter since freshman psych with Buzz Yocom!"

**Suzanne Lundy** is in her third year of teaching. She plans to attend graduate school full-time in the fall. She is playing Annie in "Annie Get Your Gun," produced by Umpqua Community College.

**Gary Swearingen** is a research assistant/programmer for Mathematica Policy Research and is living in Washington, D.C.

## 88

**James M. Bailey** lives in Salem and is employed by Il Morrow Inc. as East

Coast marketing manager. He spends about two weeks of every month on the East Coast overseeing a network of manufacturer representatives.

**John Benjamin** works in Research & Development for Seiko-Epson Corporation in Suwa, Japan. He plays on the company's basketball team and also teaches English one Saturday each month at a school in Kawagoe City.

**Susan (Carlson) Houghham** is an analyst with Cadre Technologies, Inc. and lives in Aloha, OR. She participates in the company's continuing education program and will begin Portland State University's MBA program in September. She was married in January.

**Jeff P. Clark** is a financial analyst/associate manager with the Loan Pricing Corporation in Washington, D.C.

**Colleen A. Cushing** recently realized a dream by becoming a guide dog instructor. She now works at Guiding Eyes for the Blind, Inc., in New York.

**Christopher T. Davis** is an associate English teacher in Japan.

**Kim L. Dianich** works at KAMA Enterprises in Portland.

**Chris Duquette** is a supply corps officer in the U.S. Navy. He finished transportation management school in Oakland, CA, and was recently assigned to the aircraft carrier U.S.S. Nimitz, based in Bremerton, WA. He joined the Navy in November 1988.

**Robert G. Gray** lives in Lake Oswego. He is employed by Cushman Wakefield as a financial analyst in Portland and Seattle.

**Ken Kilbreath** is a broker for Cushman Wakefield in Seattle. He took the LSAT in December and plans to enter law school in the fall.

**Matt D. Kolding** resides in the Bay Area. He is employed by a property management company in San Jose.

**Erick P. Landeen** is employed by Spencer Powell and Associates as a real estate appraiser in Salem.

**Greg A. Levin** is in his last year of the MBA program at the University of Washington.

**Derek M. Louch** completed Officer Candidate School for the Navy and just finished supply school based in Brinnon, WA. In November he reported to the battleship Missouri based in Long Beach, CA, as disbursing officer.

**Monica A. McLin** lives in Asuncion, Paraguay, and is in the Peace Corps, promoting pre-cooperative stores. She will finish in December 1990 and plans to pursue an MBA in human resources.

**Sally E. Peters** is an assistant economist at U.S. Bancorp in Portland.

**Scott Swindell** attends law school at Willamette and lives in Tigard. He recently married **Lisa Dulle**.

**Megan Taylor** is employed as an industrial economist with the Bonneville Power Administration in Portland.

**Diane Wardner** lives in Kamuela, HI, and is employed as a sales clerk/tennis hostess by the Mauna Kea Beach Hotel. She is active in tennis tournaments.

## 89

**John D. Blatt** is a legislative assistant for Representative Mike Burton and lives in Portland.

**David P. Chiappetta** attends aviation officer candidate school in the U.S. Navy, based in Rye Brook, NY.

**Eric Davin Harebo** has been in Japan for six months. He traveled to Seoul, South Korea, and reports that everything was very cheap. He is still studying Japanese and hoping to become somewhat fluent.

**Daniel L. Keppler** is in his first year of law school at Gonzaga University.

**Eric N. Nelson** lives in Pendleton. He spent last winter in San Diego and this winter in Australia.

**Hiroyuki Shimazu** lives in Osaka,

## CLASS NOTES

Japan, where he plans to work for a few years before returning to the U.S. to study.

**Scott K. Wilson** is an economist with Bonneville Power Administration in Portland. After his June 1989 wedding to **Charlene Newton '89**, they traveled to Georgia where Scott held a summer internship in economics with the Federal Reserve Bank of Atlanta.

**Wes L. Woolbright** is in his first year of the four-year joint degree program at Willamette's College of Law and Atkinson Graduate School of Management. He is also a debate coach at WU.

## GSM Notes

**Patrick Pine '74, M'76** is the administrator of the House Majority Office of the Oregon Legislature in Salem. He and his wife, Deborah, have two daughters, Courtney and Kelsey.

**Sherry J. Witt '75, M'78** is an administrative/research assistant in the computer section of the medical department at Stanford University.

**Scott G. Gunning '77, M'79** is a partner with his brother in personal and commercial insurance for Gunning & Associates in Issaquah, WA.

**Alan M. Shiffer M'79** is a principal for Rubicon West, Inc. in Lake Oswego. He also keeps busy as Atkinson Graduate School Alumni Association president.

**Jim A. Vangelos M'79** was promoted to Eastern divisional sales manager at Ocean Spray Cranberries, Inc. in Lakeville-Middle, MA. He is responsible for sales in excess of \$250 million, including managing five regional sales managers and 17 food brokers.

**Larry J. Schuetz M'80** earned a Ph.D. at Oregon State. His thesis title was "An Analytical Model for Implementation of Statistical Process Control."

Larry is an instructor in the business department of Linn-Benton Community College.

**Barbara (Maier) Dugan M'81** is a volunteer with the YWCA of Salem. She dedicates her time to programs to educate women about financial planning. She contacts potential facilitators, trains them and attends and evaluates the weekly classes.

**Kathie M. Golik M'82** is human resources manager for AT & E Laboratories in Portland.

**Greg B. Millard III M'82** lives with his wife, Gala, and sons Cameron, Jordon, Dallin and Jackson in Salem where Greg is co-owner of Jackson's Books.

**Zafar U. Ahmed M'83** earned a Master of Professional Studies degree in international development, with a concentration on planning, at Cornell University. He returned to the United States after working for several years for Aga Khan Foundation, Rural Support Program in Pakistan.

**Ted J. Leonard M'85** is a Certified Management Accountant. He and his wife, Karen, live in Alaska, where he is an accountant for the Matanuska-Susitna School District.

**Linda (Nugent) McCullough M'85** received her CPA license in March 1989. She is an accountant for Johnson & Glaze in Salem.

**Eric B. Hannibal '84, M'86** is a Certified Management Accountant.

**Lori (Ballard) Sauter M'86** is a Certified Management Accountant.

**Kathryn Van Natta M'86** is in project management at Boeing Computer Services in Seattle.

**Scott Davidson M/L'87** is a contract administrator for Intel Corporation in Portland.

**Leta Havea M'88** is a business adviser for the Tonga Development Bank. It is a new position, providing finance, accounting, and marketing assistance and advisory services to clients.

**Kippe Spear M'88** is a manager for Gunderson, Inc. in Portland.

**Jon Sprecher M'88** is a project manager for a hydrogeology company, Brown & Caldwell, in Portland.

**Michael Code M/L'89** is an attorney for Hinshaw Culbertson et al in Naperville, IL.

**Scott Coe M'89** is a budget/financial analyst for Bonneville Power Administration in Portland.

**Linda Gilbert M'89** is operations manager for the House Majority Office in the Oregon House of Representatives.

**Rawleigh Grove M/L'89** is an attorney for Ellis and Li in Seattle. He is married to **Christine (North) '88**.

**Ron M. Hittner '87, M'89** is a consultant for Andersen Consulting in Portland.

**Kevin C. Horst M'89** is a management consultant for Thomas Ross and Associates in Seattle. He consults with small businesses in the northwest.

**Kirk M. Marston M'89** is an assistant auditor for the California Auditor General's Office in Sacramento.

**Scott R. McIntyre M'89** is a financial analyst for Vredenburg Corporation in Reston, VA.

**Siew-Choy Mok M'89** is an administrative assistant for the Port of Singapore Authority.

**Sherry B. Much M'89** is an accounting instructor for Willamette University, College of Liberal Arts.

**Dong-Chung Park M'89** is a Ph.D. candidate at the University of Illinois.

**Pushker Renjen M'89** is public affairs coordinator for State Farm Insurance Company in Salem. He deals with legislative issues and advertising.

**Mark A. Wisneski M/L'89** is a compliance officer for the Oregon Ethics Commission in Salem.

**Keith A. Young M'89** is a broker for Norris, Beggs & Simpson in Portland.

## Law Notes

**Yvonne (Cornell) Montchalin** L'30 received "Woman of Achievement" honors from Clark College in March. She helped form the Friends of the Gorge and is still on its board.

**Frank H. Pozzi** L'48 of Portland has been named Trial Lawyer of the Year. He heads the firm of Pozzi Wilson Atchison O'Leary & Conboy.

**Orval O. Hager, Jr.** L'49 of the Portland firm Miller, Nash, Wiener, Hager & Carlsen was recently elected president of the Rotary Club of Portland.

**John B. Matheny** L'51 of Sacramento is semi-retired and self-employed. He is sitting as a volunteer Superior Court judge for settlement conferences on the state and Sacramento County "Fast Track," an effort to get most civil cases to trial within a year.

**Richard Brownstein** L'53 received an Award of Merit from the University of Judaism. The award recognizes leadership in both the Jewish and secular communities.

**Joseph B. Richards** L'54 of Eugene is a member of the board of the Oregon Law Foundation and chairman of the state-wide advisory committee to the Department of Environmental Quality (DEQ) on recycling and solid waste reduction.

**Leonard W. Pearlman** L'59 is company manager of UBEH Investments in Portland.

**William B. Crow** L'61, a Portland attorney, was elected to the American Judicature Society board of directors. He is a fellow of the American College of Trial Lawyers, a member of the International Association of Defense Counsel, American Bar Foundation and member of the Oregon State Bar Judicial Administration Committee.

**Evelyn Scott (Nafus) Ferris** L'61 is executive assistant to the director of the Oregon Department of Insurance and Finance for Workers' Compensation in Salem. She also serves on the Execu-

tive Board of the International Association of Industrial Accident Boards and Commissions.

**John Patrick Cooney** L'62 has been appointed as a part-time federal magistrate in Medford.

**Paul K. Davis** L'63 is the new mayor of Bend.

**Raymond B. Little** L'63 of Seattle is chief administrative law judge for the Department of Health and Human Resources.

**Phillip Chadsey** L'66 of Portland was recently reappointed state chairman of the American College of Trial Lawyers.

**Stan F. Long** L'67, president and chief executive officer of SAIF Corporation, spoke at a presentation on worker's compensation presented by the Monmouth-Independence Chamber of Commerce.

**Warner E. Allen** L'69 was promoted to the rank of Marine colonel while serving with 4th Force Service Support Group in Portland. He is married to **Bonnie (Bailey)** L'68.

**Rex A. Bell** L'69 is Clark County district attorney in Las Vegas.

**Ronald H. Clark** L'69 is chief King County prosecuting attorney in Seattle.

**Robert T. Jett** L'69 is executive vice president of product development of CFI Bankers Service Group in Portland.

**David E. Rhea** L'69 of Bellingham, Washington, is District Court judge for Whatcom County.

**John L. Tatum** L'69 is vice president and general counsel at Regulatory Resources, Inc. in Livonia, MI.

**Douglas L. McKee** L'70 was recently promoted to senior vice president of administration and chief financial officer of Pay Less Drug Stores. He will oversee financial departments, plus human resources, public relations, legal, insurance and benefits.

**J. David Bennett** L'71 of Portland is chairman of the board of Tualatin Valley Economic Development Corporation. He and his wife, **Bonnie Cruson** '64, have a son, **Joshua**, who is a freshman at Willamette.

**Gary D. Allen** L'72 is an associate attorney with the law firm of Emmons, Kropp, Kryger, Alexander & Egan in Albany, OR.

**Ron C. Mattson** L'72 is senior contracts manager of the Propulsion Systems Division for Boeing Commercial Airplane Group in Seattle.

**Mike C. McClinton** L'72 of Salem was elected secretary-treasurer of the Oregon Association of Defense Counsel. The group is a trade association of 500 members of the Oregon State Bar who devote most of their trial practice to the defense of civil damage cases.

**Greg C. West** L'72 began a two-year term on January 1 as presiding judge for Marion County Circuit Court in Salem. The circuit court has seven judges.

**Thomas J. Westbrook** L'72 is president of WestCap Forest Products, Inc. of Littlerock, WA.

**Marla Ludolph-Heikkala** L'74 was honored by George Fox College as the 1990 Young Alumnus of the Year. She is a member of the Washington State Bar Association, Washington State Trial Lawyers Association, National Association of Social Security Claimants Representatives, Association of Trial Lawyers of America, Clark County Bar Association, and has served on the GFC Board of Trustees since 1984.

**Joe H. Hobson** L'75 and partner **John Lien** L'75 were the attorneys who helped incorporate Keizer, OR, into a city in 1983. Joe deals primarily with real estate law; John deals primarily with estate law.

**Mark Shapera** L'75 lived in Israel from May 1986 through June 1989, and visited Ireland, Scotland and Norway. He joined Gaucher, Peters & Shapera

## CLASS NOTES

in July 1989 in Willimantic, CT.

**Ronald A. Shellan** L'75 is a partner in the Portland firm of Sussman, Shank, Wapnich, Caplan and Stiles where he specializes in business and tax law. He has been appointed to the board of directors of the Robison Jewish Home.

**Steven W. Seymour** L'75, managing attorney with the Portland firm of Samuels, Yoelin, Weiner, Kantor and Seymour was elected chairman of the Oregon State Bar Litigation Section.

**Jay R. Inslee** L'76 is an attorney at Peters, Fowler & Inslee in Selah, WA. He is also State Representative from the 14th District in Washington.

**William D. Schaub** L'76 was promoted to first vice president, counsel and chief operations officer at Capital Consultants, Inc. in Portland, Oregon's second-largest investment advisory firm. A member of the American Bar Association, the Multnomah Bar Association and the Oregon State Bar Election Law Reform Committee, Schaub is also a director of the Portland Rose Festival Association and a director of the Oregon Military Museum and Research Foundation.

**Gregory A. Parker** L'77 of Seattle is a new associate with Gordon, Thomas, Honeywell, Malanca, Peterson and Daheim. His practice includes taxation, corporations, partnerships and general business.

**Mark E. Birge** L'78 of Lake Oswego joined Aldrich, Kilbride and Tatone as a tax partner, specializing in individual and corporate income taxes, financial planning, estate planning, and compensation planning.

**Lorraine (Harrison) Blalock** L'79 of Folsom, CA, is president/CEO of Disability Evaluations Group in Sacramento. She notes that son **Jeff** L'82, who attended law school with her, is leaving the Navy and will join the family business.

**Liz L. Fancher** L'80 is assistant city attorney in Bend. She was elected president of the Oregon City Attorneys As-

sociation for 1990.

**Corinne Sheraton** L'80 of Salem is chief referee for the Land Use Board of Appeals.

**Melinda (Lewkowitz) Cauvin** L'81 of Scottsdale, AZ, is a member of the Oregon, California and Arizona bars. She opened a solo practice in Scottsdale in February.

**Mark B. Comstock** L'81, a Salem lawyer, was elected chairman of the Debtor-Creditor Section of the Oregon State Bar for 1990. His wife is **Wendy Lewis** L'81.

**Louis A. Falcone** L'81 of Woodinville, WA, is labor relations counsel for Timber Operator's Council, Inc. He and his wife have two daughters.

**William R. Phillips** L'81 of Seattle is an attorney with Burgess, Kennedy & Fitzer in Tacoma. He and his wife, Debra, have two children.

**Richard J. Scruggs** M/L'81 is a special assistant U.S. Attorney, taking drug dealers from the mid-Willamette Valley into U.S. District Court.

**Elizabeth (Pike) Martin** L'82 is a partner with the firm Gordon, Thomas, Honeywell in Seattle.

**Chrystal (Sommers) Brand** L'83 is a partner in the firm of Baxter Bruce Brand & Rodriguez in Juneau, AK.

**Jerry F. Czuleger** L'83 is deputy county counsel of the County of Santa Barbara in California. He and his wife have a three-year-old daughter.

**Joel K. Pearsall** L'83 is a partner with the law firm of Heltzel, Upjohn, Shaw, Williams, Yandell & Pearsall.

**Joy (Holland) Hansler** L'84 of Moreno Valley, CA, is staff attorney for Farm Credit Services of Southern California.

**William J. MacKay** L'84 of Grants Pass, OR, is a judge for the Josephine County District Court.

**Kerry R. Tymchuk** L'84 of Washington, D.C., recently won \$30,000 on the television game show *Jeopardy!*

**Tymchuk**, who is U.S. Secretary of Labor Elizabeth Dole's chief speech writer, won four shows.

**Thomas R. Goode** L'85 is a new sales associate with Colliers Macaulay Nicolls International.

**David D. Loreman** L'85 of Sandy, UT, is circuit court judge pro tem in Salt Lake City and teaches business law in the MBA program at Westminster College.

**Lisa Murkowski** L'85 is an associate attorney with Hoge and Lekisck in Anchorage.

**Mark E. Mills** L'86 is an associate with Clarke, Bovingdon & Cole in Seattle.

**Diana G. Parker** L'86 has accepted a position with the newly established office of Assigned Counsel in Yakima, WA. Attorney and WU graduate **Louis Fessler** L'75 is director.

**Thomas J. Slagle** L'86 is an attorney with the State of Alaska in Juneau.

**Douglas K. Walker** L'87 is an associate with the firm Clark Ladner in its Haddonfield, NJ, office.

**Kevin J. McCarty** L'89 has joined the law firm of Douglas, Carson, Dickey & Lynch in Salem as an associate.

**Steven L. Patterson** L'89 is associated with the firm of Brophy, Wilson, Duhaime, Mills, Schmor & Gerking in Medford.

**Janai Powell** L'89 has become the first clerk for the newest justice of the Washington Supreme Court in Olympia. She will provide primary research support to Justice Richard Guy.

**Scott J. Schaub** L'89 is an attorney with Kulla & Ronnau, P.C. He and his wife, Diana Yeakley, have two daughters.

**Jeffrey Wilkinson** L'89 is an associate with Churchill, Leonard, Brown & Donaldson in Salem. His practice includes commercial law, civil litigation and construction law.

## Marriages

**Grace Morton Sparrow** '50 married Sven Wahlberg on June 28.

**Louis Parker** L'65 of Phoenix was married in Hawaii in November 1989. In addition to his research, writing, litigation and consulting work with other trial lawyers in Arizona, he is an AAA arbitrator, Superior Court arbitrator and hearings officer to the Arizona Department of Environmental Quality.

**Susan (Corcoran) Hayes** '68 married Jonathan A. Hayes on October 22, 1988. Susan is vice president of CitiCorp North America, Inc.

**Sallie E. Gordon** '69 was married on September 23 to Christopher Hanson. They took a short respite in the Redwoods before returning to their jobs in Philadelphia.

**Jackie (Shivers) Sims** '70 and her new husband, Jim, received an award for 1989 Outstanding Historical Restoration by the City of Ashland for their home. They invite any WU grads to come and stay at the Fox House Inn.

**Helen (Schmidt) Roberts** '73 and new husband Thomas recently traveled to Yellowstone and New England.

**Jaclyn Fisher-Eiquihua** '75 was married on April 22 to Ray Eiquihua. They moved to Albany where Jaci seeks a teaching position.

**Henry W. Mosley** M'79 and Carol Watts Mosley were married in December 1989, in California.

**June A. (Kaiser) Campbell** L'80 married Tom Campbell in September. Class of '80 members attending the wedding were **Janet Gray**, **Steve Goldstein**, **Patricia (Hickey) O'Brien**, and **Dan McMonagle**. June is in practice with the Seattle law firm of Williams, Kastner & Gibbs.

**Steven M. Prince** M'82 married Mauria Kathleen Jensen on October 7. Steve is branch manager for First Interstate Bank in Yakima, WA.

**Jack W. Schifferdecker Jr.** L'82 was married to Nancy Elizabeth Fisher in March 1989.

**Salley A. Sederstrom** M'83 and **Forrest Rodgers** M'90, GSM assistant dean, were married in August 1989.

**Susan A. Wilson** '83 married Robert Fisher on July 2, in Burlington, VT. They met nearly three years ago through their involvement with the Peace and Justice Center in Burlington.

**C. David Eyster** L'83 of Ukiah, CA, is deputy district attorney in Mendocino County. He was married to Elizabeth Salado on March 10.

**Thomas R. Gygi** '85 and Kirsten Kelly Peterson were married on April 15, 1989. They live in Maple Valley, WA.

**Cynthia Thies Levine** '85 married Ron Levine on August 26. Cindy is employed as a medical social worker in Indianapolis, IN.

**Robert L. Baugh, Jr.** '86 married Kelly J. Baugh on August 5.

**Doug L. Sommer** '88 and Emily Sommer were married on July 15. Recently, Doug helped coach Tigard High School's football team to the Class AAA semi-finals.

**Jay P. Desai** M'89 was married to Medhavi Patel in December. He is a staff consultant for Arthur Andersen and Company in Bombay, India.

## Births

**Bob W. Rieder** '64 and his wife, Cynthia, became the parents of their fourth child, Maryanne Grace, in June.

On August 5, **James W. Kubitz** '71 and his wife, Susan Urig, had a baby boy, Maxwell Daniel. James is now in his second term on the Anchorage Municipal Assembly.

**Dana (Fobes) Bowne** '74 and her husband, Jon, announce the birth of Walter Burling on April 4, 1989. Walter joins an older brother and sister at their home in Fairbanks, Alaska.

**David A. Reese** '74 G'76 and **Kim (Witte) Reese** '75, are the new parents of a son, Kyle David, born August 24. Kim and David live in Poway, CA, where David is a publisher with Californian Publishing Company.

**Don B. Wassam** '74 and his wife, Sue, are the proud parents of a daughter, Kristen Marie, born January 31.

On December 19, Benjamin David joined mom, **Kathryn E. (Yocom) Matson** '77, dad, **Gary M. Matson** '78 and sister Jennifer.

**Alan B. Hughes** '78 and wife Julie had a baby girl, Natallie, on December 14. They live in Seattle, where Al is a lawyer.

**Marguerite (Hill) Roberson** '78, a customer service officer for U.S. Bank of Oregon, and her husband, Rodney, announce the birth of their second child, Gary Ross Roberson II on May 10. He joins sister Elizabeth.

**Ted C. Luebke** L'78 works at the Santa Clara County Superior Court in San Jose. He and wife Melissa have a new son, William Donald, born December 13.

**Libby (Algood) Olsen** M'79 and her husband, Tom, are the new parents of a daughter, Helen Elizabeth, born November 21.

**C. William Rehm** L'79 and his wife,

## CLASS NOTES

**Liz (Herrmann) '80**, announce their first child, Sarah Anne, born September 23.

**Alice (Hunsaker) Smith '79** and her husband, Chris, are the new parents of son Kevin Matthew, born May 6.

**Saleem B. Ahmad '80** and his wife, **Kate (Suckow) Ahmad '82, M'84**, are the new parents of a son, Camran, born May 19, 1989.

**Ernest L'80 and Cammy (Shay) Artiz '80** of Houston, Texas, are the new parents of Soledad Shay Artiz, born January 20. Ernie is practicing law, and Cammy is teaching at Houston Community College.

**Kelley (Charles) Poynter '80** and her husband, Richard, announce the June 13, 1989, birth of their daughter, Robyn Joanne.

**Katherine (Berggren) Richards '80** and her husband, Bob, joyfully announce the birth of their new daughter, Kaitlyn Alice, born December 28. Katie joins brother Sean and sister Emily.

Branden Kota was born September 5 to **Masaki Shimada '80** and his wife, Sue. He joins brother Sean Yoji.

**Paul J. Dugaw L'80** of Chehalis, WA, and his wife, Marie, welcome new daughter Claire, who joins two brothers.

**Annette Bader '81** and James Jarvis have a son, Ahren Bader-Jarvis, who will celebrate his first birthday this year. They live in Portland.

**Jeffrey W. Sandler L'81** of Tempe, AZ, is deputy county attorney, Major Felony Bureau for Maricopa County in Phoenix. Jeff and his wife, Vicki, have a new son born in June 1989, joining a daughter.

**Donald Kraemer, Jr. '81 M/L'87** and his wife, Suzanne, are the proud parents of a daughter, Hillary Elizabeth, born February 16, 1989, in Portland.

Charlie Martin joined parents **Becca (Roberts) '83** and **Chuck Martin, Jr.**

'81 on August 10. Becca is taking the year off from school, and enjoys being a full-time mom. Chuck is coaching basketball. They live in Wasilla, AK.

**Randy P. Oetkin '80** and **Lisa (Lazzareschi) Oetken '82** announce the birth of Annalise Marie, born August 10. She joins sister Alexandra Claire. Randy is an attorney and Lisa is a legal secretary in Sacramento.

**Lyman E. Howard II M'82** and his wife, Erin, have a new son, Lyman Edward III, born February 18, 1989.

**Dan S. Hoyt M'82** and his wife, **Reis (Wilbanks) Hoyt M/L'83** are the proud parents of a son, Zachery, born February 19, 1989.

**Keith A. DeGrandmont M'82** and his wife, MaryJo, have a daughter, Lauren Michelle, born in October 1989.

**Michael E. Delanty '82** and his wife, **Laurie (Eader) Delanty '84** proudly announce the birth of their first child, Dain Barrett, born April 14. Michael is a vice president/account executive with JBL&K Insurance in Portland.

**Lori (Schmer) U'ren '82** and her husband, Doug, are pleased to announce the birth of their first child, Hilary Kay, on August 27.

**John E. Combs L'83** is a sole proprietor in Tacoma, Washington. He and his wife, Kitty, recently had a new addition to their family, son Lucas.

**Rebecca L. (Johns) Dop '84** and her husband, Randy, are the new parents of son Jeremy Lee, born September 22.

**Richard G. Kokesh '84** and **Jessica (Slavich) Kokesh '86** had a baby boy, Zachary Adam, on July 12.

**Jim C. Fleming M'84** and his wife, Nancy, have a new daughter, Amy, born in April 1989.

Douglas Cameron was born to **Scott '85** and **Wendy Bradshaw '86** on April 26. They live in Clayton, CA, where Douglas is a district manager for Bradshaw Inc.-North, and Wendy teaches at Creative Learning Center.

**Barbaradee Foote '85** gave birth to the first baby of the new year, Amber Gold, in Lake Elsinore, CA, at 2:20 a.m. on January 1. Barbaradee received her master's in counseling with an emphasis on marriage, family and children in December 1988. She is working with the chronically mentally ill and has specialized in alcoholics.

**Catherine (Buttice) Galvin L'85** is deputy prosecuting attorney of Thurston County in Olympia, WA. She and husband Daniel (also an attorney) have a new family member, son Alexander, born August 17.

**Bryan W. Gruetter L'85** and his wife, Michelle, of Bend, OR, welcome their new son, who joins a two-year-old sister. He works in the central Oregon office of Dunn, Carney, Allen, Higgins & Tongue.

**Michael S. and Cathy (Nelson) McLaughlin M/L'85** have a son, Stephan, born December 17. He joins sister, Emily.

**Layne D. Westover M'86** and his wife, Kristine, have a new son, Thomas, born September 28. He joins two brothers. Layne is product manager for new product development at Diet Center, Inc. in Rexburg, ID.

**Sean D. Kuni '85, M'87** and his wife, **Paige (Parker) Kuni**, have a new daughter, Kristin Marie, born January 29, 1989. Sean is sales manager for Kuni Cadillac BMW & Sterling in Beaverton.

**Tom W. Nisbet-Lance M/L'89** and his wife, Jerri, have a new daughter, Kelsey Elizabeth, born February 15, 1989. Tom is a private investigator for TMI Investigation in Salem.

**Bill H. Prentice III M/L'89** and his wife, Caren, are the proud parents of a new son, Joseph, born July 11. He joins two sisters, Alyce and Natalie. Bill is a general counsel for Bonneville Power Administration in Portland.

## In Memoriam

**Harold D. "Papa" Sohn** died November 20. A Salem native, he worked for the Willamette Maintenance Department for the past five years. He was an army veteran of the Korean conflict. He had served as president of the Bent 8 Car Club, and he enjoyed sports and cooking. He is survived by his wife, Shirley, one son and seven daughters.

**Carol E. (Rahskopf) Petree** '23 died in May. After graduating from Willamette, she taught in Oregon and Washington high schools. She was active in church and community activities. She is survived by two children and four grandchildren.

**Martha (Hutt) Mahoney** '24 died March 8 in Hermiston, OR. She taught high school and college at various locations in Oregon. She was president of the Pendleton Garden Club, District Garden Club and Oregon State Garden Club. She was a National Garden Club member and nationally accredited instructor in flower show schools.

**Laura (Best) Fisk** '25 died December 27.

**Lucile (Wylie) Brechtel** '26 died January 27.

**Esther Ruth (Bauman) Brougner** '26 died January 3 in Newberg, OR. She was a founding member of the Vancouver First Friends Church. She and her late husband, **Dr. John Brougner** '23 hosted August picnics for mid-20s alumni at their suburban Vancouver home for many years. In 1980 they moved to Newberg, where she attended the Newberg Friends Church and the Newberg Christian Women's Club. She was honorary chairwoman of the president's council of the George Fox College Century II campaign. Survivors include her son, Gordon.

**Frank Molstrom** '26 died February 16.

**Floyd H. "Spud" Emmons** '30 died April 26 in Portland. He spent most of his life in the Salem area before moving to the Gleneden Beach area of the Oregon coast in 1964. He served in the Army during World War II. He was an executive for the Credit Bureau in Salem. He was a member of the Masonic Lodge. Survivors include his brother, **C.S. "Pat" Emmons** '31, LLB'31, and his sister, **Florence Emmons Riggs** '30.

**Lucille (Flanary) Rose** '33 died September 3, 1988. She had worked in the Willamette University library. She is survived by her husband, **Harold E. Rose** '33.

**David Drager, Jr.** '34 died October 6 in Reedsport, OR.

**Frances (Albee) Plancich** '34 died June 19.

**Walter A. Commons** '37, M. Ed. '50 of Eugene died March 8 at his winter home in Yuma, AZ. He was Springfield School District superintendent from 1955 until he left for a position as superintendent of the Jackson County Intermediate Education District in Medford in 1970. He retired in 1976 and moved to Eugene.

**Thelma E. Davis** '37 died in Salem on March 20. She taught school in Silverton and Lake Grove, then worked at the

Salem Meier & Frank jewelry department for 26 years, retiring in 1979.

**Elizabeth "Betty" (Taylor) Ritchey** '38 died in Independence, OR, January 21. She taught social science and English. In 1943, she enlisted in the Marine Corps Women's Reserve. Following military service during World War II, she returned to Independence to teach. She worked in administration at Oregon College of Education from 1968 until her retirement in 1979. She was a member of Christ's Church in Monmouth. Survivors include two sons.

**Lionel Trommlitz** '39 died December 1.

**James Robert "J.R." Campbell** '40, L'42 died January 7 at his John Day, OR, home. He was a former Grant County circuit court judge from 1966 to 1979 and Oregon Supreme Court Justice from 1980 until his retirement in 1988. He practiced law in Canyon City and John Day for 20 years before he was named to the Circuit Court for the 11th district which covers six counties. He was appointed by Governor Victor Atiyeh to the Court of Appeals in March 1979, and was appointed to the Supreme Court 10 months later. He is survived by his wife, Nell, and two sons.

**Bruce B. Groseclose** '40 died in February. He had recently written a histori-



### Frank J. Healy

**Frank J. Healy** '44, L'47 died January 29 in Salem. He was born in Portland. After losing his sight in the first year of high school, he moved with his family to Salem and finished his high school education at the School for the Blind. He graduated from Willamette University in 1944 and from the College of Law in 1947. He practiced law in Salem and was a part-time instructor at the University. He was appointed Oregon State corporation commissioner in 1954 and served under seven governors before retiring in 1983. He served as president of the North American Securities Administrators Association 1961-62 and received their highest award for excellence in 1982. After his retirement he served as a consultant to the Oregon State Bar professional liability fund. Survivors include his wife, Sibyl and son **F. James Healey** L'79.



## Willamette Trustee Floyd K. Bowers

Floyd K. Bowers, life member of the Willamette University Board of Trustees, died in Salem on May 4. He was a certified public accountant and partner in the firm Touche Ross & Co. On the WU Board of Trustees, Bowers served on the Organization, Financial Affairs and Endowment committees. He was named a life member in

1978. He served as chairman of the Oregon State Board of Accountancy and chairman of the board of Salem Memorial Hospital. Survivors include his wife, Alice, and son, Gene '61.

cal novel, *If Your Enemy Hanged*. He is survived by his wife, E. Mildred.

The Honorable William C. Speirs '41 of South Laguna, CA, died November 23.

Robert W. Pentney '42 died February 1. A severe stroke forced his retirement from the National Weather Service, situated at the FAA facility in Auburn, WA, in 1984. He is survived by his wife, Leanore and one daughter.

Lucille J. (Pierstorff) Middleton '44 died March 5 in Keizer. She was a first grade teacher for 31 years. She enjoyed word and math games and traveling. She is survived by husband Charles and three children.

Robert J. Weaver '45 died April 1, 1989.

John C. Roth, Jr. '49 died in Salem on November 20. He graduated from the University of Oregon Medical School in 1954, and taught anesthesiology at The U of O Health Sciences Center until 1970. He practiced at Salem Hospital until retiring in 1988. He was a World War II Army veteran who served in the Pacific area. He enjoyed reading and classical music. Survivors include his wife, Ivy, and two children.

Lou Lamar Williams '54, L'60 died in Portland February 10. He was legal adviser to the chief of the Portland Po-

lice Bureau in the 1960s and was a lecturer in Portland State University's college degree program for students planning to enter police work. He served as district attorney of Columbia County and was assistant chief criminal deputy in the Multnomah County District Attorney's office. While there, he received a Ford Foundation scholarship for two years of study at the Northwestern University Law School in Chicago. He also had a private law practice. He is survived by his wife, Martha, and three daughters.

Richard L. Amato L'61 of Portland died December 18. He operated his law practice in southeast Portland for the past 28 years. At the time of his death, he was serving his second term as a member of the University of Portland Board of Regents. His daughter, Lisa, attends the WU College of Law.

Masahi Watanabe '61 died on January 1. He had been a teacher at Nyssa High School.

Charles H.S. Howe L'62 died June 21 in Nashua, NH. He was vice president for legal affairs with Sanders Associates, Inc. in Nashua. Previously, he served as vice president, general counsel and secretary. He was a member of the Oregon State Bar, American Bar Association, the American Society of Corporate Secretaries and was a communicant of the Amherst Congrega-

tional Church.

Lucian J. Carson L'69 of Salem died January 19. He studied Russian at the Army Language School in Monterey, CA, and later attended WU. For many years he was a partner with the Salem law firm of Douglas, Carson, Dickey and Lynch. He was past president of Consumer Credit Counseling. He was on the Salem Library Foundation Board and enjoyed reading and baseball. Members of the Law class of '69 held a dinner in Salem on February 22 to organize a memorial fund in his honor.

Robert M. Janzik '73 died October 14.

William T. McReynolds '39 died in Portland December 18. He earned a bachelor of divinity degree from Pacific School of Religion in 1953 and served as minister of La Selva Beach Community Church in CA. In the late 1950s, he became a co-owner of the Alameda Ridge mansion in Northeast Portland. He was a World War II conscientious objector who continued his peace activism after the war. He and other volunteers restored a Congregational church in England that had been damaged by bombs. From 1979 through 1985, he operated the Now and Then Antique Shop in Portland. There are no immediate survivors. Remembrances may be given to Willamette University.

Michael Keith Allen '84 died March 5.

Ada C. Lee, daughter of former Willamette University president Dr. John H. Coleman (1903-1906), died March 19 in Salem. She is survived by her daughter.

Jeanette Putnam, wife of Professor Emeritus of Theatre Robert Putnam, died March 21. She is survived by her husband and three children.

Willamette Council of Camp Fire & Willamette University

present the



7<sup>th</sup>  
Annual  
Midsummer  
Night's  
MUSICALE

... featuring a gourmet picnic by the Mill Stream on the Willamette University campus, followed by a concert by John West '73 in Smith Auditorium

Sunday, July 29

6:30 p.m. Picnic

8 p.m. Concert

\$20 per person For information call: 581-0477



Midsummer Night's Musicale  
Order Form



Name \_\_\_\_\_

Address \_\_\_\_\_

City \_\_\_\_\_ State \_\_\_\_\_ Zip \_\_\_\_\_

Number of tickets \_\_\_\_\_ @ \$20 each = \$ \_\_\_\_\_

(Dinners come in boxes for two)

Amount  
enclosed

Please make checks payable to Camp Fire and mail with this form to:

Midsummer Night's Musicale  
c/o Willamette Council of Camp Fire  
PO Box 2352, Salem, OR 97308



## Providing for Future Generations

Many special friends have invested in Willamette through bequests and other testamentary gifts to the University. Their generosity and foresight have truly provided vital educational support for future generations of Willamette students.

Unfortunately, though, Willamette often does not learn about such gifts until a special friend has passed on...with the University not having had an opportunity to say "Thank You!"

Those who are providing for future generations by naming Willamette a beneficiary of their estates deserve special recognition. If you have done this, or are thinking about it, please consider informing us—we would like to express our gratitude firsthand, clarify how you want your legacy to live on beyond your years, and periodically send you special news about the University.

Providing for Future Generations—

An affirmation that

"Not Unto Ourselves Alone Are We Born";

An investment in the dreams and potential of others;

A living legacy of love.

---

Michael W. Bennett ■ Waller Hall ■ Fourth Floor ■ Willamette University ■ Salem, Oregon 97301 ■ (503) 370-6340

---

**WILLAMETTE**  
**SCENE**

MS. CAROL A. DROST  
9344 LIBERTY ROAD S  
SALEM, OR 97302-4651

A