



# WILLAMETTE SCENE

SUMMER

1988

## WORLDLY WISE

International education  
thrives

# WILLAMETTE SCENE

PUBLISHED FOR ALUMNI & FRIENDS OF THE WEST'S OLDEST UNIVERSITY

SUMMER 1988 VOL. V, NO. 2

**Editor:**

Andrea G. Dailey

**Art Director:**

Susan C. Blettel

**Contributing Editor:**

J. Wesley Sullivan

**Contributors:**

Robert Gormsen

James A. Hand

Jerry E. Hudson

Norman Huffman

Barbara S. Mahoney

**Class Notes:**

Heather Malcom

**Photographers:**

Susan Blettel, Jill Cannefax,  
Francoise Goeury-Richardson

Shan Gordon,

Norman J. Hudak

Sally Peters

**Cover Photograph:**

Professor Norman J. Hudak



Published Winter, Spring, Summer and Fall by Willamette University, Salem, Oregon, for constituents of the West's oldest university. Second class postage paid at Salem, Oregon 97301. Send address change to University House, Willamette University, Salem, OR 97301.

7A-889-17.5mTL

(USPS 684-26000)

## CONTENTS

---

- 3 **Cover:** Worldly Wise: International Education
- 6 Tokyo International University Salem campus
- 9 Waller Hall: Restoring the past
- 11 Commencement 1988
- 13 Smullin Hall dedicated
- 15 Campus Report: new CLA dean, art gallery friends, baseball stadium goes up...and more
- 18 Semester calendar
- 20 Book reviews
- 22 Alumni Weekend
- 26 Class Notes

**Cover photograph:** Professor Norman J. Hudak took this photograph of "Lausanne's counterpart at Willamette's sister university"—one of the residence halls on the campus of Xiamen University in China.

# International Education Key to Future Success



**B**y the beginning of the next century, it will not surprise me if colleges and universities that do not offer an international dimension in their educational programs are required to print labels on their catalogs announcing that their colleges are hazardous to the health of students and the nation. International education is that important.

We have spent years teaching the value and importance of independence; it is a basic tenet of several academic disciplines. It is now time, however, to stress interdependence. Technology has made our world increasingly interdependent, and the extent to which we solve the problems facing the United States and the rest of the world may well depend on our knowledge and understanding of others in the world. This is the rationale that drives our significant efforts in international education.

Last October's financial crisis in the stock market was a vivid demonstration of the interdependent economic web of trade, investments, and other economic arrangements. We no longer have the luxury of thinking only in national terms. Economics must be viewed in a global context—monetary policies, the influx of foreign capital to the United States, international debt, and patterns of international trade. The volatility on Wall Street had repercussions in Tokyo, London, Hong Kong, and Bonn, and Black Monday and its aftermath provided a shocking example of global economic interdependence.

Of course, the world is not merely economically interdependent, but culturally and politically as well. In addition to the tremendous knowledge gained about other people and other cultures by foreign study, there is a new perspective gained about our own national values and a healthy, functioning democratic political system in the United States. We learn with the founding fathers that democracy is the worst of all political systems—except for all the rest.

In front of the Hatfield Library stands the Whipple Clock Tower. On the four sides of the tower are carved quotations from Senator Hatfield that are especially appropriate for a liberal arts college. One of the statements is, "Education Brings National Security." To me that rings especially true when the education is international education.

At Willamette, we are committed to enhancing the effectiveness of every dimension of international education—by study abroad, by emphasizing it within the regular curriculum on campus, by increasing the number of international students studying on campus, and by maximizing the impact on the daily lives of all our students. In this issue of the *SCENE*, we highlight several aspects of this important dimension of our education mission.

A handwritten signature in dark ink that reads "Jerry E. Hudson". The signature is written in a cursive, flowing style.

Jerry E. Hudson



*A statue of Chinese author Lu Xun graces the grounds of Xiamen University in China.*

# WORLDLY WISE

A vigorous  
program of  
international  
education  
enriches  
students and  
campus life



By J. Wesley Sullivan

*A study group from the Independent Liberal Arts Colleges London semester program at Stonehenge in England. The group is led by Willamette University Political Science Professor Suresht Bald.*

Willamette University is painting its future in bold strokes on an expanding worldwide canvas.

The university's curriculum continues to push its horizons beyond the Willamette Valley to the world. With a growing array of overseas study programs and a burgeoning curriculum of international studies on its home campus, it practices what it teaches.

At one time or another, Willamette students can be found in:

- Paris — studying French language and culture and living with French families.
- Spain — at a new university at Alicante, where all the courses are taught in Spanish.
- Japan — benefitting from Willamette's expanding relationship with Tokyo International University.
- China — studying at Xiamen University and touring the People's Republic.
- Shanghai — studying Chinese

law at the East China Institute of Politics and Law.

- Korea — learning Pacific Rim economics, politics, and history at Kookmin University.
- The Soviet Union — in the Crimea, studying at Simferopol State University, Willamette's newest sister university.
- Germany — studying German language, culture, and civilization at the University of Munich.
- England — studying in the London suburb of Watford and in the great city itself.
- Italy — renewing contact with Renaissance culture and art in Florence.

Willamette's internationalist thrust grows out of its liberal arts mission in a world constantly being compressed by technology and communications.

"It's essential that a truly educated person have a better under-

standing of the entire globe," WU President Jerry Hudson contends. "This includes studying abroad and studying about foreign cultures."

Willamette is not unique in setting such goals, Hudson says. "Our uniqueness is in our ability to achieve them. We can alter our curricula to fit our objectives much more easily than can bigger schools with their bureaucracies."

The international emphasis is reflected in all three of the university's colleges—liberal arts, management, and law.

The College of Liberal Arts offers a major in international studies, a program that examines nations' relationships from social, cultural, economic, political, geographic, and historical perspectives. In addition to the traditional focus on Western Europe, the program pays special attention to the Hispanic culture, the Soviet Union, and East Asia. The program requires a minimum of two

years of foreign language study; most emphasis areas require courses beyond that. Russian, Japanese, and Chinese are growing fastest in popularity. Annual enrollment in Japanese language courses, for example, increased from 54 to 178 in the past five years.

The Atkinson School of Management has a full-year sequence in international management issues along with courses in international finance and in Japanese and Asian management styles. Heading the international management studies program is Prof. Richard Wright who, at McGill University, founded what is recognized as Canada's leading program in international business studies.

The College of Law offers nine courses in international law, constituting Oregon's most substantial program in that field. A world view animates co-curricular activities, too. For example, the 300-page autumn 1987 edition of the *Willamette Law Review* was devoted to China and international trade. The college hopes to repeat the coverage every two years, making the *Law Review* a forum for exchange of international opinions on legal subjects.

Willamette's international thrust is particularly needful considering the student body, according to R.S. "Sam" Hall, vice president for academic affairs.

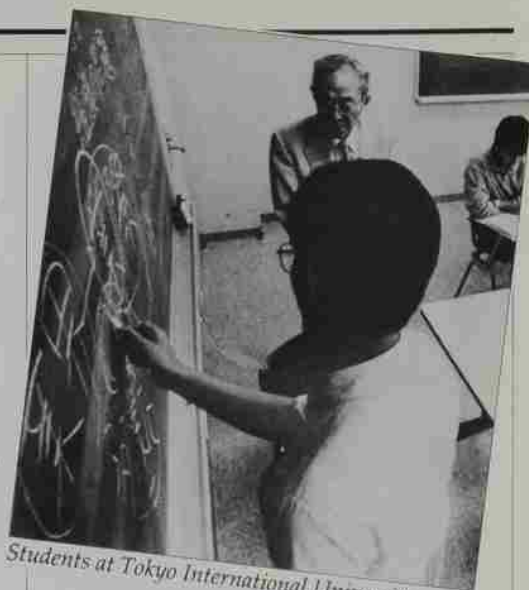
"About half our undergraduate students are from Oregon—and

many have traveled very little out of the state," he says. "For students with a provincial background, there is tremendous advantage to living in another culture. It's important that they be a part of that culture during their overseas experience, and not just be tourists.

"Perhaps the most valuable part of this experience is in getting a new perspective on your own country, looking at it from overseas and through the eyes of another culture," Hall adds. The total number of Willamette students going overseas is small—about 20 percent of graduating seniors have participated in a program. However, Hall believes that as returning students enrich the Salem campus community with their experiences and new perspectives, the "multiplier effect" makes the program's impact considerably greater than numbers might indicate.

Relationships with schools in Pacific Basin nations are the cornerstone of Willamette's international education programs, according to Hudson.

Willamette's longest and strongest overseas connection—with Tokyo International University (TIU) at Kawagoe City, Japan—is expanding in two directions (see story, page 6). The creation of a TIU campus in Salem will bring as many as 200 Japanese students a year to Salem. For Willamette students, the traditional semester-at-TIU program will



Students at Tokyo International University.

continue; in addition, TIU will be included in a new program starting this fall in which WU students make a comparative study of the politics, economics, and history of the Pacific Rim and the area's relation to Oregon.

Besides a month at TIU, the East Asian study program includes a month's study at Xiamen University in China and at Kookmin University in Seoul, Korea, both of which are sister universities. Besides the classroom work there are also lessons to be learned in doing without hot water in the austere accommodations at Xiamen in the frustrations of dealing with the Chinese bureaucracy about visas, and in adapting to foreign foods. A week's travel in each of the three countries also is included.

Vice Pres. Hall is especially proud of the university's most recent foreign exchange program, with Simferopol State University in the Soviet Union. This sister university agreement grows out of the sister city relationship between Salem and Simferopol.

A pilot exchange of students and faculty is planned for this year. Despite the *glasnost* thaw in U.S.-Soviet relations that makes such an exchange possible, it presents substantial practical problems. Soviet citizens are not allowed to bring money with them, so all the expenses of the visitors must be



Three students about to investigate mining at a museum in Stoke-on-Trent, England

borne on this end. The expense will be "repaid," in a manner of speaking, when Willamette students and faculty visit Simferopol.

In the College of Law, Prof. James Nafziger adds another dimension to Willamette's international stature by conducting a summer study tour to the East China Institute of Politics and Law in Shanghai. The program, now in its fifth year, also brings Chinese law students to Willamette.

Nafziger's program offers a unique opportunity for law students to witness a developing legal system that is still recovering from the Cultural Revolution. "China is a nation preserving a culture 7,000 years old while playing catch-up with the modern world. At times our group feels it is traveling in a time warp," Nafziger says.

Pointing to the contrast in legal systems, Nafziger recalls seeing a street fight in Shanghai. A grandmother came out of a nearby building and quickly separated the fighters. She is a block dispute mediator. She arranged a time when the contestants could come to her to present their case. Only if the quarrel can't be settled on that level will it get into the court system.

Nafziger sees the role of international law increasing as technology and commerce shrink the world. The expanding international law curriculum at the law school is partially in response to demand, as students see more professional opportunities in the developing Pacific Rim business relationships centered in Portland, Seattle, and San Francisco.

Oversight of Willamette's undergraduate overseas programs is through the Off-Campus Study Committee which comprises six faculty members and two students. The associate dean of the College of Liberal Arts, currently Prof. Richard Lord, is the committee's executive officer.

Lord and the committee work with ILACA, a consortium of five

schools that sponsors two programs in England and one in Spain. In these programs, WU students join those from Whitman College and from Gonzaga, Pacific Lutheran, and Puget Sound universities.

The programs at London and Watford are run independently of any British college or university, but most faculty are from nearby institutions. Students live with British families and learn British ways.

The learning experience works both ways judging from the evaluation of the student who wrote of his host family, "I think they learned a heck of a lot from this experience. I'm sure they will be a very nice family for the next American student." Language study is emphasized at the ILACA site at the University of Alicante in Spain and in a Paris program where, for the last seven years, Willamette has hired French professors and classroom space. The Willamette students in France and Spain are under the direction of a Willamette faculty member in each location, and the

students live with French and Spanish host families. In Munich, students from Willamette, Reed College, and Lewis and Clark College spend a year at the University of Munich pursuing studies in German in their major fields.

In addition to programs during the academic year, Willamette conducts several post-session study trips in the summer, guided by WU faculty. Last spring, for example, two dozen students and alumni spent more than three weeks studying art and architecture in Florence; another student group traveled to Hawaii for field studies in the sciences.

Just as Willamette is finding its way to the world, its globe-traveling faculty and students bring back to the Salem campus an ever-expanding base of information and new perspectives about the world. This infuses itself into classroom teaching, informal discussions, and into campus life in ways that are numerous and subtle.

In WISH House, for example, "international" is a way of life. WISH—an acronym for Willamette International Studies House—is a residence for 32 students, many of whom are enrolled in foreign language or international studies programs. Two foreign-language experts also live in the house and help American students with their language studies.

The purpose of WISH House is to foster and develop better understanding among diverse cultures. International dinners and other formal and informal programs promote that end. WISH is just a segment of the pervasive lifting of horizons as a result of its international education programs.

That global emphasis, in Pres. Hudson's view, is part of the university's philosophical commitment to the liberal arts in a world with an increasing interrelated future. "We have both an opportunity and a responsibility to make a difference in that future," he says. ■



Corinne Lewis '88 (R) and friend enjoy Paris.



Library, Tokyo International University, Japan.

# Tokyo International University

*Salem branch campus expands opportunities for sister universities*

By J. Wesley Sullivan

Along with having one of the oldest overseas sister university ties in the nation, Willamette University is the first to have the "sister" move next door.

Current construction of a Tokyo International University branch campus next to Willamette is both the culmination of a 23-year student and faculty exchange and the beginning of a new, exciting relationship that could make Willamette-TIU a hub of international research.

The first phase of the TIU campus, on the old Del Monte cannery property southeast of the campus, will house dormitory, office, and classroom space for 100 students and 4 faculty. Classes may start as early as April 1989, although the campus isn't expected to be ready for full use before September 1989.

A second phase, scheduled in perhaps two or three years, will accommodate another 100 students. It also will feature a language laboratory and a 250-seat auditorium equipped for simultaneous Japanese-English translation. The entire project will encompass about 40,000 square feet, at a cost of about \$5 million.

Pointing to the 58 joint U.S.-Japanese business ventures already located in the Portland-Salem area, TIU Pres. Yasuo Kaneko sees a growing Pacific Rim business research role for the linked campuses. The TIU branch holds

promise as a tourist attraction as well, with a Japanese ornamental garden, gate, and teahouse built into its design.

Kaneko sees the campus as part of the Kaneko family search for new ways to create international understanding and cooperation as a means of building world peace and prosperity. "We have to find new ideas, a new paradigm," he says. "For us [at TIU], it is the global idea, not the national idea.

"To a young person who is internationally minded, to live in a foreign country is the best shortcut to learning the language and culture—to understanding the real meaning of 'international,'" Kaneko says. Then he quotes Goethe: "To learn a foreign language is to double the size of the world."

The academic program at the TIU campus will feature intensive English-language work, a second foreign language (the student's choice of French or Spanish), courses in American culture and politics, and several elective courses which may be the in the student's major field. Half the Japanese students at the TIU branch will live in Willamette residence halls, and half the residence space at TIU will be occupied by Willamette students. This is part of the continuing effort to mesh the two campuses in mutually beneficial ways. An expanding faculty-to-faculty research program between

Willamette and TIU in Japan is laying the groundwork for even closer faculty cooperation.

This all began in 1965 when Kaneko's father, Taizo, decided he needed an American connection for his newly founded International College of Commerce and Economics (ICC), later to become TIU.

Taizo Kaneko had begun his school proprietorship career by opening a preparatory school for Japanese students seeking to gain entry to Tokyo University. Recognizing that many bright students at his prep school were being denied places at Tokyo U., he decided to open ICC.

He dispatched letters to 50 western U.S. colleges and universities offering a sister university relationship. He received 35 replies, 34 of which suggested negotiations with college boards of trustees or faculty committees.

Only one, the letter from Pres. G. Herbert Smith of Willamette, offered to sign the papers immediately. Kaneko, who made the decisions at his private university, liked the prospect of dealing with Smith, who assumed the same prerogative at Willamette.

The first student group, 20 men and 3 women, came from Japan in 1966. All the men wore black suits and ties and white shirts. The women wore kimonos. They came for a summer session of intensive

language training.

By 1973, Willamette began sending student groups, led by a WU faculty member, to ICC. R.A. "Buzz" Yocom, Willamette's registrar and assistant to the university president, with his wife, Elizabeth, led one of the first student groups overseas. "The connection with TIU," he says, "is the best thing that's happened to Willamette in my 40 years here."

To illustrate the broader horizons it opens for WU students, he cites the story of "Lisa" (not her real name) in the first group of students he took to Japan. "She was about as deep as a pencil scratch," he says, "and took only a superficial interest in her Japanese studies. But about halfway through the stay she caught on and began passing others in the class."

After her graduation from Willamette, she went back to Japan to work and later returned to the U.S. to get a master's degree in Far East studies at the University of California-Berkeley. She now is working on a Ph.D. The opportunity to live in Japanese homes is as central as academic studies to the students' overseas learning experience, carrying with it the need to adapt to Japanese customs. Students who might complain about having to do household chores at home nevertheless feel uncomfortable and deprived when faced with the Japanese imperative against guests' helping in any way.

One student evaluated his experience in this manner: "Be sure to be firm about doing things for yourself around the house right from the start. Being waited on hand and foot gets old real fast." Students and their hosts learn compromise and accommodation, along with another language and culture.

Since its inception, the ICC/TIU connection has brought more than 2,000 Japanese students and faculty members to the WU campus. The relationship with TIU started out as a student exchange program but has added new and important dimen-

sions. One of the most exciting is the faculty-to-faculty program headed by Stephen Hey, associate professor of sociology at Willamette.

Formally titled the Joint Institutional Research Project, it searches for ways in which faculty members from the two campuses can coordinate or merge their research. When a joint project is begun, TIU and WU provide housing and research support for visiting faculty.

Hey now is working with Prof. Osamu Inoshita of TIU on a project involving the visually impaired. Describing his research trip to TIU, Hey says, "I went over there with an American agenda. I got there and found a Japanese agenda. I come from an individualistic culture. Over there, I found a collective culture. The Japanese want to work together first, then deal with individual objectives. I learned to adapt to their ways."

Adele Birnbaum, Willamette professor of English, is enthused about her joint research project centering on Japanese and American women writers. Articles and perhaps a book are growing out of this

joint research with TIU Prof. Yuko Kasaki, who visited the Willamette campus in 1987. After Japan was opened to the West in the mid-1800s, Japanese women began chafing under the bondage imposed by the male-dominated culture. The story of this liberation movement is chronicled by the Japanese women writers who are the subject of the research study.

The joint faculty research program is solidifying the link between the two campuses, in Hey's opinion. Birnbaum sees another benefit in that the program "stretches us from our narrow academic background. We discover how much more there is to know about one another." Students share in this new linkage. Hey has tutored one of Prof. Iroshita's students, and one of Hey's students went to Japan to work with Iroshita.

If it is people, rather than programs, that truly link TIU and Willamette, then Ryuji Torihara and Barry Duell come to mind.

Torihara was among the Japanese students to come to WU for the summer program in 1969. He



*Tokyo International University's two campuses in Kawagoe City, Japan.*

returned the next year on a scholarship, graduated from Willamette in 1972, and then returned to TIU to graduate there. Back in Oregon in 1973, he married Karen Loucks '73 of Portland. He worked for the Oregon Department of Transportation and took two years out to go to the Atkinson Graduate School of Management where he graduated in 1978. He now is a full-time employee of TIU, serving as liaison with Willamette in the development of the new TIU campus.

Barry Duell was among the first group of WU students to study at the Kawagoe City campus. After graduation in 1974, he returned to the Japanese campus to teach English. His wife is Masaka, a high school teacher in Kawagoe City. They have two sons.

Duell serves as unofficial Salem ambassador in Kawagoe City, welcoming Salem people and assisting the WU students there. For many years he doggedly pursued his goal of making Kawagoe City and Salem sister cities. Long negotiations and an exchange of visits between the cities' mayors culminated in a sister city agreement two years ago, yet another spinoff of the Willamette sister university relationship.

With the addition of sister university linkages to Kookmin University in Korea and Xiamen University in China, Willamette is spreading its Asian connections along the eastern side of the Pacific Rim. But Tokyo International University, with its branch campus next to Willamette, continues to exercise a leadership role in Willamette's sister university relationships.

In 1966, when the black-clad first contingent of Japanese students came to WU, it would have taken a presumptuous imagination to envision a branch TIU campus at Willamette 2,000 students and 23 years later. But now that this great leap has taken place, it is difficult to temper one's imagination about where this relationship will lead. ■

# Fred Meyer Grant

## *Affirms, Enhances International Leadership*

By J. Wesley Sullivan

A major impetus to Willamette University's international programs—and an affirmation of Willamette's leadership in that field—came earlier this year with a grant of \$295,000 from the Fred Meyer Charitable Trust.

The grant funds a three-year project that will among other things upgrade the university's language laboratory, add to its foreign languages faculty, enhance international student scholarships, and expand resource materials.

Through conferences on international subjects, seminars, scholars-in-residence, and joint research projects, the program will put Willamette at the center of international exchange on many levels. The first objective is to enhance the university's Pacific Basin programs; the second is to strengthen the infrastructure for all the university's international education programs.

Under the grant, Willamette will play host to an annual, high-visibility event, a forum where experts address Pacific Basin subjects of importance to the Pacific Northwest and where appropriate cultural exhibits and activities can be presented. Planning is now under way for a scholarly conference next February to examine the Northwest's historic relationship with East Asia and the ways in which the relationship ideally should develop in the future. "The relationship is more than trade and investment," says William G. "Jerry" Berberet, the grant director and conference coordinator. "There is a very important cultural component that needs to be addressed." Berberet anticipates more than 200 scholars and other experts will

participate in the conference.

In addition to that conference, the Atkinson Graduate School of Management plans to conduct a series of seminars to provide executive-level training for Northwest business and government leaders in the Pacific Basin.

The grant includes \$25,000 for a new language laboratory for the department of foreign languages and literatures. Willamette will match those funds on a 2:1 basis.

Teaching of Asian languages and culture will be enhanced with the addition of one full-time and one part-time professor. Joining the Willamette faculty for two years is Katsu Hirai-Young from Australia. Adding to the Chinese capability will be Chung So, head of the Chinese Language Program at the Monterey Institute of International Studies. Students from Japan and China will be hired as language program assistants.

The program also envisions a series of scholars-in-residence and visiting scholars to add to curricular offerings in international management or economics, in international and comparative law, and in language and culturally related programs.

The Fred Meyer Charitable Trust funds will expand the university's collection of periodicals and journals dealing with international, and especially Pacific Basin, subjects.

Armed with increased scholarship aid, Willamette will seek out top students throughout the Pacific Basin to bring to the Salem campus for study and to provide enrichment for other students. ■

# Major renovation slated for historic Waller Hall

**W**ILLAMETTE University's most historic building, Waller Hall, will be completely renovated over the next 18 months to provide a chapel, an archive, and offices for the university's president and other administration.

Trustees in May approved the \$2.6 million project which will rebuild the entire interior of the existing building and will add a new entrance and terrace on the south side, facing the quad. Construction can begin as soon as 75 percent of the project cost has been funded, trustees stipulated. As of July, \$1.5 million had been received or pledged toward the renovation, including a \$400,000 challenge pledge from an anonymous donor.

"This is a very exciting project and a unique opportunity," says Pres. Jerry Hudson. "It allows us to preserve an invaluable part of our history and to rededicate the building to several of its original functions."

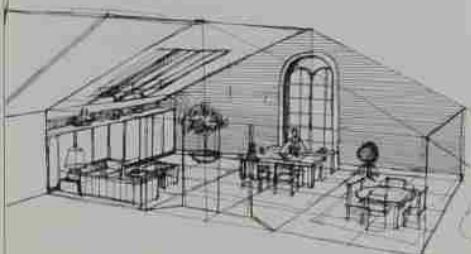
The renovation will both improve structural efficiency and preserve the historic character of the 121-year-old building, which is listed on the National Register of Historic Places and on Oregon's register.

For example, the trusses on the top two floors will be eliminated, freeing up considerable space for other uses. Old wooden moldings will be refinished, the stained glass windows will be restored, and new stained glass windows will be added in the chapel.

The existing floor system will remain, says architect Phillip Settecase, but most of the rest of the interior structure will be torn down.



Settecase Smith Doss



Settecase Smith Doss

Top: new south entrance  
Above: The President's office

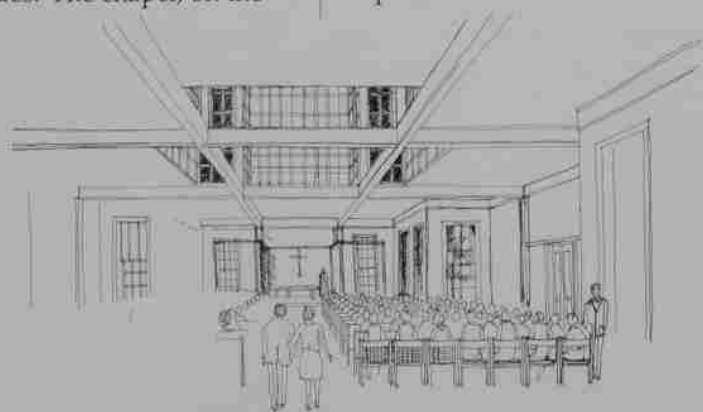
The major architectural challenge, as Settecase sees it, is to bring the building up to present day building codes. The chapel, on the

main floor as before, will open in its center to a raised ceiling extending up to the second floor. A large chandelier will hang from the raised portion. A new organ also is planned for the chapel; the old organ already has been removed and sold to a Portland church.

The floor above the chapel will contain the office of the university chaplain, rooms for chaplaincy-related functions, and the Methodist Archives.

The university president will have an office on the top floor of the building. Skylights in the gabled roof and the cupola on top will provide abundant natural light and a feeling of spaciousness; the windows will give panoramic views of the campus, the capitol, and the city.

Alumni Office and the offices of other university administrators also will be in the restored Waller Hall. Alumni Terrace, a bricked plaza extending toward the quad from the building's new south entrance, will enhance the view of Waller Hall from the rest of the campus and, shaded by the large old chestnut trees, will provide a congenial spot for informal gatherings. The building's three other entrances will be preserved. ■



The renewed chapel

Settecase Smith Doss

# University, state history intertwine in Waller

**F**IRES have twice devastated the interior of Waller Hall, the first in 1891 and the second in 1919. The brick exterior has survived, however, as steadfast as the man who built the "old historic temple," the Rev. Alvan F. Waller.

As the university's agent, Waller campaigned with seemingly endless energy for the funds and support needed to build University Hall, as it was originally called. He raised some \$40,000 for the project and personally supervised much of the construction work.

The hall apparently was built without benefit of an architect—at least there is no record of one—but has been widely praised for its classic lines, excellent bricks, and fine workmanship. It also possesses an organic wholeness with its environment that Frank Lloyd Wright would have envied: the earth dug from the site was used to make 500,000 bricks for the hall.

After more than three years of work, the building was occupied on Oct. 21, 1867. Angie Grubbe Engle, Class of 1868, recorded, "All was excitement among both young and older students, and though daily



*The original building, "the new Willamette University," was opened Oct. 21, 1867.*

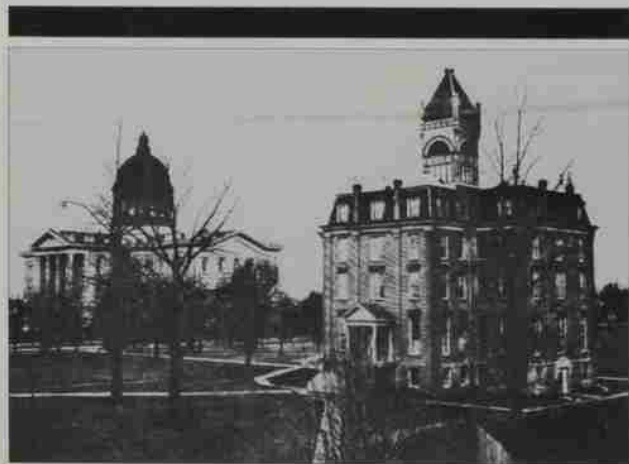
admonished by our teacher to remember our station in life, 'that of young Ladies and Gentlemen, and act accordingly,' yet so great was our enthusiasm that to spectators we no doubt appeared as children.... Up early in the morning, in preparation for the hour, we donned our best clothes, and hied us to our accustomed rooms, eager to be placed in line for the wonderful event—the grand march across the campus, to the new building which was just completed, the new Willamette

University."

On that date, the *Salem Daily Record* lauded "...the new and elegant building, which...stands today a fitting representative of the state, and the position sustained in it by the Willamette University."

The original building contained on the first floor the chapel which seated 500, a parlor and ladies reception room, a library, a recitation room, and an "apparatus room." The second floor was devoted to classrooms. The third floor included rooms for the medical and surgical departments as well as two "elegant" halls for the men's and women's societies. The attic was intended to be a gymnasium. The crowning ornament, the cupola, gave views of "circling landscapes of varied and unrivaled beauty."

The building, renamed Waller Hall in 1912, has served many other uses over the years including a men's dormitory, the Cat Cavern cafeteria/lounge, and the first home of the College of Law. After its next renovation it will again become a vital center for the university. ■



*After the first fire in 1891, the roof was rebuilt in the mansard style. After the second fire, the original roofline was restored. The state capitol is shown at the left in this photo.*

# 'Be a trustee,' graduates told

**A**N overflow crowd of family and well-wishers filled McCulloch Stadium and a good part of the track for Willamette's 146th commencement exercises May 15. Bright sunshine warmed the proceedings as law, management, and a record number of liberal arts students received degrees.

Honorary degrees were granted to Oregon Attorney General David Frohnmayer—who also gave the principal address to the graduates—to university benefactor William B. Smullin '29, and to the state legislature's historian, Cecil Edwards.

Frohnmayer told the audience that studies of college students in this decade have not painted an attractive picture.

"[In the early 1980s] students had become overwhelmingly materialistic, cynical about society and its institutions...and so competitive about grades that they openly condoned cheating.... The corrosive legacy of Vietnam and Watergate was so profound that only 5 out of 100 believed that any government at any level could do any citizen any good at all."

Fortunately, recent signs are that "again we're preparing to change the terms of our contract with society, from the me-ism of the '70s and early '80s to the rediscovery of community today," Frohnmayer said.

He urged graduates to "be a trustee."

"Make a difference. Rediscover that community. Because, you see, if things do go in cycles in our society, surely we started on the high point of that cycle. I can think of no better way to see it embodied than in a famous exchange of American letters [between John and Abigail Adams] during the Revolutionary War.

"Contrary to the myths of the history books, at that time in Amer-



*Oregon Attorney General David Frohnmayer*

ica only one-third of our population were really on the side of a revolution. One-third were neutral, and a third were actually siding with the Tories.

"So Abigail wrote to John, and she said, 'What can I tell our friends, why you are fighting this war and why we are in it together?'"

"And he wrote back to her and said, 'You tell them that I study war so that our children can study business, law, commerce, and invention, so that *their* children can study art and poetry and music.'

"Among the many wonderful things that that letter says is surely this: the sense of personal responsibility for building a society and a community that we will never see because that's the birthright of a generation to come.

"If [surveys] are right, you're on the cutting edge of the rediscovery of that community and that mission. It's important that you not lose sight of just how important your difference can be." ■



# Not unto ourselves alone: a reflection at baccalaureate

*At baccalaureate in May, Prof. James A. Hand reflected on the university's motto, "Non nobis solum nati sumus" or "Not unto ourselves alone are we born." Later that day, at commencement, Prof. Hand concluded his 24-year teaching career at Willamette and was named professor emeritus of religion. His baccalaureate remarks are excerpted here.*

## ***Not unto ourselves alone are we born.***

My first conscious encounter with this idea was back in my college days when I was initiated into the concepts of social psychology. The individual, so I learned, is an abstraction. Selfhood arises and is sustained only in interaction. It is only in relation to the group that we develop the senses of self-identity and social location.

But that was over 40 years ago. What a shocking witness to the fact that not all things old are obsolete!

## ***Not unto ourselves alone are we born.***

Think how 20th-century theology is indebted to the great Jewish philosopher-theologian Martin Buber. Buber's classic reflections upon the difference between the I-Thou relation and the I-It relation show that human consciousness begins in interpersonal encounter. The I-Thou is the *primal* mode of consciousness; the I-It, or detached mode, is a derived case. We have to learn how to "thingify" or "desacralize" the world and the other. And in reducing the other from a Thou to an It, we diminish ourselves. We become like our partner in the relationship.

## **by Prof. James A. Hand**

### ***Not unto ourselves alone are we born.***

Dietrich Bonhoeffer's theology is characterized by a consistent *relational* doctrine of man. The divine-human encounter and dialogue is an ontological necessity, not just a psychological boon. To be *addressed* and *elicited* by the Word of God is constitutive of our being, not just an optional addition to our well-being.

### ***Not unto ourselves alone are we born.***

In religion and science, recall how process philosophy picks up the models and paradigms of modern physics and biology. An entity is constituted by its relationships. Reality consists of systems, not discrete particles. Not even things are merely "things"—that is, independent, inert, insensate matter. Even in physics entities interact not just externally like billiard balls colliding but internally in ways for which the best analogy is to posit a rudimentary mentality even in low grade events. Whitehead unashamedly describes all events in terms of "feelings," "inner aims," and "decisions."

### ***Not unto ourselves alone are we born.***

How could I miss the chance to observe how the "Christian humanism" of C.S. Lewis exemplifies this! Gilbert Meilaender calls the heart of Lewis's thought "the reality principle," which is to say that we were created for fellowship with God and with one another, and that to fall short of that is to be less than human.

Humanity is not a "given." We are not born human. It is a potentiality actualized only in the right relationship with God, which is the acknowledgement of His sovereign lordship over our lives. "Thou has made us for Thyself," says Saint Augustine, "and our hearts are restless until they find their rest in Thee."

Can it be that here we have the original pattern or archetype of which all the other instances are images and shadows?

### ***Not unto ourselves alone are we born.***

But let us not be deceived. We are part of an age that does not believe any of what I have been saying. We live in an age, for example, that fondly imagines that there can be such things as "victimless crimes"—that if a person destroys himself, no one else is hurt. We live in an age, to cite another example, that counts itself more enlightened and advanced by being permissive of whatever passes between consenting adults, as if the whole fabric of society were not being trashed by decadent and irresponsible behavior.

We are in this thing together—for better or for worse! What an awesome challenge there is before us to reconstruct personal and social life, but we have a lodestar: Not unto ourselves alone are we born. To acknowledge this is a *first* step. But it is a *big* one and can easily lead to the incalculable. For if we are not born unto ourselves, unto whom then *are* we born? To Whom are we answerable? To Whom are we responsible? To Whom must we render an account? Who has the Word of Life? ■

# Smullin Hall dedicated

**S**ATURDAY, May 14, marked "the end of the beginnings of Smullin Hall," as University President Jerry Hudson put it when he opened dedication ceremonies for the new building, the largest academic facility on campus. Scores of faculty, alumni, trustees, and friends gathered in the warm sunshine for prayers of thanks and words of welcome to the building that houses seven departments in the College of Liberal Arts. The Very Rev. Donald G. Brown '68, dean of Trinity Cathedral in Sacramento, CA and son-in-law of benefactor William B. Smullin, offered the prayer of dedication.

After the ceremonies, the building was opened for tours and a reception. The ground floor contains offices and classrooms for the speech communications department as well as a small auditorium which is named for Ross and Pauline McIntire.

Vice Admiral McIntire received his M.D. degree from Willamette in 1912. For 10 years during his long and distinguished career, he served as President Franklin D. Roosevelt's personal physician. McIntire died in 1959; his widow, Pauline, died in 1986 and made a generous bequest to the university.



The first floor of Smullin Hall contains the university computing center, the office of the college's dean, and classrooms. A new micro-computer lab also is part of the facility; formerly, the computing center was in the Atkinson School's Mudd Building, and the undergraduate computer labs were in York House, a residence hall. York now is being reconverted to much needed residence space.

The departments of computer science, psychology, and mathematics occupy the second floor with offices and classrooms.

The top floor houses the departments of economics, political science, and sociology and a faculty lounge.

Smullin Hall incorporates the former university library and adjoins Walton Hall which also was extensively renovated during the project.





William B. Smullin at the podium with Board of Trustees Chairman William Swindells (left) and University President Jerry Hudson.

*“Over the years, Willamette University has contributed materially to the learning processes of its thousands of students. Our gift for this building is in appreciation for that contribution to myself. I trust that Smullin Hall will enable enhancement of this process to both students and faculty.”*

**William B. Smullin '29**  
**May 14, 1988**



Smullin and his wife, Patricia ("Rusty"), unveil the nameplate on the new building.



Mr. and Mrs. William B. Smullin

# ON CAMPUS

## New CLA dean appointed

An English professor and associate dean of the University of Minnesota's College of Liberal Arts is the new dean of Willamette University's College of Liberal Arts.



Julie Ann Carson was selected after a nationwide search to succeed William G. Berberet, who has served as liberal arts dean since 1976. Berberet has taken on a new assignment as special assistant to President Jerry Hudson for the 1988-89 year.

As associate dean in Minnesota since 1984, Carson's responsibilities centered on comprehensive planning, particularly at the undergraduate level, and on overseeing curriculum and instruction in 45 departments and 3 schools in the college. Her previous positions at the University of Minnesota, dating from 1974, were as director of composition in

the College of Liberal Arts and as director of undergraduate studies in the School of Management.

Carson said her interest in WU's position stemmed from her dedication to undergraduate education—"never anyone's first priority at a large research university" like Minnesota—and her opinion of Willamette.

"Willamette's in very good shape. Faculty are keenly interested in what they're doing; they're well educated and very active and positive in their involvement with students and the mission of the school.

"Willamette is an excellent regional institution that's ready to expand its reputation nationally, which is a very exciting prospect."

Carson sees faculty development as a critically important area for an institution like Willamette.

"Faculty at institutions that focus on teaching need to feel certain they understand what's happening on the edges of their disciplines. In small comprehensive schools, especially if they're heavily tenured, there can be a tendency to settle back into the wonderful curriculum. But we as teachers have to stay current in our disciplines so we can be vital for our students. They rely for their futures on what we can learn."

Carson, who earned her Ph.D. in English linguistics from Indiana University, currently has scholarly interests in emergent literature—works written in English by authors whose native tongue is not English—and has an abiding, "intense" interest in the theatre. She is the author of nine plays that have been produced, a book of poetry, and numerous articles for professional and scholarly publications.

She received her bachelor's degree in classics and speech communication from the University of Michigan in 1964 and her master's

degree in English from Wayne State University in 1968.

## WU's art gallery seeks new friends

The Hallie Brown Ford Gallery on the top floor of the Art Building will begin its second decade in September with a new faculty director and a new support group called Friends of the Gallery.

James B. Thompson, who joined the art faculty in 1986, succeeds Prof. Robert Hess as gallery director. Thompson plans this fall to enlist gallery supporters who, through annual dues and involvement in various activities, will enhance the gallery's programs.

For example, Thompson says, Friends of the Gallery will help sponsor an annual exhibition by



Illustration: Bonnie Hull

nationally known artists; also planned are monthly lectures and master's classes given by artists, critics, curators, and gallery owners.

Membership benefits will include a subscription to the gallery newsletter and invitations to special events such as an annual banquet. For more information about Friends of the Gallery, contact Prof. James Thompson at the Art Department.

## Board of Trustees elects new members

Six new members have joined the university's Board of Trustees, and three other members have been awarded life member recognition by the board. The changes bring board membership to 58 regular members and 20 life members.

Joining the board as new regular members are George Azumano and Stuart Hall '62 L'65 of Portland, and Douglas McGregor of Wilsonville. New members from the Methodist Conference are Luis Caraballo of Salem and Rebecca Lowe-Warren '70 of Portland. Hance Haney '85 succeeds John Sherwood '64 as the board's representative from the university Alumni Association.

Newly designated life members are trustees Donald Grant '29 L'29 of San Mateo, CA, William Kilkenny '41 of Portland, and George Rives of Newberg.

Azumano, president of Azumano Travel Services in Portland, is very active in Japanese-American affairs and has been awarded the Japanese American Citizens League's sapphire pin for service of more than 10 years at the local, district, and national levels. He also has served as an officer in numerous civic and professional organizations including the Portland Chamber of Commerce, the Portland Rotary Club, and the American Society of Travel Agents' Oregon chapter.

Caraballo, an attorney, is executive director of the Governor's Immigration Coordinating Committee. He has been on the boards of Family Health Net, Inc. and Northwest Human Services, Inc. and also has served on the Marion-Polk Regional Economic Development Task Force, the Community Housing Resources Board, United Way fund distribution panels, and in the youth ministries of Trinity Methodist Church in Salem.

Grant has served on the board of trustees for 38 years. A retired

attorney, he is currently an executive consultant with the Guy F. Atkinson Co. in South San Francisco.

Hall is president of Carson Oil Company, Inc. of Portland. He has served on the boards of the Portland Chamber of Commerce, the Visiting Nurses Association, and the Portland Rotary Club. He also has been active in youth sports as a Little League coach, a Babe Ruth coach and league president, and a Pop Warner Football

League commissioner.

Haney, a field representative with U.S. Sen. Bob Packwood's office in Portland, is president-elect of the Willamette University Alumni Association.

Kilkenny, who is chairman of the board of Hyater Company in Portland, has been a university trustee for 21 years and has served as chairman of the finance and business affairs committees.

■ (Cont'd on next page)



## New baseball stadium goes up

A new baseball stadium for the university is taking shape rapidly at John Lewis Field in Bush's Pasture Park. The stadium will have a grandstand seating 1,250, locker rooms and rest rooms, concession stands, and a fully equipped press box.

The new facility will contrast sharply with the previous one, which consisted of a few bleachers and a make-do press box and lacked locker rooms and rest rooms. "It was ironic that our playing field itself has been known as one of the best in the state, but the lack of facilities meant it wasn't a very comfortable place to watch baseball," says Bill Trenbeath,

former baseball coach and director of the stadium project.

The stadium will be named in honor of Roy S. "Spec" Keene, legendary Willamette coach from 1926 to 1943. Construction is solid, with prestressed concrete, cement block risers, and treated lumber. Total project cost is over \$115,000.

Besides making Willamette's baseball activities much more attractive, the new stadium will enable the university and Salem to host baseball tournaments at all program levels, from youth leagues to adult, and that in turn will produce recognition for Salem and Willamette, Trenbeath notes.

■ (Cont'd)

Lowe-Warren, a writer, is active in support of public broadcasting and in Girl Scouts and the United Methodist Church. She is a member of the KBPS Advisory Council and chaired this year's KBPS Pledge Week. She has held several offices in the Portland branch of the American Association of University Women. She currently chairs a committee on the status and role of women for the Montavilla United Methodist Church and has served eight years on the Oregon-Idaho Conference Board of Higher Education and Campus Ministry.

McGregor is executive vice president with First Interstate Bank of Oregon in Portland. His community work includes having served on the Portland Development Commission, as a director of the Oregon Coast Aquarium, on the Portland Public/Private Transit Task Force, as president of the Portland Opera Association, and as president of United Way of Oregon. He also is a past president of the Oregon State University Alumni Association and a former advisory director of OSU's College of Business.

Rives has served as a Willamette University trustee since 1985. He is of counsel with the Portland law firm of Stoel, Rives, Boley, Fraser & Wyse and has served as a director of PacifiCorp, a trustee of St. Vincent's Hospital, and a member of the Oregon State Indigent Defense Board.

## GSM students reap honors

Recent Atkinson School graduates garnered a variety of honors last spring from business and government. The U.S. Small Business Administration gave its Small Business Institute Award for Oregon to 1987 alumnae Mary Ann Harty and Leslie Dana-Frigault for their outstanding work as consultants to small business. GSM Prof. Steve

Archer, the team's advisor, also received a certificate of recognition for his support of the Institute program.

Rotary International awarded one of its prestigious scholarships to Clarke Coburn M'88, which Coburn will use to pursue his M.S. degree in entrepreneurial studies at the University of Stirling, Scotland.

Charla Worley M'88 was selected to participate in the federal government's highly competitive Presidential Management Intern program. Worley, the Atkinson's School's tenth graduate to be selected as an intern in that program, will spend the next two years in intensive, upper level management training.

Carolyn Yocom M'88 is the first Atkinson graduate to be selected by the City of Washington, DC for its Mayor's Urban Fellowship program. Yocom, daughter of WU Registrar Richard A. "Buzz" Yocom '49 and WU Prof. Libby Yocom, was the only unanimous choice of the selection committee.

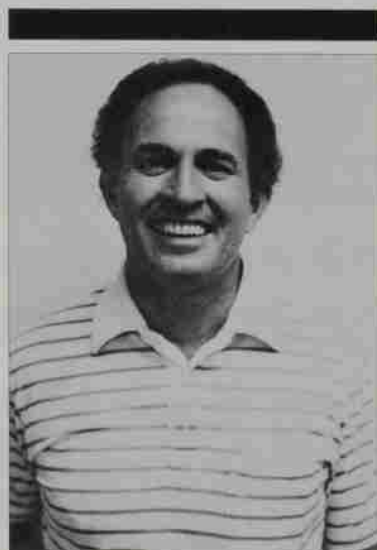
## Willamette Singers in national spotlight

Willamette's vocal jazz group, the Willamette Singers, was honored with two prestigious invitations to perform during spring semester. Under the direction of Prof. Wallace Long, the 15-member group performed in March at the regional convention of the American Choral Directors Association in Seattle. In April, the Singers traveled to Indianapolis to present a 30-minute show on the opening night of the Music Educators National Conference.

The invitation to Indianapolis was particularly gratifying, Long said. "The Music Educators held highly competitive national auditions before deciding which groups to invite to perform. Our group is only four years old, so it's even more exciting that we did so well."

## Trenbeath named director of athletics

William G. "Bill" Trenbeath, a longtime coach and most recently Director of Annual Funds for Willamette, has been named the university's new director of athletics, effective Aug. 1. He succeeds Richard A. Kaiser who accepted the



athletic director position at Western Oregon State College.

Trenbeath will have administrative and teaching responsibilities in his new position but will not coach. He joined Willamette in 1973 as head baseball coach, assistant football coach, and assistant professor of physical education. He continued to coach baseball when serving as chairman of the physical education department from 1980 to 1983 and even after he began his fundraising work in 1983. In 1986 he resigned as head baseball coach to devote full time to the Annual Funds. His 1986 team was the first in the school's history to win the NAIA District 2 baseball championship; four of his teams had made the District 2 playoffs in earlier years. ■

# CALENDAR



FALL SEMESTER 1988

**Sept. 1-28** Sculpture: Michihiro Kosuge, PSU Art Faculty.  
*Hallie Brown Ford Gallery.*

**Sept. 10** Alumni-Student Football Game. *McCulloch Stadium.* 1 p.m.

**Half-time:** Alumni Men's and Women's Cross-Country Run. *Bush Park.*

**Sept. 13** 2nd Tuesday Brown-bag Lunch. Speaker: Adele Birnbaum, Professor of English. *Cat Cavern, Noon.*

**Sept. 15** Royal Lichtenstein Circus. *Brown Field.* 4 p.m.

**Sept. 16** Joan Ogard, pianist: Concert *Smith Auditorium,* 8 p.m.



**Sept. 22** Wordsworth Lecture: Gerald Bowers, Dept. of English.  
*Mark O. Hatfield Library.* 3 p.m.

**Sept. 24** Community Fair. *Quad.* 12-6 p.m.

**Sept. 29** William Sloan Coffin Lecture. *Smith Auditorium.* 8 p.m.

**Oct. 1** Class of '68 Reunion. *Cat Cavern.* 2-6 p.m.

**Oct. 3-26** Prints: Jennifer Warburton;  
Sculpture: Nathaniel Ross. *Hallie Brown Ford Gallery.*

**Oct. 6** Frances Moore Lappé, author of *Diet for a Small Planet.* *Smith Auditorium.* 8 p.m.

**Oct. 7** Willamette Band and Choir in concert.  
*Smith Auditorium.* 7 p.m.



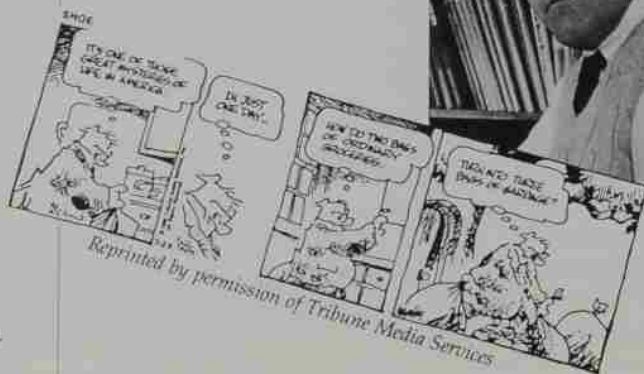
**Oct. 7, 8, 9\*, 13, 14, 15** Willamette Theatre, *Objection Overruled.* This is the first American production of this play written by New Zealander Carolyn Burns.  
*Playhouse.* 8 p.m. (\*Matinee 2 p.m.)

**Oct. 9** Faculty Recital: Jeanne E. Krem (Flute) & Laura Zaerr (Harp). *Mark O. Hatfield Library.* 2 p.m.



**Oct. 11** 2nd Tuesday Brown-bag Lunch. Speaker: Frances Chapple, Professor of Chemistry. *Cat Cavern, Noon.*

**Oct. 11** Atkinson Lecture Series: "Shoe" cartoonist Jeff MacNelly.  
*Smith Auditorium.* 8 p.m.



Reprinted by permission of Tribune Media Services.

**Oct. 19** Willamette University Woodwind Quintet.  
*Mark O. Hatfield Library.* 8 p.m.

**Oct. 22** Community Concert: New York Light Opera.  
*Smith Auditorium.* 8 p.m.

**Oct. 27** Lecture: Thomas Szasz, Mental Health Patient Advocate. *Smith Auditorium.* 8 p.m.

**Oct. 30** Willamette University Choir in concert.  
*Smith Auditorium.* 3 p.m.

**Nov. 2** Willamette University Band in concert.  
*Smith Auditorium.* 8 p.m.

**Nov. 2-30** Art Exhibit (please call Art Department for November offering.) *Hallie Brown Ford Gallery.*

**Nov. 5** Sweet Adelines Concert. *Smith Auditorium*. 8 p.m.

**Nov. 6** Distinguished Artists Series: John Perry Concert. *Smith Auditorium*, 8 p.m.

**Nov. 8** 2nd Tuesday Brown-bag Lunch. Speaker: Robert Hawkinson, Associate Professor of Political Science. *Cat Cavern*, Noon.

**Nov. 9** Trio Northwest. Music of Shostakovich and Brahms. *Smith Auditorium*. 8 p.m.

**Nov. 12** Opera Recital. *Smith Auditorium*. 8 p.m.

**Nov. 17, 18, 19** Madrigal Dinner. *Cat Cavern*. 7 p.m.



**Nov. 30** Trio Northwest. *Smith Auditorium*. 8 p.m.

**Dec. 1** Alumni Christmas Party. *Performing Arts Center, Portland*. 5:30 p.m.

After the party, seats are reserved for George Bernard Shaw's *Heartbreak House* by Portland Center Stage/Portland Shakespearean Co.



**Dec. 2, 3, 4\*, 8, 9, 10** University Theatre, *Canada* by George Bernard Shaw. *Playhouse*. 8 p.m. (\*Matinee, 2 p.m.)

**Dec. 2,3** Community Sing Together, Handel's *Messiah*. Rehearsal at 7 p.m. Dec. 2; Performance with orchestra and soloists at 8 p.m. Dec. 3. *Smith Auditorium*.

**Dec. 3** Men's Basketball vs. Alumni. *Cone Field House, Sparks Center*. 7:30 p.m.

**Dec. 4** Willamette University Band and Choir in concert. *Smith Auditorium*. 8 p.m.



**Dec. 7** "Jazz in the Cat." University Jazz Ensemble. *Cat Cavern*. 8 p.m.

**Dec. 9** Shakespeare Readers' Theatre. *Mark O. Hatfield Library*. 8 p.m.

**Dec. 13** 2nd Tuesday Brown-bag Lunch. Speaker: James Hanson, Professor of Economics. *Cat Cavern*. Noon.

## 1988-89 Atkinson Lecture Series

Nationally syndicated cartoonist **Jeff MacNelly**, will be the first speaker in this year's Atkinson Lecture Series. MacNelly, whose work has won The Pulitzer Prize, The National Cartoonists Society's Rueben, and the Thomas Nast Award, is the creator of "Shoe" which appears in daily newspapers. He will be speaking in Smith Auditorium on October 11 at 8 p.m.

Writer **Joyce Carol Oates** comes to Willamette on January 26. Oates is one of America's most versatile writers. Her latest novel, *You Must Remember This* has been called "an American masterpiece." Her writing has earned many awards including a Guggenheim fellowship, the O. Henry Prize and the National Book Award.

**Maya Angelou** is the third speaker in the series. An award winning writer of international renown, Angelou's work extends to poetry, theatre, television and film. She is author of the best selling *I know why the caged bird sings*, an autobiographical accounting of her youth. She will be speaking in Smith Auditorium on February 9.

**Kurt Vonnegut**, short story writer, novelist and critic, has led a varied life including time as a prisoner of war in Dresden during the destruction of that city in World War II, a graduate student in anthropology, a police reporter in Chicago and "the SAAB dealer for Cape Cod." From this checkered background Vonnegut draws material for his novels and stories. He will be the final speaker in the 1988-89 Atkinson Lecture Series on April 19, 1989.

# Recalling the V-12 experience

**T**his new book, an overview of the World War II V-12 program, has special significance for Willamette University. When the United States entered World War II after the attack on Pearl Harbor, Willamette like many institutions of its size faced a crisis of declining enrollment because of military manpower demands. The V-12 program proved to be a godsend.

Faced with the need to provide an officer corps for the expanding wartime navy, the Navy Department developed the V-12 program that utilized college campuses and faculties to educate and train potential officers. The institutions chosen to participate were geographically distributed. Aside from patriotic motives, many small colleges saw the program as their chance for survival and were cheered by a statement by Secretary of the Navy Frank Knox: "We will not place at the top of the priority list the large state universities and privately endowed institutions of the country which should be able to carry on unaided... We will give special consideration to the smaller colleges whose financial resources are so meager that their existence may be threatened by the war."

More than 500 schools had the academic and housing capability to accommodate a V-12 unit. Competition among the schools was keen, and some offered special inducements and exerted heavy political pressure. Willamette, for example, was probably aided in its quest for a unit by the fact that President Franklin Roosevelt's physician was Admiral Ross T. MacIntire, a Willamette alumnus.

By the end of the war, more than 130 colleges and universities participated in the program which pro-

## The Navy V-12 Program: Leadership for a Lifetime

by James G. Schneider  
(Houghton Mifflin, 1987)

Reviewed by  
Robert Gormsen

duced 60,000 marine and naval officers from the 125,000 men who were enrolled.

Trainees were chosen on a broad democratic basis by selection boards which included civilian members. Some enlisted men then on active duty were also included as well as men in pre-medical and pre-dental programs.

Participating colleges were allowed to determine course content and select textbooks within certain broad guidelines. The Navy urged that full academic credit be awarded, but that was left to the discretion of the schools. Men who had completed seven semesters of college were trained a minimum of 240 days before being commissioned. Those with less previous schooling remained in the program longer.

Many of the "sailors" in Willamette's V-12 unit arrived in Salem by train and walked from the station across Twelfth Street to Gatke Hall which served as administrative headquarters. New trainees were issued a complete set of naval enlisted men's uniforms and a duffle bag and were sent to their lodgings in Lausanne Hall or the YMCA.

Lausanne Hall became the USS Lausanne, the floors became decks, the walls bulkheads, the entry hall the quarterdeck, the dining room the mess hall, and the back porches the weather decks. The daily routine began with a muster on the front

yard. Two chief petty officers stood on the steps and issued the orders of the day. Next the entire battalion went to Sweetland Field for calisthenics. After breakfast, trainees went to class. Professor Chester Luther taught trigonometry; Professor Maurice Brennan taught mechanical drawing; Professor Les Sparks taught physical education in the old gymnasium. An obstacle course, reputedly one of the toughest anywhere, was constructed between the gymnasium and Twelfth Street about where Baxter Hall now stands. Saturdays featured inspections and parades followed by a welcome liberty through Sunday.

Schneider notes that the *Wallulah* provided what was probably the best coverage of V-12s of any small college. The trainees became quite involved in campus life as student-body and class officers, members of the choir and band, and participants in dramatics and forensics. The V-12 wrote the winning song for the 36th annual Freshman Glee, "You're Everything That a Sailor Dreams Of."

As his subtitle indicates, Schneider found in his research that many V-12s went on to become leaders in various fields. His book offers insight into a wartime experience that Willamette University shared.

---

ROBERT W. GORMSEN was a member of Willamette's V-12 unit at its inception in July 1943. Following the war, he operated a family business in Salem and later worked for the State Highway Division in Salem, retiring in 1986.

# Biblical 'echoes' tell intriguing tales

**T**here is nothing new under the sun" (Ecclesiastes 1:9) may have been an astute observation of ancient societies, but it has been repudiated by the twentieth century. Now Ted Loder has broken the mold of one of the most traditional of communications, the Sunday sermon. In its place he has substituted a narrative monologue, 12 of which he has selected to form this book.

In each chapter, an Old Testament character is speaking in the first person about some dilemma in life as the biblical text presents it. The reader enters somewhere in the middle of the soliloquy. Gradually, the narrator reveals his or her identity. The discussion alternates between the autobiographical and the universal, and from the ancient to the contemporary (such as mentioning that one or two movies have been made about Nathan's rebuke to David). The style varies with the characters, and a liberal amount of vernacular is used, often with humorous effect. On the other hand, there are many lyrical passages. What is literally a monologue is really a dialogue: the interlocutor is the biblical word with which the protagonist wrestles. Various solutions are proposed and rejected. Everything is tentative, ambiguous; paradoxes abound. For example:

"One night my life came together, or came apart, and I saw ... no, more than seeing. I was *seen*, confronted. One night I collided with myself, yet more than myself."

The 12 chapters portray a variety of characters: Isaac, Abraham and Sarah, Jacob, Moses, Rahab, Mahlon,

## Eavesdropping on the Echoes: Voices from the Old Testament

by Ted Loder '52  
Drawings by Ed Kerns  
(San Diego: LuraMedia, 1987)

Reviewed by  
Norman Huffman

Obed, David, Nathan, Gomer, Hosea, Josiah.

A rather lighthearted chapter is "Wanna Buy a Used Camel?" It adopts the salesman's vocabulary and pitch: "You could be among the first in your neighborhood... Think about the low maintenance... It starts every time on cold mornings." There is a discourse on the various meanings of "used." Words fascinate Loder, and he does original things with them. The used camel salesman-narrator, Mahlon ("not the kind of guy you'd buy a used camel from"), is the husband of Ruth. He gives a flippant account of the famine in Bethlehem, the family's migration to Moab with "my old man, Elimelech" and "our ma, Naomi" through the deaths of all of the men (Mahlon last, "while test driving a used camel.") To continue the story, Mahlon becomes an invisible ghost. He sermonizes incidentally about Ruth's open-mindedness toward foreigners and the extended family. He explains how God is too busy with his "other franchises" (a cosmic IRS, Better Business Bureau, etc.) to come "running when I whistle." So he gave rules to Moses. "Look it up."

A final detail is the connection of Ruth with David's and Jesus' ancestry. The conclusion is characteristic: "Wanna buy a used camel? No warranty. I need the commission."

Other chapters are more profound.

After Abraham showed his willingness to turn Isaac into a burnt sacrifice, Loder's perceptive imagination asks, "How could father and son ever again live in the same tent?" The answer is in the name Isaac (which means "he laughs"). In their relief they laugh at the entangled ram. Isaac suggests that not only did Abraham and Sarah laugh at God's ridiculous promise to give this elderly couple a son, but God may have laughed with them at his own joke.

Nathan rebuked David for the Bathsheba affair, but he added, "The Lord also laid aside your sin." David could believe the punishment—but not the forgiveness—of God, the worst but not the best.

There is a freshness of imagination here. The messages are presented through characters. The unusual and varied style adds interest. Although some units are less successful than others, all in all it is a fascinating book, and presented orally could be quite dramatic. (The book also is available on tape.)

NORMAN HUFFMAN is professor emeritus of religion at Willamette University, where he taught for 28 years. An ordained Methodist minister, his scholarly interests include the Greek texts of the Old and New Testaments.

THE REV. TED LODER is senior minister of the United Methodist Church in Philadelphia. He is a graduate of Yale Divinity School and received an honorary doctor of divinity degree from Willamette in 1971.



# *Alumni Weekend*

## Honoring friendship, tradition



*At the Alumni Banquet, members of the Class of 1963 presented a medley of tunes celebrating friendship and reunion. Dave Robertson '63, a composer now living in Dallas, TX, put the show together and produced the accompanying soundtrack.*



*The Class of 1973, with spouses, children, and of course the occasional duck, enjoyed a picnic on the lawn during the afternoon.*



*Dorothy Patch '30, poses for a photo after lunch.*



*Professor Emeritus Cecil Monk and Dorothy Monk chatting at the reception preceding the Alumni Banquet.*



*Virginia Woods '38 singing the alma mater at the Alumni Banquet.*



At left: Art Prof. Robert Hess talks with alumni after his Alumni University lecture on art and the imagination.



Miriam Lidell '45 greets friends near Eaton Hall

Barney Bearcat (John Baker '63) pays a visit to Rich Litchfield '63 at the Alumni Banquet. Seated are Jon Steiner '63 and Alice Steiner.



## Citations honor six

Six alumni received special recognition in May during Alumni Weekend for outstanding contributions to their communities and professions.

Alumni Citation Awards went to: Douglas H. Bosco '68 L'71 for achievement in public service; Vernon Casterline '41 for service in health care; Janice Patterson Cate '46 for service to women and minorities; William Cate '45 for humanitarian service; and C.S. "Pat" Emmons L'31 for service in the legal profession.

Dale R. Gustafson '56 received the Lestle J. Sparks Medallion for his loyalty and service to the university.

\*\*\*

Doug Bosco is in his sixth year in Congress, representing a large and diverse district in northern California. During his first term, his compromise proposals on a wilderness bill broke a 10-year deadlock and helped clear the way for passage of the California Wilderness Act of 1984. His current committee assignments include the House Public Works and Transportation Commit-



Dale Gustafson '56, the Lestle J. Sparks Medallion recipient, and his wife, Sally.



University President Jerry Hudson, third from left, with Alumni Citation recipients William Cate '45, Douglas Bosco '68 L'71, Janice Patterson Cate '46, C.S. "Pat" Emmons L'31, and Vernon Casterline '41.

tee and the Merchant Marine and Fisheries Committee. Before he was elected to Congress, he served in the California Assembly where he was active on consumer protection issues.

Recalling his time on the Willamette campus, Bosco said, "For better or worse, students in that time looked outward and tried to make a difference in the world. [These days] we see privatization of so much of our lives and of America, a priority on looking out for oneself. But the best of what's been done hasn't been for profit or personal gain but for the common good."

\*\*\*

Vern Casterline came to Willamette from Minnesota in 1937, having worked as an orderly after high school to earn enough for one semester's tuition—\$68. "Highlights of my time at Willamette include Prof. Brown's physics course, escorting the May Queen my senior year, and being the only one in my class to graduate without having taken Western Civilization," he said.

Casterline practiced his entire career in Keizer and was the first physician to open an office there.

His wide range of community activities include working to improve patient care in nursing homes, serving as sports team physician, and membership in Lions, Rotary, and the Salem Chorale. He has been named a Fellow of the American Academy of Family Practice, a recipient of the Physicians Recognition Award of the Marion-Polk County Medical Society, and Keizer's First Citizen in 1982.

\*\*\*

The causes for which Jan Cate labors include women's issues and the global issues of peace and justice. A resident of the Seattle metropolitan area, she has been a member of the United Nations Association there, the Seattle-Managua Sister City Association, and the Seattle Religious Peace Action Coalition. She also has been a leader, locally and nationally, in Church Women United.

Our society is limited in its ability to envision what a nonviolent, truly just society might be like, Cate said, yet today's young graduates do want to contribute to the betterment of the world. Cate proposed creat-

ing a university-level course of study that would foster growth of such a consciousness and an agenda for change, not just in students but for the broader society.

\*\*\*

Bill Cate acknowledged two very important gifts from Willamette, "the first, an excellent education, the foundation for future study and grounding in the church; and the second, my wife, Jan, whom I met here."

Regarding the education, he recalled, "Egbert S. Oliver, my English teacher, said 'A Willamette education sticks with you,' and he continues to give me reason to believe him. Regularly Dr. Oliver sends me his notes on *The Source* [a newspaper Cate edits] with corrections on my composition and critiques of my views."

Cate has served 17 years as president-director of the Church Council of Greater Seattle which represents more than 200 mainline churches in its program of direct action and advocacy. He is well known in the national ecumenical movement and has represented the Seattle council and the National Council of Churches in forums throughout the world.

\*\*\*

Pat Emmons, named 1987 Trial Lawyer of the Year by the Oregon Trial Lawyers Association, accepted his Alumni Citation "on behalf of all alumni Willamette returns to their communities, not necessarily as high public officials or captains of industry but as solid, contributing citizens."

Emmons has been in private practice in Albany since 1948 and has been active in that city's community affairs, chairing the committee that created the city charter and helping to establish the Albany parks system. He served as president of the Oregon State Bar in 1959 and 1960.

\*\*\*

Dale Gustafson's service to Willamette began in his student days

## The university also rests on alumni's laurels

By Barbara S. Mahoney  
Director of Alumni Relations

The other day I got to perform one of my favorite "chores," showing a visiting alum around the Willamette



campus. Her pleasure in recognizing people and places and her delight in the beautiful and functional additions to campus made me appreciate more what I usually take for granted. But

the best part of the visit for me was the opportunity to get to know her.

What interesting and productive people Willamette alumni are! My impression, derived from meeting hundreds of you, is confirmed by the responses to Vice President for Academic Affairs Sam Hall's recent survey. The several thousand responses are enough to sample the variety and quality of your achievements.

In many ways, those achievements are the most meaningful report card the university can have. Willamette's ability to point with pride to your successes, to your

and includes two terms as a member of the Alumni Association Board of Directors, a two-year term as the board's president, and membership on the Board of Trustees from 1972 to 1974. Gustafson led alumni participation in the Campaign for Willamette, and he has worked throughout the years on behalf of the Alumni Annual Fund.

His community activities include singing with the Portland Symphony Choir and active participation in sports. ■

service in your communities, and to your leadership in so many fields of endeavor is truly the base on which its reputation rests.

The survey reminds us, too, of what a tremendous resource you are to your university. Your investment in the university's future continues to grow. Last year a larger percentage of you than ever before contributed to the largest annual fund ever. This year, many of you are supporting not only the annual fund but the Campaign for Waller Hall as well.

But your financial support is only one of the ways in which you can and do assist us. Your involvement in the admissions effort has enabled Willamette to attract high-quality students. Your willingness to provide your insights into life after Willamette has helped our seniors plan their futures. Your participation in the Alumni Host Family program has welcomed our international students to Willamette. Your presence on the Board of Trustees and the Board of Directors of the Alumni Association has given us the benefit of your counsel. So important are you to the life of the university that this fall Willamette will host an Alumni Leadership Conference to give our alumni volunteers a chance to see the university as it is today, to attend classes, and to visit with students, faculty, and staff.

The Office of Alumni Relations exists to serve you and to strengthen your ties to the university. I hope you will let us know how we can help you, what kind of programs you would like to have, and what kind of information about Willamette interests you most. Most of all, I hope you'll come see us. It is always a pleasure to welcome you. ■

---

### 26

---

**Isabelle Noftsker Bové** and husband LaRoy enjoy traveling and plan an Oregon visit this year. At home in Palm Bay, FL, they give instruction in English as a second language and in their leisure time enjoy camping near the ocean.

---

### 28

---

**Paul Trueblood** reports that a third edition has been requested for his book "Lord Byron," one of three books he has authored on Byron. The two others are in their second editions.

---

### 30

---

**Midge Miller Marsh** and husband Ralph of Sebastopol, CA celebrated their 50th wedding anniversary in March. The Marshes planned to visit Europe this summer—their fourth trip—where Midge was to sing with the Northern California Chamber Chorale at the cathedrals of Notre Dame and Cologne.

---

### 32

---

**Hayes and Sarah Dark Beall** stay very busy—Sarah with her work in Oregon Food Share and Jason Lee United Methodist Church, and Hayes as a member of the board of six nonprofit organizations. Hayes recently addressed the Oregon Banking Institute Educational Service on consumer issues and also has taught a class on consumer problems at Chemeketa Community College in Salem.

Now semiretired, **Stearns Cushing** and wife Eloise enjoy spending time in Hawaii. Stearns notes he has built an extensive collection of island scenes.

**Dorothy Eastridge Gillam** last May received a distinguished service award from the Oregon State Women's Bowling Assn. Dorothy has been a member of the Prineville Women's Bowling Assn. for 28 years and has been an officer at the local and league levels. She and her husband,

Lewis, celebrated their 50th wedding anniversary last fall.

**Ellen Jean Moody McBride** writes from her new home in Gibsons, BC that "Canada is like 'the last frontier,' a quiet yet exciting place to live." After a trip to Alaska in April and May, she spent a month in Poland, Russia, and Scandinavia during the summer. Since her grandson plans to attend Willamette College of Law, Ellen looks forward to being in Salem often.

**Marvelle Edwards Mefford** and husband Russell celebrated their 55th wedding anniversary in April. Russell continues his work as a consultant for Rose Villa Retirement Residence in Portland.

---

### 35

---

**Anna Jo Fleming Phares** and her husband, Dick, enjoy traveling from their Laguna Niguel, CA home to attend various Elderhostel programs, which they applaud as an excellent way to enjoy continuing education.

---

### 36

---

**William Voss** writes from Los Angeles, "I fought a battle with cancer of the nasal septum last fall and have apparently won, courtesy of lots of radiation treatments at UCLA Medical Center and even more prayer support from many friends."

---

### 37

---

**Ruth West Jones** and husband **Dillon** '38 never lack for fresh vegetables, which they grow in prodigious quantities on their 15-acre homestead south of Salem. Ruth and Dillon, who start many of their vegetables in a basement greenhouse nursery, supply a number of other families with vegetables throughout the growing season.

---

### 38

---

**Ariss Jones Wold** and her husband, Roland, both retired teachers, are active in

their church and in community affairs in Joseph, OR, which Ariss describes as "the Swiss Alps of America."

**Virginia Pugh Woods** recently sold her home in West Salem and moved to Eugene where her daughter lives. She continues to be active in AAUW, her sorority alumnae group, Little Theatre, and volunteer work.

---

### 41

---

**Marjorie Herr Caldwell**, named Volunteer of the Week in 1986 in recognition of her community service, continues to be involved as a board and committee member in various organizations and is active in women's sports at the YWCA in Salem.

**Oscar Donaldson, Jr.**, now semiretired from his executive post with the Federal Employees Credit Union in Salinas, CA, is enjoying additional leisure time on the Monterey Peninsula "which compares favorably with the Oregon Coast," he notes.

---

### 42

---

**Dorothy Moore Achor** and husband **Winfield** spent last fall in the Semester at Sea program, which combines study with an around-the-world cruise.

---

### 43

---

**Ednamae Hopfer Bryan** reports that her husband, **Cebert**, has recently completed his term as prime minister of the Royal Rosarians, the Portland Rose Festival organizers and goodwill ambassadors.

---

### 48

---

**Patricia Haverty** missed attending her class reunion last May because she was traveling in New Zealand and Australia during the spring.

**Richard Hill** has retired after dissolving the land development corporation he had led for 38 years. He and wife **Billjean** continue to make their home in Salem.

## 49

**Beth Guttridge McMullen** reports that husband **Albert '50 L'52** will retire at the end of the year from the bench of the Lincoln County Circuit Court. The McMullens plan to travel and to spend more time with their children and grandchildren.

**James Nickel**, professor of math and computer science at the University of Texas, Odessa, has co-authored a citizenship monograph published at Stanford. This summer he returned for a third time on a Navy-ASEE Faculty Fellowship to the Naval Air Development Center in Pennsylvania.

### Mrs. G. Herbert Smith resides in Maryland

Eugenia Smith, widow of Dr. G. Herbert Smith, president of Willamette University from 1942 to 1969, is living in the Greenbelt Nursing Center in Greenbelt, MD.

## 50

**Lyle Hamilton** last summer became professor emeritus in the Department of Physiology, Medical College of Wisconsin. Currently he is active in the management of a medical instrument manufacturing company in Milwaukee.

## 51

**Don Carpenter** reports from Palo Alto, CA that he's alive and well and eager to know the whereabouts of his favorite professor, Ed Kollman.

Besides practicing law in San Jose, CA, **Jack Gunn** stays busy with Gunn's Gardens, a 3.5-acre flower garden and fruit orchard which he and his wife, Karla, operate in Soquel. They raise flowers for drying and also rent out the gardens for weddings and parties. The Gunns vacationed in New Zealand in spring 1987 where they held an impromptu reunion for the large Gunn clan.

**Marian Sayre Poindexter** teaches Christian education at Drew Theological School in Madison, NJ. The United Methodist Church recently published a senior high school curriculum she wrote on the Old Testament. Husband **David** is now president of the Center for Population Communication—International with projects in Kenya, India, Brazil, and Mexico.

## 52

**Philip Gallo** moved to Chicago in May 1987 and is now vice president of sales and marketing for Datalogics, Inc., which develops computer systems for large-scale database publishing applications.

**Margaret Sargent Kane** and husband Harry recently sold the family business and are back in education, Margaret as a teacher at Cochise College in Douglas, AZ and Harry as an administrator there. "We are enjoying it tremendously," Margaret writes. "What a vitalizing atmosphere!"



**Gene Maudlin**, former Oregon Public Utility Commissioner, has become an account executive with McKellar, Inc., a Salem-based public relations, advertising, marketing, and government relations firm.

## 53

**Don Scarborough** has been named editorial page editor of the Salem *Statesman-Journal*. In his career with the paper, he had served previously on the S-J copy desk and as night news editor.

**Donna Sebern Talus** and husband Hank moved back to the Salem area in

1987 after living in John Day for 20 years. Donna has been working as a substitute teacher in area schools and taught summer school at Rosemont School for Girls in Portland.

## 55

**Fadhilla Nancy Bradley** took time off last summer from her nursing post at the Student Health Center at University of California-Berkeley to travel to India.

**Tom Foster** and wife **Colleen Chilcote Foster '58** have moved from Salem to Roseburg where Tom was called to be pastor of the First United Methodist Church.

## 56

**John and Carol Litchfield Rehfuess '57** are looking forward to study in Germany and England next summer, where John will be doing research during his sabbatical from the business faculty at California State University-Sacramento. John also plans to publish two books in 1989, "The Job of the Public Executive" and "Contracting Out in the Public Sector." Carol is continuing her graduate studies in special education at Cal State-Sacramento and plans to teach full time in special education this coming school year.

## 57

**Richard Bauman** has embarked on a new part-time career as a novelist and says he would like to retire from engineering to devote full energies to writing. Wife Elaine is a psychologist in Palo Alto, CA where they live.

**Daniel Feller**, a chemistry teacher at Sunset High School in Beaverton, was selected in May as one of five recipients of the 1988 Award for Excellence in Teaching Science and Mathematics. The award carries a \$5,000 prize. Daniel began his teaching career in Stayton after serving in the U.S. Air Force, and has taught high school science for 21 years. He was an Oregon State finalist for the Presidential Award for Teaching Excellence.

## CLASS NOTES

**Joanne Jene**, a physician and anesthesiologist at Portland's Emanuel Hospital, serves on several committees of the American Society of Anesthesiology and is a member of the Board of Medical Examiners for the State of Oregon. She is also president of the alumni association of Project HOPE and is very active in planning this fall's 30th anniversary event marking the founding of Project HOPE. Since 1964, Joanne has traveled to a number of countries in South America, Africa, and Asia on Project HOPE missions.

**Donald and Charlotte Kleen Miller '58** make their home in Forest Grove now that Donald has retired from the U.S. Air Force. The Millers traveled extensively in Europe and the United States last year and spent three months skiing last spring.

---

### 58

---

**Paula Preuss Becks** was named in May to manage the St. Helens (Columbia County) branch of the Oregon State Children's Services Division. Until last spring she had been managing the La-Grande branch of CSD and before that managed the Ontario office for 15 years.

After retiring from the U.S. Air Force in June 1986, **Douglas Rhodes** entered Western State University College of Law in San Diego where he has been building a record of distinction—dean's list, spring semester 1987; American Jurisprudence Award, Torts I, 1987; and winner of the Best Oralist Award, WSU Moot Court, 1988.

---

### 59

---

The Portland YWCA honored **Nancy Ryles** in May as one of the 1988 Women of Achievement. Last year Gov. Goldschmidt appointed Nancy to a four-year term on the Oregon Public Utility Commission; previously she had served two terms in the Oregon House of Representatives and was elected twice to the Oregon Senate.

---

### 60

---

Retired Army officer **Robert Donald**, now living in Nampa, ID, has recently finished writing a biography of former U.S.



### The 'Golden Girls' of 1959

More than a score of the Class of 1959 alumnae celebrated their collective 50th birthday last fall at the home of Jo Ann "Jody" Mills Everts in Beaverton.

The women enjoyed an afternoon of reminiscing, catching up on the news, and celebrating with a cake that proclaimed "WU's Golden Girls—aged to perfection!"

Front row, from left: Carol Warren Ackerson, Laura Butchart Haney, Kay Ruberg Cogswell, Martha Eagleson Peterson, and Jody Mills Everts.

Middle row, from left: Gwen Fried Acker, Celeste Gibbens Vaughters, Pat Renshaw Robinson, Jo Heald Simpson, Barbara Dennis Barrie, Karma Miller Fowler, and Karen Enberg Backlund.

Top row, from left: Marietta Lind Kuykendall, Joan Sherrill McNamara, Carolyn Miller Williams, Sondra Roark Lippman, Mary Johnson Clark, Patti Kimberling Nopp, Bev Hamman MacDonald, Sandy Mischke Pattison, Bonnie Crandall Crecilius, and Sandra Beasley Nichols.

Marine Corps Maj. Gen. **Gregon A. Williams**. Robert hopes to publish the book, "From Santo Domingo to Korea," as a magazine serial.

**Judith Hume Rafanelli** has been living and traveling in Europe since 1982. Currently she lives in Brussels where husband Gene, a U.S. Army colonel, is with the U.S. delegation to NATO headquarters.

---

### 61

---

**MarKatheryn Allender Brooks** earned her B.A. in 1972 from the University of Hawaii-Hilo. She and her husband, Robert, raised six children; Robert died last year. Currently, MarKatheryn is a process analyst in a raw sugar factory in Pahala, HI where she has worked 13 years.

**Roy Chapin** spent three weeks in China last spring lecturing to feed mill managers on swine and dairy nutrition. He also travels regularly to Mexico, lecturing throughout the country on dairy nutrition. Wife **Carolyn Mathis Chapin '71** is substitute teaching and manages the family feed and supply business in Scio.

---

### 62

---

**Frederick Doshier** and wife **Alexandria March Doshier '63** have earned their master's degrees, Fred in public administration and Alexandria in family counseling. Fred is a senior flight instructor with Delta Airlines; Alexandria works half time as a therapist in juvenile hall and half time as a social worker for Ventura County (CA). The Doshers live in Camarillo, CA.

**Janeen Hardy Denham** has been promoted to manager of the Benton-Franklin chapter of the Red Cross in Kennewick, WA.

**Al Neimann**, head of the Weapons Evaluation Branch of the Concord (CA) Naval Weapons Station, was named to "Who's Who in California" again this year.

He also had been named to the 1981 and 1987 editions and was named in the 1977 edition of "Who's Who in the West."

---

## 63

---

**John Baker** has extended his Episcopal ministry to Ohlone College in Fremont, CA where he is a counselor. John also serves on the Fremont City Council.

**Holt Williams** has been teaching in Eskisehir, Turkey this year. Last year he taught English at the Second Foreign Language Institute in Beijing, China.

---

## 64

---

After 20 years as a dental hygienist, **Carol Jo Knudsen Shannon** has changed careers and now keeps the books for her husband's electronics business in San Carlos, CA. Carol Jo remains active in the leadership of state and national dental hygienist associations.

---

## 65

---

**David W. Hansen** is managing 28,500 acres of open-space land between San Carlos and San Jose in California. He also serves on the steering committee for the proposed San Francisco Bay Area Ridge Trail which would extend more than 350 miles around the bay.

**David Nielsen** plans to introduce his son, Matthew, to Willamette this year in hopes he'll "find a collegiate home there in 1989." David and family live in Wooster, OH; he is a research entomologist at Ohio State University.

**Margaret Sawyer** was married in August 1987 to William Christ, an engineer for Westinghouse in Pittsburgh, PA. Margaret, a communications specialist with the University of Pittsburgh, has a daughter in high school and another daughter at University of California-Santa Cruz.

---

## 66

---

**Arlene Rice Dietz** has been named chief of the U.S. Army Corps of Engineers'



Navigation Data Center in the Water Resources Support Center at Fort Belvoir, VA. Arlene has been with the Corps since 1968. Among her recent accomplishments, she managed a 29-volume,

5-year study of the nation's waterways and also assessed defense use of civil works projects nationally. Arlene and husband Chuck live with their two sons near Mount Vernon, VA.

**Karen Reppun Foster** reports that her husband, **Stuart Foster L'67**, has been appointed to the Governor's Task Force on School Funding. Stuart also was elected last fall to the Oregon Board of Bar Governors, "so traveling has become a big part of his/our lives."

**Dave A. Hansen** is now associate dean of students at Linfield College.

---

## 67

---

Last year was a busy one for **Lanae Isaacson**. She was at Harvard University on a fellowship from the National Endowment for the Humanities and also traveled to Norway to participate in a seminar on Norwegian folk music at Ole Bull Akademiet in Voss.

**Levi Crooks Query** is an exercise physiologist at Portland Adventist Medical Center's Health for Life Center. Levi's achievements on the track, where she is one of the Northwest's fastest runners over age 40, were featured in *The Oregonian* newspaper's *Northwest Magazine* last spring.

**Wendy Wilson** is back in school again after 22 years. She's entering her senior year at Western Washington University, majoring in speech pathology and audiology. Her plan is to continue on for a master's degree in audiology. "Really love being a student again!" she writes.

**Janet Loomis Withycombe** lost her husband, Donald, to cancer in April 1987. "It's a challenge to be a single parent of two actively involved teenagers, but I love it (most of the time)," she writes. The family will stay in Lincroft, NJ for a few more years, then may move west when it's time for the children to go to college.

**Donna Wright** now is a full-time field representative for A.C. Nielsen's market research group, working principally with retail stores in the Chicago metropolitan area.

---

## 68

---

**Beverly Jaeck Johnson** lives on a farm outside Charleston, WV with attorney husband David, three daughters, three horses, two dogs, and two cats.

**Clayton Morris** is director of music and liturgy at St. Mark's Church in Palo Alto (CA). Wife **Mary Susan Pacquero Morris '69** is district sales manager for Liberty Mutual Insurance.

**John Thomas** recently expanded his financial services practice and also is working to complete his master's degree in financial services. He, wife Sharon and their two teenage children are settled along the McKenzie River north of Springfield.

---

## Class of '68, reunite!

It's been 20 eventful years since you and your classmates left Willamette. Don't miss the opportunity to catch up on all the news everyone's made since then. Attend the Class of 1968 Reunion Weekend this fall!

**October 1  
weekend,  
in Salem**

(of course)

For more information,  
contact Alumni Office  
(503) 370-6340

---

## CLASS NOTES

**Gary Webb** has been promoted to chief operating officer of Home Shopping Pharmaceuticals in Clearwater, FL. His older daughter currently holds Florida swimming records in the 100- and 200-meter breaststroke. Wife Ellen and their younger daughter also are active in swim team.



---

### 69

---

**Nancy Bearg Dyke** and husband Bill have been living in Japan since 1985, where he is commander of the U.S. Army-Japan. "We're having great fun with our daughters," ages 4 and 3, Nancy reports, and they also enjoyed a visit from classmate **Kim Foskett Duncan** last fall. Before the Dykes began their tour abroad—which entailed three years in Germany before the move to Japan—Nancy was a defense and foreign policy analyst for the Army, serving as National Security Advisor to Vice President Bush. She plans to return to her career "when it is feasible."

**Thomas Williams**, assistant professor of biology at North Central College in Naperville, IL, received the college's 1987-88 Clarence F. Dissinger Memorial Award for distinguished teaching and extraordinary service to the college.



He joined the North Central faculty in 1981 after three years on the faculty of Ricker College in Houlton, ME. Thomas, a specialist in herpetology, earned his Ph.D. in zoology from Washington State University.

---

### 70

---

Life has been busy lately for **Tony** and **Linda Jambor Robinson '71**. They welcomed a daughter, Laura, to the family, joining brothers Joseph (13) and Nick (9) in

their home in Hawaii. Tony received and accepted a call to Shepherd of the Hills Congregational Church in Phoenix, AZ. The Robinsons have become first-time homeowners and look forward to life in Arizona.

---

### 71

---

**Al Edmonds** and his wife, Lu Ann, spent the 1986-87 school year on the "sunny" island of Guam surviving typhoons. Since then, they have moved to the dry lands of Eastern Oregon and are enjoying the peaceful countryside while Al works at Wasco County Union High School in Maupin.

---

### 72

---

**Stuart Causey** has recently joined Genecor, Inc. of South San Francisco, a protein engineering corporation, where he is a research molecular biologist/microbiologist. His move comes after living in the San Diego area for the past five years and working at Syntro Corp. where he and his colleagues were able to genetically engineer bacteria to produce a silk-like protein.

**Randy Stockdale** is the new owner of Thelin's House of Wines in Salem. His wife, **Elizabeth Schade Stockdale '72** L'76, is an attorney in charge of the tax section for the Oregon Department of Justice.

---

### 73

---

**Sheldon Delph** and his wife, Anne, have just purchased a house in Packwood, WA. Sheldon is a special education teacher for the White Pass (WA) School District and reports that his varsity volleyball team has done very well.

**John** and **Denise Allen Thompson** are active residents in Corvallis. Denise is on the Alpha Phi Corporation Board, as well as being Alpha Phi Alumnae president in the Corvallis-Albany area. John is chairman of the Crescent Valley High School science department, and is president of the Oregon Junior Academy of Science.

---

### 74

---

**Ethan Tomokiyo** is a trustee of the Olivet Baptist Church in Honolulu. In business, he is in accounting and commercial property management with Westpac Shelter Corp.

---

### 75

---

**Daniel Foster** acted as a representative of the Bureau of Prisons during the prison hostage crises at Atlanta and Oakdale last year. Currently, he is chief of psychology at the Federal Medical Center in Rochester, MN.



**Rick Rosenbloom** has been made a partner in the Portland office of Deloitte Haskins + Sells, an international accounting firm. He has been with the firm since 1977.

---

### 77

---

**Bruce** and **Ann Croswaite Borquist '78** are American Baptist missionaries working at Central Philippine University. There, Bruce is in entrepreneurship education and small business assistance, and Ann is with the community outreach program promoting community development. W.U. friends who are in the neighborhood should feel free to drop by, the Borquists say.

After returning from a two-year tour of duty on the USS Mount Vernon, which was deployed in the Persian Gulf, **G. Bruce Suckow** has recently been transferred to the Naval Supply Center at Oakland, CA for three years. Bruce does not recommend Manama, Bahrain for a vacation—"not a fun place."

## 78

**Christine Hemp** is teaching writing at Harvard University. She also visits Massachusetts schools as a poet-in-residence, and in her leisure time plays the flute and guitar in a Boston band.

In 1987, **Steven Fullmer** was named an Outstanding Young Man in America. Currently he is an alumni admissions representative for Willamette and is employed with First Interstate Bank of Arizona as a senior decisions analyst in information systems. Steven also owns his own software consulting company.

**Tommi Colwell Krumm** and her husband, Derac, are operating a group of residential treatment facilities in Sacramento, CA for juvenile offenders and abused boys. Derac is the CEO and manages the treatment program while Tommi is the financial director. "We love it!" Tommi says.

**Lynne Davis Reynolds** has settled in Madison, AL with her husband, Drew, and is working as an operations manager for ADS Services.

## 79

"Still single and looking—actively," **Kenneth Chaitlin** is assistant manager of the Mocha Tree coffee store at Washington Square in Portland. He also reports that Mike Ratiani is alive and well, married, and living in San Francisco.

## 80

**Mary Coleman** is enjoying her work in Portland as a donor resources consultant for the American Red Cross and is looking forward to visiting Australia and Greece soon. Mary finished her master's degree in education (college student services administration) at Oregon State University in 1985.

After moving last year to San Jose, CA, **Nora Hill** has taken a job overseeing a child development program which works in association with the YMCA and the public school system.

**Bryan Buescher** is on the dean's list at Cleveland University of Los Angeles where he is studying to be a chiropractor. Bryan also works part time at a chiropractic clinic and runs his own recording and tape duplication business.

**Rebecca Collman McMahon** married Timothy McMahon in August 1987 and returned with him to Vermont where Rebecca finished her residency in pediatrics at Medical Center Hospital of Vermont in June.

Since receiving his Ph.D. in chemistry from Princeton in 1985, **Brent Koplitz** has been doing research at the University of Southern California. Starting this fall, Brent will be an assistant professor of chemistry at Tulane University in New Orleans.

**Andrew McIvor** has received an M.D. degree from the Bowman Gray School of Medicine of Wake Forest University. Andrew also has been awarded a house officer appointment for 1988-89 and will train in surgery at the State University of New York Hospital in Syracuse.

## 81

**Anne Davenport** is working as a physicist for the Naval Coastal Systems Center in Panama City Beach, FL.

**Jeffrey E. Ferguson** was recently promoted from assistant manager of the State Farm Insurance Regional Office in Salem to manager of the region's credit union operations.



**Scott Flowers** was promoted last spring to manager of U.S. National Bank of Oregon's industrial center district in Portland. Previously, Scott had been district manager in commercial lending and branch management.

## 82

**Heidi Brevet** has been working for the Oakland (CA) YMCA for four years and is now the assistant fitness director at the

new Downtown Oakland "Y". She recently bought her first house and also is having a good time traveling.

## 83

**Lisa Ann Pruyn Hardy** is taking graduate courses at Sonoma (CA) State University and is applying for the counseling program at either SSU or Humboldt State. Lisa has been employed at the Hanna Boys Center for over four years. Her husband, Michael, is preparing exhibits of his woodworks to show and sell at art and craft fairs.

The Salem Area Sigma Chi Alumni Assn. has elected **Stuart Charleston** as its secretary-treasurer. Stuart, a physical education teacher at Candalaria Elementary School, will work closely with **Darrell Fuller '88** who was elected president in the same election. Darrell is a consultant with Adams & Company.

**Roger Alvey** has joined the Portland



office of Piper, Jaffray & Hopwood, Inc. as an investment executive. In his leisure time, Roger is an actor with the Little Theater on the Bay. He and his wife, Laurie, live in Portland with their son, Justin.

## 84

**Pamela Byrne** sent word last spring that she planned a May wedding to Kurt Imig. Pamela, an account executive with KTBY in Anchorage, AK, writes that she'd like to hear about class reunion plans.

**Michelle Mendoza** of San Francisco is working both with orthopedic patients at Children's Hospital and with the Muscular Dystrophy Clinic. Recently, she was involved in a research project testing the effects of a new drug on strength in patients with Lou Gehrig's Disease.

85

Jeff Curran has been making steady progress in his career with Dun & Bradstreet Information Resources. After starting with the company in Eugene in 1986, he was promoted and transferred to Sacramento, CA in 1987 where he won that year's Regional Citation Award for performance in the top 10 percent nationally. Last May, Jeff was promoted to divisional operations manager at D&B's regional headquarters in Concord, CA.

William Potter has finished a two-year stint with the Peace Corps in Mali, West Africa. He couldn't bear to leave what he calls the "wild continent," however, and has taken on a contract with the Foster Parent Plan in Mali.

Theresa Westfall enjoyed a busy summer this year. In June, she earned her master's degree in college student services administration from Oregon State University, and in July she married Richard MacLennan and moved to New Orleans, LA where Rick is director of student affairs and admissions at Our Lady of Holy Cross College. Theresa will be looking for a position in that field as well.

86

For the next two years, Don and Christine Miller McLean of Malibu, CA will be working as missionaries in La Paz, Bolivia ministering to the physical and spiritual needs of the Bolivian peasants.



The National Science Foundation has awarded a fellowship to Francis "Poncho" LaChapelle, and he has been accepted in Stanford University's graduate program in International Development Education.

Bill McGowan handles cargo operations and sales for an export firm in Berkeley, CA while working for his M.A. in history at Cal State-Hayward. Wife Cindy Sheaks McGowan '87 just finished her first year in the child development master's degree program at Mills College in Oakland, CA.

Law Notes

Members of the Marion County Bar Assn. have honored Roy Harland L'32 with their distinguished service award. Wally Carson, Jr. L'62 said Harland "dedicated his life to his profession" and that the honor was bestowed upon him for the "quiet and unassuming" way that he works. A Law Library Fund has been established in Roy's name at Willamette University; donations can be made by writing a check to Willamette University, noting "for the Roy Harland Law Library Fund."

Berkeley "Bud" Lent L'50, the senior member of the Oregon Supreme Court in time of service, has not sought re-election this year. Lent is the only current member to have come to the Supreme Court by election rather than gubernatorial appointment and was its chief justice in 1982-83. Before he was elected in 1976, he spent five years as a circuit judge in Multnomah County and served three terms each in the Oregon Senate and the House of Representatives.

James Minturn L'51 has been elected to a three-year term on the board of governors of the Oregon State Bar. Jim, a past president of the Central Oregon Bar Assn., is chairman of the state bar's joint committee for Crook, Deschutes, Jefferson, and Wheeler counties.

Peter Brix L'61, CEO of Knappton Corp., purchased the majority of the assets of Willamette Tug and Barge Co. last spring. Knappton's parent company's board of directors recommended the acquisition's name be changed to Brix Maritime Co. Peter has served 10 years on the Oregon Transportation Commission and is a member of the Port of Portland Commission and of the Inland Waterway Users Board. He is also on the board of directors of Portland General Corp.

Keith Thompson L'71 has been elected president of the Junction City-Harrisburg Area Chamber of Commerce. Keith, a Junction City attorney, lives near Monroe with his wife, Sheri, their daughter, Yvonne, and grandson, Jarrod.

Robert M. Johnstone L'72 has set up a new law firm in McMinnville with fellow alumni Bruce A. Zagar L'75 and Eric L. Hanson L'77 among his partners. The firm represents a number of Oregon school

districts and community colleges and also conducts a general practice including corporation and business law, criminal law, and probate.

Al Miller L'74 spent many of his leisure hours the past year on preparations for the Keizer Iris Festival. Al, who has practiced in Keizer since 1975, was parade chairman for this year's festival.

Former Polk County legal counsel Mike Najewicz L'78 has taken a position as a staff attorney for Benj. Franklin Savings and Loan in Portland.

Mike Ross L'80, a Polk County attorney, is now the deputy district attorney for the county.

Heather Reynolds L'81 represents indigent defendants in municipal court in Astoria. In her community work, she was chosen earlier this year to head the Clatsop County Historical Society. Heather also has served on the board of the Astoria Downtown Assn. and was president of the local chapter of the American Cancer Society.

Martha Pagel L'83, former deputy director of the Division of State Lands and a former assistant attorney general, became director of the Division of State Lands last spring.

Christopher Kneib L'84, a prosecuting attorney for the U.S. Army, has been transferred from Bamberg, Germany, where he has been for three years, to Heidelberg where he expects to be for two years.

C. Wayne Mehlenbeck M'77, L'85 has joined the firm of Eichstadt, Bolland, Engle & Schmidtman in Woodburn.

P. Gregory Frey L'86 is an associate in the firm of Cowan and Frey in Honolulu. He specializes in personal injury litigation and family law.

Mark Rauch L'86 has left a Portland law firm to join the Salem firm of Garrett, Seideman, Hemann, Robertson & DeMuniz.

Tim O'Rourke L'87 joined the law firm of Corey, Byler, Rew, Lorenzen and Hojem in Pendleton last fall.

# Have wrench, will travel

**J**UNE 1989 is a red-letter date for astronomers and other space fans. That's the planned launch date for the Hubble space telescope which is expected to give Earth its best glimpse yet of what lies beyond the edge of the universe.

Leslie Wickman '80 is looking just as eagerly to a date past June 1989, to the time of the first maintenance mission to the telescope in orbit. If her dream comes true, she'll be on that mission and will have her first chance to use in space the tools and equipment she designs in the laboratories at Lockheed Missiles and Space Co. in California.

For both the space telescope and the space station programs, Leslie is designing tools and construction features that will make it easier to maintain and repair the structures in space. Footrests on the ship's exterior, for example, must be convenient and, above all, must provide completely secure footing for the weightless astronaut. Wrenches must be easily gripped by a space-gloved hand and must operate efficiently to avoid astronaut fatigue which can lead to accidents.

To test her equipment designs, Leslie occasionally suits up for a session in Lockheed's neutral buoyancy laboratory, actually a large pool of water. Through a combination of weights and floats, a zero-gravity environment is simulated in which Leslie and her colleagues can perform the activities and use the tools that astronauts would in space. She also has conducted tests in an

*Leslie Wickman '80, in her test lab suit.*

*Photo courtesy of Lockheed Missiles and Space Co.*



airborne laboratory—a KC-135 jet which flies parabolic trajectories that periodically produce about 30 seconds of weightlessness for the jet's passengers.

That's not long enough or high enough for Leslie, though. She's had stars in her eyes ever since she took an astronomy course from Prof. Maurice Stewart at Willamette. "I was fascinated by space, and I got a lot out of that course," Leslie recalls. "But I didn't pursue it directly because it didn't seem to fit with my long-term plans at the time."

Her intended career field then was arms control, for which she figured political science was the right educational background. But when she interned at the Soviet desk in the U.S. State Department, a new realization dawned.

"I saw lots of people there with the degrees I was going to have, and they'd been there in the same place for years. So I chose to go for a technical degree because it seemed to me that most politicians in arms control don't know the technical details."

While getting her master's degree in aero/astro engineering at Stanford University, however, she had another change of mind. "I really got interested in space again, and this time I decided to run with it." Now she is in Stanford's Ph.D. program in mechanical engineering, with a specialty in human factors engineering, or how to achieve the best fit between human and machine.

Besides the academic work at Stanford and the hands-on work at Lockheed, Leslie is gearing herself for astronaut candidacy by flying, jumping, and scuba diving. She's earned her private pilot's licence and a single-engine land rating, she's a certified scuba diver, and she's completed parachute training and made six jumps so far.

The manned space program has had a difficult time since the Challenger disaster, Leslie says. "We've seen many delays, many obstacles, and it's been frustrating and at times demoralizing. But now it's picking up, and I think some very exciting times lie ahead." ■

## GSM Notes

**Dick Winn '76** has started his own computer consulting company in Portland, specializing in installing accounting systems software.

**Richard Gross '77** is director of finance for the Doctors' Clinic in Bremerton, WA. He formerly was with the Columbia Memorial Hospital in Astoria.

**Phil Arzt '78** is assistant administrator for finance at Mount Hood Medical Center in Gresham, OR. He had been director of financial planning at Emanuel Hospital in Portland.

**George Mead '78** is financial advisor for Tara Financial Co. in Campbell, CA.

**Joe Rubinstein '78** is an account executive with Diversified Securities, Inc. in West Covina, CA.

**Matt Brink '79** has moved to San Diego where his employer, Dormac Publishing Co., has relocated. Matt is general manager of the company.

**Meng Lim '80** is financial controller for National Semi-conductor in Santa Clara, CA.

**Martin Loring '80** is the new finance officer in the Business Resources Division of the Oregon Economic Development Dept. Before joining OEDD, he was executive director of River East Progress, Inc., a Portland-based economic development financing agency. In 1986, the U.S. Small Business Administration recognized Martin as the outstanding small business advocate in financial services in the Pacific Northwest. Currently, he serves as a regional director of the National Assn. of Development Companies.

**Ileen Erickson '81** is manager of vendor services for Pacific Gas and Electric in San Francisco. The services for which she contracts include food service, security, and maintenance.

**Curt de Crinis '81** is senior vice president and manager for public finance with MuniCorp of California in Los Angeles, specialists in municipal bonds and tax-advantaged investments.

**Beverly Herrin '82** is assistant director at the Marie Mills Rehabilitation Center in Tillamook.

**Brian Petersen '83** is an account representative for Waddell and Reed, Inc. in Bellevue, WA.

**Tedd Wilkinson '83** is a manufacturing accountant at Litton Guidance and Control Systems in Grants Pass. He previously was with Electronic Data Systems Corp. in Michigan.

**Les Back '84** is a representative for West Hills Enterprises, Inc. in Salem.

**Kevin Brannon L/MM '84** has joined the Portland law firm of Preston, Thorgrimson, Ellis and Holman.

**Michael Kennedy '84** is administrative site manager for Planning Research Corp. in Lake Oswego.

**Janet Madland '84** is information officer for the Oregon Teacher Standards and Practices Commission.

**Patrick Waite '84** has been named manager of financial analysis at Unisys Corp. Peripherals Group in Santa Clara, CA (formerly Memorex Corp.).

**Mark James '84**, intercontinental program manager for Hewlett-Packard in McMinnville, is responsible for joint ventures and product marketing in Latin America, Australia, New Zealand, and Asia.

**Judy Heltzel '84** has received the certified financial planner designation from the International Board of Standards and Practices for Certified Financial Planners. Judy is a registered representative with Integrated Resources Equity Corp.

**Rodney Nye '85** is in the budgeting department of Boeing Commercial Airplanes Co. in Seattle.

**Craig Faiman '86** is a sales coordinator for Coe Manufacturing in Tigard.

**Tom Seguire L/MM '86** is a capital management officer for Rainier National Bank in Olympia, WA.

**Nancy McAllister L/MM '87** is a project director for Impact Business Development Center in Seattle.

**Elizabeth Querry L/MM '87** is the contracts administrator and legal counsel for On-Site Energy, a PacifiCorp subsidiary, in Portland.

**Lee Peterson L/MM '87** has opened his own law practice in Salem.

## Births

**Gale Vaandering '70** and his wife, Susan, announce the birth of their son, Trevor Alan Vaandering, born Aug. 23, 1987. Trevor joins siblings Jamie, Jennifer,

and Alicia at their home in Salem.

**Garnet Kenyon Elliot '73** and **Richard Randall Elliot M '83** welcomed their first child, Andrew "Drew" Randall, on Feb. 24, 1988.

**Alice-Elizabeth Hart Carpenter '75** and her husband, Jeffrey, had their first child, Jonathan Harrison, on May 25, 1987 in Olympia.

Another son, Benjamin Lawrence, joined the family of **Cassandra Carpentier '77**, her husband, and son Michael in their Katy, TX home on April 28, 1988.

**Janice Bush Hogue '80** and her husband, Dewey, welcomed a daughter, Beth, born on July 14, 1986. The Hagues live in Portland.

The first child of **Shawn Van Dyke '80** and Galen Russell III was born June 24, 1987. Joseph David Van Dyke Russell and his family live in Sandy, UT where his parents are ministers.

**Brenda Owings-Klimek '81** and her husband, John, had their first child, Chesna, on June 6, 1987. The family lives in the Chehalis, WA area.

**Mark and Annie Holt Pledger '84** announce a new addition to their family. Alanna, born April 7, 1987, joins brother Matthew at their Modesto, CA home.

**Christopher Kneib L '84** and his wife, Allyson, welcomed a son, Jonathan, to their family in February. Christopher has been in Germany for three years, where he is a prosecuting attorney with the U.S. Army.

Tova Christine Westfall was born Jan. 24, 1986 in Salem to **Theresa Westfall '85**.

**Gregory Frey L '86** and his wife, Mia, welcomed their one-month-premature daughter, Samantha Io'ana Malia, May 12, 1988. The Freys live in Honolulu where Gregory is an attorney.

## Marriages

On May 9, 1987, **Sue Ann Harrison '77** and Conrad Spens were married in Medina, WA. They are self-employed and live in Bellevue.

**James Horn '79 L '82** married Amy Weber on March 26, 1988 in St. Helens where James practices law. The couple are making their home in Scappoose.

**Jeffrey E. Ferguson '81** and Rebekah E. Hanan were married April 2, 1988 in

Salem. Jeff is the credit union manager for State Farm Insurance's Northwest region, and Becky is an agent for State Farm in Salem.

**Timothy R. Strader** '81 and **Lisa Bartholomew** were married May 21, 1988 in Portland.

**Kathryn L. Skimas** '82 married **Allan M. Whitaker III** '82 in Portland on May 14, 1988.

**Ho-Chong "Stacy" Choy** '84 married recently and is now using the name Stacy Kang. She and her husband live in Newark, CA.

**Lena Grace Gurney** '87 exchanged wedding vows with **Wade A. Peterson** '83 on May 7, 1988 in Portland.

**Elizabeth Mork** '88 and **Michael Cocks** '88 were married June 4, 1988 in Portland.

**Judith Neeland** '88 married **Joseph Stewart** '88 in Portland on June 18, 1988. The couple are living in New Brunswick, NJ. Joseph is working in New York as a telecommunications specialist for Mobil Oil Corp.

## Memoriam

**Ross C. Miles** '20 died April 11, 1988 in Panorama City, WA. Miles was an active member in the Religious Society of Friends and attended his last committee meeting three weeks before his death at age 90.

**Carolene Tallman** '25 of Canby died Feb. 20, 1988. She had lived in the Elmhurst Nursing Home in Canby since 1985.

**Pauline Miller Gillim** '26, a retired librarian, died Feb. 12, 1988 in Cortland, NY where she had lived since April 1987. Survivors include her sister, **Lois Roemer** '38.

**Gurnee A. Flesher** '29, a longtime Salem educator, died May 26, 1988 in the city he served from 1929 until his retirement in 1971. He was a four-year letterman in three sports at Willamette and, after his graduation, received a master's degree from the University of Oregon. Flesher began his long career in educational administration as a coach and teacher at Leslie Middle School. In 1941 he was sent to Salem High School and served there until 1963 as, successively, director of athletics, dean of boys, and vice principal. In 1963 he was named the first principal of McNary High School. He was also a recipient of the Keizer First Citizen Award, and was a past

president of Keizer Rotary Club and the Oregon Guidance Association. In 1964, Willamette honored him with a Distinguished Alumnus Citation for his outstanding service to education. Survivors include a sister, **Gladys Flesher McClintock** '27 of Medina, OH and her husband, **James McClintock** '27.



Gurnee A. Flesher

**Paul E. Geddes** L'30, a prominent Roseburg attorney for more than half a century, died March 16, 1988. He had served as Roseburg's city attorney for 31 years. His extensive professional service included the presidency of the Oregon State Bar from 1951 to 1952, and serving as a member of the Oregon Board of Bar Examiners and as a fellow of the American College of Probate Counsel. Geddes also was active in public service. A Republican, he was elected to the Oregon House in 1948 and 1950 and to a four-year term in the Oregon Senate in 1952. He was also a trustee of Willamette University from 1953 to 1959, director of the Roseburg Area Chamber of Commerce, president of the Roseburg Kiwanis Club, Exalted Ruler of the Elks, chairman of the Douglas County chapter of the American Red Cross, member of the advisory board of the Salvation Army and the Council of the Boy Scouts of America.



Renowned Salem athlete and coach **Harold Hawk** '30 died May 20, 1988 in Salem. He was 83. As a student at Willamette, Hawk earned 10 letters in sports and was named All-Conference in basketball for four years and in baseball for three years. He coached and was athletic director in Salem high schools for many years, coaching football for eight years and basketball and baseball for 15 years. His basketball teams had a .717 winning average over that time; they won nine straight district titles and three state titles. Hawk's lifetime coaching record of 312-123 and his other achievements in sports led to his being named to the District 2 NAIA Hall of Fame in 1962 and to the Oregon Sports Hall of Fame in 1982. After his retirement he remained very involved in Salem and Oregon sports and was an active member of Willamette University's Cardinal Roundtable.

**Willis Willard Balderree** '31 L'33 of Grants Pass died April 7, 1988. In 1983, Balderree retired from the law firm he established in 1934. He acted as city attorney for both Grants Pass (1938-47, 1948-74) and Brookings. Balderree was president of the Oregon State Bar in 1947-48, and served in both the Oregon House of Representatives (1945) and the Oregon Senate (1947). In 1947, Balderree was president of the Grants Pass Rotary Club and received that club's Distinguished Service Citation in 1985. He was also an active member of the Grants Pass Masonic Lodge No. 84, the Grants Pass Elks Lodge 1584, and the Sigma Chi Fraternity.

**Frances Smullin Allen '32** of Milwaukie died May 10, 1988 at the age of 78. She studied economics at Willamette and at the University of California and was a member of Eastern Star and of the P.E.O. Sisterhood. Her survivors include her husband, **Harley W. Allen L'28**, and her brother, **William B. Smullin '29**.

**Jane Fischer Harvey '37** died April 16, 1988 in Fallbrook, CA where she had made her home for nine years. Her husband, **Joseph Harvey '37**, had died in 1985.

**Arthur S. Miller '38**, author and professor emeritus of constitutional law at George Washington University, died May 13, 1988 at his home in Key West, FL. Miller, considered one of the nation's top constitutional law authorities, received his LL.B. degree from Stanford and his J.S.D. from Yale, and taught at both George Washington University and Emory University. During the Senate's 1973 investigation of Watergate, he was chief consultant to Sen. Sam Ervin, chairman of the investigating committee; and throughout his life he gave frequent testimony before congressional committees and served as a consultant to the Senate subcommittee on separation of powers, the General Accounting Office, the Commission on Congress and American Foreign Policy, and the President's Commission on Population and the American future. An Army Air Forces veteran of both World War II and the Korean War, Miller also was an occasional lecturer for the Advanced Study Program at Brookings Institution, the Civil Service Commission, and at universities in the United States and Europe. He had moved from Washington, DC to Key West in 1978.

## R. C. Montgomery, geology professor

**Richard C. "Monte" Montgomery**, a professor of physical science and geology at Willamette for 13 years, died June 8, 1988 in Salem. He was 66. After leaving Willamette in 1966, he taught at California State University-Fresno for 20 years. His particular interest was field geography, and he conducted field trips in Death Valley, the Mojave Desert, and the central coast of California. Montgomery was a member of the honorary societies Sigma Xi, Pi Gamma Mu, and Gamma Theta Upsilon and was included in "Who's Who in the American Men of Science."

## Trustee Elfstrom, former Salem mayor

**Robert L. Elfstrom**, a member of Willamette University's Board of Trustees since 1944 and a former mayor of Salem, died June 27, 1988 in Salem. He was 83.

Elfstrom served as Salem's mayor from 1947 to 1950. He also was a member of the Oregon House of Representatives from 1953 to 1963 and of the Oregon Senate from 1963 to 1971, serving in both houses as Republican minority leader. He was a member of the founding board of directors of Commercial Bank. His community leadership included serving as president of the Salem Rotary Club, the Cascade Area Boy Scouts Council, and the League of Oregon Cities. He also was a chairman of the Marion County March of Dimes and a board member of the Salem Area Chamber of Commerce and the Salem Hospital. In 1951 Elfstrom was honored for his community and civic service by being named Salem First Citizen. The National Wildlife Federation also honored him in 1967 with



its legislative award.

Survivors include his granddaughter, **Nancy Ann Johnson '81**.

**John J. Minneman '38** of Hazel Crest, IL died Dec. 15, 1987. After graduating in 1943 from B.D. Wartburg Seminary in Dubuque, IA., Minneman served in six different parishes throughout the country.

**Wilma Matthes McCaffree '43** of Myrtle Point died March 31, 1988.

**John S. Horton '46 L'49** died in Corvallis June 2, 1988. He attended Willamette for three years, served in World War II in the Navy, was discharged as a lieutenant commander, and returned to Willamette to graduate in 1946. After receiving his law degree in 1949, Horton practiced law in Baker until 1963 when he moved to Albany. In 1977, he was named a circuit judge pro-tem. He also was appointed Linn County District Court judge and later was elected to the position. Horton was a member of the Republican Party's state central committee and president of the Baker Kiwanis Club. Survivors include his wife, **Florence Duffy Horton '45**, son **William P. Horton '73**, and daughter-in-law **Barbara Keller Horton '73**.

**Melvin L. Gilson '50** of Lebanon died April 24, 1988 in Medford. Gilson taught music at Madras, Newberg and Dallas before working at Linn-Benton Community College from 1970 to 1985. At the time of his death, he had been working for Pinkerton Security. Survivors include his wife, **Earline Gleason '44**.

**Joy Black Wood '53**, a retired bookkeeper for the state of Oregon, died March 30, 1988 in Salem at the age of 85.

The university recently learned of the death of **David Givens '67** on April 30, 1984. Among the survivors are his brother, **John Givens '66** of Piedmont, CA and his former wife, **Mary Shaffer Givens '68** of Pasadena, CA. Either may be contacted by classmates who wish more information.

## Amplification

**Theodore Edward Douglas Shay '79**, who died in Boston on Oct. 14, 1987, is survived by his mother and her husband, **Shirley Shay Miller '67** and Jim Miller of Lake Oswego; his father and his father's wife, Prof. Theodore Shay of the Willamette University Department of Political Science and **Cari O'Donnell Roshani Shay '64** of Salem; his sisters, **Meredith Shay** of Los Angeles, **Cecile "Cammy" Shay Artiz '80** of Houston, TX, and **Kimberly Shay '81** of Salem; his brother, **John E. D. Shay**; and his grandmother, **Ann George** of Sacramento, CA.

The spring issue of the SCENE omitted the names of some survivors. The editor regrets the omissions.

## Tinkham Gilbert, trustee and banker

Tinkham Gilbert '21, a member of Willamette University's Board of Trustees since 1937, and a life member since 1972, died June 19, 1988 in Corvallis. He was 93. Gilbert began his banking career in 1914 with Ladd & Bush Bank in Salem. After service with the U.S. Army in World War I, he became an examiner and assistant superintendent of banks for the Oregon Banking Division. He left the division in 1934 to return to the Ladd and Bush branch of U.S. Bank, later moving to Commercial Bank from which he retired as a vice president and director.

Gilbert's community leadership included service on the Salem YMCA's board beginning in 1934 and as YMCA president from 1949 to 1951. He also was president of the Marion County Public Health Assn., the Marion County Bankers Assn., the Northwest Council of YMCAs, and the Rotary. He was chairman of the board of the National Council of YMCAs and was a director of School District 61,



Polk County. Survivors include daughters Alcetta Gilbert Campbell '53, Elizabeth Gilbert Green '55, and Rosemary Gilbert Bell '59.

## Rev. Roseberry, trustee and minister

George G. Roseberry, a member of Willamette University's Board of Trustees from 1951 to 1958 and founder of two Methodist churches in Salem, died July 1, 1988 in Salem at the age of 89. During his 40-year career in the ministry, he served as district superintendent in Idaho, with the Rose City Park United Methodist Church in Portland, and as superintendent of the Salem district for six years. In his time in Salem, he helped found Trinity United Methodist Church in 1954 and Morningside United Methodist Church in 1956. His son-in-law, Paul Jewell, is now pastor at Trinity. After leaving Salem in 1957, Roseberry served the First United Methodist Church in Medford until his retirement in 1965. His community awards included receiving the Silver Beaver Award from the Boy Scouts for 45 years of service. Among his survivors is his daughter, Elois Roseberry Jewell '53.



### INCREASE YOUR INCOME WHILE SUPPORTING YOUR ALMA MATER! WHY NOT CONSIDER A GIFT ANNUITY WITH WILLAMETTE UNIVERSITY?

- Lifetime guaranteed income • Excellent tax advantaged interest rates • Immediate charitable deduction •
- Enhance educational programs at Willamette University •

You can establish a gift annuity by transferring money or securities to Willamette and begin receiving guaranteed income (tax advantaged) for the remainder of your life at interest rates which are higher than most current CD rates.

I am interested in knowing more about a gift annuity with W.U.

Name: \_\_\_\_\_ Address: \_\_\_\_\_

Day phone: \_\_\_\_\_ Evening phone: \_\_\_\_\_

Return to  
Michael Bennett, Director of Planned Giving  
Willamette University, 900 State Street, Salem, OR 97301



# Renewing the Old Historic Temple

## THE \$400,000 WALLER HALL CHALLENGE



recognition of the need to maintain support  
for Willamette University's Annual Fund  
*and* to provide funds  
for renewing the old historic temple,  
an anonymous donor has offered  
a \$400,000 challenge.

This challenge gift  
provides a dollar-for-dollar match  
for the Waller Hall project.

Join us in restoring the past  
and assuring the future!

**WILLAMETTE  
SCENE**

PUBLISHED FOR ALUMNI & FRIENDS OF THE WEST'S OLDEST UNIVERSITY

ADDRESS CORRECTION REQUESTED

---

PRESIDENT'S  
ANNUAL  
REPORT

---

1987-88

---

