

Bearcats vs.
Pacific U.
Sat. Night
Forest Grove

Willamette Collegian

1842—Willamette University in its Second Century—1949
"In Age There Is Wisdom"

Vol. LX

Salem, Oregon, Friday, February 18, 1949

No. 19

Bearcats vs.
Lewis & Clark
WU Gym
Tonight

Student Council Discusses Chapel Programs, Elections

By Eric Bergman
Collegian Editor

Topics discussed by the student council this week at the Golden Arrow restaurant were numerous, ranging from better programs and speakers at chapels and more facilities for the Cat Cavern, to revisions of the constitution, including a one-day election article and the setting of awards day and consideration of candidates for May Weekend manager.

Chapel Causes Discussion

Several council members were up-in-arms concerning chapel programs. They believed that speakers should be selected from a list which would include speakers "which the students would find more entertaining", as stated by one council member. The matter is to be discussed with Dean Raymond Withey by a council committee, following council-approved action. Also the matter concerning availability of Tuesday chapel for every-other-week student body or student direction is to be straightened out, the council decided.

Yell Leaders Get Pay

Following a plea by Scotty Washburn, the student council reaffirmed its position to pay yell leaders' transportation expenses from administrative budgets. This came following the recent refusal by the administration to pay for the yell leaders' trip in private cars to a Portland basketball game.

A proposal to make moving pictures available on the campus for entertainment purposes was tabled because of lack of money to finance the plan and because of lack of facilities to show pictures here.

Better Facilities for Cat

Introduced by Russ Tripp was a proposal to better lounging and meeting facilities in the Cat Cavern.

As Tripp expressed it, "I am ashamed to bring friends from other colleges to the supposed student union in the Cavern."

"The place looks like an abandoned car wrecking lot filled with old Essex chassis. The place should be fixed to include a door which would be open as long as the building is open and which would make it a temporary student union until the University can afford better facilities."

It was mentioned that several colleges have used Camp Adair buildings for temporary student unions. The matter is to be dis-

Student Body Budget Gains Council Nod

Student body budgets for this school year were approved by both the finance committee and the student council, following their consideration at meetings this week.

Very few items were questioned since all budgets had been underestimated by the various departments and therefore were believed to be within the scope of appropriations from the student fund. Total of budgets submitted approximated \$24,200, according to estimates by the finance committee.

The Wallulah is to cost approximately \$9,464 as submitted by Editor Geri Bowles, while the Collegian will get \$4,782 from all sources, according to the budget submitted by Publications Manager Marilee Olson.

The forensics budget, submitted by Manager Jack Gunn, shows appropriations of \$1,737; the drama department, estimated by Carl Ritchie, shows \$1,525; the band, \$1,000; orchestra, \$525 and the choir, \$3,525.

cussed by the Cat Cavern board and proposals for better or revised facilities are to be presented by the board at the next council meeting.

Constitution Needs Revision

George Gottfried, at present working on the constitutional revisions committee, presented his findings to the council. He said that many articles in the constitution need clarifying, discarding and revising.

Among articles to be worked over and presented later for student and council approval are those on elections and those covering several obsolete boards and committees. It was suggested that a one-ray election revision be included in the next revision proposals. This would elect all candidates for class officers and student offices in one day, eliminating the present run-off election system. It was believed that this would create more interest in elections.

Council Gets Final School Chest Report

Manager John Christensen, of the School Chest drive, which was concluded in November, presented his final report to the student council this week. The drive was found to be a "100 per cent success", and the council proposed that the Chest be continued in future years.

The drive, which lasted one week last November and was climaxed with a variety show presented by WU students at the high school auditorium, was found to have grossed \$962.14 with only \$5 or \$10 not yet collected, Christensen reported.

Allotted from the net proceeds of \$843.16 were the following appropriations: WSSF, \$461; Community Chest, \$92.20; March of Dimes, \$50.29; YWCA, \$92.20; Cancer, \$50.29, and to the general fund, \$97.18.

Several proposals have been made to allot the money from the general fund, it was stated by Christensen. Among these is a membership in the Red Cross for \$50, "if they will accept it", and allotment of the rest of the fund to the Community Chest.

Suggestions will be filed with the student body office by Christensen recommending ideas for next year's manager. All council members commended Christensen and his committee for the work of consolidating school drives into a successful one-week campaign.

New Sophomore, Senior Presidents



DICK ENDSLEY



BOB BAILEY

Endsley, Bailey Win Posts; Run-offs Scheduled Tuesday

Run-off elections to fill six of 20 positions for class offices, will be held Tuesday, announced Al McMullen, vice-president of the student body, this week.

Dick Endsley became sophomore president in Monday elections, as a substantial number from each class cast ballots for favorite sons and daughters. Bob Bailey was made president of the class of '49 for the remaining part of the year, with Harry Ryan capturing the vice-president's post, Mary Wilcox gaining the treasurer's position, and Barbara Miller the secretariat.

Morris McElwee was elected senior sergeant-at-arms, and Patricia Holtz became publicity manager without opposition.

Contested votes for two presidential posts left Gordon Cline

and Bud Holmes still vying for the junior position, with Freshmen Sherm Biss and Don Benson facing the same revote.

Bob Muhr was handed the vice-presidency of the class of '51, with Beatrice Nagl and Joan Cloudy elected secretary and treasurer, respectively.

Sophomore Don Carpenter, sergeant-at-arms, was the only other winning candidate for his group. Connie Bailey was made freshman secretary, Priscilla Botkin was elected treasurer, and Dan Montag became co-sergeant-at-arms with Louis Prediletto.

Remaining candidates for run-off decisions included Colleen Whiteman and Jack Brown for sophomore vice-president, and Ludene Hargrave and Chuck Robins for the money-keeper's post. Janet Stark and Mary Scott vie for the sophomore secretarial job. Harry Summers and Don Pritchett complete the list, as they await the voters' decision for freshman vice-president.

Students Give Recital Today

Six students will participate in the regular weekly student recital in Waller hall this afternoon at 3 o'clock.

Included in the program will be Doris Walser, pianist, playing "The Cat and The Mouse" by Scherzo; Philip Stoehr, pianist, playing Chopin's "Polonaise"; Velma Youmans, mezzo-soprano, singing a pair of French bergerettes; Beverly Hutchinson, pianist, presenting Rachmaninoff's Prelude in B major; Jean Rickli, pianist, playing preludes by Bach and Debussy, and Betty Kuhlman, violinist, playing Bach's Fugue from Sonata No. 1 in G minor.

VOTE
Next Tuesday

Band Returns From Concert

The Willamette band returned last night from a 500-mile, five-day concert tour in central and eastern Oregon. The 45 musicians left in a chartered bus last Sunday to be in Bend for their first concert appearance.

Directed by Maurice Brennen, the band played six concerts: two each at Bend, Prineville and Redmond. While in Redmond they also held a clinic for the Redmond high school band. A concert at Lakeview was cancelled because of snow.

Approximately \$375 was made in concert fees which paid part of the expense of the trip.

The first local band concert is scheduled for chapel period, Tuesday, March 15, in Waller hall.

Band Comes Home from Snowbound Eastern Oregon



Wearing new uniforms, members of the University band pose for the Collegian photographer. A concert tour to Bend, Prineville and other Eastern Oregon points was completed when the group returned to Salem last night, complaining of "cold weather back East!"

'Workshop Will Change,' Says Power

"The Tenth Hour Workshop", a radio program independent of the University, took the place this week of the former University Workshop on KOCO at 10 Monday night.

Producer Joe Power stated that the action had been necessitated by a number of prominent Workshop members leaving school, and others being affected by the drama department interpretation of the University probation ruling.

Power added that machinery is in motion to obtain Columbia Workshop scripts from New York for use in the continuation of the programs.

Blue Monday To Be Calmer, Merriam Says

With Freshman Glee only three weeks away confidence in inability of other classes to earn the pennant and the general spirit of rivalry grow more apparent as the March 5 event approaches.

Millstream dunking for the fourth place class, almost as traditional as Glee itself, will not be banned, even though a restriction was placed on "swimming" early in the fall semester.

Unfortunate incidents resulting from Blue Monday revelry in recent years has prompted certain regulation, which was formulated at a joint meeting of the student council and the Glee committee.

The statement issued at the meeting declared, "Using as a guide recommendations made by the student affairs committee following last year's Glee, the student council and Glee committee, in an attempt to reflect the feeling of students and faculty, definitely feel bets which flagrantly violate standard university policy should be 'off-limits'. Also working in the tradition of Blue Monday has been the idea that betting is for the amusement of the campus and should thus properly belong on the campus. It is our sincere desire that we can show originality and humor in our betting this year and yet not give the casual observer reason to criticize."

Floor-damaging, frowned-upon water bags will be discouraged; although pie-throwing is o.k. if it is restricted to the athletic field. Presence of animals on campus in payment of bets is considered taboo for 1949 Blue Monday. The general regulation points to consideration of townspeople and condition of the campus.

Glee Manager Bill Merriam hinted that faculty members are not necessarily immune from betting, and history has even recorded an occasional dip in the millstream for certain pedagogues who bet too rashly.

Chapel Cancels Teachers' Meet

Future Teachers of America will hold no meeting in February due to the resumption of compulsory chapel third period on Tuesday, which was the FTA meeting hour.

Prof. Chas. A. Derthick of the psychology department will be speaker at the March meeting. Derthick will speak on psychology in education.

Last Wednesday the FTA presented "Professor, Please", the fourth of a series of 13 broadcasts at 9:30 over KOCO. The discussion was of teacher pets, and was brought forth in question and answer conversation.

Religion Won't Hurt You

As Religious Emphasis Week comes to a close and after perhaps you have been thoroughly saturated with the feeling that you should take a more thorough interest in your church, we wish to put in our two-cents worth.

We do feel perfectly sure that there has been a decided trend away from the church in the past few years, though some figures seem to prove otherwise. But we certainly feel that those who have been attending church regularly are more thoroughly convinced that there is hope for the world—that is, that maybe peace can be achieved in an otherwise "cracking up of society."

If for no other reason than to put yourself in a better spot to observe that there are persons who feel that hope still survives in the world and that fear may be overcome by prayer, you should try to attend church once in awhile.

The Emphasis on religion this week is your invitation to join the crusade to Peace next Sunday.

Oregon a Nonagenarian

This week, the Valentine state of Oregon, became a nonagenarian. The state's birthday is hard to forget because it became a state on Valentine's day back in 1859 just before the Civil war and when Abraham Lincoln was at least thinking about taking residence in the White House.

Ninety years ago, Salem and Willamette university were just dots on the horizon of a state which had to battle for everything it got from the East and every consideration it got from Congress. Few people were much interested in this wilderness which, if they only knew then, was to grow into the most promising of living places in 1949.

Today, with a great migration started in our direction and with every indication of competition becoming great between our own region and the East, we have a great deal to look forward to. When the state is a century old, we can look forward to a Salem of 100,000 persons, a Willamette valley of a million and a half and a state of prime importance to the future of this country.

The Brotherhood of Man

Directly following Religious Emphasis week is Brotherhood week. It is not to be classified as one of the more intangible weeks such as Dried Apple week or Hot Tea week or Boston Baked Bean week.

It is a week in which man thinks of man as his brother and establishes that fact for the rest of his life in his mind and activities.

President Truman in proclaiming next week as Brotherhood week says this, "Let us join as a united people to serve with diligence that brotherhood which springs from the Fatherhood of God and which offers true glory to our nation and hope to all mankind."

Faculty Did Not Resign

We find through further investigation of the editorial last week concerning the release of a professor at Mt. Olivet college that our supposed facts were incorrect. Although a professor was released, he was given a year's notice with pay and refused to attend a hearing concerning the facts of the case against him. However, the faculty did not (we repeat, did not) resign as a protest against his release but merely posted an ad in a newspaper offering their services as a body to interested takers. Other professors were subsequently released on similar "social" charges but also were given the usual notices of release. Our editorial in content, however, stands in meaning though not in facts.

Enthusiastic Frosh, Tired Upper Classmen View Dubious Past While Testing Glee Tunes

Neither wind, storm, war, or depression could stop it . . . and as a result, this year marks the forty-first annual Glee to capture the musical spirit of the Willamette campus.

It wasn't easy. In 1933, for instance, the gloom of the almighty depression had so implanted itself on the nearly penniless students of the campus, that discontinuation of the traditional event was seriously considered. Again in 1942, just after an unlucky Willamette football team inadvertently led a Japanese fleet to the shores of Pearl Harbor, and many of its men were leaving for military service, there seemed little room for Freshman Glee.

As freshman, sophomore, junior and senior struggle with musical scores and stage formations, it's interesting to review past happenings inspired by the onslaught of preparation—and betting.

In 1945 Winona Henderson recited "T'was the Night Before Christmas" in the Oregon senate, and was commended by ex-Senator Marshall Cornett who went on record as saying that "This is the best speech I've heard in the Senate this season."

Other legislators failed to see

the humor of invasions of the legislature, and as a consequence, Ralph Watson, Oregon Journal statehouse reporter wrote that "it was a demonstration by students of Willamette university who were getting into sororities, fraternities and such."

Comments ranged from "I think it is beneath the dignity of this chamber to allow such a demonstration" to "undignified and unbecoming to Willamette university."

President Smith paid for his newness to the campus several years ago by receiving an invigorating plunge in the Stream. The fable of Diogenes with his lighted candle in the House of Representatives is classic now, but it, too, aroused the righteous wrath of the law-makers, counteracted somewhat by the comment of Representative John Steelhammer that "We've probably done sillier things than that ourselves."

Bets went so slowly in 1941 that enterprising students set up a betting bureau to facilitate agreements between rival classmen. One of their brainstormers had the loser dressed as a Turk, carrying a clock and a rug. Every half hour he would kneel to Waller hall, remaining prostrate for a full five minutes.



"This two-chapel deal presents a definite problem, Mo. . . . I don't know which one to cut . . . (or both)!"

Feature page
STAN HAWK, Editor

On the SOUTHard Side

By Wally D. Southard

The latest word is that dresses are coming up two or three inches and so is feminine indignation. The latter surprises me, for it is a well known fact that a New York dress designer could drape frills on a cement sack and still find plenty of purchasers. At any rate, there wasn't too much indignation expressed after the war when short dresses were thrown out for what the women are wearing at present . . .

I went over to the capitol coffee shop the other afternoon to check on the length of the dresses. There wasn't any change in the dress lengths, and my visit would probably have been in vain had I not bumped into Norman Stone. I decided to get a typical masculine reaction to the new fashion trend.

"Norman, what do you think of the shorter dresses for women?" Norman didn't reply for a mo-

ment, and then he turned to me and said rather quizzically, "I wonder where all these girls go every night."

So much for the typical masculine reaction.

Eileen Riney came over to the table a few minutes later and sat down. Here was an opportunity to get a feminine reaction to the new style.

"Tell me, Eileen, what do you think of shorter dresses for women?"

Oh, no! Heaven forbid! I don't like it."

"Then you believe that girls would rather keep their present wardrobes for reasons of personal appearance and economy?"

"Definitely." Eileen was emphatic . . .

Well, if the new fashion materializes later on in the spring, there will probably be the usual imprecations and such muttered against the dress designers by the women; but in the final analysis, after imprecations and such, Miss and Mrs. America will wind up wearing shorter dresses. And Mr. America, except for the strain on his pocketbook, will probably be more than happy with the old "new look."

Campus "Creeps" Haunt Library

By Pat Sebastian

I am a librarian's assistant and I know many things, for I walk through the archives.

I know the nameless terrors of students who have wandered into the shadow of knowledge the night before exams and the rising fears of those who would memorize the Bible. Even more, I know the secrets hidden in the hearts of those mysterious few who pass frayed test papers under the tables; secrets of which I dare not speak.

Emaciated pre-meds, sad of eye, who came to the library armed with a hypodermic needle (for experimental purposes only) are indeed a familiar sight to me. I've even managed to develop a certain callousness to the anguished, piercing screams of English majors upon finding the "Oresteia" to be a trilogy of rather meaty material, after optimistically allotting an hour of a tight schedule for its reading. What a brutal game this is!

By far the most trying are the orgies which take place here in the library the few days preceding finals. As the lights flicker on in the library at night, the curious pilgrimage begins. As 10:00 p.m. approaches, I must steel myself to turn a deaf ear to the pleading of those frantic students who beg to be left overnight in the building so they might have constant access to the suddenly treasured volumes. Their fame is short-lived, however, and soon after these few mad nights, they succumb to the dust.

One day I see a sparkling, keen-eyed freshman bustling about the place; two years later, it's hard to believe that this bent and aging man wearing what appears to be the bottoms of milk bottles for glasses, is that same blue-eyed lad.

Then there are the alleged "toughs" who crouch in the dim-lit corners to absorb the collected works of Keats and Shelley and muse over parched sheets of Homer and Virgil. On second thought, I can think of no better place to read these masters!

An intriguing episode, though tragic in consequence, was the time we locked a boy up over the Christmas holidays. I can see him now as we cracked the seal on the swinging doors that third day of January.

He walked with a ghoulish shuffle, looking neither to the left nor to the right, going by us as if we didn't exist. As he passed, I heard him reciting the "Oxford Companion to Classical Literature" . . . backwards, yet! According to rumor, the guy is now approaching chapter two, volume one, in retrospect, and is showing signs of running down.

I really should spend no more time on this account, for the description of a character wanted for a two-cent fine is coming over the teletype. Besides, I've got to . . . volume one is to volume two, as pressure two is to . . . ?

Willamette Collegian

"In Age there is Wisdom"

Published Fridays

Official Publication of the Associated Students of Willamette University

Member Collegiate and Intercollegiate Press

Rated "All-American" 1947-48

Editorial and Business Offices

Salem, Oregon

Phone 3-3068

Entered at the Postoffice at Salem, Oregon, for transmission through the mails as second class matter. Published weekly except during examination and vacation periods. Subscription rate: \$1.50 per year. Represented for national advertising by NATIONAL ADVERTISING SERVICE, INC., college publishers' representatives, 420 Madison Ave., New York—Chicago—Boston—Los Angeles—San Francisco—Portland—Seattle.

MARILEE OLSON—Publications Manager

Advertising Manager—JACK BROWN Circulation Manager—JIM MYLLEN

ERIC BERGMAN—Editor

News Editor—EILEEN SCOTT Campus Editor—ELLEN MONTAGUE
Sports Editor—DALE REYNOLDS Copy Editor—JOHN CONNETT
Society Editor—MARY LOUISE LEE Rewrite Ed.—EARL van LYDEGRAF
Feature Editor—STAN HAWK Staff Photographer—DAVE SCOTT
Staff Cartoonist—ED FITZSIMONS

Staff Reporters:

Earlyne Foley, Connie Bailey, Dolores Banx, Robert Christensen, Claribelle Easton, Bob Hearn, Barbara Garrett, Mary Lou Herndon, Mary Howe, Pat Jones, Mary Louise Lee, Al Ladendorf, Pat Morgan, Glenda McAllister, Patrick Paddock, Barbara Redenbaugh, Ron Symons, Bev Tribble, Myrtle Walker, John Weisser, Phil Gallo, Mickey Newell, Ken Nerison, Dale Reynolds, Bill Bonington, Dave Card, Lowell Mauditt, John Williams, Joyce Kelly and Jerry Jewett.

(Note: All material published with by-line, signature or in editorial columns is the writer's own opinion and not necessarily the opinion of the Collegian or Willamette University.)

Extra Section Would Depict Glee Activities

Depending on the outcome of senior and sophomore votes, the March 11 Collegian may have an extra four page section of glossy pictures covering Glee events.

If each class will contribute \$15, the Glee committee will provide \$25 for the project and the Collegian will spend \$25. Freshmen have voted to grant the money, and juniors will do so only if the other three classes vote yes.

According to Editor Eric Bergman, the section would be printed by Yourtown and would include a pictorial record of the classes in formation, the winners claiming the banner and Blue Monday antics.

Because of budget limitations, three four page issues of the Collegian will appear this semester, the first on February 5.

Wallulah Submits Copy to Printers, Increases Staff

The Wallulah staff is busy preparing photographs and pictures for senior panels, student activities and fall social events in order to meet a March 1 deadline.

Football, women's sports and rally squad sections went to the printers between semesters. Several deadlines have not been met because of a lack of students' help in indexing lay-outs, typing and picture cutting, said Editor Geri Bowles. Students wishing to specify time free for publications work.

New members added to the Wallulah staff recently are Ludene Hargrave, who has been appointed lay-out editor, and Barbara Redenbaugh, proof reader.

Chapel Notice

Harry Burks of the American Friends Service committee, will speak in chapel Tuesday. Burks will later be a luncheon guest at Baxter hall where he will interview students interested in his work. In the afternoon, a tea will be given in Burk's honor at Lausanne hall from 3 to 4.

Reverend Ralph Kleen, pastor of the First Methodist church of Forest Grove, will speak Thursday at the First Methodist church.

Compliments of the
Capitol Restaurant
Rooms 9 and 10
State Capitol Building



An Asset to Popularity
Personality Glasses

Face-contour-fitting personality glasses give you, in addition to better sight, more confidence in actoins thus increasing your popularity. An important item to remember is that personality glasses not only "fit your face," but also "FIT YOUR EYES."

Dr. Kenneth W. Morris
and
Dr. Henry E. Morris
Optometrists at

Morris Optical Co.

444 State St. Phone 3-5523

Roots of Culture YOUR BIRTHSTONE AND ITS MEANING



FEBRUARY - THE AMETHYST
WITHOUT TELESCOPES, ANCIENT EGYPTIANS MAPPED THE STARS ACCURATELY, DEDUCING HUMAN DESTINY FROM THE ZODIACAL SIGNS, SYMBOLIZED LATER BY JEWELS - OUR BIRTHSTONES.

FEBRUARY'S BIRTHSTONE, THE NOBLE AMETHYST, OF PALEST VIOLET TO DEEPEST PURPLE, REPRESENTS CHRIST'S SACRIFICE. ADORNS BISHOPS' RINGS AND CEREMONIAL GOBLET.

FEBRUARY PEOPLE INCLUDE MANY FAMOUS ORGANISERS, WRITERS, SCIENCE-RESEARCHERS, POLITICIANS.



THE AMETHYST, A TRULY ROYAL GEM, FEATURED IN ENGLAND'S CORONATION SERVICE, WAS FAVORED BY CATHERINE THE GREAT AND QUEEN CHARLOTTE.

ACCORDING TO ANCIENT TRADITION, THE AMETHYST CONFERS UPON ITS WEARER SINCERITY AND PEACE OF MIND.

Copyright 1949 Joe

Fantasy Turns Into Farce Despite Players' 'Good Try'

By Robert Scott

The drama department's Wednesday night premier of Karel Capek's 1921 fantasy-melodrama, "R. U. R.," had the reception the War II-dead author must have dreaded in nightmares. His fantasy was taken for farce, his pathos for ludicrousness, while the "message" got lost in the shuffle.

The occasion for this mishap may not, however, be put entirely to the audience, Fantasy, essentially, must sustain a mood of credibility throughout in order to succeed. "R. U. R." is a good fantasy, as immediate and sustained popularity on the professional stage has testified. Wednesday night, however, "R. U. R." somehow lost its original impact.

It had a good try, we won't quarrel with that. Bill Strobbe did an excellent job of exposition and his efforts to sustain the mood as it trickled away left us admiring. Ray Yocom was overly-officious as Dr. Gall, but kept very well within the spirit of the play. Udell McManus was fine in moments of passion and Phil Hammond was convincing when he was restrained. Robert Withan got the comic relief when it was needed and intended.

Betty Thompson, we feel, was somewhat awed by her role. It is unfortunate that she should premeditate third-act dramatics from her entrance in act one, however. Though her grasp of the implications of her part was excellent, the note of restrained hysteria

throughout damaged her characterization considerably.

Ray Loter we sympathize with, who had the task of winding up the dramatic conclusions in an already difficult epilogue. He did a fine job, but the mood was long-shattered and the curtain closed on a laugh instead of a sob.

In conclusion, it is our modest opinion that the drama department bit off more of "R. U. R." than it could chew. We feel that some cognizance should be taken of the natural limitations of amateur productions. If they are incapable of high passion or social instruction, let 'em alone.



Sign Removal Asked

Al McMullen, student body second vice-president, asks that students remove all campaign signs immediately following elections.



Salem's Leading Credit Jewelers and Opticians

Whites Lunch and Drive In

1138 So. Commercial

Phone 3-3267 or 2-1495

Deans Return From Meeting With Personnel Counsellors

By Barbara Redenbaugh

That the student needs more intensified individual counselling was the belief and conclusion of the three counsellors from Willamette—Dr. Raymond Withey, dean of students, Mrs. Regina Ewalt, dean of women, and Helen Mae Olson, counsellor of women—who attended the annual conference of the Northwest College Personnel association at the Multnomah hotel in Portland, February 10 to 12.

A main topic brought out, according to Dean Ewalt, was that more professionalization of counselling staffs is needed in the future. That is, specific standards, requiring a higher background of training and knowledge, should be required of the personnel. She also reported that emphasis was placed on the need for coordination of personnel service in each institution.

Professor Influence Strong

Withey feels strongly that the more superior method of counselling is not merely through an occasional appointment with advisors or professional counsellors, but through the association of the student with his actual classroom instructor. A professor, lecturing on his subject, may purposely or even unconsciously influence the student much more than the strictly professional counsellor might in some instances, according to Withey.

Miss Olson, while at the conference, especially noticed the keen interest of all college representatives present. They all took the problems seriously and many notable speeches and panel discussions were held.

Audience Participation

It was noted that all sessions of the conference were designed for audience participation. Questions and points of disagreement were welcomed by the speakers. Friday a panel discussion, consisting of ten guidance supervisors and counseling directors discussed the need for coordination within each institution.

The four states represented at the conference — Washington, Oregon, Idaho and Montana—elected Dan Poling, dean of men at Oregon State college, as president of the conference for the following year.

KSLM Presents WU Legal Forum Friday Evenings

Radio station KSLM is now broadcasting the Willamette university legislative forum every Friday evening at 9:30 for the duration of the legislature. This forum previously was broadcast only over KPOJ on Thursday nights. Now stations in Corvallis, Bend and Coquille, as well as Salem, will play transcriptions from the KPOJ broadcasts.

Tonight's subject for Salem listeners will be "What Labor Wants From this Legislature."

Guest speakers include the executive secretary of the Oregon CIO, Stanley Earl, and Representative Giles French, chairman of the house committee on labor and industries.

"As Fine as Skilled Hands Can Make"



Stradivari
CUSTOM-SUIT-TAILORED
SPORT SHIRTS

BISHOP'S

Cavern Valentine Given to Wards

Conley and Eloise Ward, a married couple from Nyssa, were the winners of a box of chocolates on Valentine's day. Their names were drawn from a list of 58 couples who signed the heart in the Bearcat Cavern.

Schneebles, the Phi Delta Theta mascot, and 14 male couples, plus a number of fictitious feminine names were withdrawn from the contest.

Tax Tickets Issued

Confusion regarding the white cards issued at registration this semester has been cleared up by Registrar H. B. Jory, who announces that the cards will take the place of tax tickets. Students will be expected to present them, in addition to regular student body cards, at all athletic events.

NEWS

ENTERTAINMENT

MUSIC

DRAMA

& SPECIAL FEATURES

Your WESTINGHOUSE STATION

KEX
PORTLAND

6:00 A.M. to 1:00 A.M.
19 HOURS DAILY (Sunday 18 Hours)

Always DIAL
1190

50,000 WATTS

L&C Invades Bearcat Lair Tonight

Collegian Sports

DALE REYNOLDS, Editor

Cats Journey to Forest Grove Tomorrow

Basketball coach John Lewis and his men will play host to the league-leading Lewis and Clark Pioneers tonight in a game which is shaping up to be the most decisive of the current season. Tomorrow night the Bearcats are scheduled against Pacific university at Forest Grove.

The setting for the Lewis and Clark game tonight was heightened when Whitman defeated the locals on Monday night. The loss made it imperative that the Cats whip the Pioneers and win their remaining conference games if they are to figure in the pennant chase. All this will make tonight's go a "ding-dong" affair.

Pioneers Have 6-1 Record

The Pioneers, coached by Eldon Fix, have lost only one game and have won six in the conference. Since Willamette has a 4-2 league record, Lewis and Clark can lose one of its three remaining games and still end the season in a tie for first place. If the Pioneers top WU tonight they will virtually be the new champs,

since their two remaining games are with Pacific and Linfield.

The Pioneers are led by 6' 6" center Bob Pollard, a three-year letterman, and forwards Gordon Mills, 6' 1", and Dean Sempert, 6' 4". These three men were the squads' leading scorers last season, scoring 797 points among them.

Harold Ellmers, 5' 6", and Arnold Thomas, 5' 10", hold down the guard spots. Both are extremely fast and good "team" players.

Pacific Game Anti-Climactic

The Pacific game tomorrow night should be anti-climactic, the Bearcats having walloped the Badgers, 74-40, earlier in the season. Harvey Roloff's men, however, seem to have found new hope in their last few outings, stopping Linfield and the College

Clark their lone defeat.

With seven returning lettermen Pacific is still in the process of rebuilding in an effort to do better than last season's seventh place finish.

Badgers Play Double-Post

The Badgers have been experimenting with a "double-post" style of play, and will probably throw caution to the winds in an effort to halt the Bearcats.

Pacific's main scoring threat is in center Ed Rooney, who has held the league scoring lead several times this season. Rooney, one of the team's many tall men, has been described as "dependable, experienced, and a good team man."

Willamette	Lewis & Clark
B. Johnson	F. Sempert
Loder	F. Mills
J. Johnson	C. Pollard
Warren	G. Ellmers
T. Johnson	G. Thomas

	W	L	Pct.	PF	PA
Lewis and Clark	6	1	.833	330	314
Willamette	4	2	.667	341	305
Whitman	4	3	.572	387	345
College of Idaho	3	4	.428	357	356
Pacific	3	5	.375	263	394
Linfield	1	5	.167	268	332

LAST WEEK'S GAMES		NEXT WEEK'S GAMES	
At Whitman 58, Willamette 51	Whitman at College of Idaho	Whitman at College of Idaho	Lewis and Clark at Willamette
At College of Idaho 46, WU 49	Lewis and Clark at Willamette	Linfield at Lewis and Clark	Willamette at Pacific
At College of Idaho 53, Linfield 46	Linfield at Lewis and Clark		
At Whitman 74, Linfield 42			
At Linfield 53, Lewis & Clark 65			

Cagers Divide Inland Contests; Drop Coyotes, Yield to Whits

By Dave Card
The Willamette university basketball squad returned from its Caldwell-Walla Walla trip with one win and one loss, defeating College of Idaho 49-46 at Caldwell Saturday, and losing to Whitman 58-51 at Walla Walla Monday.

In the College of Idaho encounter Willamette went out in front 21-19 in a nip and tuck first

half, but the Coyotes drove into the lead 46-45 with but two minutes remaining in the game.

Loder Scores Cincher
At this point the Bearcats scored a two-pointer to go up one point on the desperate hometowners, and then Ted Loder sank his only field goal of the evening with four seconds remaining to put the game on ice.

Excellent marksmanship from the foul line paid off for the winners as they dropped in 17 out

of 21 gift tosses while College of Idaho was making good on only 10 of 22. Center Jim Johnson, garnered high point honors for Willamette with 13 counters, while Rex Adamson of College of Idaho was high for the night with 15.

Whits Drop Cats

Willamette's loss to Whitman was the Bearcats' second in Northwest conference play and dropped the losers a full game behind leading Lewis and Clark and but a half game up on the Missionaries.

Coach John Lewis' charges opened the scoring with a field goal, but the men from Walla Walla quickly took a lead which they never relinquished. At half-time the winners led 33-28.

Jim Johnson again gained high point honors for Willamette, scoring 12 points. Forward Jack Heron, top conference scorer, led the Whitman attack with 14 counters beside playing a whale of a "feeder" game.

Lineups:

Willamette (49)	(46) Col. Idaho
B. Johnson 9	F. 12 Jensen
Loder 5	F. 2 Larson
J. Johnson 13	C. 8 Lee
Warren 4	G. 2 Sayers
T. Johnson 4	G. 15 Adamson
Subs: Willamette—Brouwer 9, Logue 1, Barker 2, Scrivens 2, and Baum; College of Idaho—Dunn 4, Lundgarden 3, and Keys.	

Willamette (51)	(58) Whitman
B. Johnson 6	F. 14 Heron
Brouwer 6	F. 10 Blinkenstaff
J. Johnson 12	C. 7 Anderson
T. Johnson 6	G. 7 Ingle
Logue 3	G. 6 Green
Subs: Willamette—Baum 3, Loder 4, Warren 6, Barker 3, and Bryant 2; Whitman—Wall 8, Boyer 2, and Garr 4.	

Kittens Face L&C, Pacific, Vancouver In Next Games

Willamette's Frosh cagers find another full weekend staring them in the face, as they are scheduled to play the Lewis and Clark Frosh in tonight's preliminary to the varsity clash, the Pacific Frosh in tomorrow night's prelim, and then the Vancouver Trappers in Vancouver next Tuesday night, February 22.

squad tonight, they will be meeting the same team they defeated earlier, 49-31. The Pioneer juniors are led by Bill Reid, lanky forward, who potted 15 of his team's counters in their last clash with the Willamette Frosh. The Pioneers, however, have undergone a recent rejuvenation and are primed to knock over the locals.

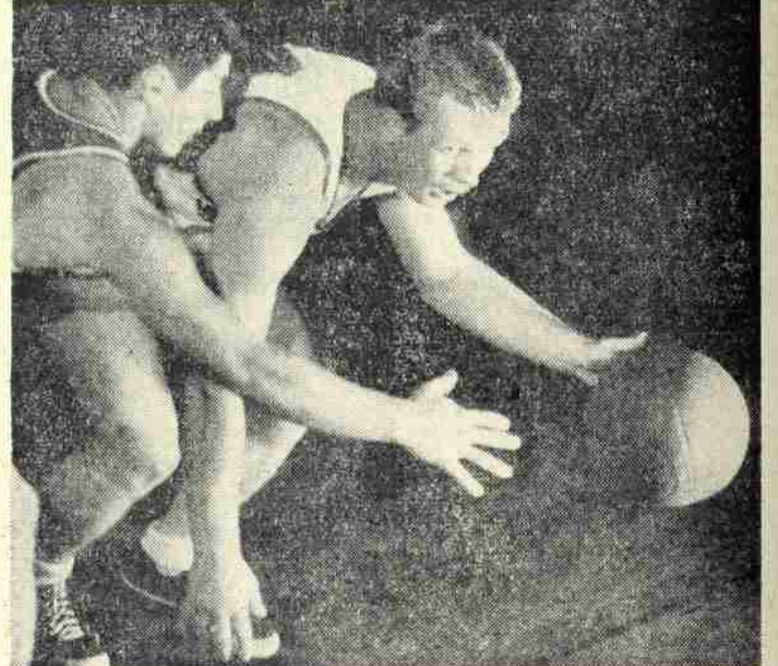
When the Bearkittens come up against the Lewis and Clark

The Bearkittens whipped the Pacific Frosh with no difficulty at all in their previous meeting, 40-23. Coach Jerry Lillie cleared the bench and ten men broke into the scoring column.

Tomorrow night's game at Forest Grove isn't expected to be much different than the first encounter, unless the loss of Waldo Unruh and Dave Chamberlain has hurt the Kits more than has been apparent so far. Pacific's big threat is their one-two punch of center Bob Stanhope and forward Chuck Taylor.

The Vancouver high game has just recently been added to the Bearkitten schedule to keep them in shape for their final encounters of the season next weekend. The Trapper team started out the season with a bang but ran into trouble in the Commerce high (Portland) game and have been only so-so ever since.

Scrimmage for Pioneers



Ted Johnson (with ball) and Lou Scrivens scrimmage in preparation for tonight's crucial game with the conference leading Lewis and Clark Pioneers.

HOW THEY'RE SHOOTIN'

	FG	FTA	FT	PCT.	PF	TP
B. Johnson, f	89	93	66	.709	36	244
J. Johnson, c	91	67	51	.761	35	233
Loder, f	64	80	60	.750	44	188
T. Johnson, g	28	42	24	.571	37	80
Brouwer, f	23	42	31	.738	20	77
Warren, g	27	11	9	.818	26	63
Logue, c	18	35	21	.600	27	57
Scrivens, g	20	22	14	.636	23	54
Barker, c	14	17	10	.588	18	38
Fedje, c	8	20	13	.650	13	29
Baum, f	5	3	1	.333	2	11
Bryant, g	2	6	3	.500	5	7

Co-Ed Swimming
at the
YMCA
Fridays 8-10
685 Court St. Phone 3-9117

Fred Reidy
76 Gas
Stop Wear Lubrication
UNION SERVICE STATION
13th and State

"ACE" FISH, the Barber
1256 State Street

W Club Meeting Set

The Letterman's club will hold an important meeting in the gymnasium on February 23 at 2 p.m. The meeting is being held to discuss the coming Letterman's dance.

Howie Lorenz, club president, urges that all members attend so that details for the dance may be worked out. The dance is an annual affair at which a queen is chosen from ten freshman candidates.

1964 North Capitol In Hollywood
ELLIOTS' BLACK & WHITE CAFE
"FINE FOODS"
Open 6 a.m. to 1 a.m. Phone 2-9168

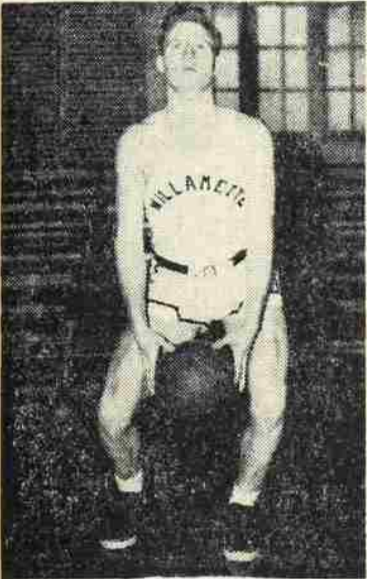
Double and Triple Soles
At Their Best
Dye, Shine and Plates
Men's Shoes
Jim's Shoe Service
175 N. High

TOP HAT RESTAURANT & ICE CREAM PARLOR
Open 7 A.M. - 11 P.M.
TASTY ICE CREAM—FINE FOOD
1275 State Street—Salem, Oregon

Cat Chats

By Dale Reynolds

On the two-game inland trek, Coach Johnny Lewis' charges met with an unfortunate situation. The situation was, of course, that Whitman seemed to be at their basketball peak when the Bearcats invaded the Missionary maple.



Bob Baum

On the Tuesday before the Bearcats were handed their 58-51 defeat, the Whits downed the "bigtime" Montana basketball club 61-59. Then the Misisonaries white-washed the Lindfield Wildcats 74-22 on the Saturday preceding the Bearcat's Monday clashing. Judging from these scores the previously so-so Whits must have been reaching their peak when the Bearcats drifted into Walla Walla.

Up at Caldwell the College of Idaho club seems to monopolize their home games. They have lost only three home games in as many years. The Coyotes lost to the Northwest champs, College of Puget Sound, last season and have lost to Lewis and Clark and Willamette this year.

Cat Field Goals Low on Tour

While on the inland tour the Cats looked very poor from the field. In the College of Idaho game the Cats bucked only 16 out of 55 field shots. The Whitman game was only a little more of the same story, but worse, since the Cats sunk only 18 out of 75 attempts. Usually the Cats have been hitting 30 or 40 per cent of their field shots, but against Whitman the percentage was only 24.

In the early season the Bearcats seemed to be a "red hot" squad, but during the last three weeks they have been on the decline. Possibly the decline is due to finals or maybe it is just a natural drop. But, at any rate, the Jasons ought to start moving toward a peak quickly.

Murals Boosted by Baum

Bob Baum, one of those persons receiving little recognition for his work, is in charge of the intramural sports program. A great deal of responsibility is laid upon the intramural program leader. He must figure out the intramural schedules and name officials and score keepers. The intramural program is being run so as many as possible can participate.

Besides Bob's intramural program, he plays basketball on the Bearcat squad. In the present season Bob hasn't been a high scorer but he is a very scrappy and consistent player. Bob also must be able to find time to study since he carried 18 hours of "A" and two hours of "B" last semester. Hats off to Bob for his mural program, basketball and grades.

Frosh Face Rough Schedule

After the rough final exam week the Bearkittens have stepped into tougher weeks and their marvelous record is suffering accordingly. In three weeks the Bearkittens play ten games, seven away. As well as a large number of games in a short period of time, the Frosh are now playing most of the top teams in the state.

Last week the Kits lost three of four tries to lower their record to 14-5. Both this week and next week the Kits are faced with three rough squads. These games, however, will be evenly divided as to the home court and the road.

'B' Mural Basketball Tournament Saturday

Intramural basketball for the 1948-49 season draws to a close tomorrow when the four top teams of the "B" league square off in their championship tourney. The four teams involved, the Phi Alpha C's, Beta B's, Baxter B's, and the Hot Shots, will draw for opponents in the morning round.

The mornings' two losers will scramble for third place in the afternoon's first game, and the two morning winners will meet in the second afternoon game for the championship. The tournament will take place in the Willamette gym.

Bearkit Quint Wins 1, Drops 3 On Journey

By John Williams

Playing four games in six nights on foreign maples, the Freshman basketball squad dropped three games, salvaging only one win. The Frosh lost to Grants Pass 44-38, a strong Klamath Falls five 54-49, and Lebanon on 52-44, all three of whom are state title-contending teams. The win came at the expense of Redmond, 59-45.

Starting their long trek in the south at Grants Pass on Thursday night of last week, the Kits were surprised by the Cavemen who have had only a so-so season. A diminutive guard, Vern Craft, playing quick, smart basketball, led his mates to a 20-17 halftime lead. He was high man for the game with 13. Claude Nordhill collected 11 from his forward spot to lead the Frosh.

Moving over to Klamath Falls on Friday night, the Bearkittens started slowly and never quite found themselves, being on the short end of a 21-20 halftime score. The Pelicans took command of the situation in the second half, commanding a 42-34 third-quarter lead.

Once more Claude Nordhill did yeoman work with 17 counters, but he got help from Hugh Bellingier who canned another 17 for his big evening of the year.

By Saturday night, the Freshmen were panting for breath, but managed to overcome an early lead by Redmond and go on to win 59-45. Halftime score was 30-23 Willamette. Hugh Bellingier continued his torrid pace with 15 points, and Chuck Robinson caught fire and canned 12.

Resting Sunday and Monday, the Kittens journeyed to Lebanon, one of the strong teams in their district, and took it on the chin again 52-44, Tuesday evening. Center Chuck Robinson tried to halt the Warriors in a one-man effort as he dropped in 20 points. His total was almost half the score, the four men of the starting five dividing the remaining 24 points.

Lebanon was on top of the score pile most of the game. Halftime count was 22-19, after the Warriors had led 10-6 at the end of the first quarter.

Rubes Favored in Volleyball Play; Sigs, Betas Undefeated

Paced by the stellar play of Ed Fitzsimmons, Charley Nee and Jimmy Noa, the Rubes easily defeated Laurel hall 15-3 and 15-0 Tuesday night for their second straight win of the current volleyball season, placing them in the favorite's role for the coming tourney.

NAIB Playoff Set for U of P

A tournament to determine the team to go to the National Association of Intercollegiate Basketball playoffs in Kansas City, March 7-12, will be held in Portland February 28 and March 1, according to Jerry Lillie, this district chairman of NAIB.

The floor where the tourney is to be played is still in dispute. However, the tourney will probably be held on the University of Portland maple although Jefferson high court is a possibility.

This district's tourney will be a single elimination affair with two games each night. There will probably be a drawing for the positions of play on the opening night. The second evening the losers of the first night's games will play a prelim to the championship game.

The teams to play in the tourney are Southern Oregon with an 18-4 record, Portland, 18-10 tally, Lewis and Clark, and Willamette with a 12-8 record.

Last year the Southern Oregon Raiders went to the tourney in Kansas City and they were allowed \$1188 to cover their expenses to the national tourney. The Raiders found the funds for the trip a little short, but since they played no tourney to gain their berth they had no tourney profits to aid in the trip. This year's tourney profits will, no doubt, make the tourney burden-free for the school making the trip to Kansas City.

Willamette's Lillie is chairman of this district's NAIB. Other members of the committee are Mush Torson, Portland; Bob Knox, OCE; and Eldon Fix, Lewis and Clark.

Their first win came last week at the expense of a good Phi Alpha team which has since crept into fourth place.

Their position was further strengthened by the Phi Alpha's defeat of the unbeaten Phi Deltas Monday night 10-15, 15-7 and 15-3. The Phi Alphas also topped Baxter hall Tuesday 15-8, 15-4.

The only other unbeaten teams, Sigma Chi and Beta Theta Pi, have similar records, but neither seems to match the power of the Rubes. The Sigs have a forfeit win from the Band and a close victory over Laurel hall to their credit, while the Betas have a

STANDINGS

	W	L	Pct.
Rubes	2	0	1.000
Sigs	2	0	1.000
Betas	2	0	1.000
Phi Alpha	2	1	.667
Phi Deltas	1	1	.500
Independents	0	0	.000
Has Beens	0	0	.000
Band	0	1	.000
Law School	0	1	.000
Baxter Hall	0	2	.000
Laurel Hall	0	3	.000

forfeit win from the Law school and also a win over Laurel hall.

The volleyball tournament is scheduled to start next Tuesday evening at 6:30 p.m. and will run through Thursday night. Eight teams have been entered according to Les Sparks, intramural director. A double elimination setup is planned for the tourney. Tuesday night the Phi Deltas will play Baxter hall, Phi Alpha will meet the Has Beens, the favored Rubes are scheduled to play the Independents, and the other two undefeated teams in the league, the Sigs and the Betas, will square off in the last game.

SAVE TIME!
 RIDE A BIKE
HARRY W. SCOTT
 147 S. Commercial

WILLS MUSIC STORE

Soul Janz - Vernor Wiscarson

Everything Musical

Books - Studies - Records - Radios

Pianos - Band and String Instruments

432 State Street

Salem

Gays Fine Candies

For the Best

Quality and Taste

Phone 2-9235 135 N. High

SPORTS CALENDAR

Varsity

Today—
 Willamette vs. Lewis and Clark, here, 8 p. m.

February 19—
 Willamette vs. Pacific, there 8 p. m.

Today—
 Willamette vs. Lewis and Clark, here, 6:30 p. m.

February 19—
 Willamette vs. Pacific, there, 6:30 p. m.

February 22—
 Willamette vs. Vancouver, there, 8 p. m.

"B" Basketball

February 19—
 Tourney, here.

Volleyball

February 22, 23, and 24—
 Tourney, here.



RELAX in
 San Juan
 SLACKS
 Tailor-d by
 Day's

Fashioned with care
 To give longer wear
 Finest Fabrics
 Newest Patterns
 Most popular Shades
 Youthful Pleated Models
 Full-cut... Zipper Closure

\$12.95

TO

\$19.50

ALEX JONES

121 North High Street

McMillan's Fountain Lunch

Where the Gang Meets to Eat

Next Time Try Mac's

1949 State Street

Phone 9825

Hearts will dance
 and Irish eyes
 be a-smilin'

when you send
 jolly Hallmark
 St. Patrick's
 Day Cards to
 your friends!

We Feature
HALLMARK CARDS
EDWARD WILLIAMS
 330 COURT



Barbara Robinson
(Jesten-Miller photo)

Floral Heart Tells Troth of Miss Robinson

Romantic news revealed appropriately on Valentine's day at the Chi Omega house was the engagement of Barbara Robinson, sophomore, and Stanley Ryals. During the dinner hour, a houseboy, impersonating a Western Union messenger, delivered a large floral piece made of spun plastic, flowers and ribbons. The sixteen inch red heart was outlined with red rosebuds and a white satin ruffle. In the center was formed a large engagement ring of white satin ribbon and white hyacinth blossoms, Miss Robinson's engagement ring being pinned to the white satin diamond of the flower ring. Chi Omegas were kept in suspense until dessert was served, when the formal announcement was made by a poem written on red hearts placed on the dessert plates. A box of chocolates was passed also.

Miss Robinson, a Chi Omega, is from Gooding, Idaho. Mr. Ryals, from Salem, graduated as an economics major last semester. While on the campus he was affiliated with Beta Theta Pi fraternity, Blue Key and Alpha Phi Omega.

The couple plan to be married this May in Salem, following which they will go to New York where Mr. Ryals will attend classes in investment banking. They will live in Portland.

AMEN CORNER

Westminster Fellowship will meet to evaluate Religious Emphasis Week at 6 p.m. Sunday, at the manse. Marilyn Brooks will lead a discussion.

Phi Zeta Christo will present its third talk of a series concerning the Disciples of Christ. The meeting is to be held Sunday from 6:15 to 7:30 p.m. at the First Christian church.

Canterbury Club will work on decorations for the "Land of Oz" February 26. Workers welcome.

FILMS

DEVELOPING
PRINTING
ENLARGING

On the Campus at
Willamette Bookstore

Open Every Day 6:30 to 12—Open All Night on
Friday and Saturday

London's Candies - Beverages - Cigarettes - Magazines

MAR'S DESSERT LUNCH

BREAKFAST - LUNCH - DINNER

Phone 2-5434

WILLAMETTE

Social Whirl
MARY LOUISE LEE, Editor

Alpha Chi, Chi O, Pi Phi Initiate 29 Tomorrow

Formal initiation of sorority pledges will take place Saturday, February 19, for all houses except Delta Gamma which will hold its initiation in March.

Fourteen pledges will become members of Alpha Chi Omega at an initiation which starts Saturday afternoon at 3, followed by a banquet that evening at 6:30.

Willamette Coed Former Editor

Stressing that she "traded fame for a normal life", the magazine section of Sunday's Oregon Journal featured the story of Dorothy Anne Hobson, junior on campus, in the article, "The Star Sets for Dorothy Anne", by Florence Donnals. Miss Hobson received national acclaim when, as a child of nine, she started publishing a newspaper, the *Valsetz Star*, editorializing on local and world news.

The article in the Journal stated, "Seven years ago Dorothy Anne Hobson, then a freckle-faced 13-year-old with braces on her teeth, decided to quit publishing the *Valsetz Star*. Her mimeographed newspaper's naive charm had won its place in some of the nation's most distinguished homes, including the White House."

The first paper clearly stated her policy with the masthead: "We Believe in Hemlock, Fir, Kindness, and Republicans." Among her subscribers were such national personalities as Al Smith, Mrs. Eleanor Roosevelt, and Shirley Temple.

Chi Omegas Choose Officers

Elected Chi Omega president for 1949 at their regular chapter meeting last Tuesday was Dorothy Anne Hobson. La Fyrne Showacy will be vice-president, Claribelle Easton will be scholarship chairman, secretary is Helen Blevens, and Barbara Lee Miller will take over the duties of treasurer.

Other officers are: correspondent, Evelyn Taylor; assistant, Audrey Lein; pledge trainer, Wesley Woodard; house manager, Betty Cummings; personnel, Mary Libby; social chairman, Evelyn Baxendale; assistant, Bo Brooks; Panhellenic representative, Midge Newton; social and civic service, Donna Roberts; activities, Pat Zahare; historian, Barbara Benjamin. Editing the chapter news letter will be Barbara Ann Garrett; Jean Gilmer is in charge of vocations; Lizbeth Trullinger, hospitality, and Barbara Robinson, house duties.

Leaders Plan

Mrs. G. Herbert Smith, president of the City Panhellenic association, Donna Adams, president of the collegiate Panhellenic association, and Nancy Vandelay, president of the Pledge Panhellenic accompanied Dean Regina Ewalt and Mrs. Alice Nelson to Corvallis yesterday to attend a luncheon planning for the three-school Panhellenic Workshop to be held in April.

Those being initiated will include Barbara Langley, Eleanor Loveless, Dolores Spelbrink, Jo Ann Wallace, Deanne Adams, Genevieve Armstrong, Pricilla Botkin, Jean Doolittle, Mary Hawke, Ellen Christianson, Marcelline Hutchison, Jackie Johnson and Alice Wilhelm.

Mrs. Vernon Gilmore, alumni pledge advisor, will welcome the new members, followed by welcomings from representatives of each class. Sara Warner will speak on behalf of the senior class; Ruth James for the juniors, and Nanette Pratt for the sophomores.

On Sunday morning, after an informal breakfast, the members will attend the Methodist church.

Pi Beta Phi will start its initiation at 9:30 on Saturday morning. A banquet at 5:30, with Ludene Hargrave in charge, will be held in honor of the newly initiated Pi Phi members.

Those being initiated are Florence Campbell, Joan Baldaree, Dolores Banz, Prudence Craig, Alice Espeseth, Jeanette Gilbertson, Shirley Hansen, Pat Jones, Sue Mellor and Colleen Schodde.

Pledges of Chi Omega will begin their initiation at 9 Saturday morning. A banquet will be held Sunday at 1:00 in honor of the initiates after they have attended church. Those that Chi O will be initiating are Barbara Benjamin, Norvada Smedley, Barbara Garrett, Jeanette Wolfe and Claribelle Easton.

Wesley Woodard will be in charge of the entertainment, while decoration of the tables will be done by Mary Libby. Betty Cummings is in charge of the programs. All decorations will be centered around cardinal and straw, the colors of Chi Omega.

Dorm Installs

Installation of the new officers of Lausanne hall was held Wednesday evening during the dinner hour.

The old officers installed the new ones, while Miss Olson, housemother, installed Helen Larson, who was reelected president. Each officer, old and new, received a tiny corsage.

Exclusive Creations
in Diamonds
Nationally Advertised
Watches and Jewelry

The Jewel Box

"Guaranteed Watch Repairing"
443 State Phone 5510

SUNDIN & SEIME

Custom Tailors to
Men and Women

Alterations and Repairs

196 So. Liberty St.
Salem, Oregon

Buttons and Bows Adorn Lausanne for Open House

"Buttons and Bows," this year's theme for the Lausanne hall open house to be held Sunday, February 20, from 2 to 5 p.m., will take the guests back to the days of the Gay 90's.

Gibson girl programs trimmed with buttons, bows and lace, which were designed by Leta Adams, will be given to all guests, and figures of girls dressed in costumes of the Gay 90's will adorn the doors to all rooms.

Guests will be greeted at the door by a receiving line composed of Marjorie Aldinger, general chairman; Helen Larson, house president; Miss Olson, housemother; Dean Ewalt, Dr. and Mrs. Raymond Withey and Miss Jack, director of residences.

Each girl has received invitations to send out while other invitations have been sent to all living organizations and the advisory board by Frances Linton.

Refreshments of tea, coffee and cookies have been arranged for by Ursula Boysen and table decorations, composed of floral arrangements, have been planned by Frances Schodde. Other committee heads are Alice Turtle-dove, welcoming committee; Dannie Holland, guestbook and Pat Koupal, clean-up.



Arlene Zastera
(Jesten-Miller photo)

Cupid, Arrows Tell Engagement

Cupids and hearts told the engagement of Arlene Zastera and Bob Bennett Monday night following Fredrickson hall's house meeting. The house president received a box of chocolates in a heart shaped box with a cupid complete with bow, arrows and quiver on the top, from the groom-elect, revealing the names of the couple.

A large sheet cake decorated with individual red hearts was passed to the Freddy women and house mother. In each heart was a small wooden arrow with the names "Arlene and Bob" on the end of each arrow.

Miss Zastera, daughter of Mr. and Mrs. E. C. Zastera, is a junior majoring in psychology. Bennett, son of Mr. and Mrs. Frank B. Bennett, is also a junior and is majoring in physics.

KAY'S

WOMEN'S WEAR

480 State Salem

Patronize Our
Advertisers!

Pause That Refreshes Is Part of the Party



5¢

Ask for it either way... both trade-marks mean the same thing.

BOTTLED UNDER AUTHORITY OF THE COCA-COLA COMPANY BY

COCA-COLA BOTTLING COMPANY, SALEM, OREGON

© 1948, The Coca-Cola Company

Phi Alpha Entertains SAE Officer



With April installation approaching, Phi Alpha colony of Sigma Alpha Epsilon was visited this week by Barry McNulty of Evanston, Ill., national traveling secretary of SAE. Left to right are: Harry Mason, Tom Yates, Bob DeBord, Bob White and Al Wortner.

Members of Board Chosen As Administrators of Trust

Trustees Truman W. Collins and E. C. McCulloch have been named to administer the trust recently left to Willamette by the late Fred Leadbetter. The board of trustees accepted the 2400 acre tract of land in North Portland at a meeting in Portland this week.

Although the Leadbetter will stipulates that the property shall not be sold for 50 years, there is no restriction on leasing, and the land has considerable potential value for industrial sites.

Pres. G. Herbert Smith told trustees that greater emphasis will be placed on graduate work, with the appointment of Dr. George B. Martin as director of graduate studies. He also reported the recent enrollment drop, adding that the next few years will see registration reduced once again to under 1000.

The board approved summer session plans and authorized Smith to create an office of financial development, and to select a man to head this department. Appointments announced were those of Maurice W. Brennan as associate professor of music in the instrumental department and Ray L. Smith, now on leave, as professor emeritus of law.

Seniors Meet Today

There will be a senior class meeting today at 4 p.m. in the music hall. All seniors are urged to attend to assist in making plans for Glee.

When You Think Drugs Think Schaefer's Drug Store

135 N. Commercial St.

L. G. Balfour Co.

"Your Fraternity Jeweler"

Pins, Rings

Novelties, Dance Programs

Favors, Stationery

N. W. Office and Display Room

807 General Insurance Bldg.

Seattle, 5, Washington

MARK McCOLM, Mgr.

Next Student Council Business

Among items of business which will be taken up next Tuesday at the student council meeting which will be held at 4 p.m. next Tuesday in room 2, Eaton hall are:

1. Report from committee composed of Scotty Washburn and Russell Tripp in regard to the Tuesday chapel situation. The emphasis is on speakers.
2. Report from the 'Cat Cavern board made up of Mary Ellen Wilcox, Bill Faminow and George Hurt, who investigated several Cavern changes with Mr. Robert Fenix, University vice-president in charge of finance.
3. Progress report of Freshman Glee by Bill Merriam, Glee Manager, with emphasis on the distribution of tickets.
4. Discussion of changes in the general election set-up.
5. Selection of March Rotarian.

New Catalogue Out

Copies of the 1949-1950 University catalogue may now be obtained in the registrar's office.

The catalogue contains the changes for the fall semester including revised numbering system, board and room and tuition costs and minor departmental changes in major requirements.

Copies of the catalogue are being distributed to prospective students throughout Oregon and Washington.

INSTALLMENT COMING

Publication of the second installment of Jim Miller's "When Are We Going to Wake Up" scheduled to appear in this issue, will be printed in a later issue.

'Cat Cavern Closes

The manager of the 'Cat Cavern announced today that it will be closed from 9:45 to 10:45 on Tuesday and Thursday morning during chapel.

Paeth Attributes Interest in WU To Student Ideas

Charles A. Paeth, director of admissions, reports a wide-spread interest in Willamette among students he has interviewed in Oregon and Washington high schools. He attributes the interest to home town students who are now or have been on the campus.

In the past two weeks he has visited Oregon coast high schools as far south as Coquille and schools in the Tacoma, Washington area. Paeth traveled the Oregon coast with a group of Oregon independent college representatives including those from Reed, Lewis and Clark, Linfield and Willamette. He also was in a group of both Oregon and Washington private endowment colleges and Washington state universities on the visitation to the Tacoma area.

These visitations are for the purpose of acquainting and counseling the high school graduates about Willamette and other colleges represented by the group.

COMMON COMMENT

There's one in every crowd. We mean a professor who delights in alternately sneering and cheering at the "younger generation now in college."

One such professor was leaning over his rostrum delivering a dissertation on the mode of talk sported by the younger among us.

"Now what's that silly saying the girls on the campus are in the habit of saying?" he mused to the discomfiture of the coeds in the class.

"NO!" shouted a male from the recesses of the back row.—(The Daily Reveille)

"Everyday is a day to REMEMBER Someone"

SEND



GREETING CARDS of Character

THE MODERNE

305 Court Street Phone 3-3805

Annual Sells Prints

Glossy prints of 1947-48 sports, social functions, faculty members and the various departments are on sale in the Wallulah office, according to Geri Bowles, Wallulah editor. These prints may be purchased for 5 cents to 25 cents.

Copies of the 1948 year book may also be obtained in the Wallulah office for \$1 each.

System Explained To Art Educators By Mrs. Huffman

Mrs. Esther Huffman, acting professor of art, was a speaker at the five-county education conference at Corvallis Friday.

Mrs. Huffman presented information on the North Carolina system of art education at the business session of the newly organized art teachers' division of the conference.

A program of regularly circulating art exhibitions by grammar and high school students, with Salem exhibitions to be held at Willamette, was voted by the group. A system of monthly teacher workshops, the April session of which will be held here, was also approved.

Philosophers Discuss Need For Religion

"Is Religion Necessary?", a topic chosen for its bearing on Religious Emphasis Week, was discussed by the Willamette philosophical society Sunday.

Principal speakers were R. J. Portal, Willamette graduate student who received his bachelor's degree in philosophy here in 1948, and Udell McManus, senior in psychology. Don Yocom, president of the group, served as moderator for the discussion, which was held at the Chi Omega house.

Portal offered the opinion that religion satisfies one of man's basic needs, happiness. Basing his argument on a belief in God, Portal also stressed the importance of defining terms.

McManus answered Portal with a psychological approach to the question, offering the possibility that religion was an easy way out of difficulty. A general discussion representing both philosophical and psychological interpretations followed.

No one religion was singled out for discussion, and the general subject of religion was treated in a very broad sense.

IRC Will Elect

The International Relations club will hold election of officers at the meeting Wednesday at 7:30 p.m. in Chresto cottage.

For Unexcelled Quality in Jewelry... Visit POMEROY & KEENE 379 State

Let's Skate Tonight at the **SALEM ICE ARENA**

Evenings 8:00 - 10:00
Saturday and Sunday Afternoons 2:00 - 4:00
Special Rate for Willamette Students
Located at 610 North Capitol



present

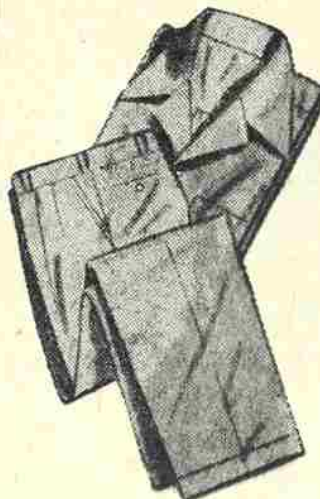
THE POPULAR

FADED

BLUE DENIM

Jackets \$3.95

Slacks \$3.95



- Sanforized
- Perfect for Sport
- Ideal for Liesure Wear

— The Home —

Lord Jeff Sweaters—McGregor Sportswear

JAYSONS
LIBERTY at COURT

For That After Class Snack
Come to

THE ACE

Almond Roca Candy Fountain Service and Magazines

127 North High

Phone 3-4044

Discipline Committee Given Control of Student Cheating

A resolution, designed to provide uniform control of cheating problems on the campus, has recently been adopted by the faculty.

The resolution says, in effect, that any student who is charged with cheating has committed an act of dishonesty against the university and therefore he will be dealt with by the discipline committee rather than the individual professor concerned. The student will be turned over to the committee after the professor has reported the case to the appropriate dean.

Dean Raymond Withey, who announced the measure, pointed out that in the past there have been unfair situations in which the punishment for two different students has varied for the same offense.

The resolution, along with other rules and regulations, will be

put into a proposed administrative handbook that will soon be off the press. The handbook, designed to clarify administrative policy concerning the activities and conduct of the student body, will be issued to all students.

WSSF Director Visits Local YW, Talks to Cabinet

Mrs. Gladys Lawther, Pacific Northwest Regional secretary of the student YWCA and regional director of the World Student Service Fund, spoke to Willamette university's YWCA Monday evening.

Mrs. Lawther told of the vast scope and the many fields in the Young Women's Christian association, its work and projects in the world community and on other campuses. One of the opportunities offered for students this summer is the European work study seminar where 90 students will have the opportunity to go to Europe to actually study and understand conditions there.

She was entertained at the Alpha Chi Omega house Monday evening for dinner and spent Tuesday planning with members of the University YW cabinet.

Advice to the freshman on campus:
Gather good grades while ye may,
The second year is tougher;
For this same prof that smiles today
Tomorrow will be rougher.



Dean Robert D. Gregg, who will be principal speaker at the Americanization Council's reception in Portland Tuesday.

Gregg Will Make Welcome Speech To New Citizens

Dr. Robert D. Gregg, dean of the College of Liberal Arts, will be the principal speaker at the Portland Americanization Council's annual reception in Portland Tuesday at the public auditorium at 7:30 p.m.

The reception is in honor of all new American citizens including native born who have reached their majority and the foreign born who have been granted their citizenship papers this past year.

The purpose of such an affair is to welcome, encourage and assist immigrants to learn the English language and customs of Americans.

CARTER Slings the Ink

Commentary on the Week's News

THE WORLD AT PEACE: The Chinese situation seems to have bogged down temporarily to a contest of pressures to get the Nationalists to (1) carry on the fight to the last against the Communists and (2) surrender fully under a negotiated peace. The paradox of the situation lies in the fact that the positions of the two groups are almost exactly reversed, both geographically and militarily, from what they were some twenty years ago . . . The Cardinal Mindszenty issue is still boiling. To top it off it has been publically "revealed" that a far reaching purge has been going on against the church in Bulgaria. Friendly Henry has labeled the handling of the whole affair as "warmongering", but we aren't too clear as to whether he includes both sides. . . General Lucius Clay has ordered the Soviet repatriation mission out of the American zone. The Reds protested violently, but Clay claimed that the mission has yet to induce a single Russian to return to the soviet zone. We wonder whether this action will strengthen or weaken Clay's position. He has been under fire recently for antagonizing German labor . . . The North Atlantic Defense Pact seems to be shaping up. Acheson has firmly denied rumors that the US would back down on their pledge to see it through. Truman supported this type of alliance in his inaugural address . . . Soviets have made their first withdrawal from a UN unit, the World Health Organization. They said financial reasons, but some fear the start of a trend.

THE HOME FRONT: ECA head Paul Hoffman claims that only 5 million can safely be cut from the Marshall plan appropriation (5 1/2 billion). Both Connally and Vandenberg are supporting him . . . Skidding commodity prices have stabilized somewhat, and some items have gained a little. The nosedive of some types of livestock could be due to the weather . . . More faculty members have been ousted at Washington U. The administration claims that politics have nothing to do with it. OSC has refused to renew the contracts of two avowed extreme liberals. At least one was close to the Progressive party. The American Association of University Professors, formerly pledging opposition to this sort of thing, has approved the OSC action . . . T-H law co-author Fred Hartley has turned lobbyist . . . Oregon's Senator Morse has been voicing loud protest over the Army's handling of the recent blizzard relief. If true, it should remind people of their blundering during (and before) the Vanport disaster.



Talk about a buy! Talk about smartness or value—wearability or washability—they're all right here in these faded blue PAIR-OFFS

DENIM

Koret of California knows how to

handle denim—picks these 8 pieces so full of style you'll

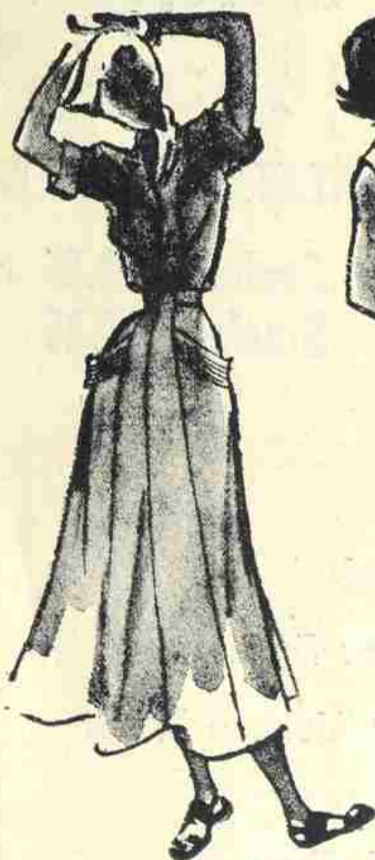
wear them in town or country. Note the wonderful coating that cuts physical pockets and trims the visor cap! And, when you try them on, note

the wonderful fit. Yes, they're Sanforized*—guaranteed

washable. Candy-stripe shirt and blouse coordinates. Sizes 10-18 and 32-38.

SHOP NOW FOR

BEST CHOICE!



- Flare Skirt\$ 9.50
- Sundress\$14.50
- Slacks\$ 9.50
- Shorts, Halter\$ 9.50

- Belted Jackets\$14.50
- Smarty Pants\$ 7.95
- Stripe Shirt\$ 5.95
- Stripe Blouse\$ 5.95

2nd Floor Sports Shop

