

PERIODICAL STACKS

WALLULAH '68







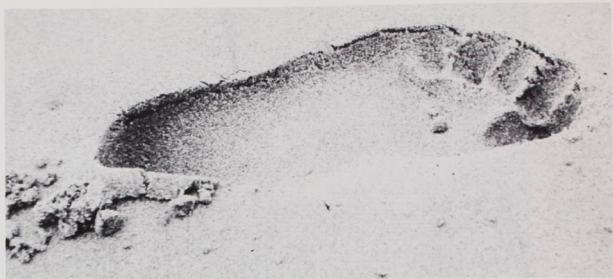






wallulah 68 wallulah 68 wa


WILLAMETTE UNIVERSITY  
SALEM, OREGON  
VOLUME FIFTY-EIGHT



*Imprinted on my mind  
one beautiful  
joyous moment—  
uninhibited  
unlimited  
untimed, and  
free*



*I remember so long ago  
how good it was  
to be in "the swing"  
Under constant pressure  
of books  
pens  
weekends, and  
day laughter;  
I responded  
by myself  
as a one  
and yet  
it held no real significance  
until I became  
aware of why  
I responded  
the way I did—  
but, was it too late . . . .*



*I gathered carrot baskets  
chock full 'o nuts for winter  
cbbing spring  
and the waves were bigger than life,  
anticipating . . .*





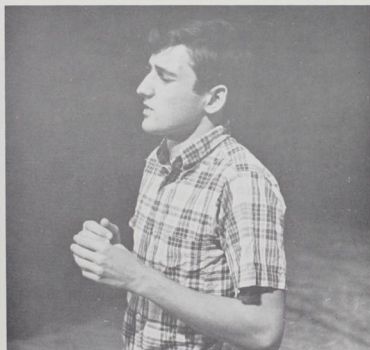
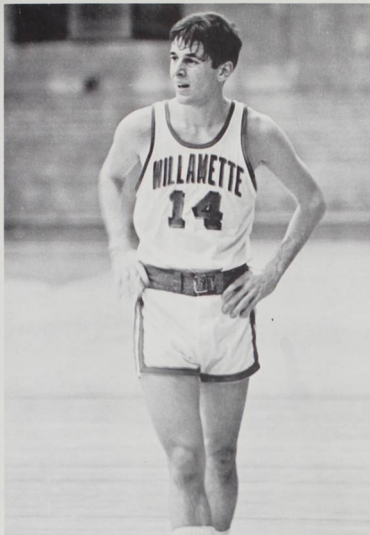
*so the road goes crooked  
hung-up on finding a way  
unnumbered thoughts create a mind-bending,  
but you claim yours  
in the building of a one.*





*You became  
another discovery  
more important  
than others,  
calling on my every reaction  
intensifying it,  
simply through  
your sensitivity to me—  
Important too—  
because through you  
I learned more  
about myself.*





*caught here  
in a special world;  
one moment of expression.  
You breed other worlds  
in another place.*



*"Soldiers aren't made of tin anymore."*

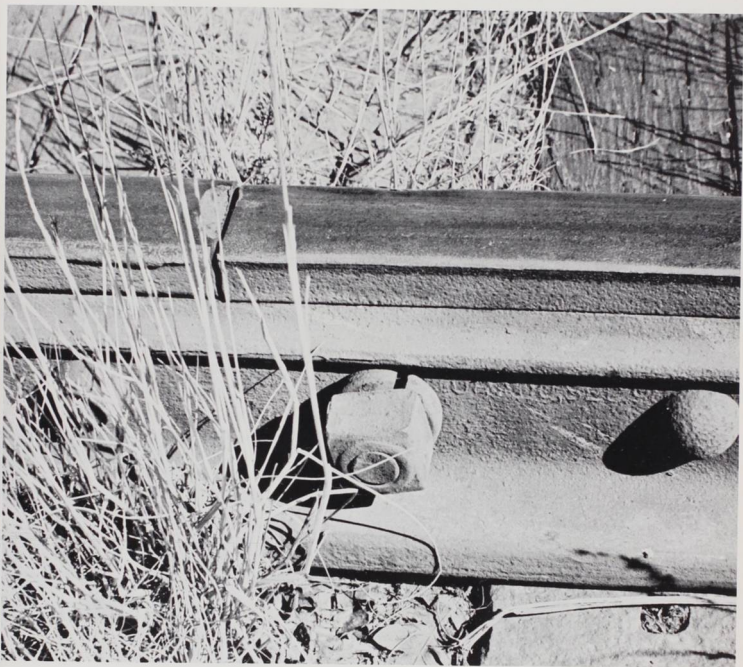




*we'll make it move,  
one group  
hold my hand  
dance with me  
who's seen one and twenty days  
where there's only room for ten?*



*there's even a lot of people when I'm  
alone*



*what happens when one emerges into  
the mind of  
more than a university*



*it was written yesterday  
when I was little  
but it rained  
and the fresh snow to slush  
brought a new year and noisemakers  
and more study  
contemplation of breaking ripples  
in a tide pool  
where do I go next?*



e campus life campus life ca



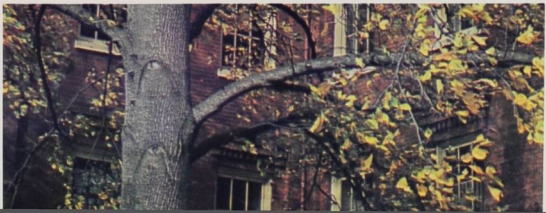


campus life ca

ife campus life campus life



tumn autumn autumn autumn







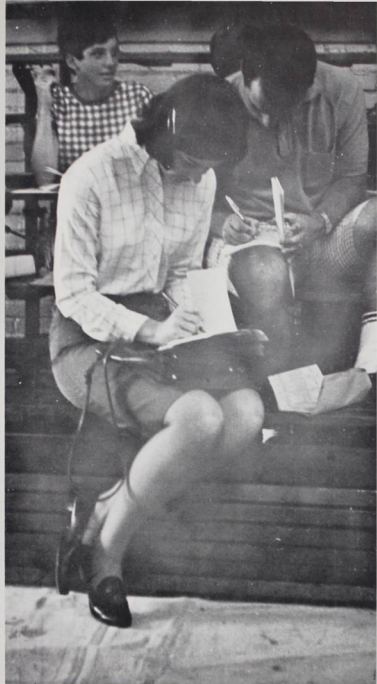
## Summer Ends--- The Return Begins



A newly remodeled campus greeted students as they returned to Willamette this year. The library was enlarged and classrooms and a language lab made up the new Walton Hall. The Truman Wesley Collins Legal Center was ready to receive law students. Rooms were added to Doney Hall and the Alpha Chi Omega's and the Delta Gamma's moved into their new homes on Mill Street, thus completing sorority row. But the trains still rumbled down Twelfth Street.

Besides new additions, the beginning of the school year was also characterized by cancellations. Scheduled speaker at the Legal Center Dedication, Supreme Court Justice Thurgood Marshall was unable to attend at the last minute. Freshman Orientation Camp was cancelled due to fire danger prompted by a very dry summer. Freshmen, however, did not let the first week slip by silently. They were the culprits behind the first water fight of the year held in the Willamette Quad.





## Registration and Orientation Greet Freshmen

Utterances such as "Fill out all these little white cards? You're kidding me!!", and the cries of a poor girl, "By the time I registered at 11:00, all that was open was Weight Training and Conditioning", marked registration as unique.

Despite many hours with their various advisors, long registration lines, and complete confusion, Freshmen managed to make it through Orientation Week. A President's Reception at President Smith's home, a movie, several assemblies, dance and student-faculty picnic kept freshmen more than busy.

## Parents View Willamette Life



Parents discovered Willamette student life as they converged on the campus for the annual Parent's Weekend on October 13, 14, and 15. Varsity Varieties started off the weekend. The winners of the Campus Chest contest, freshmen representatives Cathy Strong and Bruce Pahl, were named at this student talent show.

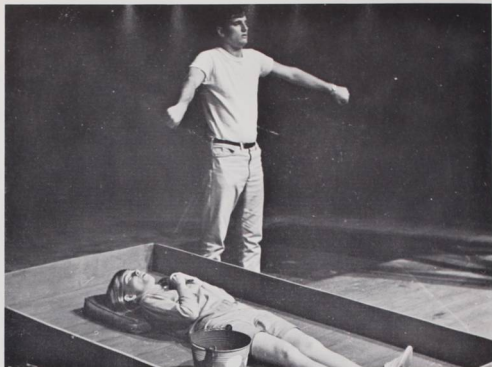
The next day parents attended a breakfast sponsored by Campus Koinonia, an assembly explaining the 4-2 program, visited classes and even got to sample Saga food. A victorious football game with Pacific University highlighted the afternoon, and an All-Campus Sing at the gym in which each living organization participated climaxed the weekend.





Freshmen representatives, Cathy Strong and Bruce Pahl, below, were crowned Campus Chest Queen and King of Varsity Varieties.



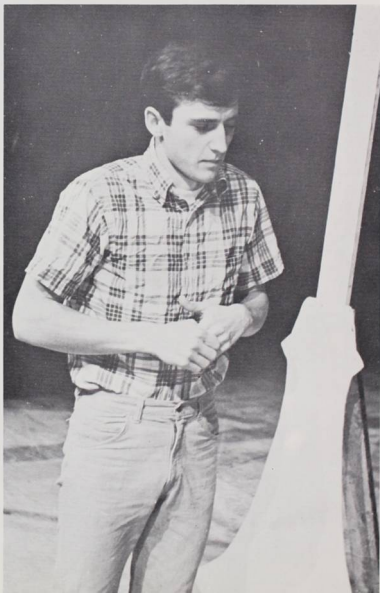


## "An Evening with Albee" Exhibits Moving Performances

Willamette University Players presented three modern plays of Edward Albee in "An Evening with Albee" on October 27 and 28. The three plays were THE DEATH OF BESSIE SMITH, THE SANDBOX, and THE ZOO STORY. All three dealt with various aspects of the artificialness and emptiness of contemporary society.

Albee, one of the newest voices in Avant-Garde theater, is concerned with the lack of communication and the lack of meaningful relations between people. Many of the students viewing the plays reported that they were very moved by the performances.

Student directors for the "Evening" were Christopher Keuss and Jon Roberson.





#### CAST

##### *THE DEATH OF BESSIE SMITH*

Director: Christopher Wm. Keuss

##### Cast:

Bernie – Kenneth Thomas

Jack – David Rages

The Father – Duffy Lederman

The Nurse – Elizabeth Carter

The Orderly – Kenneth Thomas

Second Nurse – Lynn Delaney

The Intern – Preston Morrow

##### *THE SANDBOX*

Director: Jon M. Roberson

##### Cast:

Mommy – Jennifer Wilke

Daddy – Alan Gould

Grandma – Lynne Norton

Musician – Laura Bryant

Young Man – Rodney Scott

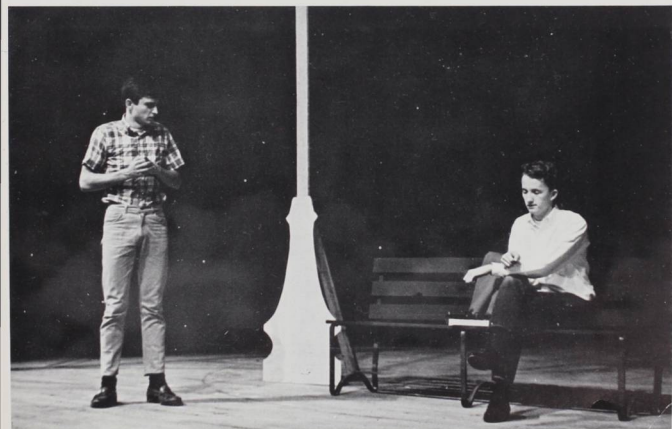
##### *THE ZOO STORY*

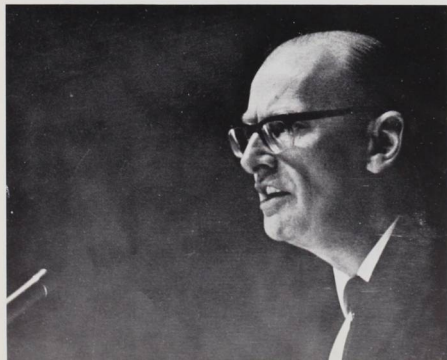
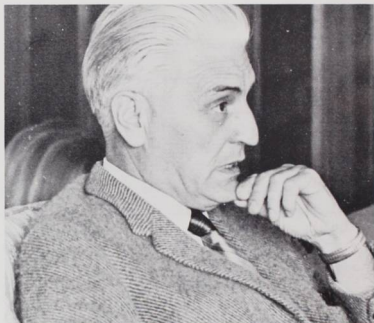
Director: Jon M. Roberson

##### Cast:

Peter – Ross Kane

Jerry – Bruce Robertson





Perhaps due to the Convo Controversy of spring 1967, the fall convocations showed a marked improvement over the previous year. Speakers included well known and diversified men.

Speakers included: Dr. Gilbert Sauvage, Danforth Lecturer; Mr. Floyd McKissick, National Director of CORE; Mr. Jens Bjerre, Danish Journalist; Dr. Sidney Cohen; Senator Wayne Mofse; Mr. Arthur Clarke, Inventor of the Communications Satellite; Dr. Paul Engle; and Dr. Lawrence Meredith, Chaplain, University of the Pacific.

## Convocations Show Marked Improvement



Convocation attraction during the fall semester included Floyd McKissick, right, and the AWS Auction, above. On the facing page are Senator Wayne Morse, top left, Arthur Clarke, bottom left, and Dr. Sidney Cohen, right.



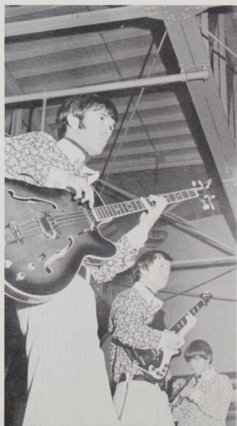
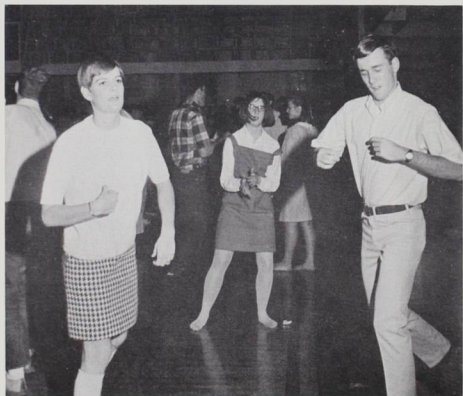
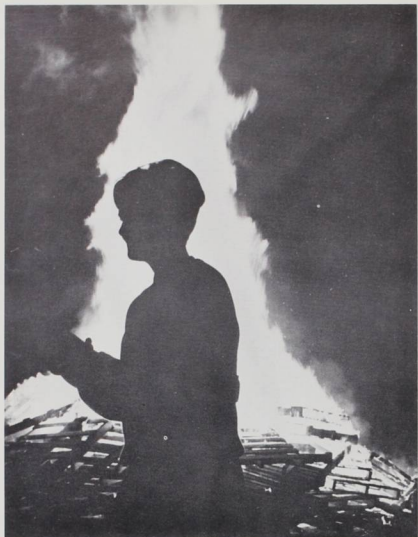




## Homecoming '67-- "It's a Sign of the Times"

"It's a Sign of the Times" was the theme of the 1967 Willamette Homecoming. Kicking the activities off was the Woodgathers Ball on Thursday night. This was followed by a Noise Parade through the streets of Salem on Friday, which culminated in the back of Sorority Row at the Bonfire. Homecoming Queen Teresa Krug was crowned at the game Saturday. Princesses included Mary Linda Laird and Joy Gustafson. Also announced at the game were the winners of the sign contest, Pi Beta Phi and Delta Tau Delta. Most importantly though, Saturday represented a victory for the Bearcats over the Whitman Missionaries.

The week was climaxed on a quieter note, with a dance at the Marion Hotel. Co-managers of "It's a Sign of the Times" were Earline Anderson and Dick King.





## Noise Dominates on Friday Night





Dick King (right) and Earline Anderson coordinated plans for the 1967 Homecoming festivities.



## Teresa Krug Reigns As Homecoming Queen



Peggy Shaffer, (right) 1966 Homecoming Queen, congratulates her successor Teresa Krug (left) at the coronation ceremony between halves of the football game. Above are the members of the Homecoming court, Mary Linda Laird (top) and Joy Gustafson.



The Distinguished Artist' Series for the fall semester featured two performances, those of George Shearing and his orchestra on October 20 and British actor John Stuart Anderson on November 10.

Shearing, popular jazz pianist was joined by four other instrumentalists for a quintet performance in the Fine Arts Building. The group is noted for its brilliant instrumental blend.

Anderson presented a solo performance combining mime, music, movement, and the spoken word. He presented "Three

Fantastic Journeys", the first an adaptation of the biblical story of Daniel, the second an account of Odysseus's wanderings and the third a psychedelic fantasy.



# Shearing, Anderson Head D.A. Series





*Director: Robert M. Putnam*

*Cast:*

*Countess of Rousillon – Marian Fuller  
Bertram, Count of Rousillon – Ross Kane  
Lafeu, an old Lord – Alan Gould  
Helena – Jacquelyn Shivers  
Parolles, friend of Bertram – Haukur Hazen  
Page – Bernice Balcomb  
King of France – Relan Colley  
Attendants of the King – David  
Lederman and William Phillips  
First French Lord – Jon Roberson  
Second French Lord – Christopher Keuss  
Steward to the Countess – Kerry Brannan  
Clown – Preston Morrow*

## Willamette Players Produce "All's Well That Ends Well"

"All's Well that Ends Well" a play of love told with humor was presented by the Willamette Players Nov. 16 and 18. It is noted as one of Shakespeare's darker comedies, consisting of a straight plot of intrigue about a love that endured time and trouble.



*Four young Lords – Kerry Brannan,  
Ronald Wrede, William Phillips,  
and Christian Hurd*

*Duke of Florence – Christian Hurd*

*First Gentleman – Ronald Wrede*

*Second Gentleman – William Phillips*

*Widow of Florence – Marilyn Montgomery*

*Diana, her daughter – Helen Eggener*

*Mariana, her neighbor – Ann Stephens*

*Violenta, another neighbor – Lynn Delaney*

*Women – Bernice Balcomb, Katherine*

*Palmer, and Kathleen Peel*

*First Soldier – Christian Hurd*

*Second Soldier – William Phillips*

*Third Soldier – Ronald Wrede*

*Messenger – David Lederman*

*A gentleman – Kerry Brannan*



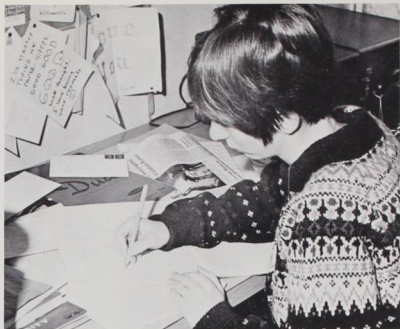
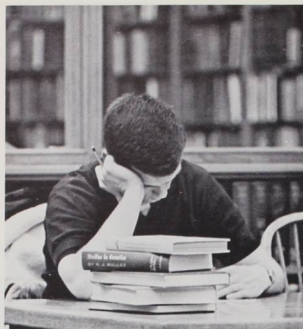
## Christmas Spirit Reduces Tensions...



The Christmas spirit came to Willamette, despite heavy snows in Portland and the drudgery of Dead Week and finals. Almost every dorm or house had a Christmas tree and a huge tree dominated the main hall of Eaton. Many of the living organizations had Christmas parties, Santa's or tree trims.







## As Finals Near, Need We Say More





er winter winter winter winter



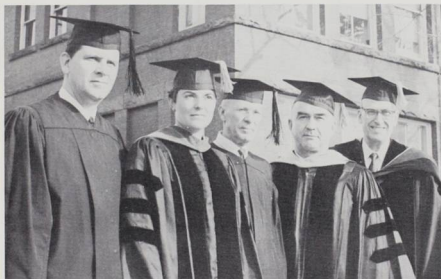


Who says it always rains in Oregon. Even those from Southern California were surprised as "old man Winter" dumped seven inches of snow on Salem shortly after Christmas vacation. Snowball fights were continuous and hazardous as coeds dodged unexpected assaults. For three days the campus seemed unbelievably alive. But as quickly and unpredictably as it came, the snow melted, only to be followed by a week of the ordinary rain and then a week of premature sunshine.



# Unexpected Snow Delights Snowball Fans





Variety characterized the winter convocations and Distinguished Artists series. Mid-semester commencement saw twenty-five seniors receive diplomas and five alumni cited for distinguished achievements. The honored graduates of Willamette included Elliot Becken, Margery Hannah, Joanne Jene, William Mumford, and Dean Pollock. Dr. Elton Trueblood led Christian Resources Week discussions on the topic "Stability in a World of Storm." In February Rabbi Emanuel Ross stimulated his audience with his commentary on the Middle East crisis, and three students — Relan Colley, Betty Jo Hicks, and Bruce Botello — competed for the Doney Speech Prize. Chapel took on a new look as students presented an original jazz church service.

On February 16, duo-pianists Melvin Stecher and Norman Horowitz, noted for their "impeccable teamwork, balance of tone, technique, and musical understanding", entranced their audience with a selection of classical music in a D.A. series.

# Convos and Artists Series Offer Varied Entertainment



Winter cultural events featured: top left, a jazz chapel; bottom left, President Smith and distinguished alumni; center, Doney Speech Contest; above, pianists Stecher and Horowitz; and right, Rabbi Emanuel Rose.

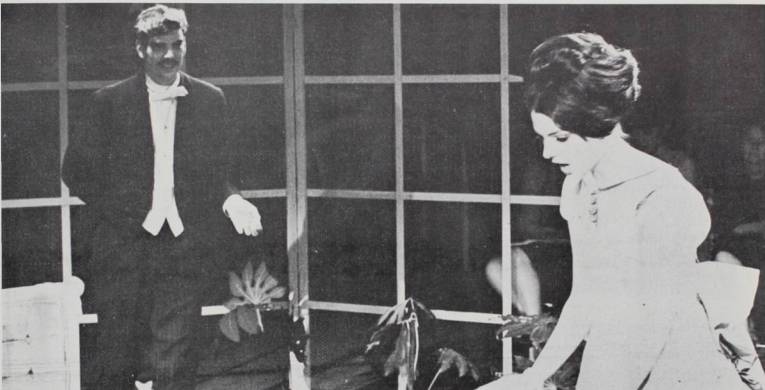


Willamette dramatists provided theater-goers with a unique experience in viewing as they presented a French farce-comedy "Let's Get a Divorce" February 28 to March 2 "in the round". The audience was seated on the stage with the actors. This seating arrangement heightened the effectiveness of the humorous dialogue and the gestures of the actors.

The play, written in 1880 by Victorian Sardou and Emile de Najac, satirizes the perils of divorce, producing its humor through marriage, divorce lovers, and the eternal triangle. Directing the play was drama professor Robert Putnum.



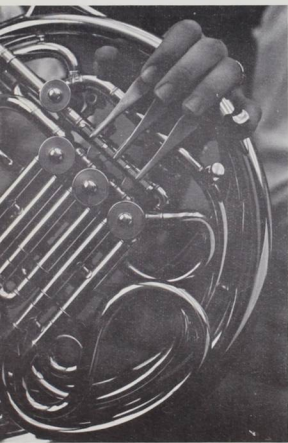
# W.U. Actors Present French Comedy "In The Round"



## CAST

*Joseph* — Bernice Balcomb  
*Bastien* — Relan Colley  
*Messenger* — Bruce Robertson  
*Caretaker* — David Slusser  
*Henri des Prunelles* — Theodore Fritts  
*Clavignac* — Ross Kane  
*Cyprienne des Prunelles* — Marian Fuller  
*Bafourdin* — Jon Roberson  
*Mme. de Brienne* — Lynn Delaney  
*Adhemar de Gratignan* — Micheal Arant  
*Mlle. de Lusignan* — Helen Eggener  
*Mlle. de Valfontaine* — Marilyn Montgomery  
*Joseph* — Bruce Robertson  
*First waiter* — Barry Slade  
*Second waiter* — Ron Wrede  
*Police officer* — Richard Jones  
*First policeman* — Alan Ellis  
*Second policeman* — William Leslie  
*Director* — Robert Putnum

# Musical Events Enrich University Atmosphere



The Willamette Singers delighted audiences at home and away. Members of the group were (back row, left to right) Keith Kinsman, Clay Morris, Pete Roth, Mike Arant, Mike Sherman, (front row, left to right) Linda Rough (hidden), Walter Farrier, director, Marie Gardner, Ilene Fleming, Lynn Delaney, Charlotte Suther, and Sallie Gordon.



Music plays an integral part in the academic and cultural atmosphere of Willamette. For the members of the College of Music this means individual performances and participation in numerous musical groups to develop their talents. For the rest of the school and the community this means hours of enjoyment and excellent opportunities to enrich their appreciation of the fine arts.

The highlight of the year for the 36-member University choir was the annual Spring Vacation tour which took them this year to Washington and British Columbia. Under the direction of Walter Farrier, the choir was well-received at all stops and delighted the home audience with a concert on March 22.

The Willamette Singers, chosen from the University Choir, provided another varied form of entertainment. Joined by the brass quintet and other members of the University Band, the Singers under the direction of Maurice Brennan and Walter Farrier, organized a Christmas tour to the Bay Area. Their home concert "Musical Kaleidoscope" was presented on January 17.

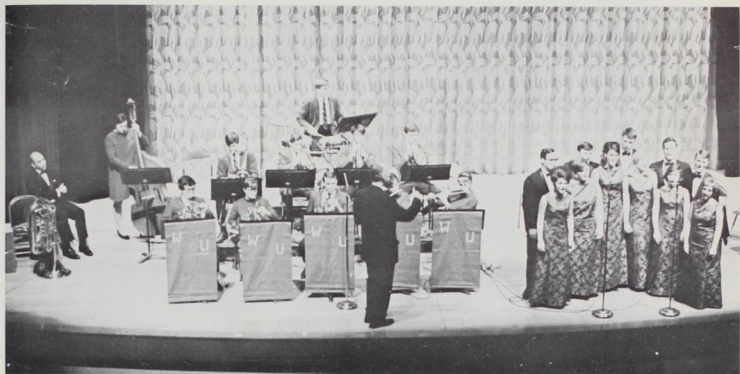
Opera came to Willamette for the first time this year as the school's newly-organized Opera Theater presented "Dido and Aeneas", the classical love story taken from Virgil's "Aeneid" on April 3. Voice professor Julio Viamonte directed the production in which Sylvia Whyte appeared as Dido and Dave Hjelt as Aeneas.

Twenty-three Willamette students comprise an important part of the Salem Community Symphony conducted by music professor Dr. Charles Heiden. The University Chamber Orchestra appeared at the Christmas Vespers and in "Dido and Aeneas."

The University Band, under the direction of Maurice Brennan, provided varied entertainment including half-time performances at football games, a pep band, a brass ensemble, and concerts.

Numerous student and faculty recitals rounded out another fine year of music at Willamette.





The musical year at Willamette featured abundant and superior performances. Some of the highlights are pictured on these pages. Below students are busy in rehearsal for the school's first operatic production "Dido and Aeneas". Above the Willamette Singers and Brass Quintet and other band members perform at the Fine Arts Auditorium. Pictured on the opposite page is the Salem Community Orchestra which presented numerous concerts throughout the year.



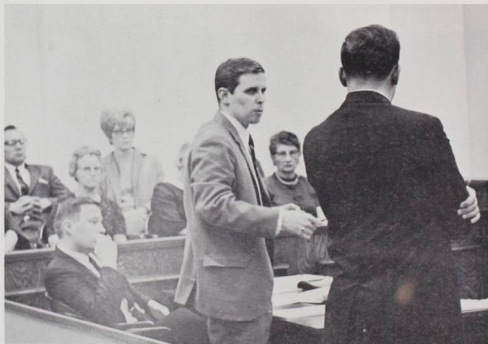


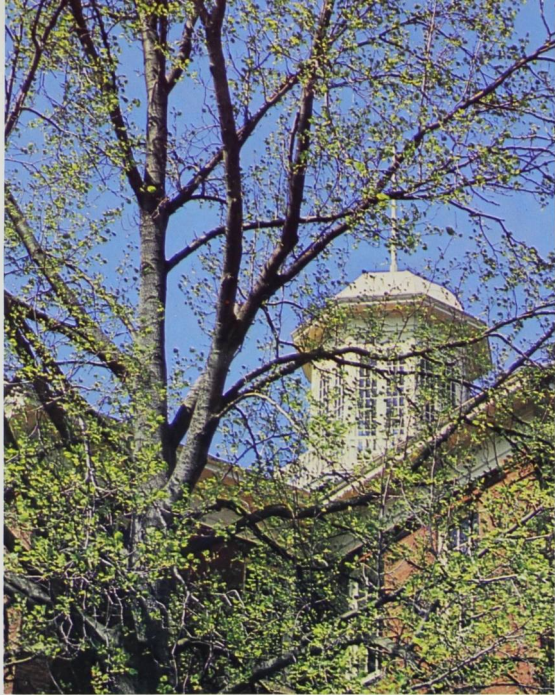
## Practice Court Provides Unique Experience

Practice court, conducted by the Willamette College of Law, provided a unique experience not only for the law students, but also for some Willamette students who participated as witnesses and as members of the jury.

Each pair of law students taking the class received a hypothetical case. They recruited witnesses who were given the facts of the case which were still unknown to the law students. The future lawyers then interviewed each witness to determine these facts. And, finally, the trial commenced as each pair tried to convince the jury in behalf of its client.

For both the law students and Willamette students who participated, practice court provided a new learning experience preparing them to become responsible citizens in today's world.





spring spring spring spring



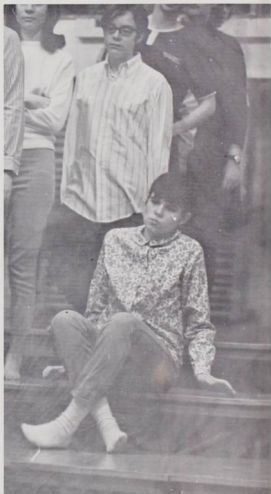
## The Challenge Leads to Hours of Endless Preparation...

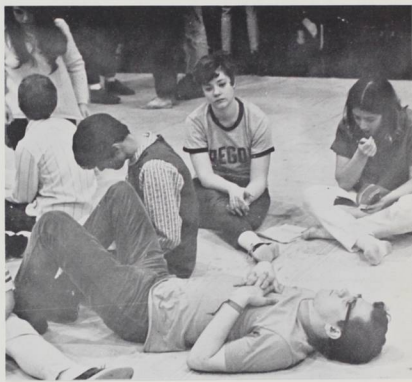


The challenge rang out on March 20 for the sixtieth annual Freshman Glee. Students entered the auditorium eager for the traditional senior cut-ups, waited only to find a lone hand on stage, and left not quite understanding the intentions of the class of 1968.

But, in spite of this break with the expected, the campus braced itself for the annual transformation and burst of enthusiasm by the student body known as Freshman Glee. It is not often that a stream of students, unshaven or hair in rollers, can be seen headed for the gym at 5 a.m. It is not often that students devote up to eight hours a day to an activity. But it does happen . . . during Glee Week.

Six days and nights of hectic practice are all geared for that one Saturday night. Hoarse voices and tired muscles only heighten the determination of each class to take the coveted banner. But, win or lose, Glee is Willamette, a chance to renew and build the bond of the "Willamette" family.





All For  
One Moment---  
And the Thrill  
of Victory...



March 30 — Glee Night.

It marked the end of months of hectic planning by the first female Freshman Glee Manager Kathy Hartman. Glee this year was dedicated to Dr. Cecil Monk, head of the biology department, retiring after 42 years at Willamette.

The senior cut-ups finally appeared in the form of a political convention supporting "Big George for President". And the "lost" Glee banner appeared in the midst of the celebration. Class parodies and senior signs were present in their usual good form.

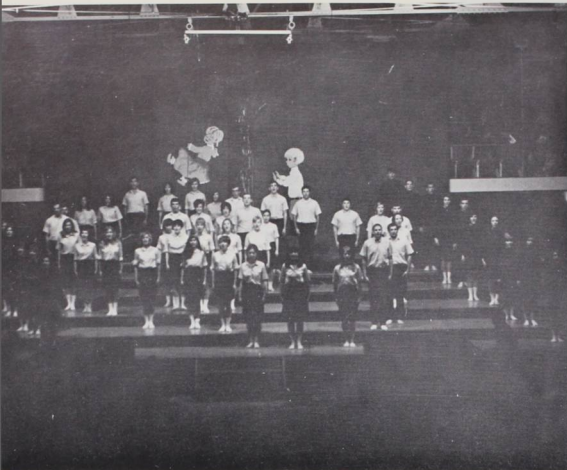
Each class performed its song to this year's theme "Serenade" in turn, but the excitement reached a peak as Dr. Trueblood announced the victors — the Class of 1969 and "One Chain of Brass".





KATHY HARTMAN  
*Glee Manager*





## Juniors--- a long- awaited victory

### CLASS OF 1969

Words and Music	14
Presentation	32
Formation	20
<b>TOTAL POINTS</b>	<b>66</b>

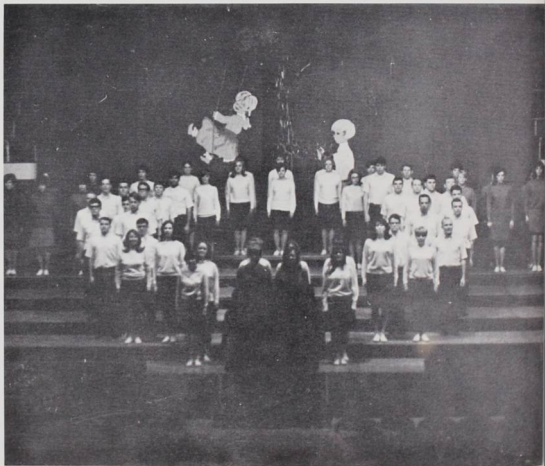
Formation Leader: Don Solbert  
Song Leader: Rick Kraft

## Seniors--- a determined and sober second

### CLASS OF 1968

Words and Music	11
Presentation	22
Formation	28
<b>TOTAL POINTS</b>	<b>61</b>

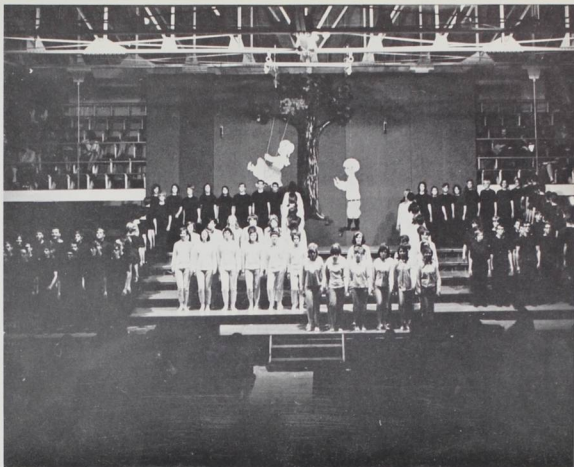
Formation Leader: Denny Cole  
Song Leader: Sue Thompson



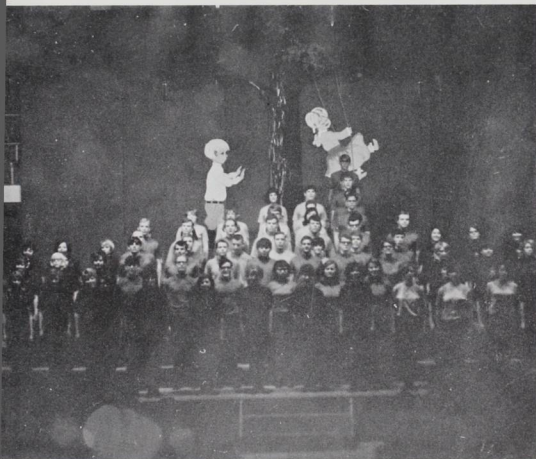
### CLASS OF 1971

Words and Music	9
Presentation	34
Formation	16
TOTAL POINTS	59

Formation Leader: Dave Hjelt  
Song Leader: Larry Cunningham



Freshmen---  
a surprising  
third



Sophomores---  
a heart-  
breaking  
fourth

### CLASS OF 1970

Words and Music	9
Presentation	26
Formation	18
TOTAL POINTS	53

Formation Leader: Jon Haynor  
Song Leader: Bruce Robertson



## Or Defeat-- A Lost Bet or the Millstream



It was a wet and cold Blue Monday as the sophomores took their plunge through the millstream. But with it came a new unity — a unity which can only be known in defeat, a unity which typifies the spirit of Freshman Glee.

The creative imagination of the student body emerged throughout the day. Cream pies — raw eggs — feathers — shaving cream — stopped traffic on 12th Street — signs on Fine Arts — all were commonplace on Blue Monday.

Glee was over for another year, but it remained alive in the memories of those who lived it for this one week.



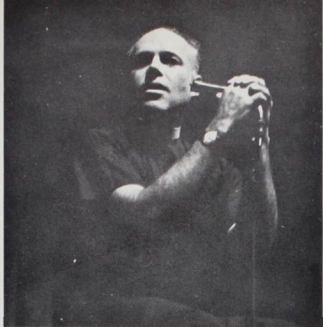




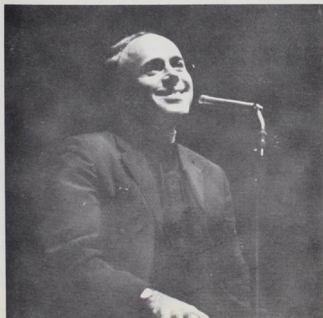
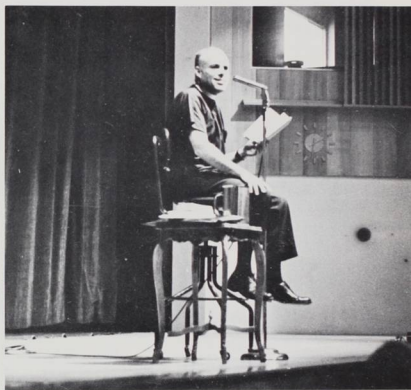
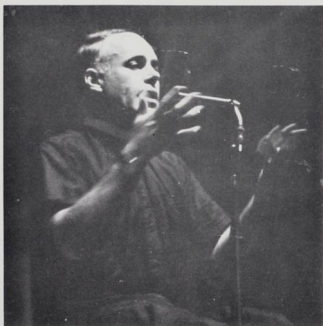
Convocation highlights are featured on these two pages. On the opposite page is Father Malcom Boyd. Directly above and to the right are scenes from "The Barber of Seville". Newly-elected student body president Terry Hall delivers his campaign speech in the top picture, while out-going president Doug Bosco officiates at the annual scholarship assembly (top right).

The Distinguished Artists Series closed the season with the presentation of the opera "The Barber of Seville" by the Turnau Opera Players on April 25. The Players are noted for their "non-stereotyped, spontaneous performance of high spirited hilarity".





## Father Boyd Holds Three Hour Convocation



April 10 was an unusual day at Willamette. Between 11 a.m. and 2 p.m. a steady stream of students could be seen heading for the Fine Arts Auditorium between classes and lunch. This was the day of the three hour convocation by Father Malcom Boyd, an Episcopal priest who carries his message from city discotheques to freedom houses in the South. He spoke, in a style which was frank and provocative and shocking to some, of today's issues — the black community, the war in Vietnam, the new morality, the role of the church in our society. Father Boyd demonstrated that he "is what's happening".

The rest of the spring convocation schedule was rather anti-climactic after Father Boyd. On April 3 Danforth visiting lecturer Dr. Tiwo O. Dosumu-Johnson, advisor to the president of Liberia, spoke on "The Problem of Tribalism in Africa". The end of the year brought the annual student body election convocation as well as the awards and scholarship assemblies.

Senior Claudette Ebi, escorted by Jim Kleinke, was crowned Spring Queen between acts of the Friday night drama production.



Phi Delta Theta Turtle Princesses (below) prepare for the race. From left to right are Mary Bench, Alpha Chi Omega winner, Karen Patch, Pi Beta Phi, Jean Barelman, Alpha Phi, Jackie Beavert, Delta Gamma, and Connie Schwendemann, Chi Omega.



High school seniors had an opportunity to preview college life as they arrived April 19 and 20 for Willamette's annual Spring Weekend. They were always on the go with a busy schedule of events which included the spring play "Mary, Mary" on Friday night at which Claudette Ebi was crowned Spring Queen. A waffle feed, an academic assembly, the Phi Delt Smoker and Turtle Race, the AWS fashion show, a concert featuring the New Folk Impressions and the Weekly Gathering, a dance with the Morning Reign, and fraternity serenades filled the day and night on Saturday. Patti Chase and Kathy Redfield were co-chairmen for the event.



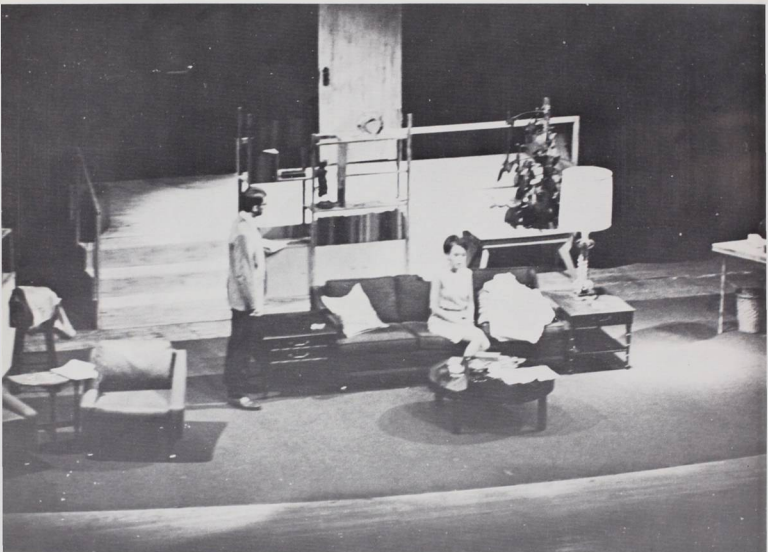
Spring Weekend royalty included Queen Claudette Ebi, Princess Dawn Hanson, and Princess Earline Anderson.



## Seniors Preview College Life on Spring Weekend



## All-Freshmen Cast Presents Divorce Comedy "Mary, Mary"

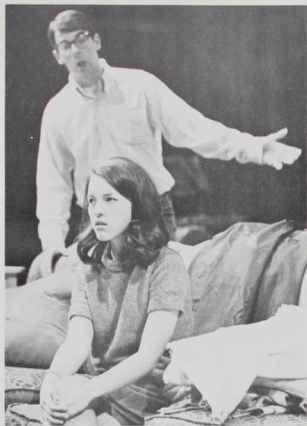


A cast composed entirely of freshmen delighted Spring Weekend audiences in the final drama production of the year "Mary, Mary" on April 19 and 20.

The situation comedy by contemporary playwright Jean Kerr centers around the problems of divorce. Already divorced, Mary McKellaway (Sally Irwin) returns to the apartment of her husband Bob (Bill Shirey) to settle some urgent money matters. Here they begin to discover that their marriage failed due to a lack of communication and realize that they still

love each other. The play then portrays their efforts to understand each other. A lawyer Oscar Nelson (Dave Slusser), a movie idol Dirk Winston (Tim Jackinsky), and a girlfriend Tiffaney Richards (Lynn Delaney) become involved in the plot.

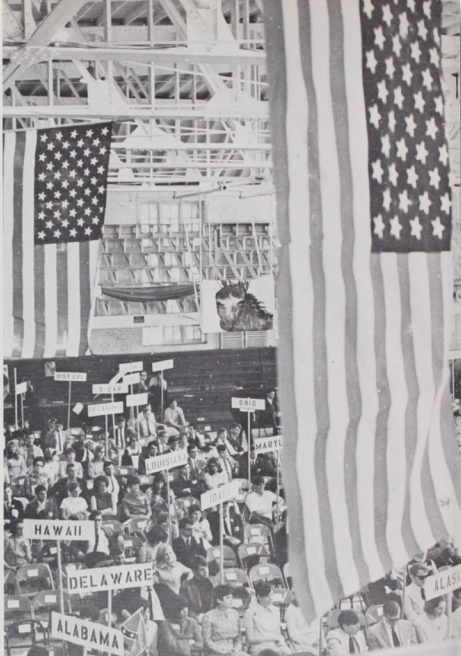
Much of the charm of the play revolves around the bright remarks and the witty lines so well delivered by the cast, three of which were appearing in their first production. Junior drama major Chris Keuss directed the play.



*Director: Chris Keuss*

*Cast:*  
*Mary McKellaway – Sally Irwin*  
*Bob McKellaway – Bill Shirey*  
*Tiffany Richards – Lynn Delaney*  
*Oscar Nelson – Dave Slusser*  
*Dirk Winston – Tim Jackinsky*





# McCarthy Gains Nomination As Mock Political Convention Goes Democratic



Cancellations dotted the schedule of the Mock Political Convention, but did not dampen the spirits of the 450 delegates assembled at Willamette from northwest colleges on April 26 and 27. Breaking with the tradition of representing the party out of power in Washington, the MPC, this year, switched to the Democratic party because the big contest is there. Senator Eugene McCarthy got the nod of the delegates for president on the fourth ballot; Texas governor John Connally was selected as his running mate.

Although featured speakers Senator Wayne Morse and former Congressman Robert Duncan did not appear as scheduled, the convention did not lack exciting oratory, some of the best coming from the delegates themselves. Washington Congressman Brock Adams delivered the keynote address and representatives of the major candidates spoke: Democratic National Committeeman Norman Stoll (Humphrey), William VandeHeuval, manager of Robert Kennedy's 1964 senatorial campaign, and Wisconsin Congressman Henry Reuss (McCarthy). Supporters of George Wallace mingled with the delegates.

Noisy and colorful demonstrations by the members of the convention preceded the nomination of the candidates. Permanent convention chairman, State Senator Cornelius Bateson, kept the delegates in order. Delegation caucuses lasted late into the night.

The convention was the culmination of many months of hectic planning by co-chairmen Bill Bennett, Dave Humphrey, and Ken Rice and numerous student committees.





MPC---  
Excitement  
and Chaos

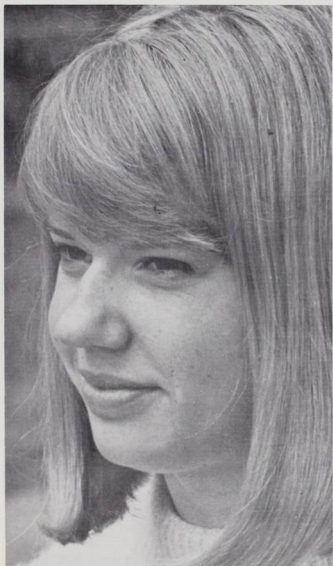




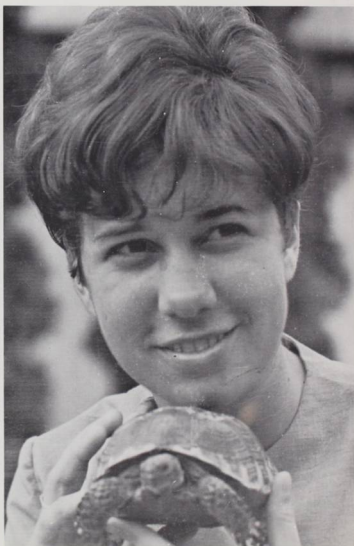
SALLY IRWIN  
*SAE Queen of Violets*



KAREN PATCH  
*Phi Delta Theta Turtle Queen*



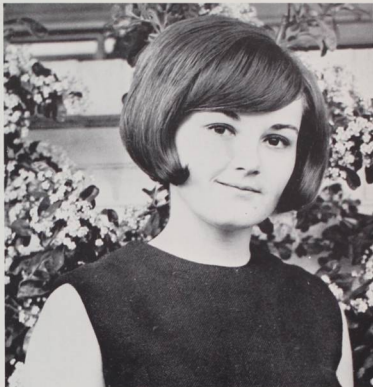
JEANNE BRENNAN  
*Beta Theta Pi Hulkess Queen*





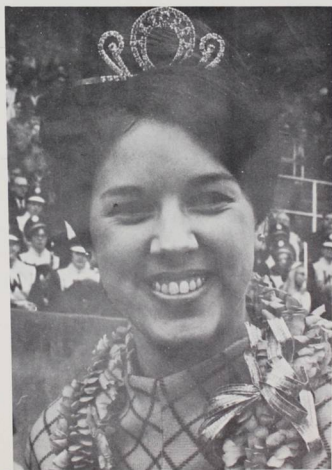
KATHY AKINS  
*Delta Tau Delta Queen*

CLAUDETTE EBI, *Spring Queen*



COURTNEY WEISBERG  
*Little Colonel*

## Royalty



TERESA KRUG  
*Homecoming Queen*

MARIAN FULLER  
*Kappa Sigma Stardust Queen*



BARBARA RANTON  
*Sweetheart of Sigma Chi*



RICK KRAFT  
*Delta Gamma Anchor Man*



administration & faculty ad

MARIAN FULLER

*Kappa Sigma Stardust Queen*

BARBARA RANTON

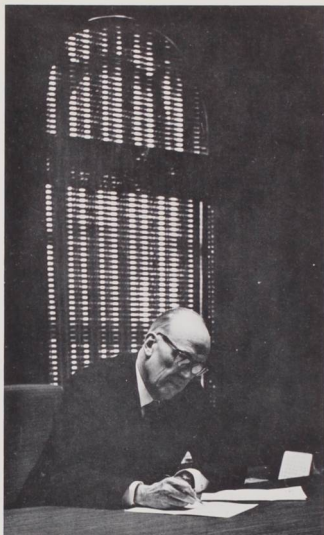
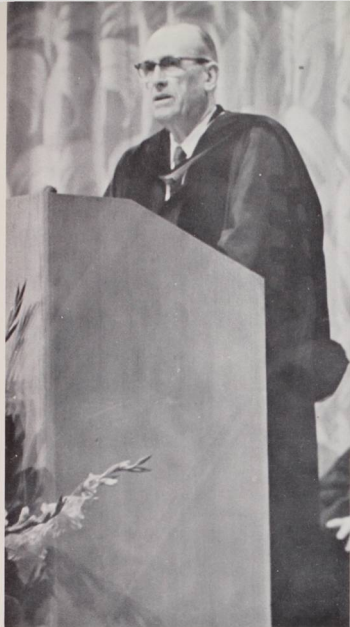
*Sweetheart of Sigma Chi*





& faculty ad

Administration & faculty adm



## President Smith Moves to New Office



The beginning of the second semester saw President G. Herbert Smith move into a spacious and elegant new office. The office located on the north end of the College of Law, provides excellent facilities for the president of the university and his immediate staff, including a conference room where the Board of Trustees will meet.

The new administrative quarters are only a small part of the \$12.5 million expansion program instituted by President Smith. Also new this year was Walton Hall, including new language department and library facilities, the Truman Wesley Collins Legal Center, and an addition to Doney Hall. Scheduled for completion in fall 1969 is a new student union. This program represents the endless effort of President Smith in creating a fine educational institution.

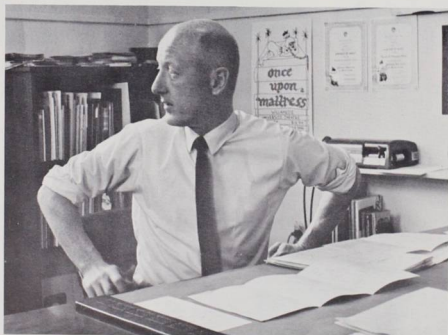
# Administration



**JAMES MALONE**  
*Dean-Elect, College of Law*



**DR. SEWARD REESE**  
*Dean, College of Law*

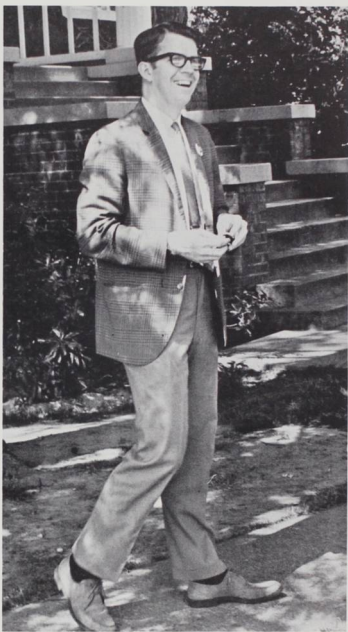


**CHARLES L. BESTOR**  
*Dean, College of Music*





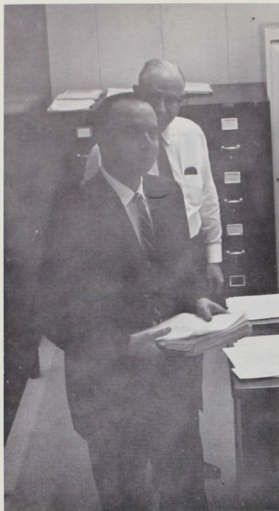
VERA M. HABERER  
*Dean of Women*



DR. SCOTT T. RICKARD  
*Dean of Men*



DR. BYRON DOENGES  
*Dean, College of Liberal Arts*



**DR. E. JERRY WHIPPLE**  
*Vice President for Student Affairs*



**FRANKLIN D. MEYER**  
*Assistant Director of Admissions*



**RAYMOND I. BRAHAMS, JR.**  
*Vice President of Development*



**ROBERT WOODLE**  
*Director, Public Information*

**ALFRED M. FEDJE**  
*Director of Admissions*





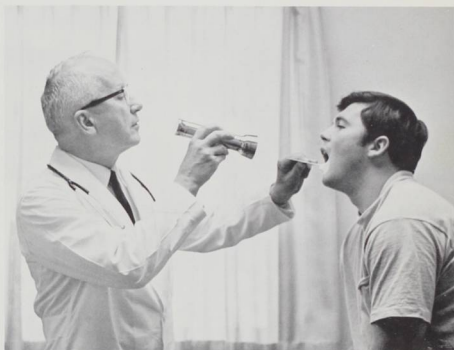
**T.C. SHOBERG**  
*Director, Student Financial Aid*



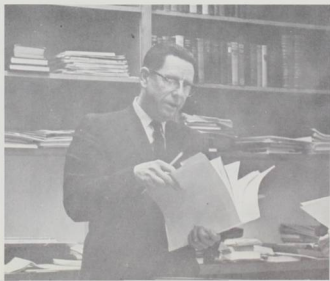
**DR. RICHARD P. PETRIE**  
*Financial Vice President*



**DAVID A. LEWIS**  
*Business Manager*



**DR. RALPH E. PURVINE**  
*Director of Health Service*



**GEORGE W. STANBERY**  
*Librarian*

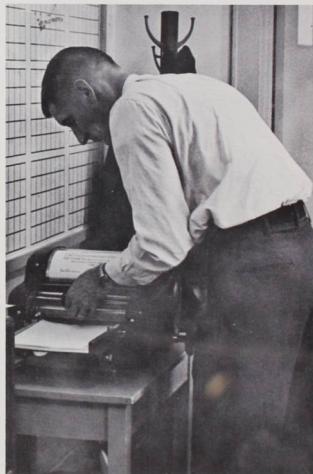
MAJOR  
DOUGLAS A.  
HARRISON



## Air Science



MAJOR DAVID WEILAND



M/SGT. AUSTIN GILES



CARL A. HALL



DR. CAMERON PAULIN



INGRID DERKATSCH

## Art

MRS. ELIZABETH YOCOM



DR. DONALD R. BREAKEY

## Biology



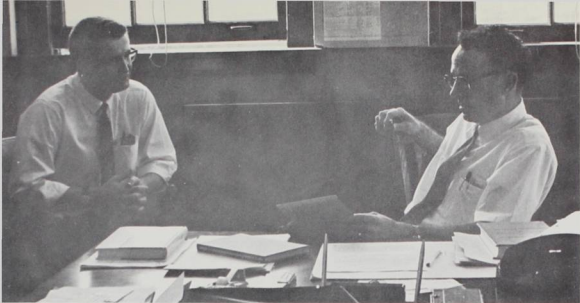
DR. CECIL R. MONK



DR. MARTHA E. SPRINGER

GRANT O. THORSETT





FREDERICK H.  
MATTES and  
DR. PAUL M.  
DUELL

## Chemistry



DR. NORMAN J. HUDAK



DR. FRANCES H. CHAPPLE

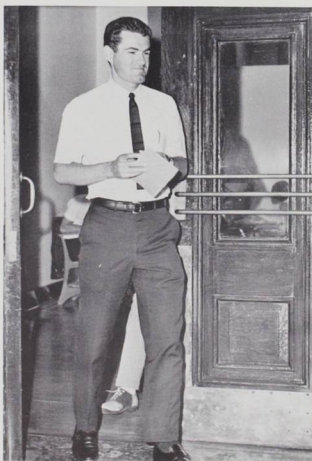


DR. ARTHUR D. PAYTON

# Economics



JACK LEONARD



DAVID  
ASHBY

COLONEL LYLE C. GRIMES



DR. RICHARD M.  
GILLIS



DR. ROGER MOURITSEN

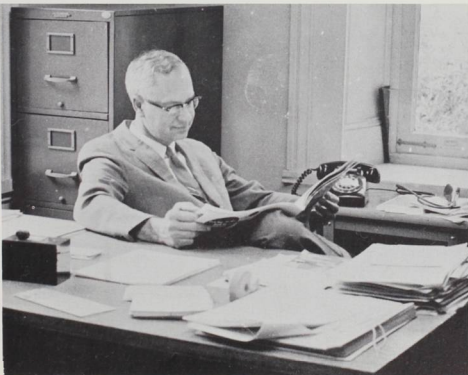


## Education

## Earth Science



ALBERT C. BERGLUND



DR. JAMES R. LYLES, JR.

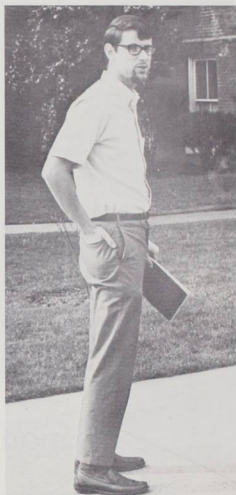
MARGARET B. RINGNALDA



DR. MURCO RINGNALDA



KENNETH S. NOLLEY



## English



ADELE BIRNBAUM



JAMES S. DOUGLAS

DR. HARUE KOIKE



RICHARD D.  
LORD



SUSAN M. HUBBUCH



RICHARD A. SUTLIFF

DR. PAUL G. TRUEBLOOD



DR. OTTO W.  
MANDL  
*German*

## Foreign Languages



CLARENCE A. KRAFT  
*Spanish*



DR. MARION  
MORANGE  
*French*



PAULE G. DRAYTON  
*French*



DR. PAUL B. BEAL and  
FRANCOISE GOEURY, *French*



**JAMES G. PHILLIPS**  
*German*

**RAUL G. CASILLAS**, *Spanish*



**MARGARET  
BILLINGS**  
*Spanish*



**MARIJA UDRIS**, *Russian*

**CHRISTINE A. GENTZKOW**, *German*



# History



DR. GEORGE S. McCOWEN



DR. ROBERT D. GREGG



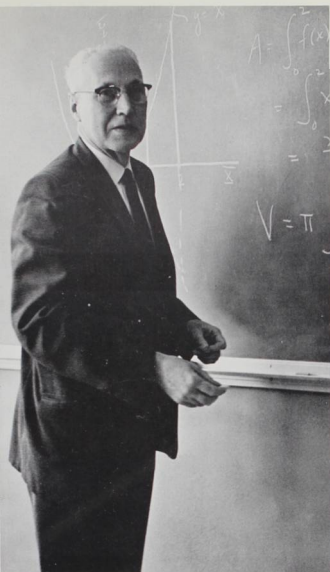
KENT F. MARKUS



DAVID R. NOWICKI

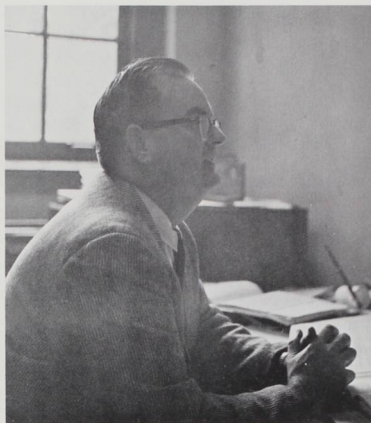


DR. CHESTER C. KAISER

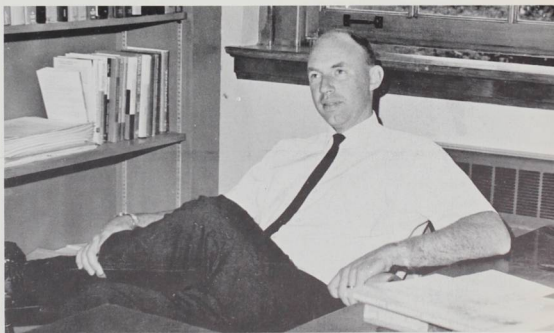


DR. CHESTER F. LUTHER

JACK H. HAFFERKAMP



## Mathematics



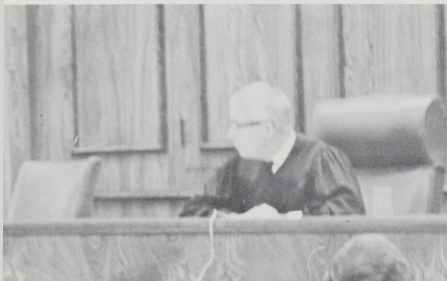
STEPHEN PROTHERO

## College of Law

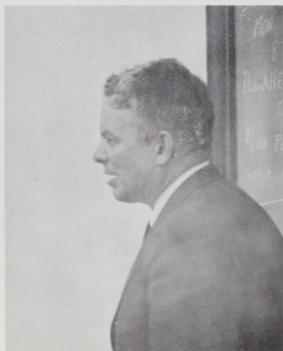
ALAN D.  
GROSS



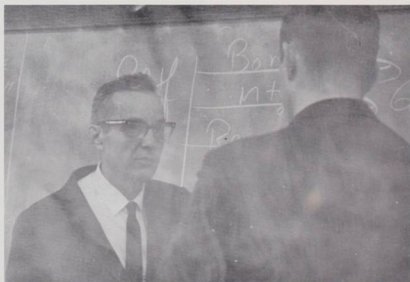
COURTNEY ARTHUR



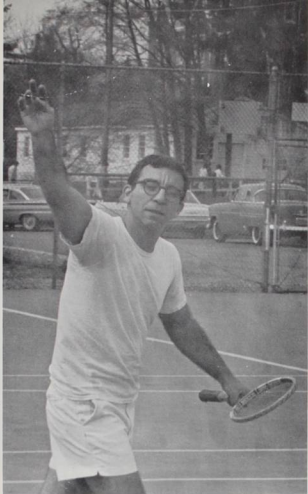
JOHN A.  
REULING, JR.



HENRY BAILEY



EDWIN W. BUTLER



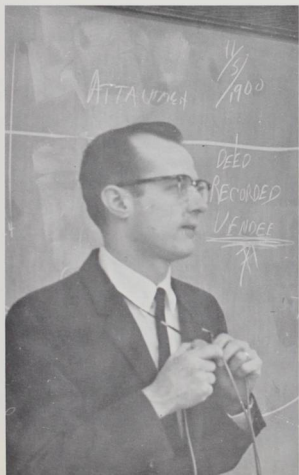
DON W. LLEWELLYN



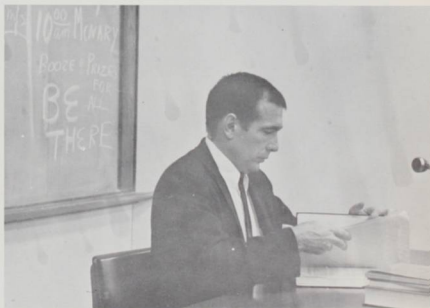
DON BERGER



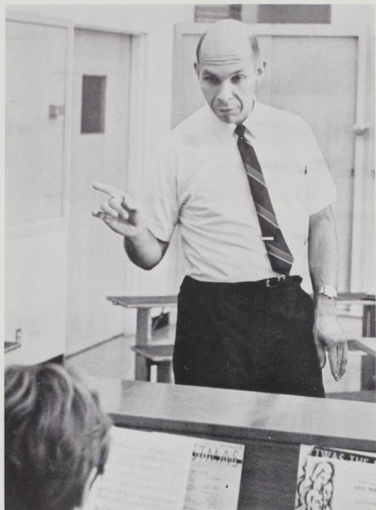
DR. JOHN C. PAULUS



MICHEAL D. O'KEEFE



ROBERT L. STOYLES, JR.



WALTER FARRIER



## Music



ROBERT CHAULS



JOSEF H. SCHNELKER

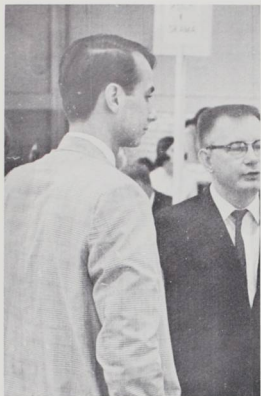


STANLEY BUTLER



JULIO VIAMONTE

RALPH DOBBS



WILLIAM KONNEY

## Music



MAURICE W. BRENNAN



DR. EDWIN J. STILLINGS

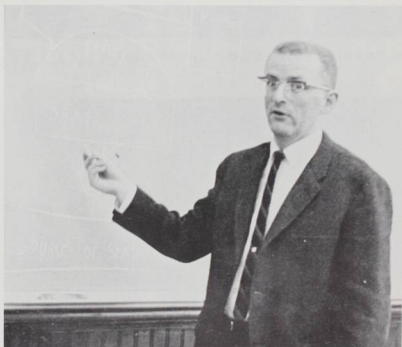


DR. KENNETH R. SMITH



DR. THEODORE L. SHAY

## Political Science



DONALD F. LAWS

# Physical Education



JOE  
SCHAFFELD



DR. CHARLES BOWLES and K. JAMES BOUTIN



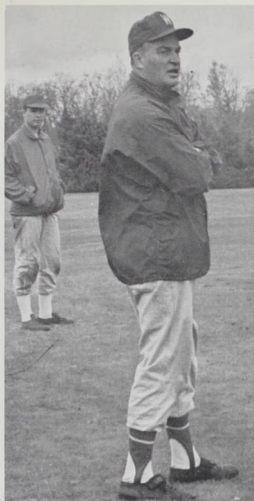
RAMONA ANN  
SEARLE



THEODORE OGD AHL



JEAN WILLIAMS



JOHN R. LEWIS

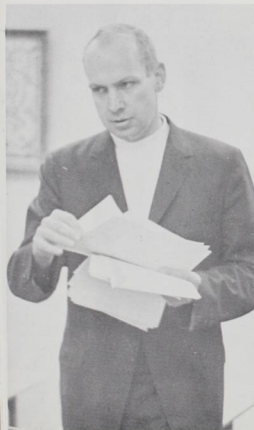


STELLA  
SALEE



RICHARD A.  
YOCOM

## Psychology

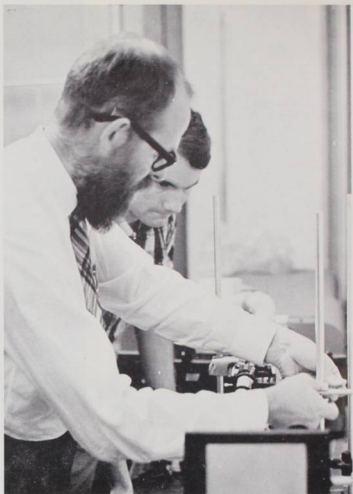


DR. NOEL F. KAESTNER



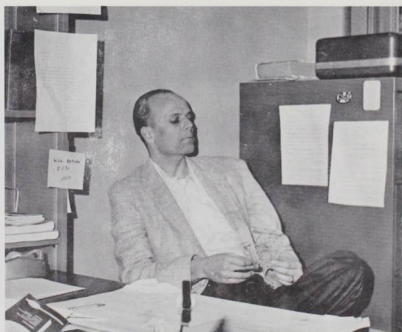
DR. CHARLES DERTHICK

DR. ROBERT L. PURBRICK



MAURICE B. STEWART

## Physics



LARRY O.  
CHRISTIAN



DR. JEREMIAH CANNING

# Philosophy



DR. MILTON D. HUNNEX



# Religion

CALVIN D.  
McCONNELL



DR. NORMAN A. HUFFMAN

## Speech and Drama



ROBERT M. PUTNAM

DR. HOWARD W. RUNKEL



DR. JOHN A. RADEMAKER



## Sociology

MIRIAM CARLSON



honoraries & organizations



ROBERT M. PUTNAM

DR. HOWARD W. RUNKEL

S



DR. JOHN A. RADEMAKER



## Sociology

MIRIA





organizations

zations honoraries & orga

# Honoraries

## Alpha Lambda Delta

### *Freshmen Women's Scholastic Honorary*



*President*  
Liz Carter  
Carla Atchison  
Linda Blankenship  
Pat Bowen  
Cindy Britain  
Margaret Chesney  
Linda Forrest

Susan Friesen  
Orianna Gross  
Mary Hadlock  
Marilyn Hale  
Anne Jackson  
Margaret Jensen  
Janice Martilla

Leslie Robertson  
Dorothy Slaughter  
Celia Smith  
Carol Taranoff  
Mary Jo Turek  
Linda Wild  
Shelly Winters

Nancy Wolff  
*Not pictured:*  
Donna Dunbar  
Anne Stephens

## Beta Alpha Gamma

### *Freshmen Women's Service Honorary*



*President*  
Debbie Dean  
Liz Carter  
Sue Hales  
Donna Handley  
Cindy Irvine  
Anne Jackson  
Margaret Jensen

Candy Linskog  
Terri Ostlund  
Leslie Peterson  
Jackie Shivers  
Christie Sleeter  
Carol Ward  
*Not pictured:*  
Betty Jo Hicks  
Lynn Wood

# Dobro Slovo

## National Slavic Honor Society

### President

Mike Lincicum  
Carla Atchison  
Jon Carder  
Dan Christianson



Sally Dana  
Al Ellis  
Susan Hatfield  
Peter Lutz  
*Not pictured:*  
Betty Jo Hicks



# Kappa Delta Pi

## Education Honorary

Marlene Anderson  
Mary Beechler  
Christie Broms  
Claudette Ebi  
Marg Horn  
Melinda Jack  
Laurie Monnes



Jane Osborne  
Sally Schramm  
Sue Trullinger  
Lynne Williams



### *Not pictured:*

Lori Baker  
Larry Brown  
Carolyn Bush  
Kay Douglas  
Jean Hoem  
Judy Lorenzen  
Steve Miller  
Mary Pugh  
Judy Smith

# Mortar Board

## Senior Women's Honorary

### President

Dawn Hanson  
Christie Broms  
Laurie Monnes  
Peggy Shaffer  
V'Elia Warren



### *Not pictured:*

Susie Amen Hammond  
Nancy Detering  
Marilyn Hanson  
Vicki Johnson

# Mu Phi Epsilon

## Women's Music Honorary



*President*  
 Laura Bryant  
 Lee Doving  
 Susan Dickey  
 Susan Frieson  
 Lois Gielow  
 Sallie Gordon  
 Glenda Hieber

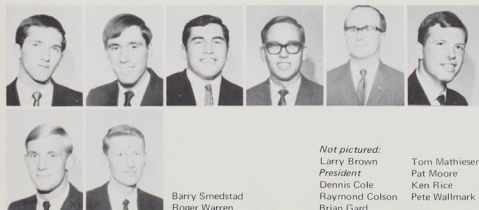
Teresa Krug  
 Geri Lawrence  
 Colleen Lien  
 Jeanna Reeves  
 Cathy Ricco  
 Sue Talbot  
 Judy Wallich

*Not pictured:*  
 Linda Brown  
 Sylvia Chauls  
 Marie Gardner  
 Linda Greene  
 Ginni Hawkins  
 Diane McKinney

Gail Watson  
 Janice Watson

# Omicron Delta Kappa

## Senior Men's Honorary



John Barker  
 Doug Bosco  
 Al Ellis  
 Jack Hickling  
 Mike Lincicum  
 Mark Olson

*Not pictured:*  
 Larry Brown  
*President*  
 Dennis Cole  
 Raymond Colson  
 Brian Gard

Tom Mathiesen  
 Pat Moore  
 Ken Rice  
 Pete Wallmark

Barry Smedstad  
 Roger Warren

# Phi Eta Sigma

## *Freshmen Men's Service Honorary*

### *President*

Barry Sudderth  
 Jeff Albaugh  
 Bill Bennett  
 Bruce Botelho  
 James Foster  
 Delwin Franz  
 Gordon Greathouse



Joe Hoffman  
 Jon Michael Luce  
 Ken Mongrain  
 Rodger Nichols  
 Bruce Robertson  
 Lauren Ronald



Phil Schnell  
 Eric Smith  
 Kent Tobiska  
 Jim Turk  
 Gale Vaandering  
 Ed Wallace  
 Bob Willoughby



### *Not pictured*

Dennis Graves  
 Donald L. Hanson  
 Richard Huddleston  
 Tim Larson  
 Dan Rabe  
 John Steinke

# Phi Mu Alpha

## *Men's Music Honorary*

### *President*

Keith Kinsman  
 Jack Hickling  
 Montee Kennedy  
 Rick Kraft  
 Clay Morris  
 Mark Olson  
 Rich Polley



Pete Roth  
 Mike Sherman  
 Mart Stewart  
 Barry Sudderth  
 Mike Turner



### *Not pictured*

Larry Brown  
 Jim Langford  
 Tom Mathiesen  
 Roger Paulson  
 Tom Ray

# Phi Sigma Iota

## Language Honorary



*President*  
Linda Putman  
Nancy Aplan  
Suzi Corcoran  
Dee Hammond  
Joanie Loomis



Jane Osborne  
Cathy Wetherby  
*Not pictured:*  
Susan Amen Hammond  
Susan Collett  
Gaye German  
Jeanine Kammeyer  
Sue Leeson

# Pi Gamma Mu

## Social Science Honorary



*President*  
Jim Carlson  
Nancy Crotchett  
Jackie Gruver  
Jack Hickling  
Marg Horn  
Melinda Jack  
Montee Kennedy

*Not pictured:*  
Dave Albright  
Dean Guyer  
Vicki Johnson  
Sue Leeson  
John Stephen Smith  
Pete Wallmark  
Maureen Willard



Mike Lincicum  
Mary Martin  
Sally Schramm  
Karen Swim  
V'Elita Warren

# Psi Chi

## Psychology Honorary



*President*  
Lynn Campton  
Marlene Anderson  
Sue Cox  
Pixie Downing  
Elaine French  
Ken Fukunaga  
Lynne Lucas



Nancy Miller  
Chris Pearson  
Becky Rudin  
Don Solberg  
Craig Weaver  
Gary Yunker

*Not pictured:*  
Ray Colson  
Greg Johnson  
Darla Sanders  
Kitten Stafford

# Sigma Alpha Chi

## Freshmen Men's Scholastic Honorary

*President*  
 Jim Averill  
 Bill Bennett  
 Richard Polley  
 Bob Rasor  
 Barry Suderth



# Theta Alpha Phi

## Drama Honorary

Chris Keuss  
 Jon Roberson  
 Chris Willard



*Not pictured:*  
 Bubbles Balcomb  
 Dean Charles Bestor  
 Relan Colley  
 Marian Fuller  
 Al Gould

Pete Harmon  
 Chris Hurd  
 Tom Mathiesen  
 Robert Putnum  
 Ramona Searle

# Who's Who Among Students in American Colleges and Universities

Earline Anderson  
 Shirley Baird  
 Bill Bennett  
 Doug Bosco  
 Dave Brink  
 Suzi Corcoran



Gib Gilmore  
 Dawn Hanson  
 Chuck Honeycutt  
 Kit Jensen  
 Joanie Loomis  
 Rick Meeder  
 Rich Monteith



Bob Schlegel  
 Karen Swim



*Not pictured*  
 Larry Brown  
 Dennis Cole  
 Ginni Hawkins  
 Charlotte Langford  
 Tom Mathiesen

Ken Rice  
 Bob Selander  
 Mike Shinn  
 Pete Wallmark



#### FALL SEMESTER

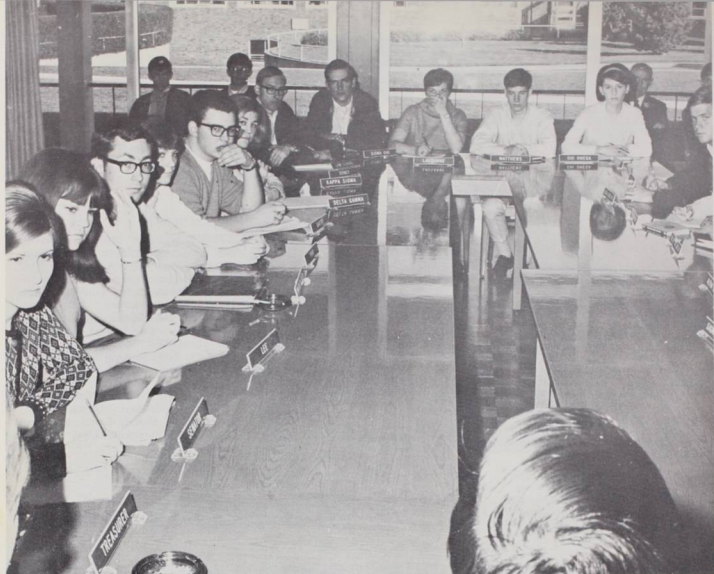
SENIORS — Rick Meeder, president; Dick King, vice-president; Dawn Hanson, secretary; Mary Watkins, treasurer; Rick Jones, sergeant-at-arms. JUNIORS — Chuck Honneycutt, president; Bob Stoops, vice-president; Judy King, secretary; Ron Sticka, treasurer; Gib Stewart, sergeant-at-arms. SOPHOMORES — Denzel Scheller, president; Tim Bowman, vice-president; Ann Stephens, secretary; Mike Bennett, treasurer; Sanford Kawana, sergeant-at-arms. FRESHMEN — Dave Williams, president; Dennis Payne, vice-president; Melody Smith, secretary; Lillian Bladine, treasurer; Larry Ramsey, sergeant-at-arms.

## Class Officers



#### SPRING SEMESTER

SENIORS — Tom Angelo, president; Claudette Ebi, vice-president; Nancy Detering, secretary; Dawn Hanson, treasurer; Melinda Jack, sergeant-at-arms. JUNIORS — Terry Hall, president; Frank Youngman, vice-president; Wendy Wolf, secretary; Judy Wallich, treasurer; Tony Furniss, sergeant-at-arms. SOPHOMORES — Dick Howsley, president; Ted Fritts, vice-president; Lester Seto, secretary; Diana Blaisdell, treasurer; Tom Weathers, sergeant-at-arms. FRESHMEN — Eric Smith, president; Sally Rountree, vice-president; Cindy Smith, secretary; Cathy Ingram, treasurer; Mike Holmes, sergeant-at-arms.



## Senate Heads Changes

Change became the hallmark of Willamette University student government under the able leadership of Doug Bosco (pictured right), ASWU President. Serving with Doug were first vice-president Dick King, second vice-president Dave Brink, secretary Karen Swim, treasurer Bob Selander, and senators-at-large Charlotte Langford and Bob Schlegal.

Two of the year's outstanding innovations included the reorganization of Student Senate to include a representative of each living organization and the establishment of a joint student-faculty-administration committee to act as a policy making body for self-government of the university.

The movement toward increased communications among these three segments of the university was highlighted by a conference under the chairmanship of Dr. Canning and Professor Phillips. Here opinions were changed, grievances aired, and a spirit of cooperation sought and found, enabling those concerned to develop a more positive attitude toward change and innovation at the oldest university west of the Mississippi.

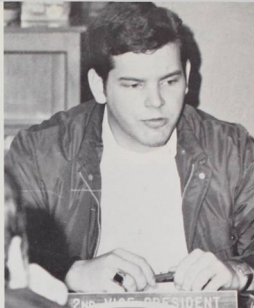
Other items attracting the attention of student government included passage of grading resolutions, establishment of a campus test file, recommendation of an open housing policy, and a disputed student body election.





**CHARLOTTE LANGFORD**  
*Senator*

**RICH MONTEITH**  
*First Vice President (first semester)*



**DAVE BRINK**  
*Second Vice President*



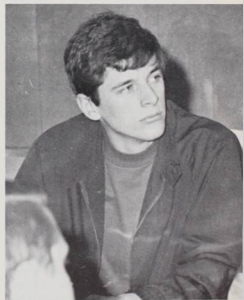
**BOB SELANDER**  
*Treasurer*



**DICK KING**  
*First Vice President  
(second semester)*



**KAREN SWIM**  
*Secretary*



**BOB SCHLEGAL**  
*Senator*



KRISTI WALTER  
*ALOTODATA* Editor  
and  
SUSAN HUBBUCH  
Advisor



SUZI CORCORAN  
*WALLULAH* Editor



JUDY BUTTS  
*FUSSER'S GUIDE* Editor

DAVE PEARSON  
*Darkroom Manager*

Composed largely of the editors of the campus publications, publications board, under the leadership of manager Joanie Loomis, put forth a united effort to promote journalism and publications in general on campus. The board was hit by the continuing criticism of the *COLLEGIAN* and the attempted resignation of its editor; it succeeded in reinstating a much-needed journalism class. Not pictured above among the editors are Brian Gard and Bonnie Bedord, in charge of the *JASON*.

The goal of the 1968 *WALLULAH* staff was to create a yearbook distinct from those of past years. The color photographs and dividers as well as several changes in layout design are aimed in this direction.



# Publications



JOANIE LOOMIS  
*Publications Board Manager*



# Organizations

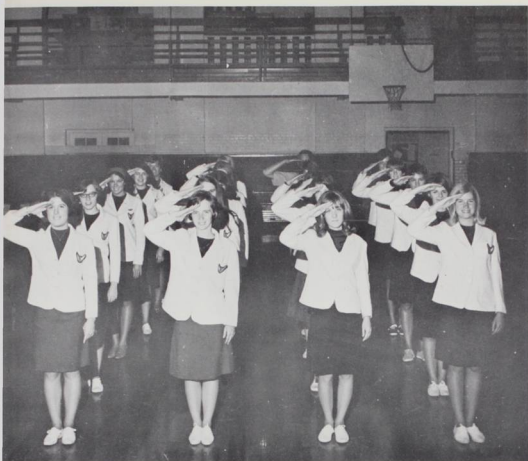
AWS officers and representatives gather for the cameraman. Seated, left to right, are Sue McGeehon, first vice-president, Beth Donaldson, second vice-president, Connie Schwendemann, editor, and Candy Lindskog, treasurer. Standing behind them are members of the Council: Christie Sleeter, Toni Doane, and Corrine Maxwell. Not pictured are Nancy Berg, third vice-president and Liz Carter, secretary.



JOANIE LOOMIS  
*AWS President*



The Associated Women Students is a self-governing organization to which all Willamette women belong. AWS defines its role to promote and develop leadership and equality of women, to provide a means of expression of the opinions of women students on matters of general interest to them, and to cite outstanding achievement of women on campus. The organization was successful this year in its move to abolish required dress standards. AWS annually sponsors the Big-Little Sister program, the AWS auction, the Spring Weekend fashion show, a scholarship program, a freshmen orientation assembly, and the Coed-of-the-Month selection.



Angel Flight, a coed auxiliary of AFROTC, participate in campus and community service projects, plan activities in coordination with the AFROTC program, and act as hostesses at official Air Force events. The Angels donned new royal blue uniforms this year and decided to discontinue their drill performances in favor of more service activities. President of the group this year was Liz Power.



Circle K is a service club, open to any male student willing to devote his time to the objectives of the club, which is designed to meet the needs of Willamette and the Salem area. It is affiliated with Kiwanis International. President Craig Horton accepted two awards for the Willamette chapter at the club's District Convention this year: an honorable mention in the contest for the Club Achievement Award and a second place in the Single Service Award Competition.



Beta Kappa Chi is a four year honorary open to members of all classes. Left to right, first row, Mart Stewart, Cathy Welch, Sharon Usher, Linda Jambor, Willis Lau, Mike Bennett. Second row, Barry Smedstad, Mike Holmes, Jim Griggs — Epsilon Chapter President, Doug Courson — Delta Chapter President, John Thomas — Alpha Chapter President, John Barker — Gamma Chapter President, Tony Robinson — Beta Chapter President, Lester Seto — National Vice-President, Frank Youngman — National President, Lindsay Stewart, Ed Crawford. Members not pictured: Bob Millikan and Dennis Fern.

The Young Republicans strive to popularize and perpetuate the ideals and principles of the Republican party and sponsor discussions of local, state, and national affairs to stimulate an active interest in the workings of our government. The State Capitol, uniquely located across State Street from Willamette provides an excellent workshop for the YR's and other students. Members meet high ranking officials of the party at banquets and political rallies, especially in this election year. Pictured to the right, club members enjoy a retreat at Thetford Lodge. Guiding the YR's this year was President Richard Cox.



Campus Koinonia, (right), a student interfaith fellowship, is the center of Willamette's Christian Community. Students of many faiths meet weekly on Thursday evenings for ecumenical study. Under the leadership of Mark Olson, this group assisted Chaplain McConnell in the preparation of chapel services and the annual Christian Resources Week.





The AFROTC program (above) provides an opportunity for the male student to participate in an officers education program leading to a commission in the United States Air Force upon graduation. Advanced students may be selected for membership in the Arnold Air Society, the national honorary. Its objective is to further the purpose, mission, tradition, and concept of the United States Air Force as a means of national defense, promote American citizenship, and create high ideals of service among the AFROTC students. The participants are shown during drill.

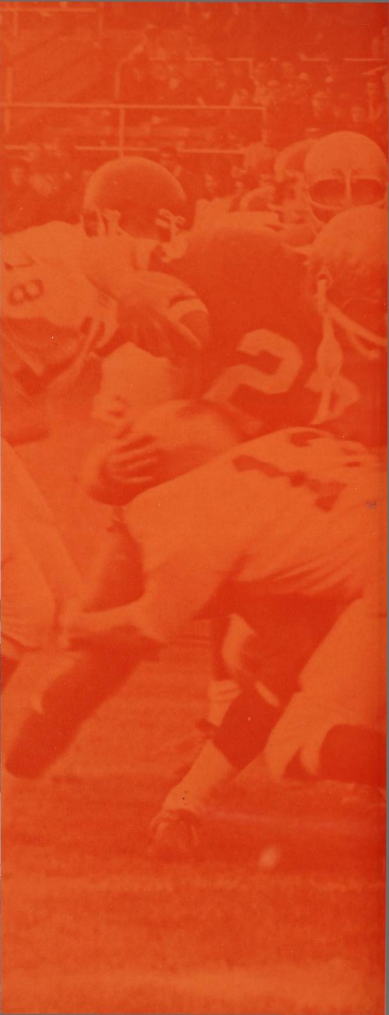
The Panhellenic Council (below), whose membership includes representatives of each sorority on campus, meet twice a month to discuss mutual problems concerning sorority standards, scholarship, campus activities, rushing and its rules, and inter-sorority functions. Under the leadership of President Shirley Baird, the Council attempted to foster close cooperation and increase the bonds of friendship among the sororities. Members of the Council pictured below include, left to right, Kathy Bullock, Cindy Irvine, Pat Davidson, Lynne Lucas, Shirley Baird, Suzi Corcoran, and Sue McGeehon.

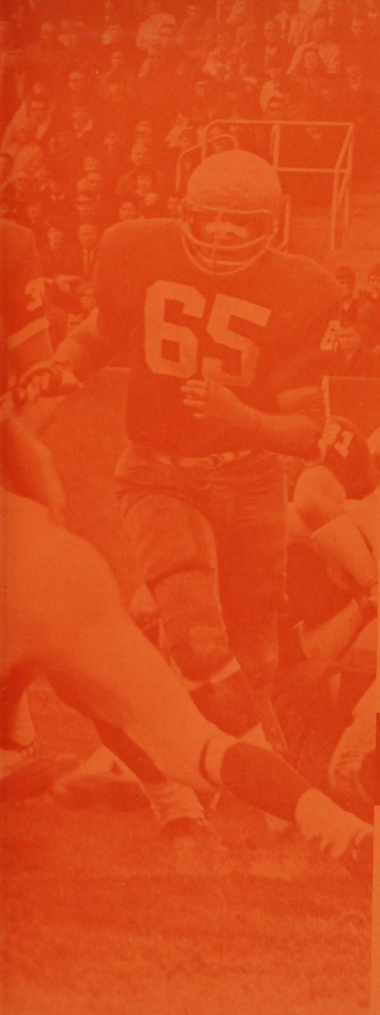






The AFROTC program (above) provides an opportunity for the male student to participate in an officers education program leading to a commission in the United States Air Force upon graduation. Advanced students may be selected for membership in the Arnold Air Society, the national honorary. Its objective is to further the purpose, mission, tradition, and concept of the United States Air Force as a means of national defense, promote American citizenship, and create high ideals of service among the AFROTC students. The participants are shown during drill.





athletics    athlet

athletics athletics athletics



Football

# Offense and Defense Rule as Bearcats Share Conference Crown

The football season came to its climax this year as Willamette University shared the trophy of the Northwest Conference with Lewis and Clark and Linfield. The Bearcats finished the season with a 5 win - 1 loss record in the conference standings and a 7-2 record in the overall standings. An infraction of league rules governing financial aid for players cost Linfield its share of the crown and the school was ruled ineligible for any other athletic titles this year.

Willamette should have a comparable team next year, losing only three seniors, Rod Allison, Bob Riensche, and Bob Shields. Many of the other returning players received honors for themselves as well as for the whole team.

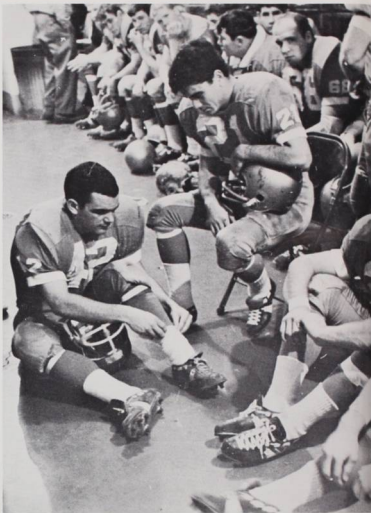
Willamette University was named as District Champion by the football coaches and a committee of the district. Ted Ogdahl was named as football "coach of the year." Another Willamette honor was the naming of tailback Jim "Tiger" Nicholson as "player of the year."

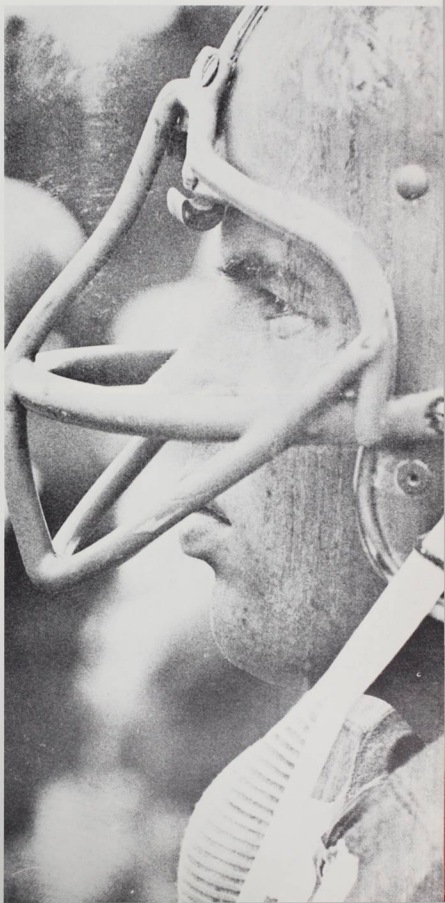
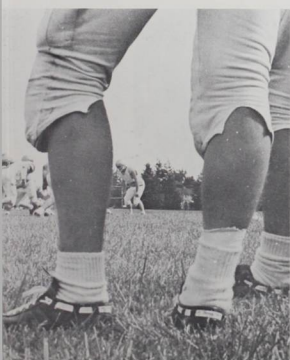
Seven of the twenty-four man all-star squad of the NAIA District Two came from Willamette. Named were Jim Nicholson, tailback; Cal Lee, linebacker; Jeff Knox, offensive guard; Gib Gilmore, end; Tom Weathers, defensive end; Bob Shields, middle guard; and Al Ellis, defensive tackle. Gib Gilmore and Jim Nicholson were nominated by the district for Little All-American honors.

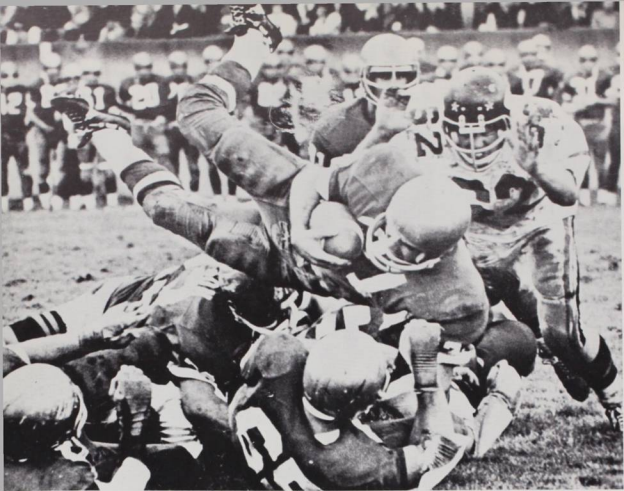
Bearcat players led the league in several categories of individual statistics. Nicholson led the league in rushing and scoring, while Shinn took the title in passing.

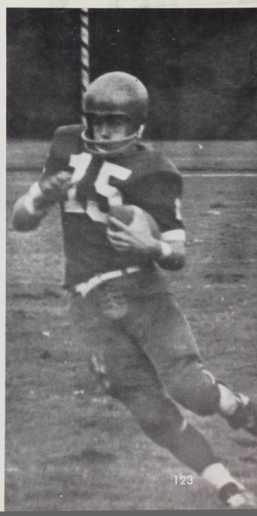
The season saw numerous records broken or tied. Shinn demonstrated his passing ability in setting a new record by completing twenty-four passes in one game; the old mark was twenty-two completions. He also tied the mark for scoring passes thrown in one game at four touchdowns. Gib Gilmore also made numerous additions to the record book. He set a new field goal record by booting one forty-eight yards. He equaled three other Bearcat records: passes received in one game (12), scoring passes received in a game (four), and points scored in a game (thirty). The team as a whole led the Northwest Conference in passing offense, total offense, rushing defense, and total defense.

Losing only three players from a talented championship squad, hopes are high next year for a repeat performance.











#### 1967 FOOTBALL SCORES

	W.U.	Opp.
University of Nevada	15	32
University of British Columbia	43	13
Pacific Lutheran University	40	13
Pacific University	42	8
Lewis and Clark College	17	10
University of Puget Sound	16	0
Whitman College	61	7
Linfield College	7	16
College of Idaho	58	13

Record: 7 wins, 2 losses



## Nicholson Captures All-American Honors

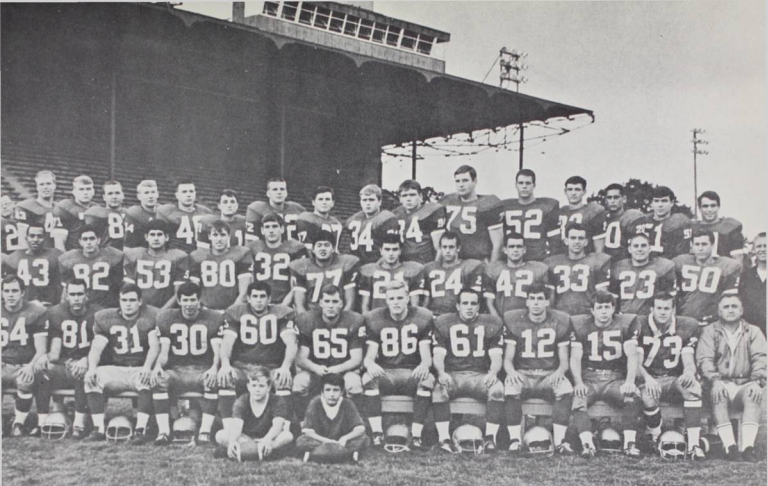
Bringing honor not only to himself, but also to his team and to his school, Jim "Tiger" Nicholson, junior tailback from Salem, was named to the 1967 NAIA All-American First Team. His selection came at the close of the season which saw Willamette as co-champion of the Northwest Conference. Nicholson's outstanding performance all season was instrumental in the Bearcat success.

His other accomplishments on the gridiron attest to his selection. Also during the 1967 season he was chosen "outstanding football player" of the NAIA District Two and named to the Northwest Conference all-star team. As a sophomore, Nicholson garnered berths on the Little All-Coast team as well as the conference all-star team.

"Tiger" led the NAIA district in rushing and scoring in both 1966 and 1967. This season he averaged 6.8 yards rushing on a total of 167 carries and scored 90 points. He also averaged 14.3 yards on 17 pass receptions. Great speed (4.6 seconds in the forty-yard dash) and strength (bench pressing 335 pounds) account in part for his brilliant record on the football field.

Coach Ted Ogdahl praises the progress of his star: "He has improved tremendously each season and is without a doubt as good a back as there is playing collegiate football at any level." Professional scouts agree as they have been following his progress with great interest.





Front row, L-R: Windy Sequiera, football aide; Cal Lee, Bob Shields, Mike Houck, Tom Williams, Bruce Williams, Al Ellis, Jeff Knox, Bob Riensche, Mike Smith, Ian Fulp, and Ted Ogdahl, head coach. Second row, L-R: Bob Loyd, trainer; Walt Looney, football aide; Dave Cook, Dennis Payne, Mike Shim, Eric Kautzky, Tom Weathers, Tom Williams, Sanford Kawana, Jim Morgado, Jim Nicholson, Ted Albrich, Ron Jensen, Rod

Allison, Jay Brunner, and Joe Schaffeld, assistant coach. Third row, L-R: Kit Korish, Carl Phifer, Harold Poujade, Larry Ramsey, Bernie Carter, Gordy Wiseman, Steve Stocker, Chris Powers, Oscar Olson, Russ Ferguson, Al Woldrich, Larry Arnold, Jeff Hudson, Gary Scrivner, Bob Steenson, Bob Riley, Mike Holmes, and Bill Mitchell. Seated in front, Gary Luidahl and Dennis Day, ball boys.

Coach Ted Ogdahl congratulates the graduating seniors from this year's squad, Bob Riensche, Rod Allison, and Bob Shields, on a fine football career at Willamette.





Youth and spirit predominated this season for the 1967 Bearcat cross-country team. Working with an eager group of freshmen and sophomores Coach Chuck Bowles produced a unified team which took third place honors in the Northwest Conference and placed fourth in the NAIA District Two competition.

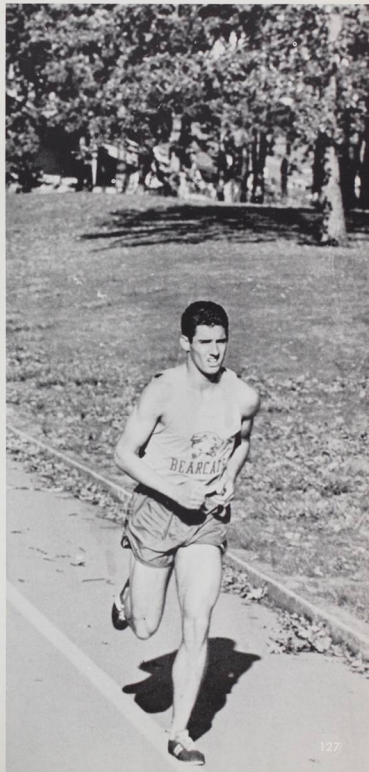
Characteristic of their close teamwork is the fact that during many of their meets the majority of the team finished within about twenty seconds of each other. Running approximately 75 miles a week in practice around Bush Park and other areas of the city the team was definitely devoted to its task.

In dual meets Willamette triumphed over Oregon College of Education 24-37 and Whitman 20-41, while losing to conference and district champion Lewis and Clark 32-23. The team placed a close third in the Southwest Oregon Community College Invitational meet.

Letters were awarded to seven of the team members. Receiving awards for the second time were Rick Sparber, David Grigonis, and Ed Wallace. David Steinke, Leonard Valadez, Gary Horrell, and John Steinke received first-year awards. With this young and talented team, the 1968 season looks even better.



## Bearcat Harriers Display Youth and Spirit



Front row, L-R: Dave Steinke, David Grigonis, John Steinke, Leonard Valadez. Back row, L-R: Rick Sparber, Ed Wallace, Dwight Anderson, Gary Horrell, Coach Chuck Bowles. Not pictured: Geoff Parks.

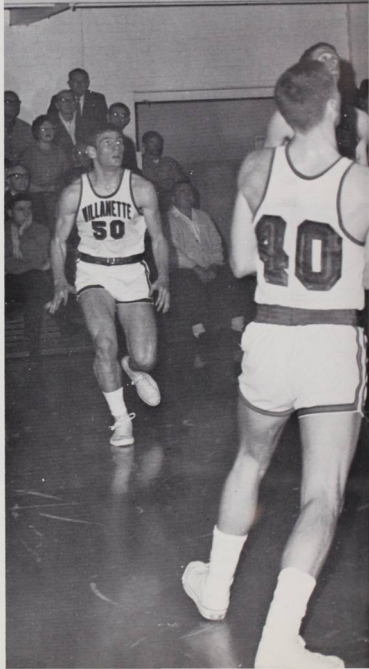
## "Great Moments" Characterize Basketball Season

Completing his first season at Willamette, Coach Jim Boutin described this initial experience in college basketball coaching as "a generally satisfying season with some great moments." One of those "great moments" certainly must have been the first Linfield game in which the Bearcats upset the so-far undefeated Wildcats 101-96. But this was not the only exciting game. In fact, basketball became a spectator's sport this year with the team utilizing their combined assets: an all-around good shooting team and a pace-setting fast break with a full-court press defense.

Junior Jim George was named to the first team of District Two and to the Northwest Conference team. Sandy Marcelino was also named to the Conference second team. John Barker, Rich Benner, and Bob Lundahl received honorable mention for the same second team. Honors given by the team were awarded to Jim George and John Barker for the co-most valuable players and to Bob Lundahl and Sandy Marcelino for the Hustle and Inspiration award.

The conference record was the best since 1959 with ten wins and eight losses giving the Bearcats a third place berth. Three major school records were broken. They now stand as the most points scored in a game — 123, the most points scored in a season — 2366, and the highest average — 91.

Next season promises better things to come with the loss of only one senior, Rich Benner. This year the team centered around freshmen and sophomores, so with the return of these young members the team should be much stronger next season.





Kansas

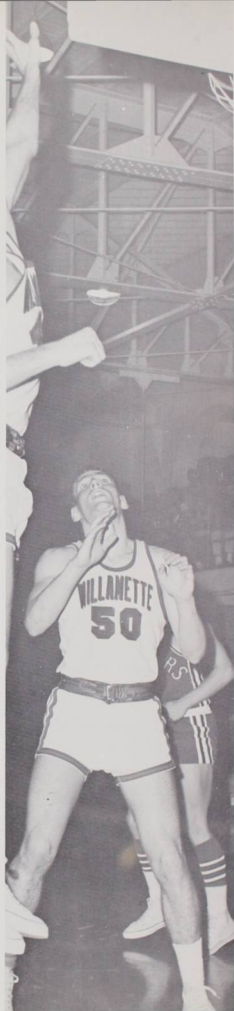
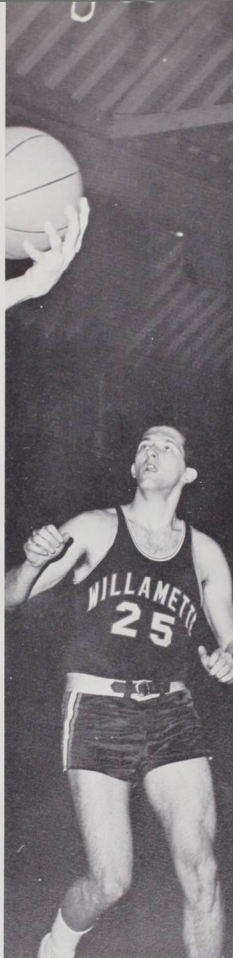
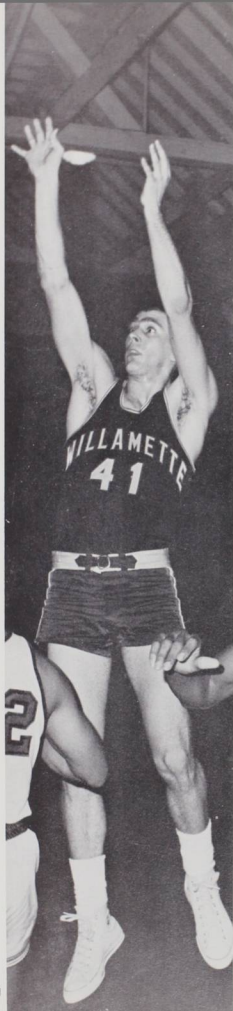
BEARCATS TO VICT

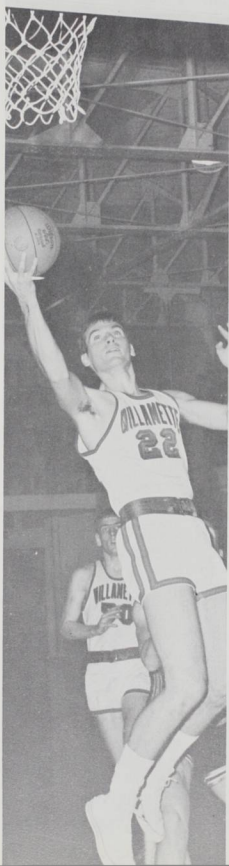
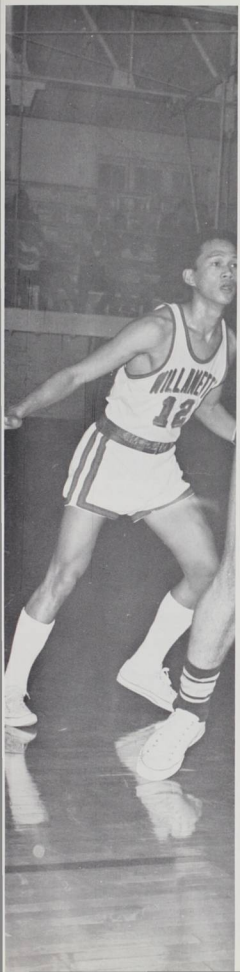
52

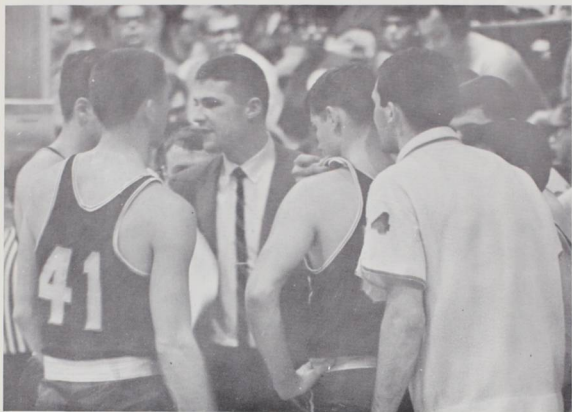
31

53

15







#### 1967 - 1968 BASKETBALL SCORES

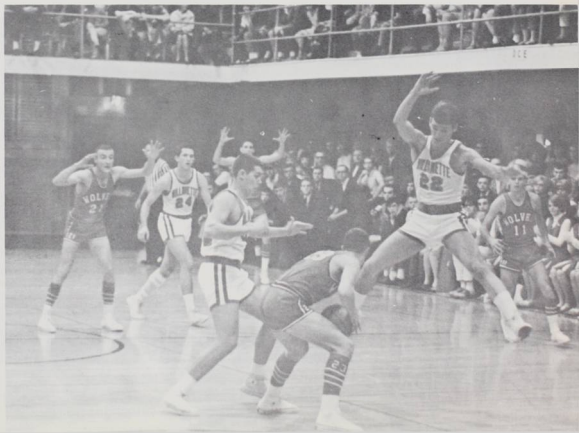
Southern Oregon College	95	W.U. 80
University of Nevada	104	94
NATA Tip-Off Tournament		
George Fox College	73	123
Oregon College of Education	78	74
Pacific University	81	103
Chico Invitational Tournament		
Chico State	71	95
Central Washington College	81	58
Humboldt State	101	115
College of Idaho	72	71
College of Idaho	82	88
Whitman College	83	99
Lewis and Clark	85	96
Lewis and Clark	115	103
Pacific University	78	84
Pacific Lutheran University	92	86
Pacific University	84	104
Linfield College	96	101
Linfield College	122	94
Pacific University	74	87
Pacific Lutheran University	88	91
Pacific Lutheran University	98	77
College of Idaho	80	79
Whitman College	76	116
Whitman College	84	85
Linfield College	110	76
Lewis and Clark	103	97

Conference record: 10-8, third place  
 Season record: 14-12



Varsity basketball team, 1967-68: Top row, L-R: Assistant coach Spike Moore, Rich Benner, Bob Douglass, Tom Williams, John Barker, Jack Dale, Ed Gibb, Denzil Scheller,

Bob Lundahl, and Coach Jim Boutin. Bottom row, L-R: Gib Stewart, Gib Gilmore, Sandy Marcelino, Bob Schlegal, Kim Logan, and Jim George.



Honeybears for 1967-68 included, top to bottom, Cindy Smith, Jan Brecht, Kathy Burke, Susie Doughten, Linda Forrest, Jackie Beavert, and Marlee McWain. Not pictured Vicki Talbot.



Spirit and enthusiasm were the bywords for this year's Rally Squad and Honeybears. Always present at athletic events, they led Bearcat fans in cheering on the teams. Many hard hours of practice produced enjoyable half-time entertainment by the Honeybears, composed entirely of freshmen, as well as the varsity squad. They followed the team on many of their road games, too. The new Bearcat spell-out yell was a favorite of the crowds. The enthusiasm of both groups was a vital ingredient in the success of Willamette teams this year.



## Honeybears, Rally Boost Spirit



Members of the 1967-68 Rally Squad are: front row left to right, Shorty Lewis, Carol Miller, Cindy Irvine, and Christie Sleeter; middle row, Judy Moore and Cathy Welch; and back row, Jeff Weinstein and Craig Mackie. Missing is Rich Osborne.

## Swimmers Send Four to National Meet



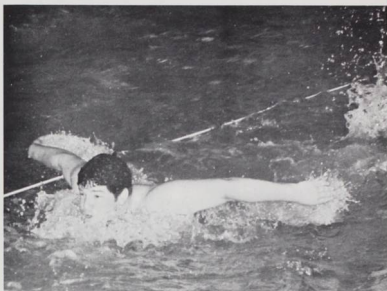
Willamette's 1968 swimming team included: Back row, l-r: Dennis Gardner, Barry Smedstad, Cobe Grabenhorst, Darrell Dunham, Coach David Nowicki. Middle row, l-r: Nick Allis, Don Moore, Bruce Wright, Glenn Knitter, Duffy Lederman. Front row, l-r: Manager Jim Turk, Chris McKenzie, Tim Bowman, Skip Souther, Keith Knitter, Pete Stremmel. Not pictured: Sandy Abbott and Tracy Terzian.





#### 1968 SWIMMING SCORES

Oregon College of Education	33	W.U.
Oregon College of Education	32	70
Pacific Lutheran University	37	71
Lewis and Clark College	27	67
University of Puget Sound	80	76
Linfield College	13	34
Portland State College	57	86
Southern Oregon College	56	47
Southern Oregon College	50	46
Western Washington State	47	54
Linfield Invitational		47
NAIA District II Meet		57
		First Place
		Second Place

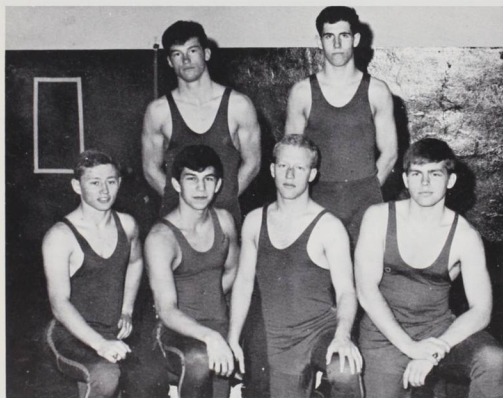
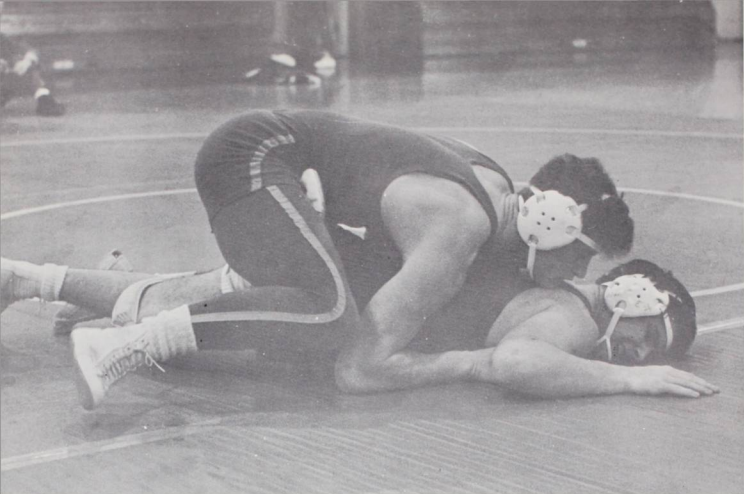


Four Willamette tankers stroked their way to St. Cloud, Minnesota, and berths in the NAIA national competition. Senior Cobe Grabenhorst, sophomore Tim Bowman, and freshmen Don Moore and Sandy Abbott swam individually and combined to finish thirteenth in the freestyle relays.

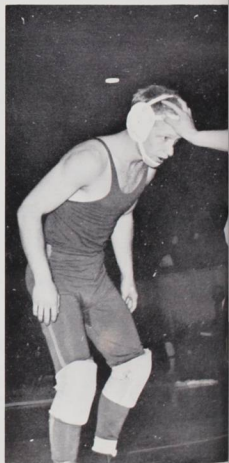
The school's first national entry was only one sign of a highly successful season. Bearcat swimmers finished a close second to Southern Oregon College in the District II competition and placed five of its members on the all-district team. Those selected included Don Moore, Tim Bowman, Cobe Grabenhorst, Glenn Knitter, and Sandy Abbott. A fitting symbol of the enthusiasm and unity of the team throughout the season was the awarding of the District Sportsmanship Trophy to the Willamette squad.

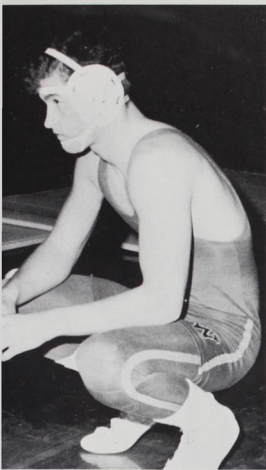
A vote by the team honored some of its outstanding members. Cobe Grabenhorst was selected as "most valuable", Bruce Wright garnered the "most improved" award, and Nick Allis was named "most inspirational". Team captain was senior Barry Smedstad.

Coach David Nowicki is looking forward to another strong, but challenging season next winter. The loss of his four seniors will be felt as will the lack of adequate practice facilities, but with his young and enthusiastic squad he feels certain that 1969 will again bring a victory.

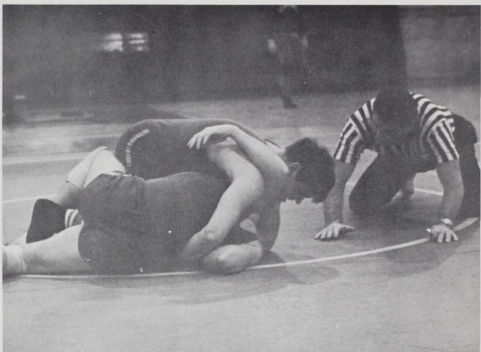


1967-68 Wrestling Team: Back row, left to right: Bob Mial, Dwight Wilson. Front row, l-r: Rick Huddleston, Eric Smith, Randy Johnson, Joe Much.





## Disappointments Mark Wrestling Season

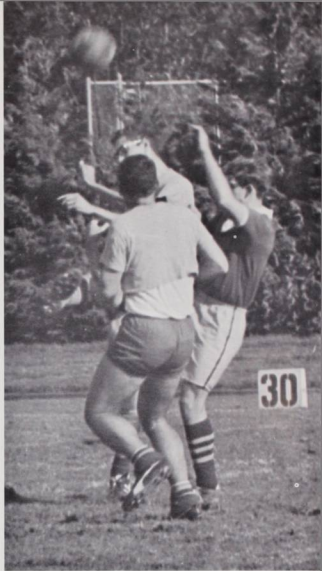


The 1968 season was an uphill struggle for the Bearcat wrestling team. Beginning the season with a squad of eighteen, the grapplers lost eight members at the end of first semester due to grades and ended the season with only six wrestlers. Needless to say, many points were lost as a result of forfeits and wrestlers participating in heavier weight classes.

In dual meet action, the wrestlers were victorious over Pacific University 26-11. Losses were at the hands of OCE, Linfield, a combined team from Cascade and Warner Pacific, and Seattle Pacific.

Tournament action produced a Bearcat champion: Bob Mial captured the conference title at 152 pounds. Three of the four other Willamette entrants placed. Dwight Wilson took third place at 145 pounds, while Joe Much was fourth in the 177 pound bracket. Randy Johnson, 1967 title holder, slipped to third at 137 pounds. Rich Huddleston participated in the 123 pound class. These performances earned a fifth place finish for Willamette.

Despite the smallness of the team, Coach Joe Schaffeld emphasized that team spirit remained high. He cited sophomore Bob Mial as the outstanding wrestler and freshman Dwight Wilson as the "most improved." Next season looks brighter as Schaffeld expects some freshmen who have placed high in state high school meets and the return of his veterans, mainly freshmen and sophomores, lost by grades.



## Soccer Team Gains Experience in First Season

With pride and enthusiasm Coach Al Berglund described Willamette's first soccer season as "spectacular". The team record was not exceptional, but the players' cooperation, performance, and support was. Hit by inexperience and fielding exclusively American players, the only team in the league to do so, Willamette established a 2-7-1 record in conference play. The season mark was 5-8-2.

Team voting honored outstanding members. Second year law student Bill Lebov and freshman Mark Brennand were named "most inspirational". Best all-around player was senior Tom Angelo, while freshman Gary Weigel garnered "most improved" honors. Brennand and Lebov were selected best offensive and defensive players, respectively.

Three good freshmen are expected for the team, so, with many experienced players returning next season should be an exciting one for soccer fans.



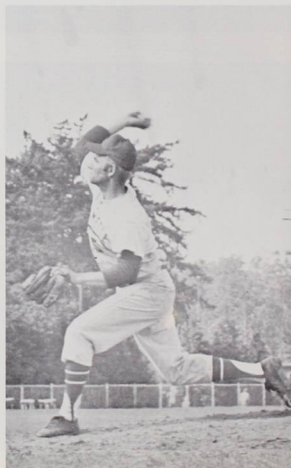
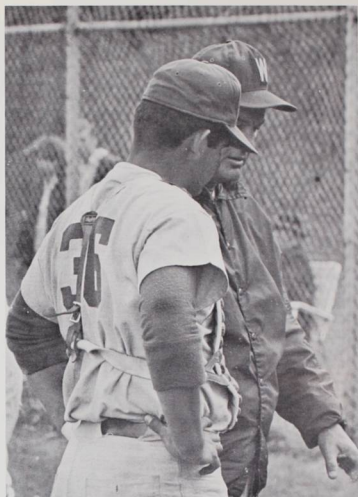


#### 1967 - 68 SOCCER SCORES

	W.U.
* Reed College	3 1
* Catlin Gable	1 2
Reed College	2 4
University of Portland	2 0
Oregon State University	3 2
University of Oregon	9 2
Lewis and Clark College	2 2
* Oregon Correctional Institute	0 2
* Oregon Correctional Institute	4 4
Lewis and Clark College	1 0
Reed College	1 2
* Oregon Correctional Institute	3 3
Oregon State University	2 0
University of Portland	5 0
University of Oregon	7 2

\* Indicates non-conference games





## Baseballers Finish Third in NWC, Look to Next Season



Outstanding freshmen and consistent lettermen led Willamette's baseball nine to a third place finish in Northwest Conference play in posting an even 12-12 season mark and a 10-8 league record. Freshman Roger Hurm led an excellent mound staff as he wound up with a 7-1 record. Veteran Gib Gilmore led all hitters with a .398 average followed by pitcher Hurm with a .327. Hitting was the nemesis of the hardballers early in the season, but improved as the season progressed.

Senior letterman Clayton Fujie paced the team with RBI's with a total of 20. Posting the season's record in home runs was Roger Hurm with seven roundtrippers.

Bearcat baseballers garnered berths on conference and district all-star teams. Center-fielder Gilmore, utility infielder Jon Edwards, catcher Eric Kautsky, and pitcher Hurm were named to the all-conference nine. Gilmore and Edwards repeated on the NAIA District II squad.

Long-time coach John Lewis predicts a real strong league in the 1969 season and expects the Bearcat nine to be right on top with many outstanding players returning.



### 1968 BASEBALL SCORES

*Portland University	4	7
*Oregon College of Education	4	5
*Portland University	7	4
*Oregon State University	6	1
*Oregon College of Education	6	1
Pacific University	0	1
Pacific University	2	0
Lewis and Clark College	1	0
*Oregon State College	9	8
Whitman College	0	13
Whitman College	0	11
College of Idaho	5	1
College of Idaho	2	1
Linfield College	1	0
Linfield College	0	2
College of Idaho	3	10
Whitman College	2	9
Pacific Lutheran University	0	6
Pacific Lutheran University	6	4
Pacific Lutheran University	4	11
Linfield College	7	8
Pacific University	9	6
Lewis and Clark College	2	5
Lewis and Clark College	6	5

W.U.



\* Indicates non-conference games



## Bearcat Trackmen Shatter Records

Bearcat trackmen demonstrated strength in most departments this season, especially in the throwing, hurdle, and sprint events, to set conference and school records, to compile a 3-2 dual meet record, and to narrowly miss the Northwest Conference track crown.

Leading through eight events, Willamette's hopes for the NWC title were shattered as Lewis and Clark pulled ahead in the final events. But Willamette cindermen claimed first in five events and set two of the three new conference records. The 440 relay team of Mac Clouse, Gib Stewart, Mike Houck, and Tom Williams shattered the school, conference, and district marks at 42.4 seconds. Shot putter Ron Jensen eclipsed the old school and NWC record in the event with a heave of 52' 11 $\frac{1}{2}$ ". Other firsts were taken by Ed Wallace in the mile (4:23.2), 220 yard dash man Clouse (22.5), and Tom Whelan in the javelin (205' 9").

Coach Chuck Bowles's men showed their strength also at the District meet. Wallace set a new mile record (4:16.2) and Clouse doubled in the 100 yard dash (9.9) and the 220 (21.9). Wallace and shot putter Jensen qualified for the national meet.

Other school records set include a 9:26.6 performance by Wallace in the two-mile and a tie of the 100 yard dash mark by Tom Williams (9.7).

Sophomore sprinter Clouse ended the season as the leading point winner.

Coach Bowles viewed the season with pride not only in the actual performances of his men, but also in their development of a wholesome attitude toward track and a feeling of pride in their performances. Losing only three seniors, hurdler and team captain Ray Colson, javelin man Ladd Zastoupil, and distance runner Fred Mueller, Bowles predicts an even stronger season next spring. All of this season's record breakers will return and some outstanding freshmen are expected.







#### 1968 TRACK SCORES

University of Portland	84	W.U.
Linfield College	39	105
Lewis and Clark College	102	43
Pacific Lutheran University	44	100
University of Puget Sound	38	103

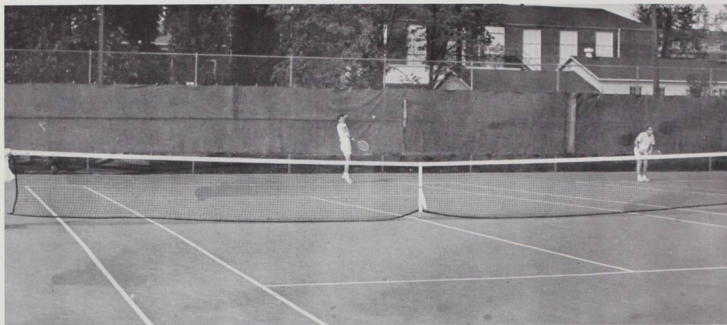


#### Northwest Conference Meet

Lewis and Clark College	128
<b>WILLAMETTE UNIVERSITY</b>	<b>92½</b>
Pacific University	35½
Linfield College	28
Whitman College	17
College of Idaho	16
Pacific Lutheran University	6



## Netmen Bring Home Honors



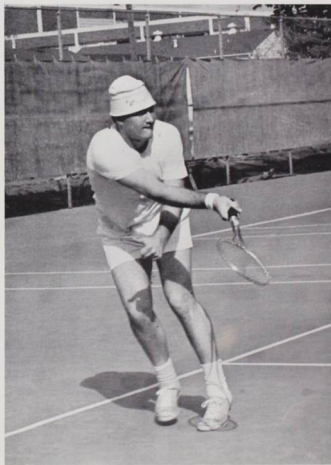
Willamette's oft-forgotten tennis team brought home the laurels this season. Les Sparks, completing his 42nd year as tennis coach, guided the Bearcat netmen to an 11-2 dual meet record. They established a 7-1 conference record and a 4-1 mark in non-conference matches.

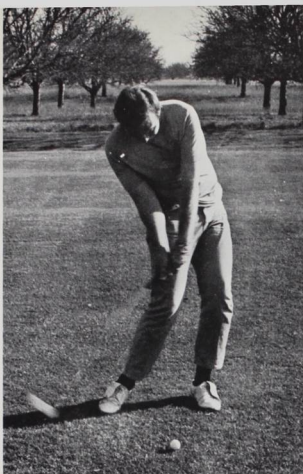
Tournament play was no less successful for the netmen. They were victorious in the conference tourney with eight points. The combination of junior Bob Schaeffer and freshman Bruce Love captured the doubles crown. Schaeffer was runner-up in the singles competition.

Willamette walked away with every honor at the NAIA District Meet. Bob Schaeffer won the singles championship, while the Schaeffer-Love duo again took doubles honors. They were also named all-district players in these categories. The district player of the year award went to Schaeffer, while coach of the year honors went to Coach Sparks.

Their outstanding play earned Schaeffer and Love berths in the NAIA National Tennis Tournament in Kansas City, Missouri. Willamette finished 14th among 37 teams. The Schaeffer-Love team was defeated for the first time in thirteen matches at Kansas City by the eventual champions, the University of Redlands, winners of three consecutive titles. In singles action, Schaeffer and Love were also eliminated by Redlands players.

Coach Sparks will lose none of his players due to graduation so another very successful season is expected next year. Members of the 1968 squad, in addition to Schaeffer and Love, were Bill Leslie, Chris Keuss, Ron Rainger, Dan Christiansen, Russ Ferguson, James Fitzpatrick, Terry Collins, Tim Collins, Tim Larson, and Carl Knappe.





## Bearcats Share Link Title

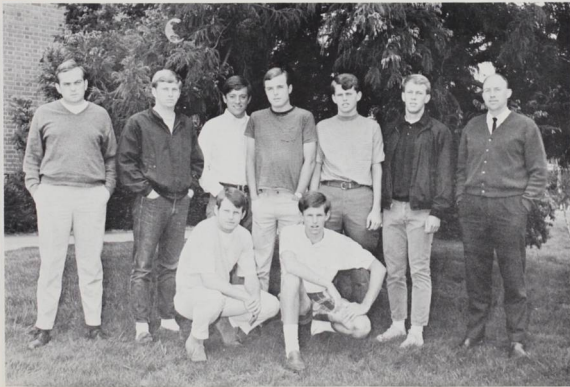
The 1968 season for the Willamette golf team was one of highs and lows. Playing a heavy schedule of non-conference as well as conference teams, the Bearcats finished with an 11-8 season's mark and a 7-4 conference record.

The linksmen began the season by winning the Tee-Off Tournament against the other conference teams with a total of 307 points. Senior John Orr and freshman Mike Haakensen gained spots on the all-tourney team. They came on strong again at the season's end to tie with Whitman for the conference championship with 610 points. This gave Willamette its fifteenth golf title in the last twenty years. Haakensen had a 36-hole total of 150 to take medalist honors and a berth on the all-star team. Orr, with a total of 151 was also named. In the District meet, coming right after final examinations, the team slipped to fourth place, Haakensen again earned all-star honors with a 153.

Coach Steve Prothero will be losing three men from this year's squad — senior John Orr, Greg Pierce, and Jerry Hansen. With a nucleus of five, including Haakensen, he hopes to pick up some freshmen and other golfers to build up the team to full strength.

### 1968 GOLF SCORES

Conference Matches:	W.U.	W.U.	W.U.	W.U.	Non-conference Matches:	W.U.	W.U.		
Lewis and Clark College	8	10	7	11	9½	8%			
Linfield College	6	12	1	0	1	0			
Pacific University	1	17	7½	10%	0	1			
Pacific Lutheran University	7½	10%							
Whitman College	2½	12%							
					Oregon College of Education	14	4	1	0
					Portland State College	11	7	15½	11½
					University of Portland	3½	14%	5%	12%
					St. Martin's College	9½	8%		
					University of Puget Sound	0	1		



The 1968 Bearcat golf team included (back row, left to right) John Orr, Steve Tate, Mitch Wolfsehr, Mike Callahan, Jerry Hansen, Greg Pierce, Coach Steve Prothero, (front row, l-r) Bob Boal, and Mike Haakensen.



## Coeds Compete in Many Sports

Willamette coeds, whose accomplishments are often overlooked, compiled a commendable record during the 1967-68 season.

Participating in the Women's Conference of Independent Colleges, the Bearcat gals divided their attention among six sports. In their first year of competition the golf team trounced all other contenders to garner the championship. The tennis team established a 3-2 mark, while the volleyball team hit an even 3-3 mark. Coeds also participated in badminton (third place), track (second place), and bowling meets.

Intramurals, bringing the living organizations together in heated competition in volleyball and basketball, saw Delta Gamma walk away with the first place trophy in both events.

Physical education classes provide a wide variety of sports for the coed population. In conjunction with the modern dance class Miss Ramona Searle directed an evening program developed by the class members.

Highest honors went to senior Mary Watkins as she was named "outstanding woman athlete" at the awards convocation by Jean Williams, head of the women's P.E. department.

The 1968 women's golf team included, left to right, Coach Jean Williams, Joy Gustafson, Jacque Hodges, Linda Forrest, and Becky Purvine.





Members of the coed tennis team were (back row, left to right) Gayle Jones, Mary Watkins, Gwen Gallaher, Phyllis Brinkerhoff, (front row, l-r) Betty Woodworth, Sally Irwin, and Nancy Crotchett.

# Belknap Takes IM Crown



Belknap Hall emerged victorious in the battle for the 1967-68 intramural trophy. They piled up 809 points while walking off with championships in three sports (volleyball, track, badminton). Phi Delta Theta and Sigma Alpha Epsilon, though not winning any individual sports, placed high overall to garner second and third places, respectively. Taking first place in other sports were Beta Theta Pi (swimming, golf, softball), the Faculty (tennis, basketball), Delta Tau Delta (cross-country, wrestling), and Law III (football).



## FINAL IM STANDINGS

Belknap	.809
Phi Delta Theta	.742
Sigma Alpha Epsilon	.667½
Beta Theta Pi	.656
Faculty	.558
Law I	.544
Delta Tau Delta	.536
Sigma Chi	.437½
Law II	.415
Kappa Sigma	.332
Baxter	.274
Mathews	.230
Law III	.203



ents

students

students

stude



**FINAL IM STANDINGS**

<i>Belknap</i>	.809
<i>Phi Delta Theta</i>	.742
<i>Sigma Alpha Epsilon</i>	.667½
<i>Beta Theta Pi</i>	.656
<i>Faculty</i>	.558
<i>Law I</i>	.544
<i>Delta Tau Delta</i>	.536
<i>Sigma Chi</i>	.437½
<i>Law II</i>	.415
<i>Kappa Sigma</i>	.332
<i>Baxter</i>	.274
<i>Matthews</i>	.230
<i>Law III</i>	.203





students stude

nts students students stu



ons living organizations living



# Alpha Chi Omega

## Seniors

Nancy Aplan  
Marybeth Bare  
Christie Broms



Suzi Corcoran  
Damaris Hammond  
Pat Parfitt



Mary Shaffer  
Karen Swim  
Cathy Wetherby



Lynne Williams  
Juniors  
Kathy Albertson  
Lynda Bocking



Wendy Gardner  
Marcia Hunt\*  
Mary Linda Laird



Liz Myers  
Vicki Thompson  
Luann Tuller  
Kristi Walter



## Sophomores

Mary Bench  
Cathy Callahan  
Linda Cates  
Kathi Cole



Sue Hales  
Bonnie Hansen  
Sue Johnson  
Jayne Lilles\*



Home at last! A beautiful new house and 23 BEAUTIFUL pledges to start the year off right . . . Mel on Homecoming Court, Lil and Sue Delt Princesses, Sheila on K-Sig Court, Mary a Phi Delt Turtle Princess, Jan on Beta Court . . . Honeybears and Rally . . . sexy houseboys and their "Kitchen Crew" . . . psychedelic Hera . . . I don't want a pickle, I just wanna ride my motorsickle! . . . Mary's microphone . . . our ob-Knox-ious bench, redecorated by Beta craftsmen . . . musical housemothers . . . ski trip with the Delts, complete with hot wassail . . . the houseboy's powder room . . . Alpha Chi sisters from OSU cook us a surprise breakfast . . . Jack-eeeeee and the Zap committee . . . the incredible body transplant . . . Life with Sissy . . . would YOU like to be Heap of the Week? . . . Ralph Farstein for V.P. . . . Sneak (?) Pledge Sneak . . . the restful, soothing sound of flapping window shades . . . we LOVE Spring Weekend . . . fording Brown Memorial Swamp . . . isn't anybody going to Soviet? . . . Senior Banquet, and a lot of memories . . . Life at 920 Mill is oh, so fine!





Leslie Peterson  
Pam Rice  
Marg Roupf



Pam Schriber  
Jackie Shivers  
Mary Simmons



Christie Sleeter  
Nancy Stevens  
Pat Weber



*Freshmen*  
Lillian Bladine  
Pat Bowen  
Chris Brunsvold  
Peggy Chandler



Leslie Duryee  
Linda Forrest  
Sue Garrison  
Lynda Grundy



Jan Hatcher  
Joyce Hoehne  
Janice Martilla  
Carrie Ohlson



Linda Patrick  
Peggy Ringler  
Robin Simonon  
Kathy Spezza



Vicki Talbot  
Sheila Wells  
Joyce Whittier  
Shelley Winters

# Alpha Phi

## Seniors

Jean Hamner  
Lynette Jones  
Lynne Lucas



Kit Lynch  
Mary Martin  
Marilyn Montgomery



Susan Talbot  
Pat Tucker  
V'Elia Warren



## Juniors

Phyllis Brinkerhoff  
Ellen Hickman



Nancy Hochsterler  
Jodee Howard



Mary Pacquer  
Nancy Rea  
Kathryn Way



Barbara Wert  
Kathy Yeo  
*Sophomores*  
Jean Barelman



Jessica Hanford  
Margaret Jensen  
Marianne Kellum





Gilub . . . zonk . . . gurgle . . . blog . . .  
 . . . These are the sounds of Alpha Phi?  
 . . . Poof! and a few sophomores take  
 a holiday — someone know a  
 handsome policeman? . . . Pull the  
 fire alarm, pledges — not again? . . .  
 Los picaros leave calling cards . . .  
 Spirit! Pledges tell us we have it  
 using posters and that creative new  
 place to learn songs . . . Seniors  
 march up the stairs in raucous refrain  
 — isn't 7:00 a little early for that? . . .  
 Freshmen march through the  
 building . . . "Have you ever seen the  
 Alpha Phi with so many exchanges  
 before?" "Mrs. B — if you don't  
 invite the boys to dinner, I will!" . . .  
 the Jungle . . . White nights on satin . . .  
 . . . David McCallum loves you . . .



Colleen Lien  
 Jan Melvin  
 Lynn Miller



Terri Ostlund  
 Wendy Ray  
 Suzanne Stunz



*Freshmen*  
 Jackie Agee  
 Carol Betteridge



Serry Bolling  
 Barbara Byrer



Candy Cloudy  
 Rosalie Drake



Janice Gregory  
 Karen Hawkims  
 Kathy Jensen



Shelley Medaris  
 Martha Messner  
 Elsa Morris



Charlotte Rajala  
 Sharon Schooley  
 Janice Watson

# Baxter Hall

Mrs. Ryntha Sturges  
*Junior*  
Chuck Linderman



*Sophomores*  
Gordon Greathouse  
Alan Rose



*Freshmen*  
William Anderson  
Anwar Bashar



Bob Bonar  
Bruce Botelho  
Don Boyle



Wayne Bunker  
Tom Chuay  
Douglas R. Coats  
David Cook



Larry Cunningham  
Dan Damewood  
Graham Dinny  
John Fitz



Stafford Hazelett  
Gary Horrell  
Roger Hurm



Tim Jackinsky  
Dana Kim  
John Kimmel





Dave King  
Rick Landt



Bob Lillig  
Lowell Owen



James Pinkham  
Doug Quade

Baxter Frosh start year with water fight against Matthews and Lausanne . . . Counselors come and go . . . Light bulbs and "nipples" disappear as Pinkham and Cunningham visit the Dean . . . Baxter supplies class presidents and leadership? . . . Halkides leaves at Christmas and Greg (George Lincoln) takes over . . . Oops, exit Rockwell (as if he ever entered) and Baxter is without a head counselor . . . Smoke bombs (Bennett to the rescue) . . . "Now they say the men of Baxter are too wild for this old school . . ." . . . Dances really wild . . . Larry's: "There's Only a Meadow" . . . "Goon Squad" attacks Ward 3E . . . Baxter beats Matthews in grades and sports . . . Dorm council perfects kangaroo court methods as brass gets polished and roof cleaned . . . Rickard comes to get things under control, and Bunker gets Rickard under control - oops, exit Bunker . . . Marine recruiter has field day as "patriots" join up . . . Finally spring arrives and the "grass" continues to grow . . . "rrhht" . . .



Mike Rasmussen



Chuck Reddel



Steve Stocker  
Bob Tower



Tom True  
Dave Williams



Woody Yerxa  
John Yoakum

# Belknap Hall

Mrs. Dorothy Quinn  
Willie  
*Seniors*  
O.J. Beaudette  
Daran Dauble  
John Garner



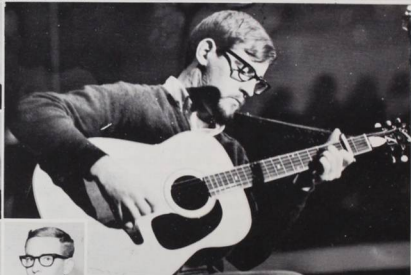
Bob Hamel  
Jack Hickling  
Peter Lutz  
Doug MacPherson  
Rich Monteith



Bob Richardson  
*Juniors*  
George Barker  
Jim Carlson  
Fred Castro  
George Dyer



Elton Graves  
Jon Hill



John Hoover  
Greg Hurlburt



Rod Johnson  
George Mante  
Bruce McLeod



Bill Miller  
Jim Murchison  
Bill Phillips



Jon Roberson  
Bill Royce  
Jim Savard





New housemother's a kick in the pants . . . New basement . . . Phillips recruits Station A . . . "You're going to make that phone call if I have to drag you out there" . . . Dunham's Human Endurance Chart . . . First Constitution burning . . . Rabies sector . . . Scandinavian Power? . . . "Wall Flowers" . . . "B.F.D." . . . Fun night at last . . . "Six fire trucks for one waste basket" . . . Snipers in the lunch room . . . "I'll be damned if I'm going to pay" . . . Campus Pack . . . Miracle Milers . . . Football with what? . . . Graffiti over the phones . . . The Unsocial Social Chairman . . . Belknap Investment Club . . . Curly's Dairy . . . Anderson's armored car . . . Willie's a stud . . . "didn't the stars tell you not to do a dumb thing like that?" . . . and Marsha's lovely serenade.



Charlie Smith  
Mike Turner  
Steve Wells  
Chris Willard



*Sophomores*  
Jim Averill  
Chuck Bennett  
Pat Campbell  
Wayne Cook



James Foster  
Peter Galland  
Roger Hansen  
Craig Horton



Bill Howe  
Bob Jerman  
Carl Knappe  
Michael Luce



George Newberry  
Charles Nevin  
Kalapoli Paongo  
Dennis Quade



Bob Reinhard  
Rick Sparber  
Leigh Stevens  
Joe Trachtenberg



Gale Vaandering  
Roger VanHoy



Geoffrey Webb  
Dave Weston

Mrs. Luella Hanson  
*Seniors*  
 David Ashby



Dave Brink  
 Doug Courson  
 Jim Kleinke



Tom Rygg  
 Barry Smedstad  
 John Thomas



*Juniors*  
 John Barker  
 Dave Bloye  
 Mike Callahan



Jeff Knox  
 Jim Law  
 Mike Olson



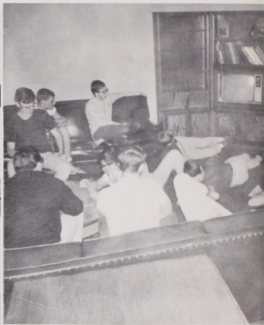
Bob Schaeffer  
 Bob Schlegal  
 Lindsay Stewart



Mart Stewart  
 Steve Tate  
*Sophomores*  
 Jeff Albaugh  
 Mike Bennett  
 Dave Bryson  
 Dana Hammond



Tony Robinson  
 Denzil Scheller  
 Lester Seto  
 Micheal Shim  
 Calvin Souther





Denzil and Cathy make front page of Capital Journal . . . house gets 27 pledges and a dog . . . Souther dries up pop machine . . . Boxer Association gives a "Chinese New Year" party . . . IFC claims "dirty rush" . . . house is remodeled six months late . . . First Annual Turkey Bowl . . . Beta Trucking, Inc. turns into pledge sneak . . . seniors go crazy because no officer programs open . . . Fergy's a marine . . . spring house dance . . . Henry Thiele's at the beach . . . snowballs deposited on Doney's steps . . . two man football tournament . . . Faceman-Bennett complete grand slam . . . Youngman breaks leg playing Jean-Claude.



Tom Weathers  
Jeff Weinstein



Alan Wilson  
Dave Woster  
Freshmen  
Sandy Abbott



John Bogardas  
Mike Boyd  
Walter Eriksen



Russ Ferguson  
Dick Gregory  
Jim Griggs



Micheal Holmes  
Bob Kagy  
John Karas



Dick Kraus  
Keith Palmer  
Eric Smith



Dave Stone  
Leonard Valadez  
Jim Vannice



Larry Voth  
Tom Williams  
Mitch Wolfsehr

# Chi Omega

## Seniors

Shirley Baird  
Mary Beechler  
Lynne Campton  
Dawn Hanson



Millie Kennedy  
Joan Lincoln  
Anne Woods

*Juniors*  
Beth Donaldson



Pixie Downing  
Glenda Hieber  
Lois McElDowney  
Sue McGeehon



Chris Pearson  
Liz Power  
Connie Schwendemann



Linda Walker  
Judi Wallich  
Bobbie Weidner



Cindy Welsh  
Carolyn Woods  
*Sophomores*  
Diana Blaisdell



Liz Carter  
Patti Chase  
Sandi Fujimoto



Sue Hill  
Ann Jackson



Voices in the night . . . bye bye birdie . . . Chi O how I love you? . . . SMILE . . . blue and yellow? light blue and dark blue? how about all blue? . . . Progressive Elizabeth . . . water, water everywhere, but . . . sophomores pay your obligations . . . is there a fourth in the house . . . is there a fifth in the house? . . . Char's trousseau . . . psychedelic Santa . . . Beth, how about a champagne party? . . . Chinese food . . . Mac's 21st . . . Grand Keeper of the Daffodils . . . her hair is gold and her eyes are blue, or is it a fall and contacts? . . . jokes with the houseboys . . . Things that go bump in the Night . . . long nightgowns and short robes . . .





Debbie Kuhns  
Carol Miller  
Janine Onfroy  
Terry Powell



Kathy Redfield  
Cathy Ricco  
Linda Rogers  
Carol Ward



Courtney Weisberg  
Linda Wild



*Freshmen*  
Pam Butler  
Cory Coleman



Alison Daines  
Donna Grant



Kriste Henderson  
Debbie Huffman  
Gayle Jones  
Judy Knipe



Stephanie Lewis  
Sue Lewis  
Merry Mitchell  
Debbie Purse



Jan Sampson  
Linda Stanley  
Laura Steege  
Suzanne Swanson

# Delta Gamma

## Seniors

Earline Anderson  
Bonnie Bedford  
Jackie Gruver



## Sue Karr

Nancy Miller  
Jane Pollock



## Peggy Shaffer

Susan Trullinger  
Mary Watkins  
Barbara Worden



## Juniors

Nancy Bearg  
Kathy Bullock  
Pat Davidson  
Kathy Herndon



## Kathy Judy

Judy King  
Shorty Lewis  
Sher Spears



## Wendy Wolf

Sophomores  
Jill Coldiron  
Debbie Dean  
Gwen Gallaehr



## Donna Handly

Lois Holt\*  
Darlene Kleiner  
Becky Lowe



## Candy Lindskog

Leanne Scarff  
Linda Sharpe  
Ann Sherrard





4 AM: The Purloined Pink Bathrobe . . . A pinning? . . . Who's left? . . . I mean REALLY! . . . Wilt the Stilt Waddy . . . Out-phone, Popp! . . . Who's gross? . . . A flood? . . . It's not our fault — they're on backwards . . . BJOP . . . Sherabella . . . How 'bout a cookie — I skipped lunch . . . Hi Pineapple! . . . Sit down I think I love you . . . Karr — upstairs monitor . . . Or else, we could always pawn a chair . . . TGIF . . . Joe did it! . . . Hey, anybody 21 tonight? . . . Merry Christmas from the houseboys . . . Chickie . . . Wolf's Glee Song . . . Snowball fight — go Lindskog! . . . dancing on the sun porch . . . Bull Durham Roll-in . . . Anchor Man Rick and crew . . . O.K. Pile, I dare you to open the closet . . . Quiet hours? . . . Oh well, it's Spring . . . Pseudo-soprano . . . the Big Four and the Little Four . . . New neighbors and 880 Mill Street.



Andi Southard  
Mina VanVliet  
Rozanne VanZyl



Lanni Watanabe  
Dee Whitford\*  
Robin Whittle



Betty Woodworth  
*Freshman*  
Jackie Beavert  
Lynn Callender



Margaret Chesney  
Darcy Dauble  
Gael Donovan



Susie Doughten  
Gretchen Guver  
Kathy Hartman



Ann Lebsack  
Corinne Maxwell  
Shelley Milne  
Pat Prentice



Barbara Ranton  
Darilyn Raschio  
Linda Rough  
Sally Rountree



Barbara Spears  
Kathy Welch  
Nancy Wells  
Nancy Wolff

\*Independent

# Delta Tau Delta

## Seniors

Bill Thomas  
Gary Webb  
Ed Whitehead



## John Yaple

Juniors  
Keith Bauer  
Anthony Furniss



Doug Gilmore  
Gib Gilmore



John Hudkins  
Kit Jensen



Glenn Knitter  
Chris McKenzie  
John Mitchell



Dan Moore  
Rodney Scott  
Mike Smith



Don Solberg  
Sophomores  
Nick Allis  
Bob Boal  
Jim Bucklin



Mac Clouse  
Bob Gallagher  
Warren Holmes  
Dick Howsley



Delts '67-'68 . . . Delake . . . hey, bruddan . . . 16 pledges . . . housemouse and bro . . . fake cups . . . pink bellies . . . Delt sit-ins . . . red lights . . . Kathy . . . sophomore football game . . . Delake . . . Bauer's . . . DG's . . . Gilmore's Chi-O's . . . Gib . . . pledges mess . . . Nick's efficiency = broke bros . . . homecoming sign, yes or no? . . . DG's . . . little kids . . . stereo . . . 9 initiates . . . Clarlee and Marle . . . Sue . . . free car washes . . . lots of glee . . . Lil . . . otr-Vancouver . . . Pres. Don . . . pancake feed . . . burp . . . the club . . . spring orgy . . . the McLeay function . . . the GOOD DELT YEAR!





Sanford Kawana  
Kim Logan  
Jim Moore



Greg Pierce  
Bruce Robertson  
Bob Swanson  
*Freshmen*  
Mark Brennand



Bruce Danielson  
Rick Fairbrook  
Jerry Hansen  
Bruce Jeddeloh



Keith Knitter  
Randy Nelson  
Harold Poujade



John Shimek  
Dave Thomas  
Bruce Wright

# Kappa Sigma

Mrs. Carolyn Weleber  
Seniors  
Russell Anderson  
Doug Bosco



Don Brown  
Jon Carder  
Mike DuBois



Montee Kennedy  
Keith Kinsman  
Clay Morris



Kirk Smith  
Tom Smith  
Juniors  
Dan Christianson



Jack Cooper  
Larry Gale  
Charles Honeycutt



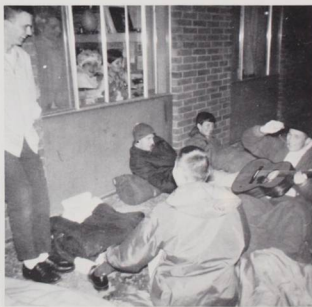
Mike Houck  
Dan Lotz  
Glenn Pinegar



Gib Stewart  
Norm Thorpe  
Roger Warren



Sophomores  
Bruce Boyd  
Terry Collins  
Tim Collins





"Bring out that old golden goblet with the Kappa Sigma on it..." . . . 22 new slugs descent on apple orchard . . . a dead chicken on the sleeping porch . . . (Jade East anyone?) and a live chicken on the front porch . . . Oggie scouts pledge-member grid battle . . . Marian leads a lovely court . . . sneaky pledges bag their limit . . . a new royal family . . . Queen and President . . . and the rats multiply . . . crucifixion of the "Kappa Sigs Weekly" . . . Bobo Bosco chugs through a year of change . . . the HFJ Memorial Collection reaches 7000 . . . T. Garret folly acclaimed by Nolley . . . bass power . . . aiming for York . . . Alpha Phi's celebrate Rary find . . . The Hoag lives on . . . Alpha Ep . . .



Pete George  
David Grignonis  
Greg Hathaway  
Rush Hoag



Dennis C. Johnson  
Bob Jones  
George McLean  
Bob Rasor



Pete Roth  
Rick Synowski  
Ed Wallace  
*Freshmen*  
Tom Button



Dan Casey  
Ed Ellis  
Knut Hoff  
Dennis L. Johnson



Don Liddycoat  
Ken Mongrain  
Donald Moore



Ron Pinckney  
Ron Rainger  
Jim Robinson



Lauren Ronald  
Bill Russell  
Greg Simunds



Ed Temple  
Rob Wallace  
Dave Warner

# Lee House

*Seniors*  
Nancy Adams



Julie Bosshart



Nancy Crotchett



Elaine French



Rita Herman



Is the mail here yet? . . . skate board casualties . . . Who's the buzz for? . . . Spaghetti, again? . . . Wake me up at 6:30 Molly . . . Where is Lucy, Mrs. Russell? . . . French—TELEPHONE!! . . . Quiet Puleez! . . . Can I have the comics after you? . . . Another rose! — Who is it THIS time? . . . Eat your vegetables, Jan . . . Is Gruber really a mouseketeer? . . . "He's everywhere, he's everywhere . . ." . . . Highest grades on CAMPUS . . . Who's dog house is that? . . . Hug a warm puppy . . . Will ANYBODY volunteer? . . . Just as I suspected . . . Julie trumps her ace . . . I wish Lee would call . . . Hey, sophs, have you met any juniors lately? . . . Sexa Peel . . . Linseed, let me in . . . May I have an extra glass? . . . Sue and Mary Jo love the Pinkerton . . . Hike 1 . . . 2 . . . 3 . . . on Saturday mornings . . . Where's my killing jar? . . . Carried away with feelin' groovyey . . . How many days?

Bev Jaeck  
Geri Lawrence  
Leslie Lockwood



Jodie Logan  
Lynne Norton  
*Juniors*  
Susan Fogel



Lois Gielow  
Sallie Gordon  
Chris Gruber





Margy McGrath  
Susan Scott



*Sophomores*  
Carla Atchison  
Georgia Cunningham



Ilene Fleming  
Susan Hatfield



Molly Holsapple  
Sheila Lankford



Christie Nesseth  
Kathy Peel



Jeannette Prather  
Jeanna Reeves



Bonnie Stevens  
Mary Jo Turek



Gail Watson

# Phi Delta Theta

*Seniors*  
Marlboro Country  
Jon Edwards



Jim Gardner  
Dick King



Tracy Terzian  
Gary Yunker



*Juniors*  
Rich Baird  
Cisco Harrison  
Duffy Lederman



Bob Moberg  
Bob Stoops  
Bob Weiss



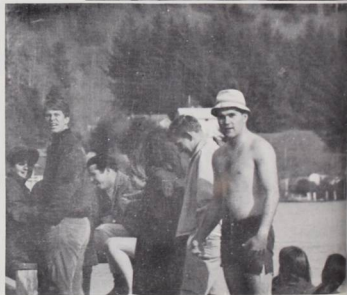
Tom Williams  
*Sophomores*  
Tim Bowman

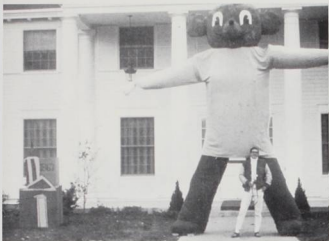


Frank Butto  
Dr. Chicago



Greg Cushman  
Craig Danielson





Tom Felix  
Steve Gressel



Eric Kautzky  
Bob Mial



Bill Reagan  
Roger Reif



*Freshmen*  
Mike Anderson  
Mark Barrall



Roger Brown  
Pat Lampton  
Bob Lundahl



Bruce Pahl  
Gary Scrivner



Tim Shea  
Bill Shelton



Kent Tobiska  
John Wyatt

PDT . . . THE CULTURAL REVOLUTION . . .  
Tuna spirits . . . Phi's lead football . . . Pi Phi's  
rally for pumpkins while Duffy's the Greatest . . .  
Willamette Valley Ski League meets at McLeay . . .  
Chaos versus Control . . . Chet's pool room and  
the Ponderosa . . . Who's in the rack? . . . Fulp  
joins the bond . . . DG's to Timberline — out of  
sight . . . Joyce's Chinese laundry . . . 9 pinnings  
show Phi's get serious . . . Aumsville . . . Checkers  
Tournament and Donahue pays off the cops . . .  
O.J. patches out . . . Swimmers stroke to  
nationals . . . Dr. Dogger's date at the Holiday  
slips out . . . Incognito's get together and the  
seniors sock it to 'em . . . Turtle Race revived, it's  
Karen's "Mellow Yellow in 29 flat . . . Phi's lead  
Spring Weekend . . . Nelson covers IM's . . .  
Reagan rallies as Kathy's page 2 . . . Board lauds  
Phi's for service to Salem . . . ASB 1st Vice Pres.  
and Treas. with 4 class V.P.'s . . . King and  
Selander get keys . . . Bernie rides the waves as  
seniors await draft . . . Mom Powell and the  
Brothers . . . YITB . . .



# Pi Beta Phi

## Seniors

Marlene Anderson  
Sue Cox  
Julie Cramer  
Claudette Ebi  
Melinda Jack



Sharon Lehrer  
Joanie Loomis  
Laurie Monnes  
Barbara Montfort  
Judi Moore



Jane Osborne  
Becky Rudin  
Sally Schramm  
Susan Thompson  
Nancy Wintz



## Juniors

Madge Baughman  
Shana Bechtel  
Randi Cole  
Lexi Crow  
Judy Dodd



Susan Gilpin  
Joy Gustafson  
Teresa Krug  
Sue Smith



## Sophomores

Kathy Akins  
Janis Bacci  
Candy Barnick  
Lindy Barto



Cindy Carlson  
Mary Hadlock  
Elizabeth Harri  
Natalie Horne



Cindy Irvine  
Donna Loo  
Marg Magruder  
Judy Moore





Karen Patch  
Sam Robertson  
Page Schwenn  
Sharon Usher

Cathy Welch  
*Freshmen*  
Tina Anderson  
Sue Blair  
Jan Brecht

Mary Bronson  
Debbie Davis  
Marsha Fancher  
Kathy Flannery

These days with you . . . Pi Phi Hideaway . . .  
"Brown-eyed girl" . . . young bucks . . . "Poatini"  
. . . Sophomore clean-up! . . . no bones in the  
disposal . . . pumpkins, Pi Phis, and Phi Deltas . . .  
Aren't you glad we use whip and chill, don't you  
wish everyone did? . . . red Tuesday . . . "Flamin'  
Mamie" . . . dry pledges create a fire hazard . . .  
Angelo's on phone duty . . . frozen pop . . . Mom  
Magruder's caramels . . . Stump Usher . . . Beatrice  
Piumarta Hagopian Memorial Stomp II . . . how  
much is glass a foot? . . . "high above a Pi Phi's  
bracelet" . . . square dancing . . . FOREVER . . .  
color T.V. . . . spit and lugie . . . someone get  
Ralphia out of the bathtub! . . . "G.O." . . .  
"willow wind" . . . who stole my suit? . . .  
another candle? . . . Ayn Rand . . . anyone for an  
"I.Q." test? . . . "Leavin' on a jet plane" . . . lock  
the refrigerator? . . . at 844 - "Joy is not in  
things, it is in us."



Pam Forch  
Marilyn Fullmer  
Kathy Gould



Jacque Hodges  
Cathy Ingram  
Sally Irwin



Janice Kimura  
Marlee McWain  
Ann Sandifur



Cindy Smith  
Cathy Strong  
Carol Taranoff



Diane Upham  
Betsy Wilson

# Sigma Alpha Epsilon

Mrs. Minna Ratzlaff  
*Seniors*  
 Mike Arant  
 Darrell Dunham  
 Ken Fukunaga



Fereydoon Haghshenas  
 Rick Jones  
 Mike Lincicum  
 Marty Rohrer



Mike Scott  
 Scott Walker  
*Juniors*  
 Abdul the Arab  
 Dennis Calhoun



Alan Ellis  
 Greg Gourley  
 Bob Ingram  
 Chris Keuss



Rick Kraft  
 Bill Leslie  
 Scott Mangold  
 Doug Warnaca



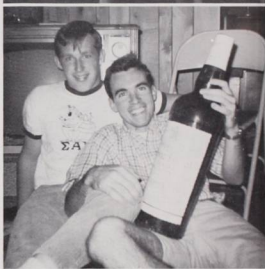
Craig Weaver  
*Sophomores*  
 Jim Baldwin  
 Bill Bennett  
 James Fitzpatrick



Sonny Gamponia  
 Ken Harris  
 Graham Hicks  
 Dave Houghton



Davy Humphrey  
 Jim Maylie  
 Joe Much





21 poppies . . . "Shirley Temples for the Seniors" . . . SAE leads in IM's . . . Mike pins Bubbles . . . Sanitary Engineers at the Fairgrounds . . . Big No. 60 . . . the Great Arab . . . Li'l Sis' pumpkin patch . . . Poppies sell poppies . . . JOYCE . . . members-24, pledges-0 . . . Doug & Kathy . . . Alpha Chi Omega scavenger hunt . . . SAE's found sober, shocks Salem . . . second floor blow-out . . . Community effort: Operation Little Bro. . . Tinker Toad . . . Dunham is out of his tree . . . Humphrey's cat-house . . . JOYCE . . . FRED bathes . . . TOP PLEDGE GRADES . . . Kraft is Anchor Man . . . Phantom Phrolic . . . Sally is Queen . . . Alpha Phis at Jory Park . . . Chi Omega treasure hunt . . . Bill + Trish . . . Magical Mystery Tour . . . First Frosh Pinning . . . JOYCE . . . SAE Water-works . . . Mock Political Convention . . . Coup in the Drama Department . . . Fritts dabbles in ping-pong . . . "Ice-cream" Socials . . . Little Sisters in 31 Flavors . . .



Dennis Nolan  
Richard Osborne  
Doug Roberts  
Mike Sherman



Barry Sudderth  
Jerry Willard  
Calvin Zane  
*Freshmen*  
Gregory Batiste



Dave Burtner  
Bernie Carter  
Jack Dale  
Bill Florer



Daren Goin  
Bob Hermann



Joe Hoffman  
Katsumi Itoh



Jim Kubitz  
Skip Macy  
Phil Schnell  
Bill Shirey



Peter Smith  
Jim Spall  
Robbie Steeves



Paul Thompson  
John Wallace

# Sigma Chi

Mrs. Sharp  
Senior  
Rick Meeder  
Juniors  
Kevin Brown



Zoot Finster  
Bob Gallucci  
Jim George



Klaus Laetsch  
David Pearson  
Sophomores  
Marshall Drack



. . . Good grits . . . all time functions  
. . . the Floater . . . Barb Ranton  
takes Sweetheart . . . G.A.S. . . .  
round body and hog body . . . down  
at the Holiday . . . who's that bag? . .  
. the super sneak - B.S. . . . a visit  
from the big Cahuna . . . Hardly  
Hairy Harry . . . on the wall . . .  
Chresto Hall? . . . the toilet . . . goin'  
to the beach . . . WOPS . . . the  
Bondsman . . . I'd EVER be . . . the  
Traveling Turkey . . . the Buffoons . .  
. a brown helmet . . . Williams and  
Russell . . . Boxer short function . . .  
Balfour winner . . . Horns and Steeps  
4 AM wake-up . . . Hum that toad . .  
. the hydro and the bike . . . Hey!  
How about a thing this weekend?



Ian Dunlap  
Steve Gerrish  
Don Haines



Jon Haynor  
Gary Hull





Craig Mackie  
Bob Puckett  
Mike Stebbins  
Dan Stiffler

Bill Tharp  
*Freshmen*  
Howard Becker  
Doug Krutson  
Gary Richardson

Dave Thornton  
Dwight Wilson  
*Chresto Hall*  
Norm Emerson  
Don Spears



# Doney Hall

## *Sophomores*

Sue Carlson  
Wendy MacLeod  
Ginny O'Toole  
Dorothy Slughter  
*Freshmen*  
Judy Anderson  
Joan Bennett  
Carol Blucher



Monte Bradshaw  
Kathy Burke  
Patricia Burke  
Delynne Chambers  
Otis Christensen



Bev Clunes  
Toni Doane  
Barbara Fulp  
Julie Gaudette  
Sandra Green  
Orianne Gross



Alyson Harmer  
Ruth Holman  
Linda Knipher  
Gaylyn Rapozo  
Celia Smith  
Melody Smith  
Jan Templeton



Marilyn Ward  
Chris Weisenborn  
Betty Wellenbrock  
Tricia Westbrook  
Robin Winston



# Lausanne Hall

## *Freshmen*

Nancy Barnes  
Lyn Bergstrom  
Kathy Bradley  
Jeanne Brennan  
Cindy Britain  
Kay Conklin  
Anita Cummings



Cindy Davis  
Lynn Delaney  
Susan Dickey  
Joan Dudgeon  
Helen Eggen  
Nancy Ellis  
Beckie Freres





Marilyn Hale  
Sue Hergert  
Joyce Hiatt  
Linda Jambor  
Marie Leonard  
Jean Lockwood  
Sue MacKinnon

Sandra Matsushima  
Sara Morris  
Marilyn Palmer  
Caroline Pearson  
Linda Sacher  
Lindsay Schwyn  
Becky Seeman

Karen Showers  
Cheri Smith  
Nancy Taylor  
Teri Tinker  
Kathy VanWalk  
Lorna Viken  
Lana Walter

## Matthews Hall



*Freshmen*  
Bob Adam  
Dwight Anderson  
Bruce Beauchamp  
Steve Braet  
Glenn Bryans  
Ron Chambers  
William Fitch

Delwin Franz  
Leslie Gilmore  
Bob Harrison  
John Houser  
Steve Humber  
Ron Judson  
Steve Kerley

Lewis Littlehales  
Mike Marley  
Guy Mansfield  
George Manthey  
Ross Mercer  
Alan Mushen  
Rodger Nichols

Oscar Olson  
John Pallett  
Dale Pierce  
David Rapes  
Christopher Savereid  
Jim Sheehan  
Allen Shibuya

Ken Thomas  
 Jim Turk  
 Harry Watkins  
 Alvin Wert  
 Anthony Woodward  
 Ron Wrede



## York House

### Seniors

Carolyn Leonard  
 Linda Putman  
 Gayle Shafford  
 Paula Zimmerman  
*Juniors*  
 Margaret Barton  
 Laura Bryant  
 Kathleen Childress



Sally Dana  
 Loraine Dickman  
 Helen Lang  
 Susan Pazina  
 Nancy Wiles  
*Sophomores*  
 Linda Blankenship  
 Lee Doving



Susan Friesen  
 Virginia Grubb  
 Sheri Knutson  
 Nancy J. Miller  
 Kathryn VanBlitterswyk  
 Suzi Williams



## Town Students

### Seniors

Richard Benner  
 Mark Olson  
 Christine Tabor  
*Juniors*  
 Janet Edlund  
 Luci Moore  
 Becky Purvine  
 Don Ramsey



Wally Sanford  
 Bob Willoughby  
*Sophomore*  
 Candy Miller  
*Freshman*  
 Anita Moore





seniors seniors seniors seniors



# Class of 1968

Rodney Allison, *Mathematics*  
 Susan Andersen, *English*  
 Bret Anderson, *English*  
 Earline Anderson, *Biology*  
 Marlene Anderson, *Biology*  
 Russell Anderson, *Physics/Mathematics*  
 Thomas Angelo, *History*  
 Nancy Aplan, *French*  
 Micheal Arant, *Economics*



David Ashby, *Physics*  
 Shirley Baird, *Mathematics*  
 Marybeth Bare, *French*  
 Loraine Barker, *Physical Education*  
 Bonnie Bedford, *Art*  
 Mary Beechler, *Mathematics*  
 Richard Benner, *Physical Education*  
 Gail Bittner, *Sociology*  
 Stephen Blixseth, *Political Science*  
 Douglas Bosco, *English*



Julianne Bosshart, *English*  
 Thomas Branford, *History*  
 Bruce Brennan, *Physics*  
 Christie Broms, *Biology*  
 Donald Brown, *Philosophy/Political Science*  
 Gerald Brown, *Political Science/History*  
 Roberta Brown, *Political Science*  
 Stephen Burdick, *Economics*  
 Carolyn Bush, *Mathematics*



Judith Butts, *Sociology*  
 Lynne Campton, *Psychology*  
 Jonathan Carder, *Economics/Russian*  
 Peter Carlson, *Psychology*  
 Carol Cartwright, *Economics*  
 Patricia Cassidy, *Biology*  
 Craig Chastain, *Political Science*  
 Dennis Cole, *Political Science*  
 Susan Collett, *Spanish*  
 John Coomler, *Sociology*

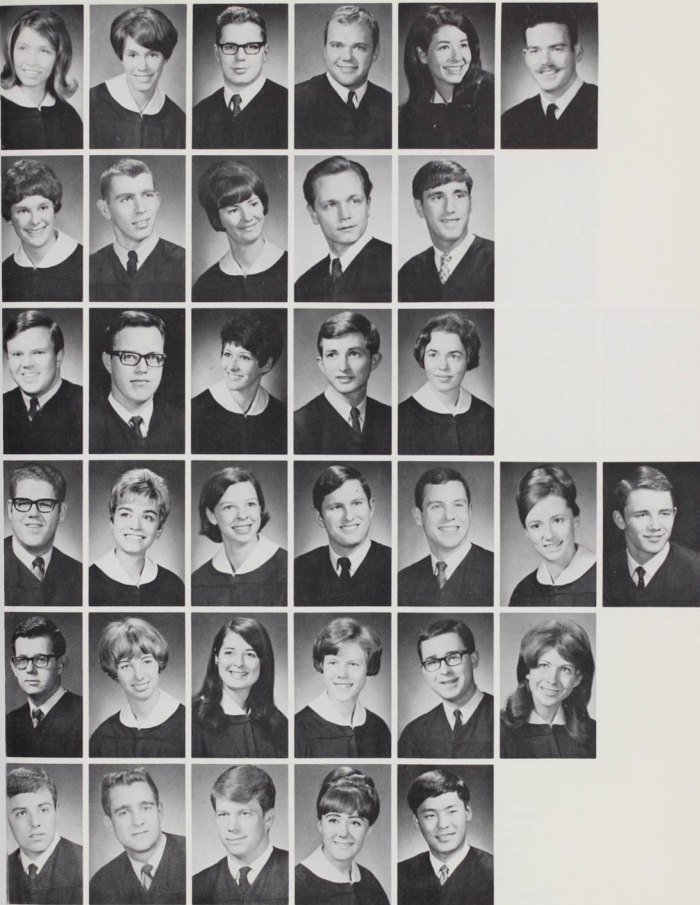


Susan Corcoran, *Political Science*  
 Douglas Courson, *Political Science*  
 Richard Cox, *Economics/Political Science*  
 Susan Cox, *Psychology*  
 Julia Cramer, *Psychology*  
 Nancy Crotchett, *History*  
 Alan Davis, *History*  
 Nancy Detering, *Chemistry*



Micheal DuBois, *Biology*  
 Darrell Dunham, *Economics*  
 Claudette Ebi, *Physical Education*  
 Cheryl Edwards, *History*  
 Jon Edwards, *Economics*  
 James Euler, *Sociology*  
 Samuel Felix, *Economics*  
 Elaine French, *Psychology*  
 Clayton Fujie, *History/Physical Education*





Kenneth Fukunaga, *Psychology*  
 James Gardner, *Political Science*  
 Linda Gardner, *Spanish*  
 John Garner, *Mathematics*  
 Gayle German, *Spanish*  
 Coburn Grabenhorst, *Art*  
 William Grant, *Economics*  
 Jacqueline Gruver, *History*  
 Dean Guyer, *Economics*



Penny Guyer, *Political Science*  
 Fereydoon Haghsheenas, *Mathematics/Physics*  
 Lenore Hall, *English*  
 Samuel Hall, *Sociology*  
 Demaris Hammond, *French*  
 Jean Hamner, *History*  
 Dawn Hanson, *Mathematics*  
 Peter Harmon, *Theater*



Jonathan Harnish, *Political Science*  
 Alan Hasuike, *Biology*  
 Haukur Hazen, *Economics*  
 Stephen Henigson, *Political Science*  
 Jack Hickling, *History*  
 Ronald Hoevet, *Economics*  
 Hargaret Horn, *History*  
 Lawrence Hull, *History*  
 Norman Hunter, *Chemistry*  
 Melinda Jack, *History*



Beverly Jaeck, *German*  
 Susan Jensen, *Biology*  
 Randolph Johnson, *Russian*  
 Vicki Johnson, *Sociology*  
 Clinton Johnstone, *Mathematics*  
 Lynnette Jones, *Spanish*  
 Richard Jones, *Physics/Mathematics*  
 Susan Karr, *German*  
 Judith Keniston, *Political Science*  
 Mildred Kennedy, *English*

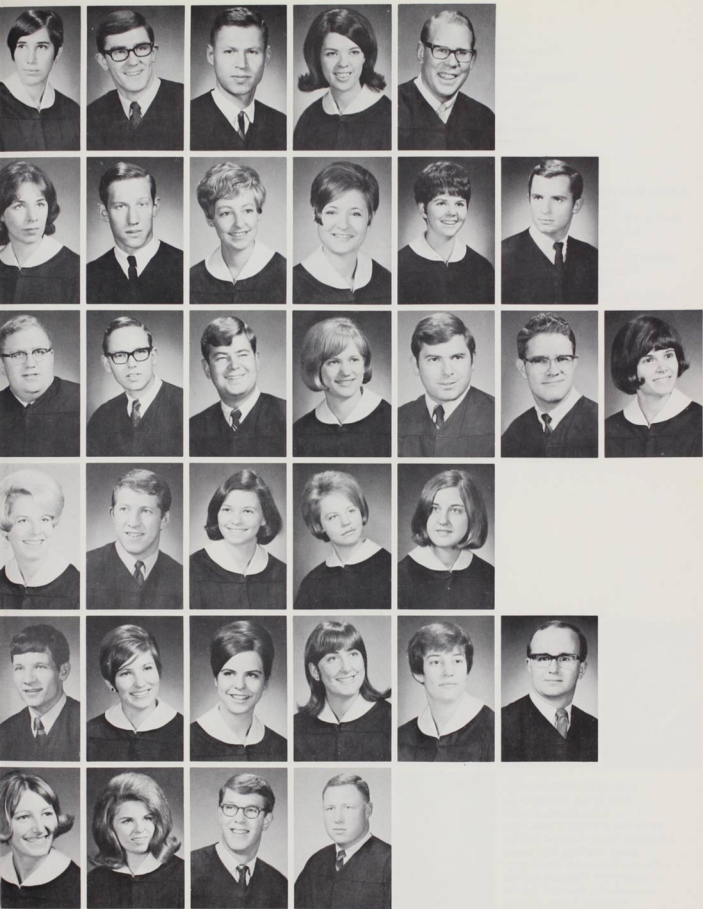


Montee Kennedy, *Economics*  
 Richard King, *Political Science*  
 Keith Kinsman, *Political Science*  
 James Kleinke, *Economics*  
 Charlotte Langford, *Political Science*  
 Geraldine Lawrence, *Music*  
 Sharon Lehrer, *Biology*  
 Carolyn Leonard, *French*  
 Micheal Lincicum, *Political Science/Russian*



Joan Lincoln, *Mathematics*  
 Lesley Lockwood, *Sociology*  
 Joan Ann Loomis, *English*  
 Curtis Lorenz, *History*  
 Judith Lorenzen, *English*  
 Lynne Lucas, *Psychology*  
 Peter Lutz, *Chemistry*  
 Richard Magruder, *Economics*





Mary Martin, *History*  
 Thomas Matheson, *Economics*  
 Thomas Mathiesen, *Organ*  
 Richard Meeder, *Political Science*  
 Susanne Mendoza, *Spanish*  
 Nancy G. Miller, *Psychology*  
 Nancy M. Miller, *English*  
 Robert Millikan, *Economics*  
 Laurel Monnes, *Biology*



Richard Monteith, *Political Science*  
 Barbara Monfort, *Art*  
 Marilyn Montgomery, *Psychology*  
 Judith Moore, *Psychology*  
 Clayton Morris, *Organ*  
 George Morrow, *Political Science*  
 Fredrick Mueller, *Biology*  
 Mark Olson, *Biology*  
 Lawrence Olstad, *Political Science*



William Opray, *Chemistry*  
 John Orr, *English*  
 Jane Osborne, *French*  
 Patricia Parfitt, *Sociology*  
 Panagiotis Paulus, *Chemistry*  
 Bruce Purvine, *Economics/History*  
 William Purvine, *Sociology*  
 Linda Putman, *Art/French*  
 Teddy Raburn, *Economics*



Connie Rector, *Political Science*  
 Roger Rees, *Political Science*  
 Kenneth Rice, *History*  
 Raymond Rice, *Mathematics*  
 Robert Richardson, *History*  
 Robert Riensche, *Psychology*  
 Martin Rohrer, *Political Science*



Rebecca Rudin, *Psychology*  
 Thomas Rygg, *Economics*  
 Darla Sanders, *Psychology*  
 Sara Schramm, *History*  
 Nancy Scott, *American Studies*  
 Robert Selander, *Political Science*  
 Margaret Shaffer, *Mathematics*  
 Mary Shaffer, *Political Science*  
 Gayle Shafford, *Art*  
 Barry Smedstad, *Economics*  
 Kirk Smith, *Sociology*



Richard Smith, *Chemistry*  
 Tom Smith, *Mathematics*  
 James Spake, *English*  
 Katherine Stafford, *Psychology*  
 Alexander Stein, *Political Science*  
 James Sterling, *Economics*  
 Yvonne Stevenson, *Psychology*  
 Micheal Stott, *Political Science*  
 Karen Swim, *Political Science*  
 Christine Tabor, *History*





Susan Talbot, *Music*  
 John Thomas, *Sociology*  
 William Thomas, *Biology*  
 Susan Thompson, *Psychology*  
 Susan Trullinger, *English*



Patricia Tucker, *English*  
 Scott Walker, *Biology*  
 Peter Wallmark, *Economics*  
 V'ella Warren, *Political Science*



Mary Watkins, *Physical Education*  
 Gary Webb, *Economics*  
 Catherine Wetherby, *French*  
 Edward Whitehead, *Economics/Political Science*



Maureen Willard, *Political Science*  
 Lynne Williams, *English*  
 Nancy Wintz, *Mathematics*  
 Anne Woods, *Psychology*  
 Barbara Worden, *Psychology*



John Yaple, *History*  
 Gary Yunker, *Psychology*  
 Paula Zimmerman, *Psychology*



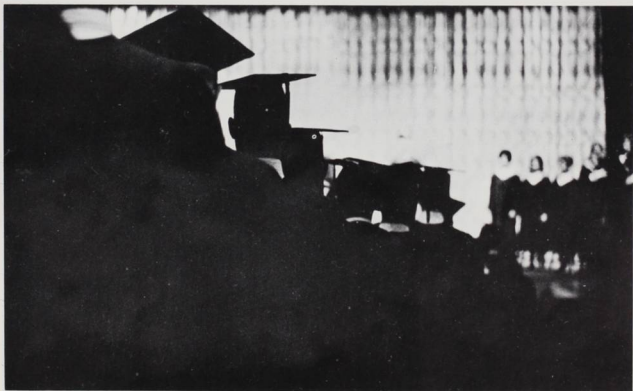
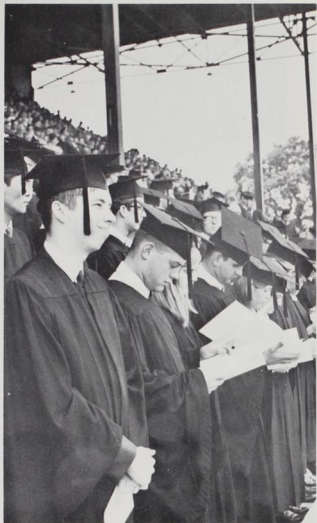
**SENIORS NOT PICTURED:**

Nikolaus Albrecht, *Economics*  
 David Albright, *Political Science*  
 David Baird, *History*  
 Micheal Bennett, *Art/Philosophy*  
 Karen Birch, *History*  
 Lowell Birch, *Biology*  
 David Brink, *Political Science*  
 Collier Buffington, *English*  
 Micheal Callan, *Psychology*  
 Priscilla Card, *English*  
 Daran Dauble, *History*  
 Terrie Edwards, *Biology*

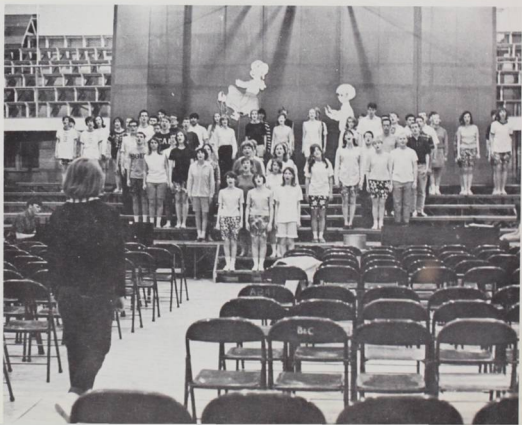
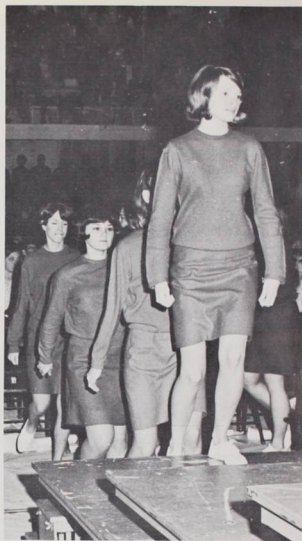
Antone Fahden, *Political Science*  
 Brian Gård, *English*  
 Dennis Gardner, *Mathematics/Physics*  
 Warren Glaede, *Russian*  
 John Green, *English*  
 Robert Hamel, *Chemistry*  
 Stanley Heisler, *History*  
 Gary Hertzog, *Physical Education*  
 James Hicks, *Biology*  
 Jane Hill, *English*  
 Jeanine Kammeyer, *Spanish*  
 Susan Leeson, *Political Science*  
 Jo Nell Logan, *Chemistry*

Linda Lovett, *Sociology*  
 Catherine Lynch, *English*  
 Patrick McLarney, *Economics*  
 Dan Metcalf, *Economics*  
 Richard Moore, *Physical Education*  
 William Moore, *Mathematics*  
 Tamara Morrison, *Biology*  
 Lawrence Paulson, *Economics*  
 Steven Reynolds, *Biology*  
 William Severin, *Economics*  
 James Ward, *Chemistry*  
 Laurel Willard, *Sociology*  
 Ladd Zastoupil, *History*

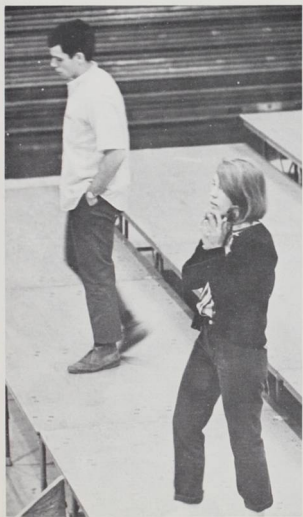
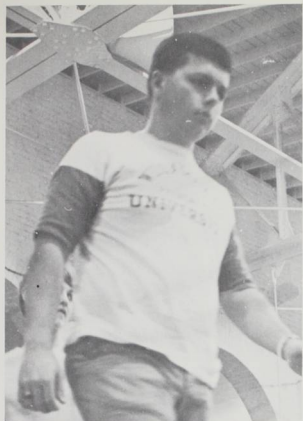
# At Last--- Graduation,



# Leaving Memories Behind, Looking to the Future...



Pete Wallmark, winner of the Schulze Award as the "best friend" of the Senior class.





## **In Memoriam**

*ANNETTE DODDS CROSS  
ROBERT F. KENNEDY  
DR. MARTIN LUTHER KING, JR.*

# Wallulah Staff

## EDITOR

*Suzi Corcoran*

## INTRODUCTION

*Wendy Wolf*

## CAMPUS LIFE

*Pat Bowen*

*Linda Forrest*

*Jennifer Wilke*

## ADMINISTRATION AND FACULTY

*Anne Jackson*

## ATHLETICS

*Susan Anders Harrell*

## LIVING ORGANIZATIONS

*Jack Cooper*

*Bob Ingram*

*Pat Prentice*

## SENIORS

*Kit Lynch*

## PHOTOGRAPHY

*Dave Pearson, darkroom manager*

*Les Gilmore*

*Bob Hamel*

*Rick Hoebee*

*Greg Hurlburt*

*Bob Jones*

*Colin Lamb*

*Dan Stiffler*

## Contents

- 4 *Introduction*
- 17 *Campus Life*
- 75 *Administration and Faculty*
- 103 *Honoraries and Organizations*
- 119 *Athletics*
- 153 *Students*
- 153 *Living Organizations*
- 185 *Seniors*
- 198 *Index*

## Acknowledgements

- To Your Town Press, and especially David Stall.
- To McEwan's Studio, especially to Wes Darby and Morrell Cray.
- To Dave Pearson for his hours of hard work and patience.
- To Gary DeLong, Class of 1966, for his coverage of Homecoming.
- To Bob Hamel for his last minute help during the summer.
- To the *Oregon Statesman* and the *Capital Journal* for photographs.

# Index

## ADMINISTRATION AND FACULTY

Arthur, Courtney	92
Ashby, David	84
Bailey, Henry	92
Beal, Dr. Paul B.	88
Berger, Don	93
Berglund, Albert C.	85
Bestor, Dean Charles L.	76
Billings, Margaret	89
Birnbaum, Adele	86
Boutin, K. James	98, 133
Bowles, Dr. Charles	98, 127
Brahams, Raymond I., Jr.	78
Breakay, Dr. Donald R.	82
Brennan, Maurice W.	96
Butler, Edwin W.	92
Butler, Stanley	95
Canning, Dr. Jeremiah	100
Carlson, Miriam	102
Casillas, Paul G.	89
Chapple, Dr. Frances H.	83
Chauls, Robert	94
Christian, Larry O.	100
Derkatsch, Ingrid	81
Derthick, Dr. Charles	99
Dobbs, Ralph	96
Doenges, Dr. Byron	77
Douglas, James S.	86
Drayton, Paule G.	88
Duell, Dr. Paul M.	83
Farrier, Walter	48, 94
Fedje, Alfred M.	78
Gentzkow, Christine A.	89
Giles, M/Sgt. Austin	80
Gillis, Dr. Richard M.	84
Goeury, Francoise A.	88
Gregg, Dr. Robert D.	90
Grimes, Col. Lyle O.	84
Gross, Alan D.	92
Haberer, Vera M.	77
Hafferkamp, Jack H.	91
Hall, Carl A.	81
Hand, James A.	101
Harrison, Maj. Douglas A.	80
Heiden, Dr. Charles R.	94
Hubbuck, Susan M.	87, 112
Hudak, Dr. Norman J.	83
Huffman, Dr. Norman A.	101
Hunnex, Dr. Milton D.	101
Kaestner, Dr. Noel F.	99
Kaiser, Dr. Chester C.	90
Koike, Dr. Harue	87
Konney, William	96
Kraft, Clarence A.	88
Laws, F. Donald	97
Leonard, Jack	84
Lewis, David A.	79
Lewis, John R.	99
Llewellyn, Don W.	93
Lord, Richard D.	87
Luther, Dr. Chester F.	91
Lyles, Dr. James R., Jr.	85
Malone, Dean James	76
Mandl, Dr. Otto W.	88
Markus, F. Kent	90
Mattes, Frederick H.	83
McConnell, Chaplain Calvin D.	101
McCowen, Dr. George S.	90
Meyer, Franklin D.	78
Monk, Dr. Cecil R.	82
Morange, Dr. Marion	88
Mouritsen, Dr. Roger	85
Nolley, Kenneth S.	86
Nowicki, David R.	90, 136
Ogdahl, T. Theodore	98, 121
O'Keefe, Micheal D.	93
Paulin, Dr. Cameron	81
Paulus, Dr. John C.	93
Payton, Dr. Arthur D.	83
Petrie, Dr. Richard P.	79
Phillips, James G.	89
Prothero, Stephen	91, 149
Purbrick, Dr. Robert L.	100
Purvine, Dr. Ralph E.	79
Putnam, Robert M.	102
Rademaker, Dr. John A.	102
Reese, Dr. Seward	76
Reuling, John A., Jr.	76
Rickard, Dr. Scott T.	77
Ringnalda, Margaret B.	86
Ringnalda, Dr. Murco	86
Runkel, Dr. Howard W.	102
Salee, Stella	99
Schaffeld, Joe	98, 121
Schnelker, Josef H.	95
Searle, Ramona Ann	98
Shay, Dr. Theodore L.	97
Shoberg, T.C.	79
Smith, Dr. G. Herbert	75
Springer, Dr. Martha E.	82
Stanbery, George W.	79
Stewart, Maurice B.	100
Stillings, Dr. Edwin J.	97
Stoyles, Robert L., Jr.	93
Sutliff, Richard A.	87
Thorsett, Grant O.	82
Trueblood, Dr. Paul G.	87
Udris, Marija	89
Viamonte, Julio	95
Weiland, Major David	80
Whipple, Dr. E. Jerry	78
Williams, J. Jean	98, 150
Woodle, Robert	78
Yocum, Elizabeth	82
Yocom, Richard A.	99

## STUDENTS

### A

Abbott, Sandy	163
Adam, Bob	183
Adams, Nancy	172
Agee, Jackie	157
Akins, Kathy	73, 176
Albaugh, Jeff	106, 162
Albertson, Kathy	154
Albrich, Ted	121
Allis, Nick	108, 136, 168
Allison, Rodney	121, 186
Andersen, Suzy	186
Anderson, Bret	186
Anderson, Dwight	127, 183
Anderson, Earline	65, 108, 166, 187
Anderson, Judy	182
Anderson, Marlene	104, 107, 176, 187
Anderson, Mike	175
Anderson, Russell	170, 187
Anderson, Tina	177
Anderson, William	158
Angelo, Tom	109, 187
Aplan, Nancy	107, 154, 187
Arant, Mike	48, 178, 187
Arnold, Larry	121
Ashby, Dave	162, 186

Atchison, Carla . . . . . 103, 104, 173  
 Averill, Jim . . . . . 108, 161

**B**

Bacci, Janis . . . . . 176  
 Baird, Rich . . . . . 174  
 Baird, Shirley . . . . . 108, 118, 164, 186  
 Baldwin, Jim . . . . . 178  
 Bare, Marybeth . . . . . 154, 186  
 Barelman, Jean . . . . . 64, 156  
 Barker, George . . . . . 160  
 Barker, John . . . . . 105, 116, 133, 162  
 Barker, Loraine . . . . . 186  
 Barnes, Nancy . . . . . 182  
 Barnick, Candy . . . . . 176  
 Barrall, Mark . . . . . 175  
 Barto, Lindy . . . . . 176  
 Barton, Margaret . . . . . 184  
 Bashar, Anwar . . . . . 158  
 Batiste, Greg . . . . . 179  
 Bauer, Keith . . . . . 168  
 Baughman, Madge . . . . . 176  
 Bearg, Nancy . . . . . 166  
 Beaudette, O.J. . . . . 160  
 Beauchamp, Bruce . . . . . 183  
 Beavert, Jackie . . . . . 64, 134, 167  
 Bechtel, Shana . . . . . 176  
 Becker, Howard . . . . . 181  
 Bedford, Bonnie . . . . . 166, 186  
 Beechler, Mary . . . . . 104, 164, 187  
 Bench, Mary . . . . . 64, 154  
 Benner, Rich . . . . . 133, 184, 187  
 Bennett, Bill . . . . . 106, 108, 178  
 Bennett, Chuck . . . . . 161  
 Bennett, Joan . . . . . 182  
 Bennett, Mike . . . . . 116, 162  
 Bergstrom, Lyn . . . . . 182  
 Betteridge, Carol . . . . . 157  
 Bittner, Gail . . . . . 187  
 Bladine, Lillian . . . . . 155  
 Blair, Su . . . . . 177  
 Blaisdell, Diana . . . . . 164  
 Blankenship, Linda . . . . . 103, 184  
 Blixseth, Steve . . . . . 187  
 Bloye, Dave . . . . . 162  
 Blucher, Carol . . . . . 182  
 Boal, Bob . . . . . 149, 168  
 Bocking, Lynda . . . . . 154  
 Bogardas, John . . . . . 163  
 Bolling, Serry . . . . . 157  
 Bonar, Bob . . . . . 158  
 Bosco, Doug . . . . . 62, 105, 108, 110, 170, 187  
 Bosshart, Julianne . . . . . 172, 186  
 Botelho, Bruce . . . . . 106, 158  
 Bowen, Pat . . . . . 103, 155  
 Bowman, Tim . . . . . 136, 174  
 Boyd, Bruce . . . . . 170  
 Boyd, Mike . . . . . 163  
 Boyle, Don . . . . . 158  
 Bradley, Kathy . . . . . 182  
 Bradshaw, Monte . . . . . 182  
 Braet, Steve . . . . . 183  
 Branford, Tom . . . . . 186  
 Brecht, Jan . . . . . 134, 177  
 Brennand, Mark . . . . . 169  
 Brennan, Bruce . . . . . 186  
 Brennan, Jeannie . . . . . 72, 182  
 Brink, Dave . . . . . 108, 111, 162  
 Brinkerhoff, Phylis . . . . . 151, 156  
 Britain, Cindy . . . . . 103, 182  
 Broms, Christie . . . . . 104, 154, 186  
 Bronson, Mary . . . . . 177  
 Brown, Don . . . . . 170, 187  
 Brown, Gerald . . . . . 187

Brown, Kevin . . . . . 180  
 Brown, Larry . . . . . 112  
 Brown, Roberta Payne . . . . . 187  
 Brown, Roger . . . . . 175  
 Brunner, Jay . . . . . 121  
 Brunsvold, Chris . . . . . 155  
 Bryans, Glenn . . . . . 183  
 Bryant, Laura . . . . . 105, 184  
 Bryson, Dave . . . . . 162  
 Bucklin, Jim . . . . . 168  
 Bullock, Kathy . . . . . 118, 166  
 Bunker, Wayne . . . . . 158  
 Burdick, Steve . . . . . 187  
 Burke, Kathy . . . . . 134, 178, 182  
 Burke, Pat . . . . . 182  
 Burton, Tom . . . . . 171  
 Bush, Carolyn . . . . . 187  
 Butler, Pam . . . . . 165  
 Butto, Frank . . . . . 174  
 Butts, Judy . . . . . 112, 186  
 Byrer, Barbara . . . . . 157

**C**

Calhoun, Denny . . . . . 178  
 Callahan, Cathy . . . . . 154  
 Callahan, Mike . . . . . 149, 162  
 Callender, Lynn . . . . . 167  
 Campbell, Pat . . . . . 161  
 Campton, Lynne . . . . . 107, 164, 186  
 Carder, Jon . . . . . 104, 170, 186  
 Carlson, Cindy . . . . . 176  
 Carlson, Jim . . . . . 107, 160  
 Carlson, Pete . . . . . 187  
 Carlson, Susanne . . . . . 182  
 Carter, Bernie . . . . . 121, 179  
 Carter, Liz . . . . . 103, 164  
 Cartwright, Carol . . . . . 187  
 Casey, Dan . . . . . 171  
 Cassidy, Pat . . . . . 187  
 Castro, Fred . . . . . 160  
 Cates, Linda . . . . . 154  
 Chambers, Delynne . . . . . 182  
 Chambers, Ron . . . . . 183  
 Chandler, Peggy . . . . . 155  
 Chase, Patti . . . . . 164  
 Chastain, Craig . . . . . 187  
 Chesney, Margaret . . . . . 103, 167  
 Childress, Kathy . . . . . 184  
 Christensen, Otis . . . . . 182  
 Christiansen, Dan . . . . . 104, 170  
 Chuhay, Tom . . . . . 158  
 Cloudy, Candy . . . . . 157  
 Clouse, Mac . . . . . 168  
 Clunes, Bev . . . . . 182  
 Coats, Doug . . . . . 158  
 Coldiron, Jill . . . . . 166  
 Cole, Denny . . . . . 187  
 Cole, Kathy . . . . . 154  
 Cole, Randi . . . . . 176  
 Coleman, Cory . . . . . 165  
 Collett, Susan . . . . . 187  
 Collins, Terry . . . . . 170  
 Collins, Tim . . . . . 170  
 Conklin, Kay . . . . . 182  
 Cook, Dave . . . . . 121, 158  
 Cook, Wayne . . . . . 161  
 Coomler, John . . . . . 187  
 Cooper, Jack . . . . . 170  
 Corcoran, Suzi . . . . . 107, 108, 112, 118, 154, 186  
 Courson, Doug . . . . . 116, 162, 186  
 Cox, Richard . . . . . 187  
 Cox, Sue . . . . . 107, 176, 187  
 Cramer, Julie . . . . . 176, 187

Crawford, Ed	106, 183
Crotchett, Nancy	107, 151, 172, 187
Crow, Lexi	176
Cummings, Anita	182
Cunningham, Georgia	173
Cunningham, Larry	158
Cushman, Greg	174

D

Daines, Alison	165
Dale, Jack	133, 179
Damewood, Dan	158
Dana, Sally	104, 184
Danielson, Bruce	169
Danielson, Craig	174
Dauble, Daran	160
Dauble, Darcy	167
Davidson, Pat	118, 166
Davis, Alan	187
Davis, Cindy	182
Davis, Debbie	177
Dean, Debbie	103, 166
Delaney, Lynn	48, 182
Detering, Nancy	187
Dickey, Susan	105, 182
Dickman, Loraine	184
Dinny, Doug	158
Doane, Toni	114, 182
Dodd, Judy	176
Donaldson, Beth	114, 164
Donovan, Gael	167
Doughten, Susie	134, 167
Douglass, Bob	133
Doving, Lee	105, 184
Downing, Pixie	107, 164
Drack, Marshall	180
Drake, Rosalie	157
DuBois, Mike	170, 186
Dudgeon, Joan	182
Dunham, Darrell	136, 178, 186
Dunlap, Ian	180
Duryee, Leslie	155
Dyer, George	160

E

Ebi, Claudette	64, 65, 73, 104 176, 186
Edlund, Janet	184
Edwards, Cheryl	186
Edwards, Jon	174, 187
Eggener, Helen	182
Ellis, Al	104, 105, 121, 178
Ellis, Ed	171
Ellis, Nancy	182
Emerson, Norm	181
Eriksen, Walt	163
Euler, Jim	187

F

Fairbrook, Rick	169
Fancher, Marsha	177
Felix, Sam	187
Felix, Tom	175
Ferguson, Russ	121, 163
Filz, John	158
Fitch, William	183
Fitzpatrick, Jim	178
Flannery, Kathy	177
Fleming, Ilene	173
Florer, Bill	179
Fogel, Susan	172
Forrest, Linda	103, 134, 150, 155
Forsch, Pam	177
Foster, Jim	106, 161

Franz, Delwin	106, 183
French, Elaine	107, 172, 187
Frees, Beckie	182
Friesen, Susan	103, 105, 184
Fujie, Clayton	187
Fujimoto, Sandy	164
Fukunaga, Ken	107, 178, 188
Fuller, Marian	74
Fullmer, Marilyn	177
Fulp, Barbara	182
Fulp, Ian	121
Furniss, Tony	168

G

Gale, Larry	170
Gallagher, Bob	168
Gallagher, Gwen	151, 166
Galland, Pete	161
Gallucci, Bob	180
Gamponia, Sonny	178
Gardner, Dennis	136
Gardner, Jim	174, 188
Gardner, Linda	188
Gardner, Marie	48
Gardner, Wendy	154
Garner, John	160, 188
Garrison, Sue	155
Gaudette, Julie	182
George, Jim	133, 180
George, Pete	171
German, Gayle	189
Gerrish, Steve	180
Gibb, Ed	133
Gielow, Lois	105, 172
Gilmore, Doug	168
Gilmore, Leslie	183
Gilmore, Gib	108, 121, 133, 168
Gilpin, Sue	176
Gordon, Sallie	48, 105, 178
Gould, Kathy	177
Gourley, Greg	178
Grabenhorst, Cobe	136, 189
Grant, Donna	165
Grant, William	189
Graves, Elton	160
Greathouse, Gordon	106, 158
Green, Sandra	182
Gregory, Janice	157
Gregory, Dick	163
Gressel, Steve	175
Griggs, Jim	116, 163
Grignonis, Dave	127, 171
Gross, Orriane	103, 182
Grubb, Virginia	184
Gruber, Chris	172
Grundy, Lynda	155
Gruver, Gretchen	167
Gruver, Jackie	107, 166, 189
Gustafson, Joy	150, 176
Guyer, Dean	189
Guyer, Penny	188

H

Haakenson, Mike	175
Hadlock, Mary	103, 176
Haghshenas, Fereydoon	178, 188
Haines, Don	180
Hale, Marilyn	103, 183
Hales, Sue	103, 154
Hall, Lenore	189
Hall, Sam	189
Hall, Terry	62, 109
Hamel, Bob	160
Hammond, Dana	162

Hammond, Demaris	107, 154, 189
Hamner, Jean	156, 189
Hanley, Donna	103, 166
Hanford, Jessica	156
Hansen, Bonnie	154
Hansen, Jerry	149, 169
Hansen, Roger	161
Hanson, Dawn	65, 104, 108, 164, 189
Harmer, Alyson	182
Harmon, Pete	189
Harnish, Jon	188
Harri, Elizabeth	176
Harris, Ken	178
Harrison, Bob	183
Harrison, Terry	174
Hartman, Kathy	57, 167
Hasuike, Alan	188
Hatcher, Jan	155, 178
Hatfield, Susan	104, 173
Hathaway, Greg	171
Hawkins, Karen	157
Haynor, Jon	180
Hazelett, Stafford	158
Hazen, Haukur	188
Henderson, Kristie	165
Henigson, Steve	189
Hergert, Susan	183
Herman, Rita	172
Hermann, Bob	179
Herndon, Kathy	166
Hiatt, Joyce	183
Hickling, Jack	105, 106, 107, 160, 189
Hickman, Ellen	156
Hicks, Graham	178
Hieber, Glenda	105, 164
Hill, Jon	160
Hill, Sue	164
Hoag, Rush	171
Hochstetler, Nancy	156
Hodges, Jacque	150, 177
Hoehne, Joyce	155
Hoevet, Ron	189
Hoff, Knut	171
Hoffman, Joe	106, 179
Holman, Ruth	182
Holmes, Mike	116, 121, 163
Holsapple, Molly	175
Holt, Lois	166
Honeycutt, Chuck	108, 109, 170
Hoover, John	160
Horn, Marg	104, 107, 189
Horne, Natalie	176
Horrell, Gary	127, 158
Horton, Craig	161
Houck, Mike	121, 170
Houghton, Dave	178
Houser, John	183
Howard, Jody	156
Howe, Bill	161
Howlsley, Dick	109, 168
Huddleston, Rich	138
Hudkins, John	168
Hudson, Jeff	121
Huffman, Debra	165
Hull, Gary	180
Hull, Larry	189
Humber, Steve	183
Humphrey, Dave	178
Hunt, Marica	154
Hunter, Norm	189
Hurlburt, Greg	160
Hurm, Roger	158

I

Ingram, Bob	178
-------------	-----

Ingram, Cathy	177
Irvine, Cindy	103, 118, 135, 176
Irwin, Sally	72, 151, 177, 178
Itoh, Katsumi	179

J

Jack, Melinda	104, 107, 176, 189
Jackinsky, Tim	158
Jackson, Anne	103, 164
Jaeck, Beverly	172, 188
Jambor, Linda	116, 183
Jeddleoh, Bruce	169
Jensen, Kathy	157
Jensen, Kit	108, 168
Jensen, Margaret	103, 156
Jensen, Ron	121
Jensen, Sue	154
Jerman, Bob	161
Johnson, Dennis C.	171
Johnson, Dennis L.	171
Johnson, Randy	138, 188
Johnson, Rod	160
Johnson, Sue	154
Johnson, Vicki	188
Johnstone, Clint	188
Jones, Bob	171
Jones, Gayle	151, 165
Jones, Lynette	156, 189
Jones, Rick	178, 189
Judson, Ron	183
Judy, Kathy	166

K

Kagy, Bob	163
Karas, John	163
Karr, Sue	166, 189
Kautzky, Eric	121, 175
Kawana, Sanford	121, 169
Kellum, Marianne	156
Keniston, Judy	189
Kennedy, Millie	164, 189
Kennedy, Montee	106, 107, 170, 188
Kerley, Steve	183
Keuss, Chris	108, 178
Kim, Dana	159
Kimmel, John	158
Kimura, Janice	177
King, Dave	111, 159
King, Dick	32, 174, 188
King, Judy	166
Kinsman, Keith	48, 106, 170, 188
Kleiner, Darlene	166
Kleinke, Jim	64, 162, 189
Knipe, Judy	165
Knipher, Linda	182
Knitter, Glenn	136, 168
Knitter, Keith	136, 169
Knox, Jeff	121, 162
Knutson, Doug	181
Knutson, Sherry	184
Korish, Kit	121
Kraft, Rick	74, 106, 178
Kraus, Richard	163
Krug, Teresa	73, 105, 176
Kubitz, Jim	179
Kuhns, Debbie	165

L

Laetsch, Klaus	180
Laird, Mary Linda	154
Lampton, Pat	175
Landt, Rick	159
Lang, Helen	184
Langford, Charlotte	111, 189
Lankford, Sheila	173

Lau, Willis	.116
Law, Jim	.162
Lawrence, Gerry	105, 172, 189
Lebsack, Ann	.167
Lederman, Duffy	136, 174
Lee, Cal	.121
Leonard, Carolyn	184, 189
Leonard, Marie	.183
Leslie, Bill	.178
Lewis, Shorty	135, 166
Lewis, Stephanie	.165
Lewis, Sue	.165
Liddycoat, Don	.179
Lien, Colleen	105, 157
Lilles, Jayne	.154
Lillig, Bob	.159
Lincicum, Mike	104, 105, 107, 178, 189
Lincoln, Joan	.164, 188
Linderman, Chuck	.158
Lindskog, Candy	103, 114, 166
Littlehales, Lewis	.183
Lockwood, Jean	.183
Lockwood, Lesley	.172, 188
Logan, Jo Nell	.172
Logan, Kim	133, 169
Loo, Donna	.176
Loomis, Joanie	107, 108, 113, 114, 176, 188
Looney, Walt	.121
Lorenz, Curt	.188
Lorenzen, Judy	.189
Lotz, Dan	.170
Lowe, Becky	.166
Lucas, Lynne	107, 118, 156, 189
Luce, Jon	106, 161
Lundahl, Bob	133, 175
Lutz, Peter	104, 160, 189
Lynch, Kit	.156

### M

Mackie, Craig	135, 181
MacKinnon, Susan	.183
MacLeod, Wendy	.182
MacPherson, Doug	.160
Macy, Skip	.179
Magruder, Dick	.189
Magruder, Marg	.176
Mangold, Scott	.178
Manley, Mike	.183
Mansfield, Guy	.183
Mante, George	.160
Manthey, George	.183
Marcelino, Sandy	.133
Martilla, Janice	103, 155
Martin, Mary	107, 156, 190
Matheson, Tom	.190
Mathiesen, Tom	.190
Matsushima, Sandra	.183
Maxwell, Corinne	114, 167
Maylie, Jim	.178
McEldowney, Lois	.164
McGeehon, Sue	114, 118, 164
McGrath, Margie	.173
McKenzie, Chris	136, 168
McLean, George	.171
McLeod, Bruce	.160
McWain, Marlee	134, 177
Medaris, Shelley	.157
Meeder, Rick	108, 109, 180, 190
Melvin, Jan	.157
Mendoza, Suzanne	.191
Mercer, Ross	.183
Messner, Marty	.157

Mial, Bob	138, 175
Miller, Bill	.160
Miller, Candy	.184
Miller, Carol	135, 156
Miller, Lynn	.157
Miller, Nancy G.	107, 166, 191
Miller, Nancy J.	.184
Miller, Nancy M.	.191
Millikan, Bob	.191
Milne, Shelley	.167
Mitchell, John	.168
Mitchell, Merry	.165
Mitchell, William	.121
Moberg, Bob	.174
Mongrain, Ken	106, 171
Monnes, Laurie	104, 176, 191
Monteith, Rich	108, 111, 160, 190
Montfort, Barb	.176, 190
Montgomery, Marilyn	.156, 190
Moore, Anita	.184
Moore, Dan	.168
Moore, Don	136, 171
Moore, Jim	.169
Moore, Judy A.	.176, 190
Moore, Judy C.	135, 176
Moore, Luci	.184
Moore, Spike	.133
Morgado, Jim	.121
Morris, Clay	48, 106, 170, 190
Morris, Elsa	.157
Morris, Sara	.183
Morrow, George	.191
Much, Joe	138, 178
Mueller, Fred	.191
Murchison, Jim	.160
Muschen, Alan	.183
Myers, Liz	.154

### N

Nelson, Randy	.169
Neseth, Christie	.173
Nevin, Charles	.161
Newberry, George	.161
Nichols, Rodger	106, 183
Nicholson, Jim	121, 124
Nolan, Dennis	.179
Norton, Lynne	.172

### O

Ohlson, Carrie	.155
Olsen, Mike	.162
Olson, Mark	105, 106, 184, 191
Olson, Oscar	121, 183
Olstad, Larry	.191
Onnfroy, Janine	.165
Opray, Bill	.190
Orr, John	149, 190
Osborne, Jane	104, 107, 176, 190
Osborne, Rich	.179
Ostlund, Terri	103, 157
O'Toole, Ginny	.182
Owen, Lowell	.159

### P

Pacquer, Mary	.156
Pahl, Bruce	.175
Pallett, John	.183
Palmer, Keith	.163
Palmer, Marilyn	.183
Paongo, Kalapoli	.161
Parfitt, Pat	154, 191
Patch, Karen	64, 72, 177
Patrick, Linda	.155
Paulua, Panagiotis	.191

Payne, Dennis	.121
Pazina, Sue	.184
Pearson, Caroline	107, 183
Pearson, Chris	.164
Pearson, Dave	112, 180
Peel, Kathy	.173
Peirce, Dale	.183
Petersen, Leslie	103, 155
Phifer, Carl	.121
Phillips, Bill	.160
Pierce, Greg	149, 169
Pinckney, Ron	.171
Pinegar, Glenn	.170
Pinkham, Jim	.159
Polley, Richard	106, 108
Pollock, Jane	.166
Poujade, Harold	121, 169
Powell, Terry	.165
Power, Liz	.164
Powers, Chris	.121
Prather, Jeanette	.173
Prentice, Pat	.167
Puckett, Bob	.181
Pursel, Debbie	.165
Purvine, Becky	150, 184
Purvine, Bruce	.191
Putman, Linda	107, 191, 184

Q

Quade, Dennis	.161
Quade, Doug	.159

R

Raburn, Teddy	.191
Rages, David	.183
Rainger, Ron	.171
Rajala, Charlotte	.157
Ramsay, Larry	.121
Ramsey, Don	.184
Ranton, Barb	.74, 167
Rapozo, Gaylyn	.182
Raschio, Darilyn	.167
Rasmussen, Richard	.159
Rasor, Bob	108, 171
Ray, Wendy	.157
Rea, Nancy	.156
Reagan, Bill	.175
Rector, Connie	.190
Reddel, Charles	.159
Redfield, Kathy	.165
Rees, Roger	.190
Reeves, Jeanna	105, 173
Reif, Roger	.175
Reinhard, Bob	.161
Ricco, Cathy	105, 165
Rice, Ken	.191
Rice, Pam	.155
Rice, Raymond	.191
Richardson, Bob	160, 191
Richardson, Gary	.181
Riensch, Bob	121, 191
Riley, Bob	.121
Ringler, Peggy	.155
Roberson, Jon	108, 160
Roberts, Doug	.179
Robertson, Bruce	106, 169
Robertson, Leslie	103, 177
Robinson, Jim	.171
Robinson, Tony	116, 162
Rogers, Linda	.165
Rohrer, Marty	178, 191
Ronald, Lauren	106, 171
Rose, Alan	.158
Roth, Pete	.48, 106, 171

Rough, Linda	.48, 167
Roumpf, Marg	.155
Rountree, Sally	.167
Royce, Bill	.160
Rudin, Becky	107, 176, 190
Russell, Bill	.171
Rygg, Tom	162, 190

S

Sacher, Linda	.183
Sampson, Jan	.165
Sanders, Darla	.190
Sandifur, Ann	.177
Sanford, Wally	.184
Savard, Jim	.160
Savereid, Chris	.183
Scarff, Leanne	.166
Schaeffer, Bob	.162
Scheller, Denzil	109, 133, 162
Schlegal, Bob	108, 111, 133, 162
Schnell, Phil	106, 179
Schooley, Sharon	.157
Schramm, Sally	104, 107, 176, 190
Schriber, Pam	.155
Schwendemann, Connie	.64, 114, 164
Schwenn, Page	.177
Schwyn, Lindsay	.183
Scott, Nancy	.191
Scott, Rodney	.168
Scott, Susan	.173
Scriver, Gary	121, 175
Seeman, Becky	.183
Selander, Bob	111, 191
Seto, Lester	.116, 162
Shaffer, Mary	.154, 191
Shaffer, Peggy	104, 166, 191
Shafford, Gayle	.184, 191
Sharpe, Linda	.166
Shea, Tim	.175
Sheehan, Jim	.183
Shelton, Bill	.175
Sherman, Mike	.48, 106, 179
Sherrard, Ann	.166
Shibuya, Allen	.183
Shields, Bob	.121
Shim, Mike	121, 162
Shimek, John	.169
Shinn, Mike	.121
Shirey, Bill	.179
Shivers, Jackie	103, 155
Showers, Karen	.183
Simmons, Mary	.155
Simonet, Robin	.155
Simunds, Greg	.171
Slaughter, Dorothy	.103, 182
Sleeter, Christie	103, 114, 135, 155
Smedstad, Barry	105, 116, 136, 162, 191
Smith, Celia	.103, 182
Smith, Charles	.161
Smith, Cheri	.183
Smith, Cindy	.134, 177
Smith, Dick	.190
Smith, Eric	106, 109, 138, 163
Smith, Kirk	.170, 191
Smith, Melody	.182
Smith, Mike	.121, 168
Smith, Pete	.179
Smith, Susan	.176
Smith, Tom	.170, 190
Solberg, Don	.107, 168
Southard, Andi	.167
Souther, Calvin	.136, 162
Spake, Jim	.190
Spall, Jim	.179

Sparber, Rick	127, 161
Spears, Barbara	167
Spears, Don	181
Spears, Sher	166
Spezza, Kathy	155
Stafford, Kitten	190
Stanley, Linda	165
Stebbins, Mike	181
Steege, Laura	165
Stenson, Bob	121
Steeves, Robbie	179
Stein, Alex	190
Steinke, Dave	127
Steinke, John	127
Sterling, Jim	191
Stevens, Bonnie	173
Stevens, Leigh	161
Stevens, Nancy	155
Stevenson, Yvonne	191
Stewart, Gib	133, 170
Stewart, Lindsay	116, 162
Stewart, Mart	106, 162
Stiffler, Dan	181
Stocker, Steve	121, 159
Stone, Dave	163
Spoons, Bob	174
Stott, Mike	178, 191
Stremmel, Pete	136
Strong, Cathy	177
Stunz, Suzanne	157
Sudderth, Barry	106, 108, 179
Suther, Charlotte	48
Swanson, Bob	169
Swanson, Suzanne	165
Swim, Karen	107, 108, 111, 154, 191
Synowski, Rick	171

T

Tabor, Christine	184, 191
Talbot, Sue	105, 156, 192
Talbot, Vicki	155
Taranoff, Carol	103, 177
Tate, Steve	149, 162
Taylor, Nancy	183
Temple, Ed	171
Templeton, Jan	182
Terzian, Tracy	174
Tharp, Bill	181
Thomas, Bill	168, 192
Thomas, Dave	169
Thomas, John	116, 162, 192
Thomas, Ken	184
Thompson, Paul	179
Thompson, Susan	176, 192
Thompson, Vicki	154
Thornton, Dave	181
Thorp, Norm	170
Tinker, Terri	183
Tobiska, Kent	106, 175
Tower, Bob	159
Trachtenberg, Joe	161
True, Tom	159
Trullinger, Sue	104, 166, 192
Turk, Jim	106, 136, 184
Tucker, Pat	156, 192
Tuller, Luann	154
Turek, Mary Jo	103, 173
Turner, Mike	106, 161

U

Upham, Diane	177
Usher, Sharon	116, 177

V

Vaandering, Gale	106, 161
VanBlitterswyk, Kathryn	184
Valadez, Leonard	127, 163
VanHoy, Roger	161
Vannice, Jim	163
VanVliet, Mina	167
VanWalk, Kathy	183
VanZyl, Rozanne	167
Viken, Lorna	183
Voth, Larry	163

W

Walker, Linda	164
Walker, Scott	178, 192
Wallace, Ed	106, 127, 171
Wallace, Rob	171
Wallace, John	179
Wallich, Judy	105, 164
Wallmark, Pete	192, 195
Walter, Kristi	112, 154
Walter, Lana	183
Ward, Carol	103, 165
Ward, Marilyn	182
Warnaca, Doug	178
Warner, Dave	171
Warren, Roger	105, 170
Warren, V'Ella	104, 107, 156, 192
Watanabe, Laani	167
Watkins, Harvey	184
Watkins, Mary	151, 166, 192
Watson, Gail	105, 173
Watson, Janice	105, 157
Way, Kathy	156
Weathers, Tom	121, 163
Weaver, Craig	107, 178
Webb, Gary	168, 192
Webb, Geoff	161
Weber, Pat	155
Weidner, Bobbie	164
Weisberg, Courtney	73, 165
Weinstein, Jeff	135, 163
Weisenborn, Chris	182
Weiss, Bob	174
Welch, Cathy	116, 136, 177
Welch, Kathy	167
Wellenbrook, Betty	812
Wells, Nancy	167
Wells, Shiela	155
Wells, Steve	161
Welsh, Cindy	164
Wert, Alvin	184
Wert, Barbara	156
Westbrook, Tricia	182
Weston, Dave	161
Wetherby, Cathy	107, 154, 192
Whitehead, Rock	168, 192
Whitford, Dee	167
Whittier, Joyce	155
Whittle, Robin	167
Wild, Linda	103, 165
Wiles, Nancy	184
Willard, Chris	108, 167
Willard, Jerry	179
Willard, Maureen	192
Williams, Bruce	121
Williams, Dave	109, 159
Williams, Lynne	109, 154, 192
Williams, Suzi	184
Williams, Tom A.	121, 174
Williams, Tom D.	121, 133, 163
Willoughby, Bob	106, 184
Wilson, Alan	163

Wilson, Betsy . . . . .	.177
Wilson, Dwight . . . . .	.138, 181
Winston, Robin . . . . .	.182
Winters, Shelley . . . . .	.103, 155
Wintz, Nancy . . . . .	.176, 192
Wiseman, Gordon . . . . .	.121
Woldrich, Albert . . . . .	.121
Wolf, Wendy . . . . .	.166
Wolff, Nancy . . . . .	.103, 167
Wolfsehr, Mitch . . . . .	.149, 163
Woods, Anne . . . . .	.164, 192
Woods, Carolyn . . . . .	.164
Woodward, Tony . . . . .	.184
Woodworth, Betty . . . . .	.151, 167
Worden, Barbara . . . . .	.166, 192
Woster, Dave . . . . .	.163
Wrede, Ron . . . . .	.184
Wright, Bruce . . . . .	.136, 169
Wyatt, John . . . . .	.175

Y

Yaple, John . . . . .	.168, 192
Yeo, Kathy . . . . .	.156
Yerxa, Woody . . . . .	.159
Yoakum, John . . . . .	.159
Youngman, Frank . . . . .	.116
Yunker, Gary . . . . .	.174, 192

Z

Zane, Calvin . . . . .	.179
Zimmerman, Paula . . . . .	.184, 192













