

WILLAMETTE ALUMNIJS

SUMMER, 1968



Students speak out — page 4

Campus CAPSULES

TWO ADMINISTRATIVE posts were filled in June, as President Smith announced the appointments of a Dean of the College of Law and a Dean of Men. Dr. Arthur B. Custy, Assistant Dean of the University of Mississippi School of Law, succeeds Dean Seward Reese, while Norman L. Nelson, a personnel administrator at private boarding schools for five years, is the new Dean of Men.

DEAN CUSTY, 49, is a native of Brooklyn, N.Y. He holds a Juris Doctor degree from the University of Mississippi School of Law and a Doctor of Juridical Science degree from Yale Law School.

For the past 17 years he has been on the law faculty at Mississippi. In 1958 he served as Visiting Professor of Law at the University of Texas School of Law, and from 1965-67 he was on leave to serve as Staff Assistant to the Chief Counsel for the Internal Revenue Service.

As an Assistant Dean at Mississippi, he

had primary responsibility for the administration of graduate legal education. He was active in developing a program to encourage and assist minority group students, especially Afro-Americans, to enter the study of law. Among his other duties, Dean Custy served as faculty advisor to the Mississippi Law Journal, he was an attorney for the University of Mississippi, and he served the state bar with responsibility for the Continuing Legal Education Program.

During his 17 years of teaching experience, he taught 24 different subjects and found time to write numerous articles and book reviews for Law Journals, edit two books, and serve on editorial boards for other publications.

The new Dean's academic background includes membership in Phi Eta Sigma, Phi Delta Phi, Pi Sigma Alpha, Omicron Delta Kappa, and Tau Kappa Alpha. He is retired from the Army Reserve Judge Advocate General's Corps with the rank of Major. Dean Custy is married and has two daughters.



Dean Custy

DEAN NELSON, 30, was born in Battlecreek, Michigan. He has recently served as personnel administrator and history teacher at Wayland Academy, a coeducational boarding school at Beaver Dam, Wis. Prior to that, he held a similar position at Williston Academy for boys at East Hampton, Mass.

A graduate of Olivet College (Mich.), Dean Nelson has a master's degree in history from the University of Virginia.

During administrative service at Williston, he directed the residential program, served as counselor and was Master of History.



Dean Nelson

His wife, Judy Ann, holds a master's degree in physical education from Smith College and was recently appointed to the staff at Oregon College of Education.

GRADE AVERAGES during Spring Semester show the 40 women of Lucy Anna Lee House topping the campus with a 3.068 mark, while Kappa Sigma Fraternity topped the men at 2.841. The All School average was 2.655; All Women, 2.735; All Men, 2.591; All Sorority, 2.775; and All Fraternity, 2.689. The house averages in order were: Lee, 3.068; York, 2.922; Delta Gamma, 2.854; Kappa Sigma, 2.841; Pi Beta Phi, 2.825; Chi Omega, 2.810; Alpha Chi Omega, 2.809; Belknap and Chresto, 2.804; Sigma Alpha Epsilon, 2.761; Beta Theta Pi, 2.739; Town Women, 2.731; Delta Tau Delta, 2.592; Phi Delta Theta, 2.574; Sigma Chi, 2.542; Alpha Phi, 2.515; Lausanne, 2.476; Town Men, 2.444; Matthews, 2.367; Baxter, 2.282, and Doney, 2.156.

FOOTBALL COACH Ted Ogdahl can't help but be a bit optimistic. He has 32 lettermen returning from last year's co-championship team (7-2 record), and only three seniors graduated from the offensive and defensive platoons. Little All-American Jim Nicholson will be running for his third straight league rushing title, and quarterback Mike Shinn returns as the Northwest Conference's leading passer, both in yardage and percentage. Split end and kicker Gib Gilmore and linebacker Cal Lee are the other superstars returning.

The 1968 grid schedule follows:

- Sept. 21 University of Nevada (2 p.m.)
 - Sept. 28 at U. of British Col. (1:30 p.m.)
 - Oct. 5 at Pacific University (8 p.m.)
 - Oct. 12 at Whitman College (8:15 p.m.)
 - Oct. 19 U. of Puget Sound (2 p.m.)
 - Oct. 26 College of Idaho (2 p.m.)*
 - Nov. 2 at Lewis & Clark (1:30 p.m.)
 - Nov. 9 Linfield College (1:30 p.m.)
 - Nov. 16 Pacific Lutheran (1:30 p.m.)**
- *Parents' Weekend; **Homecoming

WILLAMETTE ALUMNUS

SUMMER '68

- 4 The Student Voice is Raised . . . and Heard
Students speak out responsibly to seek changes in the climate of learning
- 10 1968 Report of Gifts
President Smith reports a record amount of gifts for the year
- 11 The Honor Roll
Start of 12 page insert naming donors for the year
- 23 Statement of Gift Income
- 24 Graduate Views Student Activism in Latin America
1963 Alumnus Holt Williams reports his experiences in the Peace Corps in Chile
- 27 CLASS NOTES

Editor: ROBERT C. WOODLE
Classnotes: THERESA PRIMBS
Volume XVI, Number 1

Published Quarterly for the former students of Willamette University.
Second class postage paid at Salem, Oregon. Return postage guaranteed.

Graduates Hear Virtues of Communication

Forms of communication "among ourselves as human beings, the simple everyday you-and-me awareness" was the subject of Willamette's commencement speaker, Kenneth McCormick, during this year's ceremony for 284 graduates on May 19.

McCormick, editor-in-chief of Doubleday & Co., New York, and a 1928 graduate of Willamette, spoke on the sending and receiving of communication, and the necessity to listen, see, and feel.

"We're in a period of almost total freedom from censorship. It's healthy because it puts the responsibility on us to rely on our good taste—or lack of it—and our sense of values. Almost anything that you could want to know is available for you to know. And this is true, more or less, for the first time in history, and it's truer in this country than it is in many.

"... in dealing with the printed and spoken word, our communication is so close, can be so intimate and vital that we need to be alert to its richness or—too often—its low mental-vitamin content."

"Silence isn't necessarily golden, but it is capable of being incredibly rich."

In "sending" communication, McCormick related that "people who have a great deal to say and who have enormous conviction about what they are going to say, deal in a basic language of clear, simple words . . . I urge you to take a lesson from great writers and speakers, who speak simply, clearly, and directly. If you really have something to say, it's the best way."

The art of listening involves concentration "a terribly important thing, but it shouldn't rule out the possibility of accepting, storing away, and evaluating other things that are happening simultaneously and may not happen again in the same set of circumstances. Communication is becoming more complex, and our own senses must sharpen themselves to keep pace.

"... the danger of not listening is that you may miss the one reference, the one sharp-pointed shaft of intelligence that the communicator has to say. We have two ears, so there isn't any reason why we can't develop a way of hearing with each individually.

"Silence is a means of communication. Silence isn't necessarily golden, but it is capable of being incredibly rich." This is evident in the fine arts of communication such as music, painting, photography, sculpture and dance.

"Whenever a new device or a new world of science is opened, there is a tendency to believe, as in medicine, that this answers all the problems. My point is not to deride them. Far from it. But, no more than the printed word has the answer to the world's woes, does the electronic age provide all the answers.



KENNETH McCORMICK had to overcome a microphone short circuit and rainy weather to deliver his thoughtful commencement address on "Communications." It was his second commencement speaking engagement at his Alma Mater. He also addressed the graduates of 1950.

Healthy skepticism, as part of your appraisal of the extraordinary world that is exploding about you, is useful.

"One of the strongest and most important elements in communication is receiving—either absorbing the print you read, the message—when there is one—on TV, or the words that are spoken and intended for your benefit, and often not even intended for your benefit but from which you can learn."

Reading is a "receiving" communication "susceptible of being the most rewarding experience one can have, because you can select what you read, and since—within reason—you can carry it anywhere you want to, there isn't any reason ever to be without something to read."

However, McCormick quoted award winning author W. H. Auden who cautioned, "We're all tempted to read more books, look at more pictures, listen to more music than we can possibly absorb. And the result of such gluttony is not a cultured mind, but a consuming one. What it (the mind) reads, looks at, listens to, is immediately forgotten, leaving no more traces behind it than yesterday's newspaper."

The belief that the speed of communication and transportation, has brought us closer together is a modern fallacy according to McCormick. "It is true that we hear sooner and we get there faster, but in another sense they only emphasize our wide differences when thus confronted and exposed. The means, for a long time, have seemed in a strange way to be the end. That is, if we could all be one small world, each communicating with each, we would get along. But that is increasingly being proved wrong. Our need to do something with what is communicated to us is the essence of the problem.

"If one small part of the advice that is given in this world were taken, there would—admittedly—be some confusion; but there would be some radical changes. So, as important as communication is, it isn't enough."

Self-communication, McCormick believes, is the most important communication of all. "This is more than just discovering consciousness . . . nobody can tell you how to 'self-communicate'; this you will have to learn for yourself. But it will be one of the most rewarding things in your life."

Current "self-communication" for many graduates concerns the draft and the Vietnam war. "Any draft method has faults. Established law and order, on which this country is founded, is being given a pretty severe test, not only in Vietnam, but here at home in the problem of civil rights.

"Nobody can tell you how to 'self-communicate'; this you will have to learn for yourself. But it will be one of the most rewarding things in your life."

"You have made up your minds about the draft. But bear in mind that you will have to live a lifetime with your decision. If it's possible in the present climate to make a rational rather than an emotional decision, I urge you to try."

Graduation entails "leaving a privileged society . . . moving into a world of other values . . . you should hear and be aware of the different drummers around you; and let the one with whom you communicate, if he offers the best that represents your life interest, dominate you, while still tolerating and living with the beat of the other drummers. To hear everything, and yet respond to what is your mission or call to do, is part of the excitement and part of the experience of the first years out of college. You'll love it."

—Elinor Lindquist, '66.

The Student Voice is Raised ...and Heard

Students speak out responsibly
to seek changes in the climate
of learning at Willamette

THE "SPEAK-OUT" appears to be the Willamette students' mode of expression in the wake of much publicized sit-ins, pickets and riots at a few other college campuses this past year. Willamette students, like their counterparts nationally, seek a stronger voice in appraising their educational and social environment. This quest for greater voice and change at Willamette has been aired through numerous means, including letters to *The Collegian*, campus surveys, Student Senate initiatives, the faculty-student conference, and through personal appeals to administrators.

For the most part, the "voices" have been those of responsible students, willing to work within the established channels for change. Effective student leaders have set an example of responsibility, thus avoiding undue turmoil and facilitating favorable responses as their requests are formally considered.

The "speak-out" method has met with considerable success this past year.

To capture what the student voice at Willamette is saying and requesting, and the subsequent results, *The Alumnus* will examine the faculty-student conference; a sampling of attitudes expressed in letters to *The Collegian*; an analysis by Douglas Bosco, past president of the student body, along with an itemized list of accomplishments; and responses of administrators.

MORE THAN any single event, the faculty-student conference in April produced the most clearly defined "student voice" under the theme "The Climate of Learning." Preparation for the conference included administration of the College Student Questionnaire in February to 200 randomly selected students. The CSQ, produced by the Educational Testing Service of Princeton, New Jersey, provided data on student attitudes about various aspects of life at Willamette University. To analyze the results, Eldon E. Park of Princeton, director of the Educational Testing Service, was invited to serve as keynote speaker for the conference. Following are excerpts from his address which was delivered to 44 student representatives and about 50 faculty members and administrators:

THESE ARE Dickens' times—'a time of wisdom, a time of foolishness.' But sadly today it is very difficult to tell which is which. These are the times of generation gaps . . . identity crises . . . when students are seeking relevance . . . From my point of view, both the administrator and faculty member should be seeking relevance in much the same spirit that some of today's students are. Perhaps research can point the way toward relevance, and perhaps the administrator and faculty member together can carry out relevant research.

"... student leaders must be taken seriously, or they will cease being leaders, on the one hand, or they will become extremely effective leaders of their peers on the other, and then watch out!

"The difficulty with occasional bits of information drawn from conversations with students or from articles in the student newspaper is that no one is certain to what extent a certain view is indicative of the prevailing opinions held by students. The administration of the College Student Questionnaires is one step toward gaining greater understanding of students and, therefore, hopefully raising existing problems to a more rational level. Research, however, does not provide answers. A single administration of CSQ does not establish a data trend. The comparison of these one time data with a national sample may be suspect from both a logical and statistical point of view. The important point is that you have begun to use research as a professional tool in order to improve the functioning of the University . . .

"... we are educating students who come to college knowing that they are adolescents and that they want to leave as adults, and they assume there is a difference which they are supposed to discover while they are there. This difference is presumed to include new attitudes, tastes, values, commitments, and competencies . . .

"The focus of this conference is on the climate of learning with special emphasis on student attitudes on the student body . . . the faculty . . . and the administration . . .

(On the national scale) "A key difference between 1963 and 1966-67 is that there is a modest but important decrease in students reporting that they have no voice or a weak voice in formulating the regulations which affect them. I am on dangerous ground when I make an inference here, but I am going to do so anyway. I read this shift to mean that continued student unrest has caused more administrators to consider including students in the decision making processes that affect them. The trouble is that we have had to have crises to effect change. But from what I know of the campus scene now, many a wise and prudent administrator has taken action before an acute crisis existed. I also know that on many campuses it has been the faculty who have helped the administration anticipate the change in student involvement in college policy making. In other words, an alert faculty prodded a cautious administration. On other campuses, an alert student body has enlisted the latent energies of an aware, but not active faculty. On other campuses the administrators joined forces with the students to get the faculty's atten-

tion refocused on the teaching-learning process. I would draw the obvious conclusion that 2 to 1 odds are about the best you can do in any intellectual environment and that 2 to 1, whatever the combination of students, faculty and administrators usually provides the ratio that leads to the critical mass that can effect change.

"BUT WHAT ABOUT WILLAMETTE? Looking at the items on the Satisfaction with Faculty scale, I see that the students in general are enjoying their studies but are less satisfied with the teaching, especially upperclassmen and particularly upperclass women. Students are not very satisfied with the intellectual and creative challenges they are receiving, especially upperclass women. Yet, the students are satisfied with their teachers' competence in their major field of study. It is also interesting to note that freshmen and sophomore women are enjoying their courses less than the other students. This same group of students reports that there is less tolerance for argument and disagreement on the part of the faculty than do the other students . . .

"Probably of most interest to students for some sort of sadistic reason is the Satisfaction with Administration scale score. The general dissatisfaction with the administration as compared with the other scale scores cannot be missed. What this scale score means is quite another matter. One can argue that this score reflects the climate of the times. All students are rebellious. Being dissatisfied with administrators or administrative restriction is in vogue. But most administrators, however, find that rationalization rarely provides a permanent or even temporary solution for a campus problem. Of course, it is all right to sit down and reason out why something is the case, but understanding the problem is a poor substitute for amelioration of the problem. This in one sense is important for all the CSQ data. Some of the data show that certain conditions are more unique to Willamette, while other data indicate strikingly that Willamette students are much like other students elsewhere or Willamette is much like other institutions elsewhere. What must be remembered is that these are not ordinary times. Students know what is happening around the country as far as what other students are like or are doing . . .

"As we look directly at Willamette, we note that a very large proportion of students feel that most of the existing rules and regulations on campus are not logical or necessary. A somewhat

Dissatisfaction With Administration

larger proportion of women feel this way. The latter point may mean that women feel less than equal or it may mean they are reacting to an entirely different set of rules than the men. We also get a consistently strong reading that the university exercises too much authority over student life outside the classroom. This point of view is held by a large percentage of students at many campuses and the trend in this direction is increasing. But the intensity of this feeling on the part of Willamette students is one of Willamette's uniquenesses. Steps must be taken, it seems to me, to examine this question in the university community. New positions must be worked out or at least there must be an involvement on the part of the students to sanction present practices. This approach is a part of John Gardner's concern with self-renewing institutions. He quips that the last act of a dying organization is to issue a new and larger book of regulations and rules. There must be a continuing process within an organization that facilitates a rethinking of current practices. Inflexibility is to be avoided at all costs. All members of an organization, at all levels must feel that they can effect change. In this regard the university can be self renewing, and at the same time can provide a model of constructive action for the students to follow.

"At Willamette almost all students feel that they have almost no voice as individual students in formulating regulations which affect them. One can debate whether an individual student should have such a voice, but if he should, then the challenge to Willamette has been presented.

"The final item I will present on this scale concerns whether the college administration generally treats students more like children than adults. The response is strongly that it does treat them more like children, and that attitude is held more strongly by upperclassmen than underclassmen. The student response to this question, based on a theory of student development, should show a lessening of feeling about this question as the students become upperclassmen. Differential treatment as the student develops within the four year frame of college should lead from adolescence to adulthood . . . from a developing maturity to a developed maturity.

"Concerning the Satisfaction with Students scale, we see substantiated a feeling I have read about in the *Collegian*. Students like each other. The strength of feeling among students about themselves should be used constructively. But the picture we get of Willamette students is not a very exciting one. One thing we can be certain of is that there are few extremists or nonconformists here. That is really true of most campuses, but it is nice to have a few authentic nonconformists around just to keep everyone honest.

"A crucial CSQ question asks how satisfied are you with the degree of concern about political, economic and social issues shown by most students at this college. More students, especially women, are dissatisfied with other students in this regard than are satisfied. Here is where a student can seek relevance for his education. Here is where the basic tenants of a liberalizing education can be tested. What difference does attendance at Willamette make? Why are men less concerned about political, economic and social issues than women?

"In conclusion, what are the students like at Willamette? We know that they are a lot like other students across the country. The important question is what are they becoming. What is Willamette University like? It too is a lot like other colleges and universities. The important question is what is it becoming? . . .

"I would hope that all of you would continue to seek relevance for Willamette and not continue to swing in your separate orbits. For these are not quiet seasons and that makes all the difference."

What Is Willamette Becoming?



ELDON E. PARK (left), director of the Educational Testing Service, and Dr. Richard E. Peterson, Chairman of the Higher Education Research Group at ETS, look over the College Student Questionnaires submitted by Willamette. Park was keynote speaker for the Faculty-Student Conference.

IN THE DESIRE to seek relevance, the conference split into small discussion groups and then reassembled to consider various proposals. It was recognized that the faculty-student conference held no authority in the decision making process, so all resolutions passed by the assembly were done in the spirit of recommendations.

Discussions touched upon nearly every area in "The Climate of Learning," but the major resolutions are summarized below.

A reconstruction of the Student Affairs Committee was urged, with membership to include seven students, five faculty members, the two personnel deans, and the Vice-president for Student Affairs as chairman. The duties would encompass legislation of all student rules and regulations outside of the classroom in what the students termed "home rule." The intent was to relieve the Board of Trustees of the responsibility of determining the rules outside of the classroom, although a provision offered veto power to the President acting for the Board of Governors.

The conference narrowly passed a recommendation "that appropriate representatives of the Student Body be allowed to attend meetings of the Faculty and Board of Trustees where issues relevant to the student body will be discussed."

Discussion in the smaller groups produced other recommendations that were read to, but not adopted by, the conference as a whole. These discussions concerned women's dress rules, faculty involvement outside of the classroom, faculty evaluation, faculty tenure policy, a freshman seminar, independent study projects, team teaching, and other areas relating to "The Climate of Learning."

Dr. Jeremiah Canning, a conference co-chairman, praised the role of the students in the discussions and said that the faculty, administrators and trustee present "could not help but be favorably impressed." He summed up the two day conference: "I thought the level of interaction at the conference was really fantastic. After the smoke cleared when we all had finished airing our pet gripes to each other, it became increasingly clear that we've got a real university here and that we hold in our hands the ability to finish realizing its full potential. A sense of school spirit and common commitment resulted which simply vaporized any 'negative atmosphere' present."

Willamette Collegian

THE COLLEGIAN today is not the All-American publication it was for many years through the early 60's. But for airing current student opinions through an enlarged letters section, publication day each Friday holds an aura of suspense and anticipation. Few areas of the University have not felt the pointed barbs of a crusading student. Writers have heaped abuse upon *The Collegian* itself for "gross unprofessionalism," "irresponsibility," and "bias." Nonetheless, *The Collegian* comes across as an uncensored forum that chronicles feelings of students who are moved to write. The following excerpts by no means capture the full spectrum of student comment, but they represent opinions of writers who desired to "speak-out" about their college education.

☆ ☆ ☆

(After suggesting changes in rules governing off-campus housing, regulatory hours for women, and dress rules, and criticizing Willamette's lack of diversity in the student body, lack of books in the library and book store, and some teachers who "bore you to death," senior Joan Loomis remarked to alumni at Homecoming:)

"... You alumni must be seeing great changes in Willamette since you were here. Now more than ever the demands made upon the student force him to be more critical of all aspects of his education. Willamette is preparing us to live and earn a liv-

ing. We wonder if we are being realistically prepared and if our overall education couldn't be just a little bit better."

—(Nov. 17, 1967)

☆ ☆ ☆

(Senior Don Brown responded to Miss Loomis)

"... As students we should be inquisitive and always strive to improve ourselves as well as our environment. However, it is our responsibility as students to find out the facts of a given situation before passing judgment and making hasty decisions. This is damaging to us as students as well as any cause we might choose to advocate. (Dec. 1, 1967)

☆ ☆ ☆

(In response to an editorial that appeared in the Oregon Statesman which said that yesterday's student generation "... never would have dreamed of assaulting the bastions of faculty or administration control of the institution," freshman Ross Kane said):

"... And just what is so noble about apathy? Accepting everything at face value is easy. You merely close your mind and walk blindly into oblivion, dreaming dreams of ranch style houses, two cats, two parakeets and two children... The difference is that today's generation believes some of the rules and traditions must go in order to make school, learning, and life more meaningful. For we sense in the older generation a feeling of futility, an emptiness. We see them 'bent out of shape by society's pliers,' pliers in the form of rules, standards and traditions still existing, and that we are continually told we must follow... (Nov. 10, 1967)

☆ ☆ ☆

(In defense of Willamette, senior Thomas Mathiesen commented):

"... Every year *The Collegian* is filled with letters complaining about apathy, isolationism, conservatism, etc., at Willamette. They say the University stifles ambition, creativity, responsibility, individual experiences. This, if you'll pardon the slang, is utter bunk. The University is not a playground director. It is here to provide ACADEMIC opportunities for the study of relative ideas... (March 29, 1968)

☆ ☆ ☆

(Former Collegian editor Jon Carder had a little different view on the role of the University):

"... The University should be a forum of discussion, a potpourri of ideas, a place where the so-called "knowledge" must meet the test of validity and application. "Facts" in themselves serve no purpose. It is the ability to use these facts in the real world that distinguishes the student from the sponge, and it is the university that gives a student the best opportunity to learn how—to develop a critical faculty, to begin THINKING instead of absorbing... (April 5, 1968)

☆ ☆ ☆

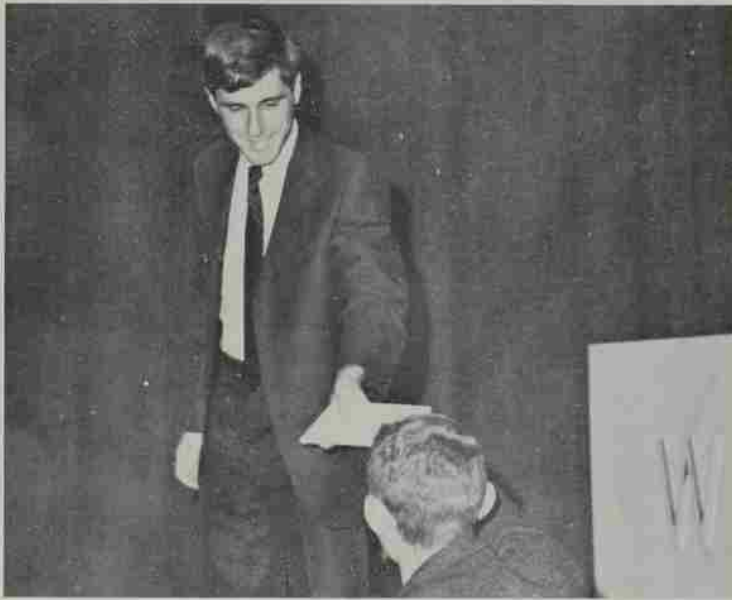
(Two seniors, Dennis Cole and Thomas Angelo, summed up their feelings):

"There is much that can be said about the feelings of many of the Senior Class toward the Willamette experience, however, we yield to one of the greatest liberal spokesmen, Edmund Burke, who said, 'When the reason of old establishments is gone, it is absurd to preserve nothing but the burden of them.' (May 3, 1968)

☆ ☆ ☆

(Junior Terry Hall, who will serve as president of the ASWU through next year, commented in his campaign statement):

"... I have found that a great deal of change is possible within the structure of the university. The old paternalism of the Willamette Family is dying, but it will not be buried until the 'children' that were subject to it are willing to accept the responsibilities that will accompany their freedom."



WILLAMETTE was fortunate to have an effective and responsible student body president this past year in Douglas Bosco. He served as a thoughtful and articulate spokesman for the students and was highly instrumental in welding student opinions into specific proposals for consideration. In his farewell address he itemized some of the changes that his administration supported. We have lifted these changes from his speech for listing later. His other thoughts remain:

"About this time last year I stood here and accepted the job of being your student body president. It was an honor such as had never been bestowed on me before and it was a task which I knew would be difficult. It would be difficult because I did not then believe in student government. Throughout this whole year I did not believe in student government, and I stand before you now and tell you that student government is a farce!

"It is a farce because students simply do not want to be governed. By the time they get to college they are tired of being governed by their parents, their high schools, and, to an extent, even by their past social environment. They want to be free to explore, to think, to re-evaluate and to govern themselves. They do not want a University that acts like a parent with them, they do not want to be told what to do and what not to do by the college president, and they certainly do not want to be governed by other students. And so I decided to dedicate my term of office to the abolishment of student government at Willamette and the establishment in its place of student leadership.

"And by this I mean the leadership of all students working together with their combined skills and ideas and enthusiasm toward the goal of bringing our University into the world of today. So, I asked you to join in bringing our University back to the forefront of change where she was when she pioneered education in the West, and where she belongs today. I can say truthfully today that because of your dedication and effort we have come to the beginning of a new era of leadership for Willamette University . . .

"I have a final comment, and this affects us as students. This may make a lot of enemies in a short time, but may I say that I am sick and tired of the grippers and complainers and character assassins who perpetually find fault and continue to pour venom into the bloodstream of this University.

"I am tired of the 'that's Willamette for you' attitude, the 'I don't know why anyone would want to come to this dump' remark that more than one high school senior heard this last Spring Weekend, and the martyr complex so many students have for having to go to school here.

"I am sick of hearing the insults hurled at President Smith by

those who don't realize that he has granted willingly every single request we have made of him this year, and there have been a lot of requests, believe me. And the ones who complain that there are no Negroes on campus and yet when the administration goes out of its way to recruit Negroes, they were insulted when they came here last weekend. When all of the fraternities and sororities on campus will gladly accept Negroes, then we will have them. Or the ones who bicker that we don't have foreign students—and yet how many have bothered to get to know the ten that we do have. Or the ones who delight in declaring the incompetency of our faculty members when they are equally incompetent as students.

"I have been on many college campuses and have met many student leaders this year from all over the country. And I can tell you with no reason other than honesty that we are lucky to be at Willamette. We are lucky to be able to get to know each other so well, to know our professors, and to work together as students as we have done this year, toward the goals we want to achieve.

"The time has come for us to take pride in this University, to criticize only when we are willing to construct, to not shake our heads in thoughtless agreement to the complainers and grippers and destroyers.

"Let us usher in this new era at Willamette with optimism and strength and determination. Let all of us in this academic community—students, faculty and administrators alike—join together and together seek our goals. Let us remember that Willamette is a good University and can be a great University. And let us never forget, especially now, that Willamette is us."

THE MAJOR proportion of the following changes in policy and student regulations were initiated by the students. They are broken down into three main categories, facilities, academic affairs and student affairs.

FACILITIES

- Residents of Belknap Hall petitioned to have their basement remodeled to equal facilities provided at the other dormitories and fraternity units. This was accomplished.
- Students were invited to express ideas and opinions on the facilities to be offered in the proposed University Center. Many of their suggestions have been incorporated in the plans.

ACADEMIC AFFAIRS

- Students petitioned for and received an introductory journalism course that was not originally scheduled in the curriculum.
- Students requested that final examinations for each course be placed on file at the library after each semester. The faculty expanded the request by stating that all faculty members be required to file copies of final examinations, and such file should cover a five-year period.
- Students requested that mid-term grades be abolished for the upper three classes. This is now before the educational policy committee of the faculty.
- Students requested a pass-fail grading system for one course each semester. The faculty approved a pass-fail program that will start this Fall, limited to students who have a minimum 2.0 cumulative grade average. One course each semester may be designated by the student for grading on a pass-fail basis, with no more than one pass-fail course allowed per student per subject field.

- The faculty revised the traditional oral and comprehensive examination policy. No longer are orals and comps required, but each department will determine what type of senior evaluation shall be used, subject to faculty approval.

- Students have petitioned for a course on Negro Culture to be included in the Spring, 1969, curriculum. This is being arranged.

- For the second year, students have participated in a course evaluation. The results will again be shown only to the professors whose courses are evaluated. According to the original provisions of the evaluation, next year the results may be made public.

STUDENT AFFAIRS

- Students sought and gained equal representation on the University Discipline Committee.

- Students approved a revision in Student Senate so that each living organization has a representative rather than having class officers attend.

- Students requested and received a revision in the convocation policy. The trustees and students more than doubled specified convo budgets to attract a greater number of better speakers. Six cuts are allowed for the 10 convo and six chapel programs.

- Student Senate endorsed a "statement of position" on dangerous drugs and narcotics that was submitted by the administration. The statement outlined Willamette's policy and expressed that "Willamette University (will) take strong disciplinary action up to and including dismissal against any student found to be involved in the illegal purchase, use, possession or distribution of dangerous drugs and narcotics."

- Students requested that the chaperone policy be changed, eliminating the necessity of having a faculty member attend all social functions. The adopted policy now allows for a housemother, parent, living organization advisor, or an alumnus over 25 years of age who is approved by the personnel deans to serve as a chaperone.

- Campus women sought and received a change in dress rules. That adopted policy states: "It is considered the responsibility of every student to dress appropriately and in good taste. Specific dress regulations within each living organization are decided by the women of that living organization."

- Campus women have requested a key or card key system for senior women (thus, the elimination of closing hours for senior women). This request will be reviewed this Summer by the policy committee of the Board of Trustees.

- Hours for freshmen women were extended to 11 p.m. on week nights during the second semester. Hours for Friday and Saturday nights are now 1:30 a.m. for all women.

- Housemothers at women's living organizations have been given the authority to approve on and off campus overnights on school nights.

- Women students rejected a proposal to ask for an extension of smoking privileges to include the living rooms.

- Students and faculty requested a change in the Student Affairs Committee as reported in the summary of the faculty-student conference (page 6). This is being considered by the Board of Governors.

- Students voted to eliminate Christian Resources Week under its present format.

- The prohibition of bringing automobiles to the campus and retaining them here for all underclassmen was lifted for sophomores as more parking areas were developed south of the campus.

- Students instituted a Student-Advisory Board to counsel entering freshmen on various aspects of the University.

- Students sought equal visiting privileges in men's and women's living organizations. Men had previously been allowed visiting privileges in all public rooms of women's living organizations daily from 11 a.m. to five minutes before women's closing hours. Approval was granted for women to visit the men's living organizations on the same time schedule.

- A motion was passed by the Student Affairs committee: "to establish a one semester trial program allowing any invited guest in the private rooms of all school-owned residences on Saturdays and Sundays from 1 p.m. to 5 p.m. Individual living groups may limit hours, but may not extend them. Further rules will be outlined by this committee." The motion has not yet been formally presented to President Smith or the Board of Trustees for approval.



*"We'll Defend You, Baby!
Nobody's Going to Push Our
Gal Around!"*

*Haynie in the Louisville Courier-Journal
Copyright, Los Angeles Times Syndicate*

WILLAMETTE ALUMNUS

THERE IS no question that the student voice has been heard this year. Since the administration ultimately deals with student requests, *The Alumnus* sought the views of five administrators who encounter students directly.

President G. Herbert Smith, who will start his 27th year at Willamette this Fall, said "We have been fortunate to have students who have shown mature judgment and responsible student leaders who have worked through recognized channels in seeking to effect changes on the campus which they deem desirable. The changes which have been indicated in this article have been affected in a rational, decent, orderly manner befitting educated men and women."

President Smith went on to explain that "the problems on some campuses have developed through an absence of proper understanding of the responsibilities of the various segments of the university community. As Willamette has grown larger and more complex we have recognized the desirability of providing channels for expression and opportunities to responsibly participate in and to become involved in the ongoing program and development of the university. These channels include joint faculty and student committees on Student Affairs, Student Discipline, Student Publications, and the College of Law Council. In the past two years students and trustees have participated in the annual Faculty Conference. Student representatives have been invited to meet on special occasions with standing committees of the faculty and the Policy Committee of the Board of Trustees.

"Never has there been any doubt that all segments of the University personnel—trustees, faculty, administration, students and alumni—have a right to be heard and are provided opportunities to express their insights, convictions, and to offer constructive criticism on University affairs.

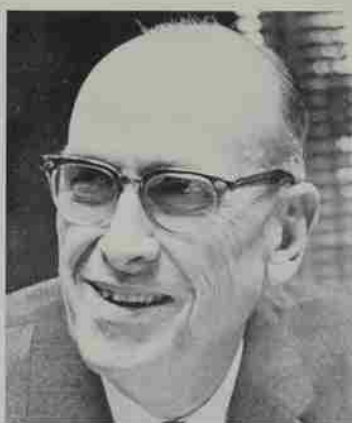
"Neither should there be any doubt regarding the final authority by which the University is governed. Church founded and related, Willamette is a private, independent residential university which *legally belongs* to the Board of Trustees. It operates under a charter granted by the State of Oregon and under the authority of recognized By-Laws adopted for the orderly management of the University. The Board of Trustees has both the moral right and responsibility to govern the University. In its wisdom, the Board delegates specific authority and responsibility to the Faculty, the President and to certain Administrative officers. The responsibilities cannot be abdicated, and the final responsibility of the Board of Trustees to govern cannot be delegated."



Dean Doenges

DEAN BYRON DOENGES of the College of Liberal Arts believes that students today are much more aware of what is going on in the world because of the pervasive nature of modern communication. "Students are quick to note the failure of a faculty member to be current in his subject.

"This past year at Willamette, the students have zeroed in on rules and regulations that affect them. They will zero in on the faculty next," he predicted. "We must get the faculty involved and charged up to meet the intellectual challenge.



President Smith

"Students seem to be more and more concerned about their educational program. This is good. It means that we faculty members must be constantly concerned about every aspect of our subjects.

"Student involvement makes necessary increased faculty dialogue. We should discuss our fields with our peers and not solely address ourselves to undergraduates," he said.

ON THE STUDENT personnel side, Vice-president for Student Affairs Jerry Whipple stated that it is "almost a fact on any campus today that students want to be an integral part of the University community. Our great dilemma is to determine the optimum freedom which will provide a student the opportunity to achieve his goals."



As the student seeks relevancy in his education, Dr. Whipple views the administration's role "to help students gain this relevancy by assisting them to gain insight on what *really is* relevant. We must help create the best possible climate to allow room for individual success and tolerance for failure," he concluded.



Dean Haberer

DEAN OF WOMEN Vera Haberer feels that "we need to be sensitive to students' hopes and aspirations as well as their frustrations and disappointment; we need to provide for student participation in rule-making with a deep sense of responsibility; and we need to encourage students to continue in their respect for legitimate paths of disagreement."

She also expressed the belief that all segments of the University community have the common goals of communication, mutual respect and good will.

On the admissions side, Dean of Admissions Richard Yocom concurs with many experts that today's college students are much more critical and questioning than any previous generation. "They hold that traditions are meaningless unless there is real substance behind them. This is good for us as it causes us to evaluate ourselves and check our motives. Sometimes our answers are a little embarrassing," he allows.



Dean Yocom

The admissions personnel have been seeking greater diversity in their recruitment. "We have made a conscious effort to attract disadvantaged students, both racially and economically—and we would welcome any assistance in this endeavor," said Dean Yocom. Asked if the search included admission of the "non-conformist" type of students he said "we have made no specific effort to exclude them, but then we haven't sought them out either."

A CLIMATE of learning at Willamette this past year has also been a climate of change. The "speak-out" mode of expression has met with favorable response, largely because the voices were those of responsible students. If responsibility remains a constant ingredient, then a cooperative climate will continue to exist as Willamette examines its programs and policies. ■



1968 Report of Gifts

By all objective measures Willamette University has attained a new level of excellence. In faculty and facilities it is better prepared than it has ever been to serve those who choose it as their Alma Mater.

A new demonstration of strength and quality is evident in figures which reveal another record year in gifts and grants of cash and property to the University. For the fiscal year June 1, 1967-May 31, 1968, a total of \$1,771,853.45 was received from all sources.

The record sum, which was \$365,826.45 above the previous record established in 1966-67, enabled the University to complete the \$375,000 matching fund for the University Center and assure its construction in the near future.

Of particular significance was the transfer of the Reynolds Trust Fund to the University by the Centenary-Wilbur Methodist Church of Portland. The Fund, valued at \$331,472 at the time of transfer, provides annual income for scholarships which are given to Methodist students attending the University. The addition of this Fund to the endowment for scholarships dramatically testifies to the strength of the historical and traditional ties which exist between the University and the Church under whose auspices it came into being.

As a result of gifts and pledges received during the past year, the Fund for Educational Excellence, 1965-1972, now stands at \$7,349,101 toward the goal of \$12,500,000. Four years remain in which to secure the balance of \$5,150,899.

Gifts and pledges received since the program was inaugurated in 1965 have been allocated as follows:

Collins Legal Center and Endowment	\$1,570,103
Library	\$ 337,222
University Center	\$ 758,659
Other Campus and Plant	\$1,118,308
Endowment for Faculty Salaries and Scholarships	\$3,564,809
Total	\$7,349,101

Of necessity colleges and universities talk a great deal about dollars. The spring *Alumnus* carried a nationally prepared report on the financial status of higher education including a section on the financial condition of Willamette University. More needs to be said on the subject, and we will continue to ask for your support.

Dollars are, however, only the means to an end, the means by which those who come to receive an additional four years of formal education are further committed to a life long pursuit of learning.

On behalf of the entire University community, and particularly those students who have been and will be the recipients of your generosity and concern, we again express our thanks for your gift. With renewed confidence in the future of Willamette University we pledge our best efforts to achieve greater excellence.

G. HERBERT SMITH
President

WILLAMETTE ALUMNUS

THE HONOR ROLL

1967-68 Loyalty Fund

Alumni gave \$58,604.38 to Willamette University in fiscal 1967-68 (see note page 23), including \$31,830.44 to the Alumni Loyalty Fund for the support of faculty salaries.

Active Alumni whose addresses are currently known number 8435, and of these, 2219 contributed during the year. Gifts to the Loyalty Fund numbered 2145, representing a twenty-five per cent participation, slightly above the national average.

Grateful recognition is given in the list below to Alumni who supported any phase of the University's advancement program during 1967-68. Participation in and gifts to the Loyalty Fund have been separately computed for each Class.

The Class lists include graduates of the College of Law whose Loyalty Fund gifts, unless otherwise specified, have been used for Law faculty salaries. Law Alumni have also been recognized in a special list which indicates gifts by 180, one hundred of whom gave a total of \$2,291.50 to the Loyalty Fund.



1897

Hetta Field

1898

*Edna Rugg Hubbard

1899

Ina Stilwell Taggart

1903

Harry W. Swafford

1905

Lila Swafford Moser

1907

Olive Rigby Lucas
Arthur J. Pridoux
Veve Bartlett Smithson
Rev. Edward J. Winans

1908

Merle Hockett Davenport
Bessie Cornelius Elliott
Ione Fisher Emery
Rev. Fred Hornshuh
Austin C. Price
Ruth Whipple

1909

John C. Johnson
Edith Carter Runey
Elva Winslow Nelson
Orytha Helen Gatch Skidmore

1910

Cynthia Hornibrook Bowden
Clark R. Belknap
George G. Forbes, D.M.D.
Nora Emmel Forbes

1911

Hattie Beckley Bellinger
*Beulah Clark Bullock
Guy A. Woods, D.M.D.

1912

Frank W. Barton
Alta Altman Hurst
James A. Oakes
Frances Pohle Utter

1913

ALF Participation—33%
Amount—\$200.00

Charles E. Bates, M.D.
Harlie A. Blackwell
Gertrude Reeves Frees
Lula Heist
Pearl Bradley Hollingworth
William Schreiber
Sadie Houghney Small
Jessie Young West

1914

ALF Participation—28%
Amount—\$301.00

Ava McMahon Barnes
Electa Chapman Fisher
Mary Pigler Goebel
Lottie Lee Penn Gregory
Laura Heist
Aggie Alford Larson
Edith Sherwood Mason
Reynolds W. Ohmart
Neal L. Zimmerman, D.M.D.

1915

ALF Participation—40%
Amount—\$89.50

Mary Cone Acheson
Mildred McBride Getchell, M.D.
Keith Van Winkle Heinz
Daisy Mulkey Maltby
Milton A. Marcy, D.D.
Helen Pearce, Ph.D.
Leland Sackett
Lucile Kuntz Schramm

1916

ALF Participation—45%
Amount—\$140.00

Read Bain
Edith Rideout Bennett
Herbert Blatchford
Flora Cone Brim
Rev. Maurice L. Bullock
John L. Gary
Beryl Holt
Constance Jory
Florence Page Nussbaum
Rev. George Allen Odgers, Sr.
Ada C. Ross
Samuel W. Russell
Mabel St. Pierre

1917

ALF Participation—33%
Amount—\$171.00

Irma Botsford
Olive Beckley Fields
A. J. Gillette
Esther Emmel Gillette
Rosamond Gilbert Haight
Col. Walter R. Jeffrey
Samuel R. King
Violet Maclean
Netna Emmel Olson
Adelaide Tobie Orange
Ruth Winters Tasker

1918

ALF Participation—42%
Amount—\$172.00

Mabel Boughay
Florence Hofer Bynon
Mary E. Eyre
Lloyd R. Haight, M.D.
Donald Matthews
Blanche Baker Proctor
Marie Lathy Putnam
Charles K. Randall
Mary McKinney Rawlings
Margaret Garrison Robinson
Fannie McKennon Sackett
Esther Cox Todd
Mabel Garrett Wagner

1919

ALF Participation—43%
Amount—\$187.50

Metta Walker Baughman
Robert M. Gatke, Ph.D.
Lelia Johnson
Helen Moore Lee
Vesta Mulligan
Fred Otto
Ruth Stewart Roe
Mary Parounagian Schroeder
Lestie J. Sparks
Carolyn Sterling
Louis P. Stewart
Homer G. Tasker
Charlotte Tebben Wilson

1920

ALF Participation—42%
Amount—\$205.50

Myrtle Smith Baicourt
Freda Campbell
Pern Wells Daugherty
Evelyn Gordon Ekstrom
Estelle Satchwell Gatke
Eva Parrett Klein
D. A. Kloster, D.M.D.
Kenneth Leape
Velma Baker Legge
M. D. Ohling
Odell Savage Ohling
Grace Bagley Person
Hazel Bear Stewart
Genevieve L. Yanneke

1921

ALF Participation—46%
Amount—\$332.50

Rhoda Parsons Baker
Frank B. Bennett, Ed.D.
Ivan Corner, Sr.
Ray Foringer Coulter
Edna Gilbert Davies
Lawrence E. Davies
Robbin E. Fisher, M.D.
Tinkham Gilbert
Helen Satchwell Gragg
Rein E. Jackson
Marguerite Cook Lawson
Glyde Ausman McGrew
Myrtle Mason McKittrick
Muriel Steeves Morse
Linda Crozer Morse
W. Bernard Morse
Ina Moore Potter
Raymond Schmalie
Veda Brown Schroeder
E. B. Socolofsky
Henry R. Spiess
Hubert T. Wilken, M.D.



Paul W. Wise
Sibyl Smith Wise

1922

ALF Participation—49%
Amount—\$1,814.00

Minnie Ambler
Ethel Moccroft Bennett
Andrew C. Caton, D.D.
Lorlei Blatchford Cayton
S. Marie Corner
Emma Shanafelt Day
Lester S. Day
Ramon E. Dimick
Hugh B. Doney
Harold P. Drake
Mildred Clarke George
Grace Collins Goudy
Garret W. Harza
Grace Tyler Hockett
Elsie Gilbert Jackson
Laura Ruggless Kracaw
Virginia H. Mason
Noble S. Moodhe
Eva Roberts Nippes
Dean Pollock
Mildred Brown Pollock
Rev. Edwin T. Randall
Ralph Rehbock
Benjamin E. Rickli
Mabel P. Robertson
Cecil L. Shotwell, M.D.
Irma Fanning Shotwell
Marion Linn Sparks

1923

ALF Participation—49%
Amount—\$414.18

Lola Housley Alter
Elsworth L. Anslow
Verne D. Bain, Ed.D.
Pauline McClintock Bain
William Baker
Vesta Dicks Bean
John C. Brougher, M.D.
Pauline Rickli Cairns
Luther D. Cook
Laura Pemberton Corner
Ina Mae Beisell Cross
Martha Ferguson Dana
Esther Parounagian Downs
W. V. Ferguson
Faye McKinnis Fisher
Florence A. Howe
Marjorie Fliegel Jacroux
Carmen Harwood Jennison
Rev. Francis Kinch
Everett W. Lisle
Thelma Mills
Lillian Cooper Misemer
Deane Hatton Moodhe
Carol Rahskopf Petree

Alta Kershner Rieck
Winifred St. Clair Rogers
Roy L. Skeen, Ed.D.
Ruby Rosenkranz Skeen
Elton L. Von Eschen
Bruce E. White, Ph.D.
Grace Brainerd White
Helen Hardy Yancey
Waldo Zeller, M.D.

1924

ALF Participation—34%
Amount—\$472.00

Byron Arnold, Ph.D.
Isabel Clawson Bowersox
Alma Wells Bratton
James C. Caughlan, Ph.D.
Pauline Remington Cohen
Georgia Morgan Cook
Maurice E. Corthell, M.D.
Lela E. Ellis
Margaret L. Gates
F. Edward Huston
Carolyn Wilson Keck
Albert V. Logan
Violet Cos Mumford
Robert C. Notson
Fred J. Patton
Phyllis Palmer Patton
Irene Walker Rickli
Perry Sloop
Julia Corner Street
Ruth Hill Viguers
Willis D. Vinsón
Ethel Adams Walker
Carol Cheney Winters
Kathleen LaWaut Wrenn

1925

ALF Participation—49%
Amount—\$545.50

Hulda Hagman Atwood
Carmelita Barquist
Herbert S. Booth
Maxine Elliott Dickson
Dwight Findley, M.D.
Elaine Clower Fisher
Laura Best Flisk
Thornton M. Gleiser
Milton E. Gralap
Margaret Legge Griffith
Rev. Percy Malcolm Hammond
Lucia Card Hansen
Lloyd L. Hockett, M.D.
Frances M. Hodge
Harold K. Isham, D.M.D.
Volens Jenks Jones
Mary Keefer
Jennelle Vandevort Moorhead
Adella White Notson
Paul A. Pemberton, M.D.
Paul N. Poling, D.D.

Ruth Ross Rhoten
Paul G. Roeder
Lola Millard Ross
Dorothy Owen Sloop
Fay Sparks
Harry C. Spencer, D.D.
Carolene E. Tallman
Ellis P. Von Eschen
Rev. Leroy H. Walker
Esther Moyer Zeller

1926

ALF Participation—35%
Amount—\$1,235.00

George H. Atkinson
Louise Kaufman Barton
Eva Tacheron Bell
Charles A. Bond
Jessie Pybus Bond
Isabelle Nofstker Bove
Lucile Wylie Brechtel
Esther Bauman Brougher
Filmer Carter, M.D.
Ila G. Comstock
Mary Leighton Doney
Mildred Tucker Duncan
Genevieve Thompson Dyer
Herbert S. Erickson
Pauline Miller Gilliam
Hazel Hinds Hiday
Susie Church Huston
Mabel Flock Larrison
Oma Emmons Mackie
Helen Johnson Marcy
Rachael De Yo Medler
Beulah Fanning Moore
Charles T. Nunn
Gerald Pearson, Sc.D.
Daniel T. Schreiber
Alice Paik Stewart
Lloyd E. Thompson
Hollis Vick
C. Gilbert Wrenn, Ph.D.

1927

ALF Participation—26%
Amount—\$475.50

R. C. Blatchford, D.M.D.
Anna Lennartz Bushue
Daryl M. Chapin, Sc.D.
William Wayne Crow
William T. Edmundson, M.D.
Mary M. Erickson
Eunice Flock
Hazel Burdett Eyfe
John W. Givens
Nena Froloff Haynes
Ruth Drew Holman
Dean Lobaugh, Ph.D.
Eleanor Merewether Lobaugh
Lt. Col. Theodore B. Mitzner

Edgar Mumford
 Hazel R. Newhouse
 Cora Barkley Oliver
 Mildred Tomlinson Phillips
 Olive Tomlinson Poling
 Sadie Jo Read
 Viola Carrier Renshaw
 T. D. Schindler
 Loyal A. Warner
 Walter W. Welbon

1928

ALF Participation—33%
 Amount—\$897.50

Mildred Mills Blatchford
 Albert J. Boothby
 Rosa Ricco Butterdahl
 Claudine Gerth Elbert
 Albert W. Herrman
 Hobart R. Kelly
 Doris Condit Lantz
 Bessie Cox Larsen
 Kenneth D. McCormick, Litt.D.
 Louise Nunn McGilvra
 Hugh McGilvra
 William Mickelson
 Frances Lemfrey Miller
 Paul Miller
 Ellen Van Nice Mitzner
 Harold S. Mumford
 O. B. Patton
 Virginia Crites Rigby
 Neva Root
 L. E. Schreiber
 Vernon R. Taylor
 Rev. Ormal B. Trick
 Paul G. Trueblood, Ph.D.
 Irene Breithaupt Van Natta
 Asa C. Zeller

1929

ALF Participation—46%
 Amount—\$1,106.00

Reeve H. Betts, M.D.
 Esther Lisle Billman
 Beatrice Lockhart Bliss
 Helen Hisey Bohannon
 Neil J. Brown
 Rev. Everett Gardner
 Frank P. Girod, M.D.
 Louise Liere Glenn
 Donald K. Grant
 Alice Lane Hopkins
 Bernice M. Jackson
 Charles L. Kaufman, M.D.
 Elma P. Kimbrell
 Dwight Lear
 Grace White Ledbetter
 W. Glenn Ledbetter
 Elsie Tucker Lewis
 Elma White Montgomery
 Charles Loren Mort
 Emma Jean White Potts
 Bertha Ripplinger
 Doris Phenicie Silke
 William B. Smullin
 Anna McKinley Swafford
 Georgia Fairbanks Taylor
 Mary Louise Aiken Thione
 William Tweedie
 Margaret Klein Walker
 Carolyn Parker Welcher
 Vivian Isham Wilken
 Margaret Wood Woodworth

1930

ALF Participation—42%
 Amount—\$670.50

Roberta Vannice Boylen
 Mary Hershberger Church
 Loretta G. Fisher
 Lois Benjamin Gardner
 Helene Price Green
 Sarah Poor Hallin
 Harold Hawk
 Helen L. Hughes
 Raymond Hurley
 Katherine Everett Kaufman
 Walter H. Kaufman
 Wendell M. Keck, Ph.D.
 Donna Hildeshelm Kramer
 Marion B. Lamb
 Frances McGilvra Litchfield
 Emily Brown McClure
 Helen McPherson

Margory Miller Marsh
 Marion Morange, Ph.D.
 Fay Irvine Mort
 Kenneth H. Mosher
 William W. Mumford
 Rev. George L. Poor
 Ruth Burch Renfroe
 Florence Emmons Riggs
 John F. Risley
 Leta Hale Roehl
 Frieda Falconer Schreiber
 Rev. Harold S. Shellhart
 Eugene H. Silke
 Anna Lanke Van Winkle
 Lewis Van Winkle
 Evelyn Hartung Zeller

1931

ALF Participation—43%
 Amount—\$766.50

Gertrude Gehler Bergman
 Eva Gorham Craig
 Hugh B. Curran, D.M.D.
 Esther Ross Curryer
 E. Grace Henderson DeHarpport
 Francis L. DeHarpport
 Roberta Archibald Dykes
 Marna Powell Estep
 Judge Joseph B. Felton
 Margaret L. Ghormley
 Frank N. Grover
 Bonnie Weinheimer Hart
 Constance Fisher Hollingworth
 Margaret Morehouse Kaufman
 Margaret Warnke King
 *F. Howard Kurtz, M.D.
 Jean Middleton McAllister
 Virginia Edwards McCamant
 Helen Louise Brown McMinimee
 Warren A. McMinimee
 Edith Morange Meiseger
 Harold R. Meiseger
 Rosalind Van Winkle Melton
 Lois Barker Metcalf
 Howard F. Miller
 Mary Allen Miller
 Norabel Pratt Miller
 Raymond Miller
 Beatrice Hartung Moore
 Albert Lars Nelson
 Mildred Cannoy Pearson
 Jennie Lilly Roys
 Lola Basch Seegar
 Bruce Spaulding
 Josephine Albert Spaulding
 Ellen Mae Standard
 Ramond C. Waddel, Ph.D.
 Edward C. Wells, Sc.D.
 Elizabeth Atkinson Whitsett
 Pauline Findley Wulf

1932

ALF Participation—31%
 Amount—\$783.50

Nellie Bradley Ackerman
 Sarah Dark Beall
 William H. Beall
 Gertrude Gehler Bergman
 Edith Findley Brydon
 Charles S. Campbell, M.D.
 Rosetta Smith Caswell
 Carl Cording
 Stearns Cushing, Jr.
 Jesse C. Deetz
 Marjorie Moser Durham
 Alfred J. French, M.D.
 Lois V. German
 Lloyd D. Girod
 Doris Clarke Hamilton
 Margery E. Hannah
 Esther Girod Jensen
 Ellen J. Moody McBride
 Marvella Edwards Mefford
 Clarence A. Poor
 Mildred Leighton Query
 Helen Ney Standcliff
 Margaret Marsh Walker
 Ruth Barnes Warner
 Rev. Walter R. Warner
 Irene Widner Weiler
 Irma Sawyer Wells

1933

ALF Participation—32%
 Amount—\$299.00

Gertrude Beard Blair
 Frances Jackson Bushnell
 Barney G. Cameron
 Faye M. Cornutt
 Hazel Snyder Crothers
 Walter E. Erickson
 Gladys Taylor Garlinghouse
 Bernice Rickman Gordon
 Leland B. Gould, M.D.
 Gilbert C. Hamman
 Robert Lee Houck
 Erwin F. Lange, Ed.D.
 Beulah Cramer McLennan
 J. D. McLennan
 Dorothy Rose Marcy
 Frances Laws Margosian
 M. E. "Gus" Moore
 Marjory O'Dell Morgan
 Lt. Col. Del K. Neiderhiser
 Harold Rhoten
 Harold Rose
 Lucille Flanary Rose
 Marcelle Demytt Roth
 Harriett Adams Smart

1934

ALF Participation—35%
 Amount—\$638.50

Rev. E. J. Aschenbrenner
 Faitha Sherburne Bercovich
 Savilla Phelps Busick
 Sue Louise Pringle Bushnell
 Vernon C. Bushnell, Ph.D.
 Helen Childs de Lespinasse
 David G. Drager, Jr.
 Blair F. Dunlap
 Frederick Edmondson
 Virginia Matlack Frederick
 Anna Calaba Fuller
 Thomas W. Goynes
 Lowell L. Gribble
 Olga Janik Hawley
 Ruth Schreiber Houck
 Rev. Ross Knotts
 Naomi Hewett Labberton
 Pauline Lockart McMahon
 Percie M. Miles
 Margaret A. Morris
 Kenneth Oliver, Ph.D.
 Madaline Schmidt Oliver
 Frances Albee Plancic
 Roberta Mills Price
 Margaret Purvine
 Roberta Brainard Rice
 Rex R. Rhoten
 Eugene L. Smith, Ed.D.
 Jessie Fukuda Tanaka
 Richard H. Upjohn, M.D.

1935

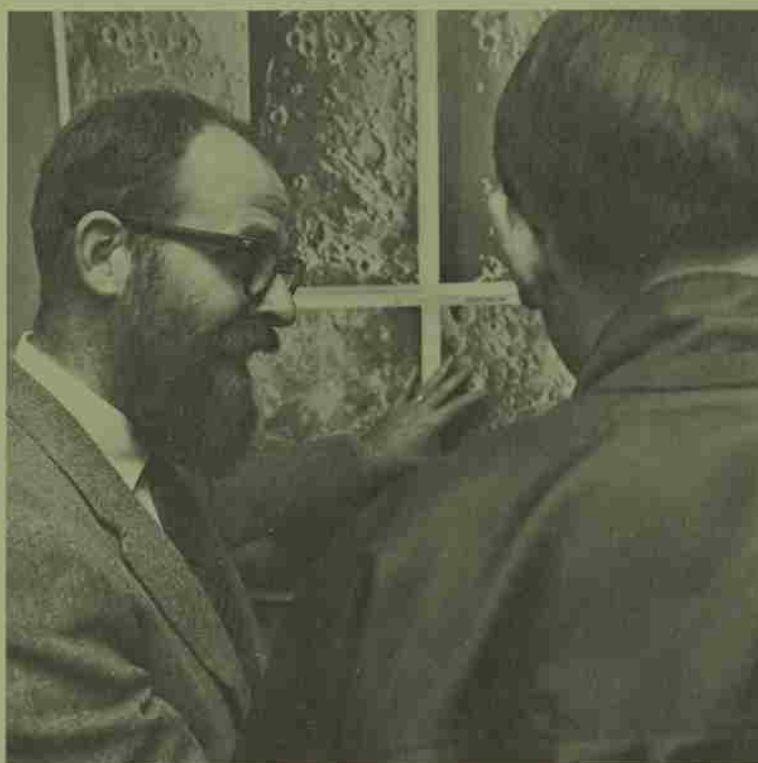
ALF Participation—21%
 Amount—\$349.00

Anonymous Donors
 Donald L. Erickson
 Edward Prantz
 Ruth Chapman Prantz
 Sydney Hannaford Gustafson
 Frederick P. Harris, Ph.D.
 E. Loraine Sheldon Kissling
 Harold Lamb
 Isobel Morehouse Lemmon
 Richard H. Locke
 Carol Fleming Markee
 Francis Schilling Miller
 Eleanor Yarnes Mosher
 William A. Mosher, Ph.D.
 Willis Noel
 Forrest E. Rieke, M.D.
 Ethel Adam Schreiber
 Edith Sidwell Scott
 Arthur B. Smith
 Karl E. Weisser

1936

ALF Participation—33%
 Amount—\$501.50

Michael Balkovich
 Helen Knight Beaver
 Harriet Sanders Burdette
 Laurance A. Burdette
 Kathryn Smullin Chenoweth
 Gwendolyn Hunt Coleman
 Galen K. Dean
 F. de Lespinasse
 Donald John Egr
 Harry E. Emmel, M.D.
 Jeremy Upston English
 Hortense Taylor Foster
 Dorothy Durkee Harris
 Mary Nelson Hilton
 Edna Holder
 Robert L. Jeffcott, D.M.D.
 Marian Pope Kahl
 May Ringo King
 Burton C. Lemmon
 Dorothy Minnich McKey
 Esther Gibbard Manning
 Kenneth G. Manning
 Myrtle Wettlaufer Miller
 Waldo O. Mills, Jr., M.D.
 C. Gordon Morris
 Carl Rhoda
 John M. Ross, M.D.
 Richard Smart
 Gladys Hanson Smith
 Margaret Haight Thome
 William M. Thome, Jr.
 William B. Voss
 Lois Underwood Weiler



Second Century Club 1968

The Second Century Club is composed of Willamette University Alumni who give \$100 or more annually to the Alumni Loyalty Fund. During 1967-68 this giving leadership resulted in a total of \$10,365 and represented 31% of the entire Fund. To those listed below the Alumni Association and the University are particularly grateful for generous support.



Dr. Robert A. Anderson
 Dr. and Mrs. Robert F. Anderson
 Mr. George H. Atkinson
 Mr. and Mrs. James T. Barnett
 Mrs. Hugh M. Bell
 Mr. and Mrs. Charles A. Bond
 Mr. Albert J. Boothby
 Mrs. Charles J. Bowles
 Dr. and Mrs. John C. Brougher
 Mr. George L. Buland, Jr.
 Mrs. Andrew H. Burnett
 Dr. Charles S. Campbell
 Mr. and Mrs. Paul B. Cole
 Dr. Maurice E. Corthell
 Mr. and Mrs. Travis Cross
 Dr. Hugh B. Currin
 Mr. and Mrs. Lawrence E. Davies
 Mrs. Joseph M. Dyer
 Mr. David John Erickson
 Dr. William T. Edmundson
 Dr. Allan L. Ferrin
 Mrs. Norman W. Frees
 Miss Lois V. German
 Mr. and Mrs. A. J. Gillette
 Mrs. Pauline M. Gillim
 Mr. John W. Givens
 Mr. Alan C. Goudy

Mrs. Elmer Goudy
 Mr. and Mrs. Dale Gustafson
 Mr. and Mrs. Evans T. Hamilton
 Mr. Winthrop C. Henderson
 Mr. and Mrs. George W. Hoyt
 Dr. Donald M. Jeppesen
 Dr. and Mrs. Charles L. Kaufman
 Dr. Kenji Kurita
 Mr. Ray H. Lafky
 Mr. and Mrs. George Litchfield
 Mr. and Mrs. Eugene L. Lowe
 Judge and Mrs. W. M. McAllister
 Mr. Kenneth D. McCormick
 Mr. and Mrs. Hugh McGilvra
 Mr. and Mrs. Warren A. McMinimee
 Mr. Charles K. Mills
 Mrs. George Montgomery
 Mr. Dan E. Mosee
 Dr. and Mrs. William A. Mosher
 Mr. William W. Mumford
 Mr. Bernard Newby
 Dr. Glenn A. Olds
 Dr. and Mrs. Gerald Pearson
 Dr. Clay A. Racely
 Dr. and Mrs. John Rehfuess
 Mrs. Virginia C. Rigby
 Dr. John M. Ross

Mr. John C. Roth
 Mr. Sidney Schlesinger
 Mr. William B. Smullin
 Mr. and Mrs. Glen V. Sorensen
 Mr. David I. Stall
 Prof. William M. Stone, Jr.
 Mr. and Mrs. Vernon R. Taylor
 Mrs. R. I. Thieme, Sr.
 Dr. Richard H. Upjohn
 Mrs. Floyd L. Utter
 Mr. Ellis Von Eschen
 Mrs. Norman White
 Dr. and Mrs. Hubert T. Wilken
 Mr. and Mrs. G. W. Wintz
 Dr. Neal L. Zimmerman

1937

ALF Participation—33%
 Amount—\$929.00

John R. Adlard
 James T. Barnett
 Joseph Blanchard
 Martha Warren Burdett
 Helen Burdick Burk
 Helen Purvine Burnett
 Jack F. Connors
 Ronald P. Crossland
 Lincoln Doney
 George E. Erickson
 Shirley Siegner Faith
 Bessie Gregerson
 Margaret Howerton Gullickson
 Winthrop C. Henderson
 Marian Wakefield-Hermann

Julia G. Johnson
 Randall B. Kester
 Lucy M. Klein
 Constance Smart Kopp
 Helen Peterson Minter
 Laurance L. Morley
 K. James Nakagata, M.D.
 Margaret Hupp Newell
 Edna Savage Olson
 Rev. Warren W. Peters
 James H. Pyke, D.D.
 Julia Philip Raser
 R. Cloyd Riffe
 Forest E. Robinson
 Wilfred C. Sutton, Ed.D.
 Marjorie Ann Thorne Thorpe
 Charlotte Kallander Thuesmel
 Luis A. Turner

Charles N. Versteeg, M.D.
 Lois Webb Wennstrom
 Rachael D. Voccom, Ph.D.

1938

ALF Participation—30%
 Amount—\$628.00

Verne Adams
 Robert E. Anderson, D.M.D.
 William E. Beard
 Rosamond Weston Burroughs
 Lunelle Chapin
 Charlotte Litchfield Dixon
 Margaret Hauser Ebert
 Ariss Jones Englund
 Barbara Crookham Euler
 Catherin L. Headrick
 Charlotte Byre Hunt
 Rev. Ralph G. Kleens
 Una Lee Kruse
 Thure A. Lindstrom, Jr.
 Robert L. McClure
 C. Maynard McKinley
 Arthur Myers
 Robert S. Nelson
 Rev. Charles S. Neville
 Mary Jean Sargent Neville
 Almeron T. Perry, M.D.
 Lee V. Ragsdale
 Leonard E. Ranton
 Myron Ray
 Frank D. Reid, D.M.D.
 Lee N. Rudin
 Theresa Ulrich Rudin
 Allan Stevens, Sr.
 Prof. William M. Stone, Jr.
 Lillian Hart Viken
 Melvin G. Viken
 Otto J. Wilson
 Tatsuro Yada

1939

ALF Participation—18%
 Amount—\$486.00

Margaret Taylor Anderson
 Elliott D. Becken, Ph.D.
 Jean Anunsen Brady
 Pearl Boothby Bucklin
 Lois Burton Cleveland
 Belle Brown Elmer
 Eleanor Johnson Gillespie
 Tyrone Gillespie, D.C.L.
 Lawrence Guderian, D.D.
 T. Melvin Holt
 Karl Kahle, Jr.
 Esther Nelson Kraemer
 Valera Amort Lanier
 Betty Crane Marion
 Ruth Ramsden Nelson
 Bingham G. Powell
 Gretchen Spencer Powell
 Clay A. Racely, M.D.
 Barbara Kurtz Smith
 Norma Fuller Starrett
 Martha Okuda Tachino
 Irvin P. Wall, M.D.
 Rev. Orval M. Whitman
 Margaret Macy Wilson
 Robert Wilson, Ph.D.

1940

ALF Participation—29%
 Amount—\$948.50

George B. Abbott
 Betty Starr Anderson
 Eleanor Perry Baker
 Roger Baker
 Mabel Lenz Balkovich



Maravene Thompson Barnett
 Verna Vosper Berg
 Warren Biggerstaff, Ph.D.
 Gerald C. Burnett
 Dwight Catherwood
 Helen Neiger Cherry
 June Brasted Chipman
 Beth Hall Clark
 Bellrose Molloy Collins
 C. M. Collins
 Jessica Kinsey Corey
 Barbara Chapler Dewar
 Reuben W. Dutton
 Margaret Kells Hiestand
 Harold R. B. Hutchison, D.M.D.
 Agnes Mickey Kaiser
 Marvin M. Lacy, M.D.
 Virginia Furst Lacy
 Madge Leslie
 Capt. John A. Lindbeck
 Erna Taylor Llenas
 Mae Morrison McKinley
 Rev. Carl B. Mason
 Dan E. Mosee
 Gertrude Hughes Partlow
 Doris Riggs Poque
 Philip M. Rummell, M.D.
 Julia Foglesong Runyan
 Sidney Schlesinger
 Martha Roddy Shirley
 George J. Sirnio, Ed.D.
 Roger C. Southard, M.D.
 Elizabeth Ann Zook Stainsby
 David I. Stall
 Helena Schneider deSully
 Lorraine Vick
 Irma West, M.D.
 Lois Herman Whalin
 Betty Williams Zumwalt

1941

ALF Participation—36%
 Amount—\$607.00

Grace Jackson Anders
 James K. Anderson
 Floyd B. Baker
 Morris C. Beers
 Paul I. Bennett
 Robert Brady
 John A. Brown
 Winston Bunnell
 William J. Byars
 Harry Calbow, Jr.
 Marjorie Herr Caldwell
 Edwin E. Cone
 Vernon D. Casterline, M.D.
 Alice Dahlen
 Oscar L. Donaldson, Jr.
 Allan L. Ferrin, M.D.
 Margaret Wright Florea
 Hazel Rummell Gallaher
 Peter H. Geiser

Roland E. Gleason
 Ernest P. Greenwood, M.D.
 Helen Dean Grennan
 Gilbert S. Heald
 Richard D. Jewett
 Barbara Lamb Jones
 Richard H. Jones
 Amy Sebring Kahle
 William H. Kilkenny
 Vernon A. Larson
 Mabelle J. Lilburn
 Ardea Hanson Mohr
 Muriel Smithson Moore
 Warne H. Munn
 Arthur G. Olson
 Jeannette Holst Onffroy
 Madolyn Best Palmer
 Myron Poque
 Jewell Minier Potter
 Barbara Young Reinhard
 Marjorie Van De Walker Sherman
 John H. Stalnaker, M.D.
 Evelyn Jane Sherk Stevens
 Ardo B. Stocks
 Sam R. Sumner, Jr.
 William R. Thomas
 Barbara Pinney Treiber
 Dean D. Trumbo
 Genevieve Stoddard Vehr
 Taul Watanabe
 Everett Wilcox, Ed.D.
 Frances Gorsuch Wilcox

1942

ALF Participation—35%
 Amount—\$957.50

Dorothy Moore Achor
 R. Winfield Achor
 Charlotte Ellingworth Aslanian
 Claude W. Barrick, Jr., M.D.
 Robert P. Blanding
 Carl Bowman
 Madge Thompson Broshot
 Hilma Breuser Byars
 Elizabeth Hamilton Caldwell
 Boris Laney Childress
 John R. Christopher, M.D.
 Lois Moore Clement
 June Woldt Cone
 Macario T. Corpuz
 Corliss Clark Cotton
 Robert E. Daggett
 Rev. William Elmer
 Luann Green Ent
 Maurice Fitzsimons
 H. Sumner Gallaher
 Chloe Anderson Gilmore
 J. Lee Gilmore, Ph.D.
 Carol Johnson Guderian
 Wayne Hadley
 John W. Hathaway

Loren D. Hicks
 Barbara Minor Hottinger
 Kenneth J. Hunt
 Harry S. Irvine, Jr., M.D.
 Maryjane Smith Irvine
 Jean Geddes Johnson
 Ivan T. Lowe
 Eve Shellito Lucas
 Ralph E. May
 Bertha Boyle Mitchell
 Gordon H. Moore
 Greta Motzen Morley
 Rosemary Detweiler Murrell
 Delores Hatz Munn
 Glenn A. Olds, Ph.D., D.D.
 Frances Harris Parke
 Lawrence C. Personett
 Robert L. Furbrick, Ph.D.
 Orville D. Ragsdale
 Arthur S. Rathkey, M.D.
 A. David Reinhard
 Tom Riches
 Raymond Shirley
 Cleo Nissen Swenson
 Oscar Swenson
 Hale Tabor
 Douglas J. Treiber
 Robert D. Van Patten
 Bruce Van Wyngarden
 Maxine Holt Van Wyngarden
 Nelle Reeder Vazakas
 Bob W. Voight
 Ward E. Walker
 Avis Pick Waring
 Cecil Wickline
 Gwendolyn Griffith Williams
 Margaret Siegmund Wilson
 Helen Acheson Wolfhagen
 Marion Sanders Woodham

1943

ALF Participation—25%
 Amount—\$244.00

Edna Hopfer Bryan
 Iris McCurdy Bunnell
 Dean H. Byrd
 Miriam Jensen Danner
 Lt. Col. Fred Ellis
 Muriel Lindstrom Eshleman
 Elvy Frederickson, Ph.D.
 Betty Brock French
 Betty Sackett Heald
 Eloise Smith Irwin
 Ralph J. Kennedy
 John E. Martin
 J. Wallace Olson
 R. Merle Palmer
 Ancil H. Payne
 Nancy Boles Peters
 Harriet Monroe Peterson
 Dorothy Calderwood Petrequin
 Betty Thelander Shaw

Norman Shaw
 Hall Simons
 Amedee M. Smith
 Audrey Fehler Smith
 Reeva Schmidt Spies
 Ruth Matthews Tabor
 June Earle Trumbo
 Shirley Caulfield Tomlinson
 Olivia Olson White

1944

ALF Participation—17%
 Amount—\$213.50

Anabel Dickson Albert
 Robert B. Albert
 John Beeble, M.D.
 Barbara Pitts Bowles
 Connie Graves Comer
 Marjorie Maulding Coughanour
 Janet Hagglund Craine
 Anthony Fraiola
 James Garson, D.M.D.
 Glenmerva Hornsberger Goodrich
 Shirley McKay Hadley
 Mary Anne Owen Kortemeyer
 J. Robert Lee, M.D.
 Paul F. Libby
 George R. Luthy
 Betty Geannet Petersen
 Ruth Ranson Reiniger
 Louise Lucas Stalnaker
 Gladys Crawford Stearn

1945

ALF Participation—29%
 Amount—\$326.00

Mary E. Bennett
 William B. Cate, Ph.D.
 Eunice Massee Davis
 Eldon Merritt Diehm
 Emma East Donovan
 Daryl W. Drorbaugh
 Elaine Murray Ellis
 Brady Gallagher
 Vincent M. Genna
 Florence Duff Horton
 Lois Robinson Hosmer
 Jean Fries Hunt
 Doris Doughton Jewett
 Kenji Kurita, M.D.
 Mary Acheson Libby
 Lillian Oliver McLaughlin
 Alice Jones Northway
 Jean Carlin Sanesi
 Betty Jean Andrews Saveried
 Marion Carter Showers
 N. D. Smith, M.D.
 Rev. Nevitt B. Smith
 Aileen Hutchinson Steeves
 Richard Steeves
 Abe Steinbock
 Charles Curtis Strong, M.D.
 Vernon Summers, M.D.
 David M. Teeter
 Helen E. Thomas
 Joyce McClendon Zipprich

1946

ALF Participation—30%
 Amount—\$196.50

Ina Mae Monroe Aden
 Delyon Long Barrett
 Mary Jean Nims Beegle
 Janice Patterson Cate
 Betty Balch Corey
 David R. Davis, M.D.
 David C. Demster
 Myrtle Meier Drorbaugh
 Lorraine Nelson Ellis
 Ruth Farmer Feinberg
 Jane Huston Fitzsimons
 Don Fox, M.D.
 Roberta Yocum Fox
 Virginia Case Gallagher
 Dorothy Jean Hall
 Dorothy Kenney Johnson
 Jeannette Mack Luthy
 June Equiman McCullum
 Thomas G. Murphy, M.D.
 Myrtle Pylman
 Ann Strother Sandoz
 Betty Randall Strong
 Charles Wicks, Ph.D.
 Miriam Day Wicks



1947

ALF Participation—25%
Amount—\$532.50

- Betty Sinkala Acton
- Winner Acton, Ph.D.
- Donald S. Barnick
- Elaine Cloudy Bartsch
- Frank M. Bennett, M.D.
- Marian Bertoglio
- Barbara Causey Butts
- John W. Cotton, Ph.D.
- Marion Crews
- Garrel F. Deiner
- Robert H. Donovan
- Adele L. Egan
- Robert M. Fletcher
- Richard L. French
- Lloyd F. Heimsath
- Elaine Berquist Iverson
- Wayne E. Jacobson, M.D.
- Donald M. Jeppesen, M.D.
- Dale E. Jones
- Hester Linn Lafky
- Lore Curtis Lafky
- Patricia McCargar
- John A. Macy
- Velora Williams Morris
- Evelyn Johnson Page
- Robert D. Perry
- Willis B. Perron, Ph.D.
- George E. Russell
- Benjamin F. Schaad
- Wilbur L. Senders, M.D.
- Georgia Hall Spooner
- Thomas L. Stearn, M.D.
- Nancy Stuart
- Jack L. Watson
- Doris Ewin Wilson

- Barbara Korell White
- Albert E. Wickert
- Loren Winterscheid, Ph.D., M.D.
- Muriel Oliver Winterscheid
- Howard R. Woodburn, Jr.
- Marion Denson Yosinitsky

1949

ALF Participation—28%
Amount—\$1,538.00

- Donald L. Alderton
- Jean Marie Crakes Ambrose
- William R. Barber
- James K. Bartlett, Ph.D.
- Milton R. Baum, Ed.D.
- Eric P. Bergman
- Ota D. Binegar, Jr.
- William Bonnington, M.D.
- Isabel Mason Buschman
- Chester Chiles, Ph.D.
- Mary Alice Kamm Chrismer
- Lt. Col. Charles E. Crecelius
- Dorothy Libby Cross
- Beverly Briggs Cross
- Travis Cross
- Benton R. Dailey
- Joan Morgan Darou
- Patricia Holtz Fairbank
- Raymond Fudge, Ph.D.
- Eric Fitzsimons
- Roberta Meyer Frus
- Vee Gould
- Edith Fairham Gunnar
- Wendell C. Hall
- Barbara Nelson Hartley
- Marjorie Hawkins Johansen
- Ethel Larson Jones
- Ira W. Jones

1950

ALF Participation—22%
Amount—\$672.50

- Roger C. Adams
- Roberta Batey Allison
- Jean Carrico Barber
- Lawrence W. Barham
- Gordon D. Barnhart
- Virginia Allen Barnhart
- P. Wesley Bolliger
- Joseph Brazie
- Roland V. Brown
- Glennis Allen Buehning
- Walter P. Buehning
- John M. Byhre
- Allan H. Carson
- Dale C. Cleaver, Ph.D.
- Norma Faaborg Cole
- Paul B. Cole
- Janice Smith Edmondson
- Rex Edmondson
- Thomas L. Edwards
- Al Fudge
- Polly Pollock Fudge
- Betty Thompson Fudge
- Dean C. Gatewood
- Robert L. Gilliland
- *D. Russell Gochnour
- Ruth E. Haggelstein
- John W. Hakanson
- Mary Frances Libby Hales
- Richard D. Hartley
- Fern Ingram Hills
- Addie Snoddy Holmes
- Bernice J. Isham
- Harold Jole
- Marilyn Dixon Jole
- Audrey Lien Kaplan

- Marjorie Lundahl Baum
- Alan Bickford
- Jean Rickli Bolliger
- Charles S. Bowe, Jr.
- Jack R. Brown
- Jacquelin Chute Calkins
- Jeneane Christensen Cherry
- Lawrence T. Cherry
- Russell S. Day
- Eugene P. DiLoreto
- Donald B. Eshleman, D.M.D.
- Cdr. Carl W. Fedge
- Alan C. Goudy
- John B. Gunn
- Sara Louise Smith Gunn
- Frank J. Hedges
- M. R. Hunsaker
- May Jeffery R. McDougall
- Howard Mader
- Ellen Reynolds Martin
- Helen Slevins Martin
- Robert S. Miller, M.D.
- Conrad T. Miner
- Terry L. Murray
- Valeva Beatty Murray
- Janey Stark Nicoll
- Gilbert Oliver, D.M.D.
- Patricia Hammond Oliver
- Philip I. Phipps
- Sue Woodward Place
- Rev. D. O. Poindexter
- Marion Sayre Poindexter
- William M. Ross, M.D.
- Paul J. Russell
- Barbara Robinson Ryals
- Diane Proctor Stearns
- Douglas H. Stearns
- Richard Stratton
- Robert G. Taylor
- Margaret Guice Thomson
- Scott Thomson, Ph.D.

ALUMNI LOYALTY FUND LEADERS

Percentage of Participation	Number of Donors	Amount of Dollars
1922 49%	1968 97	1922 \$1,814.00
1923 49%	1953 76	1949 1,538.00
1925 49%	1952 75	1926 1,235.00
1921 46%	1942 67	1929 1,106.00
1929 46%	1949 66	1942 957.50
1916 45%	1957 66	1940 948.50
1968 45%	1958 63	1937 929.00
1919 43%	1962 58	1951 913.50
1931 43%	1961 56	1928 897.50
1918 42%	1955 55	1952 832.00
1920 42%		

1948

ALF Participation—21%
Amount—\$414.00

- Dale A. Bates
- Lora Ellen Robinson Bates
- Jean M. Caldwell
- Laura Bates Carlson
- John M. Chrismer
- Jean Gibbons Couzens
- Henry M. Ercolini
- Merlin Estep
- Leighton C. Fairham
- Patricia Miller Fletcher
- Ellen M. Forslund
- Rev. W. Raleigh Gourley
- Robert P. Gray, D.D.S.
- Earl Hampton, Ph.D.
- James C. Hatfield
- Patricia Haverty
- David M. Holmek, M.D.
- Carolyn Brady Lindbeck
- Lucien B. Jones
- Donald E. Link
- Ethel Closs McManus
- Ward C. Miles, M.D.
- Patricia Kenney Pardey
- Joyce Purman Patton
- Artie Phillips Rodgers
- Caroline Cooper Saunders
- Allan Voight, M.D.
- Dorothy Deal Wells

- Robert Kester
- Al F. Ledendorff
- Edward C. Lind
- Eugene L. Low
- Guy L. Lutz
- Jean Carsh McColl
- Elizabeth Guttridge McMullin
- Joan Thomas Macy
- Joy Bushnell Mason
- Leonard E. Maurer
- Charles K. Mills
- Dale Morgan
- Marilee Olson Morgan
- Robert W. O'Dell
- Richard M. Page
- Alan R. Patton
- Helen Montag Pickett
- Calvin L. Plants
- Bonnie Daugherty Ploeger
- Don E. Boulson, M.D.
- Marjorie Powell
- Robert C. Rhoads
- Alan G. Robertson
- Benneth M. Robertson, D.M.D.
- John C. Roth
- Eona Adams Rothwell
- Stanley D. Ryals
- Robert M. Sayre
- Barbara Mac Duffee Tripp
- Lt. Col. John L. Watkins
- Virgie Buzzard Wicks
- Heloise A. Wilcox
- Richard A. Yocom

- William M. Laidlaw, M.D.
- Garaid Lawrence
- Albert R. McMullin
- Harry T. Mason
- Patricia Parsons Matson
- William F. Moynihan
- Gordon A. Mardock
- Ronald C. Nichols
- Doris Walsler O'Neill
- Robert O'Neill
- Marcella Pantrum
- Betty Kuhlman Pease
- Maxine Muckle Pietachman
- Richard D. Reid, D.V.M.
- Pauline Wallace Schroeder
- Doris Gragg Sharry
- Leland Svarverud, Jr.
- Margaret Austin Taylor
- Russell Tripp
- Frank M. Washburn
- Tom L. Yates

- George Wagner
- Patricia Long Wagner
- Ethel G. Weinstein, D.D.S.
- Robert Wiper
- Merritt E. Wood
- A. Norton Younglove

1952

ALF Participation—26%
Amount—\$832.00

- George B. Adams, M.D.
- Marjorie Aldinger Akers
- Barbara Freeman Anderson
- John Anicker
- Allan Bellinger
- Lucy Collins Bellinger
- Joanne Oliver Block
- Gladys F. Blue
- Felix Calkins
- Delores Spellbrink Christensen
- Dorothy A. Clarke
- Donna Whitsely Combs
- Ivan H. Corner, Jr.
- Mark F. Cotton
- Mary Howe Covert
- Rose Marie Wilhoit Cunningham
- Kathleen Revis Duvall
- Arlene Deakins Gatewood
- Betty Jean Simpson Gillihan
- Chester Gillihan
- Michael D. Glenn

1951

ALF Participation—23%
Amount—\$913.50

- Diana Arpke Adams
- F. Burnell Ambrose
- Patricia Curtis Bartlett
- Thomas A. Bartlett, Ph.D.
- Duane Bartsch

Carroll L. Graber
 Maj. Robert L. Graham
 Charles H. Gutzler
 Barbara Kemmarich Halliday
 Glenn E. Halliday
 Jodie Lou Johannaber Hampton
 Walter J. Hart
 Wesley Hedeon
 Martha Hooker Helms
 Jean Estey Hoops
 Jean Sheperd Hunsaker
 Walter L. Jones
 Betty Jean Mullin Joseph
 Thomas P. Joseph
 George E. Juba
 Sue Mellor Juba
 Robert Kaplan, Ph.D.
 Rev. O. Jack Larson
 Frances C. Linton
 Ellen Marie Christiansen Lowe
 William L. Mac Dougal
 Jaqueline Johnson Mader
 Beverly Tribble Markoskae
 Alan G. Miller, M.D.
 Dan Montag
 Jean Kell Montag
 David H. Morris
 Dorothy Casper Murphy
 Douglas Nicoll
 Edythe Holland Norton
 Howard Payne
 Herman A. Peters
 Norman D. Potter, Ph.D.
 Louis E. Prediletto
 Orville D. Raesdale
 Clarabelle Easton Ross
 Irvin J. Roth
 Robert M. Schaefer
 Robert A. Seamster
 Audrey Bliss Selby
 Carlotta Hendricks Sorensen
 Wallace Snyder
 Ron P. Symons
 John W. Vanderwal
 Basil John Wallace
 Margaret Gastinger Wallace
 Carolann Snarr Walters
 Rev. Eugene Walters
 Aline Wilhelm Webb
 Carmelite Weddle
 Robert L. Witham
 Shirley Hall Wood
 JoAnne Estey Yates
 E. Vance Yang, M.D.



Marlene Vincent Muchow
 Ann Klindworth Nelson
 Jeanne Allen O'Dell
 Robert E. Pattison, Jr., D.M.D.
 David Parton
 George E. Porter
 Amaryllis Lillies Powell
 Ursula Glaesser Purbrick
 Sue McElhinny Rankin
 Frank D. Riebe
 Philip Ringle, Jr.
 E. L. Scheelar
 Helmuth G. Schreima
 R. C. Schroeder
 Grace Connell Scott
 Lawrence C. Smith
 Leah Case Smith
 Daniel E. Snyder
 Mary Ellen Phillips Snyder
 Harriet Aller Storaker
 Ellen Schadel Stroeve
 Donna Sebern Talus
 Robert A. Ulrich
 Janet Rogers Waite
 William Walters
 Dorothy Engelhart Weisser
 Ardith Bailey Younglove

Greta Ann Wildey Nelson
 Maj. Hugh B. Nelson
 Carolyn Crane O'Connor
 Robert William Packwood
 William Britchard
 Betty Rofer
 Doris Holmes Scheelar
 Sheila A. Scherman
 Richard T. Scott
 Larry W. Standifer
 Mary Polales Standifer
 Barbara Manley Steel
 George G. Strozut
 Maj. Michael S. Tavenner
 Leona Todd
 Ellis R. Von Eschen
 Mary Jane Stewart Wade
 Gaylord Weeks, M.D.
 Howard Wilson
 Neal Black Wineman
 Betty Breaker Witham

1953

ALF Participation—29%
 Amount—\$656.00

JoAnn Richardson Adams
 Kenard W. Adams, D.M.D.
 Marilyn Merz Adkins
 Robert W. Atkinson
 Robert V. Bain, M.D.
 Barbara Baker Blakesley
 Ralph W. Bolliger
 Beverly Rands Brosterhous
 Jean Stewart Brown
 George L. Buland, Jr.
 William Butts
 Rollin J. Cocking
 Ronald M. Coffey
 Margaret B. Conklin
 Jane Pinkerton Cotton
 William W. Covert
 Donna Palmer Day
 Duane Denney, M.D.
 Prudence Edwards Denney
 George R. Duncan, Jr.
 Ardath Durbin
 Ernest Duvall, M.D.
 Robert J. Dyer
 James R. Ellis
 James E. Freeman, Jr.
 James F. Gay
 Clifford Gregg
 Joy Koepfen Gugin
 Margaret Smith Hardman
 John C. Hande
 Joyce Taylor Hedeon
 Shirley Helweg Hercher
 Donald L. Hitchman
 James P. Jackman
 Eloise Roseberry Jewell
 Rev. Paul O. Jewell
 Eli E. Kapostins, Ph.D.
 Juris Krigens
 Janice Gladden Kusler
 Cdr. Keith D. Lawrence
 Rev. Kent O. Lawrence
 Rev. Norman R. Lawson
 Richard D. Mase
 Kenzaburo Mizugaki

1954

ALF Participation—23%
 Amount—\$544.50

Dale Ackerman
 Robert A. Anderson, M.D.
 Joyce Crouch Anicker
 Ronald W. Bartlett
 Robert Batchelder
 Donald A. Bennett, Ed.D.
 Dorothy Tanning Bosch
 Nancy L. Doughton
 Donald W. Empey, Ed.D.
 Cynthia Lee Arpke Furman
 Layton J. Gilson
 Douglas P. Gordenier
 Linda Gragg
 Jane Carolyn Notson Gregg
 Daline Montag Gregory
 Sara Jane Bridgeman Gustafson
 Donna Cheldelin Gutzler
 Alan R. Hallowsell
 JoAnna Hirtzel Hart
 Joseph S. Harvey
 Mary Lou Johnson Harvey
 Martin Howard
 Robert W. Howe
 Norma Erickson Hulet
 Mary Androsen Janis
 William D. McDonald
 James R. Morgali
 Dee Miller Myers
 Kent C. Myers, Ph.D.

1955

ALF Participation—24%
 Amount—\$658.00

Janet DeWesse Ackerman
 Richard O. Adams, Ph.D.
 Robert L. Alfred
 Donald W. Burney
 Charles Carter, MD.
 Neil E. Daugherty
 Vivian Chance Didzun
 Larry Doyle, M.D.
 Richard F. Drake, M.D.
 John H. Ellis
 Patricia Sundstrom Ellis
 Jean Thomas Fisher
 Edward Fredrickson
 Mary Ewell Gilson
 Lt. Cdr. Donald M. Gragg, M.D.
 Patricia Gentle Gracberg
 David Gray
 J. Wallace Gutzler
 Lewis B. Hampton
 Rosemary Weaver Holden
 Watson Hovis
 Donald A. Humphries
 David R. Jackson
 Maj. H. Paul Johnson
 Marlene Rowe Lazarus
 Elizabeth Winship Lewis
 Richard Lewis
 Marie DeHarpport Lindsay
 Jerry McNeerney, D.M.D.
 James L. Matherly
 Ruben J. Menashe
 Lawrence Monk
 Marthajane Stearns Mulholland
 Jack Phipps

Earl L. Pickett, Jr.
 Joyce Schmittz Pickett
 Julie Mellor Reid
 E. Burke Samuelson, Jr.
 Sally Jo Grimm Schaefer
 Charles H. Seagraves
 JoAnn Howard Seagraves
 Patricia Wegner Seamster
 Elizabeth Loving Sittser
 Gail Updike Steeves
 Rev. Ronald L. Swanson
 James F. Verdick, Ph.D.
 Rev. Thomas Whitehead
 Judith Anne Wood
 Tom Yoshiki

1956

ALF Participation—22%
 Amount—\$512.50

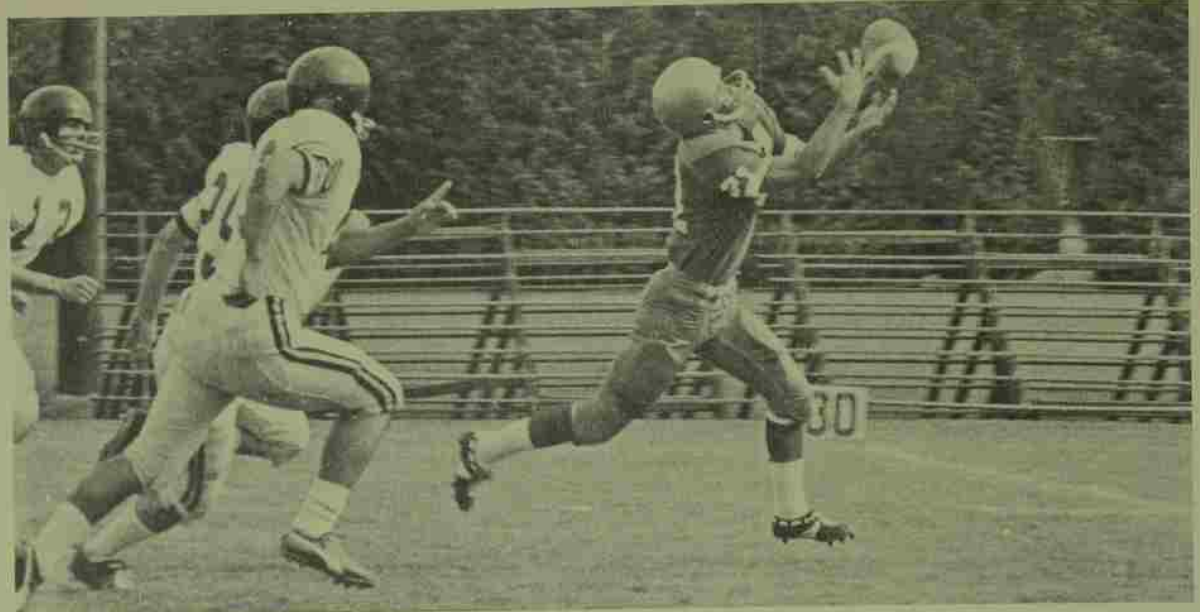
Millicent Tower Armer
 Joanne Terhark Bahls
 Frances Miller Batchelder
 Dean K. Benson
 Judy Mortz Benson
 William S. Bjorkman
 Gay Kent Bossart
 Richard Boynton
 Donald Brader
 Margaret Huson Brown
 Chester L. Daniels
 Earl Didzun
 Mary Catherine Rech Emyp
 Carol Hewitt Erickson
 William Freeman
 Dale Gustafson
 Gaylord Hall
 Lorraine Landrud Halverson
 Peter C. Harvey
 Alma Felton Howe
 Marilyn Russell Kaufman
 Robert Kaufman, M.D.
 Shirleen Schleinig Lawson
 William N. Lee
 Wayne McMurray
 Wesley R. Malcolm
 Amy Girod Mase
 George A. Matile
 Shirley Witters Murray
 Ray A. Myers
 Jerry L. Patterson
 Dale Patton
 Charles R. Peter
 June Harms Peter
 Gino G. Piseretti, Jr.
 Janice Weber Reeder
 John Rehfuss
 SaVanne Wood Shirley
 Maj. Thomas W. Steeves
 Marilyn Ludlow Stevens
 William Sundstrom
 Sandra Schuerman Walters
 Ellinor Taylor Wheeler
 David S. Wood
 Robert Zoelch

1957

ALF Participation—24%
 Amount—\$683.50

Donald L. Agnew
 Robert R. Allen, Ph.D.
 L. Duane Baird
 David S. Barrows
 Lewis D. Beatty
 Arda Lien Berryhill
 Winidred Waltz Beu
 Jack L. Bishop
 Ed Boothby
 Jean Van Valkenburgh Boynton
 Joyce Ambler Carter
 William F. Cozad
 John R. Edmundson
 Patricia Turner Edmundson
 Gwendolyn Standifer Elfers
 Eldon Erickson, M.D.
 Daniel Feller
 David G. Frost
 Jean Snow Geller
 Dale L. Greenlee
 Rev. L. Eugene Groves
 Barbara Kauffman Hall
 Dale DeHarpport
 Janis Hershe Hoekstra
 Douglas G. Houser
 Ann Denman Hultgren
 Marilyn J. Isaak
 Joanne Jene, M.D.
 David G. Johnson
 Jack V. Jones
 Marilyn Mee Jones
 Louisa Lamb Kingston

Donald F. Laws
 H. Lawrence Lister
 Gary Lockwood
 Gayle Rogers Lockwood
 Carol Ann Sigler Mc Nerney
 Roy A. Maltby, Jr.
 Capt. Donald Miller
 Margaret Buckley Mills
 Patsy Williams Moore
 Rev. Glen R. Murray
 George Nelson
 Carolyn Burr Neubauer
 Diane Burkland Oxhandler
 Ann Notson Poling
 Carol Litchfield Rebuss
 Kenneth C. Ronshaw
 Joseph F. Ricks
 Donald B. Ross
 Capt. Volney G. Sigmund
 Sophia Goritsan Sly
 Melissa Steward
 William Strand
 E. Gene Stuntz
 Sally Jones Van Niel
 William J. Wheat
 Robert J. White
 Ronald H. White, Jr.
 Lois Wickersham
 Martin R. Wolf
 Norman K. Zeller, D.M.D.



1958

ALF Participation—27%
 Amount—\$522.50

Gerald Ackerson
 Paul W. Aldinger
 Sharon Bates Backman
 Capt. Larry J. Buckner
 Anna Rosbergs Campbell
 Warren K. Campbell, Ph.D.
 Marion Gillet Carrison
 Richard Chanda
 Lyle E. Crecelius, M.D.
 Janet Roscoe Dahle
 Donna Holm Daniels
 Gordon B. Domogala
 Judith Eberhardt
 Patricia J. Taylor Erbes
 Annette Carson Ewing
 Mary Beth Van Cleave Feller
 Mary Anne Swafford Folsom
 Max Folsom
 Jac L. Fowler
 Barbara Mitchell Frost
 Thomas A. Gail, M.D.
 Harold Geller
 Elaine Gustafson DeHarpport
 Maryn Stookey Hovis
 Ivone Shdo Howard
 George W. Hoyt
 Thomas A. Johns
 Jerry Ann Brackens Kieta
 Mary Lou Krause
 Lola Ann Lane
 Constance Clark Lister
 Miriam Lee Mathews
 Jeannine Graber Mercer
 Kendrick M. Mercer
 Charlotte Kleen Miller
 Mary Louise Pickett Miller
 Shirley J. Minten
 James Myhre
 L. Keith Neubauer
 Donald Palmer
 Jim C. Person
 Pat J. Packwood Richardson
 Elizabeth Susie Carter Riley
 Arla Roberts
 Ann Lawson Ross
 Joanne Lindstrom Ross
 Warren D. Short
 Lawrence A. Siebert, Ph.D.
 Beverly Reinhardt Sinning
 Ralph C. Sipprell
 Gary L. Smith
 Robert W. Stevens
 Frank Tannehill
 Mary Louise Turner
 Joyce Lonneker Wheat
 Richard A. Whit, Ph.D.
 Anne B. Yoder

1959

ALF Participation—18%
 Amount—\$428.00

Carole Warren Ackerson
 R. Richard Addley
 Capt. Dead Bishoprick

Gail Beyer Brown
 William E. Bullard
 Willard C. Bunney
 Arvin J. Crose, D.M.D.
 Norman Dyer
 David John Erickson
 Rosemary Gilbert
 Barbara Duncan Hewitt
 Roger Hewitt, Ph.D.
 Craig Hickok
 Katherine Ruberg Hutchison
 Craig L. Johnson
 Charlotte Means Jones
 Peter J. Leveton
 Marietta Lind
 Joan Sherrill McNamara
 Edward Moellering
 Conrad Moore
 Saunders Wagner Moore
 Thomas S. Moore
 Dennis M. Malm
 Anne Lasswell Nagel
 George Nye, D.D.
 Jane Brader Palmer
 Sandra Mischke Pattison
 Caroline M. Prince
 Gilbert J. Schwabauer
 Josephine Heald Simpson
 Joseph Stewart
 Diane Griffith Strand
 Herbert F. Talabere, D.D.
 John Vale
 Charles E. Williams
 Karen Michalson Williams
 Carolyn Miller Williams
 L. Donald Williams
 John Wood, M.D.

1960

ALF Participation—20%
 Amount—\$528.00

Janice Adams
 C. R. Beaton, Jr.
 John O. Bergstrom, M.D.
 Arleen Niemi Boothby
 Virginia Cain Chanda
 Laurence R. Chandos
 Cynthia Shaw Conrad
 L. Jay Conrad
 E. Jane Dedrick
 Dale H. Denham
 Robert F. Donald
 Toni Polson Dyer
 Sue Wilcox Elliott
 G. Ronald Gerbing
 Joan E. Griffis
 Larry Lyle Halstead, D.M.D.
 Rogene Alger Hingston
 Stephen A. Hone
 Joanne McGilvra Hoyt
 John A. Jelderks
 Ann Fields Kaufman
 John E. Kaufman
 James W. Lewis
 Ralph Litchfield, M.D.
 Marlin V. Marsh
 Carol McMinisee Merchant
 Janet Robison Moore
 Keith G. Falthrop

John L. Rasmussen
 Carrie Saito
 Jeremy Saito
 William T. Schantz
 Bonnie Brown Shidler
 Capt. Robert W. Smith
 John R. Sweeney
 Mark W. Teppola
 Rosemary Stephenson Vaughan
 ReNaye Hall Weber
 Jean Pritchard Wheeler

1961

ALF Participation—20%
 Amount—\$477.00

James T. Baird
 Steven E. Berglund, D.M.D.
 Floyd H. Bergmann
 Sharon Pleurnoy Berryessa
 Beverly Fulton Bolland
 Gene R. Bowers
 Barbara Simon Bunney
 Jay B. Butler, M.D.
 Stewart M. Butler
 Bruce E. Buzzell
 Elaine Buckinger Chandler
 Capt. Ellison Chandler
 Roy Chapin
 Dale Daniel, M.D.
 Judd W. DeBoer
 Harriet G. Dockstader
 William C. Fritts
 David D. Gilley
 Kenneth T. Ganoza
 Wayne P. Gladwin
 Barbara Sherik Hickok
 Neil B. Hutchinson
 Laura Johnson Johnson
 Terry Thompson Johnson
 David L. Kitchener
 Then West Kreis
 Larry J. Lynn
 Sammie Lou Barker McCormack
 Paul H. McGilvra
 Peter Manning, Ph.D.
 Claudia Peterson May
 Gerald M. May
 Anthony Neeker
 Gregory Milnas
 Loretta Ray Milnes
 Paul J. Minor, D.M.D.
 Janet Gilmore Mota
 Karen Madsen Myers
 Rev. Eldon L. Olson
 Marcia Humphrey Olson
 Orrin Ormsbee
 Alice Stewart Falthrop
 Annabelle Stambaugh Parr
 Karen Myers Ray
 David F. Rebuss
 William L. Richter
 Larry L. Schmidt
 Gwen Hanson Smith
 James M. Snell
 Peter Stenzel
 Terry Boyd Stenzel
 Lee H. Thurber
 Lyle M. Tucker

1962

ALF Participation—19%
 Amount—\$685.00

Jeanne C. Amlin
 Judith Kicks Audley
 Virginia Keats Ball
 Richard Lee Barton
 Betty Stephens Bauer
 Judith Parr Berger
 Barbara Giberson Billings
 George B. Birrell
 Anne Petrie Brummer
 Donald W. Bryan
 Linda Krebs Butler
 David Crane
 Dorven K. Crooch
 Karen Smith Crooch
 Robert E. Courser
 Penelope Vulgas Currier
 Diane Brown DeBoer
 Suellen Stanley Diaconoff
 C. Arthur Diamond
 Norma Young Fales
 J. Nicholas, Jr., M.D.
 Michael W. Foster
 Marianna Koch Fronczak
 Charles Godwin
 Raymond W. Honerlah
 Donna L. Horn
 Beatrice Julian
 Susie Williams Kaylor
 Clinton W. Kersten, Jr.
 John F. Kreis
 Janet Donnell LaPlant
 Bonnie Scott Kremer
 Peter C. Kremer
 Penelope Post Lewis
 Alfred G. Luchini
 Peter B. McDowell
 Victoria Shaughnessy Manning
 Marshall W. Moore
 David J. Patch
 Paul L. Richey
 Robert C. Seegar, M.D.
 Jean Ann Sherwood
 Terry W. Shachat
 Marilyn F. Sparks
 Laurel Ratcliff Talabere
 Marian Hauke Thom
 Phillip L. Thom
 Judith Smith Wayland
 Richard D. Wayland
 Lee Weaver
 Marilyn Wright Weaver
 Susan J. Wilson
 Barbara Jackson Woodward
 Robert L. Youngblood

1963

ALF Participation—16%
 Amount—\$359.24

LaRae Adkisson
 John W. Allen
 Rev. Norman Barley
 Rev. John Baker
 Nancy Stewart Burkhardt
 William H. Bush, Jr., M.D.

MEMORIAL GIFTS

During the past year
gifts were made
to the Loyalty Fund
in memory of:

Beula Clarke Bullock, '11
Alma Rhorer Vinson, '23
Dr. Charles B. Harrison, '12
J. Chris Schneider, L'37

Judith N. Cook
Susan Lewis Davis
Tom R. Dunham, M.D.
Sam S. Farr
John E. Frank
Shirley Gillard Godwin
Eugene R. Gregory
Catherine Ann Mespelt Honerlah
James A. Hughes
Ann Aronson Jelderks
J. Robert Jussila
Patricia McWilliams Jussila
Richard C. Litchfield, D.M.D.
Richard P. Lord
Robert L. Lutje
Susan J. MacDuff
Barbara Nelson McDowell
Dexter C. Maust
Merle Gillespie Maust
Lynn Edwards Miller
James P. O'Hair
Jeanette Baker Ormsbee
Ronald Ray
John S. Rogers
John E. Ryan
Richard A. Sly
John G. Topping
Joyce Heringer Topping
Jeffrey G. Wade
Wayne A. Walker
Joan Benson Wheeler
Floyd Whiting
Judith Rogers Whiting
Elaine Pflugmacher Wick
Rosemary Doolen Wood
Robert C. Woodie
Walter A. Yungen

1964

ALF Participation—16%
Amount—\$295.50

William H. Allen
Susan Meyer Barter
James C. Booth
James McElwain Brown
Patricia Hull Cavender
Gregg E. Childs
Lee Ann Marchi Childs
Gwendolyn Hunt Crane
James L. Dixon
Darlene Ridley Dunham
Fay Chamberlin Elson
Ronald J. Fahl
Frederick Fogg
Francoise Goenry
Ronald C. Gustafson
Kristi Scott Hardin
William J. Harmon
Nancy E. Jones
Virginia M. Judd
Marne Wendell Krozek
Philip Krozek
Lorraine Demler Lang
William L. Lang
Jacqueline Graber Litchfield
Joseph D. McClure, Jr.
Clare Griffiths McKenzie
Gary McKenzie
Margo E. Maris
Leanna Harville Morgan
Suzanne Shane Myrene
Gregory L. Nelson
Thomas C. Newell
Dianne Wilson Nicholson
Charlotte J. Perkins
Mary Lee Jones Pickett
Duane Pinkerton, III
David W. Powers
Linda Clark Richter
Robert W. Rieder
Barbara Woodworth Saigo
Ivona Randall Schacker
William J. Slimak
Frank B. Swayze
Hartwell H. Whitney
Rossie Johnston Whitney

1965

ALF Participation—11%
Amount—\$165.50

Charles K. Akers
James C. Baker
Jonathan J. Barter
Kareem Zumwalt Burnard
Mary Jane Dobson
Douglas S. Dunham
Linda Odle Finlay
Charles P. Flynn

Heather Lundgren Flynn
Sharon Brown Gregory
David W. Hansen
R. W. Harper
Charleah M. Hattrick
Victoria Hull Hazelrigg
Richard V. Heermance
Barry C. Howard
Bonnie Brown Howard
Mary Schwyhart Inman
Pamela Potter Jones
Herbert J. Munson
Ronald C. Nelson
Ruth Taylor Newell
Maradee Oliver Olmscheid
Richard Olmscheid
Rena C. Parsons
Carol Gibson Ratzlaf
Elizabeth Anderson Reynolds
Jean Bockman Scott
Ronald C. Slabaugh
James L. Smith
Lyle E. Smith
Shauna Dougher Smith
Stephen A. Smith
Robert H. Upson
Carol K. Woodward

1966

ALF Participation—13%
Amount—\$307.00

Virginia Latticken Allen
Phoebe Finley Baker
Ralph A. Breitenstein
2/Lt. Harold B. Bugado
Douglas G. Burleigh
Roland K. Chun
George Mackie Cornwall
Michael F. Egans
Margaret J. Eichelberger
Karen B. Evans
Joan W. Gardner
Susan E. Garner
John W. Givens, Jr.
Laurie Hall
David A. Hansen
Paula Harris
Virginia Verity Kimball
Beverly Kleiner
Jefferson D. Lamoree
James D. Lewis
Raynette Pierce Lewis
Elinor Lindquist
Claire Elaine Lorenz
Stephen M. Lowry

William A. Marshall
Carolyn Moore
Linda Moore
Ellen Reese Peterson
Victoria L. Pitkanen
Karen M. Reppon
Lt. Terry R. Rover
Hugh W. Tattersall
Carol Lee Ten Eyck
Jean Lundstrom Theisen
Terry Albright Thorsas
Elisa M. Torp
Suzanne Underwood
Robert Van Natta
Barbara L. Whalin

1967

ALF Participation—8%
Amount—\$149.50

William R. Alberger
John David Baker
Julie Branford
Judith A. Brecht
Marilyn Luther Egans
Ruth E. Fenske
Steven Gray
Susan Johnson Harper
Lois M. Horton
James S. Hutcheson
Robin Petersen Lowry
James R. Ludders
John McCaffery
Martha Millard
Molly Munson
Mary Beth Mason Slabaugh
George Theisen
Janet Loomis Withycombe
Donna M. Wright

1968

ALF Participation—45%
Amount—\$145.00

Russell L. Anderson
Nancy C. Apian
Shirley Baird
Marybeth Bare
Lorraine E. Barker
Bonnie J. Bedford
Michael P. Bennett
Gail D. Bittner
Stephen R. Blixseth
Douglas H. Bosco
Thomas O. Branford
Julianne M. Bosshart
Christie J. Broms
Donald G. Brown
Collier H. Buffington, III
Stephen M. Burdick
Carolyn A. Bush
Judith K. Butts
Carol S. Cartwright
Craig W. Chastain
Susan C. Collett
Susan J. Coreoran
Alan V. Davis
James C. Euler
Karan Fishback
Kenneth K. Fukunaga
Dennis Gardner
Christine Gentzkow
Coburn L. Grabenhorst, Jr.
Jackie Gruver
Robert E. Hamel
Dawn J. Hanson
Jonathan T. Harnish
Aish T. Hasulike
Haukor R. Hazen
Carol Lutz Heermance
Stanley D. Heisler
Stephen S. Henigson
Charles J. Hickling, Jr.
Ronald H. Hoevet
Margaret C. Horn
Norman P. Hunter
Randolph L. Johnson
Robert C. Johnstone, Jr.
Carl Montee Kennedy
Keith J. Kinaman
Richard W. King
James W. Kleinke
Geraldine Lawrence
Charlotte E. Langford
Jo Nell Logan
Carolyn A. Leonard
Judith McLean Lorenzen
Peter D. Lutz
Hick Magruder
Thomas R. Matheson
Thomas J. Mathiesen
Nancy G. Miller
Marilyn J. Montgomery
William S. Moore
Clayton L. Morris
Tammy Morrison
George W. Morrow
Fred A. Mueller
William E. Opray
John R. Orr
Jane M. Osborne
Patricia C. Parfitt
Panagiotis B. Paulus
R. William Purvine
Connie A. Rector
Robert R. Riensche
Thomas S. Rygg
Sara L. Schramm
Nancy S. Scott
Mary E. Shaffer
Margaret A. Shaffer
Gayle D. Shafford
Barry A. Smedstad
Stephen Smith
Michael L. Stott
Karen R. Swin
Christine Allen Tabor
Susan L. Talbot
John L. Thomas
Susan L. Thompson
Susan K. Trullinger
James P. Ward
Gary L. Webb
Catherine A. Wetherby
Edward R. Whitehead
Maureen A. Willard
Lynne E. Williams
Anne M. Woods
Gary W. Yunker
Paula R. Zimmerman



Law Loyalty Fund

1907

Max H. Gehler

1910

Clark R. Belknap

1911

Arthur W. Schaupp
Lois Byrd Upjohn

1912

Joseph O. Stearns
Albert H. Minton

1914

Russell H. Stephens

1918

Harold E. Hakin
Brazier C. Small

1923

Wallace P. Carson, Sr.
Jay D. Coulter
Chris J. Kowitz

1925

George R. Duncan, Sr.
Floyd D. Moore
Clarence D. Phillips

1926

O. Bryan Goodenough
Fred H. Paulus

1927

Earl A. Lawton
George Rhoten
Manley B. Strayer
William E. Walsh

1928

Judge W. M. McAllister
Judge W. Charles Redding

1929

George Litchfield
George G. Van Natta
L. Woodworth

1930

John B. Ebinger
Judge Paul E. Geddes
William J. Linfoot
Judge Ian R. Mac Iver
Yvonne Cornell Montchalin
Bruce Spaulding

1931

Paul R. Ackerman
Warren A. McMinimee

1932

Bernard Newby
Rowe Weber, Jr.
Dwight Lear

1933

Capt. Howard Bergman
Judge Joseph B. Felton

1934

Evans T. Hamilton
Ray H. LeEky

1935

Judge Wesley F. Brownton

1936

James Burdett
Ray E. McKey

1937

Carroll F. Addison
Lynn Moore
Max S. Taggart
Victoria Schneider Taggart

1938

Charles H. Heltzel
George H. McAllister

1939

Asa L. Lewelling

1940

Laurance Morley
Lyle H. Truax

1941

Samuel O. Kyle
Robert O. Smith
Sam R. Sumner, Jr.

1942

Judge J. S. Bohannon
Mervin W. Brink
Kenneth Sherman
Max de Sully

1943

William R. Thomas

1945

Charlotte Ellingworth Aslanian

1947

Rupert E. Park

1948

Allan Lane
Robert Metcalf
Gordon H. Moore
Frank Pozzi

1949

Donald L. Alderton
Richard H. Allen

1949

Continued

Vernon L. Burda
Harold A. Fabre
Orval O. Hager, Jr.
R. M. Heltzerline
Loren D. Hicks
George A. Jones
Frank C. McKinney
Robert D. McMullen
Clifford B. Olsen
Lt. Col. Richard Spooner
Jack W. Stanley
Samuel B. Stewart
Clarence R. Wicks

1950

James F. Bodie
William D. Carlson
Merlin Estep
Peter M. Gunner
Hattie Bratzel Kremen
Richard W. Pic Kell
Glen V. Sorensen

1951

Robert W. Gibson
Omar W. Halvorson
Wayne Hilliard
James B. Minturn
Ervin W. Potter
Robert M. Stults

1952

Jack P. Farrell, Jr.
Albert R. McMullin

1953

A. D. Brosterhous
Richard J. Brownstein
L. M. Giovanini
Gordon E. Teter

1954

John Anicker
Wayne H. Blair
Ralf H. Erlandson
Joseph M. Hardman
Thomas A. Huffman
M. C. McClanahan
Joe B. Richards
Roger N. Rook
George J. Woodrich

1955

Ralph W. Bolliger
William J. Daw
George R. Duncan, Jr.
Thomas P. Joseph
William D. McDonald
Louis Prediletto
Frank D. Riebe
Robert M. Schaefer
Helmut G. Schreims
Ronald A. Watson
John Weisser

1956

L. James Bergmann, Jr.
James R. Ellis
Alan R. Hallowell
Cdr. Keith D. Lawrence
Philip Ringle, Jr.
Maurice M. Orona
William Sundstrom

1957

Robert Batchelder
Russell G. Day
J. Wallace Gutzler
Ira W. Jones

1958

Harold J. Blank
Koon Imm Ching
Robert D. Heffernan, Jr.
Robert L. Johnson
Gino G. Pieretti, Jr.
William Southwell
Richard Stratton
George Wagner

1959

Marvin E. Hansen
Martin Howard
Lt. Cdr. Jack W. Howay
Robert G. Simpson
E. Gene Stunz

1960

Orlin R. Anson
David G. Frost
Lewis B. Hampton
Alan R. Jack
Ronald B. Lansing
Gary Lockwood
Sidney F. Pearson
Martin R. Wolf

1961

Clifford A. Allison
David S. Barrows
Marvin O. Bolland
Kendrick M. Mercer
Robert D. Steinmetz

1962

Morris A. Arntson, Jr.
William V. Bierek
Larry R. Duff
William M. McAllister
Thomas S. Moore
A. Thomas Niebergall
Charles H. Seagraves
John W. Smallmon
Stanley C. Urbigkeit

1963

Marion Brady Embick
Orrin Ormsbee
Richard A. Sly

1964

Frederick L. Decker
John A. Jelders
Gregory Milnes

1965

Richard Lee Barton
Ronald S. Jolley

1966

Eric B. Lindauer
Harry C. Looney
Duane Pinkerton, III
Richard A. Uffelmann

1967

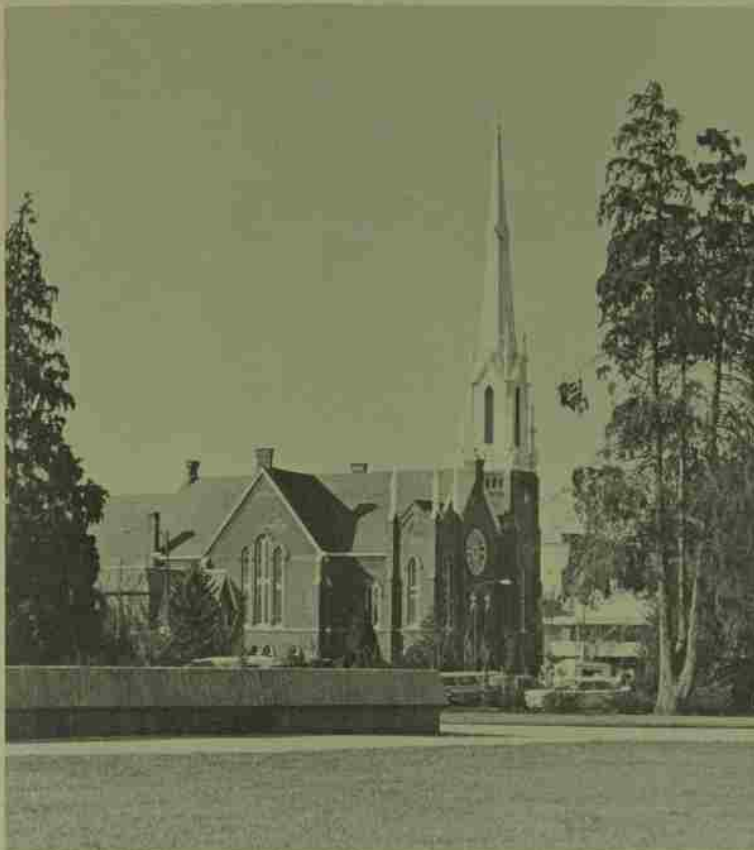
Gregory L. Nelson



Oregon United Methodist Church

During the 1967 Conference year 84 churches sent gifts totaling \$10,366 and World Service support was \$33,011 for a grand total of \$43,377. The average per-member giving was 78 cents.

EGGERS DISTRICT	Hood River	Oak Grove
Camas Valley	Pine Grove	Oregon City
Canyonville	Tygh Valley	Pleasant Home
Goburg	Wasco	Portland
Creswell	Portland	Capitol Hill
Days Creek	Bennett Chapel	Christ Church
Drain	Portland, First	Vermont Hills
Eugene	Fremont Street	Rainier
Asbury	Laurelwood	Seaside
Wesley	Lincoln Street	St. Helens
Grants Pass	Montavilla	Tigard
Junction City	Patton Central	Tillamook
Lakeview	Pioneer	Tuplatin
Medford, First	Rockwood	Warrenton
Myrtle Creek	Rose City Park	Woodburn
Myrtle Point	Sellwood	Yamhill
Oakridge	Sunnyside	
Reedsport	Trinity	
Springfield	University Park	SALEM DISTRICT
Ebbett Memorial		Albany
St. Pauls	FOREST GROVE DISTRICT	Bend
Ten Mile		Busina Vista
Unity	Astoria	Grand Ronde
Wilbur	Beaverton	Halsey
Wilderville	Boring	Madras
Williamson River	Canby	Salem
	Estacada	First
PORTLAND DISTRICT	Forest Grove	Jason Lee
Arlington	Hillsboro	Trinity
Dufur	Lake Oswego	West Salem
Gresham	Milwaukie	Shedd
Hermiston	Nobleson Bay	Turner
	Newberg	Willamina



PARENTS' FUND

The Parents' Fund reached a new high during the past year of \$26,042.16, with most gifts designated for the University Center. In the past two years, during which the Center has been a special project of the Parents' Association, more than \$85,000 in gifts and earned matching funds has been provided by Parents. A dining-conference room in the University Center will be designated as a gift from Parents.

Mrs. Dorothy Adolfsen
 Mr. and Mrs. Frederick Albaugh
 Mrs. Ogie A. Allen
 Mr. and Mrs. C. K. Anderson
 Mr. and Mrs. Harold E. Anderson
 Mr. and Mrs. Kenneth Anderson
 Mr. and Mrs. Kenneth B. Anderson
 Mr. and Mrs. Kirby Atterbury
 Dr. and Mrs. G. J. Bacci
 Dr. and Mrs. Raymond E. Balcomb
 Mr. and Mrs. S. T. Banta
 Mr. and Mrs. James W. Barber
 Mr. and Mrs. Doyle J. Barnett
 Rev. and Mrs. Herbert Barrall
 Dr. J. Brandon Bassett
 Mr. and Mrs. Robert J. Bauman
 Mr. and Mrs. K. K. Bechtel
 Mr. and Mrs. Stephen D. Bechtel, Jr.
 Mr. and Mrs. Jackson A. Bliss
 Mr. and Mrs. Leonard Bonar
 Dr. and Mrs. J. D. Branford
 Mr. and Mrs. D. L. Brixius
 Mr. and Mrs. B. G. Broms
 Rev. and Mrs. David C. Brooks
 Mrs. William H. Brown
 Mr. V. Scott Brown
 Mrs. Barbara K. Brunner
 Mr. and Mrs. Chambers P. Bryson, Jr.
 Mr. and Mrs. Richard Bullock
 Mr. and Mrs. W. H. Buss
 Mr. and Mrs. Ian Campbell
 Mr. and Mrs. William B. Campbell
 Dr. and Mrs. Bryan J. Cardor
 Mr. and Mrs. John W. Carrell
 Mr. and Mrs. Moon Chan
 Mr. and Mrs. Victor E. Cole
 Col. and Mrs. Robert Coleman
 Mr. and Mrs. Harley Colson
 Mr. and Mrs. Clarence S. Cook
 Mr. and Mrs. Sidney M. Cooper
 Mr. and Mrs. William J. Corcoran
 Dr. C. J. Cox
 Mr. and Mrs. Frederick Cramer
 Mr. E. W. Crawford
 Mr. and Mrs. Victor M. Crotchett
 Mr. and Mrs. Howard Cunningham

Mr. and Mrs. Lester M. Cushman
 Dr. and Mrs. J. G. Daines
 Mr. and Mrs. Gilman Danielson
 Mr. and Mrs. Clayton L. Davidson
 Mrs. Alice Davis
 Mr. and Mrs. Daniel W. Davis
 Dr. and Mrs. Philip T. Doughten
 Lt. Col. and Mrs. Warren E. Brock
 Mrs. Kay E. Edwards
 Mr. and Mrs. H. Francis Fenske
 Mr. and Mrs. B. R. Flanagan
 Mr. and Mrs. Clarence Fleming
 Mr. and Mrs. Lee Foster
 Dr. Alfred J. French
 Mr. and Mrs. Stanley I. Friedman
 Mr. and Mrs. Nick A. Friesen
 Mrs. Bernice C. Pratta
 Mr. and Mrs. Richard M. Felle
 Mr. and Mrs. Tsutomu Fujimoto
 Mr. and Mrs. Ralph K. Fukunaga
 Dr. and Mrs. Cyril D. Fuller
 Mr. and Mrs. J. D. Pulp, Jr.
 Mr. and Mrs. Demetrio A. Gasponia
 Mr. and Mrs. Arthur F. Gardner
 Mr. and Mrs. John R. Gardner
 Mrs. Dan George
 Mr. and Mrs. Warren George
 Mr. and Mrs. William H. Gielow
 Mrs. Margaret McIntosh Gilmore
 Mr. Stanley J. Gilmore
 Mrs. Velma R. Glass
 Mr. and Mrs. Ronald H. Gordon
 Mr. and Mrs. Michael Gross, Jr.
 Mr. Leslie Green
 Mr. and Mrs. Herbert M. Hamblen
 Mrs. W. H. Hadlock
 Mr. and Mrs. Samuel Hall
 Mr. and Mrs. J. Lester Harnish
 Mr. and Mrs. Richard M. Hoag
 Mr. and Mrs. Louis Harmon
 Dr. and Mrs. J. Scott Heatherington
 Mr. Isaac Herman
 Mr. and Mrs. Knut Hoff
 Mr. Jack Hoffman
 Mr. and Mrs. A. W. Hooton
 Mr. and Mrs. R. K. Hoover
 Mr. and Mrs. Richard C. Horn

Mr. and Mrs. Bruce Howard
 Mr. and Mrs. Gail Howard
 Mr. and Mrs. H. L. Hull
 Mr. and Mrs. Maurice Hull
 Mr. and Mrs. K. B. Humphrey
 Mr. and Mrs. Fred Humphrey
 Mr. and Mrs. Lee G. Hunt
 Mr. and Mrs. R. M. Ingram, Jr.
 Mr. and Mrs. Ronald E. Irwin
 Mr. and Mrs. H. A. Jambor
 Mr. and Mrs. Otto G. Jeddeloh
 Mr. and Mrs. Harry C. Johnson
 Mr. and Mrs. Gerswyn A. Jones
 Mr. and Mrs. John Jussila
 Dr. and Mrs. Milton A. Kansier, Jr.
 Mr. and Mrs. Chad Karr
 Mr. and Mrs. Melvin Kennedy
 Mr. and Mrs. Harold E. King
 Mr. and Mrs. John Kitamiller
 Mr. and Mrs. F. C. Knappe
 Mr. and Mrs. Gerald B. Knitter
 Mr. and Mrs. Norman M. Kuzura
 Mr. and Mrs. Ray H. Lamp
 Mr. and Mrs. Gilbert O. Lang
 Mr. and Mrs. Willie B. Q. Lau
 Mr. and Mrs. David R. Lawrence
 Mr. and Mrs. David Lederman
 Mr. and Mrs. Walter D. Loder
 Mr. and Mrs. George McLean
 Mr. and Mrs. C. A. McMonagle
 Mr. and Mrs. Callum MacLeod
 Mr. and Mrs. Hector MacPherson, Jr.
 Mr. and Mrs. M. A. Manger
 Mrs. C. L. Mausten
 Mr. and Mrs. Edward T. Melvin
 Mr. and Mrs. George T. Melvin
 Mr. Don G. Metcalf
 Col. and Mrs. Farley E. Mosen
 Mr. and Mrs. Ira J. Moore
 Dr. Clyde V. Moxleson
 Mr. and Mrs. Carl W. Nelson
 Mr. and Mrs. L. J. Nesseth
 Mr. and Mrs. Marvin B. Noble
 Mrs. Sumiya Okada
 Mr. and Mrs. Clifford B. Olsen
 Mr. and Mrs. A. W. Duda
 Mr. and Mrs. Joseph E. Opray
 Mr. and Mrs. Lewis D. Osborne
 Dr. and Mrs. Lyle E. Ostlund
 Mrs. Geneva V. Pace
 Mr. and Mrs. R. E. Pacquet
 Mr. and Mrs. John E. Pallett
 Dr. and Mrs. James K. Palmer
 Mr. and Mrs. Robert Paxina
 Mr. and Mrs. Arthur S. Pearson
 Mr. and Mrs. Arthur Pederson
 Mr. and Mrs. Grant T. Perkins
 Mr. and Mrs. Forest R. Petersen
 Mr. and Mrs. Samuel B. Pierce
 Mr. and Mrs. James R. Polley
 Mr. and Mrs. Clermont S. Powell
 Mr. and Mrs. James V. Power
 Mrs. C. Quenton Prather
 Mr. and Mrs. Lloyd Quick
 Mr. and Mrs. George B. Ray
 Mr. and Mrs. E. J. Rea

Mr. and Mrs. William L. Reagan
 Dr. and Mrs. E. W. Rector
 Mr. and Mrs. Lawrence J. Rees
 Mr. and Mrs. A. David Reinhard
 Mr. and Mrs. Kenneth C. Rich
 Mr. and Mrs. George E. Robinson
 Mr. and Mrs. Edd E. Rountree
 Mr. and Mrs. Joseph J. Rutkowski
 Mrs. Frances M. Santos
 Mr. and Mrs. Robert W. Scarff
 Mr. and Mrs. Arnold D. Scheller
 Mr. and Mrs. Peter Schnell
 Mr. and Mrs. G. Edward Schnug
 Mrs. Richard B. Schwyn
 Mr. and Mrs. Carl W. Sherman
 Mr. and Mrs. Allen Shibuya
 Mr. James R. Simonet
 Mr. and Mrs. W. B. Sisler
 Mr. and Mrs. Wendell H. Slabaugh
 Mrs. Dean H. Smith
 Mrs. Katherine C. Smith
 Mr. and Mrs. William Southard
 Mr. and Mrs. D. N. Speight
 Mr. and Mrs. Thomas W. Steege
 Mr. and Mrs. Eldon A. Stocker
 Mr. and Mrs. C. M. Swim
 Mr. and Mrs. Mardon Talbot
 Mr. and Mrs. Mitsugi Tamura
 Dr. and Mrs. Daniel Taylor
 Mr. and Mrs. Lewis A. Temple
 Mr. and Mrs. Earl Tenola
 Mr. and Mrs. See Terzian
 Mr. and Mrs. William E. Tharp
 Mrs. George Thissen
 Mr. and Mrs. Stanley Topping
 Col. and Mrs. Donald O. Tower
 Mr. and Mrs. Erwald Tuller
 Mr. and Mrs. Alfred Tyson
 Mr. and Mrs. Dale Van Hoy
 Mr. and Mrs. Rudy P. Von Ohlen
 Dr. Henry C. Ward
 Mr. and Mrs. H. M. S. Watkins
 Mr. Keene Watkins
 Mr. and Mrs. W. R. Watson
 Mr. and Mrs. Groville L. Way
 Mr. and Mrs. John T. Weaver
 Mr. and Mrs. Virgil L. Webb
 Mrs. Alene M. Weber
 Mr. and Mrs. Louis C. Weiss
 Mr. and Mrs. Robert B. Welch
 Mr. and Mrs. A. H. Wellenbrock
 Mr. Donald D. Wells
 Mr. and Mrs. Richard K. Welsh
 Mr. and Mrs. James Whyte
 Mr. and Mrs. Glen H. Wilfert
 Dr. and Mrs. N. D. Wilson
 Mr. and Mrs. U. W. Winte
 Mr. and Mrs. Jack Wiseman
 Mr. and Mrs. Robert M. Wisnom
 Mr. and Mrs. William Woodworth
 Mr. and Mrs. John Woolley
 Mr. and Mrs. John R. Wyatt
 Mr. and Mrs. Stanley Young
 Mr. and Mrs. Frank N. Youngman, Sr.
 Mr. and Mrs. Robert E. Zimmerman
 Dr. Wayne W. Zimmerman

Other Individuals, Business Firms, Corporations, Foundations and Organizations

This section of the 1967-68 gift report illustrates the diversity of Willamette University's supporting constituency. Individuals, business firms and corporations, foundations and organizations have helped the University realize its goals and accomplish its objectives. Here, too, is illustrated that general concern for higher education which causes those not directly related to Willamette University to invest in its future.

The gifts from these donors, taken together, exceed one million dollars and indicate how significant their participation is in the life of the University.

Carle Abrams Estate
Francis E. Albada
Albany Union High School,
Associated Student Body
Rev. C. Gene Albertson
Alcoa Foundation
Alpha Chi Omega,
Alumnae Club
America's Junior Miss
Scholarship Foundation
American Association of
University Women, Klamath
Falls Branch
American Chemical Society
American College of Trial Lawyers
Amherst Community Opera, Inc.
Anna Grace Anderson
Associated Women Students,
Willamette University
Atkinson Foundation
Myrtle L. Atkinson Foundation
Autzen Foundation
Tom Autzen
Bank of California
Dr. and Mrs. Gerard Banks
Arthur Bates
Paul B. Beal, Ph.D.
Bill Beard Sporting Goods
Beaumont High School P.T.A.
Mr. and Mrs. Stephen D. Bechtel, Jr.
Mr. and Mrs. Howard C. Belton
Bend Senior High School
Mrs. Elizabeth Peters Binney
Boise Cascade Corporation
Foundation, Inc.
Russell F. Bonesteel
Floyd Bowers
Charles Bowles, Ph.D.
Mr. and Mrs. Raymond I. Braham, Jr.
Russell M. and Marquerite J. Brooks
Estate
Robert Burrell
Rev. Robert Butner
Prof. Edwin W. Butler
Prof. and Mrs. Stanley Butler
Capital Chevrolet-Cadillac, Inc.
Carnation Company Scholarship
Cascade Warehouse Company
Chamber of Commerce
Carpenteria Valley

Chi Omega Peninsula Alumnae
Chrysler Corporation
Edward L. Clark
Class of 1921
Class of 1967
Collins Foundation
Colton Alumni Association
Russell M. Colwell
Commercial Bank
Commercial Credit Companies
Foundation, Inc.
Cotton High School P.T.A.
Trevor Corby Memorial
Scholarship Fund
Research Corp. for Science,
Frederick Gardner Cottrell Grant
Crown Zellerbach Foundation
Cutler Manufacturing Company
John Deere Foundation
Delta Gamma Foundation
Judge Arno H. Denecke
Dennis and Company, Inc.
Charles H. Berthick, Ed.D.
Prof. Raiph J. Dobbs
Byron F. Doenges, Ph.D.
Dow Chemical Company
E. J. B. Fund
R. L. Elfsstrom
Bend Elks Lodge, BPOE, #1371
Lebanon Elks Lodge, BPOE, #1651
Oregon City Elks Lodge,
BPOE, #1189
Oregon State Association,
BPOE Elks
Portland Elks Lodge,
BPOE, #142
Elliot Fund
Equitable Life Assurance Society
Erlanson, Morgan and McClain
ESSO Education Foundation
Mrs. Roy A. Fedje
Mr. and Mrs. Allan Finstad
First National Bank of Oregon
Portland, Oregon
First National City-Education
and Charitable Foundation
Mr. and Mrs. George E. Flanagan
Ford Motor Company Fund
A. M. Frank

Gerald W. Frank
Fukunaga Scholarship Foundation
Mrs. H. William Gazley
General Mills Foundation
J. Jay Gerber
Mrs. Louis Gerlinger
Della C. German Estate
W. E. Gladow
Mr. and Mrs. Coburn L.
Grabenhorst, Sr.
Robert D. Gregg, Ph.D.
Gilbert Groff
Grace Collins Goudy Scholarship
Fund
Vera Haberzer
Prof. Jack Hafferkamp
Mrs. Dorothy J. Hall
Mr. and Mrs. Herbert M. Hamblen
Stanley Hamner
Prot. James A. Hand
Haskins and Bellis
Mrs. Mark O. Hatfield
Dick Hendrie
Hillsboro Lions Club, Inc.
Hillsboro Union High School
Student Body
Edward Hines Lumber Company
Foundation
Booker Charitable Foundation, Inc.
Household Finance Foundation
Dr. and Mrs. Norman A. Huffwar
Hughes Aircraft Company
Isaac D. Hunt
IBM, Grants to Educational
Programs
Institute for Music in
Contemporary Music Education
Jackson Foundation
Jantzen Incorporated
Rev. and Mrs. H. James Jenkins
Jennie R. Jenkins Estate
Jenks-White Seed Company, Inc.
Cecil Johnson
Mrs. Gertrude W. Johnson
Mr. and Mrs. John W. Judy
Noel F. Kasstner, Ph.D.
Knapp Printing Company
Mrs. D. E. Laird
Lakers Dads Club
Lake Oswego High School
Mrs. Minnie E. W. Lawrence
Mr. and Mrs. Thomas H. Lee
Ed Lewis
Al Loucks
Harvey Lovell
James R. Lyles, Jr., Ed.D.
Dr. and Mrs. Chester F. Luther
McChord APH, Education Service
Office
Rev. Calvin D. McConnell
George S. McCowen, Jr., Ph.D.
John W. McHale
Madras Senior High School
Otto W. Mandl, Ph.D.
K. K. Manning
Marion Car Rental Company
H. D. Maxwell
Medford Senior High School,
Carpenter Foundation
Methodist Church, Board of
Education
Methodist Church, Oregon
Annual Conference
Miller's Department Store
Owen G. Miller, M.D.
Vern W. Miller, M.D.
Milwaukie High School
Dr. and Mrs. Cecil R. Monk
Leigh J. Monac
Mu Phi Epsilon
Multnomah County Bar,
Womens Association
W. J. Murphy
National Defense Student Loan
Fund
National Health Institute
National Merit Scholarship
Corporation
New Jersey State Scholarship
Committee
Roscoe and Margaret Oakes
Foundation
Ochoco Lumber Company
Officers Wives' Club
Fort Hood, Texas
Oregon Builders Hardware
Oregon Colleges Foundation
Oregon Commission for the
Blind
Oregon Dept. of Education,
Division of Vocational
Rehabilitation
Oregon Junior Achievement,
Columbia Empire
Oregon State Grange
Oregon State University
Foundation, S. Santiam
Education & Research Project
Oregonian Publishing Company

Oreana Fund
P.E.O. Sisterhood, Oregon
State Chapter
Mr. and Mrs. Charles L. Paar
Pacific Power and Light Company
Albina Page Fund
Parkrose Senior High School
Cameron S. Paulin, Ph.D.
Bayne and Settecase
Frank Peoples
J. C. Penney Company, Inc.
Dr. and Mrs. Richard P. Petrie
Prof. James G. Phillips
Portland Panhellenic Association
Potts-Davis and Company
Keith Powell
The Presser Foundation
Publishers Paper Company
George Putnam Fund
John A. Rademaker, Ph.D.
Dr. and Mrs. Howard W. Runkel
Richard A. Rawlinson
Research Corporation
Mr. and Mrs. Albert Reuter
Reynolds Trust
Mrs. Ann L. Reynolds
Mr. and Mrs. Paul Reynolds
E. S. Ritter Company, Inc.
Earl R. Robertson
Annie Roberts Foundation
Herbert W. Roberts Estate
Roberts Motor Company
Robert Rodgers
Wallace Roseboro
Rotary Club of Albany
Rotary Club of Lakewood
Rotary Club of Salem
S. & H. Foundation, Inc.
Sage Food Service
Salem Breakfast Club
Salem Federated Music Clubs
Salem Geological Society
Salem Sand & Gravel Company
San Mateo High School Faculty
Wives Association
San Mateo High School P.T.A.
Mr. and Mrs. Austin B. Sanford
Scientific Products
M. M. Scott Scholarship
Sears-Roebuck Foundation
John I. Sell
Mrs. Veins J. Shaffer
Shell Companies Foundation
Theodore C. Shoberg
Betty Simmons
Rev. Kenneth Simons
Mrs. Roy H. Simons
Audrey S. Smith
Dr. and Mrs. G. Herbert Smith
Victor E. Snyder
Howard R. Somers
Soroptimist Club of Beaumont
Southern Pacific Foundation
Bomer R. Spence
Charles A. Sprague
Martha E. Springer, Ph.D.
Standard Oil Foundation
Everett W. Stark and Company
Statesman-Journal Newspapers
James R. Staffard
A. H. Steiner
Sidney Stenerodden, M.D.
Edwin J. Stillings, Ph.D.
Robert Sundberg
Tektronix Foundation
Herbert A. Templeton Foundation
Max D. Tucker Scholarship Fund
Max and Rose Tucker Foundation
Howard Turner Educational Trust
Fund
U. P. Reformation Committee
Prof. Marija Udris
Union Pacific Railroad
Foundation
United States Government
United States Dept. of Health,
Education and Welfare
United States National Bank of
Oregon
Mr. and Mrs. Robert J. Vinson
Jerry H. Walling
Walton Charitable Trust
William B. Webber
A. M. Weinstein
West Anchorage High School
Westab Charitable Trust
Norman White
E. Jerry Whipple, D.C.S.
John Wilbur
Willamette Iron & Steel Company
Willamette University Mother's
Club of Portland
Williamina Clay Products, Inc.
Williams, Skopil and Miller
WY East P.T.A.
Elmer E. Young
Young Republican Club
Willamette University
Xerox Corporation

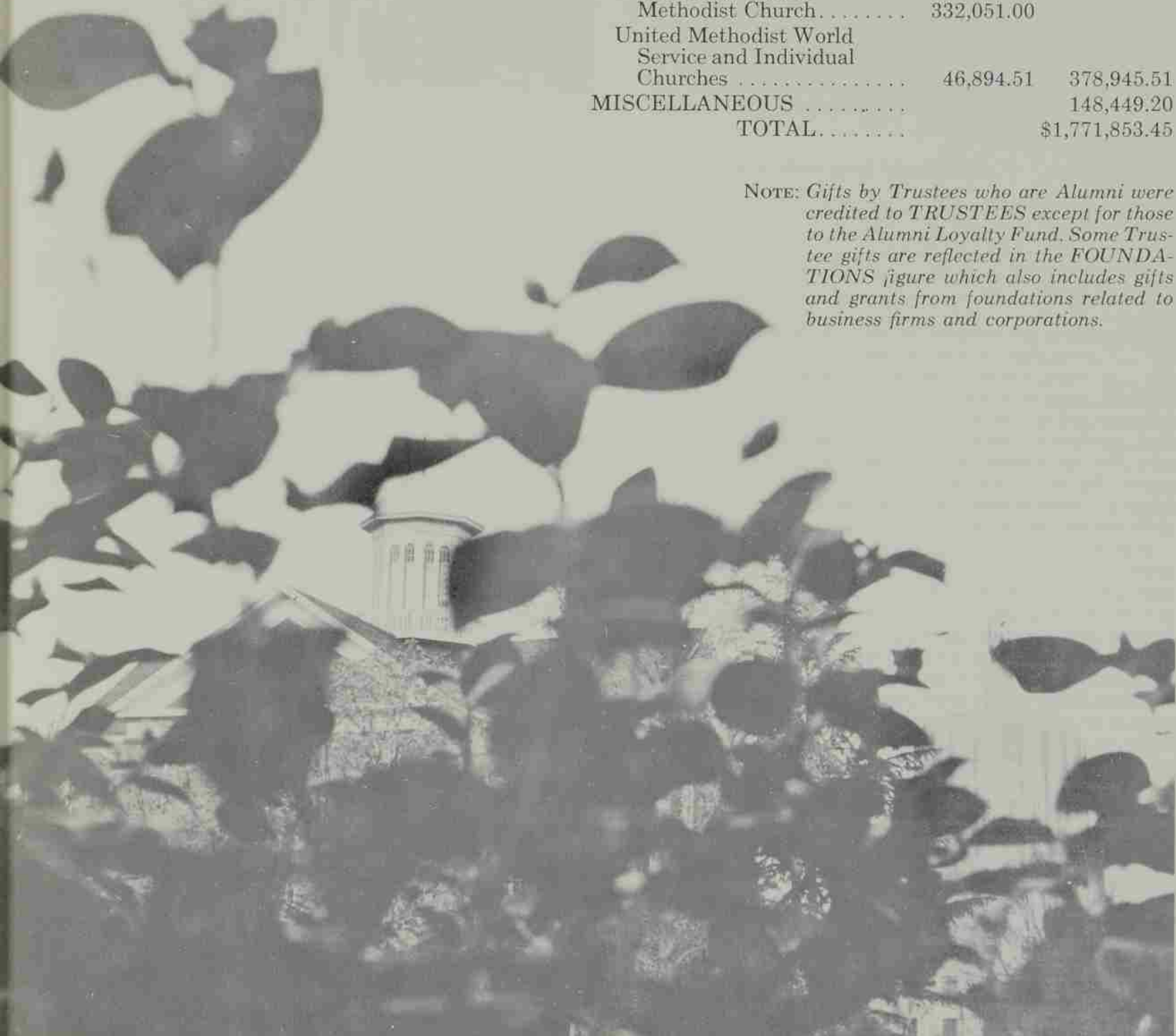


Statement of Gift Income

June 1, 1967 - May 31, 1968

ALUMNI		
Liberal Arts and Music	\$ 45,410.54	
Law	13,193.84	\$ 58,604.38
PARENTS		26,042.16
TRUSTEES		60,871.22
OTHER INDIVIDUALS		102,995.67
BUSINESS FIRMS AND CORPORATIONS		
Through the Oregon Colleges Foundation	47,254.50	
Direct to the University	87,031.60	134,286.10
FOUNDATIONS		536,851.63
GOVERNMENT		324,807.58
CHURCH		
Reynolds Trust Fund- Centenary Wilbur Methodist Church	332,051.00	
United Methodist World Service and Individual Churches	46,894.51	378,945.51
MISCELLANEOUS		148,449.20
TOTAL		\$1,771,853.45

NOTE: Gifts by Trustees who are Alumni were credited to TRUSTEES except for those to the Alumni Loyalty Fund. Some Trustee gifts are reflected in the FOUNDATIONS figure which also includes gifts and grants from foundations related to business firms and corporations.



Graduate Views Student Activism in Latin America

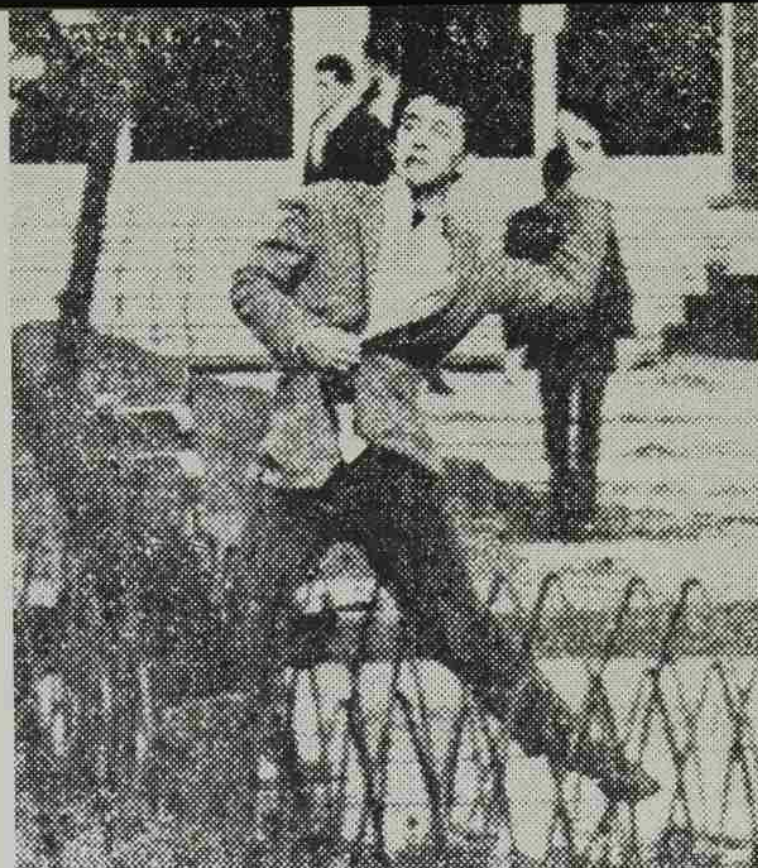
Holt Williams, '63, who served the Peace Corps for two years in Chile, cautions U.S. campuses after watching experienced hands lead student protest movements in Latin America.

CAMPUS MILITANTISM has made headlines this past year from Paris to Rio de Janeiro. Even the Communist world, which is considered by many to be in the vanguard of education, has been subject to major student outbursts in Czechoslovakia and Yugoslavia. But probably the most experienced hands at protest activities are Latin Americans. This year's uproar at Columbia University may seem like a new thing here in Yankeeland, but south of the border young Latins are nodding with a certain knowing self assurance as the rocks and tear gas fill the air in the U.S.A.

With the increase in student protest movements and general unrest on many U.S. campuses during the past few years, perhaps greater consideration of Latin American student activism is warranted. It is generally known here that student politics in Central and South America are considerably livelier than in the United States. What is not as well known is that university politics there are often a microcosm of the national political situation. When viewed from this perspective, what often appears to be a ludicrous circus to visiting North Americans may really be a manifestation of the tension and turbulence of a continent which has probably become "the dark continent" to most people in the United States.



Holt Williams, a graduate in political science, joined the Peace Corps following graduate study at the University of Oregon and Portland State College. He was assigned to work at the University of Concepcion at Concepcion just south of Santiago, Chile. Since his return to Oregon he taught briefly at Hillsboro High School and now plans to return to graduate school in Latin American studies.



Un grupo de universitarios lanza piedras contra las fuerzas policiales durante los graves incidentes registrados frente al Barrio Universitario y que tuvieron como campo de batalla la Plaza Peru y sus inmediaciones. Los estudiantes se proveían de piedras de las construcciones que se realizan tras la Casa del Arte, para atacar a los carabineros.

EL SUR - Concepcion, Chile, S.A.

Most Latin American educators consider their university students to be quite different from university students in the United States. They may tend to exaggerate the differences, but any North American who works a fair length of time in one of the universities of our neighbors to the south will discover that there indeed are some differences. One of the most interesting and significant of these differences is that represented by the concept implied by the motto of the far left at the University of Concepcion, "ESTUDIAR Y LUCHAR," which means "to study and to fight for." The role of the university student according to the motto is therefore a dual one, both passive and active in nature. Virtually all effective student leaders insist that it is not enough for the Latin student to conscientiously attend classes, study his course material, and participate in social activities. The student is also obligated to strive to effect change.

It is not always easy to discern just what the Latin students want to change. Their propaganda for the public often deals with huge generalities. If there is any dialogue at all with university authorities, it tends to be erratic and hard to follow. At the U. of Concepcion, the present broad goal of the protest movement is "to democratize" the university. In this case the main argument is that the university today receives most of its finances from the state while private interests, namely the Masonry, still run the university. The students want to alter the administrative power structure through a system of co-government which already exists in many of Latin America's universities. Sometimes student movements have more specific goals, such as opposition to new objective test entrance exams. At the U. of Caracas such tests were rejected by student leaders for their being too unfair to the culturally deprived. The Latin American student agitation which receives most publicity in the U.S.A. almost always centers around the ideological confrontation and invariably is grossly oversimplified by the news media.

More often than not the protest issues emerge from individual departments. Politics may have nothing to do with the problem. The target may be an incompetent professor, an obsolete required course, or a lack of vital laboratory equipment. Other times the issue is or becomes largely political. The students of U. of Concepcion's two year old Sociology Department are almost all Castro-line Marxists. Last year they disliked the orientation of their curriculum, wanting to study a methodology focused on critical analysis of historical evolution of society based on the dialectic rather than learning to employ esoteric models abstracted out of reality. They believe that the latter approach is accepted in the U.S.A. because it justifies the country's capitalistic economic system, which they of course reject. Theoretically if the cause is a worthy one which could be an issue in other departments on campus and if the authorities are unreasonably intransigent, the issue is then brought before the university student federation. The federation may show disinterest in the problem or choose to escalate the conflict to the all university level. Some issues reach national scale and could conceivably become international student causes throughout Latin America.

This brings us to the phenomena of Latin American student solidarity and the most common protest tactic which is a consequence of it — the general student strike. There seems to be a clear distinction between the mentality of Latin American and North American university students in regards to solidarity and striking. In both situations the mass of students are usually apathetic to protest issues. In both cases the most studious people usually show little interest in becoming actively involved. However, there is a significant difference in regards to the reaction of these students to the movements that interfere directly with their education. It is a rare North American student, especially a highly conscientious one, who will cooperate with a protest movement that he is not vitally interested in, such as by complying with a strike by not attending classes. In turn it is a rare Latin American student who will attempt to attend classes during a student strike, although he may have no idea as to what the strike is about.

Short Term Sacrifices for Long Term Gains

North Americans generally do not believe that teacher strikes are justifiable in education, let alone student strikes. Even the more frantic New Left leaders on U.S. campuses feel that the student strike is too good a weapon to use very often. It is evident south of the Rio Grande that students and to some extent faculty strikes have occurred so often that the tactic has lost much of its effectiveness. Yet student leaders and sometimes faculty members there continue to insist that strikes are necessary in spite of their short term negative effect on education. They maintain that the administration often will not listen to or act on any constructive criticism. The students emphasize or rationalize that short term sacrifices, such as lost or interrupted class and study time, must be made in order to achieve long term gains for the students of future years. The administration in turn usually points out that the students have not sufficiently analyzed the problems and are motivated by general political goals rather than by specific educational needs. They believe that the students are negative in their approach and do not offer feasible alternatives. North Americans working in this perplexing environment will gradually perceive that both sides are at the same time right and wrong.

There of course are reasons for this instability in Latin American education. Professors and administrators, though they may be wanting in material possessions, spend years building a sphere of responsibility and power which they jealously guard. They often feel threatened by new ideas. Many of the

qualified personnel are part time people whose main interests lie outside of the university. The educational systems of almost all the countries are characterized by their resistance to new ideas, be they from visiting North Americans or from bright young Marxist students. Although the staff of a department may be very large, productivity per person is usually quite low. It is not uncommon to see a department head spending hours doing clerical tasks or passing many of his supposedly working hours chatting with a friend over coffee about social concerns. The universities are very stratified. High level administrators almost never expose themselves to direct contact with students. I do not recall one instance during my two years at the U. of Concepcion when the Rector (President) spoke before the students. His best effort at communication was a two page personal appeal to students in the major local newspapers. It is hard for me to imagine a high level Latin American administrator or even a professor browsing about the campus and mingling with students. Moreover, there is often almost as great a gap between the administration and faculty as between administration and students. Faculty strikes for higher salary and better working conditions are not uncommon in all levels of the educational system, thus providing an exemplary tactic for students to imitate. Also very noticeable is a preoccupation with form and correct channels of communication which has a deadening effect on the vitality of the whole educational system.

Strong Minded and Idealistic

Yet the students can hardly claim to be more competent than the administrators and professors. They have been educated on years of rote memorization of class notes and sensitized to literary and artistic expression that is essentially much more emotional than intellectual in content. Their mental set is such that they do not approach a problem as North American students would. Their student government has all the trappings of sound democratic institutions, but the students do not systematically investigate the problems they protest. They are strong minded and idealistic rather than pragmatic and analytical. They rarely have had to shoulder major responsibilities at home or had a summer or part time job. Most are unaccustomed to doing even small chores about the house. They are required to pay very little for their education. Yet most of them come from families that could pay far more than is required and thereby open greater possibilities for the children of poor families to continue their education.

THE PROFESSIONAL political activist on campus is not as common as North American sources often claim, but there indeed is a small but very active percentage of students whose interests are almost solely political. Such student leaders frequently become very important in national politics later on. The Marxists almost always take the initiative in campus movements. They normally have been the first to focus student and public attention on genuine educational problems. Thus today they can drag in the North American imperialism bugaboo and successfully identify it with the more concrete problems which are evident to everyone. Hence ideas such as creeping North American control over the planning of social science departments become standardized as protest issues by all student groups. Large center groups, though they may have no real quarrel with the university system, have to take up some protest causes or lose their political influence on campus. Failure to act dramatically on espoused convictions can result in a takeover of the student federation by the more vocal and better organized extreme left. The U. of Concepcion is a case in point. The center and democratic left groups are kept on the defensive

trying to prove somehow that they are not reactionary and not pushovers for the countless subtle manifestations of North American imperialism. I believe this is the principal reason that the Concepción Christian Democrat student leaders decided to approve the expulsion of the Peace Corps from campus, even though it is Chile's Christian Democratic government which invites the Peace Corps to the country in the first place.

Student political leaders sometimes label the apathetic, uninvolved, uninformed student as having an immature, incomplete personality. The inarticulate mass is looked upon by the Marxists as being essentially naive. They feel that this numerical majority must be led by the most politically conscious who by definition are from the far left. This attitude seems reminiscent of the attitude of the early Puritans in colonial America that God's chosen elect are recognizable by their piety and self abnegation, in short their Puritanical characteristics. A North American himself may find that he is developing an almost contemptuous feeling for this sheeplike student mass which always just goes along with whatever is happening. One wonders if they are really afraid to buck the activists or if they simply figure that it is easier not to go to class than to go, and consequently it will be a little easier to receive a diploma. A more positive explanation for these students' acquiescence postulates that Latin American students learn very early in their democratic system of secondary school student government that the principle of fidelity to unions is inviolable and that the students share strong faith in their bright, energetic leaders whom they very democratically have elected.

The response of faculty and administration to student protest movements is usually disappointing to the North American observer. The students' valid suggestions are almost always ignored or receive the same dilatory handling that the more blatantly politically motivated complaints receive. The pattern is usually about the same. Student leaders report to the student general assembly (normally about 10-15% of the student body attend) that the administration has ignored them, and an appropriate response is debated. If a strike is voted, the far left and other active political groups begin to compete for control of the movement.

Consequences Are Sometimes Serious

The consequences of all this are sometimes serious. Last year at the U. of Concepción a day and night of rioting by hundreds of students resulted in the injury of many policemen and the kidnapping of one policeman who had inadvertently set foot on the sidewalk bordering the campus. He was subsequently held hostage in a campus men's dorm until an exchange of prisoners agreement secured his release. At the Central U. of Quito, Ecuador last year the local military commander invaded and occupied the university after students seized and burned a U.S. geodetic survey jeep which they maintained was really being used for military purposes. (The presence of U.S. Marines in Ecuador and many other Latin American countries arouses the ire of students. Even in Chile where there is no guerilla movement, the U.S. Embassy staff is 60% military personnel.) In another incident at U. of Concepción the Marxists raised the Cuban flag on campus and lowered the Chilean flag to half mast the day Che Guevara's death was confirmed. A student who attempted to lower the Cuban flag and raise the Chilean one was severely beaten and had his nose smashed by a rock. In other situations such as U. of Santo Domingo and the U. of Guatamala City, students and police have been killed.

The administration's most frequently used weapon is delay. The prevailing philosophy is close to the idea that any problem which can't solve itself can't be solved. The forming of a student-faculty-administrative committee "to look into the problems"

more often than not serves only to put the problem off until the next year. Due to the idiosyncrasies of the Latin temperament, crises often cool off as fast as they flare up. However, if the students are well led and well unified they can sometimes exert tremendous pressure on the administration. Even Chile's Catholic Universities underwent major upheavals last year. At the largest technical university, a Communist student directorate actually forced the resignation of the Rector. Few students are willing to strike to the point that they would have to repeat the school year, but the leaders know that the government cannot tolerate a lack of space for an incoming first year class at a major university. Thus the cancellation of enrollment by the administration is almost always an empty threat. This occurred at U. of Concepción in 1966 but was simply an administrative tactic to break down student solidarity. The government would most certainly have intervened had the loss of the year been imminent. Summer gives the school year a couple months of elasticity and standards are fairly flexible anyway.

WHAT IF ANY relevance does all this have to education in the United States? It seems to me that there indeed are some lessons to be learned. First of all, Latin American education does offer us a good case for the argument that the controversial issues of the day should receive a hearing in our institutions of higher learning. The university which is able to maintain a lively debate of the causes and effects of the various problems of society, without interrupting the normal educational process, in my opinion has the best of both worlds. Going to college in today's unstable world should be a disturbing experience for the rosy cheeked young, middle class American who has never encountered the stark reality that faces 80% of the world's population. A semester or two in a Latin American university might wake him up to a degree of social consciousness and sensitivity to world events which he might never attain in ten years in most North American universities.

On the other hand, it is clear that we would not welcome the excesses of student protest movements that are so evident in Latin America. Although Latin students may argue that these excesses are simply a response to the inferiority of the educational system, it seems very possible that they are really one of the causes of it. A Concepción professor once commented to me that the school might be such a good one if only the students would dedicate themselves to studying, the professors to teaching, and the administrators to administrating. The deviation of each group from its most appropriate role results from a basic lack of mutual confidence which exists in these universities and throughout Latin American society. Here I believe lies the crux of the dilemma of the U. of Concepción and probably of Latin American education in general. People simply are unwilling to grant confidence. Yet it is impossible for any person or group or institution to earn the confidence and respect of others unless a basic underlying mutual trust exists which gives them a fair chance. Students, professors, and administrators are theoretically a team, coordinating their efforts in order to approach a common goal. Yet too often the common faith implied by this goal is lacking in Latin American education. Even the most open channels of communication will be useless unless this state of mutual faith exists. Thus the lack of respect Latin students, faculty, and administrators often show for each other is symptomatic of a vicious circle. Perhaps some North American universities avoid the Latin American dilemma by avoiding the issues. Hopefully Americans both North and South involved in university education will strive towards the achievement of a creative tension of competing ideas amidst a constructive dedication of mutual effort.

Class Notes

1910

CYNTHIA HORNIBROOK BOWDEN plans to have her book of one hundred original poems published this year; forty-two of which have already been published in newspapers and magazines. Her address is 104 S. Palouse St., Walla Walla, Washington.

1911

ARTHUR W. SCHAUPP (L) is practicing law in Klamath Falls, Oregon, where he has been located since 1925—205 Willis Bldg.

1918

ESTHER COX TODD wrote the music for the musical play "Hudson Bay Man" which was presented at Portland State this spring. The play depicting the life of Dr. John McLoughlin was produced by Phi Beta as a tribute to Mrs. Todd and proceeds went to speech and music scholarships. Esther resides at 1927 NE Tillamook, Portland, Oregon.

1920

EVA PARRETT KLEIN continues to work as a supervisor of the Day Care Program for the Social Service Dept. She and her husband, Adolf, reside at 6004 NE Sacramento, Portland, Oregon.

1924

CAROLYN WILSON KECK recently completed 3 months service as interim Executive Director of the YWCA in Ogden, Utah. She had previously served two 3-year terms on the Board of Directors. Dr. & Mrs. WENDELL KECK '30 reside at 1379 28th, Ogden, Utah.

1925

LEONEL R. GRAY is living at 1046 Leland Dr., Lafayette, California. He is field director for the Red Cross at the Alameda Naval Air Station.

CARMELITA BARQUIST is now employed at Willamette University as an assistant in the supervisory capacity of practice teachers. She was also honored to be named the Biology Teacher of the Year in Oregon for 1967 and the recipient of a \$600 microscope from the American Optical Co. Her address is 1395 Mission St., Salem, Oregon.

DWIGHT FINDLEY, M.D., recently returned from 4 months in Mexico. His wife died on Sept. 9, 1967. Dr. Findley resides at 737 Stevens, #121, Medford, Oregon.

PAUL G. ROEDER retired last summer and spent two months traveling in South America. He is now building a cottage at Ocean Shores, Washington. Paul lives at 4201 Spruce St., Vancouver, Washington.

1926

ISABELLE NOFTSKER BOVE traveled in Scandinavian countries in 1967 and traced her husband's family. She is now very busy in AAUW Diplomatic Coffees—helping the wives from other countries with their English. Her address is 5840 21st N., Arlington, Va.

MABEL FLOCK LARRISON resides at 1420 N. 48th St., Seattle, Washington. She retired from teaching in the Seattle Public Schools this year.

HOLLIS VICK is Staff Associate for the Community Planning Div., United Community Funds and Councils of America. She resides at 230 E. Fifteenth St., New York, N. Y.

MARGARET MADES retired in 1967. She spends the winters in Orlando, Florida, and during the summer months she resides in East Boothby, Maine.

Prof. GERALD L. PEARSON of the Electrical Engineering Department of Stanford University has been elected to

the National Academy of Engineering. Election to the Academy is the highest professional distinction that can be conferred on an American engineer. Prof. Pearson and his wife, MILDRED CANNOY '29, reside at 185 Golden Oak Dr., Menlo Park, California.

1927

HAZEL NEWHOUSE has been granted a sabbatical leave to attend the International Geography Union meetings to be held in India in November and December, 1968. Address is 4709 N. Willamette Blvd., Portland, Oregon.

1929

GEORGE BIRRELL, 310 Richmond St., Salem, Oregon, was named the state's outstanding teacher by The Chemical Industry Council of the Pacific Northwest. George has taught chemistry at South Salem High School since 1954 and is the author of many articles in chemical publications.

1930

LORETTA G. FISHER has resigned as assistant state librarian to join the staff at Oregon State University Library. She has been with the State Library for 32 years. Her new address is 2916 NW Polk, Corvallis, Oregon.

1931

BONNIE WEINHEIMER HART is counselor and coordinator of testing at Columbia Basin College in Pasco, Washington. Her address is 815 W. Henry.

Dr. RAYMOND C. WADDEL resides at 4207 Yarnell Ct., Bowie, Maryland. He has had several papers published recently on his space experiments for NASA.

1932

Mr. & Mrs. W. HAYES BEALL SARAH DARK) are living at 103 Greenfield Ave., Lombard, Ill. Hayes was elected in January to the presidency of United Nations Association for Greater Chicago and Illinois. Gov. Otto Kerner of Illinois also recently appointed Beall to serve as a member of a state advisory committee on kidney disease. The committee advises the Illinois Department of Public Health.

1936

BILL LEMMON continues to teach French and Spanish at Mount Tahoma High School in Tacoma, Wash. He spent the summer of 1967 in Areachon, France where he attended an NDEA Institute for French Teachers. Mr. & Mrs. Lemmon (ISOBEL MOREHOUSE '35) reside at 103 Shore Ave. SE, Tacoma, Washington.

Mr. & Mrs. T. H. HAMMOND (L) (HELEN BOARDMAN '33) live at 4525 12th Ave. So., Salem, Oregon. Mr. Hammond is assistant to the medical director of the State Public Welfare Commission. Mrs. Hammond is a part time secretary. They have two daughters, Patty who received her MA from OSU and will teach, and Marilyn who is a sophomore at Oregon State University.

KATHRYN SMULLIN CHENOWETH is choir director for the First Presbyterian Church in Anchorage, Alaska. She is also substitute teacher for the Anchorage Borough School District. Her address is Box 1538, Anchorage, Alaska.

1937

COURTNEY JOHNS (L) was appointed District Judge for Linn, Benton and Lincoln counties. He was former Linn county district attorney. He resides at 127 Broad Albin, Albany, Ore.

1939

LOIS BURTON CLEVELAND and her husband, Harlan, were part of the move of NATO from Paris to Brussels. Address is USNATO, APO New York, N. Y. 09667.

Dr. TYRONE GILLESPIE (L) represented Willamette University at the inauguration of the president, Dr. Robben W. Fleming, at the University of Michigan. Dr. Gillespie resides at 1200 W. Sugnet, Midland, Michigan.

1940

Dr. ROBERT KEUSCHER is presently serving as coordinator of the League of Cooperating Schools for the Institute of Development of Educational Activities (IDEA) and teaching at the University of California in Los Angeles. He is the co-author of a new book entitled "Individualization of Instruction—a Search." His address is 2929 Colorado, Santa Monica, California.

DAN E. MOSEE, 12330 NE Multnomah St., Portland, Oregon, was recently awarded a "Distinguished Service Award" by the Mt. Scott Kiwanis and another by S.E. Post #146, American Legion, for "Service Above and Beyond the Call of Duty" to the community.

Dr. WARREN BIGGERSTAFF spent the spring of 1967 at the University of Lund in Sweden. He was accompanied by his family—his daughter, Mary spent her junior year at the University of Stockholm. Steven and Jennifer attended school in Lund. His address now is Fresno State College, Fresno, California.

1941

DOROTHY PALMER KNOX is a lumber invoice clerk for Tartar, Webster & Johnson. She and her husband, Kenneth and two sons, George (15) and Lambert (14) reside at 846 25th Ave., San Francisco, California.

VERNON A. LARSON of 4514 SE Hull Ave., Milwaukie, Oregon, is completing his eighth year as principal of Oregon City Senior High School.

Dr. ELIZABETH HENGSTELER now resides at 708 N. Euclid, Fullerton, California. She teaches Philosophy in college.

ROBERT POWELL is an appraiser for Benjamin Franklin Savings and resides at 668 McVey, #82, Lake Oswego, Oregon.

ROBERT S. HINMAN lives at 13349 SW Parkway, Beaverton, Oregon. He is plant record analyst-supervisor for Pacific Power & Light Co.

1942

JUNE WOLDT CONE was recently honored at a luncheon as one of five women who have given outstanding service to the community. One of them will be named Senior Woman of the Year. Mrs. Cone is the wife of Eugene's mayor, EDWIN CONE '41 and is now serving her 10th year as First Lady of Eugene. Mr. & Mrs. Cone reside at 2130 Olive St., Eugene, Oregon.

Dr. GLENN A. OLDS, noted educator and architect of the VISTA program has accepted a post as Special Assistant to Richard Nixon for Policy and Manpower Development. Since 1965 Dr. Olds has been the University Dean of International Studies and World Affairs at State University of New York. Dr. & Mrs. Olds and two children presently live in Oyster Bay, New York.

Operating out of the same building at Tuy Hoa Air Base, Vietnam are Lt. Col. ROBERT MCKOWN '42 and H. W. (BUD) WEDEL '52. Lt. Col. McKown is Chief of the Airlift Control Element which is responsible for all airlift support missions within Vietnam. Lt. Col. Wedel is Commander of Aerial Survey team #3. His unit is presently providing precision photography of the South Vietnam terrain.



1943



SENATOR MARK O. HATFIELD has published his first book through Harper & Row entitled "Not Quite So Simple." From the viewpoint of his own career which has taken him from political science professor at Willamette, to Governor of Oregon, to U. S. Senator, he cautions both politician and citizen against the dangers of the easy answer. A large portion of the book is devoted to his views on the war in Vietnam.

WILMA MATTHES McCAFFREE and her husband have opened an electrical store in Myrtle Point, Oregon. Their address is P.O. Box 456.

Mr. & Mrs. Clyde Shreve (DAWN BATES) are living at 1200 Carmela Ln., La Habra, California. They have 4 children.

HAROLD V. McABEE has resigned his position as Deputy Director at Tongue Point Job Corps Center to accept a position as a Research Professor with the Teaching Research Division, Oregon State System of Higher Education in Monmouth, Oregon.

1944

Mr. & Mrs. Jim Hukari (LUCILE BARNHART) and their three children, Elizabeth (11), Ronald (9), Evelyn (4) live on a 200 acre farm near Monmouth. Mr. Hukari is employed by Oregon State University in the Department of Oceanography. The address is Rt. 2, Box 96, Monmouth, Oregon.

1945

WILLIAM H. BYRD is school director of Northwest Outward Bound School in Eugene, Oregon. His address is 2570 Van Ness.

ELDON M. DIEHM is now in the third year of owning and operating a "Gift and Handicraft" shop in the downtown section of Beaverton, Oregon. His address is 12825 SW Glenhaven Ct., Portland, Oregon.

1947

JAMES ELLIOTT, director of the Wadsworth Athenaeum in Hartford, Conn., has been appointed as associate fellow of Trumbull College, Yale University, for a five-year term. Prior to taking the Athenaeum post, Mr. Elliott was chief of the Los Angeles County Museum of Art. He resides at 25 Atheneum Sq. No., Hartford, Conn.

JACK WATSON recently visited with his former roommate, LEE HALE, of Navy V-12 days at Willamette. Lee's original song won Freshman Glee in 1943 and he is still writing songs in Hollywood where he is the musical arranger for the Dean Martin show. Jack lives at 4302 No. Orchard, Tacoma, Washington.

1948

ORVILLE D. SMITH is mathematician with North American Rockwell Corp. in Los Angeles, California. He resides at 2536 Via Rivera, Palos Verdes, California.

1949

In mid-July, Dr. & Mrs. RAYMOND FEDJE (BETTY THOMPSON '50) will leave for Palestine and Europe. Betty gave a vocal concert in the Gardner Museum of Boston on July 9th. Their address is 800 Highland Ave., Needham Heights, Mass.

KATHLEEN SECORD is now Mrs. Louis Bourcier and is living in Burns Lake, B.C., Canada.

ROBERT C. RHOADS was recently elected president of Eugene-Emerald Rotary Club. He resides at 2195 W. 24th Ave., Eugene, Oregon.

Mr. & Mrs. TRAVIS CROSS (BEVERLY BRIGGS) and family have returned to Oregon after nearly a year's residence in Michigan where Travis was associated with Governor George Romney. He has a public relations firm in Salem. Their address is now 950 Market NE, Salem, Oregon.

RAY YOCOM has been promoted to Manager of the new office being opened by Educational Development Laboratories in New York City. Formerly sales representative, Ray will be responsible for setting up and managing EDL sales and orientation facilities to serve all five boroughs. He resides at 36 Hark Lane, Westbury, L.I., N.Y.

SHIRLEY DURAND BEARDSLEY, Box 105, Clinton St., Keeseville, N.Y., was elected to "Who's Who of American Women."

1950

BERNICE ISHAM has been granted a sabbatical leave from Coalinga College to do graduate study at the University of Oregon during 1968-69. Her address is 455 Dartmouth, Coalinga, Calif.

Mr. & Mrs. TOM YATES (JoANNE ESTEY '52) will be taking a year's leave of absence from Oregon State University beginning July 1. Tom will be a senior programmer analyst with Control Data Corp. in Minnesota. Their new address will be 2088 Fry St., Roseville, Minn.

FRANK M. WASHBURN has been appointed Executive Director of Blue Ridge Assembly Inc., Black Mt., N.C. Blue Ridge Assembly is a conference and leadership training center owned and operated by the YMCAs of ten states of the Southeast.

BETTY KUHLMAN PEASE is professor of Violin and Theory at Western Kentucky University in Bowling Green, Ky. Betty will study this summer at the Royal Conservatory in London, England, and with the great teacher, Ivan Galamian in New York. Her husband and daughter will tour the British Isles with her. Address is 1611 High St., Bowling Green, Kentucky.

BENJAMIN A. FLECK has been promoted by President Johnson to Class 2 in the Foreign Service of U.S. He is presently assigned to the Department of State as Country Director for Korea, Bureau of East Asian and Pacific Affairs. Concurrently he served as East Asia Adviser to the U.S. Delegation to the 22nd UN General Assembly. Mr. & Mrs. Fleck (MARJORIE COOPER '50) and children, Alan (14), Kenneth (11) and David (5) reside at 11909 Redwood Lane, Rockville, Maryland.

1951

Cdr. EARL W. FEDJE has been residing in Princeton, N.J., where he has been studying under a Navy sponsored post graduate study program. He will receive a Th.M. Degree and then will be transferred to the Naval Support Activity in Saigon, Vietnam. Present address is NROTC Unit—Princeton University, Princeton, New Jersey.

Mr. & Mrs. W. DONALD NEW (JOANNE ENYEART '52) are living at 406 Shadybrook Dr., Creve Coeur, Mo. Don is project manager for Anheuser-Busch Inc. Joanne is teaching 4th grade. They have two sons, Bill (13) and Brad (11).



Oregon's new State Superintendent of Public Instruction is DALE PARNELL who left the presidency of Lane Community College, Eugene, Oregon. He succeeds Leon Minear. Mr. Parnell has been at Lane Community College since its organization three years ago.

1952

Rev. & Mrs. EUGENE WALTERS (Carolann Snarr) and family are visiting the South Pacific, especially the Tonga Islands. They will stay there three weeks, helping to celebrate the centennial of the establishment of first schools under Methodist Missions. Rev. Walters is pastor at the First Methodist Church in Anchorage, Alaska. Their address is 725 9th Ave.

BARBARA GERTSON, 360 Grant St., Ashland, Oregon, is secretary to the chairman of the music department and working on her MA at Southern Oregon College.

Mr. & Mrs. THOMAS P. JOSEPH (BETTY MULLIN) and children Tom (7) and Sally (4) have moved to 10770 SW Berkshire, Portland, Oregon. Tom is a partner in the law firm of McMenamin, Blyth, Jones and Joseph.

Maj. ROBERT L. GRAHAM will be assigned to the staff and faculty of the US Army Artillery and Missile School at Fort Sill, Oklahoma, after graduation at the U.S. Army Command and General Staff College in June.

FELIX CALKINS has been chosen recipient of the 1968 World Affairs-Citizen Award. The award is made annually to a person who is judged to have made "an outstanding contribution to international understanding and goodwill." Felix is coordinator for an exchange student program which has sent about 6,000 Oregon and Washington high school and college students both abroad and on the East Coast for study. He resides at 1125 SW Oak, Lake Oswego, Oregon.

Mr. & Mrs. FRANK COMBS (DONNA WHITELEY) and 3 children, Mark (14), Kathleen (12) and Mary Beth (5), live at 2315 NE 32nd Ct., Portland, Oregon.

Dr. ROBERT B. KAPLAN, director of the English Communications Program for Foreign Students at the University of Southern California, has assumed the national chairmanship of the Association of Teachers of English. Dr. & Mrs. Kaplan (AUDREY LIEN '50) and their children reside at 11517 Ruthellen St. Los Angeles, California.

DOROTHY BEACHLER ROARK is a librarian and is living at 478 Craig Way, El Paso, Texas.

1953



Maj. ROBERT I. PLATENBERG is attending the Armed Forces Staff College at Norfolk, Va. The college, operated under the direct supervision of the Joint Chiefs of Staff, prepares students for positions in joint and combined commands that involve more than one country or military service.

ROLLIN J. COCKING is living in a suburb of Cleveland, Ohio, 23370 Ranch Rd., Beachwood, Ohio. He has two children—Kristin (4½) and John (1½).

SUZANNE SHIPLEY DREYER has moved to 2325 Donegal Ave., So. San Francisco, Calif. Her husband, David, is now an associate professor of chemistry at San Francisco State College.

Dr. & Mrs. DUANE DENNEY (PRUDENCE EDWARDS) returned at Christmas from 1½ years in Freiburg, Breisgau, Germany, where Duane did research in neurophysiology at the University. Prudy attended language courses for foreigners at the University. Their current address is 5732 SW Hewett Blvd., Portland, Oregon.

ANN SHIDELL MUELLER is still active as accompanist for the Port Arthur Choral Club and as a community concert board member. She has a young son, Laurence (1½). Address is 2645 33rd St., Port Arthur, Texas.

ROBERT J. DYER recently returned from Vietnam. His next assignment is Mildenhall, England, 7120 ACC Sq., P.O. Box 1649, APO New York, N.Y.

09127. While in Vietnam Bob received 10 air medals, a distinguished flying cross and Vietnamese awards while flying with the 12th Air Commandos.

JAMES BRADSHAW is currently employed as director of administrative services for the Oregon State Mental Health Division. He lives at 1567 Madonna SE, Salem, Oregon.

VERNE SHANGLE with his wife and two children: Nancy (14) and Becky (12) reside at 1299 21st NE, Salem, Oregon. Verne has been administrator at The Doctors Clinic for the past 12 years. He is also currently member of the Executive Committee and Trustee for Oregon Physicians Service.

MARILYN MERZ ADKINS is a housewife and resides at 3807 Haynsworth Pl., Fairfax, Virginia. She has a young son, Brian (4).

CAROLINE MATTER NEUWIRTH has been county secretary for her party for the past two years and is now running for a public office. Her address is Rt. 2, Box 158, Silverton, Oregon.

1954

LARRY STANDIFER has been appointed the Head Athletic Trainer for the Athletic Dept. at the University of Oregon. He will also continue as Head of Physical Therapy for the Student Health Service at U of O. Mr. & Mrs. Standifer (MARY POLALES '54) reside at 2360 Douglas Dr., Eugene, Ore.

Dr. KENT C. MYERS presently is assistant superintendent of Lake Oswego Public Schools. He has been appointed to the National Commission on Supervision and Curriculum. Dr. and Mrs. Myers have 4 daughters, Sally, Laura, Jill and Jane who was a year old last April. Address is 13580 SW Goodall Rd., Lake Oswego, Oregon.

Dr. SALLIE VERRETTE and her husband have been living in Grinnell, Iowa, for the past 7 years—916 10th Ave. He is associate professor of French. They have two children, Charles (6) and Claire (4).

BETTY WALSER HAMILTON and her husband, Kenneth, have moved from Oconomowoc, Wisconsin, to Hillsboro, Oregon—608 SE Oak. Her husband has taken a position with Haley's Food Inc. at Food Technologist.

Dr. DONALD A. MORRISON is an orthopedic surgeon in Baltimore, Maryland, and resides at 30 Thornhill Rd., Lutherville, Maryland.

MARY JANE STEWART WADE has moved to Tall Pines, Rt. 5, Charlottesville, Virginia. The National Radio Astronomy Observatory has moved the scientific staff to Charlottesville. The Wades have 4 children, Karen (11), Stewart (9), David (4), Richard (3).

DON CANTRELL has left The Register newspaper in Santa Ana, California to become managing editor of The Casa Grande Dispatch, Casa Grande, Arizona. He has also written two 3-act plays, "Death in the City Room," and "Estancia Gold," the latter of which is now under serious consideration by an agency. He and his wife are making their home at Apt. B, 774 E. Laurel Dr., Casa Grande, Ariz.

Dr. DONALD E. CHITTICK will be teaching at George Fox College in Newberg, Oregon, this fall.

1955

ROBERT L. ALFRED is working in San Francisco now as Traffic Planning Supervisor. Bob, his wife and daughter, are living in Mill Valley, California, 108 Richardson.

Cdr. D. M. GRAGG has recently been promoted to Commander and is serving as Chief of Medicine and Chief of Out-Patient Services at the U.S. Naval Hospital in Naples, Italy. His wife and three children are enjoying life in Europe. New address is NAV HOSP., Box 19, FPO, New York, N.Y. 09521.

PATRICIA GENTLE GRANBERG graduated from the medical school at the University of California at Irvine in June and will begin her internship at Mt. Zion Hospital in San Francisco. She plans to specialize in pediatrics. Her current address is 4221 Feliz, Los Angeles, California.

Mr. & Mrs. KENNETH COOPER (KAROLYN KREMER) continue to enjoy living in Gilroy, California—140 Westwood Dr. Ken is employed as Construction Manager for Woodside Homes, Inc., and Kay is busy with civic and church affairs. They have two children, Ian (11) and Nancy (8).

DONNA SEBURN TALUS will be teaching girls' P.E. at Prairie City, Oregon, this next year. Her present address is E. Star Rd., John Day, Oregon.

After ten years with the Boeing Co.,

WARREN D. ECKLES (L) is now corporation attorney with T.R.W. He and his wife and 4 children live at 225 Allynd Blvd., Chardon, Ohio.

1956

Mr. & Mrs. DUANE EAKIN (MARILYN HARLAND '58) are now living at 10435 Portal Ave., Cupertino, California. Duane left the regular Air Force in July 1967 and is now flying as a second officer on Boeing 720B for Western Airlines out of San Francisco.

WILLIAM FREEMAN is a doctoral student in Geography at the University of Washington. He is presently on active duty with the 941st Mil. AIST Gp. at McChord AFB, Washington. His wife, Evelyn, is a teacher in Home Economics at Hale Senior High School. Their address is 3234 Market, Seattle, Wash.

CLARINE WOOLERY HARP has been teaching at Parrish Junior High in Salem for seven years. She and her husband and two sons, Douglas (3) and Donald (2) reside at 1170 Hines SE.

W. RONALD ORLEBEKE '56 L '66 passed the California Bar in December '66 and since then has been associated with the law firm of Eliassen & Postel in San Francisco. He recently purchased a home in Concord, California, 4312 Pembroke Dr.

JEANNE HOLMES STOKER has spent two years in Porto Alegre, Brazil, where her husband, Wayne, was Vice-Consul. They have a daughter, Pamela who is 3½ years old. Jeanne has been teaching first and second grades at the newly formed American School there. They are now moving to Brasilia where Mr. Stoker will be with the American Embassy. Their new address will be U.S. Embassy—BR, APO New York, N.Y. 09676.

DAVID WOOD is attending Graduate School at the University of Colorado. He will be teaching Spanish next year in the Denver-Boulder area. His address is 645 Dewey, Boulder, Colorado.

Mr. & Mrs. JOHN A. REHFUSS (CAROL LITCHFIELD '57) live at 5085 Elrose, San Jose, California. John has a position for one year with the Federal Government's Administrative Training Program. He will return to teaching at San Jose State College in September. Carol is busy at home with children, ages 8, 6 and 4.

JERRY L. PATTERSON has a new assignment with Computer Usage Development Corp. It involves consulting with colleges and universities to develop large computer-based information systems. Jerry received his Masters Degree in June from George Washington University. New address is 300 Gayler Terrace, Media, Pennsylvania.

The Corwin Hortons (MARGIE SWANSON) bought a large old home on a hill in Mill Valley four years ago and have been redoing the entire house themselves to suit their needs. Decorative ceramic pieces and art work throughout the house are by Margie. She will be featured as a "bright new talent" during the American Artists Council national convention in San Francisco. Their address is 22 Hillcrest Rd., Mill Valley, California.

Mr. & Mrs. RAY MEYERS (DELORES MILLER '54) have moved to 4133 Barrett St., Salem, Oregon.

Dr. DAVID A. FRENCH is the minister at West Anaheim Methodist Church and resides at 2102 Beacon Ave., Anaheim, California.

KENNETH C. RENSCHAW left the Air Force after almost ten years service and joined Delta Airlines as a pilot. He is also active in Farmers Branch community activities as a realtor and Little League coach. Ken and JACK BISHOP '57 are neighbors and attend Phi Delta alumni meetings together. Address is 2817 Maydelle Lane, Dallas, Texas.

SALLY JONES VAN NIEL is working in the Neurology Div., Dept. Medicine, University of Washington while working on an advanced degree in Physical Anthropology. Her husband is working on his doctorate in Zoology. They have a three year old daughter, Kristi. Address is 4404 222nd St. SW., Mountlake Terr., Washington.

DIANE BURKLAND OXHANDLER is an educational researcher for Fair West Laboratory and resides at 440 Davis Ct., San Francisco, Calif.

Maj. & Mrs. DONALD MILLER (CHARLOTTE KLEEN '58) have been living in Colorado—USAF Academy, Maj. Miller will be stationed at George AFB, California, for training in the F-4E "Phantom" and then assigned to Vietnam.

VOLNEY G. SIGMUND is presently recruiting campers (boys 8-16) for Camp Paulina, an independent camp 21 miles south of Bend, Oregon. His wife, Lynn, is helping organize the Red Cross swimming program in Bend and plans to teach next year. Their new address is 1154 Columbia Ave., Bend, Oregon.

MARTIN BURLINGAME is serving as an assistant professor in the Department of Educational Administration at the University of New Mexico.

DALE GREENLEE is YMCA Director at the Paris Community Y in Paris, Illinois. He lives at 516 E. Madison St.

1958

LOLA LANE is Registrar at Dyke College in Cleveland, Ohio. She resides at 2830 Van Aken Blvd.

RALPH C. SIPPRELL recently became a law partner in the Portland firm of Groce, Becker, Ellis & Sipprell in the Yeon Bldg. He lives at 2140 SW 78th Ave., Portland, Oregon.

Mr. and Mrs. DONALD PALMER (JANE BRADER '59) live at 2325 Tallahassee St., Hayward, California. Don was promoted to plant superintendent of Aluminum Plumbing and Fixture Corp. in Burlingame. Jane had an interesting job with California State at Hayward last summer as a demonstration science teacher. They have a new son, Stephen who was born last August.

ANN LAWSON ROSS received a Masters of Nursing in March '68 (Psychiatric-Mental Health Nursing) from the University of Washington. She is now employed by Overlake Memorial Hospital in Bellevue as a psychiatric supervisor. Her address is 11003 SE 30th, Bellevue, Washington.

DIANE WICKSTROM received an M.A. in Anthropology from the University of Washington. She will be teaching Anthropology at the College of Marin, Kentfield, California, in the Behavioral Science Division this fall.

Dr. RICHARD A. WHITE lives at 913 So. 4th, Bend, Oregon. He is assistant professor of Guidance and Psychology and Director of Counseling at Central Oregon Community College.

SHIRLEY RIEGEL THAYER and her husband, Richard, transferred from Cocoa, Florida to Huntsville, Alabama to work for the newly organized Huntsville Division, Corps of Engineers. They have two children, Michael (6) and Todd (2). Their new address is 3305 Deerfield Rd., Huntsville, Alabama.

1959

ANNE LASSWELL NAGEL is currently employed as coordinator of a special Reading Project for inner city schools, sponsored by the Mott Founda-

tion and Michigan State University. Her husband, Tom, is enrolled in a doctoral program in educational research at Michigan State. Their address is 1997 Lake Lansing Rd., #6, Haslett, Mich.

Lt. Comm. JACK W. HOWAY (L) was just reassigned as special attorney to the Admiralty and Shipping Section, Department of Justice in San Francisco, California. He resides at 46 San Luis Ct., Novato, California.

Rev. GEORGE NYE has completed 3 years as pastor of Columbia Baptist Church in Seattle, Washington. The Church in Seattle, Washington, George and his wife, Sandra, adopted a baby boy, Michael, who was born Dec. 31, 1967. They reside at 4443 S. Frontenac, Seattle, Wash.

JUDITH SEHON WRIGHT is living with her 15 month old daughter at 1623 Virginia St., San Leandro, California, while her husband, who is in the Air Force, is in Vietnam.

Capt. JAMES K. STOOP with his wife, Myrtle, and three children, Jimmy (7), Danny (5) and Laura (10 months) are living in Okinawa. Jim is attached to 4252nd Wing, Strategic Air Command, as a navigator. The address is 4252 Strategic Wing, Box 1309, APO San Francisco, California 96239.

GAIL BEYER BROWN is living in Concord, California. Her husband works for Dean Witter & Co. in Walnut Creek. They have two daughters, Katherine (4) and Michelle (2). Their address is 1775 Woodland Ct., Concord, California.

JOAN SHERRILL McNAMARA has been living in Portland, Oregon since her husband's release from the Air Force in 1966. He is a psychiatric social worker with the Parry Center for Children—a residential treatment facility for emotionally disturbed children. They have three children now, Kathleen (4), Patrick (2½) and Beth (1). Address is 606 SE 164th, Portland, Oregon.

CAROLINE M. PRINCE left June 13th for a 2 month European tour as chaperon of a high school student group. She also had an operation on her foot and is now able to go without a leg brace. Her address is 8705 SE Knapp St., Portland, Oregon.

Dr. CHARLES D. SAUL, his wife, Patricia, and 6 children, Dudley (12), Cathy (11), Beth (9), Robert (8), Brian (7) and Tricia (4) are living in Edmonds, Washington—23228 97th W. Dr. Saul is now in full time private practice in Seattle at 20030 Ballinger Rd. NE.

1960

EMILY GANNAWAY WILLECKE is a teacher and church choir director for the Oak Harbor Southern Baptist Church. They have two children, Mark (6) and Karen (4). The address is Rt. 2, Box 32-3, Oak Harbor, Washington.

Capt. STEPHEN A. HONE with his wife, Gloria and son, David, have just moved into their new home at 108 Woodland Dr., Warner Robins, Ga. Stephen has been assigned to Robins AFB as a Procurement Officer.

WILLIAM L. CORNIE is District Executive for the Boy Scouts of America in San Diego, California. He resides at 152 W. Renetta Ave., El Cato, Calif.

WILLIAM T. SCHANTZ (L) is now associate professor of Law at Portland State College. He won \$1,000 Mosser Teaching Award for outstanding professor at PSC in 1966 and 1967. His address is 2215 SW 84th, Portland, Ore.

JAMES W. LEWIS, 2642 35th Ave. W., Seattle, Washington, is presently a Systems Analyst with Pacific Northwest Bell. He and his wife, Helen, have two children, Jeffrey (3) and Nicole (6 months).

WILLIAM F. WALL is an airline pilot with Air West and resides at 15464 25th Ave. So., Seattle, Washington, with his wife, Beverly and daughter, DeeAnn (4½).

SONJA PETERSON BEHRENS received a full tuition award to serve as teaching assistant for Dr. Bela Nagy at Boston University while working toward D.M.A. during the 1967-1968 academic year. Her address is 989 Gatenbury St., Coquitlam, B.C., Canada.

1961

WAYNE P. GLADWIN is purchasing agent for Control Data Corp. in Palo Alto, California. He resides at 1244 Balboa Ct., #7, Sunnyvale, Calif.

Dr. & Mrs. PETER MANNING (VICTORIA SHAUGHNESSY '62) are living at 1138 Albert St., East Lansing, Michigan. Peter is assistant professor of Sociology at Michigan State University. They have a daughter, Merry Kathleen, who was born in December.

BRUCE E. BUZZELL just finished his first year of teaching in the North Marion School District. He instructed the 7th, 8th, 9th and 10th grade mathematics. He was also head Junior High School football coach and freshman basketball coach. Bruce is married and has one child and lives at Gervais, Oregon.

GERRY FANDRICH JOHNSON is living at 19834 NE Multnomah, Portland, Oregon. She is busy being a housewife and mother of Denise (6), Neil (4) and Erik (1½). She was also newly elected financial secretary for the Gresham Women of Elks for 1968-69.

Capt. & Mrs. GERALD M. MAY (CLAUDIA PETERSON) and daughter, Tracey (2) are stationed with the 15th Communications Sq. of the Aerospace Defense Command at Aviano Air Base, Italy. Capt. May was recently awarded the first Oak Leaf Cluster to the Air Force Commendation Medal for meritorious service while assigned to the 71st Missile Warning Wing, Ent Air Force Base, Colorado. Their current address is P.O. Box 527, 15th Communications Sq., APO New York, N.Y. 09293.

After graduation from U. of O. Dental School in 1966 Dr. RICHARD M. KAUFMAN entered the army and served 13 months in Korea. He is now stationed at Fort Sill, Oklahoma, as a dentist with the U.S. Army. He and his wife and daughter, Kimberly (1) reside at 24 N. 25th St., Lawton, Okla.

LARRY L. SCHMIDT left the Air Force in May of this year and has joined United Airlines as a flight officer. His new address is 301 Cherokee, Wynnewood, Oklahoma.

Dr. PAUL deLESPINASSE has been named chairman of the newly-formed Department of Political Science at Adrian College. The department was formerly combined with the History department. Paul's address is Adrian College, Adrian, Michigan.

Mr. & Mrs. GEORGE L. CLARKE (KATHRYN KINSLEY '64) now live in Seattle, Washington, at 655 NW 76th St. Kathryn teaches English and German at a Junior High School and George is organist and choir master at St. Stephens Episcopal Church. Both are doing graduate work at the University of Washington.

ARTHUR WESTON is head track coach and assistant basketball coach at Pacific University. He resides at Rt. 1, Box 1019Q, Veneta, Oregon.

KATHY EVANS CARL with her husband and two children, Kim (5) and Kevin (3) are living at 4996 Hillridge, Fair Oaks, California.

1962

RAY HONERLAH received his Ph.D. in mathematics in June from the University of Oregon. He has accepted a post as Assistant Professor of Mathematics at Marquette University. KATY MESPILT HONERLAH '63 will teach history and economics at East High School in Brookfield, a suburb of Milwaukee, Wisconsin. Their address is Dept. of Mathematics, Marquette University, Milwaukee, Wisconsin.

MICHAEL W. FOSTER is teaching history in the American International School of Kabul in Afghanistan for two years. He will be at his home in Oregon during the summer and the address is 786 5th St., Astoria, Oregon.

FRANK J. TULLIUS is counselor at the Oregon State Penitentiary and resides at 1362 Elm NW, Salem, Oregon.

TERRY N. SHUCHAT, 871 Ames Ave., Palo Alto, California, is owner of a camera store and commercial photography business. He takes care of all sports photography for Stanford Univ.

Capt. KEITH BURRESS was selected as an "Outstanding Young Man of 1967" by Young Men of America. They publish an annual volume used as a directory of our nation's outstanding leaders. Keith was nominated by the Eielson AFB Commander. For two years he has been selected as an Air Force outstanding Supply Officer. Keith, his wife, Shari and two year old son, Kip, can be reached through 5245 E. Broadway, APO Seattle, Wash. 98737.

BETTY STEPHENS BAUER is a teacher and living at 4125 Carnelia Way, North Highlands, California.

SUELLEN STANLEY DIACONOFF received her MA in French from Indiana University in February 1968. Her address is 811 N. Grant, Bloomington, Indiana.

Lt. PETER R. MOURER is a naval officer and will leave later this summer for Londonberry, Northern Ireland, for two years duty with the Navy. His present address is 2608 Shelton Island Dr., San Diego, California.

Mr. & Mrs. SEWARD McAULAY (CHARLENE FARROW '63) are living at 34 Granite St., San Carlos, California. Seward was released from the Air Force in February '68 and is a Programmer in Systems Development Division for IBM.

Dr. J. NICHOLAS FAX was transferred to Okinawa in May where he will have a one year tour of duty as a Navy Medical Officer assigned to the Marines at Camp Butler. His wife will remain in Oakland and their address there is 2032 E. 30th #3, Oakland, California.

WALTER A. YUNGEN is now employed by IBM Corp., in Eugene, Oregon, as a Systems Engineering Assistant. His new address is 810 E. 32nd, Eugene, Oregon.

Mr. & Mrs. RONALD SHANANDER have two daughters, Sara (2 years) and Cathy (8 months) and are living on a 35 acre farm near Bellingham, Washington. Ron is teaching and coaching at Sedro Wooley High School. Their address is Star Rt., Box, 142, Acme, Washington.

Dr. WILLIAM H. BUSH will complete medical internship at Hennepin General Hospital in Minneapolis, Minn., this summer. He will then be stationed at the Public Health Service Indian Health Center in Poplar, Montana. His current mailing address is 820 Prospect Pl., So. Salem, Oregon.

Dr. & Mrs. TOM R. DUNHAM (DARLENE RIDLEY '64) are living at 1718 W. Flournoy, Chicago, Illinois. Tom is currently finishing straight medical internship at the Presbyterian-St. Lukes Hospital in Chicago. He will continue medical residency.

PHILLIP STEPHEN was released from active duty with the USAF in December. He is now Systems Designer for System Development Corp. in Santa Monica, California. His address is 824 10th St. #5.

PATRICK M. KELLEY resides at 859 E. 9th, Apt. G, Medford, Oregon, and is Staff Adjuster for General Motors.

JOAN BENSON WHEELER and her husband, Bill, are in a new home at 19707 NE 156th Pl., Woodinville, Washington. Joan is teaching first and second grades for Bellevue School District. Bill is customer engineer for Control Data Corp.

LARRY B. CAMPBELL is Director of Personnel for KING-TV in Seattle, Washington. He resides at 9109 Fortuna Dr., Mercer Island, Washington.

CHARLES W. SHERMAN is manager for Kienow Food Stores in Lake Oswego, Oregon, and resides at 16536 SW Inverurie Rd.

LARRY E. WILSON, 4101 Beresford St., Sacramento, California, is in the US Air Force and stationed in Vietnam.

LYNN EDWARDS MILLER is teaching second grade in Coos Bay. She and her husband live at 853 Clark, North Bend, Oregon.

Dr. JOHN C. ABELE recently received his Ph.D. from Michigan State University. He has accepted a position at the Douglas Advanced Research Laboratory in Huntington Beach, California. Dr. & Mrs. Abele (JOY DAVIS '63) can be reached at 3349 NE Tillamook, Portland, Oregon.

EDWARD A. Le COCQ is living at 2207 Fairview, Seattle, Washington. He is with the Nettleton Co.—Timber Dept.

Capt. RICHARD F. LORD has been graduated from the U.S. Air Force officer instructor school at Randolph AFB, Texas. He has now been assigned to Webb AFB as a member of the Air Training Command. His new address is 4-A Albrook, Big Spring, Texas.

JAMES P. O'HAIR has finished work for his Ph.D. in Sociology. He is presently writing two teacher's manuals and one student work book for a forthcoming Introductory Sociology Text by Professor Mark Abrahamson. Jim is also preparing a research proposal on urban migration to be submitted to the Labor Department. He and his wife, Margaret, and two children, Jay (3) and Tim (1½) reside at 446 Ellis St., Syracuse, New York.

Mr. & Mrs. CHARLES GOONEY and children, Casey (6) and Vance (1) reside at 2870 Cottage SE, Salem, Oregon. He is teaching.

MARGO MOYER MASON is now living at 3103A Hawk St., San Diego, California. Margo is a social caseworker supervisor for the San Diego County Department of Public Welfare.

1964

WILLIAM J. SLIMAK is engineer with Pacific Gas and Electric Co. in San Francisco. His home address is 1011 Ygnacio Valley Rd. #46, Walnut Creek, California.

JULIE BAUSERMAN COOPER, her husband, Fred, and son, Fred, Jr. (1) reside at 839 W. Birch, Redmond, Oregon. Julie is a registered Physical Therapist with Central Oregon District Hospital.

THOMAS G. TOOMBS is counselor and warden's assistant at the Oregon State Prison and his address is 2605 State St., Salem, Oregon.

JANET I. COUSINS, 53 Murray Ave., Larkspur, California, is a teacher at Olive School (Marin County) Calif.

Mr. & Mrs. MICHAEL J. KELLY (PRISCILLA TOWER) have moved from Puyallup, Washington, to Slippery Rock, Pennsylvania, 337 Franklin St. Mike is an English professor at Slippery Rock College. They have a 2 year old daughter, Holly Miranda.

Lt. WILLIAM J. HARMON is production officer with the U.S. Air Force and stationed at Hill AFB, Utah. His residence is 1525 N. Marilyn, Layton, Washington.

Mr. and Mrs. HARTWELL WHITNEY (ROSALIE JOHNSTON) have returned from 9 months overseas, teaching in an International School in West Pakistan. Rusty is now employed as Director of Student Research at the Oregon Museum of Science and Industry. Rosalie is combining homemaking with work toward a Master's degree at Reed College. Their address is now 931 SE 11th, Beaverton, Oregon.

RAYMOND ASHTON received an MA in Political Science from Tulane University in New Orleans, Louisiana. He now resides in Little Rock, Arkansas—P.O. Box 626, and is Area Representative for Holt, Rinehart & Winston Publishers.

Mr. & Mrs. DAVE BEIER (KAREN JOHNSTON '65) are living at 908 Howe St., Dallas, Oregon. In addition to duties as band director, Dave is also junior high assistant track coach in the Dallas Public Schools.

EDWARD W. SHALLENBERGER is working on his Ph.D. in Zoology at UCLA. He lives at 1447 Harvard St., Santa Monica, California.

Capt. GENE L. JUVE is attending a special schooling at Maxwell AFB, Montgomery, Alabama—FR 83635 SOS 68-B, P.O. Box 316.

HOWARD LIEBREICH is a stock broker and resides at 3541 SW, Beaverton Hwy. #20, Portland, Oregon.

R. GARY MILLER is a student of landscape architecture. He and his wife, Mary, reside at 712 E. Kingsley, Pomona, California.

JAMES L. FOSTER received an M.A. degree from the School of Advanced International Studies last year and is now working on his Ph.D. in Political Science at MIT. Jim and his wife, Elizabeth, reside at 60 Wadsworth #18G, Cambridge, Massachusetts.

DIANE MABERRY MITCHELL is teaching and lives at 2500 Whittier Blvd., La Habra, California.



MARY GAYLE SHAFFER recently became the editor of the United Bank of Arizona's monthly publication "Pacesetter." She will also handle public relations and publicity for the bank. Her home address is 1425 E. Occotillo, Phoenix, Arizona.

SUSAN HILL TRABONT lives at 2300 Algonquin Rd., Rolling Meadows, Illinois, and is teaching school.

VIRGINIA JUDD is teaching French at Centennial High School in Portland, Oregon. Her mailing address remains 1045 Palo Dr. NW, Salem, Oregon.

MYRON L. STENSRUD, 1416 E. 34th, Albany, Oregon, is a claims adjuster for the Oregon Automobile Insurance Company.

HENRY C. WILLENER is in the Air Force and his present address is Cromwell Terr. #50E, Squire Village, New Windsor, New York.

1965

GORDON K. CHUN is employed as a Developmental Chemical Engineer at Wah Chang Corporation in Albany, Oregon. He lives at 213 Jordan SE, Salem, Oregon.

PAULA BOATRIGHT RISHER lives at 1225 M St., Springfield, Oregon, and is a first grade teacher.

VICTORIA HULL HAZELRIG is teaching fourth grade and is really enjoying it. Her husband, Paul, is in his 3rd year of Medical School at U.C. Their address is 1251 8th Ave. #7, San Francisco, California.

WILLIAM M. MACKAY served for 2 years in Panama as a Peace Corp volunteer, working in Vocational Education and Housing Projects. He has now enrolled at the University of California in Department of City and Regional Planning. Bill lives at 415 Hazel Ave., Millbrae, California.

JANET SCHLECHTER STAATS is busy directing Girl Scout summer day camps and is president of the local Women's Society of Christian Service. She is also kept busy with her young daughter, Cindy. Janet lives at 1628 Verbena, Denver, Colorado.

JON M. WILSON is stationed in Germany and starting on the last year of a 3 year enlistment with the U.S. Army. He can be contacted through Rt. 5, Box 108, Oregon City, Oregon.

MELINDA MARTIN LITTLE-HALES has recently moved to 1524 Pensacola #303, Honolulu, Hawaii. Her husband, John, an Ensign in the Coast Guard, was transferred there.

Mr. & Mrs. RICHARD OLMSCHIED (MARADEE OLIVER) live at 3130 SW 12th Ave., Portland, Oregon. Dick is in junior year at University of Oregon Medical School. Maradee will complete her Masters Degree in General Science this summer. She teaches junior high science in Tigard.

JOHN SCHWARTZ graduated from Boalt Hall School of Law, University of California in Berkeley in June. He will enter private practice with Nagel, Vale & McDewall in San Mateo, California. His present address is 764 Kingston #8, Oakland, California.



WILLIAM G. JOHNSON has completed basic training at Lackland AFB, Texas. He has been assigned to the Air Force Technical Training Center at the Defense Language Institute, Monterey, California. Bill is presently using his parents address, Rt. 4, Box 211, The Dalles, Oregon.

Mr. and Mrs. RICHARD HEERMANCE (CAROL LUTZ '68) are living in Sunnyvale, California, at 110 Locksart. Dick is working at Lockheed and Carol graduated from San Jose State College in June.

Mr. & Mrs. LYLE E. SMITH (SHAUNA DOUGHER) live at 27 Bacon St., Waltham, Massachusetts. Lyle is finishing his 3rd year of graduate study at Harvard University. He is currently a Teaching Fellow and anticipates 2 more years of study before receiving his Ph.D. Shauna is teaching in a private school in Waltham.

LYMAN C. HERB is a speech pathologist and audiologist. He is living at 88 Skylark Ave. #1000, Merritt Island, Florida.

DRUE BARNUM SAMPSELL, 255 W. Harrison, Apt. 12-E, Portland, Oregon, is a social worker.



Lt. GARTH M. NELSON has entered the 100 mission club of the 559th Tactical Fighter Sqd. at Cam Ranh Bay AB, Vietnam. He qualified for admission by completing 100 combat missions piloting the F-4 Phantom jet over North and South Vietnam. His address is 559th Tactical Fighter Sqd, 12th T.F. Wing, APO San Francisco, California.

EDWARD JAROS and his wife, Cheryl reside at 47 So. Logan, Denver, Colorado. Ed is a salesman.

GEORGE TANABE was recipient of an honor award announced recently at Union Theological Seminary in New York City. The award is given annually to a student who in the judgment of the faculty has made the best preparation for the preaching ministry. Mr. & Mrs. Tanabe (WILLA VARNER '67) reside at 527 Riverside Dr., #1D, New York, N.Y.

MYER AVEDOVECHI (L.) is assistant Attorney General and assigned to the Department of Motor Vehicles. He resides at 1044 Wilbur SE, Salem, Ore.

ANTHONY P. DEGIULIO (L.) is stationed in Italy with the U.S. Army. He uses Pingree, Idaho, as his mailing address.

1966

MARJORIE MacIVER MINK is a decorator's assistant and is also busy with many other activities, writing, showing dogs and painting. Her address is 323 N. Almont Dr., Beverly Hills, California.

MARIANNE MAY is a Peace Corp volunteer at Satri Irad School, Irad, Thailand, as an English instructor.

NANCY E. HUTCHISON is in Europe on a vacation after working in Philadelphia for a year as a social worker. She plans to stay in Colorado when she returns. Her mailing address is 10821 Montview, Aurora, Colorado.

ROBERT W. LO is a naval architect at the Pearl Harbor Naval Shipyard. His address is 610B Sumer St., Honolulu, Hawaii.

BRUCE I. LUKE, 724 Hillside Blvd., Daly City, California, is a graduate student at San Francisco State College.

Lt. KENNETH R. SOLBECK is a Naval Aviator with the U.S. Marine Corp and stationed at El Toro Marine Base. He and his wife, Floy, reside at 1144-D Bryan St., Tustin, California.

Mr. & Mrs. ROGER WEED (CAROL MUCKRIDGE '67) are living at 2271-1 Patterson Dr., Eugene, Oregon. Roger is a graduate student.

MARGARET EICHELBERGER is Systems Engineer with IBM and is living at 1556 Mokuuu Drive, Kailua, Hawaii.

SUZANNE UNDERWOOD is living in San Diego, working as an occupational therapist with the physically handicapped. She will leave for Europe for a 2½ month vacation in July. Address—5696 Los Angeles Ave., Moorpark, California.

JOHN M. ERICKSON and his wife, Charlene, are living at 4648 Cosner Dr., Corpus Christi, Texas. John is a naval officer/aviator.

ANN RHIGER received a A.A.S. from the Fashion Institute of Technology and is now a designer for "Tape-measure" (Women's Boutique). Her address is 24 W. 68th St., New York, New York.

BRUCE F. ALSIP is a Marketing Trainee for Simpson Timber Co. in Seattle and is living at 9027 W. Shorewood Dr., Apt #604, Mercer Island, Washington.

Lt. CHRISTOPHER REPSOLD, US-ASC CRB, APO San Francisco, California 96312, is a Quartermaster in the U.S. Army.

ELLEN REESE PETERSON is a teacher at Hillview School Junior High, in Pittsburg, California, and lives at 1743 Carmel Dr., Apt. 30, Walnut Creek, California.

DOUGLAS G. BURLEIGH finished his M.A. in Political Science at the University of Washington in August 1967. He is presently working for "Young Life" Campaign and plans to return to Russia again in 1969. His new address is 8033 118th NE, Kirkland, Washington.

DOUGLAS W. SCOTT received his B.S. from the University of Michigan in 1966 and is now a graduate student for his Ph.D. in Natural Resources. His address is 1011 East University, Ann Arbor, Michigan.

NANCY LOU LESH graduated in August 1967 from Simmons College in Boston with a Masters in Library Science. She is now working as assistant librarian at the Anchorage Community College in Anchorage, Alaska—1802 11th Ave.

GRANT E. NOEL and his wife, Bonnie, reside at 1704 NE 81st, Portland, Oregon. Grant is with Reynolds Metal Co.

NANCY VAN WINKLE is an instructor in German and English at Wenatchee Valley College. This summer she will study at the University of Freiburg (West Germany) in German Language and Literature. She plans to travel also to London, Paris, Florence and Austria. Nancy's address is 10 S. Cove Ave. #6, Wenatchee, Wash.

JAY E. BRACK is Underwriter for Travelers Insurance Co., in Portland, Oregon. His address is 3325 Azalea Dr. S., Salem, Oregon.

MICHAEL G. MCKINLEY is living at 240 Chattanooga #24, San Francisco, California, and is an employee of TWA.

WILLIAM J. TUPKER has been commissioned a second lieutenant in the U.S. Air Force upon graduation from Officer Training School at Lackland AFB, Texas. He is now being assigned to Williams AFB, Arizona, for pilot training.

Lt. JAMES R. DYKE (L.) is currently serving as Staff Legal Officer for the Commander of Fleet Activities located in Naha, Okinawa. His new address is Legal Office, Comm. Fleet Activities, Ryukyus, FPO San Francisco, California 96670.



JAMES F. LARSON (L) has a new address—7814 SE 36th, Portland, Oregon. He is presently employed as an Assistant Attorney General of the State of Oregon.

1967

RUTH E. FENSKE is a part-time graduate student in Library Science and half-time Projects Assistant at the University of Wisconsin Medical Library. Her address is 103 No. Randall, Madison, Wisconsin.

EDA SMOTHERS CLEMONS taught Spanish at Serra Catholic High School in Salem this past year. This next year she will teach at Lincoln Junior High School in Cottage Grove. Her husband, Marvin, is doing graduate work in Ed. Psych. at the University of Oregon. They are living at 2014 16th Way, Eugene, Oregon.

Mr. & Mrs. CLIFFORD SMITH (SALLY SHILLING '66) are now living at 2 Mile—North Douglas Rd., Juneau, Alaska. Cliff is preparing to take the Alaska Bar Examination.

KATHLEEN SHERFEY received a B.S. in Business from the University of Colorado. She is now assistant Product Manager for Boise Cascade. Her address is 4929 SW Scholls Ferry Rd., Portland, Oregon.

GAY-LEIGH GLENN CAMP and her husband, Denis, are stationed in Karlsruhe, Germany. Address is 7th Maint. Bn. APO, New York, N.Y. 09095.

JANET L. ALLEN POLLEY received her BA from Whitman College. She is now a graduate student at the University of Minnesota in Social Work. She lives at 2101 21st Ave. So., Minneapolis, Minnesota.

DAVID M. ZEIT, 930 Cross St. SE, Salem, Oregon, is a florist, band manager and business manager for Capitol St. Ballroom.

Mr. & Mrs. WESLEY STEIN (JUDITH HARDING) have moved to 2545 Vendome, Los Angeles, California. Judith is United Airline reservationist and Wesley is in Structural Design study at Otis.

MARLYNN LATHAM lives at 1814-B Filbert St., San Francisco, California. She is a keypunch operator for Standard Oil of California and enrolled at San Francisco Conservatory of Ballet.

RONALD S. STEWART is a graduate student in the English Department at the University of Arizona. For the summer his address will be 2850 South 99—East #22, Oregon City, Oregon.

LANAE ISAACSON, 1001 Malott Dr., San Jose, California, is secretary for Security Insurance Group Inc. She has been awarded a Regents' Fellowship to attend UCLA and expects to enroll in the School of Library Science.

JOHN S. KENDALL received his B.S. from the University of Oregon and is now working for KOIN-TV. He lives at 2944 SW 55th, Portland, Oregon.

LARRY HILLHOUSE is in the Peace Corps and will be in Western Samoa for the next two years. His new address is c/o Catholic Mission, Vailoa, Palauli, Savaii, Western Samoa.

JULIE BRANFORD has been teaching school and living with LAURIE HALL '66 on Vashon Island, Washington. She and PAUL ARAGON '67 will be married on July 29, 1968. Her present address is 3108 SE Woodstock, Portland, Oregon.

MARK K. MULDER, 1424-SW Montgomery, Portland, Oregon, is in inventory control for Freightliner Corp.

Mr. & Mrs. GEO. THEISEN (JEAN LUNDSTROM '66) are living at 215 S. Oak Knoll, Pasadena, Calif. George will receive his commission in the Air Force in early summer and will enter pilot training in July. Both he and Jean have been taking some graduate courses at Cal State in Los Angeles.

Mr. & Mrs. CHRISTOPHER GRADY (GAIL WHITTIER '68) live at 11918 Nyanza Rd., Tacoma, Washington, where Chris is stationed with the Army.

PATRICIA BILES is attending San Francisco State College to obtain her elementary teaching credential. Her new address is 156 Locksley, Apt. 1, San Francisco, California.

MICHAEL L. PHELAN, 1410 Center St., Albany, Oregon, is a staff writer for the Albany Democrat Herald.

DIANNE L. SEAVER, 533 Abbott Rd., E. Lansing, Mich., will receive her MA this July from Michigan State University in College Student Personnel Administration.

JEFF W. HELLYER, 640 E. Lynnwood, San Bernardino, California, is presently with the U.S. Navy and serving on the USS Ticonderoga.

RICHARD C. PINKHAM is a First Lieutenant with the U.S. Army Corps of Engineers and his address is now Co. A, 78th Engr. Bn., APO New York, N.Y. 09164.

JAMES R. LUDDERS, 2180 SW Crest Dr., Lake Oswego, Oregon, has finished his first year of law at the University of Oregon.

RAYMOND E. RICE is a graduate student in the Department of Math. at the University of California at Riverside. His address is 3895 Locust, Riverside, California.

STANTON F. LONG (L) resides at 576 Cinderella Loop, Eugene, Oregon. He is an attorney with Johnson, Johnson & Harrang.

Marriages

GARY M. WYATT '65 and GLENYS HUBBARD '68 were married in Portland, Oregon on June 23, 1968. They will live in Richmond, California where he is an industrial engineer with Bethlehem Steel.

JANE D. LUNA '63 became the bride of Roger Saville on June 29, 1968 in Palo Alto, California. Their new address is 204 Via Quito, Newport Beach, Calif.

ANDREA M. HUNNELL '62 was married to James E. Grinnell in Portland, Oregon on March 16, 1968. They are now living at 2362-B Anza, Torrance, California.

LI. STEPHEN A. SMITH '65 and Pamela C. Jeffreys were married on Feb. 24, at McClellan Air Force Base in Sacramento, California. Steve is stationed at Hamilton AFB and Pamela is working for Luxo Lamp Corp. Their address is 61 Canal St., #11, San Rafael, California.

LEANNA J. HARVILLE '64 became Mrs. Larry G. Morgan on Feb. 3, 1968. She teaches seventh grade English and Social Studies at Chief Joseph junior high school in Richland, Washington and her husband is a research chemist at Battelle Northwest on the Hanford Atomic Reservation. Their address is 1915 Hoxie, Apt. C, Richland, Wash.

MARBE BOER '67 and STEPHEN BURDICK '68 were married on May 25, in Palo Alto, California. They will be living in Salem during the summer at 4940 6th Ave. NE.

CORISE SORESENSEN '65 and GEORGE B. MACREADY '65 were married on June 22, 1968 in a garden wedding in Santa Barbara, California. George is completing his Ph.D. program in Education Psychology at the University of Minnesota. Corise has been accepted to Masters degree program in School Psychology at the University of Minnesota. For the summer their address is 12 La Flecha Lane, Santa Barbara, California.

LARRY E. MONK '55 and Ardith E. Chase were married in Lewiston, Idaho on April 6, 1968. Larry is pastor of the Methodist Church in Stayton, Oregon and their new address is 343 E. Virginia St.

JOAN V. DOUGLAS '63 was married to Hugh Campbell in Arnold, California last November. Mr. Campbell is assistant ski patrol leader at Mt. Reba Ski Resort, Mt. Reba, California.

KATHERINE STAFFORD '68 and John E. Schmidt were married at the First Methodist Church in Mount Ver-

non, Washington on June 13, 1968. Katherine will teach school this fall and her husband is attending Northwest Christian College. They will live in Eugene, Oregon.

SUE COX '68 and DENNIS COLE '68 were married on June 1 in Los Altos, California. This fall they will live in New Haven, Connecticut, where Dennis will enroll at Yale Divinity School. Their present address for the summer is 415 W. Roy, Seattle, Washington.

L. DUANE BAIRD '57 was married on July 28, 1968 in Wilmington, California to Gayle Rose. Their address is 22003 S. Vermont, Torrance, California.

CATHERINE WETHERBY '68 and EDWARD R. WHITEHEAD '68 were married at the Lake Grove Presbyterian Church on June 2, 1968.

EDWIN D. HARRIS '67 and Constance M. Euler were married on June 15 in Portland, Oregon. The couple will live in Salem, Oregon. Mrs. Harris attends Willamette University.

LEW KING '67 and MELINDA JACK '68 were married in Portland on June 15. Lew will begin his second year at Willamette Law School next Fall and Melinda will teach in high school in Salem.

Births

To Mr. and Mrs. Maynard Johnson (TERRYL THOMPSON '61), a son, Kevin James was born on September 9, 1967. He joins Brett, Lisa and Mark. Their address is 6400 44th Ave. No., Minneapolis, Minnesota.

JOHN VAAGEN '64 and his wife, Penny became the parents on December 8, 1968 to Geoffrey John. Address is 3980 Manor Dr., NE, Salem, Oregon.

Mr. & Mrs. Allan Currier (PENELOPE VULGAS '62) became the parents of a son, Aaron who was born on Sept. 2, 1967. They live at 2230 Emmet Dr., NW, Salem, Oregon.

A girl, Debra Sun, was born on March 15, 1968 to Mr. & Mrs. Guy De Cillis (JANICE MACDONALD '65). Their address is 7500 Elmhurst Rd., Box 284, Bensenville, Illinois.

Dr. & Mrs. William Vaughan (ROSEMARY STEPHENSON '60), of 515 Rhodes, Palo Alto, California became the parents of a son, Craig William on February 21, 1968.

Mr. & Mrs. John B. Waite (JANET ROGERS '53) adopted a little girl, Nancy Gayle last September. She has two brothers, David (13) and Richard (10). The address is 5981 Monaco Ct., Norfolk, Va.

Dr. & Mrs. ROBERT R. ALLEN '57 have a new daughter, Katherine Maureen who was born on March 9, 1968. She joins a sister, Susan (5). They live at 5187 Northcliff Loop West, Columbus, Ohio.

Dr. & Mrs. JAY B. BUTLER '61 (LINDA KREBS '62) became the parents of another son, Christopher Stewart on Nov. 7, 1967. He joins brother, Jay Jr. (5 years old). Their address is 2202 Bauer Dr., Kaneohe MCAS FPO San Francisco, California 96615.

Mr. & Mrs. Phil Buckman (SHARON BATES '58) are the parents of a son, Brian was born on January 17, 1968. He joins two sisters, Sonia (3) and Karen (15 months). They live at 970 Gay Ct., Eugene, Oregon.

A daughter, Annette Suzanne was born to Mr. & Mrs. James Adair, (SANDRA HARRIS '59) on February 22, 1968. They reside at 868 Quetta Ave., Sunnyvale, California.

Mr. & Mrs. PETER VERLOOP '63 became the parents of a son, Mark Alexander who was born on May 4, 1968. They live at Schillerstrasse 13, 4018 Langenfeld, Germany.

Mr. & Mrs. JEREMY SAITO '60, 1604 Carmel Dr., San Jose, California became the parents of a daughter, Kathryn, born on April 15, 1968. She joins two sisters, Laurel (4½) and Elaine (3).

On March 11, 1968, a boy, Richard Ernst was born to Mr. & Mrs. Daniel

Brummer (M. ANNE PETRIE '62) of 525 W. Burnett, Stayton, Oregon. He joins brother, Karl (3).

Mr. & Mrs. RICHARD BOYNTON '56 (JEAN VAN VALKENBURG '57) adopted an infant son, Thomas Vane. Their other children are Jennifer (8) and Lee Richard (6). Their address is 1845 Juniper, Coos Bay, Oregon.

Mr. & Mrs. JAMES MYERS '60 (CAROLE CARTWRIGHT '60) have a son, James Joseph who was born on March 26, 1968—their first. They also have a new address—1425 N.W. 23rd Ave., Portland, Oregon.

Capt. & Mrs. R. W. SMITH '60 (GWEN HANSON '61) have adopted a baby girl, Stacey Renee. Their son, Kevin (6) is in first grade. Bob is still at Williams AFB and is flying. Address is 548 S. Forest, Mesa, Arizona.

Dr. EDWARD G. FOXLEY '61 and his wife, Roberta became the parents of a daughter, Kristen Michelle on April 14, 1968. They have moved to 4349 E. Richert, Fresno, California.

First child was born to Mr. & Mrs. DONALD L. AGNEW '57 on January 29, 1968, a boy named David Samuel. The address is 151 Calderon Ave., Mt. View, California.

Mr. & Mrs. Inman (MARY SCHWY-HART '65) have a girl, Betsy Lynn who was born May 22, 1967. They live at 3670 Camellia Dr., San Bernardino, California.

Deaths

MINNIE IRETON THOMPSON '88 died on April 4, 1968 at Olympia, Wash.

EDNA ALMIRA RUGG HUBBARD '98 died in Waco, Texas on May 5, 1968. Since the death of her husband in 1958, she had lived in Texas with a daughter.

ETHEL HUGHES CARTER '96 formerly of Salem, died in Portland, Oregon on June 19, 1968.

WILLIAM WATERBURY (L) '14 died in Salem, Oregon on June 17, 1968. He had practiced law for 40 years in Toledo and for 10 years in Yachats before retiring in 1960.

IRIS HANNA BUTLER '03 passed away in Salem, Oregon on March 29, 1968.

FRED RADSPINNER '23 died of a stroke in Darlington, So. Carolina on April 2, 1968.

Rev. PERCIVAL M. BLENKINSOP '23 died on April 6, 1968 in Portland, Oregon. During his career, Rev. Blenkinsop had been pastor of 11 Oregon Methodist Churches and an Army chaplain. He was chief of chaplains in the South Pacific until 1947 with a rank of Lieutenant Colonel.

PAUL F. BURRIS (L) '23 an attorney in Salem, Oregon for the past 45 years, died on June 25, 1968.

Dr. HOWARD VARNEY '38 and M. ELEANOR HENDERSON VARNEY '35 died in Bakersfield, California on Feb. 17, 1968.

Dr. RUSSELL A. E. MORLEY '47 died in April, 1968 of a heart attack in Grass Valley, California. He was an authority on meteorites and rare earth minerals and the author of many technical papers on these subjects. He recently was a consultant for mining interests in California.

ROBERT C. HOWELL '50 died of a heart attack in Portland, Oregon on May 28, 1968. He was a wholesale lumber salesman and very active as a sports official and umpire.

D. RUSSELL GOCHNOUR, '50 died on March 5, 1968 in Portland, Oregon. He was manager of the Oregon-Columbia Chapter, Associated General Contractors of America.

SHARON ROUNDTREE KUNSELMAN '64 died in Denver, Colorado in December of 1967.

ALTHEA STEVENS FERRIS '39 died in Salem, Oregon on July 3, 1968. She is survived by her husband, ROY FERRIS '37.



CLASS OF 1918 members gathered on Alumni Day to celebrate their 50th reunion and to receive their gold Matthews Medallions. About 350 alumni attended Alumni Day, including the 20 above, 15 of whom are members of the Class of 1918. They are (front row, left to right): Charles Randall; Evelyn Reigelman Jordan; Nellie Patchin Snyder; Marie Luthy Putnam; Olive Mark Haugen, and Fannie McKennon Sackett. Second row: Mrs. Donald Matthews (not a graduate); Mary Eyre; Blanche Baker Proctor; Mrs. Lloyd Lee (not a graduate); and Andrew Haugen (not a graduate). Third row: Donald Matthews; Lola Cooley Metcalf; Margaret Garrison Robinson, and Esther Cox Todd. Fourth row: Harold Eakin; Leland Sackett ('15); Lloyd Lee; Lela McCaddum Larson, and Wesley Todd (not a graduate).

1968 HOMECOMING

Saturday, November 16

Reunions for Classes of 1953, 1958, 1963