



New Features On Program of '36 Week-end

Game and Play Reversed On This Year's Grad Activities Plan

Novelties On Deck For Carnival and Half Recess at Game

Homecoming arrangements under the direction of T. A. Lindstrom, Jr., homecoming manager, near completion this year according to a new winnery schedule.

Previously it was the accepted custom for the week-end program to include the annual play Friday night and the football game Saturday. This year the order is reversed.

Official activity will begin, as usual, with the alumni registration tea, from 4 to 6 p. m. Friday. Lillian Graham, first vice president of the student body, is in charge and her committee, previously announced, have begun preparation. Lawrence Morley will greet the alumni as they register.

Campus living organization signs, designed to portray the slogan "Trim the Timbermen" will be scrutinized by officials on a sign competition judges' tour scheduled for 6 p. m. The final decision will be announced at Sweetland field during the ball game.

Next comes the W. U.-C. P. S. game on Sweetland field, with the usual homecoming attractions in connection with freshman initiation. Included in the between-halves entertainment with the annual frosh-soph bar rush will be the initial appearance of the '36 Willamette band in drill formation. The American Legion drum and bugle corps will cooperate with the band during the drill.

Immediately after the game the carnival, the preparation for which has been supervised by Anna Mae Unrath, will be the center of attraction. As usual the gym is to be the carnival setting.

Alumni will gather at the Fraternal Temple 5:30 p. m. Saturday for the annual banquet. Good food is guaranteed by the committee in charge at 50c per plate.

Last on the program is the Theta Alpha Phi production, "The Torchbearers," to be staged at the high school auditorium Saturday evening at 8:15 p. m.

Miss Fowler Again in Charge of Play Scenes

Miss Constance Fowler will design and produce the setting of the homecoming play, "The Torchbearers," with the assistance of the Paint Spots.

To those who saw "Outward Bound" and "Mr. Pim Passes By," two plays of last year, no description is needed to convey the creative ability of Miss Fowler.

The Wallulah pictures, in the dramatic section, may be of interest to those who did not see the above mentioned plays.

Torch-Bearers to Light Stage Saturday Night in Annual Play

(Contributed by Drama Dept.) "The Torchbearers," Willamette's homecoming play, which will be presented Saturday night, at 8:15 in the Salem High School auditorium, is a comedy, not the usual "boy meets girl" farce, but an ingenious satire upon amateur dramatic effort by George Kelly.

Exemplified by the "show-must-go-on" spirit, a group of smart-set art patrons naively prepare their masterpiece for the eager public. The play opens with the last frenzied rehearsal which develops into a nice blend of gossip, fashion display and drama. Poor Mr. Ritter comes home to find his sweet wife playing the part of a Mae West coquette.

The high spot of the play is in the second act when the audience is taken back stage to witness the "comedy of errors," typical of an amateur production, in this play-funny-in-play. This is probably the funniest second act ever written and the safest one to play, for all the faux pas that occur can be accredited to the plot.

Not seen back stage, however, is the great amount of routine work which will make the production a successful subsequence to

Public Ad Course Offered Students

Situation of Willamette Is Exceptional Chance For Politicians

By RAY THOMPSON
Willamette's location, in relation to the study of state, county and local government gives to students of this campus, with one exception, an advantage over men and women enrolled in any other college in the United States. As a result there has been established here a complete new course in public administration which, after five weeks' trial since the opening of the semester, has been set forth by faculty members as an outstanding opportunity for public administration students.

Willamette's advantage in location, in connection with the new course, is unrivaled west of the Rocky Mountains.

This new course which provides the best obtainable basis for law school or for governmental service was formed by Professor Jones, Dr. Glatke, and Professor Ray Smith of the law school as a result of a summer's survey, and was planned in cooperation with leading experts in public administration all over the country.

"I look for this to be one of the most significant developments that has ever occurred in Willamette university. Someday Willamette will be known all over the United States for this department," states Professor Jones when asked about this new course.

Going further he said, "We have sent out over 2500 bulletins explaining the objectives and advantages of the course to the mayors of all Oregon cities, to the chairman of political science in every college in the United States of more than 1000 students, to all governmental public administration organizations in the country, to all public administration organizations in Oregon, Washington, Montana, and Idaho, to all Oregon county officials, to all editors of Oregon newspapers, all state officials, to all outstanding public administration instructors in the United States, and as soon as we get the directory of high schools, we will send bulletins to every high school in the U. S. What more could we ask in the way of location? We have the new state capitol across from us, the state office building, county courthouse, city hall, all within a radius of 5 blocks."

This course is not an appendage to the economics or political science courses, but is in itself a complete new course for the purpose of giving experience in the practice and theory of government. All courses aim at this purpose.

Next month Professor Jones will go to California to confer with some of the outstanding officials and teachers in this field about further development on the Willamette campus.

In time new personnel will be brought to the staff to take care of the course. This year Professor Jones, Dr. Glatke, and Professor Smith carry the teaching responsibility.

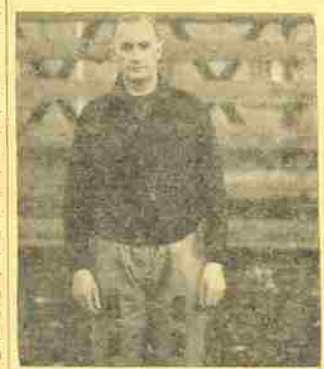
(Continued on Page 2)

Keene's System Rivals Rocknes In Diffusion

Bearcat Graduates Out Spreading Will. U. Coach Wizardry

Adams, Rarey, Erickson, Hauk, Frantz, French, Others Make Good

The Notre Dame coaching system, as a product of the genius of the immortal Knute Rocknes, has become synonymous with the phrase, "American Football." The fundamentals of the Rockne system have been impressed upon the minds of thousands of potential young gridiron stars throughout America because of the efforts of the legion of former Irish luminaries who now hold coaching jobs in all parts of the land.



The Willamette system of athletics has spread very much in the same way as that of Notre Dame, though, of course, not as far in scope. The "Spec" Keene method of teaching football and other sports has become widely known throughout the northwest during the past several years, this the result of activities of ex-Bearcat stars, who are giving the Keene system to young athletic hopefuls in high schools of Oregon and Washington, as well as a number of other states.

It is well to mention a very few of the many Willamette men now holding active coaching positions. Here they are:

Dwight Adams, Dallas, a star in basketball, baseball and football. The Polk county school is assured of a brilliant athletic future under Dwight's mentorship. Adams is building from the ground up, so... Watch Out!, opponents. Incidentally Dallas athletes regularly come to Willamette.

Curtis French, Cottage Grove, a former Bearcat gridiron great. Curt has had great success at the coaching game thus far and, this year has one of the eight undefeated teams in Oregon.

Loren Mori, Independence, boasting of a win over Camas which trounced Salem. Mori's progress have suffered but one loss this season.

Ken Litchfield, Myrtle Creek. Ken's record is not available for this year but you can't forget what his Bellfountain basketball team did at the last state tournament. It's not improbable that his success there will carry over into his new position.

Burton Lemmon, Bellfountain, former hoop star at Willamette. Lemmon should have a good season this winter, only one man being lost from last season's aggregation which won the state "B" championship.

Walt Erickson, Camas, Washington. The teams at the Camas school have been consistently good since Walt took over the reins. His crowning achievement was a thorough trouncing of Salem high this fall.

Other Willamette men proving to be success in coaching capacities are:

Harold Hauk, Salem. Eddie Frantz, St. Helens. Seymour Fentress, Astoria. Harold Hoyt, Hunkington. and Garney Fletcher, Leslie Jr. High, Salem.

Probably the most outstanding grad in the Oregon high school coaching field is Russ Rarey, Tillamook member, whose football and basketball squads have as long a list of attainments in the last few years as any school in the state.

So the Keene coaching system goes marching on...

STARTING LINEUPS

C. P. S. Loggers vs. W. U. Bearcats
Roy H. Sandberg (W.S.C.) Coach Roy S. Keene (O.S.C.)

Player	Wt.	Pos.	Wt.	Player
Bob Morris	170	LE	195	Bill McAdam
Gus Boker	200	LT	200	Bob Vagt
Jesse Dawkins	180	LG	185	Elliott Becken
Russell Perkins	180	C	195	Vernon Urell
Frank Sreen	165	RG	190	Norman Hogneson
Frank Sullen	200	RT	235	Darrell Newhouse
Carl Smith	168	RE	190	(c) Chas. Versteeg
Mel Miller	190	QB	175	Bill Beard
Alex Schwetz	180	LH	180	Don Brandon
Norm Mayer	172	RH	175	Art Gallon
Bernard Remson	175	FB	208	Dick Welagerber

SUBSTITUTIONS

C. P. S.		WILLAMETTE	
Kimball, 165	QB	Abbott, 170	C
R. Miller, 160	LHB	Erickson, 180	C
Pate, 190	FB	Weaver, 180	C
Caughlin, 190	T	Kahle, 195	T
W. Piper, 175	C	Sirino, 200	T
Underwood, 175	C	Yada, 221	G
McFadden, 195	C	Waldron, 180	C
Wafford, 190	C	Peters, 245	C
Berthelet, 195	T	Bennett, 143	QB
Haas, 195	G	Shaffer, 195	RHB
Martin, 190	G	Hogg, 180	LHB
Powell, 180	G	Stone, 178	RHB
		Williams, 165	RHB

Hot Discussions As Sophomores Discuss Sweater

Amid the usual discussions the Sophomores are trying to choose a class sweater.

The voting committee for the sweaters is headed by Betty Lane. Also on the committee are Leonard Donaldson, Ed Howell, Eugene Hill.

Samples from local stores have been presented by the committee for the consideration of the class as a group.

The class has voted to have coat sweaters. The style and knit of the sweaters have also been decided. The color of the sweaters and the store from which they will be purchased has yet to be voted on.

Miss Bartholomew Talks To Willamette Wesleyans

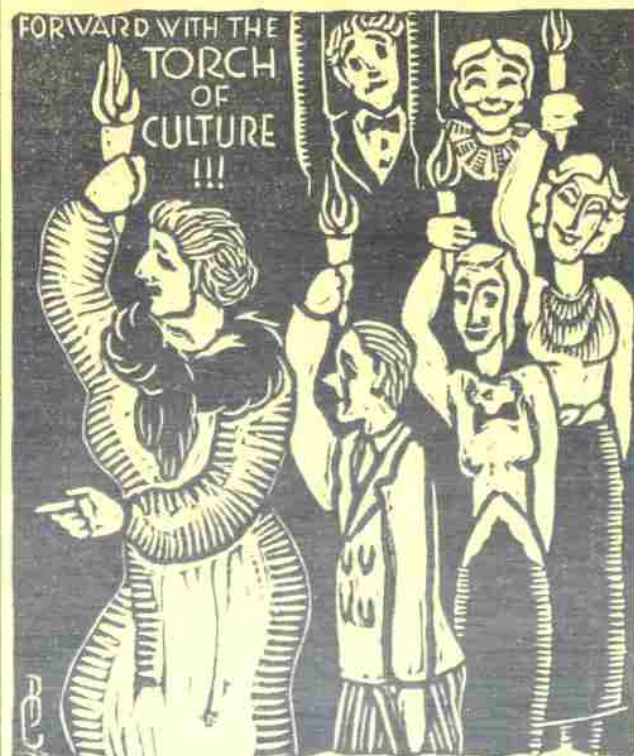
Miss Mildred Bartholomew of First Methodist church gave a very inspirational informal talk to the Wesleyans on Monday noon when she explained the place which this group should have in building the finer campus life. Of the group present, she discovered that twenty different campus activities were represented, and that there are from one to seven Wesleyans in every other group on the campus.

Gene Hill announced the Preaching Mission in Portland Nov. 5th to 8th at which Stanley E. Jones, Muriel Lester, Richard Raines, and Lynn Harold Hough are to be the speakers. The theme will be "Christian youth building a new world." All members were urged to attend as this is an unusual opportunity to hear some of the world's greatest Protestant leaders.

Following the meeting, Orrille Whitman exhibited some articles which he brought back from South Africa.

The meeting next week will be led by a student, and will be concerning the history of the group as revealed by the record book kept since the first organization.

ANOTHER HOMECOMING—ANOTHER PLAY



"The Torchbearers" carry on as the dramatic department presents another homecoming production. This time it's a farce. Campus critics who have been present at rehearsals herald it as a success.

Marine Animals Shown In Eaton

Collection Made During Summer by Professor At Friday Harbor

The Biology Department has placed on display on the third floor of Eaton Hall a very interesting collection of animals from Puget Sound, collected by Prof. C. R. Monk during the past summer in the region of Friday Harbor, Wash.

Most of the major groups of animals are represented, sometimes by rare or unusual specimens. An example is the sac-like parasitic barnacle, Sacculina, on the abdomen of a shore crab.

Very few Biology students ever have the opportunity to see actual specimens of this parasite, which has lost all resemblance to its free living relatives.

The Sea Pen and Sea Whip are relatives of the corals which live on muddy bottoms at 50 to 100 meters depth. The jellyfishes are represented by the pretty little Gularia, which is known to every zoology student.

The worms displayed are unusually interesting; Eudistylia, the feather worm, builds a gelatinous tube which may reach a length of two feet, and is usually covered with a rich growth of smaller marine animals and plants.

Prof. Monk found 25 different kinds of animals on a small piece of worm tube. A colony of these worms with their feather-like tentacles extended is a real marine flower garden. The worm Amphitrite builds a tube of sand and mud under rocks, and quite generally shares its home with the scale worm Acholoe. The most interesting worm is the Sea Mouse, Aphrodite, with its beautifully iridescent bristles and copper-like setae.

Man's earliest ancestors (according to some investigators) are represented by several kinds of Tunicates or Sea Squirts, the finest specimen being the Sea Peach, Tethyum aurantium.

Few Willamette students have ever seen a star-fish collection which compares in number with the one on display.

Many other interesting animals are displayed, and it is hoped that many students will avail themselves of the opportunity to study this collection of animals.

Campus Art Week Plans Are Made By Paint Spots

Art week will not go without notice on the Willamette campus as members of this year's new up-and-coming Paints Spots organization, begun a year ago under the supervision of Miss Constance Fowler, art director.

At a recent meeting the progress of the organization last year was outlined by last year's president, Betty Craney, and plans for the coming year were outlined.

The club will specialize in stage setting this year and are off to a start on scenery for "The Torchbearer." They will continue to do poster work.

A club pin was selected upon the recommendation of Mary Farnum, committee head.

The regular meeting time is to be 4:00 each Tuesday, every other meeting to be used as a work session for matting prints for the library.

The club will have a booth in the Homecoming carnival to paint shadow pictures of those interested. The idea of painting couples on one piece of paper was especially favored.

The next meeting will be a pot-luck supper on Tuesday, Nov. 3, at 6:30. It will be held at 263 N. 13th and anyone interested in art who wishes to become a member of the club is invited if they will speak to Miss Fowler, Betty Craney or Ralph Woodall first.

Equally thrilling should be the play of the backs, with Dick Weisgerber, Willamette's candidate for all-coast fullback; Bill Beard; and Don Brandon, sparking the Bearcat offense, and Alex Schwetz, triple-threat halfback; and Bernard Remson, 175 pound colored lad from Oakland and one of the outstanding freshman prospects on the coast, leading the Loggers.

In 15 games played since 1919 each team has won seven, one being a scoreless tie. Previous Willamette-Puget Sound scores follow:

1919—W. U. 19	C. P. S. 0
1920—W. U. 24	C. P. S. 0
1921—W. U. 0	C. P. S. 10
1922—W. U. 9	C. P. S. 9
1923—W. U. 6	C. P. S. 14
1924—W. U. 0	C. P. S. 8
1925—W. U. 5	C. P. S. 7
1926—W. U. 6	C. P. S. 9
1927—W. U. 25	C. P. S. 18
1928—W. U. 21	C. P. S. 0
1929—W. U. 21	C. P. S. 0
1930—W. U. 0	C. P. S. 0
1931—W. U. 0	C. P. S. 0
1932—W. U. 0	C. P. S. 0
1933—W. U. 0	C. P. S. 0
1934—W. U. 27	C. P. S. 0
1935—W. U. 15	C. P. S. 0

Unbeaten CPS 11, Bearcats Mix Tonight

Homecoming Feature Brings Together Two Leading Outfits

Logger Team Last To De- feat Willamette In Conference Play

Willamette University's championship defending Bearcats and College of Puget Sound's unbeaten Logger eleven provide the main attraction of the annual homecoming program for this year, when they tangle in their all-important Northwest Conference grid battle tonight on Sweetland field. The clash, scheduled to get under way at 8:15, brings together two of the outstanding contenders for the 1936 league crowns, both unbeaten in conference play and both confident that the final whistle will see their outfit on the long end of the score.

As far as weight and experience are concerned, the two outfits rank on par, but each possesses at least one glaring weakness that may prove to be their downfall this evening. In the Logger's case, it is lack of capable reserve material in the forward wall. Though well equipped with experienced ends, Coach Roy Sandberg's Timbermen faces a severe shortage of tackles and guards and against a smashing, power-driving machine like "Spec" Keene has put together this season, this is a critical situation.

Willamette has revealed two visible sore spots in her attack this season. One is poor blocking. Although at times they flash streaks when the ball carrier gets some fine assistance, the blocking isn't consistent and no less than three times last week against Linfield failed when touchdowns were in reach. This weakness may be strengthened with the return of Art Gallon and Bill Stone to the blocking halfback spot in the backfield. Both have been out with injuries. The second weak spot is the locals' poor passing attack, the offensive through the airways having netted the Cardinal and Gold practically nothing this season.

Pre-game dope points to a fierce line battle between two veteran forward walls, with the Bearcats holding some advantage with more capable reserves. Bright spots in Coach Sandberg's line are the ends Carl Smith and Bud Morris, both freshmen, who have taken the call from last year's regulars, Wofford and McFadden. Both are fine blockers, fast, aggressive, and fine pass receivers.

At tackle, two 215 pounders Sullivan and Bower, get the call. Dawkins and Sreen at the guard positions and Perkins, sophomore pivot man, complete the line. For Willamette, no change in the group that has had the starting call all season is expected. They are: Bill McAdam and Co-captain Versteeg, both seniors, at end; Bob Vagt and Darrell Newhouse, also seniors, tackles; "Tootie" Becken and Norm Hogneson, guards; and Vern Urell, center.

The play of Versteeg, Becken, and Vagt has been especially outstanding thus far.

Equally thrilling should be the play of the backs, with Dick Weisgerber, Willamette's candidate for all-coast fullback; Bill Beard; and Don Brandon, sparking the Bearcat offense, and Alex Schwetz, triple-threat halfback; and Bernard Remson, 175 pound colored lad from Oakland and one of the outstanding freshman prospects on the coast, leading the Loggers.

In 15 games played since 1919 each team has won seven, one being a scoreless tie. Previous Willamette-Puget Sound scores follow:

1919—W. U. 19	C. P. S. 0
1920—W. U. 24	C. P. S. 0
1921—W. U. 0	C. P. S. 10
1922—W. U. 9	C. P. S. 9
1923—W. U. 6	C. P. S. 14
1924—W. U. 0	C. P. S. 8
1925—W. U. 5	C. P. S. 7
1926—W. U. 6	C. P. S. 9
1927—W. U. 25	C. P. S. 18
1928—W. U. 21	C. P. S. 0
1929—W. U. 21	C. P. S. 0
1930—W. U. 0	C. P. S. 0
1931—W. U. 0	C. P. S. 0
1932—W. U. 0	C. P. S. 0
1933—W. U. 0	C. P. S. 0
1934—W. U. 27	C. P. S. 0
1935—W. U. 15	C. P. S. 0

Willamette Collegian

Official Publication A. S. W. U.
Subscription rate \$1.00 per year

Entered at the Postoffice at Salem, Oregon, for transmission through the mails as second-class matter.

Editor: ROSS GLADDEN

Managing Editor: KATHRYN THOMPSON

Manager: WARREN PETERS

Assistant Manager: MARGARET MAGEE

News Editor: JAMES FOWLER

Sports Editor: BOB KEUSCHER

Society Editor: HELEN PURVINE

Assistants: BETTY TAYLOR

BARBARA CROOKHAM

MARGARET GARY

Proof Reader: ROGER MILLER

Alumni Editor: FAYE SPARKS

Reporters: MARGARET GILLETTE, WILLIAM W.

CLEMES, JOHN VOSS, LOYE BOGARDUS, BETTY

DOTSON, MARY FRONK, ROGER MILLER, BILL

DESOUZA, MARGARET TAYLOR, GEORGE LA

YATTA, MORRIS CHARY, GROVER WILLIAMS,

DAN MOSES, LILLIAN GRAHAM, MARJORIE

CRANEY, CORA DAVIS, ALENE FAIRCLOUGH,

HELENE TRULSEN.

Editorial and Business offices, Basement Waller

Hall. Phone 3088.

What Else Can You Say?

"Hello grads" expresses the sentiment, not only of the editor, but of the entire campus, for this week-end. Perhaps an editor could be expected to require a few more words in which to express his sentiment. Instead we have decided to sign off for the present in favor of one of the most energetic members of the staff, Miss Faye Sparks, alumni editor, who will assist the alum readers of this Collegian to re-acquaint themselves with former classmates who could not be on the campus for the '36 homecoming.

This Week's Bouquet

Manager Lindstrum—Junior Lindstrum is the only name we were able to find for him—takes the boutonniere for this issue. Under his direction homecoming plans are shaping into what we predict will be the best event of its kind since we (the present senior class) entered Willamette with a fresh lid and an inferiority complex.

Even if the 1936 homecoming doesn't quite live up to our expectations, we still think the blossoms should be thrown in Lindstrum's direction.

Among the chief menaces in the life of any homecoming manager are the people who refuse to do things they easily could do, and, worse still, the people who promise to do things and don't—at the last minute.

And who is the man responsible, the man who must please the alums and also the students and still stay within his budget? It's the homecoming manager who must have everything in proper form—or else...

"Trim the Timbermen" . . .

WE SPECIALIZE
IN SCHOOL
PRINTING!

Statesman
Publishing Co.

215 South Commercial Street

PUBLISHERS OF

THE OREGON
STATESMAN

"ALWAYS FIRST WITH THE
SPORT NEWS"

This Week's Brickbat

This is the beginning of a new feature which the editor warns us, is for the purpose of keeping campus men and women on their toes but which must never be written with a straight face, not quite straight anyway.

For the first issue we toss the brickbat in among the faculty members to be used at their discretion and pleasure until after November 3.

We hope that Prof. Jones nabs it first and, if so, we suggest that he write thereon a friendly little political note before letting go his last one at Dr. Gatzke. Then if the good Doctor is not too set upon retaliation, he might repeat the procedure and, after a short wind-up, side-arm a bean ball at Dr. Laughlin of the sociology department.

And that will probably end the faculty marksmanship because Dr. Laughlin will no doubt be unable to refrain from opening fire at the head of some class skipping delinquent.

And if a piece chips off at this juncture we suggest it be slung gently at Warren Peters, Collegian manager, referred to several times this week, by the way, as "the mebricate" in connection with his yell leading activity Friday night. We are convinced that he meant well.

If it's GOOD food
you want . . .

EAT AT SALEM'S
COLLEGIATE
RENDEZVOUS

THE BLUEBIRD

Next to Capitol Theatre

Patronize our advertisers.

FOR

ENERGY AND VITALITY

EAT

Master Bread

"The Toast of the Town"

Baked by
Master Bakers in a
CLEAN Bakery

Alumni News

OFFICERS FOR 1936-37

President: Hugh McGilvra, '35
First Vice-President: Pat Emmons, '31
Second Vice-President: John L. Gary, '16
Third Vice-President: Harold Hawk, '30
Secretary-Treasurer: Faye Sparks, '25
Executive Committee Members-at-large:
Mrs. Ellen Fisher, '09, Mary Paroungian, '19, Walter Erickson, '32

MARRIAGES

Miss Hazel Irons, '35, has announced her wedding date for October 31. She will be married to Maurice D. Ebner, of Mt. Angel, Saturday morning at St. Joseph's church in Salem. The couple will be attended by Miss Irons's sister, Mrs. Roguski, and Mr. Ebner's brother, Charles. They will make their home in Salem, where Mr. Ebner is proprietor of a grocery store. Miss Irons has been employed at Fred Meyer's store in Salem for the past year and a half.

PERSONALS

Kenneth Manning, '36, is employed at Bishop's clothing store in Salem.

Henry Hartley, '27, superintendent of schools, and John Fasnacht, '26, utilities manager, are taking an important part in the reorganization of the town of Randon, which was destroyed by fire. Schools have resumed their work, the grades being housed in the high school gymnasium, which was saved along with the high school building itself. Rupert Philpott, '31, whose home also was destroyed, was among building contractors who contributed his services in conditioning the interior of the gymnasium for classes.

HOMECOMING ALUMNI BANQUET

The alumni will meet on the second floor of the Fraternal Temple, 447 Center street, Saturday, October 31, at 5:30 p. m. for their annual Homecoming banquet. Hugh McGilvra, '28, president of the association, will preside. Several former song queens will be present to lead the group in singing of Willamette songs. The new Willamette faculty members, Dr. White, and Dr. Luther will be presented. Dr. Bruce R. Baxter, Prof. William Jones, and C. M. Imman, '01, will be among the speakers who will tell of progressive steps at the university. Prof. Leslie J. Sparks, '19, will show motion pictures which he has taken on and off the campus, including the Oregon State-W. U. game and "Kangaroo Court," freshman initiation. The price of the banquet is 50¢ per plate. The banquet will be over in time for the Theta Alpha Phi play, which will be held at the high school at 8:15 p. m. An alumni section is reserved. Reservations should be left at the General Manager's office; phone 6778.

C. P. S.-W. U. GAME

An Alumni section is reserved in the old grandstand at 75¢ admission. The student rooting sections will also be in the old grandstand.

BECOME ACTIVE MEMBERS OF THE WILLAMETTE ALUMNI ASSOCIATION BY PAYING DUES OF \$1.50 FOR THE CURRENT YEAR. AND RECEIVE THE WILLAMETTE COLLEGIAN FREE. Dues may be paid to Faye Sparks, alumni secretary-treasurer, in the office of the General Manager, gymnasium, W. U.

AMONG THE TEACHERS

Graduates of the class of 1936 have been placed in teaching positions as follows: Esther Black is physical education instructor in La Grande high school. Arnold Gralapp, '17, is superintendent of the schools there. Olivia DeVries is instructing in religious education in the public schools of McMinnville. Hortense Taylor is teaching in the Willamina high school.

Carl Rhoda is part-time instructor in the physical education and coaching department of Edison six-year high school in Portland. May Ringo teaches home economics at Walla.

Margaret Savage is history, English, and physical education instructor in the high school at Jefferson, Oregon.

Louise Anderson is teaching English and physical education in the high school at Cove.

Mary Andrews instructs in mathematics at Fairfield, Idaho. Mr. and Mrs. Frank DeLespasse (Helen Childs, '34) live at Halfway, where Mr. DeLespasse teaches physics, mathematics, band, and orchestra.

Florence Durette is teacher of commerce, physical education and English in Central Point high school. Howard Jewett, '16, is superintendent.

John Edwards teaches biology in the high school in Ashland, his home town.

Winifred Gardner is teaching English and mathematics in Clatsop Union high school. Eugene Sikke, '30, is principal. Other Willamette alumni who teach there are Wayne Welch, '29, social science instructor and assistant coach; Mrs. Wayne Welch (Beulah

Wampler, '29), part-time teacher in English, science, and world history; Enid Bolton, ex-'26, commerce; Faye Sparks, '25, English and music; and Rev. Edward Terry, '28, substitute.

Keith Jones is education director for CCC at Slinnasho. Marnetta Jones teaches English and speech at Buhl, Idaho.

Helen Knight is instructor in foreign language at Bethel.

Alfred Pietila is teaching science and physical education in the junior high school at Astoria. Other Willamette graduates at Astoria are Esther Girod, who teaches mathematics and physical education, and Elizabeth Ogden, '32, who teaches English and music. Delmer Ramsdell is teaching English at Rogue River.

Roberta Smith teaches biology, commerce, and girls' athletics at Astoria.

Edgar Tweed, '26, is teaching and coaching in the high school at Jefferson, Ore.

Faye Cornutt, '33, is instructor in English and music at McMinnville.

Denna Brown, '32, is instructing in social science at Marshfield. She formerly taught at Monroe.

Estel Chaney, '32, who formerly taught at Reedsport, is teaching music, French, and English at Wheeler.

George Birrell, '29, is a CCC camp educational advisor.

Ruth Chapman, '35, who taught last year at Dundee, is now teaching social science at Sherwood.

Claude Cook, '34, who taught the past two years at Kerby, is now instructor in social science at Helix.

Eleanor Corthell, '34, who formerly taught at Arango, teaches history and Latin at Elkton.

Edna Danford, '35, who taught at Rogue River last year, now teaches English at Umatilla.

Mildred Drager, '35, who took advance work in home economics at O. S. C. last year, is teaching that subject in the junior high school at Ashland.

Mr. and Mrs. Curtis French (Henrietta Bishop) both '31, live at Cottage Grove, where Mr. French is coach and instructor in physical education. They were formerly at Bandon.

Lloyd Girod, '32, is principal of the elementary school at Aurora. He formerly taught in the grades at Gates.

Marie Ledbetter, '24, is home economics teacher at Baker.

Mr. and Mrs. Kenneth Litchfield (Frances McGilvra), '29, and '30, are now living at Shedd, where Mr. Litchfield is principal of the high school. They were formerly at Bellefontaine, where Mr. Litchfield had the championship "B" team of the state in basketball. Mrs. Oscar White (Helen Sande), '27, who was at Bellefontaine last year, is teaching English and music at Shedd. Mr. White, '29, has been doing graduate work at U. of O.

Virginia Mason, '22, is teaching English and coaching dramatics at Tillamook. She formerly taught at Woodburn, from which position she resigned to take graduate work at the University of Washington. Later she taught at Mill City.

Margaret Morris, '34, is teacher of Latin and English at Elkton.

Marjorie Nelson, '30, who taught at Vernonia last year, is this year teacher of Latin and history in the high school at Baker.

Marjorie O'Dell, '33, who taught last year at Wheeler, is now supervisor of music in The Dalles public schools.

Neil Perrine, '35, is teaching English and physical education at Colton.

Sadie Jo Read, '27, is teaching English in the Rainier high school. Gertrude Roenicke, '35, teaches commerce and girls' athletics at Turner.

Romo Rice, '28, who taught at Umatilla last year, is now teaching French in The Dalles.

Frances Stewart, '35, teaches physical education at Ione.

Matthew Thompson, '33, formerly principal of the high school at Sweet Home, is superintendent of the Prairie City schools. Other Willamette residents there are Dr. and Mrs. David Lawson (Margaret Cook), both '21. Dr. Lawson has his own hospital there.

Roseland Van Winkle, '21, who taught two years in the La Grande high school, is teaching social science in Peshaw Junior high school in Salem, filling the place of Lois Fellows, '27, who is on leave of absence.

Caroline Wilson, '23, who has taught in the Hood River high school for the past few years, is teaching Latin in Salem high school, taking the place of Frances Fellows, '29, who has a leave of absence.

Mildred Wilkens, '30, is teaching social science in Salem.

WIEDER'S

Salem Laundry Co.



DRY CLEANING

Phone 9125

263 South High

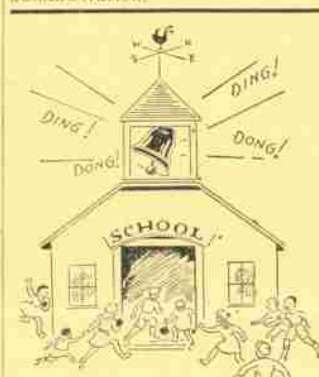
Public Ad Course

(Continued from Page 1)

"Professor Jones says, 'Students must understand that this year we are pioneering, and that many improvements will come. This year we have four economics majors and two political science majors who have changed their courses to public administration so we will have six graduating students in our new course. A degree of Bachelor of Arts is granted to public ad majors.'"

This course offers an opportunity for the consideration of practical problems of administration in government. The major emphasis of the curriculum in public administration is upon political science, public law, economics and business administration.

Any student who wishes further information about this course should see Professor Jones, chairman of the committee on public administration.



HERE'S A
"BELL RINGER"
FOR COLLEGE MEN AND
WOMEN

HALF SOLES AND
RUBBER HEELS
Real Quality leather. Put on
while you wait. All soles sewed.

GRAND SILVER SHOE
REPAIR
132 NORTH LIBERTY

WILLET'S
CAPITAL
DRUG STORE
Quality Always Wins
405 State St. at Liberty

State Street
Grocery
& Market
1312 STATE
Willamette's
Next Door Neighbor

PERRY'S DRUG STORE
415 S. Commercial St.
The Rexall Store

HAZEL DELL DAIRY
INC.
Gentle A Raw and Pasteurized
Milk and Dairy Products
1200 State Dial 9022

Appropriate Gifts for
Any Occasion
WOOLPERT & LEGG
Corner Court and Liberty

THE RAMBLING SHOPPER

By Uncle Willie

Hi-de-ho, dodos, and all you birds. Seems like Uncle's absence last week from the paper caused almost as big a stir as the burning of the Capitol a year ago. Dean Schulze claimed that Mrs. S. was sorry to see Uncle left out, because it left her without bedtime stories for Master Merlin. Personally, Uncle thinks Dean S. has been losing a few hours' repose nightly; so welcome back, pals, here's hoping you sleep better—in classes.

Uncle doesn't know why he should think of Sally's right off the bat (not that Uncle is just off a "bat") unless it is because they are featuring "singing skirts" for college gals. Last time we heard from Sally's they had what put you in the swim of things. Now they have what puts you in the swing of things. Uncle can't help but wonder what things they won't put you in next, gals. (Not that Uncle should know.)

These wintry mornings bring out the poet in Uncle, because they give him whitt-ears: So pip! pip!

Mary had a little lamb
Its fleas were white as snow,
And every time that Mary
scratched
The fleas did laugh, "Ho-Ho!"
and did say, "You can't hurt us,
because we eat Master Bread which
is full of vitality and energy." And
pals, take a lesson from the in-
significant flea. After all, life is
just one hop and a scratch after
another. Why not let Master
Bread help you hop?

It happened the other evening.
Psi Boy: "Say—uh—"
Phi Girl: (Coyly) "Yes, dear?"
Psi: "Well—here we've been
going together over a year now—"
Phi: "Yes, Dear."
Psi: "And we've come to know
each other pretty well—"
Phi: "Yes, Dear."
Psi: "You know all my faults,
and yet you still care a lot for
me—"
Phi: "Yes, Dear."
Psi: "Well—er—I want to ask
you a question—"
Phi: "Yes, Dear?"
Psi: "Er—er— Well—Miller's
are having their Dollar Day Sale
this week-end. Can you loan me a
dollar?"

Uncle wishes to take a few
words to welcome The Man's Shop
into the fold. It's clothes what
bring out the man in youse mugs,
and it's The Man's Shop what
brings out the clothes for youse
mugs what want to look your
supremest. Ed Howell is their
campus representative, and gals, he's
the answer to a maiden's prayer,
and the recipient of many another
guy's howl.

In closing, Uncle feels he must
leave another poem with you:
Out of the night that covers me,
Black as a pit from pole to pole,
I thank whatever Gods may be,
For the Spas's Junior Junho.

You guys what think you have
a "jewel" of a date, should take
a squint at what Ed. Muchuck has
in his Jewel Box.

HOSIERY MENDING
Special Price to Students
HOWARD CORSET SHOP

ORANGE AND BLACK
JELLY BEANS
15c lb.
2 lbs. 25c
½ lb. 8c
Schaefer's Drug
Store
125 N. Commercial
PHONE 5107



ACKLIN BOOTERY
BEAUTIFUL SHOES
Phone 3556 105 N. High St.

Drs. Morse, Robertson,
Power, Buren and
Robertson
Physicians and Surgeons
Phone 3123 Guardian Bldg.

SHOE REPAIRING
SHINING — DYING
HAT CLEANING and
BLOCKING
THE SHYNE SHOP
147 N. High Ph. 7000

HARTMAN BROS.
Jewelers
Gifts for All Occasions
Corner State and Liberty

Ask for . . .
MEADOW GROVE
DAIRY
FARM FRESH PRODUCTS
Rieck Bros. 116 Cal 85F11

Office Ph. 5858 Res. Ph. 5120
Dr. David Bennett Hill
General Dentistry
— Dental X-Ray —
303 First Nat'l Bank Bldg.
Salem, Oregon

GEO. E. ALLEN
HARDWARE—PAINTS
Refrigerators — Washers
HOUSEWARES
Ph. 4610 236 N. Comm'l St.

Phone 5561 Res. 3383
Dr. Claude W. Clifford
Extraction and Dental X-Ray
Exclusively
415 First Nat'l Bank Building
Nitrous Oxide and Oxygen Gas
Administered

LADD & BUSH
BANKERS
SALEM, OREGON
Established in 1868
Member Federal Deposit
Insurance Corporation

WHEN ORDERING PRINTING
CALL—
KRAPS AND LONG
PRINTERS
370 ½ State Street
TELEPHONE 8594

POMEROY
& KEENE
Jewelers
379 State St.

Hussey's
RED CROSS
PHARMACY
— DRUGS —
Phone 4804

T. W. CREECH
DRUGS
1220 State Street
Salem Dial 6527 Oregon

PATRONIZE
OUR ADVERTISERS

Sororities Give Exchange Dinners Tuesday Night

A double event of Tuesday night was the exchange dinner given by Beta Chi and Delta Phi.

Guests at the Delta Phi house were the Misses Marjorie Thorne, Ina Bennett, Lucile Brainard, Ruth Burrow, Margaret Dooge, Belle Brown, Dorothy McGee, Dorothy Ellinger, Julia Philp, and Marian Wakefield. Hostesses were the Misses Ruth Tscharnier, Esther Nelson, Dolly Dingle, and Catherine Faxon.

Beta Chi guests were the Misses Wanda Landon, Frances Faber, Rosemary Huffman, Katherine Ringe, Marian Steigewald, Anna May Unrath, Harriet Childs, Martha Warren, and Mary Jeannette Sargent. Their hostesses were the Misses Helen Burdick, Mildred Walker, Helen Olds, Phyllis Pythian, Luella Corn, Lillian Graham, Pauline Winslow, Irma Calvert, and Ethel Denham.

Miss Mary Jeannette Sargent and Miss Gwen Gallaher traveled to Portland Monday evening to attend the concert given by the Don Cossack chorus in the civic auditorium.

Sunday night at an impressive ceremony Alpha Phi Alpha formally initiated Katherine Thompson, Ruth Ramsden, Jean Lundberg, Echo Johnson, Alice Midwood, Esther Callison, and Betty Taylor.

SOCIETY

Helen Purvine, Editor

Assistants

Betty Taylor and Barbara Crookham

Daleth Teth Gimel Holds Pledge Service

A very impressive event was the Daleth Teth Gimel joint pledging and initiation service held Sunday morning at Lausanne Hall. The ceremony, which was performed by Miss Ruth West, president, and Miss Willetta Smith, marshal, of the local chapter of Daleth Teth Gimel, was a candlelight affair and was followed by the attendance of all members and pledges at the First Methodist Church.

Pledges who were initiated were Miss Esther Callison, Miss Phyllis Bunnell, Miss Jessica Kinsey, Miss Virginia Bendickson, Miss Margaret Magee, and Miss Barbara Jones.

New pledges of the organization are the Misses Betty DeLong, Ethel Baxter, Lorraine Vick, Helen Neiger, Marie Bendickson, Hannah Kaufman, Ruth Miller, Beth Hall, Gertrude Cannell, Mary Farnum, Helen Trindle, Julia Foglesong, Margaret Allison, Edna Sherwood,

Edna Luther, Faye Dalton, Louise Perry, Erma Taylor, Edna Thoman, Frances Smith, and Eileen Van Eaton.

Last night at 5-50 Daleth Teth Gimel entertained with a potluck supper at Chresto Cottage in honor of its new initiates and pledges. After the supper, an informal evening of games and singing was spent. Miss Beatrice Gillette was in charge of the affair.

String Quartet's Second Concert Much Appreciated

The second concert of the famed Abas String Quartet of Los Angeles was given Tuesday night in Waller Hall. The group again demonstrated its remarkable command over quartet music, with a large group of students and townspeople in attendance. The program follows:

I. Adagio Allegro from Concerto for String Quartet—Sammartini
II. Lento Scherzo from Quartet in G Minor, Opus 10—Debussy
III. Four Bagatelles for String Quartet—McEwen
Lament
March of the Little Ones
The Dark Lake
Red Murdock
IV. Adagio Polka from Quartet in E Minor—Satana

Homecoming Alums To Be Honored

Tomorrow afternoon from three to five active members of Beta Chi will be hostesses at their chapter house for an informal tea honoring their alumnae members who will be on the campus for Homecoming. The house will be decorated in a color scheme of orange and black, with candles and flowers of these colors on the mantel and table. There will be no formal receiving line.

Guests will be served in the den. Senior members of the house, including Miss Marjorie Thorne, Miss Julia Johnson, Miss Dorothy McGee, and Miss Pauline Winslow, will pour. Underclass girls will serve.

During the afternoon, Miss Ina Bennett and Miss Kathryn Smullen will play and sing.

Miss Belle Brown is in charge of the affair, assisted by Miss Helena Schneider and Miss Dorothy Ellinger.

Miss Anna May Unrath traveled to Eugene Sunday to be a bridesmaid at the wedding of her brother, Bill, formerly of Willamette, to Miss Eleanor Boyd of Eugene and the University of Oregon.

Mr. and Mrs. Grover Williams, Sr., were guests of their son, Grover, at the Sigma Tau house Sunday. Malcolm Waitman and Al Heuman also visited their fraternity.

Guests for dinner at the Delta Phi house last night were Mr. and Mrs. B. F. Irvine. Mr. Irvine, editor of the Oregon Journal, was the chapel speaker Thursday.

Kappa Gamma Rho announces this week the pledging of Eugene Hill, Irwin Wedel, and Bill Voss.

Miss Martha Herman spent the last week end at the home of her parents in Roseburg, Oregon.

Lausanne Hall and the three sororities were entertained very early Saturday morning with a Sigma Tau serenade featuring Leonard Ranton as soloist and a trio composed of Bruce Eckman, Jerry Sherman, and Helen Stult. To compliment Mr. Eckman, the trio afterwards traveled to Monmouth to serenade there.

Miss Helen Peterson spent the week end as a guest of friends in Fall City.

Here's Your

HOSIER!

REALSILK

Hosiery and Lingerie for Co-eds

Sox, Ties, Shirts for Men

Ask for Free Gift

STEVE ANDERSON

Campus Representative

Phone 6588

The SPA

A Rendezvous for those who appreciate the Finest Foods and Confections.

F. G. MYERS

DOLLAR DAY

AT

MILLER'S

FRIDAY

AND

SATURDAY

Come and See What \$1 Will Buy!

Beta Chi's Are Hostesses Friday

Beta Chi's were hostesses at the Linfield game for an informal dance at their chapter house, for which Mrs. Frank Elliot was chaperone. Cider and doughnuts were served late in the evening.

Those making up the party were the Misses Luella Corn, Betty Savage, Maxine Beagle, Rosalie Goulder, Julia Johnson, Marjorie Thorne, Margaret Moulton, Melva Belle Savage, and Dorothy Wright; and LeRoy Casey, Stanley Eland, Oren McDowell, Leonard Ranton, Bob Vagt, Randall Kester, Ted Ladden, Otto Wilson, and Frank Shepard.

TO BE SEEN ON THE SCREEN

GRAND

At the Grand this week is showing Shirley Temple in her latest picture, "Dimples." Lovers of this feminine star will find all that they can wish for out of one picture. Her intricate tap-dancing, her singing, and her emotional characterization are to be appreciated.

Supporting her is a splendid cast, most notable of which are Frank Morgan and Helen Westley. Mr. Morgan's characterization of an old Southern gentleman whose matinee-idol days may be over but not forgotten, is one of the most human of his career. His voice reminds the listener of Lionel Barrymore, and Mr. Morgan could very well uphold the prestige of that Academy Prize Award winner.

Stephan Feltich helps supply the comedy.

STATE

Leave it to Boris Karloff to provide thrills in any picture. His latest comes from the G. B. studios in England, and in many instances it is his best. Appearing as "The Man Who Lived Again," Mr. Karloff will bring to the State Theatre Saturday one of the most nerve-tugging and fear-emotional characterizations ever to be seen on the screen. If you love pictures of this type you will appreciate his performance.

Mr. Lewis announces that one of the highest rated pictures of the movie season, both by critics and movie stars themselves, will be shown at the State Theatre November 12th and 13th. The picture is called, "Nine Days a Queen," and will be sponsored by the University Women's Club. Interested students are asked to see the Koko for advertisement names.

Edward Foynt, '35, who coached in the junior high school at Astoria last year, is head coach in the high school at St. Helens. Fred Patton, '34, is superintendent of schools there, and Hazel Newhouse, '37, who taught last year at Tule, is teaching history in the high school.

The Capital Theatre
BARBER SHOPPE
Treat Yourself to the Best!
Sanitary Methods . . .
Skilled Workmen . . .
Earl Messinger, Prop.
Next to Capital Theatre

Western Auto Supply Co.
TIRES - BATTERIES - RADIO
PAINTS - ACCESSORIES
CAMP GOODS
FISHING TACKLE

HOMECOMING

isn't complete without a

MUM

FROM

C. F. BREITHAUP

Willamette's Florist Phone 5904

CAMPUS FOOTWEAR

BOYS OR GIRLS

Fashionable Footwear at Moderate Cost

BUSTER BROWN SHOE STORE

Shoes Hosiery Service

HUTCHEON PAINT STORE

PAINT AND WALLPAPER

ARTIST'S MATERIALS

"Buy Your Paint at a Paint Store"

174 N. Commercial St.

Phone 6087

LLOYD THOMAS—Stylist

OIL PERMANENT \$1.95 up to \$7.50

LLOYD'S BEAUTY SERVICE

230 North Liberty Phone 7131

ROBINSON'S CONFECTIONERY & GROCERY

Hot Lunches - Fountain

Just Across From Lausanne

227 South Winter Street

Phone 5745

WILLAMETTE UNIVERSITY

SALEM, OREGON

Founded February 1, 1842

Liberal Arts - Law - Music

Pre-Professional Curricula

Highest Accredited

Exceptional Location

Reasonable Expenses

Christian—Non-Sectarian

"An Outstanding American Institution"

Bulletin on Request

COATS

Ladies' Ready To Wear

Ladies' Ready-to-Wear

Sally's

357 Court St
Salem

DRESSES

Hosiery - Lingerie



VERN MATHIS

Mathis Paint & Roofing Co.

474 Ferry
Between Liberty and High
Phone 4642

Where the thinnest Dime Buys the thickest Milkshake.

PARVAY CREAM
CARAMEL CORN
CANDIES

PARKER'S

Across from Senator Hotel on High Street

BETTER VISION
BETTER GRADES
SEE TO YOUR VISION



DIAMONDS - WATCHES
AT SPECIAL PRICES

New Location
THE JEWEL BOX
443 State Phone 5510

KAY'S

Coat & Dress Shop

Late Fashions - Individually Selected - Popular Prices
469 State St. Salem

Miss Weil Bride In Berkeley

A wedding of particular interest to Willamette students was that of Miss Janet Weil, daughter of Mrs. Fred Alban Weil, and Charles West, son of Mr. and Mrs. Wharton West, which took place Sunday afternoon at four o'clock in Berkeley, Calif. The ceremony was performed at the home of the bride's uncle and aunt, Dr. and Mrs. Earle M. Wilbur of Berkeley. Dr. Wilbur read the service.

The bride wore her grandmother's wedding dress of heavy ivory silk, made with a full sweeping skirt and train, and a long lace veil, falling from a cap. She carried a shower bouquet of mixed white flowers.

Miss Wylvia DuBois of Salem was the bride's only attendant. She wore a blue taffeta gown, fashioned like that of the bride, and carried an old fashioned bouquet. Miss Nancy Lou West of Berkeley was the junior attendant. She wore an old fashioned floor length dress and carried a nosegay.

A reception followed the ceremony, after which the couple left for a short wedding trip. They will return to be at home in Berkeley.

Mrs. West is a graduate of Willamette, in the class of '34, and a member of Delta Phi, where her mother is now house-mother. Mr. West attended the Willamette law school.

Sorority Dance Is Big Success

The inter-sorority informal, the first big post-rushing party of the year, was given last Saturday night at the Armory from eight-thirty to eleven-thirty by Alpha Phi Alpha, Beta Chi, and Delta Phi sororities. More than a hundred couples were there, to dance to the music of Harry Wesley's orchestra.

Patrons and patronesses for the affair were Dean Olive Dahl, Mrs. F. A. Elliot, Mrs. Charles Wilson, Dr. and Mrs. Bruce Buxton, Dean and Mrs. Frank Erickson and Dean and Mrs. Daniel Schultz.

The committee in charge included Miss Julia Johnson, Miss Norma Fuller, Miss Mary Jeannette Sargent, Miss Marjorie Thorne, Miss Martha Warren, and Miss Rachael Yocum.

Kappas Give Breakfast Sunday

Mervin Brink and Pat Crossland were formally initiated into Kappa Gamma Rho last week. The initiation ceremonies were concluded Sunday morning, with a breakfast in honor of the two initiates, for which the Kappas were hosts. Table decorations were varied pink and white flowers. Special guests were Dr. and Mrs. Robert Gatto. Dr. Gatto spoke to the group.

Guests were the Misses Irma Calvert, Helen Woodfin, Marjorie Thorne, Betty Savage, Helen Hammond, Helen Rogers, Melba Riepelle, Ruth Tscharnier, Dorothy Wright, Leone Burdick, Maryvonne Thompson, and Gwen Hunt.

Hosts were Lorence Morley, Ralph Gustafson, Dandall Keston, Charles Neville, Ellsworth Morley, Pat Crossland, Mervin Brink, Kendall Teisinger, Bob Anderson, Jimmie Barnett, and Verdell Ragsdale.

Legal Theme Is Sig Dinner Idea

Friday night before the game a bit of the law school was carried to the Sigma Tau house, when that fraternity entertained with a "legal" dinner. The table was centered with flowers and decorated further with musty law books placed so that they formed the words, Sigma Tau. Also about the table were typewriters exuding legal documents and the lawyers' pal, their pipes. The placecards were abstracts of title made out to each guest. After the dinner members and guests attended the game.

Guests were Professor and Mrs. Cecil Monk and the Misses Alecia Fairclough, Dorianne Wilson, Melva Belle Savage, Enid Winningsham, Alice Speck, Catherine Paxson, Charlotte La Due, Ruth Arney, Virginia Beaton, Jeanne Probert, Maxine Beagle, Jane Fisher, and Alice Chandler.

Hosts were Winthrop Henderson, Grover Williams, Otto Wilson, Kenneth Brunkow, Herman Estes, Jack Alton, Ross Gladden, Ronald Sherck, Jerry Sherman, Frank Hunt, Oren McDowell, Joe Harvey, and George LaVatta.

Alpha Psi's Give Dance After Game

Following the game with Linfield Friday night, members of Alpha Psi Delta entertained with a party. Dancing was enjoyed and later refreshments were served. Mr. and Mrs. James Nutter were patrons for the affair.

Guests were the Misses June Brasted, Antoinette Irish, Mary Frommilk, Irma Oehler, Jane Johnson, Eleanor Swift, Verna Vosper, Lois Miller, Althea Stevens, Dorrine Wilson, Madeline Kappan, Anoka Coates, Rachael Yocum, Ruth Yocum, Elsa Lampi, Margaret Hauser, Evelyn Shark, Arrie Jones, Helene Trulsen, Leone Burdick, Charlotte Kallendar, Elizabeth Sears, and Lucille Brainard. Hosts included Jack Criswell, Louis Hersherberger, Corliss Berry, George Abbott, Paul Bennett, Max Hauser, George McLeod, Everett Gary, Roy Ferris, Ray Borby, Steve Anderson, Henry Franz, Guy Heinmuth, Bill Anton, Bill Woodcock, Bill Stone, Brant Gard, Jim Robinson, Carl Rhonda, Bob Cummings, Bob Yeo, Glenn Helmsmith, and John Kelly.

The annual Beta Chi alum breakfast will be given by active members in compliment to their alumnae at the chapter house Sunday morning. Varying shades of fall flowers will be used to decorate the rooms. Pledges will serve, under the direction of Miss Susanne Curtis, who is in general charge of the breakfast.

Delta Phi alumnae will be entertained by their members on the campus with a luncheon Saturday.

Alpha Psi Delta, Kappa Gamma Rho, and Sigma Tau will each entertain with an informal dance after the Homecoming play.

Harold Hoyt, '36, now coach at the high school at Beattonton, Oregon, spent last week end in Salem with his parents, visiting the campus and friends.

Miss Enid Winningsham entertained her parents and younger sister last week end. They were visiting from Klamath Falls.

Elevens Enter Sixth Week of Pigskin Combat

C.P.S.-W. U. Tilt Heads
Week's Schedule:
Outcome Tossup

Linfield-Whitman Go Is
Delayed; Other Teams
Take Needed Rest

Northwest Conference			
Team	W	L	T
Willamette	3	0	0
C. P. S.	2	0	1
Whitman	2	0	1
Linfield	2	1	1
Cal. Idaho	0	2	1
Pacific	0	2	0
Albany	0	2	0

Last Week
Albany 27, Oregon Tech. 0. (Toss-
day); Willamette 3, Linfield 0; C. P. S.
27, Pacific 6; Whitman 7, Cal. Idaho 7;
Albany 8, O.S.S. 21.

Schedule
Oct. 30—C. P. S. at Willamette
Nov. 3—Linfield at Whitman.

Having completed the first half of the 1936 football season, teams of the Northwest Conference enter their sixth week of grid combat this week-end with two

very crucial games on schedule. Most important of these tilts is the battle between Coach Roy S. "Spec" Keene's Willamette eleven and the Puget Sound Loggers, both undefeated in league play at Salem, Friday night. The contest, outstanding feature of Willamette's 15th annual homecoming, will eliminate one of the outfits from further championship consideration.

Linfield and Whitman, scheduled to tangle at Walla Walla, Saturday, have postponed their game until Tuesday, November 3, giving each team a little longer period of rest after last week's torrid encounters. For Whitman, a victory will mean a clean slate and a chance at the league crown later, while a loss will put the winner of the W. U.-C. P. S. tilt in the favored spot. The Willamettes gave up nearly all pinpoint hopes in losing to Willamette last week-end and will play with easy minds from now on.

The Logger-Bearcat mix is a toss-up. Apparently on their way to their third straight championship a week ago, the latter team hit a snag in Linfield, Friday eve, and barely eked out a 3-0 triumph, giving vent to the forecast that the Salemites face a rocky road throughout the remainder of the season. The Loggers played the Willamettes to a 7-7 tie, but in doing so made a much more favorable showing than did the Bearcats and should give the champs a real tussle.

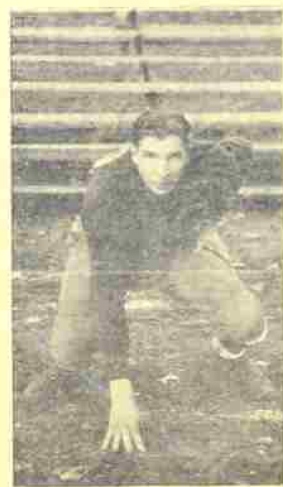
Albany, after a strenuous schedule last week in which two games were played in five days, Pacific, still looking for her first league win of the year, and "Pat" Pags' vastly improved College of Idaho Coyotes who handed Whitman a surprise in the form of a 7-7 tie game last Friday, all take rests this week. The latter two teams will spend the period in contemplation of their tussle a week hence, while the "defeatist" champs have plenty of work to do before meeting Linfield on November 6.

HAS C.P.S. WORRIED



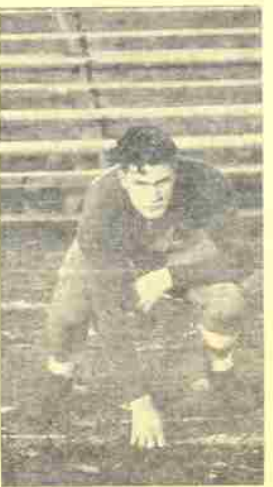
Bill "Whiskers" Beard, star Willamette halfback, who gave C. P. S. scouts plenty to report home about with his performance against Linfield last week, Bill is expected to be a marked man when the Loggers and Bearcats tangle Friday evening.

RETURNS TO LINEUP



George Erickson, four-year letterman end from Clatskanie, Oregon, is back in suit after a three-week layoff enforced by a severe leg injury. The husky Finn is sure to see considerable action for the rest of the season.

IRON-MAN GUARD



Norman Hogenson, stellar line-man who hails from La Grande, Oregon, is one of the steadiest men on the Cardinal and Gold squad. Norman is a 60-minute man and has made quite a record at E. O. N. S. and Willamette for full-time service.

Bearcat Who's Who

(Wherein it is hoped that students can become more acquainted with some of the grid-iron stars of W. U.)

KARL KAHLE

Born: Hubbard, Oregon.
Age: 19.
High school: West Linn. Played 2 years of football and track.
College: Has won 2 letters—in football and 1 in track. Now playing his second year at tackle on the Bearcat eleven.
Nickname: His teammates call him "the big Swede."
Course of study: Physical education. Intends to take up coaching.

JAMES HOGG

Born: Portland, Oregon.
Age: 21.
High school: Astoria, Oregon, and played football for four years under John Warren.
College: Entered W. U. in 1935 and won letter in football last season. Has won a regular spot in the Bearcat backfield this season and looks like a future star.

ARTHUR GALLON

Born: Portland, Oregon.
Age: 21.
High school: Franklin of Portland. Played football years and in his last season won a trophy voted to him by his teammates for being the most valuable player on the team.
College: A soph at Willamette, but playing his first year of football. Takes care of one of the most important, though least publicized, spot on the team—the blocking right-half back position, and is expected to develop into a real star.

Field Goal From Weisgerber's Toe Wins For Locals

A long, soaring placement kick, booted from an extremely difficult angle by the educated toe of co-captain Dick Weisgerber, carried with it 2 points and victory over Linfield college for Willamette's lighting Bearcats Friday evening on Sweetland field. The win enabled the locals to maintain their position as pace-maker of the Northwest conference and dropped the losers from further championship consideration.

The contest, which was Willamette's first athletic encounter with the Willcits in two years, was one of the hardest fought seen here in years, featuring a fierce battle between two charging lines and the brilliant ball packing of Bill Beard and Dick Weisgerber, Bearcat backs.

Willamette made several forays into Linfield territory, while holding the outfit from Yamhill county well in check, but they just couldn't muster the force to punch over a touchdown. Three times thwarted by the lighter Linfield line within the shadow of the goal posts, Weisgerber stepped back and aimed his kicks for the uprights and it was the second of these, traveling a total distance of 22 yards, which chalked up the margin of triumph.

Willamette knocked on the doors of scoring territory four times, marching to the Linfield 6 yard line in the first period, where two incomplete passes ended the drive, reaching the 27 later in the same quarter, from where the first place-kick failed, threatening the 12 in third stanza which resulted in the winning score, and gaining the 22 near the close of the tilt. Here again a field-goal attempt failed, the ball bouncing off the crossbar.

Linfield threatened, but once, making a sustained drive through the air to the winners' 26 yard stripe just before the halftime whistle. An intercepted pass, with Bill Waldron doing the grabbing, stopped the march before any damage occurred.

Willamette outscored the visitors 7 to 4 in first downs, and piled up 173 yards from scrimmage to 52. Linfield, however, totaled 62 yards from passes to none for the Bearcats.

Outstanding were Bob Vast, El-Hott Becken, Bill McAdam, and Charlie Versteeg, W. U. linemen, Sommerverse and Roth, Wildcat tackles, and Cook, Harrington, Beard and Weisgerber, backs. Cook, Linfield fullback, piled up 32 of his team's 52 yards from scrimmage, while Harrington, Coach Lever's veteran quarterback, gave a superb exhibition of punting, reeling off several kicks of better than 50 yards. Weisgerber and Beard chalked up 90 and 65 scrimmage yards, respectively, while the latter turned in some long runs on punt returns.

GRID SUMMARY

Coast Conference			
Team	W	L	T
San. Calif.	3	0	0
Wash. State	2	0	1
U. C. L. A.	2	0	1
U. C. B. A.	2	0	1
U. C. S. F.	2	0	1
Oregon State	0	2	1
Oregon State	0	2	1

This Week
Washington vs. Oregon, Portland, Sat.
U. C. L. A. vs. W. S. U. at Los Angeles,
Monday at Oregon State.

N. W. Conference Scoring Leaders

Player	Td.	Exp.	Pt.
Boyd	4	0	24
Quinn	3	0	18
Beard	2	0	12
Harrington	1	0	6

National Scoring Leaders

Player	Td.	Exp.	Pt.
Boyd	4	0	24
Quinn	3	0	18
Beard	2	0	12
Harrington	1	0	6

Campus Quarterback

By BOB KEUSCHER
(Collegian Sports Editor)

Basketball is in the air!

Though the hoop season is still six or eight weeks off, the call of the maple-court is already taking its toll among the athletes of the school and each evening the band of cassaba (passers) that greets Coach "Les" Sparks in the gym grows larger and larger. Beside the thirty-odd frosh prospects from which Sparks will build his 1936 team, a number of varsity candidates have been taking some pre-season workouts in anticipation of Coach Keene's call for practice. Included in the latter group are: Bill Auton, Harry Mosher, Jerry Gastineau, Jack Alton, Bill Barrett, Larry Nunnkamp, John Kelly, and Roy Orren.

It certainly makes one eager for Christmas and the cage season to watch these boys go through their paces. Jerry Gastineau, the same, old "Gas-house," swishing 'em through the hoop from any place on the court; Bill Auton, a veritable dead-eye on those long, sweeping pivot shots of his; John Kelly, as talkative as ever, putting on a show for everybody; Harry Mosher, a dead-eye-dick on his long shots and probably fastest man out; and Larry Nunnkamp, a vastly improved player, an excellent shot with either hand and a fine passer, the man whom this writer picks to show the most improvement from last year on the entire squad.

And speaking of the freshman outfit, I wonder if anybody in school realizes the task that each year confronts the rook mentor, Leslie Sparks, in coaching his team. It's tough enough to make a winning combination out of a group of experienced varsity men, but when it comes to a band of college freshmen—oh my! First of all, practically every man who turns out is an ex-all-star from high school who was either the whole show on his prep team or the man around whom the team was built. When he turns out for the team in his first year at college, he finds it very hard to become just one of the cogs in a five-man combination. Then, too, the high school coaching systems vary greatly and it's up to the rook head-man to make many necessary changes in each individual's style of play. For instance, a player who was taught to play a zone defense in prep school finds it rather difficult to change to the customary man-for-man checking used in college. Also, there is always a large number that turn out that either must be gradually weeded out entirely or given additional work. When these obstacles have all been ironed out, it so happens that usually the rook mentor has done his job so well that one, or perhaps several, of his best prospects fit into the varsity coach's plans very well and proceed to graduate to higher company.

Irregardless of all the nightmares in store for him each year as freshman coach, "Les" Sparks always manages to produce a winning outfit. Hardly does he enter a team that doesn't manage to win over three-fourths of its contests. Even last season, when graduation to the varsity broke up the most promising rook team in years, Sparks' outfit won 24 of 29 games.

It's time for some more predictions, but guessing the scores is out—it seems as though you just can't trust anybody anymore, not even your own Bearcat outfit. Our record to-date: Right 21, wrong 0, ties 3. We'll take Willamette by 13 points over C.P.S., Whitman in a close one over Linfield, Wash-

BROOKS—SALEM STORE

Extends "Congratulations"

TO
Chas. "Chuck" Versteeg
for his outstanding playing
against Linfield

BROOKS

"Headquarters for College Men"
Also extends a hearty welcome to any
one interested in STYLE and PRICE.

\$29.50

\$19.50

\$24.50

Includes Our Finest Tops and
Overcoats
Single and Double Breasted

The Brooks
Tailored Man
Always
Stands Out

Mention
Darryl Newhouse

AT **BROOKS**
CLOTHIERS

Unbeaten Alpha Psi's Pace Loop

PASSBALL LEAGUE

Team	W	L	Pct.
Alpha Psi D.	4	0	1.000
P. E. Staff	3	1	.750
Kappa Gamma Rho	2	1	.667
Sigma Tau	1	2	.333
Independents	1	3	.250
Freshmen	0	5	.000

With four victories and no defeats the Alpha Psi Delta fraternity team is leading the intramural passball league in the final week of play in the first half.

By defeating the strong Kappa Gamma Rho team 23 to 20 last Monday, the physical education staff advanced into a tie for second place with the Kappa's, each team having three victories and one defeat. Moe, Leighton, and Lindstrom were outstanding in bringing victory to the physical education men.

Play has proved unusually interesting in this year's league, and it play in the first half is a sample of the caliber of the teams the race for the second half championship promises to be neck and neck among all the teams.

Players for each of the teams are: Physical Education men—N. Joyce, B. Brown, E. Franz, A. Franz, B. Dick, B. Keuscher, C. Leighton, Howe, Miller, Lindstrom, H. Moe, Alpha Psi Delta players are: Aden, Anton, Kelly, Guerin, Hershberger, H. Franz, D. Catherswood, D. Moses, Sam Kyles, W. Bralnard, McDowell, B. Rhee, Quesseth, Sturges, H. Mosher, Glenn and Guy Helmsloth, Sigma Tau men are: R. Gladden, Harvey, Estes, Hart, Shorman, Ruzic, S. Eland, Wagner, Dunbar, La. Vatta. Kappa Gamma Rho players are: L. Morley, Eb. Morley, B. Nelson, L. Nunnkamp, J. Barnett, H. Moore, Vosper. The independent men are: D. Crabtree, W. Crabtree, Johnson, T. Asai, J. Pike, D. Buxton, E. Hibbard, C. Perry, McNight, H. McKee, Keeney.

Following is the schedule for the remainder of the season as compiled by George Erickson, who is in charge of intramural sports:

Oct. 29—Sigma Tau vs. P. E. Staff.
Nov. 2—P. E. vs. Alpha Psi Delta.
Nov. 3—Kappa Gamma Rho vs. Sigma Tau.
Nov. 4—Independents vs. Alpha Psi Delta.
Nov. 5—P. E. Staff vs. Sigma Tau.
Nov. 16—P. E. vs. Independents.
Nov. 17—Kappa Gamma Rho vs. Alpha Psi Delta.
Nov. 18—Sigma Tau vs. Independents.
Nov. 19—P. E. vs. Kappa Gamma Rho.
Nov. 23—Independents vs. Kappa Gamma Rho.
Nov. 24—Alpha Psi Delta vs. Sigma Tau.
Nov. 25—Alpha Psi Delta vs. Independents.

California Trip Comes Next On Gridiron Menu

What is unquestionably the toughest assignment that any Bearcat grid team has ever faced is in store for the present edition of "Spec" Keene's Cardinal and Gold platoon after completion of Friday night's encounter with C. P. S. The assignment, featuring two inter-sectional battles with the best of the "smaller" teams, California provides Whittier and Fresno State, not only means two strenuous tilts in a row for the Bearcats, but lists

ington to be far too strong for Oregon, W.S.U. to take California, O.S.C. to beat Montana, U.C.L.A. to lick Stanford, and branching out a little into "big time," Pittsburgh to trim Fordham, and Minnesota to nose out Northwestern.

them within a space of five days. The locals engage the Fresno Bulldogs on Saturday, Nov. 6 and tangle with Whittier the following Thursday, Nov. 11 (Armistice day).

Whittier and Fresno State both won conference championships last year and boast just as formidable outfits this year. The former won four and lost one tilt in 1935 to cap the Southern California Conference crown, while the Bulldogs chalked up an unblemished record in winning the Far Western Conference pennant.

Both squads are well up in the race this year, and in all probability will give the Bearcats the toughest competition of the season.

Bearcat Scoring

Player	Td.	Exp.	Pt.
Weisgerber (1)	6	0	24
Beard (3)	4	0	18
Beard (2)	2	1	12
Beard (1)	1	0	6
Hogg (1)	1	0	6
Ulen (1)	1	0	6
Totals	15	11	110

WE HAVE

Sport "Sneakers"

Colored Especially for
W. U. Students

CLIFF PARKER SPORTING GOODS

372 State St. Salem

FOR
Style
Leadership
SEE THE

Brigadier



Campus-wise collegians know a style leader when they see one... that's why you'll go for the BRIGADIER. This swanky sweater in the new shorty-cut length has a flattering sports back which makes it drape and fit perfectly. Its smartly distinctive "diamond weave" gives it a very rich, silky sheen. Attractive colors..... \$5
A BENRYB Sweater

Bishop's

The Store for College Men

Show Your Colors!

WEAR A

"MUM"

FROM

"FROSTY" OLSON

Salem's Bearcat Florist

Court and High St.

Phone 7166

Shop First or Last At The Man's Shop



You men who want quality commensurate with the price you pay.—We invite your attention to our feature lines of Men's Wear, and we urge you to shop and compare.

You will be surprised to find how easy it is to buy the better things at really no greater cost. Satisfy your personal pride—buy up your self esteem.

KUPPENHEIMER CLOTHES

An investment in good appearance.

DOBBS HATS

America's most popular headwear.

NUNN-BUSH SHOES

Ankle fashioned, no slipping or gapping at the heel.

INTERWOVEN SOCKS

The most used men's socks in the world.

MANHATTAN SHIRTS

"Known as the best—the best known."

DANIEL HAYS GLOVES

Perfect in quality and workmanship.

WIL WITE KNIT WEAR

The seal-skin of knitted apparel.

All other clothing and furnishings with a guarantee of standard make and quality

The Man's Shop

The Store of

STYLE, QUALITY & VALUE

416 STATE ST.