

# Senate discusses rally, elections, Black Week

President Bill Bennett announced the cancellation of Black Week at Student Senate Monday evening. Also discussed were the ASWU student body elections, rally squad, and counselor applications for Freshman camp.

Reading from a letter from President Fritz, Bennett disclosed that a delegation of blacks had visited the University President's office earlier in the day and informed him of their plans to cancel Black Week. No explanation was offered.

This left the problem of the expenses already incurred for the proposed Black Week. A \$700 contract had already been issued to Artiz Wilson and it was decided to allot the necessary \$300 to pay for traveling expenses.

In addition \$350 had been spent on clothes for the planned fashion show; it was decided that the black students could either put on the fashion show, buy the clothes for themselves, or turn them over to the drama department.

First Vice-President Lauren Ronald then suggested that the week contain a modified series of activities aimed at bettering relations within the Willamette

community. This suggestion was adopted by Senate.

Second Vice-President Jim Kubitz announced that petitions for Publicity manager were due Monday, April 6. The publicity for all activities sponsored by the ASWU are part of this manager's responsibility. His responsibility also includes regulation of signs and notices within the University Center.

Senate filled the position of

Half-Time manager. Les Krambeal was appointed to this office with the consent of Senate.

The schedule of the Student Body elections was revealed. Persons desiring a place on the ballot must submit a petition to the second vice-president by Friday, April 3 at 5 p.m. Campaigns will be the week of April 6 with speeches in the Cat Cavern Wednesday morning at 11 a.m. Voting will take place in the quad

Monday April 13 from 8 a.m. to 5 p.m.

Senate completed the amendment of its by-laws by voting for the second time to return to one rally squad a year.

Applications for Freshman Camp counselors were distributed. Senators will make these applications available to their living organizations.

## Willamette Collegian

Vol. 72 No. 25

Willamette University, Salem, Oregon

Friday, April 3, 1970

### Earth Day scheduled

The Interfraternity Council with the support of the Freshman class, will sponsor a Conservation Week from April 20-24, in conjunction with the "Earth Day" program on college campuses throughout the country on April 22.

The primary purpose of Conservation Week is to stimulate more awareness at Willamette and in the Salem community of present and impending environmental threats.

IFC president Bill Shelton, has outlined several points that will be the basis for Conservation Week. People involved with conservation problems will be invited to speak and take part in panel discussions. Presentation of opposing arguments on various issues will be a main concern.

Teachers will be asked to devote one of their classroom per-

iods during Conservation Week to attempt to relate their subject field to applicable environmental problems. Other possibilities include presentation of films dealing with specific environmental threats, poster displays emphasizing pertinent photographs and statistics, and circulation of petitions of protest to certain industries. A complete schedule of Conservation Week activities will appear in a future issue.

A plea is made to all students, on and off-campus to fill out and return their Course Critique Questionnaire as SOON AS POSSIBLE, if they have not already done so. Return the completed forms to your respective living organization representative or to the Main Desk of the University Center.

### Blood drive on April 8

Spring blood drive for Willamette University will be April 8 in the gymnasium. Hours for the drawing will be from 10 a.m. to 4:30 p.m. next Wednesday.

John Yerke, chairman of the drive, pointed out that Willamette has had the highest percentage of students participate in its blood drawings of any college in the state. Much of the reason for the excellent turn-out of students to the drawing is the inter-living organization competition.

Each living organization will be judged on its percentage of students who participate in the drawing. Because of the previously excellent record of contributions from Willamette the quota is 300 pints at this drawing according to Yerke.

The Willamette chapter of the American Red Cross states there is an urgent need of the blood at this time.

### Black Week cancelled

No reasons were given the COLLEGIAN or others following cancellation of nearly all Black Week activities by manager Eddie Hammonds. A delegation of Black Student Union members, including Hammonds, announced to President Fritz they were discontinuing plans for the week of activities.

The Monday meeting with President Fritz resulted in a

### Botelho passes elections board

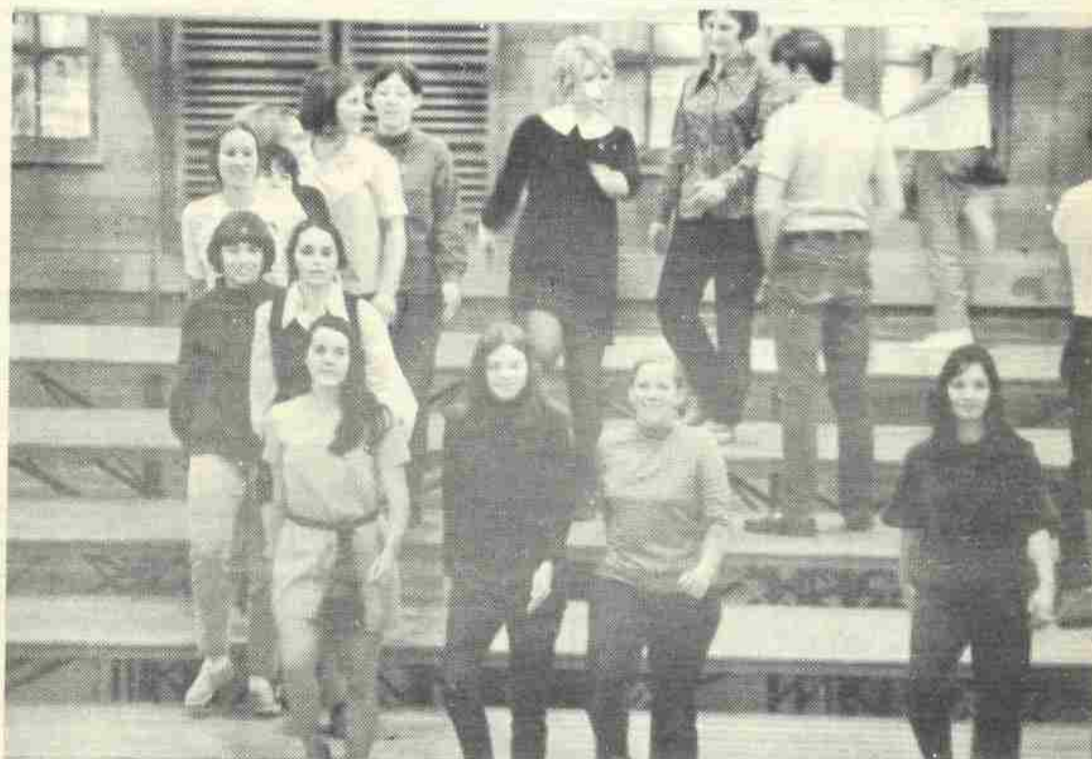
A special Elections Board meeting was called to consider the eligibility of Bruce Botelho for student body office. The board also adopted new election rules.

Bruce Botelho is currently on leave from Willamette University to study in Europe. So that there would be no question about the legality of his campaign, an ad hoc committee for Botelho brought the matter before Elections Board.

The board ruled that he was eligible. The decision was based on the fact that there exists a precedent for candidacy in absentia, that the ASWU constitution does not require current registration, and that the University considers Botelho a Willamette student.

letter from the President to ASWU President Bill Bennett. The letter was read at the Student Senate meeting that evening.

The only Black Week activity still scheduled is the appearance of jazz musician Ortiz Walton. Walton and his group will appear in the Cat Cavern at 7 p.m. Tuesday. A discussion of Black music will follow.



In a valiant effort to improve on last year's dismal fourth place finish the class of '71 is shown here practicing their formation with renewed diligence and vigor. With his back to the camera, formation leader Skip Macy is helping former Glee manager Kathy Hartman and other juniors with their efforts. More details on Glee are below.

### Glee ready for 62nd showing

Moving right along (to borrow an oft-used phrase by Ron Bemis, Freshman Glee Manager) D-Day, or as some would have it - Glee Day is almost upon us. Tripping through formations and practicing Glee songs, the four classes prepare to open Willamette's 62nd annual Freshman Glee this Saturday night.

After the all-campus picnic in the quad at 12:30 p.m. and the Judge's banquet at 5:30 p.m., the competition will begin, the climax of a week of hard work and chaos. Actual presentations will start at 8:00 p.m., with seniors leading off and Freshmen bringing up the home stretch. One of the highlights will be the traditional senior cut-ups. Each year the senior class uses every possible resort, by signs and words to try and disrupt the rest of the classes' performance.

At the close of the evening after all the decisions are in, Dr. Trueblood, acting as master of ceremonies will announce the winning class in a manner designed to maintain the suspense as long as possible. It is at this time that the Glee banner, borne by four freshman girls and lettermen from each class will be presented to the class that comes

in first place. Simultaneously the fourth place finishers will learn of their fateful walk in the mill stream slated for Blue Monday.

Formation leaders this year are: freshman-John Welty, sophomore-Chris Brantley, juniors-Skip Macy and seniors-Jon Haynor. Song Leaders include John West, freshman, Dean Petrich-sophomore, Kathy Hartman and Dave Hjelt - juniors, and Bruce Robertson, Doug Forsyth and John Foster for the seniors.

The tenth judge has been secured and will be Lt. Emile Hoffman of the U.S. Marine Corps.

Glee tickets and records will be available at the door for both students and townspeople. For the first time the Glee records will be in stereo and will cost only a \$1.00. Tickets also are \$1.00.

Students are also reminded about the all-campus dance featuring the Morning Reign to be held tonight in the new University Center.

### Collegian receives first class rating for fall '69 semester

A First Class rating was awarded the Willamette COLLEGIAN by the Associated Collegiate Press at the University of Minnesota in the 82nd All American Critical Service. Approximately 600 newspapers from throughout the United States were evaluated.

Newspapers published from September to December 1969 were judged on coverage and content, writing and editing, editorial leadership, physical appearance and photography. The COLLEGIAN

received the Mark of Distinction credit for superior accomplishment in editorial leadership, as well as several "excellent" ratings in the areas of photography, printing, straight news stories and style, and copyreading. The First Class rating is second only to the All-American rating which requires four marks of distinction in various areas.

Editor of the Willamette COLLEGIAN for the semester critiqued was Rick S. Landt.

# Willamette Collegian

David Weston, Editor Nancy Ellis, Publisher

Elizabeth Schade . . . . . Assistant Publisher  
 Paulette Magistro . . . . . Copy Editor  
 Jim Robinson . . . . . Editorial Page Editor  
 Mike Brown . . . . . Special Features Editor  
 Jeff Weinstein . . . . . Sports Editor  
 Larry Cunningham . . . . . Arts Editor  
 D. Wesley Pearson . . . . . Dark Room Manager  
 John Sutton . . . . . Business Manager

## Future employment?

One area of concern for every student is what he is going to do in the future. Some choose graduate school, teaching, or the Peace Corps, and others are chosen by the Army. However, for those who wish to go right into a job, especially the women, one can see little help of placement from the school.

The administration doesn't make any effort to contact representatives of large corporations for job interviews. Company representatives themselves must contact the school to set up a time for these interviews. We invest approximately \$12,000 in our education. One would hope that after a price like this the school would make a greater effort toward helping graduates find jobs.

jr

## BSU owes explanation

The decision made by the Black Student Union to cancel Black Week understandably had repercussions within the body of students who authorized its existence and appropriated the funds it needed. Noted for their absence from the Monday evening Student Senate meeting were the BSU members who earlier in the day had announced their decision to President Fritz.

It is commendable that the BSU notified the president of its decision to scuttle the activities for which an entire week had been set aside. However, it is deplorable that the Black Week organizers did not explain their reasons to the students who were willing to make Black Week the most heavily funded and longest lasting special activity of the semester.

Following approval last week of a budget in excess of \$4,000 and the subsequent publicity for the activities, not to mention the tentative agreements with various speakers and performers, a full and honest explanation is due to the elected representatives of the students and to the student body itself.

dw

## Bookstore is there to serve

Assurances have come from University Business Manager Dave Lewis that "the University Bookstore is there to serve students and faculty." With a projected doubling of inventory from the Waller hall store it is hoped that the bookstore will be of greater service now than ever.

To serve the students of Willamette the bookstore must first attract them to the premises to purchase goods. In order to accomplish this the operation must be competitive, even though its scale of operation is not as great as that of the downtown and outlying chain stores.

We believe the students of Willamette would gladly patronize the bookstore for purchases of many kinds on the basis of economy if at all possible. In most cases, it now seems the bookstore receives student trade only on the bases of convenience and necessity; with the latter occupying the premier position (i.e., buying texts, souvenirs of Willamette and other items unavailable elsewhere).

There is a reciprocal responsibility between students and bookstore management. The responsibility of the students involves letting the business office know what the bookstore can do to enhance its service to the university.

It is the responsibility of the bookstore to do its best to give students a place which is economical as well as convenient. With the addition of new lines of goods and the spacious new quarters a good beginning has been made. However it will take a determined effort to achieve the full potential of the bookstore in serving the students.

dw

# Diverse reactions expected from Glee participants ; matter of personal taste

by L. Edward Seto

As the specter of Glee looms threateningly on the horizon, it is curious to note what diverse reactions it evokes in the hearts and minds of a great number of students. Judging from the rhetorical utterances that always appear at this time of year, one would surmise that the call of Glee must elicit an extreme reaction. One must be either maudlinly saccharine about the joys of Glee; its mystical sense of unity and good fellowship, or acridly cynical and prone to deprecating it as totally non-intellectual or a rather anachronistic waste of time.

However, if one places much credence on participation statistics, the true spirit of Glee to a great number of Willamette students would appear to be primarily one of "benign neglect." Even if one were to assume that there is, behind every front line marcher, an active non-marcher

performing some logistical function, there would still be something less than half the undergraduate population partaking of this festive rite of Spring.

It can be assumed that this

## High school seniors due

The annual Spring Weekend Program will be held next weekend Friday, April 10 and Saturday, April 11. About 200 high school seniors from across the nation will be visiting the campus, according to Pam Butler Spring Weekend Manager.

Included in the Weekend's activities is the drama production "Tartuffe" to be presented by the drama department both Friday and Saturday nights. A dance is scheduled for Saturday night.

Academic seminars will follow a welcome assembly on Saturday. These seminars will consist of students and faculty members representing the various disciplines offered at Willamette. The participating high school seniors will be able to learn and ask questions at these seminars. They will become acquainted with Willamette programs and some faculty members and students.

On Saturday afternoon, campus workshops will be held. The form of these workshops is similar to the academic seminars but the substance of these workshops will be concerned with areas of campus activities, such as athletics, publications, or drama.

Several activities which had been planned for Spring Weekend had to be cancelled or revised following the cancellation of many Black Week activities. Those activities cancelled include a Black Student production scheduled for Friday night and a fashion show scheduled for Saturday afternoon. The dance on Saturday night had been scheduled as part of both Black Week and Spring Weekend. The dance will be held as scheduled.

tight-knit little band of Glee participants are, indeed, deriving great pleasure from their participation. One can make this assumption judging from the missionary zeal with which they undertake the conversion of the heathen (i.e. non-participants). There is an obvious benevolent desire to share with others the mystic sense of becoming at one with the class.

Similarly it is easy to look on smugly and ridicule this old and unique institution, Glee, for its very age and eccentricities. Glee is, lamentably, imminently knockable, but it should not be done maliciously, but with an air of cool detachment.

Glee is a venerable institution from which many have derived much satisfaction. In fact, some of my best friends have gone out for Glee. Glee is after all, not such a bad thing, if you like that kind of stuff.

Thus a "benign neglect" on one hand and a controlled enthusiasm on the other seems to be appropriate for participants and non-participants. Peaceful co-existence is both necessary and reasonably proper. Glee is not an activity that can be described generally and then categorized. It appeals or doesn't appeal to the individual sensibilities of individual people. Much like a creamsicle or an artichoke heart, it is a matter of personal taste.

## Census slated on campus

The decennial Federal census is now being enumerated on the Willamette University campus. Lists of names of all residents on the Willamette campus have been supplied to the census bureau by the personnel deans.

Carolyn Smith, clerk for the Census Bureau field supervisor, stated that each student will be asked to fill out a form giving name, birth, sex, marital status, position in family or household and other questions whose answers will all be confidential.

In addition, every fifth person enumerated will be requested to complete a longer form asking a number of other questions. The two special place enumerators in the Salem area are expected on the Willamette campus next week.

## inside straight

Tony Robinson

Last Sunday I attended what seemed to me to be one of the more enlightening Open Seminar presentations, a lecture on the "Sense and Structure of History," by Dr. Thomas Langan. There was a large attendance for the occasion, far exceeding my expectations. After a few moments in my seat I sensed the reason for the large attendance — most of the students had been required by professors to attend.

I should stress that I sensed that this was the case. Reminiscent of required convocations the atmosphere of forced attendance pervaded the room. Talking, restlessness, inattention, and profanity reflected the lack of interest, understanding and resentment of the coerced.

The fault is not that of the forced students, but of the professor who wished them on the interested listeners and the speaker. The possibility of ideas or knowledge rubbing off on the captive student does not justify detracting from the presentation for those who are interested.

\*\*\*\*\*

Although Hans Morgenthau, the last University Forum Speaker, was quite good, the overall program of the University Forum proved primarily that "big name" speakers can be just as bad as the "little name" speakers.

In last week's COLLEGIAN new course offerings were discussed. I was interested to see that, if general interest is any criterion, Willamette now has the course it needed most — Bridge 15. Rumor has it that the new course may be made a requirement for a major in the Political Science department.

## activities calendar

Friday, April 3

3 p.m. — Track — Willamette vs. OCE, Monmouth.  
 3 p.m. — Baseball — WU vs. U. of Puget Sound, Tacoma.  
 9:30 p.m.-12:30 p.m. — All Campus Glee Dance — "South Hart", University Center.

Saturday, April 4

12-1 p.m. — All Campus Picnic on Quad, University Center (if rain).  
 8 p.m. — Freshman Glee, Gymnasium.

Sunday, April 5

11-12 p.m. — Soviet Political Discussion, Autzen Senate Chamber.

Monday, April 6

Black Week begins

Tuesday, April 7

7:30-8:30 p.m. — Continuing Education Lunar Geography, Law School.

Wednesday, April 8

Red Cross Blood Bank, Gym.

Thursday, April 9

3:30 p.m. — College of Music Convocation, Music Recital Hall.

Friday, April 10

8:15 p.m. — "Tartuffe"—Moliere.  
 Senior Recital—Susan Friesen, Music Recital Hall.

Saturday, April 11

8:15 p.m. — "Tartuffe", Smith Auditorium.  
 8-10 p.m. — Transcendental Meditation Lecture, Student Center, (Harrison).

Sunday, April 12

3 p.m. — Junior Recital, Lynn Delaney — Soprano, Music Recital Hall.

# Cactus Flower delightful at Elsinore

by Jon Michael Luce

I can't think of anything cooler than dancing with Ingrid Bergman in a really swinging nightclub frequented by really groovy people! This is just the opportunity the stars and extras of "Cactus Flower" had in making the movie version of the Broadway hit of the same name. Abe Burrows' play is a delightful fare that has made the transition to screen surprisingly well.

The story revolves around the love affair between a middle-aged dentist and a young, kookie blonde. The dentist played by Walter Matthau (The Odd Couple) has kept his adorable mistress at bay by spinning a tale of lies that he is married and has two kids. Toni, the girl, (Goldie Hawn) makes vain attempts at suicide to which Julian, the dentist, succumbs and proposes marriage.

This is when the trouble begins, Toni, believing that Julian is quite married, insists on meeting the wife to make sure that the parting is made on an agreeable basis. Julian, now desperate, enlists his receptionist and girl Friday, Miss Dickinson, to pose as his wife and to meet Toni. At first the "seemingly prudish"

Miss Dickinson is turned off by the suggestion, but goes through with it rather on the sly, for obvious reasons.

Meanwhile, Toni's neighbor, a young, handsome writer, has been wooing her into a life of togetherness. After the meeting between Toni and Mrs. Francically, Toni's latent guilt feelings about the impending divorce become overt. From this the plot thickens into an uproariously funny chain of events that concludes just as the viewer hopes and expects it to do.

"Cactus Flower" is Goldie Hawn's film debut, and she comes off extremely well, well enough to garner an Oscar nomination. The part calls for just her type, a girl who is so squeaky clean and innocent, yet who is not afraid to follow her heart. Her guilt feelings are expressed with such sincerity that the viewer feels sympathy while the dentist attempts to keep one lie ahead of her. Walter Matthau continues his unique style of comedy acting, shaking his flabby cheeks in dismay and maintaining a picture of imminent ruin when his time runs out.

Ingrid Bergman plays the role of the nurse exquisitely! "Cactus Flower" is one of her first movies since her return to Hollywood after a lengthy exile due to an old public scandal. It is also her first comedy role. She is just as at home in this idiom as in straight drama, which is to be expected from an actress of her calibre. Miss Bergman captures the expression of the role's phony prudishness so well that the viewer feels so happy for her when she (and her cactus flower) blossom into the swinging chick that she really is and wants to be. The cast is supported adequately by Rick Lenz, the wri-

ter, and Jack Weston, Julian's buddy, an "always talking about it but never doing it" type play-boy.

If you haven't seen "Cactus Flower" by all means do! It contains nothing heavy, only things that are delightfully funny. It would be almost impossible not to enjoy it. One more thing, don't let the G rating scare you away, Walt Disney had nothing to do with it.

## BAG opens loans to men

The women of Beta Alpha Gamma voted recently to open their loan fund, formerly reserved for coeds only, to men students.

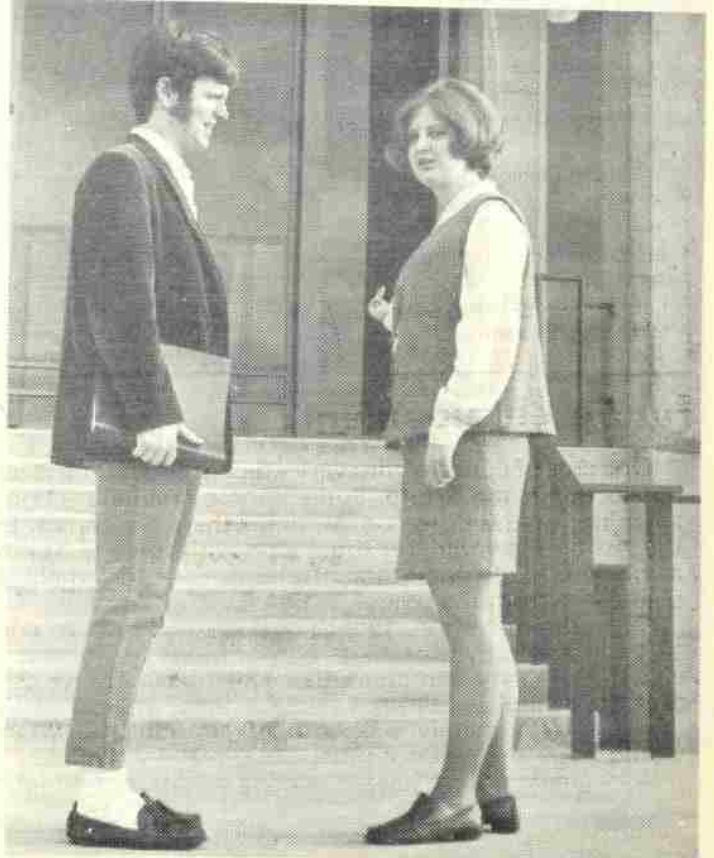
The organization maintains a reserve of \$222 for emergency loans to students. A student may obtain up to \$25 in cash, interest free, and has 90 days in which to repay the money, thus making it available once again to fellow students.

Formerly under the auspices of the Personnel deans, student loans are now handled directly by the Financial Aid Office.

Originally an amount in excess of \$400 was made available by BAGs but unrepaid loans have depleted this sum. The possibility of contributing more to the fund has been raised.

## Petitions ready for counselors

Petitions are now available for freshman camp/orientation week counselor positions. They can be picked up at the main desk in the university center, from your Senate representatives, or from Kathy Hartman, Sue Meikle, Bob Tower or Robbie Steeves. They must be returned to the main desk of the U.C. by April 8.



Spring Weekend plans are no doubt being discussed here by Spring Weekend manager Pam Butler and Spring Weekend publicity man, Mike Brown. Details on the upcoming events on page 2 of this week's COLLEGIAN.

## Letters requisite altered

Most freshmen entering Willamette University in the fall of 1970 will be eligible to fulfill in a single course both their Freshman English requirement, and their letters visitation requirement. This new policy was submitted for faculty approval by English department head, Dr. Donald Smith, and will apply to all freshmen except those who need remedial help.

During Orientation week, testing will be conducted to determine who needs remedial help. These people will be assigned to remedial English 9e, which will carry Communication Arts credit, but

will not satisfy the letters visitation requirement.

Students not assigned to English 9e may satisfy both their Freshman English requirement and the letters visitation requirement by electing to take particular courses in poetry, drama, fiction, or World Literature. Those who elect to take the course in World Literature will find that the course will be correlated with the Western Civilization course. The student taking the World Literature course would therefore profit by taking the Western Civilization course simultaneously.

## Text chosen

Beginning next Tuesday, April 7, bridge lessons will be offered twice a week, Tuesday and Thursday evenings, from 7:30 to 9 p.m. The cost for eight lessons will be \$1.00. You will also be required to purchase Goren's "Play Bridge with Goren" book, which can be picked up at Lipman's stationery department for \$.60. All interested students may sign up at the main desk of the University Center. Please meet at the Cat next Tuesday at 7:30 p.m.

Enrollments now being accepted Junior Semester Abroad Rome program of the University of Puget Sound. For full information, call, write or see: Dr. Gerard Banks, Vice President University of Puget Sound Tacoma, Washington 98416 Office: Jones Hall, Room 111 Phone: Code 206-759-3521 ext. 203

## Girls campused

First infraction of intervisitation rules has resulted in punishment for three Doney hall residents. The dormitory disciplinary board suspended visitation rights for a week for all three offenders and campused two co-eds for a weekend.

Dean of Women, Karen Anderson, has scheduled a meeting with appropriate parties to discuss the situation this evening (Friday).

## Course Critique suffers apathy problem

The Willamette University Course Critique being tabulated for the academic year 1969-70 is suffering from the age old plague - student apathy. With the responses in at present only 55% of the student body has made an effort to answer their questionnaires - far short of the 70%

considered the minimum percentage for accuracy or validity by last year's editor, Larry Cunningham. The fall semester evaluation is in danger of not being printed. Students who have filled out the questionnaire, for the most part, have taken considerable time to do so.

Last year's Critique had an overall response of 70%, the "best that could be expected" according to last year's C.C. Director, Lauren Ronald. However, fall semester's responses have fallen far short of that figure.

The distribution of the questionnaires is handled on the basis of living organizations. An overview by percentages of individual house response shows Alpha Chi Omega (95%), Alpha Phi (95%), and Phi Delta Theta (94%) lead the campus. The four freshman dorms, Baxter (47%), Matthews (57%), Doney (78%), and Lausanne (65%) show a marked decrease in responses when compared with last year's figures. Some of the other living organizations - York, 61%; Lee, 62%; Chi Omega, 86%; SAE, 43%; Belknap, 84%; and Sigma Chi with the campus low of 14%.

Students, both on and off campus, are urged if they have not already filled out a Course Critique Questionnaire, to pick one up from the main desk of the University Center and return it there after they have filled it out as soon as possible.

With the questionnaires for Spring coming out next week, it is hoped that the percentage of responses will increase to a "valid" level.

**Herfy's**

**WHERE**

The Burgers are Bigger  
The Food is Better  
The Menu Larger  
The Atmosphere Fresher

**WHERE . . .**

QUALITY IS QUEEN  
CLEANLINESS IS KING

Herfy's Drive-In  
"Salem's Finest"

13th & Mission St.

Open Sun.-Thurs. 10 a.m.-12 p.m.  
Fri. and Sat. 10 am - 1 am

We Want You To Join Our Church  
As An  
**Ordained Minister**  
And Have The Rank Of  
**Doctor of Divinity**

We are a non-structured faith, undenominational, with no traditional doctrine or dogma. Our fast growing church is actively seeking new ministers who believe what we believe. All men are entitled to their own convictions. To seek truth their own way, whatever it may be, no questions asked. As a minister of the church, you may:

1. Start your own church and apply for exemption from property and other taxes.
2. Perform marriages, baptisms, funerals and all other ministerial functions.
3. Enjoy reduced rates from some modes of transportation, some theaters, stocks, hotels, etc.
4. Seek draft exemption as one of our working missionaries. We will tell you how.

Enroll as a free will donation for the Minister's credentials and license. We also issue Doctor of Divinity Degrees. We are State Chartered and your ordination is recognized in all 50 states and most foreign countries. **FREE LIFE CHURCH** - 8096 4029, HOLLYWOOD, FLORIDA 33023

**TYPEWRITER RENTALS**  
LATE MODELS  
REASONABLE RATES  
3 Months Rental  
May Apply on Purchase

**ROEN'S**  
456 Court St., Salem, Ore.  
Phone 363-6773

**Heath's FLORIST**

just a little nicer!

Greyhound Bus Depot  
Flower Phone 363-9179 456 Church St. N.E.

**PIPES CIGARS**

**PIPE REPAIRS**  
Featuring  
Domestic & Imported Tobaccos

**TREASURE PIPE SHOP**  
130 Liberty St. S.E.  
STOP IN  
for a free tobacco sample

Official publication of the Associated Students of Willamette University. Second Class postage paid at Salem, Oregon, 97301. Published weekly except during vacation and examination periods. Phone number 370-6224. Ads and subscriptions, John Sutton, Business Manager at 370-6236.



Mary Anderson, Mike Brown, Thomas Chuhay, Diane Farquhar, Tom Felix, Wayne Larsen, Laurie Lindquist, Steve Little, Lisa Lum, Vince Morrison, Charles Nevin, Terry Prottzman, Ron Rainger, Roger Reif, Tony Robinson, John Ryan, Lester Seto, Pete Steinert, Dave Taylor, Sara Tibbutt, Lyn Trainer, Carol Van Bokkelen, Jean Woodring.



On Wednesday, April first, students Chuck Petzel and Evelyn Hicks from the Save our Squirrels committee met with Oregon Governor Tom McCall, and presented him with 450 signatures asking him to declare the squirrels on Willamette's campus and in Wilson Park an endangered species.

## Squirrels create furor in Salem

by Chuck Petzel

Just what is this little creature, this infamous squirrel, which has stolen the hearts and news coverage of a nation? After all, a squirrel is a squirrel, is a squirrel, isn't it? Most emphatically not! The squirrels under question, the type which inhabit Willson Park and Willamette University, are unique, not at all like the other little gray beasties that one sees on nature trips in the forests and woodlands of our area.

For one thing, this type of squirrel the eastern gray squirrel, is not native to Oregon. Rather, 'Sciurus carolinensis', as it prefers to be known, is a native of the midwest and the east coast, and was first brought to the Oregon country as a gift to Willamette clear back in the 1880s. Although a wild animal in the eastern part of the country, 'S. carolinensis' soon became civilized and Salem's predominant park animal. In fact, the city is the only place he has managed to survive. When forced out into rural areas, he is an unsuccessful competitor against the gray silver squirrel and the red squirrel, and perishes.

Having established a beachhead in Salem he soon spread to other major Oregon cities, Salem, Eugene and Portland have the only colonies of 'S. carolinensis' known on the west coast.

Why has this animal managed to adapt to the demands of an urban environment when other wild creatures haven't? Part of the answer lies in the temperament of the animal. Although still wild, he is bold enough to go up to people who offer him food and take it. Thus, through his own bravery, he is able to supplement his foraging and to become less dependent upon the food supply of mother nature. Another type of animal, with more of an in-born fear of man, would not do so, and might perish.

And then there is the factor of heredity. Each generation of 'S. carolinensis' has a longer heritage of living within an urban environment, and finds it that much easier to adapt to it and to survive. With this decrease in the effort needed to survive, a greater species realization of how mankind benefits him, makes the squirrel tamer.

But as for making pets out of these animals, forget it. Urbanized they are, domesticized, they aren't. Although they fit well into a park, and often become tame enough to feed by hand, they are still a wild animal inside, and can never be truly tamed. Even younger ones, caught as babies and raised, do not become pets like a cat or a dog. They still hold many of the wild instincts of their type. Ask any youngster who has been bitten by a "tame" squirrel

Long, long ago, when Salem was growing up, and still a young and immature city, and didn't know what was best for it, a wise and benevolent city named Longview, Washington, offered to do the city a favor. This favor was the building of a squirrel bridge across State street from the Willamette University campus to Willson park, which surrounds the state capital. All that Longview asked in return was for some pairs of breeding stock squirrels to help replenish that city's parks.

Like any youngster, Salem was suspicious, and wanted to know all the angles and all the facts, before committing itself. What was Longview going to get out of it? Why did they care about Salem squirrels?

The city council debated at length and with wisdom over this strange affair. And for two long and painful weeks, the fate of Salem squirrels was hanging in the balance of their decision. Finally, through decision-making processes unfathomable to the human mind, they voted against the squirrel bridge, and in effect told Longview to take their charity elsewhere squirrels lived.

Unmindful of the pressure the Salem officials had been under while trying to make their monumental decision, Longview people seemed to become extremely distressed at this state of affairs. All sorts of rumors and other comments filtered down from that northern city, not a one of them mindful of all that Salem had just been through.

One such comment was an offer by the city council of a reward for any squirrel brought into the city and released in the park system. This bounty was said to range from one to five dollars. And when asked where to get these squirrels, all city officials seemed to do was point south, towards Salem.

Then, the president of the boosters club in Longview made the suggestion that his club come down to Salem one day during the Spring, and kidnap all the squirrel in Salem and take them back to Longview. All this was supposed to be in fun, but one still wonders about the statement, since it is a fact that Longview does not suffer from an abundance of squirrels, and if the bounty isn't working as well as it should, then perhaps the only recourse is extra-legal means such as kidnapping.

## Constitution goes to students on April 13

A constitution for the ASWU is being presented to the student body for its consideration. The proposed constitution is printed on page 5 of this week's COLLEGIAN. Students will vote to accept or reject the proposed constitution in the general student body elections Monday, April 13.

Major changes include the aims of student government, the terms and duties of office, the exclusion of law students from membership in the ASWU, and eligibility of second semester freshmen for student body office.

The preamble redefines the aims and scope of student government to include "the collective responsibility shared by the University Community in student life and affairs, and in order to strengthen the academic community."

The membership of the Association is limited to those students registered in the Colleges of Liberal Arts and Music. Law students are not included in membership of the new ASWU. All student body fees paid by law students will be set by a student bar association and funds will go directly to the College of Law.

Student body officers will be chosen from the three upper classes of the following year. This provision will allow second semester freshmen to run for office. The term of office will be from February 1 to January 31. The new term of office is expected to bring a continuity and gradual change over in appointments which generally run the length of the school year.

The primary change from the current position of president is that the new officer will not be presiding at Student Senate meetings. Chairing Senate meetings will be the first vice-president.

In a major shift the presidents of the four undergraduate classes will serve as members of the student affairs committee, in essence, they will become the first elected voting members of student affairs.

Election procedures will remain much the same aside from no longer requiring a petition bearing the signatures of a specified number of students. Instead a statement of candidacy will be required. Those seeking class offices need only file a statement. It would no longer be required that candidates be nominated at a class meeting.

## Committee offers course discussion

An open meeting of the faculty curriculum and requirements committee Tuesday evening in the Autzen senate chambers offered a variety of topics for discussion.

Few students appeared for the meeting but those who did were apprised of the situation concerning curriculum and faculty openings.

General agreement was voiced on the desirability of hiring a Black professor to fill one of two vacancies in the sociology department. The positions require a Ph. D. Dr. Byron F. Doenges, liberal arts dean stated.

## Marriage is togetherness.

Zales "Embrace" Overlap Diamond Bridal Sets



\$325



\$295



\$225



\$195



\$150



Zales Custom Charge  
Convenient Terms Available

**ZALES**  
JEWELERS  
We're nothing without your love.

In the Salem Plaza

Illustrations Enlarged

**READY** A tip from Wieder's  
**FOR THE WEEKEND?**

If your slacks, coat, or dress need to be in the best of shape, let Wieder's dry clean them for you. And if time is short . . . bring them in by ten and we'll have them ready at five. This service available Monday through Friday.

**Wieder's** SALEM LAUNDRY COMPANY  
263 HIGH ST. S.E. PHONE 263-9125

**TYPEWRITERS**  
ADDING MACHINES

SALES  
RENTALS - REPAIRS

Capitol Office  
Equipment Co.  
148 High St. SE

# Proposed ASWU constitution

**PREAMBLE**

We, the students of Willamette University, recognizing the collective responsibility shared by the University Community in student life and affairs, and in order to strengthen the academic community, present student opinion on matters affecting student life and affairs, promote a program of service, social, and academic activities, and to establish an organization for the control of all matters of student concern, do hereby constitute the ASSOCIATED STUDENTS OF WILLAMETTE UNIVERSITY.

**ARTICLE I. ORGANIZATION**

Sec. 1. Name. The name of this organization shall be ASSOCIATED STUDENTS OF WILLAMETTE UNIVERSITY.

Sec. 2. Membership. All registered students of the Liberal Arts College and the College of Music of Willamette University shall be members of the Association upon payment of the student body fee.

**ARTICLE II. OFFICERS**

Sec. 1. The officers of the Association shall consist of the president, the first vice-president, the second vice-president, the secretary, and the treasurer, all of whom shall be students during a term of office for one

year to run from February 1 to January 31.

Sec. 2. The president shall serve as the chief executive officer, shall be responsible for the efficient management of the student government, and shall serve as the official representative of the Student Body at all University functions. The president shall also stand ready to answer to Senate on any matter and shall present special messages and proposals to Senate from time to time. He shall nominate students to the various Student, Faculty, and Trustee committees as specified, and shall serve on all committees of which he is a member.

Sec. 3. The first vice-president shall preside as chairman of Student Senate, of the Activities Board and shall assume the duties of the president in the absence of that officer.

Sec. 4. The second vice-president shall be in charge of ASWU elections, the elections board, all activity managers' applications, and shall serve as chairman of Senate in the absence of the first vice-president. He shall further be responsible for compiling and maintaining a complete Managers' Guide, and see that a calendar of appointments is published at the beginning of each semester. He shall also see that all activities are carried out as prescribed by Senate and shall be ultimately responsible for the managerships programs. The second vice-president shall also serve as chairman of the Academic Affairs Committee.

Sec. 5. The secretary shall keep a record of all meetings of Student Senate, and Activities Board; shall be responsible for the codification and maintaining of records of all proposals pertaining to Student Government. The secretary shall further be responsible for seeing that secretaries are appointed to all Student Government committees and the minutes of all meetings are maintained in the Student Body office.

Sec. 6. The treasurer shall keep a record of all ASWU expenditures, shall act as chairman of the Finance Board, and shall serve as financial advisor to all ASWU activities. The ASWU treasurer will also be custodian of the student association properties. He shall further be responsible for presenting to Senate and the president, at the beginning of each semester, a proposed budget of income and expenses for that semester, in accordance with the annual budget. It shall be the responsibility of the treasurer to insure that no money shall be drawn from the treasury, but in consequence of appropriations made by law, and a regular statement and account of the receipts and expenditures of all money shall be published from time to time.

Sec. 7. The membership of the executive committee shall consist of the student body officers, including the president, first vice-president, second vice-president, secretary, treasurer, with the president as presiding officer.

a. Meetings of the executive committee shall be called by the president as required for the efficient discharge of ASWU responsibilities.

b. The executive committee shall establish an agenda for the coming Student Senate meeting.

c. This committee shall have the power to set student body administrative policy; and to discuss over-all policies in the individual areas of the respective student body officers in order to function as a unified group.

d. The ASWU executive committee shall be responsible for fostering communication of student body business, activities, and policies to the entire student body.

e. The executive committee shall be ultimately responsible to see that all committees appointed either under the jurisdiction of the by-laws or the Student Senate shall fulfill their duties.

f. It shall be the duty of the executive committee to select a manager for the student body office.

**Article III. Established Procedures**

Sec. 1. THE ASSOCIATED STUDENTS OF WILLAMETTE UNIVERSITY recognize the responsibility of students to participate in the formulation of the (1) standards and rules governing student conduct, (2) academic regulations and (3) administrative regulations according to procedures established by the Student Senate, Faculty, Administration, and Board of Trustees of Willamette University.

a. Student Senate has the authority to appoint committees and make recommendations over all matters of policy affecting student life and affairs.

Sec. 2. Students shall serve on faculty and trustee committees and attend faculty and trustee meetings in numbers established by the faculty and trustees respectively.

a. Students serving on faculty and trustee committees shall be appointed by the president of the University upon recommendation of the student body president with the approval of Student Senate. Two students shall be recommended for each appointment.

b. The presidents of the four undergraduate classes shall serve on the Student Affairs Committee. Additional members shall be appointed by the student body president with the approval of Student Senate.

**ARTICLE IV. STUDENT SENATE**

Sec. 1. The following shall be voting members of Student Senate: First vice-president in case of a tie; second vice-president, secretary, treasurer; one representative elected by each respective living organization on campus; one representative of Willamette Independent Town Students.

a. Student Senators shall be elected biannually at the beginning of the Fall semester and at the beginning of the Spring semester prior to February 1.

**Sec. 2. Powers**

a. The Student Senate shall enforce the Constitution and By-Laws; shall by two-thirds vote approve appointments for ASWU activities, committees and boards.

b. The Student Senate shall act as ultimate authority over all ASWU activities. This power may not be delegated to any other committee or board.

c. The Student Senate shall have power to investigate and report on any area of student life and make any necessary recommendations to the proper persons or committees.

Sec. 3. Any individual or group of individuals may petition Student Senate on any matter of student interest. The Student Senate shall consider all petitions and make recommendations according to established procedure.

**Sec. 4. Meetings**

Student Senate meetings shall be open to all students and other members of the Willamette University community.

**Sec. 5. Recall Procedures.**

a. Student Senate shall have the power to remove any Senate representative or officer of the ASWU. Removal proceedings will begin upon presentation of a petition signed by 50% of Senate membership, and stating the cause of the intended proceedings. A hearing, scheduled for seven days after presentation of the petition will be presided over by the University vice-president for Student Affairs. The hearing may be public or private, according to the defendant's discretion. Student Senate shall vote following the hearing. A 3/4 vote of total Senate membership is required for removal from office.

b. The Student Body president shall have authority to report to Student Senate any chairman or committee member, previously approved by Senate, who has demonstrated inadequate participation in his assigned position. The member in question will then be asked to show cause to Student Senate why he should remain in the position to which he was appointed. Student Senate may, by a 3/4 vote, declare the seat vacant. The new member shall then be appointed according to duly constituted procedures.

**ARTICLE V. ELECTIONS**

**Sec. 1. ASWU Elections**

a. ASWU elections shall be held prior to February 1, the date to be set by Student Senate. All candidates for elective office shall submit a Statement of Candidacy to the second vice-president at least one week prior to elections.

b. The Australian ballot system shall be used for all elections.

c. All members of the Association

shall be entitled to vote upon presentation of an ASWU student body card.

d. All officers shall be elected by a majority vote. If no candidate receives a majority, the second vice-president shall call a new election within one week; at this election only the names of the two candidates receiving the highest number of votes shall appear on the ballot.

e. All vacancies which may occur in an ASWU elective office shall be filled according to ASWU election procedures.

f. All candidates must have a 2.0 accumulative G.P.A.

g. The second vice-president must certify the legality of all candidates. Any challenge of the legality of a candidate must be made before the primary begins; otherwise all candidates shall be considered legal.

h. Challenges or complaints during elections shall be handled by the second vice-president and the elections board.

**Sec. 2. Class Elections**

a. The officers of the classes shall consist of the president, the vice-president, the secretary, and the treasurer.

b. Freshman class elections shall be held at the beginning of each semester to elect officers for the semester. Sophomore, Junior and Senior class elections shall be held at the beginning of each fall semester to elect officers for the academic year.

c. Qualifications: (1) All candidates must be academic members of their respective classes. (2) Candidates must have a 2.0 accumulative G.P.A.

d. All candidates for class office shall submit a Statement of Candidacy to the second vice-president at least one week prior to elections.

e. Class meetings may be initiated by the president of the class or upon petition of 10% of the respective class.

**ARTICLE VI. FUNDS**

Sec. 1. Income of the Association shall be derived from money received in the form of fees paid upon registration in Willamette University and from such other receipts as may result from the activity program of the Association.

a. Student body fees are \$17.50 per person per semester.

Sec. 2. Funds of the Association shall be administered by the Finance Board as outlined in the BY-LAWS.

Sec. 3. The listing of the budgetary allocation is as follows:

Willamette University	2%
Reserve	2%
Capital Outlay	3%
Non-Allocated	94%
	100%

a. Non-allocated funds shall be administered upon the recommendation of the Finance Board and with the consent of the Student Senate as outlined in the By-Laws. Ultimate authority to approve, attach, or modify any budget shall be vested in Student Senate.

Sec. 4. Fees for services rendered to members of the Student Bar Association shall be assessed by agreement between the Student Senate and the officers of the Student Bar Association.

**ARTICLE VII. PUBLICATION BOARD**

Sec. 1. The official publications of the Association shall be the COLLEGIAN, the JASON, WALLULAH, the Student Handbook, the Fusser's Guide, the Course Critique and other such publications as may be approved by the Student Senate as recommended by the Publications Board.

Sec. 2. The policies of the official publications of the Association shall be administered by the Publications Board as provided for in the By-Laws with ultimate authority vested in Student Senate.

**ARTICLE VIII. ASWU BY-LAWS**

Sec. 1. The Student Senate shall vote on proposed By-Laws and By-Law revisions at each of two meetings at least one week apart. If the motion does not pass the preliminary vote by a simple majority it shall not be brought up for the final vote. Upon final vote the motion may be passed by two-thirds of all votes cast, provided a quorum casts ballots in the vote. The proposed By-Laws shall appear in the COLLEGIAN after the preliminary vote and prior to the final vote.

**ARTICLE IX. AMENDMENT**

Sec. 1. Amendments to the Constitution shall be proposed by the Constitutional Revisions Committee at a meeting of the Student Senate, shall then be posted for a week, and must appear in the COLLEGIAN. At a subsequent election they may be passed by two-thirds of all votes cast, provided a duly constituted election as provided for in Article VI of this constitution is held.

## Replace your old Stereos

Component Sale now in process

gigantic savings in all departments

Receivers-Stereo Cut

Turntables Dual 1212 now in stock (limited)

April 8th 7-11pm only  
All Equipment 15-20% off regular sticker price

Wed. nite only all regular

\$4.98 stereo albums  
\$2.90

**SPECIAL**

Friday-Saturday (April 3-4)

Record Bonus

All \$4.98 Stereo Albums  
\$3.00 with student body card

Shogren's

**STEREO ELECTRONICS**

170 Liberty St NE

363-8632

**NOPP'S GOLDEN PHEASANT**

Klasic Camera Shop

**CAMERAS - FINISHING**

Film - Darkroom Supplies

- Photographic Equipment -

1146 Center N.E. 364-6481

# Let the sunshine in

With the advent of spring the Willamette campus comes alive with outdoor activities as witnessed on this page. The following pictures have been taken on various sunny days during the last few weeks. Collegian photographers Vince Morrison, Terry Prottzman, Tom Felix and Dean Petrich have captured the following scenes in their travels around campus.

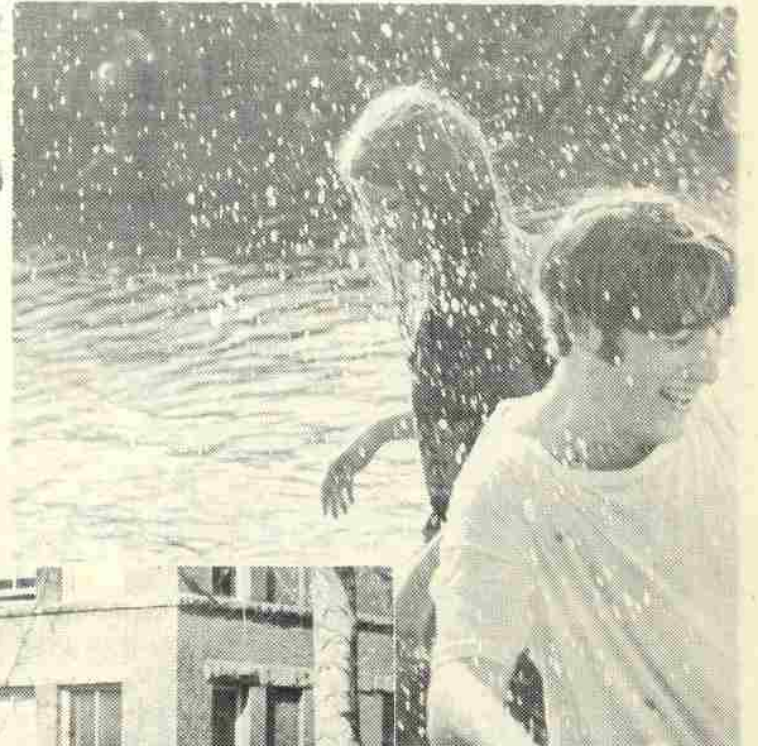
Unseasonably warm weather and an unusually mild winter have made this a semester of heavy use for the campus grounds, especially the quad. The best part of all is the good weather promised for the next several weeks as spring blossoms forth in the Willamette valley.

The young couple below have found a refreshing way to enjoy the sun's rays in the Willamette mill stream. The stream is awaiting the traditional Blue Monday arrival of the fourth place finishers from Freshman Glee competition.



Shown here addressing a group of interested Willamette students is a visiting Stanford University student. The visitor was a representative of a Christian group informing Willamette students about the Christian way of living.

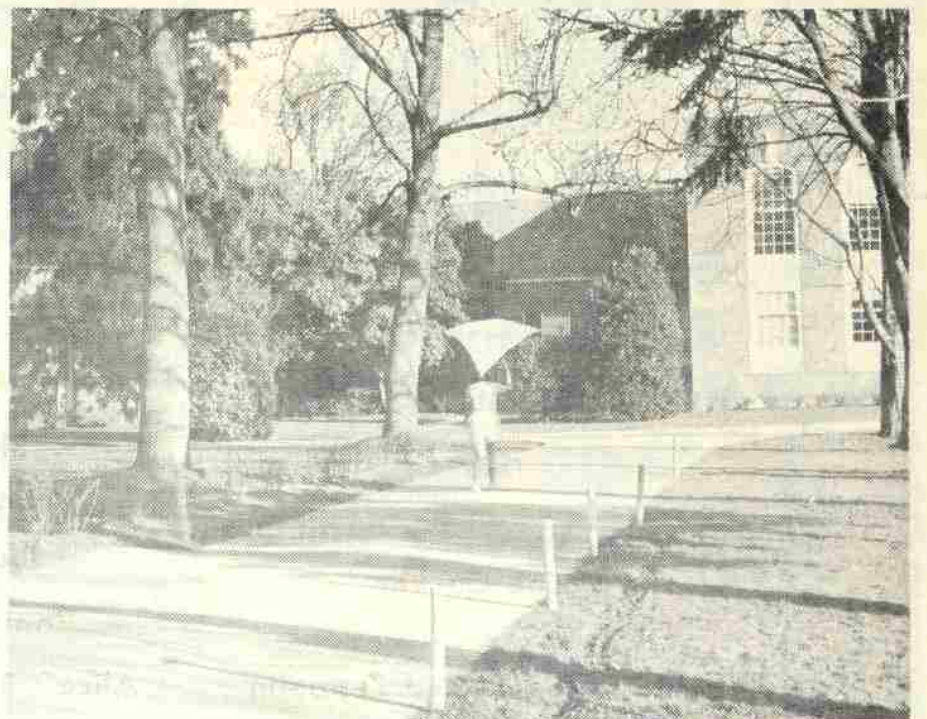
# S P R I N G



Irrefutable proof the skateboard is alive and prospering in Salem, Oregon. This graceful demonstration of skateboarding was captured on film recently by a strolling photographer near Walton Hall.



One of Willamette's beleaguered squirrels, hardly appears to fill the role of an endangered species, although a number of his allies are apparently missing. The gray squirrel has been the subject of much comment recently and has received national notice.



Go fly a kite! This may have been the advice which prompted the young man pictured above to run down the service path behind Eaton Hall. His kite appears to be having difficulties getting airborne with the tree limbs putting a definite ceiling on its flight.

# Jeff's Bullsheet

The Girl's Tennis team won their first match of the year as they defeated Pacific at Forest Grove last Tuesday. Competing for Willamette were: Donny Curtis, Carol Hagmann Olga Honchariw, Carolyn Schmidt, Allyn Shellenberger, and Betsy Wilson.

\*\*\*\*\*

Tomorrow the Annual Willamette Relays will be held at McCulloch Stadium. Track Coach Bowles expects more than 80 high schools to be represented by more than 1300 athletes. The meet is scheduled to begin at 1:00.

One of the top entrants is Central Linn's Tinker Hatfield. Last season Hatfield ran the hurdles in 14.0 sec.. The relay record is 14.6 sec..

\*\*\*\*\*

The Golf team continued its winning ways as they edged the University of Portland and Pacific last week in non-league matches. Representing Willamette were: John Sutton, Steve Cylke Mike Bennett, Pat Tate, Chuck Marshall, and Bob Boal

\*\*\*\*\*

In IM action the Betas tied a IM record by placing three teams in the playoffs for the basketball title.

In the track meet next Friday the Shockers will be the favorites to win the shot put event as they boast Rocky Higgins, Dan Olsen and Lyle Lolotai.

\*\*\*\*\*

The NAIA rules committee has voted to allow basketball players to dunk the ball next season.

## Manalili leads Bearcats

Bob Woodle, Willamette's Publicity Director and the NWC's official statistician, has published the conference's leaders for the first week of the 1970 baseball season.

Linfield's Shawn Mosley tops the league's hitters with a hefty .750 average, while he also leads

the pitchers with a sparkling ERA of .000.

The Lewis and Clark Pioneers lead the NWC in team hitting with a .333 average, while the Boxers of Pacific have yet to give up a run and lead the ERA department with a .000 average. Pacific also is tops in fielding with no errors in their only league game.

Bearcats who are in the league's top ten include: Roger Hurm- 4 RBI (3rd); Hermann Manalili-.600 (4th); and .61 ERA (3rd); and Peter Fern-.400 (10th).

To Beat Inflation

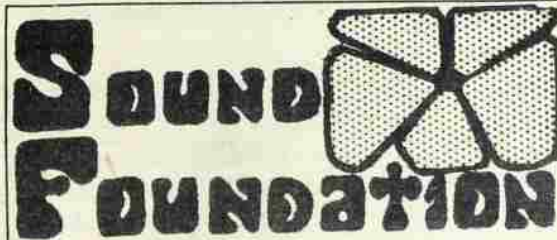


"Bob It" at Bob's

## Capital Drug Stores PRESCRIPTIONS

COSMETICS, FILMS and PROCESSING GIFTS and SUNDRIES

405 State Street Downtown 363-3118  
4470 RIVER RD. N. KEIZER 581-1503  
597 WINTER ST. S.E. - PARK MEDICAL 364-6227



New live Stones Album & Factory Overruns due Wed. April 1

all stereo albums no defects

regular 4.99-5.99

now 1.99

Blind Faith

Doors

Bloodyn Pig

Canned Heat

Cream

Phil Ochs

Judy Collins

Iron Butterfly

Joe Cocker

Vanilla Fudge

Midnight Cowboy

Alice's Restaurant

Crosby, Stills & Nash

Led Zeppelin

in the Senator Hotel

224 High St., N.E.

Phone: 581-6132

# L&C edges Willamette

The Willamette baseball team is in Tacoma this afternoon for a double header against the University of Puget Sound after falling victim 7-1 Monday to NWC opponent Lewis and Clark in Portland.

Coming off a 6-1 rout of the University of Portland Saturday that saw two fancy double plays,

near shut out pitching and heavy hitting by Roger Hurm, Chuck White, Doug Holden and the Fern brothers, Denny and Peter, the Bearcats just couldn't maintain momentum against the

Nine hits were scattered through the lineup but Willamette left 13 men stranded. Starting pitcher Chris McLaren gave up

five runs in the first two innings, only three of which were earned. Reliever Herman Manalili was tabbed for two more unearned tallies in the fifth on the Bearcats' second two-run error of the game.

Peter Fern scored WU's lone run in the third as he singled, advanced to second on a passed ball and came in on third baseman Ernie Ankrim's single.

Manalili, workhorse of the pitching staff, leads the team in strikeouts with 13 and an accum ERA of 0.69.

Among batters with a minimum of 10 at bats, Hurm leads the team with a .358 average, followed by Holden at .353, Dave Bloye at .333 and Peter Fern at .314.

Monday afternoon at 3 p.m. the Bearcats return home to face Oregon State in another non-conference game.

Tuesday they will be back in Tacoma for a single game against NWC foe Pacific Lutheran.

## Betas capture IM lead

Defending champions Beta Theta Pi have moved into first place in the race for the 1969-70 Intramural trophy. Aided by a fine basketball season which produced a championship and 302 lated 911 points and are ahead of the SAEs by 144 points. The Delts are in third place 188 points out of first.

In the IM badminton tournament, the Faculty led by Dr. Frances Chapple defeated the Delts for the championship.

Next week the IM golf tourney will be held at McNary golf course. Each organization is allowed eight competitors with the top four scores being counted for

the championship. Top teams competing will include the Faculty with Bob Woodle and golf coach Steve Prothero, the Law teams and the Betas.

On April 10, the annual track meet will be held at the stadium. All those interested in competing should contact their IM managers as soon as possible.

## IM stat summary

Team	6 Sports	Basketball	Badminton	Totals
Betas	589	302	22	911
SAE	623	107	37	767
Delts	480	179	64	723
Sigs	497	176	34	707
Faculty	497	76	82	655
Phi Delts	386	161	30	577
K Sigs	257	62	-	319
Shockers	169	108	11	288
Law I	121	161	-	282
Law III	154	107	-	261
Law II	71	156	-	227
Belknap	121	52	44	227
Baxter	114	100	12	226
WITS	130	31	6	137
Matthews	115	0	-	115

## WU stomps Linfield

Willamette clobbered Linfield 103 to 42 last Saturday in our last home meet. We swept the mile and two mile. Ed Wallace won both the 880 and the mile. We won both relays, the 440 relay in a new meet record of 43.3. The old record of 43.4 was held by Linfield. In the high hurdles we picked up first and third places. The intermediate hurdles proved to be an exciting race with Brown

of Linfield barely edging out Don Hansen of Willamette in the last thirty yards. Brown was clocked in 58.2 and Hansen in 58.4, both under the old record of 59.5 seconds.

We fared well in the sprints with a first and second place in the 100 and second and third places in both the 220 and 440.

The field events were just as strong with a Willamette sweep in both the high jump and javelin throw. Ron Jensen rolled up thirteen points in winning the shot put and placing second in the pole vault and high jump and third in the long jump and discus.

Team captains were elected after the meet. Ron Jensen was chosen for the field events; Mac Clouse for the sprints; and Ed Wallace for the distance races. Our next meet will be this Friday at 3:00 p.m. against a strong O.C.E. squad at their stadium.

## Shape Up!

WEIGHT LIFTING

BODY CONDITIONING

STUDENT RATES

NO CONTRACTS

ORIAN'S HEALTH STUDIO

1071 Commercial St. S.E.

SALEM 362-9519

Sambo's RESTAURANTS



585-6403

# Music school's .... specimens revealed

by Susan Dickey and Lana Walter

The next time you go browsing through the music library, take a glance at the new exhibits on the shelves of the west wall. These exhibits represent the essence of the College of Music, an essence which has been well-known and loved by music students for hundreds of years. For those of you who may be unfamiliar with this marvelous essence, we will attempt to describe it as it appears in the exhibits — which are becoming more numerous hourly as music students are excitedly drawn into the spirit of the enterprise.

Specimen numbers 1 and 2, a brick and a chunk of mortar, were obtained by a devoted librarian, who merely reached out of a window and plucked them off the building.

Specimen number 3 is a turntable dust cover which is serving as the final resting place for many an aged beetle (the kind that crawls out of the Music Building walls and woodwork in massive abundance every fall) as well as bees, flies, wasps, and various and sundry other delicacies, such as petrified marshmallows and cobwebs.

Specimen number 4 is a "Study in Grass, Dirt, and Insects," which was also plucked from the outside of the building through an open window.

Specimen number 5 is a peculiar piece of metal of undetermined purpose which was discovered up on top of the record shelves, a veritable treasure trove of items dear to every music student's heart.

Specimen number 6 is living proof that our college of Music is not only ivy-covered, but also ivy-lined. This piece of vine was found growing inside Mr. Viamonte's studio.

Also a vital part of our musical heritage, but impractical to include in the above-mentioned display, are the large chunks of plaster which fall from the walls when loosened by vibrations from closing doors, piercing high-notes, etc.; the holes in the practice room walls which were apparently created by the heads and fists of frustrated music students, weary of having the sounds of their own practicing drowned out by those of their neighbors, the ladies' room, painted 2 ghastly shades of hot pink, a completely unnecessary attempt to create a warm atmosphere, since the radiator in the room is always kept at temperatures varying between 95 degrees and 140 degrees (Fahrenheit); and of course, the elevator shaft which was used to transport cadavers from the basement (now our practice rooms) to the upper floors, when the building was used a medical school.

You might think by this time, with all this talk of chunks and pieces, that there is a diabolical plot by our music students to tear down their beloved music building bit by bit. Well, you could be right. Several years ago the attic was condemned (2 occupants maximum at any one time), and just recently the fire marshal condemned the 2nd floor so that no classes may be held there next year. Since obviously we're being slowly chased out of our building, we calculate that if we hasten the process of decay, perhaps the administration will sooner notice our plight and provide us with the proper up-to-date facilities that our rapidly expanding music student body so desperately needs.

## Tartuffe-next drama performance

On April 9, 10, 11 the Willamette University Drama Department will present Moliere's play, "Tartuffe" in the Smith Auditorium. The play was written in 1669 and enjoyed much popular success ever since.

Moliere's purpose in writing the play was to point out the hypocrisies of life, by placing his characters in strange and unique situations.

Tartuffe is a "con man" who pretends to be very religious in attitude. Tartuffe meets Orgon and his mother who believes that he is really a great man. Orgon takes him in and gives him the

freedom of his house. Everyone in the household is aware of Tartuffe's intentions with the exception of Orgon and his mother.

Orgon's wife hides her husband under the dining room table and then invites their guest (Tartuffe) into the room to lead him on. Orgon has been instructed to appear before the situation gets

**Quisenberry PHARMACIES**  
150 Liberty St. S.E.  
2440 Gear St. N.E.

**McEwan Photo Shops, Inc.**  
Portrait & Commercial Photography  
PHOTOGRAPHIC EQUIPMENT & SUPPLIES  
245 HIGH ST. N.E.  
363-5470

**JIM'S SHOE SERVICE**  
• WATER PROOFING  
• SHOE REPAIR and DYEING  
• NEW SHOES FEATURING BOOTS OF ALL KINDS  
183 High St. NE 363-1420

## Bach 'St. Matthew Passion' shows polish, spirit in Good Friday performance

by John Ryan

The fruits of many hours, days, weeks, and even months of planning and labor were brought to bear last Friday evening in a 3 hour and 45 minute standing - room - only performance of J.S. Bach's massive work, the St. Matthew Passion. The performance came off with the reverence and spirit with which it was intended, even to the point of audience participa-

tion in a few of the chorales that were intermingled among the arias and recitatives of the Passion.

From the outset the conductor, Dr. Heiden, was in command of the stage — over 150 performers, all assembled for one purpose, to present to the audience a stirring performance, and indeed it was. The soloists were nothing less than superb. The "mellow" voice of Roland Harris as Jesus was nothing less than great (and

an excellent job of casting). The Willamette Choir which divided into the double choirs for the Passion did some "mighty fine singin'" throughout the entire evening.

Those very fine impurities present were fortunately outweighed by the overall performance. Two small things deserve mentioning however. The solo tenor, Bob Lamberson, seemed to be a little off last Friday on his arias. It was unfortunate too, because during rehearsal he displayed near perfection in his solo passages. The other fine point was merely a matter of seating all who came last Friday. It is unfortunate that a few might have been turned away due to the fact that eight community church choirs were dispersed throughout the auditorium.

Everybody concerned, no matter how minor their part might have been, is to be congratulated for a sterling performance.



"All of our classes at Willamette should be run like the Spring Intercession." This was the comment revealed to this editor by Professor Bruce McIntosh of the College of Music last week. A number of music students also

feel that this is an excellent idea.

This would mean the incorporation of many related topics into the academic encounters of music majors along with a marked increase in the involvement between the music faculty and the music student body than there is at the present time.

In effect, however, isn't that the promise of this liberal arts institution, anyway? We feel McIntosh's comment has much value to this college and should to many music majors.

### Art at center

On view in the upper level of the Putnam University Center from now through April 28 is a display of prints by Mrs. LaVerne Krause.

Subjects of the Oregon artist's prints are varied; landscape seascape, cityscape and figure. Prints are black and white, monochromatic as well as multiple-color.



In rehearsal of Moliere's play Tartuffe, to be presented by the University Players next week. (See accompanying story.)

Pete and Bonner Price  
**FIRESIDE A&W**  
Corner 12th & State 364-9306

AT THE HOLLYWOOD  
Doors open Sunday at 4:45  
Saturday and Sunday at the CAPITOL and ELSINORE shows continuous from 12:45  
**the hollywood**  
Jan Sterling in "THE MINX"  
Unique Adult Entertainment  
X: No One Under 18  
Added Color Short Subjects

too sticky. The web of comedy and intrigue becomes more complex as the plot of the play proceeds.

**TRANSCENDENTAL MEDITATION**

Introductory Lecture  
Saturday, April 11 Old Senate Chambers  
Matthews Hall

**the ELSINORE**  
A FRANKOVICH PRODUCTION  
Walter Matthau Ingrid Bergman  
cactus flower  
Introducing BOLLE BAUBL ATON  
From Columbia Pictures TECHNICOLOR  
D. VanDyke "THE COMIC"  
**the CAPITOL**  
**easy rider**  
Peter Fonda  
"LOCK UP YOUR DAUGHTERS"  
NORTH SALEM  
**DRIVE-IN**  
"NIGHT OF BLOODY HORROR" — "FEARLESS VAMPIRE KILLERS"  
"DRACULA HAS RISEN"