

campus capsules



James A. Cover, (left) alumni director, James S. Triolo, vice president for development.

Positions Filled in Development, Alumni Relations

Vacancies in the development and alumni offices have been filled by two men who have a combined experience of 29 years in their respective fields.

James S. Triolo, an 18-year veteran of college development work, joined the administrative staff Oct. 1, after serving as Vice President for Public Affairs and Development of The Salk Institute in La Jolla, Calif. He is the new Vice President for Development.

James A. Cover, who directed alumni relations at the University of Kansas City and the University of Denver before serving as general manager of the Holiday Inn of Salem, assumes the vacancy left when Dr. Jerry Whipple became Vice President for Student Affairs.

Triolo succeeds Raymond I. Brahams, Jr., who resigned last March to become

assistant to the president at Maryville College (Tenn.).

The recipient of two degrees at Stanford University, Triolo later served there as Associate General Secretary and Associate Director of Development from 1951-60. He has headed the development staffs at the University of Texas at Austin and the Southwest Center for Advanced Studies in Dallas.

His background also includes high school teaching and coaching, civilian work with the Office of Naval Intelligence, U.S. Foreign Service, and public relations.

He has served in national capacities with the American Alumni Council and the American College Public Relations Association and has been a consultant on development and public relations in Mexico, Colombia, Panama, and Peru.

Cover, a graduate of the University of Denver in the field of hotel and restaurant management, started his career in personnel, beverage, food and banquet management in restaurant and private club operations. In 1958, he became Director of Community and Alumni Relations at the University of Kansas City, serving for three years.

He returned to his alma mater in 1961 as associate director and two years later director of alumni relations. He administered the university's centennial observance in 1964 at which time the Denver alumni program was rated among the top 14 out of 1,380 member institutions in the American Alumni Council.

He came to Salem in 1967 to manage the Holiday Inn.

Free University Draws Large Response

The line forms at the rear when something of value is offered without charge. Junior Bud Alkire found that out quickly when the Willamette-Salem Free University was announced to the public.

In its second year, the student organized Free University offered 23 "extra-curricular" courses ranging from Israeli Folk Dancing to Basic Rock Climbing to A Study in Peace.

When the phones stopped ringing, some 250 Salemites joined about 150 students in registering for the evening classes. About 50 others were turned down "because of the limited sizes imposed by the nature of the class and the availability of space."

Most of the classes are being taught by Willamette students, although Alkire recruited a number of Salem "experts" to offer some of the courses. The Free University is not officially connected with the regular University or any private organization, but is a joint effort of interested students and Salem citizens, according to Alkire.

The small budget the Free University is being underwritten by Omicron Delta Kappa, a men's scholastic honorary.

How well the Free University meets its goal of providing courses and intellectual experiences to complement the regular university experience can only be determined by the success each individual student and course chairman finds in the classes, according to Alkire.

Plans have already been started for Free University courses next semester, and "hopefully we will be able to accommodate more people then," said Alkire.

Plaque Commemorates First Medical College

A 30x40 inch bronze plaque with inscription and a replica of a pioneer saddlebag doctor was planned for dedication at Homecoming in commemoration of the first medical college established in the Pacific Northwest at Willamette.

The plaque, financed by Willamette alumni in the medical profession, will be placed on the west pillar at the entrance of the walk leading into Eaton Hall from State Street.

The inscription recalls the start of medical education in 1867 when classes were held in Waller Hall. From 1878 to 1895 the College of Medicine was maintained in Portland. Ten years after instruction returned to the campus, a building was erected on the northwest corner of the campus for the College of Medicine. In 1913 Willamette's trustees agreed to a merger with the University of Oregon.

WILLAMETTE ALUMNUS

October, 1969

Editor: Robert C. Woodle

Class Notes: Theresa Primbs

Volume XVII Number 1

Published Quarterly for the former students of Willamette University. Second Class postage paid at Salem, Oregon. Return postage guaranteed.

Medical School in Portland and the building later became the College of Music building.

Two years ago Willamette's role in the beginning of medical education in Oregon was featured in a centennial publication "Men and Milestones in Medicine," published by the University of Oregon Medical School.

Enrollment 1,631, A Record High

As expected, fall enrollment reached a record high of 1,631 students, including part-time and graduate students. Last fall enrollment was 1,571.

Undergraduates in the Colleges of Liberal Arts and Music totaled 705 men and 560 women, while the College of Law numbered 313 men and eight women for a record high of 321. A class breakdown of the undergraduates shows 464 freshmen, 360 sophomores, 241 juniors and 200 seniors.

Campus Mulls Student Court

Students and faculty are taking a hard look at what has been termed a growing disparity between social life and academic life on the campus. In an 11-page document, the Student Affairs Committee states "there can be no bifurcation between the activities involved in academic inquiry and the patterns of social life on campus." It supports one alternative in dealing with the disparity, labeling it "Recommended Standards of Conduct and Adjudicational Procedures for the Willamette University Community."

Students have shortened this concept to "Student Court," but by whatever name, it is essentially a proposal of student government whereby students participate in the formulation of standards and rules and accept the responsibility for their enforcement.

A referendum on the proposal will be presented to the entire student body. If it passes, the faculty will vote whether to send it on to the president and possibly the Board of Trustees.

In addition to outlining the educational principles of Willamette and statements of common responsibility and student responsibility, the document lists standards of conduct, penalties for violation of these standards, and enforcement procedures.

ASWU student body president Bill Bennett commented that the concept "may not be perfect, but it is head and shoulders above the present system. It will give meaning to student government on the University level. It is the final step toward recognition of equal partnership and responsibility for the Willamette community."

Response to Moratorium Includes 36-hour Vigil

A 36-hour vigil was planned by students in response to the Oct. 15 national Vietnam Moratorium. Student Senate adopted a resolution urging all students and faculty members "to set aside this day for the purpose of discussing and expressing their individual opinions concerning the role of the United States in Vietnam."

It went on: "We recognize the right of any student or professor without fear of social or academic reprisal to follow the dictates of his conscience and not attend or hold class on this particular day. We fully recognize that this is a decision to be made by each individual without duress or compulsion by any group or body."

President Roger J. Fritz and the academic and personnel deans who discussed the issue with the students agreed that each individual must follow the dictates of his conscience in matters of this kind.

Dr. Fritz added that "we must keep uppermost in mind, however, that Willamette University, as an educational institution, is committed to a program encompassing all of its students. Academic calendars, course content and individual programs of instruction are all designed to attain this objective. We, therefore, have a duty and responsibility to insure that the mission of the University is

carried out in the daily conduct of our academic affairs. This (Student Senate resolution) was not a request that classes be suspended and they have not been suspended."

The students were commended by Dr. Fritz for the appropriate way in which they presented the resolution and the responsible way in which they had planned events connected with the observance of the moratorium.

Like some of the nation-wide procedures, plans called for a reading of the 44,000 names of American war dead, a special service conducted by Chaplain Phil Harder, a teach-in covering the history of the Vietnam situation from 1945 to the present, a petition presentation to Governor Tom McCall, an open seminar, and a candlelight peace service. Former Senator Wayne Morse was scheduled to speak the following day, reflecting on the national moratorium.

Mid-term Grades Given for D's and F's Only

A new policy on mid-term grades will go into effect this semester. Professors will no longer grade each student but will record mid-terms for only those students who are receiving D's or F's.

Four copies of the grades will be distributed: to the student, his parents, his adviser and the personnel deans.

Bearcats Suffer Through 75th Grid Year; Injuries Take Toll

This year marks the 75th anniversary of the start of football at Willamette. It's also a season coach Ted Ogdahl would like to forget.

Prospects were good at the start of the season with substantial remnants from last year's undefeated and nationally ranked squad due to report. However, before the 'Cats opened against the University of Nevada, 10 lettermen (and six starters) were on the sidelines as a result of injuries, transfer, and grade problems.

Despite the presence of such defensive stalwarts as Little All-American linebacker Cal Lee, and All-Northwest end Tom Weathers and cornerback Tom Williams, the defense has featured as many as seven freshmen starters.

Freshmen had to take up the slack, and while the rookies show great potential, inexperience has taken the rap for six Willamette losses and just one win at the time of this writing. The losses include the first for Ogdahl against Whitman in 18 years, that a 60-7 rout in front of a parents' weekend crowd. Other setbacks have been to Nevada (27-7), Puget Sound (34-24), College of Idaho (23-19), Lewis and Clark (20-6) and Linfield (20-17). The

only victory was 28-0 over British Columbia. Pacific Lutheran (pre-season favorite in the Northwest Conference) and Pacific conclude the schedule.



RUGGED defensive end Tom Weathers (80) bears down on the UBC quarterback as Little All-American linebacker Cal Lee (51) of Willamette sets sights on his third interception in Willamette's sole victory through seven games.



Celebrating Life With Soul

Folk Soul music helps new chaplain "discover where the students are and what's going on."



ABOUT 400 students gathered in the quadrangle Sept. 10 to "Celebrate Life With Soul" with two folk soul artists from Southern California, Clabe Hangan (top left) and Jim Chambers. They were invited by Chaplain Phil Harder (above) who hopes to spread to the campus the unity that 120 freshmen found at this year's Freshman Camp. Students have held smaller gatherings called "spontaneous chaos" to share life and talent together through music and poetry.

"An expression of common humanity or what I call ecumenical humanism," is how Willamette's new Chaplain, Philip Harder, explains the use of "folk soul" music as a communications medium among students.

Chaplain Harder, 37, a Rel. D. recipient from the School of Theology at Claremont, knows that the younger generation relates to folk soul music and the programs of this type on campus are helping him "discover where the students are and what's going on."

In addition to discovering the nature of the human condition at Willamette, Chaplain Harder sees his task of "interpreting the religious significance amidst the various academic and social structures as well as the personal lives of the entire Willamette community."

To rekindle the unity that 120 freshmen discovered at Freshman Camp this year and to spread it to the rest of the campus, Harder invited two folk soul artists to the campus Sept. 10. Clabe Hangan, a Negro poet, singer-guitarist and specialist in human relations (as well as a Ph.D. candidate at Claremont) and Jim Chambers, a mop-haired poet-composer in painting, sculpting and music, performed at an outdoor convocation under the theme "Celebrating Life With Soul." Their song message was generally people caring for people, ranging from pollution of the environment to the miseries of war.

Since their appearance, Willamette students have had two smaller gatherings called "Spontaneous Chaos," at which the students share life and talent together through music and poetry.

Following the Hangan-Chambers appearance the Oregon Statesman editorialized "The 'straight' community which turns off 'folk soul' music without even listening is missing a lot. Even the most conservative might find they could join in on some of the choruses with conviction."

Trustees acknowledge \$450,000 challenge pledge; extend card-key system

PE Building, Law Library Rate Top Priority

WHEN THE finishing touches are put on the George Putnam University Center in December, construction sounds on campus will give way to a long sigh of satisfaction. That sigh will signal the end of an energetic and phenomenal decade of capital growth — and commitment. Sixteen buildings or additions to the campus in 10 years weren't raised with bricks alone. The desire of many people to provide the University with facilities commensurate with Willamette's goal of high quality education gave rise to 12 attractive residences, addition to Collins Hall (science), Walton Hall (languages), the Truman W. Collins Legal Center and now the George Putnam University Center.

The between-decades lull will be brief, however. Stimulated by a generous challenge pledge from the Collins Foundation of Portland, the Board of Trustees at its October meeting enthusiastically placed top priority on the construction of a physical education building and sports center. The \$400,000 Collins pledge will swell to \$1.2 million when alumni, parents and friends of the University successfully match the \$1 for \$2 challenge.

A \$1 for \$1 challenge up to \$50,000 from the Collins Foundation was announced at the same time by University President Roger Fritz to increase the resources of the law library which now serves a record enrollment of 315. The College of Law is seeking to bring its library up to the new standards set by the Association of American Law Schools, a project that is expected to take at least \$250,000 by Jan. 1, 1975.

In a major item of new business before the Board, dormitory closing hours for women, long a major topic of discussion on the campus, were drastically revised through the unanimously endorsed extension of the "card-key system" to junior and sophomore women. A card-key is magnetically coded to unlock a special cartridge attached to the living organization door, thereby allowing access to a card holder after the doors have been locked. The smooth operation of the system by senior women in a one-year trial period and the responsibility they showed were major reasons for trustee endorsement.

Old Gymnasium no longer adequate

Someone recently described Willamette's gymnasium as the type "that gives the home team a 10 point advantage," which is a polite way of saying it's old fashioned. But more important than intercollegiate basketball or fashion, the Willamette gymnasium is no longer adequate to serve the present needs of 1600 students. Built in 1923 when enrollment was 500, it has had 47 years of good, hard use. Activity runs from 8 a.m. to 10:30 p.m. daily and on Sundays from 1 to 5 p.m. At that, only about 50 per cent of the students fulfill their two-year credit requirement in physical education on campus. The others use the YWCA and YMCA facilities, a nearby bowling alley and golf course at an estimated additional cost of between \$5,000 and \$7,000.

It took no persuasion to get top priority for the project from the Trustees, and their decision has already had a substantial effect on the morale of the physical education and athletic staff, not to mention the eager anticipation generated among students, faculty and the community.

"We're delighted" was athletic director John Lewis' obvious understatement. "For years now we've been asked 'When are you going to get a new gym?' and all we could express was our hope that it would be soon. We're going to need a lot of assistance but that day is now in sight."

Physical education director and track coach Dr. Charles Bowles sees tremendous possibilities, as he's been the one who has juggled classes and the often times complicated schedule of the

old gym. "We'll have so many more teaching stations and much greater versatility in our whole program," he gleamed.

Various committees will soon be swinging into action, planning the facilities and fund raising. Preliminary drawings have served as a starting point while facts are being gathered on construction costs, and the experiences of other colleges in launching modern physical education facilities. Lewis & Clark, Pacific Lutheran, and Whitman have already inaugurated new sports centers, and Pacific's will be ready soon.

Anticipated features of Willamette's structure include two full basketball courts, swimming pool, handball courts, running track, and rooms for weight training, gymnastics, dance, wrestling and lecture classes. Cleared land is already available for the building on 12th between Mill and Bellevue Streets. Adequate parking and a fine outdoor recreation area are adjacent to the building site.

Law library needs 22,000 more volumes

Enrollment jumped to 300 when the Truman Collins Legal Center opened its doors in fall, 1967. Planners had the foresight to provide library space for 100,000 volumes, nearly two-thirds more than the space necessary to house the law collection at that time. Now, with 38,000 volumes, the law school is eager to acquire up to 60,000 volumes by 1975 to meet the new AALS standard. Heretofore the law library was above what the AALS called "a minimum collection," and only last December was a minimum volume figure established at 60,000 for all member schools of AALS.

Motivation for the library increase isn't entirely based on the AALS request. A good library is the heart of a law school; it can help attract and hold excellent faculty and students, and it is necessary to provide adequate "tools" for the students who seek a Willamette law education.

"Our most pressing need and top priority in the College of Law is to bolster the library," commented Dean Arthur B. Custy. "Our library resources are inadequate in comparison with law schools with which we directly compete for students and faculty."

Card-key system implemented quickly

Within two weeks of the Trustee's decision to extend card-keys to junior and sophomore women, 85 per cent of those eligible to participate requested application forms. Recipients have to meet two basic requirements before card-keys are issued: (1) be in good academic standing, and (2) have parental permission. Seniors and those over 21 don't need parental permission.

"One of the main aspects of the card-key system is personal responsibility," said new Dean of Women Karen Anderson.

She went on to explain that a sign-out and a sign-in procedure is still in effect "so we'll know where or when we can reach a girl in case of emergency." Recipients have also assumed a financial responsibility, for if they lose a key they must pay to have the code changed in the cartridge and cover the cost of issuing new card-keys to each holder in the living organization. This could amount to as much as \$20.

Prior to Trustee endorsement, the card-key system was adjudged "extremely successful" by the senior participants, house-mothers and Dean of Women. The proposal was previously passed by Student Affairs Committee, Student Senate and the Faculty.

Freshmen women will remain under the former closing hour regulations in the dormitories, which are 10:30 p.m. Sunday through Thursday (11 p.m. second semester) and 1:30 a.m. Friday and Saturday.

"HOW ABOUT Professor Shakespeare in that 8 o'clock Freshman English class," suggests the faculty adviser.

"Just a second," says Fred Freshman as he pulls out a little yellow book and flips to the section marked English. A frown creases his brow.

"It says here that Professor Shakespeare is a dull lecturer and speaks over the heads of the students. How about if I take this 9 o'clock course from Professor Milton? It says he is well prepared and encourages class discussion."

And so it went. Fred was using (or misusing) the first published student evaluation of classes at Willamette University, a 60-page document issued during orientation week and still smoldering on campus.

Entitled "Course Critique 1969," the volume puts into published and public form what for two years has been reserved for faculty consumption only. To say that it received mixed reactions is an understatement.

Put together with the aid of many students, but directed by Lauren Ronald, edited by Larry Cunningham, and "computerized" by Fred Wert, all juniors, the publication represents a 70 per cent response from the undergraduate students on courses offered last fall.

Two-part format

The format, which has received much of the criticism, calls for two parts, a written summary of student comments and averages of their responses to 18 specific questions. Responses to the questions were on a 1-5 scale, from much below average to much better than average. A zero response meant the question was not applicable. The course and professor were listed, followed by the numbers and percentage of questionnaire response for that class. Then came the 18 numerical averages corresponding to the 18 questions listed in the front of the book, followed by a one or two paragraph prose comment.

At the outset, Ronald states that "students are capable of presenting their views on instructional efficacy with fairness, even though complete objectivity is impossible." He indicates that the general aim of the Course Critique is to improve both teaching and learning. "The evaluation can provide the instructor with feed-back of student opinion and perhaps assist him in improving course content and presentation."

Editor Cunningham explained the prose comments which were edited by him from responses made on the ques-

COURSE CRITIQUE 1969

... the official student evaluation
of classes at Willamette University



tionnaire forms. "The frequency and general ictus of these prose responses constitute the substance of each paragraph. Admittedly, these are brief and should be analyzed carefully with the numerical statistics in order to 'form an opinion' about any one course or its instructor," he wrote.

A random poll of 22 freshmen taken by Publications Board showed that 18 used the Critique in their course selection and 17 relied mainly on the comments, so Cunningham's admonition apparently went unheeded to a great extent. Freshmen were polled since the 600 copies of the book were placed on sale (50¢) during orientation week and soon became a "hot" item at the time of course scheduling.

This reliance on the prose comments and general disregard for the numerical analysis was somewhat understandable from the generally acknowledged "poor format" which made it difficult to flip back and forth from number to question. It was much easier to read a concise statement.

Wide range of comments

These prose comments ranged from such statements as "the students find him encouraging, stimulating and a great challenge," to "the class is generally dull and boring and hardly worth attending."

A number of professors (and not just those who received unfavorable comments) and students have questioned the credibility of the editor's synopsis. On

Ambivalence Greets First Issue

*Course Critique has merits
if "bugs" can be worked out*

some occasions, the synopsis doesn't agree with the numerical responses. Cunningham stands behind the statements as reflecting the frequency in which they appeared on the questionnaires. At an open forum on the Critique, Ronald pointed out the impossibility of presenting a total view and a totally objective view, but he felt the Critique presented a fair view of the subjective opinions of students and "we made no value judgement on whether the student opinions were right or wrong."

Unfortunately, raw data used as the basis of the prose comments were destroyed. This was explained as a safeguard to the students writing the comments, ostensibly to prevent a professor from identifying a particular student from the handwriting.

While some professors saw little or no value in the Critique at all, a general consensus was that the Critique had its merits if some of the "bugs" can be worked out.

A major criticism was aimed at the students' infrequent use of the average numerical response to the 18 questions. The questions themselves were generally regarded as comprehensive enough, although the total evaluation of a professor was mainly limited to the time he entered the classroom until he left.

Dean Byron Doenges of the College of Liberal Arts believes that the classroom is just one facet of faculty responsibility. "We advise, tutor, remain current in our subjects. Each faculty member plays a unique role in our

learning community, a role which transcends the classroom."

He went on to say that he believes the Critique could be a useful tool if it is designed to aid the faculty member in improving his teaching techniques. "I am convinced of the sincerity of the editors and publisher in their attempt to make The Critique a positive influence."

Shouldn't serve as 'Bible'

Junior German major Celia Smith critiqued the Critique in a letter to *The Collegian*. She feels that "the Critique should be a guide, used to better Willamette's classes, not serve as a Bible for new students, indicating which professors they should avoid."

Professor Milton Hunnex, chairman of the philosophy department believes the Critique "should be a help in all regards." The current Critique falls far short of being constructive, he feels. "The editors should ask themselves, 'does this really help the student and the professor? Does this guide the student to the professor who may meet the student's objective, or does it just encourage a student to avoid certain classes?' I have grave misgivings about the possible consequences of the Critique on the climate of the relationship between professor and student. This relationship is a real key on a small campus and we can't afford to jeopardize it." He would favor a Critique that identifies the strong points of the professors and the courses. It should not be self defeating as is his reaction to the 1969 Critique.

"I have grave misgivings about the possible consequences of the Critique on the climate of the relationship between professor and student . . . we can't afford to jeopardize this relationship"

The communication of the Critique from student to professor is invaluable according to economics Professor Richard Gillis. He doesn't believe the student is in a position to rate the content of a course because he doesn't have an overall view of the field, but "he can tell us if we are communicating. We can't say he was taught unless he learned."

Under an editorial headline in *The Collegian* "Perspective: course critique fails," editor Rick Landt states ". . . for the most part it gave a pretty candid



"Students are capable of presenting their views on instructional efficacy with fairness . . ." — Ronald

review of the strengths and weaknesses of the Willamette faculty. This information, however, was already the common knowledge of the student body. In fact, aside from the obvious curiosity value of the booklet, the information it contained was basically worthless to any student with more perceptivity than the Golden Pioneer who lives on top of the State Capitol . . ."

He concluded with the hope that "this zephyr called the Course Critique may turn into the gale that shakes and revitalizes the trees in this minor grove of Academia . . ."

President Roger Fritz, who, along with Dean Doenges, has discussed the Critique at length with both students and faculty, issued the following statement for *The Alumnus*: "When one considers the various ways in which teaching effectiveness can be studied and evaluated, the constructive viewpoints of students certainly should be given serious consideration. After all, what happens as a result of our influences upon them represents the ultimate test of the educational experience at Willamette. We must keep in mind, however, that course critiques and other ways of receiving student judgments represent only one of many valuable sources of information. We have long been dependent upon judgment of peers through established faculty departments, concentration areas and committees, and the need for measurements applied by those with administrative responsibility is obvious."

"Some schools are experimenting with new tools in this area such as video tape



"The prose responses should be analyzed carefully with the numerical statistics . . ." —Cunningham

and other devices which enable individual professors to "see themselves as others see them." All of these means, including student critiques, can be used effectively if we try. It is my hope that we can put them each in proper perspective at Willamette."

Alumni participation?

And so it goes. With this type of reaction to the first published Critique, students are developing plans for improving the next edition. Some of the ground rules have already been changed. The publication will now fall under the student publications board with the editorship granted by that body. Steps will be taken to make the numerical data more readily useful. Yet to be decided are such things as time of issue, in what form will the prose contents be, whether it will encompass both semesters, how increase student response to the course questionnaires, etc.

One point that was touched upon during the critique of the Critique proceedings, and one that could involve alumni participation, is what effect would a few years outside of Willamette have upon opinion of a professor or course? We've all heard stories like "I thought Professor Meany was worthless, but I wouldn't be a millionaire today if he hadn't assigned all that research."

Perhaps some alumni would like to add another perspective to this business of course critiquing. Letters to the *Alumnus* editor will be shared with the publications board.

Association By-Laws and Constitution Changed

A change in the By-Laws of Willamette University has necessitated a revision of the Constitution and By-Laws of the Alumni Association, College of Liberal Arts and College of Music. At its meeting on February 27, 1969, the Alumni Board adopted the following Constitution and By-Laws by unanimous vote, and they are here printed in their entirety for your information. In general they provide for a larger Board with geographic representation, including two students.

By vote of the Board, the Constitution became immediately operational. President Larry Standifer, '54 and President-Elect Dale Gustafson, '56 will together appoint Board members to fill the open positions, and the first election of Officers and Board members will take place at the annual meeting in the spring of 1970.

CONSTITUTION OF THE WILLAMETTE UNIVERSITY ALUMNI ASSOCIATION College of Liberal Arts College of Music

ARTICLE I — NAME AND PURPOSE

Section 1.

NAME. The name of this organization is The Willamette University Alumni Association.

Section 2.

PURPOSE. The purpose of the Association is to promote the interests of Willamette University and to maintain and establish mutually beneficial relations between the University and its Alumni.

ARTICLE II — MEMBERSHIP

Section 1.

ELIGIBILITY FOR MEMBERSHIP. Any former student at Willamette University, in any classification in the College of Liberal Arts or the College of Music, who has been regularly enrolled is eligible for membership in the Association.

Section 2.

HONORARY MEMBERSHIP. Trustees of the University and members of the Faculty who are not otherwise eligible for membership, and persons upon whom the University has conferred honorary degrees and who are not otherwise eligible for membership, are enrolled as honorary members of the Association.

The Association may, upon nomination by the Executive Board, elect as honorary members other persons not eligible for membership. Honorary members are eligible for all privileges of the Association.

ARTICLE III — OFFICERS

Section 1.

NAMES. The officers of the Association are President, President-Elect, Secretary and Director of Alumni Relations.

Section 2.

ELECTION. The President, President-Elect, and Secretary are elected at the Annual Meeting of the Association and hold office for two years. Nominations are made by a nominating committee of five which is appointed by the President of the Association at least sixty days prior to the Annual Meeting.

A nominating ballot is included in the Winter Issue of the *Alumnus* and each member of the Association may nominate one member for each vacant office. Nominating ballots must be returned to the Director of Alumni Relations.

Section 3.

DIRECTOR OF ALUMNI RELATIONS. The Director of Alumni Relations is appointed by the University in consultation with the Executive Board of the Association. He is a member of the University staff as well as an officer of the Association, and is responsible to the Administration of the University.

Section 4.

DUTIES OF OFFICERS. (1) The President presides at all meetings of the Association and the Executive Board, and performs all duties ordinarily performed by the President of such an association, or those duties which may be assigned by the Association or the Executive Board. (2) The President-Elect assumes the duties of the President in case of his absence or disability, and otherwise serves as a member of the Executive Board until he assumes the office of President. (3) The Secretary keeps a record of all proceedings of the Association and of the Executive Board.

Section 5.

The Director of Alumni Relations maintains the Association office at the University, keeps the membership directory and files, and with the cooperation of the Executive Board and the Administration of the University plans and implements the program of the Association. In the event of the disability of the Director of Alumni Relations or a vacancy in the office, the duties of the office are arranged for by the President of the University in consultation with the Executive Board.

ARTICLE IV — EXECUTIVE BOARD

Section 1.

COMPOSITION. The management of this Association is vested in an Executive Board comprised of the officers, fifteen other members of the Association, and two students.

Section 2.

ELECTION. Members of the Executive Board other than the officers and the students are elected at the Annual Meeting of the Association for a term of three years, one class of five being elected at each Annual Meeting on nomination made by the nominating committee provided for in Article III, Section 2. The two students are elected at the beginning of the Junior year by the Junior Class, and serve for two years.

Section 3.

MEETINGS. The Executive Board meets

at least once in the fall prior to Homecoming, once in the spring at least sixty days before Commencement, and at such other times as special meetings may be called by the President of the Association or the Director of Alumni Relations. Seven members present and voting constitute a quorum.

ARTICLE V — COMMITTEES

The appointment of permanent, special, and temporary committees is provided for in the By-Laws of the Association.

ARTICLE VI — MEETINGS OF THE ASSOCIATION

Section 1.

ANNUAL MEETING. The Association holds its annual meeting at the College on the Saturday preceding Commencement, with notification of the exact time and place sent to all members of the Association at least sixty days prior to the meeting.

Section 2.

SPECIAL MEETINGS. Special meetings of the Association are called on vote of the Executive Board or on petition of fifty members. The Executive Board determines the exact time, place, and agenda of all special meetings, and the Director of Alumni Relations notifies members at least fifteen days in advance of special meetings.

Section 3.

QUORUM. Seventy-five members present constitute a quorum for the transaction of business at any meeting of the Association. A number less than a quorum may vote to adjourn that meeting to a later time.

ARTICLE VII — ALUMNI CLUBS

Section 1.

ORGANIZATION. Local and area clubs of the Association are organized, when considered desirable and practicable, by the officers of the Association. The plan of organization of Willamette University Alumni Clubs is included in the By-Laws of the Association.

Section 2.

PURPOSE AND MEMBERSHIP. The purpose of local clubs is the same as that of the Association, and club membership is open to all members of the Association. Activities of local clubs are reported at least annually through the Director of Alumni Relations to the Executive Board and the Association.

ARTICLE VIII — PROCEDURE

Section 1.

BY-LAWS. By-Laws of the Association are established to cover details of organization and operation not appropriately included in the Constitution.

Section 2.

FISCAL YEAR. The fiscal year of the Association corresponds to that of the University, which ends May 31.

Section 3.

AMENDMENTS. This Constitution may be amended by a two-thirds vote of the regular members who are present at any meeting of the Association, provided that the substance of the proposed amendment has been submitted to the membership with one of the notices of the meeting.

(See By-Laws Page 25)

1969 Report of Gifts

June 1, 1968 to May 31, 1969

ALUMNI	\$ 78,536.42
PARENTS	12,532.00
TRUSTEES	24,310.90
OTHER INDIVIDUALS	41,145.09
BUSINESS & INDUSTRY	110,108.82
FOUNDATIONS	3,898,547.25
GOVERNMENT	344,799.55
UNITED METHODIST CHURCH	46,347.85
OTHERS	19,720.95
TOTAL	\$ 4,576,048.83

SINCE THIS, my twenty-seventh annual report on financial support of the University, will be the last which I shall be privileged to make to the alumni and friends of Willamette, it is indeed a great satisfaction again to report that a new record has been set in the total value of gifts and grants in support of the many projects of Willamette. For the past fiscal year, June 1, 1968 to May 31, 1969 a total of \$4,576,048.83 was received from all sources. The past year would have been another million dollar record even without the magnificent gift of the President of the Board of Trustees, Mr. Geo. H. Atkinson, who turned over to the Atkinson Fund of Willamette University stock in the Guy F. Atkinson Company with a market value on the day of transfer of \$3,412,500.

We get some perspective on the magnitude of the support Willamette has had during 1968-69 when we realize that at the end of the first hundred years of the history of the University, the acknowledged value of the assets, including endowment, campus and plant amounted to \$3,188,455.00.

Generosity of our friends has made possible improved facilities and added resources to serve a larger body of students, but even more important, the quality of the University service has been immeasurably improved. The faculty has been enlarged and is better supported than at any time in history. Educational resources including libraries, laboratories, and equipment have been enriched. The curriculum of the University has been thoroughly revised and updated. Greatest care is being exercised in the management of the resources of Willamette, and in the expenditure of the educational dollars entrusted to us to see that they are wisely invested in the best possible educational opportunities for the students whom we serve. Only under such condi-

tions are we justified in continuing to offer the friends and alumni of Willamette the opportunity to invest their wealth in the ongoing program of education on this campus.

While much has been achieved, continued support must be sought if Willamette is to go from strength to strength and maintain her position of excellence in higher education. We must still secure in excess of two million dollars for the endowment to meet the goal set in our campaign for the Fund for Educational Excellence (FEE-125). We have still to provide a minimum of \$1,500,000 to launch the Graduate School of Administration. There is a crying need for a new physical education and physical recreation which are so important to the physical and emotional health of the University community. Scholarship funds must be secured to assist worthy students so that the kind of education offered by Willamette may be readily available to qualified students without reference to their financial status.

The continuing explosion of knowledge is placing tremendous demands for increased accessions for the library and for expensive, sophisticated equipment for laboratories.

With these challenges before us, the decade ahead must be the most important in Willamette's long history and new friends must be found to join hands with those who have provided, often through sacrificial giving, the assets which have brought Willamette to her present position of influence and service.

I would close this report by expressing my heartfelt thanks for all the support, the good wishes and the friendship of the past twenty-seven years.

Most sincerely,
G. Herbert Smith
Chancellor



THE HONOR ROLL

1968-69 Loyalty Fund

Alumni giving to the Loyalty Fund for faculty salaries reached an all-time high of \$43,805.79 for the college year 1968-69. This amount was contributed by 1,900 alumni and represented 22 per cent of the active alumni file. Since the total number of donors was not the largest on record (2,145 in 1967-68), the average size of the gift to the Loyalty Fund this year was notably increased. As a result, the alumni claimed \$18,000 from the Collins Foundation Matching Fund giving a grand total of \$61,805.79 for the faculty salary budget.

Of the 1900 individual gifts to the Loyalty Fund, 126 were College of Law alumni whose gifts totaling \$3,299.60 were applied to the College of Law Alumni Fund for law faculty salaries or for additions to the College of Law Library as designated.

Over and above the Loyalty Fund gifts, 115 additional alumni made gifts for other projects of the University. The total of all gifts made by alumni to the projects other than the Loyalty Fund amounted to \$34,730.63.

The University is proud to list below the names of those sons and daughters of Willamette whose gifts for all purposes assisted in making the college year 1968-69 the most significant year in gifts and grants in the long history of the University. All of these gifts are gratefully recorded and here recognized.

This annual report includes the individual names of the donors, class totals and percentage of participation by each class.

1905

Lila Swafford Moser

1907

Olive Rigby Lucas
Arthur J. Pridemore
Veva Bartlett Smithson
Rev. Edward J. Winans

1908

Merle Hockett Davenport
Bessie Cornelius Elliott
Rev. Fred Hornshuh
Austin C. Price
Ruth Whipple

1909

John C. Johnson
Edith Carter Kuney
Elva Winslow Nelson

1910

Cynthia J. Hornbrook Bowden
Clark R. Belknap
George G. Forbes, D.M.D.
Nora Emmel Forbes

1911

Hattie Beckley Bellinger
Guy A. Woods, D.M.D.

1912

Frank W. Barton
Alta Altman Hurst
Albert N. Minton
James A. Oakes
Frances Pohle Utter

1913

Participation-27%
Amount-\$235.00

Charles E. Bates, M.D.
Gertrude Reeves Freese
Lulu Heist
Pearl Bradley Hollingworth
Ada Mark Mills
William Schreiber
Jessie Young West

1914

Participation-35%
Amount-\$441.00

Ava McMahon Barnes
Herman Clark
Mary Rigler Goebel
Laura Heist
Aggie Alford Larson
Edith Sherwood Mason
Waldo O. Mills, M.D.
Reynolds W. Ohmart
Lester Proebstel
George Vandever, M.D.
Neal L. Zimmerman, D.M.D.

1915

Participation-42%
Amount-\$91.00

Mary Cone Acheson
Thomas E. Brunk
Mildred McBride Gatchell, M.D.
Keith Van Winkle Heinz
Milton A. Marcy, D.D.
Helen Pearce, Ph.D.
Leland Sackett
Lucille Kentz Schramm
Eunice Miller Tobie

1916

Participation-25%
Amount-\$100.00

Herbert Blatchford
Rev. Maurice L. Bullock
John L. Gary
Beryl Holt
Florence Page Nussbaum
George Allen Odgers, Ed.D.
Ada C. Ross
Mabel St. Pierre

1917

Participation-35%
Amount-\$232.00

Irma Botsford
Gladys Carson Douglass
Leigh C. Douglass, Ph.D.
Olive Beckley Fields
A. J. Gillette
Esther Emmel Gillette
Rosamond Gilbert Haight

Col. Walter R. Jeffrey
Samuel R. King, Ph.D.
* Aetna Emmel Olson
Adeleide Tobie Orange
Ruth Winters Tasker

1918

Participation-38%
Amount-\$344.50

Harold E. Eakin
Clara Perkins Elliott
Mary E. Eyre
Lloyd R. Haight, M.D.
Hortense Ingalls Manning
Blanche Baker Proctor
Charles R. Randall
Margaret Garrison Robinson
Fannie McKennon Sackett
Esther Cox Todd
Mabel Garrett Wagner

1919

Participation-55%
Amount-\$234.00

Venita McKinney Armstrong
Helen Goltz Bagley
Metta Walker Baughman
Gladys Nichols Elliott
Grace Sherwood Fleming
* Robert M. Gatke, Ph.D.
Elizabeth Tebben Harris
Esther Yeend Horton
Lella Johnson
Helen Moore Lee
Fay Wells Lien
Florence Shirley Medler
Faye Bolin Millie
Mary Putnam Mort
Vesta Mulligan
Fred Otto
Ruth Stewart Roe
Mary Parounagian Schroeder
Prof. Lestle J. Sparks
Carolyn Sterling
Louis F. Stewart
Homer G. Tasker
Charlotte Tebben Wilson

1920

Participation-41%
Amount-\$252.50

Myrtle A. Smith Boicoourt
Evelyn Gordon Ekstrom
Estelle Satchwell Gatke
Eva Parrett Klein
Kenneth Legge
Velma Baker Legge
Mary E. Findley Lockenear
Harold Miller
Merrill D. Ohling
Odell Savage Ohling
Grace Bagley Person
Hazel Bear Stewart
Genevieve L. Yankke

1921

Participation-50%
Amount-\$622.50

Rhoda Persons Baker
Frank B. Bennett, Ed.
Ivan Corner, St.
Fay Peringer Coulter
Edna Gilbert Davies
Lawrence A. Davies
Mildred Garrett Day
Paul L. Day, Ph.D.
Robbin E. Fisher, M.D.
Tankham Gilbert
Helen Satchwell Gragg
Rein E. Jackson
Marguerite Cook Lawson
Glyde Ausman McGrew
Myrtle Mason McKittrick
Muriel Steeves Morse
Gladys Crozer Morse
W. Bernard Morse
Ina Moore Potter
Charlotte Croisan Rerey
D. Russell Rerey
Raymond Schmalie
Veda Brown Schroeder
Edwin D. Spoolofsky

1922

Participation-51%
Amount-\$4,506.00

Minnie Ambler
Gladys I. Bartholomew
Ethel Mccroft Bennett
Andrew C. Caton, D.D.
Lorlei Blatchford Cayton
S. Marie Corner
Emma Shanafelt Day
Lester S. Day
Hugh E. Doney
Harold P. Drake
Ruth Busch Fraser
Mildred Clarke George
Grace Collins Goudy
Grace Tyler Hockett
Elsie Gilbert Jackson
Laura Ruggless Kracaw
Virginia H. Mason
Noble S. Moodhe
Eva Roberts Nipps
Ruth Schaefer Page
Dean Pollock
Mildred Brown Pollock
Ralph Ashbrook
Benjamin E. Rickli
Cecil L. Shotwell, M.D.
Irma Fanning Shotwell
Marion Linn Sparks
Vivian Isham Wilken

1923

Participation-45%
Amount-\$544.50

Lola Housley Alter
Pauline McClintock Bain
Verne D. Bain, Ed.D.

William Baker
Freda S. Beck
John C. Brougher, M.D.
Mildred Strevey Colcord
Luther D. Cook
Ina Mae Beisell Cross
Martha Ferguson Dana
Zsther Parounagian Downs
W. V. Ferguson
Faye McKinnis Fisher
Helen R. Hoover
Florence A. Howe
Louise Rumohr Irving
Marjorie Flegel Jacroux
Carmen Harwood Jenkinson
Rev. Francis Kinch
Helen McInturff Lawson
Willard Lawson
Thelma Mills
Deane Hatton Moodhe
Genevieve Findley Oliver
Carol Rahskopf Petree
Winifred St. Clair Rogers
Elton L. Von Eschen
Bruce F. White, Ph.D.
Grace Brainerd White
Helen Hardy Yancey
Waldo Zeller, D.D.

1924

Participation-34%
Amount-\$717.00

Byron Arnold, Ph.D.
Isabel Clawson Bowersox
Alma Wells Bratton
Georgia Morgan Cook
Maurice E. Corthell, M.D.
Lela E. Ellis
Margaret L. Gates
Orlo M. Gillett
P. Edward Huston
Carolyn Wilson Keck
Albert V. Logan, Ph.D.
Eva Ledbetter Miller
Violet Coe Mumford
Robert C. Notson
Fred J. Patton
Phyllis Palmer Patton
Irene Walker Rickli
Perry Sloop
Julia Corner Street
Ruth Hill Viguers
Willis D. Vinson
Ethel Adams Walker
Carol Cheney Winters
Kathleen LaRaut Wrenn

1925

Participation-46%
Amount-\$980.00

Hulda Hagman Atwood
Carmelita Barquist
Merl E. Bonney
Marian Wyatt Cheldelin
Volens Jenks Danielson
Maxine Elliott Dickson
Dwight Findley, M.D.
* Elaine Clower Fisher
Laura Best Fisk
Thornton M. Gleiser
Milton E. Gralap
Rev. Percy Malcolm Hammond
Lucia Card Hansen
Grace Tyler Hockett
Lloyd L. Hockett, D.D.
Frances M. Hodge
Mary Keefer
Jennelle Vandevort Moorhead
Howard W. Mort
Adelia White Notson
Paul A. Pemberton, M.D.
Paul N. Poling, D.D.
Treval C. Powers
Ruth Ross Rhoten
Paul G. Roeder
Lola Millard Ross
Dorothy Owen Sloop
Fay Sparks
Harry C. Spencer, D.D.
Caroline E. Tallman
Ellis F. Von Eschen
Rev. Leroy H. Walker
Esther Moyer Zeller

1926

Participation-37%
Amount-\$1,420.00

George H. Atkinson
Louise Kaufman Barton

MEMORIAL GIFTS

*During the past year
gifts were made
to the Loyalty Fund
in memory of:*

Harry W. Swafford 1903
J. Chris Schneider Law 1937
Max F. de Sully, Jr. 1967
Clarence M. Bishop, Life
Member-Board of Trustees

Eva Tacheron Bell
Enid Bolton
Charles A. Bond
Jessie Pybus Bond
Isabelle Noftsker Bove
Lucile Wylie Brechtel
Ruth Heineck Brook
Esther Bauman Brougher
Palmer Carter, M.D.
Ila G. Comstock
Laura Pemberton Corner
Mary Leighton Doney
Genevieve Thompson Dyer
Herbert S. Erickson
Pauline Miller Gillis
Mildred Grant Hartley
Hazel Hilda Hiday
Susie Church Huston
G. Paul Johnston
Marjorie Christenson King
Oma Emmons Mackie
Helen Johnson Marcy
Rachael De Yo Medler
Beulah Fanning Moore
Charles T. Nunn
Daniel T. Schreiber
Lloyd E. Thompson
Hollis Vick
G. Gilbert Wrenn, Ph.D.

1927

Participation-34%
Amount-\$1,080.50

Eugenia Baker Allen
Millicent King Beaver
Nathaniel E. Beaver, M.D.
Ruskin Blatchford, D.M.D.
Roderick Clarence Blatchford, M.D.
Anna Lennartz Bushue
Daryl M. Chapin, Sc.D.
Orland Cheldelin
William Wayne Crow
William T. Edmundson, M.D.
Mary M. Erickson, Ph.D.
Eunice Flock
Hazel Burdett Fyfe
M. Clara Geddes
John W. Givens, Sr.
Henry Hartley
Nena Froloff Haynes
Ruth Drew Holman
Grace M. Linn
Denn Lobaugh, Ph.D.
Eleanor Metewether Lobaugh
Margaret Brown Miller
Lt. Col. Theodore B. Mitzner
Edgar Mumford
Hazel R. Newhouse
Mildred Tomlinson Phillips
Olive Tomlinson Poling
Sadie Jo Read
Joseph K. Rhodes
Thomas R. Roe
John P. Russell, M.D.
T. D. Schindler
Loyal A. Warner
Walter W. Welbon

1928

Participation-37%
Amount-\$1,728.75

Evangelina Heineck Blatchford
Mildred Mills Blatchford
Albert J. Boothby
Rosa Ricco Butterdahl
Claudine Gerth Elbert
Joy Hillis Gubser
Albert W. Herriman
Robert R. Kelly
Doris Condit Lentz
Kenneth D. McCormick, Litt.D.



Hugh McGilvra
Louise Nunn McGilvra
William Mickelson
Frances Lemfrey Miller
Paul Miller
Ellen Van Nice Mitzner
Harold S. Mumford
Elie R. Pfeiffer
Trista Wenger Powers
Phoebe Smith Redding
Virginia Crites Rigby
L. E. Schreiber
Vernon R. Taylor
Rev. Ormal B. Trick
Helen Sande Truber
Paul G. Trueblood, Ph.D.
Irene Breithaupt Van Natta
Hal Wittenberg
Aza C. Zeller

1929

Participation-47%
Amount-\$1,290.50

Reeve H. Betts, M.D.
Esther Lisle Billman
Beatrice Lockhart Bliss
Helen Hisey Bohannon
Maida Caldwell Estes
Rev. Everett Gardner
Frank P. Girod, M.D.
Louise Liere Glenn
Donald K. Grant
Meredithe Groves, D.D.
Alice Lane Hopkins
Bernice M. Jackson
Charles L. Kaufman, M.D.
Elma P. Kimbrell

Grace White Ledbetter
W. Glenn Ledbetter
Elsie Tucker Lewis
O. Kenneth Litchfield
Dorothy Peters Longston
Elma White Montgomery
Charles Loren Mort
Emma Jean White Potts
Carol B. Pratt, O.D.
Bertha Ripplinger
Doris Phenicia Silke
William B. Smullin
Anna McKinley Swafford
Georgia Fairbanks Taylor
Mary Louise Aiken Thione
Margaret Klein Walker
Carolyn Parker Waleber
Dionel M. Woodworth
Margaret Wood Woodworth

1930

Participation-39%
Amount-\$905.00

Gaynelle Beckett Alfred
Roberta Vannice Boylen
Ida Ford Chaney
Mary Herschberger Church
Dorothy Brant Deacon
Dorothy Whipple Fisher
Lois Benjamin Gardner
Joyce Kidder Gowen
Margaret Hogg
Helen L. Hughes
Raymond Hurley
Katherine Everett Kaufman
Walter H. Kaufman
Wendell M. Keck, Ph.D.
Donna Hildesheim Kramer
Frances McGilvra Litchfield
Emily Brown McClure
Helen McPherson
Marjory Miller Marsh
Marion Morange, Ph.D.
Fay Irvine Mort
Kenneth H. Mosher
William W. Mumford
Dorothy Taylor Patch
Rev. George L. Poor
Ruth Burch Renfroe
Florence Emmons Riggs
John F. Risley
Frieda Falconer Schreiber
Rev. Harold S. Sheihart
Eugene H. Silke
Anna Lanke Van Winkle
Lewis Van Winkle
Evelyn Hartung Zeller

1931

Participation-34%
Amount-\$1,342.00

Eva Gorham Craig
Hugh B. Curran, M.D.



Esther Ross Curryer
Laurence Deacon
Margaret Schreiber Dumas
Roberta Archibald Dykes
Mildred Pugh Emmons
Marna Powell Estep
Judge Joseph B. Felton
Betty Lewis Frewing
H. Leslie Frewing, M.D.
Margaret L. Ghorley
Evelyn High Grant
Frank N. Grover
Bonnie Weinheimer Hart
Margaret Morehouse Kaufman
Virginia Edwards McCamant
Helen Louise Brown McMinimee
Edith Morange Meiseger
Harold R. Meiseger
Lois Barker Metcalf
Howard F. Miller
Mary Allen Miller
Norabel Pratt Miller
Raymond Miller
Beatrice Hartung Moore
Albert Lars Nelson
Rupert Philipott
Jennie Lilly Roys
Doris Corbin Sheythe
Ellen Mae Standard
Mary Wagner Thompson
Ramond C. Waddell, Ph.D.
Edward C. Weiss, Sc. D.
Elizabeth Atkinson Whitsett
Pauline Findley Wolf

1932

Participation-20%
Amount-\$855.00

Sarah Dark Beall
W. Haynes Beall
Edith Findley Brydon
Charles S. Campbell, M.D.
Stearns Cushing, Jr.
Jesse C. Deetz
Marjorie Moser Durham
Donald E. Faber
Lois V. German
Lloyd B. Girod
Doris Clarke Hamilton
Margery E. Hannah
Faye Henderson
Esther Girod Jensen
Beuna Brown Miller
Clarence A. Poor, M.D.
Mildred Leighton Query
Isabel Childs Rosebraugh
Perry W. Spelbrink
Margaret Marsh Walker
Irene Widner Weller

1933

Participation-33%
Amount-\$374.00

Gertrude Beard Blair
Frances Jackson Bushnell
Bainey G. Cameron
Faye M. Cornutt
Hazel Snyder Cruthers
Louise Sidwell Crow
Enoch Dumas, Ph.D.
Walter E. Erickson
Leland H. Gould, M.D.
Gilbert C. Hamman
Helen Boardman Hammond
Robert Lee Houck
Erwin P. Lang, Ed.D.
Pauline Livesey Lewis
Pauline Crumer McLennan
J. D. McLennan
Dorothy Rose Marcy
Frances Lows Margosian
M. E. Moore
Lt. Col. Del K.
Neiderhiser, USAF, RET
John W. Nelson
Harold Rose
Lucille Finnary Rose
Edwin Rounds
Roberta Riggs Rounds
Harriett Adams Smart
Orville D. Torbert

1934

Participation-33%
Amount-\$602.50

Rev. Edward J. Aschenbrenner
Benjamin T. Briggs, Ph.D.
Mary Scott Briggs
Vernon C. Bushnell, Ph.D.
Frank E. Childs, Ph.D.
Helen Childs deLespinasse
David G. Drager, Jr.
Blair Foley Dunlap
Frederick Edmundson
Virginia Matlack Frederick
Anna Calaba Fuller
Lowell L. Gribble
Ruth Schreiber Houck
Rev. Ross Knotts
Marie Ledbetter
Kenneth V. MacKenzie
Margaret A. Morris
Kenneth Oliver, Ph.D.
Madeline Schmidt Oliver
Frances Albee Plancic
Roberta Mills Price

Margaret Purvine
Rex R. Rhoten
Roberta Brainard Rice
Eugene L. Smith, Ed.D.
Jessie Fukuda Tanaka
Richard H. Upjohn, M.D.
Janet Weil West
Mary M. White
Miles E. Woodworth

1935

Participation-25%
Amount-\$611.50

Anonymous Donor
Frances Stewart Carlson
Lowell L. Eddy, M.D.
Donald L. Erickson
Leola Johnson Faber
Edward Frantz
Ruth Chapman Frantz
Sydney Hannaford Gustafson
Seiko Watanabe Hasegawa
E. Lorraine Sheldon Kissling
Harold Lamb
Isobel Morehouse Lemmon
Richard H. Lucke
Frances Schilling Miller
David Elliott Moser
Margaret Notson Moser
Eleanor Yarnes Mosher
William A. Mosher, Ph.D.
Willis Noel
Anna Jo Fleming Phares
Ethel Adam Schreiber
Norman Swanson
Karl E. Weissner

1936

Participation-22%
Amount-\$547.00

Michael Balkovich
Harriet Sanders Burdette
Rev. Laurance A. Burdette
Frank deLespinasse
Donald John Egr
Harry E. Emmel, M.D.
Jeryme Upston English
Edna Holder
Albert M. Hughes
Marion Pope Kahl
Burton C. Lemmon
Winifred Gardner McLeod
Ian MacDonald, M.D.
Eather Gibbard Manning
Kenneth G. Manning
Waldo O. Mills, Jr., M.D.
John M. Ross, M.D.
Florence DuRette Saalfeld
Richard Smart
Margaret Haight Thome
William M. Thome, Jr.
William B. Voss
Charles West

1937

Participation-29%
Amount-\$1,117.50

Steven W. Anderson
James T. Barnett
Joseph Blanchard
Martha Warren Burdett
Helen Purvine Burnett
Muriel Jones Cason
Walter A. Commons
Jack P. Connors
Ronald P. Crossland
Shirley Siegner Faith
Roy S. Ferris
John Finkbeiner
Bessie Gregerson
Margaret Hewerton Gullickson
Winthrop C. Henderson
Marian Wakefield Hermann
Lucile Bepinard Kelly
Randall B. Kester
Lucy M. Klein
George M. McLeod

Laurance L. Morley
Harry S. Mosher, Ph.D.
K. James Nakadato, M.D.
Margaret Nunn Newell
Edna Savage Olson
Howard F. Pemberton
Rev. Warren W. Peters
Mildred Walker Postl
James H. Pyke, D.D.
Donald Ream
Forest E. Robinson
Rosemary Huffman Schultz
Jeannette Scott
Wilfred C. Sutton, Ed.D.

Charles W. Versteeg, M.D.
Lois Webb Wennstrom

1938

Participation-23%
Amount-\$730.00

Erma Gehler Abbott
Verne Adams
Robert F. Anderson, M.D.
William B. Beard
Charlotte Bitchfield Dixon
Margaret Hauser Ebert
Barbara Crookham Euler
Genevieve Bellinger Hughes
Charlotte Eyre Hunt
Rev. Ralph G. Kleens
Una Lee Kruse
Thure A. Lindstrom, Jr.
Frances Faber Mitchell
Arthur Myers
Robert S. Nelson
Rev. Charles S. Neville
Mary Jean Sargent Neville
Willetta Smith Nielsen
Dorothy Ellinger Pemberton
Ina Bennett Purvis
Myron Ray
Frank D. Reid, D.M.D.
Lee N. Rudin
Theresa Ulrich Rudin
Prof. William M. Stone, Jr.
Lois Miller Van Vleck
Otto J. Wilson

1939

Participation-16%
Amount-\$629.50

Elliott D. Becken, Ph.D.
George Billings
Pearl Boothby Bucklin
Lois Burton Cleveland
Selle Brown Elmer
Eleanor Johnson Gillespie
Tyrone Gillespie, D.C.L.
Frank M. Guerin
T. Melvin Holt
Karl Kahle, Jr.
John Kelly
Eather Nelson Kraemer
Valera Amort Lander
Theodore E. Ludden, M.D.
Betty Craney Marion
Marian Steigerwald Murphy
Clay A. Racely, M.D.
Suzanne Curtis Sheppard
Martha Okuda Tachino
Rev. Orval B. Whitman
Margaret Macy Wilson
Robert Wilson, Ph.D.

1940

Participation-27%
Amount-\$964.00

George B. Abbott
Betty Starr Anderson
* Eleanor Perry Baker
Roger Baker
Mabel Lenz Balkovich
Maravene Thompson Barnett
Verna Vosper Berg
Warren Biggsataff, Ph.D.
Gerald C. Burnett, Sr.
Dwight Catherwood
Helen Neider Cherry
June Brasted Chipman
Jessica Kinsey Cozay
Carolyn Woods Drobot
R. Watson Dutton
Elizabeth James Hogsett
Agnes Mickey Kaiser
Robert Knauscher, Ph.D.
Marvin M. Dacy, M.D.
Virginia Furst Lacy
Capt. John A. Lindbeck,
USN-RET
Erma Taylor Llenas
Rev. Carl B. Mason
Dan E. Moser
Arthur W. Olson
Gertrude Hughes Partlow
Doris Riggs Poque
Ervin W. Potter
Philip M. Rommell, M.D.
Julia Foglesong Runyan
Sidney W. Schlesinger
George J. Sirnio, Ed.D.
John A. Snell
Roger C. Southard, M.D.
Tom C. Stacer
Elizabeth Ann Zook Stainsby

David I. Stall
Helena Schneider de Sully
Lorraine Vick
Irma West, M.D.
Lois Herman Whalin
Betty Williams Zumwalt

1941

Participation-21%
Amount-\$920.00

Winston Bunnell
Harry Calbow, Jr.
Edwin E. Cone
Vernon D. Casterline, M.D.
Melvin Crow
Alice Dahlen
Olive Dook
Oscar L. Donaldson, Jr.
Allan L. Ferrin, M.D.
Margaret Wright Flores
Peter H. Geiser
Roland E. Gleason
Ernest P. Greenwood, M.D.
Gilbert S. Heald
Richard D. Jewett
Amy Sebring Kahle
William H. Kilkeny
Vernon A. Larson
Robert McKown
Ardea Hanson Mohr
Warne H. Nunn
Madolyn Best Palmer
Myron Poque
Jewell Minier Potter
M. Eugene Reed
Patricia Otten Reed
Barbara Young Reinhard
Marjorie Van De Walker Sherman
Elizabeth Moser Smith
Ardo B. Stocks
Dean D. Trumbo
Genevieve Stoddard Vehrs
Taul Watanabe
Everett Wilcox, Ed.D.
Frances Gorsuch Wilcox

1942

Participation-25%
Amount-\$1,105.50

Dorothy Moore Anchor
R. Winfield Anchor
Charlotte Ellingworth Aslanian
Claude W. Barrick, Jr., M.D.
Carl Bowman
Madge Thompson Broshot
Elizabeth Hamilton Caldwell
John R. Christopher, M.D.

June Woldt Cone
Macario T. Corpus
Robert Y. Dean, Ph.D.
Rev. William Elmer
Lillian Green Enz
Maurice Fitzsimons
Wayne Hadley
Poster M. Hagy
John W. Hathaway
Loren B. Hicks
Ruth Amason Hill
Tom B. Hill, Jr.
Kenneth J. Hunt
Jean Geddes Johnson
Ivan T. Lowe
Ralph E. May
Bertha Boyle Mitchell
Gordon H. Moore
Madeline R. Morgan
Greta Motzen Morley
Deiores Setz Nunn
Glenn A. Olds, Ph.D., D.D.
Frances Harris Parke
Lawrence C. Persimmet
Robert L. Purbrick, Ph.D.
Orville D. Regsdale
Arthur S. Rathkey, M.D.
A. David Reinhard
Tom Riches
Walter Keith Roberts, Ph.D.
Cleo Nissen Swenson
Oscar Swenson
Winston Taylor
Betty Lou Strachan Tenold
Bruce Van Wyngarden
Maxine Holt Van Wyngarden
Robert W. Voigt
Ward E. Walker
Marcus E. Waltz, D.M.D.
Avis Pick Waring
Gwendolyn Griffith Williams
Margaret Siegmund Wilson
Helen Acheson Wolfhagen
Marion Sanders Woodham

1943

Participation-24%
Amount-\$382.50

Martha Hamilton Atwood
Edna Hopper Bryan
Iris McCurdy Bunnell
Dean H. Byrd
Patricia Hutchinson Coffeen
Dorothy Tate Downs
E. Hume Downs, M.D.
Fred Ellis
Muriel Lindstrom Eshleman
Elvy Frederickson, Ph.D.
Billie Jean Gillilan Haley
Mark O. Hatfield

Betty Sackett Heald
Wendell Johnson
Ralph J. Kennedy
Carlton J. McLeod
J. Wallace Olson

R. Merle Palmer
Nancy Boles Peters
Coe Roberts
Lois Gladden Roberts
Amedee M. Smith
Audrey Fehler Smith
Reeva Schmidt Spies
R. K. Stacer
June Earle Trumbo
Olivia Olson White

1944

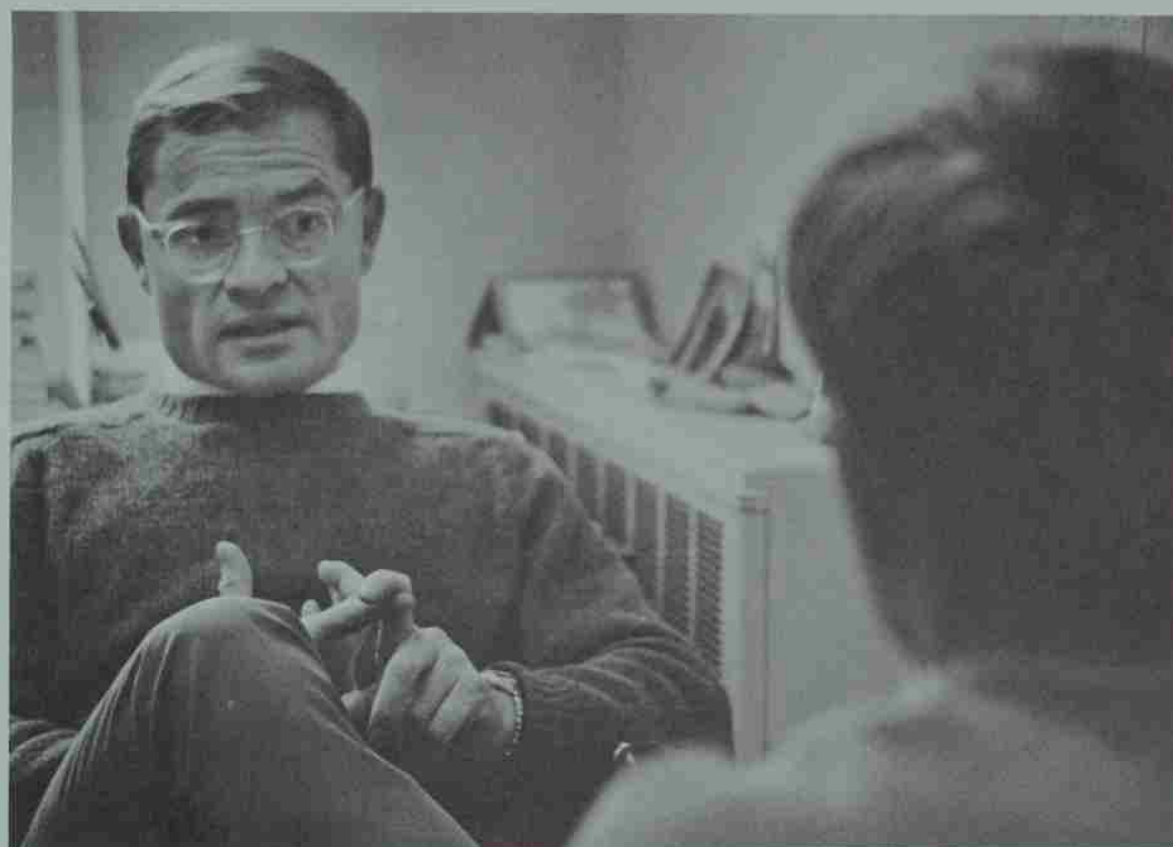
Participation-14%
Amount-\$228.00

Aubel Dickson Albert
Robert B. Albert
William Atwood
John Beeble, M.D.
Barbara Pitts Bowles
Marjorie Maulding Coughanour
Janet Haggland Craine
Anthony Fraiola
Glennerva Hornsberger Goodrich
Shirley McKay Hadley
Marcia Fry Johnson
J. Robert Lee, M.D.
Sybil Spears McLeod
Dorothy Estes Mitchell
Raymond E. Short, Ph.D.
Gladys Crawford Stearn

1945

Participation-14%
Amount-\$276.50

Bernice Elgin Anderson
Mary E. Bennett
Fred G. Bradshaw
William B. Cate, Ph.D.
Eunice Massee Davis
Emma East Donovan
Elsine Murray Ellis
Betty Adkins Fukuyama
Doris Doughton Jewett
Jesh Carlin Saneal
Betty Joan Andrews Saverled
Marian Carter Showers
Norris D. Smith, M.D.
Abe Steinback
Charles Curtis Strong, M.D.
David M. Teeter
Helen E. Thomas

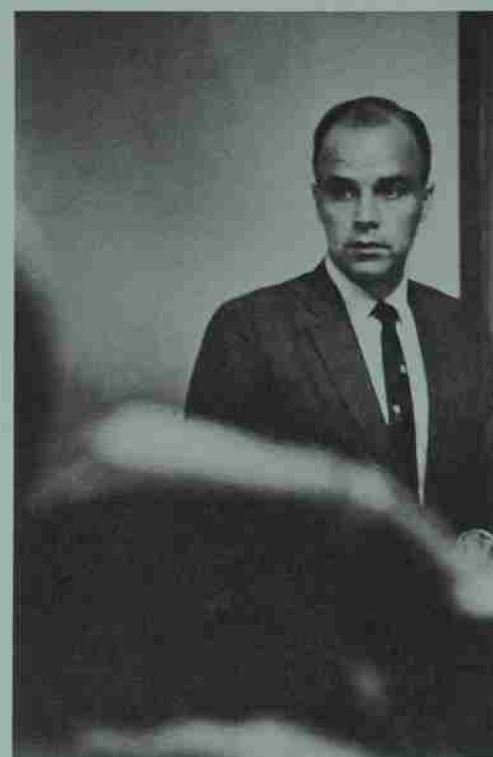


Second Century Club

The Second Century Club is comprised of Willamette alumni who give \$100 or more annually to the Alumni Loyalty Fund. This past year the 135 donors below offered \$18,802.95 to the Loyalty Fund. The Alumni Association and the University are particularly grateful for this generous support.

Robert A. Anderson, M.D.
Dr. and Mrs. Robert F. Anderson
Mr. George H. Atkinson
Mr. and Mrs. James T. Barnett
Mr. David S. Barrows
Mr. and Mrs. Arthur Beddoe
Mrs. Hugh M. Bell
Frank M. Bennett, M.D.
Richard C. Bennett, M.D.
Dr. and Mrs. Richard N. Bolton
Mr. and Mrs. Charles A. Bond
Mr. Albert J. Boothby
Mrs. Charles J. Bowles
Dr. and Mrs. John C. Brougher
Mr. George L. Buland, Jr.
Mrs. Andrew H. Burnett
Charles S. Campbell, M.D.
Mr. and Mrs. Paul B. Cole
Mr. and Mrs. Edwin E. Cone
Maurice E. Corthell, M.D.
Hugh B. Currin, M.D.
Mr. and Mrs. Lawrence E. Davies
Richard F. Drake, M.D.
Mrs. Joseph M. Dyer
Lowell L. Eddy, M.D.
William T. Edmundson, M.D.
Harry E. Emmell, M.D.
Mr. David J. Erickson
Mrs. Marna Powell Estep
M. Patricia Farnes, M.D.
Allan L. Ferrin, M.D.
Mrs. Norman W. Frees
Mrs. Harold G. Fyfe
Miss Lois V. German
Dr. and Mrs. Tyrone Gillespie
Mr. and Mrs. A. J. Gillette
Mrs. Pauline Miller Gillim
John W. Givens, Sr.
Mr. Alan Collins Goudy
Mrs. Elmer Goudy

Mr. Steven C. Gray
Mr. and Mrs. Dale Gustafson
Mr. and Mrs. Evans T. Hamilton
Miss Laura Heist
Mr. Winthrop C. Henderson
Mr. and Mrs. George W. Hoyt
Mr. Ronald M. James
Mr. and Mrs. Harold Jole
Dr. and Mrs. Charles L. Kaufman
Dr. and Mrs. Wendell M. Keck
Mr. William H. Kilkenny
Mr. Al F. Ladendorff
Mrs. David J. Lawson
Mr. and Mrs. Kenneth Legge
Capt. and Mrs. John A. Lindbeck
Mr. and Mrs. G. Kenneth Litchfield
Mr. and Mrs. Eugene L. Lowe
Kenneth D. McCormick, Lt.D.
Mr. and Mrs. Hugh McGilvra
Mr. and Mrs. Warren A. McMinimee
Mrs. Paul Manning
Richard L. Mercer, M.D.
Mr. and Mrs. Paul Miller
Mr. Charles K. Mills
Waldo O. Mills, Jr., M.D.
Mrs. George Montgomery
Dr. and Mrs. William A. Mosher
Mr. William W. Mumford
Mr. Bernard Newby
Mr. and Mrs. Warne H. Nunn
Mr. James M. Oakes
Glenn A. Olds, Ph.D., D.D.
Senator Robert W. Packwood
Paul A. Pemberton, M.D.
Dr. and Mrs. Marvin G. Pursinger
Clay A. Racely, M.D.
Judge and Mrs. W. Charles Redding
Dr. and Mrs. John Rehfuess
Mrs. Virginia Crites Rigby
John M. Ross, M.D.



Dr. and Mrs. William M. Ross
Mr. John C. Roth
Mr. Sidney W. Schlesinger
Mr. and Mrs. Eugene H. Silke
Mr. William B. Smullen
Mr. David I. Stall
Prof. William M. Stone, Jr.
Dr. and Mrs. Charles Curtis Strong
Mr. Robert M. Stults
Mr. and Mrs. Vernon R. Taylor
Mrs. R. I. Thieme, Sr.
Miss Mary Louise Turner
Richard H. Upjohn, M.D.
Mrs. Floyd Utter
George Vandever, M.D.
Mr. Ellis F. Von Eschen
Mr. Karl E. Weissner
Mrs. Norman White
Dr. and Mrs. Hubert T. Wilken
Mrs. Robert Wulf
Neal L. Zimmerman, D.M.D.

1946

Participation-30%
Amount-\$232.50

Ina Mae Monroe Aden
Mary Jean Nims Beegle
George W. Bent
Janice Patterson Cate
Betty Balch Corey
David R. Davis, M.D.
David C. Demeter
Lorraine Nelson Ellis
Ruth Farmer Feinberg
Jane Huston Fitzsimons
Don Fox, M.D.
Roberta Yocum Fox
Dorothy Jean Hall
Dorothy Kenney Johnson
Joni Eggiman McCullum
Richard J. Mallett
Thomas O. Murphy, M.D.
Maxine Hildegard Orange
Philip Orange, O.D.
Myrtle Pylman
Betty Randall Strong
Charles Wicks, Ph.D.
Miriam Day Wicks
Olene Mehlhoff White

1947

Participation-22%
Amount-\$659.00

Evelyn Chapman Back
Donald E. Barnick
Donald Beegle
Frank M. Bennett, M.D.
Marian Bertoglio
Barbara Causey Butte
Patricia Mansfield Cooke
William H. Cooke
Melva Williamson Cookingham
Paul Cookingham
Marion Crews
F. Garrel Deiner
Robert H. Donovan
June A. Dunn
Adele L. Egan
Robert M. Fletcher
Dorothy D. Gage
Elsaine Berquist Iverson
Wayne E. Jacobson, M.D.
Dale E. Jones
Lora Curtis LaFay
Patricia McGargar
John A. Macy
Evelyn Johnson Page

Elizabeth Hansen Pursinger
Benjamin E. Schaad
Wilbur L. Senders, M.D.
Georgia Hull Spooner
Thomas L. Stearns, M.D.
Nancy Stuart
Jack L. Watson
Clarence R. Wicks
Patricia Carter Wilhelm
Doris Owen Wilson

1948

Participation-18%
Amount-\$383.50

Dale A. Bates
Lora Ellen Robinson Bates
Nedry V. Burris
Jean M. Caldwell
John M. Chrismar
Mark S. Crutcher
Rev. Donald Douris
William G. Edwards
Leighton C. Fairham
Patricia Miller Fletcher
Rev. W. Raleigh Gourley
Libby A. Griffiths

James C. Hatfield
Patricia Haverly
Richard H. Hill
David M. Holmes, M.D.
Carolyn Brady Lindbeck
Jack A. Jensen
Ethel Larson Jones
Lucien B. Jones
Stewart V. Leek
Katherine Karnopp Laine, M.D.
Donald E. Link
Herbert Lucas

Dale Mansfield
Ward C. Miles, M.D.
Patricia Kenney Pardey
Joyce Furman Patton
Artie Phillips Rodgers
Caroline Cooper Saunders
Jon V. Straumfjord, Ph.D., M.D.
Collins W. Utter, D.M.D.
Dorothy Deal Wells
Loren Winterscheid, Ph.D., M.D.
Mariel Oliver Winterscheid

1949

Participation-22%
Amount-\$1,535.50

Donald L. Alderton
William R. Barber
James K. Bartlett, Ph.D.
Milton R. Baum, Ed.D.
Ota D. Binegar, Jr.
William Bonnington, M.D.
Isabel Mason Buschman
Mary Alice Kamm Chrismer
Vera Jack Cook
Lt. Col. Charles E. Crecelius
Beverly Briggs Cross
Travis Cross
Benton R. Dailley
Eugene Diloreto
Patricia Holts Fairbank
Raymond Fedje, Ph.D.
Eric Fitzsimons
Roberta Meyer Foss
Vee Gould
Rev. Meredith R. Groves
Edith Fairham Gunnar
William A. Halseth
William H. Harris
George C. Hurt
Marjorie Hawkins Johansen
Ira W. Jones
Robert Kester
Al P. Ladendorff
Edward C. Lind
Ellen Stuve Lloyd
Eugene L. Lowe
Mary Beth Snow Lucas
Joan Thomas Macy
Charles K. Mills
Dale Marston
Marilee Olson Morgan
James A. Nickel, Ph.D.
James M. Oakes
Richard M. Page
Alan R. Patton
Helen Montag Pickett
Calvin L. Plants
Bonnie Daugherty Ploeger
Don E. Poulson, M.D.
Marjorie Powell
Robert C. Rhoads
Kenneth M. Robertson, D.M.D.
John C. Roth
Dona Adams Rothwell
Stanley D. Ryals
Robert H. Saxton
Robert H. Sayre
Donald W. Serrell
Vivian Buzzard Wicks
Heloise A. Wilcox
Betty Mae Jackman Wilson
James A. Wilson, M.D.
Raymond L. Yocom
Richard A. Yocom

1950

Participation-18%
Amount-\$980.00

Roger C. Adams
Warren W. Albright
Roberta Batey Allison
Frank E. Bales, Jr.
Jwan Carrico Barber
Donald E. Barclay
Nancy Whitmore Barclay
Lawrence W. Barkham
John M. Byrne
Allan H. Carson
Dale G. Cleaver, Ph.D.
Gordon C. Cline
Norma Fairberry Cole
Paul B. Cole
Janice Smith Edmondson
Rex Edmondson
Alfred W. Fedje
Polly Paddock Fedje
Betty Thompson Fedje
Gordon Ferrell
Marge Cooper Fleck
Dawn C. Gatewood
Ruth E. Hagelstein
John W. Hakanson
Mary Frances Libby Hales
Lyle H. Hamilton, Ph.D.
Adelle Snoddy Holmes
Harold Jole
Marilyn Dixon Jole
Audrey Ellen Kaplan
Garold Lawrence
Margaret Simpson Lawrence
Shirley Allen Minn
William F. Moynihan
Gordon A. Murdock
Doris Walker O'Neill
Robert O'Neill
Marcella Pambrum
Betty Kuhlman Pease
Gloria Stone Peters
Marvin G. Pursinger, Ph.D.
Richard B. Reid, D.V.M.
J. Gordon Ringle
Marjorie Quamme Singleton
Robert Singleton

Glen V. Sorensen
Leland Svarverud, Jr.
Frank M. Washburn

1951

Participation-16%
Amount-\$1,067.00

Patricia Curtis Bartlett
Thomas A. Bartlett, Ph.D.
Marjorie Lundahl Baum
Arthur Beddoe
Alan Bickford
Richard M. Bolton, M.D.
Jeneane Christensen Cherry
Patricia Zahara Elling
Donald B. Eshleman, D.M.D.
Gordon E. Fisher
Alan Collins Goudy
John B. Gunn
Sara Louise Smith Gunn
Frank J. Hodges
Morris R. Hunsaker
Helen Takayama Kwan
John R. Lewis
Howard Mader
Gordon E. Mallory
Theodore H. Mertz
Robert S. Miller, M.D.
Conrad T. Miner
Albert Minn
James K. Noa
Gilbert Oliver, D.M.D.
Patricia Hammond Oliver
Dale P. Parnell, Ed.D.
Rev. David O. Poindexter
Marion Sayre Poindexter
William M. Ross, M.D.
Paul J. Russell
Barbara Robinson Ryals
Alice Adams Schmidt
Richard Stratton
Robert G. Taylor
Margaret Grace Thomson
Scott Thomson, Ph.D.
Martha Bernard Warberg
Esther G. Weinstein, D.S.S.
Robert Wiper

1952

Participation-20%
Amount-\$933.50

Barbara Freeman Anderson
Doreen Lyon Beddoe
Allan Bellinger
Lucy Collins Bellinger
Hugh E. Bellinger
Richard C. Bennett, M.D.
Gay Simons Blankenship
M. Sherman Bliss
Joanne Oliver Block
Gladys F. Blue
Mary Louise Lee Burum
Delores Spellbrink Christensen
Dorothy A. Clarke
Ivan H. Corner, Jr.
Mary Howe Covert
Rose Marie Wilhoit Cunningham
Marylou Herndon DeCook
Constance Bailey Ferrell
Selma J. Gliberson Fields
Arlene Deakins Gatewood
Michael D. Glenn
Ernest P. Gordon
Carroll L. Graber
Charles H. Gutzler
Barbara Kemmerich Halliday
Glenn E. Halliday
Phillip E. Hammond
Wesley Hedeen
Martha Booker Helms
Jean Shepherd Hunsaker
Clyde Jackson, D.M.D.
Walter L. Jones
George E. Juba
Sue Mellor Juba
Robert Kaplan, Ph.D.
Thelma Bennett Key
Frances C. Linton
Ellen Marie Christiansen Lowe
William L. MacDougall
Mark McClanahan
Jaqueline Johnson Mader
Beverly Tribble Markoskie
Alan G. Miller, M.D.
Dan Montag
Jean Kell Montag
David H. Morris
Dorothy Casper Murphy
Herman A. Peters
Norman D. Potter, Ph.D.
Louis E. Prediletto
Clairabelle Easton Ross
Irvin J. Roth

Harry E. Summers
Ron P. Symons
Sally Ogle Tanning
John W. Vandervel
Margaret Gastering Wallace
Alice Wilhelms Webb
Carmalite Weddle
Richard A. White
John D. Wilkins
Robert L. Witham
Shirley Hall Wood

1953

Participation-17%
Amount-\$878.50

JoAnn Richardson Adams
Robert V. Bein, M.D.
Edith Wheeler Benninghoff
Joseph C. Benninghoff
Ralph W. Bolliger
Betty Weber Bolton
Beverly Reids Brosterhaus
George L. Buland, Jr.
William Carl Butte
Rollin J. Cocking
William W. Covert
Elizabeth Morley Douris
George R. Duncan, Jr.
M. Patricia Farnes, M.D.
Jean Shipley Fisher
James E. Freeman, Jr.
James F. Gay
Louis M. Giovannini
Joyce Taylor Hedeen
Robert Hilmer
James P. Jackson
Eli E. Kapostins, Ph.D.
Juris Krigena

Janice Gladden Kuesier
Cdr. Keith D. Lawrence
Rev. Kent D. Lawrence
Rev. Norman R. Lawson
Nancy Lumijarvi McDonald
Douglas McLeod
Marilyn Quamme McLeod
Robert J. Miller
Ann Klindworth Nelson
David Parton, Ph.D.

George E. Porter
Amaryllis Lilles Powell
Ursula Glaeser Puchrick
Frank D. Riebe
Philip Ringle, Jr.
Jane Pooshee Sanford
Helmut G. Schreima
Lawrence C. Smith
Mary Lou Hatcliff Smith
Daniel E. Snyder
Ellen Schadel Stroeve
Donna Sobern Talus
Ove H. Tanning, M.D.
Dorothy Engelhart Weissner

1954

Participation-22%
Amount-\$997.00

Dale Ackerman
Robert A. Anderson, M.D.
Paul D. Baker
Ronald W. Bartlett
Robert Batchelder
Carol McLeod Beatty
Donald A. Bennett, Ed.D.
Dorothy Tanning Bosch
Donald W. Empey, Ed.D.
Donna Mae Cheney England





Layton J. Gilson
 Douglas E. Gordenier
 Linda Gragg
 Daline Montag Gregory
 Sara Jane Bridgeman Gustafson
 Donna Cheldelin Gutzler
 JoAnna Hirtzel Hart
 Joseph S. Harvey
 Mary Lou Johnson Harvey
 Shirley Swoboda Hilmer
 Martin Howard
 Robert W. Howe
 Mary Andreson Janis
 Marguerite Dawson Kranz
 Harold J. Lance
 Lola Brooke Lawson
 Marilyn Meiseger
 Richard L. Mercer, M.D.
 James R. Morgali
 Donald A. Morrison, M.D.
 Dee Miller Myers
 Kent C. Myers, Ph.D.
 Greta Ann Wilkey Nelson
 Maj. Hugh E. Nelson
 Carolyn Crane O'Connor
 Robert William Packwood
 Harriet May Parcher
 William Pritchard
 Betty Royer Smythe
 Sheila A. Scherman
 Rev. Stuart R. Shaw
 Larry W. Standifer
 Mary Polales Standifer
 Barbara Manley Steel
 George G. Strozut
 Lorraine Lauber Summers
 Jack Tilton
 Leona Todd
 Lyle Wilhelmi
 Lou L. Williams
 Howard L. Wilson, Ph.D.
 Neal Black Wineman
 Betty Breakley Witham

1955

Participation-19%
 Amount-\$791.50

Janet DeWeese Ackerman
 Richard O. Adams, Ph.D.
 Robert L. Alfred
 Donald W. Bernay
 Sarah Benjamin Bush

Charles Carter, M.D.
 David W. Corthell
 Neil E. Daugherty
 William J. Daw
 Vivian Chance Didzun
 Richard F. Drake, M.D.
 Robert J. Dyer
 Kay Perrin Elliot
 John H. Ellis
 Edward Frederickson
 Rev. Thomas Foster
 Mary Ewell Gilson
 Lt. Cdr. Donald M. Gragg, M.D.
 J. Wallace Gutzler
 Rosemary Weaver Holden
 Kent E. Holmes
 Watson Hovis
 Julia Fullager Hume
 Donald A. Humphries
 David R. Jackson
 Maj. H. Paul Johnson
 John M. Kent
 Judith Wood Kent
 Elizabeth Winship Lewis
 Richard A. Lewis
 Marie DeHarrpport Lindsay
 Robert L. Lowery
 Jack Phipps
 Marilyn Witham Platt
 Thomas M. Raitt, Ph.D.
 Julie Mellor Reid
 E. Burke Samuelson, Jr.
 Jackie Meadows Shaw
 Elizabeth Loving Sittser
 Gail Updike Steeves
 Robert W. Straumfjord, M.D.
 Thomas Summers
 Sally Cooney Underwood
 Judith Anne Wood
 Tom T. Yeabickel

1956

Participation-17%
 Amount-\$538.54

Judy Grant Allen
 Millicent Tower Armer
 Joanne Terhark Bahls
 Ardyne Bomke Baker
 Frances Miller Batschelder
 Dean K. Benson
 Judy Mortz Benson

William S. Bjorkman
Donald Brader
Margaret Huson Brown
Gordon A. Chang
Chester L. Daniels
Earl Didson
Mary Catherine Reeh Empey
William A. Fredericksen, Ed.D.
Dale Gustafson
Charlotte Stark Hall
Lorraine Landrud Halverson
Alma Felton Howe
Marilyn Russell Kaufman
Robert Kaufman, M.D.
Maxine Brown Kent
Ross O. Kines
J. K. McCallister
Roberta Sjoding McCallister
George A. Matile
Anita Tonnin Miller
Robert P. Mobley
Shirley Witters Murray
Ray A. Myers
William R. Orlebeke, Jr.
Dale Patton
Charles R. Peter
June Harms Peter
John Rehfuess, D.F.A.
Richard E. Ross
Ernest Snarr
Maj. Thomas W. Steeves
Sandra Schuerman Walters
Robert Zoelich

Claris C. Poppert
Theodore Primrose
Carol Litchfield Rehfuess
Fred L. Rose, Ph.D.
Donald Ross
Melissa Stewart
Coralie Roseberry Van Horn
Sally Jones Van Niel
William J. Whitat
Robert J. White
Martin R. Wolf
Darrell S. Wright

1958

Participation-19%
Amount-\$539.50

Victor Backlund
John K. Bowker
Minnlou Schultz Byler
Anna Rosbergs Campbell
Warren A. Campbell, Ph.D.
Marion Gillet Carrison
Elizabeth Maxwell Chambers
Fred Chambers
Eugene Corsey, Ph.D.
Janet Roscoe Dahle
Donna Holm Daniels
Patricia J. Taylor Erbes
Annette Carson Ewing
Mary Anne Swafford Polson

Gail Beyer Brown
Willard C. Bunney
Norman Dyer
David John Erickson
Bruce L. Gustafson
Barbara Duncan Hewitt
Roger Hewitt, Ph.D.
Craig Hickok
Craig L. Johnson
Charlotte Means Jones
Phyllis A. Kaufman
David Landis
Gary H. Larson, Ph.D.
Peter J. Levaton
Marietta Lind
Leonard J. Manwaring
Anne Lasswell Nagel
Gene M. Paterson
Beverly Thronson Riley
Celeste Gibbons Schneider
Philip Schreiber
William T. Seawell
Gilbert J. Schwabauer
Josephine Heald Simpson
James R. Sitzman
Herbert P. Talschere, D.D.
John Vale
Dorothy Rohlfing Whiteside
Charles E. Williams
Karen Michelson Williams
Carolyn Miller Williams
L. Donald Williams
John W. Wood, M.D.

1961

Participation-12%
Amount-\$504.50

James T. Baird
Floyd H. Bergmann
Gene R. Bowers
Barbara Simon Bunney
Jay B. Butler, M.D.
Stewart M. Butler
Bruce E. Buzzell
Roy Chapin, Ph.D.
Charles Cheed
Karen Honninger Cheed
Dale Daniel, M.D.
Judd W. DeBoer
R. Eugene Giesbrecht, M.D.
Wayne P. Gladwin
Michael T. Graydon
Barbara Sherk Hickok
Byron F. Johnson
Laura Johnson Johnson
Terry Thompson Johnson
Gail Larsen Joseph
Richard M. Kaufman, D.M.D.
David L. Kitchener
Thes West Kreis
Paul H. McGilvra
Anthony Meeker
Karen Madsen Myers
Rev. Eldon L. Olson
Marcia Humphrey Olson

ALUMNI LOYALTY FUND LEADERSHIP CLASSES

Percentage of Participation		Number of Donors	Amount of Dollars
1919	55%	1922	\$4,506.00
1922	51%	1928	\$1,728.75
1921	50%	1949	\$1,535.50
1929	47%	1926	\$1,420.00
1925	46%	1931	\$1,342.00
1923	45%	1929	\$1,290.50
1915	42%	1937	\$1,117.50
1920	41%	1942	\$1,105.50
1930	39%	1927	\$1,080.50
1918	38%	1951	\$1,067.00
1928	37%	1954	\$997.00
1926	37%	1950	\$980.00

1957

Participation-17%
Amount-\$790.50

Donald L. Agnew
Elizabeth Church Ameling
L. Duane Baird
David S. Barrows
Lewis O. Beatty
Arda Dlen Berryhill
Winifred Walts Ben
Jack L. Bishop
Edwin Boothby
Joyce Ambler Carter
Robert W. Cram
James G. Davis
John R. Edmundson
Patricia Turner Edmundson
Jean Snow Geller
Rev. L. Eugene Groves
Dale DeHarppert
Douglas G. Houser
Robert M. Jelders, M.D.
Joanne Jene, M.D.
David G. Johnson
Jack V. Jones
Marilyn Mae Jones
Robert E. Joseph, Jr.
Louisa Lamb Kingston
H. Lawrence Lister
Douglas A. Logue
Donald Miller
Margaret Buckley Mills
Rev. Glen R. Murray
George Nelson
Carolyn Burr Neubauer
Lois Wickarham Oringdolph
Aiane Burkland Oxhandler
Cash R. Perrine
Charles Pickett

Max Polson
Colleen Chilcote Foster
Thomas A. Gail, M.D.
Harold Geller
Elsine Gustafson DeHarppert
Maryn Stookey Hovis
Dyane Shdo Howard
George W. Hoyt
Mary Lee Krause
Lois Ann Lane
James L. Layport, D.M.D.
Constance Clark Lister
Rev. Alan Mackillop
Jeannine Graber Mercer
Kendrick W. Mercer
Charlotte Kileen Miller
James Myhre
L. Keith Neubauer
Jim C. Person
Pat J. Packwood Richardson
Herbert Riley
Elizabeth Susie Carter Riley
Ann Lawson Ross
Joanne Lindstrom Ross
Lawrence A. Siebert, Ph.D.
Per Helge Tonnin, M.D.
Mary Louise Turner
Ralph E. Van Horn
Joyce Lonneker Wheat
Richard A. White, Ph.D.
Geneva Russell Wright

1959

Participation-16%
Amount-\$546.50

Sandra Harris Adair
R. Richard Audley
Karen Enberg Backlund
Capt. Dean Bishoprick

1960

Participation-16%
Amount-\$613.00

Janice Adams
John O. Bergstrom, M.D.
William L. Bong
Arleen Niemi Boothby
Margaret Huiman Byers
Laurence R. Chandon
Cynthia Shaw Conrad
L. Jay Conrad
Ted A. Cook, M.D.
Virginia Grant Cook
Dale H. Denham
Barbara Dixon Dohrinen
Toni Polson Dyer
K. Calvert Eling
Sue Wilcox Elliott
Charles R. Foster
John R. Galbraith
John E. Driffis
Larry Lyle Halstead, D.M.D.
Rosemarie Alper Hingsten
Stephen A. Howe
Joanne McGilvra Hoyt
Ann Follen Jelders
Ann Fields Kaufman
John E. Kaufman
John S. Kelley
Leta Klock Kelley
Eunelia Kind Larson
Ralph Litchfield, M.D.
Carol McMinnes Merchant
Corrie Saito
Jeremy Saito
John R. Sweeney
Mark W. Teppole
Rosemary Stephenson Vaughan
Ronald E. Walker
Joan Pritchard Wheeler

Orrin Ormabes
Midge Scott Paterson
Robert F. Penater
David P. Rehfuess
William L. Richter
Gordon Rounds
James M. Snell
Nancy Elliott Spaniol
Peter Stenzel, M.D.
Terry Boyd Stenzel
Jane Eagleson Viehl

1962

Participation-16%
Amount-\$562.50

Judith Hicks Audley
Judith Parr Berger
George B. Birrell
Ellen Passy Bong
Anne Petrie Brummer
Linda Krebs Butler
Diane Brown DeBoer
Suzellen Stanley Diaconoff
David Dobriner
Marjorie Mikkelsen Eneking, Ph.D.
Barbara McPartland Friesen
Marion Koch Fromczak
Charles Godwin
Theodore J. Gooding
Ray Graber
Raymond W. Moneriah, Ph.D.
Donna L. Horn
Thomas J. Inrig
Capt. Thomas R. Johnson
Beatrice Julian
Clinton W. Kersten, Jr.
John F. Kreis
Barbara K. Leineth
Sonnie Scott Krenner

Peter C. Kramer
 Penelope Boat Lewis
 Alfred G. Iachini
 Dorothy Hanson Hackillip
 David E. Marsters
 Marshall W. Moore
 David Edward Moser
 Robin Mosley O'Connell
 Joan Laurita Orzelle
 Patricia McCready Ostenson
 Eleanor Hawkins Purvine
 Gloria Litscher Ramsey
 David R. Reed
 Robert C. Seeger, M.D.
 Terry M. Shuchat
 Hugh D. Stiles
 Laurel Ratoliff Talabero
 Marian Hauke Thom
 Phillip L. Thom
 Judith Smith Wayland
 Richard D. Wayland
 Lee R. Weaver
 Marilyn Wright Weaver
 Melbourne Whiteside
 Carl A. Williams
 Ronald E. Williams
 Susan J. Wilson
 Barbara Jackman Woodward
 Robert L. Youngblood

1963

Participation-17%
 Amount-\$607.00

John W. Allen
 Lucy M. Baird
 Rev. John T. Baker
 Judith Cook Beguin
 William H. Bush, Jr., M.D.
 Elizabeth Keyser Cummins
 George Douglas, M.D.
 Tom R. Daughan, M.D.
 Margaret Allen Elbow
 Charles H. Evans, Jr.
 Joann A. Gay
 Shirley Gillard Godwin
 Carl Shelton Hakala
 Robert M. Hakala, M.D.
 Susan Bowers Hodges
 Catherine Ann Mesapelt Honerlwh
 James A. Hughes
 Sherrie Steele James
 Bernard R. Kiska, M.D.
 Judith Triplett Kiska
 Judith Leaverton Linn
 Richard C. Litchfield, D.M.D.
 Susan J. MacDuff
 Gary T. Manavagau
 Dexter C. Meist
 Merle Gillespie Maust
 Jeanette Baker Ormsbee
 Janet Stewart Potter
 Maurice Potter
 James E. Robinson
 John S. Rogers
 John E. Ryan
 Jon A. Steiner
 John G. Topping
 Joyce Hefinger Topping
 Peter A. Verloop
 Jeffrey G. Wade
 Wayne A. Walker
 Joan Benson Wheeler
 Floyd Whiting
 Judith Rogers Whiting
 Elaine Pflugmacher Wick
 Rosemary Doolen Wood
 Robert C. Woodie
 Walter A. Yungen

1964

Participation-14%
 Amount-\$402.22

William B. Allen
 Alan Beardsley
 Sharon Paulsen Beardsley
 James C. Booth
 Patricia Hull Cavender
 Gregg E. Childs
 Lee Ann Marchi Childs
 Kathryn Kinaley Clarke
 C. V. Comisky
 Carole Ann Davis
 Lorraine Demler
 Robert G. DePew
 Darlene Ridley Dunham
 Judith Dehyer Ebbler
 Bruce A. Baines
 Kristi Scott Hardin
 Les R. James
 Marv Wendell Krozek
 Phillip Krozek
 William L. Lang
 Jacqueline Orsper Litchfield
 Joseph D. McClure, Jr.



Robert Merriam
 Douglas Moore
 Judith Jensen Moore
 Rosemary K. Myers
 Suzanne Shane Myrone
 Thomas C. Newell
 Dianne Wilson Nicholson
 David W. Powers
 Clarence Pugh
 Linda Clark Richter
 Robert W. Rieder
 Paula Abbott Rounds
 Howard I. Sleeper
 Alice Bryant Steamer
 Frank H. Swayze
 Elizabeth Buncayne Thompson
 Hartwell H. Whitney, Jr.
 Rosalie Johnston Whitney
 Henry C. Willener

1965

Participation-12%
 Amount-\$357.50

J. Kendall Anderson
 Joan Kane Anderson
 Marc J. Anderson
 James C. Baker
 Craig S. Brown
 Karen Sumwalt Burnard
 Lavon Allen Cherba
 Sidney M. Cooper, Jr.
 Vickie Howie Cornwall
 Rosemary Shea Coulsey
 Cheryl Bohannon Dawson
 Arlene Hefinger Douglas
 Douglas S. Dunham
 Donald R. Ellis
 Delores Kraft Harralson
 Richard V. Hiersance
 Joan E. Himmel
 Barry C. Howard
 Bonnie Brown Howard
 Mary Schwyhart Inman
 William F. Jackson
 Cynthia L. James
 Marie Chaney Jorgensen
 John S. Mitchell, III
 Karen Nelson Mitchell
 Carol McMurtry Nelson
 Ronald C. Nelson
 Ruth Taylor Newell
 Lawrence E. Nye
 Maraden Oliver
 Richard Olmstead, M.D.
 Rena C. Parsons
 David W. Pollock
 Edward L. Potter
 Carol Gibson Ratalei
 Dennis Riley
 Betty Lou Moynihan Rockwell
 Carl Schneideman
 Peter J. Stidd

1966

Participation-12%
 Amount-\$464.50

Virginia Lutzicken Allen

Bruce F. Alsip
 Phoebe Finley Baker
 Richard W. Ball
 Patricia Casson Bonyng
 Ralph A. Breitenstein
 George MacKie Cornwall
 James S. Dean
 Mary Lee Edinger
 Michael F. Egans
 Karen B. Evans
 Susan Garner Gelling
 David A. Hansen
 Paula Harris
 Ted G. Hetu
 Richard S. Kawana
 Virginia Verity Kimball
 Karen Krueck
 James D. Lewis
 Reynette Pierce Lewis
 Shirley Schobblom Lindell
 Elinor Lindquist
 Claire Elaine Lorenz
 Stephen M. Lowry
 William A. Marshall
 Linda Moore
 Dale C. Nelson
 Ward A. Nelson
 Ned M. Norris
 Joanne Loomis Olsen
 Ellen Reese Peterson
 Victoria L. Pitkanen
 Janet Potter Roomagosa
 Susan Thompson Schneiderman
 Michael J. Schunk
 Carol Lee Ten Eyck
 Elissa M. Terp
 Glenn N. Tril
 Robert P. Van Natta
 Nancy Van Winkle
 Barbara L. Whalin

1967

Participation-9%
 Amount-\$391.50

David B. Avison
 Vicki Keranen Ball
 Marba Brown Burdick
 Leslie W. Castle
 Alice Jappesen Cook
 Marilyn Luther Egans
 Martha Gilmore Ellis
 Ruth E. Fenske
 Judith A. Gerber
 David E. Good
 Steven Clark Gray
 Robert S. Holzapfel
 Nancy A. Hooton
 Carol Schmidt Huebner
 James S. Hutchinson
 Ellen Campbell Layman
 Robin Petersen Lowry
 John McCaffery
 Susan Aho Marrian
 Lindsay M. Michimoto
 Martha Millard
 Molly Monahan
 Gay D. Pennington
 Kathryn Bakken Phelps
 Merry Kathleen Rock Pugh
 Cheryl Richardson Simpson
 Carol Smittin

Rev. Wesley D. Taylor
 Janet Loomis Withycombe
 Donna M. Wright

1968

Participation-7%
 Amount-\$108.50

David W. Ashby
 Loraine E. Barker
 Stephen M. Burdick
 Susan J. Corcoran
 Nancy Detering
 Michael W. Dubois
 Samuel Palmer Felix, Jr.
 Dean C. Gayer
 Penny Lynn Howie Gayer
 Alan T. Hasulike
 Nancy Apian Hawkins
 Carol Lutz Heermance
 Charles J. Hickling, Jr.
 Susan E. Karr
 Judith L. Manington
 Claudette Ebi Kleinke
 James W. Kleinke
 Richard Layman
 Jo Nell Logan
 Katherine L. Noble
 Anne M. Woods
 Mildred Kennedy Weigle

1969

Participation-26%
 Amount-\$122.75

Kathy Albartson
 Susan McNeel Ashby
 George Barker
 John Barker
 Keith Bauer
 Robert K. Bayha
 Gerald Bonds
 Phyllis M. Brinkerhoff
 Larry Brown
 Patricia Brown
 Jay Bruhner
 Laura Bryant
 Kathleen Childress
 Ray Colson
 George Cooper
 Cynthia Davis
 Judy Dodd
 Alan Ellis
 George Ellis
 Elaine L. French
 Lauren Fuller
 Jim George
 Glen Gibbons, Jr.
 Lois Gieslow
 Vernon Gilmore
 Paul Goeller
 Sally Gordon
 Elton Graves
 Joy Gustafson
 Terrence Hall
 Connie Harris
 Douglas Heatherington
 Ellen Hickman
 Glendon Hieber
 Nancy Hochstetler
 Chuck Honeycutt
 John Huskins
 Marola Hunt
 Gray Harthart
 Bob Ingram
 Patricia Itoh
 Albert Jensen
 Edward John Johanson
 Rod Johnson
 J. Scott Kessler
 Judy King
 Forese Knaq
 Mary Linda Laird
 Helen Lang
 David Lederman
 Charles Linderman
 Daniel Lutz
 Evelyn Silberstein Lutz
 Margaret McGrath
 Scott Mangold
 George Mante
 Robert Moberg
 Victor Musselman
 Michael Olsen
 Dave Pearson
 Roger W. Rees
 Jon Robertson
 Jim Seyard
 Mike Shinn
 Barry Slade
 Thomas Staible
 R. C. Stewart
 Ron Sticka
 Vicki Thompson
 Douglas Warnara
 Barbara Wort
 Donald Young

Law Loyalty Fund

Gifts to the Loyalty Fund from graduates of the College of Law go directly to support of law faculty salaries unless designated for additions to the law library. This year 126 law alumni provided gifts to the Loyalty Fund totaling \$3,299.60.

1907
Max H. Gehler

1910
Clark R. Seiknap

1911
Arthur W. Schaupp
Lois Byrd Upjohn

1912
Albert M. Minton
Joseph O. Stearns

1914
Russell H. Stephens

1918
Harold E. Eakin
James D. Fletcher

1921
Henry J. Millie

1922
Allen G. Carson

1923
Wallace P. Carson, Sr.
Jay D. Coulter
Waldo Zeller, D.O.

1924
Michael T. Edwards
Robey S. Ratcliff

1925
George R. Duncan, Sr.
Allen V. Jones
Floyd DeLox Moore
Clarence D. Phillips

1926
O. Bryan Goodenough
Fred Henry Paulus

1927
George Rhoten

1928
Judge W. Charles Redding
Francis W. Smith, Sr.

1929
Alvin A. Kartz
C. Kenneth Litchfield
George G. Van Watta
Lionel M. Woodworth

1930
John B. Ebinger
Judge Paul E. Geddes
Judge Ian R. Maciver

1931
Clarence Emmons
Warren A. McKinzie

1932
Bernard Newby
Roder Weber, Jr.

1933
Judge Joseph B. Felton

1934
Evans T. Hamilton

1935
Judge Wesley F. Brownston

1936
James E. Burdett, Jr.
Thorne H. Hammond
J. Ray Rhoten

1937
Carroll P. Addison
Lynn Moore
Max S. Taggart
Victoria Schneider Taggart



1938
Alice Speck Estes
Herman Estes
Charles H. Heltzel
George H. McAllister
George M. McLeod

1939
Tyrone Gillespie, D.C.L.
Asa L. Lewelling

1940
William G. Dick
Laurence L. Morley

1941
Sam R. Sumner, Jr.

1942
Steven W. Anderson
Judge J. S. Bubannon
Kenneth Sherman
Max de Sully

1943
William R. Thomas

1944
Carolanne Doby Glasman

1945
Charlotte Ellingworth Aslanian

1947
Rupert E. Park

1948
Merle A. Long
Gordon H. Moore

1949
Donald L. Alderton
Vernon L. Burda
Harold A. Fabre
Orval G. Hager, Jr.
Loren D. Hicks
George J. Jones
Robert W. O'Neil
Lt. Col. Richard Spooner
Jack W. Stanley
Clarence R. Wicks

1950
James F. Bodie
Merlin Estep
Peter M. Gunnar
Hattie Bretzel Kremen
Berkeley Lent
Richard W. Pic Kell
Glen V. Sorensen

1954
Wayne H. Blair
Ralf H. Erlanson
Mark McClanahan
George J. Woodrich

1955
Ralph W. Bolliger
William J. Daw
George R. Duncan, Jr.
Harold J. Lence
Louis E. Frediletto
Frank D. Riebe
Helmuth G. Schreim
John Weissner

1956
Willard K. Carey
Cdr. Keith D. Lawrence
Jon P. McConnell
Philip Ringla, Jr.

1957
Robert Batchelder
J. Wallace Gatzler
Ira W. Jones

1958
Alex M. Byler
Koon Imm Ching
Ernest F. Gordon
Robert D. Hoffmann, Jr.
Robert L. Johnson
Cash R. Perrine
Richard Stratton

1959
Kenneth H. Colley
Marvin E. Hansen
Martin Howard
Robert G. Simpson

1960
Orlin R. Anson
John A. Hataaka
Ronald B. Lansing
William T. Schantz
Lou L. Williams
Martin R. Wolf

1961
David S. Barrows
Fred Chambers
Hendrick M. Mercer
Evelyn Natus Scott

1962
Morris A. Arntson, Jr.
William V. Biezek
George G. Brandt
Donald K. Denman
Larry R. Duff
Richard T. Kropp

1963
Ronald M. James
Robert E. Joseph, Jr.
J. K. McCallister
Oran Ormsbee
William H. Ostenson

1964
Dennis Chozha
Robert F. Penater

1965
Theodore J. Gooding
Ronald S. Jolley
Stephen T. Tucker

1966
John D. Simchuk

1967
Laurence H. Hamblen

1968
Martin Van Weipel

1951
Anonymous Donor
R. H. Anderson
Douglas R. Kaufman
James B. Mihrum
Ervin W. Potter
Robert M. Stults

1952
Warren H. Albright
Jack P. Farrell, Jr.
Carlotta Hendricks Sorensen

1953
A. D. Brosterhaus
Richard J. Brownstein
Louis M. Giovenone
Gordon E. Teter
Charles L. Thomas

Anonymous Donor.

Mrs. Dorothy Adolfsen
Mr. and Mrs. Frederick Albaugh
Mr. and Mrs. Robert B. Albert
Capt. H. C. Albrecht
Mr. and Mrs. Carl E. Anderson
Mr. and Mrs. Kenneth R. Anderson
Mr. and Mrs. Ted F. Aronson
Dr. and Mrs. Ray C. Atkinson
Mr. and Mrs. Kirby Atterbury
Mr. and Mrs. H. R. Barker
Mr. and Mrs. Doyle J. Barnett
Rev. and Mrs. Herbert M. Barrall
Dr. and Mrs. J. Brandon Bassett
Mr. and Mrs. Harrison T. Beardsley
Mr. and Mrs. Stephen D. Bechtel, Jr.
Mr. and Mrs. Gerhart Bendix
Mr. and Mrs. H. S. Blitz
Mrs. Helen S. Blomquist
Mr. and Mrs. Maurice Brennen
Mr. and Mrs. Stephen A. Bristol
Mr. and Mrs. William H. Brown
Mrs. Barbara K. Brunner
Mr. and Mrs. William C. Bryant
Mr. and Mrs. Richard G. Bullock
Mr. and Mrs. W. H. Buss
Mr. and Mrs. J. P. Byrne
Mr. and Mrs. J. R. Callahan
Mr. and Mrs. Ian Campbell
Mr. and Mrs. William S. Campbell
Dr. and Mrs. Bryan J. Carder
Mr. and Mrs. John W. Carroll
Mrs. Marie Castro
Mr. and Mrs. Moon Chan
Mr. and Mrs. R. W. Chandler
Mr. and Mrs. John L. Christensen
Mr. and Mrs. Victor E. Cole
Col. and Mrs. Robert Coleman
Mr. and Mrs. Clarence S. Cook
Mr. and Mrs. Sidney M. Cooper, Sr.
Mr. and Mrs. William J. Corcoran
Dr. and Mrs. C. J. Cox
Mr. and Mrs. Victor M. Crotchett
Mr. and Mrs. Howard A. Cunningham
Mr. and Mrs. Lester M. Cushman
Mr. and Mrs. Norman J. Dain
Dr. and Mrs. J. G. Daines
Mr. and Mrs. Gilman Danielson
Mr. and Mrs. Clayton L. Davidson
Dr. and Mrs. Hugh L. H. Dick
Mr. and Mrs. Edward Dingman, Sr.
Lt. Col. and Mrs. Warren E. Drack
Mr. and Mrs. Carl Dudley
Mr. and Mrs. Donald F. Dunbar
Mr. and Mrs. R. H. Dunford
Mr. and Mrs. A. D. Duval
Mr. and Mrs. Stanley C. Dye
Rev. and Mrs. Albert G. Edwards, III
Mr. and Mrs. Carl G. Eneyart
Mr. and Mrs. H. Francis Fenske
Mr. and Mrs. Lawrence Forsch
Mr. and Mrs. Ferdinand Franz
Mr. and Mrs. H. R. Freitag
Mr. and Mrs. Stanley L. Friedman
Mr. and Mrs. Nick A. Friesen
Mrs. Bernice C. Fritz
Mr. and Mrs. Richard M. Fugle
Mr. and Mrs. Tutomu Fujimoto
Dr. and Mrs. Cyril D. Fuller
Mr. and Mrs. J. D. Fulp, Jr.
Mr. and Mrs. Demetrio A. Gasponia
Mr. and Mrs. S. A. Ganz
Mr. and Mrs. John R. Gardner
Mr. and Mrs. Herman O. Gerhardt
Mr. and Mrs. William R. Gielow
Mrs. Margaret McIntosh Gilmore
Mr. and Mrs. Ronald H. Gordon
Mr. and Mrs. S. A. Gotter, Jr.
Mrs. Ben Graves
Mrs. Charles L. Graves
Mr. and Mrs. Alfred Greathouse
Mr. and Mrs. W. A. Gregory
Mr. and Mrs. Michael Gross, Jr.
Mr. and Mrs. J. J. Gutsky
Mr. and Mrs. George C. Grubb, Jr.
Dr. and Mrs. Charles O. Gruber
Mr. and Mrs. James E. Gustafson
Mr. and Mrs. Henry Haa
Mrs. W. H. Hadlock
Mr. and Mrs. D. S. Hansen
Dr. and Mrs. Fred M. Hansen
Mr. and Mrs. H. S. Harner
Mr. and Mrs. L. J. Harris, Jr.
Mr. and Mrs. Lawrence Hickman
Mr. and Mrs. Richard N. Hoag
Mr. and Mrs. H. N. Holmes
Dr. and Mrs. W. Wayne Holmes
Mr. and Mrs. Rie F. Hom
Mr. and Mrs. J. S. Henschel
Mr. and Mrs. A. M. Hooton
Mr. and Mrs. Bruce S. Howard
Mr. and Mrs. H. Lawrence Hull
Mr. and Mrs. K. B. Humphrey
Mr. and Mrs. Fred H. Humphrey
Mr. and Mrs. Sterling Hutchison
Mr. and Mrs. H. A. Jambor
Mr. and Mrs. Otto G. Jeddesh
Mr. and Mrs. Richard H. Jessup
Mr. and Mrs. Harry C. Johnson
Mr. and Mrs. L. C. Johnson
Mr. and Mrs. W. Byron Johnson

Mr. and Mrs. Gerwyn A. Jones
Mr. and Mrs. Gwilym G. Jones, Jr.
Dr. and Mrs. William Kaiser
Dr. and Mrs. Milton A. Kamsler, Jr.
Mr. and Mrs. W. Kaufmann
Mr. and Mrs. Norman Kimura
Mr. and Mrs. J. L. King
Mrs. Margaret C. Kinnere
Mr. and Mrs. P. C. Knappe
Mr. and Mrs. Gerald H. Knitter

Mr. and Mrs. Edward T. Melvin
Mr. and Mrs. R. W. Merryman
Mr. and Mrs. Earl P. Miller
Mr. and Mrs. Herbert F. Miller
Mr. and Mrs. Ira J. Moore
Mrs. Mary Mowry
Dr. and Mrs. Clyde V. Mussaleman
Dr. and Mrs. Samuel F. Nebel
Col. and Mrs. Carl W. Nelson
Dr. and Mrs. E. L. Nelson

Mr. and Mrs. Albert Reuter
Mr. and Mrs. H. E. Rice
Mr. and Mrs. J. E. Rice
Mr. and Mrs. George E. Robinson
Mr. and Mrs. Edd E. Rountree
Dr. and Mrs. Philip M. Rummell
Mr. and Mrs. Joseph J. Rutkowski
Mr. and Mrs. J. B. St. Clair
Mr. and Mrs. William Sakagawa
Mrs. Frances M. Santos
Mr. and Mrs. G. Edward Schnug
Rev. and Mrs. Robert Schwyhart
Mr. and Mrs. William H. Shea
Dr. and Mrs. Robert M. Shelton
Mr. and Mrs. Carl W. Sherman
Mr. and Mrs. Takeo Shibuya
Mr. and Mrs. Albert G. Simonet
Mr. and Mrs. D. W. Simpson
Mr. and Mrs. L. O. Sisemore
Mr. and Mrs. W. B. Sisler
Mr. and Mrs. Wendell H. Slabaugh
Mr. and Mrs. William Southard
Mr. and Mrs. D. Norman Speight
Mr. and Mrs. Bud Spezza
Mr. and Mrs. Thomas W. Steege
Mr. and Mrs. E. E. Steffens
Mr. and Mrs. A. B. Steiner
Mr. and Mrs. C. W. Stewart
Mr. and Mrs. H. W. Stockdale
Mr. and Mrs. Eldon A. Stocker
Mr. and Mrs. J. R. Sutton
Mr. and Mrs. Jack B. Teitge
Mr. and Mrs. Lewis A. Temple
Mrs. Danella E. Thompson
Mr. and Mrs. Thomas S. Thompson
Col. and Mrs. Donald O. Tower
Mr. and Mrs. Eugene Tower
Mr. and Mrs. I. N. Trachtenberg
Mrs. P. Tucker
Mr. and Mrs. E. H. Turk
Mr. and Mrs. P. N. Twining
Mr. and Mrs. Alfred S. Tyson
Dr. and Mrs. W. M. Van Bokkelen
Mr. and Mrs. Edwin E. Wallace
Mr. and Mrs. Hugh H. Wallace
Mr. and Mrs. Willard W. Warren
Mr. and Mrs. Ralph Washburn
Mr. and Mrs. H. M. S. Watkins
Mr. and Mrs. Jesse Watts
Mr. and Mrs. Greville L. Way
Mr. and Mrs. Allan Weinstein
Mr. and Mrs. Louis C. Weiss
Mr. and Mrs. Robert B. Welch
Mr. and Mrs. Glen H. Wilfert
Mr. and Mrs. G. W. Wintz
Dr. and Mrs. G. L. Wolf
Dr. and Mrs. Charles D. Wood
Mr. and Mrs. William Woodworth
Mr. and Mrs. Charles Yerxa
Mr. and Mrs. W. S. Yorozu
Mr. and Mrs. Carl R. Yunker
Mr. and Mrs. Robert E. Zimmerman
Dr. and Mrs. Wayne W. Zimmerman

PARENTS' FUND

The majority of the gifts to this year's Parents' Fund were designated for one of four major projects: books for the University Library, books for the Legal Center library, furnishings for the University Center or special assistance for minority groups. Some gifts were designated in other areas such as College of Music, faculty salaries and scholarships. Some 243 gifts were received totaling \$12,482.00.

Mr. Duncan Knudsen
Mr. and Mrs. Alfred P. Krampert
Mr. K. A. Kreis
Mr. and Mrs. Gilbert C. Lang
Mr. and Mrs. V. L. B. Larson
Mr. and Mrs. Willie B. O. Lau
Mr. and Mrs. David W. Lederman
Mr. and Mrs. G. J. Lee
Mr. and Mrs. Thomas H. Lee
Mr. and Mrs. G. M. Lhamon
Mr. and Mrs. Everett H. Lillig
Mr. and Mrs. Walter D. Loder
Mr. and Mrs. Frederick T. Loomis
Mr. and Mrs. A. N. Lopez
Mr. and Mrs. C. M. McKinley
Mr. and Mrs. Ross B. McKenzie
Mr. and Mrs. F. R. McLainey
Mr. and Mrs. George McLean
Mr. and Mrs. Duncan A. McLeod, Jr.
Mr. and Mrs. C. A. McMonagle
Mr. and Mrs. J. S. Mandigo
Mrs. C. L. Mausten
Mr. and Mrs. Glenn Maxwell
Mr. and Mrs. Byron A. Maxson

Mr. and Mrs. Marvin S. Noble
Mr. and Mrs. James Ochs
Mrs. Stephen Okada
Mrs. A. Olds
Mr. and Mrs. A. E. Omdahl
Mr. and Mrs. John E. Pallett
Dr. and Mrs. James K. Palmer
Mr. and Mrs. L. L. Patterson
Mr. and Mrs. K. D. Park
Mr. and Mrs. K. E. Paul
Mr. and Mrs. Arthur S. Pearson
Mr. and Mrs. Arthur Pederson
Mr. and Mrs. C. E. Perry
Mr. and Mrs. H. B. Peschel
Mr. and Mrs. James R. Polley
Mr. and Mrs. Charles W. Potter
Mr. and Mrs. Harold L. Potter
Mr. and Mrs. Clermont S. Powell
Mr. and Mrs. W. G. Powers
Mr. and Mrs. Lloyd Quick
Mr. and Mrs. Edmund J. Rea
Mr. and Mrs. William L. Reagen
Mr. and Mrs. R. H. Redmond
Mr. and Mrs. Paul E. Reidy



Oregon United Methodist Church

During the 1968-69 year, 90 United Methodist Churches in Oregon sent gifts totaling \$9,671. An additional \$17,184 was received from World Service for a grand total of \$26,856.

SALEM DISTRICT
Bend
Corvallis
Falls City
Halsey
McCabe
McMinnville
Salem
Salem, First
Jason Lee
Leslie
Morningside
Trinity
West Salem
Shedd
Sheridan
Stayton
Sweet Home
Yamhill

PORTLAND DISTRICT
Arlington
Dufur
Echo
Gresham
Hermiston
Milton-Freewater
Odell
Pine Grove
Tygh Valley
Wasco
Weston

Portland
Cherry Park
Epworth
Portland, First
Freemont St.
Hughes Memorial
Laurelwood
Lincoln St.
Montavilla
Pioneer
Rose City Park
Sellwood
Sunnyside
Trinity
University Park
Woodlawn

FOREST GROVE DISTRICT

Astoria
Beaverton
Canby
Clackamas
Clatskanie
Cornelius
Dundee
Estacada
Forest Grove
Geribaldi
Hillsboro
Lake Oswego
Milwaukie
Newberg
Oak Grove
Oregon City

Portland
Christ Church
Metzger
Vermont Hills
Rainier
St. Helena
Tigard
Tillamook
Warrenton
Willamette
Woodburn
EUGENE DISTRICT

Camas Valley
Canyonville
Days Creek
Eugene, First
Grants Pass
Junction City
Klamath Falls-Beatty
Medford, First
Myrtle Creek
Myrtle Point
North Bend
Oakridge
Reedsport
Springfield
Ebbett Memorial
St. Pauls
Ten Mile
Unity
Wilbur
Williamson River
Veneta
Yoncalla



Oregon Colleges Foundation

Willamette University received \$52,856 as its share of support from individuals, business and industry making gifts to the Oregon Colleges Foundation, Inc. OCF, an incorporation of the accredited independent colleges of Oregon, received \$421,466 from 458 subscribers. Willamette gratefully acknowledges this support.

Abbey Rents
Ace Electric Company
Acme Metal Works, Inc.
Acme Trading & Supply Co.
Addressograph-Multigraph Corporation
Air King Manufacturing Corp.
Alaska Steel Company
Albany Democrat-Herald
Albertson's, Inc.
Albina Engine & Machine Works, Inc.
Allis Chalmers Foundation, Inc.
Aluminum Company of America
Alcoa Foundation
American Bakeries Company
Langendorf Division
American Brush Company
American Guaranty Life Insurance Company
American Mail Line, Ltd.
American Oil Foundation
American Pipe & Construction Company
American Telephone and Telegraph Company - Long Lines Dept.
American Tobacco Company
Anonymous
Arthur Andersen & Company
H. A. Andersen Company
Archer Blower & Pipe Co., Inc.
Arden-Mayfair, Inc.
Arrow Transportation
Atlantic Richfield Oil, Corp.
Atwood-Larson Company
The Autsen Foundation
Behcock & Wilcox
Belzer Machinery Company
The Bank of California, N.A.
Bank of Commerce, Milton-Freewater
Bank of Newport
Bank of Tokyo, Ltd.
Barker Manufacturing Company
The E. J. Bartells Company
The Norman Bassett Foundation
Battelle Northwest
Bauman Lumber Company
Bayer, Inc.
The Bend Bulletin
Beneficial Finance Company
The Benson
Western International Hotels
Charles F. Berg
Big "C" Stores, Inc.
Bioproducts, Warrenton-Astoria
Black & Company, Inc.
George Black & Company
Blitz-Weinhard Foundation

George R. Blodgett
Arthur Young Foundation
Blyth & Company, Inc.
Boise Cascade Corporation
Foundation, Inc.
William L. Brewster
Brewster, Scholz, Burnett & Baily
Bristol-Myers
Brooks-Scanlon, Inc.
The Bend Foundation
Brown Oldsmobile Company
Bullier & Bullier
Bumble Bee Seafoods, Inc.
John W. Burles, CPA
World of Coos Bay
Burns Bros. Tire & Supply Co.
Business Equipment Bureau
CWS Grinding & Machine Works
Henry P. Cabell
Calbag Metals, Inc.
Caldwell's Colonial Mortuary
California Pacific Utilities Co.
Canadian Imperial Bank of Commerce
Canteen Company of Oregon
Carroll, Incorporated
Carnation Company
The Carpenter Foundation
E. H. Carruthers Company
Cascade Corporation
Cascade Natural Gas Corp.
Cascade Pacific Lumber Co.
Cascadia Lumber Company
Robert W. Chandler, Personal
The Bend Bulletin
Chown Hardware & Machinery
Chrysler Corporation Fund
Citizens Bank of Corvallis

Citizens Bank, Eugene
Citizens Bank of Oregon
Lake Oswego
Citizens Valley Bank, Albany
Coastal Machinery Co., Inc.
The Coe Manufacturing Company
Collins Pine Company
Commonwealth, Inc.
Community Bank, Lake Oswego
Concrete Steel Corporation
Cone Lumber Company
The Connecticut Mutual Life Insurance Company
Conrad Veneers, Inc.
Consolidated Supply Company
Container Corporation of America Foundation
Continental Can Company, Inc.
The Continental Insurance Companies
Convoy Company
The Westland Foundation
Morrison A. Conway
Cascade Construction Co.
Ward Cook, Inc.
J. W. Copeland Yards
Cornell Manufacturing Co.
Cornell, Howland, Hayes & Merryfield, Inc.
Corvallis Gazette Times
Anonymous
Credithrift Financial - Richard H. Meier Foundations, Inc.
Cummings Oregon Diesel, Inc.
Custom Stamping & Mfg. Co.
Daily Journal of Commerce
Dant & Russell, Inc.
Davidson Industries, Inc.

A. J. Davis and Sons, Inc.
Dawson, Turner & Jenkins, Inc.
John Deere Foundation
Del Monte Meat Company
Del Monte Corporation
Fremont Foundation
Deluxe Check Printers
Dennis Uniform Manufacturing Co.
Dimitre Electric Company
Douglas Forest Materials Corp.
Donald M. Drake Company
East Oregonian, Pendleton
Economy Oil Company
J. G. Edwards Charitable Trust
Wilbert B. Eichenberger
Electrical Distributing, Inc.
Electronic Specialty Company
Electro Scientific Industries, Inc.
Ellingson Timber Company
Paul R. Emerick Company
Empire Building Material Co.
Equitable Savings & Loan Association
ESCO Corporation
Eugene Register Guard
Eugene Stud and Veneer, Inc.
Evans Products Company
Foundation
Exact Electronics, Inc.
First Federal Savings and Loan Association of Willamette Valley, Albany
First Federal Savings & Loan Association of Clatsop County
First Federal Savings & Loan of Klamath Falls
First National Bank of Oregon
First State Bank of Oregon
Fisher's
McLane Fisher
Flightcraft, Inc.
Flehrer Properties
John F. Forbes & Company
Ford Motor Company Fund
Foremost Foods Company
Fought & Company, Inc.
The Fowler Distributing Co.
Francis Ford, Inc.
R. H. Hazen
Benjamin Franklin Savings & Loan
Franz Bread
United States Bakery
Fraser Paper Company
Fulton Provision Company
Future Products Company

GAF Corporation
The Garco Foundation
Gibbons & Reed Company
Gardner & Beeson Company
George Gelat Company
The General Foods Fund
General Mills Foundation
General Motors Corporation
General Telephone & Electronics Foundation
Georgia-Pacific Foundation
Gilchrist Timber Company
The J. K. Gill Company
Giustina Bros. Lumber and Plywood Company
Archie Goldsmith & Bro.
Grandma Cookie Company
Graphic Arts Center
Agency Lithograph
Abbott, Kerns & Bell Co.
Hallwyler Printing Co.
H. A. Gray & Company
Graybar Electric Company
Great Northern Railway Foundation
Grigsby Bros. Paper Box Manufacturers
Gunderson Bros. Engineering Corporation

E. C. Hall Construction Co.
Haltor Tractor Company
William A. Hammond
Ross B. Hammond
John Hancock Mutual Life Insurance Company
Hanel Lumber Company, Inc.
The Hanna Mining Company Fund
Harris Pine Mills
Harry and David
Bear Creek Orchards
Harvey Aluminum
Hawcock Door Mfg.
Henningson Enterprises, Inc.
J. A. Heryin
The Heryin Company
Hiram Walker & Sons, Inc.
The Hoffman Fund
Holman Transfer Company
Houghton-Mifflin Company
Howard-Cooper Corporation
The Hub
Anonymous
Nils Hult
Hyster Company

Industrial Air Products Co.
Industrial Lumber Company, Inc.
Industrial Parts, Inc.
International Business Machines Corporation
International Harvester Company
Irrington Machine Works
Irwin Hodson Metal Mfg. Company

Jackson County Federal Savings and Loan Association
Jantzen, Inc.
Jayvee Brand, Inc.
Jeddloh Bros. Suede Mills, Inc.
Jeld-Wen, Inc.
June S. Jones Company
W. J. Jones & Son
Juhn & Sons, Oreg. Ltd.

KPTV-Channel 12
Kaiser Cement & Gypsum
Kandel Knitting Mills, Inc.
Kerns Company
Kienows Food Stores
Klamath Ice & Storage Company
Klamath Iron Works
Klamath Lumber Company
Knappton Towboat Company
Koppers
Kraft Foods Division
National Dairy Products Corporation
Kubla Kahn Food Company
Kuckenberg Construction Co.

E. H. Ladum
Lamb-Weston, Inc.
Anonymous
Lane County Bank, Florence
The George Lawrence Company
L. Layton Creations
Leupold & Stevens Instruments, Inc.
Liberty Mutual Insurance Company
Fund
The Charles H. Lilly Company
Portland Seed Company Division
Lincoln Bank, Lincoln City
Lind-Somers & Collins, Inc.
Lloyd Corporation, Ltd.
The Ralph B. Lloyd Foundation
Lomar Motors, Inc.
Loomis Armored Car Service, Inc.
Lord Bros. Contractors, Inc.
Lumber Products

The Lynch Company, Inc.

Mail-Well Envelope Company
Marsh & McLennan - D. K. MacDonald & Company, Inc.
David T. Mason
Massachusetts Mutual Life Insurance Company
G. Ellis Matthews
Klamath Iron Works
McCall Oil and Chemical Corp.

Mead Packaging
Medford Corporation
Medford Printing Company
Meier & Frank Company
Mercoer Steel Company, Inc.
Merchants Riverview Delivery
The Merck Foundation
Metropolitan Printing Co.
L. Davis Michel
Midway Lumber Supply
Miller Paint Company, Inc.
Minden Construction, Inc.
Minnesota Mining & Mfg. Co.
Mitchell, Lewis & Stayer
Mobil Foundation, Inc.
Modern Firescreens Co.
Montgomery, Shinn & Mangels, Inc.
Montgomery Ward
George A. Moore & Associates
R. Burke Morden
Morden Machines Company
Mount Baldy Lumber Company
Mt. Hood Chemical Corporation
Mount Hood Radio & Television Broadcasting Corporation
KOIN and KOIN TV
Multnomah Bank

Bailey's, Inc.
National Biscuit Company
National Metallurgical Corp.
Nationwide Papers, Inc.
Paul Neils
Nelson Equipment Company
Ted Nelson Company
New England Mutual Life Insurance Company
New York Life Insurance Co.
Nicolai Company
Nordstrom Best
North Pacific Cannery & Packers, Inc.
Northern Pacific Railway Foundation
Northern Wholesale Hardware Co.
North Side Lumber Company
Northwest Industrial Laundry Division of Rentex Corp.
Northwest Natural Gas Company

Ocean Foods of Astoria
Ochoco Lumber Company
Oakmark Industries, Inc.
Oregon Air-Motive, Inc.
Oregon Automobile Insurance Co.
The Oregon Bank
The Adams Foundation
Oregon Freeze Dry Foods, Inc.
Oregon Laundry Cleaners
Oregon Leather Company
Oregon Marine Supply Company
Oregon Metallurgical Corp.
Oregon Mutual Savings Bank
Oregon National Life Insurance Company
Oregon Portland Cement Company
Oregon Steel Mills
William G. Gilmore Foundation
Oregon Transfer Company
Oregon-Washington Plywood Co.
Oregonian Publishing Company
Oroweat Bakers, Inc.
Owens Illinois Charities Foundation

P & C Tool Company
Pacific Carbide & Alloys Co.
Pacific Coca Cola Bottling Co.
Pacific Diesel Power Company

Pacific First Federal Savings and Loan Association
Pacific Machinery & Tool Steel Company
Pacific Metal Company
Pacific Northwest Bell
Pacific Power & Light Company
Pacific Steel Warehouse
Packer-Scott
Patrick Lumber Company
Paulson & Roles Laboratories
Peat, Marwick, Mitchell & Co.
Peavey Company Group Foundation
Peerless Trailer & Truck Service, Inc.
Peerless Pacific Company
PSCO, Inc.
Al Pearce Company
Pendleton Woolen Mills
J. C. Penney Company, Inc.
Pepsi Cola Bottling Co., Gambie, Inc.
A. V. Petersen Company
Pettit Bedding Company
Sealy Mattress Company
Calvin P. Peyton
Charles Pfizer Company, Inc.
Philip Morris, Inc.
George M. Philipott Co., Oregon Ltd.
Pierce Freight Lines, Div. of Valley Copperstate System
Pioneer National Title Insurance Company, Title Insurance and Trust Company Foundation
Pitney-Bowes, Inc.
Polk County State Bank
Ponderosa Mouldings, Inc.
Pope & Talbot, Inc.
Porter-Scarpelli Macaroni Co.
Portland Chain Manufacturing Co.
Portland Federal Savings
Portland Furniture Mfg. Co.
Portland General Electric Co.
Portland Machinery Company
Portland Wholesale Grocery Co.
Portland Wire & Iron Works
Precision Castparts Corp.
H. R. Pringle
Concrete Steel Corp.
The Procter & Gamble Fund
Public Finance Company
American Investment Co. Foundation
Publishers' Paper Company

Randall Chevychtown
Reimers & Jolivet
Reliable Transfer
Reiter Fruit Company
Reynolds Metals Company
Rich Manufacturing Company
C. E. Riggs, Inc.
Riviera Motors, Inc.
Robertson Hay and Wallace
Rodda Paint Company
Rodgers Organ Company
Rogge Lumber Sales
W. G. Rovang & Associates, Inc.
Roseburg Lumber Company
Kenneth W. Ford Foundation
Ross Island Sand & Gravel Co.
R T & E Corporation
Harry Rubenstein
Rubenstein's
Ben Rybke Company

S & W Farm Equipment, Inc.
SAFECO Insurance Group
SAFECO Insurance Company of America
General Insurance Company of America
SAFECO Life Insurance Company
Safeway Stores, Inc.
Saga Food Service, Inc.
Sause Brothers Towing
Schenley Industries, Inc.
Schetky Equipment Corp.
Harold J. Schnitzer
Harsh Investment Corp.

Schmitt Steel, Inc.
Seaport Manufacturing Co.
Securities Intermountain, Inc.
Security Bank of Oregon
Shaw Surgical Company
Shedrain Umbrella Company
Sheraton Motor Inn
Sheraton Foundation, Inc.
Sigma, Inc.
Silver Eagle Company
Simpson Timber Co. Foundation
Siuslaw Valley Bank, Florence
W. C. Silvers Company
Six Robbies, Inc.
Skidmore, Owings & Merrill
Donald C. Sloan & Company
Southern Oregon State Bank
The Sperry and Hutchinson Co.
The S&H Foundation, Inc.
George Stadelman
Standard Insurance Company
Standard Motor Products, Inc.
Standard Oil Company of California
Standard & Poors Corp.
Stanton, Boles, Maguire & Church
Star Machinery
The Rebel Foundation
Statesman-Journal Company, Inc.
Sterling Drug
Stevens & Son
Suburban Gas of Portland, Inc.
Sunset Fuel Company
Sunshine Dairy
Sun Stads, Inc.
Alfred D. Collier
Swan Lake Moulding
Tektronix, Inc.
Tektronix Foundation
The Herbert A. Templeton Foundation
Terminal Ice & Cold Storage Co.
The Oelles Chronicle
Timber Structures, Inc.
Touche, Ross, Bailey & Smart
Tracey & Co., Inc.

Union Oil Company of California Foundation
Union Pacific Railroad Foundation
United Data Processing
United Finance Company
United States National Bank of Oregon
United States Steel Foundation, Inc.
United Telephone Company of the Northwest

VWS United Corporation
Van Waters & Rogers Division
Scientific Supplies Company
Centennial Mills Division
Pacific Resins & Chemicals, Inc.
United Pacific Foundation
Van Duyn's
Van Waters & Rogers, Inc.
Viking Automatic Sprinkler Co.
The Village Green
W. A. Woodard Foundation
Dean Vincent, Inc.
The Vinton Company
W. J. Voit Rubber Corp.

R. M. Wade & Co.
Wadhams & Co.
Wagner Mining Scoop, Inc.
Wanke Panel Company
A. R. Watrek
Weisfield Foundation
Wentworth Foundation
The Wertheimer Foundation
Westab
Western Auto Supply Company
Western Bank
Western Kraft Corporation
Western Wholesale Company
Payless Drugstores
Western Wood Manufacturing Co.
Weyerhaeuser Company Foundation
White Stag Mfg. Company
Whittier Moulding Company
Hudie Wilhelm Warehouse Co.
Willamette Industries, Inc.
Willamette Iron & Steel Co.
Bingham Pump Company
Guy F. Atkinson Company
Willamette Western Corporation
Lew Williams Motors, Inc.
Lew Williams Foundation, Inc.
Wills Enterprises, Inc.
Portland Leasing
Witco Chemical
Wollenberg Foundation
F. W. Woolworth

Yaw's Top Notch Restaurant
Yergen and Meyer
The Arthur Young & Company Foundation, Inc.

Zell Brothers
Zidell Explorations, Inc.
Zip O Log Veneer Inc.



Other Individuals, Business Firms, Corporations Foundations and Organizations

In addition to its share from the Oregon Colleges Foundation, the University directly received the support of the following individuals, business firms, corporations, foundations and organizations, indicating the wide diversity of Willamette's supporting constituency. This illustrates the general concern for higher education, as many who are not directly related to Willamette are willing to invest in its future.

Counting the large Atkinson Foundation gift, the donors below provided nearly \$4 million in gifts to Willamette University during 1968-69.

The A. B. Dick Foundation
C. Gene Albertson, D.D.
Anonymous Donor
The Allstate Foundation
American Legion, Dept. of Oregon
Barbara Cox Anthony Foundation
Gen. Henry H. Arnold Educational Fund
Air Force Aid Society
Associated Students of Willamette University

Associated Women Students of Willamette University
Atkinson Foundation
Guy F. Atkinson Scholarship Fund
Myrtle L. Atkinson Foundation
The Autzen Foundation
Arthur B. Bates
Peter J. Batten, M.D.
Bill Beard Sporting Goods
Paul B. Beal, Ph.D.
Mr. and Mrs. Howard C. Belton
Mrs. Elizabeth Peters Binney
* Clarence M. Bishop
A. C. Bonebrake
Russell F. Bonesteel
Estate of Marguerite J. and Russell M. Brooks
E. H. Burrell Automotive Electric

Prof. Edwin W. Butler
Prof. and Mrs. Stanley Butler
Capitol Chevrolet Cadillac, Inc.
Capitol City Transfer Company
Capitol Concrete Block Co., Inc.
Carnation Company Scholarship
Cascade Warehouse Company
Castle & Cooke, Inc.
Clark College
Edward L. Clark, Jr.
Estate of Wilson W. Clark
Class of 1921
Mrs. Truman W. Collins
The Collins Foundation
Columbia Gas Company
The Commercial Bank
Cordon High School, Parent-Teacher Association
Keno Valley Junior Women's Club
Construction Insurance Agency, Inc.
Rodney T. Cox Investment Co.
Crown Zellerbach Foundation
Crescent Oil Tool & Specialty Co.
John Deere Foundation
Charles H. Derthick, Ed.D.
Prof. Ralph J. Dobbs

Prof. Ralph J. Dobbs
Pow Chemical Company, Plan for Higher Education
Paul M. Dunll, Ph.D.
Prater Order of Eagles
Oregon State Aerie
East Anchorage High School, Student Body
Mrs. Ronald S. Edwards, Jr.
Elks National Foundation
Burns Elks Lodge, B.P.O.E. # 1680
Concord Elks Lodge, B.P.O.E. # 1994
Kodiak Elks Emblem Club, B.P.O.E. # 187
Oregon State Association of the B.P.O. Elks
San Mateo Elks Lodge, B.P.O.E. # 1112
Equitable Life Assurance Society
First National Bank of Oregon, Salem Branch
Mr. and Mrs. George C. Flanagan
Max C. Fleischmann Foundation
Ford Motor Company Fund
Mr. A. M. Frank
Mr. Gerald W. Frank
Mrs. H. William Gazeley
Georgia Pacific Foundation

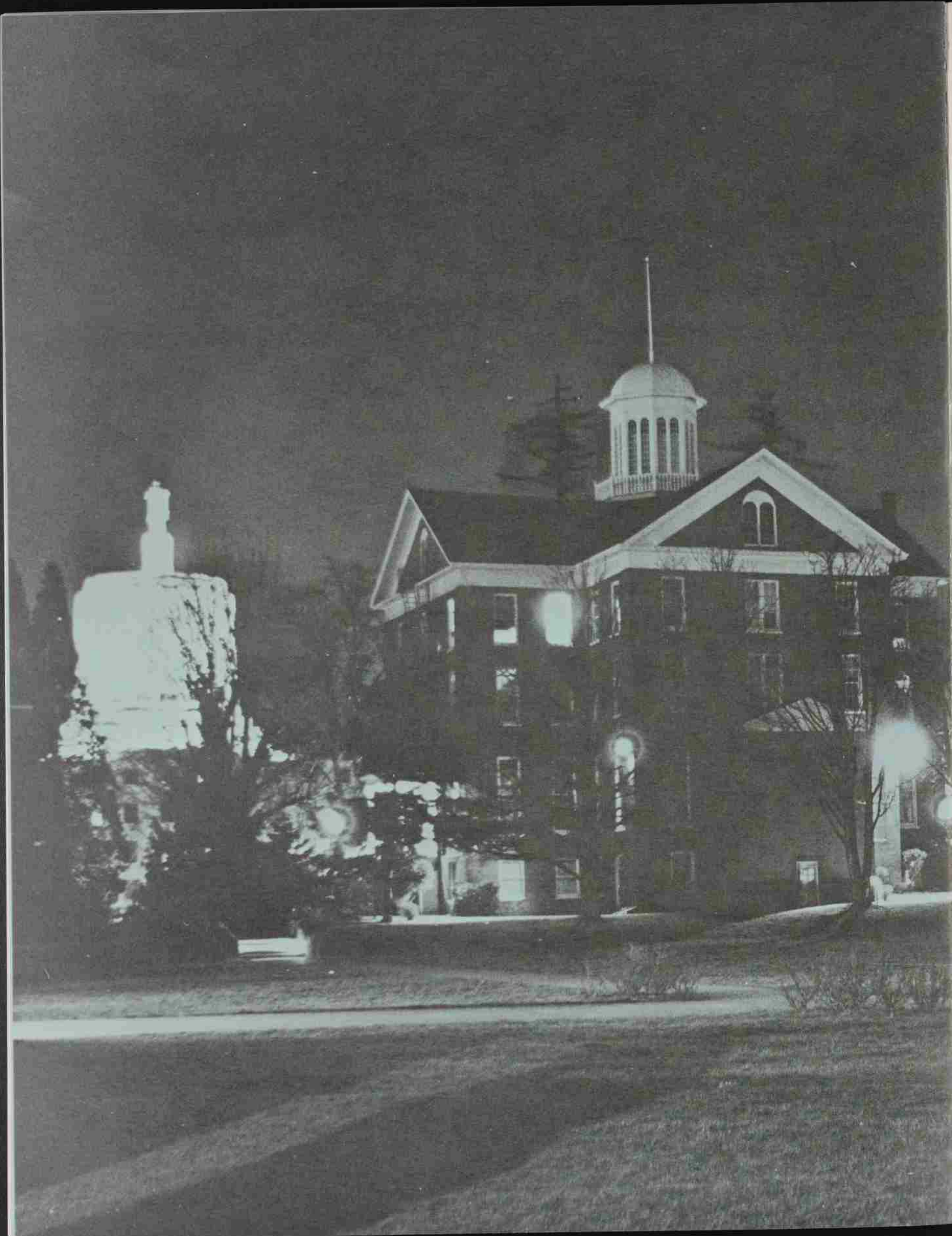
Carl A. Gerlinger, Jr.
Estate of Della C. German
Grabenhorst Brothers
Mr. and Mrs. Coburn L. Grabenhorst, Sr.
Mrs. Caroline C. Grabenhorst
Grant High School, Dads' Club
Robert D. Gregg, Ph.D.
Prof. Lyle C. Grimes
Glibert Groff
Grace Collins Gaudy Scholarship Fund
Prof. Jack H. Haferkamp
Prof. James A. Hand
Mrs. Mark O. Hatfield
Staff of Senator Mark O. Hatfield
George F. Henriksen
Edward Hines Lumber Company Foundation
Household Finance Foundation
Dr. and Mrs. Norman J. Hudak
Hughes Aircraft Company
Wilton D. Hunnax, Ph.D.
IBM, Matching Grants for Education Program
International Association of Y's Men's Clubs, Inc.
International Telephone & Telegraph Corporation

Jackson Foundation
Jaycees of Wilbur, Washington
Rev. and Mrs. H. James Jenkins
Mrs. Gertrude W. Johnson
The S. S. Johnson Foundation
Oregon Junior Achievement
Columbia Empire, Inc.
Junior Achievement of San Francisco, Inc.
Noel F. Kaestner, Ph.D.
Chester C. Kaiser, Ph.D.
Keg and Platter
Kell & Alterman, Attys.
Kellogg Senior High School
Dr. and Mrs. Reid R. Kimball
The Estate of Mary H. Kitz
Knapp Printing Company
Dr. and Mrs. A. J. Kraft
Kreage Foundation
K S L M Radio
Lakers Dads' Club, Lake Oswego High School
Mrs. Minnie E. W. Lawrence
Estate of Lester L. Laws
Dorothy and Thomas Leavey Foundation
Ed Lewis Oil Company
Alfred W. Loucks
Harvey Loveall Salon
Dr. and Mrs. Chester F. Luther
James R. Lyles, Jr., Ph.D.
McChord Air Force Base
Education Services Office
George S. McCowen, Jr., Ph.D.
McKay, Panner, Johnson & Marceau, Attys.
Reginald A. Machaffie
Robert F. Maguire
Otto W. Mandl, Ph.D.
March of Dimes, Lane County Chapter
Prineville Masonic Lodge, A.F. & A.M. # 76
Maxwell Air Force Base, Base Procurement Office, U.S.A.F.
Medford Senior High School
Merck Distributing Company
Merrill Lynch, Pierce, Fenner & Smith Foundation, Inc.
The Methodist Church, Board of Education
The Methodist Church, Oregon Annual Conference
Owen G. Miller, M.D.
Vern W. Miller, M.D.
Moore Oregon Lumber Company



Morrison & Bailey, Trust Account
Mu Phi Epsilon
National Defense Student Loan Fund
National Health Institute
National Merit Scholarship Corporation
National Science Foundation
The New York Times Foundation, Inc.
Ochoco Lumber Company
Oregon Builders Hardware
Oregon Colleges Foundation
Oregon Commission for the Blind
Oregon Dept. of Education
Division of Vocational Rehabilitation
P.E.O. Sisterhood, Oregon State Chapter
Mr. and Mrs. Charles L. Paar
Pacific Grains, Inc.
Pacific Power & Light Company
Albina Page Fund
Cameron S. Paulin, Ph.D.
Portland Rose Festival Assoc.
Parkrose Senior High School
Payne & Settecase, A.I.A.
Phi Delta Phi Legal Fraternity
Potts-Davis & Company
Keith Powell
Presbyterians United for Biblical Confession
The Presser Foundation
Principal Programming Corporation
Publishers Paper Company
Pumilite Block and Supply Company
John A. Rademaker, Ph.D.
Kawlinson's Capital City Laundry
Research Corporation for Science
C. E. Riggs, Inc. Scholarship Fund
Roberson Motors, Inc.
Annie Roberts Foundation
Roberts Motor Company
Rotary Club of Lakewood
Rotary Club of Salem
Dr. and Mrs. Howard W. Runkel
Ryan Aeronautical Foundation
S. & H. Foundation, Inc.
Saga Food Service
Salem Automobile Dealers Association
Salem Breakfast Club
Salem Federal Savings and Loan Association
Salem Geological Society

Salem Heating and Sheet Metal, Inc.
Salem Heavy Hauling & Equipment Co.
Salem Numismatic Society
Salem Sand & Gravel Company
San Mateo High School P.T.A.
Scherer Foundation, Inc.
Scott Paper Company Foundation
Sears-Roebuck Foundation
Service Bureau Corporation
Shattuck Avenue Methodist Church
Shell Companies Foundation
Theodore C. Shoberg
Sid's Furniture & Appliances
Mrs. Roy H. Simmons
Mrs. Audrey S. Smith
O. Herbert Smith, Ed.D., M.D.
Edwin F. Snider, M.D.
Howard R. Somers
Southern Pacific Foundation
Justice Homer R. Spence
* Charles A. Sprague
Martha E. Springer, Ph.D.
State Finance Company, Inc.
August M. Steiner
Edwin J. Stallings, Ph.D.
Tangerelli Pontiac Company
Tektronix Foundation
Herbert A. Templeton Foundation
Touche, Ross, Bailey & Smart, C.P.A.
Merritt W. Truax
Max D. Tucker Scholarship Fund
Max and Rose Tucker Foundation
Prof. Marija Udrin
United States Dept. of Health, Education and Welfare
United States National Bank of Oregon, Ladd & Bush Branch
William Volker Foundation
Walling Sand & Gravel Company
Washington High School
William B. Webster, Sr.
A. M. Weinstein
Frankie Welch of Virginia
West Anchorage High School
Weyerhaeuser Company Foundation
E. Jerry Whipple, D.C.S.
Mrs. Thomas M. Whitehead
Wieder's Salem Laundry
Willamette University Mothers' Club of Portland
Williams, Skopel & Miller, Attys.
The Estate of Colonel Percy Willis
Your Town Press, Inc.



By-Laws of the Alumni Association

College of Liberal Arts
College of Music

ARTICLE I—Committees

Section 1. *Permanent Committees.* The Executive Board has the following permanent committees, with the chairman of each a member of the Executive Board:

(1) Alumni Loyalty Fund Committee, (2) Special Events Committee, (3) Records and Achievement Committee, (4) Admissions Counseling Committee.

Section 2.

Other Committees. Temporary and special committees are appointed as the need arises.

Section 3.

Appointment. Permanent, temporary and special committees are ordinarily appointed by the President, or in his absence the President-Elect, but temporary and special committees authorized by the Executive Board may be elected by the Board at its discretion.

ARTICLE II—Plan of Organization of Willamette University Alumni Clubs

(1) Willamette University and the Alumni Association of Willamette University authorize and encourage the organization of Alumni Clubs in cities and areas where there are sufficient interested Alumni.

(2) Persons eligible for membership in the Association are eligible for membership in Willamette University Alumni Clubs.

(3) A Willamette University Alumni Club is registered in the Association office at Salem, Oregon, and reports regularly to the Director of Alumni Relations concerning its membership, officers, and activities. Copies of the minutes of Alumni Clubs are filed with the Association office.

(4) Each Club shall select its own name, maintain its own membership, elect its own officers and determine its own times of meeting. It is suggested that the name of a Club include the designation "Willamette University Club" (e.g., The Seattle Willamette University Club), and that in other matters of organization the club consult regularly with the Alumni office of the University.

(5) To preserve organizational uniformity it is recommended that each Club have a Chairman, Vice-Chairman and Secretary.

(6) It is recommended that meetings be held at least once each year. The University will cooperate in having a University Faculty or Staff member present to report on the University whenever possible.

ARTICLE III—Collegian

Any member of the Association who contributes fifteen dollars or more to the Alumni Loyalty Fund of Willamette University during any fiscal year will be entitled to receive the *Willamette Collegian*, during the following University year.

ARTICLE IV—Amendments

These By-Laws may be amended by a two-thirds vote of the members who are present at any meeting of the Association, provided that the substance of the proposed amendment has been submitted to the membership with one of the notices for the meeting.

CLASS NOTES

Theresa Primbs, Records Secretary

1911

ARTHUR W. SCHAUPP (L) is still practicing law in Klamath Falls, Oregon. His address is 205 Willits Bldg.

1917

ADELAIDE TOBIE ORANGE is now retired and is living on a farm near her daughter. Her address is 7364 Sequoia NE, Brooks, Oregon.

1918

CHARLES R. RANDALL (L) writes that he had a wonderful time renewing old friendships at their 50th class reunion last May. Mr. Randall resides at 317 N. Adams Rd. Spokane, Washington.

1923

Rev. FRANCIS M. KINCH is now retired and living at 12556 15th NE, Seattle, Wash.

1924

Mr. & Mrs. LEONARD SATCHWELL (LOIS NYE '26) are now living in a retirement area in Laguna Hills, California. Their new address is 654P Sevilla. Mr. Satchwell writes that there are three other Willamette fraternity brothers living in the same area.

Dr. & Mrs. TRACY STREVEY '23, Dr. & Mrs. WALDO ZELLER '23 (ESTHER MOYER '25) and Dr. & Mrs. HUBERT WILKEN '21 (VIVIAN ISHAM '29).

MICHAEL T. EDWARDS (L) retired in 1953. He spends 8 months of the year in Thousand Palms, California-Box 145 and 4 months in Salem, Oregon at 370 Magnolia Ct. NW.

1925

In April and May of this year, Dr. P. MALCOLM HAMMOND and his wife took a two month "people-seeing" tour of the U.S. visiting relatives and friends in 24 states. Dr. Hammond is now minister of Grace United Methodist Church in Oakland, California. His new address is 2369 103rd Ave.

JENNELLE VANDEVORT MOORHEAD will spend 9 weeks in South America this summer. This is the 4th summer that she has directed seminars in Ecuador and the 2nd summer that she has been in Peru, Bolivia and Colombia. Mrs. Moorhead resides at 2683 Potter, Eugene, Oregon.

FRANCES M. HODGE has joined a group of Willamette graduates at Willamette View Manor. She moved there in April and enjoys it very much. Her address is 2705 SE River Rd. Portland, Oregon.

HULDA HAGMAN ATWOOD, long-time secretary of the Federated Churches of Corvallis and later of the First Congregational Church was honored by that church at a dinner on May 9. A highlight of the dinner was the singing of the Willamette Alma Mater by six male voices with the baritone lead by CLARENCE CHURCH '27. Mr. & Mrs. Atwood reside at 1046 N. 10th, Corvallis, Oregon.

1926

MARJORIE CHRISTENSON KING is living with her sister at 247 Judson, Salem, Oregon. Her son, LEW '67 is finishing his second year of law school at Willamette and his wife, (MELINDA JACK '68) is teaching in one of the Salem junior high schools.

CHARLES A. BOND has retired after 20 years as editor for the College of Agriculture at Washington State University. He and Mrs. Bond (JESSIE PYBUS '26) are planning to move to Panorama City, a retirement community, within the next month. Their new address will be 123 Griffith St. Panorama City, Olympia, Washington.

1927

Rev. WALTER LEE moved from the pastorate of First Friends Church of Spokane, Washington to pastorate of Springbrook Friends Church in Newberg, Oregon. Rev. Lee has been a member of the Board of Trustees of George Fox College for the past 24 years and was recently appointed Chairman of Academic Affairs of that board. His new address is 115 W. Illinois, Newberg, Oregon.

DR. MARY M. ERICKSON continues to teach in the Department of Biological Sciences at the University of California, Santa Barbara. Part of her 1969 sabbatical leave was spent studying birds and mammals in the South Pacific, New Zealand, Australia, Rhodesia and East Africa. Dr. Erickson is currently finishing the first year of a two year elected term on the Executive Committee of the College of Letters and Sciences and this quarter is chairman of it. Her address remains at 3505 Foothill Rd., Santa Barbara, California.

MILDRED JONES BYRNE is office manager of the Brookings Land & Townsite Co., and the Brookings Water Co. She is also past president and past district director of the Soroptimist clubs. Her address is P.O. Box 142, Brookings, Oregon.

1929

In recognition of significant service to the purpose of the American Association

of University Women, the Salinas, California branch has named a gift of \$600 to the Fellowships Program for graduate study in honor of ELSIE TUCKER LEWIS. Mrs. Lewis presently resides at 1071 Pajara St. Salinas, California.

OSCAR WHITE, materials and research engineer for the Oregon State Highway Department recently retired. He and his wife, Marjorie have moved from Salem to 660 W. Clackamas Circle, Woodburn, Oregon.

Mr. and Mrs. Thieme (MARY AIKEN) have taken trips this year to Hawaii and the Caribbean. Their son, Bob is with Bell Telephone, son, Bill is a practicing orthopedic surgeon in Seattle, Washington. Their daughter, Susan lives in Anacortes. Mr. and Mrs. Thieme reside at 4701 Gardner Ave. Everett, Washington.

Rev. EVERETT H. GARDNER has been appointed pastor for the First Methodist Church in Rupert, Idaho. For the past three years, he has served the Methodist Church in Milton-Freewater and Weston, Oregon. Rev. and Mrs. Gardner (LOIS BENJAMIN '30) send their new address as Box 266, Rupert, Idaho.

ESTHER LISLE BILLMAN is working on her MA in Anthropology at the University of Alaska this summer. She will then return to Sheldon Jackson College in Sitka where she teaches and is curator of the museum. This museum has much eskimo and indian material from the very early days. Esther writes that she enjoys her work very much. Her summer address is 109 Wickersham Hall, University of Alaska, College, Alaska.

1930

Rev. HAROLD S. SHELLHART was recently appointed to serve the Whitney United Methodist Church in Boise, Idaho.

His new address is 3101 Teton St. Boise, Idaho.

Dr. WENDELL M. KECK retired in June after 12 years as editor for Intermountain Forest and Range Experiment Station of the US Forest Service. Dr. and Mrs. Keck (CAROLYN WILSON '24) reside at 1379 28th, Ogden, Utah.

DONNA HILDESHEIM-KRAMER resides at 1307 W. 6th Ave. Olympia, Washington. The Kramers became the grandparents of twin grandsons this past spring. She is also kept busy as vice president of their large girl scout council.

1931

EVELYN HIGH GRANT, a trustee of the San Mateo Union High School District was elected president of the board recently. Her husband, DONALD K. GRANT '29 is vice president of Guy F. Atkinson Co. They make their home at 241 West Poplar Ave. San Mateo, Calif.

A. LARS NELSON received the Earl Coe Award for Efforts in Resource Development for the state, the region and the nation. He continues to serve on the Federal Farm Credit Board for 37 regional banks. He is also trustee for the Washington State 4-H Foundation. Address is 336 N. 149th St. Seattle, Washington.

HELEN PEMBERTON PRICE teaches english at the Newport High School and lives at 313 NW 16th, Newport, Oregon.

1932

JESSE C. DEETZ will retire from teaching this year. He has spent the past 27 years as a teacher in Oregon City. His current address is 110 Dell Ave. Oregon City, Oregon.

1933

GUS MOORE was recently elected to the National Council of YMCAs as a representative from Northern California. He also serves on the YMCA International Committee and will attend meetings of these groups in St. Louis. For the past 5 years, Gus has been head of the YMCA in Berkeley, California. This summer he and his wife (BEATRICE HARTUNG '31) will conduct a student exchange group of 20 to Japan on a Sister City Exchange program between Berkeley and Sakai. Their address is 1433 Arlington Ave. El Cerrito, California.

1934

KENNETH MACKENZIE, supervisory physicist in the Acoustic Propagation Division, has been appointed Director for the Marine Sciences Division of the Instrument Society of America (ISA). The ISA is a scientific organization of 20,000 members. It is dedicated to advancing the knowledge and practice related to the theory, design, manufacture and use of instrumentation for measurement and automatic control in science and industry. Mr. Mackenzie has specialized for 22 years in antisubmarine warfare research and is an internationally recognized authority on deep and shallow water acoustics and sound speed. His address is 879 Cornish Dr. San Diego, Calif.

VIRGINIA MATLACK FREDERICK is traveling for 6 months in Europe, Mid-East and the Orient. She will return via her former home, Hawaii on Dec. 1, 1969. Her home address is Twin Island Park, Box 1220, Eagle Creek, Oregon.

1935

FRANCES SCHILLING MILLER lives at 1930 Miner, San Pablo, California.

She is teaching kindergarten for Richmond Unified School District.

1936

FLORENCE DURETTE SAALFIELD lives on a farm north of Salem, Rt. 1, Box 271, Gervais, Oregon. She has been with the St. Paul schools for 12 years, this year she will be librarian for the grade and high school. Florence has two sons-one in the service and the other is married and has two daughters.

1937

JEANNETTE SCOTT will direct the Suzuki Talent Education Workshop at Western Washington State College this summer. This workshop will study the program of violin and string instruction as developed by the internationally famous Dr. Shinichi Suzuki. Miss Scott has studied with Dr. Suzuki both in Japan and in the United States and holds a Master of Music from the University of Southern California. She is resident director of the "Talent Education" program in the Pendleton, Oregon Public Schools. Address is 424 NW Bailey, Pendleton, Oregon.

Dr. RACHAEL DUNAVEN YOCOM is chairman of the Dance Department of New York City School of Performing Arts. She also supervises Radio City scholarship auditions and has been elected to another term on the Governing Board of the National Regional Ballet Assoc. Her address is 86 W. 12th St. New York, N.Y.

1938

WILETTA SMITH NIELSEN is employed by the Missouri State Health Department as a psychiatric social worker and working in that capacity at the Rolla Regional Diagnostic Clinic for mental retardation. She lives at 807 A. No. Rolla St. Rolla, Mo.

HOWARD M. TEEPLE has resigned his position as Senior Assistant Reference Librarian at Northwestern University to become Head of Reference and Readers' Services and Assistant Professor of Library Science at Chicago State College. Mrs. Teeple is Chief of the Catalog Department at the John Crerar Library in Chicago. Their address is 400 Main St. Evanston, Illinois.

1939

Dr. LAWRENCE GUDERIAN has been appointed minister of the Garden St. Methodist Church in Bellingham, Washington. Dr. and Mrs. Guderian (CAROL JOHNSON '42) are now living at 2201 Henry St. Bellingham, Washington.

Mr. and Mrs. Harlan Cleveland (LOIS BURTON) have moved to Honolulu, Hawaii. After four years as US representative on the North Atlantic Council in Brussels, Belgium, Mr. Cleveland is quitting to become president of the University of Hawaii. The new position will begin the first of September. In October, they will be joined by one of their three children, Zoe who plans to study and teach art in one of the elementary schools. The new address is University of Hawaii, 2444 Dole St. Honolulu, Hawaii.

MARIAN STEIGERWOLD MURPHY and her husband still have a furniture showroom in Old Seattle Square. Their son, Steve is a Lt. Jg. on a destroyer stationed at Pearl Harbor. Another son, Terry is teaching. Their daughter, Pam is a sophomore at Washington State University and plans to teach. The Murphys reside at 4820 NE 43rd St. Seattle, Washington.

MARGARET TAYLER ANDERSON was recently appointed Director of the Rockland County Guidance Center for women which was developed by Gov. Nelson Rockefeller as a pilot project for the state of New York. It is a vocational and educational counseling service agency of Rockland Community College. Mrs. Anderson is also completing work on her professional diploma in student personnel administration at Teachers College, Columbia University. Her address is Rt. 9W, Palisades, New York.

SUZANNE CURTIS SHEPPERD teaches Latin at Gresham High School and spends the summers in Europe. This year, her daughter, Rosemary travelled with her. Their address is 1100 NW 8th, Gresham, Oregon.

1940

Dr. FRANCIS H. WISE is a Psychologist with a private practice in Sherman Oaks and resides at 3625 Wilhelmina Ave. Woodland Hills, California.

Dr. ROBERT E. KEUSCHER is director of the League of Cooperating Schools, a project sponsored by the Institute for the Development of Educational Activities. His address is 1100 Glendon, Los Angeles, California.

1941

JEANNE PROBERT HUNT is a receptionist for an optical company in Portland, Oregon and resides at 923 NE 47th #4.

ROBERT K. POWELL is vice president of Empire Savings and Loan and resides at Rt. 1, Bozeman, Montana.

1942

ANNE MORRIS TELLVIK lives at 1035 So. Gale, Albany, Oregon. She teaches French at the Albany Union High School.

WINSTON TAYLOR has just completed a two year term as national president of Religious Public Relations Council with accomplishments including the starting of three new city chapters. His address is 1014 Woodside Parkway, Silver Springs, Maryland.

BERTHA BOYLE MITCHELL expects to be installed as area vice president of the California Social Workers Organization for a region covering San Joaquin, Stanislaus and Merced Counties at the annual membership meeting in Los Angeles. She has just completed two years as president of the Delta Chapter in Stockton. Bertha lives at 620 No. Harrison, Stockton, California.

ROBERT E. DAGGETT is principal of the Rancho Cotate High School in the Petaluma High School District. His home is at 114 El Rose Dr. Petaluma, California.

HELEN NEWLAND JONES was one of the finalists for the Senior Woman Award given by the Council of Women's Organizations. This award is based upon life in the area and service to the community. Helen lives at 1511 Moss, Eugene, Oregon.

1943

ANDREW ROGERS now lives at 465 Skyline Dr. Vallejo, California. His occupation is the construction and management of apartments.

1944

KEN TORGESON is with Westab Inc., a division of the Mead Corp., which manufactures school supplies, stationery and other allied products. In his position of corporate manager of inventory planning and control, he travels extensively to the

numerous Westab manufacturing plants around the country, including the one in Salem. Ken resides at 3410 Neighbor Rd. St. Joseph, Mo.

1946

EDWIN F. COULTER is now living at 1366 Walenta, Moscow, Idaho. He is librarian at the University of Idaho.

1947

JOHN M. COPENHAVER '47-L'50 was named circuit judge for the 11th Judicial District. The circuit court includes Crook, Deschutes, Grant, Gilliam, Jefferson and Wheeler Counties. Mr. and Mrs. Copenhaver (LORA GRIFFITH '47) reside at 303 N. Canyon Dr. Redmond, Oregon.

EVELYN DEAL ROBERTS recently moved to 4212 Sleepy Hollow Rd. Annandale, Virginia. Her husband is a geologist with the US Geological Survey and will be working on the staff of the Office of Marine Resources of the Department of Interior in Washington D.C. for the next few years.

AGNES WHITE UMPHRESS resides at Rt. 2, Box 252, Chehalis, Washington and is a social worker for Childrens Home.

1948

FORNIA BLOWER HORSLEY is living at 3099 Rivers Dr. Burlingame, California. Her husband is a partner in the CPA firm of Ernst & Ernst. They have one child, Robert who is 9½ years old who keeps them busy with Cubs and other activities.

WALTER M. RIESS (L) is deputy public defender for Kern County. He resides at 3909 Balboa, Bakersfield, California.

Dr. WARD C. MILES is serving as the Peace Corp Staff Physician in Micronesia for two years. He is coordinating the Peace Corp medical programs in six districts so has travelled over much of the Trust Territory-one of the United States neglected areas for years-with much to be done. His address is Box 392, Saipan, Marianas.

1949

Rev. MEREDITH R. GROVES has been appointed minister of the First Methodist Church in Eugene, Oregon. His new address is 2035 Charnelton, Eugene, Oregon.

Dr. and Mrs. RAY N. FEDJE (BETTY THOMPSON '50) have recently moved to Rochester, New York where Ray will be the pastor of the Asbury First Methodist Church, a cathedral-type church of 2500 members. Their new address is 1050 East Ave., Rochester, New York.

STANLEY C. JOBE is Superintendent of Ashland Public Schools and recently elected president of Oregon School Administrators Assoc. He resides at 1440 Woodland Dr., Ashland, Oregon.

Mr. and Mrs. STANLEY RYALS (BARBARA ROBINSON '51) and five sons reside at 924 Chehalem Rd. La Canada, California. Last year, Stan received news of his election to the Institute of Chartered Financial Analysts. This professional organization requires three examinations and other qualifications. There are about 2200 CFA's in the United States and Canada.

1950

Dr. GORDON MURDOCK has been named technical reprographic manager of Crown Zellerbach Corp. Flexible Packaging Division. He will continue to be located at the Central Research Division where he has served in a supervisory capacity while engaged in development



Don Noonchester '50



Maj. Robt. Miller '56



Capt. Fred Davis '59

of electrostatic paper grades. Dr. Murock, his wife and five children reside at 1906 NW Couch, Camas, Washington.

MARGE COOPER FLECK lives in Rockville, Maryland at 11909 Renwood Lane. Her husband is completing the year at National War College and then expects to be sent overseas to a US Embassy or Consulate. The Flecks have three children: Alan (15), Ken (12) and David (6).

JOHN W. HAKANSON is president of Chickamas Community College in Oregon City. He resides at 3665 SW Washington Ct. Lake Oswego, Oregon.

DONALD R. McMASTER is the broadcaster of the nationally and internationally syndicated program "Music with McMaster" heard on 100 radio stations in the United States and around the world on Armed Forces Radio. Don lives at 485 Barnes Rd. Bellingham, Washington.

MARGARET AUSTIN TAYLOR has completed a four year term on the Bremerton, Washington school board of which she is the first woman member in over 15 years. She is now completing a master's degree program to credential as a school psychologist. She and her husband and two children reside at Rt. 5, Box 382, Bremerton, Washington.

DONALD NOONCHESTER formerly a real estate loan officer at the Phoenix Home Office of Valley National Bank has been named assistant manager of the Lake Havasu City Office. Don and his wife, Karen have three children, ages nine, eight and five.

1951

Mr. and Mrs. ALBERT LUND (BETTY LEONARD '50) have built a new home and are now living at 1622 W. 28th, Eugene, Oregon. Bert teaches 8th grade Social Living at Jefferson Junior High. Their two children are Timmy (9) and David (7).

JACK R. BROWN has been promoted to the position of Regional Manager of Public Affairs for Crown Zellerbach Corp. Mr. Brown had been Northwest Corporate Communications Manager. In his new position he will administer the company's public relations and public affairs programs in Oregon and Washington. Mr. and Mrs. Brown (JEAN STEWART '53) live at 331 Chandler Dr. Lake Oswego, Oregon.

1952

ROBERT L. WITHAM has been promoted to vice president of sales and marketing for Campbell-Weiss Reprographics, Inc. In his new position he will be responsible for sales and marketing for all departments in the Oregon, Southern Washington area. Mr. and Mrs. Witham (BETTY BREAKER '54) are living at 8600 SW Homewood, Portland, Ore.

Rev. EDWARD V. HARGREAVES moved from Wendell, Idaho where he

served the Wendell-Hagerman Methodist Churches for the past five years. He is now minister of the First Methodist Church in Payette, Idaho. The new address is 2040 Moss Dr. Payette, Idaho.

ROBERT LEE HALL is track coach for Alsea High School. His address is P.O. Box 265, Alsea, Oregon.

MARYLOU HERNDON DeCOOK has recently moved to Virginia Beach, Virginia where her husband, Cdr. David DeCook will be Intelligence Officer for the Atlantic Submarine Force. They have three children, David (15), Terrile (12) and Anthony (10). The new address is 532 Buffer Dr. Virginia Beach, Va.

C. MARTIN HULL writes that after graduation from Willamette, he completed a graduate program in Public Health at the University of California with credits in Biochemistry and Bacteriology. Although not employed in this field, he currently pursues medical research at a non-profit foundation. For some time, his occupation has been investment banking in Los Angeles, California. Address is Blyth & Co. 629 So. Spring St.

1953

VERNE G. SHANGLE recently moved from Salem, Oregon to Auburn, Washington, 2926 14th Pl. SE. He is now business manager of the Doctors Clinic Association.

WALTER RICHARTZ is chairman of the upper division of Electronic Engineering Technology at Oregon Technical Institute in Klamath Falls, Oregon. His address is 6408 Elder Way, Klamath Falls, Oregon.

GEORGE E. PORTER is now controller for Boise Cascade Corp. His new address is 7630 Cherrywood Dr. Boise, Idaho.

L. Cdr. ROBERT M. REDDING '53-L'57 transferred from the Naval Air Station in Alameda to the office of Judge Advocate General in Washington D.C. He is now assigned to the Litigation and Claims Division. He is living at 7316 Calvert St. Annandale, Virginia.

M. PATRICIA FARNES, M.D. is chief of Experimental Cell Biology Lab. at Rhode Island Hospital and Assistant Professor of Medicine (Research) at Brown University where she teaches Hematology. Last year she was listed in "American Men of Science." Address is 66 Bowden Ave. Barrington, R.I.

PETER C. COWAN is a breeder of registered Angus cattle and a grower of Easter lilies in Harbor, Oregon (Cowan Bros.). He and his wife, Sharon and four children, Peter (7) David (5), Carla (3) and James (1) reside at 940 Pioneer Lane, Brookings, Oregon.

RICHARD MASE is on sabbatical leave from the Portland school district and is a graduate student at Stanford University. He and his wife, (AMY GIROD '56)

and three children are living at 66B Escondido Village, Stanford, California.

1954

Dr. KENT C. MYERS is presently assistant superintendent of schools in Lake Oswego, Oregon. He and his wife and four daughters reside at 13500 SW Goodall Rd.

Maj. and Mrs. CHARLES HAR- GRAVE recently purchased a new home in Dayton, Ohio where Chuck is an Electronic Warfare Developmental Engineer and Chief of the Threat Definition Teams for the Directorate of Foreign Technology at Wright Patterson AFB. Their new address is 5701 Longford Rd. Dayton, Ohio.

LEAH J. CONNER recently moved to Pendleton, Oregon, Rt. 1, Box 160. She is one of three teachers hired to establish a physical education program in the elementary schools of Pendleton.

MARILYN MEISER is back in Stockton, California working toward an Ed. S. degree at the University of the Pacific. Her address is 4469 Cotton St. #3.

GORDON COTTRELL (L) has been appointed to the Lane County Circuit Court by Gov. McCall. Mr. Cottrell has been in private law practice in Eugene since 1956 in addition to serving as assistant municipal judge for that city. His address is 2137 Olive, Eugene, Oregon.

Rev. and Mrs. STUART SHAW (JAC- QUIE MEADOWS '55) are now living at 6144 SE Holgate, Portland, Oregon. Stuart is pastor of Laurelwood United Methodist Church and Jacquie is the youth worker at Rose City Methodist Church. They have four children: Stanley (10), Eric (8), La Rae (6) and Andre (4).

1955

JEAN TURNBULL HINKLE writes that their four year old son, Douglas has been ill with a chronic kidney condition for the past two years. In Feb., he received a kidney in a transplant operation at the Medical School. He has been home since March 21 and his progress has been remarkable. Jean's husband is in charge of vocal music at Fremont Jr. High and she is teaching piano. Address is 333 S. Hickory, Roseburg, Oregon.

ROBERT L. ALFRED is now General Employment Manager for Pacific Telephone in the San Francisco Bay area. He lives with his wife, Chris and daughter, Lisa at 108 Richardson, Mill Valley, California.

Maj. ROBERT J. DYER recently had his Master's thesis published in two magazines. The first article "An Evaluation of Grievance Procedure Training" was published in Arizona Business Bulletin and the second article was published in Training and Development Journal. Maj. Dyer received his MA from Arizona State in January '69. He is presently stationed at RAF, Mildenhall, England. Address is Box 1649, APO New York, N.Y. 09127.

REV. ORVILLE CLARK is minister of Assemblies of God Church in Kenmore, Washington and resides at 7060 NE 145th, Bothell, Washington.

GERALD ROLPH retired from corporate work the first of this year. In May, he left for London, England to attend an antique car auction at Sotheby's. He will then spend the next three months on the French Riviera and Spain's Costa Brava. In September, he will attend Northwestern University to work toward a Ph.D. in Business. After receiving his Ph.D., he plans to teach business at Graduate School level. Gerald uses as his mailing address, 908 Burton Hill Rd. Ft. Worth, Texas.

ELIZABETH LOVING SITTNER teaches third grade in Beaverton, Oregon

and resides at 1665 SW Filmont, Portland, Oregon.

1956

Maj. ROBERT C. MILLER has been decorated with the Distinguished Flying Cross and three awards of the Air Medal for aerial achievement in Southeast Asia. He received the Flying Cross for his performance as navigator of the C-130 Hercules at Khe Sanh. He flew through mountainous terrain to deliver emergency supplies to besieged marines. He is now assigned to a unit of the Alaskan Air Command at Elmendorf AFB, Alaska.

JERRY L. PATTERSON is a principle in the formation of a new computer consulting firm: Systems & Computer Technology Corp. He is managing the University Information Systems Division. Jerry and his wife and two sons live at 300 Gayley St. Media, Pa.

IAN R. MacIVER has been appointed to the position of Manager-Employee Relations at the Houston Refinery of Shell Oil Co. Prior to this, he held the position of Manager of Industrial Relations. Ian resides at 15730 Diana Lane, Deer Park, Texas.

ERNEST SNARR appraises homes for Central Valley National Bank. He is now living in Montclair-Piedmont Pines section of Oakland, 2575 El Caminito, Oakland, California.

Maj. and Mrs. THOMAS STEEVES (GAIL UPDIKE '55) are leaving in September for a three year tour in Germany. Maj. Steeves has an assignment with NATO at Ramstein AB. Their new address will be Det. 6, 1141 Spec. Acty. Sq. APO New York 09012.

JUDY GRANT ALLEN has recently returned to California from Ft. Sill, Oklahoma where she has been living since her husband, Arnold was recalled to active duty with the army reserve a year ago. Her address is Box 2064, Olympic Valley, California.

JOHN REHFUSS has completed two years as Associate Director of the United States Civil Service Commission Executive Seminar Center at Berkeley, California. His book, GOVERNING THE UN-GOVERNABLE will be published by Appleton-Century-Crofts in 1970. In September, he will become Associate Professor of Political Science at Northern Illinois University. John and his wife (CAROL LITCHFIELD '57) and three children, Debbie, Brent and Todd will live at 127 W. Sunset Place, DeKalb, Illinois.

1957

Rev. and Mrs. GLEN R. MURRAY (SHIRLEY WITTERS '56) and three sons are now living at 5524 Pia St. Honolulu, Hawaii. Glen is now Program Director for the United Methodist Church in Hawaii.

DALE GREENLEE lives in Paris, Ill. 516 E. Madison, where he is director of YMCA. Dale writes that FRED AND SALLY (HUGHES '56) KAUFFMAN have been frequent visitors. They have recently moved from Decatur, Ill. to Olympia, Washington, where Fred returned to work for the Purdy Steel Co.

L. DUANE BAIRD is a teacher for the Los Angeles city schools and resides at 23413 Kentworthy Ave., Harbor City, California.

Dr. FRED L. ROSE will be on the staff at Idaho State University this coming year. His current address is 1919 Howell, Richland, Washington.

Maj. and Mrs. DONALD SMITH (STEPHANIE RYER '60) are now stationed at Lakenheath AFB in England. Don flies a fighter-bomber and spends

each third month at an Air Force base in either Turkey or Libya. Don and Stephanie have four children: Randy (9), Jeff (8) and twins Cindy and Gary (3½). Their current address is Box 2842, APO New York 09179.

LOUISE OWENS JOHNSON attended Minot State College, North Dakota, for the past three years and received her Master of Science in Speech Pathology in May '69. Her husband, Maj. Johnson is serving with the 24th Strategic Recon. Sqd., Eielson AFB, Alaska. The new address is CMR-5, Box 72, APO Seattle, Washington.

JOANNE JENE, M.D., was interviewed by BETTY DOTSON PATAPOFF '39 for the Oregon Education Broadcasting System (KOAC-KOAP) with regards to her experiences with Project Hope. It was viewed July 31 on a program called "Converse." Dr. Jene resides at 1831 NE Thompson, Portland, Oregon.

JACK L. BISHOP recently moved into a new home. The new address is 4141 Mendenhall Dr. Dallas, Texas.

1958

RONALD F. TAYLOR has been appointed manager of First National Bank of Oregon's new branch in the Valley River Shopping Center. Ron has been regional sales manager and assistant vice president at the Eugene main office. Mr. and Mrs. Taylor (CATHERINE LUND '60) reside at 378 Blazer Ave. Eugene, Oregon.

Maj. and Mrs. CHARLES MARSTERS (NANCY GROTH) have recently moved from Kailua, Hawaii to 2218 Pontiac East, Fresno, California. Charles was recently promoted from Captain to Major.

ANNETTE CARSON EWING recently moved from Pope AFB, North Carolina to 1450 Northview Place, Redlands, California.

Dr. RICHARD WHITE recently moved to Honolulu, Hawaii from Bend, Oregon where he has been counselor and teacher at Central Oregon Community College. For the next academic year, Dick will be counselor at The Kamehameha Schools. His new address is 1516 Hanai Loop, Honolulu, Hawaii.

JOHN BOWKER, his wife, Adele and three children live at 613 S. Roche, Porterville, California. John grows and packs citrus fruits.

WILLIAM G. PAULUS, Salem attorney was named Salem School District's legal counsel recently by the School Board. He resides at 3090 Pigeon Hollow Rd. Salem, Oregon.

1959

Mr. and Mrs. WILLARD BUNNEY (BARBARA SIMON '61) have recently moved to San Francisco, California, 545 Post. Willard was transferred to become Branch Administrative Manager for the Xerox Corp.

JOHN F. BARTH is Applications Analyst-Computer Division for Control Data Corp. He and his wife, Janet are living at 3741 Maryland Ave. N. New Hope, Minn.

CHARLOTTE MEANS JONES will be moving from Berkeley, California to Seattle, Washington this summer. Her husband, Del will work for the firm of Balhizer, Rhodes, Smith and Morgan-architects.

GARY A. RAID is now living at 1550 Sycamore Dr. SE, Issaquah, Washington. He is an actuary for Unigard Ins. Group in Seattle.

Dr. and Mrs. JOHN WOOD (ROSEMARY DOOLEN '63) have been living at 730 Harpeth Pkwy, Nashville, Tenn.

Dr. Wood has been chief resident of Ophthalmology at the Vanderbilt University Medical Center and upon completion of his residency plans to enter private practice in Salem, Oregon.

Capt. FREDERICK L. DAVIS has been decorated with the Bronze Star Medal for meritorious service in Vietnam. He is now stationed at Davis-Monthan AFB, Ariz. where he is serving in a unit of the Strategic Air Command. His new address is 2718 Albion Blvd., Tucson, Arizona.

1960

DALE H. DENHAM transferred from the Nuclear Safety Section to the Environmental Evaluations Section of Battelle Northwest last January. He was recently notified of his certification by the American Board of Health Physics. Dale resides at 1107 Perkins, Richland, Washington.

JANICE ADAMS will start her fourth year of teaching Home Economics at Cascade Jr. High School. She resides at 1090 Liberty St. SE, Salem, Oregon.

JUDIE HUME RAFANELLI is a home maker and teacher. Her current address is 120 Dearborn N. Salem, Oregon.

LARRY KELLEY recently moved from Wilsonville, Oregon where he worked for five years as claims agent for Northwest Natural Gas Company. He is now sales representative for Glidden Paint Co. in Eugene, Oregon. The new address is 3460 Westward Ho.

Capt. and Mrs. ROBERT SMITH (GWEN HANSON '61) will be living in Winnipeg, Canada for the next two years. Bob is now serving as an exchange officer from the USAF to the Canadian Forces. He will be instructing in the Canadian Forces Instrument School, both classroom and airborne instruction. Their new address is 25 Heritage Blvd. Winnipeg 22, Manitoba, Canada.

1961

MARK KATHERYN ALLENDER HENDRICKS is living at Rt. 1, Box 431B, Springfield, Oregon. She will be attending Lane Community College this fall and hopes to transfer to the University of Oregon next spring.

GEORGE B. DILLEY is living in Salem, Oregon at 325 13th NE. He is attending the College of Law at Willamette.

KAREN MADSEN MYERS is now living at 6034 Hardwick Pl. Falls Church, Va. Her husband is district manager for Timeshare Inc.

NEIL B. HUTCHINSON played an important role in the Apollo 11 lunar landing mission. He is assistant chief of the command and service module systems branch in the National Aeronautics and Space Administration's Manned Spacecraft Center in Houston. The Center provides control of all NASA manned spaceflights and exercised fulltime control over the Apollo 11 flight from launch to recovery. Neil resides at 18100 Nassau Bay #158, Houston, Texas.

Dr. ROY CHAPIN is an animal nutritionist with Elliott Feed and Seed Co. in Perrydale, Oregon.

LARRY L. SCHMIDT is living at Rt. 2, Box 205, Flemington, New Jersey. He is an airline pilot with United Airlines and is based at Newark International Airport.

SAMMIE LOU BARKER McCORMACK has a new address: 9610 SW Eagle Lane, Beaverton, Oregon. Her husband, Mack has been transferred to Head Office Consumer Credit department of US National Bank (Portland). Sammie has taken a position as Director of Forensic at Beaverton High School.

ARTHUR WESTON is on the Physical Education Staff at Central Oregon Community College. He is basketball coach and in the spring will coach the golf team. Art and his wife, Marilyn reside at 1015 Roanoke, Bend, Oregon.

KAREN MADSEN MYERS will soon be moving to Washington D.C. where her husband, Gary will be District Manager for TYMSHARE Inc. Currently their address is 1514 Canna Ct. Mt. View, California.

KAREN FLORY MORRISON is now living in Reno, Nevada at 917A Willow St. She is the bookkeeper for Harrah's Club.

Mr. and Mrs. GREGORY MILNES (LORETTA RAY) are now settled in their new home in Hillsboro, Oregon, 2590 SE Spruce. On July 1, Greg was sworn in as judge of the District Court for Washington County. He is the youngest district court judge in Oregon. Greg and Loretta have two growing daughters, Sherri (3) and Wendy (5 months).

HENRY BEREZ is a stock broker with Eppler, Guerin and Turner in San Antonio, Texas. He lives at 631 Briar Oak.

Mr. and Mrs. ROBERT HELLENTHAL (BETTY WILLIAMS '62) are now living at 8218 Terry Lane, Hermitage, Tenn. Bob is engaged in the wholesale lumber distribution and distributor of formica for the mid-Tennessee area. They are enjoying Tennessee and the great Smoky Mountain country.

Dr. JAMES C. CHEATHAM is Executive Director of the Yakima Family Counseling Center in Yakima, Washington. His wife, Winona, is Executive Director of the Blue Mountain Action Council in Walla Walla. The family reside at 318 N. Bellevue, Walla Walla, Washington.

DEBORAH GRAY is a teacher at Phoenix Country Day School and is living at 5715 N. 76th St. Scottsdale, Arizona.

JERRY W. SPOONEMORE graduated from the University of Washington School of Law in June '69. He is now an attorney with Montgomery, Purdue, Blankenship & Austin in Seattle, Washington. Jerry and his wife, Norma have two children: Ricky (2½) and Brenda Kay (6 weeks). The family resides at 18322 Greenwood Ave. N. Seattle, Washington.

Mr. and Mrs. EUGENE HARRIS (SUSAN BROOKS '67) live on a ranch at Rt. 2, Box 1343, Madras, Oregon.

DENNIS S. COFFEY travels throughout the country for the frozen food industry, boarding meals for the many major airlines. His address is 562 Sutter St. San Francisco, Calif.

1962

Rev. WESLEY G. MONROE was appointed the pastor of the Cherry Park United Methodist Church on June 8. He and his wife, Carol and children: Kathryn (8), Daniel (7) and John (4) reside at 10736 SE Market, Portland, Oregon.

ELEANOR CARLSON McCLURE will be a girls counselor at Shasta Jr. High this fall. Her husband, Larry is attending the University of Oregon, working on his doctorate in School Administration. Their address is 1765 Arthur, Eugene, Oregon.

Dr. J. NICHOLAS FAX, JR., finished a year on Okinawa as a naval medical officer and is now living in Oakland, California, 1945 E. 30th St. He will begin residency in Orthopedics in Kansas City, Mo. this fall.

REBECCA BROWN RICHARDSON is living at 7911 SE King Rd. Milwaukie, Oregon. She is a microbiologist for the City and County Health Lab. Her husband, Patrick started his own business, Protocart & Molding Co., in Portland,

Oregon. The Richardsons have two children: Randall (4) and Kira Lee (2).

BARRIE STEBBINGS having returned from several months in Europe, has taken a job as apprentice sound engineer at Columbus Recording Studios. She lives at 345 Union, San Francisco, California.

DELLA ROGERS is Administrative Assistant to the Regional Vice President of McGraw-Hill Publications. She is a volunteer leader of an educational tutoring program for black teenagers. Della lives at 345 Union St. San Francisco, California.

Mr. and Mrs. DAVID DOBRINEN (BARBARA DIXON '60) have enjoyed a summer in Europe, filled with music, art and architecture. Both enjoy teaching music in the San Francisco schools. Dave teaches orchestra and Barbara teaches choral and general music. Their address is 8 Nordhoff St. San Francisco, California.

GEORGIA FERGUSON SCHNEIDER is still at Onondaga Community College where she is assistant professor in German and will be Chairman of the Modern Language Department this fall. She is also working on her Ph.D. in German at Syracuse University. Her address is 313 Southfield Dr. Fayetteville, New York.

Mr. and Mrs. JOHN KREIS (THEA WEST '61) and sons, Thomas (3) and Timothy (1½) are living at 4631 Ironwood, Malmstrom AFB, Montana. John is assigned to the 341st Security Police Sqd. and is in charge of missile security.

Capt. ROBERT J. HISEL has received the US Air Force Commendation Medal at Lockbourne AFB, Ohio. Capt. HiseL was decorated for meritorious service as a navigator at Travis AFB, Calif. His address is P.O. Box 139, Lithopolis, Ohio.

PENELOPE POST LEWIS recently moved to Wichita Falls, Texas, USAF Hospital, Sheppard AFB. Her husband has completed his general surgery residency and will now begin a two year tour of duty.

STEPHEN E. MURDOCK is a navigator with the US Air Force. He and his wife and daughter, Theresa reside at 205 Market St., Portsmouth, N.H.

RICHARD A. BJUR has been awarded a research fellowship by the National Institute of General Medical Sciences. The fellowship will assist him in research projects as part of his academic preparation for the Ph. D. His address is 737 Glencoe St. Denver, Colorado.

ROGER GRABINSKI resigned as president of the Board of Directors of Lane Human Resources Inc. He has accepted a fellowship from the Mott Foundation for study with Western Michigan University. He will be completing a doctoral program in Educational Leadership. Roger and his wife reside at 3457 Rangelley Dr. Flint, Michigan.

BARBARA McPARTLAND FRIESEN received her MA in Social Work from the University of Michigan in 1966. She is now a psychiatric social worker for the Kalamazoo State Hospital. Her address is 915 Weaver Ave. Kalamazoo, Michigan.

JUDY MILLS TREFETHEN is residing in Athens, Ohio this year at 38509 N. McKinley Ave. Her husband, Duane is the recipient of an experienced teachers fellowship in Economics.

Mr. and Mrs. JAMES CLINE (JOETTA MILLER '63) will be living at Goldsworth Valley #w10 Western Michigan University, Kalamazoo, Michigan for the next year. Jim received a grant from the National Science Foundation to work for his Masters in Mathematics. During the past three years he has been teaching at Scio High School. The Clines' have a young



Capt. Robt. Hise '62 Capt. Robt. Hartman '63 Lt. Wm. Tupker '66

son, Eric John, 1 year old.

DAVID MARSTERS will be living at 22225 SE 4th St. Redmond, Washington after Sept. 1. He is now a management trainee with Sears, Roebuck and Co. and is currently assigned to the Renton, Washington store for training. Dave and his wife have two children, Kele (2½) and Melinda Keala (9 months).

HARRY C. COOLIDGE '62-L'65 has been admitted to partnership in the law firm of Stanley, Scott & Prosser in Santa Cruz, California. Mr. & Mrs. Coolidge (CAROL McNEIL '65) reside at 129 Gross Ave.

1963

HILARY TEAGUE is currently a stewardess for Trans-International Airlines, a worldwide charter airlines flying the world's largest Super DC-8. Hilary is based in San Francisco, California and resides at 2795 Green St. #4.

LYNN EDWARDS MILLER recently moved to Seattle, Washington, 11011 Sand Point Way NE. Her husband, Lon was transferred to Seattle with Pacific Maritime Assoc. Lynn plans to teach in that vicinity.

PETER VERLOOP and his family will move to Fontainebleau, France for the next year. Peter will be studying for an MBA at the European Institute of Business Administration. The new address is 20 Rue Henri Chapu, 77 Fontainebleau, France.

Capt. RICHARD F. LORD has a new address, 541 Shin Oak Dr. San Antonio, Texas. He is a jet pilot with the US Air Force. His new assignment is flight examiner, air training command, Standardization-Evaluation Board at Randolph AFB.

Dr. and Mrs. TOM R. DUNHAM (DARLENE RIDLEY '64) will be moving to Rochester, Minn. soon. Tom will be at Mayo's Graduate School of Medicine for the next two years taking more training in internal medicine. The Dunhams have a young son, Thomas Dean (9 months).

MIKE H. LAUGHLIN is living at 302 NW 112th St. Seattle, Washington. He is assistant golf professional at the Seattle Golf Club.

Rev. RAY L. WHITLOW has spent the past three years in Orofino, Idaho. He has now been appointed minister of the Methodist Church in Edwall, Washington, Box 86.

Mr. and Mrs. GEOFFREY RUTKOWSKI (JOAN BARBER '61) are living at 1631 Loma St., Santa Barbara, California. This summer, Geof. is teaching summer school and going to London on a research project. He is concertizing extensively and is the principal cellist with the Santa Barbara Symphony. Joan is singing Adele in Die Fledermaus with the Nevada Opera Co. in July and sang Pamina in Santa Barbara last February.

BRIANG JONES is an insurance agent with Cox and Jones in Walla Walla, Washington. He resides at 1112 Ankeny St.

Rev. NORMAN BARLEY is the new minister of the Methodist Church in Milton-Freewater Oregon. Before moving to Oregon, he was pastor of the Richmond Hill Methodist Church in New York. Rev. and Mrs. Barley and son, Richard (16 months) will reside at 142 SE 6th Ave. Milton-Freewater, Oregon.

Capt. ROBERT F. HARTMAN has received the US Air Force Commendation Medal at Pleiku AB, Vietnam. He was decorated for meritorious service as a security police officer at Aviano AB, Italy. He is now assigned to a unit of Pacific Air Forces at Pleiku.

RODNEY T. COX is president of Rodney T. Cox Investment Co. and resides at Salmon River Star Rt., McCall, Idaho.

GARY L. ROBINSON is a salesman for Palmolive-Colgate. His address is 825 156th Ave. NE, Bellevue, Washington.

DIANA L. PEARCY is now living at 2095 Raynor SE, Salem, Oregon. She is a counselor at Hillcrest School for girls.

ANTHONY J. DORSCH has been named a full time professor of Biology at Linfield College. Mr. and Mrs. Dorsch (DIANE HUNNEX '64) have moved to 1225 Lever St. McMinnville, Oregon.

GARY F. TEMPLE is a medical intern at University Hospital in Boston, Mass. His address is 43 Upton St.

BOB WOODLE and his wife and two daughters have moved to 1045 19th St. N.E., Salem 97301.

1964

DUANE PINKERTON and his wife Diane have moved to 570 West D., Burns, Oregon. A new law partnership of Spencer and Pinkerton was formed on June 1.

Mr. and Mrs. PETER S. SMITH (ANN LEE '66) and their year old son, Justin left in May for a 4 month vacation in Europe. They plan to camp throughout Europe in a Volkswagen campmobile. Their home address is 1499 Edgewood Dr. Palo Alto, Calif.

THOMAS R. SCHMIDT and his wife, Carole own a distinctive printing company in Roseburg, Oregon that specializes in gifts and office furniture. They have three children: Peter (7), Heather (6) and Eric (2½) and live at 757 NE Alameda.

JOHN P. SUTHERLAND received his Ph.D. from the University of California. He is now the resident marine ecologist at the Duke University Marine Lab. His address is Duke Marine Lab., Beaufort, N.C.

Mr. and Mrs. RICHARD KRUECKEL (KAREN GELLERMAN) live at 1915 Andrews, Lawton, Okla. Dick is a 1st Lt. in the army artillery and has been serving on the Commanding General's staff as a Training Division Action Officer at Ft.

Sill. Karen has been teaching science in Jr. High School in Lawton. Dick will return to a civilian life in Aug.

KRISTI SCOTT HARDIN is living in Long Branch, N.J. where her husband is on active duty with the army and stationed at Ft. Monmouth. The address is 280 Cleveland Ave.

Mr. and Mrs. KENNETH STEWART (TERRI MITCHELL '65) live at 2813 7th Ave., N., Great Falls, Montana. Ken is a 1st Lt. in the Air Force at Malmstrom AFB. They have a young son, Robert (1 year old).

Capt. and Mrs. THOMAS NEWELL (RUTH TAYLOR '65) have recently moved to 2238 Dexter Rd. #202, Ann Arbor, Michigan. Tom is working on his Ph.D. in Philosophy at the University of Michigan under an Air Force program.

MARY E. WHITFORD GRAVES is field representative for the San Francisco Bay Girl Scouts. She and her husband, Nicholas are living at 2725 Bryon St. Palo Alto, California but are planning to move to Peru this fall.

SLAVA LUBOMUDROV is a graduate student at Indiana University under a NDEA Fellowship to complete the dissertation for his Ph.D. Address is 719 N. Washington, Bloomington, Indiana.

WILLIAM L. LANG is presently completing a Ph.D. in American History at the University of Delaware, where he also is an instructor in the Extension Division. His address is P.O. Box 31, Landenberg, Pa.

JANET JOHNSON teaches at the John F. Kennedy High School in Denver, Colorado and lives at 2156 So. Union Blvd.

Dr. ALLAN R. FROST will be spending two years in Alaska with the US Public Health Service. Allan and his wife have two daughters, Marin (2) and Laura Jean (3 months). The new address is 2141 Lord Baranof Dr. Anchorage, Alaska.

ROBERT W. RIEDER (LT. JG.) has just completed a tour aboard the cruiser USS Topeka. He is now serving as legal officer on the USS Yellowstone, homeported in Mayport, Florida.

Mr. and Mrs. ALEXANDER FREW (MARGARET SAWYER '65) are now living at 161 Eureka St. San Francisco, California. Alexander graduated from the University of Washington with his MA in Social Work in June '69. He now will be social service program consultant to metropolitan chapters of the American Red Cross in thirteen western states. Margaret has retired from teaching and is a housewife.

ELIZABETH BURGOYNE THOMPSON is still working for Sunset Sportswear as Assist. Production Planner. Her husband, Rick is in US Army Officers Candidate School at Ft. Benning, Ga. Current address is 4315 Whitman Ave. Seattle, Washington.

IVONA RANDAL SCHACKER will be teaching vocal music and directing the boys chorus at Cabrillo Intermediate School in Santa Clara during the coming year. Her husband is an engineer for General Electric Missiles and Space Division. Their address is 1574 Parrot, Sunnyvale, California.

ROBERT MERRIAM is working for Landstrom Co. (distributing specialty foods). He and his wife (SUSAN AHO '67) and two sons, Jimmy (3½) and Stevie (1½) live in Belmont, California at 2037 Belle Monti Ave.

JULIE BAUSERMAN COOPER is a housewife and is now living at Rt. 8, Box 3A, Lakeview, Oregon.

Mr. and Mrs. DAVID NARTONIS (CYNTHIA COLLINS '65) has moved to 44 Whittemore Rd., Newton, Mass. David

will be a laboratory instructor at Wellesley College while writing his Ph. D. dissertation at Boston University. Candy is lecturing at the Boston Museum of Fine Arts.

1965

SUE DEE DONNER LAZZERINI will be teaching Russian language, Russian literature and world problems at Mt. Rainier Senior High School. She lives at 23020 25th Ave. Kent, Washington.

SUSAN MORGAN HANALEY lives in Tacoma where her husband, Derek is reliability engineer at Boeing. A son, Christopher was born last March and they went to Derek's home in England to have the baby christened (July). Their home is at 8017 Thorne Lane SW Tacoma, Washington.

STAN CHRISTIANSEN is Converting Superintendent for Boise Cascade Corp. in St. Helens and resides at Rt. 1, Box 534, Scappoose, Oregon.

CAROL YEO SABINS lives at 218 Vernaldo Pl. Irving, California. She is an elementary grade school teacher in Huntington Beach.

FRANCIS M. WONG received his MS from Columbia University in Industr. & Mgt. Engineering in February '68. He then joined General Electric and has been working on their Technical Marketing Program. His address is 62 Saturn St. San Francisco, Calif.

ARLENE RICE DIETZ is now living at 7455 N. Ridge Blvd. #C-4, Chicago, Ill. Her husband is beginning a doctoral program in Math. Education at Northwestern University. Arlene will continue as Economist with the Corps of Engineers.

CATHERINE COFFELT TROY is teaching at Mercer Island and resides at 12819 NE 8th, Bellevue, Washington.

Mr. and Mrs. CARL SCHNEIDERMAN (SUSAN THOMPSON '66) reside at 327 Evans St. #5, Williamsville, N.Y. Carl completes his Ph.D. this summer in Speech Pathology and Audiology. He will be professor of the same at Miami University in Oxford, Ohio this coming year. Carl and Susan have a new son, Jeffrey who is now 4 months old.

Lt. DANIEL W. KESSLER has a new address - H & HS MCAF, Special Services, FPO Seattle, Washington. Dan recently returned from spending 19 months in Vietnam as a helicopter pilot.

SHARON SCHROEDER LORD is Systems Engineer for I.B.M. in Denver, Colorado and resides at 624 Penn #403.

JULIANNE AUNGST KAWABATA and her husband, Fred are living at 1035 SW Farmington Rd. Beaverton, Oregon. Both are employed by Tektronix Inc. Julie as a librarian and Fred as a circuit design engineer.

ERIC MCDOWELL received his MA from the University of Oregon in March '69. He is now Deputy Director for the Department of Economical Development for the State of Alaska. Eric, his wife and two boys reside in Douglas, Alaska - Box 381.

STEPHEN T. TUCKER (L) recently became a partner in the firm of Dunivan, Wies, Murphy and Tucker. His address is 1828 Trym St. Hayward, California.

1966

RONALEE MYSER RAMSEY is teaching at Springfield High School - senior and sophomore English and enjoying it very much. Her husband, Steve, is attending school.

MARILYN M. MILLER is secretary to the president of University Hills Bank in Denver, Colorado and is living at 600 Penn St. #204.

LAWRENCE E. TATE is Industrial

Engineer for the ALCOA Co. and is living at 2816 E. 5th #6, Vancouver, Washington.

MAX BIGBY and his wife, Judy are living at 2304 Oakway Terrace, Eugene, Oregon. Max recently completed his Masters degree.

WARD A. NELSON is teaching band, choir and US history in Vernonia, Oregon - Box 161. He is also kept busy as organist for the Valley Community Presbyterian Church in Portland.

NEIL J. LASLEY is adjutor for SAFECO Ins. in Portland, Oregon. His address is 2170 NE Hancock.

LINDA TORKELSON is a teacher in the San Mateo Union High School District. Her address is 1218 So. Delaware, San Mateo, California.

Mr. and Mrs. JAMES WORDEN (KATHLEEN NORRIS) live at 151 Drake St. #25-C, Pomona, California. Jim is teaching high school history and coaching basketball - swimming. Kathy taught the third grade this past year.

NORMAN E. WILLIAMS is the new minister for the Olivia Park United Methodist Church in Everett, Washington. His new address is 7531 Lower Ridge Rd.

PATRICIA HART CLIFFORD has a new address - 2611 Benvenue, Berkeley, California. She is a student at University of California - working for her teaching credential.

Mr. and Mrs. JAY GRENIG (SHARON FLANIGAN '67) are now living at 1530 Albemarle Way, Burlingame, California. Jay has transferred to Hastings College of Law and is also working for a law firm in San Francisco as a researcher. Sharon is a transcript evaluator at the College of San Mateo.

ROGER A. BERGMANN will finish his MA program at the University of Nevada in Jan. '70. He was appointed to the Bureau of Economic Development for the State of Nevada and during the summer is doing research work for Governor Laxalt. Roger resides at 1007 N. Sierra, Reno, Nevada.

NANCY FARMAR is enrolled for one year on a Masters program for Orientation and Mobility Training for the blind at California State in Los Angeles. She is living at 1387 Morada Pl. Altadena, California.

PAT CASSON BONYNGE and her husband, Tom are living in Sausalito, California at 15 Edwards Ave. Tom is teaching elementary school and Pat works as a Public Health Nurse for Marin County.

LUCY CHRISTENSEN CAMPEN has been teaching this past year at the Bakersfield High School. Her husband, Jeff recently returned from active duty in the airforce reserves. They are planning a trip to Europe in September - October. Their current address is 506 "A" St. Bakersfield, California.

Mr. and Mrs. GEO. THEISEN '67 (JEAN LUNDSTROM '66) and their young son, Craig (8 months) are currently at 627 Plymouth, Burlingame, California. George just completed pilot training and will be flying C-130's. After several advanced phases of flight training, they will depart for Okinawa for a 2 year tour.

DOUGLAS BURLEIGH is area director for the Seattle Young Life. He is living at 4701 47th NE, Seattle, Washington.

ROBERT E. BURLES is stationed at Ft. Lewis, Washington as 1st Lt. in Madigan Gen. Hospital in the Physical Therapy Department. Bob and his wife and daughter, Cathryn Nicole (1) reside at 25170 Barber Dr. Ft. Lewis, Washington.

Mr. and Mrs. KEN ROST (MARY DORSCH) are living at 931 SW Gaines,

Portland, Oregon. Ken is finishing his third year at the University of Oregon Medical School and Mary is teaching at Waluga Jr. High School in Oswego.

RALPH BREITENSTEIN will be interning at the US Public Health Service Hospital in San Francisco and Christy will complete the second year of the MSW degree program. Their new address is 131 9th Ave. San Francisco, California.

Lt. Jg. GEORGE M. CORNWALL moved to Exmouth, Australia while with the US Navy. Exmouth is the site of the world's largest VLF radio transmitter. At this US NAVCOMM Sta. they control and command the system for FBM (Polaris Subs). His address is NAVCOMM - Holt, FPO San Francisco, California 96680.

Mr. and Mrs. STEPHEN M. LOWRY (ROBIN PETERSEN '67) are now living at 829 S. 48th Philadelphia, Pa. Robin is finishing her second year of teaching kindergarten. Steve finished a year as a teaching fellow at the University of Pa. He passed his doctoral preliminary examinations and has embarked on the last phase of the Ph.D. - the dissertation.

JANET NELSON has a job in commercial art & advertising. She plans to remain in Burlingame, California at 1840 Sequoia.

WILLIAM J. TUPKER has been awarded the US Air Force silver pilot wings upon graduation at Williams AFB, Arizona. He is now being assigned to England AFB, La. for specialized aircrew training.

DAVID G. NIELSEN received his MS in Entomology in January '69. He passed advancement to Ph.D. candidacy examination at Cornell University. His address is Highway 90, King Ferry, New York.

WALTER MAZE is a 1st Lt. with the US Air Force and is presently stationed at Kunsan Air Base, South Korea. Mrs. Maze (ANITA DRINKER) is living at 900 West Gate #C6, Bossier City, La.

GORDON K. SPRINGER passed his Ph.D. candidacy orals in Computer Science at Penn State University. He was the co-author of a book entitled "Details of the Solid System-July 1968". His current address is P.O. Box 1052, State College, Pa.

MARIANNE MAY is in Rehabilitation & Special Education of the Blind with the Veterans Administration in Palo Alto. She will receive her MA from Western Michigan Univ. in August and at the present is in internship at Mo. School for the Blind. Her permanent address is 1247 Pampas Dr. San Jose, California.

BRUCE SCHULTHEIS (L) is the legislative assistant to Cong. Howard Pollock. His address is 304 East Capital, Washington D.C.

RONALD D. GREGORY (L) is on the general staff counsel for Pacific Securities in Salem, Oregon and resides at 207 NE 25th.

Mr. and Mrs. WILLIAM (FROSTY) COMER left recently for Italy where he will serve as pharmacy officer in a 50 bed hospital at Vicenza for the next three years. The couple are looking forward to the new assignment with great enthusiasm and plan to see as much of Europe as possible.

HAROLD BUGADO (LT.) is now stationed at Clinton Sherman AFB, Oklahoma with a B-52 crew. The new address is 216A, Iroquois Trail.

CAROLE LARSEN THOMAS is living at 4265 NW 174th, Portland, Oregon. She is a research assistant at the University of Oregon Medical School.

CHARLES P. ANDERSON is in Communications for the Army Engineers and is presently in the Delta area of Vietnam.

He expects to return to the states in October and then will return to Claremont Graduate School. He recently returned from a few days in Australia. His mailing address remains at 201 Spring, Kingman, Arizona.

1967

DIANNE L. SEEVER received her MA from Michigan State University - July '68. She is now Activities Advisor at San Fernando Valley State College. Her address is 10338 Lindley Ave. #331, Northridge, California.

2/LT. GEORGE THEISEN has been awarded the US Air Force silver pilot wings upon graduation at Webb AB, Texas. He is now being assigned to Naha AB, Okinawa for flying duty as a C-130 Hercules pilot.

JANET LOOMIS WITHYCOMBE recently moved to San Francisco, California - 290 Alhambra. Her husband was drafted in February and has been assigned to the Presidio in San Francisco. Janet plans to complete her Masters in Guidance and Counseling while there.

LEONARD R. ANDERSON graduated in March '69 from Stanford University with a Masters in Aero Engineering. He is now flight mechanics engineer for Martin Marietta. His address is 6532 So. Sherman, Littleton, Colorado.

LYNDELL GREY FINCH is a housewife and mother of a 1 year old son, Andrew John. She and her husband live at 6820 W. 78th, Shawnee Mission, Kansas.

LOIS M. HORTON completed requirements for Elementary and Mentally Retarded Certification at the University of Oregon. She will be teaching primary Special Ed. in Seattle this fall and will complete Masters at the University of Oregon next summer. Lois's new address is 9215 Greenwood #101, Seattle, Washington.

WALTER H. EVANS III (L) was appointed Legal Counsel and Legislative Assistant to United States Senator Mark O. Hatfield of Oregon. His new address is c/o Senator Hatfield, 463 Old Senate Office Bldg., Washington D.C. 20510.

LESLIE H. CASTLE teaches French and German at Reedsport High School. He is meeting his brother, LARRY ('67) in Paris this summer for two months of travel in Europe. Larry leaves the Peace Corp on June 1. His address is Rt. 1, Box 137-C, Silverton, Oregon.

KATHRYN MAXSON PHELPS received her Masters in Biology from the University of Oregon. She will teach Biology at McKenzie High School this next year. Her husband is studying Law at the University of Oregon. Their address this fall will be Leaburg, Oregon.

SHIRLEY COFFIELD received her M.A. in Indian Studies from the University of Wisconsin in June. She is in charge of the East Asian Dept. this summer and is enjoying it very much. Shirley and several friends are planning to drive to South America this fall. She writes that it should be quite an adventure and she plans to visit with LARRY AND KATHLEEN LIEBENOW ('66) while in Buenos Aires, Argentina. The current address is University of Wisconsin, Dept. East Asian Languages, Madison, Wisconsin.

MARY M. WHITEMORE will teach at West High in Anchorage, Alaska this fall. She has been teaching summer school at Sitka. Her address is 4914 Rogers Rd. Anchorage, Alaska.

GERALD G. WATSON received his Masters from the University of Florida in March '69. He is presently working toward a Doctorate in Political Science. His

address is 3530 SW 24th Ave., Box 62, Gainesville, Florida.

KATHLEEN VRADENBURG RITCHIE is teaching at Lassen Elementary School in Sepulveda, California. She lives at 3240 Sawtelle Blvd., Los Angeles, California.

LANAE ISAACSON is Librarian for the University of Santa Clara and resides at 1001 Malott Dr. San Jose, California.

GAY-LEIGH GLENN CAMP and her husband returned to the states this summer after having lived in Germany for the past 1 1/2 years. This fall, her husband will be attending graduate school. Their current address is 399 Laurel St. San Carlos, California.

Mr. and Mrs. EDWIN HARRIS (CONSTANCE EULER '69) have bought a house and are now living at 1425 W. 8th, Albany, Oregon. Ed is in insurance sales with Briscoe & Assoc.

Mr. and Mrs. CHRIS GRADY (GAIL WHITTIER '68) reside at 5311 188th SW, Lynnwood, Washington. Chris is in sales with Georgia-Pacific Co. and Gail teaches 3rd grade at Lynnwood Elementary School.

MARSHAL A. PHILLIPS (L) is presently clerking for a judge of the Superior Court of Los Angeles. He is living at 2351 Scarff, Los Angeles, California.

LAURENCE HAMBLIN (L) lives at 13 3rd St. NE, Washington D.C. He is patent examiner for the US Patent Office.

DAVID M. LOGAN (L) has been appointed the new Tillamook County district attorney. He has been the deputy district attorney for Marion County. He and his wife, Saralee and daughter Julie currently live at 3990 Manor Dr. NE, Salem, Oregon.

GAYE HYNDNS FANN has moved to 609 Decatur Rd., Jacksonville, N.C. Her husband recently graduated from the University of Louisville School of Dentistry. He is now serving 2 years with the US Navy Dental Corps.

1968

RICHARD K. MOORE will be living at 861 25th SE, Salem, Oregon until Sept. 1. He will be football and basketball coach at Roseburg High School this fall and will also teach Biology.

WILLIAM E. OPRAY is a customer service agent for United Airlines at Portland International Airport. He lives at Rt. 4, Box 722, Gresham, Oregon.

Lt. ROBERT R. RIENSCHKE has been awarded the US Air Force silver pilot wings upon graduation with honors at Vance AFB, Okla. After specialized training, he will be assigned to Pope AFB, N.C. for duty with a unit of the Tactical Air Command.

MARY L. BEECHLER is Computer Programmer Analyst for Control Data Corp. in St. Paul, Minn. She lives at 3585 Owasso, Apt. 303.

Mr. and Mrs. DAVID ASHBY (SUSAN MCGEEHON '69) have been living in Tucson since last December. Dave is working toward his MS in Physics and also as a teaching assistant at the University of Arizona. Susan is working as a secretary in the English Department while working toward a M.Ed. in Teaching Reading. Their address is 910 E. Helen, Tucson, Arizona.

Ens. BARRY A. SMEDSTAD is with the US Navy Supply Corp. and living at Callaway Gardens #Q-6, 2360 Broad St. Athens, Georgia.

JIM KLEINKE is in the service (US Army) and serving in Korea. CLAUDETTE (EBI) hopes to join him next year. Their mailing address is 6436 SE 21st, Portland, Oregon.



Lt. Geo. Theisen '67



Walt Evans '67



Lt. Robt. Riensche '68

MILDRED KENNEDY WRIGGLE is living at 930 NW 25th #428, Portland, Oregon. Her husband received a Bachelor of Architecture from the University of Oregon in June. Mildred received her Masters in Interdisciplinary Studies at the University of Oregon also in June.

LAWRENCE W. HULL is a graduate student at the University of Washington and is living at 8609 Roosevelt Way NE, Seattle, Washington.

Mr. and Mrs. DAVID OLSTAD (DARLENE HAWKINS '66) are currently living at 4664 17th Ave. S. Salem, Oregon. David is presently finishing his 1st year at Willamette Law School. Darlene has been working in the loan department of the US National Bank for the last three years.

VICKI JOHNSON RECTOR has been attending the University of Chicago and her husband is a Physicist with Illinois Institute Technology. They are living at 7616 S. Shore Dr., Apt. 207, Chicago, Illinois.

JONATHAN T. HARNISH is a law student at the University of Colorado. His new address is 176 Nichols Hall, Boulder, Colorado.

LORAIN E. BARKER is teaching at the Poulso Jr. High School and her address is Rt. 1, Box 682, Carnation, Washington.

R. BEN GRAHAM (L) is an attorney with Blivens & Graham in Dallas, Oregon and resides at 400 Court St.

DONALD H. CROUCH (L) is an attorney with Oseran & Hahn in Kent, Washington. He lives at 1411 West Smith.

1969

PHYLLIS BRINKERHOFF is doing graduate work at the University of California, Riverside in Education. Her address is 1327 Alessandro Rd. Redlands, California.

Mr. and Mrs. DENNIS CALHOUN (CHARLOTTE LANGFORD '68) have been spending the summer in Homer, Alaska. After September 1, Dennis will enter the Navy CCS in Newport, R.I. Charlotte will reside at 1263 Elm, Denver, Colorado.

GIL W. BELLAMY (L) was appointed by Gov. McCall as executive secretary of the recreated Oregon Traffic Safety Commission. The primary purpose of this commission will be to coordinate Oregon's Participation in the Federal Highway Safety Program. For the past two years, Gil has worked for the Legislative Counsel Committee while attending law school. He and his wife, Glencoe reside at 985 Bellevue SE, Salem, Ore.

LARRY K. REYNOLDS (L) will be joining the law firm of Garst & Dilworth in Riverside, California on Sept. 1. His current address is 2353 Portland, Los Angeles, California.

DEATHS

LORETA VARLEY DEPEW '31 died of a heart attack at her home in Salem, Oregon on May 15. She had returned to Salem four years ago after teaching at the junior high school in Klamath Falls, Oregon for 16 years.

HOWARD J. NOTTAGE '26 died in Portland, Oregon on May 4. He had served as a mathematics teacher and boy's counselor at Grant High School for more than 30 years.

MABEL P. ROBERTSON '22 died on May 24 at her residence in Salem, Oregon. Miss Robertson started teaching in Salem schools in 1910. She retired in 1948 and at that time was dean of girls at the Salem High School.

PAUL T. HOMAN '14 died after a long illness in Washington D.C. on July 3. He was a former editor of the American Economic Review and a staff member on the Council of Economic Advisers during the Truman administration. Mr. Homan was a Rhodes Scholar, held faculty positions at Cornell, UCLA and SMU. At his death, he was a consultant to resources for the Future—a research foundation.

VERA BYARS GLOVER '07 died in a Silverton, Oregon nursing home on June 26.

RUTH HODGE TODD '17 died on May 16 in Seattle, Washington. She was a member of the First Methodist Church and had been a member of the General Board of Missions with special responsibility for work in Alaska.

Word was received June 9 that MAX F. de SULLY '67 was killed in Vietnam. After graduation from Willamette, he attended Wharton School of Finance & Commerce at the University of Pa. He then was employed by Jantzen Inc. until he was drafted into the Army in October. He is survived by his wife CATHLEEN ARBAUGH '67 and his parents, Mr. and Mrs. MAX F. deSULLY L '42 (HELENA SCHNEIDER '40).

ELAINE CLOWER FISHER '25 of Silverton, Oregon was killed in a car accident near Marion Forks on July 24. She had taught at Silverton Union High School and had been active in youth work with the YWCA and other organizations.

MARRIAGES

BETTY ROYER '54 was married to Neil P. Smyth on June 7th in Portland, Oregon. She will now be living at 1955 West 33rd Ave., Apt. 203, Vancouver, B.C. Canada.

On June 22, HALL H. Sisson '61 married Betty Lou Morris of Washington, North Carolina. He is Legislative Representative for the National Aero Space Services Assn. and Mrs. Sisson is employed by Congressman John Tunney.

They will reside at 216 Maryland Ave. NE, Washington D.C.

Julia Ann Selfman became the bride of PHILLIP STEPHEN '63 on July 6 in the Chateau Wedding Chapel in Van Nuys, California. The couple will live in Santa Monica.

ANNE BALLOU PETERSON '64 and Leon K. Martin were married June 21 at the Chapel Church of Epiphany in Seattle, Washington. The couple will make their home in Salmon, Idaho - Box 92.

ELAINE LYONS '63 was married on July 4 to William L. Halnan. They will reside at 3101 Jackson St. San Francisco, California. Elaine is Administrative Assistant for the firm of H.S. Dakin.

FRANCES MCKINLEY '65 became Mrs. Albert B. Sloan on February 8. The couple are living in Tampa, Florida at 6704 Highland Dr.

Married in Molalla Methodist Church on June 28 were JANE STOREY '65 and Dale Jones. Jane has been teaching in Oregon City the past school year. The couple will make their home in Portland, Oregon where Mr. Jones is a certified public accountant with a Portland firm.

VICTORIA PITKANEN '66 was married on March 8 in Boulder, Colorado to Damon Tempey. Mr. Tempey is working towards his Ph.D. in Social Psychology at the University of Colorado. The new address is Box 524, Nederland, Colorado.

CAROLE L. LARSEN '66 and Stephen J. Thomas were married on June 29 at Bethel Congregational Church in Beaverton, Oregon. Carole is a research associate in pediatric cardiology at the University of Oregon Medical School and her husband, Stephen is enrolled at the Medical School.

On June 28, GARY S. PEDERSEN '67 and Sheila Munkers were married in the McMinnville First Baptist Church. Mrs. Pedersen is a graduate of San Francisco Dental Nursing School and is presently employed as a medical claims secretary with Aetna Life Insurance. Mr. Pedersen is a second year law student at the University of Oregon.

SUSAN D. PALMER '67 was married to Charles F. Engle on May 17 at Trinity United Methodist Church in Portland, Oregon. Sue is working on a Masters degree in Library Science at the University of Michigan and is also employed at the Ann Arbor Public Library. Her husband is employed as a Research Assistant at the University of Michigan Computing Center. They are making their home at 536 S. Forest Ave. Apt. 15H, Ann Arbor, Michigan.

Janet Richman and WALTER L. EDMONDS '67 were married on June 11 in St. Paul's Lutheran Church in Tower City, North Dakota. They will make their home in Madras, Oregon where Mr. Edmonds is District Attorney and she is a teacher in the Madras Grade School.

LINDA PUTMAN '68 became Mrs. Edwin Dover on May 14. They now live at 152 North 6th, Laramie, Wyoming. Linda is working on her MA in French Literature at the University of Wyoming and her husband is doing graduate study in Political Science.

BERNICE BALCOMB '69 and MICHAEL LINCICUM '68 were married on June 15 at the First United Methodist Church in Portland, Oregon. Mike has just completed work on his Masters at the University of Wisconsin. During the summer, Mike will be with Frieghtliner Corp. and Bernice will be recreation director for the city park department.

On June 14, in Hillsborough, California, MARIN PEARSE '68 and RICHARD W. KING '68 were married. They are now

at home in Springfield, Oregon. Dick has been attending the University of Oregon Law School.

NANCY HOCHSTETLER '69 and E. GREGORY HURLBURT '69 were married on May 24 and are now living at 4041 SE Belmont, Portland, Oregon.

EVELYN SILBERSTEIN '69 and PETER LUTZ '69 were married in Salem, Oregon on May 17. They are now living in Eaton town, New Jersey at 57 Throckmorton. Peter is in communications training with the US Army and Evelyn is with the Head Start Program.

GLEN GIBBONS '69 was married on July 14 in Portland, Oregon to Marjean Langley (Miss Oregon 1968). They are planning to leave for Georgia to begin Peace Corps training.

MARIAN FULLER was married to Thomas Felker on June 12 in Hillsboro, Oregon. They are living in Gig Harbor this summer. Mr. Felker is a law clerk with a Tacoma firm.

BIRTHS

A son, Timothy Michael was born on September 23 to Mr. & Mrs. PHILIP KROZEK '64 (MARNE WENDELL '64). Marne attended the wedding of her sister in Seoul, Korea in February. Their address is 29 Williams Lane, San Carlos, California.

On April 17, Jeffrey Laurence was born to Mr. and Mrs. DOUGLAS MOORE '64 (JUDITH JESSEN '64). He joins a sister, Jennifer who is 2½ years. Doug is an Engineer in the Economic Evaluation Department of Dow Chemical's Western Division. They are living at 944 Jaunita Dr. Walnut Creek, California.

Mr. and Mrs. William Wheeler (JOAN BENSON '63) are the parents of a son, Joseph William who was born April 3. They live at 19707 NE 156th Pl. Woodinville, Wash.

A son, Steven Andrew was born July 15 to Mr. and Mrs. JAMES T. BAIRD '61 in Eugene, Oregon, 345 E. Rosewood.

On July 1, a daughter, Lucia Christine was born to Rev. and Mrs. ELDON OLSON '61 (MARCIA HUMPHREY '61). They have three other children: Per (2½) and two adopted children, Clifford (10) and Ellen (7). The address is Box 281, Monong, Wisc.

A second daughter, Nicole Elaine was born in July to Mr. and Mrs. Peter Diakonoff (SUELLEN STANLEY '62). They reside at 811 N. Grant, Bloomington, Ind.

A daughter, Andrea Jane was born to Mr. and Mrs. Don Webb (ROBERTA ALDRICH '65) on May 1. Mr. Webb graduated from Southern Oregon College on June 8. The family lives at 1517 Terrace Dr. Medford, Oregon.

To Mr. and Mrs. Anthony Deahl (MARTHA SNEARY '65) a son, Peter Michael was born on April 7. The Deahl's reside at 3205 Softwater Lake Dr. Grand Rapids, Michigan.

A boy, Martin Andrew was born on February 7 to Dr. and Mrs. FRED L. ROSE '57 - 1919 Howell, Richland, Washington.

A son, Eric James was born on April 29 to Mr. and Mrs. James Adair (SANDRA HARRIS '59). He joins a sister, Annette. Their address is 868 Quetta Ave. Sunnyvale, California.

A son, Marc Allen was born on Feb. 25 to Capt. & Mrs. STEPHEN A. HONE '60 of 108 Woodland Dr. Warner Robins, Georgia.

Mr. and Mrs. GEORGE ROGERS '61 are the parents of a son, Eric Jay who was born on March 31. George is employed by the Park & Recreation Dept. of Berkeley. His address is 1617 63rd St. Berkeley, California.



Homecoming Court

Homecoming Queen Becky Lowe, Canby, left, and Princesses, second from left, Gayle Jones, Portland; Sue Russell, Spokane, Wash.; and Heather McDowell, also of Portland, "grass-tested" the pioneer wagon wheel before they turned it over to the Lewis and Clark College Pioneers following their win over the Bearcats in the homecoming game, Oct. 25.

Dedication Ceremonies

Jan. 31, 1970, has been set as the day of dedication for the George Putnam University Center. A special tribute banquet in honor of Chancellor and Mrs. G. Herbert Smith will conclude the festivities. Details will be announced at a later date.