

# Classes Rush Preparations for 40th Glee

## Glee Authorities Announce Serenade Titles and Review History

All the old thrill, rivalry and glamour and glitter of the traditional public event of the university's social year, will hit the stage for the 40th one-night stand next Saturday night, March 6, as Freshman Glee is presented in the campus gymnasium at 8 p.m.

### Song Names Given

Glee Publicity Director Martha DuRette has announced this year's song names by classes as follows:

**Freshman class:** "Willamette Girl," with words by Margaret Powell and Jean Rickli and music by Martha Benard.

**Sophomore class:** "Serenade of Willamette," with words by Patricia Persons and music by Gloria Stone.

**Junior class:** "Moonlight Reverie," with words by James Purdy and Edith Fairham and music by Edith Fairham and Aldene Gould.

**Senior class:** "Serenade of Dreams," with words by Kay Karnopp and music by Robert H. Johnson.

Judges will decide the winner on the basis of:

Words: 10 points for originality and 10 points for adaptability.

Presentation: Vocal rendition, 20 points for sonority and 10 points for diction; formation, 10 points for origin-

ality, 10 for adaptability to theme and 10 for execution.

Music: Adaptability to theme, 5 points, adaptability to group singing, 5, originality, 5 and quality of music, 5.

Prof. Herman Clark is the man of the hour after the four classes promenade and sing their original songs, which this year will follow the theme, "Serenade." Each year, Prof. Clark takes his own sweet time in revealing the winning class after the contest. The intermission following the contests is probably the most suspenseful period in the school year. Following Prof. Clark's announcement, all bedlam breaks loose as the winning class stampedes to the platform to claim the Freshman Glee banner, the prize of the evening.

The origination of Glee, told many times in this paper and elsewhere, wherever a Willamette graduate happens to be, is a story oft-repeated and as traditional and ageless as the period in which it originated.

### Glee Started in '08

It was back in '08, Prof. Clark recalls, that such men as J. A. C. Oakes, now of Portland and father of two current WU students, Vinton Ellis, later a practicing physician and now deceased, and other members of the class of '12 would gather around a piano, played by Ellis

and improvise tunes and lyrics. Around that piano, Freshman Glee was born, and it has been going on each year since.

Until 1916 the event was held in Waller hall on the campus. In that year it had become so popular that it was moved to the city armory and an admission fee charged to see it. The first World War moved it into the First Methodist church where it was staged until 1923 when the university gymnasium was built.

### Willamette Sings

Held in the gymnasium each year since, Glee has become so popular that people all over the U.S. have come to see it and remember Willamette as "the school that has the song contests."

During a performance that was broadcast one year by Art Kirkham, Portland radio announcer, a listener in Polk county became so enthusiastic that he jumped into his car and just made it for the last part of the performance, Clark says.

This year's Glee is to be broadcast over KOCO for a maximum of two hours, if necessary, ASWU Manager Dr. D. H. Schulze announces.

## Student-Prof Group Discuss Cheating Curb

By Eileen Scott

Several suggestions to eliminate cheating were formulated Tuesday by a combined student-faculty committee appointed by the student council, and will be submitted at the next council meeting. It was generally agreed by the group that present measures are needed to deal with the situation.

Bill Harris, chairman of the committee, will conduct a poll of student opinion among organizations on campus regarding the honor system, attempting to find out whether students would rather be left alone during a test or take it under faculty supervision. The question of having Saturday and evening tests will be raised before the council.

### Honor Committee to Judge

An honor committee composed of faculty members and students has also been suggested. This group would act on cases of cheating, rather than the present method of referring these cases to the disciplinary committee.

Another recommendation is that professors base grades on at least two tests, or the equivalent, in addition to the final examination, and that no six week's tests be given the week before finals. This would be known as "dead week."

### "Get Thee Behind Me—"

Temptation to cheat might be removed by the following measures, according to the committee. Students should leave all unnecessary material at the front of the room at the beginning of an examination, and should sit in seats spaced so that it is impossible to see other test papers. The university might also furnish all examination material.

The Tuesday meeting was the second one which the committee has held to discuss the cribbing problem. Besides Harris, members of the group are Dale Broeder, Annabel Peterson, Dale Cleaver, Dr. R. M. Gatke, Dr. J. R. Morris and Dr. C. F. Luther.

## Ex-Pres. Doney Gives Fund For Annual Oratory Award

Dr. Carl Doney, past president of Willamette, has presented the university with \$1000, the income from which is to be used as an annual prize in honor of his son, Pres. G. Herbert Smith said yesterday.

The prize is to be known as the Paul H. Doney award in memoriam of Dr. Doney's son who was drowned in 1941.

Dr. Doney donated the award with the following statement:

"Income from \$1000 is to be awarded annually to the students whose orations given each spring in public are deemed one and two in excellence of thought, composition and delivery. Each

# Willamette Collegian

1842—Willamette University in its Second Century—1947

Vol. LIX

Salem, Oregon, Friday, February 27, 1948

No. 19

## Glee Originators Display First Banner



The class of 1912, which won the first Freshman Glee in 1908, looks down over 40 years at another generation of participants in the now traditional Willamette class song competition. James Oakes, third from right, is credited with originating the idea of Glee with the assistance of R. V. Ellis. Oakes now has three children, Miriam, James and Helen, enrolled at Willamette. Fourteen students participated in Glee for the class of 1912. G. H. Patterson, Willamette dean, announced the first winner of the songfest.

## Trustees Increase Faculty Pay; Room and Board Fees Upped

Faculty members will receive a pay boost averaging \$200 for the next academic year following action by the board of trustees at their semi-annual meeting Tuesday on the campus.

The board also approved a special salary grant for the current year, to faculty and staff to meet the increase in living costs.

The new pay rate will be scaled according to educational qualifications and experience,

Pres. G. Herbert Smith explained.

Students will pay 10 per cent more room and board next year but no raise in tuition cost is planned. Total cost of room, board and tuition for Willamette will still be among the lowest for universities of comparable rank, Smith pointed out.

All but two of the present

### Top Scholars Listed

The Registrar's office announced today that 24 students, 16 men and 8 women, have a grade point average of 4.0 for the past semester. These students are:

James Bartlett, Wallace Bjorke, Stuart Compton, George Constable, Richard Drinnon, Edith Fairham, Robert Gilbert, Florence Goodridge, Foster Hagy, Earl Hampton, Royal Hart, Joan Johnston, Ira Jones, John Kaemar, Mary Lumijarvi, Albert McMullen, Ward Miles, Albert Miller, Robert Mitchell, Mary Lou Ohling, Marilee Olson, Donald Carl Ritchie, Katherine Schissler, Geraldine Schmoker.

A grade point average of 3.5 or above was attained by 119 students, including 84 men and 35 women.

members of the faculty were re-elected by the board. The two faculty members not re-elected are under temporary appointment, Smith explained.

The board approved advancement of Joseph Schnelker and Frank Dobbs from the rank of assistant professor of music to associate professor of music.

Smith told the trustees that over \$478,000 in cash and pledges have been received for construction of Baxter hall. \$443,000 of this amount have been received in cash. Total cost of the building, including architects drawings, is \$750,000. A bank loan covers the balance of the cost not covered by cash donations, Smith said.

Summer sessions of eight weeks for the college of liberal arts and ten weeks for the college of law were approved by the board.

### In This Issue . . .

Cartoon shows trials of a Glee participant . . . Page 2.  
Dr. Robert Purbrick works to develop supplement to Geiger counter . . . Page 3.  
'Cats make do or die effort for pennant Friday . . . Page 4.  
Capable reserves ease forward problem for WU quintet . . . Page 5.  
Freshman Glee practice schedule may draw groans from songsters . . . Page 7.  
Stassen urges strong foreign policy . . . Page 8.

## Johnson, Gunn Elected Senior, Frosh Prexies

Bob Johnson and Jack Gunn will head the senior and freshman classes, respectively, spring semester, according to elections and run-offs Monday.

Other senior officers elected in Friday's voting are Winona Dillard, vice-president, and Winona Varner, secretary-treasurer.

Elliott Motchenbacher secured the office of frosh treasurer in Monday's elections, but run-offs in the other officers will be necessary next week. Dick Peterson and Scotty Washburn will compete for the vice-presidency, while Edith Anderson and Martha DuRette will be on the ballot for secretary. The run-off for sergeant-at-arms will be between Burnell Ambrose and Jack Eby.

### Hemmingway Around?

No one seemed to know for what or whom the bells tolled in Eaton hall this week, as the class signals buzzed with the irregularity of a war-time bus.

Some student groups speculated on the possibility that an attempt was being made to coordinate the bells with the arrivals to class of various professors.

Technicians were unavailable for comment.

## WU Radio Show Turns to Sports, Invites Coaches

An all-sports program will be the subject of Willamette's weekly broadcast, "In This Our Age," at 7 p.m. Monday. The entire 15 minutes will be devoted to sports instead of the usual round-up of campus activities.

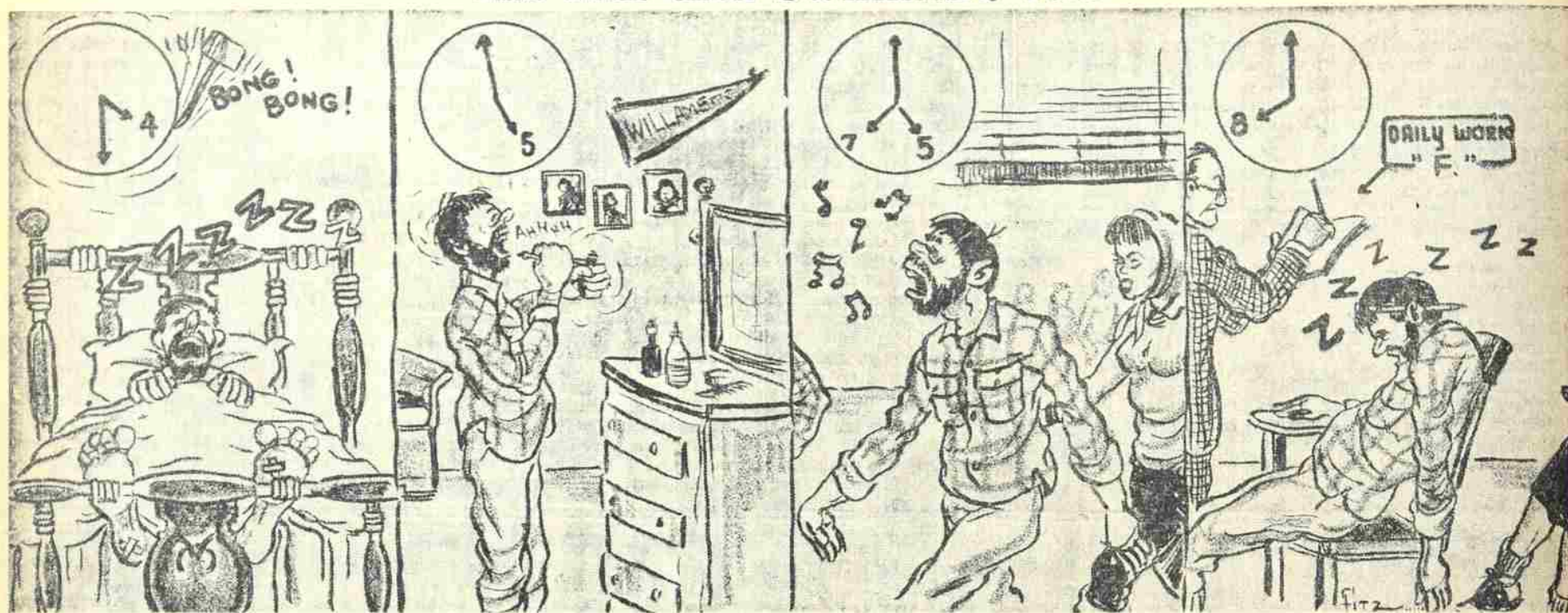
Spring sports, the wind-up of the current basketball season and the forthcoming Lettermen's ball will be the topic of interviews during the program.

Listed to be queried are Athletic Director Jerry Lillie, Basketball and Baseball Coach John Lewis, Physical Educator Les Sparks, Assistant Coach Ted Ogdahl and Earl Hampton, Lettermen club prexy.

A quartet, consisting of Mike Carolyn, Warren James, Dale Morgan and Chuck Winkewer, will sing two songs during the broadcast.



## All This and Swimmin, Too



## Willamette Collegian

"In Age there is Wisdom"

Official Publication of the Associated Students  
of Willamette UniversityEntered at the Postoffice at Salem, Oregon, for transmission  
through the mails as second class matter. Published weekly ex-  
cept during examination and vacation periods. Subscription rate:  
ninety cents per semester.Represented for national advertising by NATIONAL ADVER-  
TISING SERVICE, INC., college publishers' representatives, 420  
Madison Ave., New York—Chicago—Boston—Los Angeles—San  
Francisco—Portland—Seattle.Editorial and Business Offices  
Ground Floor, Waller Hall

Phone 3088

## EDITORIAL STAFF

EDITOR	BOB GUILD
MANAGING EDITOR	GEORGE HURT
NEWS EDITOR	DONA ADAMS
FEATURE EDITOR	MARILEE OLSON
SPORTS EDITOR	JIM OAKES
SOCIETY EDITOR	ELLEN MONTAGUE
COPY EDITOR	EILEEN SCOTT

## BUSINESS STAFF

PUBLICATIONS MANAGER	RAY MCCOY
ADVERTISING MANAGER	BILL BROWN

## COLLEGIAN FEATURES

MARILEE OLSON, Editor

Blue Monday's Gonna Be Rare  
As Glee Betters Lose Inhibitions

Betting among students on the outcome of Freshman Glee is off to a slow start, but it promises to pick up before the contest begins on March 6. Few students had actually made any wagers, although a majority stated they were going to make bets of some kind.

Freshman Bill Church and Sophomore Bob Ross have a wager that the loser of their bet will receive a banana cream pie. The presentation will take place on Blue Monday in front of and preceding Chapel, and the loser will get the pie—right in his face.

Freshman Chuck Martin and Sophomore Gary Lawt-

ence have made an agreement whereby the loser of the bet will spend a night in the open, raining or dry.

Junior Helen Stout and Freshman Joyce Slick have enough confidence in their respective classes' chances in the contest to make a bet with each other which provides that the loser will have her hair cut to three inches.

Rex Lindemood is a trusting lad. He and Freshman Joan Holbeck have a bet, although Rex is going into the wager blind. He's leaving it up to the girl to decide what the wager will be, which if he loses could be anything.

Senior Ralph Ohling and Junior Jim Nickel have a blackface bet. The loser will have to wear blackface, a red shaft, and earrings of bicycle trouser leg clips.

Senior Artie Phillips, Sophomore Jo Gunnar, and Freshman Wally Southard have a three-way bet, which involves the two losers in singing and washing underclothing at the birdbath on Blue Monday preceding chapel.

Some students are not making bets this year. Senior Betsy Stuller said that she hadn't made a bet since 1943. "I went swimming in the mill stream in February that year, and I haven't warmed up yet," she declared.

The Olson sisters, Bettie and Marilee, are going to show their true Scandinavian colors Blue Monday, when the loser will doll up in old country clothes, (black stockings, high shoes, stocking hat), and sing "It's Going to Be a Long Hard Winter" in chapel, besides speaking with a Norse brogue all day.

## Bettors Optimistic

If the sophs win Glee, a certain frosh from Baxter will be knitting a pair of socks for his lady love on the steps of Lausanne, come rain or shine. Claude Coffman, another "happy" lad of soph vintage will be dining without a shirt and tie before the high society of Baxter hall if his class doesn't win Glee. The entire meal will be eaten while wearing only a towel.

A couple of girls from Freddy hall, Dottie Libby and Arlene Zastera, have made a bet whereby the loser wears a green Japanese kimono all day, and feeds the winner with chopsticks. Chuck Martin and Gary Lawrence have vowed that the loser will sleep under the horse on the statue of the circuit rider across the way. A senior, Annabelle Petersen, will be serving as waiter at Baxter hall if her class loses to the sophs.

Mustard Savers Offer Helpful Suggestions  
To Cutters for Getting Most Out of College Life

Dear Students, Scholars, Four-points and Plubs of Willamette university:

I have received a letter from the Bureau of Universal Mustard Savers (BUMS) instructing me to make up a list of helpful hints and rules for getting the most out of college life. In the following paragraphs I have listed a few suggestions gleaned from years of experience in the field. I hope you find these suggestions helpful in your search for new ways of legitimately cutting classes.

1. You must first get the right attitude in mind. Colleges and universities have set up classes in every known subject and have offered such classes for your scrutiny. Don't let this little blind fool you. These classes are only to be used as a decoy for trusting parents. They serve as a front to get away

from home and taste the spice of college life and all it offers.

2. An organization is underway known as Professors Unlimited (PU) whose main policy is to frustrate students into attending classes. Avoid this organization like the plague. However, since it is inevitable that you run into one of these underground fifth-columnists here are a few excuses to use when you are caught without excuse blanks:

- Your mother insisted you take a week off and take her water-skiing at Hoodoo.
- You had to tap-dance for the MEDS.
- You were out capturing elephants for the dissecting lab.
- You were up all night pasting hominy grits on your new formal.

3. Learn to use your time to the best advantage. Avoid all interfering influences such as reading assignments, exams, lectures, term papers, and intelligent conversations. Remember your time is valuable and that you do not live forever. We have come up with the following conclusions:

- A large vocabulary gives your friends an inferiority complex. Spend five hours daily getting rid of all words over four letters.
- Take time to memorize Plato's Republic backwards as this tends to give you a well-rounded education and helps establish friendships with other weird people.
- Subscribe to the Saturday Evening Post as everyone needs something to do on Saturday evening.

Yours,  
Hanson

Phis Corner Market  
On Speedy New Fund

Amid the confusion of moving, carpeting and getting organized there arose a new and extremely different fad in the Phi Delta Theta wing of Baxter hall. Small balsa wood racing car and rocket ship models ranging in size from three to ten inches have consumed the major interests of the Phi Deltas for the past week.

The cars are fastened to a hundred foot length of piano wire which is strung from one end of the hall to the other. The 'racers' are propelled by carbon dioxide cartridges normally used for the fizz in seltzer bottles.

Ray Atkinson, returning to school after a week in Texas, where it is suspected he spent most of his time investigating various dime store models of the toy jet racers, originated the idea and wasted no time in arousing the young adventurous blood of other enthusiastic Phis including such illustrious figures as O. J. 'Speedy' Sparrow, Jeff McDougal, Gordie Cline, and Jim Ragland who claims the 'unofficial house 'rocket' speed record. Jim bases his claim on the fact that his 'jetrocket', which runs on a wire raised a few feet from the floor, took off with such a dynamic burst of speed that the wire broke before the rocket had gone half the length of the hall.

As yet the fellows are unable to offer a purpose to their jet racing other than the amusement it offers the other members who kick in regularly to purchase the carbon dioxide cartridges.

Members of Sigma Chi witnessed a recent jet racer session at the Phi Delt house and asserted that greater speed was attainable. Plans are now being formulated by the Sigs to construct even better jets, and interfraternity 'jet racing' competition is foreseen in the near future.

## 'Cry Wolf' Can Be Detected—Here's How

Male wolves (the so-called human variety) can be spotted as far as you can see them if you are wise to the wolf technique. And the technique is unvarying, according to an article by Alice Leone Moats in the February issue of Junior Bazaar entitled "How To Spot a Wolf."

"The technique of wolves seldom differs," the article states in part. "Young ones use it by instinct and aren't necessarily aware that they are using a technique; older ones have perfected and given it polish and they know exactly what they are doing. Their technique might be compared to that of the jujitsu artist who defeats his opponent by making him use his own strength against himself. A wolf keeps stepping back and letting the girl come forward, until, in her eagerness, she falls on her face—to put it politely."

Uncertainty is one of the chief weapons of the wolf. At the end of his first date he will murmur something about calling you again sometime and then let you sweat it out for a few weeks, wondering why he hasn't called! Another wolf approach is his declaration that he

"doesn't like casual affairs."

"The moment a man says that, run for your life," the article continues. "You may be certain that they are all he does like, and the more casual the better. Naturally they have to be casual on his side only. Part of the fun is making you think that this is the real thing, this is for keeps."

When your new boy friend confides pensively that he "has been terribly hurt by a woman," beware, because to the trained ear this wolf call is as recognizable as The Star-Spangled Banner.

And wittingly or unwittingly the wolf is aware of the fact that most women want to be needed. Therefore the work he is doing is never what really suits him, but with you at his side he could really accomplish great things.

When he finally slips out of your life either through an adroitly engineered quarrel or a gradual disappearance, you can console yourself that you will not be forgotten immediately—when he starts to work on your successor, you will live on as the women who "hurt" him the article concludes.



# Purbrick to Conduct Research On Geiger Counter Improvement

By Norman Stone

Dr. Robert Purbrick, professor of physics at Willamette, will direct research on modifications of the well known Geiger counter during the spring semester. He will use the facilities available at Collins hall and will be assisted by Joe Law, physics major.

Professor Purbrick, who participated in atomic bomb research during the war at Argonne Laboratory, University of Chicago, said that during wartime work he and other scientists became interested in various sideline phases of nuclear physics but then there was no

time for such work.

**Gained Fame at Bikini**

The Geiger counter, one of the things in which he became interested, gained its fame at Bikini as the instrument able to detect radioactivity and thus protect its users from burns.

In explaining his work Purbrick said, in effect, that the present Geiger counter is effective only in recording the radiations of the strongest radioactive substances and is of little value in working with elements of less strength. The weaker materials are unable to penetrate the glass wall of the container

and therefore are not recorded.

The problem facing the professor is to work out a system whereby these weaker radioactive elements can be placed inside the counter when a recording is desired.

**Problems Involved**

This system involves the problems of effectively evacuating the glass container of air and setting up the right medium of gases for the recording.

Professor Purbrick has acquired for his work a quantity of the radioactive element, Carbon-fourteen. He explained that the material has a half-life of 5000 years which means that the amount he has now would be half gone, through radiation, after that time.

## No Chapel Thursday

There will be no chapel Thursday, March 4, Dr. Raymond Withey announced yesterday.



Dr. Robert Purbrick, physics professor, is testing a power supply with some of the equipment received by the department recently.

## Honor Roll Students Listed; 84 Men, 35 Women Named

The following students attained a grade point average of 3.5 or better last semester. Students with a G.P.A. of 4.0 are listed on page 1.

Glenn Allen, Stanley Aschenbrenner, Richard Bailey, Marshall Barbour, Tom Bartlett, Doris Batholomy, Loro Ellen Bates, Robert Bennett, Kenneth Blume, Geri Bowles, Joseph Brazie, Dale Broeder, Stanley Brown, Earl Ted Bussele, Emil Carlson, Michael Carolan, James Cavanaugh, Lawrence Cherry, George Chozanjo, John Chrismer, Jeneane Christensen, Jacqueline Chute, Dale Cleaver, Louise Close, Charles Cloudy, Paul Cole, Robert Conklin, Mary Lois Cotton, Richard Cravens.

Dorothy Deal, William Dodge, Robert Donovan, Robert Douglas, Billy Edwards, Richard Endsley, Duane Ertsgaard, James Fitzgerald, Harold Gardner, Louis Geary, Lois Gottwald, Doris Gragg, Phyllis Graham, Robert Guild, Jack Gunn, William Hallin, Jack Hazelett, Kenneth Holmes, Dale Jones, Katherine

Karnopp, Joan Klindworth, William Koester, Robert Koster, Betty Jean Kuhlman, William Laidlaw, Addyse Lane, Murley Larimer, John Lienhart, Eleanor Loveless, Robert McGee, Naseeb Malouf, Lois Martin.

Maxine Meyers, Barbara Miller, Pauline Morse, Gordon Murock, Ronald Neperud, James Nickel, Tillman Ogdahl, Muriel Oliver, Hylda Olley, Elizabeth Olson, Gloria Palo, Patricia Pardey, Mary Parker, Charles Patterson, Joyce Patton, Philip Phipps, Marjorie Quamme, Harold Ranton, Donald Reitzer, Donald Reville, Gerald Richardson, Patricia Richmond, Robert Ross, William Ross, George Russell, Stanley Ryals.

Robert Sayre, Benjamin Schaad, Quentin Schenk, Eileen Scott, Reid Shelton, Marjorie Sinclair, O. Dale Smith, Sara Louise Smith, Wallace Southard, Marion Sparks, Orville Sparrow, Ronald Staley, Shirley Starke, Douglas Stearns, Marjorie Stockman, Margaret Stone, Rollo Stowaser, Dean Thomas, Alice Turtledove, Earl Van Lydegraf, Winona Varner, Lucille Veelman, Florence Waespe, Irving Wagner, Albert Wardin, John Watkins, Robert West, Paul Whitmore, Vergie Wicks, Patricia Zahare, Vernon Zornes, Loren Winterscheid.

## Glee Schedule

Week of March 1 to 6

**Monday, March 1—**  
5:00 to 7:00 a.m.: Freshmen ..... Gym  
Sophomore ..... Chapel  
Junior ..... Music Hall  
Senior ..... Chresto

12:00 to 1:00 p.m.: Freshmen ..... Music Hall  
Sophomore ..... Gym  
Junior ..... Chapel  
Senior ..... Collins

4:00 to 5:00 p.m.: Freshmen ..... Little Theater  
Sophomore ..... Music Hall  
Junior ..... Gym  
Senior ..... Chapel

6:30 to 9:30 p.m.: Freshmen ..... Chapel  
Sophomore ..... Little Theater  
Junior ..... Music Hall  
Senior ..... Gym

**Tuesday, March 2—**  
5:00 to 7:00 a.m.: Freshmen ..... Chapel  
Sophomore ..... Music Hall  
Junior ..... Chresto  
Senior ..... Gym

12:00 to 1:00 p.m.: Freshmen ..... Gym  
Sophomore ..... Chapel  
Junior ..... Collins  
Senior ..... Music Hall

4:00 to 5:00 p.m.: Freshmen ..... Music Hall  
Sophomore ..... Gym  
Junior ..... Chapel  
Senior ..... Little Theater

6:30 to 9:30 p.m.: Freshmen ..... Little Theater  
Sophomore ..... Music Hall  
Junior ..... Gym  
Senior ..... Chapel

**Wednesday, March 3—**  
5:00 to 7:00 a.m.: Freshmen ..... Music Hall  
Sophomore ..... Chresto  
Junior ..... Gym  
Senior ..... Chapel

12:00 to 1:00 p.m.: Freshmen ..... Chapel  
Sophomore ..... Collins  
Junior ..... Music Hall  
Senior ..... Gym

4:00 to 5:00 p.m.: Freshmen ..... Gym  
Sophomore ..... Chapel  
Junior ..... Little Theater  
Senior ..... Music Hall

6:30 to 9:30 p.m.: Freshmen ..... Music Hall  
Sophomore ..... Gym  
Junior ..... Chapel  
Senior ..... Little Theater

**Thursday, March 4—**  
5:00 to 7:00 a.m.: Freshmen ..... Chresto  
Sophomore ..... Gym  
Junior ..... Chapel  
Senior ..... Music Hall

12:00 to 1:00 p.m.: Freshmen ..... Collins  
Sophomore ..... Music Hall  
Junior ..... Gym  
Senior ..... Chapel

4:00 to 5:00 p.m.: Freshmen ..... Chapel  
Sophomore ..... Little Theater  
Junior ..... Music Hall  
Senior ..... Gym

6:30 to 9:30 p.m.: Freshmen ..... Gym  
Sophomore ..... Chapel  
Junior ..... Little Theater  
Senior ..... Music Hall

**Friday, March 5—**  
Follow original schedule of Monday, March 1.

**Saturday, March 6—**  
5:00-7:00 a.m.: Freshmen ..... Gym  
11:00-12:00 p.m.: Sophomore ..... Gym  
10:00-11:00 a.m.: Junior ..... Gym  
8:00-9:00 a.m.: Senior ..... Gym  
9:00-10:00 a.m.: ..... Gym

## 22 WU Forensics Students Seek Western Speech Honors in Three-Day Tournament

By Dona Adams

Twenty-two WU students are competing against representatives from 32 western colleges in the 18th annual intercollegiate three-day tournament at Linfield college, which started yesterday. Accompanying the forensic students are Prof. Lloyd Jones and Dr. Herbert E. Rahe, who is on the tournament committee.

Participating in senior men's debate are Bob Sayre and Chuck Mills, undefeated this year, while junior men's debaters are Jerry Igo and Tom Bartlett, Jack Gunn and Elliott Motchenbacher, and Russell Tripp and Frank Lockman.

Betty Ferguson and Joan Morgan are competing in junior women's debate. Entering one man debate are Sheila Ryan, Harold Ranton and Henry Ulvin.

Entering extemp in the senior varsity men's division are Sayre and Gunn, while Tripp, Lockman and Bartlett are competing in junior men's extemp. Miss Ferguson is participating in women's upper division extemp as Maxine Muckle and Miss Ryan are in women's lower division extemp.

Men forensic students entering after dinner speaking are Sayre,

Igo, Tripp and Guy Jonas, while Harriet Ness is the only woman competing in after dinner. Motchenbacher and Frank Washburn are participating in speech of occasion. Competing in the acting contest are Barbara Burrier and Lou Hartke.

In the reading contest are Motchenbacher and Igo in the men's division and Rosanna McMeekin, Grace Morton, Marian Sparks, Miss Ferguson, Miss Ryan, Miss Hartke, Miss Ness and Miss Morgan in the women's

division.

Competing in oratory are Lockman, Motchenbacher and Bartlett in the men's division and Miss Muckle, Miss Ferguson, Miss Morgan and Miss Ness in the women's.

Sayre and Bartlett in the senior division and Motchenbacher, Ulvin and Mills in the junior division are entering men's impromptu, while Miss Ryan and Miss Morgan are in women's upper and lower division, respectively.

## STOP-LITE COFFEE SHOP

is now ready to serve you their . . .

**GOLDEN FRIED CHICKEN AT 95¢**

We Have Full Fountain Service  
On 99E, 1000 Feet South of 12th Street Junction



**Ramager's**

## It's Great to Skate

Let's Go Tonight

After session parties for groups at no extra charge . . .  
Make your date to skate NOW!

Call Today for Your Party Reservation

**Capitola Roller Rink**

90 Lana Avenue

Phone 25211 or 9066  
Take Capitola Bus

## Gays Fine Candies

For the Best in Quality and Taste

Phone 9835 135 N. High

**"ACE" FISH, the Barber**  
1256 State Street

**SKATE YOUR DATE TONIGHT AT EIGHT**  
SPECIAL RATES TO WILLAMETTE STUDENTS  
On Presentation of Student Body Card



**Salem Ice Arena**

610 N. Capitol

Phone 6868



# Jasons Do or Die Tonight

## Wins Over CPS, Pioneers Needed for Title Tie Chance

By Mulkey

Willamette's battling Bearcats play host to the top conference contenders, College of Puget Sound, tonight on the local hardwood garden at 8 p.m. The Methodists will have a last chance to effect a possible tie for first place in the league race as well as gain revenge over the Loggers who handed the 'Cats a 42-38 dunking last week at Tacoma.

Tuesday the Jasons journey to Portland to invade the Pioneer clubhouse of Lewis and Clark, a red hot ball outfit now sitting comfortably on the fourth hole in conference standings.

### Tonight's the Night

Tonight, however, will be the home game of the year in league play as the Loggers will attempt to cinch up a clean first place by beating the Bearcats and taking on Lewis and Clark tomorrow night.

If the locals can overcome the pace setting Tacomans and if the Loggers lose to Lewis and Clark then the conference championship will be all tied up between the Lewismen and CPS.

### CPS Win Slight

There was only a slim four point difference between the Loggers and Willamette in the Tacoma contest and in the light

of the locals playing on a foreign court, they should show more on the scoreboard here in Salem. Angeline and Fincham, Logger hoop aces, were held to 12 and 8 points respectively in the last fray, showing Willamette's defensive abilities.

It is virtually impossible that high Cat scorer, Bob Johnson, will play tonight. CPS has won 11 contests and lost one to UBC, which gives the Loggers the advantage as they can drop one of

their games and still come out wearing the conference crown.

### Pioneers Final Foe

Lewis and Clark will be the last Bearcat hurdle for the current basketball season, the tilt being staged in Portland. The vastly improved Pioneers have won the last four of their league games and have exhibited high scoring abilities by lacing Linfield recently 70-67.



These two Bearcat cagers Ted Johnson, left, and Bob Medley, right, may be the Jason aces in the hole in tonight's CPS game. Johnson did his part in the recent UBC victory by adding eleven tallies to the Bearcat score. Medley also helped greatly in the victory by scoring one of the cinching buckets.

## Northwest Conference Standings

	W	L	Pct.	PF	PA
Puget Sound	11	1	.917	773	559
Willamette	9	3	.750	692	576
British Columbia	9	5	.643	799	749
Lewis & Clark	6	6	.500	685	677
College of Idaho	4	8	.333	682	720
Linfield	4	8	.333	618	704
Cliff	3	9	.250	530	616
Whitman	3	9	.250	550	728

### LAST WEEK'S RESULTS

At Puget Sound 42, Willamette 38  
At British Columbia 68, Linfield 41  
At Pacific 46, Lewis & Clark 51  
At British Columbia 40, Willamette 44  
At Puget Sound 63, Linfield 44  
At College of Idaho 72, Whitman 47  
At Puget Sound 77, British Columbia 54  
At Linfield 67, Lewis & Clark 70

## Phi Delts, Sigs Win Contests In Mural Elimination Playoff

Sigma Chi came through in the crucial moment with a free throw to gain a 21-20 decision over the Hawaiians Tuesday evening to stay in the race for 'mural league basketball championship. The loss pushed the Hawaiians out of the running with their second straight defeat and gave the Sigs a mathematical chance for the championship. With the 26-13 victory over the Phi Alphas Monday, the Phi Delts moved up even with the Betas in the win column with three straight wins.

### Sigs Come From Behind

Behind 11-13 at the half, Fred Graham flipped in a two pointer and three free throws and Gordon Farrel broke through for a tipin to give the Sigs an 18-16 advantage at the three quarter way. Farrel's second field goal gave the Sigs a four point lead going into the final minutes.

Al Minn quickly closed the gap at 20-18 by taking a pass all alone under the hoop. Charlie Nee tied it up at 20 all with a field goal from the side. Don Priess put in the clincher with a free throw and the Sigs were

able to hang on to the ball for the remaining seconds.

Graham took individual scoring honors with three field goals and four free throws for a total of 10 points.

### Volleyball Scheduled

Following the basketball playoff, volleyball schedules will be drawn up for the men's 'mural league and a co-recreational league which will consist of three men and three women on each team.

Les Sparks announced that every organization who plans on entering a team in the volleyball league should hand in the name of their team and a list of players.

## Frosh Play Sacred Heart Quint Tonight

After splitting a series with Dayton high school this week, Willamette's Frosh play the Sacred Heart quint tonight at 6:30 in a prelim to the varsity struggle and return to the local hardwood Tuesday to play the OSC Rooks in the second of a two-game series.

Though the Dayton basketballers drew first blood, a free toss in Dayton last Wednesday, the Bearkittens came back in a low scoring game to win 26-16. The table was reversed earlier in the week on Monday when the Daytonites visited the local court and took the top end of a 27-21 score.

When the Goodman coached freshmen take to the floor Tuesday night against the OSC Babes at 8 p.m., they will be out to avenge an earlier swatting, 50-31, dished out earlier in the season by the Corvallis men.

# Collegian Sports

JIM OAKES, Editor

## Baseball Call Issued

Baseball Coach Johnny Lewis will hold a meeting for all prospective baseball catchers and pitchers today at 3 p.m. in the gymnasium.

Lewis plans to hold battery-men workouts beginning next Monday. The turnout for all ballplayers has been set for the following Monday, after Freshman Glee.

## League Swim Meet Set For Tomorrow

The newly formed Willamette swimming team, under the leadership of John Burleigh, will have their initial test in the Northwest conference meet tomorrow at the Multnomah Athletic club in Portland. The meet will begin at 2:30 p.m.

Because of short notice and few candidates, the 'Cat swimmers hopes for tomorrow's test are pretty slim. However, Coach Jerry Lillie urges all interested swimmers to continue to turn out so that Willamette can launch a good team in future meets.

Only five men make up the present team which will make the jaunt to Portland tomorrow. They include Burleigh, Ray Atkinson, Dick Blois, John Day, and Dick Fleming.

## Cagers Keep Title Hopes Alive With Victory Over Canadians

### Bird Triumph Keeps Cats in Race After Logger Loss

Willamette's second place hump meshers kept faint title hopes barely alive by splitting their recent two game crucial northern tour, beating University of British Columbia at Vancouver 44-40 Saturday, and losing a heart-breaker to College of Puget Sound, 42-38, Friday.

### Loggers Checked

The league leading Loggers were held at bay for most of the first period until about five minutes to go until intermission when Captain Bobby Fincham looped in two gifters. This put the Tacomans in the lead 18-16 at the half.

Puget Sound continued to add to their lead in the last half and went into the final three minutes with a 42-33 advantage. Employing stalling tactics the Loggers gave the Bearcats hope

via two long shots and a free throw ending the battle at 42-38.

### 'Cats Fight Back

The Bearcats fought back the next night in their clash with UBC by grabbing an early lead and resting at the half time enjoying a 21-12 lead over the Thunderbirds.

The Canadians rallied in the second stanza tying the score at 40-40 with two minutes left in the ball game. At this crucial point Bob Medley and Jim Johnson laced in a field goal apiece

to give the Methodists the winning edge.

### Johnsons Pace Scoring

The 44-40 victory over the Canucks boosted the Bearcats to the second spot in the conference standings with Jim Johnson setting the scoring pace for the winners at 13 points and Ted Johnson contributing 11 counters.

### At Tacoma:

Puget S. (42) P (38) Willam. Fincham (8) F (4) Richardson Hoff (10) F (3) Medley Rinker (3) C (12) J. Johnson Angeline (12) G (2) T. Johnson Stivers (3) G (13) Warren Willamette subs—Allison, Baum, Douglas (4), Bates, Bryant.

### At Vancouver:

Willam. (44) P (40) UBC Richardson (1) F (5) McGeer Medley (8) F (10) Kermod J. Johnson (13) C (5) Haas Warren (10) G (6) Monroe T. Johnson (11) G (4) Mitchell Willamette subs—Allison, Baum, Bryant, Bates, Waldron, Douglas, Barker (1).

## BEARCAT FOOTBALL SCHEDULE (1948)

Sept. 18—U. of Portland at Portland.  
Sept. 24—Central Washington College of Education at Salem.  
Oct. 1—U. of Idaho at Moscow.  
Oct. 8—College of Idaho at Salem.  
Oct. 16—British Columbia at Vancouver, B.C.  
Oct. 23—Puget Sound at Salem (Homecoming).  
Oct. 29—Lewis and Clark at Portland.  
Nov. 5—Linfield at Salem.  
Nov. 11—Whitman at Walla Walla.  
Nov. 20—Pacific U at Forest Grove.

## Opening Dance

At Silverton Armory

with

**GLEN WILLIAMS**  
AND HIS ORCHESTRA

Featuring Vocalist  
Vick Stewart and Eldon Caley

Starting Saturday, February 28

Sponsored by Silverton National Guard Company

## The Little French Shop

Ladies' Wearing Apparel

Home of the Hooded Coat

115 North High Street  
Telephone 7070

## Next Time Try Mac's

Where the Gang Meets to Eat



**McMillan's Fountain Lunch**

1949 State Street

Phone 9825

Sweaters  
by  
**LORD JEFF**

Wool-Hara . 12.50  
Hampshire . 5.85  
Cashmere . 18.50

**ALEX JONES**

121 North High St.



# Able Subs Fill Forward Positions

## Douglas and Richardson Help Solve Troubled Spots

**By Reynolds**  
During the basketball season, Coach John Lewis' greatest headaches have come from trying to get a man to fill in the fifth spot on the Johnson dominated maple team.  
In both the CPS and UBC games, Lewis started Richardson in the place of Bob Johnson and played Douglas a great deal in filling-up the forward spots. Douglas has broken into the starting lineup several times during the season.  
**Douglas All-Around Athlete**  
One of Willamette's foremost all-around athletes, Douglas revealed, while suffering from a

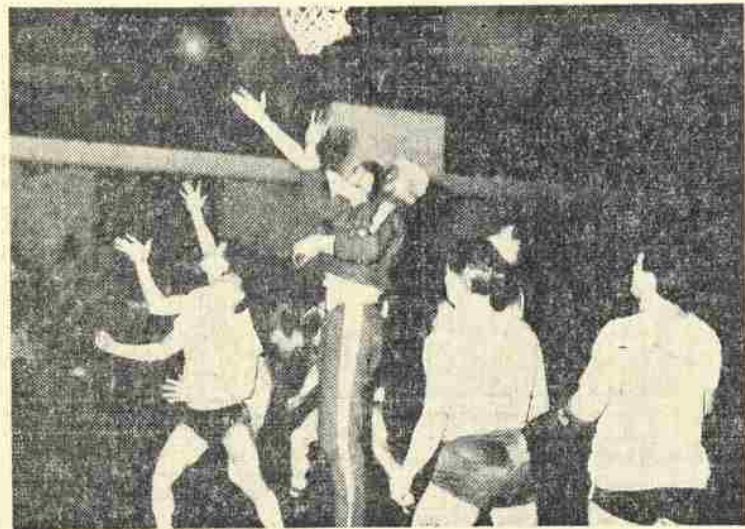
recently pulled tooth, several aspects of his sports life. As his nick name "Hula Hips" would tell one, Bob is from Honolulu where he played all major sports at Kamehameha high school. A first semester senior major in PE, he has another year of eligibility left.  
Bob is one of those pre-war Willametteers whose college career was interrupted by a three year hitch in the army, during which time he spent 12 months in Europe. Before the war, the 23 year old islander played basketball one year, skipping last year's play, however.

**Richardson Pinch Hits**  
Last week's greatest relief to Lewis was the fine job of filling in Bob Johnson's shoes that Fred Richardson did.  
Fred also traveled a long way in order to attend WU, but from the opposite way of Douglas, Meaville, Pennsylvania. Richardson, a married veteran of the navy, attended Washington State before transferring to Willamette a year ago last fall.  
Fred is a senior and, as Douglas, a physical education major. Richardson's even six feet makes him one of the taller men on the Jason's squad. Besides being a hoop star Fred earned his letter last year on the mound for the Willamette baseball club.

# Women Archers Make Plans For March National Tourney

**By Jewett**  
Willamette women archers are laying plans now for entering the national intercollegiate tournament. Two teams each consisting of four women will be chosen to enter competition.  
Each woman will shoot 60 arrows at 20 yards once a week for a three week period from March 8 to 27. Last year Willamette women placed high in their division and will be aiming for a repeat performance this year.  
University of Illinois is conducting the annual winter meet this year and competition will consist of college women archers from all over the United States.

**Play Day Success**  
The Play Day, on February 12, was declared a success by all who were able to attend it. Badminton was dominated by the Reed women. First place in singles competition was taken by Reed's Pat Mercerall, state women's champion, and a team consisting of Mercerall and Wilbur was at the top of the doubles ladder at the close of competition in the afternoon.  
The archery tournament went to Louise Close, Willamette, by a narrow margin of two points, her score of 240 just topping the 238 of Shirley Allen, Willamette. Nan Wilcox walked away with the novelty shoot with a score of 302, her closest competition Shirley Allen's 231.  
A basketball official's rating examination will be given at Lewis and Clark tomorrow.



Jackson Johnson, a colored boy recruited to help win the Faculty's tussle with the Betas, 42-39, last Tuesday, sports a white midriff in attempting to halt a Beta shot. At right is Dick Endsley, Betas, and Ted Ogdahl, Faculty, waiting for something to happen.

# Faculty Backs up Champ Talk With Slim Victory Over Betas

An insurrection attempted by the Betas' 'mural league team, was put asunder Tuesday evening by the faculty in one of the most hectic battles played on the local court, in an overtime contest, 42-39.  
Behind 37-34 in the last quarter, the faculty speedster, Les Sparks flipped in one of his favorite shots from the middle of the floor to cut the Beta lead to one point.  
The faculty powerhouse Jerry Lillie broke through the Sig defense for a layin to give the faculty a one point lead only to have it quickly nabbed from them by a tipin by Al Straumfjord to make the count 39-38 Betas.  
Lillie quickly came to the rescue again by taking careful aim to sink a last second free throw to tie up the contest at the end of the regular play, 39-39.

**SUNDIN & SEIME**  
  
Custom Tailors to  
Men and Women  
  
Alterations and Repairs  
  
196 So. Liberty St.  
Salem, Ore.

**SAVE TIME!**  
RIDE A BIKE  
**HARRY W. SCOTT**  
147 S. Commercial

**Will's Music Store**  
SAUL JANZ, Prop.  
  
Everything Musical  
  
Books - Studies - Records - Radios  
Band and String Instruments  
  
432 State Street  
Salem

# Sports Orbit

by Oakes

## It's Do or Die Tonight

For the past two weeks every game the Bearcats have played has been labeled crucial, and tonight's contest is not an exception. To stay in the race for a tie for the league championship they will have to beat the Loggers tonight.  
If the 'Cats, minus the services of Bob Johnson, manage to scrape through to a win, they will have to sit on pins and needles tomorrow night waiting for results of the Lewis & Clark-Puget Sound tilt in Portland. And if the Pioneers, who have been very hot of late, manage to come through with a victory over the Loggers, the 'Cats themselves will have to come through with a win over the Portland quint next Tuesday. So chances for a league tie seem mighty slim all around.

## Peterson Bearcat Nemesis

Linfield's Gene Peterson has been a nemesis to the 'Cats even when he isn't playing against them. About three weeks ago he led his team to a 61-52 upset victory over the locals at McMinnville. However, just when he could have done the 'Cats the most good, by playing against Puget Sound, he was off to spring training with the Portland Beavers and his mates were swamped at Tacoma 63-44.  
Though Peterson didn't score too many points against us, he was the cohesive force that kept the Wildcats together and without him this year, they have been able to do little or nothing.

## Baseball Looms Around Corner

With basketball just two games from being over at Willamette, local Bearcat enthusiasts have been wondering what the baseball team will have to offer this year. Since both John Lewis and Jerry Lillie have had much better respective seasons then were allotted by the experts, we may be expecting too much from the coming baseball season.  
However, things look brighter than they did last year for Walt Erickson.  
The batteries, especially the pitching department looks stronger. Fred Richardson, the side arm work horse of last season will no doubt again be a Bearcat mainstay, as will John Slanchik, if his chipped elbow doesn't bother him. "Shoes" Olson, who beat Oregon last year, could add a lot of strength to the mound staff.  
Down from Portland, comes Lou Scrivens, who won eight games for Franklin high last year, and Burt Lund, who pitched for Lewis' Aero club last summer in American Legion play, to give the 'Cats a possible five starters.

## Three Able Receivers

Receiving the chuckers will likely be three capable performers in "Deek" Walker, third stringer from last year, Roy Harrington, who has plenty of Portland semi-pro experience, and Flashy Dick Allison the Salem high whiz.  
Though not much is known yet about the infield and outfield situation, a strong battery set-up could go a long way to promoting a successful season.

IT'S STILL  
NOT TOO  
LATE!

SEND A COLLEGIAN HOME



Subscribe to The Collegian for the  
Rest of This Semester

ONLY 50c



## DGs Honor Stage Star At Banquet

Terry Clemes, who is playing the lead in the stage play "Dream Girl" tonight at the Salem high school, was entertained at dinner at the Delta Gamma chapter house last night.

Miss Clemes, a graduate of Willamette, was affiliated with Delta Phi which became a national sorority several years ago and is now Delta Gamma.

Mrs. Donovan Worden, Delta Gamma province secretary, was also honored at dinner last night. The purpose of her visit to the Willamette campus at this time was to meet and get acquainted with the five new pledges.

Other dinner guests were Mrs. Steve Anderson, an active Delta Gamma alumnae, and Mrs. Deseret Sheaffer.

General chairman of set up for the dinner was Arlene Joseph, Betty Leonard, Patty Haltz, Pat Parsons, Harriet Houghton, Carol Dimond and Nancy Strother assisted.

## WSSF Sponsors "Toujours Gaie" Variety Benefit Show

"Toujours Gaie," a benefit variety show sponsored by the World Student Service Fund, will be presented Friday evening, March 12, at the Salem high school auditorium. The program will include 19 different acts, according to Ray Yocom, general chairman.

Emceed by Yocom and Ray Loter, this show will climax the week of contests and projects for the purpose of collecting money for the WSSF. Reid Shelton and Edie Fairham will sing "The Surrey With the Fringe on Top" and other selections from "Okla-

## Sororities Hold Formal Pledging

Eighteen new sorority pledges received their pins Monday night at formal pledging ceremonies at four houses.

Pledging Alpha Chi Omega are Beverly Hutchison, Nan Pratt, Betty Townsend, Ernestine Vosper and Helen Bonadurer.

New Chi Omega pledges are Audrey Lien, Barbara Miller and Bonnie Weigand.

Pledges of Delta Gamma are Nancy Phillips, Colleen Whitman, Earlyne Foley, Jean Rickli and Martha DuRette.

Pi Phi pledges are Nickie Haynes, Anna Fay Olson, Joyce Hanks, Diana Arpke and Kay Stark.

## KOCO Presents Music Students

Robert Gwinn, baritone, and Beatrice Nagl, pianist, were featured on the "This Is Music" program aired over KOCO Wednesday evening. Both participants are majors in music.

Gwinn sang the recitative and aria "Draw Near All Ye People" by Mendelssohn, and "Arm, Arm Ye Brave" from Judas Mac-callus by Handel.

Beatrice Nagl played "Forest Murmurs" by Litz.

The program is presented each Wednesday night at 7:00 and the programs alternate between faculty and student performance.

# SOCIETY

ELLEN MONTAGUE, Editor

## GLEE PRACTICES GET UNDERWAY

With Freshman Glee practices being held three and four times daily, other social activities have been placed in the background. Story of the week is "Dream Girl," stage play being presented tonight at the Salem high school auditorium. Taking the lead in the comedy is Terry Clemes, graduate of Willamette in 1940 and a member of Delta Phi. After game informal dances and firesides are being given by Sigma Chi and Baxter men. Both sorority and fraternity pledging are also in the spotlight.

## WU Graduate Terry Clemes Plays Lead in "Dream Girl"

"Dream Girl," the first of a series of three legitimate stage plays being brought to Salem by the 20-30 club with the profits to go to the Salem Memorial Auditorium association, is a dream come true for a Willam-

ette University graduate, Terry (Olive) Clemes.

Friday night when the play comes to the Salem high school stage, Terry Clemes will be playing the lead role of Elmer Rice's stage comedy.

"Dream Girl" is in 19 scenes and Miss Clemes is in every scene for practically its entire time since she dreams of herself in various characters she has very little time between scenes, as she acts out the roles of a bookshop proprietress, a Mexican lady, a tragic trollop and an imbibing debutante. Three different stage playing areas are used and she walks from one scene to the other, changing costumes in the fleeting second behind a drop or in a blackout, with a maid waiting in the dark to slip on a dress or hat as she passes through.

Among the all star New York cast supporting Terry Clemes are such well-known Broadway players as Robert Herrman, Gloria Sloane, Franklyn George, Penny Kasper and Rita Burwell.

Miss Clemes was born in Indiana and was graduated from Willamette University where she was affiliated with the local sorority, Delta Phi. She first came to the attention of New York producers when she won the John Golden Talent contest.

## Baxter Men Hold Informal Dance

At an informal open house dance tonight following the game, residents of Baxter hall will entertain members of the student body who wish to come. This is the first function the Baxter hall men have held in the new dormitory, and all students are invited.

Will Henderson, social chairman of the Baxter hall group, is in charge of the affair. Dancing will be to records.

## A Chis Fete Phi Alphas At Fireside

Alpha Chi Omega sorority women entertained Phi Alpha fraternity members at a fireside Wednesday night at the A Chi O chapter house at 7:30 p.m.

The Phi Alphas provided mystifying entertainment in the form of a magician, Bob Rhoads.

Committees for the affair were decorations, Laura Jean Bates, chairman, Doris Kimble, Barbara Halvorson, Carlotta Hendricks; refreshments, Daphne Lekas, chairman; clean-up, Vera Jack, chairman, assisted by Jo Ann Up-ton, Marcia Dunnells; Doraine Praed, Mary Lynn Scott and Kathleen Kinder.

## Women Entertain With Open House

At the annual Lausanne hall open house many friends and guests of the girls were entertained last week.

An old-fashioned motif was used on the programs and in the decorations of the rooms and halls. The hostesses were dressed in formals and showed the guests to the various rooms.

The receiving line was composed of Fonia Blower, Jean Carrico, Helen Olson, Lorena Jack, Mrs. Mary Linerode, and Dean and Mrs. Riggs.

Pouring were Mrs. Gertie Spaur, Mrs. Gayle Morris, Mrs. Ellen Foster, and Mrs. Elizabeth Higbee. Some of the hall women assisted in serving.

## Shelton, Johnson Featured In Second WU Symphony

Featuring Joan Johnston and Reid Shelton as soloists, the University symphony orchestra under the direction of Frank Fisher, will present its second concert of the year in the auditorium of Leslie junior high school, Sunday afternoon.

At 3:00 p.m., Fisher will raise his baton to lead the 42 Willamette musicians in the exciting overture to the opera "The Barber of Seville" by Rossini.

The soloists, Joan Johnston, piano, and Reid Shelton, tenor, are both well known music students on the campus. Both are majors in their field. Shelton is particularly well known for his performance in the Christmas presentation of Handel's "Messiah". He has given many concerts on and off the campus.

Joan Johnston has been recently elected to the post of president in the Willamette chapter of Mu Phi Epsilon, a national honorary sorority.

Sponsored by the Willamette College of Music and the ASWU the concert will be open to all and all are invited to attend.

Program for the afternoon is as follows:

Overture to the opera, "The Barber of Seville" ..... Rossini  
Apres un Reve ..... Faure  
Psyche ..... Paladilhe  
Le Manoir de .....  
Rosamonde ..... Duparc  
Reid Shelton  
Concertino for Piano and Orchestra, Op. 15 ..... Weiner  
Joan Johnston  
INTERMISSION  
Symphony No. 1 in C Major, Op. 21 ..... Beethoven

## Phi Delts, Sigs Pledge 14 Men

Eight men were formally pledged by Phi Delta Theta Wednesday night at the chapter house.

Those pledged are Duane Bartsch, Berwin Murray and Don Phillips, Salem; Bob Muir, St. Helens; Harry Ryan, Eureka, Calif.; Newt Thompson, Halfway; Tom Huffman, Dayton; John Searles, Ann Arbor, Mich.

## Sigs Pledge Six

Sigma Chi held pledging services for the following six men this week: Norman Stone and Gary Keppinger, Salem; Gene Allison, Grants Pass; Will Henderson, North Bend; Dick Bolten, Camas, Wash.; Ken Jarrott, Redondo Beach, Calif.

## Chi O, Pi Phi Set Initiation Ceremonies

Nu Delta chapter of Chi Omega will hold formal initiation this evening for 14 pledges. A banquet will be given tomorrow night for the new members.

Initiates are: Evelyn Baxendale, Helen Blevins, Jeanne du Buy, Jean Gilmer, Beth Tedford, Marian Spann, Barbara Robinson, Wesley Woodward, Betty Cummings, Joan Morgan, Viona Noyes, Donna Roberts, Alice Adams, and Patricia Zahare.

## Phi Phis Initiate 21

Pi Beta Phi will hold initiation ceremonies for 21 women this weekend at the chapter house.

Those being initiated are Diane Allen, Virginia Balk, Martha Benard, Shirley Butler, Pauleen Foote, Marie Glasse, Nancy Glenn, Barbara Goldman, Margaret Gulce, Jo Gunnar, Lu Dene Hargrave, Arden Hebb, Barbara Miller, Lois Mulcahy, Diane Proctor, Pat Richmond, Avis Roberts, Sally Smith, Janet Stark, Nancy Welch and Mary Jo Wigginton.

The University Workshop Presents . . .

## Willamette University On the Air

KOCO

1490 k.c.

KOCO

### ● IN THIS OUR AGE

Tuesday evening at 7:00 p.m. Sports news, faculty interviews, campus news, student editorials.

### ● HERE IS THE MUSIC

Wednesday evening at 7:00 p.m. Faculty members and students, College of Music.

### ● MAN IN CONFLICT

Thursday evening at 7:00 p.m. Dr. A. S. Burton, Psychology Department.

KOCO

1490 k.c.

KOCO

**KAY'S**  
WOMEN'S WEAR

482 State

Salem

L. G. BALFOUR CO.  
"Your Fraternity Jeweler"

Pins, Rings  
Novelties, Dance Programs  
Favors, Stationery

N. W. Office and Display Room  
807 General Insurance Bldg.  
Seattle, 5, Washington  
MARK McCOLM, Mgr.



## Library Exhibits Paintings Of 14th Century Europe

Forty-six small colored reproductions illustrating the painting of the 14th century down to the French impressionists are now on exhibition in the library.

The first group, the early Italian artists, painted for the church for both instructive and ornamental reasons, adds to the religious aspects of the exhibit. This collection shows examples of the high Renaissance in Italy, the greatest period of western painting. Artists of this period made use of portraits, as well as religious and classical subjects.

### Second Group Listed

Paintings of Germany, France and Flanders, much like Italian but more homely in tone, compose the next period. Seventeenth century Hollanders liked to show the life and surrounding of their times, their interiors, still life and landscapes with figures. Rembrandt reached the peak of expression with his use of light and depth which expressed his insight into the human soul.

The German painters presented a forceful interpretation of their country and thoughts, while in England, Holbein was paint-

ing his famous decorative portraits. Spain's El Greco has exerted terrific influence on modern painting through his interest in energetic composition and expressionism, contrasting directly with Velasquez, the court painter.

### Chardin Included

The French painters shown include Chardin of the 18th century to Ingres of the early 19th century, the latter wholly classical in attitude. The romantic Delacroix and Corot follow with their silvery landscapes.

Englishman Hogarth was painting portraits as well as social satire in the 18th century. Working down into the 19th century, Constable's interest in out-of-door light was influential in the change from traditional composition to those qualities characteristic of the French impressionists.

This exhibition is interesting for its historical significance and explanation of the emergence of individual schools of art, all of which were dependent to some extent on ideas of the past while adding their own particular contemporary theories.

## British Offer Summer School For International Students

British summer schools, held in seven British universities and university colleges, will be open to all nationalities during July and August 1948, the British Information service announced recently.

Each course will last six weeks and they will be held at widely separated centers ranging from Scotland to London, and to the south coast of England. The subjects will take in studies on European Civilization, Shakespeare and Elizabethan Drama, Britain's Economic Future, Contemporary English Literature, Education in England; an Historical and Sociological Survey of Contemporary Britain, and a post graduate school in medical and scientific studies.

### Teachers Admitted

Although the schools are in-

tended primarily for graduates and teachers who have made some previous study in the subjects offered, in some cases students in the junior or senior year with special interests or academic training will be considered.

All questions about the summer schools should be asked of the Institute of International Education at 2 West 45th Street, New York. The Institute will make the final selection of successful applicants. All applications must be in by March 15, and the candidates will be notified of the results by April 15.

### Costs Estimated

Arrangements will be made for students to live either in colleges or in university hostels. The cost of the courses, including tuition and maintenance for the six weeks, will be from \$240 to \$264. Round trip tickets for American students will be from \$328 to \$448 with the Cunard-White Star Line agreeing to make about 500 round trip passages available for the successful candidates.

## History Students To Hear Address By Harvard Prof

Dr. Kirtley F. Mather, for 19 years head of the geology department at Harvard University, will speak to Dr. Ivan Lovell's history class at 11 Friday, March 5, in Waller hall. Topic of Mather's address is "America's Resources in the Light of World Needs."

Classes will not be dismissed but professors may make arrangements to have their classes attend. Pres. G. Herbert Smith said Wednesday.

Mather was one of the American leaders at the Oslo Youth conference last summer and was one of the delegates to the world council of churches at Edinburgh. He is also president of the National Council of the YMCA, Smith said.

## Cameraman Lectures

R. J. Goodman, representing E. Leitz Inc., New York City, importers of world famous Leica cameras, microscopes, etc., will be on hand to lecture to Willamette camera hounds February 26 at 8 p.m. Goodman plans to show over 100 color slides and following the lecture will conduct an open forum discussion on all photographic problems with amateurs or professionals alike.

## Lettermen Name 10 Finalists In 'W' Club Queen Contest

Finalists in the "W" club queen contest have been announced by Club President Earl Hampton as Lorraine Allen, Edith Anderson, Alene Axelson, Barbara Bates, Martha Durette, Kathleen Kinder, Jean Mills, Nancy Phillips, Pat Ryan and Mary Lynn Scott. Chosen by lettermen from a group of 31, the ten candidates will be narrowed down to five, who will be announced Tuesday.

The annual Lettermen's ball is scheduled for Friday, March

19. General chairmen are Hank Ercolini and Bob Donovan. Travis Cross, publicity chairman, has announced that Glen Woody's band will play. KOCO will broadcast for half an hour, with Ray Loter and Cross officiating. Cece Johnson, in charge of decorations, reported that a theme has not yet been selected.

A sock dance will be given in the gym during chapel period on Tuesday, March 16, in honor of the five finalists. The Salem high school dance band will play, and there will be no admission charge.

Joan Cloudy, last year's queen, has been invited to participate in the crowning ceremony, and her court, Daphne Lekas, Nan Preede Bohenkamp, Enid Lye and Salley Gable have also received invitations.

Various local merchants will contribute gifts for the queen and her court. Holly Jackson will present the queen with a \$58 watch, while Maple's will present the princesses with bracelets. Knapp's will contribute the programs, and Bishop-Moderne will take care of the photography. Page Woolen Mills will contribute carpet to be used during the ceremony.

## Guide Editor Wanted

A call has been issued for an editor of the Fusser's Guide supplement, Publications Manager Ray McCoy announced today. No previous experience is necessary for the job.

The editor's task for this semester consists of obtaining a list of men living in the new dorm and new students. This list will be published in the Collegian.

Anyone interested is urged to see McCoy.

## New Students Represent 15 Universities

Of the 60 new students registered for spring semester, 20 are transfers representing 15 colleges and universities scattered over the United States, according to the director of admissions.

The University of Oregon lost four of its students to Willamette and Oregon State turned over two of its enrollment. Students arrived from other colleges along the west coast. They include the following: Washington State College, Multnomah College, University of California, Stanford College, Loyola University of Los Angeles, and San Mateo junior college.

A scattering of other schools from various sections of the country are also represented. They include Bradley university; College of Wooster, Wooster, Ohio; University of Hawaii; Olivet Nazarene college, Olivet, Illinois; College of Idaho, Caldwell; Yale university, New Haven, Connecticut; and Boise Junior College.

## The Spa

Where Quality Foods Prevail

J. R. (Ray) Linton  
Savilla D. (June) Linton  
382 State St. Salem, Ore.

## Double and Triple Soles At Their Best

Dye, Shine and Plates Complete While You Wait Service

Jim's Shoe Service  
175 N. High



**Roberts Bros.**  
SALEM, OREGON



**Girls!...**

**For Making Your Own Ballerina Skirt**



Here Is Some of Our Stock of New Materials

- We Have Faille in Assorted Colors
- Wool Plaids in Colors
  - GREEN
  - BLUE
  - RED

**For Suits We Have Rayon Gabardine in Gray, Tan and Blue**



# Strong Foreign Policy Urged by Stassen

## Presidential Aspirant Opposes Appeasement in WU Speech

"You cannot pave the road to peace with jelly-like blocks of appeasement," said Harold E. Stassen, republican aspirant for the presidential nomination, in a 30-minute to-the-point speech Friday, addressing students, faculty and interested townspeople at the Willamette gymnasium.

He recommended that no more essential material that might be used to build a communist war machine be sent to Russia.

### Kremlin Errs

"No one can predict what the Kremlin's decisions will be," the ex-governor of Minnesota pointed out as he covered the possibility of Russian aggression. "The Kremlin has made three major miscalculations," continued Stassen, and outlined them as follows:

Communist Russia is certain that an economic crash will occur in this country.

### Communist Infiltration

With the individual freedom in the United States, Russia feels the field would be wide open for communist infiltration.

Russia expects us to reduce our national defenses, weakening ourselves and leaving us vulnerable to attack.

Stassen stressed that we can prove to the Russians that they are wrong and he urged that all young men should participate actively in public affairs regardless of their occupation.

"Man is an individual of spiritual value and of equal creation," said Stassen, "and our interpretation of this fundamental precept will determine our hope of the future."

Stassen answered several questions from the audience which gave more real platform

planks than his main speech. Dr. E. S. Oliver asked Stassen about his policy concerning racial tolerance. Stassen replied that he believes that the findings of the Truman committee on human rights and civil liberties indicates the direction in which we should move.

### Marshall Plan Discussed

Prof. Raoul Bertrand asked how the European recovery program should be handled. Stassen feels that we should follow through on the Marshall plan, but set up a new administration policy along the lines of Senator Vandenberg's plan, taking the job out of the hands of the State department. He pointed out that the flow should be supervised by set up on a centralized control basis.

### UN Needs Power

Bob Sayre asked Stassen if the responsibility to maintain peace is the United States' or the United Nations'. Stassen thinks that the UN is not capable, but the strong participating nations are responsible, and the US must maintain a firm position.

Richard Yocom asked about compulsory military training. Stassen feels we should not allow ourselves to become weak, but that compulsory military training may not be the answer.

## Service Group Bids

Don Douris, student body social chairman, requests that all students who are interested in Alpha Phi Omega, National Service Fraternity, contact him in the Student Body office any week day.

## 50 Pep Cats To Solicit WSSF Funds

Willamette's 50 Pep Cats will cover the campus to solicit funds for the WSSF drive March 8 to 12, according to president Avis Roberts. The all girl yell organization will sell 50c WSSF booklets to students and faculty on the campus to raise \$500 needed to help foreign students.

According to Kathleen Secord, chairman of the WSSF drive, each booklet sold will admit one person to "Toujours Gaie", musical comedy, March 12. "We feel that 50c is not too much for each student to donate to the assistance of needy students in China and Europe. We hope that Willamette people will buy as many booklets as possible so that we can say WU invested one hundred per cent. It would be nice to say that out of 1200 students there was not one small 'smoe' on the campus", she stated.

## Political Discussion Group Organized by WU Students

"A good idea is worth voicing, a bad one worth correcting. An unprejudiced point of view is essentially democratic" is the slogan of the newly formed campus Political Discussion group which will meet in Waller hall, March 1, at 7:30.

The objective of this organization is to acquaint students, faculty and townspeople with all sides of current political thought, said Francis Sopp, publicity director for the group. Members of the discussion group feel that this information is necessary for intelligent voting, she explained.

Speakers from the right, left and middle of the political road have been invited to present their views at future meetings of the organization.

"Panel discussions between

Mr. Dewey, Mr. Wallace and Mr. Stassen will also be presented. Students with an understanding of the political theories of these men will impersonate "Mr. Dewey, Mr. Wallace and Mr. Stassen," Miss Sopp said.

## Cavern Aid Named

Mrs. Agnes Vogl of Salem has been named assistant manager of the 'Cat Cavern' according to Mrs. Pauline Boetticher, Cavern manager. Mrs. Vogl has replaced Virginia Lovcick.

New Cavern decorations carry out a St. Patrick's Day theme with green and white paper streamers on the ceiling and large green shamrocks on the walls.

## The Amen Corner

The Episcopal Students of Willamette will hold a recreation meeting Sunday evening at 7:00 in St. Paul's Episcopal church. Games and refreshments are the order of the evening. The group meets every other Sunday, alternating with the high school meetings.

Westminster Fellowship's discussion for Sunday night will be on Christian stewardship, with Ralph Ewing leading. With the resignation of Howard Burrell, Marian Sparks, vice-president, was elected to president, and Martha DuRette was elected vice-president.

The Inter-varsity Christian Fellowship will have no meetings this week.

Wesley Fellowship is planning a party for Sunday night, with Leap Year as the theme. It will also be a birthday party for someone special. The group will meet at 6:00 instead of 6:30, and will see the movie, "Golgotha" at 8:00 in the sanctuary.

Joe Brazie is in charge of recreation for the party. Doris Gragg is planning refreshments, Jackie Chute is handling invita-

tions, and Arlene Zastera is arranging for sponsors. Everyone is invited to attend.

Gladys Schollian will lead Phi Zeta Christo's discussion Sunday night. Subject will be "Church, What Is It?" Carl Parkhurst will lead the worship service. An informal discussion of the problems of leading discussions, conducting worship services, and planning parties will be held tomorrow afternoon, as the group works on drapes of its new Sunday School room.

When you think drugs think

**Schaefer's Drug Store**

135 N. Commercial St.

Stylish Clothes

for the  
Smart Set

**The Fashionette**

429 Court

## WU Law School Launches Series of Legal Handbooks

The first publication of the Willamette Series of Legal Handbooks climaxed a law school experiment last week. It is an index of every instruction to a jury, given or refused, which has been commented upon by the Supreme Court of Oregon.

Editor-in-chief, Richard Wicks stated that these indices are for the benefit of practicing attorneys in Oregon and a free copy has been sent to every member of the bar association in Oregon.

The financing of this project has been done by the alumni association of the Willamette college of law. Although in existence for only a year, the association was still able to support the publication.

Faculty editor for the series

is Prof. Kenneth H. York. Other law school students working on the publication were Frank Pozzi, Donald Alderton, Russell Helterline, Clarence Wicks, Bruce Williams, business manager and Arthur Wilson, assistant.

## Infirmary Notice

Students are requested to come to the infirmary for treatment only at the hours regularly scheduled for such treatment. Dean Lawrence Riggs announced this week. Hours for treatment are from 8 to 5.

Students have been coming in for treatment after the doctor and nurse have left, Riggs explained.



*Yours for Success...*

## STRIPE FOR JUNIORS

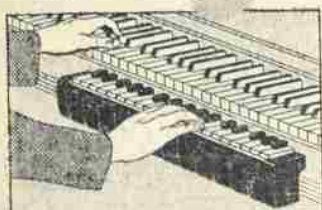
A winning junior fashion in your choice of coral, green, or brown striped Ardross wool, designed and cut to slenderize. Tiny nipped-in waistline, gold-colored buttons, sweeping, swirling skirt. Sizes 9 to 17.



See it!  
Hear it!  
Play it!

**Solovox**

MADE BY THE MAKERS OF  
THE HAMMOND ORGAN



Double your fun with Solovox—the amazing instrument that attaches to your piano. Gives the effects of many instrumental solos with your piano accompaniment. It's easy for anyone to play. See it—hear it—play it today. Convenient terms.

**Jaquith Music Co.**

"Complete Music Service"

136 South High Salem

## BEAUTY NOOK

HAIR SHAPING  
A SPECIALTY

Phone 6631 319 Court St.

JEWELERS - OPTOMETRISTS

**Brown's**

JEWELRY AND COURT ST.

Salem's Leading Credit Jewellers and Opticians