



Wallulah, 1945

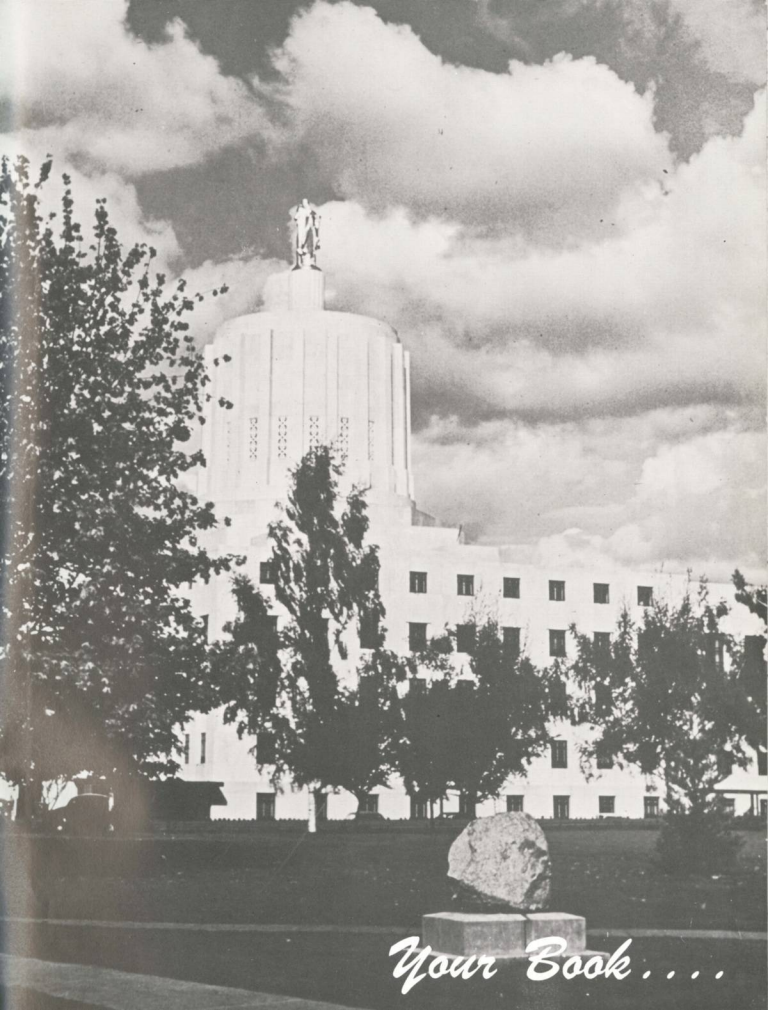
WILLAMETTE UNIVERSITY
LIBRARY

Call Number

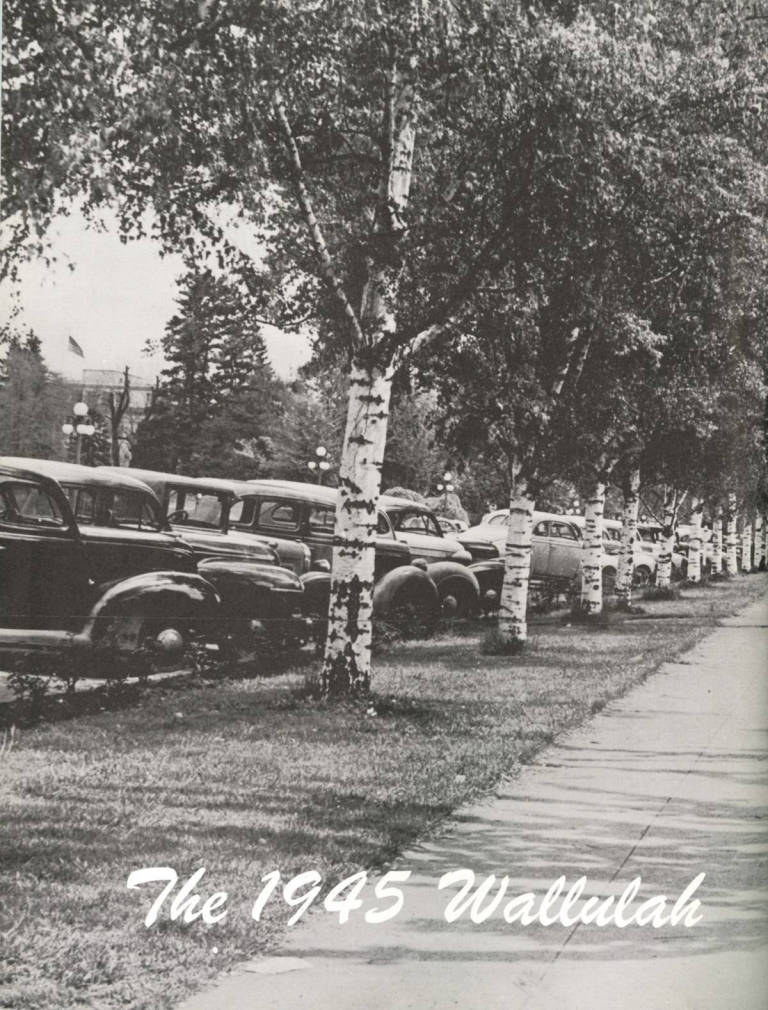


LIBRARY
WILLAMETTE
UNIVERSITY

LIBRARY
WILLAMETTE
UNIVERSITY



Your Book



The 1945 Wallulah



WILLAMETTE
UNIVERSITY

FOUNDED BY JASON LEE AND
THE EARLY CHRISTIAN PIONEERS
1842
THE OLDEST UNIVERSITY IN THE WEST

*Presented by the Associated Students of
Willamette University*

Editor, Jean Fries

Publication Manager, Jan Patterson

*This is the story of Willamette . . .
dedicated to Robinson Spencer,
"Butch" to the campus for 13 years.*

Because for each of us the story
will be a different one, we are
presenting only the highlights --
the stuff with which to start our
dreaming --- the opening curtain
for a personal panorama of the
hopes, laughs and worries of a
college year.

*The basic story is old and
familiar . . .*

gals and guys . . .

Campus personalities who eventually see their college history in "Who's Who Among Students in American Colleges and Universities" are selected annually by a faculty committee. Members on the Willamette campus are Foman, Strong, Robinson, Thomas, East, Boyd, Fries, Cate, Patterson; Bennett and Wicks not pictured.

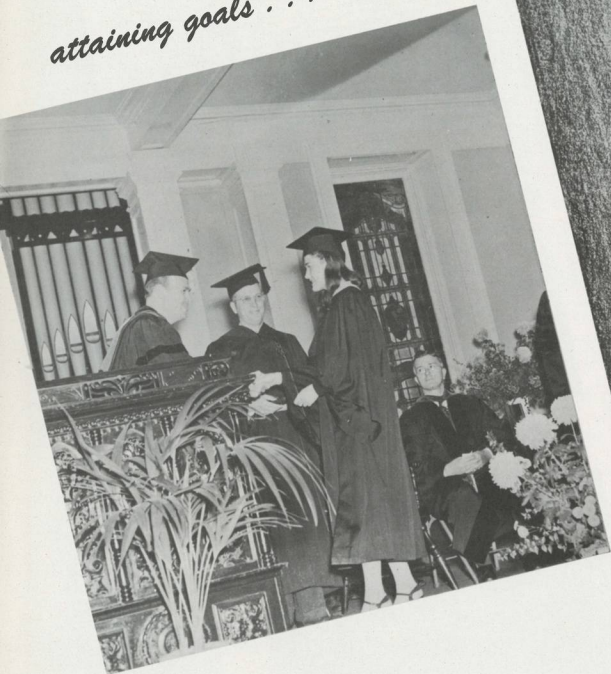


books and profs . . .



*wearry minds and
tired feet . . .*

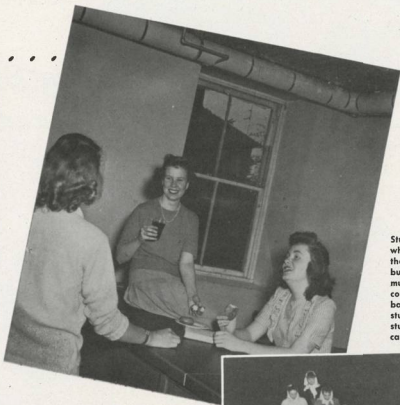
attaining goals . . .



cheering for



the home team . . .



Student body office . . . spot where news hungry students get their gazette and barter in S. B. business. Though appearing much like a tea shoppe where coeds stop and chat with Barbara Shirley and Joan Roddy, student body secretaries, the student body office centralizes campus big business.

*snacks and
gab sessions . . .*

*and exchange of talents
and ideas . . .*



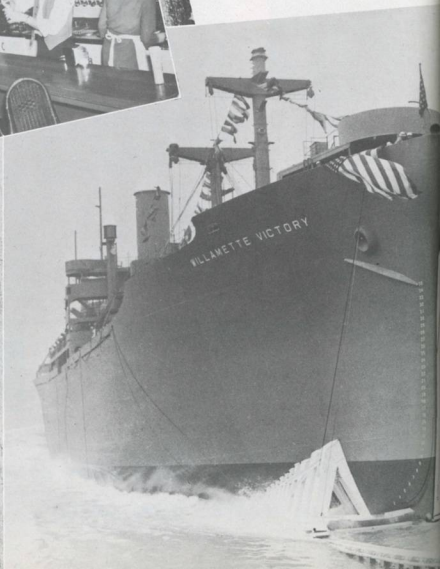
*But there have been countless changes . . .
in names and faces . . .*

in surroundings . . .

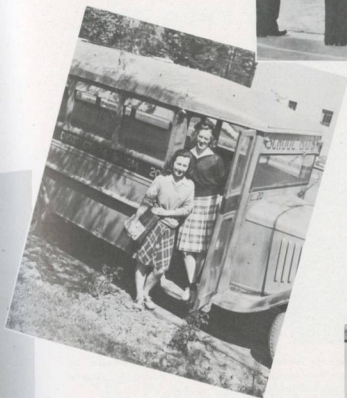
The newly remodeled Cavern . . . sporting a fountain presented by civilian men. Correct-beans-in-a-jar-guesser Nicolai gets the distinction of receiving the first fountain service from Guy Jonas, representative of the contributors.



*in achievements
and recognition .*



in dress . . .



in contributions

*and in dreams and
their realizations.*



*Then too, more than ever before we read and
heard Willamette names, names of former
classmates, which now are ours to keep . . .*



In Memory

The touch of Iwo Jima and related regions has reached more men than those here mentioned. But conflicting reports and other difficulties have made the omission of some names unavoidable. However, no one is omitted when each reader pauses in his thoughts for a friend.

FRANK LYNCH, USA, '27
FRANCIS SCHMIDT, USAAC, '39
MILTON BELL, USAAC, '40
HOWARD EBERLY, USAAC, '41
TALBOT BENNETT, USMCR, '38
ELLIS ROGERS, USAAC, '40
REX PUTNAM, USAAC, '42
JAMES ROBERTSON, USMCR, '37

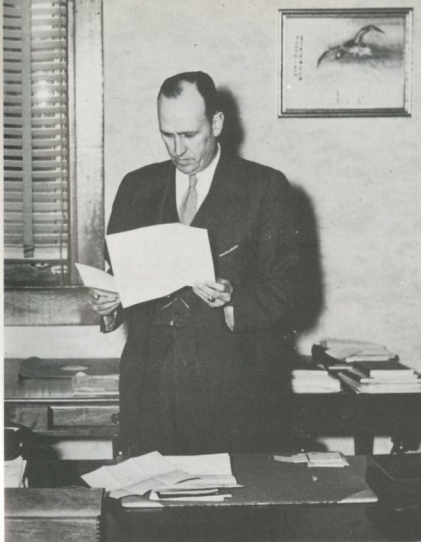
JAMES SHERWOOD, USN, '45
CARL SEIBEL, USA, '42
RUSSELL SATTER, USMCR, '44
ELBERT MCKINLAY, USAAC, '45
MILTON LIPPS, USAAC, '33
EDWARD CHURCH, '41
PAUL JUDD, USNR, '45
DIX MOSER, USNR, '44

*So we give you the framework
for your year's story . . . in
five parts . . .*

- 1. Cuts and Cramming**
(Classrooms, Faculty)
- 2. Cogs and Careerists**
(Students, Honararies)
- 3. Cokes and Confetti**
(Activities)
- 4. 'Cats and Clamor**
(Athletics)
- 5. Chums and Chatting**
(Social Groups)

cuts and cramming





EXECUTIVES

A grin-warmed "hello" or a momentary chat are as much the president's life as are his services in the field of education or his post-war dormitory and athletic designs. With clear foresight and relentless energy Dr. G. Herbert Smith works always toward a bigger, better Willamette. A Phi Beta Kappa, he is also national secretary of Beta Theta Pi. Closely associated with Dr. Smith in our thoughts are his wife, charming hostess of University House, gracious Sally, and sparkling-eyed Margie.

The year witnessed two advancements in the naval career of Lt. Marshall E. Woodell. Shortly after Mr. Woodell was promoted to full lieutenant, he was placed in command of Willamette's V-12 battalion. Carrying out his duties in a very efficient and military manner, he exemplifies the spirit of a true naval officer.





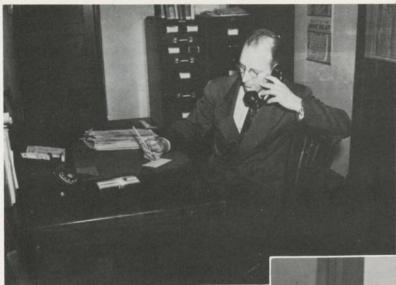
◀ Olive M. Dahl, in addition to teaching German vocabs, keeps an eagle-eye on coed closing hours, grade points and the social calendar. In her capacity as Dean of Women, she helps new coeds find their niche in college life.

"Genuine admiration" understates campus regard for Chester F. Luther, Dean of the College of Liberal Arts and head of the math department. Dean Luther, gentleman, brilliant scholar, camper par-excellence, and master of patient understanding, personifies the highest qualities of manhood. His student secretary is Virginia Barber. ▶



◀ No matter how many they number, the duties of Daniel H. Schulze, Dean of men, professor of religion and German and Blue Key adviser, fail to rob him of his cheerful disposition. While keeping his acreage up to snuff and raising prize begonias, he ponders student problems.





Man of many titles, Dean of Freshmen, Director of Admissions, Registrar, Chairman of Cavern Board, Walter Erickson finds welcome relaxation in wading Oregon streams in search of the elusive steelhead.

Being guardian angel of Willamette's property is a headache of immeasurable magnitude. Robert W. Fenix, however, directs business office proceedings most efficiently—and always with a smile.

OFFICES

Money, Money, Money—here's where all your hard-earned shekels begin their trip toward purchasing an education. The business office staff, Elsie Kook, Mrs. F. W. Lien and Mrs. M. I. Boone, also keeps tab on University belongings.



Firms, blanks, petitions! — it's almost as bad as a ration board. Nonetheless, deadlines are met faithfully by registrar's secretaries, Constance Rutledge, Mrs. Ralph Dobbs and Joyce Hugill.



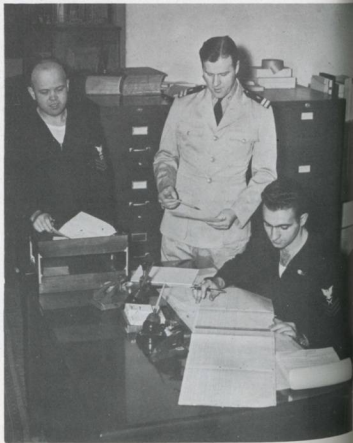
V-12 ADMINISTRATORS

Medical Officer Capt. George W. Shepard, ably assisted by corpsmen John Gearin and A. E. Reisenauer, keeps tab on micro-organisms that go racing through bloodstreams. Much to the dismay of apprentice seamen, booster shots prove to be valuable inhibitors of said organisms. ➔



Chip, Chip, Chip — thus goes the thankless job of being a Chief Petty Officer. In addition to directing activities around Lausanne, Chiefs Harry Trotter and Robert McGuire conduct P.E. and swimming classes, offer their services as coaches of the University ball clubs. ➔

The smooth operation of the V-12 battalion is dependent upon the executive staff. Lt. James F. Kee, Storekeeper Scanlon and Yeoman Bruno. Their office is located in the Naval Ad building whence come rules and regulations for apprentice seamen. ➔





← Newly-located bookstore, source of navy tomes for V-12's or "blue books" and five-cent graphites for all interested, is capably managed by friendly Mrs. Delsia Larson.

→ The blare of James' trumpet from the nickelodeon proves to be too much competition for Plato, das Deutch, or Koch's postulates. Many a GPA takes wing over donuts and a steaming cup of coffee.



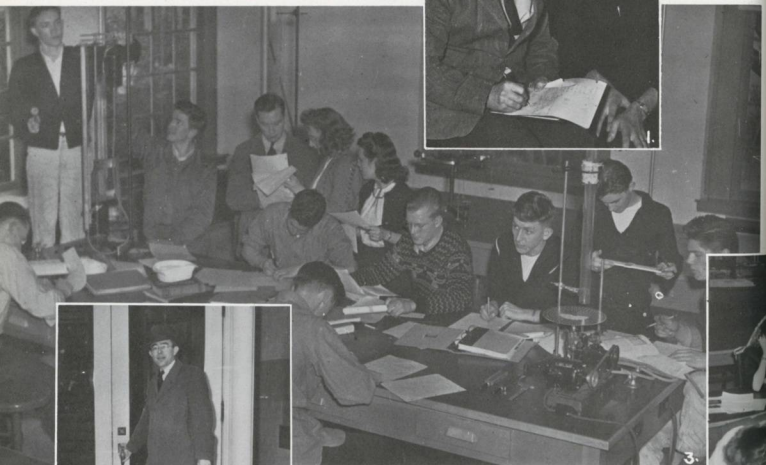
DIVISION OF MATHEMATICS AND NATURAL

Physics • Physical Science • Geology

Chemistry

1. Prof. (F. = MA) E. T. Brown juggles physics formulas around like apples, that is when not pitching hay on his prized two-acre farm.

2. Likeable Warner Schultz shares the Collins' teaching load. Special headache allotted him is the all-girl math analysis class.



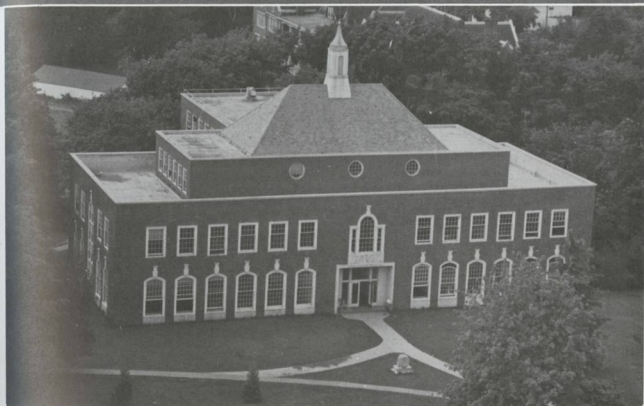
3. Not Bach prodigies trying to play a fugue on a lead pipe organ, but members of the physics class studying wave length and frequency. Prof. Spelbrink explains to zealous physicists that

$$\lambda = \frac{v}{n}$$

Biology

Mathematics

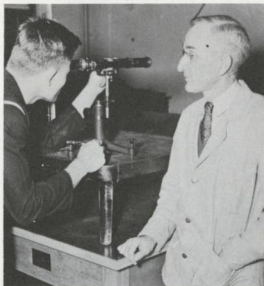
Home Economics



Because of war-acceleration and its increased emphasis on math, physics, biology and chem, Collins Hall has become that veritable bee-hive. Friendly animosity between scientists and musicians over wandering odors and unusual tonal effects adds a certain spice to life!



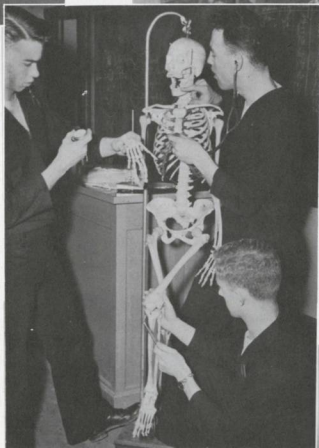
Meet the geology lab, affectionately known as the rock sanctuary or relic realm. Located in lower Collins, it is the scene of many pilgrimages into the world of Archeopteryx and Tyrannosaurus rex.



Ruling the domain of physical science and geology is energy-charged Herman Clark. Known by all through his annual Glee banner presentation, Prof's sympathetic understanding and sincerity have won him the confidence and friendship of all his associates. He spends week-ends digging around Oregon for new rock specimens.



Third floor Collins, home of four chem labs, watches young chemists forever wage the battle of burettes, group III ions, isobutyl alcohol and physical constants. Orange and green smears autograph careers on numerous ceilings.



Josephine, boniest member of the physiology class, gets a thorough examination by pre-meds. Diagnosis: The girl just doesn't have a thing to her.

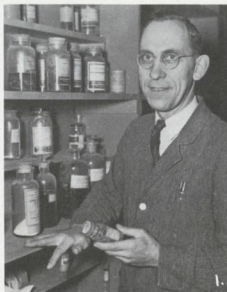
Beautiful June Skopil left her duties as biology lab instructor when her husband returned from the South Pacific in February. At Glee time her reckless bets caused no end of furor, but she even looked sharp in a G. I. prison jacket!

So what if I did drop it? — so what if it is two weeks' work gone? — so what if I don't get to be a doctor? Doctors don't get to sleep much anyway. ➔

Rosella Bell, neophyte faculty member, had barely finished her senior orals when she stepped into the vacancy left by Mrs. Skopil and began expounding the intricacies of the amoeba.



1. Dr. Charles H. Johnson, heading the chemistry department, spends most of his time in lab helping embryo-MD's batter down that always present obstacle, organic chem.



2. Man of many talents, head of biology department, baby tender, copepod authority, and punster of the nth degree, Dr. Cecil Monk is a well-known figure about second-floor Collins.



3. Familiar figure dashing across campus with tie flying is busy biology prof, Dr. Robert H. Tschudy. When absent from Collins, he may be playing top-notch badminton in the gym or climbing yon mountain.

4. Dr. Kenneth McLeod seeks diversion from his realm of atoms and molecules in giving Dr. Tschudy stiff badminton competition and as faculty adviser to the student council.



5. Though lacking the Persian fez, Miss Louisa Plummer taught three years at a mission college in Iran. She came on leave of absence from Northern Montana College to relieve the war-burdened chemistry staff.

6. Lovable Dr. Marton E. Peck, professor emeritus of biology, is widely recognized for his work in plant taxonomy. The herbarium which he developed boasts approximately 27,000 specimens.

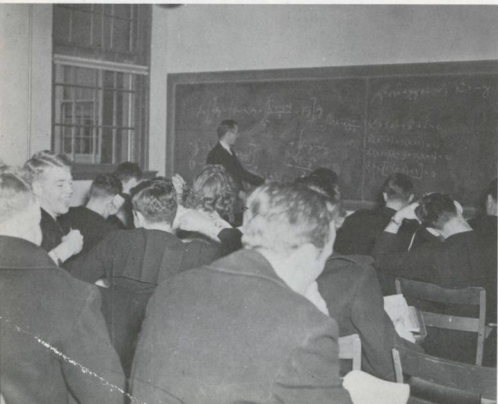


Mathematics



Future admirals—or even ensigns—must know all the angles, geometrically speaking. Hence, descriptive geometry is considered one of the most practical courses offered deck candidates.

Though reduced in number, V-12 students still dominate math classrooms in Willamette's fourth war year. A few months hence, buzz-boys will be using fundamentals used here to calculate the way back to their carrier.



In a sphere of square roots, slide rules and parabolas, Mrs. Perry Spelbrink offers her contribution to an accelerated program.



Handy-man in physics lab, math lecture room, on a farm, or behind a trumpet is Perry Spelbrink, now in his second year of teaching for Willamette.

Home Economics



Future Schiaparellis begin their training by learning to distinguish dotted swiss from blue serge. By the end of the year they are turning out nifty bound buttonholes.



Souffle, tailor's chalk, and calorie charts are all part of the home ec courses conducted by Miss Lois Lalimer. She takes a busman's holiday each summer by caring for five young nieces.

Balancer unsurpassed of red and blue points is Miss Lorena Jack, director of dormitories, whose work ranges from repairing window shades to planning menus for the living groups.



The home ec dining room witnesses progress of coed cooks from their first uneasy tea-hostessing for faculty members to their professional preparation of a senior dinner. Sounds easy! — but it means mastering household economics, dietetics and similar stickers.

DIVISION OF SOCIAL SCIENCE

Education

Economics

History



Mention Boy Scouts and you'll interest amiable Dr. Robert E. Lantz every time. Wound-up in student activities, Dr. Lantz, general manager of the ASWU and education prof, casts his vote for the ideals and atmosphere of a small school any day.



In one year Dr. Lawrence Riggs, professor of education, won a place in Willamette's heart. Students agree that a man who loves people, makes education popular, and thrills listeners with tenor solos is strictly "tops".



Youngest male member of the faculty (discovered, despite his constant effort to appear older) Stephen Smith, instructor in economics, gets his fingers into campus publications, looks forward to doing further graduate work.

Sanka coffee didn't put these boys to sleep.



Five-week worries and burning of the midnight oil are only some of the steps leading to the commercial and civic responsibilities social science majors expect shortly to assume. Even so, present troubles are miniature compared to those of future business managerships.



During the summer Eaton Hall was brightened with a new coat of paint, in the fall her spirits lifted by the addition of many new profs. Coordinator of the University, Eaton houses the administration and the switchboard, manned by student operators. Late at night lights aglow in the attic disclose artists turning out decorations for dances, Glee or the Carnival.

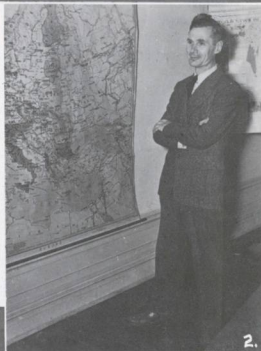


Salem scholars serve as guinea pigs for Willamette practice teachers who invade classrooms to try out newly acquired theories of education.

History



Political Science



Future statesmen, now just political science majors, get an eyeful and an earful of the 43rd session of the legislature. Dr. Gotke's prodigies invade the marble halls of the statehouse each year to study firsthand the workings of government.

1. Climbing the eventful trail from student to professor of political science and history, Dr. Robert M. Gaika obtained the material for his "Chronicles of Willamette" firsthand.
2. Dr. Reginald I. Lovell's intense interest in world events and his immediate knowledge of Europe make his lectures some of the most colorful on the campus. Election time again heard evidence of the Gaika-Lovell friendly feud.

3. Willamette will lose one of its most respected faculty members with the imminent retirement of Dr. Charles L. Sherman. Since 1920 his philosophy and psychology courses have ranked among the most popular.
4. From the University of South Dakota Dr. Herbert McMurry brought a zest for student activities and an interest in vocational aptitude tests which is especially welcome during wartime uncertainty.



Seminar groups meet weekly to provide opportunity for the coordination of four years' study in any major field. Dr. Laughlin's sociology majors meet at his home, combine intellectual endeavor with Mrs. Laughlin's marvelous cookies!

Dr. S. B. Laughlin, keen sports fan, heads one of the most popular departments in school — sociology. He has earned the reputation of keeping the longest and most consistent office hours of any faculty member.

Sociology



Speaking engagements keep Counsellor of religious life, John L. Knight, jumping between classrooms and pulpits. The secret of his popularity is his understanding of student problems and his participation in campus fun.

Talking and thinking it out together has been the program outline for popular Bill Cate's University Vespers people. An interdenominational group who put their heads together in religious and philosophical discussions, led by students and townsmen, they meet Sunday evenings in the Carrier Room of the First Methodist Church.



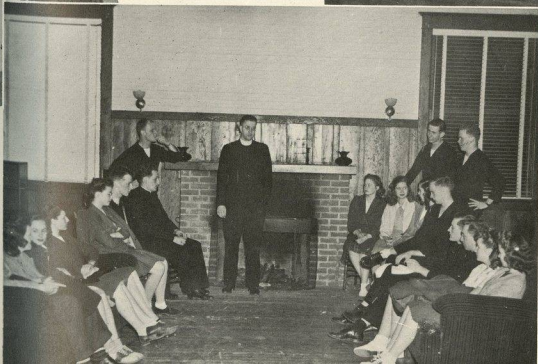
Religion

The Inter-Varsity Christian Fellowship is an international organization. Willamette's chapter, led by Gloria Wunsch, holds weekly Bible study meetings in Chresto. During noon hour, the group climbs the four flights of stairs to the Little Chapel for daily prayer meetings.



From a corner of Waller's cobweb-festooned attic comes the echo of pounding hammers and slapping paint brushes, revealing the presence of student interior decorators in the Little Chapel. The Little Chapel is entirely a product of student initiative, being financed, finished and decorated by students alone. Cooperative effort has come also from Mr. Fenix and Prof. Clark.

Mixers, picnics and discussions reveal considerable cerebral activity on the part of YWCA cabinet members. The bi-weekly meetings and campus services, such as giving the fall freshmen reception, are outgrowths of the group's interest in social and religious matters. Cabinet members are: Hays, Toomey, Chapmen, Carter, Zerzan, Mrs. E. T. Brown, Long, Beadles, Curtis, Forsythe.



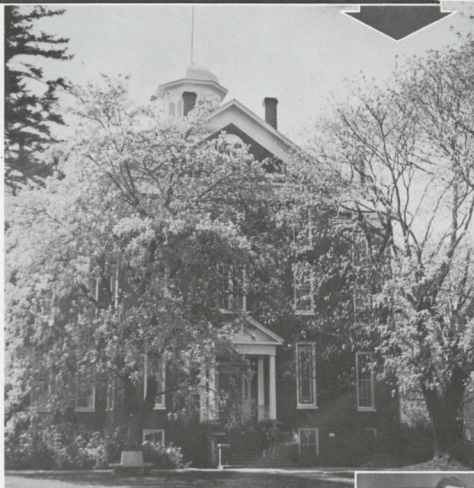
When Conrad Pavlack lustily wields an ax or hunts down the nightwatchman's key in a rainstorm, it's time for the Catholic Club's bi-weekly meeting in Chresto Cottage. The group gathers for discussion and authoritative lectures by prominent guest speakers.

DIVISION OF LANGUAGES AND LITERATURE

English

Journalism

Drama



Historic Waller Hall houses many of the traditions dear to students of Willamette. Through the years of change it stands as mute evidence of the devotion of pioneer forefathers to the cause of education. Its walls have resounded to the care-free laughter of the Cavern as well as to the sobering words of great thinkers.

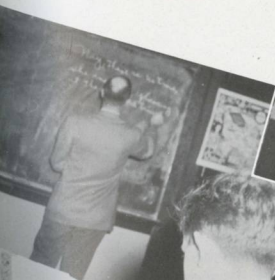


Under publication worries, individualist Murco Ringnald, professor of journalism, hides a vast knowledge of philosophy and a jack-of-all-trades talent.

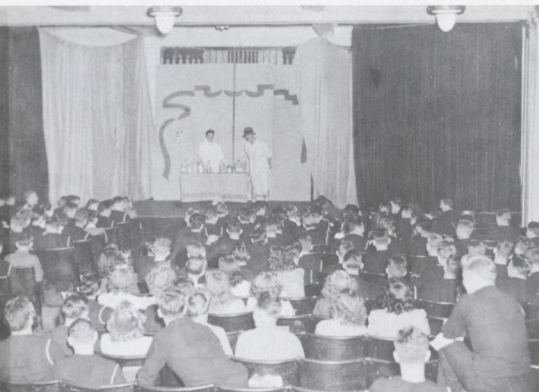
Speech

Language

Library Science



1. Head of the English department is Dr. Henry Kohler, campus authority on Basic English. His chief delight is collecting.
2. Author Egbert Oliver, of the infectious laugh, conducts especially thought-provoking classes, fills the Congregational session into his American lit class.
3. A lover of his field, English literature, Dr. Henry Kohler inspires students to appreciate his subject. It's a sure sign of spring when Dr. Kohler's classes meet on the lawn. Incidentally, he edits the University Catalogue.



With special effort to giving campus audiences hearty guffaws, These plan-minded students release pent up theatrical aspirations in the form of Friday chapel shows. When Willamette art players reach the bottom of their barrel of scripts, they call on outside talent to satisfy their wants.

Combination publicity-financial wizards are students who undertake drama managerships. Making pre-curtain arrangements for the May day play, "You Can't Take It With You", was Lois Messing, hard-working freshman. Much of the applause for "The Male Animal" goes to sophomore, Carola Hays, first term manager.



High up in his speech sanctuary, top floor Waller, Dr. Herbert E. Rahe turns out drama productions and winning forensic teams, also ponders over English comp papers.

Speech

Drama

Honoraries



Like a spark plug, small but active, Theta Apha Phi, national dramatic honorary, claims in its membership students who have made considerable contribution to drama productions. They are Pat Otis and Chuck Strong, standing; Carola Hays, Phyllis Crowder, Stan Boyd, Joyce Feiden (not pictured).



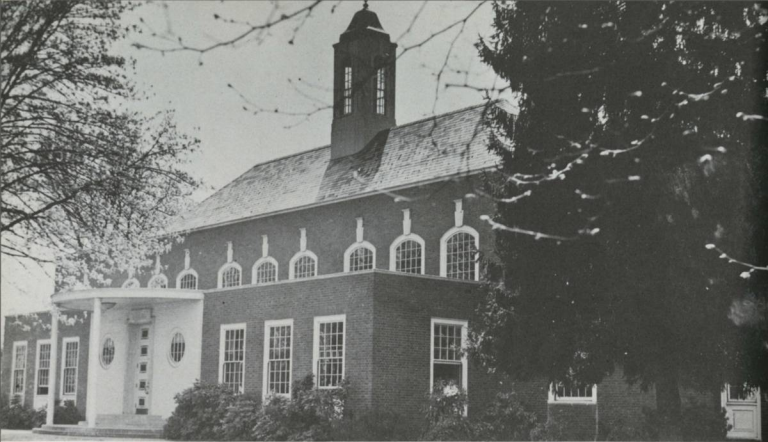
Talking is second nature for many, but outstanding participation in intercollegiate forensics is achieved by few. Belonging to the latter group are student speakers elected to Tau Kappa Alpha, national speech honorary: Matt Gruber, Rich Wicks, Joyce Feiden, Nevitt Smith, Catharine Thomas.

Cycling linguist Marion Morange, associate professor of French, has covered France and Oregon on her two-wheeler, recorded some magnificent shots of same. Bandyng the birdie around on a faculty badminton team keeps her in trim between jaunts.

Spanish students have resigned themselves to working under difficulties until Dr. William Mollering publishes his own text. New, keen-minded professor of Spanish, he holds a diploma and high honors from Stanford.

Languages





Library Science

The library's shelves are gratifying testimony of Mr. Spencer's unparalleled ardor for an up to the minute library collection. Despite the power of literary attraction and combined efforts of Graves and Spencer, the libe is still used least for remedying that aching grade point.

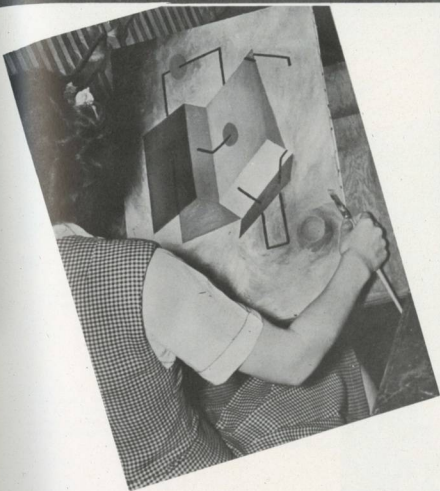


Librarian Robinson Spencer, inspiration of a Glee song ("Please, let's have it quiet!") is an ardent hiker, arouses interest in current books with his personally sponsored reading contest.



With a passion for tennis, basketball, and a certain friendly knack for being very helpful, Dan Graves came to Willamette's library after serving overseas with the Navy.

DIVISION OF ART



A consistent exhibitor of oils, watercolors and wood engravings in Pacific Coast galleries, Constance Fowler believes students have worthwhile ideas and that art provides means for expressing them.



The art department finds its brushes and crayons flying as students, in the current rush for an education, seek to enlarge their art appreciation or work toward practical goals. Under Miss Fowler's direction they learn to understand art in relationship to broader fields.

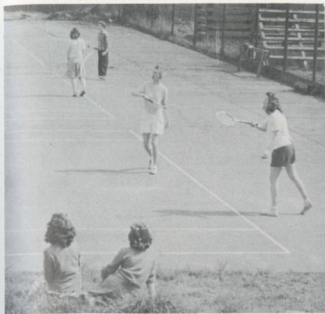
DIVISION OF PHYSICAL EDUCATION



Believed to be the brainchild of some genius who had lost his marbles, the tortuous path described by the obstacle course leads only to the spot whence it began.

Rather than an empty tomb reminding one of the decrease in male students, Willamette's muscle factory is the scene of many a gruelling strength test, hard-fought 'mural' contests, and casaba fustels. In its lighter moments, the gymnasium serves as a gathering place for study-weary minds seeking diversion.





Coeds endeavor to mold the body beautiful by chasing tennis balls around like mad, sometimes even manage to contact said ball. Other interests for the more athletic-minded include badminton, archery, swimming and indoor sports.



Emergency do's and don'ts comprise the subject matter these First-Aiders are trying to absorb. Example—it is not necessary to shoot a person simply because he is suffering from a broken leg.



Remember gymnasium fun and Navy-cat headlines and you're paying tribute to Lestle J. Sparks, acting director of athletics, who has pushed one of the few complete war-time athletic programs. Remember him too behind that moving picture camera!



Ex-little-All-American-turned-coach Tony Fraiola helped the V-12's complete several successful intramural tournaments as well as coaching the kitten casabamen through a win-loaded season.



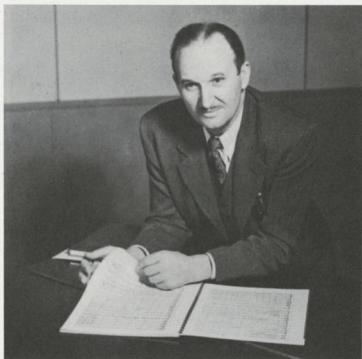
Weekends, Miss Gale Currey endeavors to cut down her cycling time to the coast, keeps in smiling trim for her week-long job as calisthenics coach for the co-ed half of the student body.

COLLEGE OF MUSIC

Theory

Piano

Voice



Master of the music department is Melvin H. Geist. Besides cultivating do-re-mi's and conducting university choral work, Dean Geist directed Salem's Christmas presentation of "The Messiah". Encounter the Dean any time and he'll query, "Know where I can find some tenors?"



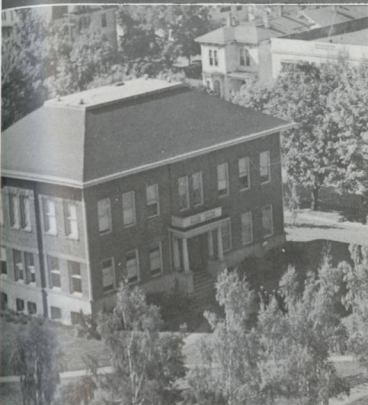
New to Willamette is soprano Margaret Scruggs. Already popular on campus, she was a "Messiah" soloist, is adviser for the Inter-Varsity Christian Fellowship group.



Students in the School of Music hibernate within the above confines twelve hours out of the twenty-four, when they graduate are expected to know the difference between five flats and a new housing project.



The maelstrom of melody emanating from these laboratories of major and minor gives evidence of music in the making.



Chief punster and stamp-collector Ralph Dobbs consistently captivates Salem audiences with his piano recitals. Artist and Mrs. Dobbs serve as patron and patroness for Mu Phi Epsilon.

Found: One pianist that has studied abroad, is still very young, is a 4.0 French student, and a culinary artist. The name: Bennet Ludden.



The man behind the baton is Lewis Pankaskie, instructor in theory and composition, who also plunks a solid boogie on the bass fiddle. Prof. Pankaskie also swings a neatly turned mashie at the West Salem Golf Club, digs up the turf only now and then.



Gershwin enthusiast Maurice Brennan, instructor of instrumental music, wields a wicked baton or a bow compass with equal dexterity, introduced a new course in Physics of Music.



Violinist Mary Schultz Duncan commutes to Portland weekly to teach at Lewis & Clark College, can be found lunching at the capitol during her on-campus days here. History has it that Nero fiddled while Rome burned, but modern archives record that students fiddle while Mrs. Duncan burns.



Practice in doing it the hard way—for an audience—is gained by the scholars of sharps and flats when they participate in weekly student recitals.



Prize record collection on the campus belongs to the Carnegie Library. Listeners range from faculty to fresh, selections from Beethoven's Ninth to Blood on the Saddle.



Norm for craftsman T. S. Roberts is 440-A, standard for tuning the ivories. Prof. teaches organ and presides at the console in the First Methodist Church.



Clangy lids as jungle tom-toms, and one-two, one-two (weird incantations, no less) belie sessions of Helen MacHirron's beginning rhythm class. Musician MacHirron metes out practice hours to aspiring Iturbis, housemothered Kappa Hall for several weeks this spring.

MUSIC HONORARY



Be a coed, musician and scholar — all in one — and from your sophomore year on you stand the chance of being elected to Mu Phi Epsilon, national music sorority. Willamette's chapter is Phi Lambda. Members discussing recital plans are Masseur, Duncan, Wunsch, Froman, Geist.



Mu Phi members conducted the ticket sales for WU's first concert series featuring off-campus artists. Around their scrapbook are members: Niles, Moeze, MacHirren, Mrs. Denton, Scruggs.

Mu Phi Epsilon

At the beginning of fall term Mu Phi, as a national organization, attained professional standing. Willamette members acting as hostesses are: Sinkola, Rose, President Wrisley, Erikson, Idso.



COLLEGE OF LAW



Unknown to many, quiet Ray L. Smith, Dean of the law school, finds enjoyment in the most ponderous law volume or in the gayest student undertaking. Willamette is proud to call him a grad.

Although functioning with a small number, the law school is one of the few in the nation that has been able to continue turning out potential DA's. Pictured are Dean Smith, freshmen Frank Healy, Don Ream, Catherine Zorn and Prof. Lockenour.



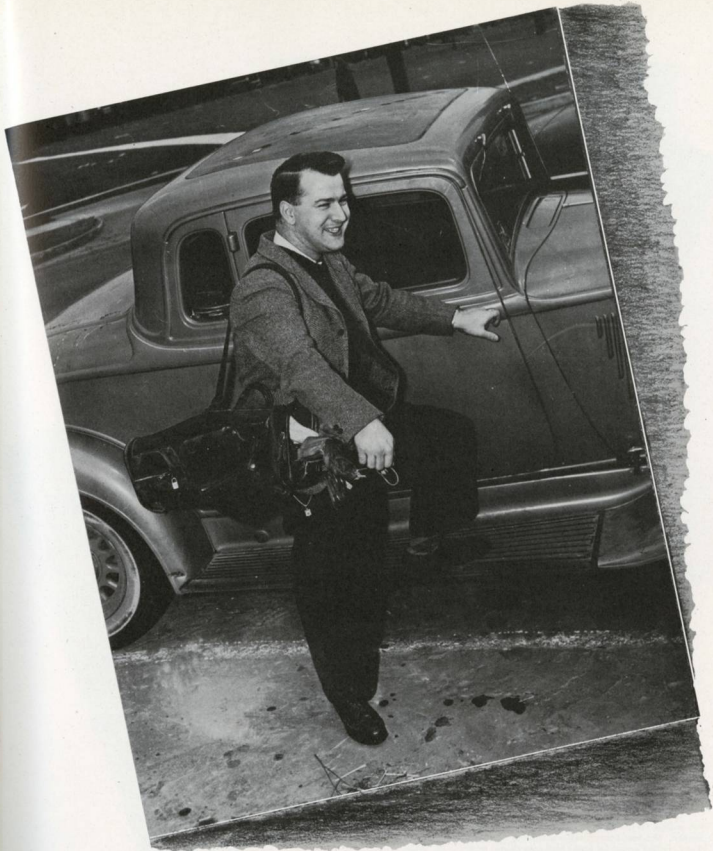
The Cavern or a spring afternoon holds no appeal for this lad. Intent on being a success, he sticks doggedly to his legal studies and dreams of the day he'll be admitted to the bar . . . k! (He may be reached through Frank Healy.)



Outdoorsman and law professor, Roy M. Lockenour, claims twenty years' experience as Sunday School teacher, prefers teaching lassies' because they open books more frequently.

cogs and careerists





Rich

This year's man with the gavel was Blue Key member Rich Wicks, as well known in debate circles as on golfing greens. In fraternity days he was affiliated with Alpha Psi Delta, but since the housing problem loomed, the closest he's come to his old stamping ground is taking nourishment at the A Chi O house. Student-bodily speaking Rich turned a conglomerate group into a smooth-running organization. Perhaps the secret to all his success lies in his cerebral hemispheres—origin of his 4.0 record.

Emma Lou

Sure sign of a S.B. election was the opening of Emma Lou East's little booth bearing the placard "Have your student body tickets ready!". Following her term as Pi Phi house manager, she garnished an active college career by being May Day princess.



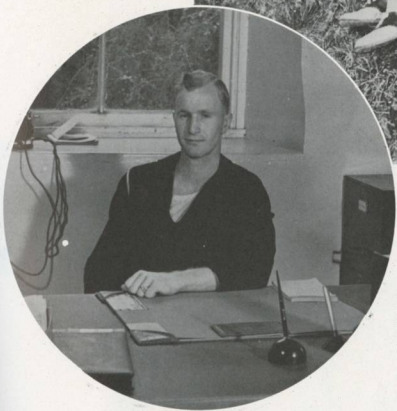
Benny

Pen-wielder for the student council was A Chi O Mary Bennett. She kept hours filled presiding Cap and Gown, calling orders for junior high gym classes and driving a school bus back and forth.

Cogs of

Wilma

Energetic blond, famous the campus o'er for her vulnerable skull and her war-caused difficulties of finding dance bands for the college clique, first Vice-president, Wilma Froman held her own both in music hall competition and in May Court elections.



e. e.

Clarke Brown labored over responsibilities of summer student government as chairman of a new governing group, the steering committee. He earlier mixed his fingers in govern proceedings and student body ticket sale.

Government . . .




Steering committee . . . a new type of student government designed to handle political problems of a summer semester.

The steering committee was composed of officers elected for the coming year and a representative from each of the six platoons: Hart, Thomas, Brown, Adviser Lantz, Wicks, Bennett, Watson, Elliott, Davis, Dickerson, Fries, Parkin.

Acclaimed by faculty members as "the most wide awake in years", this year's student council under the guidance of Dr. McLeod and Dr. Lantz ironed out problems that have long been trouble makers. Larkin, Fries, Froman, McLeod, Boyd, Wicks, Senders, Bennett, Lantz, East.




Student Council . . . theirs is the job of keeping an eye on student body purse strings and outlining an activity program that keeps everyone happy.



Revision Committee . . . intent on making the constitution a more flexible set of rules to facilitate the smooth operation of activities.

Faculty adviser Lantz and student adviser Wicks offer suggestions as well as present student ideas. Discussing angles pro and con of a considered change are Boyd, Malde, Pavlock, Stortz, Wicks, Buch, Jory, McClendon.



Govern Board . . . transacts improvement business, ponders student suggestions and assists the boss lady in her battles with the local point board.

Enlisting faculty members and students, the board is composed of Stern, Luther, Froman, Wicks, Brennan, Manager Brown.

Latest signs of the group's activities are the religious plays presented in Wednesday chapels and the annual programs sponsored before Christmas and Easter. Serving on the council in its coordinating capacity are Patterson, Smith, Wunsch, Messing, Bartholomy, Horton, Cooper, Toomey, Pavlock, Long, Jones.



Interfaith Council . . . representatives from the various religious groups meet biweekly to discuss ways and means to coordinate religious efforts on the campus.



ACHESON



ADAMS



ANDREWS



BELL



BENNETT



BLAKE



BOYD



BUCH



BURKHART



BUTLER



CARTER



CATE

As the finishing class neared the climax of its college career, midnight oil burned consistently in preparation for senior orals. 'Twas not all work though—through the year there were parties, early morning doughnut feeds in the Cavern, outstanding people such as Wicks on his speech trips and Habby manhandling a paint brush on the interior of the Cat's abode. Spring picnic at Silver Creek Falls, May weekend, and graduation exercises ushered in the closing of an all too short period of college life.

When Jer Wolfsehr took over S. Claus' suit at the Christmas party all the kids for miles around figured hanging up socks and Xmas were nothing but a big joke—that much man just can't come down a chimney. As the evening grew short and the toy bag remained overflowing, class president Brown, M.C. Chuck Strong and food chairman Habby Habernicht mounted the platform and assisted the old gentleman in the distribution of the prized packages.





CUTLER

EAST

ELGIN

FRIES

GABRIEL

GOODING



DOERR

EDWARDS

FORSYTHE

FROMAN

GLASSE

HANAUSKA

1945 Seniors



Padre Bill Cate, lone V-12 theological student, mixed presiding of Blue Key and Vespers with varsity football and intramural sports. Willamette loses him, but our loss is Boston University's gain.

First term presidency of the seniors gave pre-med Mary Brown the job of directing the class-sponsored Christmas party. Co-chairmaning the January "Anchors Aweigh" added to his hair-thinning worries, but there was compensation, too—namely ten pin-up girls.



HOOVER



LAUGHLIN



McCLELLAND



MOZEE



ROBINSON



SMITH, E.



THOMAS, C.



JONES



MASSEE



McCLENDON



NORDEAN



SMITH, B. J.



STRONG



THOMAS, H.

Terrors of compartment 26, Chuck Strong and Stan Boyd, add fun, laughs and surprises to campus life. They have an efficient side, too — Stan, active on student council, Collegian and Wallajah — Chuck, ex-battalion commander, ever-popular M.C., director of Intersorority Sing. Both manage to squeeze in drama, music, forensics and Blue Key offices. No wonder they're Honorary Rotarians!





WICKS



WRISLEY



BROWN



EDWARDS



HARRISON



NYGREN



TAYLOR



WILSON



BATSON



BURNETT



HABERNICHT



KAUFFMAN



SMITH



WOLFSEHR

Disproving geneticists' contention that he's a victim of polydactylia (more than five toes a foot) occupies pre-med Dean Smith only temporarily. Before leaving for further medical studies he spent most of his time in Everell Stanton Collins communing with necturi and organic reagents.



Neat-as-a-pin Pi Phi Mary Laughlin, sociology senior scholar, took over class affairs in the spring. An avid reader, she invariably cops first place honors in Mr. Spencer's annual reading contest.

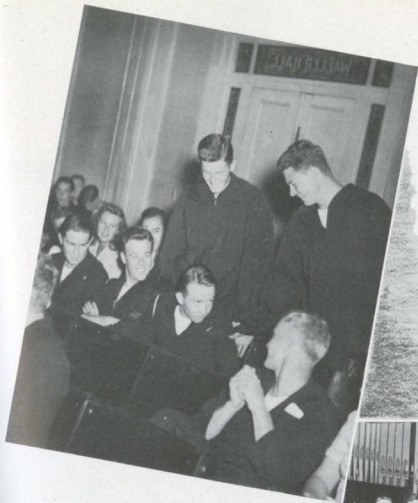
Cap and Gown

In the few moments that could be squeezed from five crowded schedules, Cap and Gown members, led by Mary Bennett, traditionally planned a dinner for freshmen girls on scholarships and also honored scholastically high sophomores.



Members of the senior women's honorary, chosen for outstanding service, scholarship, leadership and Christian character were Robinson, Thomas, Andrews, Fries, Maulding, Bennett.

Blue Key



Dashing around like mad with misleading cigarette signs—sedate ushering at May Weekend—cooking up a joke-packed chapel show—it's all part of the life of a member of Blue Key, national honor fraternity. Standing are spring term members: Boyd, Cate, fall term president, Strong, spring term president, Adviser Schulze, Stortz, Wicks, Davis, Larkin. Pledges seated are Skrondal, Buch, Hart, Mallett, Bowman, Stein. Honorary member Dean Luther is not pictured.



Guarded secret of the welcome banquets for semester pledges are the impromptu speeches which ride high with that Blue Key touch.



Most suspense-filled chapel is one in which gowned members file down the rows of chapel seats to top upperclassmen outstanding for leadership, service, scholarship and character.

Juniors



With gavel in hand or keyboard at fingertips, modest Dick Mallett is one of the most in demand of campus men. Not only can he turn out a terrific musical score, but he boosted Friday chapels to a new level in school entertainment.



Led on by the motto JWJ (Juniors will win) class members optimistically test the millstream's icy waters. Second-place Juniors weren't the only ones to miscalculate Glee's outcome. Spring semester the Juniors splurged, sponsoring an all-school kid party and a picnic at Silver Creek for departing seniors.

'46



ADKINS



ALLEN



ANDERSON



ASHFORD



AYERS



BAUMAN



BENNETT



BARBER, S.



BARBER, V.



CARPENTER



CARTER



CASE



COULTER



CRAVEN



CUNNINGHAM



CURREY



DAUGHERTY



DAVIS



DAY



DEAL



DE LANCY



DICKERSON



DOERFLER



DONFRIO



DRAKE



EGGIMAN



ERIKSON



FARMER



FEIDEN



FORMAN



GEISLER



GOLSON



GOODMAN



GRIFFITHS



GRIMM



HANAUSKA



HARNSBERGER



HART



HEMPHILL



HOAR



HOBBS



HUSTON

A trio that's really in the know — Stan Buch, class president, feature writer extraordinary and constitutional revision head, talks it over with representative Chuck Larkin and Glee-May day bigwig Thyra Jean Currey.



Way back behind the huba huba and bright lights of the S. B. Carnival sits little old Bob Carpenter figuring out new types of bingo stands and fun houses. Barnum and Bailey's idea child came to Willamette in July of '44 after spending a good deal of time in the So. Pacific. Since his arrival he's been a busy lad what with pre-med studies, student activities and Sophomore honorary, SAX.



JACOBSON

JEPPSEN

JONES, J.

JONES, V.

KENNEY

KORELL



LARKIN

LIEN

LONG

LUTHY

LYNCH

MacDOUGALL



McKAY

MENASHE

MODROW

MOE

NIMS

OLIVER



OHLINGER

OLSON, R. D.

PARKIN

PATTERSON

PETERSEN

RANDALL



SANDERSON

SCHAPPACHER

SCHOPPERT

SCHWARTZ

SENDERS

SHAPIRO



SHUM

SKRONDAL

SMART

SMITH, C.

STEIN

STERN



STROTHER

TRASK

TYNDALL

UTTER

WAGNER

WALLACE



WALLS

WARDROP

WEBB-BOWEN

WHITE

YOCUM

ZAUFF



ALLEN ALLENBACH ANDERSON BACON BANNCKER



BARHAM BARTHOLOMEW BARRON BATCHER BEADLES



BEEGLE BELL BOETTICHER BOROUGH BRADY



BREMER BROWN BRUCKMAN BUCHANAN BUGGE



BUNNETT BURROWS BYFIELD CAMPBELL CANNON



CANTRELL CAREY CARTER CAUSEY CHAMBERS, D.



CHAMBERS CHAPMAN CLOUDY COVERT COX.



CUMMINGS CURTIS DAVIS DE SART DICKERHOFF

The Glee-winning Sophs, found much besides honors and ribbons to merit effort on their part. Four A.M. coffee and doughnut socials and nine P.M. liquid refreshers turned unholy Glee hours into moments remembered. Different in other ways, the unpredictable Sophs dominated a weekend with a moonlit hay ride ending in an orgy of food.



DITTY DUNN



GAGE GILLINGS



HAWLEY HAYS



KANOFF KELLIS

Sophomores

Important person in maintaining daily happiness of campus people, sophomore Geneva Brown found life as Cavern manager almost as nerve-wrecking as flying in the ferry command. One step inside the cavern door gives ample evidence of her efficiency.



Jumping on the band wagon of class officers, Royal Hart assumed the title role of his class first semester. Squeak, who was general Glee manager, left the sophomore class and president's chair of SAX to become a Blue Key member.



DUSSIN EAST EDSON EDWARDS EGAN ELLIOTT EVENSON FELTON FERGUSON FINNEY FRICKEY



GILPIN GOTHE GRAY GREENLEE GRIFFITH GRUBER HALIK HAMPTON HANSEN HARTMAN HATHAWAY



HENDERSON HOAK HOVEN HULL HUNSAKER JARRETT JAQUITH JONAS JOHNSON JOHNSTON JUNGERS



KENDALL KERN KJELSTAD KNOUFF KOOK KORELL LAKE LARSON, E. LARSON, R. LEMON LEWIS



LEWIS, L. LIEBEL LINN MANSFIELD MARVEL



MATTINEN MAYFIELD McDERMOTT McDONALD McFARLANE



McGEE McIVER McKAY MERKI MIJICH



MILLER MORGAN MUHLE MURDOCK NELSON



NICOLAI NICHOLS, C. NICHOLS, C. NICHOLS, D. NILES



NIXON NOLAN OTIS OTT PARKER



PAVLOCK PETERSON PETTET POORMAN PURCIFULL



QUADE RABENAU RADCLIFFE REA REETZ



Presidents of the BAGS and SAX argue the relative merits of their organizations. Dramatist Pat Otis and pre-med Ed Gothe brought their flocks together in the spring for a wiener roast in Chresto.



ROBINSON RODDY RODIE



SHAFFER SHEEHY SHIRLEY



STONE, M. STOVALL STRICKLAND



WAHLGREN WARD WATERS

Freshman Glee's winning combination — Alice Rose and Betty Louise Sinkala — pooled their talents to produce a top-notch "Song of Willamette". Mu Phi claims both of them, as do the A Chi O's.



Joe Mijich's favorite summer pastime was comparing backs with "The Beak" Mantle. Later, however, he concentrated on the executive affairs of the sophomore class. Thanks go to Joe for Easter baskets and all the trimmings at the Bunny Dance.



ROGERS ROSE ROSS ROWLAND ROYE RUTTEN SAFFRON SANFORD SEARS SCHIFFERER SCHMIERER



SHUGHART SHUSTER SILVIS SIMMONS SINKOLA SLY SMITH, P. SMITH, W. STOCKS STOFFT STONE, L.



STUART, J. STUART, N. SYMES TARPENNING THOMAS THOMPSON TINGELSTAD TOOMB TOOMEY TUCKER TURNEY VAERETTI



WHITE WIENERT WILDE WILCOX WILLIAMSON WIRTLIFF WORK WRIGHT YOUNG, B. YOUNG, R. ZERZAN ZIMMERMAN



Two more of the original charter members are Mansfield and Robinson.

Don't be misled by their name — the BAGS were selected from outstanding women in the sophomore class. Since the group came into being fall semester, Mrs. Robert Tschudy has kept them from going wayward. Pictured at their joint party with the SAX are Sinkola, Hook, Chapman, East, Waldroff.

BAGS



With their fingers in countless pies members become familiar campus faces. During the basketball tournament they appeared in the gym selling programs to innocent onlookers to bolster group finances. Rounding out the membership are Rose, Merki, Chapman, Waters, Deal, Otis.

Another outgrowth of the year, Sigma Alpha Chi, was established during summer semester as a sophomore men's honorary. They're famed for their pledge scavenger hunt which invariably ends up with some unlucky fellow leading B. Goat down state street or some mighty lucky lad searching the town over for a pin-up girl to take to dinner.

SAX



Feature of each semester is the banquet at which formal recognition of new members is given. Highlight of one such affair was the scavenger-sought measurements of one Donna Hinkley, promptly named Sax pin-up girl.

Men selected to membership must be outstanding in scholarship, activities and character whence comes their name. Dr. Tschudy has served as adviser to the group. Pictured are Ott, Galt, Tate, Gruber, Pavlock, Hunsacker, Bannecker, Milich, Ward, Peterson.





ADAMS

ALLENBACH

ANDERSON, D.

ANDERSON, R.

ARRINGTON

BAILEY

BAIN

BALL, F.



BALL, J.

BARBER

BARTHOLOMY

BATEMAN

BATES, C.

BATES, L.

BENSON

BINFORD



BISBEE

BLOWER

BOEHI

BOUCHER

BOYD

BRADY

BRIGGS

BROWN, J.



BROWN, J.



BROWN, V.



BUHLER



BURNET



BUSICK



CALDWELL



CARSH



CARSON



CHESSMAN



CLARK



COLLIS



CONNER



COOPER, B.



COOPER, C.



CORBETT



CRAWFORD



CROZIER



CURTIS



CUTLER



DAVIS



DEAL



DEMYTT



DETRICK



DICK



DILLARD



DOOLITTLE



DUTTON



EMMONS



ENGAHL



FISHER, J.



FISHER, H.



FLEETWOOD



FOOTE



FORSLUND



FOUCH



FRANKLIN



FRICKEY



FROGLEY



FRUM



FURMAN



GILLIAN

GIROD

GLASS

GLEDENNING

GOODMAN

GORTON

GRAVES

GRENFELL



GRIBSKOV

HABERLY

HAMMOND

HANKS

HARRIS

HARRINGTON

HARVEY

HAVERTY



HAZELETT

HELLER

HEMPEL

HENDRICKSON

HERRMAN

HERRMANN

HIBBARD

HILDEBRAND



HILFIKER

HILL

HJORT

HOGGATT

HOLEMAN

HOLLAND

HORTON

HOWARD



HUFFMAN, J.

HUFFMAN, M.

IRVINE

JANIN

JENKINS

JOHNSON, P.

JOHNSON, W.

JONES, J.

Fleetman on the inside with navy Catalinas, Day Morgan, receives the Presidential Unit Citation. In his present capacity as student, he dabbles with forensics, philosophy and his own eulogy of "Pegasus", squadron VP-11.



Whenever you think about 88 keys and "Down the Road Apiece" your mind invariably includes Brad Young. An outstanding frosh, his talents vary—from ardent musician to pugilist. To his right and always a right hand man, especially at Glee time, is Dean Thomas whose mural activities are not to be treated lightly.



JONES, W.

JORY

JOSCELYN

KARNOPP

KATHAN

KENT

KNOWLES

LARSON



LEEK

LEUPOLD

LEVINE

LEWIS

LINDSAY

LOONEY

LUDLOW

LYTLE



MANKERTZ

MORITZ

MATHERS

MATHISON

MATTSO

MAW, I.

MAW, A.

McCLAIN



McDONALD

McKINLAY

MERTEN

MEARS

MERRITT

MESSING

MEYERS, M.

MILLER



MINTURN

MOOR

MYERS, JANICE

MYERS, JEANNE

NELSON

NEWMAN

NOWACK

OHLING



OLIVER

OLSON

PAGE

PARKER

PATTISON

PERSON

PEELER

PETERKORT

PETERSON

PHILLIPS

PRATT

PURVIS

RATHE

REMINGTON

RINEY

RITTENHOUSE

ROBERTS

ROBINSON

RODIE

ROOP

ROOT

ROSS, B.

ROSS, R.

RUSSELL

RYAN

SCHATZ

SCHISSLER

SCHIESSLER

SCHLEWITZ

SCHMOKER

SCHNEIDER

SCHWANBERG

SHERIDAN

SHIELDS

SIEMENS

SIEVERS

SIMMONS

SIMPSON

SMITH, B.

SMITH, M.

Champion decoration chairman is Portlander Eileen Lytle who rounded up the novel decorations for Glee, the Fresh party and the fall Inter-dorm formal. A Delta Phi member of the freshman trio, she sings a mean second soprano, too.



Lights, seats, ushers, decorations, programs, a successful Glee—it all goes back to the committee appointed by Freshman Glee Manager Stein. They handled the numerous little details which always turn out to be the most work. They are, standing: Nicolai, Senders, Ford, Peterson; sitting: Lytle, Emmons, Stein, Russell, Sopp.



SMITH, O. SMITH, T. SOPP STAB STAPES STEWART STOCKMAN SUNDLING



TERRY TOMPSON THORN TIPP TRACY TRASK TRAEGER TULLY



TURVILLE TWEDT UNRUH VAN LEEUWEN VARNER VEELMAN WAESPE WALKER



WALLACE WARMINGTON WHITE, T. WETSTEIN WHITE, D. WIDDOWS WIEBE WILLARD



WILSON, H. WILSON, J. WILSON, M. WITHERS WYNN WYATT XENEDES ZIMMERMAN

cokes and confetti

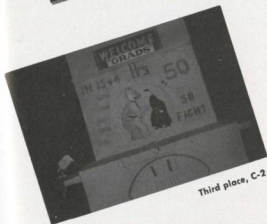




Second place, B-2.



The winning sign, B-1.



Third place, C-2.



A-1

Sign Contest Highlight of Homecoming

Heralded by displays involving yards of string, goldfish and hosiery forms, Homecoming climaxed the summer social calendar. The traditional sign contest telling of 50 years of football at Willamette was strictly out of this world, as exemplified by B-1's winning mechanical wonder box. It took 4-hour shifts through the night, cavern coffee and navy innovations to produce the signs, but wide acclaim repaid the hard work.



C-1

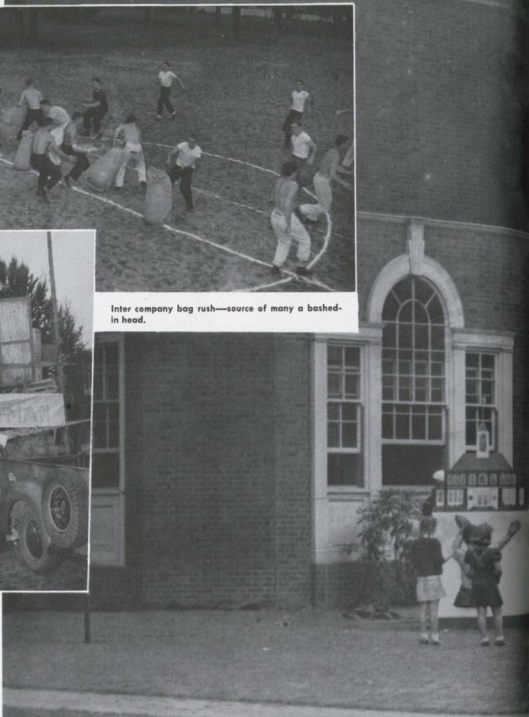




Inter company bag rush—source of many a bashed-in head.



The battle cries and serpentine and the bonfire's blaze of glory following Friday evening's picnic were significantly prophetic, for the Bearcats handed the Missionaries a tidy drubbing Saturday afternoon. Dance goes will never forget Duke's lengthy oration nor the colorful decorations by B. B. Carson and committee. 'Twas all a feather in General Chairman Jim Elliott's hat—a weekend well planned!



Stein's realm—huba huba

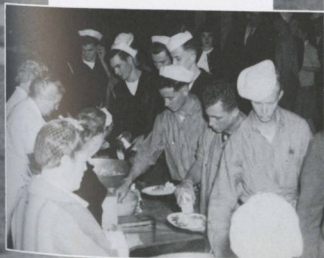




Victory Dance — mood supplied by music maker Freddie Keller.



Navy chow minus the four enclosing walls.



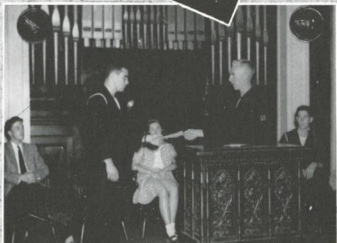
C-1 hard at work with brush and hammer.



Summer Bulletin

1. Mrs. Farmer's pride and joy finds cavern co-managing involves more than just filling the Silex.
2. Homecoming rally rocks the sacred halls of government. Gruber and Manager Keak, the Cavern annex entered campus life on the night of Homecoming.
3. With the proper raz-ma-taz, provided by Mrs. Larson, Matt the Bearsats shove off for K. Falls and subsequent victory.
4. Everything's here but baguets and banners as Duke and the Bearsats shove off for K. Falls and subsequent victory.
5. Blue ribbon winners for the summer chapel shows were members of C-2.
6. Even summer splurges with an Anchors Aweigh dance. Dona'rous "Dan" Straud and "Lou" Barber undoubtedly impressed judges considerably.
7. Frank "Let Me In Jacobson" brings down the house in B-2's chapel show.
8. Summer activities carried on despite woman shortage . . . Matt Gruber and Whitley Jacobson won summer forensic recognition as well as welcome "pieces of eight".

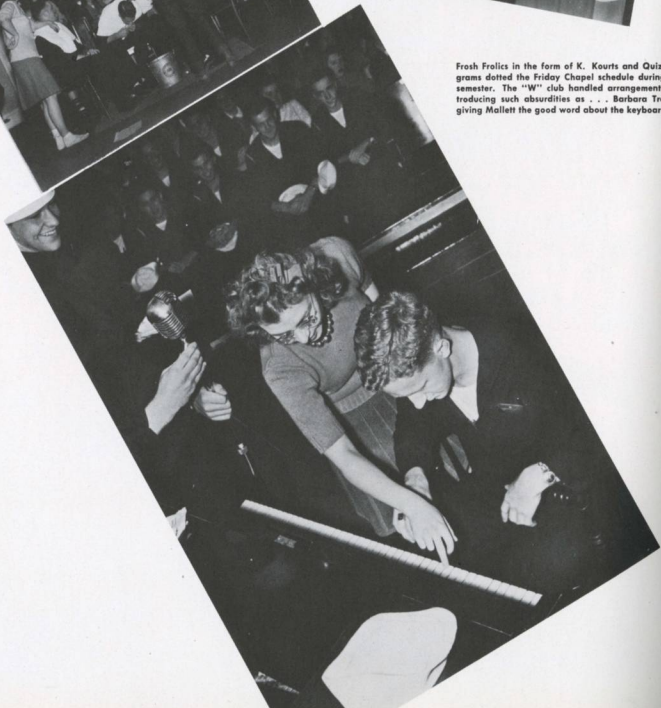




Initiation



Frosh Frolics in the form of K. Kourts and Quiz programs dotted the Friday Chapel schedule during fall semester. The "W" club handled arrangements, introducing such absurdities as . . . Barbara Traeger giving Mallett the good word about the keyboard . . .



Give and Take



... musical entertainment by Naval Issue bedecked Claire Purvis and Peggy Johnson . . . Ban Cutler and Charlotte Turville downing a gallon of H₂O apiece as punishment for laughing at any of the proceedings . . . and a new variation of ping pong. Fresh heyday came, however, when mud facials and egg shampoos put an end to the tyrannical rule of the lettermen.

Seniors



Hosts at Christmas Party



Came Christmas time and seniors rallied to support a class sponsored party. Entertainment ranged from gags and gifts from Santa G. K. Wolfsehr to the presentation of Willamette's Band Queen, Lee Tingelstad. Following the big event, party goers slid out on the floor in stocking feet, pajama tops and jeans to spend the remainder of the evenin' dancin'.

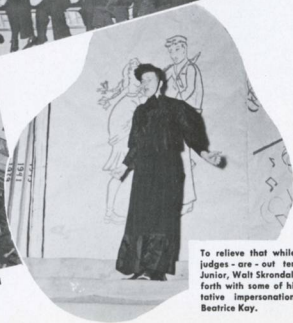
*Freshman Glee
brought weary
days . . .*



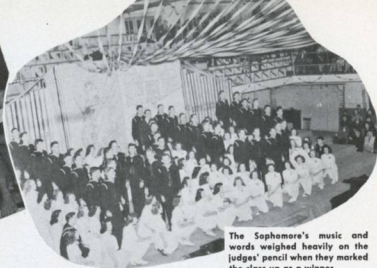
The consequences for just not being in the right class . . . It's a tough life, hey!



Juniors, too, fought hard for banner glory.



To relieve that while-the-judges-are-out tension, Junior, Walt Skrandal gave forth with some of his optative impersonations of Beatrice Kay.



The Sophomore's music and words weighed heavily on the judges' pencil when they marked the class up as a winner.



Sophs won, but looked much the same in marching (the term is used loosely here) as when claiming the banner.

Pulling down second place, the Juniors finally climbed out of a two time loser streak.



So small in numbers they could scarcely be distinguished from a group of introductory speakers, the seniors managed to squeeze a close third out of the man with the critical eye.

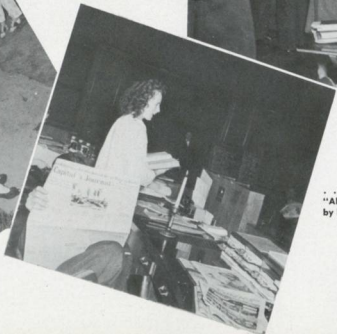
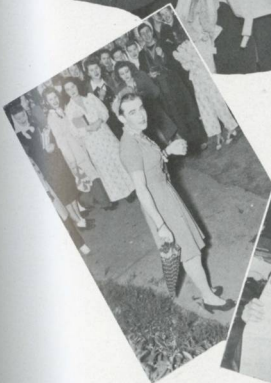


Groaning under the massive load, the stage could barely support the frosh class. Such an immense group meant difficulty with the formation — difficulty with the formation meant — ah well — life's like that.





Members of the winning class were uninterestingly normal while fresh, juniors and seniors basked in Monday morning unconventionalities . . . invaders for breakfast aboard the good ship, Mallett's research into psychological spheres, Hammond's success in selling the governor a solid foundation . . .



. . . Wolfsehr's much-responded to cry for "Aims", "The Night Before Christmas" rendered by Henderson, and a V-12 lovely—P. M. Brown.



The week-long mystery as to Navy choice of a Pin-up girl was finally removed when P. M. Brown 'midst broadcasting arrangements, audience agitation and the inevitable squeals of feminine delight announced the winner, Ruth Nelson, at the semesterly Anchors Aweigh dance.





Barbara Ross



Marilee McFarlane



Lee Tingelstad



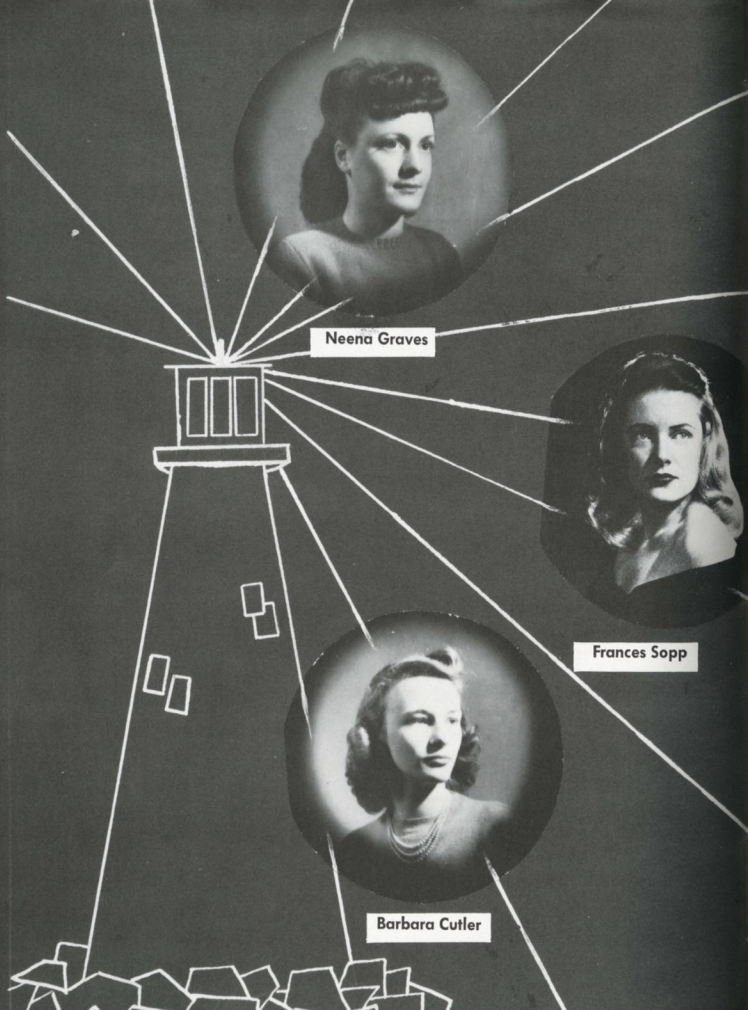
Neena Graves



Frances Sopp



Barbara Cutler





Arline Boehi



Pegge Wienert



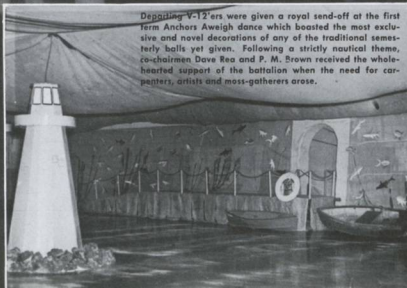
Donna Shafer



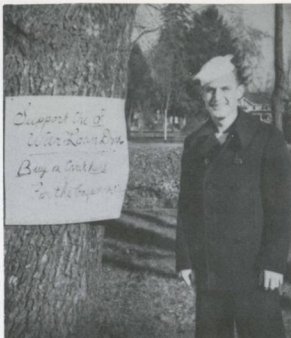
Davey Jones' Locker supplied dancers with thirst-quenching cokes.



Departing V-12'ers were given a royal send-off at the first term Anchors Aweigh dance which boasted the most exclusive and novel decorations of any of the traditional semester balls yet given. Following a strictly nautical theme, co-chairmen Dave Res and P. M. Brown received the whole-hearted support of the battalion when the need for carpenters, artists and moss-gatherers arose.



Bond Drive Set Pace for Campus War Activities

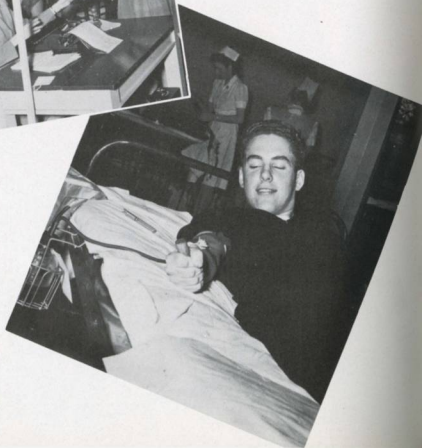


Inside of Con Pavlock's old bald head ideas took shape that were to become an integral part of one of the most successful school-sponsored bond drives in the Northwest. The first goal of \$34,000 was easily met, and a total of \$319,200.25 worth of bonds was sent off to the treasury department for the purchase of a baby tank to be named the Bearcat. Civilian men took top honors in being the best salesmen and won the \$350 prize which they promptly turned into a fountain for the Cavern. Highlight of the drive was the election of Willamette's Bond Queen, Delta Phi Lee Tingledad.

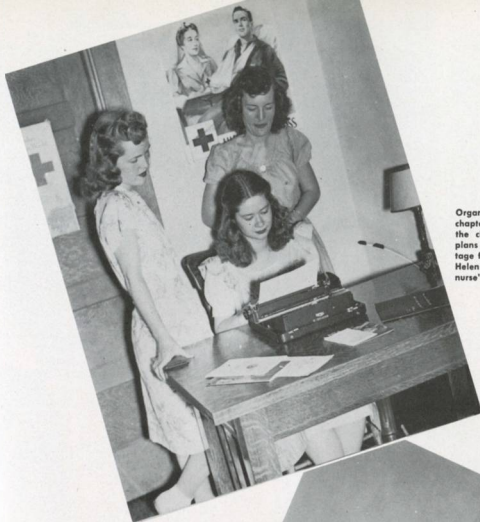


Bond dance decorations fell into place in an even seven minutes following the Oregon basketball tilt.

Blood Bank

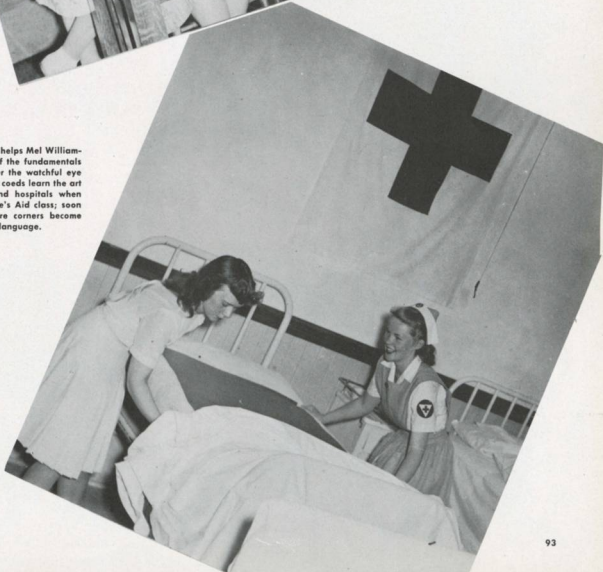


Following arrangements made by co-chairmen Bud Davis and Betty Randall, patriotic students and profs boasting an excess of corpuscles and plasma gathered at the First Methodist Church Tuesday noons to help accommodate the Red Cross Mobile blood bank which settled there. Year's donations total approximately 64 gallons. The big attraction was food, coffee and donuts to eliminate temporary after effects.



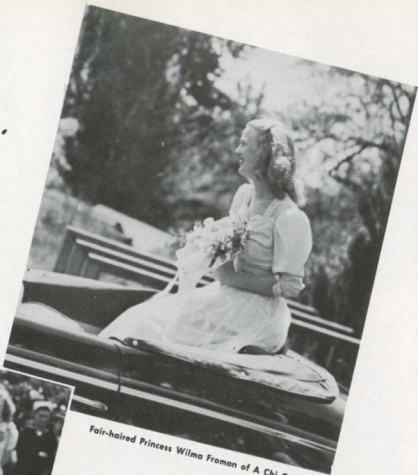
Organized last spring, the campus Red Cross chapter received its charter in the fall. Under the chairmanship of Virginia Barber, center, plans were instigated for securing Chresto Cottage for a general office, Dorothy Kenney and Helen Craven were in charge of the blue-bibbed nurse's aides.

Band Queen Tingelstad helps Mel Williamson catch-on to some of the fundamentals of her new work. Under the watchful eye of Mrs. Louise Arneson, coeds learn the art of being helpful around hospitals when they enroll in the Nurse's Aid class; soon I.V.'s, 4x4's and square corners become common idioms in their language.





*Queen Betty
the Third ruled . . .*



Fair-haired Princess Wilma Froman of A Chi O.



Pi Phi's Princess Emma Lou East and escort Chuck Larkin.



With Betty Provost Hanauska's debut in royal circles, May Weekend thrills and excitement this year spread as far as the war-busy Pacific where husband Bill proudly shared the happiness of Alpha Chi and Betty. Escorting the queen and princesses were Lausanne men, Mary Goodman, Chuck Larkin and Dick Olson. Mary Jean Huston, last year's princess, left her English teaching to participate in the festivities and to place the crown on Queen Betty.



May Weekend Festivities

It was one breathless round beginning with the Friday morning Pan-Hellenic sing at which Chuck Strong's non-competing chorus won the audience's heart and the Alpha Chis ran off with all honors. Sophs then larded victory over the struggling frosh in the three o'clock tussles at the greasy pole. That night all were glad to relax under the spell of Willamette players in "You Can't Take It With You". Saturday's dance brought an end to royal proceedings for another year, and Manager Bill Stertz went home to recuperate, knowing it was a job well done.



The Male Animal



Little did Thurber and Nugent realize when they were busy penning "The Male Animal" that it was a play destined to knock-out Salemites. The story of a mild-minded English professor and his wife, capably portrayed by Chuck Strong and Pat Otis, it reveals the troubles caused by the return of an old flame, a post football hero, Joe Sanford.



1. Scenes such as this, of Strong and Boyd, often rehearsed in compartment 26, are fake (verified this date January 18, '45 by the duty watch officer).
2. To complicate matters Stan Boyd, prize student of the composition department, writes an editorial that calls down the wrath of the Dean, Dean Smith, and the head of the Board of Trustees, Matt Gruber.

You Can't Take It With You

Following the arrival of Queen Betty III and her court the curtains parted to reveal one of the zaniest plots to hit Leslie Jr. High's stage in many seasons—Kauffman and Hart's prized production "You Can't Take It With You". The plan of the story is centered around a family which makes their life enjoyable by doing only what they please. Stan Boyd's superb dickerering with fireworks or an erector set, Bob Farman's antics as the Russian ballet master and Caroline Cooper's performance as his pupil all won bravos from campus critics.



Walt Skrendal's memorable portrayal of the lovable head of the family was matched only by Joyce Feiden's interpretation of Penny. Evelyn Jory and Joe Mijich, romantic leads, both turned in star performances, too.

Speech

Pacing the forensic field with seven wins and scads of seconds, Nevitt Smith and Rich Wicks toured the southern extremities of California, visited the Vandal's hideout for their final speech engagements.



Local followers of Demosthenes carried out a full scale forensic program this year, complete with meets at the various Northwest schools. Contributing a bit of culture to WU's inter-collegiate contests, they carried away their share of the honors, too. Working out rough spots are Boyd, Cooper, Gruber, Unruh, Messing. Gruber won a first in intramural extemp, summer semester, and three seconds in extemp, impromptu and debate.

Joyce Feiden, Mel Davidson and Kay Karnopp showed ambition in interp, oratory, and after-dinner speaking, respectively. Day Morgan who was not around when the photographer was, took second place in the state oratory contest.



Song

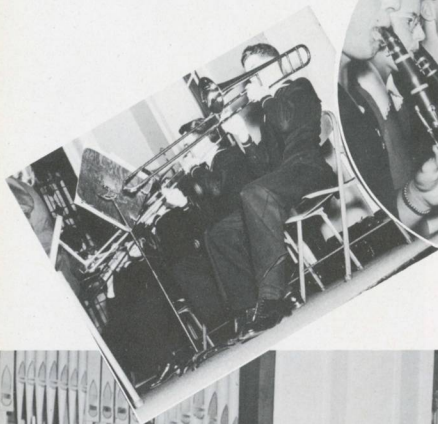


In sheer desperation of being overrun by feminine voices the music department divided the choir into two organizations—one a mixed group and the other featuring women's voices. Chills went up and down many a spine at their May Weekend and V-E day presentations of "The Battle Hymn of the Republic".



While coeds were away vacationing or working, Dean Geist organized a male chorus that did its share of entertaining. Featuring rollicking, salty sea chanties, the fellows were rated top-notch by local business clubs and campus fans.

Bandsmen



Following Tuesday-Thursday evenings' periods of incubation, in which band members diligently ran through their music books, the music of the University band was really a credit to Maurice Brennan and his baton. Undaunted by temporary set-backs, such as the sudden loss of a trumpet soloist, they could be counted on to provide the proper pep for impromptu rallies and ball games or to present a concert for May Weekend or Thursday's chapel.



The Messiah



Providing accompaniment for "The Messiah", the University symphony, under the direction of Lewis Pankaskie, again chose Christmas season for the highlight of its concert year. The 200-voice chorus led by Dean Geist was formed from the University singers and members of local church choirs.

Also doing their bit in daily practice sessions and before various audiences were special ensembles such as Mrs. Duncan's four string enthusiasts: Schmoker, Muhle, Kathan, Masseur and pianist Anderson.

FUSSER'S GUIDE

1944-1945



Willam
Univers

Salem, Orego



When you filled out the little card at registration, giving name, address, phone, etc., you were NOT contributing information for Betty Randall's personal file. She was merely compiling vital data for the *Fusser's Guide*. Having edited the little weekend reference book once before, she found time this year for her weekly column "Belles and Bell Bottoms". A Delta Phi, she claims to be the outstanding Organic Chemist on the Pacific Coast—ask her.

Campus Publications . . .

Info for the green, green frosh was compiled in the handbook by Gladys Crawford. A public school music major, she graduated in November, is now teaching in Portland.



WILLAMETTE
UNIVERSITY

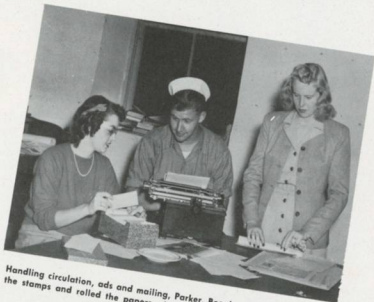
Student Handbook
1944-1945



Salemite Jan Patterson divided her eighty-four hour day between her all-inclusive duties of publications manager, Vespers vice-president, and the Avenging Angel. At the annual meeting of the Oregon Federation of Collegiate Leaders she was elected vice-president for the coming year. She's a Who's Who-er and a Delta Phi.



How to convince the manager that ads in the school paper are worthwhile: by Veelman, Hoar and Kauffman.



Handling circulation, ads and mailing, Parker, Beegle and Rowland licked the stamps and rolled the papers—local postal authorities did the rest.



Helping cover downtown shops and checking on inches for Wallulah advertising and prices were Pat Anne Sty, Carola Hays, Ruth Saffron. Mary Nims served as exchange editor for the Collegian.



Like warriors going forth laden with armor, Nancys Stuart and Haak went along just for the thrill and the chance to pretend they were in the pics, while photographer Gin Wiebe did the head work and supplied the talent. Managed to get people at the proper places at proper times and wearing the desired expressions.

Collegian

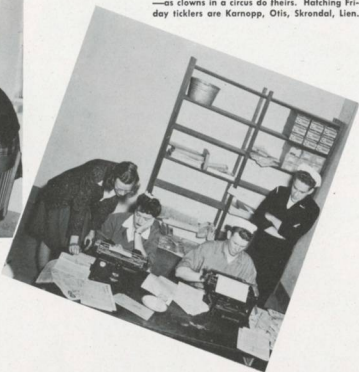


Thursday is Statesman day when Collegian editors go down to make up and direct placement of type in compounding their various pages. Balancing ads and copy, cutting and adding, reading galley proofs and creating heads are all a part of the weekly crisis. Exhausted by Thursday's ever-recurring 4:30 deadline are editors Boyd and Pavlock, sports; Burkhart, society; Strother, copy; Stuart, features; Deal, news.



Big cogs in the Collegian staff are the news gatherers—those who worry the profs and press their ears to keyholes to learn the latest scoops and angles to fill pages 1, 3 and 8. Working along with star reporters Horton and Waters are copy editors Smart and Mattinen. Reporter Butler works over the gleanings of her beat.

Feature staff members view their work seriously—as clowns in a circus do theirs. Hatching Friday ticklers are Karnopp, Otis, Skrandal, Lien.



Society and sports staffs scrambled for typewriters and chairs in an effort to cover ever increasing engagements and Duke's Bearcats. Hard workers included: Jones, Olson, Tate, Goodman, Schwartz, Hobbs.

Collegian editor, Catharine Thomas, struggled with 2 a.m. sessions and last-minute news breaks to bring her weekly pet a national pacemaker award. The rating which fulfilled campus expectations placed the Collegian among the four top papers in the nation. Rounding-out Tommie's own pacemaker college career are her Delta Phi activities and her role as biology senior scholar, in which she spends hours trying to discover the secret of the castor bean's success. Typical of Tommie are such extreme exclamations as "Oh, dear"—emitted only on such occasions as when her deluxe Ford job blows a gasket.





Appropriate title for the editorial staff might well be "52-hour crew". Despite the facts that pictures wouldn't dry and milk was spilled in the typewriter, they did their best to present your story as you wanted it; and they actually met the May 1st deadline—before collapsing in a heap. Weary workers were Kanaff, Boyd, sports editor, Hoak, Williamson, Strother.

A yearbook without pictures is as impossible as pictures would be without photographers. So Jean Strickland spent summer term drawing up blue prints for a dark room, then rallied construction aid from Jack Glasse. Fall term saw George Petterson assume the prominent role of camera man and printer. When midshipman studies called him away, Gin Wiebe and Dale Hunsaker became the indispensable camera figures. Handy assistants in printing pics were Archie Porter, Deloris Rodie and Margaret Jane Emmons.



Top: Porter, Rodie; bottom left: Wiebe, Emmons; right: Petterson, Strickland.

Wallulah

Tyrant who directed all night sessions to meet deadlines, Editor Jean Fries managed to compile her book, even though at times it looked as if there would be no more flash bulbs, film, print paper or other necessities. Dr. Monk's zoology senior scholar, she is a member of Cap and Gown, Who's Who and Delta Phi.



With their fingers constantly in a dozen places, the art staff, Farman, Moritz and Deal, laughed their way through the planning and mounting of nearly a hundred layouts. At that, their tasks were considerably eased by the products of Jim Elliott's summer efforts.

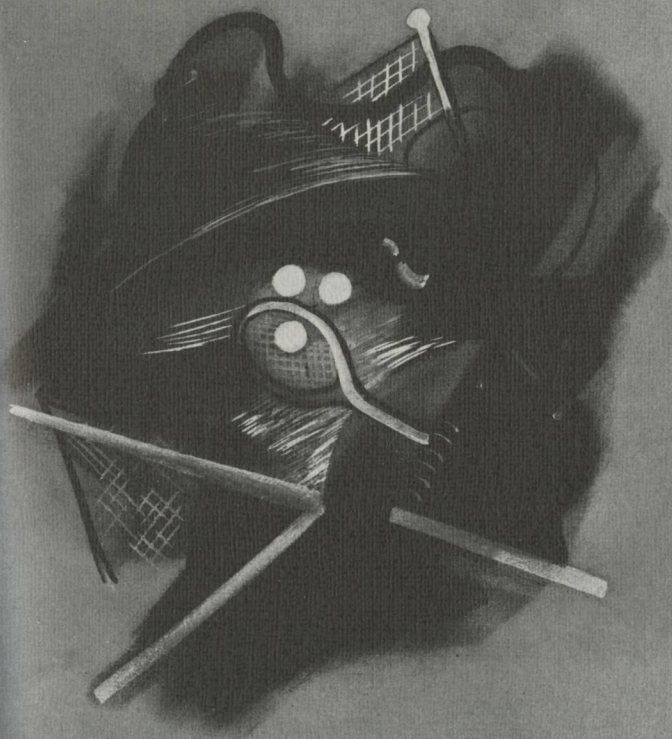


1. Artists de luxe are Achason and Sopp who combined charcoal, India ink and white paint in a modern note for Waulah division pages. Miss Fowler also deserves three cheers for her help.

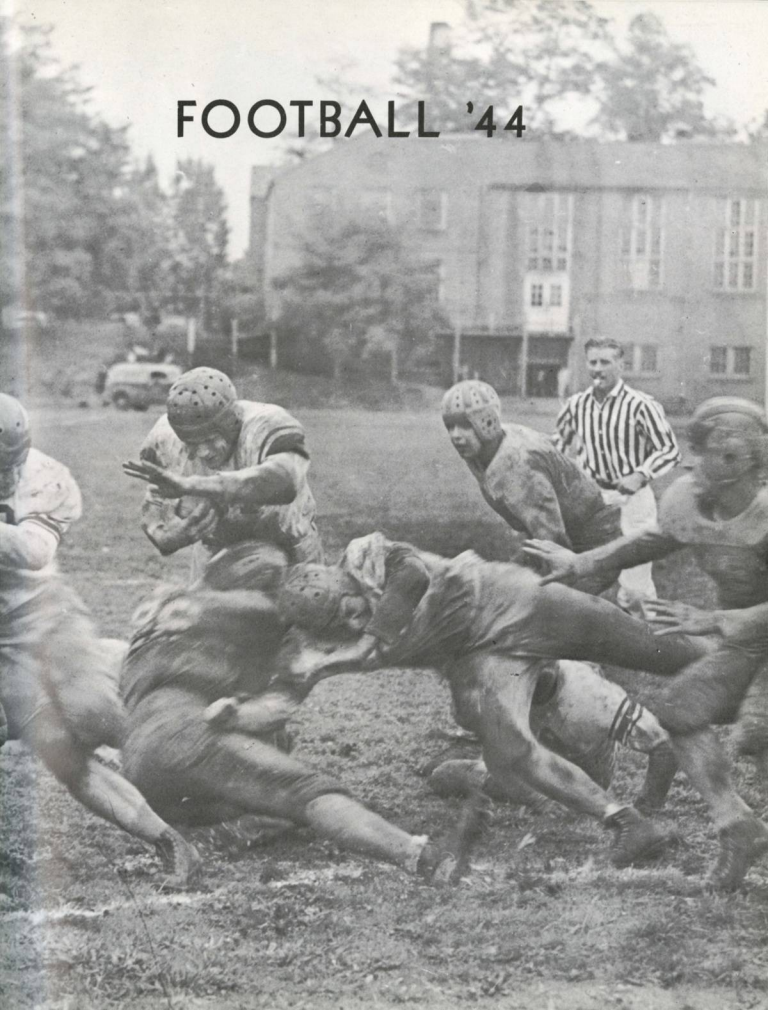
2. Reams of paper were consumed while Randall and Strong learned how to write, and although they think that the captions appearing among this aggregation of photos should have been lost, their efforts were so generous in quantity and quality as to merit them the title of copy editors.

3. Helping out in periods of high tension these coeds inspired by selections from Jim Lake's radio, lightened the burden of editors: Muhle, Otis, Demytt. Nims and Mozee are not pictured.

'cats and clamor



FOOTBALL '44





Gerald Wolfesh, tackle, now in dental school. Always the old work-horse, yet modest, level, and witty, he played practically 300 minutes of rough football to win him the captaincy of the squad.

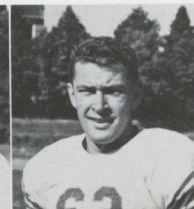


Floyd Simmons, fullback, deck. Fresh from the Portland high school league, modest Floyd churned through all opposition, as shown particularly when 205 pounds of Simmons blasted 76 yards through the U. of W. team of Seattle. That's also Floyd to the right.



Marvin Goodman, end, deck. Back at Willamette in V-12 after having played here in 1941, Mav's speed and pass-snagging ability were only surpassed by his Apollo physique.

Bill Blade, tackle, awaiting mad school. Smaller half of the Wolfesh-Blade tackle combo, 195 pounds of Blade were prominent in all intramurals as well as in pre-med classrooms.



It's the end-around with Goodman packing in a prelin scrub game. Apparently Bremer and his cohorts are determined to get Wardup out of the play—hands or no hands.



These guys look as if they really want to stop that Simmons kick — but he got it away. Typical practice session activity.



Don Rochon, left half, deck. Swissal-hipped with a characteristic French determination, Don pitched passes and galloped his way to being a consistent yard-tallyer.

Conrad Pavlock, quarterback, pre-med. Smart on the gridiron as well as in classrooms, Con stepped fresh from a dive-bomber into the driver's seat of the Navy-cat machine.

Ken Mantle, guard, now Ensign. "Beak" Mantle beat out all competition in the battalion "nose" contest and also battled his way to a starting berth in the guard slot.

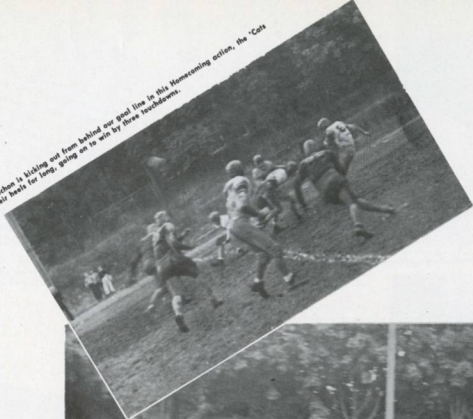


Rechon practices scoring them to death as Ed Wood makes like he's leading the interference during warm-up drills.



Harry Trotter, chief specialist. Handling the reins gratis for the second season, Chief Specialist "Duke" Trotter was a 240 pound cog in the machine that carried Willamette to a successful Golden Anniversary season.

Though Don Rechon is kicking out from behind our goal line in this Homecoming action, the 'Cats weren't on their heels for long, going on to win by three touchdowns.



That's Simmons packing, and he made it, counting up another six points against the Missionaries in the Homecoming game. Check that block that paved the way!

Marking Willamette's fiftieth year of football and the second straight year of non-Conference competition by navy trainees, the Navycat gridiron squad battled out a win-three-lost-two season which definitely rates the success label.

An early season question mark as to potentialities changed to an exclamation point as the 'Cats took the first game against Whitman 13-0 at Walla Walla under a 95° sun. A 35-yard gallop by Rechon, a smash by Simmons and one perfect kick by Al Rowe accounted for the scoring.

Accentuating the positive scoring ability to the tune of 26-6 in the Homecoming game, the 'Cats tied up the overall series with Whitman at 14 games apiece. Simmons tallied three of the four touchdowns, the fourth coming on a pass from Rechon to Goodman in the end-zone.



Cal Wardrop, center, fleet. Transfer from the University of Utah, center Cal Wardrop entered the ranks of the distinctive when he dashed a full hundred yards for a touchdown in the K-Falls Marine game.



Wayne Mayfield, end, deck. Only Willamette man to score against the Huskies this year was tall, good looking "Maizie" who snagged a midfield pass from Don Rechon and outraced the opposing backs.



Walt Jacobs, guard, pre-flight. An inexperienced freshman when the season started, Jake finished a veteran, turning in a whale of a game for his 185 pounds.

Bob Ward, end, deck. Halling from Baker, Oregon, Bob did a good deal of the opening kick-offs throughout the season, as well as shining in all his assignments from the end position, particularly down-field blocking in the Marine game.

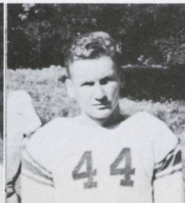
Doug McIver, right half, in pre-flight school. Only 150 pounds, but he was one of the 'Cats' longest ground gainers, particularly in the first Whitman game and the Washington game at Portland.

George Fraser, guard, in pre-flight school. Taking over Ken Mandle's duties in the guard slot after Beck was injured, George developed rapidly, showing plenty of stamina.

John Aungst, left half, engineering. A little boy with a good right arm for flipping passes and a couple of churning legs, John did a lot of good relief work in a hot spot.

With two decisive victories and six touchdowns under their belts, having only been scored on once, the Bearcats stepped a bit out of their class for their next tussle. The Rose Bowl Huskies banged, powered and substituted their way to a crushing 71-0 victory over the W-men. But it remained a Willamette's Floyd Simmons to bring the 5,000 fans to their feet with a driving 76-yard run. The Navycats lost to a better team, but were to show two weeks hence that they could give that big squad a good rough battle.

In the meantime the local boys travelled to Klamath Falls to take on the favored Marine squad. But the 'Cats weren't to be beaten, and with Simmons and Goodman both scoring twice, Wardrop dashing 100 yards for another, and big Al Rowe converting four out of his five chances, the V-12ers came home the winners, 34-14.



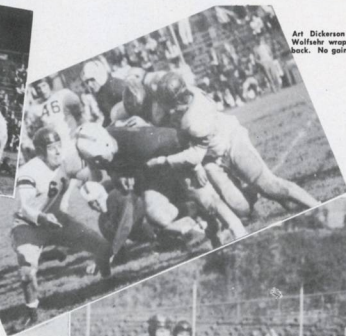


McGuire, Gandy, Hess, Gatewood, Bremer, Cate, Jacobs, Frank, Cottingham, Wolfsehr, Blade, Trotter, Sias, Hancock, Mayfield, Mijich, Ward, Goodman, Beegle, Pette, Dickerson, McGinnity, Farris, Simmons, Eardley, Olson, Gowan, Buch, Edson, Rogers, Fraser, Pavlack, Conway, Boyd, Hagan, Rechen, Anderson, McIver, Scott, Acton, Lofts, Aungst, Rowe, Strong, Wardrop, Mantle, Carson.

With several of the first string men still out on injuries, it was up to a lot of good reserves to hold the Huskies down a bit as well as to draw first blood in scoring in the return game at Portland. Men like Jim Cowan, Walt Jacobs, George Fraser, Bob Hess, Pruyin Schoppacher, and the 'Cat spark plug, Jerry Wolfsehr, did a lot of good line work and deserve all the credit they receive. Final, Washington 40, WU 6.



Rechen gained ground against Washington on this play as Al Rowe readies himself to clear a larger path.



Art Dickerson (61) gets set for the kill as Wolfsehr wraps himself around this Washington back. No gain.

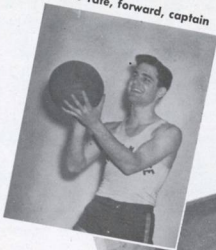


Simmons, Pavlack, and Rowe seem to be well taken care of in this action in the second Washington game.



Robert McGuire, chief specialist. Second in command of the squad, likewise on the gratis basis was Chief Specialist "Max" McGuire, assisting Coach Trotter. An ex-Santa Clara quarterback himself, Bob worked with backfield men in particular.

Bob Tate, forward, captain



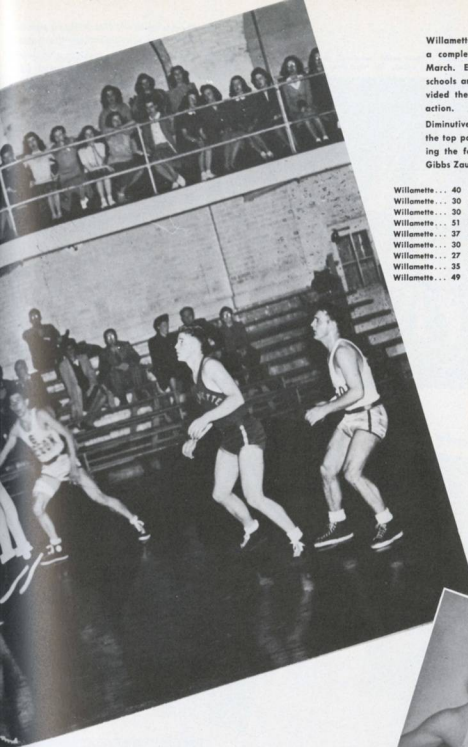
B
A
S
K
E
T
B
A
L
L

'44

,

'45





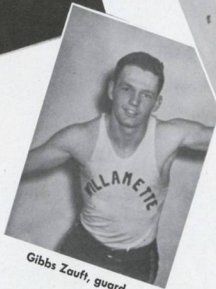
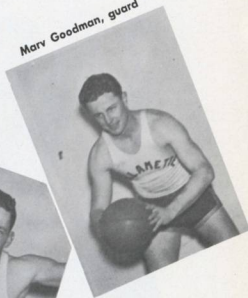
Willamette had plenty of casaba competition this year, playing a complete eighteen game season between November and March. Eight of the 18 tussles were with Northern division schools and though the 'Cats failed to topple them, they provided the fans with evenings of swishing hemp and lots of action.

Diminutive Bob Tate, typical of the size of the 'Cat squad, was the top point-getter for the season, racking up 164 points during the four month period, followed by Marv Goodman and Gibbs Zauff.

Willamette . . .	40	Portland Police . . .	38
Willamette . . .	30	Oregon State . . .	43
Willamette . . .	30	Oregon State . . .	36
Willamette . . .	51	U. of Oregon . . .	70
Willamette . . .	37	U. of Oregon . . .	48
Willamette . . .	30	Oregon State . . .	48
Willamette . . .	27	Oregon State . . .	33
Willamette . . .	35	U. of Oregon . . .	55
Willamette . . .	49	U. of Oregon . . .	69

Willamette . . .	38	Portland Police . . .	35
Willamette . . .	45	Astoria Air Base . . .	59
Willamette . . .	22	U. of O. Medics . . .	54
Willamette . . .	36	K-Falls Marines . . .	41
Willamette . . .	35	K-Falls Marines . . .	51
Willamette . . .	52	Albany Plylocks . . .	32
Willamette . . .	49	Fart Stevens	43
Willamette . . .	55	Whitman	53
Willamette . . .	47	Whitman	50

Marv Goodman, guard



Gibbs Zauff, guard

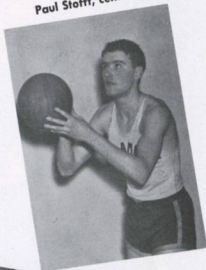
It's one man against many which makes it about equal considering sizes involved. The little fella is McKaown of the Portland Police squad. The 'Cats beat them in both tilts.



Though taking the season opener from the Portland Police, 40-38, the 'Cat casaba men next ran into a tough four week-end period during which they dropped eight games, four each to Oregon and Oregon State.

On the first of the four Friday-Saturday games, the Oregon State Beavers whacked the Navycats, 43-30, at Corvallis, but had to come from behind to take the Saturday night game at Willamette 36-30. The Willamettes outplayed the invaders during the first half of the latter contest, but

Paul Stofft, center



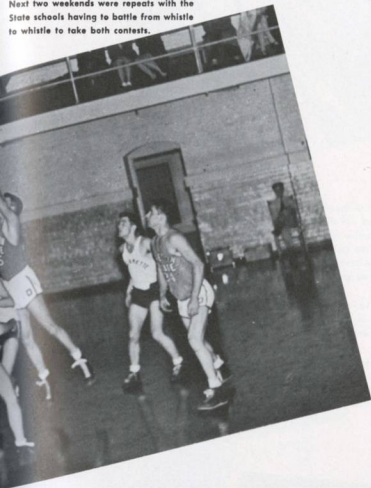
Marv is guiding it in with his hands—and doing a good job of it despite the fact that Oregon took the game by a 20-point margin.



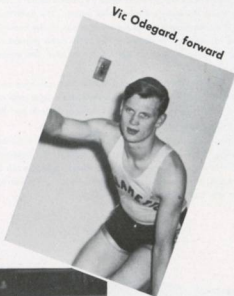
Bob Ward, forward

ran into a second half slump that was to prove their downfall in many later battles.

The next weekend found the W-men battling the northwest champs at Eugene and Salem. The first 70-51 count at Eugene was pretty decisive, but the home game was a rip-snorter, the 'Cats just three points behind the high-flying Ducks with nine minutes to play. Another slump and a splurge by Oregon spelled a 48-37 defeat. Next two weekends were repeats with the State schools having to battle from whistle to whistle to take both contests.



Kenny Gilpin, forward



Vic Odegard, forward



Bob Tate, team captain, went on a slight scoring spree, collecting 27 points as the Navycats whipped the Portland Police for a second time, though they dropped the following night's contest to the Astoria Naval Air Base.



Just before the holidays a mixed varsity-fresh squad bowed to the U. of O. Medics, feature of which was the 23-point performance of Medic center Zimmerman, one more point than the whole Willamette squad could garner. The Saturday following vacation found the 'Cats clashing with the K-Falls Marines on the home floor, the Marines going home the winners by five points, 41-36. Gib Zauft showed a lot in this game, keeping the ball moving as well as potting ten points. The second game saw the Marines win 51-35.

The next two weekends found 'Cat guard Gibbs Zauft counting up 14, 10, 17, and 11 points respectively as the W-men registered three wins and a loss in the four contests. The first two wins came over the Albany Plylock and Fort Stevens fives, bringing the total wins to four at that point.

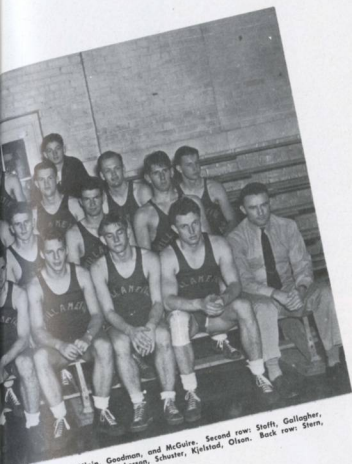
To conclude the season, the Whitman Missionaries played a double-game schedule on one day, losing to the 'Cats in the first one, 55-53 after holding a 13-point half-time advantage. In the night-cap feature, the Whits came through 50-47, in another torrid battle on the maples. Bob Tate matched Zauft's 11-point performance while Marv Goodman was right behind with ten counters.



Front row: Trotter, Zeller, Odgers, Zauft, Ward, Mayfield, Sanders, Bennett, Pettet.



Staff goes up after the tip-off as the W. U.—K. Falls Marines game gets under way. The Marines won this game and toppled the 'Cats when they traveled to K. Falls.



Tate, Waldroff, Gilpin, Goodman, and McGuire. Second row: Stoff, Gallagher, Back. Third row: Liebel, Gray, Dickerson, Schuster, Kjelstad, Olson.

Cal Liebel, guard



Tony Fraiola, added to the faculty this year, took over Chief McGuire's task of coaching the fresh basketball squad, tutoring them to a success filled season. Besides complete City League competition, the Kittens played and whipped such squads as Linfield, Pacific, and Mt. Angel, dropping a contest to Salem Hi and one to Linfield. High scorer for the season was Jack Jensen, who shined particularly with one 21-point show.

Wayne Mayfield, center



Kenny Waldroff, guard

Those who played on the Fresh squad are, left to right: Dean Thomas, Jack Jensen, Mason Nolan, Bob Nixon, Coach Tony Fraiola, Bruce McKay, and Ron McReary. Not pictured are Harold DuHadway, Lyle Shum and Bob Zeller.

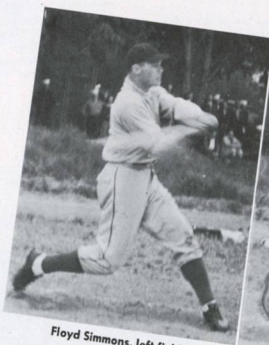


B A S E B A L L



Back row: Trotter, Hampton, Finney, Lake, Dickerhoff, Simmons, Thompson, Olsen, Purcifull, Edson, Cummings, Goodman, McGuire.
Front: Beegle, Conway, McDermott, Rechan, Tate, Ditty, Larkin, Jensen, Zauft, Schumaker, Fraiola.

1
9
4
5



Floyd Simmons, left field



Jack Thompson, third base



Gibbs Zauft, second base

Not often under rapid turnover are there veterans from one year to the next, but this year's baseball squad claims some. Gibbs Zauft and Chuck Larkin played with the University of Wisconsin first before coming to Willamette in 1944 in time to play both on last year's nine and as second and first, respectively, this year.

Pitchers Marv Goodman and Ward Cummings, left fielder Floyd Simmons and right fielder Dick Olson were also members of last year's team. Bolstered by newcomers Jack Jensen, catcher, and Jack Thompson, third baseman, and by transfers Bob Tate, shortstop, and John Hampton, center field, the 'Cats had a well-rounded outfit, potentially able to top a good share of any competition.



With a good share of the season yet to be completed at press time, the Bearcat baseballers had three games under their belts, two wins and a tie. Chief Bob McGuire did most of the tutelage and organization, though Chief Trotter, Les Sparks, and Tony Fraiola were on hand at practice sessions to help out.

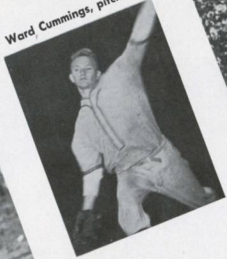
Navycats won their first game against the Oregon State Prison, 12-10, in a game that saw the local boys out-err, under-hit, and yet outscore the Grays. Mary Goodman was the winning pitcher. In the practice game with Salem Hi in our own backyard, the 'Cats again came out victorious, 6-5, with Cummings the winning pitcher.



Tony Fraiola, assistant coach



Ward Cummings, pitcher

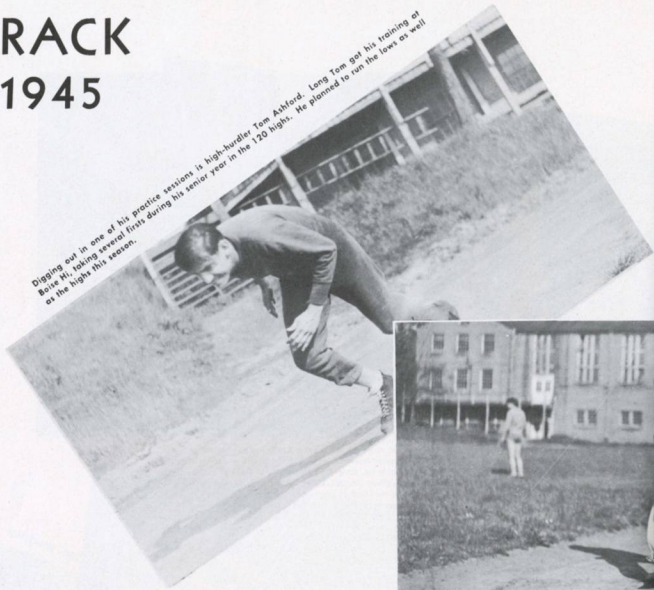


Bob Tate, shortstop



TRACK 1945

Digging out in one of his practice sessions is high-jumper Tom Ashford. Lone Tom got his training at Boise HI, taking several firsts during his senior year in the 120 highs. He planned to run the lows as well as the highs this season.



Student intramural director Con Pavlack jogs around the oval with team-mate Bob Ward, both of whom planned to enter relay events as well as their specialties. Connie ran himself hairiest in a Pennsylvania high school — mainly the quarter and half mile events.



Combination weight man, sprinter, and relayist is all-around athlete Floyd Simmons. Floyd tossed the lead sphere at Jeff HI in Portland to a distance well over 40 feet as well as dashing and passing in the relays.

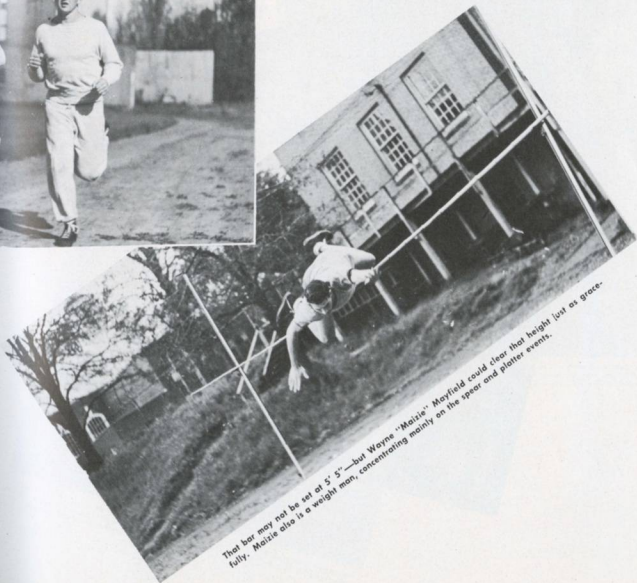
The chap with the ballet stance is weight man Walt Jacobs, in the act of completing a discus toss good for plenty of mileage. Jake planned to put the shot and sling the javelin. He thrun 'em both in high school.



With a track-meet yet to be held at press time, the Bearcat track squad remained an untried quantity. The squad, formed by the men themselves, worked out entirely on their own, either during physical ed periods on our own track, or after school hours at Salem Hi.

Man-about-sports, Can Pavlock, undertook to line up some definite competition by contacting other schools in the northwest.

The well-rounded man below is 220 man Bob Ward. Bob hails from Baker, Oregon, where he not only 220'd but also broad jumped, pole vaulted and relayed his way to varsity honors.



That bar may not be set at 5' 5" —but Wayne "Matzie" Matzie could clear that height just as gracefully. Matzie also is a weight man, concentrating mainly on the spear and platter events.

MURALS

'44 - '45



Blond, good looking Ward Cummings was "mural" tennis champion in the summer of '44, also teamed with Don Plath to take the double title.

Photographed from the water, Trotter's men actually look as if they enjoyed the stuff—but all the effort that's expended weekly to get out of class!



Six-man football champions were members of platoon C-2: Bob Nixon, Collins Utter, Vic Odsgard, Tom Stern, Jack Thompson. Absent members are Mill Carl and Clarke Brown.



With travel restrictions and navy duties limiting activities along athletic lines, athletic director Les Sparks, Tony Fraiola and student director Con Pavlock put a good share of time and work in on a full intramural program.

Uneven distribution of manpower among the four classes caused the second-year use of interplatoon competition with teams from women's living groups, civilian men, ship's company and faculty rounding out the play.

Bill Cate (A-2), Bob Finney (B-1), Sol Menashe (B-2), Dick D. Olson (A-2) and Collins Utter (C-2) were named on the all-star basketball squad from the battalion.



Battalion as well as all-school champs in volleyball are chaps from platoon A-2. Left to right, Milt Carl, Gus Edson, Bill Cate, Dick Olson, Dick Sheehy, Don Rechon, Con Pavleck, Chuck Lorkin, Gibbs Zault, and Mary Goodman.



Summary of the various tournaments and champions:

Golf — Summer, '44 — Al Rowe.

Softball — Summer, '44 — Platoon C-2.

Tennis — Summer, '44 — Ward Cummings, A-2.

Touch Football — Summer, '44 — Platoon C-2.

Basketball — Winter, '44-'45 — Platoon C-2.

Volleyball (battalion) — Winter, '44-'45 — Plat. A-2.

Volleyball (all campus) — Spring, '45 — Platoon A-2.

Tennis — Spring, '45 — Undetermined.

Golf — Spring, '45 — Undetermined.

Softball — Spring, '45 — Undetermined.

Highpoint of the 'mural program came in the mixed, all-campus volleyball tournament which proved popular with men and women alike and did a great deal to build up an already prevailing good spirit on campus.



Swimming at the local Y was not only part of the physical training program but also provided inter-company competition, Co. A running off with all honors.



Holders of certificates in lieu of varsity W's are members of the Willamette Letterman's Club. Biggest activity guided by president Jerry Wellisbr was the hazing of the Fresh and the Kangaroo Kourts that went with it.

WOMEN'S SPORTS '44 - '45

Diversity marked women's sports programs this year as modern dance, tennis, volleyball, basketball, softball all found devoted adherents. Extracurricular activities were popularized by the intramural mixed volleyball tournament with Pi Phi's taking top spot for women's teams. Other tournaments for badminton, indoor archery (national) and tennis kept up the rivalry. Y swim classes had many coed splashers enrolled.

Top women athletes are the Portland Multnomah Athletic Club's swim stars, Nancy Merki and Suzy Zimmerman. Senior Mary Bennett also sets a good example for would-be all-around sports enthusiasts of the undergrads.



Fran Sopp executes a fancy jack-knife.

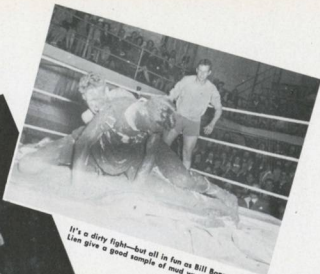
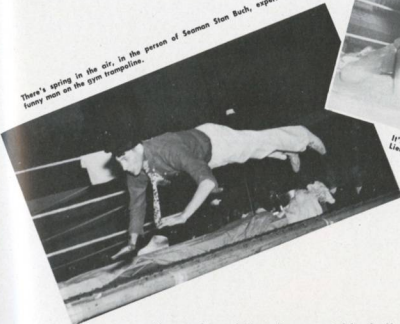
Miss Currey trains coeds in modern interpretative dancing—for grace's sake.



Sue Zimmerman and Nancy Merki, Multnomah Club and national swimming stars, relax a bit on the athletic field.

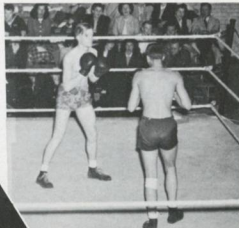


There's spring in the air. In the person of Seaman Stan Buch, expert funny man on the gym trampolines.

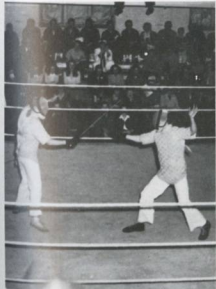


It's a dirty fight—but all in fun as Bill Rannecker and Corston Lien give a good sample of mud wrestling.

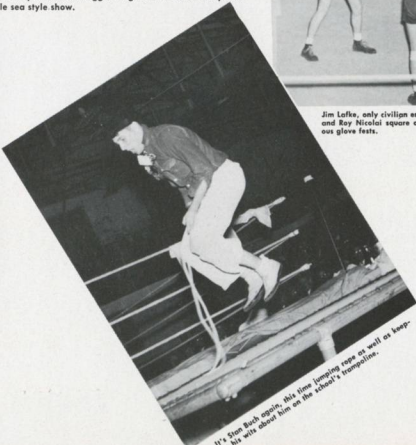
The second annual Happy Hour presented by the Navymen under the direction of Seaman Milt Carl and Chiefs McGuire and Trotter during spring semester rated a ten gun salute for performance and entertainment. Boys from Lausanne combined the thrills and spills of the ring, mat, and trampoline into a laudable three hour exposition. Filling in the in-between were renditions by a battalion German band, a catching reading of Gunga Din and clever novelty skits on the part of M.C.'s. Judo and fencing left the spectators glad they were spectating, and the coordination displayed by the tumblers and tramps was breath taking. None of the bouts turned bloody, but the final count of one TKO, one draw, and the remaining coin toss decisions summed up a series of rugged ring matches which completed the highly laudable sea style show.



Jim Laika, only civilian entered in the V-12 show, and Ray Nicolai square off in one of the numerous glove fests.

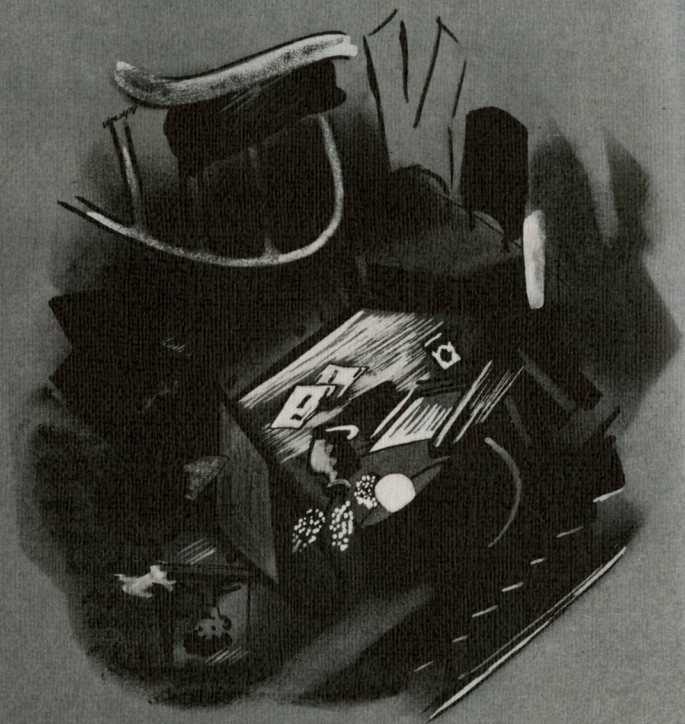


A good bit of serious and humorous fencing is provided by Chuck Nichols and Stan Buch—in full regalia.



It's Stan Buch again this time jumping rope as well as keeping his wits about him on the school's trampolines.

chums and chatting



Lausannites turn bus boys
for $\Delta\Phi$ rush dinner.



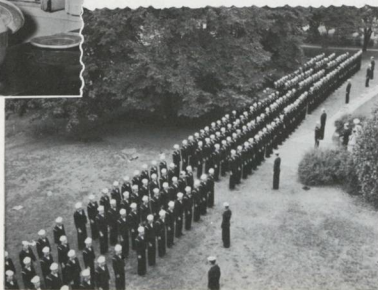
Chi O culture.



Two good reasons why house mothers get low on points.

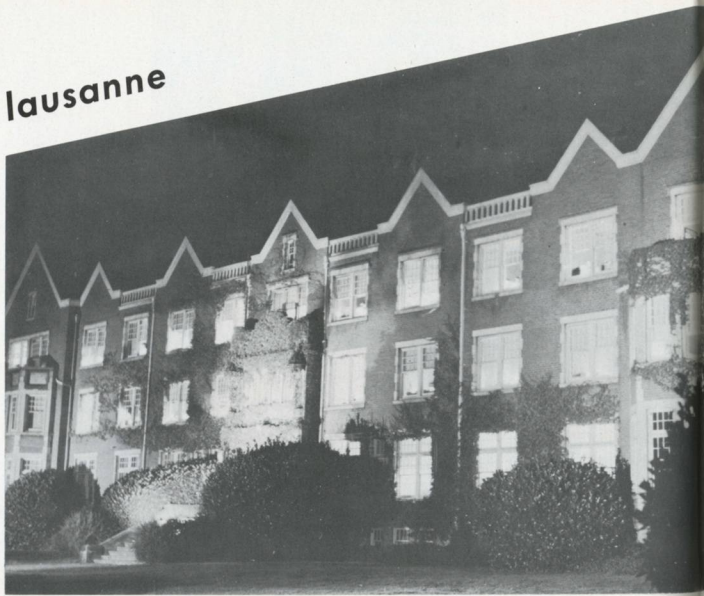


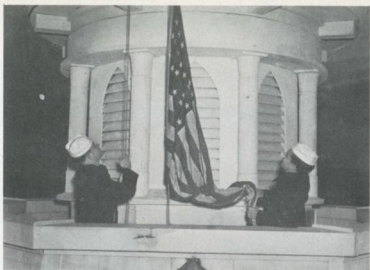
Caldron boil, caldron growl
Here is what we'll have for chow.



Daily muster in front of Lausanne.

lausanne





No longer a hall, the good building is now referred to as the U.S.S. Lausanne. Here seamen get a touch of navy life in the form of watches, chow lines, work details and duties. That fifty men can be crammed into one compartment was evident when Christmas spirit-filled lads turned carolers.



alpha psi



Alpha Psi — home of the most used fire escape on campus — Elinor's wedding and reception — cram and jam sessions in the attic — Proxy's Thomas and Massee — "coaster" system of greeting the male — "Ye Olde Tavern" and admonitions from Mrs. Bailey.



fredrickson



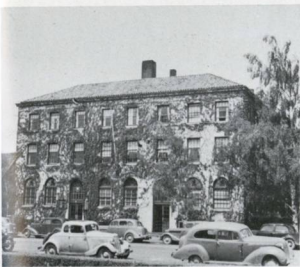
fredrickson, busy place—housed majority of campus females summer term—Von and Nicky's orgy—broccoli and spinach. Came fall and brand new frosh — waffle feeds and song fests—parade of Presidents Bell, Chapman, Greenlee—battle between mice and kittens—sad affair of the lost ironing board—bike-hikes for the more energetic.

kappa



Kappa Kids lapsed into onion orgies on the slightest provocation. Life included too frequent sufferings from hot water shortage—much used music room—the skating president, Marian Erikson.

y dorm



Fall saw females take over former home for Marshall's boys; new inhabitants also found that junior high basketeers present a problem. Proud they were of the Grem-lin Hop — and engagements, too! Mrs. Foster was boss-lady; Lois and Muriel shared the gavel.





greek life

rushing

Whether their reason for coming to Willamette was naval or academic, they came, and it was the job of the old-timers to show them the ways of sorority life. During the summer, they met sororities at rush parties in Portland and Salem. From registration until Thanksgiving, they were entertained with teas, informal firesides and buffet suppers. The climax came after sorority girls had waited on the steps in Eaton while Dean Dahl and Miss Jack counted bids — finally the news was out and the rushees stepped into their new roles of sorority pledges.

pan-hellenic formal



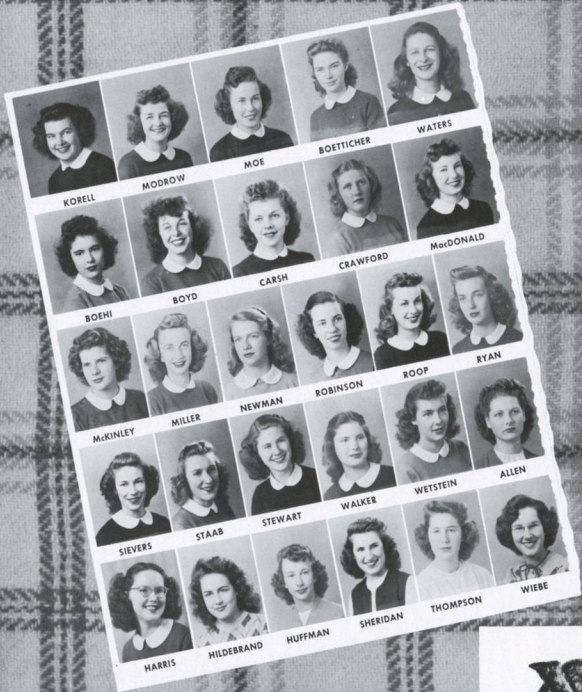
To the music of Al Benning's Albany nine, sorority women and their guests spent a pleasant winter evening tripping the light one at the Pan-Hellenic formal. Capitalizing on the "Lady in the Dark" theme, AXO's strategically placed facsimiles of Varga girls around the room. The $\Delta\Phi\chi$'s came through with the band and the floor while XO's opened coke bottles during the evening. The $\tau\phi$ furnished programs were not only attractive but possessed that all important virtue — the right size to fit a dress blue jumper pocket.



alpha chi omega

A Chi O might be called the Wee Kirk of Alpha Chi Omega — with no intended reference to the house-mother — but weddings were so numerous. Lack of houseboy necessitated fire stoking from May Queen-President Betsy Dish and the lowliest of pledges. They decorated playroom with stubbies filled with hand lotion, changed their name to Alpha Chi Omega last June.





chi omega

Baby sorority on campus emerged St. Patrick's Day with much credit going to organizer Barbara Korell. From then on it was southern accents left over from Minstrel Show — tallies of mail loot — "Candy" — Wy's long-distance calls — Korell and Waters sharing presidential honors — ants, millions of ants — lovely piano without bench — poison oak victims.

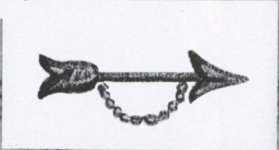




delta phi

Upper court street girls had a busy year — despite fact that the doorknob kept coming off, leaving them stranded for days at a time — sponsored March of Dimes campaign, contributed Band Queen and campus Pin-up Girl to student contests. Story includes president Burkhart laboring over practice teaching projects, bridge games in the basement, Jenny's midnight departure for New Orleans and George.





pi beta phi

Pi Phi, home of the all-star dog-boarders — monthly arrival of Helen's red roses — lunch in the back yard — periodical fires which led to no blazes of glory — abundance of engagement rings, but—quote—no weddings. Last June third saw the jeweled BX take a back seat in favor of the Pi Phi arrow.





Something new and different was added in the realm of sororities on campus when Pan-Hellenic council was organized in the fall. Taking the place of Inter-Sorority council, Pan-Hel formulates all the rules and regulations pertaining to sorority activity. Barbara Karall, Pat Miller, Nancy Hook, Helen Craven, Kay Wilson, Dorothy Hoar, Mary Parker, Roberta Jean Yukum.

pan-hellenic council



delta tau gamma



Independent women's organization, Delta Tau Gamma, has been guided through the year by presidents Lois Robinson and Marian Erikson. Highlight of activity-filled spring term was the formal "Lilac Time." Marian Erikson, president; Jean Stuart, secretary; Vivian Miller, reporter; Velle Felton, corresponding secretary; Jane Hansen, vice-president; Pat Johnson, treasurer.



Those who gain lead-heavy eyelids, slap-happy wit, and headache-accompanied morning classes have some inkling of the importance of their parts in the production of their yearbook, and hence know also that their slave-driving boss appreciates their various contributions to the assembly line.

But among those who are fortunate enough not to be staff members are people who have given odds and ends of time, talent and just plain moral support. Emergency jaunts for glue, a borrowed car for midnight trips to furnish staff nutrition, many an understanding prof, an hour's chat concerning what to say and how to say it, campus rallying for individual purchases of the ever-impossible-to-get flash bulb, an evening spent just in keeping the editor company while journalistic efforts progressed, and Delta Phi forgiveness for neglected house duties — these are the things that go unrecognized and unthanked. And these are the things which every day have helped to make this Wallulah a reality.

So now that I have put away glue, paper cutters and drawing boards, I want to thank the people who helped with the LITTLE things—and once again to voice my thanks to those who made up the best staff an editor could ask for. They made a hard job easy and lots of fun.

JEAN FRIES, Editor.

In Appreciation . . .

To all of those who gave their time so willingly to make the financing of this book possible and to those advertisers who cooperated so generously with the students in this effort, we extend our fullest gratitude.

We are particularly grateful to Nancy Hoak, Carola Hays, Pat Anne Sly, Gin Wiebe, Ruth Saffron and Carol Smith.

NANCY STUART, Advertising Manager.

JAN PATTERSON, Publications Manager.

Acknowledgements . . .

From cover to cover your Wallulah is the product of a chain of talents and contributions. Though the variety of skills and interests involved in its production can never be fully appreciated, we, the editorial staff, take this opportunity to gratefully acknowledge the sources from which the 1945 Wallulah grew.

BISHOP STUDIOS

Class portraits

Bond Queen photo

BUSHONG & CO., PRINTERS

Wallulah lithographers

CONSTANCE FOWLER

Cover design

Art adviser

HENRY'S PHOTO SHOP

JESTEN-MILLER

May Queen photo

KENNEL-ELLIS

Pin-Up Girl photo

C. R. MONK

Capitol picture, page 1

GIN WIEBE

Pin-Up photos

Advertising photos

We, the
Official Photographers

for the Wallulah

wish to extend our

Appreciation

to the Students of Willamette University

for their Patronage

The NEW BISHOP STUDIOS

520 State (on Ground Floor)

Operated by

HARMON & KLOSTERMAN

KENNETH ASHTON, *Studio Manager*

FOR THE WALLULAH



GREETINGS

Willamette Students

from

The Popular Store for Co-eds

Ruth Nelson



Phyllis Parker



WILLAMETTE UNIVERSITY

SALEM, OREGON

Entering the One Hundred-Third Year

"The Oldest University in the West"



MUSIC - LIBERAL ARTS - LAW

Fully Accredited

Approved by
Association of American Universities
National Association of Schools of Music
American Bar Association

Pomeroy & Keene

Complete Jewellery and Optical Service

379-383 STATE STREET

SALEM, OREGON

Featuring . . .

Virginia Case

at the Fountain

T. W. CREECH, DRUGS

1220 State Street

Salem

Dial 6527

Oregon

MEN'S FURNISHINGS

STYLED

FOR

UNIVERSITY MEN

ALEX JONES

121 N. HIGH ST.

SALEM, OREGON

For
Vital
Energy



920 South Commercial Street
Phone 8101

PHONE 5955

RAY MORROW

THE MORROW CO.

Radio - Electronic

153 S. LIBERTY ST.

SALEM, OREGON

MAKE THE YMCA YOUR HOME

While You Are at Willamette U.

- 45 MODERN ROOMS
- CLOSE TO THE CAMPUS
- THE UNIVERSITY MEN'S DORM

- SWIMMING
- BASKETBALL
- HANDBALL

- VOLLEYBALL
- BOXING
- WRESTLING

SALEM LAUNDRY COMPANY



The Home of
GOOD LAUNDERING
and
DRY CLEANING



WEIDER'S SALEM
LAUNDRY COMPANY

Phone 9125

263 South High

Henry's Things PHOTO graphic

Henry J. Millie 469 State Street

Salem, Oregon

Still and Movie Cameras - Projectors - Supplies - Chemicals
Film - Paper - Color Materials - Equipment - Accessories

VALLEY TRACTOR COMPANY

SALEM, ORE.

Ask Your Grocer for

Smith's Bread

Enriched with B1 B2 Thiamine
Niacin White and Wheat
Always "Good"

Smith Baking Co.

46 Court Street

Salem, Oregon

MERRILL D. OHLING INSURANCE

275 State Street

Phone 9494

Valley Motor Co.

Salem, Oregon

Ford V-8
Sales - Service

The Blue Bird Restaurant



For Grads and Undergrads!

School Supplies Now

Typewriters for
Students
(when available)

Needham's Book Store

Agents for
Royal Typewriters
465 State St.



Salem, Ore.

Quisenberry's Central Pharmacy

P. D. QUISENBERRY

Guardian Building
410 State Street

Commercial Book Store



Virginia Case, Willamette Junior

Everything for the Office

141 N. COMMERCIAL ST.

SALEM

VINCE'S ELECTRIC

*Electrical Appliances
Sales and Service*

*

157 S. Liberty, Salem

Phone 6292

BURKE'S CAMERA SHOP

*Serving the
Amateur Photographers*

174 N. COMMERCIAL ST.
SALEM, OREGON

Capital Business College

*Accredited by National Association of
Commercial Schools*

Bookkeeping and Accounting, Shorthand,
Typewriting, Commercial Law, English,
Office Machines, Filing, etc.

345 COURT STREET

SALEM, OREGON

E. J. SCHELLARS
Res. Phone 7655

J. D. FOLEY
Res. Phone 3674

SCHELLARS & FOLEY, INC.

A Progressive Insurance Office

DIAL 2-4143

Agents
Oregon Mutual Fire Insurance Co.
McMinnville, Oregon

143 S. Liberty Street
Salem, Oregon

Thousands prefer Elsinore brand because they know the quality is always the best.

If you have not been using Elsinore fine foods, ask your grocer for Elsinore Brands.

Distributed by

Willamette Grocery Co.
WHOLESALE GROCERS
SALEM, OREGON



Artist Supplies

*

Hutcheon Paint Store

162 N. Commercial Street
Phone 6687 Salem, Oregon

La Dou's Fountain Lunch

Coffee Our Specialty

MR. AND MRS. J. E. KITCHEN
Phone 9774 183 N. High, Salem

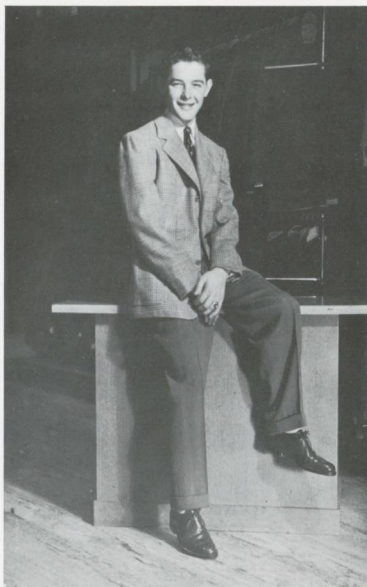
Western Auto Supply Co.

*Headquarters for
Auto Supplies and Parts
Household Goods and Appliances*

SALEM OREGON

BISHOP'S

The Style Center for Men



Bill Stortz, Willamette Junior

145 N. LIBERTY

SALEM

Meet your friends at

MONTGOMERY WARD AND
COMPANY



Arline Bochi, Willamette Freshman

155 N. LIBERTY STREET

SALEM

GENERATIONS OF WILLAMETTE UNIVERSITY STUDENTS

have turned to

THE OREGON STATESMAN

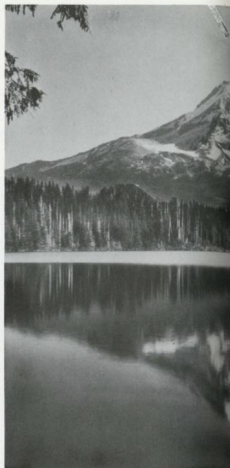
for news of university doings as well as for general
news of state and nation.

Founded in 1851. The Statesman has marched along
with old Willamette in the diffusion of knowledge.

*Remember! it's MAC'S for after-dance or
daytime snacks!*

•
McMILLAN'S

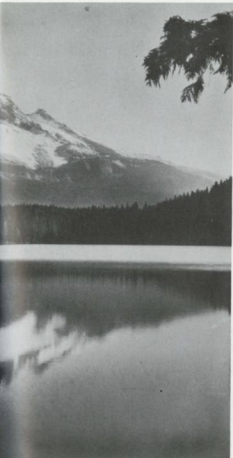
1949 STATE STREET, SALEM, OREGON



**W A R
B O N D S**

are not only the world's best investment . . . they are the
measure of participation in the all-out war against our enemies.
The continued purchase of War Bonds is essential for the win-
ning of the war, and the enjoyment of the peace to follow.

Meier & Frank Co.



Inquire about
Special Checking Account

- ★ NO MONTHLY SERVICE CHARGE!
- ★ NO MINIMUM BALANCE REQUIRED!

Ask for Details

**LADD & BUSH-SALEM BRANCH
UNITED STATES NATIONAL BANK**

Salem, Oregon

Member FDIC



MARILYN'S SHOE STORE

387 COURT STREET

SALEM, OREGON

Fountain Lunch

Ice Cream

Sandwiches

Chili

French Fries

Short Orders

Salads

Magazines

Cigarettes

Our Specialty

Baked Ham

BLACK & WHITE RESTAURANT 1964 N. Capitol

PADE'S Coffee Shop



Nancy Hoak, Bob Forman, Nancy Stuart,

Jack Schoppart

Afternoon Treat

PHONOGRAPH RECORDS
NEEDLES ACCESSORIES
BOOKS ON MUSIC

The SALEM RECORD SHOP

OREGON BLDG., STATE AT HIGH
Downstairs — Telephone 8632



SUPERIOR PRINTING

GUARDIAN BLDG. SALEM, OREGON

YEATER APPLIANCE CO.

WESTINGHOUSE ELECTRIC APPLIANCES

Phone 4311

255 N. Liberty St., Salem, Ore.

Funland

Fun for All — All for Fun

*

Under New Management
Betty and Johnny Bush,
Both Overseas Veterans

Water Systems Tinning Oil Burners

Leonard B. Judson

*Plumbing - Heating
Electrical Service*

279 N. Commercial Street, Salem, Oregon
Telephone 4141

THE MODERNE

GIFTS . . . SPECIALTIES

READY-TO-WEAR

Salem's Exclusive Specialty Shop

*

305 COURT STREET

PHONE 3808

Geo. E. Allen Hardware

Hardware - Paints - Norge Appliances - Plumbing
Fairbanks Morse Pumps
A Complete Housewares Department

236 North Commercial Street
Salem, Oregon

Heider's Record Shop



CO-ED AND SAILOR

FRANK BENNETT

ALICE ROSE

Music for Everyone's Pleasure

428 COURT STREET

SALEM

The SMART SHOP



BETTY HANAUSKA

Modeled by BETTY HANAUSKA, Willamette Senior, The Smart Shop presents a beautiful five o'clock gown of black crepe designed by Friedlander of New York.

Much of the beauty lies in the huge rose lined, starched lace bow poised at the shoulder.

The same sheath trim moulds the bodice skillfully designed to slenderize the waist. \$45.95. Hat \$9.95.

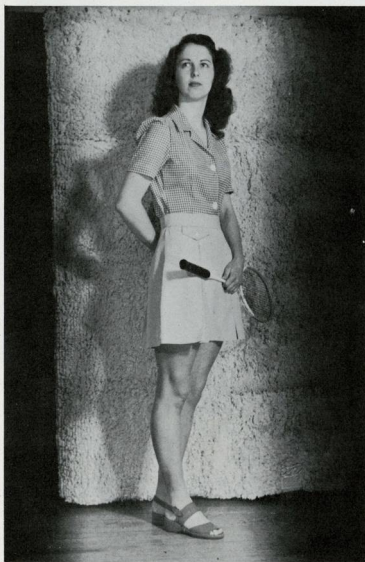
SMART SHOP

115 N. Liberty, Salem

For all occasions . . .

SEARS

(Roebuck and Company)



Shirley Rabenau, Willamette Sophomore

484 STATE ST.

SALEM

ESTHER FOSTER

Women's Fashions

COVER THE CAMPUS IN OUR LATEST STYLES

260 State Street
Salem

MEAL TIME ANY TIME

at

QUELLE CAFE

Fountain Specials

440 STATE STREET
PHONE 5016

BOSLER ELECTRIC COMPANY

- *Electrical Installations*
- *Fluorescent Lighting*
- *Motor Sales and Repairs*

236 STATE

TELEPHONE 7822

JAYSONS

*"Smart Clothes
for Smart Men"*

Liberty at Court

Salem, Oregon

*Do You Have
Eye Trouble?*

If there is any probability that your eyes are not in the best of condition, see us today.

Morris Optical Co.

444 STATE STREET



Bicycles . . . Motorcycles . . . Keys Duplicated . . . Lawn Mowers

"Everything in Wheel Goods"

HARRY W. SCOTT

"THE CYCLE MAN"

147 S. Commercial Street

Phone 4516

PIONEER TRUST COMPANY

This corporate trustee with its continual existence provides the competent and conservative investment facilities so important in the administration of institutional, educational, endowment and pension funds.

GENERAL INSURANCE

SAFE DEPOSIT BOXES

Officers and Directors

A. N. BUSH - H. V. COMPTON - E. O. STADTER, JR. - K. E. WENGER

THE SPA



TWO GIRLS AND THREE SAILORS!

*Dennis Cunningham, Maryanne Whittliff, Morton Shapiro,
Helen Craven, and Bill Kendall.*

Student's Friendly Place to Meet

Furniture of Distinction

Drapery
Curtains

China
Gifts

Stoves
Refrigerators

A LITTLE DOWN ON A BIG BILL

The Gevurtz Furniture Co.

275 N. Liberty Street

Salem, Ore.

Phone 4615

Model Food Market

EDWARD SCHUNKE, Manager Grocery Dept.

CATERING DEPT.

- *Free Delivery and*
- *Monthly Account Service*

Telephone 4111

Salem, Oregon

275 N. High Street

PADE'S GROCERY AND MARKET

DELIVERY SERVICE

1244 State Street

Phone 9135

State Street Grocery and Market

Fresh Fruits and Vegetables
Fancy and Staple Groceries Quality Meats

1230 State St.
Emmett Kleinke

Phone 9127
Bill Patton

PENNEY'S

(J. C. Penney Co., Inc.)



ROBERTA JEAN YOCUM,

Willamette Junior

Fashions for Moderns

Sophisticated Simplicity

Bushong & Co.

Portland, Oregon



Printers - Lithographers
Stationery - Office Equipment
Shaw-Walker Filing Cabinets



Phone Atwater 7313

Always a Choice Selection

F
L
O
W
E
R
S

"FROSTY" OLSON

Court and High Street
Telephone 7166

Leo N. Childs, Inc.
REALTORS

Mortgage Loans
Insurance for Every Risk
28 Years Continuous Business on State Street

344 State Street

Phone 9216

THE MAN'S SHOP

The Store of Style, Quality and Value for
the University Man

416 State Street

Salem, Oregon

**BUY BONDS--
DONATE BLOOD**



S & N Clothiers

Clothes for Men and Young Men
At Popular Prices

456 State Street

Coon's
"Top Hat"

*Featuring the Best Hamburgers,
Milkshakes and Coffee in Town*

MR. AND MRS. BILL COON
Proprietors

1275 State Street

Salem, Oregon

Jaquith's Music Company



Dorothy Toomey

Mr. Jaquith

Complete Music Service

191 S. High St., Salem, Oregon

Phone 4641

Bertelson & Son

The Name to Know in

Printing

PHONE 7109
394 Chemeketa

SALEM, OREGON

Owned and Operated by 3000 Producing Dairymen

MAYFLOWER MILK

Dairy Cooperative Association

*

Telephone 9205

910 S. Commercial St., Salem, Ore.

JEWELERS-OPTOMETRISTS

Salem's Leading
Credit Jewelers and Opticians

PHONE 4129

SALEM, OREGON



fashions for
the young in heart

CHARLES F. BERG

Portland, Oregon

G. H. GRABENHORST

E. B. GRABENHORST

Over Thirty-four Years of Successful
Service to the Public

GRABENHORST BROS. REALTORS

Fire and Auto Insurance

134 South Liberty Street

Salem, Oregon

Telephone 4131

Kuhn's Shoe Repairing and Hat Service

"We Rebuild 'Em"

464 Court Street

Phone 9576



FLOWERS

Always the Latest and Best . . .

BREITHAUPT'S, Florist

Telephone 9195

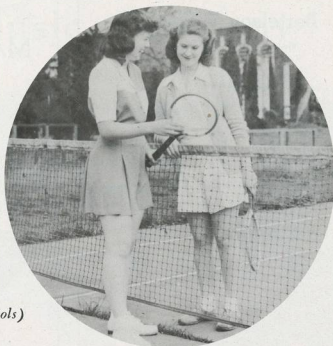
Say (Brite-Hop)

447 Court Street



MAPLE'S

Sporting Goods



TWO SPORT CO-EDS!

Lois Messing and Terry Stuart

(Sporting Goods Wholesale to Schools)

372 State Street, Salem

SALLY'S

For Eye Catching Fashions

Frances Sopp,

Willamette Freshman

399 COURT STREET

SALEM



STEVENS AND SON

Manufacturing Jewelers



Patricia Waters,
Willamette Sophomore



399 COURT STREET

SALEM

A Friendly Place To Trade

Les Newman's

School Clothing
Work Clothing
Brogue OxforDs
Work Shoes
Navy Supplies

Phone 5508

179 N. Commercial

Metropolitan Store

Bargains in . . .

- NOTIONS
- GIFTS
- TOILETRIES
- SCHOOL SUPPLIES

136 North Commercial Street



SALEM'S LEADING
CREDIT JEWELERS AND OPTICIANS

PHONE 4129

SALEM, OREGON

Nelson Bros.

SHEET METAL WORK
PLUMBING - HEATING - FURNACES
OIL BURNERS - NEON SIGNS - GAS FURNACES

355-361 Chemeketa St.

Salem, Ore.

Phone 4149

The Golden Pheasant



FINE FOODS • SENSIBLY PRICED
Two Forty Eight North Liberty

Telephone 4109

Hawkins & Roberts, Inc. REALTORS

Property Management - Investments - Sales - Loans - Insurance

Guardian Building - Salem, Oregon

The CHADWICK Operated Hotels

Hotel Senator

SALEM, OREGON

C. T. Reaney, Manager

Hotel Oregon

EUGENE, OREGON

W. A. Cummings, Manager

Hotel Jackson

MEDFORD, OREGON

Macklin Robinson, Manager

HOTEL MARION

Commercial and Ferry Street Salem, Oregon

GILBERT O. MADISON, Manager

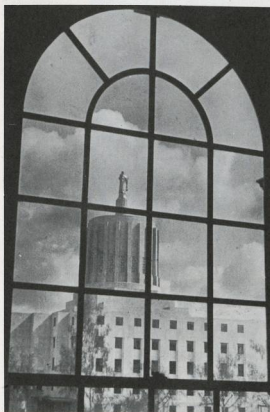
A Chadwick Operated Hotel

- Special weekly and monthly rates given on application.
- Rooms for meetings, banquets and dancing.
- Remodeled, new furniture and equipment added.
- Modern Coffee Shop
Open 6 a.m. to 9 p.m.
- Delicious food at moderate prices.
- Dining service for special luncheons, dinners and dances.
- Headquarters for service clubs, conventions.

★ ★ BUY MORE WAR BONDS AND STAMPS ★ ★

Kraps and Long "PRINTING OF DISTINCTION"

Telephone 8594
370½ State Street



EYE, EAR, NOSE, AND THROAT

Drs. Findley, Clement, Baun*,
Thompson and Dunham*

DENTISTS

Dr. Kinley K. Adams

OPTOMETRISTS

Drs. Benson and Daugherty

*Men in the service.

MUSIC NOOK

Large Album and Record Selections



Gloria Wunsch, Dick Mallette, Faith Idso, Duane Drake

Four Willamette Students Enjoy Good Music

154 S. HIGH STREET

SALEM

Advertising Index . . .

Alex Jones	159	Meier and Frank	166
Berg's	179	Merrill D. Ohling	161
Bertelson and Son	179	Metropolitan	182
Bishop's	164	Miller's	156, 157
Bishop's Photographers	155	Model Food Market	175
Black and White	167	Moderne	169
Blue Bird	161	Montgomery Ward	165
Bosler Electric Co.	173	Morris Optical Co.	173
Breithaupt's	179	Morrow	159
Brown's	182	Music Nook	184
Burke's Photography Shop	163	Needham's	161
Bushong's	176	Nelson Brothers	182
Capital Business College	163	Pade's Coffee Shop	168
Chadwick Hotels	182	Pade's Grocery	175
Commercial Book Store	162	Penney's	175
Creeches Drug Store	159	Pioneer Trust	173
Elliott's Printing Shop	169	Pomeroy and Keene	159
Esther Foster	173	Quelle	173
Frosty Olson	177	Quisenberry's	161
Funland	169	Record Shop	169
George Allen	169	Sally's	180
Gevurtz Furniture	175	S. and N.	177
Golden Pheasant	182	Scellers and Foley	163
Grabenhorst	179	Scott's Bicycle Shop	173
Hawkin's and Roberts	182	Sears	172
Heider's	170	Smart Shop	171
Henry's Photo Shop	161	Smith Baking Co.	161
Hutcheon's Paint Store	163	Spa	174
Jaquith's	178	Statesman Publishing Co.	166
Jayson's	173	State Street Market	175
Kraps and Long	183	Stevens Jewelers	181
Kuhn's	179	Sunfreze	159
Ladd and Bush	167	Top Hat	177
La Dou's	163	Valley Motor	161
Leo Childs Inc.	177	Valley Tractor	161
Leonard B. Judson	169	Vince's Electric	163
Les Newman	182	Weider's Laundry	160
Macmillans	166	Western Auto Supply	163
Man's Shop	177	Willamette Grocery	163
Maple's Sporting Goods	180	Willamette University	158
Marion Hotel	183	Y. M. C. A.	159
Marylin's	167	Yeater's	169
Mayflower Milk Co.	179		

INDEX

Administration	13-16
Advertising	152
Alpha Chi Omega	141
Alpha Psi	134
Anchors Aweigh Dance	90
Band	102
Baseball	122, 123
Basketball	116-121
Beta Alpha Gamma	64
Blue Key	55
Bookstore	17
Business Office	15
Carnegie Library	41
Cap and Gown	54
Capitol Building	1
Catholic Club	29
Cavern	8, 17
Cavern Board	49
Chem Lab	20
Chi Omega	143
Choir	101
Christmas Party	50
Collins Hall	19
College of Law	43
Collegian	106, 107
Commanding Officer, V-12 Unit	13
Constitutional Revision Committee	49
Dean of the University	14
Dean of Men	14
Dean of Women	14
Delta Phi	131, 145
Delta Tau Gamma	149
Descriptive Geometry	22
Drama	98, 99
Eaton	25
First Aid	37
Football	111-115
Forensics	110
Fredrickson	135
Freshman Class	66
Freshman Class President	66
Freshman Glee	5, 82-85
Freshman Handbook	104
Freshman Initiation	78-79
Fusser's Guide	104
Geology Lab	19
Gymnasium	36
Happy Hour	129
Homecoming	71
In Memory	10
Inter-Faith Council	49
Inter-Varsity Fellowship	29
Intramural Sports	126, 127
Junior Class	57
Junior Class President	58
Kappa	136
Launching	7
Legislature	26
Lausanne Hall	132, 133
Library	24
Little Chapel	28
Living Groups	131-147
May Weekend	95-97
Messiah	103
Mu Phi Epsilon	42
Music Hall	39
Naval Administration	16
Obstacle Course	36

Pan-Hellenic Council	148
Pan-Hellenic Formal	139
Physics Lab	18
Pi Beta Phi	146, 147
Pin-Up Girls	86-89
President of the University	13
Publications Staff	105
Registrar	15
Rushing	138
Senior Class	50
Senior Class Officers	51, 53
Sigma Alpha Chi	65
Sophomore Class	60
Sophomore Class Officers	61, 63
Steering Committee	48
Student Body Office	7
Student Body Officers	45-47
Student Council	48
Summer Semester	76, 77
Table of Contents	11
Tau Kappa Alpha	33
Tennis	37
Theta Alpha Phi	33
Title Page	2, 3
Track	124, 125
University Vespers	28
"W" Club	127
Waller Hall	30
Wallulah	108, 109
War Activities	91, 92, 93
Who's Who	5
Women's Athletics	37, 128
"Y" Dorm	137
YWCA Cabinet	29

ADMINISTRATION AND FACULTY

Bell, Rosella	20
Boone, Mrs. M. L.	15
Bruno, Frank, Yeoman 2/c.	16
Brennen, Maurice	40, 49
Brown, E. T.	18
Clark, W. H.	19
Currey, Gale	37
Dahl, Olive M.	14
Dobbs, Mrs. Ralph	15
Dobbs, Ralph	39
Duncan, Mary Schultz	40
Erickson, Walter	15
Fenix, Robert	15
Fowler, Constance	35
Fraiola, Tony	37
Galts, Robert	26
Gearin, John, Ph. Male 1/c.	16
Geist, Melvin H.	38
Graves, Dan	34
Hugill, Joyce	15
Jack, Lorena	23
Johnson, Charles	21
Kee, James, Lt. USNR	16
Knight, John L.	28
Kohler, Henry	31
Lantz, Robert E.	24, 48
Larson, Mrs. Delsia	17
Latimer, Lois	23
Laughlin, S. B.	27
Lien, Mrs. F. W.	15

Lockenour, Roy	43
Lovell, R. I.	26
Ludden, Bennet	39
Luther, Chester F.	14, 49
MacHirron, Helen	41, 42
McLeod, Kenneth	21, 48
McGuire, Robert, CPO	16
McMurtry, Herbert	27
Maellering, Wm.	33
Monk, Cecil	21
Morange, Marion	33
Oliver, Egbert	31
Pankaskie, Lewis	39
Pearce, Helen	31
Peck, Marlon	21
Plummer, Louisa	21
Rahe, Herbert	32
Reisenauer, A., Ph. Mate 2/c	16
Riggs, Lawrence	24
Ringnald, Murco	30
Roberts, T. S.	41
Rutledge, Constance	15
Scanlon, Thomas, Storekeeper 1/c	16
Schultz, Warner	18
Schulze, Daniel	14
Scruggs, Margaret	38, 42
Shepard, George, Capt. USN Ret.	16
Sherman, Charles	27
Skopil, June	20
Smith, G. Herbert	13
Smith, Ray L.	43
Smith, Stephen C.	24
Sparks, Lestle J.	37
Spelbrink, Frances	22
Spelbrink, Perry	22
Spencer, Robinson	34
Trotter, Harry, CPO	16
Tschudy, Robert	21
Woodell, Marshall, Lt. USNR	13

PORTRAIT INDEX

Acheson, Mary	50, 109
Adams, Gloria Jean	66
Adams, Shirley	50
Adkins, Betty	57
Allen, David	57
Allen, Margaret	60, 142
Allenbach, Charles	60
Allenbach, Edna	66
Anderson, Dol	66, 140
Anderson, Neil	60
Anderson, Pat	57, 131
Anderson, Ruth	66
Andrews, Betty	50, 54, 146, 147
Arrington, Kenyon	66
Ashford, Tom	57, 124
Ayers, Bob	57
Bacon, John	60
Bailey, Irene	66
Bain, Ruth	66, 144
Ball, Frances	66
Ball, Jean	66, 140
Bannecker, Bill	60, 129
Barber, Ruth	66
Barber, Shirley	57, 140
Barber, Virginia	14, 56, 57, 73, 93, 140
Barham, Jean	60, 140
Bartholomew, Walter	60
Bartholomew, Doris	49, 66
Baron, Ed.	60
Batcher, Bonita	60
Bateman, Joyce Ann	66
Bates, Carolyn	66
Bates, Lora Ellen	66
Batson, Ilona	31, 53

Bauman, William	55, 56, 57
Beadles, Marjorie	29, 60, 144
Beegle, Don	60, 105, 115
Bell, Rosella	20, 50, 146
Bell, Rosemary	60, 140
Bennett, Frank	20, 57, 120
Bennett, Mary	9, 46, 48, 50, 54, 140
Benson, Bonnie	66
Binford, Jessie	66
Bisbee, Donald	66
Blade, Bill	112
Blake, Janet	50, 140, 141
Blower, Fonia	66
Boehi, Arline	66, 89, 142
Boetticher, Betty	60, 142
Borough, Kenneth	60
Boucher, Dorothy	66
Boyd, Dorothy	66, 142, 143
Boyd, Stan	5, 21, 33, 48, 49, 50, 52, 55, 98, 99, 100, 106, 108, 115, 127
Brady, Caroline	60, 146
Brady, Mary Ann	66, 146
Bremer, Jack	60, 66
Briggs, Beverly	146
Brown, Clarke	47, 48
Brown, Geneva	49, 60, 61
Brown, Jane	66
Brown, Juanita	67
Brown, Marvin	51, 53, 55, 85, 86
Brown, Virginia	67
Bruckman, Betty	60
Buch, Stanley	49, 50, 55, 58, 129
Buchanan, Walt	60
Bugge, Robert	60
Buhler, Carl	67
Burnett, Donald	60
Burkhart, Bette	50, 106, 144, 145
Burnet, Bonnie	67
Burnett, John	53
Burrows, Lois	60
Busick, Robert	67
Butler, Lois	50, 107, 146
Byfield, Dick	60
Caldwell, Jean	67
Campbell, Betty	60
Cannon, Virginia	60
Cantrell, Anita	60, 146
Carey, Mary Louise	60
Carpenter, Robert	57, 58, 99
Carsh, Grace	67, 142
Carson, Mary	67, 140
Carter, Marian	30
Carter, Pat	57, 140
Carter, Patricia	60
Case, Virginia	57, 144
Cate, William	5, 31, 50, 51, 55, 127
Causey, Barbara	60, 146, 147
Chambers, Donna	60
Chambers, Robert	60
Chapman, Evelyn	60, 64
Chessman, Marian	67
Clark, Dottie Ann	67
Claudy, Elaine	60, 140
Collis, Elaine	67
Conner, Antoinette	67
Conway, James	98
Cooper, Barbara	67
Cooper, Barbara	67
Cooper, Caroline	49, 67, 99, 100
Corbett, Betty	67
Coulter, Edwin	57
Covert, Virginia	60, 146
Cox, Beverly	60
Craven, Helen	57, 93, 146, 147, 148
Crawford, Barbara	67, 142
Crawford, Gladys	104
Crowder, Phyllis	60
Crazier, Gayle	33
Cummings, Ward	60, 126
Cunningham, Dennis	57
Currey, Thyra Jean	9, 57, 58, 140
Curtis, Jane	67

Curtis, Lora	29, 60
Cutler, Barbara	67, 79, 88, 146
Cutler, Louise	27, 51, 146
Daugherty, Alice Fay	57
Davidson, Mel	100
Davis, Bruce	60
Davis, Bud	20, 48, 55, 57
Davis, Virginia	67
Day, Miriam	57, 144
Deal, Dorothy	31, 67, 109, 144
Deal, Evelyn	57, 64, 106, 144, 145
DeLancy, Frances	57, 98, 99
Demmy, Jean	67, 109, 144
DeSart, Lola	60
Detrick, Dorothy	67
Dick, Kaye	67
Dickerhoff, Donald	60
Dickerson, Arthur	48, 57, 120
Dillard, Winona	67
Ditty, Darrel	60, 122
Doer, Ruth	51, 146
Doerfler, Delora	57
Doollittle, Pat	67, 140
Donfriso, Mary	57
Drake, Dwayne	57
Dunn, June	60
Dussin, Georgia	61, 144
Dutton, Betty Ann	67, 140
East, Emma Lou	5, 9, 27, 46, 48, 51, 61, 95, 96, 146
East, Mary	64, 146, 147
East, Howard	61, 127
Edwards, Don	61
Edwards, Robert	53
Edwards, Theodora	51
Egan, Adele	61, 146
Eggiman, June	57, 140
Elgin, Bernice	51, 146
Elliot, Ann	61, 144
Elliot, James	48, 73
Emmons, Margaret	67, 70, 108, 140, 141
Engdahl, Corrine	67, 144
Erikson, Marian	42, 57, 149
Evenson, Marjorie	61
Farmer, Ruth	31, 57, 144
Felden, Joyce	33, 35, 57, 99, 100, 140
Felton, Velle	61, 149
Ferguson, Saralee	61
Finney, Robert	61
Fisher, Jane	67
Fischer, Helen	67
Fleetwood, Joe	67
Foote, Frances	67, 146
Ford, Fenton	70
Forman, Robert	57, 73, 90, 99, 108
Forslund, Ellen	67
Forsythe, Margaret	29, 51
Fouche, Beverly	67
Franklin, Alice	67
Fricke, Lawrence	61
Fricke, Norton	67
Fries, Jean	5, 48, 51, 54, 109, 143
Fragley, Arlene	67
Froman, Wilma	5, 42, 47, 49, 51, 95, 96, 140
Frum, George	67
Furman, Joyce	67
Gabriel, Peggy	51
Gage, Dorothy	60
Geisler, Margaret	57
Gillilan, Pat	68, 144
Gillings, Lois	60
Gilpin, Kenneth	61, 119
Girod, Stanley	68
Glass, Adrienne	68
Glasse, Jack	51
Glendenning, Dorothy	68
Golson, William	57
Gooding, Anna Ruth	51
Goodman, Barbara	68
Goodman, Marvin	57, 97, 107, 112, 115, 117, 127

Gorton, Wilma	68
Gotthe, Ed	61, 62
Groves, Neena	68, 88
Gray, Robert	61, 120
Greenlee, Verna	61
Grenfell, Marjorie	68, 140, 141
Gribskov, Shirley	68, 140
Griffith, Larah	61, 146
Griffiths, Virginia	57, 140
Grimm, Billie	57, 140
Gruber, Mathew	33, 61, 65, 100
Haberly, Phyllis	68
Habernicht, Bill	53
Halik, Janet	61, 146
Hammond, Barbara	68, 140
Hampton, John	67
Hanuska, Betty	51, 94, 95, 96, 97, 140, 141
Hanuska, Geraldine	61
Hanks, Joyce	68, 144
Hansen, Jane	61, 149
Harnsberger, La Verne	57, 140
Harrington, Gloria	68, 146
Harris, Beverly	68, 142
Harrison, William	53
Hart, Royal	48, 55, 61
Hartman, Donna	61
Harvey, Eunice	68
Hathaway, Margaret	61
Haverty, Pat	68
Hawley, Gary	60
Hays, Carola	29, 32, 33, 60, 105, 144, 145
Hazelett, Jack	68
Healy, Frank	68
Heller, Dorothy	68
Hempel, Colleen	68
Hemphill, Harry	57
Henderson, Winona	61, 85
Hendrickson, Freta	68
Herrman, Angela	68
Herrmann, Carol	68, 140
Hibbard, Louise	68
Hildebrand, Marie	68, 142
Hilfiker, Evelyn	68
Hill, Richard	68
Hjort, Marilyn	68, 146
Hoak, Nancy	61, 64, 90, 105, 108, 144, 148
Hoar, Dorothy	57, 140, 141, 148
Hobbs, Virginia	57, 107, 144
Hoggatt, Elsie	68
Holeman, Jean	68, 144
Holland, Helen	68
Hoover, Rosalie	52
Horton, Larry	49, 67, 107
Hoven, Ronald	61
Howard, Evangeline	68
Huffman, Jeanne	68, 146, 147
Huffman, Marjorie	142
Hull, Georgia	61, 146
Hunsaker, Dale	61, 65
Huston, Jane	57, 146
Idso, Faith	42
Irvine, Edith	68, 144
Jacobson, Loren	59
Janin, Veralou	68, 140
Jarrett, Beverly	61
Jacquith, Paul	61
Jenkins, Sylvia	68
Jensen, Jack	127
Jeppson, Donald	59
Johnson, Evelyn	61, 146
Johnson, Peggy	68, 79, 144
Johnson, Weston	68
Johnston, Pat	61, 149
Jones, Guy	8, 61
Jones, Alice	52, 92, 146
Jones, Jack	59
Jones, Jean	68
Jones, Vicky	49, 59, 107, 144, 145
Jones, Wawnela	69
Jory, Evelyn	49, 66, 69, 99, 140

Jacelyn, Edwin	69	Mae, Juanita	59, 142
Jungers, Frank	61	Maor, Myrna	69
Kanoff, Mary	60, 108	Margan, Day	62, 68, 99
Karnopp, Kay	69, 100, 107, 146	Maritz, Peggy	69, 109, 144
Karhan, Joan	69, 103, 140	Mazee, Yvonne	42, 52
Kaufman, Yvonne	34, 53, 105, 144, 145	Muhle, Virginia	62, 103, 108, 144
Kellis, Tom	60	Murdock, Lorraine	62, 146
Kendall, William	61	Murphy, Tom	55
Kenney, Dorothy	59, 93, 140, 141	Myers, Janice	69
Kent, Barbara	69	Myers, Jeanne	69
Kern, Georgiana	61	Nelson, Geraldine	69, 140
Kjelstad, Nels	61	Nelson, Marilyn	62, 144
Kook, Elsie	61	Nelson, Ruth	86
Knouff, Louise	61, 146	Newman, Joan	69, 142
Knowles, June	69	Nichols, Charles	62, 129
Korell, Barbara	59, 61, 142, 143, 148	Nichols, Coralee	62, 144
Lake, James	61	Nichols, Delores	62, 146, 147
Larkin, Charles	48, 55, 58, 59, 122, 127	Nicolei, Roy	6, 62, 70, 129
Larson, Ethel	61	Niles, Dorothy	42, 62
Larson, Roderick	69	Nims, Mary	59, 105, 144
Larson, John	69	Nixon, Robert	62, 126
Laughlin, Mary	27, 52, 55, 146	Nolan, Mason	62
Leek, Doris Jean	69	Nordean, Beth	52
Leman, Ralph	61	Nowack, Norma	69
Leupold, Georgia	69	Nygren, Roy	53
Levine, Betty	69	Ohling, Sara Ann	69, 146
Lewis, David	69	Oliver, Lillian	59
Lewis, Florence	61, 146	Oliver, Muriel	70
Lewis, Lois	62, 131	Olson, Bettie	70, 146
Liabel, Calvin	62, 121	Olson, Richard D.	59, 107, 115, 122, 127
Lian, Corsten	59, 92, 107	Otis, Pat	33, 35, 62, 64, 98, 107, 108, 144, 145
Lieser, Jean	27	Oh, Charles	62, 126
Lindsay, Rebecca	69	Page, Doreen	70
Linn, Hester	62	Parker, Mary	70, 140, 148
Long, Delvon	29, 49, 59, 140	Parker, Phyllis	62, 105, 140
Looney, Mildred	69	Parkin, William	48, 59
Ludlow, Jean	69	Patterson, Janice	5, 49, 56, 59, 105, 144
Luthy, Jeannette	59	Pattison, Beverly	70
Lynch, Larry	59	Pavlack, Conrad	49, 62, 65, 81, 91, 106, 112, 115, 124, 127
Lytle, Eileen	69, 70, 144	Peeler, Patricia	70
MacDougall, Malcolm	59	Person, Willis	70
Maide, Harold	49	Peterkort, Annie	70
Mallett, Richard	20, 55, 56, 78, 85	Peterson, Enobel	70
Mansfield, Pat	62, 64, 140	Peterson, Frank	62, 70
Mankertz, Theodore	69	Pettersen, George	59, 108
Marvel, Doris	62	Pettel, Carl	62, 115, 127
Massee, Eunice	42, 52, 103	Phillips, Arlie	70
Mathers, Jane	69, 140	Poorman, Guy	62
Mathison, Meryl	69	Porter, Archie	108
Mattinen, Ida	62, 107	Prait, Gordon	70
Mattson, Marv	69	Purcull, James	62, 122
Maulding, Marjorie	54	Purvis, Claire	70, 79
Maw, Alisha	69	Quade, Henry	62
Maw, Idaleen	69	Rabinau, Shirley	62, 146
Mayfield, Wayne	62, 114, 115, 120	Radcliffe, Eleanor	62
McCain, Marian	69	Randall, Betty	55, 56, 59, 104, 108, 144
McClelland, Sally	52, 144	Rathe, Hjalmar	70
McClendon, Joyce	25, 49, 52, 144	Rea, David	62
McDermott, Charles	62, 69	Ream, Don	63
McDonald, Barbara	142	Reetz, Charles	62
McDonald, Howard	62	Remington, Joan	70, 85, 140
McFarlane, Marilee	62, 87, 140	Riney, Delphine	70, 140
McGee, Elizabeth	62, 146	Rittenhouse, Earl	70
McIver, Douglas	62, 114	Roberts, Leslie	70
McKay, Bruce	62	Robinson, Dorothy	62, 64
McKay, Mary	59, 146	Robinson, Jeanne	70
McKinlay, Evangeline	69, 142	Robinson, Lois	5, 52, 54
Mears, Virginia	69	Rochan, Don	112, 127
Menashe, Sol	59	Roddy, Joan	7, 62, 144
Mercer, Theresa	71	Radis, Dolores	62, 108
Merki, Nancy	62, 64, 128, 144	Radie, Donna Jean	70
Merritt, Marilyn	69	Rae, Allan	79
Merten, Betty Jean	69	Rogers, Janet	63
Messing, Lois	32, 49, 69, 99, 144	Roop, Edna	70, 142
Meyers, Maxine	69	Roop, Orpha	70
Mijich, Joseph	62, 63, 99	Rose, Alice	42, 63, 64, 140
Miller, Pat	69, 142, 148	Ross, Barbara	70, 87
Miller, Vivian	62, 149	Ross, Margaret	63
Minturn, James	69		
Modrow, Dorothy	59, 142		

Ross, Rosabelle	70
Rowland, Jean	63, 105
Roye, Imogene	63
Russell, Jean	70, 146
Rutten, Loren	63
Ryan, Phyllis	70, 142
Saffron, Ruth	63, 105, 144
Sanderson, Jim	59
Sanford, Joseph	63
Schoppacher, Pruyll	59, 115
Schatz, Jean	70
Scheissler, Barbara	70
Schifferer, Edith	63, 140
Schissler, Katherine	70
Schlewitz, Robert	70
Schmierer, Dolores	63, 144
Schmoker, Geraldine	70, 103, 146
Schneider, Patsy	70, 146
Schoppert, John	59
Schwanberg, Carol	70
Schwartz, Arlene	59, 107, 144, 145
Sears, Patricia	63
Senders, Wilbur	48, 59, 70
Shafar, Donna	62, 89, 146
Shapiro, Louis	59
Sheehy, Richard	62, 127
Sheridan, Barbara	70, 142
Shields, Grace	70
Shirley, Barbara	7, 62, 146
Shughart, Lewis	63
Shum, Lyle	59
Shuster, Jack	63
Siemens, Joy	70
Siewers, Betty	70, 142
Silvis, Robert	63
Simmons, Darline	70
Simmons, Floyd	63, 111, 112, 114, 115, 124, 127
Simpson, Madge	70
Sinkola, Betty	42, 63, 64
Skrondal, Walter	55, 59, 82, 99, 107
Sly, Pat Anne	63, 105, 144, 145
Smart, Lyman	59, 107
Smith, Beatrice	70
Smith, Betty Jean	52, 146
Smith, Carol	59
Smith, Dean	53
Smith, Eleanor	52
Smith, Marjorie	70
Smith, Nevill	33, 49, 98, 99, 100
Smith, Orville	71
Smith, Paulo	63, 146
Smith, Thelma	71, 140
Smith, William	63
Sopp, Frances	70, 71, 88, 109, 128, 146
Staob, Betty	71, 142
Staples, William	71
Stein, Jack	55, 59, 66, 70
Stern, Tom	49, 59, 126
Stewart, Harriet	71, 142, 143
Stockman, Evelyn	71
Stocks, Verna	63, 144
Stoff, Paul	63, 118
Stone, Lynn	63
Stone, Margaret	62
Storz, William	49, 55, 97
Stovall, William	62
Strickland, Anita	62
Strickland, Jean	108, 133
Strong, Charles	5, 39, 52, 55, 98, 108, 115, 127
Strother, Ann	59, 106, 108, 144
Stuart, Jean	63, 149
Stuart, Nancy	63, 105, 106, 144
Sundling, Betty	71
Symes, Dorothy	63, 146
Tarpenning, Duane	63
Tate, Robert	107
Taylor, Ralph	53
Terry, Helen	71

Thomas, Catharine	5, 33, 48, 52, 54, 107, 144
Thomas, Dean	63, 69, 127
Thomas, Helen	53
Thompson, Lorne	63
Thompson, Vivian	71, 142
Thorn, Jerry	71
Tingelstad, Leona	63, 81, 87, 91, 93, 144, 145
Tipp, Marjorie	71
Toomb, Claire	63
Toomey, Dorothy	29, 49, 63
Tracy, Melba	71
Tracy, Barbara	71, 78
Trask, Dorothea	59
Trask, Nancy	71
Tucker, Betty Jean	63, 140
Tulley, Rachel Ann	71
Turney, Kenneth	63
Turville, Charlotte	71, 79, 146
Twedi, Joanne	71
Tyndall, William	59
Unruh, Donna	71, 100
Utter, Collins	59, 126
Vaerelli, Howard	63
VanLeeuwen, Hendrina	71
Varner, Winona	71
Veelman, Lucille	71, 105
Woespe, Florence	71
Wagner, Maxine	59, 140
Wahlgren, Ruth	62, 144
Walker, Wylene	71, 142
Wallace, Cloise	71
Wallace, Bob	59
Waldruff, Kenneth	64, 115, 127
Walls, Betty	59
Ward, Robert	62, 65, 114, 119, 127
Wardrop, Calvin	59, 114, 115, 127
Warrington, Julia	71
Waters, Pat	62, 64, 107, 142, 143
Watson, Jack	48
Webb-Bowen, Jean	59, 146, 147
Weststein, Pat	71
White, Agnes	59
White, Dorothy	71
White, Richard	63
White, T.	71
Wicks, Richard	33, 45, 48, 49, 53, 55, 100
Widdows, Glen	71
Wiebe, Virginia	71, 105, 108, 142
Wienert, Pegge	63, 89, 139, 140
Wilde, Sylvia	63
Wilcox, Thelma	63, 146
Williamson, Melva	63, 92, 93, 108, 144
Willard, Betty Jean	71
Wilson, Helen	71
Wilson, Juanita	71
Wilson, Kathryn	27, 53, 144, 148
Wilson, Marjorie	71
Withers, Helen	71
Wittliff, Mary Ann	63, 146
Wolfsheer, Gerald	50, 53, 55, 85, 111, 112, 115, 127
Work, William	63
Wright, John	63
Wrisley, Louise	42, 53, 144
Wunsch, Gloria	42, 49
Wynn, Helen	71
Wyatt, Marilyn	71
Xenedes, Arla	71
Yacom, Roberta	59, 140, 148
Young, Bradley	63, 69
Young, Richard	63
Zaufi, Gibbs	59, 116, 122, 127
Zerzan, Dorothy	29, 63
Zimmerman, Elizabeth	71, 144
Zimmerman, Suzanne	63, 128, 146
Zorn, Catherine	43

FEB 11 '78

**THIS BOOK DOES
NOT LEAVE
THE LIBRARY**

WILLI
1