

Thanksgiving Football Edition

Willamette Collegian



VOLUME XXXII, No. 9

WILLAMETTE UNIVERSITY, SALEM, OREGON, NOVEMBER 24, 1920

PRICE: FIVE CENTS

WILLAMETTE - WHITMAN CLASH BIGGEST GAME IN NORTHWEST

Teams Regarded As Evenly Matched But Definite Comparison of Prowess Cannot Be Made From Records; Both Squads Enjoy Period of Recuperation

Bearcats to Present Strongest and Heaviest Lineup Shown This Year and Hope That Familiarity With Field Will Overbalance Any Advantage Missionaries May Have in Weight; Every First-String Man Is Ready for Play

By Ralph Curtis

Willamette's Thanksgiving football game with Whitman College tomorrow on Sweetland field will be the biggest contest played in the Northwest on that day, according to sport writers on all leading newspapers.

Although neither is a contender for the conference championship, the two teams are recognized as being unusually strong, and the fact that they are so evenly matched, as far as dopsters can tell, gives the game first place in the interest of football fans all over the northwest.

There is little to be learned of the outcome by comparing the personnel and records of the two teams. Neither has played a team that the other has met, so comparisons are necessarily vague.

The most nearly direct basis of comparison favors the Bearcats. O. A. C. and Willamette each tied Multnomah; O. A. C. defeated University of Washington, and the latter defeated Whitman. A comparison involving five teams, however, is not the best criterion of relative strength, particularly as some of the games were quite early in the season.

So far as condition goes, both teams are in first class shape. Whitman has not played for two weeks and five days, time enough for every injury to heal. Willamette likewise enters this game after a rest, with every man in first class condition and with a full first string lineup, something that was lacking in her other important game, with Multnomah.

Whitman is said to have a slight advantage in weight on the line, but this is offset by the fact that Willamette plays on the home field. Whitman has met stronger teams than has Willamette, and may be therefore said to have an advantage in experience. The Bearcats have, however, played sufficiently strong teams that they can be counted on not to have stage fright.

The Bearcats will present the strongest and heaviest lineup they have sent onto the field this year, but even so, they will scarcely average 160 pounds. This lineup will not be different from that of former games with the exception that every first-string man will be present. There are only two or three positions in which there is a question as to who will play.

It is practically certain that Rarey, Zeller, Irvine and Wapato will function in the backfield, with Power, Sherwood and Ganzans as alternates. Rarey, Lynn and Ganzans are all possibilities at end, and while Lawson is sure to play one tackle, it is possible that either Harry Rarey or Basler may play the other, and that either Basler or Bain may play center. Of guards, there is little to pick between White, Nickel, Ramsey and Harry Rarey. In fact, the only sub lineman who has not an equal chance to start the game with the rest is Bird.

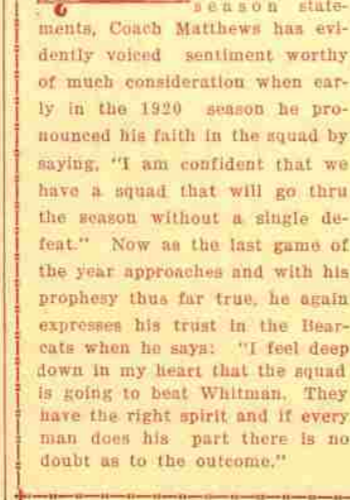
Here are 18 men, every one experienced, tested and dependable, on whose work the university bases its hope of victory in her first conference football game.

Of the possibility of gaining that victory, these 18 men are saying less than anyone else on the campus. Before previous games the team has been outspoken in its opinion, but the silence now is indicative of the spirit which has been growing within them, which means that if Whitman scores, it will be over some badly mangled Bearcats.

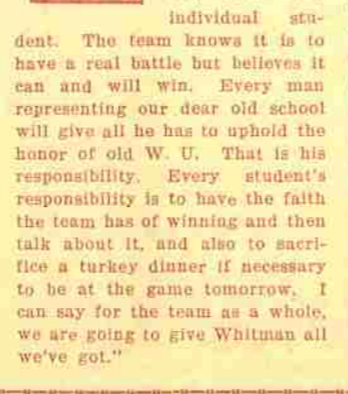
Patronize Collegian advertisers.

Chief Moguls Express Optimistic Views for Tomorrow Coach, Manager and Captain Hold a "Whittling" Party

Willamette's spirit is embodied in the slogan, "Whittle Whitman" and is given great impetus by these gleamings from the Bearcat stellers themselves. Never extremely optimistic in his pre-season statements, Coach Matthews has evidently voiced sentiment worthy of much consideration when early in the 1920 season he pronounced his faith in the squad by saying, "I am confident that we have a squad that will go thru the season without a single defeat." Now as the last game of the year approaches and with his prophesy thus far true, he again expresses his trust in the Bearcats when he says: "I feel deep down in my heart that the squad is going to beat Whitman. They have the right spirit and if every man does his part there is no doubt as to the outcome."



Captain Rarey has given out the following on the conflict of the morrow: "Most of the responsibility of whether or not we win our first conference game which will put Willamette on the map, rests with the team. A part of the responsibility rests tho, with each individual student. The team knows it is to have a real battle but believes it can and will win. Every man representing our dear old school will give all he has to uphold the honor of old W. U. That is his responsibility. Every student's responsibility is to have the faith the team has of winning and then talk about it, and also to sacrifice a turkey dinner if necessary to be at the game tomorrow. I can say for the team as a whole, we are going to give Whitman all we've got."



"The Willamette-Whitman battle," says Athletic Manager Bain, "is the first conference game ever featured in Salem and promises to be the most important turkey day contest in the northwest. Without doubt Willamette has one of the strongest aggregations she has had in years and all the players are in the game to give everything they have from the first whistle to the final shot. On the other side, Whitman has made a showing of the highest class football this season. Indications are that this coming game will be one of the closest and hardest fought exhibitions that the local field has ever witnessed. The teams are evenly matched in weight and experience, both are supremely anxious to win, and so the game will resolve itself into a case of fight from first to last."

HISTORY OF ATHLETICS TELLS OF MANY VICTORIES FOR WILLAMETTE

University Teams Compete With Best Players in Northwest in Year of 1894 and Emerge from Season With Worthy Record; Gym Constructed 1895

President Hawley Wallows in Mud With Other Members of Team; O. A. C., Along With Pacific University, Suffers Defeat at the Hands of These Early Bearcats; W. U. Wins State Championship in 1899 and Gets Pennant

By Paul Wapato

Through ignorance of facts and hasty conclusions, it is the opinion of those who know Willamette meagerly that her athletic history is anything but impressive; and that it has wrought but little in the life of this historical institution.

But as a matter of fact, for a quarter of a century, the athletic history of Willamette University has been exceptionally impressive—impressive because of her numerous victorious and worthy achievements when competing against larger institutions; and also because athletics have been a potent factor in kindling enthusiasm, in arousing college spirit and in cementing relationship between students and the university. At least, such is the testimony of the alumni.

During 1894, Willamette University was represented with athletic teams, competing against the best teams extant in that period and closing the season with a worthy record. Pacific university received its first bitter pill that year, being swamped under an avalanche of touchdowns in a game of football. According to an early edition of the Wal-

lulah, Willis C. Hawley, then president of the university, "wallowed in the mud with the members of the team in aspiration for the position of center on the team."

The following year, the "big gym" was constructed and apparently athletics were destined for certain boom. "Brick" Norse was coach, and under his tutelage, the gridsters completed a successful season, having suffered only two defeats, and in each case, being set-back by the University of Oregon team by the narrow margins of 2 to 6, and 6 to 9. O. A. C., according to the records, was mowed under by Willamette in a game of football.

Thru the loss of Chester Murphy, who was the star performer for the Willamette team, by virtue of his transfer to Stanford university, athletics in Willamette were at a low ebb, and football was at a standstill until the year of 1899 when a team was again sent out on the field. Another reason, it is recorded, for the cessation

of athletic activity was the inability to finance the teams. Coaches were not readily enticed to accept positions on the staff of the university.

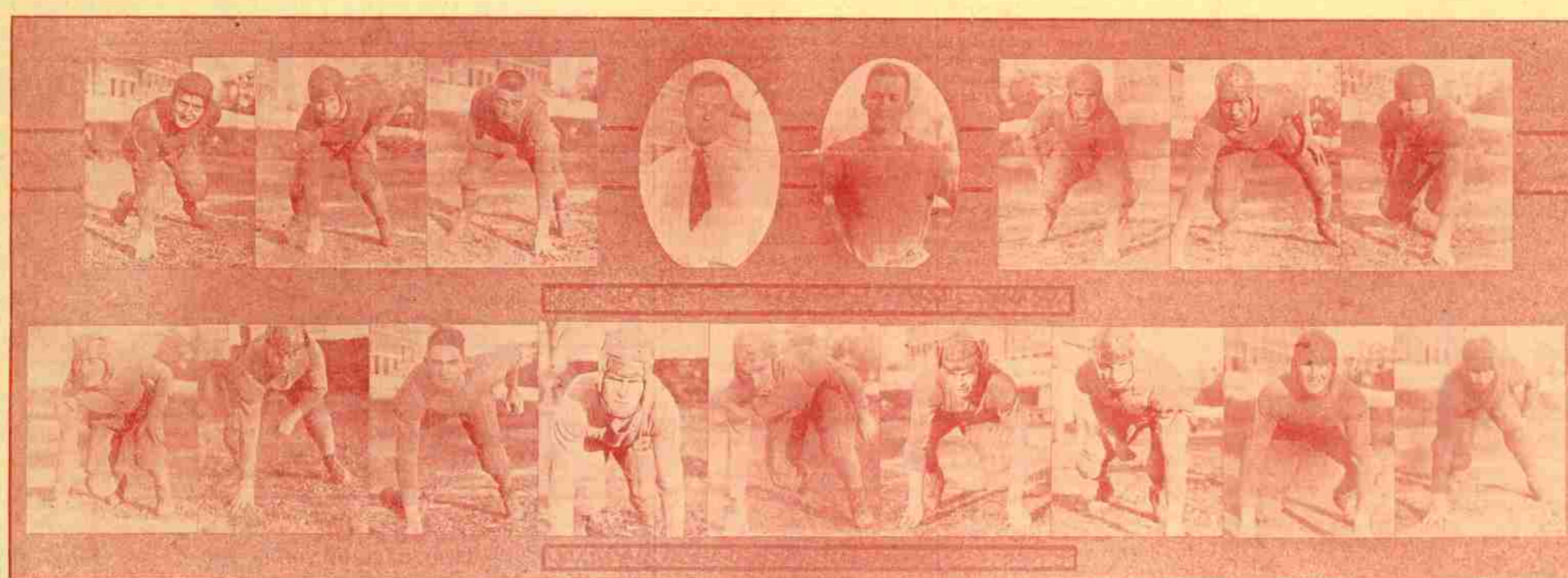
Soon after the resumption of athletics in '99, Willamette University won the state championship, having defeated the leading teams of the northwest, and it is said, that a pennant can be produced to authenticate the claim. The personnel of the championship team was: Chauncey Bishop, E. P. Holt, "Rube" Sanders, Harry Olinger, Harry Young, John Williams, Marcus Savage, J. J. Murray, Edward Judd, Albert Jessup, Paul Jarvis, Ralph Bonham, Lloyd Marquam, and L. D. Reed.

Willamette University has not only won distinction and fame on the gridiron, but has also been represented on the basketball court with able teams which triumphed over the pick of the northwest teams. The peak of supremacy in this sport was first attained in 1902, and again in 1912 she met few teams that equaled her strength. According to the Walulah for 1912, the cardinal and gold defenders triumphed over the conference teams with regularity.

Also during this year, under the able mentorship of Dr. Sweetland, Willamette easily established her football prowess in the northwest. She was rated second only to the

(Continued on page 4).

WILLAMETTE BEARCATS, WHO WILL MEET THE WHITMAN MISSIONARIES TOMORROW ON SWEETLAND FIELD AT 2 O'CLOCK IN WHAT PROMISES TO BE THE HARDEST CONTESTED GAME IN THE NORTHWEST



Upper row—(reading from left to right): Nichol, guard; P. Sherwood, fullback; Irvine, quarter; Matthews, coach; Russel Rarey, halfback and captain; Zeller, halfback; Wapato, full; H. Rarey, tackle. Lower row—W. Socolofsky, end; K. Lyman, end; Basler, tackle; Ramsey, guard; Bain, center; White, guard; B. Lawson, tackle; Barnes, end; Ganzans, end.

MONEY WILL GO TO ASSIST INDIA

Missionary Committee Plans Campaign to Raise \$600 for Foreign Workers

Out of a multitude of worthy and needy causes, the university missionary committee has chosen three on which to center its attention this year. From the \$600 to be raised, Miss Aetna Emanuel, a Willamette graduate, will receive \$300; the fund for needy students in central Europe will receive \$200; and the remaining \$100 will be a part of the contribution to the general missionary fund of the Y. W. C. A. These make a total of \$600. The proposed campaign has the hearty approval of President Doney.

It is the purpose of the students of Willamette to aid, in so far as possible, Willamette graduates who are now serving in the foreign field as teachers, preachers, and other missionary workers. Royal Blisbee, now serving in India, and a Willamette graduate, was the recipient of (Continued on page 2).

RALLIES AND PARADES HERALD BIG CONTEST

Men Present Unusual Sight as They March the Streets; Maidens Do Their Bit With Gay Lanterns

The students have been doing their share toward making tomorrow's game a success. As early as last Friday an impromptu rally was held just after student body meeting. Since then everybody has presumably been thinking, talking, wishing and advertising football at every possible opportunity.

But the big event was the rally which occurred last night. Accompanied by the band and various other noise producers the masculine members of the student body serpentine downtown. They were clad in—well, they presented a somewhat unusual sight. Whitman's goat was present, and also some fair maidens who presented an original stunt. Considerable trouble was taken to convince the townspeople that there was no ball about the proceedings.

The better half of the student body showed their pep by carrying Japanese lanterns. After all its quality that counts and Monbet, the tailor, puts real quality in every suit.—Adv.

LEE WINS GAME FROM WHITMAN

First W. U.-W. C. Scrimmage Real Bone Crusher Says Tuffy the Water Boy

(By Lawrence Davis)

"That first scrimmage with Whitman, 'way back in the early fifties, was a fight to the last ditch," mused Tuffy, as he closed his eyes in reverie. "Why, I can still remember chasing out on the field with the water bucket, when our star halfback twisted his ankle by stepping into a gopher hole. Things looked bad for us then, for the northerners were fighting desperately, and we still had nearly two full quarters to play. But I am getting ahead of my story."

"Nowadays, in any branch of athletics, we have our heroes. We attend the games expecting to see our favorites star. But, altho my mentality was not far developed during that plunger period in our history, I nevertheless can remember that I had my hero—and he was a real man, real football player, lowering (Continued on page 2).

ALMA MATER HONORS WILLAMETTE'S COACH

R. L. Matthews Awarded Position on All Notre Dame Football Team Says Notice in "Scholastic"

R. L. Matthews, Willamette's premier athletic coach has been awarded a position on the All Notre Dame football team, according to an announcement contained in the Notre Dame Scholastic. He has been named as an end, and also mentioned as a good man at quarter or halfback. The statement further says that "Matthews is having considerable success as coach for Willamette University."

It is thru the direct efforts of Coach Matthews that Willamette will play her first game of conference football on Thanksgiving day and it is due to his ability that the strongest squad the university has ever produced will be seen in action against the fast Whitman aggregation from the north, on that day.

For five seasons Coach has been building up a machine which is soon to give Willamette a technical standing of 100 per cent in the Northwest football conference. He has developed a line, altho light, whose defense is impenetrable to (Continued on page 4).

CROSS COUNTRY ADDED FEATURE

Annual Interclass Run Will Furnish Interest Between Halves of Grid Clash

A feature of the Thanksgiving day football game, not so interesting as the main event to outsiders but rivaling it in the interest of students will be the cross-country run which is to be held between halves of the game.

This is the annual interclass cross-country, with six entries from each class. Points for the interclass rivalry championship and cup will be awarded.

Aside from the class competition interest, there is much discussion and speculation as to who will be the individual winners. The race will be better than that of last year, in that every man will be trained and familiar with the course.

Jackson has already covered the distance in something less than 10 minutes, and the seniors are expecting him to seize the gold water-blade. However, to do so he must (Continued on page 2).

MASSACRE THE MISSIONARIES!

Willamette Collegian



Founded 1859

OFFICIAL ORGAN OF THE ASSOCIATED STUDENT BODY OF WILLAMETTE UNIVERSITY.

Entered at the Postoffice at Salem, Or., for transmission through the mails as Second Class matter.

BY MAIL, ONE YEAR . . . \$1.75
SINGLE COPY05

A COLLEGE NEWSPAPER PUBLISHED EVERY WEDNESDAY

Advertising Rates Furnished on Application to the Manager.

FAY PERINGER EDITOR

Rodney Alden, '23, associate editor; Ralph Curtis, '22, athletics; Earl Cotton, '18, alumni notes; Sheldon Sackett, '22, chapel notes; Ruth Smith, '23, proof reader.

Reporters

Lawrence Davies, '23, Bertha Leifer '22, Evelyn De Long '21, Paul Wapato '21, Marjorie Flegel '22, Frank Bennett '21, Ruth Hill '24, Audred Bunch '24, Mary Gilbert '24, Clifford Berry '23, Vivian Isham '22.

KENNETH POWER MANAGER
Phone 285W

Sheldon F. Sackett, . . . Assistant Mgr.
Phone 1401

Truman Collins, . . . Circulation Mgr.

YES, IT'S TRUE.

Perhaps a few of you may have heard it rumored that there is going to be a football game tomorrow. Well, it is true. Perhaps you may have heard that this game is to be between Whitman College and Willamette University, and will be the best football match ever staged in the city of Salem. This also is true. And by some unaccountable chance you may have heard a wild rumor to the effect that Willamette figures pretty strongly on winning this game. You may bet your last cent this is true.

You may have heard that Willamette has a light team this year. This is true, but it is only about 1 per cent of the truth about our team. In weight our players range down below 140 pounds. True enough, but 140 pounds of straight guts are worth more than 240 pounds of plain beef any day—not meaning to cast any reflections upon anybody else, either. Our team does not need reflections, for it has a flashing, scintillating brightness of its own.

Perhaps you have heard some other remarkable statements about our

Bearcats and their game tomorrow. Well, you may rest assured that it is all true.

For the past two weeks every Willamette student has been face to face with the opportunity to show his loyalty for his alma mater. Furthermore the opportunity is still with us: some real effort at this vital time, may yet put any of us who have thus far neglected our duty, upon the list of Willamette students who deserve the name.

Tomorrow's game must be a success financially for any other reason is only a partial victory. Have you advertised the game? Match is at stake and the Willamette students are responsible. How? Enthusiasm—pop. Talk football, talk Whitman vs. Willamette. Yell about "Russ," "Wap," Zelar, "Tuffy"—talk "Bearcats." Sell tickets; and every student of Willamette—a Willamette student. Show the town we are behind our team to the last puddle and Salem will respond with real support. Today is not too late to talk football and sell tickets.

LEE WINS GAME.

(Continued from page one)

above his teammates in stature and in gameness. Quarterback Lee was my ideal as a football pilot. "However, the Missionaries from the Inland Empire country brought with them a 115 pound tackle, noted throughout the Oregon country for his fierce style of defensive play. Notwithstanding his extreme lightness, Captain M. Whitman of the visiting eleven had shown his true makeup for three strenuous seasons of gridiron work. Consequently, the vast assemblage of white settlers and Indians gathered to witness the battle on that Thanksgiving day, I waited intensely for the start of the contest, in order to see these two unlike exponents of the great American game in action against each other.

"I perched unessily on the home bench while the teams lined up for the battle. The crowds were silent as the referee's whistle sounded, followed by Captain Lee's beautiful kickoff of 55 yards. Then the tense moments began. The ball seagawed back and forth down the field, with neither team threatening to score. The first half ended with a cipher after each name on the scoreboard.

"Then, at the opening of the second session, the unfortunate accident occurred, of which I made mention above. However, the crippled halfback was not easily deterred from his purpose. That man, suffering intense agony from the sprain, had his ankle bandaged, and the play went on.

"Until the fourth quarter started, neither Lee nor Whitman had shown any special brilliancy. They were, undoubtedly, 'marked' men, and even in the powerful flying wedge plays when the former carried the pigskin, he was unable to penetrate the Missionaries' line for more than two or three yards. But, after a series of flying wedges, all of which proved unsuccessful, Captain Lee resorted to some rare strategy. The team took the same formation, the ball was passed to the quarterback, who made an open break for right end, intent on skirting that part of the line without interference. However, the lithe body of Captain Whitman squeezed thru the local line, and one of the little tackle's

See Our Sample Line of Xmas Greeting Cards

None Too Early to Place Your Order

Bertelson Printing Co.

Phone 779 Y. M. C. A. Bldg.

When You Think of Drugs

Think of

Schaefer's Drug Store
135 N. Com'l St.

STYLES SHOE SHOP

Particular Attention to First Class Shoe Repairing
130 So. Liberty
In Bank of Commerce Bldg.

Buy your Thanksgiving and Xmas cards and seals. We have a beautiful line.

SALEM VARIETY STORE
152 N. Com'l. St.

THE WHITE HOUSE Restaurant

Lunch Counter—Dining Service
Open All Night
362 State Street

arms shot out with one final, determined effort, just as Lee was almost in the clear. The crowd gasped, for the most brilliant tackle of the day had been staged. As was the custom in the pioneer days, the college men took delight in growing beards, particularly chin whiskers. Well, our hero had his share of them, and the diminutive Whitman, taking advantage of the fact, had seized them with one hand and with a mighty effort, had hurled Lee to the ground for a loss.

"Then a spark of fire began to glow in the eyes of our captain, and he led his men down the field in a final march of victory or death. In a desperate attempt to stem the tide, the visiting mentor sent in substitutes one after another, but all to no advantage. New formations, in which the home eleven had been drilled the night before, were used in his victorious journey down the field.

"Five yards from the goal line, the march was stopped; the Willamette team faced a stone wall. First down—six inches gained; second down—the right half was thrown for a half yard loss. Not a sound was heard all along the sidelines as Quarterback Lee barked out the next signal, slowly and calmly. I remember them yet—19889, center rush formation, 267451, 18. The Whitman eleven rushed forward; Captain Lee received the ball in his outstretched arms and disappeared. The home players surged toward the center of the line with a mighty yell. After the whistle blew, player after player was removed from the pile of human debris; and on the bottom, in an unconscious condition, but laying over the ball, which was a scant six inches across the goal, was my hero, captain and quarterback, J. Lee. After receiving the ball, he had dropped to his knees, and in the blind rash of the opposing eleven, had crawled between the legs of his faithful center for the winning touchdown.

"Tell them for me," the narrator concluded, "that frat Willamette-Whitman battle was a real bone-crusher from the water-boy's point of view."

"Suits that Serve." That is our motto and every suit we turn out we guarantee will render satisfaction.—Adv.

Recital Postponed Two Weeks

The miscellaneous recital which was to have been presented Tuesday evening, November 23, has been postponed until December 7, according to an announcement made by Miss Harding.

This action was taken in order not to interfere with the rally which will be held on Tuesday evening for the purpose of getting everybody in tune for the Thanksgiving clash.

Lausanne Infirmary Completed
The Lausanne hall infirmary is now finished and, judging from the conversation of Willamette women, good health has lost some of its attributes as an asset. The three rooms on the main floor of the new dormitory which have been set aside for a sick ward have been furnished by Mr. Wise of Eastern Oregon, and are regarded as the most attractive part of the hall, as yet. One room is finished in walnut; another, which contains besides the bed a nurse's cot, is in ivory; the third is the convalescent room, in bird's-eye maple.

Alumni Notes

'11 A. R.

James W. Crawford, some time ago appointed by State Treasurer Hoff as his deputy, has formally assumed the position, succeeding Joseph G. Richardson.

Mr. Crawford is 32 years old. He is a son of A. M. Crawford, former attorney-general, and for two and one-half years was assistant attorney general under his father. Later he became his father's law partner in Portland. He is a graduate of Willamette University, where he received the degrees of A. B. and LL. B. in 1911, and of Yale university law school, where he received the degree of LL. B. in 1913.

Mr. Crawford enlisted in the United States army as a private July 7, 1917, and was discharged as a first lieutenant of infantry December 15, 1918.

Prior to coming to the state treasurer's office, he had practiced law in Portland since January 1, 1915, with the exception of his 18 months in the army. He was secretary of the Multnomah Bar Association, adjutant of the Portland post of the American Legion and a member of many civic clubs.

Ex-'15?

Mildred Oppenlander, a former student of the music school, now Mrs. E. W. Peterson, is living in Portland with her husband, who is church editor of the Oregon Journal. Mr. Peterson is president of the Multnomah County Sunday School Association and has spent some time this year visiting the schools of the county and addressing institutes. He spoke at Pleasant Home recently on "The Need of Religious Education."

MONEY WILL GO.

(Continued from page 1).

a part of the \$500 raised during the spring semester of 1920. This money, a tangible expression of the thoughtfulness and good wishes of the students of his alma mater, greatly aided and encouraged Rev. Bibbee in his work.

This year efforts will center largely around Miss Emmel, who is also serving in India. At the present time, in addition to her social service work, she is acquiring a knowledge of the native language preparatory to teaching in the mission schools. The great need of the people of India is known to all, and any detailed explanation would serve no good purpose here. The missionary committee is striving to place the hand of encouragement on the shoulder of Miss Emmel so that she will know that Willamette is with her in her work.

The contribution of \$100 is a part of the sum asked for the general mission fund by the national Y. W. C. A. This money will be distributed over the various parts of the field where the need is the greatest. The campaign will commence on the 30th of November, and will be continued during that week. The pledges given at that time will be payable on or before the first of February.

Philanthropy—When a rich man wants to get rid of his money, he gives a million to charity, or sends his son to college.—C. J. Macy, Columbia U., '21.

CROSS COUNTRY.

(Continued from page 1)

beat "Jeter" Gillette of the juniors, and some fast men among both sophomores and freshmen. The race starts at the west gate of Sweetland field shortly before the end of the first half. The runners will go to Winter street, north to State, east to Twelfth, south to Oak, west to Winter, north to Lausanne, and finish in front of the grandstand after a lap and a half around the track.

The winner will score one point, five men from each class scoring the number of points as they place, and low score winning.

If you want style, and quality all happily combined in a garment which will insure satisfaction and service, drop in and see Mesher, the tailor.—Adv.

Patronize Collegian advertisers.

Useful Xmas Gifts

Dinnerware
Glassware
Silverware
Percolators
Percolators
Kitchenware

at
WM. GAHLSDORF
135 N. Liberty Street, Salem

Willamette University

FOUNDED FEBRUARY 1, 1842
A Christian institution of higher learning. Located at the Capital of the State of Oregon. A beautiful campus opposite the Capitol building. Buildings and equipment attractive and adequate. Faculty of highest character, preparation and teaching ability. Student body clean, able and wholesome. Scholarship high and accredited everywhere. Very inexpensive. Rich in tradition and in large and honored alumni. Students wishing work in the College of Liberal Arts, in Law, in Theology, in Music, or in Fine Art are highly advantaged at Willamette. Closest investigation is invited. Bulletins on request.
PRESIDENT CARL G. DONEY, SALEM, OREGON.

Salem Bank of Commerce
Corner State and Liberty St.
Salem, Ore.

Ladd's BOOKS
For over Fifty Years
Students of Willamette University
Have banked with
LADD & BUSH
127 2 STATE STREET

CONFECTIONERY MAGAZINES
W. H. Westbrook
HOME MADE CANDY
A SPECIALTY
Try Our Ice Cream Parlor
127 2 STATE STREET

Reduce the high cost of living by trading at
THE PEOPLE'S MARKET
Best Meat and Best Butter in Town
Save 5 per cent by buying a coupon book, good for anything in the market. Prices Always Right.
155 N. Liberty St. Phone 594

W. J. PORTER
Exclusive
Wall Paper and Paint Store
PICTURE FRAMING
Phone M 485 455 Court Street

LOVE
THE JEWELER
337 State St.,
Salem, Ore.

In the Lobby of the
BLIGH HOTEL
We do the work and the Patrons do the talking.
Bligh Hotel Barber Shop

City Cleaning Works
Cleaners of Quality
Student Cleaners
Phone 793 1261 State St.

Commercial Printing Co.
"Under the Chimes"
U. S. Nat'l Bank Bldg. Phone 207

Wm. Neimeyer
Drugs
Stationery
and Candy
444 STATE ST.

WEST FUR CO.
EXCLUSIVE DEALERS IN FINE FURS
521 Court St. Opposite the Court House

State Street Market
PAUL KOHN, Prop.
Best quality of meat at fair prices. All kinds of fresh and smoked meats including poultry.
Cash paid for all kinds of stock
1256 State St. Phone 574

The Salem Steam Laundry
137 South Liberty St.
Largest Best
Tin and Gravel Roofing. General Jobbing in Tin and Galvanized Iron Work
NELSON BROTHERS
Plumbing
Dealers in Warm Air Furnaces, Metal Skylights, Metal Cornices
355 Chomeketa St., Phone Main 1906
Salem, Oregon

To Close Out
ALL SILVERWARE AT COST
Salem Hardware Co.
129 N. Com'l

W. U.
WE'RE BACK OF YOU!
You want to clean up on Whitman tomorrow
After you have cleaned up on Whitman, why not make yourself look clean by buying a new suit or overcoat at Bishop's while the sale is on?
Salem Woolen Mills Store
C. P. Bishop, Prop.

Dr. C. B. O'Neill
Optometrist-Optician
Bush Bank Building
Complete grinding plant on the premises
Phone 625

Dr. F. L. Utter
DENTIST
414 Bank of Commerce Bldg.
Salem, Oregon

Drs. Epley & Olinger
DENTISTS
Corner State and Liberty
Salem, Oregon

Dr. O. L. Scott, D. C.
Chiropractic Spinalist
Palmer School Graduates 1911
Rooms 309-12 W. S. Nat'l Bank Bldg.
Phone 1182 Derby Building

Dr. Steeves & Findley
Eyes, Ear, Nose and Throat
Glasses Fitted and Furnished
Rooms 205-211, Salem Bank of Commerce Bldg., Salem, Oregon

Dr. C. H. Schenk
DRUGLESS PHYSICIAN
AND CHIROPRACTOR
Cor. Court and High Sts., Salem, Ore.
Residence: 234 W. Miller St.
Phone 1297-R

PROFESSIONAL CARDS

Save Your Eyes
MORRIS & KEENE
Optical Company
507 Bank of Commerce Building

Dr. B. F. Pound
DENTIST
Fifth Floor U. S. Nat'l Bank Building
Salem, Oregon.

Dr. W. L. Mercer
OSTEOPATH
Graduate American School of Osteopathy Kirksville, Mo.,
Salem, Oregon.

Dr. O. L. Scott, D. C.
Chiropractic Spinalist
Palmer School Graduates 1911
Rooms 309-12 W. S. Nat'l Bank Bldg.
Phone 1182 Derby Building

Dr. C. H. Schenk
DRUGLESS PHYSICIAN
AND CHIROPRACTOR
Cor. Court and High Sts., Salem, Ore.
Residence: 234 W. Miller St.
Phone 1297-R

J. O. Matthis
Physician and Surgeon
Office: 409-410 Bank of Com. Bldg.
Phone 572

LET A HOT POINT DO THE WORK



Electric Fixture & Supply Co.
Phone 1934R
222 N. Liberty St. Salem

MADE IN SALEM



Peanut Brittle

Special prices during the Holidays on Everything in Our Line of HARDWARE and FURNITURE
CAPITAL HARDWARE AND FURNITURE CO.
285 N. Com'l Phone 947

Buy Harley-Davidson Bicycles from Harry W. Scott
147 S. Com'l St.

PRICE SHOE CO.

Leaders in FOOTWEAR
326 State St., next to Ladd & Bush
Phone 276

CENTRAL PHARMACY

PRESCRIPTIONS
410 State Street, Salem, Oregon

A. B. GARDNER

Leading GOLD and SILVERSMITH
A visit to our store will convince you that we have everything in the Jewelry Line for Holiday Gifts

Ladies' Bracelet, Watches, Rings, Neck Chains, Bows, Purses, Umbrellas and Hair Ornaments
Gents' High Grade Watches, Chains, Charms, Military Sets in Ebony and Ivory

We are makers of W. U. Class and Society Pins
Successor to Gardner & Keene

Dependable Printing ...

Statesman Publishing Co.

CAPITAL CITY STEAM LAUNDRY
Work and Service that you will appreciate
PHONE 165

U. G. SHIPLEY CO.
FEMININE WEAR EXCLUSIVELY
Where the "pay as you go plan" has started many a Savings Bank Account

C. B. CLANCEY Phone 381
"Say It With Flowers"
123 N. Liberty St. Salem, Ore.

Portland Coat & Suit Co.
SALEM'S GREATEST WOMEN'S APPAREL STORE
Salem, Or.
(Old White Corner)

WOOD PRICES REDUCED
5 Loads 16-inch . . \$20.00
Prompt Delivery
SPAULDING LOGGING CO.

At the Electric Sign "SHOES"

Foot Ball Thanksgiving Day

"MASSACRE THE MISSIONARIES"

It's fine and W. U. very probably will, but before the game you players and rooters better come and see those

"Peppy" "Jazzy" Brogues

The Young Man's Shoes They Are Only

\$9.95

Young Ladies Also Use the BROGUE SHOES AND OXFORDS

There are plenty of other Styles if you want them From \$6.00 up to \$13.00



At the Electric Sign "SHOES"



(By Lorlei Blatchford)

Social events during the past week have been rather a minus quantity at Willamette University. However, perhaps the most important event of the Philodorian Society was celebrated on Saturday evening in the form of the Phil reunion. During the coming week, the Thanksgiving jolly-up and the dinners for the Whitman team, will be of most prominence in the social world.

Miss Mabel Stanford entertained Miss Twyla Dotterer, one of her freshman sisters, for dinner on Thursday evening.

Miss Lucille Tucker spent the week-end at the country home of her sister, Mrs. Wells.

Miss Emma Shanafelt spent Saturday at her home in the country.

Miss Lucy Holt, a former member of the class of '22, spent last week visiting in Salem. Miss Holt was

on her way to Los Angeles. Willamette was indeed glad to welcome her as a visitor on the campus.

The freshman girls took charge of the Thanksgiving services of the Y. W. C. A. last week. Ruth Hill had charge of the program.

Caroline Stober gave a reading entitled "Thanksgiving." Audred Bunch read an original poem, and Gertrude Aldrich and Alice Wells contributed solos. The rest of the program consisted of talks by various girls.

Miss Christina Johns of Portland is the guest of Miss Marjory Flegel during teachers' institute.

Professor and Mrs. Peck were the dinner guests of Miss Ina Moore at Lausanne hall on Thursday evening.

Misses Opal Munsen and Jewell Cox entertained the following girls at a dinner party on Thursday evening: Marguerite Cook, Sybil Smith,

Ether Paroungian, and Winifred St. Clair.

Miss Edna Gilbert was a guest at the Beta Chi house Saturday night.

Guests of Miss Ruth Smith in Dallas were the Misses Mable Stanford, Laura Ruggless, Ruth Wise and Pauline Riekl.

Miss Myrtle Smith, ex-'20, was a guest of the Beta Chi girls over the week-end.

Miss Lucy Holt was the guest of Miss Myrtle Mason for luncheon last Friday.

Miss Ruth Hill was the dinner guest of Miss Laura Ruggless on Thursday evening.

Mrs. F. B. Sackett of Sheridan, was a visitor at the Sigma Tau house last Thursday.

Loren Basler and Bryan McKittick were dinner guests of Frank Delmarter and Harry McEwen Friday evening.

Harry Rarey, Vaughn Callow, Athill Irvine, Earl Shafer, Fred Radspinner, Walter Socolofsky, and Loren Basler attended the U. of O.-O. A. C. game Saturday.

Dinner guests at the Sigma Tau house Sunday were Marguerite Cook, Grace Brainerd, Fay Peringer, Irene Brainerd, Pauline McClintock, Alma Wells and Miss Richards.

Professors Ray Smith and Hewitt were dinner guests of the Phi Kappa Pi fraternity on Sunday. Both men are honorary members of the fraternity.

Glen Chandler spent the week-end at Corvallis, where he attended the U. of O.-O. A. C. game on Saturday.

Miss Phyllis Palmer spent the week-end in Corvallis.

Miss Margaret Graham of Portland, formerly an English teacher in Salem High School, spent the week-end here. She attended the Philodorian reunion which was held on Saturday evening.

Miss Frances Gragg has returned to school after a prolonged absence due to illness. We all join in welcoming Miss Gragg back to school.

Miss Mary Jane Albert, U. of O. '23, spent Sunday in Salem with her parents.

Autumn was the central theme of the program given by the Palladian Literary society last Tuesday afternoon. A short business meeting was held after the following program had been enjoyed:

Out Where the West Begins... Alta Kerschner
Autumn... Genevieve Phillips
Twilight in Autumn... Evelyn DeMoss
Autumn Fancies... Helen Hardy

The members of the Adelante Literary society, and the new members met in the halls on Friday afternoon. The first number on the program was a trio, "The Seasons," by the Misses Streyev, Pratt and Corner. This was followed by a paper by Gladys Bartholomew on "The Pilgrim and the Turkey." Miss Lorlei Blatchford sang the solo while Elsie Gilbert as the Pilgrim, and Sadie Pratt as Mr. Turkey, portrayed the song in clever pantomime. After a snappy parliamentary practice led by Miss Pratt, the meeting adjourned. There were several guests present.

Garnet Harra was a dinner guest of the Sigma Tau fraternity Monday.

Ten new women were pledged to the Philodorian Literary Society at the meeting on Friday afternoon. Miss Beryl Holt gave the history of the society since its formation, particularly emphasizing the aims and ideals for which the members have striven thru the years. The impressive pledge service was then read to the Misses Ruth Hill, Irene Brainerd, Pauline Riekl, Jewell Cox, Opal Munsen, Edna Jennison, Marjorie Cable, Edith Brooks, Kathleen La Rant and Eva Ledbetter.

HAND BAGS

and other luggage
REDUCED



Max O. Buren
179 N. Com'l. St. - Salem

See Our Windows for New

Low Levels on
SHOES

at
PARIS SHOE STORE
357 State St.

The turkey once more called together the large family of Grandfather and Grandmother Snodgrass, when the Philodorian, old and new, joyfully participated in the annual reunion Saturday evening. Everybody arrived in the truck at Leslie Methodist church where the banquet was served by the ladies of the church. All the children were permitted to sit at the tables. Everything from the turkey to the plum pudding disappeared at a most astonishing rate, so astonishing in fact that Dr. Killenquik was frantically summoned to administer comfort to Peck's Bad Boy. Nearly all of the members were present, and the great sorrow was caused by the injuries of Sir Percival Swatterbean, this was partly overcome by the joy of having the real Ma Peck back again.

Grandfather Snodgrass presided as toastmaster. His remarks were flavored with touching reminiscences. Liz Peck responded to the toast, "A Peck of Nonsense." Mrs. Newlywed has found no "Concentrated Extract of Honey" in married life; while Mrs. Killenquik has found a cure for all ills in true Phil spirit. Mrs. Sherwood delightfully concluded the program by inviting everybody to "Come over to my house and play."

Following the banquet all the youngsters were bundled up and the whole family went to the home of Mrs. Sherwood, where the remainder of the evening was spent. Shortly after arriving, a charming wedding took place, when Miss Marguerite Clark Dramaticus was united in "worn out matrimony" with Mr. Jake Bushwhacker. The Rev. Spindewheel officiated. Previous to the ceremony, Sally Bushwhacker rendered a clever parody on the song, "Oh, Promise Me."

In accordance with the time honored custom, each family performed for the pleasure of Grandfather and Grandmother Snodgrass. The Swatterbeans, in an artistic and most realistic manner gave an evening's entertainment at the Bligh, the Bushwhackers presented a class, well versed in M. B. V.; the Dramaticus family united with the Killenquicks in individual pantomimic interpretations of poems; the Spindewheels gave a true representation of a morning in church; the Dunciacs united with the Vandermorgans in having their pictures taken in the most artistic poses imaginable; while one of the Pecks showed great skill and dexterity in the swinging of two quart milk bottles.

After the picture taking, the guests indulged in Virginia Reel until grandmother sent them all home, until next year.

Miss Helen McInturff spent the week-end at her home in Portland.

WU UW
U Show U
U Your Colors U
U For the Game U
U Tomorrow U

Caps Pennants Sweaters
Varsity Book Store
"Massacre the Missionaries"
WU UW

STYLISH SERVICEABLE DEPENDABLE FOOTWEAR

Buster Brown Shoe Store
125 No. Commercial St.

STUDENTS---
Come in and let us show you our line of Christmas Gifts
BOOKS, FINE STATIONERY
EVERSHARP PENCILS AND FOUNTAIN PENS
ROCKWELL REMINDERS

Commercial Book Store
163 N. Commercial St. Salem, Oregon

Bearcats:-

Keep all unnecessary roughness out of the game!

Get your
Shaving Accessories
at
Tyler's
157 S. Com'l

HARTMAN BROS. CO.
Hallmark Jewelers

Fine Jewelry and Optical Work

BOBBY FISHER LEADS MUSICAL ADVERTISING

Band Concert in Downtown District Entices Salem Citizens to Buy Tickets to Whitman Game

Boom! Ah! Zum! Bah! Rattly tat ti tat ti tat!
"Has Sousa's band come to town," asked a bystander on the corner of State and Liberty, "or has the Salvation Army increased its force?"
"You are wrong there, pard," exclaimed a youth decked in a green cap and a cardinal and gold sweater, "that's the Willamette University band. Some musicians, eh! What!"

At this point Bobby Fisher's variety musicians came marching down the street, each one's step was quick and sure and each was decked in his empyrean colors of the school. Their hearts beat high as well as did the big bass drum, for they were celebrating the coming of the greatest event in the history of Willamette.

"By George, they are some musicians. I've paid a dollar to hear worse than them. But why all the celebration?" continued the bystander, fast growing enthusiastic.

"You mean to say you haven't heard," gasped the frosh in surprise. "Why they are the advance guard to the Whitman-Willamette football game on Thanksgiving."
"So that's it, eh! Well, have you any tickets to get me in?" The frosh gulped—how easy, and nodded his head as if it were made of rubber.
"Well, then give me seven. My whole family must see this performance."

When you think of good clothes, think of Mosher, the tailor.—Adv.

Everything that is New in Sheet Music

"Pop" Player Rolls and "Okeh" Records

Myrtle Knowland
415 Court St. Phone 352

"Massacre the Missionaries"

Something to be Thankful for—

A Box of SPA CHOCOLATES

The Spa

"Massacre the Missionaries"

Mme. Alda



has made a record that will be heard with "still rapture" of rarely awakened feelings long after her living voice has passed into eternal silence.

"By the Waters of Minnetonka" 64908

Many persons know the legend of Minnetonka—how the two Indian lovers who, rather than face the torture of their tribal law for the love they bore one another, met death together in the waters of the lonely northern lake.

It is a lovely American song and it will thrill you to hear Mme. Alda sing it.

W. W. MOORE
FURNITURE STORE

GEO. C. WILL
Salem's Music and Sewing Machine Dealer

Sheet Music Piano Studies
432 State St. :: Salem, Or.

Say Fellows

These damp cold days will make you think about an overcoat. Then just step in our store on your way up town and look over the finest line to be found anywhere.

We have them Ready Tailored or make them to order. Prices always the lowest.

SCOTCH WOOLEN MILLS
426 State St. Salem, Ore.



THE PEOPLE'S CASH STORE

The Store for YOUNG MEN

Also Groceries, Dry Goods We Give Premiums

Commercial Phones 453, 460

Economical Buyers

should always visit the J. C. Penny Co. first regardless of where you intend to buy. Prices have been changing and we are generally recognized as price authority.



GOOD REASONS
-: for :-
Thanksgiving

A Study Lamp

A Cosy Glow Heater (Westinghouse)

A Hotpoint Grill

COME IN AND SEE THEM

SALEM ELECTRIC CO.
"If It's Electric, Come to Us"
Corner State and High Streets

Rubber Heels on Mondays

35 Cents per Pair
Champion, Peerless, Electric Heated Sitcher

For Fine Shoe Repairing Go to
G. C. PATTERSON
143 S. Liberty Street

L. Tweedale A. B. McKillop

Royale Cafeteria
GOOD EATS
Quick Service
Short Orders Served at Night
Open from 6 a.m. to 8 p.m.
460 State St. :: Salem, Ore.

SALEM ELITE
429 Court Street
Hemstitching and Chainstitching
10c a Yard
Come to us for Christmas Suggestions
Buttons—Pleating
A. E. DeLong M. E. Blake

For Christmas—

An
Enlargement
from your
Favorite Negative

Jeff's

—548 State Street, Opposite Court House

QUALITY KODAK FINISHING

Why Worry?
Let the **ELECTRIC APPLIANCES** do the work
Electric Appliances a Specialty
WELCH ELECTRIC CO.
379 STATE ST. SALEM

The **Students' Store**
Handling only
High Quality Merchandise
at the Right Prices.
MILLER'S
Good Goods.

Between School-mates—
YOUR PHOTOGRAPH

Don't be **MUM** at a football game, but be sure to wear a **MUM** at every game. Get them from **HILL, The Florist**
331 State St.

BEAT WHITMAN!

and then
Beat it to the Grand Theatre,
as we have arranged a special
Program for you.

BEAUTIFUL

Lucille Stewart

in

"The Eleventh Commandment"

VAUDEVILLE—

"MANHATTAN TRIO"

Three Boys Who Can Sing

WEEKLY

COMEDY

No Raise in Prices

Starting Saturday — "THE KENTUCKY COLONEL"

GRAND THEATRE

When you think of
DRUGS
Think of

RED CROSS PHARMACY

W. H. Frank, Prop.
386 State St. Phone 144

HAVE YOUR CLOTHES
IN GOOD CONDITION

The New York Tailoring Co.

We Buy and Sell
Second Hand Clothes

Phone 298 320 N. Com'l

Writing Paper

We carry a Complete Line for
Your Correspondence

THE "POUND" PAPERS
are the most economical

Priced at
50c, 75c and \$1.25 a pound

Come in and see them

Perry's Drug Store

115 S. Commercial St.

Phone 191

RAY L. FARMER HARDWARE CO.

EVERYTHING IN HARDWARE
PAINTS AND AUTO ACCESSORIES

Corner Court and Commercial Sts.
SALEM, OREGON

Bread is your best food—Eat
more of it.

HOLSUM is your best bread
—buy more of it.

Cherry City Baking Co.
Salem

Lebold & Co. Groceries

1244 State Street

HAIRCUTS
that please the most particular
taste

The Model Shaving Parlor
112 North Com'l

456 COURT ST. PHONE 256 Main

C. M. Roberts GROCERIES

SALEM, OREGON

AT THE THEATRES

AT THE GRAND

One of the high lights in the film
dramatization of Opie Read's "The
Kentucky Colonel," the most re-
cent Hodgkinson release, showing at
the Grand theater, 3 days, starting
Saturday, is the work of Jill Wood-
ward as Ella Mayhew, the adventu-
ress who follows the fiancée of the
little southern heroine to the small
town of Emeryville. Slim, dark,
and very good to look at, with a
wealth of shining black hair, Miss
Woodward is an excellent type for
the so-called "vamp." As the "mys-
tery woman" in the "Lightning
Bryce" serial, she proved herself an
artist of outstanding ability. She
likes her role in "The Kentucky
Colonel," because it gives her an op-
portunity to be "slinky and sleuthy." It
is her ambition to be the leading
"bad woman" of the screen. In private
life Miss Woodward is the charming
and very domestic Mrs. William
A. Selter, wife of the di-
rector of "The Kentucky Colonel."

YE LIBERTY

There's a string of gay, bright
lights in every great city that en-
circles the globe. In "The Yellow
Typhoon" these lights are all around
the world lights. They stretch from
New York to London, Paris, Rome,
Monte Carlo, Berlin, Shanghai, Chi-
na, Manila, and back to New York
again.

This remarkable story, starring
Anita Stewart in a dual role, is
Harold MacGrath's greatest adventu-
re tale, a First National attraction
which will be shown at the Lib-
erty theater on next Sunday.

Whip Whitman. Skin 'em good,
but you'll not get skinned by get-
ting your hair cut at Lee Canfield's.
—Adv.

When you think of clothes, think
of Mosher, the tailor.—Adv.

MRS. H. P. STITH MILLINERY

Also a Line of
Novelties, Umbrellas, Bows,
Handbags, Hair Nets, Etc.

333 State Street

A cordial invitation is extended
to W. U. Students to open an
account with us.

Capital National Bank

Peerless Bakery

For Quality Bakery Goods
P. Winters, Proprietor
179 N. Com'l St.

Hibler's Barber Shop

for
Real Barber Work
335 State St.
Opposite Patton Book Store

SIDE LIGHTS OF TACOMA TRIP

Prior to the game, Tacoma pa-
pers referred to the Bearcat machine
as one of the fastest and strongest
grid eleven in Oregon. The Bearcats
justified the accusations of the
Tacoma dailies in the C. P. S. game
by repeatedly throwing the backfield
men of the Pugeters for losses, and
by chalking up 24 markers on
straight football.

On Russ's fumble the northern-
ers advanced the pinball to the
Bearcats' 12 yard line. The specu-
lous stadium reverberated with the
hopes for a touchdown. A Puget
half attempted to buck the line and
was met head-on by Dan and Jit for
a 3 yard loss. The other halfback
attempted to slide off tackle, but
the terrible Sweds still halted him
for a 5 yard loss. A forward pass
was next attempted which Russ
frustrated; no loss of ground. Hav-
ing failed to puncture the Bearcat
line, the Sounders attempted an end
run, but Lyman proved the undoing
of their hopes for a touchdown as
he dived the man for a 12 yard
loss. In four downs, C. P. S. lost
20 yards. Some Bearcat defense!

"It is a crime to permit Wap to
play against these little fellows";
thus, was a Puget Sounder over-
heard to remark about the playing
of the Bearcat fullback. He and
Bain were a tower of strength on
the defense.

Toad, sometimes known as Phat,
and Wap successfully executed a re-
solute; neither fumbled the ball in
the C. P. S. game, altho Wap, on
one occasion, skirted the edge of
danger; in making a line plunge, he
juggled the ball momentarily and
then retried it in time for a touch-
down.

Five minutes before the end of
the game, Coach Matthews sent in
five substitutes. "Gilt-of-Gab" Ram-
say remained on the side lines, due
to the injury on his foot. Coach
may play Gabby in the Whitman
game.

According to Ken Power, he and
Ralph Barnes visited a tenuous
parlor in Tacoma, their object being
—a hair cut. While in the barber
shop, says Kenny, Barnes voracious-

OREGON THEATRE

FRIDAY-SATURDAY

Eugene O'Brien

in
"THE WONDERFUL
CHANCE"

"Snooky"
THE HUMANZEE

©

Sunday-Monday-Tuesday

WILLIAM FARNUM

in
"DRAG HARLAN"

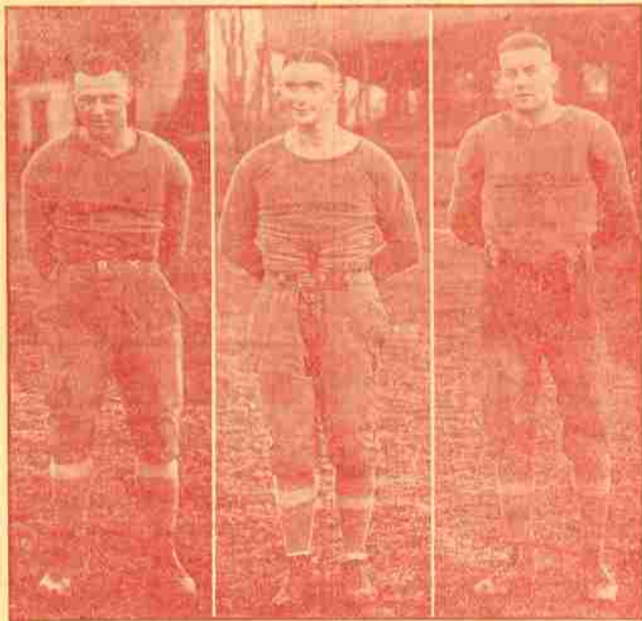
A Real Western Thriller
With a Wallop

his side and requested, "Can a
Nickel be insured?"

Several Willamette alumni were
at the game lustily rooting for the
team representing "The Old Histor-
ic Temple." Among them was Dr.
Sweetland who played and under Dr.
McRae who played and under Dr.
Sweetland when Willamette defeat-
ed the University of Montana 40 to
0. Dr. McRae officiated as time-
keeper for Willamette at Tacoma.

Coach Matthews has several gen-
erations of relatives residing at Ev-
erett. All generations motored to
Tacoma for the game, and each
generation carried cardinal and gold
colors at the game, rooting for the
Bearcats. Coach disappeared mys-
teriously after the game; it is
thought he left for Everett.

WHITMAN STARS WHO MEET BEARCATS THURSDAY



TILTON
Halfback

GARVER
Fullback

CAMRAEA
Tackle

ly devoured the contents of "The
Police Gazette," and cast "Come
hither" glances at the peroxide
blonde manicurist, who was seated
in the corner. Barnes denies the
accusation of his cousin, but for ver-
ification ask Kenny.

Toad easily won the distinction
of being the Beau Brummel of the
Bearcat squad on the Tacoma trip.
He presented himself at the Espee
depot neatly attired in a new, tall-
or made brown suit, and peacock
overcoat, with a cap to match. And
he had smiles for everyone. The ac-
cusee indiscreetly leaked out in Ta-
coma. She came over from Seattle
and was a zealous rooter at the
game. It is said Phat accompanied
her to Seattle where she is attend-
ing the state university. How the
mighty fall!

While on the trip Manager Bain
studiously and considerably attend-
ed to the welfare of his men; none
dared to request, or pray for addi-
tional favors. But it remained for
Jit to be solicitous. On the return
trip, Bain was busily engaged at the
ticket window purchasing tickets
and making reservations, when the
scrappy Bearcat guard stepped to

ALMA MATER HONORS.

(Continued from page 1).

any opponent, and who can open up
holes miles wide when the oppor-
tunity presents itself. A faster
backfield cannot be found upon the
coast and there is no line real or
fictional that can stop these plung-
ers when once they get started for
they do not know what it is to go
backwards.

Quite appropriate to the occasion
is the manifestation of pep by the
Kappa Gamma Itho fraternity. Last
Monday evening students were sur-
prised to see displayed prominently
on the front of their Court street
home the large W. U. monogram and
a large illuminated banner bearing
the slogan "Whip Whitman."

The Chrestomatheans held their
pledge service Friday afternoon. Miss
Beatrice Dunnette sang a solo and
Miss Mabel Stanford rendered a very
pleasing selection on the piano. The
following girls were pledged: Lois
Nebergall, Irene Pratt, Emily Irwin,
Hilda Hagemann, Hilda Crandall,
Ruth Francisco, Lila Deyer, Olive Mer-
ry, Martha Hawley and Laura Hoyt.



Yell King Gillette today has
given forth the following
words of eloquence in an en-
deavor to urge his loyal sub-
jects to still greater endea-
vour: "A word to the wise is
sufficient. Eat enough drops
and drink hot lemonade in-
stead of Thebans and lemon
coes, for all previous noises
will be little ones compared
with those to be heard Thurs-
day when the ecclesiastical
slaughter begins. To say it
in a few words:
"The hand will play
The boys will shout
The Willamette coeds
Will all turn out."

Messrs. Edward and Robert Not-
son were dinner guests of Miss Mary
Notson at the Delta Phi House Sun-
day.

HISTORY OF ATHLETICS.

(Continued from page 1)

University of Washington. During
this year, in a game played in Sa-
lem, the University of Montana team
fell before the onslaught of the car-
dinal and gold defenders to the hu-
miliating tune of 39 to 9. "Prunty"
Francis, right end, and McRae, full-
back, were that year selected by
Fawcett for the mythical all-north-
west team.

The following year Dr. Sweetland
severed his connection with Willam-
ette University with an enviable re-
cord as an athletic coach, and par-
ticularly as a football mentor, for,
while he was in the Salem institu-
tion, he had been able to develop
teams of power. Such was the her-
itage of Coach R. L. Matthews when
he came to Salem as the successor
of Dr. Sweetland.

The achievement of Coach
Matthews, since coming to Willam-
ette six years ago, is common knowl-
edge to followers of the Salem in-
stitution. Not only were the suc-
cesses of the past team perpetuat-
ed, but athletics took a new lease of
life, until the forward progress cul-
minated in Willamette's entrance
into the northwest conference dur-
ing the past winter.

Although the Bearcats did not
win honors in the conference last
winter with her basketball team,
she was able to furnish stiff com-
petition and proved to be a thorn
in the pathway of pennant contend-
ers. The Bearcats were to be reck-
oned with, and since the team re-
mains intact for the coming season,
a triumphant season is predicted for
them.

When the Bearcats clash with the
Whitman Missionaries on Sweetland
field tomorrow afternoon, the game
will mark the first conference
game for the local institution as a
member of that fraternity of col-
lege teams. It is rumored that
should this game prove to be fairly
successful, other games may be
scheduled for the local field, and
with the strongest intercollegiate
teams of the northwest.

LOOK OUT! The YELLOW TYPHOON IS COMING

Next Sunday
LIBERTY

DOUGHTON & MILLER HARDWARE

The new hardware store is now open with a complete
line of new and up to date stock. \$10 will be given to the
party giving us the best SLOGAN to be used in our adver-
tising. All slogans must be in by Nov. 30th.

Doughton & Miller Hdw.
286 N. Com'l St.

WELLER BROS. GROCERS

Telephone 49 155 N. Com'l St.

Eat a plate every day
of

Weatherly Ice Cream

and
serve at all occasions
Sold most everywhere
Manufactured in Salem
Buttercup Ice Cream Co.

Printing—
Class Work
Frat Cuts
Rowland Printing Co.
322 State St.
Over Patton's Book Store

Cozy Nook Barber Shop

1266 State Street
E. A. WEDDLE, Prop.
Nuff Sed.

Brewer Drug Co.

MRS. M. E. BREWER, Prop.

Full line of Drugs, Patent Medicines
and Toilet Articles, Stationery, White
Ivory and Drug Sundries, Cigars,
Candies and Gums, Wearover Rubber
Goods. Prescriptions carefully com-
pounded and double checked before
leaving the store. Our motto: "To
please you and welcome you." Free
and prompt delivery.

PHONE 184. 405 Court St.

Art Hickman's Famous Records

- 2811—My Baby's Arms —Fox Trot
- \$1 On the Streets of Cairo—One Step
- 2812—Peggy —Fox Trot
- \$1 Tell Me Why —Fox Trot
- 2813—Hesitating Blues —Fox Trot
- \$1 Those Drafting Blues —Fox Trot
- 2841—Rainbow of My Dreams —Fox Trot
- \$1 Burmese Belles —One Step
- 2858—Rose Room —Fox Trot
- \$1 Cairo —One Step
- 2880—Dancing Honey Moon
- \$1 Fee Fi Fo Fum
- 2890—Hold Me —Fox Trot
- \$1 Dance It Again with Me
- 2917—Along the Way to Damascus
- \$1 Rose of Mandalay
- 2938—Take It Easy —Fox Trot
- \$1 Come Back to Georgia —One Step
- 2955—Love Nest —Fox Trot
- \$1 Song of the Orient —Fox Trot
- 2970—Young Man's Fancy —Fox Trot
- \$1 In the Gloaming —Waltz
- 2982—Cuban Moon —Fox Trot
- \$1 In Old Manila
- 3801—Whispering —Fox Trot
- \$1 If a Wish Could Make It So
- 3322—Avalon —Fox Trot
- \$1 Japanese —Fox Trot

H. L. Stiff Furniture Co.
COMPLETE HOUSE FURNISHING

U. S. Government Inspected MEATS

CHOICEST QUALITY
All Kinds Fresh and
Cured Meats
PURE LARD
SAUSAGES, Etc.

STEUSLOFF BROS. MARKET

Court and Liberty Sts.
SALEM, ORE.

The MAPLES

Light Lunches
and Confectionery
Reasonable Prices

W. H. Schaefer 447 Court

ROTH GROCERY CO.

134 N. Liberty St.

Fancy and Staple Groceries
Fruits

Delicatessen and Bakery Goods

HOME RESTAURANT

Meals and family style at
Regular Hours

223 N. Commercial



Cleaning, Pressing and Repairing.
194 South 12th Street.

Leather Boots



**Munson Army
Shoes**
Just the thing for
College wear

HAUSER BROS.

Whittle Whitman!

Bearcats!

WHIP WHITMAN and WOOL SOX

"Massacre the Missionaries"

But Don't Forget That

are just the thing for Fall and Winter wear. We have a large assortment in spiffy styles and a variety of colors.

Popularly Priced—\$1.00 to \$2.00

Kasbury Bros.

MEN'S STORE