



By GEORGE McLEOD

THE maintenance of law and order is one of the important issues facing the people of Oregon today.

Polk county arson indictments and "goon" recent arrests made in Marion, Lane and Multnomah counties have forcibly presented this problem to the public. The condition is serious.

Are the gangsters of Chicago to find a new field of operation in Oregon? Are residents of the Willamette valley to be forced by dynamite squads to pay tribute to lawless terrorists? It is said that Seattle is in such a plight.

Will Dave Beck's lieutenants be permitted to come south of the Columbia to use their ruthless strong arm methods upon law abiding Salemites? Will a vicious code of violence be substituted for the laws and the Constitution of this state? Will an Al Capone of the West rise to a position of dominance and power superior to that of governors and legislatures combined? Will brass knuckles and clubs supplant courts of equity?

Oregonians, if they have to ride by night as the vigilantes of old, will not permit their freedom life, property, and security to be thus swept away.

But this is not necessary. Adequate laws are upon the books. The men and the machinery to enforce them are with us. The law, however, is only as strong as the public opinion that is behind it. Criminals can be successfully prosecuted only when an aroused public opinion demands that the guilty be convicted.

District Attorneys Bruce Spalding in Polk, Lyle Page in Marion, and John Bain in Multnomah counties, acting with the advice of Governor Martin, have taken a definite stand. They have put their cards upon the table. Their county jails are filled with suspects awaiting trial.

Those indicted most assuredly are entitled to public trials by impartial juries. They are presumed to be innocent until proved guilty beyond a reasonable doubt. This is the American way.

However, when the state presents its case in these criminal trials, will the juries, if the facts warrant such a verdict, find the defendants guilty. The man on the street will decide this issue. Juries will not bring in a finding of guilty unless public opinion overwhelmingly demands that the law be enforced.

The problem is not simply that of bringing down the bar of public justice. It involves the more vital and fundamental issue of whether the citizens of Oregon stand for law and order, safety and security or whether they will tolerate pillage, murder, vice, and the sawed off shot-gun of the gangster.

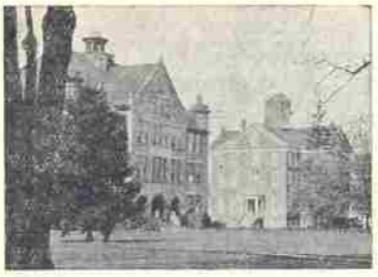
It is a question that each of us must decide for himself and decide now. As Judge McBride of the Oregon Supreme court once wrote, "A man cannot blow hot and cold in the same breath." We are either in favor of law and order or we are not.

Without hesitation, without question in this crisis surely we will fearlessly present a united front against lawlessness.

Handies, Knock-Knocks, Foo-Goo Language Thrown Into Discard By New Craze For "Double-Talk"

Handies, knock-knocks, foo-goo language is now playing another game. It takes quite some skill to learn to play, but once learned you can be the life of any classroom and the bore at every party. It's that cute little game of putting periods and question marks in the middle of a sentence and changing the meaning of the sentence completely. This "double talk" has taken the campus by storm. Here are some little gems I've picked up in my meanderings through classrooms and halls.

# Willamette



# Collegian

VOL. XLIX.

SALEM, OREGON, FRIDAY, MARCH 4, 1938.

No. 19.

## Thirty-Year Old Tradition Unique To Willamette U. Boasts Unusual History

### Class of 1912 Given Credit For Originating Songfest; Chapel, M. E. Church, Armory, Gym, Have Been Settings

By Carolyn Woods  
Freshman Glee is perhaps the oldest and most revered of all the Willamette traditions. Now in its thirtieth year, the Glee, formerly called "College Glee", serves many purposes. It is responsible for the creation of college songs, it brings all the members of each class together for the only class competition of the year. It also brings the alumni close to the school because of the fact that the original Glee rules have not been appreciably altered. Willamette is the only known university in this country with such a musical competition.

The class of 1912, and particularly "Jimmie" Oakes, "Brock" Harrison, and "Rusty" Schramm, have been given the credit for originating Freshman Glee. It was at this time that the still-existing rules were formulated. The freshmen challenge the other classes to a tournament of songs. Each class is to compose the words and music of a song based on the theme of the year, as serenade, victory, novelty, fight, march, or loyalty. Each class is allowed to present its selection without interference. The classes are judged on the words, music, and rendition of their song. The winning class receives the Glee banner, and the losing class must go swimming in the Mill Stream.

The Glee has grown in size and popularity annually. During the first years of the competition just eight members of each class competed. This year almost two hundred freshmen will participate. Waller Hall was the original scene of the Glee. In 1916 the First Methodist Church was used for the presentation. A few years later the Glee was presented in the Armory, which afforded a larger seating capacity. Since 1923 the gymnasium has been the place of Freshman Glee presentation. This latter location has made it possible for large audiences to view the gain affair.

With but two exceptions, Dr. James T. Matthews has announced the winning class at the termination of each Glee. Each class has won the contest almost an equal number of times. The seniors have had eight victories, and each of the other classes has won at seven different times.

A brief history of Freshman Glee might be outlined by comparing some of the outstanding features of each year's competition. 1909 and 1910. The class to institute the custom of singing of 1912, won the first two contests. 1911. The sophomores won the song, "Go," composed by Ray Smith and Jessal Young. 1912. For a third time the class of 1912 won. 1913. The sophomores won with

the song, "Loyal Forever," written by Kate Barton. 1914. The freshmen triumphed with the song composed by Ruth Schultz and Esther Emmel. 1915. "The Glory of Willamette" by Helen Galtra and Ray Metcalf gave the freshmen a victory. The Willamette Book, containing many Freshman Glee songs, was published. 1916. "Give a Cheer for Old Willamette," written by Arnold Grolapp and Eugenia McIntuff, brought fame to the junior class. The seniors started the precedent of appearing for the first time at the Glee in their caps and gowns. 1917. The freshmen won with the song by Hazel Hockensmith and Gule Leo. 1918. "Willamette Spring Song," the juniors' winning song by Helen Galtra and May Mickey, long remained a musical classic on the campus. 1919. The sophomores were most successful. 1920. The sophomore song "Fight 'Em Bears," by John Luckner saved that class from the Mill Stream. 1921. Bruce Putnam's "Willamette Fight" brought victory to the sophomores. 1922. "Willamette, Conqueror," by Fred McGeevy gave a senior decision. 1923. Mary Jane Albert, Kathleen La Rait, and Ruth Hill of the junior class excelled with the serenade song, "Dream On." 1924. "Our Pledge," by the juniors, Ruth Hill and Kathleen La Rait, triumphed. 1925. "The Fight Song," "Willamette," by Louise Finley and Ruth Pemberton brought victory to the freshmen. 1926. The song with a march theme, by Edith Mickey, "Queen of the West," created a sophomore win. 1927. "Maid of the Mountains," "Dribbling" to a serenade theme brought fame to the seniors. 1928. "Let's Go Willamette," by the juniors, Frank Alfred and Helen Bridgeman, won the class point. The freshmen lost with the well known song, "Fight, Sons of Old Willamette," by Grace Henderson and Mary Allen. 1929. "A Challenge to Loyalty," by the juniors, Rose Windust and Marjory Miller, was the winning song. 1930. The juniors won with "Willamette Night Song" by Mary Allen, Josephine Albert, Dorothy Pemberton, and Grace Henderson. A Willamette Song Book was published. 1931. The traditional university victory song, "Victory for Willamette," by juniors Howard and Mary, won the victory. 1932. Clara Wright's fight song created a freshman victory. Many members of the class of 1912 returned for the competition to present the first Freshman Glee banner to the school. 1933. The Silver Glee winning song by Helen Benner and Florence Du Rette early brought fame to the freshman class. 1934. Helen Benner and Martha Jane Hotel created the winning sophomore loyalty song. 1935. The same class, now juniors, won with a fight song by Helen Benner and Martha Jane Hotel. 1936. A new Freshman Glee height was reached when Helen Benner's song won for the fourth successive year. 1937. Frank Pemberton and Anna Mae Urab's novelty song created a Glee victory for the seniors. 1938. A large Glee is being planned to the loyalty theme. Each class anxiously anticipates Dr. Matthews' decision on Saturday. For the third consecutive year KOIN will broadcast the Glee so that larger audiences may hear the tournament of song.

### Paint Spot Arranges Plans of Indian Exhibit

Paint Spots held a short business meeting at Cresto Tuesday afternoon, March 1, to make plans for the Indian exhibit which is to be at Willamette March 15, 16, and 17. Next Tuesday, March 3, the club will have its picture taken for the Wallulah. Freshman Glee activities caused the postponement of the meetings of International Club and Little Theater Guild this week.

## Erickson Attends NEA Convention

### Willamette Dean One Of Two Delegates From Northwest

Attending the annual convention of the National Education Association meet this week in Atlantic City, New Jersey, was Dean Frank M. Erickson, Dean of Willamette University. Dean Erickson, representing the Association of College Professors of Education, one of the six groups that make up the N. E. A., is one of the two delegates from the northwest, Chancellor Hunter, of the state schools, being the only other. The local representative left late last week by plane and will return via the airways this weekend. Highlight of the convention which sat in session from Saturday, Feb. 26, through last Wednesday, was a speech by President Conant, of Harvard. The speech was carried by radio to the entire nation.

## Ministers Render Chapel Speeches

Bishop Titus Lowe, Bishop of the Portland District of the Methodist Episcopal Church, and Dr. Perry C. Hopper of the Westminster Church of Portland occupied the platform for the chapel programs on March 1 and 2, respectively. Bishop Lowe, a member of the Board of Trustees of Willamette, gave an address on why we are in college. His four suggestions for the answer of this question were to stimulate public interest, moral endeavor, to stimulate a desire for achievement, and to achieve a spiritual experience. Dr. Hopper, in his speech of March 3, presented several extra-curricular suggestions. His first point was that every young person should decide and determine to do his or her own work, both in and out of school, the very best possible. The second suggestion was a motto, "Do the best you can with what you have where you are and do it now." The other two were to cultivate good manners and cultivate the spiritual side of life. Both speeches were seriously received by the students.

## Oliver, Rahe Get Leave of Absence At Trustee Meet

At the meeting of the board of trustees of Willamette university, held in the First Methodist church at Portland, Monday, February 28, routine matters were presented and certain actions taken. Leaves of absence for one year were granted to Professor Herbert E. Rahe and Professor Egbert S. Oliver to complete their study for the Ph. D. degrees. No announcement was made of substitute professors for next year. The board ratified the purchase of the Lachmund house on Court street and authorized it being moved April 1, to the college campus for use as the president's home. It will stand facing Winter street, north of Lausanne hall.

## Liston Parrish Is Old Line Entrant

The Annual Old Line Oratorical contest will be held at Willamette University next Wednesday afternoon and evening, March 9. Five schools are competing in this contest. The women orators will compete at 4:30 in Waller Hall. Josephine Gilstrap will represent Willamette. At 7:30 p. m. the men's contest takes place, also in Waller Hall, and Liston Parrish will speak for Willamette. The Willamette orators are to speak last according to constitution regulations. The Old Line Contest was held at Willamette last year with Bill Clemens winning second place.

## Wesleyans Hold Monthly Service of Worship

The Wesleyan club again held a meeting last Tuesday evening at Cresto in spite of Freshman Glee practices with nine students present. The monthly service of worship includes participation by as many members as possible at short devotional bits. The program read as follows: songs, scripture by Miss Betty Mason, prayer by Miss Virginia Hinds, reading by Miss Barbara Pinney, song, reading by Don Smith, song, reading by Al Vesper, song, reading by John Whittaker, and benediction. The various readings included selections from The Prophet by Gilbey, Victorian Living by E. Stanley Jones, The Man Nobody Knows by Bruce Barton, and others of similar nature.

## Library Contest Drawing To Close

The library reading contest is slowly drawing to a close. Though the deadline is April 15, there is still plenty of time for those interested to enter, states Librarian Robinson Spencer. So far considerable interest has been shown. It is still too early to tell how many contestants will compete. Several students have asked to see some of the entries of previous years. Mr. Spencer has expressed his willingness to show these reports to those who wish to know what would be expected of them should they participate.

## Paint Spot Arranges Plans of Indian Exhibit

Paint Spots held a short business meeting at Cresto Tuesday afternoon, March 1, to make plans for the Indian exhibit which is to be at Willamette March 15, 16, and 17. Next Tuesday, March 3, the club will have its picture taken for the Wallulah. Freshman Glee activities caused the postponement of the meetings of International Club and Little Theater Guild this week.

# Interest in Freshman Glee Hits New High

## Exhibit of Indian Art To Be Shown

An Indian Arts and Crafts exhibit, sponsored by Paint Spots, will be shown at Cresto Cottage March 16, 17, 18. The exhibit is a part of the Indian Art exhibit that was shown at the American Museum of Natural History in New York City recently.

Under the auspices of the College Art Association it has been sent on a world tour to the leading art centers of the world. In the summer of 1934 it was shown at the Century of Progress in Chicago. Later it was shown at the Southwestern Fair at Atlanta, Georgia. Parts of the main exhibit have been displayed in the Department of the Interior building for the Progressive Education Association.

Miss Amelia White of the National Association of Indian Affairs sent exhibits to Paris, France, and Seville, Spain. At Paris, France, the exhibit was sponsored by the Museum of Natural History, Department of Ethnology. Paul Coze was responsible for the arrangement and advertising of the display. A famous French paper, L'Illustration, published an article by Paul Coze and allowed him four full pages for colored illustrations.

Critics state that Indian Art has long been a deplorably neglected phase of art education and appreciation in the public schools and in the art schools. Art theories and texts have ignored Indian Art little attention. The average student knows far more about classic Greek art than he does about American Indian Art. The popular conception of Indians, Indian life and art, has become as set and senseless as the Washington hatchet and cherry tree idea.

Various things can be said about Indian Art that are true of other art works done by his white brother. Such as, "It is flat and decorative, it is pictorial, it is rhythmic and dramatic, it is subjective, it is objective, it has good linear perspective, it has beauty, it has a story-telling quality, it is a pantomime art, it is moody and introspective, and its subject matter in the main is the Indian's own dramatic ceremonies."

Paint Spots feels very fortunate to be able to present this world known display to the art lovers of this vicinity. It is an opportunity that comes once in a lifetime. It is an exhibit everyone should see while it is on the Willamette campus, club members feel.

## Liston Parrish Is Old Line Entrant

The Annual Old Line Oratorical contest will be held at Willamette University next Wednesday afternoon and evening, March 9. Five schools are competing in this contest. The women orators will compete at 4:30 in Waller Hall. Josephine Gilstrap will represent Willamette. At 7:30 p. m. the men's contest takes place, also in Waller Hall, and Liston Parrish will speak for Willamette. The Willamette orators are to speak last according to constitution regulations. The Old Line Contest was held at Willamette last year with Bill Clemens winning second place.

## Wesleyans Hold Monthly Service of Worship

The Wesleyan club again held a meeting last Tuesday evening at Cresto in spite of Freshman Glee practices with nine students present. The monthly service of worship includes participation by as many members as possible at short devotional bits. The program read as follows: songs, scripture by Miss Betty Mason, prayer by Miss Virginia Hinds, reading by Miss Barbara Pinney, song, reading by Don Smith, song, reading by Al Vesper, song, reading by John Whittaker, and benediction. The various readings included selections from The Prophet by Gilbey, Victorian Living by E. Stanley Jones, The Man Nobody Knows by Bruce Barton, and others of similar nature.

## Four Classes Toe Mark For Annual All-Campus Songfest Saturday Eve

### Broadcast Set For Coast Stations; Life Magazine To Feature Special Section On Contest

"The thirtieth annual Freshman Glee, to be presented Saturday night, March 5, at seven forty-five in the Willamette gym, promises to be a huge success," according to Keith Sherman, Freshman Glee manager. "All the classes are working diligently, and formation and song practices are improving rapidly. Also the fact that 'Life' magazine is going to photograph Freshman Glee and the bets that are going to be paid off after chapel March 7, is doing much for the success of Freshman Glee this year, as it is the greatest publicity Willamette has ever had."

This year's theme is "Loyalty," and the gym is being decorated with a modernistic Waller Hall as a background. The false ceiling of the gym is in three shades of blue. Classes are practicing every day.

## Following is the letter received by President Baxter from the publishers of "Life" revealing the intention of that magazine to run a special section on the Glee:

Dear President Baxter: We are delighted to learn of the song festival and contest to be held at Willamette U. on the 5th of March. We're definitely planning to get pictures of this attractive affair, and we have already informed our Portland correspondent, Ralph Vincent, of the Portland Journal, to check with you as to the best day or days, for coverage. Let me assure you that we are very grateful for your kindness in bringing this festival to our attention and we appreciate your offer to cooperate with our representative. We shall look forward to a fine batch of pictures for "Life."

Sincerely yours,  
MUREL FOX,  
Editorial Dept.

## Classes Combine Forces For Post Glee Celebration

This year the four classes have decided to join forces and have one good dance for Freshman Glee. Instead of three or four Glee's, chided the social chairman of the individual classes while the four vice-presidents, Carol Gardner, senior, Suzanne Curtis, junior, Dorothy Wright, sophomore, and Francis Foldhahn, freshman, are the general committee and intend to make the dance a celebration for both the victors and mill streams.

This all-class dance will be held in the old high school gymnasium from 10:00 until 12:00. Church and his Deacons were given the job of playing. Patrons and patronesses are: Professor and Mrs. Mosher, Professor and Mrs. Luther, Professor and Mrs. Sherman, and Coach and Mrs. Keene. Not only are all class members welcome but also the visiting alumni.

## Baxter Hopes For Library Dedication For May 1st

"I am hoping that the dedication of our new library may be planned for May morning," stated Dr. Bruce Baxter this week, concerning the progress of Willamette's library. Work is now concentrated on the interior, where the finishing woodwork is being built.

## SEÑOR DE LA RAUSA SPEAKS IN CHAPEL

Senior Roberto Gerro de la Rausa, an official ambassador from Mexico, portrayed his native life in a speech in chapel March 3. Dressed in his striking native garments, the most attractive part being the beautifully woven Mexican blanket used for an outer cloak, he spoke of various social customs differing from ours. Señor de la Rausa is a graduate of the University of Mexico.

## Local Speakers Enter C.P.S. Meet

Last night and this morning the freshman and sophomore debaters left for the Junior College Debate Tournament at the College of Puget Sound, in Tacoma, Washington. This year's delegation is the largest delegation Prof. Rahe has ever taken to the C. P. S. tournament.

Albert Klassen and Bill Thomas compose the first debate team. Both have had extensive experience in high school and have represented Willamette University in several tournaments. Klassen, Thomas, and Liston Parrish, orator, left last night in Klassen's car.

Don Smith, debater from Gooding College, and Myron Pogue, former member of the Salem High School debate team, promise to give the contestants good competition. Bob Campbell represented Willamette at the Stockton tournament last year, and with Wayne Williams and John Hobson participated in the Linfield tournament. John Hobson and Wayne Williams are for the first time participating in debate and the ability shown so far adequately qualifies them for their selection to go to the C. P. S. tournament.

Prof. Rahe is entering one woman's team, consisting of Della Willard and Bertha Boyle, affirmative, and Frances Pickard and Marian Hall, negative. Miss Pickard and Miss Hall are now in forensics, while Bertha Boyle comes as a competent debater from Gooding College and Della Willard with experience at Ashland Normal.

There will be six preliminary debate rounds in the contest and teams losing two debates will be eliminated. Cars belonging to Myron Pogue and Professor Rahe left this morning.

Bill Thomas will be in the extempore speaking contest. Having won third place at the Linfield tournament recently, he is expected to crash through the two preliminary rounds and speak his piece in the finals. Liston Parrish will compete in oratory. Prof. Rahe has selected him to represent Willamette also in the Old Line Contest to be held in Waller Hall next Wednesday.

## OUR SYMPATHY

The Collegian staff wishes to extend its deepest sympathy and best wishes for a rapid recovery to June Johnson, popular Willamette song queen, who underwent an appendectomy this week.

## NO DIRECTORY

There will be no student directory this semester due to the budget slash made for the Wallulah.

## Number "4" King Figure In Plans And Production of Freshman Glee Forecast Ventured On Result

Marching, turning, Thumping-up and down again. Talking, singing, Marking-four-four time again. Freshman Glee occurs in but one of the four seasons of the year. Two weeks before the scheduled time a murmur is heard in the peaceful thoughts of the student. As the days grow on, a breeze of activity begins to blow. It increases to a gale and finally to a hurricane of excitement. At its vortex swirls the maddest and the gladiest of Willamette traditions and the best musical on the face of the shining earth. After the wind has passed, in its wake is left a tired but happy aggregation—a portion of which is extremely wet.

The music word four rules the universe: there are four seasons in the year, four classes of the student body, four yelling drill masters, four patient song leaders, and four sedate judges. And through them all riffs the melody of song. In one's dreams it comes thumping, thumping; in the classes it is beating, beating; in the gym it is ringing, ringing; in our hearts it is throbbing, throbbing; and in the mill race it is gurgling, gurgling. . . . Freshman Glee. The Freshman Class: Ah—700

# Willamette Collegian

Official Publication A. S. W. U.  
 Editorial and Business Offices  
 Basement Waller Hall Phone 3088

Editor **Manager**  
**Bob Keuscher Cecil Quesseth**

Assistant Manager **TOM OYE**

ASSOCIATE EDITORS  
**Fred Bernau, Helene Trulsen, Ahleen Bamber**

Society **Barbara Crookham**  
 Sports **Dan Moses**  
 Art **Ralph Woodall**  
 Exchange **Catherine Mackay**  
 Alumni **Faye Sparks**  
 Features **Beverly Brown**  
 Columns **Frances Feldbahn Erd Potter**

Proof Readers **Melvin Holt Wayne Brainard**  
 Typists **Alice Thompson Mabel Wittrock**

Reporters This Issue  
 Carolyn Woods, Larry Guderian, Martha Okuda, Betty Williams, Marian Sanders, Lando Hebert, Shirlee Thomas, Virginia Moore, June Charbonneau, Esther Vehrs, Hazel Magee, Edith Kyle, Toni Cummings, Mildred Williams, Orval Whitman.

### STOP AND THINK

One of the most progressive achievements in the development of the university intramural program was the securing, last fall, of a student body membership at the Salem Golf Club. The membership which was secured for something like one hundred dollars permits anyone owning an A. S. W. U. ticket to play on the Salem course at any time excepting Sundays, holidays, and Saturday afternoons. It has been surprising to note to what extent the privilege has been used. Interest in golf has increased enormously on the campus. Equipment that has been hidden away for years has been brought out for use once more; flabby muscles and hefty swings, long forgotten, have been tried, tested, and exhibited anew; neophytes

in great numbers have begun to learn the game.

Yes, Willamette students have more than received their "money's worth" from the fee paid. But one thing spoils the otherwise pleasant picture. There are a certain few who have exceeded their privileges, have violated the rules of the course, and otherwise irritated officials of the golf club. This fact came to light early this week when a letter from John Varley, head of the club, was received by the president of the student body. In his letter Mr. Varley asks that students who play the course attempt to abide by the rules and try to show some courtesy to club members who may be playing. Specifically, Mr. Varley asks that students be courteous enough to allow members, who for the main part are business men and are usually pressed for time, the privilege of playing straight through without having to wait; asks that care of the course and borrowed equipment be considered; and that students who play on Saturday afternoons, Sundays, and holidays, expect to pay the regular green fees. Mr. Varley's suggestions are not at all exaggerated, but, rather, are very timely. Willamette's golfers and would-be golfers should take them to heart. Any negligence in the matter will surely cost the school the privilege of using the course another year.

### FOR THIRTY YEARS . . .

For 30 years the tradition has been carried on. Certainly for as many years as Willamette University remains a part of the system of higher education of this country, will that same tradition continue to carry on. For 30 years has the very best musical talent in the school produced songs, songs of every class, 120 in all, and in all the years one can conceive in the future there will continue to be songs . . . original, undying melodies. For 30 years have the tramp, tramp of marching feet, the shriek of the tiny silver whistle, and the sharp commands of the formation manager, graced this campus, and we can see and hear through the coming years the same feet, the same whistle, the same commands. For 30 years bets have been made, won, and lost. Who could dare to vision the day in the future when bets were not made, paid, and collected.

For 30 years Freshman Glee has been an annual event of the campus . . . has been the one item that has lived as the outstanding event of each individual's college career. The spirit of Freshman Glee will never die, but will continue to instill in the hearts of every individual competitor a little joy, a little zest for competition, a little class spirit, a lot of undying memory . . . memory that will live gloriously through the entire lifetime of every person who takes part in the event which is unique to Willamette university.



### The Cat's Eye

Last week's column received so much encouragement from the student body, with the exception of the few privileged individuals who were chosen as the targets of our supposedly subtle comments, that we have decided, after a great amount of deep thought and deliberation, to continue reporting the follies, mistakes and humorous blunders of Willamette's jads and lassies with the hope that they may sail through Freshman Glee with flying colors and start classes Monday morning with their pre-Glee thirst for knowledge.

Our staunch friend, Bill Miller, can no longer boast that he has gone through college without displaying a bluish upon his manly countenance. The other night in Senior glee practice, he tried his best to go through the floor of the Chapel stage, and when the whole class turned around to determine the cause of the loud sound of splintering boards, the color of Bill's face was similar to the Daphnes in front of Waller Hall.

Judging from the great amount of correspondence received from the McCleary sanitarium, practically all of Willamette's student-body are—well, indisposed. Anyone wishing information in regard to this ask: Bob Anderson, Betty Lou Lacy, Leland Shinn and last but not least, Max Hauser.

Warren Lesseg is so versatile that he is with a different fem every time we see him. There must be something in the old saying, "Variety is the spice of life." Maybe we'll try it some time; it looks pretty good to us.

Katie Hendrick and Bob Brady just entered our office and made the announcement that they had tied the knot. It seems to us that they should be a little more careful about what they say in the presence of a dirt-columnist. Bob is so confusing. We wish he would make up his mind, and Katie too.

We suspect that Freshman Glee bets will be carried to a great extreme this year with everyone trying to outdo everyone else all in an effort to have a picture in "Life". To be photographed rolling a peanut across the Willamette campus by means of the nose is no small honor. We must all remember that our faces will be seen from ocean to ocean and from Canada to Mexico!

Some of the little Freshman kiddies (i. e. Janet Hinkley and Co.) have taken to eating oranges, apples, etc., during Chapel. We're known of people reading, studying, or writing letters during this time (though of course we've never done it ourselves) but this is something new. Soon the Chapel service will resemble a pot-luck dinner in Chresto.

Ed Cone and Janet Powell have taken a sudden interest in the mechanics of airplanes. We can't understand what they're up to, but maybe it makes them happy, and that's all that matters.

Eileen Van Eaton was much dismayed in biology lab one day when she opened her purse to find a live skinned frog peering at her. Some biology student has a crude sense of humor, we'd say.

Bill Hansen explains his blackened fingernail by saying that he caught it in a cash register. But he didn't say what he was doing in the cash register (and it's so near tuition time, too).

We always give credit where credit is due. May we say then that Prof. Thompson is one of our star reporters for this dirt column. He always has something meaty to divulge when questioned. We are all for transferring him from the position of Western Civ prof to a prominent place on the Collegian staff.

We have decided that the freshmen get the worst of the deal as far as Freshman Glee is concerned. Not only do they have to practice morning, noon and night on their own song and formation, but also they are compelled to stay up half the night decorating the gym. In spite of the bitter competition between the classes, the freshmen are all backed heartily by the Sophs, Juniors and Seniors, 100 per cent, who all hope that this Glee will be the best ever!

Will Someone Tell Me?  
 Whether the quiet, disinterested boys are shy or faithful to someone at home.

Why is it difficult to describe "Swing" and stand still at the same time?  
 —Deane Owl

### Introducing . . .



### PROFESSOR JOHNSON

At Wabash there is a traditional song, a song that takes the place to a certain degree our own Freshman Glee. And it is from the banks of a stream of that name that Dr. Charles H. Johnson, head of the chemistry shack, came to Willamette. Wabash college conferred upon him, A. B. and A. M. degrees. In was the privilege of Cornell university to present him a Ph. D. He is a graduate student of the University of Washington and came to Willamette in 1928.

In this period of worry, march, skip, and song, we believe that a bit of relaxation might be provided by the faculty in the mode of song. Toward this goal, Miss Lillian Briggs claims that she would like to put a "bug in the ear" of the faculty and start the faculty artist series with a duet-composed of Dr. Johnson and Dean Erickson singing "On the Banks of the Wabash."

Dr. Johnson is very efficient in chemical pedagogy, and is always congenial. He is a pleasant, interesting, intellectual man to talk to and is entirely lacking of bluster, egotistic narrow-minded convictions. He talks very little, but he expresses himself in such a poised, assured manner that one is almost compelled to listen. The complaisant, competent lecture method that Dr. Johnson uses is most certainly ideal in presenting the intricate, basic subject of chemistry.

It is generally understood that Dr. Johnson has turned down several commercial offers with the simple philosophy that he was prepared to teach chemistry to students, and that was what he wanted and liked to do. And that is the feeling that underlies the teaching of Dr. Johnson. Willamette, he is very valuable. Tenex.

### To Be Seen On the Screen

#### STATE

FRIDAY, SATURDAY: 4-act Eastern Circuit vaudeville. "Charlie Chan on Broadway," with Warner Oland.

SUN., MON., TUES.: "Double Wedding," with William Powell and Myrna Loy.

WE., THURS.: "Toast of New York," with Edward Arnold and Francis Farmer.

#### HOLLYWOOD

FRI., SAT.: Two Big Features—"Range Defenders," with the 3 Mesquites; Lew Ayres and Mary Carlisle in "Hold 'Em Navy"; Added News, Mickey Mouse cartoon, and Chapter 1 of a new serial, "Wild West Days."

SUN., MON., TUES.: "The Year's Funniest, Sunniest, Hottest of All Comedies," "The Awful Truth," starring Irene Dunne and Cary Grant. Added news, and Charley Chase comedy.

WED., THURS.: Family nights, Mom, Pop, and unmarried kids 4c. Two Big Features: Gene Autry in "Spring Time in the Rockies," and "The Wrong Road," with Richard Cromwell and Helen Mack. Added news, and cartoon.

"THE AWFUL TRUTH" MADCAP SCREEN COMEDY

Irene Dunne, the Theodorable screen comedienne, scores mightily in the year's choicest comedy role as Lucy Warriner in Columbia's "The Awful Truth," which will open at the Hollywood theater. Irene merely scratched the surface of her comedy capabilities in "Theodora Goes Wild." It remained for her hilarious clowning in "The Awful Truth" to reveal the treasure-trove of talent in her inimitable personality.

This gay, madcap story of the Warriners, played by Miss Dunne as Lucy and Cary Grant as Jerry, is so uproariously funny it should make the annual ten best list in a walk. The fun starts when Jerry and Lucy decide to separate with the only bone of contention the custody of Mr. Smith, their wire-hair terrier.

The court allows Mr. Smith to Lucy but permits Jerry to visit the dog. Thus many of the film's outstanding comedy scenes arise out of Jerry's visits to Lucy's apartment while the is entertaining impatient suitors.

### MAGIC OF THE PEN

Edited by JOSEPHINE GILSTRAP

#### IN BEHALF OF AGE

His white head is bent low as he intently delves into the depths of some book. Fine and old like himself. As you enter the room, he greets you cordially, searching your face with a still interested and eager glance. Warmly and willingly he gives you the advice you seek, granting it unreservedly from his wisdom of the years.

How harsh it is to look to age and Gosh when one is young! For every day do we not see aged derelicts of men that might have been the great ones of their age. That old man digging in a ditch. An aged one selling papers on a cold, bleak corner. Even that would be endurable; the horror is in the weakening of faculties and energies. To see a man (or woman) lose his hold on life, his energy for doing, and his beliefs, is unbearable. If I were forced to feel that some day I must be dependent on another's care, another's mental faculties; if I must lose my interest in life and cease to care what becomes of mankind, then I would ask only death before I live to see that day.

But I am encouraged by the white haired reader and wisdom giver. He who sits in the fullness of his wisdom and contemplates with still bright eyes and eager mind the activity of mankind. There are few sights as gratifying as active, independent, bright old age; and nothing more pathetic than the shambling footsteps and the groping mind of dull and decrepit age.

When they have lived to give the best they knew, though slight and simple but sincere, how can it be fair that time should rob them of the only thing in life worth while? No pity for the man who loses power. He loses only an earthly thing. But to lose active life, which Ruskin deems the only wealth, is to let the soul come at last "to rust unburnished not to shine in use."

### COLLEGIATE QUOTES

The Temperature of Kisses  
 Wedding Day: 200 in the shade.  
 He: "My own duckiest dovey!"  
 She: "My own darlingest darling!"

One day later: 100 in the shade.  
 He: "My own darling!"  
 She: "My own love!"

Two days later: 75 summer heat.  
 He: "Dearest!"  
 She: "Dearie!"

Three days later: 60 temperature.  
 He: "Sweetheart!"  
 She: "Dear!"

Four days later: 50, cooling rapidly.  
 He: "Margaret!"  
 She: "Reginald!"

Five days later: 32, freezing.  
 He: "Madam!"  
 She: "Sir!"

Six days later: Zero.  
 He: "Deceitful Imp!"  
 She: "Horrid thing!"

Seven days later: 20 below zero.  
 He: "Cat!"  
 She: "Brute!"

Eight days later: 50 below zero.  
 She: "Take that!" Slap.  
 He: "Take that!" Wallop.

Nine days later: Absolute zero, Separation.  
 Ten days after wedding ceremony: 212 boiling. Reconciliation.

He: "Why did oo leave ooz hubby, lovey dovey?"  
 She: "Why was oo so ewoss wiv ooz pidy diddy widdy wifey?"  
 Both: "Mmmmmmmmmmm—"  
 —C. Idaho Coyote.

Seen on our bulletin board:  
 "Will the individual who carried away the head lights, tires, radiator caps, spark plugs, and windshield of my car, please call for the rest of the contraption?"—which reminds us—we haven't seen Bill Kyle around lately—political safety or theft?  
 —C. Idaho Coyote.

She—"No, we mustn't! Don't you know the Deans decided to stop smoking?"  
 He—"Aw heck, the next thing you know they'll be wanting the students to stop too!"  
 —C. Idaho Coyote.



WOULD YOU LOOK AT MARY!  
 YES, HER PEP GOES UP AS HER WEIGHT GOES DOWN

### New BREAD DIET maintains energy while reducing

LOSS of weight can only be accomplished by burning up body fat faster than the body stores it. Excess fat normally comes from over-eating, particularly of foods high in caloric value. To get quick results, most extreme diets cut down too much on energy and protective foods, forcing the body to function almost exclusively on its own fat.

The New Bread Diet avoids all such extremes. It is based on four years of research in leading American universities and laboratories and offers a safe, sane and efficient way to reduce.

Unlike extreme measures, bread is included because it is a food high in energy, not of itself fattening. It is an almost perfect combination of carbohydrates and protein—especially important while reducing. It supplies the carbohydrate necessary to burn up completely the fat you lose, without leaving any harmful residue.

With bread included in this diet, excess fat is safely changed into energy. Muscle and nerve tissues are sustained. So carefully has each daily menu been planned that you scarcely miss those things you shouldn't eat. And the pounds roll away!

Follow this safe and sane diet outline—and watch your own outline grow slimmer

These Diet Meals give about 1500 Calories a day—reducing allowance of the average person, moderately active, with an ideal weight of 130 lbs., who is 10 to 20 lbs. overweight. If your ideal weight is more or less than 130 lbs., increase or decrease foods in these meals, but keep bread in the right proportion.

**BREAKFAST**  
 one glass of grapefruit juice  
 portion of fish  
 2 slices of toast  
 one cup of clear coffee with one lump of sugar

**LUNCH**  
 ham sandwich (2 slices of lean ham and 2 lettuce leaves)  
 1 glass of milk  
 1 medium apple

**DINNER**  
 half of mutton  
 halibut steak (average portion—broiled)  
 string beans (1/2 cup)  
 spinach (1/2 cup)  
 2 slices of bread  
 one stewed apricot  
 1 cup of coffee with 1 lump of sugar and 1 tablespoon of cream

## HILLMAN'S MASTER BREAD

BAKED IN A CLEAN BAKERY

Do Your "After the Freshmen Glee Party" Shopping With Us . . .

In Fact Shop Every Day at the "Friendly Place"

## Salem Columbia Market

Next Door to the Golden Pheasant  
 We Are Open Evenings

## CAPITAL CITY LAUNDRY

And  
**GOOD DRY CLEANING**

Phone 3165 1264 Broadway

## Those Delicious Wimpy Hamburgers

and Home-made Ice Cream and double-thick milkshakes  
**TOM HILLS**  
 697 NORTH CAPITOL



## COOKE STATIONERY CO.

Headquarters For  
 SCHOOL SUPPLIES, FOUNTAIN PEN, ZIPPER NOTE BOOKS, KODAK, COMPLETE LINE OFFICE SUPPLIES.  
 340 State St. Just East of Ladd & Bush

## PIKE'S SUPER-CREAMED ICE CREAM STORE

takes this opportunity to thank the University students for their line patronage.  
 We Like to Serve You.  
 138 South Liberty Salem, Oregon

### CAMPUS CLUBS

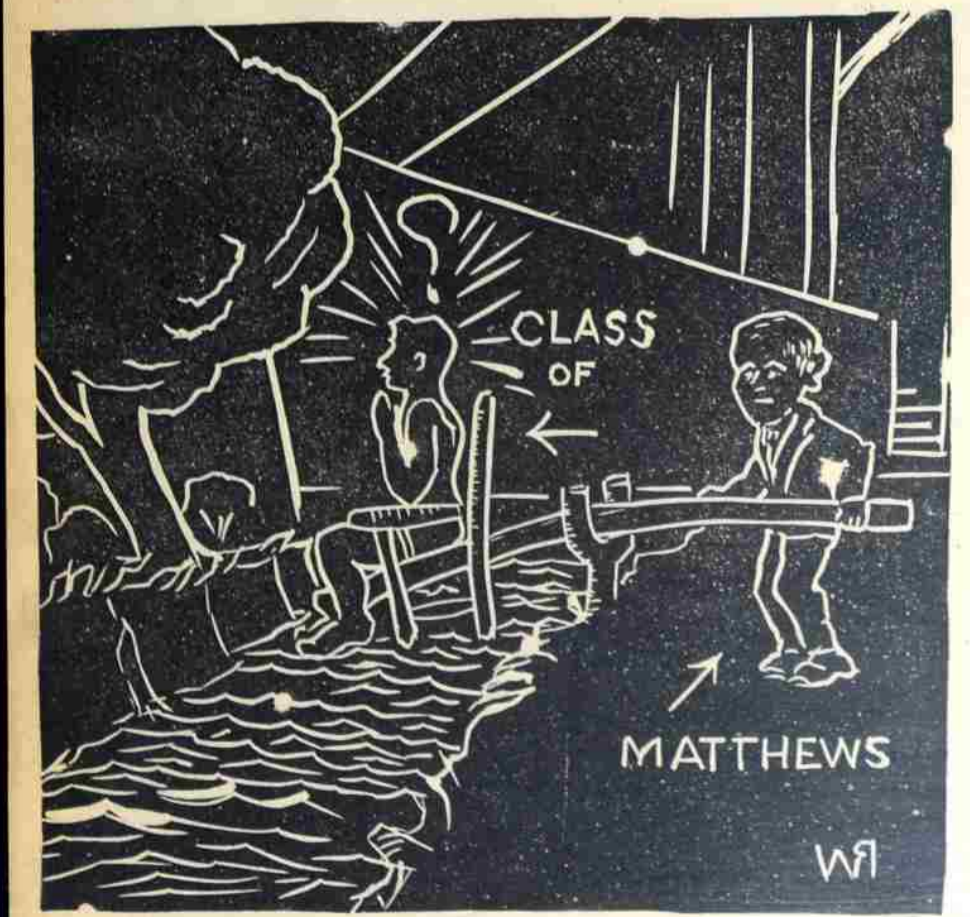
By Marian Sanders  
 Efforts of the Oregon Commonwealth Federation in trying to improve social conditions were explained to Vespers last Sunday evening by Monroe Sweetland, executive secretary of that organization. In his work he has found that many complex political and economic factors block social progress. "Every person should take an interest in politics," said Mr. Sweetland.  
 Professor Clark will speak Sunday evening, March 6, at 7:30. All Willamette students are invited.

### From the Files . . .

Collegian March 5, 1938  
 Elections of Y. M. C. A. officers for ensuing year to be held tomorrow after chapel.  
 Madam Herbst, grand opera artist and native Oregonian singer, delights students in Chapel.  
 March 3, 1938  
 Robert Witty wins prize for oration in state contest.  
 W. U. women debate Linfield Monday.  
 March 3, 1932  
 Freshmen Glee work at peak. New fire alarm system ordered. International banquet big.  
 Carral Shank chosen May Day manager.

Soccer, football to be new sport at Willamette.  
 March 4, 1937  
 Professor W. E. Kirk of Language department passes.  
 Ninety-six students in total number who receive N.Y.A. help.  
 Conversation overheard between Bill Thomason and Walt Weaver of Willamette between halves of the Friday game—  
 "Wait, what do you think of our little college?"  
 "Well, I'd call it rather unique."  
 "Wazzat?"  
 "From the Latin words 'unis' meaning 'one', and 'equus' meaning 'horse'."  
 Col. of Idaho Coyote.

### Impression of the Week



There's a Monday Morning Dip Awaiting Someone . . . But Who?

# White Fashions for "Freshman Glee"! Miller's

# Society

Edited by  
**BARBARA CROOKHAM**  
Assistants  
**BETTY DOTSON KAY THOMPSON**

## Sororities Exchange Dinners Sunday

Co-eds of Beta Chi and Delta Phi exchanged dinners last Sunday at the two chapter houses. The Misses Charlotte Litchfield and Martha Herman arranged the affair for one o'clock.

At the Delta Phi house places were laid for eighteen. The table was attractively centered with a large crystal bowl of daffodils and fern set on a circular mirror and yellow tapers. Other bouquets around the rooms were of acacia, pussy-willows, daffodils and Japanese quince.

Guests at Delta Phi were the Misses: Margaret Hinkle, Belle Brown, Melva Belle Savage, Leone Burdick, Ella May Morris, Margaret Gillette, Carolyn Woods, Charlotte Litchfield, Ruth Bunzow, Mary Sadler and Dorothy Ellinger. Hostesses included: Mrs. F. A. Well, the Misses Barbara Crookham, Lorene Tompkins, Martha Herman, Gwen Hunt, Lillian Hart and Melba Riopelle.

The dinner table at the Beta Chi house was centered by a bouquet of deep red roses. Covers were placed for Mrs. C. A. McCarger, Miss Mary Jeanette Sargent, Miss Helene Trulsen, Miss Frances Faber, Miss Dorothy Dingle, Miss Verna Vosper, Miss Loye Bogardus, Miss Margaret Ann Kells, Miss Eleanor Perry, Miss Katherine Ringe, Miss Helen Marcy, Miss Cathrin Headrick, and Miss Edith Wittingham.

Hostesses included Miss Lucille Brainard, Miss Phyllis Pritchard, Miss Jean Hollingsworth, Miss Ina Bennett, Miss Carol Smith, Miss Suzanne Curtis, Miss Irma Calvert, Miss Dorothy Wright, Miss Elizabeth Zook, and Miss Charlotte Schneller.

**FOR THE BEST PRINTING SERVICE CALL 8594**  
Krapns and Long PRINTERS

**W. U. Students Make this Headquarters COLLEGE CONFECTIONERY**

**Drs. Morse, Robertson, Power, Buren and Robertson PHYSICIANS & SURGEONS**  
Phone 3123 Guardian Bldg.

**Popcorn—French Fried "Best in Town" HAMBURGERS CHILE—Mexican or American POPCORN STAND**  
1286 State Street

**Good Food, Efficient Service, and Reasonable Prices WHITE'S LUNCH TRY OUR FAMOUS MILKSHAKES**  
1138 S. Commercial

**State Street Grocery and Market Quality Goods at Lowest Prices "Your Neighbor"**  
1230 State St.

**GEO. C. WILL'S MUSIC STORE PIANOS - RADIOS SHEET MUSIC**  
432 State Street

**HOLLYWOOD PALACENE CONFECTIONERY and LUNCH After the Show**  
Next door to "Hollywood"

**Your Eyesight is Your Most Valuable Asset Morris Optical Company**  
444 State St. Salem, Ore. Phone 5528

**Quisenberry's CENTRAL PHARMACY**  
Phone 9123 410 State St. Salem, Ore.

**PATRONIZE OUR ADVERTISERS**

## Post-Glee Dance At Salem High

Members of the four classes will join together to hold the traditional post-glee party, which will be in the form of a dance.

The dance will start at 9:45 o'clock in the gymnasium of the old high school and dancing will continue until 11:45. Church and his deacons will play.

Chaperones are Mr. and Mrs. Roy S. Keene, Dr. and Mrs. Sherman, Dr. and Mrs. Luther, Professor and Mrs. William Mosher, and Mr. and Mrs. Lestie V. Sparks. The vice-presidents of the four classes form the general committee for the dance. The Seniors were in charge of the hall; Juniors, the orchestra; Sophomores, refreshments; and Freshmen, the decorations.

## Delta Phi Alumns Play Bridge

The Salem Alumnae Association of Delta Phi sponsored a bridge benefit party at 1610 Court last Tuesday evening at 7:30 o'clock with fourteen tables of bridge. Coffee, mints and cake were served as refreshments at a late hour. Miss Marian Bretz was general chairman of arrangements and was helped by Mrs. Delvin Durham, Mrs. Gus Moore, Mrs. Joe Felton, the Misses Doris Unruh, Bertha Babcock and Mrs. Dave Lewis.

Playing at the sorority for the evening were Mrs. Kenneth Barker, Miss Colene Mennis, Miss Myrtle McClay, Mrs. Opal Hardin, Mrs. May Scott, Mrs. Wm. Burghardt, Mrs. Marcia Smith, Miss Bessie Donaldson, Mrs. Pearl Ames, Mrs. Iva Reed, Mrs. Helen Follansbee, Mr. and Mrs. F. S. Rosebrough, Mr. and Mrs. W. W. Rosebrough, Miss Rosemary Snyder, Miss Zelma Bush, Miss Irma Bolander, Miss Maxine Hankin, Miss Edna Licklin, Mrs. John Licklin, Mrs. Clinton Standish, Mrs. Homer Schabert, Miss Melba Riopelle, Miss Gwen Hunt, Miss Helen Lipps, Miss Dorothy Lipps, Mrs. Max Page, Mrs. Leo Page, Mrs. Henry Compton, Mrs. Merrill Oiling, Mrs. Herbert Stiff, Mrs. George Croisan, Mrs. Harry Miller, Mrs. John Beakley, Miss Honora Reidy, Miss Jessie Blackburn, Mrs. Kenneth Zwicker, Miss Pauline Johnson, Mrs. George Mischler, Mrs. Hugh Hull, Mrs. Louis Lorenz, Mrs. Tyler Brown, Miss

## Social Calendar

**Wed., March 9**  
Exhibit of Indian Art (Paint Spots)  
Paint Spots Honorary Membership Dinner

**Thurs., March 10**  
W.A.A. Banquet

**Fri., March 11**  
International Club Dance "W" Club Cord Crawl

**Sat., March 12**  
Kappa Serenade

Bertha Babcock, Mr. and Mrs. Allen Looney, Mrs. Delvin Durham, Mrs. Dave Lewis, Miss Doris Unruh, Miss Marian Bretz, Mr. and Mrs. A. A. Cohen, Mr. and Mrs. Verne Bain, Miss Marian Moore, Mrs. Joe Felton, Mrs. M. C. Poltey, Mrs. W. S. Parker, Mrs. W. A. Baldwin and Mrs. E. M. Steiner.

## DeMolays Sponsor Dance

Promising to be one of the best semi-formal dances of the season, will be the Chemeketa Chapter DeMolay dance Friday night, 11, in the Armory, with Jack Shepard and his orchestra from Corvallis. Dancing hours will be nine to twelve, with scheduled entertainment for intermission.

An elaborate decoration scheme has been worked out by Don Seely, with the assistance of "Frosty" Olson. Tickets may be secured from Bill Hagedorn, Ernest Greenwood, Jack Pollock, Charles Watt, or from the cashier at the Armory box office the evening of the dance.

**TRAVEL ON Union Pacific TRAINS**  
SAFE - FAST COMFORTABLE ECONOMICAL  
• LOW-COST MEALS  
• AIR-CONDITIONED COACHES AND SLEEPERS  
• CONVENIENT SERVICE  
• FREE PILLOWS AND PORTER SERVICE IN COACHES

J. C. Cumming, Gen. Pass. Agent  
C. H. Jacka, Trav. Traffic Agt.  
751 Pittock Block  
Portland, Oregon



**THE BLUE BIRD**  
Salem's Collegiate Restaurant  
524 State Street

## Firesides Are Judged Huge Success

Under the direction of the Y. W. C. A. the Faculty Firesides have been highly successful this year. Many students and faculty members have met for informal Sunday afternoons.

The one new factor introduced to the meetings has been the opportunity for students to state their faculty preference. Dean Dahl is still receiving the choice of the faculty home any student particularly desires to visit.

The plan of Faculty Firesides is this: Ten different student body members are invited to attend a different faculty home each Sunday afternoon from 4 to 5:30. During this time informal discussions are held and a light supper is served.

Faculty Firesides serve two purposes. First, students become more personally acquainted with faculty members, and also, the faculty members meet new students. Second, students have the opportunity of meeting other students.

The faculty homes thus far opened to students this school year include those of Dean and Mrs. D. H. Schulze, Dean O. M. Dahl, Dr. and Mrs. R. M. Gatke, Dr. and Mrs. S. B. Laughlin, Prof. and Mrs. E. S. Oliver, Dr. H. Pearce, and Prof. and Mrs. H. E. Rahe.

During March, Mr. and Mrs. C. Oppen, Mr. R. Spencer, and Prof. and Mrs. R. F. Thompson will entertain Faculty Fireside groups.

These gatherings will be held weekly for the remainder of the school year.

## Alumni News

By FAY SPARKS  
OFFICERS FOR 1937-38  
Pres., Clarence (Pat) Emmons, '31  
1st Vice-President,  
(Pres-Elect), John L. Gary, '16  
2nd Vice-Pres., Harold Hawk, '30  
3rd Vice-Pres., M. Farnsworth, '19  
Sec., Treas., Fay Sparks, '25  
Executive Committee Members at Large, Mrs. Ava Fisher, '33, Oliver Crowther, '26, Verne Bain, '23.

**ENGAGEMENTS**  
Word has been received of the engagement of Miss Myro Hulser of Boise to David Johnson of the same city. The wedding will be an event of February 13 at the home of the bride-elect's family.

Miss Hulser is a former University of Oregon student, where she was a member of Alpha Chi Omega. She is now society editor of the Boise Capital News.

Mr. Johnson, a member of the class of '26, was a member of Alpha Psi Delta and served as editor of the Collegian. He is now state manager of the United Press association in Idaho.

**BIRTHS**  
Mr. and Mrs. Hugh McGillivra (Louise Nunn), both of the class of '28, are receiving felicitations upon the birth of a daughter, Joanne Ruth, February 19, in Portland. Mr. McGillivra is editor and owner of the Forest Grove News-Times.

**PORTLAND ALUMNI HAVE MEETING**  
The Willamette University Alumni of Portland and vicinity met February 21, in the studio of Esther Cox Todd. Moving pictures of modern Europe, taken by Dr. John C. Brougher, '23, were shown and commented upon by the doctor. Musical numbers were given by members of the present Willamette U. Songmen. Dessert was served later in the evening. About a hundred were present for the meeting, at which Herbert Hardy presided.

**WILLAMETTE ALUMNI PROMINENT IN MUSIC CIRCLES**  
Mrs. Bruce Spaulding (Josephine Albert), '31, was soloist for the final Sunday afternoon concert of the Portland Symphony orchestra, conducted by Dr. William Van Hoogstraten. She sang the aria for contralto from Bach's "St. Matthew Passion" with Edward Burlingame, conductor of the Salem Philharmonic orchestra, playing the violin obligato, and the string section of the Portland orchestra accompanying. Recently Mrs. Spaulding, who is a student of Paul Petri of Oregon State College, appeared in recital at Prof. T. S. Roberts' studio.

The Town and Gown club members of Salem presented Miss Lucille Cummings, ex-W.U., of Portland, as soloist at their monthly meeting and tea at Lausanne Hall on February 24. Miss Cummings has been in Hollywood, Calif., for some time, and this is her first appearance on the local campus since her school days. At Christmas she had one of the solo parts

## Alpha Phis Plan Banquet

Alpha Phi Alpha sorority is planning a banquet for Saturday evening before Freshman Glee. Visiting alumnae, pledges and members will be present for the dinner at the Golden Pheasant at 5:30. Glee participants will go directly to the gym. Miss Marjorie Jones is in charge of arrangements.

In the Messiah, presented by the Portland Symphony orchestra.

Mrs. Walter Denton, '29, who for 15 years has been chairman of the Salem National Music Week plans and who has served as state chairman for 12 years, is already making arrangements for musical programs throughout the state during the national week of music recognition. Mrs. Denton is also adviser for the Junior Harmony club of Salem.

Mrs. Gilbert Wrenn (Kathleen LaRaut), '24, is a prominent member of the exclusive Minneapolis capella choir, which position she gained over a hundred other applicants. Dr. Wrenn is a member of the faculty of the University of Minnesota.

Mrs. Donald Sheythe (Doris Corbin), '31, was guest artist at Newport during National Music Festival week, observed there in connection with the American Legion essay contest on Americanism. The program featured American composers. Mrs. Sheythe is an accomplished pianist.

**BETA CHI ALUMNAE ARE FETED AT MOORHEAD'S**  
Mrs. George R. K. Moorhead, '25, Mrs. E. E. Thomas, '25, and Miss Lella Johnson, '19, entertained the alumnae members of Beta Chi sorority February 16 at the Moorhead home on North Cottage street, Salem.

Miss Marjorie Christenson, '26, presided at the business meeting in the absence of Miss Ruth Rick. Cards were in play during the evening and supper was served at a late hour.

Those present were Mrs. Kenneth Potts, Mrs. Clarence Emmons, Mrs. George Scales, Mrs. Dan Schreiber, Miss Jane Fisher, Miss Marjorie Christenson, Miss Esther Gubbard, Miss Marian Ayer, Miss Carol Braden, Miss Lila Cation, Miss Hattie Rump, Mrs. George Moorhead, Mrs. E. E. Thomas, and Miss Lella Johnson.

**PERSONALS**  
Rev. J. Stanley VanWinkle, ex-W. U., has been extended an invitation to become permanent pastor of the Congregational church at Hubbard.

Robert Katch, '27, '31, is coach of the Dallas B squad basketball team which is still in the championship lead, since it has won every game played to date.

"Gus" Moore, '34, is winner of the fifteen dollar prize offered for the best slogan which will be used in Salem literature stressing the excellence of the city's new gravity water supply. The slogan is "Phenomenal water at nominal cost, from mountains direct to you." In explaining the statement, Mr. Moore mentioned that the YMCA formerly had to filter water for four days in order to fit it for use in the swimming pool, since the change to the new North Santiam gravity supply, this is no longer necessary, and the bottom of the tank may be seen clearly without any filtering. Mr. Moore is Boys' Secretary at the local YMCA.

Joseph Stearns Jr., '12, former Portland attorney, is now associated with Harry G. McCain, ex-W. U., in the practice of law in Ketchikan, Alaska.

Miss Mary McKee, '28, former pastor of the church at Silverdale and Tracyton, Wash., is one of two active women ministers in Seattle. She is now pastor of Fauntleroy Congregational church there. Her church combines YMCA and church activities. There is a five-day program for every age in her congregation. Among the things taught are wood-carving and dramatics.

Mr. and Mrs. George R. K. Moorhead, (Jennelle Vandervort), '25, were hosts at an informal party honoring Gus Anderson, ex-'21, globe trotter, who gave 10 Salem several lectures combined with motion pictures.

Mr. Anderson, who each summer conducts tours of the European countries, showed motion pictures, February 25, to the Cauby Union High School student body. Included in the pictures were Miss Winifred Gardner, '26, and Miss Faith Sherburne, '26, who were members of the touring party last summer. Miss Gardner is a member of the faculty at Canby.

Miss Sherburne, who teaches in the high school at Browning, Montana, recently flew to Chicago to attend a party at which members of the tour were guests of Mr. Anderson.

**Full Fashioned Silk Hosiery**  
• Famous "Royal Purples"  
• 3 or 4-Thread Crepes  
**69c**  
• Season's Newest Shades  
• Silk Tops, French Heels  
Sheer beauty of crepe-twist chiffons... in six new spring colors. French heels, sandal soles, silk tops! Splashproof! Slim seams!

**Sears, Roebuck & Co.**

**GENUINE BETSY ROSS Table Lamps**  
While They Last  
**\$2.00**  
SALEM FURNITURE COMPANY  
Near Elsinore Theater  
130 South High St.

**Capital Drug Store**  
J. H. WILLET  
Quality Always Wins  
We Give S & H Green Trading Stamps

**JUICY JUMBO**  
The Sandwich Students are Goofy About  
**The Spa**  
3 PHOTOS - 3 POSES IN 3 MINUTES  
**15c**  
COURT STREET PHOTO SHOP  
457 Court Street  
Let Us do Your Developing

**CARSON PHARMACY**  
Hotel Senator Building  
Phone 5408 Salem, Ore.

**Something Different to Eat**  
Tokio Sukiyaki House  
11 a. m. to 2 a. m.  
Fountain Service  
222 1/2 North Commercial  
Telephone 4024

**JAPANESE LAUNDRY and DRY CLEANING WORKS CO.**  
Fine Laundry Work of All Descriptions  
445 Ferry St. Phone 6977

**PADE'S GROCERY and MARKET**  
BEN O. PADE, Prop.  
1244 E. State St. Phone 0135

**HARTMAN BROS. Jewelers**  
Gifts for All Occasions  
Corner State and Liberty

**H. F. SHANKS Jeweler**  
325 State St. Salem, Ore.

**RAMAGE'S Cold Storage Lockers Beverages**  
810 N. Liberty St. Phone 8751

**HAMBURGERS**  
Also good chili and milk shakes...  
See Ed at...  
**BUNTIN'S**  
(Near Capitol Theatre)

"When that day comes call on us"  
**HOGG BROS. WASHERS REFRIGERATORS, STOVES**  
325 Court Phone 6022

**POMEROY & KEENE Jewelers**  
379 State Street

**PERRY'S DRUG STORE**  
115 S. Commercial St.  
The REXALL Store

**TRY OUR Delicious Hamburgers TIP TOP LUNCH**  
2099 N. Capitol

**JAQUITH MUSIC CO.**  
COMPLETE MUSICAL NEEDS  
157 South Liberty

**BISHOP'S ICE CREAM STORE**  
Super-Cream Ice Cream New and Better Flavors MILKSHAKES  
1316 State Street

# White Fashions for "Freshman Glee"! Miller's

By DAN MOSES (Collegian Sports Editor)



DAN MOSES, Editor



ERROL HARRIS FRANCIS SCHMIDT EARL NICHOLS ED. MAERZ SAM KYLE GEORGE SCHREIBER RICHARD JEWETT

Bearkittens Drop Second Play-Off Game

Chemawa Ties Up City Series By 36-33 Win

Racers Capture Contest On Own Floor; Third Game Needed

Coach Leslie Spark's fighting rook maple court five, aspiring to win the first city league pennant for a freshman team in the history of the loop, received a major jolt in their plan last evening when they dropped the second game of the 1938 title series to the Chemawa Racers at Chemawa by a 3-point margin 36-33.

Willamette and Linfield were the two unfortunate quitters to draw the extra game, which was played on Wednesday night.

W.A.A. Reporter by CORNELIA HULST

The W. A. A. meeting—like practically all else not pertaining to Freshman Glee—was called off this week; but a meeting for all W. A. A. members has definitely been set for Monday, March 7.

Anyone interested in taking archery for points should sign up at once in Miss Currey's office. A beginning class for those who need instruction will be taught by Miss Currey at four o'clock on Wednesday and Friday.

In a recent Willamette intramural league contest a similar event occurred when Merle Hayes, forward for the Twisp, Wash., entry tossed the ball through the wrong basket when his team was playing the Alpha Psi Delta aggregation.

The Fish Chokers, a quintet composed of Willamette football players, carried off the intramural basketball title this year, going through the whole schedule undefeated, winning both the regular season honors and the playoff championship.

STRANGE EVENTS IN ATHLETIC WORLD

In the world of athletics, strange things often happen, and a player may become either a star or a "goat."

A baseball meeting will be held next Monday afternoon at 4:00 in the conference room at the east end of the gymnasium for all men who are interested in turning out for the sport, according to Director of Athletics Spec Keene.

TOURNEY ALL-STAR



WALT WEAVER

who added the honor of all-tourney guard to his all-conference selection, has just completed his third year on the Willamette varsity hoop team.

W. U. Wrestlers To Meet Y.M.C.A.

Twelve Willamette men have been lined up by student coach Verne Rierison for the wrestling meet to be held next Thursday with the Portland Y. M. C. A. in the Rose City.

Three Are Ex-Champs

The six experienced men, the first four from Salem high, are Bob Reeves in the 135-pound division; Bob Clark in the 127-pound class; Tats Yada, 226-pound heavyweight; Earl Nichols in the 130-pound division; and L. McComachy, of New Jersey; and Arthur W. Olson, of Montana.

Six Inexperienced

The six inexperienced men include Arde Stocks, 185-pounder from Medford; Curles Barry, of Portland, in the 170-pound class; Robby E. Nelson, of Portland, in the 175-pound division; Robert F. Anderson, of Troutdale, in the 170-pound class; Don Smith, 130-pounder from Idaho; and Harold Howe, of Salem, in the 124-pound division.

Frosh Win First City Playoff Tilt

Summer Gallaher, ex-Salem high ace, led his Bearkitten teammates to a 48 to 27 win over the Chemawa Racers last Tuesday evening, in the initial playoff of a three game series for the championship in the city "A" league.

Gallaher Stars

Gallaher netted 15 points, while Dick Jones garnered 10 for the victorious Willamette Freshmen. A. Bighorn sparked Chemawa with seven markers.

Return of Weight and Distance Men Arouses Enthusiasm for Track

Willamette Cinder Path Artists Getting Into Shape As Schedule Is Drawn For Season

In order to stave off that so-called "Spring Fever," a few track enthusiasts have already started to train by running in circles around the football field.

Track in the last few years at Willamette has not been up to par, and because of this, interest has steadily declined. This year, however, the students of Willamette are showing more interest than formerly. A great deal of this enthusiasm may be caused by the return of several weight and distance men, and also by the many promising prospects who have entered Willamette this year.

Track Schedule Drawn The entire track schedule has not been worked out but meets already arranged are as follows:

April 1, Hill Military Invitational Relay at Portland. April 9, Annual University of Portland Meet at Portland. April 29, Pacific - Willamette Dual meet at Salem. May 6, Triangular meet with C.P.S. Pacific University and Willamette at Salem. May 27, Northwest Conference Track Meet at Walla Walla.

Hoop Tourney Preparations Get Attention

Drawings Listed For First Day's Program; Teams Shaping Up

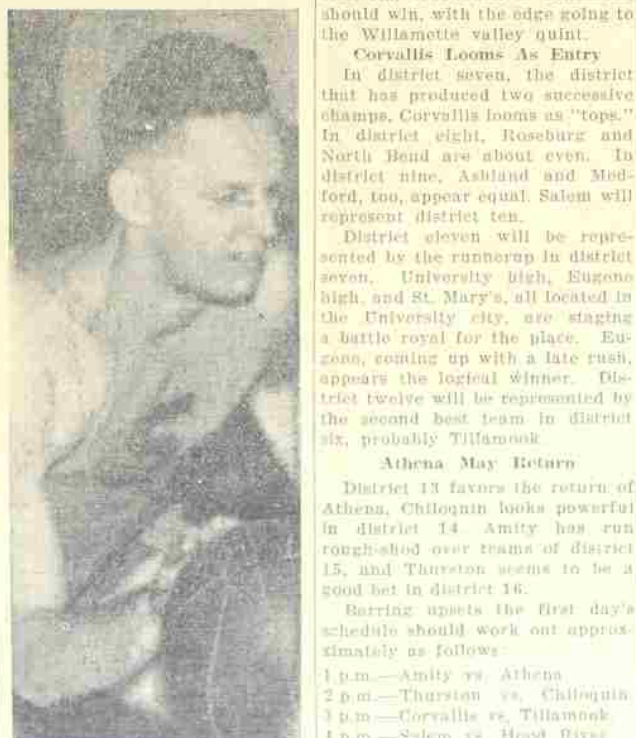
Salem, Medford, Klamath Falls, Baker, Hood River Loom As Favorites

With opening day set for Wednesday, March 16, less than two weeks away, interest in the state high school basketball tournament, and annual event on the local campus, has reached the fever point.

Drawings Announced

The drawings for the first day's games have already been announced. The first game at 1:00 p. m. on Wednesday brings together the winners of districts 15 and 13.

STAR FRESHMAN



OTTO SKOPLI

former Salem and Corvallis high sensation, has played outstanding basketball for the Bearcat varsity this year. Skopli was chosen guard on the second all-star team of the Oregon State intercollegiate tournament played here last week.

Three Bearcats Win Places, Collegian All-Conference

Whitman, Pacific Get 2 Berths Each; C.P.S. Given One Position

Willamette, Missionaries Finish Northwest Loop Race As Co-Champs; White, Anton, Weaver Selected On First Team

1938 WILLAMETTE COLLEGIAN PACIFIC NORTHWEST CONFERENCE LINEUPS

Table with columns: First Team, ALL-STAR, Second Team. Lists players and schools for various positions.

Honorable Mention Carpenter, College of Puget Sound; McFadden, C. P. S.; Haddock, College of Idaho; Harry Pepin, Whitman; Pollock, C. P. S.; Long, C. of Idaho; Staben, Albany; Henry Pete, Albany; Kolb, Willamette; Gastineau, W. U.; Anderson, College of Idaho; Selfridge, Pacific; Gentry, Whitman; Haller, Pacific.

Three from the co-champion Willamette Bearcats, two from the other co-champion hoop team, Whitman; two from the third place Pacific Badgers, and one from the fifth place College of Puget Sound Loggers, comprise the second annual eight-man basketball all-conference selection of the Willamette Collegian.

Mike Resor, of Whitman, the league's second leading scorer, was considered by most conference followers to be the best hoopster of the 1938 campaign. It was Resor who almost single-handedly defeated the Bears in the second game of the crucial Willamette-Whitman series, split by the two teams in Walla Walla Resor's inspirational play in every game rightly have won for him his all-star rating.

Seim Leads Pacific Johnny Seim, sophomore Pacific flash, was the man who, along with "Suede" Sikstrom and Truman Osburn, inspired the Badgers into their sensational five-game conference winning streak at the close of the season which won a tie for third place in the standings for Pacific with the Albany Pirates. Seim, an expert shot and a smart defensive player, was also noted for his excellent ball handling. As Seim went, so went Pacific. The former Hill City high flash would be welcome on any coach's ball club.

Anton Wins Center Berth At the center berth, Bill Anton, the most outstanding pivot man in the conference again this year, repeats his 1937 all-conference position, though, due to an attack of the flu, the big six foot, four-inch Bearcat star, was unable to make the eastern trip early in February, thus missing the tilt with the College of Idaho and Whitman. Yet, Anton was so far above the rest of the field at his position that hardly a dissenting voice can be raised against his selection, despite his inability to play against the Coyotes and the Missionaries.

Skopli, Kolb Improve Skopli, the star freshman guard of the Bearcats, though not a regular at the start of the season, showed such improvement that by the latter part of the campaign he proved himself to be one of the most outstanding players in the conference. Likewise, Johnny Kolb, also a W. U. freshman, broke into the starting lineup too late to win all-conference honors.

The second team includes two from Albany, two from Willamette, and one man each from C. P. S., Whitman, College of Idaho, and Pacific.

Join the Y.M.C.A. and enjoy a year of Sports and Fun

HAMB-9-Q HAMBURGERS HERTRAM'S SIBERRIAN SHOP Mr. and Mrs. E. E. Bertram 605 S. Capital Phone 7418

Two Willamette Hoopsters Win All-Star Honors

Intercollegiate Tourney Team Includes Kolb, Walt Weaver

A pair of Bearcat basketball players were accorded all-star honors last week by officials of the first annual intercollegiate tournament, veteran guard Walt Weaver, and freshman forward Johnny Kolb.

Both played consistently strong basketball in the four-day tournament, which concluded with Willamette's 45-35 defeat at the hands of Oregon Normal in the championship affair last Saturday.

All Tourney Five Chosen Rounding out the first all-tourney quintet were Oregon Normal's forward, Ralph Mohler, and guard Dick Gromquist, plus Eastern Oregon Normal's sensational freshman center, Hank Anderson.

Skopli, the Bearcats' flashy guard, was also the tournament's high scorer with 42 points, two better than the total posted by Mohler. Skopli and his Bearcat mates played on more game than any other entry, however.

The Sportsman's Store Cliff Parker SPORTING GOODS

372 State St., Phone 6042

ARMY AND NAVY STORE WE SELL Can't Bust 'em Cords Friedman Shelby Brogues Parkas and Alligator Silk Slickers 233 N. Com'l St. Next door to Piggly Wiggly

Kuhn Shoe Repairing AND Hat Service "WE REBUILD 'EM" 404 Court St. Phone 9570

TYPEWRITERS All Makes - Sold - Rented - Swapped - Repaired ROEN New Location - 456 Court St.

T. W. CREECH DRUGS 1220 State Street Salem Dial 6527 Oregon

SPECIAL SALE STATIONERY ALL THIS WEEK Woolpert & Legg, Drugs Ph. 3444 Cor. Liberty & Court

AK-SAR-BEN We Feature: 25c LUNCH (Except Sundays) Forest Ice Cream Open Sundays and Evenings 150 South Liberty Under New Management

PATRONIZE OUR ADVERTISERS