

Property
577

Viola P. V. Franklin
Reference Librarian

LADD & BUSH

BANKERS

Capital and Surplus
\$600,000

Accounts of
Willamette Students
Cordially
Welcomed

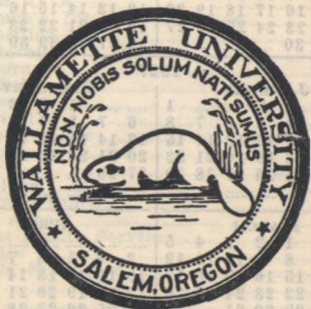
Willamette University Handbook

Presented by

**D. M. C. A. and
D. W. C. A.**

MARY ERICKSON, *Editor*

LYNN BOOTHBY, *Manager*



VOL. XXXIII

1926-1927

Willamette University
SALEM, OREGON

Name

Address

Phone Number.....

CONTENTS

Year Calendar	4
School Calendar.....	6
President's Message.....	7
Organizations	8
Student Body.....	8
Y. W. C. A.....	10
Y. M. C. A.....	13
Women's Literary Societies.....	15
Sororities	17
Fraternities	19
Honorary	20
Athletic	22
Forensic	23
Musical	24
Miscellaneous	26
Publications	28
Prizes	29
Traditions	31
Freshman Rules.....	32
"Plan Ahead".....	33
Student Health Service.....	33
Athletics	34
Athletic Schedules.....	37
Yells	41
Songs	43
Social Calendar	59
Church Directory.....	61
Libraries	63
Telephone Directory	63
Campus Work.....	65
Index to Advertisers.....	77
Recitation Schedules.....	79

CALENDAR

1926

- September 20-22—Registration and entrance examinations.
 September 20—2:30 p. m., Freshman classifying examination in English.
 September 23—7:45 a. m., Instruction begins.
 November 25-28—Thanksgiving recess.
 December 22—4:00 p. m., Christmas vacation begins.

1927

- January 4—7:45 a. m., Instruction begins.
 January 31-February 5—Examinations of first semester.
 January 31-February 5—Registration second semester.
 March 5—Freshman Glee.
 March 18—4:00 p. m., Spring vacation begins.
 March 28—7:45 a. m., Instruction resumes.
 May 6-7—May Festival, beginning May 6, 1 p. m.
 May 30—Memorial Day.
 June 8—Examinations of second semester begin.

COMMENCEMENT WEEK

- June 11—Class day. 6:30 a. m., senior breakfast. 10:00 a. m., meeting of the board of trustees. 2:30 p. m., alumni business meeting. 8:00 p. m., president's reception.
 June 12—Baccalaureate sermon. Farewell meeting of Christian associations. 8:00 p. m., sermon to Christian associations.
 June 13—1:00 a. m., commencement exercises. 6:30 p. m., alumni banquet.
 June 15—Examinations for underclassmen end.

THE PRESIDENT'S MESSAGE

Shelley reminds us that "the mist of familiarity obscures from us the wonder of our being." This, too, is the way of college life except for the wise—for those whose seeking and finding spirits continue to be avid for the things of learning. It is well for a student coming to college to watch lest the sense of wonder be lost. Familiarity may not breed contempt in order to be fatal to him; it need only deaden curiosity. Herein is the secret of scholarship, of achievement and of enduring youth. For so long as he is lured by what lies over the hill all things are possible to him.

I pass this secret especially to the Freshmen while giving them greeting in the name of Willamette and welcome to these halls. A thousand hills are ahead, each worth the climbing; and the professors are the friendliest of guides. I hope you will like the conquests and enjoy your fellow travelers.

Very cordially yours,

CARL G. DONEY.

THE ASSOCIATED STUDENT BODY



Joel Berreman

STUDENT BODY OFFICERS

<i>President</i>	JOEL BERREMAN
<i>First Vice-president</i>	SADIE JO READ
<i>Second Vice-president</i>	CLARE GEDDES
<i>Secretary</i>	GLADYS FLESHER
<i>Yell King</i>	IVAN WHITE
<i>Song Queen</i>	MARGARET ARNOLD

Student self-government is designed to impress upon the students of Willamette University the responsibility of managing their own affairs and to develop, through practical experience, the ability to administer them most effectively.

The Student Body fee, paid at registration, entitles the student to a voting membership in the organization and pays for a subscription to the Collegian, a copy of

the Wallulah, class dues and admission to all athletic contests.

Regular Student Body meetings are held every fourth Friday at the Chapel hour. Attendance is essential for a knowledge of what is going on as the organization controls athletics, forensics, library study rules, The Collegian, Wallulah, etc.

The Executive Committee, which is composed of the officers of the Student Body, the editor of the Collegian, a member of the faculty, and four members from the students at large, has full control of student activities throughout the year. A full account of all the business done by it is published regularly.

A Student Affairs Committee consisting of representatives from the trustees, faculty, and students meets regularly to consider campus problems which are of vital interest to all. Although it has no authority to put its conclusions into effect, it brings about a mutual understanding of the three viewpoints.

Every minute has sixty seconds—and an opportunity.

"A friendship that makes the least noise is very often the most useful, for which reason I should prefer a prudent friend to a zealous one."—Addison.

THE YOUNG WOMEN'S CHRISTIAN ASSOCIATION



Elizabeth Silver

GREETINGS

We greet you most cordially as new students who have chosen for your Alma Mater the school we love so well. We are glad to have you with us, joining in our big adventure of seeking for a fuller and more radiant life. May we work and play together, realizing our most cherished dreams of college days.

We will place our confidence in you, as we want you to place yours in us. We want to use you, as we hope you will use us, that together through fellowship, we can find the fullest life.

Cordially yours,

ELIZABETH SILVER.

THE Y. W. C. A. CABINET

<i>President</i>	ELIZABETH SILVER
<i>Vice-President</i>	VIRGINIA MERLE CRITES
<i>Secretary</i>	CAROLYN PARKER
<i>Treasurer</i>	ANNA ZIMMERMAN
<i>Undergraduate Representative</i>	
.....	MILDRED MILLS
<i>Meetings</i>	LOUISE FINDLEY
<i>Bible Study</i>	ELAINE CHAPIN
<i>World Fellowship</i>	PHOEBE SMITH
<i>Social Service</i>	EDNA LEDBETTER
<i>Social</i>	LOUISE NUNN
<i>Association Rooms</i>	DOROTHY FISHER
<i>Seabeck</i>	EUGENIA SAVAGE
<i>Finance</i>	RUBY DELK

THE PURPOSE OF THE ASSOCIATION

1. To lead students to faith in God through Jesus Christ;
2. To lead them into membership and service in the Christian Church;
3. To promote their growth in Christian faith and character, especially through the study of the Bible;
4. To influence them to devote themselves, in united efforts with all Christians, to making the will of Christ effective in human society, and in extending the Kingdom of God throughout the world.

Furthermore, with all college Y. W.'s in the United States, we unite in the determination to live unreservedly Jesus' law of love in every relationship and so to know God.

UNOFFICIAL GUIDE OF THE Y. W. C. A.

1. We hope that you will immediately become a member of the Young Woman's Christian Association.
2. The Y. W. C. A. is more than an organization, it is a fellowship.
3. There is a place for each one on the committees. Find the committee work which you will be interested in.
4. Make the Association rooms a habit. There you will make congenial friendships.
5. The regular weekly meetings of the Y. W. C. A. are on Thursday afternoons. You are always welcome. It may be that you are interested in art, trees, literature, international problems, discussion groups, fanciful ideas, whatever it is, may you find the way to a more complete life among this circle of friends.
6. What is your hobby? We are anxious to know in order that here you may find a way of developing it.
7. Part of college life is the play. Merrymaking is one of the jolliest sides of the Association.
8. Finally, remember that the "Y. W." is yours. Make of it what you would like to have it.

A man is but half educated who has not learned to place humanity above self and to work and fight together with others for the common good.

THE YOUNG MEN'S CHRISTIAN ASSOCIATION



James McClintock

GREETINGS

The mark of good scholarship is never divorced from the worth of true character, and true character is not separate, but is a part of the program of Jesus Christ. It is only as we build into our lives the qualities of fellowship, love, and service, that we really become useful to our generation. We are glad that the new men can be with us, and together with those who have moved out of a past of achievement and true effort, we will expect to attain during this year the results in Christian living that are expected of us. We welcome you to the Y. M. C. A. of Willamette University.

Cordially yours,

JAMES McCLINTOCK.

PURPOSE

The Y. M. C. A. is the church of Jesus Christ at work on the campus. This organization possesses standards, and ideals that will challenge the thinking, and living of every university man. The present Y headquarters are inadequate for our needs, but if each man will bring to this place the attitude of fellowship, and devotion, it will help to keep sacred the meaning of this room. Our aim for this year is the building of a life according to the plans and principles outlined by Christ. We have no apologies, we merely ask for the privilege to serve you, and to work with you.

ORGANIZATION

The executive organization is made up of the cabinet which consists of the four officers, and the chairmen of the five major committees. The largest organized executive group is made up of the Cabinet, and the members of all the committees. This organization is known as the Y council.

The following are the members of the Cabinet of the "Y".

<i>President</i>	JAMES McCLINTOCK
<i>Vice-President</i>	JAMES RETTIE
<i>Secretary</i>	CHARLES CAUGHLIN
<i>Treasurer</i>	*ROBERT WITTIE
<i>Campus Service</i>	CHARLES SWAN
<i>Community Service</i>	HUGH MCGILVRA
<i>Publicity and Literature</i>	WALTER ILIFF
<i>World Service</i>	CLARE GEDDES
<i>Life Service Guidance</i>	LYNN BOOTHBY

*Not definite.

WOMEN'S LITERARY SOCIETIES

Closely interwoven with the history and progress of Willamette University are the women's literary societies, in which several generations of college girls have found a broadening and cultural influence that could not be given by the regular curriculum. Each society meets two or four times a month in its own halls for a program, social hour, and business meeting.

PHILODOSIAN, 1883

President MILDRED TOMLINSON

ADELANTE, 1906

President SADIE JO READ

CHRESTOMATHEAN, 1916

President RUBY DELK

CLIONIAN, 1921

President IRENE CLARK

RULES

Each society shall hold its reception and each new woman shall have an opportunity to attend each society at least once and not more than twice before the second Saturday before Thanksgiving.

No woman shall be invited to join a society, either by verbal or written invitation, before the second Saturday before Thanksgiving.

Each girl shall answer in writing.

Any girl taking ten hours work in music, law or arts, or in regular standing in the university is eligible for membership in any society.

Any non-society girl, no matter how much or how little work she is carrying is entitled to attend the various open meetings and "At Homes."

Every new and non-society girl turns in her preference of societies in order; a committee formulates lists of choices for each society and furnishes the societies with their lists. Each society bids from the lists as received in order.

Each society has one "At Home," and one week-end rush date.

In order to secure secrecy in the actual bidding, the preferential lists are prepared from the choices by the faculty member of the Inter-Society Council alone, and these lists are sealed and not opened until after the meeting in which they are to be voted upon has been formally opened.

All the invitations to the various "At Homes" are printed on one card, with their respective dates, and sent to each non-society girl at the beginning of the season.

The answers to the invitations to join a society shall be in the mail by Monday night, following the Saturday they are issued.

No girl can change her choices after she hands them in.

Don't gossip in the library. Go to the "Y" room to entertain your friends.

Make some activity your objective; stick to it.

SORORITIES

BETA CHI, 1919

670 S. Winter Street. Phone 1378

President.....MARGARET RAUGHT

DELTA PHI, 1920

757 Center Street Phone 1378

President.....LETHA MILLER

ALPHA PHI ALPHA, 1923

1155 Oak Street Phone 1717

President.....ANN SILVER

RULES OF INTER-SORORITY COUNCIL

1. Sorority rush season shall be held during the first semester, the date being fixed by the Inter-Sorority Council. For the year 1926-1927, formal rush week will be before Thanksgiving vacation.

2. Sorority rush season shall be confined to one week, each Sorority having one mid-week dinner date.

3. Sororities may pledge, during the first semester, any girl who has been on the campus a previous semester.

4. New girls of either Freshman, Sophomore or Junior classes shall not be pledged until rush week; new Senior girls may be pledged before but shall not live in the house until the second semester.

5. No bids shall be promised to any girls at any time.

6. Bids shall be sent out on the date set by the Inter-Sorority Council which shall be after the last rush party.

7. There shall be no personal rushing during the formal rush season, each girl in each Sorority taking a personal pledge to refrain from such intercourse.

8. Any Sorority violating the above rules shall be obliged to forfeit one-half of all bids for that year.

9. Although the rules set forth in Article 8 do not compel Sororities to refrain from personal rushing of girls who have completed a year's work at Willamette, the Council suggests that this is the best policy to be pursued in regard to any girls who have been on the campus one year.

10. Any girls seeking advice or information concerning Sororities during rush week will receive impartial advice from Dean Richards.

11. In case of doubt or argument as to what a purely business relationship includes, Dean Richards' opinion will be final.

Be a loyal freshman—play the game and do what is expected of you.

Most of the difficulties into which students get are the result of undertaking to accomplish their ends by methods other than those in operation at Willamette. Avoid this by studying the college catalogue.

TAT KAPPA ALPHA

FRATERNITIES

SIGMA TAU, 1919

920 Oak Street Phone 1401
President.....KEITH RHODES

ALPHA PSI DELTA, 1920

840 Union Street Phone 549
President.....CLARE GEDDES

KAPPA GAMMA RHO, 1921

316 N. Church Street Phone 1074
President.....VICTOR CARLSON

EPSILON DELTA MU, 1923

1118 Oak Street Phone 1408
President.....FLOYD BAILY

Do not sacrifice or compromise the essentials of character, whatever your changes of belief or opinion. Remember that you are here to make "character more efficient through knowledge."—*F. W. Roe.*

THETA ALPHA PHI

To say hello to your fellow students and classmates on the campus is at all times expected of you. You cannot say hello too often.

HONORARY

ALPHA KAPPA NU

This is a local honorary society established primarily for the encouragement of high scholarship. Not more than fifteen per cent of any Senior class are eligible to membership.

BETA CHI ALPHA

The purpose of the national honorary society is to create a standard for college annuals and also to afford a medium for the consideration of college annual problems. Members are elected from students having one year of experience on the Wallulah staff.

PI GAMMA MU

This national honorary social science fraternity has as its aim the development of interest on the part of young college men and women in the scientific study of society and co-operation in the scientific solution of human problems. Seniors who have had twenty semester hours in this field with an average grade of at least 85 per cent therein, are eligible.

THETA ALPHA PHI

Theta Alpha Phi, national dramatic fraternity, promotes a deeper interest in dramatics and public speaking on the campus. During the year it presents from two to four major plays. Membership is open to students who show real ability in this line of work.

TAU KAPPA ALPHA

In recognition of Willamette's excellent work in forensics during the past years, a local chapter of the national forensic fraternity was established on the campus. The presence of this chapter is a big step forward in forensics at Willamette.

BLUE KEY FRATERNITY

The Blue Key, a national fraternity for upperclassmen, was formed to foster a national student spirit through an exchange of ideas and common understanding. The watchword of the club is "service"; service to the nation, to the state, and especially to the University in every field of activity. Its members who can be recognized by a gold key with blue corners are elected each year from the Sophomore class because of some outstanding service rendered to Willamette.

Begin your work promptly. More than half the freshmen who fail, fail because they waste the first six weeks. Watch them.

Handbook advertisers are your friends. They made this book possible.

ATHLETIC

ATHLETIC COMMITTEE

The Athletic Committee is composed of representatives from the trustees, faculty, alumni, and students. Its function is to advise in matters of policy, finance, etc., and to promote athletics at Willamette.

"W" CLUB

This organization takes a keen interest in Willamette and does much to further her work in athletics. Its membership includes all students who have received the official athletic "W."

WOMEN'S ATHLETIC ASSOCIATION

The purpose of this club is to develop interest in women's athletics and to instill in its members the spirit of true sportsmanship. Membership and awards are based on a point system. As soon as possible the association will apply for membership in the Athletic Conference of American College Women.

THE CUBS

The Cubs are a self-perpetuating group of underclassmen whose object is to greet and direct visitors on the campus and at athletic games, to instruct the freshmen in college traditions, and to instill in them the true Willamette spirit. The members act as campus policemen and are backed in their decisions both morally and physically by the "W" Club men and the Blue Key Fraternity.

FORENSIC

BAR "W" CLUB

This club is made up of those individuals who have won the official Bar "W" pin by representing Willamette in a winning debate or inter-collegiate oratorical contest. Through its members it does much to promote interest in public speaking at Willamette.

FORENSIC COUNCIL

The Forensic Council is composed of three wearers of the Bar "W" and the debate coaches. It has direct charge of all debate and oratorical activities including the finances of the department.

DEBATE

Debate at any university signifies intellectual prowess, and at Willamette it stands for inter-collegiate triumph. The men's team, through two successful tours which included schools in the Middle and South West and a large number of local contests, has gained Willamette's membership in the Pacific Forensic League and in Tau Kappa Alpha.

Nor is the men's squad the only exponent of debate at Willamette. The women's teams have had a full schedule of inter-collegiate contests and are faithful defenders of the cardinal and gold.

Inter-class and Freshmen debates also have a place and offer an opportunity for aspiring varsity debaters.

ORATORY

The inter-class, Old Line, Peace, and Inter-state Oratorical Contests which are held yearly provide sufficient activity for those interested in this work. In the past Willamette has placed first or second in the inter-collegiate contests.

MUSICAL

WOMEN'S GLEE CLUB

There is great interest in music at Willamette and this women's organization provides a pleasing expression of that interest in its numerous local concerts, a home concert, and an extended tour at mid-year. The vacancies in membership are filled by an open try-out.

MEN'S GLEE CLUB

This organization is well and favorably known almost as far as is Willamette itself. The membership is determined by open try-out and the Dean of the School of Music is the director. Like the girls' club it gives a home concert and makes an extended tour carrying excellent musical programs to the towns of Oregon and Washington. Besides affording the club great pleasure and good financial returns, the trip is an advertising feature for Willamette.

THE VARSITY BAND

The A. S. W. U. constitution encourages a Varsity Band by providing awards for activity in this field. Music furnished by it is an important feature at rallies and games.

ROGUSH UMPS

These girls, with their ukes, guitars, and banjos, produce a much-loved type of music at Willamette, and a serenade by the group is a joy.

BEETHOVEN SOCIETY

The Beethoven Society is a group of talented musicians who have organized for the purpose of developing more interest in music and of furthering its appreciation on the campus. This year, the organization as well as presenting its own members in programs is sponsoring a Salem Artist Series which will consist of four concerts by internationally famous artists.

THE FRESHMAN GLEE

This is an inter-class rivalry song contest provided for in the A. S. W. U. constitution. But it is also very much more. It is an occasion unique to Willamette. The four songs produced are all of merit and those which stand the test of actual use become a part of Willamette's large collection of favorite songs.

Get in touch with some adviser, your instructor, or some other responsible official to whom you may turn when in need of advice about your college work. Do not run the risk of failure through ignorance of the rules.

Cultivate personal relations with your teachers. They are interested in you and anxious to be of the most possible service to you.

BROTHERHOOD SOCIETY

MISCELLANEOUS

COSMOPOLITAN CLUB

The Cosmopolitan Club is a group of foreign and American students organized for the purpose of creating understanding and good fellowship between students of the various nationalities and races.

WILLAMETTE WESLEYANS

The Willamette Wesleyans are a part of a national organization of students who are planning on full time Christian service in the home or foreign field. The members lunch together once a week and discuss problems pertinent to their future work.

CHRISTIAN COUNCIL

The Council is composed of representatives of all the student Christian organizations and serves as a coordination agency for their work on the campus.

PHI DELTA DELTA

Epsilon chapter of this fraternity for women law students was installed on the Willamette campus in 1925.

BLACKSTONE CLUB

The men of School of Law formed this organization to create a closer unity among the members of the three classes and "to aid the growth and development of the College of Law of Willamette University."

WRITERS CLUB

The Writers Club, composed of students showing literary ability and inclination, meets for the purpose of stimulating its

members to better creative writing by mutual criticism and suggestion. The club publishes annually a magazine, "The Willamette Writers Publication," which contains the best work of its members.

SCIENCE CLUB

The Science Club was organized by the students of the natural sciences in 1925. Its purpose is to afford opportunity for study and research beyond that possible in the classroom.

HOME ECONOMICS CLUB

The purpose of this organization is to further interest in Home Economics.

CLASSICAL CLUB

Through its regular meetings this group develops a better understanding and appreciation of the Greeks and Romans and their languages. Any student taking the classics is eligible to membership.

FRENCH CLUB

This organization of students taking advanced work in French provides an opportunity for those interested to study the French nation and to learn to speak the language more fluently.

LAUSANNE HALL CLUB

"Lausanne is more than a building; it is an ideal." Those girls who meet under its spacious roof in an atmosphere of culture and refinement unite to form a significant campus organization with Willamette traditions as its ideal.

The best way to fail is to cut classes.

PUBLICATIONS

THE WILLAMETTE COLLEGIAN

Editor.....VICTOR CARLSON
Manager.....EVERETT FABER

The Collegian is the official college paper. In this weekly which appears on Wednesday mornings are published the happenings of the campus and interesting bits of intercollegiate news. Staff workers who do work of particular merit are eligible to the official award, a gold old English C. It is customary and expected that Willamette students will patronize Collegian advertisers.

WALLULAH

Editor.....HUGH MCGILVRA
Manager.....KENNETH LITCHFIELD

The Wallulah is the annual year book put out by the A. S. W. U. A part of the student body fee is devoted to its support so that everyone is entitled to a book when it appears during Junior Week End.

WILLAMETTE SONG BOOK

The Song Book contains Willamette's splendid collection of college songs and provides for a permanent record of the new songs introduced each year at the annual Freshman Glee. Every Willamette student should own one and become familiar with the songs.

THE HANDBOOK

The Handbook published every year by the Christian Associations is presented to each student during registration. Its purpose is to briefly acquaint the new student with the traditions, songs, activities, rules, and spirit of the school.

PRIZES

At commencement time of each year a number of prizes are awarded to those students in the University who have shown ability in certain fields of activity.

Albert Prize: Mr. Jos. H. Albert, of Salem, awards \$25 to the student having a record for faithful study and scholarship not below the average, who, during the school year, opportunities considered, has made the greatest progress toward the ideal in character, service, and wholesome influence.

The Colonel Willis Prize: Col. Percy Willis, '85, of Portland, offers a prize of \$25 "to the student who throughout the school year has done the most real good to fellow students and the University by deeds of kindness and genuine helpfulness, coupled with steadfast devotion to high ideals and upright character."

Burghardt Prize: Mr. William Burghardt, Jr., of Salem, offers \$25 to the student in the first course in calculus who earns the highest grade throughout the year.

Steeves Prize: A prize of \$10 is offered by Dr. B. L. Steeves, '91, for the student who does the best work in Latin.

Keyes Prizes: Hon. Walter E. Keyes, of Salem, offers two prizes of \$15 and \$10 to those who win first and second honors in oratory.

University Prizes: The University offers the following prizes to winners in any University contest in Public Speaking, to be applied on tuition in the College of

Liberal Arts, except in the case of seniors in their last semester, who will be paid in cash:

1. Five dollars to the winner in a local contest.
2. Ten dollars to the winner in an inter-collegiate contest.
3. Fifteen dollars to the winner in an inter-state contest.

No person may receive more than one prize in any college year.

Senior Scholars: Senior scholars are chosen from the various departments each year to serve as readers and student assistants in the respective departments. Besides the honor attached to the choice there is also credit given in college hours.

Printers of

School Annuals

of the Highest Class



Statesman Publishing Co.

215-217 S. COMMERCIAL : PHONE 583

23 TRADITIONS

Each student is a member of a Christian Association.

Student's mail addressed to Willamette University is placed in the alphabetical mail boxes back of the stairs on the first floor of Eaton Hall.

Girls leave off the pins of their social organizations for the first two weeks of the fall term.

Rise when the "Old Historic Temple" is sung.

A smile and "Hello" are expected from every student regardless of age, class, or rate of speed.

Willamette students are good sports in all inter-collegiate contests.

Students do not smoke on the campus.

Street shoes are not worn on the gym floor.

Only Juniors wear corduroys.

The library is a place for study.

Representatives of the Y. W. C. A. and the Y. M. C. A. meet all incoming trains and will be glad to help you in any way possible.

Don't be afraid to ask questions at the "Y" headquarters.

Go to all your class meetings.

It is fortunate for most of us that we get what we get instead of what we deserve.

FRESHMAN RULES

The "Cubs" greet you class of '30.

Following is a list of traditions that must be observed by the Freshman during the Rook year 1926-7 until May day.

1. The songs and yells in the Handbook are to be learned and presented at the rally soon after the beginning of school.

2. Green caps of standard size are to be worn at all times except Sunday when within the city limits. Penalty for failure to do so 5 spats.

3. The Handbook must be carried at all times. Penalty, 3 spats is minimum.

4. Attendance at all games, rallies, and A. S. W. U. meetings is required. Penalty, 5 is minimum.

5. Only Seniors use the Senior bench. Penalty, 5 spats.

6. Freshmen do not enter or leave Chapel by the side doors. Penalty, 5 spats.

7. Freshmen do not wear high school emblems, pins or rings. Penalty, 5 spats.

8. A certain amount of work on the campus and athletic field is required of all Freshmen. Penalty for failure to perform work, 10 spats is minimum.

9. Freshmen must obey Cub and "W" club men at all times. Penalty, 5 spats.

Excuses are valid only when signed by the President of the Cubs.

It is our duty to uphold and carry this out. If you have questions to ask, come to us and we will try to help you out. We hope for cooperation.

LEO HUSTON,

Pres. of "W" Club.

WILLIAM B. SMULLIN,

Pres. of Cubs.

"PLAN AHEAD"

Many students on coming to the university have no idea what subjects they will take, and what requirements they must meet in order to attain their years of college work and graduate. They often remain in this blissful state of ignorance for several years, taking what pleases them with no regard to the arrangement of courses according to the curriculum grouping. Suddenly they come to the proposition of getting more hours of requirements than they can possibly carry. As a result, they find it impossible to graduate in four years.

A little care spent at the start studying the bulletin and acquainting yourself with the requirements of your course will save a great amount of valuable time later. At the beginning of each semester, time is set for students to arrange courses properly.

The college bulletin may be found at the Registrar's office, and always remember that all members of the faculty stand ready at any time to help you keep out of difficulties.

STUDENT HEALTH SERVICE

The University maintains a very complete health service under the direction of Dr. C. A. Downs whose office is in the Masonic Temple, corner of State and High street. At the time of entrance to the University the student is given a careful physical and medical examination. Medical advice and office treatments are free to all students, altho prevention and health education are the purpose of the health service quite as much as treatment.

ATHLETICS

At Willamette, as elsewhere, the varsity and inter-class contests in football, basketball, baseball, track, and tennis claim the active interest of the majority of the University students.

Athletic participants who have fully adhered to the required conditions for the obtainance of such an honor receive from the Student Body at the award day following the term of athletic participation, an official Varsity sweater and "W." For the second and third years of participation, certificates are awarded. Service for four years in any one branch of the major sports entitles the athlete to the "W" blanket, the University's most coveted athletic prize.

With membership in the newly organized Northwest Conference, a well-equipped gymnasium, and a new coach, "Spec" Keene, Willamette is looking forward to outstanding success in athletics for the coming year.

STATE TOURNAMENT

The State High School basketball tournament held each year in March has become an important part of Willamette's athletic program.

EXTRACTS FROM THE NORTHWEST
CONFERENCE ELIGIBILITY RULES

5. A student who has participated in athletics in one institution shall not represent a second institution until he has satisfied Rule 6 in the new institution and until he has passed one season of each sport thereafter. He shall lose one season's participation in each sport.

6. No person shall participate in any intercollegiate sport—

(a) Unless he is a bona fide student, doing at least twelve hours work in a regular or special course as defined in the curriculum of his school or college.

(b) Unless he shall have passed two-thirds of the regular work for the semester or quarter of residence previous to participation; provided, however, that a fractional portion of an hour shall not be regarded in declaring him ineligible.

(c) Unless one week before the first Conference game he shall be carrying eleven hours satisfactorily, or eleven-sixteenths in accordance with section (b) above. All members of the squad found eligible at that time shall be declared scholastically eligible for the season in question.

(d) Conference rules shall also apply to games with non-conference games.

(e) No student shall participate in intercollegiate athletics who has more than one-fifth as many hours of delinquency on his record as he has hours of total credit passed.

(g) No student shall represent his institution in any intercollegiate game or contest who registered later than three weeks after the first day set for registration in the semester or quarter in which he desires to compete.

8. No student shall represent an athletic club or organization, baseball club or team other than his institution from the opening of the fall quarter or semester to the close of the spring quarter or semester, provided that students not in training as members of freshmen or varsity squads may compete on church teams.

Willamette
Men and Women

Do you like to swim?

Do you wish to learn to
swim?

The "Y" pool offers you
the opportunity

Society Programs

Window Cards

*and All Kinds of Printing
for the Student*



Statesman Publishing Co.

215-217 S. COMMERCIAL :: PHONE 583

1926 FOOTBALL SEASON

Date	Opponent	Score	
		W. U.	Op.

1926-1927 BASKETBALL SEASON

Date	Opponent	Score	
		W. U.	Op.

**WILLAMETTE
UNIVERSITY
STUDENTS
are**

ALWAYS WELCOME

We carry a full line of
SCHOOL SUPPLIES

Atlas Book Store

Spalding and Goldsmith
Athletic Goods

Anderson's

**THE SPORTING GOODS
STORE**

465 State St.
Salem, Oregon

167 N. Commercial St.

1927 SPRING SPORTS

	Date	Opponent	Score	
			W. U.	Op.
Baseball				
Tennis				
Track				

HARTMAN BROS. CO.

WATCHES
DIAMONDS
JEWELRY

Society and Other
College Pins

Expert Watch and Jewelry
Repairing

SALEM'S
SQUARE
DEAL
JEWELERS

Cor. State and Liberty Sts.
Salem, Oregon

YELLS

Yell King.....IVAN WHITE
Crown Prince.....WILLIAM SMULLIN

BEARCATS

Hip Hooray! Hip Hooray! Hip Hooray!
 W O W I E !
 Rah, Rah, Rah, Rah, Bearcats! !

K-ZIP

K-zip, K-zip, K-zee.
 K-zip, K-zip, K-zoo.
 At 'em, Willamette;
 Kill 'em, Willamette
 Rah for W. U.

LOCOMOTIVE

Rah, Rah, Rah, Rah, W. U., W. U.
 Rah, Rah, Rah, Rah, W. U., W. U.
 Rah, Rah, Rah, Rah, W. U., W. U.
 Rah, Rah, Rah, Rah, WILLAMETTE.

Y-E-A—W. U.

Y-e-a—W. U.
 Y-e-a—W. U.
 Y-e-a—W. U.
 Fight 'em, Fight 'em, Fight 'em
 WILLAMETTE.

SKYROCKET

Z————boom!
 Ah————!
 Willamette! !

Official Photographers

1927 "WALLULAH"
W. U. Year Book

1927 "NORM"
O. S. N. S. Year Book

Kennell-Ellis

EUGENE—SALEM

"Better Pictures"

Telephone 351

PORTRAIT COMMERCIAL and
HOME PORTRAIT
PHOTOGRAPHY

429 Oregon Building
Salem, Oregon

PORTRAIT STUDIOS

RICKA-CHICK

Ricka-Chicka-Boom! ! !
 Ricka-Chicka-Boom! ! !
 Boom, Boom, Boom, Boom,
 Boom, Boom, Boom! ! !
 Ah-hh-hh-hh-!
 Ah-hh-hh-hh-!
 Willamette, Willamette
 Rah, Rah, Rah.

B-E-A-R-C-A-T-S—RAH

B—E—A—R—C—A—T—S—Rah!

(slow)

B--E--A--R--C--A--T--S—Rah

(faster)

B-E-A-R-C-A-T-S—Rah

(fast)

Rah, Rah, Rah, Rah

Bearcats!

WILLAMETTE
 STUDENTS
 ALWAYS WELCOME

at the

Best Barber Shop

Just South of the New First
 National Bank Building

Where four first-class barbers
 always endeavor to please.

P. W. Hubbard

J. G. Hall

Darl Kenyon

Dorsey Reeves

Salem Laundry Co.

(WIEDER'S LAUNDRY)

Phone

25

263 S. HIGH ST.

SONGS

Song Queen.....MARGARET ARNOLD

OLD HISTORIC TEMPLE

There's an old Historic Temple
Rising grandly through the years,
Where the oaken-hearted fathers
Drew their strength for strong careers.
Down the years its portals open,
Gathers wise ones to its fold;
Breathes the spirit of the Westland,
Card'nal emblem 'bossed with gold.

Spirit of the Golden Westland,
Breathing through our fathers' tears,
Tells the story of the Temple,
Bids us hope adown the years.
Sing, oh sing, of old Willamette,
Sing while hearts are young and true;
Sea to sea the chorus swelling,
Dear old school, our W. U.

MIGHTY FIGHTING BEARCATS

Fight on, Willamette! show us your might
As you trample the valiant foe.

Go lay their colors low,
Give undaunted blow for blow.

Come show your spirits, fight to the end,
Willamette, we'll defend.

Come ye mighty fighting Bearcats,
Show your fight, fight, fight!

Rah! Rah!

Fight on, ye Bearcats, let naught dismay
While striving to win the day;

Let not a fighter yield
As you play on floor or field.

Join in our song of rousing good cheer
With every rooter here!

As onward, forward, goes our team,
Let's fight! fight! fight!

Rah! Rah!



When you
are feeling **SPIFFY**—

Let us make your Portrait

Gunnell & Robb Studio

520 STATE ST.

Bligh's New Capital Theater
Bldg.

QUEEN OF THE WEST

The East may love old Harvard,
 The North love old Cornell;
 But the school of fame, whose noble name,
 Forever shall excel
 Stands proudly in the Westland
 Where friends are staunch and true;
 We love our dear old college,
 So here's to W. U.!

Chorus—

Willamette, to thee we will be true,
 Willamette, we'll ever fight for you,
 We pledge our loyalty,
 Our homage pay to thee,
 Pride of all the West, you are the best,
 Willamette, our hearts we pledge anew,
 Willamette, our fealty to you,
 Faithful we will be
 With staunch fidelity,
 Willamette, queen of all!

Fling high our glorious colors
 The cardinal and the gold,
 Exalt the dream which stands supreme
 Wrought by the men of old.
 With eager hearts and voices
 And veneration true;
 Sing forth our acclamations
 Bold sons of W. U.

IN THE LAND OF THE GOLDEN SUNSET

Rah! for our dear Alma Mater!
 Rah! for the football score!
 Rah! for the men who defend her
 On gym or debating floor,
 Ever to thee we'll be loyal.
 True to the Cardinal and Gold;
 Oh, Willamette, Willamette, we love thee,
 Our school we'll forever uphold.

"Say it with flowers"

QUALITY FLOWERS

ARTISTICALLY

ARRANGED

FOR ALL

OCCASIONS

Phone 380

Night 1360 or 554W

C. F. Breithaupt

Florist and Decorator

512 State

SALEM

WILLAMETTE

There's a school we call Willamette
That will ever prompt our praise,
For 'tis there we win our victories
And there our standards raise.
It's a school that makes true sportsmen
And will lasting service give
To those who dare to do their share
And fight that she might live.

Chorus—

Willamette, Willamette, we're with you
to the end!
Willamette, Willamette, our voices gladly
blend
To cheer you, revere you, and your un-
daunted fame,
Oh, Willamette U, we will see you through,
And guard your glorious name!

So we'll fight for old Willamette
And with courage ever bold
We will cheer our mighty Bearcats,
Cheer the Cardinal and the Gold;
And our team still striving onward,
With a victory in view,
Brings cheer for old Willamette,
Brings cheer for W. U.

I LOVE WILLAMETTE U.

I love Willamette U.
I love her campus too;
I love her pros so good and true,
I love her spirit real true blue.
I love the old mill stream,
I love to sit and dream;
I see it all in shadows cool,
I love the dear old school.

WHEN YOU THINK MUSIC—

Think Moore's

Always the latest hits in
record and sheet music.

Our library of classical
songs, piano and violin
numbers is greatly increas-
ed to meet your every need.

Moore's Music House

409-415 Court

Phone 983

Moore Means Music

ON WILLAMETTE

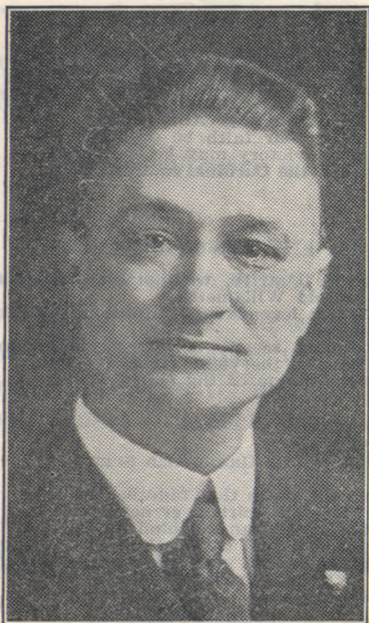
On Willamette, ever onward,
To the highest goal in view,
From the bell tower rings the story
Of thy conquests, W. U.
In our mighty Alma Mater
Let our faith be ever bold,
That victory may be the prize,
Of the Cardinal and the Gold.

MAGIC SPIRIT

Then we'll strive, we'll stand, we'll stay
by old Willamette
With her legends and traditions old and
true.
Something seems to draw us onward
ever to the victor's goal;
'Tis the magic of thy spirit, W. U.

THE GRAND OLD SPIRIT

From the years that fade behind us
Comes a spirit ever new,
Comes to grip and to bind us
To the soul of W. U.
Winning cannot mar her spirit,
With the tarnish of conceit,
And the foes we meet all fear it,
For it never knows defeat.
Oh, our hearts beat high for singing
When we hear that magic name;
And we set the echoes ringing
With Willamette's ancient fame.
Sing the glory of Willamette,
All ye loyal ones and true;
Keep alive the grand old spirit,
Ever changing, ever new;
Trim your souls and hearts for fighting
And we'll see Willamette thru.



THIS IS
SCHAEFER
THE DRUGGIST

LET'S GET ACQUAINTED

Phone 197 135 N. Commercial St.

Schaefer's Drug Store
YELLOW FRONT

FIGHT 'EM BEARCATS

Fight 'em, Bearcats, fight forever,
 Guard Willamette through the years;
 Fight with mighty strong endeavor,
 Shield the spirit of our seers.
 Fight 'em, Bearcats, sturdy warriors,
 Fight with matchless courage bold,
 For the glory of our Cardinal,
 Cardinal and undaunted Gold.

GO, WILLAMETTE

Fight the fight that knows no fear,
 Oh, Willamette, heart of cheer.
 Then we'll shout the name we love
 To the bending skies above.
 Go, Willamette, go, Willamette, go, W. U.
 Go and win the victory,
 Show them all both great and small,
 What Willamette fight can do.

CANNIBAL KING

A cannibal king with a big nose ring,
 Got stuck on a Zulu maid,
 And every night when the moon shone
 bright
 Across the canal he'd wade
 To hug and kiss that dusky miss
 Out under the big bay tree,
 And when they met they sang a duet
 That sounded like this to me:

(Yell)

Hip, heck, tra, boom!
 Gin bisum, yah room!
 Hulla baloo, baloo, balee!
 Old Willamette Varsity!

THE STORE FOR
YOUNG MEN

Always the Newest
in

CLOTHING AND
FURNISHINGS

With Better Service
at Better Values

THE MAN'S SHOP
DUDS FOR MEN

416 State St. Salem

HOLLIS HUNTINGTON

ELLIS E. COOLEY

WILLAMETTE SPRING SONG

Oh, springtime at Willamette,
There's naught could sweeter be!
Like mists by sunlight melted,
The clouds of trouble flee.
And all of life seems gladness
At just a sparrow's trill,
Or glimpse of maple blossoms,
Our hearts with rapture thrill.

Oh, sweet is day's stern labor,
We conquer without fear;
And sweet the hours of evening
When college friends are near.
So gathered here at twilight
Amid the shadows long,
Soft notes of youth and springtime
Are mingled in our song.

BEND THE KNEE

Bend the knee, yes, bend the knee
To the Cardinal and the Gold;
Before the Bearcats' fighting power
Mars himself must even cower.
Rise, ye sons of Jason Lee,
We will win the victory,
So bend, bend the knee to Willamette
Varsity.
Victory; yes, victory to the Cardinal and
the Gold;
Then fearful foes will bite the dust,
For win we will, for win we must.
Onward, then to mastery,
This our conquering song shall be;
So bend, bend the knee to Willamette
Varsity.

B. & B. Optical Co., 370 1/2 State
St., Dr. Harry Bancroft, Mgr., Salem,
Oregon.

DAY PHONES 529 and 13

Salem Transfer & Fuel, Inc.

BAGGAGE

Auto Trucks For Hire

752 Trade St.

NIGHT PHONE 1606

W. U. WE SHINE FOR U
Ladies' and Gentlemen's Shoe Shining

The Shyne Shoppe

439 State Street

The Shyne Shoppe Too

Lobby U. S. Bank Bldg.

Springer and McLeod

Cherry City Cleaners

QUICK SERVICE

We do your mending

PHONE 934

231 North High St.

DREAM ON

The stars are softly gleaming,
In the shadows of the night,
The moon like glowing silver
Covers all with mellow light,
The world is resting peaceful
From the hurry of the day,
So now beneath your window
Do I sing to you and say—

Chorus: (Boys sing)

Dream on gently, pretty maiden,
Till the golden heart of you
Thrills with night-time's beauty,
And your fairest dreams come
true.

(Girls sing)

Dream on, lad of Old Willamette,
Till the youthful heart of you
Thrills with life and love and glory,
And your fairest dreams come
true.

The mill stream ripples onward
Through the mottled shade of
trees,
The moon is wafted gently
By the golden evening breeze,
And making light the shadows
Dance the moonlight fairy beams
And they mingle with our music
And they harmonize your dreams.

OUR DEAR OLD WILLAMETTE

For our dear old Willamette U.,
The varsity loved so well,
The college leading all others,
As our contests nobly tell.
We shall live and die for W. U.
And do it with a will;
So, here's to the best in all the West,
The greatest college still.

Wanted

Last year a new student wanted to know where the best place to buy his clothing and furnishings was. An older student made this suggestion:

“Down to Bishop’s”

They specialize in college men’s clothing and will give you a square deal when it comes to price.

They carry

HART SCHAFFNER & MARX CLOTHES

and all of the best in the way
of SHOES and FURNISHINGS.

Bishop’s Clothing &
Woolen Mills Store,
Inc.

SOCIAL CALENDAR

Y. W. Teas—In the Association rooms during registration week; a chance for new and old girls to become acquainted.

Jolly Jaunt—A Y. W. C. A. function on September 25; all women go.

Stag Mix—A Y. M. C. A. function early in the semester; all men go.

Y. M.-Y. W. Reception—October 2; an all college affair; everybody goes.

Epworth League Receptions—During the early weeks of school; everybody welcome.

Homecoming—Last of October; everyone turns out to welcome home the Alumni.

Student Body Parties—One each semester; for all students.

Thanksgiving Jolly Up—Thanksgiving evening; all students remaining in Salem go.

Fraternity, Sorority, and Lausanne Open Houses—December affairs; friends attend.

The Dean's Tea—Sometime in the fall; women students invited.

Post Exam Jubilee—February 5; all "survivors" go.

Annual Freshman Glee—March 5; everybody is there.

Co-ed Carnival—Sometime in April; all women attend.

Junior Week End and May Festival—Early in May; everybody is there and everybody has guests.

Commencement—June 11-13; friends, faculty, and students are present.

Make friends by being one yourself. It is a tragedy to live an isolated life. There are important sides of your nature that cannot be developed except by healthy contact with your fellow students.

Your Church Home

The **First Methodist Episcopal Church**

TWO BLOCKS FROM THE
UNIVERSITY ON STATE STREET

**The Church with a Glad Hand,
Glowing Heart and
Glorious History**

A full program of interest and
inspiration for young people.

Bearcat Forum S. S. Class
..... 9:45 A. M.

Epworth League ... 6:30 P. M.

Preaching Service
11:00 A. M. and 7:30 P.M.

FRED C. TAYLOR.....Minister

MARGARET K. SUTHERLAND.....
.....Director of Religious Education

PROF. E. W. HOBSON.....
.....Director of Music

PROF. T. S. ROBERTS.....Organist

CHURCH DIRECTORY

- First Baptist, Liberty and Marion.
First German Baptist, Cottage and D.
First Christian, High and Center.
Court Street Christian, Court and 17th.
First Church of Christ Scientist, Liberty and Chemeketa.
Church of God, 1346 N. Church.
First Congregational, Liberty and Center.
Central Congregational, Ferry and 19th.
First Evangelical, Chemeketa and 17th.
United Evangelical, Cottage and Center.
Free Methodist, N. Winter and Market.
South Salem Friends, S. Commercial and Washington.
Highland Friends, Elm and Highland.
German Reformed, Capitol and Marion.
Christ's Lutheran, 16th and A.
St. John's Lutheran, State and 18th.
First Methodist Episcopal, State and Church.
Leslie Methodist Episcopal, S. Commercial and Myers.
Jason Lee Memorial, N. Winter and Jefferson.
West Salem M. E., West Salem.
Center Street M. E., Center and 13th.
Swedish Methodist Episcopal, Mill and 15th.
Nazarene, Marion and 19th.
First Presbyterian, Church and Chemeketa.
St. Paul's Protestant Episcopal, Church and Chemeketa.
St. Joseph's Roman Catholic, Cottage and Chemeketa.
St. Vincent de Paul, Roman Catholic, Highland and Myrtle.
Salvation Army Mission, 245 State.
Seventh Day Adventist, Gaines and N. 5th.

(Continued on page 63)

Don't Register

until you have carefully examined the courses offered by the Kimball School of Theology.

Willamette students may elect freely from our courses for credit toward their university degree and may major in religion if they so desire.

See pages 14, 37 and 44 of the Willamette Catalog.

**Consult with the
Kimball Faculty**

You will find them helpful
and sympathetic

CHURCH DIRECTORY—(Continued)

Unity Unitarian, Cottage and Chemeketa.

First United Brethren, Mission and S. 12th.

Castle Chapel U. B., Nebraska and 17th.

W. C. T. U. Hall, S. Commercial and Ferry.

LIBRARIES

Willamette—Third floor Waller Hall; open 7:30 a. m. to 9:30 p. m.

City—State and Winter Sts.; open 9:00 a. m. to 9:00 p. m. weekdays and on Sundays for reading only from 2:00 to 5:00 p. m.

State Library—State and 12th Sts., order books through Willamette Library.

State Law Library—Third floor Supreme Court Building; open 8:00 a. m. to 10:00 p. m.

TELEPHONE DIRECTORY

Lausanne Hall.....	602
Sororities, see Sorority section.	
Fraternities, see Fraternity section.	
President Carl G. Doney.....	1538
Registrar's Office.....	317
S. P. Station.....	41
O. E. Station.....	727
Stage Terminal.....	696
Kimball School of Theology.....	838
Statesman Office.....	23
Journal Office.....	82
Salem Clinic, Dr. Downs.....	329

Center Street Valeteria

STUDENTS CLEANER

SPECIAL RATES
TO
STUDENTS

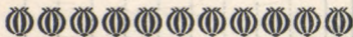
Club Service

485 CENTER ST.

Phone 2227

CAMPUS WORK

	Date	Name of Work	Hours	Cub Signature
1.				
2.				
3.				
4.				
5.				
6.				
7.				
8.				
9.				
10.				



THE
WILLAMETTE
COLLEGIAN
IS
YOUR PAPER

BE A BOOSTER

Patronize Our Advertisers

VICTOR CARLSON
Editor

EVERETT FABER
Manager



MEMORANDA

The Drug Store
Complete

STATIONERY, COSMETICS
KODAKS, PENS

CENTRAL
PHARMACY
Woolpert & Quisenberry

Next Door to Bank of Commerce
Phone 272

D. H. MOSHER
STUDENT'S TAILOR

Suits \$32.50
ALL WOOL

MATERIAL AND WORKMANSHIP

LEARN THE YELLS

B. & B. Optical Co., 370 1/2 State
St., Dr. Harry Bancroft, Mgr., Salem,
Oregon.

**The Drug Store
Complete**

**KODAKS, PENS,
STATIONERY, COSMETICS**

**CENTRAL
PHARMACY**

Woolpert & Quisenberry

**Next Door to Bank of Commerce
Phone 276**

**D. H. MOSHER
STUDENT'S TAILOR**

Suits \$32.50

ALL WOOL

**Material and Workmanship
of W. U. Quality**

**Cleaning, Pressing,
Alterations, Remodeling**

MEMORANDA

Wallace

1927

The College Year

in

Word and Picture

Hugh McGivra, Editor

Kenneth L. Johnson, Manager

The Capital Drug
Store

"Only The Best"

LEARN THE SONGS

J. H. WILLET

B. & B. Optical Co., 370 1/2 State
St., Dr. Harry Bancroft, Mgr., Salem,
Oregon.

Wallulah 1927

The College Year
in
Word and Picture

Hugh McGilvra, Editor
Kenneth Litchfield, Manager

The Capital Drug Store

"Only The Best"

Sheaffer's Fountain Pens and Pencils,
Eastman Kodaks, Helena Rubenstein's
Cosmetics, Martha Washington Can-
dies and Exclusive Agents for Darnee,
Red Feather and Owl Co. Products.

J. H. WILLETT

Katty-Corner First National Bank
Bldg.

MEMORANDA

COMPLIMENTS OF

John J. Rottle

"Just Good Shoes"

415 STATE STREET

Your Patronage Is Appreciated

Welcome Always

AT

The SPAWe make a special effort to take
care of students, bandmen and serve
you well in every way.

Make this Corner Bakery Restaurant

Affiliate with some church in Salem.
It will be well worth your while.

P. O. MYERS

B. & B. Optical Co., 370 1/2 State
St., Dr. Harry Bancroft, Mrs., Salem,
Oregon.

MEMORANDA
 COMPLIMENTS OF

John J. Rottle

"Just Good Shoes"

The College Year
 415 STATE STREET

Word and Picture
 Your Patronage Is Appreciated
 Hugh McGuire, Editor
 Kenneth L. J. L. Manager

Welcome Always

AT

The SPA

We make a special effort to take care of students' banquets and serve you well in every way.

Make this Confectionery-Restaurant your headquarters.

F. G. MYERS

You Will Like Our New Annex

MEMORANDA

Health and Accident

From

The Old Line Life Ins. Co.

Salem

C. B. Madsen

General Agent

250 U. S. BANK BLDG.

Get Your Shine

at the

Terminal

Shine

Try giving your professors a square deal. They might reciprocate.

B. & B. Optical Co., 370 ½ State St., Dr. Harry Bancroft, Mgr., Salem, Oregon.

LIFE INSURANCE

Health and Accident

From

The Old Line Life Ins. Co.

Satisfies

C. B. Madsen

General Agent

520 U. S. BANK BLDG.

Get Your Shine

at the

Terminal

Shine

Parlors

Terminal Building

GOOD SERVICE

MEMORANDA

College life abounds in chances to learn to speak in public, and the student does well who takes advantage of them.

City Cleaning Works

1245 State St.

Phone 703

MEMORANDA

LIFE INSURANCE

Health and Accident

From

The Old Line Life Ins. Co.

C. B. Madsen

500 F. B. BANK BLDG

Get Your Shine

Bearcat rooters are sportsmen. Courtesy to their opponents is a practice of many years standing.

Eaton's Hat Shop

Cleaning and Renovating of all
kinds of hats

Ladies 141 S. Liberty Gents

PHONE 1919

INDEX TO ADVERTISERS

Anderson's—Sporting Goods.....	38
Atlas Book Store.....	38
B. & B. Optical Co.....	55
Best Barber Shop.....	43
Bishop's Clothing and Woolen Mills Store	58
Breithaupt, C. F.—Florist.....	48
Capital Drug Store.....	70
Center Street Valetaria—Cleaners.....	64
Central Pharmacy.....	68
Cherry City Cleaners.....	56
City Cleaning Works.....	75
Eaton's Hat Shop.....	76
First M. E. Church, The.....	60
Gunnell & Robb Studio.....	46
Hartman Bros.—Jewelers	40
Kennell-Ellis Portrait Studio.....	42
Kimball School of Theology.....	62
Ladd & Bush—Bankers	2
Madsen, C. B.—Insurance.....	74
Man's Shop, The.....	54
Moore's Music House	50
Mosher, D. H.—Tailor.....	68
Rottle, John J.—Shoes.....	72
Salem Laundry Co.....	44
Salem Transfer & Fuel Co.....	56
Schaefer's Drug Store.....	52
Shyne Shoppe, The.....	56
Spa, The—Confectionery	72
Statesman Publishing Co.	30-36
Terminal Shine Parlors.....	74
Wallulah	70
Willamette Collegian	66
Y. M. C. A.....	36

The editor and business manager of the 1926-27 Hand Book wish sincerely to thank The Statesman Publishing Co., printers; and the advertisers for their generous assistance and cooperation.

RECITATION SCHEDULE—FIRST SEMESTER

	Monday	Tuesday	Wednesday	Thursday	Friday
7:45					
8:40					
9:35					
10:30					
11:25	Chapel	Chapel	Chapel	Chapel	Chapel
1:15					
2:10					
3:05					
4:00					

Chapel Seat.....
Gym No.....

RECITATION SCHEDULE—SECOND SEMESTER

	Monday	Tuesday	Wednesday	Thursday	Friday
7:45
8:40
9:35
10:30
11:25	Chapel	Chapel	Chapel	Chapel	Chapel
1:15
2:10
3:05
4:00

Chapel Seat.....

Gym No.....

