

ANTICIPATED CONCERT SCHEDULED MAR. 27

Local Men's Glee Organization Present Program of Diversified Entertainment

ELSINORE THEATER PLACE Ensemble, Quartet, Duet, Solo, and Reading Numbers Constitute Arrangement

On Tuesday the second day following the taking up of school after Spring vacation the Men's Glee Club will present their annual home concert in the Elsinore theater.

After having met with enthusiastic approval wherever they sang on their tour of Eastern Oregon and Washington the club has spent several weeks of practice preparing for this home concert.

The program will consist of numbers by the quartet, solos by William Wright and Ronald Craven, and ensemble numbers by the club.

The dramatic duet, "Joshua Fit De Battle of Jericho," which was well received by audiences on the concert trip will be sung by Ronald Craven and Willie Hathaway.

The quartet, which will give two numbers, has been practicing three nights a week since the beginning of the school year.

Charles Kaufman, the reader for the club, will give in costume an interpretation of a political speech by a German immigrant.

With a few additions the program will be as follows: A Sea Song... Glee Club Ah Moon of My Delight... Lehman Ronald Craven

INTERMISSION Jolly Students... Mendenhall Oh Miss Hannah... Deppen Glee Club My Love Is Like a Red, Red Rose... Prothero Heaven, Heaven... Burleigh Quartet

College Songs... Glee Club Joshua Fit de Battle of Jericho... Brown Messrs. Hathaway and Craven Reading... Selected Charles Kaufman

The tickets are now on sale by all members of the club. Student tickets are thirty-five cents, adults fifty, and the mezzanine floor is seventy-five.

OREGON GLEESTERS WILL APPEAR AT CAPITOL SAT.

University Club Announces Varied Program for Three Vaudeville Performances

A dozen numbers, including two skits and several quartet and duet features, will comprise the 30-minute University of Oregon glee club appearance at the Capitol theater Saturday.

One of the outstanding numbers on the concert bill is a piano fight by Ray Burke and George Barron. Another is "The Last Rose of Summer" sung by Ernest McKinney, tenor, disguised as a woman opera singer.

A saxophone trio will be introduced to enliven the proceedings. The complete program: Oregon "Pledge Song"... Glee Club "In the Harbor of the Mountains"... Glee Club "Here Rose"... Glee Club "Don Ostrander and Glee Club "Archers' Marching Song"... Glee Club Piano fight

(Continued on Page 5)

Home Concert Soloist



William Wright

PROGRAM ANNOUNCED FOR SUMMER SESSION

Variety of Courses Available; Twelve Credits Possible by Attending Both Terms

Willamette University again announces the two annual summer sessions at which extra credits may be made in regular university work by high school graduates, college students, and those who do not have time to take a full college course.

As has been the policy heretofore, unless special permission is obtained, six semester hours will be the maximum amount of work which a student can take in each session, making a possible total of twelve credits given for attending both sessions.

These courses, with the exception of laboratory subjects, will all come in the morning, enabling students to work outside half-time.

The expenses of attending the summer sessions, five dollars for each semester hour with a maximum of twenty-five dollars, and twenty-five to thirty dollars for room and board, add an especially attractive feature.

The summer sessions are designed to meet the needs of three classes of people; the school teacher who desires to get inspiration and enthusiasm as well as a broader outlook and deeper knowledge concerning certain subjects; the man or woman who hopes some day to complete a college course but finds it impossible to attend the regular full college sessions; and the high school graduate or advanced college student who wishes by summer work to finish college in less than the usual four years.

The Bulletin of the Willamette University Summer Sessions, which will come out tomorrow, Friday, gives full information as to courses, costs, and the value of such a session. These summer sessions have always been well attended and a large enrollment is expected this year.

Dean Frank M. Erickson, director of the summer session, invites correspondence with anyone desiring further information regarding the summer session.

JUNIORS ENTERTAIN HOPE OF SINGING FIRST SONG

Winning Glee Song to Be Presented at Armory as Feature of Better Music Week

The Junior class is again to present its winning song. It will be given as a feature of the program of Salem music to be given at the armory during Better Music week.

The song will be presented with the formation as nearly like it was on the night of Freshman Glee as will be possible in the Armory Stage. The Halilajah march will be used as on previous occasions.

The Sophomore class has also been asked to present its song and will probably decide in favor of accepting the invitation at its next meeting.

HISTORY ACCLAIMS FROSH WINNERS OF INITIAL GLEE

Alma Mater Motif of First Banner Song in 1908; Humorous Element in Program

Despite the varied lengths of time required for college graduation, there is probably no student now in Willamette who sang in the first Freshman Glee of 1908. It was held in the old chapel and was much less complicated than our last celebration. Doors were open to all. Professor W. E. Kirk presided and made the opening talk. The songs followed in unbroken succession. There were no readings or other music. Only the words were original and there was no particular type of song assigned for that first event.

The Senior song was written for the tune of "Oh Italia Beloved." The words began as follows: "Oh, Willamette, Willamette, beloved Shrine of gladness and old college song, When afar from thy dear halls removed Will our fond hearts for thee ever long."

Evidently the Junior song had met some catastrophe that year for they presented something similar to our post mortem chapel parodies. Clad in Indian blankets they rushed upon the platform and entertained in humorous rather than artistic manner.

The Sophomore song, a medley, was called "One Nine Double One." It was sang to stanzas of tones from "Fair Harvard," "Atta Wanna," "Hatties' Tune," "Solomon Levi," "Way Down Yonder," "Hail Jerusalem" and "Old Black Joe." It was addressed principally to the Freshman encouraging them in the true Sophomore fashion.

The Freshman song was the winner: "Long, long ago, years in truth Our Alma Mater, old Willamette dear, Our Fathers reared with hopes and prospects high Amid the grand and lonely forests wide, Within the sheltered vale of snow capped peaks And near the ever winding river-side, And now we hail the New Willamette dear, The School of each student's pride."

Two more verses followed and the song closed with a chorus of "Rads!" Dean Frederick S. Mendenhall composer of the music for "The Old Historic Temple," presented the banner awarded in consideration of words and rendition.

Freshman Glee grew in popularity. It was afterwards held at the First Methodist church, the Armory and last year in the Gymnasium. Each year it becomes more elaborate and more a part of the spirit of Willamette.

CAST OF IBSEN PLAY CHOSEN BY DIRECTOR

Frank Alfred and Leone Marlatt Chosen for Leads in Second Semester Production

The cast of the second semester Theta Alpha Phi play, "The Master Builder" by Henri Ibsen was selected by the director of the play, Dr. Gatzke, in try-outs held yesterday afternoon.

The leads in the play are to be taken by Frank Alfred and Leone Marlatt, but no part in the play can be said to be a minor role.

The cast for the play is as follows: Halvard Solness... Frank Alfred Aline Solness... Leah Fanning Dr. Hergel... Charles Kaufman Knut Brovik... Jack Ramage Ragnar Brovik... Wesley Gordon Kala Tost... Ruth Bower Hilda Wangle... Leone Marlatt

The play will be presented in the chapel auditorium about two weeks before the May Day week-end.

"The Master Builder" centers around Halvard Solness, who gained his first recognition of strength through pure luck. From this occasion he builds himself a dominant position. He holds people by a ruthless suppression to projects that will further his own ends. His wife as well as his employers suffer from his cruelty.

He makes one young woman think that he loves her purely to further his business interests. At the same time he is fearful of his position because of the technique and skill possessed by the younger generation. He has a fear of high places. This fear was especially shown when he stood in a tower of a church to be dedicated. At these services a little girl saw him and idolized him, and after ten years when she had come to know him and love him, she inspired and dares him to climb to the tower of a building that is to be dedicated. He is overcome with fear but he does as the girl desires. At the dedication when he reaches the tower he becomes dizzy and falls to his death.

The selection of this play was made after "The Boyer Road" by A. A. Milne met with the disapproval of the faculty censorship committee.

STUDENTS PLAN MEET WITH PORTLAND CLUB

"Take the Campus to the Alumni" Slogan for Students in Planning Program

KEENE PRESENTS SPORTS Student Body Committee Working With Idea of Giving Student Pep to Grads

With the idea of taking the campus to the alumni a large delegation of Portland and Salem students are going to furnish the program for the Portland Willamette Club at their regular meeting on next Monday evening. The purpose of the program is to present to the alumni the point of view of the present student body and to arouse a greater and better informed interest on the part of alumni in the present activities of the university.

The program is also designed with the purpose of interesting prospective students in Willamette and explaining to them what Willamette university is trying to do. With this object in mind every alumnus in Portland has been requested to bring with him some high school student who might be interested in attending Willamette. Portland students have the privilege of cooperating in like manner.

As a part of the program Coach "Spec" Keene will present Willamette athletics and explain his program in connection with the physical education department of the university. Charles Redding, the president of the student body, will speak representing the students. Prof. Cecil R. Monk will be presented to the alumni club as a representative of the new faculty members. Musical numbers will be given by Willis Hathaway and Ronald Craven accompanied by Margaret Lewis. Mrs. Sadie Sackent, who is a former Willamette song queen, will lead the singing of Willamette songs. Other features on the program cannot be definitely announced at this writing.

The student body committee work on the program is composed of Hugh McGilvra, Kenneth Litenfield, Jean White, and Margaret Lewis. The program will be given at a dinner to be held at six o'clock on Monday evening, March 19, at Henry Thiel's Restaurant on Tenth street. Plates for the dinner are fifty cents per person.

FILING CASES PURCHASED FOR LIBRARY CONVENIENCE

Steel Contrivance Added for Classifying Pamphlets; Fifty Books Are Received

A steel filing case for the purpose of classifying pamphlets has been purchased by the administration for use in the library. The case consists of eight drawers of legal size permitting two rows of pamphlets in each drawer. After this there will be no pamphlets on the shelves but they will be found in the case arranged according to the Dewey decimal system of classification. On the case a Dewey look serving as an index for material filed will be available for student use. Not until after spring vacations will the reading matter be assorted in correct form. Students wishing to check out pamphlets must do so at the desk.

SHERWOOD CHAPEL TALK URGES NATIONAL CONTROL

Need for Strict Enforcement of Eighteenth Amendment Emphasized by Delegate

Carlton Sherwood, who is traveling with Colonel Robins in behalf of law enforcement, spoke in chapel on Wednesday, on the subject of National Control.

Mr. Sherwood is a member of the world's alliance of international friends, and is the executive chairman of the committee of a thousand for Law Enforcement.

Mr. Sherwood's talk centered about the need for the strict enforcement of the Eighteenth Amendment. He has come to the west from New York City, speaking to large audiences in 15 cities enroute.

FATE OF SENIOR GIFT MOURNED BY STUDENTS

Thirsty Ones Have to Seek Far for a Drink and a Long Drouth Is Forecast

In the shadow of the Old Historic Temple and an ancient fir tree stands a concrete whatnot. Whatnot may not be the exact name for this piece of campus furniture, but its original purpose has been so long disguised that one may echo Shakespeare's famous query, "What's in a name?"

An examination of the archives reveals the interesting and rather startling information that this "concrete washbowl" as one freshman graphically described it, was at one time a drinking fountain, the gift of a loyal graduating class. Formerly this fountain served the purposes of refreshment and social leaning post; it was an oasis in the desert of dry academic pursuit—a slaker of thirst for student, professor, and the stranger within the gates. On warm spring evenings it was at various times the mecca of collegians bent on discussing the questions of the day, and other collegians, bent on purposes romantic. It was at once a thing of usefulness and beauty, an object whose usefulness contributed to its beauty.

But look at it today! It stands alone upon its little triangular concrete island, passed by without a glance from students and teachers alike. In the fall, an occasional leaf drops in, and once in a while a careless passer-by nonchalantly tosses in the remains of a smoking coffin nail. The only use which this old ornament now receives from students is that of leaning post for male youths needing support from an over-seariously winded paddle. No longer does it serve useful purposes from either the standpoint of materialism or of romance. It is just a whatnot.

Further than that, we may point out that it is an economic waste. A student in the Library, in order to satisfy his thirst, must journey to the rotunda of Eaton Hall. This extra travel involves the use of extra time, extra shoe-leather, extra use of the hall floor, the making of extra noise in the halls, and countless other hits too numerous to mention—hits infinitesimal in themselves, but of account in the aggregate. None of our local scientists, mathematicians, or statisticians have yet computed this waste in cold monetary terms, but this circumstance is no denial of the existence of the waste. Were there any reasonable defense for the present state of affairs—but we need not go into that; there isn't.

But who wants the Fountain repaired merely for the purposes of utility? Little that we hold dear of our college associations and acquisitions do we esteem primarily for its utilitarian worth. We weave a web of sentiment about our Alma Mater. Its buildings, professors, walks, trees, and drinking fountain. But we would like another drink before we graduate.

SORORITIES SUGGEST RUSHING RULE CHANGE

Length of Rushing Period Will Be Cut in Half if Change is Voted on Favorably

The following rushing rules have been suggested for next year by the inter-sorority committees. They will be voted on at the next inter-sorority council meeting.

The sorority rush season for the year 1928-1929 shall be from September 18th to October 7th, inclusive. This is cutting the length of rushing period just one half.

1. From September 14-17 inclusive there shall be no rushing whatever; this shall include personal rushing such as sitting downtown, shows, calls, walking, flowers, room attention, alumni rushing etc.

2. From September 18-20 inclusive there shall be only personal rushing excluding any entertaining at the houses.

3. No invitations either written or verbal to formal functions shall be given before September 29.

4. When more than three sorority girls and three freshman girls are in a group it shall be considered as formal rushing and is prohibited during the days September 18-20 inclusive.

5. Formal rush season shall be from October 8-12 inclusive.

6. The succession of parties for 1928-29 shall be: (1) Alpha Phi Alpha, (2) Beta Chi, (3) Delta Phi.

An itemized amount of 1928-29 formal rush party expenses must be turned in to the Dean of Women by October 12.

Any one Freshman girls may be entertained at one house for not more than three dinner dates between 5:30 and 7:30 p. m. and one slumber date between 9 p. m. and 9:00 a. m.

Four Enter Semi-Finals In Basketball Tourney

Medford, Washington, Salem, and Marshfield Enter Second Lap of Tournament With Portland-Medford Teams Being Favored for Championship Trophy

As a result of Thursday's games four teams, Marshfield, Washington, Medford, and Salem enter the semi-finals of the State Basketball Tournament. Washington as a result of its easy victory over University High emerges along with Medford as the favorite.

Salem High barely escaped being eliminated in the first round of the tournament last night when they defeated Astoria High by the narrow margin of one basket.

Astoria piled up an early lead and held it until the middle of the third quarter when baskets by Beecher, Duffy, and Kelley enabled the Red and Black five to tie the score.

Duffy opened the scoring with a basket from the center of the floor but Astoria evaded the score with a similar shot and started to pile up a 13 to 8 lead at the end of the quarter. Wilson of Astoria took the tipoff consistently and led the scoring with nine points in the first half.

In the second period the Salem five started working the ball in for short shots instead of shooting from the black line and they immediately narrowed the score until the third quarter ended with the score 28 to 28.

In the last quarter Astoria again took the lead with two baskets but Salem sank four in a row and stalled the last minute on a one basket margin.

In the first game of the tournament on Wednesday night Medford emerged victorious over Tillamook 32 to 20. Tillamook started the game with a rush and with a barrage of long shots secured a 14 to 11 lead in the first half. James and Buel were sinking shots from every position and the Cheesemakers looked like a winning five.

In the third quarter the Tillamook boys looked tired and the large Medford team slowly closed the gap and were leading 22 to 17 when the third period ended. In the last quarter Medford started to stall and drew the Tillamook defense out so that they scored five baskets without exerting themselves. It was just a case of two much weight and reach for the Tillamook boys to overcome.

In the second game on Wednesday night The Dalles High team overcame a first quarter lead and defeated the McLoughlin team 28 to 18. The McLoughlin team started out like sure winners and secured a 7 to 12 lead in the first quarter, but Gibson, flashy Dalles forward, found the basket for eight points in the second period and the half ended with The Dalles in the lead 18 to 9.

In the second half The Dalles continued to hold their lead and a last minute rain of long shots by McLoughlin failed to bring results.

In the first game Thursday morning Marshfield made a slow start but finally started hitting the basket and defeated Wallowa 37 to 23. Sarrett opened the scoring for Wallowa but Chan followed closely with a basket to tie the score. Both teams relied upon their ability to work the ball in for cripple shots. Marshfield taking every tipoff and passing the ball to Edwards in the corner who made three baskets in the first half. Marshfield was leading 13 to 11 at the end of the half.

Marshfield secured a 10 point lead in the second period but they slowed up near the last and Wallowa came within three points of tying the score.

In the second game Thursday morning Washington proved to large and powerful for the small University High quintet and won an easy game 37 to 16. Lewin took every tipoff and led the Colonial scoring with 14 points.

The Portland team's lead was never challenged but the game was fast from start to finish and interesting to the large crowd of spectators. The first half ended 21 to 8 and Washington improved their lead all through the next period.

Medford showed itself to be a serious contender for the State title by romping over The Dalles 49 to 11 in the second game Thursday night. Melvin, leading Medford scorer, sat on the bench through the entire game.

The Medford boys started the game slowly and it looked like a tight game for a short time until McDonald located the basket and dropped the ball through for six points in the first period. The half ended with Medford in the lead 19 to 9.

The second half was a repetition of the first with Medford continuing its scoring at will. The Medford substitutes played the last quarter and were able to score almost as much as the first string.

Two Wallowa men Loyd and Crawford were placed on the All Eastern Oregon Mythical Five.

Wallowa High School comes to the State Tournament with a good record in their Eastern Oregon games and will doubtless furnish some competition.

Only two games out of the seven played were lost and these under difficult circumstances. In the finale of the district tournament Wallowa upset the dope and won from Inger.

Two Wallowa men Loyd and Crawford were placed on the All Eastern Oregon Mythical Five.

Wallowa High School comes to the State Tournament with a good record in their Eastern Oregon games and will doubtless furnish some competition.

Only two games out of the seven played were lost and these under difficult circumstances. In the finale of the district tournament Wallowa upset the dope and won from Inger.

Two Wallowa men Loyd and Crawford were placed on the All Eastern Oregon Mythical Five.

Official publication of the Associated Student Body of Willamette University

Willamette Collegian

HUGH MCGILVRA
Editor Phone 1974

WILLIAM B. SMULLIN
Business Mgr. Phone 1411

EDITORIAL STAFF

Associate Editor	ELLA PRITCHEP
Managing Editor	GEORGE POOL
Exchange Editor	CAMILLA GATES
Society Editor	MARY CLASFIELD
Literary Editor	DOROTHEY E. S.
Music Editor	MARGARET ARBOLD
Personnel Editor	EVILYTT CARPENTER
Kindergarten Editor	GEORGIA FAIRBANKS
News Editor	BEATRICE LOOKHART
Special Editor	ROBERT MCGILVRA

REPORTERS

BROWN, KAUFMAN, BECKETT, WARREN, URRY, MERRILL, KENDALL, DE PRINCH, HOLLNBERG, ACKERMAN, WOODWORTH, CLITES, R. POOL.

MANAGERIAL STAFF

Advertising Manager	IVAN WHITE
Assistant	BEATRICE HARTUNG
Circulation Manager	GRAHAM YOUNG
Circulation Assistant	HESTINE HOLLISTER
Collector	HOMER ROBERTS

Member of the Pacific Intercollegiate Press Association.
Entered at the Postoffice at Salem, Oregon, for transmission through the mails as second class matter.

HAIL CONQUERORS

Basketball has experienced a phenomenal growth in popularity during the past few years. Pavilions have been built and are being planned which would accommodate at one game what was formerly a normal season crowd. It is not alone in this country that basketball has attracted adherents. Only recently the press carried the notice that over 85,000 people had attended eight basketball games held in Japan.

The Oregon State Basketball Tournament has kept pace with the growth of basketball in the rest of the world. The growth has been wholesome and gradual, and there are indications for even a better future.

Many reasons can be found for this increase in interest in basketball. The fact that personal contact was forbidden from the very beginning and that the dependence was placed on skill rather than brute force accounts for much of the general approval with which basketball is regarded.

The high esteem in which basketball is held in Oregon is largely accounted for by the unusually high calibre of the teams which represent the high schools of the state. The contests in the various districts which precede the tournament are enough to stir the interest of any red blooded person and the teams which participate in the final tournament are worthy of the admiration and respect of anyone even though they may not be basketball fans.

Willamette University welcomes you visitors who have proven your worth in many hotly contested battles. We greet you with a hearty "Hello," and anticipating your departure in a few days we say, "Good-bye, we hope that you enjoyed your stay and will come back again next year."

WHY AT WILLAMETTE?

In every group there are those who quietly accept and those who rise and question. The location of the place of holding the State High School Basketball Tournament is not at present a topic of dispute, but it might be well to consider why the tournament is being held here this week and not some other place.

The historical background is found in the vision of Coach R. L. Matthews who in 1917 saw the possibilities for growth in such a tournament and gave his strength and endeavor that the idea might be firmly established. The tournament is here because it had its beginning here and because it has been successfully sponsored here since its inauguration.

The existence of Salem as the capital of the State of Oregon makes for a sort of sentimental connection between Salem as the political center and Salem as the final goal of the various high school basketball teams of the state.

Geographically, Salem is conveniently located and easily accessible by all means of transportation. It is as centrally located a city as could be found with the accompanying conditions of a city with the size and facilities enabling it to support a tournament.

Finally, the satisfactory conduct of a tournament calls for as neutral a floor as can be obtained. The tournament at Willamette is free from the disturbing competitive influences which have sometimes gone to the extent of almost ruining a tournament when they have been held on the floors of one or the other of the large state education institutions in the state.

These may not be all the reasons why the tournament is here for the ninth time, but these are a few answers which may be made to the questionings of the curious.

BRINGING THE CAMPUS TO THE ALUMNI

Nearly every student from the day he matriculates into a university until he dies is a part of the educational institution of his choice. Allegiance once given to a college by entering into its activities and life is a sort of irrevocable loyalty which continues throughout all time even though time and distance may make it less effective. The expression of this loyalty is found in alumni organizations.

Willamette has down through the years acquired a long list of alumni of which she may well be proud and look to for active support. The history of Willamette graduates is one of achievement and service. The contributions of alumni to the ministry and the teaching profession are popularly known, but the records of Willamette graduates in other fields are not realized by the public. Prominent officials in our municipal, state, and national government once studied on this quiet campus. District attorneys, justices of the state supreme court, and attorney generals look back with pleasure upon their student days spent at Willamette. It is also significant that the editors of the two leading metropolitan dailies of the state are included among those who would rise when "The Old Historic Temple" is sung. The prestige of Willamette graduates in the ranks of journalism are not dependent on the past, for there are many of the younger generation of alumni who have already arisen to prominence in the ranks of the Fourth Estate. Doctors, scientists, and scholars have received their fundamental foundation here and experienced the unique advantages of the institution of small size and high scholastic standards.

Willamette has alumni with which she may well keep in vital contact with the university. Every phase of university life can be strengthened and made better by an intelligent and educated alumni interest. The step of a group of the Portland students in trying to put on a program which will bring the campus to the alumni has a worthy purpose in that it is an attempt to bring alumni and students closer together. Both can profit from a better acquaintance and cooperation in an effort toward making a better Willamette University.

We have with us this week another illustration of the vitality of competitive athletics. Probably no single feature of modern education has been more severely criticized and been more ardently defended than the present program of intense competition in sports.

Dean Clark with his lawn mowers reminds us of the housewife who gets the vacuum cleaners demonstrator to clean her entire house.

MRS. W. E. KIRK RECEIVES HONORS IN Y. W. C. A.

Miss Kirk and Miss E. Baker Elected Salem Delegates for National Convention

Announcement was made at the meeting of the executive board of the Salem Y. W. C. A. Tuesday, that Mrs. W. E. Kirk, one of the board members has been appointed to represent the state of Oregon on the national town committee. The appointment has been made from national headquarters in New York City by the national president.

Both Mrs. Kirk and Miss Elizabeth Baker, Salem general secretary, were elected by the Salem association as delegates to the National Y. W. C. A. convention which will be held in Sacramento, California from April 14 to 20. Immediately after the national convention Mrs. Kirk will go to Astoria, California, to take part in the three day meeting of the national town committee. The committee includes one representative from each state in the union. Future activities of the town Y. W. C. A. associations will be planned by this committee.

Plans were made at the Salem board meeting yesterday for the state girl reserve conference which will be held here March 30, 31, and April 1. More than 175 Girl Reserve delegates from all parts of the state will be in Salem during the three day conference.

Sessions will be held in Waller hall on the Willamette University campus on Friday night and Saturday and on Sunday church services will be held in the First Methodist Episcopal church. The delegates will be entertained in the homes of Salem Y. W. C. A. members.

Entertainment for the delegates will include a trip about the city, government Indian school at Chemung, various institutions, and to the sea.

INTERNATIONAL EXHIBIT SPONSORED BY Y.W.C.A.

Fellowship Committee Offers Attractive Display, Fisher and Hall in Charge

The fellowship committee sponsored a unique and worth-while affair in the form of an International Art Exhibit which was held last Sunday afternoon at Lassanne Hall. Pottery, brassware, textiles, embroideries, books and other relics and curiosities from Persia, India, China, Japan, Spain, Palestine, Philippines, and other countries were arranged in a tasteful and attractive manner.

Dorothy Fisher and Ruth Margaret Hall were in charge of the afternoon.

A program consisting of piano solos by Louise Findley and Eugenia Savage, and a vocal trio by Virginia Slusser, Ruth Margaret Hall and Martina Pruitt was given.

About a hundred people attended the exhibit.

ELSIE TUCKER SELECTED NEW Y.W.C.A. PRESIDENT

Installation This Afternoon at Four O'Clock; Cabinet Position to Be Appointed Soon

Last Friday the campus Y. W. C. A. organization held election of officers for the coming year. The new leaders were installed in their offices Thursday at the regular meeting. Nominations for the positions were effected by petitions bearing twenty signatures and also the approval of the nominee. The results of the voting were:

President.....Elsie Tucker
Vice President.....Anna Mary McKinley

Treasurer.....Virginia Slusser
Secretary.....Betty Lewis
Under graduate Representative.....Virginia Edwards.

In the near future these officers will appoint the new members for the various places on the Y. W. C. A. cabinet.

Money Talks—It also stops talk.

Praise men and flatter all women and you will never lack for friends.

PERRY'S DRUG STORE

Retall Store

Everything in Drugs

Patton Bros.

SALEM'S BEST BOOK STORE

TROVER

PHOTOS THAT PLEASE
122 N. Commercial

HARTMAN BROS.

JEWELERS

Cor. Liberty and State

Marimba Soloist



Edith Findley

Among the special features on the program of the women's glee club on their southern tour will be the solo work of Edith Findley.

ASTRONOMER SPEAKS ON "COLLEGE FLARE"

Prof. Oliver J. Lee of Chicago University Greets Student Body Last Monday

The "College Flare," which according to Professor Oliver J. Lee, betokens a difference of mind from that of the common herd, reaches its maximum during the sophomore year and thereafter declines, but never gets back to the axis of zero.

Professor Lee, until recently a professor of Astronomy at the University of Chicago, is now spending a vacation at Silverton, in an effort to regain his health.

According to him the peculiarity of college dress is only an outward sign of an inward change. He believes that it has not received enough serious consideration from present philosophers. It shows an attitude that is not afraid to change and it makes apparent a certain receptiveness of mind which should be the result of the college education.

A college graduate has lost the hunted look of the average individual. He does not seem to defeat after his first few clashes with life. He is more willing to shift to a new point, for he has obtained a perspective on life and knows that one may investigate without fear of losing all.

The college graduate has lost the oxlike, bovine, stolidity of the ditch digger. A certain thoroughness by a little smile will follow us through life as a result of our college education.

We have learned that investigation and facts will not hurt anything that has any reality in it.

The entire chapel address showed not only a deep understanding and sympathy for the modern youth but also that the speaker was a living example of the doctrines which he preached.

FORENSIC ACTIVITIES GET INTO FULL SWING

Reiding Represents Willamette at Pacific Extemporaneous Contest in Los Angeles

Willamette is now in the midst of the forensic season with several contests scheduled for the next two weeks.

Last evening at 8 o'clock in the chapel, Edith Starrett and Bernice Mulvey represented Willamette in a debate with College of the Pacific of Stockton, California.

On the twenty-second Margaret

Neimeyer

Just Drugs 175 N. Com'l St.

Rowland Printing Co.

Masonic Temple

Phone 1512

"The Home of Good Printing"

PAT THATCHER VIG BARBERS

QUALITY BARBER SHOP

Next to Dixie Bakery
439 Court St.

DR. W. L. MERCER

Graduate American School of Osteopathy
Kirksville, Mo.
Salem, Ore.

THE NAME TO KNOW IN PRINTING

Bertelson & McShane

PRINTERS -- PUBLISHERS
Commercial at Chemeketa Phone 779 SALEM, OREGON

EDITOR PROMISES ANNUAL AS FEATURE OF MAY DAY

Cover Considered to Have One of Most Effective Designs Ever Designed

The editor of the Wallulah, Paul Geddes, promises that the 1928 Wallulah will be out May Day in accordance with the precedent of former years.

No less authority than the representative of the Zellerbach Paper Company, dealing with annuals throughout the Northwest and under contract for the Wallulah declares that the 1928 Wallulah cover to be the most attractive and effective he has seen this year.

Geo. L. Vick, the president of the Salem Chamber of Commerce, will officially accept the dedication of the Wallulah to the Salem business men at chapel the week after Spring Vacation.

The printing of the border began this week and the perfecting of the various sections is now under way. Already the plates of the class panels and athletic cuts are being received from the engraving company.

WOMEN DEBATE UTAH MEN ON INTERESTING QUESTION

Audience Decision Shows Change After Hearing Negative Arguments of Pro and Hall

The Willamette women's negative team debated the men's team from Weber College, Ogden, Utah, last Monday night in Waller Hall on the question "Resolved that the United States should cease to protect by armed force capital invested in foreign lands except after a formal declaration of war."

Weber College upheld the affirmative and was represented by Mr. Frank Rose and Mr. Frank Robinson, both sophomores and debating their second year in college debate. Willamette University with the negative was represented by Miss Margaret Pro and Miss Evangeline Hall.

Dean Roy R. Hewitt of the Law School presided at the debate and requested a vote from the audience both before and after the debate. The vote at the beginning was 16 to 13 in favor of the affirmative side of the question; but the vote after the debate stood 14 to 9.

After Chapel Program

This program for after chapel meetings is reprinted for the third time at the request of Dean Frank M. Erickson who requests that all organization presidents or those who would be likely to call meetings for after chapel clip it and take it into consideration when calling their meetings.

After Chapel Meeting

- Monday:
 - (1) Open
 - (2) Open
 - (3) Open
 - (4) Open
- Tuesday:
 - (1) Science club—Blue Key (Lunchroom)
 - (2) Beethoven—Executive Committee
 - (3) Science Club—Blue Key
 - (4) Beethoven—Executive Committee
- Wednesday:
 - (1) Wesleyan—classes
 - (2) Wesleyan—classes
 - (3) Wesleyan—classes
 - (4) Wesleyan—classes
- Thursday:
 - (1) Cubs—Y.M. Cabinet (Lunchroom)
 - (2) Cubs—Classical Club
 - (3) Cubs—Y.M. Cabinet
 - (4) Cubs—Classical Club
- Friday:
 - (1) Societies
 - (2) Theta Alpha Phi
 - (3) Societies
 - (4) Theta Alpha Phi

Senator Confectionery

A Good Place to Buy Milk Shakes

I. N. STURTEVANT, Prop.

TRY US FIRST

Salem Hardware Co.
The Winchester Store
Salem, Oregon
120 N. Commercial Street
Phone 172

Hart-Schaffner and Marx

Spring Suits \$29 up

Don't Miss Seeing them at

Bishop's

CLOTHING—WOOLEN MILLS STORE INC.

HEY, MEN!

SEE OUR NEW SPRING OXFORDS OF STYLE AND DURABILITY AT OUR FEATURE PRICE

\$4.95

Oregon Shoe Company

326 State Street—Next to Ladd & Bush Bank

The Best Quality Merchandise at Best Possible Prices

20th Century Grocery

Store No. 59 Cor. State & Com'l. Store No. 79 174 No. Com'l.

See Our Favors for St. Patrick's Day

PARTY SUPPLIES

YOU CAN GET ALL YOUR PARTY FAVORS AT THE

THE ATLAS BOOK STORE

465 STATE ST.

Peppy Stuff!

that printing from Salem's Largest and up-to-date plant.

Try It.

STATESMAN PUBLISHING CO.

Telephone 583 Job Department

SOCIETY

MARY CLANFIELD and SARAH POOR

International Exhibit Given at Lausanne Hall

Sunday afternoon from four to five-thirty at Lausanne Hall the World Fellowship Committee of the Y.W.C.A. held an international exhibit.

The twelve active members of the committee gathered from the students, faculty members, and friends of the university curious articles from Japan, China, India, Palestine, Spain, Korea, Philippine Islands, Greece, Italy, Egypt, and the American Indians.

Teruya Otsuki sent to Portland for several kinds of Japanese candy and nuts which added much to the exhibit from that country. Hing Tsai aided much with the Chinese table.

Girls dressed in the native costume explained the purpose of the various articles on the tables.

During the afternoon the following program was presented:

Violin Solo—
"Spanish Dance".....Mazskowski
Vina Emmott

Piano Solo:
"To the Sea".....MacDowell
Louise Findley

Vocal Solo:
"Ballynacloe".....S. P. Scott
"A Little Bit of Heaven".....R. Ball
Thelma Davis

Piano Solo:
"Japanese Sunset".....Deppen
Eugenia Savage

Trio:
"Chinese Flowers Fete"
Ruth Margaret Hall, Virginia Slusser, and Martina Pruitt

Alpha Phi Alpha Entertains Initiates With Banquet at Spa

The Alpha Phi Alpha sorority on Saturday afternoon initiated fourteen pledges into membership.

After the initiation ceremony the new members were entertained at a formal banquet at the Green Gate room of the Spa. Mrs. Ben Rickel presided as toastmistress, and Ella Pfeiffer, Georgia Fairbanks, Helen Kafoury, and Bessie Weaver responded with toasts.

The St. Patrick's motif was carried out in the table decoration and the favors.

The initiates were Grace Henderson, Helen Moore, Mildred Cannoy, Ruth Burch, Loretta Varley, Salem; Leona Clothier, Georgia Striker, Wasco; Marion Michaelson, Bend; Lysle Scheidt, Everett, Washington; Helen Curry, Seattle, Washington; Bessie Weaver, and Dorothy Estling, Twin Falls, Idaho.

Basketball Team Guests at Dinner

The members of the 1928 basketball squad were guests of honor at dinner at Alpha Psi Delta on Sunday.

Basketball men and their guests included: Helen Bridgeman, Frances McGilvra, Beatrice Lockhart, Florence Power, Laura Booth, Grace White, Coach Roy Keene, Professor Cecil R. Monk, Kenneth Litchfield, William Tweedie, Jack Minto, Harold Hauk, Glenn Ledbetter, George Glass, Verne Eaton, and Kenneth Donnan.

Beta Chi Entertains With Line Party

Saturday evening Beta Chi held an informal party at the Hollywood theater. The "country store" was the chief attraction. Three members of the party held lucky numbers.

After the entertainment the group went to the Beta Chi house where refreshments were served. The rooms were decorated with Indian blankets, pillows, and pennants. Clever St. Patrick's favors were presented.

The guests included: Hugh McGilvra, William Smullin, Warren McMinimoe, Kenneth McCormick, Louis Oberson, Charles Redding, Walter Kaufman, Kenneth Litchfield, Walter Fuhrer, Loren Mort, Carol Pratt, Jack Minto, Charles Kaufman, William Tweedie, Jack Ramage, Frank Lombard, Vernon Taylor, Earl Henry, Willis Hathaway, Willis Baldersee, Raymond Miller, Collas Marsters, Joe Felton, Odell Bennett, Harold Colgan, Edward Stadter, Walter Simpson, Ivan White, and Stanley Satchwell.

Chrestomathean Society Sees "Abraham Lincoln"

On Thursday, the Chrestomathean Society held a line party at the Elsinore. The feature of the evening was the play "Abraham Lincoln" by John Drinkwater.

Mrs. A. P. Hoff was the special guest.

Adelante Society Gives Banquet for Alumni

The Adelante society entertained its alumni members with a banquet on Friday night at the Gray Belle.

The motif for the decoration and the program was a ship.

Toastmistress, or Rear Admiral, was Marjorie Christenson. Responses were made by Old Captain, Louise Nunn; New Captain, Irene Brett-

haupt; First Mate, Elsie Tucker; Sailor, Kathryn Everett; Jack Tar, Dorothy Pemberton.

Alumni and guests present were: Mrs. Charles L. Sherman, Mrs. W. E. Kirk, Dean Olive M. Dahl, Mrs. Florian Van Eschen, Miss Lola Latimer, Miss Virginia Melton, Miss Marjorie Christensen and Miss Charlotte Orr.

Alpha Psi Delta Honors New Members

Alpha Psi Delta entertained their new members and their guests at dinner on Sunday, March 4. Among those present were: Professor and Mrs. Florian Von Eschen, Mary Allen, Helen Pemberton, Beatrice Hartung, Grace Henderson, Florian Pheubetz, Amy Fox and Howard Miller, Philip Retram, Edward Wells, Lars Nelson, Phillip Staats, and Edwin Cardinal.

Mrs. Doney Hostess At Afternoon Tea

On Monday afternoon during the hours from three until five, Mrs. Carl Gregg Doney was the hostess at one of her delightful informal afternoon teas for the girls of the university.

Mrs. F. M. Erickson and Miss Ella Pfeiffer assisted in serving during the afternoon.

Sigma Tau Honors New Members at the Marion

Sunday morning Sigma Tau formally initiated seventeen new members. They are Raymond Miller, Claire Miller, Paul Ackerman, Ralph Purvine, Collas Marsters, Raymond Waddell, Francis De Harport, Stanley Satchwell, Jack Ramage, Joe Davis, Fred Rodgers, Lester Kaufman, Willis Baldersee, Stanley Trefren, John Gillhouse, Kenneth Graber, and Lawrence Deacon.

After the initiation ceremony, the fraternity entertained the new members at breakfast at the Marion hotel.

Alumni present for the event were Alvin Bond, Ronald Haines, C. D. Phillips, Verne Bain, Ruskin Blatchford, Ben Rickel, and Jack Vinson.

Philodorian Society Holds Regular Meeting

The Philodorian society held its regular meeting on Friday, March 9.

Helen Ashlman, accompanied by Helen McPherson, entertained with a pianologue. Yvonne Cornell gave a classical dance. Mrs. J. G. Heltzel, the oldest Philodorian member in Salem, spoke on Parliamentary Drill.

Beta Chi Formally Initiates New Members

Beta Chi on Thursday, March 8, formally initiated the following: Elma Nell, Margaret Ghormley, Louise Brown, Harriet Hageman, Margaret Wieneke, Norabel Pratt, Portland; Dorothy Young, Elinor Palmer, Medford; Ella Howard, Yamhill; Mary Jo Wagner, Clarkston, Washington; Helen Pemberton, Ashland; Roby Laughlin, Helen Ashlman, Rosalind VanWinkle, Minnie Shrode, Marvel Edwards, Evelyn High, and Vivian Hauge, Salem.

Following the initiation at the house, the members held a banquet at the Gray Belle. Miss Ruth Hewitt acted as toast mistress. Responses were made by Frances McGilvra, Clara Jasper, Rosalind VanWinkle, and Elma White.

Special guests were Mrs. Alice H. Dodd, Mrs. George Morehead, Marjorie Christensen, Florence Young, and June Gaines.

Clark Home Is Scene of Party

Professor and Mrs. Herman Clark entertained the class in "Jesus and the Records" at their home in north Winter street on Monday evening.

Popsora was popped over the open fire, and marshmallows were toasted around the fireplace.

Guests present were: Irene Breithaupt, Bernice Newhouse; Barbara Gallaher, Helen Sachs, Paul Trueblood, Vernon Taylor, Lloyd Harder, William Mickleson, and Jim Rettie.

Mrs. Hertzog Entertains Faculty Women of Kimball

Mrs. W. H. Hertzog entertained the wives of the faculty members of the Kimball School of Theology Friday afternoon at her home on Sagnaw street.

The living rooms were attractively decorated with baskets of daffodils. Daffodils and tall green tapers were

"Say it With Flowers"

From
C. F. BREITHAUPT
Salem's Telegraph Florist
123 N. Liberty St. Phone 380

Men's Breeches
And
Men's Shoes
Logger's Shoes and Work Clothing

Hillpot & Son
805 State
The Little Store With a Big Stock and Low Prices.
Trade With Us and Prove It.

W. U. GIRLS
Dress Making
ALYS SHAWEN
Phone 1771M

the decorations on the serving table in the dining room.

The group included Mrs. John Martin Canse, Mrs. E. S. Hammond, Mrs. C. L. Andrews, Mrs. C. M. Keefer, and the hostess, Mrs. Hertzog.

Members of Thursday Club Entertained at Doney Home

Mrs. Carl Gregg Doney, assisted by Mrs. George Pearce and Mrs. Alice H. Dodd, delightfully entertained the members of the Thursday club at her home, 825 South 12th street, on Thursday afternoon.

As an interesting feature of the affair Mrs. Charles A. Park read sketches from the work of Mark Twain.

Late in the afternoon the guests were served at small tables arranged about the dining room. The tables were beautifully decorated with daffodils and freesia.

Cionian Society Holds Informal Party

On Friday the Cionian society held a "kid" party at the home of Barbara Gallaher.

Youthful games were enjoyed during the evening.

Refreshments of fruit salad, cookies, and chocolate were served at the end of the evening.

Students Help Entertain Standard Bearer's Society

Esther Lisle and Violet Swanson assisted Mrs. F. A. Legge in entertaining the Standard Bearer's society of the First Methodist church Monday evening at Mrs. Legge's home at 1499 State street.

The devotions were read by Loraine Robins and Mrs. J. M. Canse presented the chapter from the study book, "Ownership." An interesting study on "Korea" was conducted by LeVeda Maxwell, Edna Newberg, and Mrs. A. A. Lee.

St. Patrick is Subject At Chrestomathean Meeting

At the meeting of the Chrestomathean society on Wednesday a St. Patrick's program was presented.

Virginia Slusser sang "When Irish Eyes Are Smiling." Marjory Kendall gave a reading. Clara Jasper rendered a feature number on St. Patrick.

Mrs. Franklin Receives Letter From Miss Richards

Mrs. F. G. Franklin received a letter recently from Miss Frances M. Richards, who is teaching English and working for a Ph.D. degree in English at the University of California at Berkeley. Miss Richards stated that she was enjoying her work a great deal but that she thought much of her friends at Willamette.

Classical Club Hears Lecture

At the regular meeting of the Classical club on Saturday in Philodorian Halls, the Reverend Richard Briggs of Kimball gave an illustrated lecture on "Greece at its Height."

After the interesting program a social hour was enjoyed.

Dramatic Club Presents Sunday Evening Program

Mrs. A. M. Gentry took the dramatic club from Jason Lee church consisting of Mary Rettle, Leah Fanning, Buelah Graham, Joe Felton, Wesley Warren, and Poggie Minkewits to Amity Sunday where they produced the pageant "The Child in the Midst," at the Sunday evening service. Professor Andrews spoke before the presentation of the pageant. They are to present the pageant at Bennett Chapel where Rev. Harry Crouse is pastor on March 25.

Ruth Sawyers of Spokane, Washington is visiting Elsie Allen at Lausanne Hall.

Phone 625
Dr. L. R. Burdette
401-402 First Nat. Bank Bldg.

Classy Oxfords For
Young Men
At Popular Prices
Kafeteria Shoe Store

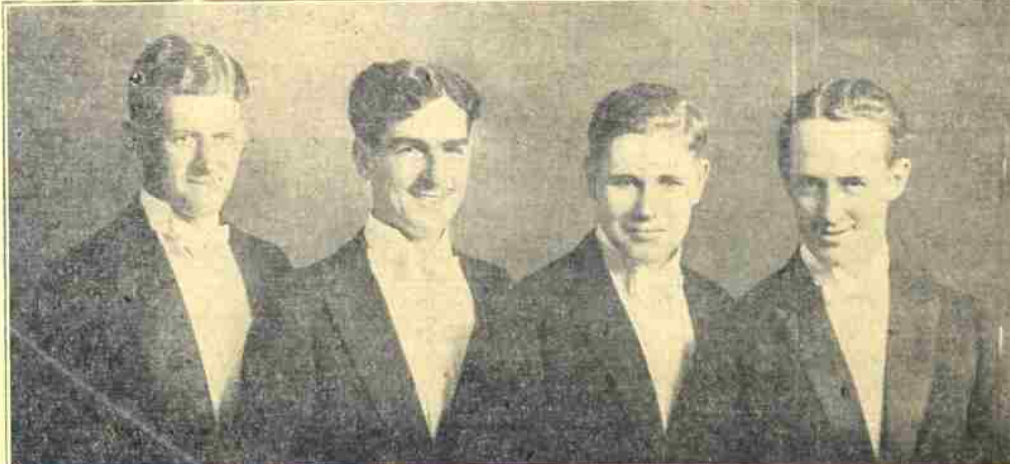
THE BEST
Barber Shop is still the best for Willamette Students.
139 S. Liberty

T. Pomeroy A. A. Keene
POMEROY & KEENE
Reliable
JEWELERS and OPTOMETRISTS
Phone 820
388 State St. Salem, Ore.

MALTESE BARBER SHOP
Tools all 482
Sterilized Court St.
4 Artists
Sign of Maltese Cross
H. A. GWYNN, Prop.

Shoe Rebuilding a Specialty
H. M. STYLES
South Liberty Street

Varsity Quartet Which Will Appear in Home Concert Soon



From left to right: Walter Kaufman, second bass; Willis Hathaway, first bass; Wendell Robinson, second tenor; Ronald Craven, first tenor.

Y.W. Meeting Considers Possibilities of the Drama

Dr. R. M. Gatke was the speaker at yesterday's Y. W. meeting, developing the topic "The Drama and its Influence on Personality."

Miss Elizabeth Evans and Miss Lucille Threlson, debaters from the college of the Pacific at Stockton, California, were guests at Alpha Phi Alpha on Wednesday and Thursday.

James Braly visited his home in Portland last week-end.

Kappa Gamma Rho entertained at dinner Sunday, Dr. J. D. McCormick; Vivian Attir and Reginald Attir of Portland; Mr. and Mrs. J. W. Kaufman of Carbonado, Washington; and Mrs. Alice Kaufman Spamey of Silverton.

George Oliver, '24, who is now the General Secretary of the Y.M.C.A. at the College of the City of New York, received his M.A. degree from Columbia University last month.

Margaret Brooks of Woodburn was a guest of Katherine Everett at Beta Chi last Saturday and Sunday.

Helen Pollock was the guest of Elizabeth Hyde at lunch Thursday.

Dorothy Fisher is at her home in Portland on account of illness.

Betty Carskie visited her sister, Mrs. Claire Ausman, at Tangent last week-end.

Harley Allen, Everett Faber, Paul Geddes, Hobart Kelley, Willis Hathaway, Lawrence Schrieber, and Wayne Welch were dinner guests at Delta Phi on Sunday.

Among Lausanne Hall girls to spend the week-end at their respective homes were: Elma Nell, Margaret Khormley, Kathleen Garrison, Florence Valstorff, and Elizabeth Hyde.

Tuesday at Kimball chapel W. H. Hertzog gave an illustrated lecture on the "Stewardship of Life;" and on Wednesday Rev. W. A. Briggs, a Kimball student, gave one on "Monuments of Ancient Greece."

Dinner guests at Kappa Gamma Rho on Wednesday were: Professor and Mrs. W. E. Kirk, Professor and Mrs. J. O. Hall, and Professor Alexander Vazakas.

Dr. Carl Gregg Doney was in Portland Tuesday to attend a meeting of the Forward movement committee which was considering endowment plans.

Professor W. H. Hertzog spoke at Hubbard last Sunday at the church service.

Louise Nunn was the dinner guest of Helen Curry at Lausanne Hall last Sunday.

Dean and Mrs. F. M. Erickson motored to Monmouth Monday. Dean Erickson was the judge of a debate at the Oregon Normal School.

Dinner guests at Alpha Phi Alpha on Tuesday were Professor and Mrs. Charles L. Sherman.

BETTER SHOE SHINES AT
THE SHYNE SHOPPE
443 State Salem, Ore.

Sherman Clay & Co
Everything in Music
130 So. High St. Phone 2284

Betty Lou Luncheonette
A Two-Block Step From the Library
Best Lunches Ever 1326 State St.

A REAL TREAT IN HOSIERY
Ladies' Full Fashioned
\$1.35 Phoenix Cadet Van Dyke and Profile Heel \$1.49
Shipley's
SAY AS YOU GO STORE

Walk-over Footwear
John J. Rottle
415 State Street
Cantilever Shoes

A CURE FOR "That Hungry Feeling"
—AT—
THE BLUEBIRD
HUGHES & TAYLOR

ST. PATRICK'S DAY
FAVORS—DECORATIONS AND NOVELTIES
Come in and See Our Assortment
The Commercial Book Store
A. A. GUEFFROY Service With a Smile

Mr. and Mrs. G. Y. Garrison of Vancouver, Washington, visited their daughter, Louise, Saturday and Sunday.

Ella Howard entertained Doris Howard and Grace Kirk of Halsey over the week-end.

Mr. and Mrs. H. G. Cornell and son, Orlo, of Ridgefield, Washington, visited Yvonne Cornell Saturday and Sunday.

Professor C. L. Andrews and Miss Edna Jennison of Kimball addressed an Epworth League Rally last Saturday at Sherwood.

Mr. and Mrs. R. D. Everett visited their daughter, Katherine, last week.

Ruth Baner, who was called home Thursday on account of the death of her mother, has returned to school.

John Russell, '27, and Clarence Oliver, '26, were in Salem Saturday to attend Freshman Glee.

Mr. and Mrs. C. E. Newhouse of Springbrook visited their daughter Bernice Saturday.

Elma Kimbrell, ex '28, of Portland visited Dorothy Peters over the week-end.

Dorothy Williams, Portland, visited Helen Curry on Saturday.

Dr. J. D. McCormick will speak at Bennett Chapel next Sunday.

Prof and Mrs. W. E. Kirk, Prof. and Mrs. J. O. Hall, and Prof. A. A. Vazakas were dinner guests at the Kappa Gamma Rho fraternity Wednesday.

Dean and Mrs. F. M. Erickson were guests at dinner on Saturday at Beta Chi.

Dr. J. D. McCormick will speak at Bennett Chapel next Sunday.

Salem's Leading Department Store

Stop and Shop With Us
Spring Opening Specials All This Week

MILLER'S
Good Goods

MONDAY—MARCH 18-19
Fanchon & Marco's
"Jungle Idea"
Native Settings—Native Costumes
Sunkish Beauties—Native Music
20---People---20
Monday Matinee 25c

ELSINORE

35c
Student Tickets

Men's Glee Club
HOME CONCERT
MARCH 27

Get Your Ticket Before You Go Home
Mezzanine Floor 75c; Adults 50c

ELSINORE

Tuesday Nite March 27

Sports Editor Robert McGilvra

Assistants Meredith Woodworth Paul Ackerman

S P O R T S

Sport Sidelights

McCormick Elected to Pilot Lettermen Through Year



McCormick winning first place in the mile against Pacific and taking third place in the two mile.

At the last meeting of the W club Kenneth McCormick was elected president to fill the vacancy left by Gurnee Plesher who has dropped school for this semester. McCormick is a letterman in track, winning first place in the mile against Pacific and taking third place in the two mile.

The Whitman basketball team for 1929 will be led by Lynn Croxdale, star forward of this year's championship team. Croxdale is a two year letterman and was named by Ralph Coleman as all-conference forward this year.

Ivan White should be an authority on the state basketball tournament. He has seen every tournament that has been held. He says that his Aunt bought him his ticket and that he never missed a game. He, however, doesn't try to prove that he bought a ticket to every football game at Willamette.

Doctor Franklin asserts that he once saw a basketball game in which a player shot a basket from the middle of the floor by throwing the ball straight back over his head.

Spec Keene deserves a medal for taking his job seriously. He even changed his plans for a fishing trip on Monday in order that he may be able to present the cause of Willamette athletics to the Portland Alumni club.

After Les Sparks closes his tournament books and sees that his accounts balance he will immediately hit for part of California unknown. Even California ought to be a relief after staying off requests for passes and handling many of the other little details of a tournament. No doubt the Chrysler will be broken in to do more than twenty miles an hour by the time he returns.

CONFERENCE BASEBALL HONORS WILL CHANGE

The championship of the Northwest Conference in baseball is liable to change hands this year. Last year Anse Cornell's Idaho team won the championship from Pacific who won the western title. This year College of Idaho will be minus five of their star players. Only one of Idaho's infield which was rated as the best in the conference will be back. Brown at shortstop is the only infielder returning.

Whitman has not disclosed her prospects as yet but Willamette will not meet them unless she comes to Salem. The conference is divided into the eastern and western division for financial reasons. It would not be practical for the western teams to take trips into Idaho to play because the crowd would not be enough to pay the expense. This year the winner of the eastern division plays the winner of the western division on their home grounds.

The College of Puget Sound seems to have the best material. Nine lettermen are in school and there is wealth of new men. The infield is intact with Ferguson, at first, Klepka at second, Wilson at shortstop, and Ginn at third. In the outfield are Hannus, Ganero, and Gillman of last year besides Purvis who will give the veterans a run. The Loggers will be stronger at the pitching position than they were last year with Elerman from last year and Smith and Witter new men.

Pacific will be minus the services of Ike Rannow who almost single handed pitched his team to the championship of the western division. Jim King, hard hitting second baseman, will also be missing.

Linfield is also minus the services of its star pitcher, Morehouse. Baird, second baseman, will also be missing. Beard and Lambert of McMinnville Hi will help strengthen the battery situation. Willamette will have a harder hitting team than last year, and the suc-

TENNIS CAPTAIN



Litchfield

Kenneth Litchfield was elected captain of this year's tennis team at a meeting of the lettermen on Wednesday. Litchfield has been a member of the team for the last two years playing as third man. He is a steady player and always forces his opponents to the limit.

Success of the team depends mostly on the ability of Ledbetter to assume the pitching assignment. The Willamette schedule is as yet tentative but a heavy schedule is contemplated. If the finances can be found sufficient to support such.

The tentative schedule is as follows: April 21 and 22 Oregon State at Corvallis. April 27 and 28 Oregon at Eugene. May 4 Pacific at Salem. May 11 Pacific at Forest Grove. May 12 Columbia at Portland. Dates not fixed: C. P.S. two games at Tacoma. Linfield two games. Chemawa two games.

BASKETBALL SEASON GOOD FOR W.U. TEAM

Bearcats Score 632 Points to 489 for Opponents; Next Year Prospects Bright



ette Bearcats had a successful season in basketball this year, completing the conference schedule with only two losses and the entire season with six losses out of eighteen games played. Willamette dropped three games to the University of Oregon, two to Whitman, and one to Ashland Normal. Willamette scored 632 points to its opponents 489. Two players, Adams and Cardinal were placed on the all-conference team chosen by Coach Keene. Cardinal was also chosen by Coleman on his all-star selection. Cardinal was the leading scorer in the conference and averaged more points per game than any other player. Adams was the second high scorer in the conference. Willamette should have the best team in its history next year with every man from this year's team back and with some promising men coming from this year's Freshman team.

Scores of Willamette basketball season:	
Willamette 37	Oregon Mohawks 29
Willamette 17	Oregon 36
Willamette 23	Oregon 30
Willamette 39	Gonzaga 26
Willamette 34	Pacific 24
Willamette 37	Columbia 10
Willamette 33	Oregon 45
Willamette 41	Linfield 28
Willamette 28	Ashland 29
Willamette 27	Linfield 18
Willamette 26	Whitman 31
Willamette 29	Whitman 39
Willamette 55	LaGrande 25
Willamette 43	Idaho 22
Willamette 31	Idaho 24
Willamette 48	Puget Sound 31
Willamette 29	Puget Sound 29
Willamette 55	Pacific 14
632	489

SOCIETY STATIONERY
Printed or Processed
Engraved

PHONE 1243
Basement Bank of Commerce

TOURNAMENT STARTED BY COACH MATTHEWS

Salem Has Won Coveted Cup Five Times Since 1917; First Event Invitational

The first State High School Basketball Tournament to be held at Willamette University took place in 1917 under the supervision of Coach Matthews who has since gained fame as a football coach at University of Idaho and Washington University at St. Louis. The first meet was an invitational affair with the host teams in the state being asked to participate.

Roseburg Hi carried off the honors the first year. Salem Hi won the title the two following years. In 1920 the first official state tournament was held in which twelve teams from different districts in the state took part. Salem captured the title for the third time in a row by defeating Franklin Hi of Portland in the finals.

Franklin came back the next year and secured the title by whipping the best in the state. This was the last year that Portland teams were invited to the tournament, the Portland schools organizing a league of their own.

In 1922 Ashland won the state title by defeating Pendleton Hi in the final game. University Hi of Eugene won the title the following year.

In 1924 Medford Hi came north with a great team and walked through the tournament and were invited to the National Tournament in Chicago.

In 1925 Franklin Hi and Salem Hi again fought for the championship with Salem Hi emerging the victor in the finals by a small margin. This year both Salem and Franklin went to the National Tournament in Chicago and came out well, Franklin Hi taking third place in the consolation tournament.

In 1926 Salem Hi again won the tournament and emerged as the leading basketball team in the state. Last year Salem Hi and Eugene Hi battled for the title with Eugene emerging as the victor in the finals. The winners of the state title since 1927 are:

1917	Roseburg
1918	Salem
1919	Salem
1920	Salem
1921	Franklin
1922	Ashland
1923	University Hi
1924	Medford
1925	Salem
1926	Salem
1927	Eugene

W. U. GRADUATE COACHES TILLAMOOK HIGH QUINTET
Team Has Gone Through Entire Season Undeclared by Any High School Team

The Tillamook team of this year can boast of having one of the best high school basketball records of any of the teams entered in the state tournament. Having gone through the entire season undefeated by a high school team, they suffered their only defeat of the season at the hands of the Portland Coliseum checkerboards. The checkerboards are in a class considerably above the high school teams of the state

H. T. LOVE THE JEWELER
Salem, Oregon

We have Handle W. U. Students' Accounts for 59 years

LADD & BUSH BANKERS
Salem, Oregon

Roller Skating Dreamland Rink
Tuesday — Friday

H. T. LOVE THE JEWELER
Salem, Oregon

Spalding Rackets
Spalding and Pennsylvania Tennis Balls

Anderson's
The Sporting Goods Store

BEST FIVE CHAIR ACCOMMODATIONS IN THE
New Hotel Senato r Barber Shop

BEARCAT MENTOR



Coach Roy "Spec" Keene

and include players of the ability of Westergren, former coast conference guard.

Russ Rarey, former Willamette athlete, and coach of the Tillamook team, deserves much credit for his team's success. During the two years he has coached basketball at Tillamook his teams have been undefeated except state tournament play. Astoria was the only team to give the Tillamook players a close game during this season, and the Tillamook players were extended to win, 28 to 24. The most remarkable achievement of the Tillamook team was in winning from Forest Grove 51 to 0.

James, regular forward, will be a hard man to beat for all state honors, while Page, running mva is also a capable forward. Knowlton, sub of last year's team, is another regular of ability.

Tillamook, with their impressive record, seem likely to be among the leaders at the finish and are favored by many to win the state championship.

Following is Tillamook's record:

Opponents	Score	T.H.S.	Place
Alumni	23	36	Here
Castle Rock	12	21	There
Kelso	12	35	There
Rainier	11	35	There
Montesano	5	41	There
Aberdeen	21	33	There
Hogquiam	30	34	There
Cloverdale	16	25	There
Forest Grove	0	51	Here
Newberg	13	25	There
McMinnville	14	33	There
Hillsboro	22	48	Here
Monmouth	7	49	Here
Astoria	24	28	There
Astoria Cardinals	25	54	Here
McMinnville	21	35	Here
Cloverdale	8	31	Here
Newberg	18	40	Here
Hillsboro	16	38	There
Forest Grove	13	26	There
Astoria	26	33	Here
Coliseum Checkerboards, Portland	39	16	Here

Dr. O. A. Olson
Treatment of Pyorrhea and X-Ray
Evenings by Appointment
214 Masonic Temple, Salem, Ore.

FOR FLOWERS "Frosty" Olson
PHONE 801
Corner High and Court

Geo. C. Will
Dealer in Pianos, Phonographs Sewing Machines Musical Instruments Sheet Music, Music Studies
Pianos and Sewing Machines Rented
432 State St. Salem, Oregon

New Victor and Brunswick
Releases Every Thursday and Friday

H.L. Stiff Furniture Co
COMPLETE HOUSE FURNISHERS

ATTENTION FOCUSED ON TRACK PROSPECTS

Practice Will Be Taken Up in Earnest Immediately After Spring Vacation Period

Practice for the 1927 track season will start in earnest after spring vacation. Last year Willamette had to be content with one first and two seconds, making 11 points and rating a poor fifth in the Northwest Conference Meet.

Willamette's track team will be late in starting compared with the other schools already engaged in active practice.

Whitman had about 25 men out for practice, four lettermen, a great number of last year's squad, and several new men. Their team will be built around their lettermen, Forquer, Garrett, Millam, and Joyce. Forquer took first place in both the 100 and the 220 last year and also ran in the relay team. Garrett took two seconds, in the low hurdles and in the broad jump. Millam is the conference champion in the 440. Joyce is expected to be a serious contender in the distance races.

The College of Puget Sound is planning one of the heaviest track seasons in the history of the school. Coach Hubbard has six lettermen back in school but is a little bit dubious about his prospects. Ganero is the conference weight champion, taking first place in both the shot and in the discus. Tatum took second in the 440 last year. Hendal will no doubt place again in the quarter mile. Other men whom the Loggers are depending upon are Darrow, Fascett and Booth. Puget Sound has a wealth of new material.

Pacific University placed third in last year's meet but they are keeping their prospects silent for this year. Coon who took second in the 100 and 220 last year is back and Miller is back for the hurdles and the quarter mile. Other men who ought to show to good advantage are Jones, Elliot, and Ingles.

College of Idaho took a severe drop last year from first to fourth place but they have a new track and football field this year and they should be able to develop a good track team.

Willamette has three veterans and some good prospects among the new

\$2.25 PORTLAND AND RETURN VIA Oregon Electric ON ACCOUNT OF THE W. U. SPRING VACATION
Tickets on Sale March 16th and 17th Return limit March 26

Also \$2.20 Round-Trip Week-Ends
Tickets on sale Fridays, Saturday and Sundays; Return Limit Tuesdays

Six O. E. Trains Per Day for PORTLAND
Leaving Salem at:
7:15, 10:02 a. m.;
1:20, 4:11, 5:30, 8:23 p. m.
Lv. for Eugene, Corvallis, and Albany:
9:54 a. m.;
12:45, 4:03 and 8:00 p. m.
Corresponding Service Returning x Denotes Limited, with Parlor Observation Car
Tickets, information, etc., of J. W. Ritchie, L. F. Knowlton, Ticket Agent Trav. Psgr. Agt. MAIN 727

GRADUATE MANAGER



Lestle Sparks

The interclass meet on the 21 of April will bring out all the men in the school so that Coach Sparks can see what his prospects are.

Whitman will be host to the conference teams this year with the meet being held in Walla Walla stadium. Willamette's schedule for the season is:

April 21 Inter-class.
April 23 Chemawa at Salem
May 8 Pacific at Salem.
May 12 Linfield (tentative)
May 17 Columbia at Portland.
May 26 Conference meet at Walla walla.

Elma Kimbrell has been forced to withdraw from school on account of ill health. Cynthia Pier spent the week-end in Oregon City.

men. The interclass meet on the 21 of April will bring out all the men in the school so that Coach Sparks can see what his prospects are.

Whitman will be host to the conference teams this year with the meet being held in Walla Walla stadium. Willamette's schedule for the season is:

April 21 Inter-class.
April 23 Chemawa at Salem
May 8 Pacific at Salem.
May 12 Linfield (tentative)
May 17 Columbia at Portland.
May 26 Conference meet at Walla walla.

Elma Kimbrell has been forced to withdraw from school on account of ill health. Cynthia Pier spent the week-end in Oregon City.

BOOTHS FOUNTAIN SERVICE
THE WHITE HOUSE RESTAURANT
Soft Drinks Meals

EVERYTHING IN Hardware Fishing Tackle and Sporting Goods
RAY L. FARMER HDW. CO.
Court and Com'l. Sts. Phone 191

Willamette University
FOUNDED FEBRUARY 1, 1842
Salem, Oregon

A Christian institution of higher learning. Located at the Capital of the State of Oregon. A beautiful campus opposite the Capitol Building. Buildings and equipment attractive and adequate. Faculty of highest character, preparation and teaching Student body clean, able and wholesome. Scholarship high and credited everywhere. Very inexpensive. Rich in tradition; large and honored list of alumni. Students wishing for work in the Course of Liberal Arts, in Law, in Theology, in Music, or in Fine Art are highly advantaged at Willamette. Close investigation invited.

Bulletins on Request

Low Fares
FOR
Spring Vacation
PORTLAND \$2.25 AND RETURN
Fare and One-Half to Other Points

Tickets on Sale March 16-17
Return Limit March 26th

TICKETS GOOD ON TRAINS OR
Silver Gray Motor Coaches
Frequent Schedules to All Points
Motor Coaches Depart From
New Salem Hotel
Telephone 80 or 41
Southern Pacific

EUGENE O'NEILL SUBJECT OF DRAMA LEAGUE SPEECH

The life and study of Eugene O'Neill was the subject of an address delivered by Dr. H. C. Kohler before the Salem Drama League which met Monday evening at the Public Library.

Following this an interesting resume of O'Neill's play "Lazarus Laughed" was given by Miss Beatrice Waiton.

The program was concluded by the reading "The Voice of the Unknown Soldier," written and delivered by Miss Mary McKee who was accompanied on the piano by Miss Eugenia Savage.

MORRIS OPTICAL CO.
Drs. Henry E. Morris R. W. Morris R. M. Dougherty
301-303 First Nat. Bank Bldg.

Office Phone 859 Res. Phone 469J
DR. B. H. WHITE
Physician and Surgeon
OSTEOPATHY
506 U. S. National Bank Bldg
Salem, Oregon

Central Pharmacy
Perfumes Stationery
Next Door to Bank of Commerce

STATE HIGH SCHOOL BOARD OF CONTROL



Roy E. Cannon



Austin Landreth



L. J. Michler

BEETHOVENS SPONSOR BYRD HOME CONCERT

Program of Famous Woman Pianist Will Be Given in Capitol Theatre March 29

The Beethoven Society of Willamette University is sponsoring Winifred Byrd in her home concert at the Capitol theater Thursday evening March 29. Miss Byrd is the daughter of Dr. W. H. Byrd of this city and has selected Salem in preference to Portland for her program. Miss Byrd has studied in New York under Teresa Carreno, the world's most famous woman pianist and teacher, and also under Carl Baermann. She has also studied four or five years in Europe. She gives two concerts yearly in the Aeolian Hall, New York, and has appeared with success with both the Boston and Philadelphia symphony orchestras. Miss Byrd is considered one of America's most famous woman pianists of today. Her program will consist of Chopin, Debussy, Liszt and other standard composers. She has prepared a program especially adapted to pupils and lovers of music. Student tickets may be purchased from any Beethoven member for 75 cents.

FEATURE GAME PLANNED WITH COACHES ON TEAMS

Officials and Coaches Will Have Opportunity of Showing How It Is Done

Do coaches and officials always practice what they preach? Are they conscious when they break a dribble? These and many other questions will be definitely settled this afternoon in a special feature game between the coaches and officials represented at the tournament. The teams will be divided up into the coaches representing the northern and southern teams of the state. The line-up was as follows:
 Northern Div. Southern Div.
 Eldon Jenne Russell Rarey
 (Washington) (Tillamook)
 L. E. Sowers Roy Oberberg
 (Astoria) (University HI)
 Charles Dawson Rob Murray
 (Wallowa) (Dalles)
 Al French Ralph Coleman
 (Referee) (Referee)
 Green P. J. Callison
 (McLoughlin) (Medford)
 Officials: Spec Keene and Lestle Sparks.

CHAPMAN LEADING PLAYER IN MARSHFIELD LINE-UP

Quarantine Handicaps Early Showing of Coos Bay Team; Bandon Loses District Title

After making a slow start because of quarantine the Marshfield High team has walked thru its district race, winning from Bandon in the finals and is planning on giving some teams stiff competition in the state tournament. The outstanding player of the team is Chapman, diminutive forward, who is leading scorer of the team. Chapman played in the tournament last year and made a big hit with the fans by his fast work. Edwards pivot man, is a good man under the basket. Chan at the other forward is a fast floor worker and a clever shot. Lijeberg is a good guard and a consistent scorer. Selen holds down the other guard position in capable fashion.

KIMBALL LIBRARY DONATED MANY VOLUMES OF BOOKS

Books Come From Estate of Dr. Henry C. Jennings Formerly of Book Concern

Five hundred books have recently been received at the Kimball library from the estate of Dr. Henry C. Jennings who died in Portland late in 1927. The gift is composed mostly of recent books on various subjects related to religion. Previous to his death Dr. Jennings had given from time to time large gifts of books which amounted to several hundred volumes. Dr. Jennings was for over a quarter of a century one of the leaders of the Methodist book. He was among those instrumental in building his institution up to its place as one of the leading publishing houses in the country. He has been practically retired for the past six years, making his home in Portland. During this time he wrote a history of Methodism and kept in close touch with the Book Concern.

MID-COLUMBIA LEADER HAS FAST SMALL TEAM

District Title Taken From Bend by Good Margin; Gibson and Ward Stars

The Dalles High School comes to the State Tournament with a good record in their district. The Dalles won the Mid-columbia title and played Bend for the district title winning by a good margin. The Dalles broke even in a two game series played with McLoughlin Union High. The whole team with the exception of the center is small

SALEM HI WILL LOSE 2 PLAYERS IN JUNE

Duffy and Lyons Will Be Missing From Ranks of Salem School Next Year

Starting the season with five lettermen Coach Louis Anderson of the Salem high team has developed an aggregation which has shown in-

CONSOLATION ELIMINATES TWO TEAMS FROM TOURNEY

McLoughlin and University HI Fall Before Tillamook and Wallowa Quintets

In the first round of the consolation series played Thursday afternoon McLoughlin and University HI were eliminated from the tournament by Tillamook and Wallowa.

Tillamook presented a fast breaking offense and snowed the McLoughlin team under 37 to 29. James was dropping the ball in from every position and scored a total of eighteen points for the game. The first half ended 24 to 8 for the coast boys. In the second period Robbins dropped in four shots for McLoughlin but the lead was too large to overcome. Wallowa appeared much faster faster than in their first game and won from University HI 31 to 25 in the second game of the consolation series. University High was never to far behind to not be dangerous but Wallowa stayed about six points ahead for the entire game.

University High was fighting but their larger opponents played over their heads. Loyd led the Wallowa offense with 14 points. Stevens sank two long shots in the last few minutes of play but the rally did not last.

WELCOME

Willamette University is pleased to be the host of the State High School Basketball Tournament for the ninth year. Beginning here in a small way, the Tournament has grown until it attracts attention throughout the country. It presents a form of athletics and a type of contest which commend themselves to everyone.

Each team is the representative of a host who is already proud of you and watches with keen interest to see what happens here. Whatever be the final rating I am certain that high sportsmanship will prevail and that basketball will be promoted to even greater prominence.

We have done our best to prepare for your coming and we shall do all we can to make your stay pleasant. Our welcome is so cordial that we already look eagerly for your return in twelve months.

Sincerely yours,
CARL GREGG DONEY.

GREETINGS

Since its origination in 1892, basketball has had an unusual increase in popularity both with players and with spectators.

The Physical Education Department of Willamette University welcomes this opportunity of again making its contribution to the advancement of basketball by sponsoring this tournament and holds it a high privilege to be able to entertain you who compose the teams representing the leaders in this sport in your respective districts of the state. We congratulate you on your records of which you may well be proud. Any means in the power of the student body of Willamette University and the Physical Education Department are at your disposal to make your stay enjoyable and profitable.

We want to play the game with you and to play it like good sportsmen. We wish you the best of luck.
ROY "SPEC" KEENE,
Director of Physical Education.

BUNTINS

Next to Capitol Theatre
Sandwiches & Hot Chili

Kennell-Ellis
W. U.
PHOTOGRAPHERS

"IT PAYS TO LOOK WELL"
The State St.
Barber Shop
For all the Family—
Close to the Capital and W. U.

We Are Now in the
New Hotel Senator
THE TERMINAL SHINE

When you think Drugs
Think Schaeffer
SCHAEFFER'S
DRUG STORE
THE YELLOW FRONT
135 N. Com'l. St.

ROTH'S
"The Best of Everything"
Groceries and Meats
Thirty Day Account Service
No Charge for Delivery
Phones 1885-6-7
134 N. Liberty St.

ARE YOU SATISFIED WITH YOUR HAIRCUT
Four Experienced Barbers at
BANK BARBER SHOP
No Two Piece Haircuts

WORLD SERVICE MAN DELIVERS ADDRESS

Spiritual and Legal Possessions Are Evaluated by the Reverend R. L. Gornall

"The Difference Between Legal and Spiritual Possessions" was the subject of an interesting talk delivered in Chapel by Rev. R. L. Gornall on Tuesday.

Rev. Gornall is a world service worker who travels about 350,000 miles each year. His headquarters are in Chicago at the present time. Formerly he was a Methodist min-

J. J. KRAPS CO.
PRINTERS
So. 13th and Wilbur
Phone 1256

RED AND BLACK SQUAD REPRESENTING LOCAL HIGH SCHOOL



Reading from left to right Charles Kelley, Tom Duffey, Frank Shaffer, Ivan Kafoury, Edward Seigmund, Ro Kelley, Lee Ekar, Homer Lyons, George Beechler, and Coach Louis Anderson.—Courtesy Oregon Statesman.

but they are fast and are all good shots. Gibson and Ward are the outstanding players of the team. Gibson is a clever forward and Ward is a good guard and a consistent scorer. Miller, at center, will be able to hold his own with the best. Other members of the team are Ingram, forward; and Robinson, guard.

DISCUSSION CONSIDERS ACTIVITY LIMITATION

Place of Activities in Life of Student Topic of Weekly Wesleyan Meeting

With Wesley Gordon as leader, a general discussion was held on the subject, "Should a student interested in Christian work limit his participation in general activities?"

The discussion was not limited to time spent on the campus but that the student must meet this problem throughout all of life.

Consideration was given to the claims that social and athletic activities have upon a well rounded Christian.

Much time was given to the discussion as to how to bring benefits of the Wesleyans to more of the students. The club is very anxious to have every student who is interested in Christian progress to know that he is invited to attend and participate in the discussion meetings which are held every Wednesday during the noon hour in Dr. Gatke's room.

The topic for March 28, '28, is "How is the student going to choose between the Home and Mission field?"

ASTORIA FINNS PRESENT STRONG BID FOR HONORS

Team Won Lower Columbia Title From St. Helens; Games Lost to Tillamook and Salem

The Astoria Finns will have to be reckoned with in the State Tournament this year. The Astoria five easily won the Lower Columbia Title from St. Helens and although they have lost games to both Tillamook and Salem High they are rated as a strong quintet.

At forward the Finns have Arvola who played in the tournament last year and who is the best long shot on the team. Wilson, at center, should be able to get the thump from most of his opponents and he is a good man under the basket. Other members of the Astoria team are, Luthie, a fast clever forward, Hauke, a good floor worker and guard, and Larson, a very capable guard.

MITZI-GRAY BEAUTY SHOPPE
709-13 First Nat'l Bank Bldg.
TELEPHONE 187
Nestle Circuline Permanent
Waving and Finger Waving

creasing strength as the season has progressed. During the past season the team has lost but five games.

Coach Anderson had as a nucleus around which to build his team two players which had played in the tournament last year. Duffy, all-state forward and captain is playing his last year for the Red and Black. Lyons, forward, who will graduate this June is playing his third year on the squad. Beechler who takes the place at center held down by Lyons last year is playing his first year at Salem High school and will be back again next year. Bob Kelley and Lee Ecker, guards are playing their first year for Salem and will be back again for next year's team. Cheney Kelley and Siegmund, substitute forwards will return to school next year. Kafoury, sub-guard, will be among those graduated in June.

Salem HI Record:

Salem 30	Astoria 24
Salem 31	Astoria 21
Salem 26	University 25
Salem 19	Washington 26
Salem 30	Eugene 19
Salem 36	Albany 12
Salem 31	Independence 9
Salem 13	OSC Rooks 22
Salem 24	OSC Rooks 30
Salem 27	Oregon Frosh 32
Salem 31	Ashland 22
Salem 22	Medford 30
Salem 18	Medford 16
Salem 55	Independence 5
Salem 26	Dallas 17
Salem 64	West Linn 30
Salem 30	Oregon Frosh 39
Salem 20	Eugene 19
Salem 30	Albany 23
Salem 46	West Linn 30
Salem 45	Silverton 31
Salem 25	Dallas 15
Salem 58	Oregon City 17

OREGON GLEESTERS WILL APPEAR AT CAPITOL SAT.

(Continued From Page 1)

Ray Burke and George Baron "Last Rose of Summer" Ernest McKinney Duet Don Ostrander, Dick Adams "Roll Dem Bones", "Old Oregon" "Oh Dear!" Cecil Matson, Bill Schaefer and Jack Dennis "Sandman Lullaby", "Honolulu Blues" Saxophone trio George Baron, Ray Burke, Jack Dennis. "Hallelujah", "Drinking Song".
Glee Club

WOMEN'S GLEE CLUB . . . SOC. . .
Yesterday as a student chapel program the Women's glee club sang several of the numbers which will be a part of their regular concert program. The program given is as follows:
Spring Comes Laughing . . . Carew Glee Club
Solo . . . Margaret Arnold
Morning . . . Frances McGilvra

325 State St. Phone 596
C. A. Luthy
Jeweler
Salem, Oregon

CAPITAL DRUG STORE
Agents Owl Drug Co.
J. H. Willett
"Only the Best"
Katty Korner Fire; Nat. Bank Bldg.

WE ARE OFFERING YOU OUR
St. Patrick's Day Special Brick
For Your Party
WESTERN DAIRY PRODUCTS CO.
240 S. Com'l. Phone 1101

THE STORE FOR YOUNG MEN
THE SEASON'S SMARTEST
SUITS
ARE HERE
Exclusive Styles and Patterns
\$25---\$30---\$35
LARGE SHOWING
The Man's Shop
COOLEY HUNTINGTON

BLIGHTS CAPITOL THEATRE
Today---5 Great Acts
Association Vaudeville
TOMORROW
U of O Men's Glee
IN A LAVISH
VAUDEVILLE PRESENTATION
Plenty of time to see the last show after the games!

OREGON STAR COACHES UNIVERSITY HI SQUAD

Team Has Won Eight Out of Ten Games in Past Season; Beaten by Salem

The University Hi quintet of Eugene will be one of the fastest teams at the tournament. Every man is small but can cover the floor and shoot with the best. The college five has a good record for the season, winning eight out of ten games played and scoring 297 points to their opponents 146.

In their first game of the season the University Hi lost to Salem by one point. They later dropped a game to Corvallis by a lone basket. University Hi is coached by Roy Okerberg, ex-university of Oregon center. The season record:

University Hi 25	Salem Hi 26
University Hi 28	Springfield 11
University Hi 28	Springfield 12
University Hi 28	Cottage Grove 12
University Hi 48	Cottage Grove 14
University Hi 30	Eugene 16
University Hi 22	Eugene 12
University Hi 26	Corvallis 16
University Hi 15	Corvallis 17
University Hi 47	Waldport 10

MCCORMICK BIBLE TEXT IS NEARING COMPLETION

Book to Be Used in Freshman Bible Course Will Be Published During Summer

Dr. J. D. McCormick, Dean of Kimball School of Theology, has his book, which he is preparing for the special use of his Willamette class of Freshman Bible students and for Bible readers in general, practically completed. He expects to spend his spring vacation revising and retyping his manuscript preparatory to sending it to the publisher. As yet no specific name has been selected for the work, but the main idea is "thinking through the Bible." Dr. McCormick is desirous that the book will aid the students in thinking out for themselves the great truths contained in the Bible thus coming to a better understanding of them. The book will probably be published some time during the summer.

EXECUTIVE COMMITTEE HELP PORTLAND ALUMNI

Committee Appointed to Work With Organization in Presenting Campus Program

At the regular meeting of the executive committee it was noted that Willamette University would stand behind the basketball tournament.

WASHINGTON QUINTET REPRESENT PORTLAND

Ed Lewis Playing Center Rated Second High Scorer in High School League

The Washington Hi quintet that represents the Portland interscholastic league in the State Tournament is rated as one of the strongest teams in the state. Washington walked through the Portland league playing ten games without a defeat. In the final game for the title Washington won from Benson Tech in a game that required two overtime periods before the Colonials emerged victors 27 to 25.

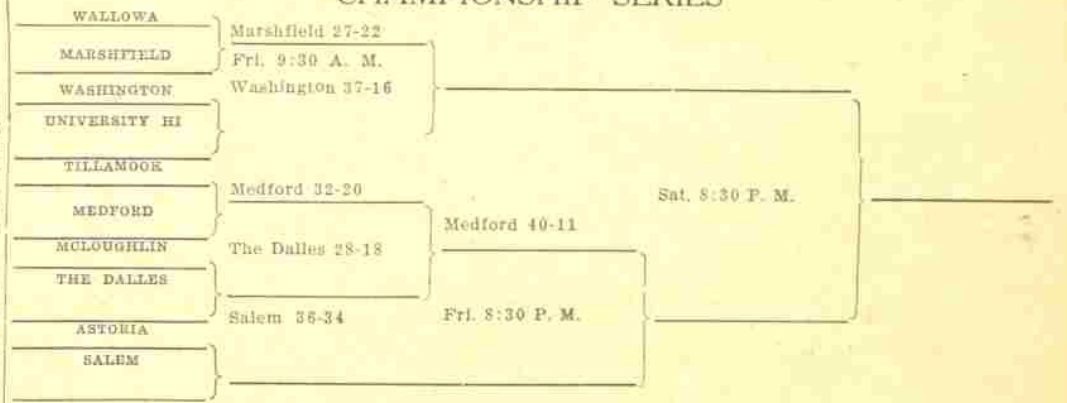
Two of the Colonials were placed on the all-star team of Portland. Ed Lewis, lanky 6 foot 5 inch center was the second high scorer in the league and he stood out as the leading offensive and defensive man on the team. Frank McCartney is short and slender but he is fast and clever with the ball and is a good long shot.

Other members of the Washington five are Vincent Dolp, Harold Inman, and Alan Cox. Dolp is a consistent scorer and he works well with his running mate Inman. Cox is a very efficient guard. Alternates that Coach Jenne will use in the tournament are Heikinen, Pearson, and MacPike.

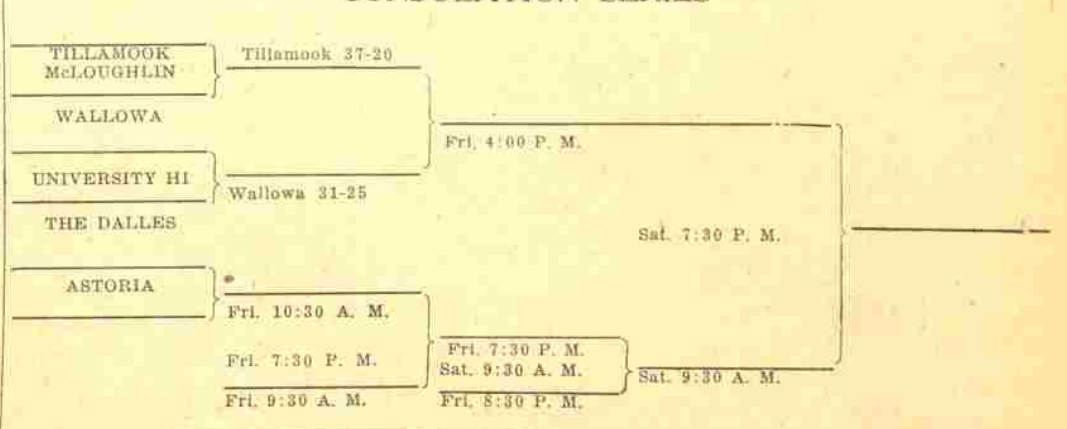
PLAYERS AND NUMBERS

WALLOWA	
Johnson	1
Sarret	2
Crawford	3
Lloyd	4
Pasey	5
Plase	6
Mitchell	7
H. Plase	8
MCOUGHLIN	
Olinger	2
Robbins	4
Varell	5
Crummins	6
Lutcher	7
Nelson	8
Saager	9
Coe	10
THE DALLES	
Gibson	7
Ingram	6
Ward	8
Miller	4
Robinson	3
Lantis	1
Kirby	2
McEachern	5
SALEM	
Beechler	7
Lyons	9
Eker	5
Kelley	3
Selgmund	4
Kafoury	8
Shaeffer	10
Kelley	6
MEDFORD	
Phipps	2
McDonald	3
Melvin	1
Garnett	4
Morgan	5
Bowerman	7
Swanson	8
Hughes	6
Thomas	6
UNIVERSITY HIGH, Eugene	
Powers	7
Scott	8
Nibby	1
Gordiner	7
Stevens	9
Rickabaugh	13
Burt	10
Jones	2
TILLAMOOK	
James	3
Knowlton	2
Metcalf	6
Pago	4
Buel	7
Stewart	9
Chapman	5
Conover	8
MARSHFIELD	
Chapman	1
Hill	3
Liljeberg	4
Selen	5
Edwards	7
Birdwell	8
Johannessen	9
Chan	11
ASTORIA	
Wilson	1
Arcolis	2
Luthe	3

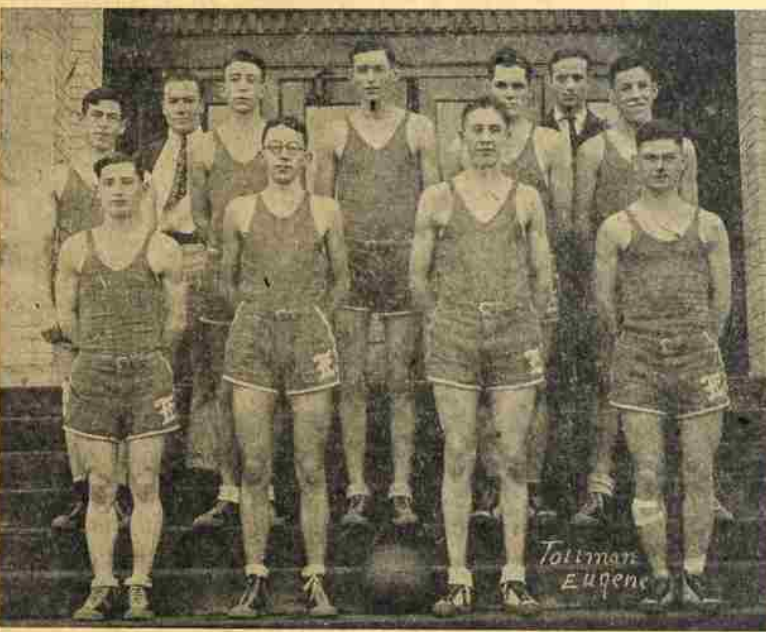
CHAMPIONSHIP SERIES



CONSOLATION SERIES



CHAMPIONSHIP EUGENE HIGH SCHOOL TEAM OF LAST YEAR



GELS GENERAL SUBJECT SCIENCE CLUB MEETING

Snakes, Eggs, Gardens, Rings, and Tubes Are Manufactured by Youthful Scientists

The subject of gels was the general topic for discussion and display at the monthly meeting of the Science club held Wednesday evening in Science Hall. Professors Herman Clark and Florian Von Eschen are faculty members of the organization.

Five members constituted the program the first dealing with the son's rate of speed. "Musical tubes" were made by Lloyd Harder and Harold Mumford. Beach Patton produced "chemical smokes" from chemical eggs and Lloyd Harder displayed and explained a "chemical garden". Several members were in charge of "chemical rings".

Lorren Bennett, a senior and a major in the department, is president of the club.

MCOUGHLIN UNION TEAM DEFEATED WALLA WALLA

Runners Up for Washington State Honors Beaten by Seven Point Lead

McLoughlin Union High School will send a strong team to the State Tournament this year. The team with the exception of the center is small but they are credited with a seven point victory over the Walla Walla quintet that took second in the Washington State Tournament, and they should make things hard for their opponents.

The McLoughlin five has lost only three games out of the twenty three played. The team dropped one to the Dalles, one to Pendleton and one to Walla Walla. In the district tourney the team won four straight games and defeated Heppner in the finals.

The season record:

McLoughlin 16	Baker 14
McLoughlin 32	The Dalles 20
McLoughlin 18	The Dalles 22
McLoughlin 29	Hood River 14
McLoughlin 21	Pendleton 22
McLoughlin 30	Pendleton 11
McLoughlin 37	Helix 23
McLoughlin 38	Helix 23
McLoughlin 16	Walla Walla 22
McLoughlin 35	Walla Walla 28
McLoughlin 31	Athens 14
McLoughlin 49	Hermiston 6
McLoughlin 54	Pilot Rock 11
McLoughlin 32	Adams 15
McLoughlin 15	Dixie 13
McLoughlin 53	Dixie 24
McLoughlin 19	Alumni 11
McLoughlin 31	Pendleton 23
McLoughlin 21	Helix 17
McLoughlin 43	Arlington 7
McLoughlin 56	Heppner 7

and make genuine efforts to be good hosts. Fifteen dollars was voted to make possible the printing of one thousand extra copies of the six-page edition of the Collegian. This is part of the program of presenting Willamette to the tournament visitors.

Hugh McGilvra, Jean White, Margaret Lewis, and Kenneth Litchfield were the committee appointed to work with the Portland alumni association in the banquet to be given in Portland on March 13.

Kenneth McCormick, editor of the Willamette song book, was appointed to investigate and report the expense of publishing a Freshman Glee supplement.

MEDFORD HIGH TEAM RETURNS TO TOURNEY

Southern Oregon Aggregation Comes Back With 3 Veterans of Last Year

The Medford High School quintet is conceded an even chance to get into the finals of the State Tournament. The team is one of the strongest in the history of the school but they are apt to go into a slump at the wrong time.

Three men from the Medford team of last year are back and will furnish some stiff competition for all-state positions. Melvin, flashy red headed forward who was a sensation of last year's team, will again play and McDonald, last year's center, is also back. Phillips has been shifted to center this year.

The team has only lost one game this year, that to Salem High by two points. The Medford team has scored 276 points to their opponents 167 in twelve games played. The season record:

Medford 19	Klamath 17
Medford 48	Grants Pass 6
Medford 39	Salem 22
Medford 16	Salem 18
Medford 34	Roseburg 8
Medford 32	Ashland 22
Medford 21	Ashland 12
Medford 39	Klamath 17
Medford 32	Ashland 5
Medford 52	Central Point 16
Medford 26	Central Point 13

The Latest Thing
—IN—
SPRING FOOTWEAR
Hamilton Shoe Co.

ment are Heikinen, Pearson, and MacPike.

The Colonials in the 23 games played this year have scored 718 points to their opponents 489. The season record:

Washington 33	Columbia 15
Washington 17	A.Z.A. 33
Washington 27	First Christian 34
Washington 44	Alberta 10
Washington 47	Mill Plain 27
Washington 31	Peninsula Aces 8
Washington 34	Vancouver 20
Washington 45	Enkes 27
Washington 36	Willamette Frosh 29
Washington 30	Salem Hi 19
Washington 19	Aggie Rooks 24
Washington 26	Aggie Rooks 22
Washington 38	Oregon Institute 16
Washington 32	Franklin 24
Washington 43	Lincoln 16
Washington 34	Commerce 19
Washington 32	Lincoln 19
Washington 25	Franklin 15
Washington 33	Commerce 19
Washington 26	Benson 19
Washington 29	Grant 19
Washington 31	Grant 30
Washington 27	Benson 25

Schei's
(Say Shay's)
MEN'S WEAR
Use Our Ten-Payment Plan
344 State Street

GRAYBELLE
THE POPULAR PLACE TO ENTERTAIN

FOR SCHOOL OR DRESS WEAR Phoenix Hosiery
Chiffon hose with profile heel. Extra long silk boot in all the new Spring shades, per pair **\$1.50**
State Street 466 **Kafoury Bros.** Phone 877

"WILSON"
THE OFFICIAL BASKETBALL OF THE TOURNAMENT
AUTHORIZED DISTRIBUTOR
KEN BROWN
372 State St.

Tournamentites
Everything Shines That We Shine
Capitol Shining Parlor
Next to Bligh's Capitol Theatre
JOHN GOSTA
Get Your Coupon Books

key Saghtelian. Willamette is the only school in the Northwest who has previously supported a student in a foreign country. Linfield is now starting a project to support a student. Their fund will be called "Linfield-in-the-Philippines."

Plans for a permanent "Willamette-in-Greece" committee have been started, the members of which will probably be chosen equally from each association on the campus, and from the student body.

Welcome Fellows to Salem
Salem Laundry Company
(WEIDER'S)
263 South High St. Phone 25

CORONA
the portable typewriter

CORONA is the pioneer of all portable typewriters—and the only one with a nineteen year's record of proved durability.
It is the only portable with all these big machine features:
Standard four-row keyboard
12 yard, two color, self-reversing ribbon
10-inch carriage, with self-spacing return
Rear trible line spacer
Margin release and back spacer on keyboard
100% straight line visibility
Shift keys on both sides
Twirlers on both ends of carriage
Adjustable paper guide
Stencil device
Strong, light aluminum frame
Standard front stroke type-bar action
Easy terms. We deal in used typewriters and can quote you the best allowance on your old machine.
Typewriter Exchange
421 Court THOS. ROEN Phone 651