

'Macbeth' Opens Tonight in Auditorium

Willamette Collegian

1842—Serving a University in Its Second Century—1955
"In Age There Is Wisdom"

Vol. LXVII

Salem, Oregon, Friday, November 11, 1955

No. 9

Dr. Doney, Longtime President, Benefactor of Willamette, Dies

Word was received here Saturday morning through a telegram to President Smith of the death of Dr. Carl Gregg Doney. Dr. Doney served as president of the University



DR. CARL GREGG DONEY

from 1915 until 1934, the longest tenure of any president.

Dr. Doney's long administration was marked by a strengthening of the academic program, construction of Lausanne Hall and the gymnasium, and by the raising of \$1,000,000 for endowment.

In 1924, a serious illness caused Dr. Doney to submit his resignation to the Board of Trustees, but it was not accepted. He was known as a witty and entertaining speaker, and was much in demand by various civic organizations and clubs.

An outspoken foe of liquor, he was active in the prohibition movement. Also he opposed the introduction of dancing into the University's social life. Recently Dr. Doney was honored by the University he had served so well by the naming of the new women's dormitory the Carl Gregg and Jennie Evans Doney Hall.

In 1948, Dr. and Mrs. Doney revisited the campus in June, at which time they were honored by the alumni at their annual dinner. In 1937 a bronze plaque honoring Dr. Doney was placed in Eaton Hall.

Dr. Doney was a member of Phi Beta Kappa, Beta Theta Pi, and Phi Delta Phi. He was also a Mason and Rotarian. In addition to this, he was the author of several books.

In the early stages of his education, Dr. Doney wavered between a career in law or the ministry. He chose the former, and graduated from Harvard. After practicing a short time in Columbus, Ohio, in 1893, he entered the Methodist ministry. In 1907 he became president of West Virginia Wesleyan College, remaining there until coming to Willamette in 1915.

Activities Calendar

Today—Play, Drama Dept., "Macbeth," auditorium, 8:15 p. m.
Pi Beta Phi house dance, 8:30 p. m.
Chi Omega house dance, 9 p. m.
Tomorrow—Play, Drama Dept., "Macbeth," auditorium, 8:15 p. m.
Football, Linfield, in McMinnville, 8 p. m.
Tuesday—Alpha Lambda Delta freshman party, Lausanne Lounge, 6:30-7:30.
Portland Symphony, auditorium, 7:30 p. m.
Thursday—Carl Palangi concert, auditorium, 8:15 p. m.
Friday—Sigma Chi sweetheart ball, 9 p. m.
Phi Delta Theta house dance, 9 p. m.
Saturday—Sigma Alpha Epsilon house dance, 9 p. m.
Beta Theta Pi house dance, 9 p. m.
Baxter Hall house dance, 8:30-11:30 p. m.

Chatter Takes Tour

Aspects of campus life, featuring The Collegian and the Sigma Chi Sweetheart contest, will be presented on Campus Chatter Tuesday at 8:30, station KOCO.

Panhellenic Unanimously Votes To Hold Open Rush Period

For the first time in three years, the Willamette Panhellenic has decided unanimously to have an open rush period from Tuesday, November 15, to Wednesday, December 14.

This open rush classifies women students into two groups according to rush status, Group A being women who have already participated in a formal rush period, and Group B women, who have had no formal contact with any house. In Group A, one dinner date is sufficient to be eligible to bid to membership and in Group B, two coke dates and one formal dinner date are required before a woman is eligible to receive a bid to membership.

Bids will be given verbally and rushees will then be required to sign a preference card in Dean Ewalt's office.

Alpha Chi Omega and Chi Omega will be participating in this

open rush as eligibility is determined from the number of active members and pledges. The maximum is 60.

Monday night during dinner at Lausanne and Doney Halls Dean Ewalt and the four rush captains of the sororities will inform independent girls of the rules and regulations governing open rush. All town students who are interested are urged to attend.

Rules for open rush include that all contacts be made on campus and none may take place during Thanksgiving vacation. Women pledging in open rush will be initiated with the fall pledge classes providing they make their grades.

All four houses will be participating in the formal spring rush to be held after grades for first semester come out. This is usually the first of March.

Symphony Begins Series of Concerts In Salem Tuesday

The 75-piece Portland Symphony Orchestra will make its first appearance under the baton of its new conductor, Theodore Bloomfield, Tuesday at 7:30 p. m. in the Fine Arts auditorium.

Tuesday's concert will include Beethoven's "Leonore Overture," Strauss' "Rosenkavalier," Brahms' "Symphony No. 1," and two nocturnes by Debussy called "Nuages" and "Fetes."

The Salem Symphony Society is sponsoring the three-concert series. Succeeding concerts will be February 14, featuring Isaak Stern, violin soloist, and March 13.

Tickets may be purchased from Stevens and Son Jewelers or from Lois Monk, campus representative. Prices are \$5 and \$7 for season tickets and \$2 and \$3 for individual concert tickets.

It was called "one of the leading symphonies in the Northwest," by Melvin H. Geist, Dean of the College of Music, who continued, "under its new permanent conductor, Mr. Bloomfield, it promises to be an even better organization. We are very fortunate that the concerts are being given on the Willamette campus, for it gives many students the opportunity to hear fine music."

Organizations Sit For Wallulah Pics

Students will be photographed for the yearbook in their respective living organizations this year rather than going to the studio, according to Sally Jones, Wallulah editor. Town students only will go there to have their pictures taken.

Although the picture-taking schedule is not yet complete, the process is tentatively planned to begin next Tuesday with Delta Gamma. The Kennell-Ellis studio, 520 State street, has been selected to do the job.

Miss Jones also stated that the finance board has agreed to a budget of \$6,350 for the production of the Wallulah for '55. The budget will be divided as follows: \$5,000 for printing, \$1,300 for photography, and \$50 for miscellaneous.

Series to Bring Palangi Here Thursday

Carl Palangi, the versatile young bass-baritone who was discovered while singing in the showers, is to appear at the Willamette Uni-



CARL PALANGI

versity Fine Arts building next Thursday at 8 p. m.

Palangi, known to many as the young Gable with the Pinza voice, is the next attraction in the current Distinguished Artists Series. With a past literally littered with operatic successes, Mr. Palangi is now on his way to become one of America's finest bass-baritones. In just the last few years he has had starring roles as Don Giovanni, Mephistopheles, and Jabez Stone in "The Devil and Daniel Webster."

He has appeared with the San Francisco Philharmonic, the Pacific Opera Company, the San Diego Philharmonic and Stanford University Opera Company besides many radio and television shows. Mr. Palangi is one of the few, if any, great singers who started out to become a professional boxer and in the meantime has been a beer truck driver, a blacksmith, a stevedore, a wrestler, a weightlifter, a football player, and a navy man.

The navy is awarded the credit for starting Palangi on his singing career. It was after a boxing

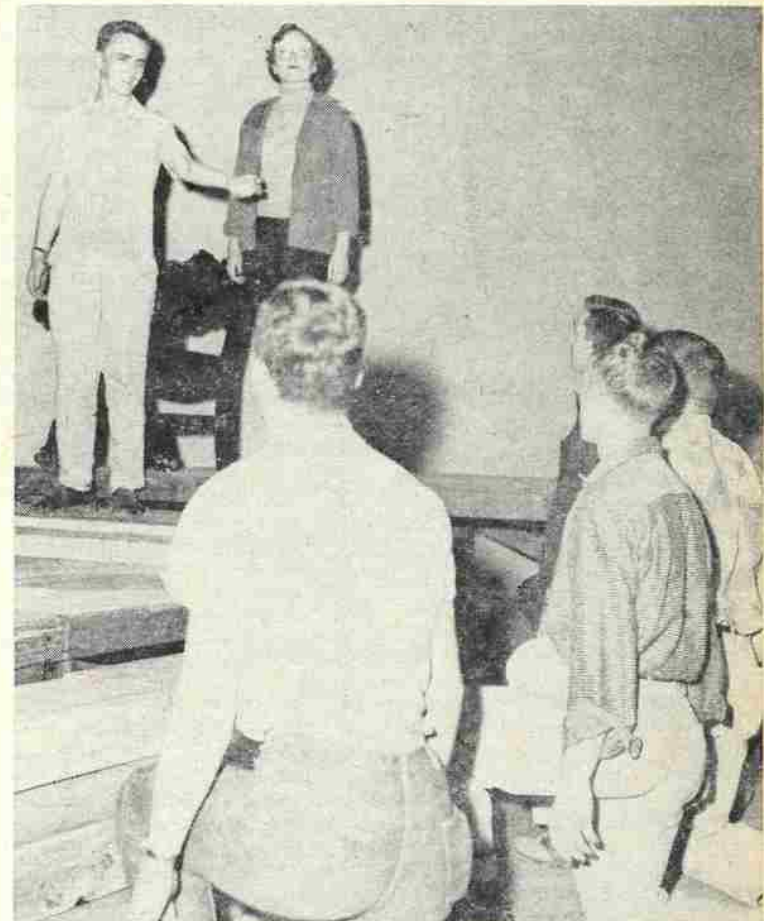
workout at Great Lakes Naval Training Station that Carl Palangi was heard singing in the showers by one of his fellow sailors.

He was put into the Great Lakes choir and thus started his long and prosperous career. The six-foot-three over 200-pound ex-boxer has many songs in his collection. They include favorites in Italian, French, German, Russian and English.

Even though Palangi is mainly interested in his singing career, he also has varied hobbies. Sculpture, painting, architecture, and reading are some of them.

Students of the College of Law will present their annual Moot Court in Tuesday's convocation. Speeches by candidates for freshman glee manager will also be given.

The Rev. George H. Swift, rector of St. Paul's Episcopal church of Salem will be the speaker at Thursday chapel in the First Methodist church.



Awaiting costume shipment from San Francisco, members of the "Macbeth" cast began final week of practice on stage levels set up for the first time in the new auditorium. (Photo by Frank Bash.)

T'n'T at Ten

Students of the College of Law will present their annual Moot Court in Tuesday's convocation. Speeches by candidates for freshman glee manager will also be given.

The Rev. George H. Swift, rector of St. Paul's Episcopal church of Salem will be the speaker at Thursday chapel in the First Methodist church.

Willamette Collegian

Official publication of the Associated Students of Willamette University. Entered at the Postoffice at Salem, Oregon, for transmission through the mails as second class matter. Published weekly except during vacations and examination periods. Subscription rate \$2 per year.

Member Associated Collegiate Press - Rated First Class
 DUANE ALVORD Editor
 BILL BJORKMAN Publications Manager

in memoriam

The Collegian acknowledges with deep regret the passing of Willamette's former president Dr. Carl Gregg Doney this week. It has been 20 years since Dr. Doney gave up his job here, but the impact of his faithful years of service is still evident.

Few of us here remember Dr. Doney. But those here who had the pleasure of meeting this brilliant and witty gentleman can not easily forget his stature. Nor can Willamette forget the great steps he made in expanding the endowment, and his steadiness during the years he led the University through the depression.

His friends are quick to fill in the details of this great man's life. His many books show insight into the great mind which he possessed. Dr. Doney was a leader of men. That Willamette should have benefited from so many years of his life is a fortunate thing.

And so it is—as one who so aptly served, even as he led, Dr. Doney will be forever a part of our University. He has been taken from this world; he remains at Willamette.

Corpus Delicti

By Bill Sundstrom

To many, the arrival of November means Thanksgiving and a turkey dinner with the family. To others it represents the close of the regular football season, or a two-day vacation. But to the law students, it stands for that time of the year when Moot Court competition comes to the front.

Competition in Moot Court exists for the self-improvement of oral advocacy and experience in finely reasoned brief writing. The Willamette College of Law has a very extensive program which allows for everyone to participate and share in its benefits.

Participation is required of all first year students in competition of appellate argument involving portions of those subjects—property, torts, criminal law, and contracts—already covered in the first semester. Everyone has an opportunity to present their actual oral argument before qualified judges without discrimination.

The competition in the second year is extra-curricular, for those who wish to enter, and involves more difficult question not generally covered in the law school curriculum. Often it is an appellate administrative hearing, which we feel is unique at Willamette, and gives the student an insight into a proceeding, which are seldom understood prior to graduation.

Winners from the second year competition may qualify in their third year to represent the College of Law in the National Moot Court competition sponsored by the Association of the Bar of New York City. Regional courts are held, and the winner from each region is eligible to argue in the finals in New

York before nationally distinguished jurists. The 19th of this month marks the date on which the regional competition will be held this year. In our area, that will be at Moscow, Idaho.

We are very proud of the organization and opportunities which we have made available for this type work here on the Willamette campus, and Bud Holmes, third year student, must be congratulated for the work he has done in making this year's program a reality.

If you are interested in listening to any of the arguments by either the first or second year class, you are certainly welcome to come over to the law school and join us. Second year competition will be held Monday, beginning at 12:30 in the afternoon and continuing until 5 o'clock. Tuesday through Friday will mark the time for the first year arguments, also to be held in the afternoons. If you will drop in any of these afternoons at the law school, posted signs will direct you to the proper room, and we want you to know that the public is invited.

CLASSIFIED

POSITIONS with well-established band open for students. Excellent opportunities for placement in the brass, woodwind, and percussion sections of the WU band. Previous experience helpful. Not necessary to own instrument. Rewards many. Hours good, MWF p.m. Many opportunities for performance. Hours of pleasure and fine musical experience guaranteed. Contact Maurice W. Brennan, 145W Fine Arts building, or see any present band member.

A Poem, Plus a Mother . . .

Smiling softly to herself, the British mother sealed the envelope and slipped it in the mailbox. Then she went home and waited quietly, saying nothing to her family.

So it was that Angela Bower, English-born sophomore at Willamette, won first place in the local division of a poetry contest without even being aware that she was a contestant. The poem, entitled "The Vision," then went on to win first place in the state-wide division of the contest, sponsored by the Catholic Daughters of America. Following is an excerpt from the poem:

"I saw the majesty of sun, and moon, and universe, and stars grow dim, and shattered was the gaiety of the crowd that reviled him.

Stilled by the wailing moan of the wind that grew, and plucked the garments of the mocking mob Til they turned in fear, yet saw no earthly hand draw near.

I saw the Cross stand dark against the darkening sky, flamed 'round

SB ROUNDTABLE . . .

Question . . . Evaluate . . . Answer

With six week tests now behind, it is time to take a moment and reflect our thoughts on what has been happening since we unloaded our suitcases, shoved the contents in the closet, and began looking at books. For the seniors, this whole process is an old story; now the juniors are beginning to catch on (and perhaps the sophomores) that it's another chance to make good. However, the frosh may think the experience is mass mayhem. Whatever the novelty may have been to you, everyone understands that now the full press is on.

SINCE WE CAN stop and trace our steps, the question that should be asked by us is, "What have I got out of these past classes and campus events?" We say "should be asked" because college is a process of continued evaluation. This questioning is important. However the answers, opinions, and decisions lie with each individual — but don't be afraid to exert and to get into the tempest, because, as a result of so doing, we, as individuals and groups, will profit. No one has ever been hurt by forming his own opinion. Nonetheless, an important factor is that this opinion should be flexible enough to change as the result of a better decision, more facts, and values. Values are actually the keynote in this questioning. For by values the worth of academic pursuits and social activities can be determined in the mind of each individual. We should ask ourselves, "How valuable is my academic and social program, what are the benefits, how can I derive them, where is my position, am I really taking advantage of all the opportunities offered?"

ON THE LARGER side of student government, one characteristic marks the efforts of your officers and council; that is the open questioning that has been done this six weeks. There is value in activities going on, but nothing is above questions. Consequently this is why the council voted down a motion to approve the University's policy on the new buildings. It was voted down because the representatives could not reconcile themselves to certain clauses as applied to certain groups, although we do understand the necessity of the plan. Now we are waiting to see how the plan works in actual operation, before saying anything about it. Also in the past weeks every manager has faced the responsibility of answering to the council and reporting his plans and hopes for a particular program. The use of Chresto is under examination, as is the selection and purposes of the Rotarian of the Month, and the rules and procedure concerning ASWU banking.

AS FOR PROJECTS in the future, we are looking with anticipation towards finishing the challenge fund and giving manager Volney Sigmund any assistance he desires. On November 22 we would like to see the blood really flow — giving with a purpose in it, or as Bob Boss

would say, "I'll be proud to roll up my sleeve."

HOWEVER, THE WAY proposed constitutional and by-laws revisions have been piling up, our whole frame of government may change. Don't worry though, they are just suggested modifications—at least I think so! But, we have seen what an expressed student opinion can do — for instance, the progress on the parking situation. Dale Patton, Bill Strand and Dean Hatfield deserve much credit for their work on this project. Again students have expressed their opinion, this time about a student body tradition; consequently, Omnicron Delta Kappa and Cap and Gown are working on defining and evaluating traditions on campus. What

do you think about these issues? This is what the council needs to know. If you have criticisms or a better idea bring them to council yourself or by the representative in your group. In so using the right channels perhaps something can be done about the issue.

THE ISSUES mentioned above are not the only things the council is working on or planning for. Instead, they are a few of the specific problems that have arisen. But the second six weeks is starting to pile up already. However don't rush it, evaluate it. The results will be rewarding. So let's not stop; let's keep asking questions and finding answers.

Dave Finlay
ASWU President

DEAR ED: . . . Touche

Dear Editor:

When a person or group of persons receive a "blast" as the Letterman's Club did in the last Collegian, the first reaction is to blast back. If one then stops to consider, you find that nothing is gained. We feel that, if an intelligent person would read those letters, he would find that, except for the one advising more selective choosing of pranks, that they are vague and offer nothing but idealistic personal opinions.

Kangaroo Kourt was not "vulgar," was not "a brawl," and was not allowed to degenerate into a "free-for-all." Granted it also was not as well-organized as it should be. For that we apologize to the students of the University and

promise to improve in that respect. We are open to suggestions, not indefinite criticisms.

In closing, we would urge the writers of the letters and anyone else who feels it was "childish" and a "violation of rights" to turn to page 116 in the 1955 Wallulah and notice another phase of Willamette University tradition.

The Lettermen's Club.

MEN
Play Handball at the
Y.M.C.A.
 Instructional Classes
 Every Thursday 7:00 P.M.
 Plus Tournaments, Leagues, Free Play

LOOK You can now
RENT A
New Portable
8 Months
at \$4 per



Apply this Rental on purchase. Any Make or Model. This is a SPECIAL OFFER for limited time. Act NOW

ROEN'S 456
COURT
 Grade B Typewriters 3 months \$7.50

50 million
 times a day
 at home, at work
 or on the way

There's nothing like a

Coke



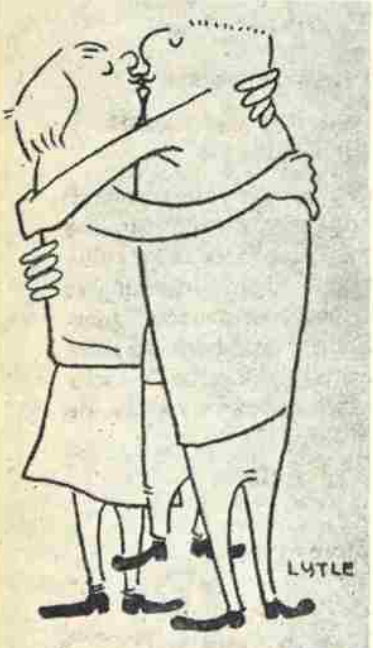
1. PURE AND WHOLESOME . . . Nature's own flavors.
2. BRIGHT, EVER-FRESH SPARKLE . . . distinctive taste.
3. REFRESHES SO QUICKLY . . . with as few calories as half an average, juicy grapefruit.



BOTTLED UNDER AUTHORITY OF THE COCA-COLA COMPANY BY
 COCA COLA BOTTLING CO. OF SALEM

"Coke" is a registered trade-mark.

© 1955, THE COCA-COLA COMPANY



"HELP!"

Chi O's, Pi Phis Dance Tonight; Both Sororities Select Costumes

"Shipwrecked" is the theme of Pi Beta Phi's annual fall costume dance which is being held this evening from 8:30 until 11:30 o'clock. Gayle Rogers, general chairman, announced that the Pi Phis and their guests will be wearing costumes representing any chosen character who might be found on a ship at the time of disaster.

The guests will enter the house through a dark cave and may then go down to the basement which will depict the depths of the sea with its array of black and green caverns, rocks and sand. The refreshments, planned by Maureen Day, will be served in these gloomy depths and will consist of green punch and starfish-shaped cookies.

Upstairs, the living room will be transformed into the wrecked ship itself and will serve as a gathering place for the group.

Dancing will take place in the dining room where an island theme will prevail. The room, with its net ceiling, palm trees, and thatched

hut, should lend a romantic atmosphere to the murky theme. Decorations have been planned by Margie Swanson.

The programs, designed by Ann Notson, will further the theme by their green and black colors and boat-shaped outline.

Chi Omega chose "Mystic Melodies" as the theme for its fall house dance tonight from 9 to 12 o'clock at the chapter house. Each couple will come costumed to represent a song title, said Lo Anne Mundingre, social chairman.

Decorations have been designed by Mary Beebe and will be life-sized silhouettes in black. The living room walls include figures of musicians. The subjects will range from trumpet and trombone players to Davy Crockett stepping out of a record. Bebop musicians in silhouette form are featured in the recreation room.

Jo Curry is in charge of refreshments of party cookies and punch which will be served from a band stand bar in the upper fireplace room.

Pledges are keeping the design of their traditional programs a secret but have been making them during the week.

Sweetheart Court Serenaded



JEANNINE GRABER



SANDY MISCHKE



NANCY WYLY

Surprise serenades held Tuesday, Wednesday and Thursday evenings announced the selection of Sandy Mischke, Jeannine Graber, and Nancy Wyly as the 1955 Sweetheart of Sigma Chi court.

Tall and stately Sandy Mischke is a freshman majoring in voice. She will be escorted to the Sweetheart Ball by Dave Gaskins. Sandy is a pledge of Delta Gamma.

An Alpha Chi Omega pledge, pert Nancy Wyly is a freshman political science major. Nancy is from Lake Grove and will be escorted to next week's functions by George Nye.

Petite Jeannine Graber is the littlest member of the court and the only sophomore. Jeannine is a member of Pi Beta Phi and will be escorted by Rick Mercer.

The 1955 Sweetheart of Sigma Chi will be crowned at the Sweetheart Ball held next Friday evening.

The Social Scoop

By FLOSSY HODGE

Due to the overwhelming abundance of news and ads the Social Scoop has been reduced—considerably. However, there are a few events that bear mentioning.

Alpha Lambda Delta, national scholastic honorary for freshman women, will have a party next Tuesday evening at 6:30 o'clock for all women who have a G.P.A. of 3.0 or better. Ninety-six women from the freshman class have been invited to this party which will be held in the Lausanne lounge.

Psi Chi, national psychology honorary, has extended membership invitations to the following persons: Carole Pfaff, Ann White, Volney Sigmund, Paul Ackerman, Bobbie Sjoding, Ruth Nally, Hugh Armstrong, Roy Fowler, Dave Johnson, Shirley Ulinder, Gayle York, Curtis Culver and Richard A. Yocom, admissions counselor. The initiation was held in the Little Chapel of Waller Hall yesterday afternoon at 5:30. A banquet at the Senator Hotel followed.

Sigma Chi announces not only their Sweetheart Court this week, but also the addition of Frank Caruso, Olympia, Wash., and Peter Harris, Twickenham, England. Both of these new pledge class members are freshmen.

Bill DeSousa

Playing at
CRYSTAL GARDENS
Saturday Night, Nov. 12

Jackson Jewelers

AUTHORIZED DEALER FOR
OMEGA WATCHES
WED LOK & ART CARVED
DIAMOND RINGS
WALLACE KIRK
INTERNATIONAL
GIFTWARE

SALEM 3-5640
225 N. LIBERTY

University Drug

Prescriptions, Magazines & Cosmetics

The Campus Drug Store
on State St.

DIAMONDS - WATCHES

GUARANTEED
JEWELRY & WATCH REPAIRING
The Jewel Box

443 STATE
SALEM, OREGON
"FRIENDLY CREDIT"

Popular  **because it's good!**

Talbot's Coffee Shop

The Place to Go for a fine Meal
or that Evening Snack

Located on State St.



You'll Be Happy Too
with a


ThriftiCheck


WONDERFUL FOR STUDENTS
Any Amount Opens Your Account

The Commercial Bank OF SALEM



CHURCH and CHEMEKETA STREETS
MEMBER FEDERAL DEPOSIT INSURANCE CORPORATION

After she's said "yes!" 



...choose jewelers before choosing diamonds

Know your jeweler before you purchase your diamond! Know that he has the knowledge, the instruments, the good reputation so you can get the true facts about value before you decide! Through our gemological training as a Registered Jeweler we can answer your diamond questions with accuracy and reliability. You'll both be more pleased with your choice when you know the "reasons why." Come in and see our diamonds before you decide on her engagement ring!



It Costs No More to Say "Charge It" at

Stevens & Son

Cats to Invade Linfield, Drop CPS Tilt

WU Takes on Wildcats; Seven Seniors in Finale

Coach Ted Ogdahl and his Willamette Bearcats close out the 1955 season tomorrow when they take on Linfield in the Wildcats home lair in McMinnville.

So far this season, the Jasons hold a 1-3 record in conference play and will be fighting with the Wildcats to stay out of the league cellar. Last week Linfield dumped Pacific, while Willamette was downed by College of Puget Sound 24-7.

The only injury plaguing the Bearcat football camp is the ankle injury that Sophomore Vern Coates received in last week's game. Both Gary Raid and Gordy Chang are off the injury list and should be in top shape for tomorrow's game.

Ogdahl will probably stick with the two Koani brothers, George and Charley, in the Willamette backfield along with Bobby Zoelch and Benny Holt. Spelling these four will be Windy Sequeira, Jim Anderson, Jerry Kenega, Jerry McCallister and the new found quarter back, Kieth Driver.

Up in the forward wall Ogdahl will be counting on the services of Vic Backlund, Keith Harris and Jerry Kangas at the ends. At the tackle slots will be Dale Greenlee and Dave Anderson while the

guards will be held down by Gordy Chang and Sam Haina. Chuck McClure will be at the starting pivot post.

Eight seniors will be playing their final games tomorrow night. They are: Tom Carr, Gordy Chang, Dave Anderson, Wes Malcolm, Bobby Zoelch, Jerry Kangas, and Sam Haina. The eighth senior is Dean Benson, but a dislocated shoulder several weeks ago ended the big wingman's college football days early.

The Wildcats boast a strong running attack headed by hard running Bob Nelson, who does most of his ball packing from the left-halfback slot on Coach Paul Durham's Wildcat squad. Bill Cotman, an up and coming freshman, will probably hold down the other half back position. Rounding out the Wildcat backfield are fullback Bob Flood and quarterback Ron Parrish.

Up in the line for Durham's eleven will be Jess Thurman at center along with Howard Glenn and Jerry Beier. All three are veteran players. Another veteran is Russ Morris, the big 240 pound tackle from Cottage Grove. Hank Crawford, a 200 pounder, and Dick Halliday round out the line.

Northwest Conference Standings

	W	L	Pct.
Lewis and Clark	4	0	1.000
College of Idaho	3	1	.750
Whitman	2	2	.500
Willamette	1	3	.250
Pacific	1	3	.250
Linfield	1	3	.250

LAST WEEK'S RESULTS

College of Puget Sound 24, Willamette 7
 Lewis and Clark 27, Whitman 16
 Linfield 13, Pacific 7
 College of Idaho 38, Westminster 7

TOMORROW'S GAMES

Willamette at Linfield
 Pacific at Lewis and Clark
 Whitman at College of Idaho

Puget Sound Nips Willamette 24-7

Held to a 7-7 tie through the first two quarters, the College of Puget Sound Loggers found the necessary ingredients, plus two helping Bearcat mistakes to go on to a 24-7 win over the hapless Willamette University grid squad last Saturday at Tacoma, Washington.

Willamette scored first on a second quarter touchdown from Jerry McCallister to Vic Backlund, a play that covered 34 yards and gave the Bearcats a brief, but enjoyable moment. In the second period the Cats took the ball but were unable to move it. Electing to kick, the punt was blocked and the CPS took over. The Loggers then sent freshman Herb Rickey plunging into the end zone to even the count.

IN THE SECOND half, the Loggers marched 6 yards in 13 plays to move out front of the Cats. It was Rickey who again plunged into the end zone from the 2 yard line to send the Washington's ahead 14-7.

A combination of a poor kick, a 1 yard return and a 135 yard penalty against the Cats, carried the Loggers to the Willamette two yard line in the fourth quarter, and from there Mike Cranston sneaked across the third College of Puget Sound touchdown.

WITH FOUR minutes remaining to be played, CPS's freshman end Jerry Burke made good on a field goal from the 2 yard line.

Basketball Practice Opens; 6 Men Back

Coach John Lewis and the Willamette Bearcats opened their second week of practice in preparation for the coming 1955-56 basketball season.

LEWIS WILL be counting on the services of returning lettermen: Neil Causbie, Pete Reed, Jack Bishop, Ron Taylor, Jerry McCallister, and Ron Fitzgerald. Both Bishop and Causbie were regulars on last year's squad, while Taylor and Fitzgerald saw limited action. Pete Reed sat most of the season on the bench last year because of an ulcer that bothered him. McCallister is still out for football and isn't expected back until after the Jason's final game this weekend with Linfield.

Up from last year's JV squad are Tom Johns, Gordy Domogalla, and Bob Miller. A junior out for the team this year is Bill Turlay who played his high school ball with Jefferson in Portland.

ONE RETURNING player and one transfer round out the varsity squad. Ray Myers, who quit school

for a stint in the air force, is back again and has been showing up well in practice. Don Hoy, brother of Willamette star forward of last year, Dick Hoy, transferred to Willamette this year and saw most of his basketball action in the armed services.

Freshmen candidates are: Larry Willingham, Larry Clark, Fred Fossbind, Dave Gaskins, Don Williams, Steve Daniels, Conrad Moore, Bob Klindworth, Dick Wassborn, Jay Hauger, Paul Osterland, and Dee Ball.

Phis, Betas Win; SAE, Baxter Tie

In Saturday league action the Phi Delt's blasted the Sigma Chi's 20-0, and the Betas rolled over the Law School 27-0. Baxter hall and the SAE's fought to the 6-6 tie.

Miller threw all of the TD passes of the Phi's. Baird caught one of Miller's scoring aeriels. The other two TD aeriels went to Withers and Smith.

Dale Gustafson hurled all four of the scoring aeriels and three of the extra points for the Betas.

In the final game, quarterback Fred Davis threw to Don Laws in the end zone for the Baxter score. SAE tied the game up when Ray Myers streaked a long one to Vern Olson who skipped across the chalk stripes for the touch down.

Linfield JVs Bop Bearkittens 14-0

Willamette JV's, coached by Bob Dyer, suffered their second defeat Monday afternoon, at the hands of the Linfield juniors 14-0.

Played on the Linfield gridiron, the game found both teams fairly evenly matched throughout the first half.

The second half began in much the same manner. But midway through the third quarter, a WU fumble and a 15-yard penalty gave the Linfield juniors a first down on the Willamette one-yard line. From there Linfield scored after four downs. Linfield added the final TD on a pass interception.

Don't Send Your Laundry Home!

It's foolish that's why! First of all, the postage alone both ways is more than we will charge you. Second, if you bring it over to us you'll get it back in as little time as two hours if necessary. Give us a try!

LAUNDERETTE

1/2 Block East of Willamette U. on Ferry St.

ARROW SHIRTS

WE HAVE YOUR FAVORITE ARROW COLLAR STYLE

Sizes 14 to 18

THE ARROW STORE


ALEX JONES

State at High St.

Cooke STATIONERY COMPANY

Phone 3-4404 370 STATE ST. SALEM, ORE.

Fresh MASTER



North's Restaurant

Across from Capitol Shopping Center
1170 Center

NOW!

POOR BOY

Come in and try these Wonderful Sandwiches

Comes in Pork - Beef - Ham

Ace's Barber Shop

1256 State Street

When You Think Drugs Think

SCHAEFFER'S DRUG STORE

135 N. Commercial St.

ALL WOOL FLANNEL SLACKS

In Charcoal, Char-Brown, Light Oxford & Oatmeal Shades.

Snugtex Waistband

13.95

Hewitt's
DISTINCTIVE MEN'S WEAR

REN'S DRIVE-IN


Hamburgers - - - - - 19c

French Fries - - - - - 10c

Milkshakes - - - - - 21c

12th AND RURAL

Ramage's



WIEDER'S SALEM LAUNDRY CO.

TRUCLEEN DRY CLEANING
YOU'LL LIKE IT

Wieder's Swift Shirt Service
Leave It At 10 - Wear It At 5

263 South High St. Phone 3-9125

Oil Collection by D. Jameson In Art Gallery During November

Main attraction in the Fine Arts gallery during November is an outstanding collection of oil paintings by Demetrios Jameson, assistant professor of art at Oregon State College.

JAMESON'S WORK seems divided into three periods: the first is heavy and darkly dramatic; the second strongly linear and calmer; the third softly and vividly pastel, ethereal and airy yet never genuinely frivolous or gay.

"Ego" is the most representative of his early period. The portrait is realistic; the surfaces heavy and darkly brooding. Of the other three in this category, "Encore" is the gloomiest, having a sour greenish light on a pair of acrobats perched high on their trapeze. All the characters of this period seem poor, brooding, withdrawn, and preoccupied with sullen unhappiness.

A STRANGE hypnotized world of mechanically playing people typifies his calmer intermediate period. Children, completely en-

wrapped in a separate world of make-believe, is the subject of "Cavaliers." There is no gaiety in "Carrousel," only silent mechanical forms going through empty motions—even the wooden horses' eyes are sad. Old sad eyes belong to the many angular and slightly medieval children in "Battle Dance with Cattails." They are playing intently, but something strangely somber keeps them from being actually childish.

Ethereal and chalk-like, the third period is transparent and softly colorful, but never free of the atmosphere of menacing sadness. "Volador," "Kite People," and "Sojer" are similar projections into the child's fantasy play. The children play, but their old eyes and serious faces communicate an unreal feeling of depression and make the superficiality of the motions vaguely disturbing. Somehow the children are completely emeshed in an inescapable world of pretending.

"Bird—No. 2" is the loveliest of this latter period. Its frothy featheriness, and tweedish pastels of yellow, pink, lilac, and blue make it some unreal bird of another world. In this one there are the same soft color tones, but there is no menacing mood to disturb the observer.

Jameson is a much-honored artist with a long list of awards and winnings. Among his notable honors were first prizes at the Denver Art Museum show in 1951, the Artists of Oregon annual show at the Portland Art Museum in 1952, and a purchase prize at the Northwest Annual show at the Seattle Art Museum in 1954. He has also participated in dozens of shows across the country.

Human Blood Need Stressed; Solicitations in Second Week

"There is no substitute for human blood," was the sentiment expressed by Bob Boss, chairman of the Blood Drive, as the drive began its second week of solicitation. He urged everyone to remember that all donors are also prospective receivers.

Willamette donations will be received November 22 by the Red Cross. Solicitation is being accomplished by the signing of pledge cards which are being circulated in the living organizations. Cards are also available in the 'Cat Cavern and the library for town students who wish to pledge.

Contributing students should remember that no heavy or fatty foods should be eaten for a 4-hour period before their donation. A special diet for breakfast and lunch will be prepared in the living organizations and a large dinner will be served.

Executive committee for the drive are Bob Boss, chairman; Joan Lawson, secretary; Tom Gail, publicity; and Bruce Philippi, miscellaneous.

Town students should contact Hermi Herring, Marian Higley, or John Gilman.

Fireside A & W Drive In

Bring the Gang to our new glass Fireside Patio. It's warm, dry, the food's good and the service is fast.

CORNER 12th & STATE

A Complete Music Store Since 1879

WILLS MUSIC STORE

VERNON WISCARSON, Owner

432 State St. Salem

Headquarters for Famous STRADIVARI SPORT SHIRTS

Strad-O-Nub	8.95
Strad-O-Tung silk	8.95
Strad-O-Gab	10.00
Strad-O-Flan	10.95
Strad-O-Worsted	15.95

Today's Winner is 309

The Man's Shop
416 STATE ST.

ELSINORE
PHONE 3-5798

FRI. & SAT. Nov. 11-12
"KISS OF FIRE"
with Jack Palance, Barbara Rush
"BENGAZI"
with Richard Conte, Victor McLaglen

SUN., MON., TUE. Nov. 13-14-15
'Girl in the Red Velvet Swing'
with Ray Milland and Joan Collins
"KISS OF DEATH"

WED. & THUR. Nov. 16-17
"MAN WITH A GUN"
with Robert Mitchum, Jan Sterling
"SHIELD FOR MURDER"

CAPITOL
PHONE 3-8050

FRI. & SAT. Nov. 11-12
"Rebel Without a Cause"
with James Dean
"ILLEGAL"
with Edward G. Robinson

SUN., MON., TUES. Nov. 13-14-15
"LADY GODIVA"
with Maureen O'Hara, George Nader
"NAKED DAWN"
with Arthur Kennedy, Bette St. John

WED. & THURS. Nov. 16-17
"DESPERATE HOURS"
with Humphrey Bogart, Frederic March
"SCARLET COAT"
with Cornel Wilde, Ann Francis

GRAND
PHONE 3-3487

WED. thru TUES. Nov. 11-15
"SUMMERTIME"
Katherine Hepburn, Rossano Brazzi
"THE MALTA STORY"
Alec Guinness

WED. & THURS. Nov. 16-17
"ROMEO AND JULIET"

DRIVE-IN Theatre
Lush Gardens—Highway 99 • 2-7829

FRI., SAT., SUN. Nov. 11-12-13
"THE McCONNEL STORY"
with June Allyson and Alan Ladd
"THE LOOTERS"
with Rory Calhoun and Julie Adams

THURS. Nov. 17
"SOLDIERS OF FORTUNE"
with Clark Gable and Susan Hayward
"AFRICAN QUEEN"
with Humphrey Bogart

Patton Chosen for Rotarian of Month

Senior Dale Patton was named honorary Rotarian of the Month for November in student council Wednesday.

Patton was given the honor as a result of services rendered to the Willamette campus during the three years plus he has been here. Especially mentioned was the service Patton is now giving the student body as member at large on the Student Council.

Other campus work includes serving as both president and vice-president of his class. Patton worked as a committee chairman for Freshman Glee his freshman year. Committee work also includes Homecoming and May Weekend.

Patton has served his fraternity, Phi Delta Theta, as rush chairman, social chairman, and president.

Also active in athletics, Patton was named last year as a Northwest Conference all-star in baseball. Patton catches for the Willamette varsity.

A member of Sigma Alpha Chi, sophomore men's service honorary, he is now a senior scholar in the economics department.

Patton will be presented to the Salem Rotary Club at their regular Wednesday noon meeting next week by outgoing Rotarian, Duane Alford.

SKIERS:

... Your Friends know that BARB'S is the place to go for Skiing Equipment. Why not come in and get acquainted with the finest

WHITE STAG SKI TOGS
NORTHLAND SKIS
KNISSL SKIS
HENKE BOOTS
DISTINCTIVE SWEATERS
ACCESSORIES

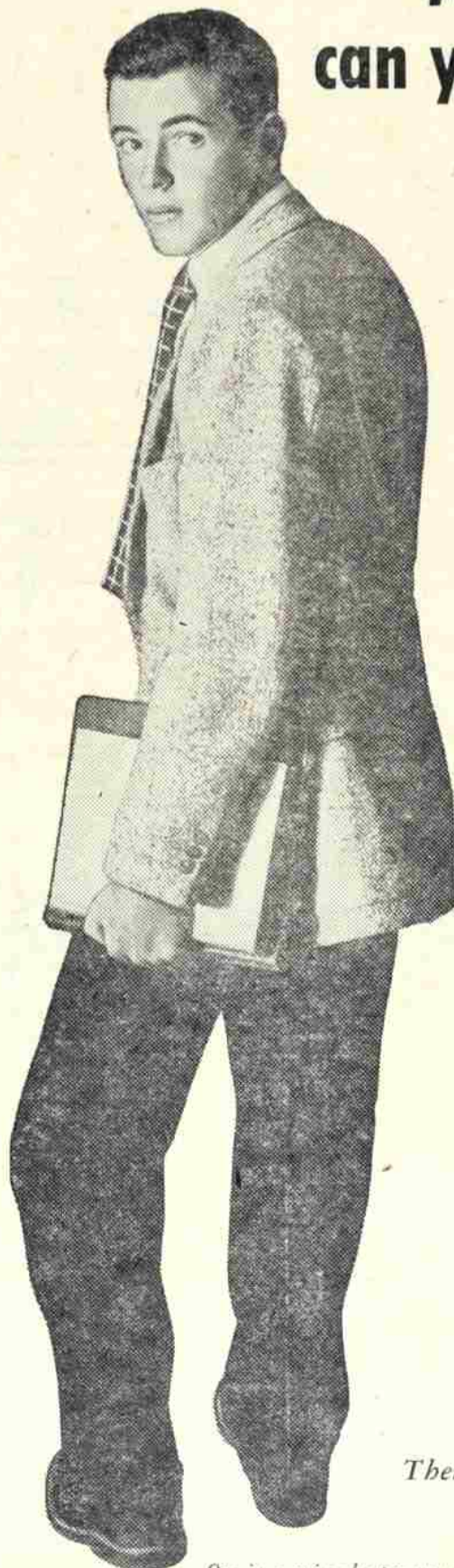
BARB'S SPORTING GOODS
175 So. High Ph. 3-4555

After college— can you start at \$300 a month

...with a chance to make double or better in a few years?

Careers in food retailing at Safeway offer opportunities like this for men of ability. Here are some facts about this challenging field

- Q. What kind of careers are there at Safeway?
- A. Running a large retail organization like Safeway requires a team of many different specialists. The key specialists are those in the retail side of the business—the Safeway store manager and his subordinates. Here, at the "heart" of the business is where many Safeway career people begin—and where the financial rewards are often greatest. There are other specialists in buying, marketing, store designing, building, product testing, training and employee relations, to name just a few.
- Q. Does Safeway train you for the next step up?
- A. Since Safeway promotes from within wherever possible, Safeway people are trained so they'll be ready to move up the ladder as opportunities occur. From food clerk to store manager, each job is a well-paid educational course—with on-the-job and group instruction designed to broaden the employee's skills.
- Q. What else makes Safeway a good place to work?
- A. Pleasant working conditions, pleasant people to work with... health and life insurance, a retirement program... profit-sharing opportunities for eligible career employees—these are some of the things Safeway people like about their careers. And they're things worth thinking about as you look ahead to a career.



There's a career to look forward to in food retailing at SAFEWAY

One in a series about career opportunities in a challenging field

S H R Y O C K S' MEN'S WEAR

In the Capital Shopping Center

Lighting Adds to Mystery Of Shakespeare Tragedy

By LOIS MONK
Ragged and grotesque, three spry witches leapt screaming onto the dimly lighted stage. Then giggling, they descended into the depths of the orchestra pit, to be lifted once again by the seven-manpower "elevator" onto the stage to cackle their first scene. So appeared the early stages of Wednesday night's rehearsal of Macbeth in the new auditorium.

This ingenious "elevator" is one of several effective devices used to create new and graphic effects of staging. The actual set is arranged in six large levels, which are draped with a huge canvas, and all the acting occurs upon it. Mushrooming clouds of mist rise and envelop the witches as they hurtle upward amid claps of tympanic thunder.

During the rehearsal, an air of vague excitement, a waiting potentiality of strength and emotion, and a flustered attempt at concentration created an atmosphere charged with electric tension. No hushed expectant theatre awaited the actors, only critics to correct and improve the production while time still remained. Constant hammering, clicking buttons, shouted directions, questions and mumbled conversation combine to produce delicious but purposive confusion.

All lighting is starkly and deeply magnificent. The hanging backdrop drape is an intense and vivid Dutch blue, but constantly spotlights transform it to jewel-like shades of purple, glowing yellows, greens and reds. The actual spotlighting is splendid. The silhouettes of all actors are graphic, and the witches are especially spectral and weird. Knarled joints and waving hands, peaking noses and chins show up clearly in shadows when witches Clarine Woolery, Barbara Ruhle, and Donna Leonard mix their supernatural brew. There is a certain air of complete and expected medieval mystery about the whole setting, and nothing prepares the audience for the drama better than this lighting effect.

Unfortunately the hardest thing to judge at such a premature stage is the actual acting. With the short time this writer had to watch, several things were evident. Most noticeable was the poverty of atmosphere created by the lack as yet of nearly all costumes. The witches naturally capture first attention by their unique profession. Lady Macbeth, Sheila Laue, was strictly excellent in her exceptionally forceful presentation. Macbeth himself, played by Richard Geer, seemed not yet at his peak of excellence. There was an air of insecurity and stiffness which destroyed his usual competence and absorption which usually communicates so well to the audi-

ence. The other players were not yet set in their parts to be judged then.

Perhaps Professor Putnam's statement "What an unholy mess!" summarizes best the half-baked stage of Wednesday evening, but the very concentration on the players' part and the progress shown then in a few hours time may yet turn the tide before tonight. Everything adds up to a total of "Success Expected." Tonight's performance is bound to be the best student production put on yet by the University.

Writing Club Revival Sought

Revival of a creative writing club is being contemplated by the English department, Dr. Paul Trueblood, department head, announced.

Sponsors of the club will include Dr. Trueblood, Dr. Henry Kohler, Dr. Orcutt Frost, and Carl Hall, artist in residence. Their function will be to encourage the creative writing of plays, poems, short stories, and even more ambitious works such as novels.

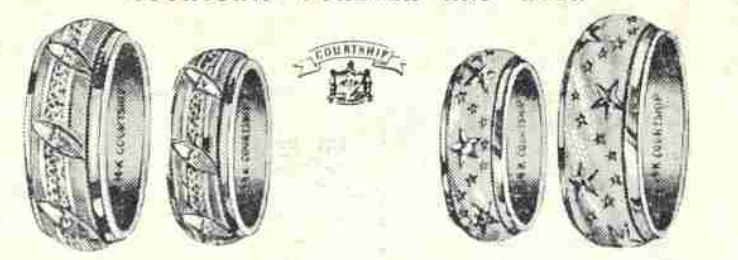
Participation in national writing competition will also be encouraged. One recent contest is sponsored by Bantam Books in a volume entitled "New Campus Writings" and will include works by students all over the United States. More information can be obtained from the English department bulletin board for all interested students.

This club has been organized in the past under various names, the most popular of which was the Coffee House, because of the custom in Shakespeare's time of discussing literary subjects over coffee.

THE PIKE
ICE CREAMERY
138 So. Liberty
SPECIAL ICE CREAMS - FOUNTAIN

The Senator
Barber Shop
The only master Barbershop
in town
"It pays to look well"
BASEMENT OF HOTEL

COURTSHIP FOREVER AND EVER



More and more couples are entering life together with a double ring ceremony. It's a beautiful custom, particularly when vows are sealed with identical wedding rings.

Whether your taste runs to the simple, or the most delicately carved, there's a Courtship Master-Guild pair for you among the 50 distinct designs, all of 14K solid gold. See them today — enjoy Courtship all through life.

For the COURTSHIP jeweler nearest you write COURTSHIP, P. O. Box 1914, Seattle 11, Wash.

Willamette Singers Reactivated; Concerts Planned by Group

Willamette Singers ensemble was reactivated this week after a year's rest. The personnel of this musical organization were selected from the University choir. Independent concerts will be given by the group, and it will be featured in choir concerts.

A varied program of semi-popular to classical music has been arranged for this year, and the group an-

ticipates a busy season singing before civic clubs, church groups, school assemblies, and campus con-

Members of the ensemble will be Barbara Anderson, Sharon Anderson, Ernestine Aschenbrenner, Page Bailey, Malcolm Brand, Carolyn Burr, Myra Friesen, Dave Frost, Nancy Groth, Charlotte Kleen, Tom Loree, Curtiss Starr, Pete VanHorn, and Carole Warren.

Extra Luxury at
No Extra Fare!

Domeliner
"CITY OF PORTLAND"

UNION PACIFIC RAILROAD

CHICAGO EAST

EXTRA COMFORT— your choice of roomy sleeping car accommodations . . . berths, roomettes, bedrooms, suites, compartments; also reserved coach seats of the most modern design, deep-cushioned, adjustable, with full-length leg rests.

Relax as you travel . . . no highway hazards no driving fatigue, no weather worries!

EXTRA TRAVEL-PLEASURE— Luxurious dining . . . wonderful food in the Astra Dome diner; room to relax in the spacious lounge; magnificent western scenery captured for your viewing pleasure by the wide windows of the comfortable dome sections.

To assure the accommodations of your choice on the date of your departure **MAKE YOUR RESERVATIONS EARLY.**

FRED LINGENFELDER, General Passenger Agent
751 Pittock Block, Phone CApitol 7-7771
Portland 5, Oregon

UNION PACIFIC RAILROAD
ROAD OF THE DAILY Domeliners