

Book Bible



Willamette
University

1842-1947



Student Handbook

AND

Book Bible

Volume 54

1947-1948

JIM BRENNAN

Editor

Annual Publication

ASSOCIATED STUDENTS
of
WILLAMETTE UNIVERSITY

TABLE OF CONTENTS

	PAGE
SEC. I. ROOK INFORMATION	
1947-1948 Calendar	2
University Calendar	3
Old Historic Temple	4
Social Highlights	5
A Good Freshman Will	8
Traditions	9
Rook Dictionary	10
Student Directory	11
A.S.W.U.	12
Class Organizations	13
Brite Spots On the Campus	14
SEC. II. ADMINISTRATION	
Student Body	17
Map of Willamette U. Campus	19
University Administration	20
SEC. III. ORGANIZATIONS	
Athletics	26
Fine Arts	26
Academic	27
Religious	28
Service	29
Social Welfare	30
SEC. IV. LIVING ORGANIZATIONS	
Regulations—Women	32
Living Org.	33
Independent Org.	34
Panhellenic Rushing	34
Fraternities	36
Interfraternity Gov't.	37
Fraternity Officers	38
SEC. V. ATHLETICS	
Meet the Coaches	40
1947 Football Schedule....	42
Athletic Activities	43
Pep Organization	44
Varsity Yells	44
Varsity Songs	46
Around the Campus	48
SEC. VI. A.S.W.U. CONSTITUTION	49

UNIVERSITY DIRECTORY

ASWU-Collegian-Wallulah	3088
Alpha Chi Omega	8911
Alpha Hall	6588
Chi Omega	8823
Delta Gamma	8730
Frederickson Hall	7958
General Manager, ASWU	3830
Laurel Hall	6417
Lausanne Hall	9267
Pi Beta Phi	8760
University Tel. Exchange	9265
Eaton Hall	
Gymnasium	
Health Office	
Library	
Science Hall	
Infirmary	

WELCOME TO WILLAMETTE

This Rook Bible has been placed in your hands in order that you may get an idea of the all-round college life of which you are now a part. By serving you in pointing out the worth while things in college it is hoped that you will catch the spirit of giving, and learn to love your Alma Mater by serving her.

Your college education will not be acquired altogether from books. Extra-curricular activities play an important part in a well rounded education. A proper balance between studies and outside interests is a point each student, both new and old, should strive to attain.

Plan to enter some activity. You will benefit yourself as much as you will help the University and the Associated Students.

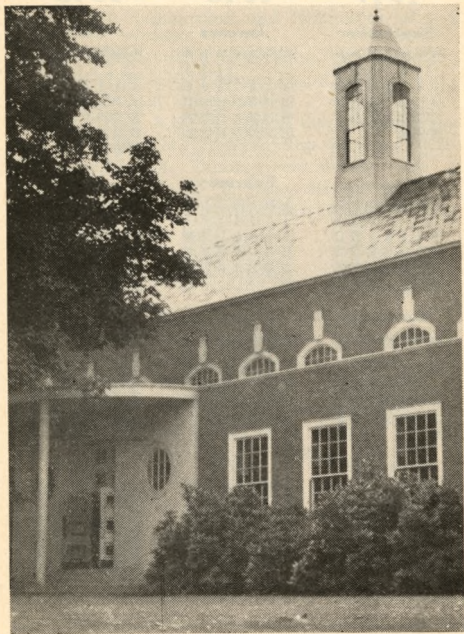
Don't think that you haven't a chance. At Willamette "money" and "pull" do not count. Work and dependability are the factors which will "make you count" on the campus. At Willamette you are considered on what you are, not what you have been.

Wonderful traditions have been established at Willamette. Respect them, and learn to love them. They help to make your college life full and enjoyable.

JIM BRENNAN

Editor

Book Information



1947

September

Su	Mo	Tu	We	Th	Fr	Sa
	1	2	3	4	5	6
7	8	9	10	11	12	13
14	15	16	17	18	19	20
21	22	23	24	25	26	27
28	29	30				

October

Su	Mo	Tu	We	Th	Fr	Sa
			1	2	3	4
5	6	7	8	9	10	11
12	13	14	15	16	17	18
19	20	21	22	23	24	25
26	27	28	29	30	31	

November

Su	Mo	Tu	We	Th	Fr	Sa
						1
2	3	4	5	6	7	8
9	10	11	12	13	14	15
16	17	18	19	20	21	22
23	24	25	26	27	28	29
30						

December

Su	Mo	Tu	We	Th	Fr	Sa
	1	2	3	4	5	6
7	8	9	10	11	12	13
14	15	16	17	18	19	20
21	22	23	24	25	26	27
28	29	30	31			

1948

January

Su	Mo	Tu	We	Th	Fr	Sa
				1	2	3
4	5	6	7	8	9	10
11	12	13	14	15	16	17
18	19	20	21	22	23	24
25	26	27	28	29	30	31

February

Su	Mo	Tu	We	Th	Fr	Sa
1	2	3	4	5	6	7
8	9	10	11	12	13	14
15	16	17	18	19	20	21
22	23	24	25	26	27	28
29						

March

Su	Mo	Tu	We	Th	Fr	Sa
	1	2	3	4	5	6
7	8	9	10	11	12	13
14	15	16	17	18	19	20
21	22	23	24	25	26	27
28	29	30	31			

April

Su	Mo	Tu	We	Th	Fr	Sa
				1	2	3
4	5	6	7	8	9	10
11	12	13	14	15	16	17
18	19	20	21	22	23	24
25	26	27	28	29	30	

1948

May

Su	Mo	Tu	We	Th	Fr	Sa
						1
2	3	4	5	6	7	8
9	10	11	12	13	14	15
16	17	18	19	20	21	22
23	24	25	26	27	28	29
30	31					

June

Su	Mo	Tu	We	Th	Fr	Sa
		1	2	3	4	5
6	7	8	9	10	11	12
13	14	15	16	17	18	19
20	21	22	23	24	25	26
27	28	29	30			

July

Su	Mo	Tu	We	Th	Fr	Sa
				1	2	3
4	5	6	7	8	9	10
11	12	13	14	15	16	17
18	19	20	21	22	23	24
25	26	27	28	29	30	31

August

Su	Mo	Tu	We	Th	Fr	Sa
1	2	3	4	5	6	7
8	9	10	11	12	13	14
15	16	17	18	19	20	21
22	23	24	25	26	27	28
29	30	31				

UNIVERSITY CALENDAR

FALL SEMESTER, 1947-48

- Sept. 17-20—Registration and Orientation of new students
Sept. 22—Registration of returning students
Sept. 23—8:00 A.M., Classes begin
Oct. 18—Annual Homecoming
Nov. 11—11:00 A.M., Armistice Day Convocation
Nov. 26—4:00 P.M., Thanksgiving Recess begins
Dec. 1—8:00 A.M., Thanksgiving Recess ends
Dec. 20—12:00 Noon, Christmas Recess begins
Jan. 5—8:00 A.M., Christmas Recess ends
Feb. 7—Semester ends

SPRING SEMESTER, 1948

- Feb. 9—Registration and Orientation
Feb. 10—8:00 A.M., Classes begin
April 3—12:00 Noon, Spring Recess begins
April 13—8:00 A.M., Spring Recess ends
June 6,—3:00 P.M., Baccalaureate Service
June 12—Semester ends, Alumni Day
June 13—3:00 P.M., Commencement Exercises

OLD HISTORIC TEMPLE

(University Hymn)

There's an old Historic Temple
Rising grandly through the years;
Where the oaken-hearted fathers
Drew their strength for strong careers.

Down the years its portals open,
Gather wise ones to its fold;
Breathes the spirit of the Westland,
Card'nal emblem 'bossed with gold.

Spirit of the Golden Westland,
Breathing through our fathers tears;
Tells the story of the Temple,
Bids us hope adown the years.

Sing, oh sing, of old Willamette,
Sing while hearts are young and true;
Sea to sea the chorus swelling,
Dear old school, our W. U.

SOCIAL HIGHLIGHTS

Homecoming

Homecoming is the important social function on the campus which honors the alumni of the University. This year, the weekend of October 17 and 18 pays special tribute to the return of football as a major sport on the campus after an absence due to the war. The customary activities include an alumni banquet; the Willamette-University of British Columbia football game played on Saturday; active competition among the living organizations in a noise parade and Homecoming Sign contest; and the Homecoming Play, and semi-formal dance.

Victory Bell

The Victory Bell in the tower of Waller Hall is rung after each Willamette athletic victory proclaiming the University's score.

Willamette has a new victory bell, presented last year by the Southern Pacific Railroad.

Freshman Glee

Freshman Glee, a thirty-nine year old tradition, is perhaps the most popular of the year's highlights. It is for this occasion, held the first Saturday night in March, that the Freshman class challenges the other three classes to a festival of song. The Freshman class has charge of all arrangements and the decoration of the gymnasium. Preceding the event, each class engages itself in the composition of words, music, and presentation of the song in consideration of an annually chosen theme.

Blue Monday

Blue Monday is so named because it is the day for payment of Freshman Glee bets. Bets of a large variety are "paid off" during Monday chapel period. The campus is alive with strangely clad creatures—the losers. The Mill Stream provides added entertainment in the form of baptism of the losing class.

May Weekend

The first weekend in May has been customarily set aside by the Junior Class for the Festival of May, primarily in honor of high school students. The busy weekend is inaugurated by the Inter-Sorority Sing Chapel on Friday morning, followed by a Student Body Dance in the evening. Early Saturday morning, the Y.W.C.A. sponsors a May Morning Breakfast. Later in the morning, the annual Freshman-Sophomore Tug-of-War and various other athletic contests are held. Climaxing the weekend is the Coronation of the Queen of May and May Pole Dance. Saturday evening's May Weekend Play is the formal conclusion of festivities.

Inter-Sorority Sing

Begun in 1944. At the last chapel before May Weekend, the Sororities on the campus vie for honors in a Song Contest as the informal opening of May Festivities. Winner in the contest is presented with a trophy at the coronation of the Queen on Saturday. Winner of the trophy last year was Delta Gamma Sorority.

Kangaroo Court

Kangaroo Court is of special benefit to the Freshman. It is held at least twice during the fall semester and whenever necessary in the spring. The first court will be held three weeks after the opening of school this fall. Rooks receive sentence and pay their debts to society at this court.

Flunk Days

During the latter part of the school year, the Juniors and Seniors plan their respective beach trips without the knowledge of the Sophomores or Freshmen. The upper-classmen are excused from classes on these days.

Chapels

Compulsory Chapels are held on Tuesday and Thursday at 10:00 A.M. Programs consist of talks by Dr. Smith and various outside speakers. Friday Chapel period is devoted to Student Body meetings or programs presented by the various campus organizations. Thursday Chapels are held at the First Methodist Church.

Award Day

One day is set aside during the latter part of the spring semester for the award of individual scholastic and athletic prizes. The awards are scholarships, cash prizes, and honoraries.

A GOOD FRESHMAN WILL:

Make his first year one of preparation for the remaining three; choose his course carefully, and having chosen, work hard. He will remember that it is easier to keep up than to catch up.

Not be afraid to cultivate his professors' acquaintance. They are a real group of friends whose cultivation may be of inestimable profit.

Not let the turmoil of the first few weeks disturb his equilibrium too violently. Take a reasonable share of social life to leaven studies.

Keep an eye on his studies—they merit consideration.

Do his part to keep the University's courtesy at athletic contests above reproach.

Remember that the churches of Salem offer something that the University cannot give his life.

Forget he came from any particular high school and keep quiet about prep school records. He will not wear high school pins, rings, or emblems.

Stand and remove his hat when the "Old Historic Temple" is being sung or played.

Wear his cap or ribbon with the proper spirit.

Follow the walks on the campus.

Write to the folks at home at least once a week. They're interested in you, you know.

Carry this handbook at all times.

TRADITIONS

We are WILLAMETTE STUDENTS, first, last, and always, and proud of it!

A smile and "Hello" are expected from every student at all times and without exception.

No one but seniors inhabits the Senior Bench.

Everyone learns the songs and yells in this book.

Freshmen do not enter or leave chapel by the side doors.

Only upperclassmen wear cords.

Students do not smoke on the campus.

Street shoes are not worn on the gym floor.

Everyone is present at all Student Body and Class meetings.

Each student is a member of a Christian organization.

Freshmen are required to do a certain amount of work on the campus and athletic field.

We all attend rallies and games.

Willamette students are good sports at all intercollegiate contests.

The library is a place for study.

Uphold the Honor Code.

There is no applause after "Farewell, Willamette."

Everybody attends the formal Y. W.-Y. M. reception.

Remember that Willamette has many traditions sacred to our University, and we are depending upon you to preserve and cherish them. A good Freshman will obey them.

ROOK DICTIONARY

ROOK—Lowest for of animal life; dullness of sensibilities, or unrestrained passion.

SOPHS—The only people around school who know anything. For this reason they are entrusted with the care and instruction of the youngest inmates.

UPPERCLASSMEN—Dont mind them, they just work here.

A.S.W.U.—Those who have consciously or otherwise become members of our Willamette "family."

FUSSING—Speaking to, holding hands with, or in any way acknowledging the existence of those campus decorations bravely referred to as members of the weaker sex.

GLEE—The one occasion in the school year when Freshmen are allowed to meekly challenge the superiority of the other three classes.

CLEAN-UP DAY—That day when Freshmen rid the campus of trash they have deposited so that returning grads may feel at home.

"W" MEN—Your main campus bosses. Obey their requests and some day you'll be promoted from the ranks of Rooks.

ROOK CAP—That little piece of cardinal and gold felt that so remarkably reflects the inferiority of its wearer. Feeble Rooks wear it for protection. Caps can be purchased in the book store.

Student Directory

Commonly known as the "Fusser's Guide," this publication is printed once a year as an aid to students in locating new friends and old on the campus. An added feature is the list of semester social functions.

Student Handbook

The Student Handbook, or "Rook Bible," is published each year to acquaint new students, especially Freshmen, with the University and its traditions and activities. Edited this year by Jim Brennan.

Willamette Collegian

The official college paper, published weekly by the student body, is one of the outstanding University publications in the nation. The Collegian last year won recognition as one of the six best publications of its kind in the United States. Edited by Bob Guild.

Wallulah

The yearbook is the annual publication which depicts campus life and student achievements during the academic year. Each edition appears in June. Upon approval of the awards committee, staff members are awarded certificates of service. Edited by Warren James.

Willamette Songbook

Includes outstanding college songs and grows larger as new Glee songs are added.

A. S. W. U.

The Associated Students of Willamette University is the organized student body of Willamette.

Student Council

Its governing body is the student council composed of the student body officers, publications board, class representatives, and a faculty member elected by the student body.

Publications Board

Its publications board consists of the ASWU president, secretary; publications manager, Collegian and Wallulah editors; professor of journalism, and the general manager. Publications budgets are subject to approval by the student council, as are budgets of all other activities.

Student Body Card

Its Student Body dues are \$15 per semester. The student body card entitles the student to:

Admission to all athletic events

Admission to all-school social functions

Admission to all school drama productions

Class social functions are supported by student body funds

Two tickets to Freshman Glee

Weekly edition of the Collegian

Upon presentation of two semesters' cards, the student is entitled to the yearbook, Wallulah.

CLASS ORGANIZATION

Each class has the responsibility of electing its own leaders. The Freshman class has a double responsibility, for not only must one of its members manage Freshman Glee, but its president is obligated to speak at that event. Officers of all classes are elected by nominations from the floor during class meetings.

LIBRARY RULES

The Library is regarded as a place for quiet study and research. Conversation and group study should be carried on in the reading rooms.

Card files are available in the lobby to help you. Books are catalogued alphabetically by title, author, and book section. Book racks are also labeled to aid in efficient selection of books.

A limited number of typewriters are available in the typing room.

Several hundred books in which reading assignments are made are kept at the desk and are given to the students upon request. Each reserve book has an orange card and a red dot. Reserve books will be charged out for two hour periods and will be due on the half hour nearest the elapsed two hours since the book was checked out. Current magazines are treated as reserve books. Reference books and periodicals do not circulate.

The Library is open from 7:30 A.M. to 9:45 P.M., Monday through Thursday. Friday and Saturday hours are from 7:30 A.M. to 6:00 P.M.

UNIVERSITY CHAPELS

Chapels are scheduled two days a week in Waller Hall and are compulsory. Four unexcused absences in one semester places the student on academic probation for the following semester.

Freshmen use the front entrance. All students should enter quickly so that programs may not be delayed.

Chapel periods this year will be on Tuesdays and Thursdays at 10:00 A.M.

BRITE SPOTS ON THE CAMPUS

Bearcat Cavern—In the basement of Waller Hall
—Student gathering place and "coke" dispensary.

Curbstone Club—Where the men gather over those **filthy** cigarettes.

Student Body Office—West end of the basement in Waller.

Bookstore—North end of Waller Hall basement.

Little Theatre—Second floor, north end of Waller.

Little Chapel—Way up in the top of Waller.

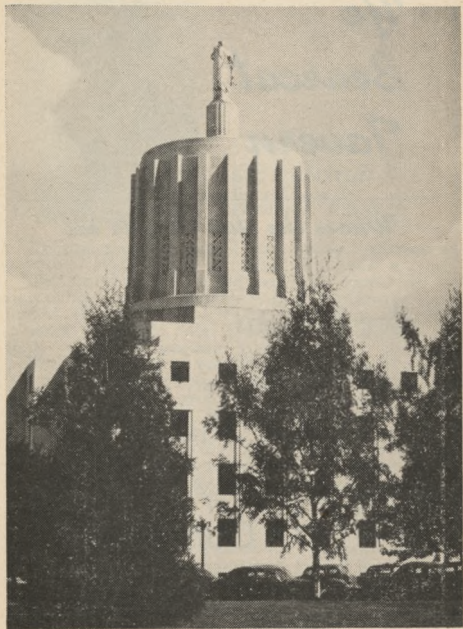
Cafeteria—Ground floor of Lausanne Hall.

Collegian and Wallulah Offices—Basement of Waller Hall.

Infirmary—Brand new and eager for patients—just east of the gym.

Chresto Cottage—Back of the tennis courts.

Administration



*Ye
Bearcat
Tavern*

Where the elite meet to eat

Ice Cream

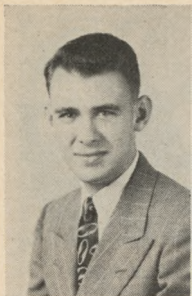
Snacks

Milk Shakes

Cokes

Coffee...and

Just Talk.



STU COMPTON
Beta Theta Pi
President, A.S.W.U.

We are pleased to call you fellow Willamette students, and extend a cordial welcome to you.

The standing of an educational institution is determined largely by the type of graduates produced. No week in the four year college program is more important than Freshman Week, and no term is more important than the first. Starting with the first day of enrollment you should make it your aim to prepare yourself for graduation at the end of four years and make of yourselves individuals of whom Willamette University may be justly proud.

Willamette has enjoyed many years of success, and the future depends on you. We have here an institution of which we are proud and we are likewise proud to accept you as members of the Associated Students.

Willamette University offers you a wonderful opportunity for an education. You will receive much help and encouragement, but in the main—it's up to you.

Sincerely,
Stu Compton
President ASWU



DON DOURIS
Independents
1st Vice-President



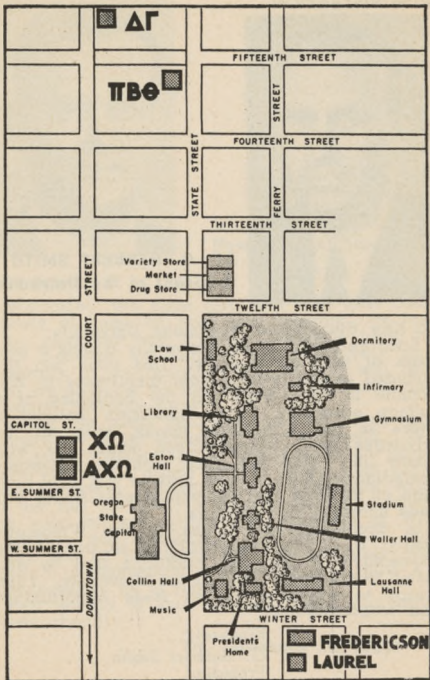
ADDYSE LANE
Pi Beta Phi
Secretary



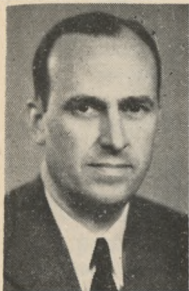
BILL REDER
Phi Delta Theta
Member-at-Large



CHARLES MILLS
Phi Delta Theta
2nd Vice-President



ADMINISTRATION



DR. G. HERBERT SMITH
President of the University

To New Students of Willamette University:

Each year Willamette University admits a new class of entering students. This year you are included in this group. Your admittance to Willamette is more than just the beginning of a college education. Your admission includes a share in the Willamette family, with all the privileges and responsibilities which go with family life. Your association with the University immediately gives you a part in the rich heritage of tradition and accomplishment which has been achieved in 105 years.

In accepting your place in the Willamette family, it is your responsibility to uphold the University's ideals and traditions and to add luster to the good name of the University. I am happy to welcome you to these opportunities and responsibilities.

Sincerely,
G. Herbert Smith
President



Dr. Lawrence A. Riggs
New Dean of Students

WELCOME

Welcome! We hope you will soon feel completely at home on this, your campus. Its faculty, programs and total facilities are here for your benefit. By joining whole-heartedly and sincerely in the activities ahead, you will find rich by-products of friendship, good times and genuine personal growth.

There are many resources for rich living and worthwhile experiences at your command. We will each consider it our privilege to do whatever we can to assist you in using them fully. The Personnel Offices of the University exist in the last analysis for the purpose of furthering your interests within the framework of Willemette's rich traditions. We hope you will make use of the many services available and consult us immediately whenever you think we may possibly be of help.

Best wishes to you for happy and successful years ahead!

Dr. Lawrence A. Riggs



OLIVE M. DAHL
Dean of Women

All women are welcome at any time in the office of Dean of Women. A conference with Miss Dahl is a part of the orientation program of each woman student during the fall semester.

As panhellenic advisor, she cooperates with the women's organizations in the arrangement of social calendars and the maintenance of high living standards of which these organizations and the University are proud.

As a member of the faculty, Miss Dahl serves as Associate Professor of German.



HAROLD B. JORY
University Registrar

WELCOME NEW STUDENTS

It has been my privilege to study exhibits "A," "B," and "C" sent in to support your applications for admission to Willamette University. In many cases I have had the pleasure of brief interviews with you in your high schools or upon the campus. Your choice, from among the many applicants, has been a real task, but one filled with the joy of anticipation. We feel that you will justify our faith in you; that the few errors in selection we have made will be offset many times by the high achievements of the group as a whole.

The staff of the registrar forms a Service Organization. It exists to aid you now, as you first come to the campus, through the years of your attendance at Willamette, and in all the succeeding years when the records of your educational achievement may be of help to you. Be sure to use the services of this office.

The faculty and former students have made Willamette great. You, with them, will enhance her glory and expand her influence this year, and in all years to come.

H. B. Jory,
Registrar

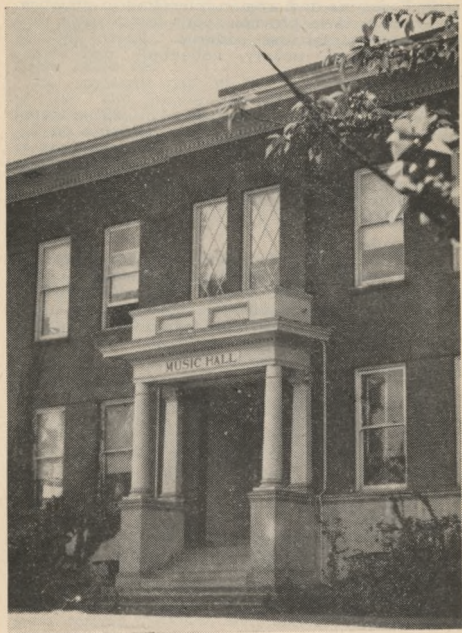
Dr. Daniel H. Schulze
A.S.W.U. General Manager
Prof. of German

Upon recommendation of the Student Council and appointment by President G. Herbert Smith, Dr. Daniel H. Schulze has been chosen to fill the post of General Manager of the ASWU. The position was left open earlier in the year when Dr. Robert E. Lantz tendered his resignation effective July 1 to accept a position as superintendent of the Woodburn schools.

As general manager of the Student Body, Dr. Schulze's duties are in the capacity of general-financial advisor to the Student Executive Council and other activities. All funds for use in student body and class activities will be disbursed from his office in Eaton.

Dr. Schulze is professor of German and Greek and until recently held the position of Dean of Men of the University.

Organizations



ATHLETIC

W. A. A.

The Women's Athletic Association is composed of P. E. majors and women interested in athletics. Its purpose is to provide sports for all girls and to promote interclass contests. Sports include tennis, softball, achery, volleyball, and swimming.

"W" Club

The "W" club is composed of all students who have won a letter in varsity athletics on the campus. Their chief purpose is to encourage a spirit of good sportsmanship at all Willamette functions and to enforce the observance of all Willamette traditions and customs.

FINE ARTS

A. Cappella Choir

The Willamette A Cappella Choir, organized in 1939, is made up of fifty men and women under the direction of Dean Melvin Geist. Outstanding among its many activities is the annual Christmas Vesper Service, and the Spring Concert Tour.

Little Theatre Guild

This organization, formed to develop dramatic talent among students, presents several plays and skits each year. Acting, costuming, play-writing, make-up, and scenery are all studied in these productions. The aim of the Guild is to present different types of plays throughout the year.

Theta Alpha Phi

The national dramatic society is open to upper-class students who show outstanding ability in dramatics or in the direction or management of student productions. Its purpose is to foster dramatic interests and to unite socially those with histrionic talents.

ACADEMIC

Alpha Kappa Nu

Has as its membership ten percent of the Senior class who have attained the highest scholastic standing throughout their four years in college. Announcement of members is made at award chapel in the spring semester.

Delta Theta Phi

An important part of the Willamette College of Law. The chapter, the Wolverton Senate, has as its purpose, the promotion of high scholarship united with the advancement of justice and high ideals in the legal profession.

Mu Phi Epsilon

A national Music Sorority for the advancement of the art of music in America. Membership is limited to music majors who have high scholastic standing.

Tau Kappa Alpha

A national Forensic Fraternity whose membership is chosen from debate and oratorical squads. The organization sponsors inter-class, inter-collegiate debates, and various oratorical contests. The Willamette chapter is a member of the Inter-Collegiate Forensic League.

Mu Epsilon Delta

A local Pre-Medical Fraternity composed of both men and women pre-med majors. Active in promoting the students' interests in the Medical Field. The fraternity is seeking national affiliation.

Phi Eta Sigma

A national freshman honor society composed of members of the Freshman class who earn a scholarship average equivalent to or better than one half of the highest grade and one half of the next highest grade in their first semester of college. Phi Eta Sigma was founded in 1923 to encourage and reward high scholastic attainment among freshmen men.

University Band

The Willamette University Band aids in creating pep and spirit at ball games. A spring concert is presented each year by this organization under the able direction of Maurice Brennen, Asst. Professor of Music. This year, it is hoped, the band will go on an extended concert tour.

University Orchestra

Provides musical interludes at plays, and other school functions. Directed by Bernard Barron, Instructor of Cello.

RELIGIOUS

Catholic Club

Meets every other Monday night in Chresto.

Inter-Faith Council

Representatives from religious groups sit on the Inter-Faith Council, which is the central religious organization on the campus.

Inter-Varsity Christian Fellowship

National organizations of interdenominational young people interested in high Christian ideals and fellowship. Prayer group every day at 1 p.m.

Methodist Vespers

Activities include a reception for students, the traditional Thursday afternoon "Cookie Jar," Spring retreat, parties, play night, Senior banquet, social activities of students to gain working philosophy of life.

Westminster Fellowship

Presbyterian students. Meetings are held Sunday evenings at the First Presbyterian church on the corner of Chemeketa and Winter.

SERVICE

Beta Alpha Gamma

Service organization of outstanding sophomore women who "serve" by ushering at many school affairs such as Glee, plays, concerts, and others.

Alpha Phi Omega

A national service fraternity founded at Lafayette College in 1925. Epsilon Kappa chapter at Willamette carries out a number of campus projects, a few of which are the annual Red Cross campaign, serving at the May Weekend barbecue, and the Wednesday night movies at Waller Hall. This fraternity selects its members from outstanding men in all of the classes.

Cap and Gown

This local honorary society is composed of five Senior women who show outstanding qualities of personality, service, scholarship, leadership, and Christian ideals. The club's annual activities include, in part, benefit socials, banquets, and cultural trips to interesting places.

Sigma Alpha Chi

Service organization of outstanding sophomore men who donate their efforts to the cause of the student body in making surveys, ushering, and general aid.

SOCIAL WELFARE

American Red Cross

The W.U. chapter of A.R.C. cooperates with the local headquarters in planning and teaching safety programs including first aid, life saving, and nutritional courses.

International Club

This campus organization studies the problems of peace and welfare among the nationalities of the world. Prominent speakers lend new ideas to this group for the furtherance of better international relations. Correspondence with students of other nationalities is a popular activity of the group.

Y.M.C.A.

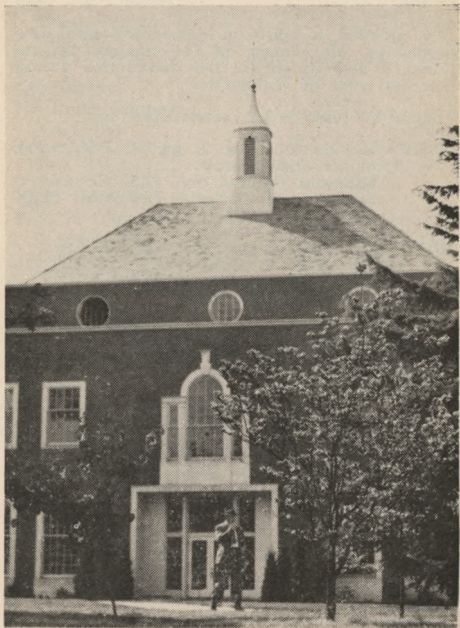
This organization, previously inactive due to the war, is being reorganized this fall. Its pattern of activities is quite similar to that of the Hi-Y organizations in high schools. It has as a two-fold purpose, a program of service to the University and the student; and the furtherance of Christian principles and fellowship.

Definite information regarding the reorganization of this group will be posted on the University bulletin boards.

Y.W.C.A.

In the pursuance of the realization of full and creative lives through a growing knowledge of God, and the determination to have a part in making this life possible for all people, the Y. W.C.A. follows an extensive service program consisting of the following factors; Big Sister project; teas; formal receptions; faculty firesides; group discussions; scholarship fund drive; and recognition service.

Living Organizations



LIVING REGULATIONS—WOMEN

Regulations herein assembled apply equally to both the Dormitories and the Sorority living groups.

To promote a spirit of democracy and new friendships, all women on the campus are required to live in one of the dormitories during their first year at Willamette.

Important rules to be remembered are:

HOURS—Women must be in by 10 P.M. week nights and Sundays.
Midnight Fridays and 12:30 Saturdays.
Sign-out required after 7:30 P. M. Sign-in also required.

QUIET—Each week night from 7:30 P.M. on.
7:45 A.M. to 11:30 A.M.; 1:15 P.M. to 4 P.M. except Saturdays.
3 to 5 P.M. Sundays.

Late permissions are granted for special functions. When attending late campus functions, all women must be in twenty minutes after the first has returned.

Permission to leave town must be secured from Dean Dahl or Housemother. Address and probable time of return must be registered before leaving. Permission must also be secured to spend a night away from the hall.

LIVING ORGANIZATIONS — WOMEN

Alpha Chi Omega

Beta Chi Chapter

Helen Montag	President
Vera Jack	Vice Pres.
Joan Kathan	Secretary

Chi Omega

Nu Delta Chapter

Pat Miller	President
Virginia Atkinson	Vice Pres.
Jean Carsh	Secretary

Delta Gamma

Beta Pi Chapter

1610 Court St.

Dorothy Deal	President
Aldene Gould	Vice Pres.
Donetta Reese	Secretary

Pi Beta Phi

Gamma Chapter

1445 State St.

Kay Karnopp	President
Muriel Oliver	Vice Pres.
Carolyn Carson	Secretary

DORMITORIES — WOMEN

Present dormitories on the campus are: Lausanne Hall, 220 S. Winter; and Frederickson Hall, 215 S. Winter. Officers governing these organizations are elected at the beginning of each semester by the student residents.

INDEPENDENTS

Not an actual living organization. The independents are an active organization of men and women students who participate in student body activities and sponsor social events in much the same manner as do the living groups.

Bill HarrisPresident
John ChristensonVice-President

PANHELLENIC RUSH RULES

National Principles

1. Rushing parties may not be scheduled which conflict with the regular University class program.
2. The Panhellenic shall agree upon a rushing program in which there is a reasonable and sane expense limit.
3. Panhellenic shall adopt a system of bidding and pledging which will not invite publicity.
4. All prospective members, participating in rushing, must be registered by the local Panhellenic Council.
5. Rush functions after the opening of colleges must be confined to the individual chapter houses.
6. Violation of Rush Rules must be reported not later than the first regular meeting of Panhellenic after rushing is concluded.

Eligibility

1. All regularly enrolled women students of Willamette University who are registered for twelve or more semester hours of academic work and who are not on probation, are eligible for rushing and pledging.
2. Primary consideration will be given students who plan to graduate from Willamette.

CHURCH DIRECTORY

- Bethany Reformed — Capitol and Marion.
Calvary Baptist — Liberty and Miller.
Castle Chapel, United Brethern — Nebraska and 17th.
Christ Evangelical, Lutheran—State, between 17th and 18th.
Church of Christ — 1489 N. Cottage.
Church of God—1346 No. Church
Church of the Latter Day Saints—Chemeketa and Cottage, Salem Women's cub.
Church of the Nazarene—Center and 13th.
Court Street Christian—Court and 17th.
First Baptist—Liberty and Marion.
First Christian—High and Center.
First Church of Christ Scientist—Chemeketa and Liberty.
First Congregational—N. Cottage and Marion.
First Evangelical—Marion and Summer.
First German Baptist—Cottage and D.
First Methodist—State and Church.
First Presbyterian—Chemeketa and N. Winter.
First United Brethern—Mission and 12th.
Highland Friends—Highland and Church.
Immanuel Baptist—Hazel and Academy.
Jason Lee Memorial, Methodist—Jefferson and N. Winter.
Knight Memorial Congregational—Ferry and 19th.
Leslie Methodist—Commercial and Myers.
Market Street Free Methodist—Market and N. Winter.
Mill Street Methodist—Mill and 15th.
Seventh Day Adventist—Hood and Summer.
South Salem Friends—Commercial and Washington.
St. John's Lutheran—16th and A.
St. Joseph's Catholic—Cottage and Chemeketa.
St. Paul's Episcopal—Church and Chemeketa.
St. Vincent de Paul, Catholic—2200 Myrtle.
West Salem Methodist—State and 3rd.

FRATERNITIES

Local fraternities originated on the W. U. campus in 1920. The first organizers were World War I veterans who were determined to experience fraternity life as a result of observation of the comradeship among fraternity brothers in the service.

Five local fraternities came into existence. Alpha Psi Delta; Epsilon Delta Mu; Kappa Gamma Rho; Pi Kappa Phi; and Sigma Tau. These proved too much of a financial burden to the student body; so in 1926 Pi Kappa Phi was absorbed by Alpha Psi Delta, and Epsilon Delta Mu disbanded. The remaining three perpetuated their organizations thru Willamette centennial year, 1942, as an integral part of campus life.

Three local Sororities also came into existence in the post War I years: Alpha Phi Alpha; Beta Chi; and Delta Phi; and progressed through the years. In 1943 a movement was started for National fraternities at W.U., resulting in the affiliation of sororities with national organizations; men's organizations being inactive during World War II years.

Returning to the campus last year, the men's fraternities prepared to follow the affiliation movement. Now, in the fall of 1947, there are four National organizations appearing on the campus. Organizations and affiliations are:

Alpha Psi Delta—Phi Delta Theta;
Kappa Gamma Rho—Beta Theta Pi;
Sigma Tau—Sigma Chi.
Sigma Alpha Epsilon.

INTERFRATERNITY GOVERNMENT

Rushing Rules

Subsequent to registration, at a time set by the Inter-Fraternity Council, each new registering man shall be given the opportunity to signify his choice of fraternities. This preference shall be written and filed in the office of Dean of Students. Official notification shall issue from the Dean's office to each fraternity respectively of the names which correspond to the list it has submitted.

No man shall be offered the opportunity to pledge any fraternity until the time of pledging set by the Inter-Fraternity Council and until he shall have completed registration. Completion of registration means the making of final arrangement with the business office in regards to payment of tuition. Any violation of this provision on the part of any fraternity shall mean the forfeiture of the right to pledge the man in question for a period of thirty days.

Scholarship Rules

For purposes of determining scholarship, a list of active, inactive, and dropped men will be turned in to the Dean by each fraternity on Friday of the fourth week of each semester. Any subsequent drops or inactive men will count towards scholarship. Inactive men must declare their active intentions before this date or remain inactive for the semester.

FRATERNITY OFFICERS

Phi Delta Theta

Orville Sparrow	President
Travis Cross	Secretary

Beta Theta Pi

Bill Cooke	President
Stuart Compton	Vice Pres.
Leonard Maurer	Secretary

Sigma Chi

Robert Ratcliffe	President
Ray McCoy	Vice Pres.
Dale Bates	Secretary

Sigma Alpha Epsilon

This fraternity at present has no officers, since it is being colonized this semester. Interested men should contact Dean Riggs.

MEN'S DORMITORY

An attractive building addition, Baxter Hall, named in honor of the late Bishop Bruce Baxter, former President of Willamette, will be ready for occupancy at the beginning of the spring semester, and will house the four fraternities as well as the independent men. The location of Baxter Hall is directly behind the Law School, east of the library.

Athletics

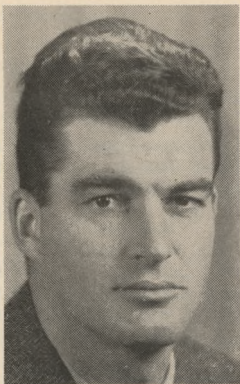




JERRY LILLIE
Coach

Jerome H. Lillie comes to Willamette this fall as the new athletic director and assistant professor of physical education.

Lillie is a former University of Oregon athletic star, graduating with a degree in physical education in 1931. Following graduation he has coached at a number of schools in the Northwest, including eight years at Grant High in Portland, Central Washington College of Education, and during the past year at Punahou School in Honolulu, T. H. His appointment as Director of Athletics promises to be beneficial to the University and students alike.



JOHN LEWIS
Assistant Coach.

The other half of the new coaching staff at Willamette this year is Mr. John Lewis. He is a graduate of the University of Oregon and has played professional baseball with Yakima.

Lewis began his coaching career in 1940 at Kent, Washington, later moving to Roosevelt High in Portland. Returning to coaching in 1946 after a two year hitch in the Navy Lewis chalked up an enviable record as basketball and baseball coach at Grant High, Portland.

While at Willamette Mr. Lewis will coach basketball and baseball, and is assisting Jerry Lillie with the football squad.

FOOTBALL SCHEDULE

1947

WILLAMETTE UNIVERSITY

- Sept. 26 College of the Pacific.....at Stockton
Oct. 3 Whittier Collegeat Salem
Oct. 11 College of Idaho.....at Caldwell
Oct. 18 Univ. Brit. Columbia.....at Salem
(Homecoming)
Oct. 25 College Puget Sound.....at Tacoma
Oct. 31 Pacific Universityat Salem
Nov. 7 Linfield Collegeat McMinnville
Nov. 15 Univ. of Portland.....at Portland
Nov. 22 Whitman Collegeat Salem

There will be rallies prior to each home game. It is the duty of every student to promote school spirit by attending these rallies.

Prior to the Homecoming game with U.B.C. the annual Homecoming noise parade and sign contest will rally school spirit for the football highlight of the season.

ATHLETIC ACTIVITIES

Stadium and Grounds

W. U. outdoor sports are at present conducted on Sweetland Field, inside the University grounds.

The administration, looking forward to the future, appropriated a fund of \$25,000 and purchased the acreage of Bush's Pasture, near the University. Present plans are to level this ground to provide an adequate field for spring sports, and to raise funds for the construction of a new stadium for fall and winter sports of the University.

Intercollegiate.

Willamette is a member of the Northwest Conference and has adopted the Conference rules for the regulation of its athletics. It is the plan of the administration to make University athletic activities clean and productive of real benefits to the participant under the personal supervision of the Director of Athletics and under the jurisdiction of the Athletic Board of Control and the Student Executive council.

Intramural

Intramural activities are maintained by the Director of Physical Education and the Chairman of the Interclass Rivalry Committee.

All types of sports are represented in these activities. Games and contests are carried on during the noon hour of days previously scheduled.

PEP ORGANIZATION

This organization consists of the A.S.W.U. under direction of the Yell Team and Rally Committee. The University Band also plays an integral part by adding its support to the molding of good school spirit.

It is the duty of the students to cooperate with the Yell Team by knowing the songs and yells thoroughly, forcing the syllables out without dragging, watching the Yell Leader, and by turning out for all rallies and games.

VARSITY YELLS

Fight Team

Fight, team, fight, (softly)
Fight, team, fight, (louder)
Fight, team, fight, fight! (shout)

Go Get 'Em Bearcats

Go get 'em, Bearcats, go get 'em!
(slowly, softly)
Go get 'em, Bearcats, go get 'em!
(faster, louder)
GO GET 'EM, BEARCATS, GO GET 'EM!

"Spell It"

Be . . ar . . ca . . ts (slowly)
Be . . ar . . ca . . ts (faster)
Be . . ar . . ca . . ts (fast)
Be . . ar . . ca . . ts (very fast)
BEARCATS! (shout)

Locomotive

(start slowly, then increase)

W-U-Rah! Rah! Rah! Rah!

W-U-Rah! Rah! Rah! Rah!

W-U-Rah! Rah! Rah! Rah!

W-U-Rah! Rah! Rah! Rah!

WILLAMETTE—U. - - - RAH!

Yea, W. U.

Yea, W. U.

Yea, W. U.

Yea, W. U.

Fight 'em, fight 'em, fight 'em!

Skyrocket

S-s-s-s-s-s-s-s-s- (rise on whistle) BOOM!

A-a-a-h, WILLAMETTE!

Bearcat Growl

GrrrR-r-r-R-r-r-AH

GrrrR-r-r-R-r-r-AH

BEARCATS! RAH! RAH!

"Four"

(To coach or honored player)

(Name)

RAH! - - - - - RAH!

RAH! RAH!

(Name)

VARSITY SONGS

I LOVE WILLAMETTE U.

I love Wilameete U.
I love her campus too:
I love her Profs, so good and true,
I love her spirit real true blue.
I love the old mill stream,
I love to sit and dream;
I see it all in shadows cool,
I love our dear old school.

FIGHT, BEARCATS FIGHT

Fight, Bearcats, fight!
A victory for W. U.
Cardinal and Gold, victorious of old
Will give us a spirit ever true.
Fight, fight, fight!
Cardinal courage show
And Gold is our faith so true
We shout our war cry out to you
Come on and fight, fight, Fight!

INDIANS KNOWN TO JASON LEE

Oh, the Indians known to Jason Lee,
Went out one night on a little spree
They organized a rythm band
That soon was known throughout the land
Then they went off to college
And they took their band along,
With sharps and flats and feathers in their
hats
They beat their big tom-toms
The big chief smiled
The squaws went wild
As they sang their college song.
Woo-oo Woo-ooo Woooo-ooo
At Willamette U each gal and lad
Has the same kind of rythm that the Indians
had
The red man's ghost is with us still
And if we don't whoop, we're sure they will.

CANNIBAL KING

A cannibal king with a big nose ring
Got stuck on a Zulu maid,
And every night when the moon shone bright
Across the canal he'd wade
To hug and kiss his dusky miss
Out under the big bay tree,
And when they met they sang a duet
That sounded like this to me:
Oh, Jasen Lee, socretty boo-ya
Oh Poppa Waller, Chenickety umpa
Umpa-Umpa-Um.

FIGHT SONS OF OLD WILLAMETTE

Fight, sons of old Willamette,
Fight, 'til the battles done;
With a valor ever bold
For the Card'nal and the Gold
Fight 'til the vict'ry's won!
Many hearts are standing by you
With a spirit ever true
Fight with courage never dying
Fight! Willamette U.

VICTORY SONG

Vict'ry for W. U.
The bell in the tower rings.
The battle's done;
The victory won;
Card'nal and Gold are flaming
Proudly o'er us.
Here's to the Bearcat Team
Who carried our colors through!
Our song shall go
Till the world will know
There's a vict'ry for W. U.

AROUND THE CAMPUS

Around the campus of old Willamette
We'll shuffle the cards and roll the bones
along, along, along.

Around the campus of old Willamette,
We'll shuffle the cards and roll the bones
along.

Slinga da ink, slinga da ink,
Slinga da ink and pusha da pen along, along,
along.

Around the campus of old Willamette,
We'll slinga da ink and pusha da pen along.
Worry the Profs, worry the Profs,
Worry the Profs and kid them right along,
along, along,—

Boys sing:

Fuss the girls, fuss the girls,
Fuss the girls and kid them right along, along,
along,—

Girls sing:

Vamp the boys, vamp the boys,
Vamp the boys and kid them right along,
along, along,—

W. U., W. U.,

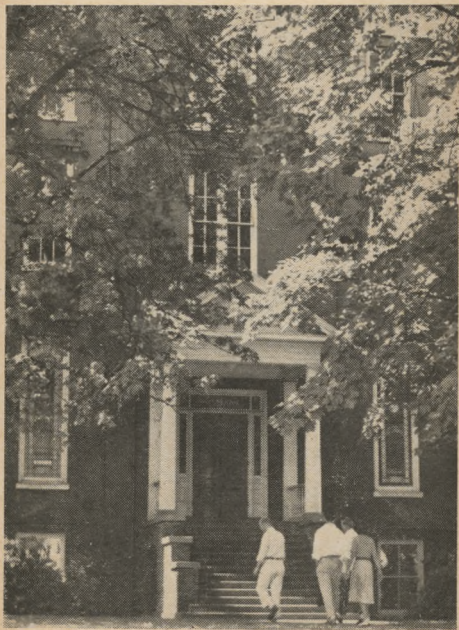
W. U. will help you right along, along, along.

Each class insert its own number:

'47, '47 (shout)

'47 will help you right along, along, along.—

Constitution



A.S.W.U. CONSTITUTION

as amended in 1946

PREAMBLE

We, the students of Willamette University, in order to provide an organization for the control of all matters of general student concern do hereby ordain and establish the following constitution.

Article I—Organization

Sec. 1. Name. The name of this organization shall be the Associated Students of Willamette University.

Sec. 2. Membership. All registered students of Willamette University shall be members of the Association upon payment of the student body fee.

Article II—Officers

Sec. 1. The officers of the Association shall consist of the president, the first vice president, the second vice president and the secretary, all of whom shall be chosen from the two upper classes of the following year and shall be elected for a term of one year.

Sec. 2. The president shall preside at all meetings of the Association, shall be chairman of the Student Council, and shall perform the usual duties pertaining to this office.

Sec. 3. The first vice president shall assume the duties of the president in the absence of that officer and shall act as chairman of the Social Activities Board.

Sec. 4. The second vice president shall be in charge of all ASWU elections.

Sec. 5. The secretary shall keep a record of all meetings of the Association and of the Student Council and shall perform the usual duties

CONSTITUTION

pertaining to this office.

Article III—Meetings

Sec. 1. Meetings of the Association shall be held upon the call of the president on his own initiative, upon request of the Student Council, or upon petition of fifty members of the Association in which they state the object of the desired meeting.

Sec. 2. Twenty-four hours notice shall be given for all meetings.

Sec. 3. Fifty-one percent of the members of the Association shall constitute a quorum.

Article IV—Elections

Sec. 1. The elections shall be held at least one month before the close of the second semester, the date to be set by the Student Council. All candidates for the elective offices of the Association shall be nominated by petition of twenty-five members of the student body. The petitions must be presented to the Student Council at least one week before the election; whenever possible at least two candidates for each office shall be named.

Sec. 2. The Australian ballot system shall be used for all elections.

Sec. 3. All members of the Association whose names appear on the official poll books shall be entitled to vote.

Sec. 4. The voting hours shall be set by the Student Council and published one week before election day.

Sec. 5. All officers shall be elected by a majority vote and in case no candidate receives a majority the Student Council shall call a new election within one week; at this election only the names of the two candidates receiving the

CONSTITUTION

highest number of votes shall appear on the ballot.

Article V—Vacancies

Sec. 1. All vacancies which may occur in the elective offices of the Association shall be filled by the regular popular ballot at a special election.

Article VI—Funds

Sec. 1. Funds of the Association shall be derived from money received in the form of dues paid upon registration in Willamette University and from such other receipts as may result from the activity program of the Association.

Sec. 2. Student body dues are fifteen dollars per person per semester, five dollars of which will be paid directly to Willamette University for the support of Athletics.

Sec. 3. Association dues shall be allotted as follows:

- (a) 35 percent to Publications
- (b) 10 percent to Office
- (c) 3 percent to Willamette University
- (d) 11 percent to Social
- (e) 4 percent to Class fund
- (f) 7½ percent to forensics
- (g) 7½ percent to Drama
- (h) 12 percent to Music
- (i) 1 percent to May week-end
- (j) 1½ percent to Freshman Glee
- (k) 1 percent to Darkroom
- (l) 3 percent to Law School
- (m) 4½ percent to Reserve Fund.

Sec. 3. Funds of the Association shall be administered as outlined in Article IX, below.

CONSTITUTION

Article VII—Publications

Sec. 1. The official publications of the Association shall be the Collegian, the Wallulah, the Student Handbook, the Fusser's Guide, and such other publications as may be approved by the Student Council.

Article VIII—Student Council

Sec. 1. The Student Council shall consist of the president, the two vice presidents, the secretary, a member of the faculty selected by the council for a term of one year, and one representative from each class to be selected by the separate classes, and one representative from the Law School to be selected from members that are attending law school. The runner-up for the position of student body president shall be a member of the council as a member-at-large. The editor of the Collegian and General Manager shall be council members but they shall have no vote. In case the newly elected Student Council has no returning student member, the Student Council shall elect following the student body election from the Freshman, Sophomore, or Junior class representatives of the foregoing year a holdover member who will serve for a year with the power of vote as a member-at-large.

Sec. 2. The council shall hold meetings as it deems necessary or upon call of the president. Six voting members besides the presiding officer shall constitute a quorum.

Sec. 3. The council shall enforce the Constitution, shall have charge of elections, shall be responsible for adherence to the traditions, shall make appointments for ASWU activities, committees and boards, and shall be responsible for the general interests of the Association. The council shall be the chartering agency for all

CONSTITUTION

student activities with the exception of those under panhellenic or inter-fraternity control.

Sec. 4. Emergency powers may be granted to the council by a three-fourths vote of the Association. When such emergency powers are granted, the council may act on all matters without strict adherence to the constitution. Such powers shall be granted only for one year at a time and only when school or national emergencies make such action practicable.

Article IX—Finance Board

Sec. 1. The membership of the Finance Board shall consist of the student body president, who shall act as chairman, the two vice presidents, the secretary, the publications manager, the graduate athletic manager, the general manager, and the finance manager of the Educational Activities Board.

Sec. 2. The Finance Board shall administer all funds of the association under supervision of the General Manager, provided however, that the class funds shall be administered by such officers as the individual classes may determine.

Sec. 3. The budget of the Finance Board is subject to the approval of the Student Council.

Sec. 4. The Finance Board shall publish in the Collegian during the second semester the budget for the ensuing year and, within a month after registration day in the fall, shall publish in the Collegian the report of the finances of the preceding year.

Sec. 5. Unused funds for one school year shall be left to the credit of the activity fund for which they were allowed and such deficits as are approved by the Finance Board shall be deducted from the sinking fund; if not approved such deficits may be deducted from the corre-

CONSTITUTION

sponding funds of the following year.

Article X—Publications Board

Sec. 1. Membership of the Publications Board shall consist of the student body president, the publications manager, the editors of the Collegian and of the Wallulah, two members of the Association selected by the Student Council from other than its own membership, two faculty members selected by the Student Council for one year terms, and the general manager who shall vote only in case of a tie.

Sec. 2. The Board shall meet as it deems necessary or upon call of the chairman.

Sec. 3. The Publications Board shall maintain monthly reports of progress in organization, shall be responsible for training of personnel, shall appoint the editors of the Collegian and the Wallulah, the publications manager, and other editors of ASWU publications by review of applications rendered and shall set all salaries for members of the business and editorial staffs subject to the approval of the Finance Board and the Student Council.

Article XI—Athletic Board

Sec. 1. Membership of the Athletic Board shall consist of the student body president as chairman pro tem, the president of Willamette University, the director of athletics, the general manager, the faculty athletic representative, two members of the board of trustees elected by that board, and two members of the Association appointed by the Student Council from other than their own membership.

Sec. 2. Regular meetings of the board shall be held during the first week of each month except when there be no matters to come before the board.

CONSTITUTION

Sec. 3. The Board shall prepare a general athletic budget for all sports and shall submit this budget to the Student Council. Upon adoption of the budget the board shall enforce the same throughout the ensuing year. The board shall attempt equitable distribution of funds to the various sports and shall foster no sport at the expense of any other. The board shall approve all athletic schedules and may require any reports and such records as it sees fit. The board shall be directly responsible to the Student Council for the execution of their duties.

Article XII—Social Activities Board

Sec. 1. Membership of the Social Activities Board shall consist of the first vice president acting as chairman, the sub-committee of the faculty-student affairs committee and students representing each of the separate organizations as determined by the Student Affairs Committee.

Sec. 2. The Board shall meet each semester to form the social calendar and at any other time when deemed necessary.

Sec. 3. The Board shall compose the social calendar for the school year and shall mediate when conflicts arise.

Article XIII—Cavern Board

Sec. 1. Membership of the Cavern Board shall consist of the student body president, the first vice president, two members of the student body at large appointed by the Student Council from other than its own membership.

Sec. 2. The board shall meet as it deems necessary or upon call of its chairman.

Sec. 3. The board shall act as an advisory committee to the business manager of Willamette University.

CONSTITUTION

Article XIV—Educational Activities Board

Sec. 1. Membership of the Educational Activities Board shall consist of the student body president, the general manager, a drama manager, a forensic manager, a music manager, and a finance manager selected from the student body at large by the Student Council.

Sec. 2. The Educational Activities Board shall meet as it deems necessary.

Sec. 3. The Board shall be responsible for the budgeting of their activity funds and shall determine the policy and the activity schedule of the educational activities: music, drama, and forensics.

Article XV—Petitions

Sec. 1. Any individual or group of individuals may petition the Student Council on any matter of student interest. The Student Council shall consider all petitions and recommend decisions to the proper administrative official, committee or board.

Article XVI—Repeal or Amendment of Legislation

Sec. 1. Any act of any officer, committee or board existing under this constitution may be repealed or amended by a two-thirds vote of quorum at a meeting of the Association.

Article XVII—Amendment to Constitution

Sec. 1. Amendments to this constitution shall be proposed by the Constitutional Revision Committee at a meeting of the Association, shall then be posted for one week, and must appear in the Collegian. At a subsequent meeting they may be passed by a two-thirds vote of quorum.

CONSTITUTION

BY-LAWS

Article 1—Awards Committee

Sec. 1. Membership of the Awards Committee shall consist of the president, the secretary, the faculty member of the Student Council, the general manager and the various faculty heads of the respective activities.

Sec. 2. The committee shall decide what awards will be given to members of the Association who have performed exceptionally meritorious work.

Sec. 3. Awards shall be presented only on award days designated by the Awards Committee.

Sec. 4. Funds for the awards shall be derived from the various activity allocations.

Article II—May Week-End Committee

Sec. 1. Membership of the May Week-End Committee shall consist of a manager appointed by the Student Council and three assistants appointed by the president.

Sec. 2. The May Queen and her court shall be elected by a regular election of the Association.

Article III—Freshman Glee Committee

Sec. 1. Membership of the Freshman Glee Committee shall consist of a manager elected by the freshman class and three upper classmen appointed by the president.

Sec. 2. The committee shall lay down the rules of the Glee and shall appoint three judges from the faculty.

Article IV—Homecoming Committee

Sec. 1. Membership of the Homecoming Com-

CONSTITUTION

mittee shall consist of a manager appointed by the Student Council and three assistants appointed by the president.

Sec. 2. The committee shall promote the Homecoming sign contest and other traditions associated with Homecoming.

Article V—Constitutional Revision Committee

Sec. 1. Membership of the Constitutional Revision Committee shall consist of the president, the senior class representative on the Student Council and three other members appointed by the president.

Sec. 2. The committee shall propose revisions to this constitution at any meeting of the Association.

Article VI—Judiciary Committee

Sec. 1. Membership to the Judiciary Committee shall consist of two members to be elected from the senior class, two members to be elected from the junior class, one member to be elected from the sophomore class, one member to be elected from the freshman class, and one member each to be elected from the College of Music, College of Liberal Arts and College of Law.

Sec. 2. Members shall serve for a term of one year, and each shall be elected by regular vote of the Association to be held not later than the third week of school in the fall semester.

Sec. 3. Nominations shall be by the usual petitioning procedure with each petition specifying the group to be represented.

Sec. 4. The presiding officer shall be elected from among the membership of the committee, and meetings shall be held upon call of the presiding officer or Student Council. Six members shall constitute a quorum for meetings.

CONSTITUTION

Sec. 5. A secretary shall be elected from among the membership of the committee whose duty it will be to keep a stenographic record of all meetings.

Sec. 6. The committee shall pass on questions of interpretation of the Constitution, and shall handle such other disciplinary matters of problems that may be referred to it by the Student Council.

Sec. 7. The committee shall hold hearings with adequate notice on all matters referred to it for decision.

We, the Associated Students of Willamette University, hereby move to amend the By-Laws of the Constitution of the ASWU, by adding the following:

"Article VII—Procedure for Chartering ASWU organizations."

Sec. 1. All petitions for charters shall be forwarded to the Student Affairs Committee and then to the Student Council, and shall require approval of both groups before issuance of a charter.

Sec. 2. All groups chartered shall be able to show evidence that they are conforming to specifications of proposed constitution.

Sec. 3. All groups chartered shall bank all funds through the General Manager of the ASWU.

Sec. 4. The Student Council shall review all charters and constitutions at least once each school year.



W