

43rd Glee to Be Tomorrow

Willamette Collegian

1842—Willamette University in its Second Century—1951
"In Age There Is Wisdom"

Vol. LXII

Salem, Oregon, March 9, 1951

No. 21

Debaters Place at Linfield; Duo May Go to West Point

A nomination to participate in the 1951 West Point invitational tournament to be held April 18 through 21 at the United States Military Academy, New York, was given Saturday to two Willamette debaters, Jack Gunn and Tom Scheidel.

This is the second time in three years in which a Willamette squad has been chosen for this distinction.

The honor, considered the highest that can come to an American college debate team, was accorded the two men following Willamette's outstanding performance at the annual inter-collegiate tournament of champions just concluded at Linfield college.

Gunn and Scheidel were elected to represent the Pacific Northwest District by a board of seven debate coaches of prominent colleges and universities in Washington, Oregon, Idaho, Montana and Wyoming.

The board's decision was based on the Willamette team's record which included a first place defeatless performance in the College of Puget Sound tournament in Tacoma and the recent showing at the Linfield tournament.

With the receipt of the formal invitation, expected this week from the military academy, the two debaters and coach, Dr. Howard W. Runkel, will prepare to fly to New York City on April 15.

During the eight rounds of debate they will be matched against the top collegiate speakers of the country, all of whom have piled up first class records in their own conferences.

Tom Bartlett and Bob Sayre represented Willamette in the West Point debates in 1949. Sayre was subsequently named the top debator in the nation.

Gunn, a senior from Palo Alto, has won speech honors in debate, oratory, impromptu, extemporaneous and experimental speaking contests throughout the west coast. Upon graduation he will engage in advanced work in political science.

Scheidel, a sophomore from Salem, has won prizes in debate, extemporaneous and after-dinner speaking events and will major in political science as an upper division student.



Jack Gunn



Tom Scheidel

Six teams, comprising the Willamette university debate squad, won the highest percentage of debates of any delegation of comparable size at the annual tournament.

The Linfield debate tournament was the largest in the country.

Top honors within the squad and a rating of third among the teams of the competing schools were awarded the team composed of Jack Gunn and Tom Scheidel.

They defeated teams from Washington State, Idaho, Montana and Utah — the latter two will also attend the West Point debates.

The squad's newest freshman team, Earl Atkinson and Bob Howe, lost only one of their debates while Marques McClanahan and Jim Wood each lost two.

In the individual events in which over 400 collegians from the Rocky mountain and Pacific coast schools participated, Jean Kyle won third place in the after-dinner speaking contest. Miss Kyle and Nancy Marks were finalists in interviewing. Phil Ringle was given honorable mention for his work in the student congress.

New Storm Front Threatens Weather for Glee Weekend

Promises of either a soggy or snowy Freshman Glee weekend were issued yesterday by the weatherman, as a new storm from the Gulf of Alaska headed for Salem.

Snow has filled the air all week long in the valley area, adding to the problem of colds and influenza that raged along with it. Nurse Henrietta Althoff said that over a dozen cases of flu were in the infirmary at the present time, though many others were reported elsewhere on the campus.

Though Salem schools closed Monday after the first day of snow, Willamette remained open throughout the week.

Financial vice-president Robert Fenix said there was no storm damage to Willamette trees or buildings. Although the heat, which ordinarily goes off on Sunday, was kept up during the cold weekend, classrooms on Waller's third floor were frigid at 8 a.m. Monday.

A sign on the gymnasium advised baseball aspirants, "pitchers and catchers take the day off." At Lausanne, women were ducking snowballs Sunday night. Pres. G. Herbert Smith was a near-casualty of the snowball-throwing crowd as he emerged from the Pi Beta Phi house.

WU to Host Debaters

Willamette will play host next Thursday, Friday and Saturday to students from 40 high schools in the annual state-wide speech contest. More than 150 students are expected.

Songfest to Begin at 8 P.M.; Stream to Await Glee Losers

By Stuart Shaw

Despite the freakish appearance of "that white stuff" during the week, sleepless songsters, participants in Willamette's forty-third annual Freshman Glee will crank up their respective class voice boxes tomorrow evening and give forth with original variations on a novelty theme, in hopes of grabbing the coveted Glee banner.

The event will be broadcast over KOCO.

According to an eleventh-hour decision by Dr. Ralph E. Purvine of the university health service, prospective Glee swimmers this year will become Glee "waders." He stated that no one should be thrown in the stream as they would be subject to swallowing the disease-infected water. Wading will be the style for the losing class.

Pick Up Gowns

Seniors singing in Glee must pick up their caps and gowns today in the Bookstore, and are asked to deposit \$5 to insure against damage.

Council Votes Queen Choice; Decision Aired

An action of the student council at the February 19 meeting, in regard to the choosing of the May Queen, brought comment today as the ten candidates were announced.

Don Carpenter, second vice president, presented a motion to have the senior class choose ten women, the student body three out of the ten, and later choose the queen from the three.

Arguments for, included: the seniors know the seniors best, and therefore can choose representative women, while the student body as a whole may either not know the women, or choose only on surface qualities rather than what that person has contributed to the class.

Some students, on hearing of the decision, felt it unfair, since May Weekend is not a senior class function but a student body function.

At the council meeting Monday, March 12, anyone who is interested in reviewing and discussing the motion, is urged to attend.

Glee manager Harold Silke, numerous Glee committees and 455 vocalists will ring up the curtain of the 1951 edition of Glee at 8 p.m. in the gymnasium. Dedication of this year's presentation will not be announced until then, Silke said.

'51 Makes Third Bid

The defending champion class of '51 will make their bid for a third winning of the Glee emblem, to start off the yearly songfest, singing "So We're Going to Willamette," with words by Janet Stark and Don Carpenter and music by Martha Benard.

Weldon Ward's composition of "Jason Lee Blues" with words by Pat Paddock will be the junior's selection. The juniors have a pair of third places to their credit.

Sophomores who gained a second place berth last year will offer "Bearcat Fling" by Virginia Benner with lyrics by Eleanor Oakes, Loren Ranton, Marijo Ogle and Miss Benner. "Campus Capers" is the novelty choice of the freshmen. Music was composed by Edna Hill and Carol Emerson with words by Bill Jessup and Paul Baker.

Past records show that over the 42 years of Glee, the junior classes have won the banner 12 times, followed by the seniors with 11, the sophomores nine and the seemingly not-too-lowly freshmen with eight. The present senior class, when freshmen, were the first class of that stripe to win in a good many years.

Following the usual custom, seniors in cap and gowns will enter the gym, marching to "Pomp and Circumstance," after the juniors, sophomores and freshmen who remain standing. Festivities will officially commence with addresses by Glee manager Silke and freshman class president Jim Bergmann.

Interlude to Feature Music

In the interlude before the announcement of the judges' decision by Prof. Herman Clark, musical entertainment along with the usual after-song parodies will be offered.

Numbers include whistling interpretations of "Listen to the Mocking Bird" and "Come for It's Spring" by Harriet Aller; "Park Avenue Fantasy," a piano duet selection by Beverly Gustafson and Jane Foosee; two vocal numbers by Betty Jean Mullin and John Peterson, "Rosemarie" and "Silver Moon."

Immediately following the program the Willamette alumni association will hold an informal reception in Baxter hall for all parents of Glee participants who are from out of town. A dance will be held after the event, in Lausanne hall.

No Glee Records to be Made

As a result of excessive costs, no records of Glee songs will be made, according to Glee publicity chairman Earl Atkinson. He said however that the Pioneer Trust company might make a tape recording of the entire program and would permit the use of this tape without charge by any student or group of students wishing to make and sell records themselves. This is still somewhat indefinite though, he pointed out.

He added that photographs would be available at a later date for an undetermined amount through the Collegian office.



Sam Vokes, golf coach, tees off in practice shot and finds snow to be the worst kind of sand trap. Golf practices were to have begun Wednesday. Snow, which began falling Sunday night, has delayed spring sports, caused Glee practitioners much inconvenience, and increased the population of the University infirmary. (Photo by Phil Wimer, M/SGL)

Seniors Attention!

Seniors who order their graduation announcements after today at 4:30 will not receive them by graduation day, June 10. Mrs. Larson stresses the importance of ordering today.

Hall Painting In Exhibition

"Vagrants," an oil painting by Carl Hall, artist-in-residence at Willamette, is now being exhibited in the 1951 University of Illinois national exhibition of contemporary American painting.

It was recently on display in the contemporary American painting series shown at the Des Moines, Iowa, art center.

This collection, soon to be shown at the Munso-Williams Proctor Institute in Utica, includes paintings by 68 artists throughout the United States. These works were selected for their portrayal of serious study and comparison.

Another painting by the Willamette artist, "Road's End," has been invited for a showing at the Corcoran Gallery of Art in Washington, D. C. A water color, "Grey Day," will be shown in May at the Brooklyn museum. Hall's painting, "Domain," will be entered in the National Academy exhibition in New York early this month.

Glee and Spirit

Freshman Glee, as always, plays an important part in Willamette's school year. Even with raw voices from 5 a.m. practices, an epidemic of colds and flu, and frigid weather, students have greeted it with all the enthusiasm necessary to make it successful in 1951.

For 43 years, Glee has brought out the most and best of that elusive and often-abused term, "school spirit."

Inter-class rivalry is a healthy thing. Freshman versus sophomore is much better than sorority versus sorority, or even department against department. Inter-class rivalry has kept bitter feelings between organizations to a minimum at Willamette. Thus we say that Glee has helped to bring another elusive quality to the campus called the "spirit of Willamette."

Its place as a unitary force on the campus is actually very important. Without it, college would settle into a very dull routine.

Glee, as one of Willamette's oldest traditions, thus serves as much more than an outlet of musical talent. In 1951, as in 1909, Freshman Glee exemplifies . . . the spirit of Willamette.

200 Colder Inside

We're not sure what the percentage might be, but we would guess that some of the colds prevalent on the campus are due to the extreme cold in both 8 a.m. classes on Monday and in the library in the evenings.

On the third floor of Waller, which alternates between a boiling inferno and a Yukon winter, it was the latter Monday morning. We can't blame the janitors, who tried to keep it warm, but we do protest against professors who made the class sit through a lecture when their breath could be seen.

We've heard people say that days are over of the one room school and its stove which singed one end while the other froze. They apparently have never visited Willamette.

Hi Alumni!

Willamette has a happy custom of attracting its many alumni back to the campus for such customs as Homecoming and Freshman Glee.

Though no estimate can be exact, former years have shown that some 200 alumni will be on hand for the forty-third Glee celebration. Even more return for Homecoming.

With a great deal of pleasure, the Collegian joins with the student body to say, "Welcome back, alumni!"

Willamette Collegian

"In Age There Is Wisdom"
Since 1875

Official Publication of the Associated Students of
Willamette University

Member Associated Collegiate Press
Rated "All-American"—1949-50

Editorial and Business Offices

Ground Floor, Waller Hall, Salem, Oregon Phone 3-3083
Entered at the Postoffice at Salem, Oregon for transmission
through the mails as second class matter. Published weekly
except during examination and vacation periods. Subscription
rate \$1.50 per year.

Represented for national advertising by NATIONAL ADVERTISING
SERVICE, INC., college publishers representatives, 429
Madison Ave., New York—Chicago—Boston—Los Angeles—San
Francisco—Portland—Seattle.

BILL MacDOUGALL, Editor

MARY LOUISE LEE, Publications Manager

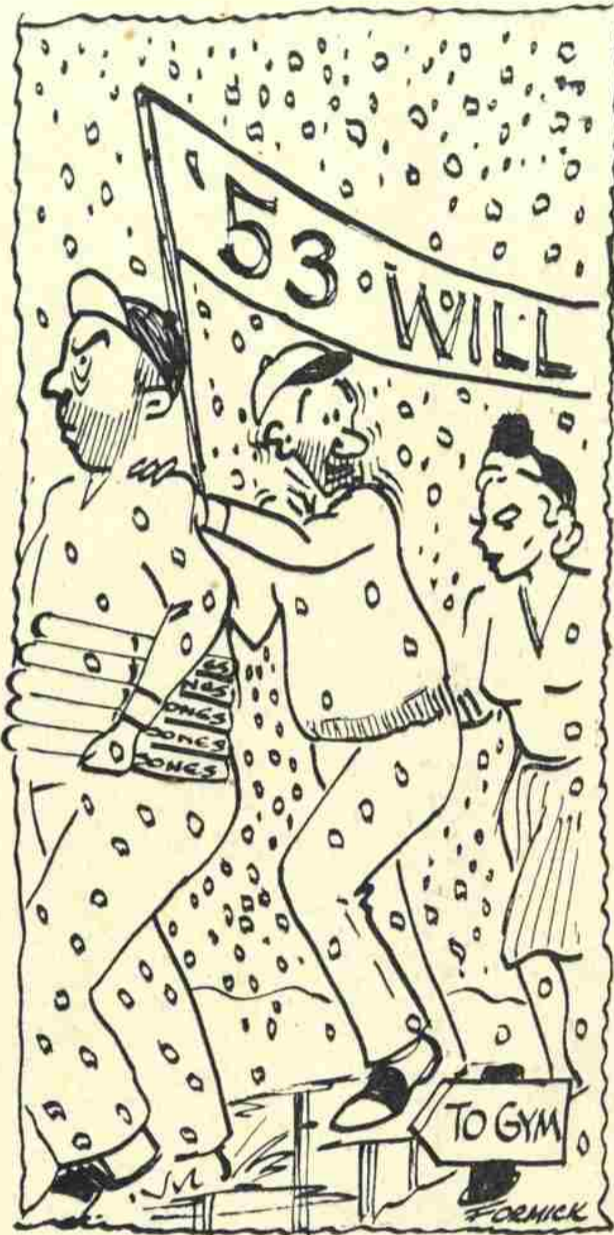
News Editor _____ MARY LOUISE LEE
Society Editor _____ JEAN GILMER
Sports Editor _____ STAN NELSON
Campus Editor _____ DON SCARBOROUGH
Copy Editor _____ JIM FREEMAN
Rewrite Editor _____ KENT LAWRENCE
Photo Editor _____ KEITH LAWRENCE
Advertising Manager _____ LARRY PRITCHETT
Circulation Manager _____ PAUL BARKLA

Frosh Glee 1951 Variety

Author Poses Suggestions for '51 Glee; Tension Obvious in Late Winter Snow

By Jim Miller

Well, as of last Tuesday, the annual prohibitory status of Frosh Glee has been established into the decorum of 1951 and now we all know that, once again, this will be a dry year. No beverage in the Cat. Not only that, but it appears that the fourth-place winners will also have a dry time of it due to a prohibiting of the usual prance through the mill stream.



Can you imagine the results of this edict on the stability of the masses? Around and around the gym they trot . . . and then what? What'll we do with them? I've heard one or two rather erratic suggestions from some "in the know," but in view of nothing to take its place up to now, maybe one of them might be adopted.

For example, some mistaken identity joker was recently "syruped and feathered" by bandits; still, the expense of such a move for an entire class seems exorbitant so we might rule it out for the present; at least until some wealthy alum endows a special fund for this purpose. Another might be to request the local fire gendarmes that they rumble a hook and ladder on Sweetland field where the congregated masses might be hosed to make up for the stream's b.o. Oh, well, a thought's a thought.

Glee tension has really snowballed this year with the beginning of the practice session hampered by the elements in detouring would be practicers. It has stimulated diversion, however. In lieu of interclass splashing in the aforementioned stream of ill repute, the classes have turned into a warring clan with snowballs flying most of the week. Several hostile groups have congregated in the sanctity of the smoker's guild in front of Eaton (WAY in front, that is) to pepper unsuspecting passers-by and other likely prospects. All in good fun, of course, but wouldn't it be humorous to mistake a legislator for a college student (unlikely, of course) and thus cause him to wonder what type of farm M. O. Hatfield is high llama for?

Friction has even mounted to the extent that Eaton has become a stronghold for conquest on the part of those either without classes or taking a few extra minutes for relaxation as they pelt missiles through open windows. Really stimulating to class lectures . . . profs get a charge out of antics like this. Shows students really champing at the adult mind as they attempt to formulate channels of thought for future world improvement.

Two other important guides to the student body in stimulation of this year's Glee bets are: (1) no tampering with the legislature and (2) no indecent exposure. Guess the first rules out the usual task of dressing in Greek robes and looking for an honest man across the street. It might be interjected at this point that never, in the history of Blue Monday's, has one been found in that vicinity! Makes you wonder, huh? Also, the second DON'T sort of edges out brief sarong hulas on the sundial by the fair sex or bathing suits in the bird bath. Things are really slowing up around here.

Maybe we'd better just forget the whole thing entirely and throw an all-school baseball game instead. Oh, well, the ingenious collegiate mind is not without its progressive nature and something might turn up. (P.S.—By the by, my wife's been hounding me about a green print scarf and a dirty pair of tan kid gloves lost in Eaton 25 about a week ago. I either locate them or it's "back to mama." Any finders?)

Future Western Production Cast; Motif of Dudes in 'Meet Arizona'

Rossini, Glee, then Whoop ee! After having been introduced to "The Barber of Seville," Willamette music lovers will have an opportunity to "Meet Arizona." With this production the old Bar-WU spread should acquire the reputation of having the singiest gosh-darn bunch of studes and dudes in the whole darn west. Furthermore, what with several other musical comedies currently in frenzied production, notably the "Freshman Follies," the "Sophomore Plaid Review," the "Junior Blues," and the "Senior Scandals," the name should stick.

Casting has been completed for the Dude-Ranch musical comedy, "Meet Arizona," which will be presented in Waller hall May 18, by the vocal methods class of the music school. According to Alice Rose Jones, in-

structor in music and advisor for the group, the production will feature full scenery and costumes, and music by the noted Charles Wakfield Cadman.

Corydon Blodgett will take the role of Larry Benson, an adopted son of Colonel Blair. Norvada Smedley is cast as Lettie Blair, Colonel Blair's niece. Romantic leads will be John Peterson as Lennie, a cowboy, and Alice Adams as Emily, a "dudeen."

Carl Blanes will appear as Jack Guidy, the ranch manager, and Wes Hamilton as Cappie, the ranch foreman. Bob Robbins will do double duty as Tom Wilder, a young lawyer, and as Arizona Tom, an ex two-gun sheriff.

Tonita Sunrise, an Indian girl, will be played by Jodie Johannaber. Will Hilgert will appear as Bertie, a cowboy. Cast as Mexican help are Anne Swanson as Maria, Jeanne Rice as Carlotta, and Terry Murray as Carlos. Mrs. Jones reveals that she still needs a baritone-bass to fill the role of Antonio, but will wait until Willamette's baritone-basses are finished with another musical comedy called Freshman Glee.

BEEFS-BOUQUETS

To the Editor:

An Air ROTC program at Willamette was favored by the students and faculty in a vote taken early in February.

The question as stated in the poll did not include any qualifying phrase as to whether the program would be voluntary or compulsory.

While most college ROTC units are compulsory, we had reason to believe that it might be otherwise. Some schools do not require students to join such units. Also, we have been informed that at the time the faculty voted they understood that this program would not be compulsory. Because of these facts, we felt justified in questioning whether or not many students thought the program would be compulsory.

We necessarily feel that this is a basis for a revote by the students and faculty on the issue, accompanied with a complete statement of the possible scope of this ROTC program.

Dave Poindexter
Phil Shaw
Dave Parton
Lois Brinks
Dick Kaemmer

News From Afar . . .

Exchange papers from other college papers seem to reflect the trials and tribulations that strike us here at Willamette.

Pacific university is considering setting up a committee to advise and budget the time of students receiving poor marks.

The index also shows, through a Blue Key survey, that men outnumber women at Pacific three to one.

Instead of an "Ugly Man" contest, Idaho State has a co-ed sponsored "Dream Man" contest.

Even the gals are being sought by the services. Co-eds at Northwestern report they have been getting letters from the war department urging them to join the Women's Army Corps. Inducements include a \$275 per month pay check, second lieutenant's commission, and a "permanent career."

At Whitman, there was some unexpected publicity when mounds of feathers were found in many of the classrooms. Associated Press headlines ran "Smelly Feathers Oust Students at Whitman."



Harold Silke

Silke Chosen New Rotarian

Freshman Harold Silke has been selected by the student council to serve as Rotarian-of-the-month for March.

Upon his graduation from Springfield high school, Silke chose Willamette for pre-med schooling. He is a member of Beta Theta Pi.

Silke is the Freshman Glee manager for this year. His selection as honorary Rotarian was prompted by his effort to make this year's Glee a success.

Pre-Med Students Asked to Register

First and second year pre medical students should apply now for entrance into medical school, according to information received this week from the registrar of the University of Oregon Medical school.

Selective service will not allow students more than three years in which to complete requirements for admission. For this reason, he said, present first year students must apply to the 1952 first year class at the Medical school.

Second year college men must apply for admission to the 1952 class. Present juniors and seniors must wait until next October to apply for the 1952 class.

Photographic Supplies
Kodak Finishing



Easter Cards
Easter Candles
Easter Party
Favors

It's Not Too Late
for Saint Patrick
Cards and Favors

EDWARD WILLIAMS
Home of Hallmark Cards
330 Court Street

Chapel Notice

Dr. Jack Finegan, of the Pacific School of Religion, will speak at Thursday chapel. Dr. Finegan is the author of many books and articles on religion. Chapel manager Harley Hoppe said there would be no chapel Tuesday because of work being done on the gym floor. The band will play March 20.

Professor Clark Describes Glee Growth; Traditions New to Freshmen Each Year

By Gary Keppinger

Established colleges all over the world characterize their individual personalities by examples of continued tradition. And so it is with Freshman Glee at Willamette.

The reporter, in conferring with Prof. Herman Clark, was given a sketch of the development of Freshman Glee.

The originators were the class of 1911, the first Glee being held late in the spring of 1908. It has always been held in the spring but a more crowded activity schedule has forced it to its present early date.

First Glee were held in the chapel but rising popularity, participation, and student population made these facilities inadequate. It was then transferred to the Methodist church. During the first World War the songfests were held in the armory and a small admission was charged which was donated to the war fund. With the building of our present gymnasium the affair was again moved and has since been presented there. A gymnasium seems to be the most correct quartering for such hardy enthusiasm.

Freshman Glee Preparations Impressive, According to Willamette Foreign Students

By Stan Hawk

Although much impressed by this week's intensive preparations for Freshman Glee, many of Willamette's foreign students seemed at a loss when asked to compare it to any similar student project in their own countries.

Evidently, Freshman Glee is even more unique than most students realize.

Gena Kryzkwowska, a Polish girl now in her second year at Willamette, remarked that in Poland's colleges and universities social activities tend to take a

back seat to politics. Gena considers the Glee idea to be a fine one because it contributes to class solidarity which seems to her to be rather neglected because not stressed in dormitory and house organization.

There is nothing in the Scandinavian countries that can be compared to Freshman Glee, according to Ove Tønning, who is from Stuyv, Norway; although, Tønning pointed out, Norway's colleges have choruses similar to those of American schools.

Helen Tokayama could recall no inter-class rivalry at Hawaii's university that even remotely resembled Willamette's annual song fest. Similarly at a loss to compare anything in their countries' colleges to Glee were Rene Charrasse and Rainis Krigen, Europeans now studying at Willamette.

Even if Freshman Glee can not be considered an entirely original idea among American colleges, it apparently hasn't a counterpart in schools of other lands.

Members of the freshman class have always managed the preparatory work for the Glee. In its babyhood days, Glee expenditures were rooted by the class. Eventually the expense burden grew too large and the student body accepted the sponsorship and has since been acting in an advisory capacity to the freshmen who continue the preparations.

Prof. Clark recalls that in early Glee, prior to the formal preparations of competitive songs, everyone present opened their Willamette Song Book and sang glee songs of previous years. To the alumni, who would often be present, this practice revived memories of previous Glee. The "Song Book" was originally published by the senior class of 1914 but in recent

years has been discontinued.

In the first years, the presentation of awards was made by the Deans of the Colleges of Music and Liberal Arts. Shortly thereafter the presentations were made by a very colorful figure in Willamette history, Dr. Mathews. Prof. Clark says of him, "Dr. Mathews' presentations were always unique, varied, filled with the element of suspense, and for this the students were extremely fond of him!" Prof. Clark succeeded Dr. Mathews when he died in 1941 after completing nearly 50 years of affiliation with Willamette.

Blue Monday is only a recent arrival to the Willamette campus. Originally, following Glee, a chapel would be held at which the classes again presented their songs, the losers substituting a parody for their song. Gradually the second and third place classes began singing parodies also. Individual betting gradually superseded the chapel.

Another development witnessed was the gradual use of extensive floral decorations and drills. The use of floral displays was so competitive that they began to detract from the original purpose of the Glee, and were discontinued.

Many of today's popular campus songs are derivatives of past Glee. Among them are "I Love Willamette U," "Farewell Willamette" and the "Fight Song."

Petitions Due

Petitions for May Weekend Manager are due in the student body office by 4 p.m. Wednesday, March 14. Petitions should state plans for May Weekend, name, reasons, etc. Applicants will be considered by the student council.

Foreign Film Series Continues With New Pictures March 16

By Bob Kaplan

Two new foreign films, part of the UNESCO movie series at Willamette, will be shown next Friday night in Waller hall.

The first film is the Italian version of "L'Elixir D'Amore," based on Donizetti's charming and ever-popular opera. It is sung by the La Scala Opera

company and features Nellie Corradi as the heroine, and Itallo Tajo as an aging doctor who deals in "magic" love potions.

The plot deals with the unreciprocated love of a handsome but poor young man for an attractive but coquettish young lady above his station in life.

Of course, matters are complicated by the appearance of a handsome young officer of the Guards, and a charlatan doctor who gives the opera its name since he sells not only potent medicines for every conceivable illness, but also deals in the elixir of love. With the aid of the elixir, and a handsome but unexpected inheritance, the young man wins his lady, they marry, and live happily ever after.

Although the film is not accompanied by English subtitles, there is an explanatory narration between acts, given by Milton Cross.

The second film, "Tomorrow's a Wonderful Day," is a motion picture recently filmed in Israel. It is of both psychological and cultural interest. This film tells the story of Benjamin, a 15-year-old Jewish boy; released from a concentration camp, who arrives at a children's village in Palestine to begin a new life. The plot shows his gradual rehabilitation and release from suspicion, fear and loneliness as he adapts to his new environment and finds friendliness, trust and cooperation.

Senior Scholar Opens Art Show

Diane Proctor, senior scholar in the Willamette art department, opened her display of four oil paintings, 11 water colors, six textile designs, two linoleum blocks and a few experiments in ceramics on display in the art building.

This is her first exhibition of paintings, as well as her first serious attempt in water colors.

According to Carl Hall, art instructor, "She has an outstanding sense of color and her water colors have a strong feeling for form."

Miss Proctor says "I don't call them finished products, but I like doing water colors best of all. I get excited about them."

Her water colors, mainly of opaque colors, consisted of paintings which she made sketches of actual scenes, and the rest were scenes which she remembered. Two of the textile designs were painted with colored ink and the rest were with textile paint and stencil.

Popular . . .
Because It's Good!



MASTER Bread
Popular... because it's Good!



Such Sheer Luxury
At Such a
LOW PRICE!

BUR-MIL
CAMEO

60 gauge
NYLOMIST
stockings

Not 51, not 54, but 60 gauge! Cameo Nylomist stockings are an adventure in loveliness that stems from a new, high twist yarn... softer... duller. And they will wear up to 40% longer than lower gauge stockings - because they're knit in extra-tiny stitches that ward off snags and runs. You can be beauty-kissed with Nylomist... at a price so low you Only \$1.65 can't resist!

... in your proportioned length

Miller's

WILLS MUSIC STORE

Vernon Wiscarson

EVERYTHING MUSICAL

Ukes - Uke Music - Sheet Music - Records - Radios
Pianos - Band and String Instruments - Repairs

432 STATE STREET

SALEM

Sports

STAN NELSON, Editor

'Cats NAIB Hope Ruined; Blast Linfield, Get Plaque

The University of Portland Pilots, sparked by forward Ray Foleen, once again ruined Willamette in the NAIB tournament, this time only by a single point, 78-77 Monday night at the Central Catholic gym, but coach John Lewis' Bearcats, using mostly second stringers, blasted Linfield the second night, 57-52. It all ended on a happy note for Willamette when they won the plaque presented each year to the team in the tourney showing the most sportsmanship.

Receiving the sportsmanship plaque for the team were captain Lou Scrivens and coach John Lewis. Rudy Lachenmier made the presentation of the plaque which is based on honesty, fairness, and courtesy.

The sportsmanship plaque was a minor thing compared to how close the Bearcats came to eliminating the high scoring Pilots from the tournament and possibly taking a trip to Kansas City.

Blond forward Ray Foleen, who arched home 29 points in the contest, pushed in the final two counters with 17 seconds remaining on the scoreboard to give the Pilots the one point 78-77 win.

Portland set a blistering pace throughout the game, but could never shake off a determined gang from Willamette who stayed with them all the way despite the loss of several regulars through fouls and injury.

When the first ten minute period ended, they held a substantial looking 22-11 margin. But the Salem club wasn't to be denied. They brought the count to 17-24 only to see Ted Loder leave the game after turning an ankle. Chuck Robinson took over and the Bearcats went right on at the same pace, eventually tying the count at 41 all at the intermission.

Bellinger, Loder Lost

The second half was a corker all the way. Guard Hugh Bellinger went to the showers early in the half via the foul route and Loder was lost the same way when the count stood at 63 up.

The lead began see-sawing back and forth as the stretch drive began. Ken Strode and Andy Johnson of Portland and Chuck Robinson of Willamette were whistled from the game during this time.

Dan Montag put his club ahead 76-75 with a lay-up and a free throw, Warren Brown tied the count with a charity toss, and Lou Scrivens made the score 77-76 for Willamette with another free throw, setting the stage for Foleen's clincher. Damien Rocha snared a Bearcat pass and flipped it to Foleen who canned it. Willamette was unable to score in the 15 seconds remaining.

Nordhill Leads 'Cats

Willamette and Linfield met for the fourth time this season in a consolation battle Tuesday evening. Claude "Lefty" Nordhill hooped in 19 points in leading the Bearcats to a 57-52 victory as the second stringers saw lots of action on both sides.

The Bearcat subs showed their superiority right away and ran up a 10-4 first quarter lead.

Willamette went the rest of the way without losing the lead although being pressed all the time by the Wildcats. It was 22-20 in favor of the Jason's at halftime.

The locals held a 40-33 advantage at the three-quarter mark and staved off a Wildcat rally in the closing minutes for the victory. Dan Montag and Ken Benschopf put in last minute buckets to clinch the win.

When You Think Drugs Think
Schaefer's Drug Store
135 N. Commercial St.

Gets Hot



Claude (Lefty) Nordhill, junior letterman from Newberg, got hot as a pistol last Tuesday evening against Linfield, and picked up 19 points to lead all scorers, as Willamette dumped the Wildcats 57-52. Lefty started, played the entire game and was unstoppable from any distance.

AA's Tip SAE's, Baxter for Titles

The All-Americans made a clean sweep of the intramural double elimination volleyball tournaments as they defeated the SAE's in the A tournament and Baxter in the B tournament last Friday noon in the gymnasium.

The All-Americans had no trouble in taking the championship of the A tournament as they dropped the SAE's by scores of 15-5 and 15-6. The B tournament was an entirely different story. Baxter and the Little All-Americans played for two hours and a half before the championship of the B circuit was settled.

In the first set of games, once-beaten Baxter defeated the previously unbeaten Little AA's in two games out of three to make it necessary to play another set of games. After both teams had won one game in the second set, the Little All-Americans came through with a 15-11 win to complete the clean sweep of the tournaments for the All-Americans.

The players for the All-Americans in the A tournament were Bill Ewaliko, Jack Fitzmaurice, Al Minn, Dick Mase, Jimmy Noa, Bob Sheppard and Jack Swartz.

Gene Bartlett, Mervin Brokke, Joe Dwight, Daryl Girod, Charlie Koani, Ralph Onzuka, Bob Riordan and Erwin Weber formed the roster for the Little All-Americans.

Les! You Forget!

Al Minn announced today, lest the students forget, the next big event after Glee will be the annual Lettermen-Faculty basketball game which will take place on Monday, March 19. Minn said to be sure and keep that date open for it is a chance to see many outstanding performers. What they are outstanding in he did not disclose.

Rebounding Wildcats Drop Bearcats, Win 71-65 to Share Conference Title

Linfield's ambitious Wildcats ran up a 71-65 victory over Willamette's reboundless Bearcats to grab a share in the Northwest Conference crown and their first win over the Bearcats this season last Friday night on the losers' floor.

It was a plain and simple case of Wildcat vs. Tomcat on the backboards as time and time again Linfield's Ted McKee and Jack Leonard shoved missed shots back into the two-point area while Willamette's men could only look on with dismay.

That was the only strategy that the Linfield quint could possibly have won by, for they have consistently been unable to match the Bearcats' ability to make a high percentage of their field goal attempts. In the first half it was that factor alone—in the person of Ted Loder—that kept Willamette in the game and gave them a 39-36 half-time lead.

Loder Hits in First

Loder hit for 17 points in that initial half, eight of them on long shots from the side. McKee picked up 12 counters in the first half, eight of them on tips.

Willamette started out in the opening minutes like a ball of fire and after six minutes had been played the Bearcats had run up a 16-5 lead.

This was no handicap to the never-say-die Linfield club. They came back and with eight minutes left in the first half had just finished a rally that netted them a 22-20 lead. They picked up ten counters in a row while holding the Jasons scoreless.

and-go until Loder and guard Lou Scrivens took over to give the Bearcats the lead at the half.

Sparked by their band and several busloads of rooters, the Linfield cagers kept pecking away at the Bearcat lead until with 12 minutes left in the game had drawn abreast of the Willamette 'Cats at 52-all.

Wildcat guard Ad Rutschman went on a one-man scoring spree and picked up five tallies in a row, Willamette's Larry Smith dropped in a free throw, then McKee picked up Linfield's next six points in rapid fashion to make the score 61-55, Linfield.

Bob Smith Scores

With time running out Bearcat coach John Lewis sent in bespectacled Bob Smith, sophomore from Burns, and the tall lad picked up six quick points to bring Willamette to within two points at 65-67, but with Linfield in control of the ball the 'Cats were forced to press and the visitors capitalized with two quick baskets.

Ted Loder led all scorers with 23 points—the same number he scored against Linfield in the two teams' last outing—and Ted McKee picked up 19 for Linfield before fouling out.

Loder's big evening left him in second place in the conference race, just 11 points behind the leader, Lloyd Neville of College of Idaho.

The Bearcats have had a hand in the last three title years. They won it undisputed last year, shared it the year before with Lewis and Clark, and this year with Linfield.



Present a "MUST" For Spring

Jersey "T" Shirts



Only **\$3.50**

- Completely Washable
- Wine, Navy, Lime, Red and Grey Color Selections.



Smart Clothes For Smart Men
Corner Liberty at Court

"WALT" CLINE and "TRUCK" JOHNSON

CLINE & JOHNSTON FOOD SHOP

444 North Church Street Salem, Oregon
Greyhound Bus Depot

"Open Round the Clock"



Ramage's

BEVERAGES

Etonic

all-weather

Shoes for Men

- More Value
- More Comfort
- More Styling

JIM'S SHOE SERVICE

175 N. High

It's The

TOP HAT



For Delicious Ice Cream & Terrific Food

Open 7 a.m. - 11 p.m.
1275 State St.
Ice Cream Parlor Open Sunday

BOWL FOR YOUR HEALTH

UNIVERSITY BOWL

BILLIARDS

OPEN 11 A.M. to 12 P.M.
1340 STATE STREET

Shields Captures Scoring Honors With 227 Points

The hard fighting Willamette Bearkittens finished a 23-game schedule last Saturday as they went down to a defeat at the hands of a well balanced Oregon Frosh squad.

This year's schedule was one of the hardest ever faced by a Willamette Frosh team as they played only four high school teams. This made the local lads playing such teams as Oregon, Oregon State, Pacific and other conference frosh teams.

Duane Shield led the Frosh scoring as he hit for 227 points on 94 field goals and 39 free throws for a 11.3 average in 20 games played. The number two man in the scoring parade for the Kittens was big Layton Gilson with 191 tallies.

In their 23 games the frosh lost 12 and won 11. They outscored their opponents 1,251 to 1,177. Their team field goal average was .328, while they managed only .490 at the gift line.

Season totals:

	FG	FT	TP
Shield	94	39	227
Gilson	82	27	191
Williams	53	39	145
Bingham	53	26	132
Eckley	38	13	89
Timms	26	16	68
Myers	28	10	66
Aldrich	24	8	56
Jacob	19	17	55
Brown	17	7	41
Zeuske	17	3	37
Moyer	11	7	29
Siefarth	8	10	26
Noteboom	9	7	25
Empey	10	0	20
Lopez	8	3	19
Benshoof	7	3	17
Forester	3	0	6
Hammer	1	0	2

Betas Keep Lead With Phi Delt Win

Beta Theta Pi retained its bowling lead last week by topping the Phi Delta Theta One's, picking up three points while losing only one. It was the third straight week that the Betas ruled the bowling ladder.

In second place after duplicating the Beta efforts of last week are the SAE Number One's who clubbed their Number Two team.

The Sigs dropped from second to a third place tie in losing three games and four points to the Phi Delt Number Two team.

So far into the season the Sigs have high team series with a 2540 total in one three-game battle, while the Phi Delt Two's have high individual game with a 900 effort.

	W	L	Tp
Betas	7	2	9
SAE No. 1	5	4	8
Phi Delt No. 1	5	4	6
Phi Delt No. 2	5	4	6
Sigma Chi	4	5	6
SAE No. 2	1	8	1

by STAN der

STAN NELSON

Willamette's final game of the season, which they won from Linfield in the consolation contest of the NAIB tournament, was just an anti-climax to the season. The real climax came the night before in that terrific battle with Portland. Although the Bearcats lost, it still can be considered nothing less than the high point of the 1950-51 basketball year. The team wanted the Linfield game badly and so ended an up and down year in the proper manner — by winning.

The Portland game was the outstanding game of the season played by the Bearcats. No doubt about it. How they wanted to win it! Beating the Pilots was the prime accomplishment that the 'Cats had in mind. And they certainly threw a huge scare into the confident and cocky Portlanders. It's games like that which keeps the turnstiles clicking year after year for athletic contests.

Replacements Carry On

Losing outstanding performers like Ted Loder and Hugh Bellinger never seemed to hurt the Bearcats in the least. The replacements carried on as if nothing happened. And how they carried on! Dan Montag, who replaced Bellinger early in the second half, played the game of his life. Montag gave Willamette a 76-75 lead in the closing minutes with a beautiful layup and a clutch free throw.

Chuck Robinson, who took over for Loder, played a whale of a game himself. Loder went out in the first half with a turned ankle and then again in the second half with the count knotted at 63 all. Both times that Robinson appeared Bearcat rallies were getting under way. Both times, the tall hook artist kept them going.

Officials "Whistle Tooters"

The officiating of the tournament was similar to those whistle tooting games we so often had to sit through here at the WU gym. At one time during the Portland-Willamette fracas saw six consecutive marches to the charity line. No field goals were scored in between. There was little time to get a shot away before another personal was called during that little stretch of the game. What to do about fouls isn't an easy problem, but so much calling of them clearly breaks down interest in the game.

Ted Loder, Willamette's stellar forward for the past three seasons, turned in his best season yet. Terrible Ted scored just one more point than last year — 374. The interesting point about the whole thing is how Loder has cooled down on his field goal attempts. He took just 358 shots at the basket this year compared to 420 attempts last season in compiling one point better. It lifted his average on baskets made better than 100 percentage points — from .319 last year to a phenomenal .422 this year — the best average on the squad. Just as an added point of interest, Loder again committed the most personal fouls with 92 compared to his team high of 87 last year.

Bearcats Pace Team Scoring

Willamette placed their first five (Loder, Smith, Logue, Bellinger and Scrivens) in the first 20 in conference scoring with Loder finishing second only to College of Idaho's Lloyd Neville with 224 points to Neville's 235. Loder scored the most field goals in the conference (90) and the team as a whole scored the most points (891). Willamette's field goal percentage for the year was .362, a terrific average. The first five hit for a .384 percentage. To show you how they did it, in Monday night's game, Portland took 101 shots and the Bearcats a mere 64 — this points to backboard troubles however.

Track coach Stackhouse discovered a handy camera for the study of his track athletes' form while showing their stuff. It's a camera that takes continuous pictures as long as the shutter button is pressed down. Not a movie camera mind you, for it doesn't take pictures quite that fast. It just snaps individual photos which, when developed and printed, look like snapshots from any ordinary snapshot camera. It beats a movie camera for form study because you can sit there and study each movement from a still photo and be able to get almost as much of the action that a movie camera would pick up. The camera retails for \$500. It used to be only handmade, but created a lot of interest among sports photographers so it was put on the market.

Through the Hoop

(Final Statistics)

	FGA	FG	Pct.	FTA	FT	Pct.	PF	TP
Ted Loder	358	151	.422	118	72	.610	92	374
Doug Logue	249	104	.418	144	75	.535	90	283
Larry Smith	243	96	.395	90	63	.700	43	255
Hugh Bellinger	207	82	.401	88	59	.670	51	223
Lou Scrivens	225	62	.274	93	62	.667	64	186
Chuck Robinson	162	55	.340	66	41	.621	76	151
Dick Brouwer	59	10	.169	30	18	.600	21	38
Ken Benshoof	28	8	.288	29	19	.655	23	35
Dan Montag	31	11	.355	19	11	.579	26	33
Claude Nordhill	49	9	.184	11	7	.636	17	25
Alva Brown	21	4	.191	11	8	.727	5	16
Bob Smith	9	3	.333	6	4	.667	4	10
Cliff Girod	4	0	.000	4	4	1.000	5	4
Totals	1645	595	.362	709	443	.625	517	1633

Bearkittens Lose to Linfield, Oregon; Finish Tough Season With 11-12 Slate

The Willamette Bearkittens finished the 1950-51 basketball season with eleven wins and twelve losses by virtue of two defeats last weekend. Friday night the Frosh lost the "rubber game" to Linfield 49 to 51 in a thrilling over-time period. Saturday, Willamette and the Oregon Frosh tangled in the seasons final for both clubs at Eu-

gene, with the Ducklings coming out on the long end of a 71 to 44 score.

The Bearkitten, Linfield clash was nip and tuck right to the final wire. The Wildcat five overcame a 29-25 half time deficit to tie the game at 46-46 at the gun sounded. Linfield, after taking the lead in the over time stalled the final minute for their victory. The loss was the second of a three game series.

"Lefty" Shields of the losers was the top scorer, with seventeen counters, followed by teammate Gene Timms with twelve. Zetterberg collected fourteen points for the winners.

After leading for the first fourteen minutes of play against the highly touted Ducklings, Oregon's Don Phillips caught fire to lead them to a 33-19 half-time bulge. Phillips led the scoring with seventeen points for the Ducks while Harris Eckly led Willamette with ten points. The Kittens were without the services of high scoring Shields due to a leg injury received in Friday night's game.

Snow Causes Delay In Baseball Practice

Wednesday was the date set for the first baseball turnout of the season, but it looked as if more basketball would be more sensible as a mantle of snow covered the ground causing them to abandon the idea except for light workouts under the protecting roof of McCulloch stadium.

Coach John Lewis remarked that this is the first time he has ever started baseball practice in the snow.

See You at . . .

MAR'S LUNCH

Open 9 A. M. to 12 P. M.
Every Day

Located Next to Quisenberry's
At the City Bus Stop

Swim

At the

YMCA

RALPH JOHNSON APPLIANCES

"Salem's Finest Appliance Store"

Hotpoint - Crosley - Bendix - RCA - Necchi

355 Center

Phone 3-3139

Everybody Sings the Praises

of the

Valley Motor Company

"Your Ford Dealer Since 1915"

375 Center St.
Salem, Oregon

Bishop's Extends the
Best of Luck
to the Winning Class

Freshman - Sophomore - Junior - Senior



Phi Deltas, SAE's to Honor Fraternities' Founding Day

Sigma Alpha Epsilon will honor the day of the fraternity's founding with a dinner Sunday, March 11, at the Senator hotel at 1 u.m. Oregon Gamma, the Willamette chapter, will be host to the Oregon State and University of Oregon chapters for the founding of their national fraternity 95 years ago.

Dr. A. L. Strand, president of Oregon State college and a member of Sigma Alpha Epsilon, will be the guest speaker. Bill MacDougall of the Oregon Gamma

chapter will be toastmaster. Approximately 150 active members of the fraternity and Salem and Portland alumni associations will be present for the annual celebration.

Jim Ellis and Jim Switzer are co-chairmen making preparatory plans and arrangements.

Legislators Present

Oregon Gamma chapter of Phi Delta Theta will observe the national Founder's day of Phi Delta Theta Thursday evening at the chapter house. A formal banquet will be held for active members of the chapter and honored guests.

State Senator Bill Walsh from Coos Bay will be the principal speaker at the banquet, and honored guests will include Governor Douglas McKay, Lawson McCall, several members of the Oregon state legislature, and alumni of the chapter.

Lou Prediletto is general chairman of the affair, and alumni secretary Bob Skirvin is helping to make arrangements for the banquet.

Seniors Vote On Queen

Elections held this week by the senior class revealed the choice of ten senior women as candidates for May Queen. Choice of three top candidates will be made later by vote of the student body, and the May Queen will be selected in a second student body election.

The ten candidates for May Queen are Alice Adams, Shirley Ambler, Jean Gilmer, Patty Jo Hammond, LuDene Hargrave, Nickie Haynes, Jean Kell, Nancy Phillips, Janet Stark, and Wesley Woodard.

The May Queen and two princesses will reign over all events at the annual May Weekend to be held May 4 and 5. A barbecue, song contests, play, Queen's breakfast, May fete and formal dance will be among the events planned for the weekend when high school guests will be entertained.

Bag's-Sax Dance

Active members and alumni of Beta Alpha Gamma and Sigma Alpha Chi, sophomore honorary societies, have been extended invitations for the annual Bag-Sax dinner dance next Friday evening. Replies are requested immediately by Shirley Griffin or Ardith Bailey.

Gays Fine Candies

For the Best

in

Quality and Taste

Phone 2-9235 135 N. High

GLEE

Will Be Broadcasted

from

8:00

Until the Conclusion

Through the Courtesy of

The Pioneer Trust Company and Radio Station KOCO

"1490 on Your dial"

WILLAMETTE

Social Weekly

JEAN GILMER, Editor

WU Sororities Pledge 27 As Rush Week Closes

Spring semester pledges of Willamette's four sororities were welcomed at the sorority of their choice at firesides Saturday evening following acceptance of formal bids. Pledging ceremonies climaxed four days of open houses, firesides and preferential luncheons and dinners.

New pledges of Alpha Chi Omega are Charleen Asvik, Harriet Bennett, Marilyn Enns, Betty Jean Mullin, Virginia Benner, Marie Deetz, Linda Gragg, Gloria Kainu, Marjorie Leonard, Marilyn Merz and Betty Royer.

Chi Omega pledges are Joan Bunnell, Dorothy Cannon and Thelma Klepp.

Pledged to Delta Gamma following formal ceremonies Sunday morning are Sylvia Hastings,

Edna Marie Hill, Marilyn Quamme, Harriet Aller, Marguerite Dawson, Ardath Durbin, Betty Foster, Jo Ann Hirtzell, Nancy Pratt and Edith Wheeler.

Wearing wine and blue pledge ribbons of Pi Beta Phi are Mary Campbell, Alice Girod and Sally Bridgeman.

Post-Glee Late Pers Granted to Women

Post-Glee late permissions have been granted to all women by Dean Ewalt. Women of the winning class will be allowed to serenade until 2 o'clock, the other classes being in by 1 o'clock. The late permissions for losing classes have been granted to enable students to spend more time at sorority and fraternity open houses and firesides with their families and alumni who have returned for the annual song fest.

Mu Phi Epsilon Pledges Seven

Mu Phi Epsilon, women's professional music sorority, formally pledged seven women at a 3 p.m. ceremony last Tuesday afternoon. Those selected for membership on the basis of their outstanding musicianship and scholarship, with a 3.0, the required grade point average, were: Jane Fooshee, Ann Gibbens, Norma Cox, Edna Marie Hill, Patty Jo Hammond, Donna Jenkins, Ann Swanson, Barbara Gertson, and Doris Hale.

Mu Phi Epsilon is an organization open only to music majors and liberal arts students carrying a required number of hours in music courses.

IRC Elects Prexy, Walter Jones

Walter Jones was elected president of the International Relations club for this semester, according to results announced Tuesday by Prof. Chester Kaiser, advisor for the group.

Joyce Kirby was chosen vice-president; Pat Rogers, secretary; Astrid Tarem, treasurer, and Jack Pierce, publicity chairman.

Plans for the semester include a conference of IRC groups to be held on the Willamette campus April 5, and the second appearance of the Austrian student good will tour on April 2.

Frosh Honorary Pledges Member

Formal pledging ceremonies will be held next Thursday evening in Lausanne hall by Alpha Lambda Delta for all freshman women who attained a 3.5 grade point average or better during the fall semester. President Sue Shipley will conduct the ceremonies.

New pledges of Alpha Lambda Delta will be Johanna Beckham, Sally Bridgeman, Dorothy Cannon, Sallie Cheavans, Nancy Doughton, Betty Foster, Joyce Frost, Ann Gibbens, Yvonne Grinnell, Edna Marie Hill, Betty Howat, Marjorie Leonard, Jane Notson, Betty Royer, Maryjane Stewart, Greta Wildey, and Priscilla Wren.

AXO Pledges Elect Officers

Newly elected officers for the Alpha Chi Omega pledge class are president, Betty Jean Mullin; vice-president, Harriet Bennett; secretary, Gloria Kainu; treasurer, Virginia Benner; junior Panhellenic representative, Charlene Asvik.

Formal pledging for the 11 pledges will take place Monday evening at the chapter house.

The Amen Corner

Dr. Clifford Maser, dean of the school of business administration at Oregon State College, will be guest speaker at this week's meeting of Wesley. He has chosen for his topic, "Christianity and Economics." There will be fun, food and fellowship at 6 p.m.

Members of Westminster fellowship and Canterbury club will have combined meetings on Sunday. The group will attend each other's church services Sunday morning, and in the evening will meet at the First Presbyterian church at 6 o'clock. There

they will have a discussion on the doctrines of their specific denominations. Canterbury will be in charge of the combined worship service, while members of Westminster are hosts for the fellowship period. Refreshments will be served.

A discussion on "Religious Groups in the Times of Jesus," will be the principal feature of Sunday evening's meeting of Phi Zeta Christo. Rev. Dudley Strain will lead the study, and Joyce Rautenkrantz will be in charge of the worship service. Refreshments will be served at 5:45 p.m.

Seniors Set Glee Dinner

Pre-Glee spirit will be aroused by members of the senior class Friday evening when they meet before song rehearsal for an informal dinner. The Veterans of Foreign Wars hall will be engaged for the dinner, to be prepared by "Pop" Crary.

Ellen Reynolds, senior class vice-president, is acting as chairman for the dinner. Nancy Phillips and Jean Kell are planning the menu.

Working on the clean-up committee will be Ted Mertz and Al Minn.

The dinner, the first of its kind to be held before Freshman Glee, will be served at the regular dinner hour as a spirit raiser in anticipation of the final dress rehearsal the next morning.

KAY'S
WOMEN'S WEAR

480 State

Salem

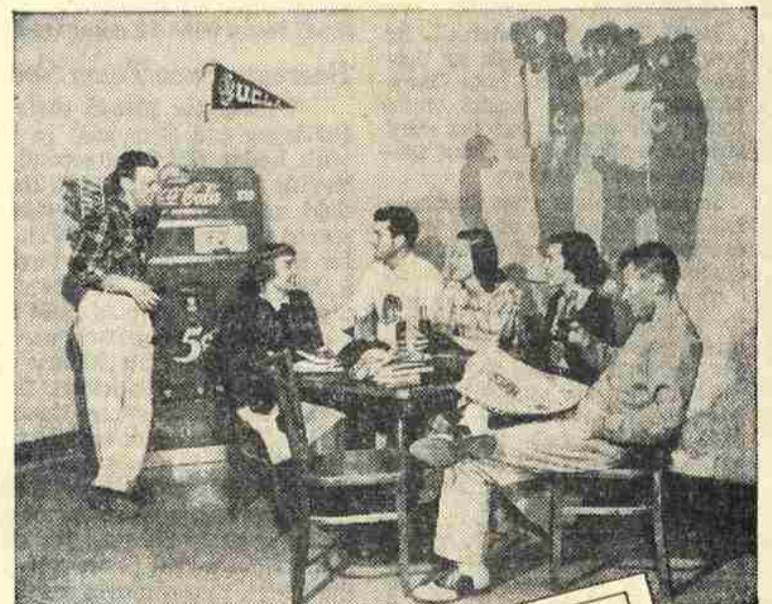
For Those . . .

- Formals
- Casuals
- Sportswear
- Dressy Dresses

The Fashionette

429 Court St.

Phone 3-7853



Student Co-op
University of California at Los Angeles
Los Angeles, California



5¢

Ask for it either way . . . both trade-marks mean the same thing.

BOTTLED UNDER AUTHORITY OF THE COCA-COLA COMPANY BY
COCA-COLA BOTTLING COMPANY OF SALEM

© 1951, The Coca-Cola Company

Breakfasts - Lunches - Dinners

KAMPUS KAFE

"Tasty Shakes"

New - We Never Close - Enlarged
Across From Lausanne on Winter Street

Proud Results Reward Effort Of Participant

By Marlene Vincent

Tired students with big, black circles under their eyes will march slowly into classes today on the campus, while others, using their class cuts, rest blissfully in bed.

After a week of early morning practices, with noon hours also devoted to Glee, final results of the efforts of four classes will appear tomorrow night in the gymnasium.

Exactly what has all this work gained for Willamette in 43 years?

Books Result

Proud alumni and students point to the impressive book of original songs that has been produced throughout the years. Most of these songs came into being through Freshman Glee.

Glee was started in 1909 when the freshman class of 1912 challenged the other classes to compete with them in a song competition. The words and music were to be original and all of the students were to take part in the presentation.

When Glee was first started, the chapel of Waller was large enough to accommodate those who came to witness Glee. As interest grew, Glee was moved to the First Methodist church, and then to the Salem armory. With the completion of the new Willamette gym, Glee was moved back to the campus. In recent years even the gym has been too small to house all the people who wanted to see the event.

Theme Changes

Every year the theme of Glee changes, giving each class a different theme to work with from their Freshman through their Senior years of college. The themes used are novelty, alma mater, fight and serenade.

Glee has always aroused much class rivalry and spirit. Last year the rivalry was increased between the freshman and sophomore class when the freshmen wrote a parody on the soph's fight song. The parody was sung constantly last year and seems to be getting started again this year, much to the dislike of this year's junior class.

The 1951 Freshman Glee promises to be one of the most colorful and exciting presentations in the history of Willamette.



Members of the junior class do a little last-minute practice on marching to put fine edge on execution of formation for forty-third annual Glee tomorrow night. Especially hard to perfect, as all four classes have discovered, is the precision needed in marching on and off the risers. (Photo by Phil Wimer.)

Englishman Describes Customs of America In Speech; Strange Procedures, 'e Says

"You Americans have some of the strangest procedures! An Englishman coming to this country learns many things: how the language has been modernized, how to "make" tea by dragging a mouse-like bag through water by the tail, and how to cut meat with a fork — in England we use a knife."

WU to Exhibit Illinoisan's Art

An exhibit of work drawings and photos of completed sets executed by Orval Larson, of the University of Illinois speech staff, will be displayed in the near future in the Art building and in the library.

According to Ruane B. Hill of the drama department, this will be the first time that the exhibit has been seen west of the Rockies. It has been all over the country, notably at Northwestern and the University of Chicago.

"Mr. Larson has contributed a whole new theory of set design to the world of theatre," according to Prof. Hill. "We are happy that Willamette students and faculty, as well as townspeople, will be able to see this outstanding work," said Hill.

Glee Tickets

All Glee participants are urged to pick up their tickets from their respective class presidents by noon deadline today. Tickets for non-participants will be available in the ASWU office to 4 p.m. today.

In this way Clifford Macquire introduced himself to the UNESCO group last Tuesday. He is on tour of the United States for a national peace organization in order to tell Americans some of the attitudes the British people have toward the war situation, and to absorb some of our attitudes and carry them back to England.

"The war scare in America particularly struck me. My countrymen just can't believe that a nation untouched by the first-hand destruction of the last war can be so upset. This atmosphere was most evident in your capital.

"Someone has said that Washington D. C. is the only asylum in the world where they are organized. But, really, it wasn't all of that. It's not organized at all!"

He also spoke highly of our newspapers — photos of bloodshed, disaster, the personal accounts of the cruelties of war, etc. — "I thank God more for the British press since I have

seen yours. This emotionalism is perhaps the cause of the increased war tension."

Commenting on our attempt at friendship with the European people Macquire humorously illustrated the ecstatic effect of CARE packages on his own family as well as the multitudes of families in the various parts of Europe. These contain far more than sometimes vital food stuffs; they convey a personal relationship, a wish for enduring peace and friendship which supercedes any and all of the political fanangling which constantly reaches the spotlight of the news.

Among such fanangling he included the Marshall plan, "which from all outward appearances was aimed not at aiding anybody, but at containing communism."

"The answer of many of our problems in the present world-shaking crisis would be resolved if the friendship found in CARE packages was allowed to engage all international and even intranational relations."

Austrian Goodwill Troupes to Return For Second Performance April 2

Again this year the Austrian student goodwill tour, sponsored by UNESCO and the International Relations club, will appear at the Salem high school auditorium April 2 at 8 p.m. Student tickets will be 75 cents. Reserved seats cost \$1.50.

This group of student entertainers from Austria perform with authentic songs, dances and costumes from their native country. They return for their second appearance. They were at Willamette last year and were received by a capacity crowd.

This provides an opportunity for those interested in music and foreign language, and helps give a better understanding of the Austrian people and their country.

Chants Prove 'Sublime' Way Of Expression

By Darrel deChaby

One of the most outstanding musical events of the year was the concert given by the Mount Angel Seminary Gregorian choir last week.

Undertaken as a "goodwill gesture," the concert proved to be more than that. It initiated many Salem music lovers to one of the most sublime forms of musical expression which can be heard, the Gregorian Chant.

One was most impressed with the deep humility of the choir of seminary students, and of their director, Father David, O.S.B. The entire concert was a deep emotional experience, not only because of the sacred nature of the music, but because of the devotion of the choir and their director to that music.

Gregorian Chant is difficult music to understand. It is wholly different from the serious music usually heard in that it concerns itself with one musical line instead of several. Father David, with his introductory remarks on the history of the chant added immeasurably to its understanding, and subsequently to its appreciation.

Willamette was grateful for this opportunity to hear the Gregorian Chant, which is so seldom sung in public. Great music beautifully sung by an inspired choir combined to make this concert an outstanding musical event.

New SPRING TEE SHIRTS

- New Colors
- New Styles

2.50 up

ALEX JONES

121 North High St.

WHY PAY MORE!

Long Playing Records (33 1/3 R.P.M. 30% Off)

Free Complete Catalogue and Price List . . . Write to

RECORD HAVEN, INC.

(Dept. C)
520 West 48th Street
New York 19, N. Y.

CONGRATULATIONS

to the WINNERS of FRESHMAN GLEE

HEIDER'S

Cecil Farnes Records
428 Court Street

1964 North Capitol

In Hollywood

ELLIOTT'S BLACK & WHITE CAFE

Fountain Service • Meals and Sandwiches "FINE FOODS"

Open 7 A.M. to 12 A.M., 1 A.M. on Saturdays

Phone 2-9168

YOUR

BOOKLETS BROCHURES

PROGRAMS POSTERS

TOWN

Lithograph Printing and Engraving

464 Ferry Street

Phone 3-7835

U. of Leiden Sets Summer Session

The University of Leiden in The Netherlands has announced plans for its 1951 summer session to be held from July 22 to August 10. The course will concentrate on Eastern and Western world relationships, their cultural contacts, human problems and technical development.

Four expense plans have been listed, the highest being \$50 for tuition, room, breakfast and lunch. Excursion expenses are included in the fee.

Applicants may obtain reservation forms, including reservations for passage on special student ships, and detailed information by writing Mr. J. Vos, Netherlands Office for Foreign Student Relations, Woodstock Hotel, Suite 424, 127 West 43rd St., New York 18, New York.

White's Lunch and Drive In

1138 South Commercial

Phone 3-3267 or 2-1495

Your Laundry Comes Clean

Salem Laundry Co.

Phone 3-9125

253 South High Street

Salem, Ore.

CLEANING and PRESSING TOO

Ralph Dobbs to Present Variety of Compositions

By Darrel deChaby

Ralph Dobbs will present his annual piano recital in the Waller hall auditorium next Monday evening at 8:15 p.m.

Dobbs, a native of Chicago, studied under Alexander Raab and Percy Grainger. He has appeared with the Chicago and Los Angeles symphony orchestras, and during the seasons from 1935 to 1937 concertized extensively in the United States and Canada.

Ralph Dobbs made his New York debut at Town Hall in 1930. At this time he was acclaimed as an artist of, "breath-taking virtuosity," "poetic feeling," and "sensitive musicianship

and unsurpassable technique." He has held the position of head of the piano department at the College of Music for seven years, making frequent concert appearances in Washington and Oregon aside from his teaching duties.

Dr. Dobbs will offer a varied selection of compositions from his extensive repertoire. They will include, in the first group, the "Sonata in A minor," by Scarlatti, and "Prelude and Fugue in A Minor," by Bach, in the Liszt transcription from the organ. According to Dobbs, Liszt has made a very literal transcription from the original Bach, so that the prelude and fugue remain in their pure form.

The large work of the evening will be the Brahms "Sonata in F Minor, Op. 5." The sonata is the third and last of his works in this form by Brahms. It is somewhat unusual in that there are five movements, an additional movement being inserted between the third movement scherzo, and the finale.

After the intermission, Mr. Dobbs will offer "After Work," from "Three Hymns in Praise of Toil," by Medtner, the Chopin posthumous "Nocturne in C Sharp Minor," and "Estampes," by Debussy. The nocturne was one of Chopin's earliest works, though it was not published until many years after his death. The Debussy "Estampes" will include three image-pieces, "Pagodes," "Evening in Grenade," and "Gardens in the Rain."

Completing the program will be the brilliant "Tarentella" from "Venezia e Napoli," by Liszt. This work was written by Liszt on one of his many trips through Italy and Switzerland. The authentic tarentella, according to Dobbs, was danced by one who had been bitten by a Tarantula. The person danced at a steadily increasing tempo until he dropped from exhaustion, hoping thus to throw off the effects of the poison. The tarentella Dobbs will play, however, will not be quite as extreme as it contains a slow section, using the thematic material of the two faster sections.

Students and faculty are invited to hear Mr. Dobbs, who has been called, by the eminent Percy Grainger, "The most perfectly trained American pianist I have heard." In the past he has never failed to win new admirers with his penetrating musicianship and technical mastery.

Richard J. Gore, Ann Gibbens, Jean Gilmer, Lois A. Gottwald, Alan C. Goudy, Yvonne Grinnell, Margaret E. Guice, Jack B. Gunn, Beverly Gustafson.

Bernice Haynes, Bob Hearn, Shirley Helweg, Wilbur Hilgert, Edna Marie Hill, Ross J. Horn, Betty L. Howat, Mary Howe, Morris Hunsaker, Sarah C. Huntley, Jacqueline Johnson, Patricia E. Jones, Walter Jones, Dorothy I. Judd.

John Kaemmer, Richard L. Kaemmer, Doris Kimble, Ann Klindworth, Betty Kostenbader, Marjorie J. Leonard, Theodore W. Loder, Eleanor Loveless, Mary McLaughlan, Howard A. Mader, Nancy Marks, Richard Dale Mase, Calvin V. Middleton, Jack R. Mitchell, Joanne Motschenbacher, Ed Mulkey, Kent Myers, Douglas Nicoll, Jane C. Notson.

Barbara Olsen, Beverly Osborn, Patrick W. Paddock, Robert D. Petzoldt, Nancy Phillips, Mary Ellen Phillips, Jack Pierce, George Porter, Marilyn Quamme, Robert E. Robins, John Rockenfeller, William M. Ross, Betty Royer, Richard T. Scott, Stuart R. Shaw, Gay Simons, Robert Lunt Small, Douglas H. Stearns, Mary Jane Stewart, Donna Stoddart.

Helen Takayama, Scott Thomson, Dick Unruh, Norton Younglove, Patricia J. Zahare, Russell Zink, George Wagner, Edith Wheeler, Greta Wildey, Robert Wilson, Edith Wissenbach, Jim Allen Wood, Wesley Woodard,

119 Students Receive GPA's Of 3.5 or Higher, Says Jory

A list of 119 students with a GPA of 3.5 or better was listed this week by Registrar Harold B. Jory.

George B. Adams, Wilma Aller, Shirley Ambler, Franklyn B. Ambrose, David Anderson, Robert A. Anderson, John C. Anickler Jr., Luther M. Asper, David J. Beckett, Johanna Beckham, Max W. Bergstrom, Arthur O. Bishop, Richard B. Blakney, Charles S. Bowe Jr., Sara J. Bridgeman, Lois G. Brinks, Mervin Brokke.

Felix E. Calkins, Dorothy Cannon, Donald L. Carpenter, James F. Carpenter, Rene Charrasse, Sallie Cheavens, Robert A. Christensen, Dorothy A. Clarke, Ray R. Crittenden, Paul J. Dally, Douglas Dougherty, Nancy Lee Doughton, Claribelle Easton, Harris L. Eckley, Joyce Edgell, Miles Edwards, Earl Eshleman, Patricia A. Faber.

Pat Farnes, Earl W. Fedje, Jane Fooshee, Elizabeth A. Foster, Margaritte J. Frost, Barbara Garrett, James E. Garrett,

Prexy Reminds Students of Don't's For Blue Monday

Stan Aschenbrenner, ASWU president, referring to rules formulated by the student affairs committee of three years ago, reminded students of the "don'ts" of Blue Monday in chapel last Tuesday.

Aschenbrenner pointed out that in keeping with past regulations all paying of bets should be restricted to the Willamette campus, with special reference to staying out of the state capitol building.

Smoking in classes and on the campus and the selling or drinking of beer were other "don'ts" listed. These are in keeping with the standard policies of the university.

Other rules prohibit the entering of halls of residence to pay off bets and bringing animals on campus. Pie throwing as last year will be limited to the athletic field.

Harold Silke, Glee manager, expressed confidence that the student body would use its common sense and stated that as much fun as in the past could be had on this year's Blue Monday.

"Responsibility will rest solely on the students," he said, "and I am sure that the administration need not have the jitters."

Opera's Finances Still Unavailable

Financial returns were still unavailable on "The Barber of Seville" as the Collegian went to press.

Manager Harley Hoppe said that he hoped the results would show a reasonable profit for the student body, which sponsored the performance by the Charles L. Wagner opera company last night.

Four-Pager Due

Next week's Collegian will be a four-page paper, according to Bill MacDougall, editor. Staff members, who have had Glee practices on top of Collegian work, will try to catch up on studies.

Win-Confident Bettors Forget Inhibitions for Blue Monday

By Jim Switzer

Willamette's day to release inhibitions—that's Blue Monday.

That's the morning when rash souls discover they have entered into the spirit of Glee at the expense of someone else who would be sure to lose.

Since the first Glee in 1909 there has been almost every sort of bet which an ingenious student could think up to inflict on a loser. In the thirties the old trees in front of Waller had would-be Tarzans warbling their

own renditions of "Sweet Adeline" while hanging from their highest branches.

Also braver bettors did things with further reaching consequences, such as shaving eyebrows, dyeing hair, and close-cut scalping of hairlines.

One bet referred to in the 1931 edition of the Collegian decreed that if the Freshmen lost they would have to play pool and drink beer all afternoon in the Blich. Faculty reaction was not recorded.

Bets do not have to be paid off only by the losing class. Last year's freshman class, which placed second, spent post-Glee week recovering from bets paid off only to one class—the winning juniors.

Pres. G. Herbert Smith, in the Glee of 1944, wagered on the class of '45 and had he lost he would have had to wear roller skates to his office on Monday.

Since College Glee, as the first one in 1909 was called, only two classes (the first and that of '36) have won all four years.

This year, with limitations on the use of the Mill stream and requests for abstaining from selling firewater on the campus and for a laissez-faire attitude toward members of the legislature, the fertile brains of bettors will have to turn to other channels.

Some of the bets which have been placed already this year point toward an interesting chapel and Blue day—and besides, some profs don't take roll that day.

AXO's to Leave Old Home Soon

As soon as possible after completion of a zone change, the members of Beta Chi chapter of Alpha Chi Omega will move into their new house at 610 North 15th street. The residents of the area have been informed that a local option petition has been filed by the sorority with the city engineer. This is one of final steps in the legal procedure involving the sale of the property to Beta Chi.

The property is being bought from Mrs. Herman E. Lafky. It is located on the bank of the Mill creek. The big white, stone-faced house was built by the late Herman Lafky, a Salem attorney. The grounds are well landscaped and will provide an ideal setting for the new Alpha Chi house.

UNIVERSITY DRUG

PRESCRIPTIONS

Phone 3-6527

1220 State St.

KRAPPS and LONG

"Printing of Distinction"

370½ State St.

Nothing finer can be made!



NoMend

exquisite 15-denier, 51-gauge nylons

\$1.95

Full-fashioned

Here's a lovely nylon by NoMend with a flattering, dull look that does thing for your legs.

Yet it gives NoMend perfection in wear, as well. NoMend's 15-denier nylon is perfectly proportioned from top to toe.

In NoMend's FAMOUS 5® Proportioned Leg Types:

Type 1—Small

Type 2—Average

Type 3—Tall

Type 4—Average—Larger above the knee

Type 5—Tall—Larger above the knee

Ask for the Orchid Stripe NoMend.

We Give and Redeem S&H Green Stamps

Roberts Bros.

177 North Liberty

McMillan's Fountain Lunch

Where the Gang Meets to Eat



Next Time Try Mac's

1949 State Street

Phone 9825