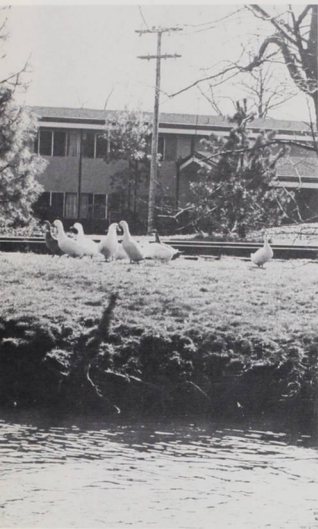




**Wallulah '76**



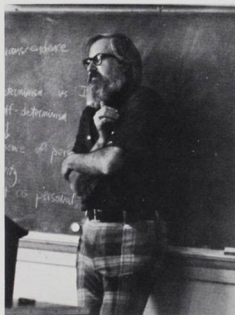
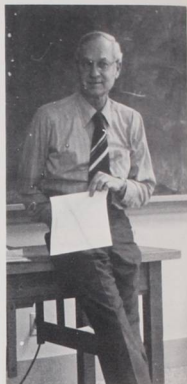


James Lyles

Ted Ozawa

Wright Cowger

## Education



## Religion



Bernard Batto

James Hand

Phil Hanni

Tom Talbott

Jerry Canning

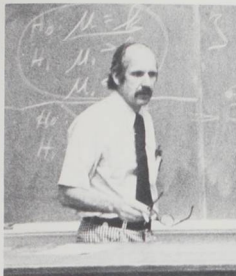


Milton Hunnex

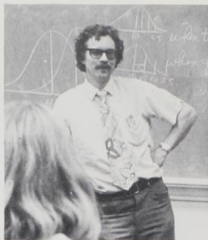
## Philosophy



# WALLER



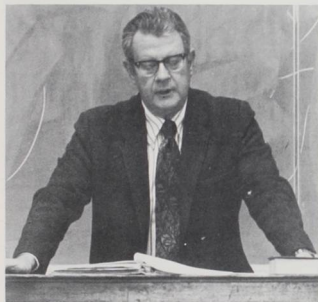
Noel Kaestner



William Devery

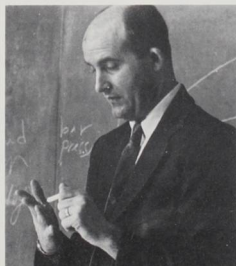


Loren McBride



Charles Dertick

## Psychology





# EATON



Herbert Childs



Richard Lord



Ken Nolley



Carol Long



Rich Sutliff



Gerry Bowers

Virginia Bothun



## English



Bill Duvall

## History



Robert Lucas



Kent Marcus



George McCowen

## Sociology



Walter Gerson



Dave Booth

Jim Bjorkquist



Charles Garth



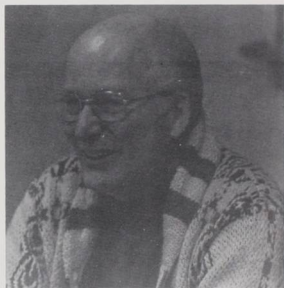


## GATKE



Cari Shay

Ted Shay



Ed Stillings

## Political Science

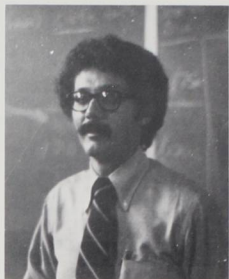


Sue Leeson





Tom Hibbard



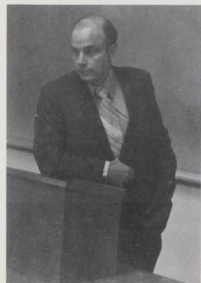
## Economics



Jack Leonard



Thomas Brand



Richard Gillis

Bill Braden

Russ Beaton



Jim Burke





Marta Velez

Clarence Kraft



Ronald Aguirre

# WALTON



Klaus Neuendorf



Christine Gentskow



Paule Drayton

## Foreign Language

Patrick Henry

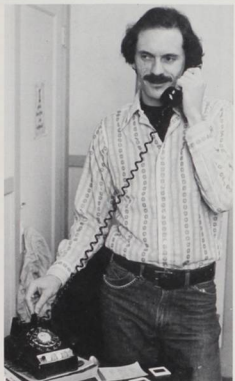


Francoise Goery Richardson





# PLAYHOUSE



Douglas Paterson



Robert Peffers



D. Scott Glasser

## Theatre

Ramona Searle





Robert Putnam

## Speech



Howard Runkel



Carl Hall



Roger Hull

Robert Hess

Cameron Paulin

# SMITH

## Art



# Physical Education

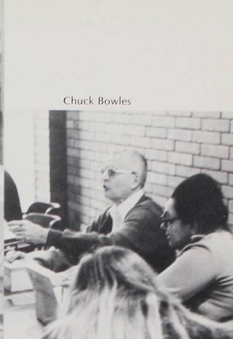


Tommy Lee

Ken Kladrnik



Jim Brik



Chuck Bowles

Jean Williams



Vern Petrick



Fran Howard



Bill Trenbeath

Jean Zumwalt

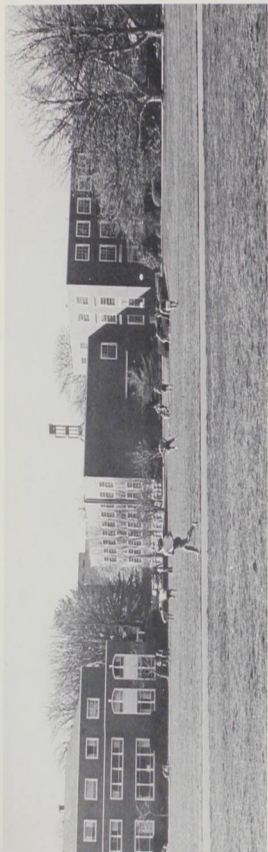
Jim Boutin



Les Sparks



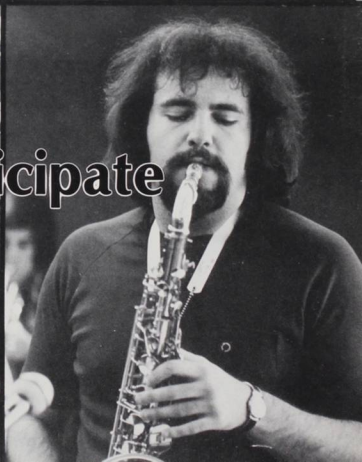
**SPARKS**







Participate



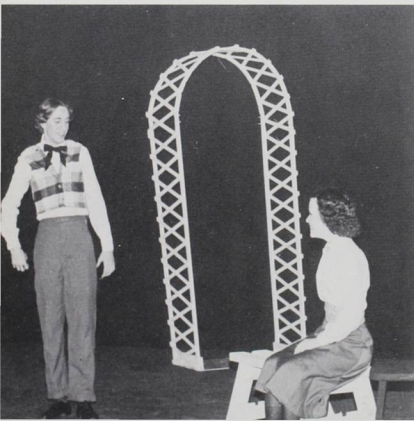
# Our Town

## Company

Wilson E. Smith  
John Quanbeck  
Terry Withers  
Don Seymour  
Mary Ann Shambers  
Helen Shepard  
Jeff Judy  
Toby Kersh  
David Blank  
Mary Patton  
William Devery  
John Rudy  
T. S. Berczynski  
Mary Jane Garson  
John Garson  
Todd Withers  
Allen Gibbs  
David Sowder  
David Sowder  
Mark Wyatt  
Dave Aiello  
Rick Smith  
Leslie King  
Kathy Seymour  
Jackie Rioux  
Linda Groves  
Gail Reider  
Joyce Walmsley

Directed by Robert Peffers  
Designs by Ramona Ann Searle

Thornton Wilder's "Our Town", a classic of American literature was appropriate for the Bicentennial Season at the Willamette Playhouse. Its timeless tale of boy meets girl is centered among the rituals of everyday existence, and it provides a basis for the statements made about birth, marriage, death, and time. The people of Salem joined in to make the play a community effort, in the spirit of "Our Town". Ultimately, the play asks, as Emily does, "Does anyone ever live their life, every, every, minute?"



# What the Butler Saw

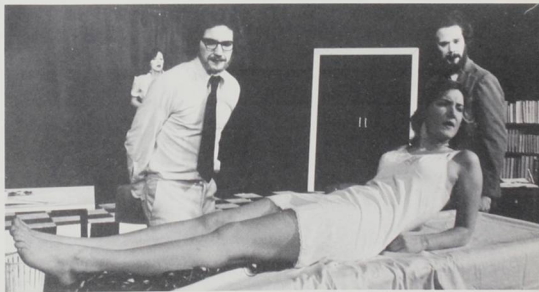


## Company

Brit Olson  
Dan Fineberg  
Polly Bond  
Craig Strobel  
Christine Hemp  
Joe Costell  
Directed by Ed Bowen



Ed Bowen's senior directing project "What the Butler Saw" was a British farce of a mental hospital set in wonderland. The clothes-swapping, rapid exits and entrances, and risqué innuendos abound in this sophisticated comedy. Dr. Prentice tries to hide from his nymphomaniac wife the fact that he was seducing a prospective secretary. Unfortunately, in his attempt to cover up, a governmental official come to inspect the hospital. Chaos ensues, but the end untangles the mess in a manner that would delight fans of Oscar Wilde.



# La Serva Padrona

Company  
Gary Helland  
Kathy Sewright  
Jim Pilon

Directed by Julio Viamonte  
Conducted by Charles Heiden  
Technical Director - Robert Putnam



"Serva" is a true ancestor of the later buffa opera of Mozart. Its characters are somewhere between those of "The Marriage of Figaro", in which Mozart presents humanized "commedia dell'arte" characters, and the maquette type of those of Rossini's "The Barber of Seville."

"Serva" has three characters: two sing and the other either is a mute or never has a chance to talk. The story is the characteristic one told in every country and every epoch: the young pert "thing" (Serpina) who with her charming, feminine arts traps the older man and become his wife and "boss."

# The Royal Lichtenstein ¼ Ring Circus



# Willamette University Choir



1st: Lynne Isonse, Yolanda Mitchell, Janet Squire, Walter Farrer, Lee Holyfield, Cara Bailey, Betty Shamberger, Beth Carey  
2nd: Ellen Baldwin, Heidi Mitzner, Jennifer Ray, Nancy Gruman, Beth Young, Linda Groves, Chris Kirkwood, Kelli Brown, Marsha Robinson  
3rd: Patty Francis, Laurie Elson, Rozanne Howell, Lisa Jampolsky, Maureen Hanley, Julie Adams, Judy West, Barbara Dellenback, Maureen Dong  
4th: Len Federico, Tom Farris, Jill Olson, Brit Olson, John Shank, Larry Jackson, Gregg Capp, Jim Pilon, Dave Ball  
5th: Ron Aiken, Jon Pounds, Bruce Suckow, Mike Katan, Ron Schilling, Mark Elgin, Randy Crenshaw, Mark LeCoc  
Not in picture: April Allen, Mary Allen, Betsy Collins, Karen Crew, Ron Gallman, Albert Hanson, Barbara Irel, Kevin Slack

# W.U. Jazzband



# Vernon Bellecourt



As a spokesman for the American Indian Movement (AIM), Vernon Bellecourt spoke to the Willamette community in January concerning the Indian in American society today, and of a "dual system of justice" in America, which has tied up Indian leaders in court. Bellecourt, the AIM national coordinator, said, "We know that we have exhausted our efforts through the judicial branch. We know the executive branch is corrupt, and we're not so sure that the legislature is not corrupt. We must now go to the people." According to Bellecourt, the enemies the movement confronts are the church, the educational system and the "colonial" practices of the government.

Overall, Bellecourt emphasized that the struggle is one of survival before it is a political battle. "The guests are now the hosts, and we are second-class citizens in our own land," he said. "There is a move to get to the land and get the land back." The role of non-Indians in the movement? Bellecourt said it is to become more aware of the issues and to recognize the contribution that Native Americans have made to America. "This Bicentennial year should be one of reconciliation, not celebration," he said.

Vernon Bellecourt spoke here at Willamette to help raise funds for Kenneth Loudhawk and Russell Redner, who are in jail in Washington County charged with possession and interstate transportation of illegal firearms and explosives.





# Al Ullman

House Ways and Means Chairman Al Ullman spoke to a packed house in which he announced he would run for re-election. In a speech which touched on most of the pressing problems within the nation, Congressman Ullman capably argued for change in such areas as social security, energy development and taxes.

In the following discussion Mr. Ullman answered questions from the audience which ranged from the concept of a negative income tax to who he supported for President. (In 1972 Congressman Ullman supported his mentor, Wilbur Mills).

As he concluded, Congressman Ullman hoped that the change in President would help get the country off its "cynical kick."





# William Whyte



William Whyte, an expert on urban design, spoke to the University concerning the need for rational and aesthetic, as well as practical, urban design.

By narrating a film and the discussion which followed, Mr. Whyte was able to reinforce his thoughts on the various changes which must be made to improve cities of all sizes throughout the country.

Throughout his stay, but especially during the class discussions, Mr. Whyte eloquently argued for changes in urban design in order for cities, and especially their core areas, to once again become the nucleus of human action.



# Expressions II      Declarations of a Dark People

This year the Black students of Willamette University presented their second annual minority awareness program, "Expression II: Declarations of a Dark People." The program began on Friday, March 5th with the introduction of Dr. Kenneth Washington, President of San Francisco City College, who spoke on the topic of Black students on white college campuses. The speech was followed by an art workshop directed by Ms. Varnette Honeywood, Art Museum Program Director of U.S.C. The program also included the play "Jewels of the Shrine" and a dinner with entertainment provided by the Mt. Hood Jazz Ensemble and M.S.U. dancers. A two day multi-cultural lab in communications was conducted by Dr. Norman Chambers, private psychologist and professor at San Diego State. "Expressions II" came to a close Friday night with a dance, music provided by "Pleasure."



# Model United Nations

Model United Nations provides an opportunity for students to participate in an extracurricular activity where they discuss international relations and the United Nations while representing a particular country.

Willamette students have participated in two local Model Security Councils this year. We represented Jordan, the Palestine Liberation Organization, Sweden, Iraq and the U.S.A. at these activities.

Willamette attended the Far West Convention in Oakland, California in April, where one thousand students from seventy colleges and universities represented over one hundred countries. Willamette has reached a position of high prestige within the Far West organization, as we were selected to represent the United States of America at this conference.



# I.F.C.



Row 1 - Tom Carter, John Wheeler, Roger Olsen, Al Reynoldson, Rich Scrivner, Ray Ono.  
Row 2 - Mark Elgin, John Cobb, Chris Ingram, Sean Duff.



Treasurer - Fritz Hahn, President - Bill Olson, 2nd Vice President - Ken Slack.  
Not pictured - 1st Vice President - Gary Thede.

# ASWU Officers '76

# Wallulalah



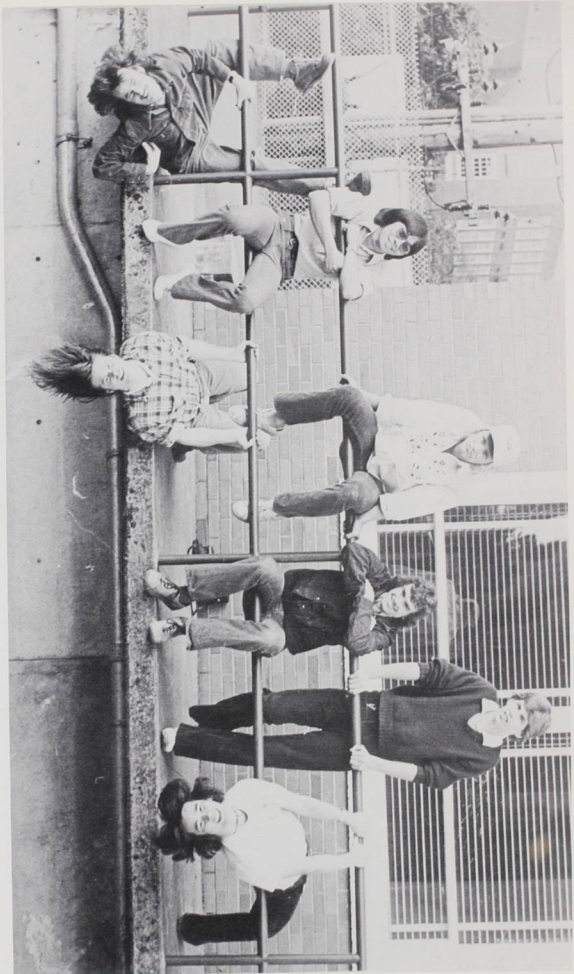
Steve Fulmer, Mike McNair, Barb Gill, Katie McEllan, Rick Ikeda, John Shank, Gary Theede. Not pictured: Jim Eustron.

# Collegian



Row 1 - Bonnie Rider, Mike McNutt, Linda Bayer, Kathy Lantz, Jim Eastrom, Anne Pfister,  
Row 2 - John Dillin, Chris Blattner, Kim Salzwedel, Mark Elgin, Jeff Sullivan, Patty Sullivan.

# Darkroom Staff



Larry Webster, Keith Lee, Mike McNair, Kim Salzwedel, Steve Fullmer, Tim Becker, Rick Ikeda,  
Not pictured: Bill Ahina, Dave Spalding, Mark Mitchell.

# Freshmen Glee

Freshman Glee, in its 68th year, is one of Willamette's enduring anachronisms, but one which never fails to draw many participants and many spectators. This year was no exception, and was termed one of W.U.'s most successful Gleees in recent years. Co-managers Hunter Emerick and Griff Frost ran the show, and were aided by a list of Freshmen too numerous to mention here.

The Class of 1977 saw its dream of four straight wins shattered as they were upset by the Class of 1978. The Class of 1979 placed a respectable third, and the Seniors returned to form in their last place finish, earning a swim in the Mill Stream for the third time in four years.





## "Cornerstones"

We all stand here together, each one of us alone.  
Looking down the long, long road that leads away from home.  
We don't know where it's taking us, but then, who's ever known?  
You say good-bye; you close the door, and then you're on your own.

The blood-red dawn before me, fighting all around...  
Friends I've known and loved, now lost...lying on the ground.  
We march now to a new day, the fighting dying down.  
But how much pain does freedom cost, for now our hearts are bound.

## Chorus

Listen to our folklore, like echoes from the past;  
Listen to our families who've made our freedom last;  
Listen to the others 'cross the sea of tears they've cried,  
To live a life of liberty for which our neighbors died.  
Be proud of what our fathers earned to keep us free.  
Realize just how they yearned, there's no one pushing me.  
And at the price they had to pay,  
Be sure it never slips away.

## Instrumental

So now we have our freedom, we had faith enough to win.  
Now another struggled is waiting to begin.  
Brothers will see brothers die, but hope will not run thin,  
If another war besieges us, we'll join as one again.

## Repeat Chorus

by Tom Spivey and Andy Gregg





## "After The Storm"

Dream of a day dawning after a storm  
 As the sun breaks through a cloud  
 And life is being born;  
 There is a place yet uncovered by the day  
 Where the wind and rain have gone,  
 Touching everything with dismay  
 But they cannot hold those who seek the rising sun.

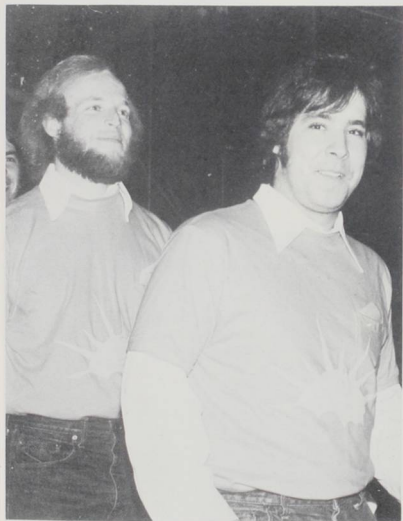
Though the rain is still pouring down  
 I see the sun about to rise  
 I see the freedom in your eyes;  
 Slowly the whirlwinds blow away  
 If only those in darkness knew  
 The morning light I'll share with you.  
 So we wait for the dawn of a new day  
 To drive away the storm  
 And we wait for the dawn of a new day  
 To see a rainbow form and light the sky.

Look beyond these four painted walls  
 The earth is full of living room  
 The rainbow shines with life in bloom;  
 Someday the storms will disappear  
 When we allow our world to be free  
 By giving ourselves and all we can be.

Oh, let yourself go:  
 Freedom is a seed that has to grow  
 Through the night and the day  
 Through the sun and the rain  
 The seed must be strong  
 To endure the winds of change  
 So we wait for the dawn of a new day  
 To drive away the storm  
 And we wait for the dawn of a new day  
 To see the rainbow form and light the sky.

Dream of a day dawning after a storm  
 As the sun breaks through a cloud  
 And life is being born  
 The seed will grow as long as we will try  
 And wait for the dawn of a new day  
 To see a rainbow form and light the sky.

by K. C. Humphrey







"Start Again"

They told us everyone was equal  
but now we know that's far from true  
They had told us we were govern'd by the people  
but now we know what Mr. Nixon knew.

And in this year of celebration  
several things are becoming clearer  
not only must we thank our nation,  
but we must look into the mirror.

Chorus

It is time to start again  
set this country on a better trend  
to build a place where freedom rings  
a world for us, and not machines.

This was supposed to be a dawn of freedom  
but that means different things to different men  
and like the earth that knows to change its season  
it seems to us we've got to start again...start again...

But through the sadness we can still find room  
to love this country that has gone astray.  
In our hearts we know she'll come back soon  
but we must help her find the way.

by Ben Carlile



## "Silver Mountain"

When I was a little boy I had a special place to go, where I could be alone.  
It was called Silver Mountain and in this place, my thoughts were all my  
own, and the trees were made of gold.

## CHORUS I

Take your troubles up to Silver Mountain, let them bubble out,  
the soda fountain and float right down into Lollipop Bay.  
And if your troubles seem a little hazy, spend the day picking  
peppermint daisies, you might even decide to stay.

Whenever I was lonely I know that there was one place I could call my own  
I'd gather up my troubles and take the to the one place I called home,  
and I'd never be alone.

## CHORUS II

Then I'd fly on up to Silver Mountain and I'd bubble out the soda  
fountain and float right on down into Lollipop Bay.  
Then I'd simply fly away.

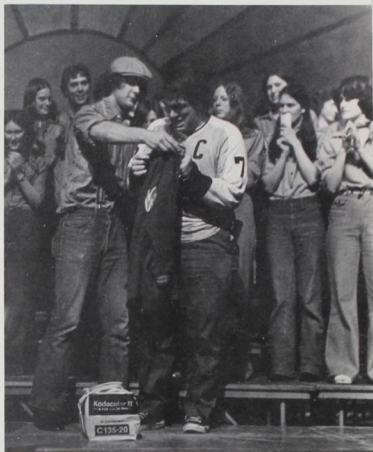
Now that I'm not so young I don't forget the things that I learned long ago.  
Whenever I have troubles I know that there's still one place I can go,  
And I'd like to let you know.

## CHORUS III

Take your troubles up to Silver Mountain, let them bubble out the  
soda fountain and float right on down into Lollipop Bay,  
and if your troubles seem a little hazy, spend the day  
picking peppermint daisies.

And you'll find it will help you through the day.  
When you learn to see the silver way.

by Gregg Capp

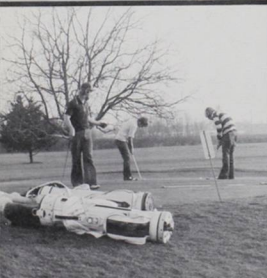
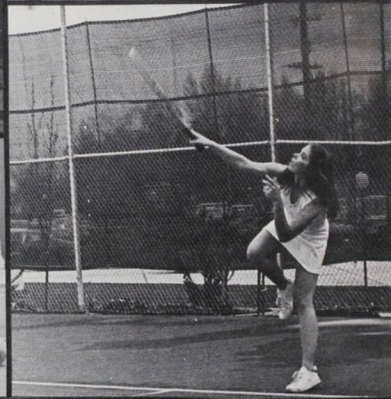


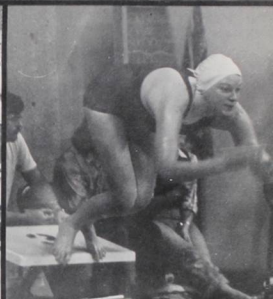


## Blue Monday

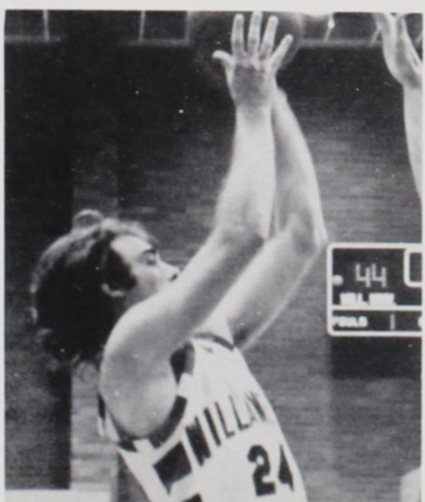


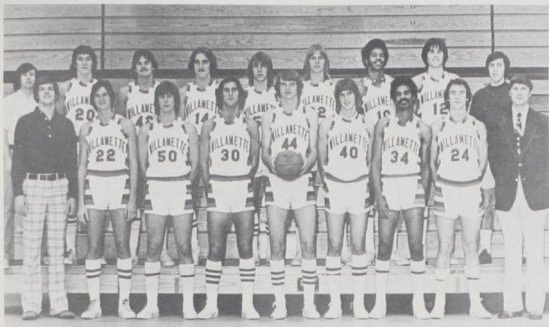






# Basketball





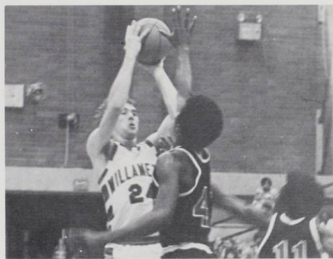
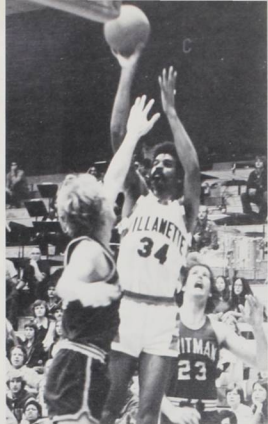
**Back Row**

(l-r) Manager Kirk Mosier  
Tom Beatty  
Les Stennes  
Mark Tichenor  
Jay Dressler  
Bruce Higginson  
Alonso Jackson  
Dave Heim  
Trainer Ken Kladnik

**Front Row**

(l-r) Assistant Mike Cashman  
Mark Le Roux  
Rex Anderson  
Craig Reingold  
Chris Jensen  
Randy Nelson  
Harry Thompson  
Charlie McClure  
Coach Jim Boutin







# Women's Basketball



**Front Row**

(l-r) Carrie Martin  
Holly Brown  
Jenny Ray  
Kelly O'Neil

**Back Row**

(l-r) Coach Fran Howard  
Lynne Crosett  
Tracey Rapp  
Shan Elich  
Cathy Lidell  
Cindy McCavit  
Carla Piluso







**(l-r) Clockwise**

Denny McCarthy    Rod Fredericks    Manny Campbell  
 Dave Milloy        John Hook            Jay Dressler  
 Jeff Krahenbuhl    Scott Printz         Not pictured:  
 Kent Kravie         Al Hicks                Doug Peoke



**Back Row**

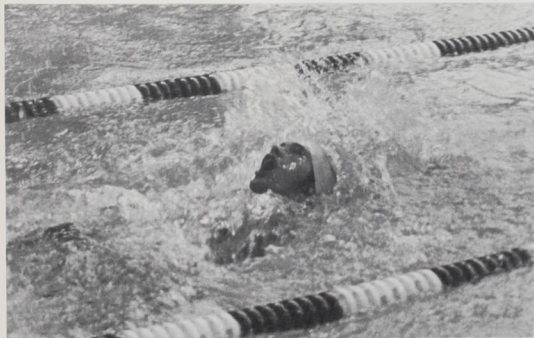
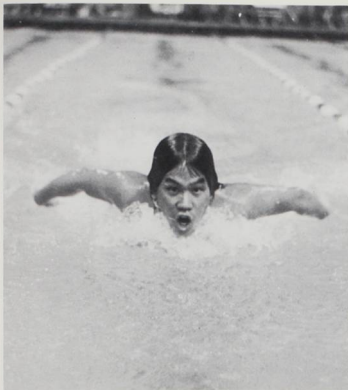
(l-r) Coach Rich Scrivner    Helen Broun    (l-r) Liza Bennet  
 Laurie Meeker                Amy Stager     Bobbie Loyman  
 Julie Barbour                Carma Franz    Cherie Boyer  
 Thelma Clark

**Front Row**

# J.V. Basketball



# Swimming



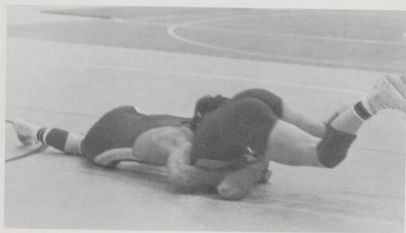
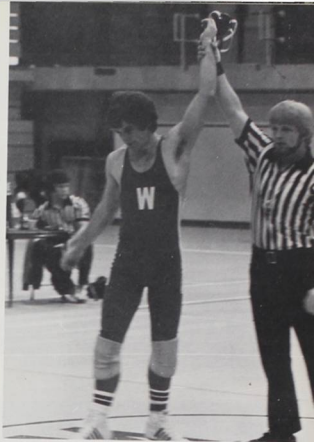
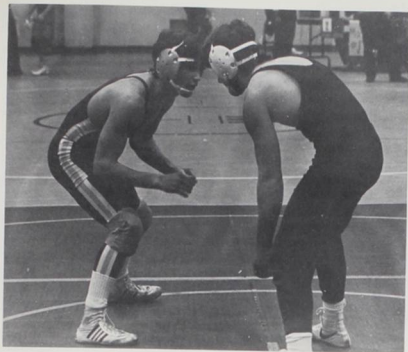
## Swimming

Mike Anderson  
Mike Brooks  
Rick Caldwell  
Bill Craine  
Lynn Davis  
Craig Friedley  
Dave Goff  
Vicki Gordon  
Gerry Hill  
Bruce Kajiwara  
Gary Matson  
Vicki Matson  
Tom Middaugh  
Rick Muller  
Drew Olsen  
Brian Richards  
Steve Shearer  
Gwen Sheehy  
Dan Wilson  
Linda Wiltse  
Sherrie Wiltse

## Diving

Dan Atkins  
Bob Hansen  
Nancy Lammers  
Todd Ritter  
Jan Schriber  
Amy Wallace





# Wrestling

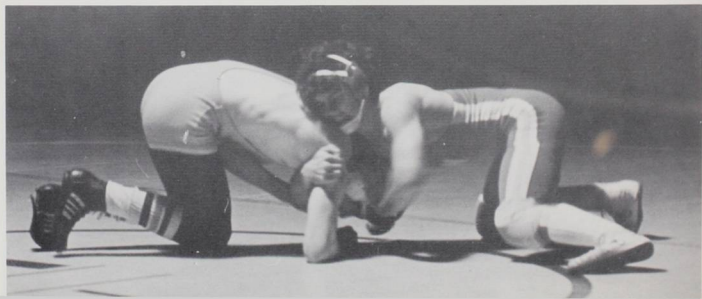
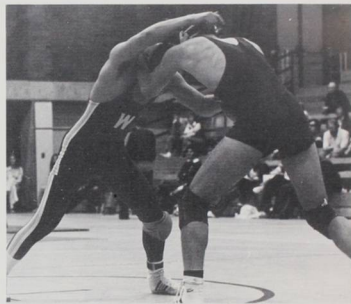
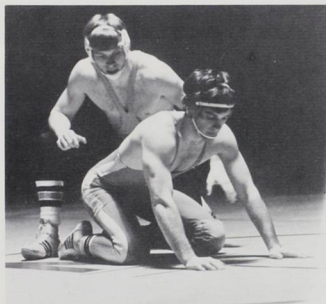
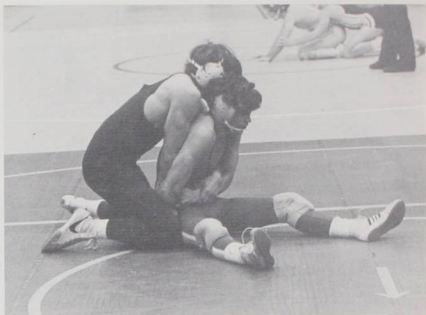
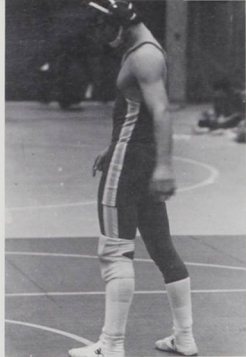
## Back Row

(l - r) Dan Foster  
 John Tyner  
 Mike Sykes  
 Butch Morfitt  
 Tracy Jackson  
 Roger Hendrix  
 Mike Long  
 Coach Vern Petrick

## Front Row

(l - r) Tony Anglin  
 Terry McIver  
 Jim McPhetridge  
 Kerry Cunningham  
 Steve Rubinstein  
 Carter Walton  
 Mike Knight







# Rugby

## Third Row

(l - r): Steve Turner  
 Dave Van Dyke  
 Ken Slack  
 John McGladery  
 Craig Heath  
 Lincoln Rutter  
 Dave Terry  
 Coach Mike Nelson

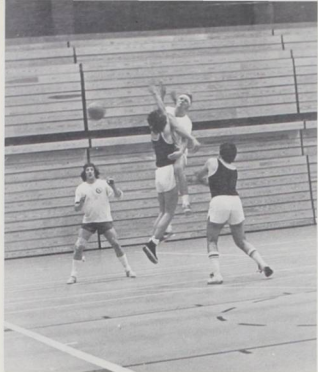
## Second Row

(l - r): Ted Miller  
 Mike Lederle  
 Mike Navares  
 Mike Martin  
 Drew Munson  
 Mick Elliot  
 Eric Hanson

## Front Row

(l - r): Trey Scott  
 Shawn Holt  
 Baron Rathe LeGurch  
 Drew Havea  
 Wes Fitzwater  
 Shepard Earl  
 Ronald Cartmell  
 Garrett Knapp





# Team Handball

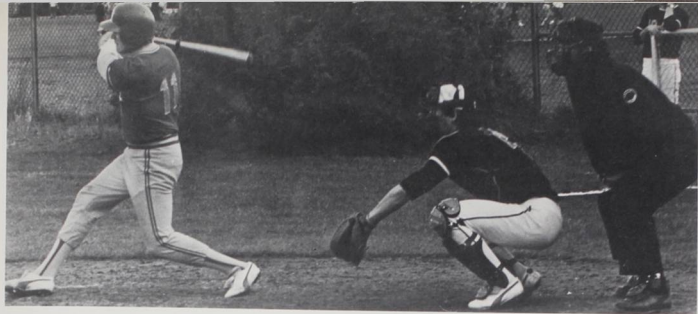


**Back Row**

- (l - r) Bill Foster  
 Dan Foster  
 Brent Mellbye  
 Gary Barbour  
 Brad Marineau  
 Bill Fleming  
 Ron Severson  
 Rich Scrivner  
 Drew Havea

**Front Row**

- (l - r) Kirk Mosher  
 Heine Fountain  
 John Barbour  
 Dave Milloy  
 Charlie Schreck



# Baseball



Rex Anderson  
Randy Brack  
Mike Bray  
Pat Daron  
Joe Denbo  
Jim Dierickx  
Shawn Farrell  
Randy Greene  
Norm Hardy  
Denny Helt  
Jeff Huddleston  
Dan Ivie  
Jim Kniffin  
Gary Koch  
Kent Kraft  
Tom Moore  
Tim Simmers  
Kevin Smith  
Coach Bill Trenbeath





# Softball

## 3rd Row

(l-r) Kathy Sulaver  
Tracy Rapp  
Lisa Kuhns  
Roberta Woods  
Wendy Kalahiki

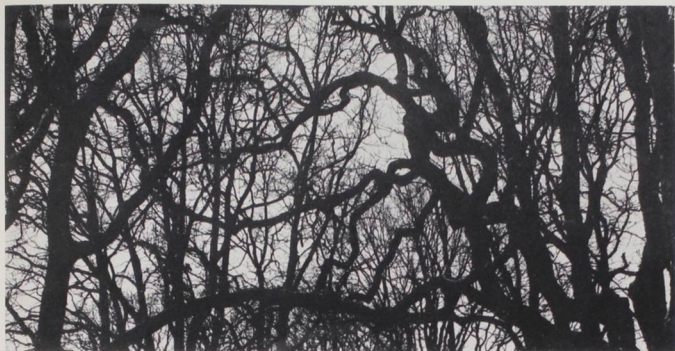
## 2nd Row

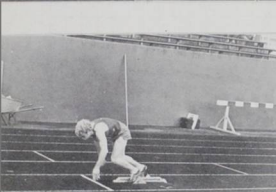
(l-r) Coach Fran Howard  
Lynne Crosett  
Kris Kostel  
Carla Piluso  
Nancy Lammers  
Jean Randall

## Front Row

(l-r) Kim Caldwell  
Carrie Martin  
Joann Atwell  
Robin Brandt







**Back Row**

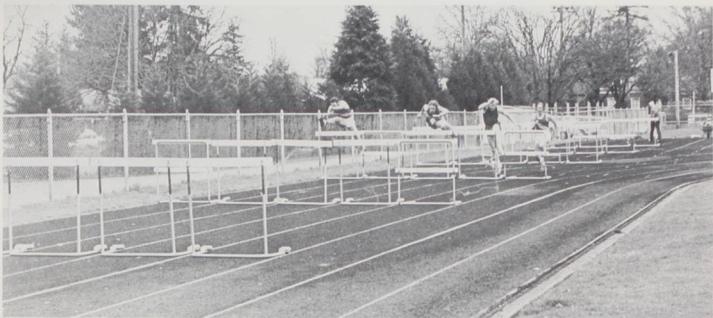
(l - r) Matt Beddoe  
Steve Eickelberg  
Don McCracken  
Dave Bowen  
Gary Hallaian  
Pete Dickson  
Rick Wheeler  
Phil Hall

**Middle Row**

(l - r) Coach Chuck Bowles  
Brent Seidler  
Tom Walsh  
Larry Staab  
Mark Stevens  
Roger Hendrix  
Dave Crowther  
Doug Knowlton  
Terry McCulley

**Back Row**

(l - r) Ed Nelson  
Dave Bacon  
Dan Hall  
Tim Archer  
Guadalupe Franco  
Steve McGrew  
Dave Runner  
Steve Potter



# Track





# Women's Track



## Back Row

(l - r) Sue Ruff  
Shan Elich  
Helen Brown  
Bobbie Halcro  
Cindy Richardson  
Alice Hunsaker  
Coach Jean Zumwalt

## Front Row

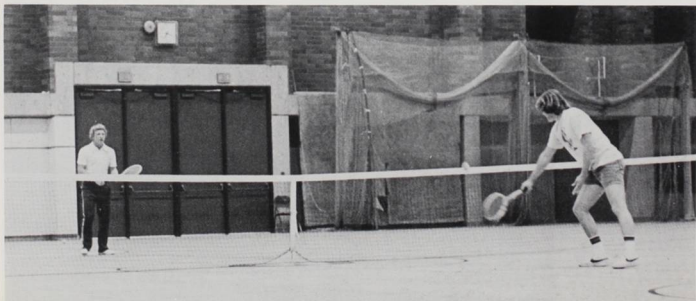
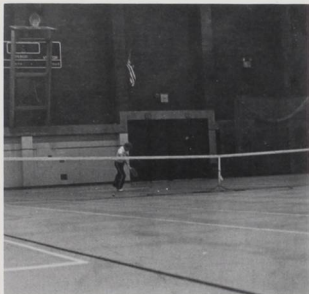
(l - r) Holly Brown  
Betty Barnes  
Jenny O'Neil  
Lynne Davis  
Nancy Lowenthal  
Laurie Freeman

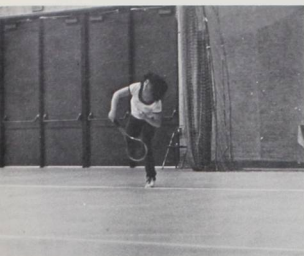


# Tennis



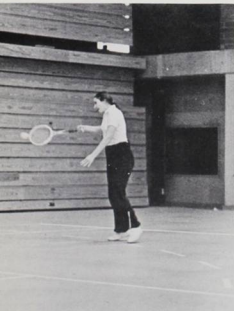
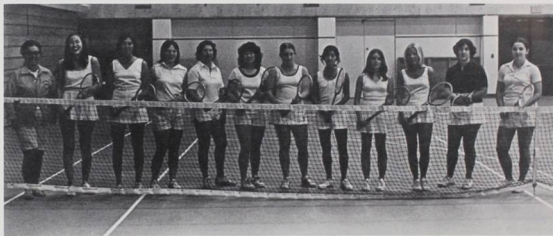
(l - r) Dan McClung  
Kirk Mosher  
Mark Mitchell  
Art Flores  
Bob Brown  
Mike O'Neil  
Mike Carlson  
Dale Bernards  
Coach Jim Boutin





# Women's Tennis

(l - r) Coach Jean Williams  
Alma Uprickson  
Laurie McQueen  
Julie Barbour  
Leah Van Natta  
Wendy Hasuike  
Laurie Meeker  
Jean Ujiki  
Patty Sullivan  
Stephanie Peterson  
Gail Winterscheid  
Polly Picco



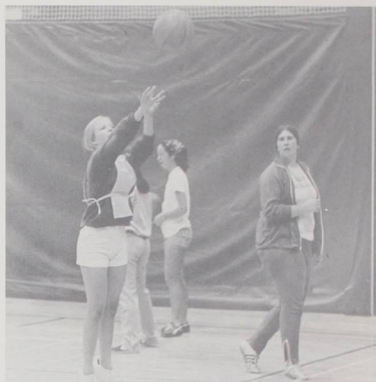
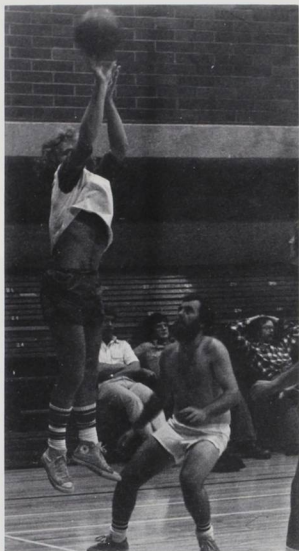
# Golf

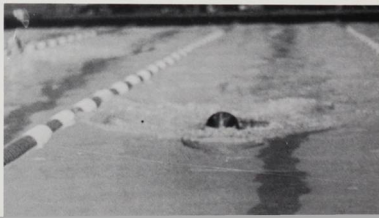
Sean Duff  
Scott Gunning  
Terry Haugen  
John Kent  
Jay McCallistar  
Dwight McFaddin  
Jeff Swanson  
Steve Warren  
Coach Steve Prothero

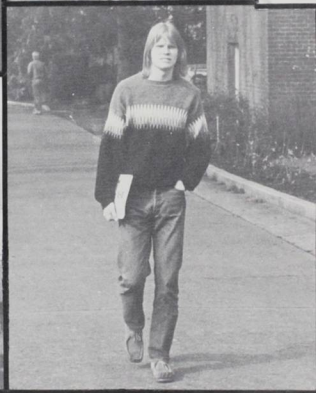
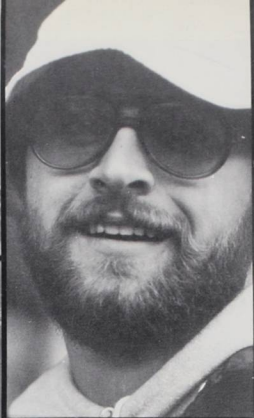


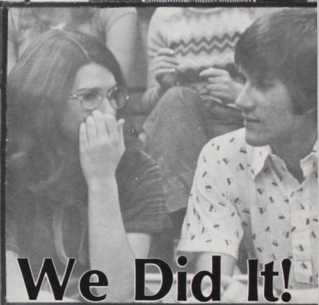
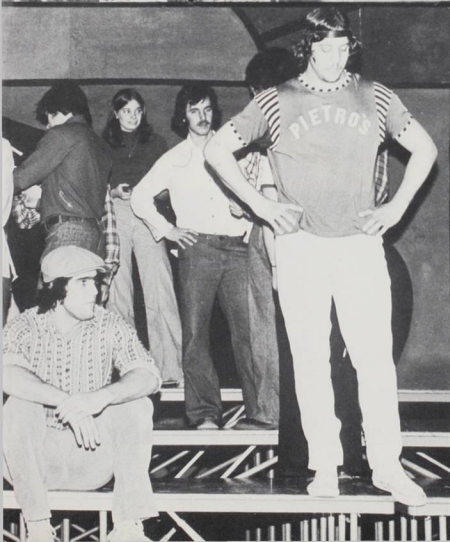
(l - r) Coach Jean Williams  
Laura Bracken  
Linda Benson  
Kiki Poth  
Wendy Teague

# Intramurals









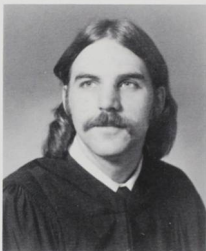
**We Did It!**







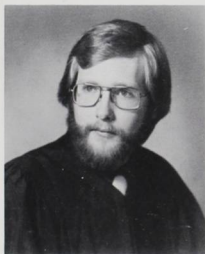
Virginia Albrough  
Psychology



Dorr Scott Allen  
English



Sue Allen  
Psychology



Eric Amos  
Chemistry



Molly Andrews  
Economics



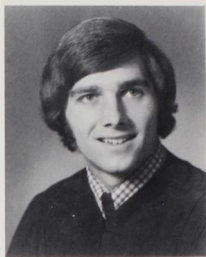
Jo Ann Atwell  
Biology



Janise Ashton  
Physical Education



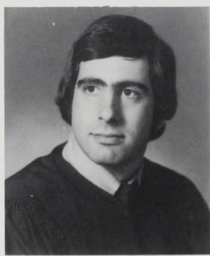
Dave Ball  
Economics/Math



Gary Barbour  
Political Science



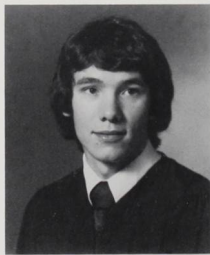
Debbie Barnhart  
PURG



Michael Batlan  
Economics



Linda Bayer  
Psychology/Sociology

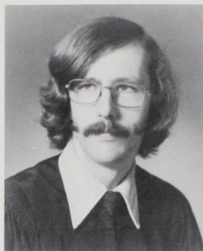


Tom Beatty  
Physical Education





Karen Bedrossian  
Biology



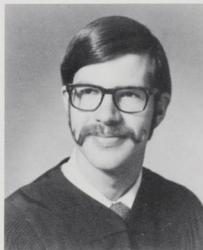
Steve Beecroft  
Biology



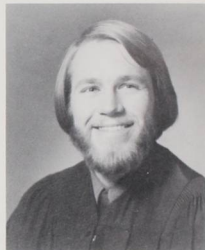
Sara Bell  
Sociology



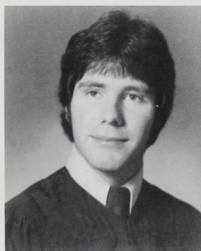
Linda Benedetti  
Biology



Mark Bierly  
Economics

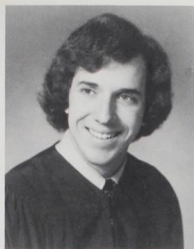


David Bixby  
History/Political Science

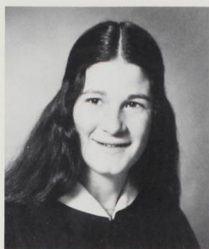


Richard Blank  
PURG





Brian Booth  
Environmental Science



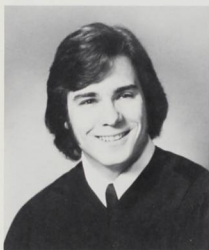
Holly Brown  
Physical Education



Pam Brown  
American Studies



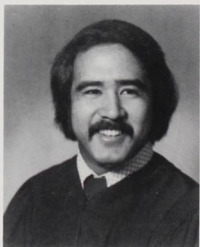
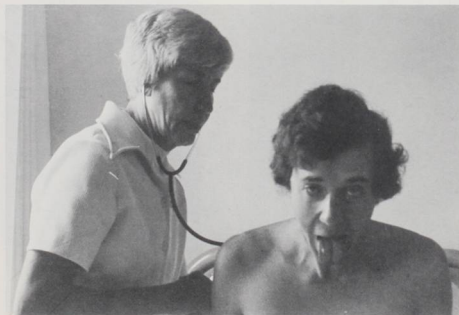
Linde Buschman  
Biology



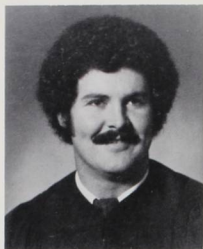
Gregory Capp  
English



Susan Cauley  
French



Joseph Cho  
Physical Education



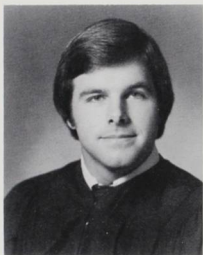
Robert Claunch  
Economics



Jaclyn Coakley  
Sociology



Kathryn Concannon  
Hispanic Studies



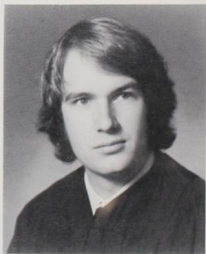
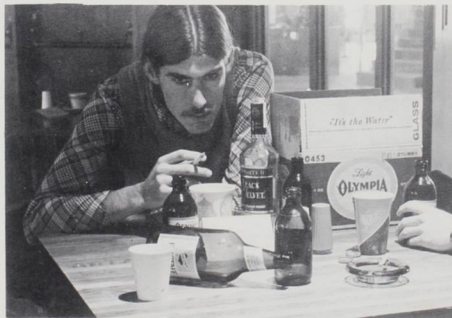
Craig Cookingham  
Biology



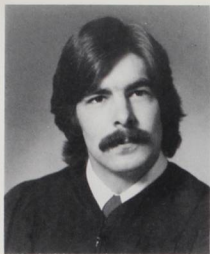
Gisela Cowger  
German



Nancy Cowles  
Environmental Science/Biology



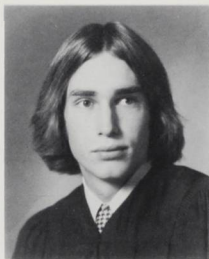
John Cronkite  
Economics/Political Science



Doug Croskell  
Economics



Lynne Crossett  
Biology



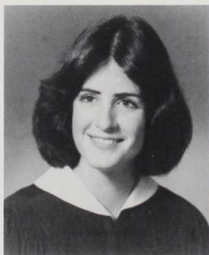
Steve Dahlem  
Economics



Karen DeShon  
English



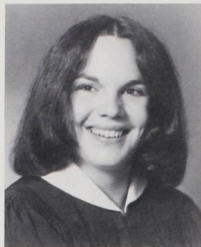
Richard Dickson  
Chemistry



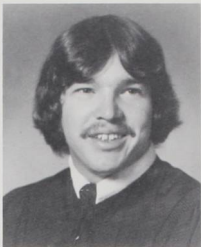
Ellen Dunn  
Physical Education



Leslie Earley  
Performance/String Instrument



Michelle Farmer  
Economics



Dennis Fast  
Political Science



Kathy Frey  
Chemistry



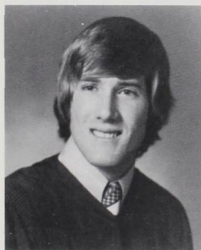
Lorelei Garson  
English



Nancy Glass  
Psychology

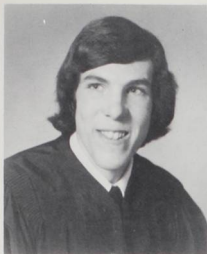


Sally Godard  
Political Science

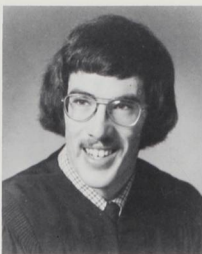


Michael Gray  
Economics





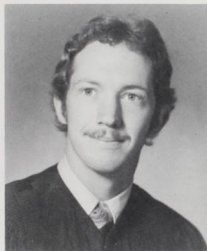
Dan Hall  
Economics



Phil Hall  
Biology



Janet Hannaford  
English/History



Robert Hansen  
Chemistry



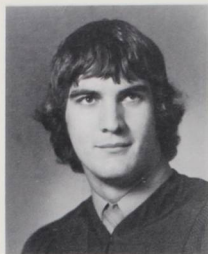
Katherine Harris  
Environmental Science



Nancy Hartig  
Economics/Math



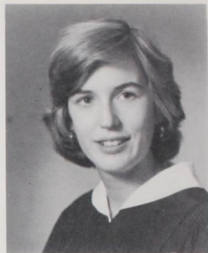
Marsha Hawkins  
English/Humanities



Craig Heath  
Psychology



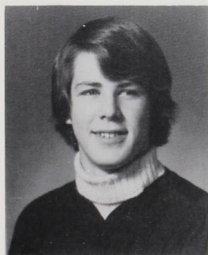
Janet Herrin  
Mathematics



Krista Hildebrand  
English



Dianna Hoffman  
French Studies



Steve Howell  
Chemistry



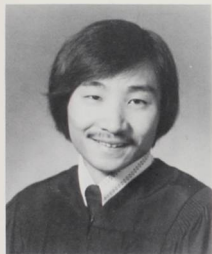
Lynne Hume  
Political Science



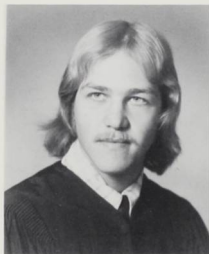
Anna Hunter  
Sociology



Richard Hunter  
Sociology



Takashi Itagaki  
Political Science



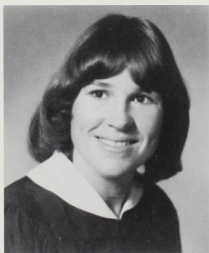
Dan Ivie  
Environmental Science



Sibyl Jarrett  
Chemistry



Pamela Johnson  
Art History

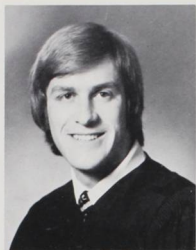


Karen Judge  
Sociology



Pam Judy  
English

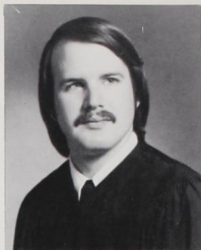




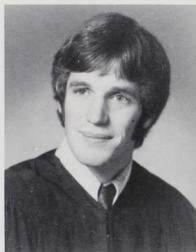
Gary Kaster  
Economics



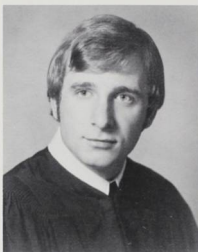
Cesile Kawakami  
Psychology



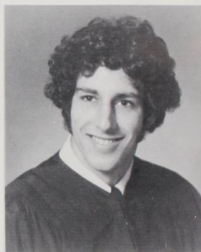
Doug Kays  
Biology/Psychology



Mike Knight  
Art



Gary Koch  
Economics



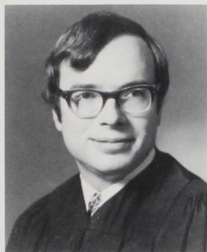
Dave Lambert  
Biology



Judy Lang  
Sociology



Mike Lederle  
Environmental Science



Chuck Lewis  
Biology



Allison Lockwood  
Psychology



Dave Long  
History



Robert Lumm  
Political Science



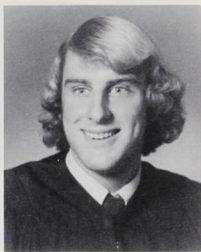
Sigrid Lund  
Environmental Science/Biology



Rob Martin  
English



Cindy Moomaw  
Biology



Dwight McFadden  
American Studies



Linda McGinnis  
Psychology



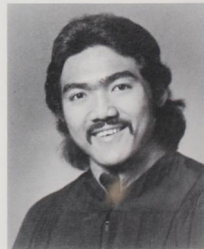
Patti McKibben  
Psychology/Sociology



Katie McLellan  
Social Science



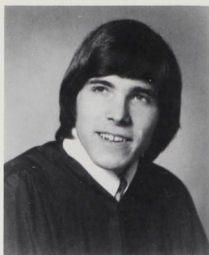
Barbara Napp  
Mathematics



Mike Navares  
Physical Education



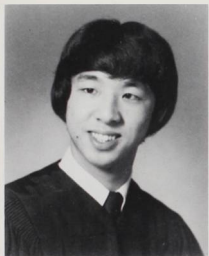
Nancy Newell  
Spanish



Bill Olson  
French



Ray Ono  
Economics



Hideya Onozuka  
Economics



Candice Pallett  
Fine Arts



Nancy Parrish  
Biology



Becky Pechman  
History

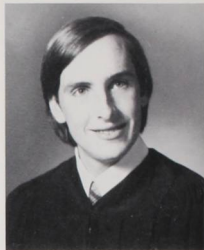




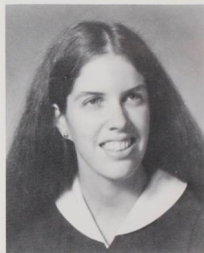
Janice Pederson  
French Studies



Anne Pendergrass  
American Studies/English



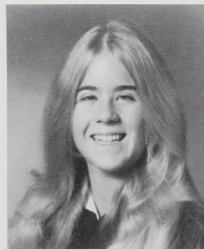
Steve Phillips  
Economics



Susan Phillips  
Sociology/Psychology



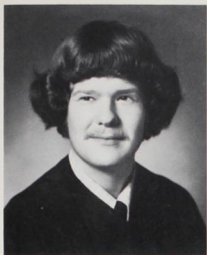
Chryl Pittman  
Psychology



Cathi Price  
Economics



Sally Purbrick  
Biology



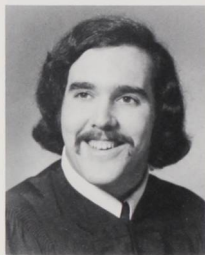
Jim Rainey  
Economics



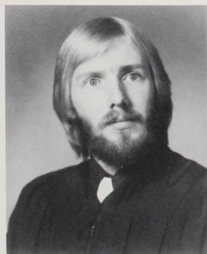
Susan Ramos  
Spanish



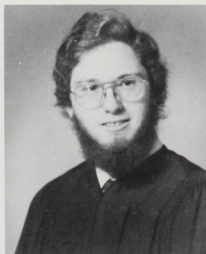
Rebecca Rowe  
English



Joseph Rubenstein  
Biology



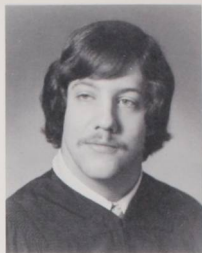
Mark Rutkowski  
Economics



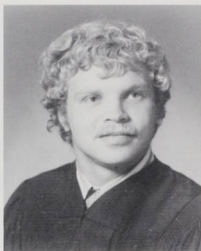
Ron Saxton  
Political Science



Joyce Schlaefli  
Sociology



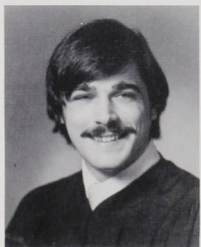
Richard Scrivner  
Environmental Science



Brent Seidler  
Biology



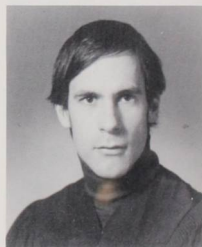
Betty Shamberger  
Music



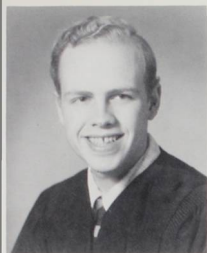
Jerry Sheehan  
History



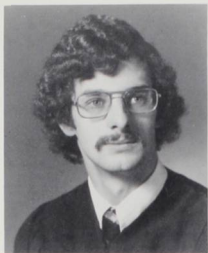
Gwen Sheehy  
Biology



Scott Sideras  
Economics



Dwight Sims  
Mathematics



Jim Smith  
Psychology



Sally Smith  
Physical Education



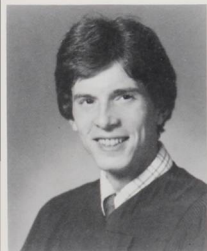
Renee Spagnola  
Political Science



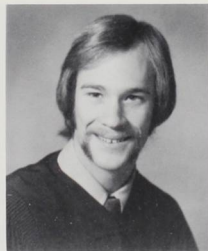
Bruce Stanton  
Chemistry



Jerry Steele  
Sociology

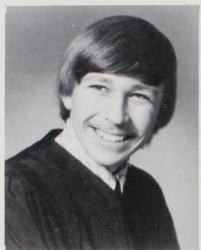


Robert Stenwick  
Music



Steve Stoyhoff  
Environmental Science





Brian Sund  
Psychology



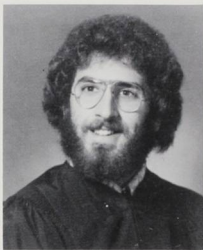
David Susen  
Political Science



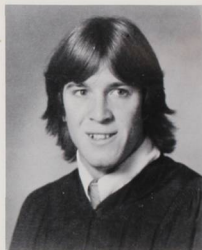
Diane Tartar  
Theater



Eileen Thomas  
Rhetoric



Michael Thomas  
Economics



Dave Titus  
Economics



Kathryn Tryck  
Environmental Science

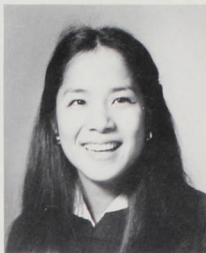




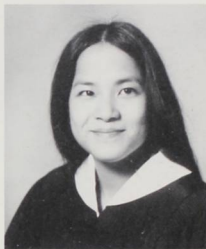
Martha Tucker  
Biology



Paul Turner  
General Science



Chris Ung  
English



Geri Ung  
Environmental Science



Leah Van Natta  
Psychology

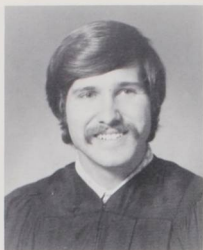


David Ventres  
PURG/Political Science

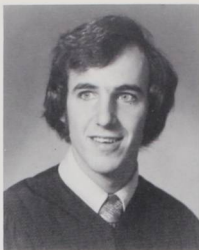


Katherine Walwyn  
Physical Education

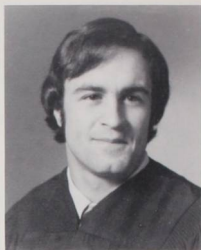




Steve Warren  
Economics



Larry Webster  
Biology



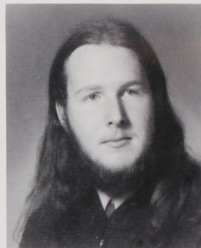
James West  
Economics



Pam Wiese  
Music



Janice Wilson  
French Studies



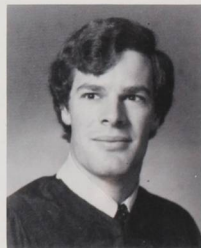
Tom Wilson  
Mathematics



Gail Winterscheid  
History



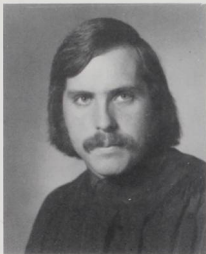
Mark Won  
English



Tom Woodworth  
Economics



Georgianna Wooton  
Art



Phil Wynn  
Biology



### Seniors Not Pictured

Rodney Bayne  
Hietho Bokides  
Randall Brack  
Harold Browning  
Allan Bruton  
David Cherry  
Carolyn Connor  
Jan Cordell  
Howell Curran  
Michael Erb  
Andrew Fainer  
Jacqueline Francis  
Traci Fritz  
Susan Gamble  
Barbara Gill  
Wayne Hall  
Scott Hamlin  
Norman Hardy  
Brock Hinzmann  
Richard Hoss  
David Houston  
David Howard  
Ann Huelskamp  
Jeffrey Jones  
Sophie Jupp  
Kristen Kiely  
Ron Kuettner  
Kathryn Lantz  
John Larson

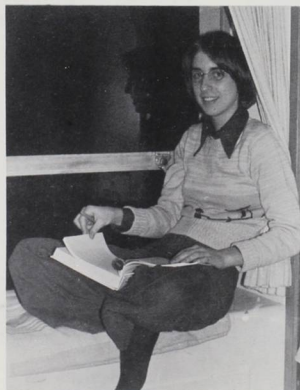
Mark Long  
James Lynn  
Jalaine Madura  
Rebecca Moffat  
William Mooney  
John Neale  
Julie Nelson  
Scott Nicholson  
Marybeth Ormsby  
Sandra Palin  
Robert Payne  
Toni Peragine  
Jean Person  
Graig Rice  
Candace Ringle  
Marcus Robins  
Ruth Rolland  
Sally Kay Rose  
Philip Sandilands  
David Scherrer  
Sandra Schnabel  
John Sekerka  
Douglas Skiles  
Gregory Slayden  
Sharon Spall  
Joseph Story  
Alexander Stuvland  
Richard Weaver  
Steven Weimer



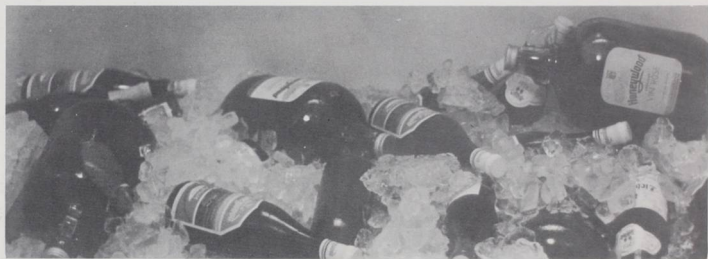
Beth Young  
Music Therapy

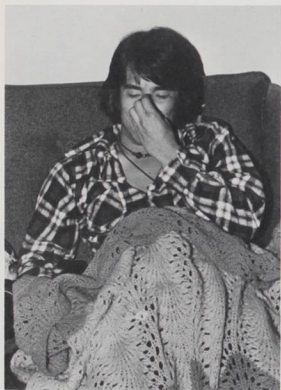


# People





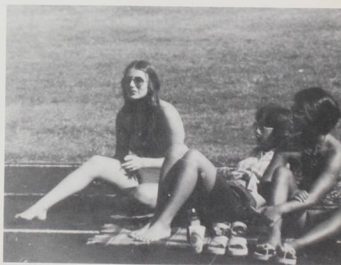


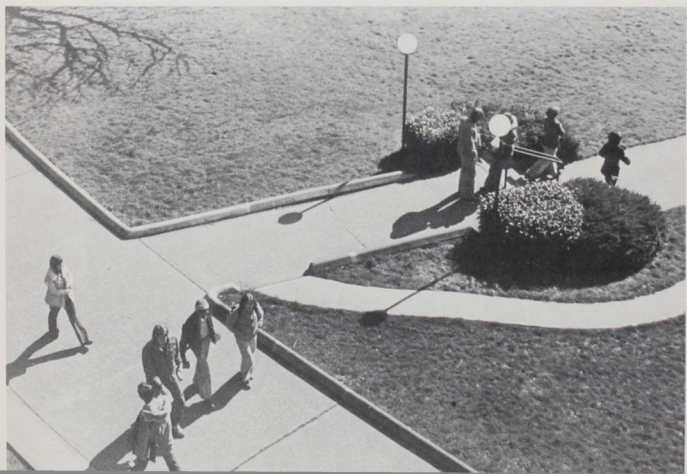


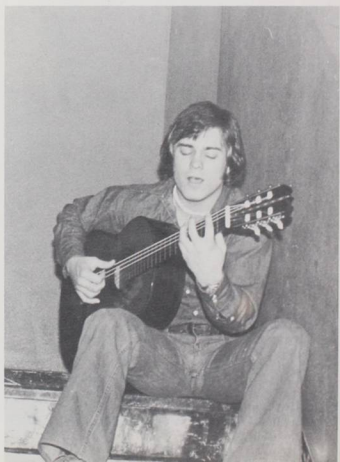
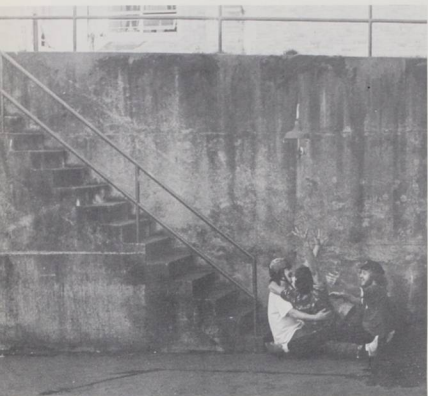




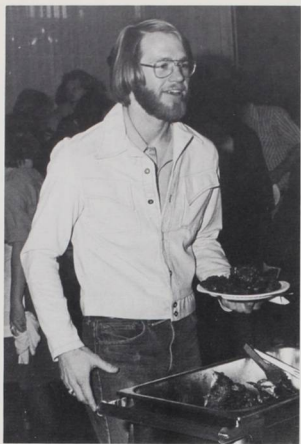


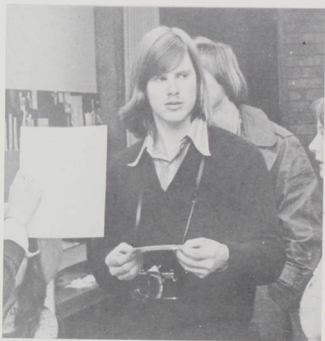
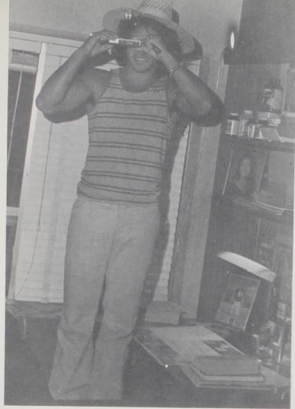


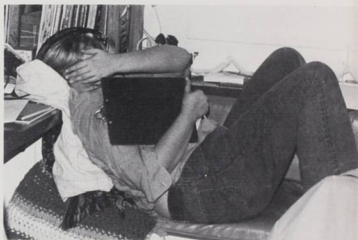
















**Create**



#### **Prelude**

Unaware of the consuming menace  
They dance. Songs are sung to Bacchus  
and beds are sighs  
and unmade. Dreams and Reality  
cannot be distinguished one from the other.  
Joy is the life of two in ignorance.

#### **Tragedy**

A noise. A whisper.  
A piece of reality eradicates all the pleasures  
of fantasy. Hopelessness and Emptiness  
devour the adrenalin of bliss.  
And love is not made, but endured.  
Joy is the life of two in ignorance.

#### **Decision**

A yellow wood awaits them and  
no thought to choice is given.  
Action obliterates thought and  
pebbles keep touch with the past.  
Exhaustion breathes upon action and darkness falls  
Joy is the life of two in ignorance.

#### **Escape**

Now they awake and breathe the powder of unfounded hope.  
A blinding light strikes them from their mount.  
The light fades and deluding visions appear.  
Their stomachs are filled with dreams and faceless voices  
and their nonexistence gives them life.  
Joy is the life of two in ignorance.

#### **Darkness and Return**

Sleep clouds their euphoric non-existence.  
until all is darkness again.  
Thin, this time, a quieter awakening.  
The vision comes, but is transformed  
by a black segment of reality.  
Joy is the life of two in ignorance.

#### **Bondage and Captivity**

The third level rises to their plane.  
The only existence is here where  
chicken bones become fingers  
and Cunegonde is ravished.  
The Blackness of un-life endured.  
Joy is the life of two in ignorance.

#### **Decision and Escape**

Agony gives birth to idea  
While passion gives birth to action.  
Reality is pushed downward  
and they take flight bound for  
Life as it may be lived and not as it exists.  
Joy is the life of two in ignorance.

by Susan Ruth Nutting

The Thunderbird, 1

In time of darkest night,  
the wrath of winter storm  
is passed from mountain fire.

Wrapped in the rain-soaked  
remains of a coarse knit sweater  
long retrieved from the barroom floor  
I huddle on the steps of a poor and vacant room.

I rest my head upon  
the wind cornered leaves;  
shredded, long soft and matted,  
cushions in the winter night.

I feel their juice among my hairs.

I taste the earth that fills their veins.

I press my fourth finger  
into the bowl of my father's pipe.

Feeble lines of whispered smoke curl.

I breathe my father's breath.

I lightly touch the wet of wool  
across my lips  
and cry fear in the cradle  
of Thunderbird's wing.

by Jim Cuno



The Night Mare

Though it be warm and moist,  
it carries no fever.

With boots of bloodied mud  
it storms with crashing hooves  
through frost on fallen leaves.

But it leaves no trace,

It leaves no trace among the leaves.

It leaves no trace in the windowless room.

Its hooves show fear  
in cold steel eyes.

by Jim Cuno



The eagle sits and watches.  
In all his years and wisdom,  
he know the fate of his brothers.  
Dry wind blows noiselessly over the barren land  
and whispers softly to the earth,  
skin stained dark  
with the blood of her sons.  
Colorless sky,  
bare trees,  
dry waters,  
Seasons one and the same,  
gray and desolate.  
Shadows fall on newborn faces.  
Wolves wait at the door.

Like caged birds, we sit.  
We are prisoners in our own land.  
Rotting in the confines of stagnant minds,  
I watch death creep towards our door.

Close, too close for comfort,  
Wolves wait . . .  
There is hunger in their eyes.

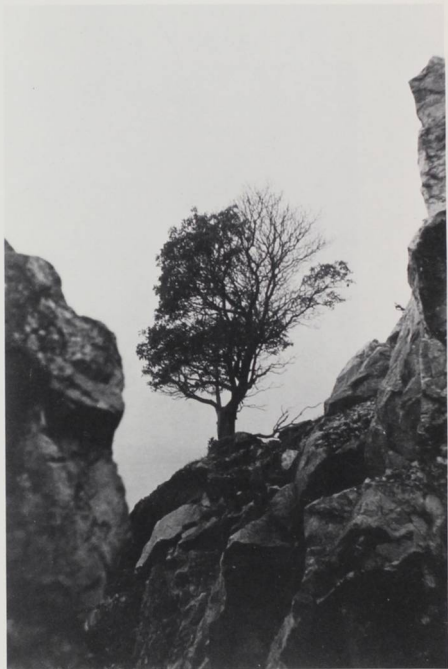
We work.  
Slowly, methodically,  
we mold our wings,  
we devise a plan.  
Wings to take us far and high,  
Strength to set us free.

The dawn breaks.  
Sunlight floods the land.  
Brothers in minds,  
poised, ready for flight.  
The time has come,  
A commitment is made,  
we are bound to our task.  
Like nestlings pushed from the nest,  
we taste our own power.  
Strong, the eagle our brother,  
we meet the air.  
Wings take us high,  
Upward, upward as if to reach heaven.  
More height,  
more strength,  
Quick, powerful strokes  
carry us beyond  
the limits of shriveled minds  
in seasonless years.

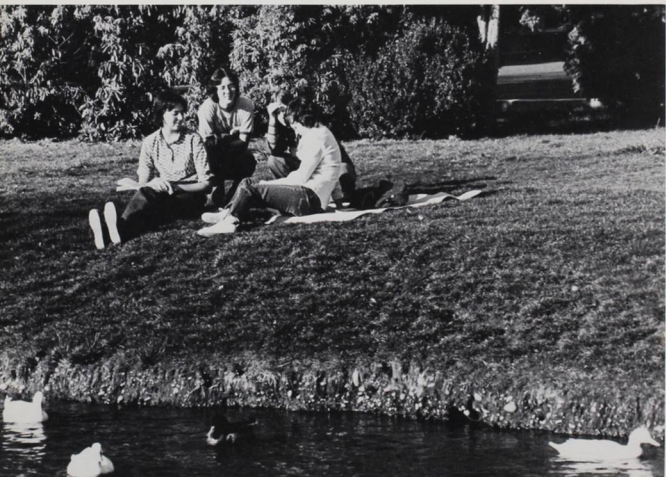
The sun is hot.  
We soar high into the burning sky.  
Heat, too much heat,  
My brothers are falling.  
The air is filled with cries  
of fear and pain,  
broken wings  
heavy bodies hurtling through  
the still air.  
I reach out to help  
but cannot reach them.  
Then silence,  
nothing more.

The eagle sits and watches.  
In all his years and wisdom,  
he knows the fate of his brothers.  
Cold wind blows.  
In disturbed dreams,  
I walk,  
All of hope in feathers.  
Wolves wait at the door.

by Robyn Matsunaga









Steve Fullmer

## Gallery '76



Tim Becker



Mike McNutt



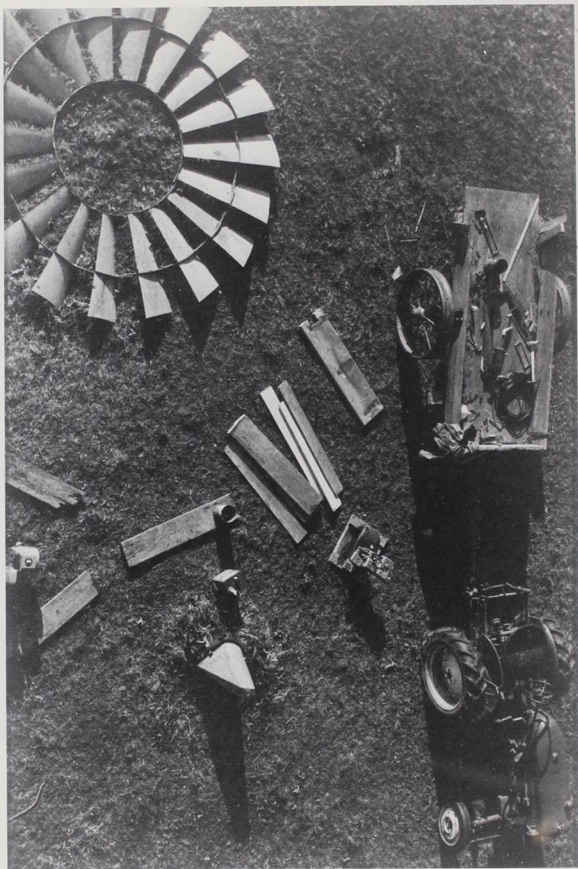
Mike McNutt



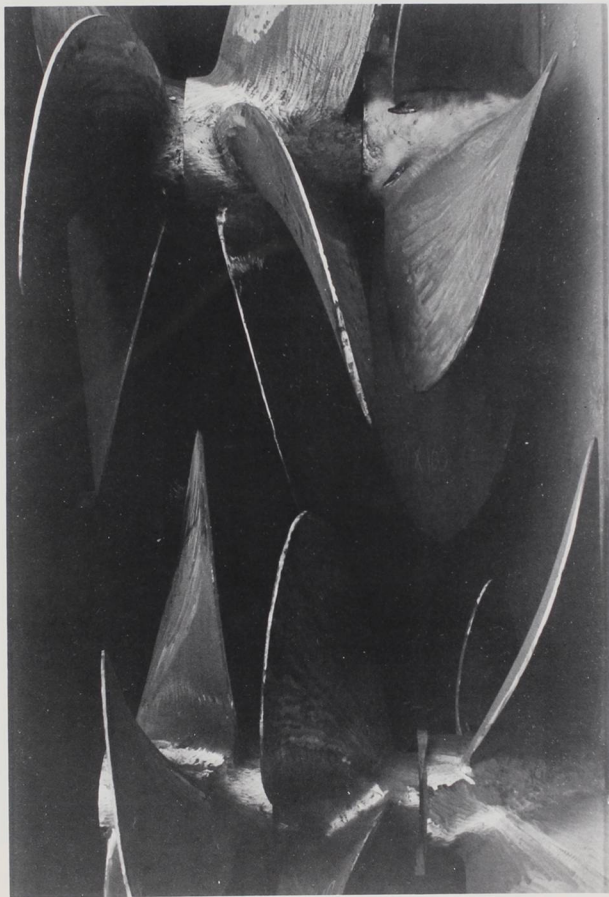
Larry Webster



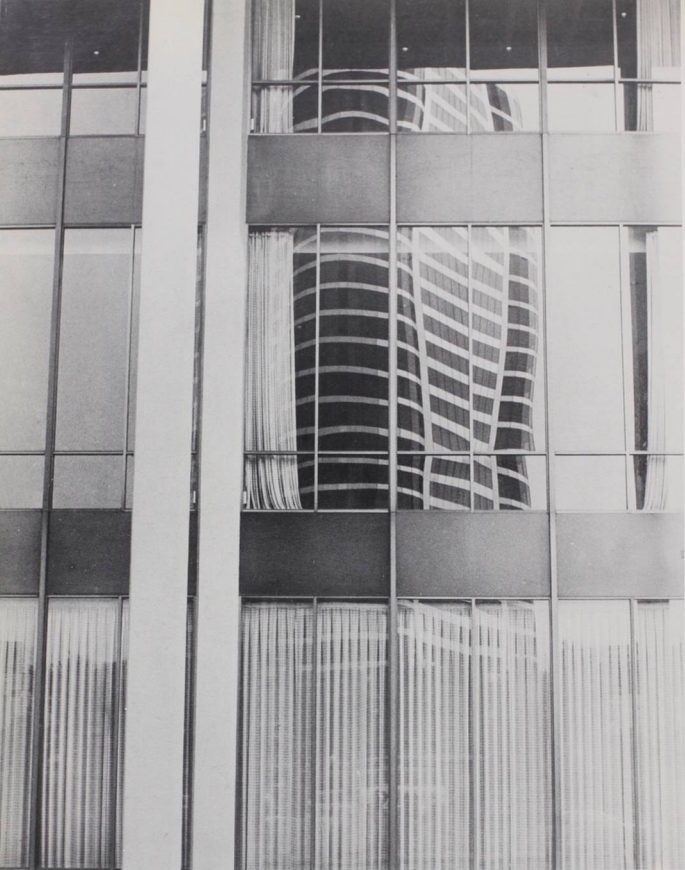
Bill Ahina



Tim Becker



Tim Becker



Kim Salzwedel



Larry Webster



### Table of Contents

Fall:	
Participate .....	18
Compete.....	32
Us .....	48
Them .....	90
Spring:	
Participate .....	106
Compete.....	130
We Did It! .....	154
People .....	178
Create .....	192
Gallery '76 .....	196
Sponsors .....	208

# Acknowledgements . . . .

The editors would like to express their sincerest appreciation to those people who helped in the production of the '76 Wallulah.

One of the most important aspects in the production of a yearbook is the printing done in the darkroom; for this we'd like to thank Steve Fullmer. We would also like to thank Keith Lee, Jim Rainey, and Larry Webster for doing the last minute, all important printing which made it possible for us to meet our deadline.

Also worthy of mention are:

Mark Bledsoe and Craig Stroebel - for helping Fullmer enlarge photos.

Bill Ahina and Rick Ikeda - for carrying their cameras with them every day and for taking so many pictures at the last minute.

Karen DeShon - but we just can't put it into words.

Dan Gordon and Jim Rainey - for bailing us out when it looked like we wouldn't be able to meet the cost of publication.

Ernestus Schnabler, Marty McBroom, John Neil, and the people who took candid of their living organizations - for their photographic help.

Rick Ikeda - for the cover photo.

Jan McMillan - for her help in our "color picture crisis."

Bob Woodle - for his help in selecting key photographs.

Tom Wilson - for his steady hand at the cutting board.

Herb Gray, Rob Martin and Joe Williams - for the write ups.

Mike McNutt - for his help, advice, and calming influence when things got tense.

Carol Long - because we had such a good time in Ireland spring semester last year.

Your Town Press, especially Chuck and Ken - for their help and patience.

## staff were ....

### Editors:

Barbara Gill  
Katie McLellan

### Faculty:

Jim Eustrom

### Activities:

John Shank

### Sports:

Gary Thede

### Advertising:

Dan Gordon  
Jim Rainey

### Darkroom Printer:

Steve Fullmer

### Photographers:

Bill Ahina  
Tim Becker  
Howell Curran  
Bill Foster  
Steve Fullmer  
Rick Ikeda  
Keith Lee  
Mike McNutt  
Mark Mitchell  
Kim Salzwedel  
Dave Spalding  
Larry Webster

**From the Editors' desk:** In spite of the pressing deadlines, high cost, and careful planning that must go into a yearbook, the Wallulah is published annually by the Associated Students of Willamette University...T.C. plays at being editor...take the peanut butter and jelly sandwich away from Fullmer...you guys want to go to the Ram?...just one drink...sunflower seeds...I wish that damn literary magazine would hurry up and leave...no, T.C., Ruthie can't be on the cover...when did Barb and Katie leave?...4 A.M....the gross man...Dan, how'd you get that Penney's ad?...Dan, why didn't you get that Penney's ad?...you guys I have to study...let's abolish the yearbook...where's McNutt?...Who's been stealing our film?...Ken, please don't tell Chuck...what is Hunter really doing in that picture?...print it...don't tell Bill I'm co-editor...there are too many Phi Deltas and Betas..."The Wizard of Oz", Mark Elgin, and T.C. Hawkins...where's Gary?...free coffee from Saga...joke...Chuck, are you mad at us?...Salaries?...yes, Fullmer, you'll get paid...who should we dedicate the yearbook to?...T.C., you've already had it dedicated to you...adventures in the toilet with the strangler...I'm hungry...will someone help me in the darkroom, I'm lonely?...8 birds in the living organizations...Fullmer counted them...how disgusting...it's a reflection on your character...sensitivity training in Publications...Baaaaarb...let's quit...yearbook pipple...where is Zoot?...down Zoot...midnight strolls with Rick...what did **you** do during spring break?...Oh, my God, it's Sunday...due date April Fool's Day...who's the fool?...Fullmer's got pinkeye...Jimbo...My language has gone from shit to zero...Jim, telephone...let's tie him up and throw him in the Mill Stream...does she really have it written up?...of course not...more beer...Kahluha and coffee...I'm upset...O.T.R? Fullmer...you've only got one page for administration?...good...I wish there was someplace closer than the Ram...you call Mike, no, you call Mike...McBroom out-talked by Becker in five seconds...Marty, how do you feel about alternatives to democracy?...I don't want any artsy shit in the activities section...where is FFFFFullmer?...don't worry Chuck, we'll get it done...And finally, continuing Willamette's tradition, **T.C.'s top ten:** 1. Melissa Clayman, 2. Priscilla Wilder, 3. Leann Thede, 4. Jamie McMahon, 5. Kathy Yocom, 6. Georgianna Wooton, 7. Kelli Brown, 8. Maryann Burke, 9. Cindy Burt, 10. Martha Tucker...and Toto, too.



**H.H.**  
ENGINE PARTS & SERVICE FOR



MIXERS, DUMPS, VANS  
GAS OR DIESEL ENGINES  
SCOUTS

A TRUCK FOR EVERY NEED

**581-1446**

1935 SILVERTON RD. N.E. SALEM  
ACROSS FROM THE FAIRGROUNDS

ROADSIDE SERVICE

REPAIRS & PARTS  
TILL 1 A.M. - WK. DAYS

PARTS  
SATURDAY

8:00 A.M. - 2:00 P.M.



## A-OK SPECIALTIES

- Party supplies
- Balloons
- Advertising Specialties

2111 Front St. Suite 110

364-8650

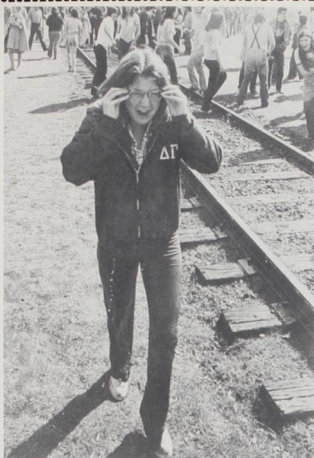
Victor Cash Registers & Calculators - Royal Typewriters - Furniture



**WILLAMETTE  
BUSINESS  
MACHINES, Ltd.**

WM. D. RUTTAN  
PHONE 364-3385

970 COMMERCIAL ST. S.E.  
SALEM, OREGON 97302



# THE GAY BLADE

CLOTHES  
FOR MEN

198 Liberty Street, N.E.,  
and Lancaster Mall

## Willamette University BOOKStore

“SALEM’S  
LARGEST  
SELECTION  
OF BOOKS”

370 - 6315

## The Harvey Loveall Salon of Hair Styling

8:00 to 5:30 Daily  
Monday and Thursday  
until 9:00 P.M.

363 - 2355

Redken Products

780 Commercial S.E.



## Funny what a cap and gown does to people.

You can almost hear them, can't you? Do this. That. You ought.

Parents, teachers, recruiters, counselors, aunts, uncles, second cousins. Even irrepressible kid brothers.

Everybody has the answer for you. And some of them, no doubt, are pretty good. The only problem is the people who have the answer don't have to live with it. You do. The decisions you have to make determine your future. Not theirs.

We, at U.S. Bank, don't have any pat answers for you. But if you could stand just one

more piece of advice, we think Shakespeare said it as well as it's ever been said: "To thine own self be true."

Take some time out. Look hard at yourself. Find out where your abilities lie, and what you enjoy doing.

Then, if you find those things, you'll be ready for a decision.

One that you can live with for a lifetime.



**United States National Bank of Oregon**  
Seven convenient branches  
serving Salem.



**good food - good spirits - good friends**



**hamburgers & hot dogs  
sandwiches, steaks,  
for lunch & dinner**

**FOR TRAVELERS - SANDWICHES TO GO**



**Corner of 12th  
& Bellvue  
directly across  
from WU**

**ROTH  
PORSCHE-AUDI  
THE O-N-L-Y  
AUTHORIZED DEALER  
for PORSCHE-AUDI  
in the MID-WILLAMETTE  
VALLEY**

**HOURS:**

MON. thru FRI. 9 p.m.

SATURDAY UNTIL 5:30 p.m.

SUNDAY (By Appointment)

**PHONE 393 - 2000**

**4723 Portland Dr. NE  
Salem**

# PACHINO'S BLACK KNIGHT PIZZA PARLOR

27 DELICIOUS VARIETIES  
HOME DELIVERY

LARGE SELECTION OF PIZZA AND HENNY-PENNY CHICKEN

OPEN MON - SAT 11 AM TO 1 AM

585 - 9281

On Sundays We Open at 4 PM

2605 COMMERCIAL SE

399 - 0081

On Sundays We Open at 1 PM

4200 RIVER ROAD N.

Go in comfort on the  
Big, luxurious  
Silver Eagle!



**Continental  
Trailways**

*easiest travel on earth*

**378-9144**

June Dress, agent 645 Chippewa St. 100

CHARLIE and NITA SOULE  
CO-OWNER MANAGERS

**TRAVE LODGE** SALEM

1555 STATE STREET, SALEM, OREGON 97301  
(503) 581-2466 TOLL FREE RESERVATIONS DIAL (800) 255-3050

## University Center SNACK BAR

Hours:

Mon. - Thurs. 9 a.m. - 4 p.m. 7 p.m. - 10 p.m.  
Friday 9 a.m. - 4 p.m. 6 p.m. - 11 p.m.  
Sat. - Sun. 6 p.m. - 11 p.m.

**court street  
Jewelry**



WATCH REPAIRING  
Watches  
Accutron—Bulova—Wylar—Zodiac  
WEDDING & ENGAGEMENT RINGS  
Orange Blossom

16 Years Experience  
GEORGE ISHIDA, Owner  
PHONE 363-8104  
474 COURT N. E.

# ARTIC CIRCLE



\* Fries

\* Hamburgers

\* Ice cream

\* Shakes

**Close to campus!  
Speedy service!**

Ph.585-4251

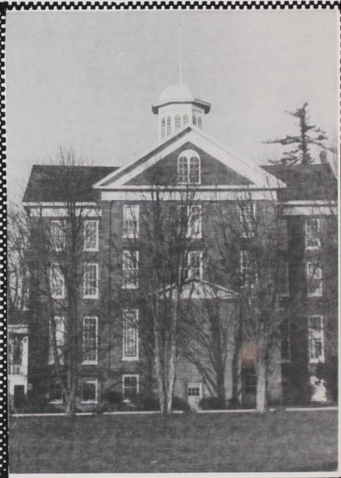
1411 State St.



**The  
Commercial Bank**

**SALEM  
East • West • Downtown  
SILVERTON • MONMOUTH  
MOLALLA NEWBERG**

Member FDIC



## The WHITE COASTER RESTAURANT

Thursday Nite

\$1.00 large pitcher

Pabst

Happy Hour

4-6 daily 1241 State St.



COOKE STATIONERY CO.

370 STATE ST., SALEM, ORE. 97301



J. A. JIM HENERY

PH. 581-1404



# EYERLY VOLKSWAGEN

Main Office

Body Shop

3230 Market St. NE

Authorized

\*Parts

\*Sales

\*Service

\*Leasing

\*Quality Used Cars

\*Complete Body Shop

Ph. 585-8066

Ph. 585-7251



EXCELLENT SELECTIONS

- Accutron - Bulova - Elgin & Croton Watches
- Crystal & Giftware



Orange Blossom Diamond Rings

SERVICES

- Jewelry & Watch Repair
- Remounting & Engraving

363-2828

315 COURT N.E.

ST. VINCENT

Ph. 364-3210

de PAUL

THRIFT

1550 Fairgrounds Rd. STORE



Columbia & Courtship Diamond Rings





Please don't hesitate  
to ask us  
for advice.

Today we offer more than 130  
individual services for all  
your financial needs.  
More than 140 offices  
statewide.

We'd like to  
get to know  
you.

 Member FDIC  
FIRST NATIONAL BANK  
OF OREGON

Seven branches serving  
the Salem area.



**A to Z Rental Center**

887 COMMERCIAL STREET, S.E.

SALEM, OREGON 97302

PHONE: 585-7782, 585-7783



*Courteous, friendly service • Clean, ready-for-use items  
Come in or phone*

## NATURAL HEALTH CENTER

NATURAL FOODS

HOFFMAN  
&  
WEIDERS } PROTEIN

Natural Vitamins & Cosmetics

1073 Commercial S.E.

Phone 362-9861



## Cueball



1262 State Street

378 - 9574

# SCOTTYS SHOES

**Quality Shoes  
for Men & Women**

The largest selection of NIKE Sports  
Shoes in Salem.

We specialize in the hard to fit.

Reed Opera House  
189 Liberty

ph 581-7987

Daily 10-6  
Fri. til 9  
Sun. 12-5

## Melting

## Soup



## Pot

## Kitchen

365 NE Liberty

Ph. 399-1823

1230 State St.

Ph.581-7620

SALADS SANDWICHES FRESH BREAD IN MINI-LOAVES

# Complete Portraiture Service

**LET MEIER & FRANK HELP YOU WITH  
THOSE IMPORTANT MEMORIES THAT  
WILL LAST A LIFE TIME**

**WHETHER THEY ARE SCHOOL PHOTOS,  
CHILDREN, FAMILY, WEDDINGS OR  
EVEN REPRODUCTIONS.**

**FRAMES ARE AVAILABLE.**

**363-2211  
Ext. 254**

***Meier*  
&  
*Frank***

# ALUMNUS PERPLEXUS

## KNOW YOUR BIRDS!

No. 14



The Alumnus Perplexus is a far-ranging nest builder indigenous to the North American continent. Both male and female sport distinctive plumage and are unable to camouflage themselves in most circumstances. Although they usually mate for life, they migrate often to new nesting sites, making them difficult to keep track of. The Perplexus maintains a strong instinct, migrating to its early training grounds each fall for games, frolic and sporting contests. Although a definite oddity in the bird realm, the Alumnus is luckily not an endangered species.

## ALUMNUS PERPLEXUS

WU'S ALUMNI PERPLEXI WELCOME THE CLASS OF '76 TO THE FLOCK!

### Alumni Association Services

- \*Continuing Education
- \*Travel Opportunities
- \*Library Privileges
- \*Sparks Center Privileges (subject to student priority)
- \*Addresses and records of classmates
- \*Reunions
- \*Alumni/Commencement Weekend Activities
- \*Alumni group parties throughout the U.S.
- \*Music, Theatre, Sports, Lectures on campus
- \*Recognition of distinguished alumni
- \*Representation through the Alumni Board of Directors
- \*The **Willamette Scene** and other publications to keep you informed on campus happenings and alumni news.

### Alumni Association Opportunities

- \*recommend students to Admissions Office
- \*offer employment possibilities for WU students
- \*provide contacts for WU in the business world or in government
- \*support the University financially (no matter how small the gift, it is needed and appreciated).

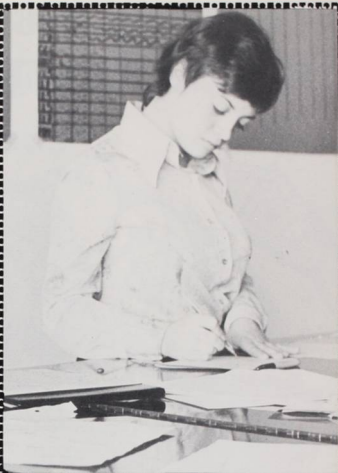
# St. Vincent de Paul Church

Sunday Masses at  
6 - 7 - 8 - 9:15 - 10:30 -  
11:45 A.M. & 5:20 P.M.

1025  
Columbia NE  
Coffee, Tea  
or Stereo

sales & installation  
364 - 2379

1949 State Street



Capital Press

1400 Broadway NE  
364 - 4431

The  
**VIKINGS 4**  
SCANDINAVIAN  
&  
AMERICAN FOOD

SCANDINAVIAN GIFTS & RECORDS

378 - 9619

1275 STATE ST.

# Bill Beard Sporting Goods

372 State Street 363-3111

Specializing in Team Equipment

# STOP 'N SHOP

## Capital Market

1420 State Street 581-7971

2 blocks east of campus

## Print Right

fast service printing

362-3631

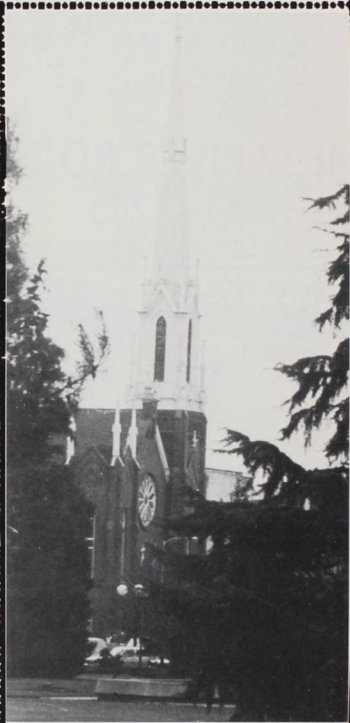
191 High Street S.E.



120 COMMERCIAL STREET N.E.  
SALEM, OREGON 97301

## Grabenhorst Realtor

198 Liberty  
Street S.E.



# HIS & HERS HAIR STYLING SALON

- PRECISION HAIR CUTTING
- CUSTOM COLORING & PERMANENT WAVING
- UNISEX

4837 RIVER RD. N.  
393 - 3215

Featuring JHIRMACK Products



The fuel injected  
**Datsun 280Z**



# JACK'S DATSUN SALES, INC.

2908 MARKET N.E.

**THE GREAT GT  
PERFORMER.**

581 - 3849



**YOUR  
TOWN  
PRESS**

**464 FERRY STREET SALEM, OREGON 97301  
364-2122**

## **KING'S MEN**

Wayne Steckley Owner & Manager

8 AM - 5:30 PM Tues. thru Fri. SAT to 4 PM  
Near Willamette University - 1 Block S. of State

RAZOR CUTTING & STYLING  
REGULAR CUTTING ALSO  
COLORING STRAIGHTENING

**146 13th SE**

**363 - 2300**

**362 - 1868**

## **DELON OLDS**

SALES AND SERVICE

**OLDS - VOLVO - HONDA**

SERVING SALEM FOR 47 YEARS

745 Liberty NE

581-1421

## **BOOSTERS**

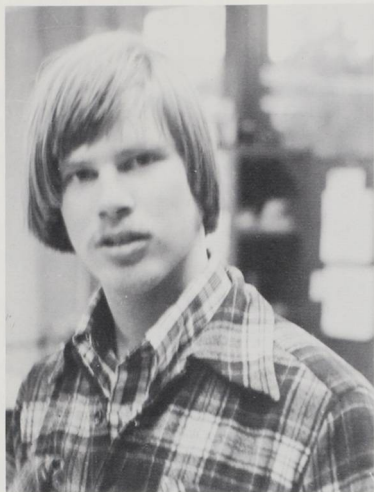
**Ball Brothers**

**Chevrolet**

## **PATRONS**

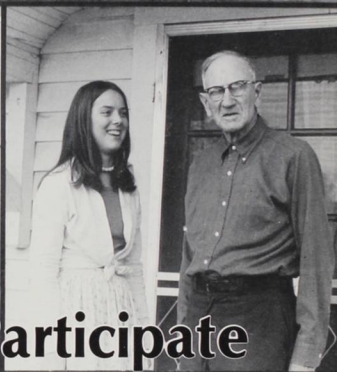
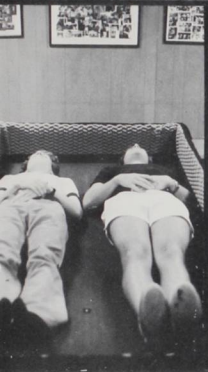
**Et Cetera**

**Antiques**



“Is that all there is?”





**Participate**





**THIS BOOK DOES  
NOT LEAVE  
THE LIBRARY**



# 1776



A rowdy musical tribute to the Bicentennial -- "1776". The events leading up to the signing of our Declaration of Independence sprang to life onstage in this opening of the major season at the Willamette University Playhouse. The play is filled with the somewhat less than perfect fathers of our country: John Adams is stuffy and obnoxious, Thomas Jefferson is a frustrated newlywed, and Benjamin Franklin is more concerned with evening affairs than governmental ones. The Declaration was signed through (or perhaps in spite of) the efforts of these illustrious countrymen on a hot summer day in Philadelphia, and "1776" closed to record crowds at the Playhouse.

## Com

Frank Martinez  
Bill Olsen  
Ed Bowen  
Dan Fineberg  
Mike Ratiani  
Brock Hinzmann  
Jim Pilon  
Steven Prince  
William E. Smith  
Mark Phillips  
D. Scott Glaser  
Ken Chaitan  
Paul Turner  
Steve Potter  
Dave Aiello  
Larry Brown  
Chuck Cooper  
Rick Smith  
Joe Reinhart  
Brit Olson  
David Paul Sowder  
Craig Strobel  
Maureen Doig  
Elizabeth Carey  
Scott Mader  
Jon Troutner  
Kerry Covington

Directed by Robert Peffers

Music Directed by Maurice Brennen

Designs by Ramona Ann Searle





The bittersweet story of a mother, imprisoned in a cluttered apartment with her two adolescent daughters. In newcomer Doug Paterson's production, Beatrice was a tiny woman; emotionally and physically dwarfed by her daughters, a very old ill woman, and her situation. The result was the feeling of a warp in time and space, where nothing is as it should be. The play contains a profound statement for our time, and within the character of Tillie, a faint glimmer of hope for the future.

Company  
Jennifer Walker  
Mary Patton  
Patty Eastepp  
Karen Crew  
Raissa Fleming  
Directed by  
Doug Paterson  
Designs by  
Ramona Ann Searle

## The Effect of



**Gamma Rays on Man-In-The-Moon Marigolds**

# Farces and Statements

The ambitious title was originated by seniors Kathryn Tryck and Valerie Thompson. In this lively collection of one-act plays, a parking meter gets plugged, a Geppetto creates a different kind of Pinocchio, an old woman is reborn by her spirit, an American romantic is disillusioned in Paris, and the cause of overpopulation is championed by a fiery wife. The continuity of the shows was found in the anger of today's society, expressed in a number of theatrical styles.



## Company

Dave Long  
Robin Olsen  
Mike Ratiani  
Shannon Shepard  
Craig Strobel  
Debbie Davis  
Chuck Cooper

Directed by Kathryn Tryck

# Salem Symphony



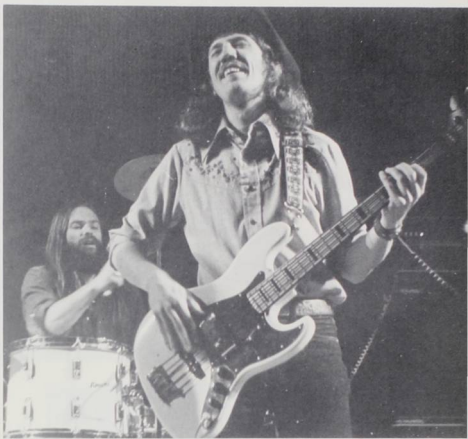
The Salem Symphony became the focus of a controversy which eventually spread throughout the College of Music and Theater this year. Dean Murray North proposed the establishment of a student symphony at Willamette, in addition to the Salem Symphony. Many saw this as an attempt to divorce the Salem Symphony from the University, and as an attempt to undermine the authority of Charles Heiden, Willamette music professor and director of the symphony.

Students reacted by proposing a boycott of the new symphony. The Salem Symphony Association removed Dr. Heiden as Music Director, and he reciprocated by resigning as Conductor.

This incident plus a number of others in the Music School led a group of more than twenty music students and music majors to demand Dean North's resignation. North claimed it was only a small, vocal minority, but unrest had arisen among the faculty also. The outcome of the confrontation is still in doubt, and it is unclear whether the students, faculty, and the good of the University will be satisfied.



# Mission Mountain Wood Band





# Dr. Gordon Craig

When Professor Craig, the Sterling Professor of Humanities at Stanford, came to the University he brought his personal brand of intellectualism which, although at times very disturbing, was thought provoking.

In his lecture before Professor Duvall's class as well as his speech on "The Dangers of Thinking Historically," Professor Craig spoke of three major mistakes made by political figures in the past. The difficulties centered around the problems in historical analogy, in seeing a too dialectic pattern in historical development and the over estimation of continuity between ages while underestimating change.

Professor Craig concluded by addressing the problems with contemporary U.S. foreign policy, especially the difficulties inherent with having a Bismark and Metternich admirer as Secretary of State.



# Jackson Turner Main



Dr. Jackson Turner Main, Professor of History at the State University of New York, spoke in November as part of Willamette's recognition of the Bicentennial. His subject, "The People of the American Revolution," dealt with the factors that influenced the attitudes of common Americans toward rebellion and independence. After dispelling popular misconceptions concerning the attitudes of colonial Americans, Dr. Main proceeded to explain that socio-economic, religious, political and geographical considerations played an important role in determining whether or not people personally supported the revolutionary effort. He continually emphasized that the colonies were sharply divided over the issue, even to the extent that many shifted their loyalty during the conflict itself as military fortunes alternated back and forth. There was little doubt that the eminent historian considered self-interest a prime motive for many of our forefathers. Dr. Main's presentation offered a humorous, refreshing and scholarly insight into the nature of the revolutionary ideology.



## William Kunstler

William Kunstler arrived at Willamette laden with an array of adjectives; "revolutionary," "radical lawyer," "defender of those left-of-center" were amongst them.

The man who set out on the tail of the Civil Rights Movement, only to emerge at the head as "defender of the undefendables," brought the spirit of the 1960's to the 1970's and Willamette.

"It's better to work without the system than within," Kunstler said. A lawyer who doesn't believe in the law, Kunstler said, "law is designed to keep the haves from the have nots. If you think it's unfair to begin with, you use whatever you have to fight it," Kunstler told his audiences.

But, if Kunstler advocated working outside the system, he urged students here to register to vote, get on jury duty and to make their own decision as to what is "just."

And the reaction on campus to William Kunstler? If it was "awe" by some, a questioning of the consistency of his theory by others, it was a consensus by most that Willamette needs to be awakened more often from a somewhat untroubled sleep.

Professor Henry said it best: Kunstler's presence made a lot of people feel uncomfortable about feeling comfortable. It is vital that the spirit he projected on this campus remain alive.





2nd Vice President - Bill Olson, Secretary - Gary Thede, 1st Vice President - Rob Martin, President - Doug Kays.  
Not pictured - Treasurer - Mark Elgin.

## Panhellenic



Vickie Parvis, Kim Olson, Helen Brown, Amy Stager, June Anderson, Carrie Martin, Wendy Elder, sitting, President Wendy Carlson.



# Minority Student Union

Tina Turner, Pearlie Rogers, Chryl Pittman, Roslynd Zeigler, Yolanda Mitchell, Ton Jordon, Jacqueline Loville, Val Mason

## Hawaiian Club



1st Row - Rae Hanashiro, Bobbie Lyman, Robyn Matsunaga, Corliss Mukigawa

2nd Row - Abbie Phillips, Peggy Cooper, Lynn Kitagawa

3rd Row - Rick Smith, Wendy Kalahiki, Mayilyn Kaohi, Crystal Rose, Lei Ann Stender, Ces Kawakami, Ron Perry

4th Row - Mike Crabbe, Patty Dietrich, Mike Rattani, Doug Alexander, Kermit Brown, Mike Bray, Jim O'Rourke, Bobby Lee, Doug Duvachelle, Dave Blanchard, Heine Fountain



Greg Capp, Matt Critchett, Jeff Crollard, Debbie Elliott, Jim Eustrom, Dave Frank, Dave Spaulding, and Mark Won experience a semester in LONDON!--- Contemporary Britain, Victorian Life and Letters, 18th Century Britain, and Theatre Fare---pubs---museums---homestays---coach trips---Stockport---Portsmouth---Cambridge---Stourhead---pubs---soccer---Dickens---plays---the underground "tube"---Angel Station---discos---parties---Weingart and Van Tassell---and a whole lot of friends from UPS, PLU, Gonzaga and Whitman.

## London



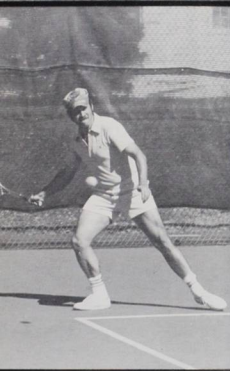
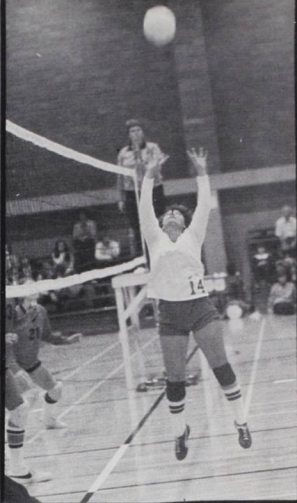


## Japan

Bill Ahina  
 Bill Cameron  
 Mike Carlson  
 Doug Dunford  
 Andy Fuller  
 Bill Gray  
 Jeff Jones  
 Laura Kidd  
 Joan Lisensky  
 Mary Ann Lyles  
 Joe Lyons  
 Bill Mooney  
 Candace Pallett  
 Jim Rainey  
 Jean Randall  
 Bob Reynolds  
 Thad Roth  
 Mary Selover  
 Dana Shannon  
 Dirk Stangier  
 Lynn Tronson  
 Carter "Cobra" Walton

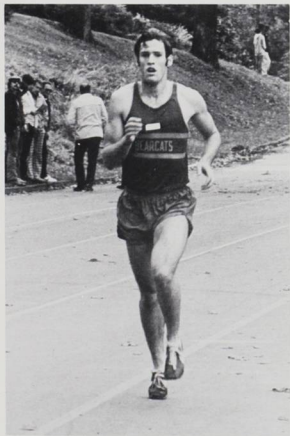
Twenty-two gaijins accompanied by Uncle Hibbarado and family educate ICC in Japan---but first, a stop over in Hawaii---then, a two weeks retreat and preparation?---do you speak English?---split level toilets---nightclubs---Bangkok---Hong Kong---Kansai trip with three lost stooges---community baths---rice, again?---Taido is a KICK!---drinking---climbing Mt. Fuji at four a.m.---beat cheeks through Kipuriba---WAKARIMASU KA?





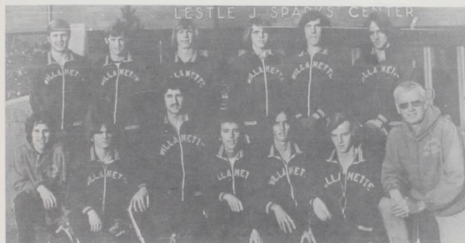


**Compete**





# Cross Country



## Front Row

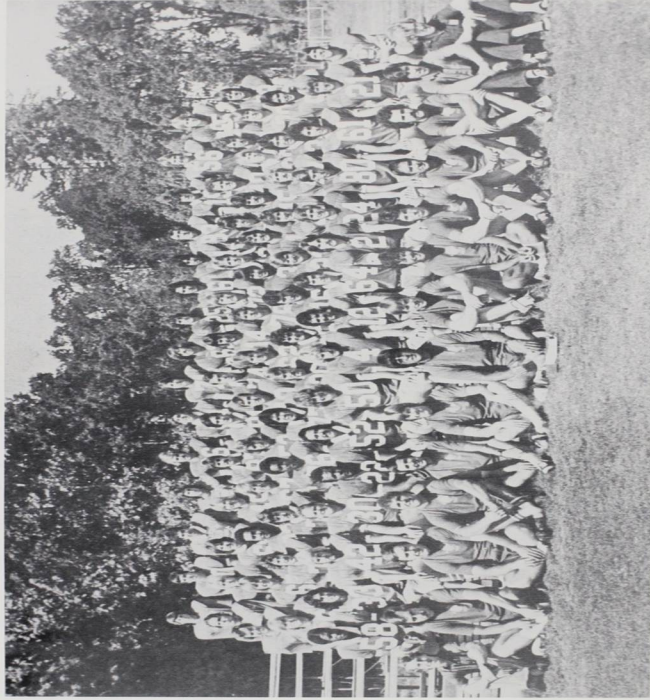
(l-r) Brock Hinzemann  
David Wright  
Guadalupe Franco  
John Watts  
Steve McGrew  
Ed Nelson  
Coach Charles Bowles

## Back Row

(l-r) Greg Gentry  
David Crowthar  
John Schmidt  
Terry Zerzar  
Dan Hall  
Kevin Hanson







**Front row** (l-r) Manager Paul Boaden, coaches Phil Wynn, Jerry Todd, Vern Perick, (Asst.) Bill Treneath (Asst.) Dave Titus, Tommi Lee (Head Coach), John Pearson, Dewey Clark, Dan Foster, Winky Sequera, Dan Percich, trainer Ken Madrik, and manager Paul Turner.

**2nd row** (l-r) Ron Cartmel, Rod Bayne, Dave Howard, Joe Hendrix, Joe Williams, Joe Cho, Alex Stouland, John Barbour, Mark Weltendorf, Mike Ballan, Joe Story, Gary Barbour, Baron Rathe Le Curche, Dave Lambert, Brad Marmeau, and John Kent.

**3rd row** (l-r) Mike Hoffman, Gary Johnson, Greg Bean, Ken Slack, Lloyd Shimabuku, Terry Haugen, Alan Bernhagen, Brent Mellyhe, Tim Archer, Scott Lusby, Mark Stevens, Willie Keola, and Danny Byrne.

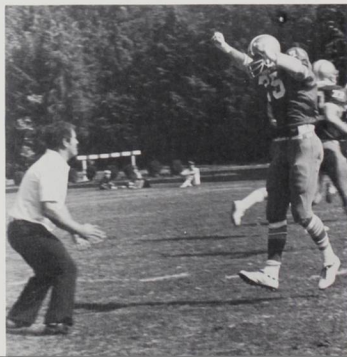
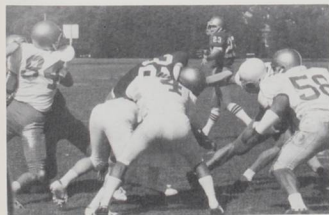
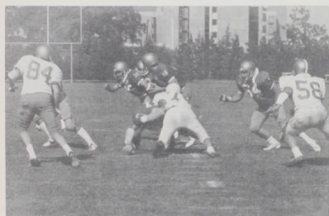
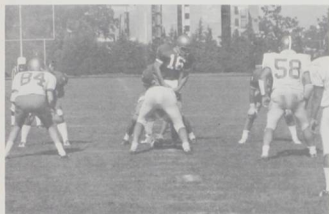
**4th row** (l-r) Terry McIver, Randy Traeger, Drew Hares, Rich Wheeler, Dean Hausman, Matt Beddoe, Shawn Hohl, Tracy Jackson, Bruce Layman, Les Steenes, David Claunch, Larry Staab, and Robney Mann.

**5th row** (l-r) Keith Hite, Kirk Shoopie, Tom Farris, Dan Cooper, Micken Erb, Steve Turner, Pete Dickson, Joe Denbo, John Gehrett, Bill Econe, Denny McCarthy, Del Christian, Kirk Holstetter, and Burch McGriff.

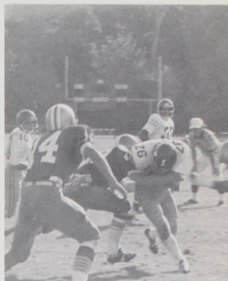
**6th row** (l-r) Dan Repasky, Dave Blanchard, Terry Keola, Jim Dierickx, Barry Sullivan, Steve Rubenstein, Greg Cowan, Rich Jones, Dan Emmons, Heine Fountain, Ron Perry, Tim Simmers, Tom Moore, Bill Zehner, and Gerrit Knapp.

Not pictured: Kevin Leahy and Namoi Thompson.

# Football









**Back Row**

(l-r) Helen Brown  
Katie Walwyn  
Sue Ruff  
Norah Sobeck  
Michele Shean  
Libby Wright  
Carla Piluso

**Front Row**

(l-r) Lynne Crosett  
Holly Brown  
Lisa Willemssen  
Coach Fran Howard  
Robin Brand  
Kelsey Bunker  
Ginney Daquil





# Field Hockey





# Soccer





Gary Boehne  
Dan Boetcher  
Dan Cohen  
Bruce Cowger  
Gary Crisbell  
Bill Foster  
Evan Hamilton  
Bobby Hansen  
Steve Kargus  
Steve Kingsley  
Scott Mader  
Garry Mason  
Bill Olson  
Doug Parker  
Don Pattison  
Mark Rose  
Scott Rowe  
Brent Siedler  
Joe Story  
Jeff Thomas  
Steve Walters  
John Wheeler  
Hal Williams  
Harold Zugunnis  
Coach Todd York

# Badminton



## Bowling

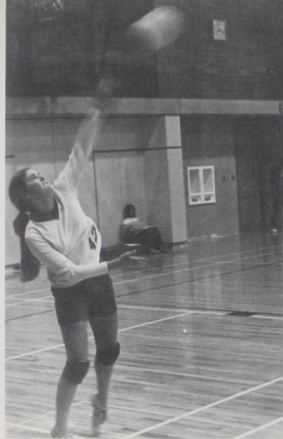
(l - r) Coach Jean Williams  
Janet Kerns  
Kathy Sulaver  
Sue Ruff  
Val Thompson

# Bowling



## Badminton

(l - r) Coach Jean Williams  
Kathy Sulaver  
Heidi Mitzner  
Wendy Tripp  
Gail Winterscheid



# Volleyball



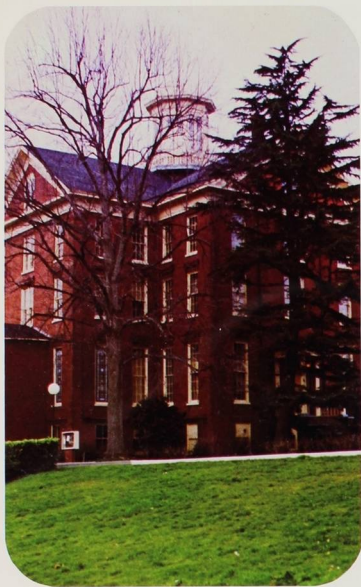
## Front Row

(l-r) Bobbie Lyman  
Debbie Cleaver  
Michelle Farmer  
Joanne Atwell  
Roberta Woods  
Carrie Martin

## Back Row

(l-r) Coach Jean Zumwalt  
Wendy Kalaheki  
Ellen Dunn  
Sharen Canda  
Kathy Sullivar  
Mary McGilvary  
Sue Hamison





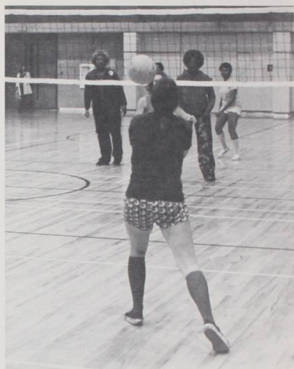
# Wallulah '76

Published by the Associated Students  
of Willamette University

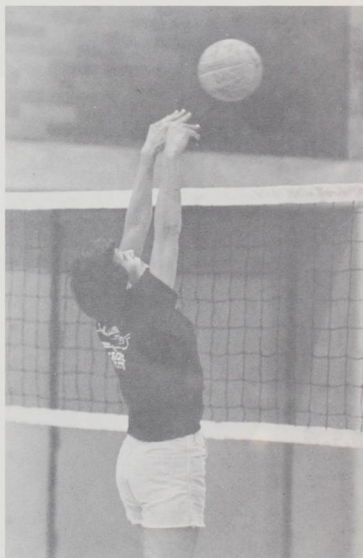
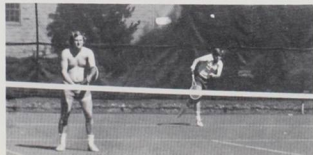
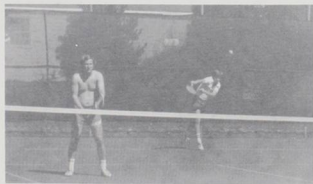
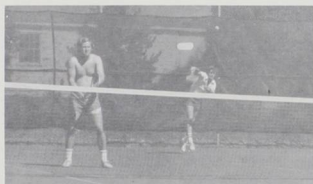
Volume 66

©1976

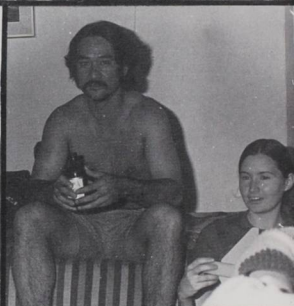
All rights reserved. No portion of this book may be  
reproduced without the expressed written permission  
of T. C. Hawkins.

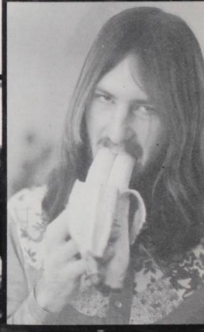


# Intramurals











16 17 18 19 20 21 22 23 24 25 26 27 28 29 14 15 36 37 38 39 40 41  
 1 2 3 4 5 6 7 8 9 10 11 12 13 30 31 32 33 34 35

# Alpha Chi Omega



1. Amanda Stewart
2. Liz Hanson
3. Becky Kresha
4. Jan Rimmerman
5. Cynthia Schreuder
6. Chris Ung
7. Carrie Martin
8. Mardi Saathoff
9. Jackie Sasaki
10. Geri Ung
11. Nancy Lowenthal
12. Sandy Gould
13. Gwen Sheehy
14. Nancy Parish
15. Judy Greenway
16. Sue Schafer
17. Suzanne Vorster
18. Polly Picco
19. Claudia Lien
20. Pam Brown
21. Jeanne Cushman
22. Pam Crowell
23. Kari Hanson
24. Missy May
25. Holly Brown
26. Wendy Elder
27. Karen DeShon
28. Nancy Hartig
29. Becky Moffat
30. Janet Clarke
31. Barb Kuryk
32. Julie Witham
33. Laurie McQueen
34. Laurie Meeker
35. Maryanne Myers
36. Debbie Fergus
37. Alice Hunsaker
38. Lynne Isenee
39. Brenda Danielson
40. Sharon Canda
41. Laurie Filson





- |                    |                    |                     |                    |
|--------------------|--------------------|---------------------|--------------------|
| 1. Kit Concannon   | 13. Janet Kerns    | 25. Ginger Ludlam   | 36. Kathy Noteboom |
| 2. Kim Caldwell    | 14. Roberta Wilson | 26. Liz Allen       | 37. Donna King     |
| 3. Teresa Rothe    | 15. Carl Davies    | 27. Teresa Kostol   | Not Pictured:      |
| 4. Linda Groves    | 16. Lisa Jampolsky | 28. Diane Whiteman  | Sue Ramos          |
| 5. Becka Martin    | 17. Ann Williams   | 29. Connie Pomerog  | Helen Brown        |
| 6. Debby Brown     | 18. Debbie Adams   | 30. Melissa Clayman | Linda Dillaman     |
| 7. Kim Olson       | 19. Betty Barnes   | 31. Wendi Teague    | Kathy Frey         |
| 8. Doris Boysen    | 20. Sue Weeks      | 32. Amy Wallace     | Erica Hanson       |
| 9. Bev Comtes      | 21. Jacquie Stuhl  | 33. Nancy Cowles    | Cris Kostol        |
| 10. Pam Johnson    | 22. Donna Morris   | 34. Wendy Hasuike   | Alison Lockwood    |
| 11. Peggy Walstrom | 23. Sue Pease      | 35. Jane Minurn     | Nina Page          |
| 12. Lee Hollyfield | 24. Barb Itel      |                     |                    |

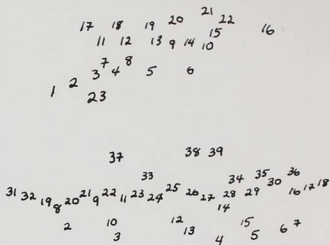
24 25 26 27 28 29 30 31  
 13 14 15 16 17 18 19 20 21 22 23  
 7 8 9 10 11 12  
 1 2 3 4 5





# Alpha Phi





# Baxter

1. Priscilla Wilder
2. Karen Gardner
3. Curt Cole
4. Kathy Battin
5. Sara Zwinger
6. Sue Kielhorn
7. Bill Mills
8. Gene "The Machine" Parker
9. Annette Blankenship
10. Lisa Kuhns
11. Sue Harrison
12. Kathy Aberle
13. Linda Wobbe

14. Bonnie Rider
15. Dick Borgman
16. Ann Pendergrass
17. Lincoln Rutter
18. Bob "Rock and Roll" Houck
19. Nancy Malm
20. Mark LeCoq
21. Gary Hallian
22. Mike Lederle
23. Gary Thede
24. Keith Brantley
25. Gary Cesario
26. Jean Randall
27. Karen Yoshimoto
28. Tami Pangborn
29. Mark Manning
30. Scott Severson
31. Linda Kollas
32. Bill Rapp
33. Tim Ruske
34. Joan Borash
35. Abbie Phillips

36. Lei Stender
37. Jana Fussel
38. Reyes Rodrigue
39. Jeff Hunt
40. Jeff Krahenbuhl
41. Lynn Hayashida
42. Marcie Hudson
43. Sue Harrison
44. Dick Borgman
45. Karen Fledderman
46. Jamie McMahon
47. Doug Kays
48. Lynn Walton
49. Harriet Metzler
50. Yolanda Mitchell
51. Sara Turner
52. Mark Holt
53. Rick "The Master" Weaver
54. Bill Ahina
55. Brian Leong
56. Rich Jones
57. Greg Cowan

58. Bob Stevens
59. Stephen Caldwell
60. Victor Miranda
61. Jose Parga
62. Brian Leong
63. Bill Frolich
64. Tom Wilson
65. John Kent
66. Ronald Perry
67. Tom Moore
68. Heine Fountain
69. Manny Campbell
70. Richard Heimerdingler
71. Mark Bowden
72. Mark Tichenor
73. Dave Blanchard
74. John Lundberg
75. John Shank
76. Dan Tuttle
77. Mark Miller
78. Rod Bayne
79. Dan Emmons





69  
70 71 72 73 74 75 76 77 78 79  
63 64 65 66 67 68  
62





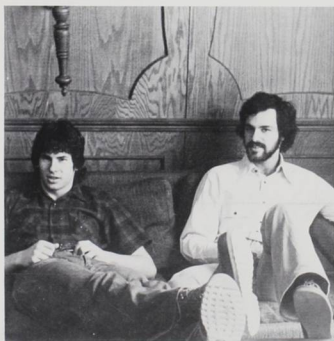
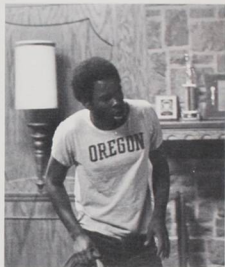
Finding it impossible to express through words, our true impressions of Willamette University, we invite you to look behind the pictures and to read between the lines. Only there is it possible to catch a glimpse of the personalities and events of the year.





# Belknap









1. Kristin Smith
2. Dede Donnan
3. Gwen Dewell
4. Patty Sullivan
5. Nancy Kraemer
6. Sue Kay
7. Amy Frank
8. Sandy Rorman
9. Cory Jewell
10. Christine Hemp
11. Lynne Koutlas
12. Pam Yockey
13. Nancy Todhunter
14. Chris Berger
15. Barb Olson
16. Shan Elich
17. Wendy Martin
18. Anne Plister
19. Susan Hunter
20. Kris Keeler
21. Kelly O'Neil
22. Kathy Lantz
23. Claire Mower
24. Mary Allen
25. Sue Morrow
26. Della Ito
27. Kris Kiely
28. June Anderson
29. Deb Nething
30. Wendy McKenzie
31. Peggy Rudolph
32. Lynne Tronson
33. Don McCracken
34. Julie Botelho
35. Lynne Hume
36. Julie Nelson

Not Pictured:  
 Anne Huelskamp  
 Molly Andrews  
 Nancy Green  
 Sue Chaffey Allen



Linda Bayer  
 Jani Ashton  
 Liz Dickson  
 Vickie Parvis  
 Diaper Man  
 Rachel Perry  
 Steph Brown  
 Linda Getchell

# Delta Gamma





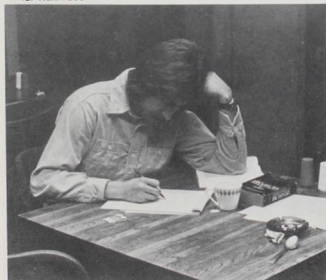
35 36 37 38 39 40 41 42 43 44  
 19 20 23 25 27 29  
 18 21 22 24 26 28 30 31 32 33 34  
 11 12 13 14 15 16 17  
 1 2 4 5 6 8 9  
 3 7 10





# Delta Tau Delta

- |                   |                   |                    |                     |                     |
|-------------------|-------------------|--------------------|---------------------|---------------------|
| 1. Larry Staab    | 13. Jon Troutner  | 24. Daryl Williams | 35. Brian Booth     | Boob Hansen         |
| 2. Miles Hamamoto | 14. Steve Walters | 25. Don McCracken  | 36. Mike Knight     | Randy Traeger       |
| 3. Kevin Hampson  | 15. Gary Boehne   | 26. "Mom" Jackson  | 37. Mark Palodichuk | Spring Pledge Class |
| 4. Garry Crispell | 16. Stan Brown    | 27. G. Paul Houtz  | 38. John Miller     | Jeff Thomas         |
| 5. Doug Parker    | 17. Dan Schultz   | 28. Pat Latimer    | 39. Chuck Thompson  | Ron Cartmel         |
| 6. Bob DeLaverne  | 18. Jerry Takase  | 29. Bill Econe     | 40. Jerry Sheehan   | Kevin Slack         |
| 7. Doug Moore     | 19. Scott Price   | 30. Jim West       | 41. John Wheeler    | Danny Atkins        |
| 8. Stan Takehara  | 20. Don Krogh     | 31. Don Pattison   | 42. Dick Libby      | Sean McGreevey      |
| 9. Jim Kanoff     | 21. Dan Gordon    | 32. John DeLapp    | 43. Larry Jackson   | Rod Fredericks      |
| 10. Jeff Tarleton | 22. Dick Jensen   | 33. Drew Havea     | 44. Don Kiyokawa    | Rick Harder         |
| 11. Ken Slack     | 23. Evan Hamilton | 34. Barry Sullivan | Not Pictured:       | Tracy Jackson       |
| 12. Keith Lee     |                   |                    |                     |                     |





# Doney

1. Michelle Hansen
2. Liza Bennett
3. Marianne Meyers
4. Cathy Guerin
5. Peggy Butler
6. Caroline Kabali
7. Marsha Hawkins
8. Pam Wiese
9. Becky Pechman
10. Janet
11. Judy Randall
12. Dee McSmith
13. Charnan Kenst
14. Carleen Molby
15. Molly Knepper
16. Iquo Udo
17. Maureen Doig
18. Norah Sobeck
19. Chris Richardson
20. Cynthia Gibbs
21. Phyllis Doran
22. Libby Wright
23. Kathy Sewright
24. Jenny Ray
25. Joyce Hidani
26. Cindy McCavit
27. Cindy Kennedy
28. Cathy Lidell
29. Patty Nosen
30. Martha Ketcham
31. Marie Williamson
32. Barb Britt
33. Jane Wallace
34. Tommi Colwell
35. Carol Baker
36. Kris Meyer
37. Cathy Meschter
38. Janice R. Wilson
39. Lisa Powell
40. Susan Young
41. Vivian Walker
42. Lynn Davis
43. Sue Elliot
44. Sigrid Coffey
45. Dora Cavanagh
46. Teresa Foster
47. Karen Yamashiro
48. Cammie Denney
49. Corliss Mukaigawa
50. Val Mason
51. Gina Brooke
52. Patty Dietrich
53. Kelsey Bunker
54. Luanne Barnes
55. Jaci Smith
56. Krista Hildebrand
57. Jackie Coakley
58. Cindy Moomaw



16 17 18 19 20 21 22 23 24 25 26 27 28 29 30 31 32 33  
 7 8 9 10 11 12 13 14 15 6  
 1 2 3 4 5  
 47 48 49 50 51 52 53 54 55 56 57 58  
 46 39 40 41 42 43 44 45  
 33 34 35 36 37 38







Modesty is a virtue which few people seem to be addicted to. However, there sometimes are those who contribute much and shun the tribute which is their due. Such was Gertrude W. Johnson, Assistant Professor in the library and Director of Readers' Services. Mrs. Johnson passed away this spring after serving the Willamette community for thirteen years.

The 1976 Wallulah is dedicated to Gertrude Johnson. We do this in a spirit of humility, realizing it is a modest honor for the things she has done for Willamette and for Salem....but that is the way she would have wanted it.



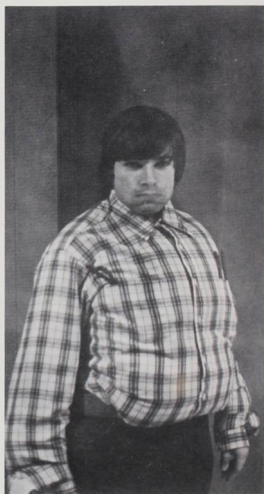
# Kappa Sigma

1. Tom Stowe
2. "Strike-out"
3. Dave Wright
4. Sean Walker
5. Kirk Hofstetter
6. Bill Channel
7. Rick Speicher
8. Rob Deller
9. Mike Gray
10. Dave Drucquer
11. Jim Hastie
12. Chris Blattner
13. Scott Stuhl
14. John Lundberg
15. Greg Englund
16. Roger Grannis
17. Hal Williams
18. Eric Muntzel
19. Jim Kniffin
20. Scott Rowe
21. Drew Munson
22. Jim Wilson
23. Randy Bateman
24. Wes Fitzwater
25. Rusty Burns
26. Roger Olson
27. Gary Cesario
28. Tim Cauller
29. Andy Gregg
30. Ron Schilling
31. Tex McPhetridge
32. Dave Fuller
33. John Schmidt

34. "Mom" Bledsoe

35. Doug Frey
36. Butch Morfitt
37. Mike Hart

30  
 29 24 23 16 11 10  
 35 34 32 28 33 25 22 20 14  
 36 27 26 21 17 15 13 8 9  
 37 19 18 7  
 1 2 3 4 5 6







1. Craig Strobel
2. Kiki Poth
3. Laurel Winterscheid
4. Gail Powell
5. Betsy Hauge
6. Mark Krulic
7. Takashi Itagaki
8. Gary Meabe
9. Stan Ockfen
10. Jose Fernandez
11. John Sekerka
12. Tim Becker
13. Mary Morton
14. Spence
15. Beth Young
16. LeAnn Oliver

17. Carma Franz
18. Helen Engeseth
19. Dave Drucquer
20. Paul Robinson
21. Julie Adams
22. Sandy Barton
23. Raissa Flemming
24. Jodie Quinton
25. Elida Kellog
26. Betsy Collins
27. Michele Shean
28. Susan Hamilton
29. Nancy Glass
30. Hideya Onozuka
31. Scott Kurtz

32. Dwight Sims
33. Mike Miles
34. Bitsy Crapuchettes
35. Dave Taylor
36. Steve Shearer
37. Dave Rice and friend
38. Terry Kabanuck
39. Ted Sims
40. Tina Turner
41. Jack's Friend
42. Dave Godfrey
43. Joan Gray
44. Dan Bracken
45. Hunter Emerick
46. John Rosenberg

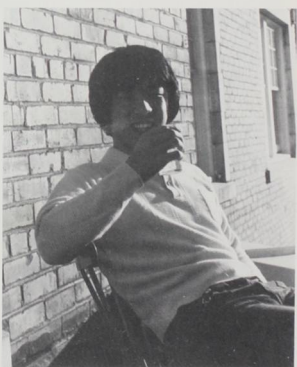
47. Alma Upicksoun
48. Jim Harvey
49. Marjorie Willits
50. Thad Rothe
51. Lisa Butkovich
52. Rich Caldwell
53. Tina Gonzalez
54. Jim Smith
55. Steve McGrew
56. Blondie's Friend
57. Ronnie Lee
58. Jamie Stillings
59. Chris Jensen
60. Joe Daggy
61. Mike Fern





# Lausanne

41  
 40 42 43 44 45 46 47 48 49 51 52 53 58 59 60 61  
 27 28 29 30 31 32 33 34 35 36 37 38 39 25 26 20  
 21 22 23 14 15 16 17 18 19 11 12  
 1 2 3 4 5 6 7 8 9 10





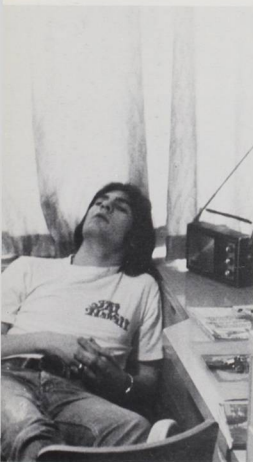
29 30 31 32 33 34 35 36 37 38 39

18 19 20<sup>40</sup> 21 22<sup>23</sup> 24 25 26 27 28 16 17

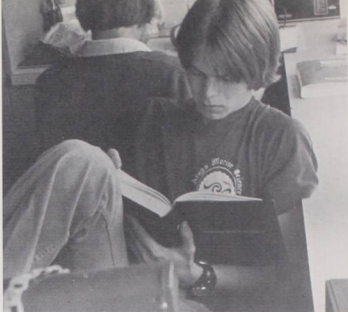
1 2 3 4 5 6 7

- |                     |                     |                      |
|---------------------|---------------------|----------------------|
| 1. Edmond Bonnot    | 15. Greg Arndt      | 28. Burt Pearl       |
| 2. Tom Farris       | 16. Linda McQuate   | 29. Tim Liu          |
| 3. Gary Helland     | 17. Jay Dressler    | 30. Steve Prince     |
| 4. John Jones       | 18. Steve Wogeltanz | 31. Steve Karges     |
| 5. Kermit Brown     | 19. Bill Woodburn   | 32. Tracy Jackson    |
| 6. Brit McQuate     | 20. Walter Music    | 33. Kevin Smith      |
| 7. John Bondurant   | 21. Tim Gesser      | 34. Rick Harder      |
| 8. David Ball       | 22. Ben Carlile     | 35. Rob Nelson       |
| 9. Bobby Lee        | 23. Don Mundinger   | 36. Bill Wustenbergl |
| 10. Doug Duvachelle | 24. Tom Birnie      | 37. Craig Friedberg  |
| 11. Rob Smith       | 25. Harold Zagunis  | 38. Dennis McGee     |
| 12. Terry McCulley  | 26. Kurt Granat     | 39. Kerry Covington  |
| 13. Art Flores      | 27. Jim O'Rourke    | 40. Steve Meamber    |
| 14. Seichiro Hatori |                     |                      |

# Lee







# Matthews





1. Michael Crabbe
2. Loren Collins
3. Art Witt
4. Debbie Lewis
5. Margaret Schaus
6. Cindy Wapnick
7. Laurie Schmidt
8. Janelle Eastham
9. Jim Kanoff
10. Ellen Baldwin
11. Vickie Eversole
12. Jennifer Walker
13. Dave Benafel
14. Dave Long
15. Laurie Freeman
16. Susan Johns
17. Heather Reimer
18. Leah Griffith
19. Nancy Lammers
20. Kevin Valencia
21. Karin Chapman

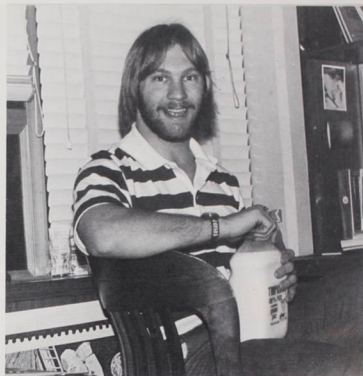
22. Kathy Kenyon
23. Peggy Jacox
24. Betsy Shoemake
25. Roberta Wood
26. Jim Pilon
27. Drew Havea
28. Jerri Israel
29. Susie Zaber
30. Bill Crane
31. Ron Gallman
32. Shari Wiltse
33. Gwen Wilkes
34. Melissa Smith
35. DarylN Teruya
36. Judy Goddard
37. Marilyn Kaohi
38. Chuck Lewis
39. Heidi Mitzner
40. Cathi Covert
41. Dan Cohen
42. Bruce Stanton

43. Rick Smith
44. Candy Griffen
45. Whitney Griffen
46. Joe Reinhart
47. Sally Avera
48. Dan Fleming
49. Doug Alexander
50. Tom Harrison
51. Bob Brown
52. Bruce Suckow
53. Sean McGreevey
54. Andrew Gregg
55. Tina Mayfield
56. Tom Spivey
57. Benji Bradford
58. Ken Chaitin
59. Jeff Thomas
60. John Watts
61. Mike Rattiani
62. Sharon Stevenson
63. Linda Wiltse



27 30 32 34 35 49 50 51 52 53 54 55 56 57 58 60 62 64  
 28 29 31 33 36 37 38 39 40 41 42 43 44 45 46 47 59 61 63 48  
 12 13 14 15 16 17 18 19 20 21 22 23 24 25 26  
 1 2 3 4 5 6 7 8 9 10 11





- |                           |                             |               |
|---------------------------|-----------------------------|---------------|
| 1. Doug Peake             | 14. Steve Rubinstein        | 27. Gary Koch |
| 2. Ron "Space" Jordan     | 15. Mike "Boom-Boom" Turner | Not Pictured  |
| 3. Mike Anderson          | 16. Matt Higashida          | Len Federico  |
| 4. Ray Ono                | 17. Jay Saifuku             | Mark Won      |
| 5. Rich "Duke" Scrivner   | 18. Bruce Kajiwara          | Gregg Capp    |
| 6. Mick Erb               | 19. Brian "Lip" Florip      | Dirk Stangier |
| 7. Rick Ikeda             | 20. Steve Tillotson         | Joe Cho       |
| 8. Joe "Ray" Rubinstein   | 21. Randy "Playboy" Green   | Willie Keola  |
| 9. Pete "Scobey" Dickson  | 22. Dave "Wolf" Ware        | Terry Keola   |
| 10. Steve "Tig" Turner    | 23. Mike "Hoss" Long        | Jim Diericks  |
| 11. Paul "Buck" Turner    | 24. Doug "Gerome" Croskell  | Ken Reimers   |
| 12. Mike Hoffman          | 25. Marv Bernhagen          | Bill Zehner   |
| 13. Mark "Eddie" Kajiwara |                             |               |

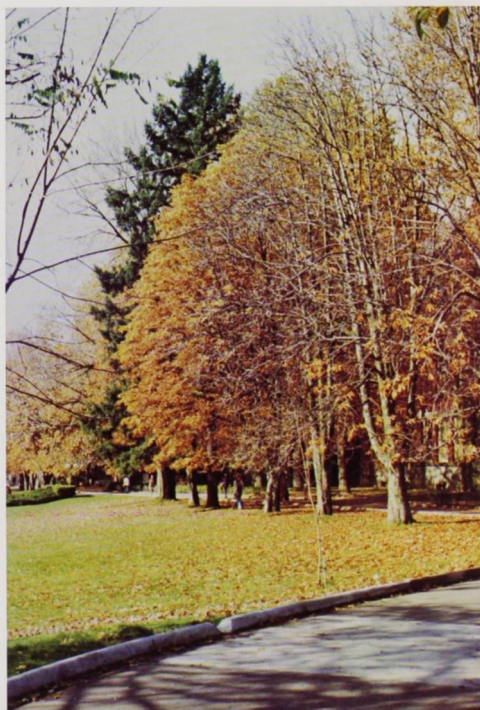
12<sup>13</sup> 14 15 16 17 18 19 20 21 22 23 24 25 26 27

1 2 3 4 5 6 7 8 9 10 11



# Phi Delta Theta



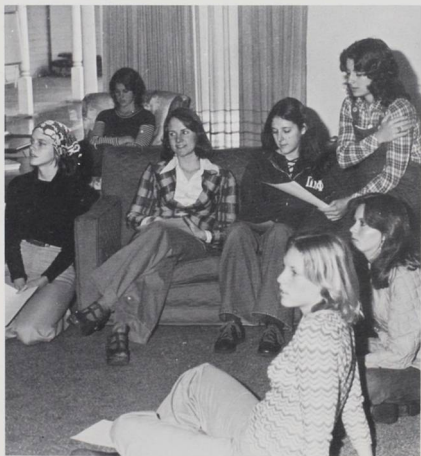




9<sup>10</sup> 11<sup>12</sup> 13<sup>14</sup> 15<sup>16</sup> 17 18 19 20 21  
 1 2 3 4 5 6 7 8

31 32 33 34 35 36 37 38 39 40  
 22 23 24<sup>25</sup> 26 27 28 29 30

- |                      |                        |
|----------------------|------------------------|
| 1. Kelli Brown       | 21. Leslie Henline     |
| 2. Sue Andersen      | 22. Kathy Yocum        |
| 3. Cherie Boyer      | 23. Laura Bracken      |
| 4. Cara Bailey       | 24. Carolanne Cromwell |
| 5. Laurie Lewine     | 25. Linda Bishop       |
| 6. Holly Lamus       | 26. Leslie King        |
| 7. Ginny Howell      | 27. Leann Thede        |
| 8. Barbara Gustafson | 28. Anita Head         |
| 9. Kaaren Anderson   | 29. Amy Stager         |
| 10. Mary Jo Hahn     | 30. Kathy Raffety      |
| 11. Peggy Doyle      | 31. Mary Selover       |
| 12. Lynne Harris     | 32. Laura Kidd         |
| 13. Sara Bell        | 33. Linda Benson       |
| 14. Sally Smith      | 34. Diane Osborne      |
| 15. Judy Lang        | 35. Marian Cobb        |
| 16. Michelle Farmer  | 36. Georgie Wooten     |
| 17. Tony Peragine    | 37. Wendy Carlson      |
| 18. Marguerite Hill  | 38. Gail Winterschied  |
| 19. Penny Ellings    | 39. Martha Tucker      |
| 20. Tina Ettinger    | 40. Wendy Tripp        |





# Pi Beta Phi





# Sigma Alpha Epsilon



35 34 33 31 30  
 23 24 32 27 29  
 12 25 26 28 20 19 18 17  
 14 13 22 21 15 16 6 5  
 11 10 9 8 7  
 1 3 4  
 2



1. Mike Salvino
2. Jerry Mason
3. Ron Severson
4. Dave Bixby
5. Neal Sachs
6. Mark Long
7. Mark Mitchell
8. Les Stennes
9. Van McGuire
10. Kim Salzwedel
11. Scott Gunning
12. Jon Hook
13. Greg Daswick
14. Dave Howard
15. Dan McClung
16. Herb Grey
17. Brad Marineau
18. Tom Carter
19. Ed
20. Dean Lambert
21. Tom Woodworth
22. Craig Howard
23. Bill Foster
24. Doug Jurgenson
25. Mark Stevens
26. John DiLorenzo
27. Bill Fleming
28. Dean Hausemann
29. Dwight McFaddin
30. Tom Beatty
31. Charlie Shreck
32. Dan Boettcher
33. Kirk Mosher
34. Art Flores
35. John Barbour





1. Kevin Doff
  2. Dan Hotchkiss
  3. Mike Brooks
  4. Mark Rose
  5. Drew Olson
  6. Charles Pannone
  7. Mike Sykes
  8. Dan Cooper
  9. Sean Duff
  10. Henry Cabral
  11. Bill Mooney
  12. Jeff Krug
  13. Steve Chambers
  14. Carter Walton
  15. Dave Claunch
  16. Brad Sutphin
  17. Steve Smith
  18. Jim Rilling
  19. Craig Reingold
  20. Jim Hicks
  21. Jeff Christiansen
  22. Bill Cameron
  23. Dan Steelhammer
  24. Ed Seecamp
  25. Zoot O. Finster
- Not Pictured  
 Joe Lyons  
 Bill Gray  
 Dave Goff

# Sigma Chi

10 12 13 14 15 16 18 19 20 21 24 23  
 5 6 7 8 9 2.2  
 1 2 3 4  
 25

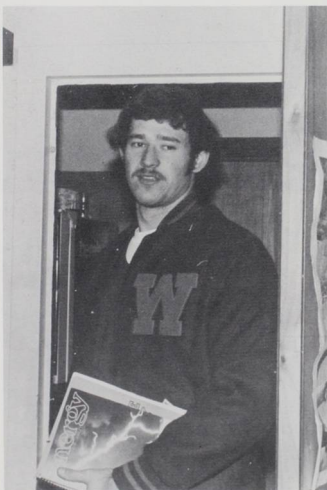


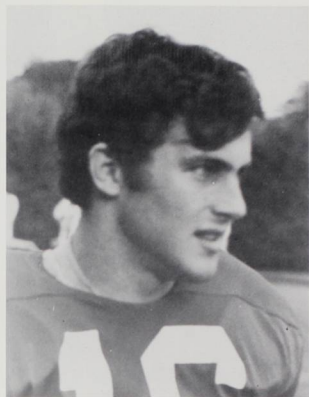




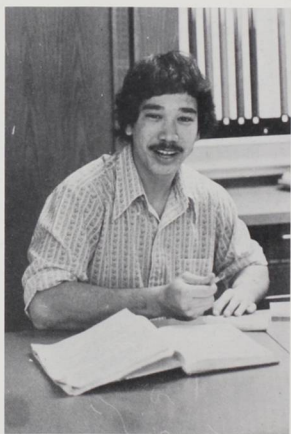
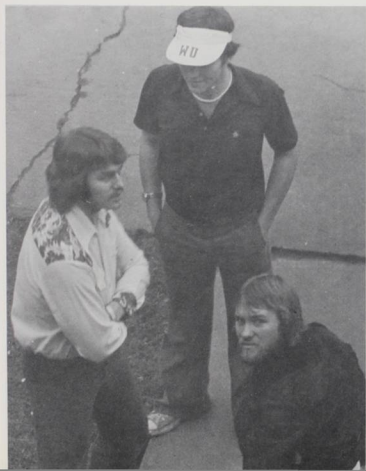
1. Mark Neffendorf
2. Jim Dierickx
3. Brent Mellbye
4. John Gehrett
5. Greg Bean
6. Rick Wheeler
7. Terry Haugen
8. Joe Cho
9. Tony Anglin
10. Willie Keola
11. Terry Keola

8 9 10 11  
 1 5 2 3 4 7





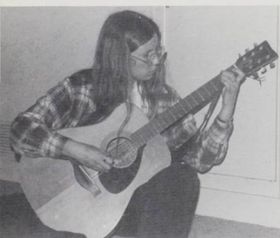
## Station A





1. Susan Barameyer
2. Brit Olson
3. Vickie Matson
4. Susan Butler
5. Ann Crowwaite
6. Kelly Ross
7. Freddy Rojas
8. Lorrie Garson
9. Debbie Cooke
10. Lorraine Kraft
11. Nancy Wilson
12. Tina Gonzalez
13. Sally Purbrick
14. Sandi Orellana
15. Dan Wilson
16. Jan Pederson
17. Stan Mungaray
18. Paul Jeffers
19. Carin Burcham
20. Janice Davis
21. Gerry Hill
22. Debbie Huddleston
23. Kirsten Jensen
24. Bart Skrumeda
25. Allan Bruton
26. Bruce Cowger

# Wish





6 7 8 9<sup>10</sup> 11 12 13 14 15 17 18 19 20 21 22 23 24 25<sup>26</sup>  
 1 2 3 4 5







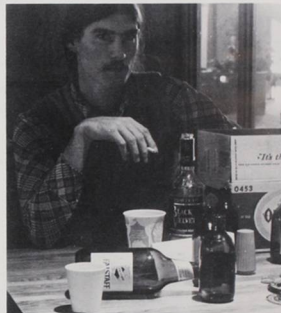
Steve Howell



Ed Blatter



Steve Dahlem, Bob Crumbley, Van Maguire, Bruce Higginson



John Neil



Sue Reidy, Eileen Thomas



Rob Martin, John Cronkite, Ron Saxton



Mary Craford, Jim Eustrom, Karen Henderson, Jim Rainey, Dana Shannon, Katie McClellan, Doug Dunford, Joe Greenly, Julie Van Buren, Barb Gill.



Ron Keuttner



Sarah Stewart



Mark Robbins

## Wits



Scott Allen



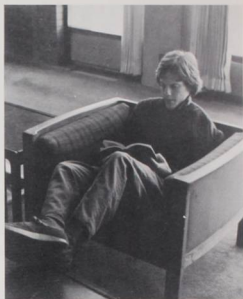
Dan Ivie, Jeff Jones, Larry Webster, Bob Andre, Jeff Stacy



Bill Olson



Laura Pauli, Steve Becroft, Becca Rowe, Sue Berkery, Barb Dellenback, Van Maguire, Pam Blake, Harold "Red" Hare, Carl Wilson, Sandy Schnabel.



Scott Nicholson



Patty Eusteppe



Linda Buschman, Becca Rowe, Eric Stoltz



Julio Viamonte, Peggy Viamonte



Kathy Janzen, Heather Bellows



John Reardon, Mike Trudell, Mona Johnk,  
Jamie Brown, Mike McNutt



Jani Ashton, Linda Bayer



Dan Hall, Tim Archer



Wayne Hall.



Jeff Judy, Scott Oates



Richard Blank





Them





Wren Nealy



Jaci Loville

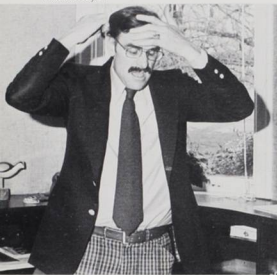


Paul Duell

Frank Meyer

Jo Seibert

Richard Schwartz



Larry Large

Ron Holloway

Buzz Yocum



Pat Stockton

Jim Woodland



Robert Lisensky



# Administration



Josef Schnelker



Walter Farrier

Bruce McIntosh

Richard Stewart

# MUSIC HALL



Charles Heiden

James Cook



Murray North

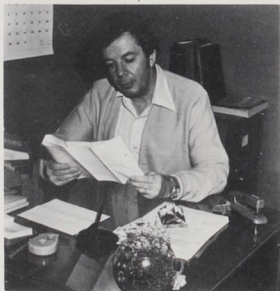


School of Music

Stanley Butler

Maurice Brennan

Julio Viamont





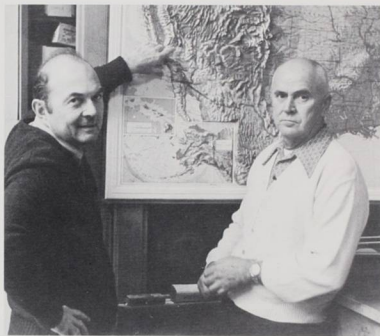
# COLLINS



Elizabeth Yocom



Grant Thorsett



Don Breakey

Harry Rorman

## Earth Science

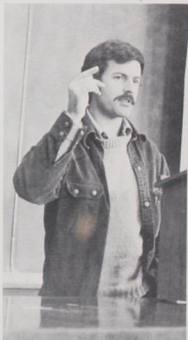
Pieter Dykman

## Biology

Ertha Springer



Scott Hawke





Steve Prothero

Jack Hafferkamp

Richard Hall



Michael Dunlap

## Mathematics



Richard Iltis

## Physics



Robert Pubrick

Maurice Stewart

Dan Montague



Arthur Payton

## Chemistry

Robert McQuate



Fred Mattes



Norman Hudak

Francis Chapple

