

WILLAMETTE  
UNIVERSITY



STUDENT'S  
HANDBOOK



1940

1941





THIS BOOK IS THE PROPERTY OF

NAME .....

ADDRESS.....

CLASS OF..... PHONE.....

CHAPEL SEAT NUMBER .....





# *The Student Handbook*

JERE SIMMONS, Editor

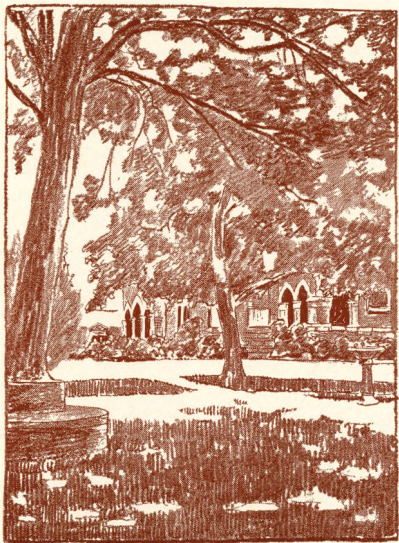
VOLUME XLVII

1940-1941



Annual Publication of  
THE ASSOCIATED STUDENTS  
OF  
WILLAMETTE UNIVERSITY





RENNELL - ELIOT

EATON HALL

## 1940 — CALENDAR — 1941

## SEPTEMBER

1	2	3	4	5	6	7
8	9	10	11	12	13	14
15	16	17	18	19	20	21
22	23	24	25	26	27	28
29	30	.....	.....	.....	.....	.....
.....	.....	.....	.....	.....	.....	.....

## OCTOBER

.....	.....	1	2	3	4	5
6	7	8	9	10	11	12
13	14	15	16	17	18	19
20	21	22	23	24	25	26
27	28	29	30	31	.....	.....

## NOVEMBER

.....	.....	.....	.....	.....	1	2
3	4	5	6	7	8	9
10	11	12	13	14	15	16
17	18	19	20	21	22	23
24	25	26	27	28	29	30

## DECEMBER

1	2	3	4	5	6	7
8	9	10	11	12	13	14
15	16	17	18	19	20	21
22	23	24	25	26	27	28
29	30	31	.....	.....	.....	.....

## JANUARY

.....	.....	.....	1	2	3	4
5	6	7	8	9	10	11
12	13	14	15	16	17	18
19	20	21	22	23	24	25
26	27	28	29	30	31	.....

## FEBRUARY

.....	.....	.....	.....	.....	.....	1
2	3	4	5	6	7	8
9	10	11	12	13	14	15
16	17	18	19	20	21	22
23	24	25	26	27	28	.....
.....	.....	.....	.....	.....	.....	.....

## MARCH

.....	.....	.....	.....	.....	.....	1
2	3	4	5	6	7	8
9	10	11	12	13	14	15
16	17	18	19	20	21	22
23	24	25	26	27	28	29
30	31	.....	.....	.....	.....	.....

## APRIL

.....	.....	1	2	3	4	5
6	7	8	9	10	11	12
13	14	15	16	17	18	19
20	21	22	23	24	25	26
27	28	29	30	.....	.....	.....

## MAY

.....	.....	.....	.....	1	2	3
4	5	6	7	8	9	10
11	12	13	14	15	16	17
18	19	20	21	22	23	24
25	26	27	28	29	30	31

## JUNE

1	2	3	4	5	6	7
8	9	10	11	12	13	14
15	16	17	18	19	20	21
22	23	24	25	26	27	28
29	30	.....	.....	.....	.....	.....

## JULY

.....	.....	1	2	3	4	5
6	7	8	9	10	11	12
13	14	15	16	17	18	19
20	21	22	23	24	25	26
27	28	29	30	31	.....	.....

## AUGUST

.....	.....	.....	.....	.....	1	2
3	4	5	6	7	8	9
10	11	12	13	14	15	16
17	18	19	20	21	22	23
24	25	26	27	28	29	30
31	.....	.....	.....	.....	.....	.....

## COLLEGE CALENDAR

The college year is divided into two semesters of approximately eighteen weeks each. There are three regular recesses, one at Thanksgiving, one at Christmas, and one at Easter.

## 1940

September 16, Monday—

Freshman Days begin, 9:00 A. M.

September 18, Wednesday—

Registration Day for other students.

September 19, Thursday—

Recitations begin, 7:45 A. M.

October 25-26—

Homecoming.

November 21-23—

Thanksgiving Holiday.

December 20, Friday—

Christmas Recess begins, 4 P. M.

## 1941

January 6, Monday—

Christmas Recess ends, 7:45 A. M.

January 20-24, Monday-Friday—

Examinations for First Semester.

January 20-24, Monday-Friday—

Registration for Second Semester.

January 27, Monday—

Recitations of Second Semester begin.

March 1—

Freshman Glee.

April 5-12—

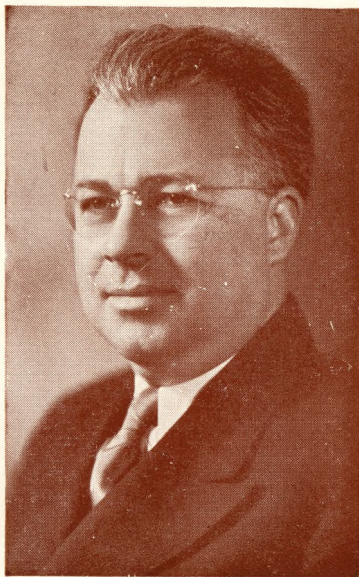
Spring Vacation.

May 2-3, Friday and Saturday—

May Festival.

June 7, Saturday—

Commencement Day.



**BRUCE R. BAXTER**  
President of Willamette University

## WELCOME

---

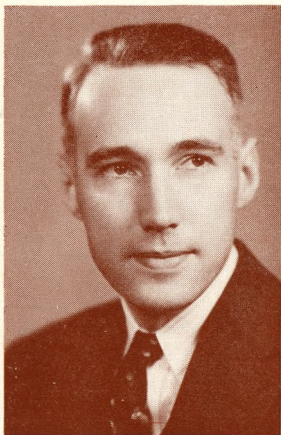
This brief word is a cordial greeting and a genuine welcome as you enter Willamette's 99th year. This means for the new students that the University has waited 98 years for you to enroll. Certainly a period of waiting as long as that should be justified by the caliber of the new arrivals.

This is probably as serious a time in the world's history as has accompanied the entrance into college of any student generation. With us, may solid thinking and serious purpose take the place of restlessness which will be found upon many college campuses.

We are proud that you will have the facilities of the new science building and as we remember the high grade of work done by those with inadequate laboratory equipment, may we be worthy of that which generous friends have provided for us.

To all of you, new and old, I wish the best of college years.

BRUCE R. BAXTER,  
President



Your decision to attend Willamette University places upon every member of the Faculty a responsibility that we accept with pride and appreciation. Whatever may be the reasons for your choice, or whatever your aspirations, we are sure you want to discover why Willamette has meant so much to many generations of students before you.

Every member of the Faculty is interested in your welfare and shares with the Dean the responsibility of guiding your efforts into channels of greatest accomplishments. With this spirit of friendly cooperation and interest I welcome you to Willamette University.

**CHESTER F. LUTHER,**  
Acting Dean, College of Liberal Arts

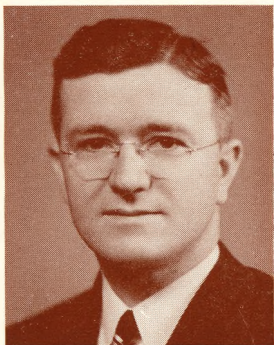


To the Freshmen:

The office of the Dean of Women extends to you its most hearty welcome. We want to offer to you every kind of help that it is possible for us to give in order that you may have a happy and successful first year at Willamette. If, on your part, you have come in the spirit of getting the very most out of this year, we know that you will never regret having chosen Willamette as your college.

If you give us an opportunity, you will find us friendly and helpful at all times.

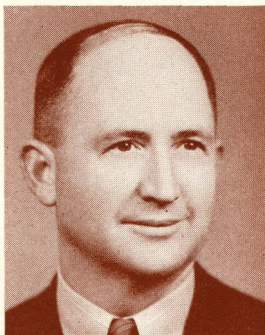
OLIVE M. DAHL,  
Dean of Women



Welcome!

Willamette welcomes you to the campus of this historic institution and welcomes, also, the opportunity of serving you. This is truly a mutual undertaking. If it is to succeed it means that there must be full co-operation. We pledge our full capacities to aid you in every way and invite you to accept our help wherever possible. This will be a new experience for all of you and will present new problems for your solution. We stand ready to help you so that this may be a profitable and pleasant experience. Please do not take for granted that we will find out about your problems by accident. Make it your business to let us know, for calamity may be avoided by giving heed to seemingly minor problems. Welcome to Willamette and to this office!

D. H. SCHULZE,  
Dean of Men



Familiarity with A. S. W. U. finances is not complete until the student has found his way to the general manager's office. The student body of Willamette University maintains and operates a business office under the direction of a general manager. The office is located in the gymnasium. Authorization for expenditure of A. S. W. U. funds is obtained from this office. All money received by managers or collected by any of the A. S. W. U. activities is turned in to the general manager's office. Student activity tickets and handbooks may be obtained from the office. If you are a returning student, make use of the office. If you are a new student, you are invited to become acquainted with the organization and administration of A. S. W. U. money.

LESTLE J. SPARKS,  
General Manager



To you, the Freshman class of 1944, is due the most cordial welcome possible. I am sure that you will find it in every student at Willamette, and I am happy to extend my own good wishes. As you know, our school has seen the advent of one hundred Freshman classes, and it is the history of these classes that is Willamette. From them have come her traditions, her customs, and her spirit—the heritage of the class of 1944. It now remains for you, the incoming Freshman class, to contribute to the next great stride in our development. We will be on hand to help you, and we invite you to take part in all of the activities of the coming year. With your cooperation, we cannot fail to enjoy a successful and profitable school year.

BILL THOMAS,  
President of A. S. W.U.



Our heartiest welcome to the class of '44.

As each of you has progressed from elementary school through high school, you have built up certain high aspirations which you hope to fulfill in college. It is our purpose to assist you in the attainment of these goals. To this end we invite your cooperation.

As a result of your contacts with professors, students, extra-curricular activities, and the field of learning itself, we are convinced that you are about to begin the living of four happy and profitable years.

As members of Blue Key we are vitally interested in acquainting you with Willamette and her many traditions, and we hope that in the end we will have helped to make your college years more profitable.

Congratulations.

ED CONE,  
President of Blue Key

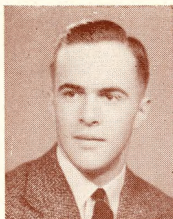


Here's a very special welcome to all you Freshmen girls! We're so glad that you have chosen Willamette as your school, and our wish for you is that this first year of college will prove just as thrilling as you have dreamed.

Because friendships are so important to a happy college life, we are especially anxious that you become acquainted with the Y. W. C. A. and its program. You see, this is your very own organization, full of opportunities for personality and leadership development, and each of you will find in its program some place which only your talents and abilities can fill. Why not join with us in our meetings and parties? You will find in them excellent opportunity for a wide acquaintance, not only with the students but with the faculty as well.

We have big plans for this year, but our success depends upon your interest and help. In return, we can promise you that this interest will afford you an added pleasure in this your first year at college.

JEANETTE HULST,  
President of Y. W. C. A.



To all the new students—and in particular to the men—we extend our heartiest welcome. It is with real pleasure that we congratulate you on choosing Willamette as your school of higher education.

As representative of the largest organization of men at Willamette, I express the hope that the Campus-Y will be of service to you throughout your college career. We want you to become a member and to enjoy its wholesome and religious fellowship.

Your coming to Willamette will mark another transition—from Hi-Y to Campus-Y—and we need not tell those of you who have been affiliated with Hi-Y clubs all that this implies. Those of you who have not had the pleasure of Hi-Y fellowship will find that your Campus-Y offers a stimulating and unique experience.

Our best wishes go with you through four fruitful years at Willamette University.

WINFIELD ACHOR,  
President of Y. M. C. A.

## TRADITIONS

### Homecoming

Homecoming is the important social function on the campus which honors the alumni of the University. The week-end, this year to be held on October 25 and 26, is devoted to the entertainment of returning graduates. The customary activities include an alumni banquet; a football game, this year to be held on Friday night with the College of Puget Sound; and the Homecoming Play at Leslie Junior High School. Active competition centers around the Homecoming Sign Contest which is entered by the seven living organizations.

### Freshman Glee

Freshman Glee, a thirty-two-year-old tradition, is perhaps the most popular of all the customs. It is for this occasion, held the first Saturday night of March, that the Freshman class challenges the other three classes to a tournament of song. The Freshman class have charge of the arrangements and the decorations of the gym. Prior to this time the members of each class compose the words and the music of a song in consideration of the theme chosen annually, and work for a novel presentation. For the past four years radio station KOIN has broadcast the program.

### May Week End

May Week End primarily honors high

school students. The busy week-end begins with a student body party on Friday night. On Saturday it is customary for the Y. W. C. A. to sponsor the May Morning Breakfast. Later in the morning the annual Freshman-Sophomore Tug-of-War is held, and there are various other athletic contests. The coronation of the May Queen on Saturday afternoon is followed by a May Pole Dance and other celebrations in honor of the royal court. Saturday evening's May Week End Play is the formal conclusion of the festivities.

### More Traditions

Regular CHAPEL ASSEMBLIES are held on Tuesday, Wednesday, and Thursday from 11:30 to 12:00 o'clock. The programs consist of talks by Dr. Baxter or various outside speakers, and attendance at the meetings is compulsory for all students. On Friday, Chapel time is devoted to student body meetings, during which period student matters are discussed or programs are presented by different campus organizations.

The VICTORY BELL in the tower of Waller Hall is rung after all Willamette athletic victories. The number of tolls proclaims the University's score.

FRESHMAN GLEE BETS are paid during Chapel time the Monday following the Glee. Strange costumes are worn by losing class members, and the compulsory swim of the men of the unsuccessful class is held in the Mill Stream.

Junior and Senior FLUNK DAYS are held during the latter part of the school year. The Juniors and Seniors plan the respective days for their beach trips without the knowledge of the Freshmen and Sophomores. On Junior Flunk Day, all Juniors are excused from classes and on Senior Flunk Day, all Seniors are dismissed from class attendance.

## CUSTOMS

1. We are WILLAMETTE STUDENTS, first, last, and always, and proud of it!
2. A SMILE and HELLO are expected from every student at all times.
3. Everyone attends the formal Y. M.-Y. W. reception.
4. No one but Seniors inhabits the Senior Bench.
5. Rise when the "Old Historic Temple" is sung.
6. Do not applaud after "Farewell Willamette."
7. Frosh enter and leave chapel by the front door only.
8. Only upperclassmen wear cords.
9. No one smokes on the campus.
10. Street shoes are not worn on the gym floor.
11. Each student is a member of a Christian organization.
12. Everyone is present at all student body and class meetings.
13. All students attend all rallies and games.
14. Willamette students are good sports at all intercollegiate contests.
15. Remember that the library is a place to study.
16. Everyone respects classroom and library furniture.

17. Uphold the Honor Code.
18. Freshman boys wear "rook" caps.
19. Freshmen girls wear a ribbon.
20. All Frosh attend Kangaroo Court, held every two weeks until homecoming.
21. Know the Student Body Constitution.
22. Freshmen carry Student Handbook at all times.
23. Students' mail addressed to Willamette University is placed in the alphabetical mail boxes on the first floor of Eaton Hall.
24. Freshmen are required to do **TEN HOURS** of work on the campus and athletic field.

Hours	Work	Checked By

25. Remember that Willamette has many traditions sacred to our University, and we are depending upon you to preserve and cherish them. A wise Freshman will obey them.
26. The "W" club is aiding you in complying with these customs.

## STUDENT PURPOSE

We unite in the desire to realize full and creative life through a growing knowledge of God.

We determine to make this life possible for all people.

In this task we seek to understand Jesus and to follow Him.

### A. S. W. U. Officers

President.....	Bill Thomas
First Vice-President .....	Mary Head
Second Vice-President.....	Howard Eberly
Secretary.....	Maxine Goodenough
Collegian Editor.....	Marion Sanders
Wallulah Editor.....	John Hathaway

## ORGANIZATIONS

### ATHLETIC:

#### P. E. Club

The Physical Education Club is composed of students interested in athletics and the furtherance of recreation as an extra-curricular activity. Among the outstanding work of the club is the bringing of notable speakers to the campus and the sponsoring of student body play nights.

Officers will be elected this fall.

#### Women's Athletic Association

The W. A. A. is composed of women who have won at least 100 points by participation in at least one sport, practices for which are held from four to five o'clock each after-

noon for a given period. Its purpose is to provide sports for all girls, to promote inter-class contests, and to promote an interest in athletics for women.

#### Officers

President.....	Maxine Crabtree
Vice-President.....	Jean McCorkle
Secretary.....	Ailein LaRout
Basketball.....	Madeline Morgan
Baseball.....	Barbara Viesko
Badminton.....	June Earle
Hiking.....	Reeva Schmidt
Soccer.....	Jean Jackson
Archery.....	Hazel Magee
Tennis.....	Barbara Ferguson
Swimming.....	Margaret Rankin
Golf.....	Bonnie Carmickeal
Volleyball.....	Margo Wright

#### "W" Club

The "W" Club is composed of all students who have won a letter in varsity athletics on the campus. Their chief duties are: to encourage a spirit of good sportsmanship at all Willamette functions and to enforce the observance of all Willamette traditions and customs.

#### Officers

President.....	Justin Weakley
Vice-President.....	Paul Bennett
Secretary.....	Lancer Robertson
Sergeant-at-Arms.....	Joe Holland

#### CULTURAL:

##### Classical Club

The Classical Club, composed of students studying the classics, aims to promote an appreciation of Greek and Roman literature and history through informal discussions at its bi-monthly meetings. A coast picnic is an

annual part of the Classical Club program.

Officers will be elected this fall.

### Coffee House

This club, made up of students interested in literature and creative writing, develops a deeper interest in individual writing by offering inspiration, encouragement, and criticism to literary members.

Officers will be elected this fall.

### Delta Tau Gamma

This chapter of the northwest organization of independent women is open to both sorority and non-sorority women. The purpose of the society is to provide an opportunity for every girl to develop personality fully through social activities, and to promote the spirit of democracy among the girls on the campus.

#### Officers

President.....	Hazel Magee
First Vice-President .....	Ruth Jones
Second Vice-President.....	Ailein LaRout
Secretary.....	Pearl Bendiksen
Treasurer.....	Mary Elizabeth Ross
Corresponding Secretary.....	Dorothy Gurney
Alumni Secretary.....	Jane Patton
Marshal.....	Muriel Smithson
Reporter.....	Luree Norris
Historian.....	Ardea Hanson

### French Club

The club is composed of students who are interested in French games, riddles, and axioms. No English is spoken at the fortnightly meetings, as the club's purpose is to promote fluency in French.

Officers will be elected this fall.

### International Club

Consisting of sixty per cent foreign-student and forty per cent American-student mem-

bership, the club creates a closer relationship between the various races and nationalities on the campus. Parties, a tea, and a coast trip form a portion of the club's annual program.

### **Mathematics Club**

This club, comprised of students interested in mathematics, has formulated a program including both the practical and the social aspects of the subject.

### **Paint Spots**

To promote an interest in art, members are selected on the basis of interest rather than ability. This club aids other organizations in the line of decorative ideas, the making of scenery for plays, and the making of posters to advertise student body functions.

Officers will be elected this fall.

## **DEBATE AND ORATORY:**

### **Tau Kappa Alpha**

This national forensic fraternity has as its purpose the promotion of interest in forensics. Membership is limited to the debate and oratorical squads. This organization sponsors inter-class and inter-collegiate debates and various oratorical contests, of which the Keyes Oratoric contest is outstanding. Because it is a member of the Inter-Collegiate Forensic Association of Oregon and the Pacific Forensic League, it brings Willamette close to the other Pacific Northwest colleges. President .....Tom Terjison

## **DRAMATIC:**

### **Theta Alpha Phi**

This national dramatic society is open to upper-class students who show outstanding ability in dramatics or in the direction or

management of student productions. Its purpose is to foster dramatic interests and to unite socially those with histrionic talents.

### Little Theatre Guild

This organization, formed to develop dramatic talent among students, presents several plays and skits each year. Acting, costuming, play-writing, make-up, and scenery are all studied in these productions. The aim of the Guild is to present different types of plays throughout the year.

### LAW:

#### Delta Theta Phi

This national law fraternity is an important part of Willamette's fifty-five-year-old College of Law. The chapter, the Wolverton Senate, has as its purpose the promotion of high scholarship united with the thought of advancement of justice and high ideals in the legal profession.

#### Officers

Dean.....	Bob Smith
Vice-Dean .....	Leonard Donaldson
Tribune.....	Claude M. Johns
Master of Rolls.....	Mervin Brink

### MUSICAL:

#### Mu Phi Epsilon

This national music sorority, recently established on the campus, has as its purpose the advancement of the art of music in America. Membership is limited to students majoring in music who have a high scholastic standing.

#### Officers

President.....	Belle Brown
Vice-President.....	Maybelle Lilburn
Recording Secretary .....	Jane Howe
Corresponding Secretary .....	Jane Howe

Treasurer.....Mrs. Findley  
Chorister.....Ina Bennett

### Phi Delta Mu

This local music organization is open to students of music. The outstanding purposes of the club are the furtherance of the cause of music on the campus, the cultivation of the appreciation of good music, and the giving to members the opportunity of performing before other students.

### A Cappella Choir

The Willamette A Cappella Choir, organized in 1939, is made up of fifty men and women under the direction of Dean Melvin Geist.

Outstanding among its many activities is the annual Christmas Vesper Service, and the Spring Concert Tour.

### String Quartette

The quartette, composed of three violins and a piano and under the direction of Mrs. Mary Schultz Duncan plays at various student and town social functions.

### University Band

The Willamette University Band aids in creating pep and spirit at games. Last year the outstanding additions to the group were the procuring of Cardinal and Gold uniforms for the members and the introduction of many new instruments. Much credit for making the band one of Willamette's best advertisements goes to Director Ralph Nohlgren.

**RELIGIOUS:****University Vespers**

Sunday meetings of this group are held in the Educational Temple of the First Methodist Church. "Cookie Jar," the Thursday afternoon tea; numerous parties and play nights; and the annual Senior banquet are among the social activities of the organization. It is the purpose of the organization to unite the religious and social activities of students to gain a working philosophy of life.

**Officers**

President .....	Winston Taylor
Vice-President.....	Jane Howe
Secretary .....	Marion Sanders

**Wesleyans**

This national organization for the promotion of interest in missionary work is composed of students concerned with Christian life and development. Modern and campus religious problems are discussed at weekly noon meetings.

**SERVICE:****Blue Key**

This national honor fraternity considers qualities of character, scholarship, student activities, leadership, and service in the annual selection of its members from the Sophomore class. Through its stimulation of the interests of the University and its study of student problems, the Blue Key renders a great service to Willamette.

**Cap and Gown**

This local honorary society is composed of five Senior women who show outstanding qualities of personality, service, scholarship, leadership, and Christian ideals. An ice cream social for the benefit of Chresto, a banquet for Freshmen and Sophomore women of high scholastic standing, and a trip to Corvallis are among the club's annual activities.

Members elected for 1940-1941:

Marion Sanders	Virginia Hubbs
Mary Head	Jessie Mae Ruhndorf
Jeanette Hulst	

**Tacks**

Tacks, the service organization, is composed of Sophomore women who cooperate with the University by serving at banquets, ushering at concerts, and assisting at other functions.

Officers will be elected this fall.

## Y. W. C. A.

"We, the members of the Y. W. C. A., Wil-  
lamette University, unite in the desire to  
realize full and creative life through a grow-  
ing knowledge of God. We determine to have  
a part in making this life possible for all  
people. In this task we seek to understand  
Jesus and follow Him."

It is in pursuance of this purpose that the  
organization follows an extensive service pro-  
gram consisting of the following factors: Big  
Sister project, teas, Chresto program, Y  
formal reception, Faculty Firesides, group  
discussions, conference and planning commit-  
tees, scholarship fund drive, bulletins, mem-  
bership dinner and recognition service.

## Officers

President.....	Jeanette Hulst
Vice-President.....	Grace Cramer
Secretary.....	Mary Barker
Treasurer.....	Louise Tucker

### Y. M. C. A.

The Y. M. C. A., under the advisership of Professor R. F. Thompson, will meet twice monthly at Chresto this year for a potluck dinner and program. There will also be a major and minor social event each semester.

The organization's first big task will be to have housing information on hand for students entering this fall. It is through such activities as the Freshman Party at the "Y" during the first week of school that the society intends to keep in contact with the Freshmen throughout the year.

#### Officers

President.....	Winfield Achor
Vice-President .....	Dick French
Secretary .....	Bob Ewing
Treasurer.....	Dick Stacer

#### Club Rooms

Chresto Cottage, Student Union, recently moved to a new location near the library, is the scene of small club meetings, informal gatherings, and teas. Many students also eat their lunches there.

Willamette Lodge, 255 North Capitol, is the private residence of Mrs. Claudius Thayer, who graciously loans her home for meetings and teas.

## PUBLICATIONS

### Student Directory

As a supplement to the Wallulah, this staff publishes a student directory, or "fussers' guide," at least once a year. Besides listing the name, address, and telephone number of each student, the term's social functions are also given.

### Student Handbook

The Student Handbook, or "frosh bible," is published each year by the student body to acquaint new students with the University and to give useful information concerning student activities.

### Wallulah

This annual publication of the associated students appears about the first of June. Upon the approval of the awards committee, ambitious staff members are awarded with a gold old English "W."

### Willamette Collegian

This official college paper, published weekly by the student body, is one of the outstanding University publications on the coast. Staff members who have served their first year faithfully are awarded a gold old English "C."

All Willamette students are expected to patronize Collegian advertisers.

### Willamette Songbook

The Songbook includes the outstanding Willamette songs up to date. The collection grows larger each year, as Freshmen Glee songs are constantly being adopted by the student body.

# LIBRARY RULES

## General Rules:

Current magazines are treated as reserve books.

Reference books and bound periodicals do not circulate.

## Hours:

The library is open from 7:30 A. M. to 9:30 P. M. from Monday through Thursday. On Friday and Saturday hours are from 7:30 A. M. to 6:00 P. M.

## Payment of Fines:

If overdue material has not been returned and the fine has not been paid a week after the first notice has been sent, a second notice is mailed, adding ten cents to the amount of the fine. If the fine has not been adjusted at the end of the next week, the student is reported to the office of the registrar in which case a fifty-cent charge is added to the original fine.

## Reserve Books:

Several hundred books in which reading assignments are made are kept at the desk and they are given to students by request.

Each reserve book has an orange card and a red dot. Reserve books will be charged out for two-hour periods and they will be due on the half hour nearest the two hours elapsed since the book was checked out.

## Schedule of Fines:

The charge for overdue two-week books is two cents a day; for three-day books, five cents a day; and for reserve books, five cents an hour and twenty-five cents a day.

## LAUSANNE HALL REGULATIONS

To promote new friendships and to create a spirit of democracy, all Freshmen girls and all other girls new to the campus are required to spend their first year in Lausanne Hall.

Hours on week nights and on Sunday nights are 10:00 P. M., signing out being required after 7:30 P. M. On Friday and Saturday nights hours are 12:00.

Students are expected to preserve quiet from 7:45 to 11:30 A. M. and from 1:15 to 4:00 P. M., except Saturdays, and from 3:00 to 5:00 P. M. on Sundays. Quiet hours are observed from 7:30 P. M. on each week night.

On leaving town, permission must be secured from Miss Jack or Dean Dahl, and girls shall register their address while away and the probable time of their return. Girls wishing to spend the night away from the Hall must secure permission. Late permissions may be granted by Miss Jack for any special functions. If, on any night, girls are attending a campus function which lets out too late for regular hours to be maintained, all girls shall be in twenty minutes after the first girl arrives from that function.

### Officers

President.....	Frances Pickard
First Vice-President.....	Dorothy Gurney
Second Vice-President.....	Billie Jean Gilliton
Secretary-Treasurer .....	Harriet Monroe
Song Leader .....	Josephine Miller
Reporter.....	Shirley Caufield

## SORORITIES

### Alpha Phi Alpha, 1923

960 Court Street, Phone 8911

#### Officers

President .....	Laura Lee Tate
First Vice-President.....	Betty Lou Strackan
Second Vice-President .....	Margaret Rankin
Recording Secretary .....	Catherine MacRay
Corresponding Secretary .....	Mary Swisher
Manager.....	Madeline Morgan

### Beta Chi, 1919

1445 State Street, Phone 8760

#### Officers

President.....	Jessie May Ruhndorf
Vice-President .....	Janet Hinkley
Treasurer.....	Dorothy Baldwin
Recording Secretary.....	Mary Hensley
Corresponding Secretary .....	Jane Howe
Sergeant-at-Arms.....	Jewel Minier
Manager.....	Barbara Hollingsworth

### Delta Phi, 1920

1610 Court Street, Phone 8730

#### Officers

President .....	Rowena Upjohn
First Vice-President.....	Nadine Pruitt
Second Vice-President .....	Helen Dean
Secretary .....	Esther Mae Devore
Corresponding Secretary.....	Ruth Hedges
Social Treasurer .....	Maybelle Lilburn
Manager .....	Chloe Anderson

## SORORITY RUSH RULES

## Fall Rushing

1. Girls planning to graduate from Willamette will be given first consideration in "rushing."
2. Girls who are registered for less than twelve semester hours are not eligible for pledging.
3. Girls on probation will not be "rushed."
4. Independent or fraternity men may not assist in sorority "rushing."
5. Unfriendly conversation about other houses shall not be indulged in.
6. "Rushing" will take place the 15th, 16th, 17th of October, 1940, with October 19th the date for the preferential dinner.
7. Friday, October 18th, shall be a day of silence for both "rushees" and active girls.
8. No favors will be given to guests at the buffet suppers.
9. Alumnae of the sorority must observe all "rush" regulations.
10. No out of town excursions shall include both active and girls eligible for "rushing" between September 16th and October 19th.
11. Violation of any "rush" rule will be subject to forfeiture of the winter social function of the sorority.
12. From September 16th to October 15th, 1940, the following rules shall be in effect:
  - a. No expenditure of time nor money on informal "rushing."
  - b. Except for the 8th, 9th, 10th, and the formal dinner, sorority members may

not invite new girls to the sorority houses. Incidental invitations issued in a general manner are allowed.

- c. These incidental invitations are only valid between the hours of 4:00 P. M. and 6:00 P. M.
- d. Sorority members may not invite new girls to stay in their homes.
- e. Sorority girls may become acquainted with new girls in a normal manner. The following are suggestions:
  - Study together
  - Attend church together
  - Double date
- f. Costs for preferential banquet is not to exceed \$50.00 including favors, decorations, food, etc.
- g. Each sorority must submit an itemized account of "rushing" expenditures to the office of the Dean of Women.

### Summer "Rushing"

1. Each sorority shall be entitled to give two major "rush" functions in Portland and two in Salem during the summer.
2. A major "rush" function will consist of more than three girls from one sorority and more than three "rushees." A group of six is not to be considered a major function.
3. Alumnae of the sorority must observe the above regulations.
4. Violation of any "rush" rule will be subject to punishment, namely, the forfeiture of the winter social function of the sorority.

## FRATERNITIES

**Alpha Psi Delta, 1920**

895 Chemeketa Street, Phone 6588

## Officers

President .....	Dean Trumbo
First Vice-President.....	Jack Walker
Second Vice-President .....	Bill Hughes
Secretary.....	Richard Jewett
Member-at-Large .....	Marvin Humphreys
Manager .....	Dan Moses

**Kappa Gamma Rho, 1921**

316 North Church Street, Phone 8882

## Officers

President.....	Al Ferrin
First Vice President.....	Ernest Greenwood
Second Vice-President.....	Edwin Cone
Secretary.....	John Stalnaker
Member-at-Large .....	Loren Hicks
Manager.....	Oscar Swenson

**Sigma Tau, 1919**

920 Oak Street, Phone 8718

## Officers

President.....	Harry Chadborne
First Vice-President.....	Robert McGee
Second Vice-President.....	Corydon Blodgett
Secretary .....	William Nesbitt

### Inter-Fraternity Rushing Rules

**Procedure:** Subsequent to registration, at a time set by the Inter-Fraternity Council, each new registering man shall be given the opportunity to signify his choice of fraternities, which shall be written and filed in the Dean of Men's office. Each fraternity shall present to the Dean a list of new men whom it wishes to pledge. Official notification shall issue from the Dean's office to each fraternity respectively of the names which correspond to the list it has handed in.

**Time of Pledging:** No man shall be offered the opportunity to pledge any fraternity until the time of pledging set by the INTER-FRATERNITY COUNCIL and until he shall have completed registration. Completion of registration means the making of final arrangements with the business office in regard to the payment of tuitions. Any violation of this provision on the part of any fraternity shall mean the forfeiture of the right to pledge the man in question for a period of thirty days.

Bids for preferences to houses shall be turned in to the Dean of Men's office by four o'clock Friday of Freshman Week.

## AWARDS

### Albert Prize

Mr. Joseph H. Albert of Salem awards \$25 to the student who, having maintained good standing in scholarship during the year, opportunities considered, has made the greatest progress toward the ideal in character, service, and wholesome influence.

John Laughlin

### Alpha Kappa Nu

Election to this local honorary fraternity is limited to ten per cent of the Senior class who have the highest scholastic standing for the entire University course.

Members elected in 1940:

Edna Thoman	John Laughlin
Verna Vosper	Clyde Wiegand
Betty Star	Olive Clemes
Margaret Upjohn	Helen Neiger
Warren Biggerstaff	Wallace Turner

Dayton Robertson

### Bancroft-Whitney Prize

The Bancroft-Whitney Company gives a set of Jones' Commentaries on Evidence, six volumes, to the Senior doing the most commendable work in trial practice.

Lyle Truax

### J. H. Booth Athletic Trophy

A plaque is awarded by Mr. J. H. Booth of Roseburg to the Senior who, in addition to maintaining high scholarship standing, has exerted a fine moral influence and has achieved the best standing in athletics. In addition to the personal trophy, the student's name is engraved on the large loving cup held as a permanent trophy at the University.

Leighton Blake

### Class of 1919 Scholastic Prize

An award of \$10 is made by the class of 1919 to the Senior who has the most outstanding record in scholarship.

Edna Thoman

### Keyes Prize

The Honorable Walter E. Keyes of Salem awards prizes of \$15 and \$10 to the students winning first and second place in oratorical competition.

First Prize.....Dean Ellis  
Second Prize .....Carl Mason

### Library Prize for Recreational Reading

Prizes of \$10, \$8, and \$5 are made to the students reading books from a selected list and writing book reports.

First Prize .....Gene Huntley  
Second Prize.....James Anderson  
Freshman Prize.....Doris Harold

### Senior Scholars for 1940-1941

These appointments are made at the close of the Junior year to hold throughout the Senior year. The duties of the Senior scholar are to make special studies of the teaching methods, examine and criticise papers, and assist in the laboratories. Selection is based on scholarship and fitness to profit by the appointment.

Biology .....Harold Hutchinson  
Business and Public Administration.....  
.....James Harris  
Classical Civilization.....Lois Herman  
Economics .....Bill Kilkenny  
English.....  
Jane Howe, Jeanette Hulst, Jessie May  
Ruhndorf, Muriel Smithson  
French.....Virginia Hubbs, Ruth Hedges  
History.....Jesse Gilmore, George Gutekunst  
Home Economics.....Jeanne Probert  
Mathematics.....Gayle Denison

Music .....	Maybelle Lilburn
Physical Education .....	
.....	Margaret Wright, Justin Weakley
Physical Science.....	Margaret Coan
Political Science.....	James Anderson
Philosophy.....	Merle Turner
Speech.....	Thomas Terjison, Frances Pickard
Sociology.....	William Laughlin
Zoology.....	Kenneth Hughes

### Willamette Women's Athletic Honor

This honor is conferred upon the Sophomore or Junior girl who in the opinion of the honor committee has made an outstanding contribution to the social and ethical aspects of the women's physical recreation activities of Willamette University.

Maxine Crabtree

### Colonel Percy Willis Prize

Col. Percy Willis, '95, of Portland, offers a prize of \$25 "to the student who throughout the school year has done the most real good to fellow students and the University by deeds of kindness and genuine helpfulness, coupled with steadfast devotion to high ideals and upright character."

Dayton Robertson

### Women's Athletic Association Senior Cup

A silver loving cup is awarded to the Senior girl who, in the opinion of the Association, shows the greatest achievement toward an all-round athlete, including sportsmanship, personality, and cooperation.

June Brasted

## CHURCH DIRECTORY

- American Lutheran — Church, between Chemeketa and Center.
- Bethany Reformed — Capitol and Marion.
- Calvary Baptist — Liberty and Miller.
- Castle Chapel, United Brethren — Nebraska and 17th.
- Christ Evangelical, Lutheran—State, between 17th and 18th.
- Church of Christ — 1489 N. Cottage.
- Church of God — 1346 N. Church.
- Church of the Latter Day Saints—Chemeketa and Cottage.
- Church of the Nazarene — Center and 13th.
- Court Street Christian — Court and 17th.
- First Baptist — Liberty and Marion.
- First Christian — High and Center.
- First Church of Christ Scientist — Chemeketa and Liberty.
- First Congregational — Salem Woman's Club.
- First Evangelical — Marion and Summer.
- First German Baptist — Cottage and D.
- First Methodist — State and Church.
- First Presbyterian — Chemeketa and N. Winter.
- First United Brethren—Mission and 12th.
- Highland Friends — Highland and Church.
- Immanuel Baptist — Hazel and Academy.
- Jason Lee Memorial, Methodist — Jefferson and N. Winter.
- Knight Memorial Congregational—Ferry and 19th.
- Leslie Methodist....S. Commercial and Myers.
- Market Street Free Methodist — Market and N. Winter.
- Mill Street Methodist — Mill and 15th.
- Seventh Day Adventist—Hood and Summer.
- South Salem Friends — S. Commercial and Washington.
- St. John's Lutheran — 16th and A.
- St. Joseph's Catholic—Cottage and Chemeketa.
- St. Paul's Episcopal—Church and Chemeketa.
- St. Vincent de Paul, Catholic—2200 Myrtle.
- West Salem Methodist—State and 3rd.



Coach Keene

### 1940 FOOTBALL SCHEDULE

- Sep. 28—Portland University at Portland.  
Oct. 4—San Jose State at Portland.  
Oct. 18—San Diego Marines at Salem.  
Oct. 25—College of Puget Sound at Salem.  
Nov. 2—Gonzaga University at Longview,  
Wash.  
Nov. 8—Linfield at Salem.  
Nov. 15—Pacific University at Salem.  
Nov. 21—Whitman at Salem.  
Nov. 30—Whittier College at Whittier.

All home games will be at night with the exception of Whitman.

## ATHLETICS

Intercollegiate athletics are maintained under the personal supervision of the Director of Athletics and under the jurisdiction of the Athletic Council.

Willamette belongs to the Northwest Conference, composed of the following schools: Whitman College, College of Idaho, College of Puget Sound, and Pacific University. It is the purpose of this Conference, as far as possible, to foster participation by all members of the Conference in contests of football, basketball, baseball, tennis, and track.

### Intramural Activities

Intramural activities are maintained under the personal supervision of the Director of Physical Education and the chairman of the Interclass Rivalry Committee.

The program extends over the entire school year, and is composed of the following activities: cross country, scrimmage ball, basketball, boxing, wrestling, physical ability tests, track, baseball, and tennis.

Students taking Physical Education for credit must pass the Physical Ability Tests before they are permitted to substitute an intramural activity for the regular class work.

### Gymnasium Requirements

Physical Education is required of all students throughout the Freshman and Sophomore years.

The regulation uniform for the Physical Education classes consists of rubber-soled shoes, supporter, sleeveless jersey, pants, and a heavy sweater or sweatshirt.

Lockers should be locked at all times. Equipment that is left out will be picked up.



**Sally Anderson**  
**Song Queen**

## VARSIITY SONGS

### Old Historic Temple

There's an old Historic Temple  
Rising grandly through the years;  
Where the oaken-hearted fathers  
Drew their strength for strong careers.  
Down the years its portals open,  
Gather wise ones to its fold;  
Breathes the spirit of the Westland,  
Card'nal emblem 'bossed with gold.  
Spirit of the Golden Westland,  
Breathing through our father's tears;  
Tells the story of the Temple,  
Bids us hope adown the years.  
Sing, oh sing, of old Willamette,  
Sing while hearts are young and true;  
Sea to sea the chorus swelling,  
Dear old school, our W. U.

## I Love Willamette U

I love Willamette U,  
I love her campus too;  
I love her Profs. so good and true,  
I love her spirit real true blue.  
I love the old mill stream,  
I love to sit and dream;  
I see it all in shadows cool,  
I love our dear old school.

## Senior Serenade Song — 1936

Silver clouds are rifted by the starlight,  
The scented blossoms lowly bend with dew;  
Magic pools of mist that come with midnight  
Echo back my song of love to you.

## Chorus—

Soft music lifting,  
Through shadows drifting,  
Into your dreamland,  
There to live anew.  
Pale moon descending,  
My love song ending—  
Sweetheart of W. U.

### Dream On

The stars are softly gleaming  
 In the shadows of the night.  
 The moon like glowing silver  
 Covers all with mellow light.  
 The world is resting peaceful  
 From the hurry of the day,  
 So now beneath your window  
 Do I sing to you and say—

**Chorus—**(Boys sing)

Dream on gently, pretty maiden,  
 Till the golden heart of you  
 Thrills with the night-time's tender beauty,  
 And you fairest dreams come true.

(Girls sing)

Dream on, lad of old Willamette  
 Till the youthful heart of you  
 Thrills with life and love and glory  
 And your fairest dreams come true.

### Senior Song — 1937

Oh, the Indians known to Jason Lee,  
 Went out one night on a little spree  
 They organized a rythm band  
 That soon was known throughout the land  
 Then they went off to college  
 And they took their band along,  
 With sharps and flats and feathers in their  
 hats  
 They beat their big tom-toms.  
 The big chief smiled  
 The squaws went wild  
 As they sang their college song.  
 Woo-oo Woo-oooo Woooo-ooo  
 At Willamette U each gal and lad  
 Has the same kind of rythm that the Indians  
 had.  
 The red man's ghost is with us still  
 And if we don't whoop, we're sure they will.

**The Pledge of Loyalty — Freshmen, 1938**

We're loyal to our Alma Mater, old Willamette U;  
Proud and strong each son and daughter,  
sings her praises true.  
Through the years we'll shout the story of  
her grand old name,  
Let the nation glory in her fame.  
We'll always love her cheerful campus, her  
traditions old;  
We'll rally 'round her flying colors, Cardinal  
and Gold.  
We'll long remember all the joys and all the  
sadness, too;  
We're loyal to the name of old Willamette  
U.

**Fight, Sons of Old Willamette**

Fight, sons of old Willamette,  
Fight, 'til the battle's done:  
With a valor ever bold  
For the Card'nal and the Gold  
Fight 'til the vict'ry's won!  
Many hearts are standing by you  
With a spirit ever true  
Fight with courage never dying  
Fight! Willamette U.

**Fight, Bearcats**

Fight, Bearcats, fight!  
A victory for W. U.  
Cardinal and Gold, victorious of old  
Will give us a spirit ever true.  
Fight, fight, fight!  
Cardinal courage show  
And Gold is our faith so true  
We shout our war cry out to you  
Come on and fight, fight, Fight!

**Wa Hoo**

Wa hoo, wa hoo  
 Rip zip ba-zoo  
 I yell, I yell for W. U.  
 Wa hoo, wa hoo, wah hoo,  
 Well, well, well,  
 Well, well, well, well,  
 Well, well, well, well,  
 Wa hoo, etc.

**Cannibal King**

A cannibal king with a big nose ring  
 Got stuck on a Zulu maid,  
 And every night when the moon shone bright  
 Across the canal he'd wade  
 To hug and kiss this dusky miss  
 Out under the big bay tree,  
 And when they met they sang a duet  
 That sounded like this to me:  
     Oh, Jason Lee, socretty boo-ya  
     Oh Poppa Waller, chenickety umba  
     Umpa-Umpa-Um.

**Fight, Fight, Fight — Junior, 1935**

Fight, fight, fight, you fearless men of might  
 Who face the foe for W. U.  
 Fight, fight, fight, with victory in sight,  
 Your strength and courage will renew.  
 Fight, fight, fight, you dauntless Bearcats,  
     fight,  
 And as you fall upon the foe  
 Let your hearts and strength unite  
 To Fight, Fight, Fight.  
 The enemy will fear you,  
 And the multitude will cheer you  
 As you Fight, Fight, Fight.      (repeat song)

**Victory Song**

Vict'ry for W. U.

The bell in the tower rings.

The battle's done;

The victory's won;

Card'nal and Gold are flaming

Proudly o'er us.

Here's to the Bearcat Team

Who carried out colors through!

Our song shall go

Till the world will know

There's a vict'ry for W. U.!

**Freshman Song — 1933**

Come let our laughter mingle

With silvery sounds of night,

But list, my sweetheart of Willamette

While I tell my plight.

**Chorus—**

Waken, loved one, heed that bright moon-  
beam

Straight as a gleaming dart;

Waken, dear one, cease your dreaming,

To you, the delight of my heart,

I'm calling. Here beneath your window sing-  
ing

A song that is ever new;

Though 'tis the old, old song I'm singing

It means, sweetheart, I love you!

## Around the Campus

Around the campus of old Willamette  
We'll shuffle the cards and roll the bones  
along, along, along.

Around the campus of old Willamette,  
We'll shuffle the cards and roll the bones  
along.

Slinga da ink and push the pen along, along,  
along,

Around the campus of old Willamette,  
We'll slinga da ink and push the pen along.

Worry the Profs, worry the Profs,  
Worry the Profs and kid them right along,  
along, along,—

Boys sing:

Fuss the girls, fuss the girls,  
Fuss the girls and kid them right along,  
along, along,—

Girls sing:

Vamp the boys, vamp the boys,  
Vamp the boys and kid them right along,  
along, along,—

W. U., W. U.,  
W. U. will help you right along, along, along.

Each class insert its own number:

'42, '42,

'42 will help you right along, along, along,—

**Sophomore Loyalty Song — 1934**

Hail to our Alma Mater,  
To the Card'nal and to the Gold,  
Honor as true as card'nal,  
Loyalty true as gold.  
Hail to the friends we cherish,  
We pledge loyalty to you;  
We'll always share the fellowship  
At our Willamette U.  
Hail to the teams whose valor  
Will bring victory to you;  
Hail to the campus spirit,  
With loyalty made more true.  
Hail to the dauntless courage,  
As bright as the card'nal hue;  
We see it all in college days,  
At our Willamette U.

**Fly the Colors — Sophomore, 1938**

Raise the colors of Willamette,  
Fly the Cardinal and Gold;  
High above our Alma-mater  
Victorious as of old.  
She is our empire builder  
Pledge our hearts so true;  
Here's where our songs will ever  
Ring glory for W. U.

**Chorus—**

So we'll fight, fight, fight, and with strength  
unite  
To keep our colors true.  
We'll give praise, praise, praise, to our college  
days  
That we spend at W. U.  
It is here we'll be with our loyalty,  
And in our spirits ever true,  
On mount or sea we'll send loyalty  
Back to our Willamette U.



**HARRY IRVINE**  
Yell King

## VARSITY YELLS

### **Fight, Team!**

Fight, team, fight, fight! (softly)

Fight, team, fight, fight; (louder)

Fight, team, fight, fight! (shout)

### **Yea, W. U.**

Yea, W. U.

Yea, W. U.

Yea, W. U.

Fight 'em, fight 'em, fight 'em!

**Go Get 'Em, Bearcats**

Go get 'em, Bearcats, go get 'em!

(slowly, softly)

Go get 'em, Bearcats, go get 'em!

(faster, louder)

**GO GET 'EM, BEARCATS, GO GET 'EM!**

**Skyrocket**

S-s-s-s-s-s-s-s-s-s- (rise on whistle) **BOOM!**

A-a-a-h, **WILLAMETTE!**

**Keene**

He's Keene!

Who's Keen?

Spec's Keen!

**Locomotive**

(Spell softly and slowly working up to fast and loud)

**W-I-L-L-A-M-E-T-T-E**

(Repeat several times)

**Spell Bearcats**

Be . . ar . . ca . . ts (slowly)

Be . . ar . . ca . . ts (faster)

Be . . ar . . ca . . ts (fast)

Be . . ar . . ca . . ts (very fast)

**Bear-cats!**

**BEARCATS! (shout)**

## TABLE OF CONTENTS

	Page
Greetings .....	9
Traditions .....	18
Customs .....	20
Student Officers.....	22
Organizations .....	22
Publications .....	32
Library Rules .....	33
Living Organizations .....	34
Awards .....	59
Church Directory .....	43
Football Schedule .....	44
Athletics .....	45
Varsity Songs .....	46
Varsity Yells .....	54
Faculty Directory .....	57

## FACULTY DIRECTORY

	Phone
Dr. Bruce R. Baxter, 180 S. Winter.....	8764
Dean Chester F. Luther, 120 E. Superior	4951
Dean Daniel H. Schulze, 30 Hanson Ave.	8139
Dean Olive M. Dahl, 925 N. Fifth.....	6694
Prof. Maurice W. Brennan.....	
Prof. E. T. Brown, Box 502, Silverton Road.....	2-2756
Prof. W. W. H. Clark, 1902 N. Church	7388
Miss A. Gale Currey, 555 N. Winter....	8125
Mrs. M. Schultz Duncan, 1305 Broad- way .....	5319
Miss Clara Eness, 157 S. Winter.....	8072
Miss Constance Fowler, Rt. 6, Box 319..	2-2294
Dr. Robert M. Gatke, 280 Richmond....	9471
Dean Melvin H. Geist, 160 W. Lefelle..	8920
Prof. C. C. Haworth, 410 W. Rural.....	7349
Prof. Maurice E. Holcomb, 1060 N. 20th	8526
Prof. H. C. Hutchins.....	
Miss Lorena N. Jack, Lausanne Hall....	4634
Dr. C. H. Johnson, 362 Jerris Ave.....	5835
Prof. William C. Jones, 465 S. 23d.....	3809
Coach Roy S. Keene, 540 Lefelle.....	9460
Dr. Henry C. Kohler, 215 S. Winter.....	6317
Miss Lois E. Latimer, 1240 N. 21st.....	8432
Dr. S. B. Laughlin, 1705 Court.....	4224
Prof. Richard Liebes, 735 "D" .....	
Dr. R. Ivan Lovell, 553 Statesman.....	7928
Miss Helen MacHirron, Lausanne Hall	6672
Coach Howard Maple, 1775 Saginaw....	3218
Dr. James T. Matthews, 1393 S. 12th..	
Prof. Kenneth McLeod.....	

Prof. Cecil R. Monk, 1025 N. Capitol..	8430
Miss Marion Morange, 555 N. Winter..	8125
Mr. Ralph S. Nohlgren, 1498 Court.....	4971
Dr. Egbert S. Oliver, 865 Jefferson.....	6771
Mrs. Genevieve L. Oppen, 1565 S. Church .....	4207
Miss Bernice Orwig, 1775 S. High.....	8510
Dr. Helen Pearce, 267 N. Winter.....	4236
Prof. Morton E. Peck, 1552 Court.....	5258
Dr. Herbert E. Rahe, 1026 N. Winter..	6160
Mr. Ivan B. Rhodes, 954 "D".....	6154
Prof. Murco Ringnalda, 1841 Fair- mount .....	5883
Prof. T. S. Roberts, 505 N. Summer....	7111
Dr. Charles L. Sherman, 835 "D".....	5762
Prof. Lestle J. Sparks, 1045 N. 14th....	3291
Robinson Spencer, 1189 Court.....	4764
Prof. R. F. Thompson, 340 E. Lincoln..	3775
Dr. A. A. Vazakas, 860 N. Cottage.....	
Prof. Robert Wilson, 1244 Chemeketa..	

### COLLEGE OF LAW DIRECTORY

	Phone
Dean Geo. L. McLeod, 385 N. Summer	7839
Mr. Edward F. Gillingham, Turner, Or.	
Mr. Charles Heltzel, 670 S. High.....	8946
Prof. C. M. Inman, 1465 Mission.....	6402
Mr. William J. Linfoot, 1848 Saginaw	
Dr. Roy M. Lockenour, 1478 Center....	5222
Prof. Willis S. Moore, 495 N. Com- mercial .....	8884
Mr. E. Max Page, 1642 Court.....	4665
Prof. Ray L. Smith, 1895 Center.....	7557
Mr. Willard H. Wirtz, 750 Stewart.....	5843

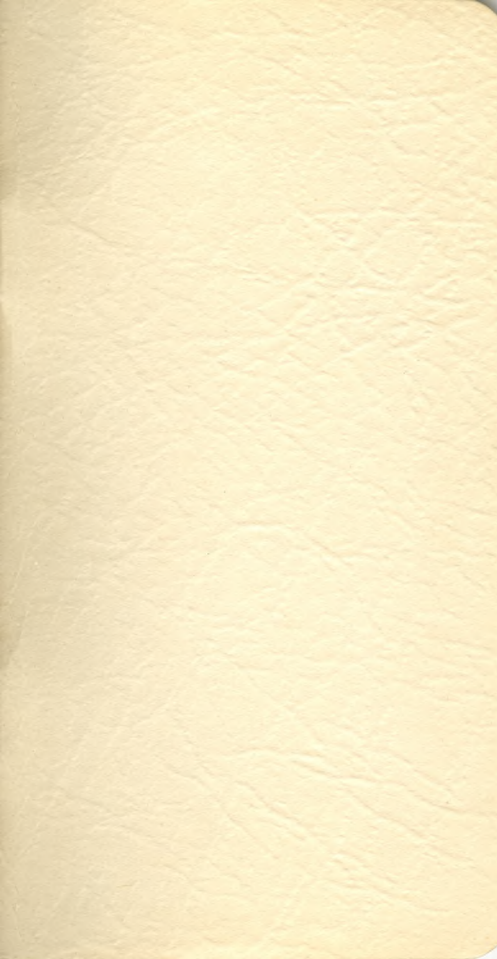
## UNIVERSITY DIRECTORY

	Phone
A.S.W.U.-Collegian-Wallulah .....	3088
Eaton Hall .....	5768
General Manager's Office.....	6778
Gymnasium .....	6778
Lausanne Hall .....	6672
Science Hall .....	3400

## STUDENT HEALTH SERVICE

	Phone
Dr. Ralph Purvine, 1st Nat'l Bank Bldg.	3139
Res., Kingwood Drive.....	6488
Doctors' Telephone Exchange.....	5568
Hours: At Gymnasium.....	1:30-2:00 P.M.
At downtown office.....	2:00-2:30 P.M.







KRAPS & LONG, PRINTERS, SALEM