

THIS BOOK IS THE PROPERTY  
OF

Name .....

School Address.....

Class of.....Phone.....

Chapel Seat Number.....

Student Handbook

Book 1

Volume 1

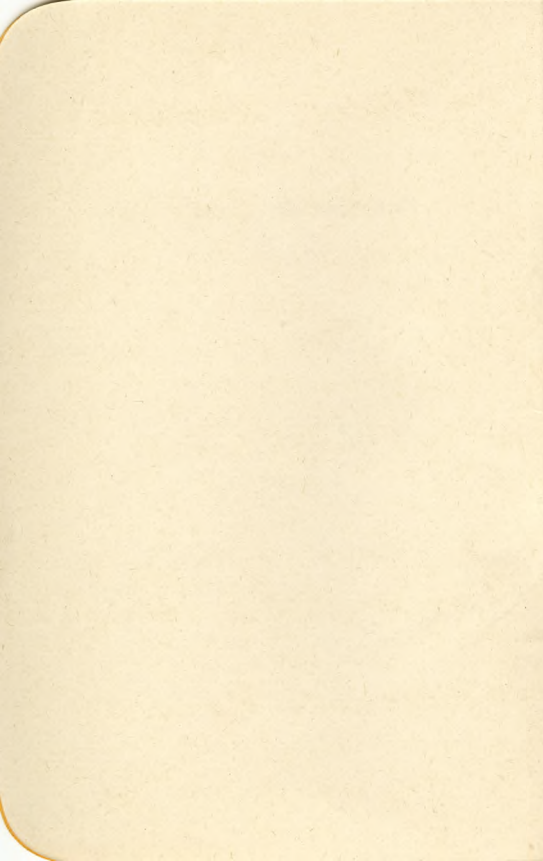
1941-1942

W. J. JAMES

W. J. JAMES

W. J. JAMES

W. J. JAMES



# *Student Handbook*

AND

# *Book Bible*

Volume 53

1946 - 1947

WARREN JAMES

Editor

Annual Publication

*Associated Students*

OF

*Willamette University*

# TABLE OF CONTENTS

<b>SEC. I. ROOK INFORMATION</b>	<b>Page</b>
Old Historic Temple.....	2
1946-1947 Calendar .....	3
University Calendar .....	4
Social Highlights .....	5
Rook Commandments .....	8
Rook Dictionary.....	9
<b>SEC. II ADMINISTRATION</b>	
Student Body .....	13
A.S.W.U. ....	15
Student Publications .....	16
University Customs .....	18
Where to go on W.U. Campus.....	20
Map of W.U. Campus.....	21
University Administration .....	22
<b>SEC. III—CAMPUS ORGANIZATIONS</b>	
Academic .....	28
Athletic.....	28
Fine Arts .....	29
Religious .....	30
Service .....	31
Social Welfare .....	32
<b>SEC. IV LIVING ORGANIZATIONS</b>	
Regulations — Women.....	34
Living Org. — Women.....	35
Independent Org. ....	36
Panhellenic Rushing .....	36
Fraternities .....	38
Interfraternity Govt. ....	40
<b>SEC. V ATHLETIC</b>	
Meet the Coaches.....	42
Welcome, Returning Athletes.....	43
1946 Football Schedule.....	44
Athletic Activities .....	46
Varsity Songs .....	46
Varsity Yells .....	49
<b>SEC. VI A.S.W.U. CONSTITUTION.....</b>	<b>52</b>

## UNIVERSITY DIRECTORY

ASWU-Collegian-Wallulah .....	3088
Alpha Chi Omega.....	8911
Alpha Hall .....	6588
Chi Omega .....	8823
Delta Gamma .....	8730
Frederickson Hall .....	7958
General Manager, ASWU.....	3830
Laurel Hall .....	6417
Lausanne Hall .....	9267
Pi Beta Phi.....	8760
University Infirmary, 165 S 15th St.....	21448
University Tel. Exchange.....	9265
Eaton Hall	
Gymnasium	
Health Office	
Library	
Science Hall	



## GREETINGS, ROOK!

This handbook of information is dedicated to you and is published to acquaint you with all the various phases of college life that you are about to become a part of here at Willamette University,—traditions, organizations, and leaders.

To you this book will be known as the ROOK BIBLE, and vigilant Lettermen and Sophomores will be on hand to see you have familiarized yourselves with the information set down on these pages. You will find it a ready, compact encyclopedia of extra curricular activities.

We who have preceded you at Willamette and are now upperclassmen welcome you to the ranks of college students. You, as Freshmen, are a vital part of the life of the University, and it is in you, as future leaders, that our hopes are vested.

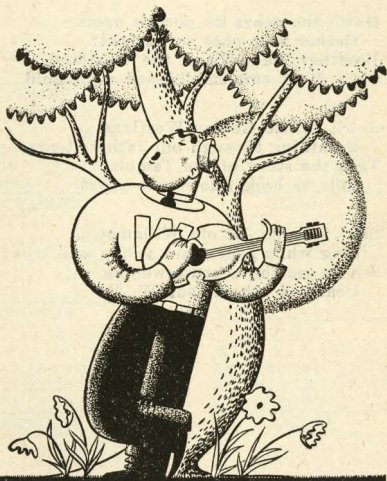
Each and every one of you can excel in some phase of college life if you try hard enough. It may be as a leader, as an athlete, or as a student; but whatever it is, find it now and work at it. Distinction is never gained without conscious effort.

You have four opportunity-laden years ahead of you here at Willamette. Dig in, Freshmen! We expect great things of you.

—The Editor



# Rook Information



## OLD HISTORIC TEMPLE

(University Hymn)

There's an old Historic Temple  
Rising grandly through the years;  
Where the oaken-hearted fathers  
Drew their strength for strong careers.

Down the years its portals open,  
Gather wise ones to its fold;  
Breathes the spirit of the Westland,  
Card'nal emblem 'bossed with gold.

Spirit of the Golden Westland,  
Breathing through our fathers tears;  
Tells the story of the Temple,  
Bids us hope adown the years.

Sing, oh sing, of old Willamette,  
Sing while hearts are young and true;  
Sea to sea the chorus swelling,  
Dear old school, our W. U.

## SEPTEMBER

1	2	3	4	5	6	7
8	9	10	11	12	13	14
15	16	17	18	19	20	21
22	23	24	25	26	27	28
29	30	-----	-----	-----	-----	-----

## OCTOBER

-----	-----	1	2	3	4	5
6	7	8	9	10	11	12
13	14	15	16	17	18	19
20	21	22	23	24	25	26
27	28	29	30	31	-----	-----

## NOVEMBER

-----	-----	-----	-----	-----	1	2
3	4	5	6	7	8	9
10	11	12	13	14	15	16
17	18	19	20	21	22	23
24	25	26	27	28	29	30

## DECEMBER

1	2	3	4	5	6	7
8	9	10	11	12	13	14
15	16	17	18	19	20	21
22	23	24	25	26	27	28
29	30	31	-----	-----	-----	-----

## JANUARY

-----	-----	-----	1	2	3	4
5	6	7	8	9	10	11
12	13	14	15	16	17	18
19	20	21	22	23	24	25
26	27	28	29	30	31	-----

## FEBRUARY

-----	-----	-----	-----	-----	-----	1
2	3	4	5	6	7	8
9	10	11	12	13	14	15
16	17	18	19	20	21	22
23	24	25	26	27	28	-----
-----	-----	-----	-----	-----	-----	-----

## MARCH

-----	-----	-----	-----	-----	-----	1
2	3	4	5	6	7	8
9	10	11	12	13	14	15
16	17	18	19	20	21	22
23	24	25	26	27	28	29
30	31	-----	-----	-----	-----	-----

## APRIL

-----	-----	1	2	3	4	5
6	7	8	9	10	11	12
13	14	15	16	17	18	19
20	21	22	23	24	25	26
27	28	29	30	-----	-----	-----

## MAY

-----	-----	-----	-----	1	2	3
4	5	6	7	8	9	10
11	12	13	14	15	16	17
18	19	20	21	22	23	24
25	26	27	28	29	30	31

## JUNE

1	2	3	4	5	6	7
8	9	10	11	12	13	14
15	16	17	18	19	20	21
22	23	24	25	26	27	28
29	30	-----	-----	-----	-----	-----

## JULY

-----	-----	1	2	3	4	5
6	7	8	9	10	11	12
13	14	15	16	17	18	19
20	21	22	23	24	25	26
27	28	29	30	31	-----	-----

## AUGUST

-----	-----	-----	-----	-----	1	2
3	4	5	6	7	8	9
10	11	12	13	14	15	16
17	18	19	20	21	22	23
24	25	26	27	28	29	30
31	-----	-----	-----	-----	-----	-----

## UNIVERSITY CALENDAR

The academic year is divided into two semesters of eighteen weeks each. University events occurring in each semester are outlined here to acquaint the student with the order of their happening.

### Fall

- Sept. 26-30—Orientation and registration of new students.  
Sept. 30—Registration of returning students.  
Oct. 1—8:00 A.M. Classes begin.  
Nov. 11—11:00 A.M. Armistice Day.  
Convocations.  
Nov. 27—4:00 P.M. Thanksgiving recess begins.  
Dec. 2—8:00 A.M. Resume classes.  
Dec. 21—12:00 Noon, Christmas recess begins.  
Jan. 2—8:00 A.M. Resume classes.  
Feb. 8—Semester ends.

### Spring

- Feb. 17—Registration and orientation.  
Feb. 18—8:00 A.M. Classes begin.  
June 8—3:00 P.M. Baccalaureate  
June 14—Semester ends. Alumni Day.  
June 15—3:00 P.M. Commencement.

Additional events for which dates have not yet been set are:

#### Fall

Frosh Initiation  
Homecoming  
B.A.G.-S.A.X Banquet  
Soph. Christmas Party

#### Spring

Freshman Glee  
Wallulah Beauty Con.  
May Weekend  
Inter-Dorm Formal  
Barn Dance  
Flunk Day  
Award Day

## **SOCIAL HIGHLIGHTS**

### **Homecoming**

Homecoming is the important social function on the campus which honors the alumni of the University. This year, the weekend of October 25 and 26 pays special tribute to the return of football as a major sport on the campus after an absence due to the war. The customary activities include an alumni banquet; the Willamette-College of Puget Sound football game played on Saturday; active competition among the living organizations in a noise parade and Homecoming Sign contest; and the Homecoming Play.

### **Victory Bell**

The Victory Bell in the tower of Waller Hall is rung after each Willamette athletic victory proclaiming the University's score.

### **Freshman Glee**

Freshman Glee, a thirty-eight year old tradition, is perhaps the most popular of the year's highlights. It is for this occasion, held the first Saturday night in March, that the Freshman class challenges the other three classes to a festival of song. The Freshman class has charge of all arrangements and the decoration of the gymnasium. Preceding the event, each class engages itself in the composition of words, music, and presentation of the song in consideration of an annually chosen theme. The program is broadcast over a Pacific Coast network radio station.

## **Blue Monday**

Blue Monday is so named because it is the day for payment of Freshman Glee bets. Bets of a large variety are "paid off" during Monday chapel period. The campus is alive with strangely clad creatures—the losers. The Mill Stream provides added entertainment in the form of baptism of the losing class.

## **May Weekend**

The first weekend in May has been customarily set aside by the Junior Class for the Festival of May, primarily in honor of high school students. The busy week-end is inaugurated by the Inter-Sorority Sing Chapel on Friday morning, followed by a Student Body Dance in the evening. Early Saturday morning, the Y.W.C.A. sponsors a May Morning Breakfast. Later in the morning, the annual Freshman-Sophomore Tug-of-War and various other athletic contests are held. Climaxing the weekend is the Coronation of the Queen of May and May Pole Dance. Saturday evening's May Weekend Play is the formal conclusion of festivities.

## **Inter-Sorority Sing**

Begun in 1944. At the last chapel before May Weekend, the Sororities on the campus vie for honors in a Song Contest as the informal opening of May Festivities. Winner in the contest is presented with a trophy at the coronation of the Queen on Saturday. Winner of the trophy last year was Alpha Chi Omega Sorority.



## **Kangaroo Court**

Kangaroo Court is of special benefit to the Freshman. It is held at least twice during the fall semester and whenever necessary in the spring. The first court will be held three weeks after the opening of school this fall. Rooks receive sentence and pay their debts to society at this court.

## **Flunk Days**

During the latter part of the school year, the Juniors and Seniors plan their respective beach trips without the knowledge of the Sophomores or Freshmen. The upper-classmen are excused from classes on these days.

## **Chapels**

Compulsory Chapels are held on Tuesday and Thursday at 10:00 A.M. Programs consist of talks by Dr. Smith and various outside speakers. Friday Chapel period is devoted to Student Body meetings or programs presented by the various campus organizations.

## **Award Day**

One day is set aside during the latter part of the spring semester for the award of individual scholastic and athletic prizes. The awards are scholarships, cash prizes, and honoraries.



## ROOK COMMANDMENTS

1. Freshmen are required to do **TEN HOURS** of work on the campus and athletic field. These must be recorded in the handbook.
2. Freshmen girls wear cardinal and gold ribbons in their hair.
3. Freshmen boys are required to wear **ROOK CAPS** on the campus.
4. Freshmen **DO NOT** wear cords on the campus.
5. Freshmen carry Student Handbook at all times.
6. Freshmen enter and leave chapel by the front door only.
7. No one but Seniors inhabit the Senior Bench.
8. Rise when the "Old Historic Temple" is sung.
9. All Freshmen attend Kangaroo Court when it is held.
10. Know the Student Body Constitution.
11. All students attend all rallies and all games.
12. A **SMILE** and **HELLO** are expected from every student at all times.
13. The "W" club is aiding you in complying with these customs.

## ROOK WORK SCHEDULE

Supervisor			
Hours			
Work Done			

## ROOK DICTIONARY

**ROOK**—Lowest form of animal life; dullness of sensibilities, or unrestrained passion.

**SOPHS**—The only people around school who know anything. For this reason they are entrusted with the care and instruction of the youngest inmates.

**UPPERCLASSMEN**—Dont mind them, they just work here.

**A.S.W.U.**—Those who have consciously or otherwise become members of our Willamette "family".

**SENIOR BENCH**—A place where no Rook dares to park his or her posterior extremity.

**FUSSING**—Speaking to, holding hands with, or in any way acknowledging the existence of those campus decorations bravely referred to as members of the weaker sex.

**GLEE**—The one occasion in the school year when Freshmen are allowed to meekly challenge the superiority of the other three classes.

**CLEAN-UP DAY**—That day when Freshmen rid the campus of trash they have deposited so that returning grads may feel at home.

**"W" MEN**—Your main campus bosses. Obey their requests and some day you'll be promoted from the ranks of Rooks.

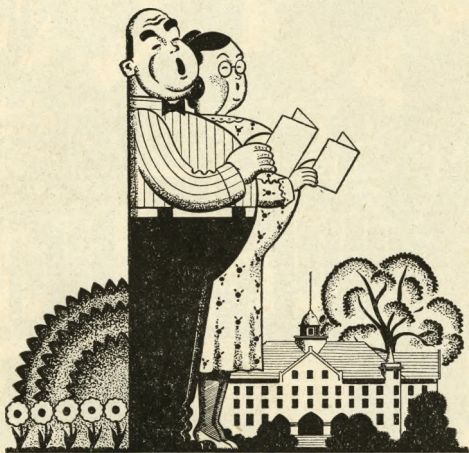
**ROOK CAP**—That little piece of cardinal and gold felt that so remarkably reflects the inferiority of its wearer. Feeble Rooks wear it for protection. Caps can be purchased in the book store.

**COKES**  
**ICE CREAM** at the . . .  
*Bearcat Cavern*



*Waller Hall*  
**COFFEE &  
SNACKS**

# *Administration*



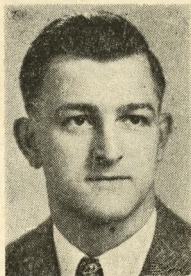




## STUDENT BODY

### CLARENCE WICKS

Alpha Psi Delta  
President, A.S.W.U.



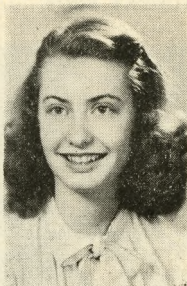
As a representative of the Associated Students, it is with genuine pleasure that I welcome you to Willamette. As you may know, our school has seen the advent of 105 Freshman classes; thus, you are becoming a part of an institution that possesses more than a century of traditions—traditions that you will come to know and cherish during your days here. One of these is Freshman Glee, in which you will find real delight next spring. Another is the spirit of friendliness through which students quickly come to know each other and the faculty—a cheerful smile and friendly “hello” are campus traditions and have done much to produce a closely knit student body. I want to urge you to enter into the spirit of university life, for by doing so you will receive more than you give, particularly now that the University is no longer geared to a strict wartime program.

Remember, it is our desire to serve you in whatever way possible, and with your cooperation we will make this a most successful year.

Clarence Wicks  
President, A.S.W.U.

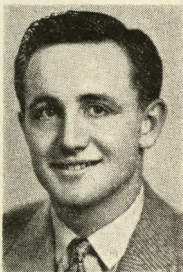


**MARGARET ALLEN**  
Chi Omega  
Second Vice President



**BETTIE OLSON**  
Phi Beta Phi  
Secretary

**ELECTION THIS**  
FALL of a First  
Vice President whose  
main duty will be  
that of Social Chair-  
man.



**HOWARD BLANDING**  
Kappa Gamma Rho  
Member at Large



## **A. S. W. U.**

The Associated Students of Willamette University is the organized student body of Willamette.

### **Student Council**

Its governing body is the student council composed of the student body officers, publications board, class representatives, and a faculty member elected by the student body.

### **Publications Board**

Its publications board consists of the ASWU president, secretary; publications manager, Collegian and Wallulah editors; professor of journalism, and the general manager. Publications budgets are subject to approval by the student council, as are budgets of all other activities.

### **Student Body Card**

Its Student Body dues are \$15 per semester. The student body card entitles the student to:

Admission to all athletic events  
Admission to all-school social functions  
Admission to all school drama productions  
Class social functions are supported by student body funds  
Two tickets to Freshman Glee  
Weekly edition of the Collegian

Upon presentation of two semesters' cards, the student is entitled to the yearbook, Wallulah.

## STUDENT PUBLICATIONS



**CAROLA HAYS**  
Delta Gamma  
Manager



**NANCY HOAK**  
Delta Gamma  
Wallulah Editor



**NANCY STEWART**  
Delta Gamma  
Collegian Editor

These three students  
have the exacting re-  
sponsibilities of produc-  
ing University Publica-  
tions.

## **Student Directory**

Commonly known as the "Fusser's Guide", this publication is printed at least once a year as an aid to students in locating new friends and old on the campus. An added feature is the list of semester social functions. Edited this year by Eugene Slick.

## **Student Handbook**

The Student Handbook, or "Rook Bible", is published each year to acquaint new students, especially Freshmen, with the University and its traditions and activities. Edited this year by Warren James.

## **Willamette Collegian**

The official college paper, published weekly by the student body, is one of the outstanding University publications in the nation. The Collegian last year won recognition as one of the six best publications of its kind in the United States.

## **Wallulah**

The yearbook is the annual publication which depicts campus life and student achievements during the academic year. Each edition appears in June. Upon approval of the awards committee, staff members are awarded certificates of service.

## **Willamette Songbook**

Includes outstanding college songs and grows larger as new Glee songs are added.

## UNIVERSITY CUSTOMS

The following are customs traditional at Willamette and are for the information of all students, new and old:

1. We are WILLAMETTE STUDENTS, first, last, and always, and are proud of it!
2. Every student smiles and says hello on the campus.
3. Everyone attends the formal YM-YW reception.
4. No one smokes on the campus.
5. Willamette students are good sports at all intercollegiate contests.
6. All students should uphold the Honor. Code
7. Every one is present at all student body and class meetings.

## CLASS ORGANIZATION

Each class has the responsibility of electing its own leaders. The Freshman class has a double responsibility, for not only must one of its members manage Freshman Glee, but its president is obligated to speak at that event. Officers of all classes are elected by nominations from the floor during class meetings.

## LIBRARY RULES

The Library is regarded as a place for quiet study and research. Conversation and group study should be carried on in the reading rooms.

Card files are available in the lobby to help you. Books are catalogued alphabetically by title, author, and book section. Book racks are also labeled to aid in efficient selection of books.

A limited number of typewriters are available in the typing room.

Several hundred books in which reading assignments are made are kept at the desk and are given to the students upon request. Each reserve book has an orange card and a red dot. Reserve books will be charged out for two hour periods and will be due on the half hour nearest the elapsed two hours since the book was checked out. Current magazines are treated as reserve books. Reference books and periodicals do not circulate.

The Library is open from 7:30 A.M. to 9:45 P.M., Monday through Thursday. Friday and Saturday hours are from 7:30 A.M. to 6:00 P.M.

## UNIVERSITY CHAPELS

Chapels are scheduled two days a week in Waller Hall and are compulsory. Four unexcused absences in one semester places the student on academic probation for the following semester.

Freshmen use the front entrance. All students should enter quickly so that programs may not be delayed.

Chapel periods this year will be on Tuesdays and Thursdays at 10:00 A.M.



## **WHERE TO GO ON W.U. CAMPUS**

### **Bearcat Cavern—Ground Floor Waller Hall**

The 'Cat Cavern is the popular confectionery and lounge where students and profs enjoy snacks, cofee, fountain service, and campus gossip during their free periods and between classes.

### **S.B. Office—Ground Floor Waller Hall**

Business office of the Student Body. Wallulabs are obtained here.

### **Collegian and Wallulah Offices—Ground Floor Waller Hall.**

Offices of editors and their staffs. All work on these publications is carried on in these offices.

### **Bookstore—Ground Floor Waller Hall**

Under the management of Mrs. Delsia Larson, the W.U. bookstore is open to students from 1:00-5:00 P.M. every day except Saturday.

### **Cafeteria—Ground Floor Lausanne Hall**

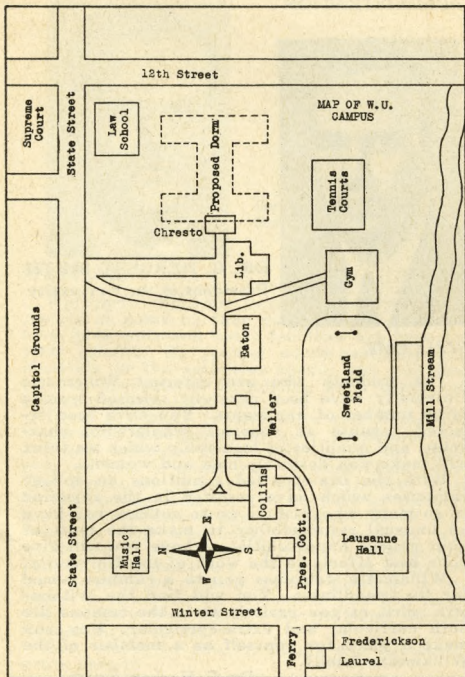
Meals will be served here to students living at Frederickson, Laurel, and Alpha Halls; local students and faculty of the University.

### **Little Chapel—Fourth Floor Waller Hall**

Built by volunteer student labor, the Little Chapel is a place for meetings of all campus religious groups.

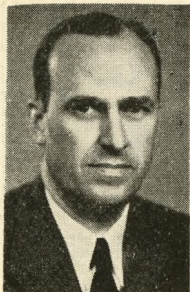
### **Little Theatre—Second Floor Waller Hall**

Seats approximately 100. May be used for presentation of student productions.





## ADMINISTRATION



**DR. G. HERBERT SMITH**  
President of the University

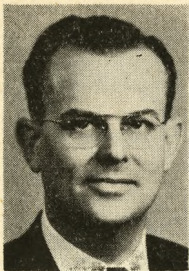
### WELCOME

The students who are entering Willamette University have been carefully selected from a large number of applicants. You have been selected because of superior scholarship, character, and qualities of leadership which we think will make you desirable men and women.

With the overcrowded conditions on college campuses which have resulted in the rejection of so many who wish to go to college, you have an unusual responsibility to make the most of your college opportunities. I hope you will give your best efforts to the work of the University.

Willamette welcomes you to a campus famed for its friendliness. You will find the Willamette spirit as you participate in the campus life both curricular and extra-curricular. May you make a place for yourself as a member of the Willamette family.

**Dr. G. Herbert Smith**



**Dr. Lawrence A. Riggs**  
**New Dean of Students**

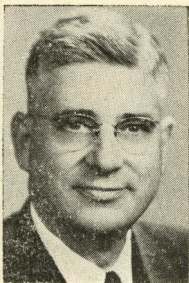
## **WELCOME**

Welcome! We hope you will soon feel completely at home on this, your campus. Its faculty, programs and total facilities are here for your benefit. By joining whole-heartedly and sincerely in the activities ahead, you will find rich by-products of friendship, good times and genuine personal growth.

There are many resources for rich living and worthwhile experiences at your command. We will each consider it our privilege to do whatever we can to assist you in using them fully. The Personnel Offices of the University exist in the last analysis for the purpose of furthering your interests within the framework of Willamette's rich traditions. We hope you will make use of the many services available and consult us immediately whenever you think we may possibly be of help. It will assist us in being of greater service to you, if you will make your needs known before your problems become unnecessarily severe.

Best wishes to you for happy and successful years ahead!

**Dr. Lawrence A. Riggs**



**HAROLD B. JORY**  
University Registrar  
and  
Director of  
Admissions

Mr. Jory came to our campus last spring as the newly appointed University Registrar. Most students become acquainted with this popular Willamette enthusiast by correspondence or in person. Through his office students obtain housing, college curriculum, and general information about the traditions and spirit of Willamette. Being a Willamette graduate, he is endowed with an intimate background of customs and history of our University. His counsel may be readily obtained by students new and old.



**OLIVE M. DAHL**  
Dean of Women

All women are welcome at any time in the office of Dean of Women. A conference with Miss Dahl is a part of the orientation program of each woman student during the fall semester.

As Panhellenic advisor, she cooperates with the women's organizations in the arrangement of social calendars and the maintenance of high living standards of which these organizations and the University are proud.

As a member of the faculty, Miss Dahl serves as Associate Professor of German.



**DR. ROBERT E. LANTZ**  
**Associate Prof. of**  
**Education and**  
**A.S.W.U. General**  
**Manager**

As Associate Professor of Education, Dr. Lantz is supervisor of secondary school curricular and extra curricular activities courses. Under him, prospective teachers become learned in the art of Secondary Education.

As General Manager of the Student Body, his duties are in the capacity of general-financial advisor to the student executive council and other activities. All funds for use in student body and class activities are disbursed from his office in Eaton Hall.

Student tickets, handbooks, Wallulahs, etc., are distributed through the Student Body Office in Waller Hall. This office is maintained by student secretaries and is open daily.



# *Campus Organizations*



## **ACADEMIC**

### **Alpha Kappa Nu**

Has as its membership ten percent of the Senior class who have attained the highest scholastic standing throughout their four years in college. Announcement of members is made at award chapel in the spring semester.

### **Delta Theta Phi**

An important part of the Willamette College of Law. The chapter, the Wolverton Senate, has as its purpose, the promotion of high scholarship united with the advancement of justice and high ideals in the legal profession.

### **Mu Phi Epsilon**

A national Music Sorority for the advancement of the art of music in America. Membership is limited to music majors who have high scholastic standing.

### **Tau Kappa Alpha**

A national Forensic Fraternity whose membership is chosen from debate and oratorical squads. The organization sponsors inter-class, inter-collegiate debates, and various oratorical contests. The Willamette chapter is a member of the Inter-Collegiate Forensic League.

## **ATHLETIC**

### **W. A. A.**

The Women's Athletic Association is composed of P. E. majors and women interested in athletics. Its purpose is to provide sports for all girls and to promote interclass contests. Sports include tennis, softball, archery, volleyball, and swimming.



## **"W" Club**

The "W" Club is composed of all students who have won a letter in varsity athletics on the campus. Their chief purpose is to encourage a spirit of good sportsmanship at all Willamette functions and to enforce the observance of all Willamette traditions and customs.

## **FINE ARTS**

### **A Cappella Choir**

The Willamette A Cappella Choir, organized in 1939, is made up of fifty men and women under the direction of Dean Melvin Geist. Outstanding among its many activities is the annual Christmas Vesper Service, and the Spring Concert Tour.

### **Little Theatre Guild**

This organization, formed to develop dramatic talent among students, presents several plays and skits each year. Acting, costuming, play-writing, make-up, and scenery are all studied in these productions. The aim of the Guild is to present different types of plays throughout the year.

### **Paint Spots**

To promote an interest in art, members are selected on the basis of interest rather than ability. This club aids other organizations in the line of decorative ideas, the making of scenery for plays, and the making of posters to advertise student body functions.

### **Theta Alpha Phi**

The national dramatic society is open to upper-class students who show outstanding ability in dramatics or in the direction or management of student productions. Its purpose is to foster dramatic interests and to unite socially those with histrionic talents.

## **University Band**

The Willamette University Band aids in creating pep and spirit at ball games. A spring concert is presented each year by this organization under the able direction of Maurice Brennen, Asst. Professor of Music. This year, it is hoped, the band will go on an extended concert tour.

## **University Orchestra**

Provides musical interludes at plays, and other school functions. Directed by Bernard Barron, Instructor of Cello.

## **RELIGIOUS**

### **Catholic Club**

Meets every other Monday night in Chresto. Advisor, Father Fritz.

### **Inter-Faith Council**

Representatives from religious groups sit on the Inter-Faith Council, which is the central religious organization on the campus.

### **Inter-Varsity Christian Fellowship**

National organization of interdenominational young people interested in high Christian ideals and fellowship. Prayer group every day at 1 p.m.

### **Methodist Vespers**

Activities include a reception for students, the traditional Thursday afternoon "Cookie Jar," Spring retreat, parties, play night, Senior banquet, social activities of students to gain working philosophy of life.

### **Westminster Fellowship**

Presbyterian students. Meetings are held Sunday evenings at the First Presbyterian church on the corner of Chemeketa and Winter.

## **SERVICE**

### **Beta Alpha Gamma**

Service organization of outstanding sophomore women who "serve" by ushering at many school affairs such as Glee, plays, concerts, and others.

### **Blue Key**

This national men's honor fraternity considers qualities of character, scholarship, student activities, leadership and service in the annual selection of its members from the Junior and Senior classes.

### **Cap and Gown**

This local honorary society is composed of five Senior women who show outstanding qualities of personality, service, scholarship, leadership, and Christian ideals. The club's annual activities include, in part, benefit socials, banquets, and cultural trips to interesting places.

### **Sigma Alpha Chi**

Service organization of outstanding sophomore men who donate their efforts to the cause of the student body in making surveys, ushering, and general aid.

## **SOCIAL WELFARE**

### **American Red Cross**

The W.U. chapter of A.R.C. cooperates with the local headquarters in planning and teaching safety programs including first aid, life saving, and nutritional courses. It is their purpose, this year, to endeavor to maintain Chresto as an entertainment lounge for students.

### **International Club**

This campus organization studies the problems of peace and welfare among the nationalities of the world. Prominent speakers lend new ideas to this group for the furtherance of better international relations. Correspondence with students of other nationalities is a popular activity of the group.

### **Y.M.C.A.**

This organization, previously inactive due to the war, is being reorganized this fall. Its pattern of activities is quite similar to that of the Hi-Y organizations in high schools. It has as a two-fold purpose, a program of service to the University and the student; and the furtherance of Christian principles and fellowship.

Definite information regarding the reorganization of this group will be posted on the University bulletin boards.

### **Y.W.C.A.**

In the pursuance of the realization of full and creative lives through a growing knowledge of God, and the determination to have a part in making this life possible for all people, the Y.W.C.A. follows an extensive service program consisting of the following factors: Big Sister project; teas; formal receptions; faculty firesides; group discussions; scholarship fund drive; and recognition service.

# *Living Organizations*





## LIVING REGULATIONS — WOMEN

Regulations herein assembled apply equally to both the Dormitories and the Sorority living groups.

To promote a spirit of democracy and new friendships, all women on the campus are required to live in one of the dormitories during their first year at Willamette.

Important rules to be remembered are:

**HOURS**--Women must be in by 10 P.M. week nights and Sundays.

Midnight Fridays and 12:30 Saturdays. Sign-out required after 7:30 P.M. Sign-in also required.

**QUIET**--Each week night from 7:30 P.M. on.

7:45 A.M. to 11:30 A.M.; 1:15 P.M. to 4 P.M. except Saturdays.  
3 to 5 P.M. Sundays.

Late permissions are granted for special functions. When attending late campus functions, all women must be in twenty minutes after the first has returned.

Permission to leave town must be secured from Dean Dahl or Housemother. Address and probable time of return must be registered before leaving. Permission must also be secured to spend a night away from the hall.



## LIVING ORGANIZATIONS — WOMEN

### Alpha Chi Omega

Beta Chi Chapter	956 Court St.
Elaine Cloudy.....	President
Geraldine Nelson.....	Vice Pres.
Shirley Gripskov.....	Manager
Betty Dutton.....	Panhellenic Rep.
Betty Lou Sinkola.....	Panhellenic Rep.

### Chi Omega

Nu Delta Chapter	993 Court St.
Barbara Crawford.....	President
Gin Wiebe.....	Vice Pres.
Marie Hildebrand.....	Manager
Patricia Miller.....	Panhellenic Rep.
Patricia Wetstein.....	Panhellenic Rep.

### Delta Gamma

Beta Pi Chapter	1610 Court St.
Melva Williamson.....	President
Pat Ann Sly.....	Vice Pres.
Lois M. Todd.....	Manager
Eileen Lytle.....	Panhellenic Rep.
Dorothy Deal.....	Panhellenic Rep.

### Pi Beta Phi

Gamma Chapter	1445 State St.
Lorraine Murdock.....	President
Dorothy Symes.....	Vice Pres.
Clarice Anunsen.....	Social Chm.
Georgia Hull.....	Panhellenic Rep.
Carolyn Brady.....	Panhellenic Rep.

## DORMITORIES — WOMEN

Present dormitories on the campus are: Lausanne Hall, 220 S. Winter; and Frederickson Hall, 215 S. Winter. Officers governing these organizations are elected at the beginning of each semester by the student residents.

## INDEPENDENTS

Not an actual living organization. The independents are an active organization of men and women students who participate in student body activities and sponsor social events in much the same manner as do the living groups.

Womens Indep. Pres.....Virginia Cannon

Mens Indep. Pres.....Dale Mansfield

## PANHELLENIC RUSH RULES

### National Principles

1. Rushing parties may not be scheduled which conflict with the regular University class program.
2. The Panhellenic shall agree upon a rushing program in which there is a reasonable and sane expense limit.
3. Panhellenic shall adopt a system of bidding and pledging which will not invite publicity.
4. All prospective members, participating in rushing, must be registered by the local Panhellenic Council.
5. Rush functions after the opening of colleges must be confined to the individual chapter houses.
6. Violation of Rush Rules must be reported not later than the first regular meeting of Panhellenic after rushing is concluded.

### Eligibility

1. All regularly enrolled women students of Willamette University who are registered for twelve or more semester hours of academic work and who are not on probation, are eligible for rushing and pledging.
2. Primary consideration will be given students who plan to graduate from Willamette.

## PANHELLENIC RUSHING: September 26-30

### THURSDAY—

- 11:40 Chapel—Meeting of new women students with Panhellenic representatives  
P.M. 2:30- 5:00 Chresto—Registration for rushing  
7:00- 7:30 Open House  
7:45- 8:15 Sports  
8:30- 9:00 Refreshments  
9:15- 9:45 Rep. of each house directs girls from house to house

### FRIDAY—

- A.M. 9:00 Sororities bids in to Chresto  
9:30 Rushees pick up bids  
10:00 Houses pick up bids  
12:30- 1:30 Luncheon—suits, heels.  
7:00 P.M. Independents' Parties  
7:30- 8:30 Rush Parties—suits  
9:00-10:00 Refreshments

### SATURDAY—

- P.M. 7:00- 8:15 Rush Parties—suits  
8:45-10:00 Refreshments

### SUNDAY—

- A.M. 9:00 Sororities Bids in  
9:30 Rushees pick up bids  
10:00 Houses pick up bids  
P.M. 2:15- 3:00 Dessert—dressy dresses.  
7:00- 9:00 Preferential Dinner—Formal  
9:00-10:00 Girls preference in  
10:00 Houses preferences in

### MONDAY—

- A.M. 8:15 Girls pick up bids and go directly to house named  
P.M. 7:30-10:00 YMCA-YWCA Mixer

## FRATERNITIES

Local fraternities originated on the W. U. campus in 1920. The first organizers were World War I veterans who were determined to experience fraternity life as a result of observation of the comradeship among fraternity brothers in the service.

Five local fraternities came into existence. Alpha Psi Delta; Epsilon Delta Mu; Kappa Gamma Rho; Pi Kappa Phi; and Sigma Tau. These proved too much of a financial burden to the student body; so in 1926 Pi Kappa Phi was absorbed by Alpha Psi Delta, and Epsilon Delta Mu disbanded. The remaining three perpetuated their organizations thru Willamette centennial year, 1942, as an integral part of campus life.

Three local Sororities also came into existence in the post War I years: Alpha Phi Alpha; Beta Chi; and Delta Phi; and progressed through the years. In 1943 a movement was started for National fraternities at W.U., resulting in the affiliation of sororities with national organizations; men's organizations being inactive during World War II years.

Returning to the campus last year, the men's fraternities prepared to follow the affiliation movement. Now, in the fall of 1946, there are three National organizations appearing on the campus. Organizations and affiliations are:

Alpha Psi Delta—Phi Delta Theta;  
Kappa Gamma Rho—Beta Theta Pi;  
Sigma Tau—Sigma Chi.

## FRATERNITY OFFICERS

### Alpha Psi Delta

Art Wilson .....	President
"Hank" Ercolini.....	Vice Pres.
Warren James.....	2nd Vice
Ed Lind .....	Secretary
Bob Marr .....	Manager

### Kappa Gamma Rho

Ray Fedje .....	President
Bob Fletcher .....	Vice Pres.
Jon Straumfjord .....	2nd Vice
Dean Barnhart .....	Secretary
Howard Dewey .....	Manager

### Sigma Tau

Leighton Fairham .....	President
David Geddes.....	Vice Pres.
Bill Stortz.....	2nd Vice
Bill Bonnington .....	Secretary
Keith Evans .....	Manager

## DORMITORIES — MEN

Present dormitories on the campus are: Alpha Hall, 895 Chemeketa; and Laurel Hall, 754 Ferry St. Officers governing these organizations are elected by the student residents.

### New Dormitory

An attractive building addition, forthcoming on the campus, is the new three-story residence quadrangle which will house fraternities and independent men. The location will be that part of the campus directly behind the Law School. \$400,000 has been appropriated for construction which will begin as soon as materials are made available.



# INTERFRATERNITY GOVERNMENT

## Rushing Rules

Subsequent to registration, at a time set by the Inter-Fraternity Council, each new registering man shall be given the opportunity to signify his choice of fraternities. This preference shall be written and filed in the office of Dean of Students. Official notification shall issue from the Dean's office to each fraternity respectively of the names which correspond to the list it has submitted.

No man shall be offered the opportunity to pledge any fraternity until the time of pledging set by the Inter-Fraternity Council and until he shall have completed registration. Completion of registration means the making of final arrangements with the business office in regards to payment of tuition. Any violation of this provision on the part of any fraternity shall mean the forfeiture of the right to pledge the man in question for a period of thirty days.

## Scholarship Rules

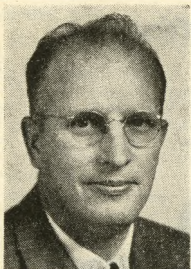
For purposes of determining scholarship, a list of active, inactive, and dropped men will be turned in to the Dean by each fraternity on Friday of the fourth week of each semester. Any subsequent drops or inactive men will count towards scholarship. Inactive men must declare their active intentions before this date or remain inactive for the semester.



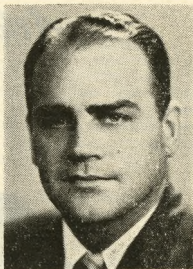
# *Athletics*



## MEET THE COACHES



**WALTER ERICKSON**  
Coach



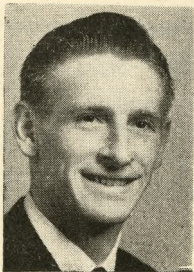
**ELMER SCHAAAKE**  
Asst. Coach

Walter E. "Walt" Erickson was appointed last spring to fill the vacancy left by Roy M. "Spec" Keene now retired. Erickson, a W. U. grad, was Keene's star backfield man of 1932, being rated Little All-American and taking position among W.U. greats in football. Upon graduation, he coached high school athletics until, several years later, he became registrar at W.U. His recent appointment as Director of Athletics and Physical Education promises to be beneficial to University and students alike.

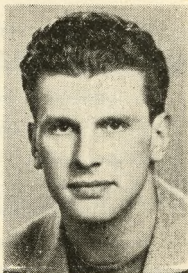
Mr. Elmer H. Schaaake comes to W.U. from the University of Kansas. He received his A.B. degree from U. of K. in 1932. While in school, he made an outstanding record in sports being named Bix Six quarterback.

After one year of professional football, Mr. Schaaake coached at Lawrence, Kan. High and Bethany College before returning to his alma mater.

## WELCOME, RETURNING ATHLETES



**BILL REDER**



**PAUL COOKINGHAM**

Football, the main fall sport at Willamette, disappeared from the campus last year as a result of the loss of coaches and players in that popular sport through termination of the Navy V-12 contract with our University.

This fall, Post War Willamette looks forward with pride and enthusiasm to the return of this great sport and its stars under the direction of Coach Erickson.

Among the returning players are two outstanding pre-war Willamette athletes: Bill Reder and Paul Cookingham. Reder recently achieved the Willamette Hall of Fame by being named on an all-time, all-star football team by veteran Coach "Spec" Keene, now retired. Cookingham, one of Keene's stalwart pre-war linemen, has returned to add his weight and drive to the first post-war squad, and to pilot the "W" Club as president.

These men, plus other returning team mates and new additions, should afford Willamette a most successful 1946 football season.

The University and its students welcome you.

## 1946 FOOTBALL SCHEDULE

Sep. 27—San Jose State at San Jose

Oct. 5—U.B.C. at Vancouver, B. C.

11—Linfield at Salem

18—College of Idaho at Salem

26—College of Puget Sound at Salem

Nov. 1—Portland University at Portland  
(Mult. Stadium)

7—Pacific University at Forest Grove

16—Whittier College at Whittier, Calif.

28—Whitman University at Walla Walla,  
Washington

There will be rallies prior to each home game. It is the duty of every student to promote school spirit by attending these rallies.

Prior to the Homecoming game with C.P.S., the annual Homecoming noise parade and sign contest will rally school spirit for the football highlight of the season.

## **ATHLETIC ACTIVITIES**

### **Stadium and Grounds**

W.U. outdoor sports are at present conducted on Sweetland Field, inside the University grounds.

The administration, looking forward to the future, appropriated a fund of \$25,000 and purchased the acreage of Bush's Pasture, near the University. Present plans are to level this ground to provide an adequate field for spring sports, and to raise funds for the construction of a new stadium for fall and winter sports of the University.

### **Intercollegiate**

Willamette is a member of the Northwest Conference and has adopted the Conference rules for the regulation of its athletics. It is the plan of the administration to make University athletic activities clean and productive of real benefits to the participant under the personal supervision of the Director of Athletics and under the jurisdiction of the Athletic Board of Control and the Student Executive council.

### **Intramural**

Intramural activities are maintained by the Director of Physical Education and the Chairman of the Interclass Rivalry Committee.

All types of sports are represented in these activities. Games and contests are carried on during the noon hour of days previously scheduled.



## **VARSITY SONGS**

### **I LOVE WILLAMETTE U.**

I love Willamette U.  
I love her campus too:  
I love her Profs, so good and true,  
I love her spirit real true blue.

I love the old mill stream,  
I love to sit and dream;  
I see it all in shadows cool,  
I love our dear old school.

### **FIGHT, BEARCATS FIGHT**

Fight, Bearcats, fight!  
A victory for W. U.  
Cardinal and Gold, victorious of old  
Will give us a spirit ever true.  
Fight, fight, fight!  
Cardinal courage show  
And Gold is our faith so true  
We shout our war cry out to you  
Come on and fight, fight, Fight!

### **INDIANS KNOWN TO JASON LEE**

Oh, the Indians known to Jason Lee,  
Went out one night on a little spree  
They organized a rythm band  
That soon was known throughout the land  
Then they went off to college  
And they took their band along,  
With sharps and flats and feathers in their  
hats  
They beat their big tom-toms  
The big chief smiled  
The squaws went wild  
As they sang their college song.  
Woo-oo Woo-ooo Wo-ooo-ooo  
At Willamette U each gal and lad  
Has the same kind of rythm that the Indians  
had.  
The red-man's ghost is with us still  
And if we don't whoop, we're sure they will.



## CANNIBAL KING

A cannibal king with a big nose ring  
Got stuck on a Zulu maid,  
And every night when the moon shone bright  
Across the canal he'd wade  
To hug and kiss his dusky miss  
Out under the big bay tree,  
And when they met they sang a duet  
That sounded like this to me:  
Oh, Jasen Lee, socretty boo-ya  
Oh Poppa Waller, chenickety umpa  
Umpa-Umpa-Um.

## FIGHT SONS OF OLD WILLAMETTE

Fight, sons of old Willamette,  
Fight, 'til the battles done;  
With a valor ever bold  
For the Card'nal and the Gold  
Fight 'til the vict'ry's won!  
Many hearts are standing by you  
With a spirit ever true  
Fight with courage never dying  
Fight! Willamette U.

## VICTORY SONG

Vict'ry for W. U.  
The bell in the tower rings.  
The battle's done;  
The victory won;  
Card'nal and Gold are flaming  
Proudly o'er us.  
Here's to the Bearcat Team  
Who carried our colors through!  
Our song shall go  
Till the world will know  
There's a vict'ry for W. U.!

## AROUND THE CAMPUS

Around the campus of old Willamette  
We'll shuffle the cards and roll the bones  
along, along, along.

Around the campus of old Willamette,  
We'll shuffle the cards and roll the bones  
along.

Slinga da ink, slinga da ink,  
Slinga da ink and pusha da pen along, along,  
along.

Around the campus of old Willamette,  
We'll slinga da ink and pusha da pen along.

Worry the Profs, worry the Profs,  
Worry the Profs and kid them right along,  
along, along,—

Boys sing:

Fuss the girls, fuss the girls,  
Fuss the girls and kid them right along, along,  
along,—

Girls sing:

Vamp the boys, vamp the boys,  
Vamp the boys and kid them right along,  
along, along,—

W. U., W. U.,  
W. U. will help you right along, along, along.

Each class insert its own number:

'47, '47 (shout)  
'47 will help you right along, along, along,—

## PEP ORGANIZATION

This organization consists of the A.S.W.U. under direction of the Yell Team and Rally Committee. The University Band also plays an integral part by adding its support to the molding of good school spirit.

It is the duty of the students to cooperate with the Yell Team by knowing the songs and yells thoroughly, forcing the syllables out without dragging, watching the Yell Leader, and by turning out for all rallies and games.

## VARSITY YELLS

### Fight Team

Fight, team, fight, (softly)  
Fight, team, fight, (louder)  
Fight, team, fight, fight! (shout)

### Go Get 'Em Bearcats

Go get 'em, Bearcats, go get 'em!  
(slowly, softly)  
Go get 'em, Bearcats, go get 'em!  
(faster, louder)  
GO GET 'EM, BEARCATS, GO GET 'EM!

### "Spell It"

Be . . ar . . ca . . ts (slowly)  
Be . . ar . . ca . . ts (faster)  
Be . . ar . . ca . . ts (fast)  
Be . . ar . . ca . . ts (very fast)  
BEARCATS! (shout)

## **Locomotive**

(start slowly, these increase)

W-U-Rah! Rah! Rah! Rah!

W-U-Rah! Rah! Rah! Rah!

W-U-Rah! Rah! Rah! Rah!

W-U-Rah! Rah! Rah! Rah!

WILLAMETTE—U. - - - RAH!

## **Yea, W. U.**

Yea, W. U.

Yea, W. U.

Yea, W. U.

Fight 'em, fight 'em, fight 'em!

## **Skyrocket**

S-s-s-s-s-s-s-s-s-s- (rise on whistle) BOOM!

A-a-a-h, WILLAMETTE!

## **Bearcat Growl**

GrrrR-r-r-R-r-r-AH

GrrrR-r-r-R-r-r-AH

BEARCATS! RAH! RAH!

## **"Four"**

(To coach or honored player)

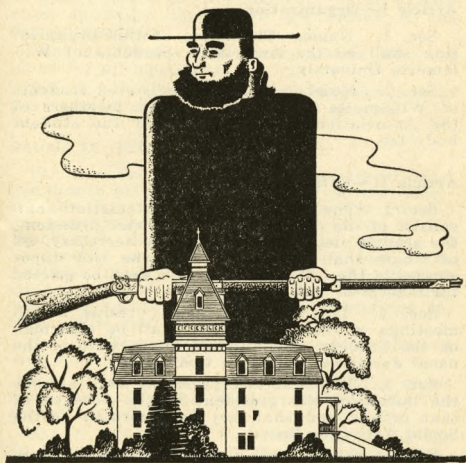
(Name)

RAH! - - - - - RAH!

RAH! RAH!

(Name)

# A.S.W.U. CONSTITUTION



# A.S.W.U. CONSTITUTION

as amended in 1946

## PREAMBLE

We, the students of Willamete University, in order to provide an organization for the control of all matters of general student concern do hereby ordain and establish the following constitution.

## Article I—Organization

Sec. 1. Name. The name of this organization shall be the Associated Students of Willamette University.

Sec. 2. Membership. All registered students of Willamette University shall be members of the Association upon payment of the student body fee.

## Article II—Officers

Sec. 1. The officers of the Association shall consist of the president, the first vice president, the second vice-president and the secretary, all of whom shall be chosen from the two upper classes of the following year and shall be elected for a term of one year.

Sec. 2. The president shall preside at all meetings of the Association, shall be chairman of the Student Council, and shall perform the usual duties pertaining to this office.

Sec. 3. The first vice-president shall assume the duties of the president in the absence of that officer and shall act as chairman of the Social Activities Board.

Sec. 4. The second vice-president shall be in charge of all ASWU elections.



## CONSTITUTION

Sec. 5. The secretary shall keep a record of all meetings of the Association and of the Student Council and shall perform the usual duties pertaining to this office.

### Article III—Meetings

Sec. 1. Meetings of the Association shall be held upon the call of the president on his own initiative, upon request of the Student Council, or upon petition of fifty members of the Association in which they state the object of the desired meeting.

Sec. 2. Twenty-four hours notice shall be given for all meetings.

Sec. 3. Fifty-one percent of the members of the Association shall constitute a quorum.

### Article IV—Elections

Sec. 1. The elections shall be held at least one month before the close of the second semester, the date to be set by the Student Council. All candidates for the elective offices of the Association shall be nominated by petition of twenty-five members of the student body. The petitions must be presented to the Student Council at least one week before the election; whenever possible at least two candidates for each office shall be named.

Sec. 2. The Australian ballot system shall be used for all elections.

Sec. 3. All members of the Association whose names appear on the official poll books shall be entitled to vote.

Sec. 4. The voting hours shall be set by the Student Council and published one week before election day.

## CONSTITUTION

Sec. 5. All officers shall be elected by a majority vote and in case no candidate receives a majority the Student Council shall call a new election within one week; at this election only the names of the two candidates receiving the highest number of votes shall appear on the ballot.

### Article V—Vacancies

Sec. 1. All vacancies which may occur in the elective offices of the Association shall be filled by the regular popular ballot at a special election.

### Article VI—Funds

Sec. 1. Funds of the Association shall be derived from money received in the form of dues paid upon registration in Willamette University and from such other receipts as may result from the activity program of the Association.

Sec. 2. Student body dues are fifteen dollars per person per semester, five dollars of which will be paid directly to Willamette University for the support of Athletics.

Section 3. Association dues shall be allotted as follows:

- (a) 35 percent to Publications
- (b) 10 percent to Office
- (c) 3 percent to Willamette University
- (d) 11 percent to Social
- (e) 4 percent to Class fund
- (f) 8 percent to Forensics
- (g) 8 percent to Drama
- (h) 12 percent to Music
- (i) 1 per cent to May week-end
- (j) 1½ percent to Freshman Glee
- (k) 1 percent to Darkroom
- (l) 1 percent to Law School
- (m) 4½ percent to Reserve Fund.

## CONSTITUTION

Sec. 3. Funds of the Association shall be administered as outlined in Article IX, below.

### Article VII—Publications

Sec. 1. The official publications of the Association shall be the Collegian, the Wallulah, the Student Handbook, the Fusser's Guide, and such other publications as may be approved by the Student Council.

### Article VIII—Student Council

Sec. 1. The Student Council shall consist of the president, the two vice-presidents, the secretary, a member of the faculty selected by the council for a term of one year, and one representative from each class to be selected by the separate classes. The runner-up for the position of student body president shall be a member of the council as a member-at-large. The editor of the Collegian and General Manager shall be council members but they shall have no vote. In case the newly elected Student Council has no returning student member, the Student Council shall elect following the student body election from the Freshman, Sophomore, or Junior class representatives of the foregoing year a hold-over member who will serve for a year with the power of vote as a member-at-large.

Sec. 2. The council shall hold meetings as it deems necessary or upon call of the president. Six voting members besides the presiding officer shall constitute a quorum.

Sec. 3. The council shall enforce the Constitution, shall have charge of elections, shall be responsible for adherence to the traditions, shall make appointments for ASWU activities, committees and boards, and shall be responsible for

## CONSTITUTION

the general interests of the Association. The council shall be the chartering agency for all student activities with the exception of those under panhellenic or inter-fraternity control.

Sec. 4. Emergency powers may be granted to the council by a three-fourths vote of the Association. When such emergency powers are granted, the council may act on all matters without strict adherence to the constitution. Such powers shall be granted only for one year at a time and only when school or national emergencies make such action practicable.

### Article IX—Finance Board

Sec. 1. The membership of the Finance Board shall consist of the student body president, who shall act as chairman, the two vice-presidents, the secretary, the publications manager, the graduate athletic manager, the general manager, and the finance manager of the Educational Activities Board.

Sec. 2. The Finance Board shall administer all funds of the association under supervision of the General Manager, provided however, that the class funds shall be administered by such officers as the individual classes may determine.

Sec. 3. The budget of the Finance Board is subject to the approval of the Student Council.

Sec. 4. The Finance Board shall publish in the Collegian during the second semester the budget for the ensuing year and, within a month after registration day in the fall, shall publish in the Collegian the report of the finances of the preceding year.

Sec. 5. Unused funds for one school year shall be left to the credit of the activity fund for which they were allowed and such deficits as

## CONSTITUTION

are approved by the Finance Board shall be deducted from the sinking fund; if not approved such deficits may be deducted from the corresponding funds of the following year.

### Article X—Publications Board

Sec. 1. Membership of the Publications Board shall consist of the student body president, the publications manager, the editors of the Collegian and of the Wallulah, two members of the Association selected by the Student Council from other than its own membership, two faculty members selected by the Student Council for one year terms, and the general manager who shall vote only in case of a tie.

Sec. 2. The Board shall meet as it deems necessary or upon call of the chairman.

Sec. 3. The Publications Board shall maintain monthly reports of progress in organization, shall be responsible for training of personnel, shall appoint the editors of the Collegian and the Wallulah, the publications manager, and other editors of ASWU publications by review of applications rendered and shall set all salaries for members of the business and editorial staffs subject to the approval of the Finance Board and the Student Council.

### Article XI—Athletic Board

Sec. 1. Membership of the Athletic Board shall consist of the student body president as chairman pro tem, the president of Willamette University, the director of athletics, the general manager, the faculty athletic representative, two members of the board of trustees elected by that board, and two members of the Association appointed by the Student Council from other than their own membership.



## CONSTITUTION

Sec. 2. Regular meetings of the board shall be held during the first week of each month except when there be no matters to come before the board.

Sec. 3. The Board shall prepare a general athletic budget for all sports and shall submit this budget to the Student Council. Upon adoption of the budget the board shall enforce the same throughout the ensuing year. The board shall attempt equitable distribution of funds to the various sports and shall foster no sport at the expense of any other. The board shall approve all athletic schedules and may require any reports and such records as it sees fit. The board shall be directly responsible to the Student Council for the execution of their duties.

### Article XII—Social Activities Board

Sec. 1. Membership of the Social Activities Board shall consist of the first vice-president acting as chairman, the sub-committee of the faculty-student affairs committee and students representing each of the separate organizations as determined by the Student Affairs Committee.

Sec. 2. The Board shall meet each semester to form the social calendar and at any other time when deemed necessary.

Sec. 3. The Board shall compose the social calendar for the school year and shall mediate when conflicts arise.

### Article XIII—Cavern Board

Sec. 1. Membership of the Cavern Board shall consist of the student body president, the first vice-president, two members of the student body at large appointed by the Student Council



## CONSTITUTION

from other than its own membership, and the business manager of Willamette University.

Sec. 2. The board shall meet as it deems necessary or upon call of its chairman.

Sec. 3. The board shall act as an advisory committee in matters of money and management.

### Article XIV—Educational Activities Board

Sec. 1. Membership of the Educational Activities Board shall consist of the student body president, the general manager, a drama manager, a forensic manager, a music manager, and a finance manager selected from the student body at large by the Student Council.

Sec. 2. The Educational Activities Board shall meet as it deems necessary.

Sec. 3. The Board shall be responsible for the budgeting of their activity funds and shall determine the policy and the activity schedule of the educational activities: music, drama, and forensics.

### Article XV—Petitions

Sec. 1. Any individual or group of individuals may petition the Student Council on any matter of student interest. The Student Council shall consider all petitions and recommend decisions to the proper administrative official, committee or board.

### Article XVI—Repeal or Amendment of Legislation

Sec. 1. Any act of any officer, committee or board existing under this constitution may be repealed or amended by a two-thirds vote of quorum at a meeting of the Association.

## CONSTITUTION

### Article XVII—Amendment to Constitution

Sec. 1. Amendments to this constitution shall be proposed by the Constitutional Revision Committee at a meeting of the Association, shall then be posted for one week, and must appear in the Collegian. At a subsequent meeting they may be passed by a two-thirds vote of quorum.

## BY-LAWS

### Article 1—Awards Committee

Sec. 1. Membership of the Awards Committee shall consist of the president, the secretary, the faculty member of the Student Council, the general manager and the various faculty heads of the respective activities.

Sec. 2. The committee shall decide what awards will be given to members of the Association who have performed exceptionally meritorious work.

Sec. 3. Awards shall be presented only on award days designated by the Awards Committee.

Sec. 4. Funds for the awards shall be derived from the various activity allocations.

### Article II—May Week-End Committee

Sec. 1. Membership of the May Week-End Committee shall consist of a manager appointed by the Student Council and three assistants appointed by the president.

Sec. 2. The May Queen and her court shall be elected by a regular election of the Association.

## **CONSTITUTION**

### **Article III—Freshman Glee Committee**

Sec. 1. Membership of the Freshman Glee Committee shall consist of a manager elected by the freshman class and three upper classmen appointed by the president.

Sec. 2. The committee shall lay down the rules of the Glee and shall appoint three judges from the faculty.

### **Article IV—Homecoming Committee**

Sec. 1. Membership of the Homecoming Committee shall consist of a manager appointed by the Student Council and three assistants appointed by the president.

Sec. 2. The committee shall promote the Homecoming sign contest and other traditions associated with Homecoming.

### **Article V—Constitutional Revision Committee**

Sec. 1. Membership of the Constitutional Revision Committee shall consist of the president, the senior class representative on the Student Council and three other members appointed by the president.

Sec. 2. The committee shall propose revisions to this constitution at any meeting of the Association.

### **Article VI—Amendments to the By-Laws**

Sec. 1. Amendments to these by-laws are subject to the same conditions as amendment to the main body of this constitution.



**Ye Olde Reliable**  
Department Store

**Miller's**

Where High Quality Meets  
Low Price . . .

