

## Co-eds Boycott

Whitman Experiment Goes  
On Rocks of Feminine  
Disapproval.

WHITMAN COLLEGE, Walla Walla, Wash., Jan. 23. I. P.—The Co-eds of the college have called off the Leap Year plan which they started a week ago. The A. S. B. had previously decided that the women should do all of the dating and paying the expenses for the next two weeks. First the women refused to call for the men and then if they did not show up in time the girls did not wait for them, (some of the men were giving the co-eds a treat of their own medicine). Finally the fair sex appealed to the student body to reconsider the idea but the motion was laid on the table.

Balked on this side the fair sex decided to boycott the men. Consequently the Leap Year dating lasted but one week. Many of the co-eds were "good sports" and dated the "secret sorrows" and showed them a good time. As always "The Woman Wins".

## WHITMAN COLLEGE PIONEER JANUARY 13, 1928

The heartiest approbation has been voiced almost unanimously by members of the masculine sex for the system whereby quintessential femininity has been granted the rare privilege of making dates for the all too brief period of two weeks. By common consent, the plan has met unbounded success in its first week of trial and the men have cooperated splendidly and even eagerly. Last Tuesday gave evidence clear and irrefutable that the men are backing the idea to the limit. When the men voted down the motion to shorten the period a week, and it was noticeable that even members of the fair sex, many of them, held back on supporting the proposition. And all seemed reluctant to lose one week of privilege. (It must be remembered that Leap Year only comes once in four years.)

The reasons which may be assigned for the remarkable and unusual success of the innovation effected by virtue of the committee of the common people are various and differ with individual men. Harry Rothrock thinks, "It is a great idea. Since it has been put into effect I have been able to devote ten more hours to my studies." Then on the other hand there are some who have found the relaxation afforded by shows, library dates, etc., very beneficial. Mental strain and fatigue have been reduced considerably.

Then another item which strikes dear to the heart of every man but more particularly to Scotchmen like Mark Bradford, is that pecuniary or monetary phase. It has been a great relief to some to attend theaters and enter the front door and not slip through exits, to sit down at a soda fountain without fear of having to pay the bill by washing dishes.

Then the dance at Prentiss proved a huge success, so it is said. For once there were no feminine wallflowers. But pleasant though the dance was, it might be unfortunate to allow an indefinite continuation of dances having ladies choice as we found Saturday what a wallflower feels like and what a wallflower thinks about.

## CHIEF VIRTUE NOVELTY (PIONEER JAN. 13)

The chief virtue of the leap year plan is its novelty. The women are eager to do something different—perhaps, even something which may shock the people of the town or their parents. Proprietors and employees of downtown places of entertainment expect the men to be the hosts, therefore the girls like to surprise them.

The men would do well, however, not to push the matter too far, for "the worm when trod upon, will turn." The women believe the scheme will lose its novelty by the end of a week, and have officially expressed this belief by a vote to this effect at a meeting in Prentiss hall. Although the men, on account of their larger numbers and deeper voices, overruled their weaker sisters by voting to lay on the table a motion made by Mary Lou Lipscomb in chapel Tuesday morning for shortening the period of "leap year dates." The women can have the last word by refusing to make any dates after this Friday night.

The motion for the men passing out of chapel first was considered by most of the women as almost too much. If more of them had remembered their places sooner, there would probably have been a scramble for the door even before the freshmen came along, as there was then.

The women feel that if any of the men have any complaints to make about the new system they should consult the responsible members of their own sex, for the people who are promoting and directing it are men, as well as those who are clamoring for its long extension.

## THE SONG BOOK

The delay in the circulation of the Willamette Song Book has met with an expression of regret on the part of many students. Such disappointment is not especially pleasing, yet it seems to assure us of the unsatisfied demand for this book.

May each student of the university make avail of this long looked for opportunity of procuring one of these books.

Charles Redding,  
President A.S.W.U.

## PACIFIC UNIVERSITY SLATED FOR DEBATE

Progress Reported in Effort To  
ward Definite Organization  
of World Tour

The men's first intercollegiate debate will be with Pacific University at Willamette on February 16th. Two other contests are scheduled with University of Montana on February 23rd and with Southwestern University of Los Angeles on April 6.

The question for debate is: "Resolved that American investors and investments in foreign nations should be protected by the government of the nation in which they are made."

Try-outs for these contests, as well as for those of the proposed world debate trip, will be comprehensive examinations both oral and written. As yet, Coach Hall has not divulged complete plans for the try-outs of the world tour.

Victor D. Carlson, special forensic manager for the contemplated world debate trip, reports that most of the universities have welcomed the coming of the Willamette debate team. Seven colleges which have responded favorably to our inquiries are: Denver University, Wheaton College, Lawrence College, University of West Virginia, University of Alabama, Louisiana State University, and University of Wyoming.

With the exception of Alabama and Louisiana, all of these institutions have previously met Willamette University on the platform. University of West Virginia is the college of which Hugh Doney, President Doney's son, is a faculty member.

The tour through England, Scotland, Wales, and Ireland will be handled by the Institute of International Education, 522, Fifth Avenue, New York City.

Aspirants for the world debate team are working hard, holding practice debates and spending each Saturday forenoon under the direction of Coach Hall. Those who are working on this question are: Robert Starrett, Roy Harland, Lowell Mundorff, Charles Redding, Robert Willy, Fred Toole Jr., Wade Harmon, David Odell Bennett.

## EXAM JUBILEE FIRST GUN IN LEAP YEAR DATE PLAN

Special Features Promise To Make  
Skating Party Unusually  
Attractive

To avoid a conflict with the game with Ashland Normal which was scheduled for Saturday, February 4, the date of the Post ex Jubilee has been set ahead to Thursday evening, February 2.

This year the annual post exam jubilee will take the form of a leap year party at the skating rink. According to Virginia Merle Crites, chairman, this affair will not be like the ordinary skating parties. Special features are planned, each skate is to be different.

Helen Sande and Oscar White will entertain with a feature skate. Paul Trueblood and Kenneth Lawson will depict college life in the gay 30's.

Barbara Gallagher and Miss Lois Lattimer will tell fortunes.

The party is being managed by the following committees:  
General chairman—Virginia Merle Crites.

Program committee—Dorothy Ferrer, Evangeline Helneck, Wendell Games committee—Margaret Arnold, Georgia Fairbanks, Roberta Willy. Refreshments—Louise Findley, Florence Emmons.

The committee urges all the girls to get their dates early and requests that all boys who do not have dates come anyway.

## NEW CLASS OFFICERS TAKE UP LEADERSHIP

Trueblood Selected to Lead  
Seniors in Graduation Pro-  
cession; Sande V-Pres.

## PRATT LEADS JUNIORS

DeHarport Elected Prexy of  
Freshmen; Class Slates  
Now All Filled

The Senior, Junior and Freshman classes elected their officers for the second semester on Wednesday.

Paul Trueblood of Roseburg was elected president of the senior class. Mr. Trueblood is a member of Sigma Tau and is prominent in school activities. He was a candidate for the Rhodes Scholarship, has been member and reader of the men's glee club, and is active in Y.M.C.A. work and in the Coffee House. The other senior officers are: Vice-president, Helen Sande; secretary, Eugenia Savage; treasurer, Hobart Kelley.

The Junior class chose Carol Pratt of Portland as their executive. Pratt is a member of Kappa Gamma Rho fraternity of which he is manager. Beatrice Lockhart was chosen vice-president; Helen Hisey, secretary; Wilburn Swafford, treasurer; and Kenneth Litchfield, athletic manager.

Francis DeHarport, who was elected leader of the freshmen, is a Salem high graduate and is an outstanding member of the Rook basketball team. He is affiliated with the Cubs and the Sigma Tau fraternity. The vice-president is Norah Pratt; secretary, Pauline Findley; treasurer, Philip Retrum.

Last week the sophomores elected the following officers: President, Frank Lombard; vice-president, Katherine Everett; secretary, Mary Harshberger; treasurer, Florence Emmons. President Lombard, whose home is in Springfield, is advertising manager of the Collegian and a member of Kappa Gamma Rho.

## 1928 WALLULAH COVERS WILL BE BLUE AND GOLD

Dedication Will Be to Salem Business Men; Acceptance Part of  
Beta Chi Alpha Chapel

All students who have not returned their proofs to the Kennell-Elis studio by tomorrow will have the selection of the picture which will appear in the 1928 Wallulah made by the members of the staff according to the solemn warning issued by Paul Geddes, editor of the annual.

The editor reports that the work on the book is progressing rapidly. The selection of the cover design and color scheme has been made and the sample returned to the Weber-McCrea company of Los Angeles. The cover colors will be blue and gold.

The issue this year will be dedicated to the Salem business men. Plans are now being made for a representative of the Salem business men to appear at a student chapel given by the Beta Chi Alpha and accept the dedication.

## REGISTRAR'S BULLETIN

Registration will be from Monday, January 30, to Friday, February 3. All students registering after these dates will be charged a late registration fee.

## Change in Examination Schedule

Latin 5, changed to Tuesday at 9:35.  
Pauline Literature 55, changed to Wednesday at 7:45.  
Romanticism 75, changed to Wednesday at 2:30.  
Theory of Play 55, changed to Wednesday at 9:35.  
Latin 1, changed to Monday at 7:45.  
Public Speaking Methods 59, changed to Tuesday at 3:10.  
Cooking 1, changed to Wednesday at 2:10.  
Home Economic Methods, 56, changed to Tuesday at 7:45.

## Announcement of New Courses for the Second Semester 1927-28

1. Freshmen Courses without prerequisite: Zoology 6, Ornithology 10, Gen. Botany 12, Syst. Botany 14, English Comp. 1B (Classifying examination required), English History 12, Library Methods 2, Solid Geometry 2, Coll. Algebra 4 (Open to freshmen who have had Trigonometry in High School), Physics 4, American Government 2, Problems of Government 4. (Seniors registering for these courses will receive but half credit). Library methods.
2. Lower Division Courses requiring Sophomore rank or specific course prerequisites: Prin. of Education 12, College Algebra 4, Surveying 6.
3. Upper Division Courses: (Consult Professor in regard to prerequisites) Biology 66 (Ecology) Not listed in Schedule or Catalogue. Mod. Relations 66, Race Problems 72, Education 58, 60 and 82, English 66, 76, 82, 94, 98 and 100, History 52, 62, 64, 76 and 80, Mathematics 56 and 58, Philosophy 54 and 56, Political Science 58, 80 and 81, Public Speaking 58.

## LEGISLATION PASSED FAVORING LEAP YEAR

Period Between February 4  
and 18 Declared Open  
Season for All Co-eds

## MEN ARE INSTIGATORS

All Rebels Considered as Liable  
To Incur Wrath of Their  
Fellow Students

From all indications the men of the university thoroughly believe that the co-eds of Willamette should be made to take their leap year obligations seriously. If the women thus far this year have perhaps been a little backward in availing themselves of the traditional privileges which quadrennially devolve upon them, the men have solved the matter with the great American panacea for all ills, namely legislation.

William Mumford was the sponsor of the movement in the student body meeting last Friday which set aside the period between February 4 and February 18 inclusive as the period during which fussing should be done only on feminine initiative. The main support of the movement came from the left wing of the chapel, but endorsement was not lacking among the so called "fair sex". However, the opposition consisted of one brave man who voted his convictions and a large share of the right wing of the chapel.

Mr. Mumford's notion with his introductory remarks was as follows: "In order to keep Willamette in her place with other universities of the Northwest and to aid in promoting a better spirit of friendship among our own students, I move that

(Continued on Page 3)

## ALBANY FACULTY MEMBER GIVES VIEWS ON PANAMA

America Held Not Actually Responsible  
for Revolt of Present  
Canal Zone

Dean Ward W. Sullivan of Albany College spoke to a group of debaters and history students last Saturday morning on relations between the United States and Columbia or what part did the United States play in the Panama Revolution.

According to Dean Sullivan although the American Government exerted unusual pressure on Columbia, it was not actually responsible for the Panama Revolution which resulted.

A revolt had been expected for some months, and was not the sudden decision which it seemed.

Nevertheless Columbia refuses to believe this and years of dissension between that country and ours followed.

In 1921 an attempt was made to settle the difficulties by paying Columbia \$25,000,000.

Dean Sullivan was especially fitted to speak on this subject because in compiling material for his doctors thesis he was allowed to search through the secret archives of the state department in Washington.

## A SOUVENIR

Of course we want one!  
Each year we try to acquire for ourselves a few more Willamette souvenirs—among others a Willamette Song Book. There are so many songs of which we have but a vague impression, and for some reason it is easier to familiarize ourselves with a thing when it is down in black and white. In just the few minutes of chapel singing it is impossible to thoroughly learn all the really good songs that Willamette has—thanks to the Freshman Glee of previous years. So this year we are going to purchase a Willamette Song Book.

Helen Bridgeman,  
Song Queen.

## LARRY WOLFE'S FIVE SHORT IN LETTERMEN

Coach Produces Team From  
Green Material Which Has  
Five Victories to Credit

By Jas. A. Ellis  
Editor, Linfield Review

LINFIELD COLLEGE, McMinnville, Jan. 23.—With only two lettermen from last year, and only one a regular, on the Wildcat basketball squad Coach Larry Wolfe was faced with the problem of producing a team from green material for the 1928 season, and despite this handicap as well as several others, Coach Wolfe turned out a team that up to Tuesday of this week has won five consecutive games and has yet to taste defeat except in a practice scrimmage with the Oregon Aggie varsity when the Aggies were in tip-top condition just before leaving for their eastern barnstorming trip.

The Wildcats' first victory was over the Reed college five of Portland by a 35 to 21 point. Pacific college of Newberg was the next victim in a Willamette valley conference test by a 25 to 23 score.

The third hurdle for the team was a Northwest conference game with Pacific university on the local floor and this obstacle was cleared with a 28 to 21 score. The fourth victory was over Albany college in a Willamette valley circuit game with a 20 to 15 score. The fifth win was at the expense of the Chemawa Indians last Friday, the score being 38 to 25.

The two lettermen on the squad are "Pill" Warren, speedy forward, and a regular, and Bern Martyn, substitute. "Hamp" Agee, captain, another regular is one of the mainstays of the quintet. "Hos" Hostettler, guard, plays a star defensive game. Stensland, scrappy forward is a consistent player. Harry Burton, flashy player and a sure point gatherer, plays at the pivot position. Others who get into the play are John Harris, Archie Finley, former local high school star, and Vernon Beard, also a product of the local high school.

The next game for the Wildcats, after the game with Albany here Tuesday evening, is the big test at Salem Saturday evening with the Willamette Bearcats.

## CLUB LEAVES FRIDAY ON TWO WEEKS' TOUR

Club To Broadcast From KGW  
Sunday; Salem Y Invites In-  
terested To Listen In

## SOME DATES STILL OPEN

Home Concert Tentative for  
March 14 Preceding Opening  
of Basketball Tournament

The glee club will leave Salem at one o'clock Friday on its annual concert trip.

The manager, Lawrence Schreiber, states that prospects are favorable in all the towns signed up, and that the Portland concert should be one of the most successful which the club has had during the last few years.

The itinerary is as follows:

- Jan. 27—West Linn high school.
- Jan. 28—Portland Sunnyside church.
- Jan. 29—Broadcasting over KGW in Portland between 5:30 and 6:30 p.m. Willamette students are invited to "listen in" at the local Y. M. C. A.
- Jan. 30—Hood River high school.
- Jan. 31—The Dalles M. E. church.
- Feb. 1—Pendleton M. E. church.
- Feb. 2—Walla Walla.
- Feb. 3—Open.
- Feb. 4—Kennewick M. E. church.
- Feb. 5—Open.
- Feb. 6—Lower Naches high school.
- Feb. 7—Ellensburg M. E. church, under the auspices of the high school.
- Feb. 8—Open.
- Feb. 9—Washougal high school, under church auspices.
- Feb. 10—Forest Grove M. E. church.
- Feb. 11—Newberg M. E. church.

The home concert will probably be given March 14.

Those who will make the trip are Ronald Craven, Arnold Taylor, Wendell Robinson, William Wright, Carl Crane, Paul Geddes, Lawrence Schreiber, Lester Smith, Laurence Deacon, Willis Hathaway, Albert Herman, Everett Patton, Earl Wilkinson, John Gilhouse, Walter Kaufman, Hobart Kelly, Howard Miller, Charles Kaufman, reader, and Margaret Lewis, accompanist. Mrs. John Reed, house mother of Delta Phi, will be chaperone. Professor E. W. Hobson, director of the club, will not take the trip.

The club will present the following program:

- A Sea Song.....Gaines
- Glee Club
- Oh Moon of My Delight.....Lehman
- Ronald Craven
- Where My Caravan Has Rested.....Lohr
- Quartet
- The Long Day Closes.....Sullivan
- Glee Club
- Reading.....Selected
- Charles Kaufman
- A Page's Road Song.....Novello
- William Wright
- The Ladies of St. James.....Borshachun
- Glee Club
- Intermission
- Jolly Students.....Mendenhall
- Oh Miss Hannah.....Deppen
- Glee Club
- My Love Is Like a Red, Red Rose.....Prothero
- Heaven, Heaven.....Burleigh
- Quartet
- College Songs.....Glee Club
- Joshua Fit De Bottle of Jericho.....Brown
- Moore, Hathaway and Craven
- Reading.....Selected
- Charles Kaufman
- The Blind Ploughman.....Clarke
- The Old Historic Temple.....Mendenhall
- Glee Club

During the intermission a stunt will be given, and "Patty" Patton, "Harmonica King" will give a number of selections.

## DEAN PLACES DEADLINE FOR SOCIAL CALENDAR

Program of Social Events for Second  
Semester Will Be Issued in  
Next Collegian

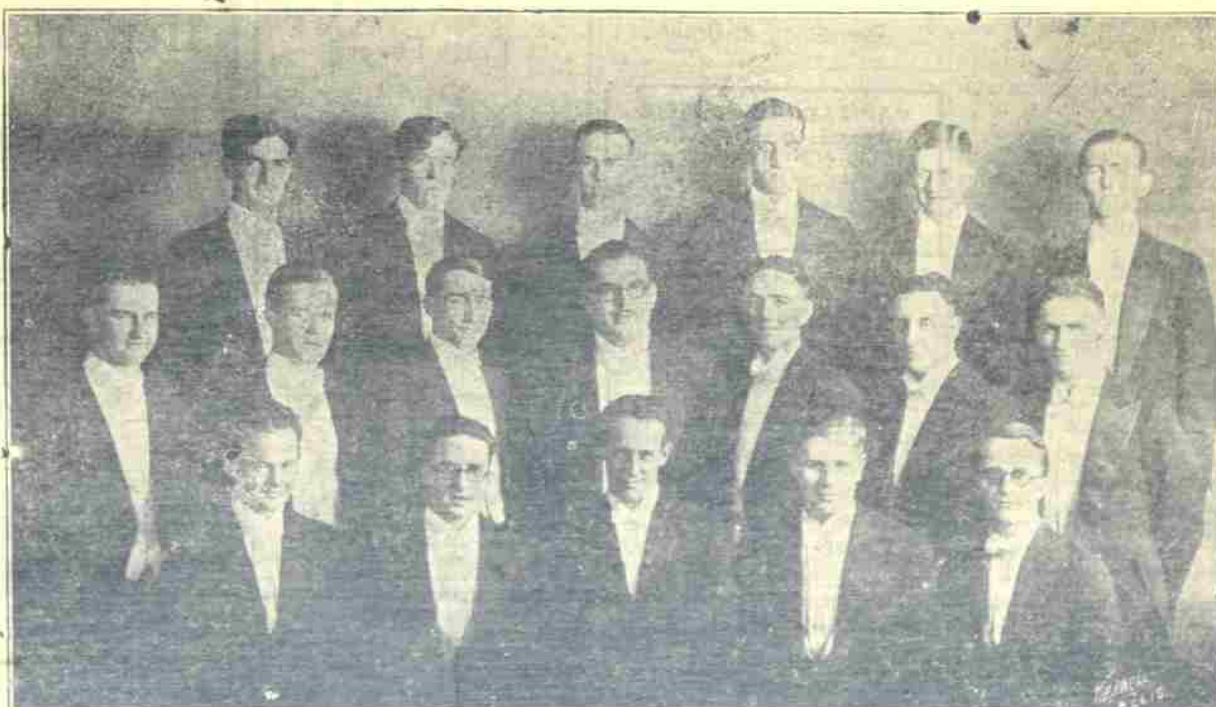
The complete social calendar for the second semester will be published in the first February edition of the Collegian.

Dean Olive M. Dahl reports that all preferences must be handed to her on or before February 2.

Debaters, musicians and literary clubs as well as social organizations are requested to hand in preferences also.

If the definitely scheduled list of athletic activities are submitted to the dean she will endeavor to prevent any conflicts between athletic and social events.

## DEPART ON TOUR TOMORROW



WILLAMETTE UNIVERSITY GLEE CLUB

Upper Row—Willis Hathaway, Pres., Everett Patton, John Gilhouse, Hobart Kelly, Walter Kaufman, and Laurence Deacon. Middle Row—Laurence Schreiber, Mgr., John Forrest, Carl Crane, Arnold Taylor, Lester Smith, Vice-Pres., Earl Wilkinson, and Albert Herman. Lower Row—Paul Geddes, Sec., William Wright, Asst. Director, Ronald Craven, Wyndell Robinson, and Howard Miller.



Official publication of the Associated Student Body of Willamette University

# Willamette Collegian

 HUGH McILVRA  
 Editor, Phone 1074

 WILLIAM B. SMULLIN  
 Business Mgr. Phone 1401

## EDITORIAL STAFF

Associate Editor: ELLA PFEIFFER  
 Managing Editor: GEORGE POOR  
 Exchange Editor: CAMILLA GATES  
 Society Editor: MARY CLANFIELD  
 Literary Editor: DOROTHY ELLIS  
 Music Editor: MARGARET ARNOLD  
 Feature Editor: EVERETT GARDNER  
 Editorial Editor: GEORGIA FAIRBANKS  
 News Editor: BEATRICE LOCKHART  
 Sports Editor: ROBERT McILVRA

## REPORTERS

BROWN, KAUFMAN, BECKETT, WARREN, W. HARMON, MILLER, CURRY,  
 MORGAN, BOWEN, C. HARMON, KING, KENDALL, DIFFENBACH, HOLLENBERG,  
 PEMBERTON, S. POOR, SCHULTZ, WOODWORTH.

## MANAGERIAL STAFF

Advertising Manager: FRANK LOMBARD  
 Auditor: BEATRICE HARTUNG  
 Circulation Manager: BEN KLINDWORTH  
 Collections: HOMER ROBERTS  
 Assistants: BEATRICE LOCKHART, JEAN WHITE, EMILY BROWN, HAROLD MEISIGER,  
 RAY MILLER, RAYMOND YARNER, PHILIP RETHUM, SAMUEL BOWE.

Member of the Pacific Intercollegiate Press Association.  
 Entered at the Postoffice at Salem, Oregon, for transmission through the mails as  
 second-class matter.

## AN ACID TEST

Every college makes some claim to distinction on the basis of uniqueness. The proud boast may be made on some feature of the composition of the student body, height of scholastic standards, or a brilliant history. Willamette is not among the least of these in respect to its claims of uniqueness, for it has many things which are distinctly and peculiarly its own.

Probably one of the most pleasant experiences which comes in the career of a student at this university is the realization that he has daily the privilege of association with a group of men and women with almost any one of whom he could find pleasure and profit in making their acquaintance. We believe that there is something unique in the character of the students composing the student body of this university. Our conviction does not suffer even with the knowledge that many other loyal students in other universities are making a similar assertion in support of their Alma Mater.

Small things are often the real tests of character. The provision in regard to Leap Year fusing on the part of the women of the university had its beginning in the spirit of jest and the desire to participate in something for the sake of sheer novelty. In spite of the fact that we are neither proponent nor critic of the innocent innuendo, we are rather disposed to regard its success or failure as indicative of something more fundamental in itself, in that it is revealing the true character of our student body.

Whether as a spectator or as a participant we will watch with interest how all play the game. We have the highest hopes that all concerned will prove themselves good sports.

## NOW I LAY ME DOWN TO SLEEP

The concluding efforts of any endeavor (be it the end of a school semester or anything else) as long as human nature continues without some radical changes will of necessity be hectic moments filled with frantic efforts and feverish haste to make amends for all past failures and neglects. The futility of comment on such a condition at this period of the semester is acknowledged without further words.

However, we do venture some comment on those who have suddenly become studious ascetics, denying themselves the pleasure of enjoying their lunch hour, keeping all sorts of weird hours, and at late hours of the night steeling their lagging minds to its vain task with cups of black coffee. There is no need to mention any names; dark lines under the eyes, furrowed brows, and unpleasant disposition are the almost sure indications of the midnight devotee of the cause of higher learning.

We do not mean to slight the usefulness of a thorough review in preparation for an examination but merely attempt to emphasize the necessity of plenty of sleep and exercise for the highest grade in the long run.

Some students have not yet reached that stage of good sense and rare judgment attained by Chesterfield who wrote while he was a student at Cambridge, "I reserve time for playing at tennis, for I wish to have the corpus sanum as well as the men sana: I thing the one is not good for much without the other."

## MUSICAL AMBASSADORS

Lindberg could well be ranked among the greatest ambassadors in the service of the United States. His winsome personality and modest character have proven the most effective means at the disposal of the government for the creation of good will in foreign countries. His series of visits to the different Latin American countries have been in a measure successfully promoted friendly relations in a region where the Monroe doctrine has no reason to make the United States particularly popular.

Willamette unfortunately has no Lindberg, but it has other organizations and means at its disposal which have the possibilities of equal effectiveness in a different field.

The Men's Glee Club leaves tomorrow on a two weeks tour of Oregon and Washington. They are one of the best means of advertising which this school could hope to have. Through their music and their personalities they can represent Willamette better than paid advertisements or a high powered publicity campaign could ever hope to do.

We wish them the best of luck on their trip and we remind them of the duties and obligations of their high calling as ambassadors of Willamette university.

Speaking of orthodox chapel exercises we believe that Dean Erickson made a contribution to the cause which ought to be sufficient to prove that orthodoxy has not been languishing during the absence of its chief priest and high guardian.

The page advertisement on the back page of this issue is but another testimony of the fact that Salem business men will support the activities of Willamette in a big way. Speak up and let them know that you appreciate their interest in Willamette.

Nothing short of an initiation would make a man carry an umbrella.

## MIDWINTER INSTITUTE

The mid-winter institute held at Tualatin last week-end was a success with forty-six Leaguers registered from six different churches.

Professor Andrews was Dean, and both he and Professor Hertzog taught classes. Thomas Potwin, Stanley Trefren, and Wesley Gordon all had good delegations present from their respective churches.



MARY CLANFIELD

## Campus Organizations Select Officers for Second Semester

The past week has witnessed the election and installation of second semester officers by many campus organizations.

The following officers were elected by the Alpha Psi Delta fraternity for the coming semester: President, William McAllister; first vice-president, Don Grant; second vice-president, Frank Alfred; manager, Kenneth Litchfield; secretary, Lawrence Schreiber; reporter, Everett Faber; assistant manager, Leland Sprecher.

New officers at Delta Phi were elected last week and installed last night. They are: President, Virginia Merle Critch; vice-president, Nell Marie Bruneau; secretary, Elizabeth Atkinson; treasurer, Florence Emmons; reporter, Betty Corskie; editor of house annual, Dorothy Ferrier.

At the regular meeting of the Lausanne Hall girls last Thursday evening, officers were elected for the new semester. Those elected are: President, Doris Klindt; vice-president, Irene Ritchie; secretary-treasurer, Bernice May Jackson; reporter, Leona Clothier.

At a short meeting of the Classical Club held after chapel, Thursday, the following officers were elected: President, Letty Leighton; vice-president, Margaret Hogg; secretary, Violet Beecher; treasurer, Louis Oberon; chairman of program committee, Lydia Child; Collegian reporter, Lyle Scheldt. The installation of the new officers will take place the first week of next semester.

The Clonian Literary society have chosen as their officers for the new term: President, Frances Lemery; vice-president, Barbara Gallaher; social chairman, Leah Fanning; recording secretary, Violet Beecher; corresponding secretary, Beulah Wampler; treasurer, Maida Caldwell; critic, Louise Liere; kitchen custodians, Katherine Barker, Edith Mae Ford; ushers, Beulah Graham, Pearl Craig; sergeant-at-arms, Winnie Arthurs.

The election of the Beethoven Society resulted as follows: President, Kenneth McCormick; vice-president, Helene Price; secretary-treasurer, Betty Corskie; reporter, Eugenia Savage.

## Theta Alpha Phi Initiates Five New Members Sunday

Mary McKee, Frank Alfred, Ian Melver, and Kenneth Lawson were formally initiated Sunday into Oregon Alpha chapter of Theta Alpha Phi, national dramatic fraternity. The ceremony took place at the home of Dr. and Mrs. Robert Moulton Gatte, 280 Richmond Ave. A short business meeting followed and later tea was served.

## Philodossians Enjoy Program And Install Officers Friday

On Friday, January 19, the Philodossian society held their regular meeting. The program consisting of a piano solo by Betty Corskie, a vocal solo by Lillian Scott, and a piano solo by Dorothy Ryan, was followed by the installation of officers. After the adjournment of the meeting, tea and wafers were served by the retiring officers.

## Mrs. Alden is Hostess At Afternoon Affair

Tuesday afternoon, Mrs. George H. Alden was hostess at a charmingly informal tea at her home, 760 N. Church street. The rooms were decorated with pussywillows and Oregon grape.

The afternoon was spent in visiting and telling fortunes. Refreshments consisting of sandwiches, fruit cake and tea were served.

The guests were Mrs. Carl Gregg Doney, Mrs. Alice H. Dodd, Mrs. John Reed; Mrs. O. P. Hoff, Mrs. J. Martin Canse, Mrs. Martin Ferry, Mrs. Moore, Mrs. Elsa Ebsen and Mrs. Page.

## Piano Department Presents Students in Evening Recital

Monday evening a number of piano students of Miss Frances Virginie Milton and Miss Lucille Ross were presented in a recital in Waller Hall.

The following numbers were included in the interesting and well-rendered program: Prelude from the Well Tempered Clavichord ..... Bach

Eugenia Savage

Bouree ..... Bach

Edith Findley

Sonata Op. 27 ..... Beethoven

Bettie Corakie

Uncle Remus ..... MacDowell

Wendell Robinson

Arabesque ..... MacDowell

Helen Bridgeman

Songs Without Words

No. 20 - "The Cloud" ..... Mendelssohn

Helene Price

Peer Gynt Suite ..... Grieg

(a) Morning Mood

(b) In the Hall of the Mountain King

Genevieve Junk

The Elf ..... Philipp

Dorothy Ryan

Two-part Invention No. 13 ..... Bach

Polonaise ..... MacDowell

Rosalind Van Winkle

## Dinner Party at Lausanne Honors Edna Thompson

Saturday evening of last week Doris Klindt was the hostess at a dinner party at Lausanne Hall in honor of Edna Thompson. The occasion was Miss Thompson's birthday.

The guests were Edna Thompson, Lolla Johnson, Betty Ellison, Martina Pruitt, Yvonne Cornell, Orma McIntyre, and Margaret Brown.

## Alpha Psi Delta Fraternity Has Many Guests Sunday

Lois Morris, Virginia Merle Critch, Virginia Edwards, Margaret Lewis, Beulah Wampler, Marjorie Miller, Helene Price, Bunea Culbertson, Dorothy Ferrier, Beulah Launer, Beatrice Hartung, Professor and Mrs. E. C. Richards, Mr. and Mrs. Frances Ellis, and James Rettie were dinner guests at Alpha Psi Delta Sunday.

The following guests were present

## DR. W. L. MERCER

Graduate  
 American School of Osteopathy  
 Kirksville, Mo.  
 Salem, Ore.

## St. Valentine's Day

February 14th

See Our Display of

Greeting Cards and

Party Favors

We have the favors that will

make your party a success

## Atlas Book Store

465 State St.

"Send a Valentine Card"

## John J. Rottle

415 State Street

Walk-over  
 Foot-wear

Canil-  
 ever  
 Shoes

at a dinner at Epsilon Delta Mu Sunday. Professor and Mrs. R. R. Hewitt, Marjorie Kendall, Edna Watts, Lola Barnes, Harriette Hagomen, and Martina Pruitt.

A number of Lausanne Hall girls spent Saturday and Sunday at their homes; Kathleen Garrison in Woodburn; Ella Howard in Halsey; Margaret Ghormley and Gloria Grafton in Portland; and Florence Volstroff in Camas, Wash.

On January 13 the marriage of Miss Clara Hawkins and Glenn Smith was announced, having been kept secret since October 29, 1927. Mr. Smith was a member of the freshman class at Willamette University at the time of his marriage and a pledge of Epsilon Delta Mu.

Miss Georgia Fairbanks was in Portland Saturday and Sunday as the guest of Mr. and Mrs. Warren H. Day.

Nell Marie Bruneau was the guest of Mary Allen at luncheon at Lausanne Hall last Friday.

Miss Bernice Newhouse spent the week-end in Portland visiting her sister, Miss Daisy Newhouse.

Mildred Mills, Mary Hershberger, Joyce Kidder, Betty Corskie, and Elizabeth Atkinson visited their respective homes over the week-end.

Dinner guests at Delta Phi Sunday included Gordon Shelley, George Glass, Kenneth Denman, Nell Brown, Ivan White, Arthur Mason, Donald Grant, and William McAllister.

Week-end guests at Delta Phi were Eloise Reed of Corvallis, and Lois Morris and Jessie Day of Monmouth.

Howard Towers, past Duke of the Beaver Knights at O. S. C. and treasurer of the National Intercollegiate Knights, spoke to the Cubs Tuesday noon at a luncheon held at the Salem restaurant.

Marion Michaelson visited friends at Monmouth over the week-end.

The Chrestomathean Society Friday afternoon held a special election at which time Virginia Slusser was

chosen secretary and Dorothy Taylor treasurer. After a short business meeting the outgoing officers treated the members.

The wedding of Edna Glendening of Boise, Idaho, and Francis Ellis of Silverton was an event of January 17. Mr. Ellis was a member of the class of '27 and of Alpha Psi Delta. Miss Ila Comstock of Portland and Bernice Groth of Vancouver spent the week-end at their respective homes.

Mrs. C. A. Park will today conduct the last of her series of Bible study lectures, using the Gospel of John as the topic for discussion.

## WESLEYAN OFFICERS

At the meeting of Wesleyans the following officers were elected for next semester: President, Dorothy Hutchison; vice-president, Wesley Gordon; secretary-treasurer, Lloyd Harden; reporter, Virginia Slusser; refreshment chairman, Violet Swanson.



BEAUTIFUL  
 VALENTINE  
 HEART BOXES  
 25c to \$5.00

Salem Store, 466 State St.  
 Phone 877

"A Store for Women"

**Katoury Bros.**  
 Portland Store, 462 Alder St.  
 Phone Beacon 7612

MEET YOUR FRIENDS

—At—

**THE BLUEBIRD**

HUGHES & TAYLOR

Rayon Vests ..... 79c  
 Rayon Bloomers ..... 79c, 98c  
 Brassiers ..... 49c, 75c, 98c  
 Garter Belts ..... 75c, 98c

**Shipley's**  
 PAY AS YOU GO STORE

SUNDAY—MONDAY

**Herbert Hoey--Doris Walker**

TOMMY ATKINS SEXTET

AND OTHERS IN

**FANCHON & MARCO'S**

"FOLLIETTES"

ALSO

**Billie Dove**

IN

"The STOLEN BRIDE"

STARTING TUESDAY

"Helen of Troy"

AN AD MAMMA IN A BC TOWN

**-ELSINORE-**

**Buster Brown Shoe Store**  
 Broadcasting

Our

**FAMOUS 2 FOR 1 SHOE SALE**

If you cannot use two pair bring a friend and split the bill.

LARGER AND BETTER THAN EVER

Rubber Heels—2 Pair For the Price of 1

**Buster Brown Shoe Store**

**A SPECIAL—**  
 FOR EVERY  
 JUNIOR AND SENIOR

"CAN'T BUST EM"  
 Campus Cords, Regular  
 \$6.00 Quality, Special Sale

**\$3.65**

— At —

**BISHOP'S**



## Sport Sidelights

### Ralph Coleman Looses Whistle When Game Gets Too Rough.

Ralph Coleman, referee in the Pacific game, showed good psychology in losing his whistle when the game began to get rough. After the two teams were cooled off a little he found his whistle down the front of his sweater and the game continued at a much smoother pace.

The size of the Pacific gym seemed to hamper the Bearcats who have practiced on a large floor all this year. The balcony overhangs the playing floor and a shot taken from the side is liable to hit the underside of the balcony.

The attendance at the Pacific game was small but they made up for their size by their spirited cheering.

It is with much regret that we notice that Robert Ashby, who was picked last year as all conference guard, and who the two previous years was picked as all state high school guard, has not only dropped from the basketball squad but has left school. His work, school work, and athletics were too much to carry at one time. His absence will be sorely felt but Williamette is fortunate in having two lettermen to fill the vacancy that he left.

In the Pacific game the Williamette men made one out of every three shots at the basket, while in the Columbia game they made only one out of every five. The only consolation was that the Bearcat five took eighty shots at the basket against Columbia compared to 50 shots against Pacific.

It is certainly gratifying to see that the old grade are taking such a keen interest in the Williamette team this year. Three came up from Portland to see the game at Forest Grove. They were Alvin Bond, Margaret Bodine, and Filmer Carter. Also Dean Lobough, who is this year teaching at Banks, Oregon, was at the game. Dean last year was associate editor of the Collegian for the first semester.

Speaking of Williamette graduates, the Forest Grove high school holds one in very high esteem. Russ Rarey of Tillamook visited Forest Grove recently with his basketball team and administered them a 55 to 0 defeat. It is very seldom in fact almost unheard of for a school to score a shut out victory in basketball but Tillamook achieved the impossible. It looks as though Russ will be with us again this year when the high school tourney comes off in March.

### CLIFFDWELLERS DEFEATED IN ONE SIDED ENCOUNTER

Both Teams Shoot Often But With Little Success; Irishmen Get Off to Fast Start

With only an occasional sparkle in the offense but with an all but impragnable defense the Williamette quintet won a rough but fast game from the Columbia University team 37 to 10. The Columbia five handled the ball exceptionally well but were unable to fathom the Bearcat defense. Heenan, star Irish forward, was able to connect with but two field baskets. He took shot after shot but was forced to take them from beyond the black line. The Columbia team made 4 out of 40 shots at the basket while Williamette did a little better making 16 out of 81.

In the first four minutes of play, Heenan, Cosgrove and Chandler connected with field goals without giving Williamette a look in. Williamette's offense looked pitiful and their defense looked little better at this stage of the game. The score stood 6 to 0 in favor of Columbia. Then Cardinal, then Flesher, then Cardinal again connected. The score was 6 all. Litchfield made a long one and then Cardinal again converted. Williamette was leading 10 to 6. Heenan following up one of his long shots made a good heave over his shoulder, and then Sullivan made a foul on Litchfield count for two points. Ten minutes of play had elapsed and the Irish had the score tied at ten all. In the last thirty minutes of play they did not make a point, but had to be content with holding the fast coming Bearcat five to 27 points. Litchfield sunk another and then Cardinal made three points and the half ended 17 to 10 Williamette.

The second half was mostly Cardinal and Flesher, the pair accounting for 15 out of the 20 points that were made. Cardinal was high point man with 18 points. He might have had twice that many but for bad luck as he took 38 shots in order to make 8 baskets. Flesher came next with ten points. He had a better average however and out of the ten shots that he took at the basket he made 5. Williamette used ten men in the game.

Columbia (10) (37) Williamette (23) (10) Depoe Sullivan (2) (4) Litchfield Cosgrove (2) (18) Cardinal Chandler (2) (10) Flesher Murphy (2) (2) Hank Davis (2) (2) Minto Milan (2) (2) Winslow Hagan (2) (2) Leadbetter S. (2) (2) Tweedie S. (2) (2) Glass

### WEST LINN VANQUISHES ROOKS BY CLOSE MARGIN

Fresh Continue to Lose by Small Scores in Spite of Rally in Second Half

By building up a large lead in the first quarter the West Linn high team defeated the Williamette freshmen by a score of 32 to 31. West Linn made nine out of fourteen shots that they tried in the first quarter and made the score 18 to 3.

With defeat staring them in the face the Rooks settled down to work in the second quarter and the half ended 20 to 10. In the last half the freshmen outplayed the high school five but they were unable to forge into the lead and the game ended with them one point behind.

Oranor was the mainstay of the West Linn team and added 15 points to his team's total. DeHarport starred for the Rooks, making 12 points.

Wednesday the team journeyed to Portland to play the Hill Military Academy at the Coliseum. Saturday the freshmen play Benson in the afternoon and Lincoln in the evening as a preliminary to the Williamette-Linfield game. In early games the Lincoln and Benson teams both defeated the freshmen by the usual score of one and two points.

Williamette 31 32 West Linn DeHarport 12 F. 6 Decker Eaton 8 F. 8 Brandt Waddell 8 C. 15 Oranor Marsters 2 G. 2 Tuer Troxel 1 G. 1 Forsyth

### H. T. LOVE THE JEWELER

Salem, Oregon

### BUNTINS

Next to Capitol Theatre Sandwiches & Hot Chili

### Senator Confectionery

A Good Place to Buy Milk Shakes  
I. N. STURTEVANT, Prop.

### Neimeyer

Just Drugs 175 N. Com'l St.

### Geo. C. Will

Dealer in Pianos, Phonographs Sewing Machines Musical Instruments Sheet Music, Music Studies Pianos and Sewing Machines Rented

432 State St. Salem, Oregon

### SOCIETY STATIONERY

Printed or Processed Engraved



PHONE 1243 Basement Bank of Commerce

### The J. J. Krapps Co.

PRINTERS

S. 13th and Wilbur Sts.

Phone 1256

## BEARCATS LACK PEP AGAINST PU BADGERS

### Pacific Forced To Resort to Long Shots; First Conference Win for Williamette

Lacking their usual fight and spirit the Bearcats won their first conference game last Friday night from the Pacific University Badgers 34 to 24. The Williamette team played good basketball part of the time but the fire of enthusiasm that was present in their other games was absent.

Williamette started the game with a rush and Reg DePoe dropped in four baskets to take the Badgers off their feet. Cardinal attempted several shots but he didn't seem to be able to find the hoop and he only scored one basket in the first half. Glass who substituted for Litchfield in the last of the half made a beautiful shot from the side of the floor. The half ended with Williamette in the lead 17 to 9.

In the second half the Badgers came back with a rush and scored four baskets in a row to bring the score up to within five points of the Bearcats. Flesher and Litchfield were rushed into the game and the Williamette defense strengthened.

While the entire Pacific team stood still the bearcats made two baskets by passing the ball in quickly when they had it out under their own basket.

Cardinal made four baskets in the second half to bring his total up to ten points to tie with DePoe and with Emerson who was the scoring ace of the Badgers.

Williamette worked the ball deep in the Pacific defense before they shot but they missed several easy crimple shots. Pacific was forced to resort to long shots but few of them went through the basket.

Williamette (34) Pacific Litchfield (2) F. (10) Emerson DePoe (10) F. (6) Walker Cardinal (10) C. (3) Dreesen Leadbetter (1) G. (4) Miller Hawk (5) G. (1) Coon Flesher (2) S. (2) Milla

### THREE TEAMS NOW LEAD IN NORTHWEST CONTEST

Only Upset Comes in Defeat of Pacific by Linfield; Oregon Bearcat Test

Northwest Conference Standings:  
W. L. Pct.  
Williamette 1 0 1000  
Whitman 1 0 1000  
Linfield 1 0 1000  
Puget Sound 0 0 000  
Idaho 0 0 000  
Pacific 0 3 000

At the end of the second week of the title race three teams are tied for leadership with one win and no defeats. Pacific is hopelessly sunk in last place with three losses.

The only upset of the week came when Linfield gave Pacific a bad

### "Say it With Flowers"

From C. F. BREITHAUP

Salem's Telegraph Florist  
123 N. Liberty St. Phone 380

### MITZI-GRAY BEAUTY SHOPPE

700-13 First Nat'l. Bank Bldg. TELEPHONE 187  
Nestle Circuline Permanent Waving and Finger Waving

### We Are Now in the

New Hotel Senator

THE TERMINAL SHINE

Phone 625

### Dr. L. R. Burdette

401-402 First Nat. Bank Bldg.

### MALTESE BARBER SHOP

Fools all 482 Court St. 4 Artista  
Sign of Maltese Cross  
H. A. GWYNN, Prop.

Shoe Rebuilding a Specialty

### H. M. STYLES

South Liberty Street

### "IT PAYS TO LOOK WELL"

The State St. Barber Shop  
For all the Family—Close to the Capital and W. U.

### Sherman Clay & Co

Everything in Music

130 So. High St. Phone 2284

## SCHEDULE PROMISES CLOSE COMPETITION

### Oregon and Linfield Next Two Hurdles in Way of Bearcats; Oregon Favored

Saturday and Tuesday nights will find the Bearcats fighting hard against the Linfield and Oregon quintets. While the Oregon game will probably be the hardest, the one with Linfield is not to be laughed at in any sense of the word. Linfield at center has a man from Colorado, the home of Coach Wolfe, who went back east with the Colorado high school champions and won the honor of being picked all national high school center. This year in all of his games he has never scored less than 15 points. Williamette will have to play very exceptional ball if she is to win. Linfield defeated the Pacific Badgers by a 28 to 21 margin while the Bearcats only defeated the Badgers by a 34 to 24 score. This shows that the teams are comparatively equal although other comparative scores might show different. For example: Columbia defeated Chemawa 47 to 29, Linfield defeated Chemawa 38 to 25, and Williamette defeated Columbia 37 to 10.

### ROOKS AVENGE DEFEAT ON GRANT HI GENERALS

Portland HI School Team Defeated 22 to 18; Lead Changes Often During Game

In a game preliminary to the varsity struggle with Columbia the Williamette freshmen avenged their recent defeat and won from the Grant High Generals 22 to 18.

Grant took the jump from the start and they ran up a 12 to 8 lead at the end of the half. The freshmen missed easy crimple shots and passed up many chances to score.

In the second half three quick baskets put the Rooks in the lead. Roth sank two baskets for the Generals and again put them ahead. The lead changed twice in just a few minutes and with only a short time left Eaton made two baskets and Trachsel sank a long shot that put them in the lead by four points. The Rooks stalled along on this advantage until the final whistle blew.

Williamette (22) Grant Eaton (11) F. (2) Gahler DeHarport (4) F. (4) Roth Waddell (1) C. (6) Stahl Trachsel (4) G. (2) Kirk Marsters (2) S. (2) Gleason Harmon (2) S. (2) Watts S. (4) Bale S. (2) Grant S. (2) Hanson S. (2) Roudhill

### TROVER

PHOTOS THAT PLEASE

122 N. Commercial

### Classy Oxfords For

Young Men

At Popular Prices

Kafeteria Shoe Store

### THE BEST

Barber Shop is still the best for Williamette Students.

139 S. Liberty

### CAPITAL DRUG STORE

J. H. Willett "Only the Best"  
Agents Owl Drug Co. Katty Korner First Nat. Bank Bldg.

325 State St. Phone 596

### C. A. Luthy

Jeweler

Salem, Oregon

EVERYTHING IN Hardware Fishing Tackle and Sporting Goods  
RAY L. FARMER HDW. CO.  
Court and Com'l. Sts. Phone 191

### Costumers Cosmeticians

We Supply Costumes for Fraternity and Sorority Parties

### THE BUTTERFLY LINEN SHOP

Curios — Gifts

365 N. High

Fancy Sewing

## FACULTY CONTINUE LEAD IN DONUT LEAGUE GAMES

Faculty, Law School, and Alpha Psi's Picked as Contenders for Pennant

Team	W.	L.	Pct.
Faculty	3	0	1000
Law School	2	0	1000
Alpha Psi	2	1	666
Kappas	1	1	500
Epsilon	1	1	500
Sigma Tau	1	2	333
Lower Class	0	2	000
Glee Club	0	3	000

With the third week of the Donut league well under way the strong Faculty team continues to lead the league with three wins and no defeats. Close behind the leaders is the Law School quintet, who, while also undefeated, have won only two games. The Alpha Psi team, after a slow start have won their last two games and risen from seventh to third in the team standings. The Glee Club and the Lower Class teams haven't broken into the win column as yet. At the present it seems that the Faculty and the Law School will fight it out for the championship with a chance that the Alpha Psi team prove an upset.

Alpha Psi 38; Lower Class 12  
On Wednesday of last week the Alpha Psi team had an easy time winning their game from the Lower Class squad. After the first quarter the question was only how large the score would be. This score is the largest that any team has piled up yet and it marks the Alpha Psi team as dangerous pennant contenders.

Law School 10; Sigma Tau 9  
The Law School and the Sigma Tau teams played one of the closest games of the year on Thursday afternoon. The Sigma Taus were in the lead for the most of the game but a last minute basket gave the victory to the Law School students.

Alpha Psi 39; Glee Club 11  
On Monday of this week the Al-

Office Phone 859 Res. Phone 469J

### DR. B. H. WHITE

Physician and Surgeon  
OSTEOPATHY  
506 U. S. National Bank Bldg  
Salem, Oregon

### ARE YOU SATISFIED WITH YOUR Hair Cut?

We try always to do our work correctly.  
No Pot Cuts Here.  
Down Stairs in Salem's Tallest Bldg.

We have Handle W. U. Students' Accounts for 59 years

### LADD & BUSH

BANKERS  
Salem, Oregon

### Rowland Printing Co.

Masonic Temple

Phone 1512

"The Home of Good Printing"

### BOOTH'S

Soft Drinks

### FOUNTAIN SERVICE

THE WHITE HOUSE RESTAURANT

Meals

### LOOK FOLKS

The Hotel Senator Barber Shop  
NOW READY TO SERVE YOU IN OUR NEW QUARTERS  
ROOMY—CLEAN—PLEASANT

BUSICK'S  
STANDARDIZED CASH STORES  
SERVICE QUALITY ECONOMY  
Wholesale Prices to Fraternities and Sororities  
Salem, Oregon

### VALENTINES

You Will Want to Send a Valentine to Someone  
If You Are Giving a Party You Will Need Favors,  
Place Cards and Decorations

Why Not Come in and Select Them Now

THE COMMERCIAL BOOK STORE

A. A. GUEFFROY

Service with a Smile

### Roller Skating

Dreamland Rink

Tuesday — Friday

### Men's Goods, Men's Shoes

Loggers' Shoes and Work Clothing

### HILLPOT & SON

305 State St.

The little store, with a big stock and Low Prices. Trade with Us and Prove It.

## Save 30%

Buy 10 Ride Ticket to All Points Served by the Comfortable

### Silver Gray MOTOR COACHES

LEAVE FOR PORTLAND

7:30, 8:30, 10:35 A. M.; 12:40, 1:35, 2:35, 4:30, 5:50, 7:45 P. M.

FOR POINTS SOUTH

9:40, 11:40 A. M.; 2:40, 4:40, 7:40 P. M.

ALSO CONVENIENT TRAIN SERVICE TO ALL POINTS NORTH AND SOUTH

### Southern Pacific

Phone 80 or 41



**Kennell--Ellis**

The W. U. Photographer



*We Know You've Got  
The Goods*

**THE BLUE BIRD**



I WISH YOU THE  
BEST OF LUCK

**AL KRAUSE**

Quality Men's Wear

**Best of Luck**

**RHODES  
INC.**

WILLAMETTE—

The Name to Know in Real  
Basketball

**Bertelson & McShane**

The Name to Know in  
Printing

Wildcat—Bearcat  
Bearcat

**Army and  
Outing  
Store**

169 N. Commercial  
Next Door to Busiek's



**Mike Panek**

**SALEM'S BRAKE  
SPECIALIST**

275 So. Commercial

"See Mike Panek and Avoid  
a Panic"

**You Knock the Spots  
Off Them**

Like We Do Off Your Clothes

**Cherry City  
Cleaners**

C. F. DOANE, Prop.

230 N. Liberty St.

**ON WITH THE  
BEARCAT  
SPIRIT,  
MEN**

**Willamette  
University**

**GO GET 'EM  
WILLAMETTE**

**"FROSTY" OLSON  
FLORIST**



**ON WILLAMETTE**

*H. L. Stiff Furniture Co.*  
**COMPLETE HOUSE FURNISHERS**

PHOTOGRAPHS COURTESY OF THE CAPITAL JOURNAL



**WE'RE WITH YOU  
BEARCATS**

**Breithaupt's  
FLORIST**

**WE ARE WITH YOU**

**BEAT LINFIELD**

**THEN WALLOP OREGON**

**SALEM  
Restaurant**

**WE'RE FOR YOU,  
BOYS**



*Go Get 'Em Willamette*

**KEN BROWN**  
Sporting Goods



**SALEM'S NEWEST  
DRUG STORE**

**Carson's  
Pharmacy**

Here To Serve

**Buy Your  
DAVENPORT  
AND  
OTHER FURNITURE**

—AT—

**Hamilton's**

340 Court Street

**Drive Them Off**

**DRIVE UR SELF  
COMPANY**

Phone 885 235 N. High

**Make  
MARION  
HOTEL  
Your  
Headquarters**



Nothing Takes the Place of a  
Fighting Bearcat, Says

**F. E. SHAFER**

LEATHER GOODS  
Briefcases, Suit Cases, Gloves

Brief Cases  
'And—Did You Know That  
Nothing Takes the Place  
of LEATHER

**20th Century  
Market**

**QUALITY MEATS**

State and Commercial

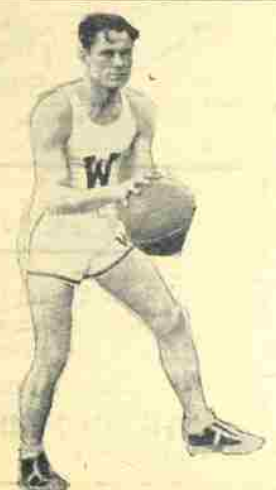
**GO GET 'EM TEAM  
THE STORE FOR  
YOUNG MEN  
STYLE—SERVICE—VALUE**

**The Man's  
Shop**

**Nelson Bros.  
Inc.**

PHONE 2673

355 CHEMEKETA ST.



*Yes We're Backing  
You Too*

**STATESMAN PUBLISHING CO.**

Job Department

Phone 583



**MOON'S  
JEWELERS**

**LAY 'EM LOW  
WILLAMETTE**