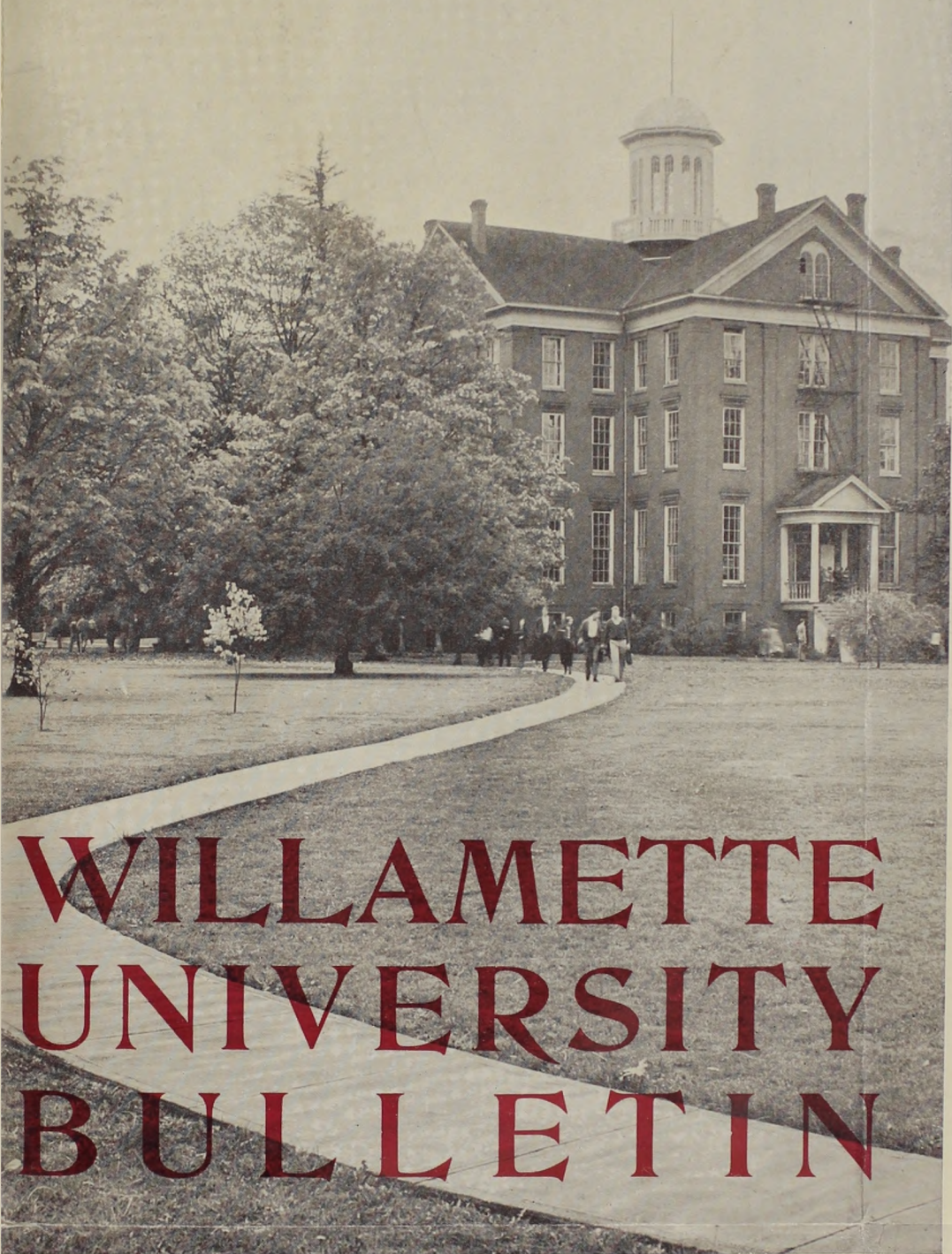


WILLAMETTE
UNIVERSITY



WILLAMETTE UNIVERSITY BULLETIN





President
Baxter

*T*HIS BULLETIN is reverently dedicated to the memory of those pioneers and missionaries who in 1842 founded WILLAMETTE UNIVERSITY the Oldest Institution of Higher Learning West of the Rockies.

It is the Ideal of Trustees, Administration and Faculty that their courage, steadfastness of purpose and abiding faith in God shall be continued in the spirit of the University which they founded.

—BRUCE RICHARD BAXTER

Willamette University Bulletin

VOL. XXXI APRIL, 1937 No. 3

Entered at the Postoffice at Salem, Oregon, as Second Class Matter, July 27, 1908, under the Act of July 16, 1894.

Tablet
on the
Rock
Monument



*The
Lantern Tower
of "Old Waller"*



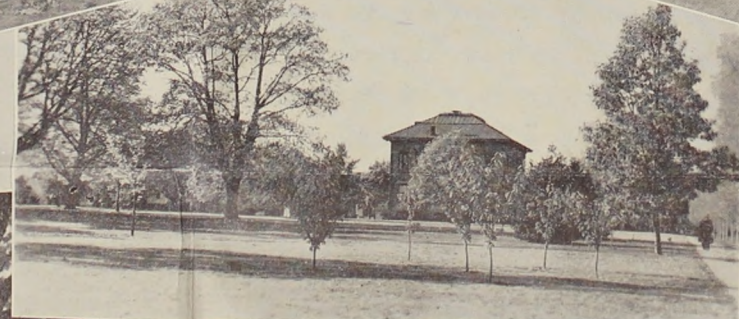
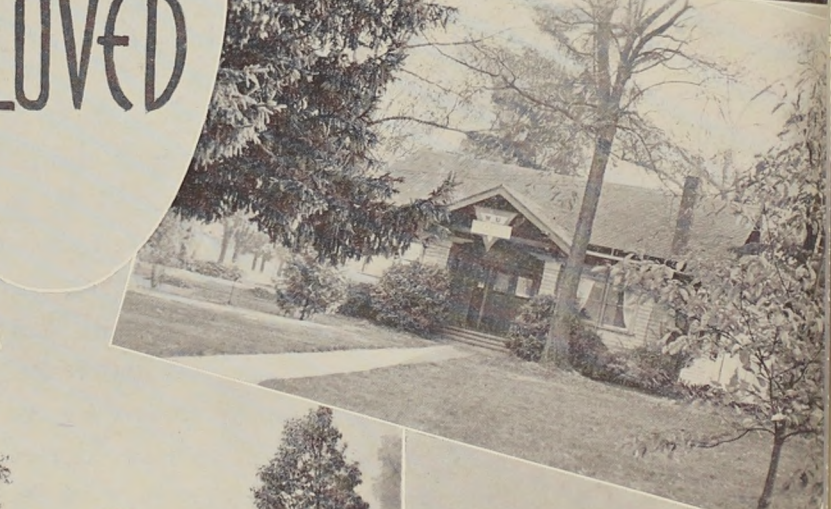
The Offer of the College

*T*O be at home in all lands and all ages; to count Nature a familiar acquaintance, and Art an intimate friend; to gain a standard for the appreciation of other men's work and the criticism of your own; to carry the keys of the world's library in your pocket, and feel its resources behind you in whatever task you undertake; to make hosts of friends among the men of your own age who are to be leaders in all walks of life; to lose yourself in generous enthusiasms and cooperate with others for common ends; to learn manners from students who are gentlemen, and form character under professors who are Christians—this is the offer of the college for the best four years of your life.

—WILLIAM DEWITT HYDE.



CAMPUS
BELOVED



*The
Campus
Unusual*



The Case of the Smaller College

*T*HE SMALLER COLLEGE—literally tens of thousands arise to call it blessed for the pattern of life which it fashioned and the opportunities for development of personality and ability which it afforded. Its tremendous influence in American life is attested in that, while the number of graduates from the smaller college and from the great universities is about equal, *Who's Who in America* names two of the former to one of the latter. Hundreds of statesmen, clergymen, publicists, scientists, lawyers glory in the remembrance that they are sons and daughters of the smaller college.

The query naturally arises as to what attracted these hosts of men and women to the halls of the smaller college. Explanation must be found for its unique position of vital importance in American life. Such explanation is easily discernible to one who really seeks the answer.

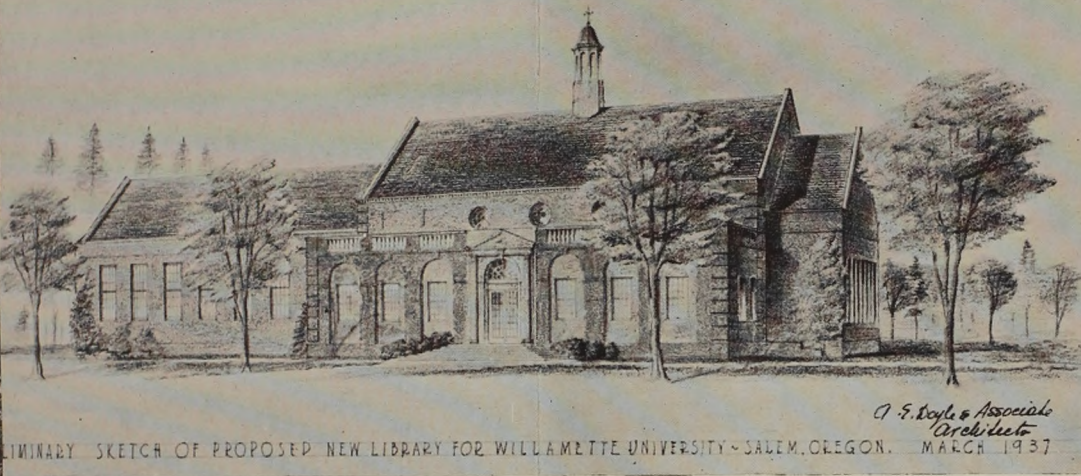
The "Gym"



Lausanne Hall—Women's Residence



*Willamette's
New Library
Now in
Construction*



FIRST, the act of teaching and learning is one that is best promoted by intimacy between the teacher and the pupil. A more impersonal instruction may succeed with an adult who is already eager and knows how to learn, but youth profits most when a subject is passed to him through the alembic of a vivid personality. The finer scholarship is most intensely kindled in a living fire; it rarely comes by spontaneous combustion. Both the larger university and the smaller college have great teachers, but in the large school these usually meet only the upperclassmen or graduate students or devote themselves to research. Many freshmen and sophomores lose vision and perspective and are fixed in dull commonplace before they meet a teacher who can enkindle them. This undesirable situation is generally recognized; Harvard, Princeton, Yale and other universities are appealing for enormous funds for the purpose of estab-

WILLAMETTE UNIVERSITY HAS FOREMOST RECOGNITION
AS AN EDUCATIONAL INSTITUTION

- Willamette is fully accredited by
- Association of American Universities.
 - Oregon State Department of Education.
 - Pacific Northwest Association of Colleges and Secondary Schools.
 - American Council on Education.
 - Association of American Colleges.
 - American Association of University Women.

*Old
First
Church*



Salem

*Seat of Government
and Home of
Willamette
University*

*State
Office
Building*



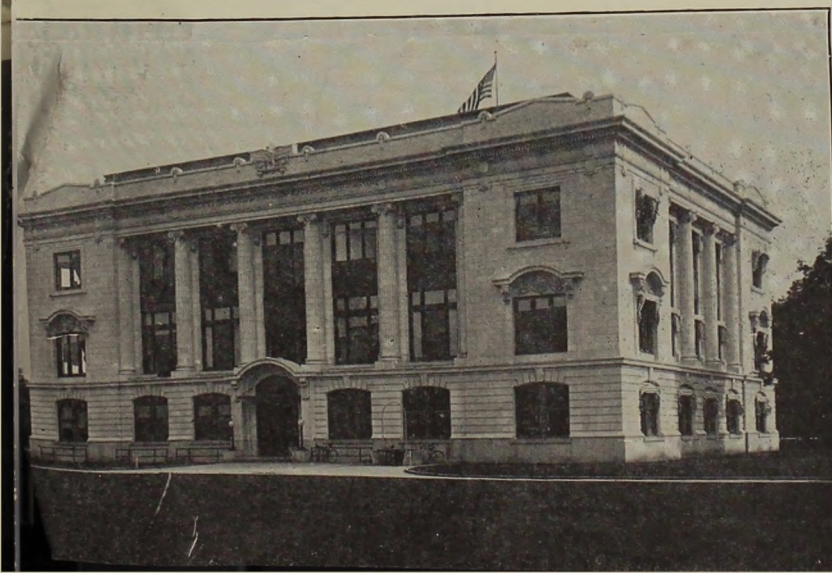
lishing a tutorial or preceptorial system which, in substance, already exists in every small college. That for which millions are to be spent—small classes and personal relations between teacher and student—has been an integral function of the smaller college from the beginning.

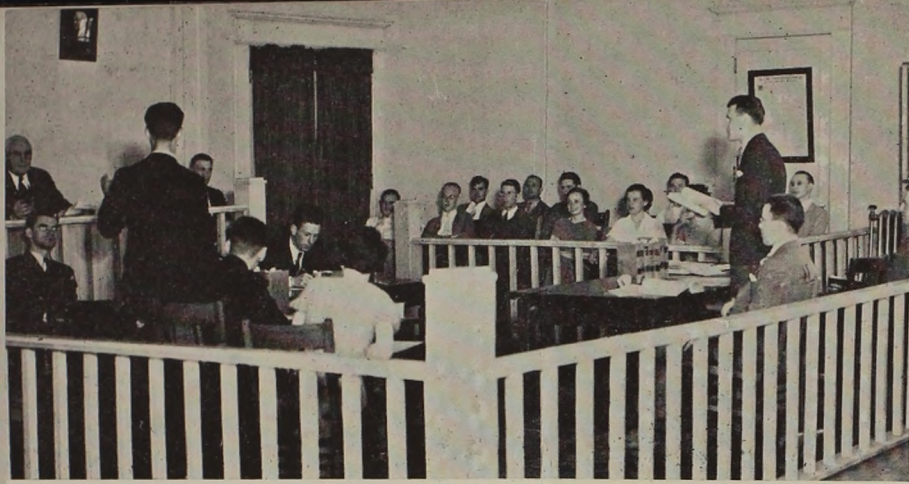
WILLAMETTE UNIVERSITY is conceived to be a company of explorers—teachers and students together engaged in a thrilling intellectual experience. With a faculty of 54 and a student body of 750, the ideal of the small, informal class is upheld. Class groups of 8 or 10 are numerous at Willamette, groups of 15 or 20 are characteristic and few classes have more than 40 students. The Faculty of Willamette University considers teaching to be its major responsibility. The teaching staff has been selected primarily for scholarship and teaching dynamic. Continuous emphasis is placed upon the student-professor partnership in learning.

*Court
House*



*Supreme
Court
Building*





Future Barristers in the Moot Court

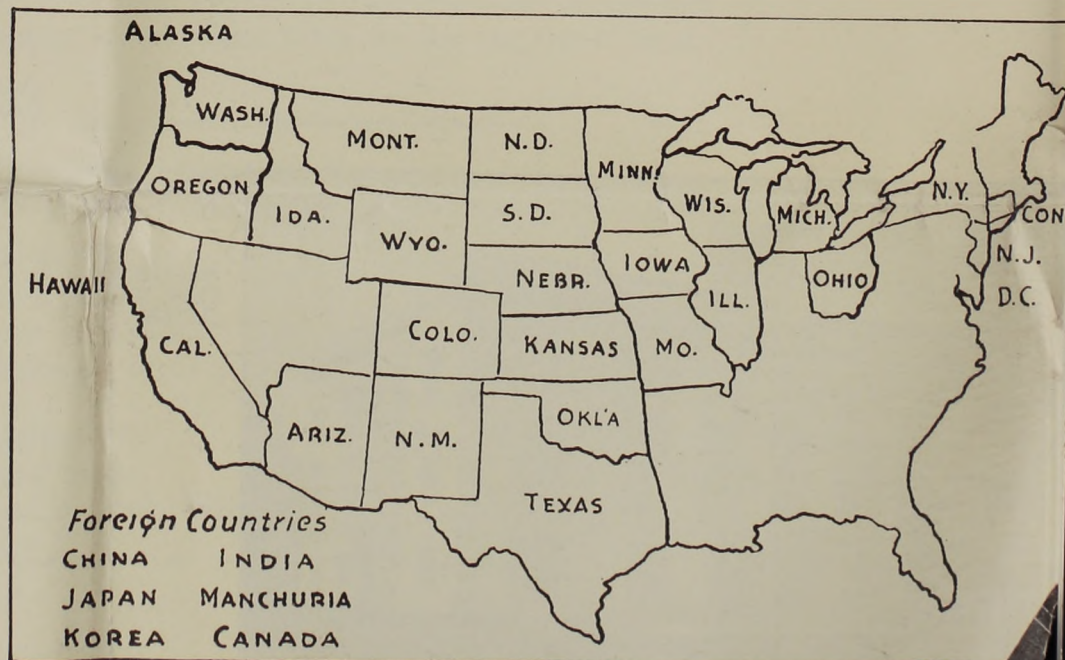


Classroom under the Old Elms

“Bearcats” at Work

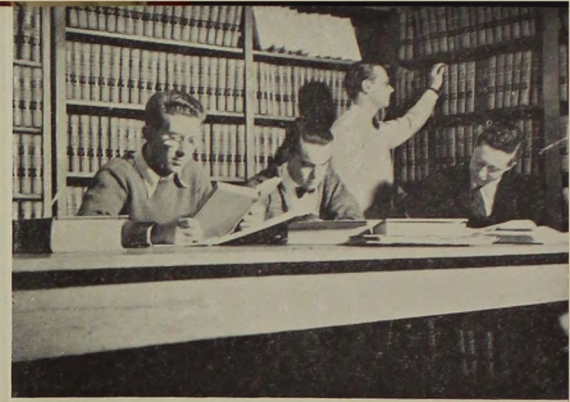
SECOND, a small college with limited enrollment chooses a more selective student body than is possible where a thousand or more freshmen are to be admitted. Naturally there should be harmony between the student and his college; mere scholastic preparation is insufficient, for both have personalities which may prove to be unsuited to each other, thus engendering cross purposes and consequent loss to each. Unless there be unity of purpose and spirit the highest results are not possible. The freshman coming to a smaller college usually knows the school well and is known by the school. His attitudes, character, antecedents and purposes have been appraised; and he, on his part, has rather definite ideas of what he will find on the college campus; there is no vastness that cannot be known, no complexity of plan or people to overwhelm him. School and freshmen have chosen each other on the basis of acquaintance. The transition from home to self-direction is more gradual and the adjustment is more easily made. The college and the student thus spare themselves loss by more quickly establishing working relations with each other.

Geographic Distribution of Willamette University's Student Body





Biology
Majors

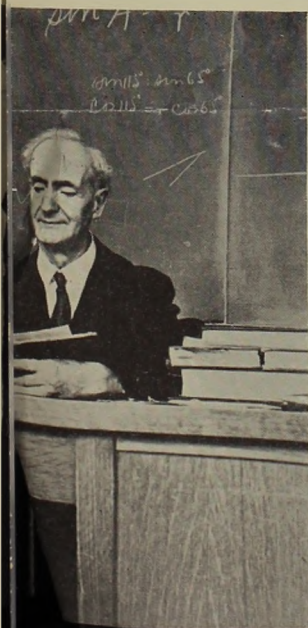


Law
Library

The smaller college is under no obligation to admit all applicants who seek admission. The size of the freshman class should be determined by the facilities which the school has for rendering the best service. *The smaller college* can prevent the crowded classroom and laboratory and it can maintain the proportion of teachers and students which insures the most desirable results.

WILLAMETTE UNIVERSITY has an acknowledged reputation for the deep attachment which its students and alumni feel for the campus and its traditions. Not only in the Northwest but also throughout the country this affection of its more than 5000 sons and daughters, though intangible, is recognized as one of the richest assets of the institution.

The Willamette University campus is capable of adequately accomodating a student body of 750. Willamette University utilizes no intensive system of student enlistment. Hospitably it invites prospective students to consider its superb advantages of location, history, endowment and academic atmosphere.



Dr. Matthews
Friend
Scholar
Philosopher
Teacher
44 years of
Service to
"Old
Willamette"

A Class in
Governmental
Administration



*Freshman Glee
A tradition
of a
Quarter Century*



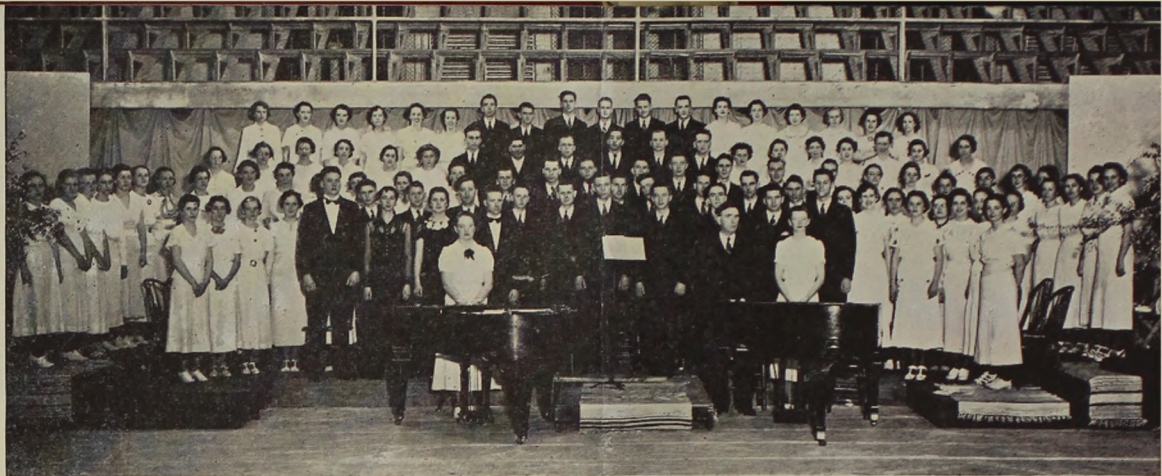
“Bearcats” at Play

THIRD, the smaller college is able to promote and observe the highest type of scholarship. Its homogeneous student body, which fits into the purpose and spirit of the college, its department heads who teach both lower and upper division classes, its facilities adequate and uncrowded make for thorough scholarship. The student cannot lose himself in a crowd because there is no crowd, neither can he avoid daily responsibility and accountability. He is obliged daily to face his task and he has close guidance in performing it. Mature counsel is at his service, so that he need not long delay in discovering himself or the way to attack his problems. Initiative and self-direction—vital factors in education—are developed where they have a chance. College enterprises likewise offer themselves in greater proportion; hence the student has the privilege of trying himself out in various lines of activity.

*Picnic
in the
timber*



*The Philharmonic
Choir presents
"Elijah"*



WILLAMETTE UNIVERSITY has a tradition of high scholarship. The fine record of its graduates (2000 at present) in the cultural and civic life of the Northwest and of the nation is notable. The stimulus of the inspiring classroom coupled with a program of student activities which are established as an essential part of the program for the development of personality eventuates here in a high percentage of leadership in each graduating class.

FOURTH, most smaller colleges have rather high standards of conduct and a definite purpose to develop sturdy character. Integrity is the warp of life which gives it strength, courage, fortitude, and value. Power and the rewards of power which come from knowledge are instable and unsafe unless there be character. It would appear to be gross educational malfeasance to spend four eager acquisitive years in an atmosphere that does not, through a religious emphasis, encourage the development of the safeguards of life.



*The
famous
W. U.
"Songmen"*

*May Day
a Gala
Occasion
at
Willamette*



*Paying
Freshman
Glee bets*



WILLAMETTE UNIVERSITY is frankly Christian in its ideals. Sponsored by the Methodist Episcopal Church, it is non-sectarian, however, and representatives of a score of denominations and sects mingle upon the campus. The sanctity of human personality and the challenge of individual responsibility for a better social order are fundamental in the attitude of the classroom and laboratory and in the spirit of the campus.

FIFTH, the smaller college willingly shares the obligation of the nation to provide higher education for its youth. In doing this it makes a substantial contribution toward lessening the financial obligation of the public. Approximately four hundred dollars are required annually to provide educational facilities for each college student in the country. Since a round million students are in halls of higher learning and half of this number is in the smaller college, the contribution of the smaller college to the cost of American education is therefore not less than two hundred million dollars a year. Were it not for the smaller college this enormous sum would be required every year from the tax-payers in addition to a like sum which they now pay. The alternative would be to dismiss half the campus population of America.



*President Baxter
welcomes the
champion debaters
home from
nation-wide tour*



*Willamette
University
fourth
in the
nation in
Women's
Archery*

WILLAMETTE UNIVERSITY has an endowment of approximately \$1,750,000 built up by devoted self-sacrificing citizens of the Northwest. Of the income from this splendid trust fund, Willamette University gives freely to reduce the financial burden of education to the citizenry. With its student body of over 750, *Willamette* saves the taxpayers of Oregon approximately \$300,000 each year.

SIXTH, the smaller college affords a wide avenue for benevolence which becomes a lasting contribution to society and to the state. Schools of widely varied types are provided which are designed to develop the capacities and potentialities of many minds. These also seek to inspire individual responsibility to society.

WILLAMETTE UNIVERSITY is the oldest institution of higher learning west of the Rockies. As it nears the end of a century of development it stands as a monument to the vision of pioneers in building a new civili-



Thespians





Coach
"Spec" Keene
talks it over
with the
coaching staff

zation in a new country. To present-day benefactors *Willamette University* affords an opportunity to realize immortality through the lives of the young men and women who will pass through its halls in the decades to come.

Not only has *Willamette University* rendered distinguished service for a century, but with a continuing vitality and high purpose it promises an even more illustrious future. With a faculty, student body and administration progressive in spirit and outlook, it confidently faces its second century.

The smaller college has been tried by two hundred and fifty years of service; it has been tested by every form of adversity; it has been subjected to severe critical examination. At the present time, more than in any previous period, it is securely grounded in the confident approval of the people. This approval is justified by results.

"Prexy" with the two "All Americans"



Willamette University Has the Lowest Tuition Charge of Any Independent College of Equal Standing in the Entire West

ESTIMATED EXPENSE BUDGETS FOR THE COLLEGE YEAR

| | Minimum | Average | Lib. |
|--------------------------------------|-----------|---------|-------|
| Tuition (full program)..... | \$130 | \$130 | \$130 |
| Library and Health Service Free..... | 10 | 10 | 10 |
| Laboratory Fees..... | 0 | 8 | 10 |
| Student Body Fee..... | 20 | 20 | 20 |
| Book and Supplies..... | 15 | 25 | 35 |
| Board and Room..... | 180-220 | 240 | 315 |
| | \$355-395 | \$433 | \$520 |

Clothing, transportation expense and miscellaneous expenditures vary with the individual and are not included in these budgets.



For three successful years *Willamette University* has been Football Champion of the Northwest Conference not losing a single game in the conference. This year *Willamette* has won the Basketball Championship. In Baseball *Willamette* has consistently been near or at the top. Freshmen are eligible for Conference play.



Willamette University

“The University that is Progressing”

THE COLLEGE OF LIBERAL ARTS
granting the A. B. degree

THE COLLEGE OF LAW
granting the LL.B. degree

THE SCHOOL OF MUSIC
granting the Mus.B. degree

For complete catalog, address

THE REGISTRAR
WILLAMETTE UNIVERSITY
SALEM, OREGON

