

Willamette Collegian



Vol. XL.—No. 26

WILLAMETTE COLLEGIAN, MAY 3, 1929

PRICE FIVE CENTS

SPIRIT OF PLAY IN KEEPING WITH DAY

IS ENGLISH ROMANCE

Florence Powers and Lombard Have Leading Roles; Mrs. Prescott Coaches

"When the third son of a humble woodcutter engages in mortal combat with one upon whom the beautiful princess has frowned, there can be but one end to the struggle. To doubt this would be to let romance go."

In the enchanted forest, romance comes to the young man who is Gervase and to Melisande, the princess. Ah,—but do not be misled, other things come to Gervase in the forest: an admiring small boy who has "ad is breakfast," and a "wise man". A philosopher of the road is Master Susan, whose ideas of romance would challenge Sir Galahad himself—and a challenge they are to Gervase and Melisande.

Note of Humor in Conversations

Life in the home of an English country gentleman would be dull indeed in contrast with the romantic dreams of his beautiful daughter were it not for the notes of humor which will creep into any situation in which a talkative self-styled invalid mother holds the upper hand.

Any disinterested onlooker—that is, anyone who does not know the players in real life, will be charmed by this delightful production,—but to those who are acquainted with the characters as they go about their unromantic daily tasks on the campus the entire thing will "come home" with doubled force, and unintended humor will, no doubt, accompany this homecoming.

We are unable to discover just who is the feminine lead but indications point to two possibilities: Melisande admirably describes her mother the unromantic Mrs. Knowle (Camilla Gates) when she says that having told her something it is unnecessary to tell anyone else for in spite of the fact that Mrs. Knowle's health is a matter of deep concern she expends an enormous amount of energy in talking—talking of everything, bread sauce, subscription dances, and her "dear departed family".

A gay, silly, charming little girl is the beautiful Melisande. Romanticism, disgust with the common things of life, and the temperament which is popularly supposed to accompany red hair are all well portrayed by Florence Power, the heroine of the little drama.

Bill Mumford as Married Man

Now to understand thoroughly the change which comes over Melisande one must first meet her prince, Gervase, whose part is admirably taken by Frank Lombard.

One seemingly unwise choice has been made in the selection of the cast. Bill Mumford is cast as a married man and many a fair co-ed will chew her fingernails in vain waiting for a spark of romance in the staid character of Mr. Knowle.

Dorothy Taylor in the role of Jane, the sweet unsophisticated cousin of Melisande, sacrifices her own abilities and personalities to furnish background and contrast for Mrs. Knowle and her daughter.

An exceedingly clever bit of acting is staged by Joseph Silver, who as Master Susan spreads his philosophy of romance everywhere he goes.

The part of Alice the maid is taken by Marjorie Miller and of Eva

(Continued on page 3)

WOMEN STUDENTS TO HAVE SCHOLASTIC CUP

Unknown Donor Gives Grecian Pitcher; Alden, Mrs. Dodd, Dean Dahl on Committee

Wednesday, May 1, during the chapel period a silver loving cup was presented to the women students of Willamette University to be awarded each semester to the organization receiving the highest scholastic rating.

The donor who is very much interested in Willamette and in its scholastic standing has requested that his name be kept secret.

The presentation was made by Dr. Alden, chairman of the committee which selected the cup. The other two members, Dean Dahl and Mrs. Alice Dodd, were elected as members of the committee by the official council of the women's organizations on the campus.

The cup is of an unusual style. (Continued on page 5)

1929 ANNUALS ARE DISTRIBUTED TODAY

Age of Chivalry is Motif Used; Special Feature is Student Index

The 1929 Wallulah will be distributed from the Wallulah office in the basement of Waller Hall this morning at 10 o'clock. Students must present student body tickets and attached coupon to receive the book.

The Wallulah is a production of art. The cover is of dark blue Mission and Pin Morocco on which is embossed the figure of a knight in armor. Above in the center, is an old English fortress done in cardinal and gold. The age of Chivalry motif is carried out through the book in the borders, divisions, and sub-divisions.

This year the members of the schools of arts, law, and music appear together instead of in three separate units as in other (Continued on page 5)

DR. DONEY ARRIVES HOME WEDNESDAY

ATTENDS COLLEGE MEET

Interviews Prospective Professors at Iowa City; No Contracts are Signed

Dr. Carl Gregg Doney returned to Salem Wednesday noon from his three weeks' trip to Chicago where he attended a session of the University Senate of the Methodist Episcopal Church of the United States.

Enroute from Chicago, Dr. Doney stopped a short time at Iowa City and Des Moines, Iowa, to interview prospective professors for the coming year. No contracts have as yet been let for the two new positions of assistant to the English department and assistant to the History and Economics departments, jointly, nor for the position of Professor of Public Speaking, which will be left vacant at the end of the present semester. Mr. Leland T. Chapin, present head of that department has accepted a position at Leland Stanford university.

Dr. Doney's chief purpose in making the eastward trip was to attend the University Senate, a committee of twenty-three per- (Continued on page 5)

GREETINGS

It is the earnest desire of the Hospitality Committee that every student will be filled with a spirit of welcome, of good comradeship, that our many guests and friends will receive at our hands this May Festival a reception and entertainment they will never forget.

We are proud of our school and proud of an opportunity to show it to the world; therefore we extend the hand of greeting and hospitality. Hospitality Committee, Charles Kaufman, Chairman.

WILLIAM MUMFORD IS NEW EXECUTIVE HEAD

Bolt is First Vice, Scott Secretary; Managers of Paper and Annual are Appointive

Last Friday, April 26, William Mumford of Prine, S. D., was elected as president of the Willamette student body. Margaret Bolt was elected vice-president, Dwight Adams, second vice-president, and Lillian Scott is the new secretary of the associated students.

Mr. Mumford, a Sigma Tau, has been president of his fraternity for the past year, president of the junior class, has been active in athletics all four years at the university, and has a lead in the junior play.

Miss Bolt is from Freewater, Oregon, and is a member of the Delta Phi sorority.

Miss Scott is a member of the (Continued on page 5)

MEN'S GLEE CLUB TO GIVE CONCERT

Annual Program to be Directed by Prof. Hobson Saturday Night at Waller

The Willamette Men's Glee Club will present their May Day concert in Waller Hall, Saturday evening. The program will be as follows:

- The Sword of Ferrara....Bullard Glee Club
- The Velvet Darkness....Reddick Ronald Craven
- The Night Has a Thousand Eyes Neidlinger Glee Club
- Reading.....Selected Charles Kaufman
- Bird Songs at Eventide...Coates Wendell Robinson
- Jack Stubbins.....Bornschein Glee Club
- Intermission Features
- Jolly Students.....Mendenhall (Continued on page 5)

CORONATION SCENE IS CALLED FOR 1:15

COURT TO BE ON CAMPUS

Queen Georgia to be Crowned By Dr. Doney; Quartet to Act as Heralds

Today, when the May Court is called at 1:15 o'clock, lovely Queen Georgia I will be crowned the twenty-third Queen of the Willamette University May Day Festivities by Dr. Carl Gregg Doney, on the campus lawn near Waller Hall.

The Varsity Quartet, whose members are Wendell Robinson, Willis Hathaway, Ronald Craven, and Walter Kaufman, will herald the Queen's arrival. Dainty little Susanna Schram and Barbara Ricketts, the Queen's flower girls, will follow the quartet.

Next in line in the royal procession will be the attending maids of Queen Georgia, Miss Jean White and Miss Beatrice Lockhart, who will be followed by David Smith, Jr., crown-bearer.

Queen Georgia will follow Master Smith with her pages, Rodney Miles and Clinton Blakley.

The senior girls will end the royal retinue.

Color Scheme of Orchid and White

The Queen's coronation dress is white taffeta with an orchid train. Her attendants will be dressed in rose-orchid georgette with transparent picture hats. The senior girls will be dressed in white and they will carry sweet-peas and snap-dragons which will finish out the color motif.

After the coronation ceremony, Lucille Cummings will sing "May Morning" by Denza.

The May dances will then be given in Queen Georgia's honor. This year the dances will carry out the idea of a little girl's dream of toyland. Lois Jean Rasch, solo dancer, is the little girl. She dances in her nursery and the fairies come and put her to sleep. From the cupboard where her toys are kept comes Miss Muffet and Jack Horner and Bo Peep and Boy Blue who dance in a double duet for their little playmate. In succession with their dances follow the wooden soldiers, the French dolls and rag doll, the animal toys, the Jumping Jacks, the Peter Pan dolls, and the Adagio Dolls. The winding of the May pole and the grand finale completes the little girl's dream.

The Queen and her court will then attend the baseball game at Sweetland field and later in the evening the Junior class play, "The Romantic Age", at the Grand theater.

PROGRAM TO FEATURE WILLAMETTE STUDENTS

Glee Clubs and Advanced Students of Piano to Appear in Recital, May 8th

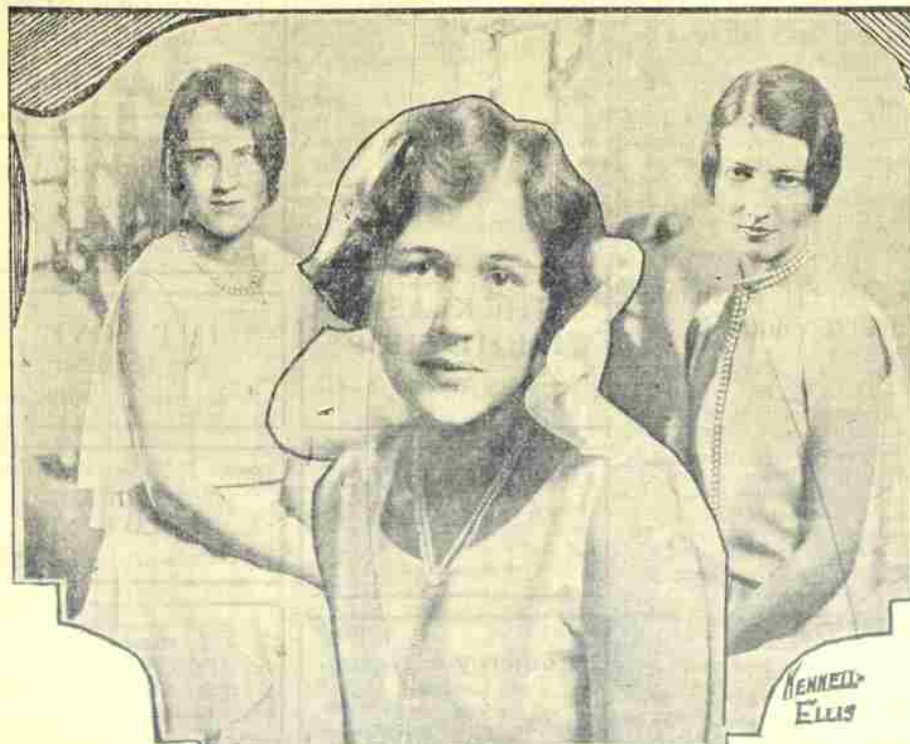
A program of music including piano, violin, and voice, will be presented May 8, in Waller Hall. The Men's Glee Club, the Women's Glee Club, and advanced students from the school of piano, under training of Mrs. Melton, will appear in the program.

The piano work will be done on two pianos. Miss Melton is noted for the wonderful two-piano numbers she has directed. The program is as follows:

- Two pianos—
- Prelude Militaire—Kachmannhoff
- Wendell Robinson, Arthur Schwartz

(Continued on page 3)

They'll Rule on Campus Today!



Charming Georgia Fairbanks (center) who will be named queen for Willamette's May Festival this afternoon and her two attractive maids, Jean White, left, and Beatrice Lockhart, right.

Official Publication A. S. W. U.

Willamette Collegian

PUBLISHED WEEKLY

Member of the Pacific Intercollegiate Press Association.

WILLIAM B. SMULLIN FRANK L. LOMBARD
Editor Manager

Associate Editor BERNICE JACKSON
Sports Editor MEREDITH WOODWORTH

Kimball Editor EVERETT GARDNER
P. I. P. Editor ARTHUR HOLLENBERG

Copy Editors HELEN CURRY
GLADYS MILLER

Music Editor KATHERINE EVERETT

Reporters—Childs, Olsson, Currin, Siles, Brunson, Fleet, Mergler, Breihaupt, Gilhousen, Felton, Ellis, Smith, Moody, Oliver, Hanke, Germann, Barker, Smullin, White, Kafoury, Hollister, Pemberton, Moody, Barker, Hanke, Bove, Germann.

Proofster—Margaret Warnke.

BUSINESS STAFF

Advertising Manager HAROLD TOMLINSON
Auditor MURIEL SHELDT

Circulation Manager HESTINE HOLLISTER
Collections ALFRED KING

Advertising Assistants—Anderson, Bove, A. Bove, King, Fitzpatrick.

Entered at the Postoffice at Salem, Oregon for transmission through the mails as second-class matter.

Subscription rate \$1.50 per year.
Editorial and Business offices, Basement Waller Hall, Phone 2341.

The Call of May Time

In England it has been the custom for centuries to celebrate the advent of springtime to the land again by participating in dance and song. The May-day ceremonies were for all people from the dignitaries of the town down to, and including the humblest citizen, and had no purpose but pure enjoyment. It is said that in his younger days King Henry VIII even delighted to rise with the sun on May mornings, and, with a group from his court, ride into the wood a-Maying.

Once again as May comes to our campus, faculty members and students put aside the

daily routine of class room recitation and lecture and yield to the impulse to be out of doors, and to sit or walk at leisure beneath the flowering maples.

Alumni, townspeople, and visitor, who are on the campus for the first time, we wish to welcome you all to Willamette's twenty-third annual May-day festival. We invite you to join us in paying homage to Queen Georgia I and her attendants, Jean and Beatrice, and to participate in the pleasures and amusements of the royal court.

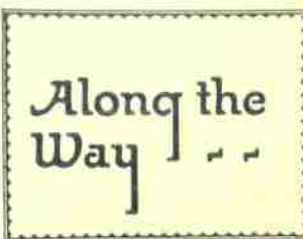
Initiative and Individualism

In good books are stored the experiences and knowledge of the men of the past and present. By reading them we enter into the labors of these men and many utilize and share in the results of these labors. Such knowledge thus acquired must be put to use else it becomes useless lumber that fills and clogs the mind. Even study and reading of good books may be carried too far. The bookworm is hardly the ideal man. Every abstract truth itself is like the dormant seed; only when warmed into real life and action does it produce anything of beauty or utility. The constant acquisition of knowledge that we never use causes us to become intellectual dyspeptics, and to finally lose the power to use that which is acquired. As one of our poets has put it:

"Who never walks, save where he sees men's tracks,

Makes no discoveries. Show me the man Who, leaving God and nature and himself, Sits at the feet of masters, stuffs his brain With Maxims, notions, usages and rules And yields his fancy up to leading strings, And shall I see a man who never did A deed worth doing."

The poet might truthfully have added that such a man never wrote a thing worth reading. The men who have moved the world and led in its progress in all lines are not those who have indiscriminately stuffed themselves with the offal of other men's minds. They are those who have gone about developing their own powers and abilities by independent investigation and effort.



(By The Wayfarers)

Yes, dancing is ordinarily tabooed at Willamette. Just look at the crowd that comes on the one day on which we can break the rule.

The manager forgot to mention that older guests will enjoy "The Romantic Age" as well as the youngsters. A certain prof recently said that alumni tend to be sentimental.

May Day we all have a good time, rushed and rushing, visiting and visited.

All the sororities and fraternities are harking to the call of the electric waffle iron—Waffle, waffle.

The losers can be philosophical. Waffles aren't good for you, anyway.

As a College Humor contributor says, "You must take off tomorrow, what you put on today."

Chapel, Tuesday, sounded like Frosh Glee, and a Junior song queen, alright. A song about "singing ever through the fight", followed by the prize Junior song—to which we were told to stand up—and "true to your spirit".

The finder of a small fortune wishes the following note placed in the Wayfarers' column to ease his conscience:

FOUND—A silver quarter on our cinderless speed path. Inquire within.

List ye, devourers of ancient lit: According to Tennyson, there were bootleggers and moonshiners.

When You Need a SHINE
See Dave
Down Stairs
In First Nat'l Bank Bldg.

Hartman Brothers JEWELERS
Cor. Liberty & State

PERRY'S DRUG STORE
Rexall Store
Everything in Drugs

Troy Laundry & Dry Cleaners
2336 S. Commercial
Phone 1756

H. T. LOVE
THE JEWELER
835 State St. Salem, Ore.

Booths Fountain Service
WHITE HOUSE RESTAURANT
Soft Drinks Meals

Your Nearest Drug Store
Phone 233
CARSON PHARMACY
Harry V. Carson, Prop.
Hotel Senator Salem, Ore.

READ COLLEGIAN ADS.

before prohibition was dreamt of. He says, "Their nectar smack'd of hemlock on the lips. Their rich ambrosia tasted aconite." What a nuisance it must have been to pack a flask, when they had to wear pocketless armor all the time.

This conscientious person puts the note in this particular department in the hope that everyone will take it as a joke.

Finders keepers, losers weepers, we used to say.

This, perhaps, explains the Sophomores' reddened eyes. We had a trackmeet last Tuesday.

There's consolation in the fact that red goes well with their green blazers.

We have resolved that, before we die, we shall will one-half our fortune as an endowment for furnishing the revered halls of our Alma Mater with a sufficiency of paper towels.

Thanks to the class of '31, we shall soon be able to go on the water wagon.

Whew! We mop our brow as though we had been in a trackmeet, today. But it's "Spring-time at Willamette, and naught could sweeter be."

Professional Directory

Listed below are the Salem Professional Men who are worthy of Willamette patronage.

Phone 440 Res. 758-R

Dr. O. A. Olson
General Dentistry
Prophylaxis and Pyorrhea
Evenings by Appointment
214 Masonic Temple, Salem, Ore.

Dr. Henry E. Morris
Eyesight Specialist; Optometrist
301-2-3 First Nat'l. Bk. Bldg.

Phone 625
Dr. L. R. Burdette
401-402 First Nat. Bk. Bldg.

Phone 169
Dr. B. Blatchford
DENTIST
701 First Nat'l. Bank Bldg.

Dr. Gorge E. Lewis
DENTIST
402-503 First Nat'l. Bank
Office Phone 852
Res. Phone 803-W

Chalmer Lee George, D. D. S.
Suite 1002-1003. Phone 181
First Nat'l. Bank Bldg.
Salem, Ore.

DR. W. L. MERCER
Graduate
American School of Osteopathy
Kirksville, Mo.
Salem, Ore.

DR. M. B. McKenney
Jeweler & Optician
Successor to C. A. Luthy
327 State St.

Phone 819
DR. DAVID B. HILL
DENTIST
Practice limited to straightening irregular teeth, X-ray of the teeth and consultation.
Rooms 806-307 First Nat'l. Bank Bldg., Salem, Ore.

MACDOWELL CLUB TO GIVE CONCERT

Miss Melton, New President, Is in Charge; Receipts to Go to Benefit Fund

The MacDowell Club of Salem is presenting the closing program of the course, and the opening concert of National Music week, Monday evening, in Waller Hall. The concert is in charge of Miss Frances Virginia Melton, recently elected the president of the Salem club. MacDowell is considered the greatest American composer. His masterpieces breathe a spirit of finesse and feeling that is lacking in other great works. His simplicity and depth of expression are outstanding.

This concert is a benefit program. The admission fee will be fifty cents. This gives one a chance to put in a profitable evening and support a worth-while cause. The program to be presented is:

Part I

To a Wild Rose—Salem MacDowell Club Chorus. (Directed by Miss Minnetta Magers).
Violin: (a) With Sweet Lavender, (b) To a Humming Bird, (c) Wiegand — Miss Elizabeth Levy, accompanied by Miss Ruth Bedford.
Voice: (a) The Robin Sings in the Apple Tree, (b) Merry Maiden Spring—Mrs. Phil Newmeyer, accompanied by Mabel S. Pomers.
Violin: (a) Long Ago, (b) To a Wild Rose—Miss Levy.
Cradle Song: Dance of the Gnomes—MacDowell Chorus.

Part II

Talk—Edward MacDowell—The Man, the Composer, his Music, and his Ideal, and the Peterborough Colony.
Piano: (a) Improvisation, (b) From a Log Cabin, (c) Song, (d) To the Sea, (e) From a Wandering Ice-berg, (f) To a Water Lily, (g) The Eagle—Miss Frances Virginia Melton.

MAY BREAKFAST WILL BE SERVED ON CAMPUS

Campus Organizations Enter Ticket Contest; Winners to Receive Waffle Iron

The annual May morning breakfast will be served Saturday morning on the lawn in front of Chresto Cottage under the auspices of the Y. W. C. A.

This year special arrangements are being made for a four-piece orchestra to play during the breakfast period, which will last from seven to ten. Chresto Cottage is being wired with special electrical connections so that hot waffles and coffee may be served easily.

Tickets are being sold by the sororities, fraternities, and Daleth Teth Gimel. The organization selling the largest number of tickets will receive an electric waffle iron, which will be awarded at the Junior play. The iron has been presented by the Fleener's Electric shop.

Tickets may be secured from the following people: Virginia Slusser, Harriette Hagemann, Henrietta Bishop, Betty Lewis, Don Sanders, Carol Pratt, and Frances De Harport.

WILLAMETTE MUSICIANS TO GIVE PROGRAM SAT.

Saturday morning at 11 o'clock, the annual program consisting of Willamette talent will be presented in Waller Hall. Each year more interest is shown in this concert, as the best of the University ability is displayed. This year the program will be put on by the following students: Lucille Cummings, Edith Findley, Josephine Albert, Willamette University Quartette, Walter Kaufman, Doris Corbin, Helen Pemberton, Wesley Roeder.

Mr. and Mrs. E. P. Black (Gladys Wilson, class of '22) of Hood River announce the birth of a daughter on April 9.

Twelve Years Ago

Tennis will hold the limelight in the sporting arena, during Junior Week-end. This will be the first chance to see Willamette's racquet wielders in action. Pacific College will form the opposition in men's doubles, men's singles, and ladies' singles, two out of three sets to decide the winner.

Manager Lonsberry of the academy, states that the Annual Tub Race will be a feature on Junior Week-end. The distance decided upon is 1—feet, and a Willamette pennant worth working for will be given to the winner.

Although the Freshmen have not yet challenged the sophomores to the annual tug-of-war, the usual scramble will take place Saturday afternoon of Junior Week-end. Officials will be chosen from the upper classes.

That more interest be shown in the campus clean-up work, the campus has been divided and certain sections assigned to each class. It is hoped that the spirit of rivalry will aid in making the campus thoroughly spick and span.

THE KLASIC PHOTO SHOP
Everything for the Kodak

PATTON BROS.
SALEM'S BEST BOOK STORE
340 State St.

T. Pomeroy A. A. Keene
Pomeroy & Keene
Reliable
Jewelers and Optometrists
Phone 820 388 State St.
Salem, Ore.

SEVENTY PRACTISE FOR MAY FESTIVAL

Miss Curry is General Supervisor; Toyland motif to be Feature of Dances

Under the general direction of Miss Gale Curry, seventy Willamette students have been practicing for the last two weeks on the May Day dances to be presented this afternoon in conjunction with the coronation of the queen.

The dances carry out the Toyland motif. Miss Grace White is chairman of the general committee. The chairman and those participating in the dances are as follows:

Lois Jean Rasch, soloist.
Dance of the Fairies, Lillian Scott, leader, Frances Smullin, Margaret Eddy, Edna Card, Helen Cochran.

Double Duet, Miss Muffet and Jack Horner—Beryl Hale and Florian Hrubetz; Bo Peep and Boy Blue—Dorothy Eastridge and Buena Brown.

Dance of the Wooden Soldiers—Norabel Pratt, leader, Betty Lewis, Maribelle Quinn, Mildred Pugh, Eloise White, Faye Cornutt, Esther Girod, Helen Hughes, Ruth Waterman, Eleanor Henderson.

French Dolls and Rag Doll Dance—Mary Allen, leader, Elizabeth Ogden, Margaret Wlencke, Miriam Armitage, Lucille Schultz, French dolls; Helen Hanke, rag doll.

Dance of the Animal Toys—Harriette Hageman, leader, Helen Pemberton, Minnie Shrode, Julia Query, Margaret Ghormley.

Dance of the Jumping Jacks—Muriel White, leader, Nellie Badley, Edna Prescott, Sarah Dark, Alvina Breithaupt, Mayre Fletcher, Lola Dash, Myrna Bonney, Edith Morange, Violet Beecher, Marjorie Moser, Lois Oliver, Muriel White.

Dance of the Peter Pan Dolls—Leona Clothier, leader, Lillian Beecher, Josephine Olsson, Maxine Ulrich, Gloria Grafton, Betty Stimpson, Ruth Sanders.

Dance of the Adagio Dolls—Elizabeth Waters and George Birrell.

May Pole Dance—Dorothy Pemberton, leader, Jean Middleton, Josephine Conn, Helen Pybus, Dorothy Pemberton, Ralph Purvine, Jack Routh, Mary Jo Wagner, Wilma Buttles, Josephine Albert, Lois German, Benelita Edwards, Mary Allen, Gladys Miller, Elinor Palmer, Charles Campbell, Floyd Albin, Cecil Harmon, Sam Bowe, Joe Felton, Francis De Harport, Gladys Miller, George Birrell, Michael Fitzpatrick.
Grande Finale.

Program to Feature

(Continued from page 1.)

It Was a Lover and His Lass

Dunn

Women's Glee Club

Two Planos—

Six Waltzes Brahms

Elizabeth Boylan, Mildred Oliver

Jack Stubbins Boruscheno

Sword of Ferrara Bullard

Men's Glee Club

Two Planos and Violin—

Midsummer Night's Dream Overture Mendelssohn

Rosalind VanWinkle, Margaret

Schreiber, Helen McPherson,

Grace Henderson

Faye Irvine, violin

Concerto D Major—Allegro

Beethoven

Helene Price

Orchestral parts by Doris Corbin

Are They Tears, My Beloved

Grieg

A Bird Flew Clozkey

Women's Glee Club

Two Planos—

Suite — Romanzo-Valse-Polka-

also Arensky

Edith Findley, Lucille Cummings

This program, as well as the

MacDowell club program which

opens national music week on

Monday, May 6, is an official program

for music week.

A cordial invitation is extended

to university and town people to

attend.

MAY WEEK-END PROGRAM

Friday, May 3

10-12 a. m.—Registration of guests, Wallulah distribution.

Chresto Cottage

12 noon—Ringling of Victory

Beil, Student Picnic Lunch.

Campus

1:15 p. m.—May Court Program

— 1. Coronation of Queen Georgia. 2. May Dances.

Campus

3 p. m.—Baseball—Pacific U.

vs. W. U.

Sweetland Field

8:15 p. m.—Junior Play, "The

Romantic Age"

Grand Theater

Saturday, May 4

8-10 a. m.—May Morning

Breakfast, sponsored by

Campus Y. W.

Campus

9:30 a. m.—Tennis Reed College

vs. W. U.

Campus Courts

11:00 a. m.—Musical Concert.

Waller Hall

2:00 p. m.—Track Meet Lin-

field College vs. W. U.

Sweetland Field

4:00 p. m.—Freshmen-Sophomore

Tug of War.

Mill Race

8:00 p. m.—Home Concert,

Men's Glee Club.

Waller Hall

Spirit of Play

(Continued from page 1)

the country boy, by Earl Henry. Hugh Currin, as Bobby, a "commonplace" Englishman, never grows tiresome. In some way he can "get away with" innumerable "dash-it-all's" and "top-holes". In his own simple way, he, too, has a bit of romance which turns out not to be so stupid after all.

Mrs. Gerald Prescott, who has had considerable experience along this line is coaching the players, and starting with a practically inexperienced group of students has in five weeks developed a fine group of players.

The production is being managed by Paul Geddes, who has chosen as his assistants: Newton Sanders, property; Elizabeth Atkinson, Marie Messersmith, Leslie Manker, wardrobe; Homer Roberts, stage manager.

The play will be presented to-night at the old Grand theater.

\$2.20
Portland
and Return

Via
Oregon Electric

Tickets on sale Fridays, Saturdays and Sundays; return limit Tuesdays—or

\$2.50
DAILY

15-Day Return Limit

Reduced Round Trip Fares Between All O. E. Ry. Points

Safe, Dependable Service

O. E. Ry. trains leave for Portland at 7:05, 9:02, 12:30,

*4:11, 5:30 and 7:45 p. m.

For Eugene, Albany, Corvallis,

Harrisburg and Junction City at *9:49 a. m.; 12:45, 4:03,

8:00 p. m.

*Observation Car

For any information about

railroad trips phone 727

J. W. RITCHIE, Agt.

L. F. KNOWLTON, Gen. Agt.

Ask about the Low Round Trip

Summer Excursions East

Oregon Electric
Railway



Patronize our advertisers.

SUCCESS IS DUE TO COMMITTEE'S WORK

The success of the May-Day festivities is due largely to the fine work of Edward Wells, and the cooperation of the committees working with him.

These committees are as follows:

Queen's Court: Chairman, Elsie Tucker, Emily Brown, Wilburn Swafford, Curtis Reed.

Hospitality: Chairman, Charles Kaufman, Leslie Manker, Paul Ackerman, Mary Clamfield, Mary Allen, Elma Nell, Katherine Everett.

Campus Clean-up: Chairman, Neil Brown, Charles Campbell, Hugh Currin.

Dances: Chairman, Grace White, Buena Culbertson, Norabel Pratt, Grace Henderson.

Student Lunch: Chairman, Margaret Bolt, Evelyn High, Dorothy Taylor, Bernard Newby, Stanley Satchwell, Ivan White.

Programs and Invitations: Chairman, Clark Wood, Pauline Findley, Floyd Albin.

Music: Chairman, Rosalind Van Winkle, Edith Findley, Wesley Roeder, Lawrence Deacon.

LAFKY REPRESENTS WU OSC WINS FIRST PLACE

Saturday evening, April 27, Ray Lafky represented Willamette at the constitutional oratorical contest held at Monmouth. The subject for oration was "Lincoln and the Constitution." Mr. Lafky gave a good presentation, although he did not rank among the first three contestants. Mr. Bryant of O. S. C. placed first. All of the universities in the state were represented.

Those going from W. U., besides Mr. Lafky, were Professor Lee Chapin, Harold Thayer, Jack Routh, and Harvey Reynolds.



4 Days Starts
1st of Week



The GHOST TALKS
with
Helen Twelvetrees - Charles Eaton
Carmel Myers - Earle Foxe

When "The Ghost Talks" you'll get a 100 per cent careful and a 100 per cent eyeful of comedy.

A honeymoon trail leads to a haunted house—and out again—in "The Ghost Talks," in which all the characters have their say to make a FOX MOVIE-TONE masterpiece of fun.



SPECIAL
Music Stands
\$1.45
This Week

Bill Brazeau's
Music Shop

In Stiff's on Court Street



485 Center Street

PAY and CARRY for 20% discount and no delivery.

DELIVERY AT REGULAR PRICE

BERTELSON & McSHANE

The name to know in Printing

PRINTERS FOR ALL

Chemeketa at Commercial

Phone 779

John J. Rottle

Walkover
Footwear

Canlever
Shoes

215 State Street

BUSICK'S

STANDARDIZED CASH STORES

SALEM

WOODBURN

SERVICE —:— QUALITY —:— ECONOMY
Wholesale Prices to Fraternities and Sororities

The warm weather gives us the spring fever too; but we're still on the job.

The J. J. Kraps Co.

PRINTERS

1310 S. 13th Street

Phone 1256

ELSINORE

4 Big Days—Starts FRIDAY, MAY 3

The "It" Girls First "Talkie"

CLARA BOW in
"Wild Party"

ON THE STAGE
Fanchon-Marco
Vaudeville

—COMING—

Buddy Rogers in "Close Harmony"

WELCOME GUESTS

and

STUDENTS

We serve the best of everything



Society

by
Mary Louise Aiken

COMING EVENTS

May Week-end: Friday, May 3—Junior Play.
Saturday, May 4—Men's Glee Club Concert.
Daijath Teth Gimel Tea.
Track Meet Linfield.

Delta Theta Phi Banquet Features Clever Program

The Delta Theta Phi fraternity held an informal banquet in the Gold Room of the Elk's Club on Friday, April 26. The fraternity insignia and colorful spring flowers were the decorations. A cleverly original program was carried out with Larry Allen as toastmaster. Several of the members responded with impromptu toasts. A quartette, composed of John Ebbinger, Kenneth Denman, Jesse Turner, and Paul Geddes sang college and fraternity songs. The pledges of the fraternity presented an extremely farcical version of the May Day coronation ceremony. Throughout the dinner an orchestra played popular music. Guests of the fraternity included Dean and Mrs. Roy R. Hewitt, Professor and Mrs. C. M. Inman, Mrs. George Rhoten, Mrs. Lee Duncan, Jean White, Francis McGivra, Margaret Bolt, Vivian Elker, Josephine Albert, Gaynelle Beckett, Louise Brown, Helen Clayton, Margaret VanVleet, Helen Currey, Eloise White, Beryle Hale, Mildred Wampler, Mrs. Ralph Campbell, Mrs. Jesse Turner, and Mrs. John Ebbinger.

Junior-Senior Banquet Event of Saturday

On Saturday evening the Gold Room of the Elk's Temple was the scene of the Junior-Senior banquet. Covers were placed for eighty. The table was decorated with baskets of daffodils, and the room was lighted by tall yellow tapers.

Dean Roy R. Hewitt acted as toastmaster, the subject for the evening being "I Love Willamette U." Raymond Derrick, Harold Shellhart, William Mumford, and Donald Grant responded to toasts. Fay Irvine played a violin solo, and Ronald Craven gave a vocal solo.

Cubs Entertain At Spa Friday

On Friday evening, after attending Willamette Night at the

Elsinore Theater, a group of Cubs and former Cubs entertained informally at the Spa.

Members and guests present included the Misses Estel Chaney, Dorothy Ferrier, Elizabeth Ogden, Helen Hanke, Grace Henderson, Marie Foster, Lois German, and Norabel Pratt, and the Messrs. Joseph Felton, Wendell Keck, Stanley Satchwell, Clarence Poor, Francis De Harport, Lars Nelson, Sam Bowe, and Raymond Miller.

Delta Theta Phi Initiates

Delta Theta Phi held its formal initiation last Saturday night in the law rooms at Waller Hall. The new members are Herbert Swift, Bruce Spaulding, Arthur Knox, and Ralph Campbell.

Alpha Phi Alpha Gives May Breakfast

On Thursday morning the Alpha Phi Alpha sorority entertained with a charming breakfast in honor of Queen Georgia, her attendants, and the senior girls of the sorority.

Colonial dolls at each place held pastel streamers from the maypole centerpiece. Corsages placed for each guest harmonized with the dainty basket of flowers which topped the maypole. Silver candlesticks with pink taper arrangement.

The guests were the Misses Georgia Fairbanks, Jean White, Beatrice Lockhart, Anna Mary McKinley, Ruth Margaret Hall, and Mary Clanfield and Mrs. O. P. Hoff and Mrs. Alice Fisher.

May Queen and Attendants Honored With Formal Tea

One of the loveliest formal teas of the season was given in honor of the May Queen, Georgia Fair-

banks and her attendants. Beatrice Lockhart and Jean White, at the Alpha Phi Alpha house last Friday afternoon. Guests were received between the hours of three - thirty and five - thirty o'clock. More than two hundred invitations were issued for the affair. The drawing room was charmingly decorated with spring flowers and lighted with yellow tapers. The serving table was very lovely with tall pink tapers and a large bouquet of pink carnations, snap dragons and tulips. Ferns and candelabra were arranged about the dining room.

Miss Dorothy Ann Gordon received at the door and Miss Anna Mary McKinley introduced to the receiving line which included Miss Mary Clanfield, Miss Georgia Fairbanks, Miss Beatrice Lockhart, Miss Jean White, Mrs. O. P. Hoff, Mrs. Carl Gregg Doney, and Dean Olive M. Dahl. Mrs. J. H. Lauterman and Mrs. Robert Moulton Gatke poured during the first hour and Mrs. Alice H. Dodd and Mrs. John Reed during the second hour.

The Misses Lois German, Georgia Striker, Josephine Conn, Leona Clothier, Sarah Poor, Mary Kafoury, Helen Stiles Elizabeth Ogden, Maxine Ulrich, Alvina Briethaupt, and Helen Currey served and the Misses Donna Hildeshiem, Dorothy Taylor, Helen Kafoury, Helen Hanke, Marie Foster, Henrietta Bishop, Lois Oliver, and Helen Briethaupt assisted about the rooms.

During the afternoon there were violin solos by William Tweedie accompanied by Miss Margaret Warnke, piano solos by Miss Warnke and a vocal solo by Miss Elizabeth Ogden, accompanied by Miss Grace Henderson.

Mrs. Leamer Entertains Glee Club Members

On Thursday, April 10 Mrs. Frank Leamer entertained the members of the Ladies Glee Club at a delightful buffet dinner. The guests enjoyed a stroll about the lovely grounds of her home on Mill Creek. They were the Misses Helen Cochran, Katherine Everett, Frances McGivra, Josephine Olsson, Helen Pemberton, Irma Sawyer, Lillian Scott, Josephine Albert, Buneva Culbertson, Hazel Shutt, Marjory Miller, Mary

Allen, Doris Clarke, Doris Corbin, Helen McPherson, Virginia Slusser, Helene Price, Elizabeth Ogden, Nellie Badley, Nell Bruneau and Helen Hughes.

Theta Alpha Phi Plans Outdoor Presentation

Theta Alpha Phi met at the home of Dr. Robert Moulton Gatke on Tuesday evening for a short business and social meeting. Plans were made for an outdoor play to be given in the garden of Dr. Gatke's home. The play is to be given for invited guests and will take the place of the formal banquet.

Dr. and Mrs. Robert Moulton Gatke entertained at dinner on Sunday, April 28. Their guests were Miss Virginia Bacon, state librarian, and Miss Blair who were classmates of Dr. Gatke at American University in Washington, D. C. and Dr. Henry Kohler, Professor Leland Chapin, Mr. and Mrs. Sheldon Sackett, and Mrs. Frank Leamer.

Mrs. Carl Gregg Doney entertained at dinner Wednesday evening honoring Mrs. Gustav Ebsen, who is now preceptress at Kidder Hall at O. S. C. The guest group included Mrs. O. P. Hoff, Mrs. John Reed, and Mrs. Alice Dodd.

Professor and Mrs. Cecil R. Monk and Dr. McCormick entertained informally for a group of students in their home one evening last week.

Those invited for the evening were Helen Cochran, Beryl Hale, Eloise White, Evelyn Lindberg, Margaret Brown, Wilma Buttles, Faye Cornutt, Doris Corbin, and Josephine Albert.

Sigma Tau announces the pledging of William Hall, LaGrande, transfer from College of Idaho, Sophomore; and Louis Clarence Van Winkle, junior, a nephew of Attorney General Van Winkle.

Dr. J. M. Canse spoke at Leslie church last Sunday evening. He left Wednesday to attend a district meeting at Chehalis, Washington.

Mrs. Carl Gregg Doney and Mrs. Gustav Ebsen were guests at Delta Phi for dinner Thursday evening.

Lillian Beecher and Edith Morange spent the week-end visiting with Mary Riddell at her home in Battleground, Washington.

(Continued on page five)

Keds
TRADE MARK REG. U. S. PAT. OFF.

Improve
The Style



Keds

of Your
Game



With
Keds



Millers

FLAUNT A SCARF

Varsity! or Whoopie
All of the "up to the minute" styles
at



Quality Merchandise

Popular Prices

ALUMNI AND FRIENDS WELCOME TO SALEM

You are invited to make our new store your
Headquarters while in Salem



255
North
Liberty St.

Telephone
Connection
517

BARE LEGS

The newest in Spring Hosiery is
Archer "Bare Legs" in the new Sun
tan shades.

\$1.95

Don't miss seeing the
Spring Combination Prints

Howard's Corset Shop
165 N. Liberty

CLEAN-UP IS FEATURE OF WEEK'S ACTIVITIES

Campus clean-up is again one of the features of May week-end although it is not so necessary this year as it has been in the past, as the care of the lawn and the shrubbery has been kept up well all this spring.

The campus will be cleared of all papers and other rubbish, and work is to be done particularly on the athletic field and the tennis courts.

All men are expected to help in this work, which is in charge of Fritz DeHarport.

Men's Glee Club

(Continued from page 1)

- Exhortation Cook
- Arnold Taylor and Glee Club
- Joshua Fit de Battle of Jerico Brown
- Willis Hathaway and Ronald Craven
- Marimba Solo Selected
- Edith Findley
- College Songs Selected
- Glee Club
- Gunga Din Speaks
- Walter Kaufman
- Oh, Lucindy Deppen
- Mister Mocking Bird Hahn
- Varsity Quartet
- On the Sea Buck
- The Old Historic Temple Mendenhall
- Glee Club

The Club will be personally directed by Professor E. W. Hobson, who has for nine years been director of the School of Music.

The Glee Club has had a very successful season, having sung in eighteen evening concerts, for five church services, before the Ashland Normal, for fifteen high school assembly programs, two radio concerts, and for the Klamath Falls Chamber of Commerce.

The Varsity Quartet has sung before several Kiwanis, Rotary, Lions, and Elks Clubs, besides taking a three day's trip, singing in the Vancouver high school, Mill Plain, Washougal, and Cascade Locks.

Dr. Doney Arrives

(Continued from page 1)

sons, which passes upon and governs the standards of recognition for all Methodist colleges and universities. This committee meets at least twice every four years. Members of this body are chosen by the various bishops on the basis of individual ability in the field.

While in Chicago, Dr. Doney met a large number of Willamette alumni at a meeting of the Chicago Association, which was held at the home of Mr. Edwin Norrene.

William Mumford

(Continued from page 1)

Beethoven society and of the Women's Glee club.

Dwight Adams, Alpha Psi Delta, of Salem is a letter man and this will make his third year on the executive committee.

The Collegian will be edited by Stephen Mergler, Kappa Gamma Rho, of Centralia, Wash. Mr. Mergler has worked on the Collegian staff as reporter for the last two years. In the closest race of the election Roy Harland was given the editorship of the Wallulah. He has been very active in debate during his college career.

The managership for both the Collegian and the Wallulah are appointive and selection for these two offices will be made soon after May Day by this year's executive committee.

Installation of new officers will take place at the last student body meeting of the year.

1929 Annuals

(Continued from page 1)

years. The same arrangement is carried out with members of the student body with the exception of the freshman law class. A number of them have had two years of liberal arts and separate classification was thought wise.

A special feature is the student index, which gives a list of all the students and pages bearing their pictures.

This exceptionally fine piece of art work has been due to the efforts of George Poor, editor; Wendell Keck, associate-editor; Frank Van Dyke, manager; and the members of the staff, which is composed of Sarah Poor, Steve Mergler, Marjorie Miller, Margaret Pro, Robert McGilvra, Helen Curry, and Katherine Everett.

Women Students

(Continued from page 1)

being a Grecian pitcher rather than the common form of award cups. It is eighteen inches tall. About the body of the pitcher is a three inch band on which is carved Grecian and Hebrew figures engaging in various literary and athletic contests. Just below the band are the letters indicating the four organized women's groups who share in its possession. These organizations are Daleth Teth Glmel, Beta Chi, Alpha Phi Alpha, and Delta Phi.

The numeral of the semester and year will be engraved beneath the name of the group receiving the award each semester.

The cup will be displayed in the university library until next September at which time it will be awarded to the organization receiving the highest standing during the spring semester of 1929.

STORY OF OLD FLOATING THEATRES SLATED SOON

"Show Boat", Universal's million dollar production of Edna Ferber's novel of the same name, and with which is combined the musical hits and stars of Florenz Ziegfeld's stage success, will be the attraction extraordinary at Bligh's Capitol theatre for the week starting Wednesday, May 15.

Coming directly to Salem from road show triumphs in the east, and with one hundred percent endorsement of press and public to its credit, "Show Boat" has been unanimously proclaimed as the most perfect talking-singing production to reach the screen since the advent of sound in pictures.

Telling as it does a heart interest story of the old floating theatres on the Mississippi river, "Show Boat" is said to blend drama, pathos, romance, action, comedy, suspense and spectacle into perfect entertainment for the masses and the classes.

"Show Boat" is a road show attraction, and takes two and a half hours running time. It is announced. Despite this fact, the usual Capitol admission tariff will prevail, Frank Bligh states.

COAST TRIP PREFERRED

The Biology and Geology classes are planning a field trip to the beach for next week-end. The Ornithology and Morphology classes will also be represented. The Hub City Auto Camp at Newport has been leased as 85 students have already signed up to take the trip. The group expects to leave late Thursday afternoon and to return some time the following Saturday.

MAYS COMMENCEMENT SPEAKER

Mr. Walter W. R. Mays, manager of the Morning Oregonian, of Portland, will deliver the commencement address to the class of 1929. Mr. Mays is noted as a forceful speaker.

Society

(Continued from page 4)

Professor J. D. McCormic kgave his lantern slide lecture on Palestine in the Methodist church in Dallas last Sunday evening.

Howard Deitrich, of the University of Oregon, was the week end guest of Donald Faber at the Alpha Psi house.

Miss Dorothy Geddes of Roseburg was a guest of Delta Phi on Sunday.

The Misses Lena Medler, Mayre Fletcher, Helene Price, Mary Hershberger, and Yvonne Cornell motored to Ridgefield, Washington, and spent the week-end at the home of Miss Cornell's parents.

The Misses Virginia and Winifred Tibben of Portland were the guests of Elizabeth Atkinson at Delta Phi.

Marjorie Moser visited with Lucille Millhollin at her home in Newberg for the week-end.

Gladys Shank, who is a student at O. S. C., spent Friday with Helen Stiles at Lausanne Hall.

Opal Hoskins, a student at Monmouth, was an overnight guest of Marjorie Nelson, Friday.

Mr. and Mrs. R. F. Hanke visited their daughter, Helen, at Lausanne Hall, Saturday.

Olive Christianson, who was on her way home to Portland from Corvallis, was a guest of Jo Olson at Lausanne Hall, Sunday afternoon.

Lois Jean Rasch spent Sunday at Tillamook, Oregon.

Nellie Badley and Lois Oliver were at Corvallis Saturday and Sunday.

Betty Stimpson visited at Eugene for the week-end.

Willis Hathaway sang a number of solos between acts of the Epworth League play "Cappy Ricks" at Silverton on Friday evening.

Among those from Lausanne Hall who went home for the week-end were Frederica Brown, Alma Wattenberg, Pava Cornutt, Mir-

Senior Diploma Fee Must be Paid Now

All seniors are requested to pay their diploma fee of \$5.00 immediately at the treasurer's office. The fee is now over due and in order that the diplomas arrive by commencement time the order must be placed at once.

iam Armitage, Ethel Adams, Alice Lane, Florence Volstorff, Ruth Margaret Hall, Jean Spencer, Elma Kimbrell, Gloria Grafton, Margaret Eddy, and Elma Nell.

Miss Elizabeth Ogden spent Saturday and Sunday at her home in Portland.

"Pat" "Vic"

Quality Barber Shop

Collegiate Haircuts
Our Specialty

Com'l St. Next to Dixie Bakery

Capital City Laundry

"the laundry of pure materials"

Phone 165 1264 Broadway

Better Weddings and Announcements



Liberty at State Salem
Phone 1243

Read Collegian Ads

The Shynne Shoppe

LADIES and GENTLEMEN
147 N. High St., Salem

DOUGHTON & SHERWIN

I. M. Doughton F. E. Sherwin
HARDWARE, PAINTS AND ROOFING
Salem, Ore. 236 N. Com'l.

"Friendly Five" SHOES

ALL STYLES
\$5.00
Five Dollars
AARON ASTILL
Haberdasher
Masonic Temple

Welcome, Old Grads and New Ones, Too!

For nearly 80 years... almost as long as the University has existed... this newspaper has shared in the joys of Willamette's May Day

The Oregon Statesman
Since 1851



important matters....

such as these new four-in-hand ties, miles handsomer than anything you've ever seen with patterns as lively as you please, and sensibly priced, of course.

the man's shop
hollis w. huntington
salem, oregon

JUNIORS PRESENT "The Romantic Age" GRAND THEATER
BY A. A. MILNE
Friday, May 3—8:15

BEARCATS DEFEAT LINFIELD'S NINE

Ledbetter Makes Good Showing as Pitcher in Spite of Rainy Weather

Willamette defeated the strong Linfield baseball team by a score of 9 to 3 by playing a headier game of ball than did their opponents.

The ineffectiveness of Lambert, Linfield's catcher was one of the deciding points of the game. His arm was undoubtedly sore as he could not keep the home boys from stealing bases which put them in a position to score when a hit was made. Gibson by a heave to home and Adams by a throw to third base cut off two threatening rallies.

In spite of the wet field and the wet balls Ledbetter pitched almost invincible ball and was credited with nine strike outs. He was touched for seven hits but he kept them well scattered.

In the first inning Dietz hit and then scored on three pass balls which Lambert was unable to handle.

Again in the third inning Dietz bunted, Scales singled into left field, McGinn was safe on an error, with Dietz scoring, then Gibson singled to score Scales and "Irish" McGinn. Willamette scored another run in the fourth, and three in the fifth. Gill singled and Cardinal hit a home run on the first ball pitched, and Adams the next man up to bat followed suit. In the sixth inning Scales got a base on balls and stole around the bases and ran home standing up while the Linfield catcher was trying vainly to get a hold of the elusive ball.

Linfield scored one run each in the first, second and eighth.

The summary is as follows:

Willamette	B	R	H	PO	A	E
Dietz	4	2	2	1	0	0
Scales	4	3	2	5	0	0
McGinn	3	1	1	0	0	0
Hauk	4	0	0	2	1	0
Gill	3	1	1	0	0	0
Gibson	4	0	1	1	1	1
Cardinal	4	1	1	14	1	1
Adams	2	1	1	2	2	0
Girod	0	0	0	0	0	0
Ledbetter	4	0	1	0	0	1
Trachsel	0	0	0	0	0	0
Roundtree	0	0	0	1	0	0
Steelhammer	1	0	0	0	0	0
McMullin	2	0	0	0	0	0

Totals 35 9 19 26* 5 3

*Todd hit by batted ball.

Linfield	B	R	H	PO	A	E
Renne	5	0	0	0	3	0
Weaver	3	0	0	1	0	0
Hostetler	5	1	1	2	0	0
Druse	3	1	1	1	4	1
Owenby	5	1	0	3	0	0
Wakeman	4	0	0	2	0	1
Clark	4	0	3	12	0	1
Lambert	4	0	0	2	2	2
Hugg	2	0	1	0	1	0
Quinn	0	0	0	0	0	0
Kingsley	0	0	0	0	0	0
Todd	2	0	1	1	1	0

Totals 37 3 7 24 11 5

VARSITY TENNIS TEAM RETURNS FROM TACOMA

The varsity tennis team reports a delightful trip to Tacoma last week-end. The four members of the team left Friday morning and returned Sunday evening. While in Tacoma they were entertained at the Steele residence.

The games with C. P. S. resulted in a tie. Edith and Pauline Findley won both their doubles

SPORTS

Editor
Woodworth

Assistants
Hillis, McGilvra
Gilhausen

OSC WINS 6 OUT OF 9 TENNIS MATCHES

The Willamette University racketeers fared poorly in the singles but took two out of the three double matches Tuesday afternoon against the O. S. C. tennis players. The Staters won six matches to the Bearcats three. A return match will be played on the Willamette courts on May 14.

Hagemann, Willamette No. 2 man, has been suffering from a sprained ankle and was sorely handicapped Tuesday.

The scores at Corvallis were:

Singles

Grafton, O. S. C., defeated White, Willamette, 6-2, 7-5.
Woods, O. S. C., defeated Hagemann, Willamette, 5-2, 6-4.
Klahn, O. S. C., defeated Minto Willamette, 8-5, 6-3.
Litchfield, Willamette, defeated Sjoblome, O. S. C., 1-6, 6-4, 6-3.

Smith, O. S. C., defeated Roeder, Willamette, 6-2, 6-2.

Winter, O. S. C., defeated Haworth, Willamette, 6-3, 6-1.

Doubles

White and Minto, Willamette, defeated Wood and Loomis, O. S. C., 6-2, 7-5.

Smith and Wilcox, O. S. C., defeated Haworth and Hagemann, Willamette, 6-2, 6-4.

Litchfield and Roeder, Willamette, defeated Elle and Bertch, O. S. C., 6-2, 6-4.

FRANK SWAZIE ENTERS CHAMPIONSHIP MATCH

At the Northwest Y. M. C. A. boxing championship held in Portland last Saturday, April 27, Frank Swazie, Willamette junior, entered for the championship of the featherweight division and won a decision in the first round by a wide margin. He had to default the next two matches however that would have won him the championship because of the tough preliminary match. In the first round he knocked his opponent down for 15 seconds, and in the second round his opponent took a sleep for thirteen seconds. Either one of the two knock downs should have been a knock-out but the referee evidently wanted to give the crowd their money's worth, so was slow in counting Swazie's opponent out.

FROSH ARE VICTORIOUS OVER THIRD-YEAR MEN

In the first game of the doughnut league indoor baseball league of the Law school, the freshmen defeated the juniors by a score of 9-8. The junior class, last year's champions, played a good game, but were outclassed by the first year men.

The outstanding star of the game was John Steelhammer, first baseman for the winners.

and singles while Margaret Morehouse and Doris Steele lost theirs to the C. P. S. girls.

Only two games are scheduled as yet for May. One, a home game, will be played on the 11th with Whitman and the other on the 15th with Linfield at Linfield.

FIVE WILLAMETTE MEN MAKE GOOD AVERAGES

In the first game five Bearcat stickers proved that they could hit the ball and came out with a batting average of over .333. They are Dietz, Scales, Adams, McGinn and Gill. Hauk the Bambino of the 1928 squad when he ended with a batting average of .600 has been unable to beat his past record so far this year. Cardinal and Adams each have one home run to their credit in the one conference game played so far.

The batting averages are as follows:

Dietz	4	2	.500
Scales	4	2	.500
Adams	2	1	.500
McGinn	3	1	.333
Gill	3	1	.333
Gibson	4	1	.333
Cardinal	4	1	.225
Ledbetter	4	1	.225
Hauk	4	0	.000
Roundtree	0	0	.000
McMullen	2	0	.000
Steelhammer	1	0	.000
Trachsel	0	0	.000
Girod	0	0	.000

CITY 'Y' SPONSORS WRESTLING MATCH

The American Athletic Union has sanctioned a city wrestling championship to be held under the auspices of the Y. M. C. A. Tuesday, May 14.

Several Willamette students have already expressed their intention of entering the meet with Red Lang and Lee Tate having almost a clinch for the heavy weight and middle weight titles.

There will be 6 classes, featherweight, lightweight, welterweight, middleweight, light weight, and heavyweight. A A U championship medals will be awarded the winner of each weight.

Anyone who desires to compete for one of the A A U medals will sign up at the "Y" with Stanley Frye, an ex-Pacific Coast heavyweight boxing champion, who has charge of the arrangements and is acting as referee.

Spec Keene will act as time keeper, Dean Roy Hewitt as an-

SALEM SHOE SHOP
138 So. Liberty St.
(20 steps from State)
Shoe Repairing the way you want it. When you need it.
J. R. POLLOCK, Salem, Ore.

Try Us First Phone 172
Salem Hardware Co.
The Winchester Store
120 N. Com'l St., Salem, Ore.

**Mother's
Day
Coming
Soon**

She prefers
**Spa
Candies**

WILLAMETTE PLAYS PU THIS AFTERNOON

Kiminki Selected by Keene to Take Place of Ledbetter; Cardinal Pitcher

Weakened by the loss of Ledbetter, first string pitcher, but ready and anxious for action, the Willamette baseball squad is preparing to encounter the Pacific Badgers, in their second N. W. Conference game this afternoon at 2:30.

That Ledbetter will be missed is a certainty. His right arm was the Willamette hope in many a game last year, and he was expected to play a large part during 1929. Just when the arms can be expected to show the effects of treatment is uncertain.

With Ledbetter on the bench, Kiminki will be Spec Keene's starting choice. He has had considerable experience and much is expected of him. If it becomes evident that Kiminke is not in form, McMullen may see much service.

Behind the plate will be Ed Cardinal, than whom there is no better catcher in the northwest. McGinn and Roundtree are alternates.

George Scales, rook sensation, will probably hold down first, although Steelhammer, whose pepper and fight have been a feature of the practices of late may be in there for the opening "Play Ball." Adams will be stationed at second, Gibson at short, and Houck at third.

The outfield will be picked from among, Dietz, McGinn, Welch, Gill, and Roundtree. Substitute infielders include, Steelhammer, Troxel, Girod, and Braley. The strength of this reserve quartet, is one of the features of Coach Keene's 1929 making.

Little is known of Pacific at this writing. There practice season has been characterized by in-and-out performances.

TEACHERS BROUGHT TO DEFEAT BY W. U.

The men's tennis team tramped on the Monmouth Normal net team in their first match of the year last Thursday. The Bearcat team won all six matches and encountered trouble in but two of the six.

White started off fast with Foster and took the first set 6-0 but he loosened up in the second and the set went to 5-5 before White could break through for a win. Minto followed with a fast victory over Watt 6-3, 6-0.

Litchfield had trouble with his first set but won the second handily 6-2. Hagemann played through his match with a sore foot but won from Smith in three sets 7-5, 3-6, 6-4.

Minto and White had easy going in their doubles match with Foster and Watt and won 6-2, 6-1. Litchfield and McGilvra dropped their first set but steadied and took the next two.

This week will see the Willamette team in action against College of Puget Sound on Thursday and Reed College on Saturday. Puget Sound will bring a four man team that will furnish some stiff opposition to the Bearcats. Reed College pulled a surprise on the Bearcats last year when they came to Salem and are apt to repeat.

nouncer and Ralph Curtis, sports editor of the Statesman, and Zimmerman the sports editor of the Journal, will act as judges.

A great many Willamette students are expected to enter the meet and all those who have any talent whatsoever along grappling lines are invited to help make Salem's first A A U wrestling meet a success.

Schei's
"SALE of SALES"
A Complete Closing-Out of Our High-Priced Lines
Forever at Ridiculous Prices!
BY FAR
OUR GREATEST SALE EVENT!
Prices Tell the Story
..SUITS..

Regular \$29.50, one and two pant Suits, NOW	\$14.87
Regular \$35.00 one and two pant Suits, NOW	\$17.87
Regular \$40.00 one and two pant Suits, NOW	\$21.67
Regular \$50.00 one and two pant Suits, NOW	\$26.67

The Suit Event of a Generation
Act Fast If You Want to Save!

All Men's Furnishings Reduced!

Hats	Shirts	Sweaters
\$3.67	\$1.39	\$3.67

Every Precedent for Price-Slashing Broken in this
'SALE OF SALES'

Schei's
Men's Wear Sale!
344 State St.

**Tennis Rackets
Restrung**
In our own shop
Tennis Balls 3 for \$1.25
KEN BROWN
372 State

Electric Cleaners

(Successors to McDonald Cleaners)

New equipment—One day service
As near as the nearest phone

Phone 2217 Merritt F. Hart
Floyd M. Seamster, Props.

GEORGIA I

purchased her wardrobe
from

MACK'S

You are invited to inspect our new
shipment of attractive formals
and Sport outfits

395 N. High Phone 765

Kuhn's Shoe Repairing

"The Kind that Satisfies"

464 Court St. Phone 2133

ACCURACY IN TYPING

as well as in anything else, is the first requisite.

DO YOU KNOW

that in the State Typing contest at Corvallis last Saturday first prize for accuracy and second for speed was won by a team using L. C. Smith Typewriters exclusively.

Thos. Roen, Dealer 421 Court St.
L. C. Smith and Corona Typewriters

Willamette University

Founded February 1, 1842
SALEM, OREGON

A Christian institution of higher learning. Located at the Capital of the State of Oregon. A beautiful campus opposite the Capitol building. Buildings and equipment attractive and adequate. Faculty of highest character, preparation and teaching. Student body clean, able and wholesome. Scholarship high and credited everywhere. Very inexpensive. Rich in tradition; large and honored list of alumni. Students wishing for work in the Course of Liberal Arts, in Law, in Theology, in Music, or in Fine Arts are highly advantaged at Willamette. Close investigation invited.

BULLETINS ON REQUEST

ARCHIVES REVEAL INTERESTING DATA

Prof. Matthews Recalls May Day When Senior; First Queen Crowned in 1907

WILLAMETTE MAY QUEENS

Phoebe Olsen, Portland	1907
Hazel Caldwell, Bend	1908
Hattie Beckley, Milwaukie	1909
Pearl Bradley, Hood River	1910
Alma Haskin, Rainier	1911
Alta Altma, Salem	1912
Ada Mark, Hood River	1913
Mary Figler	1914
Lelia Lent, Lents	1915
Francoes Gittens, Tillamook	1916
Violet MacLean, Portland	1917
Blanche Baker, Hillyard, Washington	1918
Marguerite Wible, Grants Pass	1919
Evelyn Gordon, Portland	1920
Mary Notson, Heppner	1921
Emma Shanafelt, Salem	1922
Esther Paranougian, Astoria	1923
Kathleen La Raut, Salem	1924
Lucia Card, Dallas	1925
Myrtle Jensen, Salem	1926
Mildred Tomlinson, Salem	1927
Virginia Merle Crites, Spokane	1928

May Day festival with the queen reigning celebrates its twenty-third anniversary this week-end. Although the first day of May was not uneventful in previous years, the first queen was elected in 1907.

Professor Matthews recalls an interesting May Day in 1889 when he was a senior. The president of the university secured the two-horse stage from the Hotel Chemeketa, now the Marion, and the students went to Reservoir Hill, where they spent the day playing games, reading, and boating. This was, in reality, a student body picnic, as were most of the May Days previous to the election of the first queen.

No records are available concerning the first two queens, Phoebe Olsen and Hazel Caldwell. In 1909 Queen Hattie I, now Mrs. G. C. Bellinger of the State T. B. hospital, was a sophomore, and the following year a freshman, Pearl Bradley, was chosen to reign. But in 1911, a senior girl was the choice and since that time this honor has fallen to a senior each year.

Although good weather has always been requested for this festival, it was not granted in 1911, and the coronation took place in Waller Hall. In those days there were others who shared the homage which now goes entirely to the queen. The King, and the two Archbishops of Canterbury, who crowned the King, and of York, who performed the ceremony for the Queen, stood in the limelight. It was also the custom in the few years following for the Queen or her chief councillor to deliver a fitting message to the loyal subjects.

Willamette May Day was first celebrated on May 1, the program following somewhat this order: May morning breakfast given by the Y. W. C. A., campus clean-up, luncheon, perhaps a track meet in the afternoon, and the still popular freshman-sophomore tug-of-war. The junior play became one of the events of May Day early in its history. As the idea of the present festival gradually developed, folk dances and the May pole were added to the program, and instead of its lasting only one day, the date was changed to the week-end following the first of May.

The custom of buying votes for the queen at one cent each prevailed at the first few May Day elections. The proceeds went to the Y. W. This method was soon

(Continued on page 8)

Flowers for Mother's Day

Sunday, May 12th

Oscar D. (Frosty) Olson

Phone 801
Court and High St. Salem's New Telegraph Florist

The Very Best Haircut

30c

At Orgon Barber Shop

185 N. High New Location Old Stage Terminal

Welcome Students and Guests

PADE'S GROCERY

1244 State St. Phone 649

Let us help you celebrate

MAY DAY

Buy Your Footwear at the

Kafateria Shoe Store

"We save you money always."

Flowers for Mother's Day May 12th

C. F. BREITHAUPT

512 State Salem's Bonded Telegraph Florist Phone 380

CHANGES ARE MADE IN HOME EC MAJOR

All students wishing to major in Home Economics will find that some changes have been made in the courses offered. A number of the courses are especially planned for young women who are majoring in other subjects. All women students will thus be provided with an opportunity to obtain a general background for homemaking activities.

Survey courses in clothing and in food study will be offered. These courses are Lower Division mark and require no prerequisites.

A nutrition course belonging to the science group but requiring no laboratory mark will be given for Upper Division students who

have had one year of college laboratory science.

Courses for next year also include the study of house plans, furnishing and decorations, household economics, child care and costume design. Additional courses for majors may be offered in 1930-31.

For further information the student is advised to consult the catalogue or confer with Miss Latimer.

D.T.G. ELECTS OFFICERS MORANGE IS PRESIDENT

Miss Marian Morange was elected president of Delta Theta Gamma at a meeting held recently. The other officers chosen were: Virginia Stusses, vice-president; Margaret Schreiber, secretary; Helen Hughes, treasurer; Isabel Childs, secretary of the catalog; Marcia Feustman, social chairman; and Roberta Vannice, marshal.

Archives Reveal

(Continued from page 7)

abandoned, however, and the present one of selecting the queen by popular vote took its place. A feature which has been added just recently is that of having both men and women in the May pole dance. Formerly the women were the only ones chosen to show off their ability.

Now, if anyone desires more information about May Day in the year 1914, for instance, let him see Professor Clark, for in the Collegian of that date we read that Herman Clark was a herald to the queen.

QUARTET TO BROADCAST

The Willamette quartet, composed of Ronald Craven, Wendell Robinson, Walter Kaufman, and Willis Hathaway, will sing in

Portland over KGW next Sunday evening from 6:45 to 7:45.

Following the broadcast, the quartet will sing at the Sellwood M. E. church before a meeting of boys. Rev. C. B. "Brick" Harrison, a graduate of Willamette, will preach.

These men have been much in demand for the past year and they have been able representatives of Willamette's musical talent.

STUDENT LUNCH TODAY

Under the direction of Margaret Bolt plans for the annual student lunch have been completed, and all students, faculty, Salem high seniors, and guests will be the guests of the student body this noon. As usual the lunch will be served cafeteria style near Christo Cottage.

Guests will be summoned to the lunch by the ringing of the victory bell at 12 today.

Patronize our advertisers.

You Have Tried Our Beer
Now Try Our Chicken Pie

XXX

We have handled W. U. Students' Accounts for 60 Years

LADD & BUSH
BANKERS
alem, Oregon

NEIMEYER

Just Drugs, 175 N. Com'l. St.

Central Pharmacy

Perfumes Stationery

Next door to Bank of Commerce

Roller Skating

DREAMLAND

Tuesday & Friday 7 to 10 p.m.

ROTH'S

"The Best of Everything"

Groceries and Meats
Thirty Day Account Service
No Charge for Delivery

Phones 1885-6-7

134 N. Liberty St.

Ray L. Farmer Hdw. Co.

Court and Com'l. St. Phone 191

EVERYTHING IN

Hardware
Fishing Tackle and
Sporting Goods

Cars for Rent

U Drive

2-5-7-Pass. Closed Cars
1-ton Trucks
For Your Heavy Date

Wood's Auto Service Co.
545 Chemeketa St.
Salem Phone 809 Ore

Capitol Drug Store

J. H. Willett

Agents Owl Drug Co.
Only the Best

State and Liberty St.

When you Think Drugs Think

**SCHAEFER'S
DRUG STORE**

The Original Yellow Front and
Candy Special Store of Salem.

Phone 197-135 N. Com'l. St.

The Leading Druggist

Home of Schaefer Remedies

Natty New Creations of Spring By Hart Schaffner & Marx



IF
A Wearing
Apparel
Idea is New
and
Authentic
You'll Find
it at
Bishop's



"The Hollywood" designed with a broad shoulder. The sleeve heads have a decided English roll which is in direct harmony with the peaked lapel. Hart Schaffner & Marx artists have created this model in tweeds and the new Bacchus shade.

\$45.00

The "Tracemore" is modeled in a broad shouldered notched lapel coat. It is free, easy fitting and gives the shoulders plenty of room. This coat of character and smartness is worn by many college men and may be seen in our windows in the new shades of blue.

Distinctive
Blue
Flannels



Knickers
the First
to Show Them

SEE OUR WINDOWS

THE
STYLE
SHOP

BISHOP'S

THE
STYLE
SHOP