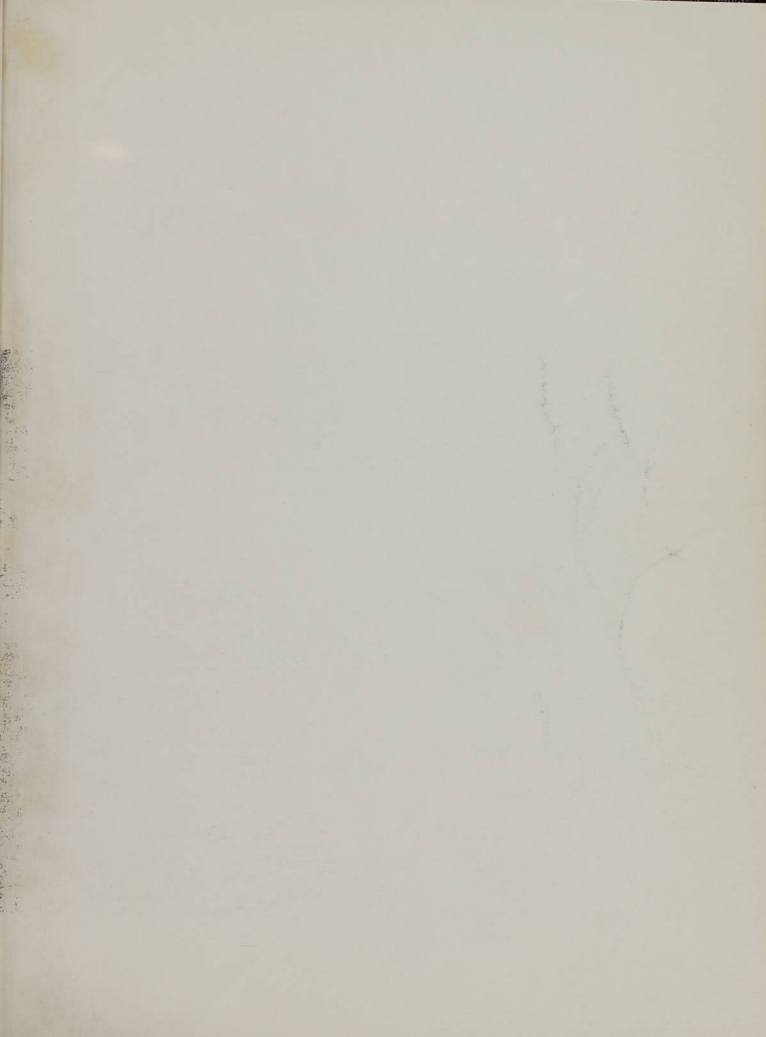




WALULAH 1964





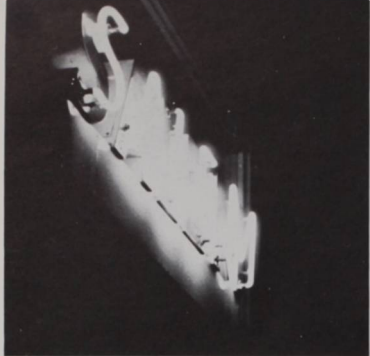
WALULAH 1964



wallulah
nineteen
hundred
sixty
four
willamette
university
salem
oregon
volume
fifty
four

reflections...

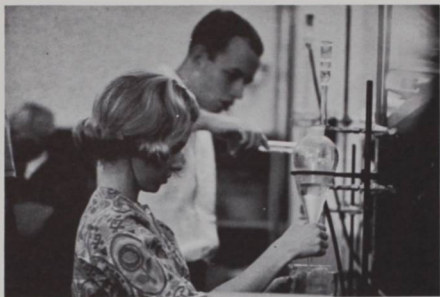






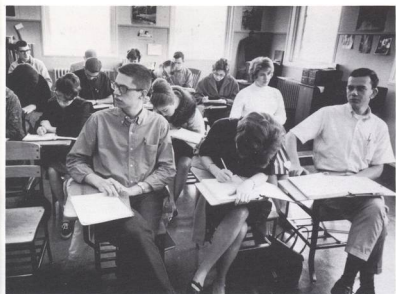




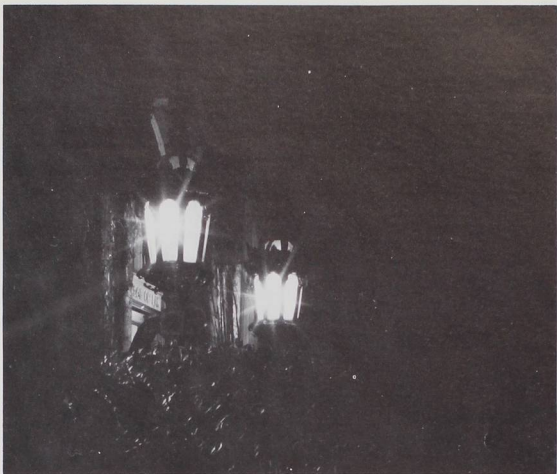


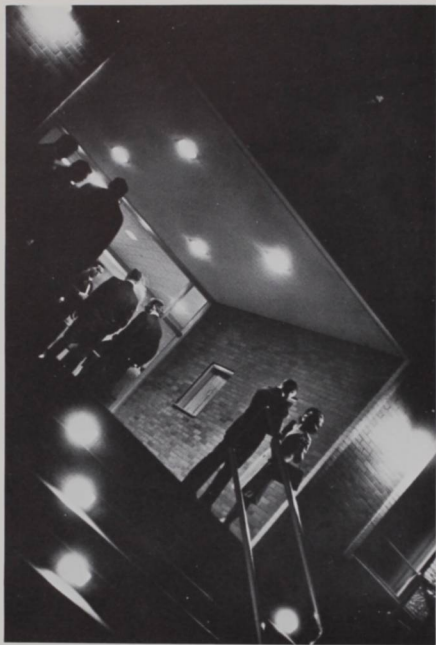












of the routine...





orientation camp

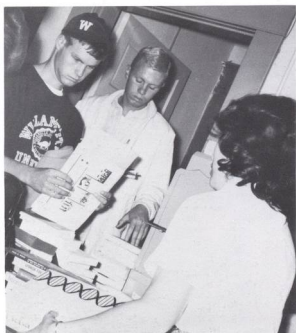
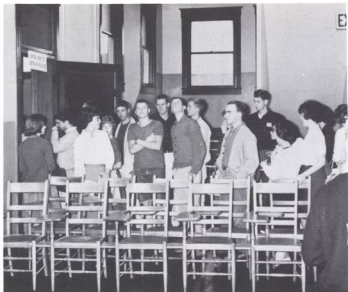
Busloads of over one hundred enthusiastic freshmen converged at Silver Creek Falls State Park for a three-day pre-orientation session. Faculty, upperclassmen and YMCA leaders were soon involved with the freshmen in work, play and serious thought. "It isn't so much what they learn in these discussions," said Chaplain Cal McConnell, "the important thing is that the new students are stimulated to think of college in intellectual terms." The second annual camp initiated many college careers with new friends, new thoughts and new concerns.





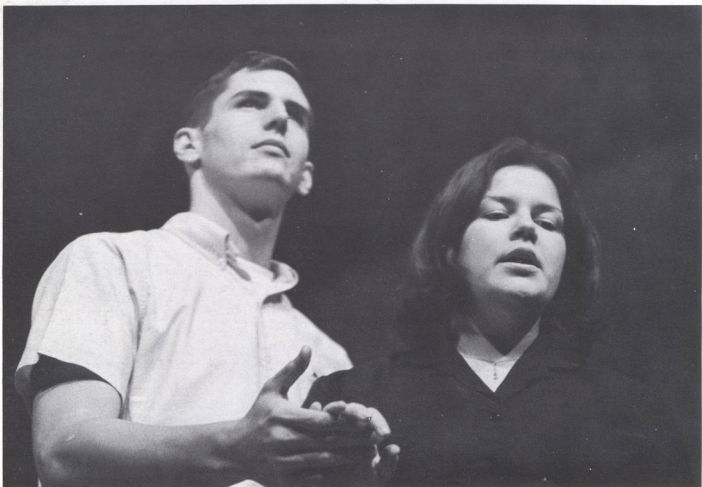
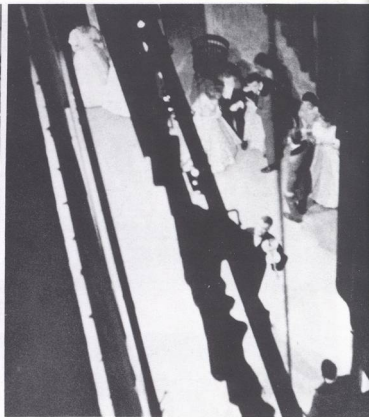


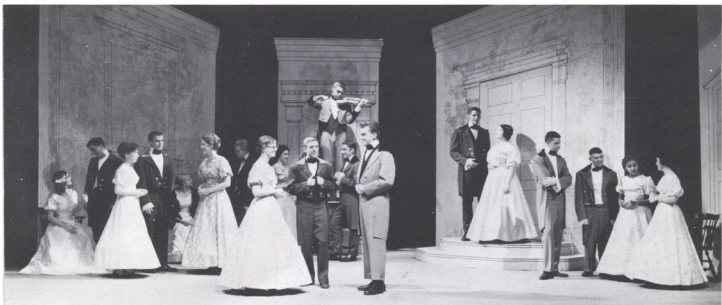




registration

Twice a year the process must be faced by Willamette students. Each time it brings back memories to those who have endured it before, and it brings unlimited confusion to those facing it for the first time. The lines appear everywhere that students seek signatures, pay fees and buy textbooks. With a record enrollment of 1441 this past year, the complicated process ran as tediously as expected.





devil and daniel webster

The combined efforts of the drama and music departments brought forth Douglas Moore's operatic production taken from the story by Stephen Vincent Benet. With song and speech, the cast portrayed the oratorical efforts of Webster to save Mr. Stone, a farmer and senator, who sold his soul to the Devil for a prosperous farm. The successful production was the first musical show to be offered at Willamette in the last several years.

CAST

Chorus—Len Anderson
Bob Blodget
Steve Brown
Dale Laird
Ward Nelson
Jeff Slottow
Dick Trefren

Old Man—Dwain Watkins
Old Woman—Mary Schwyhart
Fiddler—Bob Wallace
Jabez Stone—Jon Putnam
Mary Stone—Liz Anderson
Daniel Webster—Roger Kirchner
Mr. Scratch—Doug Ward

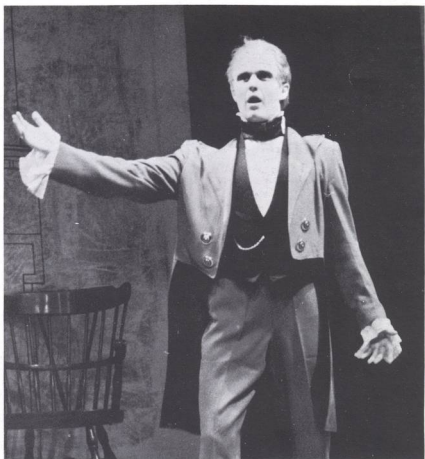
Miser Stephen's voice—Dick Trefren

Jurors—Len Anderson
Bob Blodget
Steve Brown
Dale Laird
Ward Nelson

Justice Hathorne—Ron Potts
Clerk—Jeff Slottow

Kathy Bontelle
Phoebe Finley
Gaye Heeb
Janice Ogilvie
Beatrice Perry
Karen Reppun
Linda Somers

Dave Thelen
Dick Trefren
Bob Wallace
Dwain Watkins





parents weekend

More than six hundred parents were on campus to make this the most successful weekend ever held at Willamette. Friday evening was climaxed with the Varsity Varieties student talent show "Let Me Entertain You." Saturday activities were highlighted by the dedication of the Mark Hatfield Rose Garden, the afternoon football game with Pacific University, and the evening All Campus Sing. Faculty-parent discussion groups and a briefing on life at Willamette provided the visitors with an insight into student life. Overall, happiness was apparent.







football

Youth predominated Coach Ted Ogdahl's 1963 Bearcat team. Of the forty-three squad members surviving the final cut, only six could show upper class credentials. The remaining fourteen sophomores and twenty-three frosh on the squad found themselves playing the unusual role of rookie regulars. Nonetheless, the determined Bearcats performed admirably, if somewhat timidly, in compiling a 3-5 season record in the Northwest Conference. With only four lettermen graduating, the Bearcats can look forward to next season with a more experienced line and an equally fast backfield relative to this year's squad. Completing his twelfth year as head coach, Ogdahl summed up the past season: "Overall it was our worst season since '55 in terms of wins and losses . . . it was the youngest team we've ever had . . . we're looking forward to next year."







scores

		WU
Alumni	21	19
Nevada	29	6
Lewis and Clark	41	13
British Columbia	19	0
Puget Sound	27	20
Pacific	0	7
Idaho	13	20
Whitman	12	26
Linfield	21	0







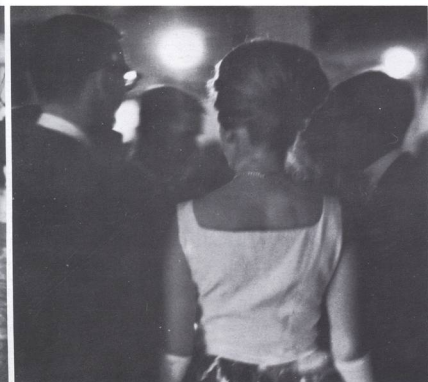


homecoming

A spirited homecoming started off with a tone of tradition and royalty. Initiated at dawn on Friday by the Leaf Rake, activities continued with the frosh bonfire, a barbecue in the gym, and various alumni gatherings. Queen Kareen Zumwalt, with Princesses Joyce Caster and Arlene Heringer, hosted the weekend. Excitement generated by inter-class rivalry at the football game was tempered later by the annual dance at the Marion Hotel. For some, homecoming was participation and action; for others, it was reunion and reminiscence.









misalliance

In late fall the Willamette Players presented George Bernard Shaw's family comedy concerning middle class family misalliances, set in England during the summer of 1910. The play, student directed by Molly Staples, involves parent-child relationships and ably displays the technique Shaw makes with little effort to disguise the ideas that he presents in this high comedy of what makes a family run.

CAST

Johnny Tarleton—Robert DePew
Bentley Summerhays—

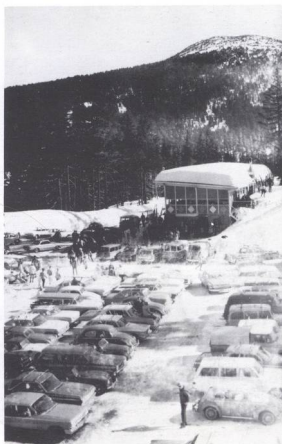
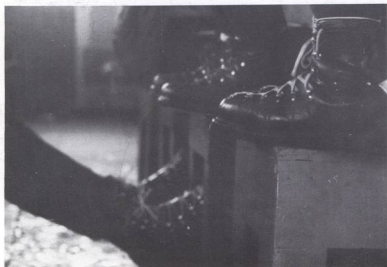
Thomas Cloyd

Mrs. Tarleton—Elaine Sutter
Hypatia Tarleton—Ruth Younker
Lord Summerhays—Charles Olson
John Tarleton—Paul Wynne
Joey Percival—Lee Knosher
Lina Szczepanowska—Patricia Hart
Julius Baker—John Erickson



winter carnival

On a Monday morning late in February some sixty Willamette students returned to campus following an exciting weekend of skiing in Bend, Oregon. Willamette senior Corky Demler brought fame to herself and her school by being crowned Carnival Queen from a field of seventeen contestants representing schools throughout the Northwest. This annual carnival, sponsored by Portland State College, this year with over four thousand participants, is the largest intercollegiate ski event in the West.





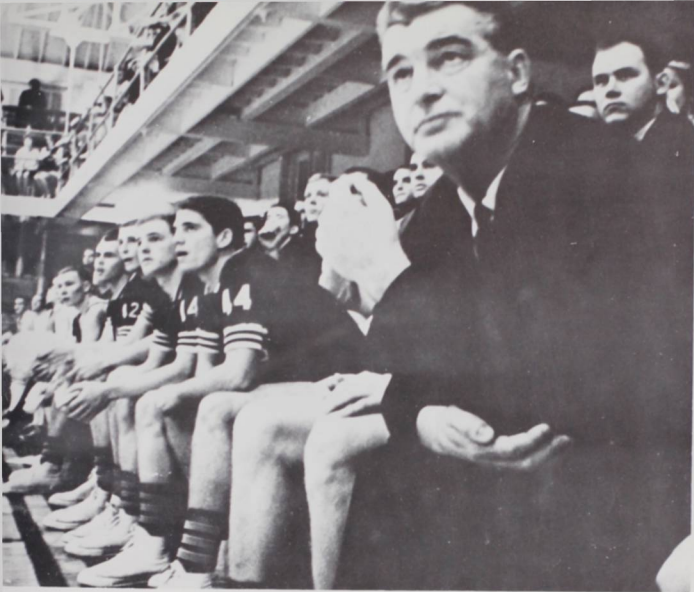
basketball

Under Coach John Lewis the 1963-64 Bearcat basketballers compiled a 7-3 pre-season record. Northwest Conference competition proved a little tougher, however, as the Jasons were able only to muster double wins over Pacific and a single victory at the expense of Whitman. The remaining twelve conference games found the Bearcats on the short end of the scoreboard. High point players for Willamette were Spike Moore, Pete Slabaugh and Lyle Smith respectively. Smith, a junior, was also the leading rebounder on the squad. With only three lettermen graduating, next season should prove to be more successful for the Willamette cagers.





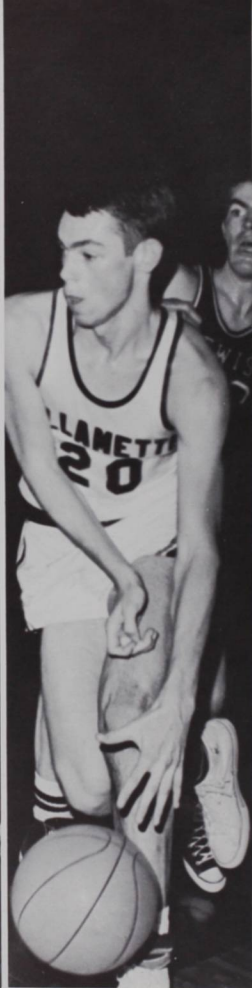


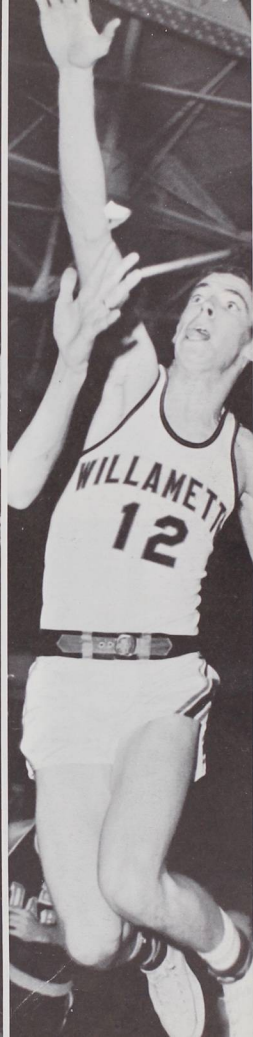
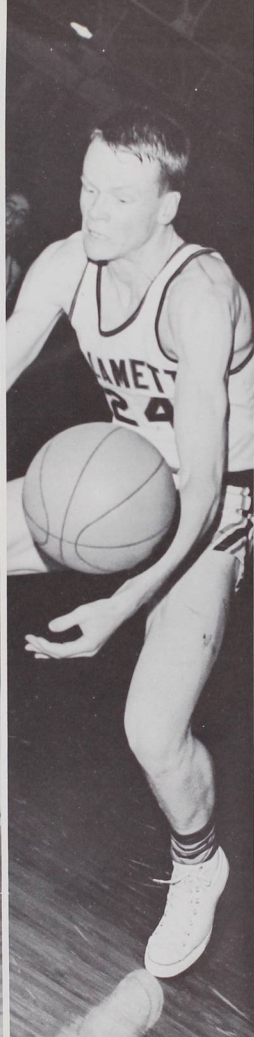


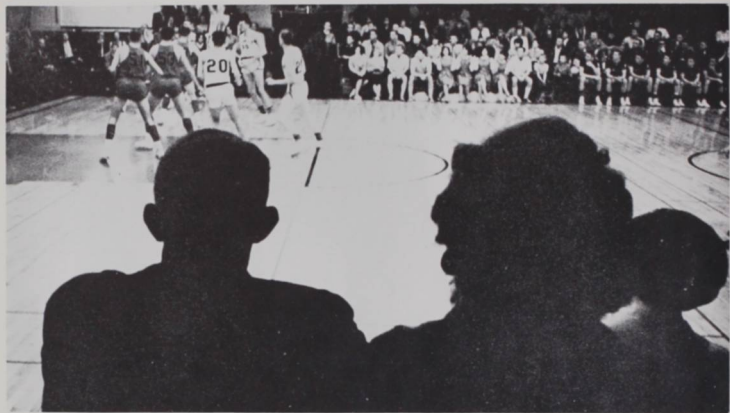
scores

Eastern Oregon	74	WU	62
Oregon College	72		77
Portland State	61		66
Humboldt State	(OT) 66		68
Humboldt State	58		79
Oregon College	58		67
Eastern Washington	65		87
Chico State	68		62
Pasadena College	85		67
Humboldt State	64		67
Linfield	98		77
Linfield	82		61
Lewis and Clark	67		61
Lewis and Clark	81		70
Pacific	59		62
Lewis and Clark	77		73
Pacific	72		62
Linfield	93		92
Idaho	77		74
Whitman	81	102	
Whitman	79		77
Idaho	90		63
Idaho	80		58
Whitman	75		73
Pacific	81		82





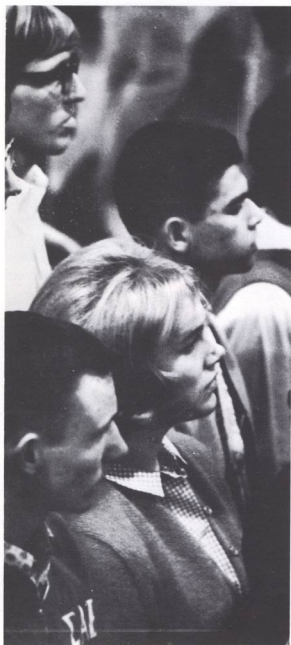


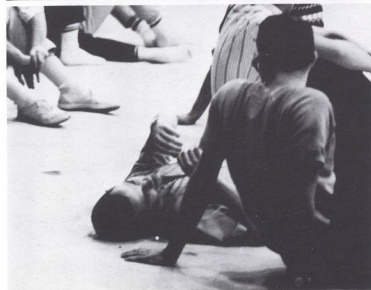


glee

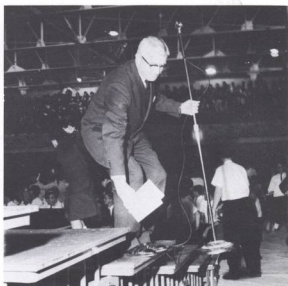
One full week of singing and marching was climaxed with each class entering the gym Saturday night confident that they would carry away the fifty-sixth annual glee banner. This year's glee, with the theme "Serenade," was dedicated to Melvin H. Geist, the Music School Dean for twenty-five years. Glee manager Larry Hillhouse welcomed the spirited audience to witness Willamette's unique tradition of songfest rivalry. Professor Daniel Schulze delivered his usual prolonged monologue in announcing that the sophomores were third, the juniors second and that the freshmen had captured the coveted prize. Thus the seniors would cross the Mill Stream for the second straight year.













aws carnival

Each year the Associated Women Students on campus present a fund-raising carnival. The various living groups set up booths in the Matthews Hall basement ranging anywhere from food to music. All proceeds from the event are given to the American Cancer Society for additional research of the disease. This year's carnival was climaxed with the selection of Joe McClure as Ugly Man.





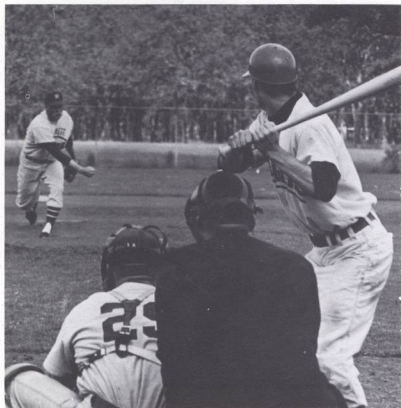
CAST

Rev. Phineas McQueston—Tom Cloyd
 A girl—Ruth Younker
 Jared Mungo—Bart White
 Winston Urquhart—Paul Poindexter
 Mrs. McQueston—Molly Staples
 Ruel McQueston—Paul Wynne
 Venture McQueston—Frances McKinley
 Faith Ingalls—Elaine Sutter
 Letty—Andrea Smith
 Happy Penny—Jim Smith
 Nathaniel McQueston—Bob DePew
 Durian—Gretchen Putnam
 Oppare—Lynne Norton
 Toala—Eda Smothers
 Harry—Dale Nelson
 Van Zandt—Bob Sibley

wingless victory

Maxwell Anderson's tragedy of racial bigotry in New England of 1800 set the theme for the Willamette Players' first offering of the spring semester. This production provided an example of drama in poetry — a relatively little used form in contemporary theatre. Through a deep understanding of the human mind and spirit, Anderson transposed the ancient legend of Medea into a modern situation.





baseball

The 1964 Bearcat diamondmen compiled an 11-16 season record, including eight wins and seven losses in Northwest Conference action. Climaxing the season, four of the Willamette regulars were selected for the All-Conference team. They included outfielder Bill Phegley, shortstop Steve Peglow, second baseman Jeff Topping and pitcher Loren Whittaker. Next season's team promises to be more experienced as Coach John Lewis loses only three of this year's squad to graduation.



scores

		WU
Oregon	11	3
Southern Oregon	6	7
Southern Oregon (2)	4-2	2- 1
Oregon	10	5
Lewis & Clark	3	4
Linfield	6	0
Oregon State	8	1
Portland	4	0
Idaho (2)	2-2	1- 4
Whitman	6	7
Linfield (2)	1-10	0- 0
Oregon College	3	7
Lewis & Clark (2)	8-11	0-12
Oregon State	3	2
Oregon College	8	0
Whitman (2)	1-0	7- 5
Pacific	4	2
Idaho	6	15
Pacific (2)	1-6	2- 4
Portland (2)	6-7	5- 9





track

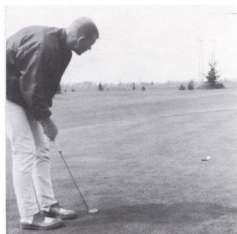
Coach Ted Ogdahl's trackmen completed the 1964 season with a 3-3 overall record and a fourth place conference finish. Senior Denny Charlton garnered first place in the discus at the conference meet. At the NAIA District II meet, junior Bob Burles set a new record in the 440 yard intermediate hurdles and qualified for the national NAIA meet and for the Olympic trials. Lack of depth kept the cindermen out of championship contention, a problem which Coach Ogdahl hopes to remedy next year.





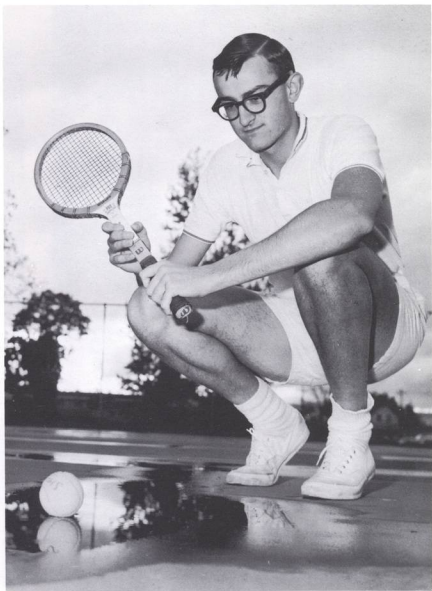
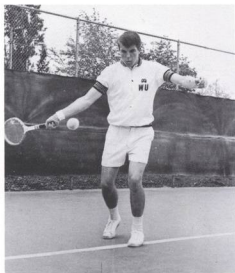
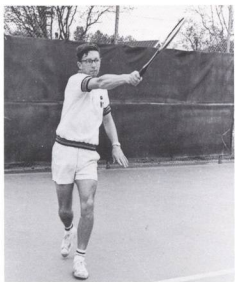
golf

This year's golf team had another successful season. Led by Alan Hudspeth, Mike Alley, and Gary Childs, the divoters compiled an 11-4 season record, followed by a perfect 6-0 record in conference matches. At the conference championships, Linfield surprised everyone by upsetting the Bearcats for the team title, with Willamette finishing second.



tennis

The 1964 Willamette netmen tied with Lewis and Clark for second place in the Northwest conference behind co-champions Whitman and Pacific. In six conference matches the Bearcats won three and lost two, along with one rainout. Senior comps and orals prevented four veteran netmen from competing until May. According to Coach Lestle Sparks, had the season been a month longer things would have looked much different. "Overall, the boys did well considering the weather and circumstances."

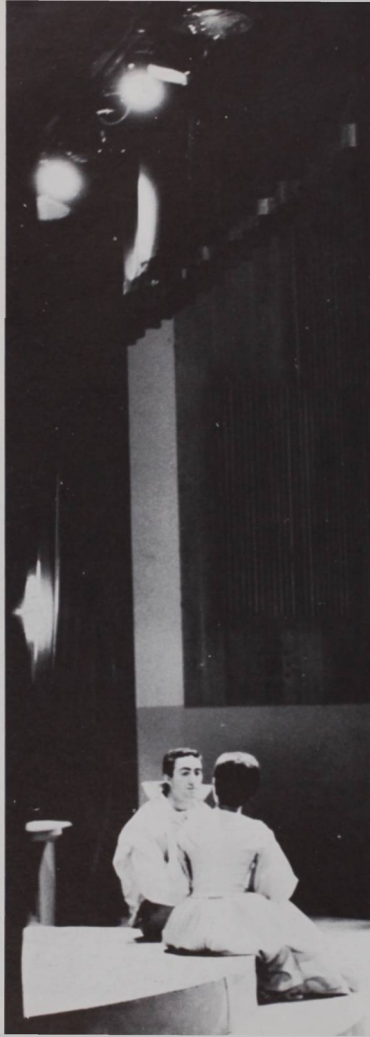


may weekend

The first weekend of May gave Willamette students a chance to forget their studies and 130 high school seniors the opportunity to get a quick glimpse of the campus to which they will be coming next fall. Queen Patti Hull officiated at the memorial tree planting ceremony for Richard Kerr in front of the library. The queen's coronation followed on the quadrangle with all its pageantry and tradition highlighted by the Heralders and the Maypole dance by the freshmen women. Early morning serenades to the living organizations ended the festivities, leaving upperclassmen to reflect on the memories of their college careers and the high school seniors to conjure up visions of their hectic college days still ahead.







midsummer night's dream

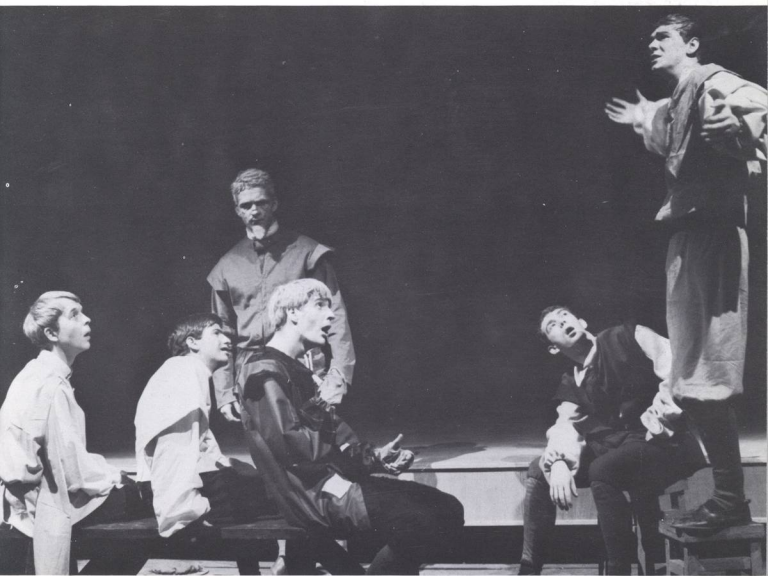
That "no play ever contained in one entity such a rare combination of raucous low comedy, lyrical high comedy and soaring fantasy" were the words of director Robert Putnam for the Willamette Players final production of the year. The large cast of twenty-seven performed this special 400 anniversary tribute to Shakespeare's birth over May Weekend to the largest audience of the season. Drawing its theme from popular Greek legend and poetry, the production incorporates a corps of classical dancers, original choreography, musical recordings and madrigal singers, specially designed and tailored costumes, and elaborate use of lighting for mood and scene change.

CAST

Theseus—Wade Bettis
Hippolyta—Amy Spaulding
Philstrate—John Mowell
Egeus—Bruce Black
Hermia—Ruth Younker
Demetrius—Chuck Olson
Lysander—Bob DePew
Helena—Wendy Wilson
Peter Quince—Don Baldwin
Nick Bottom—Paul Wynne
Frances Flute—Bob Harbison

Robin Starveling—Lee Knosher
Tom Snout—Dave Hansen
Snug—Dan Hartley
Puck—Tom Cloyd
Oberon—Nick Tri
Titania—Andrea Smith
Peasebottom—Carol Ten Eyck
Cobweb—Becki Gaines
Moth—Gael Harrington
Mustardseed—Sherma Cook
Other fairies—Carol Hertzog
Gaye Hynds

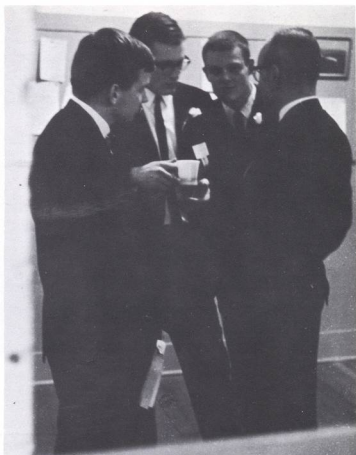
Attendants on Theseus—Stephanie Okada
Kathy Reiersen
Attendants on Oberon—Marcia Dreske
Sandra Ponder





mock convention

After three months of preparation, Willamette's mock political convention became the major topic of discussion on campus the second weekend of May. Under the leadership and organization of Ed Cole, Chuck Flynn and Dave Foote, over three hundred students from nineteen Washington and Oregon colleges participated. Representative John Dellenback of Medford acted as permanent chairman with the concluding nominations of Pennsylvania's William Scranton and Oregon's Mark Hatfield as the mock presidential slate of candidates. Overall and with representation from Willamette of more than one hundred delegates, the convention served to demonstrate in action the workings of one of the most involved functions of American politics. By tradition, the mock conventions are always of the party out of power in Washington, this year the Republicans.









president's review

Late in May the Reserve Officers Training Corps presented their annual inspection and review at McCulloch Stadium. Here medals and certificates were presented to outstanding cadets in the Willamette program. In addition, the Angel Flight presented their competition award-winning drill sequence and were led by this year's Little Colonel, Ann Paulsen, who was chosen earlier in the semester by the Arnold Air Society at their Military Ball.







music

Auditions, rehearsals and group planning were the primary components which kept the music department busy during the first weeks of school.

Singing in chapel and presenting local concerts comprised the experiences of the sixty-one member University Choir. Again this year, the annual spring tour through Oregon, Idaho and Montana highlighted the group's schedule of events.

Acting as a vital spirit booster, the University Band has performed at football and basketball games. The band also entertained at Varsity Varieties, the President's Review and the Mock Political Convention.

The Willamette University Community Orchestra consists of fifty players of which half are students and the remainder are amateurs of Salem. The orchestra gave students an opportunity to enjoy three excellent concerts during the year, in addition to productions of *The Devil and Daniel Webster*, Vaughn Williams' "Serenade to Music" and a Christmas Vespers program.









of people...



distinguished artists

Through the work and effort of Willamette's two music fraternities, a great variety and multitude of talent in the performing arts filled the Fine Arts Auditorium at numerous times during the school year. Ranging from the enduring themes of Bach by the Student Madrigal Choir of Germany to the established voice of Broadway actress Agnes Moorehead, and from the unflagging rhythm of the Jose Melina dancing troupe to the versatility of the Porgy and Bess Singers, the Distinguished Artists Series presented the perfected arts of many cultures to all who would listen and see.



convocations

Throughout the academic year at Willamette outstanding speakers and performers are brought on campus to talk and discuss with students and faculty the relation of their specialized fields as they pertain to those we are currently studying.

Luther Jerstad, University of Oregon instructor and one of four Americans to scale the world's largest peak, described to an intent audience of how "climbing to the summit of Mount Everest is like standing on the precipice between life and death."

Second speaker in the Atkinson lecture series was the Honorable Brooks Hays, special assistant to President Kennedy, who spoke on "fulfilling America's faith," and obtaining "a complete and generous education."

Dr. Alfred Stone, of the University Lutheran Church in Seattle, was Christian Resource Week speaker and informal seminar leader on the theme of the Bible's source, content and authority.

With his song rendition of "when you're smilin, the whole world smiles with you . . .", began comedian Jerry Gosley's entertaining Smile Show with numerous takeoffs on established British impressions by Americans.





With characteristic humility, William Stafford, northwest poet and professor at Lewis and Clark College, addressed students in convocation on the role of artist and at an evening session read from his published works.

Dr. Leonard Freedman, author, editor and lecturer, spoke out on the "case for the liberal arts."

Dr. Ralph Lapp, nuclear physicist and first speaker in the ninth annual Atkinson lecture series, explained to students that "there is a limit to how far man can go physically into space, but there is no limit as to how far he can send his intelligence."

Lebanese counselor in North America, Hassan Saab, addressed students on the international outlook in the Near East.

Dr. Alan Watts, considered by many as the Western authority on Eastern philosophy and Zen, spoke to students informally at convocation, in classrooms, and at seminars and discussions around campus.

The Wayfarers, a popular folk-singing quartet, although scheduled in conflict with the evening session of poet Stafford, managed to produce a lively program of music before a spirited and approving Fine Arts audience.





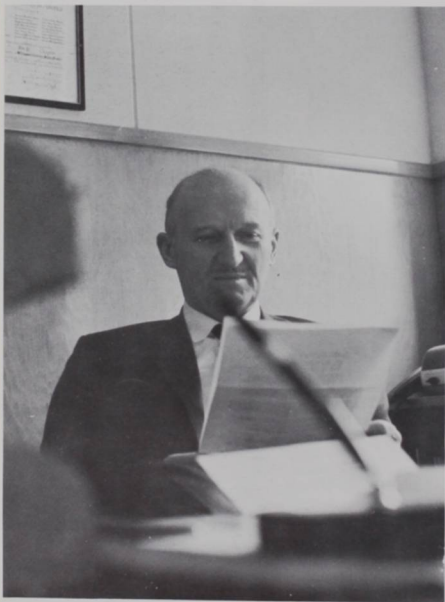
administration



G. HERBERT SMITH
President

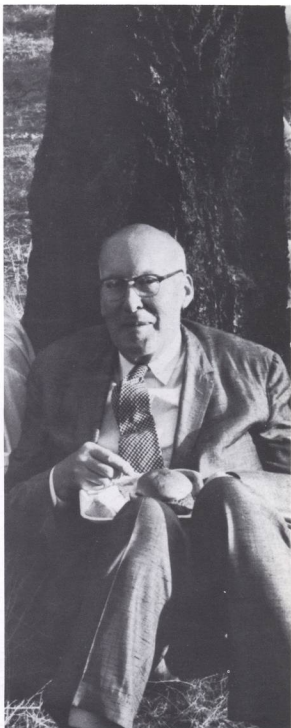


MELVIN H. GEIST
Dean, College of Music





SEWARD P. REESE
Dean, College of Law



ROBERT D. GREGG
Dean, College of Liberal Arts

VERA HABERER
Dean of Women



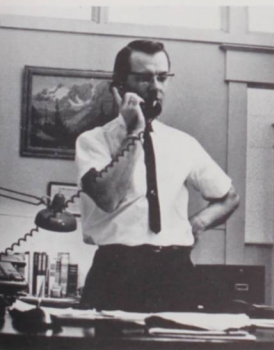
GEORGE STANBERY
Librarian

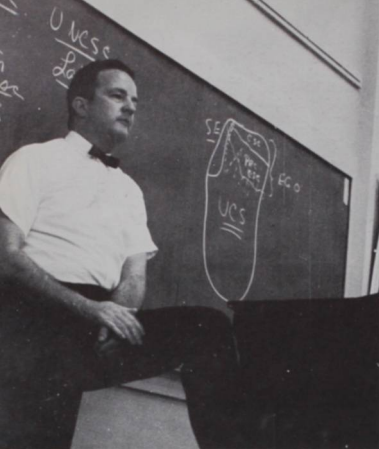




DEVON WADE
Accountant

JERRY WIPPLE
Assistant to the President





RICHARD YOCUM
Dean of Admissions and Registrar

BOB WOODLE
Publicity



CAL McCONNELL
Chaplain

RALPH PURVINE, M.D.
Health Service



faculty



DEAN ABBOTT
Air Science



WILLIAM BAKER
English



BURTON BASTUSCHECK
Religion, Sociology



PAUL BEAL
French, Spanish



ADELE BIRNBAUM
English



DONALD BREakey
Biology



MAURICE BRENNEN
Music, Band

WARREN BROWN
Education





STANLEY BUTLER
Music



JERRY CANNING
Philosophy



GALE CURREY
Physical Education

MILDRED DEISCHER
Home Economics





MIRIAM CARLSON
Sociology



GENE COOPER
Physical Education

CHARLES DERTHICK
Psychology



ANNETTE DOBBIN
Spanish



RALPH DOBBS
Music



JAMES DOUGLAS
English



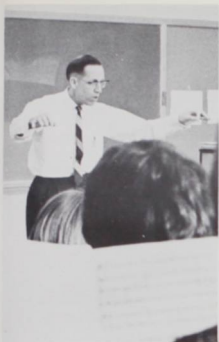
PAULE DRAYTON
French

PAUL DUELL
Chemistry



RICHARD GILLIS
Economics





DON GLECKLER
Music, Choir

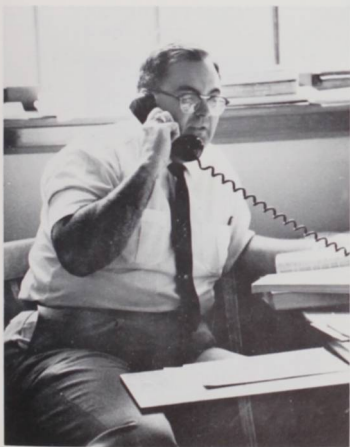


CARL HALL
Art



FRANCOISE GOEURY
French

JACK HAFFERKAMP
Mathematics



CHARLES HEIDEN
Music, Orchestra

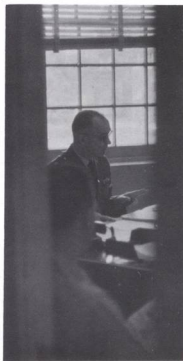


NORMAN HUDAK
Chemistry

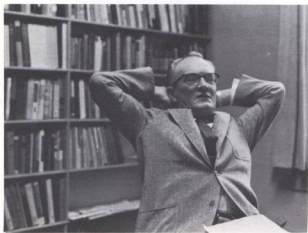


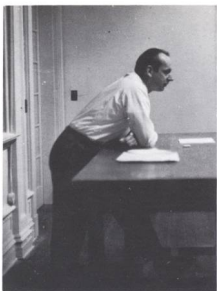
NORMAN HUFFMAN
Religion

HOWARD HUNDEMER
Air Science



MILTON HUNNEX
Philosophy





NOEL KAESTNER
Psychology



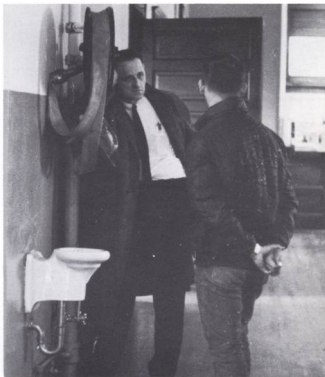
ARTHUR KIMBALL
English

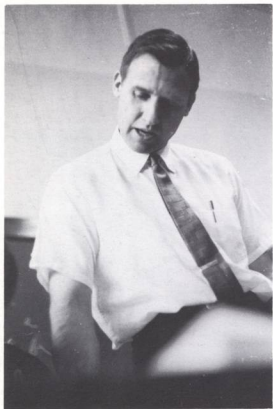


CHESTER KAISER
History

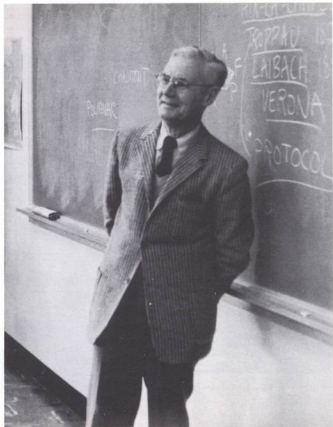
CLARENCE KRAFT
Spanish

LASH LAKER
Air Science





JACK LEONARD
Economics



IVAN LOVELL
History



CHESTER LUTHER
Mathematics



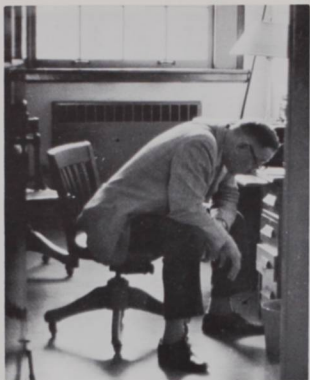
OTTO MANDL
German



FRANCIS MARKUS
History

JAMES LYLES
Education





CECIL MONK
Biology



RICHARD MONTGOMERY
Earth Science

MARION MORANGE
French



WAYNE NEWKIRK
Economics



CAMERON PAULIN
Art



ARTHUR PAYTON
Chemistry

NITA PETTIGREW
English



STEPHEN PROTHERO
Mathematics



ROBERT PUTNAM
Drama



NONA PYRON
Music



ROBERT PURBRICK
Physics

JOHN RADEMAKER
Sociology





MURCO RINGNALDA
English, Journalism



MARGARET RINGNALDA
English



JENETTE ROBERTS
Latin

ELAINE RODDY
English





HOWARD RUNKEL
Speech



JOSEF SCHNELKER
Music



THEODORE SHAY
Political Science

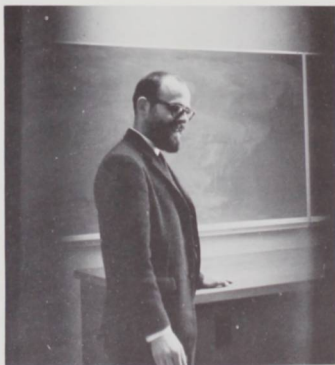


DANIEL SCHULTZE
German

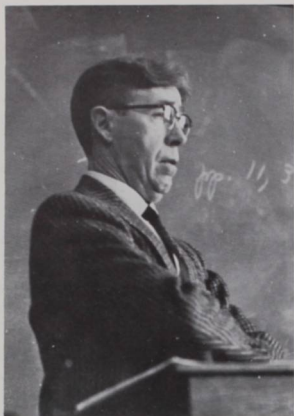


KENNETH SMITH
Political Science

MARTHA SPRINGER
Biology



MAURICE STEWART
Physics



PAUL TRUEBLOOD
English



EDWIN STILLINGS
Political Science

CLORINDA TOPPING
Music





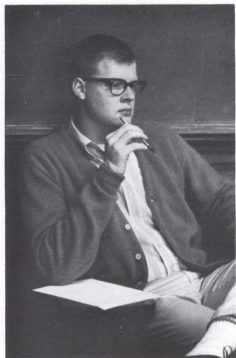
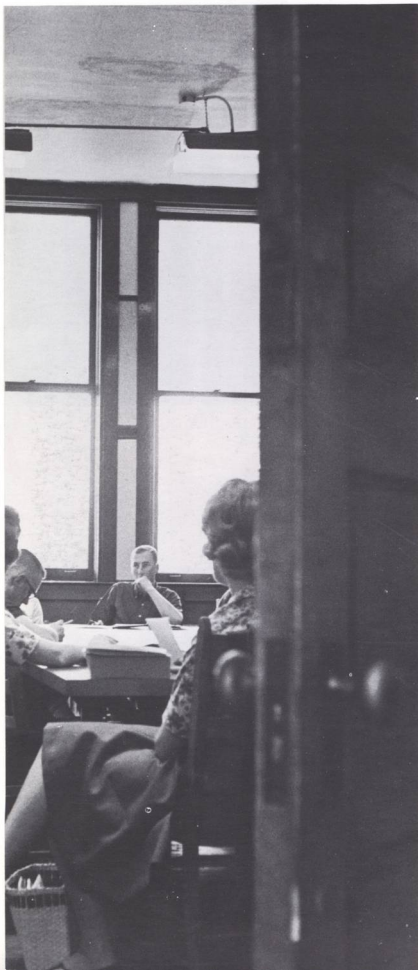
MARIJA UDRIS
German, Russian



ELIZABETH YOCOM
Biology

JEAN WILLIAMS
Physical Education





President—Jim Brown
 First VP—Joyce Caster
 Second VP—Ed Cole
 Secretary—Fran Marlette
 Treasurer—Al Beardsley
 Senators-at-large—Gary McKenzie
 Bob Reider



student senate

Willamette's student senate serves a dual purpose — the members receive an on-the-job education while the student body, hopefully, is well represented. This year's senate conducted student elections, authorized the mock convention, planned a temporary student center, and governed Willamette student life according to their delegated powers. Looking back over the past year, senate members could be satisfied with the progress of the task to which they have contributed and passed forward to their successors.



FALL

SENIORS—Denny Charlton, *president*; Gregg Childs, *vice-president*; Barb Flint, *Secretary*; Jon Goode, *Treasurer*; Doug Blachford, *sergeant-at-arms*.

JUNIORS—Dave Fairbrook, *president*; Dick Heermance, *vice-president*; Sally Stone, *secretary*; Terri Mitchell, *treasurer*; Bob Smith, *sergeant-at-arms*.

SOPHOMORES — Clark Martin, *president*; Bruce Imai, *vice-president*; Laurie Hall, *secretary*; Rich Ball, *treasurer*; Frosty Comer, *Sergeant-at-arms*.

FRESHMEN—Dick Zeller, *president*; Don Price, *vice-president*; Judi Gerber, *secretary*; Carol Schmidt, *treasurer*; Bart White, *sergeant-at-arms*.



class officers

SPRING

SENIORS—Gregg Childs, *president*; Jerry Juve, *vice-president*; Cathy Vielhauer, *secretary*; Dianne Wilson, *treasurer*; Ken Stewart, *sergeant-at-arms*.

JUNIORS—Dick Heermance, *president*; Cindy Janes, *vice-president*; Marie Chaney, *secretary*; Barry Howard, *treasurer*; Bill Johnson, *sergeant-at-arms*.

SOPHOMORES — Steve Lowry, *president*; Jim Sedell, *vice-president*; Elinor Lindquist, *secretary*; Larry Mattson, *treasurer*; Rich Kawana, *sergeant-at-arms*.

FRESHMEN — Ray Sherwood, *president*; Ed Harris, *vice-president*; Gaye Hynds, *secretary*; Judi Wier, *treasurer*; Lew King, *sergeant-at-arms*.



The Associated Women Students is a self-governing organization that promotes and develops leadership of campus women, by compiling women's standards and representing women students on the campus.



The Inter-fraternity Council, whose membership is comprised of the President and Rush Chairman from each of the fraternities, were primarily concerned with the instigation of deferred rush rules and coordinated the activities conduct among the groups.



The Panhellenic Council, with two representatives from each sorority on campus, met weekly with the Dean of Women to discuss mutual problems and encourage improved standards, scholarship, campus activities and inter-sorority functions.





This past year student publications continued to provide the university with coverage of the campus community. Under the editorship of Gerry Bill, the *Collegian* kept the students informed with news and comments of current campus events. The newspaper pro-

vided the training ground for persons interested in editorial writing and news compiling. The *Wallulah* staff with editor Mike Keuss spent their efforts in producing the annual coverage of campus life through the creation of a more photographic format into the yearbook.



organizations

People to People is part of a nationwide student oriented and operated program to bring peoples of the world together in friendship and understanding of each other's culture and way of life.



Members of the Student Education Association gather together for discussions concerning their interests in making teaching a career.



Physical Education Club members plan monthly activities which encourage leadership and understanding, and enrich their program of study through fellowship, recreation and education.





Members of Religious Life Council meet to discuss their role and task as the living organization chaplains.

During the year, members of Newman Club attempt to supply a guiding informative atmosphere for the student by directing his activities in the religious, educational and social phases.



The Lutheran Student Association met weekly at noon luncheons in the YWCA basement for discussion programs and speakers.

The Christian Science organization has been active throughout the year by both holding meetings and maintaining a library for students in Waller Hall.





Probing discussions and fellowship were the objectives that Canterbury concentrated on during the year.

As an interdenominational group the Methodist Student Movement has concentrated on promoting Christian fellowship through campus encounter groups, evening discussions and ecumenical conversations.





Members of the Young Men's Christian Association gather for dinner and fellowship, and to promote the solution of general student and campus needs.



The campus Young Women's Christian Association provides opportunities for every college woman to increase her awareness of the value of Christian living through participation in programs offered on the campus, in work projects and in study groups.



Members of the Young Republicans are actively involved in state politics and sent one of the strongest delegations to participate at the State College League Convention in Portland last April.

honoraries

alpha lambda delta *freshmen women's honorary*



President
Donna Kemp

Cathy Atterbury
Mary Dorsch
Paula Harris
Joan Michelson
Stephanie Okada

Anne Rakestraw
Arlene Rice
Ruth Rodgers
Linda Torkelson
Nancy Van Winkle
Marilyn Viken

angel flight *women's drill team honorary*



President
Ellen Reese

Suzi Aho
Margaret Allen
Pat Biles
Sandy Bunch
Bonnie Cheney
Carollee Colbrunn

Nina Crothers
Daryl Daigle
Mary Dorsch
Margie Eichelberger
Karen Evans
Claudia Farrow
Molly Gaynor

Gail Glassman
Gay Glenn
Cathy Goodart
Sue Hammersten
Gael Harrington
Marcy Harvey
Gaye Hynds

Gail Jakes
Karen Krueck
Audrey Krueger
Ruth Litchfield
Janie Loney
Sue Michelson
Ann Paulson

Robin Peterson
Anne Rakestraw
Cheryl Richardson
Kathy Sherley
Jeanne Smith
Sally Smethurst
Mary Dee Stithem



Sally Thome
Sue Thompson
Katy White



arnold air society

afrotc honorary service organization

Commander
Gene Juve



Chuck Eison
Jerry Gastineau
Dell Lindstrom
Karl Lundberg
Bill Marshall
Bob Mattson
Tom Newell



Steve Smith
Pete Stidd
Jim Vidal



beta alpha gamma

freshman women's service honorary



President
Pam Dean

Cathy Atterbury
Andy Bristol
Bonnie Brown
Mary Dorsch
Barbara Hamilton
Paula Harris



Donna Kemp
Karen Kruchek
Pat Mathews
Marilyn Miller
Kirk Ann Neil
Vicki Pitkanen
Ellen Reese



Sally Thome

coeds of the month



Janet Anderson
Heather Birnie
Diane Hunnex
Ann Kaufman
Carol Kitchen
Judy Jessen Moore
Sharon Paulsen



Joan Robinson

honeybears

women's spirit organization

President
Linda Naylor

Julie Branford
Levi Crooks
Pat Gundy
Nancy Hall
Jessie James
Alice Jeppesen



Jane Neville
Dorinda Oliver
Dianne Provancha
Judy Wier



kappa delta pi

education honorary

Heather Birnie
Jackie Graber
Diane Hunnex
Rosemary Myers
Maradee Oliver
Sharon Paulsen
Mary Ann Ragland



mortar board

senior women's honorary

President
Mary Gayle Shaffer

Janet Anderson
Heather Birnie
Mary Sue Gellatly
Diane Hunnex
Judy Jessen Moore
Sharon Paulsen



Barbara Woodworth



mu phi epsilon

women's music honorary

President
Charlotte Castillo

Liz Anderson
Judy Blackburn
Jane Bonnington
Kathy Boutelle
Jo Ann Cooley
Mary Sue Gellatly

Carol Gibson
Carolyn Hedman
Suanne Hower
Wendy Hunt
Darelyn Huson
Ann Kaufman
Colleen Kennemore

Kay Kinsley
Muriel Kramer
Ivona Randall

omicron delta kappa

senior men's honorary

President
Pete Smith

Dave Beier
Jim Booth
Jim Brown
Ed Cole
Steve Enloe
Chuck Flynn

Al Frost
Jon Goode
Jerry Juve
Phil Krozek
Slava Lubomudrux
Gary McKenzie

Tom Prediletto
Bob Reider
Ron Slabaugh
Lyle Smith
Frank Swayze
Steve Yoshihara

order of the w

letterman's honorary

President

Dean Popp

Bruce Anderson
Ken Anderson
Pat Armstrong
Wes Armstrong
Dave Baird
Robey Banks



Al Beardsley
Jim Booth
Denny Charlton
Steve Crane
Jack Deja
Jim Dombroski
Doug Dunham



Chuck Eison
John Erickson
Steve Evans
Bob Fletcher
Fred Fogg
Dave Givens
John Givens



John Green
Penn Handwerker
Dick Heermance
Jim Krier
Phil Krozek
Bob Ladum
Craig Lowell



Kirk McNeil
Phil Marsh
Bob Mattson
Carmy Mausten
Steve Miller
Spike Moore
Steve Neptune



Carl Neu
Phil Parks
Nels Pederson
Steve Peglow
Bill Phegley
Larry Potts
John Records



Pete Ruotsi
Jim Schmidt
Pete Slabaugh
Jim Smith
Lyle Smith
Don Stout
Jeff Topping





John Travis
Bob Warrington
Jim Worden
Steve Yoshihara

phi eta sigma

freshman men's honorary



Bill Alberger
John Benson
Doug Burleigh
Cecil Edwards
Joseph Ericson
Alvin Fuse
Steve Murdock



Gary Pederson
Ray Sherwood
Steve Smith
Ken Solberg
David Stanley
Gerald Watson

phi mu alpha

men's music honorary



President
Harley Wilson

Rich Ball
Dave Beier
Ray Bladine
George Blakeslee
Bob Blodget
Craig Brown



Chris Dudley
Doug Dunham
Steve Evans
Jeff Heatherington
Steve Henry
Lyman Herb
Paul Huebner

Ed Jaros
Roger Kirchner
David Miles
Ward Nelson
Clarence Pugh
Jon Putnam
Bob Reider



Gary Reuter
Gordon Springer
Dick Trefren
John Vaagen
Bob Wallace
Dave Welch



phi sigma iota

language honorary

Diane Hunnex
Penny Johnston
Virginia Judd
Jeanne Myers
Anne Peterson
Mary Ann Ragland



pi gamma mu

social science honorary

President
Chuck Flynn

Ray Ashton
Heather Birnie
Chuck Black
Jim Brown
Ed Cole
Dave Foote



Judy Francis
Ernie Gohlert
Jackie Graber
Mark Hamilton
Barry Hudspeth
Bill Johnson
Phil Krozek





Bill Lang
Slava Lubomudrov
Randy Nelson
Linda Pond
Tom Prediletto
Joan Robinson
Suzy Shane

Dan Skerritt
Pete Smith
Corky Sorenson
Frank Swayze
Canuto Taderan
Jackie Venne
Harley Wilson

psi chi

psychology honorary



President
Denny Charlton
Clark Anderson
Colleen Cochran
Jackie Graber
Cindy Janes
Don Lorenzen
Craig Ichinose

Ann Lee
Marion Oakley
Nelson Pederson
Jeanne Perkins
Beatrice Perry
Mary Gayle Shaffer
Jeff Topping

Dianne Wilson



rotarians of the month

Al Beardsley
Jim Booth
Jim Brown
Gregg Childs
Don Lorenzen
Bob Reider
Pete Smith



Frank Swayze



sigma alpha chi

freshman men's service honorary

President
Ted Hetu
Rich Ball
Mike Egans
John Erickson
Mike Hood
Clark Martin
Doug McNish



Chuck Olson
Mike Pearson
Bill Ritchie
Bill Willingham



silver wings

drill team honorary

Commander
Bill Harmon
Drill Master
Hunter Dixon
Bill Blair
Scot Crawford
Cecil Edwards
Richard Kessling
Karl Lundberg





Grant McAllister
Bob Morris
Rich Pade
John Travis
John Reed
Mike Solso
Loren Whittaker

theta alpha phi

drama honorary



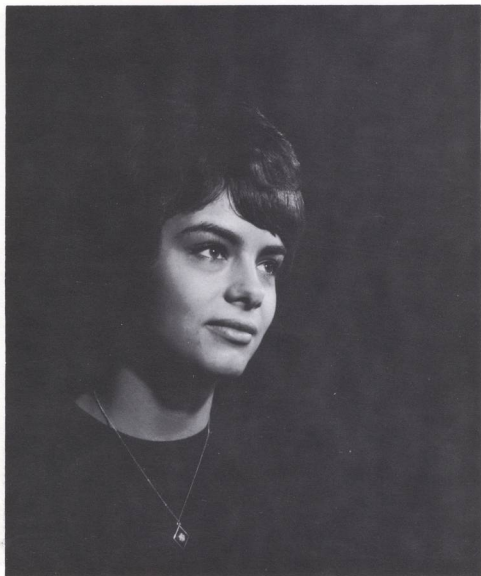
Robert Putnam
Bob Depew
Amy Spaulding
Molly Staples

sweetheart of sigma chi
linda fritz





delta tau delta queen
betty shelton



queen of violets
vicki keranen

stardust queen
sue sweet



alpha chi omega

Housemother

Mrs. Gwendolyn Rogers

Fall President

Corky Demler

Spring President

Fran Marlette

Seniors

Ann Davenport

Ann Finlayson

Karen Gellerman

Penny Johnstone

Juniors

Linn Pond

Mary Gayle Shaffer

Mary Whitford

Dianne Wilson

Lavon Allen

Susan England

Heidi Getzendaner

Sophomores

Genie Haberman

Carolyn Low

Carol Walton

Jan Waterman

Janie Bischoff

Pat Casson

Mary Dorsch

Freshmen

Margi Eichelberger

Karen Evans

Paula Harris

Jean Lundstrom

Marcia Luscher

Pam Maynard

Margery Osborn

Freshmen

Anne Rakestraw

Ellen Reese

Karen Reppun

Ginger Verity

Katy White

Suzi Aho

Margaret Allen

Freshmen

Cathy Arbaugh

Pat Biles

Marhe Boer

Sandi Bunch

Linn Chatham

Daryl Daigle

Mary Kay Euler

Freshmen

Gay Glenn

Lyndy Grey

Pat Gundy

Sue Hammersten

Gael Harrington

Gayne Hynds

Gail Jakes





Audrey Krueger
Janie Loney
Dianne Seaver
Kathy Sherley
Jackie Stratton
Sue Struthers

alpha phi

Housemother
Mrs. W. R. Terhune

Full President
Jackie Venne
Spring President
Frances McKinley

Seniors
Gerrie Scott
Suzy Shane
Juniors
Julie Aungst
Susan Foster

Carol Gibson
Sheila Holman
Marion Oakley
Suzanne Plum
Janet Schlechter
Ruth Taylor
Hedwig Williamson

Sophomores
Allyn Bartholomew
Jill Bates
Pat Cassidy
Jollie Heidbrak
Colleen Kennemore
Karen Kruehek
Marianne May

Raynette Pierce
Arlene Rice
Ynez Taggart
Lynn Van Houten
Nancy Van Winkle
Cherry Woff
Freshmen
Ellen Campbell

Linda Clausen
Joan Gillard
Martha Gilmore
Joan Hazelblade
Gay Heeb
Dea Holt
Nancy Hooton



Muriel Kramer
Sue Mendoza
Gay Pennington
Marjorie Rodda
Penny Shank



baxter hall

Housemother
Mrs. Ryntha Sturges

Full President
Mick Hoffman
Spring President
Paul Davis

Freshmen
John Anderson
Jeff Aronson
Bruce Bradshaw
Richard Boniface



Larry Castle
Leslie Castle
David Caulley
Roger Cole
Dennis George
John Gingerich
Robert Glick



Steve Gray
Jimmie Hall
Jeff Hellyer
Van Hicks
Robert Holzapfel
Jim Hutcheson
David Illig



Mike Jones
Dick Keesling
Colin Lamb
Alan Lewin
Vance McFarland
John Montgomery
Bill Morrison



Greg Mostyn
Rich Pade
John Perkins
James Reed
John Reed
Barry Secrest
Wildrie Shaad





Bob Sibley
Ron Stewart
Lee Sturgeon
Bob Sutton
Ed Tillinghast
Byron Washburn
Woodie Webber

belknap hall

Housemother

Mrs. Charlotte Ann Beck

Fall President

Jim Dixon

Spring President

Steve Lowry

Seniors

Bruce Black

Chuck Eison

Al Frew

Grover Gentry



Ron Guld

Mark Hamilton

Steve Hansen

S. Kaveinga Havea

Barry Hudspeth

Dale Laird

Tom Newell



Duane Pinkerton

Clarence Pugh

John Vaagen

Dick Van Pelt

Juniors

Ralph Baer

Jack Barter

Graig Brown



Harold Bugado

Charley Bunnag

Marvin Case

Jerry Cooper

Reid English

Gene Frickey

Galib Ali Camil



Dave Hansen

Norm Harper

Steve Hawes

Roger Kirchner

John Ledbetter

Jim Loomis

Bill Mackey



David Miles
Ed Palmason
Bob Powell
Russell Roberts
Sid Roberts
Norman Rokeberg
Terry Royer



Robert Schulze
Canuto Taederan
Richard Tomlinson
Bob Young
Sophomores
Bud Adams
Merl Annot
Ivan Buck



Roland Chun
Dick Cook
Jim Gerhardt
John Green
Dan Hartley
Vernon Ho
John Jaksch



Neil Lasley
Larry Liebenow
Dell Lindstrom
Robert Lo
Hugh MacColl
John Murchison
Jim Ott



Doug Scott
Bob Solbeck
Bob Thurman
Nick Tri
Bill Tupker
Gary Van Horn
Tom Webb



Roger Wood



beta theta pi

Housemother
Mrs. Bernice Bell
Fall President
Mike Durrell

Spring President
Chuck Flynn

Seniors
Jack Barnard
Al Beardsley
Gary Bergeron
Doug Blatchford

Gregg Childs
Al Frost
Jon Goode
Bill Hemenway
Jerry Juve
Phil Krozek
Dick Krueckel

Slava Lubomudrov
Bob Mattson
Gary McKenzie
Tom Miller
Pete Smith
Dennis Wong
Juniors
George Blakeslee

John Boyd
Sid Cooper
Steve Enloe
Keith Lovett
Dick Olmscheid
Steve Peglow
Pete Ruotsi

Jim Schmidt
Chuck Wardle
Sophomores
Rob Chase
Mike Egans
Dave Hansen
Mike Hood
Jim Krier

Chuck Lathrop
Larry Mattson
Phil Parks
Larry Tate
Bill Willingham
Freshmen
Max deSully
Ed Drake

Guy Elliot
Tom Ewing
Mick Hoffman
Dave Judd
John Kendall
Dick Kerr
Ray Sherwood



Pete Slabaugh
Dave Stanley
Jerry Stransky
Charlie Versteeg
Ben Woods



chi omega

Housemother
Mrs. Emmett Rathbun

Fall President
Judy Jessen Moore
Spring President
Marty Sneary

Seniors
Patricia Holland
Anne Peterson
Mary Ann Ragland
Joan Robinson

Juniors
Barbara Davis
Carol Doekstader
Claudia Farrow
Arlene Herringer
Alli Hull
Toni Leisure
Andrea Lindsell

Betty Ann Miller
Sue Morgan
Nancy Price
Linda Sandner
Rosemary Shea
Sophomores
Jane Bonnington
Marilyn Brandt

Lila Clockling
Anne Cowden
Cordelia Cross
Susan Garner
Nancy Hutchison
Marian Jones
Joanne Lochmiller

Ginny Lutticken
Pat Mathews
Leslie Minkner
Kirk Ann Neil
Jan Nelson
Sybil Reed
Ruth Rodgers





Carol Scharnweber
 Roberta Stanbery
 Mary Dee Stithem
 Suzanne Underwood
 Barbara Whalin
 Mary Wirt
Freshmen
 Joan Bevans

Carol Cartwright
 Cathy Goodart
 Mary Hartman
 Marcy Harvey
 Lois Horton
 Patty Howells
 Susan Johnson

Signe Lillegren
 Jan Loomis
 Judy Mann
 Jayne McLeod
 Gavin Nelson
 Carol Parr
 Robin Peterson

Carol Pratt
 Sue Robertson
 Carol Schmidt
 Linda Somers
 Shirley Wentworth
 Wendy Wilson

delta gamma

Housemother
 Mrs. Mary Brown
Fall President
 Sharon Paulsen
Spring President
 Joyce Caster
Seniors
 Janet Anderson
 Bonnie Cruson
 Clare Griffiths
 Suanne Hower



Patti Hull
 Diane Hunnex
 Mary Lee Jones
 Nancy Jones
 Margo Maris
 Nan Means
 Jeanne Meyers

Rosemary Myers
Barb Woodworth

Juniors

Sally Bryant
Gerry Howe
Pat Ranton
Corky Sorensen
Kathy Taylor



Sophomores

Carol Archambault
Bonnie Brown
Lane Burton
Bonnie Cheney
Lucy Christensen
Pam Dean
Barb Hamilton



Darlene Hawkins
Darelyn Huson
Beverly Kleiner
Ann Lee
Marilyn Miller
Linda Moore
Ronalee Myser



Ann Rhiger
Nancy Scott
Sally Thome
Sue Thompson

Freshmen

Margaret Anderson
Tamsin Boardman
Susie Brooks



Betty Buckles
Genette Bueker
Linda Fritz
Gail Glassman
Suzy Green
Rad Kong
Julie Levin



Sue Mickelsen
Jane Neville
Ann Paulsen
Dianne Provancha
Sally Smethurst
Jeanne Smith
Carol Anne Smullin



Linda Stewart
Judy Wier



delta tau delta

Housemother
Mrs. Elizabeth Spangler

President
Wayne Thompson

Seniors
Pinar Crane
Gary Gilbertson
Bob Reider
Ken Rich
Harley Wilson

Juniors
Marc Anderson
Wes Armstrong
Ed Cole
Dave Fairbrook
Jeff Heatherington
Barry Howard
Dan Kessler

Gary Miller
John Pierce
Barry Schrupf
Larry Snider
Francis Wong
Steve Yoshihara
Sophomores
Bill Blair

Les Bush
Steve Busick
Dale Claypool
John Erickson
Bruce Imai
Randy Kuhn
Mike McKinley

Sam Nebel
Chuck Olson
Bill Ritchie
Jim Worden
Freshmen
Len Anderson
Patt Armstrong
John Bingham

Glen Childs
John Erickson
Al Fuse
Rick Gates
Larry Hillhouse
Keith Johnston
Rodney Lam

Steve Miller
Chad Newton
Sam Pierce
Ken Solberg
Owen White
Dick Zeller



doney hall

Housemother

Mrs. Luella McNeil

Fall President

Linda Fritz

Spring President

Kathy Maxson

Seniors

Jan Twining

Juniors

Jean Mill

Sophomores

Pat Claxton

Freshmen

Carolee Colbrunn



Deanne Delong

Marcia Dreske

Judy Harding

Carmel Hofstetter

Lanae Isaacson

Susan James

Kathy Kato



Marjorie Kleibacker

Barbara Lawrence

Marilee Maurer

Janice McCormack

Sandy Miller

Cheryl Richardson

Jeanette Roush



Paula Sause

Pam Smith

Willa Varner

Laurie Wood

Lynn Zwald



kappa sigma

Housemother

Mrs. Ester Page

Fall President

Bill Harmon

Spring President

Dick Bangart

Seniors

Robey Banks

Nelson Pederson

Dave Powers

Juniors

Dave Arbuckle



Hunter Dixon

Don Elle

Jerry Gastineau

Rob Graun

Doug Moy

Herb Munson

Bill Sefton





Sophomores
 Steve Brown
 Richard Buck
 George Cornwall
 Bob Cowan
 John Drummond
 Penn Handwerker
 Steve Henry



Paul Huebner
 Jim Lewis
 Bill Marshall
 John Putnam
 Chris Repsold
 John Shelk
 Gordon Springer



Kip Stiltz
 Don Stout
 Pete Strand
 Nick Tibbetts
 Bob Wallace
 Roger Weed
Freshmen
 Dick Biggs



Jeff Brown
 Mark Campbell
 Norman Ericson
 Alfred French
 Scott Freund
 Les Green
 Ed Harris



Bob Ladum
 Tom LaFollett
 Ken Lowe
 Gary Pedersen
 Sandy Sevall
 Malcolm Tabor
 Dave Welch



Loren Whittaker
Guest
 Magaaki Tanaka

lausanne hall

Housemother

Mrs. Ruth Boylen

Fall President

Jeanne Smith

Spring President

Lindsay Michimoto

Junior

Elaine Sutter

Sophomores

Jane Black

Sherma Cook

Jeanne Fisher



Becki Gaines

Joan Gardner

Marian Gilmore

Ellen Hoeye

Bonnie Ritchie

Carol Ten Eyek

Linda York



Freshmen

Betty Barber

Sharon Blevins

Shirley Coffield

Carol Curtis

Denise Davies

Martha Dobratz

Ruth Fenske



Judy Gerber

Linda Gerlock

Claire Haas

Rita Herman

Jane Hill

Gay Hofmann

Alice Jeppeson



Merry Keck

Fran Kelly

Anna Leland

Ruth Litchfield

Carla Lofberg

Anne Messenger

Molly Munson



Lynn Norton

Janice Oglivie

Sandra Pond

Janice Porter

Margaret Rich

Joyce Richardson

Pat Sexton



Susan Smith

Eda Smothers

Rae Steele

Deborah Todd

Joanne Turner

Bonnie Weed

Mini Whitmore





Sue Whyte
Cynthia Wilson
Stephanie Wilson

lee house

Housemother
Mrs. Pearl Ramaker
President
Judy Francis
Seniors
Betty Burgoyne
Diane Collins
Barb Flint
Molly Staples
Juniors
Marsha Binnquist

Ruth Lynn Castle
Charlotte Castillo
Marie Chaney
Candy Collins
Joyce Dames
Kitten Dewar
Charleah Hattrick

Vicki Howie
Karyl Loback
Heather Ann Lundgren
Donna Marggi
Toni Marotz
Margaret Sawyer
Barbara Smith

Sophomores
Judy Allen
Donna Bretherick
Cheryl Castles
Nancy Claus
Carol Hertzog
Helen Hill
Judy Jamieson

Carole Lindell
Stephanie Okada
Linda Phillips
Shirley Scholblom
Andrea Smith
Rachel Wamsley
Connie Jo Whiteside



matthews hall

Housemother

Mrs. Ruth Howell

Fall President

Chuck Kuhn

Spring President

Wes Stein

Sophomores

James Clapp

Raymond Gingerich

Bruce Luke

Grant McAllister



Ward Nelson

Freshmen

Charles Baty

John Beard

John Benson

Ross Gravens

Bob Dedrick

Jim Euler



John Frykman

Steve Gellerman

John George

Jerold Goetsch

Chris Grady

Homer Kizer

Karl Lundberg



Michael McLaughlin

Yukmao Mizuta

Jay Morgensen

John Mowell

Philip Palmer

Paul Poindexter

Don Price



Doug Rives

James Roberts

Eric Rothchild

Pete Ryce

Paul Schiro

Jeff Slottow

Ron Thompson



Pete Trommald



phi delta theta

Housemother
Mrs. Charles McElhinny

Fall President

Frank Swayze

Spring President

Ken Cruden

Seniors

Chuck Black

Fred Fogg

Bill Lang

Bob Merriam

Juniors

Randy Bowles

Dick Harper

John Harris

Dick Heermance

Joe Hughes

Craig Lowell

Randy Nelson

Ron Nelson

Carl Ogden

Dave Pollock

Tom Prediletto

Carl Schneiderman

Jim Smith

Pete Stidd

Chuck Stockwell

Sophomores

Bruce Anderson

Dave Baird

Roger Bergman

Don Brookhaus

Gary Childs

Pat Curci

Jack Deja

Ty Gillespie

John Givens

Ron Kay

Jeff Lamotte

Steve Neptune

Cappy Neu

Mike Pearson

Dean Popp

Dave Powers

John Travis

Dave Waldron

Freshmen

Doug Burleigh

Jim Cash

Dave Givens

Al Hud-peth

Jack MacDonald

Carmy Mausten

Spike Moore

Tom Spanier

Bob Warrington

pi beta phi

Housemother

Mrs. Winifred Smith

Fall President

Heather Birnie

Spring President

Kateen Zumwalt

Seniors

Colleen Cochran

Jane Drinker

Judy Francis

Pat French

Jacque Graber

Ann Kaufman

Carol Kitchen

Barbara Morse

Darlene Ridley

Cathy Vielhauer

Juniors

Cheryl Bohannon

Sharon Brown

Candy Coffelt

Shauna Dougher

Tori Hull

Cindy Jones

Joan Kane

Sue Meeker

Terri Mitchell

Karen Nelson

Maradee Oliver

Janelle Sevy

Sally Stone

Sophomores

Cathy Atterbury

Andrea Bristol

Nancy Farmar

Molly Gaynor

Laurie Hall

Pat Hart

Donna Kemp

Elinor Lindquist

Dita Luers

Carolyn Moore

Kathy Norris

Vicki Pitkanen

Sue Sweet

Linda Torkelson

Lisa Torp

Marilyn Viken

Sue Wear

Ruth Younker

Freshmen

Vicki Baker

Julie Branford

Judy Brecht

Levi Crooks

Nina Crothers





Sharon Flanigan
Sue Gieckler
Nancy Hall
Diane Hoss
Vicki Keranen
Marlynn Latham
Bonnie Mitchell

Linda Naylor
Dorinda Oliver
Peggy Ostendorf
Judi Skorpen
Joan Stinehart

sigma alpha epsilon



Housemother
Mrs. Ida Wooton
Fall President
Ken Stewart
Spring President
Don Lorenzen
Seniors
Clark Anderson
Joe Anicker
Gary Beck
Dave Beier

Jim Brown
Den Charlton
Cliff Comisky
Tony Dorsch
Pete Finke
Ron Gustafson
Mike Kelly

Justin King
Tom Kreis
Gary Long
Tom Pringle
Terry Rost
Ed Shallenberger
Howdy Sleeper

Juniors
Bob Blodgett
Max Boese
Doug Dunham
Steve Evans
Dave Foote
Lyman Herb
Dale Hermann

Craig Ichinose
Ed Jaros
Bill Johnson
Mike Keuss
Dan Link
Denny Riley
Dan Skerritt



Steve Smith
Dave Templeton
Jeff Topping
Sophomores
Rich Ball
Ray Bladine
Spike Bowman
Ralph Breitenstein



Don Charlton
Keith Crawford
Chris Dudley
John Evans
Ted Hetu
Tom Johnson
Clark Martin



Bill Phegley
Gary Reuter
Ken Rost
Jim Sedell
Mike Steding
Phil Stevenson
Freshmen
Jack Baker



Dave Beeken
Scot Crawford
Garry Everson
Al Johnson
Dick Ludders
Bob McMurtrey
Bob Morris



Tom Rogers
Steve Smith
Mike Solso
Chip Sperry
Brian Stevenson
Tim Stewart
Jim Vidal



sigma chi

Housemother
Mrs. Ruth Herndon
Fall President
Jim Leathers
Spring President
Ken Anderson
Seniors
Jim Booth
Steve Crane
Bob Fletcher
Ernie Gohmert

Joe McClure
Bob Perry
Juniors
Dave Bortfeld
Hank Dickerson
Steve Harris
Mike MacNichol
Kirk McNeil

John Mitchell
Bruce Ramage
John Schwartz
Bruce Smith
Lyle Smith
Gary Wyatt
Sophomores
Max Bigby

Steve Carpenter
Frosty Comer
Jim Dean
Steve Ditewig
Jim Dombroski
Mike Genna
Bob Griswold

Bob Hamilton
Bruce Harmon
Mark Harmon
Steve Jackson
John Lorraine
Phil Marsh
Doug McNish

Rod Pelling
Wes Peterson
Larry Potts
Freshmen
Bill Alberger
Eric Bennett
Chick Edwards
Dave Good

Lewis King
Chuck Kuhn
Mark Mulder
Steve Murdock
Bill Ott
Rick Pinkham
Bruce Powers



John Records
Mike Rodell
Bill Rossi
Jim Slusser
Gordy Templeton
George Theisen
Bart White



town students

Seniors

Virginia Judd
Shirley Koch
Georgia Miles
Jim Monroe
Ron Potts



Juniors

Chuck Akers
Kristine Anderson



Bill Jackson
Delores Kraft
Dave Neilsen
Sally Plessinger
Ron Slabaugh
Dick Trefren
Pat Wilson

Sophomores

Jana Cheatham
Gary Delong
Mary Finke
Judy Francis
Cynthia Kaufman
Bill Kirchhoff
Carol McIvenna



Betty Shelton
Robert Van Natta
Gerald Watson



Freshmen

Linda Baecher
Joyce Chapin
Louanne Douris
Charles Garvin



Kelli Haynes
Jim Johnsrud
Helen Kirchhoff
Carol Muckridge
Jim Ramsey
Carol Ward
Donna Wright

york house

Housemother
Mrs. Fred Wissenback

Fall President
Jean Gray

Spring President
Diane Gentry

Seniors
Julie Adams
Judith Blackburn
Jean Bochman
Jan Egan

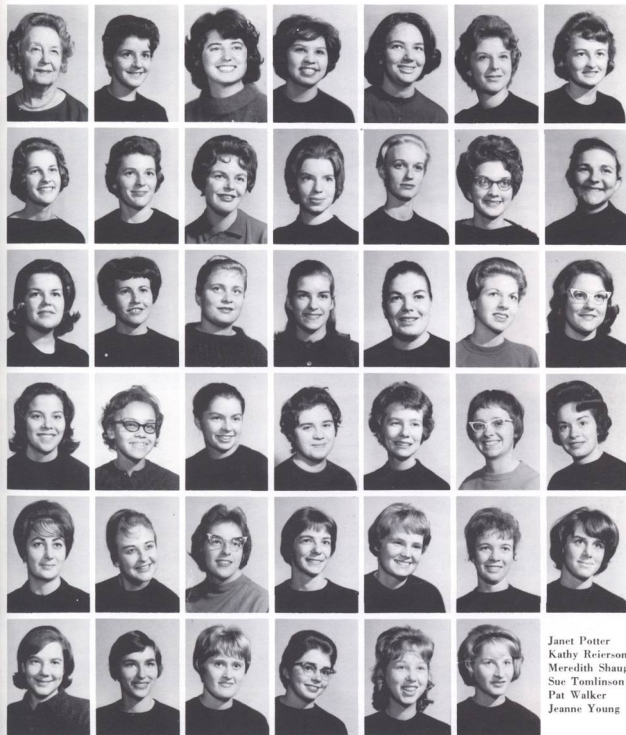
Mary Sue Gellatly
Wendy Hunt
Sharon Jones
Kay Kinsley
Susan Meyer
Jeanne Perkins
Kathryn Roner

Juniors
Elizabeth Anderson
Jean Armstrong
Nancy Eckis
Phoebe Finley
Joan Himmel
Marilyn Mabree
Janice MacDonald

Gail McElrath
Beatrice Perry
Charlene Peter
Amy Spaulding
Sophomores
Kathleen Bendix
Nancy Briggs
Lucille Clark

Margaret Gregory
Carolyn Hedman
Nancy Lesh
Becky Lyons McGilvra
Charla Meyer
Janet Miller
Terri Paquette

Janet Potter
Kathy Reierson
Meredith Shaughnessy
Sue Tomlinson
Pat Walker
Jeanne Young



seniors

Adams, Julie, *Sociology*
 Allen, William, *Mathematics and Physics*
 Anderson, Clark, *Psychology*
 Anderson, Hannah, *German and Philosophy*
 Anderson, Janet, *Political Science*
 Ashton, Raymond, *History*
 Bafus, William, *Economics*
 Banks, Robey, *Mathematics and Physics*
 Baughman, Burr, *History*
 Beardsley, Alan, *Biology*



Beck, Gary, *Chemistry*
 Beier, David, *Music Education*
 Bill, Gerald, *Philosophy, Journalism*
 Birnie, Heather, *Political Science*
 Black, Charles, *History*
 Blatchford, Douglas, *Biology*
 Booth, James, *Economics, Mathematics*
 Brown, James, *Political Science*
 Burgoyne, Elizabeth, *Sociology*



Burnard, Robert, *Chemistry*
 Bushnell, Susan, *History*
 Carney, Richard, *Physical Education*
 Carrell, Susan, *French*
 Charlton, Richard, *Psychology*
 Childs, Gregg, *Mathematics and Physics*
 Clark, Linda, *Political Science*
 Cochran, Colleen, *Psychology*



Collins, Diane, *English*
 Comisky, Clifford, *Mathematics and Philosophy*
 Countryman, Dan, *Political Science*
 Crane, Stephen, *Political Science*
 Cruden, Kenyon, *Mathematics*
 Davenport, Anne, *Psychology*
 Demler, Lorraine, *History*
 Denyer, Judith, *French*



DePew, Robert, *Chemistry*
 Dixon, James, *Mathematics*
 Dorsch, Tony, *Biology*
 Drew, Dennis, *History*
 Drinker, Susan, *Biology*
 Durrell, Michael, *Psychology*
 Easterly, Michael, *Philosophy*
 Egan, Janice, *English*
 Eison, Charles, *Psychology*
 Fahl, Ronald, *History*
 Finke, Peter, *History*



Finlayson, Ann, *English*
 Fletcher, Robert, *Sociology and Political Science*
 Flint, Barbara, *Physical Education*
 Fogg, Fredrick, *Economics*
 Francis, Judith, *Sociology*
 French, Patricia, *Art*
 Frew, Alexander, *History*
 Frost, Allan, *Chemistry*





Gellatly, Mary Susan, *Music*
 Gellerman, Karen, *Psychology*
 Gentry, Grover, *Sociology*
 Gilbertson, Gary, *Political Science*
 Goehry, Françoise, *Political Science*
 Gohlert, Ernst-Werner, *German and Political Science*
 Goode, Jonathan, *Mathematics and Physics*
 Gould, Ronald, *Political Science and Philosophy*
 Graber, Jacqueline, *History*



Griffiths, Clare, *History*
 Gustafson, Ronald, *Mathematics*
 Hamilton, Mark, *History*
 Hansen, Stephen, *Physics*
 Harmon, William, *Economics*
 Havea, Kaveinga, *History*
 Holland, Patricia, *Mathematics*
 Hower, Suanne, *Music*
 Hudspeth, Barry, *Economics*



Hull, Patricia, *Sociology*
 Hunnex, Diane, *French*
 Hunt, Gwendolyn, *Music Education*
 James, Lee, *Political Science*
 Johnstone, Penelope, *French*
 Jones, Mary Lee, *Political Science*
 Jones, Nancy, *History*
 Jones, Sharon, *History*
 Judd, Virginia, *French*



Juve, Gene, *Political Science*
 Kaufman, Anne, *Music*
 Kelly, Michael, *English*
 King, Justin, *Political Science*
 Kitchen, Carol, *English*
 Kowalski, Michael, *Mathematics and Physics*
 Kreis, Thomas, *History*
 Krozek, Philip, *Economics*



Krueckel, Richard, *Economics*
 Lang, William, *History*
 Leathers, James, *Economics and Mathematics*
 Long, Gary, *Psychology*
 Lorenzen, Richard, *Psychology*
 Lubomudrov, Slava, *Political Science and Russian*
 Maris, Margo, *History and Political Science*
 Mattson, Robert, *Biology*
 Means, Nan, *Art and Philosophy*



Meyers, Jeanne, *French*
 Miles, Georgia, *History*
 Miller, Thomas, *Economics*
 Mistkawi, John, *Physical Education and Sociology*
 Mitchell, Verle, *Sociology*
 Monroe, James, *Political Science*
 Moore, Douglas, *Mathematics and Economics*
 Moore, Judith Jessen, *English*





Morse, Barbara Lee, *Biology*
 Myers, Rosemary, *Spanish*
 Nartonis, David, *Mathematics and Physics*
 Nelson, Michael, *Political Science*
 Neu, Sandra, *Biology*
 Newell, Thomas, *Philosophy and Political Science*
 Paulsen, Sharon, *English*
 Pederson, Nelson, *Psychology*
 Perkins, Jeanne, *Psychology*



Peterson, Anne, *French*
 Pinkerton, Duane, *Economics*
 Pond, Linda, *Sociology*
 Powers, David, *Art*
 Pringle, Thomas, *Biology*
 Pugh, Clarence, *Music Education*
 Ragland, Mary Ann, *French*
 Rich, Kenneth, *Chemistry*



Ridley, Darlene, *Biology*
 Rieder, Robert, *Political Science*
 Robinson, Joan, *Political Science*
 Roner, Kathryn, *Art*
 Rost, Terry, *Economics*
 Schulze, Robert, *Biology*
 Scott, Geraldine, *Economics*
 Shaffer, Mary Gayle, *Psychology*



Shallenberger, Edward, *Biology*
 Shane, Suzanne, *Sociology*
 Sickinger, Michelle, *English*
 Sleeper, Howard, *Biology*
 Smith, Peter, *Political Science*
 Staples, Eleanor, *Speech and Drama*
 Steiner, Shirley, *Biology*

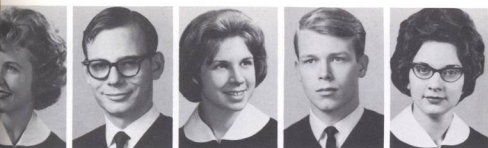


Stensrud, Myron, *Physical Education*
 Stewart, Kenneth, *Political Science*
 Swayze, Frank, *Economics and Political Science*
 Thelen, David, *Music*
 Thompson, Charles, *History*
 Thompson, Dennis, *Sociology*
 Toombs, Thomas, *Psychology*
 Trygstad, Carolyn, *Spanish*
 Twining, Janice, *Sociology*
 Vaagen, John, *Sociology*



VanPelt, James, *Political Science*
 Vielhauer, Cathryn, *Physical Education*
 Whitford, Mary, *History*
 Whitney, Hartwell, *Chemistry*
 Whitney, Rosalie, *German*
 Wilson, Dianne, *Psychology*
 Wilson, Harlan, *Political Science*
 Woodworth, Barbara, *Biology*







L. to R.: C. Roberts, J. Smith, P. Slalaugh, J. Booth, P. Marsh, D. Blatchford, Head Coach John Lewis, S. Moore, E. Sweatinger, B. Burles, K. McNeil, L. Potts, L. Smith.

basketball



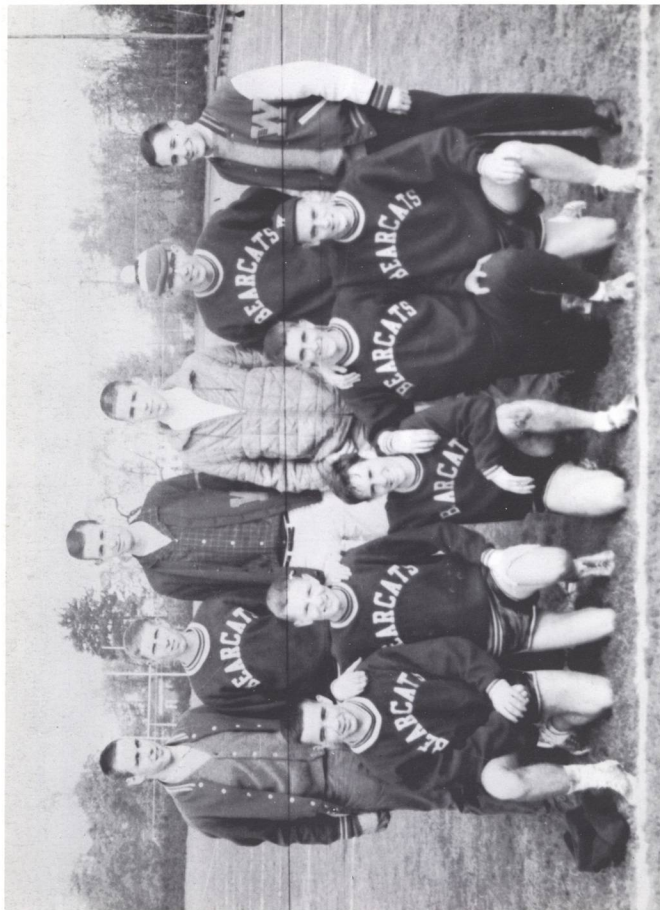
baseball

KNEELING, L. to R.: Coach John Lewis, Manager B. Anderson, FRONT ROW, L. to R.: K. Anderson, C. Lowell, J. Topping, S. Peglow, J. Dombroski, A. Geddes, S. Smith, L. Sturholm. BACK ROW, L. to R.: C. Sperry, J. Records, W. Looney, D. Stunley, D. Moore, J. Booth, D. Baird, B. Pegley, C. Mausten, G. Reuter.



FIRST ROW, L. to R.: Coach Ted Ogden, S. Evans, D. Wong, T. Toombs, A. Beardsley, Denny Charlton, K. McNeil. SECOND ROW, L. to R.: Don Charlton, C. Lamb, B. Burles, H. MacColl, J. MacDonald. THIRD ROW, L. to R.: G. Everson, S. Moore, B. Ladum, B. Buss, B. Bradshaw, C. Baty, G. Childs, P. Armstrong, R. Thomson.

track

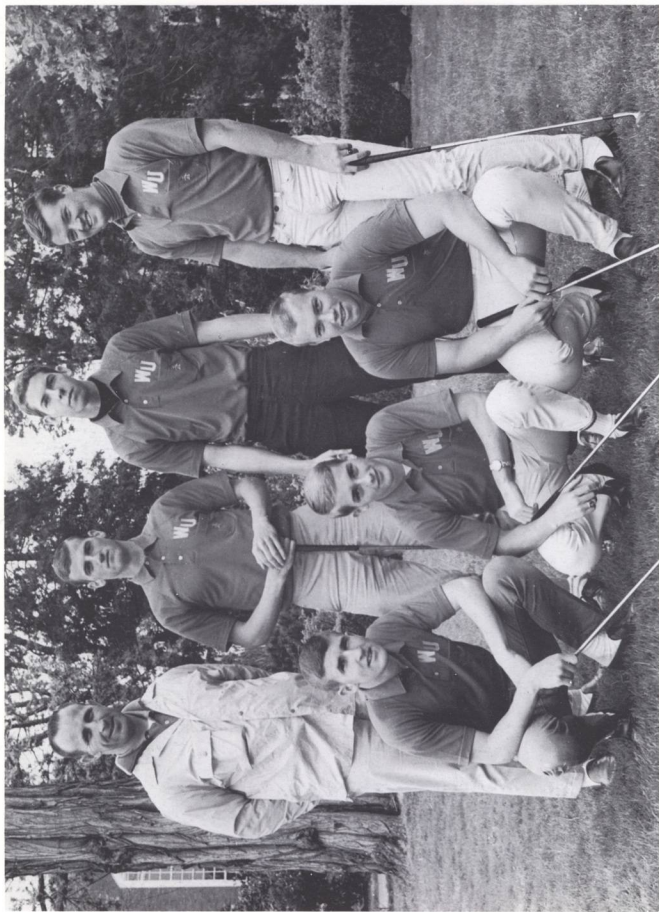


FRONT ROW, L. to R.: G. Everson, B. Ladum, D. Dunham, W. Armstrong, P. Armstrong. BACK ROW, L. to R.: B. Bradshaw, R. Thomson, C. Roberts, D. Burleigh, J. MacDonald, Coach Dexter Maust.



FRONT ROW, *L. to R.*: D. Givens, P. Krozek, C. Black, Coach Dick Gillis, SEC.
 OND ROW, *L. to R.*: A. Fise, E. Rothchild, F. Fogg, J. Worden. THIRD ROW, *L. to R.*:
 B. White, J. Bingham, S. Neptune, J. Givens, R. Banks.

swimming



FRONT ROW, L. to R.: T. Johnson, P. Parks, A. Hudspeth, BACK ROW, L. to R.:
Coach Norm Chapman, M. Alley, L. Potts, G. Childs.



FRONT ROW, *L. to R.*: J. Owen, B. Allen, B. McMurray, G. Everson, M. Bigby, R. Chun. SECOND ROW, *L. to R.*: G. Wyatt, M. Harmon, J. Perkins, R. Gingerich, J. Gingerich.

wrestling



tennis / L. to R.: F. Fogg, L. Snider, J. Erickson, C. Schneiderman, R. Graun, J. Miskawi,
S. Crane, Coach Leslie Sparks.

contents

introduction 2/ orientation camp
16/ registration 20/ devil and dan-
iel webster 22/ parents weekend
24/ football 26 /homecoming 33/
misalliance 36/ winter carnival 38/
basketball 40/ freshman glee 47/
aws carnival 53/ wingless victory
54/ baseball 56/ track 58/ golf 60/
tennis 61/ may weekend 62/ mid-
summer nights dream 64/ mock
convention 66/ presidents review
70/ music 73/ distinguished artists
78/ convocations 80/ administra-
tion 83/ faculty 90/ student senate
108/ organizations 113/ honoraries
117/ queens 128/ housing 132/ sen-
iors 154/ sports teams 160/ in mem-
oriam 170/ staff 171/ index 172.

acknowledgements

To Your Town Press, and especially David
Stall.

To McEwan's Photo Studio, and especially
Morrell Cray and Wes Darby.

To Robert Burchess of Antioch College
for the poem on the back outside cover.

To photographers John Erickson and
Lloyd Sidwell of the *Oregon Statesman*, and
Gerry Lewin of the *Capital Journal*.

in memoriam

Truman Wesley Collins
President of the Board of Trustees
1958-1964

Richard Eugene Kerr

Janet Rae Miller

wallulah staff

Mike Keuss, *editor*
Barbara Hamilton, *assistant editor*
Ward Nelson, *business manager*
Murco Ringnald, *faculty advisor*

Ralph Baer, *sports*
Bob Blodget
Barbe Boer
Bonnie Brown
Sid Cooper, *sports*
Marian Gilmore, *index*
Gail Glassman
Chuck Kuhn, *faculty*
Elinor Linquist, *copy*
Carolyn Low, *housing*
Janyne McLeod
Tom Miller
Kirk Ann Neil, *honorarys*
Jan Nelson
Mike Pearson
Doris Rose
Betty Shelton
Kathy Sherfey, *seniors*
Sue Sweet
Sue Wear
Pinkey Weight
Carol Woodward
Paul Wynne
Lynn Zwald

PHOTOGRAPHY

Charles Garvin, *manager*
Ross Cravens
Dennis George
Les Green
Tom Hamley
Alan Lewin
Carrie Lou Walters
Jan Young

index

Abbott, Dean,	90
Baker, William	90
Bastuscheck, Burton	90
Beal, Paul	90
Birnbaum, Adele	91
Breakey, Donald	91
Brennen, Maurice	91
Brown, Warren	91
Butler, Stanley	92
Canning, Jerry	92
Carlson, Miriam	93
Chapman, Norm	167
Cooper, Gene	93
Currey, Gale	92
Deischer, Mildred	92
Derthick, Charles	93
Dobbin, Annette	93
Dobbs, Ralph	93
Douglas, James	94
Drayton, Paule	94
Duell, Paul	94
Geist, Melvin H.	84
Gillis, Richard	94, 165
Gleckler, Don	95
Goeury, Francoise	95
Gregg, Robert D.	85
Haberer, Vera	86
Hafferkamp, Jack	95
Hall, Carl	95
Heiden, Charles	95
Hudak, Norman	96
Huffman, Norman	96
Hunnex, Milton	96
Hundemer, Howard	96
Kaestner, Noel	97
Kaiser, Chester	97
Kimball, Arthur	97
Kraft, Clarence	97
Laker, Lash	97
Leonard, Jack	98
Lewis, Dave	89
Lewis, John	43, 161, 162
Lovell, Ivan	98
Luther, Chester	98
Lyles, James	99
Mandl, Otto	99
Markus, Francis	99
McConnell, Cal	88
Monk, Cecil	100
Montgomery, Richard	100
Morange, Marion	100
Newkirk, Wayne	100
Ogdahl, Ted	29, 160, 163
Paulin, Cameron	101
Payton, Arthur	101
Petrie, Richard	89
Pettigrew, Nita	101
Prothero, Stephen	101
Purbrick, Robert	102
Purvine, Ralph	88
Putnam, Robert	102
Pyron, Nona	102
Rademaker, John	102
Reese, Seward P.	85
Ringnald, Margaret	103
Ringnald, Murco	103
Roberts, Jenette	103

Roddy, Elaine	103
Runkel, Howard	104
Schnelker, Joseph	104
Schulze, Daniel	105
Shay, Theodore	104
Smith, G. Herbert	83
Smith, Kenneth	105
Sparks, Lestle	168
Springer, Martha	105
Stanbery, George	86
Stewart, Maurice	105
Stillings, Edwin	106
Topping, Clorinda	106
Trueblood, Paul	106
Udris, Marija	107
Wade, DeVon	87
Williams, Jean	107
Whipple, Jerry	87
Woodle, Bob	88
Yocom, Elizabeth	107
Yocum, Richard	88

STUDENTS

Adams, Bud	136
Adams, Julie	153, 154
Aho, Suzi	117, 132
Akers, Chuck	152
Alberger, Bill	123, 151
Allen, Bill	166
Allen, Judy	145
Allen, Lavon	132
Allen, Margaret	117, 132
Allen, William	154
Alley, Mike	167
Anderson, Bruce	122, 147, 160, 162
Anderson, Clark	125, 149, 154
Anderson, Elizabeth	121, 153
Anderson, Hannah	154
Anderson, Janet	119, 120, 139, 155
Anderson, John	134
Anderson, Ken	118, 122, 151, 162
Anderson, Kristine	152
Anderson, Len	141
Anderson, Marc	141
Anderson, Margaret	140
Anicker, Joe	149
Arbaugh, Cathy	132
Arbuckle, Dave	142
Archambault, Carol	140
Armstrong, Jean	153
Armstrong, Patt	122, 141, 163, 164
Armstrong, Wes	122, 141, 164
Arnot, Merl	136
Aronson, Jeff	134
Ashton, Raymond	124, 155
Atterbury, Cathy	117, 119, 148
Aungst, Julie	133
Baecher, Linda	152
Baer, Ralph	135
Bafus, William	155
Baird, Dave	122, 147, 162
Baker, Jack	150
Baker, Vicky	148
Ball, Rich	123, 126, 150
Bangart, Dick	142
Banks, Robey	122, 142, 155, 165
Barber, Betty	144
Barber, Bonnie	144
Barnard, Jack	137
Barter, Jack	135

Bartholomew, Allyn	133	Buck, Richard	136, 143
Bates, Jill	133	Buckles, Betty	140
Baty, Charles	146, 163	Buecker, Genette	140
Baughman, Burr	155	Bugado, Harold	135
Beard, John	146	Bunch, Sandi	117, 132
Beardsley, Al	122, 126, 155, 163	Bunnag, Charley	135
Beck, Mrs. Charlotte Ann	135	Burgoynne, Betty	145, 155
Beck, Gary	149, 154	Burles, Bob	160, 161, 163
Beeken, Dave	150	Burleigh, Doug	123, 147
Beier, Dave	121, 123, 149, 159	Burnard, Robert	154
Bell, Mrs. Bernice	137	Burnett, Jerald	160
Bendix, Kathleen	153	Burton, Lane	140
Bennett, Eric	151	Bush, Les	141
Benson, John	123, 146	Bushnell, Susan	154
Bergeron, Gary	137	Busick, Steve	141
Bergmann, Roger	147, 160	Boss, Bill	160, 163
Bevans, Joan	139	Campbell, Ellen	133
Bigby, Max	151, 166	Campbell, Mark	143
Biggs, Richard	143	Carney, Richard	154
Biles, Pat	117, 132	Carpenter, Steve	151
Bill, Gerald	154	Carrell, Susan	155
Bingham, John	141, 165	Cartwright, Carol	139
Binnquist, Marsha	145	Case, Marvin	135
Birnie, Heather	119, 120, 124, 148, 154	Cash, Jim	147
Bischoff, Jamie	132	Cassidy, Pat	133
Black, Bruce	135	Casson, Pat	132
Black, Chuck	124, 147, 154, 165	Caster, Joyce	139
Black, Jane	144	Castle, Cheryl	145
Blackburn, Judith	121, 153	Castle, Larry	134
Bladine, Ray	123, 150	Castle, Leslie	134
Blair, Bill	118, 126, 141	Castle, Ruth Lynn	145
Blakeslee, George	123, 137	Castillo, Charlotte	121, 145
Blatchford, Doug	137, 155, 161	Caulley, Dave	134
Blevins, Sharon	144	Chaney, Marie	145
Blodget, Bob	123, 149	Chapin, Joyce	152
Boardman, Tamsin	140	Charlton, Den	122, 125, 149, 155
Bochman, Jean	153	Charlton, Don	150, 163
Boer, Marbe	132	Chase, Rob	137
Boese, Max	149	Chatham, Linn	132
Bohannon, Cheryl	148	Cheatham, Jana	152
Boniface, Richard	134	Cheney, Bonnie	117, 140
Bonnington, Jane	121, 138	Childs, Gary	147, 167
Booth, Jim	121, 122, 126,, 151, 155, 160, 161, 162	Childs, Glen	141, 163
Bortfeld, Dave	151	Childs, Gregg	126, 137, 155
Boutelle, Kathy	121	Chorba, Martin	160
Bowles, Randy	147	Christensen, Lucy	140
Bowman, Spike	150	Chun, Roland	136, 166
Boyd, John	137	Clapp, James	146
Boylan, Mrs. Ruth	144	Clark, Linda	155
Bradshaw, Bruce	134, 163, 164	Clark, Lucille	153
Brandt, Marilyn	138	Claus, Nancy	145
Branford, Julie	120, 148	Clausen, Linda	133
Brecht, Judi	118	Claxton, Pat	142
Breitenstein, Ralph	150	Claypool, Dale	141
Bretherick, Dona	145	Clockling, Lila	138
Briggs, Nancy	153	Cochran, Colleen	125, 148, 155
Bristol, Andrea	119, 148	Coffelt, Candy	148
Brockhaus, Don	147	Coffield, Shirley	144
Brooks, Susan	140	Colbrunn, Carollee	117, 142
Brown, Bonnie	119, 140	Cole, Ed	121, 124, 141
Brown, Craig	123, 135	Cole, Roger	134
Brown, Jeff	143	Collins, Candy	145
Brown, Jim	121, 124, 126, 149, 155	Collins, Diane	145, 154
Brown, Mrs. Mary	139	Comer, Frosty	151
Brown, Sharon	148	Comisky, Cliff	149, 154
Brown, Steve	143	Cook, Dick	136
Bryant, Sally	140	Cook, Sherma	144
Buck, Ivan	136	Cooley, Jane	121
		Cooper, Jerry	135
		Cooper, Sid	137

Cornwall, George	143	Evans, John	150
Countryman, Dan	155	Evans, Karen	117, 132
Cowan, Bob	118, 143	Evans, Steve	122, 123, 149, 163
Cowden, Anne	138	Everson, Garry	150, 163, 164, 166
Crane, Pinar	141	Ewing, Tom	137
Crane, Steve	122, 151, 155, 168	Fahl, Ron	155
Cravens, Ross	146	Fairbrook, Dave	141
Crawford, Keith	118, 150	Farmar, Nancy	148
Crawford, Scot	118, 126, 150	Farrow, Claudia	117, 138
Crooks, Levi	120, 148	Fenske, Ruth	144
Cross, Dee	138	Finke, Mary Lew Thede	152
Crothers, Nina	117, 148	Finke, Pete	149, 155
Cruden, Ken	147, 155	Finlayson, Ann	132, 154
Cruson, Bonnie	139	Finley, Phoebe	153
Curci, Pat	147	Fisher, Jeanne	144
Curtis, Carol	144	Flannigan, Sharon	149
Daigle, Daryl	117, 132	Fletcher, Bob	122, 151, 154, 160
Dames, Joyce	145	Flint, Barbara	145, 154
Davenport, Ann	132, 155	Flynn, Chuck	121, 124, 137
Davies, Denise	144	Fogg, Fred	122, 147, 155, 165, 168
Davis, Barbara	138	Foot, Dave	124, 149
Davis, Paul	134	Foster, Susan	133
Dean, Jim	151	Francis, Judy	124, 145
Dean, Pam	119, 140	Francis, Judy	148, 155
Dedrick, Bob	146	Francis, Marie	152
Deja, Jack	122, 147, 160	French, Alfred	143
DeLong, Deanne	142	French, Pat	148, 155
DeLong, Gary	152	Frew, Al	135, 155
Demler, Corky	132, 155	Freund, Scott	143
Denyer, Judith	155	Frickey, Gene	135
DePew, Bob	127, 154	Fritz, Linda	140, 142
deSully, Max,	137	Frost, Al	121, 137, 155
Dewar, Kitten	145	Fryckman, John	146
Dickerson, Hank	151	Fuse, Alvin	123, 165
Ditewig, Stephen	151	Gaines, Becki	144
Dixon, Hunter	126, 142	Gamil, Galib	135
Dixon, Jim	118, 135, 154	Gardner, Joan	144
Dobratz, Martha	144	Garner, Susan	138
Dockstader, Carol	138	Garvin, Chuck	152
Dombroski, Jim	122, 151, 160, 162	Gastineau, Jerry	118, 142
Dorsch, Tony	149, 154	Gates, Rick	141, 160
Dorsch, Mary	117, 119, 132	Gaynor, Molly	117, 148
Dougher, Shauna	148	Geddes, Allan	162
Douris, Louanne	152	Gellatly, Mary Sue	120, 121, 153, 156
Drake, Ed	137	Gellerman, Karen	132, 156
Dreske, Marcia	142	Gellerman, Steve	146
Drew, Dennis	154	Genna, Mike	151
Drinker, Jane	148, 155	Gentry, Dianna	153
Drummond, John	143	Gentry, Grover	135, 156
Dudley, Chris	123, 150	George, Dennis	134
Dunham, Doug	122, 123, 149, 164	George, John	146
Durrell, Mike	137, 155	Gerber, Judy	144
Easterly, Mike	155	Gerhardt, Jim	136
Eckis, Nancy	153	Gerlock, Linda	144
Edwards, Chick	123, 126, 151	Getzendaner, Heidi	132
Egan, Jan	153, 155	Gibson, Carol	121, 133
Egans, Mike	126, 137	Gilbertson, Gary	141, 157
Eichelberger, Margi	117, 132	Gillard, Joan	133
Eison, Chuck	118, 122, 135, 155	Gillespie, Ty	147
Elle, Don	142	Gilmore, Marian	144
Elliott, Guy	137	Gilmore, Martha	133
England, Susan	132	Gingerich, John	134, 166
English, Reid	135	Gingerich, Raymond	146, 160
Enloe, Steve	121, 137	Givens, Dave	122, 147, 165
Erickson, John	122, 126, 141	Givens, John	122, 147, 165
Erickson, John	123, 141, 160, 168	Glassman, Gail	117, 140
Ericson, Norman	143	Gleckler, Sue	149
Euler, Jim	146	Glenn, Gay	117, 132
Euler, Mary Kay	132	Glick, Robert	134

Goetsch, Jerold	146
Goeury, Francoise	157
Gohlert, Ernie	124, 151, 157
Good, Dave	151
Goodart, Cathy	117, 139
Goode, Jon	21, 137, 157
Gould, Ron	135, 157
Graber, Jacquie	120, 124, 125, 148, 157
Grady, Chris	146
Graun, Rob	142, 168
Gray, Jean	153
Gray Steve	134
Green, John	122, 136
Green, Les	143
Green, Suzy	140
Gregory, Margaret	153
Grey, Lyndy	132
Griffiths, Claire	139, 156
Griswold, Bob	151
Gundy, Pat	120, 132
Gustafson, Ron	149, 156
Haas, Clare	144
Haberman, Genie	132
Hall, Jimmie	134, 160
Hall, Laurie	148
Hall, Nancy	120, 149
Hamilton, Barbara	119, 140
Hamilton, Bob	151
Hamilton, Mark	124, 135, 156
Hammarsten, Sue	117, 132
Handwerker, Penn	122, 143
Hansen, Dave	137
Hansen, David	135
Hansen, Steve	135, 156
Harding, Judy	142
Harmon, Bill	126, 142, 156
Harmon, Bruce	151
Harmon, Mark	151, 166
Harper, Norm	135
Harper, Richard	147
Harrington, Gael	117, 132
Harris, Ed	143
Harris, John	147
Harris, Paula	117, 119, 132
Harris, Steve	151
Hart, Pat	148
Hartley, Dan	136
Hartman, Mary	139
Harvey, Marcy	117, 139
Hattrick, Charleah	145
Havea, S. Kaveinga	135, 157
Hawes, Steve	135
Hawkins, Darlene	140
Haynes, Kelli	152
Hazelblade, Joan	133
Heatherington, Jeff	123, 141
Hedman, Carolyn	121, 153
Heeb, Carolyn	133
Heermance, Dick	22, 147
Heidbrak, Jollie	133
Hellyer, Jeff	134
Hemenway, Bill	137
Henry, Steve	123, 142
Herb, Lyman	123, 149
Heringer, Arlene	138
Herman, Rita	144
Herman, Dale	149
Herndon, Mrs. Ruth	151
Hertzog, Carol	145

Hetu, Ted	126, 150
Hicks, Van	134
Hill, Helen	145
Hill, Jane	144
Hillhouse, Larry	141
Himmel, Joan	153
Ho, Vernon	136
Hoeye, Ellen	144
Hoffman, Mick	134, 137
Hofmann, Gay	144
Hofstetter, Carmel	142
Holland, Patricia	138, 157
Holman, Sheila	133
Holzapel, Robert	134
Holt, Dee	133
Hood, Mike	126, 137
Hooton, Nancy	133
Horton, Lois	139
Hoss, Diane	149
Howard, Barry	141
Howe, Gerry	140
Howell, Mrs. Ruth	146
Howells, Patty	139
Hower, Suanne	121, 139, 157
Howie, Vicki	145
Hudspeth, Al	147, 167
Hudspeth, Barry	124, 135, 157
Huebner, Paul	123, 143
Hughes, Joe	147
Hull, Allen	138
Hull, Patti	139, 156
Hull, Tori	148
Hunnex, Diane	119, 120, 124, 139, 156
Hunt, Wendy	121, 153, 156
Huson, Darellyn	121, 140
Hutcheson, Jim	134
Hutchison, Nancy	138
Hynds, Gaye	117, 132
Ichinose, Craig	125, 150
Illig, David	134, 160
Imai, Bruce	141
Isaacson, Lanae	142
Jackson, Bill	152
Jackson, Steve	151
Jakes, Gail	117, 132
Jaksch, John	136
James, Lee	157
James, Susan	120, 142
Jamieson, Judy,	145
Janes, Cindy	125, 148
Jaros, Ed	124, 150
Jeppeson, Alice	120, 144
Johnson, Al	150
Johnson, Bill	124, 150
Johnson, Susan	139
Johnson, Tom	150, 167
Johnsrud, Jim	152, 160
Johnston, Keith	141
Johnstone, Penny	124, 132, 157
Jones, Marian	138
Jones, Mary Lee	139, 157
Jones, Mike	134
Jones, Nancy	139, 157
Jones, Sharon	153, 157
Joy, Don	160
Judd, Dave	137
Judd, Virginia	124, 152, 157
Juve, Gene	118, 156
Juve, Jerry	121, 137

Kane, Joan	148
Kato, Kathy	142
Kaufman, Ann	119, 121, 148, 156
Kaufman, Cynthia	152
Kawana, Richard	160
Kay, Ron	147
Keck, Merry	144
Keesling, Dick	126, 134
Kelly, Fran	144
Kelly, Mike	149, 156
Kemp, Donna	117, 119, 148
Kendall, John	137
Kenmore, Colleen	121, 133
Keranen, Vicki	149
Kerr, Dick	137
Kessler, Dan	141
Keuss, Mike	150
King, Justin	149, 157
King, Lewis	151
Kinsley, Kay	121, 153
Kirby, Chris	160
Kirchner, Roger	124, 135
Kirchhoff, Bill	152
Kirchhoff, Helen	152
Kitchen, Carol	119, 148, 157
Kizer, Homer	146
Kleibacker, Marjorie	142
Kleiner, Beverly	140
Koch, Shirley	152
Kong, Rae	140
Kowalski, Mike	157
Kraft, Delores	152
Kramer, Muriel	134, 121
Krier, Jim	122, 137
Kreis, Tom	149, 157
Krozek, Phil	121, 122, 124, 137, 157, 165
Kruchek, Karen	117, 119, 133
Krueckel, Dick	137, 156
Krueger, Audrey	117, 133
Kuhn, Chuck	146, 151
Kuhn, Randy	141
Ladum, Bob	122, 143, 163, 164
LaFollett, Tom	143
Laird, Dale	135
Lam, Rodney	141
Lamb, Colin	134, 163
Lamoree, Jeff	125, 147, 156
Lang, Bill	125, 147, 156
Lasley, Neil	136
Latham, Marlynn	149
Lathrop, Chuck	137
Lawrence, Barbara	142
Leathers, Jim	151, 156
Ledbetter, John	135
Lee, Ann	125, 140
Lee, Ronald	160
Leisure, Toni	138
Leland, Anna	144
Lesh, Nancy	153
Levin, Julie	140
Lewin, Alan	134
Lewis, Jim	143
Liebenow, Larry	136
Lillegren, Signe	139
Lindell, Carol	145
Lindsell, Andrea	138
Lindquist, Elinor	148
Lindstrom, Dell	118, 136
Link, Dan	150

Litchfield, Ruth	117, 144
Lo, Robert	136
Loback, Karyl	145
Lochmiller, Joanne	136
Lofberg, Carla	144
Loney Janie	117, 133
Long, Gary	149, 157
Long, Steve	160
Loomis, James	135
Loomis, Jan	139
Looney, Walt	160, 162
Looney, Wayne	160
Lorenzen, Don	121, 125, 126, 149, 157
Lorraine, John	151
Lovett, Keith	137
Low, Carolyn	132
Lowe, Ken	143
Lowell, Craig	122, 147, 162
Lowry, Steve	135
Lubomudrov, Slava	121, 125, 137, 157
Ludders, Dick	150
Luers, Dita	148
Luke, Bruce	146
Lundberg, Karl	118, 126, 146
Lundgren, Heather Ann	145
Lundstrom, Jean	132
Luscher, Marcia	132
Lutticken, Ginny	138
Mabee, Marilyn	153
MacColl, Hugh	136, 163
MacDonald, Jack	147, 163, 164
MacDonald, Janice	153
Mackey, Bill	135
MacNichol, Mike	151
Mann, Judy	139
Marggi, Donna	145
Maris, Margo	139, 157
Marlette, Fran	132
Marotz, Toni	145
Marsh, Phil	122, 151, 161
Marshall, Bill	118, 143
Martin, Clark	126, 150
Mathews, Pat	119, 138
Mattson, Bob	118, 122, 137, 157
Mattson, Larry	137
Maurer, Marilee	142
Maust, Dexter	164
Mausten, Carmy	147, 160, 162
Maxson, Kathy	142
May, Marianne	133
Maynard, Pam	132
Maze, Walter	160
McAllister, Grant	127, 146
McClure, Joe	151
McCormack, Janice	142
McElrath, Gail	153
McElhinny, Mrs. Charles	147
McFarland, Vance	134
McGilvra, Becky Lyons	153
McIlvenna, Carol	152
McKenzie, Gary	121, 137
McKinley, Frances	133
McKinley, Mike	141
McLaughlin, Mike	146
McLeod, Janyne	139
McMurtrey, John	150, 166
McNeil, Kirk	122, 151, 161
McNeil, Mrs. Luella	142
McNish, Doug	126, 151

Means, Nan	139, 157
Meeker, Sue	148
Mendoza, Sue	134
Merriam, Bob	147
Messenger, Anne	144
Meyer, Charla	153
Meyer, Susan	153
Meyers, Jeanne	124, 139, 156
Michimoto, Lindsay	144
Michelson, Joan	117
Mickelson, Sue	117, 140
Miles, Georgia	152, 156
Miles, Dave	124, 136
Mill, Jean	142
Miller, Betty Ann	138
Miller, Gary	141
Miller, Janet	153
Miller, Marilyn	119, 140
Miller, Sandy	142
Miller, Steve	122, 141, 160
Miller, Tom	137, 156
Minkner, Leslie	138
Mistkawi, John	151, 156, 168
Mitchell, Bonnie	149
Mitchell, John	151
Mitchell, Terri	148
Mitchell, Verle	157
Mizuta, Yukmao	146
Monroe, Jim	152, 157
Montgomery, John	134
Moore, Carolyn	148
Moore, Doug	157, 162
Moore, Judy Jessen	119, 120, 138, 157
Moore, Linda	140
Moore, Spike	122, 147, 160, 161, 163
Morgan, Sue	138
Morgensen, Jay	146
Morris, Bob	127, 150
Morrison, Bill	134
Morse, Barbara	148, 158
Mostyn, Greg	134
Mowell, John	146
Moy, Doug	142
Muckridge, Carol	152
Mulder, Mark	151
Munson, Herb	142
Munson, Molly	144
Murchison, John	136
Murdock, Steeve	123, 151
Myers, Rosemary	120, 124, 140, 158
Myser, Ronalee	140
Nartonis, Dave	158
Naylor, Linda	120, 149
Nebel, Sam	141
Neil, Kirk Ann	119, 138
Nelson, Gavin	139
Nelson, Gregory	
Nelson, Jan	138
Nelson, Karen	148
Nelson, Mike	158
Nelson, Randy	125, 147
Nelson, Ron	147
Nelson, Ward	124, 146
Neptune, Steve	122, 147, 165
Neu, Cappy	122, 147
Neu, Sandra	159
Neville, Jane	120, 140
Newell, Tom	118, 135, 159
Newton, Chuck	141, 160

Nielson, Dave	152
Norris, Kathy	148
Norton, Lynn	144
Oakley, Marion	125, 133
Ogden, Carl	147
Ogilvie, Janice	144
Okada, Stephanie	117, 145
Oliver, Dorinda	120, 149
Oliver, Maradee	120, 148
Olmscheid, Dick	137
Olson, Chuck	126, 141
Osborn, Margery	132
Ostendorf, Peggy	149
Ott, Bill	151
Ott, Jim	136
Owen, John	166
Pade, Rich	127, 134
Palmason, Ed	136
Palmer, Philip	146
Page, Mrs. Esther	142
Paquette, Terri	153
Parks, Phil	122, 137, 167
Parr, Carol	139
Paulsen, Ann	117, 140
Paulsen, Sharon	119, 120, 139, 159
Pearson, Mike	126, 147
Pederson, Gary	123, 143
Pederson, Nels	122, 125, 142, 159
Peglow, Steve	122, 137, 162
Pelling, Rod	151
Pennington, Gay	134
Perkins, Jeanne	125, 153, 159
Perkins, John	134, 166
Perry, Beatrice	153
Perry, Bob	125, 151
Peter, Charlene	153
Petersen, Robin	118, 139
Peterson, Anne	124, 138, 158
Peterson, Wes	151
Phegley, Bill	122, 150, 162
Phillips, Howard	160
Phillips, Linda	145
Pierce, John	141
Pierce, Raynette	133
Pierce, Sam	141
Pinkerton, Duane	135, 158
Pinkham, Rich	151
Pitkanen, Vicki	119, 148
Plessinger, Sally	152
Plum, Suzanne	133
Poindexter, Paul	146
Pollock, Dave	147
Pond, Linn	125, 132, 158
Ponder, Sandra	144
Popp, Dean	122, 147, 160
Porter, Janice	144
Potter, Janet	153
Potts, Larry	122, 151, 161, 167
Potts, Ron	152
Powell, Bob	136
Powers, Bruce	151
Powers, Dave	147
Powers, David	142, 158
Pratt, Carol	139
Prediletto, Tom	121, 125, 147
Price, Don	145
Price, Nancy	138
Pringle, Tom	149, 158
Provancha, Dianne	120, 140

Pugh, Clarence	124, 135, 159	Scott, Nancy	140
Putnam, Jon	124, 126, 143	Seaver, Diane	133
Ragland, Mary Ann	120, 124, 138, 159	Secrest, Barry	134
Rakestraw, Anne	117, 118, 132	Sedell, Jim	150
Ramage, Bruce	151	Sefton, Bill	142
Ramaker, Mrs. Pearl	145	Sevall, Sandy	143
Ramsey, Jim	152	Sevy, Janelle	148
Randall, Ivona	121	Sexton, Pat	144
Ranton, Pat	140	Shaad, Wildric	134
Rathbun, Mrs. Emmett	138	Shaffer, Mary Gayle	120, 125, 132, 159
Records, John	122, 152, 160, 162	Shallenberger, Ed	149, 158
Reed, James	127, 134	Shane, Suzy	125, 133, 158
Reed, John	134	Shank, Penny	134
Reed, Sybil	138	Shaughnessy, Meredith	153
Reese, Ellen	117, 119, 132	Shea, Rosemary	138
Reider, Bob	121, 124, 126, 141	Shelk, John	143
Reiersen, Kathy	153	Shelton, Betty	152
Reppun, Karen	132	Sherfey, Kathy	118, 133
Repsold, Chris	143	Sherwood, Ray	123, 137
Rhiger, Ann	140	Sibley, Bob	135
Rice, Arlene	117, 133	Sickinger, Michelle	159
Rich, Ken	141, 159	Skerritt, Dan	124, 150
Rich, Margaret	144	Skorpen, Judith	149
Richardson, Cheryl	118, 142	Slabaugh, Pete	138, 161
Richardson, Joyce	144	Slabaugh, Ron	121, 122, 152
Ridley, Darlene	148, 158	Sleeper, Howard	149, 159
Rieder, Bob	158	Slottow, Jeff	146
Riley, Denny	150	Slusser, Jim	152
Ritchie, Bill	126, 141	Smethurst, Sally	118, 140
Ritchie, Bonnie	144	Smith, Andrea	145
Rives, Doug	146	Smith, Barbara	145
Roberts, Charles	161, 164	Smith, Bruce	151
Roberts, James	146	Smith, Jeanne	118, 140, 144
Roberts, Russell	136	Smith, Jim	122, 147
Roberts, Sid	136	Smith, Jim	160
Robertson, Sue	139	Smith, Lyle	121, 122, 151, 161
Robinson, Joan	119, 125, 138, 158	Smith, Pam	142
Rodda, Margorie	134	Smith, Peter	121, 125, 126, 137, 159
Rodell, Mike	152	Smith, Steve	118, 150
Rodgers, Ruth	117, 138	Smith, Steve	123, 150, 162
Rogers, Mrs. Gwendolyn	132	Smith, Susan	144
Rogers, Tom	150	Smith, Mrs. Winifred	148
Rokeberg, Norman	136	Smothers, Eda	144
Roner, Kathryn	153, 159	Smullin, Carol Anne	140
Rossi, Bill	152	Sneary, Marty	138
Rost, Ken	150	Snider, Larry	141, 168
Rost, Terry	149, 159	Solbeck, Bob	136
Rothchild, Eric	146, 165	Solberg, Ken	123, 141
Roush, Jeanette	142	Solso, Mike	127, 150
Rover, Terry	136	Somers, Linda	139
Rueter, Gary	124, 150, 162	Sorenson, Corky	125, 140
Ruotsi, Pete	122, 137	Spanier, Tom	147
Ryce, Pete	146	Spangler, Mrs. Elizabeth	141
Sander, Linda	138	Spaulding, Amy	127, 153
Sause, Paula	142	Sperry, Chip	150, 162
Sawyer, Margaret	145	Springer, Gordon	124, 143
Scharnweber, Carol	139	Stanbery, Roberta	139
Schiro, Paul	146	Stanley, Dave	123, 138, 162
Schlechter, Janet	133	Staples, Molly	127, 145, 159
Schmidt, Carol	139	Steding, Mike	150
Schmidt, James	122, 137	Steele, Rae	144
Schneiderman, Carl	147, 168	Stein, Wes	146, 160
Schobblom, Shirley	145	Steiner, Shirley	158
Schrumpf, Barry	141	Stensrud, Myron	150
Schulze, Robert	136, 159	Stevenson, Brian	150
Schwartz, John	151	Stevenson, Phil	150
Scott, Doug	136	Stewart, Linda	140
Scott, Gerrie	133, 159	Stewart, Ken	149, 158

Stewart, Ron	135	Venne, Jackie	125, 133
Stewart, Tim	150	Verity, Ginger	132
Stidd, Pete	118, 147	Versteeg, Charlie	138
Stilz, Kip	143	Vidal, Jim	118, 150
Stinehart, Joan	149	Vielhauer, Cathy,	148, 158
Stithem, Mary Dee	118, 139	Viken, Marilyn	117, 148
Stockwell, Chuck	147	Von Arnswald, William	160
Stone, Sally	148	Waldron, Dave	147
Stout, Don	122, 143	Walker, Pat	153
Strand, Pete	143, 160	Wallace, Bob	124, 143
Stransky, Jerry	138	Walton, Carol	132
Stratton, Jackie	133	Wamsley, Rachel	145
Sturholm, Larry	162	Ward, Carol	152
Struthers, Sue	133	Wardle, Chuck	137
Sturgeon, Lee	135	Warrington, Bob	123, 147, 160
Sturges, Mrs. Ryntha	134	Washburn, Byron	135
Sutter, Elaine	144	Waterman, Jan	132
Sutton, Robert	135	Watson, Gerald	123, 152
Swayze, Frank	121, 125, 126,, 147, 158	Wear, Sue	148
Swearinger, Ed	161	Webb, Tom	136
Sweet, Sue	148	Webber, Woodie	135
Tabor, Malcolm	143	Weed, Bonnie	144
Tacderan, Canuto	125, 136	Weed, Roger	143
Taggart, Ynez	133	Welch, Dave	124, 143
Takei, Richard	160	Wentworth, Shirley	139
Tanaka, Magaaki	143	Whalin, Barbara	138
Tate, Larry	137	White, Bart	152, 165
Taylor, Kathy	140	White, Katy	118, 132
Taylor, Ruth	133	White, Owen	141
Templeton, Dave	150	Whiteside, Connie Jo	145
Templeton, Gordy	152	Whitford, Mary	132, 158
Ten Eyck, Carol	144	Whitmore, Mimi	144
Terhune, Mrs. W.	133	Whitney, Hartwell	158
Theisen, George	152	Whitney, Rosalie	159
Thelen, David	159	Whittaker, Loren	127, 143
Thome, Sally	118, 119, 140	Whyte, Sue	145
Thompson, Charles	159	Wier, Judy	120, 140
Thompson, Dennis	159	Williamson, Hedwig	133
Thompson, Ron	146, 163, 164	Willingham, Bill	126, 137
Thompson, Sue	118, 140	Wilson, Cynthia	145
Thompson, Wayne	141	Wilson, Dianne	125, 132, 159
Thurman, Bob	136	Wilson, Hartley	123, 125, 141, 159
Tibbetts, Nick	143	Wilson, Pat	152
Tillinghast, Ed	135	Wilson, Stephanie	145
Todd, Debbie	144	Wilson, Wendy	139
Tomlinson, Richard	136	Wirt, Mary	139
Tomlinson, Sue	153	Wissenback, Mrs. Fred	153
Toombs, Thomas	159, 163	Wolff, Cherry	133
Topping, Jeff	122, 125, 150, 162	Wong, Dennis	137, 163
Torkelson, Linda	117, 148	Wong, Francis	141
Torp, Lisa	148	Wood, Laurie	142
Travis, John	123, 127, 147	Wood, Roger	136
Traner, Stan	160	Woods, Ben	138
Trefren, Dick	124, 152	Woodworth, Barb	120, 140, 159
Tri, Nick	136	Wooten, Mrs. Ida	149
Trommald, Pete	146	Worden, Jim	123, 141, 165
Trygstad, Carolyn	159	Wright, Donna	152
Tupker, Bill	136	Wright, Mike	160
Turner, Joanne	144	Wyatt, Gary	151, 166
Twining, Jan	142, 159	York, Linda	144
Underwood, Suzanne	139	Yoshihara, Steve	121, 123, 141
Vaagen, John	124, 135, 159	Young, Bob	136
Van Horn, Gary	136	Young, Jeanne	153
Van Houten, Lynn	133	Yunker, Ruth	148
Van Natta, Robert	152	Zeller, Dick	141
Van Pelt, Dick	135, 158	Zumwalt, Kareen	148
Van Winkle, Nancy	117, 133	Zwald, Lynn	142
Varner, Willa	142		

In rainy days children sit at the window
Wondering at the wetness of winter
Colossal dark beauties fill their eyes
Shading their warm dreams from a mothered
Shelter. The firesides of these lazy days
Lie in the deep of their minds
The innocence of being inside.
Symphonic calms mesmerize their thoughts
The anguish of thinking unrealized
In their sunlit slumber

Ages change and soon the child
Will lose his wonders and his mothers
To depart these bedtime fantasies and
Walk through the door
Out into the steady rains

Child will you still wonder at the wetness
Or do you already wear a raincoat

In rainy days children sit at the window
Wondering at the wetness of winter
Colossal dark beauties fill their eyes
Shading their warm dreams from a mothered
Shelter. The firesides of these lazy days
Lie in the deep of their minds
The innocence of being inside.
Symphonic calms mesmerize their thoughts
The anguish of thinking unrealized
In their sunlit slumber

Ages change and soon the child
Will lose his wonders and his mothers
To depart these bedtime fantasias and
Walk through the door
Out into the steady rains

Child will you still wonder at the wetness
Or do you already wear a raincoat