

Willamette Collegian

"In Age There Is Wisdom"

1842—Serving a University in Its Second Century—1956

Faculty Rules
Dead Week
To Die

Zeigler Appointed
First Full-Time
Chaplain

Vol. LXVIII

Salem, Oregon, December 14, 1956

No. 13

Academic Dead Week Dying as Profs Act to Abolish Test Ban

Academic dead week is, by faculty rule, dying. At the weekly faculty meeting Tuesday it was voted to completely dispense with the Wednesday to Wednesday prohibition on tests before major social functions, beginning with the academic year of 1957-58.

THIS STEP was recommended by the educational policies committee of the faculty which pointed out that the curtailment of regular academic procedure during social events is not practiced by other schools of comparable standing with Willamette. The ban on social activities during the two weeks before final tests will remain in force, however, it was reported.

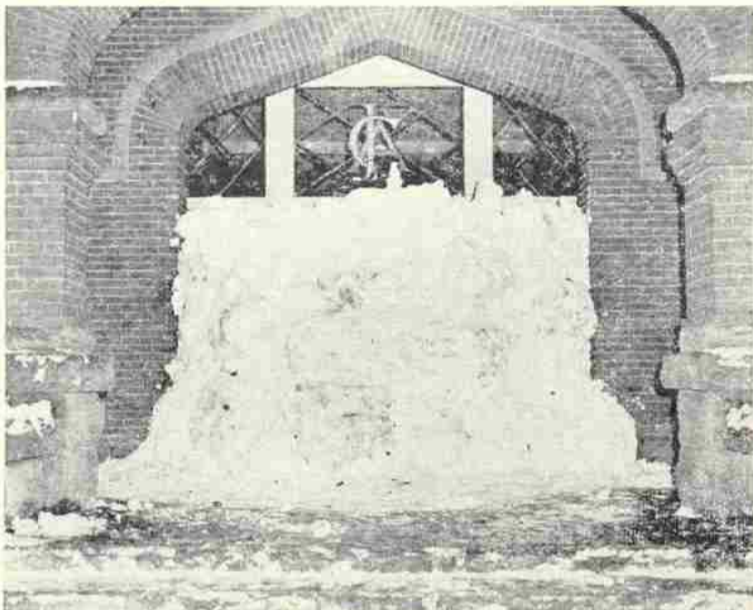
Dead week was instituted in January of 1949 by the faculty in response to a student petition. At that time the Student Council presented an 11 point proposal to the faculty, one of the points being a request to halt tests the week before major weekends. Originally this applied to Glee, Homecoming, and May Weekend.

Another recommendation of the educational policies committee accepted by the faculty Tuesday was a proposal to adopt a style sheet for student papers. This sheet,

which will be available to students at no cost in the Bookstore Monday, will set requirements as to kind of paper used and other matters of form connected with papers.

Whether or not the use of the style sheet will be required is up to the discretion of each professor.

Man-Made 'Snowbank' Blocks Eaton; Kohler Breaks Ankle



Various officials of the administration were forced to fight their way through this wall of snow Saturday morning to get into Eaton. During the night pranksters used the heavy snowfall to good advantage.

Blocked doors, snow men of various sizes and descriptions and one reclining lady marked the general celebration of the recent but now melted snowfall. Snowball fights and face washings were popular occupations and, so far as is known, there was only one serious casualty.

Dr. Henry C. Kohler of the English department suffered a broken ankle last Friday when he slipped on an icy sidewalk on his way to

University Chaplain Selected

Dr. Harley H. Zeigler, formerly director of the Hawaii School of Religion in Honolulu, has been appointed first full-time chaplain and

THE CHAPLAIN'S duties will begin with the opening of the spring semester. Included in his schedule will be an upper-division

religion course, spiritual values in great literature.

Zeigler's education background includes study at Boston University where he obtained his MA and Ph.D. degrees. He also received degrees in philosophy, theology and metaphysics from Friedrich Wilhelm University in Berlin and Eberhard Karl University in Tubingen, Germany, where he studied on fellowships.

ZEIGLER has been on the faculty of Mt. Union College in Ohio, and the schools of religion at the University of Southern California, University of Iowa, and the University of Hawaii, teaching courses including history, English, Bible, political science, philosophy, religion, and ethics.

He received the Pfeiffer scholarship and was a Howard Fellow at Boston University and is a fellow

of the Institute of International Education. A member of the Rotary club of Honolulu he also served as vice president of the Honolulu council of churches.

AUTHOR OF MANY articles for newspapers and magazines, the new



Dr. Harley Zeigler

chaplain, his wife and family of two children will arrive in Salem in January.

Funds for the appointment of Dr. Zeigler have been provided through the Atkinson Fund, which also sponsors the Willamette University Lecture series; MEMBERS of the Atkinson Fund are chairman, Truman Collins; secretary, Herbert Hardy; board members, Mrs. George Atkinson, Ray Atkinson, and Donald K. Grant.

CR Program Still In Planning Stage

Plans for Christian Resource Week, scheduled for February 12, 13, and 14, are still under construction by the Religious Life Council, led by Ashley Rose, newly appointed CR Week manager.

In addition to the principle speaker, not yet selected, and the poster contest, the Council is considering sponsoring an essay contest on the theme for the week.

According to Dr. Norman Huffman, Religious Life Council advisor, the general plan for the week is quite similar to previous years, with a chapel planned for each of the three days. In addition to these chapel services, there will be firesides at the various living organizations at which the main speaker will preside.

The poster contest, open to all students, will depict the yet to be chosen theme. A prize will be given for the best poster picked by a committee of faculty and students. This poster will be adapted for use in advertising the week.

Bills Due by Friday

With all the Christmas giving going on this time of the year, Business Manager Richard Petrie issued a plea to students to not forget the University. He reminded the students that unpaid accounts at the Business Office should be "taken care of" before the close of school Friday. Merry Christmas, anyway.

Office Manager Post Open Second Semester

Women interested in the position of Student Body office manager for the second semester must submit petitions to the Student Body office not later than noon Monday, January 14, the second Monday after school resumes.

In making this announcement, Doug Houser, second vice-president, added that further details may be obtained by inquiring in the Student Body office.

Also due at this time will be petitions for assistant Distinguished Artist Concert series manager. For further information Bill Strand should be contacted.

campus from his home at 145 N. 17th.

At present Dr. Kohler is confined to his home with a pair of crutches. He will resume his classes on January 7, when the ankle should be fully healed. He welcomes all visitors and offers tea to those who care to make it.

About four years ago Dr. Kohler missed half a day of classes, but before that it had been 17 years since he missed a class.

Sigma Chis Adopt 12-Year-Old Korean Orphan

An Kyung Sik, a 12-year-old Korean war orphan, has life a little easier since his "adoption" by the men of the local Sigma Chi chapter. The Sigs, who have been in the foster parent business since 1952, began financial support of An Kyung about a month ago.

WORKING THROUGH the Foster Parents' Plan, the men send their "son" \$180 a year to give him a monthly cash grant, food, clothing, schooling, and medicine if it is needed. Also, through frequent exchange of letters, they try to give the boy a feeling of warmth, security, and friendship.

According to Sigma Chi president, Dale Greenlee, the fraternity joined the plan in 1952 during the Korean War. At that time they were foster parents to a little German boy. Then they learned through the Foster Parents' organization of the plight of Kyung Sik.

HIS MOTHER widowed by the war, Kyung Sik, his mother and four sisters and brothers live in a room only six feet square for which they pay a rent of \$4 per month. The oldest boy, who is 15, worked to increase the family budget for a while but he is now too ill to work. One of Kyung Sik's sisters gets work once in a while as a housemaid but her wages are small. The final blow fell when the family that was previously acting as Kyung's foster parents was no longer able to continue its support.

Besides Korea, the Plan operates in Belgium, England, France, Western Germany, Greece, Holland and Italy. In addition to this, it has just undertaken complete support of all children at Hungarian refugee Camp Feffernitz in Austria.

Foster Parents' Plan is a non-profit, non-propaganda, non-sectarian, independent, government-ap-

proved relief organization which according to its by-laws provides for the "care, maintenance, education, training and well-being of children orphaned and distressed and otherwise made destitute."

Bergstrom to Post Lists Soon for Glee Workers

Newly elected Freshman Glee manager John Bergstrom began work early by explaining to a freshman class meeting the functions of the various Glee committees. Committee sign up sheets will be posted in all living organizations.

Chairmen of the several committees will be chosen from these lists Bergstrom said, thus giving someone with a particular interest in one part of Glee a chance to work in a responsible position in that area.

Jazz Players Wanted

Instrumentalists interested in forming a pep band to play at basketball games are invited to see Prof. Maurice Brennen during the week.

"Something of this type is definitely needed," Brennen commented, "and those who like to play jazz should be interested." He emphasized that comparatively little time will be needed for practice sessions.

Brennen Attends Band Conference

Prof. Maurice Brennen is at present in Chicago, attending the national conference of the College Band Directors' Association. He flew there Wednesday and will return the same way Sunday.

The conference is being held at the Conrad Hilton hotel in Chicago. There will be performances by the University of Michigan symphony band, the Cincinnati Conservatory brass ensemble, the University of Iowa faculty woodwind quintet, and the University of Illinois percussion ensemble.

Special attention will be paid to marching bands, and will include lectures, demonstrations and special films.

Brennen is the vice-president of the northwest division of the Association. In addition to Willamette, the division includes the Universities of Oregon, Washington, and Idaho, and Washington State College.

'Radio 229' Sets Christmas Show

"Radio 229," Willamette's bi-weekly radio program will present its Christmas show at 8 p.m. Wednesday over radio station KSLM. The script, property of the station, follows the format of the program "You Are There" in presenting the Nativity story.

Members of the cast are all enrolled in director Carl Ritchie's radio drama class. Taking part in the production will be Jack Knapp, Pat Farley, Mac Baker, Wayne Harris, Beth Guilbert, Lewis Bright, Lloyd Rogers, and Bruce Phillippi.

Object of the play, as stated in the script, is to "hold the mirror to the face of man so that he may once more find the truth of Christmas."

Calendar

TODAY - Movie: "The Grapes of Wrath"—Waller Hall Chapel 7 p.m.

Basketball: Bearcats vs. Western Washington College of Education at Bellingham.

TOMORROW - Chi Omega Dance 8:30 to 11:00 p.m.

Basketball: Bearcats vs. College of Puget Sound at Tacoma.

First Baptist College Banquet, Nopp's Golden Pheasant. 6:30 p.m.

SUNDAY - Lausanne Tea. 2:30-4:30.

Doney Tea 3:00-5:00.

TUESDAY - Convocation: Christmas Program, Willamette Choir and Orchestra.

10 a.m. Fine Arts Auditorium.

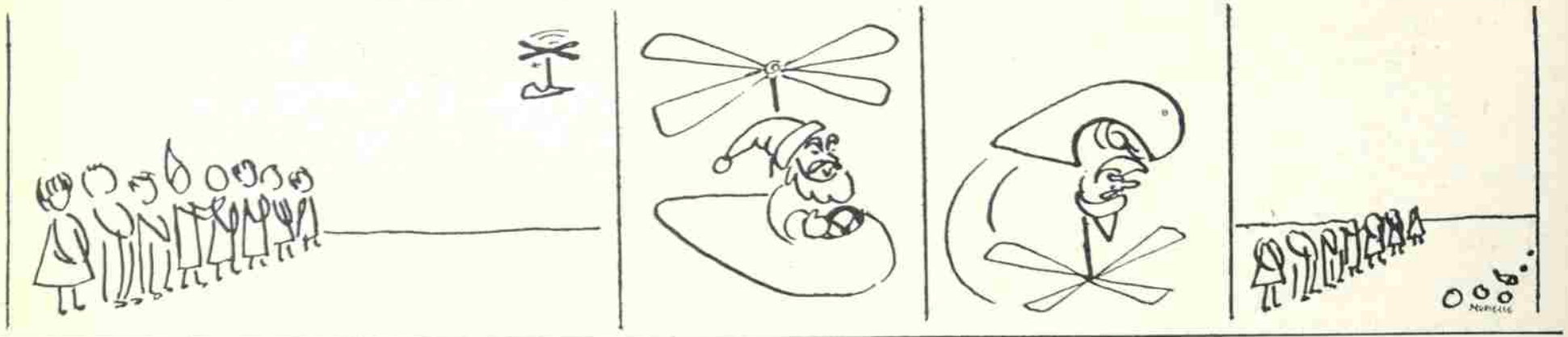
WEDNESDAY - Christmas Firesides.

Senior Pajama Dance, 8:30-11:30, Gymnasium.

THURSDAY - Chapel: First Methodist Church.

FRIDAY - Christmas Vacation Begins 4 p.m.

Basketball: Chico State Here. 8:30 p.m.



Swedish Christmas Customs Contrast With American Ways

As Christmas conscious America pushes her way through crowded department stores and frantically addresses Christmas cards to Aunt Maribel and numerous business acquaintances, Christmas-conscious Sweden is already celebrating the holiday in traditional style.

According to Brigitta Gullers, junior at Willamette from Stockholm, Sweden, the Swedish Christmas begins officially with the first Sunday of Advent when a candle is lit in every home heralding Christmas. On each following Sunday another candle is lit. Prior to this the season has begun with a flurry of house cleaning which is no less thorough than America's spring cleaning.

With the first of December also comes a flurry of baking with the entire family taking part. This is in preparation for Lucia Day which rivals Christmas Day itself in importance in the Swedish household. On the morning of the thirteenth of December the eldest daughter of the family (in the Gullers family Brigitta is Lucia) arises before the rest of the family and dons a long white robe and with a wreath of greens and candles on her head, and followed by a retinue of the younger members of the family sings to the family as she serves them breakfast in bed.

SYMBOLIZING SANTA LUCIA she serves the very special Lucia buns which are cruller-like cakes, and coffee. The Staffan, or Star boys, which follow her sing also. Every office, place of work, and schoolroom has her own Lucia on Lucia Day in much the same way as the pre-Christmas celebrations in America.

The period between Lucia and Christmas is then filled with further house cleaning and preparation. The entire family participates in the dipping and decorating of

the Christmas candles. All Christmas presents which are to be exchanged under the tree are made by the family members individually as are the decorations for the tree.

ON CHRISTMAS EVE the tree is decorated with tiny straw figures, small baskets of sweets, and like the American tree before the entrance of Mr. Edison, with tapering candles. Then the family, with perhaps a very few close relatives, (though the Swedish Christmas is celebrated principally with just the immediate family circle present) waits in breathless anticipation for the coming of the tomte. The tomte or guardian spirit of the house is the Swedish counterpart to Santa. He enters with his long white beard sweeping the floor and a huge pack of toys on his back and all the children anxiously await the moment when they will see if all the rice puddings they have left their friend impressed him and he will give them gifts.

The principal event of the Christmas Eve celebration, Brigitta assures one, is the smorgasboard and dinner. The smorgasboard precedes the dinner and consists of the herring, hors d'oeuvres, and perhaps the little candy pigs known as marizan pigs. Then comes the beautifully decorated ham which is the main dish, the Lutfisk or Lime Baked Fish, and Christmas Rice Pudding. The latter contains a peeled almond in it whose finder will be, according to tradition, the one to be married in the coming year.

AFTER DANCING and singing the family retires to bed since they must be up by 4:00 on Christmas morning to be at church. Everyone arrives in a horse drawn sleigh with jingling bells and carrying torches. The Christmas Sermon then concludes official celebrations and everyone retires to recover from the festivities as indeed Christmasers do in any country.

Poll Finds Current Knowledge 'Appalling'

CHARLEMAGNE'S coronation occurred over the space of 26 centuries—from 800 BC to 1876, 11 years after Lincoln's death. Sweden would be surprised to know that Hammarskjold is now head of the US delegation to the UN (so would Henry Cabot Lodge!). As a geographical category, the Caribbean area has been extended to include a wealth of countries from Austria to Turkey, including Iran somewhere in between.

These revelations were made from a pole taken in convocation Tuesday by the World and Campus Relatedness Commission of the YWCA, under the direction of Lou Ann Mergler and Priscilla Payne. Originally designed to survey the world awareness of the typical Willamette student, the chairman of the poll stated that the ignorance and apathy revealed were "appalling."

Boys ranked a few points higher throughout, though whether this is attributable to greater native intelligence, greater concern, or simply greater gregariousness and ability to copy others' answers, could not be demonstrated. It was significant,

however, that when one wrong answer occurred, whole sections followed with the same error.

MORE BOYS THAN girls read news both in magazines and newspapers, but an equal majority of both sexes listen regularly to news broadcasts. There appeared no correlation, however, between those reading and hearing news, and those who knew any current happenings.

In the sports world, boys led five times over girls in knowing that the Olympics were the recent non-political event affected by the present world crisis, and that Patterson is the new heavyweight champion of the world. The Suez and Pogo were rated as non-political, while some out-dated boy's newspapers were telling him that Marciano was still heavyweight champion.

Despite the botanically inclined boy who defined Ivy, and the easternly oriented gal who put Ivy League, the result of the comic character question was revealing. Where only half put Ivy as one of Dick Tracy's characters, nearly a majority put Ivy Baker Priest.

DANNY KAYE, according to

Art Gallery

Seniors' Styles Vary From Wit to Romanticism

CHRISTMAS CARDS and mosaics, as well as paintings, show the artist's development when collected over a period of time. Nancy Holcomb Carruthers and Margie Wood are exhibiting their college work until Christmas in the Fine Arts Gallery in an illuminating two-woman show.

In offering the only time the school has for recognizing growth an art student makes, this senior exhibit requirement acquires genuine significance. As their awareness of principles and problems grows, changes come about in their work, though here the comparison is available also in a contrast of approach and interpretation.

Where Nancy is sentimental, Margie is bold; where Margie is witty, Nancy is sensitive; where Nancy is studied, Margie is quick. Margie finds her medium in still lifes and nudes; Nancy finds hers in ocean scenes; where Nancy strives

to catch inner depth, Margie captures essence. Most of all, Nancy paints in blues and Margie in reds.

SEVEN OF Nancy's thirteen pictures are water scenes, and no still lifes. Most charming of all is her ocean with such a moist sandy beach that the water fairly drips out of the picture. And her seagulls are utterly soft and feathery. In the Aprilish sand dunes, her composition is good; once again the picture is done near water.

Perhaps is it most significant to note Nancy's lighting. Even her dried wood pilings are luminous; light radiates from her woods and creates vibrancy. Her details are fuzzy and studied, and one finds a definite concentration on mood verging on romanticism. Nancy works with more feeling than plan, and captures a depth which only sympathy can. She is utterly at home with the ocean, fish and blues.

MARGIE WOOD has six nudes and seven still lifes among her 15 paintings. Her method of approach

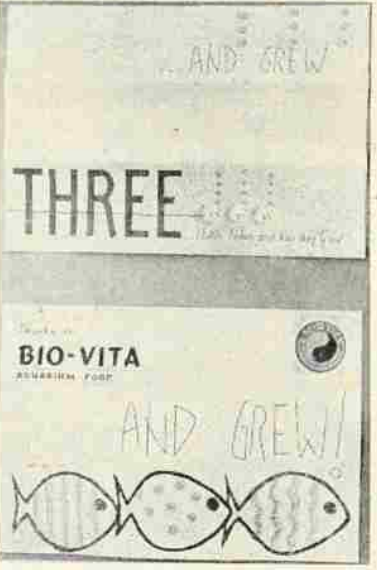
is evident in the nudes. There is an exact mental planning first, then with a few bold and quick steps the figure is drawn. The geometrizing of one nude is an emphasis afterwards of the figure's geometrical patterns as they have become evident. Waller Hall is caught in the same way, quickly, with the essence alone.

Angularity and brevity, bright colors with red predominating, and a certain wit are present in all her work, as she progresses away from the freshman exercises of the uninspired stool compositions.

It is interesting that when Margie changes color types, a dullness appears, as in her ocean scene which is done in faded, foggy blue — her simplicity remains but lacks her vibrancy and light.

A **WITTY**, world-wise wire owl and a pert, sparkling reindeer illustrate Margie's category best. The wit and almost classical brevity produce an enlivening which is charming.

Perhaps neither girl is a great artist, but each has a definite style, a definite manner of approach, and above all an understanding of the media they have used. Witty or romantic, luminous or stylized, planned or felt, the reality communicated through their work illustrates not only agility of technique but the vital awareness demanded by life itself.



'Grapes of Wrath' Shown Tonight

"The Grapes of Wrath," the film made from Steinbeck's great novel, is being shown this evening at 7:30 in the Waller auditorium under the sponsorship of Phi Sigma Tau. Admission is 25 cents.

According to Martin Burlingame, president of the recently founded philosophy honorary, the funds from the showing will be used toward bringing speakers of campus interest in philosophical areas here from greater distances, and paying expenses of the film series.

January ninth is the next date for one of Phi Sigma Tau's films. Tentatively scheduled for next semester are Hamlet, Of Human Bondage, East of Eden, Viva Zapata and Song of Bernadette.

University Drug

Prescriptions, Magazines & Cosmetics

The Campus Drug Store on State St.

ELSINORE
PHONE 3-6798

FRI. thru TUES. DEC. 14-18

"EVERYTHING BUT THE TRUTH"

Starring John Forsythe and Maureen O'Hara

Plus

"I'VE LIVED BEFORE"

STARTING WED., DEC. 19th

Burt Lancaster and Ava Gardner in

"KILLERS"
and
"SLEEPING CITY"

COMING SOON
JAMES DEAN IN "GIANT"

CAPITOL
PHONE 3-5050

FRI. thru THURS. DEC. 14-20

"DAVEY CROCKET AND THE RIVER PIRATES"

Plus

Spencer Tracy and Clark Gable in

"BOOM TOWN"

A great hit returns to the screen again to thrill you.

STARTING THURSDAY, DEC. 20th

Alan Ladd in

"TWO YEARS BEFORE THE MAST"

And

"THE VIRGINIAN"

Willamette Collegian

Official publication of the Associated Students of Willamette University. Entered at the Postoffice at Salem, Oregon, for transmission through the mails as second class matter. Published weekly except during vacations and examination periods. Subscription rate \$2.00 per year.

PEGGY COPE
Editor

LEWIS BEATTY
Publications Manager

'Great Decisions' Discussions On International Issues Dated

Plans for "Great Decision-1956" got off to a very good start Monday night according to the Willamette delegation, at the formulating meeting for a sequence of eight seminar discussions which will begin January 20. Dr. V. E. Andic, head of the Willamette economics department, and Dean Robert Clegg, Dean of Liberal Arts, were among those appointed by Thomas Enright, moderator, to an organization committee.

THIS COMMITTEE will meet at the YWCA Monday night to determine means for getting full support and then it will formulate several discussion groups which will discuss the various topics in January.

The Monday meeting was attended by representatives of city groups including the Unesco group at Willamette. Joe V. Stewart was Unesco's representative. Dr. John Rade-

maker represented the East Salem Lions Club and Dr. Andic, the Salem United Nations association.

GREAT DECISIONS started in 1955 when the Foreign Policy Association, a non-partisan, non-political body, initiated it to help Americans get a clearer understanding of our international problems, their background and alternative solutions that are offered. Americans should then be able to arrive at their own opinions more intelligently.

The idea met with so much favor in 1955 and 1956 that it is being extended in 1957. Gov. Elmo Smith gave the program his commendation and for the first time the program has generous state sponsorship. Cooperating in setting up the machinery for local participation are the extension service of Oregon State College, the general extension division of the State System of Higher Education, and the State Department of Education.

Some of the questions which will be up for study and discussion are how the United States should compete with Russia, United States policies for Europe and Red China, American stakes in the Middle East, the position of neutral nations today, military strategy in the nuclear age, and trade versus aid in the foreign policy of the United States.

Challenge Fund Deficit Remains

The University building fund, which started three years ago with two gifts of \$250,000, was matched by a similar amount through a fund-raising campaign, bringing the total to one million dollars. This was used for the beautiful new buildings which are now in use, \$10,000 of which was pledged by the student body and the major part of which has already been paid. Some of these pledges are the room deposits which will be given by students when they graduate.

However, the cost of the new quadrangle, which includes Doney Hall, Bishop memorial health center, and the Fine Arts building, was considerably more than estimated, the total expense being \$1,203,243. Subsequent gifts have reduced this sum by \$40,000 with still another \$70,500 pledged. The balance, still unpledged, was \$92,743, as of November 15.

No new fund-raising campaign is anticipated this year, but any gifts toward the liquidation of the remaining debt will be gratefully received by the University.

Remember Your Friends
This Christmas
With A Photographic Gift
From
Klassic Photo
1146 Center - 546 State

Capitol Faces Crowds Again

The State legislators will be here again by January 14 and the Capitol coffee shop and the cafeteria in the public service building will be faced by the ever increasing problem of space.

Mr. Scott, manager of the two restaurants, said in an interview with the Collegian, that many local and out of town citizens are always present in addition to the legislators, producing a crowded condition in the cafeteria and coffee shop which results in the legislators themselves having difficulty getting served.

Since it is hardly practical to expect these gentlemen to go all the way downtown to eat during sessions, Mr. Scott wondered if consideration of this problem by Willamette students might not result in some easing of the dilemma.

CAPITOL OFFICE EQUIPMENT CO.
Typewriters Rented - Repaired - Sold
148 South High Street
Next to the Elsinore

THE COMMERCIAL BOOK STORE

"Larry Ballmor"

EVERYTHING IN SCHOOL SUPPLIES
PORTABLE TYPEWRITERS - BOOKS

141 North Commercial

Phone 3-3163

WIEDER'S SALEM LAUNDRY CO.

TRUCLEEN DRY CLEANING
YOU'LL LIKE IT

Wieder's Swift Shirt Service

Leave It At 10 - Wear It At 5

"Free Pickup and Delivery"

263 South High St.

Phone 3-9125

Finals Begin Jan. 26

The long awaited and, by many, dreaded final week has been set tentatively for Saturday, January 26, 1956 and will probably continue until noon the following Friday, Registrar Harold Jory announced. There will be no classes that week - just tests.

Pre-registration for the second semester will be January 16 through 18 Jory also announced. If students complete registration and payment of fees during this time, they will not have to be present on February 4, the official registration day. In past years there have been as many as 400 students pre-register, Jory said, and "it's nice to get them through."

Council Asks To Keep Glee Dead Week

Meeting under the watchful eye of Erasmus, its official mascot, Student Council Wednesday discussed the faculty action in abolishing dead week before major social events. A letter from Dr. Martha Springer, chairman of the educational policies committee of the faculty, was read outlining faculty reasoning in dropping this rule.

WHILE MOST of the representatives were willing to drop the dead week before Parents Weekend and May Weekend, they protested abandoning it before Glee. A motion to go on record as opposing dropping of dead week for this event was proposed and carried by a substantial majority.

In other action, Council decided the method of choosing Model United Nations delegates and elected a selecting committee which will determine who will go as delegates. Anyone interested in being a delegate to the Model U.N. may pick up a petition in the Student Body office Monday.

THIS PETITION will be turned in at a date to be decided later to the selecting committee. Elected to this committee, consisting of three faculty and two student members, were Dean Robert Clegg, Prof. Richard Gillis, Dr. Theodore Shay, Doug Houser, and LouAnn Mergler.

Student Body president Neil Causbie announced the members of the Freshman Glee advisory council have been appointed. Serving on the committee will be the Glee manager John Bergstrom, Bud Mull, Peggy Buckley, Nancy Groth, and Royal Keith.

Arts, Law Degree Rules Broadened

Pre-law students who transfer to the law school after three years may obtain a Bachelor of Arts degree after one year of law-if they have completed major requirements for any of several social sciences. Previously this combination was limited to economics and political science majors.

Although this rule will go into effect immediately, its benefits will probably be limited to underclassmen who will have time to arrange their schedules properly.

Departments in which students may major and be eligible for this degree are history, psychology, philosophy, and sociology.

FLOWERS FOR
EVERY
OCCASION . . .
FROM
Don Lutz Florist
1/2 BLOCK FROM W.U.
ON STATE STREET

Dorms to Stay Open Friday, Close Early Saturday Morning

Christmas vacation officially begins at 4 p.m. next Friday, when all classes are over, but the dormitories will remain open until Saturday for students who are unable to leave Friday.

Baxter Hall and the four fraterni-

ties will remain open until 9 a.m. Saturday, December 21, while one women's dormitory will remain open until 10 a.m. Saturday. Last meal to be served in all campus living organizations will be lunch next Friday.

Women who wish to remain in their dorms until Saturday morning must contact Dean Ewalt to get permission and to find out which of the two women's dorms will be open Friday night. Regular 10 p.m. closing hours will be observed on Friday night.

Sororities must be closed by Saturday morning, according to Dean Ewalt, but they may close earlier if everyone is gone.

All living organizations will reopen Sunday, January 6, probably in the forenoon. The first meal served will be breakfast Monday.

Recital to Have Vocalists, Pianist

Both vocal and piano soloists will be featured in next week's student recital Tuesday December 18 in the Music Hall at 3 p.m.

Soprano Nancy Groth will sing three numbers by Canteloube, "Au Pre de la Rose," "Dido Nanette," and "L'autre Jour en Obulant Danser." Barbara Freitag will accompany her.

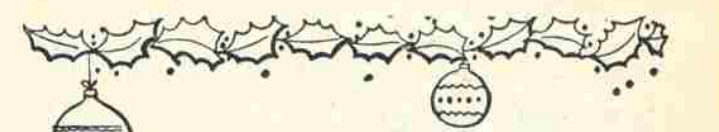
Roberta Clemens, alto, will sing "Pieta, Sig Nore" by Stradelli and two numbers from "The Messiah" by Handel will be sung by Jim Chitick; the recitative, "Thus Saith the Lord" and the aria, "But Who May Abide." He will also sing "The People That Walked in Darkness," by Handel. Both Miss Clemens and Chitick will be accompanied by Sonja Peterson.

Pianist Mac Baker will play "Six Variations on a Parisiello Opera Duet" by Beethoven.

Need a Ride?

Going home for Christmas? Need a ride to Eastern Oregon or Idaho? Then contact Lee Roseberg at the law school or at EM 3-8918 before the Christmas vacation.


Roseberg can take four students, and he needs help with the driving. On December 21 he will leave Salem, traveling through the southern route-Bend, Burns, Ontario, Caldwell, Boise, and terminating at American Falls.



to give and enjoy
for Christmas


Russell Stover

CANDIES



assorted chocolates

1 lb. box - \$1 ³⁵	3 lb. box - \$3 ⁸⁵
2 lb. box - \$2 ⁶⁰	5 lb. box - \$6 ³⁵

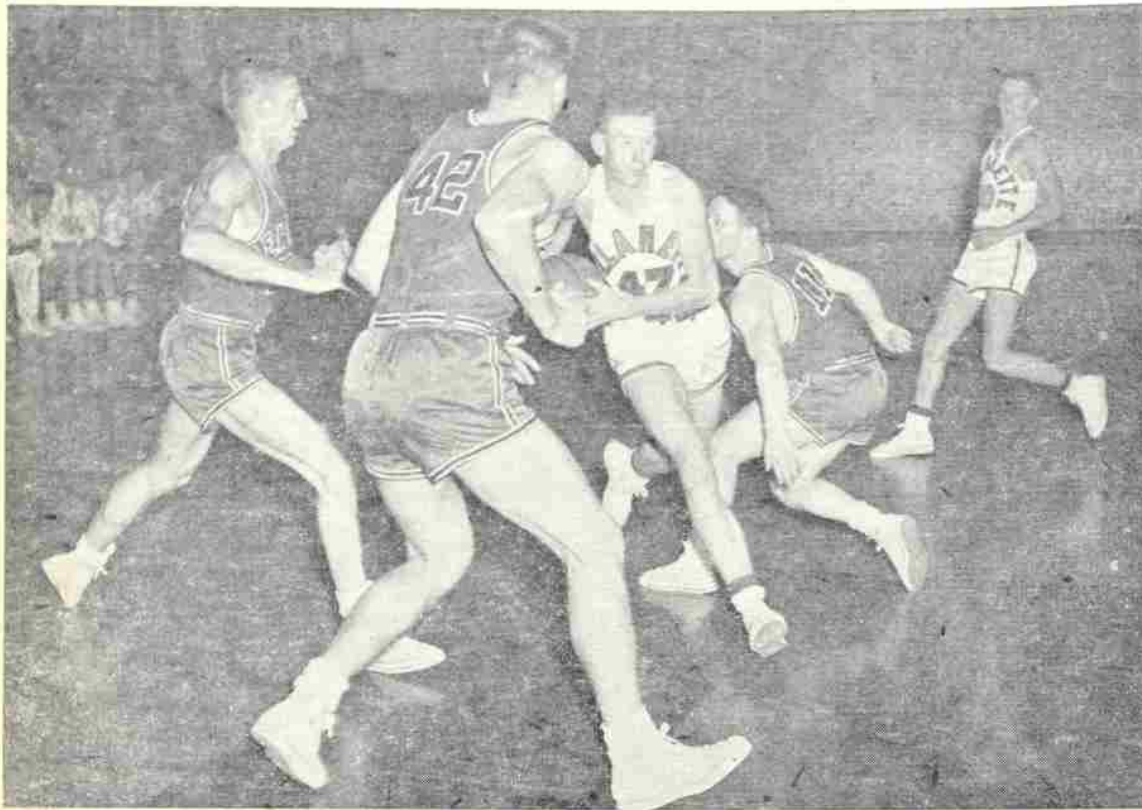


New!
the gift box
... of chocolates and butter tarts

1 1/2 lb. gift - \$2	2 1/4 lb. gift - \$3
----------------------	----------------------

exclusive at

Miller's



Dick Hartley (47), Bearcat forward, drives through key to jump one up. Ed Grossenbacher (40) is shown in backcourt. (Photo by Frank Bash).

Jasons Falter 55-49 in Opener

ONE MIGHT have thought it was snowing inside instead of outside last Saturday night, after checking the ice-cold shooting percentage of the Willamette Bearcats in the first half of their opening basketball tilt with Central Washington College of Education. In going down to defeat 56-49 the Bearcats shot at a frigid .210 in the first half, and Central Washington wasn't much warmer as they recorded a poor .280.

The Wildcats from Ellensburg were led by a couple of 6 foot 5 inch hoopsters by the names of Bill Coordes and Joe Kominski. Coordes, playing the center slot, stuffed in

17 points and Kominski, at forward, hit the hoop for 13.

CWCE TOOK OVER the lead with 10 minutes and 40 seconds gone in the first half and held it despite a couple of game threats by the Lewismen. Willamette held the lead briefly in the opening minutes of play when Don Hoy hit four consecutive foul shots.

Free throws were the only shots that flipped the net until Coordes hit from the field with 8:25 gone in the first half. This was the first field goal for either side and knotted the score at 7-all. Nearly 10 minutes had elapsed before Willamette registered their first field goal, when Hoy hit a soft jump shot from the key.

COORDES STARTED hitting and soon the Wildcats had driven to a nine-point lead, their largest lead of the first half. Willamette's big center, Neil Causbie, got busy and hooked the Bearcats within two points of CWCE, as he flipped in two uncheckable, southpaw hook shots.

The two teams returned to the floor in the second half and put on a real nip-and-tuck scramble, as they traded baskets evenly for the first four minutes of play.

CENTRAL WASHINGTON slowly pulled ahead as the second half progressed, and at the 12-minute mark they were once again out in front by nine points. At this point the Bearcats caught fire and with Causbie and Hoy finding the range they closed the gap to 50-47. Baskets were traded by both teams and then the Wildcats' Stu Hanson slipped through and scored a lay-in. Fred Hauff hit two free throws for

CWCE and that closed the scoring book for the night.

Don Hoy and Neil Causbie were the big scorers for the Bearcats. Hoy hit the twine for 14 points and big Neil garnered 11.

THE PRELIMINARY tussle saw the Willamette freshmen take on the Willamette sophomores. The freshmen emerged the superior basketballers, by the score of 78 to 38.

Buckley Leads Girl Archers

PEGGY BUCKLEY registered a perfect score of 540 for the second consecutive week to lead all Willamette women archers in the 1956 Winter Intercollegiate Archery Tournament. The tournament is conducted under the auspices of the Archery Sub-Committee of the National Section for Girls' and Women's Sports.

The total scores are sent to national headquarters, where they are entered into competition with schools throughout the entire nation. Classifications are provided so that competition can be adjusted to meet limitations in time, space or number of archers.

LAST YEAR the Willamette teams captured the coveted first place honor, and also picked up second, third, fifth and sixth place spots in national competition.

Capturing first-place scoring honors each week, Buckley scored a 536 in the first round of competition. She was followed by Marilyn Helm with a score of 524. Gail Beyer's 516 was third and Janice Adams' 514 was fourth.

THE SECOND WEEK, once again, found Buckley leading with a perfect 520, Janice Adams 516, trailed with 520, Janice Adams 516, and Judy Eberhardt 514.

In the third and final week Buckley scored her second perfect 540, and was followed by Adams with 534, Eberhardt 520 and Beyer 516 score. Not only are the total scores impressive, but just as promising is the fact that the scores have consistently improved with each week of play.

Sports

By PAUL ALDINGER, Editor

Phis, SAEs, Betas, Sigs Lead; Three Clubs Remain Unbeaten

TOP SPOTS IN the three intramural basketball leagues are well divided among the different living organizations, as teams enter their fourth round of competition.

In Tuesday night action the Phi Delt is in first place with three wins and no losses. The SAEs hold down top spot in Wednesday evening competition with a 3-1 record. The Saturday morning league is paced by Beta Theta Pi and Sigma Chi, both having perfect 3-0 slates.

LAST TUESDAY the Phi Delt kept their record clean, when they dumped the Law School 25-14. Dave Poff led the winners with eight points, followed by Bob Withers with seven. Baer was high for the lawyers with six counters.

IN THE CURTAIN raiser the Sigs blasted the SAEs 32-16. Leading the Sigs in scoring was Klindworth with 11 markers. George Nelson found the range for six in a losing effort for the Sig Alphas.

The Independents outfought the Betas 17-14 in the final game of the evening. Whittle and Burlingame were high men for the winners, with six and four points respectively. Larson led the Beta scoring with six points.

TUESDAY NIGHT LEAGUE

	W	L
Phi Delt	3	0
Law School	2	1
Betas	1	2
Independents	1	2
SAE	1	2
Sigs	1	2

UP TO THIS week the SAEs led the Wednesday night slate with three wins and one defeat. The Sigs had a 2-0 record and the Phis a 1 and 1 count. The SAEs dropped the Phi Delt last week, 42 to 40. Dale Hartman scored 14 points for the SAEs and Doug Card was high for the Phis with 11.

The same evening the Sigs crushed the Independents 33-9. John Corson paced the winners with 10 tallies, followed by Bostock with nine. Pailthorpe had four for the Independent team.

WEDNESDAY NIGHT LEAGUE

	W	L
SAEs	3	1
Sigs	2	0
Phi Delt	1	1
Betas	0	1
Independents	0	1

A Complete Music Store Since 1879

WILLS MUSIC STORE

Telephone 3-4959

432 State St. Salem, Oregon
Vernon Wiscarsan, Owner

When You Think
Drugs Think

SCHAEFFER'S DRUG STORE

135 N. Commercial St.

Naturally Fresh



SATURDAY morning basketball got under way with the Betas dropping the Rinky-Dinks 43-30. The win kept the Betas' record unblemished with three wins and no defeats. Dave Barrows dropped 20 points through the hoop for the Betas and Kent Hotaling trailed with 10. Dale Shumway had 14 points for the losers.

THE SIGS defeated the Phi Delt to the tune of 31-13. Bob White tallied 14 for the Sigs, and Ken Stoop had five for the losers. Baxter gained a victory to their credit when the SAEs failed to show.

SATURDAY MORNING LEAGUE

	W	L
Betas	3	0
Sigs	3	0
Independents	1	1
Rinky-Dinks	1	2
Phi Delt	1	2
SAE	0	3

WHITE STAG SKI TOGS

WIDDER SKI BOOTS

HART METAL SKIS

FISCHER SKIS

SKI RACKS

ACCESSORIES

IMPORTED & DOMESTIC SKI SWEATERS - 1/3 OFF

don harger - sporting goods

153 S. High Ph. 3-4555

GIFTS

HE'LL WELCOME
IN HIS WARDROBE

• SPORT COATS

Here's a gift that will rate tops with the man who rates tops with you! 100% wool in the smartest styles, patterns and colors.

\$22.95 to \$27.95

• SLACKS

Make him "Slack Happy" this Christmas. Choose from our big selection of 100% wool slacks. All sizes.

\$7.95 to \$15.95

Open All Day Saturday

KAY WOOLEN MILL STORE

Across From W. U.

ADS ARE
NEWS
READ THEM

NOW in Decorator Colors!

- MIST GREEN
- DESERT SAGE
- WHITE SAND
- FRENCH GRAY

3 MO.
RENT
FREE
ON
PURCHASE



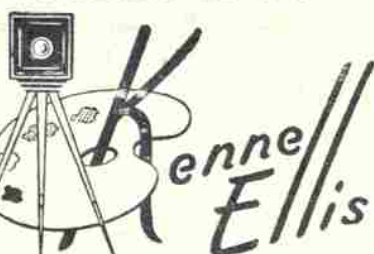
The New REMINGTON
Quiet-riter

NEEDHAM'S

Stationery - Office Supplies
465 State St. Salem, Ore.

Plan Ahead for Christmas

THE PERFECT GIFT
YOUR
PORTRAIT BY



ARTIST PHOTOGRAPHERS

520 State St.
Special Student Rates

Phis Top Keglers; Whitehurst Best Individual Bowler

By PETE BLEWETT
Collegian Sports Writer

AT THE CLOSE of the eighth week Phi Delta Theta continues its domination of intramural bowling. Only three points separate the Phi Delt's number one and number two clubs, as they lead the league with 31 and 28 points respectively.

Running third and fourth are the two SAE squads. The Sig Alphas have chalked up 18 counters for the first team and 17 for the second squad.

ROUNDING OUT the league are the Beta's number one club with 16, the Sigma Chi's number one with 15, Beta's number two with 14, Baxter Hall with 7, Phi Delt's third team with 6, and the Sigma Chi second squad with 4 points.

The Phi Delt's hold high team honors with a three-game total of 1987 pins and high game honors with a top score of 683. Duane Baird rolled the top league series of 558 and John Sweeney has collected 211 sticks in one contest to lead the pack in the single game department. Tom Whitehurst tops the field with a 165 average, and Howard Stobel runs a close second with 163 pins per contest.

TEAM STANDINGS

	W	L	TP	HG	HS
Phi Delt 1	23	1	31	683	1987
Phi Delt 2	21	3	28	675	1871
SAE 1	13	8	18	623	1744
SAE 2	12	9	17	648	1711
Beta 1	12	12	16	660	1852
Sig Chi 1	12	12	15	631	1829
Beta 2	10	14	14	620	1769
Baxter Hall	6	18	7	623	1609
Phi Delt 3	5	19	6	618	1686
Sig Chi 2	3	21	4	590	1880

HIGH INDIVIDUAL AVERAGE

Tom Whitehurst	165
Howard Stobel	163
Andy Keuhn	157
Frank Caruso	156
Duane Baird	152
Ed Boothby	152

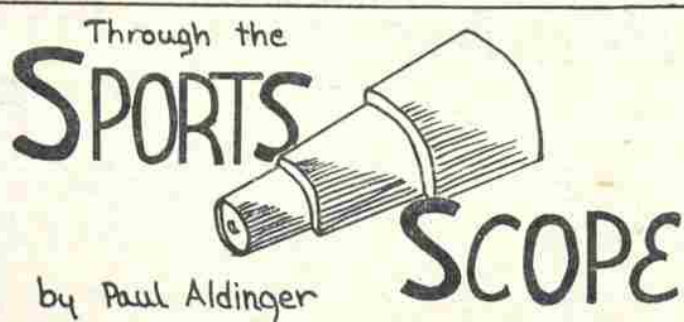
GIFT SUGGESTIONS FOR CHRISTMAS

- Sport Shirts by Paul Howard, Koret and Duke of Hollywood. Tops in styling and exclusive fabrics. **from 4.95**
- Martex Terry Cloth Robes in White, Gray, Yellow and Blue. **10.95**
- Car Coats. An extensive assortment from which to choose. **from 22.95**
- Sport Coats of imported Tweeds and Shetlands by America's foremost stylists. **from 29.50**
- Neckwear by Duval, Damon and Regal—Silk Repps, Spittalfields and Fourhands. **from 1.50**

We feature Ivy League styles short point, button down button in back, Sport and Dress Shirts. **from 4.95**

FREE DELUXE GIFT WRAPPING

Hewitt's
DISTINCTIVE MEN'S WEAR
Corner Senator Hotel



TODAY IS THE DAY the Oregon State College Beavers began their limbering-up exercises in regular scheduled sessions, before they leave for Santa Monica on December 18. Not only have the Beavers been on a special training table for the past couple of weeks, but Coach Tommy Prothro has had them on a study-table program, held nightly from 7 to 9 p. m. in Gill coliseum. Several thousand Oregon State students held an official "Good Luck" rally for the Beaver football team Monday. Prothro spoke and appeared hopeful that the squad would be in top strength for the Rose Bowl tilt.

AL LIGHTNER mentioned in his column, not too long ago, the fact that Salem would be represented in the Rose Bowl by way of the new equipment, which OSC purchased from Howard Wicklund's sporting goods store. We would like to add that the city of Salem has another local entrepreneur, who will help to give Salem representation in the Rose Bowl. We're speaking of Clayton Foreman, the proprietor of Kennedy's City Cleaning Works. Clay has the responsibility of cleaning and mending all of OSC's athletic uniforms. In fact, his son-in-law Harvey Koepf—a Willamette senior, took the last load of uniforms down Corvallis way last Monday.

FOREMAN DOES the cleaning for Lewis and Clark, OCE, Salem High Schools, a number of Portland high schools, and of course—Willamette U. However, his cleaning ability is recognized even beyond state boundaries, for the professional New York Giants send all their uniforms to Foreman at the end of each season.

TURNING OUR thoughts to basketball, there will be a maple court extravaganza taking place this weekend up Seattle way. Wilt (The Stilt) Chamberlain and the Kansas Jayhawks will engage the University of Washington on Friday and Saturday nights. Elgin (Rabbit) Baylor and the Seattle Chiefs take over the basketball spotlight in the Puget Sound area Monday and Tuesday, when they meet the Rainbows from Hawaii. Coach Phil Woolpert of the University of San Francisco had high praise for "The Rabbit" after his Dons had to stage a last minute rally in order to edge Seattle and run their record winning streak to 59 games.

THE PRAISE that is being heaped upon Baylor and Chamberlain, and the nature in which they are packing the house wherever they play is in sharp contrast to the response that greets a certain giant of the maples in another country. We're thinking of Jan Krouminch, the prognathous pylon of the Russian Olympic basketball team. Like so many of Russia's claims, Krouminch was supposed to be without equal.

RECENT OLYMPIC fans report that the big fellow is a picture of bewilderment. He is ignored by teammates, the ball occasionally bounces off him while he is in the process of looking for it. He excites in the crowd, in order, exclamations, guffaws, and then sympathy. He rarely gets into a game anymore, and then only for a short time. He just sits on the bench and nibbles at his fingertips, wishing he was home in his native Latvia. He has turned out to be another Russian hoax, used only to strike fear into teams before they actually meet on the floor.

WAYNE'S BARBER SHOP

146 South 13th Street
A Block Off Campus

SAEs, Baxter Tie for Lead

THE BIG FOUL shooting go of the current campaign, featuring the front running SAE and Independent teams, turned out to be a draw. Both teams garnered 99 points and so remain deadlocked for first place.

The first match of the evening pitted the third place Phi Delta Theta team against the Betas, who are tied with the Law School for last place. The Betas once again came out on the short end of the score as they were dumped 106-82.

ROUNDING OUT the evening competition was the Sigma Chi-Law school contest. The Sigs came out on top 104 to 0, as the Law School failed to show for the tilt.

ANDERSON'S SPORTING GOODS

Salem's Ski Headquarters

HEAD SKIS

S & H Green Stamps

167 No. Commercial

Phone 3-5934

UNIVERSITY BRANCH U. S. NATIONAL BANK

1310 State Street

THE "BEARCAT BANK"

Cat Hoopers Travel

HAVING DROPPED their home opener, the Willamette Bearcats have invaded the far-North in hopes of revenge and gaining their first win of the season. Tonight the Jansons take on Western Washington College of Education in Bellingham. Tomorrow they meet CPS.

Coach Jack Hubbard's WWCE team is an improved and greatly

strengthened squad from last year. WWCE has bolstered its personnel with the addition of several returning veterans from the service. They also boast the transfer of Leroy Nelson, the hook shot specialist, from Lower Columbia JC. Nelson is a prolific scorer, utilizing his hook to great advantage, and is a demon on the boards.

Tomorrow the Bearcats move into Tacoma for a tilt with CPS. The Loggers of CPS boast a couple of smooth working guards in Don Moserd and Jerry Thacker. They have good backboard strength in Bob Bafus and Barnett, who is also a consistent scorer.

COLLEGE OF Puget Sound blasted Pacific University early this week, 86 to 69. Moserd was high point man with 17, and Thacker dumped in 14. The Loggers used their superior speed to overcome a hard pressing Pacific crew.

Coach Johnny Lewis stated that the Northern road trip would be fine experience for his young Bearcat squad. He expects to meet real competition in both Washington clubs, but feels his squad is ready and anxious to avenge their opening loss.

The Bearcats return to Salem after the CPS game and meet Chico State next weekend in a two game series.



Don Hoy, veteran forward, is being heavily counted on for the added spark needed to make the Bearcats real title contenders. Hoy led all Bearcat scorers in shooting percentage last year.

Ski Pants Mens Sun Valley Grey 31" long

Ladies balli Ski Boots 4 1/2

Tuxedo 38 long

Phone 2-9779

MRS. DAVIDSON
2994 Lawrence

Give Your Portrait For Christmas!

Have Them Made Now at

McEwans Photo Shop

"Always Those Reasonable Prices"

DON'T WAIT! Pick yours out now for Christmas

Come in soon and see the portable that gives you big machine performance! Full-size keyboard. Wonderful to get... or to give!



Smith-Corona

WORLD'S FASTEST PORTABLE

ROEN

Ph. 3-6773

as little as \$125 a week

456 Court

HEIDER'S TV-APPLIANCES BRINGS YOU

Magnavox

HI-FI PHONOS - RADIO PHONOS

- 2 Speaker Hi-Fi Portable with Collaro Automatic Changer \$79.95
- Really Powerful Transistor Pocket Portable \$59.50

OPEN TIL 9

HEIDER'S TV-APPLIANCES

363 N. HIGH

Holiday Activities Calendar

December 9
University House Christmas party, 7-9 p. m.

December 11
Pi Beta Phi alumnae party, 7:30-9 p. m.

December 14
Chi Omega Mothers Club, at the home of Mrs. Lyle McCauley, 8 p. m.
Doney tree trim party, 8:30-11:30 p. m.
Sigma Chi tree trim party, 8 p. m.-midnight.
Beta Theta Pi Christmas party, 8 p. m.

December 15
Alpha Chi Omega pledge tree trim, 8 p. m.
"Holiday Inn," Chi Omega house dance, 8:30-11 p. m.

December 16
Doney Hall Christmas tea, 3-5 p. m.
Lausanne Hall Christmas tea, 2-4 p. m. (University House assisting).
Independent Women's party, Lausanne Lounge, 6-8 p. m.
Sigma Alpha Epsilon pledge tree trim, 5:30 p. m.

Delta Gamma tree trim, 7:30-9:30 p. m.
Pi Beta Phi tree trim for Fairview girls, 1-2 p. m.

December 17
Chi Omega house party, with gifts for the house and underprivileged children, 5:30 p. m.
Delta Gamma alumnae-active coffee hour.
Alpha Chi Omega alumnae, patronesses, and Mothers' Club meeting, 8 p. m.

December 18
Baxter Hall party for underprivileged children, 5:30-8 p. m.
Chi Omega alumnae-active party, Mrs. Frank Brown, Accacia Drive in Laurel Springs, 8 p. m.

Delta Gamma seniors' house party, 5:30 p. m.
Lausanne Hall house party, benefit for charity.
University House gift exchange for needy children, 10 p. m.

December 19
Caroling Firesides, 5:30-8 p. m.
Alpha Chi Omega-Independent Men, Chi Omega-Sigma Alpha Epsilon, Delta Gamma-Sigma Chi, Independent Women-Phi Delta Theta, Pi Beta Phi-Beta Theta Pi.
Senior Class pajama-top dance, gymnasium, 8:30-11:30 p. m.

December 20
Pi Beta Phi member-pledge party, 7-9 p. m.
Sigma Alpha Epsilon house party, 10 p. m.
Sigma Chi underprivileged children's party, 5-8 p. m.
Phi Delta Theta underprivileged children's party, 5-8 p. m.

'Holiday Inn' Winter Theme For Chi Omega Semi-Formal

The Chi Omegas will transform their chapter house into a "Holiday Inn" for their semi-formal house dance tomorrow evening from 8:30 until 11 p. m. Dancing will be to hi-fi.

Decorations will carry out the theme with ski jackets and mufflers placed in the entry hall and a rustic "inn" sign which will welcome the couples.

THE LIVING ROOM will have a holiday atmosphere with frosted windows, a fireplace, and traditional tree with gaily-wrapped packages which will be taken to a state institution after the dance.

A blue sky, stars, and moon look over a clearing in a forest where a bonfire provides contrast against banked snow. Also in the dining room will be frosted windows with lights shining through. Mary Beebe, general chairman, assisted by Pat Edwards, is in charge of the dance.

Christmas cookies and egg nog will be served from a curved bar in the beau room. The pledge class is in charge of programs which will have blue on white octagon-shaped covers, white tassels, and a poem inside.

INVITED as honored guests are President and Mrs. G. Herbert Smith, Dean and Mrs. Robert D. Gregg, Dean and Mrs. Melvin Geist, Dean and Mrs. Seward P. Reese, Dean Regina Ewalt, Dean Elmer Rieck, and the Chi O housemother, Mrs. Mary Langan.

Bidden to attend as chaperones are Dr. and Mrs. William G. Cornelius, Dr. and Mrs. Clifford T. Hanson, and Dr. and Mrs. Theodore Shay.

Twelve O'Clocks Given For Pajama-Top Dance

Twelve o'clock late permissions have been granted for Wednesday, December 19, when the senior class pajama-top dance will be held in the gym. The dance begins at 8:30, following the Christmas caroling, firesides, and will end at 11:30. Pajama tops are to be judged and Santa will be among the judges. There will be no admission charged for the function, to which everyone is invited.

AWS Awards Coed-of-Month; Ambler Is December's Choice



Joyce Ambler

Joyce Ambler, senior music education major, was named coed for the month of December in convocation Tuesday in recognition of her campus leadership during her years at Willamette. Dollie Cummings, AWS president, presented Joyce with a gold cup.

President of the Alpha Chi Omega house, Joyce is also vice-president of Cap and Gown, senior women's honorary, and secretary of Mu Phi Epsilon. She was president of Beta Alpha Gamma, the sophomore women's honorary, in her sophomore year.

Joyce has also been tapped by Kappa Delta Pi, national education honorary, and is senior scholar in music and a member of the a cappella choir. She was Betty Coed in 1955.

The Amen Corner

First Baptist's College-Age Winter semi-formal banquet will be held tomorrow evening at Nopp's Golden Pheasant restaurant at 6:30 p. m. Rev. Thornton Jansma of Forest Grove will be the speaker and Gary Messing from OSC will be the master of ceremonies. Tickets are \$1.75 each. Those interested in attending are urged to call 4-2285 or 4-5913 immediately to make their reservation. After the banquet the group will adjourn to the home of Frank Beckwith 2862 S. High, for a party.

The program for Sunday evening's youth service will be sponsored by the Salem students at Seattle Pacific College. Plans include a sextet from Portland for special music. The group meets at 6:15 p. m. in the church.

The Social Scoop

By FLOSSY HODGE

A special get-well wish to Dr. Kohler from all those who know him. A broken ankle has kept him at home the past week; we didn't realize how much we gained from his lectures until we didn't have them. Parties are being planned for him by various groups of his students.

Recordings of Shakespearean sonnets may be heard today at 1 o'clock in Eaton 33. All drama lovers and students are cordially invited.

Another famed person on the sick list is Don Peterson, ASWU member-at-large, and handsome young man about campus.

Sigma Mu, or the sisterhood of the shaggy mops has sprung up in the Alpha Chi Omega house among all the inhabitants who have begun the torturous process of letting their hair grow. Pixie Oppenheim is president of the group and Gail Boden serves as an able vice president. The fraternity badge is a bobby pin secured by blond, red, and brown ribbons.

The Chi Omegas have a cannibal gold fish. They were very pleased the other day when they became the proud mothers of many little goldfish; all the babies have disappeared except one and Mother Goldfish is suspected of having a peculiar taste for her small ones.

Everyone be sure to attend Grapes of Wrath tonight at 7 in Waller Hall. This is one of the best movies produced; it is realistic and depressing (will someone explain to me why mostly everything that is realistic is depressing?). It is a movie that one shouldn't miss, however, and a good group at this showing will insure more good movies.

"Cleaned right & pressed right by Burrights"

Burrights Cleaners
198 SOUTH CHURCH STREET
Phone 3-4242

the town shop

"Exclusive But Not Expensive"

Ladies
Ready-to-Wear &
Accessories

Gifts Exquisitely

Charged Without Charge

Liberal Credit Terms

Capitol Shopping Center

GAY'S

The Best Place to
Buy the Best
Candy

135 North High

You'll Like Our Service

PRINTING

Programs - Announcements

WALLY'S PRINT SHOP
(La Crosse Printers)

Masonic Bldg. 495 State St.
Phone 3-8853

as full of possibilities as a blank check

See Christmas list of things from

Leon's

Kay's

Women's Fashions

- SPORT
- CASUAL
- DRESS

460 State
CHARGE TODAY
Take Time To Pay

Camera Headquarters

Specialist in Cameras - Photo Equipment

- Zeiss
- Polaroid
- Bell & Howell
- View Master

See us for expert film finishing

COBURN CAMERAS 174 North Commercial St.
Photographic Christmas Cards
Phone 2-1841
SALEM, OREGON

Wipman's

Charles of the Ritz captures hand beauty in this charming Christmas gift. Soothing, smoothing Hand Lotion in a sparkling cylinder. A captive Christmas tree sits atop to set a joyous holiday mood. Stuff it in a stocking or suspend it from a tree—a gift of beauty in a beautiful gift. \$2.00 plus tax.

Charles of the Ritz

WE GIVE S & H GREEN STAMPS

Jackson Jewelers

AUTHORIZED DEALER FOR

OMEGA WATCHES
WED LOK & ART CARVED
DIAMOND RINGS
WALLACE KIRK
INTERNATIONAL
GIFTWARE

SALEM 3-5640
225 N. LIBERTY

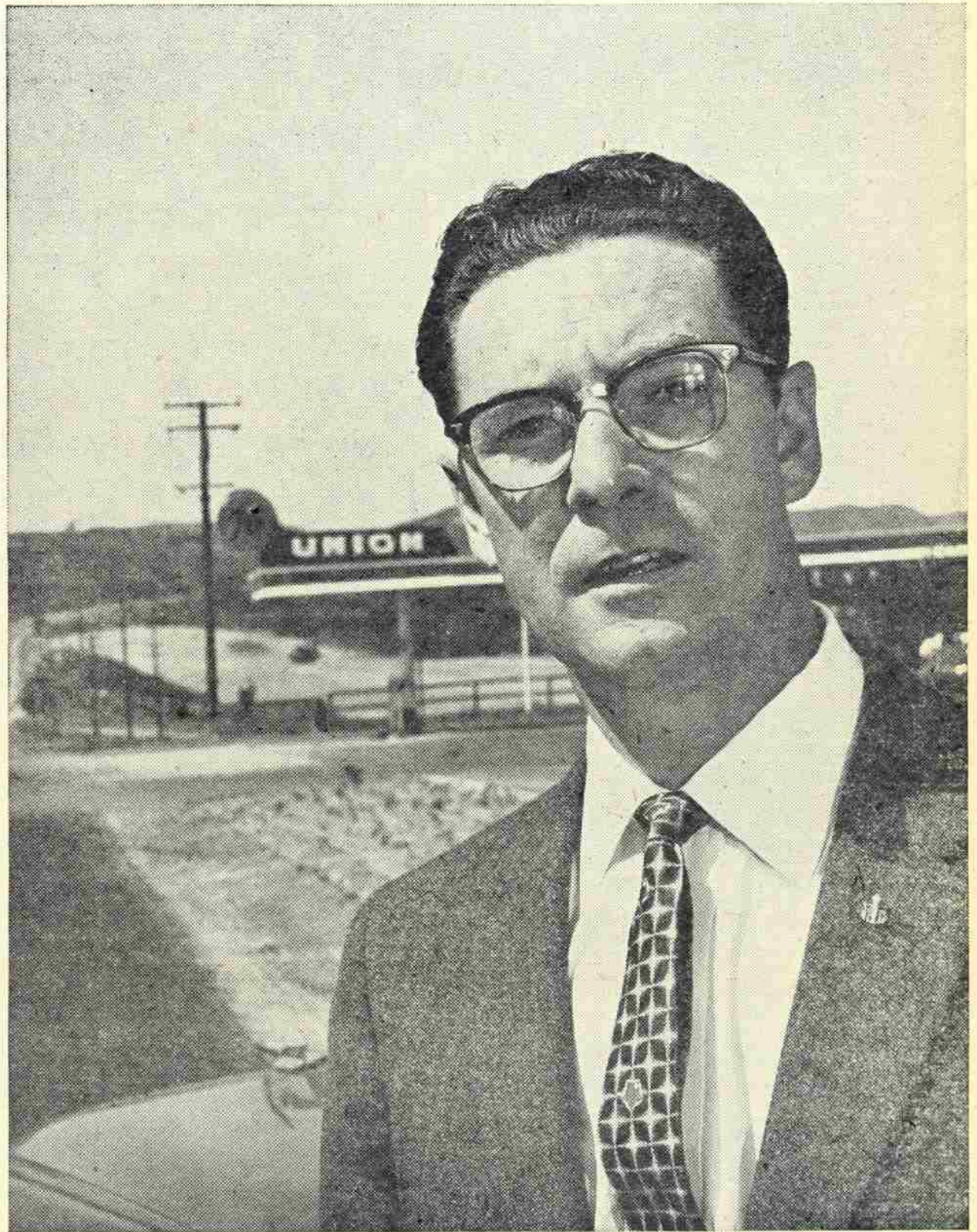
Allen Ely

Or how much highway in a gallon of gasoline?

“ASK A PERSON what he pays for a gallon of gasoline and even if he remembers correctly, his answer is usually wrong.

“Because nine times out of ten the price he quotes includes the tax.

“Gasoline, you see, is one of the few things we buy where the tax is lumped-in with the total cost of the product.



“ASK A PERSON WHAT HE PAYS FOR A GALLON OF GASOLINE... HIS ANSWER IS USUALLY WRONG.”



“Don’t misunderstand me. That tax helps build the highways this country needs, and certainly we are in favor of it.

“But since by law we have to collect it—and many motorists figure it’s part of our profit—it doesn’t make the dealer’s or our selling job any

easier. Especially since the federal tax on gasoline went up another cent last July.

“That means direct state and federal taxes now average 8.8c per gallon. In some states it is even as high as 10c.

“We get only a few cents more than that at the refinery for a gallon of gasoline. But the tax is still cheap if it buys the best highway system in the world.

“Next time you get your bill for filling up, though, just remember that at least 8.8c per gallon is the cost of roads, not gasoline.”

* * * *

Allen Ely—with the Union Oil Company since 1927—is responsible for paying our fuel and gas taxes to the government.

Last year, for example, we collected from our customers and turned over to state and federal agencies some \$63,000,000 as fuel taxes.

In spite of this, you never got so much for your money as you do today when you drive in and say “Fill her up!”

For while the cost of everything else has tripled and quadrupled in the past 20 years, we’re getting only a few cents more for gasoline.

And two gallons of our new Royal 76 premium do the work of three of our old product.

YOUR COMMENTS ARE INVITED: Write: The Chairman of the Board, Union Oil Company, Union Oil Building, 617 West 7th Street, Los Angeles 17, California.



Union Oil Company OF CALIFORNIA

MANUFACTURERS OF ROYAL TRITON, THE AMAZING PURPLE MOTOR OIL

WITS Christmas Tree Sale Tomorrow Located in Chresto

Christmas trees will be sold in Chresto Cottage from 9 a.m. to 7 p.m. Saturday by the Willamette independent town students. This is a fund-raising "buy your Christmas tree without the rain and mud" project, according to president Dan Newberry. Students will be there all day to aid those wishing to select a tree.

New Course Offered

Among new courses offered next semester will be one by Dr. Theodore Shay on Soviet-Communist foreign policy. An upper division political science course, it is scheduled for 1 o'clock Monday, Wednesday and Friday, replacing the present Oriental philosophy course.

N. J. Court Uses Parker Law Text

Dr. Reginald Parker of the law school learned recently of the use of a book written by him on administrative law in a decision by the New Jersey Supreme Court.

Although courts lean heavily for decisions on the opinions of other courts and judges, it is seldom that a book is cited. In Parker's case, he learned that the New Jersey court not only referred to his book, but also included into its opinion a full paragraph of the text.

The case was brought to Parker's attention when he read the November issue of the Atlantic Reporter, a publication which reviews cases decided in the State supreme courts.

Club Elects Officers

At a dessert meeting held at North's restaurant, the Physical Education club elected two new officers this week. Dollie Cummings was elected president while Dan Feller was named secretary. The group also discussed the possibility of having special speakers on physical education at future meetings.

Established 1891 Phone 3-7516

SHAFER'S LEATHER GOODS

For Brief Cases

Leather Gifts of All Kinds

F. E. SHAFER Res. Ph. 3-5029

Salem's Only Complete Leather Store
125 N. Commercial St.

Thanks' A Million Bearcats

It's a Pleasure
To Serve You!

Launderette

1/2 Block East of Willamette U.
on Ferry St.

Wednesday evening all town students are invited to join in the Christmas firesides for an evening of caroling and tree trimming. They will meet with the men of South Hall at 6:30 in Chresto Cottage, from where they will depart to sing at various places in town. After caroling they will return to Chresto to trim the tree with cranberries, marshmallows and other do-it-yourself decorations. The tree will be donated to Fairview.

All town students are urged to attend and bring their friends, announced Newberry.

'Victors' Auditions Complete; Cast to Be Announced Soon

Tryouts for the second in the current three-play series, "The Victors" by Jean Paul Sartre, have been completed director Robert Putnam revealed. He will not be able to reveal members of the cast until early next week, however.

Commenting on the response to notices on tryouts, he said that the turnout for this production has been very good. About 16 or 18 men and five women tried out for the ten parts, nine of which are for men.

When conducting tryouts, Putnam said, he looks mostly for potential-

LATE PERS! FUN! FROLIC!

Twelve o'clock late permissions have been granted all women students so that they may attend the annual senior class-sponsored pajama-top dance Wednesday evening from 8:30 until 11:30.

Dave Amsberry, general chairman for the occasion, stated that prizes will be awarded to the best-dressed boy and girl, and that Santa Claus will appear to take charge of the judging. Gayle Rogers and Bob Wood are among those working with Amsberry.

This is usually one of the best dances of the year; and the seniors urge everyone to attend. Besides, it is free!

ities. Partly he looks for ability to read lines, but this is only one aspect of what he is looking for. Especially desirable, he commented, is an intelligent approach to the play. "Mistakes in reading are allowable," he said. "They can be corrected. What I look for is intelligence in handling the part."

Putnam characterized the play as unusual, adding that this is the first time since he has been here that a production of this type has been attempted. He described it as very modern and intense in acting requirements. It is almost consecutive in action, and, Putnam said, starts at a high peak and keeps building through the emotional crises of the characters.

'Meaning of Christmas' Wesley Theme Sunday

Rev. Joe Harding will give the communion service at Wesley Sunday evening, after a program on "The Meaning of Christmas." The meeting will consist of a consideration individually of the various aspects of Christmas: commercial, family, religious, and its paradoxes in non-Christian countries.

Beginning at 6 p.m. there will be quiet recreation and carol singing. The meeting will be held upstairs in the First Methodist church.

Counselors Called

AS THE NEW chairman of the Oregon Camping Section Recruitment committee, Dr. Gale Currey has announced the need of counselors for summer camping programs. Both men and women students are urged to see Dr. Currey about the many summer counseling positions that are open to all students.

Organized summer camping is now recognized as a broad educational experience. Many schools throughout our country have added camping to the school curriculum. Colleges and universities are finding in organized camping invaluable laboratory experiences for their students who are going into the fields of education, psychology and sociology.

AS COUNSELORS men and women have an opportunity for working with boys and girls twenty-four hours a day over a period of many weeks under supervision and direction.

San Francisco Macy's To Hold Career Day

Macy's annual Career Open House will be held Thursday and Friday, December 27 and 28, at 1:30 p.m. in San Francisco. It will consist of a tour of Macy's San Francisco store, a general discussion of the organization of a retail store, and individual interviews of those possibly interested in working there.

Andic, Gillis to Travel To Economists' Meet

Dr. Vojtech Andic, head of the economics department, and Prof. Richard Gillis, also of the department, will travel to Cleveland, Ohio, during the Christmas vacation to take part in the annual meeting of the American Economic association.

The conference, which is scheduled for December 27-29, will be held in conjunction with a meeting of the Economic Society.

Theme of the meeting will be consideration of recent institutional and ideological changes.

DELLS BOOK STORE

139 N. High St.
Ph. 2-7627

"Used Books Bought and Sold"

'Mademoiselle' Contest Offers \$500 Prize for New Fiction

An opportunity to write fiction for \$500 is being offered to undergraduate college women by Mademoiselle magazine. In a nation-wide contest, the magazine offers two prizes of \$500 each for serial rights

to the stories as well as publication in Mademoiselle.

Although only two stories receive the \$500, finalists are invited to revise their stories, and Margarita G. Smith, fiction editor of Mademoiselle, pointed out that both of last year's honorable mention stories were printed in the magazine at regular rates.

Miss Smith emphasized that entrants will be competing only with women of their own age and experience. Deadline for entering manuscripts is March 15, and they should be submitted to College Fiction Contest, Mademoiselle, 575 Madison Avenue, New York 22, New York.

Further information about the rules of the contest may be obtained by reading the information sheet posted on the bulletin board by the Student Body office in Waller Hall.

Head to Be Listed Of Entertainment

Applications were due Wednesday in the student body office for the new position of half-time entertainment manager, it was announced by Wayne Carr, Student Body first vice president and chairman of the rally squad commission.

"Half time entertainment manager will soon be one of the biggest managerial positions on the Willamette campus, holding the same prominence here that it does at many of the larger universities around the country," Carr said.

The new office, open to members of all four classes, provides an opportunity for a student to be active on campus and to use his imagination and organizational ability. Those interested in show business would be afforded valuable experience in organizing acts and acquainting themselves with the mechanics of stage management.

The manager's term of office would be through football and basketball seasons, except this year, due to his late start, he will serve only until the end of basketball season. Until the manager is named, no plans for entertainment will be announced.

EM Prefix Use Begins

Be sure to remember to put EM prefix in front of phone numbers tomorrow, Willard Bunney, Fusser's Guide editor, reminded students. All the numbers following the prefix will remain the same, but without the EM no connection will be made, he explained.

Ace's Barber Shop

1256 State Street

KENNEDY'S

CITY CLEANING WORKS

1245 STATE ST. — PHONE 3-6897
MASONIC BLDG. — PHONE 3-7779
1110 UNION ST. — PHONE 2-0454
CANDALARIA SHOPPING CENTER — PHONE 2-7912
1680 SOUTH 12th STREET

CLAYTON FOREMAN

KAY - BOB

(Shish-KeBob, Western Style)

A Brand New Taste Treat

Eat It At

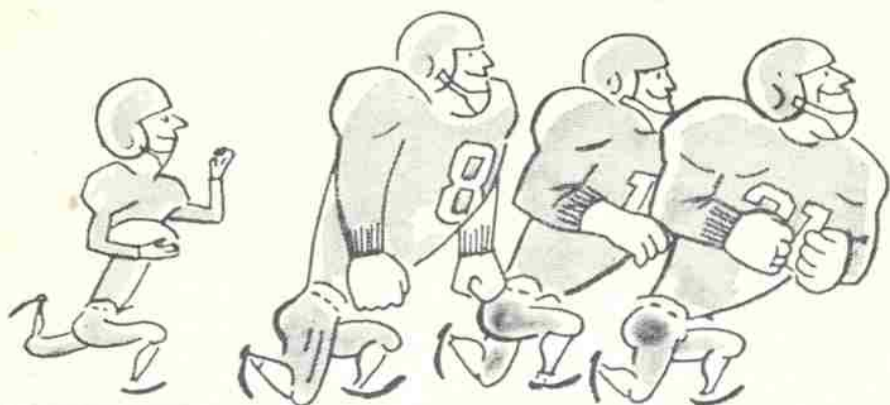
Sloppy Joe

DRIVE-IN

12th & CENTER

SALEM

It's more fun traveling among friends



Charter a Greyhound for group trips!