

# Willamette Collegian

"In Age There Is Wisdom"

1842—Serving a University in Its Second Century—1958

Vol. LXIX

Salem, Oregon, March 7, 1958

No. 21



BARBARA ROACH



CAROL McMINIMEE



JOHN GALBRAITH

## Publication Heads Set

John Galbraith, Carol McMinimee, and Barbara Roach were elected to hold next year's top campus publication positions by

the Publications Board last Friday. They will serve as Wallulah editor, Collegian editor, and publications manager, respectively.

GALBRAITH, a sophomore from Portland, has served as assistant layout editor of the Wallulah this year, while Miss McMinimee, who is a sophomore from Tillamook, has had experience as co-editor of the Fusers' Guide and feature editor of the Collegian.

Miss Roach's position as the head of the Publications Board will involve the coordination of all the campus publications. She is a junior from Medford and has had publication experience as national advertising manager for the Collegian and business manager of the Wallulah.

ACCORDING to Wayne Halverson the present publications manager, the reason for early selection of publication heads was to enable them to train with the present editors and publication manager.

Petitions for Fusers' Guide editor and the editor of the student handbook are due in the student body next Friday.

officers of the interfraternity and Panhellenic councils and by representatives from the independent living groups.

In addition, emphasis of the weekend will be less on rush activities than on acquainting the visitors with Willamette.

OTHER changes planned in the weekend schedule include most phases of the weekend but the coronation of the May Queen.

As a departure from past policy, invitations will be extended only to seniors who have been accepted for admission or who have pre-registered with the university.

THE ACADEMIC Preview begun last year will be continued with the addition of pre-engineering, pre-law, and pre-medicine. In this preview representatives from all departments in which a student may major at Willamette explain their fields.

The AWS style show of correct campus garb will include a meeting in which women guests are informed of campus rules, regulations and customs.

At press time it was not known whether the maypole dance reinstated last spring, would be continued.

## May Weekend Policy Stress On Group Living Previews

A Group Living Preview and emphasis on pre-orientation of high school senior guests will mark the biggest changes in the 1958 edition of May Weekend, May 2 to 4, according to manager Gordon Macpherson.

THE GROUP Living Preview will outline to the prospective students life in campus living organizations. It will be presented by

## Eleven to Attend Linfield Tourney

Eleven students are representing the university in McMinnville this weekend at Linfield's annual forensic tournament of champions.

Speaking for Willamette are Lewis Bright and Mac Baker, seniors; Kay Ruberg, Emil Muhs, Gayle Sandine, James Sitzman, and Dan Marsh, juniors; Justin Hardy and Louis Hisel, sophomores; and Clyde Olsen and Hubert Youngblood, freshmen.

The group is entered in debate plus individual speaking events in oratory, interpretative reading, impromptu, extemporaneous and after-dinner speaking.

Dr. Howard W. Runkel, director of forensics, will accompany the group, and will serve on the board of judges.

This annual tournament has attracted 400 speakers from 35 colleges and universities in the western third of the United States.

## Honorary to Install Chapter on Campus

Mortar Board, national honorary for senior college women, will install its 101st chapter here April 27, Dean Ewalt announced this week.

THIS NATIONAL AFFILIATION marks the end of about 25 years of effort by members of Cap and Gown, campus honorary for senior women, to achieve Mortar Board status.

Last Mortar Board chapter installed in the Northwest was at Oregon State College in 1932. Other chapters in this region are at Oregon, Washington, Washington State, Montana, Whitman, Montana State and Idaho.

INSTALLING OFFICER for the April ceremony will be Mrs. Robert De Vleming, Forest Grove, Mortar Board section director.

Present Mortar Board chapters balloted unanimously to accept the Willamette group's petition, according to notification received by Dean Ewalt from Dr. Daisy Parker, Mortar Board expansion director, of Florida State University.

THE PRINTED PETITION contained histories of the University and of Cap and Gown, activities open to women at Willamette, and activities and pictures of the nine present members of the group.

Cap and Gown members who will be installed in the charter chapter of Mortar Board are Anita Booth, Minalou Schultz Byler, Esther Gwilliam, Jean Martin, Jeanine Graber Mercer, Muriel Miettunen, Lucy Myers, Suzy Platt, and Nancy Groth Sailor.

The installation will be held in the afternoon, Sunday, April 27, in the recital hall of the music school, and a banquet will follow in Doney hall.

All former Cap and Gown members are eligible to become members of Mortar Board. All that is necessary is that they pay their dues and are present at an initiation, either at the Willamette chapter or any other Mortar Board chapter.

Omicron Delta Kappa, national men's honorary and the male equivalent of Mortar Board, installed a campus chapter three years ago.

## Beta, DG Get Grade Honors

Delta Gamma and Beta Theta Pi again won top honors in scholarship competition for the fall semester, for women's and men's organizations respectively, with Delta Gamma placing highest of all living groups.

Both groups will retain the rotating scholarship cups they hold.

FIGURES on fall grades were compiled by the Registrar's office and released earlier this week.

Women's averages: Delta Gamma, 3.1235; Alpha Chi Omega, 3.0522; Pi Beta Phi, 2.9452; University house, 2.8644; town women, 2.7563; Chi Omega, 2.7040; Doney, 2.6634; Lausanne, 2.6152.

MEN'S AVERAGES: Beta Theta Pi, 3.0735; South hall, 3.0365; Phi Delta Theta, 2.8001; Baxter, 2.6099; Sigma Alpha Epsilon, 2.5029; Sigma Chi, 2.4600; town men, 2.3170.

All school average was 2.6765; all women, 2.8404; all men, 2.5651; all sorority, 2.9850; all fraternity, 2.7315.

## Tuition Error Righted

The Collegian wishes to correct a typographical error made in last week's issue in the story about tuition raises. Tuition for the school year 1959-60 will be \$700, not \$750 as was reported. We regret the error and the consternation it caused in administration, as well as student circles.

## Practice Routine for 50th Glee Begins Monday; Frosh to Issue Traditional Challenge Tuesday

Next week the "up, 2-3-4, smile, 2-3-4" practice routine of Freshman Glee will begin for the fiftieth time as the spirited atmosphere of this year's "Fight" theme inspires each class in a unified effort to win.

THE FRESHMAN class will start the week with a 5 a.m. practice Monday morning, but Glee will not officially begin until the con-

fident Frosh issue their challenge to the other classes in Tuesday's convocation. The challenge assembly will feature speeches by the class presidents and class demonstrations designed to humiliate their adversaries.

Determination is already evident from presidential statements given to the Collegian. Freshman presi-

dent Paul McGilvra warns, "Don't count the freshmen out. Watch Glee and you'll never see a dark horse run any faster."

JOHN BERGSTROM, sophomore prexy of last year's victorious class retorted, "There is no question in my mind that the sophomore class through its invincible spirit, superior ability, and excellent leadership will overpower the seniors, humiliate the juniors, and whitewash the frosh, once again holding high its torch 'In Tribute' to the spirit of Glee."

The junior president Dave Landis wished luck "to the mighty seniors and the awkward freshmen," while Al Siebert, the casual president of the casual seniors, remarked, "Oh? Is it Glee time? We're all for the juniors . . ."

CLASS SONG leaders are Tom Elliott, freshman, Janet Jamison, sophomores; Gail Boden, juniors, and Ron Kingsley, seniors, while the formations of the same respective classes will be directed by Tony Meeker, Ron Walker, Larry Willingham, and George Hoyt.

Dale Daniel, Glee manager, re-emphasized recently that every holder of a student body ticket is entitled to one Glee ticket. Participants, including members of the Glee committees, will have first chance to sign up for a second ticket.

PARTICIPANTS in Glee may sign up for their first ticket at any of the Monday practices and the sign-up for additional tickets will be available Wednesday.

Non-participants and law students may sign up for one ticket Monday and distribution of all tickets will be made on Friday.

## No Extra Practices Needed



Senior collaborators chuckle happily as they plan this year's blase assault on the Glee Banner. Comfortably established at a table in the 'Cat with the inevitable cup of coffee to restore energy, are George Hoyt, Mim Mathews, Ron Kingsley, and Muriel Miettunen. The experienced campus oldsters fully expect the coffee break to become an integral part of Glee practice. (Photo by Jim Cline.)

## Calendar

- TOMORROW—Best Dressed Girl Fashion Show, 2-3 p.m., Doney Hall.
- Methodist Youth Conference, all day.
- Baptist Conquest Club roller skate party, 7:30-12 p.m.
- Delta Gamma open house, 7:30-10:30 p.m.
- SUNDAY—Campus YWCA trip to Silver Creek Falls, 9 a.m.-6 p.m.
- MONDAY—Freshman Glee practice begins.
- TUESDAY—Freshman Glee Challenge Assembly, 11 a.m., gymnasium.
- THURSDAY—Dr. James Robinson of New York, chapel speaker, 11 a.m., First Methodist church.
- FRIDAY—Fuser's Guide, Student Handbook and Campus Blotter petitions are due, Student Body office.
- Campus Y sock hop, after Glee practice, Baxter Hall.

# Willamette Collegian

Official publication of the Associated Students of Willamette University. Entered at the Postoffice at Salem, Oregon, for transmission through the mails as second class matter. Published weekly except during vacations and examination periods. Subscription rate \$2.00 per year.

LUCY MYERS  
Editor

WAYNE HAVERSON  
Publications Manager

Sury Platt	Copy Editor
Jane Dedrick	Asst. Copy Editor
Carol McMinimee	Feature Editor
Mary Lou Krause	Society Editor
Paul Aldinger	Sports Editor
Dan Newberry	Headline Editor
Dot Mancke	Associate Campus Editor
Howard Nelson	Associate Campus Editor
Jean Pritchard	Office Manager
Dick Forcum	Layouts
Ross Stephen	Business Manager
Dave Howells	Circulation Manager
Parker Evans	Assistant Circulation Manager
Judy Embree	Circulation Secretary
Jim Cline	Collegian Photographer
Jean Griffin, Jim Teeters, Orrn Ornesbee, Galen Van Loo	Advertising Staff

STAFF: Fran Leonard, Dale Daniel, Ed Knappe, Sandy Lindquist, Gerald Marsh, Judith Dalton, Maureen Avery, Paul deLespinaise, Pete Keiso, Joy Robinson, Dave Kitchener, Jim James, Lois Shepler, Bing Johnson, Bill Fritts, Linda Lsenhouts, Joe Pierre, Gretchen Bolmer, Stewart Butler, Barbara Royer, Henrietta Nichols, Nancy Hadley, Bill Snow, Jim Close, Alice Stewart, Gordon MacPherson, Wyatt Kersh, Barbara Goodier.

## deadly week

There was some consternation among students last winter when the faculty announced that it had abolished the traditional Dead Weeks immediately before and after all-school weekends, such as Homecoming, May Weekend, and Glee. The theory had been that so great a concentration of effort was required of students at these times that they were particularly vulnerable to exams and quizzes.

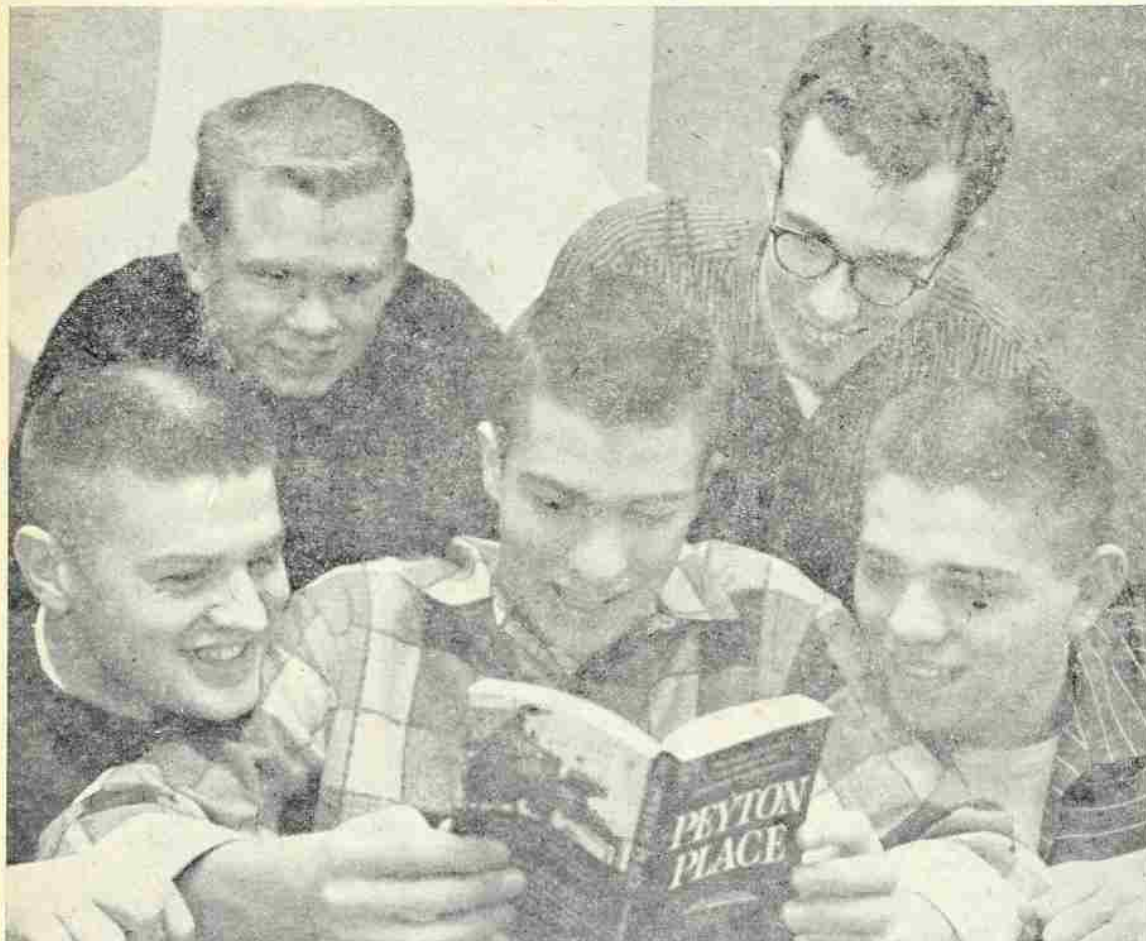
Thus, it had been an administration policy that no exams were allowed during a period from the Tuesday midnight before to the Tuesday midnight after an all-school weekend. Carefree students enthusiastically participated in these events, with qualms about undone assignments but with no lurking fears of a surprise test.

Students could be heard angrily disputing the faculty decision last spring. After all, it was argued, the university sponsors these big events and weekends and expects the students to work on them, then the students should, in return, be protected from exams. The abolition of the Dead Weeks was not to take effect until the fall semester 1957, however, and in the rush of spring activities, the shock was greatly lessened. Since there was no Homecoming last fall, there was no opportunity to test faculty action toward a big weekend with no dead period.

The first test is approaching. With Glee moving into its final phase as practice begins Monday, professors have a free field ahead of them and students can but submit. We recall a soft-voiced professor who exclaimed earnestly to this effect last year when the dead-week ruckus started, "After all we professors are human, we understand the students' problem, we won't be giving tests right before a big weekend." We believe she meant what she said, but unfortunately she does not speak for the entire faculty, some of whom seem to take positive delight in the thought of giving exams next week.

We only hope that few or no students are discouraged from participating in Glee—the most heady, exciting event of the Willamette year—simply by a few tests or two or the thought of approaching comps and orals. —S.P.

## At Second Glance *By Judy and John*



A liberal education is afforded through bull sessions as the fellows in our picture will testify. They have pushed aside Physics and American History texts for a "literary discussion" period . . . and though the novel they've chosen is one of the most prominent on the best seller lists, somehow the English department hasn't yet included it in any of its courses. (Photo by John Barth.)

## Marian Likes Warm Salem

By SUZY PLATT  
Collegian Copy Editor

Marian Anderson looked around at the small group of students waiting to talk to her after her Wednesday night concert, smiled graciously and replied yes, that it was easier to establish a feeling of warmth and intimacy with a small audience in a small auditorium.

SHE APPEARED interested in all the questions asked her, and answered easily. Her speaking voice was low and sweet, giving no suggestion of the great power of her singing voice.

She spoke purely, without any trace of accent, but she spoke slowly, seeming to articulate each sound very carefully.

SHE ALWAYS speaks of herself in the third person, a habit somewhat distracting for the first few moments.

Asked about her recent European tour, she commented that the audiences had had little contact with American Western music, but that they seemed to enjoy it and that all the audiences over there understood and loved the spirituals.

MISS ANDERSON said that she spent the greater part of each year on tour and that for the few weeks she was not touring, she went home, to a farm in Connecticut, and busied herself with homemaking.

ASKED WHETHER the Negro spiritual was her favorite type of song, she replied that although she had known them since her childhood and they were a part of her life, her favorite songs were those of Schubert, along with Haydn, Bach, and other great composers.

## Amazing



For the first time since the capitol building of Oregon was re-built in the early '30s the dome is getting a face-lifting. The maze of ladders and bars above will remain until after spring vacation in the main lobby. Thereafter students may again make the trek to the romantic view atop the building.

## Dear Abby Answers With Aid; Cites Adults as Delinquents

(Ed. Note—Representatives of college newspapers were invited by the Portland Oregonian to attend a press conference with San Francisco Chronicle writer and nation-wide syndicated columnist Abigail van Buren. The following is the gleanings of the Collegian press representative who attended the interview with Abby in Portland.)

"I'm normal," modern Dorothy Dix "Dear" Abby van Buren assured the bevy of younger set

newspapermen at special northwest tour press conferences this week.

In spite of her normal life however, the brunette problem solver from San Francisco rises each morning at 6 a.m., breakfasts twice before 8:30 a.m. and then answers the 7,000 letters she receives each week before her two teenage children arrive home from school at three.

With the aid of five secretaries, a psychiatrist, a Catholic priest, a Jewish rabbi, a Methodist minister, plus legal and medical counselors, Abigail daily dishes out advice to a host of rock-bound marriages and love-lorn teenagers in 200 newspapers across the country with her own brand of wit.

"I never sacrifice sincerity for humor though," she emphasized. Males Shy on Names

Almost as many men as women seek out Miss Van Buren, who is Mrs. Morton Phillips in real life, for advice. "But they are never so ready to admit they need it and sign their names," she noted.

But with all the complaints Abby loves her work. She majored in journalism with a minor in psychology in college days, as did her twin sister — and professional rival — Ann Landers.

Abby Answers All  
Abby doesn't dwell on the eternal sad plight of her advisees' lives in the problems she answers. To solve the vital questions that fly her way, she has set up a number of policies that always are available to her secretaries though she does her best to write each answer personally.

With the teen problems she has more trouble translating the language. With the aid of her own children, who remain indifferent to her fame, she now "digs" the teen talk and can coherently answer teenage questions.

Adults Are Delinquent  
Abby believes that the biggest problem our society faces today as it becomes increasingly more complex is contributed by the adult who leaves his child at home to fend for himself and makes no home.

"This is adult delinquency," she defined. "For the teenagers the biggest problem in the future will be getting into college! Schools of higher education are becoming increasingly more selective and important as our problems as a society increase."

Sincere Letters Obvious

Abby claims she can spot in a minute the sincere letter and the "cooked-up" number from a roomful of giggling co-eds. This type of letter is never signed and is generally too long.

Strangely enough the valid letter usually asks that the answer be sent to an address other than the sender's own.

Columns Balanced

Each day's column is made up about two weeks ahead of time and sent to the New York syndicate. Each is usually balanced with one "Odd-Ball," one marital problem, one teenage and one oldster letter. She picks the letters for their readability alone for inclusion in the column.

**CAPITOL**

Phone EM 3-5050  
MARCH 9-11  
Mario Lanza in  
"SEVEN HILLS OF ROME"  
Co-Feature  
"CHECK POINT"  
MARCH 12-15  
"FORT DEBBS"  
with Clint "Cheyenne" Walker  
and Virginia Mayo  
Co-Hit  
"HAPPY LANDING"

---

**ELSINORE**

Phone EM 3-5798  
ENDS TUESDAY  
Anna Magnani - Anthony Quinn  
"WILD IS THE WIND"  
Co-Feature  
"THE SAFE CRACKER"  
with Ray Maland  
MARCH 12-17  
"SING BOY SING"  
with Tommy Sands  
Co-Hit  
"BACK FROM THE DEAD"

# Monk Named Science Fellow; Heads Oregon Science Group

Dr. Cecil R. Monk, head of the biology department here, received certification this week as a Fellow of the American Association for the Advancement of Science.

HE WAS also recently elected president of the Oregon Academy of Science.

This appointment as a Fellow entitles Dr. Monk to vote on the governing body of the association, which is the official organization of scientific bodies in the United States.

DR. MONK was elected president of the Oregon group at its February meeting at Portland State College. During 1957 he served as vice-president.

Next meeting of the Academy is scheduled for the Christmas holidays 1958. It will be held at Ore-

gon State college in conjunction with the annual meeting of the Northwest Scientific association.

THE ASSOCIATION comprises Oregon scientists in chemistry, physics, biology, and mathematics as well as some from industrial laboratories.

The group convenes once a year for a scientific meeting, at which



DR. CECIL MONK

the various fields separate into sections for the reading of original papers and for symposiums. There is also a business meeting.

DR. MONK joined the Willamette faculty in 1927 and has been head of the biology department since 1942.

He has also been on the faculties of the University of Illinois; the Universidad Central de Venezuela and the Colegio Americano, both in Caracas, Venezuela; and the Scripps Institution of Oceanography.

## Philippi Attends YR Meeting at Whitman

Bruce Philippi will represent Willamette at a Young Republican meeting at Whitman College, Walla Walla, Wash., today and tomorrow.

National issues and tactics for the coming November elections will be debated, along with a discussion as to how to stem recent Democratic trends in bi-elections.

Philippi represented Willamette Young Republicans at a leadership training conference in Washington, D. C. late in January. He is a junior political science major and is active in the speech department.

## Final Drop Day 15th

Saturday, March 15, is the last day to drop courses without the penalty of receiving a grade of F. Regular drop-add cards should be picked up in the Registrar's office and the necessary signatures secured before that time.

## Two Initiations Held Sunday

Pledges of Alpha Chi Omega and of Sigma Chi have the honors of being the first two groups of pledges to be initiated this semester.

Alpha Chi Omega initiated eighteen new members. Those who wear the new lyres are Joan Barber, Terry Boyd, Jane Eagleson, Alice Eastman, Mary Edwards, Ann Harper, Kayla Henry, Pat Holcomb, Sue Jenkins, Bev Krough, Gail Larsen, Ann Laird, Marilyn Mackenzie, Hannah Meara, Loretta Ray, Sheila Tomlin, Ann Stambaugh, and Mary Zeller.

Taking honors at the Sigma Chi initiation banquet were John Jelders as Outstanding Pledge, and Lee Thurber who received the Shovel Award as the best pledge during work week. Others initiated were Doug Anderson, Fum Duncan, Wayne Feller, Mike Figour, Jim James, Daryl Litchfield, Pete Manning, Pete McDowell, Bill Moore, and Tom Turner. (See story on page 4.)

## Noted Pastor, Dr. Robinson, Here Thursday

Dr. James Robinson, Negro Presbyterian minister who gained national fame when he reached the \$30,000 level on a television quiz show as an authority on the life and times of Julius Caesar, will be Thursday's chapel speaker.

Born in the slums of Knoxville, Tenn., Dr. Robinson was considered an outstanding student and minister by Yale Divinity School, which invited him to give the Lyman Beecher Lectures in 1955. This is one of the highest honors which can be given to an American pastor.

Dr. Robinson's published works include an autobiography, "Road Without Turning," "Tomorrow is Today," "Adventurous Preaching," and a study of race relations, "Love of this Land."

## Commemorative Plaque Presented Law School

A picture and plaque commemorating the death of Charles L. McNary was selected and presented to the Willamette Law School by William Paulus, president of McNary Inn chapter of Phi Delta Phi law fraternity. McNary, former Oregon senator and dean of the school from 1906 to 1913, was honored last Tuesday by the school.

Tuesday's commemoration was on the 14th anniversary of McNary's death.

McNary was a deputy district attorney and for two years was associate Justice of the Supreme court. He served in the U. S. Senate for 27 years, earning wide respect for his liberalism and his farm and hydro-electric issues.

The picture, an enlarged photograph, which was secured through Mrs. Willard Marshall, a niece of the Senator, will be hung in the Law school.

## Deadline for Seniors

Senior announcements must be ordered by today, according to the manager of the book store Mrs. Delsia Larson. The deadline has been extended several times, but this must be final if the announcements are to arrive in time.

Extra announcements will not be ordered, Mrs. Larson added.

## Glee Practice Schedule

MONDAY, MARCH 10

Freshmen		Juniors	
5-7 a. m.	Gym	12-1	Gym
12-1	F. A. 145W	4-5	Auditorium
4-5	Waller	6:30-9:30	F. A. 145W
6:30-9:30	Auditorium		
Sophomores		Seniors	
12-1	Auditorium	12-1	Waller
4-5	Gym	4-5	F. A. 145W
6:30-9:30	Waller	6:30-9:30	Gym

TUESDAY, MARCH 11

Freshmen		Juniors	
12-1	Gym	12-1	Auditorium
4-5	Auditorium	4-5	Waller
6:30-9:30	Waller	6:30-9:30	Gym
Sophomores		Seniors	
5-7	Gym	12-1	F. A. 145W
12-1	Waller	4-5	Gym
4-5	Waller (2nd floor)	6:30-9:30	F. A. 145W
6:30-9:30	Auditorium		

WEDNESDAY, MARCH 12

Freshmen		Juniors	
12-1	Waller	5-7	Gym
4-5	F. A. 145W	12-1	F. A. 145W
6:30-9:30	Gym	4-5	Gym
		6:30-9:30	Auditorium
Sophomores		Seniors	
12-1	Gym	12-1	Auditorium
4-5	Auditorium	4-5	Waller
6:30-9:30	F. A. 145W	6:30-9:30	Waller

THURSDAY, MARCH 13

Freshmen		Juniors	
12-1	Gym	12-1	Auditorium
4-5	Auditorium	4-5	Gym
6:30-9:30	Auditorium	6:30-9:30	Waller
Sophomores		Seniors	
12-1	F. A. 145W	5-7	Gym
4-5	Waller	12-1	Waller
6:30-9:30	Gym	4-5	F. A. 145W
		6:30-9:30	Auditorium

FRIDAY, MARCH 14

Freshmen		Juniors	
12-1	F. A. 145W	12-1	Waller
4-5	Auditorium	4-5	F. A. 145W
6:30-8:30	Gym	6:30-9:30	Auditorium
8:30-9:30	Waller		
Sophomores		Seniors	
5-7	Gym	12-1	Gym
12-1	Auditorium	4-5	Gym
4-5	Waller	6:30-9:30	F. A. 145W
6:30-8:30	Waller		
8:30-9:30	Gym		

SATURDAY, MARCH 15

Freshmen		Juniors	
5-7	Gym	9:15-10:15	Gym
Sophomores		Seniors	
8-9	Gym	10:30-11:30	Gym

## Scientific Experiment Stations Proposed by Mark Hatfield

A proposal that scientific experiment stations be established by the state system of higher education akin to the agricultural experiment stations of Oregon State College has been made by Secretary of State Mark Hatfield.

HATFIELD said that the increased interest of young people in science and the advent of the outer space age "make it imperative that we provide an opportunity for scientists to develop to their full potential or face the consequences of tragedies from misdirected scientific energies."

The Camp Clatsop area owned by the State was suggested by Hatfield as a possible location "where young minds could assemble to experiment under the guidance of experts, where weekend retreats and seminars could be staged, and where intellectual attainment could be fostered that would pay valuable dividends in years to come."

HATFIELD SAID other areas of the state might make possible science weekend retreat areas. At Camp Clatsop, Hatfield said, the artillery firing range with bunkers could be a good facility with slight

modifications.

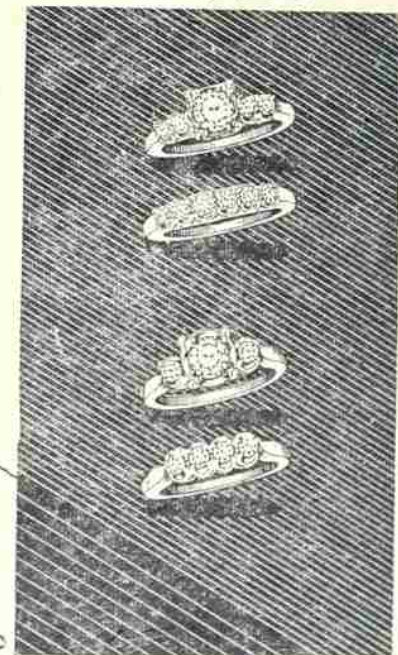
Staffing of such a program, Hatfield commented, would come from volunteers in secondary and higher education science departments and from private industry.

"WE DARE NOT discourage the experimentations of our young people but both an outlet for their creativity and safeguards for their physical protection and public well-being must be established," Hatfield said.

## Double Values!

our matched diamond sets of matchless beauty. Each of the center gems in the engagement rings is mounted to enhance the size of the diamond. Each wedding band duplicates the solitaire setting.

Illustrations slightly enlarged



\$375

\$200

\$250

\$140

Prices include Federal tax

CHARGE OR BUDGET

NO INTEREST OR CARRYING CHARGES

Store Hours  
9:30 to 5:30

# Stevens & Son

JEWELERS - SILVERSMITHS

CERTIFIED GEMOLOGIST

REGISTERED JEWELERS - AMERICAN GEM SOCIETY

## Kay's

WOMEN'S FASHIONS

- Sport
- Casual
- Dress

460 STATE STREET

Charge Today

Take Time to Pay

## Stewart on Rally Squad

Because of academic ineligibility, Virginia Cain will be replaced on the Rally Squad by Alice Stewart, who received the next highest number of votes during the Rally Squad elections.

### CAPITOL OFFICE EQUIPMENT CO.

Typewriters Rented - Repaired - Sold  
148 South High Street  
Next to the Elsinore

Let Us Help You  
Lead A Clean Life!

All Laundry and Dry Cleaning  
Problems Solved Here.

### LAUNDERETTE

1255 Ferry St.  
(1/2 Block East of W.U.)

# The Social Scoop

By MARY LOU KRAUSE

## DONEY CHOOSES SEVEN

Marietta Lind heads the spring slate of officers of Doney hall. Frances Swanson is vice-president; Linda Hostetler, secretary; Sharon Flournoy, treasurer; Judy Teufel, student council representative; Karen Anderson, social chairman; Hannah Meara, AWS representative; Judy Abele, chaplain, and Elaine Buckinger, historian.

## LAUSANNE LEADERS NAMED

Donna Frazer was chosen spring president of Lausanne Hall. Other officers include Gretchen Bulmier, vice-president; Joy Robinson, secretary; Barbie Giberson, treasurer; Terry Boyd, social chairman; Gail Larson and Marky Allender, AWS representatives; Marcia McLean, activities board representative; Carolyn Prince, student body representative; Bev Krough, historian; and Marcia O'Neill, standards chairman.

## ALL IN THE FAMILY

John Bergstrom has just found out that his brother took fourth place in Sweden's cross country skiing competition for high school students. Let's import this boy for Willamette's ski team!

## JUDGES MUST PICK FROM 17

Judges picking Willamette's entry to Glamour's best dressed contest will have a hard decision to make after the fashion show this Saturday afternoon from 2 to 3, where the following candidates will model a campus outfit, an off campus daytime outfit, and a party dress from their own wardrobes: Judi Hume, Jo Weston, Lee Wilkinson, Kay Sanford, Judy Embree, Rosemary Stephenson, Elaine Buckinger, Sandi Harris, Myrna Mangles, Kayla Henry, Martha Eagleson, Diane Miller, Barbara Royer, Marcia Humphrey, Jo Hanson, Joyce Biggs, and Judy Dalton. Though the show starts at 2 p. m., candidates must be at Doney by 1 p. m.

## Anderson, Booth Tell Troths

Summer wedding plans came to light last week for two Willamette coeds who announced their engagements.

At a party after the W. U. band concert, the group was presented with a jig-saw puzzle heart which announced the engagement of Judy Anderson and Jim Fiske. Miss Anderson is a junior music education major from Coquille, Oregon and was song leader for Lausanne. Fiske is a senior majoring in music education. He is ROTC band leader, a member of SAE, and lives in Salem. A summer wedding is planned.

Delta Gamma sisters learned of the engagement of Anita Booth to Don Peterson last Thursday when she blew out the candle being passed around the room. A political science major, Miss Booth is first vice-president of the student body, treasurer of Cap and Gown, and has been ROTC Little Colonel, Miss Young Republican

of Oregon, and social chairman for her sorority.

Peterson, who is a 1957 Willamette graduate, now works for the admissions office here. As an undergraduate he majored in political science, and was ASWU member-at-large, homecoming manager, Sigma Chi social chairman, and secretary-treasurer of the Oregon Federation of Collegiate Leaders. A June 8 wedding is planned.



ANITA BOOTH



JUDY ANDERSON

## Law Groups Add New Members

During the past week Willamette's two legal fraternities extended membership to twenty-seven students of the law school.

McNary Inn of Phi Delta Phi received as members Rod Adams, Ted Carlstrom, Don Drollman, Ross Fortner, Bob Fox, Ron Gevurtz, Jack Howay, Dave Hitchman, Johnny Katoaka, Joe Kershner, Pete Schwabe and Martin Wolf.

Those new members of Wolverton Senate of Delta Theta Phi are Pat Albano, Olin Anson, Neil Bennet, John DuBay, Richard Franzke, James Gubernath, Dave Frost, Ron Lansing, Gary Lockwood, Joe Lunsford, Lewis Myatt, Maxwell Teak, Dave Rhoten, William Schantz and Ralph Schlegel.

## Proud Smiles, New Pins Seen As Six Fraternities Initiate

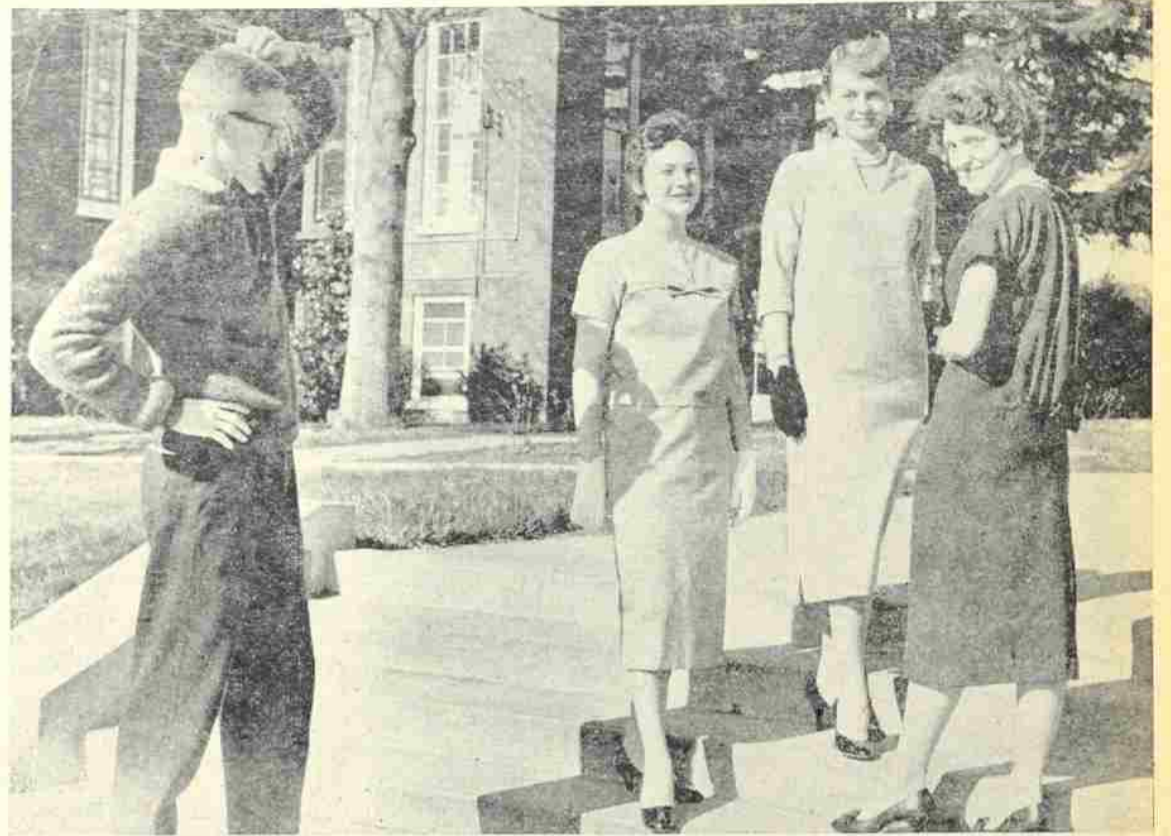
New pins are being sported by proud new members of the six Willamette groups which initiated during the past two weeks.

Initiation of new members last Sunday increased the membership of Delta Gamma by sixteen. Those girls now wearing the golden anchor are Peggy Doerfler, Judy Embree, Donna Fraser, Carolyn Frey, Jo Gannon, Ann Garner, Marcia Hafter, Karen Henninger, Marcia Humphrey, Carol Hobbs, Carol Mason, Barbara Royer, Barbara Simon, Judy Taylor, Joanne Warren and Marilyn Wood.

Pi Beta Phi placed the arrow on the following girls during initiation last weekend: Elaine Buckinger, Karen Drier, Pat Duffy, Linda Hostetler, Nora Hounsell, Bea Julian, Karen Ketterring, Fran Leonard, Mary Ella Rose, Alice Stewart, Lee Thornton and Judy Teufel.

Beta Theta Pi  
A long week of work came to an end Sunday when Beta Theta Pi

# Even Men Like the Chemise!



"Do I like the chemise dress or don't I?" wonders Pete Blewett who admits it has advantages on the three coeds who model it for him. The daring girls who brave the controversial comments on this new style are, from left to right, Marcia Hafter, Sherri Jenkins, and Judie Hume.

By JO HEALD

Relax, let yourself go, and become part of the group which is returning to the roaring twenties when flappers were in style and the short, straight chemise was liked by all.

Even the thought of such dresses seems to bring to the mind of men today the idea of a sack which looks more like a rectangle than the angular form which they generally consider a girl.

Look again, men, and you will find many effects which these dresses use that let your imagination run wild.

There are those which are bloused in back, others which are two-piece, and still others which hang straight from the shoulders with little or no decoration.

Fitting tighter below the waist, the chemise, sack, or sacque (as it may be called) also shows more of the leg which always seems to entice the men.

After inquiring as to likes and dislikes among some of the honorable members of our student body, it was found that men really do not dislike the garment as much as the women would believe.

Could it be the girls are really

against them and do not want to show it? This is doubtful, even though few of the women students own one, for since they have come into fashion only recently, the girls have not yet had time to collect a wardrobe in this line.

Most fellows feel that a girl with a "figure" (which can only be described adequately by men) can wear them and some of the fellows feel they would like to see their girls in them. Perhaps this is more out of curiosity than any other factor.

Undoubtedly the next few months will bring from hibernation many of the chemise type dresses. Girls want to wear them. Men would like to see them on the girls. Fashion trends are definitely in this direction.

Many of our mothers wore them and it didn't seem to make any difference to our fathers. Hence, be prepared to view more of the chemise. It isn't as startling as you would believe and it may open a whole new era in women's clothes and attitudes. Remember the roaring twenties? We can have a dashing fifty-eight.

## Varsity Ball Plans Formed; Girls Picked

Twenty candidates for Varsity Ball queen have been selected and committees set in action as the date of the dance, March 22, draws near.

The following girls will meet at Lausanne this Sunday from 7 to 8 p.m. to be introduced to the lettermen: Barbara Baer, Pat Duffy, Alice Eastman, Kathy Evans, Bev Fulton, Peggy Hoffman, Pat Holcomb, Linda Hostetler, Marcia Humphrey, Sue Jenkins,

Gail Larsen, Jody Lester, Jean Sanford, Midge Scott, Sandra Seely, Drury Spurlock, Alice Stewart, Sue Webber, Marilyn Wood and Marilyn Wright. From these candidates, ten semi-finalists will be chosen.

Committee chairmen for the Varsity Ball include Dean Bishoprick, queen; Jac Fowler, decorations; Vic Backlund, invitations and programs; Jim Anderson, gifts; Brad Lucas, chaperones; John Hines, refreshments; Keith Driver, public address and lighting; and Jim Robinson, cleanup.

### Meyer Bloch

MAGICIAN

240 Rivington St.  
N. Y. C. 2

"Cleaned right & pressed right by Burrights"



198 SOUTH CHURCH STREET  
Phone 3-4242

### Ace's Barber Shop

1256 State Street



Authentic

IVY LEAGUE

Suits & Slax

New Shipment Just

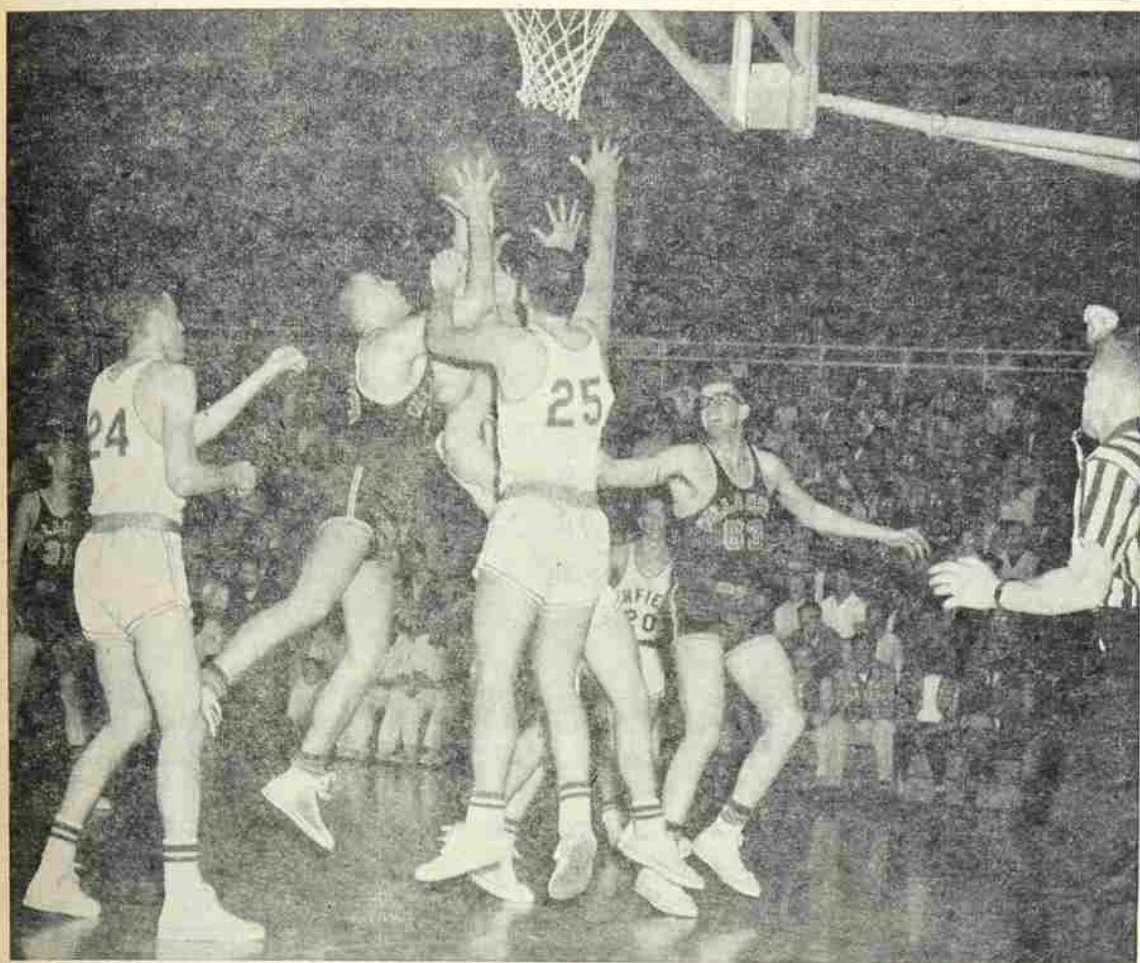
Arrived

100% VIRGIN WOOL CASUAL JACKETS \$13.95

ALEX JONES State at High St.

**ANDERSON SPORTING GOODS**  
163 N. Commercial  
Salem, Oregon Phone EM 3-5934  
Salem Ski Headquarters

**WIEDER'S SALEM LAUNDRY**  
TRUCLEEN DRY CLEANING  
YOU'LL LIKE IT  
Wieder's Swift Shirt Service  
Leave It At 10 - Wear It At 5  
"Free Pickup and Delivery"  
263 South High St. Phone EM 3-9125



Leapin' Larry Lynn, Willamette's rebounding forward, snatches ball from the outstretched hands of Linfield's Dick Brown (25) and Gene Carlson, while Bill Machamer (24) stands by helplessly. The Bearcats' big center, Tom Johns, screens off Linfield's Jack Riley (20), and Eddie Grossenbacher (31) awaits pass-off in back court.

## Willamette Loses Playoff to Linfield, Misses NCAA Bid

Last Tuesday night, 3200 fans jammed their way into South Salem high school's basketball plant to witness the playoff game between Willamette and Linfield, which determined a representative from the Northwest Conference to the Pacific Coast Small College NCAA tournament in Santa Ana, California.

THESE 3200 fans were served up a real blue-plate special in basketball games, and when the final buzzer ended this domybrook, it was Coach Roy Helsner's Linfield Wildcats on the long end of an 86-76 count.

The Wildcats, led by their pint-size guard, Jack Riley, proved too much for the Bearcats. Riley—a thorn in the Bearcats side all year—was never better as he dumped in a grand total of 39 points. But even with his 39-point performance, Riley couldn't overshadow the sterling exhibition put on by Willamette's big center—Tom Johns.

JOHNS PUMPED in 32 points for the Bearcats, did yeoman work on the boards, and made numerous checks on potential field goals which were shot by the Wildcats. This was—to be sure—the big fellow's finest game, and if any of the other Bearcats would have had

### Coeds End Mural B-Ball Tourney

The women's intramural basketball tournament came to a close this week, with Alpha Chi Omega defeating Lausanne Hall, 21-7. The win gave the women of Alpha Chi Omega first place.

PHYSICAL education instructor, Jean Williams, announced the beginning of intramural tennis for women. Mrs. Williams urges all girls, who are interested in participating in the tennis program, to sign up for competition. An intramural tennis ladder will be drawn up, and each participant entered upon it will represent her living organization.

### Aid Requests Due

Athletes who have not picked up their grant-in-aid blanks for the school year 1958-59 in the Athletic office are asked to do so by the Athletic department.

They must be completed and turned in to the Athletic office by March.

anything which resembled his performance, the outcome of the game might have been different.

Linfield opened the game's scoring when Bill Machamer sank a pair from the charity stripe. Moments later the Bearcats went into the lead on the strength of Tom Johns' free throw and Larry Lynn's tip-in. This established the trend of the whole first half, as the game saw-sawed back and forth with the

## Salem AAU Club Crowned State Champs

The Salem Valley Motor AAU basketball team, which includes three ex-Willamette University players, walked off with the Western Oregon-Southwestern Washington playoffs, and then won the Oregon State AAU title last weekend in Hermiston, Oregon.

The team, which is one of the finest AAU quintets ever to represent the city of Salem, will meet the nationally famous Buchan Bakers team of Seattle for the championship of the Northwest. This game will probably be played in Salem or Portland, and the date for the contest has been set for March 14.

The winner of the Northwest title will go to Denver for the national championships of the Amateur Athletic Union.

Vital cogs in the fine season's performance by the Valley Motor club, which has won a total of 20 while losing only two, are ex-Willamette ball players—Pete Reed, Tom Gooding, and Don Hoy. Pete Reed was named on the first team of the Oregon State AAU All-Stars last weekend in Hermiston.

lead changing hands seven times in the first 13 minutes of play.

WITH 5:38 remaining in the first half, Willamette held a 24-18 advantage, and with 1:50 to go it was 31-25 in favor of the Bearcats. But at this point, the Wildcats caught fire and hit for eight straight points while the Bearcats were blanked. Linfield walked off the court at halftime with a 34-31 lead.

As the second stanza opened, Coach Johnny Lewis' Bearcats scored five quick points, but Linfield came back with the same number. With about 15 minutes left to play, Willamette tied the score at 39-39. This was the last time Willamette caught Linfield, and from here on out Linfield controlled the game.

FOR THE game Linfield hit 31 of 89 from the field for a .348 shooting percentage. Willamette had a slightly better average at .351, coming on 26 of 74. The all-important rebound department was led by Linfield with a total of 53, compared to Willamette's 40.

Riley's 39 and Machamer's 16 were high individual scoring marks for the Wildcats. Willamette received their scoring punch from Johns' 32, Grossenbacher's and Lynn's 14, and Backlund's 11.

THE GAME closed the 1957-58 season for Willamette, and the Bearcats wound up with an 18-7 record. The game was a rubber match between Linfield and Willamette. Previously, they had played four games which they split—three in regular NWC competition and one in the NWC tip-off tourney.

Linfield now travels to Santa Ana this weekend where they will meet Chapman of California in the opening tilt of the NCAA regionals. Other teams in the tournament will be Chico State and Fresno State.

# Sports

PAUL ALDINGER, Editor; PETE BLEWETT, Assistant

## 'Cats Top Badgers, Tie for NWC Title

By JIM CLOSE

One of the most topsy-turvy Northwest Conference basketball seasons in recent years closed last Friday night as the Bearcats earned a corner of the NWC title by dropping the Pacific University Badgers 72-66 in the 'Cats' final home game. The Jasons got a big assist from the Lewis and Clark Pioneers who rolled over the second running Linfield Wildcats 95-81, the same evening in Portland.

LINFIELD reversed the previous night's decision Saturday to clinch half of the NWC toga, but the damage was done and the path cleared for Tuesday night's playoff contest.

Neither team appeared to be exceptionally torrid in the opening moments of Friday's mix which found the Badgers with their only lead of the game. Baskets by Don Adams, Bob Gehrts and Jerry Kalapus sent Pacific to a 6-5 margin, four minutes into the fray, but the lead was short lived as Vic Backlund dropped in a cripple, Ron Taylor hooped three gifiers and

Larry Lynn deposited a lay-up to send the 'Cats on their way.

WITH 6:15 remaining in the first canto, the Bearcats had built a commanding 18-point lead, 32-14. At this point the reserves came in and the Badgers came alive to close the gap to 13 points, 40 to 27 at the intermission.

Pacific had lost none of its fire in the first moments of the second stanza as Adams dumped in a pair of markers and Kalapus one, to thrust deeper into the 'Cats' margin, 40-33. Three consecutive field goals by Ed Grossenbacher, Larry Lynn, and Tom Johns, restored the Jason's confidence and their lead, 46-33. Two thirds of the way through the second half, the Lewismen were "mucho caliente," pumping in 10 quick points—four apiece by Lynn and Grossenbacher, to build a seemingly commanding lead 66-41 with six minutes remaining in the contest.

PACIFIC took advantage of the insertion of the Willamette reserve corps, in the waning minutes of the fracas to put on a whale of a spree, scoring 19 points, nine of them in 50 seconds flat. The starters could hardly return to the game quickly enough to stem the on-rushing Pacific tide, but they did get in, get the ball and stall out the final 2½ minutes to protect their final six-point victory margin.

Prime factor in the WU victory was the top-heavy rebound advantage of the 'Cats as they out-grabbed the Badgers 75 to 47. Larry Lynn lead the backboard department with 25 rebounds followed by Backlund with 16 and Johns with 15.

SCORING honors for the game went to Pacific's Kalapus with 20 markers. Johns and Lynn led the Bearcat scoring with 18 apiece, followed by Backlund's 16 and 10 each by Grossenbacher and Taylor. The Bearcats posted a scoring percentage of .345 (30-87) compared with .322 (27-84) for the losers.

### Lettermen Hold Meets To Pick Varsity Queen

The Willamette University's "W" letterman club will once again sponsor their annual varsity ball. Letterman club president, Bill Long, announced that there will be three meetings to select a queen for this year's event.

THE FIRST meeting will be this Sunday in Lausanne Hall, with the next meeting the following Sunday in Lausanne. On Wednesday, March 19, the lettermen will meet at the Phi Delta Theta house and choose the Varsity Ball queen from the remaining five candidates.

Long urged all lettermen to attend each meeting, and emphasized the importance of full attendance at the three gatherings.

DON'T FORGET

a BEARCAT SPECIAL

Made with "Real Wild" Bearcat Meat. Costs you only 55c when you show your W.S.B. card to the cashier. The regular price is 65c.

EAT AT

SLOPPY JOE'S

12th & CENTER



## 1200 Methodist Youth Hold Conclave at WU Tomorrow

Willamette University will play host to approximately 1200 members of the Methodist Fellowship Youth Conclave tomorrow; the theme for this conference is "Teach Us to Pray."

## First Pledging For Alpha Phi Underway

Initial pledging for the nucleus of Alpha Phi, fifth sorority on the Willamette campus, should be completed by next Tuesday, according to Mrs. Sydney Kromer, University of Oregon alumna. Mrs. Kromer has taken charge of initial formation of the new sorority. She relieves Mrs. Wallace Brennan who has other pressing matters.

"We can't afford to wait until the girls are all tired out because of Freshman Glee," she said.

Tomorrow will begin the rushing with a tea at President and Mrs. Smith's home. Speakers will include Dr. Smith, Mrs. Herbert Plumb of Seattle, national chairman of membership selection and Miss Antoinette Kuzmanich.

Sunday evening further rushing will include alumni from Eugene and Corvallis chapters at a party at the Robert Thornton home.

A Monday evening party will be held after Freshman Glee practice and "we hope to wind it up" that night but should plan on another day," Mrs. Kromer commented.

## Visiting AFROTC Officers Perform Annual Inspection

Visiting officers this week conducted the annual AFROTC inspection as Lt. Col. Charles M. Callis and Lt. Col. James T. Cousin arrived here on their tour of cadet detachments. They are stationed at Maxwell air force base in Alabama.

A review was staged for them at McCulloch Stadium Tuesday with all cadets, the band and drill team, the Hustlers, taking part.

"I was very impressed with the review, and the cadets are in highly satisfactory condition with weather and everything taken into consideration," stated Col. Cousin.

He continued, "Both academically and in leadership training the detachment is in good shape. An AFROTC background will provide citizenship training which is good whether it is for personal use or for a future career in the Air Force."

The weather drew praise as it was the first nice weather the two officers have encountered since

## Nasson Seniors Face Real Test

Underclassmen and especially seniors are often heard to complain about the traditional oral and comprehensive examinations required for graduation at Willamette.

Willamette students may be comforted somewhat to learn of the demanding program exacted of seniors at Nasson College in Springvale, Maine.

According to an article in the Intercollegiate Press Bulletin, Nasson seniors not only take written comprehensive exams, but also do summer field work, complete a research project and undergo an oral exam.

The article did not explain the summer field work program. The research project is begun in September of the senior year and by Christmas it must be completed and the findings correlated into a paper. Later each senior defends his project findings before a committee of three faculty members.

This extensive senior program is only in its second year, although the summer field work requirement dates back to 1949.

The conclave is held every two years to promote an organized gathering of members from the Oregon conference of Methodist young people.

Special features of this meeting will be two addresses by Reverend Bob Uphoff from Olympia, Wash., a speech contest and a religious play put on by Willamette's Wesley group.

Reverend Uphoff's first speech will be entitled "Lord Hear My Voice" and the second address will be concerned with the conference theme "Teach Us to Pray."

The speech contest will be held at 10 a.m. and is open to any conclave members who wish to speak on the subject "Hear Me, Send Me." This contest is sponsored by members of the Christian Women Society of Christian Service.

Reverend Craig Harper, sponsor and advisor of the conference, wrote the play "Lord Hear My Prayer," which the conference officers at Willamette, Norissa Legner, George Rogers, Earl Rollins, Mitzi Parsons, Bill Richter, and Dianne Dickson, will present Saturday night. Also included in the cast will be Jo Cannon and Dale Bunse.

## Senior Petitions Due

Petitions to graduate must be completed within the next week. March 15 is the last day to add courses and seniors should use the petitions to make certain their credits are complete before that date.

The blanks may be obtained in the Registrar's office and returned with the signature of one's major professor.

they arrived on the coast last month. By May the pair will have visited 40 detachments all over the country.

"Cadets have every reason to be proud of their Angel Flight, and it is comparable to the other three we have seen across the country," Col. Cousin said.

## University Food Plan a Saga; Bull Steaks Begin at Hobart

Feeding students in college dormitories is a highly specialized job. At Willamette it also represents a new and rapidly growing venture of private enterprise.

LAST YEAR Willamette, which had always maintained its own food service, turned over this responsibility to a private firm of specialists. Other colleges are following Willamette's example.

The food service at Willamette, managed by Ed Andrick at Baxter Hall and James McFadden at Lausanne, is part of Saga Food Service, a national organization which originated the idea of relieving college managements of their food problems.

Its service has grown from one to 25 colleges in ten years.

AT PRESENT Saga is expanding at the rate of about six additional colleges each year, according to William Highfield, who managed the food service at Willamette last year and is now district supervisor for the organization.

Among the six schools added

**WAYNE'S  
BARBER SHOP**  
NOW WITH 3 BARBERS  
146 South 13th Street  
A Block Off Campus

## Chapin Wins Second In State Speech Meet

Roy Chapin, freshman, won second prize in the annual state experimental speaking contest last Friday at Lewis and Clark college.

Chapin's speech, which described the technicalities of the modern beehive, was illustrated with visual aids.

The contest is sponsored yearly by the Intercollegiate Forensic association of Oregon, whose nine member colleges and universities enter one student each.

Dr. Howard W. Runkel, director of forensics, joined the eight other forensic coaches on the board of judges.

## Faculty Show In Library

A tobacco pipe patent, musical records, books, and articles appearing in professional and national magazines are currently on display in the library as the second part of an exhibit of works by Willamette faculty members.

THE PIPE belonging to Dean Seward Reese appears to have a special ventilating device. Besides his books, Dean Reese also has a play "Unexpected Debutante" on display.

Records made by Dr. Willis Gates, and Prof. Stanley Butler's reviews of musical performances appearing in the Oregon Statesman are also in the showcases.

DR. REGINALD Parker's contributions include several books and articles; one on obtaining passports, and another entitled "Pipedream of a Lawyer from Two Continents" which appeared in the American Bar Journal.

On the bulletin board are copies of the weekly column "Know the Law" series appearing in Oregon newspapers around the state. The series is being written by professors in the College of Law.

OTHER contributors from the music school are Dean Melvin Geist, Professor Josef Schmelker, and Mrs. Clorinda Topping.

Professors Edwin Butler, Charles Groomsley, Charles A. Jens, Roy M. Lockenour, and John G. Paulus are additional contributors from the Law school.

## Student Council Announces Alexander as March Rotarian



SKIP ALEXANDER

Skip Alexander, a political science major and senior scholar for Dr. Theodore Shay, was selected March Rotarian of the Month at the Student Council meeting last week. Now a senior, Alexander has been active in many of Willamette's activities.

He is president of Omicron Delta Kappa, upperclassmen's scholastic and activity honorary, and vice president of the Young Democrat Club. Last year he was a president of his junior class and Rally King.

Alexander is also a member of Pi Gamma Mu, national social science honorary.

## Cavern Makes Changes To Improve Business

The 'Cat Cavern board has initiated spring improvements for the 'Cat Cavern. A cold drink machine has been installed on a trial basis for a month to determine if it will increase profits and improve the speed of customer service.

Displays of student art work will be arranged by Dr. Cameron Paulin for the enjoyment of 'Cat inhabitants, and the board hopes to have a collection of pennants from Northwest schools.

He is Student Body member-at-large and is head of the Constitutional Revision Committee in that capacity. Alexander also played football for two years.

Responsibility of the Rotarian of the Month includes attending Rotary Wednesday luncheons for a month, representing Willamette.

## Frosh Eligible For Honorary

National freshmen scholastic honoraries will take 19 women and 13 men who became eligible by achieving grade point averages of 3.5 or better for the fall semester.

Women eligible for initiation into Alpha Lambda Delta are Judith Abele, Elaine Buckinger, Pat Holcomb, Dorothy Jacobson, Barbara Sher, Mary Zeller, Marcia Humphrey, Sue Jenkins, Terry Boyd, Kathleen Burnard;

Barbara Giberson, Ann Harper, Nora Hounsell, Joanna Lester, Marcia McLean, Marilyn Parsons, Beth Robertson, Barbara Royer, and Geranna Stevens.

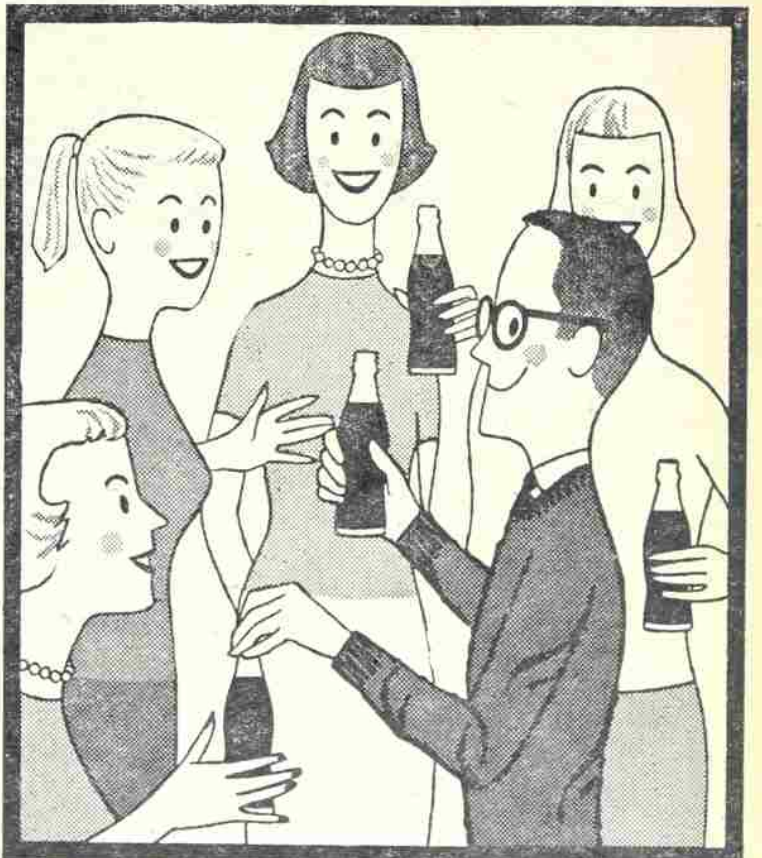
Men eligible for Phi Eta Sigma are Mike Myers, Bob Penater, Earl Rollins, Wayne Senner, Bill Richter, Bob Trelstad, Dorr Dearborn, Paul deLespinasse.

Benjamin McBride, Michael McDowell, Dale Mortenson, George Rogers, and Lyle Tucker.

## University Drug

Prescriptions, Magazines & Cosmetics

The Campus Drug Store  
on State St.



"COKE" IS A REGISTERED TRADE-MARK. COPYRIGHT 1958 THE COCA-COLA COMPANY.

# Gay's

The Best Place  
To Buy  
the  
Best Candy  
135 North High

# BMOC\*

\*Big Man On Campus—yea man! He treats the gals to Coke. Who can compete with charm like that. So if you're 5'0" and a little underweight, remember—you don't have to be a football hero to be popular. Just rely on the good taste of Coke. Put in a big supply today!



SIGN OF GOOD TASTE

Bottled under authority of The Coca-Cola Company by  
COCA-COLA BOTTLING CO. OF SALEM