

WILLAMETTE UNIVERSITY  
LIBRARY

PERIODICAL STACKS

W

A

L

L

U

L

A

H





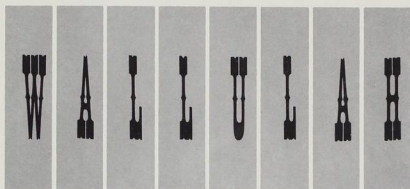




W A L L U L A H

'59





'59

## Contents

SOCIAL	4
A S W U	35
ACADEMICS	55
SPORTS	93
LIVING ORGANIZATIONS	119
SENIORS	151
CLUBS AND HONORARIES	161
ADS AND INDEX	181



john galbraith, EDITOR

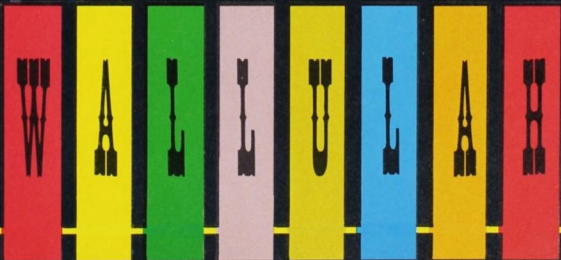
NINETEEN

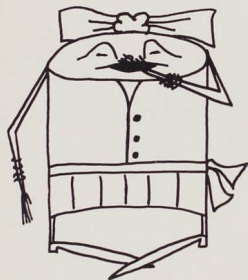
FIFTY





YNINE





S

O

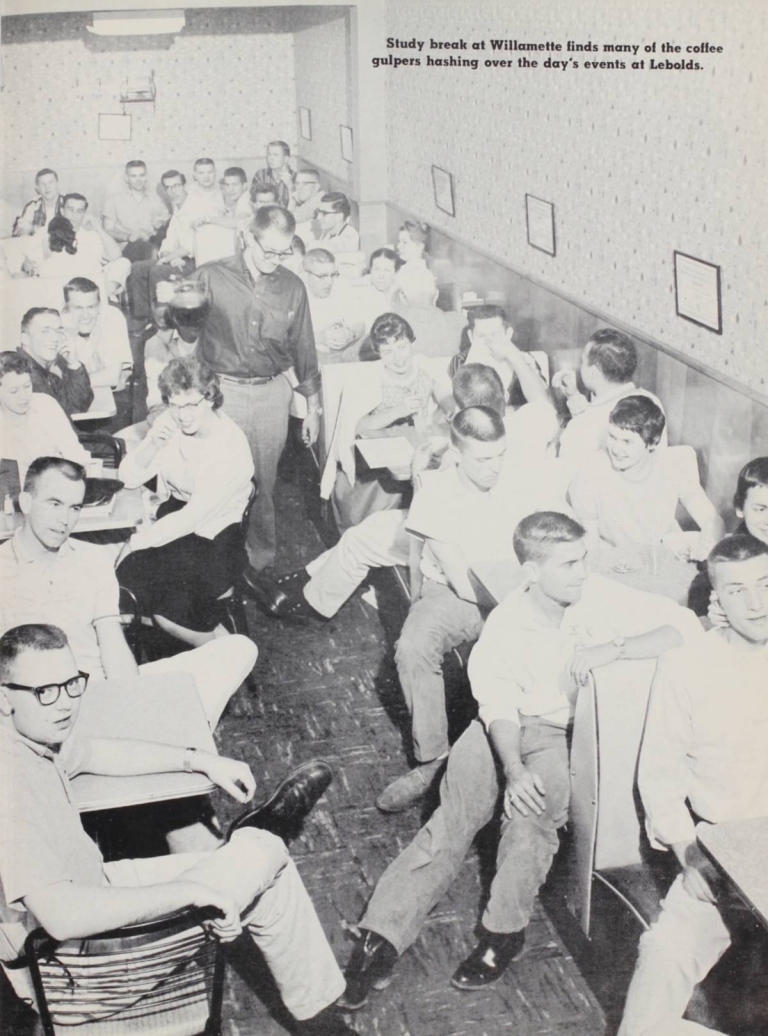
C

I

A

L

Study break at Willamette finds many of the coffee gulpers hashing over the day's events at Lebolds.



## They Came in Drove

The opening of the dorms on Sunday afternoon, September 14, witnessed the arrival of a new freshmen class. Some 343 strong, the class of '62 shows promise of taking an active part in campus life. Surviving a vigorous week of placement tests, orientation, and rush, they soon settled down to the general routine of classes. By mid-term grades, many were surprised and for some the shock was even greater at the close of the semester.



Arriving at Baxter is Jeff Keuss, one of the many bewildered freshmen.



Carol Gillett has a "few things" to unload as she moves into Doney.

Hectic as always, registration day found the Professors in the Econ department busy conferring with students.



New on this year's agenda was the freshman-faculty picnic at Bush's Park.

After waiting only six hours Carolyn Prince was finally permitted to purchase her books.



The freshmen were regally entertained by the fraternity men as rush got underway.





Jerome Hines gladly autographs Pris Prouty's program.



Last minute details were checked with the pianist before his performance.



The Concert Series presented as their second attraction, the accomplished French pianist Phillippe Entremont.

Included in his performance were selections from Bach, Beethoven, Schumann, Debussy, Roussel, Ravel, and Liszt.



## Concert Series

The Distinguished Artists Concert Series was climaxed in 1958-59 by the Roger Wagner Chorale. The stirring dynamic songs of basso Jerome Hines, the skillful artistry of the young pianist Phillipe Entremont, and the rare musical insight of violinist David Abel, led up to the final exciting performance. Abel was a replacement for Igor Besrodoni, a controversial Russian violinist, who broke his thumb at the last minute.

The responsibility for a successful series fell on Willard Bunney, Concert Series manager.



Roger Wagner Chorale rendering their final number.

## Parents Weekend

Parents Weekend was held early in October this year with a resulting increase in attendance of 150 for a record number of 682 parents. The enthusiastic parents caught a glimpse of college life between talking with the professors and visiting with their offspring.



Jim Brentlinger, Parents Weekend Manager.

After the game Saturday evening many of the parents returned to the living organizations to talk over the days events.



Jack Hjelt and Jo Gannon discuss marital problems in "The Twin Menaechmi".



Jim Chadney and Jack Hjelt (lying) invite themselves to join Carol Hille for dinner as the drama progresses.



Saturday afternoon each living organization met in the gym and presented two numbers for the pleasure of the visiting parents.



After donning appropriate attire the Delta Gamma's presented a folk song from the old country, "Ifus Castle".



To the amusement of all the Phi Delt's sang "There's Nothing Like a Dame".




Dignitaries of the Parent's Association who were present included (left to right) Dr. G. Herbert Smith; Mr. R. Coleman, President; Mr. F. Holcomb, past president; Mrs. Parrett, Board Member; Mrs. R. Mangels, past secretary; and Mrs. H. McGilvra, Secretary-Treasurer.



As typical of all living organizations the SAE's had a coffee hour for their parents.

## Homecoming Hostess

A black and white portrait of a young woman with short, dark, wavy hair. She is looking slightly upwards and to the right with a gentle expression. She is wearing a light-colored, possibly white, collared shirt. The background is a soft, out-of-focus grey.

A junior from Hermiston, Oregon, Miss Sylvia Quiring was selected as Homecoming Hostess. She is a member of Alpha Chi Omega, student body secretary and majoring in sociology.

# Homecoming

Missing rakes, pouring rain, and sign difficulties made the weekend memorable. For the frosh the greased pole climb was successful and won for them the privilege of removing their "rook lids".

Jason's Bearcats defeated the CPS Loggers 40 to 7 at McCulloch Field.



The frosh were determined.



Homecoming Hostess Sylvia Quiring presented the trophy to the women of Pi Beta Phi, sponsors of the winning Ugly Man as Homecoming Manager Emil Muhs looked on.



Joe Karmos, front and center, was chosen Ugly Man.



After three previous attempts the freshmen were finally successful with their annual bonfire.





Some people are hard to convince.



The leaf rake needs you!



Everyone enjoyed the leaf rake?



The men of Baxter Hall walked off with first place in the men's division of the sign contest.

In the women's division first place was captured by the Independent Women.





## Varsity Varieties

Jody Lester and Gene Parrett were featured in a vocal duet.



Ross Stephen, Varsity Varieties Manager, checked last minute details before the curtain went up.



Dale Bunse and Judy Teufel provided a riotous satire on returning alums.

Varsity Varieties, composed of student talent was well received by the visiting alums. Its success netted \$450 for the Willamette Campus Chest.

The closing scene brought the entire cast on stage to sing "It's a Big, Wide, Wonderful World".



## Firesides



Cards were the order of the evening with the Alpha Phi's and the SAE's.



Herb Bastuscheck demonstrated the finer art of hula hooping at the Baxter, Lausanne and Doney fireside.

Chi O's and Beta's enjoyed the Halloween festivities.



Phi Delt's and D G 's enjoyed dancing at their fire-side.



Caught in the act . . . Myrna Mangels hams it up at the Pi Phi —Phi Delt fireside.



The Alpha Chi's and the Sig's enjoy an amusing moment.



# Christian Resource Week



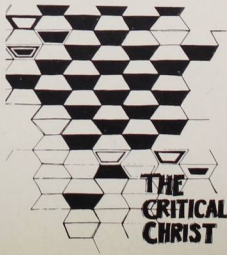
Chuck Foster  
CR Week Manager

The sanctuary of the First Methodist Church is the scene of the weekly Thursday chapel.



Featured as the fire-side speaker at Baxter was Dave Pointdexter.

Dr. Robb, the featured speaker from the University of Southern California, was well received by the student body.



This unique design drawn by Terry Boyd, was used for the CR Week posters and program covers.

## Military Ball



Candidates for Little Colonel included (first row, left to right) Ruth Parrett, Connie Snow, Sylvia Takeuchi, (second row) Karen Henninger, Lenore Elliott, Bonnie Scott, and Carol Hamman.



Chaperones taking time out for some refreshments are (left to right) Mr. Williams, Mrs. Fritch (back to camera), Colonel Fritch, and Mrs. Williams.

Both civilians and ROTC cadets danced to the music of Bill Becker's Band.







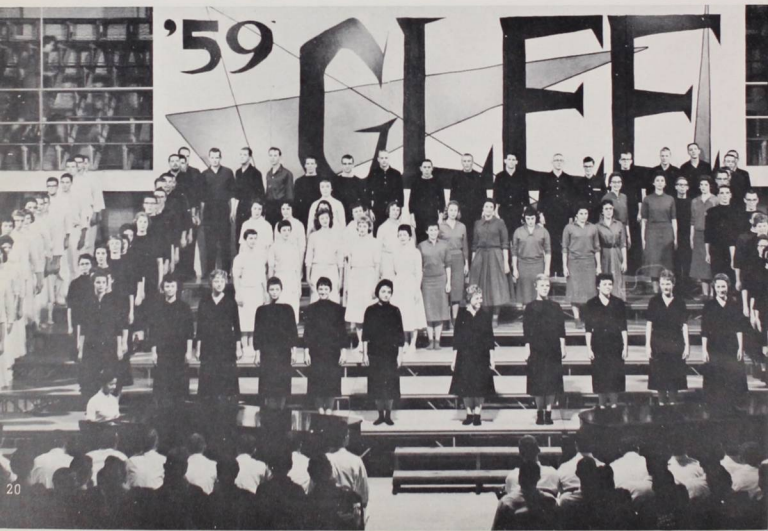
Included on the Executive Glee Committee were: (left to right) Roy Chapin, assistant manager 1958; John Bergstrom, manager 1957; Stu Hall, manager; Dick Barton, entertainment chairman; Hugh Stites, assistant manager; and Barbara Henken, secretary.

## Freshman Glee



Stuart Hall, manager of the 51st Annual Glee.

Forming the outline of the state of Oregon, intersected by the Oregon Trail, was the sophomore clas of 1961 who presented the winning song, "This Must Be Oregon".







The frosh found themselves in fourth place with their presentation of "Ode to Jason" and their tombstone formation.

The seniors opened Glee with their traditional cut-ups, centered around the centennial theme.



Moving from fourth place in their freshman year, the exuberant sophs rushed to claim the coveted banner.





Second place was captured by the seniors of 1959 with their presentation of "South Sea Holiday" and their bongo drum formation.



Miraculously escaping fourth, the juniors of 1960 managed to place third for the second straight year with an umbrella formation and their presentation of "Humidity Ditty."

Unscathed and free, frosh prexy Bill Adams casually issued the challenge to the other classes at the assembly.

In keeping with their theme of rain, the class of '60 huddled under umbrellas as they sang their parodies during the assembly

Up . . . 2 . . . 3 . . . 4, smile . . . 2 . . . 3 . . . 4.



# Monday Blues

Catching raw eggs from the second floor of Eaton proved to be a popular sport.

Many new WU coeds took the opportunity to make their debut.

A few of the Glee bets were rather messy!



Following a Willamette tradition, the losing frosh took their plunge into the Mill Stream.

An over-confident junior found himself the victim of a sophomore whip-cracker.



## May Weekend

A colorfully decorated campus greeted 180 high school seniors at the May Weekend festivities. "Out of the Frying Pan," presented by the drama department, led off the activities. The seniors spent Saturday morning in an orientation assembly and an academic preview. They later braved somewhat foul weather to see the traditional coronation of the May Queen. The activities were climaxed by a dance in the gym.

The registration committee advised the seniors of May Weekend procedures.



The visiting high school seniors listened to talks on various aspects of Willamette life. At the moment Dale Daniel is speaking on fraternity living.



Leading the May Weekend procession were the Heralders, flanked by the colorful sophomore daisy chain.

At the academic preview several high school seniors conferred with Dr. Derthick. (back to camera)







Reigning over the weekend festivities was Queen Martha I, surrounded by Princesses (left to right) Sondra Roark and Sandi Harris.

The freshmen women gracefully danced around the maypole in the breeze after the crowning of the queen.



Myrna Mangels, fashion chairman, makes a last minute inspection of model Joyce Brown's outfit.



Saturday afternoon was highlighted by a fashion show sponsored by the AWS.

# Blood Drive



Why so glum?



Easy now!

"Music to give blood by," was the added feature of this year's Blood Drive. According to the manager, Dot Manker, the yield was 225 pints.

Dot Manker, Blood Drive manager, served refreshments to the donors.

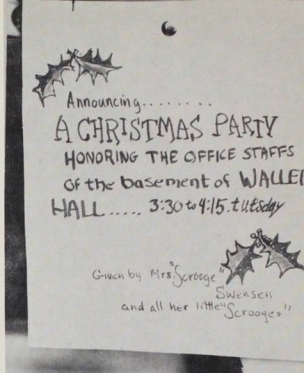


Frank Caruso demonstrates the spirit that gave the Sig's the men's Blood Drive trophy.

# Christmas Festivities



The cellar workers in Waller partied after office hours.



Winning the door decorating contest in Lausanne Hall were Nancy Gray, Margaret Hanna and Della Rogers.

The sophomore class Christmas party was one of many given for underprivileged children.



Willamette carolers serenaded many of the faculty members.





# BdTR...



As trainer for the winning D G turtle, Manuelita Nunez received an award from Phi president, Pete Leveton.



Four entries "dash" toward the finish mark.

The first annual Big Phi Delt Turtle Race and derby started with a surprise serenade and ended with the big race on Friday evening. Included in the week's activities were turtle inspections in the women's living groups, a turtle trainer's banquet, and an open house. Each of the women's living groups received a turtle to train for the event. The winner of the contest won for his sponsor a traveling trophy appropriately decorated with turtles.

Taking their place on the starting line are several of the hopeful entries. Assisting the turtles are two of the starters and a trainer.

(Left to right) Penny Post, Lausanne turtle trainer, and Kathy Burnard, attempt to relax their tense entry before the main event.



## Varsity Queen



The Letterman's Club selected Jeanette McRoberts as queen of the varsity ball. Jeanette is a freshman from Burlingame, California, and is pledged to Pi Beta Phi.

## Little Colonel



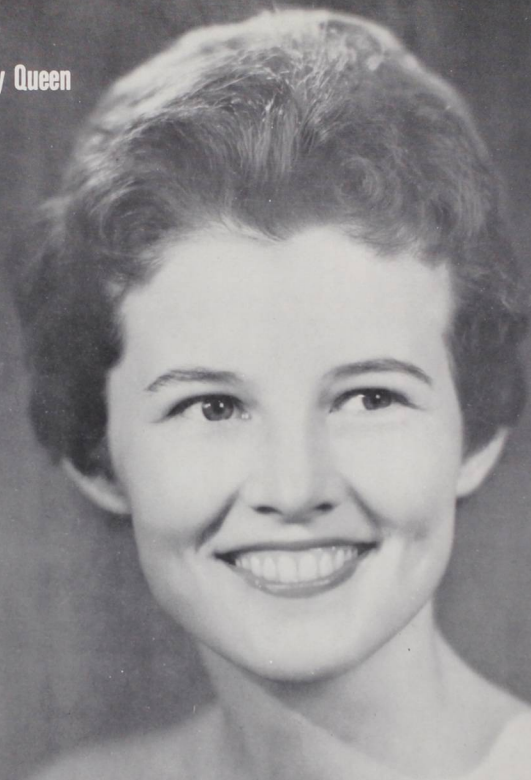
Announced at the Military Ball was the AFROT Cadets' choice of Bonnie Scott as Little Colonel. A freshman from Honolulu, Hawaii, Bonnie is a member of Alpha Chi Omega.



## SAE Queen of Violets

Miss Thelma Masserdotti, a freshman from Atherton, California, and a representative from Doney Hall, was selected by the men of Sigma Alpha Epsilon as their 1958-59 Queen of Violets. Further adding to her many titles of beauty, Thelma was chosen Miss Salem in the pageant sponsored by the Junior Chamber of Commerce.

## May Queen



Miss Martha Eagleson was elected May Queen by the Associated Students of Willamette University. Martha is a senior from Tigard, Oregon, a sociology major and senior scholar, a member of Alpha Chi Omega, and was Homecoming Queen in 1957.



## Sweetheart of Sigma Chi



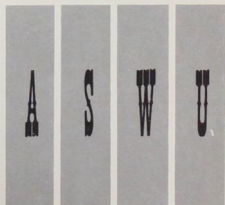
Miss Marcia Ruby, a member of Pi Beta Phi, was the Sigma Chi's choice this year. She is a freshman from Oswego, Oregon, and an active member of the Angel Flight.

## Snow Princess



Willamette's Snow Princess, Alice Eastman, was prevented by illness from attending the Winter Carnival at Mt. Hood. She is an Alpha Chi and majoring in education. The brunette from Portland, Oregon, is in the class of 1961.







S. B. President, Larry Willingham, spent his time listening to the troubles of irate students.

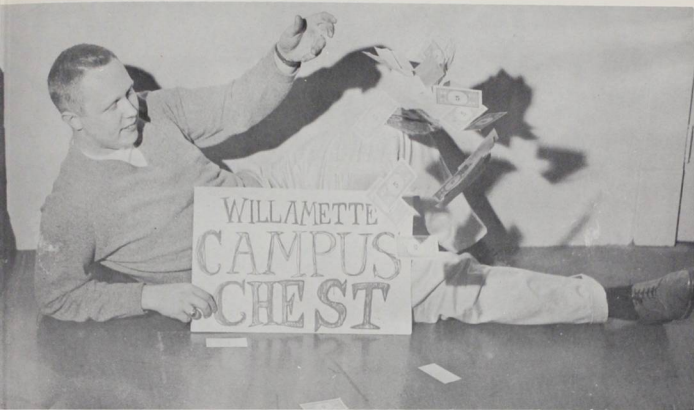


Checking the calendar for dates of coming activities occupied the time of Jo Heald, First Veep of the student body.



Loaded with ballot boxes headed for the polls, is Stan Culy, Second V.P.

## S. B. Officers



Willard Bunney, Treasurer, is seen throwing away money in one of his more carefree moments.



Sylvia Quiring found herself sitting behind a typewriter while fulfilling her job as S. B. Secretary.



Member-at-large, Gordon Macpherson, waited for constitutional revisions to present themselves.

## Student Council



Meeting each Wednesday afternoon in the Seminar Room of the library was the Student Council. Representatives included student body officers and delegates from each living organization.

## Activities Board



Jo Heald, second vice-president, presides over the Activities Board which meets to schedule and approve campus activities. The board consists of representatives from each living organization and many campus organizations.

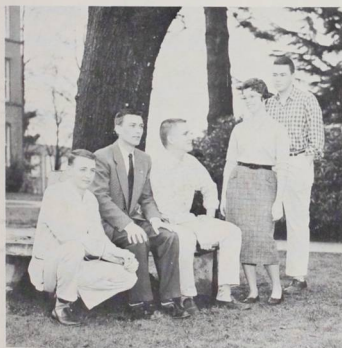
## Fall Class Officers



The frosh were led by (left to right): Dave Ackerman, treasurer; Percy Jefferson, sergeant-at-arms; Ray Blouin, president; Sylvia Takeuchi, secretary; and Lynn Hales, vice president.



Meeting informally were the sophomore officers (left to right) vice president Marcia Humphrey, sergeant-at-arms Judy Teufel, president Steve Berglund, secretary Terry Boyd, and treasurer Dean Kohntopp.



Fall senior officers included (left to right) Don Williams, vice president; Jan Aaseth, sergeant-at-arms; Dave Peterson, president; Carolyn Miller, secretary; and Frank Bash, treasurer.



Discussing their activities on the steps in Eaton were the junior officers (left to right) John Kaufman, sergeant-at-arms; John Jeldricks, president; John Sweeney, veep; Sonja Peterson, treasurer; and Ann Fields, secretary.

## Spring Class Officers

Leading the junior class were (left to right): Carol McMinimee, treasurer; Rosemary Stephenson, secretary; Keith Pailthorp, president; and Mark Teppola, vice president. (Joe Karmos, sergeant-at-arms, not pictured.)



Focusing their attention on Dorre Dearborn, president, (sitting at the piano) are the other sophomore officers: (Left to right): Gordon Rounds, vice president; Peggy Hoffman, treasurer; Ed Thornton, sergeant-at-arms; and Kathy Evans, secretary.



Taking advantage of the warm weather, the freshmen officers met informally to plan coming activities. They are (left to right) Phil Thom, vice president; Diana Dawson, treasurer; Bill Adams, president; Laurel Ratcliff, secretary; and Kevin Nagel, sergeant-at-arms.



Heading the senior class in their last semester at Willamette were (left to right): vice president, Conrad Moore, president, George Nye, treasurer, Frank Caruso, secretary Linda Berry, and sergeants-at-arms Don Williams and Mary Jo Smullen.





## Fusser's Guide

(Left to right): Terry Boyd, Fusser's Guide editor, and her assistant, Joan Pemberton, find their "new alphabet techniques" amusing.

## Blotter

The trio that composed the Blotter staff included (left to right) Bing Johnson, editor; Greg Milnes, assistant editor; and Pete Kelso, art editor.

## Managers



As publications manager, most of Barbara Roach Griffin's time was spent listening to the troubles of the Collegian and Wallulah editors.



Keeping a close watch on the purse strings of the Wallulah was Dave Reh-fuss, business manager.

Heading up the financial section of the Collegian was Ross Stephen, business manager.





# Wallulah



Andrea Hunnel, assistant to the academics editor, files pictures while Judy Miettunen busily types copy.



Giving instructions to Jeff Keuss is Bill Fritts (right), social events editor.



Jan Beggs, academic editor, schedules pictures with photography coordinator Larry Sterling.



Wallulah editor, John Galbraith, takes a breather from his rigorous task of coordinating the sections of the yearbook.



Ad manager, Joan Griffis and her assistant, Mary Kennedy look for possible cuts for the ad section.



Artalee Weber, layout editor, and her assistant, Jan Gilmore, see how pictures returned from the darkroom look with their layouts.



Collene Cody and Gordon Jones put their knowledge of the alphabet to use in compiling the index.

Looking over the proofs for his section is Gerry White, living organizations editor.



Making last minute changes in the football section before being sent to the printer are Pete Welch, sports editor, and Dr. Ringnalda, faculty advisor.



Bing Johnson, ASWU editor, searches for lost copy in file 13.



## Collegian

Winning bonus points in every category, the Willamette Collegian took top honors for college newspapers and was named "All American" by the Associated Collegiate Press, a college newspaper clinic of the University of Minnesota, for the issues of the fall semester 1958-59. Under the able direction of Carol McMinimee, the Collegian kept the campus informed of the latest news.



The job of editing the Collegian fell on Carol McMinimee.



Michelle Monte, Bitsy McCready, Marilyn Sparks, and Suellen Stanley busily typed copy.

Collegian staffers spent Friday afternoons mailing out the papers to alums and subscribers.

Assistant society editor, Dot Manker, ponders over authenticity of latest campus social scoop with Jo Herald, campus editor.





Rumaging through old files was Jack Rasmussen, Collegian extra.

Carol McMinimee and typesetter Eugene Kitzmiller consult the linotype operator.

Maureen Avery, feature editor, and Judy Olson, society editor, discuss copy before sending it to the printer.



Final check is made by the staff to see if everything has been set up correctly.

Staff looks on as layouts are completed and assembled.



Busily proofreading are Dick Forcum, copy editor, and Jim Close, sports editor.

## Darkroom Staff



Frank Bash, darkroom manager, hopelessly examines the Wallulah's washed out negatives.



Jerry McAllister  
photographer



Ron Johnson  
finisher

Lewis Seagraves  
assistant manager



Bob Bishop  
photographer



Terry Shuchat  
photographer



## Publications Board



Meeting to hash over publication problems the Publications Board, headed by Barbara Griffin, listens to petitions for editorships. Members include (left to right) Carol McMinimee, Collegian editor; Frank Bash, darkroom manager; Ross Stephen, Collegian business manager; Dr. Murco Ringnald, faculty advisor. John Galbraith, Wallulah editor; Dave Reh-fuss, Wallulah business manager; and Barbara Pfaff, member at large.





Heading up the bookstore was Mrs. Delsia Larson.



Assisting in the bookstore were (left to right) Mrs. Barbara Norman, Mrs. Enid Randeau, and Mrs. Evelyn Geer.



As student assistants (left to right) Bing Johnson and Russ Peterson were always anxious to "count the take."

## Bookstore



Mrs. Eleanor Swenson, Cat Cavern manager.

## Cat Cavern



Helping to satisfy the "lunch mouth" appetites of WU students were (left to right) Janice Adams, Dale Bunse, Jack Withers, Gary Lovre, Dave Marsters, Nancy Gray, and Mrs. Swenson who composed the Cat Cavern crew.



# Graduation



Faculty members and graduating seniors gathered on the Blind School lawn prior to their processional during the June exercises.



Commencement was held in the Fine Arts Auditorium for the February candidates.

SB president Larry Willingham spoke before the candidates received their degrees.



## Convo

Included in the tradition of Willamette is the Tuesday morning Convocation. The Convo hour is set aside to educate, entertain, and inform the students of important student body business. Serving as Convo manager this year was Joanne McGilvra.

WU's Pep Band lent flavor and spark to the Convo hour.



Well at least they're all on one leg — and in spite of the flamingo-like effect, the Honeybees were well liked.



Famous, often quoted, Margaret Meade fascinated the student body while she chided them for being content with the status quo.



Everyone joined in for the Glee challenge assembly. Loud cheers, cat-calls, and cries of "swish, swish, swish," filled the air.

## Death Takes a Holiday

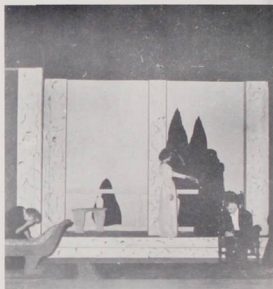
"Death Takes A Holiday" was written in Italy and brought to this country in an adaption for the American stage. It first appeared on Broadway in 1929 and has since been filmed and more recently televised. The story is a romantic fantasy concerning the personification of, and a probing into various human attitudes toward Death.



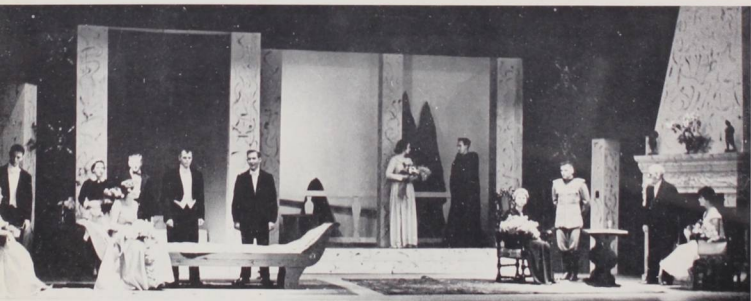
Death (Ross Stephen) tried to find out if a mortal woman (Carol Hille) could love him.



Major Whitred (Warren Walker) and Death (Ross Stephen) discuss the virtues of death.



Grazia (Sheila Grigsby) decides to follow Death (Ross Stephen) to his world and live as a beam of light.



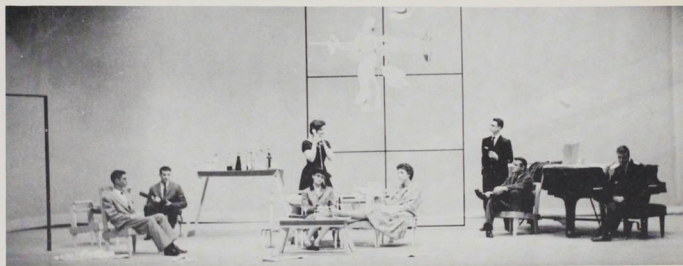
Appearing on stage for the curtain call were (left to right) Carol Kirschner, Stephen Hone, Lynn Linforth, Carole Cartwright, Stephen Carmichael, Phillip Worth, Ellis Vance, Sheila Grigsby, Ross Stephen, Carol Woodbury, Warren Walker, Laurel Tiller and Carol Hille.

## One Acts



Sir John M. Barrie's social satire, "THE TWELVE POUND LOOK."

(Left to right) Ross Stephen as Sir Harry and Christine Schurr, as Kate, had the leading roles.



Theta Alpha Phi also presented Noel Coward's comedy, "Hands Across the Sea."

Incest, murder, and suicide were shouted across the footlights as the plot unfolded in Tennessee Williams' "The Purification."



# Out of the Frying Pan

The University Theatre closed its current season with one of those frothy confections created solely to tickle the ribs. The story was concerned with the struggles of a group of young hopefuls to break into the professional theatre, and the crazy things that happened to them provided a laugh filled evening of entertainment.

Policemen Stan Sather and Dave Haugeberg stand in respectful silence at the discovery of "dead" Muriel, Martha Wynd.



Mr. Coburn, Robert Putnam, suddenly learns that the boys live there too, when they return with Mr. Kenny and his food. (left to right) Della Rogers, Martha Wynd, Julian Thurston, Tom Caylor, Al Stevens, Priscilla Prouty, Ross Stephen, Robert Putnam and Betty Williams.



Mr. Kenny, Ross Stephen, confronts Mr. Coburn and the three girls who have let their bathtub overflow into his apartment below.



Norman, Al Stevens, surveys the "dead bodies" during a scene when the kids were acting out **Mostly Murder**, hoping to impress theatrical producer Kenny.



## Miss America Visits W U

With a flashing smile and a sweet southern drawl, Mary Ann Mobley, 1958 Miss America made her debut at Willamette, February 4. Miss Mobley, an education major at the University of Mississippi, is a member of Chi Omega sorority, and was entertained by the WU chapter at dinner. Due to a misunderstanding, after dinner she retired to her hotel, leaving 300 disappointed students waiting to meet her at Doney Hall.



"Hello, you all!" said a delighted Miss America as she stepped in the door of the Chi O House.

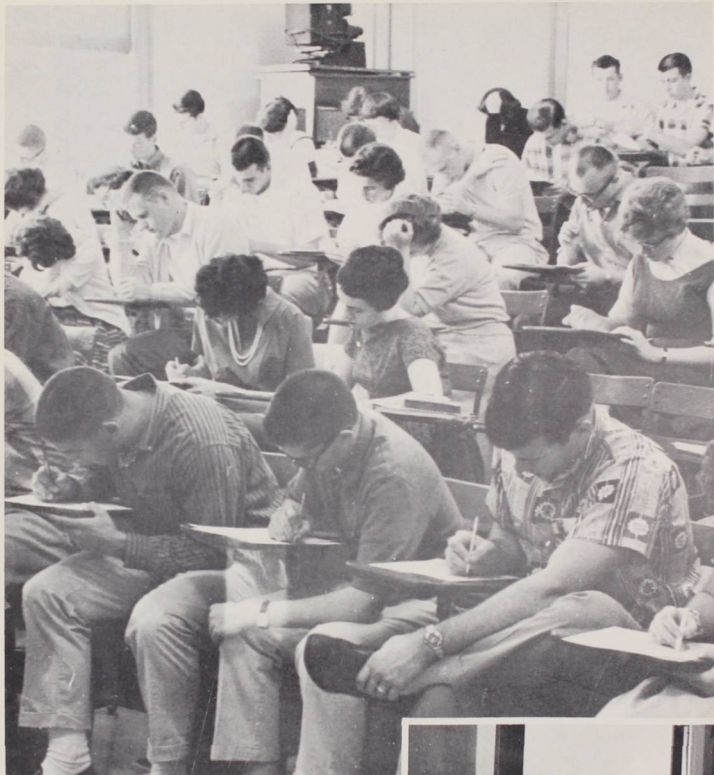
Warm and gracious, Miss America greets her sorority sisters before dinner.



Chi O house boys selected Miss America as the girl they would most like to - ?

Jane Dedrick (right) chats with Mary Ann during dinner.



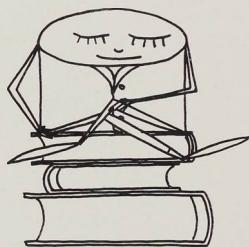


Frantically searching the test questions for something that looked familiar were the students of Physical Science 102.

## And There Were Tests

A typical freshman, Dave Haugeberg, burns the midnight oil in desperate attempt to score a passing grade on the quiz.





A

C

A

D

E

M

I

C

S



**University  
President**

Dr. G. Herbert Smith

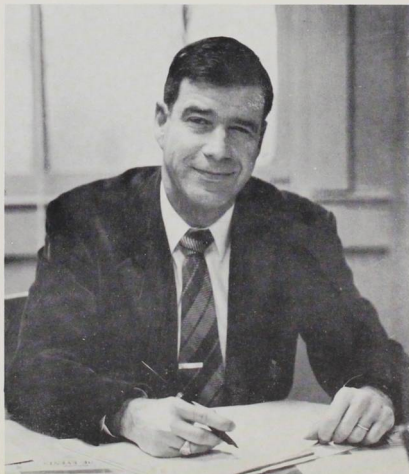
## Dean of Women

Regina L. Ewalt



## Dean of Students

Walter S. Blake Jr.





## Chaplain



Dr. Harley Zeigler, chaplain

## Admissions



(Left to right) Miss Violet Blanchard and Mrs. Rose Johnson, admissions' secretaries.



Charles Paeth, Jr.,  
director of admissions



Donald Peterson,  
admissions counselor



## Registrar

Richard Yocum, registrar



(Left to right): Mrs. Hazel Crothers, veteran's advisor; Mrs. Lillian Haytack, recorder; and Miss Blanche Christiansen, secretary.

## Secretaries

Mrs. Esther Ryan,  
secretary to President Smith

(Left to right): Mrs. Jeanelle Loewen,  
secretary to Dean Blake and Mrs.  
Marjorie Raines, secretary to Dean  
Ewall.

Mrs. Corrine Crabb, switchboard operator.



## Business Office



Dr. Richard Petrie,  
financial vice-president



Naomi James, cashier, and  
Dora Howard, accountant



David Lewis  
assistant business manager

## Alumni Office



Jerry Whipple,  
director of alumni affairs  
and church relations



Margaret Maris, alumni secretary,  
and Theresa Pumbs, records secretary



## Infirmary

Dr. Ralph Purvine, health center director and  
Henrietta Althoff, university nurse.

Mac McFadden, food  
service director and the  
food service staff.



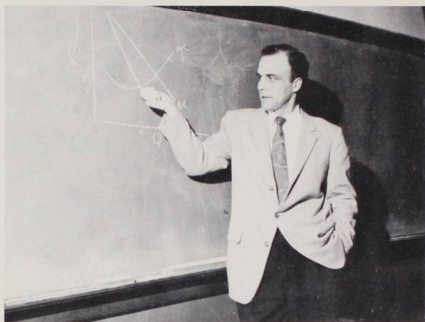
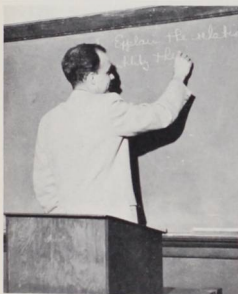
Charles Ruud,  
director of information.

## Library

Left to right: Magdelaine Detierfort, assistant librarian; Brooks Jenkins, librarian; Ruth Robbins, assistant librarian and cataloguer; Dorothea Favel, Florence Scales, and Bernice East, clerical assistants.



# The Professor



Geometry plays its part in economics as Prof. Gillis asks what happens where the marginal cost intersects the marginal revenue curve.

A typical Willamette prof is Mr. Richard M. Gillis, associate professor of Economics. Besides the lower division "Principles" course, he taught several advanced studies for the "lovers of economic theory." Hailing from the grand state of Alabama, he is at present working on his doctorate degree at U of O.

He pedaled his bicycle across campus while wearing his overcoat and ivy-league cap, and spent several Sunday evenings explaining the problem of capitalism vs socialism to the Wesleyans. Noon hours he spent playing badminton in the gymnasium with other profs, but most of his waking hours were consumed by classes, correcting papers and tests, and fulfilling the duties of a Willamette professor.



The work of correcting the weekly quizzes and the hour tests is lightened by the help of Dick Audley, a senior scholar in the department.



## The Student



Like many other WU students, Jan "hits the books" in the library stacks.

Jan Aaseth, although originally from Norway, was a typical Willamette student. He got up early for the oft-lamented "8 o'clocks", spent his day in a series of hard, unyielding chairs as the professors attempted to share their knowledge, and ended in a blaze of midnight oil. In between the papers and class assignments he found time to retail Norwegian hand-knit sweaters for much appreciated funds. A member of the ski team, his winter weekends were spent on the ski slopes of Mt. Hood. During the spring months, he represented Willamette on the golf team. Brought to WU through a fraternity plan, he lived a semester with each of the fraternity houses.



As he watches Prof Gillis expound on "Business Cycles", Jan muses about skiing in Norway.





## College of Liberal Arts

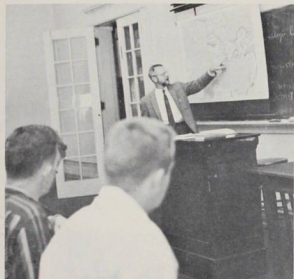
Robert D. Gregg  
Dean, College of Liberal Arts



Miss Susan Noneman  
Secretary to Dean Gregg

# Religion

Each student finds himself enrolled in the religion department at least once during his career at WU. Through study he may learn the history of the great faiths and the present interpretations and applications of religion.



Dr. Norman Huffman explains the span of religion to a classroom of interested and eager students.



Dr. Norman Huffman  
professor



Dr. Burton C. Bastuscheck  
assistant professor



Dr. Harley H. Zeigler  
professor



Rev. Boone L. White  
instructor

# Philosophy

Developing the thoughts of each individual is the primary purpose of the philosophy department. To accomplish this, the department emphasizes the study of logic and the history of the development of thought.

Philosophy senior scholar Dave Steward checks the bulletin board for new announcements.

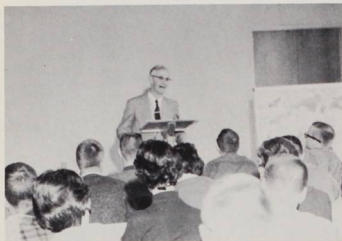


Dr. Milton D. Hunnex  
associate professor

Keeping up on research work, Alice Knoles browses in the library.



# History



Dr. Lovell holds the classes attention with the adventures of Napoleon.

Comparing and integrating the past with the present, for a better understanding of both, is the aim of the History Department. Many students in history make their careers in either law, business, or the educational field.



History senior scholars included Esther Gwilliam, Gene Paterson, and Ron Wilkinson.



Dr. Ivan Lovell  
professor



Dr. Robert Gregg  
professor



Dr. Chester Kaiser  
associate professor



Charles Ruess  
instructor



Dr. Robert Gatke  
professor



A. Freeman Holmer  
associate professor

Poly sci majors enjoy a moment of relaxation during dinner at Randall's Chuckwagon.



## Political Science

Willamette's location is ideal for political science students with future plans in governmental, political, or administrative positions. The Poly Sci Department's basic courses deal with the general problems of government. Majors in this department whose aim is to build a foundation for work in law, government, or graduate study, find advanced subjects well adapted to their needs.



Political science senior scholars were (left to right) Kay Farley, Dan Marsh, and Dave Landis.



Dr. Albert Dehner      Richard Gillis      Howard Mader  
professor      associate professor      assistant professor

Econ senior scholars and departmental assistants were (left to right) Dean Bishoprick, Sondra Roark, Tom Moore, Larry Willingham, Conrad Moore, and Dick Audley.



## Economics

As well as gaining knowledge of the economic system, past and present theories, practices, and problems, students of econ learn the practical method of handling money. This knowledge, and the history and theory of econ, prepare the students to take their place in the world of business.



Bing Johnson works out a graph for Principles of Economics.

## Education

The educational program offers courses to show the student that teaching is more than correcting papers. The ed student will have a chance to study history, philosophy, and teaching methods as well as other subjects. In his senior year, he will student teach at a local school, giving him practice in a real teaching situation.

Searching the education card file for "that certain book" was Artalee Weber.



Dr. James Lyles      Dr. Homer Hawes  
professor      professor

Assisting in the Education Department as departmental assistants were Wayne Feller and Marietta Lind.





# Sociology

Dr. John  
Rademaker,  
professor  
Donald Miller  
instructor

Arthur Gravatt  
assistant professor  
M. E. Moore  
instructor



Senior scholars and departmental assistants include (left to right, top) Linda Berry, Martha Eagleson, and Claude Garvin (bottom), Jo Heald, Mary Owens, and Babs Pfaff.

Helping students to develop an awareness and understanding of contemporary social problems, the Sociology Department offers courses in the field of human relations and society, as well as studies in anthropology.

Linda Berry prepares soc students for forthcoming exams at a seminar.



# Psychology

Although still a baby in the field of science, psychology is a scientific and systematic study of elementary principles of behavior. Students study the basic principles of behavior in relationship to problems of personal adjustment.

Jan Beggs tests Gerry White on his visual acuity in experimental psychology lab.



Dr. Charles  
Derthick  
professor

Dr. Noel  
Kaestner  
assistant professor

Richard Yocum  
instructor



Psychology senior scholars were (left to right) Barbara Clark, Joan Sherrill, and Al Zavala.

# Biology



Dr. Cecil R.  
Monk  
professor



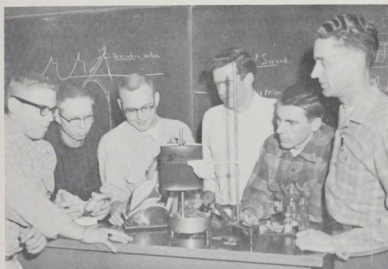
Dr. Martha E.  
Springer  
professor



Donald R.  
Breakey  
assistant professor



Dr. Morton E.  
Peck  
curator of  
herbarium



Setting up for tomorrow's lab are the biology senior scholars and departmental assistants (left to right) John Wood, Craig Johnson, John Dorsch, Roger Hewitt, Eugene Goertzen, and John Lloyd.

Biology stresses the fundamental principles and processes of life, including the study of structure, functions and inter-relations of living organisms. The pre-med and nursing students find their many requirements satisfied in the upper division biology courses.



Typical is this scene from the afternoon biology lab.

# English



Dr. Murco  
Ringnald  
professor



Dr. Paul G.  
Trueblood  
professor



James S. Douglas  
assistant professor



Dr. Orcutt W. Frost  
assistant professor



Margaret  
Ringnald  
acting  
assistant professor



Lucile D. Bartel  
instructor

The skills of composition and an appreciation of literature are cultivated within the many and varied fields of study in the English department. Freshman comp classes provide an opportunity for originality in expression and a classification of grammatical syntax. The advanced courses place special emphasis upon the study of the history of literature.



Dr. Ringnald gives standardized English exam to eagerly awaiting Freshmen.



(Left to right) Prudy Melendy, Marcia Ruby, and Marion Hauke confer with Mr. Douglas on a forthcoming test.

English senior scholars (left to right) Carolyn Prince, Sharon Lowery, and Sandra Moore.



# Foreign Language

Through the study of foreign languages — French, German, Spanish, Latin, or Russian— students are able to develop a better understanding of the other nations, peoples, and customs. The Language Department presents a thorough history, as well as the fundamentals of speaking and writing in a foreign language.

Dr. Marion  
Morange  
professor  
Dr. Daniel H.  
Schulze  
professor



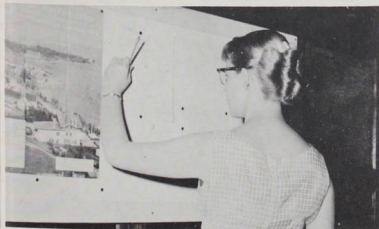
Dr. Paul B. Beal  
associate professor  
Clarence A.  
Kraft  
associate professor



Henry F. Cooper  
instructor  
William L.  
Shelnutt Jr.  
instructor



Marija Udris  
instructor



(Top) Listening to language records has become an important phase in learning pronunciation.

(Bottom) Articles and clippings of interest to the language students are found on the department's bulletin board.



(Left to right) Sue Snyder and Carolyn Miller, senior scholars for the department.



Dr. Gale Curry  
professor



Jean Williams  
instructor



Lestle J. Sparks  
professor

## Physical Education

In accord with WU's two years of required P.E. program, the department offers many various types of courses from which the student may choose. The P.E. major has a number of theoretical classes which he may take to fulfill his requirements.



John Lewis  
associate professor



T. Theodore  
Ogdahl  
assistant professor



Gerald R. Long  
instructor



P. E. senior scholar, Karen Enberg.



(Left to right) Frank Caruso, Don Neu, and Jim Manwaring served as departmental assistants and senior scholars.

Future tennis players practicing in the gym.



The girls P.E. classes moved out to the tennis courts and some sun when spring finally arrived.

# R.O.T.C.



Lt. Col. Edward Fritsch, professor  
Maj. Walter Fagan, associate professor  
Capt. Douglas Weart, assistant professor  
Capt. William Wright, assistant professor

Lt. C. Paul Muzzio, assistant professor  
M/Sgt. Donald Curtiss, instructor  
S/Sgt. Dennis Moore, instructor  
T/Sgt. Leslie Ostlund, instructor

Tuesday and Thursday afternoon drills and flights to McChord Air Force Base kept the Air Science cadets busy. The course is compulsory for all freshman and sophomore men while juniors and seniors may elect to take the advanced program. Those who do continue with the advanced program graduate with a commission as a 2nd Lieutenant in the United States Air Force.



Cadet Del Cummings was presented the Air Force Association Medal for outstanding achievement.

Members of the Angel Flight and the Drill Team wait to be inspected during the President's Review.

Armed Forces Day found the ROTC band playing at the County Court House.



Rain plagued many of the afternoon drills.





The Chemistry Department offers a basic understanding of chemical principles through both lectures and the well prepared laboratory sessions. The basic skills are utilized in advanced courses by students preparing to enter one of the many scientific vocations.



Hard at work, Rich Wayland enjoys an afternoon in the chemistry lab.

## Chemistry



Dr. Charles H.  
Johnson  
professor



Dr. Paul M.  
Duell  
professor

The senior scholars in chemistry were (left to right) Bill Randall, Dave Peterson, Marge Lowe, and Roger Hewitt.



Lois Latimer  
professor

## Home Economics



Erna Jean Buzzell  
senior scholar

The Home Economics Department, although small, offers a wide selection of courses both for those interested in majoring in Home Ec. and non-major students.



Mary Loennig spends an afternoon working on her home ec. project.



WU's "Rembrandts" are busy.

Senior exhibits are a highlight of the Art Department. The exhibits include samples from many of the courses including oil painting, water colors, lithography, etching, jewelry, ceramics, sculpture, and mosaics.

## Art



Sandi Harris  
senior scholar



Dr. Cameron  
Paulin  
professor



Carl Hall  
artist in  
residence



Ella Watson  
instructor



Carol Hille  
senior scholar



Robert Putnam  
associate professor



Dr. Howard  
Runkel  
professor

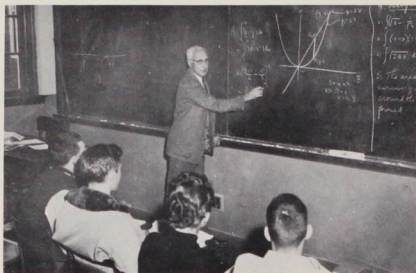
## Speech and Drama

Members of the Drama Department are busily making sets for a coming production.



Many phases of speech and drama are found in the numerous courses offered for developing skill in the field. Important fundamentals in training, technique, interpretation, method, and directing are especially stressed within the department.

## Math



Dr. Luther explains the fine points of mathematics to one of his classes.



Dr. Chester  
Luther  
professor



Dr. James Nickel  
professor

Angles, rectangles, numbers, letters - - - confusion! Well, not to the students of mathematics; through many angles and symbols mysteriously emerge the correct answers.

## Physics



Lab provides time for Leta Klock and Craig Johnson to analyze physics problems.

Physics students continued to work on a project sponsored by the National Science Foundation. By analyzing the light given off, they were able to study the structure of molecules. This work resulted in two articles appearing in national physics journals concerning the 76 experimenting being carried on at Willamette.

Dr. Robert L.  
Purbrick  
professor



Richard C.  
Montgomery  
assistant professor



Alexander G.  
Michaelides  
instructor



Maurice B.  
Stewart  
assistant professor

Physics senior scholars include (left to right) Frank Bash, Joe Stewart, Ted Neff, Gary Larson, and Don Williams.



## Honors Program



In order to provide maximum intellectual opportunities, the Junior Honors Program was installed at Willamette University. This year's participants are (left to right) Rusty Beaton, Jane Dedrick, Chuck Foster, Joanne McGilvra, Bob Ben-

nett, Mary Owens, Sonja Peterson, Barbara Dixon, Ralph Litchfield, Mike Augée, Don Hodges, Mildred Edmundson, Ann Fields, and Tim Campbell. (Not pictured, Keith Pailthorpe.) The professors seated at the back are Dr. Springer, Dr. Frost, and Dr. Monk.

In weekly seminars the students take turns leading discussions about the problems of civilization. The different viewpoints advanced by the students serve to broaden the perspective of all. This program is to be continued with the junior and senior honors groups next year.



## College of Music

Melvin H. Geist,  
Dean, College of Music





# Music Faculty



Dr. Willis C.  
Gates  
professor



Josef Schnelker  
professor



Maurice W.  
Brennen  
associate professor



Edwin W. Butler  
associate professor



Florence Wade, secretary to the Dean of the  
College of Music.



Music school senior scholars and departmental assistants included (top to bottom) Jim Fiske, Judy Fiske, Eugene Parrett, and James Warner.

Ralph Dobbs  
associate professor

Don M. Gleckler  
associate professor

Clorinda R.  
Topping  
associate professor

Nona Pyron  
instructor

Charles W. Yuki  
instructor





# Orchestra



Don Hibbard (right) instructs Gary Lovre on the finer points of playing the bassoon.

Stan Vanderwall uncovers the kettle drums in preparation for one of the mid-term concerts given by the orchestra.

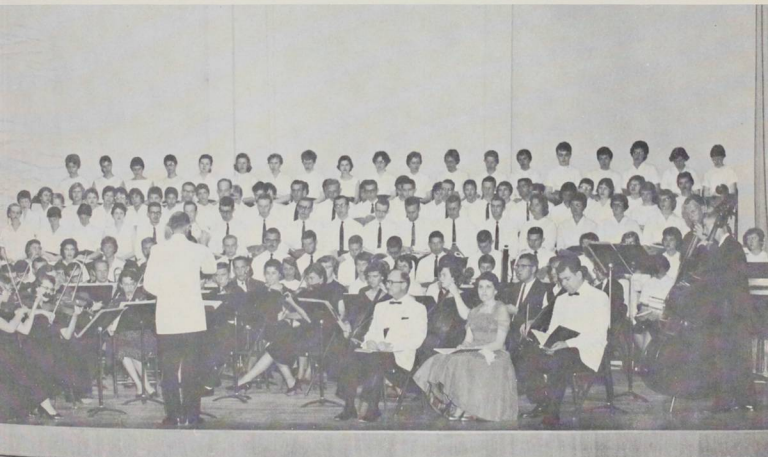


Led by Dr. Willis Gates, the Willamette musicians provided many hours of enjoyment for the student body. Three annual concerts kept the Willamette University Orchestra practicing every Tuesday and Thursday afternoon.





Members of the orchestra spend a great deal of time tuning up their instruments.



The Willamette University orchestra during the presentation of "The Creation."



## A Cappella Choir

Willamette's a cappella choir.

Willamette's a cappella choir is recognized by the University as one of the best public relations groups. They spend their time on tour, during spring vacation, giving concerts in Canada and around the Portland-Salem area.



As curtain time draws near, the members of the choir put on finishing touches.



The Choir "warms up" before performance.

The Willamette Singers



Officers for the a cappella choir this year were (left to right) Barbara Dixon, Ted Neff, John Vale, John Heidel and Pat Whelan.



The choir took part in the chapel services each Thursday.



The band officers included (left to right) Jim Fiske, Geranna Stevens, Larry Martin, and Gary Lovre.

Pleased with their band tour preparations, Maurice Brennen and Larry Martin are rarin' to get started.



Formation practices don't allow for sleeping late on Saturday mornings.





Willamette University band.

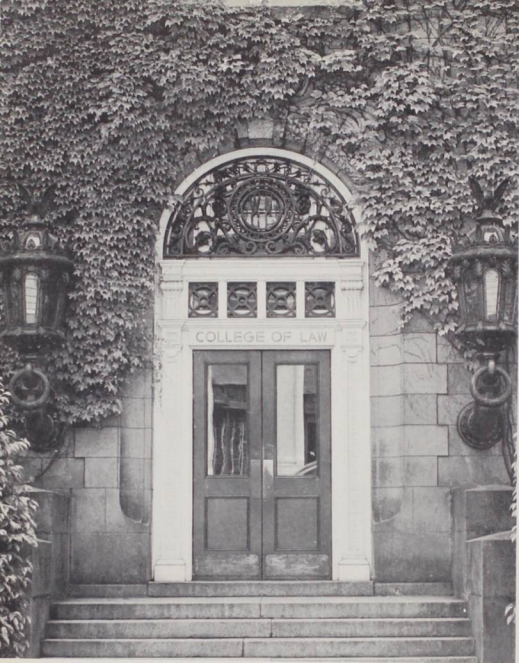
## Band

From the Fine Arts Building came the sounds of band rehearsals. This group was kept busy throughout the year providing music for games, concerts, Baccalaureate and Commencement. The year was climaxed by the band tour to Eastern Oregon.



Practice makes perfect.





## College of Law

Seward P. Reese,  
Dean, College of Law





Legal Handbook Staff included (left to right, seated) E. Gene Stunz, editor; Helen Simpson, and Neil Bennett (standing) Robert Stevens, John Du Bay, Marvin Hanson, John Ester, assistant editor; Alfred Laue, William Schantz, Robert Fox, business manager; and Robert Simpson.

Willamette University's Law School faculty includes (left to right) Alta Rieck, librarian; Courtney Arthur, visiting assistant professor; Charles Gromley, associate professor; Thomas Churchill, lecturer; John Paulus, professor; Reginald Parker, professor; Edwin Butler, professor; and Seward P. Reese, dean.



Law students' impression of Dean Reese.



Secretarial work was efficiently handled by (left to right) Linda Hill, Karen Drier, Phyllis Jo Criswell, secretary, College of Law; and Lois Bryant, typist clerk.

Future lawyers break between lectures.





(Left to right, first row) Theodore Carlstrom, Norman Webb, Dave Frost, Brant Bates, and Ronald Hershberger. (left to right, second row) Marty Wolfe, Bill Crow, William Collier, Martin Howard, Robert Sailor, Lou Williams, John Kataoka, Joe Kershner, Clyde McIver, Lawrence Rew, Richard Amato, Gary McClain, Dave Barrows, Gordon MacPherson,

son, Donald Drollman, and Harl Haas. (left to right, third row) Robert Simpson, James Scott, John Skimas, Lewis Hampton, Dr. Reginald Parker, Leonard Pearlman, Jerry Markham, David Hitchman, Donald Turner, Eldon Gish, Robert Steinmetz, Howard Speer, Rick Mercer, Walter Barrie, Dale Carroll, Thomas Goldsmith, and Marvin Bolland.

## Phi Delta Phi

Phi Delta Phi, the first legal fraternity in America, was founded in 1869. Membership in this international legal fraternity is limited to those students with high scholastic achievement. Now in its twelfth year on the Willamette campus, Phi Delta Phi promotes high standards of professional ethics and culture in the profession of law.



Officers elected for the Phi Delta Phi legal fraternity are (left to right) J. Ronald Hershberger, Theodore Carlstrom, Ronald Gevurtz, and Robert Fox.



A cup of coffee and carefree chatter make the day pass faster for law students.



Relaxing between classes are members of the Law School (left to right) David Rhoten, Robert Fox, Theodore Carlstrom, J. Ronald Hershberger, L. B. Day, and John Bryan.



Delta Theta Phi elected as their leaders for the year (left to right, standing) Joe Lunsford, John Bryan, Sidney Pearson, and Fred Chambers. (seated) L. B. Day, Neil Bennett, and David Rhoten.

## Delta Theta Phi

Delta Theta Phi, national legal fraternity for law students, has been connected with the Willamette University Law School for thirty years. The chapter promotes scholarship, the advancement of justice and the maintenance of professional ethics within the legal field.

(Left to right, first row) John Ester, Donald Blensly, Lewis Myatt, Ronald Lansing, David Frost, Karl Freerksen, Gary Lockwood, Maxwell Peak, Ralph Schlegel, and Orlin Anson.  
(Left to right, seated) Sidney Pearson, David Rhoten, Joe Lunsford, Ken Colley, Bob Chidester, Bob Stevens, Bill Schantz, and Neil Bennett.





## 75th Anniversary

The Willamette University Law School is the oldest in the Northwest, having its beginning in 1883. In 1938 Salem's old post office was remodeled and moved to the present site of the Law School.

Willamette is the only private law school of the six accredited schools in the Northwest. It is approved by the American Bar Association and is a member of the Association of American Law Schools.

A Legal Aid Clinic was established in 1947 and the Student Legal Research Service started in 1952. The Legislative Workshop was formed in 1954 and the Legal Handbook was first published in 1948.

The Law School is active in the National Moot Court Competitions; in December of 1954 and 1955, Willamette University Law students represented the Pacific Northwest region in the contest in New York City.



## Moot Court

Serving as supreme court clerks during the Moot Court session were (left to right) Tom Gooding, Douglas White, Donald Bennett, and Jack Collins.



Dr. G. Herbert Smith and guest speaker, Dr. Robert Burnham Watts, lead the procession into the Fine Arts Auditorium marking the beginning of the 75th Anniversary observance.

Recipients of honorary degrees were Roy F. Shields, Doctor of Laws, and Dr. Robert B. Watts, Doctor of Divinity.



# 3RD YR. LAW



Blensly, Donald  
Callaghan, J. Dan  
Carroll, Dale  
Chidester, Robert  
Colley, Kenneth  
Colver, William  
Drollman, Donald

Ester, John  
Garrett, James  
Gates, Stuart  
Goldsmith, Thomas  
Hansen, Marvin  
Howard, Martin  
Howay, Jack

Laue, Alfred  
Lock, James  
Loew, Ronald  
Markham, Jerrold  
Pearlman, Leonard  
Sailor, Robert  
Schlageter, F.  
"Sam"

Scott, James  
Simpson, Robert  
Skimas, John  
Stevens, Robert  
Stunz, E. Gene  
Turner, Donald  
Webb, Norman

# 2ND YR. LAW

Adams, Rodney  
Anson, Orlin  
Bennett, Neil  
Carlstrom, Theodore  
Fliegel, Joseph, Jr.  
Fox, Robert  
Freerksen, Karl

Frost, David  
Hampton, Lewis  
Hitchman, David  
Kataoka, John  
Kershner, Joe  
Lansing, Ronald  
Lockwood, Gary

Lunsford, Joe, Jr.  
May, Richard  
Mullan, John  
Myatt, Lewis  
Peak, H.

Maxwell, Jr.  
Rhoten, David  
Schwabe, Peter Jr.

Simpson, (Mrs.)  
Helen  
Tooze, James  
Williams, Lou  
Wolf, Martin

# 1ST YR. LAW

Aldinger, Paul  
Allison, Clifford  
Barrie, Walter

Barrows, David  
Bates, Brent  
Behnke, David  
Bliven, Mark  
Bolland, Marvin  
Brix, Peter



Brown, Mack  
Bryan, John  
Chambers, Frederick  
Coit, Leon  
Cox, Lawrence  
Crow, William



Day, "L" "B"  
Emblek, Marion  
Gish, Elden  
Haas, Harl  
Hale, Paul  
Hershberger, J. Ronald



Hooper, John  
Johnson, Darr  
Kleen, Jerry  
Kurtz, Courtney  
Lekas, Gary  
Lewis, Harry



Maentz, Robert  
MacIver, Clyde  
MacPherson, Gordon  
McClain, J. Gary  
McKinney, William  
Mercer, Kendrick

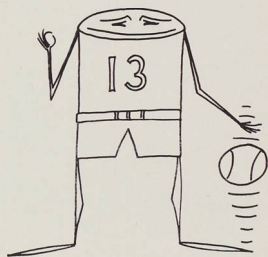


Olson, Laval  
Osterlund Paul  
Placek, Edward  
Rew, Lawrence  
Scott, Evelyn  
Speer, Howard



Stead, Robert  
Steinmetz, Robert  
Taber, John  
Winter, Herman  
Yu, David





S P O R T S

# Rally Squad

Spirited squad members (left to right) Karen Henninger, Keith Pailthorp, Dorr Dearborn, Mike Graydon, Barbara Smith, Alice Stewart, and Elaine Buckinger encouraged the championship Bearcat teams on to victory.



## FOOTBALL CONFERENCE CHAMPIONS

WU 27—14	Pacific
WU 33— 0	Linfield
WU 54— 7	C. of I.
WU 39— 0	Whitman
WU 41— 7	CPS
WU 20— 0	Cal Aggies
WU 41— 6	Whitworth
WU 27— 0	L. & C.
WU 0— 7	Arizona State

### TRACK

WU 77½—53½	Pacific
WU 106 —23	OCE
WU 67 —64	Linfield
WU 56 —75	Whitman
WU 68½—62½	PSC
WU 60½—70½	L. & C.

## TENNIS CONFERENCE CHAMPIONS

WU 6—1	Linfield
WU 7—0	L. & C.
WU 6—0	C. of I.
WU 4—0	Linfield
WU 6—1	Pacific Conference
WU 9—7	Whitman

## GOLF CONFERENCE CHAMPIONS

WU 11½—6½	L. & C.
WU 16 —2	Linfield
WU 15½—2½	L. & C.
WU 16½—1½	Pacific
WU 8½—6½	C. of I.
WU 17 —1	Pacific

## BASKETBALL CONFERENCE CHAMPIONS

Whitman	43—85
C. of I.	57—70
C. of I.	41—65
L. & C.	63—75
L. & C.	67—78
Pacific	68—87
Pacific	58—68
L. & C.	57—59
Linfield	84—78
Whitman	66—64
Whitman	50—64
C. of I.	57—47
Linfield	79—82
Linfield	66—68
Pacific	47—64

## BASEBALL

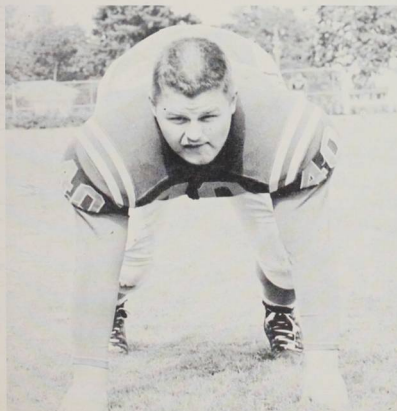
WU 5— 6	L. & C.
WU 4—17	Linfield
WU 24— 3	Whitman
WU 5— 2	Whitman
WU 7—10	C. of I.
WU 4—10	Linfield
WU 2—12	Linfield
WU 2— 6	L. & C.
WU 1— 5	L. & C.
WU 1— 2	C. of I.
WU 2— 1	C. of I.
WU 5— 4	Pacific
WU 5—11	Pacific
WU 11— 4	Pacific

## Little All Americans

Stan Solomon Williamson's  
All American first string halfback.



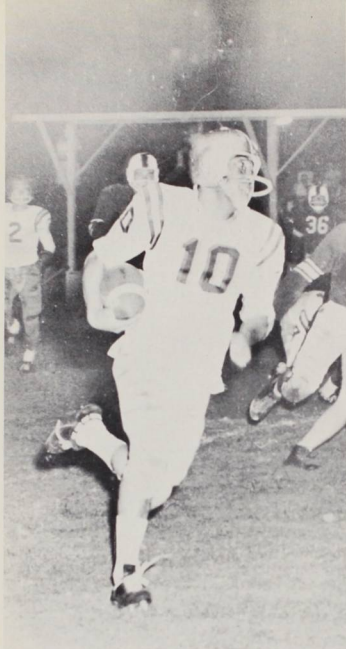
Bill Long — A P All American Center, First Team



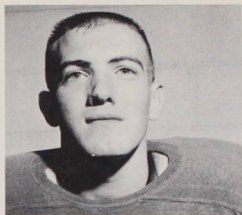
Gary Raid Williamson's second team tackle.

Bill Long and Gary Raid teamed up again as members of the Little All American team in the All American Bowl at Tucson, Arizona. These two Bearcat bulwarks opposed NCAA All-Americans in this the first game of the new Bowl.





Stan "King" Solomon rambles for yardage as Bearcats beat Pacific.



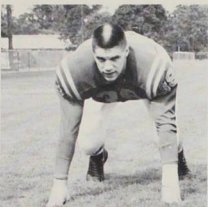
Denny Sarver  
All-Conference halfback



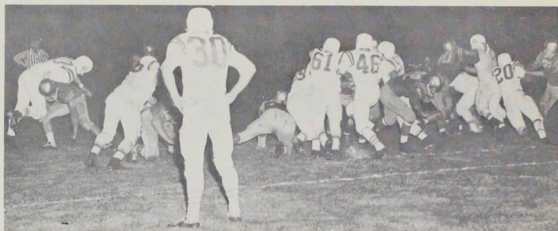
Jack Berkey stopped, but Bearcats stomp C of I.



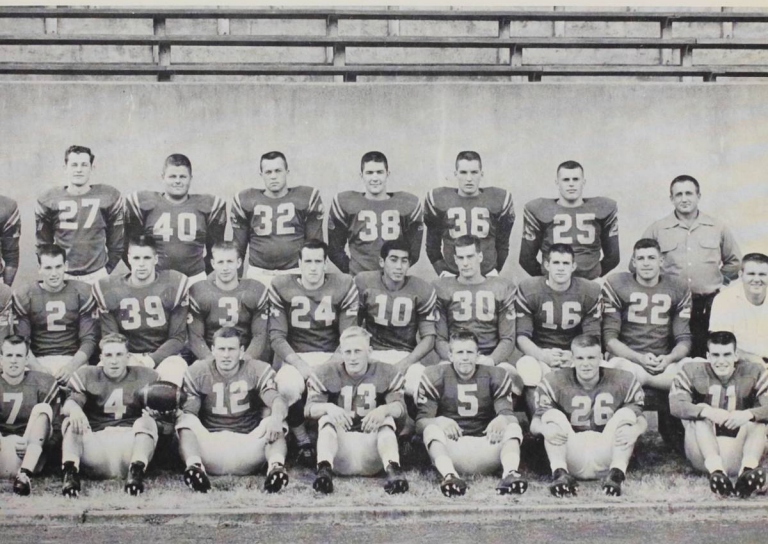
# Varsity Football



Howard Stroebe  
All-Conference tackle



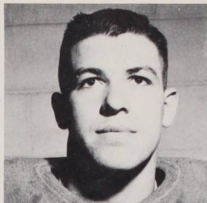
Willamette's powerful line stifles Linfield as Solomon converts.



1958 National Ranking Northwest Conference Champions: (top row, left to right): Pete Welch, Manager; Jerry Hawley, Larry Miller, Keith Burres, Rex Domascholsky, Gary Raid, Bill Long, Captain; Bob Griffin, Stu Hall, Jim Robinson, Ted Ogdahl, Coach. (Second Row): John Hinds, Earl Jambura, Denny Sarver, Doug Austin, Keith Driver, Howard Stroebe, Kevin Nagel, Marv Cisneros, Stan Solomon, Dennis Mihm, Lee Weaver, Bill Wall, Gerald Long, Coach. (Bottom Row): Dale Shumway, Percy Jefferson, Don Stalney, Jack Berkey, Al Vohland, Terry Kent, Ray Allen, John Skelton, Dennis Toomey, Ned Moser. Not pictured: Frank Caruso and Tom Morris.



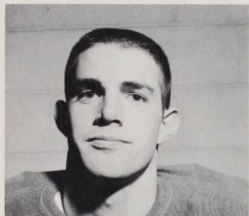
Bearcats display vaunted power as Nagel scampers against CPS at Homecoming.



Bill Wall, stalwart All-Conference end.



Gary Raid, Willamette's All-Conference tackle.



Lee Weaver, glue-fingered All-Conference end.



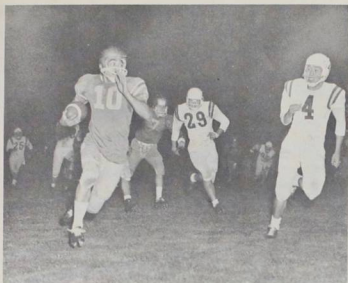
Earl Jambura smashes for valuable yardage as Willamette throttles arch-rival, Linfield.



Dennis Sarver bursts on start of 60-yard touchdown run against Linfield.



Bill Long, team captain, leads All-Conference team at center.



Solomon sprints for six as College of Idaho bows.



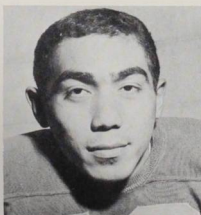
Dale Shumway, dynamic All-Conference halfback.



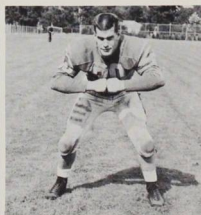
Denny Sarver pounds for yardage as Willamette wins Conference, beating L and C.



Earl Jambura,  
All-Conference halfback



Stan Solomon, All-Conference  
halfback. Also named All-  
Coast halfback.



Dennis Mihm, stalwart All-  
Conference guard.





Willamette's powerful first team: (left to right) Kent, Stroebel, Cisneros, Long, Mihm, Raid, Weaver; backs: Sarver, Jambura, Solomon, Driver.



Head coach Ted Ogdahl and line coach Jerry Long.

Willamette's rock-ribbed forward wall made the tackles and opened the holes that made it possible for the Bearcats to stack up an 8-1 record and win the Northwest Conference championship.

Jerry Long's "Horses", as he called them, were a hard-rushing crew. He recounts, "Many of the boys played together for four seasons. They had come close to the championship but had never won it. This year, through Long's constant driving, they were determined and it showed up in their spirited play."

The defensive platoon helped hold foes to an average rushing yardage of 93.2, good enough to put them among the select of the nation's small colleges. The offensive unit opened holes to let the backs go for an average of 281.4 yards per game. These figures help tell the story of one of the best football lines, the "Horses", ever produced at Willamette.

Speed, deception, blocking, and an ever-constant aerial threat made Ted Ogdahl's Willamette backfield hard to contain. Let an opponent try to bottle in their end sweeps and they would prove they could move up the middle. Let an opponent halt them on the ground and they would take to the air. This was the way Ted Ogdahl coached; and the results were shown in the proof of their deeds.

The offense this year was built around an excellent T-formation quarterback who excelled on quarterback option plays.

Backing him up were two speedy halfbacks who demonstrated more than once that they could outrun the whole of an opposing team. A sturdy fullback provided punch up the middle. Willamette was also blessed with a number of yearling substitutes who were able to fill in when gaps appeared. Both offensive and defensive backfield units were smooth-working. Willamette's pass defense was among the best in the conference; this is the great satisfaction for a mastermind of football, Ted Ogdahl. The man behind the success indeed deserves the highest of praise. He spoke and the team acted: the best small college football team in the West.

Second Team: Domaschofsky, Robinson, Toomey, Hinds, Austin, Griffin, Wall; backs: Berkey, Miller, Shumway, Burres.





## Basketball

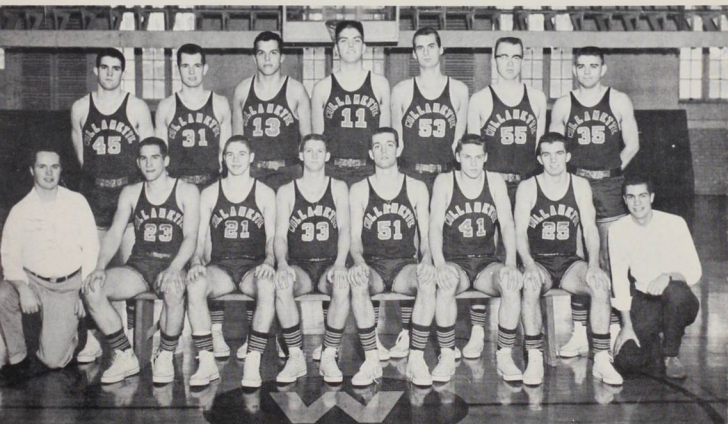


Willamette's deadly starting five (left to right): Buzz Wilfert, Lee Weaver, Larry Lynn, Ed Grossenbacher, Tom Weston, and Coach John Lewis.

Coach John Lewis started his 13th year as coach of WU with the crying towel in hand. "Short, inexperienced, can't shoot, and slow" were the words that he used to describe his future team. The experts even went along with John, everyone did except the players.

Compiling a 18-9 record, the season saw the Bearcats chalk up the second championship for the year. After only a 5-5 pre-season record the "Lewismen" caught fire and swept the Conference. Showing a great defense and a blistering fast break, the unheralded Bearcats of Willamette went wild. History may repeat itself because all key players will be returning next year.

## Northwest Conference Champions



(Standing, left to right): Lee Weaver, Jerry Auvinen, Ted Gooding, Dick Scoggins, Buzz Wilfert, Jim Litchfield, and Larry Lynn. (seated, left to right): Mgr. Dean Bishoprick, Dave Brock, Marlen Marsh, Ed Grossenbacher, Fidel Gaviola, Dick Krebs, and Mgr. Hall Sisson.



## Pacific . . . . . 3-0

The Bearcats had little trouble in beating the Badgers from Pacific as Willamette won all three games. The most deadly weapon the Bearcats own, the fast break, broke the backs of the Badgers. With Buzz Wilfert and Larry Lynn clearing the backboards and the deadly accuracy of the guards, the Bearcats couldn't be stopped.

Wilfert got caught in the "Badger" trap, but Bearcats ate up Pacific.

Rebounding exceptionally well the whole year, Willamette has two more points batted in by big Larry Lynn.



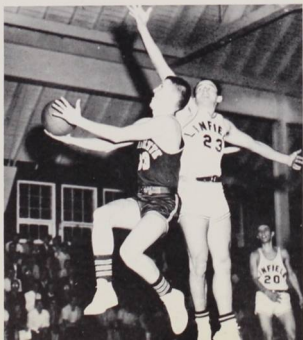
Marlin Marsh, small diminutive guard eluded "Badgers, and scored two points on a lay in.



## Linfield . . . . . 2-1

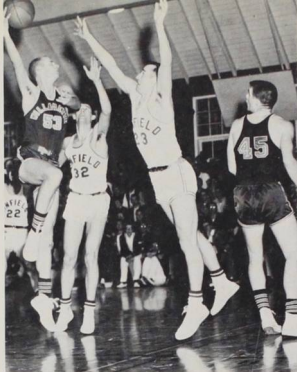
After dropping the first game, the men of WU came back to win the last two crucial games against Linfield to take the Championship. It will be many years before the fans will forget those last two games. It was a jump shot at the key by Marsh, with seconds to go, that tied the series 1-1. This set the stage for the greatest performance ever witnessed at Linfield. Fidel Gaviola, coming off the bench when it appeared as Linfield had the game in the bag, soon changed the score. He rebounded his own shots time and again, cleared both backboards, and was a tiger on defense. His great effort led the Bearcats to the Championship.

Ed Grossenbacher drives against Linfield as Bearcats romp for victory to cinch championship.





Jim Litchfield sets his eyes on the hoop in a crucial game with Linfield.



Buzz Wilfert shows the form that made the Bearcat center All-Conference, as he hooks in another two points.

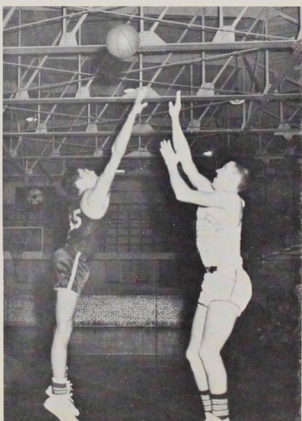
## College of Idaho . 2-1

Completely outclassing the Coyotes at Salem, the Bearcats won two easy victories at the expense of the "pants-kicking" Bob Moreno and his C of I cohorts. It was a different story in Idaho however; a complete reversal saw the Coyotes run over an ice cold Bearcat five who couldn't locate the basket.



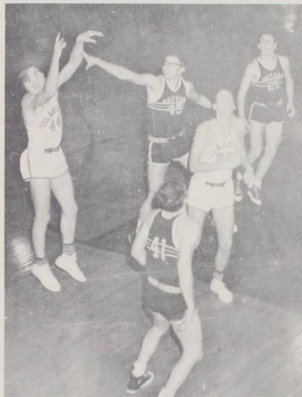
Tom Weston leads a fast break as he lays up the cripple for an easy two points.

Grossenbacher drills basket with a jump shot that eludes Bob Morino of C of I.



## Whitman . . . 2-1

Once again the Bearcats found their home gym much better than that of the Missionaries. The Bearcats humbled Whitman, with perhaps their best night of the season, 85-43. At Walla Walla it was a greatly improved Whitman team that split with the men of WU. Max Johnson, All-Conference forward for Whitman, went wild as the Missionaries squeaked by Willamette by two points. The next night found John Lewis' men back in good form and they found themselves 12 points ahead at the final buzzer.



Lee Weaver connects against Whitman as John Lewis' Bearcats chalk up another win.

## Lewis and Clark . . 3-0

For the first time in many years Willamette took three straight from the Pioneers of L and C. It was a great performance by Buzz Wilfert that sparked the Bearcats to great heights. Buzz completely dominated the boards, which led to the fast break, once again halting the opponent. In the minds of many, the last game at L and C was as great a team performance as they had ever watched.

Buzz Wilfert goes up with another two pointer that led Willamette to three in a row over the Pioneers.



Marlin Marsh hits jumper off a fast break as the Bearcats run wild against Whitman at home.







Wilfert, enjoying one of his best nights of the year, adds two points to Willamette's total with his deadly jump shot.



Steady, Eddie Grossenbacher puts the Bearcats further ahead of the Pioneers.

### All Conference

Willamette placed three men on the All-Conference team for 1958-59. They were Larry Lynn, forward; Ed Grossenbacher, guard; and Buzz Wilfert, center. These three Bearcats gave the opposition plenty of nightmares throughout the year. With Ed Grossenbacher guard, perhaps the finest play maker in the league feeding Wilfert and Lynn, the Bearcats couldn't be stopped. This was true in reverse also, as it was Lynn and Wilfert that gave Willamette the best rebounding in the league. Both of them were the prime reasons WU had such a fast break. With all three returning next year we should have another outstanding season.



Ed Grossenbacher  
guard

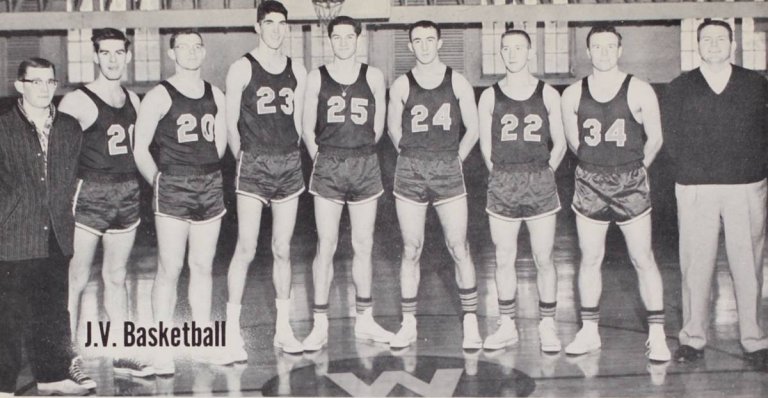


Buzz Wilfert  
center



Larry Lynn  
forward

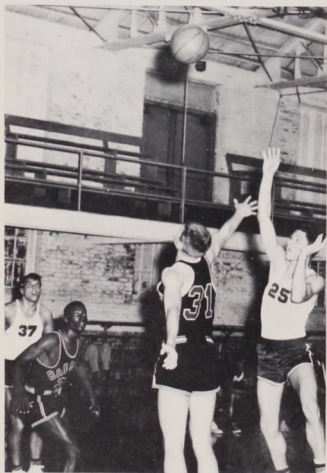




## J.V. Basketball

(Left to right) Mgr. Graham Tewksbury, Dave Marsters, Keith Burres, Ken Ashley, Bill Saunders, Curt Robertson, Al Neiman, Ted Alexander, and coach Jerry Long.

The Bearkittens, under the leadership of coach Jerry Long, had a good year in the development of future basketball talent, but a record of six wins and nine losses. This is not indicative of the team as a whole, however, as the Bearkittens had trouble combining all their individual talents into a cohesive team. As coach Lewis puts it, "I think some of the men will be playing varsity next year and doing a great job to help defend our title."



Bill Saunders is all arms and legs, but the ball is what counts, and it counted two on this play.

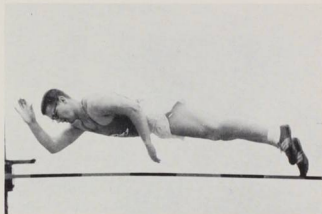


Jim Oraker aids the Bearkittens' cause with a two-point effort.



Jim Puckett, a freshman from Oregon, takes first place in the invitational 100 yard race finishing two steps in front of Amos Marsh of OSC. Time 9.9.

Pole vaulter clears the bar at 11'6". This event was taken by U. of O's Bob Decker with Willamette's Don Neu a close second.



Dyrol Burleson strides to the finish line in the Statesman Invitational Mile. He didn't break the record but ran a respectable 4:15.6.



## Willamette Relays

The Willamette Relays were highlighted by the bad weather and the breaking of ten records. The big event of the meet was the unbelievable sprinting of the U of O's Jim Puckett. Along with Puckett the Oregon frosh bettered three of the existing records. The Relays were attended by over 700 participants from high schools and colleges all over the Northwest.



Panoramic view of the meet with the high school relays being run in the foreground.



## Track

Freshman Ken Ashley gives notice that other high jumpers had better watch out!! He displays the form that led him to a tie in the conference meet.

Bob Roy shows the form that led him to the N.A.I.A. finals and a school record in the discus.



Head coach,  
Ted Ogdahl.



Don Neu goes up . . .

over . . .

and down as he clears the bar once again.





Ted Foxley gives forth with a pained expression, but it is the results that count, and Ted gave a commendable performance in his special event, the javelin.



Distance man Bill Fairbanks leads in his favorite event, the two miler. He went on to win the event and a first for the Bearcats.

Skip Spence breaks the tape in the 220 as he sets a new school record of 20.9 seconds.



"Tiny" Gary Raid always seems to hurl the shot far enough to place in the meet.



Coach Ted Ogdahl produced one of the best track squads that Willamette has had in many years. It wasn't a powerful team in depth, but the individuals were top in many events. Many school records fell, the 100 yard dash, the 220 yard dash, the discus, and the pole vault. Willamette has two representatives to the national championships in North Dakota, Bob Roy in the discus and Don Neu in the pole vault.



Stan Solomon stretches out as he skims the low hurdles on the way to another first for Willamette.



# Baseball



Willamette University baseball team (left to right, first row) Dick Hamada, John Skelton, Bob Klindworth, John Frederick, Gene Griepentrog, Keith Driver, Frank Caruso, Tom Moore, and Pete Welch. (second row) Jerry Pilug, Gordon Rounds, Ken Ginoza, Gary Lewis, Stu Hall, Dave Brock, Hisao Sato, Dick Krebs, and Coach Lewis. Not shown, Fidel Gaviola and manager Gary McBride.

The Willamette Bearcats didn't have the best season, but they did show that there is definitely going to be a better year soon. Most of the team were freshmen and sophomores who needed game experience. This is not to say the team was short of veterans, for those that were present did an admirable job. Willamette will miss the services of Frank Caruso, Tom Moore, Keith Driver, and Bob Klindworth, all seniors. As the fans in Flatbush say, "Just wait till next year."

Four seniors that captained the Bearcats this year were (left to right) Bob Klindworth, Frank Caruso, Keith Driver, and Tom Moore.



Head coach  
John Lewis





Outfielder Stu Hall prepares to fire another throw to the infield.



Sato leaps high to avoid the spikes of a sliding opponent as he completes the throw to first to chalk up another double play for the Bearcats.

Lead off man Tom Moore lashes out a base hit to open a good afternoon against the Pacific Badgers.

Tom Moore shows the form that made him the best bunter in the league.



Pete Welch tries to avoid the tag by a Pacific Badger, but his efforts were to no avail.



Keith Driver lays wood to the ball as he doubles against Lewis and Clark.



Hisao Sato displays the fancy form that gave him honors as the best shortstop in the league. He joins Dave Brock on the All-Conference team.

Frank Caruso unleashes his bat once again as a base hit resounds for the Bearcats. Frank again led the team with home runs and was second in batting, hitting a respectable .407.



Second baseman Dick Hamada.



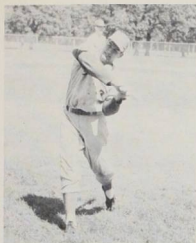
Catcher Pete Welch flips off his mask as he goes after a pop fly.



Outfielder Ken Ginoza.



Smooth fielding first baseman Gary Lewis is sure to hang on to the ball.



Dave Brock shows the form that led him to All-Conference honors and the team batting average, with a .416.



Dave Brock flashes past first base to beat out another hit. He shows why he was rated as fastest Bearcat for the past season.

Outfielder Keith Driver.



Pitcher John Frederick crosses home plate to help his own cause.

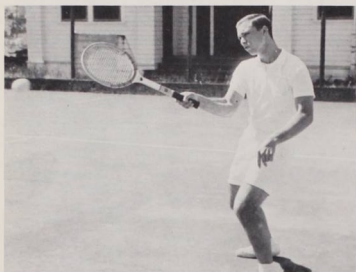


The mainstay of the mound was John Frederick, shown here whipping his trusty right arm as another fast ball smacks the catcher's mit.



Willamette's Gary Lewis squeezes the ball as the runner is thrown out in action at Bush's Pasture.

# Tennis



Willamette's number five man, Dave Dobrinen, is caught during one of his matches while stroking his firm forehand.

Les Sparks, crying towel in hand, said WU didn't have a chance in conference. The only trouble was that the team members didn't read the stories or believe their coach. As a result the tennis trophy is again at Willamette; as long as Les can bring his talented Bearcats to the conference meets it seems as if the trophy will never leave. The team had no seniors playing, so the chances for future victories look very bright.



Willamette University's championship tennis team display their trophy which they have held for the past two years.

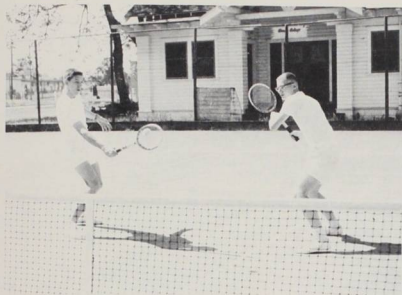
Highly intent on the job at hand, Dale Daniel pounds his favorite shot, the backhand for set point.



Tim Campbell and his famous overhead shot were feared throughout the league. Tim finished second in the conference singles on the Willamette courts.



Bob Bennett puts away another point for the Bearcat squad.



Willamette's number one doubles team, Bob Bennett and Dale Daniel, show the form that led them to second place in the conference. They had the distinction of being the only doubles team to beat the powerful University of Portland squad.



Gerry Winner and his powerful serve were big factors in the Bearcats' winning the conference meet.

Once again the golfers of WU came through to win the conference golf championship. Coach Jerry Long seems to have the magic touch on the links, and it pays off big in dividends. This was one of the best years, according to Coach Long. His number one man, Jan Aaseth, qualified for the N.A.I.A. finals to be held in North Dakota.

Jan Aaseth found himself in trouble as he blasted out of the sand in the Conference meet.



## Golf



Northwest Conference Champions (left to right) Joe Karmos, Jan Aaseth, Coach Long, Roger Mundorf, and Rusty Beaton. John Holmes and Gene Paterson are not pictured.



## And More Golf



Jerry Long decided to show the boys how the game should be played. Although he sank this put, the scorecards were not immediately available for comparison!



Joe Karmos drives off the tee in an important match during the season.



Rusty Beaton shows the form that made him one of the best putters in the league.

## Intramurals



Intramural managers and officials included (left to right) Steve Carmichael, Don Neu, Jim Manwaring, Rex Damschofsky, Frank Caruso, and Larry Thompson.

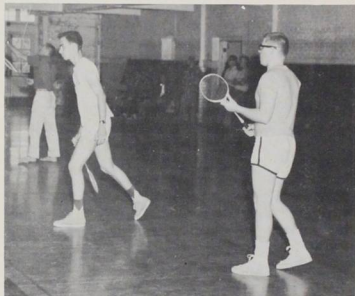
### Intramural Standings

Phi Delt	174
Sigma Chi	144
SAE	141
Law School	114
Beta	105
Baxter	64
Indepi	27



Alan Zehntbauer, playing for SAE, caught in an important tennis match.

Sig Alphas were intent on this particular point as John Laughlin prepared to hit the bird.



The champion Sigma Chi football is seen here in a pre-season practice.



Ranking as bowling champs were (left to right, second row) Larry Sterling, Ron Gerbing, and Don Williams. (first row) Earl Gaberman and Andy Kuehn.

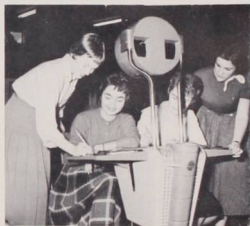
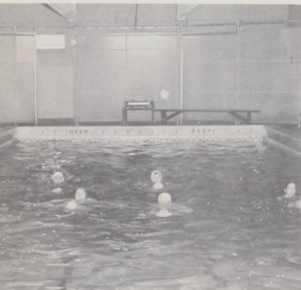


## Women's Sports

Women's sports play a big part in the athletic program at WU. This year the women had a most successful season in tennis and softball as well as in archery.

Willamette "Robin Hoods" taking aim at the target are (left to right) Mrs. Williams, instructor, Becky Brown, Alice Mercer, Annabel Aral, Sharlene Bailey, and Alice Knoles.

Water safety instruction at the YMCA finds the girls practising the hair carry.



Applying their mathematical ability to the bowling scores were (left to right) (Marcia Humphrey, Manuelita Nunez, Karen Behrman, and Jane Sagehorn.



Mrs. Jean Williams headed up the women's sports.



Included on the women's tennis team were (left to right, back row) Barbara McPartland, Jan Gilmore, Donna Horn, Ellen Sager, Jeanette McRoberts, and Mrs. Williams. (Front row) Muriel Manwaring, Norene Jenkins, Bev Peterson, Molly Babington, and Rhett Willeford.



L I V I N G

O R G A N I Z A T I O N S

## Fall House Dances



"Let's Take an Old Fashioned Walk", presented by the women of Alpha Phi was held in the Social Room of the YWCA.



"Fire and Ice" set the mood for the Lausanne fall dance.



The SAE's "Violet Ball" was highlighted by the announcement of the Queen of Violets.



"Roaring Twenties" returned in full regalia, with flappers and knickers as the appropriate dress of the evening at the Chi O dance.



Following the trend in San Francisco the women of Doney and their dates went "Bohemian".



With a Mexican motif, the D G 's presented "Fiesta".



The initiation into She - Delta - Theta at the chapter house preceded the Phi-Delt "Rumble" at the Aumsville Pavilion.





## Spring House Dances

The Beta's presented their spring formal, "Warmer than Springtime" in the ballroom of the Marion Hotel.

Lunch was served during the Phi Delt beach trip following their presentation of "Play Boy" the previous night.



The Valley Ford showroom produced the proper fishbowl effect for the DG's "Life is Just a Bowl of Fishes".



Lollipop favors set off the decor of "Sugar and Spice" at the Doney Dance.

A Grecian patio, complete with ruins, set the stage for the Chi Omega's "White Carnation Ball".





Hot dogs and root beer (a la beer bottles) were consumed by hungry beachcombers at the Alpha Chi's "On the Beach".



The Pi Phi's and their escorts danced their way through Sherwood Forest at the "Beau and Arrow Ball".



Pretzels and root beer were the refreshments as the SAE's escaped to old Germany with the theme of "Stein und Lowe".

Casual beach attire added special flavor to Alpha Phi's "Bali Ha'i Ball".



Lausanne's "Cotton Cotillion" took on the atmosphere of a Southern plantation.

# AXΩ



Mrs. Mary Booth,  
housemother.



"Down by the Old Mill Stream" are the Alpha Chi's and  
their ducks.



Beta Chi of Alpha Chi Omega was established on the Willamette campus in June, 1944. The Alpha Chi's have formed eighty-six chapters throughout the country, since their founding in October, 1885, at De Pauw University. The chapter's activities include two house dances, collecting stamps for Care Packages and a Christmas dinner for the children at Fairview.



Music by Walt Hill was featured at the fall formal  
"After Hours", given in honor of the pledges.



Alpha Chi's pound the keys in an attempt to finish  
their term papers before finals.



Eagleson, Martha  
(Fall President)  
Quiring, Sylvia  
(Spring President)  
**SENIORS**  
Barrie, B. Dennis  
Baden, Gail  
Clark, Barbara  
Enberg, Karen  
Peasley, Jeanne



Renshaw, Pat  
**JUNIORS**  
Bolmeier, Gretchen  
Dixon, Barbara  
Hanson, Jan  
Miller, Diane  
Weaver, N. Hansen  
Weeks, Nancy



**SOPHOMORES**  
Barber, Joan  
Boyd, Terry  
Davis, Pat  
Eagleson, Jane  
Eastman, Alice  
Edwards, Mary  
Evans, Kathy



Gilmore, Jan  
Holcomb, Pat  
Jenkins, Sherry  
Larson, Gail  
Meara, Hannah  
Pemberton, Joan  
Ray, Loretta



Scott, Midge  
Srambaugh, Ann  
Tomlin, Sheila  
Zeller, Mary  
**FRESHMEN**  
Baker, Jeanette  
Brown, Joanne  
Caulk, Wendy



Colomb, Sue  
Dickerson, Sherry  
Duerr, Penny  
Ferguson, Sue  
Finzer, Marcia  
Gray, Nancy  
Hanna, Margaret



Johnston, Lynette  
Parr, Carolyn  
Parr, Judy  
Post, Penny  
Rogers, Della  
Ryer, Chris  
Scott, Bonnie



Stebbins, Barrie  
Wagener, Terry  
Welch, Judy  
Williams, Sue  
Wilson, Sue



# ΑΦ



Miss Ruth Lofstrom,  
housemother.



Syracuse University in October, 1872, was the birthplace of the Alpha Phi sorority. Of its sixty-nine chapters, Gamma Tau, here at Willamette, is one of the newest. It was established in May, 1958. Participation in the national sororities Cardiac project is the Alpha Phi's main activity. They also enjoy a State Day in May with the other chapters in this district.



The former University House became the new home of the Alpha Phi's.



Ruth Applegate, Caroline Prince, and Carol Woodbury admired their French poodle.



Informal chatting took place at the Fall Tea.



Lind, Marietta  
(Fall President)  
Applegate, Ruth  
(Spring President)  
**SENIOR**  
Prince, Caroline  
**JUNIORS**  
Klock, Leta  
Lowery, Sharon  
Norbeck, Jan



Shaw, Cynthia  
Smith, Marilyn  
Teague, Nancy  
**SOPHOMERS**  
Abele, Judy  
Collins, Nancy  
Hadley, Nancy



Hille, Carol  
Hingston, Phyllis  
Jacobsen, Dorothy  
Johnson, Mary  
Laird, Elizabeth  
McNary, Jo



Paige, Patience  
Woodbury, Carol  
**FRESHMEN**  
Amling, Stormee  
Babington, Molly  
Celley, Margie  
Donnell, Janet



Elliott, Lenore  
Gustafson, Brenda  
Hunnell, Andrea  
Jenkins, Norene  
Knott, Mary  
Krebs, Linda



Laurila, Joan  
McCready, Patricia  
Martin, Patti  
Mills, Judy  
Peterson, Bev  
Riggins, Sandi



Rovelli, Sue  
Sparks, Marilyn  
Thomas, Jan  
Williams, Betty

# XΩ



Mrs. Cora Rathbun,  
housemother.



Ivy covers the weathered brick of the Chi O home.

March, 1945, saw the Nu Delta chapter of Chi Omega on the Willamette campus. The Chi O's were honored this year by a visit from Miss America, Mary Ann Mobley, a Chi O from the University of Mississippi. For their service project the chapter sponsors a Brownie troop. The Chi O national was founded in April, 1895, at the University of Arkansas; their role of active chapters now numbers 123.



Many times the Chi O's were the gleeful recipients of various fraternity cushions.



As a new "Mom" for the Chi O's, Mrs. Rathbun was honored at a Fall tea.



Dedrick, Jane  
(Fall President)  
Beggs, Jan  
(Spring President)  
**SENIOR**  
Riley, Joan Thronson  
**JUNIORS**  
Beaty, Joan  
Coleman, Lynne  
Greener, Nita



Grigsby, Sheila  
Horton, Audney  
Hume, Judie  
Loennig, Mary  
**SOPHOMORES**  
Allender, Marky  
Brooks, Langley



Cody, Collene  
Dockstader, Harriet  
Ellis, Julie  
Fudge, Jean  
Gray, Deborah  
Leenhouts, Linda



Seely, Sandra  
Wyatt, Joanne  
**FRESHMEN**  
Bailey, Sharlene  
Carlson, Eleanor  
Causbie, Catherine  
Donnelly, Vivian



Farley, Fran  
Filer, Nancy  
Kuhn, Donna  
Malott, Margaret  
Melendy, Prudy  
Morast, Kaye



Newton, Sandra  
Redo, Verrill  
Rice, Betty Ann  
Smith, Karen  
Stanberry, Rosemary  
Walrod, Colleen



Willeford, Rhetta

# ΔΓ



Mrs. Pearl Ramaker, Housemother.



The Court Street home of the Delta Gamma's.

The women of Delta Gamma this year celebrated the eighty-fifth anniversary of the founding of their sorority at Lewis School, in Oxford, Mississippi. The sorority now has eighty-five active chapters. Beta Pi of Delta Gamma came to Willamette in November, 1945. House dances and the blind school keep the DG's busy during the year.



The German Band, featuring various assorted instruments, was always tuned up and ready to play.



Gayle Sandine, Barbara Bunney, and Mildred Edmundson, catching a midnight snack.





Snyder, Sue  
(Fall President)  
Robison, Jan  
(Spring President)  
**SENIORS**  
Farley, K. Ruberg  
Frey, Carol  
Gilbert, Rosemary  
Griffin, B. Roach  
Heald, Jo  
Hillman, Melinda  
Hotaling,

Kay Sanford  
Lasswell, Anne  
Miller, Carolyn  
Miller, Karma  
Mills, Jody  
Sandine, Gayle  
Sherrill, Joan  
Stout, Marge

**JUNIORS**  
Edmundson, Midge  
Fields, Ann  
Griffis, Joan  
King, Eugenia  
Pritchard, Jean  
Trueblood, Sue  
Warren, Joanne  
**SOPHOMORES**  
Barker, Sammie

Brown, Joyce  
Bunney, B. Simon  
Embre, Judy  
Gannon, Jo  
Garner, Ann  
Haffer, Marcia  
Hanson, Gwen  
Henninger, Karen

Humphrey, Marcia  
Lusty, Suzanne  
Madsen, Karen  
Mason, Carol  
Nunez, Maye  
Royer, Barbara  
Sanford, Jean  
Sherk, Barbara

Taylor, Judy  
Van Noy, S. Webber  
Wood, Marilyn  
Zachary, Rita  
**FRESHMEN**  
Brown, Diane  
Chanda, Sherry  
Cowan, Peggy  
Dawson, Diana

Elliott, Judy  
Hardy, Janeen  
Henken, Barbara  
Hicks, Judy  
Hillman, Karen  
Horn, Donna  
Keats, Virginia  
Kennedy, Mary

Koch, Marianna  
Matson, Linda  
Petrie, Anne  
Prouty, Priscilla  
Ratcliff, Laurel  
Sagehorn, Jane  
Schierman, Marilyn  
Schurr, Chris

Stanley, Suellen  
Van Loben Sels,  
Lois  
Zeschin, Pat

# ΠΒΦ



Mrs. Winifred Smith, housemother.

Gracing the 1400 block on State Street is the home of the Pi Phi's.



In April, 1867, the Pi Beta Phi sorority was founded at Monmouth College, Monmouth, Illinois. Today there are 103 active chapters bearing the Pi Phi name. Oregon Gamma was chartered at Willamette in June, 1944. Since their founding they have become active participants in an Arrow Day project, Founders

Day picnic with Oregon and Oregon State, Fairview party, and the National project which is the sponsoring of a community in the Smoky Mountains of Tennessee.



The Pi Phi's introduced Mrs. Smith to the campus at a tea given in her honor.



Hula hoops aid Pi Phi's in reducing exercises.



Roark, Sondra  
(Fall President)  
Stephenson, Rosemary  
(Spring President)

#### **SENIORS**

Berry, Linda  
Harris, Sandi  
Hewitt, Barbara  
Lowe, Margaret  
Schrock, Lynn

#### **JUNIORS**

Smullin, Mary Jo  
Goodrich, Gretchen  
McGilvra, Joanne  
McMinimee, Carol  
Mangels, Myrna  
Manker, Dorothy  
Olsen, Judy

Owens, Mary  
Peterson, Sonja  
Pfaff, Barbara  
Rose, Mary Ella  
Thornton, Lee  
**SOPHOMORES**  
Blanchard, Mary  
Buckinger, Elaine

Drier, Karen  
Giberson, Bobbie  
Hoffman, Peggy  
Julian, Bea  
Kettenring, Karen  
Lester, Jody  
Stewart, Alice

Teufel, Judy  
Toy, Betty  
Wright, Marilyn  
**FRESHMEN**  
Adams, Nancy  
Allen, Denni  
Ball, Phyllis  
Brown, Becky

Conley, Judy  
Dugdale, Bonnie  
Dumas, Linda  
Dumond, Jane  
Erickson, Julie  
Hauke, Marian  
Huget, Bonnie

McRoberts,  
Jeanette  
Manwaring, Muriel  
Parrett, Ruth  
Ruby, Marcia  
Shaughnessy, Vicki  
Sherwood, Jean  
Smith, Judy

Smullin, Suzanne  
Vulgas, Penny  
Walton, Gail  
Webster, Linda

# Doney



Mrs. Bertha Nygard, housemother



Five minutes to ten usually finds a crowd gathering near the Doney door.

The Christmas Tea was given in honor of Mrs. Bertha Nygard, Doney's new housemother. After spending two weeks as Doney's "Mom away from home" Dean Regina Ewalt turned the job over to Miss Pyron who in turn succeeded to Mrs. Nygard. In addition to Doney's two house dances and Christmas window decorations and tea, they also honor their graduating seniors with a banquet in May.



Joanne Wyatt demonstrates the finer art of telephone conversation. No matter what time you call, the line is always busy.



Biggs, Joyce  
(Fall President)  
Linforth, Mary  
(Spring President)  
**SENIORS**  
Buzzell, Erna Jean  
Sehon, Judy  
**SOPHOMORES**  
Barclay, Betsy



Cleek, Pat  
Elliott, Nancy  
Fenner, Sally  
Hamilton, Barbara  
Hanley, Sharon



Isackson, Jo Ann  
Leitch, Nancy  
McClaskey, Dianna  
Moore, Betty  
Nickels, Henrietta



Paulson, Mara  
Shiels, Mary  
Voll, Sharon  
**FRESHMEN**  
Aronson, Ann  
Bake, Donna



Dyer, Sara  
Gillett, Carol  
Hamman, Carol  
Masserdotti, Thelma  
Mote, Linda



Niemi, Mary Nell  
Redding, Sharell  
Rhodes, Betsy  
Rubin, Sue  
Short, Robin



West, Lee  
Wynd, Martha



# Lausanne



Lausanne women playing their favorite records.



Fond farewells are made in the dimly lit shadows of the Lausanne front porch.

Included in the activities of the women of Lausanne were their fall and spring house dances and the Christmas tea. The Christmas door decorations were on exhibit during the Christmas Tea. The proud winners included Margaret Hanna, Nancy Grey, and Della Rogers. Climaxing the year's activities was a May banquet for all Lausanne seniors.

Informally chatting in Lausanne lounge are (left to right) Mitzi Parsons, Ned Moser, and Maureen Avery.



Mrs. Ella Watson, housemother.



Miss Dixie Ruud, assistant.  
(Fall Semester)



Miss Esther Gwilliam, assistant.  
(Spring Semester)



Answering the phone with a cheery hello is Joan Fretwell, Lausanne receptionist for the evening.



Parsons, Marilyn  
(Fall President)  
Burnard, Kathy  
(Spring President)

**SENIOR**

Moore, Jo Ann  
**JUNIORS**  
Brister, Sharon  
Cartwright, Carol  
Fahlstrom, Marel  
Mitter, Pat  
Saito, Carrie



Weber, Artalee  
**SOPHOMORES**  
Avery, Maureen  
Brinkworth, Carol  
Dickson, Diane  
Fandrich, Gerry  
Flory, Karen  
Fretwell, Joan  
Gage, Susan  
Johnson, Laura  
Knoles, Alice  
Leger, Norissa  
Lindquist, Sandra  
Lusch, Joanne  
Nelson, Karen  
Porter, Marilyn  
Sager, Ellen



Smith, Marel  
Stevens, Geranna  
Trenholm, Pamela  
**FRESHMEN**  
Anderson, Sharon  
Arai, Annabel  
Avery, Pat  
Balsiger, Barbara  
Barth, Mary



Behrman, Karen  
Bryant, Marcia  
Cavin, Kaye  
Coffey, Hawkins  
Drais, Judy  
Egan, Karen  
Ellis, Leanne  
Erb, Karen



Erwin, Marsha  
Feller, Marilyn  
Ferguson, Georgia  
Fluke, Claudia  
Franz, Chris  
Graham, Alice  
Gwyn, Carol  
Hanson, Judy



Hill, Linda  
Jackman, Barbara  
Kirschner, Carol  
Langley, Donna  
Levy, Penny  
McPartland,  
Barbara  
Marsh, Jane  
Merrill, Judy



Miettunen, Judy  
Monte, Michelle  
Nelson, Larsana  
Palmer, Virginia  
Perry, Betsy  
Proctor, Judy  
Savage, Jean  
Starr, Judy



Stephens, Betty  
Takeuchi, Sylvia  
Verschueren,  
Dorothy  
Young, Norma

# BΘΠ



Mrs. Hester Payne, housemother.



The Beta Crest enhances the massive stone fireplace.



Hugh Stites and Jack Hjelt polish the men's scholarship trophy won again by the Beta's.

Gamma Sig of Beta Theta Pi was founded on the campus in January, 1947. The fraternity began at Miami University in August, 1839, and now has 96 active chapters. The activities of the Willamette chapter included house dances, a Christmas party, and a district conclave held in Portland with other chapters in the Northwest.



Walker, Mike

Wilson, Larry



Moore, Conrad  
(President)

# SENIORS

Bash, Frank  
Erickson, Dave  
Ferrell, Dick  
Griffin, Bob  
Heidel, John  
Landis, Dave  
Larson, Gary

McCloud, Paul  
Moore, Tom  
Neff, Ted  
Parrett, Roland  
Peterson, Dave  
Sitzman, Jim  
Stewart, Joe  
Wade, Fred

Walker, Warren  
Williams, Don  
Willingham, Larry  
Zavala, Al

# JUNIORS

Beaton, Rusty  
Bragstrom, John  
Cook, Ted  
Denham, Dale

Geist, Carl  
Gerbing, Ronald  
Grossenbacher, Ed  
Karmos, Joe  
Kaufman, John  
Kent, Terry  
Litchfield, Ralph  
Pailthorp, Keith

Sterling, Larry  
Teppola, Mark  
Tiller, Laurel  
Walker, Ron  
**SOPHOMORES**  
Allen, Jim  
Dearborn, Darr  
Donnell, Jim  
Forcum, Dick

Hjelt, Jack  
Hutchinson, Neill  
McGilvra, Paul  
Mesker, Tony  
Midlam, Kevin  
Mortenson, Dale  
Myers, Mike  
Paulson, Bill

Peterson, Gary  
Pierce, Bob  
Rehffuss, Dave  
Rounds, Gordon  
Spence, Skip  
VanNoy, Ron  
Weisel, Pete  
Young, Paul

# FRESHMEN

Allen, Ray  
Barton, Dick  
Bishop, Bob  
Bjur, Richard  
Brown, Lyle  
Cooldige, Harry  
Foster, Mike  
Gibbons, Vern

Kirkpatrick, Pat  
Lawson, Richards  
Robertson, Curt  
Schussler, Don  
Seeger, Bob  
Shattuck, Rod  
Sites, Frank  
Srites, Hugh



# ΦΔΘ



Mrs. Neil McElhinny, housemother.



Trophies line mantle of Phi Delta's natural stone fireplace.



Phi Delta Theta fraternity was founded on the Miami University campus in December of 1848. They have now expanded to 120 chapters throughout the United States. Oregon Gamma chapter was introduced to the Willamette campus in January of 1947. Many activities, such as the fall and spring house dances and a community service project in the spring, keep the Phi's busy.



A fast game of "cut throat" hearts occupied several of the Phi's before dinner.

Neimann, Al  
Richey, Paul  
Sather, Stan  
Saunders, Bill



Scoggin, Dick  
Senn, Louie  
Skelltron, John  
Snyder, Larry  
Stevens, Al  
Tewksbury, Graham  
Wayland, Rich  
Withers, Jack





# SENIORS

Bishoprick, Dean  
(Fall President)  
Leveton, Pete  
(Spring President)  
Crooks, Dick  
Cummings, Del  
Driver, Keith  
Fudge, Bob  
Goddard, Bob  
Hewitt, Roger

Kuehn, Andy  
Long, Bill  
Paterson, Gene  
Raid, Gary  
Stoop, Ken  
Talabere, Herb  
GUEST  
Aaseth, Jan

## JUNIORS

Baird, Truman  
Busch, Jim  
Campbell, Tim  
Caylor, Tom  
Frederick, John  
Graydon, Mike  
Lewis, Jim  
Lynn, Larry  
McLin, Wendell

Rasmussen, Jack  
Sisson, Hall  
Streeper, Dick  
Sweeney, John  
Trelstad, John  
Weaver, Lee  
**SOPHOMORES**  
Baker, Bill  
Bunse, Dale

Butler, Jay  
Berglund, Steve  
Chapin, Ray  
Elliot, Tom  
Foxley, Ted  
Gaviola, Fidel  
Graham, Bill  
Hanson, Bill

Knappe, Ed  
Krebs, Dick  
Marsh, Grant  
Marsters, Dave  
Milnes, Greg  
Ormsbee, Orrin  
Richter, Bill  
Robinson, Jim

Smallcomb, Glen  
Snow, Bill  
Spoonemore, Jerry  
Stenzel, Pete  
Thompson, Larry  
Thornton, Ed  
Wilfert, Buz  
**FRESHMEN**  
Alexander, Ted

Austin, Doug  
Bryan, Don  
Burres, Keith  
Campbell, Dick  
Escount, Mike  
Fisher, Bob  
Goberman, Earl  
Gibson, Jim

Green, Dick  
Hall, Stuart  
Ihrig, Tom  
Kreis, John  
Miller, Larry  
Morris, Tom  
Moser, Ned  
Nagel, Kevin

# ΣΑΕ



Mrs. Ida Wooton, housemother.



The SAE lion guards fireplace.



Since its founding in March, 1856, at the University of Alabama, SAE has grown to 142 chapters in the colleges of the United States. Oregon Gamma was founded at WU in March, 1949. This year was highlighted by the selection of the Queen of Violets at the Violet Ball. In the spring the annual Founder's Day Banquet, with the chapters at OSC and U of O, was held in Eugene.

Eldon Olson makes use of the recently acquired library.



John Dorsch hits wicked curve as John Laughlin waits his turn.



Bunney, Willard  
(Fall President)  
Darsch, John  
(Spring President)

**GRADUATE**

White, Dick

**SENIORS**

Anderson, Earl  
Colling, Gorman  
Dyer, Norman  
Fiske, Jim



Kelley, Larry  
Murphy, Chuck  
Wood, John

**JUNIORS**

Brentlinger, Jim  
Fairbanks, Bill  
Fowler, Fred  
Galbraith, John



Gilchrist, Chuck  
Girod, Alan  
Johnson, Ron  
Jones, Gordon  
Laughlin, John  
Miller, Matt  
Nelson, Howard



Roy, Bob  
Sinner, Wayne  
Smayer, Pesa  
Stephen, Ross  
White, Gerry  
**SOPHOMORES**  
Chandler, Ellison  
Daniel, Dale



Darby, Jerry  
Davis, Norman  
Evans, Parker  
Fritts, Bill  
Johnson, Bing  
Hollen, Gary  
Howells, Dave



Kelso, Pete  
McBride, Gary  
May, Jerry  
Olson, Eldon  
Penater, Bob  
Peterson, Russ  
Thompson, Jay



Welch, Pete  
Wright, Jim  
Zehntbauer, Alan  
**FRESHMEN**  
Burrow, Bob  
Darby, Chuck  
Fox, Nick  
Fiske, Tom



Gilchrist, Dennis  
Haugeberg, Andrew  
Heryford, Bob  
Keuss, Jeff  
McAulay, Sid  
Morley, Dave  
Shuchat, Terry



Shupe, Bill  
Stensrud, Myron  
Stoddard, Chuck  
Williams, Ron  
Wollander, Jon

# ΣΧ



Mrs. Rachel McWilliams, housemother.



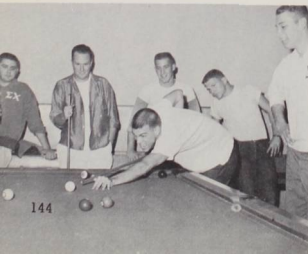
The brick fireplace makes an attractive background for the Sig's plaques and trophies.



Sigma Chi, chartered in June, 1885, now has 139 Houses; Sigma Tau chapter was founded January, 1947. The selection of the Sweetheart of Sigma Chi once again headlined the chapter's activities for the year. The annual Christmas tree serenade rounded out their activities.



Sig's enjoying television after a Friday house clean up.



Grimace seems to help as Jim Blinn gets set to pocket the ball.





# **SENIORS**

Audley, Dick  
(President)  
Caruso, Frank  
Feller, Wayne  
Holmberg, Todd  
Honl, Tom  
Joseph, Bill  
Klindworth, Bob  
Manwaring, Jim

Moore, Harry  
Neu, Don  
Nokes, Greg  
Nye, George  
Seawell, Bill

# **JUNIORS**

Chandos, Larry  
Christenson, Keith  
Clark, Bob

Jelders, John  
Schulze, Del  
Weston, Art  
Weston, Tom  
Wheeler, Mark

Winner, Gerry  
**SOPHOMORES**  
Anderson, Doug  
Auvinen, Jerry

Cheeld, Chuck  
Coffey, Dennis  
Figour, Mike  
Ginter, Jack  
Gripentrog, Gene  
Hellenenthal, Bob  
James, Jim  
Jessell, Todd

MacDowell, Pete  
Manning, Pete  
Moore, Bill  
Thurber, Lee  
Toomey, Dennis  
Ward, Doug  
**FRESHMEN**  
Ackerman, Dave  
Adams, Bill

Adams, Tom  
Blinn, Jim  
Blouin, Ray  
Boardman, Curt  
Cammarano, Dave  
Dwight, Carl  
Elliot, Chuck  
Gaddis, Alan

Gooding, Ted  
Graber, Ray  
Green, Lyle  
Hemingway, Tom  
Hicks, Prentiss  
Hisel, Bob  
Honerlah, Ray  
Johnston, Terry

Kremer, Pete  
Lewis, Gary  
Litchfield, Jim  
Luchini, Al  
McAllister, Jerry  
Marr, Ted  
Moore, Kenny  
Mundorff, Roger

Murdoch, Steve  
Oraker, Jim  
Spaulding, Chris  
Stover, Herb  
Thom, Phil  
Warden, Gary  
Wiley, Kent



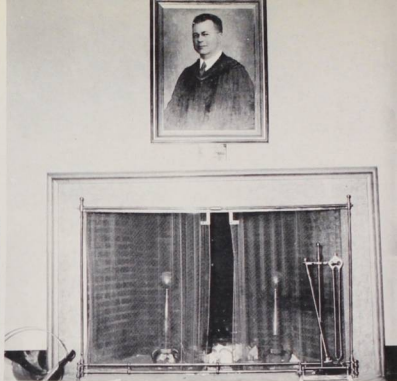
# Baxter and South Hall



Mrs. Mary Etta Ford,  
Baxter housemother.



Mrs. Esther Keller,  
South Hall housemother.



In a place of honor is the portrait of Dr. Baxter.

Winning the Homecoming Sign contest was the big event for the men of Baxter Hall this year. During the Christmas season they serenaded the women of WU and presented each living organization with a wreath. For their Fall house dance the men of Baxter and their dates found themselves shipwrecked, but by Spring they were again in formal dress.



Knupp, Bert  
Lewis, Mac



Moore, Marshall  
Palmrose, Bill  
Paulling, Steve



Root, John  
Rodney, Ken  
Sasaki, Edwin



Saverude, Charles  
Templeton, Bob  
Williamson, Steve



A fast game of cards in the Baxter lounge.



Muhs, Emil  
(Fall President)  
Steward, Dave  
(Spring President)  
**GRADUATE**  
Ikeda, Fred  
**SENIORS**  
Barth, John  
Culy, Stan  
DeArmond, Gordon  
Hickock, Craig  
Moellering, Ed

Warner, Jim  
Wilkinson, Ron  
**JUNIORS**  
Bennett, Bob  
Cannell, Tim  
Donald, Robert  
Fahey, Mike  
Foster, Chuck  
Garvin, Claude

Halstead, Larry  
Hobson, Larry  
Hone, Steve  
Hussey, Cliff  
Jones, Malcom  
Lavre, Gary  
Mankinen, Carl  
Randall, Bill

Saito, Jim  
Seagraves, Lewis  
Stratton, Larry  
Turner, Lowell  
Ward, Dave  
Woodworth, Lionel  
**SOPHOMORES**  
Briggs, Pete  
Butler, Stewart

Carmichael, Steve  
Carter, Chuck  
Gladwin, Wayne  
Cox, Gary  
Crane, Dave  
DeBoer, Judd  
deLespinasse, Paul  
Dezsofi, Laszlo

Ginaza, Ken  
Johnson, Craig  
Kitchener, Dave  
Kohnstopp, Dean  
McIntosh, Dave  
Macomber, Bob  
Matsumara, Roy  
Minor, Paul

Rogers, George  
Sanford, John  
Schmidt, Larry  
Snyder, Andy  
Stewart, Kit  
Taylor, Keith  
Tucker, Lyle  
**FRESHMEN**  
Bowman, John

Chadney, James  
Chapin, Mac  
Chi, Donald  
Cooper, John  
Croach, Dee  
Dietz, Lelon  
Dozier, Bart  
Emerson, Dick

Finch, Franklin  
Frick, Bill  
Godwin, Larry  
Grant, Donald  
Hales, Lynn  
Jefferson, Percy  
Johnson, Tom  
Kersten, Clint

# Indepi

The new independent town student group, Indepi, was organized in the fall to study needs of independent students, encourage participation in campus activities, promote understanding, and encourage responsible leaders. To further these aims, Indepi entered campus contests, encouraged officer candidates, socialized via Christmas carolling and a spring pot-luck dinner, held weekly business meetings, and informed town students of independent activities through the Indepi Newsletter.



Warmer weather found the Indepi group on the front lawn instead of in their usual Cat Cavern booth.

Taylor, Steve  
(Fall President)  
Hall, ReNaye  
(Spring President)  
**SENIORS**  
Adams, Janice  
Jew, Terry  
Michalson, Karen  
Williams, Charles



**JUNIORS**  
Criswell, Georgianna  
Gouler, B. Boniface  
Hinton, Raymond  
Scott, Dave  
VanNatta, Fred  
**SOPHOMORES**  
Coe, Pat



Forbes, Nancy  
Fulton, Beverlee  
Kangas, Kathryn  
**FRESHMEN**  
Cavender, Doreen  
Gilman, LaVerne  
Hawes, Carol



McCain, Gayle  
Smith, Carol  
Thompson, Terry



# Independent Town Students



## SENIORS

Arnold, Jerry  
Balmaseda, Cesar  
Bullard, Bill  
Crose, Arvin  
Davis, Fred  
Domaschofsky, Rex  
Goertzen, Eugene



Johnson, Bill  
McClard, Dave  
McFarland, Dianne  
Thompson, Gordon  
Vale, John  
Weber, Donald  
Wyant, Charles



## JUNIORS

Augee, Mike  
Berkey, Jack  
Bong, Bill  
Brown, Kenneth  
Brown, William  
Buzzell, Bruce  
Chinn, Gwen Graves



Cornie, LeRoy  
Elliott, Sue  
Hodge, Don  
Kuensi, James  
Maron, Virgil  
Myers, Jim  
Porter, Julian



Wallis, Douglas  
Walters, Norm  
Whelan, Patty  
Whitman, Donald  
**SOPHOMORES**  
Barber, Joel  
Feitelson, Ira  
Gallagher, John



Gwynn, Dennis  
Jacobsen, Fred  
Livia, John  
McCloud, Connie Snow  
Mahoney, Phil  
Marsh, Gerry  
Moll, Marvin



Patch, Dave  
Peterson, Claudia  
**FRESHMEN**  
Allen, Paul  
Birrell, Bruce  
Carlton, Robert  
Cheatham, James  
Frame, Gary



Hawley, Jerry  
LeQuest, Sharon  
Siewert, Chuck  
Wolf, Judy





## IFC

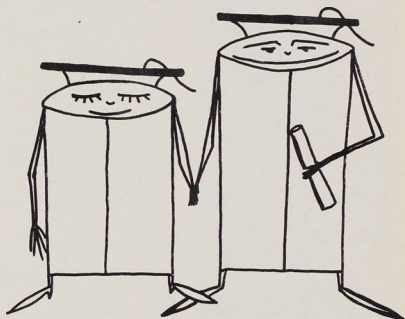
Members of the Inter-Fraternity Council relaxed after their bi-monthly luncheon meeting. Representing their individual fraternities, they handle problems, formulate policies, and make specific rules concerning rush. This year as a service project to the community they cleaned up the fountain in the Capitol Park.

## Panhellenic

Panhellenic, working through its sorority representatives, makes rush rules for pledging periods. President of Panhellenic, Jane Dedrick, works closely with Dean of Women, Regina Ewalt, advisor of the group.





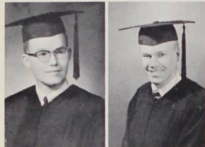


S E N I O R S

Only a small piece of paper, but one of great importance and significance to graduating seniors, was this Commencement announcement of 1959.



Aaseth, Jan  
Oslo, Norway  
Economics, BA  
Anderson, Earl Nicholas  
North Bend, Oregon  
Physics, BA



Arnold, Jerry Lee  
Rickreal, Oregon  
Philosophy, BA  
Audley, Robert Richard  
San Carlos, California  
Economics, BA



Balmaseda, Cesar John  
Salem, Oregon  
Economics, BA  
Barrie, Barbara Dennis  
Portland, Oregon  
Political Science, BA



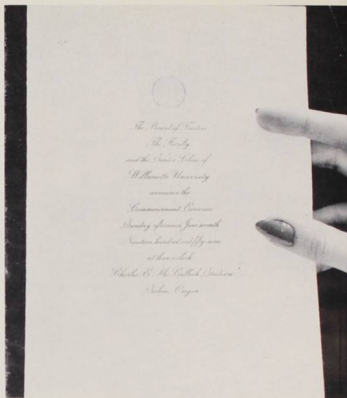
Barth, John Frederick  
Dallas, Oregon  
Chemistry and  
Mathematics, BA  
Bash, Frank Ness  
Medford, Oregon  
Physics, BA



Berry, Linda Ann  
Burlingame, Calif.  
Sociology, BA  
Bishoprick, Dean Ward  
Woodburn, Oregon  
Economics, BA



Bunney, Willard  
Carlyle, Jr.  
Vancouver, Wash.  
Economics, BA  
Buzzell, Erna Jean  
Culbertson, Nebraska  
Home Economics, BA



*The Board of Trustees  
The Faculty  
and the Senior Class of  
Willamette University  
announce the  
Commencement Exercises  
Sunday afternoon, June seventh  
Nineteen hundred and fifty nine  
at three o'clock  
Pleasant B. McCallister Stadium  
Astoria, Oregon*

Campbell, Sybil Ann  
Salem, Oregon  
Art, BA

Clark, Barbara Mildred  
Portland, Oregon  
Psychology, BA

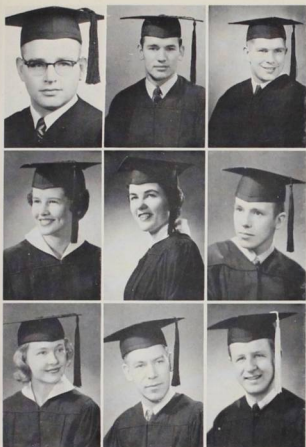
Colling, Gorman  
Douglas  
Dundee, Oregon  
Economics, BA

Crooks, Richard Wesley  
Albany, Oregon  
Political Science, BA

Culy, Stanley Palmer  
Medford, Oregon  
Philosophy, BA

Davis, Frederick Louis  
Lapwai, Idaho  
Physics, BA





Dorsch, John  
Andrew  
Redmond,  
Oregon  
Biology, BS

Driver, Cecil  
Keith  
Hubbard,  
Oregon  
Economics, BA

Dyer  
Norman  
Chandler  
Newberg,  
Oregon  
Physics, BA

Eagleson  
Martha Ann  
Portland,  
Oregon  
Sociology, BA

Enberg  
Karen LoRee  
Portland,  
Oregon  
Physical  
Education, BA

Erickson  
David John  
Longview,  
Washington  
Psychology,  
BA

Farley  
Katherine Ruth  
Ruberg  
Salem, Oregon  
Political  
Science, BA

Ferrell, Carl  
Richard  
Warrenton,  
Oregon  
Sociology, BA

Fiske, James  
Arthur  
Salem, Oregon  
Bachelor of  
Music  
Education

Fiske, Judith Joan  
Anderson  
Salem, Oregon  
Bachelor of Music  
Education

Frey, Carol Joan  
Oakland, California  
Political Science, BA

Fudge, Robert Lewis  
Berkeley, California  
Political Science, BA

Goddard, Robert  
Whitten  
Salem, Oregon  
Political Science, BA

Goertzen, Eugene  
Wilbert  
Salem, Oregon  
Biology, BS

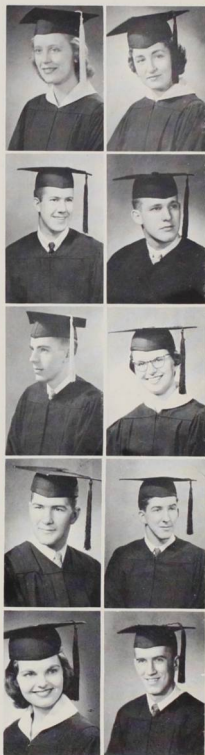
Griffin, Barbara  
Patricia Roach  
Salem, Oregon  
Psychology, BA

Griffin, Bobby Ivan  
Salem, Oregon  
Physics, BA

Hallisy, James  
Melbourne  
Salem, Oregon  
Economics, BA

Harris, Sandra Jeanne  
Redwood City,  
California  
Art, BA

Hartman, Dale Leonard  
Salem, Oregon  
Economics, BA





Hays, Leonard LeRoy  
Portland, Oregon  
Chemistry, BA

Heald, Josephine Anne  
Milton-Freewater, Ore.  
Social Science and  
Journalism, BA



Heidl, John Robert  
Buhl, Idaho  
Sociology and Religion,  
BA

Hewitt, Barbara Jean  
Duncan  
Burlingame, California  
Art, BA



Hewitt, Roger Roy  
Reno, Nevada  
Chemistry, BA

Hickok, Craig Walden  
Cottage Grove, Oregon  
Psychology, BA



Hillman, Melinda Lee  
Menlo Park, California  
Home Economics, BA

Hines, Duane Merdith  
San Francisco, Calif.  
Economics, BA



Holmberg, Wesley Todd  
Tacoma, Washington  
History, BA

Honl, Tom Carl  
Portland, Oregon  
Psychology, BA

Hotaling, Kathryn  
Sanford  
Portland, Oregon  
Art, BA

Howard, Donald Charles  
Salem, Oregon  
Economics, BA

Jew, Terrance Ting  
Seattle, Washington  
Mathematics and  
Physics, BA

Johnson, Craig Louis  
Hillsboro, Oregon  
Biology, BA

Johnson, William Worl  
Salem, Oregon  
Economics, BA

Joseph, William Murray  
Salem, Oregon  
Economics, BA

Juran, Herbert Wayne  
Salem, Oregon  
Economics, BA

Klindworth, Robert Ben  
Connell, Washington  
History, BA

Kuehn, George Andrew  
Los Altos, California  
Political Science, BA

Landis, David Charles  
Klamath Falls, Oregon  
Political Science, BA





Larson, Gary Hollis  
Carson, Washington  
Physics, BA



Lasswell, Mary Anne  
Yoncalla, Oregon  
Psychology, BA



Leveton, Peter Joe  
Portland, Oregon  
Economics, BA



Lind, Marietta  
Portland, Oregon  
Psychology, BA



Long, William David  
Salem, Oregon  
Political Science, BA



Lovell, Thomas Hubert  
Salem, Oregon  
Economics, BA



Lowe, Margaret Ann  
Kelso, Washington  
Philosophy and  
Chemistry, BA



McCloud, Paul Leonard  
Salem, Oregon  
Physics, BA



McFarland, Dianne  
Patricia  
Salem, Oregon  
Political Science, BA



Manwaring, Leonard  
James  
Burlingame, California  
Physical Education, BA

Marsh, Daniel Gabe  
Salem, Oregon  
Political Science, BA

Mihm, Dennis Martin  
Camas, Washington  
Art, BA

Miller, Carolyn Rae  
Forest Grove, Oregon  
Foreign Language, BA

Miller, Karma Marie  
Milton-Freewater, Ore.  
Psychology, BA

Mills, Jo Ann  
Bremerton, Washington  
Sociology, BA

Moellerling, Edward  
Alfred  
San Jose, California  
Mathematics, BA

Moore, Conrad Lee  
Springfield, Oregon  
Economics, BA

Moore, Jo Ann Olive  
Silverton, Oregon  
American History and  
Government, BA







Moore, Saundra Wagner  
Portland, Oregon  
English, BA



Moore, Thomas Scott  
Portland, Oregon  
Economics, BA



Muhs, Emil Otto, Jr.  
Livermore, California  
Political Science, BA



Murphy, Charles  
Howard, Jr.  
Salem, Oregon  
Economics, BA



Murray, Peter John  
Brooks, Oregon  
Mathematics, BA



Neff, Rupert Theodore  
Mt. Vernon, Washington  
Mathematics and  
Physics, BA



Nokes, Richard Gregory  
Portland, Oregon  
Political Science, BA



Nye, George Arthur  
Portland, Oregon  
Philosophy, BA



Parrett, Roland Eugene  
Portland, Oregon  
Bachelor of  
Music Education



Peasley, Jeanne Ann  
Menlo Park, California  
Sociology, BA



Peterson  
David Atley  
Minneapolis,  
Minnesota  
Chemistry, BA



Prince  
Caroline  
Margaret  
Portland,  
Oregon  
English, BA



Raid  
Gary August  
Mt. Angel,  
Oregon  
Mathematics  
and Physics,  
BA



Renshaw  
Patricia Lee  
Burlingame,  
California  
Sociology, BA



Riley, Beverly  
Thronson  
Dayton,  
Washington  
Art, BA



Roark, Sandra  
Jane  
Portland,  
Oregon  
Economics, BA

Filing down the aisle toward their seats during Senior Chapel was the graduating class of 1959.





Schrock, Shirley Lynn  
Bend, Oregon  
Sociology, BA

Schwabauer, Gilbert  
James  
Salem, Oregon  
Economics, BA



Seawell, William  
Thomas, III  
Monterey, California  
Economics, BA

Sehon, Judith Grace  
Salem, Oregon  
English, BA



Sherill, Joan Helen  
Portland, Oregon  
Psychology, BA

Sitzman, James  
Raymond  
Portland, Oregon  
Speech, and Drama, BA



Smullin, Mary Jo  
Parkdale, Oregon  
Sociology, BA

Snyder, Susan Cumming  
Seattle, Washington  
Foreign Language, BA



Steward, David Stanley  
Corvallis, Oregon  
Philosophy, BA

Stewart, Joseph Vernon  
Lebanon, Oregon  
Physics, BA



The afternoon of Commencement was marked by the traditional procession of faculty and candidates into McCulloch Stadium.

Stout  
Margaret  
Carolyn  
Oak Grove,  
Oregon  
Psychology,  
BA

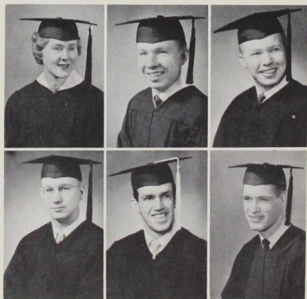
Thompson  
Gordon Elmer  
Lebanon,  
Oregon  
Political  
Science, BA

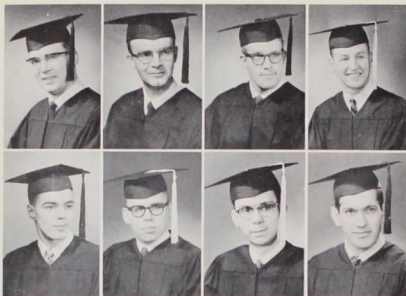
Talabere  
Herbert Frank  
Walla Walla,  
Washington  
History, BA

Vale, John  
William  
Rainier,  
Oregon  
Bachelor of  
Music  
Education

Tetrick, D.  
Lonnell  
Salem, Oregon  
Sociology, BA

Wade,  
Fredrick David  
Bend, Oregon  
Chemistry, BA





Walker, Warren  
Raymond  
McMinnville,  
Oregon  
English, BA

Wilkinson  
Ronald Cedrick  
Vancouver,  
Washington  
History, BA

Williams, Charles  
Ellis  
Aurora, Oregon  
English, BA

Williams, Louis  
Donald  
Springfield,  
Oregon  
Physics, BA

Willingham  
Larry David  
Pendleton,  
Oregon  
Economics, BA

Wood, John  
Waterbury  
Salem, Oregon  
Biology, BA

Wyant, Charles  
Salem, Oregon  
Bachelor of Music  
Education

Zavala, Albert  
Chicago, Illinois  
Psychology, BA

#### NOT PICTURED:

Cummings,  
Delbert Robert  
Los Altos,  
California  
Economics, BA

Gilbert,  
Rosemary  
Salem, Oregon  
Biology, BA

Huntemann,  
Roger Lee  
Medford, Oregon  
Bachelor of Music  
Education

Lebold, Frank  
Collins  
Salem, Oregon  
Bachelor of Music  
Education

MacIver, Clyde  
Hale  
Yakima,  
Washington  
Economics, BA

Pierre, Joseph  
Horace  
Salem, Oregon  
Social Science-  
Journalism, BA

Stoop, James  
Kendrick  
Eugene, Oregon  
Political Science,  
BA

Fulmer, Jeanette  
Lucille  
Salem, Oregon  
Foreign  
Language, BA

Gwilliam, Esther  
Walton  
McCall, Idaho  
History, BA

Jambura, Earl  
Michael, Jr.  
Pendleton,  
Oregon  
Economics, BA

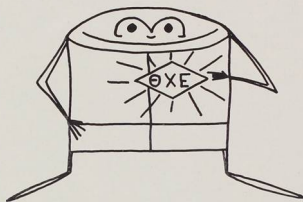
Liston, Robert  
William  
Salem, Oregon  
Biology, BA

Paterson,  
Gene Mathers  
St. Helens  
History, BA

Smith, James  
Marvin  
Port Angeles,  
Washington  
English, BA

At last the time has arrived, Jan Aaseth, diploma in hand, leaves the platform during the June graduation exercises at McCulloch Stadium.





C L U B S A N D

H O N O R A R I E S

## Mortar Board

One of the highest honors a woman student may obtain during her four years at Willamette is membership in Mortar Board, senior women's honorary. To honor freshmen scholarship holders, they staged a fall "Smarty Party", and also found time to staff the Fine Arts check room during the evening concerts. The traditional serenade, which precedes tapping of new members, climaxed the year.



Doney Hall was the scene of the "Smarty Party."

The membership includes (left to right) Joan Sherrill, Sandi Harris, Dean Ewalt, Kay Farley, Sue Snyder, Marge Stout, Martha Eagleson, Sandra Moore, Barbara Griffin, and Sondra Roark.

## Omicron Delta Kappa

A bringing together of the representative men in all phases of collegiate life, with the purpose of dealing with questions of local and inter-collegiate interest is the main function of Omicron Delta Kappa. As junior and senior men who have attained a high standard of efficiency in collegiate activities, they work to inspire others toward conspicuous attainments along similar lines. Included in the group, but not pictured are: Dr. Albert Dehner, Richard Gillis, Dean Robert Gregg, Dr. Chester Luther, Dr. Richard Petrie, Dr. Daniel Schulze, Dr. G. Herbert Smith, and Richard Yocum, members of the faculty.

Audley, Dick  
Bash, Frank  
Beaton, Rusty  
Bishoprick, Dean



Bunney, Willard  
Landis, Dave  
Larson, Gary  
Litchfield, Ralph



Long, Bill  
Moore, Conrad  
Steward, Dave  
Stewart, Joe



Tiller, Laurel  
Willingham, Larry





## Alpha Lambda Delta



Abele, Judy  
Boyd, Terry

Made up of those girls who obtained a grade point average of 3.5 or above during their freshman year, Alpha Lambda Delta purposes to encourage high scholastic ideals among freshmen women as well as rendering service to the community. During the year the members were seen regularly picking up chapel slips as well as aiding registration at Parent's Weekend, addressing post cards for the school, meeting with freshmen women to discuss scholarship, and various other activities.

Buckinger, Elaine  
Burnard, Kathy  
Giberson, Bobbie  
Henninger, Karen  
Humphrey, Marcia  
Jacobsen, Dorothy



Lester, Joanna  
Parsons, Marilyn  
Royer, Barbara  
Sherk, Barbara  
Stevens, Geranna  
Zeller, Mary

Working to some extent in conjunction with Alpha Lambda Delta was Phi Eta Sigma, honorary for those men who achieved a grade point of 3.5 or above during their freshman year. They attempted to provide an incentive to freshman men to attain a high scholastic standing in college. The organization of an ushering program at chapel started for the first time this year. One of the highlights of the year occurred when the national president of Phi Eta Sigma spoke at a joint function held with Alpha Lambda Delta.

## Phi Eta Sigma



(Front row)  
de Lespinasse, Paul  
Senner, Wayne  
Richter, Bill  
Tucker, Lyle  
(second row)  
Penater, Bob  
Olson, Eldon  
Myers, Mike  
Knappe, Ed

## Beta Alpha Gamma

Activities, scholarship, and character form the basis on which sophomore women are selected for membership in Beta Alpha Gamma. Collecting convo slips and aiding in elections have been traditional duties of the Bags. Staging an Ugly Man contest, in order to donate money to the Campus Chest, has also become an integral part of every fall semester's activities at Willamette.



The membership includes (left to right) Norissa Leger, Marcia Humphrey, Maureen Avery, Gail Larson, Karen Kettenring, Karen Henninger, Terry Boyd, Carol Woodbury, Joan Barber, and Barbara Sherck.



Berglund, Steve  
Chapin, Roy



Daniel, Dale  
Dearborn, Dorr  
Elliott, Tom



Forcum, Dick  
McGilvra, Paul  
Patch, Dave  
Richter, Bill



Rogers, George  
Trelstad, Bob  
Welch, Pete  
Wright, Jim

## Sigma Alpha Chi

The sophomore men's equivalent to Beta Alpha Gamma is Sigma Alpha Chi. Men of outstanding service and scholarship, during their freshman year, are honored with membership. During elections, they were found manning the polls along with the Bags.

# Rotarians

Student Council each month votes on the selection of a senior male to serve as Willamette's Rotarian of the Month. He is chosen on the basis of scholarship, leadership, activities, and service to the University and community. While holding the honor the student attends the weekly luncheon meetings of the Salem Rotary Club.

Dave Steward  
March



Frank Caruso  
April



Larry Willingham	Willard Bunney	Emil Muhs	Gordon MacPherson	Dick Audley	Dean Bishoprick
October	November	December	January	February	May



# Psi Chi

Sponsoring a spring picnic for all students interested in a psychology major was one of Psi Chi's functions. The year-round program was based on a motivation to advance the science of psychology and to encourage and maintain high scholarship on the part of the individual members in all fields.



(first row)  
Shaw, Cynthia  
Hansen, Jan  
Robison, Jan  
Sterling, Larry  
Sherrill, Joan  
Lasswell, Anne  
Pfaff, Babs  
(second row)  
Hickok, Craig  
Kaestner,  
Dr. Noel  
Honl, Tom  
Zavala, Al  
Griffin, Barb  
Derthick,  
Dr. Charles  
Cartwright, Carol

## Theta Alpha Phi

Theta Alpha Phi, the production organization of the Willamette University Theater, took up as their purpose, the furthering of student interest and participation in drama. "Death Takes a Holiday," three one act plays, and "Out of the Frying Pan," were presented by Theta Alpha Phi this season.

Included in the membership were (left to right, front row) Carole Cartwright, Carol Woodbury, and Robert Putnam (second row) Stephen Hone, Warren Walker, Laurel Tiller, and Ross Stephen.



## Mu Phi Epsilon



Dixon, Barbara  
(president)  
Barber, Joan  
Biggs, Joyce  
Brinkworth, Carol  
Burnard, Kathy  
Edmundson,  
Mildred  
Elliott, Judy

Fiske, Judy  
Forbes, Nancy  
Holcomb, Pat  
Jackman,  
Barbara  
Laird, Elizabeth  
Lester, Joanna  
Peterson, Sonja

Being a chapter of this national women's music honorary, the Mu Phis backed up such national projects as maintaining the Mu Phi Epsilon School of Music at Gads Hill Center in Chicago, giving both financial and musical support to music in hospitals, music therapy and music for the blind, and assisting schools of music in foreign countries through gifts of music and money. Projects unique to the Willamette campus are the sponsoring of an original composition contest and two American Music Contests with Phi Mu Alpha. Members are chosen on the basis of scholarship and musicianship.

Starr, Judy  
Stevens, Geranna  
Teague, Nancy

Warren, JoAnne  
Weeks, Nancy  
Whelan, Pat



Lovre, Gary  
(president)  
Baird, Truman  
Crane, Dave  
Fahey, Mike



Fiske, Jim  
Foster, Chuck  
Frame, Gary  
Heidel, John



Hobson, Larry  
Huntemann, Roger  
Kelley, Larry  
Litchfield, Ralph



Martin, Larry  
Milnes, Greg  
Minor, Paul  
Myers, Jim  
Parrett, Gene  
Stewart, Joe



Tucker, Lyle  
Vale, John  
Walters, Norman  
Warner, Jim  
Williams, Ron



## Phi Mu Alpha

Composed of those men with a particular aptitude and interest in music, Phi Mu Alpha took up as its purpose "the promotion of the cause of American music." Two of their main functions were to promote a composition contest and to stage an American music concert each semester.



Taking time out from their studies, the members of Phi Mu Alpha spent a relaxing day at the coast.



# Student Education Association

Formed of students with a special interest in teaching as a career, the Student Education Association sponsored regular meetings throughout the year. This afforded its members with opportunities to learn of the various positions within the teaching field. The overall program was designed to give the students a better understanding of teaching as a career.



The Student Education Association climaxed a successful year by hosting the Regional Banquet including students from OCE, Mt. Angel, and Willamette.



Karmos, Joe  
(President)  
Backlund, Vic  
Biggs, Joyce  
Brown, Kenneth



Christiansen, Art  
Drais, Judy  
Duerr, Penny  
Ferguson, Georgia  
Fiske, Jim  
Hawes, Carol



Hillman, Karen  
Hunnell, Andrea  
Johnston, Lynette  
Kaufman, John  
Lind, Marietta  
Loennig, Mary



Michalson, Karen  
Miettunen, Judy  
Miller, Carolyn  
Niemi, Mary  
Shidler, Donnise  
Smith, Carol



Snyder, Sue  
Stephens, Betty  
Trueblood, Sue  
Warner, Jim  
White, Dick  
Williams, Charles

## Kappa Delta Pi



Christensen, Art  
Clark, Barbara  
Driver, Keith  
Eagleson, Martha  
Gwilliams, Esther

As a national service honorary, Kappa Delta Pi met regularly throughout the year to discuss the education profession. The fraternity is composed of students with leadership, a high scholastic record, and an interest in education. Climax of the year was a banquet for the new initiates.

Lind, Marietta  
Moore, Sandra  
Smullin, Mary Jo



## Silver Wings

Silver Wings is composed of the men in the Honor Squadron of the ROTC Drill Team. Membership in the society is bestowed on those outstanding individuals who have shown interest and proficiency in the leadership laboratory sessions.



## Drill Team



The Drill Team was fortunate enough this year to have a much larger membership than previously. Wednesday night practices will be remembered by all the participants. The year's activities were climaxed by the drill competitions held at Eugene where the Bearcat marchers received last place again, although they were much improved over last year. The Drill Team and the Angel Flight enjoyed a day at the beach to finish off the year.

The Honor Squadron is the crack squadron of the Drill Team.

The Drill Team staged a special performance for the dignitaries at the review.



Queen Ann's Salute in front of the reviewing stand.

## Arnold Air Society

Cummings, Del  
Driver, Keith  
Fairbanks, Bill  
Graydon, Mike



Johnson, Ron  
Laughlin, John  
Leveton, Pete  
Miller, Matt



Stoop, Ken  
Sweeney, John  
Willingham, Larry



Outstanding juniors and seniors in the advanced ROTC program on campus are members of the Lindberg chapter of the national Arnold Air Society. The group sponsors the Military Ball and aids in presenting the President's Review in honor of President Smith, the Little Colonel, and the townspeople.

## Angel Flight

Closely allied to the AFROTC as its women's auxiliary, the Angel Flight worked to perfect the drill exercises. Dressed in their blue and white uniforms, they acted as hostesses during ROTC functions.

Twenty coeds serve as the ROTC's women's marching corps.



The Angel Flight marching with "eyes right" during the review.

## A.W.S.

The ooh's and ah's and excitement at the AWS Coed of the Month announcement help to make Tuesday convocations more exciting. Only the outstanding girls share the honor of being selected.

The fun of the AWS auction will be remembered by many — especially the "slaves". The mistre-waitresses, waiters, and late pers went for high prices.

Betty Coed and Joe College selections made the "February Fantasy" Dance one to be remembered by all; the dreamy atmosphere of castles and a fountain set the mood for the evening, and the Associated Women Students did their share to provide entertainment as they raised money.



Sonja Peterson and Jan Aaseth were crowned Betty Coed and Joe College (above) at the AWS formal (left).



## Coeds of the Month

Sondra Roark September	Martha Eagleson October	Kaye Farley November	Marge Stout December	
Sandi Harris January	Joan Sherrill February	Linda Berry March	Sue Snyder April	Barbara Griffin May



Slaves went for bargain prices at the AWS auction.





# YWCA

Installation of the new cabinet and officers took place at the May YW banquet.

Unusual opportunities for service are afforded the Willamette University Campus YWCA due to the University's location near to many rehabilitation institutions. The members have rendered service to the State Mental Hospital, Hillcrest Home for Girls, MacLaren Home for Boys, and the Chemawa Indian School. Guided by the principles of the Christian faith, they sponsored volunteer canvassing for the United Fund drive, a comparative religion series, and many different speakers, besides carrying on various social activities.

Elliot, Judy  
Farley, Frances  
Ferguson, Sue  
Filer, Nancy  
Finzer, Marcia  
Gillett, Carol  
Griffis, Joan  
Hamilton, Barbara  
Hardy, Janeen  
Jackman, Barbara  
Jacobsen, Dorothy  
Langley, Donna  
McPartland, Barbara  
Manwaring, Muriel  
Mason, Carol  
Mitter, Patricia  
Monte, Michelle  
Mote, Linda  
Nelson, Karen  
Perry, Elizabeth  
Peterson, Bev  
Pfaff, Barbara  
Post, Penny  
Ratcliff, Laurel  
Redding, Sharell  
Redo, Verrill  
Riggins, Sandi  
Rovelli, Suzanne  
Rubin, Susan  
Smith, Judy  
Smullin, Suzanne  
Stanberry, Rosemary  
Stanley, Suellen  
Stebbins, Barrie  
Trenholm, Pamela  
Walton, Gail  
Welch, Judith  
Willeford, Rhetta  
Wyatt, Joanne  
Zachary, Rita

Adams, Nancy  
Babington, Molly  
Brown, Diane

Cavin, Kaye  
Chanda, Charlotte  
Drais, Judi



# International Relations Club



Jew, Terry  
(fall president)  
Hisel, Louis  
(spring president)



Aaseth, Jan  
Barker, Sammie



Barney, Jerry  
Brister, Sharon  
Carlson, Eleanor  
Carter, Chuck



Causbie, Cathy  
Culy, Stan  
Dawson, Dianne  
de Lespinasse, Paul  
Dickson, Dianne  
Dyer, Sara  
Erwin, Marsha  
Finzer, Marcia



Gaberman, Earl  
Giberson, Bobbie  
Hamman, Carol  
Harris, Sandi  
Knappe, Ed  
Kuhn, Kay  
Levy, Penny  
Masserdotti, Thelma



Matson, Linda  
Moore, JoAnne  
Morast, Kaye  
Nunez, Maye  
Patch, Dave  
Perry, Betsy  
Richter, Bill  
Sanford, John



Savage, Jean  
Senn, Louie  
Snyder, Andy  
Takeuchi, Sylvia  
Talabere, Herb  
Williams, Betty  
Young, Norma

Fortunate MUN delegates leaving to soak up some California sunshine.

Recently the UNESCO organization on campus was changed to the International Relations Club. Most of former UNESCO's programs were highlighted by guest speakers and slides from foreign students picturing their countries. The group sponsored the Great Decisions program, a book drive for Asian students, and sent a delegation to the Model United Nations Conference in Los Angeles.

## Independent Women



(Left to right, first row) Judi Drais, Pat Avery, Marsha Erwin, Michelle Monte, and JoAnn Isackson (second row) Pat Mitter, Pam Trenholm, Mrs. Watson, Betty Stephens, and Jean Savage (third row) Sandra

Lindquist, Linda Hill, and Ellen Sager (fourth row) Alice Knoles, Georgia Ferguson, and Donna Langley (fifth row) Joanne Lusch and Marcia Bryant (sixth row) Norma Young and Larsana Nelson.

Developing unity and cooperation among the unaffiliated women of Wilamette was the main purpose of the Independent Women. To accomplish this end they strive toward a provision for adequate government and management of the activities of unaffiliated women, to bring about equality and justice to all independent women through the benefits and responsibilities of group organization, and to provide a satisfactory means for carrying on relations with other living organizations. Besides such various activities as open houses and get-acquainted dinners, they carried on a year-round project of helping at the mental hospital. This involved making gifts and collecting needed articles as well as making visitations to the hospital.

# Royal Order of the W

Made up of Willamette's outstanding athletes, the Letterman's Club purposed to promote sportsmanship and athletic fellowship through all phases of the athletic program. They were responsible for the execution of the traditional "Kangaroo Kourt" and greased pole climb. The lettermen be-

came acquainted with the freshmen girls early when they sold rook-lids and at times became very irritated when their products weren't shown the proper respect. The Letterman's Club also sponsored the Varsity Ball where the Varsity Queen selection was announced.

Caruso, Frank  
(president)  
Aaseth, Jan  
Beaton, Rusty  
Bennett, Bob  
Berglund, Steve  
Berkey, Jack



Campbell, Tim  
Daniel, Dale  
Domaschofsky, Rex  
Driver, Keith  
Fairbanks, Bill  
Foxley, Ed



Frederick, John  
Griffin, Bob  
Grossenbacher, Ed  
James, Jim  
Karmos, Joe  
Kent, Terry



Klindworth, Bob  
Lewis, Jim  
Long, Bill  
Lynn, Larry  
McGilvra, Paul  
Meeker, Tony



Moore, Tom  
Paterson, Gene  
Raid, Gary  
Richter, Bill  
Robinson, Jim  
Rounds, Gordon



Roy, Bob  
Shumway, Dale  
Spence, Skip  
Stroebe, Howard  
Thurber, Lee  
Wall, Bill



Weaver, Lee  
Weston, Art  
Weston, Tom  
Wilfert, Buzz  
Winner, Gerry





# Honey Bears



The Honeybears high-stepping at a Tuesday convo.

A highlight of many basketball and football games came in the form of the Honey Bears, a group of freshmen women trained to perform varied dance routines. Carrying on the practice that started last year, when the group was first formed, they decorated the traditional Christmas tree in the lobby of Eaton Hall, boosting school spirit by their enthusiasm.

Brown, Becky



Brown, Diane  
Caulk, Wendy  
Dawson, Diana  
Dickerson, Sherry  
Gray, Nancy



Hamman, Carol  
Hanson, Judy  
Hauke, Marian



Huget, Bonnie  
Keats, Virginia  
McRoberts, Jeanette

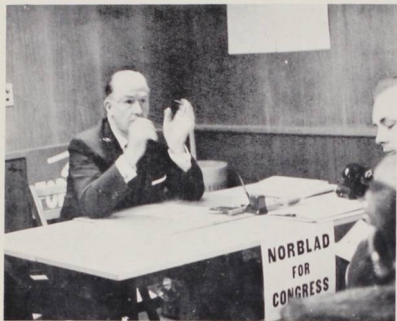


Shaughnessy, Vicki  
Smith, Karen  
Walton, Gail





## Young Republicans



U. S. Secretary of Agriculture, Ezra Taft Benson, was interviewed by YR's at the Marion County Republican Headquarters, during his visit to Salem.

The basic purpose of the Young Republicans is to provide a way for those interested in good government (particularly under Republican principles) to become better citizens with a background of training for effective leadership. They have undertaken such projects as working for the Marion County Republican Central Committee on election day (poll-sitting and transporting voters to the polls), taking part in the State Young Republican Convention which was held in Salem during the first of December, and holding discussion groups with various speakers.

Weisel, Pete  
(President)  
Ameling, Stormee  
Bailey, Sharlene  
Barclay, Betsy  
Barker, Sammie  
Barton, Dick  
Bishop, Bob  
Bishoprick, Dean



Blur, Richard  
Briggs, Pete  
Brown, Becky  
Brown, Joyce  
Brown, Lyle  
Busch, Jim  
Chanda, Chary  
Chapin, Roy



Colomb, Sue  
Conley, Judy  
delespinasse, Paul  
Dockstader, Harriet  
Donald, Robert  
Dannell, Jim  
Dannelly, Vivian  
Dugdale, Bonnie



Dumas, Linda  
Farley, Fran  
Ferguson, Sue  
Fisher, Bob  
Foster, Mike  
Frey, Carol  
Fritts, Bill  
Garner, Ann





Geist, Carl  
Giberson, Bobbie  
Goodrich, Gretchen  
Graham, Alice  
Green, Dick  
Hanley, Sharon  
Hanson, Judy  
Hardy, Janeen



Hauke, Marian  
Hille, Carol  
Hillman, Karen  
Hoffman, Peggy  
Junnell, Andrea  
Jacobsen, Dot  
Johnson, Bing  
Johnson, Mary



Johnson, Tom  
Julian, Bea  
Kelso, Pete  
Kettenring, Karen  
Kirkpatrick, Pat  
Kitchener, Dave  
Knappe, Ed  
Knupp, Bert



Kreis, John  
Landis, Dave  
Lasswell, Ann  
Laurila, Joan  
Leitch, Nancy  
Lester, Joanna  
Lindquist, Sandy  
Lusch, Joanne



McGilvra, Joanne  
McGilvra, Paul  
McMinimee, Carol  
Macomber, Bob  
Malott, Margaret  
Mankinen, Carl  
Meeker, Tony  
Miller, Karma



Mills, Judy  
Milnes, Greg  
Monte, Michelle  
Moore, Connie  
Moore, Jo Ann  
Moser, Ned  
Owens, Mary  
Paulding, Steve



Perry, Betsy  
Pritchard, Jean  
Rasmussen, Jack  
Reh fuss, Dave  
Sandine, Gayle  
Sanford, John  
Saverude, Charles  
Schrock, Lynn



Sherk, Barbara  
Sherwood, Jean  
Sites, Frank  
Smith, Karen  
Snyder, Larry  
Spooner, Jerry  
Srites, Hugh  
Toy, Betty



Trenholm, Pam  
Weber, Artalee  
Weeks, Nancy  
West, Theo  
Whelan, Patty  
White, Gerry  
Williams, Don  
Wyatt, Joanne

# Young Democrats

Young Democrats of Willamette spent a busy year listening to distinguished guest speakers, sponsoring parties, doubling their membership, and hosting the state convention. The local chapter president, Dan Marsh, became vice president of the First Congressional District.



Marsh, Dan  
(President)  
Allender, Marky



Arnold, Jerry  
Balsiger, Barbara



Brister, Sharon  
Bunse, Dale



Causbie, Cathy  
Chambers, Fred



Colley, Ken  
Dezsofi, Laszlo



Ferrell, Dick  
Gallagher, John



Gannon, Jo  
Grossenbacher, Ed

Jew, Terry  
Marsh, Gerrald  
Nelson, Karen  
Newton, Sandy



Niemi, Mary  
Ormsbee, Orrin  
Savage, Jean  
Scoggins, Jim



Takeuchi, Sylvia  
Willeford, Rhetta  
Young, Paul



State Senator, Munro Sweetland spoke to the Young Democrat's group about education in Oregon.





After carrying the food by relay up two flights of stairs, the campers wasted no time in sitting down to eat.

The work-campers' main project was to finish the lodge. Painting floors, building stairs and cabinets, and putting the finishing touches to the outside walls kept them busy and tired all week.

Ready for departure after a spring vacation of work at Wallowa Lake were (left to right) Jim Saito, Maureen Avery, Maye Nunez, Steve Carmichael, Jo McNary, Mariel Smith, Rev. Paul Ludlow, Bill Richter, Bill Frick, Dianne Dickson, Willy Ludlow, Ann Ludlow, Jan Thomas, Larry Stratton, Mrs. Ludlow, and Gary Cox.







(Left to right, front row) Frank Tullius, Larry Conrad, Loren Alexander, Elvin Smoyer, Albert Wu, Fred Doshier, Jerry Marsh, Fr. Cunniff, Chaplain; (second row) Phil Mahoney, Jim Lewis, Mary Kennedy, Nancy Hadley, Dick Lefor, and Don Kanieski.

## Newman Club

Fulfilling the need for religious growth to the Catholic students on a Protestant campus, Newman Club afforded the opportunity to meet and discuss moral, religious, and philosophic concepts as they apply to the Catholic student in his Catholic life. They carried on a continuous project of teaching Sunday school to the children at the Blind School, presented a movie for the students of Sacred Heart Academy, and did charity work for shut-ins at various hospitals and institutions at Christmas.

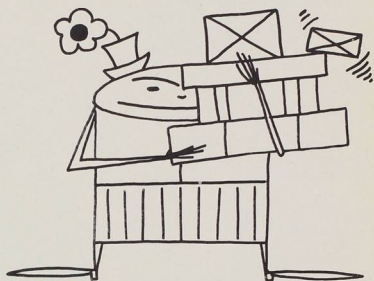
## Canterbury Club

The campus Canterbury Club spent its year investigating and studying the doctrines and theology of the Episcopal Church. Under the guidance of the Very Reverend George Swift and Dean Seward P. Reese the group was able to hear from several speakers the stand of the Church on many social problems. Every Thursday morning Father Swift held Communion for the benefit of Episcopalian students on campus.



In place of Thursday morning Chapel, Canterbury Club receives Communion during the early hours.





Gordon  
Jones

A D S a n d  
I N D E X



Coeds (left to right) Terry Wagener, Gail Walton, Peggy Cowan, Bonnie Dugdale, and Maggie Hanna take time out from studies for a shopping spree.

## INDEX

### — A —

Aaseth, Jan	39, 63, 115, 141, 152, 158, 170, 172, 174
Abele, Judy	127, 161
ACADEMICS	1, 55-92
Ackerman, Dave	39, 145
ACTIVITIES BOARD	38
Adams, Janice	47, 148
Adams, Nancy	133, 171
Adams, Rodney	91
Adams, Tom	145
Adams, William	22, 40, 145
ADMISSIONS OFFICE	58
ADVERTISING AND INDEX	181-202
AIR SCIENCE	73
Aldinger, Paul	91
Alexander, Loren	180
Alexander, Ted	106, 141
Allen, Denison	133
Allen, James	139
Allen, Paul	149
Allen, Ray	96, 97, 139
Allender, MarKatheryn	129, 178
Allison, Clifford	91
ALPHA CHI OMEGA	34, 124-125
ALPHA LAMBDA DELTA	161
ALPHA PHI	126-127
Althoff, Mrs. Henrietta, R.N.	61
Amato, Richard	88
Amling, Stormee	127, 176
Anderson, Douglas	145
Anderson, Earl	143, 152
Anderson, Sharon	137
ANGEL FLIGHT	33, 73, 168, 169



**W. T. GRANT CO.**

Greetings from Salem's  
Newest and Most Beautiful

**MARION  
MOTOR  
HOTEL**

Always Free Parking

## Pomeroy Optical

383 State Street

Empire 3-9011

Dr. Chas. B. Pomeroy, Optometrist  
and Associate

Dr. Gus C. Wallis, Optometrist

Complete Optical Service • Lenses Ground in Our Own Laboratory  
PRESCRIPTION SUNGLASSES • FRAMES FOR ALL OCCASIONS

WE GIVE "S. & H." GREEN STAMPS

## CAPITAL DRUG STORES

- 3 Locations To Get Prescriptions . . .
- 405 State Street, Corner of Liberty
  - Rx Shop, 617 Chameketa
  - 4470 N. River Road, Keizer

The Best Place To Buy

THE BEST CANDY

GAY'S CANDY

135 North High  
Salem

Phone 2-9235

Anson, Orlin	89, 91
Applegate, Ruth	126, 127
Arai, Annabel	118, 137
ARNOLD AIR SOCIETY	169
Arnold, Jerry	149, 152, 178
Aronson, Ann	135
ART	75
Arthur, Courtney, Prof.	87
Ashley, Kenneth	106, 108
ASSOCIATED WOMEN STUDENTS	170
ASWU	1, 35-54
ASWU OFFICERS	36-37
Audley, Dick	62, 67, 145, 152, 160, 163
Augee, Mike	77, 149
Austin, Douglas	96, 97, 100, 141
Auvinen, Jerry	101, 145
Avery, Maureen	45, 136, 137, 162, 179
Avery, Patricia	137, 173

### — B —

Babington, Molly	118, 127, 171
Backlund, Victor	166
Bailey, Sharlene	118, 129, 176
Baird, Truman	141, 165
Bake, Donna	135
Baker, Jeanette	125
Baker, William P., Prof.	141
Ball, Phyllis	133
Balmaseda, Cesar	149, 152
Balsiger, Barbara	137, 178
BAND	49, 84-85
Barber, Joan	125, 162, 164
Barber, Joel	149

## ACE'S BARBERSHOP

½ Block From Campus

3 Barbers

Crew Cuts

1256 State Street

## FIRST FEDERAL SAVINGS AND LOAN ASSOCIATION

129 N. Commercial St.  
Save Where Saving Pays.



Established 1901

Phone EM 4-6705

## FITTS MARKET

Fish, Clams, Oysters, Poultry  
216 North Commercial Street  
SALEM, OREGON

## Al Loucks HOME FUEL OIL CO.

S & H  
Green Stamps

Flying A  
Heating Oil

1710 N. Commercial,

Phone EM 2-4119



## ROEN'S

456 Court  
Ph. EM 3-6773

All Makes

Sold — Rented — Repaired

Buy As You Rent

Barclay, Betsy	135, 176
Barker, Sammie	131, 172, 176
Barney, Jerry	172
Barrie, Barbara	125, 152
Barrie, Walter	88, 92
Barrows, David	88, 92
Bartel, Lucile D., Prof.	70
Barth, John	147, 152
Barth, Mary	137
Barton, Richard	20, 139, 176
BASEBALL	94, 110-113
Bash, Frank	39, 46, 76, 139, 152, 160
BASKETBALL	94, 101-106
Bastuscheck, Burton C., Dr.	65
Bastuscheck, Herb	16
Bates, Brent	88, 92
BAXTER HALL	116, 146-147
Beal, Paul B., Dr.	71
BEARCAT CAVERN	47
Beaton, Rusty	77, 115, 116, 139, 160, 174
Beaty, Joan	129
Beggs, Jan	42, 68, 129
Behnke, David	92
Behrman, Karen	118, 137
Bennett, Bob	77, 114, 115, 147, 174
Bennett, Donald	90
Bennett, Neil	87, 89, 91
Berglund, Steve	39, 141, 162, 174
Bergstrom, John	20, 139
Berkey, Jack	96, 97, 100, 149, 174
Berry, Linda	40, 68, 133, 152, 170

BETA ALPHA GAMMA	162
BETA THETA PI	116, 138-139
Biggs, Joyce	135, 164, 166
BIOLOGY	69
Birrell, Bruce	149
Bishop, Robert	46, 139, 176
Bishoprick, Dean	101, 141, 152, 160, 163, 176
Bjor, Richard	139, 176
Blake, Walter S. Jr., Dr.	57
Blanchard, Mary	133
Blanchard, Violet	58
Blensly, Don	89, 91
Blinn, Jim	144, 145
Bliven, Mark	92
BLOOD DRIVE	26
BLOTTER	41
Blavin, Ray	39, 145
BLUE MONDAY	23
Boardman, Curt	145
Boden, Gail	125
Bolland, Marvin	88, 92
Bolmeier, Gretchen	125
Bong, William	149
BOOKSTORE	47
Booth, Mrs. Mary	124
Bowman, John	147
Boyd, Terry	18, 39, 41, 125, 161, 162
Breakey, Donald R., Prof.	69
Brennen, Maurice W., Prof.	79, 84
Brentlinger, James	10, 143
Briggs, Peter	147, 176
Brinkworth, Carol	137, 164
Brister, Sharon	137, 172, 178
Brix, Peter	92



STYLE CENTER FOR MEN

**BISHOP'S**

3-4933 SALEM 145 North Liberty



The kitchen crew smiles gaily as they dish up the specialty of the Saga Food Service, Garbage Compost Stew.

SALEM: Empire 3-5470 SILVERTON: TRINITY 3-7251

**McEWAN'S PHOTO SHOPS**

PORTRAIT AND COMMERCIAL PHOTOGRAPHY

Photographic Equipment and Supplies

(Wholesale and Retail)

245 N. HIGH STREET

SALEM, OREGON

**WILLS MUSIC STORE**

Instruments  
Pianos • Organs  
Radios • Records

Repair Service  
Sheet Music  
TV • Hi Fi

432 State Street

EM 4-6757

Brock, Dave	101, 110, 113
Brookes, Langley	129
Brown, Diane	131, 171, 175
Brown, JoAnne	125
Brown, Joyce	25, 131, 176
Brown, Kenneth	149, 166
Brown, Lyle	139, 176
Brown, Mack	92
Brown, Rebecca	118, 133, 175, 176
Brown, William	149
Bryan, Donald	141
Bryan, John	89, 92
Bryant, Lois	87
Bryant, Marcia	137, 173
Buckinger, Elaine	94, 133, 161
Bullard, Bill	149
Bunney, Barbara Simon	130, 131
Bunney, Willard	9, 37, 143, 152, 160, 163
Bunse, Dale	15, 47, 141, 178
Burnard, Kathy	28, 137, 161, 164
Burres, Keith	96, 97, 100, 106, 141
Burrow, Robert	143
Busch, Jim	141, 176
BUSINESS OFFICE	60
Butler, Edwin W., Prof.	87
Butler, Jay	141
Butler, Stanley, Prof.	79
Butler, Stewart	147
Buzzell, Bruce	149
Buzzell, Erna Jean	74, 135, 152

— C —

Callaghan, John	91
Cammarano, David	145
Campbell, Richard	141
Campbell, Sybil	152
Campbell, Tim	77, 114, 141, 174
Cannell, Tim	147
CANTERBURY CLUB	180
Carlson, Eleanor	129, 172
Carlstrom, Ted	88, 89, 91
Carlton, Robert	149
Carmichael, Stephen	50, 116, 147, 179
Carroll, Dale	88, 91
Carter, Charles	147, 172
Cartwright, Carole	50, 137, 163, 164
Caruso, Frank	26, 40, 72, 96, 97, 110, 112, 116, 145, 163, 174
Caulk, Wendy	125, 175
Causbie, Cathy	129, 172, 178
Cavender, Doreen	148
Cavin, Kaye	137, 171
Caylor, Tom	52, 141
Celley, Margaret	127
Chadney, Jim	10, 147
Chambers, Fred	89, 92, 178
Chando, Charlotte	131, 171, 176
Chandler, Ellison	143
Chandos, Larry	145
Chapin, Mac	147
Chapin, Roy	20, 141, 162, 176
Cheatham, Jim	149
Cheeld, Charles	145
CHEMISTRY	74
Chidester, Robert	89, 91
Chi, Donald	147
CHI OMEGA	53, 128-129
Chinn, Gwendalyn	149
CHOIR	82-83
Christenson, Keith	145
CHRISTIAN RESOURCE WEEK	18



Christiansen, Art	166, 167
Christiansen, Blanche	59
Churchill, Thomas W., Prof.	87
Cisneros, Marvin	96, 97, 100
Clark, Barbara	68, 125, 152, 167
Clark, Bob	145
Cleek, Patricia	135
Close, Jim	45
CLUBS AND HONORORIES	1, 162-180
Cody, Collene	26, 43, 129
Coe, Pat	148
Coffey, Dennis	145
Coffey, Eleanor	137
Coit, Leon	92
Coleman, Lynne	129
COLLEGE OF LAW	86-92, 116
COLLEGE OF LIBERAL ARTS	64-77
COLLEGE OF MUSIC	78-85
COLLEGIAN	44-45, 46
Colley, Kenneth	89, 91, 178
Colling, Gorman	143, 152
Collins, Jack	90
Collins, Nancy	127
Collver, William	88, 91
Colomb, Susan	125, 176
COMMENCEMENT	48, 157, 158
CONCERT SERIES	8, 9
Conley, Judy	133, 176
Conrad, Larry	180
CONVOCAION	49
Cook, Ted	139
Coolidge, Harry	139
Cooper, Henry F., Prof.	71
Cooper, John	147
Cornie, LeRoy	149
Cowan, Peggy	131, 182



248 Liberty Street N. E.

FINE FOODS — SENSIBLY PRICED

Open: Daily 11:00 - 8:30 — Sunday 12:00 - 8:30

## SALEM BRANCH FIRST NATIONAL BANK of Portland

Chemeketa at Liberty Telephone 43371  
Member Federal Deposit Insurance Corp.  
"Let's Build Oregon Together"



## HEIDERS T.V.

363 N. High

Phone EM 4-2271

TV Phonos

And

Appliances



## JAYSON'S Your Sportswear & Clothing Hdq

Styled and Purchased  
Especially for College Men

## WILTSEY-WEATHERS MUSIC

"FOR EVERYTHING FINE IN MUSIC"

Lowrey Organs for the Home  
Conn - Leblanc - Bach - Artley - Wind Instruments  
Gibson - Guild - Guitars  
Complete Sheet Music and Methods for Teachers and Students

Located in Capitol Shopping Center

470 N. CAPITOL

PHONE Empire 2-8708

## STATE STREET MARKET

1230 State St.

Your Favorite IGA Store.

Cox, Gary	147, 179
Cox, Lawrence	92
Crabb, Mrs. Corrine	59
Crane, Dave	147, 165
Criswell, Georgianna	148
Criswell, Phyllis Jo	87
Croach, Dorven	147
Crooks, Richard	141, 152
Croze, Arvin	149
Crothers, Mrs. Hazel	59
Crow, William	88, 92
Culy, Stan	36, 147, 152, 172
Cummings, Del	73, 141, 158, 169
Curry, A. Gale, Dr.	72
Curtiss, Donald R., M/Sgt.	73

— D —

Daniel, Dale	24, 114, 115, 143, 162, 174
Darby, Charles	143
Darby, Gerald	143
Davis, Fred	149, 152
Davis, Norman	143
Davis, Patricia	125
Dawson, Diana	40, 131, 172, 175
Day, L. B.	89, 92
Dearborn, Dorr	40, 94, 139, 162
DeArmond, Gordon	147
DEATH TAKES A HOLIDAY	50, 164
DeBoer, Judd	147
DeDrick, Jane	77, 129, 150
Dehner, Albert H., Dr.	67
deLespinasse, Paul	147, 161, 172, 176
DELTA GAMMA	130-131
DELTA THETA PHI	89
Denham, Dale	139

Derthick, Charles H., Dr.	24, 68, 163
Detirefort, Magdalaine P.	61
Dezofi, Laszlo	147, 178
Dickerson, Sherry	125, 175
Dickson, Dianne	137, 172, 179
Dietz, Lelon	147
Dixon, Barbara	77-83, 125, 164
Dobbs, Ralph, Prof.	79
Dobrinen, Dave	114
Dockstader, Harriet	129, 176
Damaschofsky, Rex	96, 97, 100, 116, 149, 174
Donald, Robert	147, 176
DONEY HALL	134-135
Donnell, Janet	127
Donnell, Jim	139, 176
Donnelly, Vivian	129, 176
Dorsch, John	69, 125, 142, 143, 153
Dosher, Fredrick	180
Douglas, James S., Prof.	70
Dazier, Bart	147
Drais, Judi	137, 166, 171, 173
DRAMA	50-52
Drier, Karen	87, 133
DRILL TEAM	73, 167-168
Driver, Keith	96, 97, 100, 110, 112, 113, 141, 153, 167, 169, 174
Drollman, Donald	88, 91
DuBay, John	87
Duell, Paul M., Dr.	74
Duerr, Penny	125, 166
Dugdale, Bonnie	133, 176, 182
Dumas, Linda	133, 176
Dumond, Janee	133
Dwight, Carl	145
Dyer, Norman	143, 153
Dyer, Sara	135, 172

— E —

Eagleson, Jane	125
Eagleson, Martha	25, 32, 68, 125, 153, 160, 167, 170
East, Bernice	61
Eastman, Alice	34, 125
ECONOMICS	67
Edmundson, Mildred	77, 130, 131, 164
EDUCATION	67
Edwards, Mary	125
Egan, Karen	137
Elliott, Charles	145
Elliott, Judy	131, 164, 171
Elliott, Lenore	19, 127
Elliott, Nancy	135
Elliott, Sue	149
Elliott, Tom	141, 162
Ellis, Julie	129
Ellis, Leanne	137
Embieck, Marion	92
Embree, Judy	131
Emerson, Richard	147
Enberg, Karen	72, 125, 153
ENGLISH	70
Erb, Karen	137
Erickson, David	139, 153
Erickson, Julie	133
Erwin, Marsha	137, 172, 173
Estcourt, Michael	141
Ester, John	87, 89, 91
Evans, Kathy	40, 125
Evans, Parke	143
Ewalt, Mrs. Regina L.	57, 150, 160

## COMMERCIAL PRINTING . . .

## PHOTO-ENGRAVING . . .

Printers of the Willamette Collegian

## STATESMAN PUBLISHING COMPANY

280 North Church Street

## SALEM HARDWARE COMPANY

Try Us First  
Hardware — Glidden Paint  
Housewares — Sporting Goods

120 N. Commercial

Phone EM 3-4906

## "OLDEST JEWELERS IN SALEM"

Under the Same Ownership  
Nationally Advertised Watches — Diamonds — Jewelry



NO EXTRA  
CHARGE FOR  
CREDIT!

S. & H. Green Stamps, Too

## The Commercial Bank OF SALEM



CHURCH and CHEMEKETA STREETS

Thriffticheck Checking Accounts for Students

## Vibbert Electric

Service Contracting

Paul W. Silke, owner

551 Court Street

Salem, Oregon

(Wieder's)

# SALEM LAUNDRY COMPANY AND DRY CLEANING

Phone EM 3-9125

263 So. High

## SELLARS, ETZELL AND RISING

Insurance

143 S. Liberty



- \* Complete Printing Service
- \* Designing
- \* Business Stationery

545 Ferry Street

Phone EM 3-7490

Karl G. Becke Leslie Wadsworth

All Kinds of Insurance & Surety Bonds

## BECKE & WADSWORTH

121 N.E. High Street  
Salem, Ore.

Opposite  
Court House  
Telephone 4-3333

See your local sport specialists for the most  
complete stock of quality sporting goods

## HOWARD WICKLUND SPORTING GOODS, INC.

Phone 3-6042

372 State Street

Salem, Oregon

### — F —

Fagan, Walter A., Maj.	73
Fahey, Michael	147, 165
Fahlstrom, Mariel	137
Fairbanks, Bill	109, 143, 169, 174
FALL HOUSE DANCES	120-121
Fandrich, Gerry	137
Farley, Frances	129, 171, 176
Farley, Katherine Ruberg	66, 131, 153, 160, 170
Fax, Nick	143
Feitelson, Ira	149
Feller, Marilyn	137
Feller, Wayne	67, 145
Fenner, Sally	135
Ferguson, Georgia	137, 166, 173
Ferguson, Sue	125, 171, 176
Ferrell, Dick	139, 153, 178
Fields, Ann	39, 77, 131
Figour, Mike	145
Filer, Nancy	129, 171
Finch, Franklin	147
Finner, Marcia	125, 171, 172
FIRESIDES	16-17
Fisher, Robert	141, 176
Fiske, James	79, 84, 143, 153, 165, 166
Fiske, Judy	79, 153, 164
Fiske, Tom	143
Fliesel, Joseph	91
Flory, Karen	137
Fluke, Claudia	137
FOOTBALL	94, 95-100
Forbes, Nancy	148, 164
Forcum, Richard	45, 139, 162
Ford, Mrs. Mary Etta	146
FOREIGN LANGUAGES	71
Foster, Charles	18, 77, 147, 165, 176
Foster, Michael	139
Fowler, Fred	143
Fox, Robert	87, 88, 89, 91
Foxley, Edward	141, 174
Frame, Gary	149, 165
Franz, Christine	137
Fravel, Dorothea	61
Frederick, John	110, 113, 141, 174
Freerksen, Karl	91
FRESHMAN CLASS OFFICERS	39, 40
FRESHMAN GLEE	20-23, 49
Fretwell, Joan	136, 137
Frey, Carol	131, 153, 176
Frick, Bill	147, 179
Fritsch, Edward M., Lt. Col.	19, 73
Fritts, William	42, 143, 176
Frost, David	88, 89, 91
Frost, Orcutt W., Dr.	70
Fudge, Jean	129
Fudge, Robert	141, 153
Fulmer, Jeanette	158
Fulton, Beverlee	148
FUSSER'S GUIDE	41

### — G —

Gaberman, Earl	117, 141, 172
Gaddis, Allen	145
Gage, Susan	137
Gallbraith, John	2, 42, 46, 143
Gallagher, John	149, 178
Gannon, Jo	10, 131, 178
Garner, Ann	131, 176
Garrett, James	91



Tripping gaily down the steps after being awakened from their nightly beauty rest by the gentle murmur of the fire alarm bell are these Lausanne lovelies.

Garvin, Claude	68, 147
Gates, Stuart	91
Gates, Willis C., Dr.	79, 80
Gatke, Robert M., Dr.	66
Gaviola, Fidel	101, 102, 110, 141
Geer, Mrs. Evelyn	47
Geist, Carl	139, 177
Geist, Melvin H., Prof.	78
Gerbing, Ron	117, 139
Gervitz, Ron	88
Gibbons, Vern	139
Giberson, Bobbie	133, 161, 172, 176
Gibson, Lay	141
Gilbert, Rosemary	131, 158
Gilchrist, Charles	143
Gilchrist, Dennis	143
Gillett, Carol	6, 135, 171
Gillis, Richard, Prof.	62, 63, 67
Gilman, LaVern	148
Gilmore, Jan	43, 118, 125
Ginoza, Kenneth	110, 112, 147
Ginter, John	145
Girod, Alan	143
Gish, Eldon	88, 92
Gladwin, Wayne	147
Gieckler, Don M., Prof.	79
Goddard, Robert	141, 153
Godwin, Charles (Larry)	147
Goertzen, Eugene	69, 149, 153
Goldsmith, Thomas	88, 91
GOLF	94, 115-116
Gooding, Ted	101, 145
Gooding, Tom	90
Goodrich, Gretchen	133, 177
Goulet, Barbara Boniface	148
Graber, Ray	145
Graham, Alice	137, 177
Graham, William	141
Grant, Donald	147
Gravatt, Arthur E., Prof.	68
Gray, Deborah	129
Gray, Nancy	27, 47, 125, 136, 175
Graydon, Mike	94, 141, 169
Green, Lyle	145
Green, Richard	141, 177
Greener, Juanita	129

### Thanks a Million!

Yes, thanks for having had the privilege of knowing so many Willamette students both past and present. Mrs. Bolton and I will be glad to see you whenever you're in Salem.

**LAUNDERETTE**  
1255 Ferry Street



## UPTOWN DRIVE - IN

"Come out and see your friends"

850 High N. E., Salem

EMpire 2-1098

Gregg, Robert D., Dr.	64, 66
Griepentrog, Gene	110, 145
Griffin, Barbara Roach	41, 46, 131, 153, 160, 163, 170
Griffin, Bob	96, 97, 100, 139, 153, 174
Griffis, Joan	43, 131, 171
Grigsby, Sheila	50, 129
Gromley, Charles R., Prof.	87
Grossenbacher, Ed	101, 102, 103, 105, 139, 174, 178
Gustafson, Brenda	127
Gwilliam, Esther	66, 136, 158, 167
Gwyn, Carol	137
Gwynn, Dennis	149

# — H —

Haas, Harl	88, 92
Hadley, Nancy	127, 180
Hafter, Marcia	131
Hale, Paul	92
Hales, Lynn	39, 147
Hall, Carl A., Prof.	75
Hall, ReNaye	148
Hall, Stuart	20, 96, 97, 110, 111, 141
Hallisy, James	153
Halstead, Larry	147
Hamada, Dick	110, 112
Hamilton, Barbara	135, 171
Hamman, Carol	19, 135, 172, 175
Hampton, Lewis	88, 91
HANDS ACROSS THE SEA	51
Hanley, Sharon	135, 177
Hanna, Margaret	27, 125, 136, 182
Hansen, Jan	125, 163
Hansen, Marvin	87, 91
Hanson, Gwen	131
Hanson, Judith	137, 175, 177
Hanson, William	141
Hardy, Janeen	131, 171, 177
Harris, Sandi	25, 75, 133, 153, 160, 170, 172
Hartman, Dale	153
Haugeberg, Dave	52, 54, 143
Hauke, Marian	70, 133, 175, 177
Hawes, Carol	148, 166
Hawes, Homes H., Dr.	67
Hawley, Jerry	96, 97, 149
Hays, Leonard	154
Haytack, Lillian	59
Heald, Jo	36, 38, 44, 68, 131, 154, 200
Heidel, John	83, 139, 154, 165
Hellenthal, Bob	145
Hemingway, Tom	145
Henken, Barbara	20, 131
Henninger, Karen	19, 94, 131, 161, 162
Hershberger, Ronald	88, 89, 92
Heryford, Bob	143
Hewitt, Barbara	133, 154
Hewitt, Roger	69, 74, 141, 154
Hibbard, Donald M., Prof.	80
Hickok, Craig	147, 154, 163
Hicks, Judith	131
Hicks, Prentiss	145
Hill, Linda	87, 137, 173
Hille, Carol	10, 50, 75, 127, 177
Hillman, Karen	131, 166, 177
Hillman, Melinda	131, 154
Hinds, John	96, 97, 100

Hines, Duane	154
Hingston, Phyllis	127
Hinton, Raymond	148
Hisel, Louis	172
Hisel, Robert	145
HISTORY	66
Hitchman, David	88, 91
Hjelt, Jack	10, 138, 139
Hobson, Larry	147, 165
Hodges, Donald	77, 149
Hoffman, Peggy	40, 133, 177
Holcomb, Pat	125, 164
Hollen, Gary	143
Holmberg, Todd	145, 154
Holmer, A. Freeman, Prof.	66
HOMECOMING	12-15
HOMECOMING HOSTESS	12
HOME ECONOMICS	74
Hone, Stephen	50, 147, 164
Honerlah, Raymond	145
HONEYBEARS	49, 175
Honl, Thomas	145, 154, 163
Hooper, John	92
Horn, Donna	118, 131
Horton, Audney	129
Hotaling, Kay Sanford	131, 154
Howard, Donald	154

## BURRIGHT'S CLEANERS

Cleaned Right  
Pressed Right  
By Burright

198 Church S.E.

Phone EM 3-4242

WILLAMETTE  
REALTY AND INSURANCE CO.

127 HIGH STREET N.E.  
SALEM, OREGON  
JUstice 1-1441

In demand as entertainers were the Six Plaids-men, a campus singing group.





**OREGON  
BUILDER'S HARDWARE**  
465 12th S. E.  
Suppliers of Hardware of Distinction  
Empire 3-9146

For the best in haircuts

**WAYNE'S BARBER SHOP**

146 So. 13th Street

24 hour service

**MASTER**  
**SERVICE STATIONS, INC.**

365 N. Commercial

Headquarters for

- \* General Electric Appliances & TV
- \* TV Service on All Makes
- \* Goodyear Tires
- \* Union Oil Products

*S & H Green Stamps — Terms*

*Time and Time Again*



- QUALITY
- PERSONALIZED SERVICE
- DEPENDABLE DELIVERY



... Yearbooks

**YOUR TOWN PRESS, INC.**

Salem, Oregon

Howard, Dora .....	60
Howard, Martin .....	88, 91
Howay, Jack .....	91
Howells, David .....	143
Huffman, Norman A., Dr. ....	65
Huget, Bonnie .....	133, 175
Hume, Judie .....	129
Humphrey, Marcia .....	39, 118, 131, 161, 162
Hunnell, Andrea .....	42, 127, 166, 177
Hunnex, Milton D., Dr. ....	65
Huntemann, Roger .....	158, 165
Hussey, Cliff .....	147
Hutchinson, Neil .....	139

— I —

Ihrig, Thomas .....	141
Ikeda, Fred .....	147
INDEPENDENT TOWN STUDENTS .....	149
INDEPENDENT WOMEN .....	173
INDEPI .....	148
INDEX AND ADVERTISING .....	116, 181-202
INFIRMARY .....	61
INTER-FRATERNITY COUNCIL .....	150
INTERNATIONAL RELATIONS CLUB .....	172
INTRAMURALS .....	116-117
Isackson, JoAnn .....	135, 173

— J —

Jackman, Barbara .....	137, 164, 171
Jacobsen, Dorothy .....	127, 161, 171, 177
Jacobsen, Fredrick .....	149
Jambura, Earl .....	96, 97, 98, 99, 100, 158
James, Jim .....	145, 174
James, Naomi .....	60

Jefferson, Percy .....	39, 96, 97, 147
Jelders, John .....	39, 145
Jenkins, Brookes .....	61
Jenkins, Norene .....	118, 127
Jenkins, Sherri .....	125
Jessell, Charles Todd .....	145
Jew, Terry .....	148, 154, 172, 178
Johnson, Bing .....	41, 43, 47, 67, 143, 177
Johnson, Charles H., Dr. ....	74
Johnson, Craig .....	69, 76, 147, 154
Johnson, Darr .....	92
Johnson, Laura .....	137
Johnson, Mary .....	127, 177
Johnson, Ronald .....	46, 143, 169
Johnson, Rose .....	58
Johnson, Thomas .....	147, 177
Johnson, William .....	149, 154
Johnston, Lynette .....	125, 166
Johnston, Terry .....	145
Jones, Gordon .....	43, 143
Jones, Malcolm .....	147
Joseph, Bill .....	145, 154
Julian, Beatrice .....	133, 177
JUNIOR CLASS OFFICERS .....	39, 40
Juran, Herb .....	154

— K —

Kaestner, Noel F., Dr. ....	68, 163
Kaiser, Chester C., Dr. ....	66
Kaneski, Don .....	180
Kangas, Kathryn .....	148
KAPPA DELTA PI .....	167
Karmos, Joe .....	13, 40, 115, 116, 139, 166, 174
Kataoka, John .....	88
Kaufman, John .....	39, 139, 166

## J. W. COPELAND YARDS

LUMBER, BUILDING MATERIALS,  
BOYS' PAINTS, HARDWARE

349 So. 12th Street

EM 3-9606

## STATE FINANCE CO., REALTORS

INSURANCE

Homes • Loans

167 High Street, Salem

Empire 3-3151

*Compliments of*

## The Quisenberry Pharmacies

"that operate as one"

### MEDICAL CENTER BRANCH

2440 Grear Street

Phone EM 3-3157

### PRESCRIPTION PHARMACY

150 South Liberty

Phone EM 4-3336



"Agnes Gooch and Auntie Mame", stars of the recent movie, loll around the steps of Eaton on Blue Monday.

Keats, Virginia	131, 175
Keller, Mrs. Esther	146
Kelley, Larry	143, 165
Kelso, Pete	41, 143, 177
Kennedy, Mary	43, 131, 180
Kent, Terry	96, 97, 100, 139, 174
Kerschner, Carol	50, 137
Kershner, Joe	88, 91
Kersten, Clinton	147
Kettenring, Karen	133, 162, 177
Keuss, Jeffrey	6, 42, 143
King, Eugenia	131
Kirkpatrick, Patrick	139, 177
Kitchener, David	147, 177
Kleen, Jerry	92
Klindworth, Bob	110, 145, 154, 174
Klack, Leta	76, 127
Knappe, Edward	141, 161, 172, 177
Knoles, Alice	65, 118, 137, 173
Knott, Mary	127
Knupp, Robert	146, 177
Koch, Mariana	131
Kohnapp, Dean	39, 147
Kraft, Clarence A., Prof.	71
Krebs, Linda	127
Krebs, Richard	101, 110, 141
Kreis, John	141, 177
Kremer, Pete	145
Kuehn, Andy	117, 141, 154
Kuenzi, James	149
Kuhn, Donna Kay	129, 172
Kurtz, Howard	92

— L —

Laird, Elizabeth	127, 164
Landis, David	66, 139, 154, 160, 177
Langley, Donna	137, 171, 173
Lansing, Ronald	89, 91
Larson, Mrs. Delsia	47
Larson, Gail	125, 162
Larson, Gary	76, 139, 155, 160
Lasswell, Anne	131, 155, 163, 177
Latimer, Lois E., Prof.	74
Laue, Alfred	87, 91
Laughlin, John	117, 142, 143, 169
Laurila, Joan	127, 177
LAUSANNE HALL	136-137
LAW SCHOOL	86-92
Lawson, Richard	139
LeBald, Frank	158
Leenhouts, Linda	129
Lefor, Richard	180
Leger, Norissa	137, 162
Leitch, Nancy	135, 177

"FRESH UP"... with



Nothing does it like 7-Up

**SEVEN-UP BOTTLING CO.**

402 S. Church

Empire 2-7483

## American Health Studios SILHOUETTE

FIGURE FORM

United States • Canada • Mexico • England  
• International •

365 Liberty N. E.

Salem, Oregon

## Rawlins Realty and Insurance

When you are ready to sell  
we are anxious to help!

320 Church St. N. E.

EMpire 4-6785

## SALEM CONCRETE PIPE & PRODUCTS CO.

Service — Quality — Economy

Phone EM 3-3500

2990 Portland Road

At the undercrossing

Lakas, Gary	92
LeQuest, Sharon	149
Lester, Joanna	15, 133, 161, 164, 177
LETTERMEN	174
Levelton, Pete	28, 141, 155, 169
Levy, Penny	137, 172
Lewis, David A.	60
Lewis, Gary	110, 112, 113, 145
Lewis, Harry	92
Lewis, James	141, 174, 180
Lewis, John, Prof.	72, 101, 104, 110
Lewis, Mac	146
Lind, Marietta	67, 127, 155, 166, 167
Lindquist, Sandra	137, 173, 177
Linforth, Lynn	50, 135
Liston, Robert	158
Litchfield, Jim	77, 101, 103, 145
Litchfield, Ralph	139, 160, 165
LITTLE COLONEL	30
Livie, John	149
LIVING ORGANIZATIONS	1, 119-150
Lloyd, John	69
Lock, James	91
Lockwood, Gary	89, 91
Loennig, Mary	74, 129, 166
Loew, Ronald	91
Loewen, Mrs. Jeanette	59
Lofstrom, Miss Ruth	126
Long, Gerald, Prof.	72, 96, 97, 100, 106, 115, 116
Long, William	95, 96, 97, 98, 100, 141, 155, 160, 174
Lovell, R. Ivan, Dr.	66
Lovell, Thomas	155
Lowre, Gary	47, 80, 84, 147, 165
Lowre, Margaret	74, 133, 155
Lowery, Sharon	70, 127
Luchini, Alfred	145
Lunsford, Joe	89, 91
Lusch, Joanne	137, 173, 177
Lusty, Suzanne	131
Luther, Chester F., Dr.	76
Lyles, James R., Jr., Dr.	67
Lynn, Larry	101, 102, 105, 141, 174

## — M —

MacDowell, Pete	145
MacIver, Clyde	88, 92, 158
MacPherson, Gordon	37, 88, 92, 163
McAllister, Jerry	46, 145
McAulay, Seward	143
McBride, Gary	110, 143
McCain, Gayle	148
McClain, Gary	88, 92
McClard, Dave	149
McClaskey, Diane	135
McCloud, Connie Snow	19, 149
McCloud, Paul	139, 155
McCready, Patricia	44, 127
McElhinny, Mrs. Neil	140
McFadden, Mac	61
McFarland, Dianne	149, 155
McGilvra, Joanne	49, 77, 133, 177
McGilvra, Paul	139, 162, 174, 177
McIntosh, David	147
McKinney, William	92
McLin, Wendell	141
McMinimee, Carol	40, 44, 45, 46, 133, 177
McNary, Jo	127, 179
McPartland, Barbara	118, 137, 171
McRoberts, Jeanette	29, 118, 133, 175
McWilliams, Mrs. Rachael	144
Macomber, Robert	147, 177
Mader, Howard A., Prof.	67
Madsen, Karen	131
Maentz, Robert	92
Mahoney, Phil	149, 180
Malott, Margaret	129, 177
Mangels, Myrna	17, 25, 133

## KNAPP PRINTING CO.

EMpire 4-0175

## THE SPUDNUT SHOP

The Perfect Party Confection

Wholesale & Retail

1964 N. E. Capitol

EMpire 2-6794

## CAPITAL VARIETY STORE

Complete Line of Stationery  
and School Supplies.

1262 State Street

Phone EM 2-5622

Planned Printing and Advertising

Manker, Dorothy	26, 44, 133
Mankinen, Carl	147, 177
Manning, Peter	145
Manwaring, Jim	72, 116, 145, 155
Manwaring, Muriel	118, 133, 171
Markham, Jerrald	88, 91
Maris, Margaret	60
Marr, Ted	145
Marsh, Daniel	66, 155, 178
Marsh, Gerrald	149, 178, 180
Marsh, Grant	141
Marsh, Jane	137
Marsh, Marlin	101, 102, 104
Marsters, Dave	47, 106, 141
Martin, Larry	84, 165
Martin, Patricia	127
Mason, Carol	131, 171
Masserdotti, Thelma	31, 135, 172
MATHEMATICS	76
Matson, Linda	131, 172
Matsumura, Roy	147
May, Jerry	143
MAY QUEEN	32
May, Richard	91
MAY WEEKEND	24-25, 32
Meara, Hannah	125
Meeker, Tony	139, 174, 177
Melendy, Prudy	70, 129
Mercer, Alice	118
Mercer, Rick	88, 92
Merrill, Judy	137
Michaelides, Alexander G., Prof.	76
Michalson, Karen	148, 166
Midlam, Kevin	139
Miettunen, Judy	42, 137, 166
Mihm, Dennis	96, 97, 99, 100, 155
MILITARY BALL	19, 30
Miller, Carolyn	39, 71, 131, 155, 166
Miller, Dianne	125
Miller, Donald A., Prof.	68
Miller, Matt	143, 169
Miller, Karma	131, 155, 177
Miller, Lawrence	96, 97, 100, 141
Mills, Jody	131, 155
Mills, Judy	127, 177
Milnes, Greg	41, 141, 165, 177
Minor, Paul	147, 165
MISS AMERICA	53
MISS SALEM	31
Mitter, Patricia	137, 171, 173
Moellering, Edward	147, 155
Moll, Marvin	149
Mank, Cecil R., Dr.	69
Monte, Michelle	44, 137, 171, 173, 177
Montgomery, Richard C., Prof.	76
Moore, Conrad	40, 67, 139, 155, 160, 177
Moore, Dennis, Jr., S/Sgt.	73
Moore, Elizabeth	135
Moore, Harry	145
Moore, JoAnne	137, 155, 172, 177

## C. V. KENT CO.

Mortgage Loans . . . Insurance

Calvin V. Kent • Stephen J. Fouchek

695 Cottage N.E. Salem, Oregon

### PEERLESS BAKERY

Special Orders for All Occasions

170 N. Commercial St.

Salem, Ore. Phone EM 3-5704

Bakers for Her Majesty, the Housewife  
BUY THE BEST — WE DO!

Phone EM 3-9822

### MABEL'S BEAUTY SALON

1345 State Street

Moore, Kenneth	145
Moore, Marshall	146
Moore, M. E., Prof.	68
Moore, Sandra	70, 156, 160, 167
Moore, Tom	67, 110, 111, 139, 156, 174
Moore, William	145
Morange, Marion, Dr.	71
Morast, Kaye	129, 172
Morley, David	143
Moron, Virgil	149
Morris, Tom	96, 97, 141
MORTAR BOARD	160
Mortensen, Dale	139
Moser, Ned	96, 97, 136, 141, 177
Mote, Linda	135, 171
Muhs, Emil	13, 147, 156, 163
Mullan, John	88, 91
Mundorff, Roger	115, 145
MU PHI EPSILON	164
Murdock, Stephen	145
Murphy, Charles	143, 156
Murray, Peter	156
Muzzio, C. Paul, 1st Lt.	73
Myatt, Lewis	89, 91
Myers, Jim	149, 165
Myers, Michael	139, 161



## LARMER TRANSFER, STORAGE & WAREHOUSE COs.

889 Liberty NE  
EMpire 3-3131





Cooperate and graduate!

wherever  
there's  
Squirt  
there's Fun!



**SQUIRT BOTTLING CO.**

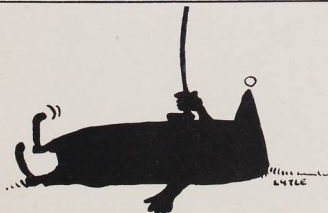
Phone 3-6116

1095 N. Liberty

**THE COLONIAL HOUSE**

THE FINEST IN FINE FOOD

For Reservations Call 4-3744



**SALEM GOLF CLUB**

— N —

Nagel, Kevin	40, 96, 97, 98, 141
Neff, Theodore	76, 83, 139, 156
Neiman, Albert	106, 140
Nelson, Howard	143
Nelson, Karen	137, 171, 178
Nelson, Larsana	137, 173
Neu, Don	72, 108, 109, 116, 145
NEWMAN CLUB	180
Newton, Sandy	129, 178
Nickel, James A., Dr.	76
Nickels, Henrietta	135
Niemi, Mary	135, 166, 178
Nokes, Richard	145, 156
Noneman, Miss Susan	64
Norbeck, Janice	127
Norman, Mrs. Barbara	47
Nunez, Manuelita	28, 118, 131, 172, 179
Nye, George	40, 145, 156
Nygard, Mrs. Bertha	134

— O —

Ogdahl, T. Theodore, Prof.	72, 96, 97, 100, 108, 109
Olson, Judy	45, 133
Olson, Eldon	142, 143, 161
Olson, Lavall	92
OMICRON DELTA KAPPA	160
Oraker, Jim	106, 145
ORCHESTRA	80-81
Ormsbee, Orrin	141, 178
Osterlund, Paul	92
Ostlund, Paul, T/Sgt.	73
OUT OF THE FRYING PAN	24, 52, 164
Owens, Mary	68, 77, 133, 177

— P —

Paeth, Charles A., Jr.	58
Paige, Patience	127
Pailthorp, Keith	40, 77, 94, 139
Palmer, Virginia	137
Palmore, William	146
PANHELLENIC	150
PARENT'S WEEKEND	10-11
Parker, Reginald, Dr.	87, 88
Parr, Carolyn	125
Parr, Judy	125
Parrett, Gene	15, 79, 139, 156, 165
Parrett, Ruth	19, 133
Parsons, Marilyn	136, 137, 161
Patch, Dave	149, 162, 172
Paterson, Gene	66, 141, 158, 174
Paulding, Steven	146, 177
Paulin, Cameron S., Dr.	75
Paulson, Mara	135
Paulson, William	139
Paulus, John C., Dr.	87
Payne, Mrs. Hester	138
Peak, Maxwell	89, 91
Pearlman, Leonard	88, 91
Pearson, Sidney	89
Pearley, Jeanne	125, 156
Peck, Marton E., Ph.D.	69
Pemberton, Joan	41, 125
Penater, Robert	143, 161
Perry, Elizabeth	137, 171, 172, 177
Peterson, Beverly	118, 127, 171
Peterson, Claudia	149
Peterson, David	39, 74, 139, 156
Peterson, Donald A.	58
Peterson, Gary	139



Peterson, Russ	47, 143
Peterson, Sonja	39, 77, 133, 164, 170
Petrie, Anne	131
Petrie, Richard P., Dr.	60
Pfaff, Barbara	46, 68, 133, 163, 171
Pflug, Jerry	110
PHI DELTA PHI	88
PHI DELTA THETA	28, 116, 140, 141
PHI DELT TURTLE RACE	28
PHI ETA SIGMA	161
PHILOSOPHY	65
PHI MU ALPHA	165
PHYSICAL EDUCATION	72
PHYSICS	76
PI BETA PHI	33, 132-133
Pierce, Bob	139
Pierce, Joseph	158
Placek, Edward	92
POLITICAL SCIENCE	66
Porter, Julian	149
Porter, Marilyn	137
Post, Penny	28, 125, 171
Prince, Caroline	7, 70, 126, 127, 156
Pritchard, Jean	131, 177
Proctor, Judith	137
Prouty, Priscilla	8, 52, 131
PSI CHI	163
PUBLICATIONS BOARD	46
Pumbs, Thresea	60
Purbrick, Robert L., Dr.	76
Purvine, Ralph E., Dr.	61
Putnam, Robert M., Prof.	52, 75, 164
Pyron, Nona, Prof.	79

Quiring, Sylvia 12, 13, 37, 125

Rademaker, John A., Dr.	68
Raid, Gary	95, 96, 97, 98, 100, 109, 141, 156, 174
Raines, Mrs. Marjorie	59
RALLY SQUAD	94
Ramaker, Mrs. Pearl	130
Randall, William	74, 147
Randau, Mrs. Enid	47
Rasmussen, Jack	45, 141, 177
Ratcliff, Laurel	40, 131, 171
Rathbun, Mrs. Cora	128
Ray, Loretta	125
Redding, Sharell	135, 171
Redo, Verrill	129, 171
Reese, Seward P., Dr.	86, 87
Rehfuss, David	41, 46, 139, 177
RELIGION	65
Renshaw, Pat	125, 156
Rew, Laurence	88, 92
Rhodes, Elizabeth	135
Rholen, David	89, 91
Rice, Betty Ann	129
Richey, Paul	140
Richter, William	141, 161, 162, 172, 174, 179
Rieck, Alta B.	87
Riggins, Sandi	127, 171
Riley, Joan Thronson	129, 156
Ringnolda, Margaret B., Prof.	70
Ringnolda, Murco, Dr.	43, 46, 70
Roark, Sondra	25, 67, 133, 156, 160, 170
Robbins, Ruth G.	61
Robertson, Curtis	106, 139
Robinson, James	96, 97, 100, 141, 174



## OTTO J. WILSON COMPANY

Buick Sales and Service

COMMERCIAL AT CENTER

SALEM, OREGON

Established 1902

Kenneth Wilson

Otto J. Wilson



"When it's flowers,  
say it with ours."

1210 S. Commercial

## KENNEDY'S

CITY CLEANING

WORKS

CLAYTON E. FOREMAN, Proprietor

1245 State Street

Salem

Oregon

KEN and JACK MULLER

Your hosts at...

## CHUCK'S STEAK HOUSE

Delicious Food in an Atmosphere of Refinement

DINING • DANCING

BANQUET ROOMS

3190 Portland Road • Phone EM 3-3992 • Salem, Oregon

# JUDSON'S

PLUMBING • HEATING

279 N. COMMERCIAL ST.

"SPEEDY SERVICE"

Phone EM 3-4141

# HOWARD J. SMALLEY OIL CO.

Complete Oil Heating Service

1405 Broadway

Phone 3-5606

Robison, Janet	131, 163
Rodney, Ken	146
Rogers, Della	27, 52, 125, 136
Rogers, George	147, 162
Root, John	146
Rose, Mary	133
ROTARIAN OF THE MONTH	163
Rounds, Gordon	40, 110, 139, 174
Rovelli, Suzanne	127, 171
Roy, Bob	108, 109, 143, 174
Royer, Barbara	131, 161
Rubin, Susan	135, 171
Ruby, Marcia	33, 70, 133
Runkel, Howard W., Dr.	75
Ruud, Charles A., Prof.	61, 66
Ruud, Dixie	136
Ryan, Mrs. Esther	59
Ryer, Christine	125

## — S —

SAGA FOOD SERVICE	61
Sagehorn, Jane	118, 131
Sager, Ellen	137, 173
Sailor, Robert	88, 91
Saito, Carrie	137
Saito, Jim	147
Sandine, Gayle	130, 131, 177, 179
Sanford, Jean	131
Sanford, John	147, 172, 177
Sarver, Dennis	96, 97, 98, 99, 100
Sasaki, Edwin	146
Sather, Stan	52, 140
Sato, Hisao	110, 111, 112
Saunders, William	106, 140
Savage, Jean	137, 172, 173, 178
Saverude, Charles	146, 177
Scales, Florence	61
Schantz, Bill	87, 89
Schierman, Marilyn	131
Schlageter, F. B.	91
Schlegel, Ralph	89
Schmidt, Larry	147
Schnecker, Josef H., Prof.	79
Schrock, Lynn	133, 157, 177
Schroder, Daniel H., Dr.	71
Schulze, Del	145
Schurr, Christine	51, 131
Schussler, Don	139
Schwabauer, James	157
Schwabe, Peter	88, 91
Scaggin, Dick	101, 140, 178
Scott, Bonnie	19, 30, 125
Scott, David	148
Scott, Evelyn	92
Scott, James	88, 91
Scott, Midge	125
Seagraves, Lewis	46, 147
Seawell, Bill	145, 157
Seeger, Robert	139
Seely, Sandra	129
Sehon, Judy	135, 157
SENIOR CLASS OFFICERS	39, 40
SENIOR PORTRAITS	151-158

Senn, Louie	140, 172
Senner, Wayne	143, 161
Shattuck, Robert	139
Shaughnessy, Victoria	133, 175
Shaw, Cynthia	127, 163
Shelnutt, William L., Jr., Prof.	71
Sherk, Barbara	131, 161, 162, 177
Sherrill, Joan	68, 131, 157, 160, 163, 170
Sherwood, Jean	133, 177
Shidler, Donnis	166
Shiels, Mary	135
Short, Robin	135
Shuchat, Terry	46, 143
Shumway, Dale	96, 97, 99, 100, 174
Shupe, William	143
Siewert, Charles	149
SILVER, WINGS	167
SIGMA ALPHA CHI	162
SIGMA ALPHA EPSILON	31, 116, 142-143
SIGMA CHI	33, 116, 144-145
Simpson, Helen	87, 91
Simpson, Robert	87, 88, 91
Sisson, Hall	101, 141
Sites, Frank	139, 177
Sitzman, Frank	139, 157
Skelton, John	96, 97, 110, 140
Skimas, John	88, 91
Smallcomb, Glen	141
Smith, Barbara	94
Smith, G. Herbert, Dr.	11, 56, 90
Smith, James	158
Smith, Judy	133, 171
Smith, Karen	129, 175, 177
Smith, Mariel	137, 179
Smith, Marilyn	127
Smith, Mrs. Winifred	132
Smoyer, Elvin	143, 180
Smullin, Mary Jo	40, 133, 157, 167
Smullin, Suzanne	133, 171
SNOW PRINCESS	34
Snow, William	141
Snyder, Andy	147, 172
Snyder, Larry	140, 177
Snyder, Sue	71, 131, 157, 160, 166, 170
SOCIAL EVENTS	1, 4-34
SOCIOLOGY	68
Solomon, Stanley	95, 96, 97, 99, 100, 109
SOPHOMORE CLASS OFFICERS	39, 40
SOUTH HALL	146-147
Sparks, Lestle J., Prof.	72, 114
Sparks, Marilyn	44, 127
Spaulding, Christopher	145
SPEECH AND DRAMA	75
Speer, Howard	88, 92
Spence, Skip	109, 139, 174
Spoonmore, Jerry	141, 177
SPORTS	1, 93-118
SPRING HOUSE DANCES	122-123
Springer, Martha A., Dr.	69
Stafney, Don	96, 97

## MOTEL INDEX



As important functions occur, such as Parent's Weekend in October, the parents and friends flocking to the campus are in need of over-night accommodations. If they appreciate economy and all the comforts of home, the following accredited motels are recommended.

### **MT. VIEW MOTEL**

5534 Commercial Street S. E.  
Phone EMpire 3-2611

### **SOUTH SALEM MOTEL**

3743 S. Commercial  
Phone EMpire 2-5355

### **EL RANCHO MOTEL**

3535 S. E. Commercial  
Phone EMpire 3-0177

### **TOWN & COUNTRY MOTEL**

2505 S. Commercial Street  
Phone EMpire 2-9404

### **DOWNTOWN COURTEL**

495 Liberty Street S. E.  
Phone EMpire 3-1677

### **ALIRMA MOTEL**

3645 Portland Road N. E.  
Phone EMpire 2-4510

### **GABLES MOTEL**

2375 S. Commercial  
Phone EMpire 2-9185

### **NOB HILL MOTEL**

2515 S. Commercial Street  
Phone EMpire 2-0965

### **LA VISTA MOTEL**

2990 S. Commercial Street  
Phone EMpire 2-6792

### **CITY CENTER MOTEL**

510 S. Liberty  
Phone EMpire 4-0121

# Rawlinson's

- Custom Laundered Shirts
- Sanitone Dry Cleaning

**1264 Broadway N.E.**  
**Salem, Oregon**  
**Phone EMpire 3-3165**



Office Supplies and Equipment  
 Stenorette — Dictating Equipment — Art  
 Metal Steel Files — El-units Sikes Chairs  
 Myrtle Desks — Herring-Hall-Harvin Safes  
 School Supplies

**Phone JU 1-1404**



An after dinner swim with a little persuasion.

Stambaugh, Annabelle	125
Stanberry, Rosemary	129, 171
Stanley, Suellen	44, 131, 171
Starr, Judy	137, 164
Stead, Robert	92
Stebbing, Barrie	125, 171
Steinmetz, Robert	88
Stensrud, Myron	143
Stenzel, Peter	141
Stephen, Ross	15, 41, 46, 50, 51, 52, 143, 164
Stephens, Betty	137, 166, 173
Stephenson, Rosemary	40, 133
Sterling, Larry	42, 117, 139, 163
Stevens, Allen	52, 140
Stevens, Geranna	84, 137, 161, 164
Stevens, Robert	87, 89, 91
Steward, David	65, 147, 157, 160, 163
Stewart, Alice	94, 133
Stewart, Joe	76, 139, 157, 160, 165
Stewart, Kit	147
Stewart, Maurice B., Prof.	76
Stites, Hugh	20, 138, 139, 177
Stoddard, Charles	143
Stoop, James Ken	141, 158, 169
Stout, Marge	131, 157, 160, 170
Stover, Herbert	145
Stratton, Larry	147, 179
Streeper, Richard	141
Stroebel, Howard	96, 97, 100, 174
STUDENT COUNCIL	38, 163
STUDENT EDUCATION ASSOCIATION	166
Stunz, Gene	87, 91
Sweeney, John	39, 141, 169
SWEETHEART OF SIGMA CHI	33
Swenson, Mrs. Elenore	47

## — T —

Taber, John	91
Takeuchi, Sylvia	19, 39, 137, 172, 178
Talabere, Herb	141, 157, 172
Taylor, Judy	131
Taylor, Keith	147
Taylor, Stephen	148
Teague, Nancy	137, 164
Templeton, Robert	146
TENNIS	94, 114
Teppola, Mark	40, 139
Tetrick, Lon	157
Teufel, Judy	15, 39, 133
Tewksbury, Graham	106, 140
THE PURIFICATION	51
THETA ALPHA PHI	51, 164
THE TWELVE POUND LOOK	51
Thom, Phillip	40, 145
Thomas, Janice	127, 179
Thompson, Gordon	149, 157
Thompson, Jay	143
Thompson, Larry	116, 141
Thompson, Terry	148
Thornton, Ed	40, 141
Thornton, Lee	133
Thruston, Julian	52
Thurber, Lee	145, 174
Tiller, Laurel	50, 139, 160, 164
Tomlin, Sheila	125
Toomey, Dennis	96, 97, 100, 145
Tooze, James	91
Topping, Clorinda R., Prof.	79
Toy, Betty	133, 177
TRACK	94, 107-109
Trelstad, Bob	162

Trelstad, John .....	141
Trenholm, Pamela .....	137, 171, 173, 177
Trueblood, Paul G., Dr. ....	70
Trueblood, Sue .....	131, 166
Tucker, Lyle .....	147, 161, 165
Tullius, Frank .....	180
Turner, Donald .....	88, 91
Turner, Lowell .....	147

— U —

Udriis, Marijo, Prof. ....	71
UNESCO .....	173

— V —

Vale, John .....	83, 149, 157, 165
Van LobenSels, Lois .....	131
Vance, Ellis .....	50
Vanderwal, Stan .....	80
VanNatta, Fred .....	148
Van Noy, Ronald .....	139
Van Noy, Sue Weber .....	131
VARSITY BALL QUEEN .....	29
VARSITY VARIETIES .....	15
Verschuere, Dorothy .....	137
VIOLET QUEEN OF SAE .....	31
Vohland, Alva .....	96, 97
Vall, Sharon .....	135
Vulgas, Penny .....	133

— W —

Wade, Mrs. Florence .....	79
Wade, Fredrick .....	139, 157
Wagener, Terry .....	125, 182
Walker, Michael .....	138, 139
Walker, Ron .....	139
Walker, Warren .....	50, 139, 158, 164
Wall, William .....	96, 97, 98, 100, 174
Wallis, Douglas .....	149
WALLULAH .....	42-43
Walrod, Colleen .....	129
Walters, Norman .....	149, 165
Walton, Gail .....	133, 171, 175, 182
Ward, David .....	147
Ward, Douglas .....	145
Warden, Gary .....	145
Warner, James .....	79, 147, 165, 166
Warren, JoAnne .....	131, 164
Watson, Mrs. Ella .....	75, 136, 173
Wayland, Richard .....	74, 140
Weart, Douglas S., Capt. ....	73
Weaver, Lee .....	96, 97, 98, 100, 101, 104, 141, 174
Weaver, Nettie Hansen .....	125



"It smells like there should be some, but the gauge says no . . . and the car won't start. What to do?" says Jo Heald!



Distinctive Apparel For Women

Phone EM 4-6828

460 State St.

## 4 CONVENIENT BRANCHES IN SALEM TO SERVE YOU



OREGON'S OWN STATE-WIDE BANK

U.S.  
NATIONAL  
BANK  
OF PORTLAND



Ride  
**GREYHOUND**

Phone EM 2-2428

**CLINE'S FOOD SHOP**

"Open all night"

WALTER J. CLINE, JR., Prop.

444 N. Church St.

Webb, Norman	88, 91
Weber, Artalee	43, 67, 137, 177
Weber, Donald	149
Webster, Linda	133
Weeks, Nancy	125, 164, 177
Weisel, Pete	139, 176
Welch, Judith	125, 171
Welch, Peter	43, 96, 97, 110, 111, 112, 143, 162
WESLEY	179
West, Thea	135, 177
Weston, Art	145, 174
Weston, Tom	101, 103, 145, 174
Wheeler, Mark	145
Whelan, Patricia	83, 149, 164, 177
Whipple, E. Jerry, Prof.	60
White, Boone L., Rev.	65
White, Dick	143, 166
White, Douglas	90
White, Gerald	43, 68, 143, 177
Whitman, Donald	149
Wiley, Kent	145
Wilfert, Gordon Buz	101, 102, 103, 104, 105, 141, 174
Wilkinson, Ronald	66, 147, 158
Willeford, Rhetta	118, 129, 171, 178
Williams, Betty	52, 127, 172
Williams, Charles	148, 158, 166
Williams, Don	39, 40, 76, 117, 139, 177
Williams, Jean, Prof.	72, 118
Williams, Lou	88, 91, 158
Williams, Ronald	143, 165
Williams, Susie	125
Williamson, Steve	146
Willingham, Larry	36, 48, 67, 139, 158, 160, 163, 169
Wilson, Larry	138, 139
Wilson, Susan	125
Winner, Gerry	115, 145, 174
Winter, Herman	91
Withers, Jack	47, 140
Wolf, Judy	149
Wolf, Martin	88, 91
Wollander, Jon	143
WOMEN'S SPORTS	118
Wood, John	69, 143, 158
Wood, Marilyn	131
Woodbury, Carol	50, 126, 127, 162, 164
Woodworth, Lionel	147
Wooton, Mrs. Elmer	142
Worth, Phillip	50
Wright, James	143, 162

Wright, Marilyn	133
Wright, William F., Capt.	73
Wu, Albert	180
Wyant, Charles	149, 158
Wyatt, Joanne	129, 134, 171, 177
Wynd, Martha	52, 135

— Y —

Yacom, Richard A., Prof.	59, 68
YOUNG DEMOCRATS	178
Young, Norma	137, 172, 173
Young, Paul	139, 178
YOUNG REPUBLICANS	176-177
YWCA	171
Yu, David	91
Yukl, Charles W., Prof.	79

— Z —

Zachary, Rita	131, 171
Zavala, Albert	68, 139, 158, 163
Zehnbauer, Alan	117, 143
Zeigler, Harley H., Dr.	58, 65
Zeller, Mary	125, 161
Zeschin, Patricia	131

For Those Extra  
Special Occasions

When you need a  
car for the  
Big Night . . .



Come in and see us at

**HERTZ RENT-A-CAR**

195 S. Commercial

EM 4-1451



Having locked the office door for the last time, the staff prepares to make their departure for places unknown.

## This is it . .

As the year moved on and the deadlines approached, many times we wondered if it was worth all the sweat and headaches. The long nights and the endless hours of combat with the darkroom resulted in a yearbook of which we feel proud. Now cognizant of the long hours—many times trying hours—we realize that our efforts were well worth while.

We certainly owe our apologies to the other inhabitants of the "cat-combs" (the basement of Waller) where we made our second home and jangled the nerves of the other residents with our ever-blasting radio. Apologies must be extended to the student body office whose phone we kept busy, whose files we ransacked, and whose employees we pestered with questions; to the Cat Cavern whose dishes we endlessly "borrowed" and whose booths we kept occupied for hours; to the bookstore where we charged 5 cent items three or four times daily, and whose student file we disorganized; to the Collegian, whose papers, files, and typewriters we stole; to the Law School with whom we tangled week after week; to Indepi, for our constant bickering; to McEwan's Photo Shop, from whom we demanded immediate service; to Your Town Press, whose deadlines we never met; and to the many faculty and administrative personnel whom we hounded day after day for lists and information.

We were fortunate enough to have as co-workers people that could both work and play well together; work was often interrupted by a joke! We sacrificed grades, time, and sleep for the many hours necessary to produce the 1959 Wal-lulah. We hope you have enjoyed it.

THE STAFF







404  
FERRY

SALEM  
OREGON

YOUR TOWN PRESS INC.







