

War Bond Sales Top \$50,000 Mark

Sum Exceeds Any Previous Amount Raised by ASWU

At the end of only the second week of Willamette's participation in the Sixth War Loan drive, student sales already total over \$50,000, more than double any amount ever raised by student efforts previously, states Chairman Con Pavlock.

However, only an approximate \$10,000 of that sum may be applied toward the \$34,500 necessary to purchase a baby tank which was set as Willamette's goal at a committee meeting after press-time on the previous Collegian. Sale of treasury bonds in which selling has been heaviest will not apply on the tank fund, Pavlock emphasized. Stating further that the sale of \$75 in bonds in series E, F and G by each student will make achievement of the quota possible, Pavlock urged concentration upon sales in the latter series.

The sale of each \$25 bond will entitle the solicitor to one vote for a candidate for bond queen. Final selection will be made by a student body vote on the top-ballotted coeds.

Pavlock's committee including Suzanne Zimmerman and Mary Goodman has definitely set the amount of prizes to be awarded to top solicitors from the \$1000 in bonds being raised by the \$1 contributions of each student. Prizes in bonds to individual winners will be \$150, first prize, \$75, second, \$50, third and \$25, fourth. The winning unit prizes will also be in bonds starting at \$350 for first, \$100 for second and \$50 for third. The latter

prizes will be based on per capita sales.

An additional prize will be a \$200 scholarship to be awarded upon maturity to a freshman whose father has either been killed or disabled in this war. Other qualifications, which will be decided on by the faculty, are scholarship, service and activities.

Totals of unit sales thus far were not available this week since organization of the civilian men and Salem women was not complete and returns from living groups had been slow. Tabulation of how they stand was promised for next week by Pavlock.

February 27 As Freshman Glee Date

The date for Freshman Glee has definitely been set for Saturday, February 27, which will be two weeks after the second five weeks exams and three weeks before the end of the semester. The event was temporarily set for February 10, but this date proved inconvenient in that bets would have to be paid off on the 13th during exam week.

The freshman glee manager will be elected in a secret ballot during a freshman class meeting after Tuesday's chapel and will work with the general committee recently appointed by the student council in deciding the theme for Glee, setting up rules, and selecting the judges. The committee consists of Royal Hart, chairman, Jack Glass and Thyra Jean Curry. All three members have been active in Glee work in the past with Hart as manager last year and Glass as a member of the general committee.

In This Issue

The Feminine mind revealed; Meet Pavlock, page 2.

Reallocation of ASWU funds explained, page 3.

Details of mixer, dance; Tschudy fireside, page 4.

More Belles; Dobbs recital hall-ed, page 5.

Varsity, frosh lose, page 6.

C-2 and B-1 lead 'mural race', page 7.

Voters to pass on Bush's pasture gridiron; Cavern may get fountain, page 8.

Death of Grad Listed in Italy War Theater

Capt. Edward J. Church of Salem, who graduated from Willamette with the class of 1941, was killed in action in the Italian theater on October 24. His brother, E. J. Church of Salem, was notified of his death last week.

The November 10 issue of the Collegian carried news of a letter to Dr. Charles Sherman from Captain Church relating his meeting with George Santayana, the Spanish philosopher. Philosophy - psychology was Church's major at Willamette.

Church was serving with the 351st infantry, in the Italian theater. He was born February 13, 1916, Baker, N. D., and was a graduate of the Bismark, N. D., high school and a student at North Dakota Agricultural college.

Post-Game Dance Tomorrow Night With Al Benning's Orch

Willamette students and their OFCL guests will dance to the music of Al Benning and his orchestra at the second major ASWU social event of the semester tomorrow evening in the gymnasium following the Willamette - University of Oregon basketball game.

A War Bond theme will add color to the informal dance. It is hoped that the floor may be ready for attending couples by 9:30 p. m. with music by Benning's nine-piece orchestra continuing until 11:30 p. m.

The Saturday night tilt with the Oregon Ducks will not only mark the Bearcats' return series with the southerners but also the initial appearance of the Willamette band which will be present in force. A large crowd is expected to be on hand to see the Bearcats attempt to even the score with the twice-victorious Ducks.

Yvonne Kauffman, in charge of securing chaperones for the

affair, announced that Dean and Mrs. Melvin H. Geist and Prof. and Mrs. Stephen Smith will be present.

Stan Boyd heads the committee for decorations. Also serving on the committee will be Carolyn Brady, Chuck Strong, Mary Ann Wittliff, Melvin Brown, Stan Buck, Nancy Menkl, Virginia Pope, Pat Otis, Ed Gortle, Bill Bagman and Walter Buchanan.

Bill Parkin, Dan Allen and Jean Barham will tend to the lighting.

Hop No. 2, Slated For Tuesday P.M.

The second matinee hop of the year will be held this Tuesday from 4 to 5:30 p. m. in Chresta cottage. It was announced by Jeannette Mack, chairman in charge of the dances. Rain on the outside and a roaring fire on the inside is the prediction of Miss Mack.

Willamette Collegian

1842—Willamette University in its Second Century—1944

Vol. LVI.

Salem, Oregon, Friday, December 1, 1944

No. 19

55 Student Leaders Arrive Today for Annual OFCL Meet



Rich Wicks, ASWU prexy and secretary-treasurer of OFCL in charge of arrangements for the present conference, seen in the student body office with Nancy Hoak, chairman of housing for the 55 delegates to the two-day annual meet.—Photo by Virginia Wiebe.

14 Oregon Colleges to Be Represented

Fifty-five student officers from 14 of Oregon's colleges will arrive on the campus this morning for the sixth annual conference of the Oregon Federation of Collegiate Leaders. Representing Willamette at the two-day confab will be Jan Patterson, Mary Bennett, Con Pavlock, Wilma Froman and Rich Wicks, ASWU president and secretary-treasurer of OFCL in charge of arrangements.

Schools registering delegates have been Eastern Oregon College of Education, Southern Oregon College of Education, University of Oregon, Willamette University, Multnomah College, St. Helens hall, Lewis and Clark college, Pacific university, Marylhurst Normal school, Marylhurst college, Linfield college, Oregon State college, Mt. Angel Normal school and Oregon College of Education.

First major event on the program for delegates will be attendance at the massacre of the sophomores and upperclassmen during the turnabout Kangaroo Court this morning. First discussion groups will meet this afternoon in the capitol building with Miss Froman leading the section on duties of the social chairman.

Panelists led by Pavlock including a discussion of student faculty relations and student cooperation will continue tomorrow with representatives reviewing the naval unit in the afternoon. A banquet at Hull's cafe followed by the Willamette-University of Oregon basketball game and post-game dance will conclude the weekend's activities. Principal speaker at the banquet which will be attended by the entire ASWU council will be Judge Arthur D. Hay of the state supreme court.

Burning of Midnight Oil Continues Anon

Although the announcements say exams are over tomorrow, many a Willamette finds himself still facing the prospect of further five weeks' ordeals early next week. Thus the rook's baptism of fire continues while the experienced rely again on the time-honored art of cramming. Comes relief Wednesday with the deadline for grades.

Lettermen Leary of Leering Frosh As Vengeance Nears

By Claire Purvis

Lettermen are quaking in their boots today as freshmen leer at them wickedly, nursing delicious thoughts of revenge when the turnabout Kangaroo Court is held this morning at 11 a. m. Previously it has been the freshmen who crept around on Fridays in silent terror and edged gingerly into chapel with longing glances at the nearest exit guarded by stalwart specimens of manhood, but now it is the lettermen who are slinking furtively by the freshmen or gathering in groups with forlorn expressions in the hope of "safety in numbers."

Somehow the self-assured dictatorship of the lettermen has not been quite so evident on the

campus since the freshmen revolted in the process of removing paint from the sidewalks. Whereas before, the freshmen shivered uncontrollably when a letterman sauntered egotistically by, after the revolt they were confident that any drastic measures the lettermen took could be dealt with accordingly. Altogether, the leaf rake scheduled for this morning was only a feeble effort on the part of the lettermen to regain their former power. However, now the freshmen have tasted glorious independence, and nothing can subdue them. Indeed, it will be the lettermen who will be sorely chastised after the Kangaroo Court this morning when six hardened frosh females find them guilty of various misdeeds and an equally sinister judge sentences them.

A contributing factor to the mortification of the lettermen will be the fact that delegates of the Oregon Federation of Collegiate Leaders will also be present at the court session to witness the massacre.

It is hoped that no letterman will be too seriously wounded in the conflict. However, as the frosh have suffered in the past so shall the lettermen suffer now.

Otis, Strong Take Leads In Play Cast

Sharing leading roles in the forthcoming production of James Thurber's "The Male Animal" are Pat Otis and Charles Strong, veterans of the spring staging of "Ladies in Retirement." Presentation of the hilarious farce by the drama department is tentatively scheduled for Friday, January 19.

The entire casting includes Miss Otis, Ellen Turner, Tommy T's wife; Strong, Tommy Turner, college English prof; Frances DeLancy, Cleota, the Turners' maid; Janie Mathers, Patricia Stanley, Ellen's sister; Stan Boyd, Michael Barnes, editor of the school magazine; Joe Sanford, Joe Ferguson, one-time beau of Ellen; Dean Smith, Dean Frederick Damon, head of the English department; Matt Gruber, Ed Keller, alumnus of the university; Virginia Hobbs, Mrs. Damon; Joyce Feiden, Myrtle Keller, wife of Ed Keller; Nevitt Smith, "Nutsy" Miller, leader of the band; Jim Cogway, Wally Myers, halfback on football team; Walt Bartholomew, newspaper reporter.

Wolfsehr Friday Chapel Head; Program Committee Formed

This week saw two developments in the university chapel system with the appointment of Jerry Wolfsehr to head the Friday student chapels and announcement of the formation of a student committee to plan and direct the Tuesday and Thursday program.

In revealing his selection of Wolfsehr, Rich Wicks, ASWU prexy, pointed out that the appointment merely constitutes Wolfsehr's continuation in that post since as president of the letterman's association he has been responsible for the Kangaroo Courts concluded today with the Frosh turnabout session.

Members of the new Tuesday-Thursday chapel committee are Rosella Bell, chairman, Maxine Wagner and Mary Goodman. Dean Daniel H. Schulze is advisor. The group will not be responsible for programs until the end of December since speakers have been obtained only then by the president's office but are already soliciting student ideas for programs.

The change has been instituted because it was felt by some that more student interest and enthusiasm could be aroused by making the programs a student responsibility.

WELCOME . . . Oregon Collegiate Leaders!

We sincerely hope that you will enjoy yourselves while on our campus as much as we enjoy having you here.

Willamette is proud to be host to a movement which will undoubtedly do much to promote better understanding and greater cooperation among Oregon's institutions of higher learning.

Right or Wrong . . .

Pervading all discussion of the recent drastic action of the ASWU council in re-allocating student body funds—the opposition cries of dictatorship and absolute power and the supporters' acclamation of a progressive step in local student government—is one evident fact which outweighs perhaps any other supposed or actual implication of the action put forth by either school of thought.

Right or wrong, the measures adopted by the student officers and representatives constituting the council are most certainly an indication that those leading the campus program this semester stand in no humble awe of precedent for the sake of precedent and will not be inclined to settle into the rut of obedient adherence to traditional policy for lack of intestinal fortitude to do otherwise.

Regardless of one's opinion of the wisdom of the motions passed upon, he must look upon them as the sincere effort on the part of the council to correct a believed injustice to the student ticket holder and an imposition on student funds by activities not authorized to expect such support. Anyone likewise desiring an activities program paying its dividends to the stockholder cannot help but respect the council's intentions and will recognize in its attitude the factor which may well make of this semester, one outstanding in Willamette annals.

The independence of thought and daring of action displayed by our elected leaders if harnessed and directed by the influence and interest of the students they represent, can only give promise of a rarity of the college campus—a vital, functioning student government.

Willamette Collegian

"In Age there is Wisdom"

Editorial and Business Offices
Ground Floor, Waller Hall

Phone 3088

Member
Associated Collegiate Press
PACEMAKER

Official Publication of the Associated Students
of Willamette University

Entered at the Postoffice at Salem, Oregon, for transmission through the mails as second class matter. Published weekly except during examination and vacation periods. Subscription rate: seventy-five cents per semester.

EDITOR — CATHARINE THOMAS
NEWS — LYMAN SMART
COPY — EVELYN DEAL, ANN STROTHER
SPORTS — STAN BOYD
SOCIETY — BETTE BURKHART

Reporters this issue: Ruth Farmer, Janice Nelson, Ronald Hoven, Larry Horton, Matt Gruber, Pat Walters, Bettyann Bietlicher, HoJean Finley, Mike Carlson, Claire Purvis, Elizabeth Zimmerman, Barbara Shirley, Jean Fries, Kay Karnopp, Ruth Anderson, Nancy Stuart, Dona Batson, Bill Parks, Jean Leiser, Artie Phillips, Jessie Blinford, Ruth Anderson, Vivian Miller, Beverly Cox, Winona Henderson, Ida Mattinen, Jane Curtis, Geneva Brown, Anita Strickland, Helen Wilson, Thyra Jean Curry, Loren Thompson, Ken Mantle, Con Pavlock, Proyne Schapacher.

Female of the Species

By das Buch

Females are what men marry. Men are constantly in hot pursuit of females, but the females finally catch them. Females are also a great boon to men's morale, because they always make you feel that you have them right where they want you.

Females inhabiting the region around Willamette may be divided into two basic genera—the "girl" and the "woman." Most species are in their natural habitat in this valley, but there are some few females from foreign abodes such as cocktail lounges, penthouses, gold mines and even Idaho. Because of the extreme complexity of this widely discussed member of the animal kingdom, it is only proper that each genus be studied separately in a comparative sense.

Both genera, of course, are in the sub-phylum vertebrate, which pertains to the possession of a spine. This brings to light the fact that the genus "girl" has less backbone than the "woman." A typical species of the genus "girl" would be the Willamette Freshmana, which is strictly an immature form ascending from the lower evolutionary brackets and is closely related to a species which commonly dwells in high schools.

This species has many strange habits. One of the oddest of which is their ability to giggle when exposed to the male sex. Some of the more advanced forms of the species have even learned to make a whistling sound when men appear on the scene. Thus, the genus "girl" would be considered by many zoologists as a larval stage, but the new school prefers to class them merely as younger bodies.

After the younger bodies have heard the word, seen the light and read the book, and a period of time equivalent to about two semesters has lapsed, a metamorphosis takes place, and the "girl" blooms triumphantly into the genus "woman." Like the metamorphosis of tad-pole to frog, so is the change from "girl" to "woman." The "woman" has usually become aware of her goals in life—all of which are men. The methods of seduction that various species of women use in subduing men are like Turkish cigarettes—all the same, but some are better disguised than others.

Along with her perfection of tactics, the "woman" definitely becomes more poised, but at the same time begins to exhibit many strange moods which perplex most men to the point of madness. For instance, some women will allow men to make love to them, and men tire of them in the end; others do not allow love-making so men tire of them in the beginning. When a woman drinks, men think she is wild; if she refrains, men call her a prude. A woman flatters a man and scares him to death; if she doesn't, she bores him to death. When she acts like a clinging vine, she has no brain, and if she is modern and intelligent, she has no heart.

These complex characteristics have driven the modern man to adopt the theory that he is wise to understand women, but a darn fool to try to prove it. Yea verily, a man like a worm comes into the world, wiggles around 'till some chicken gets him, and finally dies wondering why he didn't stay in his hole.

Heard by Gert . . .

New Vogue by Brown

Dear Bob, you Handsome Brute:

Drat this alphabetical arrangement—I'm getting a warped personality sitting by the same people in every class—always people whose names begin with A. Not that I don't like A's—schenckii-beurmanni! (glad I'm writing it, not pronouncing it)—I'm crazy about them! But I prefer getting A's to sitting by them. Another perfectly mellish item is always being in the front row of the class—and me far-sighted! But most important, I don't get to sit by you—you and your old last name. Xzywpgstmrklaioe. (Don't expect me to ever change mine to that even to get in the back row.) With that name you're practically out of the room!

Say, darling, have you heard about Jerry Walfsehr? He's supporting a family of pinheads. Dr. Tschudy told us about it in genetics class. Jerry claims they inherited the characteristic from "Mama."

Have you read Pavlock's favorite past-time "This Is My Beloved" yet? You have to go out with him three times (at your expense—risk too) before you can see it and by then you're sorry you mentioned it.

Watch out for bloodthirsty Lois Robinson, honey. She's a werewolf, vampire, and biology major out for all your corpuscles for her seminar tests and she carries her own three-times-life-size vena-puncture needle and gallon jug.

Well, sugar-daddy, nothing to do I guess but go on sitting here letting my personality twist, my eyesight fail and my beautiful romance with you die of distance.

Oodles of love from your girl across the room.

GERTIE

Introducing -

"Rally! Rally! Well, why don't you make it \$5000, you cheapskate," croaks the mellow voice of Uncle Sam's representative to WU, Connie Pavlock. Your meek and mild reporter picks the darndest things to get interviews. But after watching the mastermind of the bond drive in action for about an hour and getting thoroughly dizzy, we were finally able to get the immortal Pavlock greeting, "Hullo, hullo, hullo," and a cordial leer.

Modest Connie is very backward about proclaiming the wonders of the Catholic club. "It's the most active club on the campus," he blushes coyly. The prexy hastens to add that it is not limited to Catholics, but rather a discussion group for all live-wires interested in knock-down arguments.

Muscle-man Pavlock started on Willamette's pigskin-pushing squad as quarterback. "I got my biceps in the coal mines," mutters Connie, gently stroking his bulges. Navy calisthenic are apparently forgotten to this busy GI.

But all brawn and no brain would make Connie a dull boy, so in his spare time he does a turn at pen-pushing and comes out a SAX. Further evidence of bulges above the eyebrows are the earning of a scholarship to Penn State, first alternate for West Point and an appointment to Annapolis. However, due to heart trouble (are they kidding?), Pavlock was unable to continue his work at the naval academy.

In the navy, Pennsylvania-born Pavlock covered more territory than Sinbad, touching nearly all of the 48 states, coming out an aviation mechanic, first class. In San Diego, however, Connie got behind a rear gun of a dive bomber and worked with experimental squadrons. He saw action off Guadalcanal. His brother, a P-38 pilot lost his life in France. Another brother is now on Saipan.

Connie in his spare time (?) lends an ear to "really good music." Any bold soul who dares even to suggest that Gounod's "Ave Maria" is not the most beautiful composition ever written has a fight on his hands.

And that fight, by the way, might be a bit tough. Pavlock has dabbed in amateur boxing "in his youth." "Of course, I'm a mere shadow of my former self," Superman hastens to add. It doesn't pay to be too cocky these days.

Dropping into Oregon campus life last March, Pennsylvania's gift to the West has continually proclaimed the glories of his home state. This shocking attitude is partially excusable, however, since the abused wanderer did not touch home soil for two and a half years, returned for a meager six-day leave, was off again for nine months only to catch a quick look of four days! "The land looks better every inch east," declares Pavlock bravely.

Such Is A Gremlin!

I am a Gremlin.

Now you may have thought that all gremlins were in the air corps or the tank corps. This, however, is not the case. It's true, the gremlins in these branches of the service receive more publicity, but they don't. I am proud to say, do any finer a job than myself, with my three assistants, Bewildered, Confused and Snafu.

When the war first broke out, all the available gremlins were conscripted and immediately sent to the fighting fronts, but as the original excitement subsided, organization methods improved and the Higher Office lent its talents to heckling various other branches of the service not engaged in active warfare, and indeed, Gremlinism has now gone into active service on the Home Front.

Perhaps a better conception of this amazing organization will follow if I can give you a few reports of our activities.

Who do you think it is that muffles the clapper on the ten o'clock bell? That gives the housemother insomnia the night we muffle the tocsin? And who do you suppose rattles the steam pipes the moment you are about to grasp your calculus? Who? Bewildered, Confused and Snafu, that's who.

Who do you suppose puts you to sleep five minutes before the Chief checks rooms in the afternoon? Who puts the lint on your uniform for inspection? Who makes you sleepy in class? Who breaks your test tubes, fogs your microscope, contaminates your media, breaks your circuits, loses your minus signs, sticks the keys and breaks the ivories on your piano, turns your red paint brown, and your green paint yellow?

Who shuts your windows, turns on your heat, slams the door, locks the closet, loses your place, puts worms in your salad, smears your lipstick, puts sand in your bed, ice in your shower, dust on your chairs, mud in your coffee, tears off your buttons, straightens your hair, puts spots on your shoes, takes the crease from your trousers, the ink from your pen, the heat from your hands, the oil from your hair, the towel from your gym locker? Who unties your boots, unlaces your pants, wrinkles your neckerchief, blackens your hats? Who? Bewildered, Confused, and Snafu, that's who!

You may think this is a lot of bunk, but wait till the next time your hair falls down, your mind goes blank, your cheeks get pale, your milk is sour, your book goes shut, your pencil breaks, your pen goes dry, and your paper runs out. Then you'll know who to thank.

It's with tears of pride, and a thrill of joy in the knowledge of a job well done that I say . . .

I . . . am a gremlin.

Council Votes Drastic Reallocation of SB Funds

Sweeping Move Exercises Emergency Wartime Power

What may well be one of the most sweeping and drastic actions ever taken by a student governing body at Willamette was decided upon at the first meeting of the entire student council on Tuesday, November 21. Under emergency powers adopted by the council in the spring of 1943 to be effective for the duration of the present war, major changes in the allocation of student body funds derived from the sale of activities cards were passed.

Prompting the action was the desire on the part of council members to more nearly allocate funds to activities on the basis of value returned to the student body by those activities. Additional motive was the feeling that activities included in the university curriculum should receive university support to a greater extent rather than relying on student body funds. All

changes voted are but for the present semester.

Most radical reduction in allotments was a cut in the athletic fund from the former 27 percent to 21 percent. In addition the two percent allotments made to the Women's Athletic association and men's intramurals sports respectively, but which have been routed into the main athletics fund during the war were completely removed from the budget, making a total cut of 11 percent in the athletic revenue from ASWU coffers.

Also coming in for reductions were music from seven to one and one-half percent, forensics from five to three and one-half percent.

In distribution of the total 18 percent slashed from the above departments, the meager social fund was increased from four and one-half percent to ten percent. Profiting by the juggling were the Collegian and Wallulah, receiving increases of four and six percent respectively to up their total allotments to 12½ percent and 26 percent. An extra one percent was voted to drama with the specification that the amount be devoted to intramural one-act plays. Additional increases went to Freshman Glee upping the former one and one-half percent figure to two and one-half and to the office fund raising the latter from five to five and one-half percent.

Music Fund Cut Heavily

One of the most drastic changes made by the student council in the reallocation of ASWU funds was reduction of the music department fund from 7 to 1½ percent. At the close of the summer semester this fall, this department had an accumulation of \$856.32, after spending \$242.62 this summer, \$15 of which was the summer semester's allotment. Last term expenditures included a French horn, a snare drum and band and choral sheet music. On the basis of the present student body fee return, music will receive \$71.13 for this semester.

It is found that the former allotment supported many activities of the music school which have been incorporated into actual curriculum making such activities eligible for university support. Should the combined sources of financial support prove to be insufficient for music, the council indicated its intention to give due consideration in next semester's relocation.

Four Major Social Events Possible With Extra Funds

By Wilma Froman

In raising the percentage of student body money obtained from the sale of activity tickets earmarked for the social fund from the 4½ percent to 10 percent the executive committee has attempted to solve one of the greatest difficulties faced in organizing a workable activity schedule. The reallocation of ASWU funds actually increases the hitherto insufficient social allotment from \$191 to approximately \$500.

Not only will this action allow the student body to finance at least three and possibly four major dances complete with orchestra, decorations, etc., but will also enable the group to pur-

Salem Teachers Will Hear Prof

Mrs. Frances Spellbrink, instructor of mathematics will be the speaker at a meeting of 16 junior and senior high school teachers of mathematics to be held next Wednesday at the Leslie junior high school. Beryl Holt, head of the mathematics department of the Salem senior high school has asked Mrs. Spellbrink to speak on the teaching of mathematics from her experience in teaching in the navy program.

chase much-needed lighting equipment and will finance extensive repairs to the nickelodean and purchase of some new records.

In the past, student body socials were limited of necessity to two and sometimes only one major dance a semester. However, under the three semester setup with the influx of navy students with previous college experience elsewhere and therefore mixed loyalties, a well-planned and interesting social program assumes new importance in providing necessary relaxation and morale-building.

Though the steps taken by the council are of an emergency nature, the action of the council might well be considered in any post-war proposals when a more permanent division of funds will necessarily be set up.

20 Percent Fair, States Editor Boyd

By Stan Boyd

From general comment on the council's action of cutting the athletic appropriation from 27 percent to 20 percent for this semester, it appears that there is no dissatisfaction except possibly, "Why 20 percent?" and "Where does the 20 percent go?" Before tackling this, let us remember that in most universities and colleges, the university itself subsidizes athletic teams for trips, guarantees, equipment, etc.

One might ask, "Why take out any money for athletics. I'm not an athlete." That's not the idea, everyone is getting something back for his 20 percent if he sees any of the games. Without a student body card, each game would cost a Willamette student 30 cents, that is for a home game. Say there are eight home games; that represents \$2.40 worth of investment. Twenty percent of \$7.50 is \$1.50 and 20 percent of \$10, civilian price of a student body card, is \$2. Both of these amounts are less than the \$2.40 figure. So we are actually saving money, OK?

Now, assuming that that is square enough, one still might ask, "What happens to that 20 percent?" This money is spent for trips to various other schools or guarantees to teams playing here, spent for repairing, lettering or replacing uniforms, spent for game basketballs (these are not stamped USN), spent for publicity(?), and spent for "etc."

We still can't really kick on that, because people from the outside pay money for the game simply for the entertainment and never question where their money goes. If that money allotted were in excess of the price one would pay for admission to these games, as it was formerly, then would be the time to question it.

USDA Gets Staff Addition

Ursula Smith of Fulton, Miss., has joined the staff of the United States department of agriculture laboratory which is located in Collins hall. She will help in the laboratory's inspection of processed, canned and frozen foods for the army, navy, and lend-lease.

Miss Smith graduated from Mississippi State College for Women at Columbus, Miss., in 1943 where she majored in home economics. Before coming to the USDA laboratory in Collins, she was employed by Spencer Dehydrators at Lebanon, Ore.

Art Classes Post Display in Eaton

A group of still lifes by the art composition classes is on exhibit in the third floor hall of Eaton. In room 33 still life models may be seen with a charcoal sketch of each by one of the art students. Both exhibits are open to interested visitors. Constance Fowler, art instructor, said.

Publications Fund Assures Weekly News, Larger Annual

Absolute certainty of weekly campus news and promise of a bigger and better annual were given students this week when the executive committee voted a ten percent increase to the publication fund. Reallocation of student body fee receipts gave the Collegian a 4 percent increase over the former 8½ percent allotment, while the Wallulah received a 6 percent increase beyond the previous 20 percent allotment.

Figuring on a basis of a \$4,742 student financial return, the Collegian will now receive \$592.75. Collegian expenses last year averaged \$65 each week for 800 copies, whereas this year the weekly rate for an eight page paper is \$78. This figure, however, does not include the additional cost of pictures of campus personalities and activities which is approximately \$2.50 per cut. Even disregarding this extra expense, 14 issues (a paper every week but that of Thanksgiving) amounts to \$1,092 almost half of which (\$499.25) must come from advertisers.

Other publications financed by this same fund are the Student Handbook, a \$110 investment, and the Fussler's Guide, which is paid for by advertising, except for about \$15.

The increased allocation in terms of your 1945 Wallulah means a 20 page increase over former books, a padded cover, an improved art motif and clearer pictures. Last year without proposed improvements the cost of binding, lithography and printing alone amounted to \$2,256. In addition, one must consider that a portrait contract means \$100 and that campus darkroom expenses average \$75 a semester.

There still remain covers at approximately \$200 plus working materials such as drawing boards, T-squares, glue and mailing fees. Calculating from the 26 percent new allotment, the Wallulah will receive \$1,232.92 a semester (according to present student body returns). Again advertising makes up the difference, this time for the sum of \$120 a semester, plus the cost of material and betterments.

And that's the story of where your money goes when it's paid

Phone 7830

Kennell-Ellis Studios
Artist Photographers

420 Oregon Bldg., Salem, Ore.

to publications, except for one additional item. This fund also pays three salaries—that of both editors and the publication manager.

McMILLAN'S FOUNTAIN LUNCH

Fountain - Sandwiches
1949 State Street

JAYSONS

"Smart Clothes for Smart Men"
Liberty at Court
Salem, Oregon

Jim's Shoe Service

147 N. High St.
Shoe Repair and Shine

Fine Shoe REPAIRING

E. J. SCHMIERER
1280 State St., Salem, Oregon

"It Pays to Look Well"

First Class Work Only
Your Patronage Appreciated

The State Street Barber Shop

Geo. A. Schulz
1256 State Street, Salem, Oregon

DE LUXE MILK & ICE CREAM CO.

OSTRIN BROS.
Pure Milk and Cream
Phone 5774 1557 State St.
Salem, Oregon

Double-Checked Prescription Filling

—is your guarantee of quality service as well as quality merchandise. Your prescriptions will get better attention at our store.

SCHAEFER'S DRUG STORE

Phone 9125

263 S. High

SALEM LAUNDRY COMPANY

(Wieder's)

Complete
PRINTING
Service
Statesman
PUBLISHING COMPANY
Publishers
Oregon Statesman
215 South Commercial St.

Willamette University

Liberal Arts - Laws - Music
SALEM, ORE.—FOUNDED FEB. 1, 1842

- Pre-professional Curriculum
- Fully Accredited
- Exceptional Location
- Reasonable Expenses
- Christian—non-Sectarian

"AN OUTSTANDING AMERICAN INSTITUTION"
Bulletin on Request

Cap, Gown Serve for Phi Beta Kappa

Members of Cap and Gown, Willamette scholastic honorary society for senior women, will serve tomorrow evening for Phi Beta Kappa reception in the Carrier room of the First Methodist church at 8 p.m. Phi Beta Kappa will observe the founding of their organization at the reception. The founding date was 1776 at the College of William and Mary in Virginia.

Willamette faculty members will be prominent in the affair. Guests will be greeted at the door by Librarian Robinson Spencer and Mrs. Chester F. Luther. Introducing to the receiving line will be Dean Olive M. Dahl, Mrs. Robert Tschudy and Prof. William Moellering will usher.

An address "Foundation of Freedom" will be given by Dr. Harry L. Dillin, president of Linfield college. Prof. Ralph Dobbs will play two piano solos, Margaret E. Scruggs, soprano, of the Willamette music faculty will sing, with Bennet Ludden, piano instructor, accompanying her.

Members of Cap and Gown serving will be Betty Andrews, Catharine Thomas, Lois Robinson, Marjory Maulding, Jean Fries and Mary Bennett.

Though there is not a Phi Beta Kappa organization on the Willamette campus, several faculty members belong to the organization. All members residing in the central Willamette valley are invited to attend the observance and reception.



Elizabeth Bruckman, Willamette sophomore, whose announcement of her engagement to Charles Leighton Fairham, a former university student, was an recent event of interest in campus and to Ealem social circles.—Statesman cut.

Pat Lamb Sets Date Of Wedding

Campus friends received invitations in the mail this week for the coming wedding of Patricia Lamb and Warren Doolittle, seaman first class, US coast guard, which will take place Tuesday evening, December 12 at 8 p.m.

Rev. David Nielsen will officiate at the service which will be held in the First Congregational church. Mrs. H. William McElhinny and Roberta Jean Yocum will light the candles.

Miss Lamb attended Willamette last year and gained her sophomore standing here. She is a member of Pi Beta Phi sorority. In choosing her bridal attendants she selected two Willamette coeds and a former student, Dorothy Hoar will be her maid of honor. Bridesmaids will be Doris Duffy and Virginia Pope.

A wedding reception will be held in the fireplace room of the church immediately after the ceremony. Several bridal showers have been held in the past two weeks in honor of the bride-elect.

Jacquith Music Co.

191 SOUTH HIGH
3 Blocks West of the Campus
on High and Ferry



Ramages
RECORDS

Mrs. McDermotts Capital Coffee Shop

Home-Made Pies
Sandwiches
Ice Cream
Rm. 9, State Capitol Bldg.

Pomeroy and Keene

COMPLETE
JEWELRY and OPTICAL
SERVICE
379-383 State St. Salem, Ore.

Grad Takes New Red Cross Post

Margaret Purvine, Willamette graduate, has recently been assigned as field director for the American Red Cross at the US naval hospital at Astoria.

Miss Purvine, who entered the Red Cross service last winter, stopped in Salem Thursday en route to Astoria. She is the daughter of Dr. Mary B. Purvine of Salem.

She has been residing in California since graduating from Willamette. She later received her master's degree from Mills college.

Music Students Play Wednesday

The second student recital of this semester will be held on Wednesday in the music auditorium. It will be a joint recital of three pianists, Catherine Schissler, Wilma Froman and John Simkins.

The schedule of recitals for this term as released by Dean Melvin Geist includes December 17, the Messiah chorus at Salem high school auditorium; January 30, Faith Idso, senior recital; February 13, formal evening recital of advanced students.

SOCIETY

BETTE BURKHART, Editor

Mixer, Dance to Highlight OFCL Weekend Program

Student leaders from college campuses throughout Oregon will be entertained on the campus this week-end. They will be guests of the Willamette student body and several social events have been planned in their honor.

Of general social interest will be the student mixer to be held tonight at the Alpha Chi Omega house. The affair will give the student delegates an opportunity to talk among themselves and meet Willamette students. The mixer will be held in the basement recreation room. A program of entertainment will be given by Willamette students. Refreshments will be served in the course of the evening.

Hours for the mixer will be from 8 until 10 p.m. The four sororities are in charge of the affair. Bette Burkhardt, Delta Phi president, is general chairman. Decorations will be in charge of Peggie Wiener of Alpha Chi Omega. Helen Craven of Pi Beta

Phi will secure the entertainment. Barbara Korell of Chi Omega will be in charge of refreshments. Pat Ann Sly from Delta Phi will be in charge of inviting hosts and hostesses to attend the mixer.

A banquet will be held tomorrow evening at Hull's cafe in honor of visiting leaders. Entertainment for this banquet will be furnished by Willamette students. Judge Arthur D. Hay, justice of Oregon state supreme court will be the guest speaker.

An informal student body dance will follow the basketball game tomorrow evening and is scheduled to begin at 9:30 p.m. The student leaders will be honor guests at this dance also.

Tschudy's Entertain At Fireside

Faculty firesides will begin Sunday with Dr. and Mrs. Robert H. Tschudy entertaining student guests at their home at 126 Garden Road, at 4 p.m. This is the first in the series of firesides when the faculty and students meet for a social afternoon.

Twelve students have been invited as guests at the fireside Sunday. They are Lois Robinson, Marian Carter, Mary Jane Fisher, Ilona Batson, Tom Ashford, Duane Drake, Day Morgan, Bob Reynolds, Theresa White, Alice Fay Daugherty, Winona Henderson and Ida Mattinen.

The following Sunday a fireside will be held at the home of Prof. and Mrs. John L. Knight. The next Sunday Prof. and Mrs. William Moellering will entertain guests.

Patronize Advertisers

SAX Schedule Pledge Dinner

Initiation of Sigma Alpha Chi pledges will be climaxed Saturday, December 16, with a formal date dinner in honor of the new members at Hull's cafe.

Vice president Tom Stern will act as toastmaster and is in charge of the arrangements for the occasion.

THE MEADOWS

Next to Ladd and Bush Bank

"It's the Coffee"

KAY'S

WOMEN'S WEAR

460 State

Salem

Students! Remember

Christmas Portrait
from Your Wallulah
Proofs

Have Your Picture Taken
Early

BISHOP STUDIOS

Official Wallulah Photographers
520 STATE STREET
No Appointment Necessary

Stevens

Diamonds — Watches — Jewelry

A BIRTHSTONE RING!

An Exquisite
Christmas Gift
for "Her!"



WE
ENGRAVE
GIFTS
IN OUR
STORE

Select a colorful birthstone
ring for "Her" Christmas...
always in excellent taste...
you are certain to make a
big "hit!"

Credit If
Desired

Stevens & Son
339 Court St.
Manufacturing Jewelers

Credit If
Desired



Ralph Dobbs

Dobbs Recital Entrances Students and Townspeople

By Yvonne Mozee

A capacity crowd was entranced Tuesday night by the concert of Ralph Dobbs, pianist, in the first of the 1944-45 Willamette faculty series. Dobbs opened his program with "Pan's Dancing Song", Bach-Rummel, a selection which was both a welcome change from a pianist's usual opening piece to "show 'em I can play Bach" and which contained the essence of the charm that pervaded the rest of the program.

Dobbs played at all times with undeniable good taste. The Chopin "Impromptu" was a gem of purity of touch and feeling; Debussy's "Cortège and Air of the Dance" was done with unusual understanding and a finesse possible only through amazing clarity and restraint.

Brilliance and technical capacity of the first order, combined again with true understanding of the music, were evidenced in other numbers, among them the

Liszt "Etude," "Capriccio" by Babin and an encore, "The Juggler" by Poch. Dobbs explained that the Liszt work was based on an earlier Etude and he interpolated this early work into his program. The Brahms "Variations and Fugue on a Theme by Handel" was brilliantly executed as was the Godowsky selection.

Dobbs shows complete mastery and poise at the piano combined with a warm stage presence. He was called back repeatedly by the enthusiastic audience and gave two encores.

YM Meeting Set For Tuesday

Mrs. Little, secretary of the Salem YWCA will be the guest speaker at a meeting of the campus YW called for Tuesday evening at 6:45 p. m. in Chresto cottage by president Devon Long. Dorothy Toomey will lead a concluding devotional service. Every Willamette coed is cordially invited to attend the meeting.

HARTMAN BROS.

JEWELERS

Gifts You Love to Give and Get

Corner State and Liberty Sts.



Breithaupt Florists

(Say Brite-hop)

447 Court St.

Phone 9195

Sorority Women Install Fall Pledges at Services

The results of the rushing period the weeks before Thanksgiving have been told by the campus sororities. Pledges have been duly installed and have attended their first house meetings of the year.

On Wednesday evening the new pledges of Pi Beta Phi were installed as the fall pledge class. Sue Zimmerman, pledge supervisor, will be in charge of future plans as to pledge activities for this group.

New pledges are Barbara Cutler, Charlotte Turville, Mary Laughlin, Frances Sopp, Jeanne Huffman, Patsy Schneider, Beverly Briggs, Gerry Schmoker, Gloria Harrington, Jean Russel, Bettie Olson, Kay Karnopp, Mary Ann Brady, Marilyn Hjort, Frances Foote, and Sarah Ann Ohling.

Pledge initiation at Alpha Chi

Town, Gown Hears Riggs

Dr. Lawrence A. Riggs, professor of education at Willamette university, was guest speaker at the Town and Gown meeting held last Tuesday, November 21, in the Carrier room of the First Methodist church. His subject was "Approaches to the Problem of Juvenile Delinquency."

Riggs was assistant professor of education at John Hopkins before he joined the Willamette university faculty this October. He is a graduate of the University of California and received his doctorate in education at Columbia university.

The Town and Gown organization in Salem links the campus with interested townspeople. Faculty wives are members of the organization. Mrs. Herbert E. Rahe and Mrs. James T. Brand presided at the tea urns at the Tuesday meeting.

Belles and Bell Bottoms

By Freud

One . . . two . . . three . . . flunk . . . these tests sure raise havoc with our college life . . . People studying all over Grand Central Station . . . (library as they say in Minneapolis) . . . Habby perched on one of the chandeliers . . . he just had to get away from it all . . . Barbara Goodman . . . cramming . . . those heaven blue optics should help the cause . . . Janie Mathers . . . looking calm about the whole thing . . . Nervous? . . . Who me? . . . Shaky is just the family name . . .

Then there's dapper Dan . . . who didn't help the noise situation any by dropping a ten-foot stack of heavy literature . . . (it was too heavy . . . that's why he dropped it . . . oh . . . no . . .) Red Carlson . . . surrounded as usual by women . . . Pretty smooth . . . Janet Blake and her perfection checked suit . . . knife-pleated skirt and blazer jacket . . . it looks so good on Jan . . . too bad J. D. isn't here to bask in reflected glory . . . Joyce Hanks . . . worn out

after the rugged biology exam . . . her ice blue coat and plaid bagdana cheers us up . . . so maybe it will help her, too . . .

Just received a communique from the ship . . . "Fire drill catches that old rascal P. M. Brown in a pair of long woolen tattle gray underwear . . . quite a change from last semester's chic old-fashioned nightie . . . (which . . . incidentally . . . was torn from his back by his unappreciative compatriots . . .)"

Oskie . . . wa . . . wa . . . better buy a program . . . can't tell a jerk from a jerk without a program . . . Virginia Case . . . definitely not a jerk with her Greek god haircut . . . Shades of Alpha Psi . . . Wally Olson and Jack Burnet on the campus . . . Wally was wearing a good-looking sun-tan model with interesting shoulder trim . . . two gold stripes . . . a wide and a narrow . . . being worn so much this year . . . Jack greeted us with a . . . "You remind us of something we left behind . . ." (he was stationed at a blimp base) . . . Sometimes you just can't win.

Mary East . . . her mind on her steadies . . . beg pardon . . . studies . . . wish we had her hair . . . don't be foolish . . . she'd be chilly without it . . . and we have more than we can manage now . . .

Omega installed new pledges including Rosemary Bell, Margaret Jane Emmons, Joyce Eleden, Billie June Grimm, LeVerne Harnsberger, Geraldine Nelson, Mary Parker, Joan Remington, Delphine Riney, Thelma Smith, Mary Carson, Marjorie Grenfell, Vera Lou Gamin, Jane Mathers, Dorothy Anderson, Pat Doolittle, Carol Hermann, Betty Jean Tucker, Betty Dutton, Evelyn Jory, and Barbara Hammond.

Pledges of Chi Omicron initiated were Bettyann Boettcher, Barbara Crawford, Evangeline McKinley, Phyllis Ryan, Betty Staab, Pat Waters, Arline Bochi, Pat Miller, Jean Robinson, Harriet Stewart, Pat Wetstein, Dorothy Boyd, Grace Carsh, Jo Fleetwood, Barbara McDonald, Juanita Moe, Edna Roop, Dorothy Modrow, Joan Newman, Wyline Walker, and Betty Sievers.

New pledges of Delta Phi who were installed are Ruth Bain, Jeanne DeMytt, Margaret Moritz, Carolyn Cooper, Georgia Dussin, Corrine Engdahl, Pat Gillilan, Betsy Jean Holman, Edith Irvine, Peggy Johnson, Eileen Lytle, Lois Messing, Dorothy Deal, Joyce Hanks, Barbara Hobbs, Chaire Purvis and Elizabeth Zimmerman.

Founders Honored By Mu Phi

Founders' Day was celebrated by members of the local chapter of Nu Phi Epsilon, national professional music sorority, on Monday evening, November 20, when Louise Wrisley, president of the campus chapter, entertained members with a dessert supper at her home.

Interesting letters from alumnae were read and plans for the coming year were discussed. The members have been asked to present a chapel program at the Oregon state school for the blind but no definite plans have been made as yet.

Blue Key Initiates Begin Activities

Pledges of Blue Key will start their new activities assisting as guides at the opening of the OFCL convention today. The group of six neophytes were honored at a date dinner at the Golden Pheasant last Friday.

On January 19, the organization will hold a Gridiron banquet to be attended by faculty and Blue Key members when no feelings will be spared in a ribbing session.

Honor guests at the Friday dinner were Dean and Mrs. Daniel H. Schulze. Pledges and their dates were Joan Remington, Tom Murphy, Helen Craven, Chuck Larkin, Betty Randall, Mary Brown, Leona Tinglested, Bill Stortz, Carolyn Brady, Jerry Wolfsehr, Frances Sopp, Bud Davis. Members and their dates were Janice Patterson, Bill Cate, Donna Shafer, Charles Strong, Mary Laughlin, Rich Wicks, Dorothy Robinson, Stan Boyd.

Lt. Cornelia Hulst
(Statesman cut)

WAC Grad Visits Salem On Leave

First Lt. Cornelia Hulst of the women's army corps has been a visitor at her Salem home this week. A Willamette graduate with the class of '41, Lt. Hulst is now stationed at Wichita Falls, Texas, where she is in charge of recruiting activities.

Lt. Hulst has the distinction of being the first Salem woman to enlist in the women's branch of the armed services, having taken her oath in July, 1942. She received her basic training at Fort Des Moines and served as librarian there before her nomination to officer candidate school at that post. She received her commission in February, 1943, and has been engaged in recruiting since that date.

Lt. Hulst expressed delight at her sister Jeannette's recent enlistment in the WAC.

Burright's Cleaners & Dyers

"WE SPECIALIZE IN CLEANING NAVY UNIFORMS"

On Corner of Ferry & Church
198 South Church



Grave's School of Dancing

Corner Liberty-Ferry St.
Salem

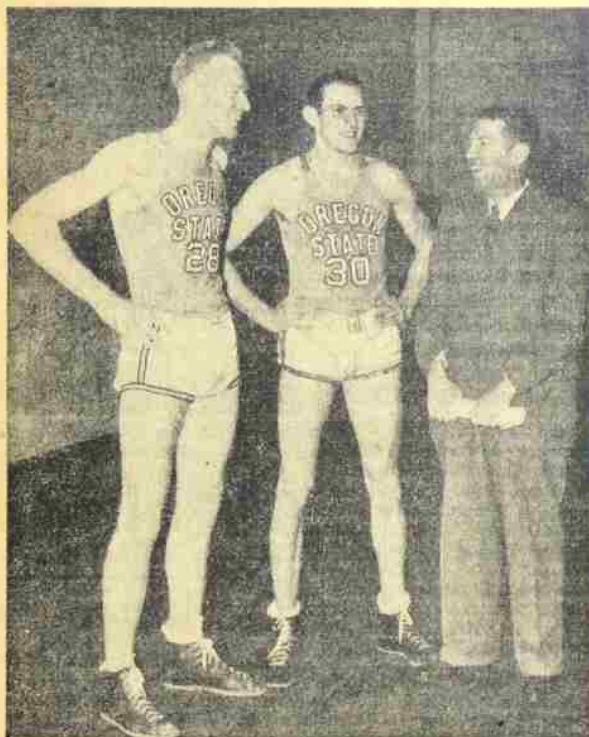
Join our group now, if you want to learn to dance before Xmas. Final enrollment and last class starting Tuesday, December 5th, 8 p.m. We teach you to dance in six easy lessons. If you can walk, we can teach you to dance.

HEIDER'S

Record Radio Service

428 Court St.

Salem, Oregon



Pictured above are three potent reasons for the twin defeats of the Bearcats at the hands of the Oregon State Beavers last weekend: At left is 6 foot, 6 inch Ted Henningsen and at his right 6 foot, 4 inch Dick Strait who with their mentor Slaty Gill are pointing to the return series with the Bearcats next weekend.

Willamette Drops Series to Oregon State; Goodman, Zauft Pace Cats' Second Game

Displaying their customary tight zone defense and amazing accuracy on long shots, the Oregon State Beavers decided the Bearcats 43-30 at Corvallis Friday night.

With veterans Puddy and Simms swishing the hemp from midcourt and the tall OSC defense battling down many 'Cat shots the Beavers were never in much danger, although the Willamettes looked good at times.

Cutting an early Beaver lead, Willamette at one time crept up to within one point, mainly by outspeeding the Beavers. But Puddy and Simms began connecting with long shots and built up a 27-18 lead by halftime.

The second half was spent preventing the shorter 'Cats from getting many close shots. With the Gillmen consistently hitting with their long shots, Willamette could not close the gap.

Puddy, who scored 16 points for the winners, was high point man for the evening while Paul Stofft and Kenny Gilpen starred for the 'Cats.

Starting off with an early lead and hanging on to it for most of the game, the vastly improved Bearcats threw a real scare into the OSC cagers in a return billing on the WU floor Saturday

night. The 'Cats lost their lead in the final minutes, however and were edged out 36-30.

The Willamettes were faster and scrappier than the Beavers and completely outplayed them throughout the first half. Although it took the Beavers nine minutes to make their first field goal, the Gillmen began pulling up slowly and were behind only 16-18 at the half. A long howitzer by Marv Goodman in the closing seconds of the first half gave Willamette the two-point half-time lead.

Although much cooler on their shooting in the second period, the 'Cats managed to stay ahead for the first ten minutes. However, the Beavers began connecting on long shots with deadly accuracy during the last five minutes while their defense held Willamette to three points during that time. The game thus ended 36-30.

Although losing, the Trottermen played their best ball of the season. Goodman looked especially good, scoring 12 points, to tie the Beavers' McGrath for top scoring honors.

Willamette (30) S Fc Fk Ft Pk Tp
Tate, f 16 2 1 5 3
Ward, f 3 0 1 1 1
Stofft, c 4 1 1 2 3

Zauft, g 5 1 4 2 8
Goodman, g 13 3 8 2 13
Odegard, f 6 0 0 0 0
Gray, f 0 0 0 0 0
Sanderson, c 0 0 0 0 0
Zeller, g 3 1 0 1 2
Gilpen, g 3 0 1 0 1
Totals 47 8 14 12 36

OREGON STATE (43)
Henningsen, f 3 0 2 4 2
McGrath, f 14 5 2 2 12
Puddy, c 12 1 0 2 10
Simms, g 9 1 0 2 10
Sertic, f 4 2 1 1 3
Strait, c 2 1 2 1 5
West, g 4 0 2 1 2
Slagg, f 1 0 0 1 0
Totals 48 12 10 18 36

Free throws missed, Willamette 12—Tate, Ward, Stofft 2; Zauft 3, Goodman 4; OSC 5—Puddy 2, Simms, Sertic, Strait.

Shooting percentages: Willamette .70, OSC .271.

OREGON STATE (43) S Fc Fk Ft Pk Tp
Henningsen, f 3 0 2 4 2
Sertic, f 4 2 1 1 3
Puddy, c 12 1 0 2 10
McGrath, g 10 4 1 0 9
Simms, g 9 1 0 2 10
Strait, f 4 2 1 1 3
Slagg, f 1 0 0 1 0
Labhart, g 0 0 0 0 0
West, g 4 0 2 1 2
Moore, g 0 0 0 0 0
Totals 60 19 8 7 43

WILLAMETTE (30)
Tate, f 16 2 1 5 3
Odegard, f 6 0 0 0 0
Stofft, c 4 1 1 2 3
Goodman, g 12 3 8 2 13
Zauft, g 5 1 4 2 8
Zeller, f 3 1 0 1 2
Ward, f 3 0 1 1 1
Sanderson, c 0 0 0 0 0
Gilpen, g 3 0 1 0 1
Kielstad, g 0 0 0 0 0
Waldroff, f 0 0 0 0 0
Mayfield, c 0 0 0 0 0
Totals 39 13 4 9 30

Shooting percentages: Oregon State .316, Willamette .333.
Officials: Ralph Coleman and Doc Ordeman.

'Cats Gunning for High-Flying Ducks

'CAT CAGERS

By WOLFSEHR

"Marvelous Marv" Goodman stands six feet tall, tips the scales at 190 pounds and has been playing a bang-up game of basketball in every sense of the word so far this year. Marv played four years of the casaba sport for Coquille high and one year on the pre-war version of WU's freshman team. An outstanding player and a flashy end on this year's football team, Marv's Marv, the Coquille kid, has made himself one of the main cogs in the Bearcat basketball machine.

Marv also keeps a bag packed to be ready should he get the nod from the powers-that-be to participate in the East-West Shrine football game on New Year's Day. He is certainly a powerhouse of an end and they couldn't go wrong on placing him on the West's team.

His work here is the regular basic course and he'll be through at WU next July. So girls, if you want a date with Marv, that big, rugged man, don't wait too long.

Intramural Officials

The officials of the intramural basketball games for the coming week are:

Monday: referee, Zauft; umpire, McIver, scorer, Mantle; timekeeper, Hauser.

Tuesday: referee, Ludwig; umpire, Anderson, W. H.; scorer, Rowe; timekeeper, Diskerson.

Wednesday: referee, Ward; umpire, Olson, R. D.; scorer, Gatewood; timekeeper, Graw.

Thursday, referee, McGinnity; umpire, Edwards; scorer, Hauser; timekeeper, Elvrum.

SPORTS

STAN BOYD, Editor

Varsity Scorers

	FG	FT	PF	TP			
Tate	17	2	2	38	Odegard	2	7
Goodman	10	14	7	34	Waldroff	2	1
Stofft	12	4	7	28	Sanderson	1	2
Zauft	7	5	6	19	Mayfield	1	2
Gilpin	7	3	3	17	Jensen	1	2
Zeller	6	3	5	15	Total		184
Ward	6	1	1	13	Tate average per game, 7.2		
					Goodman average per game, 6.8		

Salem High Basketeers Tip Baby Bearcats in Thriller

In their first encounter of the current season, the Baby Bearcat squad went down fighting at the hands of Salem Hi's Vikings, 22-20. The Wednesday night tussle saw a lot of spirit though a lot of rough spots as the lead changed hands three times during the course of the game. Dean Thomas, Bill Nolan and John Nixon were the big buns for the Cubs, while Bellinger, Boardman and Lowe contributed for the winners.

With the score 9-4 against them at halftime, the revitalized Frajolamen hit the hemp constantly to build up a three-point lead going into the fourth quarter. However, the Villamen pulled away and though holding a half-breadth lead, managed to walk off with the long end of the score.

Starting five for the Baby 'Cats were Nixon, Nolan, DuHadway, Thomas and McKay. All navy men, while on the relief

squad were Roberts, Staples, Shum, Anderson, Hill, Stovall and Schlewitz.

Scoring for WU

	FG	FT	TP
Nixon	1	2	4
Nolan	0	2	2
DuHadway	2	0	4
Thomas	3	0	6
McKay	1	0	2
Hill	1	0	2

Catmen Drop Opening Tilts To Duck Five

The university of Oregon Webfeet outscored the visiting Willamettes 55-35 at Eugene Friday, November 17, in the 'Cats first intercollegiate tilt of the season. Boasting a 6-foot, 7-inch center, Hayes, and several other biggies, the Ducks were able to overcome the fast but shorter Bearcats.

Taking on the Ducks in a return match on their home floor the following evening the Bearcats turned in a repeat loss with a consistent 20-point defeat, 69-49.

The two clubs traveled at full tilt throughout the fast, high-scoring contest. The Webfeet led at halftime 31-19. Both teams were definitely "hot" the second half which saw the Ducks score 38 points and Willamette 30.

Wilkins and Hamilton were high for Oregon with 16 and 14 points respectively and Stofft was high for Willamette with 10.

Willamette showed definite improvement but had the hard luck to run into an exceptionally hot Duck quint.

Trottermen Play Here Saturday

Willamette's defeat-laden basketekers take to the courts again this weekend for their second home-and-away series with the University of Oregon. Having been forced to yield both games of the first series to the towering Ducks, the Trotter 'Cats will migrate to Eugene this afternoon to face the U of O men on their own court and both teams will appear again tomorrow evening here at the university gym. The game will get under way at 8 p.m.

Although the Cardinal quintet has been dropping some close and some not-so-close games they still have displayed definite possibilities and flashes of abilities together with considerable spirit but have been paying heavily for a lack of height and sureness. However, by an improvement of shooting and an increase of speed, Trotter hopes to whittle down the Duck's margin of win, and better still, to win the series.

Starting five for WU will be Goodman and Zauft at guards, Tate and Ward at forwards and Stofft at center.

Women's Sports

Speaking of sports, have all you little girls been down to Bishop's to have your Wallulah picture taken? Yes, I can see you have.

We realize that many of you coeds have labs or are busy with other activities on Friday afternoons, but if a few more of you would like to come play basketball, we can start lining up some games. There are some WAC's from a nearby base who would

like to play a Willamette girl's team. Kind of hard with no team. If you don't want to come by yourself, bring some of your friends.

Or maybe you'd rather play badminton. You'll find the gym ready for you to play Friday fifth period. Even Dr. Monk with all his labs finds time every day to enjoy a game or two. It's a lot of fun and a good way to start conditioning yourself for Freshman Glee.

ATTENTION

Gym Equipment

HOWARD

MAPLE

Sporting Goods

372 State Street
Salem, Ore.

JEWELERS • OPTOMETRISTS

Brown's
LIBERTY AND COURT STS.

SALEM'S LEADING CREDIT JEWELERS & OPTICIANS

Dr. E. Boring Associate Optometrists Dr. R. A. Golden

BORING OPTICAL

383 Court Street — Salem, Oregon

No Charge for Examinations
No Charge for Adjustments
Credit Gladly

Phone 6596

STAN-DOFFS

By BOYD

Saturday's game with the Beavers showed that the 'Cats are beginning to find themselves. The game was good from the initial tipoff to the final gun, and for the majority of the time the Trottermen were the smoother of the two clubs in ball handling, speed and backboard play. That combination of Goodman and Zauft at guard, Stofft at center and Tate and Ward in the forward positions might have kept the Staters in check for the whole route if they had remained in. Marv Goodman and Paul Stofft had the OSC'ers outplayed under the bucket on defense as well as keeping that ball moving on offense for a good evening's work.

'Cat Basketballers Ask Support

With a good game such as that and a steadily improving ball club, the game tomorrow with the Ducks should draw a gymful of fans. The crowd last Saturday was fair considering Thanksgiving weekend, but not so terrible from the standpoint of a 600-student school. The local villagers made a better showing than the students and it is indeed gratifying that when a situation such as that arises, we are able to show them a good game such as that one Saturday. We've heard from several different men on the ball club that they would like to see a larger turnout and certainly there should be. The OFCL conference will be winging up this weekend with the game, followed by an ASWU dance. Everyone should turn out and watch us shoot down the high-flying Ducks.

Reduction in Athletic Fund

In the first council meeting of the semester, the council voted to cut the allotment to athletics from 27 percent to 20 percent of money received from the sale of student body cards. Also the 2 percent for women's athletics and the 2 percent intramurals were cut completely. At first glance it might appear that the student body is not in favor of these activities, but that is definitely not the case.

Should the students completely support, except for salary, a required course of the university such as women's athletics? The university should be paying for this and it certainly won't until the student council discontinues appropriating money for it. The same applies to intramurals and varsity athletics. All intramural equipment now used is marked "USN" and no new equipment is being purchased.

As to varsity athletics, the students aren't supposed to outfit a team and stand their travelling expenses. Enough should be taken out of the student body card to allow the holder free admission to athletic events. Twenty percent is certainly not too much, but 27 percent is. Here again, the university won't subsidize athletics as long as the student body continues to do so.

The money cut from these departments and others will be added to those activities which come directly back to the students such as the social fund, Collegian and Wallulah.

Bearcat Briefs

George Ottum, one of the big guns for A-1's co-champion basketball squad last year, has received his commission at Harvard after four months of supply school. George was married on Armistice day and has now returned to Harvard to complete his year course. Jim Frank and Fred Farrior were back on the campus last weekend en route to midshipman's school at Northwestern.

The frosh ball club played their first pre-season game Wednesday night with Salem high. The club when first forming showed great promise, both because of quantity and quality of the manpower turning out. Although the quality improves with practice the quantity has diminished somewhat. Many of the navy men have discovered that it's taking a little too much time away from the books to practice for the squad, as have many of the civilians. At practice the other night only about 14 greeted present Coach Tony Fraiola as compared with well over 20 when ex-frosh Coach Bob McGuire first issued the call.

Baby 'Cats' Schedule Full

After the City League in basketball gets under way, the frosh will certainly be kept hopping, what with a pretty complete schedule to meet. This is by way of inference that any of you frosh that still want to turn out for the Baby Bearcat five will probably get plenty of chances to play, if you can run down the floor without tripping over your own feet. Practices are from 1900 to 2030 Monday through Thursday.

Because of class commitments, etc., we haven't been able to cover many of the intramural tussles at the local barn, but did manage to drop in on the tail end of the C-1, A-1 game Monday night. Lanky Jack Jensen seemed to be the foam in A-1's beer, continually getting in their way to the tune of 15 points. That's 15 out of a team total of 21 which is nice shooting in any league—even this one. Jensen was out for the varsity squad and even got two points to his credit before dropping out in favor of studies.

The Doff

The doff this week goes to skyscraper Paul Stofft for his spirit and drive that has earned him a first string berth on the Trotter five.

C-2 and B-1 Boys Pace Intramurals

C-2 Routs B-2, 34-15

C-2 was really on the beam in its game with B-2 Tuesday. They snowed them under with the score of 34-15, the most lopsided score yet seen around these parts. It was teamwork, teamwork and more teamwork that trounced B-2 so badly. The score was top-heavy even at halftime when it stood at 12-4. From there on C-2 scored at will and ran the score up to the final 34 points.

Bartholomew was high-point man for C-2 and the game with five buckets and one free throw on the credit side of his ledger. Bannecker scored five points to lead the losing "B" men.

A-1 Takes B-2 in Lopsided Win

On Thursday, November 16, A-1 led off the second series of the basketball tourney by trouncing B-2, 19-9. B-2's defense was working to perfection in the first half and at the end of that period B-2 was behind only two points. From the half-time score of 8 to 6 A-1 ran their opponents to but three points while they themselves poured in 11. The basket-bagging band from A-1 were led by three score - crazy men, Wolfsehr, Smith and Work, with four points each. Doug McIver and "Peeping" Tom Ashford were busy scooping in three points apiece for their beloved B-2.

B-2 Tips C-1, 14-12

B-2 upset the dope sheet Monday night, November 20 by beating the vaunted C-1 quint 14-12. B-2 made one of those last minute rushes that thrills every sports fan from 6 to 60. They never by more than two points were behind all the way but never by more than two points as the halftime score of 8-6 proves. Their last minute stand gave them five points, enough to raise the score from 11-9, favor of C-1 to the final score.

High-scorer for the game was lithe sure-eyed Jack Jensen of C-1 with six points to his credit. For B-2 Shum and Bannecker stood out from the throng with four points each.

B-1 Defeats A-2 by 29-21 Count

B-1 seems to be the team to beat after its showing here the night of the 21st against A-2. The boys from A-2 were beaten by the highest score so far, 29-21. The winners went into the game a bit on the top-heavy side as far as the odds were concerned and they came up to all expectations. Menashe of B-1 took the high-scoring crown away from Jensen of C-2, by virtue of his four field goals and two free throws. Olson of A-2 was close behind with four field goals and one free throw. At halftime the score was B-1, 16, and A-2, 12. A-2 could never quite close this gap after that.

A-1 Loses to C-1, 21-19

C-1 won their first game of the tournament from A-1 Monday with the score of 21-19. Jensen proved to be the one-man team by potting seven field goals and one free throw. He won

back the top-scoring honors for a single game with his brilliant exhibition of basket shooting. At halftime the score was all tied up at 8 all and it stayed fairly even all the way through the rest of the game. Work, the captain of A-1's team, was high-point man for his team, with four points. Rathie was captain for C-1.

Mural Hoop Schedule

Monday, December 4, B-1 vs. C-1.
Tuesday, December 5, A-1 vs. A-2.
Wednesday, December 6, B-1 vs. B-2.
Thursday, December 7, C-1 vs. C-2.



MASTER Bread
Popular -- because it's Good!

SWIM

at the
"Y"

for physical fitness

The SPA

Students'
Friendly
Place
to
Meet



1288 STATE STREET

A Rochdale Co-operative Serving Salem and Vicinity

Patronize it and share in its earnings. More varieties of apples than anywhere else in Salem—Groceries—Fancy Work—Furniture—Shrubs—Potted Plants—Cut Flowers—Dressed Poultry, etc.

**The Pike
Ice Cream Store**

Frostys - Softies
Shakes - Sundae
16 Flavors 128 S. Liberty

Merrill D. Ohling

INSURANCE

Phone 9494

275 State St. Salem, Oregon

Cavern Board Investigates Possibilities of Fountain

Preliminary steps have been taken by the Cavern policy committee in the hopes of obtaining a complete fountain for the student establishment. If this transformation is at all possible, it will take place in the near future.

Infirmary Staff Ready To Treat Ills

The Willamette infirmary, newest addition to the university plant, at 165 South 15th street is now open under the direction of Mrs. Minnie Mortimer, school nurse. Dr. Chester Downs is the attending physician with Mrs. Leona Henderson, housemother, completing the staff.

Nearly all the necessary supplies have been received and complete facilities are available for 13 patients. The infirmary is for use of any civilian members of the student body. Any victims of contagious diseases are to be isolated and all serious cases taken to the local hospital.

Ailing navy students will continue to be cared for in the sick bay, located at Lausanne hall, by the hospital corpsmen and Capt. George W. Shepard, naval physician.

Rahe Issues Last Call for Speakers

With the first intercollegiate forensic competition of the fall semester set for next weekend at Pacific college in Newberg, Herbert E. Rahe, forensic coach issued a last call today for entries in the semester's activities to sign up with him before next Friday.

Buy Victory Bonds

For Quality Foods

State Street Market

In the Heart of Salem

Fresh Fish and Frozen Foods
Our Specialty

A Few Steps from the Capitol

1230 State Street

New Special Checking Account

- ★ No Minimum Balance Required
- ★ No Monthly Service Charge
- ★ Almost Any Amount Starts Account
- ★ Deposit Any Amount Any Time

Inquire at

Ladd & Bush
Salem Branch
of the
United States
National Bank
SALEM, OREGON
MEMBER FDIC

ure and will be equipped to serve a variety of sundaes, milkshakes, sodas and cokes.

Also on the anticipated improvements listed by Manager Geneva Brown is a higher counter which will accommodate more hungry Wallerites. The question of whether to banish the stools is still undecided as far as the remodeling is concerned.

Contrary to the statement previously made in the Collegian, hamburgers will not be served until the kitchen facilities are remodeled which will probably follow the fountain installation. A new sink, an electric burner and more ventilation will have to be installed before the burgers can be served.

Play Contest Entrants Must Contact Rahe

All prospective contestants in the one-act play contest announced Tuesday must contact Dr. Herbert E. Rahe, drama coach, of their intentions before Wednesday. All entries must be in a humorous vein and may be sponsored either by an individual or organization.

Busick to Head Frosh Class; Jory, Hjort, Parker Also Win

Bob Busick today is president of the freshman class after a unanimous victory in the class election this week. Jack Stein, also nominated, resigned, leaving Busick without opposition. The latter was previously elected temporary prexy.

A revote was necessary for the office of vice president. Evelyn Jory finally won out over Kay

Frosh to Make Up Psych Test Monday

Freshmen who failed to take a psychological exam at the beginning of either the summer or fall semester should report to room 21 in Eaton at 4:15 p. m. Monday.

A list of those who are to take the exam is posted on the registrar's bulletin board.

Salem Voters Decide Fate Of Gridiron

Fate of Willamette's proposed athletic field in Bush's pasture will not be known until February 9, 1945, when the matter will be put up to the voters of Salem. Decision to submit the issue to the electorate was made at the last regular meeting of the city council.

If the measure is passed by the voters, a \$175,000 bond issue will be sold to purchase the western 43 acres of Bush's pasture to be used as a city park. Of this land, seven acres will be deeded to Willamette for use as an athletic field.

Karnopp in the revote. Other candidates for the office were Mary Ann Brady, Frances Sopp and Larry Horton.

Pen-pusher this semester for the class of '48 is Marilyn Hjort, who takes the secretarial office after a victory over Marilee McFarlane and Ella Carson in the first election.

Mary Parker, the only nominee for the office of treasurer, will handle finances for the class after being elected unanimously.

The newly organized class is planning a freshman party for this month according to Prexy Bob Busick.

'Trolley Song' Tops Cavern Hit Parade

"The Trolley Song" jingles its way to the top of the Waller hit parade this week with 70 enthusiastic playings. Undaunted by the competition, "Redskin Rhumba" has shaken Cavern counters 68 times.

Other favorites are "In the Mood" with 67 supporters, "Dance with Dolly" at 50 and "Is You Is or Is You Ain't" at 44.

Blood Donor Quota Filled

Eleven Willamette students donated a pint of blood at the Red Cross donor center Tuesday and 11 more civilians are signed to make the trip to the First Methodist church on the coming Tuesday, according to Betty Randall, campus chairman.

Since Willamette's quota is 11 donors per week students wishing to sign up to donate blood should contact Miss Randall. No one is under obligation to go in the Willamette group, but it is to the university's credit that it be represented. Once a student signs to go he should be sure that he fulfills the appointment. Chapel excuses can be had by donors.

The donor system is handled under Willamette Red Cross unit auspices with Miss Randall as chairman.

Campus Red Cross Chairmen Named; Unit Activities Begin

Activities in the seven divisions of Red Cross work being undertaken by the newly formed campus unit were well underway today after the appointment of chairmen at an executive meeting conducted Tuesday by Chairman Jeanette Mack and her assistant, Virginia Barber.

Betty Randall will continue as chairman of the blood donor service; Janet Blake will head the nutrition course; home service will have Janice Patterson as chairman; Dorothy King heads nurses aide; Christmas box chairman is Lois Robinson; Lorah Kate Griffith will direct the water safety committee and

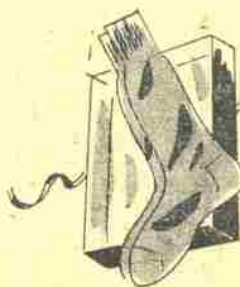
Pat Waters will handle publicity.

Later the unit chairmen hope to start classes in home service which will include a study of cases and histories in the nature of office work at the Salem Red Cross headquarters.

Monthly report meetings will be held in Christo cottage though the exact day as yet has not been decided upon.

With the Christmas season approaching, Christmas boxes sent to servicemen are to be filled and packed with the help of Junior Red Cross members, with Joan Remington as chairman, at the downtown headquarters of the Red Cross.

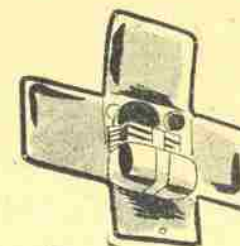
BISHOP'S



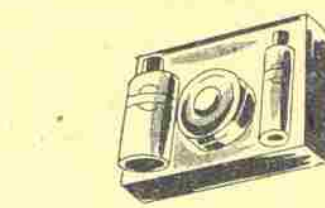
SMART
GIFTS
for
MEN



Choose his Gift from
Bishop's and
Know it's Right



Your Store for
Suggestions all
Men will
Appreciate



BISHOP'S

COON'S

"Top
Hat"



"Top
Hat"

Special Soft Ice Cream - Delicious Hamburgers
FOUNTAIN AND SHORT-ORDER SERVICE
Where Students Meet and Eat

1275 State Street — Salem, Oregon

QUALITY

Golden



Pheasant

248 North Liberty

Salem, Oregon