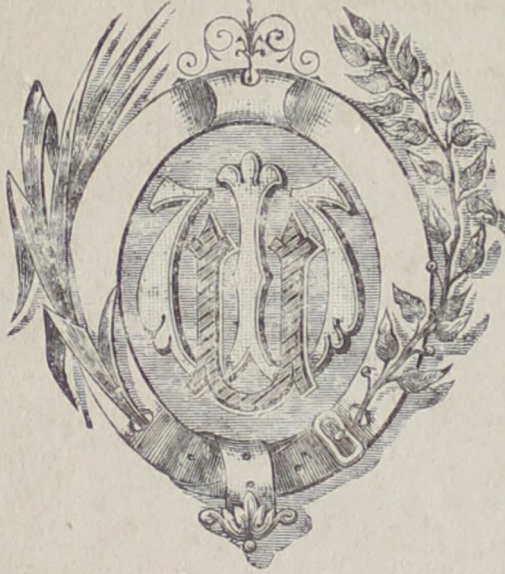


Duplicates

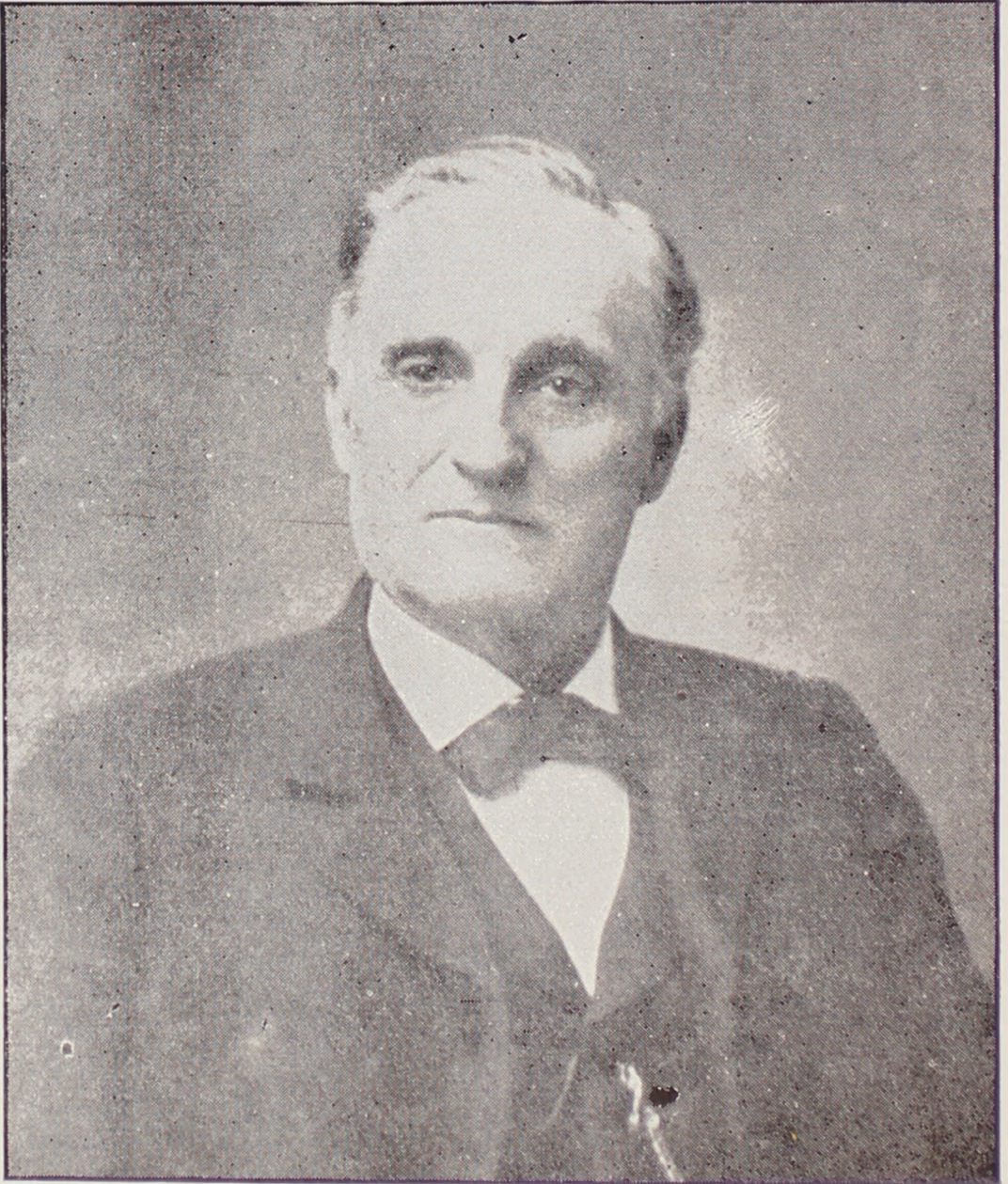
WILLAMETTE UNIVERSITY



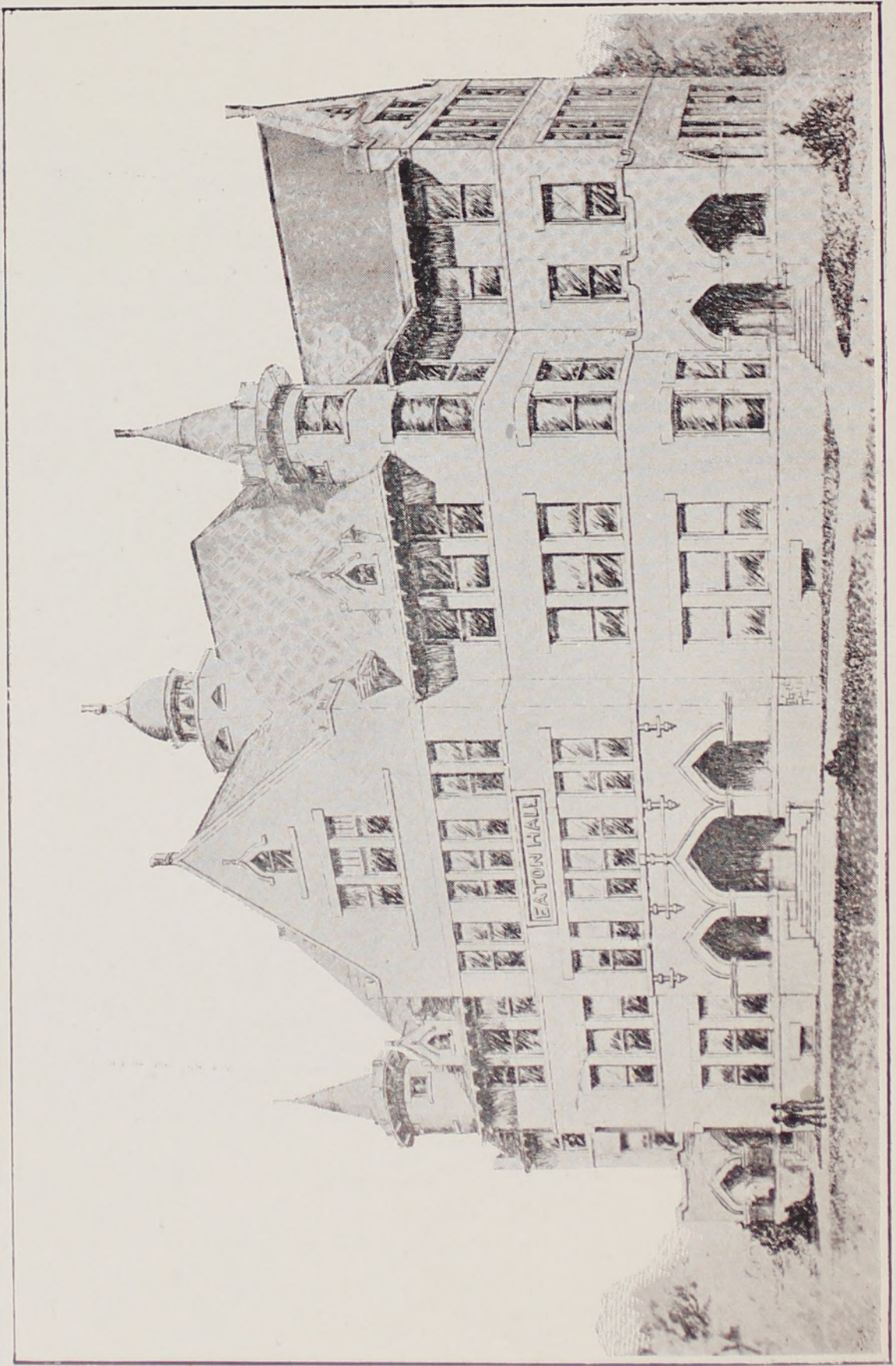
SIXTY-FIFTH YEAR

**1908
SALEM, OREGON**

Paul M. Duell



HON. A. E. EATON, Union, Oregon
Donor of Eaton Hall



Eaton Hall, to be built this Autumn

WILLAMETTE UNIVERSITY

BULLETIN OF INFORMATION

REGISTER - - 1907-1908

ANNOUNCEMENTS 1908-1909



OFFICE OF
WILLAMETTE UNIVERSITY
SALEM, OREGON

1908

SEPTEMBER							OCTOBER							NOVEMBER						
S	M	T	W	T	F	S	S	M	T	W	T	F	S	S	M	T	W	T	F	S
--	--	1	2	3	4	5	--	--	--	--	1	2	3	1	2	3	4	5	6	7
6	7	8	9	10	11	12	4	5	6	7	8	9	10	8	9	10	11	12	13	14
13	14	15	16	17	18	19	11	12	13	14	15	16	17	15	16	17	18	19	20	21
20	21	22	23	24	25	26	18	19	20	21	22	23	24	22	23	24	25	26	27	28
27	28	29	30				25	26	27	28	29	30	31	29	30	--	--	--	--	--
DECEMBER																				
S	M	T	W	T	F	S														
--	--	1	2	3	4	5														
6	7	8	9	10	11	12														
13	14	15	16	17	18	19														
20	21	22	23	24	25	26														
27	28	29	30	31	--	--														

1909

JANUARY							FEBRUARY							MARCH						
S	M	T	W	T	F	S	S	M	T	W	T	F	S	S	M	T	W	T	F	S
--	--	--	--	--	1	2	--	1	2	3	4	5	6	--	1	2	3	4	5	6
3	4	5	6	7	8	9	7	8	9	10	11	12	13	7	8	9	10	11	12	13
10	11	12	13	14	15	16	14	15	16	17	18	19	20	14	15	16	17	18	19	20
17	18	19	20	21	22	23	21	22	23	24	25	26	27	21	22	23	24	25	26	27
24	25	26	27	28	29	30	28	--	--	--	--	--	--	28	29	30	31	--	--	--
31	--	--	--	--	--	--	--	--	--	--	--	--	--	--	--	--	--	--	--	--
APRIL							MAY							JUNE						
S	M	T	W	T	F	S	S	M	T	W	T	F	S	S	M	T	W	T	F	S
--	--	--	--	1	2	3	--	--	--	--	--	1	--	--	1	2	3	4	5	
4	5	6	7	8	9	10	2	3	4	5	6	7	8	6	7	8	9	10	11	12
11	12	13	14	15	16	17	9	10	11	12	13	14	15	13	14	15	16	17	18	19
18	19	20	21	22	23	24	16	17	18	19	20	21	22	20	21	22	23	24	25	26
25	26	27	28	29	30	--	23	24	25	26	27	28	29	27	28	29	30	--	--	--
--	--	--	--	--	--	--	30	31	--	--	--	--	--	--	--	--	--	--	--	--

Calendar

1907.

September 16	College of Medicine opens.
September 24	College of Liberal Arts opens. College of Oratory opens. College of Music opens. Academy, School of Art, Normal School open.
September 30	College of Theology opens. College of Law opens.
November 28-29	Thanksgiving Recess.
December 21	Christmas Vacation begins.

1908.

January 6	School work resumed.
January 30	Day of Prayer for Colleges.
February 5-7	Examinations of First Semester.
February 10	Class-work of Second Semester begins.
March 28-April 4	Spring Vacation.
April 29	Commencement College of Medicine. Address, Ex-United States Senator John F. Gearin.
May 21	Commencement College of Law. Address, Hon. Julius C. Moreland.
June 8	Commencement College of Oratory. Address, Henry Lawrence Southwick.
June 12	Third Annual Inter-Society Contest.
June 14	10:30 a. m. Baccalaureate Sermon, The Rev. M. H. Marvin, D. D. 3 p. m. Farewell Meeting of Christian Associ- ations. President Homan. 8 p. m. Sermon to Christian Associations, President Homan.
June 15	3:30 p. m. Reception to President and Mrs. Ho- man at Lausanne Hall. 8 p. m. Graduating Exercises College of Music.
June 16	9 a. m. Annual Meeting Board of Trustees. 8 p. m. Graduating Exercises of Oregon Insti- tute and Normal School. Address, Rev. J. D. Gillilan.

June 17	Business Meeting Alumni Association. 6 p. m. Banquet Alumni Association. Address, Professor Francis Grubbs, '63.
June 18	2 p. m. Breaking of Ground for Eaton Hall. Addresses by Hon. A. E. Eaton and others. 8 p. m. Commencement of College of Liberal Arts. Addresses by Hon. A. E. Eaton and Rev. Phillip Bauer.
September 22	Summer Vacation. College of Liberal Arts opens. College of Oratory opens. College of Music opens. Academy opens.
September 29	College of Theology opens.
October 5	College of Medicine opens. College of Law opens.
November 26-27	Thanksgiving Recess.
December 19	Christmas Vacation begins.

1909.

January 4	School work resumed.
January 28	Day of Prayer for Colleges.
February 3-5	Examinations of First Semester.
February 8	Second Semester begins.
March 26-April 2	Spring Vacation.
June 12-16	Commencement week.

Board of Trustees

OFFICERS.

M. B. RANKIN, <i>President</i>	Portland
T. S. MCDANIEL, <i>Vice President</i>	Portland
A. N. BUSH, <i>Treasurer</i>	Salem
I. H. VAN WINKLE, <i>Secretary</i>	Salem

ELECTED BY THE BOARD.

		<i>Term Expires.</i>
T. S. MCDANIEL.....	Portland	1909
J. O. GOLTRA.....	Portland	1909
A. N. BUSH.....	Salem	1909
HON. C. B. MOORES.....	Salem	1911
G. F. JOHNSON.....	Portland	1911
HON. C. P. BISHOP.....	Portland	1910
A. M. SMITH.....	Portland	1910
R. J. GINN.....	Portland	1910
REV. FLETCHER HOMAN, S. T. B., D. D.....	Salem	<i>Ex-officio</i>

ELECTED BY THE ALUMNI.

I. H. VAN WINKLE, A. B., '98, LL. B., '01.....	Salem	1909
JOHN W. REYNOLDS, A. M., LL. B., '95.....	Salem	1908
A. N. MOORES, A. B., '76.....	Salem	1910

ELECTED BY THE OREGON CONFERENCE.

REV. J. W. MCDUGALL.....	Portland	1909
REV. B. F. ROWLAND, D. D.....	Portland	1909
M. B. RANKIN.....	Portland	1909
REV. W. B. HOLLINGSHEAD, D. D.....	Portland	1908
REV. M. C. WIRE, D. D.....	Eugene	1908
REV. L. F. BELKNAP.....	Hillsboro	1908
HON. R. A. BOOTH.....	Eugene	1910
HON. J. ISAAC JONES.....	Cottage Grove	1910
A. N. MOORES.....	Salem	1910
A. A. LEE.....	Salem	1910
GEN. W. H. ODELL.....	Salem	<i>Emeritus</i>

ELECTED BY THE COLUMBIA RIVER CONFERENCE.

REV. M. H. MARVIN, D. D.	Pullman, Washington
REV. WALTON SKIPWORTH	The Dalles, Oregon
REV. C. E. GIBSON, D. D.	Spokane, Washington
REV. ROBERT WARNER, D. D.	Pendleton, Oregon
REV. HENRY I. RASMUS, D. D.	Spokane, Washington
REV. A. H. HENRY	North Yakima, Washington

ELECTED BY THE IDAHO CONFERENCE.

HON. A. E. EATON	Union, Oregon	1910
REV. W. W. VAN DUSEN, D. D.	Idaho Falls, Idaho	1908
REV. J. D. GILLILAN, D. D.	LaGrande, Oregon	1909
MR. GEO. A. CLEAVER	LaGrande, Oregon	1909
MR. RALPH N. OAKES	Caldwell, Idaho	1908
REV. G. G. HALEY	Blackfoot, Idaho	1910

ENDOWMENT TRUSTEES.

SCOTT BOZORTH	Portland
B. LEE PAGET	Portland
A. M. SMITH	Portland

OFFICIAL VISITORS OF THE STATE OF OREGON TO THE UNIVERSITY.

(University Charter, Section 5.)

HON. G. E. CHAMBERLAIN	<i>Governor of Oregon</i>
HON. R. S. BEAN	<i>Chief Justice Supreme Court</i>
HON. ROBT. EAKIN	<i>Justice Supreme Court</i>
HON. F. A. MOORE	<i>Justice Supreme Court</i>
HON. H. M. HAINES	<i>President of the Senate</i>
HON. FRANK DAVEY	<i>Speaker House of Representatives</i>

CONFERENCE VISITORS.

Oregon Conference.

REV. W. H. SELLECK	Salem
REV. D. H. TRIMBLE	Eugene
HON. H. L. GILKEY	Grants Pass

Columbia River Conference.

REV. GABRIEL SYKES, D. D.	REV. U. F. HAWK, D. D.
REV. HENRY BROWN, D. D.	

STANDING COMMITTEES OF BOARD OF TRUSTEES.

Executive Committee.—PRESIDENT FLETCHER HOMAN, M. B. RANKIN, I. H. VAN WINKLE, A. A. LEE, A. N. MOORES.

Auditing Committee.—A. N. MOORES, I. H. VAN WINKLE, A. A. LEE.

Finance Committee.—PRESIDENT HOMAN, M. B. RANKIN, R. A. BOOTH, R. J. GINN, G. F. JOHNSON.

Faculty Committee.—PRESIDENT HOMAN, M. B. RANKIN, R. A. BOOTH, REV. M. C. WIRE, D. D., A. M. SMITH, W. C. HAWLEY.

OFFICERS OF WILLAMETTE ENDOWMENT ASSOCIATION.

PHILIP BUEHNER	<i>President</i>
C. P. BISHOP.....	<i>First Vice President</i>
R. J. GINN.....	<i>Second Vice President</i>
T. S. MCDANIEL.....	<i>Secretary and Treasurer</i>
E. S. COLLINS.....	<i>Director</i>
WM. D. FENTON.....	<i>Director</i>
J. I. JONES.....	<i>Director</i>
A. M. SMITH.....	<i>Director</i>
SAMUEL CONNELL	<i>Director</i>
H. E. NEAL.....	<i>Director</i>
R. A. BOOTH.....	<i>Director</i>

Faculty

FLETCHER HOMAN, A. M., S. T. B., D. D.,
President of the University.

College of Liberal Arts

*-----

Professor of Philosophy.

H. C. TILLMAN, B. S.,
Professor of Physics and Chemistry (1906-1908.)

H. J. CLEMENTS, M. S., M. D.,
Professor of Biology (1907-1908.)

W. E. KIRK, A. M.,
Professor of English Language and Literature.
GAYLARD H. PATTERSON, A. M., S. T. B., Ph. D.,
Professor of History and Economics.

J. T. MATTHEWS, M. A.,
Professor of Mathematics.

EDWIN SHERWOOD, A. M., B. D.,
Professor of Latin and Greek.

LOUIS A. BACH, A. M.,
Professor of Modern Languages.

MARY E. REYNOLDS, B. S.,
Professor of Pedagogy.

SARA BROWN SAVAGE, O. M.,
Dean of the College of Oratory and Professor of Oratory and
Dramatic Expression.

RAY D. FISHER, Ph. B.,
Librarian and Assistant Professor of History and Economics.

ETHEL ROYAL, A. B.,
Assistant Professor of English and Latin (1907-1908.)

ARTHUR J. PRIDEAUX, A. M.,
Professor of School of Commerce (1906-1908.)
Librarian and Registrar.

VEVA BARTLETT, A. B.,
Matron Lausanne Hall.

D. B. CROMWELL,
Physical Director.

*Position will be filled before school opens.

College of Music

R. A. HERITAGE, Mus. Doc.,
Dean and Professor of Voice (1906-1908.)

ARTHUR VON JESSEN,
Professor of Piano and Organ (1906-1908.)

LE ROY GESNER,
Professor of Violin (1906-1908.)

College of Oratory

SARA BROWN SAVAGE, O. M.,
Dean and Professor of Oratory and Dramatic Expression.

MAY BELLE ADAMS,
Assistant in College of Oratory.

College of Theology

HENRY D. KIMBALL, D. D., LL. D.,
Dean and Professor of Systematic and Practical Theology.

ROBERT H. WASHBURNE, A. M., B. D., Ph. D., S. T. D.,
Professor of Hebrew, Old Testament Exegesis and Church
History.

EDWIN SHERWOOD, A. M., B. D.,
Professor of New Testament Greek and Exegesis.

GAYLARD H. PATTERSON, A. M., S. T. B., Ph. D.,
Professor of Sociology.

REV. FRANK A. COLONY,
Instructor in Pastoral Theology.

MR. CHARLES L. CREESY,
Librarian.

College of Medicine

WILLIAM HENRY BYRD, M. D.,
Professor of Surgery, Surgeon to Salem Hospital, and Dean
of Faculty.

LEWIS FRANKLIN GRIFFITH, M. D.,
Professor of Diseases of Women.

JOHN N. SMITH, M. D.,
Professor of Theory and Practice of Medicine.

WALTER T. WILLIAMSON, M. D.,
Professor of Mental and Nervous Diseases.

JAMES A. RICHARDSON, M. D.,
Professor of Pediatrics.

WILLIAM CARLTON SMITH, A. B., M. D.,
Professor of Anatomy.

H. J. CLEMENTS, M. D.,
Professor of Bacteriology and Pathology.

AUGUSTUS E. TAMIESIE, M. D.,
Professor of Materia Medica and Therapeutics.

ANGUS B. GILLIS, M. D.,
Professor of Ophthalmology, Rhinology, Otology, and Laryng-
ology; Ophthalmologist to Salem Hospital.

FRANK ELDON SMITH,
Professor of Obstetrics.

CHARLES OLIVER BOYER, A. B., B. S.,
Professor of Chemistry and Toxicology.

E. E. FISHER, M. D.,
Professor of Genito-Urinary Diseases and Syphilis.

P. H. D'ARCY, A. B.,
Lecturer on Medical Jurisprudence.

H. J. CLEMENTS, M. D.,
Professor Embryology and Histology.

JOHN D. SHAW, M. D.,
Professor of Physical Diagnosis and Diseases of the Chest.

ORLA B. MILES, M. D.,
Professor of Physiology.

ROY D. BYRD, M. D.,
Demonstrator of Anatomy.

W. H. COOLEY, Ph. G.,
Professor of Pharmacy.

College of Law

C. L. MCNARY, LL. B.,
Dean and Professor Common Law, Real Property, and Code.

GEO. G. BINGHAM, LL. B.,
Professor of Evidence and Code Pleadings.

JOHN BAYNE, LL. B.,
Professor of Common Law Pleadings, Equity and Practice Work.

I. H. VAN WINKLE, A. B., LL. B.,
Professor of Torts and Constitutional Law.

W. E. KEYES, LL. B.,
Professor of Negotiable Instruments and Criminal Law.

J. G. HELTZEL, B. S., LL. B.,
Professor of Contracts and Sales.

Administrative Officers of the Colleges and Schools

FLETCHER HOMAN, A. M., S. T. B., D. D.,
President of the University.

C. O. BOYER, A. B., B. S.,
Dean of College of Liberal Arts (1907-1908.)

SARA BROWN SAVAGE, O. M.,
Dean of College of Oratory.

R. A. HERITAGE, Mus. Doc.,
Dean of College of Music (1906-1908.)

W. H. BYRD, M. D.,
Dean of College of Medicine.

C. L. MCNARY, LL. B.,
Dean of College of Law.

HENRY D. KIMBALL, D. D.,
Dean of College of Theology.

General Information

Historical

1834.

Jason Lee opened an Indian Mission School in a log cabin ten miles below the present site of Salem.

1842.

The Indian Mission School was moved to what is now the campus of Willamette University and was conducted in a \$10,000 frame house.

The white settlers of the Willamette Valley planned a school for their own children, elected a board of trustees, subscribed funds, decided to call the institution The Oregon Institute, resolved that it should grow into a college, and began to look about for a suitable location.

1844.

The Trustees of the Oregon Institute bought the Indian Mission School property and it was immediately opened as a school for white children.

1853.

By act of the Legislative Assembly of the Territory of Oregon, Willamette University was established with the Oregon Institute as a preparatory school.

1859.

The first class was graduated from the College of Liberal Arts.

1864.

The building at present occupied by the College of Liberal Arts was begun. At the laying of the cornerstone Governor Gibbs delivered the address. The Greek cross form of the building was suggested by Bishop Janes at his last visit.

1867.

April.—The College of Medicine, which had been giving instruction for two years, was formally organized.

July.—The first honorary degrees conferred by the University were given. Hon. Geo. H. Williams, U. S. Senator; Hon. M. P.

Deady, U. S. District Judge, and Hon. A. C. Gibbs, ex-Governor of Oregon, received the degree of LL. D.

1884.

The College of Law was established.

1905.

The fine brick building occupied by the College of Medicine was erected. This building was the gift of the citizens of Salem.

1906.

The elegant building for the use of the College of Theology was erected. Mrs. Luella D. Kimball, wife of Rev. H. D. Kimball, Dean of the College of Theology, presented this structure to the University.

1907.

A large frame building was placed upon the campus for the use of the College of Music. W. W. Brown, of Paulina, Oregon, presented this building to the University.

1908.

Hon. A. E. Eaton, of Union, Oregon, is to erect a magnificent College of Liberal Arts Building on the campus during the autumn, at a cost of \$50,000. Mr. Eaton alone pays the total cost of this building, believing that the Christian University is the best place to invest money for the kingdom of God. This building will be one hundred fifty feet long and three stories high above the basement, and will front the State Capitol.

Willamette has been richly honored in the success and high positions attained by her children.

Among the thousands of former students and the five hundred graduates from her different departments are numbered preachers, missionaries, teachers, professors, congressmen, judges of County Courts, of Superior Courts, of Circuit Courts, of Supreme Courts, of United States District Courts, editors, authors, explorers, municipal officers, physicians, United States Senators, Governors, United States Attorneys, Consuls, Secretaries of State, United States Surveyors General, President of State Senate, Speakers of House of Representatives, and scores of prominent and successful citizens.

Location

The location of Willamette University is ideal. Salem is the capital city of Oregon with about 15,000 inhabitants. It is on the main line of the Southern Pacific railroad, fifty miles south

of Portland, Oregon, and is easily reached. The city is rich in historic association, filled with good homes, beautiful in landscape, and made up of intelligent citizens.

The legislature, the higher courts, the public libraries, the numerous resident officials of county and state, the eminent traveling lecturers and musicians, the manufactories and commerce afford students all necessary facilities and opportunities for varied experiences and acquaintance with practical affairs.

Salem is pre-eminently a city of schools. Counting Willamette University as one, there are ten schools, academies and colleges within the boundaries of Salem and near its borders.

The University is located on high ground near the center of the city, convenient to postoffice and depot and just across the street from the Capitol. The width of the streets and the size of the campus insure against distracting sights and noises. The health conditions are such that cases of serious illness among either the Faculty or students rarely occur.

Best of all, Salem is a town of high moral and religious tone, and possessed of a rich inheritance of traditions and memories of the noble pioneers, who founded at the same time the city and the University.

Buildings

The present College of Liberal Arts Building is a large brick and stone structure, five stories high. It contains about thirty rooms, used for offices, chapel, laboratories, recitations, library, museum, and rooms for the literary societies and Christian associations.

The Medical Building is a three-story brick and stone building with ample accommodations and equipment for carrying on the Medical School, and is just opposite the Capitol grounds.

The College of Theology Building was erected by Mrs. Luella D. Kimball and occupies a delightful situation just across the street from the Capitol grounds. It is nicely equipped for conducting the work of the Theological School.

The Music College is a large frame building well arranged for conducting the School of Music. It was the gift of Mr. W. W. Brown, of Paulina, Oregon, and meets the needs of the University in every respect.

The Ladies' Hall is a commodious frame building of four stories, with present accommodations for twenty-five to thirty women. It is comfortably furnished throughout and affords a congenial home.

The Gymnasium is a large frame building with ample room for the needs of the students. It is furnished throughout with

modern equipment. It is one of the best gymnasiums on the Pacific Coast and is a source of great enjoyment and profit to the students.

The new Eaton Hall will be the finest, most beautiful, and most useful building on the campus. In the front of this catalogue is to be seen a picture of the building. The gift of this building is the crowning deed of generosity and far-seeing statesmanship in the history of Willamette University.

In addition to buildings, Willamette Athletic Field is one of the best to be found. It is well fenced, contiguous to the gymnasium, has a quarter-mile running track, a fine baseball diamond and football field, and a large grandstand. It is complete in every way.

Government

The University aims to maintain a high standard of conduct for the good of all its students.

In the internal management of the affairs of the institution appeal is always to the reason and conscience of all concerned. The students are recognized as having moral sense and ideas of propriety. Principles of honor are inculcated. Christian courtesy is encouraged. The regulations are such as everywhere govern the conduct of ladies and gentlemen of high ideals. The atmosphere of Willamette University is not congenial to any other class of students.

Matriculation presupposes a willingness to conform to the rules and usages of the University.

Religious Life

Membership in any church whatever is not required. Students of any and every religious belief are admitted to the University and in nowise is there any discrimination.

The University is devoted to Christian culture, but is not sectarian.

Devotional exercises are observed each school day at 9 a. m. in the chapel.

Special religious meetings are conducted during the year at the discretion of the President and Faculty. Christian students hold noon-day prayer meetings, and separate meetings, one for young men and one for young women, every Wednesday evening from 7 to 7:45.

The Salem churches take a special interest in the students, both in their regular services and in the Sunday schools. Students are advised to bring with them their certificates of church

membership and identify themselves with one of the Salem churches.

Student Enterprises

The Student Body is the organization of all the students of the University. This organization, under the supervision of the Faculty, has control of general student affairs, such as athletics, the business management of the *Collegian*, and inter-collegiate debates.

The *Collegian* is the college paper, published weekly. The editors and business manager are elected by the Student Body.

The Young Men's and the Young Women's Christian Associations are strong organizations and do effective work. They give especial attention to new students, making every effort to make them feel at home in Salem.

The Girls' Student Association is composed of members of the Colleges and Academy. Its purpose is to foster social life.

The Oratorical Association of the Colleges, in connection with the Intercollegiate Association, conducts the local oratorical contests.

The Literary Societies afford opportunity for such work as is usually undertaken by such organizations. They have pleasant and well-furnished halls.

Opportunities for Self-Help

Salem people are loyal in every way to the College. Young men and young women who are desirous of finding places where they may earn all or a part of their living expenses find many and various methods of earning money. Some young women find comfortable homes with families who expect a reasonable service in the domestic affairs of the home in return.

There is a limited amount of labor for students about the buildings and grounds, and the Faculty cheerfully help to secure places where students may earn money. Those who are unable to secure funds enough in advance for a year's expenses need not be deterred from beginning the year.

The President will gladly communicate with young men or young women desirous of working their way.

Loans and Scholarships

Student Aid.

Every means is taken to assist worthy students to secure an education. It is realized by the President and the Faculty that some of the best men and women we have are those that have

worked their way through schools and colleges, and have thus put themselves in a position to be more useful. At our own University many of the boys and girls are working their way, and these rank among the best in the University.

Board of Education.

The chief source of student aid in our school is the fund held by the Board of Education of the Methodist Episcopal Church. This fund is loaned to worthy Methodist boys and girls, upon such conditions that the loans are not at all burdensome. Many are those whose college course would never have been completed had it not been for the timely loan secured from this fund.

Booth Fund.

In addition to that which has been mentioned above, Senator R. A. Booth, of Eugene, Oregon, with the generosity which characterizes him in all his relations to the church, placed in the hands of a special trustee \$1000 to be loaned to properly recommended students. This fund has accomplished a great deal, and quite a number of our students have no hesitancy in saying that they would have been compelled to leave the University had it not been for the help secured from this fund.

The Home Scholarship.

The Oregon Children's Aid Society has made Willamette University trustee to handle a fund of approximately \$8000, the interest of which is to be used in educating orphans and half orphans of the state of Oregon who are students of the College of Liberal Arts in Willamette University, and who succeed in maintaining a standard of scholarship that is above the average.

Athletics

The need of physical exercise and training is apparent and universally conceded. Athletics have come to be a legitimate part of college life. It is the plan of the President and Faculty to keep in touch with this work in such a way as to eliminate evils and make athletics clean and productive of real benefit to the participants. A good gymnasium, and one of the best athletic fields in the country are among the advantages offered by the University. Classes in systematic gymnasium work are conducted by a competent director in the employ of the University.

Students having unsatisfactory scholastic rank may be debarred from match games.

Lausanne Hall

(Named for the ship which brought missionaries to Oregon.)

This is a home-like and elegant dormitory for young women. Board is \$3.25 per week, payable weekly in advance. Rooms are from 60 cents to \$1.75 per week, payable in advance.

Laboratories

In all progressive schools of modern times well equipped laboratories form a principal element of strength in theoretical and applied sciences. In fact, without a laboratory an "applied" science would be out of the question. It is gratifying to note the progress Willamette University has made in the last few years in fitting up its laboratories.

From the standpoint of the educator it must be borne in mind that the simpler the piece of apparatus that will demonstrate a given principle the better for the student, especially for elementary work. It is not apparatus, but principles, that the student wishes to study.

The biological laboratory is supplied with gas, electricity, good tables and sinks, dissecting microscopes, compound microscopes, microtome, and other articles ordinarily used in microscopic and histological work.

In the department of physics our laboratory is well equipped with working apparatus for the use of students to give a strong course extending over more than three years of continuous work. The idea of practical experiments along engineering lines is introduced in the preparatory course and continued throughout the work; such, for instance, as strength of materials, elasticity of bending and torsion, coefficient of expansion, moment of inertia, etc. Besides the ordinary apparatus in electricity the laboratory is equipped with complete apparatus for X-ray work and wireless telegraphy, as well as with high-grade instruments for accurate quantitative measurements in both electricity, mechanics, light, sound and heat; thus opening to the student special fields of investigation beyond the three years of fundamental work. It is the purpose of the department to have the student lay a thorough foundation in fundamental principles, and to this end the courses are arranged to cover the ground, as near as conditions will permit, of the freshman and sophomore years as offered by our leading universities.

In Chemistry the laboratory equipment is ample for all the work commonly offered of college grade. The laboratory is arranged with private desk and locker, set of reagents, gas burner, etc., for each student; also a very large supply of chemi-

cals for the sidetable, high-grade balance for delicate quantitative analysis, etc. Additions are being made from time to time in order to keep abreast with the general development of the science.

During the current year several high-grade instruments have been secured for the surveying department, including the Y-level and engineer's transit with solar attachment, etc., sufficient for all necessary field work for a course extending through two years, and including plane surveying, mine surveying, hydrographic surveying, and railroad surveying.

The department of astronomy can hardly claim a place of its own; still it has instruments illustrating the meridian circle, altitude-azimuth instrument, sextants, globes and several small telescopes. Besides these there are several hundred lantern slides available on astronomical subjects, including an excellent set from the Lick Observatory.

University Extension

This movement has spread into many sections of the country in connection with colleges and universities as centers.

The aim is:

First—To extend higher education to all classes of people.

Second—To extend education through the whole of adult life.

Third—To extend thorough methods of study to subjects of every-day interest.

University extension is designed to help those who desire definite instruction but cannot take a long or regular course.

A beginning in this department has been made in Willamette, a call for such work in economics having been made by a number of prominent people in Salem last fall, with the result that a division was organized. A course in Sociology and one in Hebrew Prophets and Prophecy are being planned for next year.

Graduate Work

Graduate instruction, leading to the Master's Degree, will be offered in a limited number of departments under the following conditions:

1. Candidates must have received the Bachelor's Degree from this University or one of equal rank.

2. Candidates must pursue a course of study outlined by the Faculty; or they must present evidence of having done post-graduate work equivalent to such course.

3. Candidates must submit an acceptable thesis to the professor under whom the work is done.

For information concerning fees and other conditions, address the President of the University.

College of Liberal Arts

Terms of Admission

A testimonial of good character, signed by some reliable person, is required of every student matriculating in Willamette University.

Every new student should bring a certificate of scholarship. This certificate should state: (1) each study pursued; (2) the text-book used; (3) the number of weeks devoted to the text-book and the number of recitations each week; (4) the portion of the text-book covered by the recitations; (5) the grade which the student has secured in each study; (6) the name of the school at which the studies were pursued; (7) the name of the teacher under whom the work was done.

It is very important that students register promptly upon the opening day of the semester, and every student will be expected to be in attendance at the first recitations of the semester.

Students will not be admitted to any department of the University or to any of the classes of the affiliated colleges until they have first registered in the office of the President.

Requirements for Entrance

For entrance to the Freshman class fifteen units, or one hundred and fifty semester hours, are required. If a student presents thirteen units he may rank as a conditioned Freshman, but should make up the remaining units at the earliest opportunity. A unit is the credit earned by carrying a subject five times a week (not less than forty minutes each), for one year.

Reference to the Academy course in this Bulletin will aid in understanding what studies are required to enter the Freshman class.

Any student presenting a sufficient number of units for entrance but not the right combination of subjects required for courses leading to a degree, may, temporarily, allow one subject to offset another. The deficiencies must be made up as early as possible.

Graduates from our own Academy are admitted without question to the Freshman class.

Graduates from High Schools, Academies, and Normal Schools are admitted to the Freshman class provided they have done work similar and equivalent to our own Academy courses.

Others must satisfy the Faculty of their fitness.

Candidates for advanced standing must give evidence of fitness either by examination or by credentials from another institution.

Graduation

The amount of work in all departments and courses is stated in semester hours.

A semester hour is one recitation period per week for one semester, and is called a credit.

The completion of 120 semester hours, exclusive of physical training, above the Academy courses, with all entrance requirements satisfied, is required for graduation from any course.

Tuition and Fees

Tuition is as follows:

College of Liberal Arts, \$30 per semester; \$60 per year.

Two dollars each semester of the tuition of the regular College of Liberal Arts students will be used for the support of athletics and other student affairs under the direction of the Board of Trustees.

Laboratory fees: Chemistry, Physics, Biology, \$5.00 each per year. Diploma, \$5.00.

Dependent children of ministers in the regular work of the ministry, and students preparing for the ministry, who are duly recommended by the church in which they hold membership, pay one-half the regular tuition.

Tuition is by the semester. Those wishing to register will come prepared to pay their tuition on registration.

Expenses

The following are estimates of the principal expenses for one college year of thirty-six weeks:

	<i>Low.</i>	<i>Average.</i>	<i>High.</i>
Board and room, with fuel and light.....	\$ 90	\$126	\$180
Tuition	60	60	60
Books	5	8	15
Fees	5	10	15
	—————	—————	—————
	\$160	\$204	\$270

The \$90 estimate is based on boarding one's self.

A few students succeed in reducing expenses a little below the lowest estimate above.

Special Students

Applicants for particular studies who are indifferent to the degree will be admitted, so far as they may be able to accommodate themselves to the schedules. If such students should subsequently desire to become candidates for the degree they will receive credit for all work done. Unclassified students will not receive a diploma of any kind from the College.

Persons of serious purpose and suitable maturity of mind, who have not made the usual preparation for college, will be admitted to such subjects as they may elect. Students of this class cannot change their relation to that of candidate for the degree except by examination upon presupposed work, including the requirements for admission.

The University registration fee of \$2.00 each semester will be required of special students.

Description of Courses

Philosophy

JAMES T. MATTHEWS, *Professor.*

1. Psychology. An elementary study of the nervous system and mental processes with application to teaching. Three hours.

2. Psychology. Advanced course. The work is a brief outline of the structure of the nervous system and a study of the more important mental processes. Five hours.

3. Metaphysics and Ethics. A thorough study of the fundamental moral conceptions, such as will, motive, intention, law, the good, duty, the right, followed by an introduction to the principal schools of ethics, with special emphasis on Christian Ethics. Five hours.

4. Logic. Five hours per week.

5. History of Philosophy.

6. Philosophy of Theism.

7. Butler's Analogy.

8. Christian Evidences.

Chemistry

H. C. TILLMAN, *Professor.*

1. Elementary Chemistry. Four recitation periods and laboratory work. This course covers the ground as generally re-

quired for admission to college. Much care is taken to emphasize the fundamental principles and operations.

2. General Chemistry. Three recitations and laboratory work. Students having had a thorough elementary training who can present a good laboratory note book may enter this course.

(1) Qualitative Analysis. This course introduces the general methods of qualitative analysis, including blowpipe tests.

(2) Quantitative Analysis. Gravimetric and volumetric work. In this course complete analyses will be required in a definite number of "unknown" compounds.

Surveying

H. C. TILLMAN, *Professor.*

A course in plane surveying especially suited for civil engineers, comprising the use and adjustment of instruments, leveling, stadia work, triangulation, contour and profile mapping, etc. Solid Geometry and Trigonometry required as a preparation.

Physics

H. C. TILLMAN, *Professor.*

1. Physics I. Three recitation periods and laboratory work. Covering mechanics, light and sound. The amount of time required for laboratory work in this is about four hours.

2. Physics II. Three recitation periods and two laboratory. An advanced course in General Physics. Students should endeavor to leave two afternoons open for laboratory work in Courses 1 and 2.

Astronomy

H. C. TILLMAN, *Professor.*

General Descriptive Astronomy. An outline of the fundamental facts in regard to the solar system. Text-book, lectures, and observations of the heavenly bodies in evening class work. Three hours per week.

Biology

H. J. CLEMENTS, *Professor.*

The aim of the elementary instruction in this department is to present the principles of Biology without burdensome details and to show the bearing of the subject upon other lines of thought, such as sociology, psychology and pedagogy. The more advanced

courses are adapted to the needs of prospective medical students, with special emphasis on histology, embryology and physiology.

1. (1) *Zoology of Invertebrates*. A study of the various types of Invertebrates, with special attention given to those forms which are of direct interest to students anticipating the study of medicine or agriculture. Three lectures and laboratory work, and reference reading.

(2) *Zoology and Physiology of Vertebrates*. A survey of the vertebrate types, with about half the semester given to the anatomy and physiology of mammals. Three lectures and four hours laboratory work, with reference reading. An excellent course for those preparing for medicine.

2. *Botany and Bacteriology*. Plant Relations and Plant Structures, as text, with laboratory and field work. Some time is given to the study of bacteria, pure cultures, sterilization and other subjects which have direct bearing upon problems of hygiene and sanitation. Three recitations and laboratory work.

3. *Histology and Physiology*. Practice in preparing objects for microscopical examination, and the histological study of the various tissues and organs of the body with correlated lectures on cell structure, metabolism, secretion, digestion, absorption, circulation, respiration, nerve-muscle action, etc. This course is adapted especially to the needs of students who anticipate the study of medicine.

4. *Embryology*. Laboratory study of the maturation, fertilization, and segmentation of the egg, the formation of the germ layers and the origin of the various organs from these.

5. *Neurology*. Lectures and laboratory work upon the gross anatomy of the more simple vertebrate nervous system like that of the frog or fish, the structure of the nerve cell, the nerve and the nerve endings.

Geology

C. O. BOYER, *Professor*.

A general course. Laboratory work in mineralogy. Field work consisting in excursions to points of geological interest.

English Language and Literature

W. E. KIRK, *Professor*.

I. RHETORIC AND ENGLISH COMPOSITION.

1. *Rhetoric and Composition*. Critical study of rhetorical

principles, based on Genung's Working Principles of Rhetoric. Two hours, both semesters.

2. *Advanced Composition.* A practical course in narrative and descriptive prose. Analytical study of the masterpieces of Poe, Hawthorne, Maupassant, Kipling and others. Two hours, both semesters.

3. *Studies in Orations and Debates.* Practice in analyses and briefs. Shurter's Masterpieces and Baker and Huntington's Principles of Argumentation. Two hours, both semesters.

4. *Journalism.* A practical course in reporting, editorial writing, and general newspaper and magazine work. Shuman's Practical Journalism. Two hours, both semesters.

II. ENGLISH LITERATURE.

1. *History and Development of English Literature.* Special class study of Chaucer, Spenser, Milton and other representative authors. Library readings and written reports. Three hours, both semesters.

2. *Shakespeare.* A critical analysis of six plays. Three hours, both semesters.

3. *Nineteenth Century Poetry.* Studies of the leading English poets from 1798 to 1900. Two hours, both semesters.

4. *Studies in English Prose.* Development of English prose, from Wyclif to Ruskins. Two hours, both semesters.

5. *Milton, Burns, Wordsworth and Tennyson.* Written studies of representative poems. Two hours, both semesters.

6. *History and Development of American Literature.* Written studies in the leading American authors. Library readings and reports. Two hours, both semesters.

7. *Anglo-Saxon and Early English.* Readings from Bright's Anglo-Saxon Reader, and Beowulf. Selections from Middle English. Four hours, both semesters.

8. *Browning.* Written studies of Luria Pippa Passes, Return of the Druses, and parts of The Ring and The Book. Two hours, both semesters.

9. *Advanced Studies in the Drama.* The beginning and development of the Drama, with special attention to the dramatic art of Shakespeare. Reading of eight or ten plays. Two hours, both semesters.

Courses I. 1 and II. 1 are for Freshmen.

Courses I. 2 and 3, and II. 2, 3, and 4 are for Sophomores.

Courses I. 3 and 4, and II. 5, 6, and 7 are open to Juniors.

Courses I. 4 and II. 7, 8, and 9 are primarily for Seniors.

Courses I. 4 and II. 6 will not be offered in 1908-1909 unless at least five call for them.

History and Social Science

GAYLARD H. PATTERSON, *Professor.*

RAY D. FISHER, *Assistant Professor.*

The aim of the department is to present history as a real educative process.

The evolution of European civilization from its sources, and the growth and influence of Anglo-Saxon institutions constitute the general theme.

Economic, social and political life in ancient, mediaeval and modern times are studied in the rise and fall of nations and in the evolution of institutions; present conditions being kept constantly in view and American conditions being specifically analyzed so that the student is qualified for intelligent, responsible citizenship, in addition to receiving great cultural benefit from the investigations.

I. HISTORY.

1a. *Mediaeval European History.* A study of the economic, social, religious and political conditions in Mediaeval Europe which contributed to the formation of the States of Modern Europe. Three hours, first semester.

1b. *Modern European History.* An examination of the formation of the modern states and of the great struggles growing out of their development. Three hours, second semester.

1a and b are primarily for Sophomores.

2a. *Early American History.* The founding of the colonies, the struggle between the states of Europe for domination in America, the growth of the movement for independence and the formation of the Union constitute the subject matter of this course. Two hours, first semester.

2b. *United States History.* States rights doctrine, nullification, secession, Civil War and Reconstruction. Topical analyses and special assignments, such as Internal Improvements, Political Parties, Slavery, Land Policy, etc., will be made, the sources in government publications and the writings of the statesmen, etc., being freely used. Two hours, second semester.

3a. *The Founding of the English State.* The establishment of the English constitutional monarchy; the development of the parliamentary and judicial systems. Two hours, first semester.

3b. *The Constitution of the British Empire.* The growth of democracy and the development of local self government under the Stuarts and the House of Hanover. The economic, social, literary and religious life is studied in its relation to political development. Two hours, second semester.

(Courses 2a and b, and 3a and b alternate, being electives for Juniors and Seniors.)

Other courses in history open as electives to Juniors and Seniors may be found described in the department of English Bible and Christian Missions.

Church History and History of Christian Thought, given in the College of Theology, are open as electives.

II. SOCIAL SCIENCE.

1a. *Principles of Economics.* An introduction to the principles which underlie different economic relations and institutions. Three hours, first semester.

1b. *Problems of Economics.* A detailed examination of economic principles applied to such problems as credit and banking, labor, trusts, transportation, taxation, etc. The aim is to make the method of work such as to foster a judicial spirit and an attitude of scholarly independence. Three hours, second semester.

2. *Comparative Politics.* The method is historic as well as comparative, beginning with a study of the origin, development and purpose of the state, and passing to a comparison of the governments of France, Germany, England and the United States, giving the main attention to the latter. Three hours, first semester.

3. *Sociology.* An inquiry into the nature of society, the course and factors of social progress with a view to discovering those policies of society which make for future improvement. Three hours, second semester.

4. *American Government.* An investigation of fundamental principles and of the actual workings of national, state and local administration, with particular emphasis upon the condition and rule of cities and the relation of the citizen to public affairs. Three hours, first semester.

5. *Law.* A study of the nature and divisions of law, and of the rights and duties of men in their business and family relations. Three hours, second semester.

(Courses 2 and 3 alternate with 4 and 5, being electives for Juniors and Seniors.)

English Bible and Christian Missions

GAYLARD H. PATTERSON, *Professor.*

The aim of this department is to vitalize the history and literature of the Bible. The work of the department is intended to familiarize the student with that great monument of our literature, the English Bible, and with the great civilization back of the Bible, without touching questions of doctrine or belief.

1. *Introduction to the English Bible.* A general survey of the history of the English Bible as a series of translations from the original languages, with particular reference to the evolution of its English and its influence upon our English as well as to its literary character and influence upon English literature, passing to a study of its origin, growth and canonization as seen in particular periods of history and types of literature, which affords an insight into the meaning of revelation and inspiration. Two hours, both semesters.

2. *Biblical History.* Treating the social and political life of Israel through the stages of nomadic origin, settlement of the monarchy, dissolution of the state, the Babylonian, Persian, Greek and Roman domination, to the fall of Jerusalem, 70 A. D., noting the development of religious life under prophets, priests and kings and under Jesus Christ and the apostles as seen in the literature representing each. Two hours, both semesters.

(Courses 1 and 2 are designed for Freshmen and Sophomores, and may be given in alternate years.)

3a. A study of Hebrew Prophecy and the Psalms, noting the development of religious life under them; or of the Wisdom literature. Two hours, first semester.

3b. A study of some of the Epistles of the New Testament, the circumstances of their origin, etc., or of the Gospels. Two hours, second semester.

4a. *History of Religions.* A survey of the principal religions of the world with an inquiry into their origin, development and contribution. Two hours, first semester.

4b. *History and Development of Christian Missions.* Noting their relation to commerce and social progress. Two hours, second semester.

(Courses 3a and b alternate with 4a and b, being electives for Juniors and Seniors.)

Mathematics

JAMES T. MATTHEWS, *Professor.*

1. *Advanced Algebra.* This course is pursued in connection with a stiff and thorough text, and includes such topics as the binomial theorem, logarithms, graphs, choice, chance, series, complex numbers, and the theory of equations. Four hours, throughout the year.

2. *Trigonometry.* The general formulas, practical applications of the solutions of triangles, the theory of logarithms, and trigonometric equations. Four hours, throughout the first semester.

3. *Analytic Geometry.* Including the straight line, circle, parabola, ellipse, hyperbola, and some higher curves. Four hours, throughout the second semester.

4. *Calculus.* Differentiation, expansion of functions, higher plane curves, maxima and minima; integration, areas, volumes; lengths of curves. Four hours, throughout the year.

Department of Greek and Latin

EDWIN SHERWOOD, *Professor.*

The aim of this department is to guide the student in forming the acquaintance of the representative Greek and Roman authors whose works have proven their permanent literary value, and to prepare him to enjoy and appreciate them; at the same time furnishing the mental discipline and training in the habits of accurate thinking for which the study of the classics is so admirably adapted. The emphasis is laid on quality of the work, rather than on quantity to be covered, and yet the aim is to take in as large a field as is consistent with thoroughness.

The courses designated by odd numbers are for the first semester; those by even numbers are for the second semester.

Courses above number 4 in Greek and number 8 in Latin may be given in alternate years according to the needs of the students.

A. GREEK.

Courses 1—4 are preparatory for classical students.

1-2. Beginning Greek with selections from Xenophon's *Anabasis*. Five hours.

3. Xenophon's *Anabasis*, Books I.-III., and Prose Composition. Five hours.

4. Xenophon's Anabasis, Book IV., Prose Composition, and Homer's Iliad, Books I.-III. Five hours.
5. Homer's Odyssey or Xenophon's Memorabilia. Three hours.
6. Selections from Herodotus and Thucydides. Three hours.
7. Plato's Apology and Krito. Studies in Greek Philosophy. Three hours.
8. Demosthenes De Corona and Studies in Greek Oratory. Three hours.
9. Studies in Greek Drama. Euripides' Alcestis, Aeschylus' Prometheus Bound, Sophocles' Oedipus Tyrannus. Elective. Three hours.
10. Critical Study of Plato's Phaedo. Elective. Three hours.

B. LATIN.

Courses 1—8 are preparatory work for classical students.

- 1-2. Beginning Latin. Forms and Syntax should be learned, and a vocabulary of a thousand words should be acquired. Five hours.
- 3-4. First four books of Caesar's Gallic War. Prose Composition. Five hours.
- 5-6. Cicero, Six Orations. Prose Composition. Four hours.
- 7-8. Vergil's Aeneid, Books I.-VI., with scansion, and attention to poetic idioms and the literary value of the poem. Five hours.
9. Livy, Books XXI. and XXII. or Cicero De Senectute and De Amicitia. Three hours.
10. Horace's Odes and Epodes. Three hours.
11. Studies in Latin Comedy. Plautus' Captivi or Trinummus and Terence's Andria or Phormio. Three hours.
12. Tacitus' Agricola and Germania. Three hours.
13. Horace's Satires and Epistles. Elective. Two hours.
14. Cicero, De Natura Deorum. Elective. Two hours.

German, French, Spanish

LOUIS A. BACH, *Professor.*

The aim in view is practical use, in whatever direction that may be. By this both the method and the plan of the instruction are determined. Everything is so arranged as to provide the student with a reliable working basis for industrial, commercial, literary or scientific pursuits.

GERMAN.

I. *Elementary Course.* Joynes-Meissner's German Grammar with oral and written exercises. Reading of at least 100 pages of graduated texts. Memorizing of choice poems. Five hours, throughout the year.

II. *Intermediate Course.* Advanced grammar with corresponding composition and oral exercises. Reading of about 400 pages of intermediate texts in prose and verse. Memorizing of selections from texts read. Four hours, throughout the year.

III. *Advanced Course.* German Syntax. Reading from classical authors as well as from representative historians and scientists. Oral reports in German and written summaries in German of texts read. Three hours, throughout the year.

FRENCH.

I. *Elementary Course.* Fraser and Squair's French Grammar, Part I., with copious oral practice and written exercises. Special verb drill. Reading of at least 100 pages of modern prose. Memorizing of selections. Five hours, throughout the year.

II. *Advanced French.* Fraser and Squair's Grammar, Part II, with composition and oral practice. Reading of about 400 pages of representative texts. Memorizing of selections. Four hours, throughout the year.

SPANISH.

I. *Elementary Course.* Spanish Grammar. Hills and Ford, with exercises oral and written. Reading of 150 pages of graduated texts. Memorizing of selections. Three hours, throughout the year.

II. *Advanced Course.* Spanish Grammar, by Hills and Ford continued. Composition. Reading of standard texts. Memorizing of selections. Conversational practice. Three hours, throughout the year.

Oratory

SARA BROWN SAVAGE, *Professor.*

1. Rendering, critical study of English poetry, the great English and American orators. Recitations and original oration. Extemporaneous speaking, platform, deportment, and personal control. Two hours.

2. Advanced work in rendering, theory and philosophy of

expression. Practical work in analysis, voice and physical culture; responsive drill. Pantomime—corrections of defects and mannerisms in bodily expression; study of emotion in its effect upon voice and gesture. Platform Art—reader's technique; character delineations; arrangements of programs; choice, abridgement and adaptation of selections for public reading; writing of introductions. Interpretative study of Hamlet or Macbeth. Three hours.

Academy Expression

MAY BELLE ADAMS, *Professor.*

First Semester. Fundamental work for personal development, articulation, inflection, quality of tone, pitch, force, tune, volume, modulation, power, brilliancy and abandonment in reading, elementary gesture.

Second Semester. Rhythm, music and imagination in rendering, personality in rendering, relations of values and taste, recitations and declamations with individual criticism. Two hours.

Alternate and Elective Subjects

The following subjects may be used in the College of Liberal Arts for alternates or electives in the years designated, if a sufficient number of students desire them, and enough such studies must be taken in order to complete the College course of 120 hours:

JUNIOR STUDIES.

Physiology
Ancient Languages
Modern Languages
English Literature
American Government
Sociology
American History
English Bible
Educational Psychology
History of Philosophy
Economics

SENIOR STUDIES.

English Literature
Political Science
Constitutional Law
History of Religions and
Missions
English History
Philosophy of Theism
Science

Physical Culture

Courses for both men and women are offered. The work given is systematic and progressive, organized with the following ends in view: Balanced strength of bodily members, harmony, grace

and precision of movement, and responsiveness of body to mind. The ideal is sufficient physical exercise to keep the body healthy and thus sustain clear and vigorous mental activity.

1. *For Young Women.* The work embraces free standing exercises, running, jumping, and aesthetic gymnastics in the way of drills; exercises with light hand apparatus, gymnastic games, and other beneficial exercise.

2. *For Young Men.* Systematic class-work in gymnastics. This consists of breathing exercises, free movements, vigorous exercises with dumb-bells, Indian clubs and wands, besides a graded course of exercises upon various pieces of apparatus, and such other exercises as may be necessary for the benefit of the students.

All students will be required to take such physical exercise as may be necessary, in charge of the physical director.

College of Music

FLETCHER HOMAN, S. T. B., D. D., *President.*

R. A. HERITAGE, Mus. Doc., *Dean* (1906-1908.)

The Music Department of Willamette receives a liberal patronage from students who pursue musical studies in connection with their regular college work. In addition the work of the College of Music extends its influence throughout the City of Salem in various musical organizations and in instruction by private lessons.

The commodious quarters in the Music Hall enable the professors to properly care for all of their students. The prospects for the development of this department are excellent and the Trustees will spare no effort to extend its general scope and influence.

The original purpose of encouraging the study of music as a part of a liberal education under the best moral influences and surroundings will be followed. The development of the musical art ought to include the development of a beautiful and lovely character. The needs of the students are carefully considered and courses of instruction will be followed which will give them the greatest personal benefits.

Pianoforte

The design of this course is to enable the student to secure technic skill, and to acquaint him with the best pianoforte literature. The effort will be to develop the individual into a successful musician. Originality is carefully considered, and intellectual development is sought for.

Voice Culture

Beauty of tone is the principal object of vocal study. To produce it, ease and naturalness must be acquired by the student. Such qualities alone insure power and extended use of the voice. Perfect enunciation is a requisite with proper tone in order to secure the best vocal results. The voice is trained and developed with these ends in view. As pupils become proficient they are required to give public recitals as a part of their musical training.

Violin

Painstaking effort is required to develop skill on the violin. The aim of the department is to develop the student in correct usage and proper methods; encourage a high appreciation of the art, and impart a knowledge of the classics. Beginners are encouraged in the study of rudimentary musical knowledge as preliminary to successful manipulation of the violin. The work in orchestra is also under this department.

General Advantages

There are general privileges that the students enjoy in the University. The library and gymnasium are open to him. Membership in various college organizations for which he is qualified are extended to the student. While in a professional school he gets the benefits of University life. The glee clubs, the University lecture course, the students' recitals, and other enjoyable privileges are open to him.

The course of study and rates of tuition which follow are subject to change at the discretion of the Dean when it is for the best interest of the student.

Courses of Study

PIANO.

Preparatory. Matthew's, Grade 1 and 2. Czerny, Op. 299, Grade 1 and 2. Major and minor scales and arpeggios. Kullak School of Octaves, Part I. Heller, Opus., 47. Clementi's and Kuhlau's Sonatinos. Mansfeldt Technic. Classic and popular compositions up to the third grade and lectures on the Theory of Music.

Intermediate. Mansfeldt Technic. Czerny Op. 740. Cramer's Studies. Kullak School of Octaves, Part II. Advanced Scale and Arpeggio Work. The easier of Mozart and Beethoven Sonatas. Bach two and three part inventions. Suitable classic and popular compositions.

Advanced. Bach Fugues. Clementi's Gradus ad Parnassum. Chopin Etudes. Neupert Etudes. Philip's Octave Studies. Mozart and Beethoven Sonatas. Compositions of Mendelssohn, Chopin, Weber, Schumann, Grieg, Liszt, including piano concertos.

Post Graduate. Liszt Grandes Etudes. Moszkowski School of Double Notes. Philip's Concert Octave Etudes. Piano Concertos and other compositions.

VOCAL.

Preparatory. Rudiments of Music. Sight Singing. Ear Training. Interval practice. Easy Solfeggio work. Vocal Solos, first and second grade.

Certificate. Sieber Vocalizēs. Vaccai. Concone Op. 9. Bonoldi Advanced Sight Singing. Musical Science. Musical History and Harmony to Secondary Seventh. Chords.

Diploma. Lutgen Vocalizes. S. Marchesi. Panofka Op. 81. Aug. Panseron Complete Methods. Musical Biography. Laws of Sound. Musical Pedagogy and Harmony Complete, including elementary Musical Composition.

Post Graduate. Francisco Lamperti. Sieber Advanced Studies. Solo parts in Oratorio and Opera. Italian, French, German and English Songs. Counterpoint. Orchestration, Musical Composition and Piano Accompaniment Work.

Tuition

Payable in advance to the close of the calendar month. If after the 15th of the month, then to the close of the following month.

Private Lessons

Voice Culture, 40 minutes.....	\$1.00 per lesson
Piano or Organ, 30 minutes.....	1.00 per lesson
Violin, 60 minutes.....	2.00 per lesson
Cornet, 40 minutes.....	1.00 per lesson
Practice Hours, 45 minutes.....	.75 per month
Harmony Class, 45 minutes.....	2.00 per month
Sight Singing, 45 minutes.....	1.00 per month
Musical Literature, 45 minutes.....	1.00 per month

Upon application rates for special lessons will be given. The University registration fee of \$2.00 per semester will be required of each student. Lesson time is never extended beyond the current college year. Certificate, \$2.50. Diploma, \$5.00.

College of Oratory

FLETCHER HOMAN, S. T. B., D. D., *President.*

SARA BROWN SAVAGE, O. M., *Dean.*

MAY BELLE ADAMS, *Assistant.*

It is the design of this department to teach oratory as an art, resting upon absolute laws of nature, and to give a thorough and systematic training in all the principles upon which this art is based. The student is educated, not by fashioning him after a certain model, or by making him a slave to arbitrary rules, but by quickening and developing all the intellectual faculties, cultivating the imagination, deepening and guiding the feelings, disciplining all the agents of expression, making the will sovereign, and then leaving him free to express his thoughts, convictions and emotions in accordance with his own temperament. The object is to develop natural orators—not artificial ones.

Courses of Instruction

First Semester. Articulation, inflection, quality of tone, pitch, force, tune, volume, modulation, power, brilliancy and abandonment in reading, elementary gesture.

Second Semester. Rhythm, music and imagination in rendering, personality in rendering, relations of values and taste, recitations and declamations with individual criticism.

COLLEGE ORATORY.

Rendering; critical study of English poetry, the great English and American orators, and of Shakespeare's dramas; recitation and original orations; bearing, platform deportment and personal control; the speaker's relation to his audience; extemporaneous speaking; Bible and hymn reading. Two hours.

EVOLUTION OF EXPRESSION.

Fundamental work for the personal development of the student. The evolution of the art of expression by (1) arousing interest in the subject; (2) retaining and strengthening interest; (3) determination to make others appreciate it; (4) a clear presentation of the subject. Attention to the forms of emphasis, force, pitch, volume and time. Platform deportment and ele-

mentary gesture. Careful preparation and individual drill upon selections from the best literature in both prose and poetry, as well as great orations and essays. Three hours.

PHYSICAL AND VOICE CULTURE.

Psycho-physical culture exercises for freeing the body, developing muscular sense, and securing poise, unity, harmony and responsiveness. Responsive work. Gesture chart for the direction and guidance of the student in interpretation. Study of hygienic and aesthetic value of exercises. Exercises for correct placing and free production of tone, for developing resonance, sustained power, flexibility, and radiation. Relation of breathing to tone production. Character and realms in tone. Normal work. Two hours.

PHILOSOPHY OF EXPRESSION.

Advanced work in rendering, pantomime. Emerson and Delsarte philosophy and criterions of expression. Practical analysis; responsive drill for voice and body. Correction of defects and mannerisms in bodily expression; translation of gesture at sight; study of emotion in its effect upon voice and gesture. Platform art; character delineations; arrangement of programs; choice, abridgement and adoption of selections for public reading; writing of introductions; dramatization of short stories. Interpretive study of Hamlet and Macbeth. Three hours.

COURSE FOR GRADUATION IN EXPRESSION.

Three years of class-work in Physical and Voice Culture and Expression. Five to nine hours per week.

Private lessons, two forty-minute lessons per week.

The English Composition of first year, Rhetoric and Literature of second year, Literature of third year, Literature of Freshman year, and Literature of Sophomore year.

The General History of the first year.

Repertoire material for one evening program. Practice recitals.

Normal work.

This outline covers the work for the entire three years.

Recitals

Several recitals are given during the year. These recitals are a part of the required work of the College and are designed to give students frequent opportunity to come before an audience.

Tuition

The tuition for class-work is \$18.00 per semester for ten to twelve hours; \$13.00 per semester for seven to nine hours; \$10.00 per semester for six or less hours.

The tuition for private lessons is \$13.50 for eighteen one-half-hour lessons; \$18.00 for eighteen forty-minute lessons.

The University registration fee of \$2.00 each semester will be required of each student.

Those who contemplate entering the College are requested to write early, giving a description of past education, purpose in taking up the work, etc. Address, Sara Brown Savage, O. M., Dean of the College of Oratory, Salem, Oregon.

College of Theology

FLETCHER HOMAN, S. T. B., D. D., *President.*

HENRY D. KIMBALL, D. D., *Dean.*

The Dean is ably supported in the work of this school by thoroughly qualified instructors. Professor Washburne brings the matured results of many years of study in his specialties of Hebrew and Church History. Professor Sherwood and Professor Patterson have proved their qualification and adaptation for their work. It is expected that Prof. W. E. Kirk, and the Rev. Frank A. Colony will strengthen our teaching force next year.

While many of our students are under the instruction of Dean Savage of the College of Oratory, all are required to give one hour a week to Liturgics under Dean Kimball. Besides practice in Scripture, Ritual and Hymn reading, occasional lectures have been given by the professor on such subjects as: The Minister Conducting Public Worship; The Minister in the Sickroom; The Minister at the Funeral; The Minister at the Wedding.

We believe there is no other institution in this country doing the amount and quality of work at so small cost in money as is done by our College of Theology; and no other in the Pacific Northwest will yield our Methodism a larger or richer harvest. Men high in the counsels of the church and presiding elders and pastors in adjacent conferences have repeatedly expressed this estimate as their deliberate judgment.

We confidently appeal to presiding elders and pastors to encourage young men who intend to enter the ministry, and such as have entered it without a needed equipment, to avail themselves of the advantages here offered. Three years spent in this school will give added power for their lifework and added comfort to them in their work. The next school year will open September 29th.

Courses of Instruction

First Year. Theism, Theology, Anthropology, Homiletics, Logic, Church History, Hebrew, Greek, Bible History, Liturgics.

Second Year. Christology, Soteriology, Eschatology, Psych-

ology, Hermeneutics, Sacred Rhetoric, Church History, Hebrew Exegesis, Ethics, N. T. Greek and Exegesis, O. T. Introduction, N. T. Introduction.

Third Year. Natural and Revealed Theology, History of Doctrine, N. T. Greek Exegesis, Hebrew Exegesis, Comparative Religions, Pastoral Theology, Biblical Theology, Liturgics.

Aim of the College

To assist young men who seem to themselves and to the Church to be called of God to the Christian ministry to qualify themselves spiritually and intellectually for their great work. The teaching must therefore be held in alignment with that of our Lord and His apostles. Those of either sex who, while not contemplating the work of the ministry, desire to fit themselves for larger usefulness in Christian work will be admitted to all class privileges upon the same terms as candidates for the ministry.

Methods of Instruction

By Text-books and Lectures. The student will be required to study the text-book designated in each department, and his faithful compliance with this requirement will be tested each day by oral questioning. The instructor will lecture on the topics under study as often as may seem needful to the students' clear apprehension and fuller knowledge of the subject.

Terms of Admission

1. The Degree Course is open only to such as have taken the degree of B. A., or its equivalent, in some College of Liberal Arts. Such students on completing the required course and passing examination will receive the degree of Bachelor of Divinity.

2. Those whose preparation is more limited, but embraces at least the fundamentals of an English education, may be admitted and, on completing the full course and passing satisfactory examination, will receive the Diploma of the College.

3. Those who may find it impracticable to take the required course may take elective studies and will receive a certificate of work accomplished. It will be required of all students to present a certificate of Christian standing signed by the pastor of the church to which they belong.

Tuition and Fees

A tuition fee of \$11.25 will be required of each candidate before registering, and the same sum at the beginning of each successive term during the entire course.

The University registration fee of \$2.00 per semester will be required of each student.

College of Medicine

FLETCHER HOMAN, S. T. B., D. D., *President.*

W. H. BYRD, M. D., *Dean.*

The Faculty and Trustees of the Medical Department of the Willamette University take great pleasure in recording a most successful year in the history of our school, which is the oldest continuous Medical College west of the Mississippi River.

The College is located at Salem, the Capital City of Oregon, one of the most beautiful and healthful cities in the Pacific Northwest, situated upon the east bank of the Willamette River. It is the second city of size in Oregon, having a population of 15,000 inhabitants.

In Salem the moral influences surrounding the College are good, churches of most all denominations can be found, a finely equipped Y. M. C. A. building, where all students can have access to a free reading room for a quiet hour of study, or by taking out membership they are entitled to all privileges found there.

Salem being the Capital of the state, students attending college here will come in contact with some of the most prominent and brainy men of the state, and be surrounded by an atmosphere of culture and intellectual refinement. In the State Library will be found complete works upon the practice of medicine, as well as other books of reference, to which all students will have access free of charge.

Clinical Facilities

The members of the Faculty, bearing in mind the importance of clinical instruction, devote the utmost attention to this aspect of teaching.

Abundant opportunities are offered the student, not, as so frequently happens, simply to see, but to examine patients, make diagnosis and suggest treatment.

Besides the regular clinics held at the hospitals, students are invited, whenever practicable, to see cases of interest in private practice, and to witness and assist in private operations.

Students are also allowed the privilege of attending clinics at the State Hospital for Insane as well as the State Penitentiary, both of which are located near the College.

Pharmacy

The Pharmacy Department has been affiliated with the Medical College. The courses have been greatly strengthened and made to conform with those offered by the best eastern institutions. A three months' course is offered to those who wish to review, preparatory to taking the State Board examination. For a description of courses and a statement of expenses address C. O. Boyer or W. H. Cooley.

The University registration fee of \$4.00 per year will be required of each student.

College of Law

FLETCHER HOMAN, S. T. B., D. D., *President.*

C. L. MCNARY, LL. B., *Dean.*

This department of the University offers a two years' course leading to the degree of Bachelor of Laws, and arranged to meet the requirements of the Oregon bar examinations. The advantage to the student of attendance upon a law school in preference to less systematic study in an office, is recognized in the rules of the Supreme Court, which require three years previous study of all who apply for admission to the bar without first obtaining a college degree. It is the object of this department, while giving thorough instruction in the abstract principles of law, to add such practical details as to prepare the student to commence his work as an attorney without embarrassment.

Incidental Advantages

Salem is an ideal place for the student of law. He has the advantage of access to the State Law Library, which is believed to be unexcelled by any law school library in the United States. It is also of superior advantage to the students that the Judges of the Supreme Court are lecturers in the College of Law. In addition to the regular session of the Circuit and County Courts, the Supreme Court of Oregon is in constant session and open to the attendance of the student. Here also once in his two years' course he has the opportunity of observing the State Legislature in session. The students conduct a practice court, which is of much benefit.

The department opens the first Monday in October. For circular of information address the President.

University Advantages

The students of this College have the opportunities of engaging in the various student enterprises, and activities, in common with the students of the other departments. They may participate in the inter-university contests, both athletic and intellectual, and do in fact take a prominent place in the student affairs. They are able to register in the College of Liberal Arts for such supplementary work as they need in that department at special tuition rates. The social advantage of membership in

the University is well worth attention. The moral and religious influence of the institution is especially good.

Tuition and Fees

Tuition is \$25.00 per semester in the Junior year, and \$30.00 per semester in the Senior year, payable in advance.

A diploma fee of \$5.00 is charged at graduation.

The expense for books each year is between \$20 and \$30.

The University registration fee of \$4.00 per year will be required of each student.

Normal School

The General Aim of the School

The Normal School of Willamette University is a professional school, whose single aim is the preparation of teachers for the public schools of the Northwest, and is conducted in connection with the work of the Oregon Institute.

The qualifications of a good teacher are both natural and acquired. The former include all that we mean by *personality*. In detail, these are:

1. Adaptability and tact, *i. e.*, the ability to adjust one's self in thought, language and method to the immaturity of children.
2. A strong attraction for teaching, based on a genuine love of children.
3. Intellectual ability.
4. Executive ability.
5. Common sense.
6. Good health and a cheerful disposition.

One who lacks any of these natural qualifications will not teach well. Since the Normal School cannot create personality, it cannot *make* teachers. Its most important function is to discover, to inspire and to train the born teachers, and to fit them into appropriate places in the schools.

To the natural teacher the Normal School offers unexcelled opportunities of acquiring that professional knowledge and technical skill which are indispensable to the best teaching.

The course of study includes the necessary elements in the training of teachers:

- (1) *Educational theory*. The history of education, psychology, pedagogy, organization and management of schools, the principles and art of teaching, and methods.
- (2) A thorough study of the *subject-matter* of the elementary school curriculum.
- (3) *Observation* of model teaching.

Requirements for Entrance

Graduates from the Eighth Grade presenting diplomas or certificates from their teachers or county superintendent may enter without examination. A county or state teacher's certificate also entitles the holder to admission without examination.

Graduates of High Schools will, in general, enter the Junior year.

Course of Study

The Normal Course includes four years' work. This brings the standard up to that of the best Normal Schools of Oregon. Graduates of this course are accorded the same advantages by our state laws as are given to graduates of the State Schools. The requirements for admission are a first-grade county certificate, or its equivalent.

The Teachers' Course is a review of the common school branches. College graduates and High School graduates who expect to teach in the public schools will find this review of great value. Considerable attention is paid to the method of teaching these branches. Thus the student at once secures the facts of the subject and the method of presenting them.

The courses being designed for a specific purpose cannot be elective and accomplish their purpose.

Expenses

The University registration fee of \$2.00 per semester will be required of each student. For other expenses see Oregon Institute.

Normal Diplomas

Under the present school law, the Normal diploma admits graduates at once to the examination for the state certificate (good for five years), the Normal course taking the place of the thirty months of teaching on county certificates, otherwise required. Under a ruling of the State Board of Education, students may, during their Normal course, take the state examinations before a county superintendent, and if successful in these examinations receive the state certificate immediately on graduation. After thirty months of teaching experience, they will be entitled to receive the life diploma, on the grades already made before the county superintendent and filed with the State Department.

College Credits

Students of the Normal School receive full credit for all work done corresponding to Academy or High School courses. Those completing the four years' course are admitted to full Freshman standing in the College of Liberal Arts.

*Normal Course**Freshman.*

First Semester. Algebra, Ancient History, Rhetoric, Book-keeping, Physical Geography.

Second Semester. Algebra, Ancient History, Rhetoric, Physiology, Physical Training.

Sophomore.

First Semester. Plane Geometry, Latin, English Composition and Classics, Zoology, Vocal Music, Mediaeval and Modern History.

Second Semester. Plane Geometry, Latin, English Composition and Classics, Botany, Vocal Music, Mediaeval and Modern History.

Junior.

First Semester. English Literature, School Management, Latin, Oregon School Law, Physics, Elocution.

Second Semester. English Literature, Psychology, Art of Teaching, Latin, Physics, Elocution.

Senior.

First Semester. Principles of Education, Chemistry, Methods, Sociology, American History.

Second Semester. Principles of Education, Chemistry, Methods, Solid Geometry, Civil Government.

Oregon Institute

(THE ACADEMY)

In addition to a complete College of Liberal Arts Willamette University maintains a first-class Academy.

Owing to its connection with the College, the Academy is pervaded by high ideals of character and of scholarship, and younger students are stimulated and often personally helped in their work by contact with the students of the College classes. This intercourse with College students and College instructors is in many ways itself a liberal education.

The aim of the Academy is first of all to fit young people for our College of Liberal Arts or for any college or university. For this purpose the Academy offers: A Classical Course, a Philosophical Course, a Literary Course, a Scientific Course, each four years, and each designed to fit students for the corresponding college course.

The Academy also offers to persons who do not expect to take a college course an opportunity to acquire a thorough fundamental knowledge of Algebra, Geometry, Latin, French, German, Greek, English, General History, Elementary Physics, Biology, and Chemistry.

A General Preparatory Course in the department of Pedagogy has been devised to meet the needs of students who desire special work or teacher training.

Requirements for Graduation

The work of the Academy will cover four years. Students entering the Academy will be expected to arrange their work according to the requirements and upon the successful completion of the Academy course and 120 semester hours in the College of Liberal Arts will receive a degree.

The Academy offers students of the smaller high schools an excellent opportunity to complete a first-class four-year course and to receive the diploma of the Academy. Fifteen units or one hundred and fifty semester hours, according to the new plan, are required for graduation.

A unit is the credit earned by carrying a subject five times a week for one year.

Expenses

Tuition, per semester.....	\$22.50
Laboratory fees (for students in science) per study, per semester	2.50
Diploma	2.50

Two dollars each semester of the tuition of the regular Academy students will be used for the support of athletics and other student affairs under the direction of the Board of Trustees. The University registration fee of \$2.00 per semester will be required of all other students taking special work.

Following is an estimate of the principal expenses for one year of thirty-six weeks in the Academy:

	<i>Low.</i>	<i>Average.</i>	<i>High.</i>
Board and room, with fuel and light.....	\$ 90	\$126	\$180
Tuition	45	45	45
Books	4	7	10
Fees	5	10	14
	<hr/>	<hr/>	<hr/>
	\$144	\$188	\$249

The \$90.00 estimate is based on boarding one's self.

COURSES OF STUDY

	CLASSICAL	LITERARY—PHILOSOPHICAL	SCIENTIFIC
First Year -----	Beginning Latin, 5 hours English and English Literature, 5 hours Algebra, 5 hours Physical Geography and Physiology, 3 hrs.	The same as in Classical	The same as in Classical
Second Year -----	Cæsar and Prose Composition, 5 hours Rhetoric and English Literature, 5 hours Geometry, 5 hours Botany and Zoology, 4 hours	The same as in Classical	The same as in Classical
Third Year -----	Cicero and Prose Composition, 4 hours Beginning Greek, 5 hours American Literature, 3 hours Algebra and Geometry, 3 hours American History and Civics, 4 hours	Ancient or Modern Language, 5 hours American Literature, 3 hours American History and Civics, 4 hours Algebra and Geometry, 3 hours Chemistry, 4 hours	Beginning German, 5 hours American Literature, 3 hours American History and Civics, 4 hours Algebra and Geometry, 3 hours Chemistry, 4 hours
Fourth Year -----	Vergil, 5 hours Anabasis and Homer's Iliad, 5 hours English Literature, 3 hours History of Greece and Rome, 3 hours Physics, 3 hours	Ancient or Modern Language, 5 hours English Literature, 3 hours History of Greece and Rome, 3 hours Physics, 3 hours Elementary Psychology, 3 hours Expression, 2 hours	Second Year German, 4 hours English Literature, 3 hours History of Greece and Rome, 3 hours Physics, 3 hours Advanced Algebra, 4 hours Expression, 2 hours

Description of Courses

Latin, Greek

EDWIN SHERWOOD, *Professor.*

LATIN.

Courses 1 to 8 inclusive count as preparatory work for Classical and Philosophical students. Other students may elect 5 and 6 in college.

1. Beginning Latin. Forms and syntax should be learned, and a vocabulary of a thousand words should be acquired. Five hours.

2. Continuation of Course 1. Five hours.

3-4. First four books of Caesar's Gallic War. Prose composition.

5-6. Cicero. Six Orations. Prose composition. Four hours.

7-8. Vergil's Aeneid, Books I. to VI. With scansion and attention to poetic idioms and the literary value of the poem. Five hours.

GREEK.

Courses 1, 2, 3 and 4 are preparatory for Classical students. Odd-numbered courses are given in the first half years, even-numbered in the second.

1. Beginning Greek with selections from Xenophon's Anabasis. Five hours.

2. Continuation of Course 1.

3. Xenophon's Anabasis, Books I., II., III., and Greek Prose Composition. Five hours.

4. Xenophon's Anabasis, Book IV. Prose Composition and Homer's Iliad, Books I., II., III. Five hours.

German and French

LOUIS A. BACH, *Professor.*

GERMAN.

I. *Elementary Course.* Joynes-Meissner's German Grammar with oral and written exercises. Reading of at least 100 pages of graduated texts. Memorizing of choice poems. Five hours, throughout the year.

II. *Intermediate Course.* Advanced Grammar with corresponding composition and oral exercises. Reading of about 400

pages of intermediate texts in prose and verse. Memorizing of selections from text read. Four hours, throughout year.

III. *Advanced Course*. German Syntax. Reading from Classical authors as well as from representative historians and scientists. Oral reports in German and written summaries in German of texts read. Three hours throughout the year.

FRENCH.

I. *Elementary Course*. Fraser and Squair's French Grammar, Part I, with copious oral practice and written exercises. Special verb drill. Reading of at least 100 pages of modern prose. Memorizing of selections. Five hours, throughout the year.

II. *Advanced French*. Fraser and Squair's Grammar, Part II, with composition and oral practice. Reading of about 400 pages of representative texts. Memorizing of selections. Four hours, throughout the year.

English Language and Literature

WILLIAM E. KIRK, *Professor*.

I. Study of the elementary principles of Rhetoric, and practice in English Composition. The following books are used for class study and composition work: Irving's Sketch Book, Early English Ballads, Whittier's Snow-Bound, Bryant's Translation of Homer's Iliad, books I., VI., XXI., XXII., XXIV., Goldsmith's Deserted Village, Scott's Ivanhoe and Lady of the Lake, and Shakespeare's As You Like It. For supplementary reading: Dickens' Christmas Carol and Bunyan's Pilgrim Progress. Five hours, both semesters.

II. Studies in the elements of literature and composition. Critical study of Tennyson's Idylls of the King, Gareth and Lynette, Lancelot and Elaine, and The Passing of Arthur, De Quincey's Joan of Arc and The English Mail Coach, Shakespeare's Merchant of Venice, and Ruskin's Sesame and Lilies. For supplementary reading: Dickens' David Copperfield and Eliot's Silas Marner. Five hours, both semesters.

III. Special attention given to American Literature. Classics studied: Lowell's Vision of Sir Launfal, Burke's Speech on Conciliation with America, Longfellow's Courtship of Miles Standish, Emerson's Essays, Schurz' Abraham Lincoln, and Shakespeare's Midsummer Night's Dream. Supplementary read-

ing: Hawthorne's *Twice-Told Tales*, and Holmes' *Autocrat of the Breakfast Table*. Three hours, both semesters.

IV. *History and Development of English Literature*. For class study: Chaucer's *Prologue to Canterbury Tales*, and *Knight's Tale*, Milton's *Minor Poems*, Shakespeare's *Macbeth*, Burns' *Selected Poems*, Palgrave's *Golden Treasury*. Special attention given to Wordsworth, Keats, and Shelley. Supplementary reading: Sheridan's *The Rivals*, and Arnold's *Sohrab and Rustum*. Three hours, both semesters.

Mathematics

JAMES T. MATTHEWS, *Professor*.

1. *Beginning Algebra*. For beginners. A thorough drill is given in all the elementary processes, and an introduction to quadratics. Five hours, throughout the year. Text: *Algebra for Secondary Schools*, Wells.

2. *Plane Geometry*. About one-third of the time is spent on the demonstrations in the text; the remainder of the time is devoted to originals. Five hours, throughout the year. Text: *New Plane Geometry*, Wentworth.

3. *Algebra*. A continuation of Course 1. Beginning with quadratics, the work will consist of selected topics from the last half of Wells' *Algebra for Secondary Schools*. Three hours, throughout the first semester.

4. *Solid Geometry*. Special emphasis is laid upon the practical numerical exercises. Three hours, throughout the second semester. Text: *Solid Geometry*, Wentworth.

History

GAYLARD H. PATTERSON, *Professor*.

1. *American History and Civil Government*. Four hours, third year.

2. *History of Greece and Rome*, with due reference to the life, literature and government of each. Special attention is given to methods of study, consulting the library, etc. Three hours, fourth year.

Biology

H. J. CLEMENTS, *Professor*.

1. *Physiology*. This is an elementary study of human physiology, largely from the viewpoint of hygiene, taught by text, demonstrations and laboratory methods. Three hours.

2. *Botany*. It is the purpose of this course to teach the fundamental principles of plant physiology and behavior, and how to identify flowering plants. This course is adapted, so far as possible, to the needs of one who may be called upon to teach Nature Study in the public schools. Some time will, therefore, be given to field work. Four hours.

3. *Zoology*. A study of the various types, with special attention given to those forms which are of direct interest to students anticipating the work of teaching. Four hours, and reference reading.

Chemistry and Physics

H. C. TILLMAN, *Professor*.

1. *Chemistry*. Elementary; an introduction to principles of Chemistry; lectures, recitations, and laboratory work. Four hours.

2. *Physiography*. An introduction to Physical Geography. Three hours.

3. *Physics*. Elementary Physics. Three recitations and laboratory work throughout the year. The course covers mechanics, heat, light, sound, electricity and magnetism. A thorough knowledge of arithmetic and elementary algebra required. For Senior Academy students.

Pedagogy

MARY E. REYNOLDS, *Professor*.

Especially attention will be given in this department to special students not in the regular Academy course, and to the training of teachers. The subjects studied will be: Arithmetic, Grammar, English, Algebra, Book-keeping, Physical Geography, Physiology, Plane Geometry, Botany, Zoology, Oregon School Law, Expression, Normal Psychology, English Literature, American History and Civics, General History, Physics, Art of Teaching, Normal Methods. Other studies may be elected in the Academy and College of Liberal Arts courses.

Register of Students

College of Liberal Arts

1907-1908.

SENIORS.

Bisbee, Royal D.	Spokane, Washington
Cornelius, Bessie E.	Salem, Oregon
Hornschuh, Fred C.	Oregon City, Oregon
Oliver, George O.	Turner, Oregon
Price, Austin	Salem, Oregon
Reichen, John E.	Madras, Oregon
Whipple, Ruth	Vancouver, Washington
Young, Laneta	Boise, Idaho
Heltzel, James G.	Salem, Oregon

JUNIORS.

Anderson, Ellen	Salem, Oregon
Belknap, Clark	Monroe, Oregon
Chamberlain, Weller	Salem, Oregon
Crandall, Claud E.	Cleone, Oregon
Fields, D. Lester	Salem, Oregon
Gatch, Orytha H.	Salem, Oregon
Gittins, Mary	Clatskanie, Oregon
Glover, Mabel C.	Salem, Oregon
Hewitt, Roy	Salem, Oregon
Johnson, John C.	Roseburg, Oregon
Kuney, Edith	Salem, Oregon
Nelson, Clyde	New Kamilche, Washington
Rigdon, Leila	Salem, Oregon
Schmidt, William A.	Hillsboro, Oregon
Winslow, Elva	Salem, Oregon
Wainscott, Clyde	Salem, Oregon

SOPHOMORES.

Booth, Edith	Lebanon, Oregon
Crawford, James W.	Salem, Oregon
Emmel, Mary	Sherwood, Oregon
Emmel, Nora	Sherwood, Oregon
Eakin, Robert	Salem, Oregon
Forbes, George G.	Oregon City, Oregon
Jones, Harry E.	Jefferson, Oregon
Riegleman, Perry	Salem, Oregon
Smith, Guy O.	Salem, Oregon
Scheuerman, Harry	Salem, Oregon
Smith, Helen Mar	Salem, Oregon
Shields, Roy	Davenport, Washington

Shepherd, Robert J.	Salem, Oregon
Low, Earl G.	Salem, Oregon
Underhill, Carroll	Salem, Oregon
Wilson, George	Milwaukie, Oregon
Wann, Harry A.	Walla Walla, Washington

FRESHMEN.

Austin, Harold	Woodburn, Oregon
Altman, Alta A.	Salem, Oregon
Booth, Wilfred	Salem, Oregon
Bennett, Theodosia	Salem, Oregon
Barton, Frank W.	Salem, Oregon
Clark, Beulah	Salem, Oregon
Chamberlain, Hollister	Salem, Oregon
Colony, Eleanor	Salem, Oregon
Eyre, Earl	Salem, Oregon
Funk, Fannie	Salem, Oregon
Fugate, Edith	Monmouth, Oregon
Fisher, A. Viola	Salem, Oregon
Guerne, Charles A.	Turner, Oregon
Hogg, John A.	Salem, Oregon
Harrison, Charles B.	Salem, Oregon
Haskins, Alma	Corvallis, Oregon
Isham, Mary	Caldwell, Idaho
Hutchins, Marie	Salem, Oregon
Melson, Etta	Salem, Oregon
Moore, Agnes	Dayton, Oregon
Moore, John M.	Salem, Oregon
McIntyre, Ross	Salem, Oregon
Magness, Mabel	Amity, Oregon
Newcomb, Frances	Salem, Oregon
Niles, Glenn C.	Salem, Oregon
Pigler, Annie	Salem, Oregon
Price, Ray	Earlham, Iowa
Pierce, La Ronda	Salem, Oregon
Siegmund, Mathilda A.	Klumb, Oregon
Schmidt, Marie	Hillsboro, Oregon
Woods, Guy	Murphy, Idaho
Zimmerman, Neal L.	Salem, Oregon

COLLEGE SPECIAL.

Gilbert, Ralph	Salem, Oregon
Hindman, Claude	Durkee, Oregon
Hardman, Harry S.	Portland, Oregon
Jeffries, James T.	Belt, Montana
Jackson, Anna	Hood River, Oregon
Kirby, Harley	Salem, Oregon
Mason, Ray	Mehama, Oregon
Shanks, Murray	Arlington, Washington
Vineyard, Virgil	Pittville, California
Williams, Merle	Salem, Oregon
Wimberley, Carl	Drain, Oregon
Yanckwich, Leon	Portland, Oregon

Academy

FIRST YEAR.

Allen, Hazel	Vancouver, Washington
Belknap, Harlan	Monroe, Oregon
Brewer, Earnest	Chemawa, Oregon
Bennett, Nona P.	Salem, Oregon
Boewer, Ella	Chemawa, Oregon
Cross, Veda	Salem, Oregon
Chalcraft, Edwin P.	Chemawa, Oregon
Drake, Francis G.	Brooks, Oregon
Downey, Carl H.	Stayton, Oregon
Dean, Bert E.	Monroe, Oregon
Derby, Ulva	Salem, Oregon
Garnjobst, Henry	Liberty, Oregon
Garnjobst, Julius	Salem, Oregon
Hobson, Louis	Salem, Oregon
Jory, Constance	Salem, Oregon
Judd, Alice M.	Salem, Oregon
Jory, Harold B.	Salem, Oregon
Mercer, Helen	Salem, Oregon
Oherran, Leonard	Chemawa, Oregon
Oldenburg, Will H.	Connell, Washington
Reeves, Stacy	Turner, Oregon
Skeels, George W.	Salem, Oregon
Selstice, Peter J.	Chemawa, Oregon
Siddall, Louis	Salem, Oregon
Spoor, Charles (deceased)	Salem, Oregon
Watt, Alma	Salem, Oregon
Woods, Laura	Murphy, Idaho

SECOND YEAR.

Bellinger, Ivan Ellsworth	Noble, Oregon
Blackwell, Harley	Oregon City, Oregon
Blaylock, Thomas R.	Newberg, Oregon
Bishop, Hazel	Salem, Oregon
Bales, Marion	Salem, Oregon
Bullis, Rae E.	St. Johns, Oregon
Cleveland, Jennie C.	Salem, Oregon
Corlett, Eveline J.	Cascade Locks, Oregon
Dimond, Chester	Newberg, Oregon
Dimick, Atha M.	Salem, Oregon
Gittins, Frances	Clatskanie, Oregon
Hawthorne, Carrie	Salem, Oregon
Hepp, Louis	Salem, Oregon
Hall, Luther	Salem, Oregon
Jayne, Fortunato	Chemawa, Oregon
Jeffries, Winfield	Belt, Montana
McPeck, Fleda	Salem, Oregon
McNees, John	Woodburn, Oregon
Mussell, Myrtle	Caldwell, Idaho
Reeves, Winifred	Portland, Oregon
Reeves, Frank	Portland, Oregon

Sanders, Frank	Astoria, Oregon
Soloman, Wilda	Salem, Oregon
Thomas, Laura	Marion, Oregon
Unruh, Marguerite	Dayton, Oregon
Winslow, George	Salem, Oregon

THIRD YEAR.

Bower, Altus	Spokane, Washington
Clemo, Fred J.	Junction City, Oregon
Coleman, Hamline	Salem, Oregon
Hart, Jennie M.	Lookingglass, Oregon
May, Arthur B.	Salem, Oregon
Moore, Clara E.	Salem, Oregon
Mooreland, Queen	Salem, Oregon
Newmeyer, Philip	Chemawa, Oregon
Putnam, Margaret	Salem, Oregon
Richardson, S. Whitely	Salem, Oregon
Samson, Jean	Boise, Idaho
Samson, Maurine	Boise, Idaho
Will, Elizabeth T.	Salem, Oregon
Young, Clarence	Boise, Idaho

FOURTH YEAR.

Anderson, Arta	Mead, Washington
Anderson, Paul	Salem, Oregon
Caldwell, Hazel F.	Bend, Oregon
Matthews, Oliver	Salem, Oregon
McMillan, Fred O.	Salem, Oregon
Snell, Viola Gilbert	Junction City, Oregon
Westley, Lloyd	Salem, Oregon
Jones, Raymond	Jefferson, Oregon
Mussell, Cora	Caldwell, Idaho
Unruh, Lee	Salem, Oregon

SPECIAL ACADEMY.

Allen, R. H.	Jefferson, Oregon
Beatty, Wm. T.	Salem, Oregon
Campbell, Earnest E.	Eugene, Oregon
Goudge, Earnest	Salem, Oregon
Heltzel, Samuel H.	Salem, Oregon
Johnson, Grace	Vale, Oregon
Pogue, C. W.	Bridal Veil, Oregon
Riemanschneider, Wm. F.	Salem, Oregon
Stewart, William C.	Rainier, Oregon
Tarpley, Lela	Salem, Oregon
Wachlte, Fred M.	Sherwood, Oregon

Normal

FIRST YEAR.

Crandall, Ruby	Cleone, Oregon
Evans, Ruth	Salem, Oregon
Mann, Hattie	Chemawa, Oregon
Mann, Nora	Chemawa, Oregon

SECOND YEAR.

Chattin, Vera	Salem, Oregon
Evans, Remoh	Salem, Oregon
Hogg, Lizzie	Salem, Oregon
Holcomb, Lena	Brownsville, Oregon
Morgan, Ora	Coquille, Oregon
Porter, Grace M.	Wasco, Oregon
Price, Elizabeth	Bancroft, Oregon
Rudolph, Alice	Salem, Oregon
Willson, Ella	Halsey, Oregon

THIRD YEAR.

Carlson, Mildred	Gresham, Oregon
Dow, Josephine	Astoria, Oregon

FOURTH YEAR.

Bailey, Greta	Salem, Oregon
Duncan, Bertha	Salem, Oregon
Denny, Elizabeth	Salem, Oregon
Fastabend, Laura M.	Astoria, Oregon
Kingsbury, Mabel	Salem, Oregon
Norberg, Selma E.	Astoria, Oregon
Savage, Edna A.	Salem, Oregon
Snell, Bess M.	Junction City, Oregon
Woods, Edith May	Murphy, Idaho

COMMERCIAL COURSE.

Bower, Paul	Spokane, Washington
Cameron, Robert	Butte City, California
Crouch, Harry R.	Clarkston, Washington
Coats, Grace	Salem, Oregon
Cooper, Irma L.	Salem, Oregon
Cummins, Walter	Salem, Oregon
Doege, Reuben	Clarkston, Washington
Durant, Cora	Silverton, Oregon
Dillstrom, Henry	Chemawa, Oregon
Freeman, Lucy	McMinnville, Oregon
Gaudy, Apis	Chemawa, Oregon
Harpham, V. V.	Roseburg, Oregon
Kamm, Emil F.	North Yakima, Washington
Leech, John B.	Corvallis, Oregon
McClain, Daisy Doris	Salem, Oregon
Mers, Marguerite	Salem, Oregon
McCarroll, Dallas	Clarkston, Washington
McDowell, Roy	Salem, Oregon
McBain, Ira A.	Falls River, California
Parrish, Ethelma	Chemawa, Oregon
Poland, Merl	Chemawa, Oregon
Snyder, Charles E.	Brownsville, Oregon
Sloan, James J.	Chemawa, Oregon
Wood, Homer	Hood River, Oregon
Will, Elizabeth	Salem, Oregon
Woodward, Ruby	Salem, Oregon

TEACHERS' COURSE.

Daugherty, George	Chemawa, Oregon
Frazier, Elizabeth	Happy Camp, California
Kleinbach, George	Salem, Oregon
Mason, Thomas	Latah, Washington
Pierce, Sarah	Happy Camp, California

College of Music

PUPILS OF 1907-8.

(Private lessons only.)

Anderson, Arta	Elmore, Ruby
Anderson, Edna L.	Eyre, Charles
Anderson, Paul T.	Farrington, Laura
Aral, Pauline M.	Fastabend, Laura
Ashby, Lois M.	Field, Ruth
Baller, Will. A.	Fisher, Ione P.
Beatty, Frances	Fleming, Prescilla
Beckley, Hettie C.	Givens, T. E.
Bedford, Beth Wilda	Goodenough, Helen
Belknap, Carrie N.	Hadley, Morton
Belknap, F. G.	Haid, Usona
Belknap, Stella P.	Hart, May L.
Bentley, Charlie	Hawley, Alsea
Bisbee, Royal D.	Hawley, Homer
Bishop, Mrs. Mason	Hawthorne, Carrie
Blaylock, T. R.	Hofer, Marie A.
Bohannon, Cecil	Hornibrook, Sadie
Booth, Wilford G.	Hoyt, Merton L.
Bowden, Florence	Hug, Mernie A.
Bowerman, Martha	Hughes, J. Frank
Brown, Katherine	Isham, Mary
Browning, Edna E.	Jackson, Anna F.
Burton, John P.	Jacobs, Ludwig G.
Butler, Birdie E.	James, Myrta
Byars, Allan H.	Jennings, Bertha
Campbell, Irene	Johnson, Gladys
Campbell, Irma	Johnson, Myrtle
Carlson, Mildred	Johnson, Nina P.
Catlow, Chester	Jones, Mrs. J. T.
Chamberlin, Weller	Judd, Alice M.
Colony, Eleanor	Keizer, Cornelia
Cornelius, Bessie	Kingsbury, Mabel
Crocker, Edna May	Kippin, Earl
Cross, Veda Mae	Lardon, Rhoda K.
Curtis, Tommy	Lindahl, Agnes
Daugherty, Elmer	Lloyd, Mabel
Deckebach, Frederic	Lloyd, V. Lee
Deckebach, Helen	Lord, Elizabeth
Doege, R. G.	Lord, Wm. P. Jr.
Eakin, Robert S.	Lucas, Mildred

Lundell, A. W.	Serrurier, Florence
McEvoy, Agnes	Skiff, George F.
McPeck, Fleda	Smith, Helen Mar
Mann, Nora L.	Snelling, Laura
Mason, R. L.	Soesbe, Arthur
Mason, Thomas	Sonneman, Clara
Maurer, Pansy	Spalding, Lila
Mers, Marguerite	Stege, Lily
Miller, Nettie	Stoudenmeyer, H. N.
Moreland, Queen	Strang, Archie A.
Munson, Harry	Swart, Addie
Mussell, Cora	Swart, Renska
Mussell, Myrtle	Swart, Wikje
Muths, Emma E.	Tarpley, Lela
Newman, Franc	Trill, Wallace G.
Norberg, Elizabeth	Turner, Joy
Pierce, Edwin W.	Wainscott, Clyde
Reddekopn, Elizabeth	Walton, Nellie
Roberts, F. B.	Wann, Mary B.
Ross, Mrs. H. L.	Wilson, Della
Rudolph, Alice	Wilson, Margery
Runcorn, Mollie	Wolverton, Leto
Savage, Edna A.	Wood, Marie
Schindler, Freida	Wolf, Viola Fisher
Schindler, Martha	Young, Josephine

College of Oratory

SENIORS.

Belknap, Clark R.	Salem, Oregon
Bisbee, Royal D.	Spokane, Washington
Booth, Augusta C.	Salem, Oregon
Fisher, Ione Pearl	Salem, Oregon
Hockett, B. Merle	Yoncalla, Oregon
Trill, Wallace G.	La Grande, Oregon

JUNIORS.

Anderson, Ellen	Moscow, Idaho
Casebere, Nellie	Salem, Oregon
Catlow, Chester	Barrington, Illinois
Gillis, Anna K.	Salem, Oregon
Hannon, Myrtle	Goldendale, Washington
Hardman, Harry	Portland, Oregon
Patty, June	Amity, Oregon

FRESHMEN.

Beckley, Hattie	Milwaukie, Oregon
Cross, Veda	Salem, Oregon
Gross, Bertha	Pendleton, Oregon
Hart, May L.	Banner's Ferry, Idaho
Johnston, Grace	Vale, Oregon
Isham, Mary	Caldwell, Idaho
Oliver, G. O.	Turner, Oregon

Reigleman, Perry	Salem, Oregon
Savage, Winona	Salem, Oregon
Schmidt, W. A.	Hillsboro, Oregon
Strang, Archibald	Spokane, Washington
Watt, Alma	Salem, Oregon

SPECIAL.

Ashby, Lois	Shaw, Oregon
Belknap, Harlan	Salem, Oregon
Bower, Paul	Spokane, Washington
Browning, Edna	Enterprise, Oregon
Conklin, Mrs.	Salem, Oregon
Conklin, Margaret	Salem, Oregon
Ferguson, Esther	Salem, Oregon
Fields, D. L.	Salem, Oregon
Gittens, Mary	Salem, Oregon
Glover, Mabel	Albany, Oregon
Haskins, Alma	Corvallis, Oregon
Hatch, Florence	Salem, Oregon
Hornebrook, Cynthia	Goldendale, Washington
Heise, Paul	Salem, Oregon
Heltzel, Samuel	Rock Creek, Oregon
Hofer, Marie	Salem, Oregon
Hewitt, Roy	Amity, Oregon
Hindman, Claude	Baker City, Oregon
Hornshuh, Fred L.	Oregon City, Oregon
Lewis, Noreen	Los Angeles, California
Neuner, George	Roseburg, Oregon
Reid, Milton M.	Salem, Oregon
Reichen, Hohn	Madras, Oregon
Robinson, Joe	Springfield, Oregon
Riemanschneider, W. F.	Salem, Oregon
Shanks, Murray	Arlington, Washington
Schindler, Freida	Salem, Oregon
Steele, Paul L.	Salem, Oregon
Turner, Rex	Salem, Oregon
Wilson, Marguerite	Salem, Oregon
Yanchwich, Leon	Jassy, Ramonia

SOPHOMORE ORATORY.

(Required in the College of Liberal Arts.)

Anderson, Ellen	Moscow, Idaho
Bales, Marion	Wasco, Oregon
Beckley, Hattie	Milwaukie, Oregon
Booth, Augusta	Salem, Oregon
Bisbee, Royal	Spokane, Washington
Belknap, Clark	Salem, Oregon
Bower, Paul	Spokane, Washington
Casebere, Nellie	Salem, Oregon
Catlow, C. J.	Barrington, Illinois
Cornelius, Bessie	Salem, Oregon
Emmel, Nora	Sherwood, Oregon
Emmel, May	Sherwood, Oregon

Fisher, Ione	Salem, Oregon
Fields, Lester	Salem, Oregon
Gross, Bertha	Pendleton, Oregon
Hornschuh, Fred	Oregon City, Oregon
Hardman, Harry	Portland, Oregon
Hockett, Merle	Yoncalla, Oregon
Hannon, Myrtle	Goldendale, Washington
Hornebrook, Cynthia	Goldendale, Washington
Holmes, M. A.	Rickreall, Oregon
McNees, J. A.	Woodlawn, Oregon
Patty, June	Amity, Oregon
Reigleman, Perry	Salem, Oregon
Riemanschneider, W. F.	Salem, Oregon
Robinson, Joe	Springfield, Oregon
Schmidt, W. A.	Hillsboro, Oregon
Shepherd, Robert	Zena, Oregon
Trill, Wallace	La Grande, Oregon
Wainscott, Clyde	Salem, Oregon
Wilson, George	Woodstock, Oregon
Whipple, Ruth	Vancouver, Washington
Williams, Merle	Washington, D. C.
Yanchwich, Leon	Jassy, Ramonia

NORMAL EXPRESSION.

Beckley, Hattie	Salem, Oregon
Belknap, Harlan	Salem, Oregon
Clemo, Fred	Roseburg, Oregon
Cross, Veda	Salem, Oregon
Denny, Elizabeth	Salem, Oregon
Dimond, Chester	Newberg, Oregon
Duncan, Bertha	Ironside, Oregon
Eyre, Earl	Salem, Oregon
Fastabend, Laura	Astoria, Oregon
Gilbert, Ralph	Chemawa, Oregon
Gross, Bertha	Pendleton, Oregon
Hannon, Myrtle	Goldendale, Washington
Hart, Jennie M.	Lookingglass, Oregon
Holmes, M. A.	Rickreall, Oregon
Hornebrook, Cynthia	Goldendale, Washington
Jayme, Fortunate	Bacolod, Negros, P. I.
Kuhney, Edith	Salem, Oregon
McNees, J. A.	Woodlawn, Oregon
Norberg, Elizabeth	Astoria, Oregon
Patty, June	Amity, Oregon
Porter, Grace M.	Wasco, Oregon
Reeves, Winnifred	Salem, Oregon
Reid, Mrs. M. M.	Salem, Oregon
Savage, Edna	Salem, Oregon
Schmidt, Marie	Hillsboro, Oregon
Strang, Archibald	Spokane, Washington
Watt, Alma	Salem, Oregon
Witt, Elizabeth	Salem, Oregon
Winslow, George	Salem, Oregon

Wood, Homer	Hood River, Oregon
Woods, Guy	Murphy, Idaho
Yanchwich, Leon	Portland, Oregon

College of Theology

Allen, Robert H.	Jefferson, Oregon
Bales, Marion E.	Wasco, Oregon
Beatty, William T.	Salem, Oregon
Bisbee, Royal D.	Spokane, Washington
Campbell, Ernest	Springfield, Oregon
Carlson, Charles H.	
Creesy, Charles L.	Spokane, Washington
Drake, G. F.	Brooks, Oregon
Dean, Bert E.	Monroe, Oregon
Dimond, Chester	Newberg, Oregon
Fields, D. Lester	North Yamhill, Oregon
Gittins, Edward	Clatskanie, Oregon
Gittins, Mary	Clatskanie, Oregon
Goudge, Ernest	Salem, Oregon
Iwasaki, Dataro	Portland, Oregon
Johnson, John	
Kleinbach, George	Spokane, Washington
Marquam, C. Ray	Hubbard, Oregon
Mason, Ray W.	Latah, Washington
McCain, H. G.	Salem, Oregon
May, Arthur B.	Salem, Oregon
Oldenburg, W. H.	Connell, Washington
Oliver, George O.	Turner, Oregon
Pogue, C. Walter	Bridal Veil, Oregon
Rees, Charles B.	Orient, Oregon
Reeves, F. Hall	Portland, Oregon
Reichen, John E.	Salem, Oregon
Reid, Milton M.	Salem, Oregon
Schmidt, William A.	Hillsboro, Oregon
Senow, Gainto	Portland, Oregon
Snyder, Sanford	Independence, Oregon
Stewart, William C.	Balston, Oregon
Vinyard, Virgil A.	Pittsville, California
Waehte, Fred M.	Oregon City, Oregon
Wann, Harry A.	Walla Walla, Washington
Walker, S. D. R.	Salem, Oregon

College of Medicine

SENIORS.

Barker, Z.	Roseburg, Oregon
Chandler, C. E.	Washington
Graves, Luzana	Portland, Oregon
Irvine, Malcolm	Arlington, Oregon
Knotts, Roy R.	Oswego, Oregon
McKinney, M. W.	Brownsville, Oregon

Mendenhall, F. T.	Harrisburg, Oregon
Paxton, T. O.	Astoria, Oregon
Robertson, Geo. M., M. D.	British Columbia
Takabatake, Y., M. D.	Japan

JUNIORS.

Bellinger, Grover	Salem, Oregon
Fox, M. C.	White Salmon, Washington
Haas, F. G.	Salem, Oregon
Lewis, F. D.	Salem, Oregon
Matthis, J. O.	Amity, Oregon
Nace, A. G.	Seattle, Washington
Russell, J. I.	Thurston, Oregon
Smith, Walter C.	Halsey, Oregon
Stuart, James E.	Livingston, Montana
Thompson, F. H.	Albany, Oregon

SOPHOMORES.

Bartlett, J. C.	Burns, Oregon
Bartlett, C. J.	Burns, Oregon
Cooley, William H.	Stayton, Oregon
Pemberton, Ray	Salem, Oregon
Windom, A. L.	Brownsville, Oregon
Snider, C. M.	Lakeview, Oregon
Massey, George A.	Hood River, Oregon

FRESHMEN.

Briggs, W. D.	Coquille, Oregon
Soule, A. A.	Chico, California
Byrd, P. W.	Seattle, Washington
Russell, M. C.	Salem, Oregon
Savage, R. H.	Salem, Oregon
Simpson, E. Q.	Salem, Oregon
Pemberton, W. L.	Newberg, Oregon
Kodama, S.	Japan

College of Law

SENIOR CLASS.

Winslow, Walter C.	Salem, Oregon
Trill, Wallace	Salem, Oregon
Morgan, Roy	Salem, Oregon
Stover, Phillip A.	Sunnyside, Washington
Spaulding, Harry K.	Sunnyside, Washington
Nuner, George	Days Creek, Oregon
Lord, William P.	Salem, Oregon
Hindman, C. O.	Durkee, Oregon
Goodall, George O.	Salem, Oregon

JUNIOR CLASS.

Yanchwich, Leon	Jassy, Ramonia
Wimberly, Carl	Drain, Oregon
Unruh, Glen	Salem, Oregon

Shanks, Murray D.	Arlington, Washington
Riemenschneider, W. T.	Salem, Oregon
Jeffries, James	Belt, Montana
Hewitt, Roy	Salem, Oregon
Duncan, Robert M.	Ironside, Oregon
Heltzel, S. H.	Salem, Oregon
Powers, D. E.	Spokane, Washington
Sykes, Horace	Salem, Oregon
Heise, W. C.	Salem, Oregon

Alumni

Alumni Officers

Robert Eakin, Judge of Supreme Court.....	President
Mrs. V. W. Ohmart, M. L. Butler.....	Vice Presidents
Miss Sophia Townsend, '03.....	Secretary
Miss Lena Schindler	Treasurer
Frank Grannis, Miss L. V. Swafford.....	Members Executive Committee

College of Liberal Arts

(The Alumni will please keep the University informed of correct address.)

1859

Moore (York), Mrs. Emily J., B. S.....Portland

1862

Reasoner (Locey), Mrs. Addie B., B. S.....Died 1867

1863

Crawford, T. H., A. M., Clerk, Purchasing Agent and Instructor in Bookkeeping, Oregon Agricultural College

Corvallis

Curl (Stipp), Mrs. Nellie J., B. S., Teacher.....Died March, 1879

Day (McGhee), Mrs. Mary, B. S.....Jacksonville

Drake (Robb), Mrs. Angeline, B. S.....Died May, 1900

Finlayson, Colin T., B. S., Teacher.....Died December, 1873

Grubbs, John C., A. M., (M. D. University of Michigan) ..

Died October, 1878

Grubbs, Frank H., A. M., Printer.....Portland

Grubbs (Lee), Mrs. Lucy, A. M., B. S.....Died April, 1881

Jordan (Belt), Mrs. Emily N., B. S.....Berkeley, California

McWhorter, Alva, B. S.....Died April, 1864

Odell (Grubbs), Mrs. Margaretta, B. S.....Died 1908

Waldo, John B., B. S., ex-Chief Justice Oregon Supreme Court, Attorney-at-Law.....Died 1907

1864

Jones, J. P., B. S., Attorney-at-Law.....Died 1899

Morton (Watt), Mrs. Clara A., B. S.....Portland

O'Donald (Cross), Mrs. Eliza A., B. S.....Salem

Parrish, Chas. W., A. M., Attorney-at-Law.....Burns

Parrish (Robb), Mrs. Anna R., B. S.....Died 1899

Simpson, Sylvester C., Attorney-at-Law.....San Francisco, Cal.
 Shelton (Whitson), Mrs. Pauline, B. S.....Died 1869

1865

Denny, Presley M., A. B., Attorney-at-Law.....Died 1900
 Gill (Wilson), Mrs. Frances A., B. S.....Portland
 Kahler, Chas. W., B. S., Attorney-at-Law.....Deceased
 Stowell (McCalley), Mrs. Janette, B. S.....Alaska
 Willis, Parrish L., A. B., Attorney-at-Law.....Portland

1866

Butler, Nehemiah L., A. B., Attorney-at-Law.....Dallas
 Bybee (Starkey), Mrs. Ellen E., B. S.....Portland
 Bewley, John M., B. S., Dentist.....
 Dodge, Edward E., A. B., Minister.....Oakland, California
 Garrison, John M., A. M.....Forest Grove
 Gilfrey, Henry H., A. M., Chief Clerk, United States
 SenateWashington, D. C.
 Gilkey (Robinson), Mrs. Mary A., B. S.....Dayton
 Hannon, Joseph, A. M., Attorney-at-Law.....Died July, 1878
 Harrison, Miss Elizabeth, B. S.....Died 1886
 Harvey (Case), Mrs. Fannie S., B. S.....Portland
 Kellogg (Miller), Mrs. Jane E., B. S., Teacher.....Died 1905
 Marsh (Smith), Mrs. Marie E., B. S.....Salem
 Sellwood, James R. N., A. M., Teacher.....Died October, 1891
 Sellwood, Joseph A., A. M.....Salem
 Simpson (McFarland), Mrs. Frances M., B. S.....
San Francisco, California
 Simpson, Samuel L., Poet and Journalist.....Died June, 1899
 Stratton (Williams), Mrs. Helen L., B. S.....Portland
 Willis (Stratton), Mrs. Irene, B. S.....Portland
 Wythe, William T., A. M., Physician.....Died 1880

1867

Dodge (Wythe), Mrs. Mary L., B. S.....Oakland, California
 Lee (Witten), Mrs. Eliza, B. S.....Portland
 McKinney (Harrison), Mrs. Susan, B. S.....Baker City
 Stowell (Simpson), Mrs. Louisa A.Died 1887
 Williams (Wythe), Mrs. Sarah J., B. S.....Died 1881

1868

Arnold, John C., B. S.....Died 1896
 Babcock (Pratt), Mrs. Ida M., B. S.....Salem
 Bond, Benjamin F., B. S., Physician.....Died 1874
 Buff, James K., B. S., Teacher.....Silverton
 Carter, Joseph L., B. S.....Hood River
 Chamberlain, Miss Ellen J., A. M.....Spokane, Washington
 Chambers, James, B. S., Farmer.....Died 1883
 Dashiields (Freeland), Mrs. Emma L., B. S.....Berkeley, California
 Denison, J. S., B. S., Physician.....Deceased
 Engle (Grubbs), Mrs. Angie, B. S.....Ashland

Galloway, William, B. S., Circuit Judge Third Judicial District	McMinnville
Johnson (DeVore), Mrs. Josie, A. M.	Portland
Lamson, Mrs. Dora M., B. S.	
Strong, George E., A. M.	Died 1881
Waller, Edmond J., A. M.	California

1869

Bush (Kelly), Mrs. Ellen, A. M.	Boise, Idaho
Chambers, James, A. M., Farmer	Died 1883
Comegys, George, B. S., President of Bank	Deceased
Comegys, Henry C., B. S., Attorney-at-Law and U. S. Commissioner	Snohomish, Washington
Johnson (Swain), Mrs. Carrie P., B. S.	Honolulu, H. I.
Patton, Matthew J., B. S., Physician	Deceased
Stratton, Carroll C., A. M., (D. D., N. W. U.)	Coquille
Stratton, Julius A., A. M., Attorney-at-Law	Seattle, Washington
Burney (Simpson), Mrs. Eleanor T., B. S., Teacher	Portland
Small, Miss Emily L., B. S.	Died April, 1873
Turner (Boswell), Mrs. Emma S., B. S.	Deceased
Wythe (Wilson), Mrs. L. Belle, B. S.	Deceased

1870

Crawford, Milton T., A. M., Farmer	Corvallis
Felt (Case), Mrs. Mary E., B. S.	Died 1899
Ford, Tilmon, B. S., Attorney-at-Law	Died 1908
Hewitt, Henry H., A. M., Attorney-at-Law	Albany
Hannah (Gilliland), Mrs. Hattie, B. S.	Roseburg
Lownsdale, Millard O., A. B., Farmer	Lafayette
McKinney, Edward E., A. B., Farmer	Sublimity
Moores, Charles B., A. B., (LL. B., University of Mich.)	Salem
Miller (Moores), Mrs. Gertrude E., B. S.	Died October, 1877
Nail, Miss Mattie, B. S., Teacher	
Palmer (Gilbert), Mrs. Mattie E., B. S.	Sellwood
Wilson (Chapman), Mrs. Mary, B. S.	

1871

Bonney, Augustus A., B. S., Farmer	The Dalles
Cromwell (Bridges), Mrs. Sarah E., B. S.	Los Angeles, California
Hobson, Frank M., A. B.	Died 1872
Jones, Madison L., A. M., Hopgrower	Brooks
Jory, Miss Phoebe, B. S.	Salem
McKinney (Condit), Mrs. Virginia, B. S.	Sublimity
Miller (Scriber), Mrs. Amelia E., B. S., Teacher	Salem
Stillwell (Robinson), Mrs. Eliza, B. S.	Dayton
Williams, Lafayette, A. B., Cashier	Lewiston, Idaho

1872

Bryant, Hubbard, B. S., Attorney-at-Law	Albany
Killingsworth (Simpson), Mrs. Dora P., B. S.	Portland
Wheeler, Mrs. Elva A., B. S.	Shoshone, Idaho

1873

Byrd (Holderness), Mrs. Teresa, B. S.....	Died 1886
Crockett (Chamberlain), Mrs. Lydia E., B. S.....	Died 1907
Eakin, Robert, B. S., Judge Supreme Court.....	Salem
Haines (Brown), Mrs. Libbie.....	Latourel Falls
Imbrie, James J., A. B., Farmer.....	Deceased
Kellogg (Miller), Mrs. Jane E., A. M.....	Died January, 1905
Moores (Chamberlain), Mrs. Sallie E., B. S.....	Salem
Meisse, William H., B. S., Minister.....	Died 1880
Miller, William J., B. S., Teacher.....	Pennsylvania
Nichols, Alfred, B. S.....	Died 1887
Ohmart (Smith), Mrs. Valleda, B. S.....	Salem
Royal, Ladru, A. M., Real Estate.....	Los Angeles, California
Reynolds (Jory), Mrs. Mary J., B. S., Teacher.....	Lyle, Washington
Shattuck, Miss Emily, A. M.....	Died 1879

1874

Brown (Breyman), Mrs. Elva R., B. S.....	Salem
Borthwick (Case), Mrs. Alice E., B. S.....	Portland
Cole, Miss Sarah E., B. S.....	Died 1876
Duncan, John N., B. S., County Judge, Linn County.....	Albany
McKinney, Miss Ann E., B. S.....	Clymer
Royal, Stanley O., A. M., (B. D., Drew), D. D., W. U.), Minister.....	338 South Main Street, Dayton, Ohio
Hoffman (Stannus), Mrs. Ella, B. S.....	Honolulu, H. I.

1875

Brodie (Carpenter), Mrs. Georgia S., B.S.....	R. F. D. No. 1, Lents
Foster, H. Z., B. S., County Treasurer, Yamhill Co.....	McMinnville
Royal, Miller G., A. M., Attorney-at-Law.....	Walla Walla, Wash.
Starr, Wilbur F., A. B., Farmer.....	Monroe
Starr, S. A., A. M., (B. D., Drew).....	Portland
Swayne (Jory), Mrs. Lizzie C., B. S.....	Chehalis, Washington

1876

Allen, Wiley B., A. B., Music Merchant.....	Died October, 1905
Byrd (Holderness), Mrs. Teresa D., A. B.....	Died 1886
Johnson, Frank M., B. S., Farmer.....	Moscow, Idaho
Moores, Albert N., A. B.....	Salem
Mays, Frank P., B. S., Attorney-at-Law.....	Portland
Starr, Miles T., A. B., Merchant.....	Corvallis

1877

Grubbe, Quincy A., B. S., Attorney-at-Law.....	Died 1887
Haskin (Lawrence), Mrs. Anna, B. S.....	Portland
Irvine, B. Frank, B. S., A. M., Editor.....	Corvallis
Jory, Thomas C., A. M., Teacher.....	Salem
Simmons (Jones), Mrs. Emma, B. S.....	Gervais
Lee (Cook), Mrs. Nettie A.....	Cincinnati, Ohio
McCormick (Collier), Mrs. Hattie L., B. S.....	Eugene

Miller (Griffith), Mrs. Sarella, B. S.....	Died 1903
McCully, Frank M., B. S.....	Died 1907
Moores, Miss Bertha, B. S., Stenographer.....	Portland
Moores, Miss Althea, B. S.....	Died 1883
Nichols, Richard J., B. S., Librarian Oregon Agricultural College	Corvallis
Peebles, George A., B. S., Principal of North School.....	Salem
Ross, Miss Nora, B. S.....	Died 1900
Redington (Meacham), Mrs. Nellie F., B. S.....	Pasadena, Cal.
Steiber (May), Mrs. Ada E., B. S.....	Salem
Vaughan (Hutton), Mrs. Ida, B. S., Stenographer.....	Los Angeles, California

1878

Downing (McKinney), Mrs. Henrietta, B. S.....	Died 1885
Gray, George B., A. M., Merchant 1330 First Ave., Seattle, Wash.	
Graves, Waller A., B. S. Druggist.....	Sheridan
Hughes, George P., A. M., Merchant.....	Died 1904
Johns, Charles A., A. M., Attorney-at-Law, Mayor.....	Baker City
Jones (Hovendon) Mrs. Emma, B. S.....	Brooks
Kelly, Richmond, A. M., M. D., Physician.....	Portland
Kinney (Strong), Mrs. Mary E., A. M.....	Portland
Moores (Dickinson), Mrs. Cora L., B. S.....	Salem
Albert (McNary), Mrs. Lizzie, B. S.....	Salem
Miller, Robert A., B. S., Attorney-at-Law.....	36 Commercial Building, Portland
Nelson, L. O., B. S.....	Portland
Stouffer, D. P., A. B.....	Dallas
Scriber, Miss Adelaide, B. S.....	Salem
Willis, Eugene, A. B., Commercial Traveler.....	Portland

1879

Clark (Jones), Mrs. Sarah, B. S.....	Clackamas
Cornell (Parmenter), Mrs. Emily, B. S.....	Portland
Harrison, Hugh, B. S., Farmer.....	
McKinney, John W., B. S., Farmer.....	Turner
McKinney (Johns), Mrs. Viola, B. S.....	Arlington
Reeves (Nichols), Mrs. Carrie, B. S.....	Salem
Yocum, Miss Loretta, B. S.....	Died 1886

1880

Brown (Cunningham), Mrs. Minnie, B. S.....	Died 1895
Bush (Hughes), Mrs. Lulu M., B. S.....	Salem
Bower (McKinney), Mrs. Mary, B. S.....	Spokane, Washington
Clark, Miss Gabrielle, B. S., Stenographer.....	Salem
Cornell, Thomas B., B. S., Merchant.....	Grants Pass
Harrison, Robert, B. S., Farmer.....	Died 1903
Reynolds, Miss Mary E., B. S., Professor W. U.....	Salem
Spaulding, Frank R., A. B., Minister.....	Athol, Washington
Stump, William H., B. S.....	Died 1882
Sullivan (Spaulding), Mrs. Lucy, A. B.....	Spokane, Washington

1881.

Myers (Jory), Mrs. Mattie, B. S.....Salem
 Randle, Samuel A., A. M.....Waverley, Washington
 White (Prescott), Mrs. Isabella M., A. B.....Salem

1882

Walts (Starr), Mrs. Mary, A. B.....Monroe

1883

Cranston, Charles K., Ph. B., Cashier.....Pendleton
 Gray, Charles A., Ph. B., Architect...209 Fulton Bldg., Portland
 Stump, Arthur A., Ph. B.....Died 1884

1884

Belknap, Edward H., B. S., Minister.....Salem
 Hawley, Willis C., B. S., U. S. Congressman.....Salem
 Marsh (Whipple), Mrs. Ella, B. S., Physician...Long Beach, Cal.
 Walts, Marcus M., A. M., Minister and Farmer.....Dusty

1885

Brown, George M., B. S., District Attorney.....Roseburg
 Clark, Abe L., A. M., Principal High School.....Astoria
 Goltra (Reynolds), Mrs. Kate D., A. B.....Portland
 Horner, J. B., A. M., Professor English, Oregon Agricultural College Corvallis
 Van Scoy (Eastham), Mrs. Jessie, Ph. B.....Eugene
 Willis, Percy, A. M., Captain U. S. Artillery Corps..Fort Stevens

1886

Conn, Lafayette, A. B., Attorney-at-Law.....Paisley
 Goddard, Henry S., A. B., Physician.....Goldendale
 Piper, Edgar B., A. B., Managing Editor Oregonian.....Portland
 Paget (Caples), Mrs. Margaret A.....Portland

1887

Boise, Miss Nellie S., B. L.....Died 1891
 Cavanaugh (Cunningham), Mrs. Bertha, B. S....R. F. D., Salem
 Cunningham, Miss Florence L., B. S.....Salem
 Deweese, William, A. B., Minister.....Sunnyside, Washington
 Goltra, J. O., A. B., Assistant Secretary Portland Loan & Trust Company Portland
 Holmes, S. W., A. B.....Corvallis
 Morgan (Dearborn), Mrs. Kate, B. L.....Portland
 Peebles, John M., B. S., Lawyer.....Rupert, Idaho
 Starr, J. Benson, A. B.....Pasadena, California
 Swayne, Jonathan, A. B., Minister.....Chehalis, Washington

1888

Hawley, Willis C., A. M., LL. B., U. S. Representative...Salem
 Hetzler, William F., A. B.....Los Angeles, California
 Jensen, John, B. S., Minister.....Died 1893

Mulligan, Albert S., A. B., Minister.....
 Oberg, Harold, A. B., (B. D., Evanston), Minister.....Montavilla
 Oberg (Royal), Mrs. Aeolia F., A. B.....Montavilla

1889

Alderson, William C., A. B., Principal St. Johns Schools..St. Johns
 Alderson (Brown), Mrs. Maggie B., A. B.....St. Johns
 Anderson, Frank M., A. B.....
 Boise, Miss May, B. L.....Salem
 Bowersox, Albert W., Ph. B.....Albany
 Dimick, Miss Laura M., B. L.....Grangeville, Idaho
 Matthews, James T., A. M., Professor W. U.....Salem
 Matthews (Brown), Mrs. Rebecca G., B. S.....Salem
 Rigby, William T., A. M., Farmer.....Alberta

1890

Belknap, L. F., A. B., Minister.....Hillsboro
 Cooke, Allyn H., A. B.....Deceased
 Cousland (Harrington), Mrs. Susie, A. B.....Swatow, China
 Magee, Levi, A. B., Attorney-at-Law.....Died 1907
 Newport, N. M., A. M., Attorney-at-Law, Editor.....Lebanon
 Peringer, Virgil, A. M., Attorney-at-Law.....Bellingham, Wash.
 Perry, William E., A. M., Physician and Farmer.....Salem
 Stryker, S. W., A. B., Dentist.....Portland
 Tower, Olin F., A. B.....Cleveland, Ohio
 Victor, Miss Elvira, B. S., Teacher.....Bellingham, Washington

1891

Ailshie, J. F., Ph. B., Justice Supreme Court Idaho....Boise, Idaho
 Frickey, Miss Minnie, A. M...Chatanooga, Rigdale Station, Tenn.
 Gleason, Miss Carrie, B. L.....Port Angeles, Washington
 Heerdt, William, A. B.....Salem
 Mumsford (Royal), Mrs. Carrie L., A. B.....Vancouver, Wash.
 Steeves, B. L., A. B., M. D., Physician, Lieutenant Gov-
 ernorWieser, Idaho

1892

Arnold, George R., A. B., A. M., (Portland), Minister.....
 Jordon, William H., A. B., (Portland), Minister.....
 Moore, Frank L., A. B., A. M., (Portland), Minister.....
 Phipps, Edward E., A. B., (Portland), Editor.....
 Round, Wilbur S., B. S., (Portland), Teacher.....Lafayette
 Richardson, Samuel T., A. M., Attorney-at-Law.....Salem
 Sedgwick, Alice Isabelle, A. M., M. D., (Portland).....
Vancouver, Washington
 Van Scoy, William T., A. B., A. M., (Portland), Professor
 Normal SchoolAshland
 Victor, Elvira, A. B., A. M., (Portland), Teacher.....
Bellingham, Washington
 Whitten, Fred C., A. B., (Portland), Principal of High
 SchoolClatskanie

1893

Brown, Frederick J., A. B., A. M., (Portland), Minister....
 Lynden, Washington
 Foster, Mary Eva, A. B., A. M., (Portland), Professor
 Montana Wesleyan University Helena, Montana
 Hume, John R.
 Rounds, Hezekiah N., A. B., A. M., (Portland), Minister....
 Skidmore, Joseph H., A. B., (Portland), Route Agent U. P. R. R.

1894

Bradshaw, Miss Carrie P., A. B. Denver, Colorado
 Howell, Frank T., A. B., A. M., (Portland), Minister.... Ashland
 Millar, John W. H., A. B., (Portland), Minister..... Died 1902
 Pence (Rounds), Olive J., Ph. B., (Portland).... Fairfield, Wash.
 Reynolds, L. T., A. B., Fruitgrower..... R. F. D. No. 9, Salem
 Peterson (Winters), Cora A., A. B. Dawson, Alaska
 White, Oscar A., A. B., (Portland), Minister.... Idaho Falls, Idaho
 White (Bruce), Eva J., A. B., (Portland)..... Idaho Falls, Idaho

1895

Denison, John N., A. B., Minister..... Died 1897
 D'Arcy, Peter H., A. B., Attorney-at-Law..... Salem
 Dearborn, Richard H., A. B., (Portland), Professor Uni-
 versity of Oregon Eugene
 Glass, David H., A. B., A. M., (Portland), Minister.....
 57 Sixteenth Street, Detroit, Michigan
 Horne, J. Walter, B. L., (Portland), Minister.....
 Lilly, Mary B., A. B., (Portland), Missionary..... Singapore
 Mills, Alma, Ph. B., (Portland), Teacher..... Vancouver, Wash.
 Reynolds, John W., A. M., (LL. B., University of Mich-
 igan), Attorney-at-Law.... 402 Failing Building, Portland
 Reynolds (Frizzell), Mrs. Edith F., A. B. Salem
 Washburn, Elmer E., Ph. B., (Portland), Teacher.....
 Redlands, California

1896

Beers, Charles William, A. B., (Portland), Teacher... California
 Brown, Arthur Warren, A. B., (Portland), Minister.....
 Mount Vernon, Washington
 Eastham, Orange William, A. B., (Portland), Attorney-at-
 Law Oregon City
 Knapp, Luella M., B. L., (Portland), Teacher..... Portland
 Kinder (Marsh), Mrs. Myrtie, A. B. New York City
 Matthews, William P., Ph. B., Teacher..... Wilbur, Washington
 Scott, William Bertram, B. L., (Portland)..... Portland
 Whitaker, John Holland, Ph. B., (Portland)..... Singapore, S. S.

1897

Atwood, Charles J., A. B., Nurseryman... Toppenish, Washington
 Bagley (Field), Mrs. Edith, A. B. University Park, Portland
 Chandler, Perry F., Ph. B., (Portland), Editor..... Canyon City

Haight, Clinton P., Ph. B., (Portland), Attorney-at-Law
 Haley, George Grosvenor, A. B., (Portland), Minister....
 Field, Floyd, A. B., Professor.....Atlanta, Georgia
 Field, Hetta, A. B.....Salem
 Klein, J. Warren, A. B., Minister.....Norristown, Pennsylvania
 Klein, William J., A. B., Minister.....
 Stearns, Willard E., A. B., (Portland), Minister.....
Montesano, Washington

1898

Beatty, Mattie F., Ph. B., A. M.....Salem
 Brown, Frank E., A. B., M. D., Physician.....Council, Idaho
 Rafter (Carson), Anna M., A. B., LL. B.....Seattle, Washington
 Carey, Robert, A. B., (Portland), Y. M. C. A. Secretary
Walla Walla, Washington
 Carey (Reid), Lena May, A. B., (Portland).....
Walla Walla, Washington
 De Forest, Joseph Guthrie, Ph. B., (Portland), Student....
San Francisco, California
 Hill, Dorsey Marion, Ph. B., (Portland).....Walla Walla, Wash.
 Hubbard (Rugg), Edna E., A. B., (Portland), Professor
Columbus, Ohio
 Tenny, Charles Wesley, Ph. B., (Portland), Professor....
Helena, Montana
 Van Winkle, I. Homer, A. B., LL. B., Assistant Attorney-
 GeneralSalem
 Weed, Charles Jason, A. B., (Portland), Principal of Gov-
 ernment SchoolAmoy, China

1899

Hibbard, Harry Glenn, A. B., Corporal Second Oregon
 VolunteersDied, Manila, 1899
 Van Dyke, Benjamin Franklin, A. B., (Portland), Mis-
 sionarySingapore

1900

Buche, August F., A. B., (Portland), Farmer.....
 Fletcher, Ethel M., Ph. B.....Salem
 Leavens, Seth, A. B., (Portland).....Portland
 Leavitt, Mattie R., Ph. B., (Portland), Teacher.....
Vancouver, Washington
 Manning, William A., A. B., (Ph. D., Stanford Uni-
 versity, Professor of Mathematics, Stanford Uni-
 versityPalo Alto, California
 Shepard, Walter J., A. B., Assistant in History.....
1227 Mound Street, Madison, Wisconsin

1901

Aschenbrenner, George M., Ph. B., Teacher.....Covina, California
 Gale (Gans), Mrs. D., A. B.....Baker City
 Morehead, George R., A. B., Minister.....Dufur
 Sykes, Gabriel, A. B., Minister.....Walla Walla, Washington

Siewert (Cornelius), Mrs. Frances E., B. L.....Portland
 Wood, Edgar F., A. B., Editor....601 Howard St., Tacoma, Wash.

1902

Housel, Clarence A., A. B., Minister.....Prineville

1903

McCall (Clarke), Erma M., Ph. B., (B. L., Ohio Wesleyan
 University).....Lisbon, Ohio
 Clark, Nellie J., Ph. B., Missionary.....Nanking, China
 Koschmieder, Wilhelmina, Ph. B., Stenographer.....Amity
 Meresse, Edgar, B. L., Reporter.....The Dalles
 Siewert, Samuel A., A. B., Minister.....Portland
 Swafford, Harry W., Ph. B.....Cornecopia
 Townsend, Sophia E., A. B., Teacher High School.....Salem
 Wilkins, Richard B., Ph. B., Minister.....El Monte, California

1904

Whipple (Field), Julia, A. B.....Vancouver, Washington
 Patton, Joseph J., B. S., Minister.....Dayton
 Whipple, Marie, A. B., Teacher.....Vancouver, Washington

1905

Averill, Edgar F., B. S., Journalist.....Pendleton
 Beach, Paul W., B. S., Teacher.....Seattle, Washington
 Ford, Burgess F., A. B.....Helena, Montana
 Miller, E. Kinney, B. S., Assistant Secretary Y. M. C. A.
Spokane, Washington
 Swafford, Lila V., B. S., Teacher High School.....Salem
 Whipple, G. Eugene, A. B.....Vancouver, Washington

1906

Breeden, Grace, B. L.Lewiston, Idaho
 Field, Ruth, A. B.....Salem
 Grannis, Frank, B. L., Teacher O. S. R. S.....Salem
 Jones, Sylvia Winifred, B. S.....Gervais
 Pollard (Randall), Gustena Anna, B. L.....Marcola
 Scott, William Bertram, B. S., M. D.....Salem

1907

Bartlett, Veva Maude, A. B., Matron Lausanne Hall.....Salem
 Elliott, John Arthur, A. B.....Vancouver, Washington
 Hales, Alma Evelyn, A. B.....Salem
 Hall, James, A. B.Salem
 McKnight, Charles Hood, A. B., Teacher.....The Dalles
 Sanders, William Montervilla, Jr., A. B., Teacher.....Woodburn
 Schindler, Lena, A. B.Salem
 Winans, Edward J., A. B., Student.....Oxford, England
 Whipple, Lloyd Gilbert, A. B.....Vancouver, Washington

College of Medicine

GRADUATES SINCE 1867.

- | | |
|-------------------------|----------------------------|
| Allen, Hiram R. | Burton, Ben T. |
| Allen, W. W. | Butler, Otis B. |
| Alexander, E. V. H. | Byars, J. Rex |
| Amick, D. B. | Byland, D. C. |
| Amos, William F. | Byrd, Roy D. |
| Anderson, Edward T. | Byrd, W. H. |
| Apjohn, H. J. | Callahon, Josephine |
| Atwood, J. P. | Capes, Byron McBride |
| Ausplund, Andres A. | Cardwell, Herbert W. |
| Bailey, A. B., D. D. S. | Carlton, O. |
| Bailey, Fran A. | Carter, F. M. |
| Baker, W. D. | Cartwright, Richard, M. D. |
| Ballard, F. R. | Cashatt, H. |
| Barklow, Jacob S. | Cathey, G. A. |
| Bass, Frederick | Chambers, Etta H. |
| Batcheler, James M. | Chapman, W. L. |
| Beach, William W. | Channell, Dudley B. |
| Bean, James A. | Cheadle, E. M. |
| Bean, O. W. | Clark, Daniel G. |
| Beauchamp, F. E. | Clymer, Eugene |
| Beauchamp, Harry | Clymer, H. Vance |
| Beebe, Charles E. | Cox, D. W. |
| Beers, H. E. | Cox, H. W. |
| Beers, Olive K. | Cromwell, I. N. |
| Bell, J. N. | Cusick, W. A. |
| Bennett, Laura B. | Davidson, J. E. |
| Biswell, Roger | Davis, L. L. |
| Blair, Hannibal | Davis, R. M. |
| Blaney, O. C. | Davis, S. T. |
| Bollman, L. A. | Davis, William H. |
| Bond, Benjamin F. | De Armond, R. S. |
| Bonebrake, Allen | Denison, J. S. |
| Boswell, C. M. | Doane, O. D. |
| Bostwick, E. Ordway | Dodson, O. M. |
| Botkin, A. W. | Dodson, Z. T. |
| Botsford, Florence V. | Eddy, D. M. |
| Bowerman, Mary | Embree, T. V. B. |
| Bowersox, F. R. | Estes, L. J. |
| Boyd, W. E. H. | Evans, John |
| Brewer, Charles Henry | Everest, Ernest |
| Bristow, James H. | Fanning, George J. |
| Brower, David M. | Farley, W. J. |
| Brown, E. M. | Fisher, Charles Victor |
| Brown, F. E. | Fitzgerald, Peter H. |
| Brown, Jonathan P. O. | Flannigan, William H. |
| Brown, L. W. | Flett, George H. |
| Brown, Myra A. | Flynn, M. A. |
| Bruce, Walter | Foley, L. |
| Bryant, W. E. | Ford, A. L. |
| Buckley, E. V. | Ford, J. |

- French, Corilla G.
 Fryer, C. P.
 Geary, John W.
 Giffen, John R.
 Giesy, A. J.
 Giesy, M.
 Giesy, W. W.
 Gillespie, Robert L.
 Givens, J. W.
 Goldson, Melinda
 Goodard, Henry S.
 Goucher, E. E.
 Graham, James W.
 Gray, W. C.
 Grubbs, W. P.
 Hall, C. H.
 Hampton, L. Victoria
 Harris, J. W.
 Harris, Laura A.
 Helm, A. C.
 Hendrex, J. F.
 Herndon, Joseph F.
 Hewitt, Mary A.
 Hill, Charles E.
 Hill, G. J.
 Hill, Harry Green
 Hill, J. L.
 Hill, J. W.
 Hockett, Clyde
 Holcomb, Curtis
 Holland, Leon
 Holmes, Reese
 Holschaw, B. F.
 Holt, J. H.
 Hoser, J. M.
 Howard, James W.
 Howell, W. A.
 Humphrey, T. C.
 Hunter, R. F.
 Irvine, Elijah L.
 Irvine, J. F.
 Jeffries, W. D.
 Jessup, S. R.
 Johnson, E. D.
 Jones, D. M.
 Jones, L. M.
 Judd, W. C.
 Kellem, C. Carrie
 Kelty, H. E.
 Kennedy, J. F.
 Kent, Lewis A.
 Kirby, E. G.
 Kitchen, J. M.
 Kuykendall, G. B.
 Lane, Harry
 Langhary, John
 Lee, N. L.
 LeMiller, A. J.
 Linden, Emma M.
 Locke, D.
 Looney, W. W.
 Lyall, Robert
 Mann, Thomas
 Macdonald, Henry J.
 Marquam, Lulu M.
 Marquam, Sarah S.
 Marrison, W. F.
 Martin, C. B.
 Martin, J. L.
 Matteson, F. S.
 McCauley, J. C.
 McCauley, W. F.
 McCormac, T. J.
 McDowell, W. S.
 McKay, Harry F.
 McMaster, Joseph W.
 McNary (Johnson), Mrs. J. A.
 Miles, O. B.
 Miller, Abram P.
 Mishua, H., M. D.
 Morgan, John
 Morse, Willis B.
 Mortensen, R. P.
 Nakaki, K., M. D.
 Newland, T. J.
 Nicklin, A. J.
 Nicklin, John
 Odell, G. W.
 Oglesby, W. W.
 Ong, H. F.
 Osborne, R. M.
 Palmer, William H. H.
 Palmer, Martin B.
 Parker, Edward Otis
 Parrish, Mrs. J. L.
 Patten, Mathew J.
 Patterson, John Gordon
 Payton, J. E.
 Perry, William E.
 Philbrook, Edgar B., M. D.
 Pilkington, Robert J.
 Plamondon, James Dillon
 Pomeroy, Mrs. M. E.
 Pool, William E.
 Powell, F. F.
 Power, H. L., M. D.
 Power, I. N.
 Prettyman, Alice Stinson
 Pring, Ernest
 Pruden, W. F.

Quigley, John M.	Smith, L. A.
Rafferty, C. H.	Smith, L. V.
Rafferty, David	Smith, W. Tyler
Rand, D. H.	Snyder, W. P.
Ransom, Clayton	Sommer, E. A.
Richardson, Boyd	Starr, I. W.
Riddle, D. T.	Steeves, Burpee
Rinearsen, F. B.	Steiner, R. E. Lee
Ringo, R. E.	Stone, S. C.
Roberts, W. H.	Stott, John W.
Robinson (Ford), Mrs. E. A. J.	Stuart, Charles A.
Robinson, J. W.	Tamisie, A. E.
Robison, F. M.	Thomas, J. W.
Robnett, J. H.	Todd, E. R.
Rossiter, Edward W.	Tower, C. W.
Rowland, L. L.	Turney, J. W.
Russell, Anna K.	Tuttle, Jay
Russell, George Pond	Vanderpool, Mary
Sanders, I. N.	Vial, Arthur J.
Saweteele, C. M.	Van Winkle, J. O.
Saylor, W. H.	Warren (Ford), Mrs. A. L.
Schimada, Kaname, M. D.	Watkins, Ed. T.
Schmeer, Belle H.	Watkins, William B.
Schmidt, Rudolph	Weatherford, J. W.
Schroeder, August C.	Webb, James Ellsworth
Seely, E. R.	West, Ossian T.
Sellwood, John J.	Whetham, James
Shaw, John D.	Whipple, Marie Ella
Shiple, L. L.	Whiteaker, J. C.
Shubert, Emil	Whitney, G. A.
Smith, Ellen J.	Williams, Alfred
Smith, Frank E.	Whitney, Mary H.
Smith, Gusta	Williams, H. O.
Smith, I. N.	Wright, Frank S.
Smith, J. N.	Wythe, W. T.
Smith, J. R.	Yeargain, E. L.
Smith, J. S.	Yeargain, Orville W.
Smith, W. M.	Wilson, Belle Holland, M. D.

1906

Biswell, Roger	Ketty, Harvey
Bollman, Lenthal	LeMiller, Antonium
Byrd, Roy	Looney, Walter
Evans, John	Mishina, Haashi
Fryer, Claude	Power, Howard
Hunter, Randolph	Smith, Lonzo
Judd, William C.	Snyder, William

1907

Austin, Miysl L.	Hewitt, L. L.
Barr, J. Randolph	Hewett, Fred K.
Becker, Walter H.	Hamilton, R. R.
Forbes, D. A.	Kantner, William C., Jr.
George, J. F.	Mann, Smith J.

Pollard, William H.
Randle, Harry C.
Rebhan, William C.

Wood, R. Lee
Wolf, Osmar K.
Wainscott, Elmer J.

College of Law

1886

Packingham, Charles H., LL. B., Attorney-at-Law...Boise, Idaho

1887

Bass, Daniel W., LL. B., Attorney-at-Law...Seattle, Washington
Denny, I. G., LL. B., Attorney-at-Law.....McCoy
Miller, Victor J., LL. B., Attorney-at-Law.....Harney City

1888

Brown, J. N., LL. B., Attorney-at-Law.....Salem
Hawley, Willis C., LL. B., A. M., U. S. Congressman.....Salem

1890

Crandall, Samuel B., LL. B., Attorney-at-Law..... La Grande
O'Shea, John, LL. B., Attorney-at-Law.....Salem

1891

Ailshie, James F., LL. B., Justice Supreme Court Idaho....
..... Boise, Idaho
Denny, John B., LL. B., Attorney-at-Law...Seattle, Washington
Nelson, Olaf N., LL. B., Attorney-at-Law...Seattle, Washington
Spaulding, Carlos H., LL. B., Attorney-at-Law..Goldendale, Wash.

1892

Goode, George, LL. B., Attorney-at-Law.....Lewiston, Idaho

1893

Bayne, John, LL. B., Attorney-at-Law.....Salem
Newport, Nathaniel M., LL. B., A. M., Attorney.....Albany
Roblin, Charles E., LL. B.....Ft. Simcoe, Washington

1894

Fleming, R. J., LL. B., Attorney-at-Law.....Salem
Richardson, S. T., LL. B., Attorney-at-Law.....Salem
Yerex, A. E., LL. B.....Chicago, Illinois

1895

Lyons, John, LL. B., Attorney-at-Law.....Fossil

1896

Bowerman, Jay, LL. B., Attorney-at-Law.....Condon
Charlton, Charles M., LL. B., Attorney-at-Law.....Salem
McCourt, John, LL. B., Attorney-at-Law.....Pendleton

Prescott, A. W., LL. B., Oregonian Representative.....Salem
 Sawyers, James E., LL. B., Deputy County Clerk.....Roseburg

1898

Albert, Joseph H., LL. B., Banker.....Salem
 Bushey, William, LL. B., Attorney-at-Law.....Mehama
 Byron, George, LL. B., Attorney-at-Law.....Roseburg
 Crossan, Arno G., LL. B., Stenographer.....Salem
 Clark, Gabriella, LL. B.Salem
 England, Olive S., LL. B.....Salem
 Hodgin, John S., LL. B., Attorney-at-Law...Seattle, Washington
 Horgan, Edward, LL. B., Attorney-at-Law.....Salem
 Leedy, A. D., LL. B., Attorney-at-Law.....Canyon City
 Long, John T., LL. B., Attorney-at-Law.....Roseburg
 Martin, Carey F., LL. B., Attorney-at-Law.....Salem
 Myers, Jefferson, LL. B., Attorney-at-Law.....Portland
 Robbins, William A., LL. B., Attorney-at-Law.....Fossil
 Rodgers, George, LL. B., Bookbinder.....Salem
 Turner, Frank A., LL. B., Attorney-at-Law.....Salem
 Waters, Frank W., LL. B., Abstractor.....Salem
 Wrightman, Frank, LL. B., Attorney-at-Law.....Salem

1899

Carson, Anna M., LL. B., A. B.....Salem
 McMahan, L. H., LL. B., Attorney-at-Law.....Salem
 McFarlane, LL. B., Attorney-at-Law.....Turner
 Power, Frank W., LL. B., Bookkeeper.....Salem
 Richardson, W. E., LL. B., Attorney-at-Law.....Salem

1900

Corby, Grant, LL. B., Attorney-at-Law.....Salem
 Frazier, P. L., LL. B., Real Estate Agent.....Salem
 Fleming T. M., LL. B., Attorney-at-Law.....Salem
 Johnson, H. A., Jr., LL. B., Attorney-at-Law.....Salem
 Parker, T. T., LL. B., Attorney-at-Law.....Salem
 Richardson, Francis C., LL. B.....Salem

1901

Inman, C. M., LL. B., Attorney-at-Law.....Salem
 Judd, E. C., LL. B., Attorney-at-Law.....Salem
 Parker, E. E., LL. B., Attorney-at-Law.....Salem
 Shaw, W. Ellton, LL. B., Attorney-at-Law.....Brooks
 Turner, H. H., LL. B., Attorney-at-Law.....Salem
 Van Winkle, I. H., A. B., LL. B., Attorney-at-Law.....Salem

1902

Forward, Allen, LL. B., Attorney-at-Law.....Salem
 Norwood, John L., LL. B., Attorney-at-Law.....Salem

1904

Benson, Arthur S., LL. B.....Salem
 McConnell, Henry, LL. B., Attorney-at-Law.....Salem

1906

Glover, Ronald C., LL. B. Salem
 Medcalf, Clinton Henry, LL. B. Honolulu

1907

Gehler, Max H., LL. B. Salem
 Heltzel, James G., LL. B. Salem
 Marker, Andrew R., LL. B. Roseburg
 Parcel, Hugh L., LL. B. Vancouver, Washington
 Simpson, George B., LL. B. Vancouver, Washington
 Wood, W. A., LL. B.

College of Music

1872

Woodward Libbie Died 1873
 Byrd (Holderness), Teresa Died 1886

1878

Gray (Hall), Nellie Died 1901
 Willoughby, Antonette
 Scriber, Adelaide M. Salem, North Carolina
 Byrne, Eliza

1882

Adams, Gertrude California

1883

Jones, Frankie P. New York City
 Shultz (Chamberlain), Julia Portland
 England, Olive S. Salem
 Jordan, Constance Oakland, California

1884

Cox, Eva F. Salem
 Smith (Rowland), Levia Salem
 Reily (Savage), Amelia Portland
 Scott, Pearl Salem
 Legg (Smith), Lulu Salem
 Walts (Starr), Mary Bellefontaine

1885

Legg (Smith), Lulu Salem
 Young (Akers), Theresa Snohomish, Washington
 Coper, Margaret Salem
 Starr (Goltra), Laura Phoenix, Arizona
 Henderson (Smith), Ida Salem
 Piper (Willis), Leona Portland

1886

Wait (Cline), Nellie Salem
 Bozorth (Dearborn), Lizzie Portland

1887

Wright (Byars), Effie	Mehama
Hammar (Gilbert), Frances	Albany
Overholt, Mamie	Canyon City
Bagley (Pentland), Edith	Died 1893
Crowe (Stannus), Emma	Laidlaw, Washington
Hinges (Parrish), Hallie	Salem

1888

Bagley, W. H.	Deceased
Albert (Dalrymple), Jessie	Salem
Goltra (Reynolds), Kate	Portland

1889

Green (Abrams), Lois	Philomath
Bowersox (Forrest), Acta	Albany
Howe, Nellie	Dallas
Mackie (Hughes), Genevieve	Portland
Brown (Parvin), Mamie	Salem
Thompson, Lulu	Died 1890

1890

Richie (Adams), Edna	Sellwood
Minto (Glenn), Jessie	Alaska
Chandler, Alzira	Salem
Cooke (Harris), Edith	Seattle, Washington
Byars (Nesbitt), Ida	Goldendale, Washington
Hales (Price), Nellie	Salem
Chattin (Settlemer), Daisy	Missoula, Montana
Southwick, Nellie	Salem
Denton (Steiner), Mary	Salem
Breckenridge (Stratton), Etta	Point Loma, California

1891

Lockwood (Adair), Mabel	Salem
Carpenter, Nellie	Vancouver, Washington
Elkins (Combs), Manda	Prineville
Ginn, W. A.	
Kruse, Homer A.	Aurora
McKinney (Shafer), Mary	Turner

1892

Lockwood (Adair), Mabel	Salem
Cooke (Busnell), Grace	Eugene
McIntyre (Dorrance), Ella	Portland
Hubbard, Bertha H.	Salem
Miller (Ingersol), Mabel	Chehalis, Washington
Gillis (Krebs), Anna	Salem
Sargent, Lulu M.	Newberg

1893

Carpenter, Nellie, Mus. B.	Vancouver
Kruse, Homer A., Mus. B.	Aurora
Cleaver, Gertrude	Salem
Jory, Blanche	Salem

1894

Hubbard, Bertha H., Mus. B.	Salem
Newsome, May, Mus. B.	Salem
Hanson (Beamer), Etta	Fargo, North Dakota
Fowler (Altermatt), Dorothy	Arlington
Spalding (Burcham), May	Ellensburg, Washington
Harris, Nora	Salem
Holland, Viola	Salem
Jory, Blanche	Salem
Sharp, Mrs. B. J.	Salem
Simon, Emma	Salem

1895

Burkhart (Alderson), Marguerite	Albany
Stahley, Gertrude E.	Salem
Leitch, Josephine I.	Dallas
Purvine, Emma L.	Portland

1896

Aschenbrenner, Elizabeth	California
Weller, Elma L.	Salem
Shelton, Beatrice	Salem
Tilson (Byrne), Gladys	San Francisco, California
McCormick, Blanche	Dallas
Bozorth, Scott	Portland
Dayton (Irwin), Adda	Boise, Idaho
Knight, Edna A.	Salem
Holland, Viola	Salem
McPherson (Atwood), Anna	Canby
Grannis, Eunice B.	Donora, Pennsylvania
Garland, A. Owen	Salem
Strickler, Henrietta A.	Portland
Field (Roblin), Lillian, Mus. B.	Evanston, Illinois
Trephagen, Mabel	Salem

1898

McPherson (Atwood), Anna, Mus. B.	Canby
Edmunson (Laufman), Juniata, Mus. B.	Des Moines, Iowa
French, Etta M., Mus. B.	Chemawa

1901

Raymond, Ethel M., Mus. B.	New York City
Stege, Ida, Mus. B.	Salem
Trenholm, Margaret Annie, Mus. B.	Chehalis, Washington

1902

Brewer, Gertrude A., Mus. B.	Chemawa
Jennings, Bertha Elma, Mus. B.	Salem

1903

Andrewartha, Bertha Irene, Mus. B.	Boise, Idaho
Childers, Claudia, Mus. B.	Salem
Richmond, Nellie Myrtle, Mus. B.	Cottage Grove

Tarpley, Lela Norene, Mus. B. Salem
 Watson, Hallie Hortense, Mus. B. Salem

1904

Van Patton, Ellen L., Mus. B. Salem

1905

Catlow, Chester J., Mus. B. Salem
 Churchill, Frank, Mus. B. Salem
 Fisher, Margaret, Mus. B. Salem
 Sanders, Jennie, Mus. B. Silverton
 Will, Elizabeth, Mus. B. Salem

1906

Calbreath, Mary E., Mus. B. Salem
 Finscke, Ida C., Mus. B.
 Pease, Vesta, Mus. B.

1907

Bowers, Marguerite, Mus. B. Salem
 Hug, Mernie Alberta, Mus. B. Salem
 McPeck, Fleda Ethel, Mus. B. Salem

College of Oratory

1896

Crawford, Helen Virginia, Teacher Corvallis
 Carter, Mabel Lankton, Teacher Hood River
 Carter (Hughes), Mrs. Ethel Gold Hill
 Cundiff, Mary Stewart Deceased

1897

Creighton, Mabel Scott Salem
 Chattan (Collins), Mrs. Esther Portland

1898

Geer (Wolf), Mrs. Sophie Deceased
 Young (Vandersol), Mrs. Marie Havre, Montana
 Watson (Griswold), Mrs. Neva Portland
 Fleck (Settlemer), Mrs. Jessie, Teacher Utica Conserva-
 tory New York
 Hibbard, Hall Glenn Deceased

1899

Abrams, Letlitia Lincoln
 Young (Bell), Mrs. La Blanche Died 1906
 Fisher (Kay), Mrs. Bertha Portland
 Williams (Royal), Mrs. Ella, Teacher Business College....
 Washington, D. C.

1901

Gunnell (Thomas), Mrs. Laura Grants Pass

1902

Bruce, Mrs. Lucy Edwards Portland

1903

Lewis (Parrish), Mrs. EdnaAlbany
 Byrne, Elma R.Salem
 Chapler, MaySalem

1905

Johnson, Gertrude Neonetta, Teacher.....Philomath
 Averill, Edgar

1906

Hewitt, Bertha Beatrice, Teacher.....Drain

1907

Byars, VeraSalem
 Rigby, OlivePortland

INDEX

	<i>Page.</i>		<i>Page.</i>
Academy	55-61	Degrees, requirements for—	
Admission, Terms of, for—		Master's	20
College of Liberal Arts....	21	Bachelor's	22
College of Music.....	37	Degrees conferred, 1907....	
College of Oratory.....	41	(See list of Alumni)	
College of Theology.....	44	Endowment Association	7
College of Medicine.....	47	Endowment Trustees	6
College of Law.....	50	English, Courses in.....25-27, 59-60	
Normal School	51	Expenses	22, 56
Academy	55	Expression, Courses in.....	40
Alumni	75-94	Faculty	9-12
Officers	75	Fees, College	22
Astronomy	24	Music	37
Athletics	32	Oratory	41
Biblical Literature.....	29	Theology	45
Biology	24-25, 60	Medicine	48
Board, Expense of.....	22, 56	Law	50
Buildings	15-16	Normal School.....	50
Calendar	3	Academy	56
Chapel	16	French, Courses in.....	32, 59
Chemistry, Courses in.....	23, 61	General Information	13-20
Christian Associations	17	Geology, Courses in.....	25
College of—		German, Courses in.....	32, 58
Liberal Arts	21-34	Government	16
Music	35-37	Graduate Work	20
Oratory	39-41	Greek, Courses in.....	30-31, 58
Theology	43-45	Historical Information	13-14
Medicine	47-48	History, Courses in.....	27-28, 60
Law	49-50	Information	13-20
Committees, standing.....	7	Laboratories	19
Courses of Study—		Latin, Courses in.....	31, 58
College of Liberal Arts.....	23-33	Lausanne Hall	19
College of Music	36-37	Law, College of.....	49
College of Oratory.....	32, 39	Literary Societies.....	17
College of Theology.....	43-44	Loans and Scholarships.....	17-18
Normal School	53	Location	14-15
Academy	57	Mathematics, Courses in....	30, 60

	<i>Page.</i>		<i>Page.</i>
Medicine, College of.....	47	Student Enterprises	17
Missions, Courses in.....	29	Students, Names of.....	63-74
Music, Courses in.....	36, 37	Surveying, Course in.....	24
Normal School	51-53	Theology, College of.....	43-45
Oratory, Courses in..	32-33, 39-40	Trustees	5-6
Oregon Institute	55-61	Tuition—	
Pedagogy	61	College of Liberal Arts....	22
Pharmacy, Course in.....	48	College of Music	37
Philosophy, Courses in.....	23	College of Oratory.....	41
Physical Culture.....	33-34	College of Theology	45
Physics, Courses in	24, 61	College of Law	50
Pianoforte, Courses in.....	36	Normal School	52
Register of Students.....	63-74	Academy	56
Religious Life	16-17	University Extension	20
Room and Board.....	22, 56	Visitors, State	6
Self Help	17	Conference	6
Scholarships	17-18	Voice Culture, Courses in....	37
Special Students	23	Violin	36



NEW SERIES
WILLAMETTE UNIVERSITY BULLETIN
(Published Quarterly)

VOL. I.

SALEM, OREGON, JULY, 1908

NO. 1

Application Made for Admission as Second Class Mail Matter