

Willamette University

Class of '61

presents

GOLDEN

GLEE

March 15, 1958

FORWARD

Producing the 50th Annual Freshman Glee involved many hours from over a hundred people. It was work, it was fun, and we feel it was a success. In this scrap book we, the Class of '61, will present to you the 50th Glee. We will show you behind the scenes: how Glee is organized, the work that it entails, how the different projects were accomplished, and how some weren't so successful. Our medium will be committee reports, minutes, bills--documentary evidence of what happened. Through newspaper clippings, pictures, programs, and so forth, we will also try to present that unique event called "Freshman Glee."



GLEE MANAGER Dale Daniel

Captions for slides of the 50th Annual Freshmen Glee

1. This is Glee, 1958, the 50th annual Freshmen Glee.
2. Glee doesn't just happen, before Christmas the freshmen class shoulders the responsibility of producing Glee.
3. Glee week comes in March. Tuesday of Glee Week the challenge assemble is held. Here the sophomores, winners of the 49th Glee, confidently stroll into the Gym.
4. Glee Manager Dale Daniel had planned a dynamic introduction for frosh class president Paul McGilvra, who was going to lead his class in and then deliver the challenge; but events didn't work out as planned, for the sophomores kidnapped the frosh president and brought him into the assembly bound with athletic tape.
5. Paul gains composure and issues challenge.
6. As Glee night draws near, frosh committee sets up lighting.

7. Marching practice.
8. Early morning marching practice...5:00 a.m.
9. Dress rehearsal.
10. During practice other classes analyze competition.
11. Right, Mr. Oakes, who was freshmen class president of the class that started Glee. He issued the first challenge. In this picture he chats with a fellow classmate before seeing the 50th Glee. Says Mr. Oakes; "Glee has sure been dressed up... but same spirit still there." Mr. Oakes appeared on a half hour television show the freshmen class presented over KOIN TV the following Monday.
12. The Gym is filled by 7:00 p.m.
13. The hopeful frosh march in.
14. The sophomores take their seats.
15. " "
- 16.-19. The Senior Cut Ups...the seniors get 15 minutes to "cut up." Through parody and skit the seniors evaluates Willamettes forte and foibites.
20. College...Mickey Mouse.
21. The Glee Manager officialy opens 50th Glee
22. The seniors present their song first. Their formation was a score board. The theme of the 50th Glee was Fight.

Each Glee has a theme. Four themes are alternated: fight, novelty, serenade, and alma mater.

23. The score clock turns and numbers come off.
 24. Before the seniors left the stage, they formed the formations they had done their three previous years. Shown is an ox cart, the formation they used when they won Glee their freshmen year with the novelty song: "Rock that Ox Cart Jason Daddy."
 25. The juniors formed "Barney the Bear Cat."
 - 26.& 27. The sophomores form a "W".
 28. Frosh, some 221 strong, form the "Bearcat Locomotive."
 29. As the serious frosh tried to march off, the seniors attempted to make frosh laugh with the use of signs.
 30. While the judges sheets are tallied, frosh in skit review the last 50 years.
The roaring 20's.
 31. And now the "beat 50's."
 32. The banner is ready to be given...all hope.
It must take Dr. Shutze 20 minutes to make the announcement.
 - 33.- 35. Here come the seniors. They won the banner for the third time and they are waisting no time in claiming it.
 36. Are they happy !
 37. They sing again for the audience their winning song.
-

38. Blue Monday comes and losers must pay.
 39. Audience gathers in front of Eaton to hear member of losing frosh class do a siloaué from Romeo and Juliet.
 40. How about a shave.
 41. Blue Monday Assembly...Frosh give their version of "senior cut ups."
 42. The "masses" as the seniors called them, the defeated frosh.
 43. "
 - 44-46 More bets. There have-been some rish Glee bets. One of the most famous was when a Willamette student whapped in a sheet and carrying a latern walked through the state senate while it was in session. When ask who he was, he said he was " Demosthenes looking for an honest man."
 47. And as is the tradition, the losing class all go through the mill stream. Into the drink go the freshmen, and it was a mighty blue Monday for them.
-



The president of the founding class of Freshman Glee, J. A. C. Oakes of Portland, gives pointers to Dale Daniel, manager of a Glee of 49 years later, and to Karen Henninger of the Glee history committee. (Photo by Phil Henderson.)

“Now Back in 1912 . . .”

Complete with an American Indian, a German, cabbages, carrots, lemons and onions the first annual Freshman Glee went on the boards of Waller Hall. The date: February 19, 1909.

IN AN ADDRESS 42 years later to the audience of the 1950 Freshman Glee, J. A. C. Oakes, president of the class of 1912, described the first Glee challenge.

“Imagine the feelings of the upperclassmen at our audacity,” he grinned. “There was only one thing they could do—accept!”

THE SENIORS sang first. With their polished song they “almost wrecked the Freshmen.” As they took their seats the usher presented them with a succulent head of cabbage.

“The juniors came next,” Oakes remembered. “They must not have expected to be serious contenders, for they put on a comedy relief which greatly enlivened the evening.”

“ACCORDING TO the ‘Daily Oregon Statesman’ of 1909, ‘They appeared in nondescript costumes ranging from an American Indian to a freshly imported Deutscher. Old Si was also present, and so was

Samanthy, General 23, the Tinhorn Gambler, and the Peerless Leader.’

“When the laughing was over and they were seated again, an usher presented them with three carrots on sticks.”

An orchestra accompanied the sophomores who received a bunch of onions.

OAKES CONTINUED proudly, “Finally came the more numerous and vital freshman class. Their male quartet was featured in the center with the rest of the class circled around them. Solo parts in a minor strain were sung to the accompaniment of humming by the other quartet members.

“The class as a whole came in strongly on:

New Willamette, New Willamette,
hail, hail, hail!

Ever we’ll be true to thee, hail,
hail, hail!

“When amid great applause they went back to their seats an usher presented them with three lemons impaled on sticks.”

At the reception that followed, according to Oakes, “A good time was had by all and everyone went home sober—except the freshmen. They were intoxicated with joy.”

MAR 12 1958

WU Song Fete In Preparation

WILLAMETTE UNIVERSITY, Salem, March 12. — Freshman Glee, the class song competition that features original music and words, 5 a. m. practice sessions, and dunks in the mill stream entered into its final week of preparation Monday.

This year's Glee, the 50th version of the traditional song contest, is billed for Saturday night in the Willamette gymnasium. Songs, words and formations written by members of each class are judged by professional musicians and a banner awarded the winning class.

The last place class gets doused. By tradition, the Monday after Glee is designated Blue Monday, when the fourth place group jumps in the mill stream and members of the second and third place classes pay off bets made on the outcome weeks ahead of time. Bets are usually of a freakish nature, such as bathing in a bird bath.

NOV 22 1958

GLEE MANAGER PICKED

WILLAMETTE UNIVERSITY, Salem (Special)—Dale Daniel, Arcadia, Cal., was elected manager of Willamette's golden anniversary freshman glee to be presented March 15.

The glee committee this year will publish some of the songs produced in the last century as a special 50th anniversary feature.

Willamette Songsters Get Set for 'Glee'



Rod Bernklau, Canby, draws inspiration from fellow sophomore, Nettie Hansen, La Center, Wash., for words and music he is helping write for his class's entry Saturday in Willamette University's 50th annual Freshman Glee, an original class song contest. A yell queen, she's found a new hero who fits the needs of the day. (Story on Page 7.) (Statesman photo.)

Songsters Gird For Glee Honor

Student-written songs will mix with long-rehearsed marching formations at 8 o'clock Saturday night as Willamette University classes compete in the 50th Freshman Glee.

Theme for the traditional festivity is "Fight Songs," alternating years with novelty, serenade and alma mater type songs.

Freshmen, the class of 1960, won last year. The class finishing last tonight will bear the brunt of Blue Monday, when male members get dunked in Mill Creek according to custom, and when individual bets are paid off.

SENIORS FIRST

Presenting the first song, "Bearcats to Victory," will be the senior class.

Music for their song was written by Ronald Kingsley of Beaverton, and the words by Ann Barber of Eugene, Annette Carson, George Hoyt and Miriam Mathews, all of Portland; Gene Corey of West Linn, Suzy Platt of Lewiston, Calif., Paula Pruess of Vancouver, Wash., and Lola Lane of Cleveland, O.

Hoyt is class formation leader. Junior class song will be "Cardinal and Gold," written by David Lane of Klamath Falls and Del Cummings of Los Altos, Calif. Lyrics are by Margaret Lowe or Kelso, Wash. Formation leader is

Larry Willingham of Pendleton, while song leader is Gail Boden of San Mateo, Calif.

SOPHOMORE SONG

Sophomore song writers for "To Victory" were Ralph Litchfield of Newport and Sonja Peterson of Medford. Words were written by Rod Bernclau of Canby, Judy Olson of Astoria, Nancy Teague of Salem, Janet Perry and Janet Jamison of Medford, and Catherine Casper of Walla Walla, Wash.

Ronald Walker, Vancouver, Wash., is formation leader and Miss Jamison is song leader.

Freshmen will present "Bearcat Locomotive," for which the music was composed by Joan Barber of Eugene and Drury Spurlock of Lafayette, Calif.

Helping them with the lyrics was Terry Boyd of Burlingame, Calif. Tony Meeker of Amity is class formation leader and Tom Elliott of McMinnville is song leader.

Freshman Glee on Tap Tonight at WU

Willamette University is all wound up and ready to go tonight for its 50th annual Freshman Glee.

Following a week of early morning and late-at-night rehearsals more than 500 members of the four classes will sing their original songs in competition at 8 p.m. in the gymnasium. The winning class gets the coveted Glee banner and the losers, a dunk in the Mill Stream on Blue Monday.

Live Broadcast

The entire program will be broadcast live by radio station KBZY. KGW-TV, Channel 8, will carry a half-hour of filmed highlights at 11:30 a.m. Tuesday.

Presenting the first song, "Bearcats to Victory," will be the senior class. Music for the song was written by Ronald Kingsley, Beaverton, class song leader, and the words by Ann Barber, Eugene; Annette Carson, George Hoyt and Miriam Mathews, Portland; Gene Corey, West Linn; Suzy Platt, Lewiston, Calif.; Paula Pruess, Vancouver, Wash., and Lola Lane, Cleveland, O. Hoyt is class formation leader.

The music for the junior song, "Cardinal and Gold," was written

by David Landis, Klamath Falls and Del Cummings, Los Altos, Calif. Writing the words was Margaret Lowe, Kelso, Wash. Formation leader is Larry Willingham, Pendleton and song leader is Gail Boden, San Mateo, Calif.

Prepare Music

Preparing the music for the sophomore song, "To Victory," were Ralph Litchfield, Newport, and Sonja Peterson, Medford. The words were written by Rod Bernclau, Canby; Judy Olson, Astoria; Nancy Teague, Salem; Catherine Casper, Walla Walla, Wash., and Janet Perry and Janet Jamison, Medford. Miss Jamison is class song leader and Ronald Walker, Vancouver, Wash., is formation leader. The sophomores are defending Glee champions.

The as yet untested freshman class will present "Bearcat Locomotive." Writing the music were Joan Barber, Eugene and Drury Spurlock, Lafayette, Calif. They were joined by Terry Boyd, Burlingame, Calif., for preparation of the words. Tony Meeker, Amity, is class formation leader and Tom Elliott, McMinnville, is song leader.

Judges are Milton Dieterich, University of Oregon; Mrs. Charles H. Vancil of Portland; Stanley L. Glarum, Portland; Mrs. Grace Lemm, Salem; Miss Fay Sparks, Canby; Miss Iris Gray, Oregon State College; Howard F. Miller, Mrs. Alice Rose Jones, Donald Yocum, and David Putnam, all of Salem.

Portland, Oregon
The Oregonian
(Cir. D. 232,105 - S. 295,884)

Oregon Journal
Portland, Oregon
(Cir. D. 183,910 - S. 203,476)

MAR 16 1958

NOV 25 1958

Seniors Win Singing Title

WILLAMETTE UNIVERSITY, Salem (Special) — The class of 1958 won high score in the freshman glee Saturday night to take its third win at the 50th performance of the annual class song competition.

Tallying 311 out of a possible 360 points, the seniors singing "Bearcats to Victory," barely edged the second place juniors, who won 307 points.

Last year's winner, the sophomores, placed third with 282 points, and the beginners at the game, the freshmen, wound up fourth with 266 points.

Glee Contest Plans Begun

WILLAMETTE UNIVERSITY, Salem, Nov. 25.—Dale Daniel, Arcadia, Cal., was elected manager of Willamette's golden anniversary Freshman Glee to be presented March 15.

Glee, an inter-class singing contest unique to Willamette, was begun by the class of 1912 as freshmen and continued as an annual event ever since. Novelty, fight, alma mater and serenade rotate annually as themes for Glee on which music and words are based. Fight songs come up this year

Manager for Glee Picked

Manager of Willamette University's 50th annual Freshman Glee March will be Dale Daniel, Arcadia, Calif., it was announced Tuesday.

The Golden Anniversary song contest among the four classes will feature publishing of some of the best songs produced by Glee. An example is "Victory for W.U.," the 1931 winner now sung after every athletic win. "Fight" theme will be used this year, Daniel said. Since 1912, Glee has alternated themes of novelty, serenade and fight. Individual classes will select their song

Power of Banner, Millstream In Hands of Ten Judges

Those mysterious, all-important people, the judges, have been chosen for their backgrounds in music, familiarity with Willamette, and previous experience.

FIVE OF the 10 men and women selected by the freshmen are Willamette graduates and three of them have judged one or more previous Gleees.

One of the four classes is already ahead in accumulated points, because the words and music of each class have already been judged and points awarded, but only a very few people know these results. Each of the three judges for words and each of the three for music could award up to 20 points.

THE FOUR presentation judges will be stationed around the gym in carefully selected positions tomorrow night, to watch with eagle eyes the performance of each class. Each judge can give up to 60 points, 20 for formation and 40 for vocal rendition.

Selected as judges of music were:

MILTON DIETERICH, presently a professor of music at Oregon, and organist and choirmaster of a Eugene church. He has a B.A. with a major in cello from Grinnel College and an M.M. from the Eastman School of Music with a major in music theory.

MRS. CHARLES H. VANCIL of Portland, choral director at Grant high school. She obtained her bachelor of music degree from Whitman and has had additional training with various choirs in the United States.

STANLEY L. GLARUM, director of the Lewis and Clark choir and a member of the school's music faculty. He is a graduate of St. Olaf college and has completed graduate work in composition at Washington. Many of his anthems for choirs have been published and he is in demand as a conductor of festival choirs.

He has judged music in several previous Gleees and was a judge of the fraternity-sorority songfest before it became an all-school affair.

Those who, judged the words of the songs were:

MRS. GRACE LEMM, who is supervisor of Marion county schools and has extensive background in speech work. She has a B.S. from Northwestern, an M.A. from Michigan and she conducted a private school of speech for 10 years. She judged Glee words in 1955.

MISS FAY SPARKS, a teacher at Canby high school, and sister of Lestle Sparks, longtime Willamette professor of physical education. Miss Sparks, who graduated from Willamette and has an M.A. from USC, has judged Glee words for several years. She composed and arranged the well-known song "I Love Willamette U.," during her college days.

MISS IRIS GRAY, associate professor of music at OSC, judged Glee words last year also. She has a B.M. degree from the Cincinnati Conservatory and an M.M. from the University of Idaho and has studied under several well-known pianists.

Judges scheduled to judge the presentation tomorrow night are as follows. All are former Willamette students and have participated in Glee themselves.

HOWARD F. MILLER, director of vocal music in the Salem school system, graduated from Willamette in 1931, the same year that he wrote the music to the winning Glee song. His wife composed the words to that song.

MRS. ALICE ROSE JONES wrote winning Glee songs also, in both 1945 and 1947. Since her graduation from Willamette, she has taught music both here and in Salem schools. She now teaches privately and serves as soloist and assistant organist in the First Methodist church.

DONALD YOCUM, manager of the adjusting office for General Insurance of America in Salem, was Freshman Glee manager in 1946. He graduated here in 1949.

DAVID PUTNAM, social studies teacher at Parrish Junior high in Salem, worked on set construction for Glee decorations when he was a freshman in 1939. He left Willamette to enter the navy but returned to obtain a master's degree here in 1947.

Win or Lose All Four Classes Will Celebrate After Glee

With the Glee Banner or without, the four classes participating in this Saturday's contest will celebrate following their performance in the Golden Glee. Each class will hold a fete following the fray, with one party, that of the winning class, destined to culminate in a serenade.

The seniors will hold a seminar at the Pi Phi house, the scholars taking a "study break" after a long week's work. It is rumored that Ed Shaw is trying to organize a second group along emotionalistic lines said senior prexy Al Siebert.

When queried, junior class president Dave Landis allowed they would have a get-together, but he didn't know where, when or to do what; a sort of informal gathering.

The YWCA will play host to the sophomores this Saturday night, with John Jelderks in charge of the festival. Dancing and refreshments will round out the program.

Dale Mortenson, chairman of the frosh after-Glee party committee, announced a gathering at the Delta Gamma house after the sing where post-Glee festivities will be held.

Practice Routine for 50th Glee Begins Monday; Frosh to Issue Traditional Challenge Tuesday

Next week the "up, 2-3-4, smile, 2-3-4" practice routine of Freshman Glee will begin for the fiftieth time as the spirited atmosphere of this year's "Fight" theme inspires each class in a unified effort to win.

THE FRESHMAN class will start the week with a 5 a. m. practice Monday morning, but Glee will not officially begin until the con-

fident Frosh issue their challenge to the other classes in Tuesday's convocation. The challenge assembly will feature speeches by the class presidents and class demonstrations designed to humiliate their adversaries.

Determination is already evident from presidential statements given to the Collegian. Freshman presi-

dent Paul McGilvra warns, "Don't count the freshmen out. Watch Glee and you'll never see a dark horse run any faster."

JOHN BERGSTROM, sophomore prexy of last year's victorious class retorted, "There is no question in my mind that the sophomore class through its invincible spirit, superior ability, and excellent leadership will overpower the seniors, humiliate the juniors, and whitewash the frosh, once again holding high its torch 'In Tribute' to the spirit of Glee."

The junior president Dave Landis wished luck "to the mighty seniors and the awkward freshmen," while Al Siebert, the casual president of the casual seniors, remarked, "Oh? Is it Glee time? We're all for the juniors . . ."

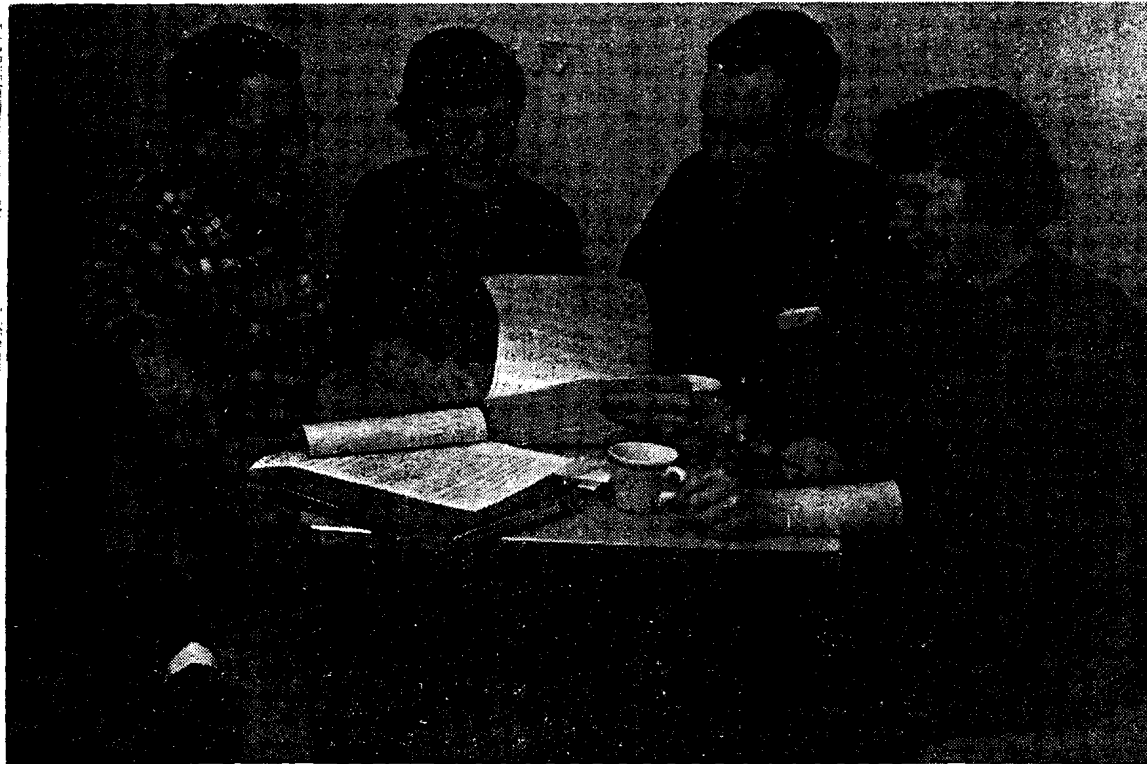
CLASS SONG leaders are Tom Elliott, freshman, Janet Jamison, sophomores; Gail Boden, juniors, and Ron Kingsley, seniors, while the formations of the same respective classes will be directed by Tony Meeker, Ron Walker, Larry Willingham, and George Hoyt.

Dale Daniel, Glee manager, re-emphasized recently that every holder of a student body ticket is entitled to one Glee ticket. Participants, including members of the Glee committees, will have first chance to sign up for a second ticket.

PARTICIPANTS in Glee may sign up for their first ticket at any of the Monday practices and the sign-up for additional tickets will be available Wednesday.

Non-participants and law students may sign up for one ticket Monday and distribution of all tickets will be made on Friday.

No Extra Practices Needed



Senior collaborators chuckle happily as they plan this year's blase assault on the Glee Banner. Comfortably established at a table in the 'Cat with the inevitable cup of coffee to restore energy, are George Hoyt, Mim Mathews, Ron Kingsley, and Muriel Miettunen. The experienced campus oldsters fully expect the coffee break to become an integral part of Glee practice. (Photo by Jim Cline.)

He'll Reveal Glee Winner

It is possible that the winner of Freshman Glee may be announced in Greek — or Hebrew — or Arabic. Or perhaps German. Or Syriac.

AS HE HAS for the last six years, Dr. Daniel H. Schulze, professor of German, will again announce the winner of Freshman Glee.

Despite the fact he knows some seven languages (he's never sat down and counted them up before) he will probably choose English to transmit the news to his hushed audience.

MODEST Dr. Schulze received his Ph.D. in Semetic languages and literature from the University of Chicago. He holds four degrees, including a Bachelor in Divinity, for which he studied at Northwestern University.

He has married some 100 couples to date.

He has taught German to both his sons, Merlin and Del — who don't like the language. Merlin is a Willamette graduate, and a ski enthusiast in New York now. Del is a sophomore here this year.

WELL-KNOWN and liked for his unflinching grin, his silver hair and his kind heart ("I only wish I were allowed to give nothing but A's") the long-horn from Southern Texas is also remembered for his evasivness.

A tradition of Glee is the seemingly interminable period while his slow voice, flavored with a German accent, announces the final scores.

"SOME DAY I'm just going to give out the score without the preliminaries — and see what happens," he remarks.

But he's careful these days about the stories he tells to the Glee audience, for he is still smarting from the year he told a joke about Lady Godiva, who covered her horse but still showed.



PASSENGERS OF THE CASCADE were not the only victims of a train wreck recovering last weekend. In fact, as freshmen glanced over the front page of Sunday's paper, here's how they saw it. After their locomotive was derailed in Saturday night's Glee, they had to go on foot to the Millstream. (Photo by Jim Cline.)

Pat Rivals Blue Day

Begorrah! Coiffures turned colorful at Willamette when her loyal Sons of Ireland remembered that the day for the "Wearin' of the Green" fell on Blue Monday.

GREEN FOOD coloring and poster paints were in demand for John Galbraith, Rita Zachary and Dale Mortenson, when the time to pay off bets arrived.

But green hair seems better than no hair at all. At exactly 8:20 a.m. on Blue Monday Howard Nelson

turned barber, and muttering, "It might have been me," transformed Bob Penater into a second Yul Brynner in exactly 13 minutes.

"WANT TO take a tramp in the woods?" invited Barbara Luoma as she attended her classes in a gunny-sack chemise. This new variation of the sack-dress was made a popular W.U. style Monday when Sally Joseph and Sally Fenner combined it with the squaw dress to become American Indians.

Taking advantage of Blue Monday, officious sophomores announced the end of classes. The staccato of the bunny-hop interrupted the professors and a standard Glee bet pay-off was to erase the board of everything the prof put on it.

ESSAYS ON free love in the dining rooms of women's living organizations and on the sun-dial in front of Eaton, and suggestions for the improvement of Willamette (including a forty-two foot window in the women's gym) were among the best attended lectures of this year at Willamette.

Glee bets began early and lasted late. Mari Fikar and Elaine Buckinger scrubbed the steps of the SAE house with a tooth-brush at 7:30 a.m. and at noon Johnny Bergstrom was tarred and feathered in front of the Beta house. All day girls picketed for higher wages.

THREE SHEIKS of Araby visited campus on Blue Monday. Dean Kohntopp, Judd Debarr and Jack Schranz wore sheets, sun-glasses, turbans and sandals to pay off a Glee bet.

Every hour one of them had to climb to the top of Waller and ring the bell, while his cohorts spread out their rugs and bowed toward it.

KATHY Burnard and Geranna Stevans (with her long hair in twenty-one pig-tails) waited table at Baxter. "Boys," reported Miss Burnard, "aren't finicky like girls about their food. Not one person wanted ketchup on his broccoli!"

It's the Water That Makes It Good!



"It's the water that makes it good," coined in a senior class parody to describe the virtues of the mill stream, was also considered apropos by the Oregon Journal which used the same headline with a similar picture of the wet, fourth place frosh in Monday's edition. After the Blue Monday convocation, the spirited yearlings took their punishment, but not without getting a few upperclassmen damp in the process.

Participation To Determine Glee Tickets

Freshman Glee tickets will be given out in the same manner as last year, reports manager Dale Daniel, with all student body cardholders entitled to one ticket and Glee participants having first chance at second tickets.

GLEE PARTICIPANTS may sign up for their first ticket at Glee practices Monday, March 10, and for their second ticket at Wednesday practices. Tickets will be given out Friday of that week in Glee practices.

Non-participants may sign up for a ticket Monday, March 10, in the student body office and law students in the law school.

NON-PARTICIPANTS who feel they have special need for a second ticket may submit a written statement explaining their reasons for not participating. These statements are due no later than Thursday, March 13, and will be considered by a special committee.

All non-participants may claim their tickets Friday, March 14, in the student body office.

DANIELS ADDED that each class would be allotted second tickets according to the percentage of class members participating in Glee.

He also emphasized that deadlines for signing up for tickets would be strictly observed.

In addition to the tickets given to students, 425 are allotted for President Smith, the Board of Trustees, faculty, and alumni. About 50 tickets will be reserved for judges, housemothers, and other special guests.

Daniel Selects Glee Helpers

Glee Manager Dale Daniel has added something new in that he has co-chairmen for all the Glee committees.

CHAIRMEN ARE as follows: assistant Glee manager, Roy Chapin; recording secretary, Kathy Burnard; corresponding secretary, Ceranna Stevens; publicity, Doug Ward, Carolyn Schrag; programs, Terry Boyd, Jean Thomson; souvenir, Russ Peterson, Sue Mullarky; tickets, Larry McMurray, Marcia Humphrey.

Entertainment, George Rogers, Barbara Royer; decorations, Gail Larson, Maureen Avery; history, Dean Kohntopp, Karen Henninger; backdrop, Dave Marsters, Judy Teufel; records, Ed Hall, Bill Richter; stage, Pete Welch, Jim Right; and ushers, Nora Hounsell and Connie Snow.

DANIEL EXPRESSED his praise of the committee co-chairmen and emphasized their responsibility. He commented that over 200 freshmen had applied to him for these chairmanships.

Committee members will be chosen this weekend and will be announced in next week's Collegian.

Tomorrow Night to Witness Race for Coveted Glee Banner

Tomorrow night's performance of the "Golden Glee," Willamette's 50th edition of its annual inter-class song contest, will culminate a week of arduous practice, which began at 5 a. m. Monday for the freshmen. Theme of this year's Glee is "Fight!"

THE CLASSES will march into the gym before the scheduled 8 p. m. starting hour in order to shorten the lengthy evening as much as possible.

After the traditional senior antics and the singing of the two parodies allotted to each class, Glee manager and master of ceremonies Dale Daniel will welcome the audience and dedicate the 1958 Glee to the Class of 1912, the class which originated the songfest and won the first Glee.

AFTER THE REPORT of freshman class president Paul McGilyra, the seniors will begin the contest with their song "Bearcats to Victory."

Music was written by Ron Kingsley, class song leader, and the words by Ann Barber, Annette Carson, Gene Corey, George Hoyt, Kingsley, Miriam Mathews, Muriel Miettunen, Suzy Platt, Paula Preuss and Lola Lane.

THE CLASS OF '58, winners their first two years of competition, placed second last year and are trying for another first place.

Senior formation will represent a scoreboard with moving hands and changing numbers to indicate the rising score, which ends as a 19-58 victory. Formation leader for the 84 participants is George Hoyt.

"CARDINAL AND GOLD" is the junior fight song. The music was written by Dave Landis and Del Cummings, the words by Margaret Lowe. The formation, designed by formation leader Larry Willingham, is the face of Barney Bearcat, in which 80 juniors will participate. Class song leader is Gail Boden.

Words of the sophomore song, "To Victory," were written by Rod Bernclau, Cappy Casper, Janet Jamison, Judy Olson, Janet Perry, Nancy Teague, and Lynn Wilcox. The music was written by Ralph Litchfield and arranged by Sonja Peterson.

THE FORMATION of a shield will, change from a "W" for Willamette to a "V" for victory at the end of the song. The sophomores are the defending Glee

champions, having won last year, and the 144 participants will attempt to make it two straight victories for the class. Formation leader is Ron Walker, song leader Miss Jamison.

The as yet untried freshman class will roll into formation as a locomotive, forming a black locomotive with red wheels on a white background. Tony Meeker is formation leader.

SONG LEADER Tom Elliott has directed the 224 participants in singing their "Bearcat Locomotive" all week. The music was composed by Joan Barber and Drury Spurlock, who also wrote the words, along with Terry Boyd.

Background for all stage activity is a large backdrop reading "50 Gleeful Years—1909 to 1958" in large gold letters.

DALE BUNSE, master of ceremonies for the entertainment, will narrate the half-hour skit, which will include sketches of the twenties, the depression, the war period, and today.

The Glee Banner will be held by Carol Hobbs, Drury Spurlock, Marilyn Wright, Sherri Jenkins, and Alice Stewart. They will be guarded by Dick Kerbs, Dorr Dearborn, Jim Travis and Dave Myers, who will take over and hold the banner as the announcement of the winning class nears. The women will leave the stage, leaving the men to face the tumultuous onslaught of the winning class.

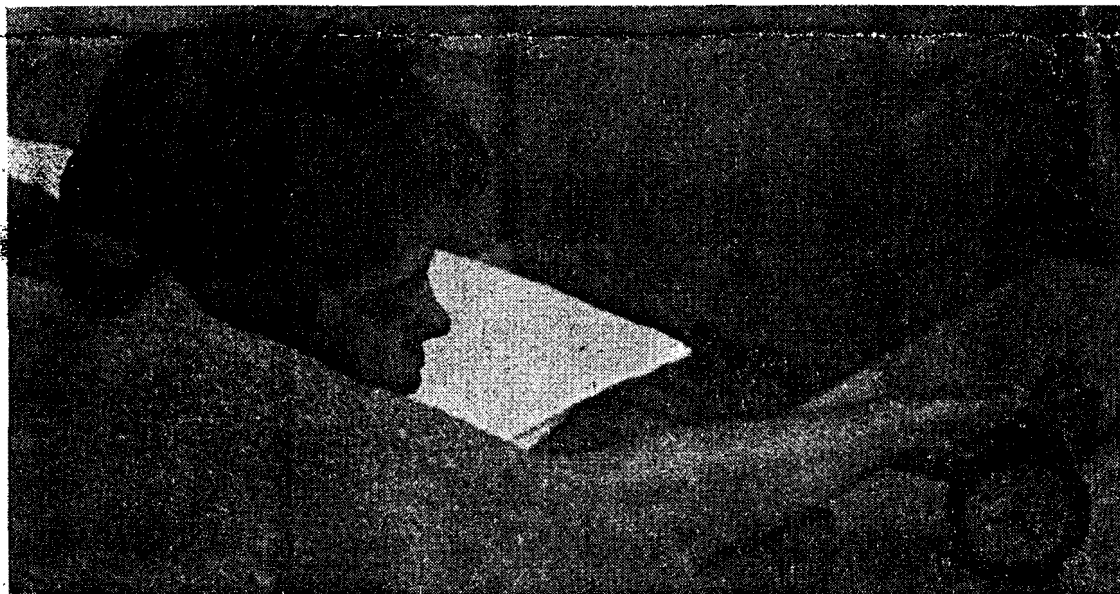
Dr. Daniel H. Schulze, professor of German and long-winded announcer of Glee results for the past six years, will again make the fateful pronouncement, probably spinning it out as long as possible.

HE WILL FIRST announce the third place class, then second, and finally—after an interminable period—the Glee winners. The fourth place class, destined to swim in the millstream on Blue Monday, will not be mentioned.

After the winning class has mobbed the stage and claimed the Glee banner, it will sing again its winning song and any previous Glee songs it may possess.

The winners will then file jubilantly out to celebrate their win with special two o'clock late permissions for the women. Women of the other classes will receive one o'clock late pers.

Up, 2-3-4



Carolyn Miller, sleepy junior shown groping her way out of bed at an ungodly hour for an early morning Glee practice, typifies most Willamette students during this week of feverish preparations for tomorrow night's performance. Five or more hours' practice a day, constant advice about diction and dynamics, plus nightly dreams of "Smile" and "Up-2, 3, 4" combine to make the student's life a hectic one and to make most Glee participants long fervently for a long sleeping in Sunday morning. (Photo by Jim Cline.)

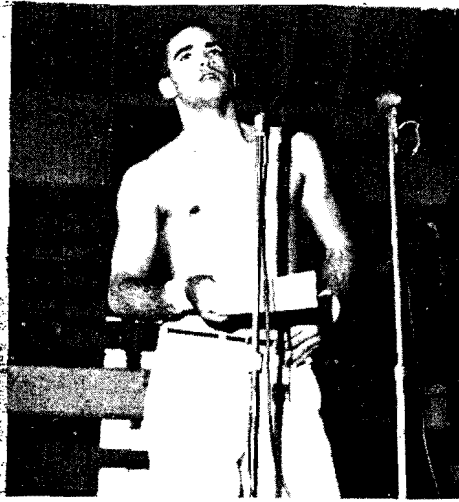
Sophs Capture Frosh Prexy

I've got a hunch!
THIS WAS the cry of the frosh this weekend as they unsuccessfully hunted for their kidnapped president, Paul McGilvra, in an effort to return him to the campus in time for him to offer his challenge to the other classes at Tuesday's Challenge Assembly.

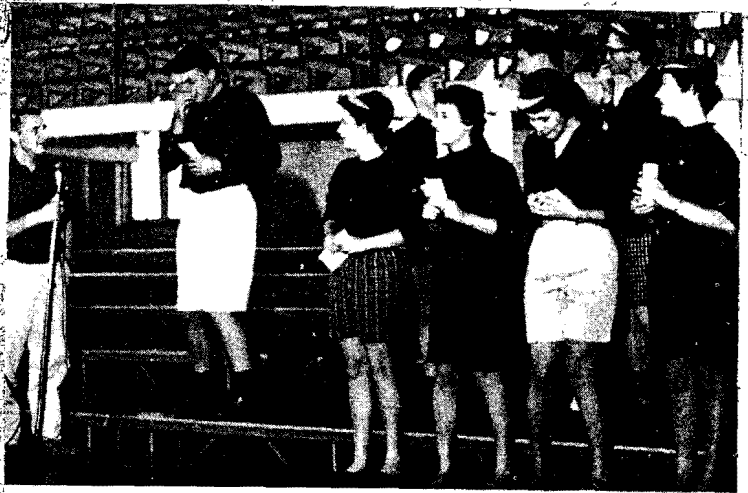
McGilvra did make it back, but with much unwanted assistance from several sophomore men who had captured him Sunday at 3 a.m. at his hideout and taken him from Mike Waterman's house in Portland.

FROM WATERMAN'S house they toured Portland, stopping at Lewis and Clark college, the Green Village Motel, and a house near the home of Larry Lynn. The cost of the weekend was about \$40, claimed McGilvra, when taking into consideration the expense of a broken window and plaster, motel bill, food and gas.

While in captivity, McGilvra's hands and feet were wrapped together with over 30 feet of adhesive tape. Other times he was belted down to the bed and unable to move.



FRESHMAN CLASS President Paul McGilvra looks tired, but delivers the challenge, full of Frosh fight.



THE FRESHMEN are portrayed by the Sophs as the "shy, children of Glee."



"MIGHTY SOPHS" render their interpretation of the Junior "Fight" song.



THE SENIORS at the last minute casually decide to accept the Glee challenge.

WU Juniors Perfect Glee Formations



Willamette University's gym is ringing to the sounds of piano music and marching tunes this week as the four classes tune up their shows for Freshman Glee Saturday night. Junior class marchers (left to right)

Bill Sewell, Jeanne Peasley, George Nyberg and Sandi Harris were under direction of Larry Willingham. Del Cummings provided the music. (Capital Journal Photo)

HISTORY TRACED

50th Freshman Glee Scheduled At Willamette

By ALFRED C. JONES
Capital Journal Writer

Since three freshmen at Willamette University in 1909 came up with the idea of Freshman Glee, 200 original songs and lyrics have echoed through those historic halls.

For the 50th time this colorful event will unfold Saturday night in the university gymnasium, and if the pattern holds, the freshmen will win when the chips are down again.

The freshman class won the first pennant Feb. 19, 1909; took honors over upperclassmen at the Silver Anniversary Glee in 1933; and with the optimism and enthusiasm of yearlings they figure they can do it again.

A double winner already, though, is the class of 1958, which placed second last year and claims the finesse to return to the throne.

WINS EVENLY DISTRIBUTED

Victories have been evenly distributed through the 49 years—11 for the frosh (who once went 14 years without a triumph), 12 each for sophomores and juniors, and 13 for seniors.

Only two classes, however, have been able to win four consecutive times—the class of 1936, with Helen Benner writing music and words each year, and the class of 1954.

To the persons who wouldn't miss Freshman Glee for anything, it presents songs of surprising beauty, impressive marching rhythms and formations, and clever jibes tossed from class to class.

It is no wonder that tickets are as scarce as the proverbial chicken molar.

→ Continued on next page

THEMES ALTERNATE

Themes alternate in this order: "Fight," novelty, serenade, and alma mater. This year it is time again for athletic fight tunes.

When Glee was first born, the announcement was made that "everyone is cordially invited." First it was conducted in Waller Hall Chapel up through 1915, at First Methodist Church in 1916, at Salem Armory from 1917 to 1923, then to the newly constructed gymnasium.

Credited with generating the Glee idea were J. C. Oakes, now living in Portland; Mrs. Elva Mason, now of Buhl, Idaho; and the late Dr. R. V. Ellis. Willamette still is believed to be the only college in the nation with such a tradition.

They could not have envisioned, though, the outgrowth known now as Blue Monday. That is when the class which finishes fourth gets a chilly dunking in Mill Creek and when repentant losers pay off their individual bets.

Some of these bets are out of this world, accenting the initiative of fertile minds. There was the senior in 1953 who had to swallow a live gold fish; others have had to wear skis from class to class, ride a horse on the campus, lead a goat all day long, push the bet winner in a wheelbarrow, or be subjected to a coat of syrup and feathers.

UNFORGETTABLE INCIDENT

Still others have had to sit on the dome of Waller Hall, to shave in chapel, get a crude public haircut, wear a barrel or newspapers as clothing.

An unforgettable incident was the appearance in the Legislature once of a student clad in white robes and holding a lantern. During a lull he rose, announced he was Diogenes looking for an honest man, but knew he could find none there.

Some legislators failed to detect the humor of the situation. They frowned. Verily, they scowled.

In the Glee itself, only once—the first year—did a class fail to produce an original tune. In 1909, apparently the rules didn't get down (or up) to the troops, for the seniors borrowed the music from a popular song to go with their lyrics.

Marching as part of the competition was added in 1912-13, and judges were added, but otherwise the original rules stand.

SOME SONGS LAST

Prof. James T. Matthews, the "grand old man of Freshman Glee," now deceased, as announcer of the winner, took impish delight in delaying the decision while students squirmed uneasily. He had the honor from 1909 to 1941, except for 1917.

Prof. Herman Clark announced decisions from 1943-52, and since then Dr. Daniel H. Schulze has employed his humorous, delaying tactics.

Are any of the songs good enough to last?

Standouts through the years include "Willamette Spring Song," written in 1919 by Helen Goetra, with words by May Mickey, a song still played on May Day weekend programs.

Another is "Fight, Bearcats, Fight," written in 1932 by Clara Wright, which still is played at athletic events. "Victory for W.U." (1931) and "Dream On" (1923) are among those still remembered.

Indicative of the sentimental quality of "Willamette Spring Song" are these closing words by May Mickey:

"Our spring time days are passing

"But through each hour's swift flight

"We gather Golden memories

"From dawn till starry night;

"And college joys shall echo

"Long after youth departs

"Like half remembered music

"Through the chambers of our hearts."

Capital Journal
Salem, Oregon
(Cir. 17,224)

OCT 3 - 1957

815 Freshman Glee Fest Scheduled

Fiftieth annual Freshman Glee at Willamette University has been set for March 15 by the student council.

The council Wednesday also scheduled Tuesday, Oct. 15, as kickoff for a United Fund goal of \$1,250 and asked each student to contribute one dollar.

The traditional Freshman Glee will find each class competing in composing a song to present March 15.

Student body officers who assumed duties Wednesday included two Salem men: President, Wayne Carr, 1260 Heather Lane, SE, and treasurer, Dean Short, 1925 Margaret, NW.

Other officers are first vice president, Anita Booth, New York; second vice president, Dick White, Cloverdale, Calif., and formerly of Salem; and secretary, Diane Wickstrom, Menlo Park, Calif.



The sour notes of Willamette University this year—the freshmen class—go for a swim in the Mill Stream to pay for landing at fourth place in the 50th Freshman Glee. Other strange bets were paid off on Blue Monday. (Statesman Photo)

The Oregon Statesman
Salem, Oregon
(Cir. 18,467)

OCT 3 - 1958

Willamette U. Schedules Freshman Glee March 15

Freshman Glee, the class among traditions at Willamette University, will be held March 15. The student council decided Wednesday at its first meeting.

Each of the four classes will compose an original song and present it that night in competition. This will be the 50th glee. The council also set Tuesday, Oct. 15, as the kickoff for United Fund. Each student will be asked to contribute \$1 toward a \$1,250 goal.

Two Salem men are among student officers who began their duties Wednesday. They are student body president Wayne Carr, 1260 Heather Lane, and treasurer Dean Short, 1925 Margaret St.

Other officers are 1st vice president Anita Booth, New York, 2d vice president Dick White, formerly of Salem and now from Cloverdale, Calif., and secretary Diane Wickstrom, Menlo Park, Calif.

Frosh Pay Piper at Blue Monday Payoff

Last-placed freshmen paid the piper at Willamette University Monday—Blue Monday—while the Senior Class as winners of Saturday night's Freshman Glee looked on happily.

Senior president Al Seibert won

a costly victory that he had to celebrate on this day set aside for paying off Glee bets.

The three losing class presidents were forced to submit to being kissed by 10 coed beauties. Seibert stood by gloating over his victory and winning at the suffering which John Bergstrom, Dave Landis and Paul McGilvra endured with each kiss.

Strange things were going on all day around the campus. Some students wore clothing frontside back, others rolled peanuts down the walks with their nose.

Freshman Barbara Royer was responsible for a stampede when it got around that she was selling kisses at 10 cents a smack. She was, candy kisses.

Howard Nelson, sophomore, did 20 push-ups in the library, counting off in French.

Several orators gave soap box speeches advancing the cause of love and 25 students did an early morning bunny hop on Eaton Hall's second floor.

Freshmen climaxed the day with the traditional swim in the cool waters of the Mill Stream.

WU Prepares For Freshman Song Contest

Freshman Glee, the Willamette University class song competition that features original music and words, 5 a.m. practice sessions and dunks in the Mill Stream will enter into its final week of preparation Monday.

This year's Glee, the 50th version of the traditional song contest, is due Saturday night, March 15, in the Willamette gymnasium. Songs, words and formations written by members of each class are judged by professional musicians and a banner awarded the winning class.

The last place class gets doused. By tradition, the Monday after Glee is designated Blue Monday, when the fourth place group jumps in the Mill Stream and members of the second and third place class pay off bets made on the outcome weeks ahead of time. Bets are usually of a freakish nature, such as bathing in a bird bath.

Practice sessions for each class begin in earnest Monday with each class due for at least one early-morning work-out, from 5 to 7 a.m. Four such practice periods are held each day sandwiched in between class and studies.

Manager of this year's Glee is Dale Daniel, Arcadia, California.

The Oregon Statesman
Salem, Oregon
(Cir. 19,625)

10 20 1958

Heads Glee



Dale Daniel who was named Tuesday to manage Willamette University's 50th Freshman Glee.

Californian Elected WU Glee Manager

Dale Daniel, Arcadia, Calif., was elected Freshman Glee manager Tuesday by the freshman class at Willamette University.

Willamette's 50th annual song contest classic will include an extra attraction this year, he said in announcing preliminary plans.

Some of the top songs produced by Glee in the past half-century will be published and a special program on the history of the tradition will be presented Glee night, March 15.

Individual classes will take the next step in preparing for the song writing and singing contest. Managers will be elected and song writers from each class will compose original songs which will be presented in competition Glee night.

One of the most conspicuous features of the celebration is Blue Monday when the losing singers pay off Glee bets and the last place class goes wading in the Mill Stream.

T V -radio highlights

TUESDAY TELEVISION

- 10:00 a.m. (Ch. 6) C. B. Mobley, Portland public relations man will tell of the advantages of living in Oregon, Hi Neighbor.
- 11:30 a.m. (Ch. 8) Featured will be Willamette University's "Freshman Glee," Community Workshop.
- 12:00 noon (Ch. 12) "Anxious Night," starring Dale Evans. A mother who has spoiled her son and made him into a selfish young man, is stunned to find he has stolen a car and blames herself, Matinee Theater.
- 1:30 p.m. (Ch. 6) "Iowa Mulligan Stew," KOIN Kitchen.
- 4:15 p.m. (Ch. 12) The lily of the valley will be introduced, showing three arrangements, How to Arrange Flowers.
- 7:00 p.m. (Ch. 6) Mr. Adams and Eve. Cook Elsie (Olive Carey) is in the spotlight for a change, and has all the punch lines. She's written a song you may care for called, "I May Be Too Late," and teams up in the song business with a con man. That leaves her employers Howard and Eve, with no recourse but to help her out.
- 7:30 p.m. (Ch. 6) Taking the view that she hasn't been close enough to her children, Liza decides to take time off from her professional duties to be a "full-time mother," Eve Arden Show. . . . (Ch. 8) A charming bit of femininity activates Sugarfoot and a sleepy town when it is revealed that her husband is a much-wanted bandit, Sugarfoot.
- 8:00 p.m. (Ch. 12) Eddie Fisher. Plenty of singing with guest Red Buttons and tiny Ann Blyth. Buttons does his once-famous musical signature, "Ho, Ho," and Miss Blyth solos on "Come Rain, or Come Shine." Eddie turns to such oldies as "How Are Things in Glocca Morra?" "The Song Is You" and "You'll Never Walk Alone." All the principals, including Academy Award nominee Buttons, do a sketch on movie musicals (color).
- 8:30 p.m. (Ch. 6) Skelton appears as "Cauliflower McPugg," whose ownership of a hamburger stand causes him to become the unwilling dupe for two hoodlums who want to fix a fight. Marie Wilson is guest, Red Skelton Show. . . . (Ch. 8) Earp turns to public relations to protect General Sherman, Wyatt Earp.
- 9:00 p.m. (Ch. 8) Broken Arrow. "The Duel." More sentiment than action tonight. A young man who operates a trading post falls for an Apache girl, and Tom tries to break up the affair. Fans of the series will enjoy seeing flash-back of Tom's romance and marriage to an Apache. The Indians don't look like Indians this week—there's one who looks like Sid Caesar and another who could double for Mel Ferrer. The Apache girls wouldn't fool a cigar-store Indian. . . . (Ch. 12) McGraw's Hawaiian vacation is interrupted when he confronts a hawgun killer who is trying to work his way up in the import-export business, Adventures of McGraw.
- 9:30 p.m. (Ch. 6) Vickie Lawson uses her million dollars in a carefully prepared masquerade to impress the most eligible bachelor in town, If You Had a Million. . . . (Ch. 8) Stage and screen star Greer Garson will portray a courageous young woman who helped bring law and order to the Wyoming territory by breaking the all-male jury tradition in the story "Revenge," Telephone Time. . . . (Ch. 12) Bob and Harvey, still posing as each other to aid Harvey in getting a big order, find themselves in real trouble when Harvey's wife shows up and makes it definite that she knows who her husband is, Bob Cummings Show.
- 10:00 p.m. (Ch. 12) Californians. "Death by Proxy." Above average for the series, largely due to the efforts of lovely Michi Kobi, making a return appearance on the show. After we've got rid of the vigilantes once and for all, it might not be a bad idea to turn this into an Oriental western series.
- 10:40 p.m. (Ch. 6) "Dark Command" (1940), starring John Wayne, Claire Trevor, Walter Pidgeon, Roy Rogers. After the Civil War the Southwest is terrorized by Quantrell's raiders, until one man puts a stop to it. Big, actionful western drama, colorful, fine cast, Showtime on Six. . . . (Ch. 8) "The Cuban Love Song" (1931), starring Lawrence Tibbett and Lupe Velez. Dated little musical about the romance of a Marine and a Cuban lass. Not funny by our standards, and even Jimmy Durante in a supporting role fails to win any laughs, Channel 8 Playhouse.

TUESDAY RADIO

Three Time Winners Grab 'Golden' Banner

Willamette Collegian

Fiftieth Annual Glee Sees Frosh Swim

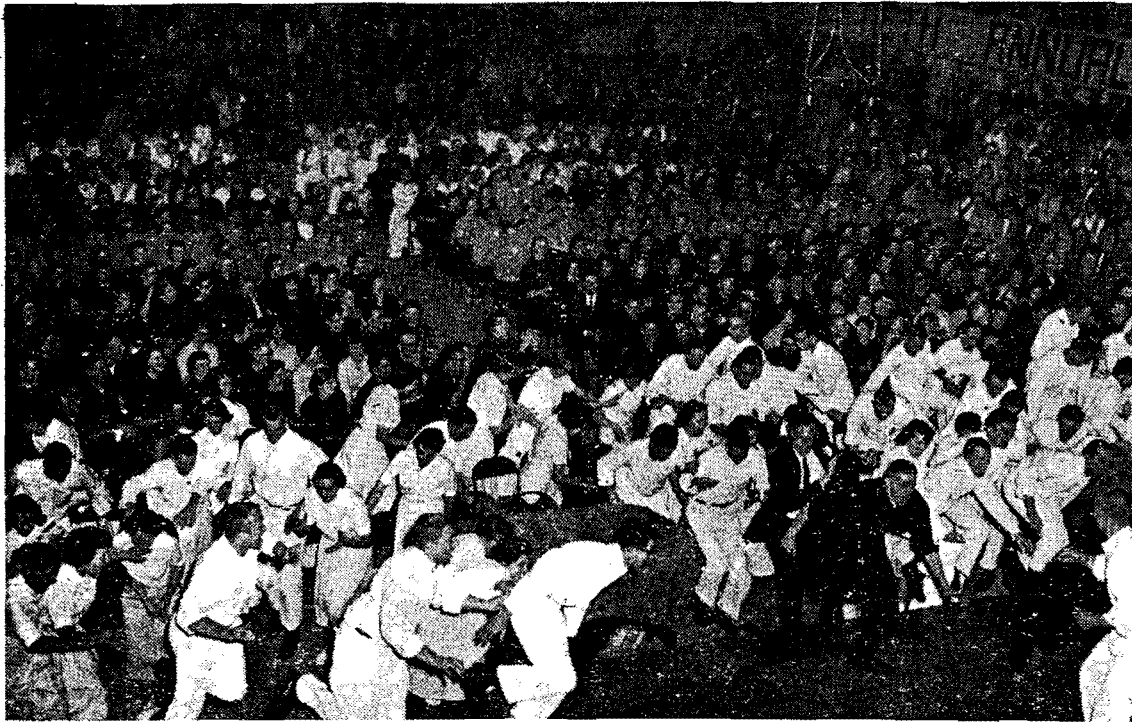
"In Age There Is Wisdom"
1842—Serving a University in Its Second Century—1958

Vol. LXIX

Salem, Oregon, March 21, 1958

No. 23

That Adequate Feeling . . .



The 84 ecstatic people pictured above are shown as they finally release their long pent up emotions after a tense evening of wondering just which class would frenziedly mob the stage and grab the Glee banner, to dissolve into a screaming, jumping, gloriously happy mass. Dr. Schulze didn't take more than five minutes to announce the three classes that won, placed, and showed, but it seemed like an eternity to some of the eager participants. The unabashed emotion displayed above is in direct contrast to the casual, studiously indifferent front the seniors had displayed to the school all during the week of practice.

The class of 1958 scored 311 points for its third victory in four years of Freshman Glee competition Saturday night, in a contest that saw the millstream awarded to the freshmen, for the first time since 1947.

THE SOPHOMORES, last year's winners, dropped to third place with 282, while the juniors rose to second after two years in the third place slot. Their total score was 304, only seven points behind the winning seniors.

The seniors went into the Golden Glee ahead, having received 113 out of a possible 120 points in words and music judging on their song "Bearcats to Victory," as against 95 for the juniors, 90 for the freshmen and 88 for the sophomores.

TWO-THIRDS of the total of 360 possible points is awarded for the presentation Glee night, with 160 for song rendition and 80 for execution and design of the formation.

It is impossible to determine scores of the classes for formation and rendition separately, because one of the four judges lumped the two together in awarding points.

THE JUNIORS with Barney Bearcat, outclassed the seniors' scoreboard in rendition-formation judging, racking up a total of 209 against the seniors' 198, but the seniors retained their pre-Glee night lead because of their high score on words and music.

Sophomores and freshmen placed 194 and 176 in this division, respectively.

TOTAL SCORES earned by the classes revealed a perfect 1-2-3-4 order, with freshmen at the bottom of the ladder and seniors at the top.

Words were judged by Mrs. Grace Lemm, Miss Fay Sparks, and Miss Iris Gray, while those judging music were Milton Dieterich, Mrs. Charles H. Vancil, and Stanley Glarum.

Judging rendition and formation Glee night were Howard F. Miller, Mrs. Alice Rose Jones, Donald Yocum, and David Putman.

Total scores earned by the classes are as follows:

	'58	'59	'60	'61
Words	57	53	43	45
Music	56	42	45	45

Students Who Can't Sing Will Be 'Schmoes' at WU

By DON SCARBOROUGH
Staff Writer, The Statesman

This is the week at Willamette University when, regardless of your 36-24-36, your IQ or the number of touchdowns you scored last season, if you can't sing pretty you're a "schmoe." (Picture on page one.)

As Willamette enters the final week before its big songfest, Freshman Glee this Saturday, athletes, scholars and beauties move over and the spotlight falls on the sloping shoulders of the guy or gal who can warble sweet and write musical.

Glee is the unique Willamette inter-class song contest begun 1908 in which each class writes its own song, then presents it in competition Glee night. The first-place Glee banner is so honored that the musical brains who might bring its capture are highly prized and richly rewarded with warm attention.

Pound Out Songs

Gathered around pianos and tuning forks this week the shy, young, music-minded proudly pound out songs and whip up scorings while dethroned campus heroes and queens sulk in corners nursing their monotones.

For the big Fifty Year celebration this year, students under manager Dale Daniel are trying to pack even more into the pre-Glee week than ever.

Monday morning at 5 o'clock classes will begin practicing formations and singing in the gym. An unblushing social event, it never fails to bring bashful boys and girls into friendly contact.

Officials Challenge

Tuesday the Freshman class officially throws down the challenge to the other three classes

and another feature takes up; replacing, that often leads on Blue Monday to shaved heads and dunks in the Mill Stream.

By Saturday at 8 p.m. each class will have reached a pitch of excitement bordering on hysteria.

The entire week preceding Glee night is one of good-natured tension and lightheartedness before which professors bow, conceding that book-learning, though it must go on, need not be everything.

Right now, glamor shots of football heroes lining many a coed's room are covered over with pictures of aspiring Rogers and Harts, lightly taped up so they can be easily removed when Glee is over, and true perspective returns.

MAR 13

Four Picked For Guards

WILLAMETTE UNIVERSITY, Salem (Special) — Dr. Daniel H. Schulze will announce the Freshman Glee winner for the sixth straight time at glee's 50th anniversary performance Saturday night.

The class song competition featuring original words and music will open in the Willamette Gym at 8 p.m.

A honor guard of burly freshmen has been provided Schulze to fend off the eager winning class after he pronounces them victors. Named to the guard this week were Dorr Dearborn, Ontario; David Myers, Sherwood; Richard Krebs, Madras, and James Travis, Independence.

Coeds to Assist

Holding the banner while Schulze prolongs the announcing of the winners will be coeds Sherri Jenkins and Marilyn Wright, Portland; Carol Hobbs, Boise, Idaho; Alice Stewart, Salem, and Drury Spurlock, Lafayette, Calif.

This week Freshman Class President Paul McGilvra, Forest Grove, challenged the other classes to the glee contest. Picking up the challenge presidents of the other classes Al Siebert, Portland, senior; David Landis, Klamath junior, and John Bergstrom, Portland, sophomore.

It's the Water That Makes It Good



Freshmen who carried out the tradition of being dunked in Mill Stream for placing last in Freshman Glee Saturday night did some rebelling Monday noon. Above, some try to drag upperclass hecklers into the

chilly water. Frosh men and women both took the swim after individual bets were paid off in the gym. See Story on Page 5, Sect. 1. (Capital Journal Photo)

CHALLENGE ASSEMBLY

The Challenge Assembly was a very enjoyable, exciting, and spontaneous affair. It was held on the Tuesday of Glee Week. About eleven o'clock, beginning with the freshman class, each class marched into the gym--singing, cheering, and putting on quite a show. After all the classes were in and had taken their seats, there was general spirited confusion for a while. The different classes sang parodies, chanted, and yelled. (The freshmen were in the East Balcony; sophomores--North Bleachers; juniors--South Bleachers; and the seniors were scattered throughout the gym--traditionally they sit in the East Bleachers.)

When the classes finally settled down the Glee Manager made a few "impartial remarks" and introduced the Freshman Class President. The class president then challenged the upper classes to an "original song contest." (The Freshman Class President, who had been kidnapped by the sophomore class earlier in the week, was brought into the assembly by a group of sophomore boys during the Glee Manager's remarks.)

The classes in turn accepted the challenge. During the process of the acceptances and the challenge, there was a great deal of yelling, lampooning, and singing.

In time the assembly drew to a close and the classes very spontaneously dispersed, singing and chanting with spirits uplifted.

PARTICULAR

THE CLASS OF

KGW-TV

KGW-TV

THE CLASS OF '61 PRESENTS
FRESHMAN GLEE

PARTICIPANTS: Nancy Wells
Dale Daniel, Glee Manager
Mr. James Oakes, Class of '12
The Freshmen Sixteen

Sets: Opening set
Library set
Set for Freshmen Sixteen, use Glee Banner for Backdrop

Props: Glee Banner behind Freshmen Sixteen
Many pictures will be used (they will need to be mounted)
A Picture of "Waller Hall" over the fire place in the library.

Background Music: Will be supplied by the Freshmen Sixteen except for the
Marching music used at the first, which will be taped.

The treatment of the program: Dale Daniel will be conversationally
telling Nancy Wells about Glee - what it is, how it developed.

Running
Time

Flormat

Wells

(Introduces program, might use the following: About
Willamette University's Freshman Glee, the New York Times
wrote, "Harvard has her Daisy Chains and Heidelberg her
duels, but willamette University has her Freshman Glee,
the only known contest of its kind in any college or
university."

1:15

Last Saturday Willamette University staged her 50th annual Freshman
Glee. Freshman Glee is an inter-class original song contest, and as the
New York Times stated, the only one of its kind. We have with us today
a group of students from Willamette who will present the story of this
grand activity which is celebrating its 50th birthday.)

Camera: Leaves Wells and is showing three shots of the 50th Glee.

Music: As Wells makes closing remarks, marching music fades in;
as she ends, it is brought up, held; and as the Camera
leaves the pictures and picks up Library Scene, music
fades out.

Camera: Leaves pictures and picks up Wells and Daniels in Library.

Wells: (Introduces Dale Daniel, Freshman Glee Manager).

Dale: Thanks Nancy....

2:15 You were just seeing shots of 50th annual Glee...It was fifty years ago, in 1909, that Glee first started. We would like to take you back to that date, as we recall how Freshman Glee was originated and developed into the great tradition it is today.

3:00 Music: Toward the end of Dale's statements the humming of "O Willamette Beloved" comes softly into the background. After he concludes it will build for almost a minute and then fade out.

Camera: After Dale is through the camera will pick up the Freshmen Sixteen and stay with them till they start to fade. It will then come back to the Library set where Daniels, Wells, and Oakes will be sitting.

Dale: (Introduces Mr. Oakes, founder of Glee, to Wells.)

3:00 Wells: (Ask Oakes questions which include the following ideas: What stimulated your class to challenge the upper classes? and what was your purpose in originating Glee? You must have had a spirited class. What was that first Glee like? /Camera on picture of Waller, where Glee started on Library wall in answer/ Did you ever think Glee would last and develop into the activity it has?)

9:00 Music: As Oakes answers last question, music would last and develop with the humming of "Old Willamette Beloved" comes into the background, builds, and after he is through, comes up for a chorus - then cuts.

Camera: It spots on singers after Oakes finishes. When singers finish, it goes back to Library set.

12:00 Dale: As Glee developed, marching and intricate song formations were used.
Camera....(Will use pictures of Formations.)

Dale:(cont'd) With all the marching and formations more practices were needed - five in the morning practices...(pictures of early practices). About this same time the present judging system and the four themes developed...Serenade, Alma Mater, Fight, and Novelty.
"Willamette Spring Song" is a famous Glee song that was written under the theme Alma Mater and inspired by Willamette's beautiful campus.

Camera: (As song is sung, show a group picture of the campus).

14:00 Music: "Willamette Spring Song", the Freshmen Sixteen.

17:00 Dale: The hot competition of Glee creates great spirit...out-growth of it:
Glee is kicked off with the Challenge Assembly...
Glee bets....
Blue Monday and the Blue Monday Assembly...(Pictures)
Glee evening's parodies show spirit of classes....

16:30 Music: Freshmen Sixteen sing a parody.
Camera: On Freshmen Sixteen.

19:00 Dale: One of the most outstanding and novel Glee songs...

21:00 Music: Freshmen Sixteen sing "Rock that Ox Cart, Jason Daddy."
Camera: On Freshman Sixteen.
Dale: That is how Glee developed...

23:00 Wells: (Comments and asks about Glee this year.)

Fifty years of Freshman Glee were presented in review via KGW-TV by the Class of '61 on the Tuesday following Glee. The program included here is called a "topic script," and gives only a brief outline of the 30-minute production. Glee Manager Dale Daniel and Glee founder James Oakes were featured on the informal, discussion-type program. The Freshman Sixteen was a group of singers from the class of '61 who provided background and highlight music using various well-known Glee songs. We felt that this provided excellent publicity for Glee, and we were most grateful to KGW for giving us this opportunity to share Glee with so many people.

BLUE MONDAY

Blue Monday was a bundle of fun. Every one was happy with Blue Monday this year. (It had gotten out of hand the year before, '57, to the extent that there was a "public hearing" concerning it in the late spring of '57. The '58 Blue Monday was therefore a delicate situation.)

Prior to Glee the Glee Manager, Class Presidents, and Dean of Students met and discussed some Blue Monday guides. They were very liberal and outlined what behavior would and wouldn't be in order. The guides were printed in the Collegian and the Class Presidents discussed them with their classes--everything went smoothly.

The fourth place class, the freshmen, had the responsibility of presenting the Blue Monday Assembly. The Class President organized the class's efforts. In the assembly the freshmen satirized other classes' performances in Glee, sang parodies of all the Glee songs, including their own, and then the assembly was opened to "publically paying off Glee Bets."

At the close of the assembly the freshman class marched over and into and through the mill stream.

Attempting to avoid the whole-hearted chaos which prevailed last year, the student council has approved the following rules the student body should follow on Blue Monday.

1. The fourth place class shall be responsible for the Blue Monday convocation preceding their "swim" in the mill stream. Students should refrain from making Blue Monday bets which will physically involve members of the faculty, or will result in damage to university property.

2. All bets must be paid off between 6 a.m. and 12 midnight Monday.

3. All Glee bets must be confined to campus.

4. Attire should not be indecent.

5. The swimming pool should be used for swimming. No swimming through the mill stream and drinking of mill water should not occur.

Thursday, December 5

Dear Women of Lausanne,

It is a pleasure to announce that seven outstanding girls of Lausanne were selected as Freshmen Glee Committee co-chairmen. They are as follows:

Terry Boyd	Program (pamphlet)
Barbara Royer	Program (entertainment)
Marchia Humphrey	Tickets
Gail Larson	Decorations
Maureen Avery	Decorations
Connie Snow	Ushers
Nora Hounsell	Ushers

Kathy Burnard was selected Recording Glee Secretary and Geranna Stevens was chosen Corresponding Glee Secretary.

A complete list of committee co-chairmen will be announced in the Collegian tomorrow, Friday, December 6.

A meeting of the co-chairmen and secretaries will be held tomorrow, Friday, December 6, at 12:30 in Eaton 33.

Sincerely yours,
Dale Daniel, Glee Manager

Roy Chapin, Assistant

Roy Chapin

Willamette University

Salem, Oregon

December 19, 1957

S.O.S.!---Salutations O Select

The newly originated History Committee of the Fiftieth Annual Freshman Glee hopes to aid in producing a Glee that is the sum total of all previous years to coincide with this year's theme, "Spirit of Glee." We want to tie in history with souvenirs, programs, and entertainment and particularly with a 20 to 30 minute color film with sound on which the Glee Committee is figuring details at present.

But,---we would like to unearth many facts which are either very sketchy or lacking altogether. It seems that only a few major points of interest have remained through the years, and we ask your help in discovering some more of the things that happened during your years of Glee.

We would appreciate it if you could answer the following questions and return them in the enclosed addressed and stamped envelope as soon as possible, as we would like to begin really working immediately after the holiday vacation.

Thank you very much, and we hope that you will be able to come to the Fiftieth Annual Freshman Glee.

Gratefully yours,

Dean Kohntopp
Karen Henninger
History Committee Co-Chairmen

Questionnaire (sample)

1. Does the memory of Glee stand above the memories of your other college activities?
2. Do you feel that you gained something from Glee?
3. Were there any Glee highlights that occurred during your college career?
4. What significant changes appeared in Glee while you were at Willamette?
5. Further remarks and/or ideas:

RULES FOR THE 50TH ANNUAL FRESHMEN GLEE

1. The theme for the 50th annual Freshman Glee shall be "Fight."
2. Each class president will act as representative of his own class to the executive committee in case questions arise.
3. Uniforms count no more than what their neatness and uniformity contribute to the judging of the song and formation. Each class will be responsible for financing its own uniforms.
4. There shall be four judges for presentation, three each for words and music. Words shall be judged in relation to the music and music judged in relation to the words. Points will be awarded in the following manner:

1. Music	20 points	3. Vocal rendition	40 points
2. Words	20 points	4. Formation	20 points

The awarding of points for formation will be broken down into the following ratio:

1. Originality	10
2. Adaptability (to theme and song)	5
3. Execution	5

Therefore, the total points will be:

1. Three (3) music judges @ 20 points or	60 points
2. Three (3) words judges @ 20 points or	60 points
3. Four (4) presentation judges @ 60 points	240 points
	360 points
5. Glee will be presented with one basic formation in each class. Minor changes that will not alter the size, shape, or theme of the original formation may be used. However, to eliminate any dissention in regard to what constitutes a major or minor change, all formations must be submitted in their entirety in writing to the Glee manager at 5:00, March 3 for approval. Participants shall not change their relative positions during the singing of the song. The executive Glee committee will be the final authority on what constitutes such changes. Needless to say, all formations will be kept in strict confidence.
6. The entire formation must participate vocally in the presentation of the song.
7. Seven copies of the words and music must be turned in to the Alumni Office by 12:00 noon, February 26. The composition must be written on standard score sheets with the words, melody line and the piano accompaniment. One of the seven copies must be in black india ink. It is recommended that the other six copies be photostated. The title of the song will appear on each score. The name of the song, class, and the person(s) writing the words and music will appear on a separate piece of paper to be handed in at the same time. (The words must be typed and no changes in the words or music can be made after they have been turned in.)
8. Parodies begin only after the seniors enter and are sung in sequence; seniors, juniors, sophomores, and freshmen. A maximum of two parodies will be sung by each class. Senior cut-up will be limited to 15 minutes.
9. The wearing of caps and gowns by seniors when entering the gym shall be left up to the desgression of the senior class.
10. Friday, March 7, by 5:00, a completed, alphabetical list of participating class members of each class must be submitted to the Alumni Office by the class president. Final lists must be set by 5:00 p.m., March 11.
11. Scheduled practices will begin Monday, March 10th. The gym will not be available before that date. There shall be no extra practices during the week of scheduled practices during the week of scheduled practice for classes or any portion thereof. Scheduled practice time may be used by the classes in the way they feel is most beneficial to them.
12. Since so many guests visit the campus for Freshman Glee, the events of the evening should reflect good taste on the part of the students.
13. Failure to comply with the above rules will result in points being deducted from the classes' overall total. The number of points will be determined by the Glee Executive Committee.
14. Concerning Blue Monday: the fourth place class shall be responsible for the Blue Monday convocation preceding their "swim" in the mill stream. Students should refrain from making Blue Monday bets which will physically involve members of the faculty, or, will result in damage to university property.

RULES FOR FRESHMAN GLEE TICKETS
-1958-

Who gets a ticket:

1. Every holder of an ASNU student body card is entitled to one (1) ticket.
2. Participants, including members of the Glee committees, have the first chance to sign up for a second ticket.
3. In addition to these, 425 tickets are allocated to the President, the Board of Trustees, the Faculty, and Alumni.
4. Approximately 50 tickets will also be allocated to judges, house-mothers, and miscellaneous individuals.

How to get ticket:

Participating Students

1. Each student may sign up for his first ticket at any of the Glee practices during Monday, March 10.
2. On Wednesday, March 12, students may sign up for an additional ticket at any of the Glee practices.
3. Students may pick up their tickets on Friday, March 14, during Glee practices.

Non-Participating Students

1. Students may sign up on Monday, March 10, in the Student Body office upon presentation of ASNU student body cards.
2. Law students may sign up at the Law Building on the same day.
3. On Thursday, March 13, students may submit a written statement for their failure to participate in Glee and their need for a second ticket to the Student Body office. A special committee will consider these requests and tickets will be distributed according to the committee's decision of Friday, March 14.
4. Tickets may be picked up on Friday, March 14, in the student body office.

Extra tickets will be allocated to classes on the percentage of participating students in that class.

These deadlines must be kept and no one may sign up after his respective deadline!

PRACTICE SCHEDULE

The Practice Schedule was planned by the Executive Glee Council, approved by the administration, and then passed through Mr. Petrie. The Practice Schedule was printed in the Collegian the Friday before Glee Week.

A supplementary schedule, designating rooms to be used for sectionals was set up by the Glee Manager and approved by the Deans. During the first couple of days of practice the classes practiced their song in sections--bass, tenor, etc. We used the houses' living rooms for sectionals.

Prior to marching into the gym on Glee night, each class needs a room to organize in. It would be a good idea to have the rooms on the Practice Schedule. We failed to do this.

FRESHMAN GLEE PRACTICE SCHEDULE
1958

MONDAY, MARCH 10

5-7	Freshmen	Gym
12-1	Seniors Juniors Sophomores Freshmen	Waller Gym Auditorium F.A. 145W
4-5	Seniors Juniors Sophomores Freshmen	F.A. 145W Auditorium Gym Waller
6:30 to 9:30	Seniors Juniors Sophomores Freshmen	Gym F.A. 145W Waller Auditorium

THURSDAY, MARCH 13

5-7	Seniors	Gym
12-1	Seniors Juniors Sophomores Freshmen	Waller Auditorium F.A. 145W Gym
4-5	Seniors Juniors Sophomores Freshmen	F.A. 145W Gym Waller F.A. 145
6:30 to 9:30	Seniors Juniors Sophomores Freshmen	Auditorium Waller Gym F.A. 145W

TUESDAY, MARCH 11

5-7	Sophomores	Gym
12-1	Seniors Juniors Sophomores Freshmen	F.A. 145 W Auditorium Waller Gym
4-5	Seniors Juniors Sophomores Freshmen	Gym Waller Waller (2nd flr.) Auditorium
6:30 to 9:30	Seniors Juniors Sophomores Freshmen	F.A. 145W Gym Auditorium Waller

FRIDAY, MARCH 14

5-7	Sophomores	Gym
12-1	Seniors Juniors Sophomores Freshmen	Gym Waller Auditorium F.A. 145 2nd Wall
4-5	Seniors Juniors Sophomores Freshmen	Gym F.W. 145 Waller Auditor
6:30 to/ 9:30 6:30- 8:30 to 9:30/	Seniors Juniors Sophomores Freshmen	F.A. 145 Auditor Waller Gym

WEDNESDAY, MARCH 12

5-7	Juniors	Gym
12-1	Seniors Juniors Sophomores Freshmen	Auditorium F.A. 145W Gym Waller
4-5	Seniors Juniors Sophomores Freshmen	Waller Gym Auditorium F.A. 145W or (2nd Waller)
6:30 to 9:30	Seniors Juniors Sophomores Freshmen	Waller Auditorium F.A. 145W Gym

SATURDAY, MARCH 15

5-7	Freshmen	Gym
8-9	Sophomores	Gym
9:15- 10:15	Juniors	Gym
10:30- 11:30	Seniors	Gym

FINANCIAL STATEMENTS, 1958

Tentative Budget, 1958		Actual Budget, 1958 [@]	
Decorations	12.00	18.25	
Souvenir	140.00	134.50	
Program	311.00	288.65	
Records (including sleeves)	255.00	282.40	
Lighting	5.00	5.00	
Backdrop	10.00	18.70	
Tickets	16.00	22.63	
Ushers	1.00	--	
History	12.00	10.00	
Entertainment	5.00	---	
Film Strip and $\frac{1}{2}$ hour (cost of first) Record	60.00	98.00	(just film)
Pianos	100.00	128.50	
News Papers	<u>24.00</u>	---	
Total	951.00	39.43	Publicity, Motion Picture Glee Manager and Sec. (Dinner Jacket, Gas, Stationary.)
		30.00	
		30.70	Overtime for maintenance men.
		<u>1106.76</u>	
			Actual Income [@]
			Student body 280.00
			Classes 145.00
			Records 412.50
			Spon. etc . 70.00
			Slides 50.00
			<u>879.50</u>
Tentative Income, 1958			
Student body	280.00		
Classes	145.00		
Records (sale of 360 of the 400)	450.00		
Sponsorship and an ad	100.00		
Sale of slides	<u>50.00</u>		
	1025.00		
Suggested Budget			
Decorations	15.00		
Souvenir	140.00		
Program	115.00		
Records (300 records)	200.00		
Lighting	5.00		
Backdrop	15.00		
Tickets	24.00		
Entertainment	5.00		
Pianos	100.00		
Publicity	10.00		
Manitenance	31.00		
Glee Manager, Sec.	30.00		
Misc.	<u>50.00</u>		
	740.00		
			Income
			Student body 280.00
			Classes 145.00
			Records (280 records) 350.00
			<u>879.00</u>

These are approximate. The schools books will be checked out in July, 1958.

PAYMENT ORDER
ASSOCIATED STUDENTS
OF
WILLAMETTE UNIVERSITY

Date 4/8/55 195

CHECK TO Willamette University

AMOUNT \$30.70

EXPLANATION overdue for maintenance
men.

ACCOUNT	AMOUNT
<u>Freshman Hall</u>	<u>30.70</u>
TOTAL	<u>30.70</u>

Nº 230

APPROVED PAYMENT J. Doyle
GENERAL MANAGER

PAYMENT ORDER
 ASSOCIATED STUDENTS
 OF
 WILLAMETTE UNIVERSITY

Date 5/26/58 195

CHECK TO Capital Press

AMOUNT \$170.60

EXPLANATION 400 record sales 80.00
1200 May week end program 90.60

ACCOUNT	AMOUNT
<u>Franklin H. Lee</u>	<u>170.60</u>
<u>May Weekend</u>	<u>80.00</u>
TOTAL	<u>170.60</u>

No: 459

APPROVED PAYMENT J. M. Fisher
 GENERAL MANAGER

Other expenses

2.40	Envelops
7.00	Gas
4.70	Paint
11.12	Dinner Jacket
10.00	Decoration
10.00	Envelops, History Committee
30.00	Pictures for the Souvenir

REQUISITION
 ASSOCIATED STUDENTS
 OF
 WILLAMETTE UNIVERSITY
 SALEM, OREGON

No 4826

3/12/58

Charge to:

- Classes _____
- Collegian _____
- Dark Room _____
- Drama _____
- Forensics _____
- Freshman Glee
- General _____
- Hand Book _____
- Homecoming _____
- Intramural _____
- May Day _____
- Music _____
- Office Exp. _____
- Social _____
- Wallulah _____
- Women's Ath. _____

M *S. B. Office Fund*

Deliver to *Dale Daniels - Glee*

	<i>Mimeo</i>				<i>0 04</i>
	<i>memo</i>				<i>89</i>
	<i>envelopes</i>				<i>90</i>
	<i>memo</i>				<i>3 25</i>
	Total				<i>2 04</i>

Approved by *SR*
 Manager

Approved by *total \$ 6.98*
 General Manager *2.30*

19.18

REQUISITION
ASSOCIATED STUDENTS
 OF
 WILLAMETTE UNIVERSITY
 SALEM, OREGON

No 4812

3/7/58

Charge to:

- | | |
|---------------------------------------------------|--------------------|
| Classes _____ | Homecoming _____ |
| Collegian _____ | Intramural _____ |
| Dark Room _____ | May Day _____ |
| Drama _____ | Music _____ |
| Forensics _____ | Office Exp. _____ |
| Freshman Glee <input checked="" type="checkbox"/> | Social _____ |
| General _____ | Wallulah _____ |
| Hand Book _____ | Women's Ath. _____ |

M *Office Fund*

Deliver to *Freshman Glee Committee*

letterhead + envelopes
letterhead + stamps
misc

\$	30
	36
	145
Total	\$ 211

Approved by _____
 Manager

Approved by _____
 General Manager

A. B. C. RENTAL SERVICE

EM 2-1414 - 2565 STATE ST.
SALEM, OREGON

No. **6103** Dept. _____ Date 11/22/53 19 53

Name Wendell J. ...

Address 137 ...

SOLD BY		CASH	C. O. D.	CHARGE	ON ACCT.	ADSE. RETD.	PAID OUT
QUAN.	DESCRIPTION	PRICE	AMOUNT				
1	<i>...</i>						
2	<i>...</i>						
3							
4	<i>...</i>						
5							
6	<i>...</i>						
7							
8	<i>...</i>						
9							
10							
11							
12	<i>...</i>						
13							
14							
15							
16							
17							
18							

**RENTALS ARE
CASH IN ADVANCE**

Customer's Order No.	Rec'd By
----------------------	----------

Rediform **5H 32** KEEP THIS SLIP FOR REFERENCE

The following persons were asked to be judges at the
Fiftieth Annual Freshman Glee:

Music

*Mrs. C. H. Vancil
12400 S. W. 121st
Tigard, Oregon

Dean Theodore Kratt
School of Music
University of Oregon
Eugene, Oregon

Tom Roberts
Department of Music
Oregon State College
Corvallis, Oregon

*L. Stanley Harum
Department of Music
Lewis and Clark College
Portland, Oregon

Robert Walls
Department of Music
Oregon State College
Corvallis, Oregon

*Hilton Dieterich
School of Music
University of Oregon
Eugene, Oregon

Presentation

*David Putnam
2745 Nola
Salem, Oregon

*Howard F. Miller
1048 N. Winter
Salem, Oregon

*Mrs. Alice Rose Jones
1098 Maine Street, N.E.
Salem, Oregon

Dr. William Swettman
710 Fairview
Salem, Oregon

Robert Root
1680 State St.
Salem, Oregon

*Don Yocum
3595 Karen Avenue
Salem, Oregon

Words

*Mrs. Forrest Lemk
W. 4517 Verda Lane
Salem, Oregon

*Miss Faye Sparks
1165 Chemeketa
Salem, Oregon

*Miss Iris Gray
Department of Music
Oregon State College
Corvallis, Oregon

*indicates those who accepted and served as judges for the
1958 Freshman Glee.

Seating Distribution

(No. of tickets to classes undetermined)

North Main Floor - 350 seats

1. freshmen
2. seniors

North Balcony - 160 seats

1. Juniors
2. Judges
3. Law School (few)

East Main Floor - 230 seats

1. President
2. Trustees
3. Faculty
4. Judges (non-active)

East Balcony - 275 seats

1. Alumni
2. Judges (active, non)
3. Law School
4. elect. co.
5. house mothers

South Main Floor - 340 seats

1. sophs
2. fresh
3. Juniors
4. judge(s)

South Balcony - 165 seats

1. seniors
2. Juniors

total seats

1520

To All "Freshman" Professors on Campus:

Because we share the common rank of Freshman, we as students and you as a first year professor, we cordially invite you to attend our rehearsals as we prepare to win Glee. The enclosed schedule tells you when and where these practices are held.

On Saturday morning we will be practicing in the gym from five a.m. to seven a.m.. You are especially invited to be present at this crucial rehearsal. As a member of the glorious Class of '61, you are an important part of the Spirit of Glee. Won't you join us in welcoming in Glee Day to the tune of UP, two, three, four; SMILE, two, three, four; DOWN, two, three, four; PIVOT, two, three, four.

Sincerely,

The Class of 1961

Sample Ballot Sheet for Music Judge

Name _____

Title of Song _____

Fill in blank with appropriate number of points:

Adaptability to theme.....	_____	(5 poss.)
Originality.....	_____	(5 poss.)
Adaptability to group singing.....	_____	(5 poss.)
Quality of music.....	_____	(5 poss.)
Total.....	_____	(20 poss.)

Sample Ballot Sheet for Words Judge

Name _____

Title of Song _____

Fill in blank with appropriate number of points:

Adaptability to theme and music.....	_____	(10 poss.)
Originality.....	_____	(10 poss.)
Total.....	_____	(20 poss.)

March 4, 1958

Regina Ewalt
Dean of Women
Willamette University

Dear Dean Ewalt,

Freshman Glee evening is one of the big evenings in the life of a Willamette student. You have recognized this in the past by extending the closing hours for the women. This I believe has been a very nice custom and has been greatly appreciated by the women.

I would like to ask that the hours be extended again this year: till 2:00 a.m. for the winning class and 1:00 a.m. for the three losing classes. Two o'clocks would enable the winning class to serenade the living organizations. The date of Glee is of course March 15th.

I would appreciate your approval of the extended hours.
Thank you.

Sincerely,

Dale Daniel
Freshman Glee Manager

To All Words Judges:

In this envelope you will find the words and music of each of the four classes for the 1958 Freshman Glee contest, and a ballot to be used in judging the words. The possible total of 20 points should be broken down into 2 categories as you consider each song:

Adaptability to theme and music.....10 points max.
Originality.....10 points max.

It is not necessary to return these copies of the words and music, but please use the enclosed envelope to return your completed ballot to us by Wednesday, March 12th.

Thank you very much for your time and effort.

Sincerely,

Geranna Stevens
Corresponding Secretary
Freshman Glee, 1958

To All Music Judges:

In this envelope you will find the music of each of the four classes for the 1958 Freshman Glee contest, and a ballot to be used in judging the music. The possible total of 20 points should be broken down into 4 categories as you consider each song:

Adaptability to the Fight Song theme...5 points max.
Originality.....5 points max.
Adaptability to group singing.....5 points max.
Quality of music.....5 points max.

Please do not consider the words in your evaluation of the music.

It is not necessary to return these copies of the music, but please use the enclosed envelope to return your completed ballot to us by Wednesday, March 12th.

Thank you very much for your time and effort.

Sincerely,

Geranna Stevens
Corresponding Secretary
Freshman Glee, 1958

To All Presentation Judges:

In this envelope you will find your tickets to the performance of the 50th Annual Freshman Glee.

On Saturday evening, March 15th, which is the night of the Glee performance, Glee Manager Dale Daniel and Mr. Jerry Whipple would like to meet with you and the other presentation judges to discuss judging procedure. This meeting will be at 7:30 p.m. in the Alumni Office, which is to your left as you enter the gymnasium.

Many thanks for your cooperation and effort. We hope the night of Glee will be most enjoyable, and one that you will long remember.

Sincerely,

Geranna Stevens
Corresponding Secretary
Freshman Glee, 1958

To All Judges: (who will be attending Glee)

We are so glad you will be able to help judge Glee. We would like this year to give a "thumbnail" sketch of each of our judges in the printed program..Could you send us a brief summary which would benefit us in this? Such things as education, occupation, and so on, would be helpful. Be sure to mention any past experience with Glee. Please do this as soon as possible, as the program must be sent to the printers within a short time.

Your tickets to the Glee performance will be sent to you as soon as possible. We are looking forward to meeting you, and hope that you will enjoy this Golden Anniversary Glee very much.

Sincerely,

Geranna Stevens
Corresponding Secretary
Freshman Glee, 1958

To All Judges: (who will not be attending Glee)

We are so glad you will be able to help judge Glee. We would like this year to give a "thumbnail" sketch of each of our judges in the printed program. Could you send us a brief summary which would benefit us in this? Such things as education, occupation, and so on, would be helpful. Be sure to mention any past experience with Glee. Please do this as soon as possible, as the program must be sent to the printers within a short time.

We wish you could be here to share the experience of Glee performance with us. Again we thank you for contributing your time to help us.

Sincerely,

Geranna Stevens
Corresponding Secretary
Freshman Glee, 1958

To Music and Word Judges: (who are familiar with Glee)

Already our Willamette University campus is bustling as preparations are begun for one of our greatest traditions, Freshman Glee. On Saturday evening, March 15th, this exciting contest will be presented for the fiftieth time at Willamette.

Early in the spring the Freshman Class will challenge the other three classes to a song writing competition. This year the words, music, and marching formations are to be based on the theme "Fight Song". Each class will present the fruit of its labor in the Saturday evening program here at the University gymnasium, where they will be judged on music, words, and presentation.

It is at this program that the winning class is selected and announced. Because of your interest and participation in former Glee's, we would like very much to have you help judge this year's contest. Could you be one of the three persons judging the (music, words)? Your time and talent would certainly be appreciated. The (music, words) of the four classes will be sent to you by February 26th. These should be judged and scored according to the instructions sent with them, and be returned to Salem by Wednesday, March 12th. We would appreciate your every effort to meet this important deadline.

We are not able to offer you any monetary reward for your service, but we will, of course, send you two tickets to the performance. Please let us know soon, by filling in the enclosed card, whether or not we may plan on you for one of our judges. The Class of 1961 hopes that this Golden Anniversary Glee will be a truly memorable one, and that you will be able to participate in it with us. Thank you so much for your consideration.

Sincerely,

Geranna Stevens
Corresponding Secretary
Freshman Glee, 1958

To Music and Word Judges: (who may not be familiar with Glee)

Already our Willamette University campus is bustling as preparations are begun for one of our greatest traditions, Freshman Glee. On Saturday evening, March 15th, this exciting contest will be presented for the fiftieth time at Willamette.

Each spring since 1908 the Freshman Class has challenged the other three classes to a song writing competition. After many arduous hours spent in composing, arranging, and practicing the original music, words, and formation, all of which are based on a theme (this year: Fight Song), each class presents the fruits of its labor in the Saturday evening program here at the University gymnasium.

It is at this program that the winning class is selected and announced. Each class is judged on music, words, and presentation. We would like very much to have you help judge this year's contest. Could you be one of the three persons judging the (music, words)? Your time and talent would certainly be appreciated. The (music, words) of the four classes will be sent to you by February 26th. These should be judged and scored according to the instructions sent with them, and be returned to Salem by Wednesday, March 12th. We would appreciate your every effort to meet this important deadline.

We are not able to offer you any monetary reward for your service, but we will, of course, send you two tickets to the performance. Please let us know soon, by filling in the enclosed card, whether or not we may plan on you for one of our judges. The Class of 1961 hopes that this Golden Anniversary Glee will be a truly memorable one, and that you will be able to participate in it with us. Thank you so much for your consideration.

Sincerely,

Geranna Stevens
Corresponding Secretary
Freshman Glee, 1958

To Presentation Judges: (who are familiar with Glee)

Already our Willamette University campus is bustling as preparations are begun for one of our greatest traditions, Freshman Glee. On Saturday evening, March 15th, this exciting contest will be presented for the fiftieth time at Willamette.

Early in the spring the Freshman Class will challenge the other three classes to a song writing competition. This year the words, music, and marching formations are to be based on the theme "Fight Song." Each class will present the fruit of its labor in the Saturday evening program here at the University gymnasium, where they will be judged on music, words, and presentation.

It is at this program that the winning class is selected and announced. Because of your interest and participation in former Glee's, we would like very much to have you help judge this year's contest. Could you be one of the four persons judging presentation on the night of Glee? Your time and talent would certainly be appreciated.

We are not able to offer you any monetary reward for your service, but we will, of course, send you two tickets to the performance. Please let us know soon, by filling in the enclosed card, whether or not we may plan on you for one of our judges. The Class of 1961 hopes that this Golden Anniversary Glee will be a truly memorable one, and that you will be able to participate in it with us. Thank you so much for your consideration.

Sincerely,

Geranna Stevens
Corresponding Secretary
Freshman Glee, 1958

To Judges who were slow to respond:

As the time of Freshman Glee is drawing near, we are anxious to know your decision concerning the judging. Will you be able to be one of our judges?

Please fill in the post card which was enclosed in the previous letter as soon as possible, so that we may know whether or not to plan on your help. We are hoping that you will find it possible to participate in this Golden Anniversary Glee with us.

Sincerely,

Geranna Stevens
Corresponding Secretary
Freshman Glee, 1958

These persons are suggested as possible future Glee judges.

Music

Prof. Joseph Brye
Oregon State College
Corvallis, Oregon

Words

Dr. Helen Pierce
490 Oak
Salem, Oregon

Presentation

John Stark Evans
Lewis and Clark College
Portland, Oregon

Virginia Ward Elliott
629 East 19th
McMinnville, Oregon

Mr. Robert Voigt
South Salem Dean of Men
Salem, Oregon

Beatrice Bliss
Forest Grove Union High School
Forest Grove, Oregon

John C. Peery
Franklin High School
Portland, Oregon

Mrs. Howard Miller
1048 N. Winter St.
Salem, Oregon

I shall be pleased to participate in judging the music of the four classes for Freshman Glee. yes

I would like to have two tickets for the performance Saturday, March 15, 1958 yes Please do not ask for these unless you are sure to use them. Thank you.

I shall complete the judging and return the materials to your campus by Wednesday, March 12, 1958 yes

Sorry, but I find I cannot help this year. .

Name Mrs. Jean A. Vancil

(Mrs. Charles H.)

12400 S.W. 121st - Tugard, Oreg

I shall be pleased to participate in judging the presentation of the four classes for Freshman Glee X.

I would like to have two tickets for the performance Saturday, March 15, 1958 yes. Please do not ask for these unless you are sure to use them. Thank you.

Sorry, but I find I cannot help this year. .

Name Howard F. Miller - 1048 N. Winter St.

Thank you. I always enjoy judging Glee.

Co-chairmen and their Committees for Freshman Glee, 1958

Tickets

Marcia Humphrey
Larry McMurray
Mary Blanchard
Midge Scott
Mary Zeller
Bing Johnson
Chuck Carter

Souvenirs

Jo Gannon
Russ Peterson
Hubert Youngblood
Pete Manning
Bob Penater
Pat Davis

Program (printed)

Terry Boyd
Jean Thomson
Ed Thornton
Mary Shiels
Bobbie Giberson
Judy Embree

Stage

Pete Welch
Jim Wright
James Stewart
Sharon Flournoy

Decorations

Gail Larson
Maureen Avery
Pat Montgomery
Bev Krough
Steve Berglund
Jane Sanford
Gene Griepentrog

Records

Bill Richter
Ed Hall
Jerry Spoonemore
Greg Milnes
Chuck Cheeld
Ann Garner
Sue Bradford
Kayla Henry
Nancy Collins
Joan Barber

Ushers

Connie Snow
Mary Edwards
Marilyn MacKenzie
Sandy Reed

History

Karen Henninger
Dean Kohntopp
Elaine Buckinger
Barbara Sherk
Beth Robertson
Alan Zehntbauer
Earl Rollins
Floyd Bergman
Lyle Tucker

Entertainment

Barbara Royer
George Rogers
Carol Hobbs
Bob Trelstad
Gary Cox
Dave Patch
Morissa Leger
Carol Mason
Joanna Lester

Backdrop

Judy Teufel
Dave Marsters
Peggy Hoffman
Dale Bunse

FRESHMAN GLEE HISTORY COMMITTEE REPORT

KAREN HENNINGER AND DEAN KOHNTOPP, CO-CHAIRMEN

- I. Committee
 - A. Selected
 1. Floyd Bergman
 2. Elaine Buckinger
 3. Beth Robertson
 4. Earl Rollins
 5. Barbara Sherk
 6. Lyle Tucker
 7. Alan Zehntbauer
 - B. Met with
 1. Gave committee objectivity
 2. Delegated assignments

- II. Data gathered from
 - A. Correspondence
 1. Past Glee managers
 2. Past winning song writers
 3. Class of 1912
 - B. Old Collegians
 - C. Trueblood, Shultze
 - D. Gatke's Chronicles
 - E. Lestle J. Sparks' records
 - F. Alumni file
 - G. Newspaper clippings
 - H. Glee scrapbooks
 - I. Wallulahs
 - J. Glee reports

- III. Data used by
 - A. Publicity office
 - B. Entertainment committee
 - C. Program committee
 - D. Record committee
 - E. Collegian (Glee issue)
 - F. Television
 - G. Publicity committee

- IV. Miscellaneous
 - A. Thanked alumns for aid
 - B. Gave tickets to alumns

Entertainment Committee

The purpose:

To provide fifteen minutes to a half an hour of light entertainment between the last Glee song and the judges decision. We would like to have something that is significant and will hold some sentimentality for returning alums and give others an idea of the glee tradition; but yet, because of the tensions, it must have humor and be light.

The method:

Divide the fifty^{years} of history of Glee into five periods and present some of the events of each period in a humorous manner worked in with a winning glee song of the period. We hope to use alums in the program. The program will probably be presented through pantomines, skits, etc, and we will use a narrator.

What we have accomplished:

1. Meeting day--Monday at 12:30 p.m. in Eaton 33
2. Discussed methods of presentation
3. Divided into sub-committees corresponding to the five periods of history.
4. We will have a meeting on Saturday, Jan. 25, to work on the script for the show.

PROGRAM COMMITTEE
January 11, 1958

We are preparing a tentative agenda of the various phases of planning the Glee program pamphlet. Most of the data therein cannot be obtained until the last three weeks of Glee preparation. We have assigned various duties to our committee members as a tentative plan of attack.

We will definitely have the program design and color scheme worked up in its final form by February 15 for presentation to the Glee Committee Chairmen. We have divided the gathering of the information needed for the program pamphlet among the members of the committee as follows in a meeting on Friday, January 10.:

- (1.) Program: the actual order of the entertainment of the night of the Presentation of Glee- Mary Shiels
- (2.) Acknowledgements for services rendered by various organizations for Glee- Bobbie Giberson
- (3.) Estimation of amount of programs needed and the cost as figured with regard to budget and last year's expenses- Ed Thornton
- (4.) Contact printers for estimates and time elements of having the Programs printed. (This involves a survey of the number of participants in Glee and the number of guest tickets needed)-Dick LeFor

Data on the class songs can be procured only after the final names and themes have been chosen. The same applies to the final programs, songs and dedication.

We, as co-chairmen, have an outline of our own proposed jobs:

- (1.) Check on the names of the judges
- (2.) Rules for judging to be written up
- (3.) The writing of the dedication itself
- (4.) Design and color of the outer program folder.

Jean Thomson and Terry Boyd
Co-chairmen, Programs Committee

SOUVENIR COMMITTEE

January 15, 1958

Unless unforeseeable events loom in the future, there will be two major costs for the Souvenir Program; (1) The cost of the photographs, (2) and the cost ~~of the~~ of the printer.

Last year the cost of the photographs was approximately \$30. Because of very satisfactory results on the 1957 Glee pictures, Phil Henderson will probably take all pictures. His connection as photographer for the "Wallullu" makes it doubly desirable. He has been contacted and will be glad to take the pictures at no cost except for the materials.

The other major cost will be for the printing. Again because of excellent results in previous years ~~the previous years~~ "Your Town Press" has been contacted in connection with the job. Last years cost was \$164.50, and they will do it for the same price again this year.

Deadlines for dummy pages will be as follows: Three pages to be delivered by the Friday prior to Glee; The remaining five will be due the following Tuesday at 10:00 A.M. As was done last year they can be distributed with the "Collegian" on the Friday following glee.

The total cost should not be over \$150

ESTIMATE

164.50.....Printing
30.00.....Photography
~~15.50~~.....Rubber cement, razor blades,
5.50 and other misc. items

\$190.00

WORK OUTLINE

for History Committee

PURPOSE- to find out interesting information concerning Freshmen Glee over the past 50 years and to have all this information compiled within a week from this date. 1/14/58

1. to compile information from letters received from past Glee managers, song leaders, and founders.
2. to examine material from the 40th anniversary of Glee.
3. to compile suggestions from our letters received and give them to the Glee Manager.
4. to examine '57 Glee Report and scrapbook
5. to look at information in past Collegians in publicity office.
6. to work in conjunction with a committee to help edit a pamphlet concerning History of Glee.
7. *Shultz*

The previous items will be completed by the 22nd of January except item 6.

Financial Report

for History Committee

bought	expenses	from where
stamped envelopes	\$10.00	Business Office
paper & stencils for letters	<u>1.88</u>	Student Body Office
total	\$ <u>11.88</u>	

This is the maximum of material that we will be using before Glee.

Usher Committee Report

January 15, 1958

January 22nd: The lists of who will usher will be complete.

In addition to thirty-five girls, five boys will be needed to open windows, doors, etc.

March 8 - 15th: There will be two or three meetings with

the ushers to go over their duties. Also there will be a meeting with the Ticket Committee to learn the seating arrangement.

March 10th: Signs for Reserved Seats and the system of seating will be made. Sandy Reed will be in charge of this. Tentative cost will be approximately \$1.00 for paper, tape, etc.

Mary Edwards and Marilyn MacKenzie will help me in seeing that everyone knows his or her job.

Connie Snow

Chairman

STAGE COM ITTEE

Report for Glee of 58.

The weekend before glee, the 8th or 9th of March if glee is to be held the 15th of said month, the stage crew will set up the risers. These risers are to be found in back of the gym. It will take about 8 or 10 boys to help set them up. There are a few stipulations that must be met however.

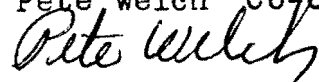
The tarp must be laid on the gym floor before we can put the risers in place.

There must be a member of the Board of Trustees present when we put the risers in place. Les sparks will be contacted to suffice in this capacity. This contact with Les will be made this week, the 18th of January.

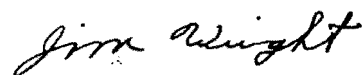
When the risers are in place, the stage committee is through until after glee when we must take the risers down. We shall take the risers down the day following glee itself. This will be the 16th of March. The risers will be put back where they were found, and the stage committee will be through.

If Les does not have the right keys to the gym so as we can procede to set up the risers, Gus the head custodian will be notified and his presence will make certain that the job can be accomplished.

Pete Welch Co-Chairman



Jim Wright Co-Chairman



Glee Report

Decoration Committee

Maureen Avery
Gail Larsen Co-chairman

Bev Krough
Jane Sanford
Pat Montgomery
Steve Bergland
Gene Grippentrog

Budget

Newsprint	\$4.00
Paint	.80
Tape	1.00
Contruction Paper	2.00
Poster paper	1.50
Pins	.20
glue	.50
Total	<u>10.00</u>

Schedule

Work to be done:	
Armbands for ushers	Jane Sanford
White paper on Bleacher sides	Steve Bergland
Ticket Sections	Gene Grippentrog
Large Gold "50s"	Bev Krough
Long posters for sides	Pat Montgomery

Work will begin Jan. 21 and continue until March 14 when we expect to decorate the gym. All work will be done on the 4th floor of Waller on Tuesdays and Saturdays between 9 and 11 in the morning. Each of the above will be responsible for their assigned project and will be expected to have it completed by the deadline-----March 15.

Jan. 13	Get supplies to Waller	March 2	Finish big signs
Jan. 20	Do usher bands	March 9	Do ticket signs
Jan. 27	Begin large "50s"		White paper for bleacher ends
Feb. 3	Finals		
Feb. 10	Finish big "50s"	March 14	Complete decorations
Feb. 17	Big signs	March 15	Glee
Feb. 22	Big signs		

*If you have any questions
please contact us.*

Progress Report of Lighting Committee -- 1958

Materials which are available to Lighting Committee on notice:

2000 watt spotlight

rostat

baby spot lights

tools

Materials which are yet to be arranged for:

25- 200 watt lights

5 - bases for 200 watt lights

500' wire

fuses, tape, screws

Proposed schedule

Feb. 26- meeting of lighting committee to assign tasks to members of committee

Mar. 1 - materials which are to be borrowed from Vibbert Electric (25- 200 watt lights, 500' wire, fuses, tape, screws) will be requested and stored in safe location on campus.

Mar. 8 - reostat will be brought from Pentacle Theatre where it has been stored.

Mar. 10- wiring in gym will begin.

Mar. 13- wiring will be approved by Mr. Sparks.

Mar. 15- 2000 watt spotlight will be borrowed from Mr. Simeral and wired into the lighting system. (It is being rented by day.)

PROGRAM COMMITTEE REPORT--FRESHMAN GLEE, 1958

The program committee began its work by checking and estimating how the programs were planned in previous years, and forming a general plan of attack by forming a schedule.

(1.) We chose a committee (Jean Thomson and I) of five capable students. We found that this is an ample number of co-workers for such a committee.

(2.) We checked the methods of financing the programs in the most economical way for this, the fiftieth, Glee.

A. We found that the maximum amount of money allocated for programs in the Glee budget was \$200.

B. Advertisements were dismissed as a means of financing because of their effect on the general appearance of the golden anniversary program. The back of the cover is to be an advertisement for Stevens and Sons Jewelers.

C. Sponsorships were decided upon by Dale Daniel, Wayne Haverson, Jean and myself as the most successful way of financing the program.

(3.) The cost of the more than two thousand programs had to be estimated and figures procured for the printing of them. We decided that twelve pages would be ample for the program and its special highlights of history. A cut was made in black and white of our cover idea, "The Old Historic Temple", and shown to Salem printers for an estimate. For the most efficient and economical service of good quality, we chose the Salem Printers and Blueprint Company where Mr. Clarence Panther, owner, showed us fine quality paper and offered us helpful suggestions.

(4.) A dummy of the program was set up in order to get an idea of the finished product and the material needed to complete the eight- or twelve-page pamphlet.

A. Our deadline for the "cut" on the cover was February 15th, a month before Glee. Two weeks were allowed for the printing of the program itself.

B. Information was procured from all chairmen for the names of their committees, the twelve regular and one new committee for the planning of the slides and record cuts of 1958 Glee.

C. Judy Embree, a committee-member, wrote and gathered the material for a thumb-nail history of the first fifty years of Glee for a page in the 12-page program.

D. Dick Lefor and Ed Thornton worked on financing and sponsorship by corresponding with the alums.

(5.) On Tuesday, February 25, we submitted the dummy program, in its final stages, to the executive council meeting, after again checking with Mr. Panther who told us that he would order the grey cover paper and white book-leaf paper.

An important phase of program planning was the distribution of work, most of which were procuring information and mobilizing printed material. Now, during the last few days of the preparation of the program for the printer, we hope to obliterate all the small errors to have this fiftieth anniversary program the best ever.

Terry Boyd, chairman.

PHYSICAL PROPERTIES COMMITTEE

February 26, 1958

Our committee is getting the details worked out as planned and all is under control. The following is what we have done to date:

Risers; They have been inspected and are in good condition. They are in in the basement of the gym.

Tarp; The tarp is also in the gym. We have secured permission to use it.

Chairs; Kit Stewart is in charge of the chairs. He has been finding out the places from where we get the chairs and has a pickup to help get them to the gym. There are 125 in South Hall. The rest will come mostly from the third floor of Waller Hall. The College of Music also has some. Dean Geist has given us permission to use any of the chairs in the music hall.

Steps; It has been requested by some members of the Senior class that a step for the middle of the stage be made so they could use the center. In the past years it has been traditional that only the Seniors use the center step, but there was none last year. We are planning to build one.

We have contacted Gus to receive his permission to put up the risers and chairs and also received permission from the gym custodian.

This is our schedule for the setting up of the physical properties.

March 8: During the afternoon we will place the tarp on the floor, set up the risers, and arrange 125 chairs on the floor. Les Sparks will be the faculty advisor.

March 15: During the afternoon we will finish setting up the chairs. Les Sparks will be the faculty advisor.

Jim Wright
Jim Wright co-chairman

Pete Welch
Pete Welch co-chairman

FRESHMAN GLEE HISTORY COMMITTEE REPORT

KAREN HENNINGER AND DEAN KOHNTOPP, CO*CHAIRMEN

FEBRUARY 26, 1958

I. Accomplished

A-~~selected~~ committee

- 1-Floyd Bergman
- 2-Elaine Buckinger
- 3-Beth Robertson
- 4-Earl Rollins
- 5-Barbara Sherk
- 6-Lyle Tucher
- 7-Alan Zehnbauer

B-met with committee

- 1-told objective of committee function
- 2-designated members to get information
 - a-corresponded with
 - 1-past glee managers
 - 2-past winning song writers
 - 3-class of 1912
 - b-delved through old Collegians
 - c-talked to Truelood, Shultze
 - d-went through Gakte's Chronicles, etc.
 - ~~e-shuffled~~ old scrapbooks, annuals, glee reports

C-composited material (except for class of 1912 which is still coming in) making available for

- 1-entertainment committee
- 2-program committee
- 3-publicity office

D-got further information from

- 1-Mr. Sparks
- 2-Alumni Office

II. Are

A-editing glee Collegian issue

- ~~B-~~ have picture of class of 1912
- 2-have given assignments

B-distributing tickets to all persons desiring same with whom have corresponded

III. Will

A-give brief summary to record committee

- B-finish up loose ends

RECORDS COMMITTEE
-1958-
Planning Outline

I. Records (400)-

A. Connelly Recording, Salem, Oregon

Includes: for \$200

taping
editing

assisted by

Greg Milnes
Chuck Cheeld

Pressing through Connelly

by Republican Recording-RCA Associate

Freighting costs

delivered to Salem

B. 400 sleeves-\$

1. written History for back liner- deadline March 2, 1958
10 pt. type

approximately 30 lines

2. picture for front- deadline March 2, 1958

3. Ann Garner will do history

Dale Bunes will do picture

4. choose company and order

C. Labels-\$ deadline March 5, 1958

choose

price

order

D. Advertising- \$7

Kayla Henry

Sandy Winters

Ways and Means

a. Posters on campus-deadline March 1, 1958

b. coupons- deadline March 5, 1958

(1) 2000 for Glee programs

see about putting in Chapel programs

Figure out how to collect after Glee

(2) figure out copy

c. contact newspapers and radio stations in town

especially KBZY

d. living organizations

1. open letter-deadline March 4, 1958

Sue Bradford

2. Personal representatives in organizations

one for each- take name of organ. and person-deadline March 4

(a) perhaps present prize, percentage based

to organ. with most records bought

e. Convocation announcements

contact Anita Booth

E. student ordering

Joan Barber

Nancy Collins

1. pick out ordering slips -dl March 4

mimeograph

2. starts March 5, 1958

3. get list of students attending Un. and after ordering starts make

an attempt to contact each one

4. collect coupons and handle mail orders, orders COD

Records cost \$1.25 apiece

II. Radio Tape

A. KBZY

1. narrate

2. cut

3. send out through Oregon Broadcasting Ass.

Jerry Spoonemore assisting

December 6, 1957
Eaton Hall

Glee Manager Dale Daniel opened the meeting, and personal introductions were made so the committee could get acquainted. Our procedure was outlined as follows:

1. Co-chairmen are to pick their committees.
2. We must learn our duties by checking Glee reports in the student body office and by contacting last year's chairmen.

Dale suggested having five people on each committee, and reminded us that the committees will not necessarily do all the work, but the planning. He asked that the committees be turned in by the following Tuesday, so the names might be in the Collegian on the next Friday.

Last year's Glee Manager, Jon Bergstrom, spoke for a few minutes telling us about what we can look forward to as the Glee Committee.

The meeting was adjourned.

Respectfully submitted,

Kathy Burnard, Recording Secretary

approved.

December 11, 1957
Library

Dale Daniel opened the meeting, and roll was called. George Rogers and Doug Ward were absent. The minutes were read and approved, and the lists of committees were turned in. It was suggested that co-chairmen sit together at committee meetings. Carolyn Schrag moved that we meet from 5:00 to 6:30 every Wednesday evening, or Friday during lunch as an alternate. The motion was seconded and passed.

Roy Chapin told us about the possibility of filming Glee, and gave suggestions for paying for it. The film could be used for publicity, on TV, by the Admissions Office, and by future Glee committees. Also the fact that this is the 50th Glee is important. We listed factors for and against filming Glee. They are:

- pro: a. admissions
- b. alumni
- c. publicity (TV through films)
- d. 50th Annual Glee
- e. future Glee committees
- con: a. money
- b. work
- c. lack of experience
- d. would Glee be commercialized?

Bill Richter moved that Dale appoint a committee to investigate all the possibilities of filming Glee. The motion was seconded and passed. Dale appointed Roy Chapin and Vera Hounsell to head the committee. They may appoint any others they need.

The meeting was adjourned.

Respectfully submitted,

Kathy Burnard, Recording Secretary

approved.

January 8, 1958
Lausanne Hall

Dale opened the meeting; the minutes were read and approved. Roy Chapin reported that his committee investigated the possibilities of filming Glee. It would cost \$500 per finished minute in color, or \$250 per finished minute in black and white. Also the Photo-Art Company could possibly do it for \$3000 if we did a bit of the work. Bill Richter moved that the committee look at the possibility of making slides of Glee. George Rogers seconded it. After some discussion the motion passed.

George Rogers moved that we give up the idea of filming Glee. It was seconded and passed.

Dean Kohntopp reported that the History Committee has been writing to past song leaders, Glee managers, etc., to find out about past Gleees. They have received some answers and are waiting for more. Dale handed out reports from last year's committees. He asked that all chairmen bring a written report of all work to be done, including dates, and a tentative financial report.

There will be a meeting next week, and then no meetings until after finals. Therefore these things must be done before finals.

The meeting was adjourned.

Respectfully submitted,

Kathy Burnard, Recording Secretary

approved.

Executive Committee

January 9, 1958
Library

Dale called the meeting to order.

Revision of the rules was discussed. The revisions suggested by the '57 Glee committee were adopted, along with several others introduced by this year's group. These rules are subject to approval by the Student Council.

The meeting was adjourned.

Respectfully submitted,

Kathy Burnard, Recording Secretary

January 15, 1958
Lausanne Hall

Dale opened the meeting; roll was taken, and the minutes were read and approved. The committee chairmen handed in their reports.

Souvenirs...Russ Peterson said that his committee was working on the 8-page souvenir program.

Publicity...Doug Ward plans to contact radio stations to have them give history, as well as a recording of Glee. Major newsmagazines have been contacted.

Decorations...Maureen Avery said her committee is making signs to show people where to sit, and armbands for the ushers.

Tickets...Marcia Humphrey said that most of their work would be in the last two weeks.

Backdrop...Judy Teufel said they have to design and build backdrops.

Records...Ed Hall said they have to tape Glee; asked about the record jacket, whether or not we wanted a special one.

Stage...Pete Welch reported that his committee was to erect the stage for Glee.

Ushers...Connie Snow reported that her job was to seat people.

Entertainment...Barbara Royer said that in the half-hour before judging they want to provide a panorama of past Glee's.

Dale made appointments with the committee chairmen to discuss their completed plans.

Respectfully submitted,

Kathy Burnard, Recording Secretary

Executive Committee

January 21, 1958
Library

Dale called the meeting to order; the minutes were not read, as they had not been copied out. Johnny Bergstrom presented last year's budget. It was suggested that we call piano companies to see about the cost of moving and tuning pianos. We discussed the cost of printing the big program, the souvenir, and the little banners for the winning class.

The practice schedule was discussed. The freshmen need about four more practice hours than the others. The 6 o'clock to 7 o'clock practice is useless for all practical purposes. Also we must contact Dr. Purvine to see about the early morning practices.

Roy Clapin reported on the idea of taking slides of pre-Glee activities, Glee itself, and Blue Monday. It would be about 30 to 50 35mm slides; which, with flashbulbs, would cost approximately 30¢ per picture. We would have to take probably about 100 pictures. The record would cost about \$9 for the first 20 records. It would make the cost for a set (pictures and record) about \$15 to \$20. The possibility of selling individual slides was discussed. This may be a better idea than doing the whole thing.

We must contact Gus Moore, Alumni president. The men's houses might be able to use pictures for rush purposes, or for May Weekend to show guests. We might show the pictures in Convo. The record should be purchased for the Alumni office and the Admissions office and such things. We vetoed the idea of some Sig who thought we could get a movie for less than \$1000.

The meeting was adjourned.

Respectfully submitted,

Kathy Burnard, Recording Secretary

January 25, 1958

The first publicity committee meeting was held in the recreation room at Doney Hall. Present were: Carolyn Schrag, Doug Ward, Bill Snow, Carol Woodbury, Mike Waterman, and Roger Grabinsky. Absent were: Sammy Barker and Alice Stewart.

Carolyn explained that the main purpose of publicizing Glee is to acquaint the neighborhoods in and around Salem with Glee by means of radio, television, speeches, newspapers, and tapes.

Doug said that, of the 26 radio stations in Oregon, last year 23 of them ran taped excerpts of Glee.

Carolyn and Doug are going to prepare a form letter for publicity, and each committee member will type five copies.

The possibility of filming Glee was ruled out because of the prohibitive cost and the fire hazard in the gym.

Committee jobs are:

- Alice Stewart - high school newspaper releases
- Roger Grabinsky - high school newspaper releases
- Carol Woodbury - secretary
- Mike Waterman - radio releases
- Bill Snow and Lois Schepler - Collegian and community newspaper correspondents
- Carolyn Schrag and Doug Ward - television

Carol Woodbury,
publicity secretary

Executive Committee

January 28, 1958
Library

Dale called the meeting to order, and told us about a possibility of having record jackets printed for \$40. It was suggested that we print the words to the songs on the jacket. He also told us about a company who would do the recording for \$264, and it would be a better record. This way we might sell more records and it would make up for the high cost of recording. Dean Short asked that we try to sell the old Glee records that are sitting around for just anything.

We should have \$1195 to work with, minus the \$34 they lost last year. That makes \$1161. We plan on spending \$986, which puts us quite a bit in the black. There must be a mistake somewhere.

The first 100 slides would cost \$25, and the recording would be the same. Thereafter, the set of slides would be \$15.00 and the recording \$5.00.

Dale has been talking to Dean Rieck and Jerry Whipple and they say that if we don't let Glee run smoothly this year it may not be back again. Evidently last year the seniors got a little out of hand. So they have been limited to definitely fifteen minutes. Also they may have to have the Executive Committee censor the parodies.

The 1957 rules were presented with suggestions about new ones to put in. There should be a rule about changing words and music, as there is none. There were more suggestions about rules, but they are in Ann Bercaw's notebook.

The meeting was adjourned.

Respectfully submitted,

Kathy Burnard, Recording Secretary

STUDENT COUNCIL MINUTES
February 12, 1958

The meeting was called to order by president, Wayne Carr, and roll was taken. The minutes were approved as corrected.

ANNOUNCEMENTS: First vice president, Anita Booth, announced the following dates for activities: Feb. 12, Beta Open House; Feb. 14, WITS sox Hop following the Linfield game, here; Feb. 15, Linfield, there, with a dance for both schools following the game; Feb. 18, Rally squad tryouts. It was suggested that students judge the ability of those students trying out.

Dick White, second vice president, announced that AWS speeches will be given in convo, Feb. 18. Feb. 20 & 21 are the primaries for AWS, Rally Squad, and class officers; the run-offs will be held Feb. 24 and 25. Each voter will vote for 4 women and 3 men on the Rally Squad ballot. The poll book system will be in use.

Wayne Carr announced that 18 O.C.E. students will be visiting our next student council meeting to view our student government in action.

OLD BUSINESS: Johnny Bergstrom reported on the Winter Carnival, and stated that schools from Washington, Oregon, Idaho, and California were represented. It was suggested that next year, the new Ski Club handle all the arrangements for Willamette's participation, with the two delegates handling all the details. Willamette placed sixth in the contest. There was no AWS report. Article 15 of the By-laws was read for the second time by Skip Alexander, Member-at-large. It was moved and seconded that we accept Article 15 as an addition to the By-Laws of the Constitution. The motion passed. After some discussion on the part of Dick White, it was moved and seconded that we adopt the Election Rules as presented in Student Council, until new rules are adopted next fall. The motion passed. These rules were passed out to the representatives and should be posted. Dale Daniels, Freshman Glee Manager, reported on this year's Glee Rules. After the "Public hearing of last year, three additions have been made. They are as follows: (1) All actions of the classes during Glee shall be in good taste. (2) Not complying with this rule, points will be deducted at the discretion of the Glee Executive Committee; (3) The Fourth place class shall be responsible for Blue Monday Convo preceding their "swim" in the mill stream. Students should refrain from making Blue Monday bets which will physically involve members of the faculty, or, will result in damage to university property. An additional change is: no changes in the words or music will be allowed after copies have been turned in. It was moved and seconded that the wearing of caps and gowns to Glee shall be left to the discretion of the seniors. The motion passed. It was moved and seconded that the parodies be cut to one per class, leaving the Seniors cutup at 15 minutes. The motion failed. It was moved and seconded that we limit each parody to three minutes per parody; two parodies per class. The motion passed. It was moved and seconded to accept the Glee Rules as presented and revised. The motion passed. It was moved to amend the motion to state that all classes march rapidly in and take their seat, except for the seniors, who shall march in. The amendment was withdrawn until further consideration by the Executive Glee Committee.

The meeting was then adjourned.

Respectfully submitted,

Diane Wickstrom
Diane Wickstrom
ASNU Secretary

Executive Committee

February 18, 1958
Library

The meeting was called to order, and the time for Glee was set at 8:00 p.m.

The rules for tickets were discussed. There will be 425 set aside for President Smith, faculty, and alumni, and 50 set aside for judges, housemothers, etc. We must urge people to get their tickets. They have to sign up for their tickets or they don't get them.

Dale presented the schedule for Glee practices. We are using the gym, Waller, the Auditorium, and FA145w.

It was suggested that the three lower classes march in at once. It would probably save about 20 minutes. However, we don't know about cutting Glee. This marching seems to start all the excitement.

The meeting was adjourned.

Respectfully submitted,

Kathy Burnard, Recording Secretary

February 19, 1958
Lausanne

Dale called the meeting to order, and roll was called.

Judy Teufel presented the three plans for the backdrop. After considerable discussion, and a short pause while Phil Henderson took pictures, we chose a backdrop that said "50 Gleeful Years."

Barbara Royer presented a report from the entertainment committee. Bob Trelstad will be the narrator. The program will be nearly all humorous, since that is what will be needed to relieve tension. We felt that it shouldn't end on a note of satire, however, but should attempt to be heartwarming. Some were afraid that the satire might be a little cruel, and decided that it might not be a good idea to parody the first Glee song.

Terry Boyd presented the program cover, which has a very nice picture of Waller on the front and a very nice Stevens ad on the back. It will be black and white.

Jo Gannon showed us some ideas for the picture souvenir. Dale Bunse had drawn two designs, and we chose the one with "50 Gleeful Years" on the top.

Karen Henninger gave a report from the history Committee. There will be a paper coming out on Glee.

Ed Hall says the Connely Company here in Salem is doing the recording, and KBZY will be doing the radio taping. The sleeve will be red and gold or something. Dale says KBZY is doing Glee live and then highlights the next day.

Jim Wright reported for the Physical Properties committee.

Andy Snyder was introduced for the Lighting Committee.

Gail Larson reported on the decorations. They seem to be coming along.

We need a name for the committee on the filmstrip. Nora Hounsell reported that she is working on the script. Roy Chapin reported that Jerry Whipple and Mr. Paeth are going to share a filmstrip. He's going to talk to the living organizations about it.

Marcia reported that ticket rules have passed Student Council and will be distributed in the living organizations. The tickets will be printed tomorrow.

Geranna Stevens reported that so far we have 2 out of 3 music judges, 2 out of 3 words judges, and 2 out of 4 presentation judges.

Dale wants detailed reports of everything we have left to do. The meeting was adjourned.

Respectfully submitted,
Kathy Lunnard, Recording Secretary

Executive Committee

February 25, 1958
Library

Dale called the meeting to order, and the minutes were read. The outline of the Glee entertainment was presented by Barbara Royer and George Rogers. We approved the idea of the humorous program.

The formations will be in next Monday so we meet at 9 p.m. Monday to check them over.

Terry Boyd reported that Salem Blueprint Company will do the program for a little under \$300. We will have the extra over the \$200 budget underwritten by Stevens and Son and others. The committees and other such lists will be in the program, along with the dedication, historical sketch, etc.

Johnny said that we should have a little short bit of seriousness at the end of the program. We agreed that that would make it more special.

Hora Mounsell presented the outline of the filmstrip-record. There was some discussion on whether all four songs should be recorded or bits and pieces or just the winning song. It will probably be just the winning song. Roy Japin reported on the financing of the filmstrip-record. Now, probably the whole thing would be about \$22 to \$25. We may reduce the cost and we may find some wealthy alums who might like to buy one. There are all sorts of sneaky schemes to sell them.

It was wondered about who should receive the blue issue of the paper. They will probably send them to parents and give them to the people who go to Glee.

We people to report on the souvenir that come.

Roy reported on the radio coverage of Glee. They may do the challenge assembly, an interview with the History Committee, an interview with Dale, and Blue Monday. We don't want Blue Monday on the radio.

Dean Short reported that we should have another \$130 from the class allocations. Johnny says probably the piano moving expenses will be about \$125. We went over the budget, but since Dale was gone we didn't know much about it.

Roy reported that people are usually there by 7:30 or 7:45, and that we could probably start marching in at 7:15. We felt that the three lower classes marching in at once might be a little dampening to the spirits. They would have to march in from the student entrance and line up toward the buses.

The meeting was adjourned.

Respectfully submitted,

Kathy Burnard, Recording Secretary

February 26, 1958
Lausanne

Dale called the meeting to order, and the minutes were read and approved.

The songs were all in on time today, and will be sent to the judges tonight.

Committee reports were given. Jerry showed a dummy of the program. The dedication is yet to be written, and all that must be in by the first of March.

Judi Rettig is the new usher chairman. The ushers, honor guard, and banner presentation guard must be in by Saturday too.

The tickets are being marked and sent to old Glee managers, etc.

Russ Peterson gave a report on the souvenir dummy. We decided against putting a little gold seal on the souvenir.

There are no center steps for formations.

The meeting was adjourned.

Respectfully submitted,

Natly Leonard, Recording Secretary

Executive Committee

March 4, 1958
Library

The Executive Committee met with Dale Daniel presiding to discuss a penalty code for the 50th Glee. The following code was adopted by the group:

PENALIZATION CODE FOR VIOLATION OF DEADLINES

1. Five percent of the total points for either words or music will be deducted if either of the above mentioned are turned in late; also if the formation in its entirety is not submitted on time, 5% of its total points will be deducted.
2. If the formation submitted to the Glee Manager is not followed during the performance, points will be deducted. The number of points to be decided upon by the Executive Glee Committee.
3. Penalty will be inflicted if the lists of participating class members are not submitted on time. The number of points will be determined by the Executive Glee Committee.
4. Five percent of the total points for either words or music will be deducted if either of the above are not followed as submitted.
5. From 5 to 25% of the total points will be deducted if extra practices, as defined in the Glee rules, are held.

This code will not be publicized. Classes will be notified of it through their presidents.

Respectfully submitted,

Kathy Burnard, Recording Secretary

March 5, 1958
Lausanne Hall

The meeting was opened.

It was announced that people may be able to participate in Glee without a 2. if they are not on social probation.

Four hundred extra Collegians are being printed for Glee.

A car is needed to drive to Portland to see Mr. Oakes.

The committees are all coming along as well as can be expected.

The group for entertainment will meet tomorrow in the Waller Auditorium from 4 to 5.

The meeting was adjourned.

Respectfully submitted,

Kathy Burnard, Recording Secretary

March 12, 1958
Lausanne Cafeteria

Dale opened the meeting; the minutes were read and approved. Committees reported as follows:

Programs...will be done tomorrow.

Decorations...are completed. Committee needs men to help string decorations from rafters.

Clean-up...All committees and anyone else they can recruit will clean up at 1:30 p.m. on Sunday.

Backdrop...will probably be up by Friday night.

Entertainment...things are under control.

Lighting...equipment is lined up and everything is ok.

History...articles are in to the paper. Collegians must be mailed. People are needed to help address them Friday morning.

Souvenirs...first page is in and everything is on schedule.

Recorded Preview of Glee...Vera is running into problems. Mr. Ritchie thinks all 4 songs should be on the record. The committee is generally opposed to this. Vera and Dale will try to straighten this out.

Publicity...no representative, no report.

Ushers...tickets are ok. Mr. Sparks has been consulted concerning fire safety. Ushers will wear their Glee uniforms and have identification badges.

Written committee reports are to be in to Dale the week after Easter Vacation. They should include progress reports, pictures, sketches, maps, bills, receipts, etc.

Tuesday after Glee there will be a Glee program presented over KGW-TV in Portland at 11:30 a.m. A group will sing some Glee songs.

The meeting was adjourned.

Respectfully submitted,

Geranna Stevens, Secretary pro-tem

April 2, 1958
Lausanne Hall

Dale called the meeting to order, and passed out budget cards so we could keep an accurate record for next year.

Bill reported that the records would probably be back by the end of spring vacation. The record is evidently a rather decent recording.

We have many many slides of Glee. The camera men got carried away, and we have too many. It has been suggested that the record be omitted and an outline or script be made for the slides. The movie takers also got carried away and we have a good half hour of movie. We may be reduced to giving it to the admissions office.

There have been many comments from alums, faculty, judges, and students telling us that this has been the best Glee in years. We may apparently be proud of ourselves.

All reports should be turned in as soon as possible, so that the over-all report can be made.

The meeting was adjourned.

Respectfully submitted,

Kathy Burnard, Recording Secretary

THE GLEE MANAGER

In a nutshell, the Glee Manager's duties are: organization, public relations, and encouragement. It is a time-consuming job which is interesting and a lot of fun. The manager has the opportunity of working with the outstanding people of his class as well as of the student body.

The organization of Glee is quite a task. Below I will try to present some ideas that may help in the future organization of Glee.

Immediately after being elected, one must begin the very important job of selecting committees. I posted application sheets about the 25th of November. Don't post them quietly. Emphasize to the class the importance of committee jobs. I sent a letter to all of the living organizations announcing the application sheets. (A copy of the letter follows.) It would be a good idea for a Glee Manager candidate to talk to the editor of the Collegian before the election results are printed. He can give the editor data on how he is going to select committee members and chairmen, so if he is elected, in the issue of the paper announcing his election there will be an article emphasizing the importance of the committees and announcing when application sheets will be posted.

Students, of course, applied for the specific committee they were interested in. Application sheets were up for about three days. Over two hundred freshmen signed up. Now the big job of selecting committee chairmen and committee members began.

I didn't know many of the applicants, yet it was my job to

select committees from the 200 names. I needed reliable people to help me evaluate the many applicants. I made arrangements with the pledge trainer and plédge class president from every house as well as the leaders from the independent associations. Individually with each faction, I went over the whole list of names. I asked them to evaluate all the people they knew by putting them into one of four categories: outstanding chairman, good chairman, outstanding member, and good member. (When evaluating, one should remember: some personalities will make outstanding chairmen, but wouldn't be good members. Others would be outstanding members, but wouldn't be good chairmen.)

After all advice was in I added it up, divided by my best judgement, and selected the committee chairmen. After notifying the chairmen of their appointments, I gave them the list of people interested in their committee, with the ones highly recommended underlined. The chairmen were given the opportunity to select their own committees. (The committee selections are subject to the Glee Manager's approval.)

Announce the committee chairmen with as much "noise" as possible. They have a lot of work ahead of them, and they deserve every bit of recognition that the school can give them.

Because so many outstanding people applied, I appointed co-chairmen for all the committees. It worked well: if one chairman failed to "cut the mustard," the other chairman was there to keep the work going strong.

At the same time the charmen are selected, the secretary is selected--or this year, secretaries. They are a vital part of the operation, so a Glee Manager should look for top notch people who

have the many hours needed to devote to the job.

If you are a Glee Manager, good luck on your committee selections. It is at this point that the potential of Glee is determined.

In planning and organizing Glee I was working with four factors: (1) the General Glee Council, which consists of all the Glee chairmen, the Glee Secretaries, and assistant Glee Manager; (2) the Executive Glee Council, the student advisor group (it consists of the Assistant Glee Manager, Glee Secretaries, four upper classmen selected by the Student Body President, and, if possible, the faculty advisor); (3) the faculty advisor; and (4) the Student Council, which approves important issues, e.g., Glee Rules. The Glee Manager presides in the General Glee Council and Executive Glee Council.

Generally, the organization and execution of the production of Glee is outlined in the minutes and committee reports. All aspects of Glee need long-range planning. In addition to this scrap book, last year's (1957) scrap book will provide very helpful background material.

Our plan of attack was outlined into three periods. During December the committees acquainted themselves with their responsibilities, did a little original thinking, and some general planning. In the early part of January each committee outlined its plans: projects to be accomplished, deadlines for the different phases of the work, budget, and made preliminary contacts with anyone they would be working with later. I met individually with each committee to discuss its plans. (I would suggest this be done individually, not in the General Glee Council, because it takes about a half hour per committee.)

By two weeks before finals all the planning was done, and after finals the execution of the plans began.

The key to success is long-term planning and good communication between all committees and factors that are part of the production of Glee.

Good luck to anyone working with Glee. If I can be of any help, please don't hesitate to contact me.

--Dale Daniel

Friday, November 22

Dear Class of '61,

In reports handed down by past Glee Managers one thought is emphasized:

The committees and their chairmen are the life blood of the freshmen class's production of Freshmen Glee. Therefore, Mr. Glee Manager, choose from the class the most responsible, creative, and energetic students to work on the Glee committees. And choose as the committee chairmen the best leaders of the group.

The selection of committees is right around the corner, in fact, Monday, November 25, sheets, each headed with a different committee, will be posted in all living organizations and the student body office. Be sure to sign your name on the paper headed with the name of the committee you would like to work on. The lists will be collected at 4:00, Wednesday, November 27. Committee chairmen will be selected over the holidays and will be announced in the Collegian Friday, December 7. In addition to the committees, another very important post will be filled. Glee Secretary is one of the biggest and most important jobs in Glee. A paper headed "Glee Secretary" will also be posted.

In closing, it is a real joy to accept the duties and responsibilities of Glee Manager for the Class of '61. Thank-you for entrusting your confidence in me. As a class, I believe we can produce a Glee of the highest quality in honor of the 50th anniversary of Freshmen Glee.

Sincerely yours,



Dale Daniel

Committees to be chosen: Souvenir, Publicity, Program (entertainment), Program (presentation of agenda), History (to work in conjunction with the above committees by investigating, and then through Publicity etc. reveal the beautiful story of Glee since 1908), Tickets, Backdrop, Decorations, Records, Stage, and Ushers.

Details on what work is to be done by each of the different committees can be found in the Glee Managers' reports, which are in the Student Body Office.

FLOOR AND STAGE

The stage and floor crew does most of its work the week before and the week after glee. The first thing that should be done is to contact Mr. Sparks. He will tell you all about the fire regulations and the general procedure for setting up the risers and putting the floor covering on the gym floor. The best thing to do would be to make out a schedule with Mr. Sparks for the times that he must be with you or another person on the Board of Directors. He must be there when the risers are put up and when they are taken down, when the floor covering is put up and then put away, and to make a final check on the chairs.

The first thing that must be done is to put the floor covering on the gym floor. This precedes the putting up of the risers. Both of these jobs are done the Sunday preceding the week of glee. These are usually accomplished in the afternoon. That Sunday there must also be enough chairs so that the class with the most participating students can all sit down. This is done so that the classes can use them the week preceding glee. That week you should check the risers at least once a day.

Friday it is your job to see that all the chairs are in the gym and set up. Mr. Sparks will tell you how many chairs you can have as a maximum. I suggest that you contact the formation leaders of the various classes to see just how many chairs you will need. This year we received chairs from the following places: Music School, Law School, Waller Hall, Fine Arts Building, Cresto Cottage, underneath South Hall, and upstairs in the Gym. All told we had about 530.

The Sunday after glee the risers must come down and the chairs also. One of the big jobs that must be done is to contact Gus, the head custodian. This must be done because you will use the school truck to pick up and take back the chairs. These contacts must be made weeks in advance.

The floor covering is left on the gym floor until after the Blue Monday assembly. The cover must be vacuumed before it is put away. This should be done the Monday after glee. When all the chairs are back and the gym is cleaned up your main job is over.

It is your job to build anything that the intertainment committee will need in the way of props. If you contact the head carpenter in the shop he will gladly offer you any help that is needed. One word of advice is to make all these contacts plenty of time in advance.

this ends the manual work, but not the most difficult. This big problem is to get enough men on your committee. About 16 or 20 men would be sufficient. I would suggest that you stand up in one of your class meetings and call for volenteers, army style if necessary. This many men will make the job interesting and fun.

Dates to remember

Make initial contacts with Mr. Sparks and the Head Custodian one month before glee.

Select the committee two monthes before glee.

Follow up the above contacts one week before glee.

Set the cover, risers, and about 250 chairs the Sunday before glee.

The Friday before glee set the rest of the chairs and be sure you have plenty.

The Sunday after glee take the risers and the chairs down and put them away.

the risers go down underneath the gym on the girls side. Mr. Sparks has a key.

After the Blue Monday assembly vacuum the floor cover and put it away.

Have fun for a job well done.

Pete Welch Co-Chairman

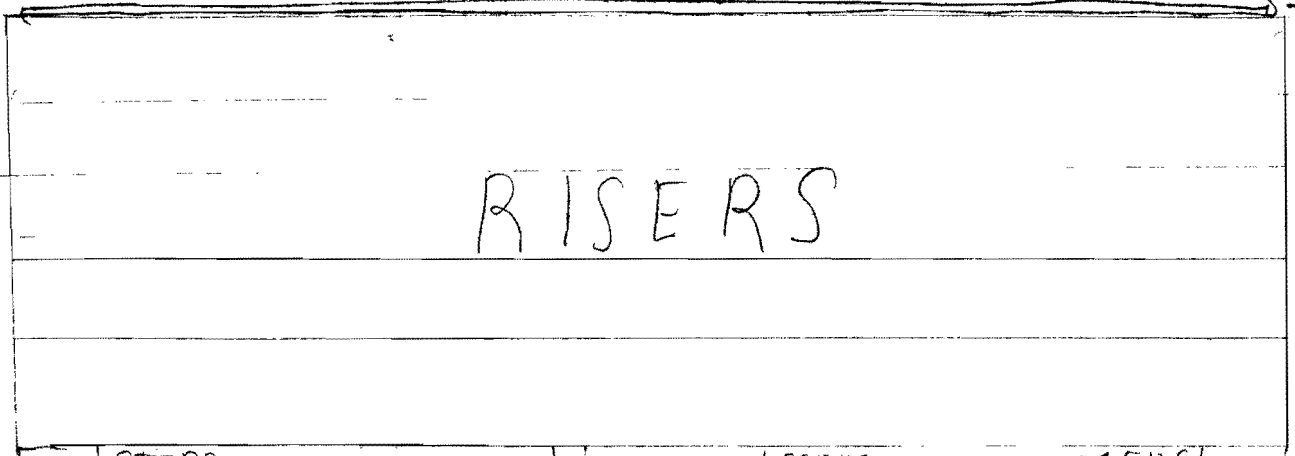
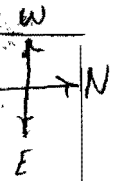
Peter W. Welch

Jim Wright Co-Chairman

Jim Wright

15 ALCONY

BACK DROP



RISERS

STEPS

STEPS

STEPS

PIANO

PIANO

CHAIRS

CHAIRS

13 chairs to row
12 inches between rows

4 foot ISLE
PIANO

3 foot ISLE

4 foot ISLE
PIANO

4 foot ISLE

BLEACHERS

Report of 1958 Freshman Glee

LIGHTING COMMITTEE

Jerry Derby	Chairman
Andy Snyder	Co-chairman
John Sanford	Supplies Assist.
Pete Briggs	Wiring Assist.
Larry Walker	Wiring Assist.

After the start of the second semester, the task of arranging for materials should begin. Most, if not all, of the same material used this year can be obtained from the same places. The reostat can be obtained from Mr. Putnam if he is assured that it will be returned on time and in good condition. Mr. Silke has a collection of materials boxed and ready for the next Freshman Glee. (Make sure that four Glee tickets go to Mr. Silke and that he gets credit on the Glee program.)

The spotlight is borrowed from Mr. Simeral (1605 N. 18.) Arrange to reserve it for Glee night as far in advance as possible. This year, we mounted the spotlight in the center of the gym. Previously, it has been mounted on the side, but this caused a shadow to fall on the speaker. The spotlight must be mounted upright on a platform; we built the platform by placing one long plank at an angle to the gym girders and laying shorter boards from the girder to the supporting plank. (see fig. below.) Be sure that the spotlight will reach the parts of the stage which will be used in the program. As far as the program itself, it is helpful to obtain a script and mark in the arrangements for lighting which the program committee wants.

A note about the lights other than the spot. This year presented more of a problem than years past. Television pictures were taken, which required a very well-lighted stage. With the lights we used, good pictures were taken, but the wattage should be increased if television is again used. After the lights have been wired in, check bright and low spots on stage with a light meter.

Don't forget to have the complete lighting system checked by Mr. Sparks.

To comply with fire code, the splices must be well wrapped, fuzes and wire must be the proper size for the load, and the lights must never be placed in front of any spectators.

Good luck. If any questions come up, feel free to ask the Chairman or Co-chairman of the 58 committee.

Andy Snyder
Co-chairman 58

MATERIALS

1-----2000 watt spotlight (1)
6-----300 watt lights (2)
11-----150 watt lights (2)
5-----bases for lights (2)
550'----wire #10 (2)
4-----60 amp fuses (have just in case) (2)
8-----15 amp fuses (reostat) (2)
1-----roll of friction tape (2)
1-----reostat (3)
2-----2"x12"x16' planks (4)
6 or 8--2"x 8"x 8' boards (4)
tools (*)

4-----Glee tickets for Mr. Silke

(1)-----J. W. Simeral 1605 N. 18 Phone EM3-6475
(2)-----Vibbert Electric, 551 Court
(3)-----Mr. Putnam, Drama Department
(4)-----Maintenance Dept., behind gym
(*)-----Get the tools anywhere but from the maintenance dept.---all that you need
can be found there but there is a \$5.00 deposit on each tool!

Cost

2.50----Spotlight rental

2.50

USHERING COMMITTEE

There were thirty-five ushers used, plus a couple of boys who opened windows before Glee started. (The gym is packed and it is necessary to get as much ventilation as possible.) All the people were needed.

During Glee week two meetings were held with the ushers. The ticket chairmen explained the reserve seats and section numbering. Mr. Sparks outlined the evacuation procedure used in case of fire.

We worked with the Decoration Committee on making identification cards. The afternoon before Glee we marked clearly the different sections and reserve seats.

At 6:30 on Glee evening all ushers were in their places. The participating ushers left to march in with their class about 7:45, and the others remained to seat late comers.

Two girls were placed at each door to take tickets, and two others handed out programs. Others were placed at the inner doors and in the different sections. Girls who knew the different honored guests were placed in the reserved sections. A couple of girls were later used to escort the judges to their special reserved seats.

For further information don't hesitate to contact Judi Rettig.

FRESHMAN GLEE TICKET COMMITTEE REPORT
1958

In presenting the 1958 Ticket Committee report, we will attempt to itemize chronologically the steps we took in completing our job. But first, our job: to print and distribute tickets. Lest this sound too simple, the intricacies of the job follow immediately.

Our first project was to contact the printer (Johnson and Siewert), about two months before Glee, to get the approximate cost for printing the tickets. This information was needed by the Executive Glee committee; otherwise the printer needn't have been contacted until the tickets were to be printed.

Secondly, we charted the seats in the gym. (The printed charts in Mr. Spark's office are grossly inaccurate, so we started from scratch and got a fairly exact count of seats.) We proceeded to divide the gym into six sections: three in the balcony, and three on the main floor, remembering that the seats at the west end, upstairs and down, are not used. The north, east, and south main floor sections were labeled A, B, and C, respectively; the corresponding balconies, AA, BB, and CC. This arrangement is clear and simple and minimizes seating complications.

About three weeks before Glee, the tickets were printed, in six different colors, designating the six sections. (We ordered a few extra for each section to be used in case of loss of any, but found we didn't have to use them.) Committee members then labeled all tickets according to section, because distinguishing tickets by color alone may have lead to confusion among ushers. No tickets were labeled according to the seat except those seventy-five tickets going to President Smith and the trustees, for whom the center back (east) section is always reserved. Perhaps this seat numbering was not necessary since the tickets were labeled "Trustees" or "President Smith."

At this time we planned the actual seating arrangement according to our chart--who sits where. This was a tricky but not at all impossible process. The judges had to be strategically placed, as did the press photographers. The faculty and trustees are accustomed to the east main floor section; the alums, to the east balcony. After an inadvertent faux pas, we found that the seating of parents is done according to rule, too. Almost after it was too late, the senior parents' seats had been planned for a downstairs section, but we were quickly corrected by indignant seniors. In other words, senior and junior parents always occupy balconies, while sophomore and frosh parents take the main floor sections.

Now came the actual dole-out of tickets. Since alumni write Mr. Whipple early for Glee tickets, we were requested to give the allotted alum tickets to his office as soon as possible. He had asked for 200, besides the seventy-five for Pres. Smith and the trustees, and 150 for the faculty. In other words, distributing these tickets was not our worry. (We were advised by past Glee committee members against giving more than 200 to alumni.)

Slowly, committees and other parties began requesting tickets. The judges committee asked for so many for judges, a certain number went to Chuck

Ruud in the publicity office, for the press, a few went to electricians. All housemothers' tickets were taken to Dean Ewalt, who distributed those. An accurate record of tickets given out and their corresponding sections was kept so that the seats remaining for students' parents could be accurately determined before distribution the final week of Glee.

As we entered this final week, most of the remaining tickets were for parents and non-participating students. A non-participant is a bad word to those participants who want tickets for their parents, for, according to an established ruling, any student holding an ASWU card is entitled to one ticket for himself, even if he isn't participating. Approximately 150 tickets were given this year to non-participants.

The procedure for obtaining tickets: The week before Glee practices began, the Ticket committee members obtained names of all students, listed by class and sex, in the Registrar's office. Duplicate copies were printed in the Student Body office. On Monday, the first day of practices, two persons were stationed at each practice of a particular class, each with a list for that class, Freshman Men and Freshman Women, for example. For the first ten minutes or so, names of participants were checked for their first ticket. By the time of the last practice of any class that day, all were to be checked () if they desired at least one ticket.

On the same day (Monday) duplicate copies of each class were also put in the S. B. office, and a committee member was stationed there to check non-participants (law students included) for their ticket. All non-participants had to produce their students body cards when being checked for a ticket. (Despite the printing of ticket rules in the Collegian and distribution of printed rules to all living organizations, many n.-p.'s didn't realize that they were to sign up Monday and Monday only for their ticket. This caused some consternation later that week. Signs were put in the Law building to inform these students about the signing up.)

On Wednesday, the committee returned to the same classes as on Monday, to check students for a second ticket if they desired it. The same list was used in order to determine whether the students asking for a second ticket had already asked for a first. No one who hadn't signed for a ticket on Monday could be checked for either one or two tickets Wednesday. Non-Participants' lists were again placed in the S. B. office and those n.-p.'s who had signed for a first ticket were given a chance for a second by submitting a written statement of reason for need of second. (It was emphasized that tickets were limited and no seconds could be promised to non-participants.)

On Thursday, all lists were gathered; the lists of participants were checked with non-participants to catch any names that were on both lists by mistake. We then prepared for the final distribution on Friday by counting out the number of tickets going to each class. In determining who were to get second tickets, we first gave them to all Glee committee members, to each class's song writers, formation and song leaders, and the class presidents. About 150 second tickets were then remaining to be divided among all participants in each class who wanted them. Many more than 150 students had asked for seconds, and here started the real fun. The committee knew that many who asked for one

and many who signed for two tickets would not use them themselves, and would therefore be in circulation on campus. The 150 tickets were divided among the classes on the basis of percentage of participating students in each class. We arbitrarily gave these tickets to names of participants on the lists, but attempted a fair distribution among the various living organizations, so that second tickets wouldn't be concentrated in one place. Of course, we knew little about who actually needed the tickets, and we heard a good number of complaints from students who really needed second tickets and had only been given one when tickets were handed out at Friday practices. We could only say that there 'd be a number of tickets floating around and if they're alert, they'll get another one. It was hard to convince them of this, and true, it wasn't a very definite way of getting tickets, but everyone ended up Saturday with enough tickets. Students were told that doors were to be opened to non-ticket-holders at 8 P.M., and a number of latecomers gained admission this way. Oh yes, while tickets were given out to participants at Friday practices, non-participants were given theirs at the S. B. office that day.

On Saturday morning, we discussed the seating arrangement with the chairman of the Usher committee, and painted section signs and reserved seat signs (for housemothers, Dr. and Mrs. Purvine, judges, and the press). Everything was set and our job was over.

Several steps were taken this year to help alleviate some of the problems that have plagued Glee Ticket committees for years. However, it seems that certain problems are inevitable under the present system of ticket distribution, due to the limited number of seats in the gym and the great demand for tickets. Obviously, two or more tickets can not be given to all who ask for them. Perhaps future committees will find it feasible to change the present set-up so that each class will be allotted a given number of tickets to be distributed to class participants according to need. The burden would be placed on the class leaders, but the last minute rush for tickets would be at least partially eliminated.

FRESHMAN GLEE PROGRAM COMMITTEE REPORT- 1958

(1.) The choice of your committee should be impartial and according to any known abilities in art or layout technique for the programs. Four people outside of the two co-chairmen are all that are necessary for a well-functioning committee. All should be oriented early as to the nature of Glee and the work involved.

(2.) Checking the content of the program of the previous year will give you adequate information as to what to plan to include in your program (excepting any innovations which might prove successful). This year was the golden anniversary of Glee and required the historical sketch and a possibly more elaborate and expensive layout.

(3.) Choice of a skilled and co-operative printer is essential. We received estimates from Yourtown, Johnson & Siewart, and the Salem Blueprint Companies, three well-known printers on Ferry Street here in Salem. Mr. Clarence Panther of the latter company proved to be the most economical, genial and conscientious of the three. He will show you samples of inside and outside papers for the programs and give you estimates on color and cost. Close contact must be maintained with the printer in order to maintain deadlines.

(4.) The committee itself, with the exception of the art end of the project, might consider early the acquisition of inner material. You will have to hound other committee chairmen and class leaders, as well as the glee council secretaries, for such data as names and workers and the judges. Be sure to pick up the words and titles, composers and songleaders of all class songs in the alumni office as soon as they are turned (about two weeks before Glee) to prepare for adequate space in the layout.

(5.) The cover design should be derived merely to carry through the backdrop and possibly the record cover design. Chances are that you can "set the pace" for the basic idea with the program cover. At any rate, an idea need only carry through the idea of Glee and its W.U. traditions. Two weeks (at least) before Glee night, a final perfected typewritten dummy should be submitted to the printer. Be sure to check the proofs before the final printing.

(6.) Financing the programs is tricky business! We used sponsors: alums in Salem whom we petitioned for help in financing the programs. Their donations averaged \$5.00 each. Stevens and Sons Jewelers, well-known Willamette sponsors, paid us \$30.00 for a full-sized advertisement on the back of the program. Do consult your Glee Manager about finances, as it is essential.

Glee is fun; the programs are exciting and part of the spirit. If deadlines are set and met accurately, you will not have trouble, so...GOOD LUCK!

1958 Committee:
Bobbie Giberson
Dick Lefor
Judy Embree
Ed Thornton
Mary Shiels

Yours truly,
Terry Boyd
Terry Boyd, chairman

PS We'll be glad to help you anytime.

subject: GLEE BACKDROP COMMITTEE REPORT

One week of concentrated effort yielded excellent results this year. Spraying, rather than hand-applying, the paint on the backdrop was a determining factor in reducing the time spent altogether on it. In addition, enthusiastic committee membership (Dale Bunse, Judy Tuefold, Joan Pemberton) and good materials to work with, all accounted for the satisfactory end product.

Itemization of tools, time, and cash used:

1. Paint sprayer (see inclosure, no. 1)----- \$3.00
 - a. rental rate: 12 hrs. @ \$2.00.
or
24 hrs. @ \$3.00.
 - b. our cost: \$3.00
because
transportation facilities were limited
as was the tight schedule we were following.
 - c. time spent painting: 8 hrs.
 - 1) actual painting only required about one hour but fire-proofing had to be applied beforehand and thus a certain amount of time elapsed before paint could be applied --it could not be sprayed onto a wet surface. (see item no. 5, fire-proofing.)
 - 2) there was also 3 hrs. required for hand painting certain parts of the backdrop.
2. Paint (see enclosure no. 2)----- \$12.06
 - a. type of paint: rubberized
cardinal red (special mixture)
 - b. Show Card Color (see enclosures nos. 3 and 4)----- \$ 1.05
 1. black (one bottle)
 2. orange (two bottles) our cost \$3.35 each.
3. Paper
 - a. Used heavy butcher paper for backdrop. 72 in. wide
 - 1) an entire roll of paper was given us by Kay Woolen Mills (260 South 12th).
 - b. Paper was taken to school, the amount needed cut from the roll, the remainder returned to Thos. Kay Woolen Mills.
4. Brushes, Hammers, Tacks.----- \$.60
 - a. were obtained from committee members and Fraternities on campus.
 - 1) Tacks were to be purchased and were obtained from
Weiler and Franks. 6 boxes @ .10.
5. Fire-proofing----- \$1.75
 - a. formula: (given us by Fire Department)
 - 1) borax----- 4 oz.
 - 2) boric acid----- 2 oz. per gal. of water.
 - 3) note: will need only one gallon if sprayer is used.
 - 4) cost: 2 cans borax @ \$3.35 - \$.70
3 cans boric acid " - \$1.05

TOTAL COST OF BACKDROP \$18.46

STEPS IN COMPLETING BACKDROP

1. obtained time when committee could work in Fine Arts from Dr. Petrie.
we worked in workshop backstage.
2. schedule was prepared and all committee members were able to sing in Glee.
3. Frames for backdrop were obtained-- were stored back of gym. (now are stored backstage in Fine Arts building.)
4. Paper, sprayer, paint, and fire-proofing obtained and stored back stage.
5. paper was attached to backdrop frames by means of tacks hammered in outer edge of frame:

6. design was placed on flats by comm. member who used white chalk. frames were placed on end, side by side, as they would be during glee.
7. fire-proofing was then applied to frames with sprayer.

8. Paint was then sprayed on over large areas. flats (frames) were placed on edge while all painting was done. different colored areas were masked with newspapers while large areas were sprayed. flats dried in approximately thirty minutes after being sprayed.

9. after completion of the painting, flats were carried from Fine Arts to the gym. were lashed to balcony and risers with rope.

REPORT OF THE ASSISTANT GLEE MANAGER

The job of assistant glee manager is quite varied, quite interesting, and at times quite a bit of work.

One of your main jobs will be to barrow, rent, buy, or steal two nine-foot grand pianos for use the night of glee. You will find Dean Geist of the music school very helpful. He usually loans one and will help you find the other one. Will's Music Store is usually a good place to start looking for the second one. We rented one from Stone Piano Company last year for \$25.00, so try there also. After that you're on your own. Naturally these people are not hot to loan or rent a piano to a tribe of yelling and screaming college students, so tread with caution in talking to them. They of course won't loan a new piano, so you'll need to find someone with a used one. You should start these negotiations a month in advance.

Your next problem is to get the pianos moved to and from the gym. This is usually done the day of glee. There is an upright piano in the gym that is used during the week of practice and it would be excellent to have both grands in the gym a day before glee so that the class and particularly the pianists can practice. This isn't always possible however. The piano from the music school is needed for instruction until the Saturday of glee. The used piano from the music store is usually up for sale and the manager will want to display it up until the bitter end. Get the Capitol City Transfer to do the moving. It will cost about \$60.00.

After the pianos are in the gym, they should be tuned. Last year we found one was in tune, so we tuned the other piano to it. You will have to tune at least one piano however, for they must be tuned together to be acceptable to the music majors in the crowd. Besides that, they sound better. Both pianos will need to be tuned when they are returned to their owners. It usually costs about \$10.00 a crack to have them tuned. This totals \$30.00 to \$40.00 for tuning, plus \$60.00 to move them, and perhaps \$25.00 to rent one.

This last year, Nora Hounsell and I were in charge of the pictures that were taken. This was about a \$100.00 operation and was that high only because this was the fiftieth anniversary of glee. My advice would be to forget pictures altogether.. If the Collegian and Wallulah want pictures (and they will) let them handle it. We took several hundred colored slide pictures that we couldn't sell, give, or even throw away. Oh yes! Someone will get the "fabulous" idea that a 25 to 30 minute color movie should be taken of the entire affair. We looked into it and it would cost about \$5000 to \$15,000 and would be far to big an operation for students who have studying to do. A few minutes of black and white movie film was shot last year. Generally however, STAY OUT OF THE PICTURE BUSINESS.

You will probably be asked to set up microphones for the challenge assembly and for glee itself. You can get this equipment from the student body office and from Les Sparks in the P.E. department. Make certain that it is working correctly and if it isn't, find some equipment that will work. A poor loudspeaking system can ruin the entire program. If you want to argue that point, go see Dr. Runkel, Head of the Speech and Drama Department.

There will be a number of odd jobs that you will be asked to do. Last year I helped announce the challenge assembly and glee over KEZY. You may be asked to do it also. Its a very enjoyable job and one which you will probably like. You will be asked to do several jobs, such as finding rooms for the classes to practice in etc. that will take some time. And of course if the glee manager can't be present for a meeting you will be asked to be in charge.

The thing to remember in this job is to plan ahead and start early. Everything should go through the glee manager so that he knows what is happening. Work with him, give him your support, and back him up every way that you can. He has a tremendous job and will need your support.

If you have any questions, I would be glad to help you if I can. I'll be on campus next year unless I get trampled to death by a pig or run over by a tractor. Have a good year, work hard, and enjoy your work. You have a big job ahead of you, but also a very rewarding one. Make the most of it.


Assistant Glee Manager, 1958

Willamette University
Salem, Oregon
June 11, 1958

1

FINANCIAL REPORT, 1958

Financially the 50th Glee wasn't successful. Our tentative budget wasn't realistic. Little things add up. After all the bills were in, we found that we had spent much more than planned, or than we had to spend. I hope you will be able to profit from our mistakes. Attached is our tentative budget, actual budget, and a suggested budget for Glee in the near future.

To make things run more efficiently, I would suggest that one person handle all the money. Either the Glee Manager, Assistant Glee Manager, or someone else that is very close to the budget.

We had many expenses that you probably won't have. For the 50th we put out a little bigger program, did a little bit more with the record cover (history on back), and got involved with pictures. Especially don't get involved with pictures, unless you have extra money. They can cut a big hole in your budget. To defray the cost of the programs we used advertisement and "sponsorship." (See the Program Report.) In the future, it would be better not to get tied up in "sponsorship."

PUBLICITY

The title of this committee is somewhat misleading, for one usually thinks of a publicity group as a group that is overtly trying to sell a product. The purpose of this committee isn't to sell Glee, it is rather to share the current Glee with alumni, parents, and friends of Willamette as well as to tell the public about Willamette's unique activity. The committee also keeps the student body up to date, via the Collegian. The media for sharing Glee with others are radio, newspapers, and sometimes TV and magazines.

RADIO: This year we worked closely with KBZY. They included in their broadcasting day many news announcements about Glee, they presented the "Highlights of the 49th Glee" on Thursday evening of Glee Week, and broadcast live the Challenge Assembly and Glee. They were scheduled to do a "Highlights of the 50th Glee." Copies of the "Highlights..." were to be sent to radio stations throughout Oregon. (The following stations were contacted and many planned to carry the tape: Medford--KBOY, KMED, KYJC; Albany--KWIL; Coos Bay--KOOS; Corvallis--KCOU, KOAC, KRUL; Dallas--KPLR; Hood River--KIHR; Lebanon--KGAL; Oregon City--KGON; Roseburg--KRNR, KRXL, KYES; Pendleton--KUBE, KUMA, KWRC; Vancouver, Wash.--KUAN; and Portland--KPOJ, KGW, KEX. We found that generally only one station in each town would carry the tape.)

KBZY was an excellent station to work with except for the fact that they were very delinquent in editing a "Highlights" tape. Therefore we didn't have a tape to send to the many radio stations we were scheduled with and the many people across Oregon interested in

Glee never got to hear the 50th.

An idea we didn't use to its full potential was to send spot announcements relating the latest news about Glee to radio stations throughout Oregon. Many stations expressed a desire to have such announcements.

NEWSPAPERS: We worked with Mr. Ruud on this. He handles the publicity for the University and is acquainted with the local reporters.

TELEVISION: Because this year was the "50th" we had the opportunity of doing a half-hour show on KGW-TV's "Community Workshop." The program looked back on the beginning and 50 years' development. (A script follows.) If the 51st Glee Committee is interested in TV I suggest you contact Chuck Foster who, along with his wife, has a local news program. Foster was going to come down from Portland and shoot pictures for his program this year, but he didn't because we couldn't give Glee to him exclusively.

MAGAZINES: No one has been able to share Glee with the whole nation via a national magazine yet, but it is an idea to keep working on. Parade, This Week, and The American Weekly are probably the best bets.

There are many possibilities and a lot of work is involved in carrying them out. Remember that magazines, radio, and TV schedule events far in advance. Unlike the other committees, your plans should be formulated and be being executed before Christmas.

You will soon discover that you are the most over-worked committee in Glee--Good luck. For further information don't hesitate to contact Doug Ward, co-publicity chairman, or Dale Daniel, Glee Manager.

ENTERTAINMENT REPORT

PURPOSE:

It was our job to provide fifteen minutes to a half an hour of light entertainment between the last Glee song and the judges' decision. The program should be significant so that returning alums will find humor in scenes from their college days and general enough so that the students could also enjoy it. Entertainment is necessary in order to break the tension of the evening.

WHAT WE DID:

First we selected a committee of about ten. The committee helped by providing basic ideas and a general theme, took parts in the production, worked on costuming, script typing and other jobs. A committee is helpful for doing jobs that take time, but should not be relied on for writing a script and producing the program. It is hard for students who are not used to thinking and planning together to utilize all of each other's ideas in developing a humorous program. Most of the actual script writing was done by the co-chairmen, the narrator of the program, another student that the narrator was used to working with, and an alum who supplied material about the history and traditions of Willamette that we, as freshmen, were not aware of and that would appeal to the alums that would watch the show.

The program had continuity. The theme was the last fifty years of history, stressing Willamette and the effect of Glee. A narrator standing on a Salem street corner (corner of the stage) interviewed passers-by while their thoughts were portrayed by actors in the center of the stage. Having a theme to tie the entertainment together held the audience's interest and added humor to the individual acts.

The program follows the Freshmen's Glee song and should be ready to start a few minutes after the Freshmen return to their seats. The impact of the program is strengthened if there is no lag of time in which the audience can become restless and disinterested.

There should be no point at which the program drags. Acts or sequences should be short and follow each other quickly. It is a good idea to have several people who are sensitive to an audience's reactions and have elastic parts so that they can lengthen or shorten the program depending on what the audience wants.

The technical part of the production is one of the most important and hardest to co-ordinate. The stage limits the program in that the action must occur on the risers. Microphones and lights should be worked out with the stage crew well before the performance. The crew should have marked scripts and an understanding of the effect that you are trying to achieve. It is important to practice with both the microphones and lights several times before Glee night. There should be at least one run-through with the lights at a night rehearsal.

Our only prop was a lamp post, which the stage crew made for us out of scraps of wood. The committee gathered many of the costumes and others were borrowed from the drama department. We used members from the Willamette band for the background music. Therefore we were able to present the whole program without spending any money.

If co-chairmen are appointed, it is important that they always understand what the other is doing. Whether the responsibilities are shared or divided, frequent

meetings are necessary to make sure that it is being accomplished. Being able to share the responsibility with another is a definite advantage, for you are able to do a bigger and better job than, as a busy college student, you could have done alone. However, it is only an advantage if you work together and are fully aware of your own and your co-chairman's responsibilities.

It is a big thrill on Glee night to see the program presented as a part of the excitement of the evening and watch an audience enjoy the performance.

Sincerely

Barbara Ryan
George Rogers

THE SOUVENIR COMMITTEE REPORT

Upon returning from Thanksgiving vacation Sue Mularky and Russ Peterson were appointed co-chairmen of the Souvenir Committee and given a list of other students who were interested in serving on this committee. From that list, Jo Gannon, Bob Penator, Hubert Youngblood, and Pete Manning were chosen.

The first committee meeting was held December 10. It was important not because there was anything to be done that early, but because it was a chance to acquaint everyone with our job and each other. Probably if we had waited until after Christmas to meet some of the members would have forgotten about it or at least become disinterested.

After Christmas it was found that Sue would not be returning to Willamette second semester, so Jo Gannon was appointed in her place.

During January and February all contacts with the photographers and printers had been completed. Your Town Press (464 Ferry St.) had done the publishing of the souvenir in the past years both well and at a moderate price, and since they also knew what should be done, we saw no reason to change printers. Phil Henderson, John Barth, and Jim Cline of WU did all the photography.

Cost of Printing
\$104.50

Cost of Photography
\$30.00

As March rapidly approached we took ^{one of} our most important steps-- planning the dummy. The dummy, an absolute necessity, is a wonderful place to jell your ideas, but of course at the time of the actual "paste-up" it is not necessary to adhere to strictly to the original

dummy.

It is a good idea to do the pages as early as possible. Page 8 was pasted up two weeks before Glee. Our deadline schedule was arranged so that we delivered 3 pages for printing the ~~Friday~~ before Glee and the remaining 5 pages the Tuesday following Glee. Thursday night the pages were picked up and brought back to the campus for folding. Friday morning the souvenirs were distributed with the "Collegians." The pages we took to the printers early were 2, 3, and 8. The pictures on these pages can all be taken before the night of Glee.

We used the "Wallulah," "Collegian," and Student Body offices, in which paper cutters, scissors, and rulers, etc., for the actual pasting up. We found that "Carter's Rubber Cement" worked just fine for glue for pasting up.

1958 Glee Report - Records Committee

Dear 1959 Records Chairman,

Well, it's all yours now....You have been given chairmanship of the most important committee in Glee. ~~If it weren't~~ for the Records Committee there would be no money with which to finance the rest of Glee, save for contributions.

Ed and I have one word of advice...start your work early! The sooner you get started, the less work you have to do once you get right into Glee week. We had a couple of meetings just before Christmas, then some afterwards. No meetings were held during Finals, or at other periods of unusual stress or strain.

It'll probably be easier for me if I tell you what we did this year and how we might have improved. Instead of ordering our records straight from the company as has been done in the past, we contracted with Connelly Recording Company here in Salem for 400 records at 50¢@. Mr. Connelly recorded all of the songs himself, did his own editing, and took care of all business with the company which did the actual pressing.

We ordered 400 sleeves for the records, (seems like a logical amount) printed but unassembled. The pieces of cardboard were printed by the Capital Press Printers and assembled by members of the committee. Labels for the records were ordered through Connelly for a nominal fee.

Sales is one big spot where our committee fell down. Up to this date we have sold only 326 of our 400 records. We are hoping, however, to reduce the difference once the finished records arrive. Many students were afraid to buy our gems this year because the recordings in the past were so lousy. We are hoping that with professional recording we shall have a much better job this year. I think that our posters and other means of advertising were O.K., but not exceptional. The posters were great, but other advertising and letters to living organizations didn't pan out.

Try to start selling just before Glee week starts, and keep hitting hard until you get the records. We did utilize the coupons which we put in the programs on the

night of Glee. I doubt if we picked up more than 40 orders from them, but 40 orders is 40 orders.

A radio tape was recorded by radio station KBZY and played over their network. I believe that they would like the same courtesy next year.....They can be very helpful with the advertising of Glee, also.

We'll enclose as much available pertinent information as possible in a packet to help you find your way through the red tape of committee chairmanship. If you need any more help, contact me, Bill Richter, co-chairman Ed Hall, or any of the members of our committee of this year.

Bonne chance!!!!!!

EM 4-4431

CAPITAL PRESS
Printing

BILL HABERNICHT

270 Com'l St. N.E.
SALEM, OREGON

GLEE REPORT

DECORATIONS COMMITTEE-- 1958



GLEE REPORT

DECORATION COMMITTEE

First of all--have fun! It's worth every minute you spent when you finally stand back and look at your handi-work.

But, to make it easier on yourself be sure to plan ahead. After the committee was chosen in the fall we drew up a schedule (including a budget and job assignments) which we followed religiously. We sent this schedule around to everyone on the committee.

The decorations committee had three main duties:

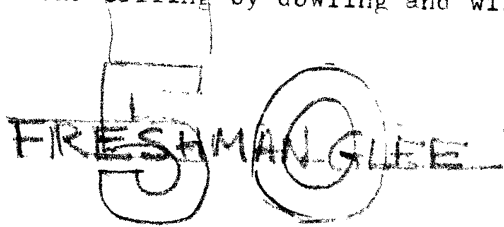
1. Make two banners the length of the gym (84 feet) saying "WELCOME ALUMNI" (we shortened it to "Welcome Alums") and "50th ANNUAL FRESHMAN GLEE".
2. Arm bands for the ushers (about 35).
3. Providing signs in the gym to correspond to the tickets.

Our supplies included:

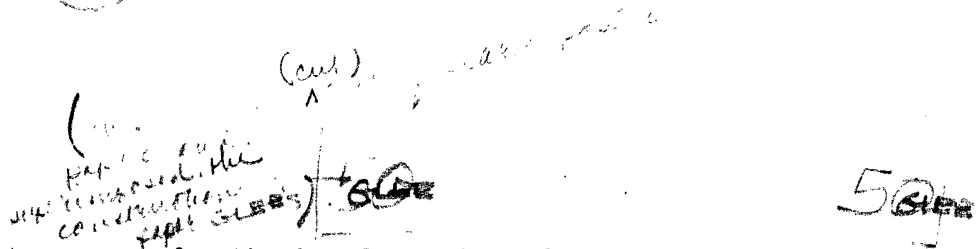
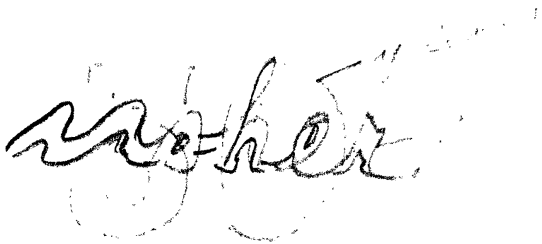
1. 200 feet of news print (see the Salem paper).
2. cans of poster paint (powder).
3. masking paint.
4. poster paper (for the usher signs)
5. four large yellow poster boards (to make big 50's hanging from the ceiling).
6. Brushes -- which we scrounged.

We worked in the 4th floor of Waller from 9--11 on every Tuesday and Saturday morning (officially).

Because this was the Fiftieth Annual Glee, we decided to spruce up the decorations a little more than usual. The result: 2 huge yellow fifties hanging from the middle of the ceiling. Across their fronts we wrote "Fiftieth Annual Glee" in red construction paper. The whole contraption was hung to the ceiling by dowling and wire and the help of scotch tape.



To correspond with the ceiling decorations we made the usher signs out of construction paper also:



Be sure to get extra paper for the two long signs for the side of the gym. You might need it. We found it helped a great deal if we cut letter patterns out of other paper before we drew them onto the final paper... that way everything was uniform. Warning: We made the mistake of painting the signs in red paint--until we realized that the red was much too dull, and at the last minute had to repaint the whole shebang in black. When making the long signs be sure to begin early! Though you think you will probably have them all finished years before Glee comes, you won't. It helps to set up specific times and days so you'll be sure everyone shows up to do everything that is supposed to be done.

Now--for getting the supplies.

Send someone down to the Statesman for the newsprint. The cost is small.

Hutchinson's paint store will give you a discount on paint if you tell him you're from Willamette. Only 1 can of each color you use is needed for normal use. If you are planning anything fancy, better get two.

On the next page you'll find a copy of our schedule with the budget (although we found we had to add about \$2.00 for dowling and more masking tape.)

You'll have a wonderful time working on Glee if you just remember to plan ahead and give yourself a lot of leeway. If you run into any problems just contact one of us former chairmen and we'll be very glad to help you out... Best of luck!

Gail Larson
Maureen Avery co-chairmen

Decorative

Decorative Committee

President: Vary
Cell: [unclear] [unclear]

Dev Krough
Steve Bergland
Gene Grippentrog

Budget

Newsprint	25.00
Paint	.80
Tape	1.00
Construction Paper	2.00
Poster paper	1.50
Fine	.20
Glue	.50
Total	<u>10.00</u>

Schedule

Work to be done:	
Usher bands	Jane Sanford
White paper on bleacher sides	Steve Bergland
Ticket sections	Gene Grippentrog
Large Gold "50s"	Dev Krough
Long posters for sides	Pat Montgomery

Work will begin Jan. 21 and continue until March 14 when we expect to decorate the gym. All work will be done on the 4th floor of Valler on Tuesdays and Saturdays between 9 and 11 in the morning. Each of the above will be responsible for their assigned project and will be expected to have it completed by the deadline—March 15.

Jan. 19	Get supplies to Valler	March 2	Finish big signs
Jan. 26	Do usher bands	March 9	Do ticket signs
Jan. 27	Begin large "50s"		White paper for bleacher ends
Feb. 3	Finals		
Feb. 10	Finish big "50s"	March 14	Complete decorations
Feb. 17	Big signs	March 15	Close
Feb. 22	Big signs		

If you have any questions or can't read this contact us, please.

To Decoration Committee
from ticket committee

Signs needed for glee:

- 1) Section labels - preferably ³⁻⁵ feet ^{square} ~~long~~,
in big print.

one of each of following:

A

A A

B

B B

C

C C

(Don't bother to put the word "section" on
the signs)

- 2) Door labels:
one of each:

Door I

Door II

(To be put over each entrance - they
don't need to be too huge.)