

# WILLAMETTE SCENE

THE WILLAMETTE UNIVERSITY MAGAZINE ♦ WINTER 1999



NON NOBIS  
SOLUM NATI SUMUS

*Where Our  
Treasure Lies*

# WILLAMETTE SCENE

THE WILLAMETTE UNIVERSITY MAGAZINE ♦ WINTER 1999



NON NOBIS  
SOLUM NATI SUMUS

*Where Our  
Treasure Lies*

# WILLAMETTE SCENE

---

EXECUTIVE EDITOR  
Betty M. O'Brien M'81

EDITOR  
Melaney Moisan

GRAPHIC DESIGNER  
Jeff C. Booth '95

WRITERS  
Russ Beaton '60  
Adele Birnbaum  
Tirzah Kerr '00  
Beth Kowal '02  
Carol Long  
Steven David Martin  
Jennifer Miller '96  
Chris Penttila '90  
Mary Ann Sprinkle  
Linda Tamura  
Cliff Voliva  
Charlie Wallace  
Kristen Wilson  
Benjamin Worsley '98

CONTRIBUTORS  
Jim Booth '64  
Brian Hess '95  
Mary DeMuniz

CLASS LINKS EDITOR  
Kay Andersen-Wyckoff

PHOTOGRAPHERS  
Shan Gordon '81  
Dale Peterson  
Alan Schmautz

Cover Photograph: Dale Peterson  
This stained glass window in Cone Chapel  
bears Willamette's motto, "Not Unto Chiseloes  
Alone Are We Born." The window was presented  
to Willamette by the Class of 1919.

Published Quarterly by the Office of Communications,  
900 State Street, Salem, OR 97301  
for constituents of the West's oldest university.  
Send correspondence to the address below.  
Phone (503) 370-6014.  
Periodicals postage paid at Salem, OR 97301

POSTMASTER: Send address changes to *Willamette  
Scene*, University Relations, Willamette University,  
900 State Street, Salem, OR 97301.  
ISSN 1088-9183  
(USPS 684-260)  
COMM-1.99-25M-KP

WINTER 1999 VOL. XVI, NO. 1

---

## FEATURES

---

- 11 **Where Our Treasure Lies**  
*Willamette is more than just books and buildings. What makes it special are its people, from an entering freshman or new faculty member to those whose connection to Willamette approaches or surpasses half a century. In this issue we share a little about the lives of six special members of the Willamette family.*

---

## DEPARTMENTS

---

- 2 **Letter to the Editor**
- 3 **Willamette Upclose**  
*Music building update, new curriculum, faculty author, student-created businesses, President's Service Award, special web site and news briefs.*
- 9 **Sports**
- 10 **Willamette People: Robin Smithtro '94**
- 22 **Alumni Connections**
- 27 **Class Links**  
*Profile: Paul Breckenridge '97  
Alumni authors: Sharon Ellison '65 and Lonnie Jackson '79*
- 40 **The Final Word**  
*Filling Jars by Mary Ann Sprinkle  
The Final Word is a new section in the Willamette Scene which will feature poetry, essays and short fiction by members of the Willamette community.*



M. Lee Pelton

Almost every day it seems I learn something new about Willamette. One of the earliest and most heartening discoveries I made was the strong sense of community that unites the Willamette family. I recognized right away that once you come to Willamette as a freshman — or a new president — you are a member of that family forever, no matter how far you travel after you leave, or how many years pass. Whether it's providing moral support to a 1998 graduate as he prepares to meet the President of the United States or making a dream come true for a 1935 graduate, Willamette really does care. It's not just words on paper.

Recently the Office of Alumni and Parent Relations got a request to help make an alumna's 85th birthday a special one. The letter began: "My mother, Anna Jo Fleming, graduated from Willamette in 1935. She was elected Song Queen in 1934 ... As luck would have it, 1934 was the year that Willamette decided they could no longer afford to provide a school sweater for the Song Queens." In the letter, Fleming's daughter writes that, even after 64 years, having the sweater would mean a lot to her mother. "On a recent visit home, Mom briefly recalled this incident with some remembered sadness," she wrote. "In all previous years, wearing that sweater was a significant part of the glory. It was a real disappointment to my mother, the daughter of a Presbyterian circuit minister who cashed in his life insurance in order to send his three kids to college. Under those circumstances, nice, new clothing of any kind was an especially wonderful thing, particularly when such an honor was connected with it.

"At that moment, I felt her disappointment of so many years ago and would have given anything to help take the sting out. Mom would never burden herself with bitterness about anything, but I would like to make her smile by presenting her with a size 8, cream-colored letterman's cardigan sweater with the words 'Song Queen' embroidered at breast

pocket height. She's going to be 85 in June and would be thrilled to her toes to open that box ... I would like to know if such a thing is possible."

I learned that Jim Booth, director of alumni relations, was challenged by that request and went to work to see if he could help. He made several phone calls as well as a trip to

Salem Emblem shop with a photo from the 1934 yearbook so, as he said, "Mom could have just the sweater she wanted."

"In my mind it was a small thing," he explained, "but a neat opportunity to do something for an alum. It's something we wouldn't even hesitate about."

It wasn't such a small thing, however, to Fleming's family, who, I imagine, are pretty happy to be part of Willamette's extended family. "I want you to know that the 'letter sweater birthday event' you organized for my mother turned out to be

one of the most satisfying presents I have ever given anyone," wrote Fleming's daughter after the birthday surprise. "... she'll proudly wear her sweater until there are holes in the elbows."

It says a lot about Willamette that even after so many years, a gift that reminds someone of the time spent here can mean so much. It says a lot about the kind of family that we are, the kind of family that makes me proud I'm a member.



Anna Jo Fleming, 1935



Anna Jo Fleming, 1998

— M. Lee Pelton, president



## WILLAMETTE UP CLOSE

### Making a Difference

**O**n an average night in the Salem area more than two thousand children and teenagers go to sleep in doorways and shelters and cars, or beneath bridges and freeway overpasses. Some of them share their small space with their families. Some want to escape their families.

Winston was one of those children, but his life changed because of a friend he made four years ago.

Will Schmautz '98 is Winston's friend. In 1994, when he first met Winston, Schmautz was a Willamette University freshman from Kalispell, Mont. "One day I was just kicking a ball around on the soccer field when I noticed a young boy around 12 watching me," he said. "I asked him if he wanted to join me."

It didn't take Schmautz long to see that the boy had troubles. "He'd come look for me five or six times a week that first semester," Schmautz said. "I'd walk him back to where he lived — a one-room house he shared with his mother and sister. He was living a pretty transient lifestyle; his mother had drug problems."

As soon as Schmautz returned to Salem following winter break, he looked for Winston. "I went by his house and his mother didn't know where he was. I finally learned that Winston was living with one of his mother's old boyfriends in a homeless camp. Some of us who knew him spent a week or more going from camp to camp around the Salem area," Schmautz said. When they found Winston, he hadn't been in school for a month. They convinced him to return to school, and Schmautz worked with a counselor to get access to Winston's school records and to make sure the school would call him if Winston missed school or had trouble.

At that time Schmautz was living in WISH (Willamette International Studies House) and Winston was able to shower there before school. "He was behind," Schmautz said, "but at least he was going."

At the end of his freshman year, Schmautz made plans to take Winston home so he could attend summer camp in Montana. Jamie Barton '98 had also befriended Winston, and her family provided the money necessary for the camp. In Montana Winston was welcomed into a large extended family that included aunts, uncles, cousins and grandparents.

"It became clear to us," said Schmautz, "that we couldn't send him back to his old life." However, there were details to be resolved, so Winston returned with Schmautz to Salem that fall.

At first Winston's mother was resistant to signing the necessary guardianship papers, but after she and her daughter were badly beaten by her new boyfriend, she relented. Winston was on a train the next morning for Kalispell.

It has been more than three years since Winston moved in with Schmautz's parents, his then 16-year-old brother and 11-year-old sister, and began attending a private Christian school. Because of previous frequent absenteeism, he had to work a little harder to fill in some of the gaps in his education, but his hard work has paid off. He is now an honor



Winston (front row, left) with the Schmautz family. Back row l to r: Alan, Joyce, Will. Front row next to Winston: Kady and Seth.

student with a g.p.a. above 3.5, plays varsity basketball, and was named first team all-state in soccer this year.

"My family has always taught me to have compassion for people and the situations they were in," Schmautz added, explaining why he couldn't turn his back on Winston. "Turning away was never an option. I didn't have a choice. I've never understood why I have had it so good when others like Winston have such hard lives. It could just as easily have been me in this situation. I believe that God blessed me and my family in such a way that it was our responsibility to pass on those blessings to others who are less fortunate."

And Winston's mother — perhaps challenged by the changes she sees in her son — has begun the journey to turn her own life around. She is off drugs, has a job and has returned to school.

Winston hopes to attend Willamette University and play Bearcat basketball in a couple of years. He has a good start toward that goal, and a good role model to help keep him focused — his friend, whom he now introduces to people as his brother, Will.

— by Melaney Moisan



## LETTER TO THE EDITOR

*Letter policy: Please limit length to about 125 words. We reserve the right to edit for length or clarity. Please sign your letter and include your name and address, plus your class year if you're an alumnus/a. Write to the Editor, The Scene, Willamette University, 900 State Street, Salem, OR 97301, or e-mail <scene@willamette.edu>.*

### Class of 1932 Speaks Out

The Class of 1932 has always taken a dim view of the idea that, after the big 50-year reunion, we should resign ourselves to being classified as "has-beens," having lunch at future reunions with any who were able to show up after their climactic "Half-Century." We insisted on our own private class luncheon for our 55-year and our 60-year reunions. Last fall (Oct. 18, 1997), again at our own private luncheon, we had our 65-year reunion with 17 of our class present. However, afterward, some of us felt that there had not been enough time for the kind of

visiting we really wanted. But why wait for our 70-year reunion? So on Aug. 21 this year, 12 of us gathered in Mt. Angel, Ore., at the retirement home where two of our class now live. After lunch together we had all afternoon for that one-on-one visiting we had missed. It was wonderful!

MARJORIE (MOSE) DURHAM '32  
Seattle, Wash.

## About the Writers



*Among the writers for the Willamette Scene are professional writers, student interns, alumni, professors and other staff of the University and of the Scene itself. Here's a brief introduction to those whose work appears in this issue.*

**RUSS BEATON** is in his 28th year at Willamette in the Economics Department. He graduated from Willamette in 1960 as (not surprisingly) an economics major. He is going through a painful conversion from a left-brained writer of dry technical treatises to having the ability to write something people might actually enjoy reading.

**ADELE BIRNBAUM** has been a professor of English for over 30 years, specializing in Chaucer, Dante, history of the English language, and writing of creative non-fiction. She has been playing golf for even longer. Check out her web site for further information: <[www.willamette.edu/~abirnbau/](http://www.willamette.edu/~abirnbau/)>.

**TIRZAH KERR** is a junior from Bellevue, Wash. She is majoring in rhetoric and media studies with minors in French and sociology. She is a member of the Pi Beta Phi sorority and works in the Office of Communications. She hopes eventually to go into a career in public relations or broadcast journalism.

**STEVEN DAVID MARTIN** is in his second year as assistant professor of theatre at Willamette. Prior to Willamette,

Martin spent 15 years working in professional theatre, acting and directing at the Oregon Shakespeare Festival, Alabama Shakespeare Festival, California Shakespeare Festival and Edinburgh International Theatre Festival, among others. Last year he directed *On the Verge* and *A Midsummer Night's Dream* at Willamette; this year he has directed *Romeo and Juliet*, acted in *Arcadia* and *Oleanna*, and will direct *A Flea In Her Ear* in the spring.

**CHRIS PENTTILA '90** is a freelance writer with a terrible curve ball. She earned a master's degree in journalism and communication at the University of Oregon in 1996. She resides in Eugene while her husband, Tom Maynard, pursues graduate studies in neuroscience at the University of Oregon.

**MARY ANN SPRINKLE**, director of development, is beginning her eighth year at Willamette. As she has mentioned before, she is a "pent-up writer in disguise." In college, she wrote poetry with Leslie Adrienne Miller. While at the University of Oregon for graduate studies in counseling psychology, she pleaded with Garrett

Hongo to allow her into his MFA poetry class. He relented.

**LINDA TAMURA**, professor of education, co-coordinated public programs this fall for Oregon's traveling Smithsonian exhibit on Japanese Americans and the Constitution. She is on the boards of Willamette's Alumni Association and the Oregon International Council, and serves on the steering committee for the Oregon Nikkei Legacy Center. She recently completed a three-year term as secretary of the Association of Independent Liberal Arts Colleges for Teacher Education.

**CHARLIE WALLACE** has been Willamette's chaplain since 1985. He first met Mary Eyre several years ago when she read a scripture lesson (on behalf of the alumni) at the Christmas Service of Lessons and Carols.

**KRISTEN WILSON** is a freelance writer and editor. She moved from New Hampshire to Salem this summer with her husband, Lee Pelton, and their two children. They currently reside on Lincoln Street, in the very spot where Charlie Perry's first bike ride so ignominiously ended.

## News about the Willamette Family



**William Duvall**, professor of history, was named the 1998 Oregon Professor of the Year by the Carnegie Foundation for the Advancement of Teaching. Recognized for his impact on students, Duvall is the sixth Willamette professor to receive this prestigious honor in the last nine years. Other professors awarded were Daniel Montague, physics, 1995; Arthur Payton, chemistry, 1994; Roger Hull, art history, 1993; Mary Ann Youngren, psychology, 1991; and Frances Chapple, chemistry, 1990.

Duvall earned his B.A. in history at Whitworth College, his M.A. in history at the University of Pennsylvania, and his Ph.D. in history at the University of California, Santa Barbara. His fields of study were history of modern France and modern European intellectual history. Duvall has taught history at Willamette University since 1971. In 1992, he was a visiting lecturer at Simferopol State University in Simferopol, Ukraine. Courses he has taught include Western Civilization, European Intellectual History and Capitalism as a World System, 1500-Present. He is a member of the American Historical Association, the Society for French Historical Studies, International Society for the Study of European Ideas, and the International Society for Intellectual History.

▶ **Jim Sumner**, vice president for enrollment, has been elected to serve a four-year term on the Oregon State Bar Board of Governors. He is one of four public members (non-lawyers) who serve on the board.

▶ **John Doan**, associate professor of music, released the compact disc "Eire: Isle of the Saints," a Celtic Odyssey that celebrates the history and people of Ireland. The album was named the 1998 Celtic Album of the Year by the NAV music awards.

▶ **Douglas McGaughey**, professor of religion, was the winner of the Templeton Foundation Science and Religion Course competition. The award includes a stipend and a week this summer at a conference on science and religion at St. Annes College in Oxford, England.

▶ **James Thompson**, professor of art, was awarded a commission for a series of paintings for the City Planning and Development Center in Portland. In addition, Thompson received a purchase award from the Pacific Art League of Palo Alto, Calif., and a first place award from the All Oregon Art Annual in Salem.

▶ The education web site StudyWeb has given its Academic Excellence Award and the highest four-apple rating to math professor **Junpei Sekino's** fractal gallery. StudyWeb has received recognition — such as being named a USA Today Hot Site — by many web critics. You can see Sekino's fractal gallery by going to <[www.willamette.edu/~sekino/fractal/fractal.htm](http://www.willamette.edu/~sekino/fractal/fractal.htm)>. He has done a lot of upgrading recently and included some new three-dimensional graphics, so even if you have looked at it before, it's worth a second visit.

## Support Continues to Grow for the Rogers Music Center

The Mary Stuart Rogers Foundation of Modesto, Calif., recently announced two memorial gifts totaling \$1 million for the Mary Stuart Rogers Music Center. The additional gifts will name the James W. Rogers Rehearsal Hall and the Roger W. Rogers Art Gallery in the music center. James Rogers was the brother of John W. Rogers '63, president of the foundation. Roger W. Rogers was the father of James and John. The foundation's total support of the building is \$4.5 million.



The Emerson String Quartet will conclude this year's Distinguished Artists Series on April 18.

## Collins Foundation provides endowment for DAS

A \$300,000 gift from The Collins Foundation has endowed Willamette's Distinguished Artists Series and ensured the continuation of this popular program, which each year brings some of the world's finest musicians to Willamette. The series has been renamed the Grace Goudy Distinguished Artists Series in honor of Goudy '22, a Willamette University trustee from 1946 until her death in 1996, a great lover of music and a generous supporter of Willamette for many years.

The Goudy Distinguished Artists Series was recently named the Salem Cultural Event of the Year by the Salem Convention and Visitors Association.

## Mary Stuart Rogers Music Center to Celebrate Opening in March



On Jan. 14 the Mary Stuart Rogers Music Center was expected to reach the stage of "substantial completion," allowing the anxious students and staff from the music department to begin the task of bringing music to the new building.

"Since spring semester starts on Jan. 19," said Wallace Long, chair of the music department, "somehow in one weekend, we have to move all of our rehearsing equipment — chairs, stands, etc. The other major chore is moving 12 faculty offices in that weekend, too." Long mused that he'd be asking every

able body on campus that weekend to help carry a tuba or a timpani to the new building.

Along with the physical task of moving a music department comes the musical task of preparing to open a new performance hall. Long and the rest of the music faculty will have just seven

weeks after the move to prepare nearly 400 students for "Share the Vision," the opening week of the music center.

From Sunday, March 7, to Sunday, March 14, the department will perform 10 concerts in the state-of-the-art, 450-seat Jerry E. Hudson Concert Hall. In an effort to share the quality of the music program with as many people as possible, concerts have been scheduled at several times of day to allow different constituencies to attend, Long said.

One concert of special interest to alumni is on Saturday, March 13, at 7:30 p.m., when an alumni choir and band will perform.

"We've invited everyone who's ever been in a Willamette choir or band to come back and be a part of this special week," Long said. He also added that any alumnus/a who participated in the music program but did not receive an invitation may call Kathy Pressler at (503) 370-6255 for information, or e-mail the Music Department at <wumusic@willamette.edu>.

## Willamette Singers Earn Invitation



After submitting audition tapes every two years for the past 15 years, Willamette Choir Director Wallace Long and the Willamette Singers have been rewarded with an invitation to sing at the biennial National Convention of American Choral Directors Association in Chicago, Ill., the most prestigious honor in the educational choral world. Chosen from 269 audi-

tioning ensembles, the Willamette Singers will represent the vocal-jazz category, participating with cross-sections of different styles from all over the world.

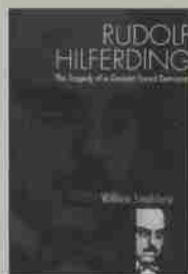
At the convention, more than 5,000 choral conductors come to watch nearly 3,000 performers, hoping for inspiration and new ideas for their choirs. The Willamette Singers will

perform a late-18th century classical style, move to a 17th century madrigal, then use the same tone for a jazz ballad.

Long said he feels extremely excited, yet anxious. "We will be performing with spectacular groups from all over the world. We've been to the National Convention of Music Educators' National Conference in 1988 and the International Convention of International Association of Jazz Educators in 1990 and 1994. This convention tops off the Triple Crown. The pressure is tremendous, but I have every confidence in my singers." They have little time to prepare, but are working non-stop in learning the music, improvisational techniques and styles.

"I tell the choir," he said, "that the alumni have helped create this opportunity for you; they built the reputation of this choir."

## German Socialist Subject of Biography



Until his death in a Gestapo prison cell, Rudolf Hilferding was one of Europe's most prominent socialist theorists and politicians. A leading economic thinker in the European socialist movement and an important politician in the German Social Democratic Party, he served as Weimar finance minister at the height of the inflation of 1923 and again at the onset of the depression in 1928.

Hilferding's biography, *Rudolf Hilferding: The Tragedy of a German Social Democrat*, by William Smaldone, associate professor of history, illustrates how Hilferding's personal and intellectual journey reflected the failures of social democracy in its confrontation with Nazism and communism. After Hitler came to power in 1933, Hilferding in exile continued the struggle against the Nazis. Caught

in the maelstrom of the French defeat, in 1940 he was arrested by Vichy authorities and handed over to the Gestapo.

Smaldone became interested in Hilferding through his interest in the history of the German labor movement, especially the history of the German Social Democratic party. "The German socialist movement historically was one of the largest and most diverse in the world," he said, "and the party was long the 'model' socialist party. Hilferding was one of the party's top thinkers and leaders at a time when it faced many enormous challenges, like the outbreak of WWI, the German Revolution of 1918 and the rise of Nazism."

Since few people had written about Hilferding, Smaldone said that working on the biography was a way to study the larger movement and a wide variety of interesting issues, such as the nature and functions of party organizations, theoretical questions of capitalist devel-

opment, and the political strategies and tactics of socialist organizations.

"I learned much about these complex subjects," he said, "but also a great deal about the very human qualities of Hilferding and his colleagues as they struggled to realize their socialist aims in the face of often very barbaric opponents."

Smaldone received his doctorate in modern European history from the State University of New York at Binghamton. He has taught at Willamette since 1991 and is co-chair of the Socialist Party of Oregon.

If you would like a copy of *Rudolf Hilferding: The Tragedy of a German Social Democrat*, it is available at the Willamette Bookstore for \$36, and for an additional \$3 the bookstore will ship it to you. To order, call Bob Kister, (503) 370-6315, or e-mail him at <rkister@willamette.edu>. You can also send a check with your order to Bob Kister, Willamette University Bookstore, 900 State Street, Salem, OR 97301.

## Atkinson Students Create New Businesses

Students can sometimes be their own best teachers. Although professors at most colleges would cringe at this statement, Willamette's Atkinson Graduate School of Management faculty are encouraging this philosophy.

This year, beginning with their very first week of class, students at the Atkinson School are applying what they learn in the classroom to the real world — and not just doing internships or part-time work. They are doing what is known as PaCE (Public, Private and Community Enterprise), a project in which students use business principles and concepts taught in the classroom and apply them to their own start-up businesses.

"What we did with PaCE was create a demand for knowledge with a ven-

geance," said Professor Steven Maser, the project's coordinator.

PaCE split the first-year Atkinson class into two business enterprises of about 30 members each. Each business had the opportunity to design its own organizational structure, create a product or service, write a business plan, apply for a loan and go into business. Loans for start-up of the businesses were provided by MaPS Credit Union. The result: Atkinson Business Services (ABS), a consulting firm; and Creative Juices, which will publish a wine guidebook, featuring wines from the Willamette Valley.

Students are allotted four hours of class time per week towards PaCE, but many find the project all-consuming, spending from 15-20 hours a week on

their business. "You want to see the project, and the enterprise succeed," said Creative Juices team member Molly Gellatly. "You don't want to attach your name to a work product that fails."

"This is a constant learning process," said Josh Quarles, Creative Juices Project Manager. "One of the biggest challenges was learning to trust people, putting them in leadership positions, and letting them create some of the organizational strategy rather than letting everyone do what they want."

Students are also committed to working 1,000 community service hours by the end of spring term as part of their PaCE requirements. ABS is working with A.C. Gilbert's Discovery Village. Creative Juices is paired with the Humane Society.

## A Cluster of New Curriculum Ideas

The Modes of Inquiry courses being developed for Willamette's new general education program in the College of Liberal Arts offer exciting opportunities for students and faculty alike. The six modes, or ways of knowing, have been identified as central — Understanding the Natural World; Creating in the Arts; Analyzing Arguments, Reasons, and Values; Viewing Cultures Historically; Interpreting Texts; and Understanding Society — and often cross the boundaries of traditional disciplines, thus allowing for new groupings to emerge.

With the help of a grant from the William and Flora Hewlett Foundation, faculty have developed several thematic clusters which take advantage of the interrelationships of knowledge in various fields of study. Clustered courses are open to all students, and students are not required to take all courses in a cluster. For further details on clusters, visit our website at <[www.willamette.edu/cla/catalog/Sect1/gened.html](http://www.willamette.edu/cla/catalog/Sect1/gened.html)>.

Three clusters are currently available. The Death Cluster includes an array of courses concerned with life, living, health, suffering, disease, dying, mortality, etc.; the Environmental Cluster, oriented toward students interested in the natural world and its relationship to human beings, social structures, and creative expression; and the Indigenous Peoples and Cultures Cluster, which aims to provide

students with an understanding of some of the world's indigenous peoples, and offers opportunities to study their diverse cultures, environments, histories, and political and social conditions. A fourth cluster focused on Chicago will be available in the fall of 1999.

Courses available this year in the Death Cluster include many innovative opportunities. Professors Sammy Basu, politics, and Linda Heuser, sociology, received grants from Oregon Campus Compact to integrate service-learning into their courses; students will spend 25-30 hours during the semester at community sites such as the Mid-Valley Women's Crisis Service, the United Methodist Retirement Center, the American Cancer Society, and the Homeless Outreach and Advocacy Program. A new music course, Music and Mortality taught by Dan Rouslin, music, allows students with little or no music background to develop a working musical vocabulary for the purpose of evaluating musical art that intersects with the subject of death. The course Microbes and Infectious Diseases with Sharon Rose, biology, offers students the opportunity through readings and lab experiences to live in informed coexistence with the millions of microbes that live in, on and around us.

Spring semester will see the first offering of paired courses taught for the

Environmental Cluster by Catherine Collins, rhetoric and media studies, and Susan Kephart, biology. The courses, Media and the Environment, and Biodiversity: Discovering Life, share a common organization schema and include a series of case studies on topics such as forest ecosystems and biodiversity, or wetlands and water resources that will allow students to explore issues from a biological and a media perspective.

The course Biodiversity will also serve students choosing the Indigenous Peoples and Cultures Cluster. Faculty designed this cluster to help students gain insight into the significant resurgence of the indigenous presence in domestic and international politics, especially in the areas of the environment, human rights, citizenship and autonomy issues, and cultural representations. Complementary teaching strategies and activities will help to connect these courses, as well as field experiences and service learning opportunities where possible.

Clusters provide an unprecedented opportunity for extended, coordinated study around a thematic focus; watch for the results of these programs to enrich both the Willamette campus and the lives of individual students.

—By Carol Long



## Shakespeare Comes to Willamette

Willamette University Department of Theatre presented Shakespeare's *Romeo and Juliet* this fall. This production was directed by Steven David Martin, assistant professor of theatre. Pictured left: Daniel Banakus as Romeo and Jenni Updenkelder as Juliet. Pictured right: Ben Carr as Mercutio and Daniel Banakus as Romeo.



## SPORTS

### The Secret of His Success

by Cliff Voliva

It was a lazy, sunny Sunday afternoon on campus in late October and Willamette's men's soccer team was enjoying the waning moments of a non-conference win. Suddenly, breaking the warm air, the opposing coach said to his players on the bench: "Is that our women's team over there?" He nodded across the field to the bleachers. "Did they have a match today?"

His players didn't have a clue.

Such a situation is not uncommon in college soccer, especially when the two teams have two separate coaches. But since Jim Tursi added the title of "men's soccer coach" to his title of "women's soccer coach" three years ago, both Bearcat teams have thrived.

Willamette's teams almost always play doubleheaders. They travel together regularly and often go to the same place for lunch or dinner.

When the squads take to the road and have some free time, Tursi tries to find forms of entertainment, such as an amusement park. Some may argue that Tursi himself would be most excited, and likely to say: "Hey, we're going to Disneyland!"



Jim Tursi, men's & women's soccer coach

The fact that he is twice as old as some of his players (39) doesn't keep him from being one of the kids. The former University of Portland soccer star often practices with the teams.

Tursi even does something most coaches wouldn't even dream of: he has the men and women practice together two or three times each season. "We generally do it at the beginning, near the middle and at the end of the season," Tursi said of his coed workouts.

Tursi said the women tend to "turn up" their level of play against the men, while the men get a break from their routine and a chance to "show off a little bit."

The coach said the closeness of the teams has allowed the players of both sexes to more easily mix, without all the normal pressures of typical meeting places on campus. "It breaks a lot of the walls down," he said.

Tursi's relaxed atmosphere goes hand-in-hand with success on the field. The women's team (19-1-4) won its sixth straight Northwest Conference title this fall and advanced to the NCAA Division III Final Four. The men's team (12-8) had its best year since 1991.

"Tursi's easygoing attitude during games helps keep most players relaxed," said junior Katie Edmonds. "In practice, he tries to make it a fun atmosphere in the drills, but at the same time he makes sure we work hard and get the most out of it."

Tursi is a master of disguising drills as fun-and-games. "We do a lot of relay races for conditioning, which I think is more fun than just plain running," said Natalie Flindt, junior.

Some coaches may not agree with Tursi's technique that has worked wonders at Willamette. Few coaches, though, can match his success.

[www.willamette.edu/athletics](http://www.willamette.edu/athletics)

If you are a big fan of Willamette's sports teams and don't get enough information about them from the University's quarterly publications, the Bearcat athletic web site should be your next stop on the information superhighway.

There's a wealth of information to be found at the site already, but it's far from complete. The potential of a web site is almost endless; for instance, some professional and college sports teams offer live radio play-by-play broadcasts.

Willamette's site has a way to go before it gets to that point, but by the same token, it has come a long way in the past two years thanks to the help of two students: Kevin Dix and Chris Roberts.

Today, anyone who logs on to the site can obtain rosters and schedules (with updated results) on a specific team. Some recent additions include year-by-year win-loss records of most teams and links to web sites for the Northwest Conference <[www.nwcesports.com](http://www.nwcesports.com)> and the NCAA <[www.ncaa.org](http://www.ncaa.org)>.

The major articles that appear in the Athletic Department's newsletter are posted on the site. One can even find driving directions to sports venues.

In September, a project began in which students write weekly updates on the sports teams in season, and hopefully it won't be long before Willamette school records are posted on the site. So, log on and enjoy!

— Cliff Voliva

## Planting Seeds of Caring



*Jeremy Hall '98 helps a Head Start family in the community garden.*

Jeremy Hall '98 didn't get to meet Bill Clinton when he accepted the President's Service Award recently in Washington, D.C. — Middle East peace talks intervened — but he did have the opportunity to lobby for his favorite cause, the environment.

Hall, who is also a recipient of the Young Botanist Award from the Botanical Society of America, was flown to Washington as one of only 18 people each year who receive this prestigious national award. The award, co-sponsored

by the Points of Light Foundation and the Corporation for National Service, was established in 1982 to honor outstanding individuals and groups engaged in voluntary community service addressing unmet human service needs. It has

honored more than 300 groups and individuals since its inception. This year Hall was the only person to receive the award in the environmental category for his Head Start Community Garden project, started while a student at Willamette with help from a Carson Undergraduate Research Grant. Amiko Matsumoto, then director of the Community Outreach Program at Willamette, nominated Hall for the award.

With help from Willamette and Salem community volunteers and with seeds donated to the project, Hall established the garden to teach low-income families in the Head Start program to grow their own food. During what would have been his senior year in 1997, Hall took time off from school and developed the garden. Twenty-three low-income families took part in the garden its first year. Hall provided them with the land, seeds and knowledge to harvest their own food.

Eventually Hall, who received his degree in biology, would like to pursue a master's degree in sustainable agriculture. He wants to continue his work on community gardens.

## Historical Jesus Site Honored by Britannica Internet Guide

The Quest of the Historical Jesus web site created by Andrew Bernhard '98 has been chosen for inclusion in the Britannica Internet Guide <[www.ebig.com](http://www.ebig.com)>, as well as being a Great Books Five Star Site <[www.mala.bc.ca/~mcneil/christ.htm](http://www.mala.bc.ca/~mcneil/christ.htm)> by the Malaspina Great Books Program.

Bernhard, now at Portland State University preparing to apply to medical school, began creating his web site in 1997 while still a student in the Department of Religious Studies. It is the outgrowth of a Carson summer research project and his senior thesis.

During the 1995-96 school year, Travis Brouwer, a student at Willamette, made the first Willamette Historical Jesus web page. At the end of the year, he decided he wanted to devote his

energy to other projects and so he gave the page to Bernhard. The page remained on Bernhard's site until it was eventually erased in June 1997. Then, last October, after teaching himself HTML, he decided to completely remake the page, virtually from scratch. "I had a definite idea of what I wanted it to become and to successfully redirect the focus I had to overhaul the whole thing," said Bernhard. All that remains from the original page is Brouwer's article on the history of the quest and a few other links and e-mail archives he had gathered.

The goal of The Quest of the Historical Jesus page is to make all Christian texts from the first two centuries A.D. easily accessible. The page includes bibliographies for easy location of pri-

mary texts in print (both in translation and in the original languages) and links to a variety of online resources. Bernhard personally translated many of the pertinent texts that were not readily available on the web.

Bernhard's site has been visited by people from 65 countries and he has established correspondence with scholars from around the world. "I think that my web page represents the culmination of my education at Willamette," he said. "I created the page, but it never would have been possible without the information I gained from my 1996 Carson Grant or without the endless time and energy professors Doug McCaughey and Lane McCaughey in Religious Studies gave (and give) me to help me learn."



# WHERE OUR TREASURE LIES

**T**his issue of the *Scene* features six heroes. None of them has ever orbited the earth in a spaceship, discovered a cure for cancer, played professional basketball, or been photographed for *People* magazine, but each has lived a life that shines like pure gold. These are people whose example makes us feel we could do just a little more with our own lives — be a little more forgiving, work harder for justice, make the world brighter with our talents, laugh more and help those who are unable to help themselves. And we can do these things whether we're 18 or 101.

None of these special people is under 80 years old, but all are still active and growing and learning and working and inspiring. Just a few years ago Bob Putnam, professor emeritus of theatre, performed on the stage of Pentacle Theatre, the theatre he helped found almost 50 years ago. Tats Yada '38 is a retired farmer who still raises food in his garden, then shares what he grows with others. Dozens of students have benefited from scholarships established by Hallie Ford, and the new art museum which bears her name stands as a testament to her continuing love of art and education. Charlie Perry '37 gives us hope that turning 80 doesn't mean retiring to the rocking chair, but can also mean hopping on your bicycle and riding 100 miles. Activist Dorothy Patch Garlinghouse '30 won a Salem Distinguished Service Award in 1991 for her community involvement, and today the newlywed — she married Lester Garlinghouse two years ago — divides her time between Boise, Idaho, and Salem. Mary Eyre '18, a feisty Salem icon who still speaks her mind, proves that being a curmudgeon can be a positive, endearing trait.

These are merely six among many who might have been included. They are people who have touched us personally in some way — people we have seen in action or have heard about too often to ignore. By telling you about them, we hope to honor those many others, and remind us all that Willamette's treasure truly does reside in Willamette's people.

## Robin Smithtro '94

by Tirzah Kerr '00



Last summer Robin Smithtro went to Tijuana with AMOR ministries to help build houses for underprivileged families. This display of charity is admirable, especially when you realize that Smithtro is sight-impaired. She modestly boasts that unlike many of her sighted co-workers, she never hit her hand with a hammer.

Smithtro is also involved with cross country skiing through the Ski for Light program, in which people with disabilities are led on week-long trips through various locations, such as Minnesota or New Jersey. For next year's trip, which will be in Anchorage, Alaska, Smithtro is planning evening activities for the skiers and will help train the sighted guides. In the past skiers from the paralympics, a high level competition for athletes with physical disabilities, have participated in the trips, providing inspiration for other skiers. Smithtro also recently finished her term as treasurer for the Guide Dog Users of Oregon.

Smithtro and her guide dog, Courtney, can often be seen walking together around the Willamette campus. For the past four years she has worked as the director of disability services at the University. As someone who is visually impaired, she brings unique understanding to her department.

Among other things, it is Smithtro's job to make sure that the increasing number of students with disabilities at Willamette are accommodated, both in the classroom and in the residence hall: from providing strobe-light fire alarms for deaf students to making sure that

students with learning disabilities are provided with class notes, or that additional time is given to complete exams. Many students with physical or learning disabilities spend a great deal of energy just dealing with the disability, so Smithtro helps them schedule their classes to allow for maximum performance. College is the first time many students live away from home, and Smithtro works with disabled students to help ensure that they have the same independence as other students.

The number of students with disabilities is increasing at Willamette, making accommodations more visible and necessary, so one of Smithtro's goals is to heighten awareness on campus. Professors and students alike need to be made aware of what it is like to have a disability. Many professors realize that they have students with disabilities, but they are unsure of what they need to do. Part of the mission of the Department of Disability Services is to educate professors and departments on what steps can be taken in a particular situation. Because there is such a wide variety of disabilities represented on campus, it is difficult to be able to focus completely on each one. Thus some issues tend to receive less attention. Smithtro said it is also frustrating not to have all the answers. However, she says that the department is making progress in many other ways.

Smithtro is also charged to help with architectural issues, such as making sure that there are wheelchair ramps where needed. Recently she was asked to

help Tokyo International University of America find ways to make the building more accessible to both students and visitors. One unresolved problem on the Willamette campus is that many buildings don't have elevators, and are therefore inaccessible to people with certain disabilities. Unfortunately, this problem is likely to remain unresolved until these buildings undergo major renovations.

For Smithtro, the hardest part of taking this job was becoming a colleague to the people who had been her professors only a few months earlier. However, people soon started paying her compliments and expressing their desire to work with her. She has become much more confident in dealing with faculty and has come to enjoy the larger tasks that she once shied away from. The people she works with, including the staff of the counseling services department, offer encouragement and help, as long as she asks for it.

Smithtro understands, because of her own disability, that there may never be a time when the entire world is accessible to her, but she also recognizes that most people, disabled or not, face similar problems. How many of us have had to ask for help getting something off of a high shelf that we could not reach? Smithtro believes that there are some things in life that we can't fix, and we just have to accept them and work with things the way they are. Of course, this can be frustrating, but everyone has goals they need to work a little harder toward.

It's tough being an icon, but Mary Eyre '18 is managing quite well. She's been at Willson House only a year and chats amiably with the attendants on her floor, but they've discovered quickly what her many friends at Willamette and in the wider Salem community have known for a long time. She's clearly "Miss Eyre" to them — none of the patronizing "sweetie" — or even the familiar "Mary."

"I suppose you'll write, 'Miss Eyre abominates most music,' she comments dryly, eyeing my note pad. But she quickly assures me she actually likes many kinds of music. Remembering I'm from campus, she segues to the importance of soundproof practice rooms, alluding to the Mary Stuart Rogers Music Center, still under construction at the time of the interview. These will give students space to express themselves more fully. Though musical tastes change and Willamette's campus continues to grow and change, she hastens to add, "I approve mostly of new things."

At 101, her faculties aren't what they once were — she strains to hear and reports, "my eyesight's broken down." People read to her occasionally, and she really ought to try Books on Tape, she admits, but she hasn't yet. However, the quintessential Mary Eyre is still there. The counterpoint to her firm opinions is the laughter that erupts from somewhere deep inside.

It comes out, somewhat wistfully, when asked about Willamette faculty who might have inspired her own teaching career. Reminiscing about a brilliant young English teacher whose class she took her freshman year, she recalls how, one day, a sign was posted saying he would not be meeting his classes, that there would be a substitute. The well-respected professor never returned. Though such things were not generally talked about, the students later discovered that he had

"come on" to a male student. The two of us muse about changing societal and campus attitudes toward sexual orientation (and the rather more constant views about sexual harassment) over the intervening 80 years.

I ask if she's met President M. Lee Pelton; she nods approvingly. What special quality does Willamette possess that she would like Dr. Pelton to be aware of? "We have tried to maintain interest in people, concern for people, watching to see that people have good opportunities in the world." And does she have any advice for Willamette's new leader? "Be yourself. Be as natural as you can. Try to remember what other people are attempting to do." She looks forward to getting to know him better.

Rooted in Salem, where she has lived, studied and worked since the age of seven, Mary Eyre has found "some variation" in her life by traveling (a European trip following her Willamette graduation, a summer in Mexico, and subsequent shorter jaunts). That's made her "a person of broader understanding."

A broader understanding is what she gave her students for 40 years at Salem (now North Salem) High, Senator Mark Hatfield '43, among them. So much so that Willamette invited her to be its commencement speaker a few years back, at the tender age of 79. So much so that the Salem-Keizer school district recently named an elementary school after her.

Mary Eyre's strong voice and clear articulation stick with me as I bid her good-bye. I might be nervous if she were in my congregation — would I get any better reviews than the country gospel performer? Perhaps not, but I could be assured that a generous heart tempers her critical mind. And in that she models qualities for those of us a half — and a third — her age.

# MARY EYRE

CLASS OF 1918



*By Charles Wallace*

“**D**id you enjoy the concert?” I ask, after we settle into the bay-windowed parlor of Salem’s Willson House retirement center. Mary Eyre has just attended the afternoon’s entertainment, a country gospel performance. She pauses a moment, then takes the liberty that every centenarian has earned and speaks her mind: “It was terrible — neither rhythm nor feeling!” Something in the set of her jaw and the force of her expression gives me a second thought: this woman has not just started speaking her mind recently.

The generous and genial Yada lets his actions speak for themselves. In his school days he was a champion wrestler and football player who earned his spending money by working on the family farm, deeded in his name because his immigrant parents could not purchase land. After graduating from Willamette with a teaching certificate in physical education, Yada took over the farm when his father became ill, following Japanese custom that placed responsibility with the eldest son. Today the Salem native still spends four hours a day working the fertile Lake Labish soil he loves. And on Sundays when Yada and his wife Masako drive to Portland to attend church and visit their three daughters' families, they are likely to fill their trunk with fruits and vegetables to give away. Says eldest daughter Jere Okada, "Dad has worked hard to provide what we kids needed, even when it was a struggle. Now he loves the freedom to do what he wants, how he wants." Clearly Yada values his independence, in contrast to days past when his freedom was tested. That time he would just as soon forget.

It began in December 1941, when Yada was 25. After Japan bombed Pearl Harbor, the United States and Japan entered World War II. The Yadas and other West Coast Japanese Americans faced curfews and travel restrictions; and items designated as contraband, including short-wave radios and cameras, were confiscated. In the Salem area Yada was appointed as the only Japanese American civilian policeman. But after President Franklin D. Roosevelt signed Executive Order 9066, the Yadas were among 120,000 Japanese Americans forced to abandon their homes and property. Leaving their 19-acre truck farm in the hands of a caretaker from the Labish farmers' cooperative, Yada and his family packed all they could carry. On the morning of June 2, 1942, they

boarded a train from Salem with 233 other Japanese Americans. "As far as I was concerned," reflected Yada, "I wasn't an enemy. I was a citizen of the United States. I didn't like it, but what could I do?"

The train was bound for Tule Lake, a dry, isolated lake bed in northern California. It was the site of one of 10 concentration camps designated for Japanese Americans. "Camp life was just like a prison," recalled Yada. Military police guarded the camp; barbed wire surrounded them. The seven Yadas lived in a one-room barrack, sleeping on army cots and hanging blankets to partition the room. They ate mutton stew and other distasteful meals in the mess hall; they shared bathroom facilities with about 40 families. Yada volunteered to head a recreation program where he organized baseball leagues and other activities for the confined residents. "But I wanted to get out," agonized Yada, who was able to find jobs harvesting sugar beets, working in the Tule Lake fire department and ordering goods for a hotel in Nebraska. Yada managed a hotel in Portland for awhile after the war, then married Masako Onishi and returned to run the family farm. The couple, married now for 52 years, resides there today.

Yada credits his parents with urging him and his three siblings to continue their education. "That's one thing the folks always told us. Follow up on our education." He and his wife have similarly encouraged their own three daughters: a teacher, an attorney and a children's advocate.

"I think I've gotten along with everybody. You have to give a little," reflects the peaceful, matter-of-fact man with the "got-to-do-it" attitude.

Then, as he recalls that unforgettable period in his life, he adds softly, "Don't let this happen again."



*By Linda Tamura*

# TATSUORO YADA

CLASS OF 1938

Once or twice a week each summer, Tatsuuro Yada '38 drives his white Chevy pickup to the back door of Salem's Union Gospel Mission. He unloads freshly picked lettuce, onions, acorn squash, corn or whatever his half-acre garden yields that week. "Steady as a rock" is how Mario Collins describes the 82-year-old retired farmer whose charity helps supply the mission's 475 daily meals. Once, when Yada learned the mission cook was short of onions, he returned the next day with three 100-pound sacks.

smile comes even more readily than usual. His children all live in the Portland area. His sons Scott and Kurt, and Kurt's wife Carol left town the day before our interview after surprising their dad with a house, lawn and deck clean up in honor of his 80th birthday. Putnam also has a daughter, Lee Foster.

When one reaches the age of 80, others expect to hear constantly of aches, pains and regrets. Putnam has but one: "I regret never having tried to be a professional actor, giving the business a try," he says. The son of a Methodist minister, he returned to the States after World War II, and earned his master's in radio speech from the University of Wisconsin. When looking for a Ph.D. program, he settled on Stanford, and only lacks completing his dissertation to have the title of doctor precede his name. The completion of this dissertation seems unlikely at this time. Why didn't he ever complete the work? "To me, the dissertation was like research in a vacuum," he replies, and one sees his point. Those of us fortunate enough to have made careers in the arts want to spend our time creating the art, not dissecting it in print.

Putnam made his stage debut in a fourth grade pageant. When asked what role he portrayed, he replies, "Tommy Toe." When I heard the name, I naturally assumed this fourth grade pageant was a symbolic tribute to our friend the foot, with each toe in its place. The theme of the pageant obviously had something to do with the concept that all five toes need to work together to create an effective foot, just as success in life depends upon teamwork and cooperating with others. A grand lesson for nine-year-olds, and indeed a notion from which we could all benefit in our everyday lives. I was a bit off the mark. "Tommy Toe was a tomato in the food pageant. You know Tommy Toe ... toe-ma-toe," Putnam patiently explained. Ah, I finally got it. It was a *food* pageant, highlighting the importance of vegetables ... or fruits; I do not wish to engage in the "Tomato: Fruit or Vegetable?" debate at this time.

From the humble beginnings of playing a tomato, Putnam went on to star in a play entitled, *Taking Father's Place* in high school. After returning from the war, he had a wife and plans for a family, so rejecting the gypsy life and low pay of a stage actor in favor of the relative security of a teaching career made sense at the time. There were other schools interested, but Willamette won out by offering more money, an exorbitant \$3,500 per year. In addition to *Hay Fever*, Robert's first two seasons included *Electra*, *She Stoops to Conquer*, *Lo and Behold*, and *Seven Keys to Baldpate*. In 1954, he co-founded the Pentacle Theatre, the extremely successful Salem community theatre which was designed and built entirely by volunteers, and has served as a creative outlet for local thespians for 45 years. These days, Putnam has become used to being introduced as the founder of Pentacle because "I'm the only one still living," he says, but he stressed that he was only one of four guiding lights that started and nourished the theatre.

Everyone in theatre has a favorite production or role. Putnam is fortunate to have several. In a production of *The Crucible* he directed at Willamette, he remembers, "I had seen the play the year before at another college and felt that the production was cold and not engaging. I don't like to sound as if I'm boasting, but I was very proud of our production, particularly the young man who played John Proctor. One of the most compelling performances I ever saw was one night toward the end of the play when we got to the crucial scene when John refuses to sign his name to a document he knows to be a lie. The actor totally went blank and forgot all his lines. He proceeded to deliver an incredibly emotional monologue that had nothing to do with Arthur Miller's words, but it was stunning. Of course, I couldn't condone this paraphrasing, and let him know, but it was a wonderful performance."

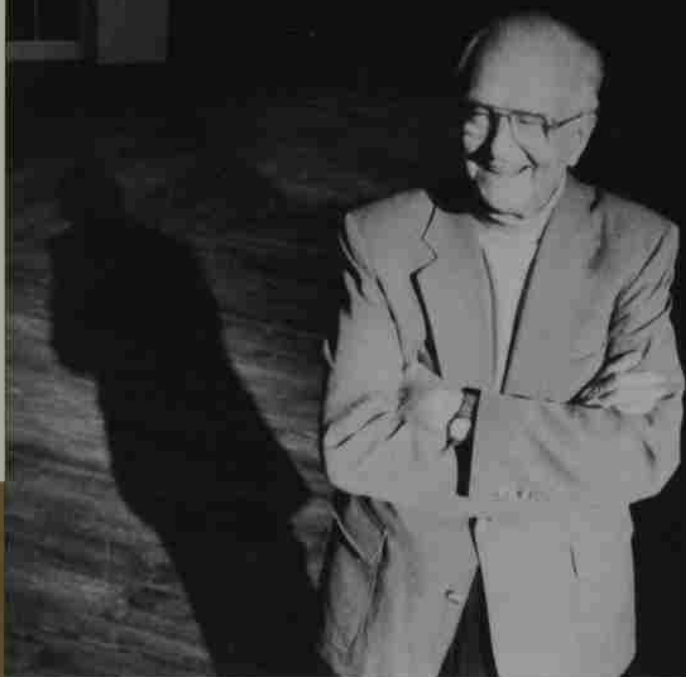
Putnam has had the opportunity to explore scripts most of us only dream of; for instance, he not only directed *King Lear*, he played the title role in the same production. "I don't know what I was thinking," he says now. While the double task proved incredibly challenging and exhausting, he greatly enjoyed playing Lear and the production provides his most embarrassing moment on stage. "Toward the end of the show, Lear is discovered lying in bed dying and has a reconciliation scene with Cordelia. One night as I was moving into position on the bed in a blackout before the scene began, the lights came up too early and caught me before I got into place. It diluted the reality of the scene a little."

Putnam has performed extensively at the Pentacle as well, and lists his roles in *On Golden Pond* and *The Gin Game* as among his favorites of all time. Is there any play he never had the opportunity to work on, but still would like to tackle? Only one: *On Borrowed Time*, one of those classic well made plays written earlier this century. When I think of that, I can't help but draw a parallel to Putnam himself, a classic from an earlier time when grace, humility, and a respect for one's art was a given. A time where cynicism enjoyed its rightful place as a balance to unwarranted optimism, but had yet to take over our consciousness as a life philosophy. A time where it was not considered uncool to believe in the good of people and the power of theatre to operate as both an instrument of social change and as pure entertainment. A time where these two aspects of our art form were considered complimentary to one another, not contradictory. From Tommy Toe to King Lear, from *Taking Father's Place* to *On Golden Pond*, Robert Putnam fashioned a rich and rewarding life in educational and community theatre and touched more lives than probably even he realizes. Theatre is a continuum, and we must always remember we are all part of a chain that stretches as far back as the first religious ceremony and first story told around a fire. Robert Putnam is an admirable link in that chain. As Shakespeare wrote in the closing lines of *King Lear*:

"The oldest hath borne most: we that are young  
Shall never see so much, nor live so long."

# ROBERT PUTNAM

*By Steven David Martin*



**M**ention to Robert Putnam that you've heard he was a one-man theatre department at Willamette for 20 years and you are met with what can only be described as a "scoff." It's a word we don't use much anymore, but I have never seen a better example of the word's true meaning. Bob Putnam actually *scoffed* at me. Which gave me an important insight into this fascinating man.

He is a genuinely humble human being in a field dominated by egocentrics. He has an easy laugh, which one hears often, and a gentle demeanor; he also, if one can surmise so much after one afternoon spent chatting in his living room, has few regrets about a life spent largely entwined with Willamette University. The truth is, Robert Putnam *was* a veritable one-man theatre department for 20 years, whether or not he owns up to the fact. Whatever success the department currently enjoys is directly attributable to his perseverance during the department's formative years. Putnam nourished the child department through its teens and well into adulthood. To put it into perspective, next year the Willamette University theatre

department will produce five mainstage shows, plus a dance concert with a full-time faculty of five, a part-time dance instructor and two other staff members. During his tenure, Putnam was producing four or five shows a year. Period. He did it all. He directed the productions, designed sets, costumes, occasionally acted in the shows, sold the tickets and did the publicity. Oh yes, he also built the sets and costumes, and oversaw the technical aspects of the productions. Of course, he did not carry out all these responsibilities entirely solus; indeed, he had student and other help with the set construction, costuming, etc. But he did oversee every single aspect of the Theatre Department from his first show, *Hay Fever* in 1953, to his last production, *The Night Thoreau Spent in Jail* in 1974. Putnam spent the last seven years of his Willamette career managing the Smith Auditorium before retiring in 1980. In this age of specialization, even in the arts, such an undertaking for one individual is practically unheard of. So what is this unique man like in person? The short answer: a delight.

It was on one of those wonderful Oregon afternoons when the sky's clear and blue, yet there's no doubt rain is lurking just around the top of the hour. Robert, or Bob as he prefers to be called, was changing out of his gardening togs into something he deemed more appropriate for an interview. Bob lives in a charming house near Bush's Pasture Park has the tangible aura of a life well spent. His wife, Jeannette, passed away eight years ago, and his love for her is palpable when he speaks of their shared past. His eyes dance and the

# DOROTHY PATCH GARLINGHOUSE

CLASS OF 1930

**T**he first thing that comes to mind when I think of Dorothy Patch Garlinghouse is a pleasant, firm and decisive voice on the phone inviting me to speak at a “gathering.” It was hard to say no – and I never did, for a couple of reasons: first, Dorothy was so organized that she normally contacted speakers considerably in advance of the actual date, and for someone who’s not sure what he’s doing for lunch, it’s hard to tell her in August that you’re busy next March 13.

Second, Dorothy is always involved with fascinating groups of people; and when I appear as a “guest speaker,” I learn at least as much from them as they do from me. Dorothy is involved in many groups, usually with themes relating to ethics, social justice, environment and international affairs.



Dorothy is a lifelong learner in the classic tradition of a liberal arts education. She remains engrossed in the vital issues of our day, determined that she and others around her must continually keep learning. She identifies herself with the “old school” that accepts it as a civic duty to work actively to promote positive change within the community. She cites an inscription on the Oregon Capitol building as her inspiration: “The mind of man knows no greater employment of its powers than the quest for righteousness in human affairs.”

Dorothy graduated as a history major from Willamette in 1930 when jobs in teaching, which was to become her life’s passion, were hard to find. She worked initially as the YWCA secretary in Baker, Ore., thus inauspiciously beginning a number of service positions with the YWCA, the last one as the “careperson” of Public Affairs for the YWCA board in Salem. (I’m sure I spoke there a time or two!)

In 1933 she got a teaching job in Halfway, outside of Baker, where she met and married Dennis Patch. Their paths led back to Salem, where Dennis served with the Oregon State Department of Education and handled the sensitive issue of school district consolidation. Dorothy embarked on a distinguished career teaching history at North Salem High School, where she was strongly influenced by Mary Eyre, another Willamette alum featured in this month’s *Scene*. Her favorite advice from Mary was: “Don’t just talk to the kids in the front row.”

Dennis died in 1972, and one year later Dorothy retired from the schools and became even more active in community affairs. She was involved in many organizations, including the YWCA, the American Association of University Women, Church Women United, the League of Women Voters, and The United Methodist Church. I especially recall her service in the Salem United Nations Association, which resulted in the informal title of “Mrs. U.N.” Her involvement earned her a Salem Distinguished Service Award in 1991.

It is typical of Dorothy to be involved in something new. In 1996 she married Lester Garlinghouse, an Oregon State graduate who served for many years as a vice president of Idaho Power. She contends that her interest in social causes required that she wait 26 years to remarry. As an 88-year-old bride, she relocated to a new life in Boise, Idaho. “I just move from one capital to another,” she laughs.

When asked for a passing bit of advice for readers of the *Scene*, Dorothy didn’t hesitate: “Live while you live, then die and be done with it.” Then she hastens to add: “But I plan to be around in 2008!” Don’t be surprised to see another article in the *Willamette Scene* in 10 years about an active 100-year-old lady named Dorothy Patch Garlinghouse determined to reform public attitudes of yet another state capital. She’s already invited me to speak to the United Methodist Women of Boise ...

By Russ Beaton

# HALLIE FORD

Philanthropist Hallie Ford is well-known at Willamette University today for her generous support of the fine arts. When asked how she sees herself, she answered that, while during her lifetime she's been a teacher, an artist, a world traveler and a golfer, the turning point in her life came with her move to Salem 26 years ago and her decision to take classes in painting from Professor Carl Hall. It was a turning point for Willamette as well.

Her initial move to help Willamette was the establishment of an endowment for art students, and her second was the establishment of a fund for the renovation of the art building. Her goal in both was to enhance recognition of the Art Department. In a recent conversation she shared some details about the beginning of her relationship with the University and the depth of her feeling for Willamette.

ADELE: Hallie, I have heard you mention before what a strong influence Carl Hall had on your education as an artist. As for me, I will remember him as a natural leader among the faculty when I started teaching here. He used to say that he saw himself as teaching students how to see, really to see.

HALLIE: Yes, it was thanks to those classes with Carl Hall that I decided to help the department. My next move was to purchase several large paintings by Carl Hall for the library. In the following years I was also to a lesser extent involved in funding programs in music and the library. For example, I am a life member of the Friends of the Library, and have been on the board of the Friends of the Library. I have been a voting member of the board of trustees of the University since 1975. In addition to all of that, I played golf in the fund-raiser "Fore Willamette" several times. In fact, that's where you and I first met, isn't it?

ADELE: Oh, yes, I remember it well: a beautiful September day at Illahee and we were both in pretty good form, weren't we?

HALLIE: If I had it all to do over, I would have started playing golf sooner! You see, I didn't really take up the game until I moved to Salem, and I just loved it.

ADELE: But to return to your other Willamette projects, I would like to understand your scholarship programs. Since I have known several students here who were Ford scholars, I am aware that you are involved in different kinds of scholarships, and I'd like to sort those out for our readers.

HALLIE: Well, I give four merit scholarships annually for students from Douglas County who attend Willamette. That is of key importance to me. Then, the Ford Family Foundation, of which I am one of the founders, offers other scholarships. I'll mention just one: the Opportunity Program which sponsors single parents at Willamette and other schools. This year there will be 40 Opportunity Program scholarships given; to date there have been a total of 130. This program is close to my heart.

ADELE: Yes, I can well understand that; some of those on the Opportunity Program are students I especially enjoy having in my classes; I



*By Adele Birnbaum*

am thinking of two current students, Annalivia Komyate and Sherry Wolcott. How about your most recent endeavors — bringing us Ann Copeland and the art museum?

HALLIE: The chair in literature, currently held by Professor Ann Copeland, was established about three years ago. I think it is a great step forward for the University to be increasing the number of endowed chairs in recent years. And this year I helped to establish the art museum, which has received so much publicity recently. I have also established an endowment for the future to enable the art museum eventually to become self-supporting. I find it exciting to have a museum in Salem which will draw people from a wide area, and I like the fact that it is slightly off-campus, which helps to break down the boundary between town and gown.

ADELE: Let me add a thought about breaking down barriers. As you perhaps know, Professor Ann Copeland, the chair in literature, is working toward the same goal; her well-organized and well-publicized readings, workshops, and panel discussions have been attended by students and visitors from all up and down the Willamette Valley. But now, Hallie, what do you suggest Willamette should look to for the future?

HALLIE: Keep those academic standards high! I think it's important to keep our emphasis on academics, not sports. Keep hiring wonderful faculty members, and, if possible, increase the number of endowed chairs even further. And I would like to ask you to close the article with this thought: One is not remembered for what one has, but for what one has given to family, community, state and nation. And now, would you care for a cup of tea and some homemade applesauce cake?

ADELE: (scribbling furiously) I'd be delighted!

This is vintage Charlie Perry: part poet, part singer, part humorist, 100 percent original and often hard to find. Ask him about his schedule and he pulls from his breast pocket a 12-week, computer generated calendar: Spanish club, choir practice, life writing class, computer club, Bible class, weekly coffee with fellow Willamette alums. He also sings in seasonal concerts around town, plays harmonica and accordion, writes voluminous amounts of poetry and, since 1984, has been a prominent member of the Salem Bicycle Club.

Yes, that's right: the Salem Bicycle Club.

Soon to be 84, Perry is their oldest active member. And active he is. By year's end he will have logged 1,700 miles on his 14-speed, aluminum Schwinn.

A local cycling legend, Perry hopes to complete his annual "century" — a ride of 100 miles — on his birthday in May, something he's been doing since 1980. Undaunted when wind and rain forced him out at mile 56 last year, he simply set his sights on a July bike rally in Eugene and successfully completed his "birthday hundred" a few months later.

"The bike club schedules a century right before my birthday," he says, adding with a grin. "I'm usually the first to leave and the last to return, I've slowed down so much."

Fellow club member Tom Artherton might disagree. He has participated in several of Perry's birthday rides and allows that Perry is "a little slow on hills, but get him on the level and he's hard to stay with."

While it's true that Perry is no fan of hills — he's even written one of many bike-related poems on the subject — this wasn't always the case. At age seven, he mounted a borrowed bicycle and took Salem's Fairmount Hill by storm. Hurling down Fir Street to Lincoln, he realized too late he had neglected to learn a crucial skill. "I didn't know a thing about back pedaling or how to stop," he laughs. "I jumped the curb and ended up on a rock in (what is now) the front yard of the Willamette University president's house."

Despite this bumpy start, Perry embraced bicycling with a passion. He's been racking up miles since completing his first long ride at age 13 — 80 miles from Salem to Mill City and back.

As an undergraduate at Willamette, where he majored in German and French, participated in interclass swim meets, sang with Freshman Glee and acted as a staff photographer for the *Wallulab*, Perry's bike was his main source of transportation.

He recalls riding to Waller Hall one afternoon in 1935 to shoot pictures of the city from the bell tower. He was down to his last frame when he noticed smoke pouring from the dome of the Capitol building. In the dimming light, he set his tiny Boy Scout Kodak on a ledge and took a single, brief, time exposure. "I claim it was probably the first picture taken of that fire," he says, noting that a copy of this historic photo now resides in the Oregon State Archives and can be found on their Internet site.

Since graduating in 1937 ("by the skin of my teeth," he notes dryly), Perry has pedaled many thousands of miles. Not long ago, he estimates, he was still logging 3,500 miles a year. He's toured dozens of states as well as parts of Canada, Australia and New Zealand. He even borrowed a bike from the Red Cross while stationed in London during WWII, and made a trip through England and Scotland.

He counts as his most memorable ride one he made in 1940, when he was living in upstate New York. He covered 1,500 miles around the Great Lakes and into Toronto, all in the span of two weeks. "I couldn't afford a car and I wanted to see the area," he says, adding, "It looked like a flat route, so I took it."

Perry is nothing if not consistent. Returning to Salem after retiring from the New York Telephone Co. in 1984, he continues to seek level ground. A favorite local ride is one he plotted for the bike club. He calls this his "Centipede Century" and describes it as "a hundred miles, as flat as I could make it."

Perry may not like toiling up hills but he can't resist a challenge. He completed the first of four 190-mile, Seattle to Portland rides at age 70, and has done each in a single day. "I didn't consider it a challenge to do it in two," he says.

"Charlie's got more get-up-and-go than most individuals," says former bike club member Hal Scheyer. And, with all his other talents, he brings a little something extra to club outings. Scheyer cites Perry's campfire recitations of original poetry, and neither he nor Artherton can think of another cyclist who packs an accordion for entertainment after a long day of biking. Perry's been known to do both of these things at the club's annual July Fourth ride-around and camp-out in Central Oregon's Tumalo State Park.

Club president John Henry Maurice remembers something else about the Tumalo ride. "When I first joined the club in '93, Charlie pulled up (to the campsite) and couldn't find his tent. He ended up sleeping out in the open ... then finding his tent the next morning! Every year he forgets something. He forgot his bike shorts one year."

While Perry is known for his sense of humor and his ability to roll with the punches, Maurice emphasizes that he is also a role model. "Just the fact that Charlie still gets up on his bicycle" provides inspiration, he says.

Perry's advice to other seniors? "Associate with younger people." And don't be deterred by a few bumps in the road. With all the mileage he's put in over the years, Perry has hit a few himself. "I'm a firm believer in helmets because I've had three crashes that could have been serious," he says. Still, he's never considered giving up the sport entirely.

"I turn 85 in the year 2000," he says. "I intend to keep riding as long as I can."



# CHARLIE PERRY

CLASS OF 1937

**T**ry phoning Charlie Perry '37 and you're not likely to find him at home. An unusually active 83-year-old, Perry is more often out than in. Like any good man of the '90s, however, Perry is loathe to miss a call. On a brilliant October day, with fall foliage brightening trees around town, a call to Perry's Salem number is answered by machine. It's technology with a twist: Perry's voice serenades the caller with a personalized version of "Autumn Leaves," ending with a promise to "return your call before the leaves fall."

*By Kristen Wilson*

Bicycling up steepest hills  
Ain't exactly full of thrills.  
Though, admittedly, descending  
Brings excitement worth commending.  
Struggling, sweating, grinding, cussing,  
Lost derailleurs, chains, and fussing –  
Is it really worth all that  
Opposed to riding on the flat?

—*from Biking Uphill, by Charlie Perry*

**Faculty Retirement Dinner**

May 7, 1999

Two Willamette professors will be honored Friday, May 7, 1999, at a faculty retirement dinner. Professor Frances Chapple has served on the faculty of the Chemistry Department for over 30 years, since 1966. In her years at Willamette, she has taught introductory, organic, analytical and physical chemistry. James Bjorkquist has served on the faculty of the Sociology Department since 1968. A reception for both retirees will start at 4:30 p.m., followed by dinner and a program at 6 p.m. in the Car Tavern, Putnam University Center. If you are not a chemistry or sociology major, but would like to be invited, please call Cheri Nopp at (800) 551-6794 or (503) 375-5304.

**Commencement Weekend**

May 15-16, 1999

Commencement will be held on the quad on Sunday, May 16. Weekend events will begin with the president's reception on Saturday, May 15, at 4 p.m. CLA baccalaureate will be at 11 a.m. on Sunday, and departmental open houses will begin at 12:30 p.m.

University commencement will be Sunday at 3 p.m., followed by a reception.

Further details will be sent to parents of seniors in March, and will be announced on the Willamette website: <[www.willamette.edu](http://www.willamette.edu)>.

**Homecoming Weekend**

September 24-26, 1999

Classes with years ending in 4 and 9 will celebrate their reunions Homecoming Weekend, September 24-26, 1999. Mark your calendars today!

**1997 ALUMNI DIRECTORIES**

Get your 1997 alumni directory today at a reduced price. Alumni listings are sorted by school, class year and geography. Only \$9.95 plus \$3 shipping & handling.

## 1999 Alumni Travel Opportunities

The Continuing Education Committee for the Willamette University Alumni Association has endorsed these travel opportunities for alumni (and friends!) for 1999. For more information, contact the Office of Alumni Relations, 900 State Street, Salem, OR 97301, (503) 375-5304 or e-mail <[alumni@willamette.edu](mailto:alumni@willamette.edu)>.

**Irish History and Literary Culture**

June 4-July 3, 1999

Join Willamette professors Carol Long and Kelly Ainsworth on a four-week post-session trip to Ireland. Tour museums in Dublin and visit Trinity College and Howth Head. Visit the historic cities of Northern Ireland, including Belfast, Derry and Armagh. Hike through the mountains of Mourne and Sperrin (where Semus Heaney drew much of his poetic inspiration). Visit the counties of Donegal and Sligo in the country of Yeats. Experience the city of Galway and tour the Connemara, the Gaeltache, the Aran Islands, Thor Ballyee and the Ring of Kerry with a final stop in Cork before departing from Dublin. Preliminary price is \$3500, and includes airfare, food and lodging. For more information, call Kelly Ainsworth at (503) 375-5493 or e-mail <[kainswor@willamette.edu](mailto:kainswor@willamette.edu)> or Carol Long at (503) 370-6285, e-mail <[clong@willamette.edu](mailto:clong@willamette.edu)>.

**Golf Tour**

Mid-to-Late June 1999

Two venues are being considered for a 1999 golf tour: 1) the wine country in France, and 2) the Myrtle Beach area in South Carolina, considered one of the best areas for golf in the U.S.

**English Legal Heritage III  
College of Law**

July 2-10, 1999

Earn 15 hours of continuing legal education (CLE) studying English legal history and civil and criminal trials, including the Old Bailey, Royal Courts of Justice and Inns of Court. Price includes dormitory lodging at Mansfield College (Oxford University, founded in 1886) for eight nights, breakfast daily, three lunches, transportation for all class-related activities in England, a welcome reception, dinner and theatre in Stratford, High Table dinner, speaker fees, guides, tips,

CLE and materials. Price does not include airfare, extra meals, entrance fees or entertainment. Trip is limited to 40 persons. Twin room accommodations \$1400 (CLE), \$1200 (without CLE); single room accommodations \$1500 (CLE); \$1300 (without CLE). For more information, call Sharon Blus at (503) 370-6492 or (800) 930-ALUM or e-mail <[law-alumni@willamette.edu](mailto:law-alumni@willamette.edu)>.

**Shakespeare in Ashland**

August 6-9, 1999

Travel to Ashland (or meet the group there) on a four-day Shakespearean adventure. Led by English Professor Bill Braden and Alumni Director Jim Booth, delight in classics such as *Othello*, *Much Ado About Nothing*, *Pericles* and *King Henry IV, part 2*. Other plays include *Chicago*, *Seven Guitars* and *The Three Musketeers*. Trip is limited to 25. Estimated cost is \$595 (double occupancy) and \$745 (single occupancy).



## ALUMNI CONNECTIONS

### WU Older Alumni: Solid Gold

Jim Booth '64, Director of Alumni and Parent Relations

When I heard that the theme of this issue was "Willamette Gold," highlighting our older alumni, I knew this column would be easy to write. Since coming to this job in 1989, I have had many experiences with alumni who have continued to stay connected to their alma mater despite the temptation to slow down a half century or more after graduation. This fall provided some excellent examples.

Of course, the most notable of these golden alumni would have to be Mary Eyre '18 H'75, who returned this fall for her 80th class reunion! Just getting here was an amazing feat, but I particularly liked the fact that she was here to celebrate the Alumni Citation being given to Thomas Edwards '53, whom she had nominated. Nominating a fellow alumnus/a for recognition is a great example of alumni involvement. If Mary Eyre can do it 80 years after graduation, maybe there's hope for the rest of us!

At the same Alumni Banquet in September, the invocation was given by Charles Neville '38, a former citation winner who was back to celebrate his 60th class reunion. At the end of the evening, the traditional "Ode to Willamette" was led by Betty (Starr) Anderson '40 with accompaniment by Edith (Findley) Brydon '32. These two loyal alumnae have participated in the

last six Alumni Banquets, sharing their talents with their alma mater, another good example of alumni involvement.

Still another great example was the exemplary service of the late Dwight Lear '29 E'32. Although he passed away in October at the age of 90, Dwight was inducted into the Athletic Hall of Fame in November for meritorious service. A longtime member of the Cardinal Round Table, Dwight may have attended more games than anyone else in history, with the possible exception of his friend, Les Sparks. Appropriately, Dwight received the Sparks Medallion for service to the University in 1995.

Staying connected to your alma mater can be as simple as attending regional events. In October, some of Willamette's older alumni turned out for receptions in the Bay Area. Dean Lobaugh '27, Clarence Poor '32, Gus Moore '33, Margaret Purvine '34, Harry Mosher '37 H'81, and George E'38 and Winifred (Gardner) '36 McLeod all came to meet President Lee Felton. What an inspiration they are!

Willamette's rich heritage is embodied in its alumni, from the oldest to the newest. It is appropriate that the legacy of continuing involvement with Willamette is being handed down so well by our older alumni. They are, indeed, solid gold!

### Alumni Activities

#### Presidential Inauguration

February 19, 1999

See calendar on inside back cover for event schedule.

#### Track & Field and Cross Country Reunion April 10, 1999

Willamette's track & field and cross country alumni/ae will have the opportunity to "meet" again on April 10 for a special reunion honoring their association with each program throughout the years. Kelly Sullivan '79, current head coach for cross country and track & field, and the Office of Alumni Relations will make special arrangements for you to attend a five-way track & field conference hosted by Willamette at McCulloch Stadium. Following the conference, there will be a reception starting at 5:30 p.m. and reunion dinner and program at 6 p.m. If you would like to help with this event, please contact Cheri Nopp in the Office of Alumni Relations, (800) 551-6794 or (503) 375-5304.

#### Alumni Leadership Conference

April 23-24, 1999

Once again, the Office of Alumni Relations is presenting its biennial Alumni Leadership Conference (ALC) for alumni who are interested in volunteering for the University. Past conferences have focused on organizing class reunions, regional events, and helping with admissions, career, financial support or continuing education programs. This year, our ALC will focus on financial support of the class agent program and the 50 by 2000 Campaign. The conference will be held on campus April 23-24, 1999, and will feature campus updates from vice presidents and deans, meals with faculty and students, and small group discussions and meetings. Class agents should definitely plan to attend. If you would like to be on the invitation list or if you are interested in being a class agent, please call Cheri Nopp at (800) 551-6794 or (503) 375-5304. Room and most food costs will be covered.



# Willamette University Bookstore

**MV**  
SPORT



**IA. Everest Jacket.** This all-occasion jacket features a full-zip front, concealed hood, elastic waist and cuffs, and two hand-warmer pockets. "Willamette University" left chest embroidery. Water-resistant, brushed 100% nylon with mesh lining. Stone/green or royal/black. M, L, XL \$44.95

**IB. Golf Shirt.** This relaxed-fit, athletic-cut polo has a drop tail, knit collar, and banded sleeves. Features "Willamette University" embroidery. 100% cotton piqué. Spruce green or navy. M, L, XL \$27.95 XXL \$29.95

**IC. Pro-Weave® University Sweatshirt.** Oversized crew features "Willamette University" imprint, oversized fit, and extended waist and cuffs. 80% cotton/20% polyester. Forest or navy. M, L, XL \$28.95 XXL \$32.95

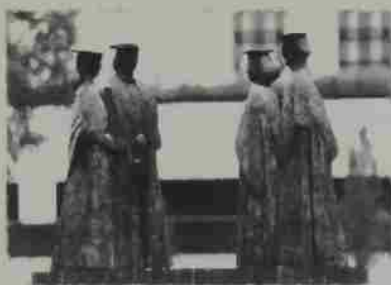
Also available:

**ICC. Short-Sleeved Shirt.** 100% cotton. M, L, XL \$13.95 XXL \$15.95

**ID. Alpine Fleece Woodland Shirt.** Indoors or out, this practical shirt/jacket sets the standard in style. Button front with two flap pockets and a corduroy collar. Polyester fleece provides lightweight warmth. "Willamette University" embroidery. 100% polyester fleece. Blackwatch plaid/tan. M, L, XL \$54.95

**IE. Denim/Twill Jacket.** A rugged look with a soft feel. Cotton denim body with contrasting cotton twill sleeves. Antique brass snap front; striped knit collar, cuffs, and waistband. Quilted cotton lining. "Willamette University" embroidery. Denim/natural. M, L, XL \$69.95 XXL \$72.95

**(503) 370-6315**



## CLASS LINKS

### 1930s

- **Esther (Black) '36 and Dwight B. '37 Aden** live in Spokane, Wash. Dwight shoots his age, 83, in golf and Esther volunteers two days a week in a first grade class.
- **Lorene (Tompkins) '38 and Verne C. '38 Reiersen** live in Beaverton, Ore. Verne retired as director of the Center of Public Health Studies and is professor emeritus at Portland State University.

### 1940s

- **Marge (Herr) Caldwell '41** was elected to the board of trustees of the YWCA of Salem. She served for many years on their board of directors.
- **Margo (Wright) '41 Florea** and husband Louie celebrated their golden wedding anniversary June 7 with a party at Peninsula Park in Portland, Ore.
- **Glenn A. Olds '42 H'55** of Portland, Ore., is actively engaged in trying to save the United Nations, and create an international criminal court to try terrorists and individuals through the U.N. system. He spoke at the annual conference on U.N. reform at Oberlin College in June. He also attended his 60th reunion at Estacada Union High School.
- **Ednamae "Hoppi" (Hopfer) Bryan '43** and husband Cebert were awarded the U.S. Coast Guard Meritorious Public Service Award, the highest civilian award. The honor was presented by Admiral Robert E. Kramek on April 18 in recognition of notable services which have assisted greatly in furthering the aims and functions of the Coast Guard.
- **Jean Williams '43** of Salem enjoys retirement and time spent with her four grandchildren.
- **Ray Short '44** and wife Jeanette of Lafayette, Ore., received the highest honor of the World Federalist Association in Washington, D.C. They are the seventh recipients of the award since the organization's inception in the 1940s. A building in Washington, D.C., was renamed the Ray and Jeanette Short Peacemaker's building. Also at the award presentation was former U.N. ambassador Glenn Olds '42 H'55, chairman of the WFA board.
- **Alice (Rose) Jones '47 MME'62** of Everett, Wash., retired as a marketing representative in securities, although she does financial consulting on the side.
- **Helen (Wynn) Hoalst '48** and husband Preston of Nampa, Idaho, celebrated their 50th wedding anniversary Sept. 3.
- **Mary (Parker) Robison '48 MEd'52** of Lake Oswego, Ore., was pleased that WU was the site of the Oregon State Chapter of P.E.O. annual convention in June 1998.
- **Mary Phyllis (Gerth) '48 and Wallace '49 Baumer** celebrated their 50th wedding anniversary August 22 in Portland, Ore. In attendance were four of their children including Paul '74 and Barbara (Dauben) '75 Baumer, six grandchildren, and many family members and friends. Both Mary Phyl and Wally are retired school teachers.
- **Melvin Lion '49** and wife Elaine moved to Charbonneau, a golf course community near Wilsonville, Ore.

### 1950s

- **Marjorie (Cooper) Fleck '50** and husband Benjamin of West Linn, Ore., toured New Zealand's south island during Christmas 1997 with their son, David, an assistant professor of biology at the University of Guam.
- **David O. '51 and Marian (Sayre) '51 Poindexter** live in Beaverton, Ore. David retired as president of Population Communications International and will assist with its international programs. He was named honorary chair of the Population Media Center. Marian consults in Christian education.
- **Phillip E. Hammond '52 E'53** of Santa Barbara, Calif., had his latest book, *With Liberty For All*, published in February 1998.
- **Bo Diane (Brooks) Johnson '52** and husband Karl moved to San Marcos, Calif. They are still in the antique business and

enjoy being close to the beach, their sons and grandchildren.

- **Gloria (Spencer) Crowson '53** and husband Don of Newport News, Va., are neighbors of Edward Kollman, assistant professor of philosophy at WU 1948-51 and associate professor 1951-52. Gloria reports that Dr. Kollman is in his 80s and still teaching—and enjoys reading the Scene.

- **Marie (Corner) Hitchman '53** of Bellingham, Wash., participated in two work trips to Dominica, where she served in the Peace Corps in 1992-94. In February 1997 she helped document folklore with an Earthwatch team, and in November she worked on a Nature Conservancy project with Trout Pitons National Park.

- **Dale T. '54 and Janet (DeWeese) '55 Ackerman** live in Camarillo, Calif. Jan returned to teaching after retiring in 1995, as the reading specialist for Rio Real School. Dale is retired but is active as an educational consultant.

- **Beverly Jean (Lytle) Kelley '54** is a freelance journalist and photographer in Kennewick, Wash. She is also grandmother to David Fredrick Kelley born Jan. 24, 1997.

- **Robert J. Dyer '55** and wife Diane are in Greensboro, Ga., where Bob golfs with Bob Miller '56 and Wes Malcolm '56.

- **Thomas M. Raitt '55** of St. Paul, Minn., is active in his local Methodist church. He is interested in wildlife and conservation, enjoys the outdoors and did some canoeing in the summer. He is looking forward to another class reunion.

- **Nancy (Baker) Toole '55** retired from the V.A. Outpatient Clinic in Orlando, Fla., in June 1998. She moved to Rockledge, Fla., and is working on a degree in computer programming.

- **James F. Verdick '55** is retired and is glad to be back in Oregon. He and wife Jane live in Medford, Ore.



# 50 BY 2000 CAMPAIGN

—An Alumni Association Endorsed Campaign

**ATTENTION ALL ALUMNI!** By now, you have most likely heard about the Alumni Association goal of achieving 50 percent alumni participation in the annual fund by the year 2000. Your participation is critically important as a measure of satisfaction with your alma mater. A 50 percent participation rate will help us to compete for major gifts, foundation grants, higher rankings and prospective students. Below you will see your class's current (through November 30) percentage and the number of classmates needed to hit 50 percent participation during this fiscal year (June 1, 1998-May 31, 1999). We look forward to your support for this effort by your Alumni Association.

Class of 1922	100%	0 more to reach 50% goal	Class of 1960	12%	56 more to reach 50% goal
Class of 1923	0%	1 more to reach 50% goal	Class of 1961	11%	71 more to reach 50% goal
Class of 1924	0%	3 more to reach 50% goal	Class of 1962	10%	79 more to reach 50% goal
Class of 1925	0%	3 more to reach 50% goal	Class of 1963	9%	75 more to reach 50% goal
Class of 1926	11%	4 more to reach 50% goal	Class of 1964	14%	74 more to reach 50% goal
Class of 1927	27%	3 more to reach 50% goal	Class of 1965	8%	100 more to reach 50% goal
Class of 1928	20%	3 more to reach 50% goal	Class of 1966	13%	88 more to reach 50% goal
Class of 1929	25%	3 more to reach 50% goal	Class of 1967	11%	76 more to reach 50% goal
Class of 1930	16%	7 more to reach 50% goal	Class of 1968	11%	94 more to reach 50% goal
Class of 1931	0%	9 more to reach 50% goal	Class of 1969	13%	88 more to reach 50% goal
Class of 1932	12%	13 more to reach 50% goal	Class of 1970	10%	82 more to reach 50% goal
Class of 1933	13%	12 more to reach 50% goal	Class of 1971	13%	80 more to reach 50% goal
Class of 1934	8%	16 more to reach 50% goal	Class of 1972	9%	110 more to reach 50% goal
Class of 1935	17%	10 more to reach 50% goal	Class of 1973	10%	95 more to reach 50% goal
Class of 1936	14%	15 more to reach 50% goal	Class of 1974	9%	103 more to reach 50% goal
Class of 1937	6%	21 more to reach 50% goal	Class of 1975	9%	96 more to reach 50% goal
Class of 1938	10%	23 more to reach 50% goal	Class of 1976	7%	103 more to reach 50% goal
Class of 1939	16%	20 more to reach 50% goal	Class of 1977	10%	96 more to reach 50% goal
Class of 1940	18%	22 more to reach 50% goal	Class of 1978	10%	103 more to reach 50% goal
Class of 1941	15%	25 more to reach 50% goal	Class of 1979	9%	97 more to reach 50% goal
Class of 1942	18%	31 more to reach 50% goal	Class of 1980	7%	114 more to reach 50% goal
Class of 1943	8%	28 more to reach 50% goal	Class of 1981	12%	99 more to reach 50% goal
Class of 1944	8%	27 more to reach 50% goal	Class of 1982	7%	107 more to reach 50% goal
Class of 1945	21%	21 more to reach 50% goal	Class of 1983	11%	96 more to reach 50% goal
Class of 1946	12%	20 more to reach 50% goal	Class of 1984	5%	124 more to reach 50% goal
Class of 1947	16%	31 more to reach 50% goal	Class of 1985	10%	90 more to reach 50% goal
Class of 1948	9%	43 more to reach 50% goal	Class of 1986	5%	107 more to reach 50% goal
Class of 1949	13%	54 more to reach 50% goal	Class of 1987	5%	100 more to reach 50% goal
Class of 1950	8%	64 more to reach 50% goal	Class of 1988	9%	133 more to reach 50% goal
Class of 1951	11%	62 more to reach 50% goal	Class of 1989	8%	137 more to reach 50% goal
Class of 1952	13%	63 more to reach 50% goal	Class of 1990	6%	147 more to reach 50% goal
Class of 1953	2%	62 more to reach 50% goal	Class of 1991	9%	134 more to reach 50% goal
Class of 1954	7%	65 more to reach 50% goal	Class of 1992	6%	150 more to reach 50% goal
Class of 1955	10%	58 more to reach 50% goal	Class of 1993	9%	169 more to reach 50% goal
Class of 1956	12%	60 more to reach 50% goal	Class of 1994	6%	171 more to reach 50% goal
Class of 1957	7%	80 more to reach 50% goal	Class of 1995	8%	164 more to reach 50% goal
Class of 1958	15%	51 more to reach 50% goal	Class of 1996	9%	150 more to reach 50% goal
Class of 1959	4%	65 more to reach 50% goal	Class of 1997	5%	177 more to reach 50% goal

• **Carol Jo "C.J." (Knudsen) Inman '64** of San Carlos, Calif., works three days a week as a dental hygienist. She is also a registered parliamentarian and hopes to make a career change.

• **Bill Slimak '64** of Pacific City, Ore., retired in August and is looking forward to attending the class reunion in 1999.

• **Charlotte (Castillo) Bara '65** of Milliani, Hawaii, teaches piano and guitar, and directs the choral and handbell choirs at Wheeler Army Base. She toured Europe with the Honolulu Chorale in July, giving concerts in Germany, Austria, Switzerland and France. She then met husband Hébert and their children in Paris and went to his hometown of Toulouse, France, to visit relatives. She also heard the WU choir in concert in Honolulu last winter and says they were superb.

• **Sharon Ellison '65** of Oakland, Calif., published *Don't Be So Defensive!* The book shows a way to communicate that is both peaceful and powerful. (See related article on page 28.)



• **Dennis D. Riley '65** professor of political science and coordinator of public administration and policy analysis at the University of Wisconsin-Stevens Point, was recognized for excellence in teaching

in September. His expertise in public personnel administration led to the writing and publishing of a textbook on the subject. With the assistance of two colleagues, he designed and implemented a major in public administration and policy analysis.

• **Carolyn Moore '66** of Portland was the recipient of the C. Hamilton Bailey Fellowship in Poetry from the Oregon Literary Arts in April.

• **Linda (Moore) Stumpf '66** retired in June. She and husband Bill live in South Lake Tahoe and are real estate brokers. Linda also substitute teaches and Bill does product photography and videography.

• **Roger O. Weed '66** is a professor in the counseling and psychology department, and coordinator of the graduate rehabilitation counselor training program at Georgia State University. His book, *Life Care Planning and Case Management Handbook*, was released in July.

• **Lynne (Williams) Booher '68** and husband David are elementary school principals in the Portland area. Both have been thrilled at hiring WU graduates. They enjoy regular gatherings with **Luanne (Tuller) '69** and **Leland "Rocky" '70 Johnson**, **Kathy (Albertson) '69** and **L. Douglas '69 Warnaca**, and **Gail (Bittner) Bonnicksen '68** and husband Bill, all with ties to Alpha Chi Omega.

• **Judy (King) Jacoby '69** and husband Harold live in Grants Pass, Ore. Their two sons have joined Harold in forming a construction and development company, *Jacoby Homes, Inc.*

## 1970s

• **Charles R. Bennett '70** adapted Plautus' comedy *The Bothers Menaechmus* which was the spring play at Linfield College. Chuck is president of Santiam Information Services, Inc., in Salem.

• **Karen (Cooper) Campbell '70** is worldwide channels marketing communications manager at Hewlett Packard in Santa Clara, Calif. She is responsible for messaging and visual identity of "HP Partnership" programs. Business travel has taken her to Singapore, Tokyo, London, Geneva and Stuttgart.

• **James Kubitz '71** is director of project planning for the Alaska Railroad Corporation in Anchorage.

• **Laura (Steege) '71** and **George '71 Manthey** live in San Jose, Calif. George is serving for two years as lead principal for the San Francisco Bay Applied Leadership Center, which is funded by the Hewlett Foundation. Laura is a library specialist at Alta Vista School in San Jose.

• **Mary Andrews '72** divides her time between Milton, Wash., and Chicago, Ill., working for Heery International. She is an associate project manager for the Northwestern Memorial Hospital Redevelopment Project, procuring equipment for the new hospital.

• **C. Akin Blitz '72** became a partner in Bullard Korshoj Smith & Jernstedt, a Portland-based management labor and employment law firm, in September.

• **Douglas C. Brown '72** of Silverton, Ore., left the practice of law after 20 years and works for the Oregon State Police.

• **Jim Buzan '72** retired after 26 years of teaching and is district manager for Primerica Financial Services. He and wife **Pam (Anders) '72 Buzan** live in Portland, Ore. Pam is a customer service representative for AAA of Oregon.

• **Alan Jenkins '73** is a senior workers' compensation consultant for Kaiser Permanente's regional occupational health department in Oakland, Calif.

• **Lucinda (Renzel) Pecota '73** and husband David live in San Jose, Calif. Lucinda works at Sartorette Elementary School as an RSP aide.

• **Lynne (Mitchell) Baab '74** published her first book, *Personality Type in Congregations: How to Work With Others More Effectively*. She is an associate pastor at Bethany Presbyterian Church in Seattle, Wash.

• **Kristen (Wiper) Barry '74** and family moved to Spokane, Wash., where her husband is general manager and producer for North by Northwest Productions.

• **Bradley S. Victor '74** of Salem is a health specialist with the Oregon Department of Education. He completed his classwork in the Ph.D. program in education at Oregon State University and is working on his dissertation.

• **P. Barton DeLacy '75** of Lake Oswego, Ore., is manager of the real estate valuation group of Arthur Andersen in Portland.

• **Steven L. Mitchell '75** is minister at The United Methodist Church in Silverton, Ore.

• **Dee (Miller) Staple '75** of Salem is a self-employed commercial real estate appraiser.

• **Randall '77 L'80** and **Patricia (Nosen) '79 Bateman** live in Portland. Randy is an attorney with Preston Gates & Ellis. Patty is a homemaker and sign language interpreter, and is active with the Portland public schools. The family took a sabbatical trip to Europe in summer 1998.

• **William T. Spence '77** is a new homes sales representative in Phoenix, Ariz.

• **Ronald T. Cartmell '78** and wife Darlene of Hendersonville, Tenn., were married on Dec. 21, 1996. Ron is a clinical network relations coordinator for Premier Behavioral Health and has private practices in nursing and behavioral psychology, and a business in cooperative marketing.

• **Charles W. Pickett '56** of Keizer, Ore., retired after nearly 39 years with State Farm Insurance. He and wife Lenore are enjoying retirement immensely. Charles participated with the Salem Senate-Aires Barbershop Chorus at the 1998 International Barbershop World Championships in Atlanta, Ga., in July.

• **David S. Wood '56** of Boulder, Colo., is a Spanish teacher at Arvada High School. In 1998 he made presentations to the Colorado Congress for Language Teachers in February in Colorado Springs, and the Southwest Congress on Language Teaching in April in Phoenix, Ariz. Summers he helps his wife, Sue, drive throughout the state for her work with the Colorado Board of Nursing. He also backpacks, canoes, plays guitar, enjoys the outdoors and attends Bluegrass Festivals.

• **Charles "Chuck" Marsters '58** retired in 1997 and moved to Bend, Ore. He is writing science fiction, landscaping and visiting family in Oregon, Texas, Georgia, Virginia and Florida. He is looking forward to the 40th reunion of the Class of '58.

• **Ralph '58 and Coralie (Roseberry) '57 Van Horn** of Tigard, Ore., divide their time between Oregon and Tucson, Ariz. They are parents of **Julie (Van Horn) Beairsto '82** of Menomonee Falls, Wisc., and **Cherie (Van Horn) Oldenburg '81** of Milwaukie, Ore.

• **Miriam (Mathews)-Weinbender '58** is a self-employed writer and educator in Pacific City, Ore.

• **Dick '59 and Judith (Hicks) '62 Audley** live in Berkeley, Calif. Dick went to Washington, D.C., with a WUCL alumni group led by Gary Lockwood '57 E'60.

• **Mary (Kramer) Kryder '59** moved back to Balboa Island, Calif., to the home where she was raised after 30 years living in Lafayette, Calif.

## 1960s

• **J. Truman Baird '60** of Eugene, Ore., retired after 30 years with the Oregon State Board of Higher Education. He plans to travel, do public service, golf and garden.

• **James Warner '60 ME'62** of Renton, Wash., enjoys retirement and substitute teaches music in the Kent, Wash., schools. He and wife **Kathy (Barnard) '61** also enjoy "star parties" — overnight camping with their telescopes.

• **Gerald "Jerry" May '61** is a division manager for the Space Initiatives Division of Anser Corporation in Arlington, Va., providing support for the Ballistic Missile Defense

Office, Department of Defense Space Architect, NASA, Secretary of the Air Force and the Naval Surface Warfare Center.

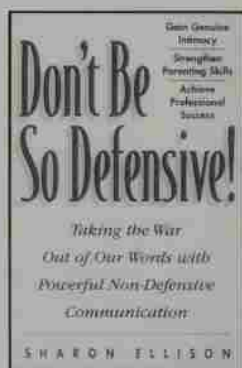
• **Barbara (Sherk) Schacht '61** and husband William are interim pastors; she at Westminster Presbyterian Church in Fort Wayne, Ind., and he at the First Presbyterian Church in Columbia City, Ind. They have also served in churches in Illinois, Washington and Alaska.

• **Caroline (Parr) '62** and **Michael '62 Estcourt** have retired and moved to Olympia, Wash., to be near their grandchildren.

• **Clinton W. Kersten Jr. '62** retired from the data processing department at the Puget Sound naval shipyard in Bremerton, Wash., in September 1997.

• **Penelope "Penny" (Post) Lewis '62** of Seattle, Wash., recently connected with the daughter of **Patty (Whelan) McAlister '60** of Yakima, Wash. Penny and Patty traveled with the WU choir in 1958-60. Penny is the associate director of development at the Overlake School in Redmond, Wash., where Patty's daughter, Erin, is choir director.

## Sharon Ellison '65



Sharon Ellison '65 believes that we communicate like we wage war, and that the defensiveness born out of this struggle is ruining relationships and lives. In her new book *Don't Be So Defensive!* Ellison shows not only how and why we become so defensive in our communication with others, but how we can retrain ourselves to be more open.

Ellison's interest in relationships and communication began with psychology classes at Willamette. However, since she wanted to know more about how people communicate, she soon switched to sociology. "The source of this interest really began in my childhood," she said. "I can remember thinking even then that there was so much needless pain.

I was always taken aback when people said violence was 'just human nature,' or when I saw how people tend to close down rather than open up during conflict."

When Ellison graduated from college she became a counselor with Marion County Juvenile Court. As she studied different psychological theories, she realized there was not much training available in the area of communication. Eventually she began to evolve her own ideas and began doing parent training and play therapy in Eugene. "People began to tell me that what I was teaching was very 'revolutionary and disarming,'" she said. "I realized people generally used the same rules to talk to each other that they would use in physical combat. Often, even with our friends and loved ones, we couldn't be open or vulnerable. We wouldn't be open or vulnerable in war, and we carried that premise from the battlefield into conversation. People only choose to be open and vulnerable if there is a very high level of trust."

Out of that revelation, Ellison organized two systems for communicating: The War Model and The Non-Defensive Model. Ellison takes the reader through a step-by-step process, showing how defensiveness makes us less secure and less confident, and more closed to learning; how it puts a ceiling on our potential and drives others away.

The model for non-defensive communication is something that could be used even beyond our individual relationships. "As we work for peace in the world," she said, "we often forget that the process determines the outcome. How can we expect world leaders to work together if we can't communicate across our own dinner table?"

Ellison is the founder of Ellison Communication Consultants and lives in Oakland, Calif., with Manza Naff, her partner of 13 years.

If you would like a copy of *Don't Be So Defensive!*, it is available at the Willamette bookstore. For cost and ordering information, call Bob Kister, (503) 370-6315, or e-mail him at <rkister@willamette.edu>.

- **Bruce A. Bornholdt '83** is a staff attorney for SAIF Corporation in Salem. He researches legal issues and writes briefs for cases pending before the workers' compensation board.
  - **Laura (Bradshaw) Mensing '83** now lives in Oakville, Ontario, Canada, a suburb of Toronto.
  - **Bruce Henderson '84** is an assistant women's basketball coach at Portland State University.
  - **Ken Yates '84** is vice president of government affairs for the Northwest Food Processors Association, a trade group representing 80 food companies in Idaho, Oregon and Washington, in Portland, Ore.
  - **Bradley J. Burket '85** practices family medicine and dentistry in Prineville, Ore. He and wife Julie have three children.
  - **Susan (Allen) Ford '85** is a medical advisor with the Office of Medical Services of the U.S. Peace Corps in Washington, D.C. She and husband Peter were in Bern, Switzerland, for three years where she worked with the Peace Corps and Peter was with the Department of State.
  - **Danna Jennings '85** is an assistant professor of neurology at Yale University. She provides clinical care to patients with Parkinson's disease and other movement disorders, conducts clinical research, and teaches medical students and residents.
  - **William Potter '85** and wife Kristen are in Guinea, West Africa. Bill is a project director of World Education's "Support for Community Education" project. Kristen is a doctoral student in educational administration.
  - **Charles R. Puch '85** of Redmond, Ore., is an assistant superintendent for the Oregon Youth Authority.
  - **Shelly (Shilhanek) Thornburg '85 MAT'92** of Woodburn, Ore., participated in summer 1997 with Judy (Johnson) Lowery and 11 other Oregon teachers in a five week Fulbright-Oregon Geographic Alliance field study in Kathmandu and the Solu Khumbu region of Nepal. In summer 1998 she participated in the Oregon Writing Project for four weeks at WU, sponsored by the School of Education.
  - **Melinda (Kurth) '85** and **Brett C. '87 Strobel** live in Grants Pass, Ore. Brett is minister at the Newman United Methodist Church. They have one son, Colin, 4.
  - **Gayle (Roth) Cutaja '86** and family moved to Conroe, Texas, 40 miles north of Houston. They have three children.
  - **Lisa A. Hellems '86** has an academic position at the University of Oregon's department of secondary special education and transition. She toured Oregon as director of a local community chorus, Soromundi. She also performed with the Eugene Chamber Singers and the Oregon Motet Singers.
  - **Kara (Crissifulli) Scott '86** and husband Jeff live on 10 acres in Gallatin, Mont., outside Bozeman. Jeff is operations manager at Intelicom and Kara is still running.
  - **Anita C. Smith '86 L'89** is an attorney in south Salem specializing in personal injury and employment law.
  - **Kurt Heisler '87** of Beverly Hills, Calif., is director of sales, western region, for the ISP Channel, a start-up company for high speed cable modems.
  - **Sue Lundy '87** is a choir director in the Scappoose School District for grades seven-12. She sings throughout Oregon in a contemporary Christian women's quartet called Counterpoint.
  - **Brenda K. Martin '87** is an associate at Morrison & Hecker in Phoenix, Ariz., primarily handling bankruptcies.
  - **Eric J. Scofield '87** is an associate regional director of Western Washington Young Life in Lynnwood, Wash., working to recruit, train and develop their college-age staff.
  - **Corrine "Cori" (Lewis) Hannam '88** of Palmer, Alaska, has returned to part-time and substitute teaching after a hiatus following the death of her husband in 1995. She has two sons.
  - **Troy G. O'Donnell '88** a captain in the U.S. Army, commands the headquarters battery, 2nd Infantry Division Artillery in the Republic of Korea.
  - **Scott Feller '89** is a physical chemistry professor at Wabash College in Crawfordsville, Ind. He and wife Wendy have two children.
- ### 1990s
- **Karen McFarlane '90** is a postdoctoral research chemist at Lawrence Berkeley National Laboratory in San Francisco, Calif., studying photosynthesis. She also plays guitar in two bands, The Puritans and The Shifters.
  - **Michael Chase '91** and wife Paige moved to Payette, Idaho, and operate the Oregon Natural Market in Ontario, Ore. Michael is pursuing certification in nutrition science and clinical psychotherapy.
  - **Niall Dillon '91** lives in Atlanta, Ga., and is a certified Novell administrator.
  - **Holly (Dawson) Driggers '91** is a business development specialist with Personnel Decisions International (PDI), a human resources consulting firm. She also works with The John C. Ford Program as a business consultant to innercity small-business owners, volunteers with the Junior League of Dallas, Texas, and is pursuing a master's degree in organizational behavior.
  - **Wendy (Walker) Hall '91** is an assistant track and field coach at Emory University in Atlanta, Ga. She also has her own business as a personal athletic trainer.
  - **Aaron McGrath '91** is an attorney at Preston Gates & Ellis in Seattle, Wash.
  - **Jennifer (Kirkpatrick) '91** and **Grant A. '91 Robbenolt** live in Monmouth Junction, N.J. Jennifer received a Ph.D. in social psychology in May and is in a postdoctoral program at Princeton University's Woodrow Wilson School of Public and International Affairs. Grant is in the MBA program at Rutgers.
  - **Kaarin L. Axelsen '92** is a deputy district attorney in Los Angeles, Calif.
  - **Lila Brown '92** lives in Grand View, Idaho, and is director of the Rimrock Senior Center and health unit coordinator at Elmore Medical Center. She is still singing and completed a CD with the Salem Big Band which was released in December.
  - **Dagny Haug '92** spent six months as an English teacher in Korea preceding the Asian economic collapse. She now lives in Minneapolis, Minn.
  - **Seiji T. Shiratori '92** is a political officer for the Foreign Service. His first assignment is a two-year tour at the U.S. Embassy in Islamabad, Pakistan. He will serve one year each in the economic and consular sections.
  - **E. Shawn Sorensen '92 MAT'94** is a fifth grade teacher at McKinley Elementary School in Beaverton, Ore.
  - **Rachel Ward '92** is a doctoral student in English at University of California, Davis. She is also an associate jewelry designer at Titanium Art Studios.
  - **Daniela F. Almeida '93** is an associate at Feldman Kieffer & Herman in Buffalo, N.Y., specializing in civil litigation, and insurance and medical malpractice defense.

- **James H. Ellis III '78** is a tax and business attorney in Fremont, Ohio. He relocated to northwest Ohio to be near family and enjoy a slower paced lifestyle.
- **Elizabeth A. Graham '78** is pastor and project coordinator at the Native American Ministry Project in Los Angeles, Calif. She sends greetings to **P. Lynne (Davis) Reynolds '78** and **Jacqueline Smith '78**.
- **Laurie Levine '78** is an English and drama teacher, and casting director in Seattle, Wash. She received her Casting Society of America endorsement and has completed casting for the movie "Snow Falling on Cedars."
- **Jan Rimerman '78** is a drawing and painting specialist at Tigard High School. She started her own greeting card line and a line of hand-painted tiles. She has eight turtles with their own turtlearium, plants and orchids.

## 1980s

- **Sandra J. Barton '80** is in private practice in internal medicine and pediatrics in Forest Grove, Ore.
- **David D. Hanaïke '80** completed his 10th year as an instructor for the Summer Ocean Studies Program at Waikiki Aquarium's Blue Water Marine Laboratory at the University of Hawaii, Manoa. He is taking a sabbatical from science chair at Prince David Kawanakoa Middle School to complete graduate studies.
- **Cynthia Lee Pemberton '80** accepted a graduate teaching position at Idaho State University in Pocatello, Idaho, in sport management studies.



- **Donald L. Krahmer Jr. '81 L.M.'87**, a partner in the Portland law firm of Black Heltzerline, is chairman of the Oregon State Bar Business Law Section. He also serves as chairman of the Oregon Entrepreneurs Forum.



- **Deston Nokes '81** is senior public relations specialist for Northwest Natural in Portland, Ore.
- **Robert W. Cook Jr. '82** is a Russian interpreter and treaty inspector with the On-Site Inspection Agency in Washington, D.C. He completed a three-year assignment as a Russian instructor at the Marshall Center for Security Studies in Garmisch-Partenkirchen, Germany.

- **Lynn K. Haas '82** of Thousand Oaks, Calif., is a project engineer for Boeing/Rocketdyne. She works on Russian projects and travels to Russia several times a year, visiting rocket engine manufacturing companies.
- **Stephen Pedroncini '82** of Los Angeles, Calif., was a principal performer in a national commercial for MasterCard.
- **Ann L. Skoe '82** retired from the state of Alaska in January 1998 and moved to Canby, Ore., in April.
- **Elizabeth "Betsy" Steinberg '82** is manager of the Medical Center Branch of Pioneer Trust Bank, just one block south of WU. She is the first woman manager.

## Lonnie Jackson '79



When Lonnie Jackson '79 graduated from high school in the mid-1970s, his mother was determined that he leave his home in South Central Los Angeles. She wanted him away from bad influences; specifically, she wanted him away from the temptation of gangs. She insisted that he come to Salem and to Willamette.

However, after his graduation from Willamette with a degree in sociology, Jackson returned to the gangs and has remained actively involved in gang membership ever since; first through his work at MacLaren Youth Correctional Facility, where he developed an innovative program for fighting the influence of gangs, and now through his position as the statewide director of Minority Services for the Oregon Youth Authority.

Jackson has written a book *Gangbusters: Strategies for Prevention and Intervention*, published by the American Correctional Association. In his book, Jackson discusses gang mentality, offers reasons why many young people are attracted to and join gangs, and explores ways to break through gang mentality and establish a gang intervention program in institutional settings. Jackson has used the principles covered in his book to rehabilitate former gang members.

Jackson has received numerous awards and citations for his achievements, including the first KGW-TV Citizenship Award, the Ruby Isom Award for Outstanding Accomplishments in Juvenile Corrections, the Model of Excellence Award from the Delta Kappa, Inc. and Willamette's Distinguished Alumni Award. In addition he received the Compton Award from the Marion County Bar Association for extraordinary service to the bar and the judicial system, and in 1993 he received a grant from the U.S. Information Agency to conduct a community action and drug prevention project in Bangkok, Thailand.

If you are interested in ordering a copy of *Gangbusters: Strategies for Prevention and Intervention*, it is available at the Willamette bookstore. For cost and ordering information, call Bob Kister, (503) 370-6315, or e-mail him at <rkister@willamette.edu>.

- **Erin (Good) '93** and **David '93 Audley** and daughter, Sarah, live in Seattle, Wash. David received a master's degree in history from Portland State University.
- **Mark W. '93** and **Kimberlee (Harper) '94 Hanken** live in Austin, Texas. Mark is director of competition and games with Special Olympics Texas. Kimber spent the summer working in Washington, D.C., at the National Governor's Association on a professional internship fellowship. She is a master's student at the L.B. Johnson School at the University of Texas, Austin.
- **Carla Poindexter '93** completed her MAT degree in elementary education at Lewis & Clark College and teaches in the Beaverton School District.
- **Justin Potts '93** and **Teri L. Watanabe '94** live in Hillsboro, Ore. Teri is a copy editor for Griggs-Anderson Research and a freelance writer-editor. Justin is a learning specialist for Marion County.
- **Mary Powell '93** and **Adam '94 Messinger** live in San Francisco, Calif. Mary is an attorney in Lafayette, Calif., and Adam is a software engineer at Web Logic, Inc. in San Francisco.
- **Tiffany Tarrant '93** graduated from Columbia University in May and began a master's-of-science in nursing program at University of Washington in fall 1998.
- **Jeremy H. Westcott '93** is in a master's of business administration and post-baccalaureate accounting certificate program at Portland State University.
- **Suzanne (Wittke) Blair '94** teaches kindergarten at Alameda Elementary School in Portland, Ore.
- **Kenneth M. Jones '94** is an outpatient physical therapist at the Mayo Clinic in Rochester, Minn.
- **Abby (Merrill) King '94** is the manager of Salem Cinema.
- **Roberta "B.J." (Wilgus) '94** and **David '95 Larmouth** bought their first home in McMinnville, Ore. B.J. is a learning resource teacher at Patton Middle School and Dave is the recycling education and promotions coordinator for City Sanitary & Recycling.
- **R. Erik Oatfield '94** is pursuing a certificate in paramedic education at Oregon Health Sciences University and works as a firefighter EMT for Cowitz 2 Fire & Rescue in Kelso, Wash.
- **Nathan Toney '94** is in the physical therapy graduate program at Chapman University in Orange, Calif.
- **Crayton Webb '94** of Arlington, Texas, is an investigative reporter for the CBS affiliate KTVT Channel 11 in Dallas. In March he was named Best Reporter by the Texas Associated Press. In July he served as the master of ceremonies, for the second time, at the Idaho Hugh O'Brian Youth Leadership Seminar in Boise, Idaho.
- **Sara N. Boylan '95** of Arlington, Va., is a licensing specialist for Virginia Social Services and college crew coach.
- **Tyler (Jones) '95** and **Jennifer '95 Chambers** married at Cone Chapel in June 1996. Tyler is a programmer and developer for Springbrook Software in Portland, Ore. Jennifer is program manager for the Executive Leadership Institute in the Mark O. Hatfield School of Government at Portland State University.
- **Heather Dahl '95** is an assistant editor in the elections unit at National Public Radio in Washington, D.C. She received her master's degree in journalism from Columbia University in New York, in spring 1998.
- **Joelfre Grant '95 MAT'96** is a Head Start teacher and supervisor for the Confederated Salish and Kootenai Tribes in Ronan, Mont.
- **Scott Griffin '95** is president of Johnny Eggs Productions, Inc., in Seattle, Wash. His current production is a feature film titled "Investigations of a Dog."
- **Jason Hunter '95** of Mountain View, Calif., has written *Java Servlet Programming*, published by O'Reilly & Assoc.
- **Kristi Lynett '95** of Tacoma, Wash., works at the Pt. Defiance Zoo and Aquarium education program and is a graduate student in environmental studies at Evergreen State College.
- **Jennifer "Lynne" MacVean '95** of Columbus, Ohio, presented a paper at the International Medieval Congress in May. "John Barbour's Bruce: A National Epic for a New Scotland."
- **Lisa Tran '95** and **Tim '96 Eblen** will spend the next two years in Da Lat, Vietnam as part of the Volunteers in Asia program teaching English at the University of Da Lat, studying Vietnamese and traveling in Vietnam.
- **Mark Furman '96** survived another "Burning Man" in Nevada's Black Rock Desert on Labor Day weekend. He is an associate editor at the *Humboldt Star* in Winnemucca, Nev.
- **Stephanie Hamrick '96** is a volunteer coordinator and family intake coordinator for Volunteers of America (VOA) in Portland, Ore. VOA serves families at risk of child abuse and neglect, and offers parenting classes, nursery services and playgroups.
- **Jon Harris-Clippinger '96** is pursuing his master's degree in music education at the University of Illinois. **Jennifer Harris-Clippinger '96** completed her master's degree in history at the University of Toronto and is a M.A.T. student at WU.
- **Melanie Hawkes '96** lives and works in Salem. She illustrated a children's book, *I Love Myself*.
- **Alex Isaac '96** is a golf pro at Rhodes Ranch Country Club in Las Vegas, Nev.
- **Brian Shipley '96** was ranked number one in his first-year law class at Georgetown University.
- **Casey Teague '96** received a master's degree in European history from the State University of New York at Binghamton.
- **Nathan Vonnahme '96** and his wife, Betsy, are master's students in biblical languages at Regent College in Vancouver, B.C.
- **Barbara "Barb" Weber '96** returned from a year-long Rotary International Scholarship studying a banking innovation to eradicate poverty in rural Bangladesh, through the Microcredit Summit. Banks provide credit to the poor in Bangladesh, giving women access to small amounts of credit to operate businesses and work their way out of poverty with dignity. With the profit they earn they are able to repay the loan and better feed, clothe, shelter and educate their families.
- **Evgenia (Tsirulnikova) '97** and **Eric MAT'97 Abbruzzese** live in Portland, Ore. Evgenia is a statistical analyst and methodologist for Griggs-Anderson Research and Eric is a sales account executive for Webtrends.
- **Matt Axling '97** taught English in Buenos Aires, Argentina, from June 1997 to May 1998. He traveled through several surrounding countries and Brazil before returning home to Bainbridge Island, Wash.
- **Teresa Panepinto '97** is a human rights monitor and "unarmed bodyguard" with Peace Brigades International in Colombia. She and her colleagues, "armed" only with cameras and international passports, work beside Colombians for human rights and to create political space to work for change.

## Paul Breckenridge '97

By Chris Penttila '90



"Two, four, six, eight—who do we appreciate!?" For the kids at Epping Forest All Ages Elementary in St. Elizabeth, Jamaica, it's Paul Breckenridge '97. When he arrived in this small town last year to begin a two-year Peace Corps assignment at the school, he noticed that something near and dear to his heart was missing: baseball.

Jamaica is a very athletic country—they love track and field, cricket and soccer—but baseball hasn't been very popular. In fact, the kids at Epping Forest didn't even know what it was. "When I asked the kids if they'd ever seen baseball, many of them said that they had, but they thought I meant basketball," he says.

For a dedicated fan like Breckenridge, who played baseball for the Bearcats during his freshman and junior years, this just wouldn't do. He approached his friends on the Seattle Mariners e-mail list about the possibility of collecting some used baseball equipment and sending it down to St. Elizabeth. A message went out to everyone on the e-mail list about a one-day equipment pickup to be organized in the Seattle area. A date was set and the "Jamaican Baseball Project" was underway.

The response was amazing. Members of the e-mail list came to the pickup site and donated all kinds of equipment. "By the end of the day, I had a dozen or so gloves, five bats, balls, other miscellaneous equipment ... and about \$125," says Craig Cyr, who oversaw the project in Seattle.

But this wasn't the end of things. Other list members—people Breckenridge and Cyr had never met in person—were busy sending in checks. Soon the project had collected over \$600. "The amazing thing was that people just trusted that I would spend the money in the appropriate way," Cyr says. "They simply trusted me because they 'knew' me from the Mariner e-mail list."

Two-dozen baseballs, 15 baseball caps, 19 gloves, and an assortment of other equipment arrived in St. Elizabeth last December, and Paul started teaching the game. Every afternoon he and about 20 kids headed out to a nearby field to practice. By June, they were ready for their first opponent. A game was organized against the kids at Belaire School in Mandeville, an American enclave about an hour away from St. Elizabeth. This was a challenge for Epping Forest, because they were going to compete against American kids who actually knew the game. It would also be the first time many of them would venture outside the city limits of St. Elizabeth.

Game day arrived, and the Epping Forest team stepped off the bus in style—grey pants and red jerseys with lettering in green across their chests—to face the Belaire kids in their blue and yellow soccer jerseys. Epping Forest was up to bat first. First baseman Jermaine Alexander led off. His first hit fouled out, but his second hit sailed down the right field line and turned into a home run. Epping's pitcher, Jimmy Russell, ended up striking

out 7 of 9 batters without giving up any hits or walks. Epping Forest would beat Belaire 4-3 in the first baseball game ever played in Jamaica. "The kids were ecstatic," Breckenridge says. "The entire bus ride home they were waving their jerseys out the windows, screaming and cheering."

Breckenridge hopes that baseball will continue when he leaves Jamaica next year, but admits that he's not sure it will. This is just something he does in his sparse free time to bring the kids together. Many Jamaican children don't have a father at home and are thrilled to find a guy like Paul who will spend time with them.

"It gives them a chance to spend some time with an adult male and it gives me an opportunity to share a game that I love," he says. "However, that's not to say that I don't have some grand dreams about seeing an island-wide league established and seeing some Jamaicans getting college baseball scholarships."

Breckenridge credits the members of the Mariners list for their support, saying that their contributions helped to broaden the horizons of these kids. People interested in donating equipment to the project can contact Breckenridge at <[a href="mailto:paul.b@cwjamaica.com">paul.b@cwjamaica.com> for more information. Letters can also be sent care of Munro College PO, St. Elizabeth, Jamaica, West Indies. The project's website is located at <[a href="http://www.seanet.com/~brianh/jamaica">www.seanet.com/~brianh/jamaica>.

• **Brione Berneche '95** and Paul Pattison married Aug. 2, 1997, at White Memorial Chapel in Salt Lake City, Utah. **Heather Dahl '95** was a bridesmaid. Also in attendance were **Kristin Anderson '95**, **Kate Kenski '95**, **Jennifer Rosenberg '95**, **Heather Beebe '96**, **Cindy Rosenberg '97**, and **Gabrielle (Byrd) '96** and **David '96 Williams**. Brione is a law student at the University of Utah and Paul is a civil engineer with BRW, Inc.

• **Christine M. Brown '95** and Jonathan Davis married Sept. 20, 1997. Christine is an administrator for Sonoco Products in Woodland, Wash., and Jon is a branch manager for American General Finance. They live in Longview, Wash.

• **Dorcas M. Brown '95 MAT'96** married Jerome Smith June 27. Dorcas is a music specialist at Manchester Elementary School and teaches private voice and piano lessons. They live in Port Orchard, Wash.

• **Tom Woo '95** and Debbie Bauer married July 25 at the Ritz Carlton in Philadelphia, Pa. **Cameron Neilson '95** was best man. Tom works as a regional sales manager for CRC Industries. The couple lives in Philadelphia.



• **Gabrielle Byrd '96** and **David Williams '96** married June 13 in Turlock, Calif. **Danica Byrd '98**, sister of the bride, was the maid of honor. Bridesmaids included **Stephanie Hamrick '96**, **Beth**

**Miller '95**, **Dana Newsom '96** and **Brione (Berneche) Pattison '95**. Groomsmen included **Eugene Berger '96**, **Pete Goertzen '95**, **Francis Gonzalez '96** and **Tucker Jones '96**. Ushers included **Jeff Lewis '96**, **Tim Marshall '97** and **Ken Ray '96**. **Tony Diaz '95 MAT'96** sang. Others in attendance were **Heather Beebe '96**, **Sara Bischoff '97**, **Kent Campbell '96**, **Ian Dawson '97**, **Jenni Beth (Wright) Diaz '95**, **Seth Hantke '95**, **Kristi Hashizaki '94**, **Mark Hughes '98**, **Mark Knepper '95**, **Jean Moore '95**, **Lisa Papulski '96**, **Ryan Shrauner '94** and assistant professor of English **Eleanor Berry** and husband **Richard**. Gabrielle received a master's degree in writing and publishing from Emerson College in Boston, Mass., and David received a master's in political science from Boston College in May. They live in Lake Oswego, Ore.

• **Catherine J. McRae '96** and **Rudolf C. van der Salm** married March 14 at the First United Methodist Church in Vancouver, Wash. Maid of honor was **Michelle (Nicholson) Grove '96 MAT'97** and bridesmaid was **Georgina D. Larcher '98**. The couple lives in Woodland, Wash.

• **Michelle M. Nicholson '96 MAT'97** married **Derek Grove July 18**. **Jeff Grove '95**, brother of the groom, was best man and **Catherine (McRae) van der Salm '96** was matron of honor. Others in attendance were **Jennifer J. Smith '95**, **Geoffrey Sinclair '96** and **Jennifer (Sah) Loewig '93**. The couple lives in Moscow, Idaho.

• **Tahra Veideland '96** and **James Sinks** married Aug. 9, 1997 in Eugene, Ore. The wedding party included **Jodi Connolly '96**, **Sarah Long '96** and **Lisa Wicklander '96**. The soloist was **Sarah Brown '96**. Also in attendance were **Teresa Johnson '96**, **Shelly Strong '96**, **Roger Martin '96**, **Kristin Feifers '96**, **Jill Estes '96**, **Mike Reynolds '96**, **Brian Matsubara '96**, and **Rich '63** and **Jacque (Graber) '64** Litchfield. Tahra attends the University of Oregon School of Law and James is a reporter for the *Statesman Journal* in Salem.

• **Jennifer K. Lindgren '97 MAT'98** and **David C.R. Kerr '97** married June 19 at Willamette Valley Vineyards. Bridesmaids included **Augusta Parra-Rodriguez '97 M'98** and **Tatiana "Tanya" Perry**, law student. Best man was **Jeffrey C. Smith '97**. David is a research assistant for the department of neurology at Oregon Health Sciences University. They live in Portland.



**Lynett '95** and **Melissa Lynett**. The couple lives in Portland.

• **Erin Lynett '97** and **Edward "Ned" Taylor '97** married Aug. 9 at Moraga Valley Presbyterian Church in Moraga, Calif. The wedding party included **Scott Anderson '96**, **Max George '97 MAT'98**, **Kristi**

## Births

• To **Peggy (Traugber) Hall '74** and husband **Donald** of Milpitas, Calif., their second son, **Scott William**, born July 24, 1997.

• To **William R. Franklin '77** and wife **Belinda** of Newport Beach, Calif., twin sons, **Frederick William** and **Robert Dewayne**, born March 25.

• To **Tammy (English) Mason '82 L'87** and husband **Greg** of Portland, Ore., a daughter, **Natalie**, born March 1. Sister **Emily** is 3 and stepbrothers are **Patrick**, 12, and **Timothy**, 10.

• To **Susan A. Wilson '83** and husband **Robert Fisher** of Ann Arbor, Mich., a daughter, **Ali**, born July 12. Brother **Max** is 5.

• To **Karen (Jones) Berry '85** and husband **Matthew** of Burlingame, Calif., their first child, a daughter, **Christa Ruth**, born April 15.

• To **Janice (Farmer) Dole '85** and husband **Jim** of Grants Pass, Ore., a son, **Bryce James**, born Nov. 1, 1997. Sister **Sarah Elizabeth** is 3.

• To **Lauren (O'Neal) Westergaard '85** and husband **Oreg** their first child, **Connor Gregory**, born at home June 2 in Milwaukie, Ore.

• To **Stephanie (Merrick) '86 L'89** and **Dana '88 Lommen** of Forest Grove, Ore., a daughter, **Audrey M'lane**, born June 4. Brother **Peter** is 3. **Sharee (Merrick) Waldron '86** is the baby's maternal aunt. Stephanie is an attorney with **Moore & Lommen, P.C.** Dana is director of marketing and business development for **Relcom, Inc.**

• To **Kathryn (Quickstad) Marshall '87** and husband **Tim** of Federal Way, Wash., their first child, a daughter, **Madeline Grace**, born June 18. She was born on the birthday of her aunt, **Karen (Quickstad) Claunch '81**.

• To **Elizabeth (Hansen) '87** and **David '88 Kaufman** of S. Pasadena, Calif., a son, **Drew Allan**, born July 10. Relatives include paternal grandmother **Ann (Fields) Kaufman '60**, aunt **Cheryl (Kaufman) Jackson '91** and uncle **Allan Hansen Jr. '89**.

• To **Thaddea Anne (Jones) Schopieray '87** and husband **Michael** of Columbus, Ohio, a son, **Shaun Paul**, born in August 1997. Thaddea and Michael work at Ohio State University.

• To **George D. Symms II '87** and wife **Jodi** of Caldwell, Idaho, their first child, a son, **Richard Allen Symms II**, born Dec. 3, 1997.

• To **M. Beth (Schulz) Danskin '88** and husband **Eric** of Portland, Ore., a son, **Cameron Scott**, born Aug. 25.

• To **Michelle (Kirkpatrick) Johnson '88** and husband **Gus** of Portland, Ore., a daughter, **Maria Bynon**, born Dec. 28, 1997. The baby's aunt is **Kate (Johnson) Speckman '88**.

- **Jaime (Welter) '97** and **Jonathan "Rafe" '96** Sales live in Albany, N.Y. Rafe is a medical student at Albany Medical College and Jaime is an account manager for Key Corporation Leasing.
- **Phillip W. Hart '98** is a graduate student and teaching assistant at Southeast Missouri State University.
- **Janice R. Pennington '98** is serving a two-year term as a missionary in the U.S. for The United Methodist Church in a rural area of northeastern Alabama.
- **Amber M. Russell '98** of Salem works as a marketing specialist for Spirit Mountain Gaming, Inc. She is a board member for the Salem-based communications group CAMPRO and an associate member of the WU Alumni Board for community relations.
- **Rebecca (Samson) Santin '98** and husband **John** live in Sacramento, Calif. Rebecca is a job developer at LaFamilia Counseling Center.
- **Jeremy Snow '98** is an associate of **P. Barton DeLacy '75** at Arthur Andersen real estate valuation group in Portland, Ore.

## Marriages

- **Sheila Kennedy '80** and **Michael Barker** married Jan. 10, 1998, at the Old Church in Portland. Sheila is residential services director for Spruce Villa in Salem and Michael is a welder for Pacific/Hoe Saw and Knife Co. in Portland. They live in Oregon City, Ore.
- **C. Susan Werner '80** and **Roger Lehman** married July 3 at Corona Presbyterian Church in Denver, Colo. Also in attendance was **Mary Coleman '80**. Sue received a master's degree in nursing at Regis University in Denver in May.
- **Cathleen M. Benedetti '86** and **Arthur David White** married April 18 at St. Anthony Church in Tigard, Ore. They live in Beaverton, Ore.
- **Todd Olson '86** and **Keiko Torii** married Sept. 19 in Fargo, N.D. In attendance was **Todd Jones '86**. The couple lives in Tokyo, Japan where Todd is manager of Ikoma Corporation, a commercial real estate services firm and Japanese partner of CB Richard Ellis.
- **Pamela Jean Reynolds '89** married **Eric Dennis Semple** March 14. Pam works at TRW Systems in Redondo Beach, Calif.

- **John Jagosh '90** and **Lisa Ott** married May 30 in Portland, Ore. Groomsmen included **Jeff Clark '88** and **Tom Hatcher '89**. Also in attendance were **Matt Stashin '87**, **Scott Coffee '88**, **Raymond Tuttle '89** MAT'96, **Elizabeth "Liz" (Newcomb) Hatcher '90**, **Brad '90** and **Christine (Baker) '89 Hill**, **James "Jamie" Mertz '90**, **Jeff Fowler '90**, **Frank Funk '89**, **Brett '92** and **Lisa (Schmitt) '92 Funk**, **Alex '92** and **Julie (Blum) '88 Tucker**, **Harry Bennett '90**, **Nick Zagone '90**, **Adam McIsaac '90** and **Marie Watt '90**. The couple lives in Tigard, Ore.

- **Mark S. Munro '91** married **Elizabeth Keeley**. Mark is an associate at Winthrop, Stimson, Putnam & Roberts in New York, N.Y.

- **Arnika R. Brown '92** and **Gunnar A. Eskeland** married Sept. 12 in Worthington, Ohio. Arnika received a master's degree in applied linguistics and teaching English as a second language from Iowa State University in 1997. The couple lives in Seattle, Wash.



- **Erik Hansen '92** and **Bonnie Van Lew** married August 22, 1997. In attendance were **Edward B. Saunders '92** and **Kelly S. Crocker '92**. Erik is a recruiter for information technology personnel. They live in Mountain View, Calif.

- **Holly Wubker '92** MAT'93 and **Paul Kantz** married June 27 in Portland, Ore. Bridesmaids included **Julia (Peters) Harvold '92** L'96 and **Michele Lanctot '93** MAT'94. Others in attendance included **Diana Fales '93** and **John Hellen '93**. Holly is a primary teacher in Vancouver, Wash., and Paul is a computer consultant in Portland.

- **Blythe Gardner '93** and **Jeff Butler '93** married July 3 in Portland. The wedding party included **Kerri (Butler) Williamson '95**, **David Mainwaring '93**, **Aaron Putnam '93**, **Karl Stöckel '93**, **Andrea "Annie" (Akita) '93** and **Aaron '92 Chun**, **Sandi (Collins) Hildreth '93**, **Vicky (Withycombe) Remy '93** MAT'94, **Daniela Almeida '93**, **Erin (Kelly) Thomson '94** and **Tracy McLellan '94**. Blythe is assistant dean of admissions at Lewis & Clark College and Jeff works as a footwear buyer for adidas America. The couple lives in Portland.



- **Nici Hoskin '93** and **Chris Flann** married Aug. 23, 1997, in Bemidji, Minn. They live in Brookings, S.D. Nici is the granddaughter of **F. Leslie Manker '30** and daughter of **Dorothy (Manker) Hoskin '60**.

- **Molly Mumma '93** and **James Patrick "Pat" Mahoney** married July 4, 1997. **Amy Josephson '93-94** was an attendant. The couple lives in Englewood, Colo.

- **Ann Marie Alden '94** and **Steve Caplan** married Sept. 7, 1997, in Seattle, Wash. In attendance were **Gabrielle Buller '95**, **Tiffany (Loescher) Scheer '96** and **Bill Scheer '95**. Ann Marie is a lead clerk at Borders Books and Music. They live in Westland, Mich.

- **Marlene Cervantes '94** and **Stephen Gregory Biersteker** married Sept. 13, 1997, in Veneta, Ore. In attendance was **Christina (Nelson) Fritz '94**. The couple live in Oakland, Ore.



- **Cindy Hawkins '94** and **Ted Robertson** married Aug. 7, 1997. Maid of honor was **Deleta Dickson '95**. Also in attendance were **Crayton Webb '94**, **Ethan Smith '93**, **Kanae "Kay" Kera '93** and **Judy Zersan '93**. Cindy is a music therapist. They live in Aurora, Colo.

- **Aurene C. Padilla '94** and **Michael Wong** married July 11 at the Bernice Pauahi Bishop Memorial Chapel in Honolulu, Hawaii. Bridesmaid was **Kristi Hashizaki '94**, the bride's Alpha Chi-Omega big sister. Also in attendance was **Sara Tanita '95**. Aurene teaches fifth grade at Holomua Elementary, is a mentor teacher for University of Hawaii College of Education students and coaches track. Mike is taking a leave of absence from teaching to attend law school.

- **Margaret (Bolt) Horner '30** died May 26 in Medford, Ore. She was a member of the Presbyterian Church and Jackson County Republican Women. She was a Girl Scout leader and enjoyed hunting, fishing, camping and bridge. Survivors include her husband, John Horner; three children including **Donald K. Denman L'62** and **Margaret (Denman) '57 Hultgren**; two siblings; seven grandchildren and six great-grandchildren.
- **Raymond Lewis Yarnes '30** died April 15 in Long Beach, Calif. He was the son of **Thomas D. Yarnes '16 H'31**. Survivors include his wife, Elaine; sister **Eleanor (Yarnes) Mosher '35**; brother **Lawrence E. Yarnes '35** and sister-in-law **Mary (Banning) Yarnes '36**.
- **Clarence Scott "Pat" Emmons '31 L'31** died May 12 in Albany, Ore. He was an assistant attorney general for Oregon before entering private practice in Albany in 1948. He was president of the Oregon State Bar 1959-60. He was active in Albany community activities and was Albany First Citizen in 1956 and Trial Lawyer of the Year in 1987. He was the recipient of an Alumni Citation in 1988. He was preceded in death by his wife, **Mildred (Pugh) Emmons '31**; sister **Florence (Emmons) Riggs '30** and brother **Floyd Emmons '30**. Survivors include his companion, Ann Hawke; three sons; daughter **Karen (Emmons) Hancock '68**; 11 grandchildren including **Daniel S. Emmons '79**; and 13 great-grandchildren.
- **Cynthia Frances (Delano) Sanders '33** died at home April 1 in Corvallis, Ore. She worked in education for many years at Marshfield Junior High in Coos Bay, Ore. She was preceded in death by her husband, **Donnell Sanders '37**. Survivors include one son, one daughter and five grandchildren.
- **Alvis Ruth (Love) Whitelaw '33** died May 12 in Royal Oak, Mich. She was a social worker in Oregon, beginning her nearly 50-year career during the 1930s helping implement President Franklin D. Roosevelt's New Deal programs. In the 1960s and '70s she established homemaker services in Oregon and served as director of homemaker services and later as associate director of Metropolitan Family Services. She helped develop programs to enable the elderly live independently and to aid parents in jeopardy of losing their children because of abuse or neglect. She moved to Michigan in 1993. She is survived by three children including **Susan Whitelaw '63**, niece **Mary (Whitford) Graves '64**, seven grandchildren and two great-grandchildren.
- **Edith (Glaisyer) Hill '34** died Sept. 4 in Newport, Ore. A long-time resident of Eugene, she lived in Newport for the past six years. She was a member of Trinity Presbyterian Church in Eugene, member and past president of Alpha Chi Omega sorority, Pacific Communities Hospital Auxiliary, past president and governor of the five western states of Quota International and a past president of Toastmasters. Survivors include her husband, Scott.
- **Tyrus Hillway '34** died of cancer of the esophagus Aug. 1 in Longmont, Colo. He founded the International Herman Melville Society, serving as secretary from 1945-59 and as president in 1960. He was also a leader of the U.S. junior college movement during and after World War II, and was a member of Who's Who in America. He was a professor from 1951-73 and from 1966-69 assistant to the president at the University of Northern Colorado. He also taught in Austria as a Fulbright professor at the University of Vienna from 1964-65 and at the University of Salzburg, Austria, from 1970-71. He was active in the education world, and wrote and published several books and textbooks. Survivors include two children.
- **Veva (Garret) Miller '34** died April 8 in Portland, Ore. She lived in the Portland area for about 50 years and taught at Scappoose High School and George Fox College for many years. Survivors include two children, one sister, three grandchildren and two great-grandchildren.
- **Laurance Alfred Burdette '36** died of cancer May 27 in Santa Cruz, Calif. He was a Methodist minister and served the Mt. Tabor Methodist Church from 1941-46. He also served in several churches in Oregon and Washington. His last position was a special appointment to Goodwill Industries in Portland where he served 13 years until his retirement. Survivors include his wife, Ruth; three children; one sister and nine grandchildren.
- **Maurice Ray Dean '36** died May 8 in Castro Valley, Calif. He taught choral music for 40 years in Michigan and California. Survivors include his wife, **Clara (Wright) Dean '35**; sister **Helen (Dean) Grennan '41**; four children; seven grandchildren and one great-grandchild.
- **Francis E. Ely '36** died Sept. 19 in Salem. He was a claims director for SAIF until retiring. He was a member of Odd Fellows, Lone Masonic Lodge, Salem Golf Club and was an avid golfer. Survivors include one son and two grandchildren.
- **Ruth Marie (Johnson) Wryn '36** died Sept. 12 in Salem. She was a librarian at Whittier College before moving to Maui, Hawaii, where she was a reference librarian. She returned to Salem in 1986. Survivors include two children and one grandchild.
- **Helen (Purvine) Burnett '37** died May 11 in Santa Barbara, Calif. She was preceded in death by her brother **Ralph E. Purvine '31**. Survivors include two daughters, sister **Margaret Purvine '34**, niece **Rebecca J. (Purvine) Sterup '70** and nephew **R. William Purvine '68**.
- **Lillian (Potter) Fleming '37** died March 15 in Denver, Colo. Survivors include brother **Ervin W. Potter '40**, two daughters and one son.
- **Ralph Thompsen '37** died Sept. 5 in Portland, Ore. He received a medical degree from the University of Oregon Medical School and served as a captain in the U.S. Army Medical Corps. He was an orthopedic surgeon in northern California and southern Oregon from 1950 until retiring in 1988. He was president of the Northwest Pacific Orthopedic Society, a board member of Rogue Valley Memorial Hospital and an avid golfer and member of the Rogue Valley Country Club. Survivors include his wife, Grace; three daughters and granddaughter **Jennifer "Poppy" (Wheaton) Bernasek '94**, an Atkinson student.
- **Everett W. Clark '38** died July 29 in Salem. He was a regional vice president for Commercial Credit Corp., supervising 14 financial offices in six western states before retiring in 1977. He was a member of the Oregon Horseshoe Pitching Association, Salem Golf Club, Cardinal Round Table at WU and the Salem Elks. He enjoyed all sports and spent winters in Hawaii and Arizona. Survivors include his wife, **Kathryn "Kay" (Thompson) Clark '39**; three children; one brother and six grandchildren.
- **Ralph Kleen '38** died Sept. 22 at his home at Pilgrim Place in Claremont, Calif. He was a Methodist minister and served in churches in California, Oregon and Arizona from 1942-69. He became district superintendent for the Southern District of the Oregon Idaho Annual Conference in 1969 retiring in 1975. He was formerly a WU trustee. Survivors include his daughter and son-in-law, **Charlotte (Kleen) '58** and **Donald '57 Miller**, and grandsons **Steven R. Miller '82** and **Keith S. Miller '86**.

- To Bryon '89 L'92 and Christine (Thietje) '90 Land of Junction City, Ore., their third child, Matthew Bryon, born June 1. Ryan is 5 and Ashley, 3.
- To Debbie (Larson) '90 MAT'92 and Roger H. '87 Reid of Tualatin, Ore., a daughter, Harnah Larson, born July 6.
- To Gregory D. Wilson '91 and wife Rebecca of Portland, Ore., a son, Jonathan Gregory, born March 24.
- To Gregg '91 M'92 and Tina (Chartraw) '92 Leiss of Reno, Nev., a daughter, Shannon Marie, born Sept. 16.
- To Stephanie (Murdock) Canty '92 and husband Bryan of Kalamazoo, Mich., a son, Trevor Matthew, born Dec. 1, 1997.
- To Dawn A. Gillette '92 and husband Charles Longerbeam of Portland, Ore., a son, Malcom Alan, born Feb. 24, 1997. The baby's godmother is Melanie L. Kirkpatrick '92.
- To Mark Jennings III '92 and wife Kristeen of Keizer, Ore., their first child, a son, Mark Elliott Jennings IV, born April 19. Mark is a claims supervisor at Safeco Insurance and Kristeen is office manager at Coldwell Banker.
- To Kari L.H. Clawson '93 and husband Nick of Salem a daughter, Kaitlyn Rose, born Feb. 16.
- To Jennifer (Irving) Fetrow '93 MAT'94 and husband Steve of Bend, Ore., a son, Wyatt Benjamin, born April 11. Jennifer is a kindergarten teacher.
- To Marcus '93 and Amanda (Gorman) '93 Brownell of Monroe, Ore., their first child, a daughter, Phoebe Abigail, born April 15.
- To Christopher Hopton '93 and fiancée Melissa Thompson of Olympia, Wash., a son, Mason Thomas, born March 14. Chris is operations director for Unisearch Inc.
- To Vicky (Withycombe) Remy '93 MAT'94 and husband Jon of Turner, Ore., a son, Jon Donald "J.D.," born April 8.
- To Cynthia (Vergon) Rosenacker '93 and husband Fabien of Chevremont, France, a son, Alix, born Aug. 23.
- To Erica (Scheller) '93 and Kris '91 MAT'92 Welch of Hillsboro, Ore., their first child, a daughter, Abbygail Gabriella, born April 28. Kris is a teacher and coach at Central Catholic High School in Portland and Erica is an aquatic program coordinator for Tualatin Hills Park and Recreation District in Beaverton, Ore.

- To Lisa (Martin) '94 and John '94 Harrison a son, Maxwell Ryan, born Sept. 30, 1997, in New York. John graduated from Columbia College of Physicians and Surgeons in May and works at Virginia Mason Hospital in Seattle, Wash.
- To Katie (Carlson) Salas '94 and husband Fernando of Portland, Ore., a daughter, Erica Isabel, born July 13. Katie recently received a degree in nursing and Fernando works for Les Schwab Tires.
- To Laura (Rudeen) Watne '94 and husband Trent of Lakewood, Colo., a daughter, Maja Christiana, born May 20.

## Obituaries

- LaVerne K. Bowersox '20 died July 10 at his home in Omaha, Neb., at age 98. Survivors include his wife, Imogene.
- Frederic DeLong Aldrich '21 died June 12 in Colchester, Vt. He taught history and English at the high school and college levels, and was an author and historian. Survivors include his wife, Dorothy, three sons and five grandchildren.
- Theresa Fern (Smith) O'Neil '25 died May 8 in Coos Bay, Ore. She taught at Marshfield High School and assisted her husband, Carl, in operating C.J. O'Neil Glass and Radiator. She was a longtime supporter of the Coos Bay School District and served on its board and budget committee. She was a past president of the Business and Professional Women's Association, member of Soroptimists, Daughters of the American Revolution and Veterans of Foreign Wars Auxiliary. Survivors include two sons, one sister, four grandchildren, numerous nieces and nephews, and seven great-grandchildren.
- Willa (Stollar) Core '26 of Mossyrock, Wash., died June 20.
- Henry H. Hartley '27 died June 29 in Port Townsend, Wash. He was superintendent for public schools, retiring after 40 years at Bandon, Nyssa and North Bend. He was a member of the Bandon Masonic Lodge, The United Methodist Church, and enjoyed fishing, golf and reading. He was inducted into the WU Sports Hall of Fame in 1992 for football and basketball. Survivors include two sons, five grandchildren and five great-grandchildren.
- Edna (Ledbetter) Paris '27 died July 5 at a care facility in La Grande, Ore. She was an English teacher prior to her marriage.

She was a member of The United Methodist Church, United Methodist Women, Chapter 1 of the PEO Sisterhood and the Auxiliary to the Brotherhood of Railroad Trainmen. She was an avid gardener and cookie baker. Survivors include sister Marie Ledbetter '34, brother and sister-in-law William G. "Glen" '29 and Grace (White) '29 Ledbetter, nephew John S. Ledbetter '65 and two daughters.

- Herman Lanke '28 died June 15 in Salem. Survivors include his wife, Mary, and daughter Joan Lanke '54.
- Paul E. Miller '28 died of chronic lung disease Sept. 11 in Tillamook, Ore. He worked for Amoco Corporation his entire business career, as an engineer and later as an executive at headquarters offices in New York and Chicago, retiring in 1970. He moved to Tillamook in 1974 and was a member of St. Alban's Episcopal Church and was involved in the National Society of Professional Engineers. Survivors include his wife, Lurleen; three sons; three stepsons including Neal C. Lemery L'79; one sister; 13 grandchildren and seven great-grandchildren.
- Genevieve (Thayer) Oppen '28 died Aug. 21 in Salem. She taught grade school in the Washington state school system, raised cacti and was a member of the Cactus Society in Arizona, and enjoyed theatre and music. She was preceded in death by her husband, Chester C. Open '40. Survivors include her cousin, John Griffith '51.
- Shannon P. Hogue '29 died April 19 in Burien, Wash. He was preceded in death by his wife, Mary Lucile. He established a generous scholarship fund at Willamette.



• Dwight Lear '29 L'32 died Oct. 17 in Portland. Retired from a successful law practice in Salem, he was an ardent supporter of WU athletics and a member of the Cardinal Round Table. A longtime friend of Les Sparks, he received the Lestle J. Sparks Medallion in 1995 for loyalty and service to the University. He established the Dwight and Margaret Lear Endowed Chair in History as well as endowed scholarships and memorial gifts honoring friends and relatives. He also enjoyed reading and travel. Survivors include his wife, Margaret; three children and four granddaughters.

• **Michael W. Eyerly '61** died of a brain tumor Aug. 24 in Salem. He became involved in cart racing in the 1950s. In 1968 he was Amateur Sports Car Club of America E-Production Champion. In 1969 and 1970 he was Pro Formula B Champion for the U.S. In 1972 he raced Formula 5000 Surtees in New Zealand which was the predecessor to the Indy cars. He also enjoyed golf. From 1971-77 he owned and operated Eyerly Volkswagen with his father, then was CEO until retiring. Survivors include his wife, Susan; two daughters; two stepchildren and one brother.

• **Jan Gilmore '61**, died May 26 in Oakland, Calif. She had worked as a hospice volunteer coordinator for Compassionate Care Hospice and Kaiser Hospital of Oakland. She is survived by her daughter and her mother.

• **Irma (Provorse) Jones '61** died Sept. 19 in Portland, Ore. She was a supervisor for the Oregon Children's Services Division until retiring in 1984. Survivors include four children, 12 grandchildren and eight great-grandchildren.

• **Jon R. Wollander '62** died of a heart attack Sept. 27 in Jefferson, Ore. He was a civil engineer for Eugene Water and Electric for 30 years. He was a member of the Mt. View Wesleyan Church in Aumsville and enjoyed singing, playing guitar, oil painting, photography, gardening and spending time with his family. Survivors include his wife, Susan; four children; one stepson; his mother; three siblings and six grandchildren.

• **Diana (Miller) Midlam '63** died of a heart attack Aug. 11 in Lake Oswego, Ore., at age 57. She was a writer for the public affairs office of the University of California's Scripps Institution of Oceanography from 1964-70. She returned in 1990 to work for the Oregon Graduate Institute of Science and Technology. She was a freelance writer and development associate for Northwest Osteopathic Medical Foundation from 1995-96 and served on the executive board of the Cascade Pacific Council of the Boy Scouts of America. Survivors include two children and two sisters including Nancy G. Miller '68.

• **Lavina M. Atkinson** died July 16 in Hillsborough, Calif. She taught in the San Mateo School District for 34 years and received two life membership awards in the California Teacher's Association. She was a member of the WU board of trustees from 1981-91 and contributed to many local, national and international causes. She was

preceded in death by her husband, George H. Atkinson, president of Guy F. Atkinson Construction Co.



• **Cameron Saint John Paulin**, professor emeritus of art, died Aug. 21 in Portland, Ore. Paulin was born on Jan. 22, 1914, in Hamilton, Ontario, Canada. He obtained a Bachelor of Fine Arts

from Alfred University and a Master of Arts degree at Ohio State University. His Ph.D. was earned at the University of Chicago. Paulin joined the faculty at Willamette in 1949, at which time the Art Department was housed in a small wooden cottage where Matthews Hall now stands. He soon became chairman of the department, a position which he held for the balance of his career. When the Fine Arts Building was built in 1955, he oversaw the move of the Art Department to the east wing. As an example of the scope of his teaching, in 1965 Paulin taught beginning and advanced ceramics, history of art, history of modern art, history of oriental art, history of ancient art, history of renaissance art, and modeling and sculpture. To support his classes he started the slide collection in the Art Department, purchasing many slides with his own money, and left thousands of them to the department upon his retirement in 1976.

## Press Clippings

**Eddie Anderson '98** was featured in the *Seattle Post-Intelligencer* as a hero who stopped a carjacker who was threatening a woman and her baby. Anderson, a 6-foot-1-inch, 250-pound former college football tight end, tackled the man and held him until the police arrived.

**Heather Dahl '95** was quoted in the *Wall Street Journal* on July 21 in a story about job hunting after college.

Five Willamette alumni were listed in an ad for Teach For America. The ad was titled "The Fortunate 700." The alumni among the fortunate were: **Ben Jackson '95**, **Jeffrey Kessler '98**, **Joshua Klaus '98**, **Marika Paez '98** and **Christopher Lohse '98**.

## GUIDELINES

- Class Links are included in the winter, spring and summer issues of the *Willamette Scene*.
- If you have information you would like to submit for Class Links, please send it to:  
University Relations  
900 State St.  
Salem, OR 97301  
or e-mail <scene@willamette.edu>
- Please print or type all submissions, in the interest of accuracy.
- If something has been written about you in a newspaper or other publication and you would like it included in the *Scene* Class Links as well, please submit a copy with a note giving your permission.
- It is the practice of Class Links not to print pregnancy or engagement announcements, nor candidacies for political offices, due to the lag time between receiving such information and the publication dates.
- The *Scene* reserves the right to edit or omit any information submitted.
- The deadlines for submissions are:  
Winter issue: Oct. 10  
Spring issue: Jan. 25  
Summer issue: April 20
- We welcome photos for possible use, depending on space and photo quality. Black and white photos are preferred. Please send a self-addressed, stamped envelope if you would like your photo returned.
- It is the practice of the *Scene* to list a surviving spouse in all obituaries when the name is available to us. Other survivors who are alumni or otherwise connected with Willamette will also be listed by name when we receive that information.
- Class notes for graduates of the professional schools at Willamette (College of Law, Atkinson Graduate School of Management and School of Education) will be printed in the *Willamette Professional* magazine. They will only appear in the *Willamette Scene* for alumni who also attended the College of Liberal Arts.

### KEY:

- L = Doctor of Jurisprudence or LL.B
- M = Master of Management or Master of Administration
- L/M = Joint degree, Law and Management
- MAT = Master of Arts in Teaching
- MEd = Master of Education
- MME = Master of Music Education
- H = Honorary Degree

- **Frank David Reid '38** died June 4 at the Oregon Veterans Home in The Dalles, Ore. Following his first dental practice in Phillipsburg, Mont. from 1946-48, he farmed in Sherman County from 1952-85 while maintaining dental practices in The Dalles and Moro. He retired from dentistry in 1980 and from farming in 1985. He was active in his community and various organizations, and was a member of St. Paul's Episcopal Church in The Dalles. Survivors include his wife, Beth; two sons; one sister; three grandchildren; one great-grandchild and numerous nieces and nephews.
- **Margaret (Upjohn) Hunter '40** died Sept. 16 in Portland, Ore. She was a librarian at the Oregon State Library, North Salem High School and Willamette University. She enjoyed Oregon history, genealogy, travel and reading. She is survived by two sons including **Richard W. Hunter '76**, one brother and four sisters including **Rowena (Upjohn) Walker '42**, **Florence (Upjohn) Singer '43** and **Donna (Upjohn) Brown '46**.
- **Robert Y. Dean '42** died June 24 in Gig Harbor, Wash. He was a mathematics instructor at Case Institute of Technology in Cleveland for two years before earning a Ph.D. from Cal Tech. He was chief mathematician at the Atomic Energy Commission's Hanford Works for General Electric and later Battelle Memorial Institute. In 1968 he became professor and chairman of the mathematics department of Central Washington University in Ellensburg, retiring in 1986 and moving to Gig Harbor. Survivors include his wife, Esther, two daughters and one sister.
- **Gil Ogden Jr. '42** died of a head injury March 5 in Hillsboro, Ore. He was a pharmacist for many years and owned Amity Drug Store until his retirement in 1987. He was active in the Methodist church and the Lions Club. Survivors include his wife, **Mary Elizabeth (Ross) Ogden '42**, three sons and five grandchildren.
- **Oscar "Swede" Swenson '42** died peacefully May 3 in Portland, Ore., of complications from a series of strokes. He was manager of Portland's Riverside Country Club for five years then Waverly Country Club for 16 years. He headed the City of Portland golf program from 1980-85 before his retirement. Survivors include his wife, **Cleo Agnes (Nissen) Swenson '42**, one daughter and four sons; five grandchildren and five step-grandchildren.
- **Florence (Lee) Godfrey '44** died Sept. 8 in Corvallis, Ore. She had a life-long interest in and love of music and was active in both school and church choirs and associated ensemble groups, and was an accomplished pianist and accompanist for these groups. The Florence Lee Godfrey Scholarship Fund has been established at Willamette in her honor and memory by her husband, Sam Godfrey (V-12 Program). Other survivors include sister **Una (Lee) Kruse '38**, four sons and nine grandchildren.
- **Raymond N. Fedje '49 H'68** died Sept. 25 in Bandon, Ore., after suffering a stroke. He was a Methodist minister and campus counselor at various campuses. He was also director of the Wesley Foundation. He was vice president of Alaska Pacific University from 1977-79 and director of behavioral health for the municipality of Anchorage from 1979-85. He was founder of Samaritan Counseling Center and its executive director from 1984-94. He resided in Bandon, Ore., since 1994. A scholarship fund has been established and memorial donations may be sent to the name of Dr. Raymond Fedje c/o WU, Office of University Relations. Survivors include his wife, **Betty (Thompson) Fedje '50**; brothers **Earl W. Fedje '51** and **Alfred M. Fedje '50**; sister-in-law **Polly (Pollock) Fedje '50**; one sister; one daughter; niece **Kirsten (Fedje) Underwood '78**; and two granddaughters.
- **Leland "Dean" Henderson '52** died of emphysema May 27 in Salem. He worked for Truax Oil from 1952 until retiring in 1996. Survivors include his wife, Carol; two daughters; his mother and four grandchildren.
- **Helen "Pat" Fitzsimons '53** died Sept. 20 in Salem. She taught briefly in Coos Bay, Medford and Parkrose, and finished her career at Salem Heights Elementary School, retiring in 1992. She is survived by four brothers including **Maurice Fitzsimons '42**, **Ed Fitzsimons '49** and **Eric L. Fitzsimons '49**.
- **Clifford C. Gregg Jr. '53** died May 2 in Seattle, Wash., after an extended illness. He had a 25-year career with Frederick & Nelson and later worked in various financial service capacities. He was a past board member of the Greater Seattle Business Association and the Seattle Men's Chorus. Survivors include his mother, **Marion Gregg**, one brother and two daughters.
- **Donald L. Boudon '55** died June 20 at his home in McMinnville, Ore. He was a grade school music teacher for district 40, retiring in 1986. He was a member of Knights of Columbus, director of the outdoor program for Boy Scouts and loved to cook, bowl and camp. Survivors include his wife, Wanda; four children; one brother and 11 grandchildren.
- **Willis H. Ludlow '55** died of cancer March 10 in Pittsburgh, Pa. He was known for his work on peace and justice issues, and as a minister. He advocated inclusive services of Christian worship and pastoral care for people of color, gays, people of all cultures, religious beliefs and faiths. He was a minister at churches in Wallowa, Ore.; Idaho Falls, Idaho; Rochester, Ohio; Edgewater, Colo.; and Pittsburgh, Pa.; and campus minister at Idaho State University, Oberlin College and the University of Wyoming. He was a nominee for Idaho's second congressional district in 1972 and a delegate for Jesse Jackson in 1988. His political activism began at Willamette in the '50s when he protested mandated ROTC training for men. Survivors include his wife, **Anne (Mellis) '54**; one daughter; three sons and 15 grandchildren.
- **A. Benito "Ben" Sanchez '55** died April 30 in Portland, Ore. He was an attorney in Oakridge, Ore., until 1967 when he moved to Portland, and was an attorney for the DMSO Research Institute. Survivors include his wife, **Marion (Reamer) Sanchez '47**; three sons; two brothers and two sisters.
- **Karl R. Frederick '56** died May 29 in Silverton, Ore. He worked for Associated Oregon Industries for 27 years, retiring several years ago to travel. He helped reform the Oregon Workers' Compensation system. He loved the outdoors, nature, camping, and was an avid reader. Survivors include his wife, **Janet (Munson)-Frederick '54**; three sons including **Rodger "Rod" Frederick '78** and four grandchildren.
- **Cecil Gordon Weaver '56** died Sept. 5, in Redding, Calif. He was office manager for Mountain Fir Lumber for 31 years. He was a mayor and a city councilor in Maupin, Ore., and a life member of the Grants Pass Elks. Survivors include his wife, Linda; two sons and one brother.
- **Robert G. Chidester '57 U'59** died of cancer Sept. 2 in Portland, Ore. He served in the U.S. Army in the late 1950s and early '60s. He then practiced as an attorney in Klamath Falls, Portland and Salem, where he lived for 15 years before returning to Portland in 1996. Survivors include his sister, Ruth Dennis.

## Come Back to Campus For Art, Theatre, Music — And Because Your Education Never Ends

Here are some of the highlights for spring.

### PRESIDENTIAL INAUGURATION

*On Feb. 19 Willamette will inaugurate its 22nd president, M. Lee Pelton. Several events are scheduled around this special occasion.*

#### Wednesday, Feb. 17

Atkinson Lecture: Writing an Autobiography: When Memory Speaks, Jill Ker Conway, Smith Auditorium, 8 p.m. Tickets: \$7.50.

#### Thursday, Feb. 18

University Symposium: New Roles for Liberal Education, with special speaker Leon Botstein, president of Bard College and conductor of the American Symphony Orchestra, Smith Auditorium, 1:30 p.m.

#### Friday, Feb. 19

Presidential Inauguration, Cone Field House, Sparks Center, 3 p.m. Keynote speaker: James Freedman, president emeritus, Dartmouth College.

#### Saturday, Feb. 20

Jazz Festival Concert featuring alto saxophonist Phil Woods, Smith Auditorium, 8 p.m.

For updates see the website:

[www.willamette.edu/inauguration](http://www.willamette.edu/inauguration)

### OPENING OF ROGERS MUSIC CENTER

*In March Willamette will open the new Mary Stuart Rogers Music Center. A week of celebration is planned. There is no admission charge for any of these concerts, but tickets are required because of limited seating. All concerts will be held in the Jerry E. Hudson Concert Hall, Mary Stuart Rogers Music Center. For more information, call 370-6214.*

#### Monday, March 8

Share the Vision Faculty Concert, 7:30 p.m.

#### Wednesday, March 10

Share the Vision Student Recital, featuring student solos, chamber groups and a Musical Theatre Workshop presentation of opera scenes, 11:30 a.m.

Share the Vision Dedication Concert. This concert will feature an opera-oratorio, *Voces Vergilianae*, (Vergilian Voices), by John Peel, libretto by M.D. Usher.

#### Thursday, March 11

Share the Vision Faculty Colloquium with John Peel, 11:30 a.m.

Share the Vision Ensemble Concert featuring Male Ensemble Willamette, University Women's Choir, University Band, University Chamber Orchestra, 7:30 p.m.

#### Friday, March 12

Share the Vision Faculty Jazz, Noon.

Share the Vision Jazz Night, 7:30 p.m.

#### Saturday, March 13

Share the Vision Chamber Concert. Featuring Chamber Winds, Chamber Choir and Alumni Choir and Alumni Band, 7:30 p.m.

#### Sunday, March 14

Share the Vision Finale Concert. Repeat of the March 10 concert of *Voces Vergilianae*, (Vergilian Voices), by John Peel, 3 p.m.

#### Other Music Events:

#### Sunday, April 18

Distinguished Artists Series, Emerson String Quartet. Co-sponsored by the Oregon Symphony Association of Salem, Smith Auditorium, 7:30 p.m.

### HALLIE FORD MUSEUM OF ART

#### Through March 28

Sculpture by Robert Hess, Melvin Henderson-Rubio Gallery.

Dean McNeil, photographer and sculptor, Study Gallery.

#### April 10 through May 23

Senior Art Majors Exhibit, Melvin Henderson-Rubio Gallery.

### THEATRE

#### Feb. 18-28

*subUrbia* by Eric Bogosian.

#### March 11-14

Spring Dance Concert.

#### April 22-May 2

*A Flea in Her Ear* by Georges Feydeau.

### OTHER EVENTS OF INTEREST

#### Thursday, March 11

American Families: Meeting the 21st Century, Stephanie Coontz, Cat Cavern, Putnam University Center, 7 p.m.

#### Saturday, April 17

Governor's Cup Regatta, Riverfront Park.

#### Thursday, April 29

Willamette Forum, Microsoft Corporate Affairs: Past, Present and Future Trends, Bill Neukom, senior vice president, law & corporate affairs, Microsoft Corp. Multnomah Athletic Club, 1849 S.W. Salmon, Portland. Cost: \$15. Time: 7:45 a.m.

#### Thursday, May 27

Willamette Forum, From Poets to Professionals: A Case for the Liberal Arts in Today's Business and Professional Fields, M. Lee Pelton, president, Willamette University, Multnomah Athletic Club, 1849 S.W. Salmon, Portland. Cost: \$15. Time: 7:45 a.m.

SPONSORED BY THE SALEM SOCIETY OF THE  
ARCHAEOLOGICAL INSTITUTE OF AMERICA

#### Tuesday, Feb. 9, 1999

Looking at Pompeii: Urban Structure and Community in a Roman Town, Stephen Dyson, professor of classics, SUNY, Buffalo, N.Y. Hatfield Room, 7:30 p.m.

#### Tuesday, March 16

New Perspectives on the Indus Civilization: Cemetery Excavations at Bronze Age Harappa, John Lukacs, professor of anthropology, University of Oregon, Hatfield Room, 7:30 p.m.

#### Thursday, April 22

Digging for Power: Industrial Archaeology and Historical Re-creation at Slater Mill Historic Site, Patrick Malone, assistant professor of urban studies and American civilization, Brown University, Hatfield Room, 7:30 p.m.

*Many Willamette events are free; others have small admission fees. Please call the University information desk at (503) 370-6300 for additional information (and because dates sometimes change or events are canceled).*

# FILLING JARS

By Mary Ann Sprinkle

I let myself into your Vancouver home, dragging a tote bag  
of marionberry jam, a bottle of Beaujolais from Australia,  
wadded weekend clothing. I have never been here, yet, somehow  
I know this smell, your Kentucky antiques, shelf after  
shelf of saké cups and Arita teapots from your year in Japan.  
All those talks you and your daughter were obligated to make  
to Rotarians, "Domo arigato," you said, again and again,  
as they took turns telling jokes and voting in women  
they'd rather not bless. You and Kate said "thank you" over  
chicken and rice lunches for the trip that taught you healing. Peace.  
You couldn't make it beyond the first floor of the  
Nagasaki Bomb Museum, but outside swarms of children  
were singing, their yellow school hats like bumblebees  
amidst a thousand origami cranes.

On the grand piano, I see a head shot of your actress  
daughter and stop still. It is one of several poses she  
must peddle in her New York wishes; cattle-call auditions which  
hardly seem worth the nine-hour lines of blondes and brunettes.  
Perfect pitches. The photograph is black and white,  
enough to escort rushing eyes. We were best friends  
though I haven't seen her in nine years. I am full, then empty,  
like tomorrow's ghost, like a tin cup of quarters saved and spent.

Later, you come home from the grocery and stir the sauce for  
our pasta with your left hand, your linen apron speckled red.  
You talk to me as though I live here — "I am concrete sequential"  
you say, as you funnel flour and wheat germ into  
commemorative jars from Williamsburg, lining them in the cabinet  
like a periodic table. You call it your Mormon stockpile.  
"Kate, on the other hand, is concrete random." I nod, knowing  
she would leave the groceries on the floor for days, letting  
things spoil. I can tell you miss her — you, too, are full and  
empty, filling your jars weekly with items from bulk bins.  
She calls collect just as we center ourselves between the candles.  
I realize I have put the sterling spoons in the wrong place.

After dinner, I welcome your fire, coffee, my Ragg wool socks.  
We discuss Carson McCullers and Gertrude Stein and  
you display a mug with Gertrude as the cup,  
Alice B. Toklas as the handle, her head settled on Gertrude's  
shoulder smugly, as they wait for the moon.  
That night I sleep in the room where you write.  
You hope I won't disturb the molecules. I am safe here,  
tucked under Southern quilts, and I think I know the different ways  
of the world; mothers who collect; daughters who scatter,  
women in strength and silence, cup and handle, full and empty.



*More than 1,000 people attended the opening of the Hallie Ford Museum of Art on Oct. 3. The Oregon Biennial was featured in the Melvin Henderson-Rubio Gallery (left). In the Carl Hall Gallery (right) visitors could view works by the Pacific Northwest's finest artists. From its opening until Dec. 31, more than 10,000 people had been through the new museum.*

## WILLAMETTE SCENE