



Serenade in '60



The victorious Class of '61.

Around this time of year the Willamette campus is lively with the anticipation of Freshman Glee. Every spare minute of the day is filled with song and formation practices. The sounds of up, two, three, four, pivot, two, three, four echo across the quad. Glee bets are made and later carried out on "Blue Monday". Freshman Glee, now in its fifty-second year, has come to be one of the most popular traditions on the Willamette campus.

Glee was originated in 1908 by three students of the freshman class, R. V. Ellis, "Brick" Harrison, and Jimmie Oaks. The first Glee, then called College Glee, was held in the auditorium of Waller Hall.

The idea of marching was introduced in 1912. Each class now had a formation which came to be just as important as the song. In 1916 the senior class established the wearing of caps and gowns. It was decided that a mutual type of song be sung by all classes so it would be easier to establish a basis for judging. Glee expanded in size as well as tradition until in 1924 the gym took the place of Waller Hall.

Class participation and enthusiasm increased rapidly until Glee became a Willamette tradition. In 1938 "Life" published an article on Glee bringing further recognition to the campus as well as to Glee itself. Parodies were included in Glee, with a limit of three to each class.

Brighter colors were used in the formation in 1947. But the next year they went back to traditional uniform dress with the men in dark clothes, the women in white. This same year brought a revival of the "whiskerino" contest.

In 1951 Glee was recorded for the first time, making it possible for all to keep its memory vivid.

This Year's Glee, "Serenade", has seen a lot of hard work and has been fun for all participants. The banner was awarded to the junior class. The sophomore class again took the traditional swim into the mill stream.

So another Glee with its uniting spirit fades into the past, as the Willamette campus settles back to await future Glee presentations.

to glee or not to glee.....



A turnabout as soph. proxy, Hugh Stites is kidnapped by spirited frosh.



Seniors sniffle in sentiment.



... but he returns as frosh proxy, Bob Hakala issues the Glee challenge.



A confident sophomore class parodies the frosh song.



Up, 2, 3, 4. The frosh practice.



... and then the juniors.

pre-gee excitement



This is senior encouragement??



Milk for France.



The Convo Chair Committee at work.



Schroeder and Companion enter.



Sign-out even on Mt. Everest?



Flo Flu Bug takes to the air.

evening in



Stars, a rising moon, and a treble clef depict the senior's "Celestial Rhapsody".



"Spring in our Hearts" brought a second win for the juniors.

Serenade



A star of white set the scene for the sophomore's "Seaswept Serenade".



In the form of a grand piano, the freshmen present "Serenade in Black and White".

Monday's blue for '62.....



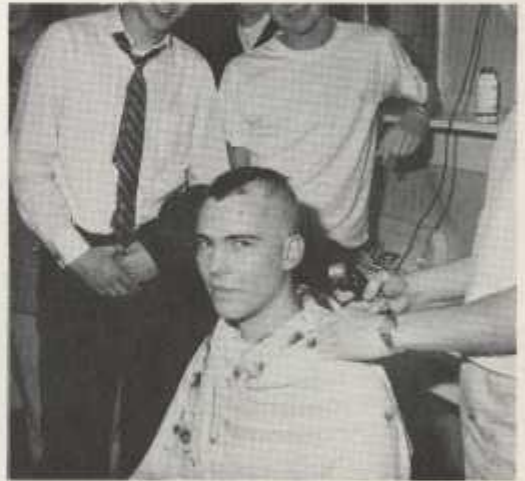
The sun appeared and the snow melted in time for the traditional crossing of the Mill Stream.



Glee bets were profitable for some, Dr. Schulze can confirm, as he gets "die Schuhe" shined.



"Come on in — the water's fine."



... and another head of hair falls prey to the clippers.



Two petite frosh find this breakfast a bit out of the ordinary.



Blue Monday saw great literary classics explained on the steps of Eaton.

again



This Glee bet brought Hindu culture to the Willamette campus.



A distinguished Blue Monday visitor was this Roman solon.



Doney porch was the scene of 15 minutes of free rib-tickling.



The amazing results of peroxide!



"Glee is such a fatiguing ordeal!"

Serenade staff



Glee Manager — Glen Downs.



Assistant Glee Manager — Doug Simon.



Committee Heads (L to R) J. Davis, V. Moran, executive secretaries; S. Cline, backdrop; J. Gay, M. Gillespie, decorations; L. Higginbotham, ushers; T. Dunham, records; B. Klicks, lighting; D. Beaton, entertainment; B. Hemanway, publicity; J. Abele, stage; T. Fahlen, tickets; J. Tacker, programs; J. Triplott, souvenirs.



Gathered around the piano are song leaders G. Darby, junior; G. Lovre, senior; S. Lewis, freshman; (seated) L. Brown, sophomore.



Fourth-floor Waller was the scene of many busy evenings for the decoration committee.



Gleefully contemplating their classes' fate are formation leaders T. Mecker, junior; J. Taylor, freshman; R. Walker, senior; T. Hemingway, sophomore.



"Which pictures to use." The souvenir committee deliberates.