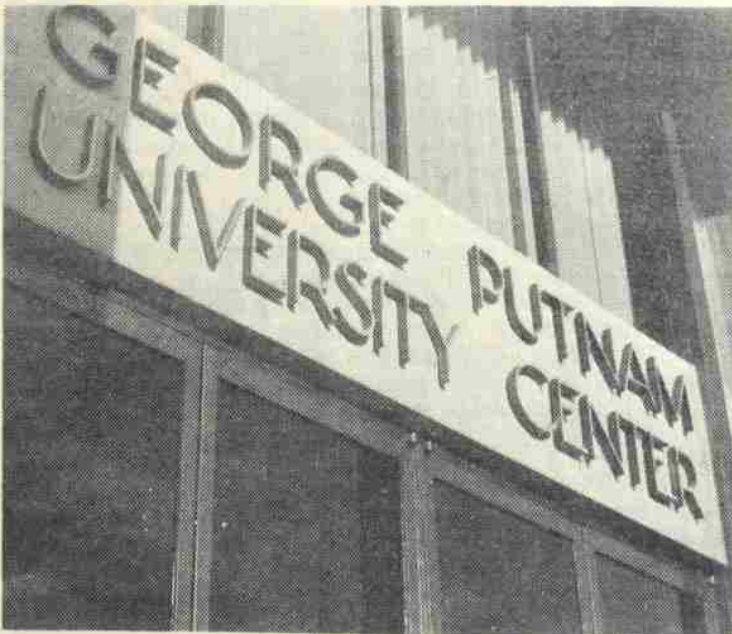


Willamette Collegian

Volume LXIII No. 18

Willamette University Salem, Oregon

February 6, 1970



This unique frontal view of George Putnam University Center is seen daily by the hundreds of Willamette students who have already made it truly the "university center." Housing nearly all non-academic, student-related administrators the center building performs many functions often not included in student centers; making the term university center appropriate. It is the social focal point of the campus with a dance scheduled this weekend along with several speakers throughout the coming weeks. The dance features the Morning Reign, Friday night. Speakers include Denis Hayes, national coordinator of environmental action, Thursday evening at 7.

Board votes on standards; housing

by Dick Todd

With the approval January 29th of the revised Standards of Conduct proposal by Student Affairs Committee, interest is now directed toward February 17th and 20th, when the faculty and the board of trustees, respectively, will review and pass judgement on the proposal. Specifically within the proposal is the provision for guest visitation, commonly known as open dorms.

The board of trustees, comprised of approximately fifty members, will meet February 20th in Portland, and contingent on the action of the faculty, will vote not only on the Standards of Conduct proposal, but also on the new housing plan and what remains of the Student Court package. Their current budget will also be reviewed. In preparation for February 20th, the Student Affairs committee of the board of trustees planned to meet with the campus' Student Affairs Committee, February 5th. The trustees' Student Affairs Committee, headed by chairman Warne Nunn, became a permanent standing committee of the board last summer.

The bylaws of the board specify only that a meeting be held each October. However, past policy has included a regular mid-summer aggregation as

well. And the board itself, along with its fourteen committees, assembles when the need arises; the February 20th meeting being exemplary of that.

As president of the board, George H. Atkinson not only presides over the governing board of the board of trustees, but serves as the means through which President Fritz can contact and inform the trustees of activities on the Willamette campus. Since all matters necessitating knowledge by the trustees is handled through the Willamette president's office, the COLLEGIAN, which is sent to each member of the board, provides the only recognized source of discourse between students and trustees.

Polley proposal reviewed by Senate

by Carol Van Bokkelen

The Polley proposal is a report on trends in spending by the Associated Students (ASWU) for the last ten years. This report shows that all programs financed by the Student Body are now operating with less funds than in the past.

The financial squeeze is due to student demands for more and better speakers and programs that stress all-campus

Jones speaks on pathos at Student-Faculty Con.

The Faculty Student Conference opens tonight (Friday) with the Conference Banquet and an address by philosopher W.T. Jones. Tomorrow morning participants in the conference divide into eight discussion groups to consider variations on the conference theme, which is "The Teaching-Learning Process at Willamette."

Professor James Philips, chairman of the Conference Committee, estimates approximately one hundred people will attend the conference. All members of the faculty and of Student Senate were invited. Each living organization also chose

two representatives in addition to their Senators.

Frequently, recommendations arise from the conference. A past recommendation of the conference which was actualized was the abolition of the dress standards for women. Another result of conference recommendations is the present representation of students on faculty committees. Also, the idea for the 4-2 program was initiated at the conference.

Topics for the discussion groups, which will meet from 9 a.m. to noon Saturday are: "The Lecture Method at Willamette, Its Advantages and Disadvan-

tages" (Speaker and moderator: Charles Bestor); "Alternatives to the Lecture Method at Willamette (Wright Cowger); "Academic Freedom and the Learning Process at Willamette" (Kenneth Smith); "The Student Population: Admissions and Recruitment Policies at Willamette" (Frank Meyer); "Evaluating Student Performance at Willamette: The Role of Grades" (R.A. Yocom); "Faculty Recruitment Policies at Willamette" (Byron Doenges); "The Life-Style of Willamette Students and Its Effect on the Learning Process at Willamette" (Phil Harder); "Student's Responsibility in the Learning Process at Willamette" (to be selected by Student Senate).

Dr. W.T. Jones, a Rhodes Scholar and the author of three books, will present the keynote address on "Learning and Existential Pathos." It will be held tonight from 8:30-9:30 p.m. in Classroom "D" at the Legal Center.

The Conference Banquet is scheduled to be from 7-8:30 p.m. tonight in the Bearcat Cavern. Accommodations have only been made for people who notified Prof. Phillips by last Tuesday that they were going to attend.

President to speak

Next Monday evening President Fritz will address Student Senate. All regular business will be set aside so that the audience as well as the Senators have a chance to ask questions of President Fritz. This open meeting will be held at 9 p.m. in the Senate Chambers Monday.

Young outlines views

"Reform, Revolution and Nonviolent Resistance" was the topic of a speech given yesterday by Ronald Young. The speaker outlined his views before an audience gathered in the senate chambers at the University Center.

by Ron Rainger

In conjunction with the mounting tension which has recently arisen on the subject of guest visitation (commonly known as open dorms), Student Affairs has passed the section of the Student Court Package known as the Standards of Conduct. These proposals deal not only with hours for guest visitation, but include recommendations on subjects such as drinking, closing hours and rules governing the implementation of these programs.

The Standards of Conduct is divided into three parts. Part I deals basically with conduct in general which should be in accordance with common decency. It also establishes rules on the use of intoxicants, drugs and firearms.

Part II is the most significant section from the point of recent student interest. Section 2 of this part states that closing hours for all freshman women and all upperclass women who do not have card-key privileges, will be 12 a.m. Sunday through Thursday and 1:30 on Friday and

Saturday nights.

The third section of this part deals with guest visitation in private rooms. The proposal calls for the approval of 2/3 of the students residing in a living organization with the concurrence of the personnel deans. The hours proposed for private room visitation are, 1:00 p.m.-5:00 p.m. on Wednesday and Sunday afternoons, 8 p.m.-midnight on Friday nights and 4:30 p.m.-midnight on Saturdays.

The third part of the Standards of Conduct establishes the rules that each living organization may make on subjects such as dress, smoking and room visitation. The regulations must be made by 2/3 of the people in that organization with the agreement of the deans.

Rules governing room visitation may be set up by the governing bodies of the specific living organizations regarding hours, rules and procedures for room visitation. The regulations dealing with hours must con-

(continued on page 4)

In this issue...

Letters to the Editor	p. 2
Denis Hayes	p. 4
Figaro	p. 5
University Center	p. 8

awareness such as Black Week. The ASWU is faced with the choice of funding new programs or its traditional commitments. In the last few years the academic budgets have been hurt the most. They have been lowered while participation and enrollment have continued to rise. The academic programs affected by this problem are; Willamette Chamber Orchestra and Salem Community Symphony, Willamette University Choir, Willamette Glee Club, Willamette University Band, Willamette Singers, Opera Theatre, Forensics, Acting I, Fundamentals in Creative Dance, Directing I, Dance Composition I, Advanced Acting, Advanced Directing.

In 1968-69 Drama and the University Choir consumed all their reserves and incurred debts beyond their ability to pay (Drama \$508.28 and Choir \$1,638.00). Choir in 1969-70 received its entire allocation by

mid-October and by November first it had used its entire allocation. The Drama department has never been able to make any improvements; its sound and lighting systems are not better

Auditorium named for Smith

George Putnam University Center was the scene of a banquet held in honor of retiring Chancellor G. Herbert Smith and his wife last Saturday evening. In recognition of his twenty-eight years of dedicated service to Willamette, the Fine Arts Auditorium was renamed the G. Herbert Smith Auditorium.

The 425-place dinner was the first social event to be held in the new three-story structure on the Willamette campus. Senator Mark O. Hatfield was the guest speaker. He remarked that under Smith's direction the University has experienced considerable

than those of a good high school.

A survey was taken of eight other colleges and universities

(continued on page 4)

growth both in terms of the number of buildings and acres owned. Hatfield also noted that two-thirds of all degrees awarded

in the University's history have been granted during Smith's administration.

The ASWU presented a portrait of Dr. Smith to be displayed in the Smith Auditorium. The work was painted by Lucille Wilson, a Portland artist.

It was also announced by Mr. Robert C. Notson, Willamette trustee and publisher of the Oregonian, that a \$30,000 endowed scholarship fund will be created in Smith's name.

Willamette Collegian

David Weston, Editor Nancy Ellis, Publisher

Elizabeth Schade Assistant Publisher
 Paulette Magistro Copy Editor
 Jim Robinson Editorial Page Editor
 Jeff Weinstein Sports Editor
 Larry Cunningham Arts Editor
 D. Wesley Pearson Dark Room Manager
 John Sutton Business Manager

More responsibility to students

Progress, in many people's opinions at Willamette, has been a non-existent word. However, if one examines the proposals of last year's Student-Faculty Conference one can see some resulting changes.

The committee on University Corporation made these proposals: 1) that students should have some type of representation at the Board of Trustees meetings 2) that students help in the selection of a new president 3) that students be provided itemized lists showing the allocation of their money. Of these three proposals the second came the closest to being accomplished. Some students were able to meet the prospective presidents but had little to say in the actual choice. The committee on Student Participation made these proposals: 1) students participation in all faculty and administrative committees 2) committee of trustees formed to confer with the Student Affairs Committee 3) better communication among all facets of university life. As of now, the first and third proposals have had some success. Students have been placed on both faculty and administrative policy-making committees. Examples of better communication have been shown through the card-key system and the possibility of co-ed and open dormitories.

The committee on Intellectual Atmosphere made these proposals: 1) dormitories be integrated by classes 2) purchase of more books 3) better interaction with the Law School 4) speed reading course 5) faculty lectures open to all students 6) that the faculty and students ask themselves if the campus is overstructured in terms of organizations and activities. Co-ed dormitories are in the process of becoming a reality. The library is still in need of books and the only speed reading course offered to the campus last year by the Class of 1971. Some faculty have given lectures open to all students but on the whole very little has been done. The evaluation of the overstructured or divisional aspect of campus has had some interesting results. It seems that more people are now becoming more aware of these divisions and in turn are realizing what harm they have caused and how, with some basic changes and moderate efforts the campus could be greatly improved.

The committee dealing with in Loco Parentis concluded that most students have the ability to assume greater responsibility, and proposed that the Student-Faculty Conference have a better make-up by representing more students. The idea of student responsibility is part of all the proposals mentioned and, as a result, some gains have been made. The same representational set-up seems to be in the making for this year's conference. This will allow the same students similar opportunities, as they have had in the past, to express their views. This will, in turn, leave the silent majority silent. The committee on Grade Requirements made these proposals: 1) that the 4-2 catalogue be re-evaluated 2) that graduated requirements be reviewed and 3) that a better definition for a Liberal Arts education be given. As of now little has been done in this area.

One cannot deny that some progress has been made in the last year. Not only have there been some actual procedural changes, but above all, people's attitudes have changed. Some people will be dissatisfied with the present rate of progress. However, we have seen what trust and understanding can do, so let us not stop now in creating a better University environment.

jr

Praise to Dr. Whipple

A well-deserved plaudit should be directed this week to Dr. Jerry Whipple for a job well-done as the University Center was occupied this week by Willamette students and administration. Dr. Whipple was instrumental in making the operation and transition as smooth as it has been. He is a real friend of the students in his efforts to make Putnam Center, student oriented with student needs receiving the highest priority. Thank you, Dr. Whipple.

dw

Letters to the Editor

Balance upset on Student Affairs

To the Editor,

Generally, the nature of a student-faculty committee is to bring together students, faculty, and their ideas and feeling regarding the academics of a school. Often their purpose is then to combine those ideas into statements of policy for the students. If the policies are social, they are founded on academic criterion.

But here the situation is different. Willamette is unique in that it supposedly functions as a community, wherein everyone, trustees, alumni, administration, and students included, participate each as a vital member of the community. Perhaps because Willamette presents itself as the typical liberal arts college, where the students need only sit back and soak up all that the college has to offer, or maybe the students enjoy being made pawns of the community, but something is out of balance, and the Student Affairs Committee is the prime example.

First, because the student members of Student Affairs are appointed by the ASWU president rather than selected by the students themselves they can not be said to be representative of the student body at all. Thus, they represent only their personal views. Nor are any freshmen on the committee, because it is reassembled every spring for the following school year. Judging from the activism on this campus, the deletion of freshmen from any form of government is either a gross error or very well planned.

And the responsiveness of the committee is most evident over the current open-dorm "controversy." Nearly ninety students, predominately freshmen, attended three Student Affairs meetings only to be greeted with a combination of scorn, dismay, disgust and tokenism. If a student affairs committee won't listen to the students, who will?

Which raises questions about the other half of student affairs, the faculty. No longer are social and academic activities bound into one, for one does not necessarily entail the other. The concept of a university community

Panhellenic names officers

New members of the Willamette Panhellenic were recently named to their positions for the coming year. Offices in the organization are rotated annually among the five sororities.

The new representatives and their offices are: Tina Anderson, Pi Beta Phi, President; Debbie Huffman, Chi Omega, vice-president; Michelle Drayton, Delta Gamma, secretary; Peggy

is obsolete or at least in need of revision. What a student does outside the classroom is of no real concern to the faculty. If the faculty feels so strongly about protecting us from Paradise's Tree of Knowledge, then they, too, should live on campus and abide by their own restrictions. Their role should be confined to the academic and intellectual atmosphere on campus, and they should address themselves accordingly.

Once they transcend this boundary, the power of the students is usurped, and the balance of the community as it should be known is upset. Until the Student Affairs Committee and the faculty reassess their obligation and responsibility to Willamette University these conditions will persist, and the students will continue to be objects and subjects of someone else's mores and beliefs.

Dick Todd '73

Grandma, Grandpa groove on Muzak

To the Students:

It is interesting that it took only one day to realize the orientation of the new University Center. Students can now tango to the tunes of Jimmy Dorsey and Glenn Miller, piped directly from the lovely Aragon Ballroom. Is that where we are at now? "Little Brown Jug," has all but disappeared in this country except at the West Salem Manor and the Willamette University Center. Which provides conclusive proof that Salem is the only place in the world that serves Geritol on Tap.

After repeated request for at least a jump into the swinging 50's (to placate the silent majority if nothing else) senior student manager was quoted as saying "we have to be careful what we play throughout the building." Careful for what! Careful so our student body officers aren't influenced by songs of peace. Careful that the moral dedication which most musicians today include in their themes does not seep into the lobbies of our University Center.

Yes folks! This is truly a University Center. Owned, operated and dictated by administrative procedure. Heaven forbid,

Chandler, Alpha Chi Omega, treasurer; and Barb Haas, Alpha Phi, rush chairman.

Last week, under the leadership of Sue Hales, Panhellenic spearheaded the March of Dimes Drive in the Willamette area, recruiting volunteers from campus living organizations. Fifty students took part, raising an approximate \$120.

Open seminar due Feb. 10

The first Open Seminar for Willamette's second semester will be held on February 10th at 7:30 in the main lounge of the University Center. Title for the seminar is "Contraceptives and Birth Control." Speakers will include Dr. Ted Shay, chairman of the Political Science Department

at Willamette, Rev. Phil Harder, Willamette's chaplain, and Dr. Joseph Trainer of the Oregon Medical School. Dr. Trainer has written five books concerning human sexual relations. Mr. Bjorkquist of Willamette's sociology department may also take part in the discussion.

(as one of the staff was caught gasping), should the students gain control of what kind of music they wish to hear. And especially what they prefer to eat - love that Saga Food. The music is however great for studying - abnormal psychology.

Perhaps one should not be too hasty to judge administrative intent, but in the meantime the "sounds of silence" would be infinitely more gratifying, to the ears of the seventies.

Dick Howsley
1970

activities calendar

Friday, February 6

7-8:30 p.m.—Student-Faculty-Trustee Conference; Cat Cavern.

8 p.m.—Basketball—Willamette vs. Linfield; Gym.

8:30-10 p.m.—Faculty-Student-Trustee Conference; Law School.

9:30-12:30 p.m.—ASWU All Campus dance—"Morning Reign"; Cat Cavern.

Saturday, February 7

9-12 a.m.—Student-Faculty-Trustee Conference; University Center.

8 p.m.—Basketball—Willamette vs. Pacific; Gym.

Monday, February 9

9-11 p.m.—Student Senate; University Center.

Tuesday, February 10

6:30-11 p.m.—Open Seminar: "Birth and Population Control"; University Center.

7:30-9:15 p.m.—Anthropology Lecture: Sponsored by Division of Continuing Education, State of Oregon; Law School, Room "E".

8 p.m.—Basketball—Willamette vs. Lewis & Clark Normal (Idaho); Gym.

Wednesday, February 11

11 a.m.—Activities Board Meeting; Student Body Office conference room.

Thursday, February 12

3:30 p.m.—College of Music Convocation; Music Recital Hall.

7:30-9:30 p.m.—Dr. Joseph Trainer Lecture: "Contraceptives"; University Center.

Saturday, February 14

8-12 p.m.—Valentine Ball-Doney House Dance; Cat Cavern.

Official publication of the Associated Students of Willamette University, Second Class postage paid at Salem, Oregon, 97301. Published weekly except during vacation and examination periods. Phone number 370-6224. Ads and subscriptions, John Sutton, Business Manager at 370-6236.



Mike Brown, Thomas Chuhay, Diane Farquhar, Tom Felix, Sue Friesen, Virginia Garrett, Gail Jeffrey, Wayne Larsen, Duffy Lederer, Laurie Lindquist, Steve Little, Lisa Lum, Vince Morrison, Natalie Morse, Charles Nevin, Terry Prottsman, Ron Rainger, Roger Reif, Tom Reuter, Linda Robinson, Tony Robinson, John Ryan, Lester Seto, Pete Steinert, Dave Taylor, Sara Tibbutt, Dick Todd, Lyn Trainer, Carol Van Bokkelen, Carol Ward, Jean Woodring.

Bennett explains

by Bill Bennett, ASWU president

The purpose of this article is to find the "why" rather than the "how" of our present system of student government, which unites us, not only with the Board of Trustees and the President, but with the faculty as well. There are, no doubt, many pros and cons as to the best possible system under which we might operate, but rather than name all of these I shall concentrate on why our present system was adopted two years ago.

In the new Revised Standards of Conduct there is a sentence which reads, "Standards of conduct and related rules having University-wide application are formulated by the joint action of students and faculty members on the Student Affairs Committee. They are given authorization by the concurrent action of the student senate and the faculty with the approval of the president of the university acting on behalf of the Board of Trustees." The rationale which I believe still holds today lies in two specific assumptions: one, that this University is a community and the social norms have an effect not only upon students

but upon faculty and administrators as well, and two, the authority and legitimization of any proposal will carry greater weight when it has been approved by not only students but by faculty as well.

Obviously, our present system is more cumbersome and prone to longer delays than a streamlined system whereby the students deal directly with the president and the Board of Trustees, but several inherent advantages outweigh this disadvantage. First of all, our present system hopes to lead to a better communication and understanding with the faculty so that they might participate with us in what is hoped is the constant improvement of the university academically as well as socially. Secondly, for those of us who have been privileged to work with the faculty members of the Student Affairs Committee, they have been a constant source of insight and wisdom in all that we have done. The obvious advantage here is that we will know to some degree how the faculty feels on any given issue and we will bring forth far better proposals to be considered by the university community.

A word is now in order, I believe, concerning the nature and function of that often maligned and seemingly always misunderstood committee—Student Affairs. As provided, its duty is to formulate and initiate propo-

sals. It has absolutely no legislative power; any proposal that it considers must be approved by both the students and the faculty before being presented to the President of the University. Obviously, it does have inherent power in its ability to formulate and initiate proposals. Any student may have a proposal considered by Student Affairs by merely submitting his proposal to Dr. Whipple or by asking a member of the committee to present a proposal at any meeting. The philosophy behind allowing this committee the power to initiate and formulate is that by doing so proposals will be developed in the best possible manner at the earliest possible time before they are presented to those legislative bodies which must give final approval. All Student Affairs Committee meetings are open to the public and all students and faculty are urged to attend.

Finally, it must be noted that in a private institution such as ours, the ultimate authority to approve a proposal or to legislate a change in social norms and policy rests with the Board of Trustees or the President acting on their behalf. It, therefore, behooves both students and faculty to work together so that we might present proposals that are substantive in both fact and thought. Obviously, there are many times when the system seems to frustrate rather than

help, when it seems to move too slowly or apparently refuses to move at all. Each of us has an idea as to what is best for this university and for ourselves as participants in this community, and it becomes the task of Student Affairs Committee, Student Senate, the Faculty, the President and the administration to arrive at a consensus of what is truly best for the community as a whole. In the process, each of us will probably not get all that we want, but in the end, the result, no matter how frustrating the process, will hopefully gain a better university for us all. If any student has further questions concerning our system please feel free to contact me. Bill Bennett, in the Student Body Office.

Students at SOC for tournament

Six Willamette student speakers will represent the University at the annual Southern Oregon College Forensic Tournament in Ashland this weekend, February 6 and 7.

Participating in debate, extempore speaking and interpretative reading will be Rush Hoag and Betty Hicks, seniors; Joe Fuiten and Ric Weaver, sophomores; and Joe Whitsett and Rich Jones, both freshmen.

College students from 24 schools will be in Ashland for the event.

Bookstore moves to new location, holds moving sale

One of the many campus functions moving to the new University Center is the University Book Store.

The new facilities that will house the book store will lead toward many innovations in service to the University.

The size and large amount of shelf space will enable the store to offer a larger line of goods such as records, magazines, sundries such as shaving cream and toothpaste, and a larger selection of popular paperbacks. With plenty of room, the book store will be able to expand its operations, and make shopping a bit easier for the customers. The new store will have three check-out stands, but except for the textbook sales at the start of each semester, only one is expected to be in normal use.

The move to the new location will not be made until the last week in February to allow some of the present stock to be sold. A "moving sale" will be put on by the book store this

coming week in order to reduce the amount of stock that has to be moved. During the move, the store will be closed, and so students are urged to buy their supplies and stock up during the first part of the month.

There is still the big question of what will happen to the space in Waller and Eaton left by the moving of the book store, the Student Body offices and some of the administrative offices. A number of proposals have been made concerning what to do with the space, including the possibility that Psychology lab space may be made out of the old Student Body offices. However, since the semester is well under way, the empty rooms will probably not be used much until the fall semester.

DG heads GPA

The Fall House grades for 1969 have been released by the Registrar's office. High honors go to Delta Gamma with a house average of 2.811.

The rest of the averages are as follows: Pi Beta Phi-2.766; York House-2.761; Lee House-2.732; Kappa Sigma-2.712; Delta Tau Delta-2.700; Alpha Phi-2.653; All Sorority-2.639; Town Women-2.637; Beta Theta Pi-2.632; All Women-2.616; Belknap Hall-2.615; Sigma Alpha Epsilon-2.614; Doney Hall-2.578; All Fraternity-2.559; All School-2.546; All Men-2.492; Chi Omega-2.486; Alpha Chi Omega-2.463; Baxter Hall-2.459; Sigma Chi-2.394; Town Men-2.387; Lausanne Hall-2.377; Matthews Hall-2.366; Phi Delta Theta-2.235.

Just in case you want to join the Establishment someday...



Success can creep up on you. You get a wife. Then a few kids. A business. And there you'll be. Established. But it'll be a lot easier road if you've prepared for it early. Like creating a savings and investment program through life insurance while you're a student. It makes sense--if you think about it.

For one thing, premiums will never be lower for you. Also, you can guarantee your right to get additional life insurance --- no matter health or occupation. It's a start on security AND independence. If the budget is tight, don't worry... you can defer premiums until after you graduate and get a job with the Establishment.

Talk to me about the value of getting life insurance while you're in college. I have lots of other reasons that make sense. Even if you DON'T join the Establishment.

Eugene L. Lowe
581-4656

The OHIO NATIONAL Life Insurance Company
a Quality name in mutual life and health insurance - Cincinnati



odds 'n ends

The Personnel Deans made the announcement of placement interviews for seniors today. The following interviews are available: Wednesday, Feb. 11 - National Farmer's Organization. Public Relations and Marketing; Wednesday, Feb. 18 - Metropolitan Life Insurance Co.; Wednesday, Feb. 25 - U.S. Civil Service; Thursday, Feb. 26 - Firestone Tire and Rubber Co.; Wednesday, March 25 - Allstate Insurance Co.

The sign-up sheets are available through Mrs. Breakey at the Personnel Deans' Office.

SALARIED typist wanted 9-10 a.m. Apply at Student Body Office. 3rd floor, University Center.

ADVERTISING SALES position now available. Commission paid on sales. Contact Willamette U. Publications Business Manager, John Sutton. Phone (campus) 6236 or 370-6236.

The 1970-71 application forms for financial assistance are now available in the Financial Aid Office, Room 4, Eaton Hall.

To be considered for any financial assistance, including a loan, a student is required to have a current Willamette University application and a 1970-71 Parent's Confidential Statement on file.

To be assured notification of financial assistance before the end of the spring semester 1970, a student must make application before February 6, 1970.

On Saturday, February 14, 1970, Doney Hall will sponsor an all-campus formal and semi-formal dance. The theme will be "Keepsake" and the dance will be held in the new student center from 9:00 to 12:00 p.m.

An all campus contract bridge tournament involving fifteen hands on a total score basis will be featured at the University Center. Thirty-two coed teams will be involved in a double elimination tournament with a fifty cent entry fee. All interested bridge players should sign up at the U.C. Information desk this week or next. The tournament begins Feb. 14.

Dance at UC

The Morning Reign will be playing at the first dance to be held in the new University Center. They will be featured tonight, February 6, from 9:30 to 12:30 p.m. The band, featuring Willamette students, is continuing to gain popularity throughout the Northwest. The charge is \$1.25 single, and \$2.00 per couple.

IN HONOR OF OUR BOOKSTORE

THE GREAT

Moving Sale

beginning FEBRUARY 9th

books-supplies

CLOTHING

MISCELLANEOUS

BOOKSTORE

We'd rather sell it than move it

Hayes speaks on environment

"Will There be a Year 2,000?" is the subject of the lecture Denis Hayes, national co-ordinator of Environmental Action, will speak on in Waller Auditorium, Thursday, February 12 at 7:00.

Contraception topic for Trainer talk

Dr. Joseph B. Trainer will speak on contraception on Thursday, February 12 at 7:30 in the main lounge of the University Center. This is the third session in a series of five.

According to Dr. Trainer, "If it is to be a family based on parental love, there is going to have to be a great deal of sexual activity going on without expectation of additional children as a probable consequence. This is the essence of the familial need for contraception."

The two following sessions, on February 26 and March 12, will cover "Abortions and Genetic Diseases," and "Child-rearing and Sex Education."

His address here on Thursday evening will stress not only the problems of the urban centers, the air, water, and population, but offer solutions and illustrate and inform on the present methods of control being employed.

Hayes will open the discussion to question and answers following his lecture.

The native of Camus, Washington, is a world traveler informed on the environmental problems of Asia, Africa, and

Umbrellas reign in January

According to the weatherman, it rained 17 days straight in January. From the 11th to 27th we were confined to scurrying from shelter to shelter and hassling umbrellas.

Had it rained 23 more days, which didn't seem entirely impossible last week, we might have noted Biblical parallels. Maybe it will come in 17 day periods with a break in between, so we can console ourselves with the possibility there may be a sun.

the Middle East as well.

Denis Hayes' appearance is sponsored by the University Lecture Series Fund.

Hayes is a graduate of Stanford University, where he was student-body president. He is presently on a leave of absence from Harvard Law School while serving in his present post.

He is particularly concerned about the lack of knowledge most people have of the true problems of the pollution crisis. For this reason he is organizing the national teach-in which will stress the problems and hoped for solutions on April 22nd.

Senate endorses newly elected class officers, Glee leaders

Results of class elections held January 30 have been received and the winners announced in Student Senate Monday night. The new officers include Senior Class President Clark Omdahl; Vice-Pres. Chuck Bennett; Secretary Becky Lowe; Treasurer Lois Holt; Sgt.-at-Arms Jim Baldwin; Formation leaders Jon Haynor and Bruce Robertson; and Songleaders Jim Foster and Doug Forsythe.

Junior officers are President Jim Turk; Vice-Pres. Darin Goin; Secretary Gayle Jones; Treasurer

Kathy Jensen.

Sophomores elected Gary Funes to the presidency and Bret Rios to the vice-presidency. Cheryl Spezza was elected secretary; John Winterscheid treasurer; Dennis Reese Formation leader; and John Gray Songleader.

Freshman officers include President Jim Cuno; Vice-Pres. Dick Todd; Secretary Mary C. Sheppard; Treasurer Lynn Kittridge; Formation leader John Welty; and Songleader John West.

Proposal to Board

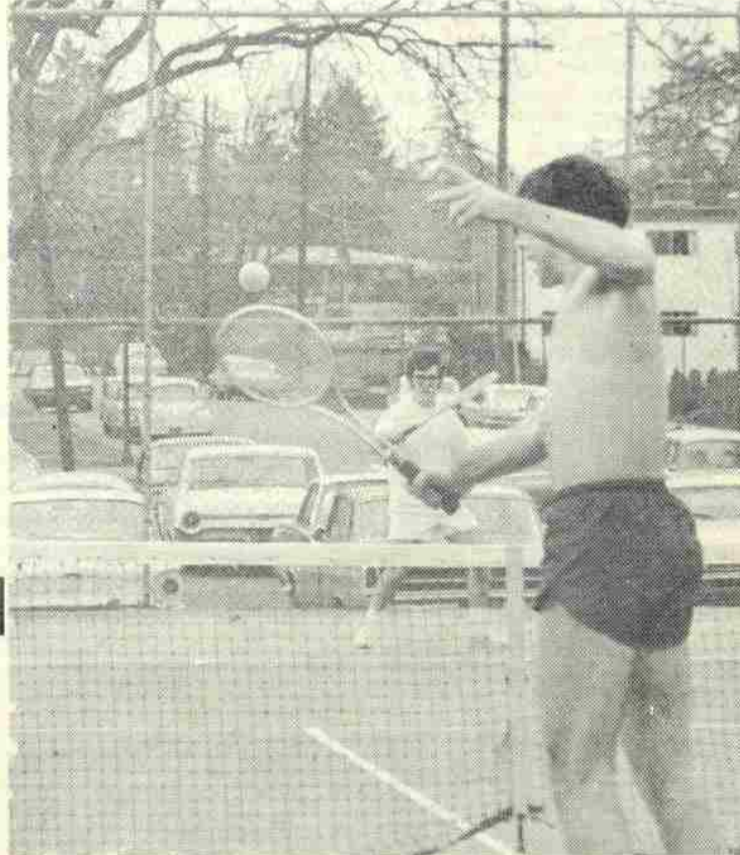
(continued from page 1)

which approximate Willamette in enrollment and total student body budget. This survey shows that only one university makes any significant attempt to finance several academic programs.

The Polley report suggests that Willamette University fund those academic programs that the ASWU now funds. A three year transfer of funding is suggested. During this period the total amount of funding for the academic programs would be raised from its present level of \$7934 to \$11,000 in 1972-73.

If the University decides not to aid the ASWU it may be necessary to seek a major student body fee increase. The fee would be approximately \$35 per student. To obtain such a fee increase a two-thirds majority approval of the Student Body is necessary.

The Polley proposal which has full Senate approval will go before the Board of Governors February 20.



With a brief respite from the rain, tennis aficionados turned out to test their skills on the newly installed Uni-Turf playing surface. Remaining courts will also be re-surfaced when the weather permits.

Visitation trial period necessary at WU?

One of the reasons cited for limited hours in the open dorm proposal which passed Student Affairs January 29th, was the result of a poll of universities and colleges taken by Lauren Ronald. The compilation tends to indicate that any policy granting more than twenty hours per week eventually becomes unsatisfactory with the students themselves. The poll failed to include the University of Washington, where Lander Hall, a multi-story co-ed dormitory is universally popular. Lander is open from 7 a.m. to 3 a.m. daily.

Nor was Western Washington State College polled; its hours being 12 to 12, Sunday through Thursday, and 12 to 2 on Friday and Saturday. A temporary open dorm policy has been in effect at Western since the beginning of the fall term. Their Board of Trustees was to meet January 31st to review and make a permanent decision on open dorm policy.

Kathi Huffsmith, a freshman attending Western and residing in Ridgeway Kappa, a co-ed dorm, wished to make her feelings known: "Everyone I know loves visitation. Every-

thing is more relaxed, and it has really become a living situation. The interaction between the guys and girls has improved. There is no fascination in a boy's room and vice versa. We all view each other more realistically. It has produced a deeper involvement with others. The guys see the girls more as 'real live' people, than objects to be played with. We listen to their feelings about girls, and they listen to our feelings about them. There is so much personal concern.

"I think the effects of visitation are most evident in Kappa. It has completely changed the dorm for the better. There is no change in your amount of privacy. There really aren't that many guys wandering the halls. As for the noise factor, all agree that there is a stabling influence in a boy's dorm to have girls around."

Does Lauren Ronald's poll and Miss Huffsmith's personal account lead to a similar solution, that being a trial period where we are given an opportunity to adequately prove our maturity and responsibility? Do the proposed hours give us that chance?

St. Affairs meet on 5th

(continued from page 1) form to the allowed time periods as designated in part II, although organizations may further limit these hours. Also rules governing visitation may be immediately suspended by the deans if they feel that any resident of a living organization has violated the responsibility of abiding by the standards of conduct. The regulations may also be suspended if 1/2 of the people in an organization petition for the suspension.

The Standards of Conduct will now go to the Student Senate on February 16, to the Faculty on February 17 and to the Board of Governors on February 20.

NOPP'S
GOLDEN PHEASANT

Senate to overhaul ASWU Constitution this semester

Next Monday evening at an open meeting President Fritz will speak to Student Senate.

Several significant proposals were acted upon at last Senate meeting. Perhaps the most interesting of these was the report given by Rich Polley. Currently, the Student Body finances several academic budgets including Band, Choir, Orchestra-Opera, Forensics, and Drama. This proposal which passed unanimously suggests that the University finance these programs.

Senate also approved formation of a standing committee on Academic Life. In the past Student Senate has concentrated upon social activities and improved social regulations. This committee would sponsor academic activities on campus.

The first task of the Academic Life Committee may be to begin informal seminars with professors in the University Center. Other possible functions

include co-ordinator of possible speakers programs, promote discussion of alternatives for the four semester language requirement, and suggest that journalism again be offered at Willamette. The committee could also investigate an honors program.

President Bill Bennett announced that a complete overhaul of the ASWU constitution would be begun this semester. It is hoped that with the help of the law school that a workable constitution will be made.

Lauren Ronald announced that in the future all Senate legislation will be codified for reference. It is not possible to determine what actions Senate has made in the past.

Quisenberry PHARMACIES
150 Liberty St. S.E., 2440 Gear St. N.E.

To Beat Inflation
BOB'S 19¢ HAMBURGERS
"Bob It" at Bob's

TYPEWRITER RENTALS
LATE MODELS REASONABLE RATES
3 Months Rental May Apply on Purchase
ROEN'S
456 Court St., Salem, Ore. Phone 363-6773

Sambo's PANCAKES
banquet facilities
480 Liberty SE
OPEN 24 HOURS 7 DAYS A WEEK

JIM'S SHOE SERVICE
WATER PROOFING
SHOE REPAIR and DYEING
NEW SHOES FEATURING BOOTS OF ALL KINDS
183 High St. NE 363-1420

the ARTS

BY LARRY CUNNINGHAM

big bands...

Last Sunday afternoon the Salem Community was treated to an extravaganza of band music—which was on the whole exciting and literally colorful. The program, consisting of bands from North, South and McNary High Schools and the Willamette Band, hosted a full house of spectators. (Though, in the balcony section some could be seen eating popcorn, candy, etc.).

A few of the high schools were hampered by definite technical problems, such as performers who couldn't play. But at the end of the program, which featured the combined ensembles (some 200 musicians), the three numbers were thrilling to listen to. Especially the "New Colonial March" which, though restrained in tempo, was a driving and exciting piece.

These concerts too, appear to be another good way to "bridge the gap" between Willamette and the Salem community. Hats off, to the bandsmen who participated.

glee...?

Well, it's about that time of year again. You know the time in the spring "gleefully" set aside for Glee Week. But is Glee really a gleeful, happy and even fun time of year? Unfortunately, I have seen a few ungleeful things happening in Glee every year I've been here.

One, there is usually, prior to Glee Week, an embittered election for song leaders, formation leaders, etc.; which pretty much sets the stage for the "fun and games" to follow. The opposing factions become embroiled during these elections and decide to keep things agitated during Glee Week, for not only the winner of the election—but for all those participating. Thus Glee turns into a bitter personality conflict—often times employing cut-throat tactics, even before Glee Week begins. The other tragedy of Glee is the phoniness and hypocrisy which accompanies this time of year. As song leader of my class for the last two years, I see people from all divisions of the University working together with common respect and friendship. But, as soon as the week is over, whammy—everything returns to the status quo. Even if you happen to pass a Glee acquaintance on campus, there's no need, after Glee Week, to say hello.

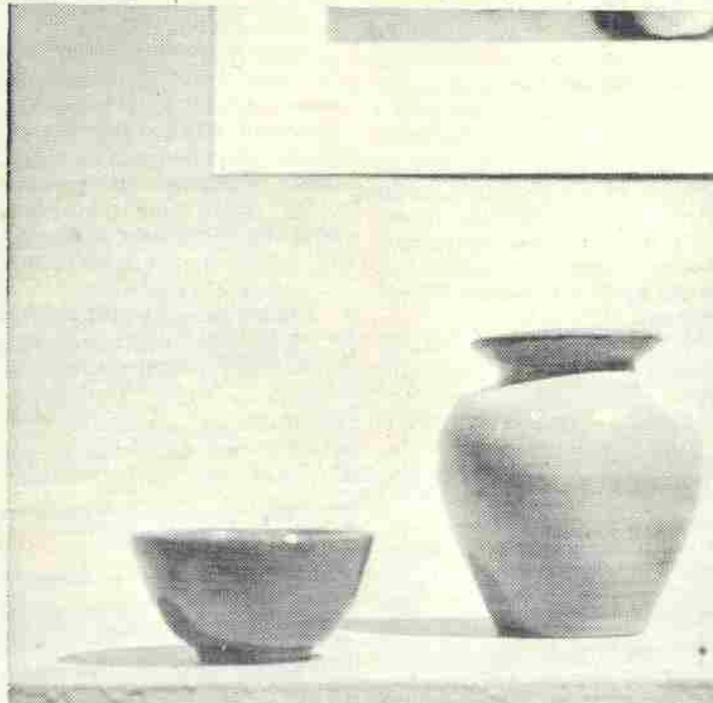
Maybe these are some of the reasons why Glee has been on the decline in popularity in the last few years. Glee is a time to have fun—period. Not to wage a political war or have an unfriendly attitude. That's not Glee.

Senior art show exhibited

Two senior art majors, Kathy Akins and Don Spears have now set up their respective art shows in the Fine Arts Gallery.

The striking feature of the exhibit is the great diversity of material the two seniors have compiled. There are works done in oils, watercolour, lithograph prints, inscribed bronze, ceramic ware, plaster and ceramic sculpture, a mobile and numerous ink drawings. Diversity of subject matter is also a prominent characteristic of this show. There is the "picture" scene done in the standard mediums, abstract portraits, ceramic abstract wall plaques, abundant glazed pottery, just to name a few. Two unusual but quite interesting works in the collection are depictions of the twelve apostles: Don Spear's version utilizes symbols on a montage of cylindrical forms; and Kathy Akin's twelve develops a design around each basic form.

All objects shown are works done in their four years' of artistic endeavours. Some are more recent and evolved than others. Thus, it's a very colorful and lively exhibition. The show is scheduled only for the month of February and the regular hours are in effect.



Two senior art majors, Kathy Akins and Donald Spears, are now exhibiting their works in the Art Gallery.

Art national convention

Dr. Cameron Paulin, head of the Willamette University Art Department, attended the National Convention of Art Historians in Washington D.C. last week. His trip was sponsored by the University. The gist of the was lectures, exhibitions and general discussions. Lecture material covered subjects ranging from the universal to the com-

prehensively detailed. Dr. Paulin took in many displays, one of which was the African Nations Show featured in the art section of last week's TIME magazine.

This is his first expedition to the National Convention in more than a decade. For the next academic year, his is expected to be on sabbatical leave of absence, during which a tour of the Near East is planned.



In rehearsal, The Marriage of Figaro, scheduled for production on February 20, 21, and 22. (See accompanying story.)

Mozart's 'Marriage of Figaro' featured at FAA in two weeks

by Virginia Garrett

It was banned in Europe and it is coming to Willamette. Under the direction of Professor Julio Viamonte, Mozart's opera, The Marriage of Figaro, is scheduled for performance February 20, 21, and 22.

The play of Charon de Beaumarchais, upon which this opera is based, was not at first allowed to be performed publicly. The ban was removed at the same time some of the story's political antagonisms were, and with the added appeal of music, The Marriage of Figaro premiered successfully in Vienna in 1786.

"It's filthy," commented Pat Neils, production manager, when asked about the plot. "The Count is very busy trying to make advances to Susanna, his wife's servant, on Susanna's wedding night, and the Countess is very busy trying to catch the Count in the act." Sub plots formulate as Figaro, Susanna's fiance, learns of the Count's desires, and joins with Susanna

and the Countess to foil his attempts. The Count counters the alliance of the three by trying to force Figaro to marry an old woman, Marcellina, to whom Figaro owes a large sum of money.

"This is one of the greatest operas ever written," according to Viamonte. He points out the unity of the work that is achieved through the close relation-

ships of the text, music, and plot. "The characterizations are carried out to perfection, and the whole thing is quite subtle and witty. Mozart is always difficult to perform.

Tryouts for Willamette's "Evening of Theatre" will be held Tuesday, Feb. 17 from 3:30 - 5 p.m. in the Little Theatre of the Fine Arts Building.

Max Frisch play is scheduled

The Chinese Wall by Max Frisch is now in rehearsal in the Drama Department. The play, under the direction of Mr. Robert Putnam, will be presented March 5, 6 and 7.

The play involves narrow-minded characters from various times in history. The scene is the emperor's palace in China approximately 2,000 years before Christ. Among those present are the Emperor, his daughter, a Chinese prince, Cleopatra, Napoleon, King Philip of Spain, Pontius Pilate, Romeo and Juliet, and a contemporary.

The contemporary tries to show the others that they must not look just at their time and the past when making decisions, but also at the future. All the other characters are wearing psychological blinders. Columbus, for example, keeps repeating that he can't understand why it was called America instead of India. Pontius Pilate continues to explain that he only washed his hands and really had no part in the crucifixion of Christ.

The Cat Cabaret! Carlos Reyes, famed Northwest poet and language instructor at Portland State will be in the Cat; Friday, Feb. 20th at 11:00 p.m. The Cat will be transformed by candlelight and guitar music, to a cabaret atmosphere. Admission is free: come and groove!

AT THE HOLLYWOOD
Doors Open Sunday
at 12:45 and 6:45

Saturday and Sunday at the
CAPITOL and ELSINORE
shows continuous from 12:45

THEATRE SCHEDULES
PHONE 363-5798

the hollywood

Steve McQueen

"THE REIVERS"

Paravision & Technicolor

A Cinema Center Films Presentation

A National General Pictures Release

"Daddy's Gone A-Hunting"

OPEN 6:45 P.M.

the ELSINORE

KRAKATOA
EAST OF JAVA

SCHILL - BAKER - KEITH - WERLE

OPEN 6:45

the CAPITOL

ELVIS PRESLEY
"CHANGE OF HABIT"

Also Paul Newman — "WINNING"

NORTH SALEM

DRIVE-IN

"JOURNEY TO THE FAR SIDE OF THE SUN"

"BATTLE BENEATH EARTH"

"3 MILLION YEARS TO EARTH"

ALL RATED G - CITY LIBRARY

Heath's FLORIST

just a little nicer!

Greyhound Bus Depot
Flower-Phone 363-9179 456 Church St. N.E.

Jeff's Bullsheet

Last Saturday in Portland, eight members of the Bearcat track team competed in the Oregon Indoor Track Meet. Those representing Willamette were: Mac Clouse - 60 yd. dash; Ron Jensen - shot put; Rich Whipple - high jump; Steve Stocker - shot put; and Lloyd Merryman, Don Hanson, Dave Deshazer and Doug Holmes - mile relay.

In girls' intramural basketball competition the Delta Gamma's will play Chi Omega with the winner earning the right to play Doney Hall for the championship. The DG's are led by captain Candy Lindskog who is in for her fourth year of basketball action.

The outstanding performer thus far has been Doney's Julie Ray. Mrs. Williams states that "Julie is our answer to Bob Lundahl."

Anyone interested in turning out for baseball should contact Coach Lewis. There will be a formal meeting on Monday, Feb. 9 in the gym at 4 p.m.

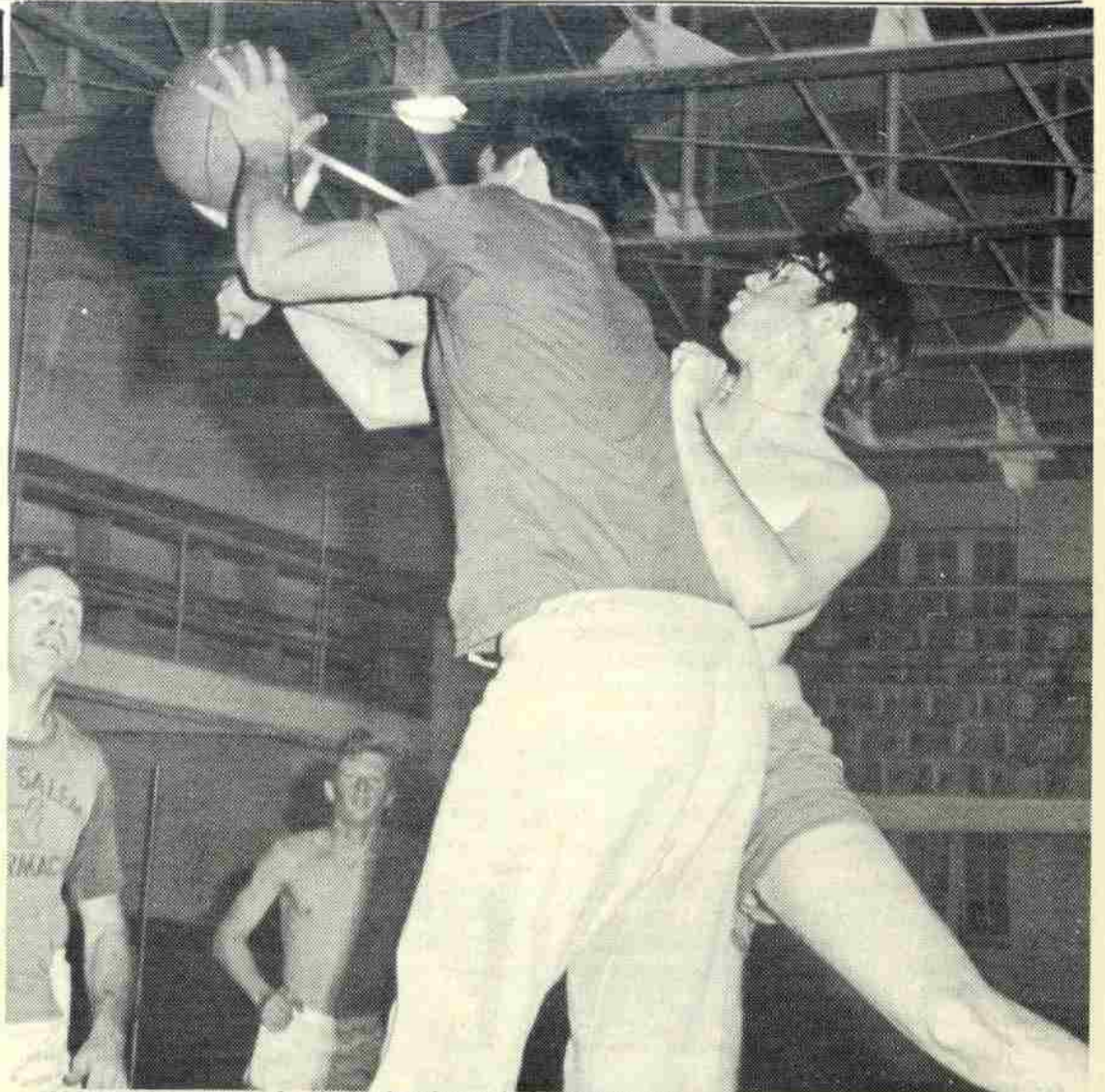
Honorable Mention - All-American Tom Weathers was drafted in the second round by the New American League Franchise - the U.S. Army. Weathers is now negotiating for a two-year no cut contract.

The Independent Shocker A team may not win too many basketball games but their opponents will know they have been in a game.

The Shockers have a front line consisting of Dan Olsen and Lyle Lolotai at tackles and Steve Stocker at center. Play breakers for the team are Gary Clark and Calvin Lee.

Olsen leads the Shockers in scoring while Lee is top in tackles.

Law Student Garry Allen tied an Intramural scoring record last Saturday as he scored 36 points to tie Jim Albaugh's mark.



IM hoopsters compete for the Wednesday night basketball title.

Anyone interested in writing golf or track stories for the COLLEGIAN should contact Jeff Weinstein as soon as possible at the COLLEGIAN office. No qualifications are necessary but knowledge of the fields would be helpful.

High-scoring Cats edge PU

The Willamette Soccer Team traveled to Forest Grove Saturday expecting an easy match against winless Pacific University. With less than ten minutes left in the match, Willamette found itself down by one and with the real possibility of yielding to Pacific its first soccer win.

Knowing that WU would be riding high after the big win of the previous week, the Boxers attempted to catch the Bearcats off-guard. As the first half got underway it was obvious that Willamette was going to have to fire-up. Still, as the first period ended WU held a tenacious 2-1 edge.

Sensing victory, the Boxers put tremendous pressure on in the second-half. Capitalizing on the numerous Willamette defens-

ive errors, they raced to a 3-2 lead. As time was running out, WU found itself down 4-3.

The Bearcat offensive, knowing they couldn't rely on the defense, took control of the game and scored three more in the final ten minutes to make a final 6-4, Willamette.

What was once the most impotent offense in the league is now averaging 5 goals per game which is the best in the conference. With machine-like precision Mark Brennand, Steve Gerrish, Staff Hazelett, and Julio Viamonte were able to score almost at will, demonstrating the king of ball-control not often seen in American soccer.

Next week the Bearcats are at Eugene to take on the Ducks. It will take a huge effort if the Bearcats are to win that one.

Win string ends

Willamette's three-win streak came to a halt last Tuesday night as Northwest Nazarene edged the Bearcats 18-76 at Nampa, Idaho.

Northwest Nazarene led by eight points at half-time, but soon increased their lead to sixteen.

The Bearcats fought back, mostly with the shooting of guard Doug Holden, only to fall three points short of victory.

Holden led Willamette scorers with twenty-six points followed by Bob Lundahl with ten points.

The victory kept Northwest Nazarene's hopes alive for the NAIA playoff bid.

Swim coach praises Sheehy, Allis and Hansen

Last Saturday the Willamette Bearcats officially opened their season at the Linfield Invitational with great individual performances by Lynn Sheehy, Nick Allis, and Chris Hansen. Despite the drought in depth of members the 'Cats were able to amass quite a respectable number of points.

By far the most outstanding performance was turned in by the newly formed Girl's Team. Coach Lederman said that he was "...quite proud of the spirit and inner strength..." demonstrated by his "girls." He also stated that he had trained them hard for this meet, and it proved to be beneficial and well balanced.

Lynn Sheehy of Portland was the most outstanding of the group. She qualified and swam in all three events, the total

number allowed a swimmer; the individual medley, butterfly, and the 60 yd. breaststroke. Lynn set a conference record in the breaststroke with a time of 44.6 sec., easily outdistancing the rest of the field. The upset came when Lynn, who qualified fourth in the IM, fought her way to a third place medal in the finals. Miss Sheehy also streaked to a fourth place in the 60 yd. fly.

Others who qualified and placed well were Nick Allis, 5th in the 100 free, and 6th in the 500 free. Chris Hansen took sixth in diving, helping the Bearcats to a close finish to Pacific and Linfield. Lederman felt that if he had one other swimmer to make a relay, Willamette would have beaten these schools.

The coach was quite pleased and happy with the over all

results. "There's a great future here with the new gym and pool in sight," said Lederman, "but for now we'll have to work with what is allotted to us."

The meet this weekend will be against Lewis and Clark and Whitman at L&C. Good luck Friday night swimmers.

Basketball teams jockey for position in IM league races

With intramural basketball now completing its fourth week of play, the various leagues are shaping into two or three team races.

The Thursday night league, probably the easiest of the five, has the Shockers in first place. Led by Pete Fern, Cliff Bailey and a few haoilies, the Shockers are 3-0. One of their victories has come over their closest challenger Beta A. The Betas (2-1) are led by ex-Bearcat Denzil Scheller and Jim Albaugh.

Beta B and Sigma Chi A are the only undefeated teams left in the Tuesday night league. The Beta team finished second in last year's playoff and has added Lloyd Merryman to go along with all-IM performer Tom Weathers and company. The Sigs are led by Larry Kammer, Brad Victor, and Chuck White.

Defending champion Phi Delt A heads the Sunday night league with Beta C and Sig B also undefeated. Gunnar Guttormsen and Roger Reif lead the Phi Delt attack which also features Greg Cushman and Gary Scrivner.

The Betas rely on Mark Barker and Chris Powers while the Sigs are led by Marc Hildebrandt and Brian Pearson.

The Monday night league title is currently up for grabs with Delt A, Baxter C and Law II A all in the thick of the battle. The Delt's, however, are the team to beat for they boast 4 JV players plus a fine guard in Tom Rawles. Rich Whipple, Jay Milojevich, Mike Faust and Bill Fatland all were members of last season's JV squad.

Delt B, led by Rick Fairbrook and Law I A are the only undefeated teams left in the Saturday morning league.

Herfy's



WHERE

The Burgers are Bigger
The Food is Better
The Menu Larger
The Atmosphere Fresher

WHERE . . .

QUALITY IS QUEEN
CLEANLINESS IS KING

Herfy's Drive-In

"Salem's Finest"

13th & Mission St.

Open Sun.-Thurs. 10 a.m.-12 p.m.
Fri. and Sat. 10 am - 1 am

McEWAN'S
PHOTO SHOPS, Inc.

Portrait and Commercial
Photography,
Photographic Equipment
and Supplies

245 High St. N.E.
363-5470

The



TOP HAT

RESTAURANT

1275 State Street Salem, Oregon

Phone 362-9478

Matmen prepare for tough Wildcat match

Saturday afternoon at 2:30, the Bearcat mat team encounters Linfield's Wildcats on the home mats. This will probably be the most important and revealing match of the season, as both teams are strong in the NWC and are expected to place high in the coming conference tournament. Also, the traditional rivalry between the two schools is intense. Other WU teams haven't fared too well against Linfield this year but Saturday should turn the tide.

In a previous meeting, Linfield edged out a victory, 26-18, but primarily due to absentees in the Bearcat ranks. Twice defeated Bill Shaeffer was temporarily ineligible and former

conference champion Bob Mial was out due to a neck injury. Both wrestlers are now back in action. The tentative lineup is as follows:

118; Jim Buzan - Buzan faces a strong opponent in former conference champion Frankie Hernandez.

123; Doug McCabe - Corrado, part of Linfield's light-weight 1-2 punch, has previously defeated McCabe but it should prove an exciting match.

134; Greg Rodgers - This is possibly one of the toughest lightweights WU has ever seen. He also faces a tough opponent but win or lose this match will keep all fans on the edge of their seats.

142; Steve Wilson - Wilson is an inexperienced wrestler yet usually comes up with a victory. Against an undefeated opponent two weeks ago, Steve came from behind to score a fall. He should be a winner.

150; Tom Goff - an experienced wrestler, from a junior college, Tom usually shows the fans a few new moves each match he wrestles. Linfield didn't have a man at this weight in the previous meeting.

158; Bob Mial - The 1968, 152 lb. champion, Mial has been out most of the season with a neck injury. This should have no

effect Saturday. Definitely a win here.

167; Carl Lopez - Carl meets Sam Adams, as he has on four previous dates. Adams is an excellent wrestler but it is Carl's turn.

177; Bill Shaeffer - A sure win over Sorber of Linfield. The only question is whether or not it will be by pin.

191; Gus Arzner or Scott Butterfield - both these wrestlers are strong but will have to display a maximum performance to defeat conference champion of Linfield.

HWT; Chuck Marshall - Mar-

shall will make his first performance this weekend but judging by his improvement in practice, he should be ready to go.

This has to be a close, exciting match. Any anti-Linfielder who can find a free hour at 2:30 Saturday should take his vocal chords on over to the gym. Any audience participation will be welcome.

The matmen will warm up for Linfield with a match against Pacific Lutheran at 3:00 p.m. on Friday. On a previous date Willamette crushed the Lutes, 27-11. It should be a closer match this week as PLU has a much improved team.

Willamette cagers burn nets, establish new accuracy mark

Last Monday the Willamette basketball team extended its winning streak to three games, as the Bearcats outshot College of Idaho 86-66. Two nights earlier WU set a school accuracy record as they demolished Whitman 100-55.

Against the Coyotes the Bearcats shot just under 50% with Bob Lundahl leading the way with 22 points. Doug Holden aided the cause with 14 points and several assists.

The key to Willamette's victory, besides its fine shooting performance, was the holding of College of Idaho's star forward Woodbury to only a lone free-throw.

The Missionary game saw the Bearcats hit the nets for 40 of 62 times for a sizzling 65% and a new school record.

Guard Doug Holden led the Bearcats in scoring with 17 points, as six players hit in double figures.

Dave Steen and reserve guard Jamie Grabenhorst each hit on seven of eight field goal attempts to claim accuracy honors.

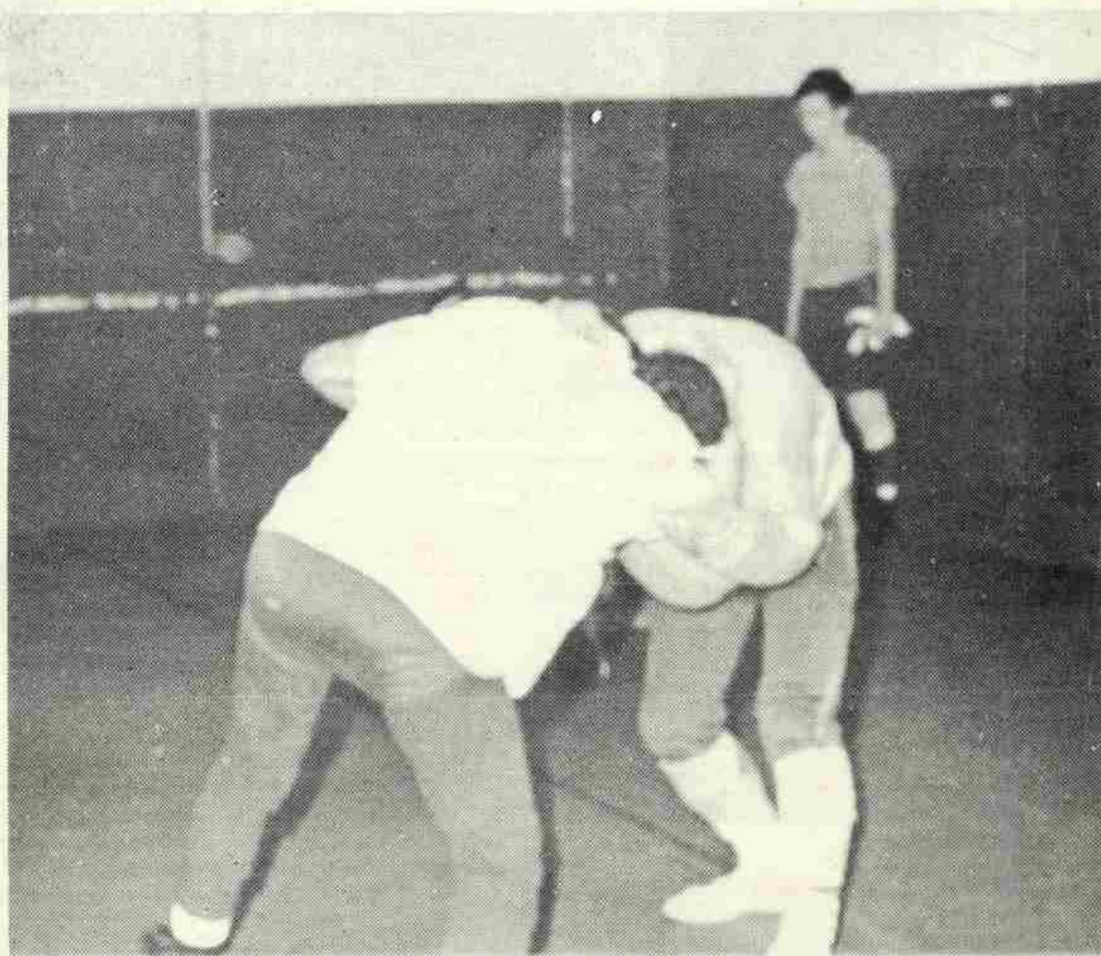
Tonight Willamette host Linfield who is currently tied with Lewis and Clark for the NWC lead. A Bearcat victory would keep Willamette in title competition, while a defeat would shatter all dreams of a championship.

Willamette has already fallen to the high-flying Wildcats twice this season, both by a quite sizeable margin.

The key to the Bearcat attack is to slow down forwards Pat Smithey and Gary Donnell and keep Dan Beeson off the boards. If Willamette can accomplish this and keep its shooting eye and pace at the same time, then victory should be theirs.

Tomorrow night Willamette hosts Pacific in what should be a real good basketball game. Unlike Linfield, Pacific is similar to Willamette in playing style and size.

All in all this is a big weekend for the team and their drive for the NWC title. Game time is 8:00.



Unidentified Willamette wrestlers prepare for this weekend's matches with Pacific Lutheran and Linfield.

New Uni-Turf surface criticism from tennis team members

No doubt most of the people connected with the Willamette community have noticed the new rubberized carpet-like surface on two of the tennis courts. This surface, known as Uni-Truf, is a special vinyl material which, according to most tennis buffs, will soon be the most popular type of court.

The purpose of this new surface is to help players develop a more "all around" game. The slow bounce of the ball will help to bring more ground strokes back into the game and will make tennis more of a spectator sport.

Although Uni-Truf is highly recommended by tennis players and tennis experts all over the world, it does not find a lot of acclaim from the Willamette Varsity Team. One of the major problems is the transition that the players have to make from the very fast, cement indoor courts of the Salem Fairgrounds, to the slower concrete surface of two of the outdoor courts, to the very slow Uni-Truf, during the season.

Another complaint is that there are seams in the surface and that the ball takes a bad

bounce when it hits one of these. Finally, although the Uni-Turf material is supposed to be impervious to wetness and dryness, they do not dry off any more quickly than any other types of court and in fact is more slippery and dangerous to play on when wet than other types of tennis courts.

In short most of the members of the team would agree that the \$9,000 spent on these courts could have been used in a better way.

Coach Bowles needs bodies

Head Track Coach Bowles has announced that track practice is now underway and anyone interested in competing on the collegiate level should contact him as soon as possible. Bowles has stated that Willamette needs bodies to form its 1970 track squad.

Anyone who can meet or better the following marks should be out for the team: 100 yd. dash-10.3 sec.; 220 yd. dash-23.0 sec.; 440 yd. dash-

53.0 sec.; 880 yd. run-2:04; mile-4:40; 2 mile-10:20; high hurdles-16.0 sec.; intermediate hurdles-59.0 sec.; shotput-42 ft.; discus-130 ft.; javelin-170 ft.; broadjump-20 ft.; triple jump-40 ft.; pole vault-12 ft.; and high jump-6 ft.

Coach Bowles added "the opportunities for exercise, fellowship and travel are unlimited." Interested students will find Bowles in the gym before 2 p.m. and at McCulloch Stadium after 2.

TYPEWRITERS
ADDING MACHINES
 SALES
 RENTALS - REPAIRS

Capitol Office
 Equipment Co.
 148 High St. SE

Capital Drug Stores
PRESCRIPTIONS

COSMETICS, FILMS and PROCESSING
 GIFTS and SUNDRIES

405 State Street Downtown 363-3118
 4470 RIVER RD. N. KEIZER 581-1503
 597 WINTER ST. S.E. - PARK MEDICAL 364-6227

READY A tip from Wieder's
FOR THE WEEKEND?

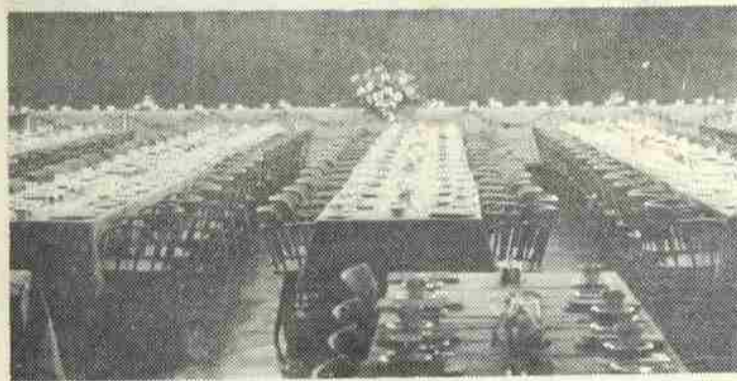
If your slacks, coat, or dress need to be in the best of shape, let Wieder's dry clean them for you. And if time is short . . . bring them in by ten and we'll have them ready at five. This service available Monday through Friday.

Wieder's SALEM LAUNDRY COMPANY
 263 HIGH ST. S.E. PHONE 363-9125

B & W
Shoe Service

FOOT COMFORT
 SPECIALISTS

in the
 Capitol Shopping Center
 Telephone 364-6586



UC named for George Putnam

The new University Center now bears the name of the late George Putnam, editor and publisher of the Capital Journal for forty-two years. The new structure was dedicated last Saturday afternoon at 3:00 p.m.

George H. Atkinson, President of the Willamette Board of Trustees presented the Center to President Fritz who accepted on behalf of the University. ASWU President Bennett expressed the appreciation the students most certainly have for this new facility. After the ritual of dedication, the ribbon was cut by Mrs. Marilyn Walkey Donovan, great niece of Mr. Putnam.

Several of the new rooms in the Center were named as memorials to various friends of the University. The new bookstore

will be a memorial to Marguerite A. Will, long-time Salem business woman. The Autzen Student Senate Chamber is in recognition of generous support of the University by Thomas Autzen of Portland. The Willamette Parents' Association provided the Conference Room and is dedicated in appreciation of the gifts of many parents of Willamette students. The J.C. Harrison Conference Room on the top floor serves as a memorial to a former president of the board of trustees

who served in that capacity from 1942-45. The Alumni Lounge is in appreciation of the gifts of hundreds of W.U. alumni.

The 425 seat banquet was held in honor of Chancellor Smith who served the University for 27 years as its President. The affair was attended by many dignitaries including Senator Mark O. Hatfield, who was the featured speaker. The banquet was the first social event to be held in the new Center.

