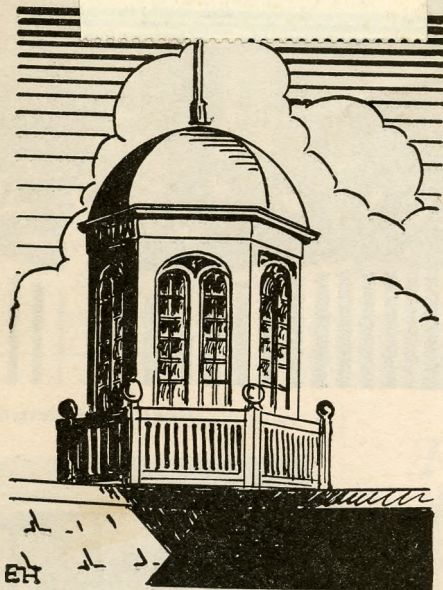


Thomas Fletcher
Canby, Oregon.



VICTORY BELL TOWER

A MESSAGE FROM "OLD WILLAMETTE"

In the following pages we are presenting a message from "Old Willamette" that you may understand why it has been called "AN OUTSTANDING AMERICAN INSTITUTION" and why it may be the most attractive college for you.

Willamette University Bulletin

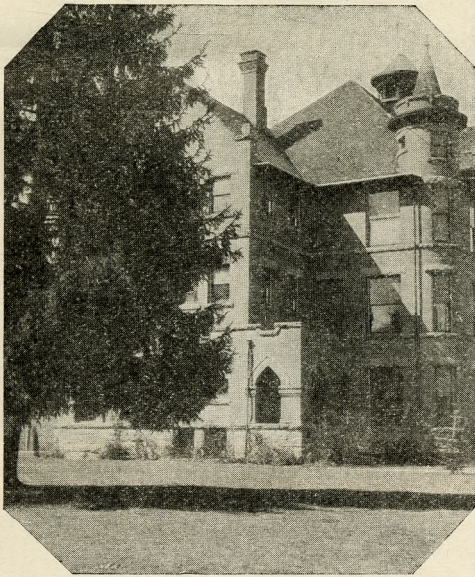
VOL. XXIX

FEBRUARY, 1935

NO. 3

Entered at the Postoffice at Salem, Oregon, as Second Class Matter,
July 27, 1908, under the Act of July 16, 1894

Choosing
Your
College
Home



A VIEW OF EATON HALL

*You .
Must Choose
Wisely*

Some sage has said that you and I should be unusually careful in making the three most important choices of our lives—our parents, our life-partners, our vocations. To these we beg to add another, a choice which, we submit, is of fundamental importance—

*Choosing Our
College Home*

In the selection of your college home we suggest that you ask yourself the following questions relative to any college being considered.

Is the college highly accredited?

Does it have a well-rounded curriculum?

Does it have a recognized faculty?

Does it have a widespread reputation for merit based upon the scholarship and achievements of its graduates?

Does it have an extensive program of student activities?

Is it highly endowed so that the expenses may be reasonable?

Willamette can answer "yes" to these questions.

Willamette University has Foremost Recognition as an Educational Institution

The United States has approximately 1300 colleges, some good, some indifferent, some woefully weak. Various accrediting agencies have come into being to evaluate the worth of our institutions of higher learning. The highest academic rating that can come to a college is to be recognized by the Association of American Universities. Only four colleges in Oregon have been recognized by the Association. They are:

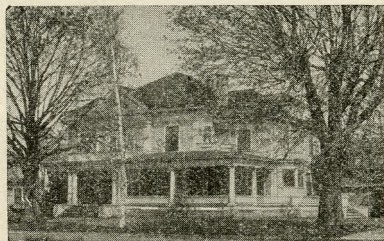
WILLAMETTE UNIVERSITY

University of Oregon

Oregon State College

Reed College

Recognition by the Association of American Universities means that graduates of Willamette University are admitted to graduate and professional schools throughout the country on the same basis as the graduates of any other similarly accredited college in the United States. Women graduates of Willamette University are privileged to become full members of the national organization of the American Association of University Women. Willamette meets the requirements for teaching certificates in four-year high schools in Oregon.



A FRATERNITY HOUSE AT WILLAMETTE

Willamette University Has a Well-rounded Curriculum

Major Fields of Work

In Letters:—

English
French
German

Speech
Spanish
Latin-Greek

In Social Sciences:

Economics—Business Administration
Education
Sociology
Religion

Philosophy
History
Political Science
Psychology

In Natural Sciences:

Biology
Chemistry
Physics

Home Economics
Mathematics
Physical Education

Supplementary Work in Art, Astronomy, Geology, Journalism, Applied Mathematics.

The College of Law leading to LL. B. degree.

The School of Music leading to the Music diploma.

Pre-medical, Pre-ministerial, Pre-dental, Pre-legal, Pre-engineering.

The faculty of Willamette University consists of 46 instructors and associates. Of these, fourteen hold the doctorate and nineteen have the master's degree. Boston, Ohio State, Chicago, Wisconsin, Washington, Southern California, Columbia, Iowa, Illinois, California, Northwestern and other leading American institutions have conferred degrees on members of our faculty. Individuals of the faculty group are members of American learned societies, their articles appearing in the journals of these societies from time to time.

Willamette University Has an Extensive Program of Student Activities

Your college activities at Willamette University will play a very definite part in your education. Willamette is large enough to afford the same program of activities as the very largest universities, yet is small enough to allow you to have a part in an activity of your liking.

Athletics

The "Cardinal and Gold" teams are coached by Roy S. (Spec) Keene, recognized as one of the leading coaches and personalities of the West, and a staff of able assistants. Willamette is a member of the Northwest Conference and, in addition, each year schedules games in all sports with the state-supported universities of the Northwest. Football, basketball, baseball, track, swimming, boxing, wrestling and golf teams represent the Bearcats in intercollegiate competition. An increasing rivalry in intra-mural sports has been developed between the classes, fraternity organizations and various student groups.

A wide program of athletics for women is maintained and includes hockey, basketball, volleyball, tennis, riding and swimming. A splendid sports field is provided for the women of the campus.



A WILLAMETTE SORORITY HOUSE

Music

The public appearances of the Men's Glee Club and the Women's Treble Clef Club are major events of the college year.

The Philharmonic Choir is a vocal ensemble of national reputation. It represented the State of Oregon and Willamette at the Century of Progress Exposition at Chicago. A light opera is presented annually. The University supports an orchestra and a band of 25 pieces, also various instrumental groups. The Salem Symphony orchestra is open to our students of outstanding ability. The Beethoven Society encourages student public appearances.

Forensics

Willamette University is a member of the Pacific Coast Forensic League. Inter-collegiate debate, oratory and extemporaneous speaking contests are student activities of major importance. Willamette has a chapter of the national forensic fraternity, Tau Kappa Alpha.

Dramatics

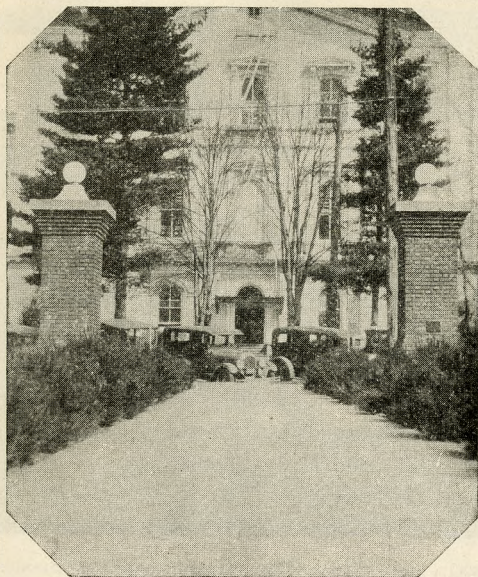
Three standard plays are produced annually at Willamette. The Speech Department sponsors a Little Theatre. A chapter of Theta Alpha Phi, national dramatics fraternity, has been established.

Publications

The student body of Willamette University publishes a weekly paper, "The Collegian." "The Wallulah" is the annual volume published by the student body. Members of the staff may be elected to Beta Chi Alpha, college annual fraternity.

FIVE YEARS OF ACHIEVEMENT

ATHLETICS—Football, 1 championship, 4 second places; Basketball, 3 championships, 2 second places; Baseball, 2 championships; Track, won 10, lost 5 dual meets; Tennis, men, 1 championship, women, 4 championships. FORENSICS—State Extempore, 3 firsts, 2 seconds; State After-dinner speaking, 1 first; Pi Kappa Delta Debate Tournament, 1 first, 1 third, 1 fourth; Pasadena Debate Tournament, 3d in debate (57 teams entered), 1st in extempore; Pacific Forensic League, 2d in after-dinner speaking, 3d in Oratory, 3d in debate.



THE STATE CAPITOL AS SEEN
FROM THE CAMPUS

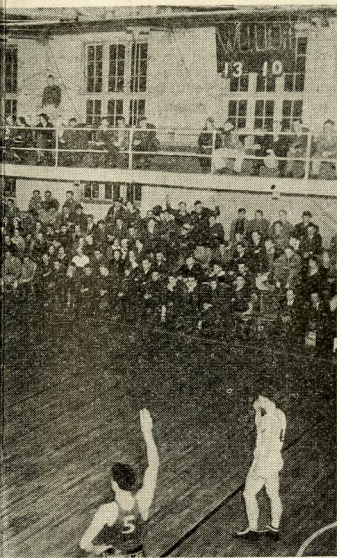
*Willamette
University is the
Oldest College
West of the
Rockies*

Early in the summer of 1834, Jason Lee and his party pitched camp in the Oregon country and soon after opened a mission school. Ten years later, its successor, the Oregon Institute, was opened on the present campus of Willamette. The original building is gone but its site is marked by a boulder monument.

This little mission was a nucleus about which clustered the early trade and cultural aspirations of the pioneers. By 1852, the pioneer village was of sufficient importance to become the state capital.

The University faces the State Capitol before which stands the statue of the Circuit Rider, emblematic of the sturdy Christian spirit of the Oregon pioneers.

Willamette University has approximately 2000 living alumni. Loyal and useful alumni, outstanding citizens of the Northwest and all parts of the world, testify to the influence of their Alma Mater. The bar, the bench, medicine, education, journalism, engineering, business, the ministry, farming, and governmental service—all have recruited their ranks from the graduating classes of Willamette.



ays Hard to Beat on the Basketball Court

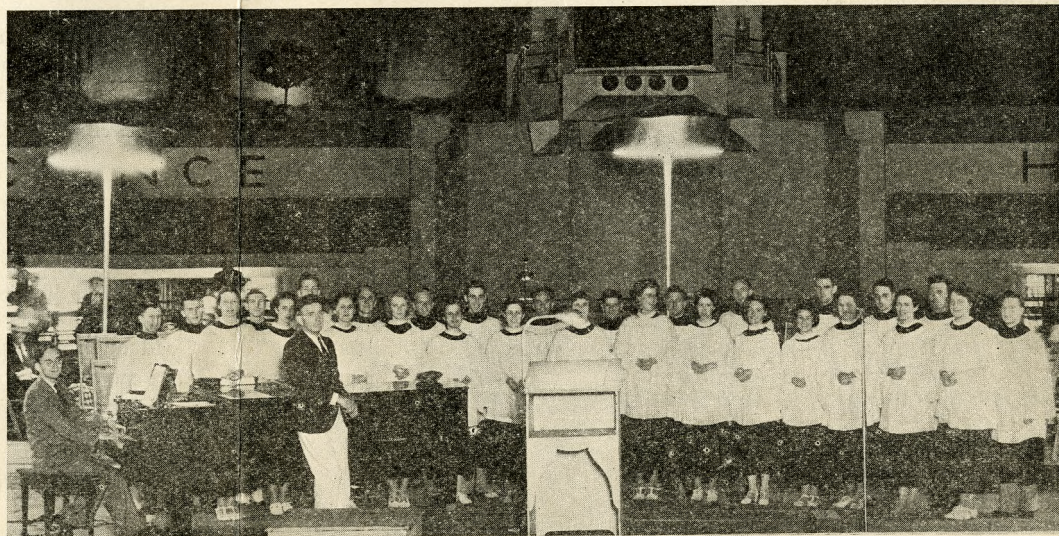
A
T
W
I
L
L
A
M
E
T
T
E

Tuition Rate Than Any Independent Rank in the Entire West

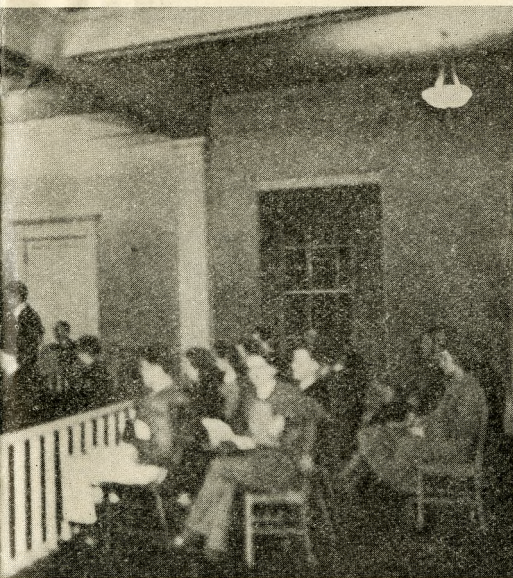
t of approximately \$1,750,000. The income is one-half the cost of running the institution; it is reasonable. Some colleges charge a high price. Willamette has followed the policy of allowing the student to pay his share (but not the share of the Willamette University and have his tuition, plus a fair allowance for incidentals for \$450 for



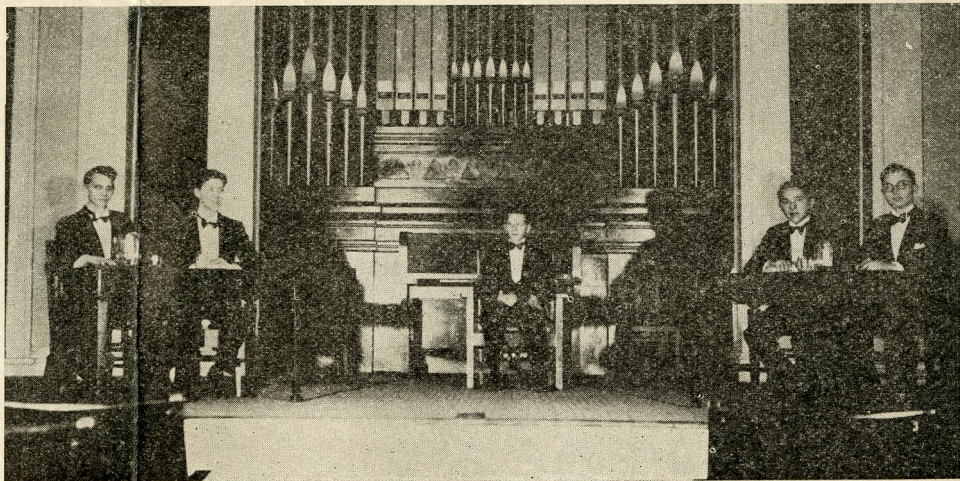
Freshman Glee—A Great Willamette Tradition. (And the Men of the Losing Class go in the Mill Stream)



The Philharmonic Choir in the Court of the Hall of Science, Representing the State of Oregon and Willamette at the Century of Progress Exposition



ing Lawyers Get Their Start



The Stanford-Willamette Debate—Decision for Willamette



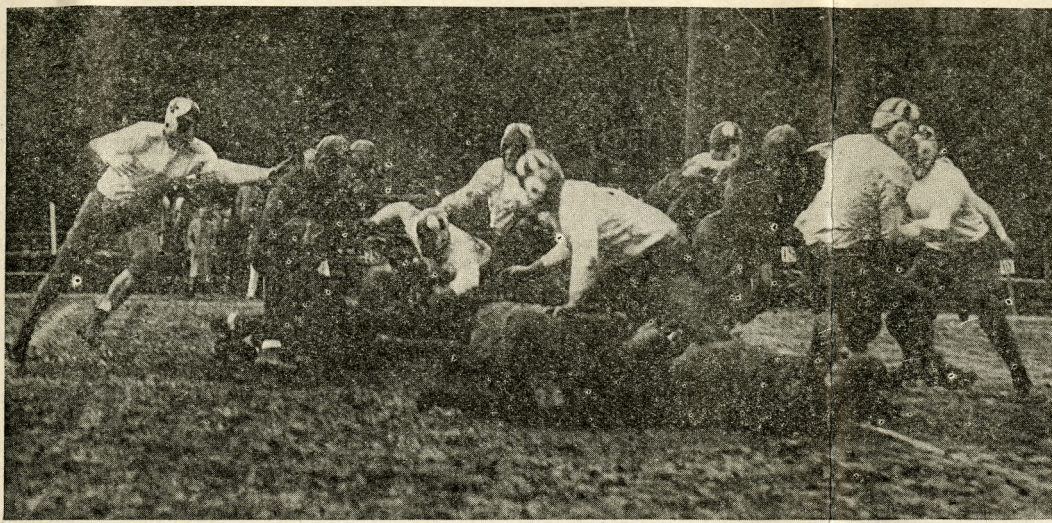
First Place



Willamette's "All-American" Johnny Oravec Skirting End



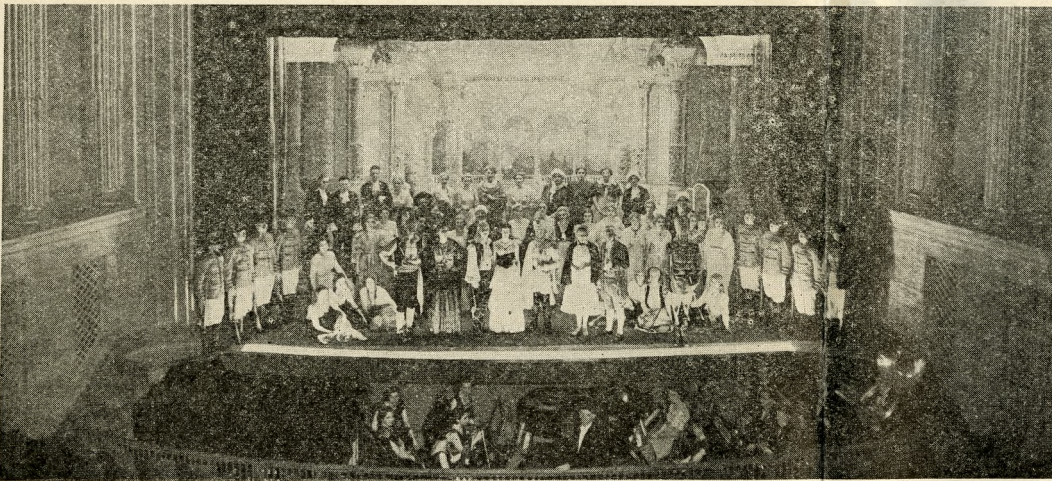
Class Day—The Seniors' Last Class Meeting



No Gain! The Bearcat Line Holds. Willamette's 1934 Conference Champions in Action



The Faculty Play One of the Events of the College Year



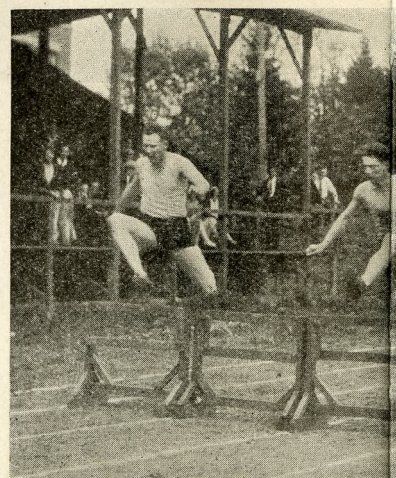
The Light Opera Club Presents "The Bohemian Girl"



A Field Trip to the Coast for the Biologists



A Safe Hit! Baseball is a Major Sport at Willamette



A Willamette Star Wins Another F

COLLEGE LIFE



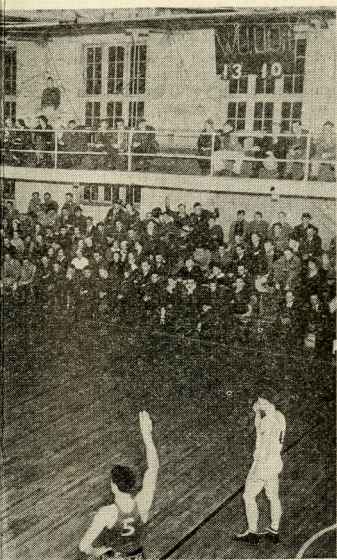
Just Before the Tip-off—the Bearcats are Alw

Willamette University Has a Lower
 Student College of Equal

Willamette University has an endowment from this splendid endowment pays about one-third as a result, tuition rates have been kept most low and give scholarships in large number of keeping the cost low and expecting each student of others) The average student may attend Willamette University student body fees, board, room, books and a the entire school year.



Moot Court—Where the Budd



ays Hard to Beat on the Basketball Court

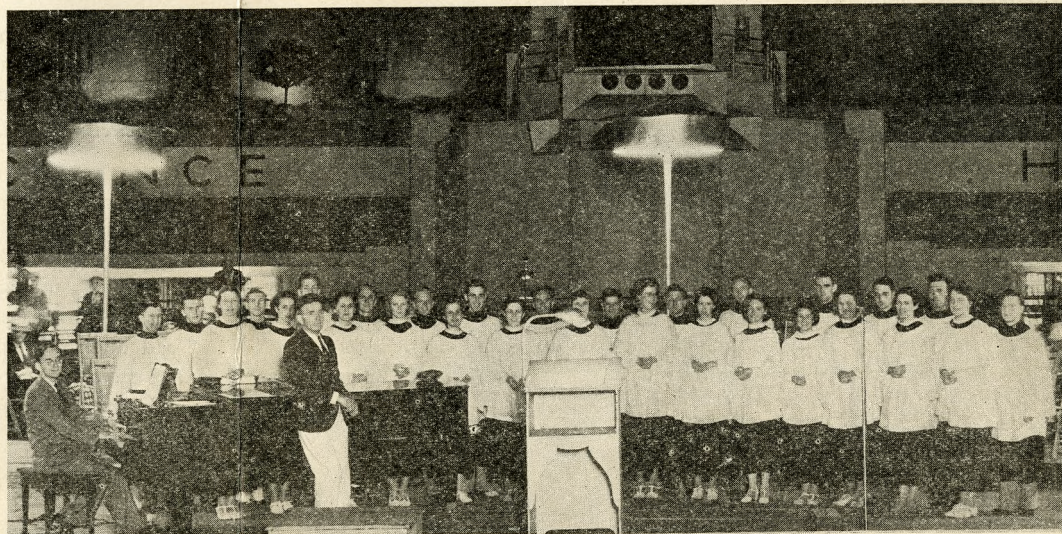
Tuition Rate Than Any Independent Rank in the Entire West

t of approximately \$1,750,000. The income is one-half the cost of running the institution; it is reasonable. Some colleges charge a high price. Willamette has followed the policy of allowing the student to pay his share (but not the share of the Willamette University and have his tuition, plus a fair allowance for incidentals for \$450 for

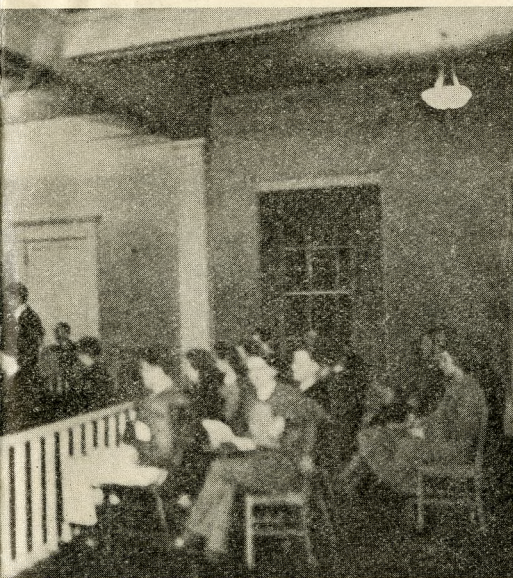
**A
T
W
I
L
L
A
M
E
T
T
E**



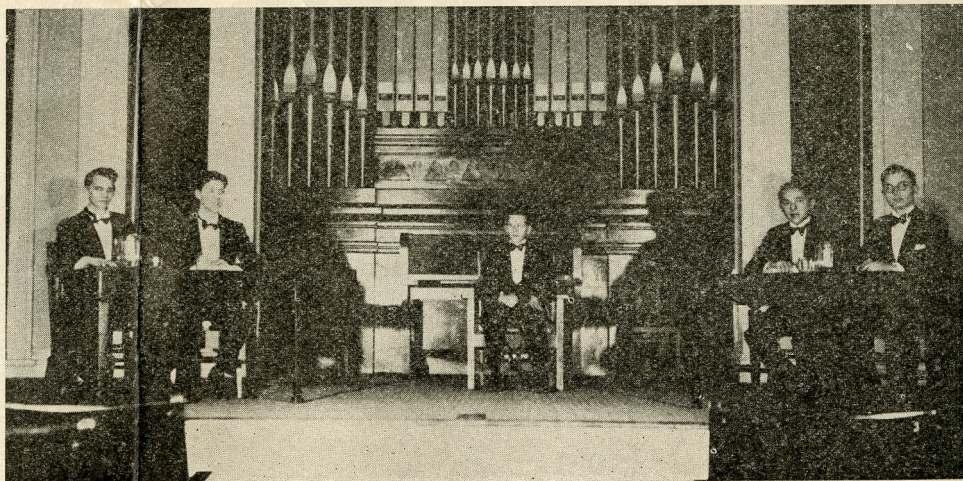
Freshman Glee — A Great Willamette Tradition. (And the Men of the Losing Class go in the Mill Stream)



The Philharmonic Choir in the Court of the Hall of Science, Representing the State of Oregon and Willamette at the Century of Progress Exposition



ing Lawyers Get Their Start



The Stanford-Willamette Debate — Decision for Willamette



First Place



Willamette's "All-American" Johnny Oravec Skirting End



Class Day — The Seniors' Last Class Meeting