

Tomorrow's The Big Night!

58th Glee Enlivens Campus

By GLEN PINEGAR

This year, as in the past, Freshman Glee on the Willamette Campus is like the arrival of color TV in a home for shrivelled up old ladies.

For some, it is the biggest event of the year. For others, it is the only event of the year. To professors and administrators, it is a mass orgy. For boys, Glee is a chance to meet girls and to show them what men they are. For the girls, it is the way, the truth, and the life.

Dedicate Glee To Dean Gregg

Secrecy has veiled many preparations for Freshman Glee this year. One of the secrets, until today, was the dedication of Glee to Dr. Robert D. Gregg, Dean of the College of Liberal Arts.

This will be Dean Gregg's 18th and last year at Willamette as he retires in May.

At Willamette the Dean has taught history classes, coordinated all the courses in liberal arts, and helped countless seniors apply for graduate fellowships.

The Dean is an avid music buff and planned to attend a Metropolitan Opera performance tomorrow

Competition is intense this year. Comments Bob Dixon, formation leader for the frosh: "I think everyone's trying to put out 100 per cent. If we don't come out on top, it won't be because we didn't put out 100 per cent." Bob adds that the approximately 160 participating freshmen listen well. This relatively large number of people added to a lack of experience would seem disadvantageous. But Bob regards these as challenges that are spurring the freshmen on. "As far as we're concerned," he concluded, "there's only one place we can come in, and that's first."

The junior class, with about 70

participants, has, according to song-leader Dave Welch, "every bit as much spirit that we had when we won our freshman year." Dave says that he is glad to see spirit blossoming. In spite of all the pressure, he is elated to see everyone out.

In the words of their song leader, Ginny Hawkins, the sophomore class is in the same circumstance as it was Saturday night of last year: "In lots of ways, we're starting from where we came in last year."

"The seniors," says song leader Joe Eding, "are going to show real hair. From the bottom of my feet, the seniors are going to show a lot of body and soul."

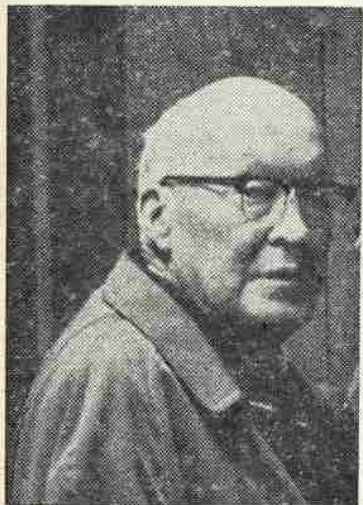
Glee is characterized by several events and institutions full of tradition. The Executive Glee Committee is composed of the song and formation leaders from all classes, Glee manager and assistant Glee manager, and the recording secretary. Judges are chosen by the freshman class, and this year the possibility of a celebrity is imminent.

The retirement of German professor Daniel Schulze last year has caused eagerness about who will announce the winner on Saturday night. People are wondering if the "fish stories" went out with him.

The last two events, Glee night and Blue Monday, compensate for the 5 to 7 hours of daily practice by each class during the week. They climax an exciting but arduous week for Glee participants.



Senior girls diligently go through their paces in preparation for the big show. (Photo by Garry DeLong).



DEAN GREGG
(Photo by Garry DeLong)

night. Now, however, through the efforts of the Glee committee and Mrs. Gregg, he will be at Glee and hopefully be able to attend the opera another evening.

Dean Gregg went to high school and college in Ohio, receiving his bachelor's degree from Oberlin College in 1923. He earned his MA from the University of Michigan and his Ph.D. from Johns Hopkins University.

His major field of study is history while he has also worked in political science, economics and English. Before coming to Willamette in 1948 he taught at Friends Seminary in New York City and at Carnegie Institute of Technology in Pittsburgh.

Dean Gregg has received many academic honors including membership in Phi Beta Kappa and other honorary societies. During college days Dean Gregg worked in the summer and once was a reporter for the Cleveland Plain Dealer.

In Salem the Dean has been active in many groups with interest in international affairs. Last fall he was chairman of Salem United Nations Day. He has also been active in Rotary, the Salem Chapter of the Atlantic Union, and was a member of the advisory board of the Oregon Council on World Affairs.

He is chairman of the Welfare Advisory Board Commission this year, and has put his experience in universities to work as a member of the steering committee of the Northwest Institute of Higher Education.

Willamette Collegian

"In Age There Is Wisdom"

1942—Serving a University in Its Second Century—1966

Vol. LXVIII

Salem, Oregon, March 11, 1966

No. 23

Sociology Dept Survey Reveals Students Favor Liberal Education

By SALLY DANA

"What is a liberal arts education?" asked the senior sociology seminar. Willamette

students replied that it should be a broad general education with intensive specialization in one field.

This conclusion was the result of a questionnaire distributed by the seminar to current and prospective students as well as parents and alumni asking what they were looking for in a Willamette education.

Specific aspects such as social environment, curriculum in general and in a major field, cultural activities and atmosphere, academic quality, and overall campus quality were included in the survey. The results have just been published in an abstract put together by the Sociology department.

Of the five possible structures for college educations, two were well received by three-fourths of the responders. One of these was the broad general education including intensive emphasis in one major field, and the other favoring the broad general education with observation and some experience of the practical aspects of one or more major fields and including intensive specialization in one field.

All of the groups participating in the survey agreed "surprisingly well," as one member of the seminar put it. There seemed to be no strong current of disagreement between either the parents, students, or alumni.

Evaluation of specific aspects of Willamette was done in a rating
(Continued on Page 6)

Winter Hits Campus Tuesday

Paul Winter, 26-year-old saxophonist, has burst upon the jazz scene with the same impact that brought international fame to such artists as Dave Brubeck and Stan Kenton.

The Paul Winter Ensemble, which will play at the Fine Arts Auditorium on March 15 at Willamette University, has been hailed by critics as possibly the most important new jazz group of the 1960's. Winter's concept of a concert jazz ensemble, playing a distinctive repertoire of composed and improvised modern music, has brought the group acclaim from audiences in 25 countries.

Paul has attracted a good deal of attention for his efforts on behalf of the cultural exchange program. In 1962, he took his group, then

known as the Paul Winter Sextet, on a six-month tour of Latin America for the State Department, playing 160 concerts in 61 cities, and conducting seminars in every major university.

This group of musicians plays music which might be called "contemporary chamber music" because of the highly organized ensemble nature of their arrangements. Yet, their music still has the rhythmic excitement and the improvisation of the best jazz.

Campus Scene

TODAY—Glee practices continue today and tomorrow.

TOMORROW—58th annual presentation of Freshman Glee, gym, 8 p. m.

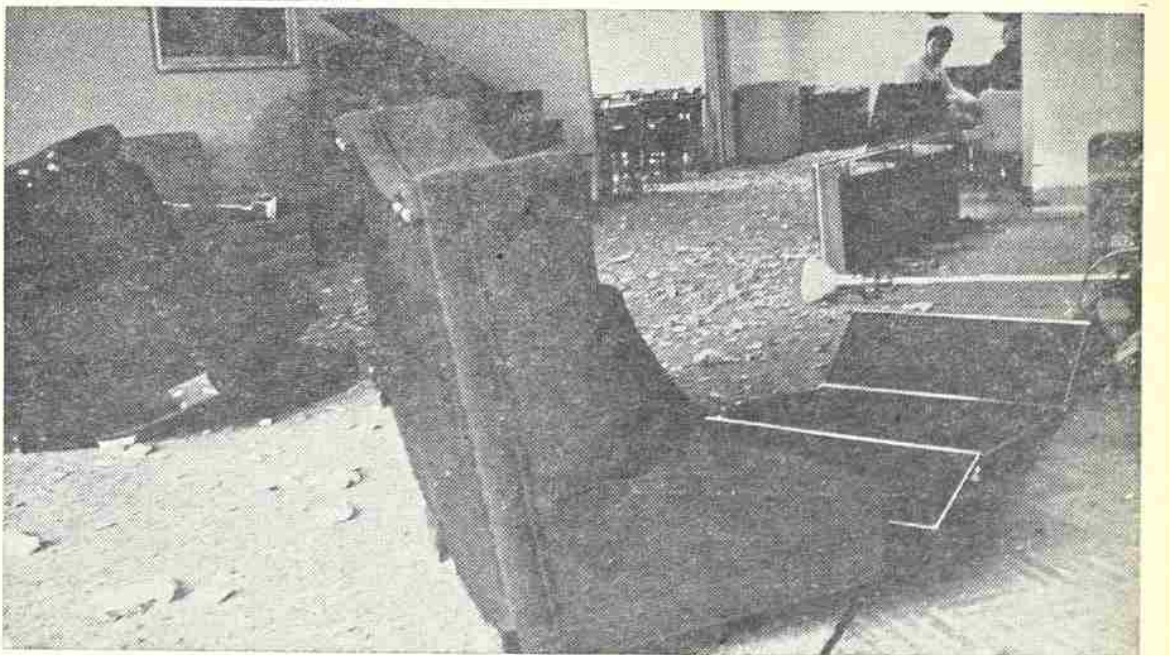
MONDAY—National Security Seminars begin today and continue through March 25 in Fine Arts Auditorium.

TUESDAY—Distinguished Artists' Series: Paul Winter Jazz Ensemble, Fine Arts Auditorium, 8:15 p. m.

THURSDAY—Chapel: Rabbi Rosenthal speaks at 11, First Methodist Church.

Choir tour begins this afternoon and continues through March 28.

FRIDAY—Spring vacation begins at 4 p. m.



The Beta House was the scene of a Phi Delt pledge "visit" last Tuesday morning at 3 a. m., resulting in at least \$45 worth of damage. The Interfraternity Council voted to make the Phi Delt's pay the cleaning bill and outlawed any further jaunts. (Photo by Garry DeLong).

TO WU STUDENTS

The March 12, 1966 presentation of Freshman Glee at Willamette is more than an opportunity for enjoyment of an entertainment function unique to the University, it is the annual renewal of an activity which symbolizes the spirit and imagination of the students, and ranks high among the many outstanding extra-curricular endeavors on the Salem campus.

In honoring Dean Robert Gregg, this year's Freshman Glee pays tribute to one of Willamette's distinguished scholars and administrators, a man who has earned a high place in University annals and throughout the community. As Dean of Liberal Arts and Professor of History, Dean Gregg's retirement at the end of the current year will be a matter of regret to alumni, faculty and students, but I know all will wish him well and hope for a most happy non-academic life.

Those who have been instructed by or associated with Dean Gregg at the University, during his term as President of the Salem Area Chamber of Commerce, Salem Rotary Club, Salem Knife and Fork Club, or in United Nations work, know of the great dedication and effort which characterize his activities. I urge all students, faculty and friends of Willamette to acknowledge the Dean's many contributions to our educational, cultural and social well-being by attendance at or participation in Freshman Glee at Willamette on March 12.

Mark O. Hatfield, Governor

Glee Song Writing: A Lively Art?

BY LINDSAY MICHIMOTO

If you want to get involved in something really lively in the arts, try Glee song writing. Four teams have worked on the fight song theme for Glee 1966 and they can tell you a few things about Glee song writing if you're courageous enough to write a Glee song.

Rule No. 1. Always have a big-time spender in the crowd for inspiration. The seniors tried it and it seems to have worked, because songleader Joe Eding was seen treating Ginger Verity to a root beer at the A&W while going over the lyrics previously formulated by Ward Nelson, Jane Bonnington and Ginger.

Rule No. 2. Always have a few mystics in the group, they always come through when all else fails, as the juniors can attest. After an inspiring presentation by Dave Welch of his Glee melody, John Erickson and Thumper Schmidt were both enlightened by the same mysterious "torch."

A similar but more threatening situation seems to have arisen be-

tween the seniors and the sophomores who both heard the same "bell."

Rule No. 3. Always seek inspiration while below the ground level. This doesn't mean that you have to go out and dig yourself a grave, but you should find something comparable—like a basement. All three classes' song writing teams spent much of their song writing time in the Music School basement, but the sophomore combination of Renda Brummell and Lou Ann Neill found the laundry room in the basement of York House the perfect "sweatshop" for their ideas.

Rule No. 4. Always keep your song writing team small—three or less in number unless you're the senior class who can boast an array of artists like Ward Nelson, Jane Bonnington, Bob Wallace, Ginger Verity, Joe Eding, and anyone else the seniors could grab off the street.

Rule No. 5. Always have traumas while writing a Glee song if you expect to get anything done. Every team had its traumas, and some of them were quite interesting . . .

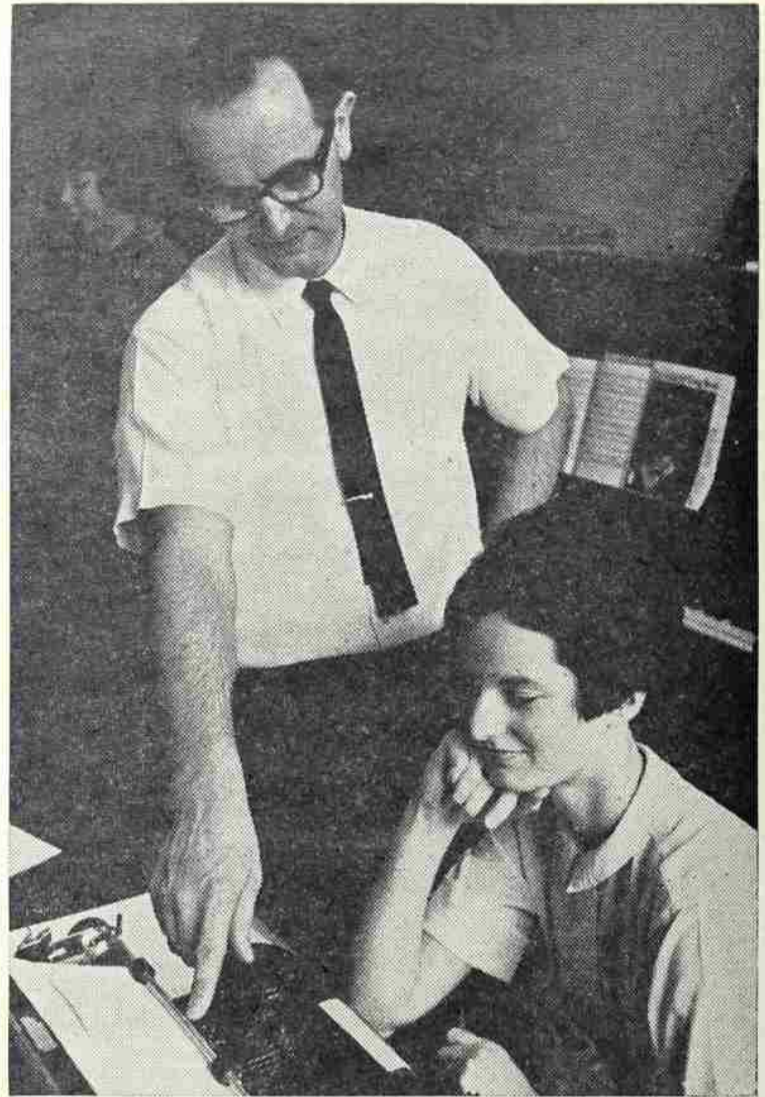
take the freshmen Tom Lebold, Tom Ray, and Laura Bryant, who couldn't get their song photographed (for the Wallulah undoubtedly) until a half an hour before the songs were due.

The sophomores on the other hand, had decided to fancy their song with a modulation to a different key. That was fine except for a few tense moments when the Brummell-Neill team couldn't get back to the original key!

Rule No. 6. Always have "last minutes"—like the freshmen. Formation leader Bob Dixon had a minor heart failure when he discovered that the words for the freshman song had been changed just before the deadline. Besides the photo problem, the appropriateness of the formation was now questionable. It was all right—wheh!

Rule No. 7. Always have one genius in the group. Take the juniors and their musical prodigy Dave Welch who kept up the juniors' mystic tradition by having a "weird" feeling and then having a melody "all of a sudden appear." It's worked for two years—will he make it a third?

Add a lot of fun, many new acquaintances, and a little apprehension about the judges' decision and you may get a fair idea of what it's like to write a Glee song. Meanwhile, good luck to those of you who even think of writing Glee songs; it takes a lot more than the rules mentioned above to write anything like the songs written for this year's Glee. Our hats are off to all the creative endeavors of the four classes.



Choir director Gordon Voiles discusses arrangements for the spring choir tour with Ena Smith, housing manager for the extensive trip. (Photo by Garry DeLong).

The Lively Arts

Sundays and Cybele Featured

"Sundays and Cybele," called by critics "French romance at the highest pitch since Cocteau's mythological 'mysteries' and a 'powerfully perfumed fleur du mal,'" will appear at the Hollywood Theatre from next Wednesday, the 16th, through March 22.

This film is one of a series of foreign films sponsored by the American Association of University Women for the benefit of their scholarship fund. The fund is used to help women pursuing post-graduate studies at American universities. Tickets are available at the Hollywood, Stevens and Son, Meier and

Frank, or from AAUW members.

The film tells the story of a 30-year-old pilot who suffers from amnesia since seeing a young woman in his strafing sights during the war in Indo-China. He meets a lonely 12-year-old girl whose mother has left home and whose father has entrusted her entirely to the care of teaching nuns.

Each Sunday the two wander, romp and dream in a park, with the man playing a sort of father role. Hardy Kruger plays the man, Pierre. Nicole Courcel is his nurse-mistress. The film introduced Patricia Gozzi, a natural actress with big brown eyes, to the public in the child-woman part.

Pierre's mistress is appalled when she finds out about the "affair" between the girl and Pierre, but decides Pierre will get over this regression to childhood as he recovers from his war experiences. The rest of the real world, however, has little sympathy for the "pait living in magic" and soon bring the plot to a tragic end with the shooting of Pierre.

In his first full-length film the director, Serge Bourguignon, may have tried to treat too many themes. The viewer sometimes cannot tell if he is watching a myth, a simple romantic tale of a prince and her knight, or a peepshow. The differing interpretations are not complementary.

The atmosphere, at any rate, is beautiful. Cameraman Henri Decae brings winter's fog and reflections on a pond into the mood of the film. This aspect, though some critics found it contrived and consciously "arty," helps the picture linger in the mind.

TV Notes . . .

"Ballet for Skeptics" attempts to prove that ballet can be fun with the help of Roland Petit, Zizi Jeanmaire and European dancers tonight at 7:30 p.m. on Channel 8.

Also this evening, at 9 p.m., Channels 7 and 10 present a concert-documentary on composer-conductor Igor Stravinsky. The 80-year-old artist is first seen talking with friends, then various works are performed. These include two of his latest works—"Abraham and Isaac," a sacred cantata for voice and chamber orchestra and "Elegy to JFK," a short composition set to a poem by W. H. Auden.

On Tuesday at 9 p.m., "U.S.A." on Channels 7 and 10 takes a look at Negro novelist Ralph Ellison book *The Invisible Man* was recently cited by 200 critics as one of the most memorable of the period 1945-1965.

"USA" considers art teaching on the elementary and secondary school levels this Thursday after having examined art in higher education. The program also takes a look at "Prints in Progress," a project that sends professional artists to demonstrate print-making in Philadelphia schools.

At 9 p.m. Thursday on the same channels England's Lake Country and its influence on Constable, the Towne brothers, Wordsworth, and Ruskin form the subject for "Art and Artists: Great Britain."

Nancy Howe, flutist, a junior in the Willamette College of Music, will present her junior recital this Sunday afternoon, March 13, at 3 p.m. in the Music Recital Hall. The public is invited free of charge.

Miss Howe's program will include works by Ibert, Quantz and Fred Barlow. She will be assisted by Diane Soloman, violinist, and Colleen Kennemore, pianist.

Speaker to Treat Asia

"Containment: Will It Work in Asia?" and "Is America Out of Step with History in Asia?" will be the topics of forthcoming speeches by Mr. Russell Johnson.

Mr. Johnson, an authority on Asia, traveler, lecturer, and American Friends Service Committee Peace Education Secretary in the New England Region, will speak on Tuesday, March 15, in Waller Auditorium at 7:30 P.M. He will also hold a discussion from 2-4 p.m. in the Cat Cavern.

Mr. Johnson, who graduated from Hamline University in St. Paul, Minnesota, recently returned from a four-and-a-half year assignment in Asia, where he was Director of the International Conferences and Seminars Program in South and Southeast Asia sponsored by ASFC.

Pentacle Offers Drama Courses

The Pentacle Theater, Salem's active drama production group, is offering five courses open to students this spring. The courses begin March 22 and end April 17. Cost is \$2 for all or any combination of the courses, and includes membership in Pentacle.

Subjects to be included are techniques of acting; set designing and lighting; posters, programs and publicity; costumes and makeup; and stage properties. More detailed information on the schedule of each course is available from Mrs. William Galloway, Jr., 362-5395.

as housing manager.

The schedule is as follows:

March 17—First Methodist Church, Roseburg, 8 p.m.

March 18—Pioneer Methodist Church, Coquille, 8 p.m.

March 19—Rogue Valley Manor, Medford, 1:30 p.m.; Newman Methodist Church, Grants Pass, 8 p.m.

March 20—First Methodist Church, Klamath Falls, 8 p.m.

March 21—St. Mark's Methodist Church, Sacramento, 8 p.m.

March 22—First Methodist Church, Burlingame, 8 p.m.

March 23—Cubberly High School,

Palo Alto, 8 p.m.

March 24—Hayward High School, Hayward, 10:20 a.m.; First Baptist Church, Berkeley, 8 p.m.

March 25—San Carlos High School, San Carlos, 9:15 a.m.; Temple Methodist Church, San Francisco, 8 p.m.

March 26—Woodland Methodist Church, Woodland, 8 p.m.

March 27—First Methodist Church, Woodland, 8 p.m.

March 27—First Methodist Church, Yreka, 8 p.m.

March 28—First Methodist, Albany, 8 p.m.

**EFFECTIVE
IMMEDIATELY
CLASSIFIED
ADS
Now Only
3¢ per word**

World-wide orgnzn nds primary, secondary, college-level teachers. Choice of countries. Two-year contract. Low pay. Write: PPeace Corps, Washington, D.C. 20525.

USED BOOKS SOLD. Everything available from a first edition to a set of complete books. Large European and American stock. Call now. Thomas Mathiesen, 581-1641, ext. 236.

FREE PARKING AT HANK'S AFTER 6 P.M.—ALL DAY SUN. • 363-5050

New Rates Retroactive to March 1st

HOLLYWOOD

DOORS OPEN 6:45 P.M.
★ First-Run Salem
"2ND BEST SECRET AGENT" In Color
WONDERFUL SARDINIA
Sun. at 12:45 & 6:45
2005 Capitol St. N.E. • 364-4713

ELSINORE

Doors Open 6:45 P.M.
Sat. & Sun. at 12:45
Natalie Wood
Christopher Plummer
Roddy McDowall
"INSIDE DAISY CLOVER" Color
★ Color Featurette . . .
"THE LAND WE LOVE"
News & Color Cartoon
Salem's Largest and Finest • 363-5798

CAPITOL

Doors Open 6:45 P.M.
Sat. & Sun. at 12:45
Kirk Douglas
"HEROES OF TELEMAR" ★
★ 2 COLOR HITS ★
"GREAT SIOUX MASSACRE"
Joseph Cotton
FREE PARKING AT HANK'S AFTER 6 P.M.—ALL DAY SUN. • 363-5050

**Willamette Collegian
Salem, Ore. 97301**

Freshmen Like Their Glee!

Glee '66 - Creativity or Hypocrisy?

Willamette Collegian

Official publication of the Associated Students of Willamette University. Second class postage paid at Salem, Oregon, 97301. Published weekly except during vacation and examination periods. Subscription rate \$3.00. Phone number 581-1641, extension 224. Ad space in The Collegian can be obtained through the Student Body Office, extension 244. For classified ads call 581-1641 extension 245.

RICHARD KAWANA
Editor

Freshman Glee-Only For the Green and Pickled

Over the last three and one-half years, this reporter has seen Freshman Glee come and go. And it has always remained a source for wonderment and amazement.

The utter naivete of the freshmen is almost appealing in its patheticness, the more restrained enthusiasm of the sophomores and juniors reflects growing disillusionment, and the alcoholic joviality of the seniors indicates that they have truly found the right answers.

In actuality, it is only the seniors and the freshmen who really know the true meaning of Glee. The freshmen are in a type of nether world, half-filled with the romantic delusions of their high school careers and half filled with the hard realities of a hopefully more academic world.

This unlikely, though quite typical combination that the freshmen personify, causes a type of situation that is quite poignant (as in whimpering puppy, half grown child taking his first steps, boy and girl on first date). First, there is the burst of enthusiasm, then there is the more cautious reaction—is this really "college?" And finally there is the "who cares, it looks like fun" attitude.

The seniors, too, have a commendable attitude toward Glee. They have suffered through too many morning practices, too many sore throats and aching feet, too many disappointments and heartbreaks to care very much or very seriously. And besides, they are all over 21 years old.

They can rationalize away their problems after downing a few at the senior club house on Bellevue Street (as they can rationalize almost anything else away). And off they go into a more euphoric, Huxley-esque environ and out of the nether reaches of their collective minds. This, too, is true apprehension of Glee.

It is only the sophomores and junior classes who reside in an unreal, nether world of miss-everything. They will suffer through early morning practices, sore feet, bad breath, no school work done, all with the grim though mistakenly messianic gleam in their eyes and the even more mistaken belief that it is all really significant. They, too, will have to learn.

Let it be proclaimed that it is only the freshmen in their innocence and the seniors in their foam-buoyed joviality who truly apprehend and appreciate the significance of Glee.

By GEORGE GUTEKUNST
How do Willamette freshmen feel about Glee? Why do some eagerly flock to participate and others deplore it as a "reversion to the trivia of the high school environment?" Why is Glee so highly lauded and eagerly accepted by the majority and so harshly rejected by a few?
Why does apathy exist among a significant number who really couldn't care if Glee comes off or not? Is Glee really all it is supposed to be and how deeply do

the majority of students really feel about the role of tradition at Willamette?
To those who work on it, Glee represents "a channeling of creative activity and a spiritual get-together to provide the basis for future class unity." For the non-participants one skeptic termed Glee "an excuse for childhood." Another student says "Glee is not at all pertinent to my life at Willamette."
One eager believer says, "There are a few sharp babes I'd like to get to know and they'll all be at

Glee." One girl is in because "I like to sing and I worked at these things in high school and made many friends this way."
Another quite serious fellow says, "I am in Glee because I want that withered piece of paper I'll get at graduation to represent far more than a 4.0 but a knowledge and understanding of people."
Still another thinks, "Glee is the greatest thing all year but 5 o'clock is ridiculous." One detached observer calls Glee "a logical offspring of the typical Willamette middle class values." Another cites Glee as "A group of infants running around thinking themselves important." Another in a jocular vein says "Glee is fascist inspired."

Possibly the most recurring answer given is that Glee is great because some respected upper classman said so and everyone else is doing it. It is really doubtful that most of the class takes Glee in such nostalgic doses as Dr. Trueblood or with any self-sacrificing altruistic fervor.

One very justified reason for getting involved was expressed by Ken Ford who says, "Glee is something to do which relieves the monotony and depression of every day college life. It's for the fun of it and no one takes it too seriously." Maybe Glee is of therapeutic value as Dr. Trueblood has said? Another illuminating comment stated that "Glee is really the same thing as high school and it's stupid but it is a lot of fun."

Thus freshman opinion is not a unanimous consensus totally in favor or opposed, but a decentralized amalgam of gripes, apathy, enthusiasm, praise, cynicism, negativism, class patriotism, and social climbing. Everyone has their own reasons and they are all different and highly diverse. Thus it is not fair to stereotype Glee motivation by making narrow, personalized value judgments based on personal preferences. Some take it seriously and others want a few kicks.

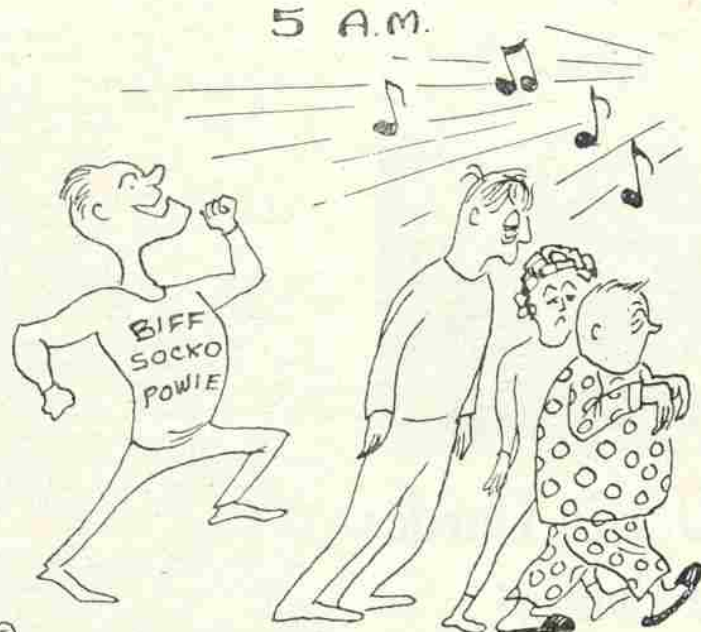
Is Glee really a serious part of Willamette in terms of education? What does Glee represent and really mean? There is no denying that there is a strong and genuine enthusiasm which by its very nature will catch on as things get going.

Is Glee only the superficial relic of the high school "rah-rah" attitude which so many found inauthentic and phony? Some of the most interesting opinions went along these lines. "Glee as a solitary tradition is a part of the dullness of Willamette and inherent conservatism which plagues and hurts the school."

"I came here to escape all the high school bull." "Glee is good for Willamette but other things must get started if Willamette is going to get rid of its old-fashion crust." "Glee is bad because it represents age and Willamette needs anything but that."

"If Glee is the only thing Willamette has, it is bound to be looked at scornfully by a few." "Tradition for the sake of tradition is a drag."

One last very interesting comment: "Is Willamette a product of Glee or Glee a product of Willamette?"



THERE'S ONE IN EVERY CROWD!

Phi Delt's Are Men!?

Yes, those individuals who constitute the fraternity known on campus as Phi Delta Theta are truly men. They proved this early Tuesday morning by entering another house on campus and wantonly making shambles of everything within it. They proved it by seeking recognition through the childish destruction of the property of that house. It takes real men to perform such acts. This author takes his stand alongside the men of Phi

Delta Theta in declaring their right to prove themselves worthy of this title. Both this school and the nation need more men like those of Phi Delta Theta in order to ensure the protection of our individual and property rights, and the National Fraternity of Phi Delta Theta can be proud of their Willamette Chapter for the promotion of these fine ideals.

Bruce A. Buchanan.

IFC: "Weak, Ineffective and Absurd"

By KIP STILZ
This is an opinionated feature article. I let you know at the outset because I've heard rumors that some Collegian patrons unfortunately mistake this type of column as factual and exhibit ineloquent irritation upon discovering that their facts do not agree with those of the reporter. They become so mad, in fact, that Collegian reporters are banished from some very sacred grounds, such as meetings of the Willamette Interfraternity Council (IFC) on pretenses that they have previously erred and strayed and shall be denied the goodies of first-hand information.

All this is to say that I don't claim to know all the facts in the lines below since no Collegian reporter was able to get them first-

hand. When you call me dirty names, please say that you disagree with my opinions and not my facts. I think that the structuring of the Willamette IFC is weak, ineffective and absurd. I have thought this for a year now since I served on last year's IFC as a house president. I feel that IFC has done little, if anything, to warrant its continued existence as a group of six fraternity presidents whose supposed raison d'etre is self-regulation and control.

What specifically is lacking? First, I feel that IFC is almost hopelessly hindered by any lack of continuity within the organization. Fraternity presidents come and go once a year, even once a semester in some instances. All IFC offices (president, vice president, etc.) are honorary,

appointed by rotation and meaningless. Under such circumstances, it is next to impossible for continuing action to be undertaken and seen to completion.

But more basic, I feel, is the fact that IFC has failed as an organization to assume the leadership it could exhibit. If I gain any overall impression after four years at Willamette, it is that student groups can accomplish quite a bit with full administration sanction if they get out and work. Any student group gains just about as much responsibility as it exhibits maturity.

So what if dirty rush and pocket-pledges are the biggest standing joke on campus among male fraternities? So just this—either IFC intends to assume a more meaningful role as fraternal self-regulator

which it should rightly have, or IFC should practically, if not completely honorably, dissolve its entity.

Will IFC continue to condone by default such cherished practices as dirty rush? Will IFC demand that further action be taken against those "naughty boys" of a certain fraternity who rather inharmoniously serenaded other Greek men and independents last Tuesday morning, further causing substantial internal property damage to one of the houses only to get off, for all practical purposes, without any effective reprimand? Perhaps the independent who rolls back to sleep at 3:30 a.m. would like to know if those "d—d frat rats" can control themselves. Perhaps the whole campus would like to know if the Willamette IFC will eventually grow up.

New Glee Traditions Added To Old This Year

Tomorrow night's 58th presentation of Freshman Glee will add more ideas to the already huge body of Glee tradition at Willamette.

Some of them, like decorating outside the gym, may in time also become traditional. The Blue Monday bets, the parodies and senior signs, even the formations and songs have evolved to their present state in a little-recorded process since the first Glee in 1909.

When three frosh (Jimmie Oaks, Brick Harrison, and R. V. Ellis) began the songfest that year, they decided only that the song must have words and music written by the class. The seniors were awarded a had of cabbage when they used new lyrics to a melody by Donizetti, the Italian composer.

The four-year cycle of song themes—fight, novelty, serenade and alma mater—also developed over the years. Some Glee songs are still sung, like Willamette's fight song "Fight, Bearcats, Fight."

Over the years the formation and presentation came to have more weight, at one time actually being worth more points than the song itself. In 1909, the students merely walked on and off the stage. After a week of practice, today's Glee participants know the importance of standing in straight lines and turning square corners.

Waller Hall was the first locale for Glee but it was rapidly outgrown. Then Glee moved to the unlikely location of the First Methodist Church Sanctuary. Glee was also held at one time in the now-

destroyed old Salem Armory.

In 1923, with the completion of the gym, matters improved for a while. The crowd again grew larger than the building's capacity, however. That is still the situation today, with tickets so scarce that publicity cannot urge everyone to come.

Public interest was great enough in the thirties to warrant radio broadcast by a Portland station. Later, in the forties and fifties, a Salem station broadcast Glee but now it is not aired. The technical problems of filming for television have proved too great in the gym.

Blue Monday is a tradition all to itself. Zany antics are the rule. Last year saw people pushed from class to class in shopping carts by "slaves," various picket-sign carriers

and dirty-book readers, and many shades of sprayed-on hair color. Some bets were messy, like the egg throwing in front of Eaton Hall which somehow reached the third floor windows.

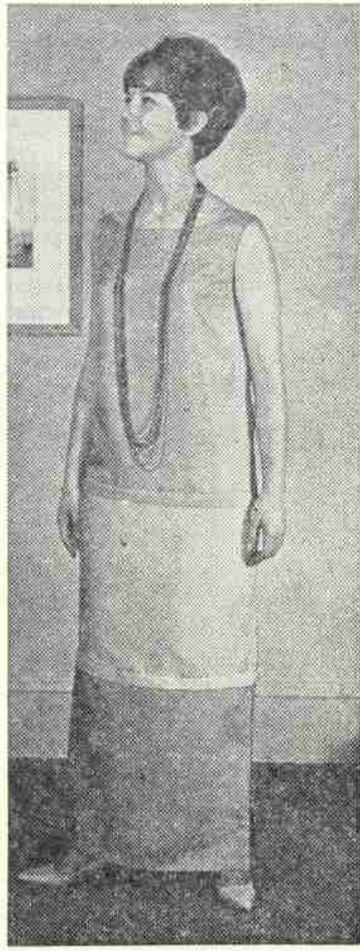
In earlier years people have worn leopard skins to climb trees, dressed as mau-maus with garbage can lid shields, and one legendary miss even ran through the legislature in session swinging a lantern and shouting, "Has anyone seen an honest man?"

Even faculty and administration members have been known to make bets. President Smith used to bet he would wear roller skates Blue Monday if his chosen class was beaten. Former Dean Mark Hatfield (now Governor Hatfield) was given a pedicure by a loser.

Others have tried to reform bets, as when in 1932 they were to consist of treats, woodwork washing, and "other safe and sane methods of entertainment." A notorious professor once ejected scantily clad students from his class on Blue Monday, only to see his own son peddling into the room on a tricycle!

James T. Matthews, mathematics professor from 1893 to 1941, developed the classic "hesitancy" in announcing the winner of Glee. Dr. Schulze, who retired last year, had such an artful (and predictable) way of dragging out the proceedings that his "script was printed in last year's Collegian. This year the "man of the hour" was kept secret until this week, when Dr. Trueblood admitted he will do the honors.

Jan Bell Chosen "Betty Coed"



Jan Bell was selected as Betty Coed, Willamette's representative to Clamour Magazine's "Ten Best Dressed College Girls in America" contest last Friday afternoon.

Judges watched and questioned the six finalists who were Jan Bell, Marcia Empey, Pat Gundy, Laurie Hall, Penney Robinson, and Karen Reppun. Each girl modeled three outfits: campus, off campus day, and party. The judges considered the girl's poise, actual wardrobe, and thought behind the wardrobe.

For her on-campus outfit Jan modeled a black turtleneck, and black wool knit skirt with an orange and gold velour overblouse. She accessorized the outfit with a necklace she made of whole cloves and nuts, and gold shoes.

A dark green and blue heather knit two-piece suit was Jan's choice for an off-campus day ensemble. She wore a Danish silver pin and tiny silver loop earrings, black shoes, and carried a black umbrella and gloves.

A switchable shocking pink, lime green, and brilliant yellow raw silk floor length sheath was Jan's choice for a formal dress. It has a boat neck, and is sleeveless. The dress is unique because it can be unzipped and switched to form different color combinations and lengths. One bottom panel can be removed to make a cocktail dress; a second can be removed which leaves a blouse and shorts combination. The dress was accented with long green "flapper beads" and green earrings.

As a freshman Jan served as class secretary and on a Glee committee. She is a member of BAGs and Alpha Lambda. This year she was the AWS Big-Little Sister chairman, art editor of the Wallulah, and an art contributor to the Jason. She was selected the Valentine Princess of Delta Tau Delta. She was the Delta Gamma pledge sneak chairman. She is an art major.

Jan taught an adult class in block printing at the YWCA, and served as a volunteer at the Blind School. For recreation Jan enjoys snow and water skiing, "and being creative and making things."

SAEs Crown Judy Dodd



Last Saturday evening, Judy Dodd, a Pi Beta Phi pledge, was crowned SAE Queen of Violets at their annual ball, which was held at the Hilton Hotel in Portland. The finalists for the SAE title were Penney Robinson, a Delta Gamma pledge, and Luann Tuller, Doney Hall.

Freshmen Turn Out in Hordes For Spirited Glee Contest

Each year, the freshman class turns out "en masse" to participate in the traditional inter-class Glee rivalry. This year's freshman class certainly is no exception. Their strong determination coupled with an overwhelming class spirit will undoubtedly give the other classes a "run-for-their-money."

Freshman plans for an after-Glee dance are indicative of this enthusiasm. "The purpose of the dance!" exclaimed Gib Stewart, freshman class president, "to celebrate, of course!" The frosh have rented Randall's Chuck Wagon, and transportation will be provided by trucks "for spirit." The Stoics, a freshman combo, will also provide music.

Alpha Chi Sells House

Alpha Chi Omega sorority announced Thursday the sale of its chapter house and future plans to

move on campus, thus coming under the wing of Willamette University. Its plans call for leasing a four-plex and large house at Winter and Bellevue streets SE from the Salem Urban Renewal Agency.

Later, when land is cleared and sold to the University, the sorority plans to build a new house at Summer and Mill street SE, according to Mrs. Kenneth Holmes, president of Beta Chi House Corporation.

Approval of leasing the interim housing has not been received from Washington, D.C., but has been given by the University and the regional office of Housing and Urban Development at San Francisco.

Purchasing the Alpha Chi Omega house was Jack Anunson, Marion county representative, for the family home.

Who's Whose

Vicki Thompson, Alpha Chi Omega pledge, was pinned last Saturday evening to Dean Torkelson, a senior Beta, majoring in economics.

Kathy Bendix, a senior psychology major, announced her engagement to Larry Liebenow, a senior majoring in political science by passing a candle at York House Sunday.

Vicky Johnson, a sophomore majoring in sociology, became engaged to Tom Green, a freshman living at the Blind School. The men of the Blind School serenaded Lee House after a green candle with white roses was passed announcing the engagement.



Pi Beta Phi and Alpha Phi held initiations recently. Julie Cramer was initiated into Pi Beta Phi. Judy Butts, Laura Fitzpatrick, Karen Edwards, and Nancy Henry were initiated into Alpha Phi.

The Chi Omegas and some of their Owls made another visit to Lane Cottages at Fairview Saturday afternoon.

February 27 and 28 the Chi Omegas were honored by a visit from their National Chapter Visitor, Mrs. Vera Thompson, of Seattle, Washington.

Our apologies to the new Delta Gamma pledge class who technically took the first pledge sneak of the year on February 5. Leaving at 2:30, they "snuck" to the beach, staying at a beach cabin near Oceanlake. The girls report that

they really enjoyed themselves—making Valentine hearts for the Delta Gamma members and frolicking on the beach.

Sigs Narrow Court to 12

The Sigma Chi's have narrowed the number of contestants for the title of Sweetheart of Sigma Chi to 12. Later, this number will be reduced until one is chosen as Sweetheart to reign over the Sweetheart dance. The 12 remaining girls are: Buni Bennett, Pat Cannon, Mary Cotton, Nancy DeGraw, Lynne Fulp, Joy Gustafson, Carol Hemke, Teresa Krug, Mary Linda Laird, Chrysan McAllister, Candy Roberts, and Sher Spears.

Alpha Lambda Taps Seven

Alpha Lambda Delta, national freshmen women's scholastic honorary, recently tapped seven freshmen women for membership. They are Jane Bovee, Paula Casey, Kathy Laing, Helen Lang, Diane McKenney, Diane Muffett, and Geri Ranney.

A grade point of 3.5 is required for eligibility into Alpha Lam. The initiation will be held on April 20 after a joint dinner with Phi Eta Sigma, national, freshman men's scholastic honorary.

Four Freshmen Form "Stoics"

"Sex Ridden Hag" is an unique title to a song, as it leaves much for the mind to imagine while the participant is doing the jerk on the dance floor. This unique song is the joint effort of a new group on campus called the Stoics. New to Willamette this year, this combo is definitely on the "in."

The Stoics are a freshman group including four members and led by Randy Donohue. Greg Frank from Yreka, California, plays lead guitar and Doug Heatherington from Lake Oswego plays bass. Dave Zeit, a junior town student, plays the drums. Randy, a freshman from Dayton, Washington, plays the electric piano.

The group started about four weeks after the beginning of school last fall. Greg and Randy first got

together and later were joined by Doug. They advertised in the paper for a drummer, with Dave offering his services. This year the group has performed for the Lee fall house dance, the Beta House dance and Beta pledge dance, two all-campus after-game dances, and will perform this Saturday night at the Freshman dance held after Glee.

Having weekly practices, the Stoics work together on the musical arrangements for their numbers. They play the "standard" rock 'n' roll hits, yet offer original interpretations. When learning a new song, they listen to the record version with each working out a special part. From the record, Doug gets the words, Greg figures the chords and Randy works out the verse scheme.

Find out if you're man enough for the Peace Corps.

Even if your name is Mary.

The Peace Corps.
Washington, D.C. 20525

- Please send me information
- Please send me an application

Name _____

Address _____

City _____

State _____ Zip Code _____

Published as a public service in cooperation with The Advertising Council.

Student Travel Overseas Program WANTS YOU!

Travel to Europe, Hawaii, Around the World See Famous Places Have Time On Your Own Inexpensive
 ☆ SEE ME I'VE BEEN THERE
DEBORAH TODD
LEE HOUSE, EXT. 326

SPORTSPOTZ

Bearcat Grumbles

By ERNIE NEUGEBAUER

Here on the Willamette campus we have just seen the end of an exciting and quite interesting basketball season. There were many thrilling games, the most notable being the last series with Lewis & Clark and the close Pacific game here, a sweet win over a team that was really fired up after upsetting the Pioneers from L-C themselves the night before.

The basketball season this year was more than exciting, though. It was an experiment in some ways, just as the entire school year itself has been, and continues to be, an experiment with moving up the calendar, having no first semester finals, plus LONG vacations, etc.

These are many things which, on the surface, sound like a university student body's dream. But underneath, when critically examined, they present many little problems, which, like slivers in your fingers, aren't that serious, until there are enough of them at once. And lest we seem to stray too far from the subject, some of these things have had quite a little effect on the Not-so-Wide World of Sports here at Willamette.

Probably the greatest effect of the new system this year was not anything NEW, but an old story told on a much larger scale. The aforesaid 28-day Christmas vacation split the basketball season up into two parts, as usual, but separated those parts by nearly a month, during which the three Chico Tourney games, plus four league games, were played. So when WU students returned from vacation, 12 of this year's 26 scheduled games had already been played. Moreover, 7 of this season's 14 wins were history, and the first games (and wins) of the year, those of the NAIA Tip-off Tournament, had been played over SIX WEEKS before, Dec. 2, 3, and 4.

If this year's "experimental" school year is dubbed a "success" by the administration and faculty, however, there is no doubt that next year will see more of the same: a season split asunder by a vacation during which everything about school is thankfully forgotten by all except the couple of dozen persons associated with the basketball team, who must break their vacation up into bits and pieces because there are seven, instead of three, games scheduled intermittently through it.

An added touch may be provided next year, though, because it will be Willamette's turn to make the long trek to Caldwell and Walla Walla during the latter part of the season; and that means that the first early-season games after Christmas (during the WU Christmas break, remember) will be hosted here in Salem, on a campus pitifully devoid of fans. That should be something for the hoopmen to really look forward to.

Basketball is behind us, now, though, and spring sports are fast

Relays Ahead

This year there will be a new face behind the stopwatch at the up and coming Willamette Relays. Taking over the head spot from coach Ted Ogdahl will be veteran track coach Dr. Chuck Bowles.

Dr. Bowles has decided to speed up the proceedings of April 2 by eliminating three events, the 100-yard dash for high school and college; the 480-yard shuttle hurdles; and the sprint medley. This should cut the expected running time of the meet from five to four hours.

The events to take place are as follows: 120-yard high hurdles, 440-yard sprint relay, 880-yard relay, one-mile relay, two-mile relay, distance medley, shot put, javelin, discus, pole vault, broad jump, and high jump. Admission will be adults \$1 and students 50 cents.

Watch for the Collegian's full page spread previewing the relays.

approaching. Baseball, track, golf, tennis, and for a little while longer, swimming, will fill the air, a good part of the dorm conversation, and this page.

Track season approaches, offering, in the way of encouragement to track fans a new coach, some new talent, both freshmen and transfers, and fine old hands back to lead the way. We hope that as the track season goes along the WU cindermen will not be left without the spirited support of Bearcat fans in the stands of McCulloch stadium.

Participation at basketball games this year has been more in the way of noise than actual spectators present. While there was plenty of yelling, some organized cheering, and the usual ref-blasting, it would be quite an optimistic estimate if one guessed that as much as 30 per cent of the student body was present at any home game this past season. We hope that the track season will be a new story. The track team should do even better than the hoop squad, and we hope the fans will support them accordingly.

And while we're at it, the baseball team will be no less deserving of our enthusiasm. Even though baseball hasn't been as well publicized in the past, and other things have also caused problems, these other things can all be taken care of by an energetic and active rally committee such as we have this year.

The big problem, though, is of student apathy, and since the cause to that problem begins in the attitude of the student himself, so must the solution. The kind of motivation that will make a student walk the extra few blocks down to Bush Park, just to see his team in action, must come from within. The student must make the decision. Even though he can be encouraged by others, he must make up his own mind.

Ruggers Snarf Up First Win, 6-3

The Salem Rugby Club won its first victory of the season last Saturday afternoon at Walker Junior High School. The local ruggers, sporting new cardinal-and-gold jerseys for the first time ever, scored twice in the first half to win 6-3 against the visiting Portland Rugby Club.

The kicks from tries for both teams went awry as strong winds, side-products of an overcast and threatening day, hampered the kicking games of both clubs.

Ex-footballer Steve Long scored both times for the Salemites on long, tight-rope runs along the sidelines. He was aided by good passing from team members who set up plays that gave Long enough running room.

All the scoring occurred in the first half. The second 40-minute stanza was a tight defensive battle as both teams threatened to score on many occasions but did not have the energy to move over the last few yards for a score.

Walker field was chosen because ruggers were told that McCulloch's turf was being manicured for the coming football season this fall. A ditch runs parallel to the Walker field. During the game, it was full of water. It made an interesting side show to see puffing ruggers almost try swimming to recover errant footballs that inadvertently fell into the water.

The Salem scrum showed great improvement over previous games as they won the majority of the scrum downs, the rugby equivalent for the football line of scrimmage, or the hockey faceoff. The home towners also took a good many more of the lineouts than they had previously.

Secretary in charge of fixtures, Wayne Looney, stated that the ruggers have a very tentative date with the University of Washington "B" team this Saturday afternoon in Portland.

Diamond Outlook

By RAY SHERWOOD

Assistant Coach Palmer Muench reports that prospects for this year's baseball team are better than for the squad a year ago. Muench attributes this to a greater all-around depth and a stronger pitching staff.

Coach John Lewis was in Kansas City for the NAIA tournament this week and was unavailable for comment.

Willamette lettermen pitchers Sam Nebel, Steve Smith, Loren Whittaker (all-NWC two years ago), Dave Baird, and Ray Sherwood will be pushed by freshmen Steve Newman, Bob Halen, and Rich Haavisto for starting and relief spots.

The infield is shaping up with probably starting roles assigned to Walt Looney and Dave Stanley at first and third. The middle is still open, but will be closed by Mike Genna or Jim Kleinke at second base, and by Karl Walker or Tom Angelo at shortstop. Bob Millikan will back either Stanley or Looney.

The outfield will see five returning lettermen. Clayton Fujie, Jim Dombrowski, and Gary Yunker, (all three can hit with power) will be spelled by Carmy Mausten and Gary Reuter.

Seeing action in the outfield will be Jon Edwards, sophomore transfer from Lower Columbia Basin Junior College. Edwards can also either catch or play the infield. Muench labels Edwards, who hits well, a possible key to Willamette success this season.

Ronnie Lee will hold down the catcher's spot. Lee has earned the confidence of pitchers through constant hustle and quickness. His dependability also helps give pitchers that secure feeling out there on the mound.

If the Bearcats can regain the momentum which carried them to six victories in their last seven games of the 1965 season (including a 14-4 thrashing of conference champion Linfield), they may go all the way this year.

With strength in all departments, the WU baseball team could find its way, as in days of yore, to the top of the NWC heap. If the hole up the middle is filled to match the other strong points of the team, this could be a big year for WU baseball.



John Givens, senior on the pool squad, executes a swift turn in recent action. Givens is one of the mainstays of the team, being an experienced man and a hard worker.

Fishmen Third

The Willamette swim team grabbed a third place finish at the all-Northwest Conference swim meet held last Friday and Saturday at Tacoma, Washington. Both Pacific Lutheran University and Lewis and Clark College showed themselves to be in top shape as their nearest contender, Willamette, was down 42 points from the second place winner, Lewis and Clark, when the final tally sheet was in.

Plagued by sickness, the Willamette team nevertheless gave a good performance. There were a number of fine individual showings by Bearcat swimmers. Dave Lederman was Willamette's only first-place winner. Dave not only managed to go away from the meet with a first place in the 100 yard butterfly, but he also managed to take top honors in the 200 yard butterfly as well.

Another fine individual performance was racked up by Willamette's Glenn Knitter. Knitter took second place in the 400 yard individual medley, the 200 yard individual medley, and, to complete the trio, a second yard back stroke.

Other Bearcat medal winners were Mark Mulder and Dennis Kauahi. Mulder took second place in the 100 yard back stroke. Kauahi placed second in the 50 yard free style. The Bearcat medley-relay team, com-

posed of Dave Lederman, Glenn Knitter, Tom Steibold and Dennis Kauahi, placed second in the conference meet.

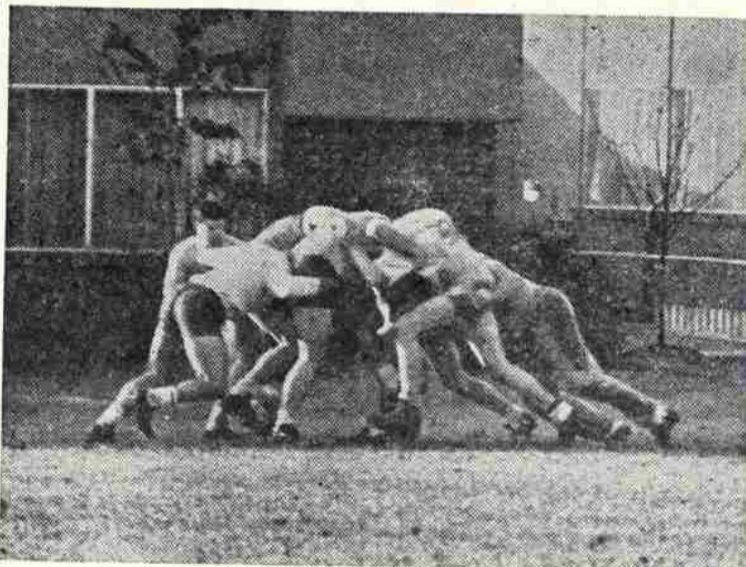
Pacific Lutheran University took first place with 127 points. Lewis and Clark followed very close behind with 125 points. Willamette took third with 83 points, barely nosing out fourth place Linfield, who tallied 80 team points.

This weekend Willamette will travel to the District meet for its final competition of the season. The Bearcat swimmers will match their talents against a tough Lewis and Clark team, not to mention Linfield College, who will be out for revenge after being edged-out by Willamette for third place at Tacoma, Washington. Oregon College of Education is the only other team competing in the meet.

Slope Shots

COLLEGE SKIING IS the Ohio State freshman who took off for the winter quarter in order to become a folk singing ski bum; then took off the spring quarter to become a ski bum; then took off the summer quarter to become a bum.

COLLEGE SKIING IS "the look" from the knees down—the most expensive boots, skis and poles—while on top you wear a creative collection from the local army surplus store.



The Salem Rugby Club whales in recent practice action. This delicate maneuver is known as a scrum, takes place at the line of scrimmage, and is variously comparable to fourth down, a hockey face-off, a jump ball, and the Batasi.

A sure date to remember, however, is the following Saturday, March 19, when the home towners will participate in an international rugby tournament in Portland. Many teams from Oregon, Washington, and even Canada are expected to be in attendance.

"Cleaned right and pressed right by Burright's"

Burright's Cleaners
198 Church St. S.E.
WE CATER TO WILLAMETTE STUDENTS
Phone 363-4242

THE CAMERA CENTER
Cameras — Projectors
Rentals — Repairs
Film — Finishing
Everything Photographic
Greeting Cards
KLASIC
Camera Shops
1146 CENTER 546 STATE



When you can't afford to be dull, sharpen your wits with NoDoz™

NoDoz Keep Alert Tablets fight off the hazy, lazy feelings of mental sluggishness. NODOZ helps restore your natural mental vitality... helps quicken physical reactions. You become more naturally alert to people and conditions around you. Yet NoDoz is as safe as coffee. Anytime... when you can't afford to be dull, sharpen your wits with NoDoz.

SAFE AS COFFEE





The seniors dedicated this year's Cut-ups to Mrs. Swenson, Student Center director, and presented her with a bouquet of roses. (Photo by Garry DeLong).



"What, me worry?" seems to be senior song leader Joe Eding's attitude toward this year's Glee. (Photo by Garry DeLong).

Committees Plan Lively Glee

Freshman Glee committees have been at work this week in preparation for the annual program. Some have finished their labors and can now take it easy while others must keep at the job even after Blue Monday.

Don Roberson, Glee manager, has been assisted by Don Solberg in coordinating general plans for the songfest.

Tickets were to be distributed by class presidents this week, with two to go to each participant. Extra tickets will go to the freshman class. Some 250 tickets were saved for the faculty and judges. Rod

Scott was ticket chairman.

Publicity chairman John Mitchell has directed the sending of news about Glee to radio and television stations and Portland as well as local papers. Posters for the campus were also designed, following the jousting theme by using a knight's helmet.

In charge of ushers was Judy Harrison and chairman for programs was Karen Heimberger. The programs will be red and black and will be given out one to a group so as to have some for participants. Sixteen hundred programs have been ordered.

In charge of recording the sound of Glee is Dennis McCarty. Pacific Northwest Sound will make the records which can be purchased today in Eaton or tomorrow evening at Glee or at the reception afterwards.

Novel decorations featuring the theme of an English jousting tournament will be carried out as pavilions bloom on the lawn before the gym, a drawbridge enters the building which will be converted by a castle front. The balcony will be draped in red with shields, flags, and other escutcheons. Bonnie Butler heads the decorations committee.

The backdrop too will follow the theme with a red background and two shields. It was planned and made by Tom Bassett's committee. Lighting will be handled by

ATTENTION, LIVING ORGANIZATION EDITORS!

Each living organization editor must turn in their copy, pictures and accompanying negatives by Monday, March 14. All material must be turned in to the Wallulah before spring vacation if your house wants "informal" pages in the yearbook.

Petitions for Collegian editor, business manager, circulation manager, darkroom manager, and for Publications Board manager must be turned into Jim Vidal at Sigma Alpha Epsilon by Wednesday, March 16.

system of excellent, superior, average, below average, and poor. Academic quality was rated superior, by 49.3 per cent of the students and excellent by 7 per cent, with the remaining replies ranging lower. Curriculum in a major field received a wide scattering of ratings, with a mean and model rating of superior, while general curriculum was rated average by just 50 per cent and superior by 36 per cent of the students.

Cultural activity and atmosphere had a mean score of average but with a wide scatter resulting from the feeling many had that the two categories should be separated because one was good and the other less so.

Overall quality of the campus was rated superior by 47 per cent and average by 43 per cent.

The thirty members of the seminar under the direction of Dr. John Rademaker, head of the sociology department, indicated they chose this project over 16 others because of a "spontaneous interest." The

advent of the 4-2 program prompted the interest in that the faculty have been making plans for new course structures and the seminar felt that student goals should be considered in these plans.

Faculty members have or will receive copies of the report, and indications are that it is being accepted heartily. As Dean Yocom commented, "This has saved me a lot of work. Many alumni felt dissatisfied with the lack of referral to the students, and have expressed hopes that this initiative will be noticed."

Formulation of the questionnaire was the first step in the project, started in October, 1965. Separate questionnaires were drawn up for each of the groups to be surveyed with background information and one question being different. The type of education desired was asked in the same form on each.

Questionnaires were pre-tested by Salem high school students and Salem alumni as well as students at three neighboring universities before being distributed to visiting seniors on Preview Day in November and current students during finals. Others were polled by mail.

Copies of the four-page abstract as well as the 50-page full report will be available in the Student Body Office or from the Sociology Department.

SP Railway Complains About Illegal Parking

Mr. David Lewis, Willamette business manager, recently received a complaint from the Southern Pacific railway that cars are being parked within a few feet of the tracks along Trade Street. The specific area lies between the tennis courts and the Mill Stream. Parking within that area endangers autos and stops rail traffic along the Trade Street line. One car has already been hit this year.

The Southern Pacific right of way extends to the center line of the street. For the present SP would like the cars moved away from the tracks. In the future, students and Willamette personnel should park their cars in the nearby parking lots.

Security Seminars Here Soon

The National Security Seminars, to be presented in Willamette's Fine Arts Auditorium for two weeks beginning Monday, are based on the idea that citizens should have a right to know everything about the United States position in world affairs.

Originally founded 17 years ago to keep military reservists up to date on world politics and economics, the Seminars are today open to the general public, including students. In fact, students will be admitted to the sessions free of charge.

Tickets for Winter Carnival will be on sale from noon Tuesday, March 15, through Friday, March 18. Bring your ID card and \$15.50 for the weekend (lodging included). Anyone racing at the Carnival please meet on Monday afternoon at 4 p.m. (March 14) at the Sigma Chi House.

Salem is one of only 14 cities in the nation to host the Seminars this year.

Registration is being taken at the Salem Chamber of Commerce and will be taken beginning Monday at the Fine Arts Auditorium as well. A five-man team from the Industrial College of the Armed Forces, under the Department of Defense, will deliver 33 lectures on topics of vital interest to citizens in the modern world.

Topics will include perspectives of national security, contemporary American management, geoeconomics, geopolitics, national security organization, human resources, strategic and critical materials, energy resources, science and technology, exploration of space, and agriculture.

Areas of the world and their current problems and development will also be treated. The areas include Africa; Canada, Australia, and New Zealand; Eastern Europe; Far East; Western Europe; Latin America; Middle East; South Asia; Southeast Asia; and the Soviet Union.

Each lecture, with illustrations by film or visual aids, is a unit in itself. Thus students may benefit by the lectures of the first week even though they may not be here during the second week of the program, which is Willamette's spring

Play Tryouts!

Professor Putnam has announced the selection of the two original plays the Drama Department will be presenting this semester. They are: A Day in the Park, and The Collapse.

Tryouts will be held Wednesday, March 16, from 7-10 p.m. in the Little Theater (FA 231W).

Professor Putnam said that those who wish to tryout for pantomime will have to demonstrate their talent by performing a pantomime at tryouts. Any interested students should contact him for copies of the script.

Students who would like to tryout for The Collapse, should contact the Drama Dept. at a later date for scripts.

The pantomime has six characters, two women and four men. The Collapse has three characters, two women and one man.

Victorian
beauty salon

WIG SALES & SERVICE

Monday, Thursday, Friday
Evening Appointments

1270 CENTER ST., N.E.
Telephone 363-6811

The Glee Judges

(Better start buttering 'em up soon!)
Words and Music

1. Mr. Merle Lotz—Choral Director at Wilson High School, Portland, Oregon.
2. Mr. Gary Aleshire, Tacoma, Washington.
3. Dr. R. Byard Fritts, Tacoma, Washington.

Vocal Rendition

1. Mr. David Beier, former song leader of Glee, Tacoma, Wash.
2. Mr. David Wallace, First Methodist choir director, Monmouth, Oregon.
3. Mr. William Mainwaring, editor and publisher of the Capital Journal, Salem, Oregon.
4. Mr. Ernest Savage, a member of the Salem City Council, Salem, Oregon.

Formation

1. Dr. Ted Meseng, Oregon State band director, Corvallis, Oregon.
2. Mr. Jerry Yahna, Stayton High School music director, Stayton, Oregon.
3. Mr. Gary Hill, announcer for radio station KAPT in Salem.

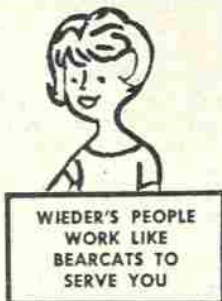


RUSSELL JOHNSON

To Speak on Asia Tuesday: Discussion 2-4 p.m. in Cat Cavern. Lectur 7:30 p.m. in Waller Auditorium.

a tip from Wendy Wieder
READY FOR THE WEEKEND?

If your slacks, coat, or dress need to be in the best of shape, let Wieder's dry clean them for you. And if time is short . . . bring them in by ten and we'll have them ready at five. This service available Monday through Friday.



WIEDER'S PEOPLE
WORK LIKE
BEARCATS TO
SERVE YOU

Wieder's

SALEM LAUNDRY COMPANY

263 HIGH ST. S.E. PHONE 363-9125

BOB'S

19¢

HAMBURGERS

1415 N. CAPITOL
3999 S. COMMERCIAL
5130 RIVER ROAD N.
"Where the food is good"