

Anti nuke rally draws throng to Capitol



Friday's anti-nuclear demonstration at the State Capitol grounds may have been the largest in Oregon's history, drawing over 2,500 people.

Demonstrators called for an indefinite moratorium on nuclear plant construction. Shouting, "No nukes, no nukes," and carrying signs such as "Hell, no, we won't glow," and "PGE: Shove Trojan Up Uranium," the crowd from all over the state basked under sunny skies during the three hour rally.

Of chief concern to the crowd and the several speakers was support of HB 2570, a proposal to ban nuclear construction in Oregon until a repository for spent fuel has been constructed. Many of the demonstrators headed into the Capitol after the rally to urge legislators to support the bill.

A group called the Lonesome Neutron Band sang songs with lyrics like "No nukes, no nukes, we'd rather make ice cream and cheese," and, to the tune of Carl Perkins' "Blue Suede Shoes," "Don't tax my capital gains. You can do anything but lay off my capital gains."

The rally's chief speaker, Dr. John Goffman, a former director of the Lawrence Livermore Laboratories at Berkeley, California, called nuclear technology "nothing more than a legalized permit to commit murder."

"The only outcome of the nuclear power industry is to make the plant unliveable," he said. He also stated that present government radiation standards are weak.

Senate approves budget

By KOFI OSEI-HEMENG

The ASWU Senate approved a total budget of \$58,750 for the 1979-80 academic year, following a long debate at its final meeting Wednesday night.

The debate centered around the proposal of Minority Student Union President Marcus Jones that the amount allocated to the MSU be increased from \$2,000 to \$2,300.

The proposal was eventually adopted when Jones stipulated that "without the MSU most white students will be ignorant of minorities because this is the only place they come into contact with some minorities."

A motion that the \$3,000 allocated to the Theatre department be revoked if the department charges undergraduate students who go to its plays passed resoundingly. Ted Shay was the only Senate member who did not vote for the motion, stating that he didn't believe the \$3,000 allocation was adequate.

A fracas almost ensued over the appointment of a new Publications Board Chairman. John Partigan was the only candidate who had applied for the post, but Stacy Heyworth wanted the elections to be postponed until some more people had applied. Frank Hausmann, Ted Shay, and Andy McIvor, however, argued that the position is so important that it is not advisable for it to be left vacant. After several motions and counter-motions, John Partigan was appointed to the post.

The Senate later made a unanimous decision to oppose the concept of the Central Dining facility and set its first meeting for next fall on Wednesday, September 5.



WILLAMETTE COLLEGIAN

Volume 91, Number 11 April 26, 1979 USPS 684-240 Salem, Oregon 97301

Awards convo honors WU's best

By WARNE BUNN

Willamette's version of the Academy Awards made its annual appearance Wednesday, with senior Bill "The Deer Hunter" Wustenberg, picking up the bulk of the honors.

Wustenberg, from Bay City, Oregon, won the Mary L. Collins Graduate Scholarship of \$1,000, the Albert Prize, will graduate cum laude, and received a senior certificate for meritorious service. He plans on attending Oregon State University's Veterinary program this fall.

Tim Simmers, a senior from Klamath Falls, Oregon, won the Daniel Schulze Award, given to the "best friend of the class." Simmers was also awarded a senior key, and won a senior blanket for athletic endeavor.

Julie Barbour, a senior from Portland, was named the Outstanding Woman Athlete of the Year, and was a senior key recipient. Dennis McCarthy, the scrappy basketball guard, and hard-throwing baseball pitcher Kevin Smith were co-winners of the J.H. Booth Athletic Prize for male athlete of the year.

Ted Shay, Jr. and Nancy Wilson were elected to graduate summa cum laude at the May 13 commencement.

The convocation program, held before a packed house at Waller Auditorium, featured the presence of three Bell Laboratory scientists in celebration of Sun-Day. Gerald L. Pearson, Daryl M. Chapin and Calvin S. Fuller are credited with inventing



Jim Woodland presents Bill Wustenberg with one of his many awards.

the solar cell, 25 years ago today, that is used to power communications satellites. The scientists have been on campus for two days. Pearson and Chapin are Willamette graduates.

One highlight of the awards convo was the oratory of Emeritus Professor Ivan Lovell. Presenting the history award named in his honor, Lovell spoke of the Planned Parenthood organization, and suggested that they should call themselves "Planned Un-Parenthood," which received a chorus of laughter.

Some of the other award winners were:

Crystal Rose, the Mary L. Collins Graduate Scholarship; Liz Geiger, the Colonel Percy-Willis Prize and the

George Putnam award; Carol Marquis, the Charles A. Sprague Award; Ann-Lisa Graves, the Robert C. Notson Award; Tom Ferrin, Garth Cummings and Melissa Jensen, the Pi Kappa Lambda Award; Barbara Gustafson, the Panhellenic Scholarship Award; Marcus Jones, the Minority Action committee Award; Lori Boshears, the Town and Gown Scholarship; Clay Poppert and Bod Hingst, the Paul H. Doney Prize; Steve Sogge, the Mary L. Dewton Award; Thomas M. Robins, the Lovell History scholarship, and Carolyn Wing, the Annie Burrett Memorial Award (which is given for high scholarship and the promise of future usefulness).

Editorial

Let Willamette lead

What has happened to the Investment Advisory Committee? That group that was borne of such controversy has not uttered a peep in the nine weeks of its existence. We urge the committee to take a stand on the University investment program prior to the May Trustee meeting.

When the committee was approved by the Trustees in January, it was charged to report to the Endowment Committee of the Trustees. But because of the visibility of the foreign investment issue, and the work of the Anti-Apartheid Coalition, we feel that the work of the advisory committee should be public knowledge and that students and other members of the community expect something to come of its work.

Composed of students, faculty, and administrators from the College of Liberal Arts, the Law School, and the GSA, this committee is one of the best represented on campus. We believe that it was President Lisensky's intention to have the committee be the campus sounding board for investment issues, partly to take the unwanted heat off the Endowment Committee and partly to take it off himself. This was a wise move on the president's part, but it appears that the committee that he appointed is reluctant to make a statement about its deliberations.

Granted, this is a touchy and controversial issue, especially when considering the University's ties to U.S. National Bank of Portland, but a university is a place for the free exchange of ideas. Therefore, we urge the committee to call for:

- Placing the Sullivan Principles of social investment responsibilities as a minimum standard for all University investments;
- Set a moratorium on investments in corporations which have not conformed to the Sullivan Principles;
- Reconsider investments of strategic value to the South African government, such as oil and banks, as long as that government fails to recognize the rights of the black majority;
- Convey the message to the Endowment Committee that the University does not want to interfere with its important financial function, but the nature of a liberal arts institution is to recognize the rights and responsibilities of all human beings.

Let Willamette be a leader among educational institutions by adopting these policies. (Swanson)



The Collegian staff says, "Adios, mothers."

A view from the bottom

Bye bye babe, it's been a sweet love.

Wrapping up the events of the past year, let alone the last semester, may prove to be a task far beyond our journalistic capabilities. We've seen Willamette rise up in a sort of by-product of the 60's by questioning its position and that of sacred institutions which influence our lives. It's been a fun year, and we suppose, like all the rest, one to remember.

We've seen political rallies, demonstrating in the U.C., a rash of resignations among faculty and staff, a train crash through a paper barrier, and we've seen students try to effect change; we even saw a woman elected student body president. But mostly we saw an unaffected, apathetic, bourgeois student body. Boring.

Will Willamette grow and prosper into the '80's? Some of the planning that is being done will radically change the campus as we currently know it, but many of these changes are needed to insure the economic survival of the University.

We have questioned the integrity of the administration, and they have questioned ours.

So we say, as the sun slowly rises in the East, AM or FM, adios, mothers. (Ferrell, Swanson)

Backtalk

To the Editors:

Currently, the subject of discrimination concerning your car insurance is coming up for vote. OSPIRG supports merit auto insurance; in essence this means the rates insurance companies affix to you cannot discriminate against you on account of age, sex or marital status; presently, they do (e.g. a 20-year-old male with a spotless driving record may end up paying \$300 more for comprehensive coverage than a 35-year-old man with an accident and a dooly. What this all means is that we are currently laboring under a rating system that forces the vast majority in high risk groups to pay for the sins of a minority of their peers. OSPIRG hopes to rectify this injustice by supporting in Salem this month a merit rating system, which by the way is currently employed in Massachusetts, Hawaii and North Carolina.

By the way a merit system does not make everybody's rate the same; rather, those individuals with moving violations and chargeable accidents are surcharged and thus pay higher risk rates. Our findings show bad drivers have more accidents — so it behooves you if you're not a bad driver to show support for merit insurance.

Please talk it over and let student government know you support this fine idea. The bill came out of committee Friday, April 20, so any support your student government gives to Nancy Fadeley, David Frohn-mayer or Mary Burrows will be critical.

Thank you,
Thomas M. Condon
University of Oregon

To the Editors:

We are not animals. We think. We are human.

— Weee!!! Let's go to war! The economy needs it. Unemployment is high and apathy prevalent. Congress is corrupt and, well, look what the country has done for us. We must uphold our dignity — and we must fight to save our oil supply!

— Are you going to the concert with us in Seattle?

— Look what the country has done for us. We have education; we have plenty to eat; we have homes; we have cars; we have TV video games. We have enough national wealth to average \$40,463 per family of four per year.

— There are approximately 10.5 million people in the U.S. living under

the poverty level. The poverty level is \$6,000 per family per year.

— What did you get for Easter? I got a stereo stand. My sister is getting a car for graduation. My parents went to shop with her today since they are due to get a new one — we've had ours now for two years!

— My brother died in the Vietnam war. How patriotic! You must be proud of him.

We are not animals. We think. We are human. Can we choose to be human only when it is convenient?

Respectfully,
Goi Hongsakul

To the Editors:

The Campus Facilities Planning Committee has been very active throughout the year in an effort to determine the needs of the campus in the years to come. An attempt has been made to place additions, renovations, etc., in order of priorities keeping in mind the goals and assumptions of the University Planning Committee.

Two documents have been placed on reserve for your perusal. Research for them has been done by members of the committee and has been compiled by the architectural firm of Martin, Soderstrom and Matteson.

One document entitled, "Campus Planning, Facts, Assumptions and Goals," has been set up in the form of other aspects of the planning document. Within it are certain planning axioms that may be of interest to you. These axioms were considered to be "givens" by members of the Campus Facilities Planning Committee and are more or less in priority order.

The second, somewhat more detailed, document is the revised draft of the Campus Development Study. This is an in-depth study of Waller, Eaton, Gatke, Collins (Science), Library/Walton, and to a lesser extent, Lausanne and Putnam, and the Art Building. Other aspects of the campus are also reviewed.

To bring those of you who are interested in being up to date with regard to the work the committee has done, a special meeting has been set for **Thursday, May 3, at 3:30 p.m. in Waller Auditorium.**

Sincerely,
Noel Kaestner
Campus Facilities
Planning Committee

WILLAMETTE COLLEGIAN

Editors	Geoff Ferrell, Jeff Swanson
Sports Editor	Dave Wright
Darkroom Manager	Andy McIvor
Composition Manager	Sandra Barton
Business Manager	Joe Postel
Advertising Manager	Everett Frank
Calendar Editor	Nita DeMaris
Graphic Design	Amy Holmes
Diversions Editor	C. J. Spencer
Headline Technician	Stasia Scarborough

The contents of this publication are the opinion and responsibility of the staff of the Collegian, and do not necessarily reflect the opinion of the publisher, the Associated Students of Willamette University. Subscription rates are \$5 in the USA. Advertising rates are \$2.50 per column inch. Office phone is 370-6224. Second class postage paid at Salem, Oregon, 97301. Published Thursdays, except for exam weeks and vacations.



Letter from the Pres.

By LIZ GEIGER

Many changes have occurred this semester under the jurisdiction of the ASWU. Some of our accomplishments include:

- A very successful Red Cross Blood Drive of 150 pints.
- Extended study hours for undergraduates at the GSA.
- Better organization of the ASWU office, with more students using this facility (plus the addition of a Model United Nations desk and OSPIRG desk in the office).
- Student representatives on faculty and Trustee committee appointed and ready to begin in September.
- Consistent Senate attendance and participation by Senators (as well as an increase in other students attending Senate).
- All publications positions filled, with an advertising campaign being planned to keep the *Wallulah* "in the black."
- Student involvement is high, exemplified by the increase in students applying for chairmanships and committees, as well as expressing their views on issues (area directors, Jason, alcohol policy).
- A successful fee increase to maintain programs (and possibly add others that students are interested in).
- Increased communication among students, specifically in readership of the *Collegian*, thanks to Geoff and Jeff.

One final word "From the Pres" for this year. After a day of awards yesterday, there are a few additions:

To the ASWU Senate: Parliamentary Procedure Award for "strict" adherence to these guidelines; and special commendation for your support of activities and the ASWU.

Nita Demaris: ASWU Secretary award. After three years of efficient work in the ASWU office, Nita will be leaving us this year to go to Japan. We don't know what we will do without her.

Debby Griffin: ASWU reporter award for keeping informed on **everything** that occurs in the ASWU office.

Finally, special commendations to Kerry Tymchuk and Finance Board for presenting a very carefully evaluated budget; John Gallagher for planning some exciting activities to open school with in September; Tanya Murray for her beautiful job with the minutes, as well as ASWU posters; and to the students of the ASWU — thanks for your support and we hope that this enthusiasm continues throughout the rest of 1979.

We know it has been said before, but from all of us in the ASWU office — "Have a **grrrreat** summer, Bearcats!"

LIZ

Weaver on the draft

By KRIS MEYER and SHEP EARL

Last Thursday evening, we took brave steps and set foot on the Reed campus in Portland to listen to Congressional Representative Jim Weaver (D-Oregon) speak against the draft.

Weaver expressed the hope that Oregonians would again take a lead in the nation and bring this issue to public debate before Congress slips it by without public awareness. He then gave a brief overview of the history of the draft, expressing two provoking ideas; one, that young people would step forward, as they did in WWI and WWII, to join the army if the U.S. were directly threatened; and two, that Viet Nam would have been a different event if the draft had been discontinued after WWII, as it had been after WWI, making debate necessary in Congress in order to draft and train people in the military.

The focus of Weaver's objection to the draft was that he felt it was a move not to protect our **national security**, as the military claims, but to protect our **national interest** — namely, oil in the Middle East. He described this draft legislation as "further adventurism" by the U.S.

He wrapped up his remarks with comments which drew loud applause and cheers: "No one should die in the Middle East for our oil and gas guzzling society. . . . Presently, we are asking for problems by our lack of

conservation. . . I see the choice as being the draft or the real conservation of our resources, by gas rationing and other good means."

We feel it is time for any person who could possibly be drafted to sit down and seriously consider a few personal questions. If a peacetime draft were reinstated, would you consent to be sent to the Middle East to protect "American oil rights?" Would you consent to kill a human being so that America could continue using an excess amount of oil to keep Americans happy? Would you consent to be drafted to any foreign country where American economic interests were being threatened? In the event of a war, would you defend this country with your life? Could you kill another person? What would you do if drafted?

There is a group of people on campus exploring the draft issue. A pamphlet with more facts about the bills is now circulating on campus. You could probably find one in your living organization or at the U.C. In it is information not only concerning the bills, but also the potential role women could play in the military, a bit on conscientious objectors, and addresses of congressmen to write to, to voice opinions. There are also in-state addresses to write to for more information concerning the draft/registration issue. If you have any questions, feel free to contact Bill Duvail, History Dept., 6314.

Willamette Collegian

International



Log

By DAVID MORAN

With only one week remaining until the British elections, both major political parties have begun to intensify their campaigns. The elections, scheduled to take place on May 3, have been called the most important since Clement Atlee's Labour Party ousted Winston Churchill in 1945, and set Britain on her shaky search for a new identity as a post-colonial Welfare State. Many view British politics as having reached a crossroads. The past 4½ years under Labour have brought repeals of most moderate restraints on trade unions. Subsequently, and especially last winter, nationwide strikes, along with the unusually inclement weather, served to paralyse much of the economy. Previous Conservative attempts to treat the union problem have also met with failure, as was perhaps most apparent in February of 1974 when Ted Heath, then the Prime Minister, challenged the authority of the unions in an election. The government fell.

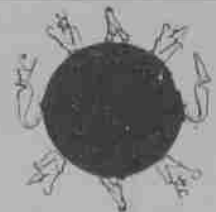
So, it has been said by some that Britain's post-war socialist development has been taken to its conclusion: unions with an inordinate amount of power, and industrial inefficiency in both public and private sectors. A strong Left-wing fringe group has grown in the Labour Party over the past five years, a group which advocates further increases in union power, further nationalisation and further public spending. Should Labour win, this faction, called the "Tribune Group," would undoubtedly acquire even more influence than at present.

Thus, the question which will be put to the voters is whether Britain will continue along the path of middle-of-the-road socialism under a Labour government led by Prime Minister Jim Callaghan, or whether she will veer away somewhere to the right under Margaret Thatcher and the Conservative Party. Whereas Labour is pledged to bring about huge increases in public expenditure, more nationalisation and further re-negotiations of Britain's terms of entry to the Common Market, the Conservatives are vowing to reduce state spending, stop further nationalisation, and perhaps most importantly, curb the power of the unions. Under a Tory government, secret ballots on strikes would be required instead of the current hand votes, secondary or sympathetic picketing would be illegal, and unions would have to bear some of the cost of strikes.

Although disillusionment with the unions may cause Labour voters to cross party lines, there is another issue whose existence few people will admit, but which nevertheless may cause some Conservatives to vote Labour. Should the Conservatives win, Margaret Thatcher would be our first woman Prime Minister. Many older male Conservatives may find that hard to stomach. However, a corresponding shift of female Labour voters to the Tories may counter-balance the effect.

In any case, most opinion polls give Thatcher's Conservatives a 10% advantage over Callaghan's crew. The Liberals have been hurt by the impending trial of their former leader Jeremy Thorpe for attempted murder, and are not expected to do well. So, given a Conservative win, we may see a different nation emerge. It could well be that Margaret Thatcher, like Clement Atlee in 1945, will be the one to set the direction which Britain will take for the last few decades of the 20th century.

ECLIPSE POSTERS



FULL COLOR
SLICK FINISH

11x 17 SLIDE
REPRODUCTION

FRAMEABLE

ORDER NOW AT \$3.95 EACH OR \$6.95 FOR TWO

QUANTITIES LIMITED.

SEND CHECK OR MONEY ORDER TO:

ECLIPSE PRODUCTIONS

271 McNARY HGTS. DR. NO., D-200

SALEM, OREGON 97303

(ALLOW 2-3 WEEKS) photo copyright pending



Shakespeare's music

A concert entitled "Lute Music From Shakespeare's England" will be presented May 3 at 8 p.m. in the Kresge Theatre at Willamette University. The performance will be presented by John Doan, lutenist, who will be assisted by Myra Brand, soprano. Doan is currently an instructor of guitar at Willamette University and at Oregon College of Education. He has been studying the music and history of the lute for the past three years. He has participated in master classes presented by internationally acclaimed lutenists Toyohiko Satoh, Robert Stresich and Cathrine Liddel. Myra Brand is on the voice faculty at Oregon College of Education and is a well-known and respected vocalist in the Northwest.

The evening should prove to be a special adventure in concert-going not only because this beautiful music is seldom heard, much less upon a live lute, but that it will be performed in full costume of the Renaissance. The concert is a must for those interested in the works of William Shakespeare because much of the program consists of music used in his plays.

Coalition's day of solidarity

The Coalition Against Apartheid is sponsoring a day of solidarity on Tuesday, May 1. At noon in the quad (in Waller if it rains), music from local blues artists will greet you as well as very inexpensive homemade soup and baked goods. There will be a variety of information tables and three interesting speakers.

Russ Linebarger, an ex-marine and a member of Eugene's Coalition to Oppose the Reinstatement of the Draft (CORD), will speak on just that issue—the possible reinstatement of the draft. Marion Barns from Eugene's People for Southern African Freedom (PSAF) will talk about back loans to South Africa. And finally, Professor Bill Duvall, a rustic local, will speak on the topic, "Why are these issues important here and what can we do?"

Traditionally, May Day is a working person's holiday celebrated internationally with parades and flower stands. On this day citizens the world over pay exuberant homage to workers and their important place in society. This year Willamette is joining with groups from all over the state, celebrating the worker and rallying for a better quality of life for people the world over. So grab a friend and come enjoy. Give your academically overworked minds a rest for just an hour on Tuesday, May 1, in the quad under the sun!

Kennedy, Crenshaw recital

The Music Department of Willamette University presents Sheila Kennedy and Barry Crenshaw in a joint recital on Monday, April 30 at 8 p.m. in Smith Auditorium.

Join Glasser in England

Assistant Professor D. Scott Glasser has announced plans to lead a tour of England and Scotland with special emphasis placed on theatre in those two countries.

The tour, organized by the Folkway International Trekking travel service, and organization that creates specialized excursions, will spend much of its time in London, attending many productions, visiting theatre collections and touring the backstages of some of the theatres there. They will also be taking in many of the sites of London: the Tate Gallery, Tower of London, Westminster Abbey, and others.

The tour will also travel to various parts of England and Scotland, including Brighton, Chichester, Coventry, Oxford, Stratford-Upon-Avon, Edinburgh, and Pitlochry. Professor Glasser is planning several walking tours, attending some of the theatre festivals that Britain is famous for, and traveling through the beautiful English countryside.

Members of the Willamette community are invited to join this tour as a few positions are still open. The dates for the trip are July 25-August 20. Those interested should contact Scott Glasser at 6222.

Evaluation forms revisited

OSPIRG member Goi Hongsakul has reported that her drive to bring professor evaluation results to the students is meeting with some success.

Her course critique form will be distributed by a few professors on a trial basis this week. The results will not be published, according to Hongsakul.

The plan to publish the critiques of classes and professors for student benefit is expected to be implemented next semester.



Chamber orchestra concert

The Willamette Chamber Orchestra will be concluding their 1978-79 concert series on Sunday, April 29 at 3 p.m. in Smith Auditorium. Works to be performed are *The Married Beau* by Henry Purcell, *The Unanswered Question* by Charles Ives, *English Folk Songs* by R. Vaughn Williams, and Felix Mendelssohn's *Reformation Symphony*, Opus 107 Number 5.

Although not the featured piece, *The Unanswered Question* is by far the most startling composition in the program. The piece features a flute quartet consisting of Dionne Hersh, Sue Reynolds, Caroline Melhuish, and Pam Beck. Also featured is Tom Ferrin on solo trumpet.

The members of the orchestra are as excited about the program as is their conductor, David Chinburg. In a recent conversation with Mr. Chinburg he stated that he "hoped the orchestra would continue to grow. They have improved quite a bit in the past year." The Chamber Orchestra has indeed improved and this concert is the culmination of a year's experience and maturity that will hopefully be carried into the next season.

The program is free of charge and the Willamette community is cordially invited to take a study break and hear this up and coming orchestra.



Washington Scene

By CAROL MARQUIS

Bishop Abel Muzorewa became the first black Prime Minister of Rhodesia as a result of elections held there Tuesday.

Muzorewa is a Methodist minister who received a great deal of his training in the U.S. His main opponent in the election was the Rev. Ndabaingi Sithole, who is also a moderate, politically.

Muzorewa has promised that his main goal will be to end the seven-year strife that has wracked Rhodesia, which is a mammoth task in itself. U.N. Ambassador Andrew Young has said that these elections could lead to a civil war in Rhodesia, because the Patriotic Front (guerilla faction) has been pretty well excluded from the new government. However, the Patriotic Front seems to have split because of a power struggle between the two leaders, Nkomo and Mugabe. The Patriotic Front is supported by the Soviets and other Communist-aligned countries.

Nkomo is the head of the Zimbabwe African People's Union, while Mugabe leads the Zimbabwe African National Union. The two groups are fairly close ideologically in that they want white influence totally eradicated from the Rhodesian government. As it stands now, the blacks hold 72 seats in the 100-seat Parliament, while the whites hold 28 seats. When the new government takes effect in June, current Prime Minister Ian Smith will become the minority leader in the Parliament.

In the U.S. there is considerable relief that some reformatory measures have been taken in Rhodesia. However, Carter has asked Congress to delay lifting the economic and political sanctions until the fairness of the elections can be judged. If the elections were indeed fair, the sanctions will probably be lifted shortly after the new government takes effect.

There has been another upheaval in Africa this week; Idi Amin has finally been deposed. He was ousted by an invading force of Tanzanians combined with Ugandan rebels. The Tanzanians invaded because Amin occupied some Tanzanian territory six months ago. Amin was supported by some Libyan troops and a few loyalist troops, although these quickly melted away before the superior Tanzanian forces.

Yusufu Lule has been sworn in as president of the new provisional Ugandan government. He has been in political exile in London for many years. Since Tanzanians invaded Uganda, there is a strong possibility that Lule is to a greater or lesser degree a puppet of Tanzania. Lule expects to obtain substantial Western support and has promised free elections within two years.

The most important thing is that Amin has finally been ousted. He executed and tortured countless victims during his eight year reign. It is somewhat a crime that the Western powers felt that they couldn't do anything to stop Amin's senseless murders.

At any rate, Amin has made good his escape — for a while, anyway. However, if he is captured, chances are that he won't die of old age.

Carol Marquis is the 1979 recipient of the Charles A. Sprague Award for outstanding reporting.

WU Law School besieged by larcenists

By JOE POSTEL

Is the College of Law the proving ground for our society's pillars, or for its petty larcenists?

Many law students have been asking themselves that question lately, as a rash of thefts has broken out at the College of Law. According to *The Lawyer*, the thefts have included many books from the Law Library's stacks, textbooks, outlines, notes and seven research and writing papers, into which many hours of work had been put. Most of the missing materials were of use only to first year students.

A number of students met recently to discuss the problem, and to discuss what could be done about it. According to *The Lawyer*, a number of minor steps have already been taken to make it harder for the wrongdoers. School administrators have made it known that such conduct constitutes a serious ethical breach — and probably one that would disqualify one from the legal profession.

One of the solutions being discussed is the installation of electronic devices in all library materials which, if not desensitized by a device at the library desk, would set off a buzzer at the door after passing through a sensor.

The library staff has commented that "our library system is truly unique and its abuse is more something to be lamented than condemned."

They have warned that continued abuses by students could lead to a library with "hidden cameras, photoelectric eyes, turnstiles, ID's, unreasonable search and seizures, fines, strict closing hours, regulations, and all manner and sorts of unpleasantness."

The Grievance Committee has lamented that "these events decrease the stature of our school, and as a result, the quality of our time spent here."

According to *The Lawyer*, thefts have halted in the last few weeks, but it's too early to feel relieved. Theft could resume soon as finals approach.

Thefts in the library are not the only problem law students are up in arms about. Another blow came when the administration, worried about declining performance by students this year, made schedule changes which will make it impossible for law students to clerk for any of the law firms in Salem while they're enrolled in school. This happens to be the year that the American Bar Association is evaluating the College of Law. The administration feels that if students aren't clerking, they'll study more, and their attendance will improve. One irate second year student commented "the administration isn't satisfied with the performance of the students, so they're blaming us instead of themselves or the professors."

This student added that the people who made this schedule change were, for the most part, in law school during an era when jobs weren't so hard to come by and clerking experience wasn't so important. These people have been sheltered in the academic world for a long time, and are unsympathetic to the plight of the law

students facing the job market, because they have lost touch with the outside world. Furthermore, they are sacrificing the law students' employment prospects for their school's reputation.

The chances for a law graduate below the top 10% of his class, with no clerking experience, to find a job, are dismal, said our source.

Another measure under discussion is intermittent surprise roll calls in classes. This measure is extremely unpopular with the students.

In other recent action, the law administration proposed to rank each member of the graduating class from top to bottom. This proposal received stiff opposition, as it would have effectively eliminated the bottom half of the class from the job market. It was decided to give individual rankings only for the top 10% of the class.

Although law students participate less in the decisions affecting them than undergraduates do, they are complaining that the schedule change decision was made without being publicized.

For these reasons, many law students are disillusioned with the integrity of the College of Law, with its ability and willingness to help prepare them for a career, and with the apparent lack of concern on the part of the administration for their unique situation.



THE OSPIRG BOOK CO-OP IS COMING

SAVE YOUR BOOKS AND WATCH FOR MORE INFO!

BY OWNER

CONVENIENT LOCATION

Nob Hill area, 895 Electric St. SE. Perfect home for someone wanting to be near Willamette University and Bush Park. 3 bedrooms, beautiful brick fireplace, full basement, full bath with tub and shower, attached garage, great garden area, neat corner lot with trees. \$45,950.

Call 588-4207 for an appointment.

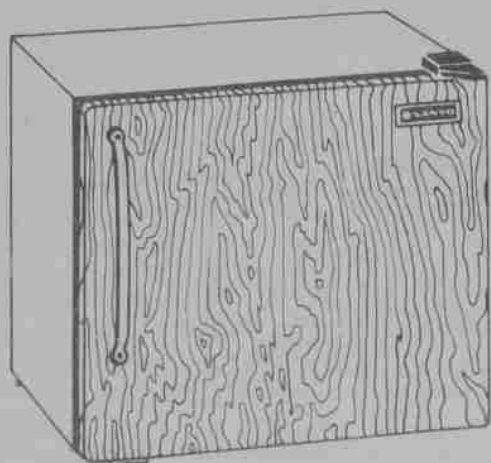
KAI ESCORT SERVICE

Catering exclusively to females.

Phone 370-6254 for reservations.

RAMONA'S TYPING SERVICE

Typing Pick-Up and Delivery 364-8868



SANYO

BEAT SUMMER HEAT! RENT A FRIDGE!

- COMPACT SIZE
- IDEAL FOR OFFICES
- HIGHEST QUALITY
- LOWEST RATES
- FREE DELIVERY

SUMMER: \$25 (May, June, July, August)

MONTHLY: \$6.25 (minimum 4 months)

RESERVE YOURS NOW!



NORTH PACIFIC REFRIGERATOR RENTAL

895 Electric /t., Salem, Oregon 97302 • (503) 585-4207



(Ferrell photo)



Six people entered the *Collegian's* Spring P... graduates and graduate students, with a to... The quality of the photos was high, and the ju... "George Wallace," by Walt Blackford, G... Square," by Helen Koba, GSA I; third plac... also by Helen Koba.

WU graduate heads Greenpeace

By GEOFF FERRELL

Dan Adams speaks quietly but surely as he discusses his work; the impression is one of life-long commitment to an ideal — man in harmony with his environment. Dan is president of the Salem chapter of Greenpeace, the environmental organization most known for its struggle to end the whale and seal hunts.

A 1975 Willamette graduate, majoring in American Studies and a member of the Kappa Sigma fraternity, Dan joined Greenpeace two years ago and became president of the newly formed chapter last year.

Dan's involvement in an environmental cause is an anomaly at a time

when most college graduates are struggling for economic security. Working ten to twelve hours a day for his \$400 per month salary, Dan's reward is obviously not monetary. Greenpeace has become "a way of life," according to Adams. A stated "fascination with whales" sparked his return to environmental concerns which had been sidelined during college.

"Greenpeace isn't just concerned about whales and seals," he points out, "our roots are in the protest of nuclear testing at Amchitka Island." Greenpeace plans to move into other areas, "depending on local support," such as nuclear power (Greenpeace was co-sponsor of the recent mora-

torium against nuclear power), the Harbor Seal controversy, and the fight against the leg-hold trap.

Dan spends much of his time in the role of educator, making presentations to area schools and organizations. Dan has been to several Willamette classes, including one of the ICC Japanese students, who he says were relatively uninformed about their country's whaling ventures.

Since its formation, the Salem chapter has grown to become the second largest Greenpeace chapter in Oregon. Salem has a paid membership of 150 and 50 active volunteers. A recent fundraising Skateathon netted pledges of \$7,500 for the national organization.



Tide and SAGA

By STEPHEN ROTH

It seems like it was just yesterday when I arrived on campus as a naive and insecure freshman — alone and away from home for the first time.

My four years at Willamette have been filled with some interesting experiences. I'll never forget all of the things I've learned and the people I've met.

For example, my first taste of SAGA food will stick in my throat forever. Learning to survive the campus food service has been by far my greatest accomplishment. I'll never forget my first insipid encounter.

I strolled into the dining room and began my adventure at the salad bar. I was stunned. Never before had I seen yellow and brown lettuce. However, I was going to give it a try until one of the croutons crawled up the side of the bowl.

When I came to the first entree — some type of potted chicken dish — my doubts about the food intensified.

When the server opened up the half-plucked hen leaped out and caped through an open window. The server, undaunted, yelled back to the kitchen, "Hey Greasy, the chicken dish is a bit undercooked."

I passed up the entree and decided just get a glass of milk. It took me an eternity to find a glass which had a biological culture growing on it when I worked the milk machine. I just about got sick.

A thick, white sludge slowly oozed from the spout. The smell was nearly intolerable. In fact, it was so bad that an unusually thin housefly which had been buzzing around the spout, landed and committed suicide.

The first time I washed clothes in the dorm was another traumatic experience. Learning how to use the dorm laundry was one of my biggest challenges.

My roommate was partially responsible. He continually complained about the smell of my clothes. In fact, he began to purchase a can of air freshener (pump style). On the morning, again in the after-

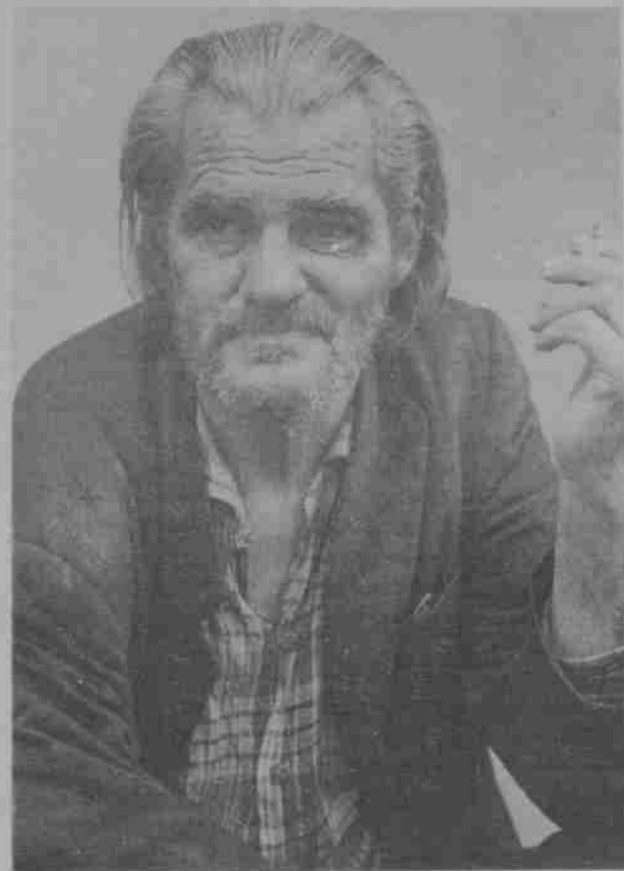


Photo Contest, including under-
tal of fourteen photos entered.
dging was difficult. First place:
SA; second place: "Pioneer
be: "Friend of Navajo Man,"

Four years of Willamette

right after dinner, and before bedtime he would squirt. To top things off, he only squirted on my side of the room. Needless to say, I got tired of smelling like an alpine meadow, cherry blossoms in the spring, or a freshly-squeezed lemon.

As a result, one day I gathered up my dirty clothes and headed to the laundry room. When I arrived, I stuffed all of my laundry — clothes, bedspreads, towels, and my down-filled sleeping bag — into a washing machine. I dumped half a box of Tide in and switched on the hot cycle.

After several minutes the machine suddenly became rabid. Soap suds bubbled out at an uncountable rate. I remember pondering, "Could I have used too much Tide?"

I was relieved when the machine completed its cycles about twenty minutes later. However, when I opened up the rusted lid, my tongue nearly dropped out. The first thing I noticed was that my white bedspread had turned a sick pink color. In fact, everything in my wash had changed colors.

Undaunted, I threw my wash into a dryer. I flipped on the high setting and waited. About an hour later I began to remove my clothes. I was shocked. My entire load had shrunk. My corduroy suit was at least two sizes too small, my socks would have had trouble fitting over my big toe, and I never did find my down-filled sleeping bag. However, I did find what appeared to be a down-filled mitten which someone had probably left in the dryer by mistake.

Reflecting back on college experiences is fun. For me, each experience, in some way, has been rewarding. Don't let anyone ever tell you that a college degree isn't worth the paper it's written on. While the degree itself may not be a key to instant success, the efforts and experiences which it represents are invaluable and incomparable.

You know, it seems like it was just yesterday when I arrived on campus...

Stephen Roth, from Springfield, Oregon, will graduate in May.



Gawdy lips and domes

By JEAN BRADY

Cruelty, flesh, love and secrets are currently on display in the Hallie Brown Ford Gallery until May 13, and can be experienced by anyone who is in possession of eyes and hands.

A Senior Show is a difficult affair, and more often than not the viewer turns away with the feeling of something wooden having been lodged firmly in the back of their throat. This, however, is not the case with the Elich-Kostel-McGilvray-Spencer presentation, as each artist has selected a personal and powerful concept, and explored it to a rich and innovative conclusion.

An emphasis on clay and the marvelous potential of the third dimension is perhaps the show's most notable feature, from Spencer's immortalized tits to Kostel's gawdy, strung-out lips. Indeed there is an overwhelming emotional mood to the clayworks, from where McGilvray has shoved her "domes" into the quest-

ionable virility of a brick wall to Kostel's resigned homage to the imminent disaster involved in clay portrayed by a "filled" purple-satin casket.

Do not leave without a full examination of the peculiarities, but take heart: it isn't all weird. Spencer shows us she can paint like Carl Hall and the other Old Masters; Elich dishes out color and water onto paper and places it under glass. Indeed, there seems to be a bit of confusion at times; where the artist says, "Look. I'm this, but I don't want to be, or I could be if I took off my clothes, and I will be that and I won't be this." Confusion, but it works out nicely in the end; the artist has asked the viewer to allow some complications, to acquiesce to a little teasing.

In vague generalities, a cohesive show. Where something lacks, another thing steps in. Where there is technique on one wall there is spontaneity across from it; where there is a solemn moment on one pedestal, there is a little joke lurking nearby.



By C. J. SPENCER

Tuesday night Willamette "heard" from one more political theatre group, the San Francisco Mime Troupe. After recent spectacular evenings "inching through the everglades" and "surviving" the prisons of South Africa, **Electro-Bucks** was a disappointment for students of Willamette's own politically outspoken Theatre department.

The Mime Troupe wanted to pinpoint problems with Affirmative Action legislation among factory workers. They added a number of minority actors to their group, chose the computer/factory "everyone is (not) alike" theme, and hit the road in two firetruck-red vans, but what

(Hendrix photo) was lacking was a thoughtful and strong presentation of their important message.

Mime being one of the hardest genres of theatre, and political theatre one of the most delicate to present, the San Francisco Mime Troupe was described as too farcical, too slapstick, and technically lacking. The theme of workers struggling in a big computer factory was often lost in the actors' being actors instead of believable characters with real problems.

After the performance, hat passing accompanied with remarks implying that their performance was more worthwhile than the movie **Superman**, was pretentious in the light of their weak acting, not to mention bad politics.



'Earnest' in Review



Directed by Robert E. Peffers
Stage and Light Design by Wayne Muller

Costume Design by Marsha Cole

CAST (In order of appearance)

LANE
ALGERNON MONCRIEFF
JOHN WORTHING
LADY BRACKNELL
GWENDOLYN FAIRFAX
CECILY CARDEW
MISS PRISM
REV. CANON CHASUBLE, D.D.
MERRIMAN

Owen Rhys Williams
Craig Strobel
D. Scott Glasser
Jennifer Walker
Annajo Trowbridge
Raissa Fleming
Amy D. Smith
Jeffrey Barr
Brewster Jamieson

By WILLIAM E. SMITH

"The artist is the creator of beautiful things. To reveal art and conceal the artist is art's aim. The critic is he who can translate into another manner or a new material his impression of beautiful things. The highest as the lowest form of criticism is a mode of autobiography." —Oscar Wilde, Preface to *The Picture of Dorian Gray*.

So much for any pretense I, as critic, might make to total detachment in writing about Oscar Wilde and his brilliant play as presented by the Willamette Theatre. Let me proceed with the translation as efficiently as possible, hoping that my manner and jargon do Wilde justice, at least as much justice as this delightful production did.

The great tradition of British high comedy, of which *Earnest* is a rather late product, dating from 1895, is one of the most demanding in existence for the performer. One breath of normal air in the midst of the artifice can be catastrophic — yet at the same time the artifice must not be guilty of calling attention to itself. What we see must appear a totally accepted and acceptable set of conventions, in no way open to question,

yet so clearly mad in some ways that "something must be wrong." What exactly that something may be the play does not attempt to analyze, nor are the characters so much as aware of it, yet it completely confines and dominates their behavior, as the rules of some complex and absurd game might do.

The problems for an actor are par-

"...THE BEST COURSE IS TO RESPECT WILDE'S TEXT AND "ACT BRITISH."

ticularly poignant in this country, where the absence of the language barrier makes the cultural barrier all the more frightening — that is, take away the British frame of reference and much of the humor evaporates. Having seen various collegiate attempts to cope with this problem, I honestly believe the best course is to respect Wilde's text and "act British," even though this choice throws still another bit of artifice into the works. It does not represent sociological so much as musical accuracy, like not trying to do a Czech opera in Swahili for an all-African audience.

The Willamette production opted for this course, and by natural association for another course, perhaps more important. Another crucial

question in this type of drama is whether the element of caricature is predominant or secondary — whether we are to see these people as "real" (whatever that means in the last quarter of the Twentieth Century) or "types", masks or faces. In this category, I felt, the choice was not quite so clear, though faces predominated.

All four of the young people, the two couples who generate the plot and hence the play, were definitely faces, real people, who perhaps spoke in stylized patterns, but whose emotions were recognizable and often likeable. They divide, as usual in such plays, into an "older" and "younger" couple (not necessarily a distinction in years). The older couple, Jack and Gwendolyn, were played by D. Scott Glasser and Annajo Trowbridge; the younger, Algernon and Cecily, by Craig Strobel and Raissa Fleming. In Wilde's world, the older a person becomes, the more malice he (or she) absorbs from the atmosphere around — hence, Jack and Gwendolyn seem more malicious than their younger counterparts. This edge of unpleasantness was nicely suggested by the actors, and paradoxically it made the younger couple seem more "fun-to-be-around," although no rational analysis would justify this idea.

With the older generation, a fam-

iliar problem of university theatre once again reared its ugly head — can undergraduates really be convincing in such roles? One might add, especially, in roles everyone has seen done by some of the finest performers of our time? Jennifer Walker, who portrays Lady Bracknell, has to carry in this production a character many great interpreters have attempted, one intended to monopolize audience attention: "I do not approve of mercenary marriages. When I married Lord Bracknell I had no fortune of any kind. But I never dreamed for a moment of allowing that to stand in my way." Here the mask dominates but the role has a tragic dimension which might allow us to be aware of a dismal resignation behind the mask,

or even at times a sadistic glee. Walker's performance does sometimes suggest these depths, though it's hard not to notice a degree of effort in her work — she gets the attention, but she pays the price.

Delightfully convincing in a less difficult old-lady role is Amy Smith as Miss Prism, so much so that the whole mask/face controversy seems irrelevant to her performance. As the governess who originally lost the famous baby in the famous hand-bag, she seems to move in a wonderful atmosphere of confusion, immediately identifiable as confusion to everyone else, but to her unshakable logic: "The bag is undoubtedly mine. I am delighted to have it so unexpectedly restored to me. It has been a great inconvenience being without it all these years." The invincible denseness behind such a line is either totally delightful or mere theatrical dead air — Smith has no problem making it a delight. As her bemused admirer, Canon Chasuble, Jeffrey Barr gives a pleasant but much more predictable performance, though his role is not so filled with plums.

The look of the production, with one major exception, was pleasing in the extreme. I refer to the hanging caricatures of Wilde and others which were pleasing enough in themselves but which, in the dark, became looming presences unrelated to the dramatic action and rather disturbing to this writer's concentration. Settings, costumes, and makeup all seemed nicely executed and appropriate to the Edwardian goings-on, including the green suit of Worthing's which has called down thunder from another critic (the manner of dress at that time was actually quite a bit more sloppy by modern standards). Though the letter of direction by Robert Peffers was occasionally smeared, its spirit was certainly lively and clear, nowhere sacrificing style for easy laughs as some productions of this work tend to do, yet keeping its audience amused for the most part. . . a pleasant evening in the theatre which should become more so with repetition.

William Smith is an Instructor of French, and has appeared in several Willamette theatre and opera productions.

Class schedule question provides insight to WU 'network'

By SANDRA BARTON

What a mess it is!

"A radical class schedule rearrangement," said the March 1 issue of the *Collegian*, "has received the endorsement of the Willamette University administration." The article outlined events that had occurred concerning the proposal to change the daily class schedule from meeting on a Monday-Tuesday-Thursday-Friday basis to class meetings that are more suitable for a majority of people.

When I set out to have a look at the question of the proposed daily class schedule changes, I didn't realize the extent of the intricate web of apparently irreconcilable perspectives on the issue among members of the "Willamette community." In researching the problem, I have alternately felt enthused about writing this story and like saying "this issue can never be resolved" and dropping the question.

The actual facts and events of the issue are relatively straightforward and fairly well known. As a result of complaints from both faculty and students, College of Liberal Arts Dean Jerry Berberet issued a proposal to reform the daily class schedule, which contained several possibilities, some minor and some complex, for class schedule alternatives, to the Time and Space Committee. Berberet requested that the Committee "give these possibilities prompt attention. Indeed, the Committee might recommend alternatives to the Academic Council rather quickly. Quite possibly, a reformed schedule could be instituted Fall Semester 1979." Berberet made clear that he was "quite aware that there may be better possibilities which have not occurred to me or to the faculty with whom I have talked." The Committee discussed it at length, took a poll of the faculty, and decided 3-2 that there was not sufficient interest or concern among the faculty to continue discussion on the topic.

The poll itself became a controversial topic for debate by the Time and Space Committee. The questionnaire regrettably contained a built-in ingredient for misconstruing the results, with the statement, "If you choose not to respond, we will assume that you are satisfied with the present schedule." Only 25 faculty members responded "yes" to the question, "Does the present schedule present any problems?" Fifteen responded "no," with 40 not bothering to respond. "If only 25 responded," remarked a member of Time and Space who asked to remain unidentified, "then it can't be that big a concern to the faculty." However, Sally Howell, Chairman of the Time and Space Committee, noted that Sociology professor Walt Gerson pointed out to the Committee that a 50% return is needed before accurate results can be tallied and that therefore this poll should not be considered significant. Nevertheless, the Committee voted to let the issue die. "There was so much haggling," Howell noted, "that some of the members probably just wanted to get out of it."

Throughout the discussion, which occurred between January 24 and February 21, 1979, the Time and Space Committee was plagued with irregular attendance by the com-

mittee members. "I kept feeling that I was the agitator just by calling the meetings," Howell laughed. One regularly attending member noted that "if the rest of the members had been present at the final meeting, the vote probably would've gone the other way."



DEAN JERRY BERBERET

The complexity of the issue revolves around the reasons for instigating the proposal. "We were getting pressured from the administration to hurry up for next fall," commented one committee member who did not want to be identified. "I thought we should take more time to collect information rather than go by our own intuitions and feelings." Another member, also asking to be unidentified, said, "the outcry for schedule change didn't come from the faculty or from the students — so where did it come from?" The member cited the President's Office as exerting the biggest push for change. Sally Howell quickly asserted however, that the push for change "didn't come from the President. He just got all this bad input about the Tuesday night party night, and wanted to look into it."

An important question arises concerning the nature of the sparks that caused Dean Berberet to write the proposal at this time. The weak point in Berberet's thoughtful and sincere but somewhat imposing proposal was his Number One reason for suggesting a change: the elimination of the "mid-week weekend" caused by the small number of classes scheduled presently on Wednesday morning. "This Tuesday evening-Wednesday morning weekend," Berberet stated, "has proven to have a disruptive effect upon the academic environment of the campus." There is something very unpleasant about a concern with the mid-week weekend. It looks like a rather parental intrusion upon an individual's right to budget his own personal time, an encroachment beyond the customary limits. As one faculty member of Time and Space who also chose to remain unidentified put it, "Students know what they have to do, and if they don't do it, it's their problem, not ours." It is disappointing that this is a consideration in the proposal to reform the schedule; it seems dated, like mandatory chapel, and indicates that the administration doesn't have much respect for students, and that they don't see them as very capable or independent people.

Dean Berberet, however, illustrated a different side of the story. "Students should be able to take charge of their own lives," he commented. "They should be confident, capable people." A change in the class schedule that includes a reduction in hours spent in the classroom would "encourage a development of student initiative"; presently, he noted, a passive kind of student learning is engendered, and not much student work is done outside of class. Within the current lecture-based four-times-per-week schedule, "students can't take charge of their learning experience in any significant way."

"It's a naive viewpoint to think that everything emanates from the President's Office," Berberet continued. "Administrators spend most of their time responding to problems brought in by other people. I can't imagine Willamette wanting a Dean or a President that couldn't think."

Professor Walt Gerson, a member of Time and Space, supported Berberet's statements. "Some of the faculty really pressured the administration about [this issue]," Gerson said. "It's not just The Administration's idea."

Dean Berberet said that the greatest student objection to the proposal that he has heard is that a change to meeting three rather than four times per week would cut back on the amount of contact with the professors, and that they therefore wouldn't "get the most from their tuition dollar." "The measure of education," Berberet countered, "is learning and not hours spent." Gerson again backed him up: "There is no relationship between quantity and quality." Gerson pointed out that at the University of Toronto, where he previously taught, students fought for fewer class hours. "I have difficulty understanding why students at Willamette want more classroom hours," he added.

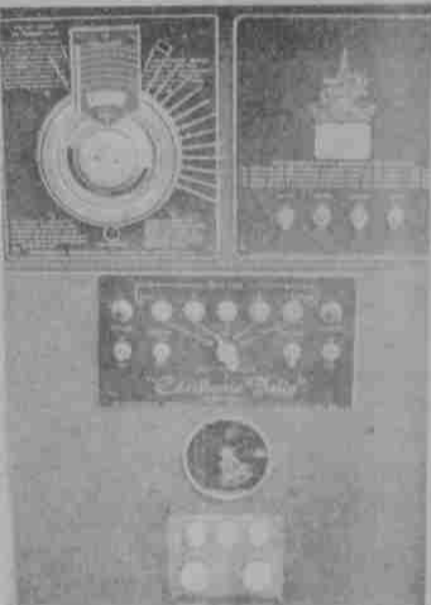
Both Berberet and Gerson said that a schedule change to fewer class periods per week would give students a chance to discipline themselves and to learn how to use their time. Gerson speculated that students would have a solid block of time to work, perhaps in the library, and both professors and students would have more time to think, rather than have a two-hour slot here and there to use. "Professors are supposed to be scholars," Gerson continued. "With one or two days entirely free, professors would have time to be scholars" and to see students on a one-to-one basis." Gerson added that a lot of professors here at Willamette, pressed for time, "have real trouble keeping up in their fields."

A complaint voiced by some faculty members is that with a cut to three rather than four meetings per week, course material would have to be compressed even more than at present, and some things would have to be eliminated entirely. This complaint comes particularly from Collins Hall. "We'd like to build a schedule for Collins," Dean Berberet answered, "so they can meet four times per week or whatever is best for them." Gerson added, "No one ever said that students at the University of Minnesota got watered-down science courses, and they met three times per week." Gerson taught at that school before coming to Willamette.

One Time and Space Committee member said that the conflicts with the schedule at Willamette can't be avoided. Willamette is smaller than the schools the committee member is familiar with, and can't offer many different sections of the same class. Another committee member agreed. "There's no 'academic disaster' going on here at Willamette. Some conflicts are unavoidable, and we should just accept that there will be some conflicts, and make the best of it." The member felt that the administration wanted "change for change's sake," and had to come up with some kind of proposal to create that change.

The Dean anticipated that kind of thinking. "Some people think that 'change for change's sake' is our policy," he noted. "I'm so busy that I don't have time for that. . . I'm only concerned with problems that need resolution."

Several questions came to mind in researching this issue. Faculty governance could perhaps use some study, as well as the "student input" that the Dean receives. The Dean stated that he receives the majority of his student input from three student representatives on Academic Council (presently Ted Shay, Jr., Stacy Heyworth, and Benji Bradford), and from what he hears from Senate. Sally Howell suggested that students should represent residences equally on committees, in the same way that the faculty represent the various departments on its committees. The question of schedule change offers a glimpse into the factionalism within the faculty, and the strong voices of certain of those factions, namely Collins Hall.



The time-keeping machine in Eaton Hall might ring the bells fewer times in the future.

"We can do better than we are doing now," the Dean concluded. "A problem is that there is no formalized communication between departments. I'm concerned with what is best for Willamette, for the education, for the academic program, a major. . . we all need to spend a little time thinking about that." Dean Berberet expressed sincerely that "there is no place where the faculty is more committed to teaching and students," and that he hopes further study of the proposed change might continue over the summer, from which new proposals may come. No changes, however, will be effected for Fall Semester '79.



WU attackman Geoff Ferrell faces opponent in recent Lacrosse action. (McGillvray photo)

SPORTS CALENDAR

- April 27 MEN'S TRACK, George Fox, Here, 2:30
- April 27 WOMEN'S TRACK, George Fox, Here, 2:30
- April 28 WILLAMETTE TRACKFEST (High school), Here, noon
- April 28 BASEBALL, PSU, Portland
- April 28 SOFTBALL, Lewis and Clark, Portland
- April 28 LACROSSE, Oak Parlor Lacrosse Club, Here, 1 p.m.
- April 29 LACROSSE, Seattle Lacrosse Club, noon.
- April 30 MEN'S TENNIS, OCE, Monmouth
- April 30 GOLF, Northwest Conference Tournament, Tokatee
- May 1 GOLF, Northwest Conference Tournament, Tokatee
- May 2 BASEBALL, OCE, Monmouth
- May 3-5 MEN'S TENNIS, Northwest Conference
- May 4 MEN'S TRACK, Northwest Conference, Here, 3:00
- May 4 SOFTBALL, Lewis and Clark Invitational
- May 5 MEN'S TRACK, Northwest Conference, Here, noon
- May 5 SOFTBALL, Lewis and Clark Invitational
- May 5 BASEBALL, Whitworth, Here, 1:00
- May 6 BASEBALL, Whitman, Here, 2:00
- May 10-12 BASEBALL, District Tournament
- May 10-12 WOMEN'S TENNIS, NCWSA Tournament
- May 11-12 SOFTBALL, NCWSA Tournament, Portland



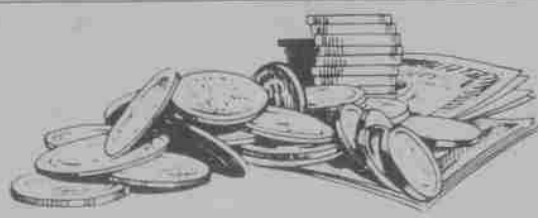
the
**Hair and Friends
Co.**

tel: 363-9483
2310 Commercial SE
Salem, Oregon 97302

featuring operator specializing
in black hair design

Unisex

FREE TUITION!



WU student-owned business has paid for three students' tuition over the past 7 years. Excellent investment yielding 50% annual return. Minimal time requirement.

INTRIGUED? Call 585-4207.

SAE's capture title

Mellow Mansion dominates

Near flawless fielding and a two-run rally in the sixth inning helped the Mellow Mansion overcome Kappa Sig 4-1 in an exhibition IM softball game. With only two games remaining, the Mansion (3-0) and Kappa Sig (2-1) appear to be the top teams.

The Mansion scored two runs in the second, but K-Sig retaliated with a run in the third. The game remained close until the sixth, when Rob Deller led off with a single. Dave Wright lined a double to left-center and Deller scored on a throwing error, with Wright advancing to third. Jeff Harrison brought Wright home with a sacrifice fly to right field, to finish the scoring.

Kappa Sig suffered from weak bats throughout the game. Pitcher Steve Caldwell hurled a five-hit game for the Mansion.

The highlight of the game was the sparkling defensive efforts by the Mansion. Third baseman Gary Cesario made numerous incredible catches. John Anderson displayed his skills at shortstop, while Bruce Bolton, Rob Deller, and Gary Price provided the entertainment in the outfield.

The Mansion, third last year, has a six-man returning nucleus, including Gary Q. Cesario, Rob "Redneck" Deller, Bill "Change The" Channell, Drew "Animal" Munson, Dan "Coops" Cooper, and David Q. Wright. Acquisitions of Gary "Big Gar" Price, John "Reese" Anderson, Will "Clue?" Wright, Jeff "Harry" Harrison, Steve "Tiger" Caldwell, and Bruce "Sometimes" Bolton have given the Mansion a formidable line-up.

In other IM news, the SAE's have sewn up their fourth consecutive championship. With only softball remaining, current point totals are: Sae 1010½, Phi Delt 864, Beta 849, Lausanne 798, Law II 534½, and K-Sig 527½.

The Birds captured the IM track meet with 69 points. The Hawaiian Club placed second with 55 and Phi Delt with 52½.

Four teams competed in the IM weightlifting competition. The Hawaiian Club won with 35; the Phi Delt had 9, K-Sig 5, and Beta 4. Individual winners were Darryl Castillo, 130; Tracy Toulou, 145; Darryl Ito, 160; Kevin Chilton, 175; Mark Chang, 190; Brian Almodova, 205; and Scot Long, UNLIMITED.

Lacrosse drops close one

The Willamette Lacrosse Club headed north last weekend to face the University of Washington and Western Washington University Lacrosse Clubs. Traveling without many of its regular players, Willamette nonetheless played the best Lacrosse of its existence, narrowly missing what would have been its first two victories.

Against the University of Washington, Willamette played evenly until the last quarter when it gave up two goals in the last minutes.

The final score was 6-5; goals for Willamette were scored by Steve Allen with two and Andy McIvor, Dave Wisnom, and Kurt Walls with one each. The goalie position was played well by Arne Espe.

In Bellingham the team got its first exposure to sleazy bars and real team Lacrosse. The game went into sudden death overtime with the score tied at 6-6. The end came quickly for Willamette, however, as WWU popped in a quick one on an extra-man play. Andy McIvor led Willamette's scoring efforts with three goals, and Geoff Ferrell and Chris Skotheim followed with one each. In the goal was Tim Coty, a Salem high school senior.

Tracksters quest crown

Willamette's trip to Spokane last weekend proved fruitful as the Bearcats were victorious in a three-way meet with PLU and Whitworth. The final score was WU 96½, Whitworth 61½, and PLU 46.

Willamette trackmen recorded 16 season's bests. Placing first for the Bearcats were Greg Hansen, long jump; Kevin Leahy, hammer throw; Rick LaGreide, steeplechase; Rick Wheeler, javelin; Brian Bean, shotput; Steve Wallace, high jump; Dave Fleming, 1500 meters; Doug Ousterhout, 110 and 400 meter hurdles; and Kelly Sullivan, 5000 meters.

Coach Bowles, pleased with the performance said, "We're getting better every week, and that's what it's all about."

Friday the Bearcats host George Fox. This meet should be a preview of the district meet, as George Fox is perennially strong.

Willamette defends its conference title on May 4 and 5 at McCulloch Stadium. Lewis and Clark will give the Bearcats the most trouble, as both teams strengths are the hurdles and the distance races.

Tennis team secures second

With one conference match remaining, the women's tennis team has been assured second place in conference after Tuesday's 7-2 win over Linfield. The Bearcats played without the services of their number one player, Jean Fisher, but had little difficulty overcoming Linfield. Winners for the Bearcats were Lisa Lindberg, Betsy Therrien, Betsy Strance, and Betsy Allen, in singles competition.

In doubles, the Willamette teams of Lindberg-Swanson, Strance-Therrien, and Allen-Wilson swept past Linfield.

The women are currently 4-1 in conference and 6-2 overall. Coach Jean Williams lauded the women's efforts. "The rain has made for a frustrating season. The girls have played well, however. Injuries have plagued us, but the girls have worked as a team," said Williams.

Today the girls face Pacific in their last conference match of the season. On May 10-12, the women compete in the NCWSA Small College tournament in Walla Walla, Washington. Over 25 schools from Oregon, Idaho, and Washington will participate, including last year's champions, Lewis and Clark. Willamette finished tenth out of 25 teams last year.

Calendar

TODAY 26

● **"THE ACES"** Professional Frisbee Team will be having a demonstration in the Quad (Cone Field House if it rains) from 1:30-3 p.m. Everyone come watch!

● **THE IMPORTANCE OF BEING EARNEST** is playing at 8 p.m. April 26-28 in the Kresge Theatre in the Playhouse. Admission: \$2.50 (WU undergrads free with current ID). Tickets are available at the Theatre Dept. Box Office Mon.-Fri., 12:30-4:45 p.m. and Sat., 1-4 p.m. (phone 6221).

● **THE SPIDER'S STRATAGEM** will be shown tonight at 7:30 p.m. in the Film Screening Room of the Playhouse. This is part of the Film Series. Admission is \$1.25.

● **PORTLAND OPERA ASSOCIATION** presents Puccini's *La Boheme* today, April 28, and April 30, in the Civic Auditorium at 8 p.m. Bruce Chalmers, POA General Manager, reports that ticket sales are excellent and looks like a sell-out. He urges opera lovers not to wait to reserve their seats. They are going fast! Don't be left out! Phone today — the Opera Association at 248-5322 or the Civic Auditorium at 248-4496.



You say you're hungry?

ETC.

● **AUDITIONS** for the WU Choir and WU Singers will be held Mon., Wed., and Fri., from 1-3:30 p.m. during the next two weeks. Please sign up for an audition time on the list posted on Dr. Bangstad's office door (FAW 147).

● **ATTENTION STUDENTS:** Students wishing to insure themselves or their dependents for summer coverage under the student group medical plan should apply before June 13. Applications will be distributed through the mailboxes and also available at the Student Health Center.

● Yair Strauss, conductor of the Salem Symphony, has announced that auditions will be held for paid positions for all string sections of the Symphony on Saturday, June 2, from 10 a.m.-4 p.m. and Sunday, June 3, from 2-8 p.m. Each applicant will be given 20 minutes performance time. Audition location is St. Paul's Episcopal Church, 1444 Liberty SE, Salem. Warm-up rooms and ample parking are available. Required repertoire will be available after May 1. Call Nadine Heald, Salem Symphony Manager, for music and an audition time.

● **THE SENIOR ART MAJORS' SHOW** featuring the work of Shan Elich, Cris Kostel, Mary McGilvray and Cindi "Spence" Spencer is on display in the Hallie Brown Ford Gallery, Art Bldg., through May 13.

● **A MIDSUMMER NIGHT'S DREAM** is playing in the Blue Room of the Portland Civic Theatre on Thursday, Friday, and Saturday nights at 8:30 p.m. through May 5. Tickets: Adults, \$4, students and senior citizens, \$3. Phone 226-3048 for reservations.

● **THE MAN WHO CAME TO DINNER** opens at the Pentacle Theatre on May 4 and runs May 4-6, 9-12, and 16-19. Tickets may be purchased at Stevens & Son and cost \$2.50.

● **MONTY PYTHON AND THE HOLY GRAIL** will be showing at the Lyric Theatre April 26-May 8. Admission: \$1.50 for students. Call 378-0703 for times.

● **THE ROCKY HORROR PICTURE SHOW** is showing at Midnight every Friday and Saturday at the Lyric Theatre. Admission for students is \$1.50.

● **JESUS NORTHWEST** presents Amy Grant in concert on Saturday, May 5 at 7:30 p.m. Doors open at 6:30 p.m. The concert will take place at the People's Church, 4500 Lancaster Drive NE, Salem. Tickets: \$3 advance and \$4 at the door. Tickets are available at all local Christian bookstores and People's Church Bookstore.

● **JUDY COLLINS** will be in concert at the Portland Civic Auditorium on Thursday, May 10 and Saturday, May 12. Both shows begin at 8 p.m. Tickets for the Northwest Releasing event are on sale at the Ticket Place at Frederick and Nelson (downtown) and the usual ticket outlets.

● Any persons interested in contributing to the *Collegian* next year, in terms of reporting, writing, or technical work, should contact Sande Barton (362-8497) or Andy McIvor (364-9224). We are eager to hear from you.

FRI. 27

● **COFFEEHOUSE** featuring Paul Tangonan, Frank Hausmann, David Moran, and Dan Gilson along with the rest of the band this afternoon from 3:30 to 5:30. Refreshments will be served. Come and enjoy an hour or two of relaxation and fun. Professors are especially invited.

SAT. 28

● **PRE-REGISTRATION** from 8-11 a.m. in the Cat Cavern, U.C.

● **THE FRONT**, starring Woody Allen, will be showing in the Cat Cavern, U.C. at 8 and 10:30 p.m. This is an ASWU-sponsored movie. Admission: \$1 with current ASWU ID, \$1.50 without.

● **LIVE MUSIC** at Boon's Treasury, featuring the Count Dutch Trio — Jazz! From 8-12 p.m.; \$2 at the door.

SUN. 29

● **"WOMEN SOUND 1979"**, a day for women musicians to share ideas, talk, jam, educate and have a lot of fun, will be held at the OCE Student Center beginning at 11 a.m. Workshops will be held in numerous musical areas such as rock, blues, old-time, dance, poetry/lyrics and more. Performances will be held in the evening, which men are welcome to attend. Registration forms are available at most Salem music stores, and at Boon's Treasury, 888 Liberty NE. For further information please call Vee Jewell (363-7612) or Jane Keefer (362-1320).

● **THE IMPORTANCE OF BEING EARNEST** will be playing at 2 p.m. in the Kresge Theatre in the Playhouse. Admission: \$2.50 (WU undergrads free with current ID).

● **THE WU CHAMBER ORCHESTRA** will conclude their 1978-79 season with a concert at 3 p.m. in Smith Auditorium. Composers represented will be Purcell, Mendelssohn, Vaughn Williams, and Ives. The concert is free and open to the community.

GRADUATION WEEKEND

● **RETIRING FACULTY ICE CREAM SOCIAL** on May 12 from 3-4 p.m. in the Cat Cavern, U.C., honoring Mrs. Virginia Anderson (library), and Professors Maurice Brennen (music), Charles Derthick (psychology), James Lyles (education), and Harry Rorman (earth science).

SUN., MAY 13

● **COMMENCEMENT REHEARSAL** is scheduled from 8:30-9:30 a.m. at McCulloch Stadium. In case of rain, alternate site is Sparks Center.

● **BUFFET BREAKFAST** is scheduled before Baccalaureate, from 9:30-10:30 a.m. All graduating students are invited to be guests of the University at this breakfast. Cost for parents, alumni, and friends will be \$2.50. Please make advance reservations by calling the Alumni Office (6356).

● **BACCALAUREATE** at 11 a.m. in Smith Auditorium. Speaker is Dr. Collin W. Williams, Dean and Professor of Religion at the Divinity School at Yale University.

● **COMMENCEMENT** at 3 p.m. at McCulloch Stadium. Speaker is William Stafford, poet laureate for the State of Oregon and nationally recognized poet.

● **THE COALITION AGAINST APARTHEID** will meet at 7:30 p.m. in the Conference Dining Room 2, U.C.

MON. 30

● **THE MUSIC DEPARTMENT** presents Barry Crenshaw (tuba) and Sheila Kennedy (clarinet) in recital at 8 p.m. in Smith Auditorium. A rare opportunity is yours to experience literature for both tuba and clarinet free of charge.

FINAL EXAM SCHEDULE

SPRING, 1979

FRIDAY, May 4

8:00 MT RF 8-11 a.m.
1:00 MWF 2-5 p.m.

SATURDAY, May 5

1:00 TR 8-11 a.m.
3:30 TR 2-5 p.m.

MONDAY, May 7

10:00 MTRF 8-11 a.m.
2:15 MWF 2-5 p.m.

TUESDAY, May 8

9:00 MTRF 8-11 a.m.
3:30 MWF 2-5 p.m.

WEDNESDAY, May 9

11:00 MTRF 8-11 a.m.
2:15 TR 2-5 p.m.

TUES. 1

● **GENESIS: A MIME DRAMA AND TWO COMEDIES** will be presented by the Portland Mime Theatre at 7:30 p.m. at the Oregon College of Education, in the "Old Gymnasium." Admission: General public, \$2, students and senior citizens, \$1.50. For reservations and further information, call Dawn Scott (838-1220, ext. 444) or Rev. Lindsey (838-1220, ext. Campus Ministries).