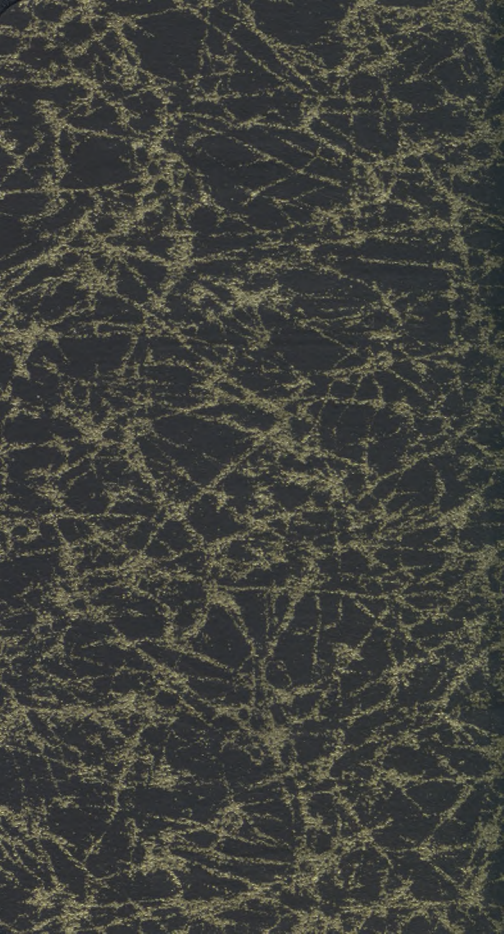


# Willamette University

## HAND BOOK



1933 · 1934



# Willamette University Student Handbook



1933-1934

Published by

THE ASSOCIATED STUDENT BODY OF  
WILLAMETTE UNIVERSITY



MADALINE SCHMIDT, Editor

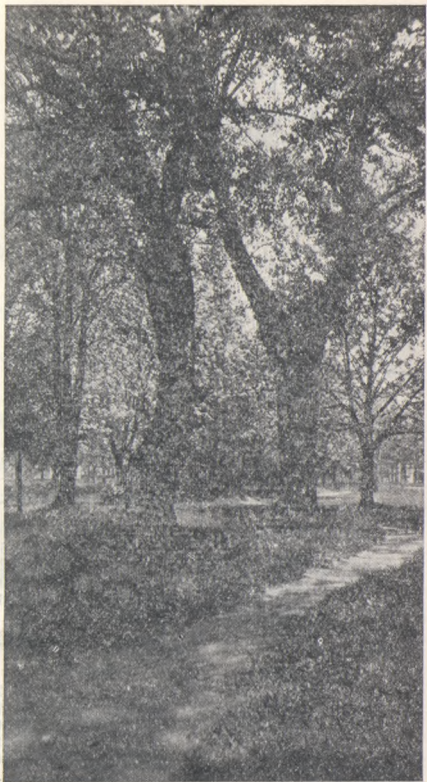


VOLUME XL

# Contents

---

	Page
Athletics .....	38
Athletic Organizations .....	30
Church Directory .....	51
Clubs and Societies.....	33
College Calendar .....	6
Dean Dahl's Greeting.....	9
Dean Erickson's Greeting.....	8
Forensics .....	32
Football Schedule .....	37
Fraternities .....	22
Honorary Organizations .....	28
Leave of Absence.....	21
Musical Organizations .....	31
President A. S. W. U. Greeting.....	10
President Blue Key Greeting.....	11
President Cub's Greeting.....	12
President's Greeting .....	7
Prizes .....	35
Publications .....	29
Recitation Schedule .....	56
Songs .....	41-50
Sororities .....	23
Telephone Directory .....	53
Traditions .....	19
Varsity Yells .....	39
Who's Who at W. U.....	15
Year Calendar .....	4
Y. M. C. A. Welcome.....	14
Y. W. C. A. Welcome.....	13





**WELCOME, FRESHMEN!**

Welcome, Freshmen, to Willamette;  
Opened wide is every door  
As a token of our greetings.  
Welcome now and evermore!

All is ready for inspection:  
Neatly varnished every floor,  
And the mill-stream—we can promise,  
We, the class of '34—

We can promise that you'll like it,  
When you know it well as we—  
And you will, unless you're better  
Than we are at Freshman Glee.

We don't hesitate to tell you  
Of our paper's excellence.  
It's a record published weekly  
Of historical events.

We've traditions by the dozen—  
(Sometimes counted by the score)  
And the first in your acquaintance  
(Meet him now)—the Sophomore.

—'34

## COLLEGE CALENDAR

1933

- Sept. 18, Monday — Freshmen Days begin  
9:00 A. M.
- Sept. 19, Tuesday, P. M. — Registration Day  
for Freshmen.
- Sept. 20, Wednesday—Registration Day for  
other students.  
Recitations begin, 7:45 A. M.
- Nov. 30-Dec. 1, Thursday-Friday—Thanksgiving  
holiday.
- Dec. 20, Wednesday—Christmas Recess be-  
gins, 4 P. M.

1934

- Jan. 2, Tuesday—Christmas Recess ends, 7:45  
A. M.
- Jan. 22-26—Examinations for First Semester.  
Registration for Second Semester.
- Jan. 29, Monday—Recitations of Second Se-  
mester begin.
- March 24-31—Spring Vacation.
- June 11, Monday—Commencement Day.

## Welcome

A student's education is vastly more than the things he knows. Even of greater significance is his choice of what he wants to know



and his way of knowing what he knows. Entering college, the student must be concerned about his mental choosings and the attitude of his spirit. The intellect is important, but after all students live their way into how they think rather than think their way into how they live.

Willamette University in its wish to serve fully is not only a place of the intellect; it is also a place of the emotions and of the soul. To this type of college, we welcome you and

express the fervent hope that you will deliberately extend the dimensions of your education to include the factors of a complete personality. We invite your cooperation and we pledge you ours.

Cordially yours,

CARL G. DONEY



With other representatives of the University I extend greetings to you as you begin your college work. You will have the kindly cooperation of your associates on the campus; many are ready to extend a helping hand or give a word of encouragement. If at times your task seems hard or discouraging, take heart; many others have survived the same troubles. You will come out at last with flying colors. Welcome. Thrice welcome.

FRANK M. ERICKSON,  
Dean of the University



## WELCOME TO THE FRESHMEN

To the group of incoming Freshmen I extend welcome. The office of Dean of Women has come throughout the years to be a symbol of authority and restriction. However, it has been the purpose on the Willamette campus to make that office stand for help, counsel and sympathy in every way that it is possible for one person to extend aid to another.

We hope you learn early that true Willamette people pull together and co-operate for the maximal personality growth of all. We ask you to give as well as to receive. We welcome, therefore, your youthful enthusiasm and individual contribution to this supreme task.

Most sincerely,

OLIVE M. DAHL,

Dean of Women

On behalf of the student body it is with pleasure that I extend to you, the incoming group of Willamette University students, a word of welcome. The next few years of your attendance here are not many in number and will pass quickly, but they are years that will mean more to you and be of greater importance to you than any other years in your life.

Willamette University offers the opportunity for the development of the individual and furnishes the necessary background to cope with the world's problems. It remains to the student to make use of these advantages and see that they are not wasted.

I am certain your years at Willamette will be pleasant, and it is my hope that they will be equally fruitful. At no time let yourself be swayed from the aim and purpose of your attendance at Willamette by the change surrounding school life.

We all play ball together and everyone feels free to enter into the many activities, for it is only in this way that each one may be developed to the fullest and gain the real benefits from attendance at Willamette. Remember above all—get into the swing of things and keep pace, for the laggards are soon eliminated.

I hope we will learn to know each other personally during the next year.

JAMES E. BURDETT,  
Student Body President



Welcome, class of 1937. Blue Key greets you in the friendly spirit of Willamette. We congratulate you on your decision to become

students of Willamette, and we are confident that the years you spend here will do much in the enriching and broadening of your life.



The richest part of your college life will be the friends you will make. Utter strangers to you now, your classmates will soon be among your most intimate associates. Choose your friends care-

fully, "and when thou hast their adoption tried, grapple them to thy soul with hoops of steel."

You will not find college life easy. The routine of classes, the unceasing pressure of study and activity, the strain of competition in everything you do will tell heavily on your spirit. Especially will you find the first few weeks of college hard. But don't forget that the rewards of a task are in proportion to the difficulties it presents. To those of you who hold on until graduation the rewards will be great. Lay your foundations well in scholarship, in character, in prayer, and in good health and all other good things will be yours in abundance.

EUGENE L. SMITH,  
President of Blue Key



### GREETINGS

The Cubs extend a hearty welcome to the class of '37. In coming to Willamette you will find new friends and a new environment. A good start in orienting yourselves to your new surroundings will help a great deal.

The Cubs, is an underclass service organization. It upholds Willamette's traditions and helps the Freshmen in learning theirs. This fall they are going to try a new plan in dealing with the Freshmen. They will need your hearty cooperation in this. I trust it will be given.

Sincerely yours,

**DICK HIATT**

## WELCOME

### Freshmen Girls:

We greet you who are entering as the class of '37.

The Willamette Y. W. C. A. is made up of every girl on the campus, and you will find its activities varied. You have already become acquainted with your Big Sisters, who are eager to help. I am sure that there will be some field in which your interests can be fulfilled. Perhaps you will wish to assist in social service work. Maybe you will want to concentrate in the field of



worship. On the other hand, you may wish to give most of your talent to the planning of social functions.

In fact, there is a place for all of you. We feel that in our many interests we all have something to give one another, and we invite you to work with us.

JANET WEIL,  
President of the Y. W. C. A.

## STUDENT PURPOSE

We unite in the desire to realize full and creative life through a growing knowledge of God.

We determine to make this life possible for all people.

In this task we seek to understand Jesus and to follow Him.

## GREETINGS '37!

You have chosen well the institution for your higher education. It is the wish of the W. U. Y. M. C. A. to be of service to you in order that your stay here may be of great value to you.

It is our desire that the Y. M. C. A. will find you responsive to its program. We want to be the means of helping you to a higher, finer, broader realization of what life should be. It is our purpose to help you to a better friendship



with God so that there may be in you that inner-genuineness that makes life worthwhile and that makes one live a truly fine life no matter what may be his surroundings.

Chresto cottage is maintained on the campus by the Y. M. C. A.; come over and make it your own.

**LAURANCE A. BURDETTE,**  
President Y. M. C. A.

## WHO'S WHO AT W. U.

## A. S. W. U.

President .....	James Burdett
First Vice-President.....	Ruth Schreiber
Second Vice-President.....	Edward Franz
Secretary.....	Kathleen Skinner
Wallulah Editor.....	Lowell Eddy
Wallulah Manager.....	David Moser
Collegian Editor.....	Reo Young
Collegian Manager.....	Louis Magin
General Manager.....	Lestle Sparks

## Senior Class

President .....	Piercy Sweet
Vice-President .....	Naomi Hewett
Secretary.....	Roberta Mills
Treasurer .....	Milo Ross

## Junior Class

President.....	Garfield Barnett
Vice-President.....	Dorothy McDonald
Secretary.....	Nellie Perrine
Treasurer.....	Norman Swanson

## Sophomore Class

President.....	Paul Hauser
Vice-President .....	Esther Gibbard
Secretary .....	Winifred Gardner
Treasurer.....	David Johnson

## SORORITIES

## Alpha Phi Alpha

President.....	Edythe Glaisyer
Vice-President.....	Dorothy McDonald
Secretary.....	Gertrude Roenicke
Manager.....	Margaret Morris

## Beta Chi

President .....	Margaret Purvine
Vice-President .....	Sae Pringle
Secretary .....	Edith Sidwell
Manager.....	Barbara Elliot
Treasurer.....	Mary Scott

## Delta Phi

President .....	Naomi Hewett
Vice-President.....	Gwendolyn Hunt
Treasurer.....	Ruth Chapman
Manager.....	Marie Ledbetter

## FRATERNITIES

## Alpha Psi Delta

President.....	Arthur Erickson
Vice-President.....	Miles Woodworth
Secretary .....	David Johnson
Manager .....	Marion Moore

## Kappa Gamma Rho

President.....	Eugene L. Smith
Vice-President.....	Thomas Goyne
Secretary.....	Leonard Logan
Manager.....	Claude Cook

## Sigma Tau

President.....	Ralph Foster
Vice-President.....	Frank Haley
Secretary.....	Francis Crouch
Manager.....	Marvin Crawford

**Blue Key**

President.....	Eugene Smith
Vice-President .....	Piercy Sweet
Secretary .....	James Burdett
Treasurer.....	Frank Haley

**The Cubs**

President.....	Richard Hiatt
Vice-President .....	Kenneth Peterson
Secretary.....	Leonard Logan
Treasurer.....	Leander Quiring

**W. A. A.**

President .....	Mary White
Vice-President.....	Betty Moffatt
Secretary.....	Anoka Coates
Treasurer.....	Seiko Watanabe

**Tau Kappa Alpha**

President.....	John Rudin
----------------	------------

(Other officers to be elected this fall.)

**Theta Alpha Phi**

President.....	Kathleen Skinner
Vice-President .....	Dorothy Dalk
Secretary.....	William Moser
Treasurer.....	Dr. Gatke

**Daleth Teth Gimel**

President .....	Veva Garrett
Vice-President.....	Harriet Sanders
Secretary .....	Mariam Pope
Treasurer.....	Margaret Markham

**International Club**

First Councilor.....	George Cannady
Second Councilor.....	Betty Moffatt
Third Councilor.....	Wallace Turner
Fourth Councilor.....	Seiko Watanabe

**Science Club**

President.....Francis Welch  
 Vice-President.....Mary Scott  
 Secretary-Treasurer.....Carolyn Schneider

**Lausanne Hall**

President.....Veva Garrett  
 Vice-President.....Katherine Holden  
 Secretary-Treasurer.....Marian Pope

**Coffee House**

President.....Darlow Johnson  
 Vice-President.....Veva Garrett  
 Secretary-Treasurer.....Florence Durette

**Classical Club**

President.....Anna Calaba  
 Vice-President.....Elva Sehon  
 Secretary-Treasurer.....Louise Anderson

**Y. W. C. A. Cabinet**

President.....Janet Weil  
 Vice-President.....Martha Jane Hottel  
 Treasurer.....Mary Nelson  
 Program.....Ruth Chaney  
 Social Service.....Helen Childs, Betty Smith  
 Social.....Edith Sidwell  
 Finance.....Lois Underwood  
 Worship.....Amelia Schrack  
 Girl Reserves.....Florence Zweifel  
 Conference Chairman.....Margaret Purvine

**Y. M. C. A.**

President.....Laurance Burdett  
 Vice-President.....Ralph Anslow  
 Secretary.....Jack Simpson  
 Treasurer.....Fred Harris

(Other officers will be chosen later.)

**Beethoven Society**

(Officers will be elected this fall.)

**Willamette Wesleyans**

President.....Harriet Sanders  
 Vice-President.....Martha Jane Hottel  
 Secretary.....Eleanor Barth  
 Treasurer.....Laurance Burdette

## TRADITIONS

We are WILLAMETTE STUDENTS, first, last, and always!

A smile and "Hello" are expected from every student at all times and without exception.

Rise when "The Old Historic Temple" is sung.

Learn the yells and songs in this book.

Freshmen do not enter or leave chapel by the side doors.

Only Seniors use the Senior bench.

Only upperclassmen wear corduroys.

Freshmen do not wear high school pins, rings, or emblems.

Students do not smoke on the campus.

Street shoes are not worn on the gym floor.

Go to all Student Body and Class meetings.

Each student is a member of a Christian organization.

Students' mail addressed to Willamette University is placed in the alphabetical mail boxes on the first floor of Eaton Hall.

Attend all rallies and games.

Freshmen are required to do a certain amount of work on the campus and athletic field.

Willamette students are good sports in all inter-collegiate contests.

The library is a place for study.

No applause after "Farewell Willamette."

Uphold the Honor Code.

## FRESHMEN REMEMBER

That Willamette has many traditions sacred to our University, and we are depending upon you to preserve and cherish these traditions.

That the University's courtesy at athletic contests is above reproach. Do your part to keep it so.

That it is a good principle to write to the folks at home at least once a week.

That the churches of Salem offer something that the University cannot give to your life.

That you are a Willamette man now. Be proud of it

To tip your hat to Doctor Doney. He has done much for the University.

To keep your eye on your studies. They merit your consideration.

To get acquainted with your professors. They are a fine bunch of fellows.

To forget that you came from any particular high school and keep quiet about your prep school records.

## A GOOD FRESHMAN WILL

Wear his cap with proper spirit.

Learn his school songs and yells and join in when he hears them.

Stand and remove his cap when the "Alma Mater" is being sung or played.

Follow the walks on the campus.

Say "hello."

Obey the University traditions.

## TIPS TO FRESHMEN

Your first year is one of preparation for the remaining three. Choose your course of study carefully, and having chosen work it hard. Do your work daily. It is easier to keep up than to catch up.

Do not be afraid to cultivate your instructors' acquaintance. The opportunity to know earnest students is one of their chief delights, and the advantage to you may be inestimable.

Do not let the turmoil of the first week disturb your equilibrium too violently. Take a reasonable share of social life. Play is an essential part of normal development.

### LEAVE OF ABSENCE FOR WOMEN'S RESIDENCE HALLS

No resident of the Lausanne Hall or of any Sorority House shall be out of the Hall or House after 7:30 except for college engagements and for study at the libraries, or when permission has been granted by the Dean of Women or House Mother. Upper class girls may have one extra night out each week.

On Friday and Saturday nights girls must be in at 11:10 P. M. On Sunday night the hour is 10:00 P. M.

On leaving town, permission having been previously secured from the Dean of Women or House Mother, all girls shall register the time of the departure, their address while away, and the time of return.

Residents wishing to spend the night outside the Hall or House shall first obtain permission from the Dean of Women or House Mother.

Residents of Hall or Houses shall not accept invitations to evening social functions or entertainments, on week nights, without permission from the Dean of Women or House Mother; but attendance at the following regular meetings is understood as approved:

Clubs and societies connected with the various departments of academic work in the college; evening classes; literary societies; public oratorical contests; college debates; public college lecture; religious services; athletic events; entertainments given by permission of the authorities of the college for college classes or for the entire student body.

Should these functions hold until 9:40 on week nights, 10:50 on Friday night, and

10:50 on Saturday nights, girls must be in twenty minutes after the first girl returns.

### FRATERNITIES

#### Sigma Tau, 1919

920 Oak Street.....Phone 8718

#### Alpha Psi Delta, 1920

895 Chemeketa Street.....Phone 6588

#### Kappa Gamma Rho, 1921

316 North Church Street.....Phone 8122

### INTER-FRATERNITY PLEDGING RULES

**Pledging**—The act of pledging shall consist of a man wearing the official pledge pin of the fraternity and signing the official pledge card of the fraternity.

**Time of Pledging**—No man shall be offered the opportunity to pledge any fraternity until he shall have completed registration. Completion of registration means the making of final arrangements with the business office in regard to the payment of tuition. Any violation of this provision on the part of any fraternity shall mean the forfeiture of the right to pledge the man in question for a period of thirty days.

**Breaking of Pledge**—No man may accept a bid from any fraternity after having broken a pledge to another fraternity until a period of ninety days has elapsed after the breaking of his first pledge, except on the condition that he be given a release by the fraternity to which he was first pledged.

**Enforcement**—These rules shall be enforced by the Inter-fraternity Council with provision for appeal as enumerated in the Constitution of the Inter-fraternity Council.

**SORORITIES****Beta Chi, 1919**

1445 State Street.....Phone 8760

**Delta Phi, 1920**

1530 Court Street.....Phone 8730

**Alpha Phi Alpha**

750 North Summer Street.....Phone 8911

**SUMMER RUSHING RULES**

1. Informal rushing, during the summer, may include 4 house girls and 4 rushees.
2. There may be only two formal rush functions in any town.
3. The guest list for a rush party held in any town shall be limited to local rushees only. However, house members from any town may go to any other town to help with a rush party.
4. Violations of summer rushing rules shall be punishable in the same manner as violations of fall rushing rules.
5. It is a University ruling that the sorority houses shall not be used for rushing purposes during the summer.

**Fall Rushing Rules, 1933**

The sorority rushing season for the year 1933-1934 shall be from September 28 to October 8 inclusive.

**I**

Personal rushing shall begin September 26 through September 28.

- (a) When more than three sorority girls or three new girls are in a group, it shall be considered a formal rushing.

- (b) Personal rushing shall not include any expenditure of funds whatsoever by sorority girls; that includes food, gifts, and games. Home rushing is forbidden. There shall be no entertaining of rushers at town houses. Girls may, however, be entertained at the sorority house at any time during the days of personal rushing.
- (c) Throughout all rushing there is to be no conversation about other houses or concerning personal house affairs.
- (d) Alumnae are put under the same rules as active sorority girls.
- (e) In personal rushing sorority girls may enter the hall from 4:00 to 5:45 and 6:30 to 7:20 P. M.
- (f) There shall be no rushing by men or non-sorority women. This includes mothers or sisters.
- (g) All personal rushing shall be from 4:00 to 7:30 P. M.
- (h) Personal rush days for the three houses shall be as follows:  
 Tuesday, Sept. 26.....Alpha Phi Alpha  
 Wednesday, Sept. 27.....Beta Chi  
 Thursday, Sept. 28 .....Delta Phi

## II

Inter-sorority at home shall be held Monday, September 25, for all freshmen girls. No rushing shall be done before this time.

## III

House rushing shall begin September 29, through October 2, omitting Sunday, October 1.

- (a) No slumber parties shall be given.
- (b) No personal rushing shall be done.  
 1. This includes sending letters, gifts, or visiting hall, etc.

- (c) A date book shall be issued by inter-sorority council and dates shall be checked, and no invitations shall be issued.
- (d) A schedule of dates shall be agreed upon.
- (e) Sororities shall not call for rushees.
- (f) Dinners shall last from 5:30 to 7:30 P.M.
- (g) Teas shall last from 4:15 to 5:15 P. M.
- (h) No favors shall be used at any informal rush affair.

## IV

Formal rush season shall be from October 3 to October 8, inclusive.

- (a) Formal party shall be a dinner party to be held from 5:00 to 8:00 P. M. The succession of parties for 1933-1934 shall be:
 

Tuesday .....	Beta Chi
Wednesday.....	Delta Phi
Thursday .....	Alpha Phi Alpha
- (b) The formal rush parties shall be limited to a certain fixed sum. For the year 1933-1934 it shall not exceed \$50.00. Only formal decorations shall be used.
- (c) An itemized account of party expenses is to be turned in to the Dean of Women by October 14.

## V

There shall be a system of preferential bidding.

- (a) New girls shall hand in their choices of sororities by 6:00 P. M., October 6, to the Dean of Women.
- (b) The sororities shall have their bids in at the office of the Dean of Women by 6:00 P. M., October 6.

- (c) The girls shall then receive their bids by 9:00 P. M. Pledge services shall be held October 8, attendance at church following.

## VI

Sororities may pledge during the first six weeks any girls who has been on the campus a previous semester.

## VII

New girls of Freshman, Sophomore, Junior, or Senior classes shall not be pledged until formal pledging of rush week.

- (a) No girl taking less than 12 hours shall be pledged.

## VIII

No bids shall be promised to any girl at any time.

## IX

No personal expenditure for favors.

## X

Any sorority violating the above rules shall be subject to forfeit in the following manner.

First offense .....	Tea
Second offense.....	Dinner
Third offense.....	Formal Dinner

For any violation from September 29 to October 5, the formal dinner shall be forfeited.

## XI

Silence shall last from October 3 to October 7, inclusive.

### Second Semester Rushing

## I

Second semester rushing shall take place second week.

- (a) It shall last from Monday at 4:00 P. M until Friday at 9:30 P. M.

- (b) There shall be no rushing during study hours.

## II

Personal rushing shall be Monday from 4:30 to 5:30 and 6:30 to 7:30 P. M., and Friday from 4:00 to 6:00 and 7:30 to 9:30 P. M.

- (a) Notes for personal rushing on Monday shall be sent to girls on Friday. Notes for Friday shall be put in mail boxes in Eaton Hall Friday morning. Reply by 'phone for Friday and in writing for Monday.

## III

Each house shall have a tea and a dinner.

- (a) Teas shall last from 4:15 to 5:15; dinners 5:30 to 7:30.  
 (b) Invitations shall be issued by 'phone or personally.

Tuesday—

Tea.....	Delta Phi
Dinner.....	Alpha Phi Alpha

Wednesday—

Tea.....	Beta Chi
Dinner.....	Delta Phi

Thursday—

Tea.....	Alpha Phi Alpha
Dinner.....	Beta Chi

## IV

Bids and preferences shall be in by 6:00 P. M. Saturday to the Dean of Women and they shall be delivered by one girl from each house.

## V

There shall be silence Saturday. Pledging shall be Sunday morning as in fall rushing.

## HONORARY ORGANIZATIONS

### Alpha Kappa Nu

Alpha Kappa Nu, established on the Willamette campus in 1920, is a local honorary scholastic fraternity, having for its purpose the promotion of high scholarship. Its membership is limited to not more than fifteen per cent of each Senior class, and selection of members is made just preceding Commencement each year.

### Tau Kappa Alpha

Tau Kappa Alpha, national forensic fraternity, established a chapter at Willamette in 1926. The purpose of this organization is to promote interest in forensics, and in the years since its installation here it has proven to be the foundation upon which all forensic activities are based.

### Pi Gamma Mu

Oregon Alpha chapter of Pi Gamma Mu was installed on the Willamette campus in 1924. This national social fraternity aims to develop in the college students an interest in the solution of human problems by scientific methods. Seniors having completed twenty semester hours work in this field, with an average grade of at least 85 per cent therein, are eligible to membership.

### Theta Alpha Phi

Since its installation on the campus in 1920, the Oregon Alpha chapter of Theta Alpha Phi, national dramatic fraternity, has promoted interest in dramatics to a large degree. The fraternity presents from two to four plays each year, and the tryouts are open to all students, thus offering a medium for any who are interested to take part. Membership is limited to those who show real ability in the field.

### Blue Key

The Blue Key Fraternity, which is a national service fraternity, established a chapter at Willamette in 1926. It is composed of upperclassmen, and each year members are elected from the Sophomore class. The fraternity endeavors to render service to the campus in every field of activity.

### Delta Theta Phi

The Wolverton Senate of Delta Theta Phi, national legal fraternity, was established on the Willamette campus in 1928. It has been in existence but a short time here, but already it promises to be an organization of great strength in the Law School. The honor of having the Law School of Willamette recognized in this manner is felt to be a big step forward for the University.

### Cap and Gown

Each spring, five Junior girls are elected to Cap and Gown. They are selected for their outstanding qualities of character, leadership, personality, and scholarship. It is the desire of the organization to maintain such high quality during the next five years that they will be eligible to inaugurate "Mortar Board," a national honorary for Senior women.

### PUBLICATIONS

#### The Willamette Collegian

The Collegian is the official college paper, and is published weekly by the student body. Staff members who have served one year faithfully, and who have done work of real merit are awarded with a gold Old English "C."

It is customary and expected that Willamette students will patronize Collegian advertisers.

### Wallulah

The Wallulah is the annual year book, published by the student body, and appearing June first. Staff members who are recommended by the Manager or the Editor of the Wallulah as having done work of genuine merit are awarded with a gold Old English "W," if such recommendations are approved by the Awards committee.

### Willamette Song Book

The Willamette Song Book includes all the Willamette songs up to date. Every student should own a copy.

### Student Handbook

The Student Handbook is published by the A. S. W. U. Its purpose is to acquaint new students with the University and give useful information concerning student activities.

## ATHLETIC ORGANIZATIONS

### "W" Club

The "W" Club is composed of all students who have won their letter in varsity athletics on the campus, and encourages a spirit of good sportsmanship at all inter-collegiate contests.

### Women's Athletic Association

The Women's Athletic Association is composed of women who have earned their letter in inter-class or varsity athletic contests. The organization sponsors a number of hikes during the school year, and actively promotes interest in inter-class sports.

### Cubs

The Cubs is an organization of Freshmen and Sophomores, whose duty it is to usher at games, care for the interests of visiting teams, and enforce traditions. They are recognized as officials at all games.

### **Athletic Board**

The Athletic Board, composed of members from the Board of Trustees, faculty, coaching staff, and students, acts as an advisory committee in regard to policy, finance, etc.

### **Awards Committee**

The Awards Committee is composed of members from the faculty, coaching staff, and student body, and decides upon the distribution of awards, upon the recommendation of the coaches.

### **Athletic Managers**

Varsity sports managers are appointed, and class managers elected, and these students arrange the various inter-class and varsity sports.

## **MUSICAL ORGANIZATIONS**

### **Women's Glee Club**

Tryouts for membership in the Women's Glee Club are held soon after the opening of school in the fall. The club gives a home concert, and, during spring vacation takes a trip, giving concerts in Oregon and Washington. The members are active in all musical activities on the campus.

### **Men's Glee Club**

Membership in the Men's Glee Club is determined by tryouts, and the organization makes an extended tour between semesters. The Varsity Quartette takes a prominent part in the festivities of Junior Week End.

### **Beethoven Society**

The Beethoven Society is an organization of talented musicians, which has for its pur-

pose the development of interest in music and furtherance of its appreciation on the campus. The members of the society, besides presenting a monthly chapel program, sponsor and participate in many musical programs in Salem.

### **University Band**

The Willamette University Band was organized in 1930 for the prime purpose of creating pep and spirit at athletic contests.

### **University Orchestra**

The Orchestra was organized in order to bring out and develop the musical talent of the University.

### **Freshman Glee**

Freshman Glee is held early in March each year, and is the occasion of great inter-class rivalry. Each class presents an original song, and the winning class is awarded the coveted Freshman Glee Banner. Through this contest, Willamette has come into possession of many beautiful songs, and has become noted for its music.

## **FORENSICS**

### **Forensic Council**

The Forensic Council is composed of three members of the debate squad who have won the Bar "W." It has charge of all forensic activities and promotes interest in public speaking on the campus.

### **Debate**

Willamette now holds an outstanding position in the Pacific Coast Forensic League, due to her excellent work in debate. Both the men's and women's teams took rather extensive tours during the past school year.

Interclass debate is an activity in which numerous students can and do participate.

## ORATORY

Willamette was represented in a number of oratorical contests last year and scored high in all of them.

## CLUBS AND SOCIETIES

### Daleth Teth Gimel

Daleth Teth Gimel is a chapter of the national organization of Daleth Teth Gimel, and was organized on the campus in the fall of 1928. Both sorority and non-sorority girls are members. The purpose of the society is to provide an opportunity for every girl to develop personality fully through social activities, and to promote a spirit of democracy among the girls on the campus.

### Willamette Wesleyans

The national organization of which the Willamette Wesleyans is a part has for its purpose the promotion of interest in missionary work, and is composed of students who plan to give full time Christian service in the home or foreign field. The Willamette group holds weekly meetings, at which time lectures and discussions of interest are enjoyed.

### Coffee House

Coffee House, the only campus creative literary society, has a membership selected from students interested in literature from a creative viewpoint. It meets bi-weekly to read and discuss the productions of its members and has as its purpose the promotion of constructive criticism and creative writing among students. Membership is by invitation.

### The French Club

The French Club is a comparatively new organization upon the Willamette Campus,

having been organized in the fall of 1930. It meets every other week at Willamette Lodge, and is conducted under the very efficient leadership of Madame Vazakas. Here the French majors who are interested have the opportunity of hearing French as it is spoken, as well as the opportunity of speaking it under the direction of those most capable of aiding. French games are played, riddles and axioms are presented in interesting manners, and progressive stories with amusing and startling details are told in French.

The club has no definite membership, but is open to all those who feel interested enough to attend. No English is spoken at the fortnightly meetings, as the purpose of the organization is to aid pupils to become fluent and precise in their use of the French language.

### Science Club

Students who are interested in study and research in the field of the natural sciences compose the Science Club. Interesting and unique experiments are conducted, and the group entertains at student chapel once or twice during the year.

### International Club

International Club, as the name denotes, is made up of Japanese, Chinese, Negro, Indian, Russian, Filipino, Korean, and American students. The object of this organization is to create a feeling of international friendship and understanding. The club's motto is "International Good Will."

Membership is restricted to sixty per cent foreign and forty per cent American and is by invitation.

### Classical Club

Students taking the classics are eligible to membership in the Classical Club, whose

purpose is to further interest in and appreciation of the Greeks and Romans and their languages.

### Shakespeare Club

The Shakespeare Club, the newest organization on the campus, is composed of students who take an especial interest in the works of Shakespeare from a literary, dramatic, or musical standpoint. Dr. Kohler is the founder and adviser of the group.

## PRIZES

At Commencement time of each year a number of prizes are awarded to those students in the University who have shown ability in certain fields of endeavor.

### Albert Prize

Mr. Jos. H. Albert, of Salem, awards \$25 to the student having a record for faithful study and scholarship not below the average, who, during the school year, opportunities considered, has made the greatest progress toward the ideal in character, service, and wholesome influence.

### The Colonel Willis Prize

Col. Percy Willis, '95, of Portland, offers a prize of \$25 "to the student who throughout the school year has done the most real good to fellow students and the University by deeds of kindness and genuine helpfulness, coupled with steadfast devotion to high ideals and upright character."

### Steeves Prize

A prize of \$10 is offered by Dr. B. L. Steeves, '91, for the student who does the best work in Latin.

### Keyes Prize

Hon. Walter E. Keyes, of Salem, offers two prizes of \$15 and \$10 to those who win first and second honors in oratory.

### Outstanding Athlete's Trophy

To the Senior man whose record in scholarship, athletics and all-around development is deemed most outstanding a silver loving cup is given.

To the Senior girl whose achievement in personality, sportsmanship, leadership, scholarship, and assistance to others in athletics is deemed greatest, and who is herself outstanding in athletics, a silver loving cup is given.



**COACH KEENE**

**FOOTBALL SCHEDULE**

**1933**

- Sept. 23—Oregon State College, there.  
Sept. 30—Oregon Normal School, here.  
Oct. 13—College of Puget Sound, there.  
Oct. 20—Columbia University, there.  
Oct. 28—Linfield College, there.  
Nov. 4—Pacific University, here.  
Nov. 10—Southern Oregon Normal, here.  
Nov. 26—Whitman College, there.

## ATHLETICS

Intercollegiate Athletics are maintained under the personal supervision of the Director of Athletics and under the jurisdiction of the Athletic Council.

Willamette belong to the Northwest Conference, composed of the following schools: Whitman College, College of Idaho, College of Puget Sound, Pacific University, and Linfield College. It is the purpose of this Conference, as far as possible, to foster participation by all members of the Conference in contests of football, basketball, baseball, tennis, and track.

### Intramural Activities

Intramural activities are maintained under the personal supervision of the Director of Physical Education and the Chairman of the Interclass Rivalry Committee.

The program extends over the entire school year, and is composed of the following activities: cross country scrimmage ball, basketball, wrestling, boxing, physical ability tests, track, baseball, and tennis.

Students taking Physical Education for credit must pass the Physical Ability Tests before they are permitted to substitute an intramural activity for the regular class work.

### Gymnasium Requirements

Physical Education is required of all students throughout the Freshman and Sophomore years.

The regulation uniform for the Physical Education classes consists of rubber-soled shoes, supporter, sleeveless jersey, pants, and a heavy sweater or sweatshirt.

Locker should be locked at all times. Equipment that is left out will be picked up.



**JOE ROE**

**Yell King**

**VARSITY YELLS**

**Spell Bearcats**

**B—E—A—R—C—A—T—S**

**Rah!**

**B—E—A—R—C—A—T—S**

**Rah!**

**BEARCATS**

**(Spelled)**

**RAH RAH RAH RAH—BEARCATS**

**(Yelled)**

**Y—E—A—W. U.**

**Y—e—a—W. U.**

**Y—e—a—W. U.**

**Y—e—a—W. U.**

**Fight 'em, Fight 'em, Fight 'em**  
**Willamette**

**Locomotive**

Rah, Rah, Rah, Rah, W. U., W. U.  
 Rah, Rah, Rah, Rah, W. U., W. U.  
 Rah, Rah, Rah, Rah, W. U., W. U.  
 Rah, Rah, Rah, Rah, WILLAMETTE

**Go Get 'Em Yell**

Go get 'em, Bearcats, Go get 'em  
 (slowly, softly)

Go Get 'Em, Bearcats, Go Get 'Em  
 (faster, louder)

GO GET 'EM—BEARCATS, GO GET 'EM  
 (FAST AND LOUD)

**Skyrocket**

S-s-s-s-s-s-s-s (rise on whistle) s-s—BOOM!

A-a-a-a-ah . . . WILLAMETTE!!!!!!

**Keene**

He's Keen!

Who's Keen?

SPEC'S KEEN!

**Team Yell**

T-E-A-M—TEAM!

Fight-Fight-Fight . . . TEAM!



ANNA JO FLEMING

Song Queen

## OLD HISTORIC TEMPLE

There's an old Historic temple

Rising grandly through the years,

Where the oaken-hearted fathers

Drew their strength for strong careers.

Down the years its portals open,

Gathers wise ones to its fold;

Breathes the spirit of the Westland,

Card'nal emblem 'bossed with gold.

Spirit of the Golden Westland,

Breathing through our father's tears;

Tells the story of the Temple,

Bids us hope adown the years.

Sing, oh sing, of old Willamette,

Sing while hearts are young and true;

Sea to sea the chorus swelling,

Dear old school, our W. U.

## I LOVE WILLAMETTE U

I love Willamette U,  
I love her campus too;  
I love her Profs so good and true,  
I love her spirit real true blue.  
I love the old mill stream,  
I love to sit and dream;  
I see it all in shadows cool,  
I love our dear old school.

## QUEEN OF THE WEST

The East may love old Harvard,  
The North love old Cornell;  
But the school of fame, whose noble name  
Forever shall excel  
Stands proudly in the Westland ,  
Where friends are staunch and true;  
We love our dear old college,  
So here's to W. U!

### Chorus—

Willamette, to thee we will be true,  
Willamette, we'll ever fight for you,  
We pledge our loyalty,  
Our homage pay to thee,  
Pride of all the West, you are the best,  
Willamette, our hearts we pledge anew,  
Willamette, our fealty to you,  
Faithful we will be  
With staunch fidelity  
Willamette, queen of all!

## CHALLENGE TO LOYALTY

There's a cardinal bar from a western sky,  
And a golden beam from the sun,  
The cardinal for the men of old  
Whose valiant courage won.  
To these memories we are loyal,  
They were wrought with a purpose true,  
On these we build our standards  
And our faith in Willamette U!

There's a challenge flung from this western  
sky,  
And this golden beam of light;  
There's a flaming hope of victory  
That will guide us ever right.  
And from these colors blended,  
The cardinal and golden hue;  
We gain the strength of our loyalty,  
And our love for Willamette U!

## ON WILLAMETTE

On Willamette, ever onward,  
To the highest goal in view,  
From the bell tower rings the story  
Of thy conquests, W. U.  
In our mighty Alma Mater  
Let our faith be ever bold,  
That victory may be the prize  
Of the Cardinal and the Gold.

## Chorus—

Then we'll strive to stand and stay by old  
Willamette,  
With her legends and traditions old and  
true;  
Something seems to draw us onward ever to  
the victor's goal—  
'Tis the magic of thy spirit, W. U.

**VICTORY FOR W. U.**

Vict'ry for W. U.

The bell in the tower rings.

The battle's done;

The victory's won;

Card'nal and Gold are flaming

Proudly o'er us.

Here's to the Bearcat team

Who carried our colors through!

Our song shall go

Till the world will know

There's a vict'ry for W. U!

**FIGHT, SONS OF OLD WILLAMETTE**

Fight, sons of old Willamette,

Fight 'til the battle's done;

With a valor ever bold

For the Card'nal and the Gold

Fight 'til the vict'ry's won!

Many hearts are standing by you

With a spirit ever true;

Fight with courage never dying

Fight! Willamette U.

**TRUE TO YOUR SPIRIT**

True to your spirit!

On brave warriors, to the end;

Fight till the foe shall fear us,

Till the enemy's haughty head shall bend.

On for Willamette,

Fight the battle as of old,

Victory the prize shall be

Of the Cardinal embossed with Gold.

**FIGHT, BEARCATS, FIGHT**

Fight, Bearcats, fight!

A victory for W. U.,  
The Card'nal and Gold,  
Victorious of old,

Shall give us a spirit ever new.

Card'nal courage shows,

And Gold in our faith so true.

We shout our war cry now to you—

Come on and fight, fight, fight,

Fight, fight, fight!

**WA HOO**

Wa hoo wa hoo

Rip zip ba zoo,

I yell, I yell for W. U.

Wa hoo wa hoo wa hoo

Well! well, well,

Well, well, well, well,

Well, well, well, well,

Wa hoo, etc.

**CHEER, WILLAMETTE, CHEER**

Stand! Willamette loyal,

Stand you true,

Defeat is not for you

Who see the battle through;

For our Willamette band,

Oh, triumph team;

You pass from hand to hand

The flaming battle brand,

And we shall shout the rousing chorus,

Cheer, Willamette, Cheer!

**CANNIBAL KING**

A cannibal king with a big nose ring  
Got stuck on a Zulu maid,  
And every night when the moon shone bright  
Across the canal he'd wade  
To hug and kiss this dusky miss  
Out under the big bay tree,  
And when they met they sang a duet  
That sounded like this to me:

Oh, Jason Lee, socretty boo-ya  
Oh, Poppa Wa'ller, chenickety umba  
Umba-Umba-Um.

**WILLAMETTE**

There's a school we call Willamette  
That will ever prompt our praise,  
For 'tis there we win our victories  
And there our standards raise.  
It's a school that makes true sportsmen  
And will lasting service give  
To those who dare to do their share  
And fight that she might live.

**Chorus—**

Willamette, Willamette, we're with you to  
the end!  
Willamette, Willamette, our voices gladly  
blend  
To cheer you, revere you and your undaunted  
fame,  
Oh, Willamette U,  
We will see you through  
And guard your glorious name!

**BEND THE KNEE**

Bend the knee, yes, bend the knee  
To the Cardinal and the Gold;  
Before the Bearcat's fighting power  
Mars himself must even cower  
Rise, we sons of Jason Lee  
We will win the victory.  
So bend, bend the knee to Willamette Varsity.  
Victory; yes, victory to the Cardinal and the  
Gold;  
Then fearful foes will bite the dust,  
For win we will, for win we must.  
Onward, then to mastery,  
This our conquering song shall be;  
So bend, bend the knee to Willamette Varsity.

**FRESHMAN SONG—1933**

Come let our laughter mingle  
With silvery sounds of night,  
But list, my sweetheart of Willamette  
While I tell my plight.

**Chorus—**

Waken, loved one, heed that bright moonbeam  
Straight as a gleaming dart.  
Waken, dear one, cease your dreaming,  
To you, the delight of my heart,  
I'm calling.  
Here beneath your window singing  
A song that is ever new.  
Though 'tis the old, old song I'm singing,  
It means, sweetheart, I love you!

## SERENADE SONG

When all the campus is sleeping,  
Bathed in a silv'ry glow,  
Lulled to rest by the mill stream,  
Murmuring soft and low,  
Our voices will life 'neath your window,  
Soft as the palest moonlight  
Not to disturb your fair slumbers;  
But wish as we bid you good night.

**Chorus—**

While you are sleeping, sleeping,  
Under the milky way,  
Wrapt in the shadow of night-time,  
Far from the cares of the day;  
May you be dreaming, dreaming,  
Dreams of a love ever true  
Love that a lad of Willamette  
Holds in his heart for you.

## WILLAMETTE NIGHT SONG

Over the moon's bright circle  
Clouds like a curtain creep  
The night with sombre darkness  
Covers the world asleep,  
Then the moon by the clouds unveiled,  
Casts a flood of silvered light  
And my longing heart turns to singing  
This fantasy of the night.

**Chorus—**

Dream on, Oh fairest one  
Wrapt in gentle slumber  
Sleep on, while yet the moon so softly beams;  
Dream on in sweet repose  
Lulled by songs of love  
And may their spirit weave into your dreams

Sleep on while still the night  
Dobed in velvet splendor  
Has charmed Willamette with its magic spell  
My heart bids you sweet farewell  
For the paling stars forete'l  
Night shall fade in morning light,  
Fairest one, goodnight—goodnight.

The years shall pass by us swiftly  
Dimming youth's brightest rays  
But the mem'ries of life's gay springtime  
Will lighten the darkest days;  
The spell of our dear Willamette  
Binds our hearts with a golden chain  
And the song we sang together  
Shall echo for us again.

### DREAM ON

The stars are softly gleaming  
In the shadows of the night,  
The moon like glowing silver  
Covers all with mellow light.  
The world is resting peaceful  
From the hurry of the day,  
So now beneath your window  
Do I sing to you and say—

Chorus—(Boys sing)

Dream on gently, pretty maiden,  
Till the golden heart of you  
Thrills with night-time's tender beauty,  
And your fairest dreams come true.

(Girls sing)

Dream on, lad of old Willamette  
Till the youthful heart of you  
Thrills with life and love and glory,  
And your fairest dreams come true.

## WILLAMETTE SPRING SONG

Oh, springtime at Willamette,  
There's naught could sweeter be!  
Like mists by sunlight melted,  
The clouds of trouble flee.  
And all of life seems gladness  
At just a sparrow's trill,  
Or glimpse of maple blossoms,  
Our hearts with rapture thrill.

**Chorus—**

Oh, sweet is day's stern labor,  
We conquer without fear;  
And sweet the hours of evening  
When college friends are near.  
So gathered here at twilight  
Amid the shadows long,  
Soft notes of youth and springtime  
Are mingled in our song.

## CHURCH DIRECTORY

- Calvary Baptist—High and Ferry.  
First Baptist—Liberty and Marion.  
First German Baptist—Cottage and D.  
Immanuel Baptist—Hazel and Academy.  
St. Joseph's Catholic—Cottage and Chemeketa.  
St. Vincent De Paul, Catholic—2200 Myrtle.  
Court Street Christian—Court and 17th.  
First Christian—High and Center.  
First Church of Christ Scientist—Chemeketa and Liberty.  
Church of Christ—1489 N. Cottage.  
Church of God—1346 N. Church.  
First Congregational—Liberty and Center.  
Knight Memorial, Congregational—Ferry and 19th.  
St. Paul's, Episcopal—Church and Chemeketa.  
First Evangelical—Marion and Summer.  
Highland Friends—Highland and Church.  
South Salem Friends—Commercial and Washington.  
American Lutheran—Church, between Chemeketa and Center.  
Christ Evangelical, Lutheran—State, between 17th and 18th.  
St. John's Lutheran—16th and A.  
First Methodist—State and Church.  
Center Street Methodist—Center and 13th.  
Jason Lee Memorial, Methodist—Jefferson and N. Winter.  
Leslie Methodist—Commercial and Myers.  
Mill Street Methodist—Mill and 15th.  
West Salem Methodist—State and 3rd.  
Market Street Free Methodist—Market and N. Winter.  
Church of the Nazarene—Breyman and 11th.  
First Presbyterian—Chemeketa and N. Winter.  
Bethany Reformed—Capitol and Marion.  
Seventh Day Adventist—Gaines and 5th.

First Unitarian—Chemeketa and Cottage.  
 First United Brethren—Mission and 12th.  
 Castle Chapel, United Brethren—Nebraska  
 and 17th.

\* \* \*

## GO TO CHURCH

History records man as a being who worships. The desire to worship is universal. Among every people of whom we have record, signs of worship have been discovered. Let us develop and direct this instinct of worship.

Today, while attending college, most of us are away from home; yet the deep wish in the heart of every father and mother is that we remain true to the teachings of our youth. By home training and tradition we have some knowledge of the purposes and claims of religion. We believe that in the Bible man finds a standard whereby to guide his life. Religion in its broadest sense is life lived in all its relationships. Religion is the ballast which steadies man's life. Religion is friendship with God.

Willamette wishes to co-operate with the churches of Salem. We have included this church directory in the handbook with the special hope that the church going habit learned at home may not be lost at college.



## MEMORANDA

MEMORANDA

First Semester						
Day	Time	Room	Instructor	Section	Notes	Grade
	7:15					
	8:40					
	9:55					
	10:30					
	11:15					
	1:15					
	2:40					
	3:55					
	4:00					
Gym. No.						
Second Semester						
Day	Time	Room	Instructor	Section	Notes	Grade
	7:15					
	8:40					
	9:55					
	10:30					
	11:15					
	1:15					
	2:40					
	3:55					
	4:00					
Gym. No.						

## RECITATION SCHEDULE

## First Semester

7:45	M	T	W	Th.	F
8:40	-----	-----	-----	-----	-----
9:35	-----	-----	-----	-----	-----
10:30	-----	-----	-----	-----	-----
11:25	Chapel	Chapel	Chapel	Chapel	Chapel
1:15	-----	-----	-----	-----	-----
2:10	-----	-----	-----	-----	-----
3:05	-----	-----	-----	-----	-----
4:00	-----	-----	-----	-----	-----

Chapel Seat.....

Gym. No.....

## Second Semester

7:45	M	T	W	Th.	F
8:40	-----	-----	-----	-----	-----
9:35	-----	-----	-----	-----	-----
10:30	-----	-----	-----	-----	-----
11:25	Chapel	Chapel	Chapel	Chapel	Chapel
1:15	-----	-----	-----	-----	-----
2:10	-----	-----	-----	-----	-----
3:05	-----	-----	-----	-----	-----
4:00	-----	-----	-----	-----	-----

Chapel Seat.....

Gym. No.....

## IDENTIFICATION

Name

Phone No.

Salem Address

Class

Home Address

In Case of Accident Notify

Address

**CAPITAL CITY LAUNDRY  
AND DRY CLEANERS**

**FIRST IN QUALITY  
AND SERVICE**

1246 Broadway

PHONE 3165

---

**CAPITAL CITY TRANSFER**

**FUEL OIL, COAL AND  
BRIQUETS**

226 STATE ST.

Office Phone 7773

Residence 659

OUTFITTERS OF  
SPORTSMEN AND ATHLETES

**CLIFF PARKER, INC.**

Sporting Goods

372 STATE ST.

PHONE 6042

---

**SUNFREZE**

(Protected Ice Cream)

CAKES AND INDIVIDUAL MOLDS  
FOR ALL OCCASIONS

Ask Your Nearest Sunfreze Dealer

**Western Dairy Products Co.**

PHONE 8101

**CAPITAL  
DRUG  
STORE**

J. H. Willet

Filling  
Prescriptions  
is the  
Best Thing  
We Do

Cor. State & Liberty

ANY WOOL  
CLOTHING  
IS BEST

From

**KAY  
WOOLEN  
MILLS**

South 12th Street

**WILLAMETTE FRESHMEN**

As Well as Upper Classmen  
Buy Their Supplies

**LOOSE-LEAF NOTEBOOKS  
STATIONERY  
BOOKS AND  
FOUNTAIN PENS**

At

**NEEDHAM'S  
ATLAS BOOK STORE**

465 State Street

The Nearest Bookstore to the Campus

# THE SPA

in Salem

WHERE FOOD IS BETTER!

Hospitality and Service to Please

Those Who Prefer the Best

---

# FLOWERS

CORSAGES - CENTERPIECES

Always a Choice Selection

at

# FROSTY'S

PHONE 7166

Court and High Streets

**“GOOD EATS?”**

**?**

Yes, indeed,  
We all like 'em!

**CALL**

---

**“BURT” CRARY**

Catering Service

For

**BANQUETS  
PARTIES – PICNICS  
REFRESHMENTS  
ETC.**

**PHONE 6753  
Salem, Oregon**

---

The J. J. KRAPS Co.

*Printers*

13th at Wilbur Street

---

Phone 8594

Salem, Oregon

---

FOR SANDWICHES—

Hillman's Master Loaf  
(Sliced)

FOR DESSERT—

Tasty Cakes

and

Master Doughnuts

Made in Salem by

**CHERRY CITY BAKING CO.**

START RIGHT

And the Battle  
Is Half Won

**THE  
FRENCH  
SHOP**


115 N. High Street

CALL A MAN  
From

**EOFF'S  
ELECTRIC**

Instead of  
Worrying Over  
That Lighting  
Trouble


347 Court St.  
PHONE 9119




**CAPITOL  
THEATRE  
BARBER  
SHOP**

On Your Way  
to Town

550 STATE ST.  
Earl Messinger,  
Prop.



TO




**JENNIE  
LIND**

**TAVERN**

“WHEN  
“FAMISHED”

N. Pacific Highway



**T.W.CREECH**  
**DRUGS**

Is Close to the  
Campus

The Corner of  
12th and State

**UPSTON'S**  
**GROCERY**

State & Commercial

Appreciates  
Your  
Patronage

**THE KLASIC**

**"A KODAK SHOP"**

In the Capitol Theatre

Cards

Frames

**HILL'S**

The Home of Good Candy  
and Frozen Milkshakes

697 N. CAPITOL

**ANDERSON'S**

SPORTING GOODS

167 N. COMMERCIAL

Thanks to  
Willamette

**Wiles**

**Opera House**

**Pharmacy**

COME—

IT'S FUN

**THE GRAND**

**Jacob A. Rise**

Shoes and  
Leather  
Goods

233 N. Commercial

**IMPERIAL  
FURNITURE  
CO.**

Where Quality  
Is Higher  
Than Price

467 COURT ST.

**LITTLE LADY'S STORE**

GROCERY AND DELICATESSEN

PHONE 1357

1190 CENTER

**COBBS & MITCHELL CO.**

LUMBER

349 S. 12TH

SALEM

---

---

DIAMONDS

WATCHES

and

JEWELRY

at

**POMEROY & KEENE**

Willamette's

Official

Jewelers

---

---

---

---

**GEO. C. WILL**

Pianos and  
Sewing  
Machines  
Rented

PHONE 4959  
432 State St.

**NELSON  
BROS.**

Sheet Metal  
Work  
Plumbing  
and  
More

355-61 Chemeketa

---

**CARSON'S PHARMACY**

PHONE 5468

COURT AND HIGH

---

**HALIK RADIO CO.**

RADIO

337 COURT

---

**TYPEWRITER  
EXCHANGE**

Thos. Roen

420 COURT

**W. U.**

We're for You

**SHYNNE  
SHOP**147 N. High  
PHONE 7000CLOTHES FOR  
COEDS!**SMART SHOP**

115 N. LIBERTY

**HARTMAN BROS. CO.  
JEWELERS**

SALEM, OREGON

**C. F. BREITHAAPT  
FLORIST**

557 COURT

PHONE 5904

**LADD  
&  
BUSH****BANKERS**SALEM,  
OREGONA GOOD  
PLACE TO  
TRADE**BLOCH'S  
Golden Rule  
STORE**

---

**LARMER TRANSFER  
AND STORAGE**

PHONE 3131

For Us to Move Your Baggage

---

**W. U. IS RELIABLE**

SO IS OUR PRINTING

**THATCHER PRINTING CO.**

---

**THINK TWICE**

For you will  
surely reap  
as you have  
sown.

**GAHLDORF'S  
INC.**

325 COURT ST.

---

**SENATOR  
FOOD  
SHOP**

232 N. HIGH  
PHONE 1111



**CAPITAL  
BUSINESS  
COLLEGE**

Intensive  
Practical  
Training  
That Will  
Help You  
N. HIGH ST.



Willamette's ideals are high through  
and through

Producers products are their dreams  
come true

Do not delay

Try them today

The Ice Cream is rich, the milk never  
blue

You'll like our's better too!

## **PRODUCERS MILK CO.**

Highest Quality  
**MILK, BUTTER AND  
ICE CREAM**

PHONE 4616

153 S. LIBERTY



MEET ME

At

**THE  
BLUEBIRD**

Go Where the  
Crowds Go

**“JACK”**

**ANDERSON'S**

HOME  
MADE  
CANDY





NOW IS THE TIME TO

**BLOSSOM OUT**

THESE SMART SPRING TOGS  
WILL SURE OPEN YOUR  
EYES

ALWAYS THE  
LARGEST ASSORTMENT AND  
BETTER VALUES

**BISHOP'S**

## TRUE ECONOMY . . .

Students of Willamette will find in Millers a store that is 100 per cent dependable.

There need be no skepticism regarding our low prices. Our merchandise has not been substandardized. It is the same well known quality that you've known for years.

Make Millers your downtown headquarters. Your meeting place. Use the phones, city directory, writing desks, rest rooms.

## MILLERS

~

KENNEL-ELLIS  
PORTRAIT  
STUDIO

OFFICIAL PHOTOGRAPHERS  
OF THE 1934  
WALLULAH

409 Oregon Bldg.  
PHONE 7830  
Salem, Oregon

~

