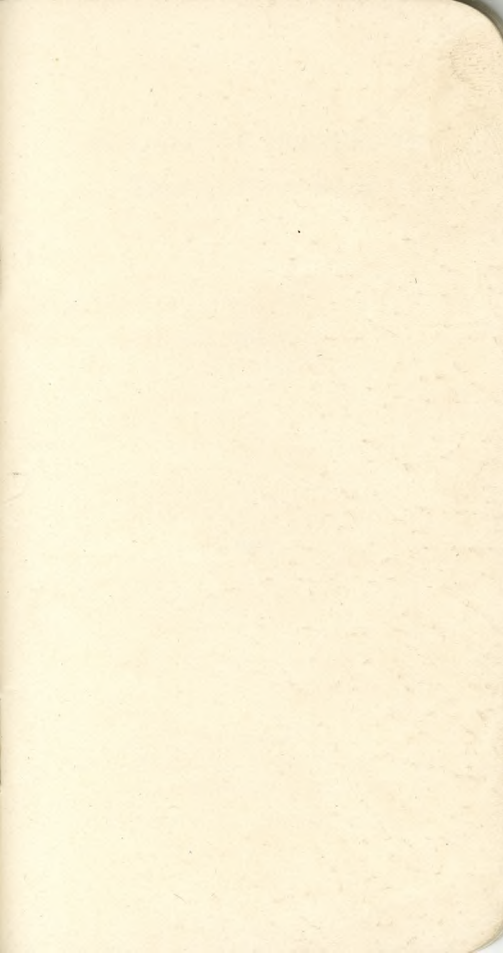


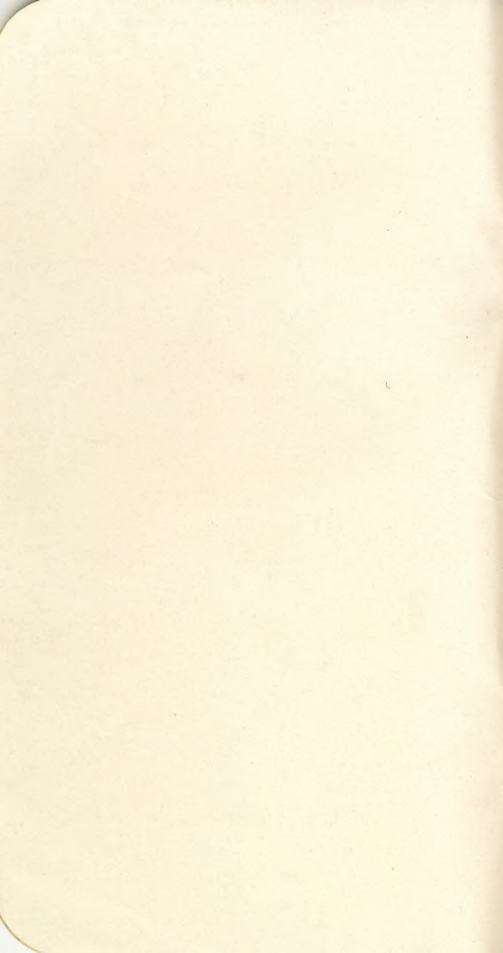
# Willamette University



1937-1938







WILLAMETTE UNIVERSITY  
Student Hand Book

VOLUME XLIV  
1937-1938



Published by  
THE ASSOCIATED STUDENT BODY OF  
WILLAMETTE UNIVERSITY  
KATHRYN THOMPSON, Editor

## FOREWORD

The Associated Student Body in editing this handbook has tried to present a kaleidoscopic picture of the vigorous activities and friendly traditions of Willamette University, and to bring to you new students the greetings of the faculty and students.

As Doctor Baxter has said, "Willamette has waited ninety-five years for **you**," so it behooves you to give the university the best that is in you, and the university in turn will give her best to you.

We hope your four years on our campus will be very worth while, and very happy years.

THE EDITOR



KENNELL - ELIS

OLD EATON IN THE SPRING

## 1937 — CALENDAR — 1938

## SEPTEMBER

S	M	T	W	T	F	S
-----	-----	-----	1	2	3	4
5	6	7	8	9	10	11
12	13	14	15	16	17	18
19	20	21	22	23	24	25
26	27	28	29	30	-----	-----

## OCTOBER

-----	-----	-----	-----	-----	1	2
3	4	5	6	7	8	9
10	11	12	13	14	15	16
17	18	19	20	21	22	23
24	25	26	27	28	29	30
31	-----	-----	-----	-----	-----	-----

## NOVEMBER

-----	1	2	3	4	5	6
7	8	9	10	11	12	13
14	15	16	17	18	19	20
21	22	23	24	25	26	27
28	29	30	-----	-----	-----	-----

## DECEMBER

-----	-----	-----	1	2	3	4
5	6	7	8	9	10	11
12	13	14	15	16	17	18
19	20	21	22	23	24	25
26	27	28	29	30	31	-----

## JANUARY

-----	-----	-----	-----	-----	-----	1
2	3	4	5	6	7	8
9	10	11	12	13	14	15
16	17	18	19	20	21	22
23	24	25	26	27	28	29
30	31	-----	-----	-----	-----	-----

## FEBRUARY

-----	-----	1	2	3	4	5
6	7	8	9	10	11	12
13	14	15	16	17	18	19
20	21	22	23	24	25	26
27	28	-----	-----	-----	-----	-----

## MARCH

S	M	T	W	T	F	S
-----	-----	1	2	3	4	5
6	7	8	9	10	11	12
13	14	15	16	17	18	19
20	21	22	23	24	25	26
27	28	29	30	31	-----	-----

## APRIL

-----	-----	-----	-----	-----	1	2
3	4	5	6	7	8	9
10	11	12	13	14	15	16
17	18	19	20	21	22	23
24	25	26	27	28	29	30
-----	-----	-----	-----	-----	-----	-----

## MAY

1	2	3	4	5	6	7
8	9	10	11	12	13	14
15	16	17	18	19	20	21
22	23	24	25	26	27	28
29	30	31	-----	-----	-----	-----

## JUNE

-----	-----	-----	1	2	3	4
5	6	7	8	9	10	11
12	13	14	15	16	17	18
19	20	21	22	23	24	25
26	27	28	29	30	-----	-----

## JULY

-----	-----	-----	-----	-----	1	2
3	4	5	6	7	8	9
10	11	12	13	14	15	16
17	18	19	20	21	22	23
24	25	26	27	28	29	30
31	-----	-----	-----	-----	-----	-----

## AUGUST

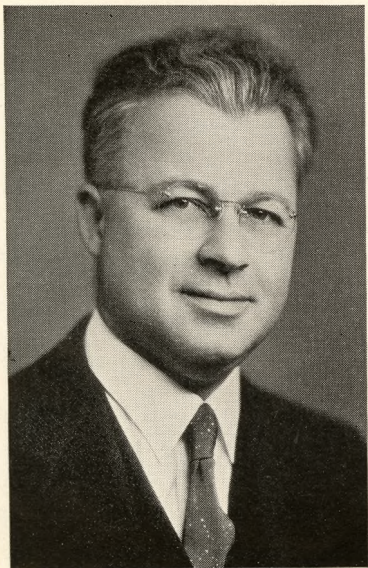
-----	1	2	3	4	5	6
7	8	9	10	11	12	13
14	15	16	17	18	19	20
21	22	23	24	25	26	27
28	29	30	31	-----	-----	-----



## COLLEGE CALENDAR

1937

- Monday, Sept. 20—Faculty Reception.  
Tuesday, Sept. 21—Y. W. Personality Party;  
Y. M. Stag Party.  
Wednesday, Sept. 22—Organizations' Night.  
Thursday, Sept. 23—Y. M.-Y. W. Formal Reception.  
Friday, Sept. 24—Y. M.-Y. W. Transfer Party,  
5:00 to 8:30; Student Body, 8:30.  
Saturday, Sept. 25—Jolly Jaunt-Game (Albany).  
Thursday, Sept. 30—Sorority Formal House Teas.  
Friday, Oct. 1—Noise Rally 6:30; Game (Fresno).  
Monday, Oct. 4—Personal Rush; Delta Phi.  
Tuesday, Oct. 5—Alpha Phi Alpha.  
Wednesday, Oct. 6—Beta Chi.  
Friday, Oct. 8—Excursion: Portland at Portland; CHURCH NIGHT.  
Saturday, Oct. 9—Excursion: Portland.  
Monday, Oct. 11—Informal Dinners; Alpha Phi Alpha.  
Tuesday, Oct. 12—Beta Chi.  
Wednesday, Oct. 13—Delta Phi.  
Thursday, Oct. 14—Silence.  
Friday, Oct. 15—Sorority Formal Dinners.  
Sunday, Oct. 17—Pledging.  
Monday, Oct. 18—Start: Student Body Dinners.  
Friday, Oct. 22—HOMECOMING; Whittier Game.  
Saturday, Oct. 23—HOMECOMING; Play.  
Friday, Oct. 29—C.P.S. Game at C.P.S.  
Saturday, Oct. 30—Intersorority Informal Dance.  
Thursday, Nov. 25—Thanksgiving (Holiday).  
Friday, Dec. 17 to Jan. 3—Christmas Recess.  
Monday to Friday, Jan. 24-28—Examinations.  
Monday to Friday, Jan. 24-28—Registration for Second Semester.  
April 9-17—Spring Vacation.  
Saturday, June 11—Commencement Day.



**DR. BRUCE R. BAXTER**  
President, Willamette University


## FRESHMAN GREETING

I wish that you would take this greeting in as personal a fashion as if it were spoken to you individually. We are genuinely glad that you have come. Let me tell you one of the many Willamette characteristics. I have never known as friendly a student body as the one upon this campus. Why not enter into this spirit the very first day? Speak to everybody you meet, for you now belong to the Willamette family.

You are entering upon the ninety-sixth year of the University's history. Rich are the traditions which you have inherited. May you not only observe them but may you add to them traditions which you shall set and which will be observed a hundred years from now.

All who have preceded you have had their days of disappointment and discouragement. The former students of whom we are the most proud are those who kept their courage and their faith and their good humor and stayed through to the end of the course. May you be worthy of being numbered among those who have thus achieved. May every good thing be yours.

BRUCE R. BAXTER,  
President, Willamette University





Education may be defined as a widening of horizons and, in this process, going to college is a step of most far reaching importance. It is the step that gives literally wider horizons, the step that carries one from the level of public schools to that of higher education and in most cases means the stretching of home ties almost to the breaking point. It means release from much of the restraint of home and school, greater freedom to choose your own companions and your own way of living. But if a word of advice and caution may be mixed with the word of greeting, remember that happiness is not in freedom but in the acceptance of duty.

Think well of your opportunities; resist the side roads that lead away from the proper destination. Remember that the development of self control, good habits, high ideals is no less important than the acquisition of knowledge.

**FRANK M. ERICKSON,**  
Dean of Willamette University



To the welcome that has been expressed by the other officers and members of the administration, I wish to add my word of welcome. Willamette is here to offer you everything within its power to help make your school year and your college course a success. This, of course, pre-supposes that you are seriously intent upon gaining the best for yourself. The office of the Dean of Women, as well as that of Dean of Men, keeps its door open and I hope that you will not wait to be "called on the carpet" before you come in to get acquainted. Any question, no matter how simple, or how difficult, my office is always willing to help you with. We cannot always answer the question nor grant the permission, but we are willing to do our best to help you.

OLIVE M. DAHL,

Dean of Women

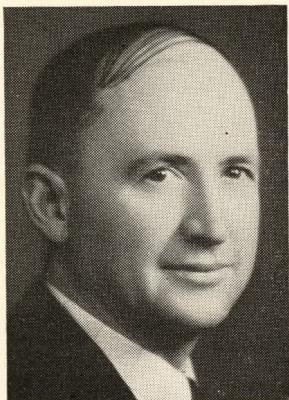




Welcome Freshmen!

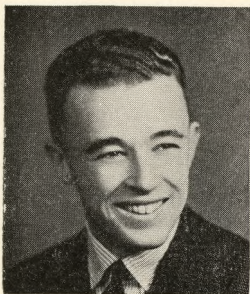
When we say this we should like you to know that it is not just an idle gesture, for we really mean it. Each year we look forward to the freshman class with a great deal of anticipation for when you become part of the student body of Willamette University the assets of the school are enhanced by just so much. It is our hope, and we are confident that you will not disappoint us, that you will be an asset and not a liability to Willamette. To that end we offer our assistance through the office of Dean of Men. We invite you to make use of this office whenever the need may arise, for we wish to make the school year as profitable and as pleasant as possible, and we hope that you will enter upon the scholastic pursuit with much zeal.

DAN H. SCHULZE,  
Dean of Men



Familiarity with A. S. W. U. finances is not complete until the student has found his way to the general manager's office. The student body of Willamette University maintains and operates a business office under the direction of a general manager. The office is located in the gymnasium. Authorization for expenditure of A. S. W. U. funds is obtained from this office. All money received by managers or collected by any of the A. S. W. U. activities is turned in to the general manager's office. Student activity tickets and handbooks may be obtained from the office. If you are a returning student, make use of the office. If you are a new student, you are invited to become acquainted with the organization and administration of A. S. W. U. money.

LESTLE J. SPARKS,  
General Manager



You will find that at Willamette, no one is lost in the crowd. A glance at these pages and you will see at once the breadth of the activities provided for you, and the fact that it is no idle boast that here every student is given an opportunity to take an active part in campus life. You will also see that this is no static, artificial program, but one arising out of the needs and interests of the students themselves — an ever changing and living record of the ambitions, talents, and ideals of a student body. It is a program whose continued vitality is dependent upon the energies and abilities of the students who give it life. This having become your university and these your activities, enjoy and support them, and your years here will be profitable and happy ones.

I congratulate you on your choice of a university, and on behalf of the Associated Students, bid you a most hearty welcome to our Willamette family.

**TALBOT BENNETT,**  
President A. S. W.U.





We of the Y. W. C. A. welcome the women of the class of '41. We hope you will take advantage of the many fine opportunities that will be provided for you throughout your college life at Willamette. Willamette has much to offer you and, in order to play fair, you should offer her your best. It will be your responsibility now as well as ours to help carry on Willamette's ideals. Through your contacts with professors and students, and your participation in activities you may do your part.

The Y. W. offers opportunities for you to create friendships, contact different groups, work out campus problems as well as to develop your own personality. We invite each of you to become a member.

Sincerely,

MARY JEANETTE SARGENT



Welcome, members of the class of "41." Blue Key congratulates you for having chosen Willamette. We believe you will find here an unforgettable spirit, glorious traditions and high scholastic standards. Willamette seeks to develop a well rounded personality through her classes, intimate contact with professors, and extra-curricular activities. We hope that in them you may find the development that will make your college days a credit to yourselves and to our school. Again we say welcome and continued success in your endeavors.

Sincerely,

MELVIN VIKEN,  
President of Blue Key.

## TRADITIONS

### Homecoming

There are three major campus social events which are enjoyed during the year of which the first is Homecoming. Every fall, this year October 22 and 23, one week-end is given over to the entertainment and welcoming of "Old Grads" of Willamette. The Homecoming play on Saturday night will end the activities. Meanwhile judges choose the best of the Homecoming signs which the sororities, fraternities, and Lausanne Hall erect to celebrate the game and welcome the Alums. An Alum banquet on Friday is followed by a night football game, this year against Whittier. Between halves of the game Freshmen compete with Sophomores in a traditional bag rush. After the game a colorful carnival with barkers and concessions draws everyone to eat candy and popcorn, throw darts, or practice miniature golf.

### Freshman Glee

Freshman Glee, held early in March each year, is the occasion of the greatest inter-class rivalry. Each class presents an original song and Dr. Matthews, after tense moments of suspense, awards the coveted Freshman Glee Banner. The class of 1936 has won the unprecedented record of winning first place for four years.

Through this glee contest Willamette has come to possess many beautiful songs and has become noted for its music.

### May Week End

Our annual May Day Festival is the last all-campus celebration. Guests are invited to see our campus and enjoy our festivities for the week-end. This week-end is one of the first in May and is sponsored by the Junior class. Friday night, a local theatre opens to students, who present a program and pep meeting; this is known as Willamette Night.

The next morning the Y. W. gives the May Morning Breakfast on the lawn in front of Chresto. Following the breakfast there will be a tug-of-war across the mill stream, baseball game, track meet, and tennis matches. At noon, high school guests are served lunch in the gym. In the afternoon, the May Queen is crowned; this is preceded by a program of dancing and music in her honor. The Queen and her court make their last appearance at the Junior play Saturday night in the Salem High auditorium.

### **A GOOD FRESHMAN WILL:**

Make his first year one of preparation for the remaining three; choose his course carefully, and having chosen, work hard. He will remember that it is easier to keep up than to catch up.

Not be afraid to cultivate his professors' acquaintance. They are a real group of friends whose cultivation may be of inestimable profit.

Not let the turmoil of the first few weeks disturb his equilibrium too violently. Take a reasonable share of social life to leaven his studies.

Keep an eye on his studies — they merit consideration.

Do his part to keep the University's courtesy at athletic contests above reproach.

Remember that the churches of Salem offer something that the University cannot give his life.

Forget he came from any particular high school and keep quiet about prep school records. He will not wear high school pins, rings, or emblems.

Stand and remove his hat when the "Old Historic Temple" is being sung or played.

Wear his cap or ribbon with the proper spirit.

Follow the walks on the campus.

Write to the folks at home at least once a week. They're interested in you, you know.

Carry this handbook at all times.

### CUSTOMS:

We are WILLAMETTE STUDENTS, first, last, and always, and proud of it!

A smile and "Hello" are expected from every student at all times and without exception.

No one but Seniors inhabits the Senior Bench.

Rise when the "Old Historic Temple" is sung.

Everyone learns the songs and yells in this book.

Freshmen do not enter or leave chapel by the side doors.

Only upperclassmen wear cords.

Students do not smoke on the campus.

Street shoes are not worn on the gym floor.

Everyone is present at all Student Body and Class meetings.

Each student is a member of a Christian organization.

Freshmen are required to do a certain amount of work on the campus and athletic field.

We all attend rallies and games.

Willamette students are good sports at all intercollegiate contests.

The library is a place for study.

Uphold the Honor Code.

There is no applause after "Farewell, Willamette."

Students' mail addressed to Willamette University is placed in the alphabetical mail boxes on the first floor of Eaton.

Everyone attends the formal Y. M.-Y. W. reception.

Remember that Willamette has many traditions sacred to our University, and we are depending upon you to preserve and cherish them. A good Freshman will obey them.

### STUDENT PURPOSE

We unite in the desire to realize full and creative life through a growing knowledge of God.

We determine to make this life possible for all people.

In this task we seek to understand Jesus and to follow Him.

### WHO'S WHO AT W. U.

#### A. S. W. U. Officers

President .....	Talbot Bennett
First Vice-President .....	Irma Oehler
Second Vice-Pres. ....	Lawrence Nunnenkamp
Secretary .....	Dolly Dingle
Wallulah Editor .....	
Wallulah Manager .....	Cathrin Headrick
Collegian Editor .....	Robert Keuscher
Collegian Manager .....	Cecil Quesseth

#### Senior Class

President .....	Wayne Doughton
Vice-President .....	
Secretary .....	Cornelia Hulst
Treasurer .....	

#### Junior Class

President .....	Arthur Gallón
Vice-President .....	June Johnson
Secretary .....	Marguerite Smith
Treasurer .....	J. Manning Nelson

#### Sophomore Class

President .....	Wayne Brainerd
Vice-President .....	June Brasted
Secretary .....	Tony Irish
Treasurer .....	Verna Vosper



## ORGANIZATIONS

### Club Rooms:

Willamette is very fortunate to have two buildings where small club meetings and teas may be held. Chresto Cottage on the campus is used constantly for meetings and many students study and eat their lunches there. Willamette Lodge, at 255 North Capitol, is owned by Mrs. Claudius Thayer, who graciously loans her home for meetings and teas.

### FORENSICS:

#### Forensic Council

This Council is composed of three members of the debate squad who have won the Bar "W." It has charge of all forensic activities and promotes interest in public speaking on the campus.

#### Debate and Oratory

Willamette now holds an outstanding position in the Pacific Coast Forensic League, due to her record in debate. In oratory we placed, last year in the Peace Contest and in the Old Line Contest, and also won honors in the State Extemporaneous Contest. Trips made last year were: to San Francisco, to Tacoma, and to Los Angeles. Inter-class debate is an activity in which a representative of each class gives an extemporaneous speech before the student body.

#### Theta Alpha Phi

Willamette's Alpha chapter of this national dramatic fraternity has promoted interest in dramatics by presenting from two to four plays each year, thereby offering a medium for any who are interested to take part. Membership is limited to those who show real ability in this field.

## Officers

President .....	Arthur Lamka
Vice-President.....	Marion Averill
Secretary.....	Mary Elizabeth Kells
Treasurer and Adviser.....	Dr. R. M. Gatke

**Tau Kappa Alpha**

Tau Kappa Alpha, national forensic fraternity, has as its purpose the promotion of interest in forensics, and in the years since its installation here its members have composed Willamette's debate and oratorical squads.

## Officers

President .....	Waldo Hiebert
Secretary-Treasurer .....	Helen Mae Beal
Adviser .....	Professor Rahe

**Little Theatre Guild**

This organization is primarily one to develop dramatic talent among students. It presents several plays and skits during the year, thus giving opportunity for students who are interested in costuming, play-writing, make-up, and scenery. Membership, the requirements for which include ability in any of these fields, is determined by tryouts held each fall.

## Officers

President .....	Lunelle Chapin
Vice-President.....	Edwin Minneman
Secretary.....	Loye Bogardus
Treasurer.....	Howard Teeple

**RELIGIOUS:****Go to Church**

History records man as a being who worships. Among every people of whom we have record, signs of worship have been discovered. Let us develop and direct this instinct.

Today, while attending college, most of us are away from home; yet the deep wish in the heart of every father and mother is that we remain true to the teachings of our youth.



By home training and tradition we have some knowledge of the purposes and claims of religion. We believe that in the Bible man finds a standard whereby to guide his life. Religion in its broad sense is life lived in all its relationships. Religion is the ballast which steadies man's life. Religion is friendship with God.

### **Willamette Wesleyans**

This national organization of which Willamette has a chapter has for its purpose the promotion of interest in missionary work. The club is composed of students who plan to give full time Christian service in home or foreign missions. Their meetings are weekly with discussions.

#### **Officers**

President .....	Waldo Hiebert
Vice-President .....	Margaret Tayler
Secretary .....	Mildred Pederson
Treasurer .....	Margaret Coan

### **ATHLETIC:**

#### **"W" Club**

The "W" Club is composed of all students who have won their letter in varsity athletics on the campus, and encourages a spirit of good sportsmanship at all intercollegiate contests.

Officers will be elected this fall.

#### **P. E. Club**

The P. E. Club, organized in 1935, is composed of physical education majors only who meet every month for lectures by outside speakers. Meetings are conducted like a seminar and members sponsor play nights in the gym.

Officers will be elected this fall.

#### **Women's Athletic Association**

The W. A. A. is composed of women who have earned 100 points in women's athletics

or have won their letters in varsity athletics. Its purpose is to provide a sport for each girl and promote interest in athletics.

#### Officers

President.....	Marguerite DuRette
Vice-President.....	Kathryn Thompson
Secretary.....	Jean Anunsen
Archery.....	Margaret Engdahl
Swimming.....	June Brasted
Baseball.....	Dorothy Moore
Soccer.....	June Johnson
Tennis.....	Barbara Kurtz
Volleyball.....	Margaret Gillette
Basketball.....	Marjorie Herr
Hiking.....	Myrle Martin

### MUSICAL:

#### Treble Cleff

Tryouts for membership in the women's glee club are held in the early fall. Members are active in all musical activities on the campus. Last year they aided in the production of "Stabet Mater."

#### Willamette Songmen

Membership in the men's glee club is determined by tryouts, and the organization makes an extended tour between semesters and spring vacation. Last year they sang on the Sperry program over KOIN and in various churches and high schools in Oregon.

#### Philharmonic Choir

Membership in the choir consists of those in both Treble Cleff and Songmen. Last year after intensive work they presented the oratorio, "Stabet Mater," by Mendelssohn on Sunday of May Week End, May 2. The following Sunday over KOIN the choir presented an hour of the oratorio. Many of the members sing in the First Methodist Church choir. The director of all three organizations is Prof. Marshall.

### University Band

The Willamette University Band was organized for the purpose of creating pep and spirit at games. This year Ralph Nolgren will continue the direction of the band.

### Quartettes

Willamette enjoys the music of two men's quartettes, a Varsity quartette and a Junior quartette. They sing frequently at University programs and over the radio.

### Radio Programs

Once monthly KOAC in Corvallis allowed Willamette a half hour program. Students in music furnished opening and closing numbers while University faculty members gave brief talks.

### SERVICE:

#### Y. W. C. A.

"Our purpose shall be to endeavor to help each girl to adjust herself to her immediate problems and to develop her personality to the realization of its highest potentialities." With this purpose Y. W. members and cabinet put on an extensive service program. The Big Sister group, the Jolly Jaunt, the Y room, the campus teas, the Christmas parties, the G. R.'s, the formal Y reception; all these constitute a busy year of campus service.

#### Officers

President.....	Mary Jeanette Sargent
Vice-President.....	Suzanne Curtis
Secretary .....	Leone Burdick
Treasurer.....	Olive Clemes
Contact .....	Ariss Jones
Public Affairs.....	Ardelle Yadon
International Affairs.....	Echo Johnson
Freshman Commission.....	Patience Priesing
Campus Relationships.....	Marguerite Smith
Finance .....	Barbara Chapler
Inter-collegiate .....	Lunelle Chapin
Girl Reserve .....	Betty Taylor
Reinterpretation of Religion...	Martha Okuda
Hostess.....	Helen Trindle

### Health Service

The University offers each student a health service for \$2 a year under the direction of Dr. Powers. He will attend any student at his office in the gymnasium from 1:00-2:00 p. m. daily.

### Y. M. C. A.

The purpose of the Y. M. is to lead students to faith in God, to membership and service in a Christian church, to promote their Christian character, and to influence them to devote themselves to making Christian ideals effective in human society.

Officers will be elected this fall.

### Blue Key

Blue Key, a national service fraternity, established a chapter at Willamette in 1926. It is composed of upperclassmen, each year members being selected from the Sophomore class. The fraternity endeavors to render service to the campus in every field of activity.

### Officers

President.....	Melvin Viken
Vice-President .....	Verdell Ragsdale
Secretary.....	Basil Anton
Treasurer.....	George Abbott

### Cap and Gown

Each spring, five Junior girls are elected to Cap and Gown. They are selected for their outstanding qualities of character, leadership, personality, and scholarship. Willamette's chapter soon hopes to be eligible for "Mortar Board," a national honorary for Senior women.

Members for 1937-1938:

Ina Bennett	Lillian Hart
Barbara Crookham	Irma Oehler
Betty Taylor	

### Tacks

Tacks service organization for Sophomore women was organized in the fall of 1935 as a need was felt for a group of girls available to serve at banquets, usher at concerts, and aid other functions.

#### Officers

President.....	June Brasted
Vice-President .....	Esther Vehrs
Secretary-Treasurer.....	Rose Ann Gibson

### Mathematics Club

In the spring of 1937 the Mathematics Club was organized. The club will work toward a program which will present both the practical and social sides of mathematics for all those interested in the subject.

#### Officers

President.....	Leonard Laws
Secretary-Treasurer .....	Richard Smith
Adviser.....	Professor Luther

### CULTURAL STUDY:

#### Daleth Teth Gimel

Daleth Teth Gimel is a chapter of the northwest organization of independent women, to which sorority women may belong. The purpose of the society is to provide an opportunity for every girl to develop personality fully through social activities, and to promote the spirit of democracy among the girls on the campus.

#### Officers

President .....	Marion Chase
First Vice-President.....	Helen Smith
Second Vice-President.....	Willetta Smith
Secretary .....	Hannah Kaufman
Treasurer.....	Helen Trindle
Corresponding Secretary..	Virginia Beudiksen
Historian .....	Helen Neiger
Alumnae Secretary .....	Margaret Magee
Marshal .....	Beatrice Gillette

### International Club

This organization, as the name denotes, is made up of students who have lived in foreign countries, are of another race, and American students. Their purpose is to create a feeling of international friendship and understanding. Membership is restricted to sixty per cent foreign and forty per cent American students and is by invitation.

#### Officers

First Counselor.....Tats Yada  
Second Counselor.....Barbara Jones

### Coffee House

This campus creative literary society has a membership selected from students interested in literature as they make it themselves. At meetings members read and discuss their own productions with the purpose of promoting constructive criticism and creative writing.

Officers to be elected this fall.

### English Club

English who are interested in further work in their major are to organize a club this fall to take the place of the Shakespeare Club. Officers will be elected when membership is completed. Dr. Kohler will act as adviser.

### Delta Theta Phi

The Wolverton Senate of Delta Theta Phi, national legal fraternity, was established on the campus in 1928. It is coming to be an important force in Law School and was influential in the standardization of the Law School.

#### Officers

Dean .....Malcolm Jones  
Vice Dean .....Talbot Bennett  
Tribune .....Herman Estes  
Master of the Exchequer.....George McAllister  
Clerk of Rolls .....Frank Kucera  
Master of Ritual.....Charles Heltzel  
Bailiff .....Charles Dunbar



### Paint Spots

The Paint Spots was organized to promote interest in art on the campus and was instrumental in securing art courses in the curriculum. With Miss Fowler as adviser students are encouraged to develop their own line of art and may become members by submitting satisfactory work.

Officers to be elected in the fall.

### The French Club

This organization meets every other week at Willamette Lodge and is conducted with the efficient leadership of Madame Vazakas. French games are played, riddles and axioms told—all in French. The club has no definite membership; any interested may attend. No English is spoken as their purpose is to aid fluency and preciseness of French.

Officers to be elected this fall.

### Classical Club

Students taking the classics are eligible to membership in this club whose purpose is to further interest in the appreciation of the Greeks and Romans and their languages.

#### Officers

President.....	Esther Callison
Vice-President .....	Bellroie Malloy
Secretary-Treasurer .....	Al Vosper
Program Chairman .....	Nola Clark

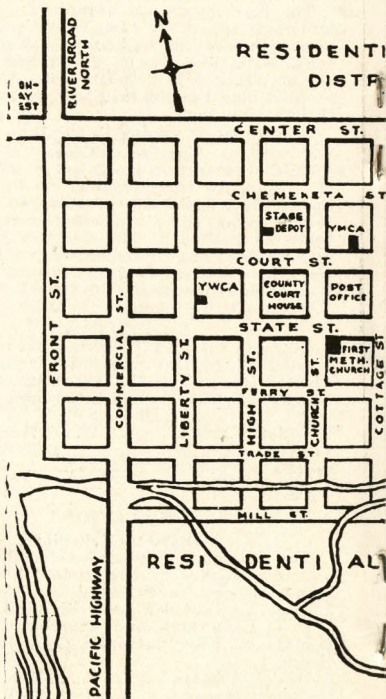
## PUBLICATIONS

### Willamette Collegian

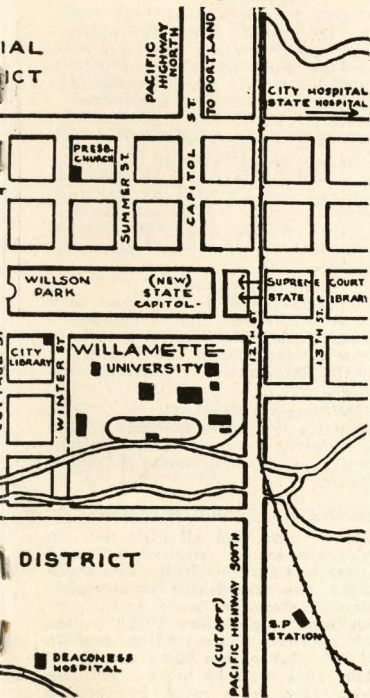
The Collegian is the official college paper and is published by the student body. Staff members who have served one year faithfully, are awarded a gold old English "C."

It is customary and expected that Willamette students patronize Collegian advertisers.

Collegian Editor.....	Bob Keuscher
Collegian Manager.....	Cecil Quesseth







### Wallulah

The Wallulah is the annual year book, published by the student body, and appearing June first. Staff members who have done work of genuine merit are awarded with a gold old English "W," if such recommendation is approved by the awards committee.

Wallulah Editor.....  
Wallulah Manager.....Cathrin Headrick

### Spring Social Calendar

The Spring Social Calendar is published as a supplement to the Wallulah by its staff. It is commonly known as the "fusser's guide," giving the name, address, and phone number of each student, as well as a list of all spring social functions.

### Student Handbook

The Student Handbook is published each fall by the A. S. W. U. and is commonly known as the "frosh bible." Its purpose is to acquaint new students with the University and give useful information concerning student activities.

### Willamette Songbook

The Willamette Songbook includes all the Willamette songs up to date. Every student should own a copy, for Willamette is famous for her songs.

## LAUSANNE HALL REGULATIONS

All Freshmen girls and all girls new on Willamette's campus are required to spend their first year in Lausanne Hall. This regulation promotes new friendships for new girls and a spirit of democracy.

Hours on week nights are 10:00 p. m., signing out required after 7:30 p. m. On Friday and Saturday nights hours are 12:00, Sunday night girls must be in at 10:00. On leaving town permission must be secured

from Miss Jack or Dean Dahl, and girls shall register their address while away and time of probable return. Girls wishing to spend the night away from the Hall must secure permission. Late permissions may be granted by Mrs. Mills or Dean Dahl for any special functions. If, on any night, girls are attending a campus function which lets out too late for regular hours to be kept, all girls shall be in twenty minutes after the first girl arrives from that function.

#### Officers

President .....	Alene Fairclough
Vice-President.....	Norma Leek
Second Vice-President.....	Genevra Pond
Reporter.....	Mildred Pederson
Song Leader .....	Ethel Baxter

### SORORITIES

#### Beta Chi

1445 State Street, Phone 8760

#### Officers

President.....	Melva Belle Savage
Vice-President .....	Betty Dotson
Recording Secretary.....	Helena Schneider
Corresponding Secretary.....	Ruth Bunzow
Manager.....	Charlotte Litchfield
Treasurer .....	Carol Smith
Sergeant-at-Arms.....	Marguerite DuRette

#### Delta Phi

1610 Court Street, Phone 8730

#### Officers

President.....	Mary Jeanette Sargent
First Vice-President.....	Lillian Hart
Second Vice-President.....	June Johnson
Recording Secretary .....	Marguerite Smith
Corresponding Secretary.....	Elizabeth James
Telephone Secretary.....	Verna Vosper
Manager.....	Martha Herman

### Alpha Phi Alpha

750 North Summer Street, Phone 8911

#### Officers

President .....	Ruth Yocum
First Vice-President.....	Marjorie Jones
Second Vice-President.....	Lunelle Chapin
Recording Secretary.....	Esther Vehrs
Corresponding Secretary.....	Ariss Jones
Sergeant-at-Arms .....	Barbara Kurtz
Song Chairman.....	Rose Ann Gibson
Manager.....	Kathryn Thompson

### INTER-SORORITY RUSH RULES

1. Informal rushing, during the summer, may include eight house girls and eight rushees.

2. There may be only two formal rush functions in any town, one being an inter-sorority dance in Salem.

3. Violations of summer rushing rules shall be punishable in the same manner as violations of fall rushing rules.

4. It is a University ruling that the sorority houses shall not be used for rushing purposes during the summer.

5. There is to be a money limit of \$2.00 per person during summer rushing. At the opening of the fall term, the rush captains are to submit to Dean Dahl an itemized account of summer rushing expenditures.

#### Fall Rushing Rules, 1937

The sorority rushing season for the year 1937-1938 shall be from September 30 to October 15, inclusive.

#### I

Sorority girls may not enter the hall during rush season except at stated times.

#### II

No money shall be spent on rushees before the beginning of the rush season on September 30.

## III

Inter-sorority At Home shall be held Thursday, September 30, for all new girls. No rushing shall be done before this time.

## IV

Personal rushing shall begin October 4 extending through October 6.

- (a) Personal rushing shall not include an expenditure of funds whatsoever by sorority girls; that includes food, gifts, and games. Home rushing is forbidden. There shall be no entertainment of rushees at town houses.
- (b) Throughout all rushing there is to be no conversation about other houses or concerning personal house affairs.
- (c) Alumnae are put under the same rules as active sorority girls.
- (d) In personal rushing sorority girls may enter the Hall between the hours 7:00 to 9:00 P. M.
- (e) There shall be no rushing by men or non-sorority women. This includes mothers or sisters.
- (f) All personal rushing shall be from 7:00-9:00 P. M.
- (g) Personal rush days for the three houses shall be as follows:  
Monday, October 4.....Delta Phi  
Tuesday, October 5....Alpha Phi Alpha  
Wednesday, October 6.....Beta Chi

## V

House rushing shall begin October 11 extending through October 13.

- (a) No slumber parties shall be given.
- (b) No personal rushing shall be done.
  - 1. This includes sending letters, gifts, or visiting hall.
- (c) A date book shall be issued by inter-sorority council and dates shall be checked, and no invitations shall be issued.

- (d) A schedule of dates shall be agreed upon.
- (e) No favors shall be issued at any informal rush affair.
- (f) Buffet dinners shall be held from 5:00 to 8:00 P. M., October 11 to October 13, inclusive. The succession of dinners for 1937-1938 shall be:  
 Monday, October 11....Alpha Phi Alpha  
 Tuesday, October 12.....Beta Chi  
 Wednesday, October 13.....Delta Phi

## VI

A preferential formal dinner shall be held on Friday, October 15. Each sorority shall have this dinner on the same night.

- (a) Invitation for the formal rush dinners shall be in Dean Dahl's office by 4:30 P. M., Thursday, October 14.
- (b) The acceptance of the invitations must be in Dean Dahl's office by 4:30 P. M., Thursday, October 14.
- (c) The formal rush dinners shall be limited to a fixed sum. For the year 1937-1938 it shall not exceed \$50.00. Only formal decorations shall be used.
- (d) An itemized account of part expenses is to be turned in to the Dean of Women by October 22.

## VII

Those girls who have been on the campus the previous term will follow the same specified regulations as the new girls on receipt of an invitation to one of the informal dinners.

## VIII

No girl shall be pledged before formal pledging of rush week.

- (a) No girl taking less than 12 hours shall be pledged.

## IX

Any sorority violating the above rules shall be subjected to forfeit in the following



manner:

- (a) For any violation from September 30 to October 15, the formal dinner shall be forfeited.

X

A day of complete silence shall be maintained Thursday, October 14.

**Second Semester Rushing Rules**

I

Second semester rushing shall take place second week.

- (a) It shall last from Monday at 4:00 P. M. until Friday at 9:00 P. M.
- (b) There shall be no rushing during study hours.

II

Personal rushing shall be Monday from 6:30 to 8:30 P. M. and Friday from 6:30 to 8:30 P. M.

- (a) Notes for personal rushing on Monday shall be sent to girls on Friday. Notes for Friday shall be put in mail boxes in Eaton Hall Friday Morning. Reply by phone for Friday and in writing for Monday.

III

Each house shall have a tea and a dinner.

- (a) Teas shall last from 4:15 to 5:15; dinners, 5:30 to 7:30.
- (b) Invitations shall be issued by phone or personally.

Tuesday—

Tea.....

Dinner .....

Wednesday—

Tea.....

Dinner .....

Thursday—

Tea.....

Dinner .....

## IV

Bids and preferences shall be in by 6:00 P. M., Saturday, to the Dean of Women and they shall be delivered by one girl from each house.

## V

There shall be silence Saturday. Pledging shall be Sunday morning as in fall rushing.

## VI

Penalties for failure to comply with these rules to be fixed before rushing begins.

## FRATERNITIES

## Kappa Gamma Rho

316 North Church Street, Phone 8882

## Officers

President.....Ralph Gustafson  
Vice-President.....Kendall Peisinger  
Secretary.....Ward Weineke  
Manager.....Lawrence Nunnenkamp  
Assistant Manager.....Charles Bickner

## Sigma Tau

920 Oak Street, Phone 8718

## Officers

President.....Otto Wilson  
First Vice-President.....Ronald Sherk  
Second Vice-President.....Robert Clarke  
Secretary.....Bill Burget  
Manager.....Lloyd Rhie

## Alpha Psi Delta

895 Chemeketa Street, Phone 6588

## Officers

President.....Warner Crow  
Vice-President.....John Kelly  
Secretary.....Wayne Brainerd  
Member-at-Large.....Arthur Lampka  
Manager.....Bill Anton

## Inter-Fraternity Rushing Rules

Procedure: Subsequent to registration, at a time set by the Inter-Fraternity Council, each new registering man shall be given the



opportunity to signify his choice of fraternities, which shall be written and filed with the Dean's office. Each fraternity shall present to the Dean a list of new men whom it wishes to pledge. Official notification shall issue from the Dean's office to each fraternity respectively of the names which correspond to the list it has handed in.

**Time of Pledging:** No man shall be offered the opportunity to pledge any fraternity until the time of pledging set by the Inter-Fraternity Council and until he shall have completed registration. Completion of registration means the making of final arrangements with the business office in regard to the payment of tuitions. Any violation of this provision on the part of any fraternity shall mean the forfeiture of the right to pledge the man in question for a period of thirty days.

Pledge day for the Fall Semester, 1937, shall be Friday, September 25. Fraternity lists must be in the Dean's office by four o'clock in the afternoon.

## AWARDS

At Commencement time each year a number of prizes are awarded to those students who have shown ability in certain fields of endeavor.

### Alpha Kappa Nu

Alpha Kappa Nu is a local honorary fraternity, having for its purpose the promotion of high scholarship. Its membership is limited to ten per cent of each Senior class, selection being made before Commencement each year.

#### Members 1937:

Margaret Doege  
Winthrop Henderson  
Mildred Walker  
Helen Purvine  
Elizabeth Galloway

Constance Smart  
Lucile Brainard  
James Pyke  
Randall Kester  
LaVerne Holmyer

### **Albert Prize**

Mr. J. H. Albert, of Salem, awards \$25 to the student having a record for faithful study and scholarship not below the average, who, during the school year, opportunities considered, has made the greatest progress toward the ideal in character, service, and wholesome influence.

Billy Sutton

### **The Colonel Willis Prize**

Col. Percy Willis, '95, of Portland, offers a prize of \$25 "to the student who throughout the school year has done the most real good to fellow students and the University by deeds of kindness and genuine helpfulness coupled with steadfast devotion to high ideals and upright character."

George Self

### **Keyes Prize**

This prize, given by Walter E. Keyes, of Salem, offers two awards of \$15 and \$10 to those who win first and second honors in oratory.

First prize, Warren Peters

Second prize, Edwin Minneman

### **Outstanding Athletic Trophies**

A plaque is awarded by Mr. J. H. Booth of Roseburg to the Senior man who, in addition to maintaining high scholarship, has exerted a fine moral influence and has achieved the best standing in athletics. In addition to the personal trophy, his name is engraved on a large loving cup held as a permanent trophy at the University.

Charles Versteeg

To the Senior girl whose achievement in personality, sportsmanship, leadership, scholarship, and assistance to others in athletics is deemed greatest, and who is herself outstanding in athletics, a silver loving cup is given.

Rachael Yocom

**Willamette Women's Athletic Honor**

This honor is conferred upon the Sophomore or Junior girl who in the opinion of the honor committee has made an outstanding contribution to the social and ethical aspects of the women's physical recreation activities of Willamette University. This award was given for the first time this year.

Ruth Yoccm

**The Class of 1919 Scholarship Prize**

An award of \$10 is made by the Class of 1919 to the Senior who in scholarship has the most outstanding record.

Margaret Doege

**Callaghan and Company Prize**

This is an award of an annual prize consisting of the choice of any law school textbook published by the company to the Junior maintaining the highest scholastic standing throughout the year.

Dewey Palmer

**Bancroft-Whitney Prize**

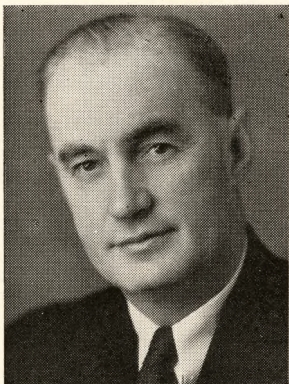
The Bancroft-Whitney Company gives a set of Jones' Commentaries on Evidence, six volumes, to the Senior doing the most commendable work in trial practice.

Max Taggart and Courtney Johns

**Senior Scholars 1937-1938**

These appointments are made at the close of the Junior year to hold throughout the Senior year. The duties of the Senior scholar are to make special studies of the teaching methods, examine papers, and assist in the laboratories. Selection is based on scholarship and fitness.

Biology .....	Barbara Crookham
Economics.....	Melvin Viken
English Composition .....	
.....	Muriel Ingham and Cornelia Hulst
English Literature.....	Phyllis Macy
French.....	Jean Hollingworth
Latin.....	Charlotte Eyre
Music .....	Marion Chase
Physical Education.....	
.....	Verdell Ragsdale and Frances Faber
Political Science.....	Arthur Miller
Spanish .....	Elizabeth Brown
Speech .....	Katherine Ringe
Sociology .....	Elizabeth Taylor

**COACH KEENE****1937 FOOTBALL SCHEDULE**

- Sept. 25—Albany College, at Salem, Night.  
Oct. 1—Fresno State College, at Salem, Night.  
Oct. 9—University of Portland, at Portland, Day.  
Oct. 15—San Jose State College, at San Jose, Night.  
Oct. 22—Whittier College, at Salem, Night.  
Oct. 29—College of Puget Sound, at Tacoma, Night.  
Nov. 6—Oregon State College, at Corvallis, Day.  
Nov. 12—Pacific University at Salem, Night.  
Nov. 20—Whitman College, at Walla Walla, Day.  
Nov. 25—University of Nevada, at Reno, Day.

## ATHLETICS

Intercollegiate athletics are maintained under the personal supervision of the Director of Athletics and under the jurisdiction of the Athletic Council.

Willamette belongs to the Northwest Conference, composed of the following schools: Whitman College, College of Idaho, College of Puget Sound, and Pacific University. It is the purpose of this Conference, as far as possible, to foster participation by all members of the Conference in contests of football, basketball, baseball, tennis, and track.

### Intramural Activities

Intramural activities are maintained under the personal supervision of the Director of Physical Education and the chairman of the Interclass Rivalry Committee.

The program extends over the entire school year, and is composed of the following activities: cross country, scrimmage ball, basketball, boxing, wrestling, physical ability tests, track, baseball, and tennis.

Students taking Physical Education for credit must pass the Physical Ability Tests before they are permitted to substitute an intramural activity for the regular class work.

### Gymnasium Requirements

Physical Education is required of all students throughout the Freshman and Sophomore years.

The regulation uniform for the Physical Education classes consists of rubber-soled shoes, supporter, sleeveless jersey, pants, and a heavy sweater or sweatshirt.

Locker should be locked at all times. Equipment that is left out will be picked up.





George LaVatta

## VARSITY YELLS

**Fight, Team!**

Fight, team, fight, fight! (softly)

Fight, team, fight, fight! (louder)

Fight, team, fight, fight! (shout)

**Yea, W. U.**

Yea, W. U.

Yea, W. U.

Yea, W. U.

Fight 'em, fight 'em, fight 'em!

WILLAMETTE!

**Go Get 'Em, Bearcats**

Go get 'em, Bearcats, go get 'em!

(slowly, softly)

Go get 'em, Bearcats, go get 'em!

(faster, louder)

GO GET 'EM, BEARCATS, GO GET 'EM!

**Skyrocket**

S-s-s-s-s-s-s-s-s-s- (rise on whistle) BOOM!

A-a-a-h, WILLAMETTE!

**Keene**

He's Keene!  
Who's Keen?  
Spec's Keen!


**Locomotive**

(Spell softly and slowly working up to  
fast and loud)

W-I-L-L-A-M-E-T-T-E  
(Repeat several times)

**Spell Bearcats**

Be . . ar . . ca . . ts (slowly)  
Be . . ar . . ca . . ts (faster)  
Be . . ar . . ca . . ts (fast)  
Be . . ar . . ca . . ts (very fast)  
Bear-cats!  
Bear-cats!  
BEARCATS! (shout)





June Johnson

**VARSITY SONGS**  
**OLD HISTORIC TEMPLE**

There's an old Historic Temple  
Rising grandly through the years;  
Where the oaken-hearted fathers  
Drew their strength for strong careers.  
Down the years its portals open,  
Gather wise ones to its fold;  
Breathes the spirit of the Westland,  
Card'nal emblem 'bossed with gold.  
Spirit of the Golden Westland,  
Breathing through our father's tears;  
Tells the story of the Temple,  
Bids us hope adown the years.  
Sing, oh sing, of old Willamette,  
Sing while hearts are young and true;  
Sea to sea the chorus swelling,  
Dear old school, our W. U.

**FIGHT, SONS OF OLD WILLAMETTE**

Fight, sons of old Willamette,  
Fight, 'til the battle's done;  
    With a valor ever bold  
    For the Card'nal and the Gold  
Fight 'til the vict'ry's won!  
    Many hearts are standing by you  
    With a spirit ever true;  
Fight with courage never dying  
    Fight! Williamette U.

**FIGHT, FIGHT, FIGHT—JUNIOR, 1935**

Fight, fight, fight, you fearless men of might  
    Who face the foe for W. U.  
Fight, fight, fight, with victory in sight  
    Your strength and courage will renew.  
Fight, fight, fight, you dauntless Bearcats,  
    fight,  
    And as you fall upon the foe  
Let your hearts and strength unite  
To Fight, Fight, Fight.  
    The enemy will fear you,  
    And the multitude will cheer you  
As you Fight, Fight, Fight.      (repeat song)

**SERENADE SONG**

When all the campus is sleeping,  
    Bathed in a silv'ry glow,  
Lulled to rest by the mill stream,  
    Murmuring soft and low.

Our voices will lift 'neath your window,  
    Soft as the palest moonlight;  
Not to disturb your fair slumbers,  
    But wish as we bid you good night.

**Chorus—**

While you are sleeping, sleeping,  
Under the milky way,  
Wrapt in the shadow of night-time,  
    Far from the cares of the day;  
May you be dreaming, dreaming,

Dreams of a love ever true,  
Love that a lad of Willamette  
Holds in his heart for you.

### I LOVE WILLAMETTE U

I love Willamette U,  
I love her campus too;  
I love her Profs. so good and true,  
I love her spirit real true blue.  
I love the old mill stream,  
I love to sit and dream;  
I see it all in shadows cool,  
I love our dear old school.

### WA HOO

Wa hoo, wa hoo  
Rip zip ba-zoo,  
I yell, I yell for W. U.  
Wa hoo, wa ho, wa hoo,  
Well, well, well,  
Well, well, well, well,  
Well, well, well, well,  
Wa hoo, etc.

### TRUE TO YOUR SPIRIT

True to your spirit!

On brave warriors, to the end;  
Fight till the foe shall fear us,  
Till the enemy's haughty head shall bend.  
On for Willamette,  
Fight the battle as of old,  
Victory the prize shall be  
Of the Cardinal embossed with Gold.

### FRESHMAN SONG—1933

Come let our laughter mingle  
With silvery sounds of night,  
But list, my sweetheart of Willamette  
While I tell my plight.

**Chorus—**

Waken, loved one, heed that bright moonbeam  
Straight as a gleaming dart;  
Waken, dear one, cease your dreaming,  
To you, the delight of my heart,  
I'm calling. Here beneath your window singing  
A song that is ever new;  
Though 'tis the old, old song I'm singing  
It means, sweetheart, I love you!

**VICTORY FOR W. U.**

Vict'ry for W. U.  
The bell in the tower rings.  
The battle's done;  
The victory's won;  
Card'nal and Gold are flaming  
Proudly o'er us.  
Here's to the Bearcat Team  
Who carried our color through!  
Our song shall go  
Till the world will know  
There's a vict'ry for W. U.!

**DREAM ON**

The stars are softly gleaming  
In the shadows of the night.  
The moon like glowing silver  
Covers all with mellow light.  
The world is resting peaceful  
From the hurry of the day,  
So now beneath your window  
Do I sing to you and say—

**Chorus—(Boys sing)**

Dream on gently, pretty maiden,  
Till the golden heart of you  
Thrills with the night-time's tender beauty,  
And your fairest dreams come true.

**(Girls sing)**

Dream on, lad of old Willamette  
Till the youthful heart of you  
Thrills with life and love and glory  
And your fairest dreams come true.



**CANNIBAL KING**

A cannibal king with a big nose ring  
Got stuck on a Zulu maid,  
And every night when the moon shone bright  
Across the canal he'd wade  
To hug and kiss this dusky miss  
Out under the big bay tree,  
And when they met they sang a duet  
That sounded like this to me:  
    Oh, Jason Lee, socretty boo-ya  
    Oh Poppa Waller, chenickety umba  
    Umpa-Umpa-Um.

**SOPHOMORE LOYALTY SONG—1934**

Hail to our Alma Mater,  
    To the Card'nal and to the Gold,  
Honor as true as card'nal,  
    Loyalty true as gold.  
Hail to the friends we cherish,  
We pledge loyalty to you;  
We'll always share the fellowship  
    At our Willamette U.  
Hail to the teams whose valor  
    Will bring victory to you;  
Hail to the campus spirit,  
    With loyalty made more true.  
Hail to the dauntless courage,  
    As bright as the card'nal hue;  
We see it all in college days,  
    At our Willamette U.

**SENIOR SONG—1936**

Silver clouds are rifted by the starlight,  
The scented blossoms lowly bend with dew;  
Magic pools of mist that come with midnight  
Echo back my song of love to you.

**Chorus—**

Soft music lifting,  
Through shadows drifting,  
    Into your dreamland,  
    There to live anew.  
Pale moon descending,  
My love song ending—  
    Sweetheart of W. U.

**AROUND THE CAMPUS**

Around the campus of old Willamette  
We'll shuffle the cards and roll the bones  
along, along, along,  
Around the campus of old Willamette,  
We'll shuffle the cards and roll the bones  
along.  
Slinga da ink, slinga da ink,  
Slinga da ink and push the pen along, along,  
along,  
Around the campus of old Willamette,  
We'll slinga da ink and push the pen along.  
Worry the profs, worry the profs,  
Worry the profs and kid them right along,  
along, along,—

Boys sing:

Fuss the girls, fuss the girls,  
Fuss the girls and kid them right along,  
along, along,—

Girls sing:

Vamp the boys, vamp the boys,  
Vamp the boys and kid them right along,  
along, along,—

W. U., W. U.,  
W. U. will help you right along, along, along,

Each class insert its own number:

'41, '41,  
'41 will help you right along, along, along,—

**FIGHT, BEARCATS!**

Fight, Bearcats, fight!  
A victory for W. U.  
Cardinal and Gold, victorious of old  
Will give us a spirit ever true.  
Fight, fight, fight!  
Cardinal courage show  
And Gold is our faith so true  
We shout our war cry out to you  
Come on and fight, fight, Fight!

**QUEEN OF THE WEST**

The East may love old Harvard,  
The North love old Cornell;  
But the school of fame, whose noble name  
Forever shall excel  
Stands proudly in the West land,  
Where friends are staunch and true;  
We love our dear old college,  
So here's to W. U.!

**Chorus—**

Willamette, to thee we will be true,  
Willamette, we'll ever fight for you,  
We pledge our loyalty,  
Our homage pay to thee.  
Pride of all the West, you are the best.  
Willamette, our hearts we pledge anew,  
Willamette, our fealty to you,  
Faithful we will be  
With staunch fidelity  
Willamette, queen of all!

**FIGHT, WILLAMETTE U**

Fight Willamette U  
Remember, boys, we're proud of you;  
Let your courage show  
And you will conquer over any other foe.  
LET'S GO, so  
Fight with loyalty, and you will win the victory  
That comes by right to men of might  
So, FIGHT, WILLAMETTE  
FIGHT WILLAMETTE  
FIGHT.

**SENIOR SONG—1937**

Oh, the Indians known to Jason Lee  
Went out one night on a little spree  
They organized a rythm band  
That soon was known throughout the land.  
Then they went off to college  
And they took their band along,  
With sharps and flats and feathers in their

hats

They beat their big tom-toms.

The big chief smiled

The squaws went wild

As they sang their college song.

Woo-oo Woo-oooo Woooo-ooo

At Willamette U each gal and lad

Has the same kind of rythm that the Indians  
had.

The red man's ghost is with us still

And if we don't whoop we're sure they will.



## FACULTY DIRECTORY

Name and Address	Phone
Dr. Bruce R. Baxter, 196 E. Washington	3006
Dean Frank M. Erickson, Rt. 3, Box 73A	
.....Dial 116	62F3
Dean Daniel H. Schulze, 120 E. Superior	8139
Dean Olive M. Dahl, Lausane Hall.....	6694
Dr. George H. Alden, 760 N. Church.....	5609
Prof. E. T. Brown, 715 S. Capitol.....	3496
Prof. Clark, 1625 N. Winter.....	7388
Miss Alida Gale Currey, Sundberg Apts.	8125
Miss Edith DeNise, Roberts Apts.....	8929
Mrs. Edna J. Ellis, 2535 E. Nob Hill.....	7379
Miss Clara Enness, Lausanne Hall.....	6672
Miss Constance Fowler, Rt. 6, Box 319	
.....Dial 116	110F13
Dr. F. G. Franklin, 1365 Marion.....	6207
Dr. Robert M. Gatke, 280 Richmond Ave.	9471
Prof. C. C. Haworth, 410 W. Rural Ave.	7349
Dr. Chas. H. Johnson, 365 E. Rural Ave.	5835
Prof. William C. Jones, 1000 N. Capitol	3809
Coach Roy S. Keene, 540 Lefelle.....	9460
Dr. Henry C. Kohler, Kimball Hall.....	3851
Miss Lois E. Latimer, 966 Center.....	8432
Dr. S. B. Laughlin, 1705 Court.....	4224
Miss Helen MacHirron, Lausanne Hall..	4240
Prof. Cameron Marshall, 756 Mill St.....	9693
Dr. James T. Matthews, 1393 S. 12th....	
Prof. Cecil R. Monk, 1025 Capitol.....	5408
Miss Marion Morange, Sundberg Apts...	8125
Prof. Egbert S. Oliver, 920 Hood.....	6851
Miss Bernice Orwig, 1655 S. Liberty.....	8510
Dr. Helen Pierce, 267 N. Winter.....	4236
Prof. Morton E. Peck, 1552 Court.....	5258
Prof. Herbert E. Rahe, 1026 N. Winter	7479
Prof. Ernest C. Richards, 966 Center....	8432
Prof. T. S. Roberts, 505 N. Summer.....	7111
Miss Mary Schulze, 1547 Market.....	3923
Dr. Chas. L. Sherman, 835 D.....	5762
Prof. Lestle J. Sparks, 140 N. 21st.....	3291
Robinson Spencer, 340 N. Church.....	
Prof. R. W. Tavenner, 290 W. Superior	6233
Dr. A. A. Vazakas, 860 N. Cottage.....	6840

**LAW FACULTY**

<b>Name and Address</b>	<b>Phone</b>
Dean Roy M. Lockenour, 465 N. 14th....	7568
C. M. Inman, 1465 Mission.....	6402
Willis S. Moore, 1370 D.....	8884
Ray L. Smith, 1895 Center.....	7557
Edw. N. Gillingham, Turner....Dial 116	33F14
Victor R. Griggs, 670 S. High.....	9366
Walter E. Keyes, 755 Ferry.....	9475
E. M. Page, 1642 Court.....	4665



# RECITATION SCHEDULE

## First Semester

	M	T	W	Th.	F
7:45.....					
8:40.....					
9:35.....					
10:30.....					
11:25.....		Chapel	Chapel	Chapel	St. Bdy Meets
1:15.....					
2:10.....					
3:05.....					
4:00.....					

Chapel Seat..... Gym No.....

## Second Semester

	M	T	W	Th.	F
7:45.....					
8:40.....					
9:35.....					
10:30.....					
11:25.....		Chapel	Chapel	Chapel	St. Bdy Meets
1:15.....					
2:10.....					
3:05.....					
4:00.....					

Chapel Seat..... Gym No.....

**CHURCH DIRECTORY**

American Lutheran—Church, between Chemeketa and Center.

Bethany Reformed—Capitol and Marion.

Calvary Baptist—High and Ferry.

Castle Chapel, United Brethren—Nebraska and 17th.

Christ Evangelical, Lutheran—State, between 17th and 18th.

Church of Christ—1489 N. Cottage.

Church of God—1346 N. Church.

Church of the Latter Day Saints—Chemeketa and Cottage.

Church of the Nazarene—Center and 13th.

Court Street Christian—Court and 17th.

First Baptist—Liberty and Marion.

First Christian—High and Center.

First Church of Christ Scientist—Chemeketa and Liberty.

First Congregational—Liberty and Center.

First Evangelical—Marion and Summer.

First German Baptist—Cottage and "D".

First Methodist—State and Church.

First Presbyterian—Chemeketa and N. Winter

First United Brethren—Mission and 12th.

Highland Friends—Highland and Church.

Immanuel Baptist—Hazel and Academy.

Jason Lee Memorial, Methodist—Jefferson and N. Winter.

Knight Memorial Congregational—Ferry and 19th.

Leslie Methodist—Commercial and Myers.

Market Street Free Methodist—Market and N. Winter.

Mill Street Methodist—Mill and 15th.

Seventh Day Adventist—Gaines and 5th.

South Salem Friends—Commercial and Washington.

St. John's Lutheran—16th and A.

St. Joseph's Catholic—Cottage and Chemeketa.

St. Paul's Episcopal—Church and Chemeketa.

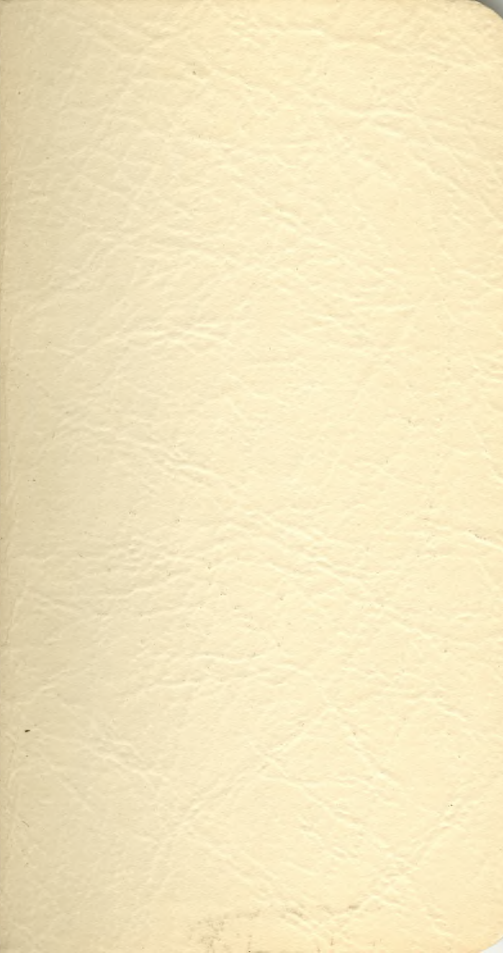
St. Vincent de Paul, Catholic—2200 Myrtle.

West Salem Methodist—State and 3rd.



## INDEX

	Page
A Good Freshman .....	16
A. S. W. U. Greeting .....	12
Athletics .....	42
Awards .....	37
Blue Key's Greeting.....	14
Dr. Baxter's Greeting.....	7
Calendar .....	4
Church Directory .....	56
College Calendar.....	5
Customs .....	17
Dean Dahl's Greeting.....	9
Dean Erickson's Greeting .....	8
Dean Schulze's Greeting .....	10
Faculty Directory.....	53
Football Schedule.....	41
Fraternities .....	36
General Manager's Greeting .....	11
Health Service .....	24
Interfraternity Rushing Rules .....	26
Intersorority Rushing Rules .....	32
Lausanne Hall .....	30
Map of Campus .....	28
Organizations .....	19
Publications .....	27
Recitation Schedule .....	55
Sororities .....	31
Student Purpose.....	18
Telephone Directory .....	57
Traditions .....	15
Varsity Songs .....	45
Varsity Yells.....	43
Who's Who at W. U.....	18
Y. W.'s Greeting.....	13



KRAPS & LONG, PRINTERS, SALEM