

WALLULAH

UNIVERSITY

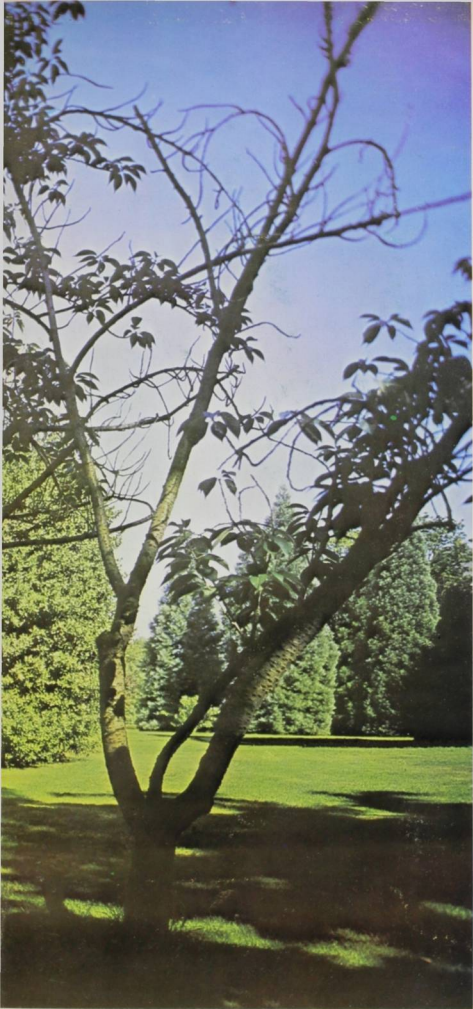
WILLAMETTE



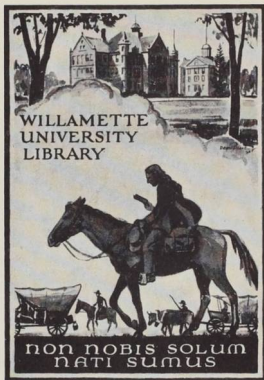


WILLAMETTE
UNIVERSITY

FOUNDED BY JACOB LEE AND
THE LARRY CHRISTIAN PIONEERS



WILLAMETTE
CAMPUS



GIFT OF A. S. W. U.

WALLULAH

63

WILLAMETTE UNIVERSITY
SALEM, OREGON

UNIVERSITY

WILLAMETTE



The "WALLULAH" of WILLAMETTE UNIVERSITY Salem, Oregon

Volume 53

EDITORS

Joann Gay
John Ryan

ASSISTANT EDITOR

Merle Gillespie

EDITORIAL STAFF

Managing Mike Keuss
Assistants Carolyn Low, Barbara Hamilton
Sports Tom Miller, Sid Cooper
Living Organizations Candy Blair
Lay-out Merle Gillespie
Faculty Advisor Dr. Murco Ringnalda

BUSINESS STAFF

Business Manager — Al Frew
Advertising Manager — Tom Newell
Advertising Staff — Betty Burgoyne,
Toye Fay Esch

DARKROOM STAFF

Manager — Burr Baughman
Assistant — Donna Marggi
Photographers — David Miles,
Dale Ross

MANAGERIAL ASSISTANTS: Lucy Christianson, Pat Hart, Kirk Ann Neil, Bonnie Brown, Susan Furguson, Darlene Hawkins, Marion Gilmore.

PUBLISHED BY THE ASSOCIATED STUDENTS OF
WILLAMETTE UNIVERSITY — SALEM, OREGON

Willamette University Library
Salem, Oregon

0
378,795
V681w
1962-63
e.2

Activities14

Royalty 43

Academics 78

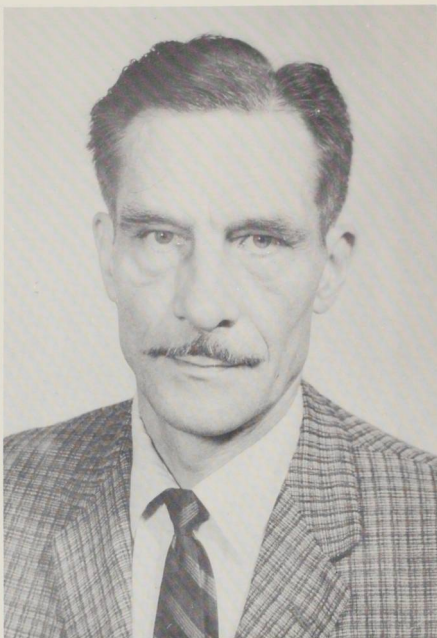
**Living
Organizations** 110

Seniors 147

Sports162

Index197

Dr. Murco Ringnalda



... To **MURCO RINGNALDA**, Professor of Journalism and English, for his continuous contribution of more than twenty years to the advancement of journalistic endeavor at Willamette University ... For his diligent guidance and supervision, the staff of the 1962-63 Wallulah express sincere appreciation.

FOREWORD

. . . the university inhabitant . . . is never alone.

"Non Nobis Solum Nati Sumus" . . . "We Are Not Born Unto Ourselves Alone" . . . The 1963 Wallulah, official recorder of Willamette tradition and student life, befittingly takes as its theme the words embossed upon the official seal of Willamette University, "We Are Not Born Unto Ourselves Alone."

Through the university pass young people eager for knowledge, ready to learn. Their goals are as many and as varied as their own numbers. From medicine to history to art to education, each must prepare for a future outside the academic walls of the university. But human beings are social beings and the university is a social institution; indeed the learning process itself involves a social awareness and interaction between people, between teacher and student. Thus the university inhabitant, in one sense, is never alone. Through cooperation and even competition the university provides a framework within which the student can strengthen his own ideas, challenge the thoughts and theories of others, create an ideal toward which to work. Could such accomplishments be achieved alone?

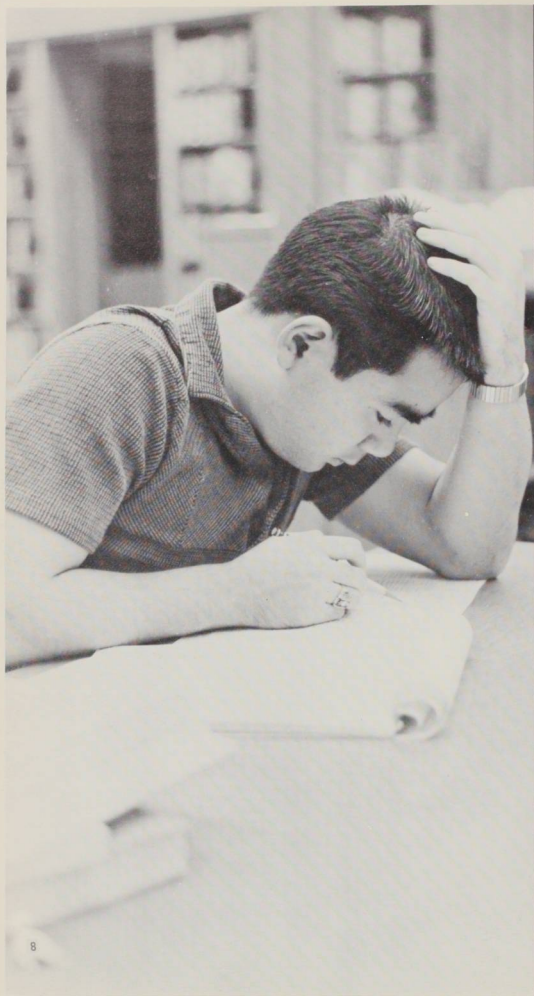
And leaving the somewhat structured existence of the university, by its own purpose sheltered in ways from the outside, the student emerges into another social current. Here, as in the pattern of the university, he confronts a social environment in which the exchange, the sharing of ideas, values, convictions becomes a basic tenet for existence.

It is the hope of the editors and staff of the 1963 Wallulah to portray that aspect of life and of learning which admits to a mutual understanding and advancement of university and student — this goal through the representation of processes, events, and their integration into an atmosphere which is Willamette University.

"We Are Not Born Unto Ourselves Alone"

**“We are not born unto
ourselves alone.”**



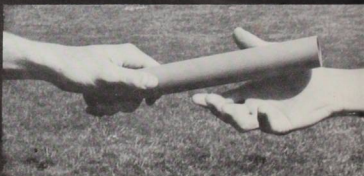


***“We are not born unto
ourselves alone.”***





**"We are not born unto
ourselves alone."**





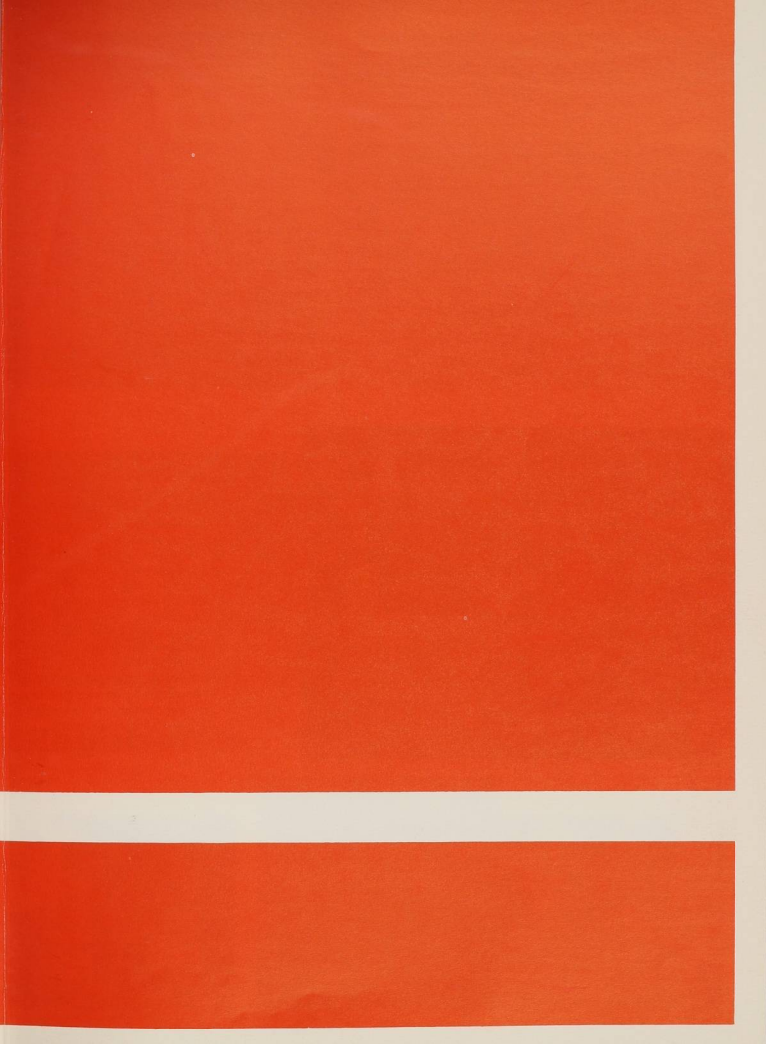




***“We are not born unto
ourselves alone.”***



Activities



Freshman Orientation



An innovation in the Orientation Week schedule this year was the "Orientation Retreat" for incoming freshmen students. The three day retreat was held at Silver Creek Falls and was attended on a voluntary basis by the frosh. The purpose of the "Retreat" was to introduce to the new students a more academic atmosphere. It was felt by the orientations committee that too often new students are met with a barrage of activities which does not allow for academic orientation. Thus, much of the time at the retreat was spent in group discussion which centered around the more serious aspect of college life. Of course, not all was in a serious vein, as hikes, relays, and other entertainments filled the docket. Final evaluation of the "Retreat" showed it to be a positive force in the schedule of Orientations Week.





Registration



The Columbus Day Storm 1962

It started out to be, what we thought, just another slight wind storm. The day had been cloudy with a bit of wind all day, but late in the afternoon on Oct. 12, 1962, all hell broke loose. Hurricane Frieda, with all her force blew through Salem with winds that measured near 100 mph. For four hours the campus waited in darkness until about 10:00 p.m. when the electricity was restored on the campus. Some of the sororities were not so lucky and had to wait as long as two weeks before they received their power back.

We would like to salute the students, faculty, and administrative members who pitched in the Sat. after the storm, and again on the following Friday for the campus clean-up. In an unprecedented first, the administration canceled classes for the clean-up. Wilamette can be proud of its students for the assistance they provided to the community and the campus both during and after the storm.





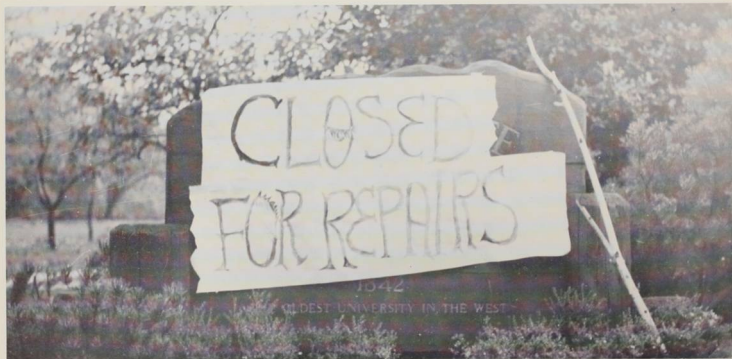




**. . . all hell
broke loose.**

Parent's Weekend

A crisp October weekend hailed the arrival of Willamette's annual Parents' Weekend, packed with activities designed to acquaint parents with academic and social aspects of the Willamette tradition. The weekend, high-lighted by the all-campus sing, included opportunities for parents to meet the faculty and to visit in the living organizations, as well as to view the annual student-sponsored Varsity Varieties and to attend Saturday evening's football game against the College of Idaho. Although the campus had barely begun to recover from the damage done in the previous weekend's big wind storm, the spirit of the occasion was not marred, and both parents and students enjoyed having Willamette "on display."

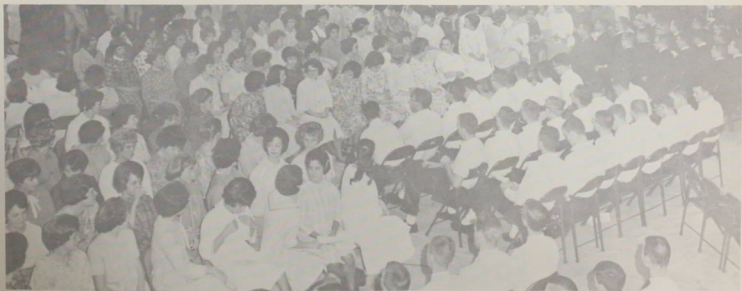


This sign welcomed parents as they arrived for the 12th annual Parent's Weekend festivities. Only a week before (Oct. 12, 1962) the Columbus Day storm did an adequate job of changing the face of the campus by blowing down trees, power lines, and chimneys. With the help of students, maintenance men, and contracted help, a valiant attempt was made to get the campus cleaned up for the arrival of the parents, but the damage was too extensive to clean up in one week. The sign did not express the exact situation as the academic schedule was carried out as usual. The campus was not seriously damaged, but the homes of some of the university personnel and faculty were seriously damaged by Hurricane Frieda.



With the prospect of Mom and Dad coming to the campus, the brooms and dustmops really flew into action, yet not really wanting to hide the 'way we really live'. The students best effort was put forth to clean up rooms and dorms for the visitation of the parents.

All parents were guests of W.U. for the All Campus Sing, and the football game with College of Idaho. The Bearcats thumped the potato diggers 20-0.





All Together Now . . . Pull



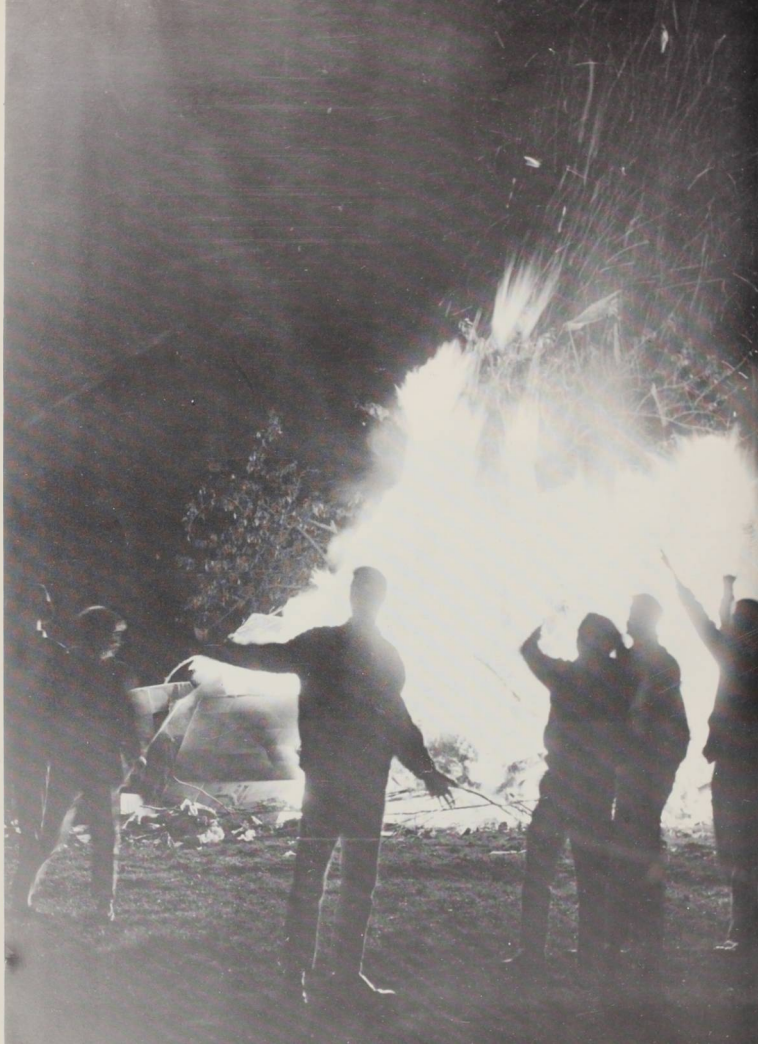
Homecoming

At 5 o'clock Friday morning, Homecoming Weekend began as early rising sophomores awakened the freshmen for a noisy rally in the quad. Freshmen then spent the day guarding the site of their bonfire until 6:30 that evening when they sent the flames leaping into the air.

A traditional alumni assembly and Bar-B-Q lunch gathered the returning alums together before all made their way to McCulloch Stadium to watch the Willamette gridmen face Linfield. At halftime Homecoming Queen Corky Demler and her court, Princesses Paula Abbott and Barbara Woodworth, were presented and Queen Corky received her crown. Also the enthusiastic seniors won the "Spirit Trophy" awarded by the rally squad for presentation of the best original yell. Coach Ted Ogdahl's Bearcats lost a hard-fought contest to the Wildcats, 20-12. After the game, senior players were honored, and then the freshmen strained the hardest to win the after-game tug-of-war with the sophomores.

Concluding the weekend was the Homecoming Dance, "One Bright Night," honoring the Queen and her court. As the finale of the weekend approached, Homecoming Manager Joe Hughes and his committee could look back upon a highly successful Homecoming for 1962.







SENIORS



SOPHOMORES



FRESHMEN



JUNIORS



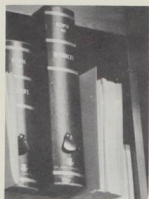


Christmas At W. U.

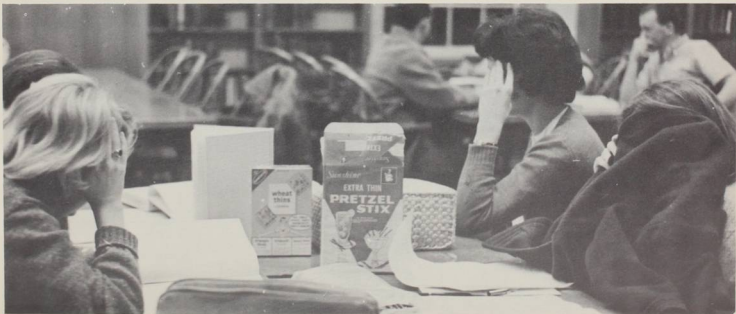
With finals a whole month and a half away, Willamette students are able to fully enjoy the holiday atmosphere that envelops the campus. Pre-vacation days are filled with many and varied activities. Living organizations may be seen cheerily trimming their Christmas trees, stringing popcorn, wrapping holiday gifts. Highlighting each Christmas season on campus are the many serenades sponsored by individual living organizations. And it is not unusual to see old Saint Nick making appearances, his white beard and jolly remarks adding to the fun of these special serenades. A most rewarding activity of the campus holiday season is the party for underprivileged children held by various living organizations. Here the children are treated to an evening of games, fun, and of course a visit from Santa Claus.

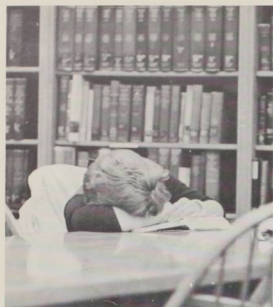


Finals --- Twice A Year



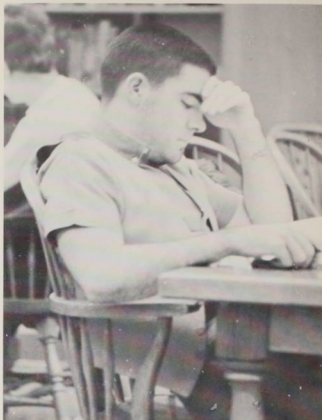
Christmas in the background, students begin feverishly to prepare for winter finals. The library is transformed almost overnight into the campus study center, tables piled high with books and notes. All of a sudden students find themselves wondering what they have been doing for the last four months, as they scan page after page of material, some for the first time. Those last nights seem never-ending. . . . resolutions are made for "next semester's better organization" . . . alarm clocks sound at unheard-of hours . . . last minute facts are learned (?) . . . at last-winter finals are now history!





L
a
t
e

N
i
g
h
t
s



C
r
a
m





C. R. Week

"The therapeutic person:" what is he, who is he, where is his place in society? These were basic topics for discussion during Christian Resources Week. Dr. Robert C. Leslie, professor of pastoral psychology and counseling at Pacific School of Religion in Berkeley, California, served as guest speaker and panel moderator during CR Week. Through dialogues presented at convocation assemblies the importance of interpersonal relationships, their values and reservations, was stressed. At the evening firesides students participated in live discussions, many of which centered around the definition of the term "therapeutic," its inferences and descriptive use in the adjoining field of counseling and religion. This week was one of thought, discussion, presentation of opinions, constructive argument, acquiring insight, formation of ideas and such is the purpose of CR Week.



Novelty

1963

Freshman Glee

The sophomore class reigned victorious at this year's Freshman Glee, an event unique to Willamette. Working with a novelty theme, all classes practiced over thirty hours preparing a song and formation to answer the freshman class's challenge. Judging is based on words and music, formation, and presentation. Up at 5 a.m. for practice, members of each class made Glee bets to be paid off on Blue Monday.

The jubilant sophomores won Glee with their presentation of "West with a Song." The serious problem of integration was the theme of the seniors' song, "Brother to Brother," which came within five points of first place. Third place went to the freshmen as they formed the engine of a train while singing "Destination W.U." The unlucky juniors sang their way to the icy waters of the millstream with "Here at Freshman Glee."

Blue Monday found the juniors entertaining the student body at an assembly which presented Glee 1963 from their point of view before they marched on down to the millstream. And undaunted, the juniors managed to take swimming with them several students who had begun as observers. The end of Blue Monday brought about the close of Glee for 1963 and a week of fun and hard work for everyone.

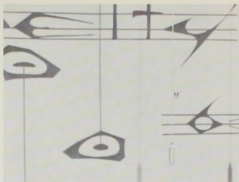
A Week Of Preparation





**A Long
Awaited
Presentation**

**Schultze
Talks
On Tonight**





The Immediate Victory

The Final Victory





Comps And Orals

Whew! Four years of knowledge to write down in four hours Hurry Write faster Fingers cramping Only three hours left Thought I'd never have to take these Hurry Only two hours left Need a drink of water Hurry, only one short hour left Oh—when did that happen? Who invented it? Stop! Dislike waiting for results Whew — passed! Now on to orals



May Weekend 1963



With the arrival of visiting high school seniors on campus, the 1963 May Weekend was officially opened. The purpose of the weekend, in addition to the enjoyment it provides for Willamette students, was to give prospective students a preview of what college life on the Willamette campus entails. Of course, the pace of the weekend was stepped up to sandwich in the many planned activities; yet the visitors were able to see what the coming year might bring. Both the academic and social aspects of campus life were sampled. On Saturday morning departments were open and professors available to give desired information in the various disciplines. Through these conferences students were aided in planning schedules and tentative course study.

With the coronation of the queen and the presentation of her court in the late morning, the social activity of the weekend was christened. Following were the Bar-B-Q, fashion show, athletic events, and general campus tours. These allowed the visitors to meet both Willamette students and other visitors. With the formal dance and the serenades following, the weekend drew to a close.



The weather was wet outside, but it couldn't dampen our spirits for:

The Coronation Of Queen Anne . . .

**The
Barbecue . . .**



**The
Fashion
Show . . .**



**And The
May
Weekend
Dance.**





Royalty

Homecoming Queen



Lorraine Demler, (Corky to her schoolmates), a junior from Shelton, Washington, was chosen to reign over this year's Homecoming festivities. Lorraine is a member of Alpha Chi Omega sorority. Queen Lorraine's attendants were Paula Abbott and Barbara Woodworth.

Little Colonel



A petite freshman from Bend, Oregon, was chosen as this year's AFROTC Little Colonel. **Mary Dorsch** was given her silver wings upon the announcement of her title at the Military Ball earlier in the fall. She is a member of Alpha Chi Omega sorority and has been active in a number of campus activities. Little Captains were Bonnie Johnson and Sue Thompson.

Queen Of Violets



Serving the men of Sigma Alpha Epsilon as Violet Queen for the year has been freshman **Claudia Farrow**. Claudia, who was also active in her class as Freshman Glee song leader, is a member of Chi Omega. She hails from San Carlos, California. The announcement of the SAE's choice was made at their annual Queen of Violets Ball held in the fall. Other members of the Violet court were K. D. Barta and Anita Drinker.

Sweetheart Of Sigma Chi



An attractive dark-haired beauty from Atherton, California, was selected Sweetheart of Sigma Chi. **Joan Kane**, a sophomore and member of Pi Beta Phi, was also a member of the rally squad. Joan served as the official Sigma Chi hostess for many of their social functions this year, including the annual Christmas serenade and party for underprivileged children. Joining Joan as members of the Sweetheart court were Mary Lane and Karen Reppun.

Winter Carnival Princess



This year Willamette's Snow Princess was sparkling-eyed, dark-haired Paula Abbott, a junior Delta Gamma whose home is Honolulu, Hawaii. Paula thus became Willamette's representative to the Winter Carnival activities held at Bachelor Butte and sponsored by Portland State College.

May Queen



May Weekend activities at Willamette saw lovely brunette Ann Martin crowned as May Queen before an audience of students and visiting senior guests. The coronation was held in the Fine Arts Auditorium. Ann, a senior music major from Los Angeles, California, has served this past year as counselor in Doney Hall. Complementing the court were princesses Martha Boyer and Joann Gay.

Delt Queen



Reigning as the first queen of Delta Tau Delta was blonde, vivacious Heather Birnie, a junior from Portland. Heather was the first princess to be selected last fall, and her announcement as queen was made during the Delt spring house dance held at Ilahee Country Club. A member of Pi Beta Phi sorority, Heather is a political science major. Completing the Delt court were princesses Carolyn Low, Joyce Badger, and Patti Hull.

Delta Gamma Anchor Man



At the Delta Gamma spring house dance, "Go Native," Dan Kessler was selected as DG Anchor Man. He was presented a plaque by last year's Anchor Man Jim Booth. Dan is a sophomore member of Delta Tau Delta.

STUDENT BODY PRESIDENT Bob Elder

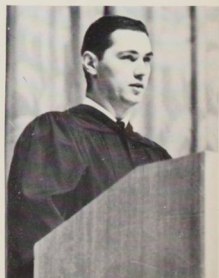


The value of student government at Willamette is hard to assess. Critics of our method of self-government have blasted away at the system for many years, and this past year was no exception. For our position, we feel that student government does play a very important role in the affairs of the campus, and compared to previous years, this year has produced new methods of government that have surpassed others both in popularity and service to the student.

It is not easy to lead in student government. For the school year 62-3, the Associated Students were led by President Bob Elder, who introduced to the students new ideas and legislation that he felt would greatly benefit the campus.

Near the end of the school year the students were introduced to an idea constructed in the most part by Bob Elder and Mary Ann Wright concerning the student judiciary to replace the disciplinary board. Plans to switch the cat cavern to the basement of Matthews Hall were presented to the students, and preliminary plans were made to make the change if feasible before the 63-64 school year. Of final note, several constitutional revisions were presented to the student body members for their approval, one of which raised the student body membership fee from \$13.50 to \$15.00. The student body officers also presented concerts of the Brothers Four and later by the Highwaymen.

In the years to come, student bodies will change, officers will change, and ideologies will change, but in the coming years we are sure student government will be more profitable to the student as a result of foundations laid years ago. The subsequent levels of success set down by interested and concerned student body members who are willing to take the time and trouble to campaign for offices and offer their time and talents to student government so that it will be an instrument that the students can use are to be commended. Through their efforts, each year Willamette becomes a better institution for higher education for having had those student body members in student government.





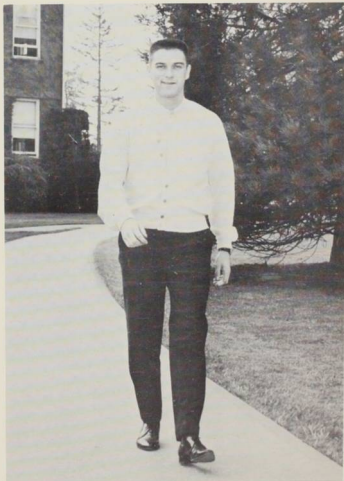
FIRST VICE PRESIDENT Diane Hunnex

The office of First Vice President has two specific functions on our campus. One, she acts as chairman of the Activities Board and the Rally Commission, and two, assumes the duties of the president in case of his absence.

Diane proved herself very capable in these areas and found time to offer help in several other areas of student government.

SECOND VICE PRESIDENT Gene Juve

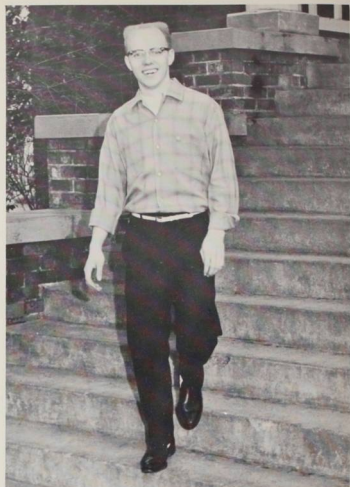
Gene's main function as Second Vice President is to coordinate and run the many elections we have on campus each year. As a result of the Spring student body elections, Gene will serve the student body in the capacity of Member-at-Large for the 63-64 academic year.



TREASURER

John Ryan

As Treasurer of the student body for the 62-3 school year, John acted as chairman of the Finance Board and served on the Homecoming, Freshman Glee, and May Weekend committees as financial advisor. Through efforts by the finance board, the fee increase was made possible.



SECRETARY

Corky Demler

As the secretary of the student body, Corky kept track of the minutes of Student Senate, Finance Board, and of Activities Board. After each Senate meeting she would make copies of minutes and distribute them to the various living organizations.



MEMBER-AT-LARGE

Gayle Emerson

As the Member-At-Large, Gayle headed up the Constitutional Revisions committee. Many pieces of legislation passed through her hands as she discussed them with her committee and set them up for student body balloting.



SENATORS-AT-LARGE

Elizabeth Keyser

Bill Henderson

Under a new constitutional revision, the student body was represented in senate by two elected senators from the student body at large. These two members were Elizabeth Keyser and Bill Henderson, who served the senate well by their membership on the standing senate committees.



Publications



The Publications Board has the responsibility and duty of governing all student publications. The board makes all necessary financial arrangements and approves the editors of campus publications. This year the post of publications manager was filled by Al Frew. Members of the board were: Judy Rhorer, Patti Hull, John Ryan, Joann Gay, Chuck Flynn, Al Frew, and Tom Newell.

Fussers Guide Editor



The Fussers Guide, this year edited by sophomore Martha Sneary, lists the student body, giving home addresses and school phone numbers. Students find this publication one of the most helpful on campus.

Darkroom Staff

The staff of the dark room is essential in the publication of both the Wallulah and the Collegian. Time and patience are most certainly qualities attributed to members of this hard-working staff.



DARKROOM MANAGER
Burr Baughman

Other students assisting with the photography this year were David Miles, Dale Ross, and Burt Czapczyns.



Donna Marggi

Student Body Office



Mary Gayle Shaffer
Student Body Office Manager
1962-63

(Who doesn't like photographers)

To some, the Student Body Office is the Hub of student government; to others it's a place to get secretarial work done; and then for yet others the S. B. Office serves as the center of organized social activities on the campus.

The S. B. Office is all of these and more. It, in so many words, coordinates the activities of the Associated Student Body in connection with whatever activity or function may be occurring whether it be academic, social, or governmental.

Subsidized by funds from the student body, and further financed by payment for services offered, the office employs student secretarial help for the benefit of the members of the student body. The office was under the very capable managership of Mary Gayle Shaffer last year.

Information concerning all managerial positions, student body business, and past files for all the sponsored activities of the student body can be obtained in the S. B. Office.

Val Boden, one of the girls that worked in the office checks her work for typing errors.



In the office it seems there are always hands busy at the typewriters.





JUNIOR

(Left to right) Vice-president Terry Rost; Sergeant-at-arms Denny Charlton; Secretary Karen Gellerman; President Phil Krozek; Treasurer Jim Leathers.

Fall

Class

Officers



SOPHOMORE



(Top to bottom) Sergeant-at-arms Dan Skerritt; Treasurer Karen Johnson; Secretary Arlene Heringer; Vice-president Steve Yoshihara; President Larry Foster.

FRESHMEN

(Left to right) Treasurer Larry Dolin; Vice-president Bob Armour; Secretary Pat Casson; Sergeant-at-arms Rob Chase; President Bill Ritchie.

JUNIOR

(left to right) Vice-president Alan Beardsley; Secretary Paula Abbott; Treasurer Greg Childs; President Gary McKenzie; Sergeant-at-arms Mike Durrell.

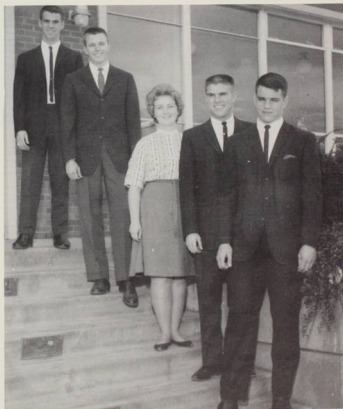


SOPHOMORE



(Left to right) President Chuck Flynn; Sergeant-at-arms Dave Templeton; Secretary Carolyn Low; Treasurer Steve Smith; Vice-president Bill Johnson.

Spring Class Officers



FRESHMEN

(Top to bottom) President Doug McNish; Treasurer Penn Handwerker; Secretary Marilyn Miller; Vice-president Ted Hetu; Sergeant-at-arms Pete Strand.



Setting up the pages in staff meeting, managing Editor Mike Kuess (R) directs the crew.



Joann Gay
Co-Editor

Wallulah



Assistant Editor Merle Gillespie
and Co-Editor John Ryan.



Dr. Murco Ringnald
Advisor





Editor-in-Chief Judy Rhorer and
Campus Editor Barbara Woodworth.



Each Thursday morning the members of the Collegian staff meet at the print shop to help put the paper together.



Sports Editor Bob Woodle.



Patti Hull
Society Editor



Through consistent hard work on the part of herself and her staff, Editor Judy Rhorer led the Collegian staff to an All-American rating, the highest possible rating.



Ruth Taylor
Business Staff



Coeds Of The Month



Gail Durham
Gayle Emerson
Joann Gay
Pat McWilliams



Thelma Ray
Karen Stone
Mary Ann Wright
Jane Yaple

Rotarians

John Baker
George Douglass
Bob Elder
Tony Good



Rich Litchfield
Dexter Maust
John Ryan
Bob Wöddle



A. W. S. Officers

Elected in February to serve for the coming year in the capacity of officers of the Associated Women Students are: Seated: Carol Dockstader, Cari O'Donnell, Dean Haberger, who serves the council in an advisory position, Janet Anderson, and Sharon Ellison. **Standing:** Marty Sneary, Joyce Caster, Pat Cramer, and Cathy Atterbury. AWS officially represents the women students' views on Student Senate and other campus-sponsored groups.



A. W. S. Carnival

This year, for the benefit of the American Cancer Society, the Associated Woman's Students held the AWS Carnival. Each living organization donated a booth to the carnival, and manned it with their members. Below Tony Good takes a break between flying pieces of jello, and an unidentified person takes his punishment in the "jail" sponsored by an independent woman's living group.



Alpha Lambda Delta



Holding to the high scholastic standards set by Willamette University are members of Alpha Lambda Delta. This nationally affiliated scholastic honorary recognizes those freshman women who have shown these exemplary academic ideals by achieving a grade point average of 3.5 or above for their freshman year. Although Alpha Lambda Delta is considered a scholastic honorary, its members may be seen involved in service projects to their campus and in an effort to create an academic enthusiasm among women students.

Phi Eta Sigma

Phi Eta Sigma, the "brother organization" to Alpha Lambda Delta, is the honorary organization on campus which promotes a high scholastic achievement among freshmen men on campus. Members are selected following winter and spring semesters on the basis of grade point average, and are active until second semester of the sophomore year when a new group is chosen.



Beta Alpha Gamma

Coeds who have proven outstanding leadership, service, and scholarship during their freshman year are tapped for membership in Beta Alpha Gamma, women's service honorary, to serve that organization during the sophomore year. Sponsoring the Ugly Man Contest each year, BAG's raise money to be donated to a charitable cause. In addition, the members usher at various programs held in the Fine Arts Auditorium throughout the year.



Sigma Alpha Chi

Sigma Alpha Chi membership includes those sophomore men who have been recognized for service and leadership on the underclass level of campus life. The SAC's this year have been active on campus during elections when members may be seen manning the election poles. This is a service not only to the student body as a whole but also to the student election committee.



Omicron Delta Kappa



David Beaton
David Beier
Charles Bush
George Douglass
Tom Dunham



Robert Elder
Robert Hakala
Gene Juve
Phil Krozek
Slava Lubumodrov



Gary Mansavage
Robert Rieder
Pete Smith
Frank Swayze
Robert Woodle

Mortar Board



Sally Bowe
Susan Bowers
Gail Durham



Joann Gay
Susan Lewis
Pat McWilliams



Elaine Pflugmacher
Thelma Ray
Karen Stone
Mary Ann Wright

A common interest in the principles, methods, curriculum of the field of education identifies Kappa Delta Pi, which is the academic honorary for education. The student members of this organization sponsor speakers and other informative programs in an effort to create an understanding and interest in this all-important field of education.



Kappa Delta Pi

P. E. Club



Seen here at one of their dinner meetings are members of the physical education club. This organization is open to those students, many of whom are majors in the department of physical education, who evidence an interest in athletics as seen from all aspects: sportsmanship, a technical knowledge of and ability in the area, and a desire to participate both as performers and spectators.

Arnold Air Society



The Willamette chapter of the Arnold Air Society is the national Air Force honor and service fraternity. Its membership consists of junior and senior men, participating in the advanced AFROTC program, who have maintained a specific air science rating as well as showing an interest in Air Force activities.

Angel Flight

Angel Flight, the women's honorary auxiliary corps, had an active year, acting as official hostess for the ROTC department and as a precision drill unit. In this latter capacity, the girls marched to first place in the state drill competition. With the Arnold Air Society, Angel Flight sponsored the annual Military Ball in October.



Silver Wings



After marching in the cellar for two years, then working up to third, the men of Silver Wings scored their highest this year with a second place in the state-wide competition held at University of Oregon. The team was under the very capable leadership of Byron Jones. Other teams in the competition were University of Oregon, Oregon State, and the "machine" from the University of Portland.

. . . Precision Drill Honorary . . .



Phi Mu Alpha Sinfonia



The Willamette chapter of Phi Mu Alpha Sinfonia was installed in 1956 and has been growing larger and more active ever since, having 28 returning members next fall. Phi Mu Alpha Sinfonia is a national professional music fraternity, with 212 chapters on various campuses across the country. As Phi Mu Alpha is the oldest and largest professional music fraternity, many of the most eminent American composers, performers, and critics are Sinfonians.

Included in this past year's activities have been: The fall retreat which was attended by members and pledges and held at Lost lake, near Mt. Hood, Oregon. The Phi Mu's also participated in the Parents Weekend All-campus Sing, in addition to giving three serenades to women's living organizations on campus. With Mu Phi Epsilon, the women's music honorary, Phi Mu Alpha sponsored the Distinguished Artists Series held at the Fine Arts Auditorium on campus and co-sponsored the American Music Concert.

Mu Phi Epsilon



Mu Phi Epsilon, which is the national honorary organization for women in the field of music, sets as a standard of membership a sincere interest in music tempered with ability in the varied branches of the art. Junior and senior coeds are eligible. Mu Phi activities include periodic meetings, serving at musical programs presented on campus, and attending such cultural events as appear in the community and neighboring vicinity.

Pi Gamma Mu

An organization which includes in its membership both faculty and students is the campus social science honorary Pi Gamma Mu. Students are selected in the junior or senior year on the basis of high scholarship in this area of study. Through discussion, presentation of informative programs, and aid of the faculty advisory staff, the students attempt to create and maintain an interest on campus for the social sciences as an area of study. This group also makes available information concerning various opportunities on the graduate level to its members and other students on campus.



Phi Sigma Iota



Active as the Romance Language honorary is Phi Sigma Iota. A common interest in the custom and culture of foreign peoples typifies membership in this honorary. Junior and senior men and women are eligible to be tapped for Phi Sigma Iota. In the recent past this organization has become more active on campus, sponsoring various foreign speakers and movies.

Religious Life Council

The Religious Life Council is composed of one representative from each living organization, and as a functioning body attempts to correlate religious activities and programs on campus. This year the council has sponsored weekly chapels which are held in the Chapel of the Seeker. In addition, the individual living organizations have been encouraged to conduct their own religious services.



Canterbury

Canterbury Club is affiliated with the Episcopal Church and is considered the official student organization of the Church on the Willamette campus. Canterbury holds weekly worship meetings, after which discussion topics range from religious subjects to various social and world problems which face students as future citizens.



Lutheran Students



Another church affiliated group on the Willamette campus is the Lutheran Student Association, whose aim is to provide an opportunity for students to meet, discuss, question, and formulate ideas on matters of religious importance to them as members of the community and of their church. In conjunction with the Lutheran Church, this body tempers a questioning and seeking mind with a religious enthusiasm.

Lettermen

Willamette's Lettermen, The Order of the W, are getting organized again after an extended period of time in which they were not able to meet. Of notable interest is the fact that the Bearcat athletes netted a 2,802 in the first semester grade competition. We are sure they will do as well the second semester although these statistics are not available yet.

With the reinstatement of the Lettermen, the campus is again sure to see the activities and services sponsored by the lettermen. In the past one of these has been the Varsity Ball which was one of the major social events held on the campus each year and heralded the selection of the Varsity Queen.



Wesley



Wesley, the campus youth group affiliated with the Methodist Church, endeavors to correlate a program of fun, intellectual accomplishment, and service. Significant in Wesley's activities is group and individual worship, emphasizing the Christian nature and basis of the organization. The primary aim is to develop mature religious thought and at the same time provide opportunity for religious experience.

Young Republicans



The Young Republicans are dedicated both to their school and to their party. One of the two organized partisan groups on campus, they draw on many sources and various backgrounds in forming their opinions. The group aims at helping fellow students form political views by sponsoring speakers, like Governor Mark Hatfield. One of the main purposes of Young Republicans is to provide a better way of understanding our working government. To these ends the organization proves an integral part of the campus life.

Y. R. Officers



Rally Squad



Carol Hansen, Tori Hull, Sharon Brown, Candy Blair, and Joan Kane.

Honeybears



Glenda Kraft, Marcia Lusher, Nancy Scott, Sue Sweet, Sharon Schroeder, Sue Hemenway, Eileen Doern, Pat Hart, Karen Reppun, Carolyn Low, Pam Powers, Ann Lee, and Sandee Head.

Y.M.C.A. & Y.W.C.A.



The Willamette University "Y" has been an active, imaginative force on the campus for both men's and women's groups. Both the Y.W.C.A. and Y.M.C.A. help to develop the students' awareness of other people's needs and of world problems through a fostering of the ideals of Christian living. Through their varied programs these organizations provide activities which meet the interests of all students. On the community level members of campus "Y" groups serve as advisors for high school youth groups and councils.



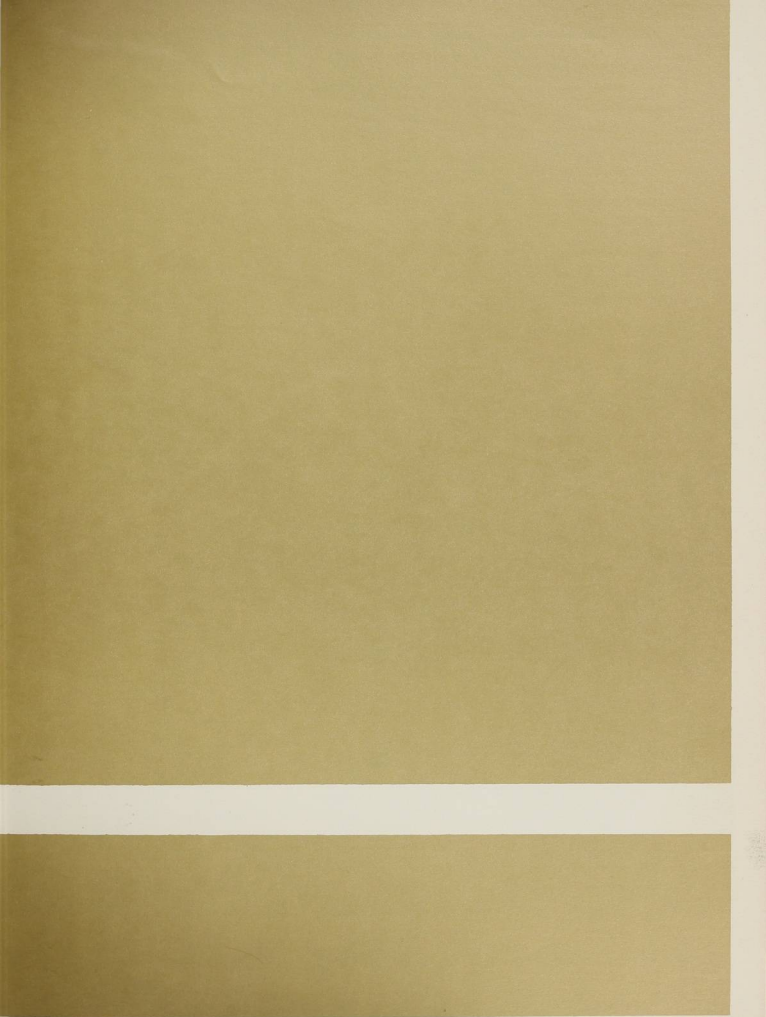
Y.M.C.A. OFFICERS

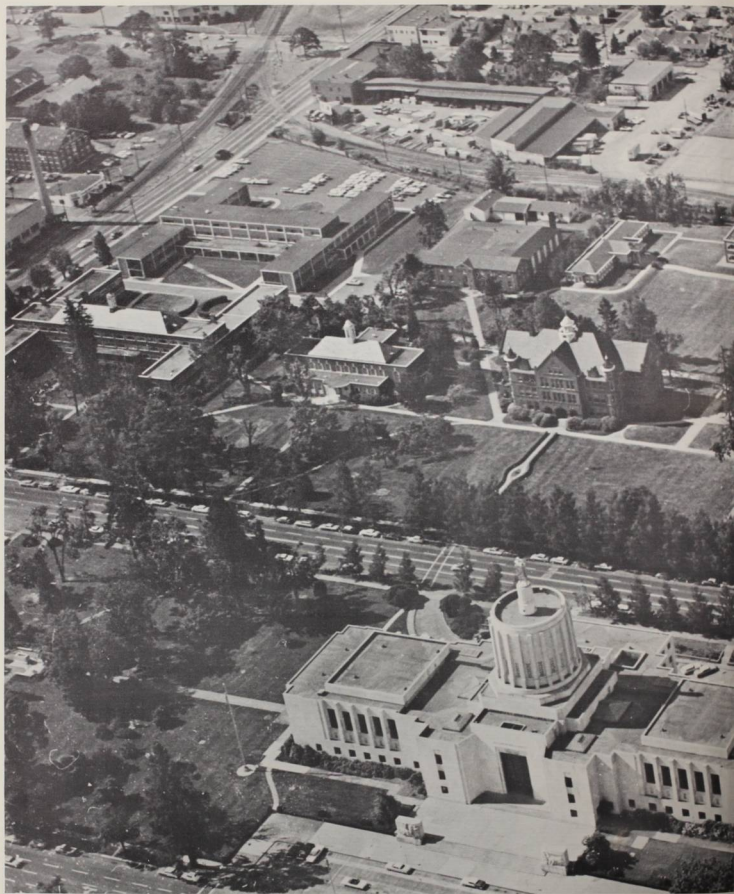
Y.W.C.A. OFFICERS





Academics





Willamette University - 1963

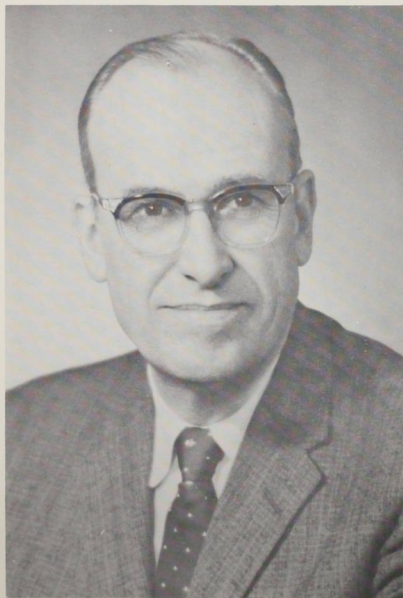


From the air, Willamette University may not look much different this year than it did last year, but there have been many changes on the campus during the past year that have altered the face of old Willamette U. The power and telephone lines that once were here, are now underground. There is a new addition to Collins Hall, and the Alpha Phis and Pi Beta Phis have new living units going up on the south end of the campus.

All these have brought changes to W.U., but nothing changed the "face" of W.U. more than did the Columbus Day storm. Many of the trees and shrubbery on the campus were leveled by the storm, as pictured on pages 18-21. But this is the campus as we remember it. It will continue to change as each class comes and goes, but the campus as we remember it will always be foremost in our minds.

PRESIDENT OF WILLAMETTE UNIVERSITY

G. Herbert Smith





Richard P. Petrie
Financial Vice-President



Miss Vera Haberer
Dean of Women



Walter S. Blake
Dean of Students



Jerry Whipple
Assistant to the President



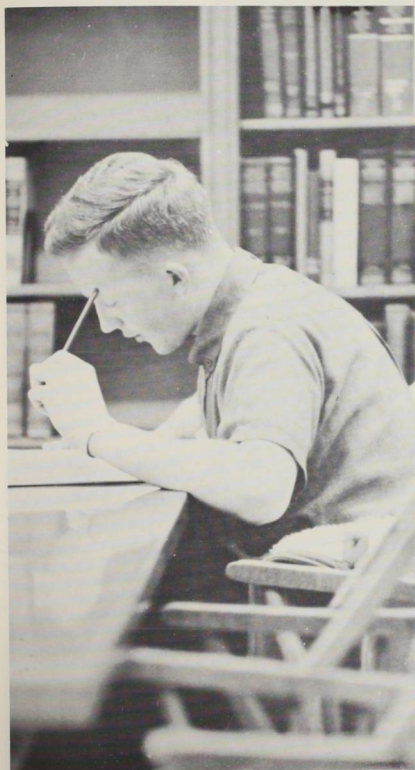
Charles A. Paeth
Director of Admissions



Richard A. Yocum
Registrar



Business Manager
David A. Lewis

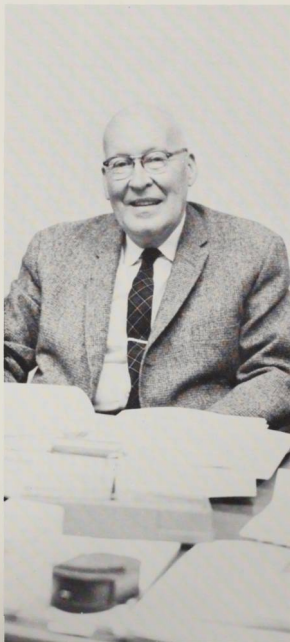


COLLEGE OF LIBERAL ARTS

LIBERAL ARTS

The College of Liberal Arts is the oldest and the largest of Willamette's three colleges. It is comprised of nineteen departments in the fields of the humanities and the natural and social sciences. Under Dean Gregg, it seeks to provide a liberal education as a basis for a rich and meaningful life and as a basis for careers in a wide variety of professions. The quality of Willamette graduates is widely acknowledged among the professional and graduate schools throughout the country, and an increasingly large percentage of the senior class is being selected each year by these institutions for further study on the post-graduate level.

As dean of the College of Liberal Arts, Dr. Gregg advises in such matters as the admission of new students, educational programs with affiliated institutions, and graduate scholarship plans. In addition, he serves as advisor to foreign students, and in faculty capacity, teaches courses in history.



Dean Gregg



English



PAUL G. TRUEBLOOD
Professor



JAMES S. DOUGLAS
Assistant Professor



SARA J. FERNALD
Instructor

ORCUTT W. FROST
Associate Professor
(Not Pictured)



MURCO RINGNALDA
Professor



MARGARET B. RINGNALDA
Assistant Professor

The study of English embraces the vast literature written in English as well as the important works of other tongues that have profoundly influenced literature in English, and also the language itself as it has evolved for more than a thousand years.

Through the study of literature, the English student becomes acquainted with "the best that has been thought and said in the world." He learns to appreciate it in its historical setting and to understand and feel an author's meaning for his own time and for all time. He gains perspective for viewing "matters which most concern us." Through the study of the language he learns of the flexibility, power, and expressiveness of English in the hands of the masters and gains facility in using it for expression of his own thoughts and feelings.



ELAINE C. RODDY
Instructor





MARION MORANGE
Professor



PAULE G. DRAYTON
Instructor



PAUL B. BEAL
Associate Professor



DANIEL H. SCHULZE
Professor



MARIJA UDRIS
Assistant Professor



CLARENCE A. KRAFT
Professor

ROMANCE

Foreign Language

GERMANIC

Willamette offers instruction in both the Germanic and Romance languages. "It is of value to know a Germanic language today for several reasons," stated Dr. Schulze, head of the Germanic division of Willamette's foreign language department. He continued by saying that the world focus is on Western and Central European nations where such languages are spoken, and that the Germanic influence is being increasingly felt in many areas. Fields in which knowledge of a Germanic language is of great benefit include international trade, diplomatic service, government, business, secretarial work, music, and the social and natural sciences. This year Willamette enrolled 240 students in the Germanic languages, with 8 majors in the field. In recent years several Willamette students have had the opportunity to study abroad in Germany and Austria, thus receiving first-hand experience by living with the people of the country, by speaking and living their language.

"A person must be able to make his way in a language other than his own," was the statement made by Dr. Morange, head of the Romance division of Willamette's language department. Dr. Morange went on to say, "It is so difficult to be a citizen and represent one's country if one cannot communicate in a language other than his own." The standards of Willamette's Romance language department are recognized by the fact that two recent graduates have been accepted as Fulbright Scholars and one as an exchange assistant in a French school, while four present students have participated in the Student International Travel Association's summer study program in France. This year two Spanish majors taught in primary grades of the Salem schools. In addition to teaching, Dr. Morange emphasized, the language major can prepare for work with the foreign service or in overseas branches of American firms. Some may plan a term with the Peace Corps, and others may prepare for graduate study with college teaching in mind.

We can be justly proud of our modern laboratory and competent faculty, both of which help to present an excellent language background to the students.

Philosophy

The great thinkers of the past and present and their illumination of the persistent problems that confront mankind form the subject matter for the students of philosophy. This discipline challenges the student to think, to reason, to endeavor to understand the foundations upon which present systems of thought are based.



MILTON D. HUNNEX
Professor



LAWRENCE J. McCOLLOUGH
Instructor

Economics

Willamette's eighty-four economics majors may look ahead to promising careers in such fields as education, government, foreign service, banking and investing, and accounting, according to the head of the Economics department, Dr. Richard Gillis. "A knowledge of economics is almost lacking among citizens today," stated Dr. Gillis. "This knowledge is increasingly necessary in understanding world and domestic problems, especially since so many basic differences are over conflicts in economic rather than political systems." As is typical of most Willamette graduates Economics majors from the university find numerous positions at graduate schools throughout this country and abroad.



RICHARD M. GILLIS
Professor



JACK LEONARD
Assistant Professor

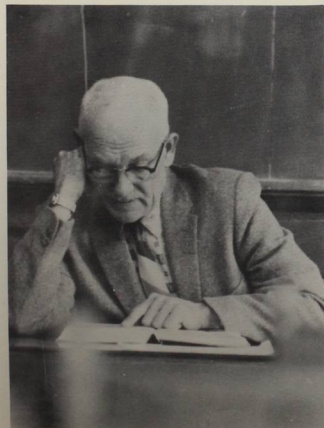
RICHARD A. GRANT
Instructor
(Not Pictured)

RICHARD P. PETRIE
Professor
(Not Pictured)



D. DeVON WADE
Instructor

MILTON NELSON
Visiting Professor





JOHN A. RADEMAKER
Professor



ROBERT PRAIRIE
Instructor

LeROY C. ANDERSON
Assistant Professor
(Photograph Unavailable)

Sociology

The subject of sociology is continually growing in stature and importance. More and more research is now being conducted in the field of human relationships, customs, and social institutions. Companies are hiring sociologists to enable them to increase their production; communities are using the studies of sociologists for community improvement projects.

Thus a course in sociology is important to each individual to help him understand his role in relation to those about him. How to be an effective member of one's community is a major area of study in the field of sociology. A study of interhuman relations emphasizes the various problems which arise between members of a group. The better we understand others, the better we are able to get along with them, and it is toward this end that sociology strives.





Political Science

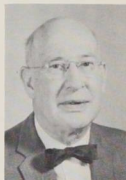
Government affects everyone, and in a democracy everyone has a stake in government. Political science studies government at all levels from local to national and even international, and of all kinds from democratic to autocratic. It is concerned with theories behind actual government and with theory as an ideal toward which government might strive. The student of political science learns to see government realistically for what it is but also to see realistically what can be achieved.



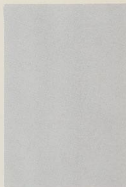
THEODORE I. SHAY
Professor



DONALD F. LAWS
Instructor



ROBERT M. GATKE
Professor Emeritus



EDWIN J. STILLINGS
Professor



History



IVAN R. LOVELL
Professor



ROBERT D. GREGG
Professor



CHESTER C. KAISER
Associate Professor



FRANCIS KENT MARKUS
Instructor

Man and his world today are the product of a history which dates back to the remotest antiquity and is still in progress. Through the study of the record of man's long journey, the history student becomes aware of the influences and the lessons of the distant and the recent past. He gains not only an appreciation of the contributions from the many centuries that have gone before but also the means for understanding how his world has evolved and something of the forces at work in it.

The study of history deals also in the present, attempting to acquaint the student with history in the making, with the current events and forces which shape world policy and thought. Through such a varied course of study the student learns to evaluate his own environment in terms of past and present.



Religion

Religion is believed to be an integral part of each student's education at Willamette. The department is important for it provides a source of reliable information for those who begin to question previously accepted ideas, and who, as their minds mature, seek to find answers to these fundamental questions. In addition the department is intended to stimulate an intelligent interest in religion and to encourage the student to think independently for himself.

Religion at Willamette is taught as one of the academic studies. The majority of the courses discuss Christianity and the Bible, but for the student who is interested there are subjects offered about religions of the Far East and Orient. The department can be termed a "service department" in that it is available to all students, yet the student is free to select the courses in which he is interested.



NORMAN HUFFMAN
Professor



BURTON C. BASTUSCHECK
Associate Professor



CALVIN D. MCCONNELL
University Chaplain
Assistant Professor



CHARLES H. DERTHICK
Professor



NOEL F. KAESTNER
Associate Professor

Psychology

"Willamette's psychology department," in the words of the department head, Dr. Charles Dertthick, "is better than most, and probably superior to those of schools of Willamette's size and class." The quality of the department is partly due to the many facilities available, including nearby state institutions and public schools.

The psychology department's high standards are exhibited by the fact that a large majority of its majors continue in further training toward advanced degrees. Graduates have done well in many of the fields open to psychology majors: teaching, research, personnel and industrial work, mental health, and therapy are only a few of the 22 divisions of general psychology practice recognized by the American Psychological Association. Says Dr. Dertthick, "It is necessary that we have an understanding of the psychological aspect of behavior because we are living in a day when a great many of man's problems are chiefly psychological."



RICHARD A. YOCUM
Assistant Professor



CHESTER F. LUTHER
Professor



JACK K. H. HAFFERKAMP
Associate Professor

Mathematics

Never before have the demands upon mathematics been so varied, so widespread, or so insistent. With the unprecedented acceleration of new and changing techniques in the sciences and in nearly every other kind of human endeavor, mathematics has become an indispensable tool. The mathematics department is doing its share in meeting the need for better prepared mathematicians in ever-increasing numbers by offering a wide range of course material in both the theoretical and practical aspects.



PAUL M. DUELL
Professor

Chemistry

Although the major function of the chemistry department is to prepare its majors who intend to teach, enter graduate school, or go into chemical research, it also offers non-majors a general understanding of chemical principles. Courses for the majors range from inorganic through organic, physical, and analytical to bio-chemistry. The importance of chemistry in the world today is a growing one, leaving few areas of modern life untouched. Such varied fields as wonder drugs, rocket fuels, conversion of sea water to fresh water, and utilization of energy in natural resources are all problems of the modern-era chemist.



NORMAN J. HUDAK
Associate Professor

CHARLES H. JOHNSON
Professor Emeritus
(Not Pictured)

ARTHUR D. PAYTON
Associate Professor
(Not Pictured)



Physics

The pressing need for physicists today in many fields, from high school teaching to astronautics and foreign service, is reflected in the growing interest in physics on the Willamette campus. This year there were 25 majors in the department, many of whom will undoubtedly continue in graduate school. In the past years a high percentage of physics majors have been granted graduate fellowships, scholarships, or assistantships.



ROBERT L. PURBRICK
Professor



RICHARD C. MONTGOMERY
Associate Professor

Biology

The biology department offers a general course for non-majors, acquainting them with the foundations of biological science, and specialized courses for majors. The biology program prepares students who will take further training for such careers as teaching, medicine, dentistry, medical technology, nursing, and forestry.

Each spring the faculty arranges for the entire department to travel to the Oregon coast where plant and animal life may be observed in their natural habitat.



CECIL R. MONK
Professor



MARTHA SPRINGER
Professor



DONALD R. BREAKEY
Associate Professor



ELIZABETH YOCOM
Instructor

Speech And Drama



HOWARD W. RUNKEL
Professor



ROBERT M. PUTNAM
Associate Professor

In an attempt to create a complete understanding of the communication arts, Willamette combines the departments of speech and drama. It is felt that competence in one of these branches is a product of a knowledge and practical application of both fields. Self-expression is important in its own right. Thus, the department offers courses in the fundamental techniques of public speaking for those students who desire to add to or improve their skills. Under the supervision of Dr. Howard Runkel, the Willamette forensics team this year earned a trip to Honolulu, Hawaii, to compete. Mr. Robert Putnam, head of dramatics at Willamette, offers the campus fine cultural entertainment with the presentation of three major productions yearly.



CARL HALL
Artist in Residence



EUGENE L. ISAACSON
Instructor



Art

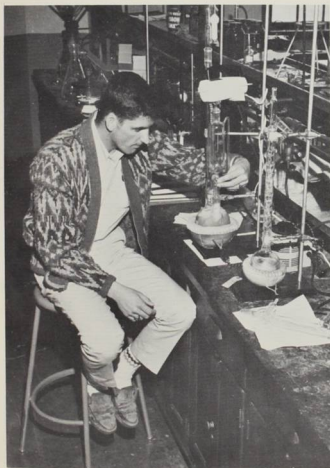
Willamette's art department is considered to be outstanding among the smaller schools in its attempt to create an understanding of the development of classical and modern art and appreciation of their forms. The department serves the entire college by stimulating an intelligent interest in the visual arts as one of the most essential in a liberal education.

The Willamette art department has a two-fold purpose. For majors in the field it offers technical courses which develop the student's skill and knowledge. Through courses in the history of art through the various ages of civilization, the student learns to assimilate the artistic works of a period with the other forces which work to make it a meaningful discipline. For the non-major courses in the appreciation of art help students to realize the place of art in the society of mankind.



Home Economics

Located in Collins Hall, the Home Economics department offers courses in the skills of home management, child care and development, kitchen cuisine, and techniques of clothing. Although Willamette offers no major in the field, many students enroll in order to gain a basic understanding. Visiting lecturers and laboratory work comprise the schedules of students in these courses.



Applications



MILDRED E. DEISCHER
Associate Professor

Education

In the Willamette Education department stress is placed on subject content rather than methodology alone. Through courses designed to instruct the student in the principles and history of American education, in addition to methods in specific fields, the students acquire a theoretical knowledge of teaching. One of the state requirements for prospective teachers is a period of student teaching under the supervision of an experienced educator. In such a situation the students gain practical knowledge.

JAMES R. LYLES, JR.
Professor
(Not Pictured)

WARREN R. BROWN
Associate Professor
(Not Pictured)

Physical Education



ALIDA GALE CURREY
Professor



JEAN WILLIAMS
Instructor



C. LESTLE SPARKS
Professor Emeritus



NORMAN L. CHAPMAN
Instructor



JOHN LEWIS
Associate Professor



T. THEODORE OGDahl
Assistant Professor

A focal point this year in the physical education department was the physical fitness program which was sponsored and conducted by the majors in the field. The tests themselves consumed the better part of one evening, but the preparation required a considerably longer period. Those participating were subjected to various tests and exercises approved by national physical education boards and promoted by the Kennedy committee on physical fitness. Through the program Willamette students were thus made more aware of some of the activities of the physical education department.



R. O. T. C.

RESERVE OFFICERS TRAINING CORPS



JOHN P. DAVIS
Lt. Colonel, USAF
Professor



MILTON J. GOLART
Major, USAF
Assistant Professor



DEAN E. ABBOTT
Captain, USAF
Assistant Professor
(Not Pictured)



LESLIE N. OSTLUND
Det. Sgt. Major, USAF
Instructor

LASH LAKER
Captain, USAF
Assistant Professor

The AFROTC department, under the direction of Lt. Col. John Davis, seeks to provide the student with a 4-year credit course leading to an Air Force commission, graduate study, flight training, or advanced technical training. Now finishing its 11th year, the department also acts as a campus and community center for military information.

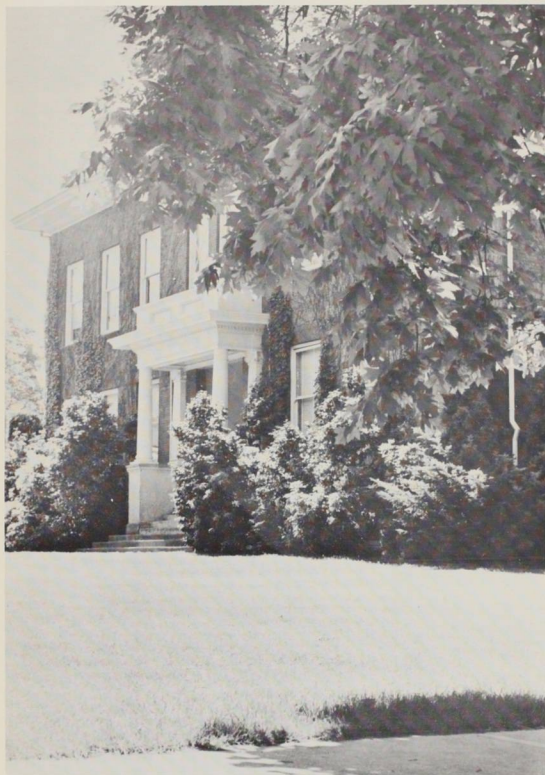
An interesting high-light came in January when a group from Willamette's department was flown to Vandenberg Air Force Base in California to see first-hand the operations of the missile base. Such opportunities and facilities help to create an interesting and beneficial program.



THOMAS E. PURDY
T/Sgt., USAF
Instructor



WILLIAM B. SIMS
S/Sgt., USAF
Instructor



COLLEGE OF MUSIC

Under the guidance of Dean Geist, who came to Willamette in 1939, the College of Music has developed into one of the finest music schools in the West. The entire Willamette campus is enriched by the presence of the College of Music, not only in sharing its reputation but in partaking of the cultural advantages the Music School provides.

The objectives of the Willamette College of Music are two fold. As part of the general educational plan of the University it offers to the Liberal Arts student the opportunity for a thorough understanding of our musical culture. For the music major it offers intensive training in the technical aspects of the art and the background in the humanities essential to the artist and teacher.

The Music School encourages an appreciation of the cultural arts on campus through the numerous and excellent musical programs which it sponsors.



Dean Geist

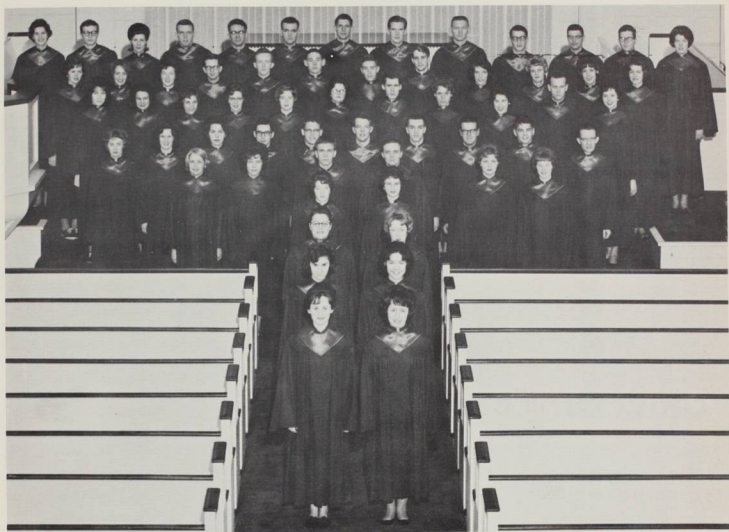
Faculty



Nona Pyron Charles Heiden Delbert Chinburg Ralph Dobbs Stanley Butler

College Of Music

Willamette University Choir



University Orchestra



University Band





COLLEGE OF LAW

College Of Law



Dean Reese



COURTNEY ARTHUR
Professor



EDWIN W. BUTLER
Professor



ROBERT E. FURLONG
Associate Professor



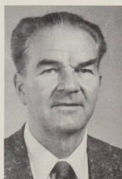
Law School Faculty



CHARLES A. JENS
Professor



ALLISTER McALLISTER
Professor



REGINALD PARKER
Professor



JOHN C. PAULUS
Professor

Law Students

1962-3



THIRD YEAR

Paul Davis
Rodney Glantz
Jodie Hughs
Raymond Little
Jerry McCallister
Kevin Midlam
William Moore



J. Hartley Newsum

Kenneth Webes

SECOND YEAR

James Barnes
Malcolm Brand
Robert Burroughs
Donna Dahlke
Ray DeFont



Dick Grant
Leon Hagen
Henry Hampton
John Jelderks
Gregg Lowe
Dennis Miller



Don Todorovich

FIRST YEAR

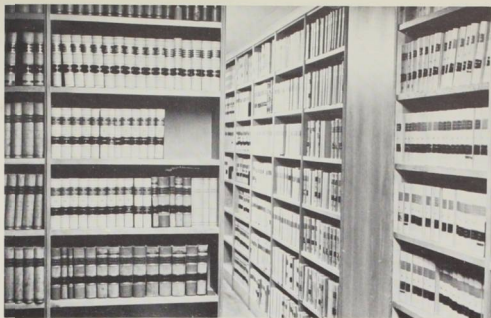
Al Alexander
Paul Allen
Balderree Willis
Robert Ball



Jerry Barron
Riley Burton
Wayne Capurro
Wayne Carter
Harry Coolidge



Books,
Books,
and
More
Books.



FIRST YEAR Cont.

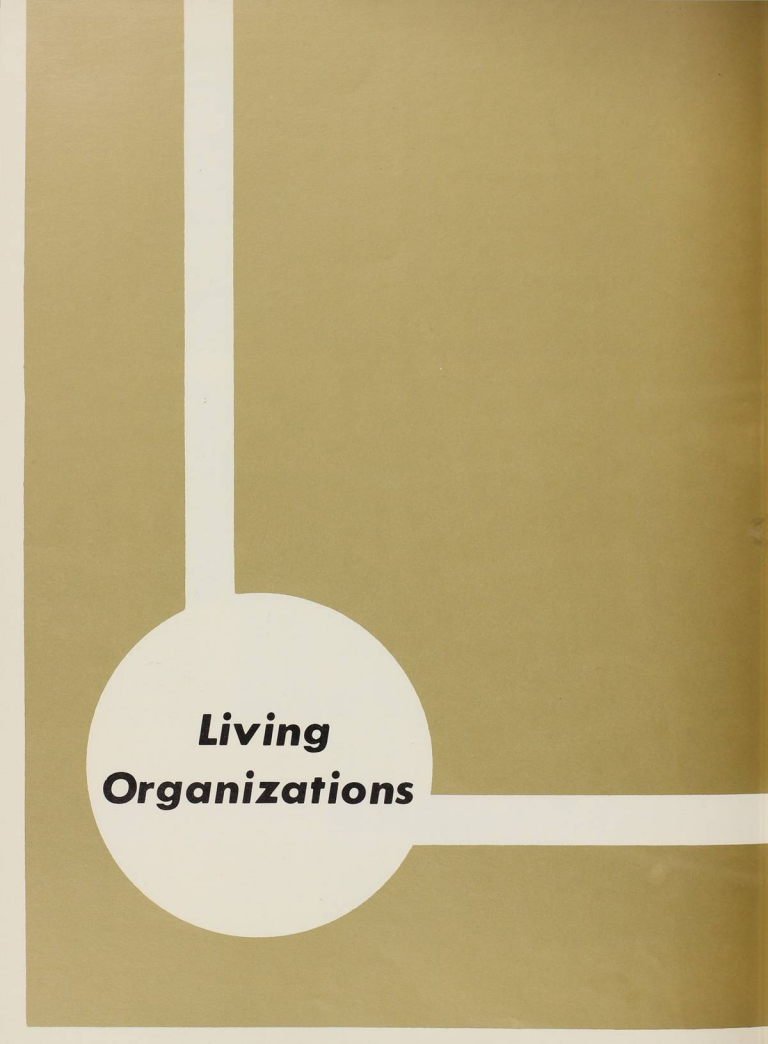
Durant Davidson
Bruce Durant
Ira Feitelson
Charles Hall
Stuart Hall
Tom Hemingway
John Jacobson

James Duncan
Garfield Jeffers
Warren Jeffers
Ronald Jolley
Charles Kirk
Ernest Kissling
Donald Lauton

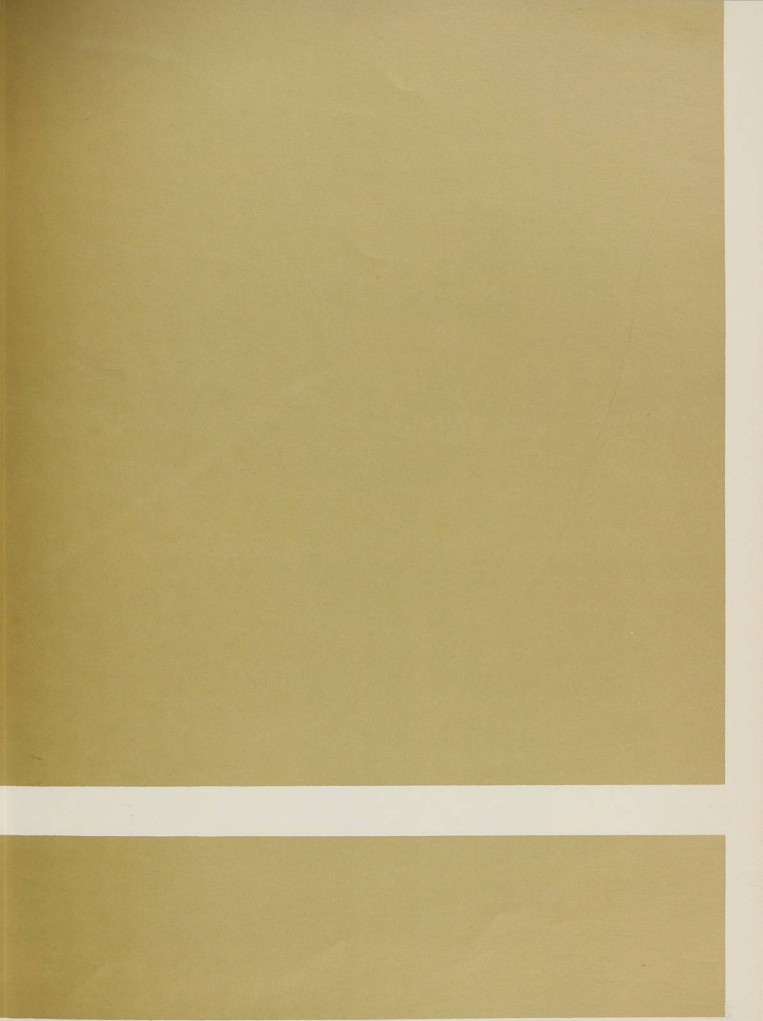
John Manandas
Mark McGrift
Edward Miley
Charles Morford
Larry Montague
Dan Ritter

Don Schussler
John Snyder
Karin Stubkjaer
Scott Tawlor
Vern Tindell

Stephen Tucker
Ed Virije
Gerald Williams
Jon Woodside



**Living
Organizations**





The Inter-fraternity Council had its job cut out for itself this year when deferred rush was ushered into Willamette's Greek system. At their evening dinner meetings, with representatives from all the fraternities on the campus in attendance, they discussed and passed legislation concerning the fraternity system on our campus. Dean of Students, Walter S. Blake is their advisor.

Panhellenic



Performing the same task for the sororities that the IFC does for the fraternities, Panhellenic governs the organized sororities on the campus. The council this year consisted of Linda Odle, Kareen Zumwalt, Sally Bryant, Nan Means, Sue Foster, and Mary Ann Ragland.

Doney Hall



Housemother of Doney Hall, Mrs. M. Hall, takes time from her busy schedule to chat with Ellen Reese (left), fall dorm president and spring proxy Pat Claxton (right).



FRESHMEN

Marilyn Brandt
 Dona Bretherick
 Cheryl Castles
 Lucy Clark
 Amy Claxton
 Shirley Curtis
 Kathy Dawson

Anita Drinker
 Sandy Duttweiler
 Mary Lee Edinger
 Helen Hill
 Jennis Johnson
 Suzanne Keller

Carole Larsen
 Carole Lindell
 Tammy McAulay
 Charla Meyer
 Janet Miller

Judi Moen
 Tina Ostlind
 Terry Paquette
 Charlene Peter
 Janet Potter

Pam Powers
 Sue Riches
 Andrea Smith
 Sandy Willers
 Cherry Wolff

Lausanne Hall



Among the rules in force at Lausanne during the 62-63 school year, this was one of the hardest for the residents there to accept.

SENIORS

Dianne Lord
SOPHOMORES
 Candy Collins
 Marie Chaney
 Kathryn Dewar
 Cheryl Hansen
 Vicki Howie
 Betty Lou Moynihan



FRESHMEN

Terry Albright
 Judith Allen
 Carol Bachelder
 Kathleen Barta
 Jamie Bischoff
 Andrea Bristol



Cheryl Clark
 Nancy Claus
 Sherma Cook
 Gretchen Cotrell
 Judy Dunn



Sue Ferguson
 Jeanne Fisher
 Joan Gardner
 Linda Garth
 Susan Harlor



Discussing dormitory business with Lausanne housemother Mrs. R. Boylen are Pam Dean (left), fall president of Lausanne and Andrea Bristol, spring president.



Kathy Harris
Carolyn Hedman
Ellen Hoeye
Judy Jamieson
Carol Johnson
Sue Leslie
Becky Lyons



Connie McMilan
Joan Michelson
Stephanie Okada
Linda Phillips
Kathy Reiersen
Shirley Schoblom



Sherry Smith
Inez Taggart
Nancy Taylor
Sue Tomlinson
Lynn Van Houten
Pat Walker



Rachael Wamsley
Sue Westerberg
Connie Whiteside
Carolyn Woolsey
Jeanne Young

Lee House



SENIORS

Julie Eubanks
Anne Martin
Karen Stone

JUNIORS

Betty Burgoyne
Diane Collins
Barbara Flint
Joyce Larson



Pam Street
Jan Twining
SOPHOMORES
Darlene Bates
Carolyn Berg
Paula Boatright
Mary Burkland



Charlotte Castillo
Joyce Dames
Sue-Dee Donner
Anne Eriksen
Judy Francis



Looking over the scrapbook and some of the years activities are Joyce Larson, Spring house president; Mrs. Ramaker, housemother; and Diane Collins, Fall house prexy.



SOPHOMORES Cont.

Charlea Herick
Penny Huff
Marilyn Jones
Joan La France
Heather Ann Lundgren
Marcia McAdoo
Donna Marggi

JoAnne Merritt
Jean Mill
Vicki Oakley
Laurie Osborn
Margaret Sawyer
Barbara Smith

Marylou Walkey
Linda Webber
Karen Willmore
Carol Yeo
Toni Marotz

York House



SENIORS

Lucy Baird
Susan Bowers
Patricia Greenacre
Diana Percy
JUNIORS
Julie Adams
Jean Bockman



Doris Davison
Mary Sue Gellatly
Wendy Hunt
Virginia Judd



Jeanne Perkins
Donna Woodward
SOPHOMORES
Liz Anderson



Chatting with Mrs. B. Wissenback, York house-
mother, is Sylvia Schubert (left), fall house president,
and Margaret Allen (right), who served York House
as spring president.



Jeanette Dewey
Phoebe Finley
Lynn Fox
Jean Lambertson
Marilyn Mabee
Janice MacDonald



Gail McElrath
Lenore Monk
Katie O'Rourke
Pamela Potter



Amy Spaulding
Bonnie Sulmonetti

Alpha Chi Omega



SENIORS

Val Boden
Marth Boyer
Gayle Emerson
Pauli Hibbard
Susan Jones
Suze Macduff
Barbara Nelson McDowell



Katie Mespelt
Jeanette Baker Ormsbee
Sherrie Steele
Nancy Stewart



JUNIORS

Carole Amell
Susan Bushnell
Anne Davenport

Corky Demler
Ann Finlayson
Karen Gellerman
Dotti Montag
Linn Pond
Mary Gayle Shaffer



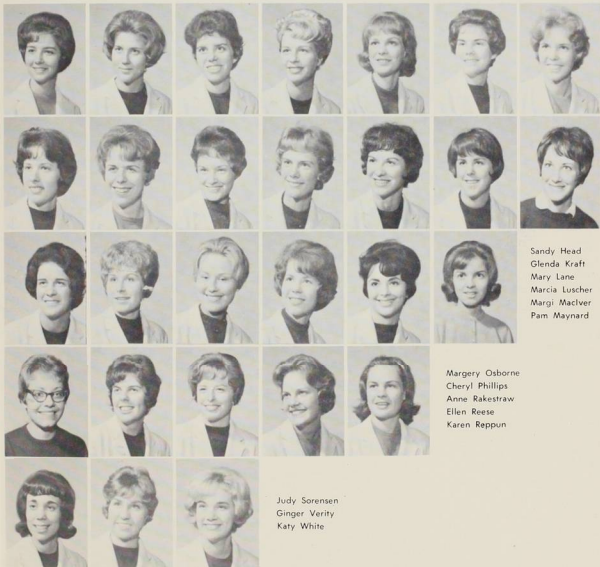
Mary Whitford
Dianne Wilson
SOPHOMORES
Candy Blair
Sharon Ellison
Susan England



Judy Gritsch
Genie Haberman
Karan Johnson
Carolyn Low
Dana Martin



Posing before the "liar" of Alpha Chi Omega are housemother Mrs. G. Rogers, escorted by Corky Demler (left), spring house president and Martha Boyer, who served the Alpha Chi's as fall house president.



Linda Odle
Cathy Parry
Dicksy Scott
Carol Walton
Janet Waterman
FRESHMEN
Joyce Badger
Ann Bowman

Pat Casson
Eileen Doern
Mary Dorsch
Margi Eichelberger
Paula Emery
Karen Evans
Paula Harris

Sandy Head
Glenda Kraft
Mary Lane
Marcia Luscher
Margi MacIver
Pam Maynard

Margery Osborne
Cheryl Phillips
Anne Rakestraw
Ellen Reese
Karen Reppun

Judy Sorensen
Ginger Verity
Katy White

Alpha Phi

It will be a move across the mill stream for the Alpha Phi's! Next fall will see the whole of "University House" transported the two blocks to their brand new house. This is a long awaited move for the girls of Alpha Phi, a move which will bring all the members together under one roof for the first time in several years. Previously, the Alpha Phi Annex, which stood at the site of the present new house, accommodated a portion of the membership. With plans for the new house well under way the Alpha Phi's settled down to a year of studying, work, and fun. The two house dances were most successful and "loads of fun!" A high light of the year was the tea given at the home of Mrs. Mark O. Hatfield in honor of the visiting Province Governor of Alpha Phi.

SENIORS

Pat McWilliams
Margo Moyer
Judy Rhorer
Judi Rogers
Suzy Shane
Sholly Sickenger

JUNIORS

Rosalie Johnson Whitney



SOPHOMORES

Julie Aungst
Sue Foster
Carol Gibson
Sheila Holman
Frances McKinley



Marion Oakley
Janet Schlechter
Ruth Taylor
Jackie Venne



Judy Rogers (left), fall house president of the Alpha Phi house, and Jackie Venne (right), spring president, pose with Mrs. E. Terhune, chaperone for the Alpha Phi house.



Hedwig Williamson
FRESHMEN

Allyn Bartholomew
Jill Bates
Patricia Cassidy
Jollie Heidbrak
Dawna Hutchins
Colleen Kennemore

Karen Kruchek
Sally Lockyear
Marianne May
Raynette Pierce
Arlene Rice

Lynn Van Houten
Nancy Van Winkle

Chi Omega



SENIORS

La Rae Adkisson
 Kathy Beaty
 Marda Kay Conrad
 Lynn Edwards
 Elaine Pflugmacher
 Joan Thielemann
JUNIORS
 Fay Chamberlin



Pat Holland
 Judy Jessen
 Anne Peterson
 Mary Ann Ragland
 Ivona Randall
SOPHOMORES
 Jane Bridges



Carol Jean Browne
 Barbara Davis
 Carol Dockstader
 Nancy Flinn
 Arlene Heringer



Toni Leisure
 Andrea Lindsell
 Melinda Martin
 Betty Ann Miller



Sue Morgan
 Nancy Price
 Linda Sandner
 Rosemary Shea





The last year in their present house finds Mrs. C. Rathbun, Chi Omega housemother, discussing moving plans with spring house president Judy Jessen (left) and fall president Elaine Pflugmacher.



Martha Sneary
Jane Storey
FRESHMEN
Jane Bonnington
Carol Buell
Lila Clockling
Anne Cowden
Cordilia Cross



Claudia Farrow
Susan Garner
Nancy Hutchison
Joanne Lochmiller
Virginia Lutticken
Pat Mathews



Leslie Minkner
Marcia Moyer
Kirk AnnNeil
Jan Nelson
Sybil Reed



Ruth Rodgers
Roberta Stanbery
Mary Dee Stithem
Kathy Squire



Suzanne Underwood
Barbara Whalin
Mary Wirt

Delta Gamma

The DG's enjoyed a busy year highlighted by their two house dances, "Scheherezade," the formal fall dance, and "Go Native," a jungly spring fun dance. It was at this event that the DG's presented their new Anchor Man, Dan Kessler. In addition the DG's held Christmas and Valentine's open houses, washed windows and acted as AWS slaves for the Phi Deltis, retreated to Champoeg State Park with their pledges for a day of fun, and enjoyed exchanges with several fraternities. In the midst of their other activities, the DG's found time to be active in their aid to the State Blind School, helping every Saturday and doing special things for the school on holidays and special occasions.

SENIORS

Sally Bowe
Carol Currey
Joan Douglas
Gail Durham
Elaine Lyons
Diana Miller
Joan Taylor



JUNIORS

Paula Abbott
Janet Anderson
Alice Bryant
Clare Griffiths
Sueanne Hower
Patti Hull
Diane Hunnax



Mary Lee Jones
Nancy Jones
LeAnne Marchi
Margo Maris
Nan Means
Rosemary Myers



Cari O'Donnell
Sharon Paulsen
Barbara Woodworth
SOPHOMORES
Kathy Boutelle
Kathy Bryant



Sally Bryant
Carol Carver
Joyce Caster
Sarah Cross
Betsy Dutton





Mrs. H. Gault, Delta Gamma housemother, poses with Sharon Paulsen, spring house president (left) and Diana Miller, fall Delta Gamma president (right).



Penny Galitzki
Gerry Howe
Pat Ranton
Kris Schwartz
Mary Schwyhart
Corky Sorensen
Tammy Young

FRESHMEN
Carol Archambault
Bonnie Brown
Lane Burton
Sharon Calavan
Bonnie Cheney
Lucy Christensen
Sandy Cook

Pamella Dean
Lee Griswold
Barbara Hamilton
Darlene Hawkins
Darelyn Huson
Bev Kleiner

Ann Lee
Ronalee Myser
Marilyn Miller
Linda Moore
Ann Rhiger

Nancy Scott
Sally Thome
Sue Thompson
Mary Lou Turner

Pi Beta Phi

Making preparations to move from their present house into new accomodations next year has kept the Pi Phi's busy as well as excited this past year. Post rush found the Arrow Girls welcoming 21 new pledges, with three more pledges joining the ranks in the spring. In the fall the Pi Phi's digressed in time to usher in their traditional roaring twenties dance, "Pi Phi Hiway." The chapter house was covered over night into a honkey-tonk retreat. In the spring "Pink Champagne" was held at the Plantation at Dallas. Any sunny afternoon in the spring could always find several Pi Phi's soaking in the sun on a leaky sleeping porch roof, sun-tan oil and cold water spray bottles handy; in spite of this seemingly lackadaisical attitude, the Pi Phi's managed to reclaim their scholarship trophy, ranking first among sororities on campus in the grade hassel.

SENIORS

Trish Evans
Joann Gay
Merle Gillespie
Sue Lewis
Thelma Ray
Judy Triplett
Mary Ann Wright



JUNIORS

Heather Birnie
Colleen Cochran
Jane Drinker
Judy Francis
Jacquie Graber
Anne Kaufman
Carol Kitchen



Barb Morse
Linda Swan
Cathy Vielbauer
SOPHOMORES
Cheryl Bohannon
Sharon Brown
Candy Coffelt



Pat Cramer
Shauna Dougher
Eli Griffith
Lin Howard
Tori Hull

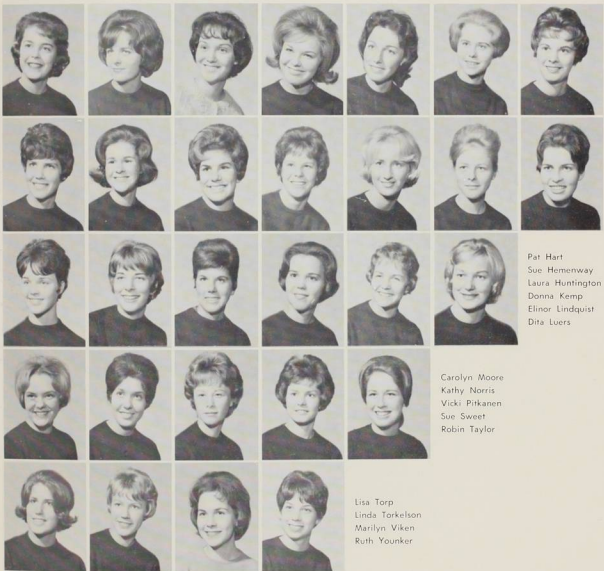


Cundy Janes
Linda Jongeneel
Joan Kane
Carol McNeill
Sue Meeker





One of the spring days on campus finds Pi Beta Phi housemother Mrs. W. Smith in front of the chapter house with fall house president Joann Gay (left) and Heather Birnie, spring president (right).



Terri Mitchell
 Karen Nelson
 Maradee Oliver
 Sharon Overbey
 Sharon Schroeder
 Janelle Sevy
 Sally Stone

Kareen Zumwalt
FRESHMEN
 Cathy Atterbury
 Michelle Bliss
 Nancy Farmer
 Molly Gaynor
 Sylvia Goodrich
 Laurie Hall

Pat Hart
 Sue Hemenway
 Laura Huntington
 Donna Kemp
 Elinor Lindquist
 Dita Luers

Carolyn Moore
 Kathy Norris
 Vicki Pitkanen
 Sue Sweet
 Robin Taylor

Lisa Torp
 Linda Torkelson
 Marilyn Viken
 Ruth Younker

Belknap Hall



During the basketball season when enthusiasm was low, the men from Belknap Hall formed a band that turned out to be a real boost to the team and the other rooters present. The band is shown here in practice in the lounge of Belknap.

SENIORS

Bill Bliss
Ahmed Makki
Steve McPhetres
Jeff Wade
JUNIORS
Ralph Baer
Burr Baughman
Jim Dixon



Chuck Eison
Dale Fisher
Al Frew
Grover Gentry
Bruce Haines
Mark Hamilton



Steve Hanson
Kaveinga Havea
Dale Laird
Tom Newell
Duane Pinkerton



Clarence Pugh
Dan Stark
John Vaagen
Dick van Pelt



SOPHOMORES
Doug Allan
Don Baldwin
Paul Bishop
Craig Brown



Shown here is Mrs. H. Payne, who served as housemother for Belknap Hall, with Jim Dixon (left), spring president and Tom Jordan (right), fall president. The men of Belknap Hall felt a dear loss when Mrs. Payne passed away in the spring. Mrs. R. Sturges assumed the duties of housemother for the rest of the year.



Charley Bunnag
Bob Burles
Marvin Case
Jerry Cooper
Galib Ali Gamil
Terry Gatchell
Preston Golden

Norman Harper
Steve Hawes
Harley Hiestand
Bruce Hubbell
Bill Jackson
Gary Jones

Tom Jordan
Roger Kirchner
Jim Loomis
David Miles
Larry Nye

Sid Roberts
Stan Smith
Dick Stewart
Larry Sturholm

Canuto Tacderan
Dick Trefen
Bill Trindle
Bob Upson

Matthews Hall

Matthews Hall's first activity, although unplanned, proved to be one of the year's best. Following the Columbus Day Storm, Rich Ball, fall president, organized a clean-up committee which conscientiously cleared an area in front of Eaton Hall. Ted Hetu rallied the men to enter the annual Blood Drive held in Matthews basement. In spite of Matthews' enthusiasm, the Delts walked away with the trophy. Under the leadership of Clark Martin, an enjoyable evening was spent by all who attended the fall house dance, "South Seas."

In the spring Matthews Hall was fortunate in having the AWS Carnival held in its basement. Neil Lasley, Jim Ott, and Dick Cook contributed to the total success of the carnival while serving as concessionaires for Matthews Hall. Spring president John Elfving and social chairman Ward Nelson stated, "Twilight in Rome," the spring house dance, was the best of spring activities.

SOPHOMORES

David Dyrud
Tom Glass
Bill Mackey
Russ Roberts

FRESHMEN

Bob Allen
Merle Arnot
Bert Barrett



Warren Brown
Richard Buch
Roland Chun
Dick Cook
Burt Czapszys
Gary Le Long



Roy Eisenbarth
Dave Hansen
Steve Henry
John Green





Mrs. E. Keller, housemother of Matthews Hall, visits with fall president Rich Ball (left) and spring president John Elfving (right) in Mrs. Keller's "always open" sitting room.



John Jaksch
Neil Lasley
Dell Lindstrom
Robert Lo
Hugh MacCall
Clark Martin
Ward Nelson



Jim Ott
Bill Ritchie
Terry Rover
Al Selander
Milton Soo
Kip Stiltz



Bob Thomson
Bill Willingham
Ladd Zastoupil

Beta Theta Pi

This has indeed been another active year for the men of Beta Theta Pi. The Beta's started off the year with a successful fall house dance entitled "Inner Sanctum." The Christmas season brought the annual Christmas party for underprivileged children as well as the other firesides and serenades typical of the pre-vacation and pre-holiday spirit. This year the Beta's were well represented at the District Conclave held in Corvallis, where the "Sixteen Man" chorus was awarded a first place for their presentation. Spring brought many and varied activities, including the annual water fight with the Sigma Chi's. Culminating a good year was the spring dance, "Room at the Top," which was held at the Top of the Cosmo in Portland.

SENIORS

Bill Bush
Buck Hemenway
Richard Litchfield
Jan Lockman
Dick Lord
Gary Mansavage
Dexter Maust



Ron Ray
Jon Steiner
Peter Verloop

JUNIORS

Ray Ashton
Al Beardsley
Doug Blatchford
Gregg Childs



Mike Durrell
Al Frost
Jon Goode
Gene Juve
Phil Krozek



Dick Kreukel
Slava Lubomudrov
Gary McKenzie
Tom Miller



Pete Smith
Rusty Whitney
Dennis Wong
SOPHOMORES
George Blakeslee





Fall Beta president Ron Ray (left) and spring prexy Mike Durrell (right) are seen here with Mrs. B. Bell, housemother for the men of Beta Theta Pi.



John Boyd
Sid Cooper
Chuck Flynn
Steve Enloe
Rich Hawkins
Keith Lovett
Jim Schmidt



Chuck Wardle
Jon Wilson
FRESHMEN
Doug Bamford
Rick Buchannan
Tom Carlson
Rob Chase
Mike Egans



Dave Hansen
Jim Krier
Mike Landfair
Chuck Lathrop
Al Lee



Larry Mattson
Dale Nelson
Phil Parks
Jon Putnam



Dean Torkleson
Larry Tate
Mike Wilkins

Delta Tau Delta

This year has been quite an important one for the Delts, as it was their first in a new chapter house, and they were initiated and installed into the National Fraternity. The fall semester was very busy with many serenades, exchanges, and firesides. The fall house dance, "Cowboys and Indians," was held at the chapter house; the basement was a corral, the dining room a saloon, and sleeping porch an Indian encampment. During this season, the Delts started an annual tradition of choosing four princesses, from whom a queen is selected at the spring dance. One activity not to be forgotten occurred when the first semester pledge class rolled a bowling ball from the front doorstep to the Delt Chapter at Oregon State. As a house, the Delts look forward to continued success in their second year.

SENIORS

Bill Hendersen

JUNIORS

Pinar Crane

Ken Rich

Wayne Thompson

Bill Webber

Harlan Wilson



SOPHOMORES

Marc Anderson

Wes Armstrong

Bob Caulk

Ed Cole

Dave Fairbrook



Barry Howard

Dan Kessler

Barry Schrupf





Mrs. E. Spangler, housemother for the Delta Tau Delta's, is shown here with spring house president Wayne Thompson and Bob Rieder, fall president.



Francis Wong
Steve Yoshihara
FRESHMEN
John Bjork
Bill Blair
Les Bush
Dale Claypool



John Erickson
Bill Handford
Bruce Imai
Mike McKinley
Sam Nebel



Randy Kuhn
Chuck Olson
Jim Worden

Kappa Sigma

This year the K Sig's doubled their membership from 15 to 30, helping to make their third year the best so far. Social activities were on the increase and the K Sig's paid off a quarter of their house loan. The first annual "Sorority Pledge Breakfast" was held, and the first membership pinning announced. Both house dances were most successful once the guests arrived — one by crawling on hands and knees down to the tree shrouded beer garden and the other by a drive into Portland. Thus, it has been a good year for building and for brotherhood for the men of Kappa Sigma.



Max Taggart, (left) fall house president of Kappa Sigma, and Bill Harmon, (right) president in the spring, visit with Mrs. E. Page, housemother for the Kappa Sig's.

SENIORS

John Ryan
Max Taggart

JUNIORS

Bill Harmon
Greg Nelson
David Powers

SOPHOMORES
Dave Arbuckle
Dick Brangart

Jerry Gastineau
Rob Graun
Dixon Hunter
Dennis Littrell
Jim Miyashiro
Doug Moy
Herb Munson



FRESHMEN

Bill Sefton
Rick Bremner
Steve Brown
Richard Buck
John Drummond
Penn Handwerker



Paul Huebner
Jim Lewis
Bill Marshall
John Murdock
Gordon Springer



Peter Strand
Nick Tibbetts
Bob Wallace
Roger Weed



Baxter Hall

The past year has marked a significant increase in the activities of Baxter Hall. Highlighting the academic year was the spring house dance, "Quiet Village by Night," held at the Marion Hotel. Important guests such as the Honorable Justice Goodwin of the Oregon Supreme Court and Mark O. Hatfield, Governor of Oregon, have dined at Baxter this year. Firesides with various living organizations have punctuated the year. A representation of men drew a constitution which will provide better clarification of hall activities.



Bob Cowan, spring president (left), and Mike Egans, fall president (right), escort Baxter Hall housemother Mrs. P. Emmel.



FRESHMEN

Mike Aldrich
William Beers
Jerry Bennett
Larry Dolin
Jim Gerhardt
Vern Ho

Rich Kawana
Larry Liebenow
Grant McAllister
John Murchison
Doug Scott

Dennis Simpson
Bob Solbeck
Jon Stachwick
Bob Thurman

Nick Tri
Garry Van Horn
Roger Wood

Phi Delta Theta

The Phi's began this year filled with the flame of academic desire. It was easy to see that from the beginning studies would come first. There was, of course, a certain element of play: a splendid house dance, "Retreat for Young Lovers," was held in November at Horizon Northwest, an abandoned art gallery and studio. Located in the midst of a meadowy forest, Horizon Northwest provided a perfect atmosphere for the dance. Later in the year and in keeping with the religious background of the University, the Phi's once again sponsored the visit of Brother Ralph, noted evangelist, at the AWS Carnival. His ministrations undoubtedly helped to strengthen students and faculty for the remainder of the year. Other points of interest were the feats of the brothers in the realm of athletics, feats of prowess in intramurals, and ever-famous economic seminars. A summary of the year finds this a most successful one for the Phi's.

SENIORS

Dave Babicky
George Douglass
Fred Ihlenburg
Jim O'Hair
Bill Redmond
Dale Sticka
George Wells



JUNIORS

Bill Allen
Ken Cruden
Fred Fogg
Mike Kowalski
Bill Lang
Frank Swayze



SOPHOMORES

Randy Bowles
Dick Heermance
Joe Hughes
Craig Lowell
Randy Nelsen



Ron Nelson
Dave Pollock
Tom Prediletto
Carl Schneiderman
Pete Stridd





Mrs. N. McElhinny, "Mom" to all her Phi Delta "sons," stops here with Phi Delta Theta spring president Jim O'Hair (left) and George Douglass, president during the fall semester.



FRESHMEN

Dave Baird
 Roger Bergmann
 Don Brockhaus
 Gary Childs
 Pat Curci
 Jack Deja
 Tyrone Gillespie

John Givens
 Dave Hawk
 Ron Kay
 Steve Neptune
 Carl Neu
 Carl Ogden

Dave Page
 Richard Payne
 Mike Pearson
 Dean Popp
 Dave Powers

Ray Schmidt
 Jim Smith
 Dave Waldron
 Bill Webb

Sigma Alpha Epsilon

The end of rush plunged Sigma Alpha Epsilon into an excellent year in 1962-63 with the patron goddess of SAE, Minerva (goddess of wisdom), and Leo (her lion) exerting their influence all the way.

Minerva used her influence early in the year, when, at the Queen of Violets Ball, Queen Claudia was chosen to reign as Queen of Violets. Following the Violet Ball, the queen and her court were initiated into the Little Sisters of Minerva. The second initiation for LSM came after the spring house dance where the names of five outstanding girls were announced granting them membership in the Little Sisters.

Not to be forgotten, Leo did his best as the SAE's captured the flagball tournament in easy style. Some think that Leo must have had something to do with the SAE German band (reports on this, however, aren't verified) and the Volkswagen that somehow ended up in the dining room (woman driver no doubt). Finally, Minerva used her powers as she guided SAE to capture the campus scholarship for the first time in several years.

SENIORS

Tony Dorsch
Gordon Humphrey
Todd Jackson
Rick Laetsch
Pat Mitchell
Dave Robertson
Phil Stephan

Greg Topping
Walt Youngen

JUNIORS

Clark Anderson
Joe Anicker
Gary Beck
Dave Beier
Jim Brown

Denny Charlton
Cliff Comisky
John Drury
Pete Finke
Ron Gustafson
Mike Kelly
Justin King

Tom Kreis
Gary Long
Don Lorenzen
Tom Pringle
Terry Rost
Ed Shallenberger
Howdie Sleeper



Bill Slimak
Ken Stewart
SOPHOMORES
Bob Blodgett
Max Boese
Doug Dunham
Steve Evans

Mrs. I. Wooten, housemother for the Sigma Alpha Epsilon house, is escorted by spring house president Todd Jackson (left) and Dave Robertson, fall prexy.



Dave Foote
Larry Foster
Dale Hermann
Craig Ichinose
Ed Jaros
Bill Johnson
Mike Keuss

Dan Link
Bob Martine
Denny Riley
Dan Skerritt
Steve Smith
Dave Templeton
Jeff Topping

FRESHMEN

Rich Ball
Bob Barron
Ray Bladine
Spike Bowman
Ralph Breitenstein
Don Charlton
Keith Crawford

Bill Crowell
Chris Dudley
John Evans
Ted Hetu
Tom Johnson
Clark Martin
Bill Phegley

Gary Reuter
Jim Sedell
Mike Steding
Ken Rost
Phil Stevenson
Larry Sturholm

Sigma Chi



Rain couldn't dampen the spirits of the participants in the Sig's Derby Day this year as the Alpha Chis upset the defending D.G. champs 116-118.

SENIORS

John Baker
Walt Cauble
Bob Elder
Charlie Evans
Sam Farr
Jeff Frank
Tony Good



Gene Gregory
Bob Hakala
Barney Kliks
Peder Knudsen
Larry Lowenberg
Bill Moore
Paul Powers



Holt Williams
Bob Woodle

JUNIORS

Jim Booth
Denny Drew
Bob Fletcher
Ernie Gohmert



Jim Leathers
George MacReady
Eric McDowell
Doug Moore
Steve Murdock



Bob Perry
SOPHOMORES
Ken Anderson
Jim Baker
Grant Denney
Steve Ditewig



The Sigma Chi housemother this past year has been Mrs. R. Herndon. She is escorted here by Doug Simon (left) who was elected fall Grand Consul by the Sig's in the fall and Jim Leathers (right) who assumed leadership responsibilities in the spring.



Rod Dorinson
Steve Harris
Doug Johnson
Mike McIntyne
Kirk McNeil
John Schwartz
Bruce Smith

Lyle Smith
Gary Wyatt
FRESHMEN
Bud Adams
Bob Armour
Max Bigby
Steve Carpenter
Frosty Comer

Jim Dean
Jim Dombroski
Bill Donnelley
John Frye
Mike Genna
Bob Griswold

Bruce Harmon
Mark Harmon
Steve Jackson
John Lorraine
Bruce Marcy

Phil Marsh
Doug McNish
Larry Potts
Gary Rusing
Bob Hamilton

WITS

Willamette Independent Town Students

SENIORS

John Allen
Norm Barley
Rollin Beaver
Pam Gray
Brenda Russell
Ray Whitlow
Floyd Whiting



JUNIORS

Jim Monroe
SOPHOMORES
Roberta Aldrien
Sandy Humphreys
George Koch
Shirley Koch
Ron Slabaugh



George Tarabe
Pat Wilson
Bob Young

FRESHMEN

Jana Cheatharo
JoAnn Cooly



Cynthia Kaufman
Carol McIlvenna
Dale Ross
Linda York
Roger Vanatta





Seniors



John Ryan
Permanent Class President



Merle Gillespie
Permanent Class Secretary

Spring



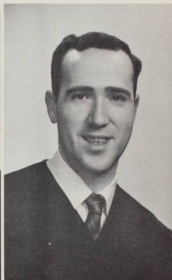
(Top to bottom) Vice-president Tony Good; Treasurer Holt Williams; Secretary Martha Boyer; Sergeant-at-arms Jan Lockman; President John Baker.



(Left to right) Sergeant-at-arms Bill Redmond; President Tony Good; Secretary Merle Gillespie; Treasurer Elaine Pflugmacher; vice-president Rich Litchfield.

Fall

The Class Of 1963 . . .



ABELE, JOHN CHARLES
B.A. Math/Physics

ALLEN, JOHN WILLIAM
B.A. Math/Physics

BAIRD, LUCY MARGARET
B.A. Sociology

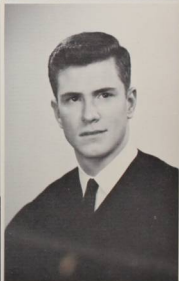
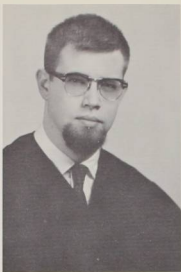
BARLEY, NORMAN HENRY
B.A. Religion

ADKISSON, ERVA LARAE
B.A. Sociology

ARONSON, ANN MARIE
B.A. Psychology

BAKER, JOHN THURLOW JR.
B.A. Sociology

BEATON, DAVID ALAN
B.A. History



BEATY, HELEN KATHRYN
B.A. History

BLISS, WILLIAM LOCKHART
B.A. Biology

BOWERS, SUSAN RAE BELLE
B.E. Political Science/Philosophy

BUSH, WILLIAM HENRY JR.
B.A. Chemistry

BEAVER, ROLLIN ANTHONY
B.A. Political Science

BODEN, VALERIE DREW
B.M. Piano

BOYER, MARTHA JANE
B.A. Psychology

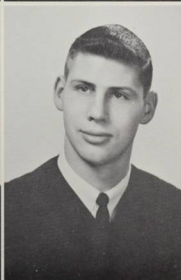
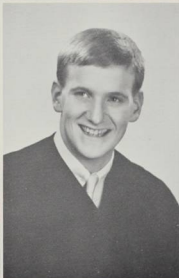
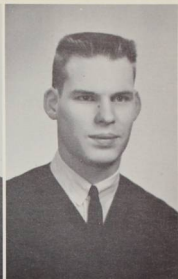
CAMPBELL, LARRY BURKE
B.A. Economics

BINFORD, JOHN PAUL
B.A. Political Science

BOWE, SALLY JANE
B.A. Philosophy

BROWN, LYLE RICHARD
B.A. Biology

CAUBLE, WALTER LEE
B.A. History



CHIDESTER, LAWRENCE WILLIAM
B.A. English

CONRAD, MARDA KAY
B.A. Biology

DARBY, GERALD LYLE
B.M./Ed. Public School Music

DUNHAM, TOM ROBERT
B.A. Psychology

CLINE, JAMES REESE
B.A. Mathematics

COX, RODNEY THOMAS
B.A. Economics/Mathematics

DOUGLAS, VINITA JOAN
B.A. Biology

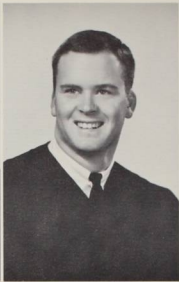
DURHAM, GAIL MAUREEN
B.A. French

CLINE, JOETTA MILLER
B.M./Ed. Public School Music

CURREY, CAROL ANNE
B.A. Sociology

DOUGLASS, GEORGE MacDONALD
B.A. Chemistry

EBAUGH, PAT SKIDMORE
B.A. Sociology



EDWARDS, MARCIA LYNN
B.A. History

EUBANKS, JULIA ELIZABETH
B.A. Art

FARR, SAMUEL S.
B.A. Psychology

GARDNER, KAREN EARLINE
B.A. Spanish

ELDER, ROBERT SCOTT III
B.A. Physics/Mathematics

EVANS, CHARLES HENRY JR.
B.A. History

FARRA, FREDRIC MICHAEL
B.A. Psychology

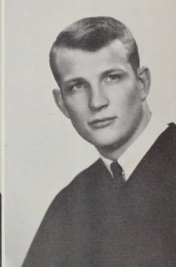
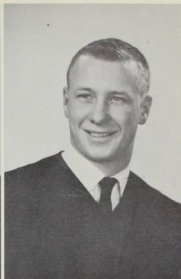
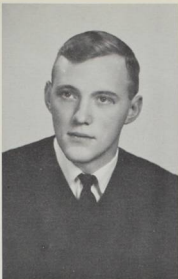
GAY, JOANN ARLENE
B.A. Psychology

EMERSON, GAYLE EILEEN
B.M./Ed. Public School Music

EVANS, PATRICIA MARY
B.A. History

FRANK, JOHN EATON
B.A. History

GILLESPIE, MERLE AMANDA
B.A. Art



GOOD, ANTHONY HOWARD
B.A. Economics

GREGORY, EUGENE RICHARD
B.A. Political Science

HARTMAN, ROBERT FRANK
B.A. Psychology

HOUSTON, KAREN KAY
B.A. Physical Education

GRAY, BEVERLY PAMELA
B.A. Sociology

HAKALA, ROBERT MICHAEL
B.A. Biology

HIBBARD, PAULINE
B.A. German

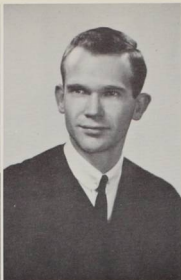
HUGHES, JAMES ARTHUR
B.A. Economics

GREENACRE, PATRICIA DIANNE
B.A. Sociology

HARRIS, RENNE LEE
B.A. Chemistry

HJELT, MARY CHRISTINE
B.A. English Literature

HUMPHREY, GORDON LAIRD
B.A. Psychology



JACKSON, HERSCHEL TODD
B.A. Psychology

JUSSILA, "J" ROBERT
B.A. Mathematics/Psychology

KERWIN, RICHARD BRADFORD
B.A. Art/Political Science

KLIKS, BERNARD ROSS
B.A. Chemistry

JONES, BRIAN GERARD
B.A. Economics

KELLEY, MICHAEL DONOVAN
B.A. Economics

KEYSER, ELIZABETH L.
B.A. English/Philosophy

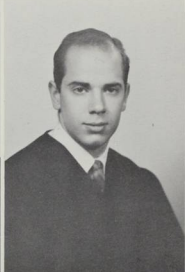
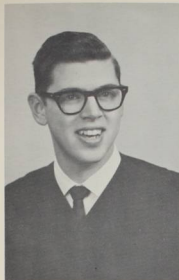
KNUDSEN, PEDER DUNCAN
B.A. Psychology

JONES, SUSAN LAURENE
B.A. Mathematics

KELLEY, PATRICK

KIRK, LITITIA JO
B.A. Sociology

KONZELMAN, DAVID LEE
B.A. Sociology



LAETSCH, ERICH KURT JR.
B.A. Physics/Mathematics

LEWIS, SUSAN TAFT
B.M./Ed. Public School Music

LORD, RICHARD FLOYD
B.A. Economics

McPHETRES, STEPHEN T.
B.M./Ed. Public School Music

LAUGHLIN, MIKE H.
B.A. Economics

LITCHFIELD, RICHARD C.
B.A. Chemistry

LOWENBERG, LARRY WAYNE
B.A. Economics

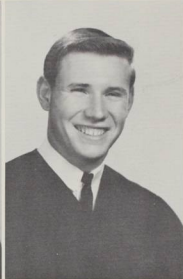
McWILLIAMS, PATRICIA ANN
B.A. Philosophy/Political Science

LEAVERTON, JUDITH ANN
B.A. French

LOCKMAN, REIDE JAN
B.A. Biology

LUTJE, ROBERT LEONARD
B.A. Mathematics/Physics

MACDUFF, SUSAN JEAN
B.A. Sociology



MANSAVAGE, GARY THEODORE
B.A. Political Science

MAUST, DEXTER
B.A. Psychology

MILLER, NANCY LOUISE
B.A. Biology

PFLUGMACHER, ELAINE L.
B.A. Sociology

MARTIN, ANN RUTH
B.M. Theory

MESPEL, CATHERINE ANN
B.A. Political Science

MITCHELL, PATRICK HOWARD
B.A. Psychology

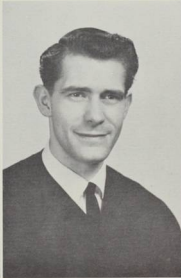
POWERS, PAUL D.
B.A. Psychology

MASON, DEAN STEINER
B.M./Ed. Public School Music

MILLER, DIANA GAY
B.A. English/Psychology

O'HAIR, JAMES PATRICK
B.A. Political Science/Russian

RAY, RONALD RALPH
B.A. Economics



RAY, THELMA JANE
B.M./Ed. Public School Music

ROBERTSON, DAVID HIRAM
B.M. Theory

RUTKOWSKI, GEOFFREY BRUCE
B.A. Biology

SCHUBERT, SYLVIA WIN
B.A. History

REDMOND, WILLIAM WALTER
B.A. Economics

ROGERS, JOHN
B.A. Psychology

RYAN, JOHN EDWARD JR.
B.A. Sociology

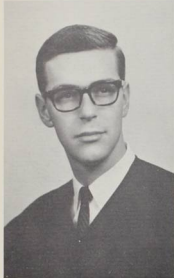
SHUPE, WILLIAM DONALD
B.A. Economics

RHORER, JUDITH ANN
B.A. Political Science

ROGERS, JUDITH ANN
B.A. English

SCHIEWEK, JOHN ALVIN
B.M./Ed. Public School Music

SIMON, DOUGLAS W.
B.A. Political Science



STEELE, SHERRIE MAE
B.A. Political Science

STEWART, NANCY LOU
B.M./Ed. Public School Music

SWEETEN, M. JEAN
B.A. Psychology

THIELEMANN, JOAN CAROL
B.A. French

STEINER, JON ALFRED
B.A. French

STICKA, DALE ALVIN
B.A. Economics

TAGGART, MAX STILWELL II
B.A. Psychology

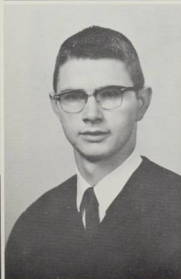
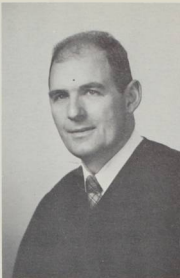
TOPPING, JOHN GREGORY
B.A. Mathematics

STEPHEN, PHILLIP LEE
B.A. Political Science

STONE, KAREN DEE
B.A. French

TAYLOR, JOAN CATHERINE
B.A. History

TRIPLETT, JUDITH GAIL
B.A. Psychology



VERLOOP, PETER ALEXANDER
B.A. Political Science

WELCH, RONALD AMES
B.A. Mathematics / Physics

WHITLOW, RAY LEONARD
B.A. Religion

WOODLE, ROBERT CRAIG
B.A. Economics

WADE, JEFFREY GEORGE
B.A. Political Science

WHITELEY, PATRICK MICHAEL
B.A. History

WILLIAMS, EVERETTE HOLT
B.A. Political Science

WOODWARD, DONNA MARIE
B.A. Sociology

WALKER, WAYNE ALLEN
B.A. Economics

WHITING, FLOYD IRA
B.A. Biology

WILLIAMS, PAUL DEAN
B.A. Economics

WRIGHT, MARY ANN
B.A. Psychology / Sociology



WYND, MARTHA ANN
B.A. English: Speech/Drama
Emphasis on Drama



YAPLE, JANE ELIZABETH
B.A. History



YUNGEN, WALTER ARTHUR
B.A. Physics/Mathematics

SENIORS NOT PICTURED

ALLEN, MARGARET LOUISA
B.A. Sociology

BAUMAN, GLEN ALLEN
B.A. Mathematics

BOYER, PAULINE ANNETTE
B.A. Sociology

BUSH, CHARLES LEE
B.A. Philosophy

CAMPBELL, RICHARD ROBERT JR.
B.A. Physics

DOMASCHOFSKY, REX
B.A. Physical Education

DORSETT, IAN
B.M. Voice

HARTMAN, WILLIAM DAVID
B.A. Physical Education

HENDERSON, WILLIAM CAMERON
B.A. Political Science

HERYFORD, ROBERT EUGENE
B.A. Mathematics/Physics

KRUEGER, RAYMOND R.
B.M./Ed. Public School Music

LAMBERTON, KURT ANGUS
B.A. Chemistry

LANDES, JUDITH LEE
B.A. Spanish

LEE, THOMAS FRANCIS
B.A. Physical Education

LUCAS, JOHN ROBERT
B.A. Economics

LYONS, ELAINE
B.A. English Literature

MOORE, WILLIAM KELLOGG
B.A. Biology

NELSON, RICHARD BARTEL
B.A. Mathematics

PEARCY, DIANA LESLIE
B.M./Ed. Public School Music

RADEMAKER, JANICE
B.A. Sociology

RUSSELL, BRENDA LEE
B.A. English

WEINSTEIN, MICHAEL LEE
B.A. History

WEISS, JAMES EDWARD
B.A. Chemistry

THE CLASS OF 1963

With 150 seniors graduating from 31 different chosen major fields, the class of 1963 is graduating one of the largest classes in recent years. Activities that included benefits for needy families at Christmas and the wild parties were only the ends of the spectrum that included many other activities that class members participated in. While going through our picture files, it only seemed fitting that we dedicate this page to the seniors in hopes that they will remember:



HOMECOMING . . .



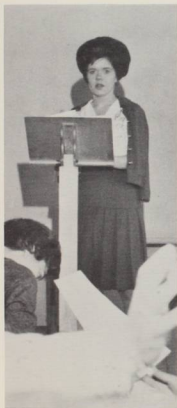
THAT GREASY KID'S STUFF . . .



CLASS MEETINGS . . .



SUZY'S TUSSY TALK . . .

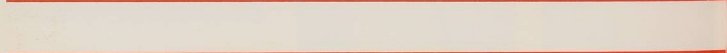


AND THE PARTIES.



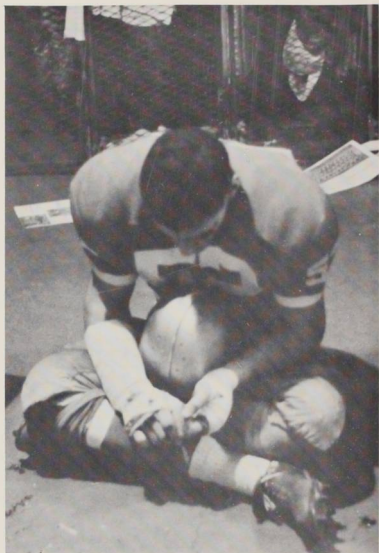
OUR SPIRIT . . .







Sports



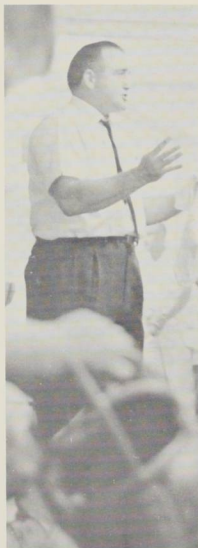
**These
Are
Our
Coaches**



JOHN LEWIS
Basketball
Baseball



NORM CHAPMAN
Football
Golf



TED OGD AHL
Football
Track



RICHARD GILLIS
Swimming



LESTLE SPARKS
Tennis

Football

Four years of wind sprints, the blocking sled, executioner, agility drills, scrimmage, sweat and more sweat came to an end for ten tough seniors this year. Gleaming smiles from mud-caked faces prevailed 23 times, quiet reflection in defeat on nine occasions and mixed emotions accompanied two ties during the span that found NWC hardware in the Bearcat trophy case twice.

All of the seniors left memories and cleat marks in the McCulloch Stadium turf, but perhaps the most gilded belong to quarterback Tommy Lee. On only two occasions during the 33 times that Tommy directed the 'Cat attack did the opponents outgain Willamette in total yardage. Individually, talented Tommy assessed more than two miles of ground covering in four years, 3,541 yards. He fired passes at a .523 percentage (240-459) and found paydirt on 32 flips. His deception and direction gained him the honor of being tabbed the most outstanding quarterback in Willamette history. Coupled with center Willie Hartman, the Bearcats possessed a hub of strength. A look at their honors is evidence enough and will last right along with the memories of the "tough ten".



TOMMY LEE
All NWC

Dist. 2 NAIA 1st Team
AP Little All-Coast
UPI Little All-Coast 2nd Team
Little All-American Hon. Men.
First Team All-Methodist



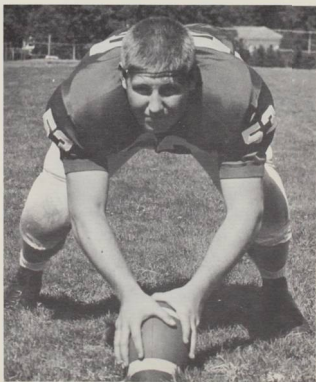
RICH LITCHFIELD
NWC Hon. Men.

WILLIE HARTMAN

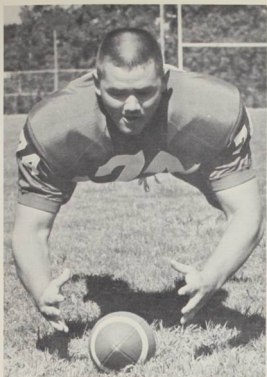
All NWC

Dist. 2 NAIA 1st Team
AP Little All-Coast 2nd Team
UPI Little All-Coast 1st Team
Little All-American Hon. Men.
Second Team All-Methodist

19

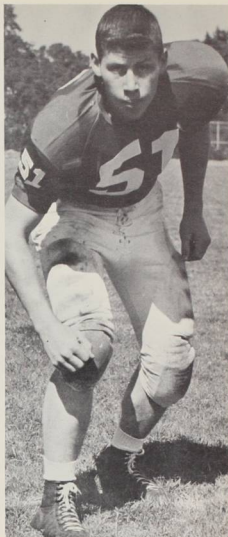


62

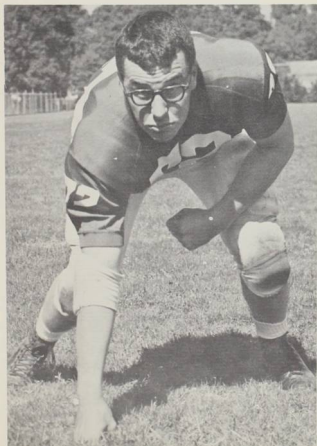


DON GREEN

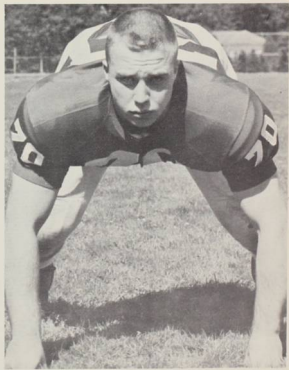
GEORGE DOUGLASS
All NWC
Dist. 2 NAIA 1st Team

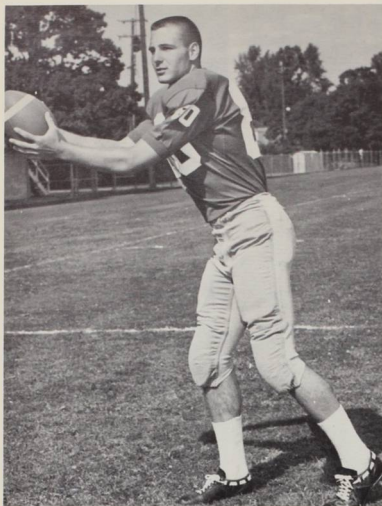


MIKE WEINSTEIN



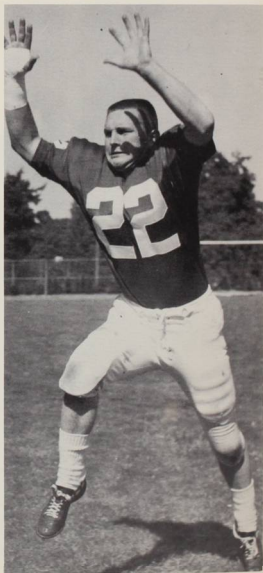
JIM O'HAIR



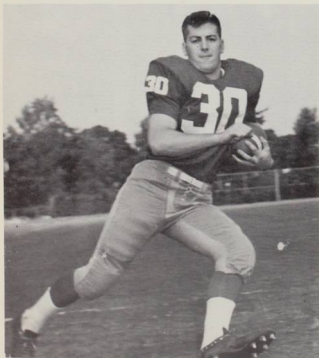


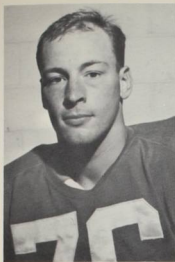
DEXTER MAUST

BOB BOWMAN
NWC Hon. Men.

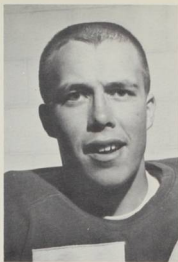


WAYNE WALKER

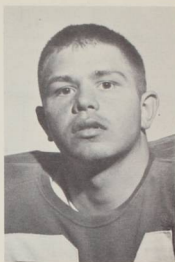




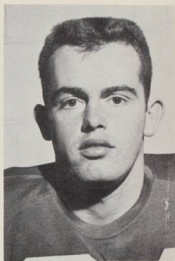
JIGGS BURNETT
All NWC
Wist. 2 NAIA 1st Team



BRUCE ANDERSON
All NWC



ROGER BERGMAN

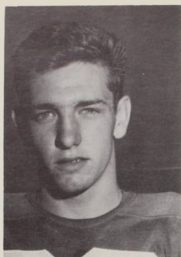


JIM BOOTH

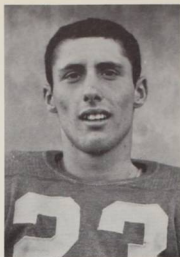
Senior halfback Bob Bowman not only packs the pigskin, but tries to carry a Linfield defender around left end with him. The extra weight proved to be too much of a burden, and the Bearcats dropped this Homecoming clash, 21-12.



DICK CARNEY



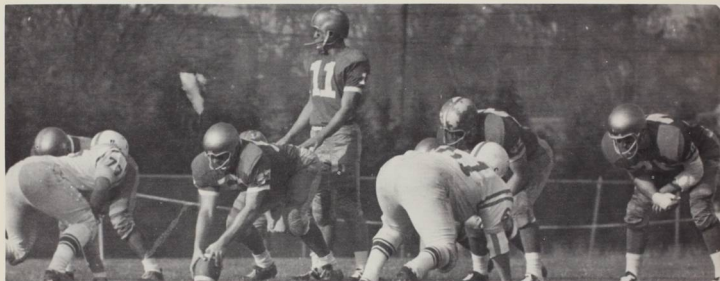
JACK DEJA



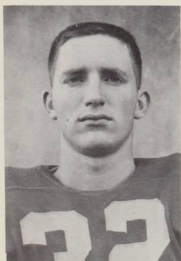
BOB FLETCHER



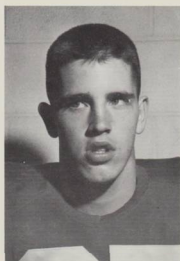
RICHARD KAWANA



"Bottoms up!"



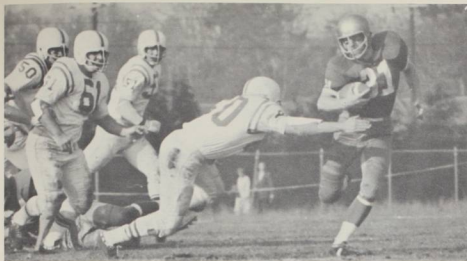
DAN KESSLER



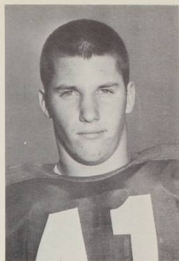
JOHN KING



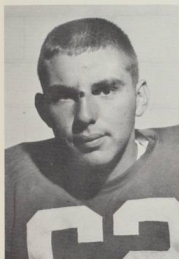
GEORGE KOCH



Jim Schmidt skirts around left end while being pursued by the "meat" of the Linfield line.



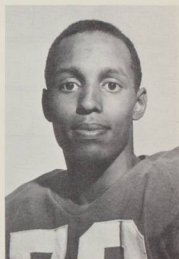
CARL NEU



WAYNE LOONEY



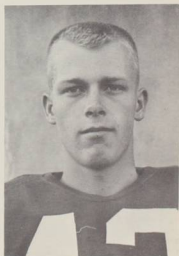
WALTER MAZE
NWC Hon. Men.



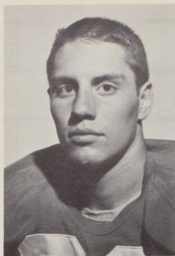
DICK PAYNE



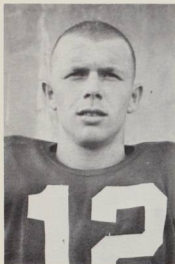
Tricky Tommy Lee has just triggered the Bearcat assault against Linfield, starting to roll right for an aerial try. He amassed 3,197 yards through the air in four years.



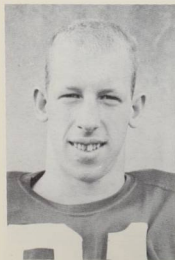
NELS PEDERSON



DEAN POPP



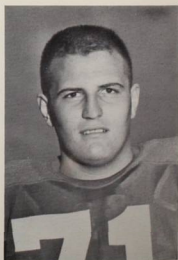
PETE RUOTSI



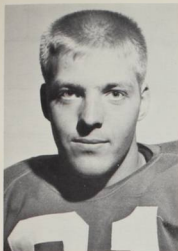
JIM SCHMIDT



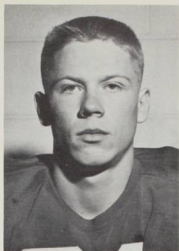
DICK TAKEI
NWC Hon. Men.



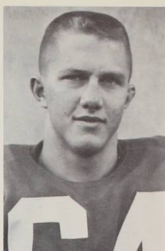
JOHN TRAVIS



STAN TRAXLER



TOM TOOMBS



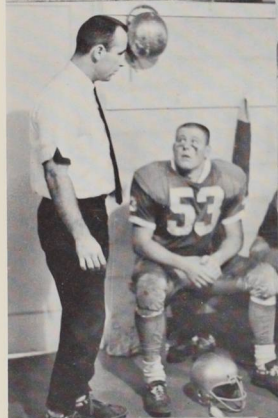
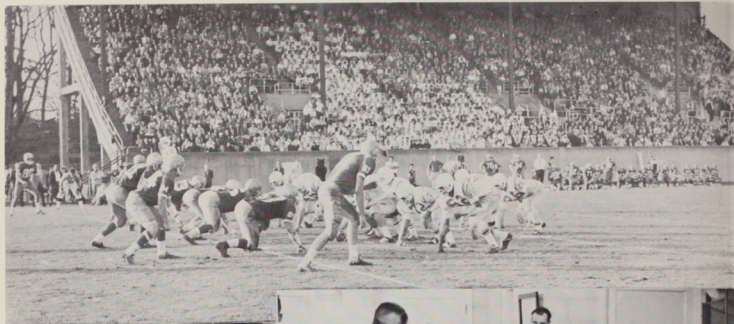
JIM WOODS



This football business is "no sweats," as the Bearcats take to lying on the floor at halftime because they weren't on their backs too often in posting the 6-3-1 record. Freshmen Wayne Looney and John Travis show the proper reclining form.



The Bearcats absorbed this first femme assault in Hawaii with great vigor, but Hawaiian huskies of the gridiron proved not so hospitable, sending the Bearcats off with a 14-12 defeat. Grid pains are soon forgotten in surroundings such as the above.





The old and new combined in '62 to give coach Ted Ogdahl a satisfying and successful football season. Veteran quarterback Tommy Lee, center Willie Hartman and eight other outstanding seniors provided the nostalgia, while amazing Walter Maze and a host of talented freshmen injected the new spark.

Maze ripped off three touchdowns in his college debut against University of Puget Sound on the way to a 27-7 victory. The following week Willamette trekked to Humboldt State for a game that had been sized up in the papers as follows: "Willamette won't get blown off the field, it'll get powdered out of the park." The final was 21-13 for the Lumberjacks, but the Bearcats certainly weren't "powdered" anywhere except in their own offense, outgaining Humboldt 292 to 263 yards.

Pacific fell to the Bearcats, 40-7, in the next encounter as did junior halfback Tom Toombs. Toombs was decked with a broken ankle and didn't see any action for the rest of the year. Whitman threw a scare at the 'Cats the following week, succumbing 21-14. A 43 yard pass from Lee to Maze with 47 seconds left in the game pulled it out.

A fogbound Parent's Weekend crowd witnessed Willamette's 20-0 victory over College of Idaho. At least that's what the final score read whether the fans could see it through the fog or not. University of British Columbia fell next, 34-6, before the onslaught of Maze's running and Lee's passing. Little Walter chalked up 170 total yards and two TD's, while Lee hurled for a pair and 109 aerial yards.

The expected title battle followed between Linfield's Wildcats and the Bearcats at Willamette Homecoming. The Wildcats prevailed in a 21-12 contest that was marked by two controversial calls. Whether the outcome would have been different became a moot point, and the Wildcats went on to win the NWC title undefeated.

A game that decided only that two good football teams battled, followed with the outcome WU 7, Lewis and Clark 7. However, the action had somewhat more bearing upon the Bearcats, as Lee "earned" a broken clavicle at the end of a 48-yard "naked reverse" that ended his playing career. Up to that point the deceptive signal caller had connected on 55 of 95 tosses for 791 yards, a 98.9 average for the season. In total offense yardage for the year he averaged 126.6 per game.

Sophomore Pete Ruotsi took over the helm and guided Willamette to a 13-6 win over Central Washington State College, and then took a 14-12 defeat on the pads at the hands of the University of Hawaii in Honolulu. The Hawaiian trip was a pleasurable caper to a fine season, excluding the game outcome.

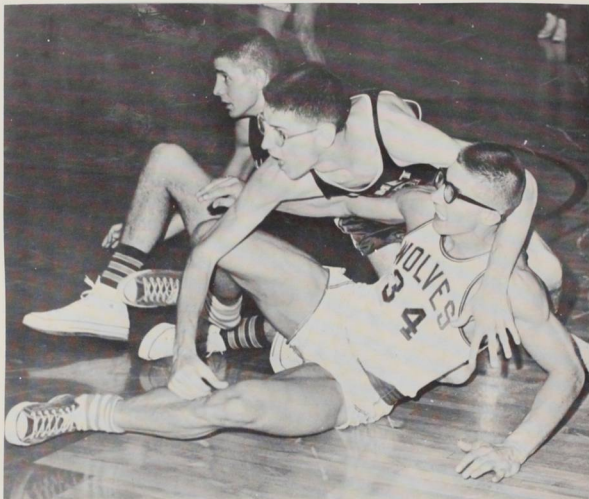
1962 FOOTBALL SCORES

Willamette...27	University of Puget Sound... 7
Willamette...13	Humboldt State College...21
Willamette...40	Pacific University... 7
Willamette...21	Whitman College... 14
Willamette...20	College of Idaho... 0
Willamette...34	Univ. of British Columbia... 6
Willamette...12	Linfield College... 21
Willamette... 7	Lewis & Clark College... 7
Willamette...13	Central Wash. State Col... 6
Willamette...12	University of Hawaii... 14

1962 FINAL NWC FOOTBALL STANDINGS

	W	L	T	PF	PA
Linfield.....	5	0	0	141	24
Willamette.....	3	1	1	100	49
Lewis & Clark.....	3	1	1	168	33
College of Idaho.....	2	3	0	40	150
Pacific.....	1	4	0	74	115
Whitman.....	0	5	0	35	186

Basketball



This year just didn't seem to be the year for Coach John Lewis and his men of the maples. Succumbing to the mightier powers in the league, the Bearcats finished fifth in the conference this season.

Looking back at the season, there were a number of things that had a negative effect upon the players. First and probably foremost were the injuries that put six of the Bearcat starters on the bench before the season was half over. Later in the campaign, four more players were lost to the sidelines because of injuries.

Of particular note, Belknap's pep band came to the front during the time when enthusiasm and support was at its lowest. With the Independent noise-makers leading the way, the final games of the season were some of the best played all year.

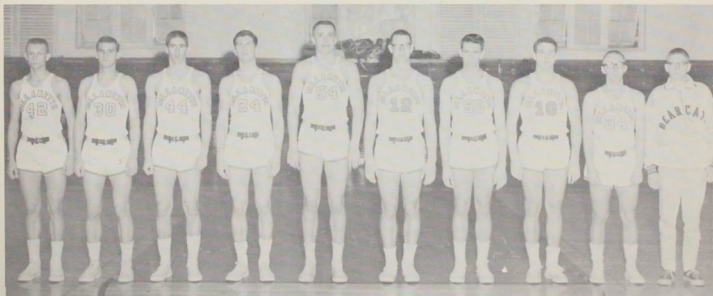
The Bearcat bucketmen finished the 62-63 campaign with a 5 win, 10 loss conference record, and an overall record of 8 wins and 17 losses, that netted them fifth place in the conference.



"Going up".



Coach Lewis and his men "in the huddle".



J.V. BASKETBALL: L. to R.: Phil Stevenson, Mike Alley, Bob Barron, Gary Pippen, Bruce Anderson, Rick Cummings, Tom Wiseman, Jim Worden, Jeff Topping, and Reid English.



Action

Bob Hartman



Bob Woodle

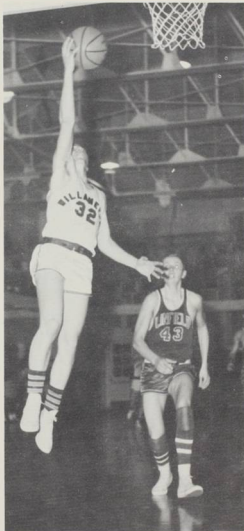
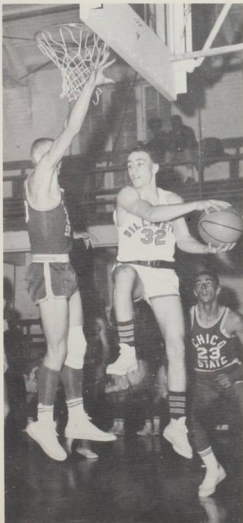
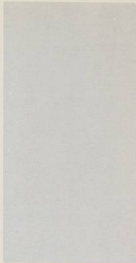


Charlie Roberts



Lyle Smith





Eric McDowell



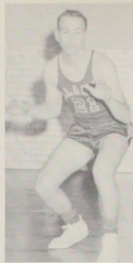
Kirk McNeil



Jim Booth



Dave Neilson



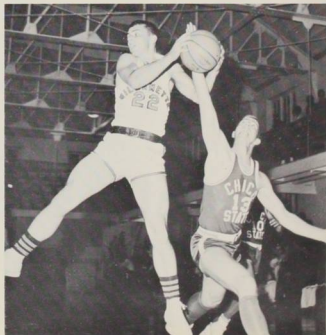
Ed Swearinger



Larry Potts

NORTHWEST CONFERENCE RESULTS

Pacific University	45	Willamette	44
Pacific University	84	Willamette	53
Whitman College	51	Willamette	74
College of Idaho	47	Willamette	60
College of Idaho	57	Willamette	67
Lewis and Clark	89	Willamette	48
Pacific University	47	Willamette	43
Linfield College	59	Willamette	56
Lewis and Clark	62	Willamette	44
Lewis and Clark	69	Willamette	54
Whitman College	52	Willamette	63
Whitman College	56	Willamette	48
College of Idaho	72	Willamette	46
Linfield College	61	Willamette	67
Linfield College	72	Willamette	71
Conference Standing:	Fifth		
Game Standing:	8-17-0		

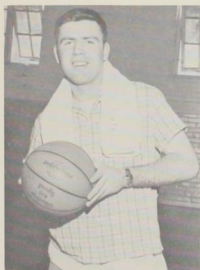




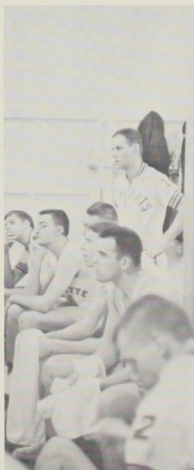
Jim Smith

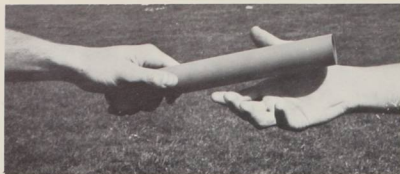


Stan Traxler



Bryan Jones





Track

As was the case with the other Spring sports on the Bearcat athletic calendar, track was not excluded from a late start because of the weather. Late rains kept the thinclads from taking to the track for their workouts. Sprinters looked like hydros as they navigated the track in the rain and mud.

Highlight of the season was Ken Ashley's record-breaking high jump of 6'-9 $\frac{3}{4}$ "', which also tied the NAIA all-time high jump mark set in 1953.

Even with the weather as an obstacle, W.U.'s thinclads brought home the third place honors from the NAIA meet held at Lewis and Clark.



NORTHWEST CONFERENCE RESULT

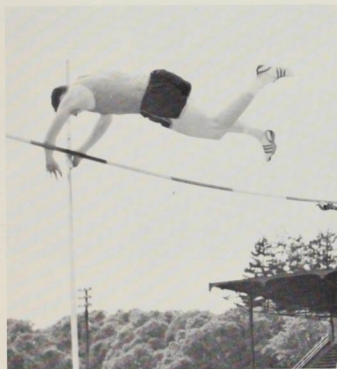
Linfield College	49	Willamette	82
Pacific University	63	Willamette	67
Whitman College	63	Willamette	68
Lewis and Clark	85	Willamette	46
Conference Meet: Placed Third			



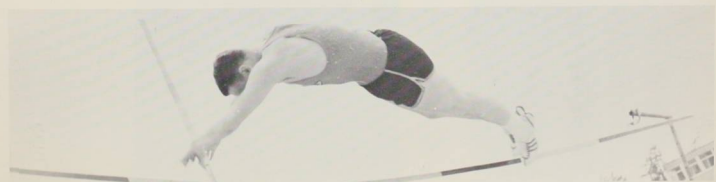


Up

And

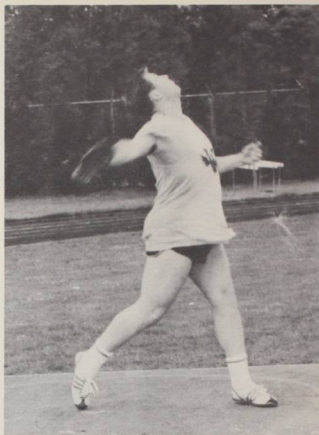


Over





Alan Beardsley



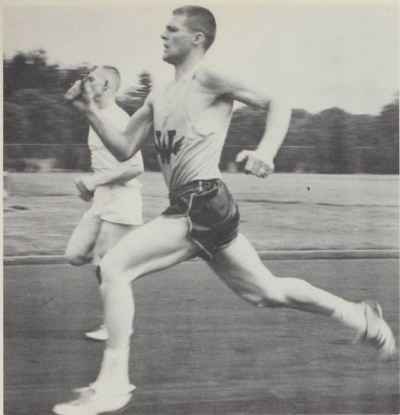
Denny Charlton



Gary Mansavage (L)



Don Green



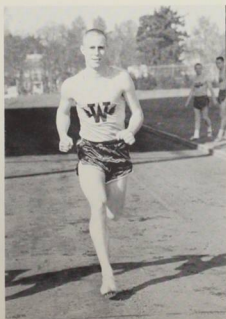
Denny Thompson



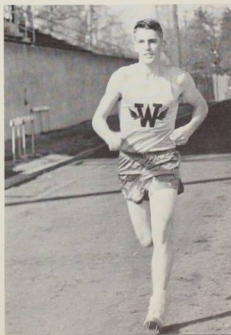
Dexter Maust (R)



Sid Cooper



Wes Armstrong



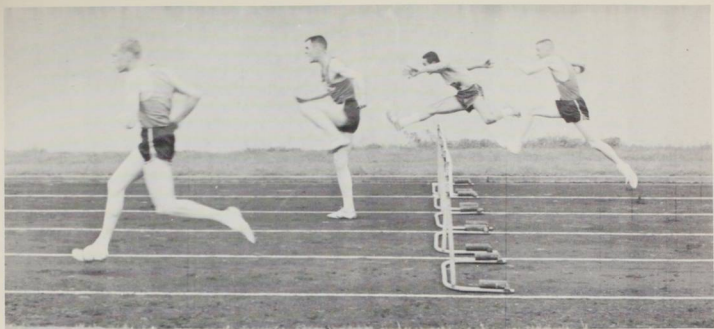


In Track, it's every man for himself . . .



But he never forgets the rest of the team.

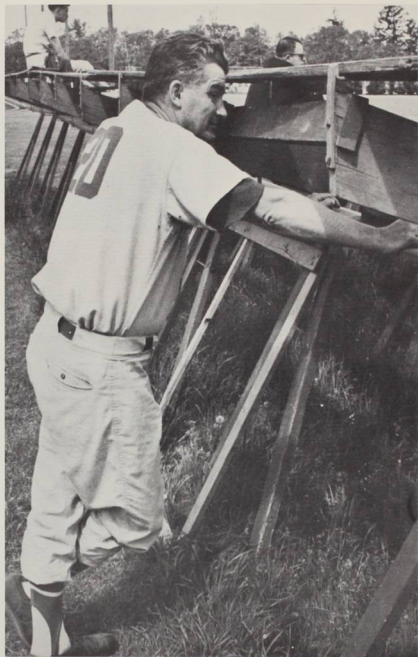




Always working toward that 'good form'.



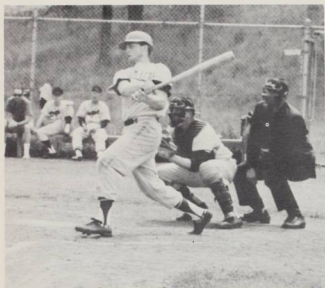
Baseball





"It's just how you play the game."

Willamette University Bearcats Second Place Team. 1963



Off to a slow start because of the weather, John Lewis' baseball squad came on strong at the finish but was edged out in the final games and had to be content with a second place in the conference, ending with a league record of 9-5 and a season record of 12 wins and 10 losses.

Selected for the NWC "Dream Team" were Jan Lockman, Mike Kelly, and Chuck Jameson. Lockman was also placed on the District II team; with honorable mention going to Jameson and Kelly. Stout, Burnett, Topping, and Bill Moore were honorable mention for the Northwest Conference.

Freshman Don Stout and Senior Jan Lockman were the "big sticks" for the Bearcats as they had a league batting average of .347 and .320 respectively. Lockman had 5 homers and 16 runs-batted-in. Sophomore hurler Chuck Jameson headed the mound crew with a 1.53 earned run average and finished with a 4-4 record while senior Bill Moore was strikeout king with 56 whiffs in 43 innings. Sophomore second sacker, Jeffing Topping proved his talent by handling 68 chances without a flaw for a perfect 1.000 fielding average.

TEAM STATISTICS: .231 batting average, 934 fielding mark and an earned run average of 2.65.



Swimming



Coach Richard Gillis' wetbacks this year were John Givens, Fred Fogg, Robey Banks, Bill Crowell, Jim Loomis, John Green, Phil Krozek, and Doug Dunham.

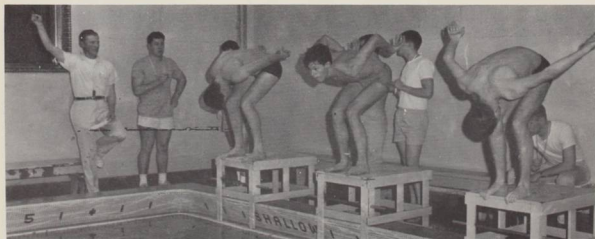


The mermaids on the Bearcat swimming team were Corky Sorenson, Ann Marchi, Nan Means, Nancy Farmer, Darlyn Huson, Sylvia Goodrich, and Anita Drinker.

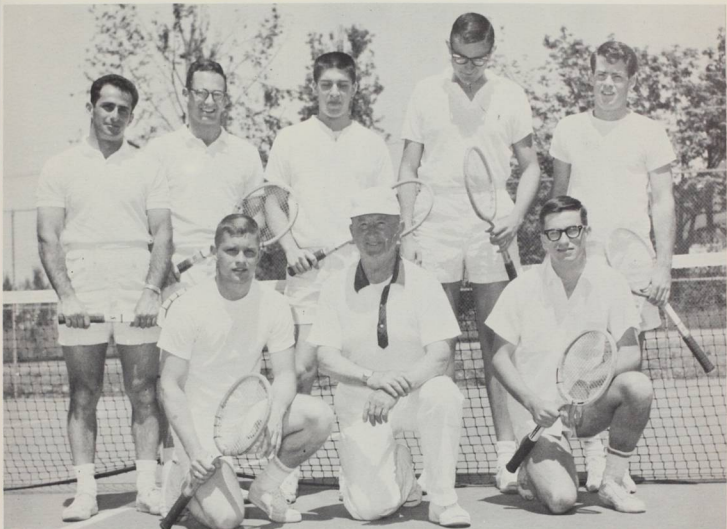
Existing through an extremely wet season, the Bearcat splashers came through conference competition with a third place standing.

Conference Results:

Linfield College 55	Willamette 31
Lewis and Clark 43	Willamette 42
Linfield College 52	Willamette 30
Linfield College 67	Willamette 38
District N.A.I.A. Standing:	Placed Third.



Tennis



With rain cancelling seven matches, the Bearcat tennis squad went on to complete its worst season since 1948. In conference play they had a 2-2-1 record. The Bearcats were paced by Fred Fogg and Steve Crane.



Golf



Bob Woodie



Bob Elder

Coach Norm Chapman's swingers bagged the Northwest Conference crown May 17th at Broadmoor Golf Course in Portland with a 36-hole team total of 610. They then went on to walk off with the District title with a 603 total over the 6,800 yard Illaha Hills Country Club here in Salem. Woodie and Hubbell made the NWC all-star squad, while Laughlin and Woodie earned spots on the all-district team. In competition, this year, Willamette posted its finest record since 1952 at 8-2-2. In 1952, the first year of a ten year string of titles for the Bearcats, the record was 8-1-1. Final stroke averages for the 12 matches went:

Woodie	71.7	Parks	79.9
Laughlin	74.8	Potts	79.0
Elder	76.2	Heermance	83.7
Hubbell	73.7	Handwerker	83.2
Eison	72.8		

As of the printing of this book, the Cats were in Kansas City for the 12th Annual NAIA golf Tournament. It was the first trip to the finals in history for the Bearcats.



Heading up Coach Norm Chapman's divot team were: Phil Parks, Larry Potts, Penn Handwerker, Bruce Hubbell, Bob Woodie, Dick Heermance, Bob Elder, Mike Laughlin, and Coach Norm Chapman.



Mike Laughlin

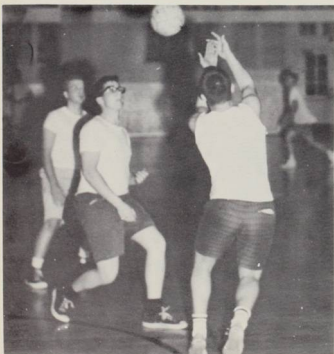


Women's Intramurals

Although we have pictured here only one phase of the women's intramural program, there are numerous other physical activities that the gals take part in for intra house sporting activities. The competitors shown above are enjoying themselves as much as are the spectators watching the sporting spectacular.



Men's Intramurals



A long wet intramural season came to an end with the new intramural champs, Phi Delta Theta, grabbing a long point lead. Competing in all phases of athletic activity, the Phis came out in front of the second place SAE's by a total score of 223½ to the SAE's 207. The list of league play includes basketball, softball, volleyball, track, and football.



***Index
&
Advertising***

MONK'S RESTAURANT440 State Street
Salem, Oregon**LES NEWMAN'S
MENS WEAR AND SHOES**179 Commercial N.E.
Salem, Oregon**HOGG BROTHERS
Furniture and Appliances**260 State Street
Salem, Oregon**RICHES ELECTRIC CO.**236 State Street
Salem, Oregon**BURRIGHT'S CLEANERS**198 Church S.E.
Salem, Oregon

Index

ADMINISTRATION AND FACULTY

AAbbott, Dean E., Capt. 99
Anderson, C. Leroy, Dr. 90
Arthur, Courtney 107**B**Bastuscheck, Burton, Dr. 93
Beal, Paul B., Dr. 88
Breakey, Donald R., Dr. 95
Brown, Warren R. 97
Butler, Edwin W. 107**C**Chapman, Norman L. 98
Currey, A. Gale, Dr. 98**D**Davis, John P., Lt. Col. 99
Deischer, Mildred E. 97
Derthick, Charles H., Dr. 93
Douglas, James S. 87
Drayton, Paule G. 88
Duell, Paul M., Dr. 94**F**Fernald, Sara J. 87
Frost, Orcutt W., Dr. 87
Furlong, Robert E. 107**G**Gatke, Robert M., Dr. 90
Gillis, Richard M., Dr. 89
Golart, Milton J., Major 99
Grant, A. Richard 89
Gregg, Robert D. 92**H**Hafferkamp, Jack H. 94
Hall, Carl A. 96Hudak, Norman J., Dr. 94
Hunnex, Milton D., Dr. 89**I**

Isaacson, Eugene L. 96

JJens, Charles A. 107
Johnson, Charles H., Dr. 94**K**Kaestner, Noel F., Dr. 93
Kaiser, Chester C., Dr. 92
Kraft, Clarence A. 88**L**Laker, Lash H., Capt. 99
Laws, F. Donald 90
Leonard, Jack 89
Lewis, John 98
Lovell, R. Ivan, Dr. 92
Luther, Chester F., Dr. 94
Lyles, James R., Jr., Dr. 97**M**Markus, Francis Kent 92
McAllister, Allister 107
McCollough, J. Lawrence 89
McConnell, Calvin D. 93
Monk, Cecil R., Dr. 95
Montgomery, Richard C., Dr. 95
Morange, Marion, Dr. 88**N**

Nelson, Milton N., Dr. 89

OOgdahl, T. Theodore 98
Ostlund, Leslie N., Det. Sgt. Maj. 99**P**Parker, Reginald, Dr. 107
Paulin, Cameron, Dr. 107
Payton, Arthur D., Dr. 94
Petrie, Richard P. 89
Prairie, Robert L. 90
Purbrick, Robert L., Dr. 95
Purdy, Thomas E., T/Sgt. 99
Putnam, Robert M. 96**R**Rademaker, John A., Dr. 90
Reese, Dean 106
Ringnalda, Margaret B. 87
Ringnalda, Murco, Dr. 87
Roddy, Elaine C. 87
Runkel, Howard W., Dr. 96**S**Schulze, Daniel H., Dr. 88
Shay, Theodore L., Dr. 90
Sims, William B., S/Sgt. 99
Sparks, Lestle J. 98
Springer, Martha E., Dr. 95
Stillings, Edwin J., Dr. 90**T**

Trueblood, Paul G., Dr. 87

U

Udris, Marija 88

WWade, DeVon 89
Williams, J. Jean 98**Y**Yocom, Elizabeth 95
Yocom, Richard A. 84, 93

LAW STUDENTS

A

Alexander, Loren 108
Allen, Paul 108

B

Balderree, Willis 108
Ball, Robert 108
Barnes, Jim 108
Barron, Jerry 108
Brand, Malcolm 108
Burrows, Robert 108
Burton, Riley 108

C

Capurro, Wayne 108
Carter, Wayne 108
Coolidge, Harry 108

D

Dahlke, Donna 108
Davidson, Durant 109
Davis, Paul 108
De Fant, Raymond 108
Duncan, James 109
Durant, Bruce 109

F

Feitelson, Ira 109

G

Glantz, Rodney 108

Grant, Richard 108

H

Hagen, Leon 108
Hall, Charles 109
Hall, Stuart 109
Hampton, S. H. 108
Hemingway, Tom 109
Hughes, Joseph 108

J

Jacobson, John 109
Jeffers, Garfield 109
Jeffries, Warren 109
Jelders, John Jr. 108
Jolley, Ronald 109

K

Kirk, Charles 109
Kissling, Ernest 109

L

Lauton, Donald 109
Little, Raymond 108
Lowe, Gregg 108

M

Manandas, John 109
McCallester, Jerry 108
McGriff, Mark 109

Midlam, Kevin 108
Miley, Edward 109
Miller, Dennis 108
Montague, Larry 109
Moore, W. B. 108
Morford, Charles 109

N

Newson, John 108

R

Ritter, Daniel 109

S

Schussler, Don 109
Snyder, John 109
Stubkjaer, Karin 109

T

Tindell, Verne 109
Towlor, Scott 109
Todorovich, Donald 108
Tucker, Stephen 109

V

Vinje, Edmund 109

W

Weber, Kenneth 108
Williams, Gerald 109
Woodside, Jon 109

The
Commercial Bank



301 Church N.E. — Salem

315 East Main — Silverton

Thrifticheck Checking Accounts for Students

"Member F.D.I.C."

POMEROY OPTICAL

383 State Street

Phone 363-9011

Dr. Chas. B. Pomeroy, Optometrist

and Associate

Dr. Gus C. Wallis, Optometrist

Complete Optical Service

Lenses Ground in Our Own Laboratory

PRESCRIPTION SUNGLASSES

FRAMES FOR ALL OCCASIONS

CONTACT LENSES

COMMERCIAL PRINTING . . .

OFFSET PRINTING . . .

TRADE COMPOSITION . . .

Printers of the Willamette Collegian
and Salem High School Papers

STATESMAN PUBLISHING CO.

280 Church Street N.E.

Phone 364-6811 — Ext. 291 or 289

BILL BEARD

See your local sport specialists for the most
complete stock of quality sporting goods

SPORTING GOODS, INC.

Phone 363-6042

372 STATE STREET

SALEM, OREGON

A

Abbott, Paula 126
Abele, John 149
Adams, Bud 145
Adams, Julie 118
Ackisson, LaKae 124, 149
Albright, Terry 114
Aldrich, Mike 139
Allan, Douglas 130
Allen, John 149
Allen, Judith 114
Allen, Margaret 119
Allen, Robert 132
Allen, William 140
Amell, Carole 120
Anderson, Clark 142
Anderson, Elizabeth 118
Anderson, Janet 126
Anderson, Kent 144
Anderson, Marc 136
Anicker, Joe 142
Arbuckle, David 138
Archambault, Carol 127
Armour, Bob 145
Armstrong, Wesley 136
Arnot, Merl 132
Aronson, Ann 149
Ashton, Ray 134
Atterbury, Cathy 129
Aungst, Julianne 122

B

Babicky, Dave 140
Bachelder, Carol 114
Badger, Joyce 121
Baird, David 141
Baird, Lucy 118, 149
Baker, Jim 144
Baker, John 144, 149
Baldwin, Don 130
Ball, Richard 142
Bamford, Doug 135
Barley, Norman 149
Barnum, Drue 128
Barron, Robert 143
Barta, Kathleen 114
Bartholomew, Allyn 123
Bates, Darlene 116
Bates, Jill 122
Baughman, Burr 130
Beardsley, Alan 134
Beaton, Dave 149
Beaty, Kathryn 124, 150
Beaver, Rollin 150
Beck, Gary 142
Beers, William 139
Beier, David 142
Bennett, Jerry 139
Berg, Carolyn 116
Bergman, Roger 141
Berret, Burt 132
Bigby, Max 145
Binford, John 150
Birnie, Heather 128
Bischoff, Jamie 114
Bishop, Paul 130
Bjork, John 137

Bladine, Raymond 143
 Blair, Bill 137
 Blair, Candy 120
 Blakesley, George 134
 Blatchford, Doug 134
 Bliss, Michelle 129
 Bliss, William 130, 150
 Blodgett, Robert 142
 Boatwright, Paula 115
 Bockman, Jean 118
 Boden, Valerie 120, 150
 Boese, Max 142
 Bohannon, Cheryl 128
 Bonnington, Jane 125
 Booth, Jim 144
 Boutelle, Kathy 126
 Bowe, Sally 126, 130, 150
 Bowers, Susan 118, 150
 Bowles, Randolph 140
 Bowman, Ann 121
 Boyd, John 135
 Boyer, Martha 120, 121, 150
 Boylen, Mrs. R. 115
 Brandt, Marilyn 113
 Brangart, Richard 138
 Bremmer, Richard 138
 Bretherick, Don 113, 143
 Bridges, Jane 124
 Bristol, Andrea 114, 115
 Brockhaus, Don 141
 Brown, Bonnie 127
 Brown, Craig 130
 Brown, James 142
 Brown, Lyle 150
 Brown, Sharon 128
 Brown, Steve 138
 Brown, Warren 132
 Browne, Carol 124
 Bryant, Alice 126
 Bryant, Kathy 126
 Bryant, Sally 126
 Buck, Richard 132, 138
 Buchannan, Rick 135
 Buell, Carol 125
 Bunnag, Charley 130
 Burgoyne, Betty 116
 Burkland, Mary 116
 Burles, Robert 131
 Burton, Lane 127
 Bush, Lester 137
 Bush, William 134, 150
 Bushnell, Susan 120

C

Calavan, Sharon 127
 Campbell, Larry 150
 Carlson, Thomas 135
 Carpenter, Stephen 145
 Carver, Carol 126
 Case, Marvin 131
 Cassidy, Patricia 123
 Casson, Patricia 121
 Caster, Joyce 126
 Castillo, Charlotte 116
 Castles, Cheryl 113
 Cauble, Walter 144, 150
 Caulk, Robert 136
 Chamberlin, Fay 124

OTTO J. WILSON COMPANY

Buick Sales and Service

COMMERCIAL AT CENTER
SALEM, OREGON

Established 1902

KENNETH WILSON

OTTO J. WILSON

CENTRAL MARKET

1420 State Street

Phone 581-2845

● Groceries

● Meats

● Fountain

OPEN FROM 7 A.M. TO 12 P.M.

Complete Confidence
in
Laundry
and
Dry Cleaning
from



Phone 363-9125

SALEM LAUNDRY COMPANY

263 HIGH ST. S.E.

PEERLESS BAKERY

"Special Orders for All Occasions"

170 N. COMMERCIAL STREET
SALEM, OREGON • PHONE 363-5704

Bakers for Her Majesty, the Housewife
BUY THE BEST — WE DO!

LEONARD & HELEN GOTTFRIED

McEWAN PHOTO SHOP

- Wedding Photography
- Portraits
- Camera Equipment

"PHOTOGRAPHERS FOR THE WALLULLAH"

245 High St. N.E.

Phone 363-5470



383 Court St. N.E. • Phone 364-9770

"FLOWERS FOR ALL OCCASIONS"

Chaney, Marie 114
Charlton, Denny 142
Charlton, Donald 143
Chase, Robert 135
Cheney, Bonnie 127
Chidester, Bill 151
Childs, Gary 141
Childs, Gregg 134
Christiansen, Lucy 127
Chun, Roland 132
Clark, Cheryl 114
Clark, Lucille 113
Claus, Nancy 114
Claxton, Amy 113
Claxton, Pat 113
Claypool, Dale 137
Cline, James 151
Cline, Joetta 151
Clocking, Lila 125
Cochran, Colleen 128
Coffelt, Catherine 128
Cole, Ed 136
Collins, Candy 114
Collins, Diane 116
Comer, Frosty 145
Comisky, Clifford 142
Conrad, Marda Kay 124, 151
Cook, Richard 132
Cook, Sandy 127
Cook, Sherma 114
Cooper, Jerome 131
Cooper, Sid 135
Cotrell, Gretchan 114
Cowden, Anne 125
Cox, Rodney 151
Cramer, Patricia 128
Crawford, Keith 143
Cross, Cordelia 125
Cross, Sara 126
Crowell, William 143
Cruden, Ken 140
Currey, Carol 126, 130, 151
Curci, Patrick 141
Curtis, Shirley 113
Czapszys, Burt 132

D

Dames, Joyce 116
Darby, Gerald 151
Davenport, Anne 120
Davis, Barbara 124
Davison, Doris 118
Dawson, Kathleen 113
Dean, James 145
Dean, Pamela 115, 127
Deja, Jack 141
De Long, Garry 132
Demler, Lorraine 120, 121
Denney, Grant 144
Dewar, Kathryn 114
Dewey, Jeanette 119
Ditewig, Stephen 144
Dixon, Jim 130
Dockstader, Carol 124
Doern, Eileen 121
Dolin, Larry 139
Dombroski, Jim 145

Donnelley, William 145
Donner, Sue 116
Dorinson, Rod 145
Dorsch, Antony 142
Dorsch, Mary 121
Dougher, Shauna 128
Douglas, Joan 126, 130, 151
Douglass, George 140, 151
Drew, Dennis 144
Drinker, Anita 113
Drinker, Susan Jane 128
Drummond, John 138
Dudley, Chris 143
Dunham, Doug 142
Dunham, Tom 151
Dunn, Judy 114
Durham, Gail 126, 151
Durrell, Michael 134
Dutton, Betsy 126
Duttweiler, Sandra 113
Dyruud, David 132
Dyury, John 142

E

Ebaugh, Patricia 151
Edinger, Mary Lee 113
Edwards, Lynn 124, 152
Egans, Mike 135
Eichelberger, Margaret 121
Eisenbarth, Royce 132
Eison, Charles 130
Elder, Bob 144, 152
Ellison, Sharon 120
Emerson, Gayle 120, 152
Emery, Paula 121
England, Susan 120
Enloe, Stephen 135
Erickson, John 137
Eriksen, Anne 116
Eubanks, Julie 116, 152
Evans, Charles 144, 152
Evans, John 143
Evans, Karen 121
Evans, Patricia 152
Evans, Steve 142
Evans, Trish 128

F

Fairbrook, Dave 136
Farmer, Nancy 129
Farr, Sam 144, 158
Farra, Fredrick 152
Farrow, Claudia 125
Ferguson, Susan 114
Finke, Pete 142
Finlayson, Ann 120
Finley, Phoebe 119
Fisher, Dale 130
Fisher, Jeanne 114
Fletcher, Robert 144
Flinn, Nancy 124
Flint, Barbara 116
Flynn, Chuck 135
Fogg, Frederick 140
Foote, David 143
Foster, Lawrence 143
Foster, Susan 122

MONTGOMERY WARD


155 Liberty St. N.E.

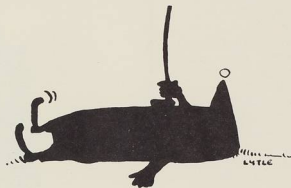
Salem, Oregon

SUPPLIERS OF QUALITY MERCHANDISE
TO THE AMERICAN PUBLIC SINCE 1872

Headquarters for all your shopping needs.
Over 100,000 items to choose from for Family,
Home, and Car.

SATISFACTION GUARANTEED

or your money back! 



SALEM GOLF CLUB

"ORDERS TO TAKE OUT"

PHONE 362-2117

"Catering to Banquets"

China City Restaurant

— FAMOUS CHINESE & AMERICAN DISHES —
— PARTIES AND BANQUETS A SPECIALTY —

3583 COMMERCIAL ST., S.E.
ON 99-E SOUTH OF SALEM

SALEM, OREGON

Fox, Lynn 119
Francis, Judy 116
Francis, Judy 128
Frank, Jeff 144
Frank, John 152
Frew, Alexander 130
Frost, Allan 134
Frye, John 145

G

Galitzki, Penny 127
Gamil, Galib Ali 131
Gardner, Joan 114
Gardner, Karen 152
Garner, Susan 125
Garth, Linda 114
Gastineau, Jerry 138
Gatchell, Terry 131
Gay, Joann 128, 152
Gaynor, Molly 129
Gellatly, Mary 118
Gellerman, Karen 120
Genna, Michael 145
Gerharot, James 139
Gentry, Grover 130
Gibson, Carol 122
Gillespie, Merle 128, 152
Gillespie, Tyrone 141
Givins, John 141
Glass, Thomas 132
Gohlert, Ernie 144
Golden, Preston 131
Good, Tony 144, 153
Goode, Jonathan 134
Goodrich, Sylvia 129
Graber, Jacqueline 128
Graun, Robert 138
Gray, Beverly 153
Green, John 132
Greenacre, Patricia 118, 153
Gregory, Gene 144, 153
Griffith, Clare 126
Griffith, Elizabeth 128
Griswold, Bob 145
Griswold, Lucile 127
Gritsch, Judith 120
Gustafson, Ron 142

H

Haberman, Eugenie 120
Haines, Bruce 130
Hakala, Bob 144, 153
Hall, Laurie 129
Hall, Mrs. M. 113
Hamilton, Barbara 127
Hamilton, Bob 145
Hamilton, Mark 130
Handford, William 137
Handwerker, Penn 138
Hansen, Cheryl 114
Hansen, David 135
Hansen, David 132
Hansen, Stephen 130
Harlor, Susan 114
Harmon, Bruce 145
Harmon, Mark 145
Harmon, William 138
Harper, Norman 131
Harris, Kathy 115

JOHNSON & SIEWERT

Printers

• DESIGNERS OF . . .

Quality Printing

Telephone 363-7490

545 FERRY STREET S. E. • SALEM, OREGON



24 hour service

MASTER
SERVICE STATIONS, INC.

Headquarters for:

365 Commercial N.E.

- ★ General Electric Appliances & TV
- ★ Appliance & TV Service All Makes
- ★ Goodyear Tires
- ★ Union Oil Products

S & H GREEN STAMPS — TERMS



Distinctive Apparel For Women

NATIONALLY ADVERTISED BRANDS

Phone 364-6828

460 State St.

HERTZ RENT-A-CAR

When you need a
car for the
Big Night

HERTZ
RENT A CAR

For Those Extra
Special Occasions

195 COMMERCIAL STREET S.

PHONE 364-1451

JAYSON'S

"Smart Clothes for Smart Men"

198 Liberty N.E.

SALEM, OREGON

Harris, Paula 121
Harris, Renne 153
Harris, Stephen 145
Hart, Pat 129
Hartman, Robert 153
Ha Vea, Setaleki 130
Hawes, Steven 131
Hawk, David 141
Hawkins, Darlene 127
Hawkins, Richard 135
Head, Sandy 121
Hedman, Carolyn 115
Heermance, Richard 140
Heidbrak, Jollie 123
Hemenway, Bill 134
Hemenway, Susan 129
Henderson, William 136
Henry, Steven 132
Herick, Charlea 117
Heringer, Arlene 124
Hermann, Dale 143
Herndon, Mrs. R. 145
Hetu, Ted 143
Hibbard, Pauli 120, 153
Hiestand, Harley 131
Hill, Helen 113
Hjelt, M. Christine 153
Ho, Vernon 139
Holland, Patricia 124
Holman, Sheila 122
Houston, Karen 153
Howard, Barry 136
Howard, Lin 128
Howe, Jeri 127
Hower, Sueann 126
Howie, Vicki 114
Huebner, Paul 138
Hubbell, Bruce 131
Huff, Penny 117
Hughes, James 153
Hughes, Joe 140
Hull, Patti 126
Hull, Tori 128
Humphrey, Gordon 142, 153
Hunnex, Diane 126
Hunt, Wendy 118
Hunter, Dixon 138
Huntington, Laura 129
Huson, Dorelyn 127
Hutchins, Dawna 123
Hutchison, Nancy 125

I

Ichinose, Craig 143
Ihlenburg, Frederick 140
Imai, Bruce 137

J

Jackson, Todd 143, 154
Jackson, Steve 145
Jackson, William 131
Jackson, John 133
Jamieson, Judith 115
Janes, Cynthia 128
Jaros, Edward 143
Jessen, Judy 124
Johnson, Bill 143
Johnson, Carol 115
Johnson, Douglas 145

Johnson, Jennis 113
 Johnson, Karen 120
 Johnson, Thomas 143
 Jones, Brian 154
 Jones, Gary 131
 Jones, Marilyn 117
 Jones, Mary Lee 126
 Jones, Nancy 126
 Jones, Susan 120, 154
 Jordan, Tom 131
 Judd, Virginia 118
 Jussila, Robert 154
 Juve, Gene 134

K

Kane, Joan 128
 Kaufman, Anne 128
 Kawana, Richard 139
 Kay, Ron 141
 Keller, Suzanne 113
 Kelley, Patrick 154
 Kelly, Michael 142, 154
 Kemp, Donna 129
 Kennemore, Colleen 123
 Kerwin, Richard 154
 Kessler, Daniel 136
 Keyser, Elizabeth 154
 King, Justin 142
 Kirchner, Roger 131
 Kirk, Lilitia 154
 Kitchen, Carol 128
 Kleiner, Beverly 127
 Kliks, Barney 144, 154
 Knudsen, Peder 144
 Konzelman, Dave 154
 Kowalski, Michael 140
 Kraft, Glenda 121
 Kreis, Tom 142
 Kreuchel, Dick 134
 Krier, James 135
 Krozek, Phil 134
 Kruchek, Karen 123
 Kuess, Mike 143
 Kuhm, Randy 137

L

Laetsch, Erich 142, 155
 LaFrance, Joan 117
 Laird, Dale 130
 Lambertson, Jean 119
 Landfair, Mike 135
 Lane, Mary 121
 Lang, Bill 140
 Larson, Carole 113
 Larson, Joyce 116
 Lasley, Neil 133
 Lathrop, Charles 135
 Laughlin, Mike 155
 Leathers, James 144, 145
 Leaverton, Ann 154
 Lee, Alan 135
 Lee, Ann 127
 Leisure, Toni 124
 Leslie, Susan 115
 Lewis, James 138
 Lewis, Susan 128, 154
 Liebenow, Larry 139
 Lindell, Carole 113
 Lindquist, Elinor 129

SMITH-CORONA

Coronet
 ELECTRIC PORTABLE



"Try a New Smith-Corona Electric Portable"

TYPEWRITERS — ALL MAKES

SALES - RENTALS - REPAIRS

Ph. 363-6773 **ROEN'S** 456 Court N.E.

Court Street Jewelry

WATCH REPAIR, DIAMONDS, WATCHES, RINGS, ETC.

484 Court Street
 Salem, Oregon

George Ishida

Phone 363-8104

N.L. Stiff Furniture Co
 COMPLETE HOUSE FURNISHERS

FURNITURE ● APPLIANCES ● TELEVISION
 FLOOR COVERINGS

Telephone 363-9185
 450 Court Street N.E.
 Salem, Oregon

VERNON L. WADSWORTH

LESLIE WADSWORTH

All Kinds of Insurance and Surety Bonds

Beke & Wadsworth

121 HIGH ST. N.E. • SALEM, OREGON

Opposite Court House

Telephone 364-3333



STYLE CENTER FOR MEN

BISHOP'S

363-4933

SALEM

145 North Liberty

COMMERCIAL

120 COMMERCIAL ST., N.E.
DIAL 363-3163 or 363-3164
SALEM, OREGON

BOOK STORE

Complete Stationery

Supplies

Lindsell, Andrea 124
Lindstrom, Dell 133
Link, Dan 143
Litchfield, Richard 134, 155
Littrell, Dennis 138
Lo, Robert 133
Lockman, Jan 134, 155
Lockmiller, Joanne 125
Lockyear, Sally 123
Long, Gary 142
Loomis, James 131
Lorraine, John 145
Lord, Dianne 114
Lord, Richard 134, 154
Lorenzen, Don 142
Lovett, Keith 135, 140
Lew, Carolyn 120
Lowell, Craig 140
Lowenburg, Larry 144, 155
Lubomudruv, Slava 134
Luers, Dita 129
Lundgren, Heather 117
Luscher, Marcia 121
Lutje, Robert 155
Lutticken, Virginia 125
Lyons, Elaine 126
Lyons, Rebecca 115

M

Mabee, Marilyn 119
MacDonald, Janice 119
Macduff, Susan 120, 155
Mackey, Bill 132
MacIver, Marjorie 121
MacReady, George 144
Makki, Ahmed 130
Mansavage, Gary 134
Marchi, LeeAnn 126
Marcy, Bruce 145
Maggi, Donna 117
Maris, Margo 126, 130
Marotz, Toni 117
Marsh, Phillip 145
Marshall, Bill 138
Martin, Anne 116
Martin, Clark 133, 143
Martin, Dana 120
Martin, Melinda 124
Martin, Robert 143
Mathews, Patricia 125
Mattson, Larry 135
Maust, Dexter 134
May, Marianne 123
Maynard, Pam 121
McAdao, Marcia 117
McAllister, Grant 139
McAulay, Tammy 113
McCall, Hugh 133
McDowell, Barbara Nelson 120
McDowell, Eric 144
McElhinny, Mrs. W. 141
McElrath, Gail 119
McIntyre, Mike 145
McKenzie, Gary 134
McKinley, Frances 122
McKinley, Michael 137
McMilan, Constance 115
McNeil, Carol 128



A MOST EXCITING STORE
FOR COLLEGE MEN AND WOMEN

- ★ Special Activities
- ★ Meeting Place
- ★ Latest Styles
- ★ Famous Labels
- ★ Casual, Friendly Atmosphere
- ★ ONE OF AMERICA'S GREAT STORES

The Best Place To Buy
THE BEST CANDY

GAY'S
CANDY

135 High Street N.E. • Salem, Oregon

Phone 362-9235

McNeil, Kirk 145
McNish, Douglas 145
McPhetres, Stephen 130, 155
McWilliams, Patricia 122, 155
Means, Nan 126
Meeker, Sue 128
Merritt, JoAnne 117
Mespelt, Catherine 120
Meyer, Charla 113
Meyster, Ronaltee 127
Michelson, Joan 115
Miles, David 131
Miller, Diana 126
Miller, Betty Ann 124
Miller, Janet 113
Miller, Marilyn 127
Miller, Tom 134
Minkner, Leslie 125
Mitchell, Pat 142
Mitchell, Terry 129
Miyashiro, James 138
Moen, Judi 113
Monk, Lenore 119
Montag, Dorothy 120
Moore, Bill 144
Moore, Carolyn 129
Moore, Douglas 144
Moore, Linda 127
Morgan, Susan 124
Morse, Barbara 128
Moy, Doug 138
Moyer, Marcia 122, 126
Moynihan, Betty 114
Munson, Herb 138
Murchison, John 139
Murdock, John 138
Murdock, Steve 144
Myers, Rosemary 126

N

Nebel, Samuel 137
Neil, Ann Kirk 125
Nelson, Dale 135
Nelson, Gregory 138
Nelson, Janet 137
Nelson, Karen 129
Nelson, Randle 140
Nelson, Ronald 140
Nelson, Ward 133
Neptune, Stephen 181
Neu, Carl 141
Newell, Thomas 130
Norris, Kathleen 129
Nye, Lawrence 131

O

Oakley, Marion 122
Oakley, Vicki 117
Odlie, Linda 121
O'Donnell, Cari 126
Ogden, Carl 141
O'Hair, Jim 140
Okada, Stephanie 115
Oliver, Maradee 129
Olson, Charles 137
O'Rourke, Kathleen 119
Ormsbee, Jeanette Baker 120
Osborn, Laurie 117
Osborne, Margery 121

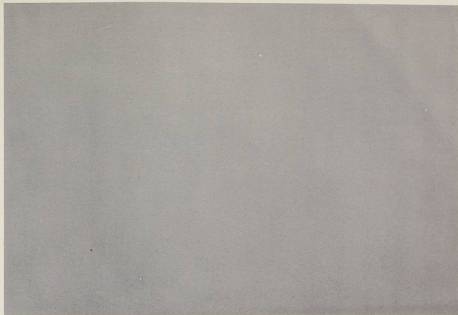
Ostlind, Matrina 113
Ott, James 133
Overby, Sharon 129

P

Page, David 141
Paquette, Terry 113
Parks, Phil 135
Parry, Catherine 121
Paulson, Sharon 126
Payne, Richard 141
Pearcy, Diana 118
Pearson, Michael 141
Perkins, Jeanne 118
Perry, Robert 144
Peter, Charlene 113
Peterson, Anne 124
Pflugmacher, Elaine 124
Phegley, William 143
Phillips, Cheryl 121
Phillips, Linda 115
Pierce, Raynette 123
Pinkerton, Duane 130
Pitkanen, Victoria 129
Pollack, David 140
Pond, Linda 120
Popp, Dean 141
Potter, Janet 113
Potter, Pamela 119
Potts, Lawrence 145
Powers, David 141
Powers, David 138
Powers, Paul 144
Powers, Pam 113
Prediletto, Thomas 140
Price, Nancy 124
Pringle, Thomas 142
Pugh, Clarence 130
Putnam, Jon 135

R

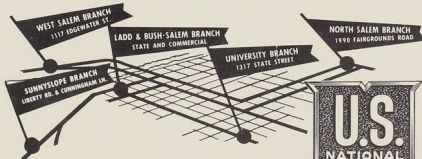
Ragland, Mary Ann 124
Rakestraw, Anne 121
Ramaker, Mrs. P. 117



IF YOU DARE TO COMPARE...
YOU'LL BUY A
Zale's DIAMOND!

Zale's exciting new series of 1/2, 1/4 and Full Carat diamond designs reveals quality even the unperfected eye can detect! And you can buy on Zale's Protected Purchase Plan, wear and compare your Zale diamond for 30 days... find a better value anywhere and Zale's will refund your money in full!

5* Convenient Branches TO SERVE YOU IN SALEM



Oregon's Only Home-owned, Statewide Bank

THE UNITED STATES NATIONAL BANK OF PORTLAND
Member Federal Deposit Insurance Corporation



Randall, Ivona 124
Ranton, Pat 127
Rathburn, Mrs. C. 125
Ray, Ron 134
Ray, Thelma 128
Redmond, Bill 140
Reed, Sybil 125
Reese, Ellen 113, 121
Reiersen, Kathleen 115
Reppun, Karen 121
Rhiger, Ann Marie 127
Rhorer, Judith 122
Rice, Arlene 123
Rich, Kenneth 136
Riches, Susan 113
Riley, Dennis 143
Ritchie, Bill 133
Roberts, Russell 132
Roberts, Sidney 131
Robertson, Dave 142
Rogers, Judi 122
Rodgers, Ruth 125
Rogers, Mrs. G. 121
Rogers, John 165
Rost, Ken 143
Rost, Terry 142
Rover, Terry 133
Rueter, Gary 143
Rusing, Gary 145
Ryan, John 138

S

Sandner, Linda 124
Sawyer, Margaret 117
Schlechter, Janet 122
Schmidt, Jim 135
Schmidt, Raymond 141
Schneiderman, Carl 140
Schoblom, Shirley 115
Schroeder, Sharon 129
Schubert, Sylvia 119
Schrumph, Barry 136
Schwartz, Kris 127
Schwartz, John 145
Schwryhart, Mary 127
Scott, Dicky 121
Scott, Douglas 139
Scott, Nancy 127
Sedell, James 143
Selander, Alan 133
Sefton, Williams 138
Sevy, Janelle 129
Shaffer, Mary Gayle 120
Shallenberger, Ed. 142
Shaughnessy, Meredith
Shane, Suzanne 122
Shea, Rosemary 124
Shilling, Shelly 122
Simpson, Dennis 139
Simon, Douglas 145
Skemitt, Daniel 143
Sleeper, Howard 142
Slimak, Bill 142
Smith, Andrea 113
Smith, Barbara 117
Smith, Bruce 145
Smith, Lyle 145

Smith, Peter 134
Smith, Sherry 115
Smith, Stanley 131
Smith, Stephen 143
Sneary, Marty 125
Solbeck, Bob 139
Soo, Milton 133
Sorensen, Corky 127
Sorensen, Judy 121
Spangler, Mrs. E. 137
Spaulding, Amy 119
Springer, Gordon 138
Squire, Kathy 125
Stackwick, Jon 139
Stanbery, Roberta 125
Stark, Dan 130
Steele, Sherrie 120
Stephen, Phil 142
Stewart, Kenneth 142
Stewart, Nancy 120
Stewart, Richard 131
Steiner, Jon 134
Stevenson, Philip 143
Sticka, Dale 140
Stidd, Pete 140
Stilz, Clifford 133
Stithem, Mary Dee 125
Stone, Karen 116
Stone, Sally 129
Storey, Jane 125
Strand, Peter F. 138
Street, Pamela 116
Sturholm, Larry 131, 143
Sulmonetti, Bonnie 119
Swan, Linda 128
Swayze, Frank 140
Sweet, Sue 129

T

Tacderan, Canuto 131
Taggart, Max 138
Taggart, Inez 115
Tate, Larry 135
Taylor, Joan 126
Taylor, Nancy 115
Taylor, Robin 129
Taylor, Ruth 122
Templeton, David 143
Thielemann, Joan 124
Thome, Sally 127
Thompson, Robert 133
Thompson, Susan 127
Thompson, Wayne 136
Thurman, Robert 139
Tibbetts, Nicholas 138
Tomlinson, Sue 115
Topping, Greg 142
Toppings, Jeff 143
Torkelson, Deanffi 135
Torkelson, Linda 129
Torp, Elisa 129
Trefren, Richard 131
Tri, Nick 139
Trinkle, William 131
Triplett, Judy 128
Turner, Mary Lou 127
Twining, Janice 116

U

Underwood, Suzanne 125
Upson, Roberts 131

V

Vaagen, John 130
Van Horn, Garrett 139
Van Houten, Lynn 115, 123
Van Pelt, Dick 130
Van Winkle, Nancy 123
Venne, Jacqueline 122
Verity, Virginia 121
Verloop, Peter 134
Vielhauer, Cathy 128
Viken, Marilyn 129

W

Wade, Jeffrey 130
Walker, Pat 115
Walron, David 141
Wallace, Robert 138
Walkey, Marylou 117
Walton, Carol 121
Wardle, Charles 135
Wamsley, Rachael 115
Waterman, Janet K. 121
Webb, Bill 141
Webber, Bill 136
Webber, Linda 117
Weed, Roger 138
Wells, George 140
Westerberg, Sue 115
Whalin, Barbara 125
White, Kathy 121
Whiteside, Connie 115
Whitford, Mary 120
Whitney, Rosalie Johnson 134
Wilkins, Michael 135
Willers, Sandy 113
Williams, Holt 144
Willmore, Karen 117
Williamson, Hedwig 123
Wilson, Dianne 120
Willingham, William 133
Wilson, Harlan 136
Wilson, Jon 135
Wirt, Mary 125
Wissenback, Mrs. B. 119
Wolff, Cherry 113
Wong, Francis 137
Wong, Dennis 134
Wood, Roger 139
Woodle, Robert 144
Woodworth, Barbara 126
Woodward, Donna 118
Woolsey, Carolyn 115
Worden, James 137
Wright, Mary Ann 128
Wyatt, Gary 145

Y

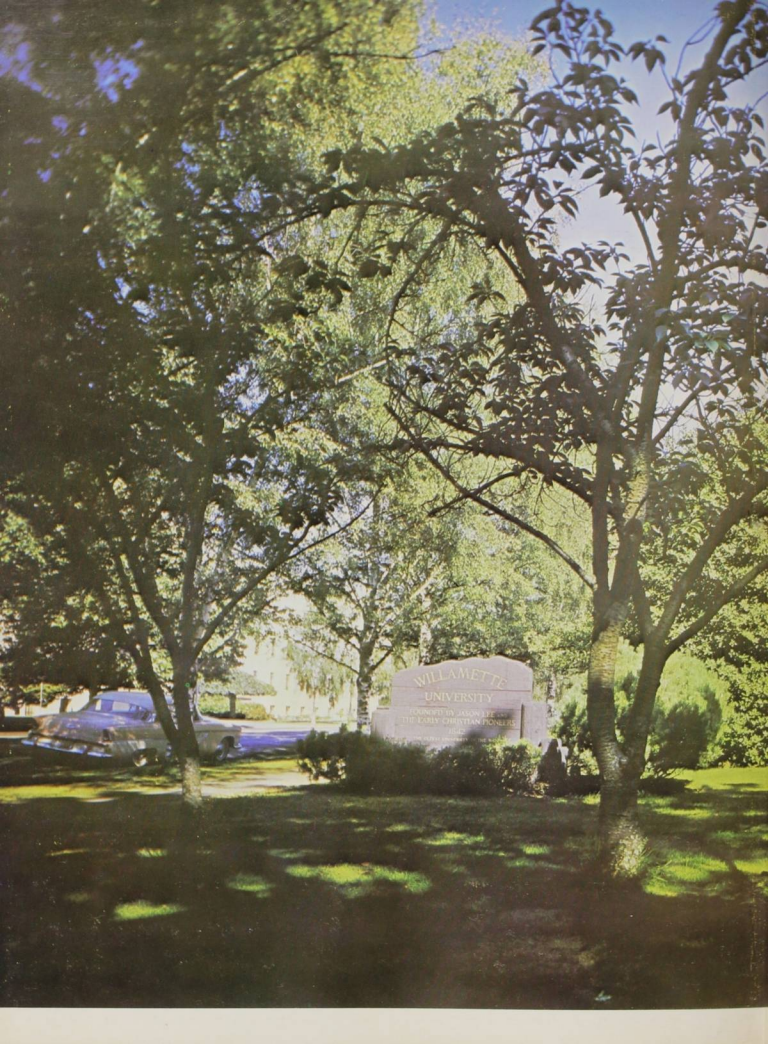
Yeo, Carol 117
Yoshihara, Stephen 137
Young, Jeanne 115
Yunker, Ruth 129
Yungen, Walter 142

Z

Zastoupil, David 133
Zumwalt, Kareen 129

Willamette University Library
Salem, Oregon

DATE DUE

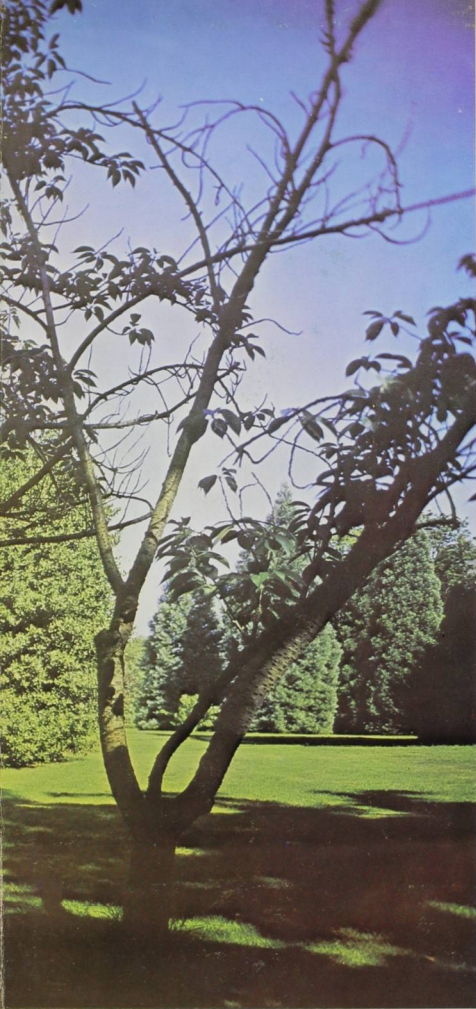


WILLAMETTE
UNIVERSITY

FOUNDED BY JAMES L. HAY
THE EARLY CHRISTIAN PIONEERS

1842

BY THE STATE OF OREGON



THIS BOOK DOES
NOT LEAVE
THE LIBRARY

WILLAMETTE
CAMPUS

WILLAMETTE UNIVERSITY
SALEM, OREGON

