

73 1973 1973 1973 19



WILLAMETTE
UNIVERSITY



WILLAMETTE
UNIVERSITY



WILLAMETTE
UNIVERSITY

WALLULAH

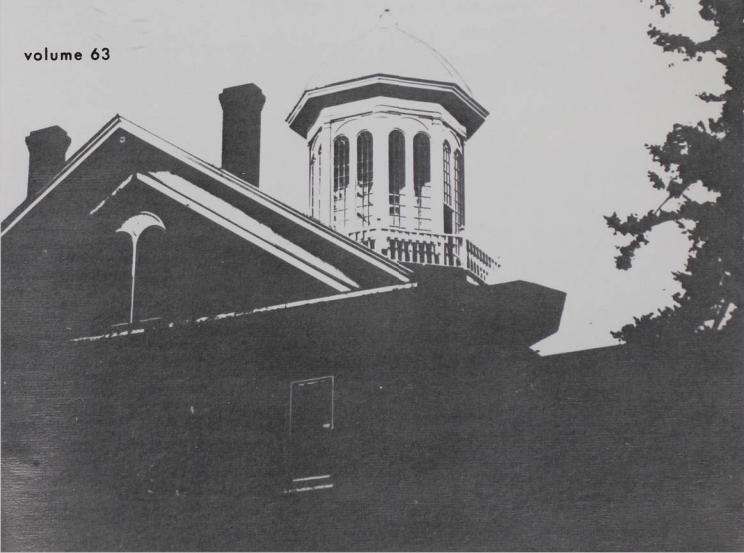
wallulah

nineteen seventy-three

published by the associated students of

willamette university
salem, oregon

volume 63



Willamette
LD
1951
1955
1957

TRADITION

transition

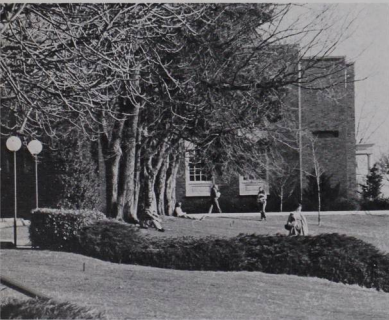
And so we begin another school year... Traditionally this is the time of year for welcoming freshmen and congratulating them on their wise decision in coming to Willamette. As friendships are made and renewed, as the student comes into first-hand contact with the Willamette academic community, an unseen molding influence characteristic to Willamette University begins to exert itself on the development of the student. This is the value of a liberal arts education, they are told by admissions officers, and this is what makes going to Willamette worth the money. In short, what Willamette had to offer was a definite character and a concrete set of values.

Unlike classes of the past, however, this year's freshman class, along with the rest of the Willamette community, has an unprecedented opportunity to reshape and remold the character of Willamette. In short, the roles of "molder" and "moldee" have been reversed. The dissention and divisiveness which marked the events of the last year have resulted in vacancies in more top administrative posts at one time than in any year since the founding of the University. This year will see the selection of a new university president, deans of the colleges of Liberal Arts, Music, Law and the Graduate School of Administration. Other administrative posts are also vacant. In filling these positions, the University will be determining its direction for many years to come.

There are those who have expressed the fear that the resignation of Dr. Jerry Whipple, the firing of Chaplain Phil Harder, the ouster of Dr. Roger Fritz, and the controversies surrounding each of these actions may be mortal blows to the future success of Willamette University. Perhaps they are, the danger clearly exists. But only if turmoil becomes a way of life.

Last year's events, however, were not an attempt to institutionalize turmoil, rather, they were a self-motivated urge for constructive change from within the University.

Now in beginning a new year, past disagreements, if not completely forgotten, have at least been set aside to meet the challenge of revitalizing the Willamette campus. Faculty, trustees, and students are, or soon will be, working together on committees to select new permanent deans and a new university presi-





dent. Competent men have temporarily assumed the reins in managing all of Willamette's vital functions. The "business" of functioning as an institution of higher education goes on. Looking forward, what one sees before us is an unparalleled opportunity for Willamette University to pause and reassess its goals and values. This will not be a "lost" year of aimless wandering rather it can be a year in which Willamette can find and establish new direction. It's also an exciting time to be at Willamette.

--Collegian editorial by
Wayne Larsen 9/7/72

James S. Woodland became the Director of Financial Aid on December 15. He served as Assistant director of financial aid at O.S.U. He graduated from O.S.U. in 1962 and got his Masters from there the next year. Woodland was a physical education teacher at Oregon State from 1966 to 1968. He was the candidate selected by the Student Affairs Committee.



Controversy erupted over the dismissal of American Literature professor Donald Zimbalist late in the fall semester. The English Department's desire to make room for a professor of Renaissance Literature divided the department and the campus community as well and renewed dissent over where the power lies to hire and fire professors. Also under fire were the goals of the department, which many students felt had been betrayed.

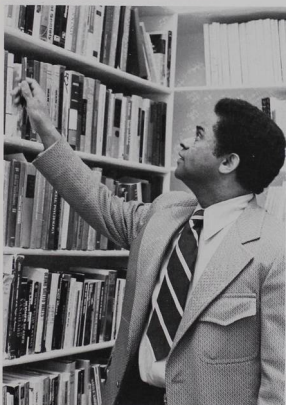


Dean Larry Large was appointed Dean of Students by acting President Corson on July 18, and assumed duties August 15. He was Director of Financial Aid at University of Oregon before coming to Willamette. He takes over from Jerry Whipple who resigned last May. Large was selected after an intensive search by trustees, faculty, and students.





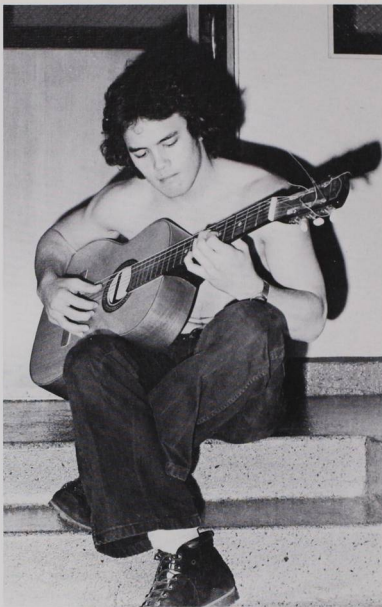
Dr. Charles Garth, pictured here in his office, arrived at Willamette this fall to head up the Sociology Department, part of the new "young look" in Willamette faculty and administration.

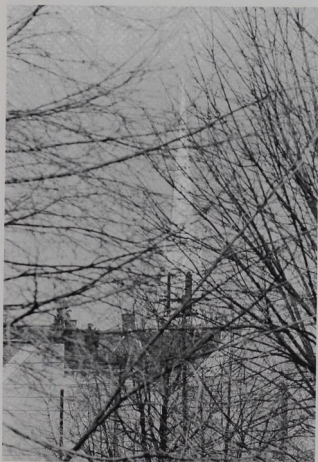


In addition to Dr. Garth, ten other new faces were to be found in faculty meetings and in classrooms this year: E. David Booth, Sociology; Dr. Robert Peffers, Theatre; Donna K. Reid, History; Dr. Carol Long and Leonard Held, English; Robert Hess, Art; Dr. Richard Hall and Dr. Richard Iltis, Math; Dr. Richard Smith, Psychology; and Thomas Talbott, Philosophy.



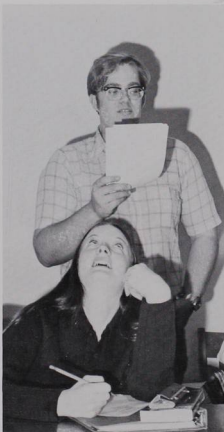
“not unto ourselves alone
are we born”





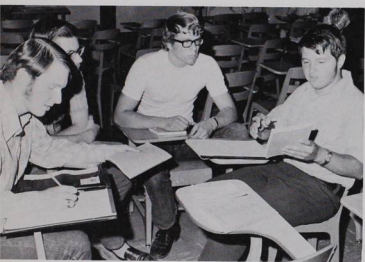
for we are born unto god,
born unto his earth,
born unto every creature,
born unto all humanity.
unto each other
in peaceful community

the willamette
community—
living together, playing together





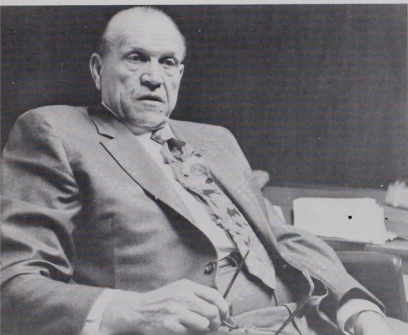
working together,
learning together,
working it out—together



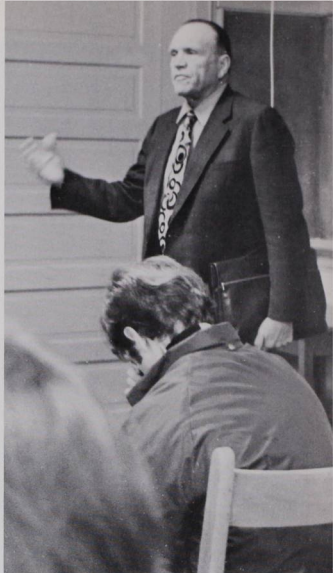


the willamette community—
microcosom of life:
action, interaction.
together we discover every
day that "not unto ourselves
alone are we born".

willamette
university's
man of the year



interim president
james h. corson





James H. Corson assumed his position as Interim President in July following the departure of former President Roger J. Fritz. He resigned his position as the executive secretary of the Calif. Association of School Administrators to accept the position at W. U. A graduate of the University of the Pacific, he received his Masters from the University of Southern California doing further study at the Pacific School of Religion and the University of the Pacific. At UOP, he progressed from Dir. of Health and Phys. Ed. to Asst. Dean of Men, Dean of Student Personnel and Dean of the College.

In 1947 he was named Superintendent of Modesto City Schools until 1960 when he took his most recent post with the Calif. Association of School Administrators.

"so, i don't just come up here and start wielding an axe, doing anything i darn please."



"They (the Board of Trustees) wanted me to do three things: 1) to assist as a resource person in the search for a permanent president, as I had just helped with that at another university, 2) to provide the leadership and take the responsibility during this year and, 3) to not just maintain the status quo, but to bring people together in every way possible, that is, to unify in terms of the common cause, common objectives.

I have, by action of the Board . . . all the responsibilities, all of the authority, all of whatever it is the president has . . . I am not restricted . . . I have all of the rights and responsibilities, authority and duties and the headaches and everything else connected with the presidency.

I'm not going to throw anything overboard unless it goes through whatever process is required to change policy or procedure. So I don't just come up here and start wielding an axe, doing anything I darn please. I have to work within the legal framework of the institution.

I don't think any one individual . . . can mandate out here in the back room all by himself. But initiate, yes."



"at first i said no . . ."

"At first I said no . . . I planned to retire at least by midyear or next year. Then I said after due deliberation, if I had a chance to talk with some of the faculty (it was difficult to talk with students because they weren't here) and some of the board, I'd give it consideration. I came up and talked with some of the faculty who were here, then with some of your administrators, and then came and talked with the board. Then I accepted and came up to be your Interim President.

How big are we? Are we big enough to look over our fences of prejudice and other things and open the vistas that are open to us? Are we big enough to stand on our own two feet? Let us raise our sights on the highest level and lay out a program for the next year and future years, a sound and beneficial program. How big are we?"

willamette expansion
enters new phase
with p.e.r.c.



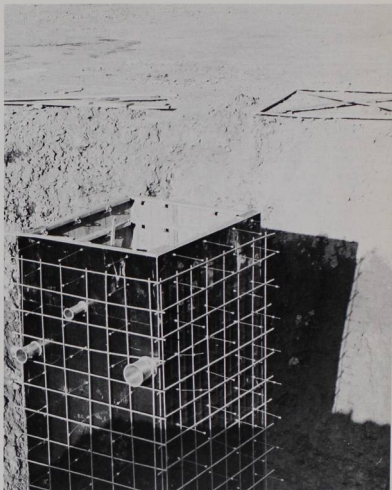
Willamette, as anyone who has spent a hot night of Bearcat basketball in the old gym knows, sorely needs a new facility for such diversions. The Lestle Sparks Physical Education and Recreational Center, (affectionately called PERC by those in the know) will serve very well as that new facility.

PERC is scheduled to open in January of 1974. The gymnasium of PERC is to be named after Chester W. Henkle. The field house will take its name from Edwin E. and June Woldt. They were the primary monetary contributors to PERC. Other features will include four handball courts, a swimming pool, wrestling room, exercise room, sauna, classrooms, locker rooms, staff offices, training rooms, and ticket and concessions areas.

Fund raising of PERC began in earnest in early 1970 shortly after the George Putnam University Center was completed. Construction of PERC began on July 12, 1972, and the total cost is expected to be \$2.6 million. Since that time cranes and large mounds of dirt have been prominent fixtures on the south side of the Willamette campus.

"The Board of Trustees of Willamette University desires to provide enduring recognition of the unmatched career of services of Lestle J. Sparks to Willamette University by naming the new Physical Education and Recreational Center for him. By this action the Board of Trustees wishes, in a most appropriate way, to honor a man who has given most of his adult life to Willamette University." With this statement PERC was named for Sparks, a retired Willamette student, professor, and still acting tennis coach. He served as the "official groundbreaker" at the ceremonies on July 13.

"When Sparks Center is completed, Willamette will have the most modern and functional sports complex among Northwest colleges," said Trustees.

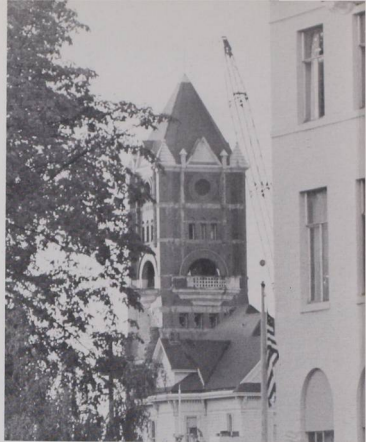


old city landmark gives way to new



I looketh up unto the clock tower from whence cometh the time to see if I am late. But alas no more. For on Tuesday, September 12, 1972, the old city hall was destroyed--to be replaced by a parking lot.

The old city hall may have been an architectural monstrosity to one with expertise in building design, and it may have been a pain in the neck for Policemen, especially those over six



feet tall, but it had historical and sentimental value. It was built piecemeal over four years as funds became available and originally housed the central fire department.

The demise of the building occurred because of the completion of the new, ultra modern Salem Civic Center in August of 1972. The Salem Historical Society wanted to save the 1897 structure, but most people felt the funds necessary to refurbish the building could be better spent elsewhere. Therefore, enter the wrecking ball.

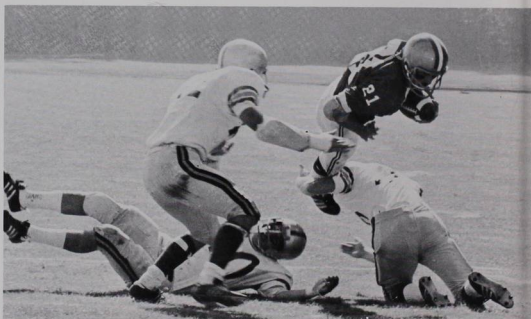
The Civic Center includes fire and police department headquarters, city offices, and a new public library.

One of the most noteworthy points of the Center is the landscape around it. This includes several squares with fountains and modern sculptures, and a park-like area southwest of the Center through which Pringle Creek and the Mill Stream flow. After the Pringle Creek Urban Renewal Project is completed there will be a large parking facility and other large office buildings in the area.



E. S. Ritter Company's crane takes a bite out of the old city hall; September 1972.

football



Willamette	17	E. W. S. C.	8	Willamette	12	P. L. U.	20
Willamette	6	Chico State	10	Willamette	0	Pacific	21
Willamette	23	College of Idaho	0	Willamette	48	Whitman	0
Willamette	10	Lewis and Clark	28	Willamette	24	Puget Sound	42
Willamette	3	Linfield	13				

The 1972-73 football season saw the bearcats under new leadership. Coach Joe Schaffield took over this year for Coach Ogdahl who left last year. Acting as assistant coach is former Willamette quarterback Tommy Lee.

The team finished the season with a 2-4 record in NWC play and a 3-6 record for the season.

Despite the disappointing record, there were outstanding individual players on the

team. Dwight Jeffers and Byron Brooks were named to the NWC all-star defensive team. Mike Ivie and Joe Story gained spots on the offensive second team. Byron Brooks was also named to the Associated Press Little All-American team.

The bearcat defense was the best in the NWC giving up an average of 180.8 yards per game. Offensively they ranked fifth with 241.8 yards per game average.



The 1973 Willamette rugby team was plagued with injuries but still managed to turn in a respectable season record of 7 wins to 9 losses. In several games the injury problem was so serious that the Bearcat ruggers had to borrow players from the other team.

The ruggers are coached by Rich Christopher. He said that the players were "showing more familiarity with the game

every week." He credited their success to hustle and good defense. A relatively small turnout at games was a major factor in the poorer than expected season, and players expressed a desire for greater participation in the future.

Outstanding players of the 1972-73 season were Pat Sweeny, Sean Cloherty, and Jim Watson.

rugby



The 1973 Cross Country season was highlighted by the strong second place team effort in the Conference Championships.

All-Conference honors were won by Brock Hinzmann, Dan Hall, and Mark Baum as they finished second, third, and fourth in the race. Brock and Dan also received All-District honors. The team record was three wins, three second place finishes,

and one fourth place finish.

The team had problems with injuries this year but next year looks bright because all but one member of this year's squad will be returning. This core, plus next year's incoming freshmen should make the Bearcat harriers a force to be reckoned with in the Northwest Conference.

—Coach Chuck Bowles

cross country



Lewis field now stands as a memorial to Willamette athletic director and baseball coach John R. Lewis. Lewis died on Wednesday, January 31 of a sudden cardiac arrest. This came at a time when he seemed to be mending nicely after his January 13th heart attack and was expected to leave the hospital by Saturday, February 3.

Lewis came to Willamette in 1947 and since then he has served as baseball and basketball coach and as athletic director.



john r. lewis
1916-
jan. 31, 1973



According to Byron Brooks who played for Lewis last year, "Lewis was a strong man. He would stand behind you as far as he could. He stuck to what he believed and he wouldn't compromise with anything he thought was wrong." In his twenty six years at Willamette his Bearcats have won seven Northwest Conference basketball championships. He retired from basketball in 1967 with a 277-239 career record. His baseball teams had a 276-264 record and came in first or second nine times in Northwest Conference play. He was honored

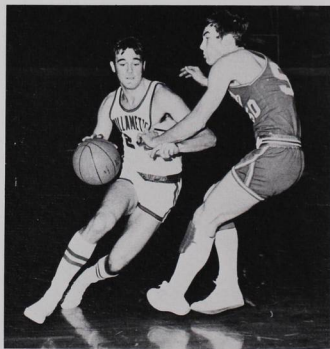
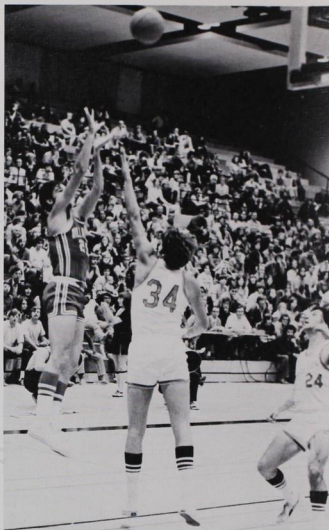


this year by the American Association of College Baseball Coaches for his twenty five years in college ball. He was named coach of the year in 1960 by the National Association of Intercollegiate Athletics District 2. Lewis held many leadership positions in conference district, national level athletic associations.

One high point in his career came last year when all the Willamette teams combined to win the Northwest Conference all-sports trophy.



bearcat
basketball



The inconsistent 72-72 Bearcats, defending NWC and district champions, could not repeat their titles with close losses in key games.

The Cats started quickly, winning the tip-off tournament, and were rated #1 in the Pacific Northwest, but found the NWC race very tough and balanced. The Cats finished 7-7, missing a co-championship by only one game; including one loss by a single point where an opposing player "threw" the ball in from half court.

The Bearcat Hoopsters, for the third year in a

row, qualified for the district NAIA #2 playoff to go to Kansas City. Pacific defeated the team 63-60 in a very close, hard fought game.

Willamette finished the season with a very respectable 16-10 and led the district in defense with a 67.9 average. Three players, Gary Erickson, Rich Grady, and Mike Coleman, led the Bearcats offensively and gained several honors.

--Coach Boutin

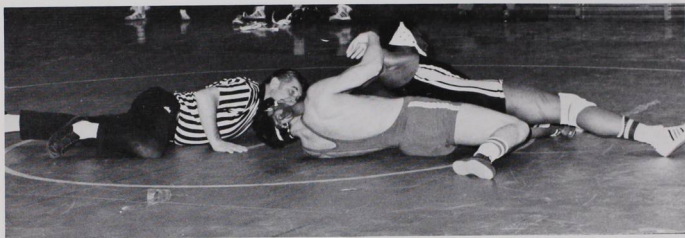


The Willamette Grapplers had a varied season with some good and some bad matches. In the first match of the year the Cats were tromped by Pacific 40 to 0. In the next match, a four-way fight against College of Idaho, Lewis and Clark, and Whitman, Willamette had 42 compared to 13 for all the other teams combined. Later in the season Willamette was beaten by Pacific Lutheran 40 to 15 and beat Lewis and Clark 39 to 33.

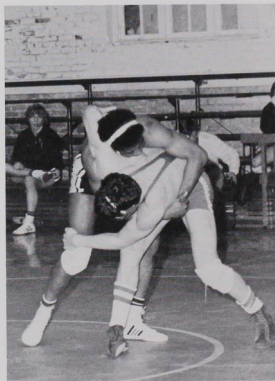
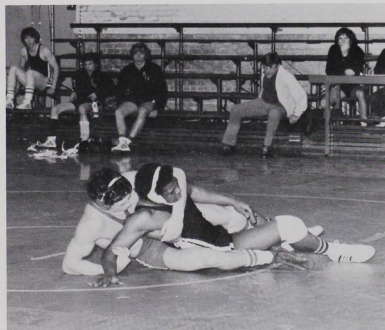
Willamette hosted the NWC wrestling cham-

pionship and came away with an unexpected third place finish. Pacific won with 107 followed by Linfield with 41, Willamette with 38, College of Idaho with 27, Whitworth and Pacific Lutheran with 26, Lewis and Clark with 18, and Whitman with 15.

Outstanding wrestlers for the Cats were Greg Rodgers, Gene Dagostini, Dennis Daneilson, and Mike Navares.



wrestling



Students at Willamette, never before this year, have had the opportunity to have fencing teams. In a very short time and with lots of enthusiasm, the fencers returned good results for Willamette, finishing second in the Fall Semester's Men's Collegiate Foil Fencing Competition at Oregon State. The women's team finished third. There were sixteen teams competing in the Men's category. After much progress, the fencers took First Place at the spring session of the same competition.

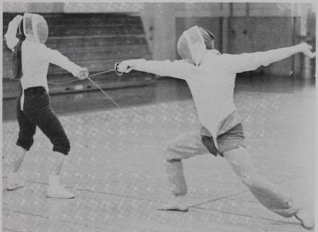
About 90% of fencing involves executing mental techniques, and yet it is as graceful as ballet and can often be seen in production on stage.

Enthusiastic members of the Willamette Fencing Team included: Eve Ford, Dave Spence, Pete Rudie, and Craig Terjeson. "Without the help of the Student Body we would never have come close to first in the league and beat the number one team in Oregon."

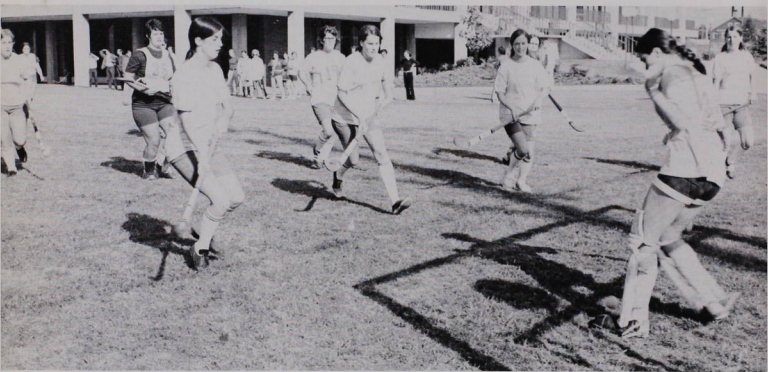
--Coach Komissarov



willamette students introduced to fencing



women's intercollegiate athletics



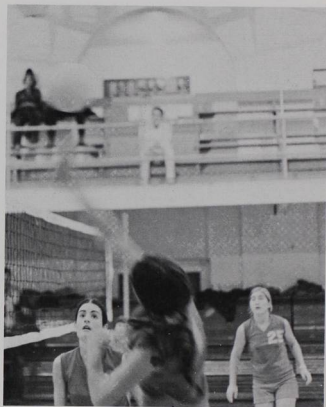
Willamette women's field hockey team ended the 1972 season with the best record in the history of the school with eight wins, three losses and five ties. At the Northwest tournament in Victoria, BC, in four games the team survived with two wins and two ties; the second best record at the tourney.

Willamette women's volleyball team won the Conference championship winning over last year's champs, Lewis and Clark by a match score of 2-1. The season's record was eight wins and two losses, the losses occurring during pre-season play.

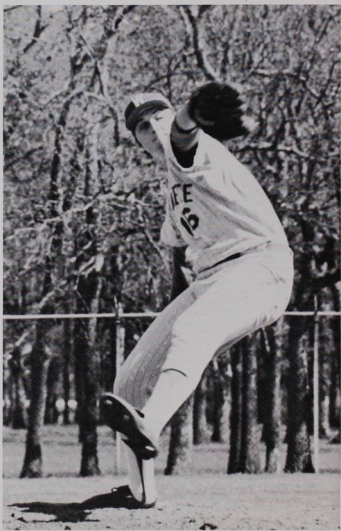
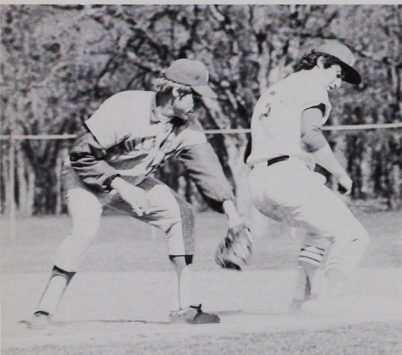
Willamette women's basketball team, after

experiencing a losing season their first two years in existence, won the 1973 Conference championship with eight wins and three losses, two of the losses coming at the Northwest tournament at OCE. During season play the only loss came at the hand of Clark College 44-40. The women's track team lacked depth and interest from most on campus, but did have several individual winners with Sally Godard in the mile, and Holly Brown in the 100 meter hurdles and 100 yard dash. Debbie Reinhardt also added much to the spirit of the team as she heaved the discus 102 feet for her season best.

--Coach Jean Williams



baseballers
complete rough
season 6-11



This past season was a building year for the W.U. Bearcats who had four seniors on the squad. They ended the season with a 6-11 record. They started slow but come on strong during the later part of the season.

The pitchers were led by Dan Percich, a sophomore, with a record of 2-4 and an E.R.A. of 3.29, and by Rich Scrivner, a freshman with a record of 2-2 and an E.R.A. of 5.02.

In the hitting department, the W.U. team batting average was .265. They were led by Dennis Danielson, .363; freshman Gary Koch with .344, freshman Norm Hardy at .327; senior Scott McCormick with .327; and sophomore Mike Bray at .308.

With the experience of the past season behind them, better things are expected of the future Bearcats.

--Coach Tommy Lee



The 1973 Willamette swimming teams had a successful season. In a meet against O.C.E. early in the season they were defeated 110 to 90. Later Willamette placed second in a contest against Lewis and Clark, Whitman, and Linfield. In a six-way battle near the end of the season, Willamette was topped by Pacific Lutheran, and Lewis and Clark, but managed to get by Whitman, Linfield, and Pacific.

The team had many outstanding individual

swimmers compete



Four tennis lettermen from last season's second place Northwest Conference team returned to the bearcat lineup this year. They were Bob Hunter, Alan Montröse, Steve Reinisch, and Brad Wells. Last year's team ace, Bob Hansen, did not return and this left a noticeable gap in the squad.

Besides the four returning lettermen, other players who made their mark on the court were Don Barkley, Mel Henderson, John

Leonard, Julio Viamonte, and Dave Reece.

According to Coach Lestle Sparks, the two toughest opponents this season were Pacific Lutheran and Lewis and Clark. Willamette managed to finish almost in the middle in Northwest Conference play. Team members said that they were disappointed with the apathy toward tennis on the part of most Willamette students, and the virtual total lack of coverage of the sport in the COLLEGIAN.



tennis season
marked by
fine
performances



track
&
field



The 1973 track season was sprinkled with fine individual efforts, but overall team success was hampered by illness and injury.

Leading this year's team was captain Gery Ellibee with consistent efforts in the long jump and relays. Eric Banks in the high jump, Brad Victor and Dan Stocker in the high hurdles, Bob Corcran and Scott Irving in the javelin, John Holmes in the pole

vault, Doug Woods in the long jump and relays, Steve Reynolds in the shotput and discus, Rick Rosenbloom in the 440, and Dan Hall and Brock Hinzmann in the distance races were steady point-getters.

The team record included two firsts, three seconds, and one third place finish.

--Coach Chuck Bowles

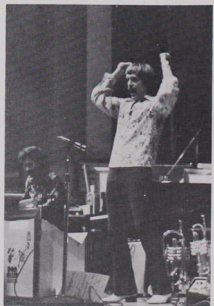


aswu brings don ellis to willamette

The orchestra rambled in around noon . . . freaks, Army recruits on leave, Doc Severinson types came off the bus, carrying their instruments, throwing frisbees or rubbing their eyes. Their presence added to the general confusion . . . the stage band and its equipment . . . John West



and his ensemble . . . roadies, groupies . . . Slowly things moved out into the auditorium. The crowd streamed in around 8:30, the lights dimming at 9:20. Ellis bounced . . . in a snakeskin cap, flowered shirt . . . boots . . . burgundy stretch pants . . . The audience . . . demanded his return . . . four encores . . . he kept leaving the stage and returning to the demands of the audience . . . the orchestra returned to business as usual . . . folding . . . packing

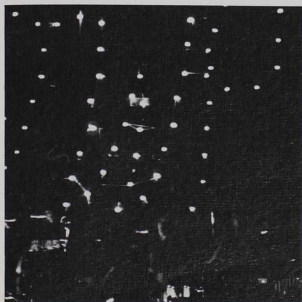
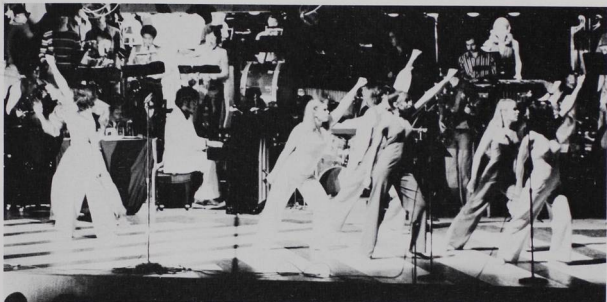




john west presents "j.w.p.!"

"JWP was a three-hour potpourri of many high, a few lows, but overall high quality music . . . West . . . was excellent . . . singing, dancing . . . soloing . . . he has a polish and style one wishes professionals had . . . It was good. John West certainly deserves to be considered the most talented music student we have . . . John's show earned praise because it was good, not simply because John West did it . . . the show must stand as a finished product . . . and JWP does stand, admirably."

--COLLEGIAN review





sandy wilson's

the boyfriend





director

Asst. Professor Robert Peffers

choreographer

Instructor Ramona Searle

designer

Joann Sprogis

musical direction

Assoc. Professor Maurice Brennan

Asst. Professor Walter Farrier

cast

Hortense	Jane McCallum
Maisie	Karen Muldoon
Dulcie	Judy Brindamour
Faye	Leanne Elliott
Nancy	Marilyn Marrow
Maggie	Lynn Ramsay
Gwendolyn	Cathy McGowen
Polly	Lezlee Pierce
Bobby	Mike Lawrence
Jacques	Larry Wiemiller
Andres	Bill McCormack
Alphonse	David Ahlman
Marcel	Jim Cuno
Pierre	Jeff Judy
Mme. Dubonnet	Anne Buelteman
Percivale	Allen Jenkins
Tony	Burr Henley
Lady Brockhurst	Debby Ranton
Lord Brockhurst	Mike Walters
Dancers: Lolita	Sandy Palin
Pepe	Dean Buhler

The Willamette University Choir left on Friday, March 16 for their annual spring tour. Cities included in the tour were Centrailia, Washington; Shelton, Washington; Tacoma; Chillvack, British Columbia; South Barnaaby, British Columbia; Edmond, Washington, and Tigard, Oregon. They also performed at Salem Sacred Heart Academy and the First United Methodist Church in Salem. Director, Walter Farrier has recently written and published a spiritual.

music and theatre
merged, to become
college of music
and theatre



students and faculty
sing and play
together

On Friday, March 9, Dr. Charles Heiden, Violinist, and Dr. James Cook, Harpsichordist, presented a program of Baroque and Rococo works from authors such as J.S. Bach, Johann Schubert, J.J. Froberger, and W.A. Mozart.

They were assisted by David Cran, Les Martin, and Bruce McIntosh.



Next year the College of Music and Theatre will open for the first time. The decision to combine the two came at the February 23, meeting of the Board of Trustees. They acted on the advice of a special committee that had been set up to study the situation.

Input was received from students and faculty before the decision was made. Mergin music and theatre will be a step in the direction of improving the physical plant.

The Willamette Chorale has thirty four members and is under the direction of Walter Farrier.

Membership is limited to freshmen and sophomores, with auditions occurring each semester. The Chorale performs several times during the year. Usually there is a concert at Christmas, one other time in the fall and twice in spring.



The band is directed by Maurice Brennen, a thirty three year member of the Willamette faculty. It seems likely that a band tour of Europe will take place in the summer of 1974. Forty five students and two faculty will tour. They will be able to combine in different ways to present a thirty five voice choir, a brass choir of ten, a wind quintet, a brass quintet, a vocal chamber group of sixteen, and a combined choir and wind ensemble. The tour will last four weeks and include England, Scotland, Holland, and another country to be decided later.

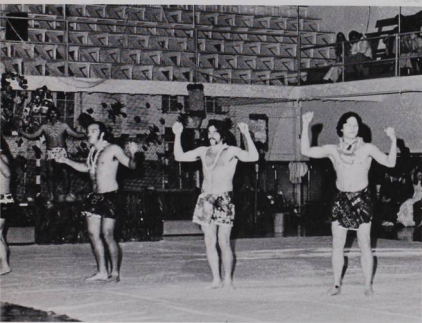




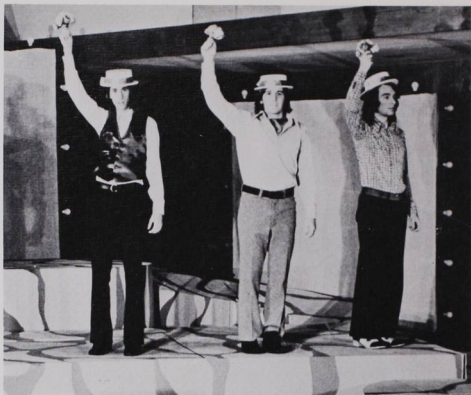
hawaiian club presents pageant

Approximately forty Hawaiian Club members presented the second Willamette Luau on Friday, March 9. The "Hookupa," under the chairmanship of Stan Okinaka with advisors Haunani Lee and Lei Seiiquiere, began with a feast which preceded the pageant. Included on the menu were teriyaki meat, poi, kalua pig, chicken long rice, coconut cake and punch. The Hawaiian Pageant featured aspects of Polynesian culture, with dances being performed which originated from American Samoa, Tonga, New Zealand, Tahiti, and Hawaii. It ended with a song, "Oh No, You'll Never Find Another Kanaka Like Me."

Hawaiian Club officers for the past year include Pat Garvey, President; Mark Marabella, Vice-President, also creator and co-ordinator of the pageant; Merle Tiara, Secretary; and Stan Okinaka, Treasurer.







jacques brel

is alive and well
and living in paris

French and Flemish
lyrics and music by
Jacques Brel

English lyrics by
Eric Blau and
Mort Shuman

. . . a show that no
one can quite be
prepared for, you
are caught in it,
raptured . . . a cabaret
musical review . . . a
delightful, tragic,
comic, wistful,
melancoly collage . . .
the world through
the eyes of the poet
Jacques Brel . . .
--COLLEGIAN review





"If we only have love
 Then we'll only be man
 And we'll drink from
 the Grail
 To be born once again.
 Then with nothing at all
 But the little we are
 We'll conquer all time
 All space, the sun and
 the stars."

directed by

Ramona Ann Searle

musical director

Mary Orcutt

set design

Susan Loomis

costumes by

Anne Buelteman

Kathy McGowan

light design

Joann Sprogis

performed by

Anne Buelteman

Jim DeJarnette

Alan Jenkins

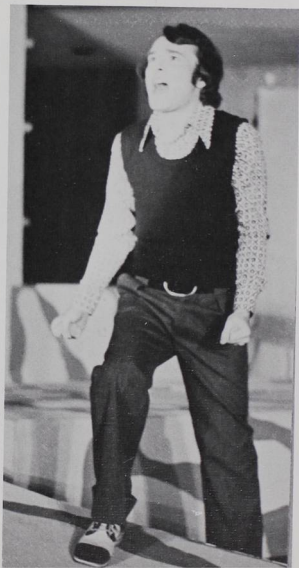
Jeff Judy

Janiey McCallum

Lezlee Pierce

musical ensemble

Piano	Helen Ferguson
Percussion	Sumita DeLemos
	Tom Murphy
Guitar	Russ Olheim
Bass Guitar	Tom Turner



opera theatre presents pair:
“the songstress” and “gallantry”





his mother's jewels. Don Pellagio overhears a conversation between the two women mocking him after he has proposed marriage to Gasparina. He is furious and summons the bailiff to get back all his furniture and to put the songstress and her duenna out of the house. Gasparina pretends to faint and Pellagio moved by pity forgives her.

gallantry

by douglas moore

Announcer	Jame McCallum
Dr. Gregg	Robert Lumm
Lola	Donna Cole
Donald	Robert Lamberson
Billy Boy Girls	Debra Mervyn, Linda McGinnis, Lois Earwood

Dr. Gregg, a surgeon, declares his love to Lola, the anethetist. She stops his advances by reminding him that it is time for "the operation." Lola enters the surgery toom and to her surprise discovers that the patient is Donald, her sweetheart. At the end of their love duet, Dr. Gregg enters. He orders Lola to anesthetize the patient and while Donald lies in deep sleep, the surgeon renews his protests of love for Lola. She realizes that Dr. Gregg cannot be allowed to operate on her beloved and she rushes out to expose Dr. Gregg.

the songstress

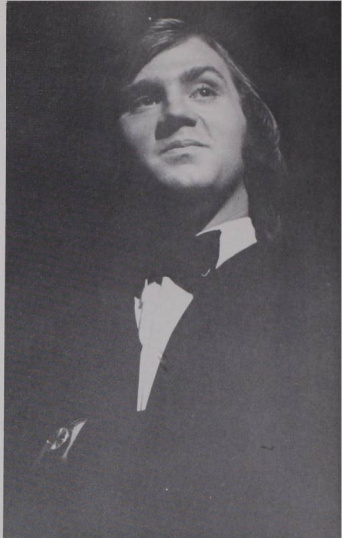
by joseph haydn

Gasparina	Lezlee Pierce Flagg
Apollonia	Jane McCallum
Don Pellagio	Robert Lamberson
Don Ettore	Donna Cole
Bailiff	Robert Lumm
Porters	Allen Jenkins, Dale Hearth, James de Jarnette, Brian Sund

Gasparina and her duenna are living in luxury at the expense of the singing teacher, Don Pellagio. Don Ettore, the son of a rich merchant is in love with Gasparina and makes her a present of

greek drama
with modern
interpretations

prometheus bound



directed by

Robert Putnam

cast

Hephaestus
Prometheus
Power
Violence
Chorus

Sergei Matuszewicz
Mike Walters
Larry Wiemiller
John McKinley
Sally Allen
Mitzi Chalmers
Nancy Cowles
Gretchen Lutz
Dave Spence
Wanda Tucker
Kent Wells

Ocean
Io
Hermes





farcial comedy examines
the question of justice



directed by

Annie-Jean MacLean

cast

Felix	Sam Tucker
Emilie	Carla Birchfield
Mme. Parole	Kathryn Tryck
Marie Louise	Pam Kehrli
Alfred	Mike Walters
Jules	John Ryan
Joseph	Kent Wells
Henri	George Blazewski
Paul	Burr Henly
Lieutenant	George Henly

my three angels



dance 1. To perform either alone or with others, a rhythmic and patterned succession of movements, commonly to music. 2. To move nimbly or merrily. --v.t. 1. To perform or take part in, as a dancer. 2. To cause to dance. 3. To cause to be in a specified condition by dancing. --n. 1. A measured stepping or leaping in unison with music. 2. A round or turn of dancing; also a special social meeting for the purpose of dancing, as a ball. 3. Music. A kind of music by which dancing is regulated, as the waltz.

creative 1. Having the power or quality of creating. 2. Productive. These two words combine to describe the type of phenomenon that was performed by the Willamette

willamette dancers display their craft

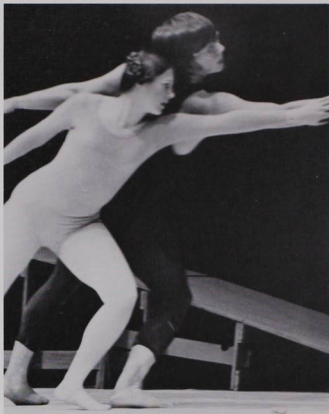
dancers on the evening of April 20.

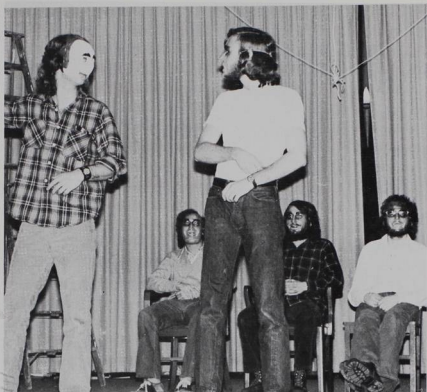
In creative dance the dancers attempt to tell a story in movement. There are several different types of movement, both stationary and ambulatory. These are combined by the dancers to enact what they want to tell.

There is often quite a bit of improvisation in creative dance. It takes some of its forms from ballet and adds others from different modes of dance. All in all it is a refreshing and different experience for those who have only seen ballet.

Willamette has a very good dance department for a school of its size. There are beginning, intermediate, and advanced classes in creative dance, as well as several in ballet and folk dance.

Quite a few may be interested to know that both the classes and the performance were co-ed. Yes, mens lib is a thing of reality on the dance floor.





fools' theatre company
presents

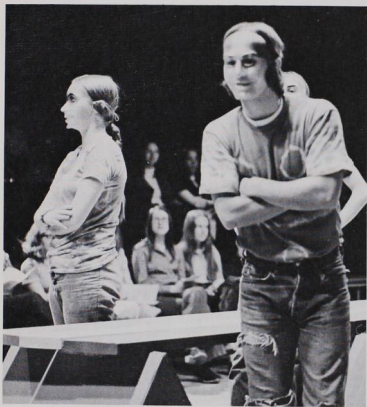
fundamental sounds

Fundamental Sounds came to Willamette on February 16 and 17. It was produced, directed, and performed entirely by students. Larry Given and Chris Merkle were the main men in the show, which consisted of music by Elton John, Bob Dylan, and Kris Kristofferson, and literary and philosophical excerpts from Yeats, James Joyce, Samuel Beckett, Friedrich Nietzsche, Fyodor Dostoevsky, and Shakespeare. According to Larry Given the show was put on to prove that students were capable of handling all aspects of a production and have it turn out a success. The actors hoped to learn from the experience. In fact, this was deemed far more important than the reaction of the audience. One said that success of the performance was measured by the number of people who walked out in disgust. Said Given, "We laugh at ourselves, everybody else, and our existence. Thus our names, The Fools' Theatre Company."



modern drama
on the arena stage

peffers presents
experimental
theatre

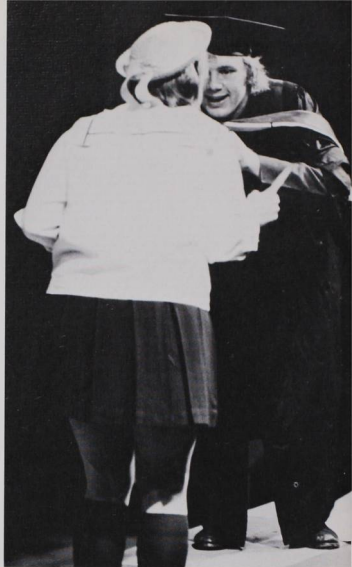


"interview" from america hurrah

the ensemble

Jeanne Person
Kathryn Tryck
Margaret Mills
Marilyn Morrow

Dave Merrifield
Jeff Judy
Sergei Matuszewicz
Mike Walters



the lesson

student director

Annie-Jane MacLean

cast

The Professor
The Pupil
The Maid

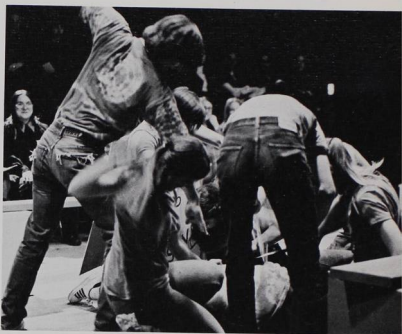
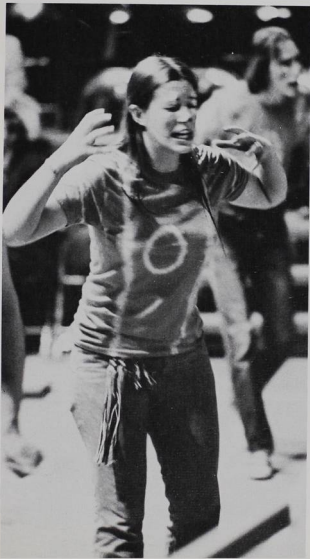
Kent Wells
Anne Opitz
A. J. MacLean

the american dream

cast

Mommy
Daddy
Grandma
Mrs. Barker
Young Man

Anne Buelteman
Dave Spence
Wanda Tucker
Diane Martin
Sean Cloherty



endgame

cast

Clov
Hamm
Nagg
Neill

Jim Cuno
Chris Merkle
Dave Ebright
Ramona Searle

dr. crook . . . population, environment

Modern industrial society will collapse, "perhaps within a century, unless population growth and material consumption are stabilized within the next few decades."

"What we see happening, I think, is the ethic of growth for growth's sake destroying itself."

Society is not yet ready to make such decisions. "Even students are afraid to think about them."

Natural resources problems "are not insoluble by any means."

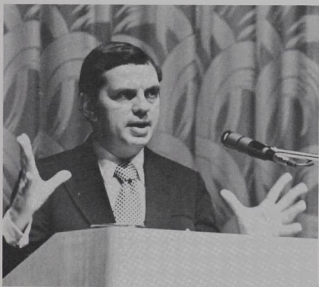
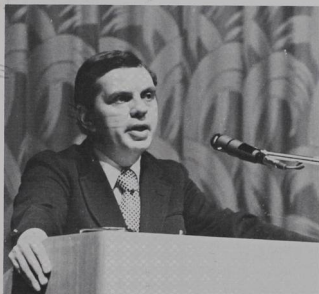
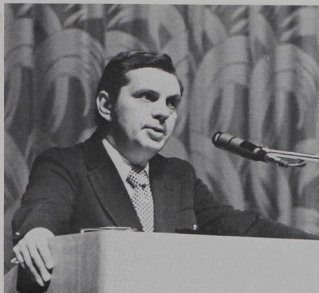


newsman goralski speaks on contemporary politics

"There is this horrible oversimplification that occurs in this country every four years." He blamed much of this oversimplification on the increasing importance of television. "It may be hard to believe, in a democracy such as ours, but sixty per cent of all Americans receive all of the news they get from the three half-hour network news shows each night."

". . . the military could easily cut \$30 billion . . . over the next five years by reducing outdated projects and troop strength, particularly the 300,000 soldiers in Western Europe."

He caustically criticized Congress' slowness to act on the revenue sharing plan saying ". . . this revenue sharing wasn't a bad idea twenty years ago, when it was first proposed, but it's taken Congress so long to get around to it . . . now it's an anachronism."



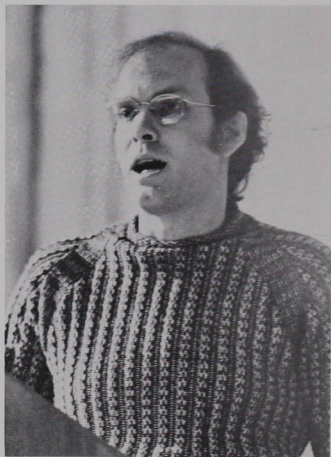
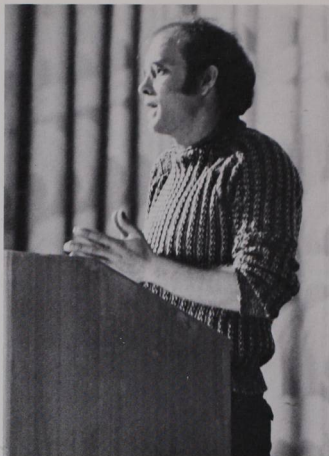
david harris critiques vietnam war

Author, draft resistor and former student body president at Stanford, David Harris brought his adamant opposition to the war to Willamette in November.

"The main roadblock for peace, freedom, and diplomacy (in S. E. Asia) is the policy of the United States government. . . . the policy of exterminating . . . an ancient race and culture."

"We don't call the war a war anymore, now the government calls it a 'withdrawl'. At first I was inclined to disagree and call it war, but now I agree, it's not a war . . . Good Jesus Christ, nobody ever called that (the air war) a war, it's a massacre!"

Harris also voiced his refusal to pay taxes:
"They keep sending me their programs (tax forms) but I look at them like Sears-Roebuch catalogs, I leaf through the programs, don't see anything I like, send it back with a statement saying there isn't anything I want to buy from the government right now, but just keep sending your program. . . ."





author alan watts reveals views on eastern philosophy

"It's become a solid part of the life of the United States. We have the second largest Zen monastery in the world in California . . . there are some 50 to 80 students there . . . they also have a very large center in San Francisco . . . also New York . . . Pennsylvania . . . There's no question of this being just a passing fad."

"Sex and mysticism always have a tendency to go together, simply because the kind of people who are sufficiently sensitive to have a mystical attitude toward the universe are also sensually sensitive. A person who likes poetry, painting, and music will also be sensuously attracted to other human beings."

"There is no such thing as an Eastern interpretation on sex. There are in the East . . . Tantric schools; where sex is sacramental."

". . . the emotion we call falling in love arises with terrific strength. Instead of trying to get rid of it this emotion's energy is used to increase spiritual power. No Tantra ever tries to deny or repress the emotions . . . he uses them . . . The emotion of love is regarded as a favorable wind."

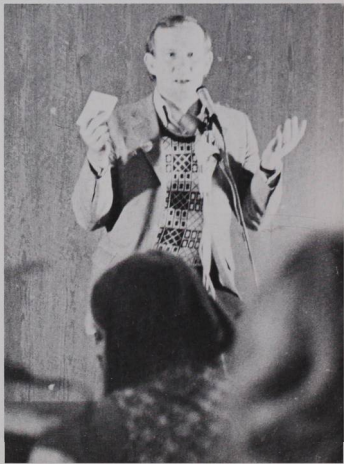




election fever spurs celebrity visits

Being an election year, Willamette was visited by quite a few political types plugging for their favorite candidates. U.S. Senator Frank Church spoke in favor of Wayne Morse and George McGovern. He said the Morse was still a young man in thought and action. He spent quite a bit of time blasting Nixon for his handling of the war. Speaking of Watergate, Church said, "The evidence of graft and corruption that has come to light has scandalized Washington. This is not just politics. But it will come to be just politics if the public is apathetic."

Sally Struthers visited Willamette on November 5. She attacked Nixon's credibility saying, "I tried to trust him (Nixon) for four years, but he's





failed me... the President has got to set a tone to follow and he's got to tell the truth... it's absolutely essential to restore credibility." She closed with a plea for McGovern. Tommy Smothers, also a McGovern man, appeared the next day. He said that "The real issue is what philosophy do we want. Nixon and McGovern are the two titlar heads of two different philosophies. Only one do I feel I can flourish under." He also condemned the people for being apathetic about politics. Senator Mark O. Hatfield, former Willamette Dean of Men and professor of Political Science, attended a bread and soup dinner here on October 23. He condemned the U.S. support of the Thieu regime in South Vietnam. When asked if he favored Nixon's reelection he said, "...we are often forced to make decisions about which we are not entirely happy..." Hatfield also got a lick in at Congress by attacking the seniority system as a thing of the past, no longer needed.



urban analyst dr. robert levine examines growth problems.

On Wednesday, October 12, Dr. Robert Levine, a Rand Corporation expert, spoke to the Willamette community in the first of the Forum Speaker Series of 1972-73. He told the audience that "there is just damn little wiggle room for local policymakers to deal with rapid urban growth problems." Levine was brought to campus by the Air Force ROTC and the Political Science and Economics departments. He spoke of a Rand research project to determine and analyze problems in twelve cities in the U.S.

He concentrated his talk on the continuing project in San Jose. Explosive growth was found to be the primary problem there. Levine drew parallels between San Jose of the 1950s and Salem today. Both serve as important urban centers in agricultural areas. He said that growth was inevitable in San Jose but not necessary to its economic well-being. Growth in San Jose was a result of long-term policies by federal and state governments. Levine said, "Perhaps since I am an economist, I see economics working through politics to create these urban growth policies in San Jose more on the federal and state level than on the city level."



He said that developers who use large tracts of land for ticky-tacky subdivisions may be defeating themselves. He added that on the basis of findings in San Jose, "... there is nothing in our (Rand Corporation) studies which indicates a need for anything more than moderate growth in any urban area..."



berkeley mayor warren widener discusses the contemporary city

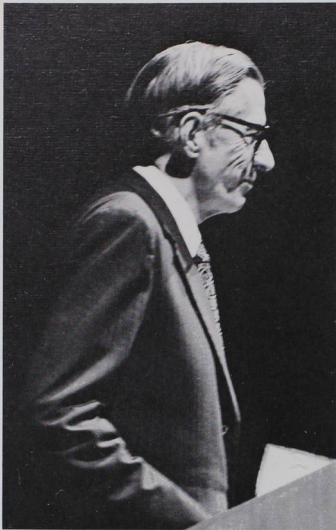
Warren Widener, Mayor of Berkeley, Calif. was the Forum speaker on Wednesday, February 28. He called for radical change in the approach to city government.

He attacked the city-manager method of government, saying that it was unable to deal with the crises of the modern urban area. He favored greater responsibility for elected officials and greater concentration of power in neighborhood units. He feels the city-manager form of government is "a structure that basically says that government is like any business and what you need is some parttime policy-makers who are elected to set policy, but what you really need is a professional administrator, like a city manager, to operate the day-to-day business of city government."

Widener has been called a radical by many in authority, and he wasted no time in taking a swing at police departments, saying that they had a military attitude which did not facilitate peace and harmony in the cities. A few policemen in Berkeley quit after Widener and other radicals were elected to the city council. Most of those who resigned were replaced by blacks or women. "They (the police department) have, at least now, conceded that the city council will run the department, and not vice versa."

Other topics of Widener's talk included the failure of drug control programs, concern for spending Berkeley revenue sharing money for parks, child day care, health programs, and aid to senior citizens.

Nixon was criticized by Widener for usurping the power of Congress and the State Department in the area of foreign affairs.

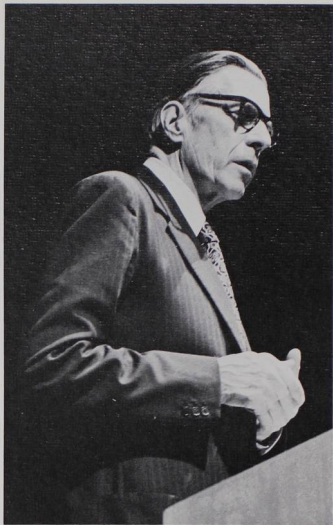
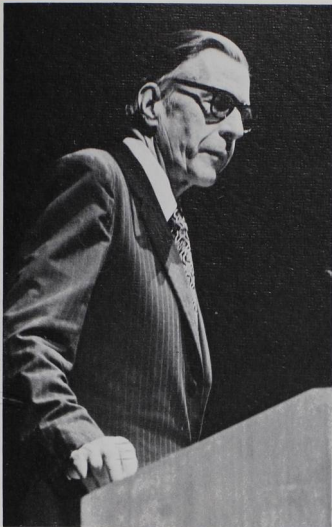


renowned economist
delivers lecture
on producer
sovereignty and
the technostructure

The American economy is split into two sectors. One of these is controlled by owners and consists primarily of small businesses. The other is composed of large corporations which use planning. Thus said John Kenneth Galbraith in his lecture here May 1. He is a world renowned economist, author of several books dealing with various aspects of politics and economics, and a former United States Ambassador to India.

Corporations under the planning system can control prices and manage demand. The primary interest of these corporations is growth.

"Beyond a threshold of profit, used to keep owners happy, the interest of the organization is the growth of the firm.



Growth means greater responsibilities, larger salaries, more prestige," said Galbraith.

Large corporations in the planning sector can also influence the national government. "Their views on what is sound public policy tend to be the public attitude. And they tend to reflect their own needs." In other words, the goals of the technostructure become the goals of society because the people have been convinced through advertising that the goals of the large corporations are the best.

Environmental problems arise because economic growth is more important than preserving the environment. In his book, *The New Industrial State*, Galbraith says that the intellectual and scientific elite hold the promise of being able to limit the growth of the technostructure. He said that some

progress has been made in that direction since 1967. In speaking of the Democratic National Conventions of 1968 and 1972, he said, "In 1968 they (the Democratic Establishment) threw us out. In 1972 we threw them out. So you see, we are making some progress."

The intellectual and scientific elite must add aesthetic value to the operation of modern industry. According to Galbraith, "The truth is that the major age of reform is not behind, but ahead; and the great tasks of social reform. This will be marvelously contentious. We will all be saved from a dull life."

Out of the Watergate scandal Galbraith sees a benefit. It is that there will now be closer monitoring of campaign policies and expenditures.

freshman glee



65th annual glee dedicated to old gym

As we begin this trying journey leading to our separate goals
The weary travels lay before us upon the sea our fortune's flow
As breezes blow the waves around
Capturing the misty sounds
That frame the picture that we see
And save it for eternity.

Will we find our way?
And have our debts all paid
Can we get a start?
Well, if not, we all split apart,
We must all join our hands and walk together.

Once we've found our strength together the doors will all be open wide
And trust serve a key forever to let our sturdy crew inside
But more than this will be the many memories of our true bond
And so we will all live in truth Together and Beyond.

Will we find a way?
Have our debts all paid
Can we get a start?
Not if we split apart,
Is the passage clear?
Nothing we should fear
If we act as one together and Beyond.

--Words and Music by:
Gregg Capp

frosh frolic to fourth
class of '76 makes debut



Remember the innocence
 As a child long ago
 The world gave me encouragement
 But from that place life bid me go,
 And all the glory has seemed to leave
 My soul alone is left to grieve.

Since that time of happiness
 I've walked the dusty road
 The world drove me to maturity
 And I took up my load,
 But deep inside my heart resists
 I can't travel on like this.

**Cry your heart out
 There's nothing you can do**

People never really were
 Able to be true.

Life is just an emptiness
 Of solitary pain

You can try to find yourself
 But all you'll do will be in vain.

It's not man's fate to sell his soul
 But to strike out boldly and command the whole!

We have so much to love,
 We have so much to try,
 We have so much to give,
 So much to live,
 All of our lives,

So much to see,
 We have so high to climb,
 We have so much to be,
 One life to lead,
 With so little time.

Don't tell me!

Don't tell me!

Can't take it!

Someday you'll see what
 The struggle to live is for,
 There'll come a day
 When you'll think of this song,
 Wake up and look out
 And see what surrounds you,
 Better prepare for it won't be too long.

There's so much, so much of life ahead
 There'll be time, time, time,
 Enough for the rest of my life.
 So pick up your pace
 And strive for your rightful place!

There's a feeling, feeling down in my soul,
 And the time to raise my voice is now at hand,
 I feel the drive, to be alive,
 Determined I'll strive, to make my stand!

I never want to stop moving forward,
 I'll never need to look behind,
 Cause I can't live for memories,
 There's a lot more left to find.

There's so much to be attained,
 And still the Styx to cross,
 But first I'll weigh just what I've gained,
 And ponder what I've lost.

And when the sun shines,
 I'll be shining too.
 And I'll have another innocence,
 That will bring me life anew.

--Words and Music by:
 Stephen Sloan
 Mark Scranton

--Formation Leader:
 Leanne Elliott

class of '75
 relinquishes
 banner . . .
 places second



'class of
'74 place
third again

—Words and Music by:
Chris Culver
—Formation Leader:
Dale Sause
Mike McKiernan

We touch the light and airy sky, in the heavens high.
Upon a cloud of our dreams reaching out for what
may seem a reality
All we can do is

When does our journey end?
As the sun light softly bends.
It's warm and tender rays
Upon our lonely day,
Still we touch the clouds
And sing our song aloud,
A loud for all to hear
Of the dreams we bear.

Our hopes of dreams and peace
When do we learn to love
Love our brothers here above,
he earth so high among the clouds,
We touch the sun,

We shall not run,
And reach out for someone,
Someone to share among
The heavens our happy song.
Dreams that do belong,
Our dreams of hope and peace,
Dreams of hope and love.

We travel on and on
Together and Beyond
On this cloud of our dreams
For it seems there's no one,
That takes the time to share
With our dreams and cares.
So we travel on
Together and Beyond.

Dreams of hope,
Dreams of peace,
Dreams of love and harmony.

“up the ladder to the roof”
west, welty and class of '73
walk away with banner



I am on a journey, a sometimes lonely road,
Trav'lin, cross many oceans and deserts,
And with ev'ry step, I draw closer to my final destination,
Until I tread the valleys,
There are things that I don't know,
I see the sunlight behind the mountain,
And that's the place I must reach,
I'm climbing up the steepest mountain,
To the voice that is beckoning me;
To the place where one becomes we.

Right now I can't turn around,
To hear the stream tinkle a mile back,
No I can't turn around,
To tickle the love that made you laugh,
Right now I can't turn around,
To return to the joys of the past,
But I can't turn around,
To watch you grow.

There are no good-byes,
So let no tears enter your eyes,
Together we will always find,
The joy that made the love shine.

In the mixed feelings of exuberance,
On the discov'ry of this brand new life,
My tears fall, when I think of mine,
Then I more than realize,
Temporarily, ev'rything must end sometime.

Every winter, green leaves the trees,
Every spring, ice unvels what used to be,
Yes, ev'ry summer, snow fades to brown,
And ev'ry fall ends in silent sounds,
Then ev'ry winter begins again.

Every day a suckling child is born,
Every week he grows while mother adores her child,
Every year he makes friends to morn,
Every Memory when he's gone,
And ev'ry child is born again.

There are no good-byes,
So let no tears enter your eyes,
I'll be gone only a little while,
Then I'm comin' back to you,
To share with you sweet, sweet love.

Let's go party and be alive,
We've got time to make it last,
Cherish these few moments that we've got left,
Don't think of the past,
All the pleasures I've seen, you will see too,
All the joys I've known, I'll give to you.

Don't be afraid to give something new a try,
Experience we've learned soon teaches what's right,
Yes, There will be times when you won't want to carry on,
But just look our your window, even the rain has its song.

Looking ahead I see sunny days,
People working all together,
Letting love lead the way,
This is my soul and inspiration,
Ain't nothin' gonna stop us now,
Come to the Fantasy world, and see how it is!

And we'll love one another, this I know!
And we'll need one another, that's the way life goes,
Yes we'll see one another, wherever we go!
This I know.

There are no good-byes,
So let no tears enter your eyes,
Together we will always find,
The joy that made the love shine and, carry on,
This will give me strength, to carry on,
Without the ones I've depended on!

--Words and Music by:
John West
--Formation Leader:
John Welty

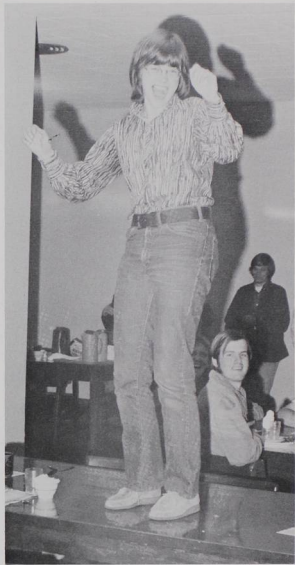


...and blue monday



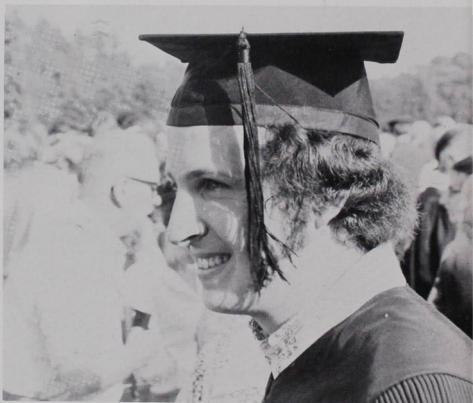
Blue Monday is the big payoff day for the winners of glee bets. Many strange sights are to be seen, Batman and Robin skipping to City Hall to ask if the police chief needs any help, a sophomore girl directs traffic in the middle of State St. while a senior plays a game of solitaire in the middle of the street, the annual food fight and jock race, and of course innumerable human sundaes.





fourth place
freshmen take an
icy stroll in
the 'ole mill stream

commencement

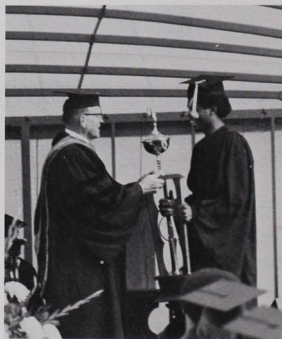
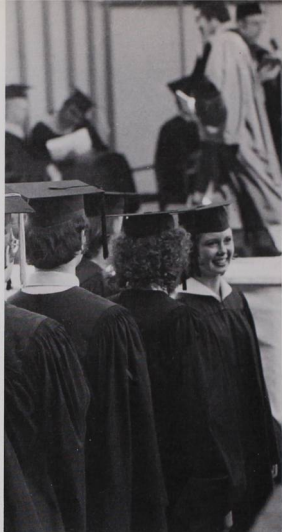




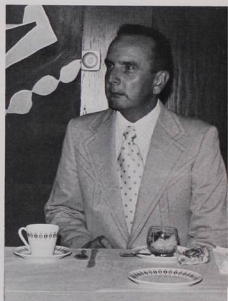
baccalaureate:
bishop jack tuell
delivers sermon;
seniors reprise
their glee winner
"there are no good byes"



commencement address from
u.o. president, dr. robert clark;
john west is presented
with schultze award



dr. e. jerry whipple, former
student affairs vice president
is honored guest of alumni

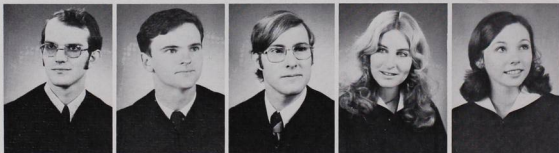


FIRST ROW

Ahlman, David Conrad BA, Fren
 Arzner, Cedran Gus BA, Hist/PE
 Bisho, Bryn Anne BA, Psyc/Soc
 Blair, Stephen Patrick BA, PolSc
 Bledsoe, Mark Stephen BA, Eng/Mus
 Boyer, Susan Lynn BA, PURG/PolSc
 Bozovich, Nicholas George BA, Econ
 Brenner, David Alan BA, Psyc
 Broughton, Mary Catherine BA, Psyc
 Brown, Diane Eleanor BA, Fren
 Buckley, Christine Marie BM, MusThrpy

SECOND ROW

Burge, Gail Ruth BA, Hist
 Carlson, Carol Arlene BA, Art
 Carrera, Deborah Anne BA, PolSc
 Carter, Patricia Louise BA, Biol
 Cherry, Henry Marvin BA, AmerSt.
 Choi, Jai Zoon BA, Math/Phys
 Conner, Lisa Clare BA, Engl
 Coston, Jacqueline BA, AmerSt
 Craine, Karl Eric BA, Econ
 Danielson, Dennis Carl BS, PE
 Dannen, Scot Daniel BS, PURG/PolSc

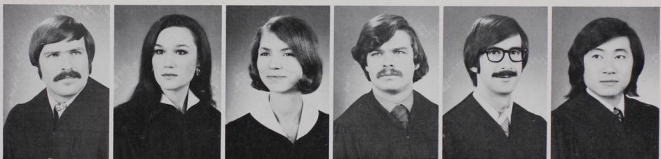
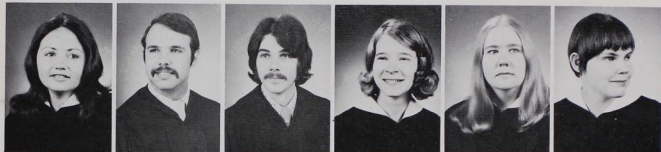


THIRD ROW

Delph, Sheldon Glen BA, Hist
 Dery, Richard Lawrence BA, Biol
 Dobson, John David BA, PolSc/Fren
 Dolezal, Kathryn Olyson BA, PE
 Dunlap, Donna Babette Hartig BA, AmerSt
 Ellibee, Gery Grant BA, PolSc
 Estep, Lynne Louise BA, Art
 Fischer, Faith Ann BA, PolSc
 Fewless, Bill
 Greenwood, Donald Lewis, Jr. BA, Econ
 Hanawa, Jun BA, Econ

FOURTH ROW

Hildreth, DeAnn Marie BA, Span
 Holloway, Curtis
 Hooper, Janice Lee BS, Soc
 Irving, D. Scott
 Jackson, Jay R. BA, PolSc
 Jeffers, Dwight, Edward BA, Soc
 Jenkins, Alan Cameron BA, Mus
 Junge, Rolf Albert BA, Hum
 Kenyon, Garnet Eileen BA, Engl
 Key, Granella Ruth BMED, MusEd
 Kiick, Mary Beth BA, Psyc

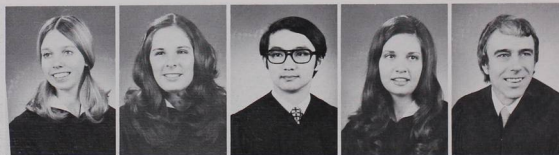
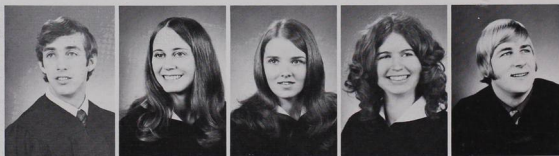
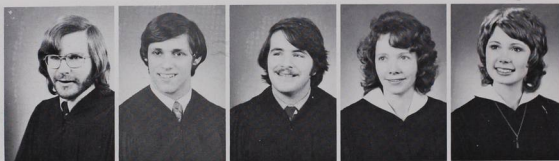


FIRST ROW

Klecker, Anita Nelly BA, Engl
 Kliewer, Jerald Edward BA, Biol
 Kraft, Joyce Ann BA, Art/Span
 Kruse, Jeffery Bruce BA, Econ
 Kuhn, Suzanne Barbara BA, Soc
 Lamb, James C. BA, PURG/PolSc
 Lamberson, Robert
 LeBrun, Suzanne BS, Hum
 Linnell, Bonny Kay BM, MusThrp
 Marshall, Charles Alan BS, PE
 McCormick, Donald Scott BA, PE/Hlth

SECOND ROW

Merkle, Chris Arnold BS, Phil/Eng/Hist
 Nathan, Barry Jay BA, Biol
 Newell, Donald Edward BS, Biol/EnvSc
 Nibler, Evelyn Carol Uhlenkott BS, Soc
 Nordlund, Heidi BA, Biol
 Orcutt, Mary Kathryn BMED, MusEd
 Ornellas, Debra Lynn BS, Soc
 Parker, Cheryl Leigh BA, Engl
 Parker, Leonard Carey BS, Phil
 Perkins, Kathryn Grace BA, Soc
 Phillips, Christopher Dunn BA, PolSc

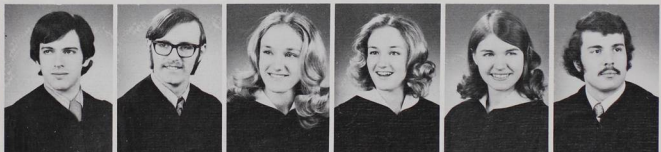
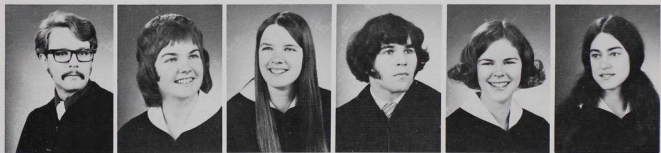
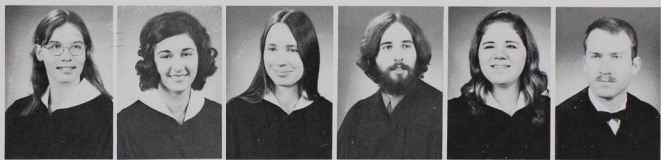


THIRD ROW

Pitts, Randolph James BA, Biol
 Pollock, Kathryn Marie BA, Soc
 Ranton, Sandra Louise BA, AmerSt/Soc
 Renzel, Mary Lucinda BA, PURG/PolSc
 Riegelmann, James Niel BA, PURG/PolSc
 Ritchie, Garry David BA, PURG/PolSc
 Roberts, Carol Ann BA, Rhet
 Rockwood, Margaret BA, AmerSt
 Rodgers, Gregory Boyd BA, Econ
 Sanford, Catherine Scott BA, AmerSt/Econ
 Schmidt, Helen Elizabeth BA, Biol

FOURTH ROW

Shellenberger, Allyn BA, Soc
 Shepperd, Rosemary BS, EnvSc
 Shibasaki, Eiichi BA, Econ
 Siegle, Peggy Jo BA, Soc
 Smith, Neil David BS, PolSc
 Sondheim, Robert Charles BA, PolSc
 Spain, Kyle David BA, Econ
 Staible, Jennie Lou BA, Art
 Staible, Julie Ann BA, Fren
 Steinmann, Tena Marie BA, Biol
 Stephenson, Guy Curtis BA, Hist



FIRST ROW

Stephenson, Irene Louise BA, Engl
 Stewart, Anne Marie BA, AmerSt
 Stiles, Bill
 Stocker, Daniel Webster BA, Math
 Taylor, Jeffrey William BA, PURG/PolSc

SECOND ROW

Thompson, John Oliver BA, Biol
 Tucker, Samuel Eaph BA, Phil
 Vandenberg, Kathryn Lynn BA, Biol
 Webber, Bruce BA, Biol
 Welty, Johnny Mack BA, AmerSt.
 West, John Arthur, Jr. BM, PianoPerf
 Williams, Clentis Keith
 Wilson, John Bruce BA, EnvSc
 Williams, Stephanie
 Young, Joann Frances BA, Biol
 Zanzot, Caryn Marie BA, Soc

THIRD ROW

Ziegler, Robert Holton Jr. BS. PURG/PolSc
 Zimmerman, Albert Howard BA, Chem



other seniors, not pictured

Alexander, Stephen Beals, BA, Psyc
 Allen, Denise Dorothy BA, AmerSt
 Alley, Patricia Christine BA, Engl
 Anderson, Robert Allen BS, Econ
 Anderson, Stuart BA, Soc
 Andrews, Deborah Jean BA, Soc
 Austin, Warren Edward BA, PolSc
 Ballou, David Lee BA, Econ
 Barr, Roger Wayne BS, AmerSt
 Barrett, Wendy Suzanne BA, Biol
 Bemis, Ronald Scott BA, PolSc
 Blachly, Elizabeth Gail BA, Chem/Engl
 Breunier, John Austin BA, PURG/PolSc
 Briggs, James Meyer BS, Psyc
 Bueltelman, Anne BS, Letters
 Bynon, George Edward, Jr. BA, Span
 Cady, Louise Marie BS AmerSt
 Capello, Donald BS, PE
 Cardiff, Chester Benny BS, Econ
 Church, Robert Dudley BA, Psyc
 Coleman, Michael Steven BA, Psyc
 Colvin, Raymond Reece BS, Soc
 Connell, Margaret Colvin BA, Soc
 Corcoran, Robert Charles BA, EnvSc
 Cousins, Ann Kellene BA, Soc
 Cunningham, Kathleen Ann BA, Hist
 Cuno, James Bash BA, Hist
 Curtis Suzanne Jean BS, PolSc/Rhet
 Custy, Mary Claire BA, PolSc
 Darling, Bruce Kirkland BA, Engl

Davis, William Warren BS, SocSc
 Diltz, Patricia Jean BA, Biol
 Drayton, Michelle Elizabeth BA, Fren
 Edwards, Kenneth Martin BA, Psyc
 Eldridge, Gregory Allen BA, AmerSt
 Erickson, Gary Michael BS, Biol
 Esler, Stanley Oran BMED, PubSchlMus
 Ettner, Larry William PURG/PolSc, BS
 Ferguson, Helen Courtenay BA, Mus
 Flagg, Anthony Jaye BS, Hist
 Freeman, George BA, Engl
 Furry, Steven Douglas BA, Phil
 Gilbert, Gregory Louis BS, Biol
 Given, Larry Paul BA, Hist
 Greenstreet, Leann BM, PiaPerf/Thy/Hist/Lit
 Grove, Daniel Kennedy BS, AmerSt
 Hagmann, Carol Ann BA, Art Hist
 Hall, Guy Lawrence BA, Soc
 Hall, John William BA, AmerSt
 Hall, Philip Merlin Harry BS, Hist
 Hanson, John Robert BA, Econ
 Heckel, Mary Ruth BA, Fren/Engl
 Hermens, Jeanne Marie BA, Math/Psyc
 Higgins, Roland William, Jr. BA, PEHlth
 Higley, Janet Elizabeth BA, Psyc
 Hildebrandt, Marc BA, Econ
 Hitchcock, Carolyn Dolly BS, Biol
 Hollen, Jeffrey Charles BA, Eng/Phil
 Judd, Marilyn Frances BS, Psyc



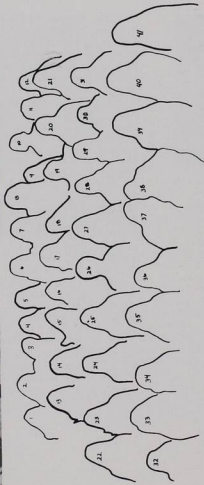
Osborne, Lyndon Anthony BS, AmerSt
 Packard, Robert Boodale, III BS, Psych
 Partridge, David McLellan BMED, MusEd
 Peet, Steven Gregory BA, Phys/Math
 Pelling, Rodney Mead BS, Hist
 Reedy, Karen Mae BA, Engl/Psych
 Reuter, Thomas Jeffery BA, PolSc
 Romine, Wanda Lou BS, Hum
 Ross, Gary Alan BA, Econ
 Ryan, John Robert BA, PolSc
 Scheller, Marie BS, Engl
 Schmor, Douglas Henry BA, PolSc
 Scott, Lee Ann BS, Hum
 Slikas, Teckla Ann BS, Soc
 Slocum, Robert Lee BA, Psych
 Sly, Richard Allen BS, Soc
 Stearns, Carol Lynn BA, Span
 Steen, David Ellis BA, Chem
 Stockdale, Randolph Bradley BA, Soc
 Stocker, Gary David BS, PE
 Stocker, Teri Nan BA, Engl
 Sweeney, Patrick Joseph BA, PolSc/Soc
 Thompson, Augusta Notdurft BA, Biol
 Tokola, Nancy Ann BA, AmerSt
 Tower, Paul Michael BS, AmerSt
 Turner, Gaynell Grace BS, Soc
 Ung, Sylvia Yuk Chun Soc, BA
 Wall, James Leonard BA, Hist
 Warren, Glen Paul BA, PolSc
 Webb, Geoffrey Lyman BA, Psych
 White Charles Andrew, BA, Econ
 Wight, David Edward BM, MusThy/Hist/Lit
 Woody, Judy, BA, Soc

Keller, Barbara Joan BS, EnvSc
 Kelsay, Michael Glenn BA, Phys
 Kennedy, Patrick John BS, Biol
 Kersh, Karol Wyatt BS, Hum/Phil
 Kuhns, Craig Alan BS, Hist
 Leighton, Wendy Jean BA, Hist
 Leong, Chris Sun BA, PE
 Lindsay, Michael Charles BA, PolSc
 Linvill, Christianna Offen BA, Soc
 Lockwood, Lawrence Boyce BS, Soc
 Lyles, Elaine Carol BA, Amerst
 MacLaren, Karen Ann BA, Fren
 MacLean, Beryl Annie-Jean BS, Thtr
 Mahle, Daniel Joseph BA, Amerst
 Mann, Julie Faye BA, PolSc
 Massae, Gordon Lee BA, InterSt
 Mattson, Diane BMED, MusEd
 Meece, Edward Burnham BA, PolSc
 Meyer, Kenneth Leo BS, Engl
 Morrison, James Kenneth BA, Envsc
 Myers, Stephen Franklin, BS, Econ
 Nelson, Philip Lovell BA, Econ
 Nystrom, Lynn Richard BS, SocSc



alpha chi omega

13. Nancy Newell
14. Nancy Harrig
15. Gail Hutter
16. Karen DeShon
17. Suzie Baer
18. Janet Brock
19. Heidi Allison
20. Betsy Clark
21. Karen Pollack
22. Francie Slane
23. Leslie Meehan
24. Candy Ringler
25. Teckla Slikas
26. Mrs. Falk
27. Jean Doving
28. Angie McClean
29. Lynn Sheehy
30. Kathy Pollack
31. Nancy Parish
32. Geri Ung
33. Marilyn Crockford
34. Sally Smithwick
35. Liz Hansen
36. Melissa Wye
37. Lynn Wolowicz
38. Diane McFedries
39. Gwen Sheehy
40. Merle Taira
41. Sylvie Ung



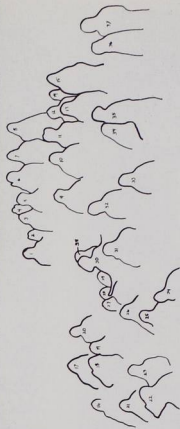
1. Becky Wiedeker
2. Kathy Gorman
3. Julie Shackelton
4. Linda Boyle
5. Urste Arzner
6. Gaynell Turner
7. Kathy Vandenberg
8. Bonnie Enloe
9. Lilli Mandelik
10. Bryn Bischo
11. Barb Helmick
12. Bron Eschell



alpha phi

1. Reneau Ufford
2. Patty Boardman
3. Rosemary Sheppard
4. Pam Johnson
5. Janet Voss
6. Sylvia Kaye
7. Liz Hunter
8. Sue Ramos
9. Barb Dauben
10. Katie Walwyn
11. Kathy Frey
12. Lillian Soltes
13. Patti Lalack
14. Gail Ross

15. Luke Renzel
16. Bev Iverson
17. Lezlee Pierce
18. Bonny Linnell
19. Susie Wiser
20. Barb Olson
21. Toni Cloud
22. Heidi Nordlund
23. Debbie Wolfe
24. Janine Kinter
25. Wendy Barrett
26. Sherry Witt
27. Lisa Stiskel
28. Carol Roberts



29. Joann Young
30. Kay Barckley
31. Beth Turner
32. Sue Lamb
33. Mom Calder

34. Kit Concannon
35. Barb Taft
36. Dolores Hammill
37. Peggy Rockwood
38. Sandy Kusumoto



baxter hall



1. Ken Jorgenson
2. Bill Reeves
3. Steve France
4. Rob Rothe
5. Jim Kopel
6. John Morris
7. John Holmes
8. Brian Sund
9. Jane McCallum
10. Eric Shoberg
11. Rich Bullock
12. Mindy Gray
13. Tom Wilson
14. Maggie Willy

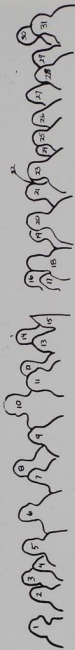
15. Doug Kays
16. Mark Wustenberg
17. Pete Donohoe
18. Jim Hilton
19. Greg Schwind
20. Mark Banks
21. James Joy
22. Mike Haley
23. Barb Gill
24. Grant Howe
25. Susie Hytholt
26. Ron Saxton
27. Leslie Hall
28. Janice Wilson

29. Shelly Vinson
30. ?
31. Mark Marabella
32. Rocky Higgins
33. Pat Garvey
34. Mike Eray
35. Peter Won
36. Jeannie McKewan
37. Jeffrey Bain
38. Lisa Geary
39. Rodney Bayne
40. Alan Montrose
41. Dianne Enright
42. Bob Payne

43. Ann Pendergrass
44. Brian Laurance
45. Jim De Jarnette
46. Rick Rosenbloom
47. Wayne Larsen
48. Linda Schneider
49. Paul Anderson
50. Glenda Anderson
51. Chris Leong
52. Jain Buelteman



belknap hall



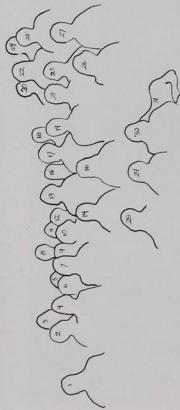
1. Brenda Jones
2. Wendy Green
3. Rod Purdy
4. Aral Hagerup
5. Tim Bunger
6. Brad Sherman
7. Haruhiko Mikami
8. Mark Spady
9. Eiichi Shibasaki
10. Paul James
11. Joyce Jones
12. Stan Williams
13. Carol Leber

14. Chris Culver
15. Mary Adams
16. Mabou
17. Laurie Jones
18. Leatrice Ogletree
19. Mark Dunn
20. Mike Navares
21. Dave Ball
22. Linde Christenson
23. Rich Ortogero

24. Leah VanNatta
25. Mark Baum
26. Willa Heyde
27. Betty Poulton
28. Chris Henry
29. Marilyn Halstead
30. Bill Breithaup
31. Dave Whitaker
32. Peggy Traugber
33. Sara Jackinsky



beta theta pi



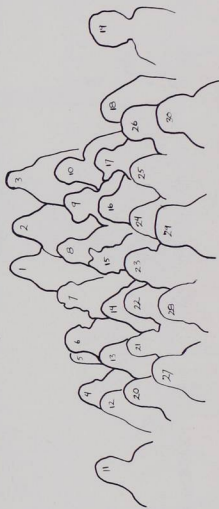
1. Timothy C. Hawkins
2. Nicholas Bokides
3. Lyndon Osbourne
4. Thomas Bailey
5. Jeffery Jones
6. Robert Hall
7. Phillip Biege
8. Eric Banks
9. Barry Grieg
10. John Carroll
11. Charles Sorenson
12. Edward Shuck

13. Thomas Knutson
14. John Hanson
15. Gregory Humnicutt
16. Robert Hunter
17. Michael Shaver
18. Harold Browning
19. Barron DeLacy
20. John Pearson
21. Michael Ivie
22. Denis Fast
23. Martin Stone
24. Dennis Miller
25. Carl Cottingham
26. Larry Webster
27. Benjamin Freudenberg
28. Leland Morris
29. George Horning
30. Charles Gall
31. Richard Hoss

1. Julie Nelson
2. Kathy McGowan
3. Linda Boyer
4. Carla Buff
5. Linda Rhodes
6. Leslie Taggesell
7. Kathy Lantz
8. Pam Bertrand
9. Anne Hueliskamp
10. Marsha Adams
11. Elaine Lyles
12. Donna Mori
13. Karen Muldoon
14. Ginny Brown
15. Kris Kiely
17. Diane Osgood
18. Peggy Louis
19. Barb Keller
20. Sandi Ramton
21. Debbie Andrews
22. Nancy Tokola
23. Anne Stewart
24. Sue Kuhn
25. Lee Scott
26. Carolyn Hitchcock
27. Martha Argust
28. Karla Birchfield
29. Debbie Hewitt
30. Leslie Bradshaw



delta gamma





delta tau delta

1. Glen Walker
2. Gwynn Aldrich
3. John Sunofsky
4. Art Geary
5. Jay Jackson
6. Kent McKenzie
7. Dave Cook
8. Rich Elliot
9. Mike McKiernan
10. Dave Jory
11. Bob Packard
12. Jim West
13. Greg Rodgers



14. Stu Bond
15. Brad Boyden
16. Morn Spangler
17. Bob Hansen
18. Mike Kennedy
19. Dave Nall
20. Chatrachai Vongthongsri
21. Gerry Sheehan
22. Mike Knight
23. Chauncey Wong-Yuen
24. Doug Lepper
25. Ward Carlson



kappa sigma



1. Karl Craine
2. Jerry Stewart
3. Andy Morrow
4. Ron Bemis
5. Eric Yandell
6. Andy Wist
7. Paul Baumer
8. George Dunford
9. Terry Plummer
10. Rob LeChevallier
11. Mark Bledsoe
12. Wayne Price
13. Mike Gray
14. Kyle Spain
15. Dave Garrison
16. Dave Merrifield
17. Chris Lundberg
18. John Welty
19. Randy Winans
20. Mike Young
21. Steve Swart
22. Robert Stenvick

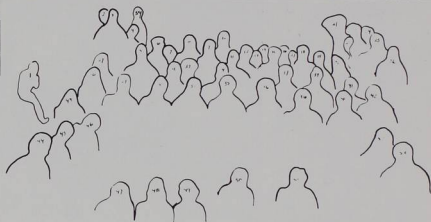


23. Judy Halstead
24. Rocky Hamman
25. Gus Arzner
26. Jay Jamison
27. David Ahlman
28. Captain Crunch
29. Bobby Sondheim
30. Bob Wells
31. Chris (Goose) Phillips
32. Steve Scott
33. Hunter
34. Don Barckley
35. Don (Old Man) Greenwood
36. Dave Price

37. Don (Schnookums) Koster
38. Chuck Reed



lausanne hall



1. Gordon Walker
2. Dan Neiderer
3. Steve Rosewall
4. Ed Blatter
5. Dave Merrifield
6. Kim Godfrey
8. Charlie Middleton
9. Craig Rice
10. Jay Nickel
11. Mike Nygaard
12. Mark Robbins
13. Dave Houston
14. Dave Lambert
15. Bill Cortez
17. Gary Barber
18. George Keele
19. Jeff Wells
20. Don Flinn

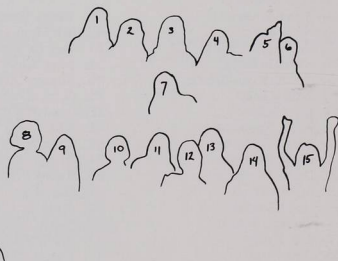
21. Terry Cato
22. Bill Uyesugi
23. Joel Cannon
24. Mike Loy
25. Lester Stannis
26. Scott Allen
27. Brad Wells
28. Kim Cox
31. Eric Amis
34. Dwight Sims
35. Robert Crawfis
37. Dan Alex
39. Mark Scranton
40. Mike Treleaven
41. Rich Whitlock
42. Larry Allen

43. Tom Shea
44. Jim Smith
45. Dave Roberts
46. Brad King
47. Dan Ivy
48. Steve Stoyhoff
50. Greg Hooper
51. Jack Bailey
52. Brian Booth
53. Lance Kahawai
54. Jeff Jones

1. Glenda Jackson
2. Diana Cafal
3. Joyce Schaefli
4. Marilyn Morrow
5. Nancy Harvey
6. Denise Marston
7. Kit Concannon
8. Janet Palmer
9. Liz Hancock
10. Holly Brown
11. Gail Hutter
12. Sibil Jarrett
13. Susan Naumes
14. Sumita deLemos
15. April Gormsen
16. Edith Lavis
17. Marva Thomas



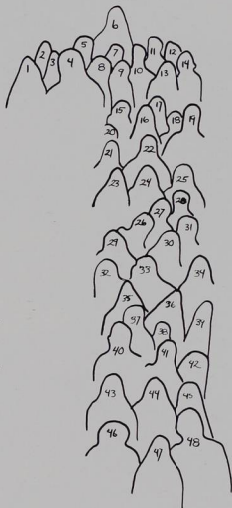
lucy anna
lee house



matthews hall

1. Debbie Morgan
2. Eric Stoltz
3. Sue Koenig
4. Burr Henly
5. Chuck Wiley
6. Whitey Whiteford
7. Del Jones
8. Masatoshi Suzuki
9. Stuart Ganzer
10. Evan Tausch
11. Robert Mousseau
12. David Pun
13. Connie Ross
14. Jeff Ives
15. Jane Buelteman
16. Mopsy Gardner
17. Lisa Geary
18. Bill Skinner
19. Bob Claunch
20. Lynn Ramsey

21. Jill Peterson
22. Paul Ellis
23. Linda Peterson
24. Donna Wallace
25. Bruce Stanton
26. Browyn Kest
27. John Morgan
28. David Bartoldus
29. Jeff Thom
30. Sue Swenson
31. David Coppock
32. Kris Jensen
33. Peggy Roesch
34. Laurie Holliday
35. Sumita deLemos
36. Linda King
37. Judy Olson
38. Chris Buckley
39. Cindy Bradshaw
40. Van Maguire
41. Deborah Tompary
42. Carol Samuel
43. Carolyn Conner
44. Mary Lynn Baxter
45. Marilyn Johnston
46. Sam Tucker
47. Tami Patterson
48. Sean Kennedy



1. Dick Tienkaara
2. Bill Workman
3. Scott Swain
4. Bill Stiles
5. Paul Turner
6. Pete Dickson
7. John Bruce
8. Jack Gordon
9. Larry Wiemiller
10. Joe Rubenstein
11. Rich Scrivener
12. Steve Schwab
13. John Watson
14. Jay Moore
15. Doug Brittingham
16. Mick Erb
17. Dirk Stengler
18. Fetus LaRue
19. Chuck Marshall
20. Ron Rosenberg
21. Jeff Kruse
22. Dwight Jeffers
23. Gregg Capp
24. Steve Stoyloff
25. Pat Sweeney
26. Bruce Webber
27. Ethan Tomokeyo
28. Mike Batlan
29. Ray Ono
30. John Ryan
31. Rick Ikeda
32. John Cronkrite
33. George Mead
34. Wilfred Okabe
35. Steve Turner
36. Stan Ohtnaka



phi delta theta





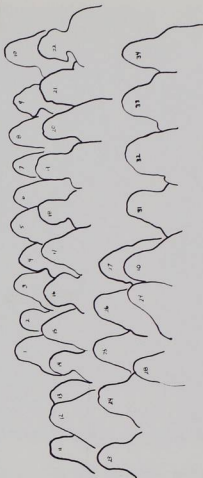
pi beta phi

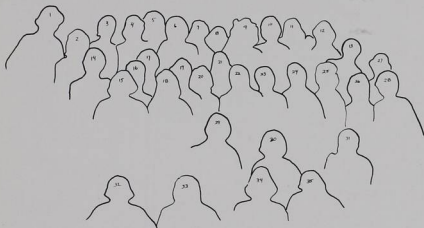
1. Tara O'Keefe
2. Marcella Gruenberg
3. Carol Hagmann
4. Judy Woody
5. Salley Allen
6. Kitty Edwards
7. Kate Granston
8. Caryn Zanzot
9. Kathy Broughton
10. Leann Elliott
11. Lois Earwood
12. Karen Judge

13. Jennie Staible
14. Melissa Veroske
15. Sue Spezza
16. Marilyn Judd
17. Debbie Lamb
18. Stephanie Hare
19. Joan Whipple
20. Mary Schuler
21. Michelle Thornberg
22. Julie Staible
23. Allyn Shellenberger
24. Kim Witte

25. Karen Reedy
26. Jenni Rates
27. Beth Carlson
28. Ann Rhodes
29. Sally Smith

30. Sarah Stewart
31. Heidi Bokides
32. Lynn Harris
33. Ann Lindbeck
34. Martha Tucker



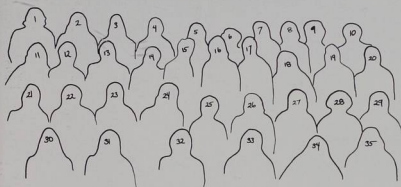


sigma alpha epsilon

1. Mike Smith
2. Steve Noac
3. Mike Wilson
4. Dave Reese
5. Jeff Walter
6. Steve Demarest
7. Brian Perko
8. Mike Walters
9. Paul Sorenson

10. Scott King
11. Don Johnson
12. Jeff Pittman
13. Mark Long
14. Jeff Hook
15. Jim Watson
16. Ron Yann
17. John West
18. Scott Nicholson

19. Scott Small
20. Scott DeWeese
21. Steve Dahlem
22. Chuck Best
23. Dave Bixby
24. Todd Neary
25. Ray Colvin
26. Keith Igarashi
27. Barry Nathan
28. Kevan Gross
29. Mom Hermann
30. Dave Pyle
31. Tom Woodworth
32. Ed Whipple
33. Paul Hoerr
34. Paul Saucy
35. Dwight McFadden



25. Mrs. Vera Sharp
26. Kurt Hafferkamp
27. Tony Lipold
28. Brad Victor
29. Sidney Zeller
30. Jeff Judy
31. Bill Iammatteo
32. Jeff Krug
33. Brad Sutphin
34. Mark Hansen
35. Bill Cameron

sigma chi

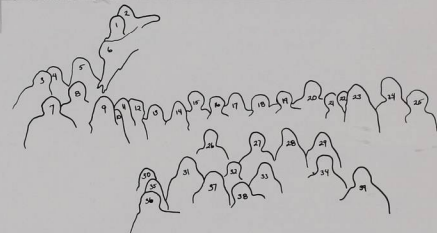
- | | |
|---------------------|----------------------|
| 1. Dave Ganahl | 13. Bill Mooney |
| 2. John Giguere | 14. Jim Weatherby |
| 3. Leonard Anderson | 15. Mark Hildebrandt |
| 4. Greg Thede | 16. John Shreck |
| 5. Rich Hill | 17. Mike Coleman |
| 6. Mark Genna | 18. Jim Briggs |
| 7. Rick Bowman | 19. Chuck White |
| 8. Steve Myers | 20. Bill Williams |
| 9. Dan Percich | 21. Todd York |
| 10. Darrell Carter | 22. Addison Sessions |
| 11. Darrell Roy | 23. Roger Cutting |
| 12. Rick Gardner | 24. Greg Smith |



w.i.s.h. house

(willamette international studies)

1. Anne Opitz
2. Diane Martin
3. Jorg Frey
4. Mary Heckel
5. Joyce Kraft
6. Dean Buhler
7. Steve Sloan
8. Prof. Bercynski
9. Joann Sprogis
10. Beth Dahl
11. Lisa Zimmerman
12. Peter Kincart
13. Betsy Welling
14. Bev Koch
15. Craig DeSelms
16. Tony Gomez
17. Terri Vestal

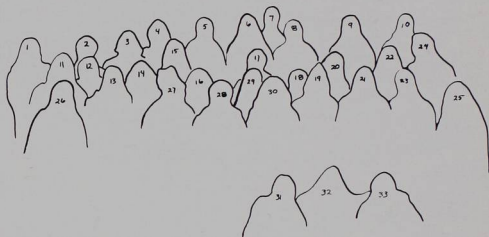


18. Lynne Mitchell
19. Steve Reinisch
20. Bill Olson
21. Sherry Hudgins
22. Maggie Mills
23. Anne Buelteman
24. Evelyn Miller
25. Kaye
26. Dee Miller
27. Karl March
28. Margie Williams

29. Terri Berg
30. Patti Campbell
31. Becky Michaels
32. Georges Blajewski
33. Karen Anderson
34. Sergei Matusiewicz
35. Suzanne McLintick
36. Mickey Shegogue
37. Yvon Charles
38. Gene Crutsinger
39. Prof. Raul Casillas



emily j. york house



1. Cindy Moore
2. Faith Fisher
3. Janet Hanaford
4. Laura Rogers
5. Carol Forrest
6. Sara Bell
7. Gretchen Coburn
8. Judy Lang
9. Mary Orcutt
10. Helen Ferguson
11. Kathy Sulaver
12. Karen McLaren
13. Deidre Erickson
14. Cheryl Holbrook
15. Kay Dolezal
16. Sue Stevens
17. Karen Gozinsky
18. Jeri Wall
19. Michelle Farmer
20. Kerri Hakoda
21. Renee Spagnola
22. Valerie Thompson
23. Lenora Brady

24. Melissa Turner
25. Gail Burge
26. Emily Yano
27. Becky Rowe
28. Mary Kammer
29. Sigrid Lund
30. Julie Adams
31. Sue Gamble
32. Kathryn Tryck
33. Lynn Crosett



production staff

mitzi chalmers, editor

patti lalack, assistant editor

debbie carrera, copy editor

john morris, photo editor

Special thanks go to:
the COLLEGIAN staff for their
reviews, interviews and other
information;
the entire darkroom staff and
manager Wayne Balsiger;
Dr. Wright Cowger for his
title and credits pages photos;
Willa Heyde, composition
manager, for Glee lyrics;
and the Publicity Office for
the cover concept.

1111

1111

1111

THIS BOOK DOES
NOT LEAVE
THE LIBRARY

